



THE MULESHOE JOURNAL

'The Community of Opportunity-Where Water Makes the Difference'

Weather

	HIGH	LOW	PREC.
October 14	62	46	.14
October 15	54	33	.16
October 16	62	32	

Vol. 52

No. 42

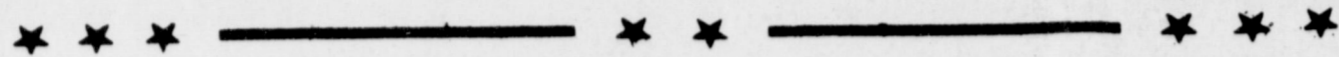
10 Pages

Published Every Thursday at Muleshoe, Bailey County, Texas 79347

10 CENTS

Thursday, October 17, 1974

First Heavy Frost Hits Area Tuesday



Viviendas Cuauhtemoc Signs RHA Contract

Viviendas Cuauhtemoc, Inc., a non-profit corporation formed for the purpose of improving the housing conditions of low income individuals and families in the area, at their monthly meeting on October 8, the board of directors approved and signed an eight month contract with the Rural Housing Alliance (RHA) of Washington, D.C.

The contract provides for a grant to be utilized in the administration of a self help housing project, a rural rental hous-

ing project and a limited home repair project.

RHA receives its funds from the Migrant Division of the U.S. Department of Labor and then delegates those funds to a number of housing programs across the country which are designed to assist low income farmworkers. Viviendas Cuauhtemoc, Inc. is the newest of RHA's delegate agencies.

In order to carry out the goals of the contract, the Board of Directors is employing a six member staff. One of the most immediate tasks of that staff will be to organize a self help project in Muleshoe.

There is now being formed a group of families who will be willing to work together, under the direction of a construction supervisor, to build their own homes. With the assistance of a group worker, each family will apply for a low interest, 33 year housing loan from the Farmers Home Administration. The successful applicants will utilize the low funds to purchase the property, the building materials and the subcontracted services which they need. The homes will be moderate, basic and fairly simple to construct. By investing their own time and labor, the families will gain both equity in their homes and pride in their accomplishments.

Similar self help efforts have been successful in Florida, Alabama, Mississippi, Ohio, Michigan, Missouri, California and other states.

In addition to the self help project, the corporation will take the steps necessary to

Cont. on Page 3, col. 1

Muleshoe

Jaycees Have Noon Meeting

The Muleshoe Jaycees met Monday, October 14, for their noon general membership meeting, with the president, Charles Moraw, presiding. Invocation was given by Gene McGuire, the Pledge of Allegiance was led by Bob Finney and the Jaycee creed was led by Hugh Young.

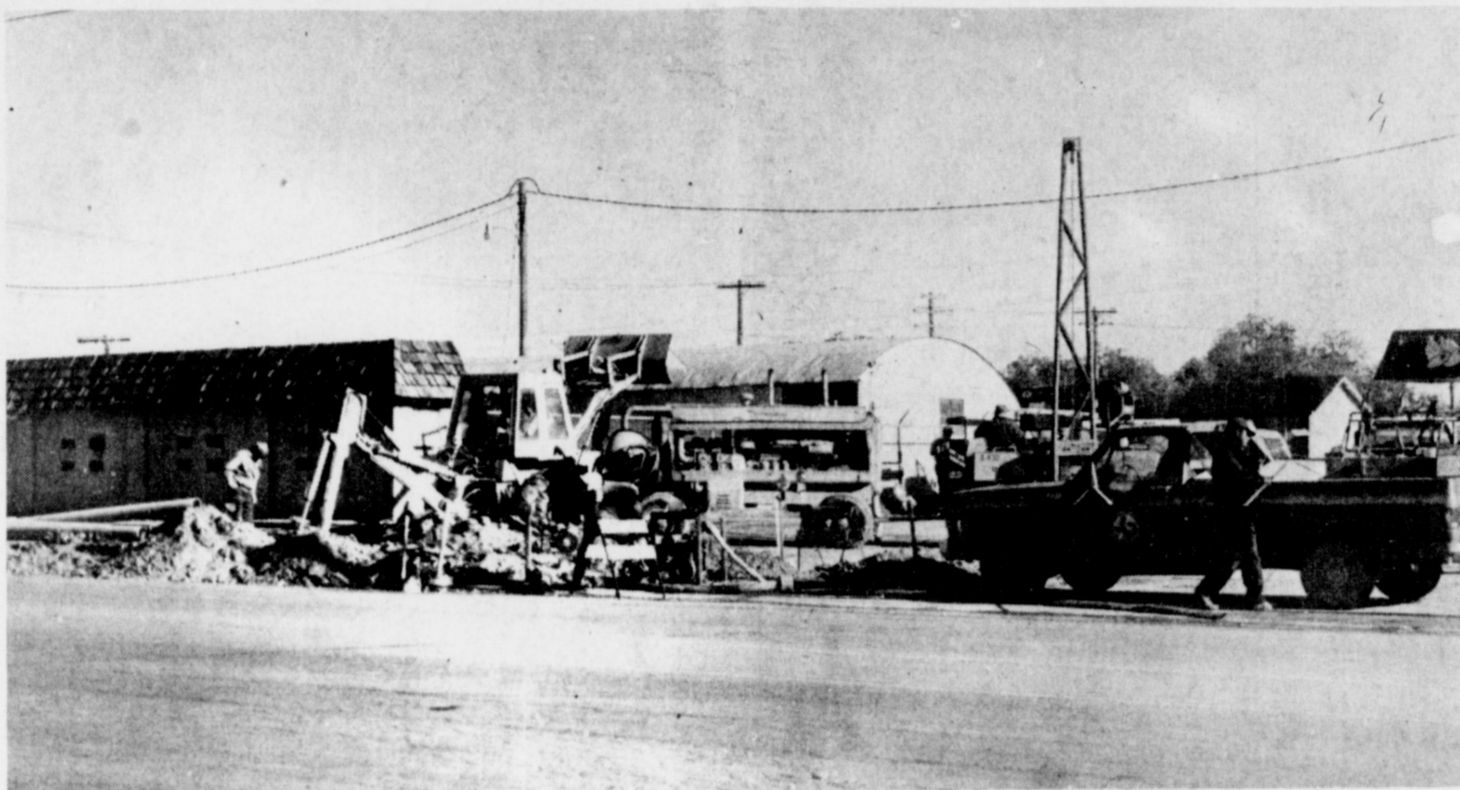
Dr. Gary Albertson was a guest of the Jaycees.

The Jaycees discussed the special called meeting which was held Tuesday night at the City Hall.

A discussion of the increase in the price of the meals was lengthy.

James Brown presented a program on Orientation for all new members as well as old members to explain the Leadership In Action program and

Cont. on Page 3, col. 2



UTILITY LINES RELOCATED ... Motorists through Muleshoe this week are noticing some confusion along U.S. Highway 84 as water and utility lines are being relocated. The lines are being moved as a part of the widening of the highway through

Muleshoe. After the completion of the relocation projects, plans can be completed for the widening project and bids will be let on the construction.

School Board Hears Enrollment Reports

The Muleshoe Independent School Board of Trustees met Monday evening, October 14, for their regular meeting.

The board heard the current financial report and heard the tax collection report which showed that 14,46 per cent of current taxes have been collected since October 1.

The preliminary application of Foundation Funds for 1974-75 that was received from the Texas Education Agency was approved.

The board heard, studied and approved the Audit Report for 1973-74 fiscal year that was presented by Don Williams of the firm Williams, Faver, Sudduth and Co. A summary of the comparison of official budget with expenditures will be published later.

The current enrollment report, average daily attendance report, race survey report by grades, withdrawals and re-entry reports were also heard by the board.

The enrollment as of October 11 was down from 1928 to 1893. This is 35 less students from last year. The average daily attendance for the first six weeks period was down 45 from last year.

During the first six weeks period there were 23 less withdrawals and re-entry of students. This dropped from 98 to 75 students.

At the end of the first six weeks period there were 1890 students enrolled, of these, 3.8 percent were Negro; 39.9 percent were Mexican-American; and 56.3 per cent were Anglo.

The board reviewed the following required reports that have been made since the beginning of school last August:

Title VI Compliance Report, H.E.W. Civil Rights; Civil Rights Survey Campus, Supplement 1 and 2; Survey of Bilingual Education needs, T.E.A.; T.E.A. Professional Personnel Assignment, P.P.A.

Inflation Is Good, Bad For Agriculture

"Inflation has both beneficial and harmful effects on agriculture," says Dr. Wayne Hayenga, economist for the Texas Agricultural Extension Service.

One of the beneficial effects is that of rising land values. "The value of Texas farm and ranch land doubled from 1966 to 1973, which is an increase of over 10 per cent compounded annually," notes the economist.

On the other hand, one of the harmful effects of inflation is the fact that production costs continue to increase.

"The estimates are that all production costs for agriculture have increased 25 per cent during the past year," points out Hayenga. "This includes an 80 per cent increase in fertilizer prices, 50 per cent increase in fuel and baling wire costs, and a 30 per cent increase in herbicide and insecticide costs."

According to Hayenga, inflation also affects the demand for agricultural products.

"We can expect an increased demand for lower cost food products and those requiring less processing and a lowered demand for higher costs, highly processed products, as inflation continues to affect the purchasing power of consumers."

"Yet, inflation will not affect agriculture to the same extent and in the same time period that it affects other industries," says the Texas A&M University System economist. "On a year to year basis, pri-

Supplement Report and T.E.A. Transportation Race Survey; Preliminary Application of Foundation Funds; Campus Organization and Principal Assignment Report; supporting information to Final Application and School Calendar Report; Student Transfer, Race Survey; Free Lunch Survey; and T.E.A. Finance Division, Roster of Professional Personnel.

The board reviewed and discussed the "Plan A" Special Education. This is a state program that will be required to be implemented by 1976. No action was taken on this matter.

The report on Adult Night Classes was heard. At the present time there are 12 enrolled in Freshman English; 13 in American History; 13 in

General Psychology; 20 in Basic Accounting and 12 in Art. Adult Education classes held on the Junior High Campus show an enrollment of 12 in Level I, eight in Level II, 12 in Level III; and 16 in G.E.D. for a total of 48.

The Texas Association of School Boards and the Texas Association of School Ad-

ministrators met in Muleshoe Tuesday evening, October 15, in the City Council Chambers at City Hall. President Charles Moraw called the meeting to order. Gene McGuire gave the invocation and Bob Finney led the Pledge of Allegiance. The Jaycee Creed was led by Ken Ferguson.

Guests included Louis Pacheco and Sandy Hernandez, of Muleshoe and Jerry Taylor, Roy Luper, Eddy Akin, Jimmy Stuard, Jim St. Clair, Charles Morina, Ed Pruitt, Mike Abbe and Willie Cheek, all of Morton.

Members present were Bill Dale, State Vice President of Region 1-14, Ted Barnhill, Larry Gore, Danny Guzman, Roy Halsell, Ken Ferguson, Jeff Smith, James Brown, Bob Addison, Gene McGuire, Jerry Wenmohs, Royce Harris, Butch Duncan, Charles Moraw, Monty Dollar,

Bob Finney and Hugh Young. Butch Duncan reported on the Area IA Convention held October 11, 12 and 13 in Perryton. Mr. and Mrs. Charles Moraw and Mr. and Mrs. Butch Duncan attended.

At the convention, the Muleshoe Jaycees won two first place trophies. They won one for the best ROC External and one for the best ROC Internal.

Monty Dollar reported on the Sandhill Crane Hunt which will be held three consecutive weekends starting on October 26. The hunt will be by reservation only so anyone who plans to attend should call in their reservations.

Bob Addison reported on the Regional Visitation and also reported on a Jaycee office that is being set up in Muleshoe.

Temperature Falls To 33 Early Tuesday

Frosty white lawns and windshields greeted local citizens as they arose early Tuesday morning as Muleshoe recorded its first frost of the season.

Coming after a day of rain, drizzle and cloudy skies, it seemed as if winter had already set in, but by Monday afternoon late, skies were clearing and heavy frost fell Tuesday morning.

Farmers were out early Tuesday checking crops for damages after the heavy frost while others who left cars out of garages were scraping ice.

The official low temperature

in Muleshoe Tuesday morning was 33 degrees.

Most farmers could not tell Tuesday whether or not the frost was heavy enough to do major damage, but it was a general opinion that the frost did not hurt the cotton. The tomato crops were probably hurt the most as a lot of tomatoes will have to be culled. Other tender vegetable crops were also damaged by the frost.

The tomatoes to the northeast of town seemed to be hit much harder than those to the southwest of town in the West Camp area.

Cont. on Page 3, col. 1

Mary Whitson Wins Weekly Grid Contest

Another weekend of upsets in College Football this week attributed to local entries missing a number of games this week in the weekly football contest.

The Pennsylvania-Cornell game which ended in a tie, contributed to each entry missing at least one game.

Mary Whitson was the big winner this week, missing only three games, the tie game, Brigham-Young and Wyoming and Texas and Oklahoma.

Mrs. Whitson was off 20 points on the two tiebreakers. She will receive 10 points in the contest and \$5.

Second place this week went to W.E. English who also missed three games. He was off 33

points on the tiebreakers and will receive \$3 and six points in the contest.

Hugh Young, who won first place last week, won third place this week, missing three games also. He was off 36 points on the tiebreakers.

Others just missing three games were Mary Sweetman, off 40 points; Pasty Lucero, off 36 points; J.E. McVicker, off 48 points; and Sanford Gilbreath, off 53 points.

Hugh Young now takes the lead in the contest. His third place win this week added to his first place win last week, giving him a total of 14 points in the contest.

Danny Waggoner is in second place with 12 points on two second place wins.

Those with 10 points in the contest are Mike Perez, Randy Waggoner, Millie May, Hoby Hawkins and Mary Whitson.

The winner of the contest will receive two tickets to the Cotton Bowl game in Dallas and \$50 in cash.

Blackman, Moore Named To Committee

In a meeting of the board of directors for the South Plains Association of Governments in Lubbock on October 8, a 36 member Regional Advisory Committee on Aging was announced.

John F. Blackman of Bula and W.D. Moore of Muleshoe were among those named.

This committee, made up of representatives from each of the 15 counties in the South Plains Region and from some social agencies, will meet as

Cont. on Page 3, col. 2

around muleshoe with the journal staff

Chad Griswold the son of Mr. and Mrs. Dale Griswold returned home Saturday from the Galveston Shriners Burn Hospital. It was reported that the doctors said his was the fastest recovery they had ever seen and everything went fine. Chad will return November 26 for a check-up. When he got home Saturday they celebrated his birthday which was September 26 but he could not celebrate it because he was in the Lubbock Hospital at the time.

Kenneth Powell is home from the hospital and is reported as doing real fine. He is on crutches from injuries which he receive in an airplane crash.

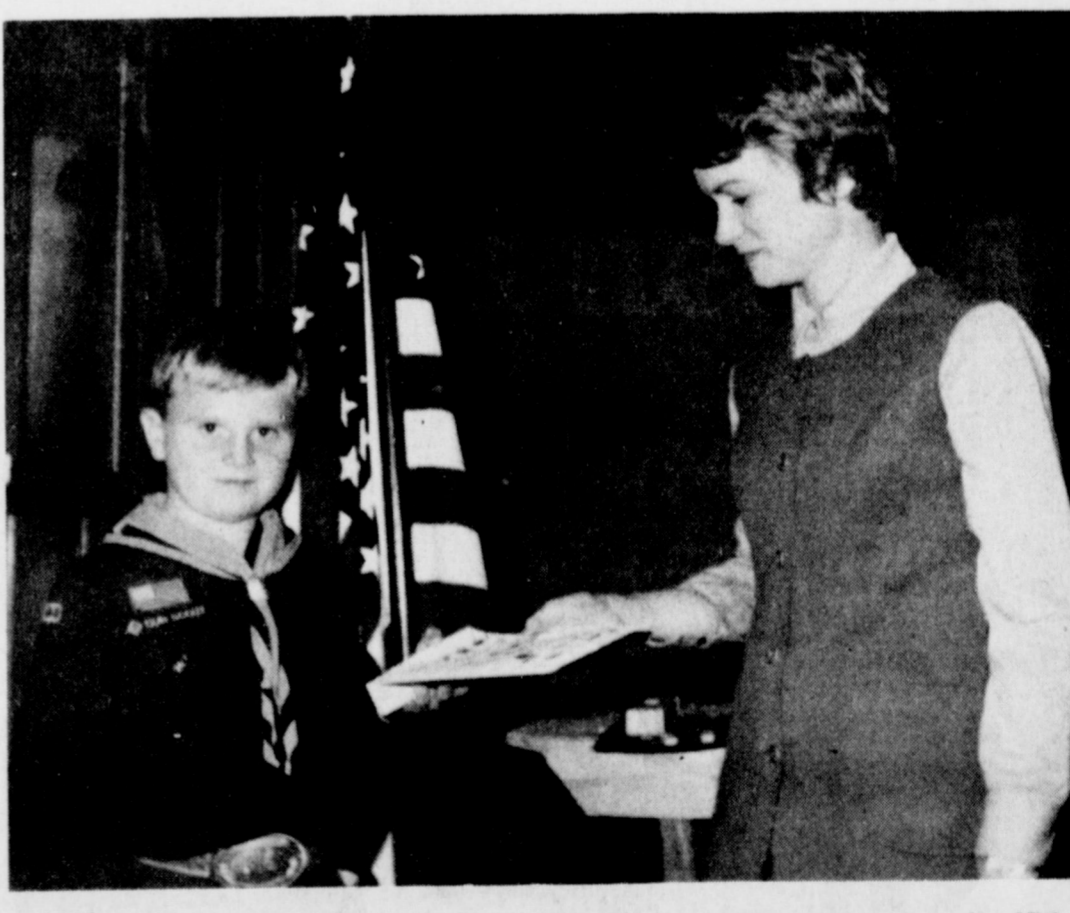
Mrs. Fred Payne and her daughters Julie and Jennifer from Amarillo and Mrs. Mack Hall and daughter Tuana from Ft. Worth visited in the home of Mr. and Mrs. Bill Miller this past weekend. Mrs. Mack Hall also visited her other relatives Mr. and Mrs. E.H. Hall.

Mr. and Mrs. Paul Poyner returned Sunday from a trip to Hawaii. They left October 6 and enjoyed a week of relaxation and fun. They visited the island of Hawaii and surrounding areas. It was an all expense paid trip they won for selling appliances.

Mrs. Corda Taylor returned home Monday after visiting five weeks with her daughter and son-in-law, Mr. and Mrs. Cecil Osborne, Jr. in Milpitas, Calif. She saw many interesting things which included San Quentin State Prison, the Oakland Bay Bridge, The Golden Gate Bridge in San Francisco and Fisherman's Wharf. She also toured the Golden Gate Baptist Theological Seminary in Mel Valley, Calif. where Cecil and Mrs. Taylor's grandson Ronnie Somers and his wife, formerly Linda Osborne are attending the seminary. She also visited her sister-in-law and her husband Mr. and Mrs. Woodrow Copland in Coulterville.



FIRST DOLLAR OF PROFIT ... Dick Kelton, owner of Kelton Electric, was presented a First Dollar of Profit plaque by Chamber of Commerce Manager Tommy Black Monday. Kelton's Electric is located at 2410 West American Blvd. in Muleshoe. The Chamber presents these plaques to new businesses in Muleshoe and also extends best wishes to Kelton on his new business in Muleshoe.



SCOUTS SELLING TICKETS. ... Mrs. Ronald Young is shown presenting Michael Barrett with his Scout-O-Rama Ticket Sales Kit. The Scout-O-Rama will be held on Saturday, November 16, in Levelland. Scouts will be selling tickets for \$1.00 each. Each scout will be working for individual prizes as well as money to help run their packs in Muleshoe. Michael is the son of Mr. and Mrs. Ricky Barrett of Muleshoe.

School Lunch Week Being Observed

National School Lunch Week, an annual celebration recognizing the National School Lunch Program, is set for October 13-19.

The week, as proclaimed by President Ford, is to recognize this program that provides nutritious and well-balanced meals to more than 26 million children across the nation.

This U.S. Department of Agriculture program is in its 28th year of operation.

In Texas last year about 1,387,000 students in more than 5,000 schools ate the school lunch daily.

Recent national goals of the National School Lunch Program include extending the program's benefits to schools that do not

Cont. on Page 3, col. 5

PIGGLY WIGGLY

We Welcome Food Stamp Customers

STORE HOURS 8AM-10PM DAILY 9AM-9PM SUNDAYS

Prices Good Thru Oct. 20, 1974. We reserve the right to limit quantities. None sold to dealers.



We Welcome Federal Food Stamp Customers

USDA Good Heavy Aged Beef

Sirloin Steak

\$1.19
Lb.



USDA Good Heavy Aged Beef, Bone In

Rib Steak

\$1.19
Lb.

USDA Good Heavy Aged Beef

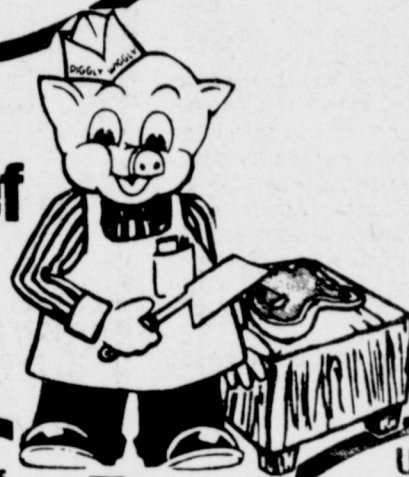
Round Steak

\$1.19
Lb.

Piggly Wiggly, Chub Pack, Fresh

Ground Beef

79c
Lb.



Ranch Style Sliced Bacon
2-Lb. 95c
Breakfast Sausage

SMOKE PICNICS

Decker's, No. 1 Quality Sliced Bacon
Sliced, Skinned and Deveined
Beef Liver

USDA Inspected, Grade A Baking Hens
Blue Marrow Breaded & Cooked, Frozen, Beef Patties and
USDA Inspected, Grade A, 12-Lbs. and Up Honeysuckle Turkeys

Lb. \$1.09

Lb. 49c

Lb. 77c

12-oz. 1.19

Lb. 98c

Lb. 59c

Lb. \$1.09

Lb. 79c

Farmer Jones

Sliced Bologna

12-oz.

79c

Quarter Pork Loin, 9 to 11 Chops

Pork Chops

Lb.

\$1.19

Lean Boston Butts

Pork Roast

Lb.

98c

USDA Good Heavy Aged Beef

T-Bone Steak

\$1.59
Lb.

USDA Inspected, Grade A, 9 to 11 Lbs., Armour Star, Self

Basting Turkey

58c
Lb.

Red

Apples

4 \$1
Lb.

RUBY

Red Grapefruit

18c
Lb.

- USDA Good Superb Valu-Trim Pike's Peak Roast Lb. \$1.19
- USDA Good Superb Valu-Trim Sirloin Tip Roast Lb. \$1.69
- USDA Good Boneless Stew Meat Lb. \$1.29
- USDA Good Superb Valu-Trim Chuck Steak Lb. 98c
- USDA Good Superb Valu-Trim, Arm Swiss Steak Lb. \$1.19
- USDA Good Superb Valu-Trim Sirloin Tip Steak Lb. \$1.69
- USDA Good Superb Valu-Trim Rib Eye Steak Lb. \$2.79
- Frying Chicken Breasts Lb. 89c
- Frying Chicken Legs Lb. 79c
- Frying Chicken Thighs Lb. 79c
- Loin Pork Chops Lb. \$1.55
- Center Cut Rib Pork Chops Lb. \$1.49

Farmer Jones, Tender and

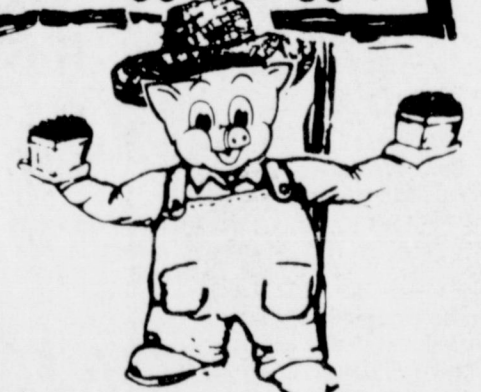
Juicy Franks

59c
12-oz. Pkg.

- Crisp Celery Hearts Pkg. 59c
- Lettuce Romaine ea. 45c
- Lettuce Endive ea. 33c

- Crisp Cucumbers Lb. 43c
- Tangy Lemons Lb. 59c
- Tart Limes Lb. 49c

Crispy-Fresh Produce from Piggly Wiggly.



- Colorful Green Onions 2/29c
- Creamy Ripe Avocados ea. 59c
- Ruby Red Grapefruit bag 99c
- Delicious Mushrooms Lb. 99c
- Colorful Bell Pepper Lb. 23c
- Delicious Cello Spinach Pkg. 59c

Laundry Detergent

Tide

\$1.39
84-oz. Box



Nutritious Potatoes

10 89c
Lb. Bag

Gold Medal, Enriched

Flour

69c
5-Lb. Bag

- Piggly Wiggly, Creamy or Crunchy Peanut Butter 18-oz. Jar 71c
- Piggly Wiggly, Waffle & Pancake Syrup Qt. 81c
- Piggly Wiggly Tomato Soup 10 1/2-oz. Can 17c

Piggly Wiggly Whole

Canned Tomatoes

3 89c
16-oz. Cans

Beauty Aids



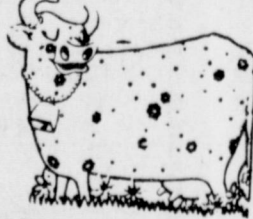
Colgate

Toothpaste

69c
5-oz. Tube

- RAPID SHAVE Instant Shave 6 1/4 -oz. Can 49c
- Gargle and Scope Mouthwash 18-oz. Btl. 99c
- Reg. or Unscented Sure Deodorant 9-oz. Can \$1.19

Fresh Dairy



Piggly Wiggly, Grade A Medium Eggs

59c
Doz. Ctn.

- Piggly Wiggly Homo Milk 1/2-Gal. Ctn. 91c
- Piggly Wiggly Cinnamon Rolls 8-Ct. Can 39c
- Piggly Wiggly, Regular, Stick Margarine Lb. 59c
- Pillsbury Assorted Varieties Hungry Jack Biscuits 10-Ct. Cans 3 \$1

Frozen Foods



Piggly Wiggly 100% Pure Florida Orange Juice

5 \$1
6-oz. Cans

- Die South Cherry Cobbler 2-Lb. Pkg. \$1.37
- Caribe Beef Tacos 6-Ct. Pkg. 97c
- Piggly Wiggly Blackeyed Peas 20-oz. Pkg. 75c
- Patio, All Varieties Mexican Dinners 12-oz. Pkg. 39c

Chef Pride Pinto Beans

79c
2-Lb. Bag

- Piggly Wiggly, Cranberry Cocktail Juice Qt. 59c
- Piggly Wiggly, Assorted Flavors Sugar Wafers 7-oz. Pkg. 55c

ON SALE THIS WEEK

La Mesa Dessert Dish With Each \$3.00 Purchase 49c	Maria Grande Salad Fork With Each \$3.00 Purchase 33c
--	---

Harmon's Football Forecast

We almost gave up trying to rate the top 20 college teams in the nation this week. It seemed a better idea would be just to throw all the names in a hat and draw them out one by one. However, there are still five powers that have escaped the virus of "upsetitis" that is running wild among football teams all over the country. Ohio State took over as our no. 1 team replacing Oklahoma. The Sooners almost stumbled over Texas and slipped to second. Michigan remained number three while Alabama, still quaking after the escape over Florida State, is No. 4. Auburn really moved into high gear and took over the fifth spot in our elite group.

Vivendas...

Cont. from Page 1
finance and construct low rent housing for farmworkers-migrant and home based. Efforts will also be directed toward assisting homeowners in the repair and improvement of their present dwellings.

Membership in the corporation is open to any community member who is concerned about the housing situation. The Board of Directors' monthly meetings are held on the second Tuesday of each month. The public is welcome to attend. Families who are interested in obtaining additional information about the self help project are encouraged to call or come by the office. Vivendas Cuauhtemoc, Inc. is located at 216 East Avenue D, phone 272-4233.

Frost...

Cont. from Page 1
Late mlo was probably the most seriously hurt as it had not had time to finish maturing before the frost. Unless another hard freeze comes in the next day or so, most of the cotton will not be injured.

that saw them both take their lumps. The Longhorns gave Oklahoma a long afternoon and Arkansas ran into a Baylor team that gets tougher each week. The Razorbacks have taken successive whippings from Texas the past two years, so there's no question here about motivation! We think Arkansas will hand Texas its third loss in four weeks ... the difference, four points.

Jaycees I ...

Cont. from Page 1
Family Life Development. Monty Dollar reported on the Personal Progress Program. This program keeps up with each individual throughout the years as Jaycees.

Members present were Royce Harris, Hugh Young, Wayne Peterson, Bob Finney, Max King, Jeff Smith, Wayne Cason, Danny Guzman, Monty Dollar, James Brown, Darrell Oliver, Leon Logsdon, Charles Moraw, Joe Bob Stevenson, Ted Barnhill, Carter Reed, Butch Duncan, Dick Kelton, Gene McGuire, Bill Russell, Ray Halsell and Bill Dale.

Committee...

Cont. from Page 1
a forum to discuss problems common to all older people and explore and pursue possible solutions to these problems. The committee will work with the South Plains Regional Office on aging in building community awareness of problems and concerns of older people, and of already available and potential programs to serve the needs of the older population.

There are 34 other local members on the board besides Moore and Blackman. The first meeting of the committee is set for Tuesday, October 22, at 2:30 p.m. at the Southwestern Public Service Reddy Room, Monterey Center, 50th and Elgin in Lubbock.

lina State manages to stay undefeated, just squeaking through enough to win. However, these squeaks don't help them as a strong national ranking. They might just get their comeuppance Saturday as rival North Carolina entertains with upset very much in mind. With powerful Maryland just around the corner, State might possibly get tarred and Heeled. In a high scoring and close game, we'll pick the Tarheels by just three points.

Back in the Midlands, Missouri and Oklahoma State take aim at one another. The Tigers of Mizou have either had a hot hand or a cool hand so far this season, and the Cowboys made news earlier with their upset of Arkansas. Missouri has upset both Arizona State and Nebraska, but died against Wisconsin. We're picking State by three.

Thanks to a polished crystal ball that actually grinned two Saturdays ago, ye olde average climbed a big notch to .749. Totals: 667 ok, 223 uh-hes

Inflation...

Cont. from Page 1
inflation will come about more gradually. Hayenga went on to say that "inflation can be viewed as a tax which often hits hardest at those who can least afford to pay it. It sometimes destroys incentive to save money because interest earned doesn't equal the increased costs of goods at a later time. Inflation also makes meaningful long-term economic planning very difficult."

He lists the alternatives to rising inflation as increasing taxes, cutting government spending, and slowing the growth of the money supply. "The reason we haven't stopped inflation is that many people feel the 'cure' is worse than the 'disease,' that raising taxes or cutting money supplies will harm our economy more than mild inflation," the economist notes.

and 25 ties. Elsewhere around the country, Oklahoma takes on Colorado to start its conference season. The Buffs upset Wisconsin earlier, but won't be able to stay with the Sooners. Oklahoma by 25 points. Auburn faces no easy task against Georgia Tech as the Yellow Jackets are only 17 point underdogs.

Board...

Cont. from Page 1
ministrators Convention that was held jointly at San Antonio on October 5-7 was discussed. This convention was attended by Lewis Wayne Shafer, President of the local board and Neal B. Dillman, Superintendent of Schools. Shafer was a delegate at the T.A.S.B. House of Delegates meeting. He heard addresses by Senator Lloyd Bentson, Dr. Martin L. Brockett, Texas Commissioner of Education, and Phillip Swain, president of the National School Boards Association from Seattle, Washington.

The following topic group sessions were attended: court decisions that will affect policy development; alternatives to corporal punishment and suspensions; finance seminar with Dr. Richard Hooker, special assistant to the Governor for educational research and planning making the presentation; school legislation, national level; and administrative umbrella organization.

The board gave approval for the Superintendent of Schools, Neal B. Dillman, to attend the University Interscholastic League, Legislative Council Meeting that will be held in Austin on November 3, 1974. Dillman was elected to the Legislative Council last year, representing Region I AAA.

The board then discussed criticisms of school personnel and also the time change that is supposed to go into effect Sunday, October 27. Clocks will be advanced one hour at this time. The meeting was adjourned and the next regular meeting will be on Monday, November 11, at 8:00 p.m.

HOUSE PANEL REPORT

The House Government Operations Committee reported that Federal expenditures on former President Lyndon B. Johnson's property had totaled \$5.9-million. Most of the funds had been spent on security facilities.

U.S. and Soviet agree on two new consulates.

GSPA Praises Farmers For Avoiding Panic

Elbert Harp, executive director of Grain Sorghum Producers Association, has praised farmers for "keeping cool" under the potential panic situation caused by the recent halt of proposed grain exports to Russia.

In spite of being alarmed by the sudden postponement of Russian grain shipments, producers remained calm and avoided the panic situation, Harp said. "The natural reaction would have been to rush the market before prices dropped," the GSPA executive director said. "The President's announcement definitely created an unstable grain market situation temporarily, but the grain market is now beginning to restabilize."

Speaking on behalf of the Lubbock-based national organization, Harp continued, "We feel that the market will rebound fairly rapidly within the next few days. It appears that the overall effect of the Russian grain purchase will be bullish in the long run because of the additional demand in the world market place for available grain."

Harp comm-ned he was pleased to see prices rebounding as anticipated, and added that "while they may take a few days to get back to prior levels, the recovery should be rapid and we should see even stronger markets in the future than we have seen yet."

Principles are usually read, not lived.

MULESHOE JOURNAL
Established February 23, 1904
Published by Muleshoe Publishing Co., Inc.
Every Thursday at 204 W. Second Box 449
Muleshoe, Texas, 79547
Second class postage paid at Muleshoe, Texas 79547

TEXAS PRESS ASSOCIATION
Member 1974

L. B. Hall, President
James P. Hall, Sec. - Treasurer
L. B. Hall - Managing Editor
Katie Buckett-News Reporter
Dobbs Kerr-District Reporter
Kay Leak, Advertising
Polly Orwell, Office

SUBSCRIPTIONS:
The Muleshoe Journal and Bailey County Journal
Bailey and surrounding counties \$4.50
The Muleshoe Journal and Bailey County Journal
Elsewhere in Texas \$10.95

The Muleshoe Journal and Bailey County Journal
Outside of Texas \$15.00
Yearly by Carrier \$25.00
Monthly by Carrier \$2.50

Advertising rate card on application

On Wall Street
By Bob Hill
Lentz, Newton & Co.



The digital watch, operating on the principle of the quartz crystal, has revolutionized the watchmaking industry in the past two years. Thus far, digital watches have been an expensive luxury with demand for outstripping supply. But get ready for bargain prices in the digital watch field.

Just two years ago, producers of integrated circuits began making electronic calculators and marketing them through high-volume retail outlets. The result has been a complete dominance of the electronic calculator market by such companies as Rockwell International, Texas Instruments and National Semi-conductor and a drop in prices of 66% from the earlier models. Now these integrated giants are moving into the \$5-million worldwide market for watches, so prepare for

Lunches...

Cont. from Page 1
have lunch or other food programs for their students. And there is a stepped up effort to increase student participation at schools that already have a lunch program.

As the President said in his proclamation, "Only healthy, well-nourished students can realize their fullest mental and physical potential and transform equality of opportunity from an ideal into a reality."

The National School Lunch Program is administered in Texas by the Texas Education Agency in cooperation with USDA's Food and Nutrition Service.

some ferocious price cutting. National Semiconductor has announced a price list which shows just how tough the competition is going to be for the established watch manufacturers. The price list starts at \$125, which is half the current retail tag price for watches displaying the time with light-emitting diodes. And that is just the starting point because

Jaycees II...

Cont. from Page 1
shoe.

Bob Finney reported on Youth Football and stated that games were played Sunday. He also reported that the Board of Trustees had met Monday and canceled a game missed three weeks ago. He said the board also set up the annual Super Bowl game which will be played next Tuesday night.

Finney urged everyone to attend the game which will end this season of Youth Football. Even though the weather has hindered some of the games, the program was still termed a success.

A discussion was brought up on donating \$25 to the Hospital Auxiliary for use in helping build shelves in their building. The Morton Jaycees will be electing officers within the week and the Muleshoe Jaycees will help in preparing for Morton's installation banquet which should be held in the near future.

The Jaycees are proud to have started the new club in Morton.

prices are expected to drop sharply as the other integrated circuit companies start up production.

Some experts believe digital watch sales could hit 5-million watches in 1975 and spokesmen at National Semiconductor think the digital watch could capture 20% of the world market, (50 million units) by 1980. National is already in production and will ship its first watches in November. They estimate 20,000 will hit the stores in time for Christmas shoppers. National has orders from jewelry and department stores in 29 cities, including Dallas - based Sales Corp. and Bloomingdale's in the top of the line models which sell for \$200 with the usual markup of 100%. But National and other manufacturers are getting away from the tradit-

ional markups by going to the high-volume, lower markups outlets.

There is no question the demand for digital watches is zooming. Digital watch sales will top 1-million units, this year, a 400% increase over the 1973 sales figures.

ON DEBT CEILING
The House has voted to raise the national debt ceiling \$19.3-billion to a total of \$495-billion. If the Senate doesn't enact by June 30, the debt ceiling will drop to \$400-billion.

HOUSE ON AID
The House has refused to raise or lower U.S. military aid to South Vietnam and rejected an effort to phase out 100,000 U.S. troops overseas.

CAR TUNE-ING
By Jones, Harrison and Gilbreath



If Your Generator Will Not CHARGE, Try Another Our Stock Is LARGE.

Plains AUTO PARTS
P. O. Box 524
Muleshoe, Texas 79547

South Main Muleshoe
Phone 272-4576

OPEN DAILY 9 A.M. - 8 P.M. CLOSED SUNDAYS

GIBSON'S DISCOUNT CENTER
WHERE YOU ALWAYS BUY THE BEST FOR LESS
1723 W. AMERICAN BLVD.

PRICES GOOD OCT. 17 THRU OCT. 19

LILT HOME PERMANENTS

LILT SPECIAL REG \$1.37
LILT BODY WAVE **99¢**

LILT REGULAR REG \$1.77
LILT GENTLE
LILT SUPER **\$1.49**



GLEEM TOOTHPASTE **59¢**

SCOPE MOUTHWASH **88¢**

SURE ANTI-PERSPIRANT **79¢**

5 OZ OUR REG 67¢
REGULAR AND UNSCENTED REG \$1.12
18 OZ OUR REG \$1.29



FALL COAT CARAVAN... SALES!

This week only we will have a huge special selection of fine **MEN'S FALL AND WINTER COATS**

HUNDREDS TO CHOOSE FROM

Shown are but a few of many handsome styles

ENTIRE STOCK WINTER COATS

SPECIAL SALE PRICES 15% OFF

OVER 300 STYLES
DRESS
CASUAL
WESTERN

REGULAR PRICE \$6.99 TO \$80.00


A small deposit will hold your selection on lay-away

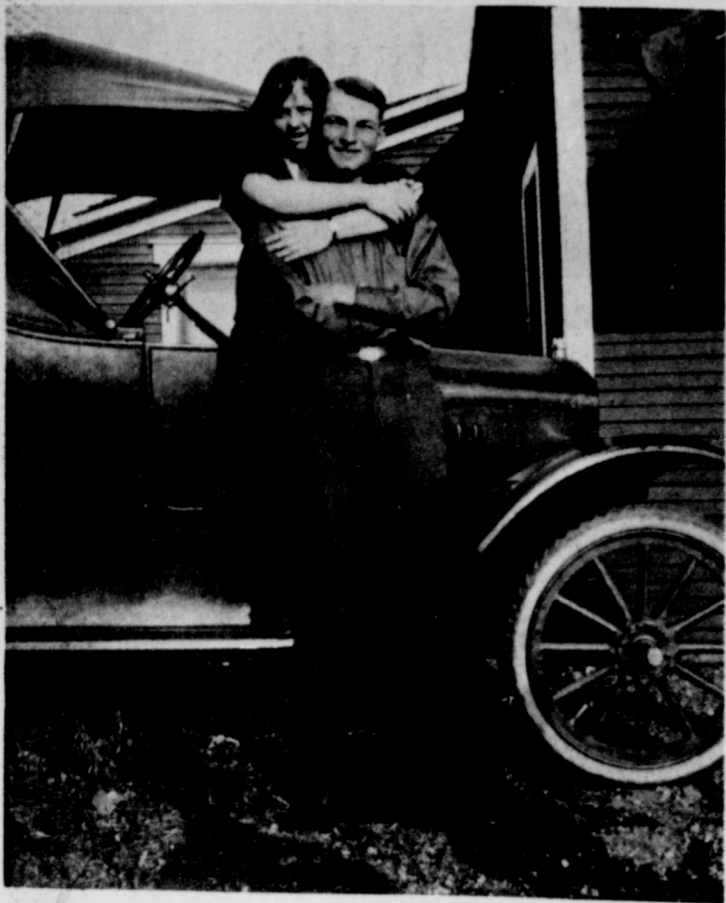
SHOP CASH LAY-A-WAY
Extra Sizes and Longs available in many styles.

This selection includes regular values up to 42.99. Choose from wool plaids, corduroy or uncut corduroy and more. Jackets, sucoats or bushcoat styles in all of the new wanted fall colors. Sizes 36 to 46. Some extra sizes available only on special order.

MULESHOE, TEXAS
OPEN 9 AM TO 6 PM

Anthony's
C. R. ANTHONY CO.





Keisha Lynn Kemp

Mr. and Mrs. Larry Kemp of Muleshoe are the proud parents of a new baby girl born October 10, at 10:41 p.m. in the West Plains Memorial Hospital of Muleshoe. The baby weighed eight pounds and thirteen ounces and was named Keisha Lynn Kemp. She is the couple's first child.

Dana Leigh McNatt

Mr. and Mrs. Wayne McNatt of Carrollton, Texas are the proud parents of a new baby girl born October 4 at 10:32 p.m. in the Presbyterian Hospital. The baby weighed eight pounds and two and one-fourth ounces and was named Dana Leigh McNatt. She is the couple's second child.



50th ANNIVERSARY TO BE HELD. Authur Bolton and Mary Ellen Hudson were married in Duncan, Oklahoma, at the First Methodist Church, by the Rev. Walter Douglas, October 16, 1924. They will be celebrating their Golden Wedding Anniversary, October 20th with a reception at the Oklahoma Lane Community Center, 13 miles east of Farwell, Texas or five miles west of Clays Corner, from 2:00 to 5:00 p.m. The Bolton's lived in Parmer County thirty-eight years, and have lived in Bailey County twelve years, where he has been a School Bus driver for all that time.

Mrs. Edwin Cox Receives Award

Mrs. Edwin Cox received her First Degree Pallas Athene from Epsilon Sigma Alpha.

Epsilon Sigma Alpha offers many awards on chapter, council, state and international levels. The purpose of these awards is two-fold: (1) to encourage better participation in ESA activities and (2) to recognize outstanding achievements by both individuals and groups.

Smallpox epidemic spreading in India.

New training improves U.S. Army in Germany.

A spokesman from the sorority said, "Our world today owes much to the ancient Greeks from them came most of our learning, many of our ideals of beauty, and the concept of free thought and democracy. The ideal of the utmost development of all the faculties of man, leading to grace of body, freedom of spirit, high discipline of mind and the love of truth -- this was the light of Ancient Greece. That light has never gone out, but has come down to us through the ages, kindled anew in the Pallas Athene awards program of Epsilon Sigma Alpha."

"Why is this award the height of excellence this triumph of achievement called Pallas Athene? Because Athene was the Greek Goddess of wisdom and the home, and her attributes are the ideal inspiration for a guide line by which every sister of Epsilon Sigma Alpha may find the poise, tranquility and charm that comes from acquiring wisdom and the beauty and strength of character that is a reward of service to others.



ESA GIVES AWARD....Mrs. Edwin Cox is shown receiving her Pallas Athene Award from the E.S.A. Sorority.

Nixon sanctions long-range funds for Public TV.

Jackson of A's sets mark in All-Star vote.

Family Dinner Held Sunday

The Department I Sunday School of the First Baptist Church held a family dinner Sunday, October 14 in the home of Frank Wuerflein, Department Director.

There were 61 in attendance. During the event a gift of appreciation was presented to Mrs. Jimmy White for her past two years of service as Director of the Department. The flowers for the church were in honor of her.

Those present were Mr. and Mrs. Tony Clines, Mr. and Mrs. Jimmy White, Kristi and Kathi, Mr. and Mrs. Bob Graves, Terry and Jerry, Mr. and Mrs. Jeff Pool, Mr. and Mrs. Ricky Hamilton, Greg, Mr. and Mrs. Elbert Hamilton, Mr. and Mrs. Mike Miller, Kurt, Kristine,

and Scott, Mr. and Mrs. Ray Halsell, Tomas and Lesley, Mr. and Mrs. Derrill Nowell, Larry, Tammy, and Tonya, Mr. and Mrs. Raymond Schroeder, Stacy, Todd, and Chad, Mr. and Mrs. Danny Noble, Jeff and Joh, Mr. and Mrs. Ronnie Holt and Todd, Mr. and Mrs. Bob Stovall and Lyndal, Mr. and Mrs. Eldon Davis, Mrs. Barbara Finney, Alan and Michelle, Robert Moss, Mr. and Mrs. Frank Wuerflein, John and Janna, The visiting preacher and family, Dr. and Mrs. Don Live, Jamie, Donnie, and Jennifer of Plainview.

Local TV Show To Teach Caulking And Weatherstripping

Television viewers in Bailey County will learn how to save fuel -- and cut home heating and cooling bills -- with a program on caulking and weatherstripping, Saturday, October 19, 1974 at 4:30 p.m. on KLBK-TV, Channel 13.

The upcoming half-hour program is part of the "You Can Do It!" television series, sponsored locally by the Bailey County Family Living Committee and KLBK-TV.

"This week's topic has become very important to the conservation of home heating and cooling fuel," Mrs. Robin Taylor, county Extension agent, observed.

"Air leaking in or out of a house wastes fuel and accounts for 15-30 per cent of home heating or cooling bills," she said.

Conducted by hostess Cindy Kidwell, "You Can Do It!" programs "provide local homeowners an opportunity to acquire skills necessary to care for and maintain their homes inexpensively and effectively," the agent said.

The 13-part "You Can Do It!" educational series was created and produced by home economics specialists with the Texas Agricultural Extension Service, The Texas A&M University System, through a United States Department of Agriculture grant.

Next week's program will focus on painting house exteriors.

FINDS DIAMOND
MURFREESBORO, ARK. -- Richard Calico found a 2.35-carat diamond at the Crater of Diamonds State Park here, a spokesman for the Arkansas Department of Parks and Tourism said. The diamond was worth between \$3,000 and \$5,000.

LINDSAY TO ACT
PARIS--Former New York Mayor John V. Lindsay has been signed by producer Otto Preminger to act in a film about Arab hijackers being filmed on location in France and Israel, a production spokesman said.

Golf Association Attended Tournament

The High Plains Women Golf Association met in Clovis, Wednesday, October 9 for the end of the season playday, which is their annual tournament.

Towns that attended High Plains Women Golf Association were Tulia, Canyon, Friona, Dimmitt, Farwell, Otton, Clovis and Muleshoe.

Muleshoe had its share of winners in the tournament which were: Mrs. Tommy Haley low net of the field, Mrs. M.D. Gunstream won low gross in second flight, Mrs. Harmon Elliott won low gross in third flight.

Those from Muleshoe attending were Mary Sweatman, Mrs. Clyde Holt, Mrs. M.D. Gunstream, Mrs. Claude Riley, Mrs. Harmon Elliott, Mrs. Tommy Haley, Mrs. Billy Burt,

Mrs. Curtis Walker, Linda Lowe, Sharon Hamilton, Glenda Ott, Mrs. Dudley Malone, and Mrs. Kenneth Hanks.

The next Muleshoe officers of High Plains Women Golf Association will be Mrs. Tommy Haley, President, Mrs. E.W. Evans, Secretary-Treasurer, and Mrs. Dudley Malone, Muleshoe High Plains Director.

West Plains Hospital Hospital Briefs

ADMITTANCE:
October 10: J. D. Kelly and Mrs. Vernice Snyder.

October 11: M.E. Lee, Everett Maxwell, Mrs. Eula Whitford, Jess H. Wood and Mrs. Walter Ellis.

October 12: Mrs. Ed Edmiston.

October 13: Cary Skagg, Mrs. George Neely, Fred Beene and Mrs. C.D. Noland.

DISMISSALS:
October 12: Mrs. Vernice Snyder and M.E. Lee.

October 13: Mrs. Walter Ellis and Mrs. Larry Kemp and daughter.

October 14: Oscar Allison.

50 YEARS AGO. Authur Bolton had just married Ellen Hudson October 16, 1920 at the First Methodist Church in Duncan, Oklahoma. A reception will be held October 20 at the Oklahoma Lane Community Center from 2:00 to 5:00 p.m.

Sweet Nothings

"And what do you say," asked the young coed next door, "when he whispers sweet nothings into your ear?"

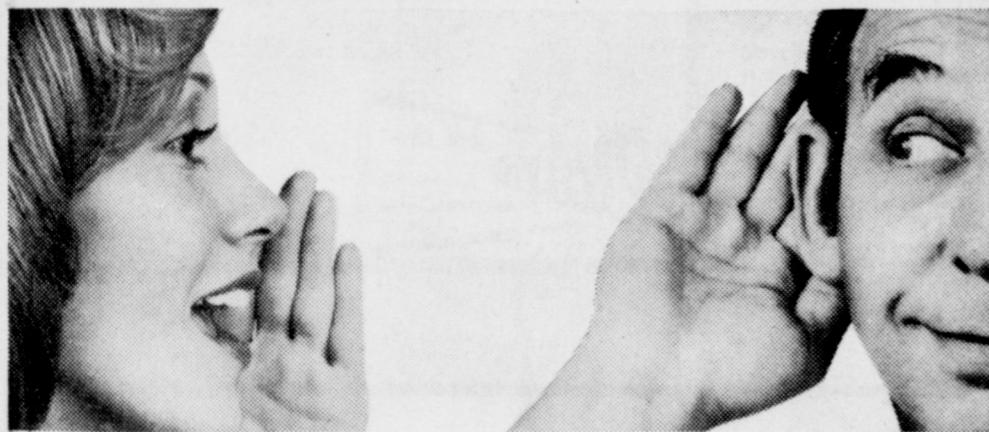
The coed smiled and answered: "I answer back sweet little nothing doings!"

Fulbright sees "efforts to unseat Kissinger."

Reported crime is up 15 per cent in U.S.

Births reported from eggs fertilized in lab.

Mrs. Gandhi criticizes U.S. and Britain.



I said hearing aids are in the



RASCO
THE FAMILY STORE

303 MAIN MULESHOE

CLIP & SAVE SALE

TWO DAY SALE
THUR. OCT. 17 AND FRIDAY OCT. 18

COUPON

BONANZA 100% ACRYLIC
BLANKETS
BY BEACON

FULL SIZE
COUPON
SPECIAL \$10

REG. \$4.99
LIMIT 3

COUPON

LADY SUNBEAM
HARD-HAT
HAIR DRYER

REG. \$23.99
LIMIT 1

COUPON

SURE
**DEODORANT
SPRAY**

25¢ OFF

6 OZ SIZE
REG. \$1.17
LIMIT 2

ONLY **67¢**

COUPON

STERO AND QUADPHONIC-FOUR
SPEAKER-8 TRACK
**TAPE
PLAYER**

REG. \$119.99
ONLY TWO ON HAND
LIMIT 1

\$69.99

COUPON

**MEN'S INSULATED
COVERALLS**

REG. \$29.99
LIMIT 1 EA

\$22.88

COUPON

LAYAWAY
Toys Now For
CHRISTMAS

10% OFF
ON ALL TOY LAYAWAYS
WITH THIS COUPON

GOOD THRU FRI. AND SAT. ONLY

See what you're talking about.

Shed a little light on the subject with our Starlite® phone and its built-in glow. Just call us up and we'll get you through the darkest night.

GTE
GENERAL TELEPHONE



MRS. BERNARD PHELPS

Mrs. Phelps, Mrs. White To Be Honor At Reception

An art exhibit sponsored by the Alpha Iota Mu Chapter of Beta Sigma Phi, featuring the work of Muleshoe artists Arline Phelps and Rheata Peeler White, will begin Sunday (October 20), with a reception from 2:00 to 5:00 at the First National Bank of Hereford.

The sponsoring organization will be acting as art dealers for the week-long show and sale, and its part of the proceeds will be used for charitable causes.

Mrs. Phelps is a member of a West Texas ranching family, and is a partner in the Art Loft Antique & Art Gallery at Muleshoe. She has received numerous exhibit awards, and has been featured on seven occasions in one-man shows in Texas and New Mexico. Her most recent honor is having a painting selected from the 1974 Six State Exhibit in Amarillo. Miss White received the First Place Award in Watercolors for 1973 at the "Texas Art Show at Palo Duro Canyon." She is also a talented floral designer, having served as one of three designers from the state at the Texas Florists Association annual convention in 1974.

Rodeo Club Attended Caprock Rodeo

The Muleshoe Rodeo Club attended the Caprock Rodeo recently.

Those winning were: Bareback Riding, Sherman Presley received a buckle and four points for placing third, Bull Riding, Gene Rogers received a buckle and four and one-half points for tying for second and third place, Calf Roping, Joe Pate received a buckle and six points for first place, Sherman Presley received three points for fourth place and Dan Ellis received one point for sixth place.

Other members riding were Eddy Mardis, Jimmy Henderson, Kim Black and Eddie Miller.

Christian Womens Fellowship Meet

The regular meeting of Christian Womens Fellowship of the First Christian Church met Tuesday, October 8, at 4:00 p.m. in the home of Mrs. Walter Bartholf.

Mrs. Walter Bartholf, President, opened the meeting by reading a prayer of Saint Francis of Assisi, Mrs. Charles Long presented the program which was the first chapter of John, Mrs. Levina Pitts gave the worship.

Members present were Mrs. Charles Long, Mrs. Sylvan Robinson, Mrs. Levina Pitts, Mrs. Joe Costen and Mrs. Walter Bartholf.

Nursing Home News by Myrtle Guinn

The "Town and Country Club" of Earth Study Club visited us and brought several cakes for us to enjoy. We enjoyed the visit and cakes.

Mrs. Mamie Miller had callers Tuesday morning. They were Mr. and Mrs. Shafer who had been visiting their son, Jimmy. They are from East Texas on their way home after stopping to see their old friends.

Mrs. Wilma Walden's niece from Eldorado, Oklahoma, Mrs. Bessie Angila is visiting her here for a few days.

Mrs. Annie Brown and Mrs. Lois Robinson have been sick for a few days and we hope they will soon be better again.

Mrs. Whitford visited her mother, Mrs. Goodin on Tuesday and also visited her husband's mother, Mrs. Whitford, Sr., and Mr. and Mrs. Boone.

Mrs. Donna Smith and son, Blane of Lazbuddie visited Donna's grandmother, Mrs. Guinn on Tuesday. Mrs. Myrtle Holt from Colorado is also visiting her mother, Mrs. Case and visited me on Wednesday.

Mrs. Clara Sloan had company Wednesday morning. Mrs. Dollie Kirkpatrick, her niece from Canyon. She also visited in the Clarence Copland home on Tuesday night while here.

Mrs. Jackson's company on Wednesday were Mr. and Mrs. Carl Ethridge from Managua Nicaragua and her sister and brother-in-law, Mrs. L.S. Hands from Hurst, Texas, Also, Mrs. Allen Berry and daughter, Robin of Muleshoe.

Mrs. Hardin's grandson, Leon Phillips visited her Wednesday afternoon.

Mrs. Birdsong visited Mrs. McDaniles and Mrs. Guinn and several others on Wednesday afternoon.

Haig sees U.S. leadership role enhanced.

Astronauts mark 5th Apollo 11 anniversary.



RHEATA WHITE

Progress 4-H Club Meets

The Progress 4-H horse club met October 11 at the Jimmie Carpenter home for the end of the project year meeting.

The mothers served Chili and Frito pies, while eating Tommy Wheeler, Curtis Wheeler, Brad Huckyby, Wayland Barker, Keith Hawkins, Tammy Huckyby, Steve Turner, Shellie Hawkins, Kinny Henderson, Larry Nowe, Kevin Huckyby played music to entertain the club members.

Jimmie Carpenter, adult leader, gave awards to those who went to district. They were Bill Hodnett, Kinny Henderson, Jimmy Henderson, Sharla Farmer, Sharon Carpenter, Curtis Carpenter, Timmy Wheeler, Curtis Wheeler, Trey Stoneham, Tomie Johnson, Melinda Presley, Tommy Stoneham. He also recognized those with their points and they were: Sharla Farmer, Casey Farmer, Kina Farmer, Jay Pearson, Shonnie Hodnett, Bill Hodnett, Jimmy Hodnett, Kristi Spies, Starla Black, Steven Griswold, Melinda Presley, Sherman Presley, Kenny Henderson, Jimmy Henderson, Tommy Wheeler, Curtis Wheeler, Jo Rhonda Rhodes, La Von Rhodes, Sharon Carpenter, Curtis Carpenter, Greg Harrison, Delia Shaw, Johnnie Puckett, Connie Puckett, Trey Stoneham, Tommy Stoneham, Tomie Johnson, James Johnson, Connie Floyd, and Larry Nowell.

Limit on food additives is proposed.

Unsafe Cribs Found In Homes

COLLEGE STATION... Unsafe cribs account for 150-200 infant deaths and 40,000 injuries every year, according to one authority.

She's Patricia Bradshaw, housing and home furnishings specialist, Texas Agricultural Extension Service, The Texas A&M University system.

"To insure that new cribs will be designed and built more safely, the U.S. Consumer Product Safety Commission has developed a new regulation," Miss Bradshaw said.

She cited some of the upcoming features that will meet new standards:

--Slats will be placed closer together so babies can't slip through and strangle.

--Metal hardware and edges will be free of sharp or rough edges.

--Locks and latches on the drop side will be safe--and secure against accidental release by the baby.

--A warning on the crib carton, assembly instructions and headboard will advise only use of a mattress that fits the crib snugly. This prevents babies from getting caught between the crib and mattress.

If you already have a crib, or are fixing a used or antique one, Miss Bradshaw suggests the following guidelines:

Check the overall condition of the crib. Is anything missing? Be sure all slots and bolts of the fasteners are in place or can be replaced.

Repaint or refinish a crib only with paint or finish labeled non-toxic.

If the mattress does not fit snugly, replace it or roll up large towels and place them between the mattress and crib for a tight fit. Make sure the baby cannot get wedged between the mattress and crib.

Purchase or make bumper pads for older cribs with slats

and three-eighths inches apart are unsafe. Make sure the bumpers fit around the entire crib. Tie or strap them into place and have at least six strips. Make sure the baby cannot chew on the straps. Use the bumpers until the baby can pull himself to a standing position.

The specialist also suggest some crib safety practices. "Don't keep your child in the crib once the height of the side rail is less than three-fourths of the child's height. Replace any damaged teething rails. They can cut the child's mouth.

"Set the mattress at its lowest position as soon as your child can pull himself to a standing position. Don't leave any toys or other articles in the crib that your child might use to help himself out.

"The crib should not be used as a playpen. If you put crib extenders on the crib's side rails, they should not make the side rails taller than the end panels of the crib. The extenders should have no easy removable nuts or bolts and their slats should be narrowly spaced.

"Remember, these are only precautions. Children are ingenious, so there is no substitute for close parental supervision," the specialist warned.

A MONEY MAKING IDEA

---FOR YOUR CLUB, GROUP, OR ORGANIZATION!

WESTINGHOUSE ELECTRIC SUPPLY

520-34th LUBBOCK, TEXAS

Every home and business has a continuous need for light bulbs. We have a special offer for groups such as yours to make up to 55% profit on sales. Get your group together and get in on this great fund raising idea today.

CALL 747-3256 Or Write

DON'T MISS OUT ON RCA WEEK!

Don't miss this "double feature!"

Two great styles... one great price!

RCA Model GT544

RCA Model GT548
21" diagonal picture

Take your pick of these compact XL-100, 100% solid state consoles, only **\$589⁹⁵**

RCA Model GT708

An XL-100, 100% solid state color console in a "work of art" cabinet! Buy now... only **\$669⁹⁵**

RCA

XL-100 and more! Beautifully designed! Completely deluxe! And it swivels!

only **\$859⁹⁵**

RCA Model GT802
25" diagonal picture

RCA

Quasar

Portable Color TV

Instant Picture and Sound

19" diagonal

- Modular Solid State Chassis (except 4 chassis tubes)
- Replaceable plug-in circuit modules
- Bright Picture Tube
- 70 detent "click" UHF tuner
- Instant Picture and Sound
- Energy Saver Switch

\$339⁹⁵

(Model WP5520LW)
Walnut grain finish on high impact plastic cabinet

HARVEY BASS APPLIANCE

Harvest of Values

OCTOBER SALE THUR-FRI-SAT

<p>LADIES COTTON AND POLYESTER BLOUSES</p> <p>REG. \$3.99 \$2⁷⁷</p>	<p>7 TRANSISTOR TABLE RADIO</p> <p>REG. \$15.88 \$11⁷⁷</p> <p>BATTERY OR ELECTRIC</p>
<p>26x45 AREA RUGS</p> <p>100% NYLON \$1⁷⁷</p> <p>REG. \$2.99</p>	<p>LADIES PANTS</p> <p>BROWN NAVY GREEN RUST BLACK \$6⁹⁹</p>
<p>ALL LIVE PLANTS</p> <p>1/2 PRICE</p>	<p>CANNON BLANKETS</p> <p>REG. \$5.47 3 FOR \$14⁰⁰</p>
<p>100% COTTON CORDUROY</p> <p>REG. \$1.39 88¢ YD.</p>	<p>DAN RIVER SPORTS FABRICS</p> <p>50% COTTON 50% POLYESTER 99¢ YD.</p> <p>REG. \$1.99 YD.</p>

perry's

HARVEY BASS APPLIANCE

122 1st MULESHOE PHONE 272-3030

Football CONTEST

"PICK-A-WINNER" LAST WEEK'S WINNERS

MARY WHITSON
FIRST PLACE

W. E. ENGLISH
SECOND PLACE

HUGH YOUNG
THIRD PLACE

The Following Firms Urge
You to Back The "MULES"
& Attend All The Games:

TRI-COUNTY
SAVINGS & LOAN

MULESHOE
IMPLEMENT & SUPPLY CO.

BOB STOVALL PRINTING

HENRY INSURANCE CO.

FIRST NATIONAL BANK

FRY & COX

Your Friendly One Stop Farm Service

MULESHOE STATE BANK

REDWINE '66'

WHITE'S CASHWAY GRO.

BAILEY COUNTY
FARM BUREAU INS.

Ray Davis, Agency Manager

RAY GRIFFITHS & SONS

MULESHOE MOTOR CO.

BEAVER'S FLOWERLAND

GIBSON'S
ELECTRICAL CENTER

WILSON APPLIANCES

MULESHOE CO-OP GINS

BAKER FARM SUPPLY

GROW/CHEVROLET COMPANY
MULESHOE, TEXAS • Telephone 272-3100

WESTERN DRUG

HARMON-FIELD INS.

JOHN'S CUSTOM MILL

DARI-DELITE

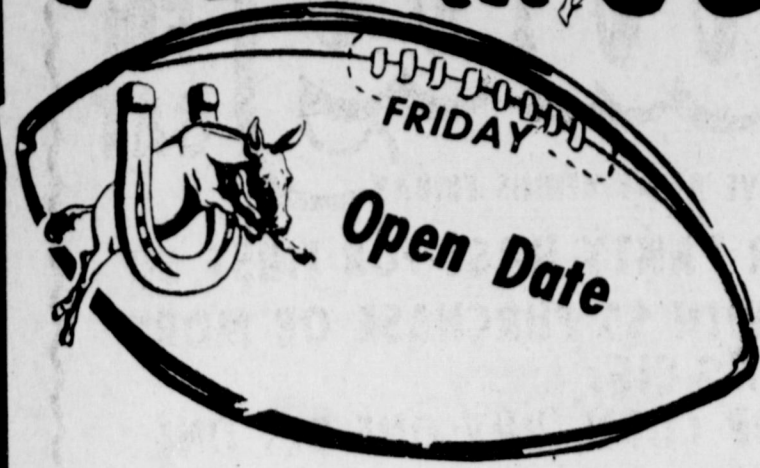
ART - CRAFT PRINTING

WOOLEY-HURST INC.

WESTERN AUTO

Earl Harris, Owner

Bailey County Electric
Cooperative Association



You Have Until 5 P.M.
Friday to Enter Contest

Enter Our Contest Each Week
...Nothing to buy - Just Pick Winners
HERE'S YOUR CHANCE TO

WIN CASH WEEKLY PRIZES!

WIN FIRST PRIZE \$5

WIN SECOND PRIZE \$3

WIN THIRD PRIZE \$2



GRAND PRIZE \$50 For expenses and
two tickets to the Cotton Bowl at Dallas, Texas. There will
also be a contest and prizes for the Bowl Games!

WINNERS TO BE ANNOUNCED
IN NEXT WEEK'S PAPER

Please write FOOTBALL CONTEST
Muleshoe Publishing Company
Box 449 Muleshoe, Texas
on envelope of mailed entry.

Read the rules... Start Winning
RULES OF THE CONTEST:

- The contestant must be 12 years or older.
 - Only one entry per person may be made for any one contest.
 - Weekly contests are open to everyone except employees and families of this newspaper; bring or mail your entries to the Journal office.
 - Mailed entries must be postmarked not later than 5 p.m. Friday; winners names will be published in this newspaper each Thursday following the close of the weekly contest.
 - Check the team you think will win; 10 points for 1st place, 6 points for 2nd place and 4 points for 3rd place determines the Grand Prize winner.
 - The tie-breakers will count as one of the games picked, the predicted scores will be used to determine the top three places in that week's contest, if necessary, and cash prizes and points will be divided between winners in event of ties. Please write FOOTBALL CONTEST on envelope of mailed entry.
- Decision of the Journal's scoring judges will be final.

Watch for the Official
Entry Blank Each Week

OFFICIAL ENTRY FORM PICK THE WINNING TEAMS

- | | | | |
|-------------------|--------------------------|----------------------|--------------------------|
| 1. Rice | <input type="checkbox"/> | SMU | <input type="checkbox"/> |
| 2. West Texas | <input type="checkbox"/> | Tulsa | <input type="checkbox"/> |
| 3. North Carolina | <input type="checkbox"/> | North Carolina State | <input type="checkbox"/> |
| 4. Oklahoma State | <input type="checkbox"/> | Missouri | <input type="checkbox"/> |
| 5. Illinois | <input type="checkbox"/> | Michigan State | <input type="checkbox"/> |
| 6. New Mexico | <input type="checkbox"/> | Wyoming | <input type="checkbox"/> |
| 7. Kansas State | <input type="checkbox"/> | Iowa State | <input type="checkbox"/> |
| 8. Princeton | <input type="checkbox"/> | Colgate | <input type="checkbox"/> |

TIEBREAKER

- | | | | |
|-------------|-------|------------|-------|
| 9. Texas | SCORE | Arkansas | SCORE |
| 10. Arizona | SCORE | Texas Tech | SCORE |

NAME _____
ADDRESS _____
CITY _____
STATE _____ ZIP _____
PHONE NO. _____

Rick Nelson To Appear Oct. 26 At LCC

Rick Nelson, popular recording star, will be in concert on October 26th at Lubbock Christian College (LCC).

The Nelson concert will be the final event of LCC's first High School Day of the year. High school students from around the South Plains area will be on campus that day for special programs designed to familiarize them with college life. High School Day is an annual event on the LCC campus and is sponsored by the College's Admissions Office. Special sessions dealing with academic and

financial aid counseling, campus tours, and a variety of other activities will fill the schedule. Rick Nelson and the Stone Canyon Band will perform at 7:30 p.m. in Moody Auditorium on the LCC campus. All seats are reserved and cost \$4.50. Tickets may be purchased at both locations of John's Jeans in Lubbock or by writing the Admissions Office, c/o Lubbock Christian College, 5601 W. 19th, Lubbock, Texas 79407. There will be one performance only. Moody Auditorium seats 1200.

The man who flashes large bills at every opportunity is obviously not accustomed to much money.

Farm-facts

A Weekly Report Of Agri-Business News

Compiled From Sources
Of The Texas Department of Agriculture
John C. White, Commissioner

Price Differences... Demand for Bees Up... More Red Meat... Rains Slow Harvest

COMPARATIVELY, prices farmers receive for their products now are much better than they were seven years ago. The difference in the farm picture is that the prices the farmer pays for production inputs are so much higher. They give every indication that they are going higher while the prices he receives are going down. In 1967, a farmer received \$1.51 a bushel for wheat, \$1.42 a bushel for corn, \$5.03 per hundred for rice and 18.5 cents a pound for cotton. Prices on those products September 15, 1974 were: \$4.18 for wheat, \$3.31 for corn, \$10.60 for rice, and 42.5 cents for cotton. Last year, the banner year for prices to farmers, wheat was \$4.47 a bushel on September 15, corn \$2.41, rice \$13.70 a hundred, and cotton 44.2 cents a pound. On the other hand, everything the farmer consumes is up and continues to go up. As one dairyman said at the recent Stephenville meeting, tractors went up \$3,800 a year and baling wire that used to cost \$10 a roll now costs \$65 and is hard to find. Additionally, mixed dairy feed on September 15, 1973 was \$127 per ton and was \$155 a ton on September 15 this year. Laying feed is the same as it was last year, \$160 a ton.

A WEEK OR SO ago, some TV newsmen reported that the demand for honey bees is up and that the cost of a queen bee has gone up from about \$1.50 to \$5 or \$6. Texas has approximately 15 queen bee breeders who ship queens, mostly by mail, all over the world. It is estimated that there are 100,000 bee hives in commercial apiaries this year in Texas, and the yield of honey is expected to be 65 pounds per colony, or about 6,500,000 pounds, compared to 5,673,000 pounds last year and 7,776,000 pounds in 1972. Bad weather reduces honey making, as it did this year.

TEXAS CROP and Livestock Reporting Services reports that Texas produced 1,545,000,000 pounds of red meat (in its commercial slaughter plants) which was six per cent more than for the same eight months of 1973. That included 2,472,000 head of cattle (up six percent from the same period in 1973), 139,000 hogs (down 12 per cent), 985,500 sheep and lambs (2,000 head more than for the same period in 1973). In August, 342,000 head of cattle were killed, the same amount as in July but 18 per cent above August, 1973. Rains have made pastures better all across Texas, and most livestock will go into winter in good condition. Wet weather damaged some hay but hay baling is still active in some areas.

THE RAINS slowed down harvest over much of the State and also the seeding of wheat and oats. Wheat seeding is estimated at 55 per cent complete and oat planting at about 30 per cent. On the Low and High Plains, early stands of wheat are making good growth. Some army worms have been reported in early oats. Cotton harvest was almost stopped the first week of October by bad weather, but harvest was estimated from 20 to 25 per cent complete, compared to about 15 per cent complete at the same time last year. Harvest of the second crop of rice is getting underway, sorghum harvest is more than half complete, and peanut harvest is about a third complete. Sorghum harvest is on about the same schedule as last year but peanut harvest is behind. Corn harvest is about 50 per cent complete over the State, and some early fields of soybeans are reported ready for harvest along the Upper Texas Coast and in East Texas. Early varieties of pecans are being harvested in Central and South Central Texas.

Get Acquainted **SPECIAL**

ALL JUSTIN
BOOTS

MEN'S-WOMEN'S
CHILDREN'S
DISCOUNTED **15%**
THRU OCT. 19

ALL BAILEY DOWN
COATS

MEN'S-WOMEN'S
CHILDREN'S
DISCOUNTED **20%**
THRU OCT. 19

Many In Store Items - New
Selections Arriving Daily!



1609 N. Prince, Clovis N.M. Ph. 762-7701

Grand Opening

THUR FRI SAT
SALE BEGINS THURSDAY GIVE AWAY BEGINS FRIDAY



HOT DOGS
10¢
FRIDAY SATURDAY EACH

FREE PAIR PANTY HOSE FOR FIRST 50 LADIES WITH \$5 PURCHASE OR MORE EXCLUDING CIG.
FRESH POP CORN (BUY ONE GET ONE FREE)
LADIES PANTY HOSE BUY ONE GET ONE FREE)
MRS. BAIRDS SWEET ROLLS 49¢ BUY ONE GET ONE FREE
FRITO LAY OR MORTON TACO FLAVORED CHIPS BUY ONE GET ONE FREE
COCA COLA 6 PAK 10 OZ. BTL. BUY ONE GET A 6 PAK SPRITE FREE
BUY 1/2 GAL. BUTTERMILK GET 8 OZ. SOUR CREAM FREE
BUY 30¢ ICEE GET 20¢ FREE
RAINBO CAKES BUY ONE AND GET FREE
LUNCH BOX CAKES REG. 25¢



TIDE CHEER OR OXYDOL DETERGENT
GIANT SIZE
89¢



ARMOUR PLAIN
CHILI
79¢



GOLD MEDAL
FLOUR
5 LB. BAG **79¢**



BORDEN PREM ROUND CTN. 1/2 GAL.
ICE CREAM BUY ONE GET ONE FREE

8 TRACK TAPES
HEMISPHERE \$1.49

TOP HITS OF THE MONTH 8 TRACK TAPES-COUNTRY-POP-ROCK
REG. \$7.50 NOW **\$6**

MAMA COOKIES 4 FOR **\$1**

CRISCO
3 LB. CAN **\$1.89**



QUART BORDEN DUTCH CHOCOLATE
MILK BUY ONE GET ONE FREE

12 OZ., BORDENS
COTTAGE CHEESE BUY ONE GET ONE FREE

8 OZ BORDENS
DIP BUY ONE GET ONE FREE

8 OZ BORDENS
SOUR CREAM BUY ONE GET ONE FREE



SURFRESH CANNED
HAMS
3LB. **\$3.39**

RACORN
BACON 1 LB. PIECES **59¢**

SHURFRESH
BOLOGNA 12 OZ. **49¢**

SHURFRESH
WIENERS 12 OZ. **49¢**

SHURFRESH
BOLOGNA-LUNCHEON SALAMI 3 FOR **\$1**



FOLGERS
COFFEE
3 LB. CAN **\$2.99**

SUGAR IMPERIAL 5 LB BAG **\$1.89**

CHIFFON PAPER TOWELS BOX **43¢**

SHURFRESH CAN BISCUITS EA. **10¢**

SHURFRESH 6 OZ. FROZEN ORANGE JUICE **19¢**

TYSON DRUMSTICKS & BREASTS
CHICKEN PARTS 2 LB. BOX **99¢**



ARMOUR OR WILSON
VIENNA SAUSAGE 4 FOR **\$1**

LUCKY LEAF
APPLE JUICE **49¢**

DAWN
DISHWASHING LIQUID **59¢**

9 OZ. CUP COCA COLA 5¢ EACH
FRIDAY & SAUTURDAY

REGULAR
KOTEX
59¢



MANY MORE ITEMS
1/2 PRICE

SIDEWALK SALE

BIG SELECTION OF MERCHANDISE

1/2 PRICE

FREE BAG OF GROCERIES
to be given away free every Hour
STARTS FRIDAY



CONVENIENCE STORES
314 WEST AMERICAN MULESHOE

OPEN 24 HOURS 7-DAYS

HOT BAR-B-QUE CHICKEN

BUY ONE GET ONE LOAF OF BREAD FREE!!



MULESHOE MULES CHEERLEADERS WILL BE PUMPING BELL GAS FOR YOU FRIDAY AND SATURDAY.

WANTED ADS

OPEN RATES
1st insertion, per word - 9¢
2nd and add., per word - 6¢
NATIONAL RATES
1st insertion, per word - 11¢
2nd and add., per word - 7¢
Minimum Charge - 50¢
CARD OF THANKS - \$2.00
Classified Display \$1.25
per column inch.
Double Rate for Blind Ads -
DEADLINE FOR INSERTION
Noon Tuesday for Thursday
Noon Friday for Sunday
WE RESERVE THE
Right to classify, revise or
reject any ad.
NOT RESPONSIBLE
For any error after ad has
run once.

PERSONALS

FOR YOUR Stanley Home Products, Jewel Broyles, call 965-2481.
1-16t-tfc

HELP WANTED

ACCEPTING Applications for R.N. at Plains Memorial Hospital at Dimmitt, Texas. Call 647-2191 and ask for Verle West, Administrator or A'Lian Bradley, Shift preference will be considered.
3-25s-tfc

WANTED: 2 mechanics. Excellent opportunity and working conditions. Apply in person, Town & Country Auto Inc, Clovis Highway.
3-32t-tfc

WANTED: Typist. Must type 50 words per minute at least. Inquire in person at Journal.
21s-3-tfp

WANTED: 'A' MECHANIC: Immediate openings. Wide experience in welding, familiar with lay-out, stainless welding and hell-arc, good mechanical background, Liberal fringe benefits, permanent employment. See of call Bob Brooks; personnel director, Amstar Corporation, P.O. Box 169, Dimmitt, Texas 79027, Phone 806-647-2137. EQUAL OPPORTUNITY EMPLOYER.
3-41s-2tc

WANTED: L.V.N. Floor supervisor. Top pay. Jewel's Hospitality House, 806-272-5512.
3-42t-tfc

APARTMENTS FOR RENT

FRONA APTS. now have available 1, 2, and 3 bedroom. \$145.00. Call 247-3666 or come by 1300 Walnut Street, Frona. Sorry no pets.
5-24s-tfc

FOR RENT: 2 bedroom unfurnished apartment. Phone 272-4838, Smallwood Real Estate.
5-47s-tfc

FOR RENT: 2 bedroom, 2 bath, refrigerator air, central heat, stove and refrigerator, fully carpeted. Contact Sam Damon or Joe Damon, 272-410 or 272-4462.
5-38s-tfc

WANTED TO RENT

WANTED: Irrigated land to rent or buy. A.E. & Bobby Redwine. Phone 806-965-2437 or 806-965-2845.
7-41t-tfc

WANTED TO RENT: Dry land farm in Bailey County. Phone 806-946-2701 after 7 p.m.
7-38s-8tc

WANTED TO RENT or lease irrigated land. Call 806-965-2160. John Mitchell.
7-38s-tfc

Would like to lease wheat pasture and stalks for 1,000 head of cattle. Call Randy Johnson, 806-272-3056 or 806-965-2224.
7-41s-tfc

REAL ESTATE FOR SALE

FOR SALE BY OWNER: 216 acres 4 miles E, 1 North, 1/4 E. of Muleshoe. See Harlan Reese, 806-965-2760.
8-39s-tfc

FOR SALE: 3 bedroom brick 2 bath, 2 car garage, 401 Commerce, Sudan, Texas. Call 806-227-4591.
8-42t-4tp

FOR SALE: 2 bedroom brick, 1 bath, livingroom, den and kitchen, utility room, garage, fenced back yard. Call 806-272-5564.
8-41s-tfc

FOR SALE: 2 bedroom house, 1 bath, livingroom, carpeted. Call 806-272-4459 or 806-272-3182.
8-42t-tfc

FOR SALE: Nice 2 bedroom house in Lenau Addition. Call 806-272-3749.
8-42t-tfc

HOUSE FOR SALE: 3 bedroom, garage, fenced backyard, 2 storage buildings. Priced to sale. Located 225 E. Elm St. Good location. Phone 505-356-3944.
8-41t-tfc

Three bedroom house for sale or lease. Sale for \$10,500.00 or lease of \$130.00 per month 1828 W. Ash. Call 806-272-3463.
8-34s-tfc

FOR SALE: Four bedroom, eight room home, fully carpeted, built in range and double oven, attached garage and carport. Call 806-272-4208 or 806-272-4412 after 6 p.m.
8-41t-tfc

FOR SALE: Beauty shop, call 965-2660 or 272-4375.
8-33s-tfc

9. AUTOMOBILES FOR SALE
FOR SALE: 1965 Chevrolet; 6 cylinder, 4 speed pick-up, Good condition. Call 806-925-3510, 9-38t-tfc

FOR SALE: 1972 Mercury Brougham 4 door. Extra clean; 24,000 miles; Call 806-272-4231 or 806-272-4632.
9-38s-8tc

FOR SALE

FOR SALE: 70 Ford F600 428 5 speed, 1 year old, 16" Knaphide grain bed with hoist and one 15" wood grain bed. 1964 95 John Deere 14' header with pick-up reel on butane, one 500 gal. propane trailer tank, 965-2680 or 272-5541.
10-34t-tfc

FOR SALE OR TRADE

OR SALE: 4 apartment complex, 300 block west 20th, good income, good tax possibilities. Phone 272-4284 after five 272-4491.
1120t-tfc

FOR SALE OR TRADE: Layne Apartments. See Mrs. Layne at 524 S. 1st Street.
11-25s-tfc

HOUSEHOLD GOODS

Pianos, organs, band instruments, new and used. Professional repairs, sheet music, rentals, terms.
Phillips House Of Music
118 Main, Clovis, N.M., Phone 505-763-5041
12-34s-tfc

MISCELLANEOUS

FOR SALE: A up and going, Liquid Feed business, Good buy, selling due to health. Call 965-2680
15-36s-tfc

WANTED TO BUY:

Damaged corn in the shuck, Hugh Collis, 806-965-2920 or 806-965-2746 evenings.
15-41s-tfc

FOR SALE: 1969 Mobile Home, 3 bedroom, fully carpeted; appliances and air conditioned. \$4,500.00 Phone 806-272-3636 or 806-272-3759.
15-41s-tfc

FOR SALE: Honda 175 C.C., good condition. Perfect for irrigating. Call 806-925-3535 after 7 p.m.
15-39t-tfc

FOR SALE: 10 X 54 Mobile Home. Completely carpeted and appliances. Good condition. Call 806-272-4458 between the hours of 8 a.m. and 7 p.m.
15-42t-tfc

FOR SALE: 1 year old Gold hydraulic beauty shop chair, Uni-perm machine with 20 permanents, Used four times. Call 806-247-3156.
15-42t-2tc

FOR SALE: 3 bedroom, 1 3/4 bath, brick home with fenced backyard, located in Richland Hills near school. Call 806-272-4375.
8-42t-tfc

SEWING WANTED: Experienced; Reasonable rates, 519 W. 5th, Call 806-272-3497.
16-42t-2tp

Card of Thanks

The family of Cecil Buhrman wishes to express their sincere thanks for all the cards, flowers and prayers during Cecil's illness and for the many loving expressions of sympathy during their sorrow.
A grateful appreciation to all of our friends and may God bless each of you.
Mrs. Cecil Buhrman
Mrs. Cecil Buhrman
Mr. and Mrs. Eugene Buhrman
Mr. and Mrs. Franklin Mann
15-42t-1tc

John Dean Installed As Master Councilor

John Kirkland Dean, son of Mr. and Mrs. M.K. Dean of Muleshoe, was installed as Master Councilor of the Muleshoe Chapter, Order of Demolay, in ceremonies held Saturday, October 12, at 8:30 p.m. in the Muleshoe Masonic Lodge.
Other officers installed were: William C. Durham, Senior Councilor; Terry Mick, Junior Councilor; George Smith, Scribe; Zeb Payne, Treasurer; Larry Mills, Senior Deacon; Steve VanZandt, Junior Deacon; Paul Torres, Senior Steward; Mike Van Zandt, Junior Steward; Mark Benedict Chaplain; Tim Jinks, Marshall; Danny Howard, Almoner; Mike Pool, Sentinel; Eugene Reeder, Standard Bearer; Mark Lovelady, Orator; Kevin Smith, First Preceptor;

David White, Second Preceptors; Aaron Lee, Third Preceptor; Rickey King, Sixth Preceptor; and Dick Pena, Seventh Preceptor.
Members of the Advisor Council are Alton Epting, Wyle Bullock, and R.R. Mick.
The invocation was given by Wyle Bullock and the welcome by Kerry Moore. The flower talk was given by John Dean and the benediction was given by Ivan Woodard.
Members of the installing team were: Perry Hall, Installing Officer; Ronnie Bullock, Installing Senior Councilor; Larry Torres, Installing Junior Councilor; Jerry Penick, Midland, Installing Chaplain; Mike Hunt, Installing Marshall and Bobby Henry, Installing Senior Deacon.
The guest registrant was Mary Flowers, Musician as Jana Oyler. Belinda Nickels, Kelly Chah, and Susie Cousatte presided at the serving table. Hostesses were Mrs. Bill Durham, Mrs. Benny Bickel, Mrs. Wyle Bullock, Mrs. Charles Smith, Mrs. Lonnie Merriott, and Mrs. Larry B. Hall. Mrs. Larry Hall made the table decorations.
Out of town guests were Mrs.



JOHN KIRKLAND DEAN INSTALLED. John Kirkland Dean was installed as Master Councilor, Saturday, October 12. Pictured above top left to right, Lee Walston, David Smith, Rogelio Puente, Ricky Claybrook; Middle left to right are, Steve Van Zandt, Mike Van Zandt, Danny Howard, Mike Pool, Mark Lovelady, Ricky Carlson; Bottom left to right are, Larry Mills, Larry Torres, Bill Durham, John Dean, Terry Mick, Zeb Payne, and David White.

All type roofing & building repair. FREE ESTIMATES
Phone 806-272-3756
DON'S ROOFING CO.
15-32s-tfc

Cess Pool Cleaning
Cesspools pumped with a MUD-PUMP & treated with bacteria & enzymes to liquify solids & loosen sides for better drainage. Dipping vats drained and liquids hauled to your disposal pit. Grease pits drained & treated. Molasses pits drained.
Phone 272-3677 or 272-3467
ELMER DAVIS

HORSE
Breaking, Training, and Showing. For all Western Events.
Call LARRY GOREE 272-4033 or ALTON GOREE 806-889-3860
15-41t-8tc

Public Notice
The dump ground on the Hunt farm south of Muleshoe is no longer a dump. Persons dumping there will be fined.
s/Owners
15-41t-4tp

Several good tracts of land for sale. Some at 25% down. Good water.
8-37s-tfc

POOL REAL ESTATE
214 E. AMERICAN BLVD
PHONE 806-272-4716

USED IRRIGATION EQUIPMENT
Pivot systems; side roll systems; traveling volume guns; tri-matics.
AVI INC.
Phone 806-272-3565

Shaklee

Food Supplements
Call: Zida M. Black
PHONE 806-565-2680

LEASE A SELF-PROPELLED VALLEY SPRINKLER SYSTEM
Available now for wheat planting season. Call or come by and let us explain the advantages of leasing a valley sprinkler.
AVI INC.
W HWY 84 272-3565

FOR SALE IN MULESHOE: Nearly new spinet piano. Concert approved. Tremendous Bargain. This is your chance to own a fine piano by just assuming payments. Write at once -- McFarland Music Co, 1401 West 3rd, Elk City, Okla. 73644.

FOR SALE: 8 piece drum set with Ludwig snare; 1972 Yamaha 100 Enduro, good shape. Gary Wrinkle. 806-272-3673.
15-42t-2tc

FOR SALE: Premier 50 minicycle, headlights and horn. Price includes 5 gallons gas and helmet. \$67.00. Call 806-272-4603 or come by 310 W. 20th.
15-42t-1tp

FOR SALE: Auto-reverse stereo cassette tape player for car or truck. Brand new. Nights call Jimmy Wedel 806-272-3332.
15-42t-3tc

16. LIVESTOCK
Calves 7 to 14 days old. Healthy and started on bottle. Free delivery of 10 or more. Call 214-223-5171 after 7 p.m.
1628s-24tc

Public Notice

THE STATE OF TEXAS
TO: SHARON NIGH
GREETING:

You are commanded to appear by filing a written answer to the plaintiff's petition at or before 10 o'clock A.M. of the first Monday after the expiration of 42 days from the date of issuance of this Citation, the same being Monday the 25th day of November, A.D., 1974, at or before 10 o'clock A.M., before the Honorable District Court of Bailey County, at the Court House in Muleshoe, Texas. Said plaintiff's petition was filed on the 9th day of Oct., 1974. The file number of said suit being No. 3751
The names of the parties in said suit are:
IN THE MATTER OF THE MARRIAGE OF LARRY JOE NIGH AND SHARON NIGH, AND IN THE INTEREST OF SHEILA JO NIGH, A CHILD.
The nature of said suit being substantially as follows, to wit: Divorce.
If this Citation is not served within 90 days after the date of its issuance, it shall be returned unserved. Issued this 11th day of October A.D., 1974.

Given under my hand and seal of said Court, at office in Muleshoe, Texas, this 11th day of October A.D., 1974.
Nelda Merriott Clerk
District Court Bailey County, Texas
15-42t-4tp

News Of Our Servicemen

Samuel Pierce
OKLAHOMA CITY -- Samuel H. Pierce, son of Mr. and Mrs. S.H. Pierce, Route 2, Muleshoe, Texas, has been assigned to Tinker AFB, Okla., from Kadena AB, Okinawa.
Pierce, an Air Force senior master sergeant, is an air traffic control superintendent with the third Mobile Communications Group.
He is a 1951 graduate of Creswell (Ore.) Union High School.

ATTENTION MULESHOE AREA CATTLEMEN
..... In regard to dead stock removal.....
If you have had a problem with service..... whether in the feed yard or on the farm.....
Please give US a chance! Thank you.
Your local used cow dealer is muleshoe-bi-products
Phone-965-2903 Mobil Phone 965-2429

OPEN DAILY 9 AM - 8 PM CLOSED SUNDAYS
GIBSON'S DISCOUNT CENTER
"WHERE YOU ALWAYS BUY THE BEST FOR LESS"
1723 W. AMERICAN BLVD.
PRICES GOOD OCT. 17 THRU OCT. 19

COLD WEATHER VALUES NOW AT GIBSON'S MEN'S COATS
MANY STYLES, COLORS AND BIG SAVINGS
25% OFF REGULAR PRICE

GET Those Cotton Trailers READY For Harvest NOW!
WE HAVE BEARINGS-SEALS -HUBS- AXLES FOR REPAIRING YOUR TRAILER
ALSO NEW AND USED TRAILER WHEELS AND TIRES
New K14 And K15 Tubes BY THE CASE \$2.49 EA.
James Crane Tire Co.
GOOD YEAR TIRES

Glen's BACKHOE SERVICE
806/272-4411
GLEN WATKINS

FALL KICK-OFF SALE

WHITE SWAN SALE

- #303 CAN WHITE SWAN
APPLE SAUCE..... 39¢
- QT. BOTTLE WHITE SWAN
APPLE JUICE..... 59¢
- #300 CAN WHITE SWAN CUT
ASPARGUS..... 59¢
- #303 CAN WHITE SWAN WHOLE
BEETS..... 3 FOR 89¢
- #303 CAN WHITE SWAN SLICED
BEETS..... 25¢
- #303 CAN WHITE SWAN SLICED
CARROTS..... 25¢
- #300 CAN WHITE SWAN
PORK & BEANS..... 3 FOR 89¢
- #303 CAN WHITE SWAN CUT
GREEN BEANS..... 3 FOR 89¢
- #303 CAN WHITE SWAN WHOLE KERNEL GOLDEN
CORN..... 3 FOR 89¢
- #303 CAN WHITE SWAN GOLDEN CREAM STYLE
CORN..... 3 FOR 89¢
- #303 CAN WHITE SWAN
SPINACH..... 25¢



- SWIFTS PREMIUM PROTEIN BEEF
RIB STEAK..... LB... \$1.09
- SWIFTS PREMIUM PROTEIN BEEF
ARM ROAST..... LB... \$1.09
- SWIFTS PREMIUM PROTEIN BEEF
GROUND BEEF 100% PURE BEEF LB..... 79¢
- SWIFTS PREMIUM PROTEIN BEEF
RANCH STEAK..... LB... \$1.09
- 1 LB PKG ARMOUR STAR THIN SLICED
BACON..... LB... \$1.19

- 12 OZ PKG ARMOUR STAR
HOT DOGS..... 69¢
- 12 OZ PKG JIMMY DEAN'S PURE PORK
SAUSAGE HOT OR MILD..... 79¢
- 24 OZ PKG JIMMY DEAN PURE PORK
SAUSAGE HOT OR MILD..... \$1.57
- SWIFTS PREMIUM PROTEIN BLADE CUT BEEF
CHUCK ROAST..... 79¢
- 40 CT PKG EL JACALITO CORN
TORTILLAS..... ea... 55¢

- #300 CAN WHITE SWAN WHITE
TOMATO SAUCE..... 6 FOR 98¢
- #300 CAN WHITE SWAN MIXED
VEGETABLES..... 3 FOR 89¢
- 26 OZ BOX WHITE SWAN
SALT..... 12¢

- #300 CAN WHITE SWAN FRESH
BLACKEYES & SNAPS..... 25¢
- WHITE SWAN OVEN READY
BISCUITS..... 4 FOR 49¢
- 1 LB TUB WHITE SWAN SOFT
OLEO..... 69¢
- 1/2 GAL WHITE SWAN
BLEACH..... 43¢

COCA COLA
\$1.59
32 OZ BTL
6 BTL CTN

GERBERS STRAINED
BABY FOOD
4 3/4 OZ JAR
10¢

18 OZ BOX
POST TOASTIES
59¢

#303 CAN WHITE SWAN LUNCHEON

PEAS

3 FOR 89¢

WHITE SWAN

COFFEE

ALL GRINDS

1 LB TIN 89¢

BANANAS
Golden Ripe 7¢

- LARGE AND SMALL
PUMPKINS..... LB..... 5¢
- TEXAS RUBY RED
GRAPEFRUIT..... LB..... 15¢

CALIFORNIA TOKAY'S
GRAPES
LB 19¢

- FROZEN FOODS**
- 2 LB PKG ORE IDA
TATOR TOTS..... 69¢
 - MEADS FROZEN 3 LOAF PKG
BREAD..... 69¢
 - 9 OZ CTN WHIPPED TOPPING
COOL WHIP..... 59¢
 - BANQUET
TV DINNERS..... 55¢

- #1 TALL CAN FULL DRESS
DOG FOOD..... 6/89¢
- 5 LB BAG SOFT N LITE
FLOUR..... 79¢
- 3 LB TIN ARMOUR'S VEGETOLE
SHORTENING..... \$1.49
- QT. BOTTLE BEST MAID WAFFLE
SYRUP..... 89¢
- 18 OZ GLASS BAMA PURE APPLE
JELLY..... 59¢
- 9 OZ PKG SUNSHINE MALLOWPUPS
COOKIES..... 59¢
- 2 OZ CAN
MAGIC SIZING..... 49¢
- BREEZE GIANT SIZE BOX
DETERGENT..... \$1.19
- 9 OZ WLARD
AIR FRESHENER..... 65¢
- 16 OZ CAN TEXIZ E
SPRAY & WASH..... \$1.09

Welcome Federal Food Stamp Customers

GUNN BROS STAMPS
DOUBLE EVERY WEDNESDAY

White's CASHWAY
STORE HOURS 7:30 A.M. TIL 9:00 P.M. Monday Thru Saturday CLOSED Sunday
We Reserve The Right To Limit Quantities

Listen to MULETRAIN over KMUL 10:15 a.m. Sponsored by WHITE'S CASHWAY

STORE HOURS
7:30 a.m. til 9:00 p.m.
MONDAY thru SATURDAY
CLOSED SUNDAY