



THE MULESHOE JOURNAL

'The Community of Opportunity-Where Water Makes the Difference'

Weather

	HIGH	LOW
July 21	93	58
July 22	97	59
July 23	96	60
July 24	98	64
Rainfall to date 3.07.		

Vol. 52 No. 30

8 Pages

Published Every Thursday at Muleshoe, Bailey County, Texas 79847

10 CENTS

Thursday, July 25, 1974

Standard Greenbug Insecticide Control On Decline

Mishap Claims Area Youth

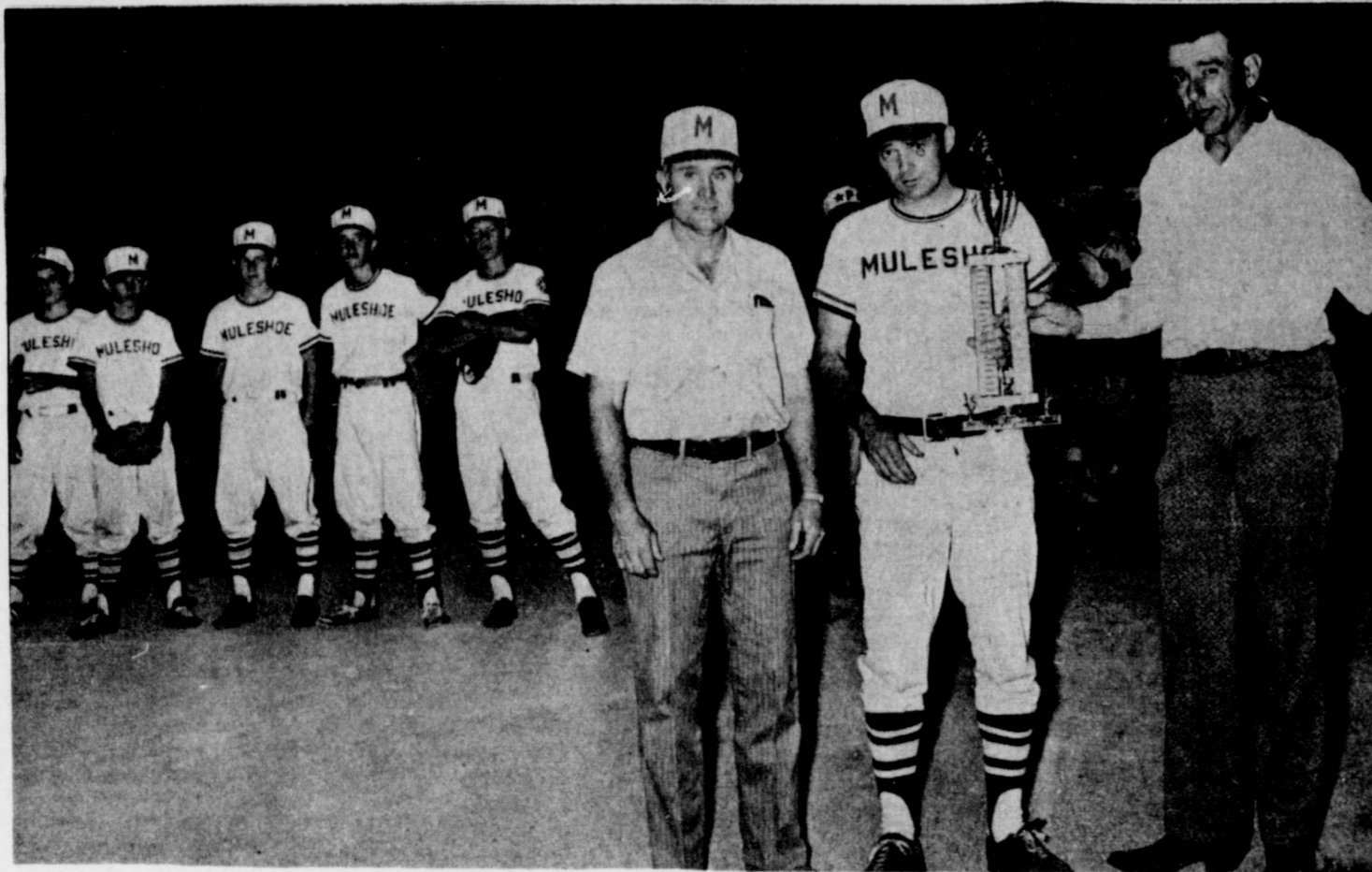
Audie Lynn Gore, age 20, died in a grinding two car crash at 1:45 a.m., July 22 at the intersection of Highways 116 and 385 in Levelland, Texas.

The Gore vehicle was traveling north on US 385 when it was struck in the left hand side by an eastbound car driven by Benny Ray Daniels of Levelland. The Daniels auto was also occupied by John Van Zandt of Levelland. As reported to the Journal by the Levelland police department, Daniels ran a flashing red light at the highway intersection resulting in the mishap. Daniels was cited for failure to have control of vehicle and further charges were pending.

The Gore youth was taken first to Cook Memorial Hospital in Levelland and then transferred to Methodist Hospital at Lubbock, where he was pronounced dead on arrival. He suffered massive head injuries. Occupants of the Daniels car were also removed to Methodist Hospital at Lubbock.

Audie Gore was a life time resident of the Circleback community and attending school in Sudan. He graduated from Sudan High School in 1972 and entered South Plains College, where he received his degree in Law Enforcement in May, 1974. While in college, he was active in the band, a member of the Flaming Spurs, the Rodeo Club and the law enforcement major's club. He was a member of the Circleback Baptist Church.

He is survived by his mother, Mrs. A. W. Gore, two brothers, James and Joe also of Circleback, and one sister. Con't on page 3, col.1



MULESHOE BABE RUTH LEAGUE WINS RUNNER-UP TROPHY . . . Pictured above are 1 to r Coach, Ronnie Jones and Preston Cargile, manager of the Muleshoe 13 year old

Babe Ruth All-Stars as they accepted the 2nd place trophy presented by Ted Robb, President of the Dimmitt Babe Ruth League and District Chairman. Photo Courtesy, Castro Co. News

County Arrests Show Increase Experts Concerned With Insecticides

Arrests logged in the Bailey County Law Enforcement Center since July 21 were: two arrested for DWI, released on \$750 Bond each. The arrests in these cases were made by J.R. Carpenter and Highway Patrolman Louis Cardinal.

On July 22 three women and one man were picked up and charged with possession of alcohol for sale, a misdemeanor. Elizabeth Ann Inman, 37, plead guilty and was fined \$100 plus court costs; Lessie B. Hardin, 49, plead guilty and was fined \$250 plus court costs; Dairea Rosales plead guilty and was fined \$100 and court costs. Lawrence Smith, 59, was charged allegedly with the possession of alcohol for sale and was released on \$500 bond.

The police reported that liquor was purchased from the people charged during the preceding week. Arresting officers were Sheriff Dee Clements, Deputy Bud Street, Deputy Pete Black and Liquor Control Board officers from Lubbock, Texas.

Dr. Robert C. McIntyre, Area Extension Entomologist advises that, "in past years, killing greenbugs has been as simple as pouring the insecticide in the crop duster and flying it on. In fact, greenbugs have been so easy to kill that researchers entomologists have been frustrated because they could not find rate sufficiently low to maintain a few greenbugs to provide a food source for beneficials."

He further stated, "as of June, the situation has changed dramatically. The realization of a problem began with a call of two to the Texas A&M Agricultural Research and Extension Center at Lubbock. Aerial applicators in the Olton area reported applying materials to control greenbug and getting little or no control. Since the initial call, the telephone line has remained hot. The problem area as defined from telephone calls begins at Hale Center and north into the Dumas-Herford area and Tulsa on the east."

At about the same time, Gene

Latham, County Entomologist heading up the Sorghum Pest Management Program in the Edmonson community, reported, "Greenbug populations are increasing dramatically on a small portion of the acreage in the program area. In past years, greenbugs have typically increased approximately six-fold per week; this year in these fields, survey records indicate the populations were increasing at a rate of 10-fold per week. Populations that had been surveyed at 30/ plant during the first week of July had increased to approximately 300/ plant during the second week."

Latham also commented that, "these fields would have to be treated by July 19, if populations maintained their present rate or even the normal rate of increase. This acreage has been treated and we have ob-

Con't on page 3, col.1

Farm, Ranch Safety Week Proclaimed

Governor Dolph Briscoe has proclaimed the week of July 25-31 Farm and Ranch Safety Week in Texas.

"Although the farm and ranch environment contains many hazards," the governor said in his proclamation, "experience has shown that caution, common sense, skill and protective equipment can counter these hazards and keep accidents and injuries to a minimum. Texas farmers and ranchers, their families and employees need to dedicate themselves to the task of safely producing the commodities

needed by an entire nation."

The proclamation is part of a statewide farm and ranch accident prevention campaign being conducted by the Texas Safety Association, Texas Farm Bureau, Texas Agricultural Extension Service, Future Farmers and Future Homemakers of America and Young Farmers of Texas. The week also concurs with National Farm Safety Week under the co-sponsorship of the National Safety Council and the U.S. Department of Agriculture.

State Health Department figures show that there were 214 fatal accidents on Texas farms during 1973. That number is up 16.9 percent over 1972. The highest ranking fatal farm accidents in 1973 were those involving firearms (42 deaths), drownings (41 deaths), tractors (26 deaths), fires and burns (24 deaths) and falls (20 deaths).

This year's national campaign is focusing on the fall with the theme, "ABC's of Avoiding Falls -- Alertness, Balance, Care."

Joe Smetana, TSA vice president for farm and ranch safety, offered some basic suggestions for preventing falls:

Con't on page 3, col.7

Loans Available Through FHA

Farmers Home Administration makes loans to finance homes in rural areas and in towns up to 10,000 population, according to John C. Kennedy, County Supervisor for the agency in Bailey County.

Loan funds may be used to buy and improve existing houses, or build new housing. Loans are available to low and moderate income families. These families must:

1. Be without decent, safe and sanitary housing.

2. Be unable to obtain a loan from private lenders.

City Purchases New Vehicle

City Manager Jim Rankin reports that the new Station wagon for the fire chief has been purchased. It is a 1974 Chevrolet and was purchased locally from Crow Chevrolet. It will be equipped with radio devices to aid in fire calls. He also reports that a new fire chief has not yet been elected, and H.E. Roeder is still serving in a temporary capacity.

Nephew of Local Residents Dies in African Ordeal

Jeffrey P. Hammock, 25 year old son of Mr. and Mrs. William R. Hammock, of Ledyard, Connecticut, died in Nairobi Hospital of acute kidney failure. Hammock was the nephew of Mrs. Lee Pool and John Hammock of Muleshoe.

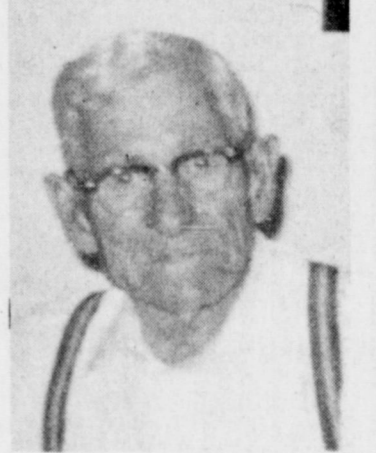
The youth was in Kenya on a research expedition in connection with part of his work toward a graduate degree. He was enrolled in the University of Rhode Island.

Hammock did not return to the East Rudolph, Kenya expedition's Karai camp on June 25. A search party was sent out after his failure to return. He was found alive and uninjured on June 29, five days after he was reported missing.

Hammock was found to be suffering from dehydration and exhaustion. Upon arrival at Nairobi Hospital, he was reported to be responding to treatment when the kidney failure occurred which resulted in his death.

Funeral arrangements at the time of report were pending, since the State Department has to assist in arrangements for the return of the body to the United States.

Hammock did not return to the East Rudolph, Kenya expedition's Karai camp on June 25. A search party was sent out after his failure to return. He was found alive and uninjured on June 29, five days after he was reported missing.



ISAAC H. ROBINSON

Robinson Rites Set Thursday

Longtime Bailey County resident Isaac H. "Ike" Robinson died at 10:10 a.m., July 23 in the Muleshoe Nursing Home. He was 78 years old and had been a resident of Muleshoe since 1924, moving here from Mangum, Oklahoma. Until his retirement in 1971, he operated Robinson's Boot Shop and Western Wear. He was a member of the First Baptist Church of Muleshoe.

Services are set for 3:00 p.m., Thursday, July 25 in the First Baptist Church with Reverend Doug DuBose of Pampa officiating. Burial will be in Bailey County Memorial Park under

Con't on page 3, col.8

Veterans Act Is Explained

Veterans and their families are asking thousands of questions concerning the benefits their Government provides for them through the Veterans Administration. Below are some representative queries. Additional information may be obtained at any VA office.

Q-- How long do veterans separated from military service between April 2, 1970, and Aug. 1, 1974 have under the Veterans Insurance Act of 1974 to apply for the new Veterans

Con't on page 3, col.5

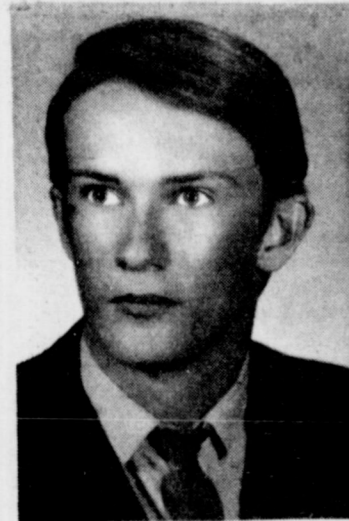
Starting Time Set For School

Tom Jinks announced that the 1974-75 school year will begin Monday, August 26. Registration for all students will be August 22. The faculty inservice training will be the week of August 19 thru August 23.

Con't on page 3, col.5



FIRST LOAF OF TRITIBREAD INSPECTED . . . Homer McPherson, vice president and chief executive officer of Mead's Foods, Inc., (left) and Douglas Bales, president of Triticale Foods Corp., inspect the first loaf of Tritibread. The new bread, was introduced Monday by Mead's Bakery in Amarillo and Baldrige Bakery in Lubbock, is the first commercial bread to contain flour from triticale, a man-made hybrid grain.



AUDIE GORE

around muleshoe with the journal staff

Weekend guests visiting in the Carl Ellington home were Miss Elaine Pike and Eddie Ellington of San Antonio and Miss Carla Ellington, of Lubbock.

The Charles Issacs just returned from an Arabian Convention held in Houston. It was called the Ramallah Convention Federation named after Ramallah, Jordan which is Isaac's hometown. Mrs. Isaac reported that it was like a family reunion. Isaac's relatives from the surrounding area all traveled together in a 20 car caravan from here to Houston. Attending from here were Mr. and Mrs. Charles Isaac and their two oldest daughters.

The Tuesday, July 23 Rotary Club program was presented by County Judge Glen Williams who spoke on the forthcoming county tax equalization program.

Judge Williams explained, "A county equalization has not been made since 1948 and the purpose of this program is to equalize tax values-not to create overall tax increases.

Kenneth Henry was in charge of the Tuesday program.

Sam Damron is going to attend a Texas State Board of Pharmacist Sunday July 21 in Houston. He will also attend the annual convention there Monday thru Thursday. He will join his wife who is already there. While in Houston they will also attend a performance

Con't on page 3, col.2

Outstanding Jaycee Chosen

The Muleshoe Jaycees met Monday, July 22 for their noon general membership meeting. The president, Charles Moraw called the meeting to order. Invocation was given by Gene McGuire, pledge of allegiance was led by Andy Douglass and the Jaycee Creed was led by Monty Dollar.

Jaycee of the month, John Carruth, was announced. He was named as an outstanding Jaycee helping in all phases of Jaycee activities and projects. Carruth has been a Jaycee for less than one year.

Dick Kelton reported on the Miss Muleshoe Pageant to be held August 24. According to Kelton, six girls have plans to enter this year's pageant and

Con't on page 3, col.3

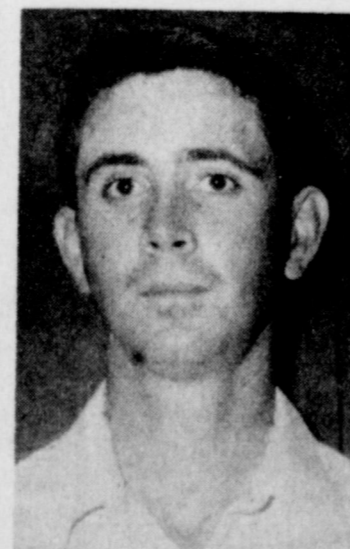
Carpenter Holds New Position

Patrolman J.R. Carpenter was appointed Assistant Chief of Police by Chief of Police Buddy Black on Monday, July 22, after his completion of training.

Carpenter is a longtime resident of Muleshoe, having moved here in 1960 from Caprock, Texas. He is a graduate of Muleshoe High School and is married to the former Deborah McIntire of Paris, Texas.

He received his degree in Basic Police School from South Plains College at a banquet held in Lubbock on July 20 in Lubbock, Texas. The award was presented by Royce Couch, who is School Coordinator for South Plains Association of Governments. The course was completed at South Plains College in Levelland.

Carpenter is the son of Mr. and Mrs. A.M. Carpenter of Muleshoe.



J.R. CARPENTER

Tritibread Now On Grocer's Shelves

A new bread is on Muleshoe local grocers' shelves this week and signals the beginning of another agribusiness boom for the Panhandle and South Plains. The new commercial product has been delivered to Piggy Wiggly, Jim's Pay & Save and White's Cashway here in Muleshoe.

Triticale grown by Panhandle and South Plains farmers is the key ingredient for the new bread, being introduced in Northwest Texas by Mead's Bakery of Amarillo and Baldrige Bakery of Lubbock.

Triticale is a laboratory-created cross between wheat and rye, which is remarkable for its nutritional value and distinctive nut-like flavor. The unique grain derives its name from triticum, the botanical

term of wheat, and secale, the word for rye. The marketing of Tritibread promises to be an economic plus for both the area farmers growing the grain and for Triticale Food Corp. of Muleshoe.

Con't on page 3, col.3

Interest Increased By Federal Land Bank

Ernest Kerr, Manager of the Federal Land Bank Association of Muleshoe, announced today that the Federal Land Bank's billing rate on farm and ranch variable interest rate loans would be increased from 7-3/4% to 8-1/2% effective August 1, 1974. The billing rate on rural residence loans will be increased from 8-1/4% to 9% on the same date. The variable interest rate loan plan was introduced by the Houston Bank in July, 1969 with a billing rate on loans outstanding to "float" with the variations in the money market.

In making this announcement, Kerr stated, "The Bank's decision to make this change was necessary because of the increased cost of bonds sold which had increased with every issue since the beginning of the year, with the most recent issue sel-

ling at an all time record high of 9.21% average effective rate. The Bank had delayed action in raising the billing rate in order to assess the duration of present high interest levels, and there is nothing in the present monetary situation to indicate any improvement in the immediate future."

The Federal Land Bank of Houston makes long-term real estate loans on farm and ranch land and rural residences throughout Texas and now has more than 913 million dollars in volume of loans outstanding. The local Association makes and services loans in Bailey and Parmer counties. Officers and directors of the Association are Gordon Duncan, Morris Douglas, Jim Claunch, Arlin Hartzog and James Glaze, directors and Ernest Kerr, manager.

STATE CAPITAL Highlights AND Sidelights

by Lyndell Williams
TEXAS PRESS ASSOCIATION

AUSTIN, Tex. — Oklahoma temporarily stopped movement of Texas cattle into the neighboring state due to an outbreak of dread anthrax in Falls County.

About 200 animal carcasses have been burned in the county since the anthrax quarantine was imposed June 28. The quarantine covers only that portion of the county east of the Brazos River.

A USDA spokesman said "suspected" cases were discovered in surrounding Texas counties and in an Oklahoma City stockyard.

Animal Health Commission officials recommended continued vaccination of cattle in Falls, McLennan, Leon, Freestone, Robertson, Bell, Milam, and Limestone counties. They were optimistic about control of the outbreak. Oklahoma first placed an embargo on Texas cattle, then limited it to movement from the eight counties.

About 300,000 cattle were scheduled for vaccination in the Central Texas area, and only 250,000 doses of the vaccine were initially available.

An estimated 110,000 head of animals were in the quarantined zone. Forty-one roadblocks were established to prohibit movement.

Texas National Guard, the Department of Public Safety and the State Department of Agriculture assisted in efforts to control spread of the disease.

ALLOWABLE SET — The Railroad Commission once more set the statewide oil allowable at 100 per cent, amid reports Texas is leading all other states in the search for oil and gas.

Texas has been operating under wide-open production orders for more than two years.

Commission Chairman Jim Langdon said the agency has handled 10,600 drilling applications this year, compared to 6,600 by July of 1973. The number of drilling rigs has increased 42 per cent from a year ago — to 511 on location — twice as many as any other states, according to Langdon.

Thirty five percent of active rigs in the national are in Texas, by Langdon's count.

CONVENTION NEARS END — Whether delegates ever agree on a new state constitution or not, the Constitutional Convention of 1974 is about to wind down.

July 30 is the deadline for completion of the revision effort.

Delegates continued in pursuit of illusive compromise, voting down proposal after proposal, yet knowing that by the end of the month they probably would accept a revision package, like it or not.

ABC ADMINISTRATOR RETAINED — Alcoholic Beverage Commission Administrator O.N. "Newt" Humphreys Jr. weathered another effort to oust him from his \$28,500-a-year job.

ABC Member R.L. Thornton Jr. of Dallas, for the second time, failed to get a second to a motion to fire Humphreys. Thornton made his first move last May.

Thus, Humphreys, 50, got a shaky two-to-one vote of confidence.

Thornton claims Humphreys is not as competent an administrator as he should be

to head up a major tax-collecting and enforcement agency. Humphreys said he will stick as long as he can.

COURTS SPEAK — Fuller Springs area annexation by Lufkin is invalid, the State Supreme Court held.

Texas Court of Criminal Appeals reversed a theft conviction of a Dallas man accused of stealing a blinker light from a construction site. The Supreme Court upheld an \$18,000 damage award to a Farmer County man injured when he fell while del-

ivering oil.

BONDS SOLD — Fifteen million dollars in student loan bonds were sold by the Coordinating Board, Texas College and University System in spite of a member's advice to delay.

An interest rate of 6.2841 per cent offered by a Chase Manhattan Bank and First National Bank of Chicago group was accepted.

Bonds will mature in 20 years, with net interest calculated at \$14,229,740.

Students will be charged seven per cent simple interest

to borrow money from the loan fund. An estimated 18,000 students will apply for about \$24 million in aid during the coming school year. More than \$160.5 million in student loan bonds have been sold since 1965.

REFUNDS WAITING — Some 18,500 South Texas area residents have undelivered income tax refunds awaiting them for 1972 and 1973.

Most of the taxpayers moved without leaving a forwarding address. Internal Revenue Service

urged taxpayers who think they may have money coming to them to contact IRS immediately. The checks will be cancelled after October 1.

AG OPINIONS — Atty. Gen. John Hill, in a controversial opinion, held the State Board of Insurance has no regulatory power over prepaid health care delivery systems (HMO's).

In other recent opinions, Hill concluded: A Constitutional Convention delegate may be reimbursed for actual expense in chartering an air-

lane for an official trip if that means of transportation is reasonably necessary.

Long Distance telephone calls by legislators charged to contingent expense accounts are public information.

A county may assume responsibility for maintaining city streets which form an integral part of the county or state road system, and a city may agree to pay a representative portion of costs incurred.

A district court cannot designate the county attorney as registry of the court to receive child support payments.

QUICK ONES Texas' cost-of-living advantage is due mainly to absence of an income tax, according to University of Texas Bureau of Business Research study.

Drought losses brought a request that Taylor and Erath County farmers, ranchers and businessmen be made eligible for special federal disaster relief loans.

Democratic Party leaders refused to move the state convention in Austin September 17 to September 19 to avoid a conflict with the Jewish Rosh Hashana religious holiday.

FOOD VALUES

BY THE BAG FULL!

USDA GRADE A FRESH DRESSED (MARKET CUT)

FRYER PARTS

SPLIT BREAST LB. **79¢**
DRUM-STICKS LB. **69¢**
THIGHS LB. **69¢**

BACKS lb. **19¢**
NECKS lb. **10¢**
WINGS lb. **29¢**

DECKER QUALITY THIN-SLICED

BACON STEAK

1 lb. **1 09**
Pkg. **1 09** **1 09** **1 09**

GLOVERS FULLY COOKED SUGAR CURED

HAMS

BUTT HALF **83¢**
SHANK HALF **73¢**
HALF **73¢**

SWIFTS PREMIUM PROTEIN BEEF (100% pure beef)

GROUND BEEF

lb. **89¢**

JIMMY DEANS PURE PORK SAUSAGE

12 oz. Pkg. **79**
24 oz. Pkg. **157**

SAUSAGE

2 LB. BAG **\$1.97**
1 LB. BAG **99¢**

WHITE SWAN SUGAR

5 lb. BAG **\$1.65**

FROZEN FOODS

8 oz. Banquet (beef, turkey, or chicken)
POT PIES **4/\$1**
Banquet
T.V. DINNERS **55¢**
10 oz. pkg. Keiths
CUTCORN **23¢**
10 oz. pkg. Aunt Jemima (asst. flavors)
WAFFLES **55¢**

DIET 7-UP

6 Bil. Ctn. **\$1.59**
PLUS DEPOSIT

- 28 oz. bottle Mr. Clean all purpose **69¢**
- CLEANER **69¢**
- Giant size box Ajax **89¢**
- DETERGENT **89¢**
- 16 oz. Can Jif foam oven **1.19**
- CLEANER **1.19**
- 32 oz. bottle Dawn dishwashing **99¢**
- DETERGENT **99¢**
- 24 oz. pkg. Borden's **89¢**
- COTTAGE CHEESE **89¢**
- 1/2 gallon carton Borden's **69¢**
- BUTTERMILK **69¢**
- 6 pk. 6 oz. Can Texus unsweetened **59¢**
- ORANGE JUICE **59¢**
- 11 oz. can Del Monte Mandarin **39¢**
- ORANGES **39¢**
- 15 oz. can Ranch style **3 for \$1**
- BEANS **3 for \$1**
- 16 oz. can Libby **29¢**
- SAUERKRAUT **29¢**
- 2 lb. box fluffy white River **75¢**
- RICE **75¢**
- 5 oz. can Armour star **39¢**
- VIENNA SAUSAGE **39¢**
- 26 oz. bottle Heinz **59¢**
- KETCHUP **59¢**
- 28 oz. Bama **69¢**
- APPLE BUTTER **69¢**
- 3 1/4 jar Betty Crocker **85¢**
- BAC-O'S **85¢**
- 5 lb. bag Gladiola white **75¢**
- CORN MEAL **75¢**
- 16 oz. pkg. Sunshine **69¢**
- FIG BARS **69¢**
- 1 lb. box Sunshine Krispie **49¢**
- CRACKERS **49¢**

INDIAN GIRL FLOUR

25 lb. BAG **\$3.39**

LIPTON INSTANT TEA

3 oz. JAR **99¢**

PRODUCE

Golden ripe **BANANAS** lb. **10¢**
Garden fresh green **ONIONS** lb. **10¢**
Arizona Valencia **ORANGES** lb. **15¢**
Sun Grande **NECTARINES** lb. **39¢**

GUNN BROS STAMPS
DOUBLE EVERY WEDNESDAY

White's CASHWAY

STORE HOURS 7:30 A.M. TIL 9:00 P.M., Monday Thru Saturday CLOSED Sunday
We Reserve The Right To Limit Quantities

Listen to MULETRAIN over KMUL 10:15 a.m. Sponsored by WHITE'S CASHWAY

STORE HOURS 7:30 a.m. til 9:00 p.m. MONDAY thru SATURDAY CLOSED SUNDAY.

Arm-facts

Compiled From Sources Of The Texas Department of Agriculture John C. White, Commissioner

Vegetables Growing... Cattle Advisors' Names... Brucellosis Again... Screwworms Increasing... Cotton Report Awaited

COMMERCIAL VEGETABLES mean around \$140,000,000-\$150,000,000 a year to the Texas economy, and tasty, healthful foods for everyone. Only California and Florida rank higher in commercial vegetable growing, although Texas ranked first in 1972 in harvested acres of watermelons, cabbage, and spinach. The Rio Grande Valley and Winter Garden areas are the biggest producers of vegetables but there are many commercial vegetables grown all over the State. As an indication, the Texas Crop and Livestock Reporting Service estimates the following acreages for harvest this year: 55,000 acres of watermelons, 4,500 acres of tomatoes, 5,400 acres of onions, and 1,000 acres of cucumbers. Of course other vegetables, like green peppers, lettuce, carrots, turnip greens, spinach, and cantaloupes are grown in Texas.

THREE TEXANS are on the new Cattle Industry Advisory Committee announced by the U. S. Department of Agriculture. They are: James W. Campbell of Pampa, Tobin Armstrong of Armstrong, and Harold D. Florence Jr. of Dumas. The large committee is supposed to provide counsel on cattle production, marketing, international trade, economics outlooks; but will meet only as needed when called by the chairman, Dr. Richard L. Feltner, assistant secretary for marketing and consumer services.

TALKING ABOUT the suffering cattle industry, cattle growers in Freestone, Leon, and Milam Counties face more brucellosis testing before shipping beef or dairy breeding cattle. Those three counties, and some counties in Oklahoma and South Dakota, have been taken off the modified-certified brucellosis areas. Navarro, Wood and Cherokee have been restored to the modified-certified brucellosis areas. A part of Bailey County, Texas has been placed under quarantine for psoroptic cattle scabies after an infestation was found in a feedlot late in June.

SCREWORM control officials report that there were 628 confirmed screwworm cases in 71 counties of Texas during June. Counties reporting their first screwworm cases in 1974 included Edwards, Reeves, Crane, Upton, Hays, Williamson, San Saba, and Menard. Over all of Texas, there were 628 cases of screwworms reported in June, Bee County leading the list with 55 cases, followed by Kennedy with 51 and Brooks with 48. There were only 145 cases reported in June, 1973 and 15,889 in June, 1972. There have been 1,500 confirmed screwworm cases so far this year in the State.

COTTON FARMERS are waiting for the USDA's first cotton production estimate August 12. It is expected that the 1974 crop will produce less than 13.4 million bales, because the crop reports earlier are believed higher than the number of acres actually planted. In late June, USDA estimated it thinks the 1974-75 cotton supply will be below the 1973-74 supply of 16 million bales. The August 1 carryover is estimated to be 3.5 million bales. On the High Plains, a total of 2,271,000 acres are estimated planted or being planted, and that is 20% below the total in 1973. Total for the entire State is estimated at 5,600,000 acres, compared to 5,400,000 acres in 1973. However, there were only 5,200,000 acres harvested last year.

AND A FEW NOTES: Federal Crop Insurance protection is now available in 87 Texas counties. . . Broiler chicks placed in Texas during the week ending July 6 totaled 3,357,000; and there were 193,000 turkey poult hatched during the same week. . . Drylot sheep feeders had 115,000 sheep and lambs on feed for slaughter July 1.

Greenbug...

Cont. from Page 1

served the same problem as encountered by the aerial applicators. Insecticides being applied are not giving the instant knock down or residual control that has been customarily observed in the past. The results over larger areas has been variable; in some fields, we are seeing as much as 90-95% control over an entire field, while in others control has been spotted."

He continued, "different formulations, rates, and amounts of total volume applied has yielded variable results. After spending the major portion of the week in the area, no consistent pattern of control has been observed."

"Initially, it was thought that aerial applicators were having difficulties applying insecticides because of environmental conditions. Temperatures during the first two weeks of July have been high with low humidity. In addition, windy conditions have further complicated application problems by limiting them to a very short period of optimal flying time. However, during the past week we have had optimal conditions for applying insecticides and we are still observing the same type of success as observed the previous week."

Dr. P.L. Adkisson, Head of Department of Entomology at Texas A&M University, was in the area on Monday and Tuesday and reported "that many of the same comments I am hearing from producers, aerial applicators, and entomologists are similar to those made by cotton producers when the budworm-bollworm-complex first became resistant to organophosphate insecticides in the Rio Grande Valley of Texas."

Dr. Adkisson elaborated, "we are concerned that many producers may not be aware of this developing situation and wanted to make sure they were alerted. Because of the problems with control and the higher rates of increase being observed for the greenbug, we would encourage producers to check their fields at least twice a week."

The Extension Service spokesman stated, "sorghum plants can tolerate the loss of two mature leaves and this gen-

Mishap...

Cont. from Page 1

ter, Mrs. Patsy Green of Taos, New Mexico.

Memorial services were held at 4:00 p.m., Tuesday, July 23 at Circleback Baptist Church with the Reverend Doug Gardner officiating. Burial was in Bailey County Memorial Park.

erally occurs when there is about 1,000 to 1,300 greenbugs per plant. We are currently recommending the application of 1/2 pint of any of the registered aphicides approved for use on sorghum. This is the upper end of the range of rates suggested in the Texas Agricultural Extension Service's bulletin, "Suggestions for Controlling Insects on Corn and Sorghum". We are recommending liquids over granules because we feel that they have given more consistent control with the exception of Thimet. In addition, the cost of the liquid applied is cheaper than granules."

"Few of the parasitic wasp which attacks the greenbug have been observed to date; leading us to believe that most fields across the affected area will require treatment. In fields which have already been treated, a second application may be necessary to prevent yield losses," he said.

The Extension further related that, "because of the control problems, Dr. George Teetes of the Texas Agricultural Experiment Station has begun screening insecticides currently registered for use on sorghum with the goal of finding a material which will give better results."

In addition to the report from the Extension service, Local agricultural consultant, Clarence Christian issued the following statement: "Greenbug infestation in our general area is slightly worse this year than in years past. The resistance to systemic insecticides has created an ineffectiveness due to the extensive use of these in the past." He further stated that "farmers will have to rely on contact chemicals which only provide an initial control."

Christian also stated that "Our general area is not suffering to the extent that some surrounding counties are. The lower population levels in some fields, however have jumped ten-fold in a week's time. For example: chemical application in some area fields have shown the same count one week after application, while others show a ninety per cent control. The cause of this fluctuation is undetermined."

Muleshoe...

Cont. from Page 1

of their daughter's show, the group she is singing with is performing at the Intercontinental Airport there in Houston.

The Dickens, Texas homecoming will be held Saturday and Sunday, July 27 and 28 in Dickens. There will be a dance on the 27 and a barbecue on the 28. The celebration is sponsored by the Dickens Exes.

Tritibread...

which produces the whole-grain triticale flour used in the new bread. As Tritibread expands to a nationwide market, the grain will be an increasingly profitable crop for area farmers, officials of the Muleshoe firm said.

Triticale can be grown anywhere wheat or grain sorghum are now produced, and the new grain has demonstrated yields of 500 to 600 more pounds per acre than wheat.

The Amarillo and Lubbock bakeries, which are part of the Amarillo based Mead's Food, Inc., selected triticale to create a new specialty bread because of the man-made grain's excellent content of protein and certain other vitamins and nutrients. Recent tests at Texas Tech University placed the protein content of triticale as much as 40 per cent higher than the protein of some other cereal grains.

Triticale has been the subject of scientific research since the late 1800's, when European botanists noticed a cross between wheat and rye occurring accidentally in nature. Because of a genetic flaw, however, the natural cross was incapable of reproducing itself, and the wild hybrid could not be used as a crop.

In 1937, American researchers found a chemical agent that could make the wheat-rye cross fertile. Several decades of work followed to eliminate other defects in the grain, and

Jaycees...

Cont. from Page 1

more are sure to enter by the deadline date. It was announced that those planning to go to the Rudosa Retreat should bring a bed roll, towels, sheets and lunch money. This event takes place, August 16, 17 and 18.

A letter was received from the Waco Jaycees. They are planning a Seminar August 1, 2 and 3 on Drug Abuse. This weekend begins the annual Summer Board F.O.Y.T. Conference at McAllen, Texas. Several Jaycees from Muleshoe are planning to attend including the president.

There are some tickets still available for the chance on the 1974 car that will be given away at the Miss Muleshoe Pageant.

Members attending were Andy Douglass, Curtis Walker, Dick Kelton, Lion Logsdon, Hugh Young, Mike Armstrong, Carter Reed, Ray Halsell, Bob Finney, Ed Cox, Bill Dale, Larry Bilberry, Terry Fields, Max King, Darrell Oliver, Jeff Smith, Bob Addison, Jack Hysinger, Bill Russell, Ted Barnhill, Gene McGuire, Monty Dollar, Royce Harris and Charles Moraw.

in the 1960's, the first commercial varieties of triticale became available to farmers. Several hundred strains of the grain have since been perfected.

Nutritionists consider triticale a valuable commodity in the struggle against hunger in the world. In addition to the grain's demonstrated content of important nutrients, triticale has also shown the ability to produce greater yields per acre than wheat. Because of the broad range of climatic conditions in which the grain can be grown, the timer will come when triticale crops are harvested somewhere in the world every month of the year, plant scientists say.

One-pound loaves of Tritibread and packages of Tritibuns -- hamburger buns from a triticale recipe, also developed by Texas Tech -- will be distributed wherever Mead's and Baldrige's products are sold.

Triticale pancakes, waffles, donuts and breads have been available over the counter at the Corral and Dinner Bell Restaurants in Muleshoe for some time in the past. Mrs. Joe Carroll at the Dinner Bell Restaurant has also had Trititicale Bread loaves for sale to the public.



JOHN CARRUTH

MULESHOE JOURNAL
Established February 23, 1924
Published by Muleshoe Publishing Co., Inc.
Every Thursday at 304 W. Second Box 449
Muleshoe, Texas, 79247
Second class postage paid at Muleshoe, Texas 79247

TEXAS PRESS ASSOCIATION
Members 1974
L.B. Hall, President
Jesse F. Hall, Sec. - Treasurer
L.B. Hall - Managing Editor
Shirley Farmer - News Reporter
Tom Eagle, Society Reporter
Clifton Meyers, Advertising
Polly Cwikel, Office
SUBSCRIPTIONS:
Zone 1 - Bailey-Parmer-Cochran-Lamb counties: \$4.00 per year, \$4.50 per year by carrier. With Sunday Bailey County Journal, both papers: \$5.50 per year; \$6.00 per year by carrier.
Zone 1-Sub-Out-Territory: \$4.50 per year; With Sunday Bailey County Journal, both papers, \$6.25 per year.
Monthly, by carrier-\$5; single copies-10¢
Advertising rate card on application

Veterans...

Cont. from Page 1

Group Life Insurance?

A-- They have until Aug. 1, 1975, to apply, but they must provide evidence of good health, except for VA-rated service-connected disabilities.

Q--What Veterans Administration benefits should a veteran make his family aware of in the event of his death?

A--A veteran's family should be especially apprised of such VA benefits as dependency and indemnity compensation for service-connected deaths, non-service-connected death pensions for widows (or children where widow is ineligible because of excessive income) and burial benefits.

Q--I was honorably discharged last month after three years of military service, and I would like to use the GI Bill to go to school in France next year. Is this possible, and do many veterans study outside the United States?

A-- Yes, to both questions. Eligible persons may study abroad where courses approved by VA, lead to college degrees. During fiscal year 1974, a total of 65,000 veterans, servicemen, dependents and survivors studied outside the United States.

Q-- Will the Veterans Administration counsel veterans seeking guidance in selecting suitable GI Bill training programs?

A--Yes, counseling will be provided veterans who request it.

Q-- If a veteran chooses that proceeds from his National Service Life Insurance he paid in monthly installments, does the beneficiary have the right to elect to receive payment under another option?

A-- Yes, provided the new option requires payments over a longer period of time.

Q--I received an honorable discharge after two years of service in Vietnam. Am I eligible for burial in a Veterans Administration cemetery?

A-- Yes. All cemeteries formerly under VA jurisdiction have been placed under a national cemetery having space, except Arlington, where space is limited.

BUS-RAIL PLAN

CHICAGO--Greyhound and Amtrak announced that passengers will be able to buy combination rail-bus tickets starting this fall. Amtrak passengers can buy tickets straight through to points not served by rail service.

Safety...

Cont. from Page 1

--Watch your step. Survey your path to spot slipping, tripping hazards.

--Wear shoes and boots with slip-resistant soles and heels. Clean them before climbing, mounting farm equipment, or walking on hard, smooth surfaces.

--Keep walking surfaces free of ice, snow, manure, loose grain, etc.

--Never permit children to ride on farm equipment. Establish a "no riders" rule --no one should be on farm equipment other than those necessary for work operation or for instructional purposes.

--Use hand holds or rails when climbing off and on machinery. Use handrails on stairs.

--Inspect ladders before each use. Repair or replace if unstable or faulty. Set ladders on firm footing. Set straight ladder base on one foot for each four feet up. Don't overreach. Stay off tall ladders on gusty days.

--Keep buildings maintained. Fix broken flooring, steps, etc.

--Have a storage place for everything; put things away when finished. Good housekeeping is a falls prevention "must."

Robinson...

Cont. from Page 1

the supervision of Singleton-Ellis Funeral Home.

Isaac Robinson is survived by his wife, Lois of Muleshoe, one sister Velma Lynch of Pine, Arizona, and two brothers, Onan of Pine, Arizona and Pete of Muleshoe.

--Fatigue, illness, excessive alcohol, worry, poor vision, anger, medicants which make you drowsy, etc. make you less alert, more prone to fall.

--Take time to be safe.

GROUNDHOG PET

BALTIMORE -- Dolores Robertson, 17, has her own weather forecaster, a small North American groundhog. Miss Robertson and her father found the baby groundhog in the woods near their home about a year ago.

OPEN DAILY 9A.M.-8P.M. WEEKDAYS
CLOSED SUNDAY

GIBSON'S DISCOUNT CENTER
WHERE YOU ALWAYS BUY THE BEST FOR LESS

1723 W. AMERICAN BLVD.

PRICES GOOD THURSDAY JULY 25 THRU JULY 27

SMOCK TOPS
BRIGHT SUMMER COLORS
PERMANENT PRESS

GIRLS REG. \$3.97 \$2.99

FOLDING CLOTHES RACK
56" TALL
HOLDS OVER 20 GARMENTS
REG. \$5.49
\$3.99

NEW! FROM THE MAKERS OF PAM
GOLDEN TOUCH
IMITATION BUTTER FLAVOR
SPRAY COATING
7 oz. CAN REG. \$1.09
88c

NEW SHIPMENT!
DICKIES FLARE JEANS
7 COLORS
TOP STITCHED WESTERN CUT
REG. \$8.97
\$6.99

SKIL MODEL 1714 JIG SAW
2.4 AMP.
3500 STROKES PER MINUTE
REG. \$17.99
\$13.99

16 PACK PLAYTEX DEODORANT TAMPONS
REGULAR REG. 69c
SUPER REG. 49c
SUPER EXTRA ASSORB.

BLACK FLAG ANTI-BUG OUTDOOR FOGGER
SPRAYS 20 Ft. AWAY
20 oz. CAN
REG. \$2.29
\$1.49

ZEE NICE 'N SOFT BATHROOM TISSUE
4 ROLL PKG. REG. 69c
57c

GOVEY 3 GALLON BEVERAGE COOLER
#703 REG. \$9.99
\$6.99

clairol® herbal essence shampoo
NEW!
8 oz. BOTTLE
FOR DELICATE HAIR
OILY NORMAL OR DRY HAIR FORMULA
16 oz. REG. \$2.09
\$1.59

Almost Everything... Can Be Bought Or Sold Thru The Classified Section Of This Paper.

If You're In Doubt... Try An Ad!

MULESHOE JOURNAL
272-4536
Today



AUGUST WEDDING PLANNED . . . Mr. and Mrs. Leon Harvey of Clovis announce the engagement and approaching marriage of their daughter, Kathy, to Butch Priest, son of Mr. and Mrs. W.A. Priest of Clovis. Kathy is the granddaughter of Mrs. Cecil Harvey and Mrs. J.U. Dawson of Muleshoe. Butch is a 1971 graduate and Kathy a 1974 graduate of Clovis High School. The couple plan an August 15 wedding at 8 p.m. at Parkland Baptist Church in Clovis.

RECIPE

By Sarah Anne Sheridan
Macaroni salads are hearty enough to feature as main dishes for luncheon and evening menus. They should contain something crunchy like crisp celery, something colorful like strips of green pepper and pimientos and something to give them zest like scraped onion or a tangy salad dressing.

Macaroni and Crabmeat

- 8 oz. elbow macaroni
 - 1 c cooked crabmeat
 - 1 c green pepper chopped
 - 1 c chopped celery
 - 1/4 c chopped pimientos
 - 1/4 c slivered almonds
 - 3 hard cooked eggs chopped
 - 1/2 c mayonnaise
 - 2 t salt
- Pepper to taste.
Cook macaroni by directions. Chill. Flake crabmeat. Combine cooked macaroni, crabmeat and remaining ingredients. Mix thoroughly, but lightly. Chill several hours before serving on salad greens.

**West Plains Hospital
Hospital Briefs**

ADMISSIONS:
July 19: Troy Joe Bass, Mrs. Dewey Stovall and Mrs. Effie Bray.
July 21: Bradley Dean Long and Linda Foster.
July 22: Margarita Gonzales.
July 22: Mrs. Victoria Duarte.
DISMISSALS:
July 19: Mrs. Gordon Blevins and baby girl, Mrs. Joaquin San Juan and baby girl, Mrs. Lillie Stinkins and J.O. Reed.
July 20: Mrs. Ruby Harris and Troy Joe Bass.
July 21: Bradley Long, Mrs. Loveta Sanders and George Mitchell.
July 22: Mrs. Effie Bray, Walter Dameron, Mrs. Dewey Stovall.

The man who said you can live without money never tried it.

**Owen Family Reunion
Held Sunday, July 14**

The children of the late Albert and Janey Owen, had their re-union Sunday, July 14, at the American Legion Hall in Muleshoe. Eleven of the twelve children were able to attend.

Children attending were Mrs. Matt Dudley, Mrs. Ralph Black, Mrs. Ozell Higginbotham, Elmo Owen, Mrs. Harvey Taten, all of Muleshoe; Dee Owen, Farwell; Dick Owen, Clovis; Pearl Carter, Plainview; Mrs. Johnnie Ester, Pasadena, Texas; Arie Owen, Battle Mountain, Nevada and Carie Owen, Cedar, Utah.

Earl Owen from Muleshoe was not able to attend, as he was in the hospital at Amberst.

Out of town relatives who attended were Mr. and Mrs. Glen Owen, Garland, Texas; Mr. and Mrs. Marvin Owen, Bayside, Texas; Roy Fisher, Ranoke, Texas; Mr. and Mrs. Dillion Jr. Stovall, El Paso; Mr. and Mrs. Dillion Stovall, Wichita, Kansas; Mrs. Vera Mullican, Marlow, Oklahoma; Rama, Ruth and Sherry James, Del City, Oklahoma; Mr. and Mrs. C.E. Brand, Muskogee,

Oklahoma; Mr. and Mrs. Jeff Brand, Lawton, Oklahoma; Mr. and Mrs. Albert Owen, Lake Jackson, Texas; Mr. and Mrs. Bernice Pearson, Mr. and Mrs. Dennis Pearson, and Mr. and Mrs. Bill Townson of Canyon, Texas; Mr. and Mrs. Don Taylor, Dinnitt; Mr. and Mrs. Larry Mobley, Melrose; Mr. and Mrs. Freddy Owen, Crosbyton; Mr. and Mrs. Jerry Owen, Farwell; Donna Teyer, Plainview; Mr. and Mrs. Bill Black, Plainview; Mr. and Mrs. Lyndale Black, Lockney; Mrs. Sandra Miller, Fowler, Colo.; Shorty Williams, Littlefield; W.L. Owen, Rush Springs, Oklahoma; Mr. and Mrs. James McCaine, Odessa; Mr. and Mrs. Clyde Phillips, Portales; Mr. and Mrs. Gary Phillips, Portales; and Mr. and Mrs. Richard Hamburger, Amarillo.

Out of town friends who attended were Mr. and Mrs. Larry Royal of Plainview and Mr. and Mrs. Bill Hillard of Talco, Texas.

Those who called in the afternoon were Mr. and Mrs. Joe

Terrell, Fort Sumner; Dorothy Terrell, Gallup, N.M.; Mr. and Mrs. Edd Harp, and Ruth Terrell, Muleshoe; Mrs. Steve

Sullivan, Mrs. O.T. Howard, Mr. and Mrs. Tommy Sullivan and Mr. and Mrs. J.R. Copley.

The Consumer Alert

By John L. Hill Attorney General

AUSTIN -- A warranty, sometimes called a guarantee, is an assurance concerning the quality of something you buy. Since warranties are designed to protect consumers it's important to learn about and use them. There are two kinds of warranties, express and implied. With an express warranty, the seller of merchandise actually gives assurances, by words or actions, about the quality of what you are buying. Here are some examples:

--Description. Such specifications as size, model, and color, if stated, guarantee that the product will conform to the description. A sale form which states "left hand door" for a refrigerator warrants that the door will swing to the left.
--Performance. Such claims as "free of defects," "uses no oil between changes," "will cool a room of 1800 cubic feet" are legally binding.
--Sample. A swatch of cloth or carpet from a bolt or roll creates a warranty that the merchandise purchased will be like the swatch.

--Model. A miniature aluminum window or door used by a salesman for demonstration warrants that the real thing will be like the miniature. A demonstration model of anything creates a warranty that the one purchased will perform the same way.

Implied warranties, on the other hand, depend on law-created assurances of quality regardless of claims or actions on the part of the merchant. Here are some examples of implied warranties:

--Appropriateness. If a consumer asks a hardware dealer for a product to strip paint from a chair, the law implies a warranty that the product sold will remove the paint.

--Merchantability. A merchant assures a consumer that goods are merchantable, that they work, and that they are "fit for their ordinary purposes." A car that won't steer or a kitchen stove that won't cook are examples of products that are not merchantable.

Who gives warranties? Sellers of goods are the main dispensers of express and implied

warranties. In Texas, manufacturers also give implied warranties, and the law also creates an implied warranty from persons who provide services.

What are a consumer's legal remedies if warranties are not fulfilled?

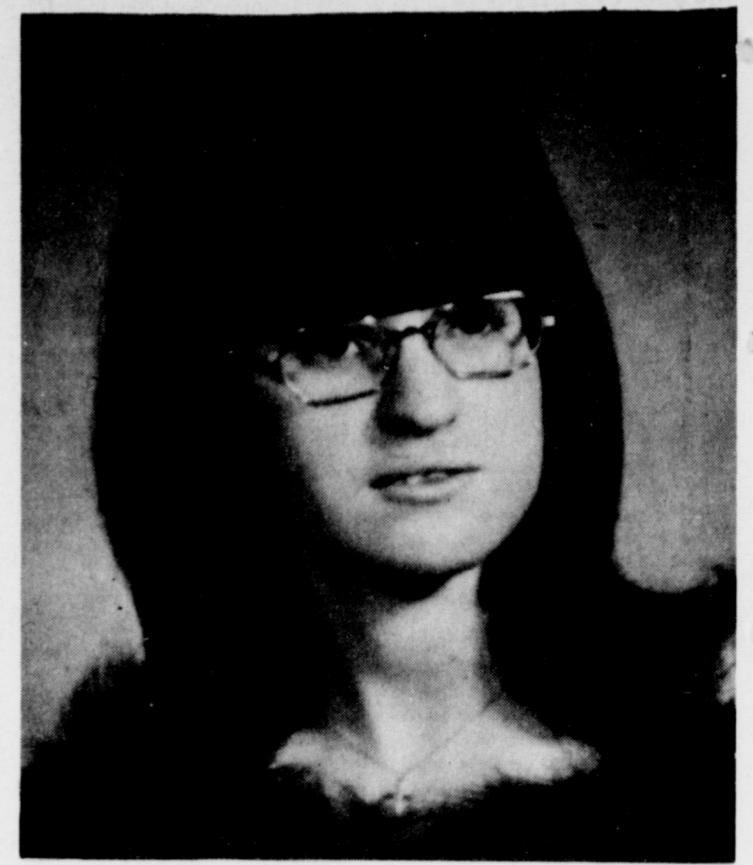
A warranty and a remedy for the breach (or violation) of a warranty are not the same. For example, the express warranty connected with a new toaster may be that it will be free of defects for one year. The remedy offered may be that it will be repaired or parts replaced free of charge. Or an express warranty may assure a car owner that an engine coolant will stop leaks in the radiator. The remedy may be only the refund of the purchase price of the coolant if it doesn't stop leaks.

However, the law also gives consumers some additional remedies.

The most basic one is that a buyer doesn't have to accept goods that don't conform to a warranty. If a buyer does accept the goods and later finds that they don't conform, he can return them if the problem was not obvious at the time he accepted them or if the problem cannot be solved by the seller.

If the buyer refuses the goods or returns them for a good reason, he can refuse to pay, get back what he paid, or collect "damages" -- the difference between the price he paid and what the goods were worth with their warranty breached, or the difference between the price he paid and what it would cost to buy the same goods from another seller. The buyer can also collect expenses incurred in keeping or returning the goods. Expenses resulting from personal harm or harm to property as a result of breach of warranty are also collectable.

Failure of a seller to comply with an express or implied warranty is a violation of the Texas Deceptive Trade Practices. Sellers can, of course, offer additional remedies which a buyer may want to use. A safe practice is to get all such promises in writing.



COUPLE PLAN WEDDING . . . Rev. and Mrs. Frank Matthews of Lazbuddie announce the engagement and approaching marriage of their daughter Martha Jan to James Arnold Kinard, to son of Mr. and Mrs. Dallas Kinard of Muleshoe. The couple plan an August wedding.



MISS LINDA CUNNINGHAM

**Bridal Shower Honors
Miss Cunningham**

Miss Linda Kay Cunningham and Terry Henry were honored with a bridal shower in the community room of Tri-County Monday, July 22 at 5:30 till 7:00 p.m.

White carnations corsages were presented to the honoree, her mother, Mrs. Carl Cunningham and his mother, Mrs. Earl Henry. Also attending was his grandmother, Mrs. Velma Hagan.

The table was laid with a eucalyptus work linen cloth and centered with four blue candles and English ivy in a brass candelabra. Cake and punch were served from silver and crystal appointments by Mrs. Melvin Griffin and Clinton Rogers, Miss Vickie Griffin registered guests.

Hostess gift was a set of harvest gold club aluminum cookware.
Hostesses were Mrs. H.A. Douglass, Mrs. J.D. Spurgeon,

Mrs. Clinton Rogers, Mrs. Phil Garrett, Mrs. Roger Albertson, Mrs. Frank Ellis, Mrs. Melvin Griffin, Mrs. J.R. Ottwell, Mrs. Olan Burrows, Mrs. Donald Harrison and Mrs. Loyd Miller.

The couple plan an August third wedding.

**New Officers
For Club**

The Muleshoe Rodeo Club recently elected officers for the coming year. They are Jimmy Henderson, president; Gene Rogers, vice president; Tammy Bruns, secretary; Connie Floyd, reporter; Mr. and Mrs. Jimmy Presley, sponsors and Mr. and Mrs. Bob Henderson, co-sponsors.

The team will enter in the Happy High School Rodeo this weekend, July 26 and 27.

Cobb's Annual July Sale
REDUCTIONS
While they last--Reduced to move

LADIES DRESSES **MEN'S SPORT SHIRTS**

Ladies Sportswear **Men's Dress Shirts**

Girls Dresses **Special Group Men's Sport Coats**

Girls Sportswear

Ladies Dress & Casual Shoes

Many Other Items

SHOP EARLY!!

Price

Special Group Men's Casual Pants
Men's Dress Pants
Boy's Sport Shirts
Boy's Casual Pants

Special Group Men's Shoes

ALL SALES FINAL
*Sorry--No Exchange or Refunds
*No Lay-A-Way on Sale Merchandise
*No-Phone or Mail Orders, Please
*No-Alteration Without Charge
*No-Gift Wrapping on Sale Merchandise

MULESHOE 272-5511

A weekly public service feature from the Texas State Department of Health

Accent on Health

J.E. PEAVY, M.D., Commissioner of Health

A blood test for gonorrhea -- a new weapon in the fight against venereal disease in Texas -- is undergoing a pilot study in the Texas State Department of Health Laboratories in Austin.

While blood tests have been available for syphilis, there has been no accepted blood test for gonorrhea. The serologic

Cow Bells To Meet Here

The Riata Cow Bells of Friona will be at the XIT Steak House Friday, July 26 from 10:00 a.m. to 5:00 p.m. They will have a beef display for the public to see.

All women in the Muleshoe area, who are interested in forming a club, are asked to be present.

procedures for detection of gonorrhea have received increasing attention, especially in efforts to identify those with no outward symptoms -- the asymptomatic carrier.

Health authorities feel that the asymptomatic carriers of gonorrhea are responsible in a large way for the continuation of the disease. Since they do not know they have gonorrhea, they can continue to spread it as long as they are sexually active.

An automated device using an indirect fluorescent-antibody technique was developed for detection of antibodies to Neisseria gonorrhoeae in the blood of persons with gonorrhea.

When a disease organism enters a person's body, the body builds up antibodies in the blood to help fight off the intruder. Research scientists have now

CAR TUNE-ING
By Jones, Harrison, and Gilbreath

If Your Wheels Are Way Outa LINE, And Need Fixing We Can Do It FINE.

Plains AUTO PARTS P.O. Box 186 MULESHOE, TEXAS 79547

South Main Muleshoe Phone 272-4576

found a way to detect gonorrhea antibodies using a fluorescent antibody technique.

To be effective, the fluorescent-antibody method of detection must be used on someone who has had an infection long enough for the body to build up its defenses, or antibodies, against it. There is no exact time period for a body to produce antibodies. It may be from seven to 10 days to as long as weeks before the appearance of detectable antibodies; therefore the test is not valuable in diagnosis of early acute infections. The time period may depend on the type and degree of infection, the response of host and the sensitivity of the detection system.

In the State Health Department Laboratories, blood samples are placed on special slides prepared by the automated machine's manufacturer -- Aerjet Medical and Biological Systems. Each slide goes through different processing, solutions and incubation stages before it is read microscopically. The first slide takes almost an hour and 46 minutes for processing, but subsequent specimens follow at intervals of only one minute and 46 seconds.

In the State Health Department's pilot program, blood samples are supplied from the Austin-Travis County Health Department.

It is a combination project, using both the conventional culture method and the indirect fluorescent-antibody technique. In the culture method, a specimen is taken from the genital tract of a patient and placed in a special cultural medium. If gonorrhea bacteria are present, they will grow, revealing their presence.

The State Health De-

partment's pilot study calls for some 4500 tests in determining if the test is worthwhile from the standpoint of results and cost.

In 1972, a stepped-up campaign against gonorrhea was begun in Texas in cooperation with the National Venereal Disease Program. The five-year program has a two-pronged attack: culture screening and interviewing of male and female patients for their sexual contacts.

During 1973, almost 400,000 cultures were screened. This year, the total is expected to reach 456,000. With increased emphasis on gonorrhea, the number of reported cases of gonorrhea increased to 64,210 cases last year. More than 88 per cent of the victims were under age 30.

The active campaign against gonorrhea has turned up some noteworthy statistics. Among these are the presence of hundreds of asymptomatic male carriers -- a condition which had gone virtually unrecognized. Some other salient trends also have been noted.

The male-to-female ratios has dropped from four-to-one to two-to-one, suggesting that the reservoir of females, or the source of male infections, is being reduced at a faster rate than they are occurring.

The female morbidity in 1973 increased 28.9 percent, the result of intensified casefinding via the culture screening program and the epidemiologic process.

Health authorities are hopeful that 1974 will be the peak year and that 1975 will be the beginning of the decline of gonorrhea as a public health problem in Texas. All indicators are pointing in this direction.

ATTENTION MULESHOE AREA CATTLEMEN

.....In regard to dead stock removal.....
If you have had a problem with service..... whether in the feed yard or on the farm.....
Please give US a chance! Thank you.....

Your local used cow dealer is muleshoe-bi-products
Phone-965-2703 Mobil Phone 965-2429

Bridal Shower Fetes Miss Elaine Pike

A bridal shower honoring Miss Elaine Pike of San Antonio, bride-elect of Eddie Ellington, Muleshoe was held Friday evening July 19 in the Muleshoe State Bank.

Special guests were Mrs. Karl Ransleben, mother of the honoree and Mrs. Carl Ellington, mother of the prospective groom.

The honoree was presented a white carnation corsage with gold miniature double rings intertwined.

The table was covered with white linen cloth with lace trim

and centered with spring bouquet of yellow and white. Finger sandwiches and pineapple punch were served by the hostesses from crystal appointments.

Miss Carla Ellington, sister of the prospective groom, registered guests.

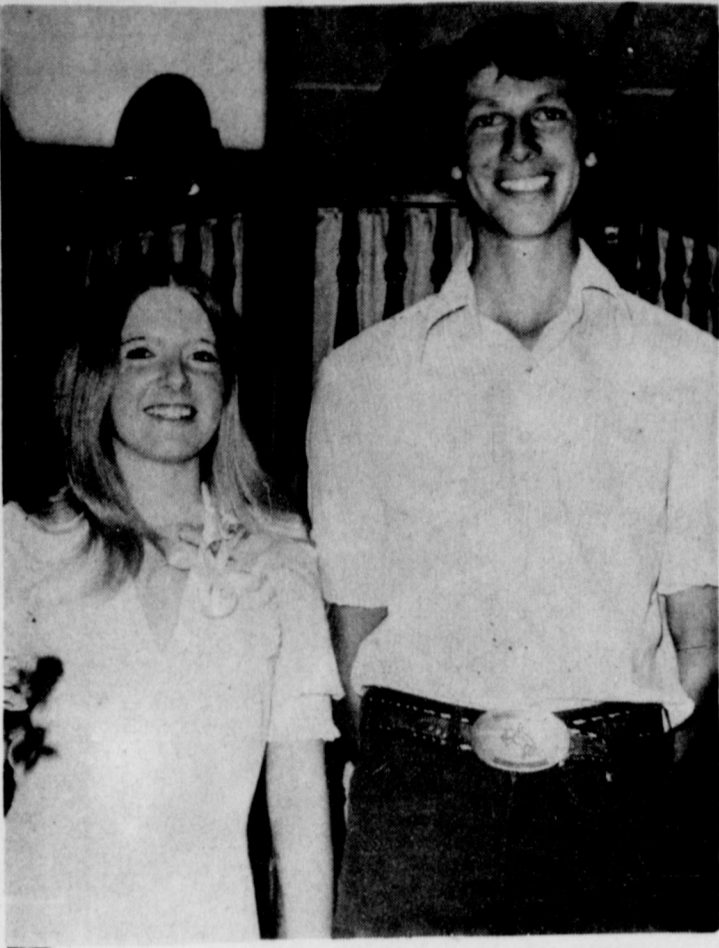
Out of town guests were Mrs. Karl Ransleben of Houston, Mrs. Randy Johnson, Clovis and

Hostess gift was mangni-lite cookware.

Hostesses were Mrs. Bob Copeland, Mrs. Calvin Embry, Mrs. James Crane, Mrs. Roger Albertson, Mrs. Ronnie Black, Mrs. Tommy Black, Mrs. Mae Province, Mrs. Mae Wilterding, Mrs. Melvin Seymore, Mrs. Alvin Tally, Mrs. Frank McCamish, Mrs. Olan Burrows, Mrs. Alton Carpenter, Mrs. S.M. Ethridge, Mrs. Jack Dunham, Mrs. Truman Lindsey and Mrs. Odell Rasco.

Rainbow Girls Regular Meeting

The Rainbow Girls had their regular initiation meeting Monday, July 22 with Faith Free, Worthy Advisor and Mrs. Robert Hunt, Mother Advisor. It was discussed to start a building fund. The money from the penny market will be set aside for this. The meeting was closed and refreshments were served downstairs.



MISS CECILIA HARDIN BOYD LEE MCCAMISH

Miss Cecilia Hardin Honored At Shower

A bridal shower honoring Miss Cecilia Ann Hardin and Boyd Lee McCamish was held

Enochs News
By Mrs. J.D. Bayless

Guests in the home of Mr. and Mrs. G.R. Newman Monday was a nephew, Mr. and Mrs. Elmer Cotton also Mr. and Mrs. John Powell and Mrs. Evelyn Brader all of Dallas.

Tom Byars of Friona visited his mother, Mrs. Winnie Byars Saturday.

Company in the home of aunt Jocy Vanlandingham Tuesday till Thursday were her sons, Woodrow Vanlandingham and daughter, Mrs. Greenwalt and two children of Albuquerque, Mr. and Mrs. Arthur Vanlandingham of Albuquerque, came Thursday and returned home Friday.

Eldon Byars attended the wedding of a niece Rebecca Morton at Misquite Thursday July 11.

Mrs. A.M. McBee visited her sister, Mrs. Mary Richardson at Levelland last Friday.

Mr. and Mrs. Cleo Hall and daughter, Sherri of Phoenix, Ariz. arrived Saturday evening for a visit with her parents, Mr. and Mrs. J.D. Bayless also his father, Carl Hall and other relatives.

Mrs. G.R. Newman observed her 80 birthday Saturday July 20. The Newmans have lived in our area for many years.

Mrs. Charlie Shaw visited her daughters, Mrs. James Crocker and family at Albuquerque and Mrs. Ralph Jorroux and family at Clayton, N.M. Friday till Sunday and she brought her grandsons Timmy and Jimmy home with her.

Mr. and Mrs. J.O. Dane are home after a three weeks visit with relatives and a daughter, Mr. and Mrs. Joe Clark. Their grandchildren Donnie and Anita Clark returned home with them for a visit.

Grandpa Bass was admitted to the Morton Hospital Saturday night.

Mr. and Mrs. W. Peterson are having their children, Mr. and Mrs. Morris Peterson and children of Hillsboro, and Rev. and Mrs. Harold Abney and baby of Channing home this week. Other dinner guests Sunday were his sisters, Mr. and Mrs. T.H. Montgomery of Idalou, Mrs. Glynn Hazel of Lubbock, also a brother, Mr. and Mrs. E.G. Peterson and daughter, Bickie of Woodrow, Mr. and Mrs. Jimmy Magourirk of Slaton.



MISS ELAINE PIKE



MISS DIANNE WASHINGTON

Miss Washington Feted At Shower

A bridal shower honoring Miss Dianne Washington, bride-elect of Olan Thompson, was held Saturday evening July 20 at the home of Mrs. Kenneth Nesbitt.

Registering the guests was Debra Washington, sister of the bride.

Assisting the honoree and Alan Thompson opening gifts was Stella Washington, mother of the bride.

Serving refreshments of sherbert punch and thumb print cookies were sisters of the

bride-elect, Kay and Sherry Washington and Evelyn. The table was graced by a yellow carnation and baby's breath center piece.

The hostesses gift given the couple was an electric skillet.

Hostesses were Mrs. Bill Dale, Mrs. Marshall Head, Mrs. James Robertson, Mrs. B.C. Stonecipher, Mrs. Ray Clayton, Mrs. Kenneth Nesbitt, Mrs. Charlie Walker, Mrs. Arthur Graves, Mrs. Carl White and Mrs. L. Byrd.

NEW ARRIVALS



Dennis Lee Watts

Mr. and Mrs. David Watts of Seminole are the proud parents of a new baby boy born July 3 at 6:39 p.m. in the Memorial Hospital of Seminole. The baby weighed six pounds and 13 ounces and was named Dennis Lee.

He is the couple's first child. His grandmother is Christine Mick of Muleshoe and great grandparents are Mr. and Mrs. Albert Zornow of Elgin, Ill. and Mrs. G.H. Hutcheson of Hereford.

Michelle Ann Foster

Mr. and Mrs. Buddy Foster of Oklahoma Lane are the proud parents of a new baby girl born July 15 at 3:22 a.m. in the Parmer County Hospital of Friona. The baby weighed six pounds and two ounces and was named Michelle Ann.

She is the couple's first child.

Grandparents are Mr. and Mrs. Weldon Tims of West Camp and Mr. and Mrs. Wayne Foster of Oklahoma Lane. Great grandmothers are Mrs. Zula Rundell of Oklahoma Lane and Violet Foster of Muleshoe.

Patricia San Juan

Mr. and Mrs. Joaquin San Juan of Muleshoe are the proud parents of a new baby girl born July 17 at 11:43 p.m. in the West Plains Memorial Hospital of Muleshoe. The baby weighed four pounds and ten ounces and was named Patricia.

She is the couple's first child.

First For Noble Grand

The Muleshoe Rebekah Lodge 114 met with twenty two members present for the first meeting presided over by the new Noble Grand, Mrs. Bill Henexson.

Mrs. Henexson appointed her committees. Mrs. J.C. Pearson will be in charge of sending birthday cards to the residents of the I.O.O.F. homes each month.

The members gave Tom Berry a vote of "thanks" for furnishing his pickup to carry the pies to the Earth Rodeo. The pie sale was a successful money making project.

District Deputy President, Lena Hawkins, and her staff went to Morton on Thursday to install the officers of the Morton Rebekah Lodge.

Mrs Evelyn Moore TOPS Queen

TOPS Chapter No. 34 met Thursday evening, July 18 at 6:30 p.m. in the meeting room of Bailey County Electric with 19 members weighing in.

Mrs. Evelyn Moore was named weekly queen. First runner-up was Mrs. Ronnie Garner and second runner-up was Mrs. Jeff Peeler.

All members are asked to remember their gifts as this Thursday, July 25, will be the auction.

Fashion

Pierced ears, which was quite the thing in our great-grandmothers age, is back and is popular with all ages. The small pearls, diamonds or gold earbobs are considered best.

Attractive clothes for the toddlers are made of knitted goods. Overall in bright colors and short pants sweater suits are favorites.

Many of the long haired girls are piling their hair on top of the head these hot summer days.

LOUISA'S LETTER

Dear Louisa,

We have one child and my husband and I have always had a good life together until this past year.

Our daughter is a teenager and we disagree on how much she should be allowed to do as she pleases. He says we should trust her and that will keep her out of trouble.

I think that the rules we have for her will make it much easier for her to avoid temptation. I think she should have a certain hour to be home at night and that we should know where she is going and with whom? What do you think?

Mother-Ind.

Answer: For a teenager's own protection in these days of so much crime, rape and murder, I feel that parents should



know who the boy is, whom she is dating. I also think she should tell them where she is going and should have a certain hour to be home.

Teenagers may be trustworthy but young people sometimes lack the judgment of older people and it is well if there are certain places not to go and a certain time to be at home.

In an emergency they should telephone home to keep parents from trying to locate them.

If an escort knows that parents are concerned about his date he will probably behave better than if he thinks it doesn't matter when they get in.

Louisa.

Address letters: Louisa, Box 532, Orangeburg, S.C. 29115

OPEN HOUSE AMHERST MANOR

Amherst, Texas

2:30----4:30

Sunday, July 28

We invite you to see our nursing and retirement facilities and meet the new owners

Richard and Mary Snow

Buy the PAIR that gives special care to knit and Permanent Press fabrics

Whirlpool WASHER AND DRYER PAIR

2-SPEED, 4-CYCLE WASHER
Model LAA 5700

- 4 washing cycles: NORMAL, KNIT, PERMANENT PRESS and GENTLE
- Proper wash and spin speed is provided automatically when cycle is selected
- 3 load-size water level selections
- Efficient lint filter
- 4 wash/rinse water temp selections
- Big family-size capacity

3-TEMP, 5-CYCLE DRYER
Model LAE 5700

- Dial the setting to fit the fabric: HEAVY, PERMT PRESS/TUMBLE PRESS, KNITS, DELICATE / or FLUFF for air drying without heat.
- TUMBLE PRESS* control helps restore creases in clean Permanent Press garments wrinkled from storage
- Shuts off automatically when door is opened
- Convenient lint screen

Washer alone \$000.00
Dryer alone \$000.00

THE PAIR NOW ONLY
\$ 399⁹⁵ W/T

HOT PRICE DISHWASHER SPECIAL.

Whirlpool CUSTOM CONVERTIBLE—PORTABLE DISHWASHER

Check the hot-value features:

- Normal cycle plus Rinse-Hold cycle for quick rinsing and washing later.
- Durable porcelain-enameled tub resists rust, stains.
- Full-time filtering system helps eliminate need for pre-rinsing.
- Reversible cutting-board top — one side for work; one side for show.
- 4-compartment silverware basket lifts out for convenience.
- "Hideaway" cord and hose storage.
- Choice of decorator colors, too.

ONLY \$199⁹⁵ W/T
model SAF-330 (Undercounter model available)

Don't wait — buy now at this hot price. Come in today!

PRICE INCLUDES FREE DELIVERY & FREE INSTALLATION TO EXISTING PLUMBING WITHIN 50 MILE RADIUS. WE MAINTAIN A COMPLETE SERVICE DEPARTMENT

Wilson Appliance

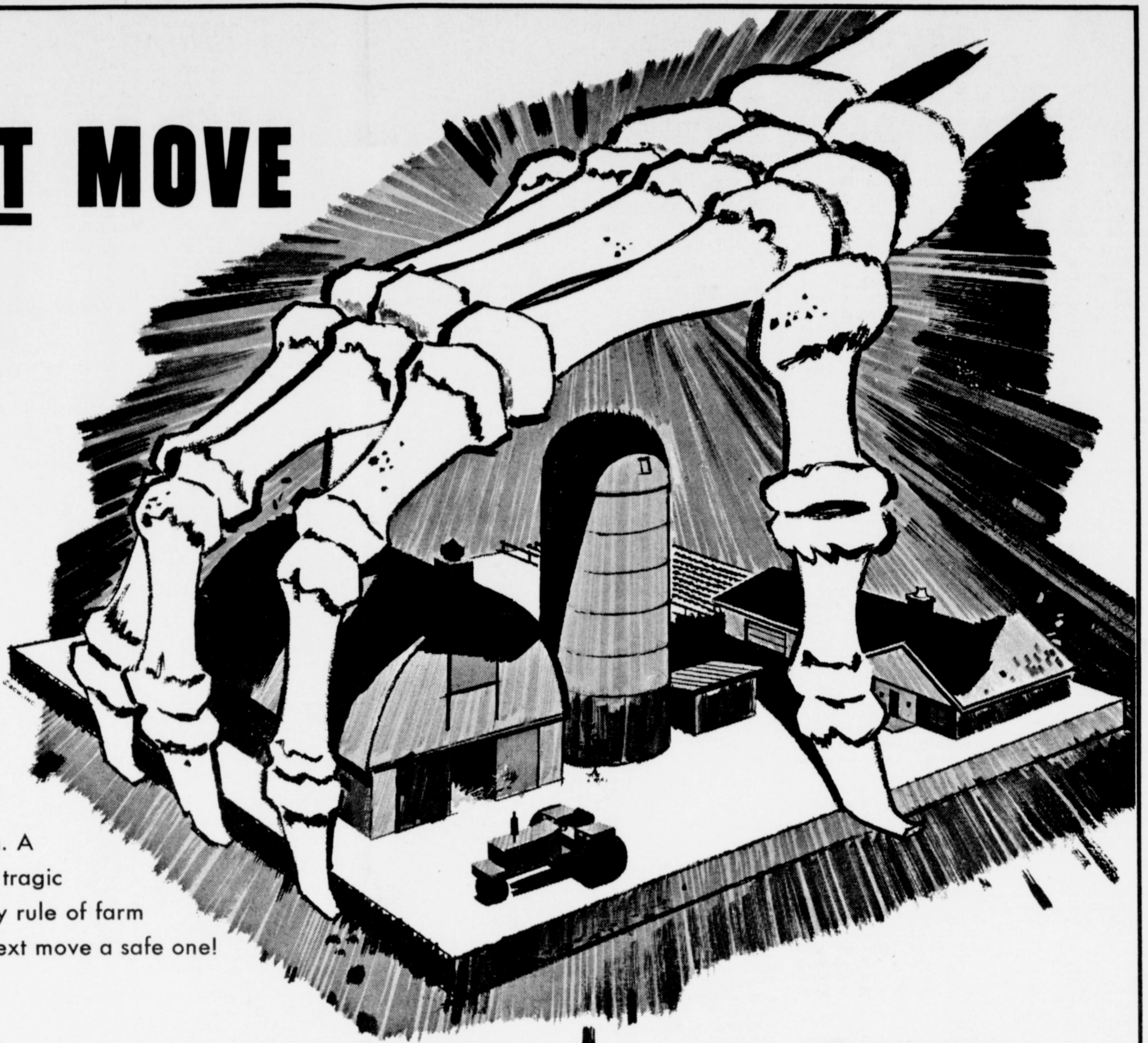
117 Main Muleshoe 272-5531



Furnaces are in the



THE NEXT MOVE IS UP TO YOU!



Any farmer would move cautiously, slowly..if he knew there was danger at hand. Yet every farmer faces unseen danger whenever he operates his machinery or works his farm. A moment of carelessness can be tragic as well as costly. Observe every rule of farm safety at all times. Make your next move a safe one!

★ THIS AD IS SPONSORED IN THE INTEREST OF FARM SAFETY BY THE FOLLOWING FIRMS: ★

<p>ANIMALS</p> <p>TREAT ANIMALS WITH CAUTION, ALWAYS SPEAK TO AN ANIMAL AS IT IS BEING APPROACHED. A FRIGHTENED ANIMAL CAN BE DANGEROUS.</p> <p>Muleshoe Co-op Gins</p>	<p>FIRST AID</p> <p>LEARN THE METHODS OF FIRST AID AND, KEEP A KIT HANDY, AND ALWAYS APPLY FIRST AID PROMPTLY WHEN AN ACCIDENT OCCURS.</p> <p>Bailey County Electric Cooperative Association</p>	<p>EQUIPMENT</p> <p>KEEP ALL EQUIPMENT IN GOOD REPAIR. KNOW AND USE THE SAFETY RULES IN OPERATING MACHINERY ON THE FARM AND HIGHWAYS.</p> <p>Wooley-Hurst Inc.</p>	<p>CLEANLINESS</p> <p>MANY ACCIDENTS CAN BE ELIMINATED BY KEEPING YOUR FARM CLEAN AND NEAT.</p> <p>James Crane Tire Company</p>
<p>IRRIGATION PIPE</p> <p>BE ESPECIALLY CAREFUL WHEN MOVING SECTIONS OF METAL IRRIGATION PIPE UNDER ELECTRIC HIGH LINE WIRES. MANY PERSONS HAVE LOST THEIR LIVES WHEN PIPE COMES IN CONTACT WITH HOT WIRE.</p> <p>Texas Sesame</p>	<p>FAULTY WIRING</p> <p>MANY FARM FIRES ARE CAUSED WHEN FIRE BREAKS OUT IN MACHINERY SHEDS OR BARNES DUE TO FAULTY ELECTRICAL WIRING. ALL FARMS IN THIS AREA NOW HAVE ELECTRICITY AND IT WOULD BE WISE TO CHECK THE CONDITION OF THE WIRING AT LEAST ONCE A YEAR.</p> <p>Protein Processors</p>	<p>SHUT OFF POWER</p> <p>MANY ACCIDENTS COULD HAVE BEEN PREVENTED IF THE MOTOR IS TURNED OFF WHILE GETTING OBSTRUCTIONS FROM THE MACHINERY. ELECTRIC MOTORS SHOULD BE UNPLUGGED, OR TURNED OFF DURING EQUIPMENT ADJUSTMENTS.</p> <p>Fry & Cox Inc</p>	<p>FIRE HAZARDS</p> <p>ELIMINATE ALL FIRE HAZARDS AROUND YOUR FARM, AND BE AWARE OF FIRE DANGERS AT ALL TIMES. DON'T SMOKE IN BARNES, OR AROUND COTTON TRAILERS.</p> <p>Sherely Anderson Grain Lazbuddie</p>
<p>OPEN WELLS</p> <p>BOTH WATER AND IRRIGATION WELLS ARE OCCASIONALLY ABANDONED IN THIS AREA AND MANY ARE HAZARDS THAT HAVE NOT BEEN PROPERLY COVERED. A SMALL RECESS SHOULD BE DUG AROUND THE HOLE AND METAL OR CONCRETE TOP SECURELY COVERED OVER THE HOLE. A LITTLE LIFE IS WORTH MORE THAN A LITTLE</p> <p>First National Bank</p>	<p>DRIVING</p> <p>GOOD DRIVING HABITS IN AUTOS PICKUPS, TRUCKS, CERTAINLY APPLIES TO THE RURAL RESIDENT, BE ESPECIALLY OBSERVANT AT BLIND CORNERS IN RURAL INTERSECTIONS WHERE WEEDS OR TREES OBSTRUCT VIEW.</p> <p>Western "66"</p>	<p>POWER EQUIPMENT</p> <p>BE ESPECIALLY ALERT AROUND IRRIGATION WELL DRIVE SHAFTS AND SHAFTS SHOULD HAVE METAL PROTECTIVE COVERING. POWER TAKE OFF SHAFTS ARE ALSO TO BE OBSERVED CARDFULLY.</p> <p>John's Custom Mill</p>	<p>CHILDREN</p> <p>A WORD OF CAUTION TO USERS OF EVAPORATIVE AIR CONDITIONERS WITH A PLASTIC WATER SUPPLY LINE. YOUR AIR CONDITIONER MUST BE GROUNDED, TO INSURE SAFETY, IF EITHER THE FAN MOTOR OR THE WATER PUMP SHOULD FAIL. AN ESTIMATED 5,000 CHILDREN ARE ELECTROCUTED EACH YEAR BY PLAYING AROUND AIR CONDITIONERS THAT ARE NOT PROPERLY GROUNDED.</p> <p>GIBSON'S DISCOUNT CENTER</p>

NATIONAL FARM SAFETY WEEK

★ ★ ★ ★ ★ JULY 25-31 ★ ★ ★ ★ ★

**WANT...
TO BUY?
TO SELL?
RESULTS?**

WANT ADS

**...WILL
WORK
FOR YOU!**

OPEN RATES
1st insertion, per word-9¢
2nd and add., per word-6¢
NATIONAL RATES
1st insertion, per word-11¢
2nd & add., per word-7¢
Minimum Charge-50¢
CARD OF THANKS - \$2.00
Classified Display-\$1.12 per
column inch
Double Rate for 2nd & 3rd
1.15 per column inch for Rev.
DEADLINE FOR INSERTION
Noon Tuesday for Thursday
Noon Friday for Sunday

WE RESERVE
Right to classify, revise or
reject any ad.

NOT RESPONSIBLE
for any error after ad
has run once.

PERSONALS

FOR YOUR Stanley Home Products, Jewell Broyles, call 965-2461
1-16t-tfc

WANTED: Pasture For Yearlings, Call 925-3186.
1-28s-4tp

WANTED

Lady to serve in a very rewarding position as Director of Diversional Activities, 20 hours per week. Must be attractively dressed and have an out-going personality. Work will consist of directing crafts, parties, programs, outings, reality orientation, and an auxiliary. Will train person capable and willing to learn. Contact Mr. and Mrs. Snow, Amherst Manor, Amherst, Texas.
3-30t-3tc

WANTED: Beautician needed at home, call 972-3448. Main Street Beauty Shop.
3-40t-tfc

ACCEPTING Applications for R.N. at Plains Memorial Hospital at Dimmitt, Texas. Call 647-2191 and ask for Verle West, Administrator or Allan Bradley. Shift preference will be considered.
3-25s-tfc

WANTED Farm Hand, year around, No row crop, Alfalfa only. 2 bedroom furnished house, garden and chicken on school bus route. Call 272-4834 nights.
3-29t-tfc

GINNER NEEDED: Experienced on Murray 120 Sair Ari Blast Gins, Planters Co-op Ginning Society. Box 258 Bardwell, Texas 75101, George Grammer, Phone 214-646-2711 Res., 214-646-2971 Gin.
3-29s-4tp

WANTED: Motor route carried for morning paper, Good Deal Phone 806-272-3534.
3-29s-2tc

APARTMENTS FOR RENT

FOR RENT: 2 bedroom unfurnished apartment, Phone 272-4838. Smallwood Real Estate.
5-47s-tfc

FRIONA APTS. now have available 1,2, and 3 bedroom, \$145.00. Call 247-3666 or come by 1300 Walnut Street, Friona. Sorry no pets.
5-24s-tfc

WANTED TO RENT

WANTED TO RENT: 2 bedroom house or trailer furnished will consider smaller. Prefer Muleshoe area. Call 272-3813.
7-28s-8tp

REAL ESTATE FOR SALE

HOUSE FOR SALE: 2 bedroom, 1 bathroom, kitchen, living room, and fenced backyard. Call 3092 for appointment after 7:00 p.m.
8-29t-8tc

Two bedroom stucco house and other buildings. Priced to be moved. Call 933-2498.
8-30t-5tc

164 acre dryland \$150.00 per acre. 324 acres \$125.00 per acre. 22 miles southwest of Muleshoe. See Curtis Walker or call 272-3162.
8-38t-tfc

FOR SALE: 2 bedroom house, garage, and celler in Earth. Call 272-4026.
8-24t-tfc

FOR SALE BY OWNER: 3 bedroom house, 2 bath, den & living room, fully carpeted, fireplace, double garage with automatic door. Call 272-3121.
8-4s-tfc

FOR SALE: 3 bedroom house on 2 acres in Progress, \$2500.00 down and assume payments of \$71.68 monthly. 15 year loan at 8% Call 505-762-6506 in Clovis.
8-30t-4tc

FOR SALE: 3 bedroom and 2 bath, Asio J.D., 70 and Ferguson 20 Tractor. Call 4073 or 4984. L. O. Norwood
8-28s-tfc

FOR SALE: 3 bedroom brick 2 bath. Phone 272-4819
8-21s-tfc

FOR SALE: Small Farm located on payment. One good 8 inch well and a three bedroom house. Pool Real Estate. 272-4716.
8-29t-4tc

MODE O'DAY - DRESS SHOP Location & Franchise now available in Muleshoe featuring nat'l adv. line of women's apparel. You can own your own business for the cost of fixtures which is \$2500 and a returnable security deposit of \$2000. For Details contact: Truman Laurie Mode O'Day Company, P.O. Box 112, Kansas City, Mo. 64141 - Phone: 816-921-7150.
8-30t-2tc

LIVESTOCK

FOR SALE: 68 Chrysler New Yorker. Call Harold Newsom 4691.
9-28t-tfc

FOR SALE: 1971 C-50 Chevrolet Truck new lingure with 1970 manure spreader. Call 806-227-4591.
9-29t-8tc

FOR SALE: 1969 and 1970 Chevy pickups. 350 engines, power and air. Call 806-965-2471 or 806-272-4718. Kenneth Banks.
9-7t-tfc

FOR SALE: 4 apartment complex, 300 block west 20th, good income, good tax possibilities. Phone 272-4284 after five 272-4491.
1120t-tfc

FOR SALE OR TRADE: Layne Apartments. See Mrs. Layne at 524 S. 1st Street.
11-25s-tfc

FOR SALE: Mobil home extension or storage room 14'X30' Metal. Has wood burning fire place and lots of closet space. Phone 272-3453.
11-30t-8tp

ACREAGE FOR SALE

ACREAGE FOR SALE: 15 acres for sale on east side of Muleshoe. Adjacent to REA Poll yard. 4" Elec. with some improvement. Perfect location for horses, a few cows, or a pig or two. 13,500.00 Call Earl Brock Real Estate 647-3257 or 647-3176, or 647-3490. Dimmitt, Texas.
14-24t-tfc

FOR SALE: Weaning size Pigs. Phone 965-2716 or 965-2713.
16-23t-tfc

WANTED to do any kind of yard work. Call 806-272-3449.
15-30t-4tc

QUICK MONEY CROP, Pinto Beans Net \$1,000. Per acre in 75 days for seed call 364-0484, Hereford, Texas.
15-30t-2tc

Cess Pool Cleaning

Cesspools pumped with MUD-PUMP & treated with bacteria & enzymes to biodegrade solids & loosen sludge for better drainage. Dipping vats drained and liquids hauled to your disposal pit. Grease pits drained & treated. Molasses pits drained. Phone 272-3677 or 272-3467
ELMER DAVIS

POOL REAL ESTATE

214 E American Blvd
Phone 806-272-4716
Farm And Homes
We make the prices fit.
8-28s-tfc

VALLEY
SPEAKER SYSTEMS
ARE AVAILABLE
FOR JULY DELIVERY
AVI INC.
272-3565

JAMES GLAZE COMPANY
Insurance
Phone 272-4549 232 Main
42t-tfc

FOR SALE: 3 bedroom house, den, fireplace, lots of closets, dishwasher, disposal. Has concrete wall and storm basement reinforced with 8" steel, 2 car carport, steel reinforced. HOLLAND REAL ESTATE 113 W. Ave. D, Phone 806-272-3293
8-30t-tfc

LIVESTOCK

Calves 7 to 14 days old, Healthy and started on bottle. Free delivery of 10 or more. Call 214-223-5171 after 7 p.m.
1628s-24tc

Public Notice

Beginning September 2, 1974, Cloverlake Dairy Foods of Plainview, Inc. will discontinue its premium program. Thereafter, Cloverlake premium points which are redeemable in merchandise will be eliminated from all Cloverlake Products Cartons. However, we will continue to redeem, through December 31, 1974, all Cloverlake premium points which you may have on hand.

This action has become necessary due to inflationary trends of salaries, distribution cost, repairs, insurance, utilities, bookkeeping and accounting and the cost of merchandise redeemable by our customers.

Please remember, we will continue to produce and process the finest dairy products at the lowest possible prices. Cloverlake Dairy Foods Of Plainview, Inc. Plainview, Texas
29t-3ttc

Public Notice

UNITED STATES DEPARTMENT OF AGRICULTURE, ANIMAL AND PLANT HEALTH INSPECTION SERVICE, OFFICE OF THE ADMINISTRATOR, Notice is hereby given that because of the existence of cattle scabies in certain parts of Texas, and the nature and extent of outbreaks of this disease, a portion of Bailey County in Texas is quarantined under amendments of the regulations in 9 CFR Part 73, as amended, effective July 5, 1974. Therefore, the restrictions pertaining to the interstate movement of cattle from quarantined areas as contained in Part 73, as amended, apply to the area quarantined.

Notice is also hereby given that a portion of Curry County in New Mexico, and a portion of Sheridan County in Kansas are excluded from the areas quarantined because of cattle scabies under amendments of the regulations in 9 CFR Part 73, as amended, do not apply to the excluded areas. However, the restrictions pertaining to the interstate movement of cattle from nonquarantined areas contained in said Part 73 apply to the areas excluded from quarantine. No areas in New Mexico or Kansas remain under quarantine.

The amendments are published in the Federal Register. Detailed information concerning the amendments may also be obtained from Dr. E.S. Cox, Area Veterinarian in Charge, Room 301, 702 Colorado Street, Austin, Texas 78701 and Dr. R.W. Gerding, Area Veterinarian in Charge, 300 South 17th Street, P.O. Box 51866, Lincoln, Nebraska, 68501. Done at Washington, D.C., this 5th day of July, 1974. J.M. Hejl Deputy Administrator, Veterinary Services Animal and Plant Health Inspection Service.
15-30t-1tc

Services Held For Bertha King

Long-time resident, Mrs. Bertha H. King, 79 of Muleshoe died in Muleshoe Nursing Home at 1:45 a.m. Sunday. Mrs. King was a native of Denton County, Texas. She is survived by four sons, J.R. and Doyle King, both of Muleshoe, Lloyd of Imperial, California

and J.W. of Santa Fe, New Mexico. She is also survived by 18 grandchildren and 32 great grandchildren. Mrs. King had been a resident of Bailey County since 1935 when she moved here from Pampa, Texas. She was a member of the Richland Hills Baptist Church. Reverend J.P. Jones, Lamasa, Reverend V.L. Huggins, Trinity Baptist Church, Muleshoe and Reverend Gerald Pepper of Richland Hills Baptist Church officiated. Burial was in Bailey County Memorial Park.



Dear Preston and Ronnie I intended on writing you sooner but thought that I would just wait to the paper came out and send you a couple of copies along with this letter and pictures. I want you and all the people in Muleshoe to know what I think of your boys. I have been in all phases of youth baseball for the past 22 years and

have unpired off and on for over 25 years. I think that the group of 13 year olds that you brought to Dimmitt to participate in our Babe Ruth Tournament last week was one of the finest examples of young men that I have ever had the privilege of being associated with. Their behavior on and off the field of play made a big impression with the people of Dimmitt. I especially wanted to thank the young man that waited by my car while I was calling the story to the Amarillo paper. He just wanted to say "thanks" and

thought that I had given them a fair shake. That one little boy's feelings toward me made me feel mighty good and I will always remember him even though he didn't give me his name. There was also a woman, I believe Leslie White's mother that thanked me one night and several other fans that thanked us and me and the other umpires certainly appreciated it. Money cannot buy things like that especially from a team that had lost. It takes more to be a good loser than a good winner. I look forward to seeing and hearing about your boys in the future for I know that if they keep at it with their attitude and playing ability that there will be victories in the future instead of losses. Thanks again, Jimmie W. Chapman 308 NW 6th St. Dimmitt, Texas 79027

Public Notice

NOTICE TO BIDDERS: Lazbuddie School Board will accept bids for 1974-75 school year on milk, bread, and gasoline. Bids are to be submitted by Aug. 12, 1974, to the administration office of Lazbuddie Public Schools. Bids will be opened at the regular Board meeting Aug. 12, 1974. The Board reserves the right to accept or reject any or all bids.
15-29t-8tc

Golden Gleams

Whether therefore ye eat, or drink, or whatever ye do, do all to the glory of God. -1 Corinthians 10:31



TOURISTS OF THE WEEK . . . Friday, July 19, a family bound for Oregon was stopped about 12 noon and were presented with a free lunch and a full tank of gas as a courtesy of Muleshoe merchants. The Houston, Texas family was Mr. and Mrs. Richard Frutiger and their two sons, Gordon and Robert. Pictured left to right are: Earl Harris, Ester Lucero, Muleshoe Ambassadorette, Gordon Frutiger, Mrs. Richard Frutiger, Robert Frutiger, Richard Frutiger, Perri Poynor, Ambassadorette and Tommy Black, Chamber Manager.

Glen's BACKHOE SERVICE
806/272-4844
GLEN WATKINS

USED TRADE-IN ITEMS FOR SALE

Refrigerators 60 Day Guarantee	\$69.95
Television 60 Day Guarantee	\$69.95
Record Player Automatic Changer	\$31.95
Sewing Machine in Case	\$39.95
Love Seat	\$45.00
Washing Machine 60 Day Guarantee	\$79.95
30" Gas Range	\$85.00
Clothes Dryer 115 Volts	\$69.95
Chest Type Freezer 16 Cu. Ft.	\$69.95
24" Girl's Bicycle	\$34.95
Lawn Mower	\$29.95
Used Down Draft Air Conditioner	\$75.00

Western Auto Assoc. Store
320 Main Street Muleshoe, Texas

Public Notice

NOTICE OF PUBLIC HEARING BY THE TAX BOARD OF EQUALIZATION OF THE LAZBUDDIE INDEPENDENT SCHOOL DISTRICT

Notice is hereby given that the Tax Board of Equalization of the Lazbuddie Independent School District will hold public hearings relating to equalization for tax purposes of all properties situated within the taxing jurisdiction of the Lazbuddie Independent School District on Aug. 5, 1974 from 6:00 p.m. to 9:00 p.m. in the Board Room of the Lazbuddie Public Schools. All persons having business before said Board may appear at this time.
15-29s-2tc

Public Notice

TO: Andy Lee Geeslin GREETING: You are commanded to appear by filing a written answer to the plaintiff's petition at or before 10 o'clock A.M. of the first Monday after the expiration of 42 days from the date of issuance of this Citation, the same being Monday the 19th day of August, A.D., 1974, at or before 10 o'clock A.M., before the Honorable District Court of Bailey County, at the Court House in Muleshoe, Texas.

Said plaintiff's petition was filed on the 8th day of November, 1972. The file number of said suit being No. 3530. The names of the parties in said suit are: Martha Geeslin as Plaintiff, and Andy Lee Geeslin as Defendant. The nature of said suit being substantially as follows, to wit: Divorce. If this Citation is not served within 90 days after the date of its issuance, it shall be returned unserved. Issued this the 3rd day of July A.D., 1974. Given under my hand and seal of said Court, at office in Muleshoe Texas, this the 3rd day of July A.D., 1974. Nelda Merriott Clerk District Court Bailey County, Texas
4-28t-4tp

HE THOUGHT HE WAS A PRETTY SHREWD BUSINESSMAN!

He Never Overbought,
He Never Sold At A Loss,
He Was Always Compellive,
He Kept His Store Modern,
His Clerks Were Friendly,
He Stocked Excellent Merchandise,
He Kept Good Books,

BUT HE NEVER ADVERTISED!

And, as a result, his business was never what it could have been! Businessmen must let their customers, and potential customers, know that their merchandise is good, their store is modern and prices are competitive. Nothing tells this story better . . . in this area . . . than the pages of The . . .

THE MULESHOE AND BAILEY COUNTY JOURNALS





Three High Plains farmers from the section of the high and rolling plains most severely affected by the prolonged drought are personally taking to Washington their case for more equitable administration of farm program disaster provisions. Heading up the delegation will be Dawson County farmer Donnell Echols of

Patricia, member of the Executive Committee and past president of Plains Cotton Growers, Inc. He will be accompanied by Donovan Phipps of Welch, also in Dawson County, and C.A. Daugherty of Fluvanna in Scurry County. The trip was planned for the week of July 22 at Chamber of Commerce sponsored meetings in Snyder and Lamesa July 16 and 18 involving some fifty farmers, PCG, the Rolling Plains Cotton Growers Association of Stamford, and the Lubbock Chamber of Commerce.

The Agriculture and Consumer Protection Act of 1973 provides that farmers prevented from planting or making less than two-thirds of normal yields because of drought or other adverse weather conditions will be paid 12.67% per pound times the difference between normal yields and actual production. Farmers who were not able to plant this year, generally, are happy with the way this section of the law is being administered. They will be paid 12.67% per pound times their

allotted acreage times the farm's established yield as the law intended. But for those who planted and either didn't get a good stand or got a stand and lost most of it to the drought, sand or hail, there are problems. ASCS is using Federal Crop Insurance Corporation procedures to "appraise" the potential production of remaining plants on these farms, and those procedures do not permit economically sound appraisals. A sample is a field with what the ECIC appraisers say

has 18 percent of a normal stand. The farm's established yield is 544 pounds per acre, so the current procedures set potential production at 98 pounds per acre (18 percent of 544), without regard for the size and condition of plants, lack of soil moisture, the economics of trying to farm 18 percent of a stand, or the fact that such a crop couldn't be machine harvested even if it realized it's full "potential" under ideal conditions. The determination that the field if left to maturity would

produce 98 pounds per acre, leaves the farmer with two choices. He can plow up the remaining cotton and lose over \$12 per acre of his disaster payment, or he can leave the cotton until Fall to prove it won't produce, foregoing in the process any possible soil conservation of other alternative use of the land. Either way, in comparison to his neighbor who did not plant, he is being penalized for having made the effort to produce a crop. Another gross injustice is encountered by the farmer who

plants and subsequently loses cotton on more than his allotted acres. A case reviewed by PCG shows that if a farmer, with a 100-acre cotton allotment and a 100-acre feed grain allotment, planted 110 acres of cotton and no grain sorghum he would get almost \$3,000 less in disaster payments than if he had planted only 100 acres of cotton. This example assumes a 600 pound established yield for cotton and a 30 bushel yield for grain sorghum.

PIGGLY WIGGLY

HELP PIGGLY WIGGLY SAVE ENERGY

Piggly Wiggly has taken many steps to help save energy including lowering our thermostats, reducing operating hours, using re-cycleable egg cartons and many more. We want you to help us with one more. Will you please bring back all your re-usable large grocery bags when you shop so we can use them again to bag your new order. Thank you for helping us.

Prices good thru July 28, 1974. We reserve the right to limit quantities. None sold to dealers.



Piggly Wiggly Welcomes Food Stamp Customers

- Center Cut Pork Chops Lb. 1.59
- Country Spareribs 1.39
- Blue Marrow, Cooked & Breaded Pork Choppettes Lb. 1.03
- Center Cuts Thick Pork Chops Lb. 1.59

Piggly Wiggly, 3 or 5-Lb. Chub Pack Ground Beef Lb. 89¢

USDA Inspected
Cut-Up Fryers
49
Lb.



Farmer Jones, No. 1 Quality 2-Lb. Pkg. — \$1.75

Sliced Bacon
\$1.09
Lb.

USDA Choice, Superb Valu Trim Short Ribs Lb. 79¢



USDA Choice, Superb Valu Trim, Arm Cut Swiss Steak Lb. 1.19

USDA Choice, Superb Valu Trim, Boneless Chuck Roast Lb. 1.39

Lean Boneless Stewing Beef Lb. 1.39

USDA Choice, Superb Valu Trim, Oven Ready Rib Roast Lb. 1.29

USDA Choice, Superb Valu Trim Cubed Steak Lb. 1.89

USDA Choice, Superb Valu Trim, Full Cut Round Steak Lb. 1.39

Juicy Nectarines Lb. 49¢

Romaine Lettuce Lb. 39¢

Cherry Tomatoes Lb. 59¢

Hearts of Celery Pkg. 79¢

Fresh Cucumbers Lb. 45¢

Firm Red Cabbage Lb. 25¢

USDA Choice, Superb Valu Trim, Center Cut

Chuck Steak
\$1.09
Lb.

USDA Choice, Whole In Cry-O-Vac, Boneless

Brisket
\$1.09
Lb.

White Rose

Potatoes
89¢
Bag

Yellow

Onions
10¢
Lb.

Farmer Jones, 4 Varieties, Sliced Luncheon Meat 6-oz. Pkg. 49¢

2-Lb. 95%, Breakfast Sausage Lb. 49¢

Fresh Peaches Lb. 49¢

Crispy-Fresh Produce from Piggly Wiggly

Gooch German Sausage 12-oz. 1.29

Farmer Jones, Old Fashioned Flavor, Sliced Bologna 12-oz. 89¢

Farmer Jones, Tender and Juicy Franks 12-oz. 79¢

12-oz. Oscar Mayer, Vac-Pak Sliced Bacon Lb. 1.19

Piggly Wiggly Canned Ham 3-Lb. 4.59

USDA Inspected, Grade A, 12 to Young 18-Lbs. Turkeys Lb. 59¢

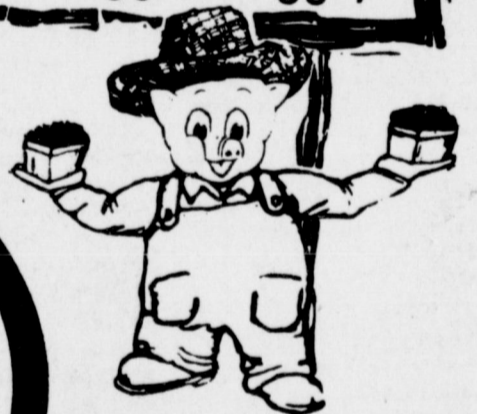
Kraft, 4 Varieties, Smoked

Barbecue Sauce
39¢
18-oz. Btl.



Firm, Ripe

Tomatoes
39¢
Lb.



Red Delicious Apples Lb. 49¢
Ruby Red Grapefruit Lb. 29¢
Fresh Tart Limes Lb. 59¢
Valencia Oranges 3 Lb. \$1

Piggly Wiggly, Assorted Flavors

Soft Drinks
5/\$1
46-oz. Can

Beauty Aids



Deodorant Arrid Extra Dry

9-oz. Can **99¢**

Fresh Dairy



Piggly Wiggly, All Flavors Ice Cream

1/2-Gal. Ctn. **79¢**

Frozen Foods



Rio, Frozen Strawberries

10-oz. Pkg. **29¢**

Delicious Seedless Grapes Lb. 79¢

Instant, Pure Lipton Tea

3-oz. Jar **99¢**

Van Camp's Light Grated Tuna 6 1/2-oz. Can 47¢

Piggly Wiggly, Cream Style or Whole Kernel Golden Corn 16-oz. Can 24¢

Piggly Wiggly Cut Beets 16-oz. Can 25¢

Piggly Wiggly, White or Assorted

Facial Tissue
25¢
2-ply 200-Ct. Box

Sandal Foot, One Size fits 9-11

Knee Highs Pr. 59¢

Noxzema Skin Cream 10-oz. Jar \$1.59

Monster, Regular, Children's Vitamins 60-Ct. Btl. \$1.19

Ex-Hold or Regular Consort Hair Spray 13-oz. Can 79¢

Farmer Jones Butter Lb. 99¢

Kraft Spread Cheez Whiz 8-oz. Jar 69¢

Local Brand Buttermilk qt. 57¢

Piggly Wiggly, Buttermilk or Sweetmilk 10-Ct. Can 10¢

Biscuits 10-Ct. Can 10¢

Kelloggs, Frozen, 8-Ct. Eggo Waffles 13-oz. Pkg. 65¢

Libby, Frozen Grapefruit Juice 6-oz. Can 35¢

Libby, 100% Pure Florida, Orange Juice 6-oz. Can 27¢

Treesweet, Regular or Pink Frozen Lemonade 6-oz. Can 8¢

8¢

Libby Vienna Sausage 4-oz. Can 39¢

Hormel Spam Luncheon Meat 7-oz. Can 67¢

The Complete Family

Recipe Card Collection

Last Week to Complete Your Recipe Card Collection Each Series 39¢

