



# THE MULESHOE JOURNAL

'The Community of Opportunity-Where Water Makes the Difference'

## Weather

	HIGH	LOW
December 30	60	21
December 31	50	16
January 1	30	12
January 2	28	6
Rainfall to Date:	14.79	

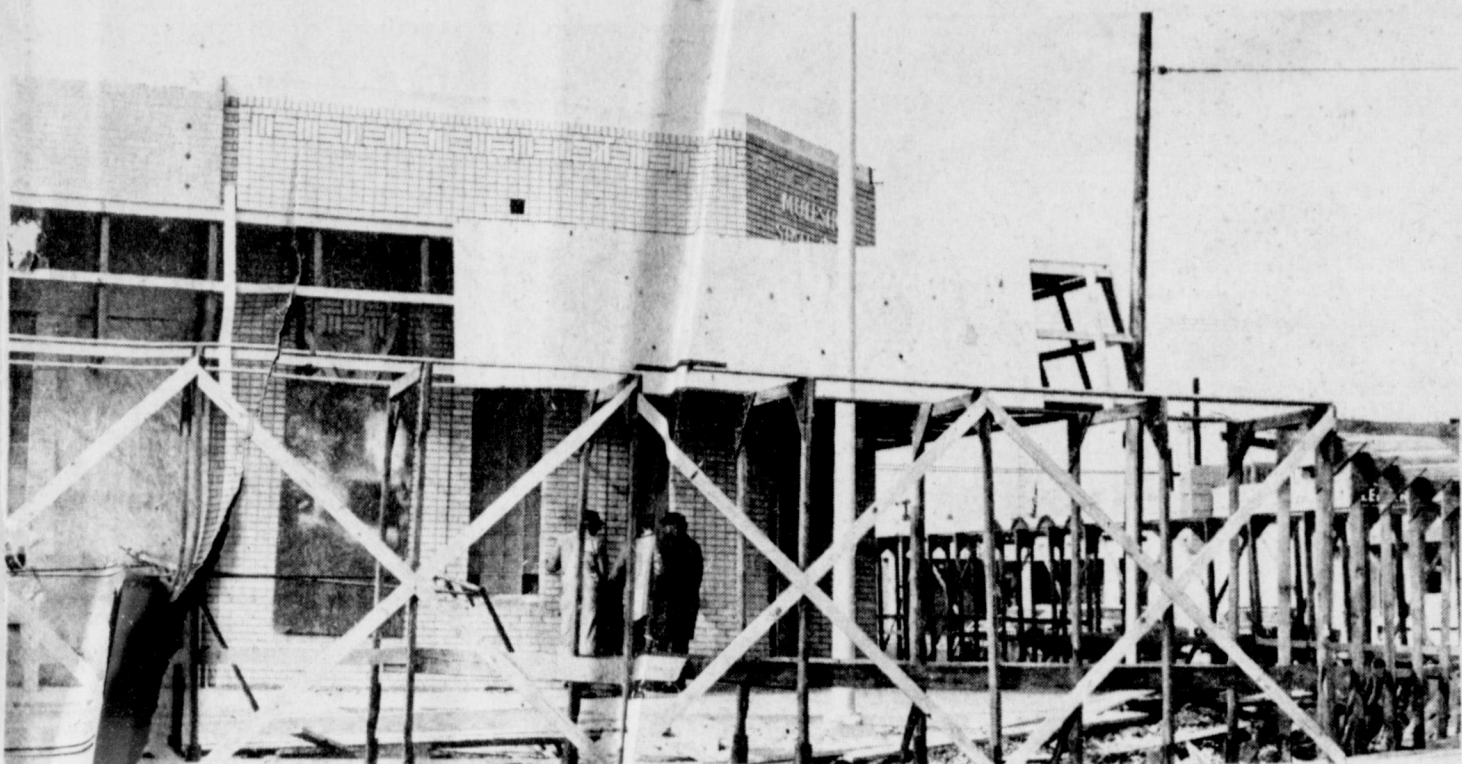
VOL. 51 No. 52

6 PAGES

Published Every Thursday at Muleshoe, Bailey County, Texas 79347

10 CENTS

Thursday, January 3, 1974



CONSTRUCTION CONTINUES. . . Construction continues on the new home of Tri-County Savings and Loan Association on Main Street. The outside is beginning to take the shape of the building as siding is being applied to the remodeled building. Tri-

County Savings and Loan is expected to move into the newly remodeled building in early spring of this year. The construction around the building includes a sidewalk for people to walk around the building without getting into the street.

## Allen To Speak At Chamber Banquet

### Gov. Briscoe Awards Grant To SPAG

### Banquet Scheduled For January 24

AUSTIN -- Governor Dolph Briscoe today awarded two grants totaling \$129,760 for improving law enforcement and justice in the area served by the South Plains Association of Governments at Lubbock.

The money will come from the Governor's Office, Criminal Justice Division. CJD administrators the state's block grant from the Law Enforcement Assistance Administration under the Crime Control Act of 1973.

Largest of the grants, \$103,565, goes to Lubbock County for organization and implementation of the newly established office of the Criminal District Attorney for the county.

With a staff of 13 attorneys, three investigators and eight secretaries, the criminal district attorney's office takes the place of the offices of the district attorney for the 72nd Judicial District and the county attorney of Lubbock County. The

annual Muleshoe Chamber of Commerce and Agriculture Banquet will be held in Muleshoe on Thursday, January 24, 1974.

Speaker for the banquet will be Dr. Charles L. Allen, according to David Sudduth, banquet chairman.

Dr. Allen is pastor of the First Methodist Church of Houston.

Dr. Allen came to Houston from the Grace Methodist Church in Atlanta, Georgia, under his ministry, Grace Church became the largest Methodist Church in the southeast. He was born and reared in Georgia, the son of a minister. He is a graduate of Young Harris College, Wofford College, and the School of Theology of Emory University. He holds the degree of Doctor of Divinity from both Piedmont College and Emory University and the degree of Doctor of Laws from John Brown University. He is a member of Phi Beta Kappa and he is listed in WHO'S WHO IN AMERICA.

Dr. Allen is the author of some twenty books, all of which have been best sellers in the religious field.

Time Magazine said of him: "The success story of Charles L. Allen is not the result of rafter-ringing oratory. He speaks simply, seldom raises his voice and uses few gestures. He emphasizes Christian daily living and prayer. He is inclined to say simply, 'You'll be happier if you live this way'."



Mrs. Lurar McNabb, 90 mother of Mrs. Jean Lovelady, Bailey County Tax Assessor and Collector, died at 5 a.m. Wednesday, January 2, at the home of her daughter in Muleshoe. Services are pending with Singleton-Ellis Funeral Home.

Mrs. Delbert (Christine) Baker of Bryson, passed away Monday, December 31, 1973 about midnight. Services were held Wednesday at Jacksboro Funeral Chapel. Mrs. Baker was a sister-in-law of J.R. Baker, a cousin of Lester Baker, both of Muleshoe.

### Captain Watson Receives Degree

Captain Don R. Watson, son of Mr. and Mrs. Charlie A. Watson of Muleshoe, received his Masters Degree (MBA) on December 20, 1973 from Babson College, Babson Park, Mass. Watson is presently with the First U.S. Army Student Detachment with duty at Babson College.

Watson graduated from Lubbudde High School in 1966 and West Texas State University in

## Reyna Charged With Murder In Shooting

Murder charges were filed Saturday morning in Muleshoe against Pedro Reyna, 25, of Friona in the shooting death of

Jacinto "Jimmy" Luera, 33, of Muleshoe.

Reyna was arraigned before County Judge Glen Williams Saturday morning and remains in Bailey County jail in lieu of a \$25,000 bond.

Reyna had earlier been charged with felony assault with intent

to murder in connection with the case. He had made bond on the earlier charge.

Luera was shot five times on December 16 in front of his home at 1902 West Avenue B. He died at 11 p.m. Tuesday in Methodist Hospital at Lubbock.

Funeral services for Luera were held here Friday.

The shooting occurred shortly after Luera, Reyna and another man returned to Luera's home after being out all night, according to law enforcement officers.

Reyna was also shot in the altercation but was treated at West Plains Memorial Hospital and released on December 17 after receiving bullet wounds in the shoulder and leg.



MRS. BESS CURRY

### Services Held Wednesday For Mrs. Curry

Mrs. Bess Arnett Curry, 93, died at 8:45 Monday morning in West Plains Memorial Hospital. She had lived in Muleshoe for five years moving from Plainview where she had lived from 1938.

Born September 5, 1880, in Burnett, Texas, she was a member of a pioneer ranching family. Her father, D.N. Arnett was associated with the Spade Ranch and D.H. and J.W. Snyder interests for over 50 years.

She was raised in Colorado City, Texas and attended Kid Key College at Sherman, Texas.

A life long member of the Methodist Church, both grandparents were circuit riding Methodist preachers.

Her husband, A. Foy Curry, preceded her in death on February 24, 1964. He was founder of the Curry Motor Freight Lines.

Funeral services were conducted at 2:30 p.m. Wednesday in the First United Methodist Church of Muleshoe with Rev. C.B. Melton officiating. Inter-

### Bill Clayton Elected To Board

Representative Bill Clayton was elected to the Governing Board of the Council of State Governments at a recent meet-

Cont. on Page 4, col. 6

## George Mahon Will Receive Annual ROA Minute Man Award

Rep. George H. Mahon, entering upon his 40th year as a member of Congress, Chairman of the House Appropriations Committee and its Military Appropriations Subcommittee for the past 10 years, has been named by the Reserve Officers Association of the United States to receive its annual "Minute Man" Award in 1974.

The Congressman, of Lubbock, Texas has been singled out by the Association as the 17th recipient of the citation as "The Citizen who has contributed most to National Security in these times."

RADM B. Hayden Crawford, of Tulsa, Okla., National President of ROA, in announcing the Congressman's selection, pointed out that he had particularly distinguished himself as Chairman of the Committee handling appropriations for the Defense Department and military services. Admiral Crawford said in a letter of announcement to Mr. Mahon: "Our Association is convinced that our career is particularly outstanding and that you are working courageously and with great talent and dedication for the security of this country. It is our hope that in making this award we can

call attention to the precepts of public service which your career exemplifies."

The presentation to Mr. Mahon will feature FOA's annual Mid-Winter banquet of its National Council on George Washington's birthday, February 22, at the Washington Hilton Hotel. It is expected that some 2,000 officers from throughout the United States will be in Washington, D.C., for a three-day conference climaxed by this evening affair.

The ROA award went last year to Sen. Henry M. (Scoop) Jackson. In previous years ROA has honored House Speaker Carl Albert; Sen. Strom Thurmond; Defense Secretary Melvin Laird; House Speaker John W. McCormack; House Armed Services Chairman F. Edward Hebert; Congressman Robert L.F. Sikes; Sen. John C. Stennis; the late Congressman L. Mendel Rivers; Sen. Margaret Chase Smith; the late Sen. Dennis Chavez; then Congressman Carl Vinson; then Under Secretary of Army Hugh M. Milton II; Presidential Assistant Bryce M. Harlow; the late Sen. Richard B. Russell; and the late RCA Board Chairman, Brig. Gen. David Sarnoff.

### MH/MR Center Will Have Board Meeting

Members of the Board of Trustees of the Central Plains MH/MR Center will hold a Board of Trustees meeting at 7 p.m. in the recreation room of the Central Plains MH/MR Center Building at 2601 Dimmitt Road

Cont. on Page 4, col. 7

## Planning Committee Urges Citizens To Make Views Known

The Co-Chairmen of the Joint Constitutional Convention Planning Committee have urged Texas citizens to make their views known to the 1974 Constitutional Convention standing committees.

State Representative DeWitt Hale of Corpus Christi and State Senator Nelson Wolff of San Antonio announced plans for the eight substantive committees of the Convention to begin public hearings January 16 in Austin. The committees, which will be gathering information and making preliminary recommendations on a revised Constitution, will try to hear every citizen who asks to testify, Hale and Wolff said. Written testimony may be submitted. Committee hearings are expected to continue until Feb. 15.

Hale and Wolff pointed out that the entire constitutional revision process so far has been characterized by enthusiastic public participation.

"The first full-scale constitutional revision effort in Texas in nearly a century should reflect the views of all Texans," they said, "and the Convention will make every effort to hear everyone."

Convention preparations anticipate that permanent meeting rooms will be assigned to

standing committees for the Convention. Tentative assignments are: Finance Committee, Senate Chamber, Capitol; Local Government Committee, Room 300, Capitol; Education Committee, 105 Reagan Building; Legislative Committee, Speaker's Committee Room, Capitol; Judiciary Committee, Old Supreme Court Room, Capitol; General Provisions Committee, Room G13, Capitol; Executive Branch Committee, Room 301, Capitol; and Committee on Rights, Suffrage, Amendments and Separation of Powers, Lieutenant Governor's Committee Room, Capitol.

Any person wishing to testify before one or more of the Convention committees should call or write Glen Provoost, Executive Director, Joint Constitutional Convention Planning Committee, P.O. Box 2910, Austin, TX 78767 (Phone 512-475-6494).

Committee hearings are expected to last approximately four weeks. Hearings on spe-

cial subjects will be announced to delegates and the news media.

The constitutional revision process approved by voters at the polls in 1972 requires that Texans' views be heard on the content of a new Constitution.

The Constitutional Revision Commission, 37 citizens charged with studying the present Constitution and recommending revision, held 19 public hearings, 13 more than required by law, to listen to citizen opinion.

The public hearings were held last spring in Amarillo, Lubbock, El Paso, Midland-Odessa, San Angelo, San Antonio, Arlington, Texarkana, Tyler, Lufkin, Houston, Corpus Christi, McAllen, Laredo, Beaumont, Abilene, Wichita Falls, Waco and Austin. The Commission listened to testimony from nearly 1,000 citizens.

In each of these cities, the Commission established Cit-

Cont. on Page 4, col. 8

### Democrats To Meet In Lubbock

Texas State Land Commissioner Bob Armstrong will be featured speaker at a general meeting of the South Plains Democratic Council in Lubbock Saturday, January 10, 1974.

The meeting of area Democrats is slated for 7:30 p.m. Saturday at Vann's Catering on Station Highway.

A popular, dynamic speaker, Armstrong is increasingly in demand at Democratic functions throughout the state.

The Lubbock meeting is the first in a series scheduled by the South Plains Democratic Council for 1974. All area democrats are urged to attend and the general public is also invited.

### Farmers Tax Guide Available

The new "Farmer's Tax Guide" is now available at the county Extension offices, announces County Extension Agent Spencer Tanksley. The publication gives information on filing farm and ranch income returns.

Written in easily understood language, the guide gives a number of examples of completed forms.

Tanksley points out that the guide contains a new section on investment credit which explains what property qualifies the amount of credit available, limitations, and how to complete credit on used property and recapture information.

The guide also has a chapter on credit for gasoline and fuels used on a farm for farming purposes. Another chapter deals with self-employment taxes for Social Security. It explains what income is and is not taxable for Social Security.

The tax guide is indexed so producers can easily find information on specific subjects very easily. Farmers or ranchers can call the county agent's office or come by and pick up a copy of the new tax guide. There is no charge for these publications.

### Helicopter Crashes, Pilot Escapes Injury

A helicopter, piloted by Dr. Charles Pummill of Muleshoe, crash landed about 12 miles south of Stratford, Texas Sunday evening at approximately 4:05 p.m.

A Federal Aviation Administration spokesman reports that Pummill and a passenger, believed to be his wife, both escaped injury when the tail rotor was chopped off. The Bell Model 47-G2 helicopter received some damage, the spokesman stated.

The spokesman said the cause of the crash was still under investigation by the FAA and no further information was available.

**MULESHOE STATE BANK**

**MULESHOE STATE BANK**

**THERMOMETER REFLECTS COLD . . .** The sub-freezing temperatures of the past few days were reflected in the thermometer at Muleshoe State Bank this week. Temperatures had still not reached 32 degrees by afternoon Monday. The same pattern followed on Tuesday, New Year's Day as temperatures stayed below freezing. Wednesday morning at pre sunrise, snow was falling in Muleshoe with 1-2 inches expected for the day. The cold front that layed over Muleshoe brought some clouds, but mostly clear, cold, windy days as winter moved into the Muleshoe area.



UB-FREEZING WEATHER INVADES AREA . . . Temperatures in Muleshoe and Bailey County have not risen above the freezing point in the last few days. This picture, taken in the afternoon reflects the cold temperatures as ice remains on the sprinkler system. The weather has been cold and windy for the last few days and snow showers have been predicted.



## Quest For Identity

COLLEGE STATION--- a young adult's opinion of himself is influenced by hereditary and environmental factors. "These influences either help--or prevent--development of self-concept," according to Jane Fleischer, specialist in family life education, Texas Agricultural Extension Service, Texas Agricultural Extension Service, Texas A&M University System.

Self concept, the specialist explained, involves the traits and habits an individual acquires as himself.

"In other words, one's concept of who and what he is--and his thoughts and feelings about himself as an individual.

"The growth of self-concept is a continuous process. All through the developmental stages--infancy, childhood, adoles-

cence and adulthood--a person searches for identity while maturing in his personality traits," Miss Fleischer noted.

As a result self-concept develops in several ways.

For one, spirit of honesty and acceptance plays an important part, she said.

"When an individual 'removes his mask' and is himself, he can accept himself more realistically and relate to others around him.

"Strong motivation for achievement is another factor. With much of our culture competitive, one's sense of self-worth largely depends on his ability to meet the demands placed upon him.

"Most of all, a young adult needs to feel he's independently responsible in his struggle for self-concept," the specialist

emphasized.

"Independence means a person can seek guidance from others who he considers role models--people that succeeded in their own searches.

"As such, he associates with mature adults who combine inner stability with freedom to change--while continuing to grow."

## Halls Christmas

The Larry Halls family spent Christmas eve and Day in Plainview with Mrs. Hall's family and 27-29 in San Angelo with his mother.

## Miss Turner Weds Vela

Miss Jacque Sue Turner and Julian C. Vela were united in marriage December 21, 1973 at 7:30 p.m. in the home of Mr. and Mrs. J.R. Johnson, Rev. D.C. DuBose officiated in the double ring ceremony.

Parents of the couple are Mr. and Mrs. Darrell Turner and Mr. and Mrs. Joe Vela.

The candlelight ceremony took place in front of an open fireplace. The room was de-

corated with holly, mistletoe and candle arrangements, carrying out the Christmas theme. Musical selections were "A Time For Us" and "Theme From Love Story" presented by Mrs. Jimmie E. Burgess on the piano.

Given in marriage by her father, the bride wore a floor length gown of taffeta with an overlay of bridal illusion with insets of lace. The gown featured empire waist, victorian neckline and sleeves. She wore a long veil of bridal illusion trimmed in lace which fell from a crown of sequined lace. Her bouquet was of red carnations and holly accented with miniature white carnations and red velvet streamers.

Miss Cassie Precure attended the bride as maid of honor. She was attired in a empire waisted gown of dark green velvet with long sleeves. She carried a bouquet of red carnations and holly accented by red velvet streamers.

A reception followed the ceremony. The table was laid in a white linen table cloth edged with lace and centered with a Christmas candle centerpiece. The wedding cake was white with red roses and green leaves. Green punch was served. Miss Christy Ford registered guests. Presiding at the table were Mrs. Mike Roberts and Miss Ginger Johnson.

For a wedding trip to points of interest in New Mexico the bride wore a red and gray two piece double knit dress with red accessories.

The bride is a 1973 graduate of Muleshoe High School and is attending El Centro College and working at Titches' Department Store in Dallas. The groom is a 1972 graduate of Muleshoe High and attended one year at W.T.S.U. He is presently attending Tarrant County Junior College where he is also employed.

Out-of-town wedding guests



MRS. JULIAN C. VELA nee MISS JACQUE TURNER

were Mrs. Charles E. Fry of Amarillo, grandmother of the bride and Mrs. Marsha Morgan of Lubbock.

## Services For Perez Infant Held Wednesday

Evette Perez, infant daughter of Mr. and Mrs. Ernest Perez of Muleshoe, died shortly after birth at 1:30 p.m. January 1, 1974.

Graveside services were held Wednesday conducted at 1:30 p.m. in Bailey County Memorial Park, with Father Timothy Schwertner of the Immaculate Conception Catholic Church officiating. Burial was under the direction of Singleton-Ellis

Funeral Home. Survivors besides the parents were grandparents, Mrs. Gertrude Perez of Muleshoe and Mr. and Mrs. Marcos Garcia of Mercedes, Texas.

Not So Funny "You say your sister makes up jokes, then she's a humorist isn't she?" "No, she works in a beauty parlor."

## LOUISA'S LETTER



Dear Louisa:

I have a devoted sister, in another state, whom I helped when she and her husband first started in the business world, and he was drawn into the armed services. I found her a cleaning job in a good hotel with room for her and her baby, in addition to pay.

When the war ended and she set up house keeping; I gave her many things and help in getting them established. After she and her husband landed good jobs, she asked me to purchase an expensive piece of furniture for her, stating she would reimburse me. I gladly responded to her request. At family gatherings she commented on how attractive the furniture was, saying she would pay me in a few days.

Well, the few days have turned into a few years, and her financial status is excellent: Vacationing in Europe, and living "high on the hog," so to speak. Recently I reminded her about her unpaid furniture debt and she jokingly put me off, again.

The purpose of this letter is to ask you how I can obtain what my sister owes me,

without offending her?

D.R.--Ga.

Answer:

It's sad but true that those people we do the most for get so accustomed to it that they take it for granted and really resent it if the givers ask for some return. Others conveniently forget their debts.

Personally, I see no reason for anyone who owes a debt, to be offended if he is asked to repay it. They should be ashamed, not to have repaid it. Of course, there are those who have so many tragedies or bad luck that they are unable to pay, and that is different.

But it's very galling to see someone, who owes you money, buying luxuries and taking trips which you cannot afford.

Why not tell your sister that you would like to have her check on a certain date as you are planning to use it for something special. Setting a date for repayment may impress her.

Louisa.

Address letters: Louisa, Box 532, Orangeburg, S.C. 29115

## AUTO REPAIRS

ENGINE OVERHAUL



Save the wasted money that you spend on additional oil and gas and let us overhaul your engine. You'll save being inconvenienced day after day. We can put your engine in tip-top condition for less money than you'd expect.

Plains AUTO PARTS P.O. Box 384 MULESHOE, TEXAS 79347

South Main Muleshoe Phone 272-4576

STORE HOURS 9 AM - 8 PM WEEKDAYS CLOSED SUNDAYS

GIBSON'S DISCOUNT CENTER 1723 WEST AMERICAN BLVD MULESHOE, TEXAS

PRICES GOOD JAN. 3 THRU JAN. 5

LEE RECONDITIONED SPARK PLUGS Set Of 8 Matched Plugs

GUARANTEED 5,000 MILES REG. \$1.27 **88¢**

REGAL 10" JIFFIE PAN COMES IN HARVEST GOLD, FLAME & AVOCADO

REG. \$5.49 **\$3.99**

COLONY II #6445 TWIN REAR FLOOR MATS #6444 TWIN FRONT

REG. \$3.43 **\$2.77**

100% POLYESTER SPUN DEE THREAD

NOW AT A LOW LOW REG. 28¢ **19¢**

1 GALLON STEEL GAS CAN With Pouring Spout

REG. \$1.37 NOW AT GIBSONS **99¢**

MODESS FLUSHABLE FEMININE NAPKINS

BOX OF 12 REG. 54¢ **33¢**

KODAK R 20 COLOR CAMERA OUTFIT TAKES SLIDES OR PRINTS

REG. \$23.97 **\$19.99**

LUX DISHWASHING LIQUID

REG. 54¢ NOW ON SALE **39¢**

WINDSOR #2085 POCKET RADIO AM ONLY

REG. \$3.89 **\$2.99**

JOHNSON'S NO MORE TANGLES SPRAY ON CREME RINSE 12 OZ.

REG. \$1.59 **\$1.19**

## Earn More In 1974 With...

FIRST FEDERAL SAVINGS & LOAN ASSOCIATION of CLOVIS

Deposits by the 10th earn from the 1st.

NOW EARN **5 1/4%** ON PASSBOOK SAVINGS PER ANNUM UP TO **7 1/2%** ON CERTIFICATES per annum

Which Plan is Right for You?				
TYPE OF ACCOUNT	ANNUAL RATE	* ANNUAL YIELD	MINIMUM TIME	MINIMUM AMOUNT
Passbook	5.25%	5.35%		\$500
Certificate	5.75%	5.87%	90 Days	\$100.00
Certificate	6.50%	6.66%	1 Year	\$100.00
Certificate	6.50%	6.66%	2 Years	\$100.00
Certificate	6.75%	6.92%	2 1/2 Years	\$100.00
Certificate	7%	7.18%	4 Years	\$100.00
Certificate	7.50%	7.71%	4 Years	\$500.00

In accordance with Federal regulations, withdrawals from certificate accounts before maturity will involve loss of 90 days interest and re-calculation of interest of the withdrawn funds from the original term of the certificate at the current passbook interest rate.

FIRST FEDERAL SAVINGS & LOAN ASSOCIATION of CLOVIS



## Galileans To Perform

In the world of gospel music, The Galileans are unique. Mexican-Americans singing gospel songs was unheard of until a 19-year-old rock band performer named Paul De La Torre, searching for some means of expressing his new-found Christianity, asked himself, "Why not?"

From this early inspiration, The Galileans were brought together, evolving gradually from a nucleus group that had been known as The King's Three when De La Torre founded the vocal team in 1961 in Mexico City. In 1969, the three guitar-playing Mexican-American vocalists were pressed by more and more requests for their performance in churches.

The group, relatively unknown until the advent of their full-time career in gospel music, sprang into the limelight with their lively recording of "Thank God, I'm Free." The number ranked as one of the top ten songs of 1970 in Mexico City, even though the song itself had been around for quite a while.

Partly on the strength of that recording's popularity, The Galileans received a Dove Award in 1970 as "the most promising new gospel talent" - a citation made annually by the Gospel Music Association.

Originality of style, combined with professional performing talents, has been a hallmark for The Galileans, who make their home in Dallas, Texas. All had had a taste of the entertainment business in earlier years and, like Paul, found it "empty."

Paul had been leader of a rock band before his conversion in 1960 and had, at one time, played with singer Trini Lopez, Joel Perales, pianist and vocalist, has a tremendous talent for writing and composing. Rose Perales is Joel's lovely wife. She sings harmony, lead and plays tamborine. Tony Gonzales rounds out the four-some singing lead and baritone. Not only is Tony a wonderful talent but he also is a dedicated minister of the Gospel. The bilingual group is the only gospel singing team that

combines a concert repertoire of their own arrangements of old and contemporary religious songs along with selections in Spanish lyrics, often in an instrumental setting that has a distinctly Latin American flavor.

Paul De La Torre describes gospel music as "one of the most beautiful ways to talk about Jesus when you do it for that purpose. When you do it just for the sake of performing music that has pretty words or a pleasing rhythm, then it has no meaning. When you do it as a means of reaching people for Christ, then it does."

In keeping with that philosophy, The Galileans are selective in the songs they sing. "We don't sing songs that we don't feel," Paul says.

The Galileans made their professional television debut in 1969 when they taped seven shows for Gospel Singing Jubilee in Nashville, a syndicated, one-hour program of gospel music with about 70 markets across the nation.

Recording first under their own label-Canto Records-and later on the Canaan label, a division of Word, Inc., The Galileans have recorded 10 stereo albums of gospel music, also available in 8-track stereo tapes.

Since the tempo and soul-stirring qualities of gospel music tend to stimulate a sort of hand-clapping, foot-tapping kind of audience participation, gospel singing concerts have a mass appeal that attracts a large following. The Galileans estimate that they perform before 100,000 people a year in concerts alone, more than most evangelists reach in their preaching ministry.

In addition to their work in the States, The Galileans travel extensively on concert tours in Central and South America, including Peru, Argentina, Bolivia, Brazil, Panama and Costa Rica.

The group has been warmly received in South America, where gospel music sung in the Spanish language is a rarity and Mexican performers enjoy a na-

tural admiration lavished upon them by Latin American people. Setting aside a month of their time each year to perform in Latin American countries, The Galileans consider their work in South America as an evangelistic type of ministry. They go at their own expense primarily for the purpose of sharing the message of Christianity with these people through the universal language of music.

Paul De La Torre's ultimate dream for the group is that they will eventually break into the commercial recording market with gospel music. He hopes to do this not to achieve fame for fame's sake, but to give the group a financial launching pad for their evangelistic work in South American countries.

They will be at the First Assembly of God Church Thursday, January 3 at 7:30.

### Far Away

"My music teacher says I have a fine voice and should go far."  
"Splendid! I'll help you pack."

### Instruction Welcomed

Irate Parent--I'll teach you to make love to my daughter, sir.  
Cool Youth--I wish you would, old boy; I don't seem to be making much headway.

Because of you... today a man is on a dusty road leading south from Rawalpindi...

reporting, analyzing, probing — to send you an eye-witness story. Other Christian Science Monitor reporters are gathering facts for you in Moscow, Nairobi, Beirut, London, Tokyo, San Francisco, and Washington.

Because you need to understand what's happening in order to change what's wrong and to support what's right.

The Christian Science Monitor gives you the facts, and reports how problems are being solved. It keeps you informed but not depressed — the Monitor has a uniquely hopeful outlook.

News, commentary, art, entertainment, fashion, sports, business, family: a lively daily newspaper (Monday-Friday) with something for everyone. For 13¢ a day — less than two postage stamps.

Yes, I want this unique daily newspaper for 4 months — over 80 issues for only \$11.

Payment enclosed  Bill me later

Name (Please print) \_\_\_\_\_

Street Apt. \_\_\_\_\_

City \_\_\_\_\_

State \_\_\_\_\_ ZIP \_\_\_\_\_

The Christian Science Monitor®  
Box 125, Astor Station  
Boston, Massachusetts 02123

## Adjust Techniques

COLLEGE STATION -- Homesewers accustomed to working with natural fiber fabrics may have to make some slight changes in sewing techniques for the new, silk-like synthetics.

This word comes from Mrs. Vivian Simmons, clothing specialist with the Texas Agricultural Extension Service, Texas A&M University System.

"For best results, select patterns with center front and center back seams."

Most of the problems arise from sewing techniques rather than the fabric itself, the specialist added, noting that sewing conditions determine seam appearance of any garment.

"Improper techniques cause seam puckering that pressing won't correct."

Several factors play important roles in producing a pucker-free seam, Mrs. Simmons said.

"For one, use a size 11 sewing needle."

"Also utilize a throat-plate with a small round hole, only slightly larger than the needle. A wide oval used for zagzagging may cause puckering."

"A stitch length of 10-12 sewing stitches per inch proves satisfactory for most woven fabrics."

"Apply a little tension to the fabric during sewing--both behind and in front of the needle to reduce puckering."

"And finally, sew at a moderate, even pace with few stops and starts."

After constructing the garment, remember that correct pressing techniques flatten seams to give a finished, professional appearance. Pressing silk-like synthetics requires special attention, the specialist added.

Special attention consists of: --using a low wool setting with steam

--steam ironing both sides of an unopened "as sewn" seam to remove puckers

--steam ironing the seam open, and

--letting the fabric cool several seconds before removing it from the ironing board.

## Fashion

It is holiday time again and women seem to be buying long dresses for evening. They come in a variety of styles but soft materials seem to be favorite fabrics.

The high neckline is still good although the low neckline is very popular. A slip like dress with a small jacket is not only becoming but makes for economy.

Hats reminiscent of the thirties are in style.

## HELP WANTED

Missouri Beef Packers, Inc. is now accepting applications for female production workers. No experience necessary, but must be willing to learn and work. This is year around employment, not seasonal work. We offer paid vacation, paid holidays, company paid group hospitalization insurance, and good wages. Apply at personnel office, Missouri Beef Packers, Inc., Friona, Texas, 4 miles west of Friona on highway 60. EQUAL OPPORTUNITY EMPLOYMENT



GALILEANS

## Dr. C. M. Neel

OPTOMETRIST

Announces his retirement effective

December 31, 1973

All files and records will remain with my associates

**Drs. Pettey, Dean,  
Bowen & Wallace**

3104 Indiana Ave.

792-4644

Lubbock, Texas

799-4472

**WOMAN DIRECTS MEN**  
CAMP PENDLETON, CALIF.--The Marines have named their first woman unit commander over a company that includes more than 2,000 men. Col. Mary E. Bane, 44, is the first woman in the 198-year history of the Marine Corps to be given direct command over men.

**GETS HER WISH**  
CLOVER, S.C.--Mrs. Josephine Mills gave her mother a 30-ton rock for Christmas. Her mother, Mrs. Lena Stewart, said she'd wanted a rock in her yard since she was a little girl. A bulldozer delivered the gift.

## A History Of Bailey County Pioneer Families

### Earnest Lovelady

Earnest Lovelady was born September 24, 1896 in Rosebud, Texas. He moved to this area from Davidson, Oklahoma in 1927 by way of a 1922 Ford truck. His first home was seven miles northeast of town where he farmed.

He was a member of the Church of Christ. Lovelady married Eula McCorkle on May 30, 1917 in Vashit, Texas in Clay County. Mrs. Lovelady was born December 23, 1901 in Scotts Hill, Tennessee. She died December 9, 1966 here in Muleshoe.

In 1934 Lovelady began driving a gasoline transport and quit farming.

Land agents nearly drove Lovelady crazy his first year farming here because he had such a beautiful crop. He made almost a ball to the acre on a dry land farm. Every afternoon in the fall of 1927 the geese and ducks were so thick they filled the sky as far as you could see to the north and east.

One of Lovelady's most vivid memories is of the wonderful friends they had.

## ATTENTION MULESHOE AREA CATTLEMEN



... In regard to dead stock removal...  
If you have had a problem with service... whether in the feedyard or on the farm... please give us a chance!

Your local used cow dealer is  
**muleshoe bi-products**

Thank you  
Phone-965-2903  
Mobil Phone 965-2429

NOW EARN **5 1/4%** ON PASSBOOK SAVINGS PER ANNUM

UP TO **7 1/2%** ON CERTIFICATES per annum

**INTEREST COMPOUNDED DAILY**

BEGINNING JANUARY FIRST

**Deposits by the 10th earn from the 1st.**

In accordance with Federal regulations, withdrawals from certificate accounts before maturity will involve loss of 90 days interest and re-calculation of interest of the withdrawn funds from the original term of the certificate at the current passbook interest rate.

**Tri-County**

SAVINGS AND LOAN ASSOCIATION



MULESHOE

232 Main--- Phone 272-4521



## LADIES & MEN'S SHOE CLEARANCE

### LADIES DRESS AND CASUAL SHOES

ALL NEW STYLES & COLORS, FAMOUS BRANDS SUCH AS JOYCE, NATURALIZER, MISS AMERICA AND U.S. KEDS, REDUCED TO CLEAR.

VALUES TO		
\$13.00	.....	\$7.99
\$15.00	.....	\$9.99
\$18.00	.....	\$11.99
\$20.00	.....	\$12.99
\$23.00	.....	\$13.99

**SPECIAL GROUP REDUCED TO LESS THAN 1/2 PRICE!!!**

### MEN'S SHOES

FALL STYLES & COLORS. DRESS OR CASUAL STYLES, SHOP EARLY FOR BEST SELECTION.

VALUES TO		
\$11.00	.....	\$6.99
\$22.00	.....	\$14.99
\$25.00	.....	\$15.99





# Experiment Station Scientists Seek To Upgrade Grain Sorghum

LUBBOCK --- Research scientists at the Texas Agricultural Experiment Station here are taking a new look at the one billion-dollar Texas grain sorghum bonanza -- this time with an eye to upgrading it as an animal feed and improving its potential for use as a human food.

To accomplish this, Dr. Jerry Johnson and Dr. Darrell Rose-nov, grain sorghum breeders with the Texas Agricultural Experiment Station at Lubbock, are working with TAES cereal chemists and animal nutrition-ists to define the character-istics that are responsible for nutritional differences among sorghums.

Improvement in quality of grain sorghum to the cattle feeding industry is uncontest-able. The one billion-dollar crop comprises over half of the ration used in Texas cat-tle feedlots. And though a sub-stantial amount is used in swine

and poultry enterprises in the nation, the majority of grain sorghum in Texas is used to support the rapidly growing fed cattle industry.

The staggering economic im-pact of the feedlot cattle in-dustry, the scientists assert, extends to the transportation of beeves and supplies, seed and fertilizer companies, export trade, labor, and many other components of the feedlot sys-tem, generating a multiplier effect of 2.5.

But the cattle feeders don't spend their time hauling money to the banks, the researchers hastily add. Profits have been slim and frustrations all too many. Prices at all levels have shot up, especially grain prices.

"This is why we are interest-ed in coming up with new vari-eties of grain sorghum to im-prove quality," says Johnson. "We know that if we can up-grade the sorghum as animal

feed, it will result in more pounds of grain on the same amount of feed, reducing the cost per pound of gain to fin-ish these cattle."

Ironically, any improvements in the sorghum might also re-sult in improving the plant for human consumption, Rosenov believes.

For one thing, he points out, research data collected thus far indicates that the genetic changes that are possible in the sorghum kernel influence its acceptance both as a human food and as animal feed. A-mong these genetic properties are certain compounds called tannins (polyphenols).

"Tests have shown that sor-gums high in tannin compounds not only are undesirable as a food source but are less ef-ficient in beef production," Johnson adds.

"Tannins affect color and as-tringency (bitterness). Some ex-otic lines of the World Sor-

ghum Collection are lower in tannins than U.S. lines," says the scientist.

"If we can improve the sor-gum kernel characteristics that affect the presence of tan-nins by breeding exotic lines into U.S. lines, we would be able to grow sorghum in the U.S. that would be improved as an animal feed and also acceptable for human food," he concludes.

Other grain characteristics being studied include the endo-sperm texture (hardness) and type (waxy, normal, sugary), protein content, quality and di-gestibility. Research findings indicate that grain with waxy type starch may be somewhat more digestible than grain with the non-waxy type, and more desirable.

Many of the grain quality characteristics being studied have been found in exotic sor-gums in the World Sorghum Collection, says Rosenov.

The world collection, he not-ed, is made up of about 14,-000 varieties of grain sorghum. Many of these cannot be used in the U.S. breeding programs because they fail to mature under long days in temperate areas and because they are too tall.

To make these types avail-able in useful form, Rosenov and Johnson, based at the Tex-as A&M University Agricultural Research and Extension Cen-ter, are converting the tall, late-maturing exotic lines to dwarf, early-maturing, day-length insensitive lines. These converted lines can then be grown and evaluated for de-sirable characteristics.

Grain from sorghum lines developed at the Lubbock Cen-ter is analyzed at the Cereal Quality Laboratory of the TAES at Texas A&M University, Head-ed by Dr. L.W. Rooney, the lab assembles information about the physical and chemical char-acteristics of sorghum grain and relays its findings to Rose-nov and Johnson for further study in their breeding pro-gram.

"Because grain sorghum as an animal feed is such an im-portant part of our High Plains economy," Johnson explains, "we are looking for ways to improve the crop from that standpoint."

"Certainly, however, we hope these studies will result in the development of varieties for food that can be grown in our climate.

## The Sandhills Philosopher

Editor's note: The Sandhill Philosopher on his Johnson grass farm gets off on a variety of subjects this week.

Dear editor:

According to an article I read last night during network cable trouble there is a move on in Congress to get a Constitutional amendment requiring the dismissal of any Congressman who's absent from his job 40 per cent of the time.

As one Congressman pointed out, lots of fellow members just don't show up very often, and he said that last year the House was unable to function on 330 occasions because no quorum was present.

I have thought this over and

## Watson...

Cont. from Page 1

1966 with a Bachelor of Science Degree. He is married to the former Janice Wheeler and they have twin daughters.

Watson has received the Distinguished Flying Cross, Bronze Star Medal (two awards), Air Medal for Valor with seven clusters; Army Commendation Medal, National Defense Service Medal, Republic of Vietnam Service Medal and the Republic of Vietnam Campaign Medal with four campaign stars.

His new assignment will be Military Ocean Terminal, Bayonne, New Jersey.

## Clayton...

Cont. from Page 1

ing of the Council in New Orleans.

The Council of State Govern-ments is an organization which is supported by all fifty (50) states, and is a co-ordinating agency for unified State Action.

The Council sponsors The National Legislative Conference - The National Governors' Conference - The National Attorneys' General Conference and many other conferences of State personnel.

Clayton said "The Council of State Governments is one mechanism whereby the States can be heard at the federal level". "Strong State Governments are necessary to our form of government" Clayton concluded.

## Curry...

Cont. from Page 1

ment was at 5 p.m. Wednesday in the Rose Hill Cemetery in Tulia under the direction of Singleton-Ellis Funeral Home of Muleshoe.

Survivors include two sons, A. Foy Curry Jr., of Ft. Worth, and Dr. D.N. Curry of Austin two daughters, Mrs. J.E. Mc-Vicker of Muleshoe and Mrs. Betty Musick, Amarillo; two sisters, Mrs. Floyd Beall of Lubbock and Mrs. Tom Stone-rod of New Orleans, La.; 12 grandchildren and 17 great-grandchildren.

I don't believe such a Con-stitutional amendment ought to be passed.

While I don't know what leg-islation was supposed to be voted on during those 330 times a quorum was absent, it's possible that if all members were on hand we would now have 330 new laws, and as every-body knows we've got more laws now than we can obey, as nearly any executive of a big corporation can tell you.

To change the subject, I've been speculating lately on the oil shortage and got to wondering what shape we'd be in now if the more rapid environ-mentalists had been organized millions of years ago when all our fossil fuel was being made. I mean, if they'd rushed in and saved the dinosaurs and other species from extinction, we wouldn't have had any oil to start with.

Another thing that's been puz-zling me is a T.V. ad for a savings and loan association saying if you save \$50 a month for 15 years, letting the inter-est accumulate and being added to the principal, at the end of the 15 years you could draw \$50 a month in interest every month from then on, for ever.

But say instead of \$50 a month you and everybody else

put in say \$200 a month. At the end of 15 years everybody would have enough interest coming in to live on and nobody would ever have to work again. I don't understand money.

Yours faithfully,  
J.A.

Private initiative seems to function best when liber-ally supported by public funds.

Mariner 10 set for voyage to film Mercury.

## Committee...

Cont. from Page 1

izens Advisory Committees charged with informing the Commission of public opinion.

When their report to the Leg-islature was complete, the Com-mission, through a small team of members and staff, returned to each of these cities in No- vember and December to report on progress.

As part of its effort to hear Texas opinion, the Commis-sion installed a tollfree state-wide telephone line, by which Texans could express views or ask questions on constitutional revision. The number of that information center is 1-800-292-9600.

Now as the Convention ap-proaches, preparations are be-ing made for even more public testimony to insure that every citizen who wishes to be heard has an opportunity to make his or her views known.

## Center...

Cont. from Page 1

in Plainview on Thursday, Jan-uary 10, according to Bill Dil-lard, Executive Director.

This will be the first fiscal year meeting of the Board of Trustees and the agenda will contain the first quarterly fi-nancial report as well as some 10 additional important center matters, Dillard said.

A dinner will be held for the Trustees and their wives. Also County Judges from Bal-ley, Briscoe, Castro, Floyd, Hale, Lamb, Motley, Farmer and Swisher counties and their wives are invited to attend the board meeting.

## SPAG...

Cont. from Page 1

agencies on a tuition-free ba-sis.

The SPAG grant applications were among 52, for a total of \$3,766,578, considered by the CJD Executive Committee at its December 14 meeting.

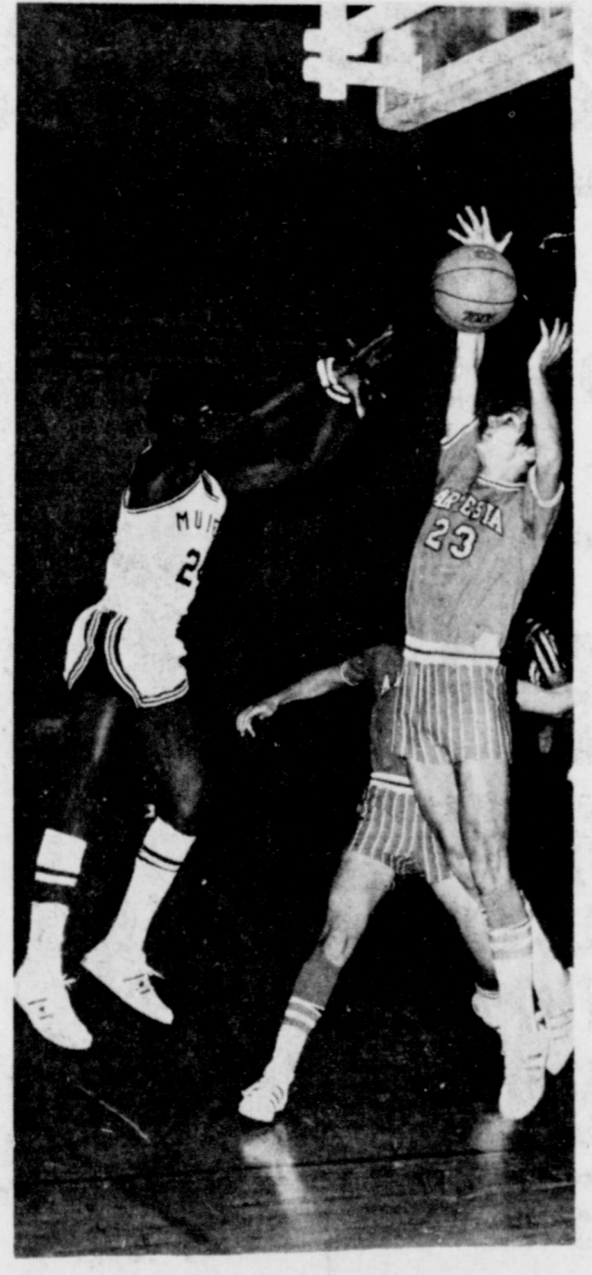


# MULESHOE

"SUPPORT THE MULES and MULETTES"  
IN 1973-1974  
MULESHOE HIGH SCHOOL  
BASKETBALL SCHEDULE  
1973 - 1974



**VARSITY & B Boys Teams**  
JAN. 3 OLTON  
THERE A&B  
JAN. 4 LOCKNEY  
THERE A&B



**VARSITY & B Girls Team**  
JAN. 3 OLTON  
THERE A&B

- Dari Delite
- Whites Cashway
- Texas Sesame
- Corral Restaurant
- Beaver's Flowerland
- Western Drug Co.
- First National Bank
- Chow-Tex Feed Lots
- Low Pump & Drilling

- Cobb's
- Swap Shop
- Dinner Bell
- El Nuevo Leal's
- John's Custom Mill
- Muleshoe State Bank
- West Plains Pharmacy
- Muleshoe Publishing Co.
- Gibson's Discount Center

Eddie's Food Market  
NEEDMORE

- Stockard Construction Co.
- Williams Bros. Office Supply
- Bailey County Electric Cooperative Association

**FREE**  
**Amana** Browning Skillet

made expressly for the  
*Radaranage*  
by CORNING.

when you buy any  
*Radaranage*  
MICROWAVE OVEN  
made only by **Amana**

You can:  
**BROWN - GRILL - SEAR - FRY - SAUTE** in  
the *Radaranage*

**Amana**  
offers 3 models  
to choose from:  
Model RR-4 Model R-2  
Model R-1J



**St. CLAIR'S DEPT. STORE**  
OF MULESHOE

Announces that in order to participate in the nationwide effort to conserve energy, St. Clair's new store hours will be  
**9:30 a.m. to 6:00 p.m.**

Six days a week, effective  
**January 1st, 1974**

We Thank You

# St. Clair's





# CLASSIFIED ADS

## THE PLACE TO LOOK



**OPEN RATES**  
1st insertion, per word-9¢  
2nd and add., per word-6¢  
**NATIONAL RATES**  
1st insertion, per word-11¢  
2nd and add., per word-7¢  
Minimum Charge-50¢  
**CARD OF THANKS - \$2.00**  
Classified Display-\$1.12 per column inch  
Double Rate for Blind Ads--\$1.15 per col inch for Rev.  
**DEADLINE FOR INSERTION**  
Noon Tuesday for Thursday  
Noon Friday for Sunday

**WE RESERVE**  
Right to classify, revise or reject any ad.  
**NOT RESPONSIBLE**  
For any error after ad has run once.

**3.HELP WANTED**

**WANTED:** Typist, must type 50 words per minute at least. Inquire in person at Journal, 213-S-4tp

**WANTED:** Typist & assistant bookkeeper. Must type 60 accurate words per minute. Please call Wooley-Hurst for appointment, 272-5514, 3-51t-tfc

**WANTED:** Experienced mechanic. Good pay scale. Good hours. Good working conditions. Apply in person, Town & Country Olds-Buick, 3-47s-tfc

**WANTED:** Beautician needed at once, call 272-3448. Main Street Beauty Shop, 3-40t-tfc

**5.APTS. FOR RENT**

**FOR RENT:** Furnished apartment. Bills paid. Call 272-3465, 5-51t-tfc

**FOR RENT:** 2 bedroom unfurnished apartment. Phone 272-4838. Smallwood Real Estate, 5-47s-tfc

**FRIONA APTS.** now have available 1, 2, & 3 bedrooms. Call 247-3666 or come by 1300 Walnut Street Friona, 5-29s-tfc

**FOR RENT:** Furnished 1 bedroom apartment. Bills paid. Cable T.V. \$95.00 monthly. \$15. deposit. 111 W. Ave. J, 5-52s-2tc

**7.WANTED TO RENT**

**Want to rent or lease irrigated land.** Contact John Mitchell, 965-2160, 7-37t-tfc

**WOULD LIKE TO RENT:** Dry land in South Bailey County. Contact Vince Simnocher 946-2344, 7-45s-16tp

**8.REAL ESTATE FOR SALE**

**FOR SALE:** High production irrigated farm, 112 acres. Buford Hunt. Call 272-3008, 8-51s-4tp

**FOR SALE by owner:** Call Joan Gaston, 272-3232 or Evelyn Riley, 272-4775 or Bertha Nickels, 272-4669 for appointment to see house at 307 W. 6th. Guy Nickels residence, 8-42s-tfc

**FOR SALE:** 3 bedroom house, 1 full bath, 1 car garage, 1225 Ave. E. Phone 272-4709, 8-34s-tfc

**FOR SALE:** 1250 a, \$450.00 per acre, 10% down, 9 full 8" wells, 500 A alfalfa hay, 1800 head feed lot, tremendous depreciation, 7 sprinkler, 2 Butler buildings, 4 nice houses, excellent improvements, 2 miles west of Muleshoe on Highway 1790. Dial 806-763-5323 or 797-1716, 8-49s-tfc

**FOR SALE:** 640 acres, Section 7, Block C Melvin Blum & Blum Survey, Bailey County. 500 in cultivation. Balance native grass, 1-4" well. Call Lubbock, 792-7444 -night 885-2108 in Herliwood, 8-49t-tfc

**FOR SALE:** -67 acre with good 8" well high pressure pipe line and side-roll sprinkler system, \$575 per acre with terms or will trade, call 272-3819, 8-40t-tfc

**FOR SALE:** 174 acres southwest of Muleshoe. Contact Mrs. Horace Byerley, Box 203, Petersburg, Texas, 8-51t-8tp

**157 choice acres irrigated land,** underground pipe, 2 wells, 29% down. 8 miles N.W. of Muleshoe. Call 965-2647, 8-52s-2tp

**FOR SALE:** 1111 acres, 320 acres cultivated, 791 pasture, 6 room house, 1/2 minerals, \$140.00 per acre, 25% down, 13-46s-tfc

**354 acres irrigated,** 3 box-cars, 3 room house, 4 wells, irrigation pipe, 1/2 minerals, \$410.00 per acre, 25% down, M.S. Childers, Phone 806-272-4347, Muleshoe, 8-48s-tfc

**FOR SALE:** 40 a. of land 4 1/2 miles on 1760 joining highway with 1/4 mile side road. Call 272-4515 or 272-4709, 8-45s-tfc

**Nice three bedroom brick,** well located 1 1/2 bath see Lee Pool Woody Goforth Pool Real Estate, 8-46s-tfc

**164 acre dryland \$150.00 per acre,** 324 acres \$125.00 per acre. 22 miles southwest of Muleshoe. See Curtis Walker or call 272-3162, 8-38t-tfc

**KREBBS REAL ESTATE**  
**FOR SALE:** 1 - 2 Br., 1 - 3 Br. 160 acres - Below Mkt., Irrig. Large tract dev. land. Listings appreciated, 8-48s-tfc  
**201 S. 1st PH. 272-3191**

**JAMES GLAZE COMPANY**  
**REAL ESTATE AND FARM & RANCH LOANS**  
Phone 272-4549 219 S. 1st, 42t-tfc

**FOR SALE:** 1969 Riviera - 47,000 miles. 272-3384 or 272-3800, 9-37s-tfc

**FOR SALE:** 73 LTD Braugham 2 door hardtop, beautiful blue metallic with vinyl top; loaded with optional equipment, Michelin Radial tires. Call 272-4203 or 272-4928, 9-41t-tfc

**FOR SALE:** 1970 LTD and 1972 Gran Torino. Call 272-4914, 9-1t-2tc

**FOR SALE:** 1973 Ford Pickup, 3300 miles, Darrell Elliott, Call 965-2729, 9-49s-tfc

**FOR SALE:** 1973 TORNADO, Loaded, under 5,000 miles, Call Clovis 762-4652, 9-1t-2tc

**10.FARM EQUIP. FOR SALE**  
PVC plastic underground pipe, A.V.I. Inc. Phone 272-3565, 10-48s-tfc

**WE PAY CASH for tractor and equipment of all kinds,** Tom Flowers Auction, Inc. Day 272-4154 Night 10-2s-tfc

**VALLEY SELFOPPROPELLED SPRINKLER SYSTEMS** standard and reversing. Let us talk with you about our new 6-8-10 year lease. Programs which now include PVC plastic pipe, AVI, Inc. 1534 W. American Blvd. Muleshoe, Tex. Phone 806-272-3565, 10-43-tfc

**11.FOR SALE OR TRADE**  
FOR SALE: 1971 350 Honda XL. Call 272-3138 or see at 117 Main, Wilson Appliance 11-36t-tfc

**12.HOUSEHOLD GOODS**  
FOR "a job well done feeling" clean your carpets with Blue Lustre. Rent our Blue Lustre electric shampoo machine. Higginbotham-Bartlett 215 Main

**Thinking about buying used furniture? We Have It At The Swap Shop**  
Call 272-3074  
213 S. Main  
Muleshoe, Texas

**13.PROPERTY FOR LEASE**

**FOR LEASE:** Modern Texaco station in Muleshoe. Inquire at Texaco Inc. Muleshoe, Texas or phone 272-4688, 13-46s-tfc

**15.MISCELLANEOUS**  
Experienced painting and building repair. Residence and commercial. Howard and Curtis Griffin. Call 225-4177 Bovina, 15-52t-6tc

**Will trim trees and remove trees.** Have reasonable rates. Phone 806-965-2724 between 6 and 9 p.m., 15-1t-2tc

**WANTED TO BUY:** Used propane tanks. Any size. Call 272-4678. Smith's L.P. Gas Co. 15-44s-tfc

**FOR SALE:** 8 foot Cabover Camper. Call 272-4485, 15-44s-tfc

**Wanted to buy-Used Box car.** Call L.B. Peugh 965-2711, 15-51s-4tp

**WE STOCK bulk motor oil, A real money saver.** Smith's L.P. Gas Co. Friona Highway, 15-43t-tfc

**GENERAL CONSTRUCTION:** Cabinet making and remodeling. Reasonable rates. Phone 763-9966 or 763-9457, 906 W. 7th, Valley Cabinet Shop, Clovis, New Mexico, 15-52s-6tp

**REAGAN ELECTRIC:** Commercial, residential, industrial wiring and maintenance. Reagan Cox, Call 965-2781, Lazbuddie, 15-52t-8tc

**Cess Pool Cleaning**  
Cesspools pumped with a MUD-PUMP & treated with bacteria & enzymes to liquify solids & loosen sides for better drainage. Dipping vats drained and liquids hauled to your disposal pit. Grease pits drained & treated. Mollasses pits drained. Phone 272-3677 or 272-3467  
**ELMER DAVIS**

**SAVE MONEY** on vaccines, antibiotics, instruments and all animal health products. Affiliated supply, 1005 Ave. A or call 481-9234, Farwell, Tex. 15-38t-tfc

**Card of Thanks**  
We wish to express our great appreciation for the kindness shown us during the loss of our loved one. For the prayers, food, flowers and the ones who sat at the hospital. May Gods richest blessings be on each of you.  
Mrs. Marina Luera  
Mr. Rosalio Luera  
Mr. and Mrs. Terezo Luera  
Mr. and Mrs. Cruz Luera  
Delfino Luera  
Mr. and Mrs. Santo Solis  
Mr. and Mrs. Joe Reynero  
Mr. and Mrs. Narciso Garza  
Mrs. Lena Hernandez  
15-1t-1tp

**News Of Our Servicemen**  
**Keith Turner**  
BEAUFORT, S.C. --Marine Cpl. Keith W. Turner, son of Mr. and Mrs. Darrell E. Turner of 912 W. Seventh St., Muleshoe, Tex., returned to the Marine Corps Air Station here after a three-week weapons training deployment to Yuma, Ariz. He serves with Marine Attack Squadron 513.

**Golden Gleams**  
The years teach much which the days never know.  
-R.W. Emerson.

A year begun is to be reckoned as one finished.  
-Legal Maxim.

No one ever regarded the first of January with indifference. It is the nativity of our common Adam.  
-Charles Lamb.

Ring out the old, ring in the new, Ring, happy bells, across the snow; The year is going, let him go; Ring out the false, ring in the true.  
-Alfred Tennyson.

Lodge No. 58  
**Muleshoe Oddfellows**  
meets each Thursday 8:00 p.m.  
Joe Carroll  
Noble Grand

**Lions Club**  
meets each Wednesday, 12 Noon  
XIT Restaurant  
Jim Shafer, President

**Jaycoes**  
meets every Monday, 12 Noon  
XIT Steak House  
Bill Russell, President

**Muleshoe Rotary Club**  
meets every Tuesday at 12:00  
DINING ROOM  
XIT Restaurant  
Jess Winn, President

**KIWANIS CLUB**  
Meets Every Wednesday 6am.  
XIT Restaurant  
R.A. Bradley, President

**VFW**  
Walter A. Moeller  
Post #8570  
8:00 p.m. 2nd & 4th Mondays  
VFW Hall  
Joe T. Gonzales, Commander

Lodge No. 1237 AF & AM  
**Masonic Lodge**  
meets the second Tuesday of each month practice night each Thursday  
Frank Hinkson, WM  
Elbert Nowell, Sec.

## Serious Crime In U.S. Increased One Percent

Serious crime in the United States increased one percent during the first nine months of 1973, Acting Attorney General Robert H. Bork announced today. This compared with a two percent decrease in serious crime during the same period of 1972.

Mr. Bork said 71 of the Nation's largest cities, including Washington, D.C., reported actual decreases in serious crime during the January-through-September period of 1973.

"This increase in serious crime in the Nation means that all of us must continue to support our law enforcement agencies in their efforts to combat crime in the streets," Mr. Bork said.

The latest figures were contained in the FBI's Uniform Crime Reports, which was released today by Director Clarence M. Kelley. The report

of nationwide statistics is made possible by the voluntary cooperation of local, country, and state law enforcement agencies. The Uniform Crime Reports divides serious crime into two categories: violent, which includes murder, forcible rape, robbery and aggravated assault and property, which includes burglary, larceny-theft and auto theft.

Violent crime increased three percent during the first nine months of 1973, the same increase as for the 1972 period. Property crimes, which are far more numerous than violent crimes, increased one percent during the 1973 period, compared with a two percent decrease the year before.

Forcible rape rose eight percent, compared with a 13 percent increase the year before. Murder was up five percent, the same increase as a year

## Best Of Press

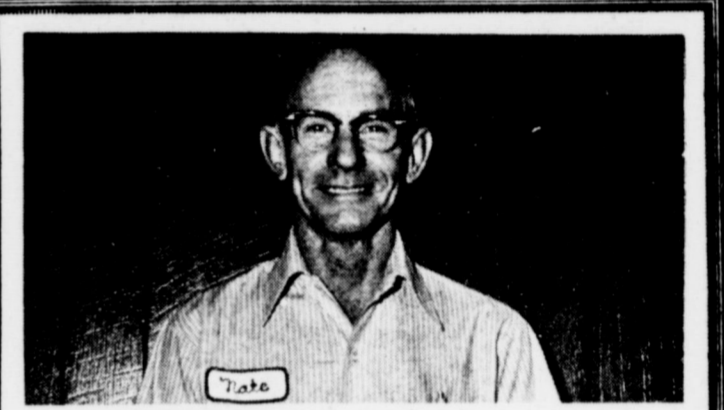
**MASS-TRANSIT AID**  
In a major shift spurred by the energy crisis, Transportation Secretary Claude S. Brinegar said the Nixon Administration was moving toward a broader look at mass transit that would include the use of Federal funds for operating subsidies.

**ARMY & DOCTORS**  
Army Secretary Howard H. Callaway has suggested that the Army consider abolishing uniforms and regimentation demanded of its young doctors to keep more of them in the service.

**CAR PRICES UP**  
The Cost of Living Council has lifted wage and price controls from the auto industry after three of the big four auto makers agreed to limit their price increases on 1974 models.



**KIP BROCK** is a new member of Crow Chevrolet's service department. Formerly with Town and Country Oldsmobile - Buick, Kip invites all of his old customers to stop by and see him at his new location.



**NATHAN HAWKE**, formerly associated with Bacus Chevrolet of Sudan, has recently joined the service department of Crow Chevrolet. Nathan encourages everyone to come by and let him take care of your car's service needs.

**CROW CHEVROLET COMPANY**  
MULESHOE, TEXAS • Telephone 272-3100

**perry's** JAN. 3rd, 4th & 5th

# PRE Inventory SALE

WE HONOR master charge

<b>KOTEX</b> 12's REGULAR OR SUPER 37¢ 59¢ VALUE	<b>100% POLYESTER DOUBLE KNIT</b> 60" Wide 2 To 5 Yds. Lengths \$1.99 YD.	<b>JUST RECEIVED COTTON &amp; COTTON BLENDS</b> BEAUTIFUL SPRING PATTERNS & COLORS 99¢ YD.
<b>16 OZ. CRAIGS ALCOHOL</b> 11¢	<b>7 OZ. FAMILY SIZE COLGATE TOOTH PASTE</b> 88	<b>BIG THIRSTY BATH TOWELS</b> REG. \$1.87 \$2.99
<b>LADIES NYLON PANTY HOSE</b> BEIGE TAUPE BROWN TOAST 53¢	<b>JERGENS SOAP</b> BATH SIZE 10¢ BAR	<b>LARGE ASSORTMENT ODDS 'N ENDS FABRICS</b> 3 YDS FOR \$1
<b>ARTIFICIAL BUSH FLOWERS</b> ROSES & POPPIES \$1.77	<b>13 OZ. AQUA NET</b> SCENTED OR UNSCENTED 57¢	<b>6 OZ. DIAL DEODORANT</b> 77¢
	<b>FULL FACE WIG HEADS</b> REG. 77¢ 37¢	

**perry's**  
128 MAIN MULESHOE



# PIGGLY WIGGLY

**STORE HOURS**  
8-10 MON.-SAT.  
9-9 SUNDAY

# Start the New Year Right Shop Piggly Wiggly

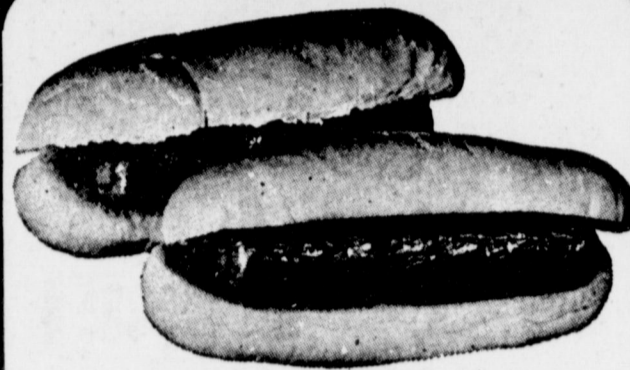


Quality Smoked  
**Decker Bacon**  
**89¢**  
12-oz. Pkg. "Sweet Hickory Smoked Flavor"  
Piggly Wiggly  
**All Meat Franks** 12-oz. Pkg. **93¢**  
Country Style, Fresh from the Farm  
**Owen's Sausage** 2-Lb. Pkg. **\$1.39** (2.76)  
1-Lb. Pkg. **\$1.09**  
Piggly Wiggly, Fully Cooked, Waste Free  
**Canned Hams** 3-Lb. Can **\$4.99**



**We Welcome Federal Food Stamp Customers in authorized counties**

USDA Grade A  
**Split Fryers**  
**47¢**  
Lb. "Split for Oven Broiling or Barbecuing"  
Polish Style Sausage 12-oz. Pkg. **\$1.39**  
**Hormel Kolbase** Lb. **98¢**  
Dallas City Packing  
**Hot Links** Lb. **98¢**  
USDA Inspected, Snow-Hill  
**Stewing Hens** Lb. **79¢**  
Peeled and Deveined  
**Cooked Shrimp** 12-oz. Pkg. **\$2.59**  
Full 1/4 Loin Sliced Family Pak.  
**PORK CHOPS** Lb. **\$1.09**  
USDA Grade A Checkerboard Farms  
**Game Hens** 20-oz. Size **\$1.30**



Decker's, Jumbo, All  
**Meat Franks**  
**99¢**  
Lb. "To Steam and Serve with Sauerkraut"  
Lean **Ground Beef** Lb. **\$1.19**  
Lee's 4 x 7 Imported **Cooked Ham** 4-oz. Pkg. **89¢**  
First Cut, Excellent Pork Steaks  
**Pork Chops** Lb. **99¢**  
Pilgrim Pride  
**Chicken Gizzards** Lb. **89¢**  
Blue Morrow  
**Burritos** Lb. **79¢**  
Piggly Wiggly  
**Fresh Bacon** Lb. **\$1.29**



All Purpose Russet  
**Potatoes**  
**10 88¢**  
Lb. Bag  
Cello **Fresh Carrots** 2-Lb. Bag **39¢**  
Fresh **Celery Stalks** Each **25¢**  
Fresh **Tangerines** Lb. **29¢**  
Red **Delicious Apples** 4 Lbs. **\$1**  
Distinctive **Yellow Onions** Lb. **12¢**



Powdered Detergent  
**Tide**  
**\$1.19**  
84-oz. Box  
Piggly Wiggly, Pink, Yellow, or Green **Liquid Detergent** 3 qt. **\$1.00**  
Piggly Wiggly, 2 Ply 375 Sheets **Bath Tissue** 4 2-Roll Pkgs. **\$1.00**  
Piggly Wiggly, Assorted Colors, 1 Ply **Paper Towels** 175-Sheet Rolls **29¢**  
Ranch Style **Blackeyed Peas** 5 15-oz. Cans **\$1.00**  
Vets, Reg. or Liver **Dog Food** 8 15-oz. Cans **\$1.00**  
Mix or Match **Hunt's Pears** 7 8-oz. Cans **\$1**  
Cut or French Green Beans Golden Corn Peas & Carrots  
Bartlett



Piggly Wiggly  
**Biscuits**  
**10 \$1**  
Sweetmilk or Buttermilk 10-Ct. Cans  
Piggly Wiggly, California **Whole Tomatoes** 4 16-oz. Cans **\$1.00**  
Piggly Wiggly **Peas & Carrots** 4 16-oz. Cans **\$1.00**  
Snap-E-Tom **Tomato Juice** 4 10-oz. Cans **\$1.00**  
Carol Ann, Assorted Flavors **Creme Cookies** 3 13-oz. Pkgs. **\$1.00**  
Piggly Wiggly Chic./Rice, Cr./Chic, Cr./Mushroom or Chicken **Noodle Soup** 6 10 1/2-oz. Cans **\$1.00**  
Carol Ann, Saltine **Crackers** 3 1-Lb. Boxes **\$1.00**  
Piggly Wiggly, Cream Style or Whole Kernel  
**Golden Corn** 16-oz. Cans **4 88¢**



Piggly Wiggly, Cut  
**Green Beans**  
**4 88¢**  
16-oz. Cans  
Piggly Wiggly, Regular, Stick **Margarine** Lb. **37¢**  
Bell **Yogurt** 3 8-oz. Ctns. **\$1.00**  
Assorted Flavors, Liquid **Sego Diet Food** 4 10-oz. Cans **\$1.00**  
Piggly Wiggly **Frozen Waffles** 8 5-oz. Pkgs. **\$1.00**  
Piggly Wiggly, Broccoli Spears or Frozen **Chopped Broccoli** 4 10-oz. Pkgs. **\$1.00**  
Piggly Wiggly, Fordhook, Speckled or Frozen **Baby Limas** 4 10-oz. Pkgs. **\$1.00**  
Simplot, Potatoes  
**Hash Browns** 2 Lb. Bag **39¢**



Plus Deposit  
**Dr. Pepper**  
**6 \$1**  
32-oz. Btls.  
Piggly Wiggly, Frozen **Cut Corn** 4 10-oz. Pkgs. **\$1.00**  
Piggly Wiggly, Frozen **Cauliflower** 4 10-oz. Pkgs. **\$1.00**  
Piggly Wiggly, Cut or French, Frozen **Green Beans** 4 9-oz. Pkgs. **\$1.00**  
Carol Ann **Snack Crackers** 3 11-oz. Boxes **\$1.00**  
Piggly Wiggly, Tortilla or **Corn Chips** 3 8-oz. Pkgs. **\$1.00**  
Piggly Wiggly, Ginger Ale or Sparkling Water **Party Drinks** 5 28-oz. N.R. Btls. **\$1.00**  
Spartime, All Varieties  
**Pot Pies** 6 6-oz. Pkgs. **\$1**