



THE MULESHOE JOURNAL

'The Community of Opportunity-Where Water Makes the Difference'

Weather

	HIGH	LOW
December 19	65	11
December 18	72	30
December 17	58	18
December 16	53	17
Rainfall to Date:	14.79	

VOL. 51 No. 51

8 PAGES

Published Every Thursday at Muleshoe, Bailey County, Texas 79347

10 CENTS

Thursday, December 20, 1973

around muleshoe with the Journal staff

Mr. and Mrs. J.W. Holmes visited his brother, Mr. and Mrs. Glen Holmes in Abilene this past weekend. He is a patient in an Abilene Hospital.

Mrs. Bill Johnson is a patient in Methodist Hospital, Lubbock, following major surgery Monday morning. She is in room 319.

Mr. and Mrs. Bob Hardaway and Tonya visited their daughter and sister, Mr. and Mrs. Dwight Lewellan in Dalhart this past weekend.

Leon Bernsen, Corpus Christi cotton producers, will head a 36-man delegation from Texas to the National Cotton Council's annual meeting in St. Louis January 28-29.

The group will join representatives from other cotton-producing states in setting guidelines for 1974 Council programs and policies.

Among other Texas delegates is Guy Nickles of Sudan.

David Crenshaw, son of Mr. and Mrs. G.W. Crenshaw, is home from Paris, Texas visiting his parents. He attends Paris Jr. College at Paris.

Marcus L. Puente, 19, son of Rev. and Mrs. Roque Puente of 202 Each Birch, has been awarded a Latin American Scholarship by the Baptist General Convention of Texas.

Puente, presently a student at West Texas State University in Canyon, plans to transfer to Baylor University next semester. He was given a grant of \$250 per semester hour for his college career.

The Latin American Scholarships are awarded annually to worthy students attending Texas Baptist schools. They are financed through the Mary Hill Davis Offering for State Missions, taken by most of the 4,400 Southern Baptist Churches in the state.

A comprehensive county history, titled "Grand Old Earth - The Saga of a Texas West Cross Timbers County" is scheduled for publication by Stephenville. Cont. on Page 3, col. 1

Courthouse News

NEW CARS

- Frank Wuerflein, 1974 Oldsmobile, Town and Country Olds-Buick.
- Secundino Mendoza, 1974 Chevrolet, Crow Chevrolet Co.
- Michael Leon Armstrong, 1974 Ford, Muleshoe Motor Co.
- E.A. Bass, 1974 Pontiac, Bill Adams Olds-Pontiac, Inc.
- Carl Pollard, 1974 Chevrolet pickup, Jackson-Wadley Chevrolet.
- Beverly Heathington, 1974 Chevrolet, Crow Chevrolet Co.
- Calvin A. Meissner, 1974 Chevrolet pickup, Crow Chevrolet Co.
- Virgil Nowell, 1974 Chevrolet pickup, Crow Chevrolet Co.
- Johnny Fried, 1974 Ford, Muleshoe Motor Co.
- Billy Jack Bruns, 1974 Ford, Muleshoe Motor Co.
- Eric J. - Lucy Faye Smith, 1974 Chevrolet, Cooper-Hobbs Chevrolet.
- Glen Carter, 1974 Chevrolet, Crow Chevrolet Co.
- Glen Carter, 1974 Chevrolet pickup, Crow Chevrolet Co.
- Elbert Nowell, 1974 Buick, Town and Country Olds-Buick.
- Marshall Head, 1974 GMC pickup, Town and Country Olds-Buick.
- C.C. Griffiths, 1974 Oldsmobile, Town and Country Olds-Buick.
- Jerry Haley, 1974 Ford, Muleshoe Motor Co.
- L.C. Herington, 1974 Ford pickup, Muleshoe Motor Co.
- Gene Smith, 1974 Ford pickup, Muleshoe Motor Co.
- J.T. Mayfield, 1974 Ford pickup, Muleshoe Motor Co.
- Quinn Weaver, 1974 Ford pickup, Muleshoe Motor Co.
- W.M. Bryant, 1974 Mercury, Muleshoe Motor Co.
- Mrs. Mervin Witterding, 1974 Mercury, Muleshoe Motor Co.
- Mills Machine Shop, 1974 Ford pickup, Muleshoe Motor Co.
- E.M. Malone, 1974 Ford pickup.

Cont. on Page 3, col. 1



COUNTY RECEIVES CHECK Muleshoe National Wildlife Refuge Manager Bert E. Blair, right, is shown presenting Bailey County Judge Glen Williams a check for \$1,499.12. The check represents the county's share of revenue generated from the Muleshoe National Wildlife Refuge and is figured on the adjusted cost of the acquired lands within the refuge. The check will be distributed between the County Road and Bridge Fund, Muleshoe Public Schools, Bula Independent School District and the Three Way Independent School District.

Chamber Commerce Banquet Set Here

David Sudduth, banquet chairman, wishes to announce that Dr. Charles L. Allen will be the guest speaker for the annual Muleshoe Chamber of Commerce and Agriculture banquet on Thursday, January 24, 1974.

Dr. Charles L. Allen is pastor of the First Methodist Church of Houston, Texas.

Dr. Allen came to Houston from the Grace Methodist Church in Atlanta, Georgia. Under his ministry, Grace Church became the largest Methodist Church in the southeast. He was born and reared in Georgia, the son of a minister. He is a graduate of Young Harris College, Wofford College, and the School of Theology of Emory University. He holds the degree of Doctor of Divinity from both Piedmont

College and Emory University and the degree of Doctor of Laws from John Brown University. He is listed in WHO'S WHO IN AMERICA.

Dr. Allen is the author of some 20 books, all of which have been best sellers in the religious field. Time Magazine said of him: "The success story of Charles L. Allen is not the result of rafter-ringing oratory. He speaks simply, seldom raises his voice and uses few gestures. He emphasizes Christian daily living and prayer. He is inclined to say simply, 'You'll be happier if you live this way.'"

Farm Bureau Not In Favor Of State Tax

"The Farm Bureau is not in favor of a state income tax." That's the statement made by L.P. (Pat) Vinson of Muleshoe, president of the Bailey County Farm Bureau, regarding tax policies adopted by the Texas Farm Bureau at its recent 40th annual convention in Abilene.

Vinson said that a wire news story incorrectly implied that the TFB had adopted a proposal favoring a state income tax. As a matter of fact, he said, the voting delegates overwhelmingly defeated proposals for such a tax.

Vinson said he was certain that the error in the news story was inadvertent and that the convention received excellent coverage by both major wire services as well as locally. But, a great many members, particularly those who had served as delegates, were confused by the incorrect news story, he said.

In explaining tax policies adopted, Vinson said the voting delegates approved a plan for taxing agricultural lands according to productive value. He said the organization had long favored such assessment, but that this was the first time for the organization to spell out exactly how it should be done.

Under the TFB plan, a five percent capitalization rate would be applied to price and production factors in determining the actual productive value of agricultural land.

In other tax matters, the delegates not only turned down proposals for the state income tax, they also voted against pari-mutual betting and a state lottery as methods of raising revenue. They did favor a \$10 additional tax on motor vehicle licenses to help pay for education.

Farmers Tax Guide Available

The new "Farmer's Tax Guide" is now available at the county Extension offices, announces County Extension Agent Spencer Tanksley. The publication gives information on filing farm and ranch income returns.

Written in easily understood language, the guide gives a number of examples of completed forms.

Tanksley points out that the guide contains a new section on investment credit which explains what property qualifies the amount of credit available, limitations, and how to complete credit on used property and recapture information.

The guide also has a chapter on credit for gasoline and fuels used on a farm for farming purposes. Another chapter deals with self-employment taxes for Social Security. It ex-

Cont. on Page 3, col. 2

Muleshoe Schools Approve New Hours

SP Cotton Harvest Two-Thirds Complete

The South Plains cotton harvest passed the two-thirds mark during the second week of December, according to Paul R. Dickson, in charge of the U.S.D.A. Cotton Classing Office in Lubbock.

Samples from 1,498 bales had been classed at the Lubbock, Brownfield, Lamesa and Levelland offices through Friday, December 14th, and the four offices had 114,000 unclassified samples on hand at that time. Estimates indicate that there were an additional 300,000 to 400,000 bales out of the fields.

Personnel at the four offices tested and classed samples from 279,000 bales during the week ending the 14th.

Quality of cotton continued excellent and this crop con-

times to be one of the highest quality crops ever produced on the South Plains.

Grades 31 and 41 continued the predominant grades at Lubbock, making up 74 percent of all classed. Grade 31 made up 29 percent, Grade 41, 45 percent and Grade 32, 14 percent.

Staples were predominantly 30

Cont. on Page 3, col. 3

New Hours Will Be From 9:30 To 5 p.m.

The Muleshoe Independent School District Board of Trustees decided Tuesday morning to change the school hours of the Muleshoe Public Schools.

Neal B. Dillman, superintendent, announced that Daylight Savings Time will replace the Central Standard Time on Sunday, Jan. 6, 1974.

This means that everyone will set their clocks ahead one hour Saturday night, January 5, 1974. Dillman said "In order to keep students from boarding the buses an hour before sun rise, and some students from walk-

ing to school in the dark and to conserve heating energy, the following schedule will be followed: After setting your clock ahead one hour, school will start at 9:30 a.m. and close at 4:45 p.m. starting Monday, January 7, 1974 (The day school opens after the holidays). "Lunch period will be moved accordingly and this will give us the same daylight hours that we now have."

The people of Muleshoe and the nation will have to make many adjustments due to the changing of the time.

Weekend Shooting Injures Two Men

A shooting in Muleshoe early Sunday morning sent two men to hospitals, one in very critical condition.

According to Bailey County Sheriff Dee Clements, law enforcement officers were summoned to the scene at 19th Street and Avenue B in Muleshoe about 6:25 a.m. Sunday where they found Jacinto "Jimmy" Luera, 33, of Muleshoe, lying in the street. He had been shot five times with wounds in the chest and stomach. He was immediately transferred to Lubbock's Methodist Hospital where he was reported in very critical condition.

Pedro Reyna, 25, was also shot, with bullet wounds in the upper chest and the left leg, was taken to West Plains Memorial Hospital by private car, where the authorities learned of Luera.

Sheriff Clements stated that the two men were running around together and were going home when they picked Reyna's brother, Alciro, Alciro Reyna was driving the car and Luera was in the front seat with Pedro Reyna in the back seat. Reyna stated that Luera jumped out of the car and started shooting Pedro Reyna. Reyna pulled out a gun and shot Luera five times. The brother, Alciro, then drove Reyna to the hospital and left Luera lying in the street.

Sheriff Clements said charges of assault with the intent to murder were filed on both men Monday. Reyna has been released from West Plains Memorial Hospital and he put up bond Monday, but Luera remains in the Lubbock hospital.

Royal Gem New Name For Grocery Store

Mr. and Mrs. Glen King of Muleshoe who purchased Calvert's Drive-In Grocery on May 1 of this year, have recently changed the name of the store.

Formerly known as Calvert's, the store is now the Royal Gem Drive-In Grocery.

Store hours are from 7-10, seven days a week. The store features self-service gas and a drive-in window.

Children 12 years and younger are urged to come by and register for the inflatable raft to be given away on December 22.

Frona Industries Announces Completion Of Feed Plant

Frona Industries, Inc., today announced the completion of a new automated plant which will produce feed supplements for range cattle.

The plant, representing an investment of about \$600,000, has the capacity to produce 15 tons of range cube feed supplements hourly. To be marketed under the name of Hi-Pro Cattle Cubes, the product will be sold at retail for about \$150 per ton. This protein and energy supplement will be marketed in 50-pound bags or in bulk to ranchers and farmers who are feeding pasture or range cattle.

"There is a substantial demand for range cubes in our immediate distribution area of western Texas and eastern New Mexico, particularly in the winter months and during periods of drought," commented Jack Carrothers, president.

"We already have a backlog of orders for several hundred tons of range cubes," he said.

In addition, the Hi-Pro Cattle Cubes will be sold through

High Winds Keep Law Officers Busy

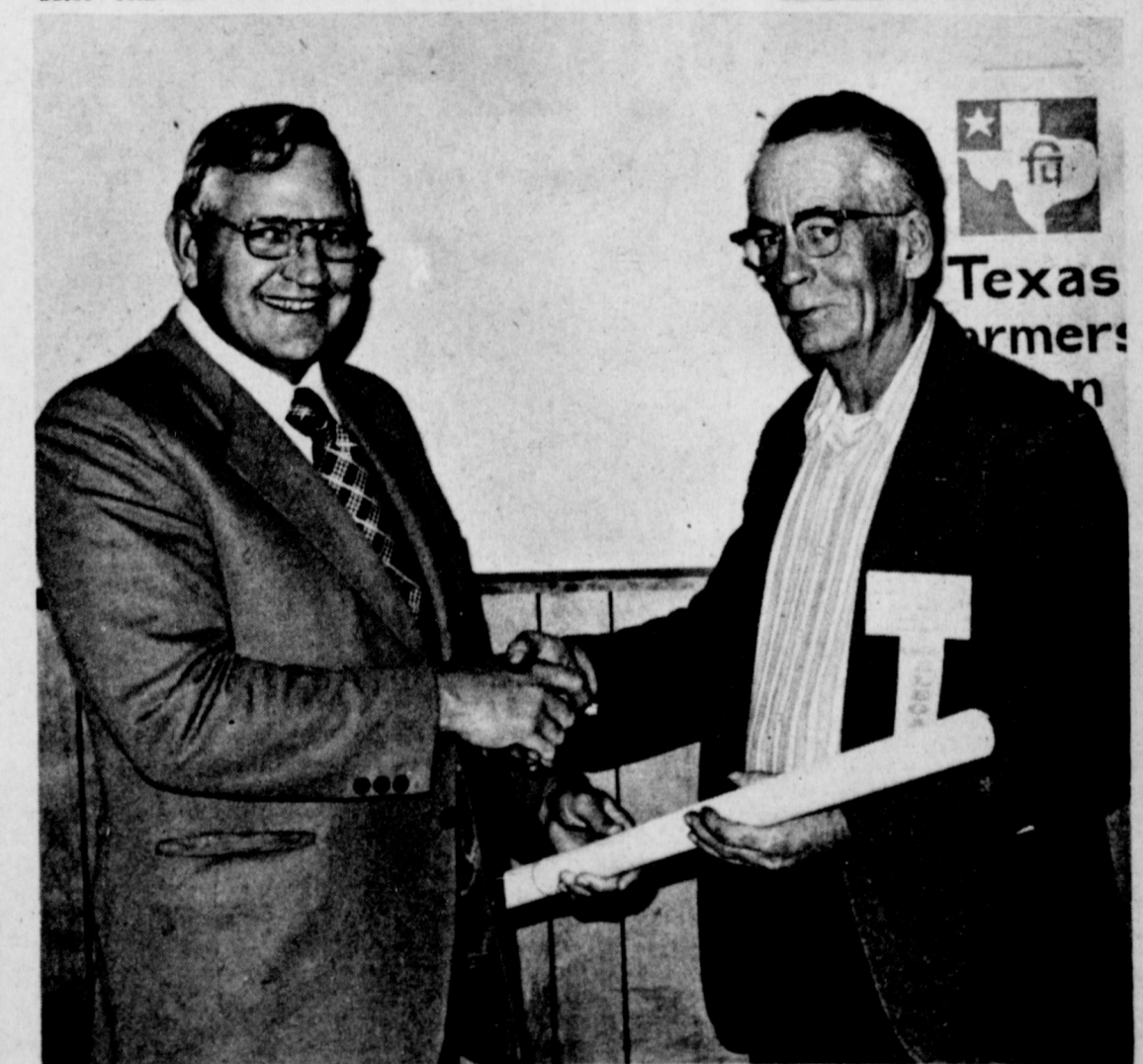
Local law enforcement officials were kept busy Tuesday night after a cold front blew into the area bringing high winds and dust that cut visibility down to almost nothing around 6:30 p.m.

At 6:15 p.m. the Bailey County Law Enforcement Center received a report of a wreck nine miles out on the Plainview Highway. When officials arrived they found instead of a wreck, there were a bunch of cars pulled off the highway into

the company's eight veterinary supply stores in Texas, Oklahoma, Kansas and New Mexico. This month Frona Industries opened a new Hi-Pro Veterinary Supply Store in Guymon, Oklahoma. A fully mature store can be expected to generate approximately \$2 million in revenues annually. The company will also construct a new computer controlled feed mill in

Guymon during 1974, similar to its Hi-Pro mill in Friona. The new range cube plant is located adjacent to the Friona Hi-Pro mill and will provide back-up production capacity for that facility. The Hi-Pro mill can produce 600 tons daily of protein and mineral supplements and complete feed

Cont. on Page 3, col. 2



RECEIVES BANNER Kenneth Moss, director of field activities, for the Texas Farmers Union, presents a county banner to Nolan Harlan of Bula, President of Bailey County Farmers Union, in recognition of the county organization having achieved their membership goal for four consecutive years.

Cont. on Page 3, col. 4



On Wall Street

By Bob Hill
Lentz, Newton & Co.

TAX-FREE. One of the most attractive investments available to the person seeking income is the tax-free bond fund. These

are bond funds which invest in only the obligations of cities, states, school districts and other taxing or revenue authorities. The interest from these bonds, which the bond fund owns, is free from all federal taxes and the investor does not even have to declare the interest he receives from these bond funds as income on his tax return. There are a number of tax-free bond funds, but the two largest are the Nuveen Fund and the Municipal Investment

Trust. A recent offering of Municipal Investment Trust was priced to give a current yield of 5.90% to the investor, completely tax-free. Investors can arrange to have their interest checks sent monthly, quarterly or semi-annually. The tax-free bond fund also has a broad geographical portfolio, which is something that is otherwise impossible to achieve for the person with \$5,000 to \$50,000 to invest.

The investment in the tax-free fund is marketable in case there is a need to liquidate your holdings, however, your profit or loss on the sale is dependent on what long term yields are at the time of sale. So, dollars going into this type of investment should be of a semi-permanent nature. For convenience and diversification, these are one of the most satisfactory ways to obtain tax-free income.

investors are aware of tax-sheltered income. This is when the income is tax-deferred (taxes are postponed) until the investor actually takes the interest earned into income. The most attractive yield available in this type investment is currently 6.54%, tax-sheltered. There is no commission or sales charge to the investor. The investor can get all or a portion of his funds on 24 hours notice and there is no market risk in this investment. In-

terest accrues daily up to the day you withdraw. There is no withdrawal penalty. This is an excellent place to put aside educational and retirement dollars while you are working. Since there is no tax on the interest earned while it is accumulating in the account, you can withdraw the original amount invested plus any additional investments, or a portion thereof, and still not have to pay any tax on the accumulated interest.

TAXABLE. For persons who need the maximum taxable income from their dollars with a minimum of risk, take a look at utility common stocks at this time rather than corporate bonds. You lock your money up for 25 or 30 years in corporate bonds and lose the liquidity of your investment that you have in utility common stocks. Today, the common stocks of major utility companies are yielding anywhere from 8% to 9.3%. That's more than the yield you can get on the mortgage bonds of the same companies. Although the earnings of the utility companies will increase very slowly over the next several years, you will at least participate in those increased earnings as a common shareholder. Bondholders do not benefit from increased earnings of the issuer unless they are holding convertible bonds.

A word of caution about bonds, corporate, government or otherwise. They are easy to buy, but almost impossible to sell unless you have \$50,000 to \$100,000 worth of them. Anything less than \$50,000 is an odd-lot. You will usually be docked substantially when you get ready to sell them unless the bonds are listed on the New York Stock Exchange where a ready market exists. If you are determined to own corporate bonds, you might look at several of the numerous corporate bond funds which are available.

It is now obvious that the stock market will build a base at the 800 level for a lengthy move upward. It is also apparent that the oil embargo is beginning to embarrass some of the Arab leaders who are now realizing that economic blackmail will inevitably fail, while creating in the meantime, strong antagonism toward the Arabs

and sympathy toward Israel. The Bear Trap we mentioned in our last column caught some over-eager investors when the Dow Jones Industrial Average dropped 50 points last week. The market got a lift Friday with the news that the Arabs were willing to partially lift the oil embargo if the U.S. would publicly request Israel to withdraw to the 1967 boundaries. Regardless of the outcome of negotiations in the Middle-East, the year 1974 will surprise most people with a much stronger economy than expected. We will cover this subject in a later column. The stock market closed out the week at 815.65 on the Industrial Average, a net change of -22.40 points. Average daily trading volume was 19 million shares.

News Of Our Servicemen

R. Costilla
Ft. Polk, La. (AHTNC) Nov. 15 -- Army Private Reynaldo Costilla, 18, son of Mr. and Mrs. Manuel Costilla, 613 E. Fourth, Muleshoe, Tex., completed eight weeks of basic training at the U.S. Army Infantry, Ft. Polk, La.
He received instruction in drill and ceremonies, weapons, map reading, combat tactics, military courtesy, military justice, first aid, and army history and traditions.



L. D. SANDERSON

Services Held Monday For L.D. Sanderson

L.D. Sanderson, Sr., 77, died at South Plains Hospital in Amherst Saturday morning, December 15.
Sanderson was born March 29, 1896 in Indian Territory, Oklahoma. He was a resident of Goodland since 1954, moving from Crosby County.
He was a member of the Hicks Chapel Baptist Church at Stegall where he was a charter member and a deacon. He was also a charter member of the Maple Lions Club.
Funeral services were held at 3 p.m. Monday, December 17, in the First Baptist Church of Muleshoe. Rev. Hugh Montgomery of Whitharrell and Rev. H.O. Huff, pastor of the Hicks Chapel Baptist Church, officiated. Burial was in Bailey County Memorial Park under the direction of Singleton-Ellis Funeral Home.
Pallbearers were J.C. Woolley, Jack Ferguson, Jim Carpenter, Doyle Davis, J.R. Alexander and A.J. Blackman.
Survivors include his wife, Peggy; one son, L.D. Sanderson, Jr., of Maple; one daughter, Mrs. W.D. Taylor of Albuquerque, N.M.; four sisters, Mrs. Mabel Ernest and Mrs. Ethel Ernest of Tucumcari, and Mrs. Dell Martin and Mrs. Elizabeth Coyne, both of Tucson, Arizona; one brother, Amos of Tucumcari; and three grandchildren.

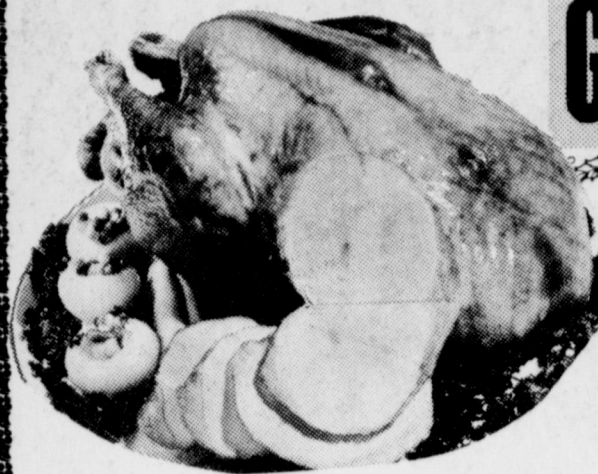
Lazbuddie School Menu

- LAZBUDDIE LUNCH MENUS
DECEMBER 17 - 21 - 1973
- MONDAY**
Milk
Pizza
Buttered Corn
Mixed Green Salad
Whole Cut Muffins
Butter
Apple Crisp
- TUESDAY**
Milk
Turkey Noodles
English Peas
Glazed Carrots
Cabbage Salad
Rolls
Butter - Jelly
- WEDNESDAY**
Milk
Enchilidas
Pinto Beans
Hot Sauce
Shredded Lettuce
Cornbread - Butter
Chocolate Cookies
- THURSDAY**
Milk
Meat Loaf
Oven Brown Potatoes
Green Beans
Carrot Salad
Rolls
Butter - Jelly
- FRIDAY**
Milk
Hamburger Patties & Sloppy Joes
French Fries
Lettuce
Pickles & Relishes
Strawberry Jello with Topping (1/2 oz. cup peanut butter with each menu)
Menu subject to change

Good Tidings of GREAT SAVINGS

U.S.D.A. GRADE A (4 TO 16 LB.)

TURKEY



SWIFTS PREMIUM ALL MEAT SKINLESS
FRANKS 12 OZ PKG **79¢**

HENS LB **69¢**

SWIFT'S PREMIUM PROTEIN BEEF
RIB STEAK LB **\$1.19**



SWIFT'S PREMIUM PROTEIN BEEF

ARM

PEYTONS SMOKED CURED SHANK HALF
HAMS LB **98¢**

HORMEL'S LITTLE SIZZLERS PURE PORK
LINK SAUSAGE 12 OZ. PKG. **79¢**

ROAST LB **98¢**

COOKBOOK
BROWN & SERVE \$1
ROLLS 3/1
12 CT PKG.



Boneless Swifts Premium Fully Cooked

HAM STYLE CANADIAN BACON LB **\$1.79**

Golden Ripe
BANANAS

GLADIOLA 5 LB. PKG
FLOUR **69¢**
LIMIT 1 WITH A \$5.00 PURCHASE OR MORE

9¢ LB



CALIFORNIA CHOICE NAVELS
ORANGES LB **19¢**
CALIFORNIA CRISP GREEN

CELERY LB **15¢**

KING SIZE BOX
TIDE \$1.19



- 22 Oz. New Fresh Mint Detergent
VEL LIQUID..... 39¢
14 Oz. Can
AJAX CLEANSER..... 2 FOR 29¢
4 Oz. Can
MAGIC SIZING..... 55¢
Laundry Pre-Soak Giant Size Box
BIZ..... 69¢
#303 Can Del Monte
PUMPKIN..... 19¢
21 Oz Jar Win You
CHERRY PIE FILLING..... 59¢
#303 Can Del Monte Whole
GREEN BEANS..... 29¢
12 Oz. Can Niblet's Whole Kernel Golden
CORN..... 4 FOR \$1
16 Oz. Bag, Bunte
CHOCOLATE DROP CANDY..... 49¢

- 25 Ft. Roll
REYNOLDS WRAP..... 29¢
14 Oz. Bottle Hunt's Tomato
CATSUP..... 4 FOR \$1
4 Oz. Box Topping Mix
DREAM WHIP..... 49¢
#303 Can Del Monte
SWEET PEAS..... 4 FOR \$1
#300 Can Our Darling Cut
ASPARGUS SPEARS..... 49¢
#300 Can Hunts
FRUIT COCKTAIL..... 29¢
1/2 Gallon Ct. Bordens
BUTTERMILK..... 65¢
1/2 Pint Your Choice
WHIPPING CREAM..... 39¢
10 oz. Box Sun-Shine Cheese - Its
CRACKERS..... 45¢

- FROZEN FOODS**
12 Oz. Can Donald Duck Frozen
ORANGE JUICE..... 45¢
10 Oz. Pkg. Keith's Frozen
BROCCOLI SPEARS..... 29¢
10 Oz. Prime Frozau
BRUSSEL SPROUTS..... 33¢
Pet Ritz Giant Size 9" Frozen
PIE SHELLS..... 39¢

GUNN BROS.
STAMPS
DOUBLE EVERY
WEDNESDAY

White's CASHWAY

We Reserve The Right To Limit Quantities

Listen to
MULETRAIN
over KMUL
10:15 a.m.
Sponsored by
WHITE'S CASHWAY

FREE Amana Browning Skillet
made expressly for the
Radarange
by CORNING
when you buy any
Radarange
MICROWAVE OVEN
made only by Amana

You can:
BROWN - GRILL - SEAR - FRY - SAUTE in
the **Radarange**

Amana offers 3 models to choose from:
Model RR-4 Model R-2 Model R-1J



Dear Santa:

Dear Santa,
Please bring me a Hot seat or a bike. Bring me a coat.
Your friend,
Milton

Dear Santa Claus,
Please bring me a doll and play money. I want a dress, long dress, a cat, I want a fur coat and a record player. I have been very good.
Your friend,
Maria Bynum

Dear Santa Claus,
Please bring me a blue bike a ball, a doll house, a cat, a stuffed pony, a barby house, and a not book.
Your friend,
Melet

Dear Santa Claus,
Please bring me some gifts I am a good boy. I am getting a big Christmas tree. I want lots of gifts under it. I will give you milk and cookies. This is a list of what I want football, cars, books.
Your friend,
Thomas

Dear Santa Claus,
I hope you bring me a pool table and a bike and a big John and a gun.
Your friend,
Johnny

Dear Santa Claus,
Please bring me a orange bike and bring me a football

Powell...

Cont. from Page 1

September 7, 1962 in Amarillo.

Survivors include the wife, Thelma; four sons, Kenneth of Muleshoe, Goodwin of Lubbock, Billy of Oklahoma City, Oklahoma, and Raymond of Dallas; one daughter, Mrs. Helen Rome of McAllen; one stepson, James Biggs of Stanton, Texas; one stepdaughter, Mrs. Vaughan Edwards of Amarillo; one sister, Mrs. Exa Blaylock of Hale Center; 20 grandchildren and five great-grandchildren.

Anyone wishing to make memorials to Owen Powell are asked to make them to the Building Fund of the First United Methodist Church of Muleshoe.

Muleshoe...

Cont. from Page 1

Printing Company in January, 1974.

There are several people in Bailey County now that came from Erath County.

This will be a limited edition, but a letter or post card order will assure reservation and the buyer will be notified when the book is ready.

The durable flex binding will be \$4.95 plus 20 cents tax and 25 cents postage, \$5.45; the cloth, hard back, \$7.95 plus 32 cents tax and 40 cents postage, \$8.67; prices to public libraries will be \$4.75 and \$7.50 prepaid.

Mr. and Mrs. Jim Noble visited Mr. and Mrs. Sandy Noble of El Paso for several days. They are also proud new grandparents.

Courthouse...

Cont. from Page 1

up, Muleshoe Motor Co.

Weldon and Sherry Stevenson, 1974 Pontiac, Town and Country Olds-Buick.

W.B. Kitrell, 1974 Chevrolet pickup, Crow Chevrolet Co.

Glenn Lowe, 1974 Oldsmobile, Gwatney-Wells Chevrolet Co.

Johnny Ferguson, 1974 Pontiac, Frank Brown Pontiac, Inc.

Gary Welch, 1974 Pontiac, Frank Brown Pontiac.

Horton Griffin, 1974 Pontiac, Town and Country Olds-Buick.

Jimmy Cannon, 1974 Chevrolet, O'Connor Strickland.

D.A. Marlow, 1974 GMC pickup, Logan Buick.

Marvin Davenport, 1974 Chevrolet pickup, Crow Chevrolet Co.

Louise Bomer, 1974 Chevrolet pickup, Crow Chevrolet.

R.E. Ethridge, 1974 Chevrolet pickup, Crow Chevrolet.

J.D. Dunlap, 1974 Chevrolet pickup, Crow Chevrolet.

Ernestine Little, 1974 Mercury, Muleshoe Motor Co.

Chyrlene Copley, 1974 Chevrolet, Hudiburg-Jones Chevrolet.

Gene Lowe, 1974 Ford pickup, Muleshoe Motor Co.

Sam Fox, 1974 Oldsmobile, Town and Country Olds-Buick.

Albert Cannon, 1974 Chevrolet pickup, Doc Stewart Chevrolet-Buick.

Eugene Vanstony, 1974 Ford pickup, Muleshoe Motor Co.

Walter B. Little, 1974 Ford pickup, Muleshoe Motor Co.

L.M. Davis, 1974 Ford, Muleshoe Motor Co.

MARRIAGE LICENSE

Francisco Ramas Pisano, Muleshoe, and Diana Maria P. Ochoa, Muleshoe.

Cariton Moffett Kesey, Clovis, and Janie Maria Harvey, Muleshoe.

please bring me sam games, and bring a new red truck I want a seat off jruims.
I have been a good boy.
Your friend,
Greg

Dear Santa,
I would like a new whisk broom and a new badge. And some new cross work puzzel to work when the sherif is gone.
Irene Splawn
Dept.

Dear Santa,
I would like a jug of mogan David wine. And be shure to hang it on my car door so I can be shure to find it.
Jim Barns
Weight and Measure boy

Dear Santa
I want a new sweater for Christmas. And a siren, I wore the other one out.
Cecil Cunningham
City Patrol

Dear Santa,
Please send me some more medical books.
Joel Young
T.S.H.P.

Dear Santa Claus,
A dolly, something to do cakes that's all I want.
Love,
Graciela Hernandez

Dear Santa Claus,
Please bring me a red bike and a red ball and a blue car. Santa Claus please bring me a blue truck.
Your friend,
Sammy

Check...

Cont. from Page 1

Law 88-203, which set up the procedure now in use for distribution of revenue from the refuge receipts. This law further specifies that funds paid to the county under this act must be used for schools and/or roads.

Distribution will be made on the same percentage basis as last year between the County Road and Bridge Fund, Muleshoe Public Schools, Bula Independent School District and the Three Way Independent School District.

Guide...

Cont. from Page 1

plains from income is and is not taxable for Social Security.

The tax guide is indexed so producers can easily find information on specific subjects very easily. Farmers or ranchers can call the county agent's office or come by and pick up a copy of the new tax guide. There is no charge for these publications.

Plant...

Cont. from Page 1

rations for commercial feedlots and pasture operations.

"The manufacture and sale of commercial cattle feeds accounted for about 22 percent of Friona Industries' \$1,951,748 in net income for the fiscal year ended June 30, 1973," explained Carrothers. "We expect this to increase substantially as markets are fully developed for range cubes, and the contribution to net income should become even more pronounced with completion of the Guymon mill," he added.

"Our sales of manufactured feeds are at record levels for the first five months of our current fiscal year," he said, "and our two cattle feedlot operations, which have a total capacity of more than 67,000 head, are at 100 percent occupancy."

These feedlots are operated for the custom-feeding of customer-owned cattle and for fattening and sale of company-owned cattle.

"We feel strongly that the current shake-out in fat cattle prices will be alleviated within the next 3-45 days and that prices will start increasing," said Carrothers.

In the first quarter of its fiscal year ended Sept. 30, 1973, the company reported net income of \$748,426, or 75 cents per share, on revenues of \$14.3 million. This was a 32 percent increase in net income and 23 percent in sales over the same period of the prior year.

Dear Santa,
Please bring me a sewing meching. And a coke meching Santa bring me a snowman meching and a doll.
Santa bring me a ring and a neckless, Santa please bring me a record player and some records too.
Santa bring me some clothes for my doll. Santa I would like a umbrell and a ball
Your friend,
Dolares

Dear Santa Claus,
Please bring me a Big Jim bring me a big jim tent, a rescue rig to cars.
Your friend,
Charles

Dear Santa Claus,
Please bring me a Chrissy doll a piano. Your so nice. A stocking with candy
Your friend,
Ciellie

Dear Santa Claus
Please bring me a purple bicycle and my mother wants a long pink dress. Father wants a shirt, my brother wants drums I want a long dress. I want Shirely Timple.
Your friend,
Abigail

Dear Santa Claus,
Please bring me a red bike I want a doll. Please bring me a book. Please bring me a

Cotton...

Cont. from Page 1

to 32. Two-thirds had staple lengths of 31 and shorter and the remaining one-third stapled 32 and longer. Average staple length was 31.

Micronaire readings continued excellent. Eighty-one percent of all cotton tested at Lubbock had micronaire readings in the premium range of 3.5 to 4.9, 5 percent was in the high micronaire range of 5.0-5.2 and 1 percent was in the very high range of 5.3 and above.

The Agricultural Marketing Service of the U.S.D.A. reported cotton prices \$2.50 to \$5.00 per bale lower on the Lubbock market on Thursday and Friday. Demand continued strongest for cotton with staple lengths of 31 and longer but was strong for cotton with staple lengths of 29 and 30. Prices ranged from 3100 points over the Government Loan for short staple cotton up to 5000 points over the loan for long staple cotton. Typical lots were bringing an average of 39 cents per pound over the loan and were selling in the price range of 55 to 65 cents per pound.

Average prices paid for the most predominant qualities in the 3.5 to 4.9 premium micronaire range were: Grade 31, Staple 30 - 55.65 cents per pound, Grade 31, Staple 31 - 61.90, Grade 31, Staple 32 - 55.90, Grade 41, Staple 30 - 54.70, Grade 41, Staple 31 - 60.75, and Grade 41, Staple 32 - 64.45.

Cottonseed prices were steady and farmers received \$95 to \$110 per ton.

sled, I want a pen. Please bring me a pencil. Please bring me a typewriter.
Your friend,
Norma

Dear Santa Claus,
Please bring me what I want. I want a baton and some dishes. That's all. I have been a good girl. But I have fought with my sister and my sister has fought with my other sister.
Your friend,
Maria Nanez

Dear Santa Claus,
Please bring me a white doll house, a baby doll, a crayolas a coloring book, a clay sand box, a blue bike, a red wagon
Your friend,
Mary Helen

Dear Santa,
How are You? I have been a good girl this year so would you please bring me a stationnary, sew magic bulletin board and a doll.
My little brother would like an inchworm some trucks and toy gun.
My sisters wants a telephoe sleeping bags and surprises.
Your friend,
Rhonda Sue Dunham

Wind...

Cont. from Page 1

the bar ditch because of the bad visibility.

At 7:06 p.m. they received a call that a cotton trailer had blown out in front of a car at Nickles Gin. After investigating and not being able to find the trailer, they learned that the incident had taken place at the Goodland Gin.

Sheriff Dee Clements reports that he and Justice of the Peace Morris Nowlin went out on a call Tuesday night to the home of Charlie Byers, one and a quarter miles west of Enochs, where he was pronounced dead of natural causes. Funeral arrangements were pending at presstime.

Arrests logged in the Bailey County Law Enforcement Center recently include the Police Department arresting five for drunk, one for no driver's license, and one sleeper.

The highway patrol arrested three for drunk, and the Sheriff's office arrested three for drunk.



GIBSON'S DISCOUNT CENTERS

1723 W. AMERICAN MULESHOE, TEXAS
OPEN MON. - SAT.
9am - 9pm
THRU CHRISTMAS

PRICES GOOD THRU DEC. 24 PICK UP LAYAWAYS NOW!

HAPPY CHRISTMAS SHOPPING!

DOLL HOUSES
RIFLES
GUNS
DOLLS
TRUCKS
GUM BANKS

1/2

GAMES
OVENS
TINKER TOYS
CARS
PANS
RIDING CARS

TOYS

OFF GIBSON'S LOW DISCOUNT PRICE

OPEN 9am - 6pm DEC. 24th CLOSED CHRISTMAS DAY

JETCO MUSTANG TREASURE FINDER

DETECT METAL & MINERALS

\$22⁹⁷

REG. \$29.97

SCHICK WARM N' CREAMY

FACIAL CLEANSER FOR WOMEN

\$13⁸⁸

REMINGTON 1100 AUTOMATIC SHOTGUNS

\$134⁹⁷

88 UNBREAKABLE Johnson & Johnson SWABS

NEW Johnson & Johnson

• Plastic Stick ... Firm Strong, Can't Break

• Tips Won't Slip Off... Wet or Dry

33¢

REG. 47¢

REMINGTON 870 PUMP SHOTGUNS

\$97⁹⁷

BEAR ARCHERY AND ACCESSORIES

1/3 OFF

DOUBLE KNIT FABRICS

REG. \$2.88 YD.

\$1⁸⁸ YD.

GIRLS & LADIES QUILTED ROBES

30% OFF

REG. \$6.69

GIBSON'S PRICE

10% OFF REG. PRICES

on Singer sewing machines



Old Machine Touch & Sew zig-zag sewing machine with your choice of 3 cabinets

Makes Downpayment With 36 Months To Pay

Cabinet styles: 686/687/699 Has 14 built-in stitches, built-in button-holer, the exclusive Singer® push-button front drop-in bobbin, more!

We have a Credit Plan designed to fit your budget. We also have a liberal trade-in policy.

HARVEY BASS APPLIANCE

APPROVED SINGER DEALER • A Trademark of THE SINGER COMPANY



Restaurants are in the

Yellow Pages

CHRISTMAS DECORATIONS

50%

OFF GIBSON'S LOW LOW DISCOUNT PRICE

TINSEL BALLS, ICYCLES ETC.

LAYAWAYS MUST BE PICKED UP BY DEC. 22nd OR WILL BE SHELVED.

3 SHOPPING DAYS 'TILL CHRISTMAS





HEREFORD ARTIST GUEST AT ART ASSOCIATION Jon Birdsong of Hereford gave a complete demonstration of enamel on copper. Enamel is a low firing glass, ground into a powder form and sprinkled on metal to be fired. Birdsong created a floral picture in the short time allowed him during his demonstration.

Artists Invited

Artists from a six state area are invited to plan now to enter a juried art show with cash prizes to be held by Artists' Studio of Amarillo, February 3-16, 1974, at the Camelot Inn, Amarillo.

The competition is open to artists in Texas, Oklahoma, New Mexico, Kansas, Colorado and Louisiana. Paintings and sculptures to be exhibited are to be judged suitable for showing through the use of color slides of the artists' work. Artists should write Alice Baldwin, 7702 Broadway, Amarillo, Texas 79108 for entry forms before January 1, 1974 and submit entries before January 5.

Viewing the slides and selecting paintings and sculptures to be exhibited will be the following heads of art departments at area colleges: Rosey Lee Palmer, Frank Phillips College, Borger; Denny Frazee, Amarillo College, Amarillo; Bob Bayle Texas State Technical Institute, Amarillo. Also to serve in the screening of paintings and sculptures for the exhibit are Margaret Campbell, art instructor at West Texas State University, and the following Amarillo Artists: Mary Han-

ton Mitchell, Stefan Kramer, Bud McCalley, and David Cale of Amarillo College. Members of Artists Studio will assist the screening committee. To select winners of awards of \$500 for first place, \$250 for second and \$150 for third place paintings with the same amounts for sculpture, plus citation awards, are the following heads of university art departments: Dr. Emilio Caballero, West Texas State University; Chris Gikas, Eastern New Mexico University; Dr. Clarence Kincaid, Texas Tech University.

Pioneer Annual Christmas Party

The annual Pioneer Christmas Party was held Saturday evening, December 15 at 7:00 p.m. in the Littlefield Community Center.

Those attending from Muleshoe were Mr. and Mrs. Jess Winn, Mr. and Mrs. Robert Lunsford, Sally, Betsy and Susan, Mr. and Mrs. Blackman, Patsy Chance, and Mr. and Mrs. Weldon Eagle.

Holiday Sportswear

COLLEGE STATION -- Holiday sportswear features pretty, movie-star glamour without "Hollywood pizzazz."

This report comes from Marilyn Brown, consumer education-clothing and textiles specialist with the Texas Agricultural Extension Service, Texas A&M University System.

"Classics of the 40's and 50's mood are played up in shiny, bright fabrics.

"Watch for taffeta, chintz, satin, moire, velvet and velveteen in dusty shades, bright pastels, rich browns and maroons, and dark green."

This year's holiday season highlights the following, Miss Brown continued.

--the Western look with yokes and rhinestone trim

--Joan Crawford pajamas in satin-backed crepe--featuring jacket with a wing collar, two hip pockets, roll-up cuffs and shirred bodice

--smoking jackets, and

--two-piece wrap dresses.

"Special details include padded shoulders, one-button closings on both single- and double-breasted jackets, big-notch collars, lace appliques and flower embroideries."

The Art Association Hosts Jon Birdsong

The Muleshoe Art Association met Tuesday morning, December 11, in the Community Meeting Room of the Muleshoe State Bank, with twenty one members and one guest present. There was a reading of the minutes and since there was no business to discuss, the guest artist was introduced. This month we were honored to have Jon Birdsong of Hereford, who gave a complete demonstration of Enamel on Copper. Jon graduated from West Texas State University in 1967 and taught in the Hereford Public School system for seven years in the field of art. He lives with his wife Judy, who teaches Reading in the Hereford School system, and one son, Jon. He began devoting full time to his art this year, specializing in Watercolor and Enamel on Copper. Presently his subject matter in Watercolor is the Western theme, while his Enamels take on a more contemporary flair.

Some of his most recent awards are; Honorable Mention at the Amarillo Spring Citation Show; 1st. place - Watercolor at the Friona Maize Days Celebration; 1st. and 2nd. place miniature at the Friona Maize Days; 1st. place Watercolor at the Amarillo Tri-State Fair and 2nd place Enamel at the Amarillo Tri-State Fair.

Presently he is showing in "Gallery A" and "The Market" at Taos, New Mexico; Barnard's Studio-Denver; The Little Gift Shop-Ralls, Texas;

and The Ola Pod of Dallas, Texas.

Art is an expression of the times and enamel is one of oldest forms of art. Today it is looked upon as a creative hobby in crafts, rather than Art. Jon skillfully created a beautifully floral picture in the short time allowed him during his demonstration to a most appreciative audience, for some it was the first time to see Enamel on Copper being done. Enamel is a low firing glass, ground into powder form and sprinkled on metal to be fired. Copper brings out the best of the enamel color. It is used quiet often in jewelry, but because of the cost of getting started it is not done by too many people in this area. Birdsong brought several of his miniature Watercolors and five enamel on copper pictures for the members to view and enjoy.

Marie Lamb is the guest artist of the month. Each month a member of the Art Association hangs one of their paintings at the Library for the enjoyment of those who visit the Library. These pictures add greatly to the already beautiful Library and are most appreciated by the employees of the Library and others.

Those attending were: Mrs. H.G. Holt guest; and mem-

C.W.F. Enjoys Dinner Party

The Christian Women's Fellowship of the First Christian Church met in the home of Mrs. R.F. Wright for the Christmas dinner party at 6:00 p.m. Tuesday, December 11, 1973. Mrs. Bobby McGee was co-hostess.

Mrs. McGee gave a Christmas devotional then Christmas carols were sung while Mrs. Moore played the organ. The dinner was served after which Court Whist, a party card game, was played.

Gifts for Mom were brought which will be given to the mother of the family the church is sponsoring for Christmas.

Guests attending were Mrs. Velma Davis, Mrs. Sylvia Robinson, Mrs. Rufus Gilbreath, and Mrs. Marie Alice Pitcock. Members attending were Mrs. T.R. White, Mrs. Joe Costen, Mrs. Charles Long, Mrs. Lula Gorrell, Mrs. Walter Barthöf, Sr., Mrs. McGee, Mrs. Wright and Mrs. John Moore.

bers: Dana Arnold, Cara Jaun Schuster, Eroid Gross, Jauree Smallwood, Sandra Chancy, Argilee Millen, Jackie Smith, Bertha Beene, Marie Lenau, Katherine Rogers, Louise Roark, Shawni Nix, Hazel Nowell, Barbara Carpenter, Blanch Lenderson, Marguerite Wright, Pauline Jamison, Gladys Maddox, Velma Davis, Ruth Hammond and Lillian Smith. Cara Jaun Schuster and Rhetta White were hostesses and served Christmas candies, nuts, dips, crackers and coffee from a decorated table. Christmas flowers added to the Christmas theme.

WEST PLAINS HOSPITAL Hospital Briefs

ADMISSIONS:

Mrs. Mildred McDaniel, Mrs. Edith Bruns, Bill Dales, Ricky White, Mrs. Julian Lenau, W.M. Pool Jr., Mrs. Homer Long, Ellis E. Mick, J.R. Carter, Mrs. Hector Munoz, baby boy Munoz, Mrs. John R. Harris, Juan Perez, Mrs. Luis Mata, Mrs. Eva Roberts, E.R. Wall, Clinton Russell, Mrs. Geronina Rasos, Michelle Russell, Mrs. Curtis Snitker, Mrs. Gary Toombs and baby girl, Mrs. Loyd Garlington and baby boy, Mrs. D.T. Strayhorn, Richard Chitwood, Corie Galloway, Tom Ammons, R.D. Precure, Delores Hernandez, Mrs. Miguel Fabela and baby boy, Dominga Gutierrez, Joe Gregory DeLeon, Mrs. Dora White, Brad Poyner, Mrs. James Johnson and baby boy, Mrs. Jose Almanza, A.S. Stovall, Jose R. Pena, Pedro Reyna, Miss Carol D. Clark, Mrs. Dorothy Beddingfield and Lowery Pierson.

DISMISSALS:

Mabel C. Owen, Mrs. Cecil Davis, Mrs. Roland McCormick, Les Smith, Sam E. Fox, Mrs. Juana Macias, Mrs. Edith Bruns, Bill Dale, Ricky White, Mrs. Julian Lenau, W. M. Pool Jr., Mrs. Homer Long, Ellis E. Mick, J.R. Carter, Mrs. Hector Munoz, baby boy, Mrs. John R. Harris, Juan Perez, Mrs. Luis Mata and baby boy, Mrs. Eva Roberts, E.R. Wall, Clinton Russell, Geronima Rosas, Miss Michelle Russell, Mrs. Curtis Snitker, Mrs. Gary Toombs and baby girl, Mrs. Loyd Garlington and baby boy, Mrs. D.T. Strayhorn, Dick Chitwood, Corie Galloway, Tom Ammons, R.D. Precure, Delores Hernandez, Mrs. Mike Fabela and baby boy, Dominza Gutierrez, Joe G. DeLeon, Mrs. Dora White, Brad Poyner, Mrs. James Johnson and baby boy, Mrs. Jose Almanza, A.S. Stovall, Jose A. Pena and Pedro Reyna.



MISS GRETA JAYNE REESE

Miss Greta Reese Is To Be Debutante

Miss Greta Jayne Reese, 17 year old daughter of Mayor and Mrs. Jim Reese of Odessa, Texas is being presented as a debutante on December 28 at the annual Crystal Ball which benefits the Permain Bas-relief Rehabilitation Center.

Miss Reese is the granddaughter of Mr. and Mrs. Joe Damron of Muleshoe.

She attended Austin College at Sherman, Texas and in January of 1974 she will attend the University of Hawaii where she will major in drama. Miss Reese attended Gonzales Elementary, Nimitz Jr. High and Permain High School.

While in Austin College she had affiliations in the Young Republican Club and the Drama Club.

She has traveled to Switzerland, Germany, Holland, Belgium, France, England and Mexico.

Her special interests are in acrobatics, dancing, speech and drama. High School honors she has received were National Honor Society at Permain High School and first runner-up in state competition for Miss Future Teacher of America.

NEW ARRIVALS



Jeremy James Jr. Johnson

Mr. and Mrs. James Lee Johnson of Muleshoe are the proud parents of a new baby boy born December 15 at 6:13 a.m. in the West Plains Memorial Hospital of Muleshoe. The baby weighed six pounds and ten ounces and was named Jeremy James Jr.

He is the couple's first child.

Christopher Lee

Michael Fabela

Mr. and Mrs. Miguel Fabela of Farwell are the proud parents of a new baby boy born December 13 at 8:24 p.m. in the West Plains Memorial Hospital of Muleshoe. The baby weighed six pounds and ten ounces and was named Christopher Lee Michael.

He is the couple's first child.

Melissa Louise Toombs

Mr. and Mrs. Gary Mack Toombs of Muleshoe are the proud parents of a new baby girl born December 12 at 3:29 a.m. in the West Plains Memorial Hospital of Muleshoe. The baby weighed eight pounds and one ounce and was named Melissa Louise.

She is the couple's first child.

Chase Byandon Garlington

Mr. and Mrs. Loyd William Garlington of Muleshoe are the proud parents of a new baby boy born December 12 at 12:15 a.m. in the West Plains Memorial Hospital of Muleshoe. The baby weighed six pounds and 3/4 ounce and was named Chase Byandon.

He is the couple's second child.

Dana Jill Noble

Mr. and Mrs. Sandy Noble of El Paso are the proud parents of a new baby girl born December 12 at 1:00 p.m. in the Beaumont Hospital in El Paso. The baby weighed six pounds and four ounces and was named Dana Jill.

She is the couple's second child.

Grandparents are Mr. and Mrs. Jim Noble of Muleshoe and Mr. and Mrs. Billie Marlow of Circle Back.

The Wonderland of Christmas Gifts...

SHOES
COATS
DRESSES
LINGERIE
BLOUSES
PANT SUITS
Suits
Sweaters-Hats
Sport Shirts
Dress Shirts
Casual Pants
Costume Jewelry

Novelties FOR MEN & WOMEN

St. Clair's
OF MULESHOE

MOTOROLA

CARRY-HOME CHRISTMAS SPECIAL!

12" BLACK & WHITE PORTABLE TV
Model BP3108KW

Deluxe personal size portable with built-in side carry handle, detachable "Glare-Guard" filter, Picture control, 70-channel UHF Detent Tuner, solid state chassis (except 2 tubes). Walnut grain finish trim, black high impact plastic cabinet.

\$84⁹⁵

MOTOROLA black & white TV CARRY-OUT CENTER

HARVEY BASS

122 S. FIRST MULESHOE, TEXAS

HELP WANTED

Missouri Beef Packers, Inc. is now accepting applications for female production workers. No experience necessary, but must be willing to learn and work. This is year around employment, not seasonal work. We offer paid vacation, paid holidays, company paid group hospitalization insurance, and good wages. Apply at personell office, Missouri Beef Packers, Inc., Friona, Texas. 4 miles west of Friona on highway 60. EQUAL OPPORTUNITY EMPLOYMENT



STOCKING STUFFER . . . Jeremy Johnson, son of Mr. and Mrs. James Lee Johnson of 523 West Avenue B., enjoys the new stocking in which to go home from the hospital in. From now until Christmas new borns will be given a stocking to go home in from the Muleshoe Memorial Hospital.

Muleshoe Study Club Hosts Miss Breaux

The Muleshoe Study Club met Thursday, December 13th, in the Community Room of the Muleshoe State Bank with Mrs. Mildred Neeley as hostess. The serving table was laid with a Christmas cloth made by Mrs. Horace Blackburn. The centerpiece and other decorations carried out the Christmas theme. Guests and members were served sandwiches, fruit cake, cookies, nuts, pickles and olives, coffee and apple cider. Mrs. John Agee introduced Mr. Carroll Lanier, Superintendent of Gristown, U.S.A., at Whiteface, Texas. Mr. Lanier spoke to the group concerning the history and various activities at Gristown. He mentioned that presently 58 girls were living in the home, ranging in ages from three years to 19 years. Mr. Lanier introduced Claudia Breaux, whom the Muleshoe Study Club sponsors, sending cash gifts to her from time to time. A quartet composed of Joan Toney, Kathy Young, Marty Massey and Becky Owens sang several songs, accompanied on their guitars. The Study Club presented the group with Christmas packages and supplies. Following the program Mrs. Wilson Witherspoon presided over a business session. The resignation of Mrs. Ed Johnson as Treasurer was accepted with regret, and Mrs. Walter Barthol was elected Treasurer. Mrs. T.R. White gave a report on the family the club is sponsoring with Santa's Helpers, and the members volunteered to take a child and be responsible for gifts. Mrs. Doyle Turner gave the prayer; Mrs. Sibel Johnson led in the Salute to the Flag, and members answered Roll Call by giving reasons for being happy at Christmas. Members present at the meeting were the following: Mrs. John Agee, Mrs. J.G. Arn, Mrs. H.L. Blackburn, Mrs. Joe Costen, Mrs. Douglas Dubose, Mrs. R.O. Gregory, Mrs. Jewell Griffiths, Mrs. George Johnson, Mrs. T.L. Kent, Mrs. Barry Lewis, Mrs. G.L. Splawn, Mrs. Doyle Turner, Mrs. Mervin Witherspoon, Mrs. T.R. White, Mrs. Walter Barthol and the hostess, Mrs. Mildred Neeley.



SPEECH WINNER . . . Mrs. Bobbie Pena of Muleshoe, Tex., a freshman majoring in special education at Eastern New Mexico University, was named winner of the annual P.M. Bailey Oratory Contest held recently on the Eastern campus. Presenting Mrs. Pena with a certificate recognizing her as winner of the contest is Leonard Leary, assistant professor in communication at the university.

Enochs News

By Mrs. J.D. Bayless

Lee Gilbert of Ft. Worth spent Saturday night with his Uncle and Aunt, Mr. and Mrs. Charlie Byars, other guests Sunday were her brothers, Mr. and Mrs. Alford and Bud Roller and son Billy Earl and a sister, Mr. and Mrs. Ruban Payne all of Lubbock, Mr. and Mrs. Carol Shelton of Morton also Mr. and Mrs. Chester Petree.

Gary Welch got his arm in the cotton stripper Tuesday afternoon and he is a patient in the Methodist hospital in Lubbock.

Mrs. Dell Sanders of Amarillo came Wednesday and returned home Wednesday after a visit with her parents, Mr. and Mrs. L.G. Fred.

Charlie Byars was able to return home Thursday after spending some time in the Littlefield hospital.

Rev. Charlie Shaw and Mr.



CHRISTMAS IS HERE!!! . . . Santa Claus and his helpers come down the chimney with live toys portrayed by girls and boys of the second grade at Richland Hills School in "The Jolly Santa Claus," a musical dramatization for primary grades. Par-

ents and friends are invited to attend this production at 2:30 p.m., December 20 in the Richland Hills School Cafeteria. All the second grade children are in the show which is produced and directed by the second grade teachers. It is thirty minutes of delightful Christmas Cheer. Make your plans to attend.

G.O. Smith attended the Crusade Orantation in Plainview Tuesday night. Bro. Shaw will be preaching in the Crusade in Vista Hermosa, Mexico, across the border December 26-January 6. The city has a population of about 2000.

Congratulations to Mr. and Mrs. Carl Henderson who are the proud parents of a baby daughter.

There was another Spanish speaking service at the Bula Baptist Church 2:00 Sunday.

Lee Olan Chick of Borger spent Saturday in the home of Mr. and Mrs. J.W. Layton.

Mr. and Mrs. W.B. Peterson left last Sunday afternoon for a visit with their son, Mr. and Mrs. Morris Peterson and children at Hillsboro, they returned home Thursday.

Rev. and Mrs. Charlie Shaw flew to Houston Monday, Dec.

17, to visit their son and wife, Mr. and Mrs. Dannie Shaw. They returned home by plane Wednesday.

Mrs. Sandra Austin spent six days as a patient in the Littlefield hospital. She came home Wednesday.

Mrs. Charlie Byars and daughter, Mary Sue Hardaway attended the funeral service of Mrs. Byars brother-in-law, Avery Payne of Roaring Springs, 2:30 Wednesday at the First Baptist Church in Roaring Springs, burial was in the Roaring Springs Cemetery.

Mr. and Mrs. Curtis Snitker were dinner guests in the home of his parents, Mr. and Mrs. C.C. Snitker Monday.

Burton Gilbert of Memphis, Texas spent Thursday night with his sister, Mr. and Mrs. H.B. King. Mrs. King's mother, Mrs. Clara Childers of Dumas also spent the weekend with her.

Visitors at the Baptist Church Sunday were Brent and Marthan George of Lubbock, Mrs. Clara Childers of Dumas, Mrs. Ann McDonald of California and Mike Wright.

Bula school will dismiss classes Friday, Dec. 21 for the Christmas holidays.

We wish to welcome Mr. and Mrs. Darnold Williams and family to Enoch, they bought the former R.P. McCall's home.

Mrs. John Gunter had her Music Recital last Sunday afternoon, Mrs. Gunter has taught in both the Bula and the Three Way School, she is still teaching in her home.

Funeral services for L.D. Sanderson of the Three Way Community was 3:00 p.m. Monday, Dec. 17, at the First Baptist Church in Muleshoe.

Mr. and Mrs. John Gunter celebrated their Golden Wedd-

ing anniversary Nov. 18, from 3-5 in the fellowship hall of the First United Methodist Church in Enoch. Hosting the event was their children, John Gunter Jr. and family, Byarn Gunter and family and Anna Margaret Motes and family. Mr. and Mrs. Gunter greeted 250 guests.

Dear Santa

Dear Santa Claus,
A gun, a bike is what I want
Love
Armando Ontiveros

Dear Santa Claus,
I want a tractor, I want a car,
I want a gun, I want a BB gun
I want a belt, I want a book to color
I want a little car, That all.
Love
Adrian Perez

ANNOUNCING

We Will
Be Closed
Saturday, Monday
And Tuesday
December 22, 24 & 25th.

**CROW CHEVROLET
MULESHOE MOTOR
CO.
TOWN & COUNTRY
OLDS-BUICK**

ZENITH
SOLID-STATE
CHROMACOLOR II
23" giant-screen consoles

- brilliant new chromacolor picture!
- 100% solid state chassis!
- 30,000 volts* of picture power!
- one-button chromatic tuning!

over 90% solid-state chassis!
dependable Zenith Quality!

YOUR CHOICE of these fine-furniture styles!

EARLY AMERICAN STYLING

The **ALTAIR** E4547M
Authentically styled Early American lowboy console. Wrap-around gallery. Spool-turned legs. Maple color. Chromatic One-button Tuning. Power Sentry System. AFC. **\$578.00** W.T.

MEDITERRANEAN STYLING

The **MARACAIBO** • E4549
Majestic Mediterranean styled full base console with casters. Dark finished Oak color (E4549DE) or Pecan color (E4549P). Chromatic One-button Tuning. Power Sentry System. AFC. **\$588** W.T.

DELUXE 23" GIANT SCREEN CONSOLE

- new, brilliant picture!
- one-button tuning!
- over 90% solid-state chassis!

Model S2966
Modern styled console, Titan 101 Chassis. Solid-State Super Video Range Tuner. Chromatic Tuning. AFC. **\$498** W/T

WILSON APPLIANCE
Muleshoe, Texas
Phone 272-5531 or 272-5532

Dear Santa

Dear Santa Claus,
I am eight years old. Can you bring me a go-cart. I am in Mrs. Hendersons room. My birthday is April the 24, 1974 I live out in the country. That's why I won't a cart. I am in third grade. And the principal's name is Mr. Taler. He is a good principal.
Your friend
Tyri Vandiver

Dear Santa,
I want a Christmas tree.
Love,
Joe Ray Fabella

Dear Santa,
I want a bicycle, a car and a racing truck and a motorcycle.
Love,
Greg Moton

Dear Santa,
I want some roller skates. I still have my big bear. We have a Christmas tree.
Love,
Shelia DeLeon

Dear Santa,
I want a training wheels bicycle.
Love,
Joe Lambert

Dear Santa Claus,
I hope you give me a electric train. I thank you for my toy last year. I thank you for the electric train that I want you to bring to me. I've been a good boy. Don't forget Gig & Scotty & Albert & Kirk & Wes, Jarret & Tommy & the girls in my kindergarten too! Does your belly really shake like a bowl full of jelly? I really love you.
Todd Besire
5 yrs. old

Dear Santa,
I want some finger-nail polish, a doll, and a play turtle.
Love,
Jamie Conner

Dear Santa,
I want a baby-alive, a play typewriter, a puzzle, a play chicken, a teddy bear, and some sea monnies.
Love,
Beatriz Garcia

Dear Santa,
I want a trailer, a car, and a car that runs on batteries.
Love,
Raul Amador

Dear Santa,
How are you and Mrs. Claus? Is Ruddolph and your reindeer strong? I will leave you some bread and milk.
I've been a good boy. Well I want some clothes. And a Big Jim. And a Texas Tech football suit. And a Dallas Cowboy suit. And a Ken, Bring Martin, Linda and me new coats. And a Evil Canevil.
Yours truly
Robert Nowlin

Dear Santa,
How are you doing and Mrs. Santa.

We are putting up our tree at school and the day I wrote this letter we put the balls on it and the star.
And I would like a tapere-corder and some nuts and a big big candy cane.
And my Dad would like a new billfold for Christmas.
And thats all this christmas.
Your friend
Dale Hughes

Dear St. Nick,
I am 8 years old and I go to school at Mary DeShazo. I live in Muleshoe, Texas. I live at 210 West 8th street. On Christmas I want a Verti-bird ship and tubes for my bike.
I want BBs for my gun and gloves and rubber boots.
Love,
Roby Wilson

Dear Santa,
My birthday is in October 19th and I am 9 years old. I shour hope I get over this cough I have. Once I was sick for a week but now I am weal.
Dear Santa,
I want a doll? And a baton?
And if you can I want a bike?
your Love
Kelly Bayless

Dear Santa Claus,
How have you been doing? And how is Miss Claus? I am fine. I have a little sister and brother my siste's name is Stephe, and my brother's name is Brandon. I live at Muleshoe, Texas. I goto school at Mary DeShazo. I am nearly nine.
Pleas bring me a New Born Baby tender love a Dina and a cradle.
Love,
Marleea Cox

Dear Santa,
I am eight years old and I am in thrid grade. My family has been nice to me. I have had fun this year. I am glad it's almost Christmas and you will be coming to town.
My sister wants a eight-track tape set and a punch right in the nose.
I want a paint-colt, bicycle, and a job.
Your friend,
Ervin Howell

Dear St. Nick
I am eight years old. I am in Miss. Henderson room. A freind of mine has a birthday the same day mine is. My birthday is January 15, I want a tenspeed and some pants.
Your friend
Denise Wilson

Dear Santa Claus,
How are you doing? I am ok I guess. How is your wife? How are your elves?
Santa this is what I want for Christmas. A bet with Misti on it, A ring with M. on it, A black and red cowboy suit, A Birthstone ring, My Birthstone is March.
Yours truly,
Misti Prater

Dear Santa Claus,
I wish I could see you, I think I should leave some cookies for you. I have been nice. Can you eat cookies? I am eight years old. I go to Mary DeShazo School. I live in a farm. I ride bus nine. I am glad you come in Christmas eve.
I think I want a football kick stand air pump.
Your friend
John Espinoza

Dear Santa Claus,
How are you I am fine I was sick to days But I am well my birthday is in August 1 1973 How is Miss Santa will you send me toys the best of all that I like is a doll and a dress best of all and a ball please.
Love friend
Sandra Martinez

Dear Santa,
I have been good this year. How are your raindeer. How is Miss Santa.
For Christmas. I want a Pellet Gun and a gokart.
Love
Lowery Pearson

Dear Santa,
How are you and Mrs. Santa? Hope you are fine. How are your elfs? I am eight years old. I go to school in Mary DeShazo. I have been good for you. I like very much. My sister Nancy, sends her love to you and Mrs. Santa.
Now I shall tell you what I what for Christmas. I want a tape recorder with a tape in it. And will you bring my brother Steven a talk and tell. I live in Muleshoe, Texas Rt. 2 Box 195.
Yours truly,
Patricia Garcia

I hope you are coming to my house Santa Claus. And if you are his my list of the thing I want. A Sweet Cokkie and a Eavy Bake Oven and a Bifou and a Sheet of my own and a Bicikl of my own and a Kiss for you, Santa Claus. Dear Mrs. Santa Claus. How are you doing Mrs. Santa Claus. I am doing find Mrs. Santa Claus.
Your friend,
Lena Jena Green.

Dear Santa
Please bring me some sol-deirs, some tennis shoes, and some cars.
Love
Benny Martinez

Dear Santa,
I want a doll, some clothes, shoes, a Snoppy toothbrush, and winter boots. And a sewing machine that works.
Love
Gina Lopez

Dear Santa
I want some Smash Derby's. For my little brother an airplane.
Love,
Santos Reyna

Dear Santa Claus,
I want a garden farm, a Jack-in-the-box, house shoes, a back hole digger and thats all.
Love,
Micheal Bynum

Dear Santa,
I want a tractor and a car. and I want a present for Mom and Dad.
Love,
Henry Hurtado

Dear Santa Claus,
I want a B-B Gun and a motor scotter, a car, a train, a truck thats all.
Love,
Jenero Gonzales

Dear Santa Claus,
I want a motor scotter, a snoppy toothbrush, I want a wagon and tractor and a santa claus and thats all.
Love,
Eddie Garcia

Dear Santa Claus,
A motorcycle, a tape recorder a mini-bike, a hot rod, a truck and thats all.
Love,
Albert Luera

Dear Santa Claus,
I want a truck, motorcycle, bicycle, tractor, big wheel, present, star, policecar, a little car.
Love,
Joey Soto

Dear Santa Claus,
A doll that makes cakes, and thats all.
Love
Gloria Ochoa

Dear Santa,
I want something for Christmas.
Love,
Vanassa Ogerly

Dear Santa,
I want a doll and a puzzle and a play Santa Claus and a train.
Love,
Linda Recio

Dear Santa,
I want a train and a gun that shoots round B B's and a record player for my little brother.
Love,
Steven Griswold

Dear Santa,
I want a B B gun. I've been a good boy.
Love,
Phillip Espisosa

Dear Santa,
I want a dolly, a bike, a play Santa Claus and a Christmas tree. I also want some clothes. I have been a good girl. I also want a play television and some shoes and a coat.
Love,
Rosemary Castorena

Dear Santa,
I want a doll and a refrigerator and a stove and a present and some puzzles.
Love,
Andrea DeLeon

Dear Santa,
I want a dolly and a table and a wagon and a play Santa Claus and a bike. That's all.
Love,
Angie Garza

Dear Santa,
I want a bike and a gun and a hat and a cowboy shirt and pants. I've been a very good boy.
Love,
Michale Lopez

Dear Santa,
I want a doll, some dishes, and a bicycle and a refrigerator and a teddy bear and a play Santa Claus and a play Christmas tree and a playtrain.
Love,
Stephanie Tubbs

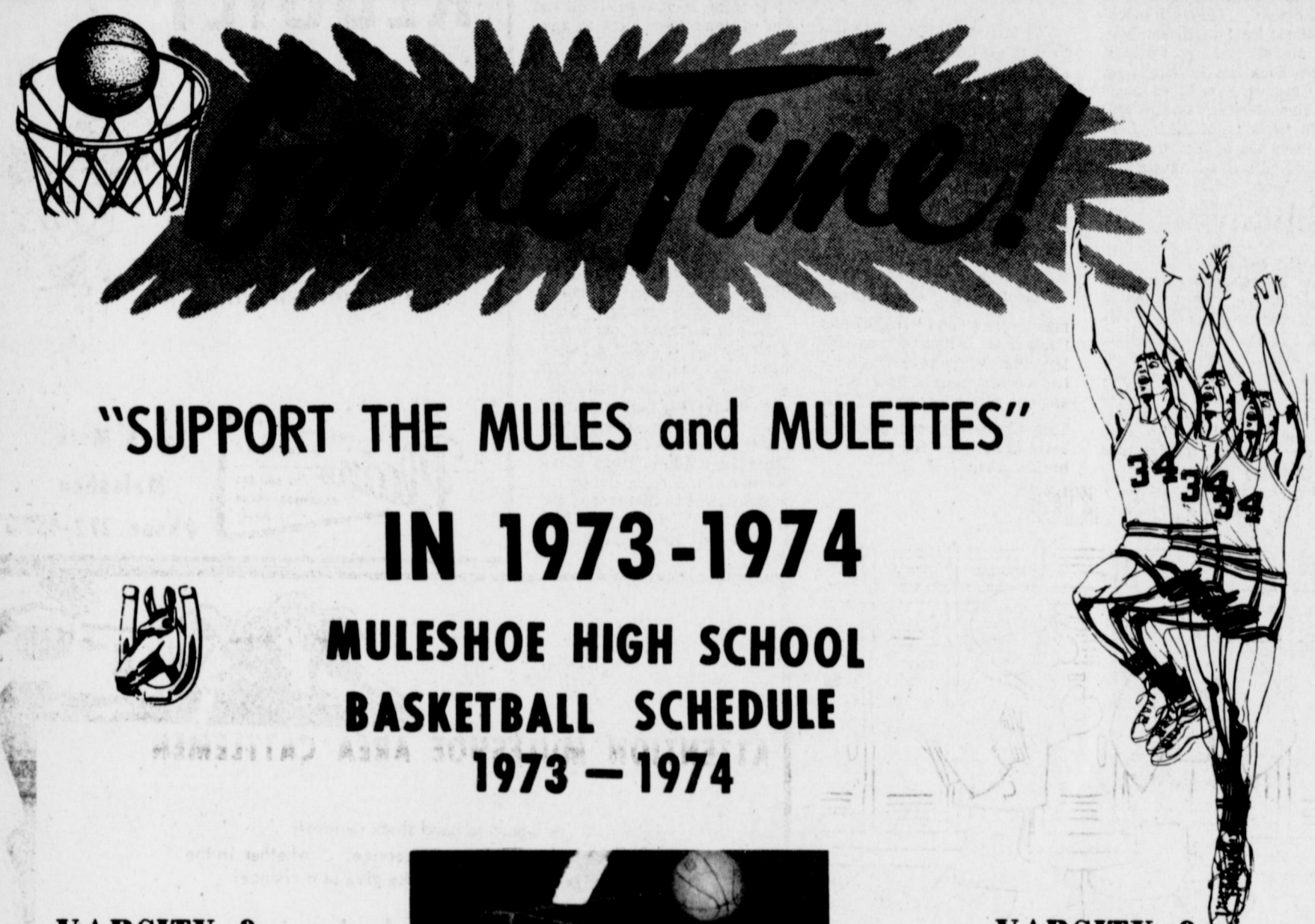
Dear Santa,
Please bring me a B B gun and a truck and a train and a tractor and a jeep and a car and a deer. Thank you.
Love,
Frank Arrendondo

Dear Santa,
I want a little truck and a car and a gingerbread man.
Love,
Rudy Andrade

Dear Santa Claus,
I wish for a football and a box of shoes. I want some clothes and I want a little television set. And I want a bike. And I want a football game.
Your Friend
William Orozco

Dear Santa Claus,
This year I have tried to be good. I would like a Light-Bright, a car racetrack, a pair of Boppers, a Camera, and some Dawn Clothes. Have a Merry Christmas and a Happy New Year.
Love,
Keva Roming

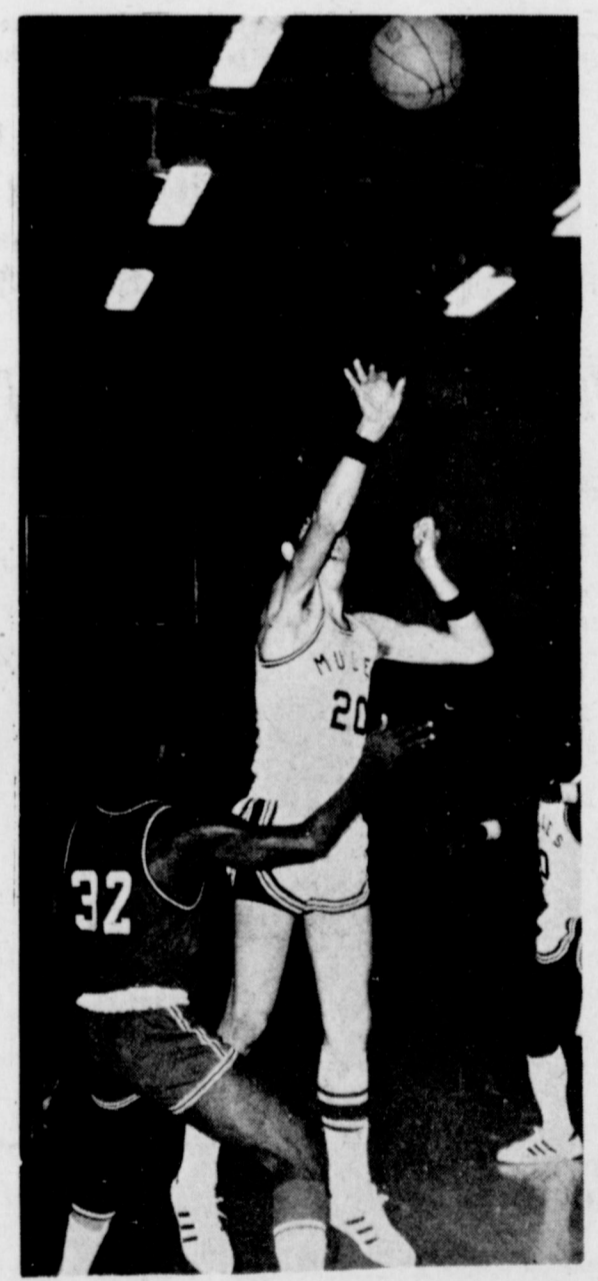
Dear Santa Claus,
I am glad Christmas near. I hope you are getting ready to come to the city. And I hope you are going to bring us some toys. I am nine years old my birthday is on July second. I hope you come to my house on Christmas night. I want you to bring me a set of dolls and a Sweet Cookie too. And a Early Bake Oven and a bat and ball to my sister. And a good wish to my other sisters.
Your friend
Barbara Pedroza



"SUPPORT THE MULES and MULETTES"
IN 1973-1974
MULESHOE HIGH SCHOOL
BASKETBALL SCHEDULE
1973 - 1974

Varsity & B Boys Teams
DEC. 18th
FRIONA THERE

DEC. 20th
OLTON HERE



Varsity & B Girls Team
DEC. 18th
FRIONA THERE

DEC. 20th
OLTON-THERE

- Dari Delite
- Whites Cashway
- Texas Sesame
- Corral Restaurant
- Beaver's Flowerland
- Western Drug Co.
- First National Bank
- Chow-Tex Feed Lots
- Lowe Pump & Drilling

- Cobb's
- Swap Shop
- Dinner Bell
- El Nuevo Leal's
- John's Custom Mill
- Muleshoe State Bank
- Blackwater Fertilizer
- Muleshoe Publishing Co.
- Gibson's Discount Center

- Eddie's Food Market
NEEDMORE
- Stockard Construction Co.
- West Plains Pharmacy
- Williams Bros. Office Supply
- Bailey County Electric Cooperative Association

FROM NELCO
THE MOST ADVANCED MACHINE
THAT SEWS THE MODERN WAY
FROM LEATHER TO LINGERIE

MAXI by NELCO

The only machine in the world where, with a flip of the finger you can create decorative embroidery and stretch fabric stitches from 3/16 (normal size) to 3/4 (giant size)

- Special stitches for sewing stretch fabric, lingerie, tricot, lycra and girldle fabrics.
- Makes the most unusual decorative stitches and buttonholes, just by flipping a button.
- 100% jamproof shuttle, no service.
- Truly portable, sturdy but lightweight.
- NO OTHER MACHINE IN THE WORLD WILL OUTPERFORM THE [MAXI by NELCO]

Friday & Saturday. DECEMBER 21st & 22nd ONLY
\$100 TRADE IN ON ANY MACHINE
precision made in Italy

The Facoty Representative
Will Be in Our Store To
Demonstrate The MAXI 3000
December, 21st and 22nd
Friday and Saturday
EVERYONE IS INVITED

HARVEY BASS
APPLIANCE

FREE COFFEE

Don't waste money on your home or auto insurance.
See
Harmon-Field Insurance
Phone 272-3522
104 E. Ave. C Muleshoe



CLASSIFIED ADS

THE PLACE TO LOOK



OPEN RATES
 1st insertion, per word-9¢
 2nd and add., per word-6¢
NATIONAL RATES
 1st insertion, per word-11¢
 2nd and add., per word-7¢
 Minimum Charge-50¢
CARD OF THANKS - \$2.00
 Classified Display-\$1.12 per column inch
 Double Rate for Blind Ads--\$1.15 per col inch for Rev. DEADLINE FOR INSERTION Noon Tuesday for Thursday Noon Friday for Sunday

WE RESERVE
 Right to classify, revise or reject any ad.
 NOT RESPONSIBLE
 For any error after ad has run once.

3.HELP WANTED
 WANTED: Typist, must type 50 words per minute at least. Inquire in person at Journal, 21s-3-1tp

WANTED: Typist & assistant bookkeeper. Must type 60 accurate words per minute. Please call Wooley-Hurst for appointment, 272-5514. 3-51t-tfc

WANTED: Experienced mechanic. Good pay scale. Good hours. Good working conditions. Apply in person, Town & Country Olds-Buick. 3-47s-tfc

WANTED: Beautician needed at once, call 272-3448. Main Street Beauty Shop. 3-40t-tfc

HELP WANTED: Feed Truck driver. Permanent job for qualified person. Apply in person to Hugh Collis, manager. Chow-Tex Feed Lots. 3-50s-2tc

EQUAL OPPORTUNITY EMPLOYER
 WANTED: Farm Manager. 2500 acres irrigated, mostly alfalfa. Bilingual. Agriculture degree or equivalent. Excellent opportunity for person willing to assume complete responsibility. Call 505-457-2503. 3-51t-tfc

WANTED: Feed Mill Manager. Must know mill operations and rations for cattle. Prefer bilingual person. 25,000 head capacity. South eastern New Mexico feed lot. Salary, commensurate with experience and ability to assume responsibility. Call 505-457-2503. 3-51t-tfc

5.APTS. FOR RENT
 FOR RENT: Furnished apartment. Bills paid. Call 272-3465. 5-51t-tfc

FOR RENT: 2 bedroom unfurnished apartment. Phone 272-4838. Smallwood Real Estate. 5-47s-tfc

FRIONA APTS. now have available 1, 2, & 3 bedrooms. Call 247-3666 or come by 1300 Walnut Street Friona. 5-29s-tfc

7.WANTED TO RENT
 Want to rent or lease irrigated land. Contact John Mitchell, 965-2160. 7-37t-tfc

WOULD LIKE TO RENT: Dry land in South Bailey County. Contact Vince Simnocher 946-2344. 7-45s-16tp

8.REAL ESTATE FOR SALE
 FOR SALE: 20 acres near Muleshoe. Price reduced for quick sale. Call 272-3658. 8-48s-6tc

FOR SALE: 40 a. of land 4 1/2 miles on 1760 joining highway with 1/4 mile side road. Call 272-4515 or 272-4709. 8-45s-tfc

FOR SALE: Two 50 ft. lake lots at Lake Clarendon, Sherwood Shares. Call 272-3658. 8-48s-6tc

FOR SALE: 3 bedrm., brick, 1 1/2 bath, carpeted, central heat and refrigerated air conditioning. 5% loan. Call 272-4429. 8-49s-4tc

FOR SALE by owner: Call Joan Gaston, 272-3232 or Evelyn Riley, 272-4775 or Bertie Nickels, 272-4669 for appointment to see house at 307 W. 6th. Guy Nickels residence. 8-42s-tfc

FOR SALE: 3 bedroom house, 1 full bath, 1 car garage. 1725 Ave. B. Phone 272-4709. 8-34s-tfc

KREBBS REAL ESTATE
 FOR SALE: 1 - 2 Br., 1 - 3 Br. 160 acres -Below Mkt., Irrig. Large tract dev. land.
 Listings appreciated.
 8-48s-tfc
201 S. 1st PH. 272-3191

JAMES GLAZE COMPANY
REAL ESTATE AND FARM & RANCH LOANS
 Phone 272-4549 219 S. 1st. 42t-tfc

FOR SALE
 One brick three bedroom home
 NEED LISTINGS FOR HOUSES AND ACREAGE
HOLLAND REAL ESTATE
 113 W. Ave D
 Phone 272-3293 day or night 32t-tfc

FOR SALE: 1 quarter section of land with well and base for circular sprinkler system. Also, nice 3 bedroom brick, one frame dwelling.
 See Lee Pool or Woody Goforth at Pool Real Estate. 8-46s-tfc

164 acre dryland \$150.00 per acre. 324 acres \$125.00 per acre. 22 miles southwest of Muleshoe. See Curtis Walker or call 272-3162. 8-38t-tfc

FOR SALE: 640 acres, Section 7, Block C Melvin Blum & Blum Survey, Bailey County. 500 in cultivation. Balance native grass. 1-4" well. Call Labcock, 792-7444 -night 885-2108 in Herliwood. 8-49t-tfc

FOR SALE: 1250 a, \$450.00 per acre, 10% down, 9 full 8" wells, 500 A alfalfa hay, 1800 head feed lot, tremendous depreciation, 7 sprinkler, 2 Butler buildings, 4 nice houses, excellent improvements, 2 miles west of Muleshoe on Highway 1790. Dial 806-763-5323 or 797-1716. 8-49s-tfc

FOR SALE: -67 acre with good 8" well high pressure pipe line and side-roll sprinkler system. \$575 per acre with terms or will trade. Call 272-3819. 8-40t-tfc

FOR SALE: 174 acres southwest of Muleshoe. Contact Mrs. Horace Byerley, Box 203, Petersburg, Texas. 8-51t-8tp

FOR SALE: 120 acres, 9 miles West of Muleshoe. Paved, nice home, 2 good wells, tile. 29% Call 925-3246 Larlat. 8-50s-2tp

FOR SALE: 2 bedroom house with attached single garage and utility room, joint owned storm cellar. Call 272-3658. 8-48s-6tc

FOR SALE: 1111 acres, 320 acres cultivated, 791 pasture, 6 room house, 1/2 minerals, \$140.00 per acre. 25% down. 354 acres irrigated, 3 box-cars, 3 room house, 4 wells, irrigation pipe. 1/2 minerals, \$410.00 per acre. 25% down. M.S. Childers. Phone 806-272-4347, Muleshoe. 8-48s-tfc

9.AUTOMOBILES FOR SALE
 FOR SALE: 1969 Riviera -47,000 miles. 272-3384 or 272-3800. 9-37s-tfc

FOR SALE: 1973 Ford Pickup, 3300 miles, Darrell Elliott, Call 965-2729. 9-49s-tfc

FOR SALE: 1970 LTD and 1972 Gran Torino. Call 272-4914.

FOR SALE: 73 LTD Braugham 2 door hardtop, beautiful blue metallic with vinyl top; loaded with optional equipment, Michelin Radial tires. Call 272-4203 or 272-4928. 9-41t-tfc

10.FARM EQUIP. FOR SALE
 WE PAY CASH for tractor and equipment of all kinds. Tom Flowers Auction, Inc. Day 272-4154 Night 10-2s-tfc

PVC plastic underground pipe. A.V.I. Inc. Phone 272-3565. 10-48s-tfc

VALLEY. SELF PROPELLED SPRINKLER SYSTEMS
 standard and reversing. Let us talk with you about our new 6-8-10 year lease. Programs which now include PVC plastic pipe. A.V.I. Inc. 1534 W. American Blvd. Muleshoe, Tex. Phone 806-272-3565. 10-48s-tfc

IL.FOR SALE OR TRADE
 FOR SALE: 1971 350 Honda XL. Call 272-3138 or see at 117 Main. Wilson Appliance 11-36t-tfc

FOR SALE
New & Rebuilt Kirbys
Carolyn Duncan
Ph. 272-4182 220W.10

Thinking about buying used furniture?
We Have It At The Swap Shop
Call 272-3074
213 S. Main
Muleshoe, Texas

MILLIONS of rugs have been cleaned with Blue Lustre. It's America's finest. Rent our Blue Lustre electric shampoo machine. Higginbotham-Bartlett 215 Main

13.PROPERTY FOR LEASE
 FOR LEASE: Modern Texaco station in Muleshoe. Inquire at Texaco Inc. Muleshoe, Texas or phone 272-4688. 13-46s-tfc

15.MISCELLANEOUS
 SAVE MONEY on vaccines, antibiotics, instruments and all animal health products. Affiliated supply, 1005 Ave. A or call 481-9234, Farwell, Tex. 15-38t-tfc

Cess Pool Cleaning
 Acid for Cess Pool Available
 Phone 272-3677 or 272-3467
 ELMER DAVIS

REAGAN ELECTRIC: Commercial, residential, industrial wiring and maintenance. Reagan Cox, Call 965-2781, Lazbuddie. 15-48t-8tc

WANTED TO BUY: Used propane tanks. Any size. Call 272-4678. Smith's L.P. Gas Co. 15-44s-tfc

FOR SALE: 8 foot Cabover Camper. Call 272-4485. 15-44s-tfc

WE STOCK bulk motor oil. A real money saver. Smith's L.P. Gas Co. Friona Highway. 15-43t-tfc

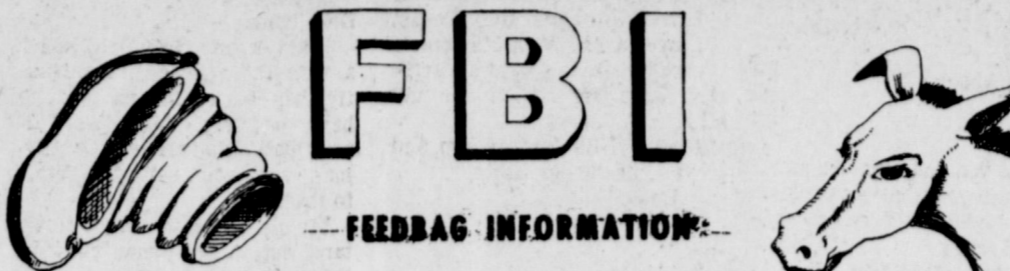
Must pick up small piano and Hammond organ by Dec. 20, will allow person with good credit to assume payments on either piano, organ or both. Call or write American Music Co., 207 E. 8th, Odessa, Tex. 79761, 915-332-2711. 15-49s-4tc

FULL BLOOD 7 week old male poodle for sale, Call 227-4331 or see at 507 Barnes, Sudan, Texas. 15-51t-2tc

ATTENTION HIGH SCHOOL SENIORS
 Don't wait until you're near graduation to apply for a choice position with the U.S. Air Force. You see, we schedule our jobs up to 6 months in advance, and many of the openings for May and June will be filled during the next few weeks. The earlier you apply, the bigger selection of jobs you will have. So, take advantage of your holiday vacation and see your local Air Force Recruiter. If you qualify, you can choose the job you really want, and be guaranteed it will be waiting for you when you graduate. Act now or the job you want may not be available.

SEE
SSG Sonny Smith 1215 1/2 Main
Clovis, New Mexico Phone 762-2000

At Muleshoe Junior High



Student Teachers At MJHS

by Shari Harlin
 On December 11, the student teachers from F.T.A. in High School observed some of the Jr. High classes. On December 12th they all came back to teach those classes in which they observed the day before. Following is a list of those who taught, and who they taught for.

Glenda Harlin taught for Mrs. Beddingfield; Jimmy Henderson taught for Mrs. Bruns; Beverly McCamish taught for Mrs. Perez; Dicky Hanks taught for Mr. Gregory; Ken Bales taught for Mrs. Gunter; Danny Vela taught for Mrs. McKillip; Debbie Jones taught for Mrs. Milburn; Kelly Head taught for Mrs. Moore; David Watson

taught for Mrs. Northcutt; Dicky Hunter taught for Mrs. Page; Gayla Hooten taught for Mr. Richardson; Sherman Presley taught for Mr. Rogers; and Sherell Bass taught for Mrs. Scoggin.

These high school students and others who are in F.T.A. will be teaching throughout the year for teachers in the Muleshoe schools.

The journalism staff would like to thank these students for doing such a good job and to welcome them back at anytime.

"B" Team Wins Over Olton

Edwin Watson
 Last Monday the Mules went to Olton to play their Colts. The Mules were hungry for a victory and they got it. They played good defense and good offense. They were mentally and physically ready. They went to the locker room at half time leading 15-9. The Mules came out in the second half and still played good ball. Edwin Watson was high point with 10. The other scorers were Martin Nowlin with nine, Trey Stoneham, Mike Lopez, Ricky Woodard, and Greg Haight all with two. The Mules won the game 27-17. Congratulations to the "B" team for a fine game.

THE MULES KICK



MY TEACHER WON'T LET ME USE MY ELECTRIC BLANKET!

DOG GROOMING-All Breeds-Reasonable fees. AKC Toy Poodle Stud service. For appointment call 272-4214. 15-51t-tfc

Public Notice

NOTICE TO ALL PERSONS HAVING CLAIMS AGAINST ESTATE OF JENNIE BEAVERS, DECEASED

Notice is hereby given that original letters testamentary upon the Estate of Jennie Beavers, Deceased, were issued to me, the undersigned, on the 17th day of December, 1973, in the proceeding indicated below my signature hereto, which is still pending, and that I now hold such letters. All persons having claims against said estate, which is being administered in the County below named, are hereby required to present the same to me at the address below given, before suit upon the same are barred by the general statutes of limitations, before such estate is closed, and within the time prescribed by law. My post office address is 521 West 8th Street, Muleshoe, Texas.

Dated this 17th day of December, 1973,
 Spencer Beavers, Executor of the Estate of Jennie Beavers, Deceased, No. 1053, in the County Court of Bailey County, Texas.

() Bailey County Journal (Outside Territory) \$4.50
 () The Muleshoe Journal & Bailey County Journal (Bailey & Surrounding Counties) \$5.50
 () The Muleshoe Journal & Bailey County Journal (Outside Territory) \$6.25
 () By City Carrier Boy Delivery \$6.00
 () The Muleshoe Journal (Bailey & Surrounding Counties) \$4.00
 () The Muleshoe Journal (Outside Territory) \$4.50
 () Bailey County Journal (Bailey & Surrounding Counties) \$4.00

"A" Team Defeats Olton

by Mark Washington
 The Mules played Olton in their last game and won 23-19. It was a close game down to the last minute of the game. With 58 seconds to go, Brad Baker scored 2 points to put the Mules ahead by 2 points. The Colts rushed their shot and the Mules got the rebound. The Mules passed the ball around and ran the clock down to 10 seconds. With that much time left, Dean Northcutt scored and the clock ran out. High point for the Mules was Dean Northcutt with 8 points.

Mullettes Defeat Olton

by Vicki Williams & Jamie Small
 Monday, December 10, the Mullettes A and B teams won both their games with Olton. The high scorer for the A team was Morgan Pena. The B team high scorer was Dani Dunham. Congratulations to these teams for their victory.

ENGINES REBUILT

Save yourself the expense of buying a new car or truck and have your engine rebuilt.



Plains AUTO PARTS
 P. O. Box 586
 MULESHOE, TEXAS
 79347
 South Main
 Muleshoe
 Phone 272-4576

ATTENTION MULESHOE AREA CATTLEMEN

... In regard to dead stock removal...
 If you have had a problem with service... whether in the feedyard or on the farm... please give us a chance!

Your local used cow dealer is **muleshoe bi-products**

Thank you
 Phone-965-2903
 Mobil Phone 965-2429

GIFT PROBLEMS WITH A GIFT THAT LASTS ALL YEAR

Just fill in the coupon, mail or bring to the Journal with your remittance, and we will start delivery on the date you specify.

The Journal is like a letter from home twice a week.

PHONE 272-4536

This is to certify that

Will receive

From The Muleshoe Publishing Co.
 With best wishes from



THE BEST THINGS FOR CHRISTMAS...



We Will Be Closed Christmas Day



ARMOUR SELF BASTING
Turkey

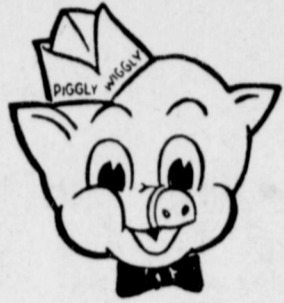
69¢
Lb.

Cudahy's Bar-S Half or Whole Waste Free

Boneless Hams \$1.79
Lb.

Country Manor or Garrard Fully Cooked
Canned Hams \$4.89
3-Lb. Can

Fresh Ham
Pork Roast 99¢
Lb.



PLANATION HEN

Turkey
75¢
Lb.

Superb Valu-Trim, Top Cut

Round Steak \$1.79
Lb.

Superb Valu-Trim Bottom Cut Cubed

Round Steak \$1.69
Lb.

Superb Valu-Trim

Rump Roast \$1.19
Lb.

Snow Hill USDA Inspected

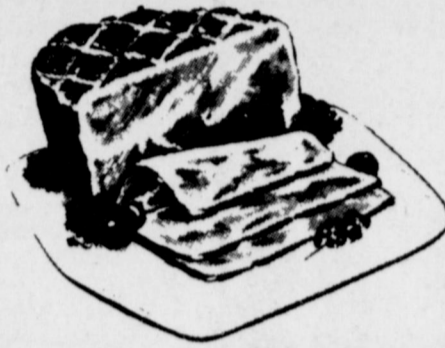
Stewing Hens 79¢
Lb.

Kraft

Blue Cheese 63¢
4-oz. Pkg.

Jimmy Dean — 24-oz. Pkg., \$2.16

Pork Sausage \$1.09
12-oz. Pkg.



Country Manor or Garland Canned
Boneless Ham

\$7.79
Waste Free
5-Lb. Can

Piggy Wiggly — 3-oz. Pkg. 17c

Cream Cheese 43¢
8-oz. Pkg.

Vac-Pac

Rodeo Bacon \$1.29
Lb.

Farmer Jones

All Meat Franks 99¢
Lb.

Honeysuckle, All White Meat

Turkey Roast \$3.98
28-oz. Pkg.

Checkerboard USDA Grade A

Game Hens \$1.30
20-oz. Pkg.

Checkerboard Frozen, With Giblet Gravy

Sliced Turkey \$1.89
28-oz. Pkg.

Prices good thru Dec. 22, 1973



Christmas
Poinsettias
\$2.98
Each

Delicious
Sweet Potatoes 19¢
Lb.

LARGE RED
Delicious Apples 25¢
Lb.

Tangy
Lemons 2 For 29¢

Holiday
In Shell Nuts 69¢
Lb.

Texas
Navel Oranges 17¢
Lb.



Plus Deposit

COCA COLA

32-oz Size
6 \$1
FOR

Piggy Wiggly Sparkling Water or

Ginger Ale 5 28-oz Btls \$1.00

Piggy Wiggly Corn or

Tortilla Chips 3 8-oz Pkgs \$1.00

Asst'd Flavors Bell

Chip Dips 3 8-oz Ctns \$1.00

Golden

Del Monte Corn 5 16-oz Cans \$1

Ocean Spray Juiced or Whole

Cranberry Sauce 16-oz Can 29¢

Jack O Lanterns

Canned Yams 3 29-oz Cans \$1.00

Walt's

Bartlett Pears 3 14-oz Cans \$1.00

Piggy Wiggly, Asst'd Flavors

Ice Cream 79¢
1/2-Gal Ctn



Holly

Sugar

5 Lb Bag
59¢
Limit one with \$7.50 or more purchase

Bell

Cottage Cheese 12 oz. Ctn. 45¢

Festive Bell

Egg Nog Qt 69¢

Delicious Bell

Sour Cream 3 8-oz Ctns \$1.00

Piggy Wiggly Green

Whole Beans 4 16-oz Cans \$1

Piggy Wiggly Asst. Colors

Paper Napkins 180 ct. 33¢

Giesha

Mandarin Oranges 11-oz Cans 29¢

All Grinds

Folger's Coffee Lb. Can 99¢

Farmer Jones

Brown & Serve Rolls 4 12 CT. PKGS. \$1



LIBBY'S

Pumpkin

2 16-oz Cans
2 39¢

Piggy Wiggly Regular Quarters

Margarine 3 Lb Pkgs \$1.00

Piggy Wiggly Country Style Sweetmilk or Buttermilk

Biscuits 10 10-Ct Cans \$1.00

Farmer Jones Sweet Cream

Fresh Butter 89¢
Lb Ctn

Halves or Pieces, Reg 79c

Azar Pecans 69¢
Pkg

Shady Lane Salad Maraschino

Cherries 10-oz Tars 29¢

Piggy Wiggly Asst'd Colors

Paper Towels 175 Sheet 1 Ply Roll 29¢

Piggy Wiggly

Liquid Bleach 25¢
1/2-Gal Btl

Dish Detergent

Ivory Liquid 48 OZ Btl. 89¢



Piggy Wiggly
100% Pure Florida Frozen

Orange Juice

5 6-oz Cans
5 \$1

Piggy Wiggly

Frozen Waffles 8 5-oz Pkgs \$1

Piggy Wiggly Frozen Brussel Sprouts or

Broccoli Spears 2 8-oz Pkgs 55¢

Piggy Wiggly Frozen Vegetables

Your Choice

Strawberries 2 18-oz Pkgs 79¢

Cut Broccoli

Strawberries 3 10-oz Pkgs \$1

Cut Corn

Strawberries 12-oz Pkg 79¢

Green Peas

Whipped Topping 10-oz Ctns 39¢

Trophy Frozen Sliced

Whipped Topping 10-oz Ctns 39¢

Sara Lee Frozen

Whipped Topping 10-oz Ctns 39¢