



THE MULESHOE JOURNAL

The Community of Opportunity-Where Water Makes the Difference

Weather

	HIGH	LOW
October 1	80	42
October 2	89	52
October 3	93	51
Rainfall to Date: 13.34		

VOL. 51 No. 40

8 PAGES

Published Every Thursday at Muleshoe, Bailey County, Texas 79347

10 CENTS

Thursday, October 4, 1973



FIRST BALE OF COTTON . . . Don Marlow brought in the first bale of cotton reported to the Journal in 1973. He brought it to the Needmore Co-op Gin in Needmore. The bale had 1640 pounds of seed cotton, 750 pounds of cotton seed and 480 pounds of lint. Marlow reported that he planted this cotton on May 4, 1973. Pictured left to right behind the bale of cotton are Leland Jones, A.L. Pace and J.M. Pace. Pictured beside the bale on the right is Dale Newson, manager of the Needmore Co-op Gin, and on the right is Marlow.

Hospital Tax Added To Tax Statement

County, State Taxes Rotary Governor To Show Tax Addition Visit In Muleshoe

Rotary District Governor Marshall Formby of Plainview will make his annual visit at the Muleshoe Rotary Club, holding a Club Assembly meeting on Monday night, October 8, and speaking at the regular Rotary Club meeting on Tuesday, October 9, at noon. Formby will discuss the program for the 47 Rotary clubs in this district for the coming year. The theme this year is "Its Time Now For Acting" and Formby will talk along these lines at the noon luncheon.

District Governor Formby is a well known West Texan having been a County Judge for Dickens County, State Senator, Chairman of the State Highway Commission, a member of the Texas Tech Board of Regents and now a member of the College and University Coordinating Board for Texas.

He and his partner, Clint Formby, own radio stations at Hereford, Levelland and Temple. Formby is a practicing attorney in Plainview. He is also a farmer and cattle feeder. He is married and has two teenage children, Frances and David.

Formby took over as governor of the 573rd Rotary District, which includes 62 counties, on July 1.



MARSHAL FORMBY

Bailey County citizens are receiving their 1973 state and county tax statements at this time and are noticing that a hospital tax has been added on to these taxes.

The Hospital tax has been levied by members of the Bailey County Hospital District.

A survey made by the Journal indicates some people do not intend to pay this hospital tax, but intend to send in the county, state and water taxes.

This tax levied by the Hospital District Board who ran for office against county taxes for a hospital, apparently is unable to raise the money to pay off hospital district debts by subscription.

The hospital tax levied is based on the county tax valuation.

In an article published in the Journal last July, Judge Williams pointed out that county taxes were out of adjustment and should be equalized.

Bailey County Judge Glen Williams said that this tax has been levied so the Bailey County Hospital District can pay off their debts.

It seems that although the district was voted to be abolished last March, a district such as this cannot be abolished until all debts are paid. Last March, two elections pertaining to the Bailey County Hospital District were held. One was a board of directors election and the other was an election to abolish the district, which carried.

Although the district was abolished in the election and by the state legislature, it cannot be dissolved until all of their accumulated bills are paid.

The Hospital District had two choices in how they could collect the money to pay off their debts.

They could have set up their own assessment operation by appointing a tax assessor and collector, building a tax role, assessing and fixing valuations on all taxable property in the county and then collecting their own taxes. This method would have required a great deal of time and would have cost the taxpayers more in the long run.

Or they could make arrangements with some established agency to collect the taxes for them.

So the Hospital Board asked the county Tax Assessor and Collector, Jean Lovelady to collect. Cont. on Page 3, col. 5



LARRY BYNUM

Andres Gonzales Wins This Week's Contest

Andres Gonzales took top honors in the weekly football contest this week, winning first place. Gonzales missed three

games, Kentucky-Indiana, Illinois-West Virginia, and Army-California. He was off 40 points on the tiebreaker. He will receive \$5 and 10 points in the contest.

Second place went to Howard Splawn who also missed three games, but was off 41 points on the tiebreaker. He will receive \$3 and six points in the contest. James Roy Jones won third place missing three games also. He was off 42 points on the tiebreaker and will receive \$2 and four points.

Still leading the contest is W.E. English with two big first place wins and 20 points. The winner of the contest will receive \$50 and two tickets to the Cotton Bowl game to be played in Dallas on New Years Day.

Anyone over 12 years of age is eligible to enter the contest each week. Only one entry per person. Deadline for entering is 5 p.m. Fridays. Mailed entries must be post-marked no later than 5 p.m. on Fridays.

In this week's contest, the majority of entries missed six games with only a few missing three games.

Services Held Monday For Larry Bynum

Funeral services for Larry Dale Bynum, 26, were held Monday, October 1, at 2:30 p.m. in the Trinity Baptist Church, Rev. V.L. Huggins, pastor of the church, officiated assisted by T.A. Mitcham, pastor of the Longview Baptist Church. Interment was in the Bailey County Memorial Park under the direction of Singleton-Ellis Funeral Home.

Bynum drowned Tuesday, September 25, after the amphibious plane he was in capsized. His body was found in the lake about 2 p.m. Sunday.

Bynum was born November 29, 1946 in Muleshoe. He was a lifelong resident of Muleshoe and a spray pilot for Lowe Spraying Service. He was a member of the Longview Baptist Church. Bynum married the former Kay Killingworth on February 3, 1968 at the Longview Church.

Survivors include the wife, Cont. on Page 3, col. 6

Judge Explains Duties Of Appointed Employees

"He that is greatest among you, let him be as the younger; and he that is Chief, as he that doth serve. But I am among you as he that doth serve." Thus spake the Master Teacher. So in the final analysis, the servant's position is the most trusted, vital, and important of all positions. For in his hands is placed the major portion of the business, political, and civic affairs of the nation.

This is as true in County government as it is anywhere. Elected officials do not do all

the work. Most of it is performed by second, third, and fourth level employees. They do it FOR the officials, and, in turn, for the people. By different levels, we have no reference to one person being better than the other, but rather, positions of employment, or lines of authority. For example, the truck driver is as good a person as the sheriff, the janitor is as good as the judge. But responsibility, with authoritative guidance, must rest somewhere. It rests with the elected officials, as indeed it must, and subordinates, whatever their position, are necessary assistants. Without them elected officials cannot successfully function.

A Commissioner, obviously, cannot operate his own road equipment. The Sheriff, alone, cannot patrol the County, answer all calls, make all arrests, do his office work, and attend to his many other duties. Neither can the Tax Assessor,

County Clerk, or Judge, personally attend to all the voluminous details of work in their offices. So equipment operators, deputy sheriffs, office deputies and secretaries are employed to help. Each elected official employs his own assistants. The Commissioner's Court determines the number of assistants an office may have, and fixes the salaries, but the official makes the appointment. For a successful relationship, it is necessary that an assistant, (deputy, clerk, secretary) believe in his/her employer, that there be no personality conflicts, that they have the same basic concept of governmental service; and there must be mutual trust and respect between them. Otherwise they cannot work together to the best advantage.

Equipment operators in Commissioner's Precinct 1, are Elmo Owen, Ronald Swanson, and Daniel Lopez, in Precinct 2, W.L. Middlebrooks, A.G. Taylor, and Hubert Gammons (part-time), in Precinct 3, E.J. Boyce, Roy H. Lackey, and Elwin B. Julian, and in Precinct 4, Goldman Stroud, Elwood M. Autry, and Tolbert Blackstock. These men operate motor graders that cost from \$30,000 to \$35,000 each, front-end loaders, trucks, and other equipment worth many thousands of dollars. Further-

more they work hundreds of miles of roads. Thus into their hands are placed tremendous responsibilities. They must be trustworthy - men that will properly care for the equipment, and pursue their work with proper devotion. In the course of their employment they contact nearly all the people of the County, and can either please or dis-please them. As is often said of a housewife, "they can either make or break

Cont. on Page 3, col. 1

FB Urges Leaders To Oppose Export Controls

Texas Farm Bureau President J.T. Woodson has urged congressional and Administration leaders to oppose export controls on agricultural products.

In a telegram to six national leaders, Woodson said exports are vital to balance of payments, domestic price stability, confidence in the U.S. as a trading partner, and position

of the U.S. in international trade agreements.

"Texas Farm Bureau members solidly support expanding exports of agricultural commodities and developing mutually advantageous trade with other nations," Woodson said in the wire.

Telegrams were sent to President Nixon, Agriculture Secretary Earl Butz, Treasury Secretary George Shultz, Cost of Living Council Director John Dunlop, and Texas Senators John Tower and Lloyd Bentsen.

The House recently passed a bill (H.R. 8547) to increase the President's authority to control exports of materials and agricultural commodities. The Senate is now holding hearings on similar bills (S. 2053 and S. 241) which would increase the President's authority to limit exports.

Woodson said some processors of agricultural raw materials are exerting influence on Congress and the Administration to limit exports.

The TFB president said "exports in recent months have brought decent prices and incomes to U.S. farmers and ranchers for the first time in memory."

The fiscal 1973 year exports The fiscal 1973 year export sales, which were 60 percent higher than a year ago, required the output of 85 million acres of the U.S. cropland--or the production of one of every four acres harvested.

Cont. on Page 3, col. 1

around muleshoe with the journal staff

Mrs. Robert Prather of Coleman visited with her mother, Mrs. George Neely and other friends and relatives. She left Monday morning.

John Blair, son of Mr. and Mrs. Bert Blair, of Muleshoe, Texas, and a senior at Subiaco Academy, has been named a semifinalist in the 1974 National Merit Scholarship Program, it was announced by Father Benno Schluterman, O.S.B., principal of the Academy.

As a semifinalist he will compete for over 300 Merit Scholarships to be awarded next spring. According to Edward C. Smith, president of the National Merit Scholarship Corporation, "The approximately 15000 semifinalists are representative of the nation's most academically talented young people, and they bring honor not only to themselves, but also to their families, their teachers, and their communities."

The semifinalists were the highest scorers in each state on the Preliminary Scholastic Aptitude Test / National Merit Scholarship Qualifying Test administered last October to over one million students. The Na-

Cont. on Page 3, col. 3

City Council Has Meeting Tuesday

Present at the City Council meeting Tuesday morning were Councilmen Max King, Clarence Christian and Kenneth Henry, and City Manager Jim Rankin.

The council discussed the recommendations of the Planning Commission and adopted standard engineering specifications. The Planning Commission was instructed to work on a zoning ordinance. Members of the Commission are Bob Finney, Doyce Turner, Melita King, Darlene Henry, J.W. Coppedge, Clarence Weeks and there is one vacancy.

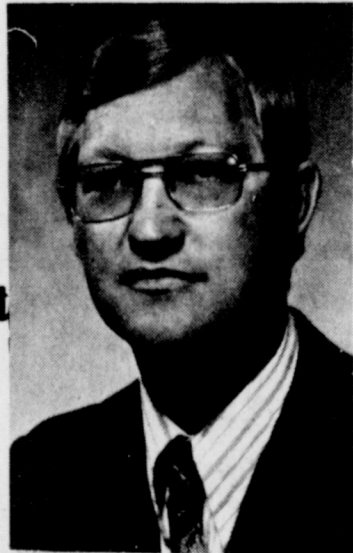
People from various neighborhoods will be invited to attend the commission meetings to comment and express ideas on various items brought be-

Cont. on Page 3, col. 5

Rotary Hears Lucky Spurlock Speak On Plant

Jeff Smith had charge of the program at Rotary Tuesday. His guest was Lucky Spurlock of Protein Processors. He explained that construction of one of three buildings is now underway east of the city. This building will be the shop. Next to be under construction will be an office building and the plant. The buildings are ex-

Cont. on Page 3, col. 1



A.J. ELLIS

Former Area Resident Receives Award

A.J. Ellis, a Maintenance Supervisor, was singled out for the Regional Manufacturing Supervisor Award for 1972. Formal presentation was made by Mr. Paul Saunders, Director of Manufacturing, J&J Sherman Plant, at ceremonies held at the Fairmont Hotel in Dallas.

A.J. joined Johnson & Johnson in 1962 as a Machinist while the plant was located in Dallas. He was promoted to the position of Shop Foreman in 1968, Maintenance Supervisor in 1969, and Maintenance Technical Supervisor in 1972.

A.J. is a graduate of Three Way High School. He and his wife, Jean, have three children and reside in Tom Bean, Texas.

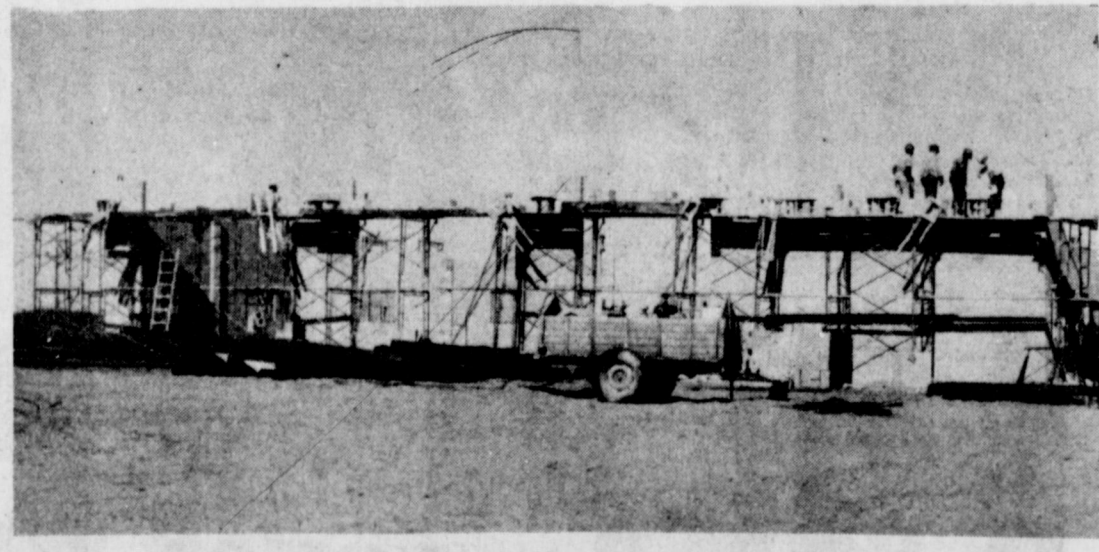
Local Cowboys Participate In Pampa Rodeo

Several Muleshoe cowboys participated in the Pampa High School rodeo last weekend.

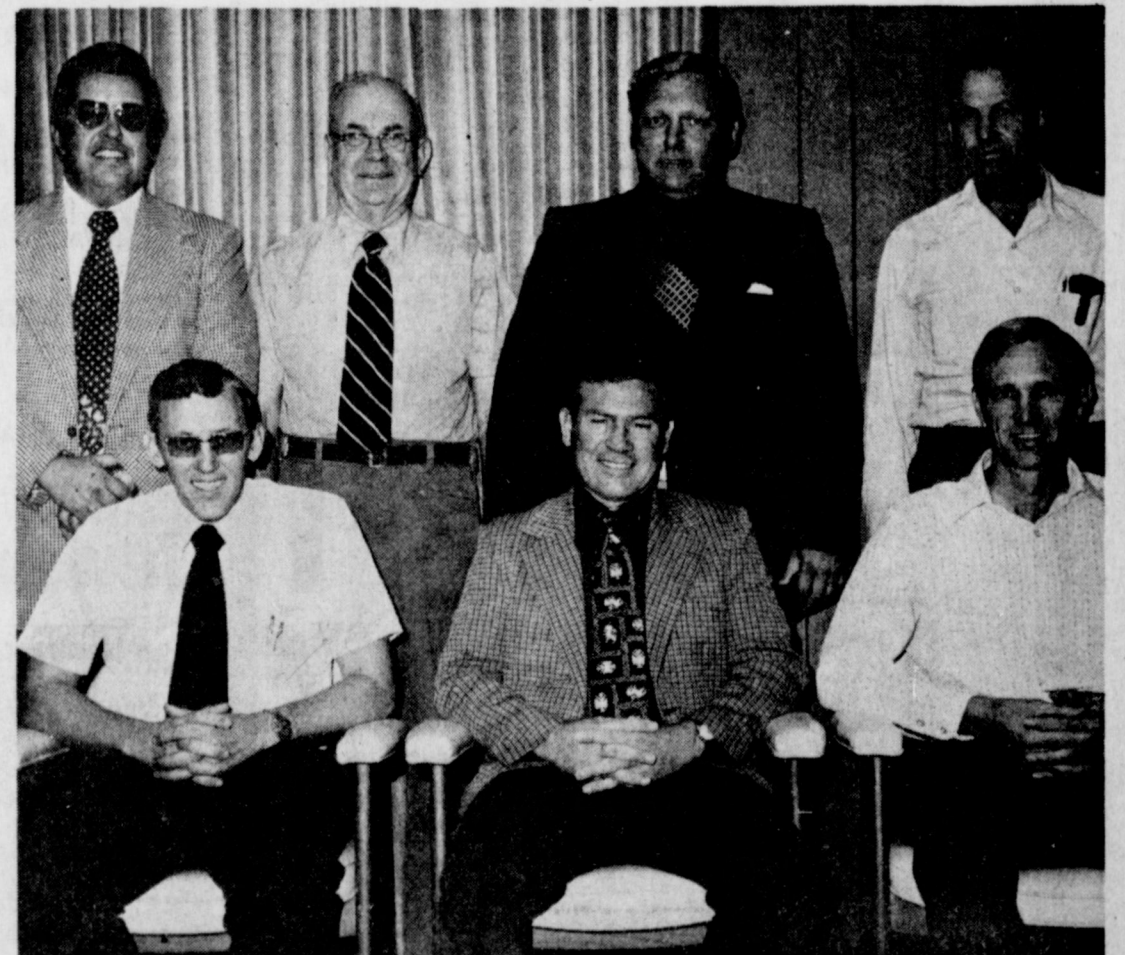
Entering the rodeo were Ross McKillip, Sherman Presley and Billy Milburn. McKillip won first in bull riding and Presley won third in ribbon roping.

Next Saturday a group of cow-

Cont. on Page 3, col. 2



PROTEIN PROCESSORS BUILDING This new building being constructed about three miles east of Muleshoe on the Lubbock Highway is the new shop for Protein Processors. It is the first of three buildings to be built. Next to be built in the multi-million dollar operation will be the office and then the plant. All three buildings are expected to be completed by the first of March next year. Plant manager at this time is Lyle King.



NEW CHAMBER OFFICERS Elected by secret ballot this past week were the new Chamber of Commerce and Agriculture officers and directors for the next year. Pictured left to right are David Sudduth, president; Kenneth Henry, vice-president; Gordan Wilson, secretary; Ted Barnhill, director; Earl Harris, director; Darrell Turner, director; and James Crane, director.

PIGGLY WIGGLY DOLLAR DAYS!

OPEN
7 A.M.-12 P.M.
 7 DAYS A WEEK
 End Cut
Pork Chops
99¢
 Lb.

Fresh, 5 to 7-Lb. Avg.
Butt Half Ham Lb. **89¢**
 Try Them Bar-B-Qued
Sirloin Pork Chops Lb. **\$1.19**
 Center Cut Pork
Loin Chops Lb. **\$1.48**

Prices good thru Oct. 6

 Pork, 5 to 7-Lb. Avg.
Fresh Picnic
75¢
 Lb.

Fresh Pork Neck Bones Lb. **49¢**
 Fresh Pork Feet Lb. **39¢**
 Fresh Side Meat Lb. **89¢**
 Loin Center, 3 to 4-Lb. Avg. Pork Roast Lb. **\$1.33**
 Fresh Boneless Pork Cutlets Lb. **\$1.29**
 Fresh, Semi-Boneless
Pork Butt Lb. **85¢**


 Center Cut Pork
Rib Chops
\$1.38
 Lb.

Center Cut Smoked Pork Chops Lb. **\$1.48**
 Farmer Jones Half Buffet Ham Lb. **\$1.99**
 Farmer Jones, Hot or Regular Roll Sausage 1-Lb. Roll **\$1.29**
 Farmer Jones Sliced Bacon 1-Lb. Pkg. **\$1.29**
 Farmer Jones Thin or Thick Sliced Bacon 2-Lb. Pkg. **\$2.57**
 Fresh Little Pig, Under 3-Lbs.
Spare Ribs Lb. **99¢**


 Delicious
Bananas
12¢
 Lb.

Firm, Green Bell Peppers Lb. **45¢**
 Firm Flavorful Red Ripe Tomato **29¢**
 Creamy Ripe California Avocados each **39¢**

Sweet, On-The-Cob Corn 2/35¢
 Delicious Yellow Squash Lb. **25**
 Tasty Jonathan Apples 3 Lb. **\$1.00**


Attractive Romaine Lettuce Ea. **25¢**
 Fresh Cello Carrots 1 Lb. Pkg. **18¢**


 Easy Open Zip-Top Cans
 Piggly Wiggly, Assorted Flavors
Canned Drinks
12¢
 12-oz. Cans


Cut, Green
Del Monte Beans 4 **\$1**
 16-oz. Cans
 Piggly Wiggly Cr./Rice, Cr./Chic., Cr./Mushroom, Chicken Noodle Soup 6 **\$1.00**
 10 1/2-oz. Cans
 Piggly Wiggly Mixed Vegetables 5 **\$1.00**
 16-oz. Cans
 Stokley's
Pineapple Juice 3 **\$1**
 46-oz. Cans

Save 45¢
 With this coupon at Piggly Wiggly when you buy one (1) 84-oz. Box

Tide **\$1.09**
 Powdered Detergent
 Without coupon \$1.54 Offer good thru Oct. 6, 193. 07980


 Van Camp's
Grated Tuna
3 \$1
 6 1/2-oz. Cans


Piggly Wiggly, In Juice
Hawaiian Pineapple 4 **\$1**
 15-oz. Cans
 Piggly Wiggly Whole Tomatoes 4 **\$1.00**
 16-oz. Cans
 Piggly Wiggly Spinach 5 **\$1.00**
 16-oz. Cans
 Piggly Wiggly Ass'td. Colors, 1 Ply
Paper Towels 4 **\$1**
 17-Sheet Rolls
 Betty Crocker Hamburger Helpers 2 **\$1.00**
 7-oz. Pkgs.
 Vet Beef or Liver
Dog Food 8 **\$1**
 16-oz. Cans
 Piggly Wiggly, Pink or Lemon Scented
Liquid Detergent 3 **\$1**
 Qt. Btl.


 Piggly Wiggly, Frozen,
 100% Pure Florida
Orange Juice
6 \$1
 6-oz. Cans
 Limit 6, please.

Piggly Wiggly
Tortilla Chips 3 **\$1**
 8-oz. Pkgs.
 Piggly Wiggly Green Lima Beans 4 **\$1.00**
 16-oz. Cans
 Ranch Style Blackeyed Peas 5 **\$1.00**
 15-oz. Cans
 Piggly Wiggly Assorted Colors
Bath Tissue 4 **\$1**
 375 Sheet 2 Ply 2-Roll Pkgs.
 Rosedale Green Peas 5 **\$1.00**
 16-oz. Cans
 Piggly Wiggly, Ass'td. Colors
Facial Tissue 4 **\$1**
 200-ct. Boxes
 Sudden Beauty Regular or Hard to Hold
Hair Spray 2 **\$1**
 12-oz. Cans

Golden
Del Monte Corn
5 \$1
 16-oz. Cans

IMPORTED FINE
Carolyn
 PORCELAIN CHINA
 BY CROWN VICTORIA


 This Weeks Feature
Dinner Plate Ea. **49¢**
 With Each \$3.00 Purchase

Wear-Ever Super-Chef Cookware
 with Teflon II
4 Cup Egg Poacher
\$5.99
 Only
 With Each \$3.00 Purchase

Judge...

Cont. from Page 1

Commissioner." Caring for expensive equipment so it will last a long time, knowing what a road should look like when it is finished, keeping roads smooth for school buses, mail routes, for the convenience of the traveling public, and for farmers to transport their produce to town, responding to personal requests or service, helping during storms, and in floods - these are the principal functions of notor grad operators and truck drivers. Such workers are in demand, and are badly needed by Commissioners - and by the public.

Really, it is not a bad job. The hourly wage might not be so good, but the fringe benefits are excellent, and the stability is unexcelled. A young man could take one of these jobs, and if he were loyal to his employer, consistently did a good job, and treated the people right, he could work at it as long as he lived, and was able to work - no matter how many times the Commissioner might be changed. He would be covered by Life and Hospitalization insurance, would make sufficient money to care for his family, and would build up substantial retirement and

FB...

Cont. from Page 1

Woodson said. Texas farmers' and ranchers' share of the 1973 fiscal year export sales amounted to almost \$800 million, he pointed out.

social security benefits to take care of him when he became old. And he would never have to look for another job - never. The Sheriff has three deputies - Irene Spahn, who attends the office and does the secretarial part of the work - "Bud" Street, and "Pete" Black, sometimes known as "Outside" deputies. Again, it is through his deputies that the Sheriff has major contact with the people, and in their hands a great portion of his affairs are entrusted. The office deputy answers the phone, and writes letters, and greets those who come to the office. The other deputies answer calls, work cases, make arrests, serve papers and perform many other duties for the Sheriff - and for the public. They can either make good impressions - or bad. They can help the Sheriff, or hurt him. He must depend on them, and trust them.

Officers are required by law to take formally structured police training. This is as it should be because today's criminal is quite sophisticated, and to cope with him, an officer must be well trained - and equipped.

Rodeo...

Cont. from Page 1

boys and cowgirls will be participating in the Caprock High School Rodeo at the Fair Park Coliseum in Amarillo. Going from Muleshoe will be Ross McPhillip, Dirk Green, Joe Pate, Jimmy Henderson, Sherman Presley, Eddie Mardis, Dan Ellis, Billy Milburn, Gene Rogers, John Saylor, Danny Lance, Gary Herring, Wayland Barker, Eddie Waggoner, Marshall Pool, Connie Floyd and Linda Vinson.

With the County Clerk, Tax Office, County Judge and Extension Service, the office girls are the real personalities of the office. They are more important than one might think. When a person comes to the office the secretary, or deputy, is generally the first person he sees. At that point he can be made to feel welcome, and that he will be waited on, with courtesy and efficiency. Or

Plant...

Cont. from Page 1

pected to be completed by March 1, 1974. The plant is anticipated to have drying capacity of 20 tons an hour. The plant will utilize alfalfa and corn.

The manager of the plant is Lyle King who has been with Morrison Grain Company for 17 years. Protein Processors is a joint venture between Purina and Morrison Grain Company.

Muleshoe...

Cont. from Page 1

tional Merit Scholarship Corporation identifies the semifinalists to all regionally accredited U.S. colleges and universities, thus facilitating the admission of the semifinalist to the school of his choice. To become finalists, the semifinalists must fulfill requirements that include endorsement of their schools, confirming their scores on a second examination, and by providing evidence of their academic and other accomplishments. Announcement of the finalists will come in April of 1974.

he can be made to feel otherwise.

Accuracy and loyalty on the part of subordinates is to be highly appreciated by elected officials. Officials will be praised if their secretaries are courteous, personable, and efficient; and will be blamed when they are otherwise.

Pauletta Crawford and Barbara McCamish serve in the County Clerk's office. Vanetta Thompson and Gayla Toombs, in the Tax Office, Dorothy Turner is secretary to the County Judge, and Deborah Goree works in the Extension Service Office.

It gives one a sense of security and encouragement to feel that matters will be handled properly, and the public treated courteously, even when he cannot attend to them personally.

Ruben Leal serves as caretaker for the courthouse, and is doing a fine job. Because of this, and because of recent repairs and improvements, the courthouse is as clean and inviting as it has been in recent years.

When one considers the constant cleaning, mopping, repair and painting, attending the lawn, running errands, and many other services performed by the janitor, it becomes instantly apparent that this is no small job. And the janitor is a very important person. We believe that nice, attractive county buildings speak well for a community, and will be appreciated by the public.

Tommy Williams, Ruth Briscoe, and Melba Cunningham serve as dispatchers. They take emergency calls when officers are needed, for fires, ambulance services, and other emergencies. This is important work, and must be done with dispatch and skill. They work long hours, late at night, and in the wee small hours of the morning while the rest of us are asleep.

James Gray is employed by the County as caretaker for the old Bailey County Cemetery, and for the other rural cemeteries of the County. We should give more attention to the cemeteries, because they have generally been neglected through recent years.

Thus, no writing on the subject of County government would be complete without giving credit to the deputies, clerks, secretaries, equipment operators, and other employees of the County. For they are a vital and necessary part of the whole, and should be thought of as such.

Courthouse News

NEW CARS

Eva Atwood, 1973 Ford, Frank Lane Ford, Troy Atkinson, 1974 Buick, Town and Country Oldsmobile-Buick, W.T. Millen, 1974 Buick, Town and Country Oldsmobile-Buick, D.M. McGuire, 1974 Oldsmobile-Buick, Howard Watson, 1974 Ford, Muleshoe Motor Co., Ricky Barrett, 1974 Ford Pickup, Frank Lane Ford, Ralph Beasley, 1973 Ford Pickup, Permian Ford, D.B. Head, 1973 Pontiac, Town and Country Oldsmobile-Buick.

Taxes...

Cont. from Page 1

fect the taxes for them using the Bailey County tax valuation.

The Hospital District Board of Directors itself levied a hospital tax of seven cents per hundred dollar valuation. This tax is included on the state and county tax statements this year. The district will have to pay the county a certain percentage of the money collected for a collection fee.

The money owed by the Hospital District is several thousand dollars and most of those bills are for bonds purchased by board members, election costs, attorney and legal fees.

Council...

Cont. from Page 1

for the commission. Crow Chevrolet received the bid award for a 1973 sedan submitting the low bid of \$3695, Muleshoe Motor Company's bid was \$3838 and Town and Country Oldsmobile-Buick's bid was \$3,735.

The city agreed to participate in paving the Country Club addition for a strip paved road running from Highway 84 on Houston Street to Fir Avenue. It was reported that additional paving was being planned in the Country Club addition.

Carroll Kelton, 1974 Chevrolet Pickup, Gwatney-Wells Chevrolet, Alton Louder, 1974 Ford Pickup, Muleshoe Motor Co., H.M. Gable and Sons, 1974 Ford, Muleshoe Motor Co., Benjamin Mata, 1974 Ford Pickup, Muleshoe Motor Co., R.L. Kimbrough, 1974 Chevrolet Pickup, Crow Chevrolet, Clark McCamish, 1973 Ford, Muleshoe Motor Co., Troy Scott, 1974 Chevrolet Pickup, Crow Chevrolet, Julio Garcia, 1974 Mercury, Muleshoe Motor Co., Gail Bizzell, 1973 Pontiac, Rierison Pontiac, Larry Vaughn, 1973 Chevrolet, Modern Chevrolet, J.C. Gatewood, 1973 Chevrolet Pickup, Crow Chevrolet, Mrs. Ira Martin, 1974 Mercury, Muleshoe Motor Co.

Bynum...

Cont. from Page 1

Kay; one son, Mike; his father, Edsel Bynum of El Paso; his grandfather, Roy Bayless of Muleshoe; one half sister, Kathy Blankenship of El Paso; one brother, Eddie Bynum of Lubbock, a half brother, Glen Blankenship of El Paso.

His family request memorials be made as a donation to the West Plains Memorial Hospital.

Pallbearers at the funeral were Don Sanderson, Kenneth Lowe, Willard Tibbets, Ronnie Haberer, Bill Bruce and Jimmy Bruton. Honorary pallbearers were L.L. Kitchens, W.B. Kirtrell, Homer Lackey, O.M. Lackey, Stan Seagroves, E.A. Glenn and Morgan Locker.

Muleshoe Journal, Thursday, October 4, 1973, Page 3

Frank Hernandez, 1973 Ford, Muleshoe Motor Co., Ruby Garner, 1973 Ford, Muleshoe Motor Co., MARRIAGE LICENSE, Santiago Malina, Jr., Edinburg, Texas, and Maria Delores Marquez, Edinburg, Jimmy Ray Fox, Wilson, Texas, and Beeky Ann Rudd, Olton, J. Faucundo Olivas, Muleshoe, and Domingo Toscano, Muleshoe, Rickie Dean Bradley, Muleshoe, and Mattie Irene Bean, Plainview, Ramonda Villalobos, Muleshoe, and Maria Rodriguez, Muleshoe, Wesley Owen Pool, Lingo, N.M., and Sandra Kay Simpson, Goodland, Texas, Kirby Martin Burch, Friona, and Vickie Sue Street, Muleshoe, WARRANTY DEEDS

John Lee Aylesworth to Bill Cookston and wife, Roslyn Cookston, a tract of land out of the northeast part of section Number 1, Block Y, W.D. and F.W. Johnson Subdivision Number 2, Bailey County.

John Lee Aylesworth to Bill Cookston and wife, Roslyn Cookston, a tract of land out of the northeast part of section Number 1, Block Y, W.D. and F.W. Johnson Subdivision Number 2, Bailey County.

Beatrice Violet Moore to Bill Cookston and wife, Roslyn Cookston, a tract of land out of the northeast part of Section Number 1, Block Y, W.D. and F.W. Johnson Subdivision Number 2, Bailey County containing 159.3 acres.

Bill Cookston and wife Roslyn Cookston to J.C. Mills all that certain tract of land out of the northeast part of Section Number 1, Block Y, W.D. and F.W. Johnson Subdivision Number 2, Containing 159.4 acres.

First Federal Savings and Loan Association of Clovis to Charles L. Pummill and wife Rhonda Sue Pummill, a rectangular tract of land 35 feet by 140 feet and being more particularly described as all of Lot Number 13 and the southwesterly 10 feet of Lot Number 14 in Block Number 7, Original Town of Muleshoe.

Alice Harry to Eldon Byars, all of Lot Number 10, Block 15, Original Town of Enochs, Bailey County.

U.S. halting aid projects in Uganda.

We Congratulate

Barry & Young Equipment Company

on their Grand Opening.

We were proud to do the wiring.

W.C. JONES ELECTRIC
5307 Ave. T Lubbock, Texas

Seven days a week dead stock removal please call as soon as possible



ATTENTION MULESHOE AREA CATTLEMEN

In regard to dead stock removal... If you have had a problem with service... whether in the feedyard or on the farm... please give us a chance!

Your local used cow dealer is **muleshoe bi-products**

Thank you
Phone-965-2903
Mobil Phone 965-2429

Congratulations

TO BARRY & YOUNG EQUIPMENT COMPANY

on your new building.

We were proud to be your General Contractors.

We Wish You Luck !!



HALLMARK

Builders

P.O. Box 16209

Lubbock, Texas 79490

Phone 795-9571

STORE HOURS
9AM TIL 8PM
WEEKDAYS
CLOSED
SUNDAY

GIBSON'S
WHERE YOU ALWAYS BUY THE BEST FOR LESS
GIBSON'S DISCOUNT CENTER
1723 WEST AMERICAN BLVD
MULESHOE, TEXAS

SPECIALS
IN OUR
DOLLAR DAY
AD CONTINUE
THRU
SATURDAY
OCT. 6th

GIBSON'S HOMOGENIZED MILK
1/2 GAL CARTON **57¢**

IVORY LIQUID FOR DISHES
32 oz. KING SIZE **56¢**

GIBSON'S SKIN CARE LOTION
16 oz. Btl. **29¢**

DOVE BATH SOAP
BATHSIZE **2/49¢**

CHIFFON PAPER TOWLES **3/87¢**

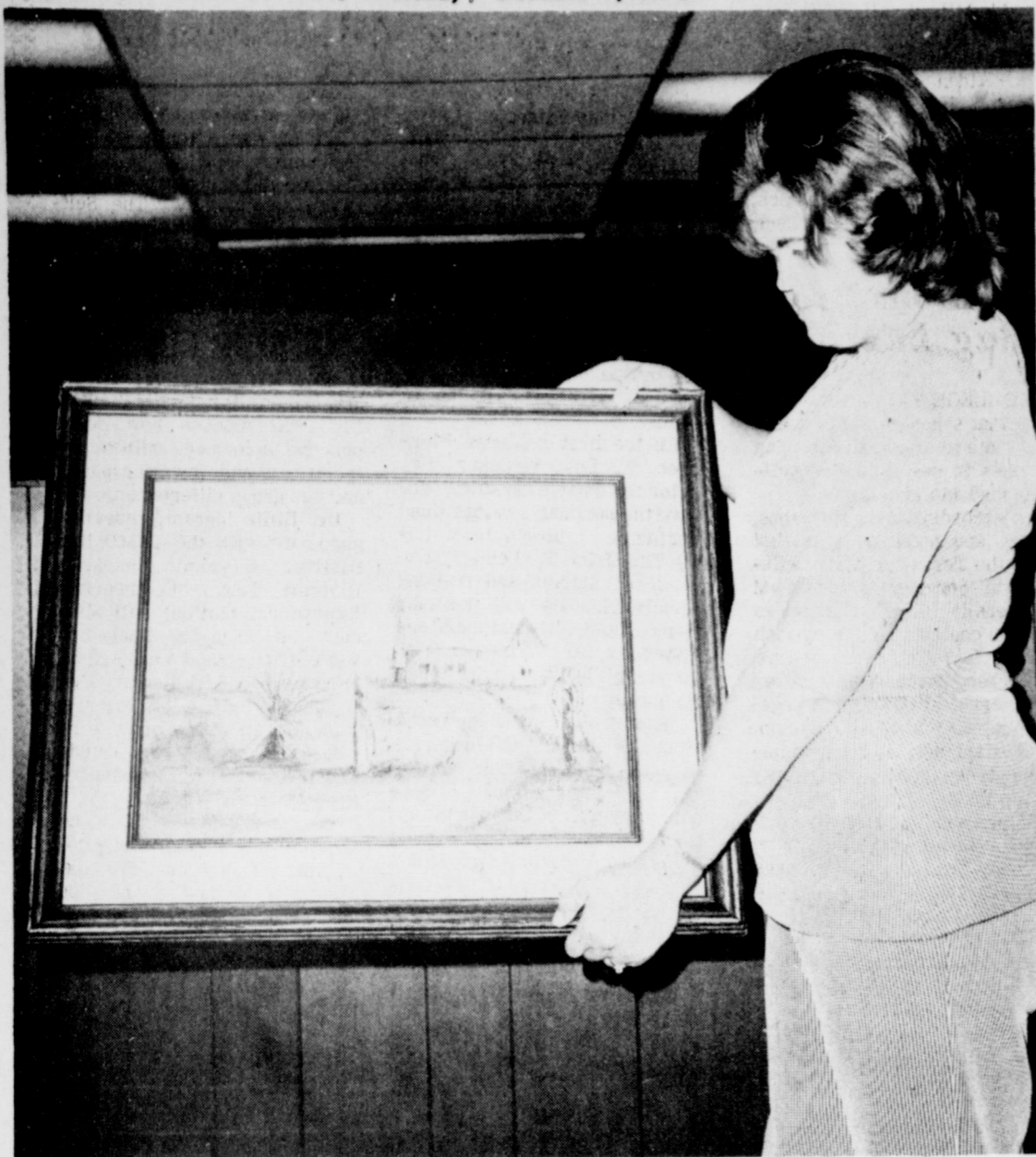
MEN'S INSULATED BOOTS
NO. 1563 **\$15⁹⁵**

CHIFFON 2-ROLL TOILET TISSUE
4 2 ROLL PKGS. FOR **88¢**

7-PC. ALUMINUM COOK SET
.16-4 POPPY
.16-5 AVACODO
.16-6 HARVEST **\$10⁷⁷**

RAPIDMAN 800 POCKET-SIZE ELECTRONIC CALCULATOR
AC ADAPTER INCLUDED **\$59⁵**

POLAROID COLORPACK CAMERA **\$29⁹⁹**



PICTURE TO BE GIVEN AWAY Mrs. Gary Skaggs is pictured with a hand painted picture to be given away after the Lazbuddie ball game Friday, October 6. The picture was donated by Mrs. Lillian Smith.

LHS Homecoming Activities Begin

Homecoming activities will begin Thursday night at 7:30 with a huge bon fire behind the Lazbuddie High School. All Lazbuddie boosters are urged to be present. Friday afternoon we will have a Pep Rally in the Gymnasium at 3:00. Public is invited!

Friday night the Senior Class is sponsoring a Barbecue supper in the Cafeteria. We will begin serving at 5:30 through 7:30 P.M., and will werve after the ball game until 11:00. Also after the ballgame pie and coffee will be on sale. Tickets for the Barbecue Supper will be Adults \$1.50 and all students under 12 years of age

\$1.00. Pictured above is a painting donated to the Senior Class by Mrs. Lillian Smith. She has painted this for us to give away. With each adult ticket for the Barbecue Supper you will begin a free chance to put in for the drawing. The painting will be given away after the ball game, approximately 11:00 p.m. YOU MUST BE PRESENT TO WIN. This is an original hand painted typical scene of the Lazbuddie Area, Painted by Lillian Smith. It will be on display in the High School all day Friday.

Candidates for homecoming are as follows: QUEEN; Nancy Bush, daughter of Mr. and Mrs. Max Bush Melanie Davison, daughter of

Mr. and Mrs. J.R. Davison Diane Coker, daughter of Mr. and Mrs. Roy Miller Hero: Bart Burnett, son of Mr. and Mrs. Orville Burnett David Buentello, son of Mr. and Mrs. Juan Buentello Jimmy Robinson, son of Mr. and Mrs. James Robinson.

True Test
No matter how busy a man is, he's never too busy to stop and talk about how busy he is.

Worthless
A nickel goes a long way these days—you carry one for a long time before finding anything it will buy.

American Heritage Observed By Club

The Muleshoe Study Club observed American Heritage Day with a meeting in the home of Mrs. Wilson Witherspoon Thursday, September 27, with Mrs. George Johnson as Hostess. The scripture was Proverbs 14:34 - "Righteousness exalteth a nation". Roll Call was answered by members and guests giving reasons why smiling comes easier in America.

Jaycee-Etts Have Two New Members

The Muleshoe Jaycee-Ettes met Monday, October 24 in the Muleshoe State Bank Community Room at 8:00.

Hostess was Mrs. Bill Dale. Alex Williams spoke on the "Development of Muleshoe". Two new members attended the meeting, Mrs. Terry Houchin and Mrs. Hugh Young. Other members attending were Mrs. Bill Dale, Mrs. Wayne Peterson, Mrs. Butch Duncan, Mrs. Steve Hamilton, and Mrs. Carter Reed.

The next meeting will be October 22.

NEW ARRIVALS

Sarah Kay Stevens

Mr. and Mrs. Kenneth Woodard Stevens of Clovis are the proud parents of a baby girl born September 26 at 1:10 p.m. in the West Plains Memorial Hospital of Muleshoe. The baby weighed 7 lbs., 13 ozs. and was named Sarah Kay. She is the couples third child.

Berta Gutierrez

Mr. and Mrs. Eufemia Ortega Gutierrez are the proud parents of a baby girl born September 29 at 4:36 a.m. in the West Plains Memorial Hospital in Muleshoe. The baby weighed 6 lbs., 3 ozs. and was named Berta Katherina Torres. She is the couple's second child.

Jory Ray McIntosh

Mr. and Mrs. Billy Ray McIntosh of Texico are the proud parents of a baby boy born September 30 at 9:45 a.m. in the West Plains Memorial Hospital in Muleshoe. The baby weighed 8 lbs., 7 ozs. and was named Jory Ray. He is the couples first child.

The editor of this paper might be willing to lend you his copy of The Christian Science Monitor.

But don't count on it. He's an expert newsman with access to many news sources and a good paper of his own. But he still wants to get the Monitor's worldwide coverage and commentary on events. Apart from 2,711 editors, there are 20,000 educators and students, 82,000 businessmen, 495 U.S. Senators and Congressmen, 3 Supreme Court Justices who read the Monitor. Why should they know more of what's going on, and why, than you do? For less than 11¢ a day, you can get your own special insight into the news. Everyday, like they do.

Send me 4 months of the Monitor — over 100 issues — for only \$11.

Payment enclosed Bill me later

Name (Please print) _____

Address _____

City _____

State _____ Zip _____

The Christian Science Monitor®
Box 125, Astor Station
Boston, Massachusetts 02123

Texas Federation Of Women's Clubs

Caprock District, Texas Federation of Women's Clubs, will hold its Fourteenth Annual Board Meeting and Workshop at the First United Methodist Church in Tahoka on October 13, 1973, with registration beginning at 8:30 a.m.

Mrs. O.C. Rampley, President of the 19-county area that comprises Caprock District, has announced that there will be workshops in areas of interest to all Federated club women.

Guest speaker for the Luncheon Meeting will be Mrs. Harriet Whitley, First Vice President of the Texas Federation of Women's Clubs.

Hostess clubs for the annual meeting will be the Phebe K. Warner Study Club of Tahoka and the 1946 Study Club of O'Donnell. The Anton Study Club will provide the Luncheon entertainment.

The Caprock District Theme for this biennium is: "Sustaining American Youth — through Love and Understanding." The Theme for the Board Meeting will be: "Stay Young at Heart."

Interested club women from other Districts are also invited. Advance registration is requested, but not necessary in order to attend.

Those attending were: Mrs. Allo Reeve, Mrs. Doris McGill, Mrs. John Agee, Mrs. J.G. Arn, Mrs. Joe Costen, Mrs. Rufus Gilbreath, Mrs. R.O.

The Day Of The Fat Soprano Has Passed

There will be no such phrase as "The same old thing" at work when Mary Costa returns to the stage of the Lubbock Municipal Auditorium for her second appearance with the Lubbock Symphony Orchestra. At 8:15 p.m. on Monday, October 15, the Lubbock Symphony will begin a new and even more promising season than any in the past. Sporting not only a beautiful voice, but also the appearance and grace of a princess, Miss Costa sang her way into that little space in the heart reserved for special people when she appeared last year and returns upon repeated requests from Symphony patrons.

Having worked with the Metropolitan Opera and currently appearing under the auspices of Sol Hurok, Miss Costa launched her career as the voice for Sleeping Beauty in the Walt Disney production but began her venture into opera after encouragement from Jack Benny.

A down home girl from Knoxville, Tennessee and later Glendale, California, Miss Costa was encouraged from the beginning by her mother and studied music at U.C.L.A. even though the death of her father placed the burden of helping support the family upon her.

Since being signed by Sol Hurok, she has sung with nearly every major orchestra and opera company in this country and on such T.V. shows as the Dinah Shore Chevy Show, Hollywood Palace, the Frank Sinatra Show, and the Jim Nabers Show. In 1964 she made her debut at the Met in "La Traviata."

Patterson Greene of the Los Angeles Examiner recently exclaimed of Miss Costa, "WHY DOES ONE GIRL HAVE TO

HAVE EVERYTHING?" Miss Costa received an honorary degree from Hardin Simmons University in Abilene in August of 1973 and Dr. O.W. English of Lubbock, serving on the Board of Directors of the college had the privilege of voting for her.

Mary Costa's returning repertoire will include "The Waltz Song" from ROMEO AND JULIET by Gounod; "Song to the Moon" by Dvorak; "Glitter and Be Gay" from CANDIDE by Bernstein; "Marietta's Lied" from the DEAD STATE by Korngold; and "Entrance of Maritza" from COUNTESS MARITZA by Kalman.

Season Tickets for the Lubbock Symphony will be available through October 10 and can be purchased at the Symphony office, 1721 Broadway, Lubbock, Texas, 79401. Phone (806) 762-4707. Season Tickets prices are \$18.00, \$15.00, \$10.00 and \$7.50 and student prices are half the regular adult prices for the season only. Single admission tickets will be on sale starting October 11 at \$5.50, \$5.00, \$4.00, \$2.50 and \$1.00. On the day of the concert all tickets will be available at the Lubbock Municipal Auditorium on Tech campus.

Enough
The new father says that he didn't get to see all of the stork that brought the new baby, only the bill.

—Chief, Perry, Ia.

Reasonable
If you can't think of any other way to flatter a man, tell him he's the kind who can't be flattered.

—Appeal, Memphis.



Lumber is in the Yellow Pages



we're having a


Garage Sale

In other words,
We want to sell you a beautiful 1974 Chevrolet for your garage! Come on in ... You won't find a better deal or a better car!



CROW CHEVROLET

201 Main Muleshoe Phone 272-3100



Personnel of Barry & Young Equipment Company: Top row, L. to R., David Routen, Jim Carpenter, H.A. Douglass, Marcia Henry, Glen Watkins, & Delbert Barry. Bottom row, L. to R., Jimmy Winn, Bill Bovell, Ronnie Spies, J. I. Brothers, and Charles Moraw.

The personnel of Barry and Young Equipment Co. extend an invitation to the public to attend the Grand Opening of their new headquarters at 803 West American Blvd. Friday & Saturday, October 5th & 6th

Case Barry and Young Equipment Company

Phone 272-4236 803 W. American Blvd.



AUGUST BIRTHDAYS . . . Mattie Hammons, Pear Miller, Veda Daugherty, Lillie Spikes and Nettie Parsons all had August birthdays and celebrated their special day last week at Bowie Con-

Enochs News
By Mrs. J. D. Bayless

Grandpa E. A. Bass was transferred from Morton hospital to Lubbock Wednesday.

Mr. and Mrs. W. B. Peterson and son Morris and family spent Monday till Wednesday at Channing with their daughter, Rev. and Mrs. Harold Abney.

Mrs. J. D. Bayless drove to Odessa Thursday morning and spent till Saturday with her daughter, Mr. and Mrs. Leland Finley.

Mrs. L. E. Nichols children surprised her with gifts, a birthday cake and home made ice cream last Sunday afternoon her birthday was the 9th, last Sunday was her granddaughters birthday, Tonya, who was three.

Mrs. Neva Joyce Brannan and Mrs. Francis Riley of Andrews visited their father, L. C. Harris Wednesday.

Mrs. Scillian mother of Mrs. E. C. Gilliam was admitted

HELP WANTED

Missouri Beef Packers, Inc. is now accepting applications for female production workers. No experience necessary, but must be willing to learn and work. This is year around employment, not seasonal work. We offer paid vacation, paid holidays, company paid group hospitalization insurance, and good wages. Apply at personell office, Missouri Beef Packers, Inc., Friona, Texas, 4 miles west of Friona on highway 60. EQUAL OPPORTUNITY EMPLOYMENT

Market Report

COLLEGE STATION-----
Due to higher prices, consumers have been buying less expensive cuts of meat--and less meat in general, instead they're purchasing more meat alternatives.

"As a result, our present meat consumption (per capital) is running fully 10 percent below 1972--at the lowest level in nearly seven years," according to Mrs. Wendolyn Clayatt, consumer marketing information specialist, Texas Agricultural Extension Service, Texas A&M University System.

However, this week finds meat counters mostly full with a wide variety of cuts to select from, she added.

"In general, look for best beef buy on chuck roasts and steaks, round steaks, ground beef and liver.

"Fresh pork, on the other hand, is in greater supply and usually a good value. Boston butt roasts, shoulder and rib chops, shoulder steaks, quarter-loins sliced and small picnics are featured in some markets."

The specialist noted that fryer chickens usually present bargains when purchased whole and cut-up at home.

"Egg supplies continue ample with prices lower than a couple of weeks ago. Watch for more medium - sized eggs in stores.

"Salad lovers will have no problem building a meal--in one these days," Mrs. Clyatt continued.

"Combine lettuce and other greens, celery, green peppers, radishes, onions and tomatoes. Add cold cuts, cheese strips, hard cooked eggs or cooked fish for protein.

"Salads of this type offer appetite appeal and stretch protein dollars."

Vegetables in good supply at the most economical prices include head lettuce, celery, collards, mustard greens and cuscaw. Also carrots, tomatoes, green peppers, squash, dry yel-

Krebs Reunion

Mr. and Mrs. K.K. Krebs hosted the Krebs family reunion in their home at 1004 W. 6th Sunday, September 30. Assisting them in the hospitalities were their son and family, Mr. and Mrs. Dale Krebs and DaLynn of Amarillo.

Those attending were Mr. and Mrs. Jack Krebs, Hobbs, N.M.; Mr. and Mrs. C.W. Krebs, Tulsa, Oklahoma; Mr. and Mrs. H.G. Krebs and Mark, Arlington; Mr. and Mrs. Ralph Krebs and Steve, Lubbock; Miss Francille Krebs, Midland; Miss Carlene Smith, Midland; Mr. and Mrs. Pat Donley and children, Lubbock; Mrs. David Woody and children, Lubbock.

WEST PLAINS HOSPITAL Hospital Briefs

ADMISSIONS
Mrs. Herbert Pugh, Shirley Jo Tigue, Mrs. A.E. Scarbrough, O. C. Hall, Mrs. Nelly Caprow, Mrs. Francisco Torres and baby girl, Mrs. Patricia Orazes, Mrs. Jane Walston, Mrs. Cleo Beller, Leonard Evans, Mrs. Billy McIntosh, and baby boy and Mrs. Viola Daves.

DISMISSALS
C.D. Alexander, Sam Barrow, G. L. Dale, R. D. Dale, Jesus Maldonado, Miss Linette Newman, Mrs. Rachael Rivera, Mrs. Curtis Walker, A.V. Wood, Mrs. Billy McIntosh and baby boy, Mrs. Patricia Orazco, Mrs. Ruby Harris, Mrs. Francisco Torres, O.C. Hall, Miss Shirley Tigue, Jame Kinard and Isabel Pepper.

Mrs. Frank Ellis Is AAUW Speaker

The Muleshoe Branch of American Association of University Women met Monday, October 1, at 7:30 p.m. in the home of Mrs. Jim Shafer.

Mrs. C.E. Moore and Mrs. Joe Costen were co-hostesses. The study topic for the Muleshoe Branch is "Dynamic Learning: Releasing Human Potential."

Mrs. Robert Hooten, Implementation Chairman, introduced Mrs. Frank Ellis who orientated the members in the study of the book, "I'm OK, You're OK", a practical guide to Transactional Analysis by Thomas A. Harris, M.D.

"Transactional Analysis is a new breakthrough, one that confronts the individual with the fact that he is responsible for what happens in the future, no matter what has happened in the past. It distinguishes three active elements in each person's make-up: the Parent, the Adult, and the Child (P-A-C)," Mrs. Ellis pointed out.

She also reviewed Dr. Harris's explanations of the four life positions underlying people's behavior. They are: (1) I'm Not OK - You're OK (the anxious dependency of the immature); (2) I'm Not OK - You're Not OK (the "give up" or despair position); (3) I'm OK, You're Not OK (the criminal position); and I'm OK, You're OK (the response of the mature adult, at peace with himself and others).

In summary Mrs. Ellis quoted from Dr. Harris, "Society cannot change until persons change. We base our hope for the future on the fact that we have seen persons change."

Miss Virginia Bowers, president, presided during the business session and called for committee reports.

Mrs. Jack Rennels, Cultural Interests Chairman, announced that the Children's Theater presentation of "Androcles and the Lion" will be given by the Muleshoe Drama Department on December 4.

Mrs. Eric Smith handed out the new Yearbooks and previewed the year's program.

If any woman college graduate is interested in joining the American Association of University Women, please contact Mrs. Mabel Wolfe, phone number 272-4487, membership chairman.

ESA Has Kidnap

Epsilon Sigma Alpha hostesses, Mrs. Bob Wilson and Mrs. Dick Howard, kidnapped members, rushees and guests for the monthly social.

The kidnapers abducted everyone Thursday morning, September 27 in the early hours for a morning breakfast in the home of Mrs. Bob Wilson.

Breakfast served to guests and rushees were: Mrs. Larry Weaver, Mrs. Don Golden, Mrs. Jim Rankin, Mrs. Richard Mitchell, Mrs. Joe Ellis, and Mrs. Charles Mayhugh. Members attending were: Mrs. Bob Wilson, Mrs. Dick Howard, Miss Janet Ellis, Mrs. John Blackwell, Mrs. Jim Crawford, Mrs. Jerry Harrison, Mrs. Jack Rennels, Mrs. Ed Cox, Mrs. Carter Williams, Mrs. Jerry Caswell, Mrs. Hugh Young, Mrs. Clifford Black and Mrs. Ronnie Barrett.

Gerald Allison, Miss Virginia Bowers, Mrs. Joe Costen, Mrs. Neal Dillman, Miss Carol Haire, Mrs. Alden Henderson, Mrs. Robert Hooten, Mrs. C.E. Moore, Mrs. Jack Rennels, Mrs. Robert Sanders, Mrs. Jim Shafer, Mrs. Eric Smith, Mrs. John Watson, Mrs. R.G. Wilson, Mrs. Mabel Wolfe, and one guest, Mrs. Frank Ellis.

Nutritious Brown Bag Lunches

COLLEGE STATION-----
Now that school is in full swing it's time to examine brown bag lunches to see if they're well-balanced and wholesome.

According to Judy Grubbs, foods and nutrition specialist with the Texas Agricultural Extension Service, Texas A&M University System, lunches should contain foods from each of the four basic food groups. "These groups--meat, bread and cereals, fruits and vegetables, and milk--all provide important nutrients for building strong bodies and energy for work and play."

Since sandwiches are favorites for brown bag lunches, try variety by using meat, eggs, peanut butter of cheese, the specialist suggested.

"A growing child needs at least two servings of this meat group daily to grow properly. "Include bread or cereal in the lunches. Besides sandwich bread, try dry cereals or crackers--they're good choices, and children like them.

"Children need at least four servings of bread and cereals daily."

Also use fruits or vegetables for a variety of textures. Containers of fresh fruits or dried fruits, such as raisins, have good flavor and make excellent desserts. Finger foods, like fresh vegetables, are easy to handle and popular, Miss Grubbs noted.

"Four or more servings of fruits and vegetables should be eaten by children every day. "Fluid milk, ice cream and cheese give lunches the needed milk group. Children need three or more cups of milk daily, while teenagers need at least four.

"Remember to include each of the food groups in brown bag lunches for nutrition and variety," the specialist concluded.

SMILES

Unfinished
A man had been talking for hours about himself and his achievements.

"I'm a self-made man, that's what I am--a self-made man," he said.

"You knocked off work too soon" came a quiet voice from the corner.

Too Much
A widely traveled sportsman was boring guests with a series of long talks about his exploits. "While I was wandering through this deserted village I spotted a leopard," he said.

"That does it," said one of his listeners. "I always knew he was a liar. Leopards come that way."

There're two things that lead to error: a speaker with a loud voice and one with deep emotion.

1973 Young Adult Seminar

COLLEGE STATION-----
Texas County Extension agents home economics will receive training concerning young adults and their relationship to society Oct. 1-5 at Texas A&M University.

Held in the J. Earl Rudder Conference Center and sponsored by the Texas Agricultural Extension Service, Texas A&M University System, the in-service workshop will feature various authorities in the field.

On the first day, Mrs. Florence W. Low, assistant director for home economics, will give the seminar's welcome and challenge, followed by a talk by Dr. John T. Pelham, Extension studies and training specialist. He will describe demographic data and social and psychological characteristics of young adults and older teens in Texas.

Mrs. Toby Schreiber, TAMU Dean of Women, will moderate a panel of adolescents and young adults discussing interests and concerns of this age group.

Three Way News
By Mrs. H.W. Garvir

Mrs. Freda Lowe is a medical patient in a Littlefield hospital.

Mrs. Scott Reed from San Antonio spent the past week visiting her parents the Elmer Lees.

The Three Way school turned out Monday and teachers and children attended South Plains fair in Lubbock.

Mr. and Mrs. D. L. Tucker, Mrs. Beadie Powell and Mrs. Sally Robinson were in El Paso the past week on business.

Mr. and Mrs. D. S. Fowler returned home Monday from Dallas where they went to visit their son-in-law, Buddy Cook who is an accident patient in Baylor hospital in Dallas.

Mrs. W. H. Eubanks and daughter, Joy, spent the past week visiting her brother and family the Dutch Davises in Farmington N.M. and on to Moab, Utah to visit her brother Lowell Davis and family and seeing other points of interest in Utah and New Mexico.

learning experiences and acquaint participants with the impact of young adults on contemporary society.

Tuesday's conferences will be highlighted by "The Self-Concept of Young Adults" and "The Relationships of Young Adults with Other Age Groups" by Dr. Millard Bienvenu.

The professor and head of the Department of Sociology-Social Work, Northwestern State University, Natchitoches, La., will discuss how self-concept is formed, influencing factors, if and how it changes, and age group differences.

Dr. Billie Ingram, research associate with the TAMU Industrial Economic Research Division, Texas Engineering Experiment Station, will discuss the changing image of work-leisure, and what will be happening in 21st Century living--how we will adjust to more leisure time with shorter work weeks, shorter work periods and work periods selected by the individual.

Featured Thursday, Dr. Alice Whately will talk about "Masculinity and Femininity: Perspectives of Maturity" and "Boy to Man - Girl to Woman: What is Adult?" concerning influencing factors, characteristics, how acquired and/or changed, and changing images. She is an assistant professor of Home Economics with the University of Texas at Austin.

Workshops and group discussions will follow each afternoon to reinforce what's presented that morning.

Wrapping up the training on Friday, Extension family life education specialists will distribute and discuss teaching materials that agents can use in their own counties.

WILL YOUR JOB BE NEXT

TO GO, SHOULDN'T YOU START YOUR OWN BUSINESS NOW - WHILE STILL EMPLOYED? OURS IS THE ANSWER.---No investment required---Full or part time---Men or women---Retirement plan which ignores age and length of service. Write at once for details to Box 449, Muleshoe, Texas, 79347. EQUAL OPPORTUNITY 15-40s-ltc

natural energy HOME

CLEAN ENERGY FOR TODAY AND TOMORROW

A Natural Energy Home uses natural gas for heating, cooling, water heating, cooking and clothes drying to save you money and help conserve our cleanest natural energy resource . . . natural gas.

That's because electricity in West Texas is generated by burning natural gas, and in the process of generating and transmitting electricity to your home, 2/3 of the gas energy is lost.

So, by using gas directly in the home for the jobs it can do, you're helping to conserve it and you're getting more energy for your money.

PIONEER NATURAL GAS COMPANY

SERVICE AND SUPPLIED by

Sprink-L-Rite Corporation

CLOVIS, NEW MEXICO
Office Phone 762-4503

MULESHOE, TEXAS
Residence 272-4316

Dee Dee's Announces

SUE STEVENS

She took her training at the International Beau School in Amarillo and is waiting to style your hair in any fashion you wish.

Call now-272-4375.

Dee Dee's Coiffure Fautasies



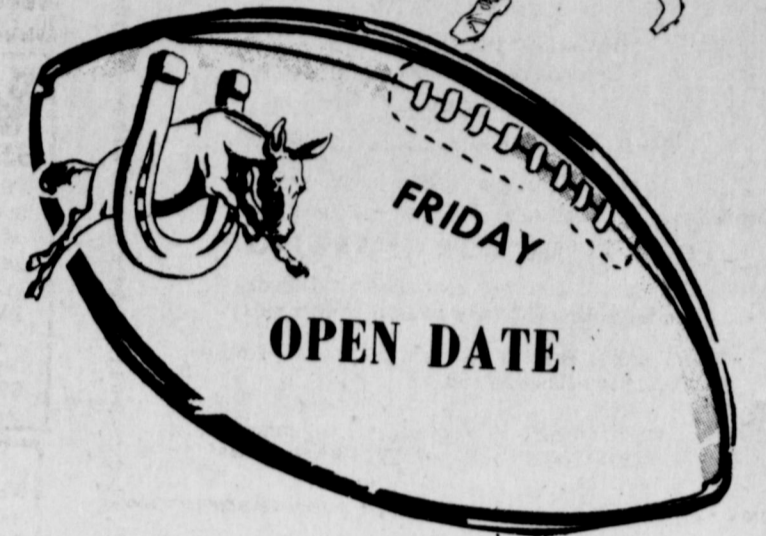
FOOTBALL CONTEST!



It's KICK-OFF Time
FOOTBALL SEASON OPENS!

You Have Until 5 P.M.
 Friday to Enter Contest

Enter Our Contest Each Week
 ...Nothing to buy - Just Pick Winners
HERE'S YOUR CHANCE TO



"PICK-A-WINNER"

LAST WEEK'S WINNERS

FIRST PLACE

Andres Gonzales

SECOND PLACE

Howard Splawn

THIRD PLACE

James Roy Jones

The Following Firms Urge

You to Back The "MULES"
 & Attend All The Games:



WIN CASH WEEKLY PRIZES!

WIN FIRST PRIZE \$ **5**
WIN SECOND PRIZE \$ **3**
WIN THIRD PRIZE \$ **2**



**THE FAMILY
 FUN GAME!**

Watch for the Official
 Entry Blank Each Week

The Following Firms Urge
 You to Back The "MULES"
 & Attend All The Games:

GRAND PRIZE \$50 For expenses and
 two tickets to the Cotton Bowl at Dallas, Texas. There will
 also be a contest and prizes for the Bowl Games!

WINNERS TO BE ANNOUNCED
 IN NEXT WEEK'S PAPER

Please write FOOTBALL CONTEST
 Muleshoe Publishing Company
 Box 449 Muleshoe, Texas
 on envelope of mailed entry.

Read the rules... Start Winning RULES OF THE CONTEST:

1. The contestant must be 12 years or older.
 2. Only one entry per person may be made for any one contest.
 3. Weekly contests are open to everyone except employees and families of this newspaper; bring or mail your entries to the Journal office.
 4. Mailed entries must be postmarked not later than 5 p.m. Friday; winners names will be published in this newspaper each Thursday following the close of the weekly contest.
 5. Check the team you think will win; 10 points for 1st place, 6 points for 2nd place and 4 points for 3rd place determines the Grand Prize winner.
 6. The tie-breakers will count as one of the games picked, the predicted scores will be used to determine the top three places in that week's contest, if necessary, and cash prizes and points will be divided between winners in event of ties. Please write FOOTBALL CONTEST on envelope of mailed entry.
- Decision of the Journal's scoring judges will be final.

JAMES GLAZE CO.
WESTERN DRUG
WILSON APPLIANCE
HENRY INSURANCE AGENCY
REDWINE '66' SERVICE STATION
JOHNS CUSTOM MILL
STATE LINE IRRIGATION Muleshoe and Littlefield
MAIN STREET BEAUTY SHOP
SMALLWOOD REAL ESTATE
HIGGINBOTHAM-BARTLETT
DARI DELITE
BEAVERS FLOWERLAND
BOB STOVALL PRINTING
COBB'S
PAT'S PHOTO PARLOR
CHOW-TEX FEEDLOT

MULESHOE MOTOR CO.
WRINKLE WELDING & MACHINE SHOP
BAILEY COUNTY ELECTRIC COOPERATIVE ASSOCIATION
COUNTY AUCTION-PHONE 272-4154
FIRST NATIONAL BANK Member FDIC
PRODUCTION CREDIT ASSOCIATION
FARM BUREAU INSURANCE Louis Stallings
WOOLEY-HURST, INC.
<i>Anthony's</i>
WEST 6th TEXACO
TRI-COUNTY SAVINGS & LOAN ASSOCIATION
MULESHOE IMPLEMENT & SUPPLY CO.
WHITT, WATTS & REMPE INC.
MULESHOE CO OP GIN
THE FAIR STORE
CURRY MOTOR FREIGHT LINES, INC. Bob Phillips, Agent

OFFICIAL ENTRY FORM
 PICK THE WINNING TEAMS

1. DUKE _____ <input type="checkbox"/>	PUDDUE _____ <input type="checkbox"/>
2. KANSAS _____ <input type="checkbox"/>	TENNESSEE _____ <input type="checkbox"/>
3. COLORADO _____ <input type="checkbox"/>	IOWA STATE _____ <input type="checkbox"/>
4. BAYLOR _____ <input type="checkbox"/>	FLORIDA STATE _____ <input type="checkbox"/>
5. ARKANSAS _____ <input type="checkbox"/>	T.C.U. _____ <input type="checkbox"/>
6. IDAHO _____ <input type="checkbox"/>	COLORADO STATE _____ <input type="checkbox"/>
7. CALIFORNIA _____ <input type="checkbox"/>	WASHINGTON _____ <input type="checkbox"/>
8. IOWA _____ <input type="checkbox"/>	ARIZONA _____ <input type="checkbox"/>

TIEBREAKER

9. S.M.U. _____ SCORE	MISSOURI _____ SCORE
10. TEXAS TECH _____ SCORE	OKLAHOMA STATE _____ SCORE

NAME _____
 ADDRESS _____
 CITY _____
 STATE _____ ZIP _____
 PHONE NO. _____



CLASSIFIED ADS

THE PLACE TO LOOK



WANT ADS PH. 272-4536

CLASSIFIED RATES

OPEN RATES

First insertion, per word-9¢
Second and additional insertions-6¢

NATIONAL RATES

First insertion, per word-11¢
Second and additional insertions-7¢

Minimum Charge-

CARD OF THANKS.....\$2.00

Classified Display \$1.12 per col. inch
Double rate for Blind Ads \$1.15 per col. inch for Reverses

DEADLINE FOR INSERTION

Thursday's Muleshoe Journal-Noon Tuesday
Sunday's Bailey County Journal-Noon Friday

The Journals reserve the right to classify, revise or reject any classified ad.

Check advertisement and report any error immediately. Journals are not responsible for error after ad has already run once.

meets every Tuesday at 12:00
DINING ROOM
XIT Restaurant
Muleshoe Rotary Club
Jess Winn, President

Lodge No. 58
Muleshoe Oddfellows
meets each Thursday 8:00 p.m.
Joe Carroll
Noble Grand

VFW
Walter A. Moeller
Post #8570
8:00 p.m. 2nd & 4th Mondays
VFW Hall
Joe T. Gonzales, Commander

Lodge No. 1237 AF & AM
Masonic Lodge
meets the second Tuesday of each month practice night each Thursday
Frank Hinkson, WM
Elbert Nowell, Sec.

meets every Wednesday 6am
XIT Restaurant
LIANS CLUB
Wednesday, 12 Noon
XIT Restaurant
Jim Shaler, President

meets every Wednesday 6am
XIT Restaurant
KIWANIS CLUB
R.A. Bradley, President

meets every Monday, 12 Noon
XIT Steak House
Jaycees
Bill Russell, President

3. HELP WANTED

WANTED: Relief Cook to cook breakfast. Apply in person to Pat Davis at West Plains Hospital. 3-38s-4tc

WANTED: Beautician at Dee Dee Coiffure Fantasies, Phone 272-4375. 3-16s-1tc

Opening for position in our warehouse and feed mill. Apply in person or call 247-2791. Friona Hi-Pro Feeds. 3-39s-4tc

WANTED: Typist, must type 50 words per minute at least, inquire in person at Journal. 21s-3-1tp

If you are the typist that wants to get ahead--come see Joe Duretos at Bovina Feeders, Inc., Route 1, Farwell, Tex. Opening for relief drivers--loader operators, night watchman. General yard help. Good pay for the right man. Night work other that watchman available. 3-40t-1tc

WANTED: Beautician needed at once, call 272-3448. Main Street Beauty Shop. 3-40t-1tc

5. APTS. FOR RENT.....

FOR RENT: 2 bedroom unfurnished apartment. Phone 272-4838 Smallwood Real Estate, 5-47s-1tc

FRIONA APTS. now have available 1, 2, & 3 bedrooms. Call 247-3666 or come by 1300 Walnut Street. 5-29s-1tc

WANTED TO RENT: WANTED: Wheat pasture in Bailey, Lamb or Parmer County. H.M. Gable Call 965-2601. 7-38t-1tc

WANTED: Wheat pasture in Clays Corner or Lazbuddie area. Bovina Feeders 825-2103. 7-38s-6tc

Want to rent or lease irrigated land. Contact John Mitchell, 965-2160. 7-37t-1tc

FOR SALE: 67 a with good 8" well high pressure pipe line and side-row sprinkler system. \$575 per acre with terms or will trade, call 272-3819. 8-40t-1tc

FOR SALE: 3 bedroom house, 1 full bath, 1 car garage, 1725 Ave. B. Phone 272-4709. 8-34s-1tc

Minimum Capitol required to buy thriving ladies dress shop. Call 272-4766 or 272-4412. 8-35s-1tc

FOR SALE by owner three bedroom, large den and living room, two baths, utility room, double garage. See at 323 W. Ave. J. or call 272-5584. 8-37t-1tc

FOR SALE: 450 acres Friona \$325 acre, Owner Mick Mason - 293-4786-Plainview. 8-39s-8tp

FOR SALE: 1,111 acres, 6 room house, 320 acres cultivated, 791 acres pasture, \$165,650. 25% down. 354 acres irrigated 4 wells, irrigation pipe, 3 box cars \$150,450. 25% down. M.S. Childers, 806-272-4347, Muleshoe, Texas. 7-38t-1tc

FOR SALE 30 acres exclusive near town. New 8 inch well in alfalfa. NEED LISTINGS FOR HOUSES AND ACREAGE: Two brick three bedroom homes in Richland Hills. HOLLAND REAL ESTATE 113 W. Ave D Phone 272-3293 day or night 32t-1tc

2 80 acre tracts 8 miles west of Muleshoe \$595,000 per acre. 164 acre dryland \$150,000 per acre. 324 acres 22 miles southwest of Muleshoe \$125,000 per acre. See Curtis Walker or call 272-3162. 8-38t-1tc

JAMES GLAZE COMPANY
REAL ESTATE AND FARM & RANCH LOANS
Phone 272-4549 219 S. 1st. 42t-1tc

POOL REAL ESTATE
For Sale: 1 section good irrigated land. Would appreciate your listings on houses, farms and ranches. Pool Real Estate 214 East American Blvd. Phone 272-4716 Lee Pool 272-3136 Woody Goforth 272-3079

FOR SALE: 1963 Ford Falcon. Runs good. Call 272-4354. 7-39s-4tc

FOR SALE: 1964 Chev. van. Call 272-4340. 9s-1tc

FOR SALE: 1969 Riviera - 47,000 miles. 272-3384 or 272-3800. 9-37s-1tc

FOR SALE: 1969 1/2 ton Ford Pickup. Good condition. Call after 5 272-3649. 7-39s-2tc

10. FARM EQUIP. FOR SALE

VALLEY.
SEMI-PROPELLED
SPRINKLER SYSTEMS
standard and reversing. Let us talk with you about our new 6-8-10 year lease. Programs which now include PVC plastic pipe, AVI, Inc. 1534 W. American Blvd. Muleshoe, Tex. Phone 806-272-3565. 10-33t-1tc

WE PAY CASH for tractor and equipment of all kinds. Tom Flowers Auction, Inc. Day 272-4154 Night 10-2s-1tc

FOR SALE: One Tri-Matic Sprinkler System with 6" lines and trail lines \$1500. One used side row sprinkler, State Line Irrigation, Muleshoe, 272-3450, Littlefield, 272-3819. 10-40t-1tc

FOR SALE: International number 22 cotton stripper on 400 tractor in good condition. Phone 946-2343. 10-38s-1tc

'55 John Deere Combine in good condition. Ready to go to field and cut maize. Call 965-2932 or 965-2953. 10-38t-1tc

FOR SALE: 1971 350 Honda XL. Call 272-3138 or see at 117 Main. Wilson Appliance 11-36t-1tc

Muleshoe's Authorized Kirby Dealer is still Carolyn Duncan
Phone 272-4187

TAKE soil away the Blue Lustre way from carpets and upholstery. It's the finest. Rent our Blue Lustre electric shampoo machine. Higginbotham-Bartlett 215 Main 12-18t-1tc

You saved and slaved for wall to wall carpet. Keep it new with Blue Lustre. Rent our Blue Lustre electric shampoo machine. Higginbotham-Bartlett 215 Main 12-18t-1tc

KREBBS REAL ESTATE

210 S. 1st PH 272-3191

FOR SALE: New and used furniture. Call 272-4340. 12-26s-1tc

BILL'S TRADING POST - W. 7th & HULL, CLOVIS, N.M. PHONE 762-4848 PFAFF MACHINES

MODEL
1221 Free arm in case \$575.00
1222 Flat bed in case \$550.00
296 Free arm in case \$425.00
297 Flat bed in case \$400.00
284 Free arm in case \$375.00
285 Flat bed in case \$350.00
1212 Free arm in case \$325.00
1211 Flat bed in case \$300.00
46 Flat bed in case \$180.00
44 Flat bed in case \$150.00
New Dressmaker \$150.00
Singer Model 630 Golden Touch & Sew \$250.00
Large number of used sewing machines \$150.00 & up
REPAIR ALL MAKES
CLEAN-OIL & ADJUST-\$6.00
Also Commercial Sewing Machines, Gleen I, Houston, 1545 Westchester, Phone 762-0692 12-40t-1tp

FOR LEASE: Modern Texaco Station in Muleshoe. Inquire at Texaco Inc, Muleshoe, Tex. or phone 272-4688. 13-38s-1tc

WANTED: Wheat pasture cattle to take care of. Call Robert Clark 272-3866. 15-39s-8tc

SAVE MONEY on vaccines, antibiotics, instruments and all animal health products. Affiliated supply, 1005 Ave. A or call 481-9234, Farwell, Tex. 15-36t-1tc

Cess Pool Cleaning
Acid for Cess Pool Available
Phone 272-3677 or 272-3467
ELMER DAVIS

Thinking about buying used furniture?
We Have It At The Swap Shop
Call 272-3074
213 S. Main
Muleshoe, Texas.

PARENTS now that the children are going back to school, do you have 15-20 hours a week to work right in your own community? Field Enterprize will thoroughly train you to sell educational materials. You can earn your own complete educational plan too. For appointment write Rayford Thomas, P.O. Box 6158, Lubbock, Tex. 79413. (L-24) 15-39s-2tc

FOR SALE: Triticale cleaned and sacked. Phone 272-4969. 15-39s-1tc

CARD OF THANKS: Thanks to our friends who showed so much kindness during my hospital confinement. All the flowers, cards, phone calls and good things to eat were truly appreciated. Micky Sowder 15-40t-1tc

Public Notice
MULESHOE ANTENNA CO.
Rate change beginning 12-1-73 from \$5 to \$6.50 per month. Customers will be advised of this change by mail. 15-39s-2tc

Public Notice
PUBLIC NOTICE
Notice is hereby given that a public hearing on the proposed County Budget for the year 1974 will be held Monday, October 8th., 1973, at the regular meeting place of the Commissioner's Court in the courthouse in Muleshoe, Texas. Time of the hearing is to be from 9:00 a.m. until 5:00 p.m. Any or all interested citizens are invited to attend. Dated this the 1st day of October, 1973.
Signed: Glen Williams
County Judge
Bailey County,
Texas
40t-2tc

HELP WANTED
Missouri Beef Packers, Inc. is now accepting applications for beef packers, production workmen, maintenance men & kill floor personnel. We offer year around employment, paid holidays, paid vacations, company paid group hospital insurance, and good wages. No experience necessary. Apply at the personnel office, Missouri Beef Packers Inc. 4 miles west of Friona on Highway 60. EQUAL OPPORTUNITY EMPLOYER.

Harmon's Forecast

Nebraska is still Number One, and a little like Ol' Man River, they just keep rolling along. A group of persistent Badgers, however, almost damped up their river last week. The Cornhuskers visit Minneapolis Saturday, and the Gophers of Minnesota, a good genial hosts that they are, will allow the visitors to steam-roller them by about 36 points. From an old Gopher: the day of reckoning just has to come one of these days!

The Jayhawks of Kansas are also rolling, undefeated in their first three outings. Ranked #20, they meet big trouble spelled with a "T", in Tennessee. The Volunteers, also undefeated, have been in and out of our Top 20, and are rated #10 this week. Kansas is an underdog for the first time this year... Tennessee will win by 4.

Even with an 81% forecast average on our major college picks two weeks ago, we weren't quite able to bring our season's average up to the 75% mark for all games through September 22nd. Our three week total reads: of 528 games, we were right on 379 and wrong on 132 (there were 17 ties) for a not too unhappy average of 742. Missouri meets S.M.U. in a Big 8 versus Southwest Conference confrontation. The Tigers, ranked 14th, and the Mustangs, rated 18th, are both undefeated. So... something's gotta give. We say it will be Missouri losing its first game of the season: Southern Methodist by two points.

And in another Southwest against Big 8, powerful Oklahoma State tussles with Texas Tech. The Cowboys have been a tremendous surprise this year - except possibly in Stillwater, Oklahoma - and the Red Raiders were expected to be strong. Oklahoma State is ranked #6 in the nation and is favored to win this one by 19 points. 9th-ranked Penn State continues to blow the opposition apart. The Nittany Lions travel

Forecast

to Colorado Saturday to do battle with the Air Force Academy, and it looks to be another Penn State victory, this one by eighteen points.

Last Saturday was to have been the day of reckoning, but Oklahoma and Southern California ended in a dead heat. 7-7.

Youngster Seeking World Drag Title

AMARILLO, TEX. ---Seventeen-year old John Stewart wants to re-write drag racing's official record book by becoming the youngest world champion in the sport's history. The Sacramento (Calif.) student is the youngest driver in the exclusive field for next weekend's (October 5-7) \$225,000 World Finals at Amarillo Dragway, which is a worthy accomplishment in itself since entry is open only to those drivers good enough to earn the necessary points in a six-month, 35-race series across the U.S. and Canada.

But Stewart is not content to stop there. He wants a victory in the rugged top Fuel Eliminator category, one of seven where 1973 World championships will be at stake. And if he is successful, he will go down in history, with an appropriate asterisk after his name.

Only three teen-agers have ever won major drag racing titles over the years, none of them in World Finals competition. Mark Coletti and Bobby Vodnik both were 19 when they captured the National Hot Rod Associations Nationals and Winter Nationals several years back, and Jeb Allen was 18 when he won the NHRA Summer Nationals in 1972. Stewart, on the other hand, is not only younger in years but also the infant of the group in terms of experience. This is only his first full season as a professional, after passing

The Sooners, still #3 in the nation, won't even have time to break stride as they bump into Miami, rated 15th. This will be the first football game in history between the two. And Oklahoma will draw first blood, winning by 24 points. Southern Cal moves into conference play, and the Trojans, ranked in the number four slot, are a big 41-point chaser over Oregon State.

World Drag Title

a rugged test and gaining his competition license last January. A former Karting champion, the slender-built driver has had little trouble if any adapting to the 1800-horse power, 230 mph fuel dragsters, despite his youth and contrary to the odds of a newcomer becoming so successful his first time out.

Odds, in fact, seem to stimulate Stewart, especially if they are against him. In his first race after earning his competition license, the dark-haired Californian came up against Don Garlits, the sport's recognized "Big Daddy" and won. During the 1973 World Championship Series, he won one points race in the Southwest division and finished the season with nearly 2500 points. That was not quite enough to earn a World Finals berth but did qualify him as second al-

drivers were forced to withdraw this week, Stewart moved in. World Finals action is slated to begin next Friday at 1 p.m. when Amarillo Dragway's quarter-mile opens for time trials. Qualifying runs, to set the seven individual fields for next Sunday's finals are scheduled for 9 a.m. to 5 p.m. Saturday.

Tickets for the event are on sale now at the NHRA regional offices, 39-A Sunset Center in Amarillo, including advance reserved seating. Tickets will also be on sale at the gates each day.

The Harmon Football Forecast

1-NEBRASKA	6-OKLAHOMA STATE	11-L.S.U.	16-TEXAS
2-ALABAMA	7-MICHIGAN	12-U.C.L.A.	17-COLORADO
3-OKLAHOMA	8-NOTRE DAME	13-ARIZONA STATE	18-S.M.U.
4-SOUTHERN CAL	9-PENN STATE	14-MISSOURI	19-HOUSTON
5-OHIO STATE	10-TENNESSEE	15-MIAMI	20-KANSAS

Saturday, Oct. 6 - Major Colleges			
Alabama	27	Georgia	10
Arizona	27	Iowa	21
Arizona State	39	North Carolina	17
Arkansas	25	Ohio State	7
Baylor	21	Texas Tech	19
Boston College	21	Texas State	10
Bowling Green	17	U.S. West	6
Brigham Young	22	Utah State	20
California	21	Washington	12
Citadel	21	West Virginia	20
Colorado	24	Wisconsin	12
Columbia	20	Wyoming	14
Cornell	20	Yale	14
Dartmouth	20		
Dayton	23		
East Carolina	34		
Georgia Tech	31		
Harvard	30		
Houston	30		
Illinois	22		
Idaho	22		
Iowa State	27		
Kansas State	27		
Kent State	17		
Lamar	17		
Long Beach	19		
L.S.U.	31		
Louisville	33		
Maryland	28		
McNeese State	21		
Miami (Ohio)	45		
Michigan	11		
Mississippi	17		
Mississippi State	22		
New Mexico State	27		
North Carolina State	28		
Northern Illinois	21		
Northwestern	31		
Notre Dame	35		
Ohio State	35		
Oklahoma	30		
Oklahoma State	30		
Pennsylvania	20		
Penn State	28		
Purdue	18		
Richmond	31		
Rutgers	29		
San Jose State	29		
South Carolina	20		
Southern California	48		
S.M.U.	23		
Southern Mississippi	22		
SW Louisiana	26		
Tampa	26		
Temple	21		
Tennessee	21		
Texas	40		
Texas A & M	24		
Tulane	20		
Tulsa	25		
U.C.L.A.	22		
U.S. West	19		
Virginia	24		
William & Mary	17		
Wisconsin	34		
Yale	20		

Other Games - East			
Alabama	27	Georgia	10
Arizona	27	Iowa	21
Arizona State	39	North Carolina	17
Arkansas	25	Ohio State	7
Baylor	21	Texas Tech	19
Boston College	21	Texas State	10
Bowling Green	17	U.S. West	6
Brigham Young	22	Utah State	20
California	21	Washington	12
Citadel	21	West Virginia	20
Colorado	24	Wisconsin	12
Columbia	20	Wyoming	14
Cornell	20		
Dartmouth	20		
Dayton	23		
East Carolina	34		
Georgia Tech	31		
Harvard	30		
Houston	30		
Illinois	22		
Idaho	22		
Iowa State	27		
Kansas State	27		
Kent State	17		
Lamar	17		
Long Beach	19		
L.S.U.	31		
Louisville	33		
Maryland	28		
McNeese State	21		
Miami (Ohio)	45		
Michigan	11		
Mississippi	17		
Mississippi State	22		
New Mexico State	27		
North Carolina State	28		
Northern Illinois	21		
Northwestern	31		
Notre Dame	35		
Ohio State	35		
Oklahoma	30		
Oklahoma State	30		
Pennsylvania	20		
Penn State	28		
Purdue	18		
Richmond	31		
Rutgers	29		
San Jose State	29		
South Carolina	20		
Southern California	48		
S.M.U.	23		
Southern Mississippi	22		
SW Louisiana	26		
Tampa	26		
Temple	21		
Tennessee	21		
Texas	40		
Texas A & M	24		
Tulane	20		
Tulsa	25		
U.C.L.A.	22		
U.S. West	19		
Virginia	24		
William & Mary	17		
Wisconsin	34		
Yale	20		

Other Games - Midwest			
Alabama	27	Georgia	10
Arizona	27	Iowa	21
Arizona State	39	North Carolina	17
Arkansas	25	Ohio State	7
Baylor	21	Texas Tech	19
Boston College	21	Texas State	10
Bowling Green	17	U.S. West	6
Brigham Young	22	Utah State	20
California	21	Washington	12
Citadel	21	West Virginia	20
Colorado	24	Wisconsin	12
Columbia	20	Wyoming	14
Cornell	20		
Dartmouth	20		
Dayton	23		
East Carolina	34		
Georgia Tech	31		
Harvard	30		
Houston	30		</

At Muleshoe Junior High



Seventh Grade Football

by Dave Poynor

The seventh grade boys played football games last Thursday and Friday. The teams that are in the seventh grade are the Raiders, Redskins, Cowboys, and Dolphins. These teams do not have kickoff's. They get the ball on the 30 yard line.

The Redskins and the Raiders played last Thursday. Both got the ball but didn't score. The second time the Raiders got the ball, Dickey Sudduth scored from 80 yards out. Mark Harmon tried a quarterback sneak, but couldn't make the extra points. The Redskins got the ball and Charles Briscoe ran to the eight. Terry Shafer then ran twice and on the second time scored from four yards out. They failed to make the extra points and the game ended in a 6 to 6 tie.

The Dolphins and Cowboys played Friday. The Dolphins had the ball first but couldn't

get a first down. The Cowboys then got the ball. They took it down to the ten where Jeep Shanks scored. The sweep for extra points failed. After the half, the Cowboys got the ball; and after three downs, had to punt. Jeep Shanks made a good punt that went to the nine. The Dolphins tried a pitch to Earnie Vela, but Dave Poynor broke through and knocked the ball loose. David Cavazos covered it in the end zone for a touchdown. Leslie White was successful with a quarterback sneak for the extra points, and the game ended with the score 14-0 in the Cowboys favor.

These boys will be playing every Thursday and Friday at 11:00 to 12:00. All parents are invited to come.

Games People Play

by Vicki Williams

Have you ever wondered what your parents did for entertainment when they were our ages? Thanks to Mr. Rogers and Mrs. Siewert, we can find out some of the things they did.

Unlike today, these people had parties almost every week. At these parties they would play Knocking For Love, Spin the Pan, Post Office, and games like Kick the Can.

The boys would often take their girls to church. The church would have parties and picnics. At these picnics, there would be soft ball games, target shootings, and sometimes the boys would have rodeos.

For dates, they would have barn dances, or square dances, and the weekly Community parties to go to. Then there was always the "picture shows". When they weren't allowed to have the cars, they would walk or they'd all get in the back of a wagon and make a hay-ride out of it. When the car was available, a group of kids would pitch in and buy the gas. After investigating these sources, this reporter concludes that there isn't much difference between the two generations. The games may have different names, our dances may be a little louder but entertainment really hasn't changed too much.

Mules Beat Farwell

In this weeks game the Mules A and B teams united together to play Farwell here at 5:00 Thursday the 27.

Farwell won the toss and elected to receive the kick. Both teams were unsuccessful in scoring in the first half. The Mules received the kick and brought it back to the 40. One play later a 20 yard pass completion to wing back Marcus Beversdorf set up the touchdown. Dean Northcutt took it in from 15 yards out and David Gutierrez made the two point conversion. The Mules played good defense and won the game 8 to 0.

Be sure and back the Mules when they play Gattis here at 4:00 CST.

Fair Day At Junior High

The 56th annual South Plains fair has been in Lubbock for the past week. It was held at the fair grounds near the colosseum. The main attraction of the fair was the midway which consisted of rides, games of chance, spook houses, fun houses, and other side attractions.

Monday, September 24, was considered student day at the fair. School was dismissed early so that students could spend more time at the fair. Several M.J.H.S. students participated in an outdoor guitar show presented by KSEL radio station. They were Dave Poynor, Dickey Sudduth, Dean, Mike, and Mark Northcutt.

Make your own frozen dinners from your left-over Christmas dinner. They'll be tasty and come in handy later.

New Chairs In Library

The library purchased 36 new chairs. One half of them tangerine in color, and the other half gold. The chairs are a Motive Contour chair with chrome legs. Mrs. Griffin loves the chairs and thinks that they blend well with the carpet. They also add to the general appearance of the library. The chairs are strong and durable and we are sure the students will enjoy them in the coming years.

H.E.W.'S REDUCTIONS

Secretary of Health, Education and Welfare has ordered a 77 per cent reduction in the department's public affairs staff and the elimination of 275 publications, which will result in a savings of about \$20-million.

Saving Bonds Total \$3,799 In August

Series E and H United States Savings Bond sales in Bailey County during the month of August totaled \$3,799, according to County Bond Chairman Mrs. Dean Sprayberry. Sales for the eight-month period were

\$23,280 for 39% of the 1973 sales goal of \$60,000. Texans purchased \$17,913,399 in Savings Bonds during the month while the year-to-date sales totaled \$155,983,171 compared to \$142,833,527 for the same period a year ago, an increase of \$12,249,644.

For snow shovelers, wax your shovel with paste wax and the job will be easier.



DISCOUNT SPECIALS

WHITE SWAN PINK
GRAPE FRUIT JUICE 39¢
46 oz. can

ARMOUR STAR THIN SLICED
BACON \$1.29
1lb. pkg.

OUR DARLING WHOLE KERNEL
GOLDEN CORN 5 FOR 1
#303 CAN

ARMOUR STAR ALL MEAT SKINLESS
FRANKS 79¢
12 oz. Pkg.

FROM SWIFTS PREMIUM PROTEN BEEF

SIRLOIN STEAK \$1.39
T-BONE STEAK \$1.59
ARM ROAST \$1.09
RANCH STEAK \$1.09
RIB STEAK \$1.29
Armour 1877 Core (half ham)
BONELESS HAMS \$1.69 LB.

FROZEN FOOD

11 oz. Pkg. Banquet Frozen
T.V. DINNERS 49¢
32 oz. Pkg. Sea Pak Frozen
ONION RINGS \$1.29
7 oz. Box Mrs. Paul's Fried Frozen
EGGPLANT STRIPS 45¢
8 oz. Captain Hook Frozen
FISH STICKS 35¢

WESTERN GOLD
COCA COLA 4 FOR 1
28 oz. Btl.

SWIFT'S PREMIUM PROTEN BEEF
ROUND STEAK \$1.39

#2 Can Del Monte
CRUSHED PINEAPPLE 39¢
#300 Can White Swan
BUTTER BEANS 19¢
#2 Can La Choy
BEAN SPROUTS 23¢
3 oz. Jar Lipton's
INSTANT TEA \$1.09
#303 Can Kimbell's Fancy
APPLE SAUCE 23¢
#300 Can
WHITE SWAN HOMINEY 2/25¢
#300 Can Ranch Style
BLACKEY PEAS 19¢
1 Lb. Ctn. Kraft
PARKAY OLEO 35¢
2 Lb. Box Hungry Jack
BUTTERMILK PANCAKE MIX 59¢

WESTERN GOLD
PORK & BEANS 19¢
#2 1/2 can

TEXAS GARDEN FRESH
SQUASH LB. 19¢
TEXAS GARDEN FRESH
GREEN ONIONS bunch 10¢

#2 COLORADO WHITE RUSSET
POTATOES 65¢
10 LB. BAG

#300 Can Hunt's with Tomato Bits
HUNTS TOMATO SAUCE 29¢
4 3/4 oz. Jar Gebbers Strained
BABY FOOD 10¢
Downy Giant Size Bottle
FABRIC SOFTNER 69¢
48 oz. Bottle Family Size
IVORY LIQUID \$1.29
13 oz. Can
INDCO LYE 29¢
Giant Size Box
OXYDOL 75¢
14 oz Can
COMET CLEANSER 2/35¢
Bounty Big Roll
PAPER TOWELS 3/\$1
18 1/2 oz. Box Swans Down
CAKE MIXES 3/\$1
9 oz. Ctn. Hip-O-Lite
MARSHMALLO CREME 19¢

Texas Firm Green Heads
LETTUCE 15¢
LB.

CRISCO 89¢
3 Lb. TIN
LIMIT 1 WITH \$5.00 PURCHASE OR MORE

Familiar Face At MJHS

by Jamie Small

This week the Journalism staff interviewed Mrs. Ramona Pollard. She was born in Shattuck, Oklahoma, on September 2, 1945. But she calls Darrouzett, Texas her home town. Mrs. Pollard attended college at West Texas State University where she earned a B.B.A. with a major in business and English. After college she moved to Tulsa, where she lived two years before coming to Muleshoe.

Mrs. Pollard began teaching at MJHS last year as a teacher's aid. This year she also teaches some classes of eighth grade reading.

Her hobbies include sewing, painting houses, reading, knitting, crocheting, and watching TV.

Mrs. Pollard says she likes Muleshoe because it's her size town.

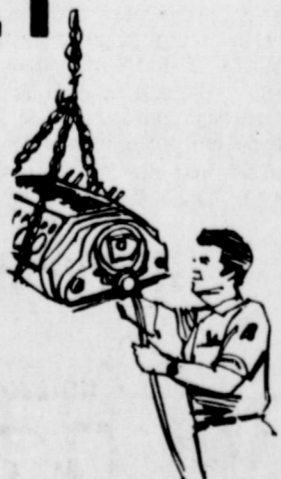
Drum Majors

Selected

by Shelly McGlaun
The M.J.H.S. Drum Majors and Majorettes have been selected. The Drum Major is Royce Clay. The Majorettes are Gayla Redwine, Terri Durben, and Renae Iuthardt. The Journalism Staff would like to congratulate these students.

ENGINES REBUILT

Save yourself the expense of buying a new car or truck and have your engine rebuilt.



Plains AUTO PARTS
P.O. Box 386
MULESHOE, TEXAS
79347

South Main
Muleshoe
Phone 272-4576

GUNN BROS.
STAMPS
DOUBLE EVERY
WEDNESDAY

White's CASHWAY

We Reserve The Right To Limit Quantities

Listen to
MULETRAIN
over KMUL
10:15 a.m.
Sponsored by
WHITE'S CASHWAY