



# THE MULESHOE JOURNAL

'The Community of Opportunity-Where Water Makes the Difference'

## Weather

	HIGH	LOW
July 22	89	57.44
July 23	89	60.03
July 24	89	61
July 25	90	63
Rainfall to Date: 11.16		

VOL. 51 No. 30

10 PAGES

Published Every Thursday at Muleshoe, Bailey County, Texas 79347

10 CENTS

Thursday, July 26, 1973

# Farm Bureau Queen Contest Friday

## Farm Safety Proclaimed

Not many persons died in farm and ranch accidents in our county last year - not more than five in any one county in Texas.

Yet, the total number of accidental farm deaths from the 105 counties where they occurred was 183 in 1972. Hundreds more persons were injured.

Governor Dolph Briscoe has proclaimed July 25-31 Texas

Farm and Ranch Safety Week. His proclamation is in cooperation with a statewide farm accident prevention and education program being conducted by the Texas Safety Association, Texas Farm Bureau, Texas Agricultural Extension Service, Future Farmers and Future Homemakers of America and Young Farmers of Texas.

"Accidents on Texas farms and ranches continue to take a heavy toll in spite of advances made in recent years in agricultural technology. These accidents are a great loss to the agricultural economy of our state," read the Governor's proclamation.

Governor Briscoe explained that, although the farm and ranch environment contains many hazards, experience has shown that caution, common

Cont. on Page 2 Col. 4

around  
muleshoe  
with the journal staff

Tom Walker, field director of Texas Democratic Party, informed Panhandle Democratic Party officials that the barbecue scheduled for the Tri-State Fair Grounds in Amarillo on Saturday, July 28 has been postponed until October. Walker stated that the sudden unexpected hospitalization of the state democratic chairman Calvin R. Guest has caused the delay.

Walker emphasized that the many tickets already sold will be good for the October barbecue. Anyone desiring a refund may obtain it from the seller or may write Andy Shuval, district attorney, in care of County Court House, Hereford, Texas.

Mrs. M.D. Gunstream, Mrs. Claude Riley, Mrs. Harmon Elliott and Mrs. Tommy Haley participated in the annual Invitational Partnership Golf Tournament held in Portales on July 19.

In the Lazbuddie area you may call Jimmy Briggs, Freeman Davis or Lottie Orteg for tickets to the Bill Clayton Appreciation Dinner to be held at the Mary Deshazo Gym, Aug. 2 at 8 p.m.

Roger Gorrell of Austin, former Muleshoe resident, came in Saturday night and brought his mother, Mrs. Lula Gorrell, back to Muleshoe. She had been visiting with him for three weeks.

T.L. (Red) Glasscock of 1625 West Ave C won a nine inch portable General Electric TV Saturday. The TV was given by Johnson Furniture Store as a climax to their trainload sale which was held from July 19 thru July 21. Ex-Mayor Irvin St. Clair drew the winning ticket.

Charles King, son of Mrs. Elizabeth King, Box 469, Muleshoe, Tx, is one of 56 students at the St. Mary's University School of Law in San Antonio to be named to the current Dean's Honor list.

To be eligible for this academic distinction St. Mary's law students must have completed two full semesters of law work and have a cumulative average in the top 10 percent of the total student body.

Cont. on Page 10 Col. 3

## Texas Jaycees Choose Five Outstanding Men

U.S. Senator John Tower of Wichita Falls will be the featured speaker at the Texas Jaycees Five Outstanding Young Texans Awards Banquet at Victoria, on July 28.

Thirty nominations were received from Jaycee chapters across Texas. The five who were chosen are: Wyatt Thomas Johnson, Jr. of Austin. Johnson is an Executive Vice President with Texas Broadcasting Corporation, Dennis W. McGill of Lubbock; McGill is an attorney and is State Vice President of the Texas Jaycees. Edwin Larry Dickens, Associate Professor of Sam Houston State University of Huntsville. Pike Powers, Jr., Beaumont-Partner Strong Pipkin, Nelson

Parker and Powers Law Firm and is a State Representative. Charles Toliver Terrell, chairman of the board of Unimark Insurance Agencies of Dallas.

These young men honored by the Texas Jaycees will be submitted to U.S. Jaycees for further honors in the competition for Ten Outstanding Young Men of America.

Muleshoe Jaycees met at the XIT Restaurant for their weekly meeting. President Bill Russell called the meeting to order. Prayer was given by Butch Duncan. The pledge was led by Raymon Schroeder and the creed by Elvora Devney. Devney was a guest from Dimmitt. He had belonged to Muleshoe

Cont. on Page 2 Col. 3



**TRAIN AND PICKUP WRECK . . . .** On Saturday July 21 a pickup driven by James L. Winders of Box 2, Earth was attempting to cross the railroad tracks at the Muleshoe Livestock Auction. Winders had stopped at the crossing when an east bound Santa Fe train caught the front of the pickup and caused it to be in collision with a parked pickup belonging to Henry Carrion of Muleshoe. There was extensive damage to both pickups and the train had some damage. Winders was taken to West Plains Memorial Hospital where it was reported that he suffered from some broken ribs.

## Auxiliary Opens Local Thrift Shop

Muleshoe has a new business. The Thrift Shop operated by the Hospital and Nursing Home Auxiliary. The store is located in the old Green Memorial Hospital building at 103 West Ave. C, and will be open every week on Wednesday and Saturday from 9 a.m. until 6 p.m.

All the rooms are full of whatever you might need and can be bought at "garage sale prices". The Hospital and Nursing Auxiliary needs your contributions to keep their stock full. If you have had a house

cleaning and will donate the things you don't want - whether it be trash or treasure - please call an Auxiliary member. You may also take it by on the days they are open, stated Mrs. J.E. McVicker. All the proceeds from this business will go back into the money projects the auxiliary women are sponsoring at the hospital and the nursing home.

The Auxiliary has recently ordered a Bennett Machine to be used in the Nursing Home, at a cost of \$600. They are planning several other projects for the very near future.

**Posi-Pump To Locate In Muleshoe**

Edwin Zenthofer, president of Posi Pumps, Inc., has just announced that a Texas based corporation has been formed in Muleshoe for the purpose of manufacturing their positive displacement pumps for agricultural, industrial and other related uses.

After extensive research, Posi Pumps chose Muleshoe as their plant location due to tremendous agricultural growth in the area.

Factors such as labor, availability of raw materials and heavy agriculture were reasons for locating in Muleshoe.

Zenthofer, speaking for Posi Pumps, says that he is very proud to be a part of a growing community.

## ASCS Certification Deadline August 1

The Bailey County ASCS Committee reports that each farm operator, who expects price support payments in 1973 on cotton, feed grain and wheat, must certify the planted acreage of all crops on the farm by August 1. Farmers will not receive payments until after crops are certified.

If crops are up, they should be measured and then certified at the local ASCS office as soon as possible. Early certification should speed up the arrival of payments.

Set-aside acres must be of equal productivity to the land crops are planted on. Size and width of the set-aside acre plot(s) must be at least 5.0 in area and two chains wide. Farmers may have one plot of

**Rain Report**

Reports of rain in the area over the weekend are as follows: Lazbuddie, .7 inch; Bula, .6 inch; Maple, .7 inch; Needmore, 1/2 inch; Clay's Corner, .6 inch; and Progress, .8 inch.

## Plant Clinic To Be Held

There will be an ornamental disease and insect clinic held in Muleshoe on Friday, July 27 at 10 p.m. in the Bailey County Electric Cooperative meeting room.

The purpose of this clinic is to give residents of Bailey County an opportunity to bring plants that have been damaged by either disease or insects and learn the proper controls for these problems.

Dr. Robert Berry who is the area plant pathologist and Dr. Robert McIntyre who is area entomologist will be the featured speakers.

They will discuss common problems that occur to ornamental plants in the Muleshoe area. Some of the topics that will be discussed are the following: Iron and Zinc Chlorosis; nematodes; common shade tree disease; Bag worms and elm leaf beetles.

The general public is invited to bring their sick plants and attend this clinic according to County Agent, Spencer Tanksley.

## Nine Beauties Will Compete For Title

The 1973 Bailey County Farm Bureau Queen will be crowned Friday evening, July 27 at 8:00 p.m. in the Muleshoe High School cafeteria.

Five other entries have been received by the Farm Bureau which makes a total of nine girls entered.

The first of the latest entries is Lavern Carpenter, the 16 year old daughter of Mr. and Mrs. Jimmie Carpenter of Rt. 2, Muleshoe. Miss Carpenter was born in Muleshoe and has been a resident for the past nine years. A junior student at Muleshoe High School, she has held offices in 4-H, FHA, the Rodeo Club and was also class officer for the past two years.

Miss Carpenter enjoys rodeos, livestock shows and water skiing, as well as basketball and other sports.

Ruth Ramm is the second latest entry in the contest. The

daughter of Mr. and Mrs. Ernest Ramm of Rt. 2, Muleshoe, she is 16 years old.

Cont. on Page 2 Col. 1



Diane Dale

## Feed Grain Bill Passes House

The House of Representatives passed its version of the 1973 farm bill with a final vote of 266 - 182. This concluded two weeks of stormy debate and what, at times, seemed almost impossible odds of passing the bill as recommended by the House Agricultural Committee.

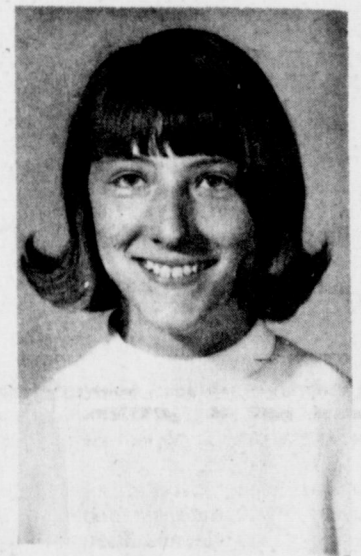
The feed grain section of the bill was passed almost exactly as recommended by the Committee. Under this legislation, as passed by the house, the target price for grain sorghum will be \$2.34 cwt. The loan rate will be increased to \$2.02 cwt. from the present level of \$1.79, if the House bill is allowed to become law.

Elbert Harp, GSPA executive director, has been in Washington two weeks working on the legislation. Harp stated that "Congress voted in favor of the farmers by allowing the 'Escalator Clause' to remain in the bill. This provision requires target prices to move up in 1975 and thereafter in relation to the increased cost of production. The major setback was in the rigid \$20,000 limit per person that GSPA has fought for years." Harp continued, "We felt annual adjustments of target prices to cover increased production costs was essential to the bill. The Administration has opposed the Escalator provision and still threatens a veto if it is passed by Congress."

The local county Farm Bureau and the Texas Farm Bureau Insurance Companies of Waco provide most of the money for registration fees, room and board with each volunteer fireman paying a nominal fee. County Farm Bureaus across the state are helping sponsor approximately 100 firemen at the six-day training school.

Practically all of the training, except fire prevention and administrative procedures, will consist of field operations with

Cont. on Page 10 Col. 5



Ruth Ramm



Pam Vinson



Dana Throckmorton



Sharon Kelton

## Stamp Program Outlined For Retailers

Food retailers in counties entering the Food Stamp Program will have to be authorized by the U.S. Department of Agriculture before they will be eligible to accept food stamp coupons.

This word comes from Martin D. Garber, Dallas, administrator of the West-Central regional office of USDA's Food and Nutrition Service.

Under the Food Stamp Program, which is scheduled to be operating in all Texas counties by the end of the year, needy families are certified for the program by the State Department of Public Welfare.

Families then pay a certain amount of money, depending on income, resources and other factors, for food stamps, which they then use to purchase eligible foods at local stores authorized by USDA.

"Most grocers in a food stamp county apply for authorization," Garber stated, "since the program usually means a noticeable increase in business."

USDA will conduct meetings in advance of the start of the program in each county to acquaint grocers with the food

Cont. on Page 2 Col. 6



Glenda Harlin



Tani Murray



Jan Harlin



Lavern Carpenter



Michael Gott

## Calvary Youth Host Fellowship

A Youth Fellowship meeting will be held Friday, July 27 at the Calvary Baptist Church. The Calvary Crusaders from Plainview will be singing. Henry Ward of Carlstad, N.M. will be the speaker. Groups from Lubbock, Brownfield, Slaton, Littlefield, Floydada are expected to attend.

Mrs. Charles Harvey will be in charge of the youths activities. Ladies of the church will provide the refreshments.



THRIFT STORE OPENS . . . . Auxiliary member Mrs. J.E. McVicker is displaying some of the items the Thrift Store will offer the bargain hunter. The Muleshoe Hospital and Nursing Home Auxiliary will operate the store two days a week with all the proceeds going to buy things for the Hospital and Nursing Home projects.

### Queen...

Cont. from Page 1

A junior in Muleshoe High School, Miss Ramm is active in 4-H work, FHA and the Lutheran Youth League. She is vice president in her 4-H club and Christian Youth Chairman in LYL. The oldest of four children, she plans to go into floral work after graduating from high school. Her hobbies are decoupage, crocheting and sewing.

The third entry is Miss Sharon Kelton, who is a 1973 graduate of Muleshoe High School. The daughter of Mr. and Mrs. Robert Kelton of Muleshoe, she is one of five children. During her high school years, Miss Kelton was a member of the Mighty "M" band, an FHA officer for three years and co-editor of the Muletrain annual. Sharon was also Junior class favorite, Halloween Queen for 1973, Band Favorite, Miss MHS, first runner-up for Princess of Friendship, Southwest Jr. Livestock Show FFA Princess, Muleshoe FFA Sweetheart, Littlefield District FFA Sweetheart and Area I FFA Sweetheart. The daughter of Mr. and Mrs.

J.L. Dale of Muleshoe, Diane Dale is another entry. Miss Dale has lived in Muleshoe all of her life and will be a junior at Muleshoe High School. A member of the First Christian Church, Diane is sixteen years old.

Miss Dale is active in FHA, FTA and basketball. Her favorite hobbies are music and swimming.

The last entry is Miss Tani Murrah, the eighteen year old daughter of Mr. and Mrs. Gordon F. Murrah of Rt. 2, Muleshoe. She was born and raised in the Muleshoe area.

A 1973 graduate of Muleshoe High School, Miss Murrah ranked third in her class. In high school she was active in FHA, varsity basketball, student council and was selected to appear in "Who's Who in American High Schools."

An active member in 4-H for ten years, Tani plans to enroll at Texas Tech this fall and major in physical education or home economics. Her hobbies are traveling, cooking and outdoor sports.

Other entries already received are Jan Harlin, Glenda Harlin, Danita Throckmorton and Pam Vinson.

### Jaycees...

Cont. from Page 1

Jaycees before moving to Dimmitt.

Billie Duncan reported on the Little Miss Muleshoe Contest. Only one entry has been turned in. The entries that are still out should be turned in by August 10.

A report on regional visitation was given by Dick Kelton. New hand books were to be ready by the last of the month reported Wayne Peterson.

Richard Hawkins reported on the progress of the bleachers that are being installed at the new City Park.



### Safety...

Cont. from Page 1  
sense, skill and protective equipment can counter these hazards and keep accidents and injuries to a minimum.

"Texas farmers and ranchers, their families and employees need to dedicate themselves to the task of safely producing the commodities needed by an entire nation. The needless waste of human economic resources caused by rural accidents is a matter of national as well as statewide concern, and the President of the United States has proclaimed the week of July 25-31, 1973, National Farm Safety Week, in order to focus attention on the problem," said Governor Briscoe.

Keeping in mind that rural residents are as susceptible to accidents off the job as they are on the job, the Governor urged a united effort to reduce home, recreational and highway accidents, as well as accidents in farm and ranch work.

Joe Smetana, vice president for farm and ranch safety of the Texas Safety Association, offered basic safety considerations for the farmer and rancher in connection with the safety week.

Taking the greatest death tolls in 1972 were drownings, 31 deaths; firearm accidents, 31 deaths; and fires and burns, 30 deaths, according to Smetana.

He suggested that farm ponds be equipped with lifesaving equipment and that children never be allowed to play in them alone. Fencing should be in place and repaired around tanks, cisterns and wells.

All firearms owned by the farmer and rancher should be securely stored, after a check to make sure they are unloaded. Any person allowed to use a firearm should be familiarized with its safe use and should be responsible enough to follow the rules. No firearm should be used by a fatigued person or one who has been drinking alcohol.

Hunters should check in and out and should be required to specify where they will hunt. They should wear identifiable clothing. No farm or ranch should allow too many hunters on the premises.

Precautions against fires and burns include checks of electrical wiring in buildings, appliances and machinery; elimination or proper storage of flammable materials and chemicals, and fire extinguisher availability. In addition, all lightning rods should be prop-

erly grounded. All burning should be supervised. All rural residents should have a plan of action in case of fire.

The safe operation of farm equipment was also emphasized by Smetana, who noted that 25 rural deaths last year resulted during tractor operation and 12 deaths were attributed to other farm machinery accidents.

A thorough knowledge of the machines and the area where they will be used is required. The operator should have an instruction manual, which he should read and study until it is understood. Machinery should always be kept in repair.

The operator should shut off power before unclogging, adjusting or servicing the machinery. Visors, goggles and other protective equipment should always be used where necessary.

Studies of the more than 1,000 fatalities resulting from tractor accidents in the United States last year showed that six in 10 of the fatalities resulted from tractor overturns, said the Texas Safety Association official. Because the upset problem is so serious, Smetana says upsets should be prevented where possible, and protection should be provided in case they occur.

Prevention, he said, requires knowledge of the tractor and its capabilities; knowledge of existing obstacles, steep grades and sandy or muddy areas, and alertness by the driver.

A tractor with overhead protection—protective frame or crush-resistant cab—safeguards the operator in an overturn by limiting roll to 90 degrees.

Tractors to be driven on public highways must be marked with slow moving vehicle symbols and be properly lighted, according to Texas law. Operators should be familiar with traffic laws.

Falls accounted for 18 of the

rural deaths in 1972, according to Smetana, and he pointed to simple repairs as one of the best preventatives.

All ladders, stairways and floors with rotten or broken steps or boards should be repaired. Rugs and mats should be secured, and spills should be wiped immediately.

Materials, particularly heavy bales, sacks, lumber and iron, should be stored so that they will not fall on someone or trip someone, he cautioned.

Injuries may be reduced by pounding down protruding nails and removing nails from loose boards before stacking. Others may be prevented by simply by moving buckets, tools or other obstacles in walkways and doorways.

Of primary importance, said Smetana, is that rural residents and workers be on the lookout for unsafe conditions. Repairs, set aside once, may be delayed until they are forgotten or overlooked.

"A hazard that has been lived with for a long time is the worst kind. Regular checks for hazards, and speedy repair, can save lives," said Smetana.

### Program...

Cont. from Page 1  
stamp operation, Garber added. Although regulations are relatively simple, certain items cannot be bought with food stamps. These include all non-food items sold in the store, as well as most imported foods. Grocers redeem the coupons through local banks and the Federal Reserve System.

\*\*\*\*  
Asking the question is much easier than finding the right answer.

### Grain...

Cont. from Page 1  
The bill now goes to the Conference Committee, where the Senate and House versions will be compromised. The compromised version will be brought back to each body of Congress for final passage. The bill, if it becomes law, will be effective for the 1974 crop. The House version is a four year bill.

The major differences for grain sorghum in the House and Senate versions are as follows: Loan Rate: senate bill, \$1.79; house bill, \$2.02; and USDA goal, \$1.79.

Target Price: senate bill, \$2.59; house bill, \$2.34; and USDA goal, \$2.14.

Total Payment per person: senate bill, \$20,000.00; house bill, \$20,000.00; and USDA goal, \$20,000.00.

Term of Legislation: senate bill, 5 years; house bill, 4 years; and USDA goal, 7.

Harp said, "We are optimistic that a workable farm program will be passed by Congress and signed into law by the President. A veto of this bill can only be construed as anti-farmer."

\*The Senate version provides that the portion of payments, which the Secretary declares for resource adjustment (set-aside), will not count against the \$20,000.00 limit per person.

### Crusade...

Cont. from Page 1  
ments; Robert Hooten, ushers; Rev. John Jaques, parking; Rev. Jim Sanderson, counselors and advisors and Rev. Glen Harlin, follow-up committee.

The first counselors training session for "Meet Jesus Crusade" will be held Sunday afternoon from 3 to 5 p.m. July 29 in the auditorium of the First Baptist Church.

Rev. Jim Sanderson, Lazbuddie Baptist Church pastor, will be conducting the training session. All who want to serve on the committee and have not been contacted, are urged to be present at the meeting.

\*\*\*\*  
One out of every four acre of farm crops raised in the United States goes to another country.

**Put away your aspirin tablets . . . give us a call and let us take over.**

**HEADACHE**

Fibrositis, Sinus Condition, Planters Warts, Muscle Spasms, Charlie Horses, Tension Headaches, Sprains, Toning of Muscles, Bursitis, Shingles, Stroke Patients. I also provide treatments to reduce symptoms associated with arthritis. I can also provide specific treatments prescribed by your Doctor.

Want to lose weight and inches? Check with me on my exercise room for membership.

**CLINICAL MASSUESE**

272-3677 Muleshoe

**MULESHOE JOURNAL**  
Established February 23, 1924  
Published by Muleshoe Publishing Co., Inc.  
Every Thursday at 304 W. Second Box 449  
Muleshoe, Texas, 79347  
Second class postage paid at Muleshoe, Texas 79347

**TEXAS PRESS ASSOCIATION**  
Member Since 1973

L.B. Hall, President  
Jessica P. Hall, Sec.-Treas.  
L.B. Hall, Managing Editor  
Kathy Beckett, News Reporter  
Kathy McCormick, Society Editor  
Dollie Long, Advertising  
Polly Ottwell, Business Office

**SUBSCRIPTIONS:**  
Zone 1-Balmy-Farmer-Cochran-Lamb counties, \$4.00 per year, \$4.50 per year by carrier, with Sunday Bailey County Journal, both papers, \$5.50 per year, \$6.00 per year by carrier.  
Zone 11-Out-of-Territory: \$4.50 per year, with Sunday Bailey County Journal, both papers, \$6.25 per year.  
Monthly, by carrier-35¢; single copies-10¢  
Advertising rates exist on application.



**Moving men are in the**

# SPECIAL ANNOUNCEMENT

**FARMERS SPRAYING SERVICE**  
has moved to a new location!!

**3 miles east on Highway 70**  
**BUT THAT'S NOT ALL!!**

**B & S IRRIGATION** has moved to  
the offices formerly occupied by  
**Farmers Spraying Service, Inc.** on  
**North Highway 70**

The managers of both businesses, Clifford Black,  
Bill Jim St. Clair, and Gary Miller invite you to  
visit them at their new locations for any of your  
spraying or irrigation needs.

**FARMERS SPRAYING SERVICE, INC.**  
Phone 272-3483

**B & S IRRIGATION**  
Phone 272-3307

**Ladies BATHING SUITS**  
**Summer SPORTSWEAR**  
**PANTS**

**Ladies TANK TOPS**  
**Ladies SHOES**  
**BLOUSES**  
**HALTERS**

**1/2** price

**Ladies DRESSES**  
Reg., Junior, Half sizes

**Children's BATHING SUITS**  
**SPORTSWEAR**

**Ladies PANT SUITS**

*St. Clair's*

# JULY 25 - 31 IS NATIONAL FARM SAFETY WEEK

Don't be a statistic...  
let's make every week  
farm safety week!

Every day hundreds of needless and costly accidents occur on the farm...accidents that could have been avoided by a simple check of equipment and machinery. Make it a must to inspect your farm for hazards and correct the problem before it's too late!


**CHECK YOUR FARM NOW  
...FOR SAFETY HAZARDS!**



**FARM SAFETY COMES FIRST**

## Here Are Some Helpful Hints on How to Make Your Farm A SAFE FARM

SPONSORED BY THE FOLLOWING COMMUNITY BUSINESSES

<p><b>ANIMALS</b></p> <p>TREAT ANIMALS WITH CAUTION, ALWAYS SPEAK TO AN ANIMAL AS IT IS BEING APPROACHED. A FRIGHTENED ANIMAL CAN BE DANGEROUS.</p> <p><i>Cobb's</i></p>	<p><b>FIRST AID</b></p> <p>LEARN THE METHODS OF FIRST AID AND, KEEP A KIT HANDY, AND ALWAYS APPLY FIRST AID PROMPTLY WHEN AN ACCIDENT OCCURS.</p> <p><b>Black Insurance Agency</b></p>	<p><b>EQUIPMENT</b></p> <p>KEEP ALL EQUIPMENT IN GOOD REPAIR. KNOW AND USE THE SAFETY RULES IN OPERATING MACHINERY ON THE FARM AND HIGHWAYS.</p> <p><b>Sherley-Anderson Lazbuddie Grain</b></p>	<p><b>CLEANLINESS</b></p> <p>MANY ACCIDENTS CAN BE ELIMINATED BY KEEPING YOUR FARM CLEAN AND NEAT.</p> <p><b>Whitt, Watts &amp; Rempe</b></p> 
<p><b>IRRIGATION PIPE</b></p> <p>BE ESPECIALLY CAREFUL WHEN MOVING SECTIONS OF METAL IRRIGATION PIPE UNDER ELECTRIC HIGH LINE WIRES. MANY PERSONS HAVE LOST THEIR LIVES WHEN PIPE COMES IN CONTACT WITH HOT WIRE.</p> <p><b>Muleshoe Co-op Gin</b></p>	<p><b>FAULTY WIRING</b></p> <p>MANY FARM FIRES ARE CAUSED WHEN FIRE BREAKS OUT IN MACHINERY SHEDS OR BARNES DUE TO FAULTY ELECTRICAL WIRING. ALL FARMS IN THIS AREA NOW HAVE ELECTRICITY AND IT WOULD BE WISE TO CHECK THE CONDITION OF THE WIRING AT LEAST ONCE A YEAR.</p> <p><b>John's Custom Mill</b></p>	<p><b>SHUT OFF POWER</b></p> <p>MANY ACCIDENTS COULD HAVE BEEN PREVENTED IF THE MOTOR IS TURNED OFF WHILE GETTING OBSTRUCTIONS FROM THE MACHINERY. ELECTRIC MOTORS SHOULD BE UNPLUGGED, OR TURNED OFF DURING EQUIPMENT ADJUSTMENTS.</p> <p><b>James Glaze Co.</b></p>	<p><b>FIRE HAZARDS</b></p> <p>ELIMINATE ALL FIRE HAZARDS AROUND YOUR FARM, AND BE AWARE OF FIRE DANGERS AT ALL TIMES. DON'T SMOKE IN BARNES, OR AROUND COTTON TRAILERS.</p> <p><b>Bailey County Electric Cooperative Association</b></p>
<p><b>OPEN WELLS</b></p> <p>BOTH WATER AND IRRIGATION WELLS ARE OCCASIONALLY ABANDONED IN THIS AREA AND MANY ARE HAZARDS THAT HAVE NOT BEEN PROPERLY COVERED. A SMALL RECESS SHOULD BE DUG AROUND THE HOLE AND METAL OR CONCRETE TOP SECURELY COVERED OVER THE HOLE. A LITTLE LIFE IS WORTH MORE THAN A LITTLE</p> <p><b>Tri-County Savings &amp; Loan Association</b></p>	<p><b>DRIVING</b></p> <p>GOOD DRIVING HABITS IN AUTOS PICKUPS, TRUCKS, CERTAINLY APPLIES TO THE RURAL RESIDENT, BE ESPECIALLY OBSERVANT AT BLIND CORNERS IN RURAL INTERSECTIONS WHERE WEEDS OR TREES OBSTRUCT VIEW.</p> <p><b>James Crane Tire Co.</b></p>	<p><b>POWER EQUIPMENT</b></p> <p>BE ESPECIALLY ALERT AROUND IRRIGATION WELL DRIVE SHAFTS AND SHAFTS SHOULD HAVE METAL PROTECTIVE COVERING. POWER TAKE OFF SHAFTS ARE ALSO TO BE OBSERVED CARDFULLY.</p> <p><b>First National Bank</b> Member FDIC</p>	<p><b>CHILDREN</b></p> <p>A WORD OF CAUTION TO USERS OF EVAPORATIVE AIR CONDITIONERS WITH A PLASTIC WATER SUPPLY LINE. YOUR AIR CONDITIONER MUST BE GROUNDED, TO INSURE SAFETY, IF EITHER THE FAN MOTOR OR THE WATER PUMP SHOULD FAIL. AN ESTIMATED 5,000 CHILDREN ARE ELECTROCUTED EACH YEAR BY PLAYING AROUND AIR CONDITIONERS THAT ARE NOT PROPERLY GROUNDED.</p> <p><b>Western '66'</b></p>



MR. AND MRS. BRITT REID GREGORY  
nee MARGARET ELIZABETH HETTINGA

## Margaret Hettinga, Gregory Wed

Mr. and Mrs. Henry Hettinga of Star Route, Earth announce the marriage of their daughter, Margaret Elizabeth, to Britt Reid Gregory, son of Mr. and Mrs. Howard Gregory of Floydada. The couple were married recently in the sunken gardens of the city park in Clovis, N.M. with only relatives and close friends attending.

Miss Hettinga wore a princess style wedding gown trimmed with lace and pearls. She carried a bouquet of gardenias and staphenotis.

Julia Hettinga attended her sister as maid of honor. Best man was Jack Gregory, brother of the groom.

A wedding supper was held

following the ceremony at the La Villa Steak House in Clovis.

Mrs. Gregory attended Muleshoe High School. The groom is a graduate of Texas Tech University and is presently employed by the Muleshoe School District. The couple will reside in Muleshoe.

## District II 4-H Dress Revue Slated July 26 in Lubbock

LUBBOCK-- The two "best dressed" 4-H girls from Bailey County will compete in the Extension District II 4-H Dress Revue at Lubbock on Thursday, July 26. "Fashion Fiesta" will be the 1973 dress revue theme.

Connie Floyd will be competing in the junior division while Jo Roming will model her garment in the junior division, announces Mrs. Robin Taylor, county Extension agent.

The revue will be held at 2:15 p.m. at the First Christian Church, 2323 Broadway. Judging in the senior division will begin at 11:30 a.m. Junior girls will not be judged. Activities for the juniors, parents and guests will also start at 11:30 a.m.

A 1:00 p.m. luncheon will be sponsored by the Plains Cooperative Oil Mill of Lubbock.

John Herzer is manager of the Oil Mill.

Senior girls will be judged on the overall appearance of their garment, suitability of the design, color and texture for the individual, grooming, posture, attitude, poise, personality, 4-H records and other factors, says Mrs. Taylor.

Special awards will be presented at the revue for best all-cotton garment and the best all-wool garment. The District II Aubrey W. Russell 4-H Girls Scholarship will be presented to an outstanding 4-H girl in the district.

The top four girls in the senior division will be eligible to compete in the State 4-H Dress Revue which will be held in October at Dallas in conjunction with the State Fair of Texas.

## County 4-H Dress Revue Held Monday

"Stitching Witchery" was the theme of the Bailey County 4-H Dress Revue presented in the Richland Hills Cafeteria Monday evening, July 23. Miss Alta Ramm served as mistress of ceremonies and Miss Dianne Vinson presented the 21 models and narrated the show.

Those who received a red award were: Staci Vandiver, Beth Harvey, Tonya Neel and Leslie Hawkins, all in the junior division.

Blue ribbons went to Jo Roming, Leslie Cowan, Tracie Walker, Benetta Roming, Shelli Walker, Tena Landers, Nancy Ramm, Keva Roming, Tonya Howard, Becky Turner, Sharla Henry and Sherri Henry, all in the junior division.

Also, Connie Floyd, Susan Head, Danita Throckmorton, Karen Head and Alta Ramm, all in the senior division, received blue ribbons.

Judging of the garments was completed on Friday, July 20. Connie Floyd, who modeled a western suit of knit fabric, was chosen senior winner. Karen Head was chosen as alternate. Jo Roming was named high point girl in the junior division and Leslie Cowan was named the alternate.

## NEW ARRIVALS



### Loy Dominguez

Mr. and Mrs. Loy Jose Dominguez of Muleshoe are the proud parents of a baby boy born July 22 at 3:44 a.m. in the West Plains Memorial Hospital of Muleshoe. The baby weighed 8 lbs., 6 ozs. and was named Loy Christopher. He is the couple's first child.

### Tonya D'Ann Young

Mr. and Mrs. Tony Young of Dimmitt are the proud parents of a baby girl born July 17 in the Plainview Hospital. The baby weighed 7 lbs., 2 1/2 ozs. and was named Tonya D'Ann. She is the couple's first child.

Grandparents are Mr. and Mrs. B.M. Gramling of Muleshoe and Mr. and Mrs. Joe Young of Dimmitt.

### Maricus Wilhite

Mr. and Mrs. Odus Whitley Wilhite of Texico, N.M. are the proud parents of a baby girl born July 20 at 6:59 p.m.



ROCK CONTEST BEGINS . . . . Various entry rocks are already pouring in at the Muleshoe Public Library as the "rock contest" begins. The deadline is August 1 for entries in the contest for the most unusual, the largest and most decorated rocks that the members of the Summer Reading Club can find. All entries must be clean and state the name and address of the finder, plus where it was found, on the rock's back side.

## Library News

by Anne Camp

in the West Plains Memorial Hospital of Muleshoe. The baby weighed 6 lbs., 11 ozs. and was named Maricus. The couple has one other child.

### Douglas Gilliam

Mr. and Mrs. Dean Gilliam of Morton are the proud parents of a baby boy born July 18 in the Morton Hospital. The baby weighed 6 lbs., 12 1/2 ozs. and was named Douglas Dewayne. He is the couple's first child.

Grandparents are Mr. and Mrs. E.C. Gilliam of Enochs and Mrs. Thelma Turney of Morton.

### Angel Marie Freeman

Mr. and Mrs. Roger Gale Freeman of Dimmitt are the proud parents of a baby girl born July 19 at 7:57 a.m. in the West Plains Memorial Hospital of Muleshoe. The baby weighed 5 lbs., 15 ozs. and was named Angel Marie. The couple has one other child.

### Richard Balli Garza

Mr. and Mrs. Ernest Hernandez Garza of Friona are the proud parents of a baby boy born July 22 at 9:55 a.m. in the West Plains Memorial Hospital of Muleshoe. The baby weighed 7 lbs., 11 ozs. and was named Richard Balli. He is the couple's first child.

To climax the Summer Reading Club Program at the Muleshoe Public Library, all boys and girls are invited to enter a Rock Contest. This is not a musical contest, or a rock-throwing contest, but a real rock contest.

The object of the contest is to see which child can find and bring to the library the most unusual rock specimen!

Who may enter? Any boy or girl who is participating in the Summer Reading Club. Rules for the contest are: one rock specimen to each boy or girl, rocks must be clean, and rocks must have the child's name and address, as well as where it was found, on the back side of the rock.

Rocks may be brought to the library at any time before August 1. This contest is mostly for fun, but prizes will be given for the most unusual, the largest and the most decorative. For decorating the rock may be painted or decorated in any manner, such as to look like an owl, turtle, etc.

Three first prizes will be given and the top twenty winners will have their rocks used as part of a permanent rock garden for the library.

The theme for the 1973 Summer

Reading Club has been right out of the Stone Age with dinosaurs and dragon books available for reading. Fairy tales have been shown on filmstrips and several posters have been on display. Wednesday, August 1, will be the last day to turn in reading lists. You don't have to be a rockhound to enter the rock contest. Let's see who can come up with the most unusual or decorative rock specimen. For any further details call the library: 272-4707.

## BIBLE VERSE

"Mine eyes are upon all their ways; they are not hid from my face, neither is their iniquity hid from mine eyes."

1. Who was the author of the above statement?
2. Of what disaster was he prophesying?
3. What is its meaning for us today?
4. Where may this verse be found?

## Answers to Bible Verse

1. Jeremiah the Prophet.
2. The utter ruin of the Jews.
3. That God is ever cognizant of our actions and knows our sins.
4. Jeremiah 16:17.

Time is our consciousness of the succession of ideas in our mind.

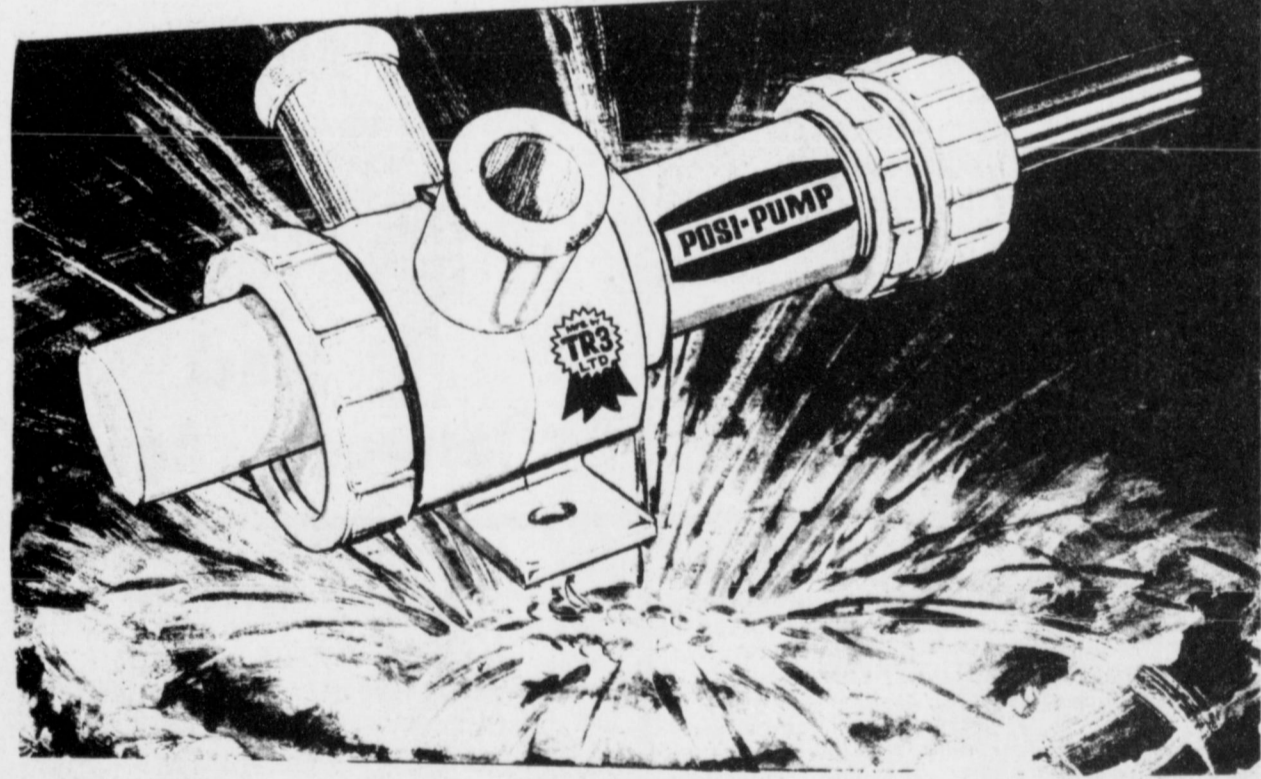


THURS. FRIDAY SATURDAY

# SUMMER clean up SALE

<p>ENTIRE STORE Ladies Summer</p> <p><b>SANDALS</b></p> <p>3<sup>77</sup></p>	<p>ENTIRE STOCK Ladies Summer</p> <p><b>PURSES</b></p> <p>Val. to \$8.50</p> <p><b>\$3</b></p>	<p>Mens Sports or Dress</p> <p><b>SHIRTS</b></p> <p>Val. to \$4.99</p> <p><b>\$2</b></p>	<p>Famous Brand</p> <p><b>JEANS &amp; SLACKS</b></p> <p>Val. to \$17.00</p> <p><b>\$6<sup>13</sup></b></p>
<p>Ladies &amp; Childrens</p> <p><b>SHOES</b></p> <p>Val. to \$12.69</p> <p><b>\$2</b></p>	<p>Dacron</p> <p><b>DOUBLE KNIT</b></p> <p>Val. to \$4.99</p> <p><b>2 YARDS FOR \$5</b></p>	<p>Boys No Iron</p> <p><b>SPORT SHIRTS</b></p> <p>2 FOR \$4<sup>97</sup></p>	<p>Boys Famous Brand</p> <p><b>JEANS &amp; SLACKS</b></p> <p>Val. to \$10.00</p> <p><b>\$4<sup>13</sup> PAIR</b></p>
<p>Mens Knit</p> <p><b>TANK TOPS</b></p> <p>Val. to \$4.50</p> <p><b>\$2</b></p>	<p>ENTIRE STOCK Better</p> <p><b>SUMMER FABRICS</b></p> <p>Val. to \$3.99</p> <p><b>2 YARDS FOR \$3</b></p>	<p>ALL SUMMER SPORTSWEAR</p> <p><b>FABRICS</b></p> <p>Val. to \$1.99</p> <p><b>2 YARDS FOR \$1</b></p>	<p>Mens</p> <p><b>SPORT SHIRTS</b></p> <p>Val. to \$6.00</p> <p><b>3 FOR \$10</b></p>
<p>Ladies &amp; Teens</p> <p><b>PANTS-TOPS SWIMWEAR</b></p> <p>Val. to \$19.00</p> <p><b>\$5</b></p>	<p>Boys</p> <p><b>TANK TOPS</b></p> <p>Val. to \$2.99</p> <p><b>2 FOR \$3</b></p>	<p>Mens Double Knit</p> <p><b>SUITS</b></p> <p>Val. to \$95.00</p> <p><b>\$57</b></p>	<p>Ladies</p> <p><b>SHOES</b></p> <p>Value to \$9.99</p> <p><b>\$1</b> pair</p>
<p>Ladies &amp; Teens</p> <p><b>BLOUSES TOPS PANTS</b></p> <p>Val. to \$14.98</p> <p><b>\$3</b></p>	<p>Ladies</p> <p><b>GIRDLES</b></p> <p>Val. to \$8.00</p> <p><b>2 FOR \$5</b></p>	<p>Mens Summer</p> <p><b>STRAW HATS</b></p> <p>Val. to \$4.99</p> <p><b>\$2<sup>47</sup></b></p>	<p>FACTORY CLOSE-OUT Boys</p> <p><b>SCHOOL SHOES</b></p> <p>Val. to \$6.99</p> <p><b>\$3</b> PAIR</p>

# POSI-PUMP



Everyone is cordially invited to attend a **FREE BANQUET** at the Muleshoe Country Club, Monday evening, July 30th, 7 p.m. to 8 p.m., for the purpose of introducing you to the newly formed Texas Corporation of Posi Pump, and to demonstrate to you our revolutionary new 100% positive Displacement pumps.

We are asking a select few to become part of the original stock holders. This will be a closed corporation, based and operated in Muleshoe, Texas.

For more details, please feel free to call Mr. Ken Duncan, phone 965-2661 or Jeff Smith, Vice President of Muleshoe State Bank, phone 272-4064.

**YOU ALL COME.**

## Miss Crawford Feted With Bridal Shower

Miss Diane Crawford, bride-elect of Galen Bock, was honored Sunday afternoon, July 22, with a bridal shower from 2:00 to 4:00 p.m. in the home of Mrs. Bill Loyd.

The serving table was laid with a white lace cloth over white satin. Centering the table was a gold candelabra featuring yellow candles entwined with yellow and white daisies. Thumb print cookies, melon balls, assorted nuts and punch were served from milk glass appointments. Presiding at the table was Miss Martha Jane Chapman. Miss Brenda Scott registered the guests.

Special guests for the occasion were Mrs. Jimmie Crawford of Muleshoe, mother of the honoree; Mrs. Harvey Crawford

of Levelland, aunt of the honoree; Mrs. Melvin Bock of Earth, mother of the prospective groom; and Mrs. Hoyt Lewis of Ft. Sumner, N.M., grandmother of the prospective groom.

The hostess gift was a set of three-ply stainless steel cookware.

Hostesses for the occasion were Mrs. Fred Mardis, Mrs. Francis Gilbreath, Mrs. Harvey Bass, Mrs. Kenneth Precure, Mrs. Clayton Finley, Mrs. Bill Taylor, Jr., Mrs. George Washington, Mrs. Alton Carpenter, Mrs. Marshall Milligan, Mrs. Burl Mardis, Mrs. Richard Turner, Mrs. Clark McCamish, Mrs. R.L. Scott, Mrs. Bill Loyd, Mrs. Tub Angeley, Miss Bill Ed Jones and Miss Irene Madrid.



MISS DIANE CRAWFORD

## Shower Honors Mrs. Ragland

Mrs. Kenneth Ragland, nee Audree Winn, was honored with a bridal shower Saturday morning, July 21, from 10:00 to 11:30 a.m. in the home of Mrs. Bill Jim St. Clair.

Receiving guests with the honoree were Mrs. Jess Winn, her mother; Mrs. Earline Ragland, mother of the groom; and Mrs. Bill Jim St. Clair.

The serving table was laid with an ecru cutwork linen cloth and centered by a floral arrangement of shades of purple and lavender in a cutglass bowl. A tiered fruit plate completed the table decor. Miniature coffee rolls, hot tea and coffee were served from crystal appointments. Alternating at the table and registering guests

were Miss Donna Howard, Miss Glenda Harlin, Miss Brenda St. Clair and Miss Brenda Weeks.

Special guest for the occasion was Mrs. Grace Winn, grandmother of the honoree.

The hostess gift was a Hoover dial-a-matic vacuum cleaner.

Hostesses for the occasion were Mrs. Jack Young, Mrs. Don Bryant, Mrs. Bill Jim St. Clair, Mrs. Clarence Weeks, Mrs. E.G. Howard, Mrs. Glen Harlin, Mrs. Herb Griffiths, Mrs. L.B. Hall, Mrs. Harmon Elliott, Mrs. J.C. Slaughter, Mrs. Clinton Rogers, Mrs. J.W. Roberts, Mrs. Sam Hopper, Mrs. Bobby Nickels and Mrs. Derrell Matthews.



MRS. KENNETH RAGLAND

## Bridal Shower Fetes Mrs. Britt Gregory

Mrs. Britt Gregory, nee Margaret Hettinga, was honored Friday evening, July 20, with a bridal shower from 7:00 to 9:00 p.m. in the home of Mrs. Reagan Cox.

The serving table was laid with a white cutwork cloth embroidered in silver over pink. Centering the table was an arrangement of pink roses. Crystal and silver appointments were used. White cake decorated with pink icing, punch, assorted nuts and mints were served by the hostesses. Miss Marleea Cox registered the guests.

Special guests for the occasion

were Mrs. Henry Hettinga of Earth, mother of the bride; Mrs. Connie Lahaise of Oliver, British Columbia, grandmother of the bride; and Mrs. Howard Gregory of Floydada, mother of the groom.

The hostess gift was a six place setting of Corelle ware.

Hostesses for the occasion were Mrs. James Cox, Mrs. Monte Dollar, Mrs. Seana Stevens, Mrs. Keith Taylor, Mrs. Francis Bruns, Mrs. Ethel Julian and Mrs. Reagan Cox.



MRS. BRITT GREGORY

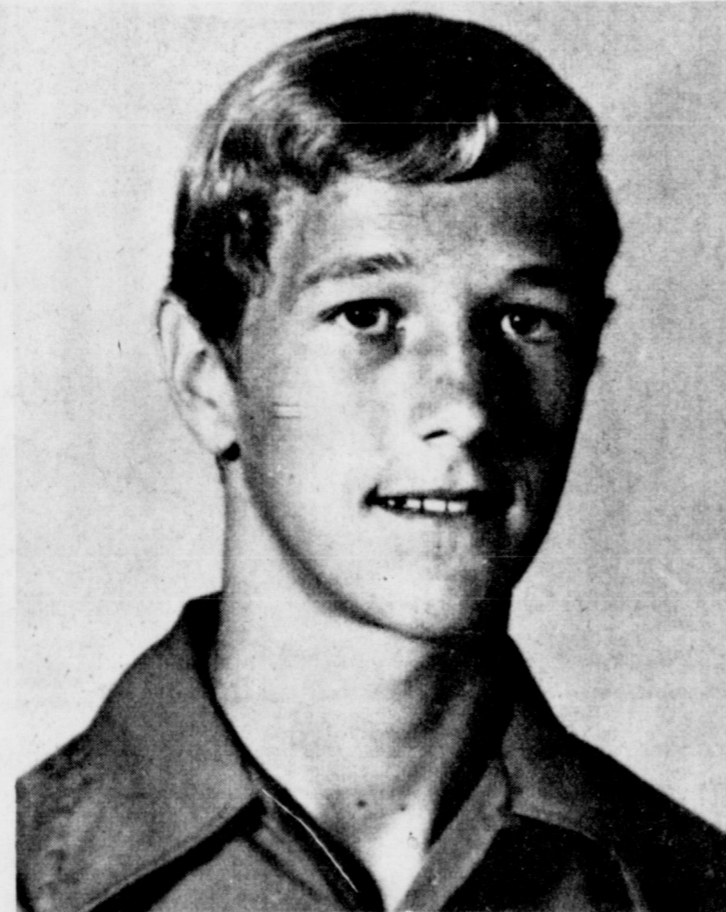
## Edward Clawson Awarded State Farmer Degree

Edward Clawson, member of the Bula FFA chapter, received his State Farmer Degree at the state FFA convention held recently in Dallas. A senior student at Bula High School, he is the son of Mr. and Mrs. I.L. Clawson.

Accompanied to the convention by Jack Birdwell, vocational agriculture teacher for Bula High School, Clawson was awarded the degree upon approval of his written records by the convention delegates.

Certain qualifications are required before the State Farmer Degree may be conferred. Some of these are: must have de-

gree of Chapter Farmer; be an active member of FFA for at least two years; have a record of satisfactory participation in the activities of the local chapter; have satisfactorily completed at least two years of instruction in vocational agriculture; must have in operation an outstanding supervised farming and/or other agricultural occupational experience program; be regularly enrolled in a vocational agriculture class; and be familiar with provisions of the constitution of the state association and national organization.



EDWARD CLAWSON

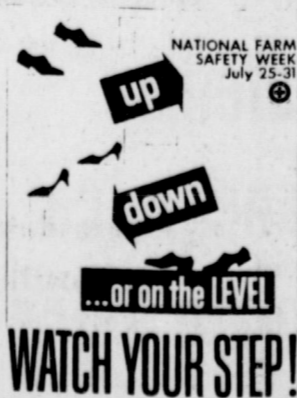
## WEST PLAINS HOSPITAL Hospital Briefs

### ADMISSIONS:

Mrs. Anna C. Hill, Terry Burchel, Roy Bayless, Mrs. O.W. Wilhite, Mrs. C.F. Garth, Baby Girl Wilhite, S.L. Thedford, James L. Winters, Mrs. Marion Cardona, Marion Cardona, Timoteo Canter, Oscar Allison, Mrs. Loy Dominguez, Baby Boy Dominguez, Mrs. Ernest Garza, Baby Boy Garza, Julius Briscoe, Mrs. Bill Hall, Mrs. Dorene Harbin, Howard Ray Manasco, Mrs. Elizabeth Black, Mrs. Barbara Milburn and Mrs. Bob Wilson.

DISMISSALS: Mrs. Joe Trevino, Baby Girl Trevino, Mrs. W.M. Vinson, Elio Jaso, Terry Burchel, Clyde Waggoner, John W. Moree, Mrs.

C.F. Garth, Mrs. Eldon Page, Mrs. O.W. Wilhite, Baby Girl Wilhite, Mrs. Lewis Sanders, Roy Bayless, Mrs. Anna C. Hill, S.L. Thedford, Mrs. Dorene Harbin, Julius Briscoe, Clarence Bennett, Mrs. Loy Dominguez, Baby Boy Dominguez and Mrs. John Harris.



**OPEN**  
9 AM-8 PM  
**WEEKDAYS**  
**CLOSED**  
**SUNDAYS**

**GIBSON'S**  
**DISCOUNT CENTER**  
1723 W. AMERICAN BLVD.  
MULESHOE, TEXAS

**SALE**  
**STARTS**  
**JULY 26TH**  
**GOOD THRU**  
**SATURDAY**  
**JULY 28TH**

**J-WAX KIT**  
CLEANER/WAX

12 OZ. CAN ONLY **\$1.19**



**PUNCH - O - BALL**  
INFLATES 10" to 14"  
LOADS OF FUN

**29¢**

**Close-up**  
Super-Whitening Toothpaste and Mouthwash in One

**CLOSE-UP TOOTHPASTE**

FAMILY SIZE TUBE ONLY **59¢**

**TRAVEL & SHAVE KIT**

BROWN OR BLACK NOW ONLY **\$2.99**

EPCO 2000

**37¢** **47¢**  
**77¢** **94¢**

**HOSIERY HIT PARADE**  
Made by one of America's leading hosiery manufacturers especially for Gibson's. Choose the styles most appealing to you — all in the season's newest shades — and save! All first quality.

**GIBSONS DICKIES**  
**LAY-A-WAY**  
**SPECIALS**  
for  
**BACK TO SCHOOL**

**BOYS COLORED DENIM FLARES**  
SIZES 4 to 16 REGULAR & SLIM

**\$2.97**  
PAIR

**MENS SIZES**

**\$4.37**  
PAIR

**AM/FM DIGITAL CLOCK RADIO**

**\$19.95**

LLOYD'S NO. J-615

**SWAG LAMPS**

OUR REG. \$13.97 \$14.97

YOUR CHOICE ONLY **\$9.88**

**DECORATIVE TABLE LAMPS**

VALUES TO \$14.97

**\$9.88**

**DECORATIVE NOVELTY CLOCKS**

Our Reg. \$9.97 \$6.97 \$10.97 \$7.97

Our Reg. \$11.97 \$8.97 \$16.97 \$12.97

**SANYO 12" BLACK & WHITE TELEVISION**

**\$69.95**

NO. 21V65

## Hanging Baskets Accent Landscapes

COLLEGE STATION--Hanging baskets can add beauty and coolness to your landscape, says Everett Janne, landscape horticulturist for the Texas Agricultural Extension Service. "Hanging baskets, made with almost any kind of container imaginable, provide attractive landscape accents and are easy to make," explains the Texas A&M University System specialist.

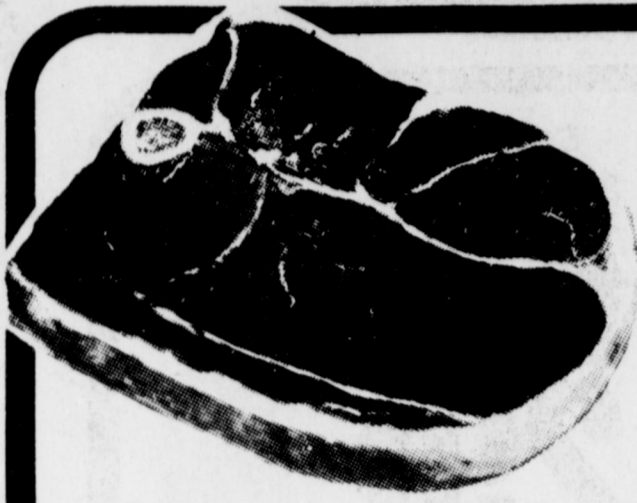
To prepare the basket, use a well-draining potting soil and leave a two-inch space between the soil line and the top of the basket for watering. Wire baskets should first be lined with a material that will hold

the soil, such as sphagnum moss. Plants should be placed at the same depth at which they were previously grown. Immediately after planting, the basket should be thoroughly soaked in a tub of water.

Many plants are available for hanging baskets, those with drooping growth being the most preferable. A few include achimenes, hanging geraniums and begonias, cascade mums and petunias, impatiens, lantana, Christmas and Easter cactus, ferns, vinca, flame violets, common mint, English ivy, wandering Jew, burro tail and kangaroo vine.



# SAVE NOW! THOUSANDS OF EVERYDAY LOW



Superb Valu Trim

## Round Steak

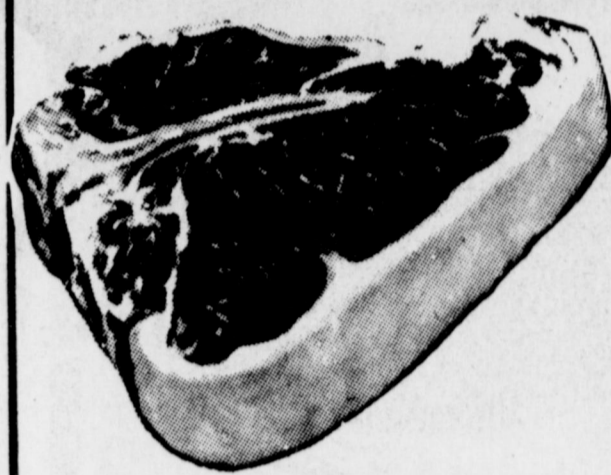
\$ **1.29**  
Lb.



Superb Valu Trim

## Sirloin Steak

\$ **1.29**  
Lb.



Superb Valu Trim

## T-Bone Steak

\$ **1.55**  
Lb.



Superb Valu Trim

## Rib Steak

\$ **1.29**  
Lb.



28 oz. Btls.  
**Coca Cola**

**\$ 1.51**

**X-TRA VALU**

EVERY DAY VALU PRICE

Regular Quarters  
**Parkay Margarine**

**\$ 1.41**  
Lb. Pkgs.

**X-TRA VALU**

EVERY DAY VALU PRICE

Piggly Wiggly Buttery Rich  
**Butter-Milk**

**\$ 1.49**  
1/2-Gal. Ctn.

**X-TRA VALU**

EVERY DAY VALU PRICE

Grated  
**Van Camp's Tuna**

**\$ 1.31**  
6 1/2-oz. Cans

**X-TRA VALU**

EVERY DAY VALU-PRICE

Active  
**Tooth Polish** 3-oz. Btl. **99c**

Rise Baby Face Aerosol  
**Shave Lather** 11-oz. Can **89c**

"Spray On-Shower Off" Lemon Scented Hair Remover 4-oz. Aerosol Btl. **\$1.39**

Arrid, Reg. or Extra Dry Powder  
**Deodorant**

6-oz. Aerosol Can **89c**

**X-TRA VALU**

Gerber's Strained Fruits & Vegetables  
**Baby Food** 4 1/2-oz. Jar **12c**

Liquid With Iron  
**Similac Formula** 13-oz. Can **30c**

Piggly Wiggly Asst'd. Flavors No Deposit  
**Soft Drinks** 28-oz. Btls. **23c**

Chocolate Drink Mix  
**Nestle's Quik** 2-Lb. Can **87c**

Kellogg's Cereal  
**Corn Flakes** 12-oz. Box **32c**

Carol Ann Nonfat  
**Dry Milk** 8 Qt. Box **\$1.10**

Liquid Asst'd. Flavors  
**Sego Diet Food** 10-oz. Can **27c**

Del Monte  
**Fruit Cocktail** 17-oz. Can **31c**

Piggly Wiggly Halves or Slices  
**Cling Peaches** 16-oz. Can **28c**

Del Monte  
**Pear Halves** 29-oz. Can **58c**

Orange  
**Tang Drink Mix** 18-oz. Jar **89c**

Lemon Juice  
**Realemon** 8-oz. Btl. **27c**

Del Monte  
**Prune Juice** 32-oz. Btl. **54c**

Piggly Wiggly  
**Tomato Juice** 46-oz. Can **42c**

Hunt's Manwich, 15 1/2-oz. Can **42c**

**Sandwich Sauce** **42c**

Ranch Style  
**Beans** 23-oz. Can **29c**

La Choy  
**Beef Chow Mein** 16-oz. Can **66c**

Chef Boy-Ar-Dee Sausage  
**Pizza Mix** 16 1/2-oz. Box **76c**

Chicken Noodle Soup Big 26-oz. Can  
**Campbell's Soup** **42c**

Piggly Wiggly Vegetable  
**Beef Soup** 10 1/2-oz. Can **20c**

American Beauty  
**Elbo Spaghetti** 10-oz. Pkg **22c**

# PRICES SLASHED FOR YOU! "VALU-PRICES"



Prices good July 26-28, 1973.



Superb Valu Trim, Blade Cut  
**Chuck Roast** Lb. **88c**

Superb Valu Trim  
**Club Steak** Lb. **\$1.49**

Superb Valu Trim  
**Rump Roast** Lb. **\$1.13**

Superb Valu Trim  
**Rib Roast** Lb. **\$1.19**

Superb Valu Trim  
**Arm Roast** Lb. **\$1.09**



Fresh, Family Pak  
**Ground Beef** Lb. **88c**

Fresh Corn Fed, Family Pak  
**Fish Fillets** Lb. **89c**

Farmer Jones  
**Sliced Bologna** Lb. **85c**

Farmer Jones  
**All Meat Franks** 12-oz. Pkg. **75c**

Kraft's American, Stagger Stak  
**Sliced Cheese** 3-Lb. Pkg. **\$2.99**

Farmer Jones, Bologna, Pickle & Olive or  
**Sliced Lunch Meat** 6-oz. Luncheon Pkg. **55c**

Superb Valu Trim, Center Cut  
**Chuck Steak** Lb. **98c**

Piggly Wiggly  
**Sliced Cheese** 6-oz. Pkg. **44c**

Farmer Jones Wafer Thin  
**Sliced Meats** 3-oz. Pkg. **39c**



Crisp  
**Head Lettuce** Lb. **29c**

Long Crisp  
**Stalk Celery** Ea. **35c**

Tart, Tangy  
**Lemons** Lb. **29c**

Bartlett  
**Juicy Pears** Lb. **43c**

Santa Rosa  
**Plums** Lb. **49c**

Colorful Cherry  
**Tomatoes** Box **69c**

Flavorful  
**Yellow Onions** 10c

Fresh, Juicy  
**Corn-on-Cob** 3/ **39c**

California  
**Avocados** 3/ **\$1**

This Week Get Your Section **11 SAUCES AND SOUPS** of the Complete Family Cookbook

The Complete Family **HOME REPAIR BOOK**  
This week get chapter 11 "Keeping your plumbing system working."



**OPEN 7 DAYS**  
**7 AM - 12 PM WEEK**

Delicious  
**Kraft's Mayonnaise**  
Quart Jar  
**69c**

**X-TRA VALU**

EVERY DAY VALU-PRICE

Thick, 4 Ply Rolls  
**Teri Towels**  
60 Sheet Rolls  
**\$1.35**

**X-TRA VALU**

EVERY DAY VALU-PRICE

Piggly Wiggly  
**Golden Corn**  
17-oz. Cans  
**\$1.55**

**X-TRA VALU**

EVERY DAY VALU-PRICE

VALUABLE COUPON PIGGLY WIGGLY

**Save 39c**  
With this coupon at Piggly Wiggly when you buy one (1) All Grinds, 1-Lb. Can  
**Folger's Coffee**  
1 with Coupon 1-Lb. Can **69c**

On first purchase with coupon. Without coupon 99c.  
Offer expires July 29, 1973.

00025

EVERY DAY VALU-PRICE

Piggly Wiggly  
**Tomato Catsup** 28-oz. Btl. **48c**

A-1  
**Steak Sauce** 5-oz. Btl. **42c**

French's  
**Mustard** 9-oz. Jar **20c**

Viva Italian Dressing  
**Seven Seas** 8-oz. Btl. **44c**

Heinz Sweet Cucumber  
**Sliced Pickles** 16-oz. Jar **45c**

Red Devil  
**Hot Sauce** 3-oz. Btl. **15c**

Towle's  
**Salad Olives** 5-oz. Jar **57c**

Chef Pride Dried Small  
**White Beans** 16-oz. Bag **32c**

Regular  
**Minute Rice** 7-oz. Box **32c**

All Purpose  
**Gladiola Flour** 5-Lb. Bag **49c**

Piggly Wiggly Ass't'd. Flavors  
**Cake Mix** 18 1/2-oz. Box **30c**

Kal Kan Ass't'd. Flavors  
**Cat Food** 6 1/2-oz. Can **21c**

Kan-L-Ration  
**Dog Food** 15 1/2-oz. Can **18c**

Rusty  
**Dog Food** 15 1/2-oz. Can **10c**

Piggly Wiggly Spears  
**Asparagus** 16-oz. Can **57c**

Del Monte Cut  
**Green Beans** 16-oz. Can **27c**

Piggly Wiggly Green  
**Lima Beans** 16-oz. Can **27c**

Del Monte Garden  
**Sweet Peas** 16-oz. Can **26c**

Furniture Polish  
**Favor** 12-oz. Can **\$1.25**

Disinfectant  
**Lysol** 21-oz. Spray Can **\$1.93**

Bonne' Heavy Duty  
**Detergent** 49-oz. Box **49c**

Piggly Wiggly Frozen  
**Cut Corr** 20-oz. Bag **39c**

Piggly Wiggly Frozen  
**Cut Broccoli** 20-oz. Bag **39c**

Spartime All Varieties  
**Pot Pies** 7 6-oz. Pkgs. **\$1.00**

Morton's, All Varieties Frozen  
**Dinners** 10-oz. Pkg. **39c**  
Except Beef & Ham

**X-TRA VALU**

# Farmer's Counted Out In Phase IV Program

"Farmers have been counted out again in the announcement of President Nixon's Phase IV economic program," stated Texas Farmers Union President Jay Naman of Waco at the charter meeting of the Scurry County Farmers Union in Snyder Monday night. Naman explained that while the announcement of the program leaves the impression that special consideration is being given farmers, the new price control program is disappointing in that it discriminates against producers of certain commodities.

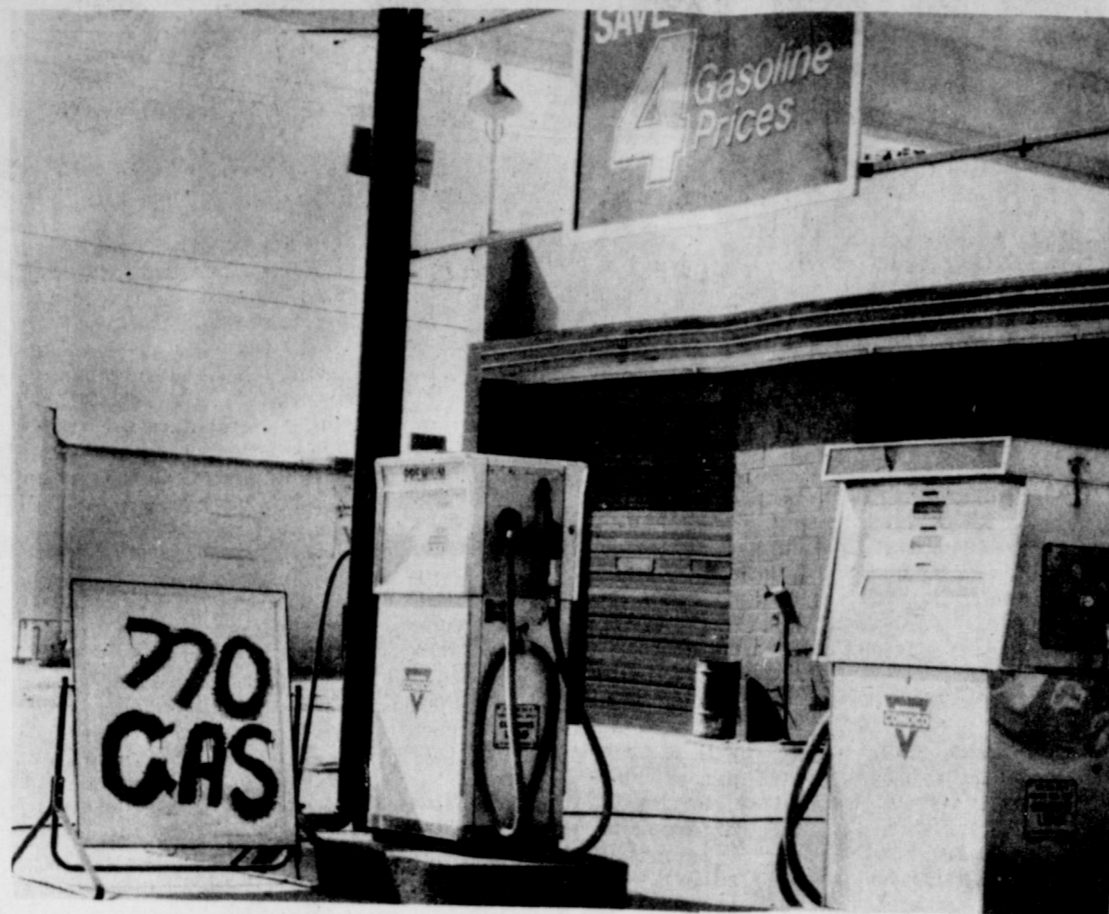
"While the cattle feeding segment of the farming industry is suffering as a result of the cost-price squeeze, Phase IV specifically avoids any relief to cattle producers. It also fails to modify the embargo that has been placed on soybeans, cottonseed and related products, which deals harshly with producers of these commodities," Naman said.

The statewide farm leader charged that Treasury Secretary Schultz's statements concerning profits in agriculture are distorted and misleading in view of the fact that farmers are still only receiving 88% of a fair price for what they produce.

"Family farmers resent Secretary Schultz's off-hand and ill-founded remarks concerning farmers crying all the way to the bank" on nationwide television, Rash comments such as this indicate that Secretary Schultz is completely lacking in understanding the serious economic problems now facing family farmers," Naman said.

The Farmers Union leader stated that Phase IV is a further indication that the Nixon Administration fails to grasp the need to provide the economic incentive to farmers and ranchers to produce in abundance. "It means that this Administration is insistent on a cheap food policy making family farmers and ranchers the scapegoats in its quest to solve the problem of inflation," according to Naman.

"Phase IV should have opened up exports on soybeans and cottonseed products to avoid the loss of foreign markets. Texas agriculture has a great stake in preserving export markets for these commodities. Also, the announcement of licensing requirements on cotton exports indicates that plans are in the offing to limit cotton exports. These decisions are apparently being made under pressure of domestic users of these products, who are anxious to drive the prices down at harvest time," Naman said.



SIGN OF THE TIMES . . . . . A no gas sign at one of the service stations in Muleshoe this week seems to indicate a change of pace for the area. J. A. Mills of First Street Conoco said he expected to be back in business Thursday.

## DPS Accepting Application For Patrolman

The Texas Department of Public Safety is actively recruiting applicants to fill the ranks of its uniformed services. Major C. W. Bell, Regional Commander of the DPS, announced that the training school for new uniformed law enforcement personnel will begin September 25, 1973.

The Major noted that the DPS had been increasingly successful in recruiting persons from minority groups to these positions and said efforts in this direction will continue.

Also in keeping with the current trend, female applicants will be considered for these rewarding careers in law enforcement.

Major Bell said general qualifications for DFS officers are these: applicants must be 20 through 35 years of age; height not less than 68 inches; weight not less than two pounds per inch of height; visual acuity of 20/40 correctable to 20/20; and a minimum of 45 semester hours of college credit.

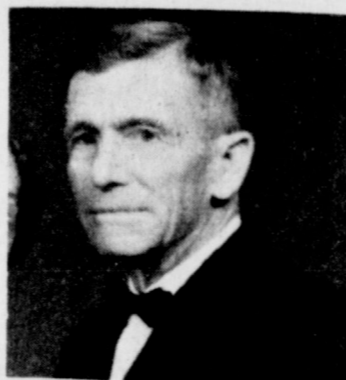
Applications may be obtained by contacting any DPS employee or any DPS office. The completed application form should be taken to offices in Lubbock, Amarillo or Wichita Falls where the competitive examination is given each Tuesday and Wednesday at 9:00 a.m.

Major Bell said persons selected as cadets will be assigned to Austin for training at the DPS Academy. The salary during training will be \$625 per month. Upon being commissioned the salary is raised to \$719.00 monthly with the opportunity to advance to \$848 per month.

Uniformed personnel receive additional longevity pay for each five year of service to 25 years. They are also granted monthly uniform cleaning allowance, and receive travel expenses when away from their station.

Uniforms, vehicles, weapons, ammunition and related equip-

## Services Pending For Tom Smith



TOM L. SMITH

there from Jack County in 1918. He married Callie Shelton on January 4, 1914 in Parker County, Tx.

Smith was a member of the First United Methodist Church of Muleshoe. He had served as a Past Master of the Muleshoe Masonic Lodge and a Past Noble Grand of the Oddfellows Lodge.

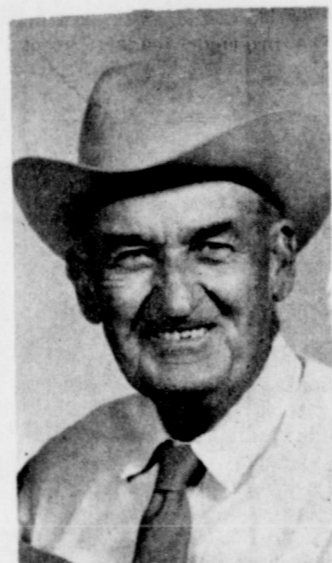
Survivors include his wife, Callie; one son, Joe Smith of Pierce, Ariz.; three daughters, Mrs. W.C. Dickenson of Albuquerque, N.M.; Mrs. Dalton Murrash of Colorado Springs, Colo.; and Mrs. L.A. Green of Muleshoe; 11 grandchildren and 14 great grandchildren.

Funeral services are pending at Singleton-Ellis Funeral Home in Muleshoe.

Tom L. Smith, 81, was dead on arrival at the West Plains Memorial Hospital around 3:00 p.m. Tuesday afternoon after suffering an apparent heart attack.

Born December 5, 1891 in Jack County, Tx., he was a retired farmer. He had lived in the Muleshoe area since 1923, moving here from Hale County, Tx. He resided in Plainview for five years upon moving

## J. U. Dawson Bailey County Pioneer Dies



J. U. Dawson

apparently suffered a heart attack at his home, 15 miles south of Muleshoe in the Longview community.

Dawson had lived in Longview community since 1926, moving from Vinita, Okla. He was born in Afton, Okla. on September 6, 1898. He married Raneta Terrell in Clovis on Nov. 28, 1931. Dawson was a farmer and a member of the 16th and Avenue D Church of Christ.

Survivors include his wife, Raneta; a son, Jerry of Parsons, Kan.; four daughters, Mrs. Estelle MacKenzie, Albuquerque, Mrs. Helen Krebs, Amarillo, Mrs. Alice Harvey, Clovis and Mrs. Hattie Jo Moser, Farwell; a sister, Mrs. Rosie Miller, Miami, Okla.; two brothers, Bob of Skiatook, Okla. and Charlie of Kansas City, Mo.

Services for J. U. Dawson, 74, were held at 3 p.m. Wednesday, July 25 in the First Baptist Church here. The Rev. Jim Green and the Rev. Eugene North, Baptist ministers from Portales officiated.

Burial was in the Bailey County Memorial Park under the direction of Singleton-Ellis Funeral Home.

Pallbearers were Jesse Ray Carter, L.L. Kitchens, O.G. Killingsworth, W.B. Kittrell, Austin Glenn and O.M. Lackey.

Dawson was pronounced dead on arrival Monday at West Plains Memorial Hospital. He



**Freshest Bun for Fun!**  
**MRS BAIRD'S**

# ANNOUNCING NEW RATES

NOW EARN

**5 1/4 %** PER ANNUM

ON PASSBOOK SAVINGS

UP TO

**7 %** PER ANNUM

ON CERTIFICATES ACCORDING TO TIME AND AMOUNT \*

- 90 DAY CERTIFICATE 1,000 MINIMUM -- 5.75%
- 1 YEAR CERTIFICATE 1,000 MINIMUM -- 6.50%
- 2 YEAR CERTIFICATE 5,000 MINIMUM -- 6.50%
- 2 1/2 YEAR CERTIFICATE 5,000 MINIMUM -- 6.75%
- 4 YEAR CERTIFICATE 1,000 MINIMUM, 5,000 MAXIMUM 7.00%

**PAID QUARTERLY**

\* FOR EARLY WITHDRAWAL CERTIFICATE INTEREST WILL BE PAID AT PASSBOOK RATE PLUS PENALTY OF 90 DAYS INTEREST AT PASS BOOK RATE

**FIRST FEDERAL SAVINGS & LOAN ASSOCIATION of CLOVIS**

801 PILE, CLOVIS, N.M. 2nd. & ABILENE, PORTALES, N.M.

"SERVING CLOVIS AREA SINCE 1934"



**NOW!**

**WHEEL ALIGNMENT AT SPECIAL LOW PRICES!**

We have the complete facilities to properly perform partial or complete front-end alignments. We stock parts and give your car dependable service.

**Plains AUTO PARTS**  
P.O. Box 386  
MULESHOE, TEXAS 79347

South Main  
Muleshoe  
Phone 272-4576

## Rev. H. F. Peiman Services Held Wednesday, July 25

The Rev. Herbert F. Peiman, 79 of Farwell died about 9 a.m. Sunday in a Clovis nursing home. He had been the pastor of St. John's Lutheran Church in Lariat, Tex., from 1964 until his retirement in 1971.

He was born Nov. 8, 1893, in Clatonia, Neb. and was graduated from Winfield College in Winfall, Kan. in 1915.

Rev. Peiman spent about 50 years in the preaching-teaching ministry of the Lutheran Church. He pastored at the Grace Lutheran Church in Cisco, Tex.; Zion Lutheran Church in Vernon, Tex.; Trinity Lutheran Church in Borger, Tex.; and at the St. John's Lutheran Church in Lariat, illness forced Rev. Peiman's retirement in 1971.

Services will be at 2 p.m. Wednesday July 25 at St. John's Lutheran Church in Lariat with Dr. Carl Heckmann, of Austin officiating, assisted by the Rev. Martin Platzer, pastor. Burial will be in Sunset Terrace Cemetery in Farwell under the direction of Steed-Tood Funeral Home, Clovis.

His survivors include the widow, Mrs. Magdalena Peiman of the home; one son, Donald, Peiman of Rapid City, S.D.; five daughters, Mrs. Louise Mueller of St. Louis, Mo.; Mrs. Ruby Young of Okmudgee, Okla.; Mrs. Ruth Streit of Vernon, Tex.; Mrs. Mildred Haneloff of Farwell, and Mrs. Edna Peterson of Houston, Tex.; two sisters, Mrs. Elsie Bauck of Vassar, Kan., and Mrs. Anna Evans of Topeka, Kan.; 21 grandchildren; and 11 great-grandchildren.

Memorials may be made for the Herbert F. Peiman Scholarship Fund St. John's College in Winfield, Kan. or to the Good Samaritan Home in Houston.

Arrangements will be made for a physical examination. A character investigation will be conducted.



THIS Friday Sat. ONLY

## BORDER TOWN DAYS

**SALE**

ALL SEWING NOTION, SCHOOL SUPPLIES, GREETING CARDS **20% off**

Womens **SHOES \$2.49** PAIR

Mens **SUITS \$25.99**

Mens **DOUBLE KNIT SUITS \$48.99**

Reg. 90.00  
Large Group **MENS PANTS** Sale 5.50 **NOW 2 for the price of 1**

**PANTY HOSE 2 for \$1**

OUR CLEARANCE SALE ITEMS ARE ON A 99¢ TABLE - New items added Daily

Ladies **SLACK SUITS 30% off**

MENS **BOOTS & SHOES 30% off**

MENS **SHIRTS 30 & 40% off**

JUST ARRIVED . . . . . Mens & Womens **WINTER COATS 20% off**

New Fall **DOUBLE KNIT MATERIAL 15% off**

VELVET BEDSPREADS Queen - **17<sup>60</sup>** Full - **14<sup>40</sup>**

THERE WILL BE A BAKE SALE HERE ON SATURDAY SPONSORED BY THE CLOVIS DRILL TEAM

**HOLIDAY FAMILY STORE** in Farwell





# CLASSIFIED ADS

## FIND IT QUICK

### WANT ADS PH.272-4536

#### CLASSIFIED RATES

##### OPEN RATES

First insertion, per word-9¢  
Second and additional insertions-6¢

##### NATIONAL RATES

First insertion, per word-11¢  
Second and additional insertions-7¢  
Minimum Charge-

CARD OF THANKS.....\$2.00

Classified Display \$1.12 per col. inch

Double rate for Blind Ads \$1.15 per col. inch for Reverses

#### DEADLINE FOR INSERTION

Thursday's Muleshoe Journal-Noon Tuesday  
Sunday's Bailey County Journal-Noon Friday

The Journals reserve the right to classify, revise or reject any classified ad.

Check advertisement and report any error immediately. Journals are not responsible for error after ad has already run once.

### 7 Accidents Investigated In County

The Texas Highway Patrol investigated 7 accidents on rural highways in Bailey County during the month of June, according to Sergeant Thurman Keffer, Highway Patrol supervisor of this area.

These crashes resulted in no persons killed and 5 persons injured.

The rural traffic accident summary for the 60 counties of the Lubbock Department of Public Safety Region for June, 1973 shows a total of 559 accidents resulting in 27 persons killed and 331 persons injured as compared to June, 1972 with 529 accidents resulting in 20 persons killed and 347 persons injured. This was 30 more accidents, seven more fatalities, and 16 less injured in 1973 at the same period of time.

The 27 traffic deaths for the month of June, 1973 occurred in the following counties: Hale, eight; Swisher, four; Parker, three; Lamb, two; and Briscoe, Deaf Smith, Hutchinson, Ochiltree, Potter, Jack, Montague, Palo Pinto, Stonewall, and Wichita counties, one each.

### Area Vo-Ag Teachers Honored

Billie E. Bickel, Vocational Agriculture Teacher, Muleshoe High School, Scotty Windham, Vocational Agriculture Teacher, Lazbuddie High School will be honored by the Vocational Agriculture Teachers Association of Texas in San Antonio, Texas, July 31, 1973, according to Sid Long, Gail, President of the Organization, Bickel will receive his 20 year tenure pin.

Graduated from Muleshoe High School and Texas Tech University. Served in the United States Air Force for three years.

Bickel received the Honorary State Farmer Degree in 1959 from the Future Farmers of America.

The Muleshoe FFA Chapter is active in leadership, judging and other contest at shows and fairs.

Windham will receive his 15 year tenure pin. The award will be presented at the Annual Awards Program of the Association. The program is held during the state-wide conference of Vocational Agriculture Teachers and the 1973 Conference will emphasize the implementation of new approaches to Vocational Agriculture Education. Leaders in

agriculture and education from throughout the state and nation will participate in the four day in-service meeting.

Education features of the meeting will be under the direction of Mr. J.A. Marshall, Director of Agriculture Education, Texas Education Agency, Austin. Marshall will be assisted by Mr. G.G. Scroggins, Assistant Director, Agriculture Education, Texas Education Agency; Mr. Billy Conner, Executive Secretary, Texas Future Farmers of America, Texas Education Agency; Mr. Raymond Holt, Consultant, Vocational Agriculture Education, Texas Education Agency and Mr. Dan Gattis, Executive Secretary, Texas Young Farmer Association, Texas Education Agency. Also assisting will be eleven area supervisors, including Walter Labay, Plainview.

Approximately 1600 Vocational Agriculture Teachers and friends are expected to attend the San Antonio Conference.

\*\*\*\*  
Memory is the product of intelligence and work.

\*\*\*\*  
Never expect good luck to make up for loafing.  
\*\*\*\*  
Health is very valuable to those who have lost it.

SPRAYING DUSTING DEFOLIATING



### AERO FARM CHEMICALS

PHONE 806 965-2355 BOX 36  
LAZBUDDIE, TEXAS 79053  
KENNETH BRISCOE HOME PH. 806 272-4860

**VFW**  
Walter A. Moeller  
Post #8570  
8:00 p.m. 2nd & 4th Mondays  
VFW Hall  
Joe T. Gonzalez, Commander

**Masonic Lodge**  
1237 AF & AM  
meets the second Tuesday of each month  
practice night each Thursday  
Ross Mick WM  
Elbert Nowell, Sec.

**Muleshoe Oddfellows**  
Lodge No. 58  
meets each Thursday 7:30 p.m.  
CLAUDE WILMON  
Grand Noble

**Jaycees**  
meets every Monday, 12 Noon  
XIT Steak House  
Bill Russell, President

**Lions Club**  
meets each Wednesday, 12 Noon  
XIT Restaurant  
Jim Shafer, President

**Kiwanis Club**  
Meets Every Wednesday 8am  
XIT Restaurant  
R.A. Bradley, President

**Muleshoe Rotary Club**  
meets every Tuesday at 12:00  
DINING ROOM  
XIT Restaurant  
Jess Winn, President

#### HELP WANTED

WANTED: Beautician at Dee Dee Coiffure Fantasies, Phone 272-4375, 3-16s-tfc

FARM HAND NEEDED: to drive tractor and irrigate. Contact Darrell Elliott, 4 miles east of Lazbuddie, Phone 965-7729 1-30t-tfc

#### HOUSES FOR RENT

FOR RENT: 2 bedroom house, artly furnished, wired for everything. Fenced back yard, and carport. Call 272-4052, 1-29s-tfc

FOR RENT: 3 bedroom cabin situated in Sherwood Forest in the upper canyon of Ruidosa, Can sleep 8. Completely furnished. Large enclosed swimming pool & recreation area. Mrs. Jerri Wagon, Phone: 272-4244 28s-12tfc

FOR RENT: 2 bedroom apt. at 205 W. 20th Street. Unfurnished, built in range, carpeted. Call 272-4284 or after 5 at 272-4491, 5-29t-lfc

FRIGONA APTS. now have available 1, 2, & 3 bedrooms. Call 247-3666 or come by 1300 Walnut Street, 5-29s-tfc

FOR RENT: 2 bedroom unfurnished apartment. Phone 272-4638 Smallwood Real Estate, 5-47s-tfc

**JAMES GLAZE COMPANY**  
REAL ESTATE AND FARM & RANCH LOANS  
Phone 272-4549 219 S. 1st, 42t-tfc

IF YOU WANT TO SELL OR buy see Lee Pool or Woody Goforth  
**Pool Real Estate**  
Ph. 272-4716  
214 East American Blvd, 8-44s-tfc

**KREBBS REAL ESTATE**  
210 S. 1st PH.272-3191

FOR SALE: 2 bedroom house at 316 West 10th. Call 272-4871 8-27t-tfc

FOR SALE: 1970 2 bedroom mobile home 12' X 64' Call 272-4549 or 925-3441 after 5pm 8-27t-tfc

**HOUSES FOR SALE**  
2 & 3 bedroom-Nice  
NEED LISTINGS FOR 1/4 section of Dry Land 1/4 section of irrigated land 80 acres of irrigated land  
CALL Phone 272-3293  
HOLLAND REAL ESTATE 8-18t-tfc

FOR SALE: 10 X 55 two bedroom trailer house. Completely furnished, carpet, drapes, air conditioner. Priced to sell. \$1500.00 Call 272-4373 from 9-6. 272-4925 after 6 pm 11-30t-tfc

FOR SALE: Trailer house 10 X 44 Good condition, priced low. Call T. L. Gleason at 965-2721 11-27s-tfc

FOR SALE: 3 bedroom, 1 3/4 bath, brick home in Richland Hills. Call 272-4376, 8-22t-tfc

#### 3 AUTOMOBILES FOR SALE

FOR SALE: 1967 Triumph Spitfire. Will consider trade. Selling at sacrifice. Call 272-4270 11-30t-2tc

FOR SALE: 1964 Chev. van. Call 272-4340, 9-2t-tfc

#### 10 FARM EQUIP FOR SALE

WE PAY CASH for tractor and equipment of all kinds, Tom Flowers Auction, Inc. Day 272-4145 Night 10-2s-tfc

**We're "Farming Out" our Case's!**

Rent one by the Day week or month  
**Barry & Young Equipment**  
Muleshoe 272-4236



#### FOR SALE OR TRADE

FOR SALE: Insulage sideboards for 16 ft bed and steel endgate. Call 272-3611 10-30t-tfc

FOR SALE: 16 ft boat with 40 hp motor and trailer, some equipment. Call 272-3611 11-30t-tfc

#### HOUSEHOLD GOODS

BRACE yourself for a thrill the first time you use Blue Lustre to clean rugs. Rent our Blue Lustre electric shampoo machine. Higginbotham-Bartlett 215 Main

FOR SALE: New and used furniture. Call 272-4340, 12-26s-tfc

**CARPETS A FRIGHT?** Make them a beautiful sight with Blue Lustre. It's marvelous. Rent our Blue Lustre electric shampoo machine. Perry's 128 Main.

#### MISCELLANEOUS

**Thinking about buying used furniture? We Have It At The Swap Shop**  
Call 272-3074  
213 S. Main  
Muleshoe, Texas

**SEWING BACK TO SCHOOL**  
KNITS Jeanne Williams, 1 mile south, 4 1/2 miles west of Muleshoe. 15-29s-3tc

**OFFICE SPACE FOR RENT:** 1614 West American Blvd. Next door to Farm Bureau Office. Contact Farm Bureau Office for further information. Phone 272-4567, 15-29s-tfc

FOR SALE: 1/2 price compact Farfisa organ like new. Also 6 lots Bailey County Memorial Park. Call Friona 247-3419, 15-20t-tfc

FOR SALE: Registered poodle puppies. See at 1616 West Ave C, or phone 3186. 15-25s-tfc

**GARAGE SALE:** Sliding glass doors, typewriter, camera, rollaway bed, bar stools, baby bed, life jackets, electric cook-stove, chairs, couches, tables, radios, and many other items. See at 618 West 7th St. July 28th and Sun, from 1:00 to 6:00 p.m. 15-30t-tfc

FOR SALE: Collection, potted hobby plants. Many specimens, bromeliads, jades, aloes, geraniums, etc. Make many cuttings, off shoots. 310 East Elm, Phone 272-3309, 15-29t-tfc

**POODLE GROOMING** by appointment. 221 E. 4th, Call 272-5597, 1-28s-tfc

FOR LEASE: Roto tiller at \$1.50 an hour or \$6.00 a day. Phone 272-3329 15-30t-4tc

**TRAILER LOT FOR SALE:** Well located on pavement. Call Lee Pool 272-3139 30t-2tc

**SKIN OIL** 28,000 Units of Vitamin E Toco-Derm skin oil. Sunburn? Skin disorder? Try Toco-Derm Cream at Western Drug. 1-27s-6tpe

**CARD OF THANKS**  
The children and grand children of Mr. C.R. Farrell wish to express our sincere thanks for the many acts of love and concern extended to us at the time of his death, 30t-ltp

### Lesson Needed

Harold - When the postman comes I'm going to wallup you within an inch of your life.  
Jack - Why wait for the postman?  
Harold - I'm taking a boxing course by correspondence.  
Snaps  
"That man lives off the snaps of life."  
"What kind of a job does he claim?"  
"He's a bone specialist-sets broken arms and legs."

### Cotton Producer Leaders Visit Cotton Incorporated

RALEIGH--Top executives of six major cotton producer organizations found out what the cotton farmer's dollar-a-bale buys during a tour of Cotton Incorporated facilities here and in New York City last month. Organizations headed by the visiting producer officials elect members of the board of directors of Cotton Incorporated the research, sales and marketing company sponsored by growers through their dollar-a-bale program.

### Area Vo-Ag Teachers Honored

Searle, South Texas Cotton and Grain Assn., Victoria; Bob Tucker, Southern Cotton Growers, Cahonega, Ga.; and Cecil Williams, Agricultural Council of Arkansas, West Memphis.

### Attention Muleshoe Area Cattlemen

Seven days a week dead stock removal please call as soon as possible  
In regard to dead stock removal... If you have had a problem with service... whether in the feedyard or on the farm... please give us a chance!

### Your local used cow dealer is muleshoe bi-products

Thank you  
Phone-965-2903  
Mobil Phone 965-2429

**MULESHOE STATE BANK**  
MULESHOE STATE BANK IS PLEASED TO ANNOUNCE THE FOLLOWING INCREASE IN INTEREST RATES:

	NEW RATES	YIELD
SAVINGS - Compounded quarterly	5%	at 1 year - 5.09%
CERTIFICATES OF DEPOSIT -		
30 - 89 Days	5%	30 days - 5.07%
90 Days - 1 year	5.5%	90 days - 5.61%
1 year - 2-1/2 years	6%	1 year - 6.27%
2-1/2 years and over	6.5%	211/2 years - 7.16%

Where All Your Banking Needs are Provided



Come see us for all your existing or future equipment needs and while you're here take a look at our new building....  
**In Progress Now at BARRY & YOUNG EQUIPMENT CO.**



**BIGGEST CATFISH REPORTED CAUGHT AT LAKE THOMAS . . .** Rev. and Mrs. Ray Lee Cunningham are pictured above with the 49 pound yellow catfish the Rev. caught July 7 at Lake J.B. Thomas. It is reported to be the largest catfish ever caught at the lake. Former residents of Baileyboro, Stegall and Enochs, Rev. Cunningham is the pastor at the Vincent Baptist Church.

## Seven Guidelines For Hungry Consumers

**COLLEGE STATION**--Beef-hungry consumers can follow seven guidelines to keep meat on the table in spite of the "shrinking buck," a livestock marketing specialist said this week.

Dr. Edward Uvacek Jr. with the Texas Agricultural Extension Service, Texas A&M University System, cited careful spending of meat dollars as the key.

--Compare meat cuts on a cost-per-serving basis, rather than price per pound.

"For example, you can get about four servings from a pound of ground beef, but only two and a half servings from a sirloin steak. For them to be equal on a cost-per-serving basis -- when sirloin brings \$1.49 per pound, ground beef could sell for as much as \$2.38 per pound," the specialist explained.

"A brisket at \$1.19 a pound will cost as much per serving as a boneless chuck at 99 cents a pound, or shortribs at 79 cents a pound.

"Boneless chuck roast at \$1.09 a pound and shortribs at 88 cents a pound have exactly the same cost per serving, but a T-bone steak at \$1.59 a pound costs twice as much per serving as liver at the same price."

Uvacek also advised homemakers -- when substituting other meats such as broiler chickens for beef -- to remember that most of them have very low servings per pound.

"For example, a ready-to-cook broiler at 59 cents a pound is slightly more expensive per serving than broiler or rolled rump at \$1.29 a pound."

--Don't pay extra for minor conveniences.

"Pre-formed ground beef patties are pretty-but expensive. The amount of work in making a hamburger patty is pretty negligible.

"Similar types of conveniences--at a cost--are built into such items as tenderized or formed steaks, cubed stewing beef, breaded chicken-fried steaks and precooked cuts. Do the work yourself, and save a bundle," he added.

--Carefully compare prices for beef cuts in different stores.

"All retailers don't charge the same price for individual cuts. In fact, it's not unusual to have very substantial variations in retail prices between stores--even in a small town.

"Shop around. Don't always buy your beef in the same old store, simply because that's where the watermelons are cheaper."

--Get your money's worth in quality.

"Unless you're an expert, the easiest way to insure consistent acceptability and quality is to buy only USDA Choice beef.

"It's either labeled as such, or has a purple shield with the word 'Choice' inside of it, stamped on the outside of the meat cut.

"Look for this before you buy. You could buy U.S. Good beef, but it's not as safe a bet in terms of quality."

--Don't be ashamed to return an unsatisfactory piece of meat.

"Most retailers, particularly larger chains, flaunt a money-back guarantee. Use it. If not completely satisfied, return it. Don't assume your cooking was bad.

"In some cases, cooking can intensify the problem (like well-done steaks), but, in general, you need a good piece of beef to begin with."

--Learn some of the basic cuts of beef.

"Several different names are used for the same cut because of regional preferences. Just a little study will show you, for example, that a rib-eye steak is the same and probably cheaper than a Delmonico.

"Similarly, a rib steak and a club steak are basically the same. Sirloin steak is a much more tender piece of meat than round steak.

"Also, take a little time to learn the recommended cooking method for each cut--which should be broiled, braised, roasted, pot-roasted. It will pay--in satisfaction."

--Buy on sales--usually the weekend sales will save you money.

"Be cautious on double-stamp days and during mid-week, non-sales days.

"Don't be ashamed of buying just the sales items."

## District Court Cases Less In '72 Than '71

**AUSTIN**--The number of cases filed in district court in Bailey County during 1972 was one less than the number filed during 1971, according to statistics released by the Texas Civil Judicial Council.

Cases filed during the last calendar year totaled 128, including 24 criminal and 104 civil.

Judge Pat H. Boone, Jr., of the 154th District Court has jurisdiction in Bailey County. He also serves Lamb and Parmer Counties.

The local district court disposed of 153 cases during 1972, 34 per cent of the cases filed during the year or carried over from 1971. At the end of the year, 302 cases were pending on the docket.

Statewide, the 245 district, domestic relations and special juvenile courts experienced less than a 1 per cent increase in filings during 1972--to 280,971 cases from 278,338 in 1971. Twenty-seven per cent of these were criminal cases.

These state courts disposed of 51 per cent of the total cases filed in 1972 or carried over from 1971. The defendant entered a guilty plea in 47 per cent of the criminal cases disposed of. In the cases disposed of by a jury verdict, 74 per cent of the defendants were found guilty and 26 per cent acquitted.

Of the 278,979 cases pending throughout the state at the end of 1972, 19 per cent had been on the docket 12 to 24 months and 28 per cent had been pending over two years.

For the last 40 years the Texas Civil Judicial Council has been collecting information concerning caseloads for the district and appellate courts. Beginning in 1973, the Council will expand its data collection activities by gathering and publishing statistics on caseloads of county, municipal and justice of the peace courts. These statistics are essential for study and evaluation of the judicial system and its effects on the people of the state.

## Muleshoe...

Brownfield is the site for the next meeting of the South Plains Democratic Council. The meeting has been set for 7:30 p.m., Friday, July 27 in the party room of the city park in Brownfield. The South Plains Democratic Council encompasses fifteen counties of the South Plains of Texas. First meeting of the group was held in Lubbock in May, at which time Harvey Morton, Lubbock attorney, was elected permanent chairman.

At the Brownfield meeting Friday, the major agenda items will be the election of officers and the appointment of committees. Also, state representative Pete Laney of Hale County will be guest speaker. Refreshments will be served Friday evening at the meeting in Brownfield and all area Democrats are urged to attend.

In the near future, Carl Ellington will open a meat market in conjunction with a fruit and vegetable room in the old

## Fireman...

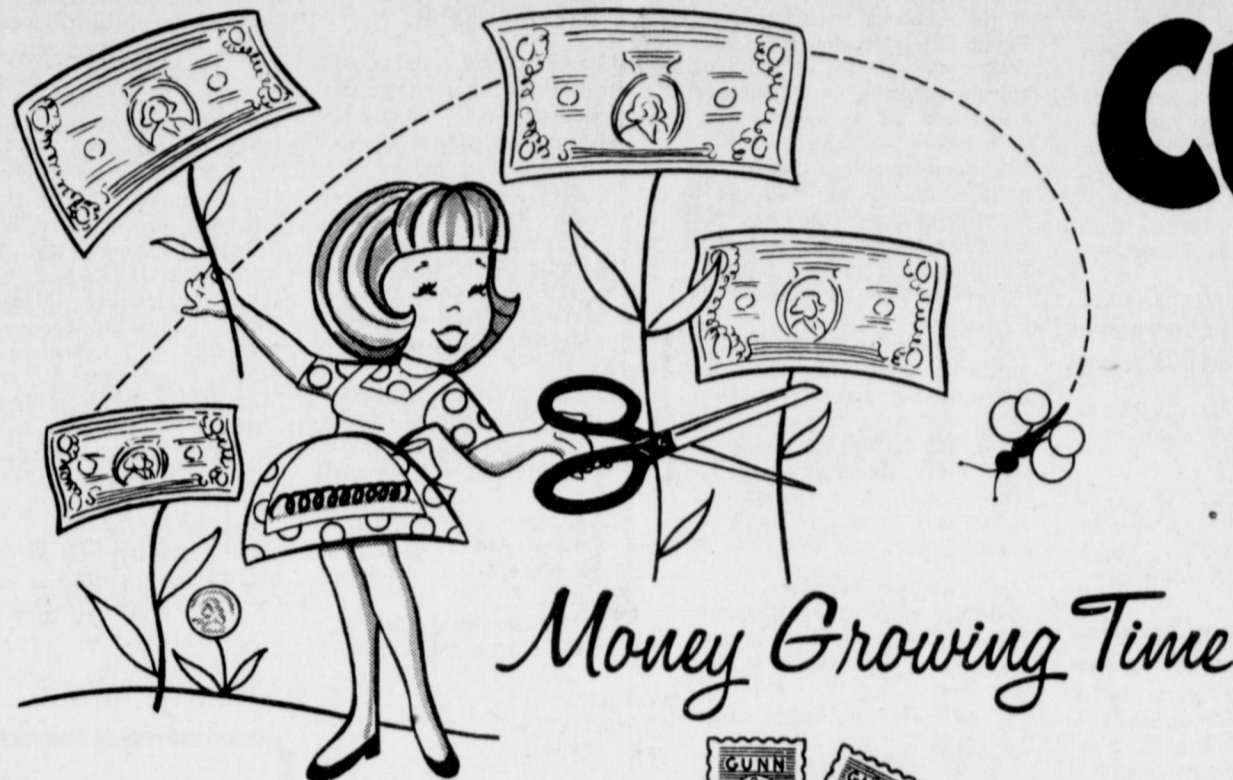
apparatus and equipment. "Farm Bureau is glad to participate in such a worthwhile program because the skills learned in the training school help hold down property losses and injuries due to

fires," the county president said. He added that Farm Bureau also has a continuing program which pays \$75 to a fire department when the department fights a fire on a Farm Bureau-insured's property in a rural area. The Texas Farm Bureau has two special conferences planned for those rural firemen sponsored by county Farm Bureaus. TFB President J.T. Woodson is scheduled to speak to a group on the evening of July 23 on the subject, "Texas Farm Bureau's Interest in

Rural Fire Protection". Joe Smetana, TFB safety director, will present a demonstration on electric shock prevention that same evening. Ward Cross, administrative assistant, TFB Insurance Companies, will talk to the group on the evening of July 24 on the topic, "Preventing Rural Fires".

**Explained**  
Seaman Sam says: "A hug is energy that has gone to waist."

-Globe, Lejeune, N.C.



# CUT YOUR FOOD BUDGET

- 19 oz. Pkg. **NABISCO OREO COOKIES** 69¢
- 14 oz. Bottle **HUNT'S TOMATO CATSUP** 25¢
- #303 can **WHITE SWAN SPINACH** 19¢
- 12 oz. can Mexico **TEXAS STYLE BISCUITS** 2/35¢
- 1 lb. ctn. 100% Corn Oil **GOLD 'N CORN OLEO** 35¢
- 28 oz. Jar Bama **PURE APPLE BUTTER** 45¢
- 24 oz. Cello Pkg. Skinners **CUT SPAGHETTI** 45¢
- #303 Can White Swan **FRUIT COCKTAIL** 29¢
- 32 oz. Box **RIVER RICE** 45¢
- 8 oz. Cello Pkg. Skinners **CURLY VERMICELLI** 19¢
- 5 lb. Bag **QUAKER MASA HARINA** 89¢

- 22 oz. Bottle Lux **LIQUID for DISHES** 49¢
- 1 Gal. Texize **FLUF FABRIC SOFTENER** 89¢
- Giant Size Box **GAIN DETERGENT** 75¢
- 28 oz. Bottle **PINE SOL** 89¢
- 28 oz. Box Pillsbury Streusel Swirl **DESSERT CAKE** 89¢
- Big Roll **SCOT PAPER TOWELS** 39¢
- (4 Roll Pkg.) Charmin **BATHROOM TISSUE** 49¢

38 OZ. BOTTLE  
**WESSON OIL**  
**89¢**

46 OZ. CAN **TEXSUN PINK GRAPEFRUIT JUICE** 39¢

WESTERN GOLD #2 1/2 CAN **PORK & BEANS** 25¢

- 10 oz. pkg. **KEITH'S BROCCOLI SPEARS** 29¢
- 10 oz. Carton **PET WHIP** 49¢
- 12 oz. can **COASTAL LEMONADE** 29¢
- Mrs. Smith's (Apple, Pumpkin, Cherry) **FRUIT PIES** 69¢

## SWIFT'S PREMIUM PROTEIN BEEF ARM ROAST

**\$ 1.09**  
Lb.

- GLOVER ALL MEAT BOLOGNA** 12 OZ. PKG. 79¢
- TURBOT BONELESS - GREENLAND FRESH FROZEN FISH FILLETS** Lb. 89¢
- BLUE MORROW'S FULLY COOKED STEAK FINGERS** Lb. 89¢
- SWIFT'S PREMIUM PROTEIN BEEF STEAK RANCH** Lb. 98¢
- SWIFT'S PREMIUM PROTEIN BEEF CHUCK ROAST BLADE CUT** Lb. 88¢

**NEW STORE HOURS** 7:30 AM to 9:00 PM Mon.-Sat.

**SWIFT'S PREMIUM PROTEIN BEEF RIB STEAK** Lb. \$1.29

**CALIFORNIA SUNKIST RUBY RED GRAPEFRUIT** Lb. 19¢

- CALIFORNIA GREEN BELL PEPPERS** lb. 35¢
- GOLDEN RIPE BANANAS** lb. 12¢
- CALIFORNIA RED CARDINAL GRAPES** lb. 45¢

28 OZ. BOTTLE  
**COCA COLA**  
**5 for \$1**

1/2 GALLON CARTON CLOVERLAKE (ASSORTED FLAVORS)  
**ICE CREAM** 79¢

**GUNN BROS. STAMPS DOUBLE EVERY WEDNESDAY**

# White's CASHWAY

We Reserve The Right To Limit Quantities

Listen to **MULETRAIN** over **KMUL** 10:15 a.m. Sponsored by **WHITE'S CASHWAY**