



THE MULESHOE JOURNAL

'The Community of Opportunity-Where Water Makes the Difference'



VOL. 51 No. 16

8 PAGES

Published Every Thursday at Muleshoe, Bailey County, Texas 79347

10 CENTS

Thursday, April 19, 1973



CHAMPIONSHIP FLIGHT. . . Pictured are the men entered in the annual Muleshoe City Golf Tournament who originally started in the Championship Flight of the Tournament. The tourney began Sunday, April 15, and will continue through Sunday, April 29, at the Muleshoe Country Club. This is the 21st Annual Tournament in Muleshoe. Shown left to right are Stanley Wilson, Bruce Chap-

man, Bill St. Clair, Gene Bartley, Don Bryant, Irvin St. Clair and Stan Barrett. There are 73 men and 26 women entered in the tournament this year. Trophies and merchandise will be awarded to the winners of each flight on Sunday, April 29, at the close of the tournament.

Golf Tournament Underway In City

First Round Played This Weekend At Club

The 21st Annual Muleshoe City Golf Tournament is now underway at the Muleshoe Country Club.

There are eight flights plus the Championship Flight being played. The tournament began Sunday and will continue through Sunday, April 29.

In golfing action this past weekend, in the Championship Flight, Kenny Taylor defeated Bruce Chapman; Irvin St. Clair defeated Raymond Schroeder; Dick Johnson defeated Stanley Wilson; Jeff Chapman defeated Gene Bartley; and Bill St. Clair defeated Tommy Hawkins. The winners will go to championship and the losers will go

to the First Flight. In the Second Flight, Glen Watkins defeated Gene Paul Jarman.

J.E. McVicker defeated Connie Gupton and Harold Cowan defeated Jim Young in the Third Flight.

In the Fourth Flight, Sammy Gonzales defeated Jess Winn and Leon Wilson defeated Don Long.

In the Fifth Flight, Joe Bob Stevenson defeated Paul Wilbanks; Jack Wood defeated Bill Wilson; Jeff Chapman defeated Earl Richards.

Jose Treiana defeated Billy Burt; Gary Mac Brown defeated George Chapman; and Charles Lenau defeated Butch Scott in the Sixth Flight.

In the Seventh Flight, Richard Green defeated Buddy Embry and in the Eighth Flight, Charles Lewis defeated Richard Hawkins and James Crane defeated Don Barnes.

Country Club Golf Pro Billy Burt reports that there are 73 men and 26 women entered in the tournament this year. The women are playing medal play and there will be no results on their tournament until April 29.

On Saturday, Rayburn Ott of Earth made a hole in one at the Country Club. He made the hole in one on the Ninth Hole using a seven iron.

Previous winners in the annual City Golf Tournament were: Jim Green, 1953; Irvin St. Clair, 1954, 1956, and 1960; Russell Cont. on Page 3, col. 2

Annual Egg Hunt Set For Saturday

The Muleshoe Jaycees will again sponsor their annual Easter Egg hunt this Saturday, April 21, at 2 p.m. in the new city park. The eggs will be hidden directly behind Radio Station KMUL.

Hugh Young, chairman of the Easter Egg Hunt, reports that more than 10,000 eggs will be hidden this year.

This year there will be five age groups: two, three and four year olds; five and six year olds; seven and eight year olds; nine and ten year olds; and 11 and 12 year olds.

There will be five prizes awarded each age group and there will be a grand prize awarded to the two, three and four year old group. Harvey Bass of Harvey Bass Appliance has donated

a giant stuffed rabbit to be given as the grand prize.

The reigning Miss Muleshoe, Janna Marrit, will award the prizes.

Serving on the hunt committee with Young this year are Steve Hamilton, publicity and advertising; Carter Reed, in charge of eggs and prizes; Charles Moraw, in charge of land; and Wayne Peterson who made arrangements to have the fire truck and the PA system at the hunt.

Circus Will Be In Muleshoe On May 3

The Muleshoe Chamber of Commerce and Agriculture will sponsor the Fishers Bros. Circus in Muleshoe on Thursday, May 3. This will be a fund-raising project to help finance the annual July 4 Celebration in Muleshoe.

The Circus will have two performances, one at 6 p.m. and another following at 8 p.m. The circus will set up at the Boy Scout grounds.

Tickets have been priced at \$1 for everyone who buys advance tickets which are now on sale from Chamber of Commerce members. If purchased at the circus ticket office they will be \$1.25 for children and \$1.50 for adults. All tickets are good for any seats in the big top as the Fisher Bros. Circus does not have reserved seats.

The Chamber will also have a special family plan where two

adults and four children will be admitted for five dollars.

Buying tickets in advance from the Chamber will save money on the tickets; keep you from waiting in line at the ticket office and last, but not least, you will help the sponsor make and keep more money as they get a much larger percentage from the advance sale than they do at the door.

Included in the Fishers Bros. Circus will be "Conga", a Regal Python who is over 20 feet long and weighs over 200 pounds; "Dixie" the elephant; and a

Cont. on Page 3, col. 3

Alfalfa Grazing Meeting Scheduled

An Alfalfa Grazing Production meeting will be held in Muleshoe on Tuesday night, April 24, at 8 p.m. in the City Hall council room.

Featured speaker for the event will be Dr. Gene Cope, area Extension veterinarian for Districts I and II.

Considerable interest has been shown in grazing alfalfa in the Bailey County area since last summer. Dr. Cope has worked with producers in the panhandle area this past summer. He will bring the recommended methods of managing the cattle in alfalfa.

One of the biggest problems

facing beef cattle producers in grazing alfalfa is the control of bloat, but several recent developments have changed the alfalfa grazing outlook.

New bloat preventatives show much promise and economically feasible to feed to the cattle.

All interested persons are urged to attend the meeting that is being co-sponsored by Extension Crops sub-committee and the Agriculture Committee of the Muleshoe Chamber of Commerce and Agriculture.

For further information concerning the meeting, contact the Extension Office at 272-3913.

Local Golfer Wins Regional, Goes To State

Kenny Taylor, son of Mr. and Mrs. Bill Taylor of Muleshoe, played in the Regional Golf meet last week and won medalist honors.

Taylor posted a 70 and a 73 for a 143 total to capture medalist honors and qualify for the state tournament in Texas High School Region I-AAA Golf Tournament at the Andrews Country Club last Friday.

He is reportedly the first golfer from Muleshoe to win Regional and he is also the first athlete to win such honors since

Holy Week Services Held In Muleshoe

Holy Week Services, sponsored by the Bailey County Ministerial Alliance, are being held all this week in Muleshoe at the First United Methodist Church. Services are being held daily at 12:05 p. m., April 16 - 20. Lunch is served daily in the Fellowship Hall of the church by the ladies of the participating churches.

On Monday, April 16, Martin Platzer, of St. John's Lutheran Church at Lariat was the speaker and talked on "The Entry Into Jerusalem". Douglas DuBose, First Baptist

Church, was the Worship Leader.

On Tuesday, Arthur Hayes of the Second Baptist Church, Progress, spoke on "In the Garden". Worship Leader was Gene Davis, First Assembly of God Church, Muleshoe.

Wednesday, Frank Matthews, United Methodist Church, Lazbuddie, was the speaker, speaking on "The Last Supper". J.B. Fowler, First United Methodist Church, Muleshoe, was the Worship Leader.

Kenneth Cole, First Christian church, Muleshoe, will speak today, Thursday, on the theme, "The Trial". Worship Leader will be V.L. Huggins, Trinity Baptist Church, Muleshoe.

On Friday, John Jaquez, Mission Bautista Latina-American, Muleshoe, will speak on "The Crucifixion". Ivan Woodard, Sixteenth and Avenue D Church of Christ, will be the Worship

Leader. Special music is presented at each service and everyone is urged to come as you are and attend the services.

Also as a part of Holy Week, Rev. Martin Platzer of St. John's Lutheran Church, Lariat, announces that on Maundy Thursday a service will be held using the theme "Christ, You're The Perfect Host" with Holy Communion to be administered. The service will begin at 8 p.m. The Good Friday service, at

Cont. on Page 3, col. 1

Tornado Safety Rules Outlined

With the "tornado season" well underway in this area, the Bailey County Civil Defense has released the following information concerning tornadoes and precautions that should be taken:

A TORNADO WATCH means tornadoes are expected to develop in a given area. Keep a battery-operated radio or television set nearby and listen for weather advisories, even if the sky is blue.

A TORNADO WARNING means a tornado has actually been sighted or indicated by weather radar. Seek inside shelter (in a storm cellar or reinforced building) and stay away from windows. Curl up so that your head and eyes are protected. Listen to local radio station KMUL and do not call the Law Enforcement Center unless you have pertinent weather information.

In homes, the basement offers the greatest safety. Seek shelter under sturdy furniture if possible. In homes without basements, take cover in the center part of the house, on the lowest floor, in a small room such as a closet or bathroom, or under sturdy furniture. Keep some windows open, but stay away from them.

In office buildings, go to an interior hallway on the lowest floor, or to the designated shelter area.

In schools, follow advance plans to an interior hallway on the lowest floor. If the building is not of reinforced construction, go to a nearby one that is, or take cover outside on low, protected ground. Stay out of auditoriums, gymnasiums, and other structures with wide, free span roofs.

In open country, move away from the tornado's path at right angles. If there is not time to escape, lie flat in the nearest ditch or ravine.

Mobile homes are particularly vulnerable to overturning during strong winds and should be evacuated when strong winds are forecast. Damage can be minimized by securing trailers with cables anchored in concrete footing. Trailer parks should have a community storm shelter and a warden to monitor broadcasts throughout the severe storm emergency. If there is no shelter nearby, leave the trailer park and take cover on low, protected ground.

Remember that tornadoes are only one of a thunderstorm's killers. Lightning is the worst killer. Stay indoors and away from electrical appliances while the storm is overhead. If you are caught outside, stay away from and lower than high, conductive objects. Thunderstorm rains can cause flash floods. Be careful where you take shelter.

The Bailey County Civil Defense Unit is always out during periods of bad weather and watch menacing clouds 24 hours a day. The Bailey County Volunteer

Six Accidents Investigated In Bailey County

The Texas Highway Patrol investigated six accidents on rural highways in Bailey County during the month of March, according to Sergeant Thurman Keffer, Highway Patrol supervisor of this area.

These crashes resulted in no persons killed and two persons injured.

The rural traffic accident summary for this county during the first three months of 1973 shows a total of 12 accidents resulting in no persons killed and five persons injured.

Cont. on Page 3, col. 2

around muleshoe with the journal staff

The Rotary Garage Sale will be held next week, April 26, 27 and 28 at the building previously occupied by Williams Brothers Office Supply on Main Street.

People are asked to bring used clothing, old bottles, jewelry, cookware, household items and miscellaneous items, and books to be sold at the sale.

Alpha Peterson of the T.B. Control of Lubbock will be giving tuberculin skin tests at the Mexican Baptist Mission, 223 Ave. E, free of charge on May 8. Hours will be from 5-8 p.m.

Cont. on Page 3, col. 3

Local Policeman Dies In Motorcycle Wreck

Joe Frank Albro, 32, the assistant police chief in Muleshoe, was killed Sunday night in a motorcycle-truck crash on Interstate 20 west of Sweetwater.

Investigators said Albro died when the rear wheel of a truck reportedly ran over him after he fell from his motorcycle. Highway patrolmen said Albro apparently hit loose gravel while riding his motorcycle and slid beneath the truck.

The truck driver apparently didn't know he hit Albro, state police said.

Witnesses said the truck driver stopped about 100 yards from the accident scene, but apparently noticed two other motorcycle riders at the scene and drove on.

Albro was born July 19, 1940 in Wilmett, Texas. He was the

assistant Police Chief in Muleshoe. In 1965 he served with the Texas Alcoholic Beverage Control Board as an agent stationed in Lubbock and then as an agent lived in Muleshoe in 1968-70 when he resigned and later went with the Midland Police Department.

In December of 1970, he came back to Muleshoe as assistant chief.

Survivors include his wife Rita, two daughters, Melissa and Brandy, both of the home; his parents, Mr. and Mrs. E. F. Albro of Wilmett; and one brother, Sammy Albro of Abilene.

Services were conducted at 1:30 p.m. Tuesday in the First Baptist of Winters, Texas. Officiating was Royce Clay.

Cont. on Page 3, col. 1



JOE ALBRO



IT CAN HAPPEN HERE. . . This picture of some of the damage inflicted on the city of Plainview early Sunday morning, shows just part of the damage a tornado can bring. In this edition of the Journal, an article about safety rules regarding tornadoes can be found. As April, May and June are the most prevalent months for tornadoes in this part of the country, it is time to start thinking about what kind of precautionary measures a family would take in case of a tornado in Muleshoe. Although Muleshoe has many professional men who will be out watching clouds this spring and summer, the safest way for a family to prepare for a menacing cloud is to keep an eye on it for themselves, and to have a plan in mind as to where to go for shelter in case one is spotted.



DONATES GRAND PRIZE . . . Harvey Bass of Harvey Bass Appliance has donated the Grand Prize to be given away during the annual Jaycee sponsored Easter Egg Hunt. The prize will be given to a child in the two, three and four age group at the hunt. The hunt will be held this Saturday, April 21, at the new city park, directly behind Radio Station KMUL, beginning at 2 p.m. The Jaycees will hide over 10,000 Easter eggs this year for the hunt. There will be five age groups this year.

At Muleshoe Junior High



UIL Winners Named

The winners of the annual UIL contest held April 12 and 13 at Muleshoe Junior High School were as follows: Ready Writing; Sixth Grade: Randy Watkins, first; Lisa Redwine, second; Paul Davis, third and Doug Cowan, fourth.

Seventh Grade: Royce Clay, first; Tammy Macha, second; Tom Crow, third and Brad Baker, fourth.

Eighth Grade: Kim Small, first; Jo Roming, second; Tammy Hicks, third and Karen Grimsley, fourth.

Number Sense--Cecil Ward, first; Zeb Payne, second; and Dennis Madrid, third.

Oral Reading--

Sixth Grade: Amy Clark, Dan M. Vicker, first; Treanna

Bass, Larry Hooten, second; and Sheri Harlin, Ernie Vela, third.

Seventh Grade: Janice Posey, Doug Fowler, first; Morgan Pena; Mark Washington, second; Kelly Gregory, Marcus Beaversdorf, third and Vicki Williams, Marvin Davenport, fourth.

Eighth Grade: Kathy Hughes, Kip Garth, first; Joyce Camp, Kim Helder, second and Judy Precure, Tony Vela, third.

Spelling--Sixth Grade: Vivian Briscoe, first; Shannon Kennedy, second; Sheila Hunt, third and Brent Burrows, fourth.

Seventh Grade: Brad Baker, first; Melody Mouldin, second; Patricia Grimsley, third; and Billy James, fourth.

Eighth Grade: Jo Roming, first; Kathy Hughes, second and Karen Grimsley, third.

Junior High Honor Roll

SIXTH GRADE
Benetta Roming, Jana Grimsley, Karen Stovall, Brent Burrows, Lavayne Lloyd, Tammy Nesbitt, Treanna Bass, Chana Eubanks, Mark Harmon, Shari Harlin, Dickey Suddeth, Shannon Kennedy and Steve Turner.

SEVENTH GRADE
Marvin Davenport, Randall Hamilton, Mary Field, Brad Baker, Edwin Watson, Billy James, Cherylee Bryant, Rhonda King, Stephanie Brantley, Vicki Williams, Tawny Kelton, Marcus Beversdorf, Vicki Gatewood, Melody Maudlin, Jane Green, Howard Monasco, Tammy Macha, Connie Harmon, Kirk Lewis, Morgan Pena, Michele Tray, Tommy Green, Mike Silguero, Curtis Carpenter and Royce Clay.

EIGHTH GRADE
Nancy Ramm, Vikki Reese, Mitzi Mardis, Cynthia Isaac, David Macha, Gary Gunter, Patty Pena, Laura Beene, Jo Roming, Mark Slayden and Geazul Hernandez.

Also Darrel Rasco, Kevin Smith, Sheryl Stovall, Tammy Hicks, Kim Small, Susan Puckett and Kathy Hughes.

Eighth Grade Registers

Eighth grade preregistration and parent's night, originally scheduled for Monday night, April 2, was cancelled because of bad weather. Registration was rescheduled and held during Math classes this past week. The Muleshoe High School curriculum was presented and explained to the future freshmen by Ben Gramling, High School Counselor, and Fred Mardis, High School Principal. The students then filled out tentative schedules for four years of high school.

Jr. High Band Goes To Contest

Tuesday, April 10, the Muleshoe Junior High Band went to contest at Estacado High School at Lubbock, Texas. They got a three in concert and a three in sight reading. The selections they played were "Minute Man", "Trumpet Voluntary", and "Battaglia".

We would like to congratulate the band and their director, Mr. Pierce, on a fine job

Science Fair Held April 6

On Friday, April 6, 14 Junior High students went to the 17th Annual South Plains Regional Science Fair sponsored by Lubbock Christian College and the South Plains Science Council. They left at noon on Friday and they traveled in four cars. The adults attending on Friday

were Mrs. Benny Pena, Mrs. Doris Scoggin, Mrs. Herb Ramage and Mrs. Mary Scoggin.

On Friday the exhibits were set up in the Lubbock Christian College Field house. From 6 to 10 in the afternoon, the exhibits were ranked by over 40 judges.

On Saturday from 9-12 in the morning and also from 1-6 in the afternoon, the field house was open for public viewing. Then from 7-9, the South Plains Regional Science Fair Banquet and Awards Ceremony in the

Betty Hancock Center was held. In this program the awards were given. In the medal division: Leslie White, Regina Burden, Karen Stovall, Mary Fields, Beth Whitt, Marvin Davenport, Leon Phillips, Edwin Watson, Paul Davis, Morgan Pena, Janis Posey and Patty Pena all received honorable mention. Leland Lambert, Gary Ramage and Walter Copley all received third place. In the certificate division Gary Ramage and Leland Lambert received Army certificates. At every science fair,

all three divisions were combined and divided into five major categories. Then certificates are awarded to the top project in each classification. Patty Pena received the environmental award for having the top project in this classification. This was an extreme credit to our school, due to the fact that over 20 counties were entered. Our school was very well represented in this science fair and congratulations to all you winners.

Special Ed. Has Easter Party

On Thursday, April 19, the special education class had a party for Easter. It was held at Mrs. Pollard's house and was conducted by Mrs. Bray and Mrs. Pollard. Refreshments were served and it was an all-morning party.

The class consists of Kruz Lasquez, Charla Bell, Kathie

Collie, Debbie Whalin, Randy Armstrong, Vance Atwood, Jerry Rodriguez, Roger Fudge, Juan Flores, and Jessie Cassanova. The kids had lots of fun and really enjoyed it.

EASTER VACATION
By Tracy Stoneham
Hooray! April 20-23 is Easter vacation. School will be dismissed Thursday, April 19 and will resume Tuesday, April 24. Enjoy your days of rest.

THIS WAY TO EASTER

FOOD VALUES

BACON 1lb. pkg. **98¢**
18oz. pkg. checker board Jack

CORNISH GAME HENS **89¢**
Cudahays Bar-S Holiday Fully Cooked

HAMS 3-5lb. avg. Boneless Lb. **\$1.59**

Cudahay All Meat FRANKS **69¢**
Skinless 12oz. pkg.

COCA COLA plus deposit
16oz. (full gallon) **59¢**

Crisco Pure Vegetable SHORTENING
3lb. tin **69¢**
LIMIT ONE WITH \$5.00 PURCHASE OR MORE.

Prices Good April 19 thru' 25

Whole Kernel 5 for \$1
No. 303 Can
Reg. 69¢

Bon Air ANGEL FOOD CAKE **55¢**

Glovers Extra Lean Family Pak PORK CHOPS lb. **98¢**

Jimmy Dean Hot or Mild PURE PORK SAUSAGE
2lb. bag \$1.89 1lb. bag 98¢

Swift Premium Proten Beef RIB STEAK lb. **\$1.29**

RANCH STEAK lb. **98¢**

Long Green Slicers CUCUMBERS lb. **19¢**

California Vine Ripe STRAWBERRIES 3 for \$1
Salad Bowl Reg. Green Leaf or Butter

LETTUCE each **19¢**

Golden Ripe BANANAS lb. **9¢**

SUNSHINE CHEEZ-IT CRACKERS 39¢
10 oz. Box
Giant Size Box

CHEER DETERGENT 75¢
16 oz. Can Texize

SPRAY N' WASH 89¢
16 oz. Can Texize Stain Remover

BIZ PRE-SOAK 69¢
20 oz. Can

MAGIC SIZING 49¢
20 oz. Can

IMITATION BACON BITS 69¢
4 1/2 oz. Jar Bac-O's

BATHROOM TISSUE 2 for 69¢
2 Roll Pkg. Aurora

WHITE KING WATER SOFTNER 59¢
Giant Size Box

ANGEL FLAKE COCONUT 59¢
14 oz. Cello Bag Baker's

BORDEN'S BUTTERMILK 39¢
1/2 Pint Ctn.

WHIPPING CREAM 29¢
Soft N Lite

BROWN & SERVE ROLLS 3 for 87¢
Soft N Light

HAMBURGER or HOT DOG BUNS 25¢
8 pk.

DEL MONTE CATSUP 3 for \$1
20 oz. Bottle

GEISHA MANDARIN ORANGES 29¢
No. 303 Can

LIBBY'S WHOLE GREEN BEANS 29¢
No. 300 Can

HUNT'S FRUIT COCKTAIL 29¢
No. 303 Can

EARLY GARDEN SWEET PEAS 25¢
10 oz. Can Gebhardt's

CHILI HOT DOG SAUCE 23¢

WIN 500 - 1,000 3,000 or 5,000

GUNN BROS. STAMPS

BE SURE AND BRING YOUR GUNN BROS. WHEEL OF FORTUNE CARD AND GET IT PUNCHED EACH TIME YOU SHOP AT CASHWAY

GUNN BROS. STAMPS
DOUBLE EVERY WEDNESDAY

White's CASHWAY

Monday thru Friday 7:30 AM to 8:00PM
Saturday 7:30 AM to 9:00PM
We Reserve The Right To Limit Quantities

Listen to MULETRAIN over KMUL 10:15 a.m.
Sponsored by WHITE'S CASHWAY

IRRIGATION MOTOR REPAIR???

YES SIR...
Anything from a minor tune-up to a complete overhaul!

Your "SATISFACTION" is our only GUARANTEE

South Main MULESHOE
Phone 272-4576



Commodity Credit Corporation is preparing to make determinations and an announcement concerning the 1973 cotton loan program, including premiums and discounts and other regulations, some of which may be substantially different from rules in effect for 1972.

An announcement in the April 9 Federal Register served notice of CCC's intentions and gave interested parties 30 days in which to submit comment. This means the announcement of loan program details should come soon after May 9.

Premiums and discounts, as in the past, will reflect differences in loan value between the base quality and the various other grades, staples and micronaire groups. The "base quality," however, under USDA's proposal in the Federal Register would be changed from Middling one-inch, 3.5 to

4.9 micronaire to Strict Low Middling inch-and-a-sixteenth, 3.5 to 4.9 micronaire.

The base loan rate for Middling-inch cotton was announced last October at 19.5 cents per pound. The new base rate, for Strict Low Middling inch-and-a-sixteenth, according to USDA will be computed by adding the difference between the loan value of the two qualities to the Middling-inch rate. Thus the change in the base quality shouldn't affect the

Golf...

Cont. from Page 1

Haberer, 1955, 1957, 1958 and 1965; Wayne Mantooth, 1959; Bill Prince, 1961; Bill St. Clair, 1962, 1963 and 1970; Stan Barrett, 1964; Don Bryant, 1966; Ricky Botkin, 1967; Bill Hart, 1968; Dick Johnson, 1969; and Lewis Wayne Morris, 1971.

Tournament play will continue at the Country Club through April 29. On that date, trophies and merchandise will be presented to the winners of each flight.

Traffic...

Cont. from Page 1

The rural traffic accident summary for the 60 counties of the Lubbock Department of Public Safety Region #5 for March, 1973 shows a total of 468 accidents, resulting in 19 persons killed and 263 persons injured as compared to March, 1972 with 420 accidents, resulting in 23 persons killed and 218 persons injured. This was 48 more accidents, 4 less fatalities and 45 more injured in 1973, at the same period of time.

The veteran officer reminds you that springtime is approaching, the weather will clear up, but the Highways will become more congested.

The 19 traffic deaths for the month of March, 1973 occurred in the following counties: Four in Gray and Moore, two in Hale, Terry, Hall and Potter, and one in Wise, Hutchinson, and Randall.

loan value of any quality in any way.

This change of base quality appears desirable to USDA because SLM inch and-a-sixteenth cotton is much more representative of upland cotton produced in the U.S. than is Middling-inch. The latter quality over the past 5 years has accounted for less than one-half of one percent of production whereas SLM inch-and-a-sixteenth has comprised over 13 percent during the same period.

Two other significant changes in operating provisions of the loan program are being proposed, involving (1) a requirement to enter the tare weight of each bale on the gin bale tag and (2) elimination of the 50-point discount on upland cotton reduced in grade because of extraneous matter such as bark, grass, notes, sand, etc.

The notice in the Federal Register points out that the tare weight requirement will help eliminate a problem experienced by spinning mills in

Muleshoe ...

Cont. from Page 1

Henry C. Beck Company has announced the creation of the Company's Indianapolis, Ind., office, headed by District Manager Monroe Lee. Lee is a graduate of Muleshoe High School and the son of Mr. and Mrs. M.E. Lee of Muleshoe. Lee holds Bachelor and Master of Science Degrees in Civil Engineering from Texas Tech University.

According to Henry C. Beck, Jr., the new district was established to serve a growing number of clients in the mid-western United States. The Company currently is general contractor and construction manager for Market Square, a multi-million dollar development in downtown Indianapolis.

With Henry C. Beck Company since 1968, Lee's most recent assignment was chief project manager for the Dallas District. Prior to that, he was project manager for Stemmons Empire Building, Dallas; North Park Mall Shopping Center, Joplin, Mo.; and O'Hare Northwest Office Park, Des Plaines, Ill.

Circus...

Cont. from Page 1

circus performance which features elephant acts, trapeze, jugglers, clowns, balancing acts, and other interesting acts.

handling cotton for which bale tags do not show the tare.

The second proposed revision that of dropping the 50-point or one-half cent discount ap-

plied to cotton containing foreign matter, came as a result of a recommendation made by Plains Cotton Growers, Inc., which represents cotton pro-

ducers in a 25-county area surrounding Lubbock.

In consultations with USDA officials PCG expressed its opinion that the half-cent per pound discount, over and above the reduction of one full grade, was not justified by the loss of such cotton's spinning utility. PCG's primary concern was for "barky" cotton, which makes up a sizeable portion of each year's Plains crop.

USDA's concurrence with the PCG view was indicated in the

The Sandhills Philosopher



Editor's note: The Sandhill Philosopher on his Johnson grass farm may have some housewives mad at him this week, but that's his outlook, not ours.

Excusing the New York Woman who wants to control the price of meat by freezing the price of cattle on the hoof, a job ranchers will be glad to turn over to her, considering the fact that on any given day at any cattle auction prices range from maybe 15 cents a pound to 80 cents, depending on the various classes of animals, their size, age, condition, and the shrewdness of the buyers and the willingness of the sellers with or without the prodding of the banker who holds the mortgage, as I say, to pick up this sentence again, excusing that woman, the rest of the housewives who are demanding a boycott on meat till the price comes down are on the right track but they don't go far enough.

For example, the price of lumber has shot up and I'd like to see the women picketing lumber yards and urging everybody to go without 2x4's. Or take gasoline and oil. You know they've gone up and the only answer is to walk to your next boycott assignment, or if you do drive to refuse to change your oil.

And of course with some of the big city banks raising interest rates, everybody ought

to stop borrowing money, farmers aren't the only ones who ought to be taught a lesson. This will put a burden on some people because, with the price of meat as high as it is, it's all they can do to keep up the payments on their campers and speed boats.

In fact, if you think about it, there's nothing whose price hasn't gone up recently, from hospitals to colleges to tractors to cow feed to eggs to bread to cars to telephones to taxes, and if the housewives of this nation really want to whip inflation they ought to form a line around the entire outer boundaries of the country and declare a national boycott of everything.

Yours faithfully, J.A.

Muleshoe Journal, Thursday, April 19, 1973, Page 3

Federal Register notice. The notice stated "... there is reason to conclude that the presence of extraneous matter doesn't affect the ultimate value of such cotton beyond that reflected in the grade reduction."

Prior to making final decisions on loan program regulations USDA will give considerations received from interested parties before May 9. Comment should be submitted to the Director, Cotton Division, Agricultural Sta-

lization and Conservation Service, U. S. Department of Agriculture, Washington D. C.

24-CENTS ALIMONY.
LONDON--Terence Brady was ordered to pay his wife 24 cents a week alimony. Court president George Baker said "there's no reason why a wife whose marriage didn't last and who has no child should have a bread ticket for life." She refused the money.



Swimwear is in the



GIBSON'S DISCOUNT CENTER

WHERE YOU ALWAYS BUY THE BEST FOR LESS

ALL EASTER CANDY & BASKETS REDUCED 1/3 OFF

ALL EASTER STUFFED ANIMALS 25% OFF

Men's double knit SLACKS popular styles and colors

reg. 11.57	7.66
12.57 - 12.97	8.33
13.97	8.99
14.97	9.99

Men's short sleeve SPORT or DRESS SHIRTS

our reg. 2.97	reg. 2.33
reg. 3.97	reg. 4.97
reg. 5.97	reg. 6.97
2.88	3.66
4.44	

PRE-EASTER SPECIALS

PRICES GOOD THRU SAT.

Ladies double knit SLACKS Popular styles and colors

reg. 5.97	4.47
6.97	4.99
7.97	5.88
8.97 & 10.97	6.66

Ladies popular styles & colors

reg. 4.97	3.66
reg. 5.97	4.44

Ladies SPRING PURSES

reg. 4.97	3.66
reg. 5.97	4.44

Men's SLACKS Popular styles and colors

reg. 11.57	7.66
12.57 - 12.97	8.33
13.97	8.99
14.97	9.99

Men's short sleeve SPORT or DRESS SHIRTS

our reg. 2.97	reg. 2.33
reg. 3.97	reg. 4.97
reg. 5.97	reg. 6.97
2.88	3.66
4.44	

Boys' short sleeve SPORT SHIRTS

reg. 1.97	1.44
reg. 2.97	2.44
reg. 3.97	2.88

Boys or Mens Orlon Blend CREW SOCKS

Boys' reg. 39¢	Mens' reg. 49¢
----------------	----------------

Turf Magic TRIPLE TREAT

Fertilizes, Controls Soil insects, Kills broadleaf weeds in Grass. Apply to Damp or Wet Grass. Wait 24 hours - water thoroughly. Do Not Apply in dripline of trees or shrubs.

40 lb. bag Covers 2000 Sq. Ft. **2.99**

Heritage House PLANT FOOD

Heritage House PLANT FOOD FLOWER FOOD ROSE FOOD TOMATO FOOD

Your Choice 5 lb. box **73¢**

ROSE CARE **1.77**

Turf Magic CRABGRASS CONTROL

CLOBER CRABGRASS AND 26 OTHER TOUGH WEEDS. GUARANTEED 95-100% EFFECTIVE.

APPLY NOW! In addition to hairy crabgrass and smooth crabgrass, you will get control on 25 other annual weeds including chickweed, green and yellow foxtail, lambquarters, purslane, pigweed and spurge if Turf Magic Crabgrass Control is applied before these weeds germinate.

One application before germination gives full season control.

40 Lb. Bag Covers 2,000 Sq. Ft. **2.99**

JACKS PARKING LOT SERVICE

Slabs
Patios
Patching
Sidewalks
Drive ways
Metal Carports
Pre-Cast Car Stops
Parking Lot Striping
Redwood Fences Painted
Asphalt Weather Proofing

**FREE ESTIMATES
CALL ANYTIME**

DON BARNES

806-272-5568
MULESHOE, TEXAS

BUTCH SCOTT

Gibson's ICE CHEST by thermos #7750 - M33 43 qt. **10.97**

Gibson's PICNIC JUG by thermos #7708 - M33 **4.33**

CAMP STOVE **17.99**
COLEMAN #413G 2 BURNERS

LANTERN **14.88**
COLEMAN #228F 2 MANTLE

everain Oscillating Sprinkler with spray area control dial... waters all rectangular lawns up to 3000 square feet

BRASS JET NOZZLES #72
WATERS UP TO 3,000 SQ. FT. (43"x70)
"SET 'N SPRAY" DIAL
SEALED MOTOR
GUARANTEED FOR ONE FULL YEAR
MADE IN U.S.A. **5.47**
1 YEAR GUARANTEE Waters up to 3,000 sq. ft.

A History Of Bailey County Pioneer Families



Mr. and Mrs. Thomas A. Gaddy

Thomas A. Gaddy left his home in Dickens County and traveled with his wife and two daughters, Lyndell and Frances, toward Muleshoe to settle south of the sand in extreme southern Bailey County. It was on Christmas Eve in 1922 when the Gaddys made their way to their new land which Gaddy had traded for. It was located on the Figure T Ranch, right out on the bald prairie.

The land had to be grubbed out before it could be plowed. The first year, Gaddy completed the grubbing and got about half of it tilled, using a team and a Sulky Rod plow. The untilled portion of the land was planted with a knife plow.

Among the hardships endured by the Gaddys as they pioneered the southern part of the county were the range cattle tromping the fields. Fences had to be built. The chief crops were cotton and corn which thrived in the newly turned soil. Then a problem with land agents developed. The agents were there in droves bringing prospective buyers to the Gaddy farm to see the crops being raised. Gaddy noticed that cotton bolls were disappearing along the edges of the field and that the ears were gone from the corn halfway down the field. He discovered that the land agents were pulling them and giving them to the people to take back home in hopes that they could entice people to come and settle there. Gaddy finally made a deal with some of the land agents and sold them an acre along the edge to use for samples and then harvested what had not been used by harvest time.

Gaddy remembers some of the agents who brought people down from the northern states. One agent in particular bought

a plot of the land, plowed it and brought sacks of Idaho potatoes with him and buried them in the plowed ground. As he showed land to the prospective buyers, he would scratch up the soil and show them the fine potatoes, telling them that they were grown right there on the plot of ground. Gaddy said that the scheme sold many acres of land, but that the people with small capital didn't make it and much of the land resold.

Mrs. Gaddy had a garden spot at one end of the field. Among the vegetables that she planted was squash. She was saving one particular squash to enter in the fair and discovered one day that it was missing. She later learned that a Muleshoe land agent, R.L. Brown, had pulled the squash and entered it in the Lubbock and Plainview Fairs, winning first place in both fairs. The squash measured 36 inches in length. She said that years later she teased Brown about taking her squash but "I was furious at the time".

From his first cotton crop, Gaddy won a prize of \$375 for the best cotton given by the Blackwater State Bank. The judging was done by the county agent who tossed his hat 30 times in each field and counted the bolls on each stalk that his hat landed on. The most bolls on the 30 stalks won the prize.

Baileyboro was the nearest school. The Gaddy children were supposed to attend school at Circleback, but were allowed to go to Baileyboro because it was closer. Gaddy hired a man to drive his daughters to school each day in a Model T. There were no roads and they drove across the range. Gaddy said they kept the old car torn up chasing coyotes in it over the pastures on the way to and from school.

The ranch families and Gaddy asked for a school district and were told that the land south of the sand could not be utilized for anything except ranching and were refused a district. The group threatened to go to Austin with the request for a school district, precinct and commissioner. The local board finally gave them 71 sections of school land and \$5,000 to start a school. The small school was named "Figure T" after the ranch. The first teacher was Lois Parker from Hereford who was said to have tongue-lashed the cowboys every time they crossed her path. She lived with the Gaddy family as no housing was provided for her. Gaddy was a trustee and a member of the County Board of Education.

A Mr. Elmore was commissioner of the newly established precinct. Mail came out of Sudan to Baileyboro by whoever happened to be passing. The Gaddy girls would ride horseback to Baileyboro for the mail and the trip would take over a half day. The men then launched a campaign for a mail route and were told that roads would have to be established first. Elmore obtained a grader from precincts north of the sand and, by following the section lines, graded roads. Then the route had to be mapped out and declared. Gaddy plotted the route from Sudan to connect with Baileyboro, Goodland, Watson and along routes to best accommodate the people.

The Gaddys did most of their shopping in Sudan. When they came to Muleshoe they drove over what was called "Coke Shack Road", an ungraded, two-track road and had to cross Black Water Draw, which often had water in it. The last gate they went through was just at the south edge of Muleshoe.

The second year's crop brought enough money to improve the Gaddy's house, so as they hauled the cotton to Sudan, they would bring back a load of lumber in their truck which had no cab, no windshield and traveled about 12 miles an hour.

On November 18, 1923, as they came home from hauling their last load of cotton, a blizzard struck. It howled for days, with drifting snow, and covered everything. It was January 7 before the Gaddys saw the tips of the baregrass. At the time the blizzard hit, 16 cowboys from the Mashed O were camped a short distance from the Gaddy home. They slept in bedrolls on the snow-covered ground and ate in a tent that was used as a cookshack. They had to remain there for the duration of the storm, trying to save what cattle they could. They would ride during the daytime, moving and milking the cattle.

A cake line was strung from the railroad for miles, stretching across the prairie to feed the cattle. All available people worked, hauling the cake from the railroad to the furthestmost end of the line.

Gaddy kept the camp in groceries, driving to Sudan for supplies, and the cowboys in turn furnished beef for the family. The cowboys often came to the Gaddy home and sang while the Gaddy girls played the piano. They often laughed and talked until midnight. The Gaddys said that the wild tales told by the cowboys weren't true -- that they were just good boys, full of life and loving every minute of it, even though their days on the range were rough.

Both Mr. and Mrs. Gaddy commented that the pioneer years

Quick Answer

A teacher was giving his class a lecture on charity. "Willie," he said, "If I saw a boy beating a donkey and stopped him from doing so, what virtue should I be showing?" Willie (promptly): "Brotherly love."

Acupuncture found to help nerve deafness.

were the most enjoyable in their life. Mrs. Gaddy said that she didn't care for a repeat performance, but it was an adventure and a challenge back when they and the county were young.

The couple leased their farm in 1943 and moved to Portales, New Mexico.

This is one in a series of historical biographies of Bailey County pioneer families who arrived prior to 1930.

AAUW State President Visits Muleshoe Branch

Mrs. William C. Pool, Texas Division President from San Marcos, was honored by the Muleshoe Branch of American Association of University Women, Friday, March 13, with a Salad Supper in the home of Mrs. Tom Jinks, 1810 West Avenue D. Co-hostesses for the occasion were Mrs. Glen Harlin, Mrs. Mabel Wolfe, and Mrs. R.G. Wilson.

Mrs. Oscar Rudd, Muleshoe Branch President, presided during the business session. The Branch voted to give \$60 to the Muleshoe Area Library to help pay the salary of a library aide for the summer. Mrs. Jack Rennels gave a report of the Cultural Interests Committee and reported that more than 1300 students saw the production "Rumpelstiltskin", March 5, which was presented by the Eastern New Mexico University Theater Group.

New officers for the biennium are: Miss Virginia Bowers, president; Mrs. Mabel Wolfe, second vice president; Mrs. Tom Jinks, secretary; and Mrs. Edith Henderson, treasurer.

Mrs. Pool briefed the Branch on the new changes that were made in the Constitution at the State Convention; she reported

on the increase in Fellowships, and announced that there are now 95 Branches in Texas.

Other guests attending the meeting were Mrs. Marilyn Pool and Mrs. Pat Myers from the Amarillo Branch and Mrs. Evelyn Pope and Miss Glenda Keyton is Division Corresponding Secretary.

Members attending were Miss Virginia Bowers, Mrs. Neal Dillman, Mrs. Lena Hawkins, Mrs. Alden Henderson, Mrs. Jack Rennels, Mrs. W.O. Rudd, Mrs. Eric Smith, Mrs. John Watson, and Mrs. Carter Williams.

Raisins make up half of all dried fruits eaten by U. S. consumers--followed by prunes, dates and figs, says Mrs. Gwendolyn Ciyatt, consumer marketing specialist Texas Agricultural Extension Service, Texas A & M University.

Bodyshirts and other bodywear are popular for all ages--and they're now in men's departments, according to Marilyn Brown, clothing specialist with the Texas Agricultural Extension Service, Texas A & M University.

Progress doesn't flow from excuses.



AUGUST WEDDING PLANNED. . . Mr. and Mrs. Elbert Hamilton of Muleshoe announce the engagement and approaching marriage of their daughter, Karen, to Darrell Wilson, son of Mr. and Mrs. R.G. Wilson of Muleshoe. The couple plans to be married on August 3 at the First Baptist Church in Muleshoe.

Gift Tea Fetes Silua Ayers

Miss Silua Ayers, bride elect of Bill Goodwin, was guest of honor at a gift tea in the home of Mrs. D. O. Burel-Smith, Saturday, April 14.

Receiving guests with Miss Ayers were her mother, Mrs. Bob Ayers of Memphis, Texas, and Mrs. Ross Goodwin, mother of the groom. Special guests were Mrs. Gerald Floyd, Elkhart, Kansas, sister of the groom. Other out of town guests were Mrs. Glen Floyd, Mrs. Max Self and Gayla, all of Friona; Mrs. Hopper Ivy, Dimmitt; Mrs. Hershel Arnold, Clovis; and Mrs. Terry Fields of Plainview. Mrs. Fields presided over the bride's guests registry.

Guests were served by Miss Sherry Wagon. The serving table was laid with a white lace edged cloth and centered with mauve tapers in silver candelabra entwined with Eng-

lish ivy, mauve gladiolas and streamers tied with lover's knots. Other appointments were silver and crystal.

Hostess gifts were card table and chairs, pillows, and candle holders.

Assisting Mrs. Burel-Smith as hostesses were Mrs. Roy Jordan, Mrs. Albert Carrol, Mrs. Gary Dale, Mrs. Joe Mac Wagon, Mrs. W.B. Wagon Jr., Mrs. Paul Scott, Mrs. Robert Blackwood, Mrs. Jack Lenderston, Mrs. Billy J. Darnell, Mrs. R.A. Bradley, Mrs. Jake Roberts, Mrs. A.R. McGuire, Mrs. Clarence Jones, Mrs. W.B. Little Jr., Mrs. Bill Loyd, Mrs. Clarence Mason, Mrs. Aubrey Heathington and Mrs. Luther Hall.

Library News

by Anne Camp

We really enjoyed Library Week, and all the activities, and visitors we had. It took the work and cooperation of a number of people to make it a success. I wish to express my appreciation to all who took part in it, especially the following: to the Newspaper, and Radio KMUL for all the good publicity; to the Study Club who sponsored it; to my staff, Holly Ann Millsap and Donna Grimsley who worked harder before, and during the week; to Ruth Hammock for the bulletin board help; to Lola White for bringing our Library scrapbook up to date; to Mrs. Bill Millen for her fine craft presentation for the Senior citizens; to Mrs. Robert Hooten for her lovely slide presentation of Greece and the Greek Isles; to Beth Watson for bringing her display of Depression Glass; and to all who came and visited all week and who bought books at the book sale on Friday.

Now we are looking forward to our Summer reading program for the children - we are going to make it as interesting as possible...and encourage reading this summer for fun. New on our shelves this week: Catherine Cookson's new book "Pure as the Lily"; "Law and Order" a novel by a former police-woman, Dorothy Umak; "The Prisoner of my Mind" by Barbara Benziger, a true account of a courageous woman's fight for sanity; and Rona Barrett's - "The Lovemaniacs" - for the insanity of Hollywood.

BIBLE VERSE

"Lay not up for yourselves treasures upon earth, where moth and rust doth corrupt, and where thieves break through and steal."

1. Who made the above statement?
2. Upon what occasion?
3. What was the concluding remark in this instance?
4. Where may this statement be found?

Answers to Bible Verse

1. Jesus.
2. During the Sermon on the Mount.
3. "For where your treasure is, there will your heart be also."
4. Matthew 6:19.

CATTLE AND LIVESTOCK BUYERS

WE NEED MEN IN THIS AREA. Train to buy cattle, sheep and hogs.

We will train qualified men with some livestock experience. For local interview, write today including complete background, address, and phone number.

WESTERN MEAT PACKERS TRAINING, INC. 4318 Woodcock, San Antonio, Texas 78228

Easter Fashions

- DRESSES
- BLOUSES
- SKIRTS
- PANT SUITS
- JEWELRY
- HATS & GLOVES
- ACCESSORIES

Special Rack of Spring Dresses & Pant Suits 1/3 OFF

The Fashion Shop

"THE FASHION CORNER" OF CLOVIS" 521 MAIN



MISS SILUA AYERS

GIVE Flowers THIS EASTER

CALL 272-4340

DECORATORS

216

FLORAL CO.

Muleshoe

HARVEY BASS APPLIANCE

Ph. 272-3030 122 S. First

another first from **Amana**

Only the **Radarange** MICROWAVE OVEN oven has it!

5-YEAR WARRANTY!

It includes free Parts Labor

And there are 3 styles. One to suit your family.

A full line of **Radarange** ovens

made specifically for the home!

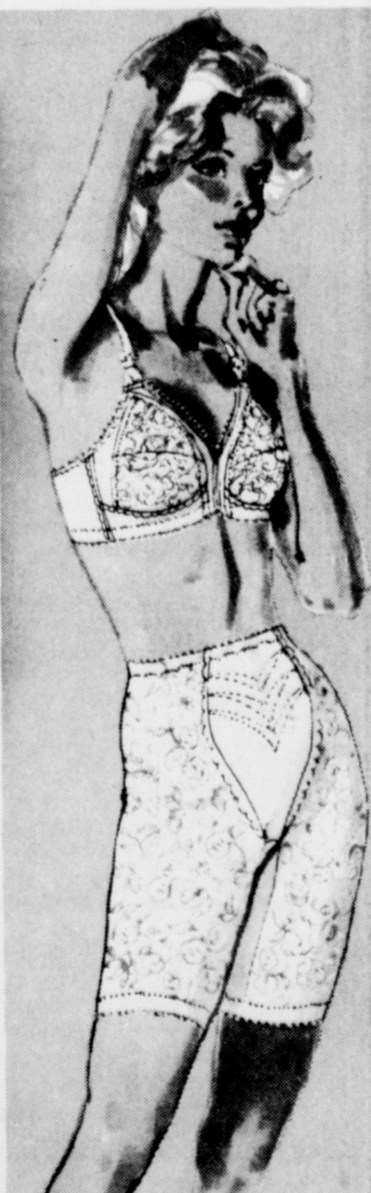
It's new exciting cookery.

And it doesn't cost you one penny extra, either!

move them from place to place on a cart!

put them on a countertop;

You can: build them in;



PLAYTEX®

18HOUR

GIRDLE & BRA

NOW IN DD SIZES

SALE

\$201 OFF ON GIRDLES (\$1.01 on Brief)

\$101 OFF ON BRAS (Styles #20, 27, 220, 227)

These are the famous firm control girdles and support bras that are comfortable for hours. They're made with the exclusive Playtex stretch fabric with the exact combination of strength and softness for truly comfortable support and control.

SAVE \$2.01 on Girdles--

- Shortie XS, S, M, L, XL, Reg. \$10.95 Now \$8.94
- Average Leg S, M, L, XL, Reg. \$11.95 Now \$9.94
- Long Leg S, M, L, XL, Reg. \$12.95 Now \$10.94
- Girdle S, M, L, XL, Reg. \$10.95 Now \$8.94
- High Waist Average Leg S, M, L, XL, Reg. \$14.95 Now \$12.94
- High Waist Long Leg S, M, L, XL, Reg. \$15.95 Now \$13.94
- High Waist Girdle S, M, L, XL, Reg. \$12.95 Now \$10.94

(*XL, XXL--\$1.00 More)

SAVE \$1.01 on Bras

- Styles #20, 27, 220, 227
- Regular Bra--Style #20/27 34-36A, 32-42B, 32-42D, 32-46DD, Reg. \$6.00 Now \$4.99
- Long Line Bra--Style #220/227 34-42B, 34-44C, 34-44D, 34-46DD, Reg. \$9.00 Now \$7.99

(*D, DD--\$1.00 More)

SALE ENDS MAY 4, 1973





ROYALTY CROWNED... Sharon Wrinkle was selected as DeMolay Sweetheart and Paul Bell was crowned Rainbow King at the Rainbow-DeMolay Banquet held recently at the fellowship hall of the First United Methodist Church. Other candidates were Kelly Cihak and Rhonda Stevenson for DeMolay Sweetheart and Perry Hall and Mike Hunt for Rainbow King.

Rainbow-DeMolay Royalty Crowned

The Rainbow-DeMolay Banquet was held April 4 at 7:30 p.m. in the fellowship hall of the First United Methodist Church. The theme, "Peanuts", was carried out with various table and wall decorations.

The invocation was given by Wylie Bullock and was followed by the welcome which was given by Beverly McCamish.

The meal, prepared by the Rainbow mothers, included spaghetti and meatballs, tossed salad, garlic French bread, dessert and ice tea. The meal was served by Sheila Hunt, Bettina Roming, Amy Clark and Shannon Kennedy.

The entertainment was presented by a group composed of Jimmy Wisian, Jim Allison,

Junior Historical Society Receives Honorable Mention

The Muleshoe Junior Historical Society of Muleshoe Junior High School received a certificate of commendation from the Texas State Historical Association, Monday, April 16. This award was presented at the State Convention in Ft. Worth, April 13-14 and was mailed to the local society. This is the second year this society

has received this award. The certificate was given in recognition of outstanding achievement in the preservation and advancement of Texas History.

The Muleshoe Junior Historical Society has had several projects for the year; namely, presentation of a book to the Muleshoe Junior High Library; sponsoring local History Fair; participating in Regional History Fair in Plainview; researching local history by interviewing early settlers in Bailey County and making replicas of early Muleshoe buildings; and participating in a historical field trip.

Officers of the local Society are Casey Sanderlin, president; Joe Don Prather, vice president; Mark Nowlin, secretary-treasurer; and Patricia Grimsley, reporter. Mrs. Dorothy Beddingfield is the sponsor of the organization.

Mark Burden and Danny Vela. Special guests were presented by Kim Cowan and Paul Bell.

The DeMolays held a Nine O'clock Interpolation, followed by the coronation ceremony. Candidates for DeMolay Sweetheart were Kelly Cihak, Rhonda Stevenson and Sharon Wrinkle. Candidates for Rainbow King were Perry Hall, Paul Bell and Mike Hunt. The Royalty selected were Sharon Wrinkle and Paul Bell.

Selected as outstanding Rainbow girl was Prisca Young. The DeMolays then conferred the title of Representative DeMolay upon David Seymore, Chuck Smith and Perry Hall. The benediction was given by Gayla Hooten.

Social Club Has Meeting

The Pleasant Valley Social Club met in the home of Mrs. Kirk Pitts on Thursday, April 12. Members voted to have a quilting bee in the home of Mrs. C.W. Calhoun on Tuesday, April 24.

Attending the meeting were Mrs. Arnold Fyie, Mrs. Kenneth Duncan, Mrs. Henry Hetta, Mrs. E.C. Galyon, Mrs. C.W. Calhoun and Mrs. Kirk Pitts.

Mrs. Hetta and Mrs. John St. Clair will be hostesses for the next regular meeting of the club which will be on Thursday, May 3.

4-H Elimination Contests Scheduled

Attention, 4-Hers! It's time to begin preparation for entering the district elimination contests. The contests will be held on May 5.

Team method demonstration include electricity, beef cattle symposium, cooperative, farm and ranch management, field crops, horse, vegetable

preparation and use and vegetable production and marketing.

Individual method demonstrations include home improvement educational activity, clothing educational activity, foods and nutrition Let's Speak Out, and public speaking.

Identification contests include entomology and range and pasture identification.

Other contests include rifle and share the fun. The share the fun contest entries can have any number from two to nine person participating.

4-Hers interested in entering any of these elimination contests should contact Spencer Tanksley or Robin Taylor at the county Extension office for further information.

It's too late to be careful after the accident occurs.

Plainview Auxiliary To Sponsor Kidney Foundation Program

The Plainview Fireman's Auxiliary is sponsoring a program to benefit the South Plains Kidney Foundation of Lubbock. The program is to be held April 26 at 8 p.m., at the Chamber of Commerce in Plainview, located at 710 W. 5th.

There will be no charge for admission to the program. There will be a member of the Board of Directors to accept donations for the Foundation from anyone who may wish to contribute.

Dr. Alan R. Hull of Dallas will be guest speaker. Dr. Hull is head of the Dialysis Center at Woodlawn and also the Renal Clinic at Parklawn Hospital in Dallas.

Easter Rabbit May Give Books

COLLEGE STATION -- Easter rabbits may give books this holiday.

"A child's book -- or children's poetry -- instead of all sweet treats or colored eggs" would make a different Easter nest for children and grandchildren, according to Dorothy Taylor.

The family life education specialist, Texas Agricultural Extension Service, Texas A&M University, discussed children and their books.

"Lifetime pleasure in good books comes from the repeated discovery that reading -- many kinds of reading -- can bring satisfaction," she noted.

"Each story, poem or book adds new dimension to the meaning of reading pleasure and strengthens a child's desire to read further."

The specialist admitted that helping a child learn to find books pleasurable and beneficial "may sound like an ivory-tower objective -- and in a sense it is." However, certain practical steps bring the goal within the reach of every parent and grandparent, she added.

"Know each child -- his interests, anxieties, hopes -- and help him find books that are related."

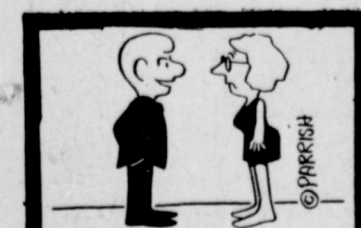
If he likes to "do things" give him a scratch-and-sniff book like "Little Bunny Follows His Nose," Miss Taylor suggested.

If he's interested in imaginary or exciting things, other Easter selections could be "The Little White Rabbit Who Wanted Red Wings" by Dorothy Aldis or "The Tale of Peter Rabbit" by Beatrix Potter.

Three additional possibilities are "The Egg Book" by Margaret Brown, "The Egg Tree" by Katherine Mithous and "An Egg Is For Wishing" by Helen Kay.

"Givers of children's literature should be aware of what is new, available and appealing to children. Librarians, teachers and book store owners usually are most willing to offer guidance," the specialist continued.

"Make reading to children a fun activity -- not a 'pill before bedtime' event or forced quiet-time. Read at a leisurely pace the amount the child seeks," she concluded.



POOL Insurance Agency
Joe Smallwood
Bob Blackwood
MULESHOE Ph 272-4531

ZENITH
brings you
the two things
you want most
in color TV

1 **The best picture of the 6 leading big-screen color TV's.***

In a recent test conducted by Opinion Research Corp., 2,707 people from all over America looked at the 6 leading big-screen color TV's. They voted Zenith Super Chromacolor the best picture by more than 2 to 1 over the next best brand.

2 **The fewest repairs according to a survey of TV servicemen.***

In a 175-city survey of independent TV servicemen, Zenith was named more than any other color TV, as needing fewest repairs.

*Survey details available on request. Write Zenith Radio Corporation, 1900 N. Austin Ave., Chicago, Illinois 60639

Here's an outstanding example of Zenith Super Chromacolor TV -- one of a complete selection of styles and sizes from portables to fine-furniture consoles. Shown here, The Hampden, Model D4771P9. Stop in today for a demonstration.

The quality goes in before the name goes on™

Wilson Appliance
117 MAIN 272-3138

Anthony's
C. R. ANTHONY CO.

Easter Additions

Men's Short Sleeve Knit Shirts
Reg. \$5.99
2 FOR \$10

Men's 65% Polyester and 35% cotton short sleeve shirts, for easy care and complete comfort. Features a fashion collar.
SIZES 14 1/2 TO 17

Ladies' Casual and Dressy Hand Bags
5.99

A group of extremely stylish, but practical ladies' hand bags. They look just right, and they have plenty of room too. A great price and opportunity.

Men's Polyester Double Knit SLACKS
NOW ONLY **\$14.**

Easy care, polyester double knit slacks for men. A slightly flared leg, for style and comfort. In navy, burgundy, black, brown and cocoa. You'll want them for expanding your new spring wardrobe. Waist sizes 29 to 42.

SHOP CASH LAY - A - WAY

master charge
or
TEXAS BANK/AMERICAN

Fashions For The Entire Family

White Monk Strap
Men's 15.99 Boys' 11.99 Youth's 6.99

Men's Crinkle Patent Slip-On
19.99

Ladies' Leather Dress Sandals
3 Styles **6.99**

WEAR WHITE

Men's Crinkle Patent Lace-Up
18.99

Girls' One-Eye Tie Dress Shoe
7.99

A fantastic assortment of shoes for every member of the family. Ladies' leather dress sandals, sizes 5 to 10, men's, boys' and youth's monk strap, sizes 6 1/2 to 12, 3 1/2 to 6, and 8 1/2 to 3. Plus, men's crinkle patent slip-on and crinkle patent lace oxford. And, for little girls, a black and white one eye, tie dress shoe, sizes 8 1/2 to 3. All in white. Girls' shoe in black and white combination.



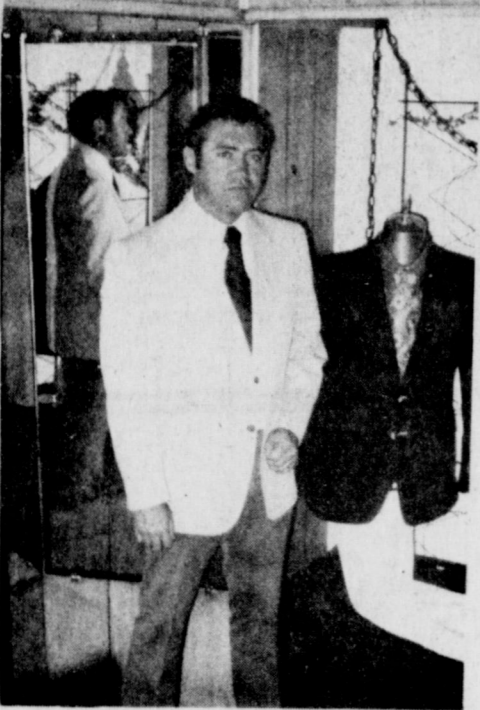
John Tower
United States Senate
 COMMITTEE ON ARMED SERVICES

During recent days I have been contacted by many Texans--through the mail, by telephone, and in person--expressing their grave concern over the upward spiral in the cost

of lumber and wood products. Soaring lumber prices are hitting hard at the pocketbook of the home buyer, the renter, and the homeowner intent on remodeling his current residence. Along with food, it's the biggest bulge in the economy and like food, it affects one of the basic needs of man--shelter. In the last six months, lumber prices added at least \$1,200 dollars to the cost of building an average new home. What does this mean to the prospective home buyer? I mean that his monthly payment on his mortgage will be higher. On the traditional lender's 5-to-1 ratio of income to monthly mortgage payment, this means that the buyer's income would have to increase as much as \$40 per month. Renters suffer also because the rocketing prices of wood products that go into apartments must be reflected in higher rents. Costs of home improvements are steeper. Building a fence in the back yard can cost more than twice what it did six months ago. A glance at the price tags on wood products tells the tale. Between January 12 and March 16 of this year, the price of 2x4 lumber increased 25 per cent. During this same period, the price of 3/8ths inch plywood increased 98 per cent. The wholesale price index for the single month of February, 1973, for softwood lumber reported an increase of 8 per cent, while the index for the same month for all lumber and wood products increased by 6.6 per cent. Astoundingly, between January, 1971, and January, 1973, the wholesale price index for softwood lumber increased a whopping 56 per cent, while during the same period all other commodities listed in the index increased by but 11 per cent, which is a difference of 45 per cent. Obviously, something must be done, and done rapidly to stabilize the prices and bring order to what has become chaos in both the wood products and homebuilding industries. It is in this context that on Monday and Tuesday of this week, the Senate's Housing and Urban Affairs Subcommittee, on which I serve as the senior Republican, held two days of most important public hearings at which time the crisis of increased lumber costs was examined in detail. Traveling to Washington to appear before our Subcommittee were individuals from across the nation representing all interests--consumers, homebuilders, environmentalists, lumbermen, and government spokesmen. As those of us who serve on the Housing Subcommittee soon learned, the factors contributing to the costs were varied and significant. Predominantly, the cause could be placed at demand-induced inflation. That is, pressures for higher prices stemmed mostly from a relative shortage of lumber and wood products with respect to a high demand for these products. Resultant higher prices acted as a rationing mechanism which allocated the limited supply among numerous potential purchasers. Increased demand was stimulated by a sharp increase in private housing starts. In 1972, 2.38 million private houses were started, representing a 66 per cent increase over '71. This increased demand pressure has continued into the early part of this year. Another factor has been the record rate of log exports, primarily to Japan. This volume that goes there represents a 27 per cent increase over the corresponding '71 volume. We have completed our hearings and now face the question: what can be done to relieve the burden of increased lumber costs? Given the desired high demand for lumber and wood products, the only way to maintain price stability in these markets over an extended period is to increase the supply. Wage and price controls which mandate artificially low prices can, at most, have a temporary effect in halting the price rise, at the expense of market distortions and apparent shortages. How then can the supply be increased in order that we can insure reasonable lumber and plywood prices? Testimony indicated three major ways: by increasing the internal supply of timber and lumber, by decreasing net exports of softwood logs, and finally, by constructing a wage and price control system which helps constrain prices without inhibiting increased internal supply. The Nixon Administration indicated this week during our hearings that action would be taken in each of these areas in the very near future. This is encouraging news. In addition, I feel confident that our Housing Subcommittee will simultaneously move toward reporting legislation designed to accomplish a reversal of the price spiral. With lumber and plywood price rises still continuing, immediate relief is needed if decent housing is not to be put beyond the financial means of those who need housing most.

LAW AND ORDER
 It is most encouraging for me to be able to report to you this week that for the first time in 17 years, there has been significant progress across the nation in the battle against crime. Figures on the nation's crime rate, just released by the FBI, show a decrease of 3 per cent in 1972 over the previous years. This trend has been building since 1969, but last year's crime ratio was the first actual decline since 1955, according to the FBI figures. The latest crime report also shows that serious crime declined in 94 major cities, including seven in Texas. It was most encouraging for me to note that major crimes last year declined 16.5 per cent in El Paso, 11 per cent in Lubbock, 8.8 per cent in Dallas, 5.6 per cent in Fort Worth, 3.7 per cent in Austin, 2.8 per cent in Corpus Christi, and 1.6 per cent in Beaumont. Prior to 1969, concerned citizens across the nation watched what appeared to be an unending upward spiral of crimes of every category. This spiral reached a climax in 1969 when FBI records showed that crime increased over the previous year by a record-breaking 17 per cent. It was at this point that many of us in public office renewed our determination to re-institute a no-nonsense law and order approach which had been demanded by the public for some time. As encouraging as the news of crime incidence is, I still am acutely aware that crime is still unacceptably high all across this country. We need to re-double our efforts and get behind programs that help local law enforcement agencies in their war on crime. Much still needs to be done in areas of criminal code reforms and in drug traffic crackdowns. Because of my great concern over the growing problems of drug trafficking, I am co-sponsoring three bills in the current Congress designed to curtail the diversion and abuse of barbiturates. Last year, the venial Delinquency found that the abuse of barbiturates has been growing at an alarming rate. I fear that we already might be experiencing an epidemic which is raging out of control. These three bills, which should get an early hearing by the Senate Judiciary Committee, offer promising methods to reduce the amount of diversion of barbiturates into illegal channels. Basically, the proposed laws would require more stringent regulations for accountability of the drugs and would require identification marks on such pills. Texas law enforcement officials are most aware of the growing drug problem in our state. Other than the state of California, the Senate Subcommittee found more reports of barbiturate abuse in Texas than any other state. Reports from Houston showed an alarming 60 per cent increase in arrests for possession of barbiturates in a one-year period recently. Problems of almost the same proportion are reported by police in Dallas, Fort Worth, Beaumont, El Paso and San Antonio. Such reports serve to heighten my concern for action. If we are going to defeat violence in our nation, we must improve and encourage local law enforcement, speed the judicial process, improve our prison systems, and update outmoded laws and enact new ones to meet the needs of our day. Controversy still is raging in many areas over capital punishment. However unfortunate it may be, I believe we must re-institute capital punishment as a deterrent for the most heinous crimes. I am encouraged to see that action already is being taken by some of the states. Most of us will agree that law after law can be passed at both the state and federal levels, but without good, efficient local law enforcement, these efforts are wasted. With this in mind, we in the Congress are trying to move in this area. The Senate, for instance, has just passed four bills designed to improve the lot of local law officers, and to recognize the need for civil remedies for victims of crime. These bills would improve group life insurance laws for public safety officers, and provide compensation for the dependents of officers killed in the line of duty. Other legislation would give citizens who are victims of racketeering activities stronger civil remedies, and would provide for compensation for victims of criminal acts who suffer death or injury. I think it's very encouraging to all of us that crime statistics are down, but the battle is not yet over, and it's an unending battle that we will not see the end of for some time yet to come. We still need strong measures to insure good law enforcement for the citizens of this country.

LOOKING JUST RIGHT FOR THE Jr. & Sr. BANQUET



Curtis Didway has his outfit for this year's banquet all picked out.

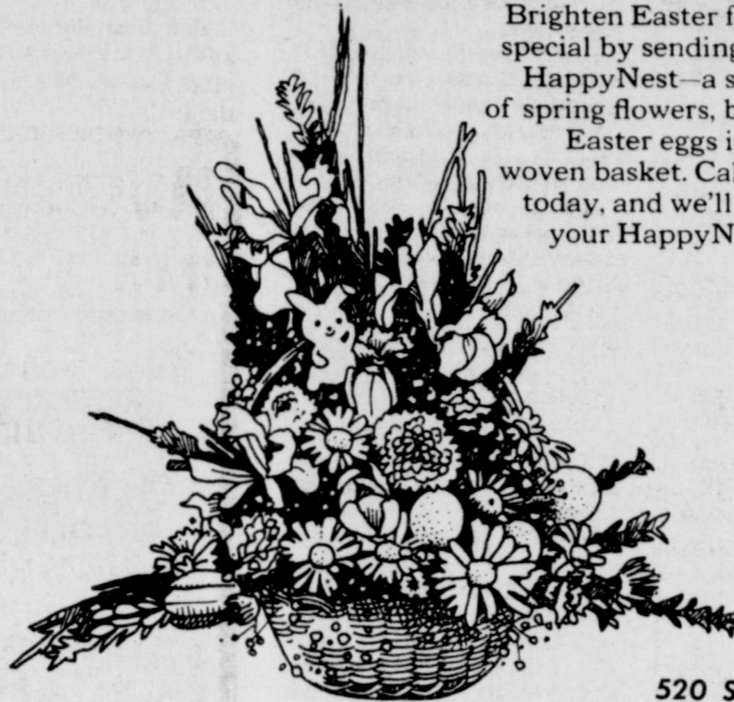
Didway chose a light blue MALE CALL suit by TONI KENT.

The suit is 100% polyester and will go anywhere in a variety of combinations.

CONGRATULATIONS TO DIDWAY ON BEING NAMED OUTSTANDING EDUCATOR.

St. Clair's

Hop to it! Send the FTD HappyNest



Brighten Easter for someone special by sending the FTD® HappyNest—a sunny array of spring flowers, bunnies and Easter eggs in their own woven basket. Call or visit us today, and we'll arrange for your HappyNest to be on its way.



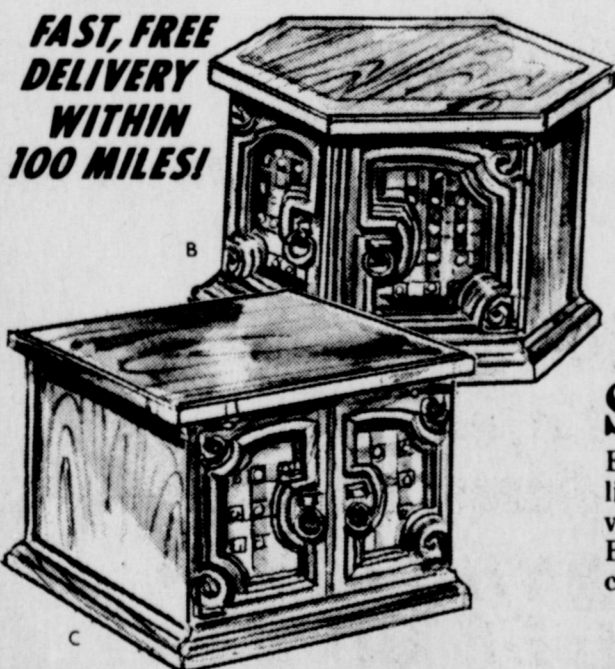
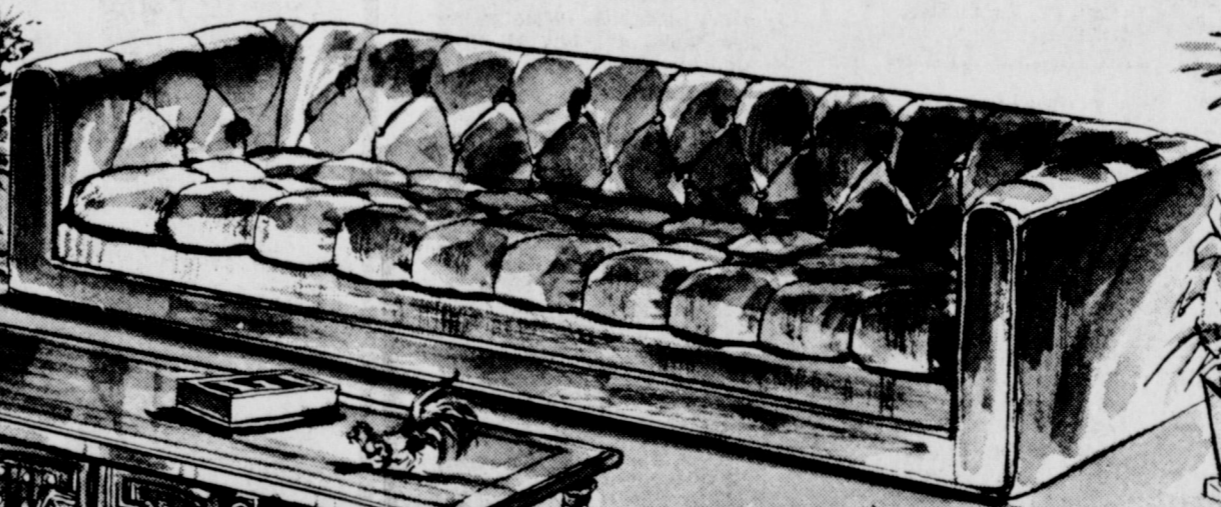
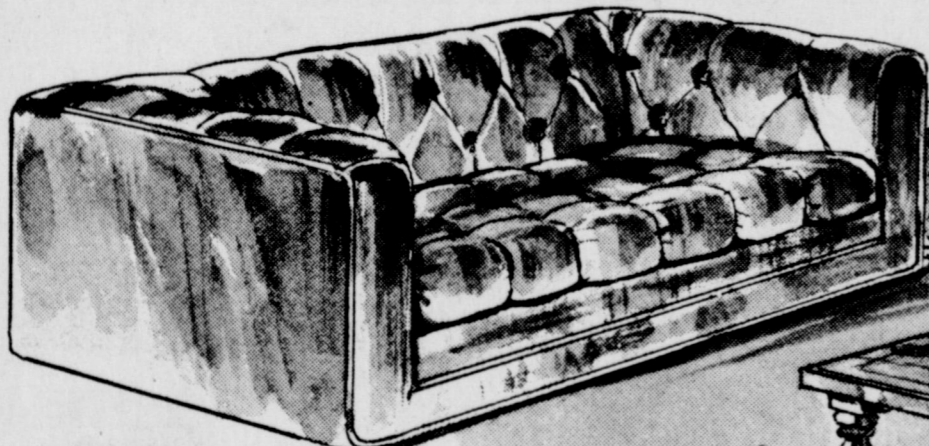
520 S. 1st MULESHOE

Beavers Flowerland

272 - 3116 or 272 - 3024

THE HOME OF WHITE STORES, INC. GREATER VALUES

Shower of Savings SALE!



FAST, FREE DELIVERY WITHIN 100 MILES!

SAVE \$61.95

Reg. \$459.95

Luxurious Velvet Sofa and Love Seat \$398

Enjoy the look and feel of luxurious living with this 2-piece transitional living room suite! The sofa and love seat are both upholstered in rich, vibrant velvet and have diamond tufted button back, seat, and arms. Both exquisite pieces seat everyone comfortable on the plush, reversible cushions.

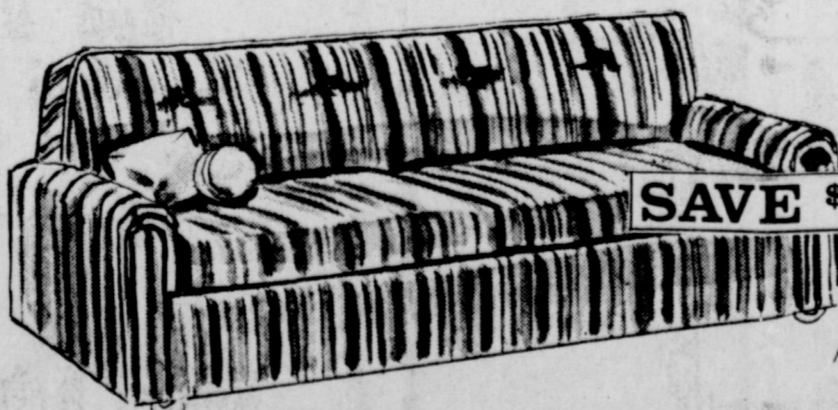
MATCHING CHAIR.....\$108

YOUR CHOICE \$88 OF TABLES In Mediterranean Style

- A Door Cocktail
- B Hexagon Commode
- C Square Commode

USE OUR **EZE-CHARGE**

CHARGE IT! Months To Pay!



MODERN HERCULON SLEEPER

Reg. \$209.95

\$188

SAVE \$21.95

Receive the convenience of a space-saving sofa and an extra bed, complete with a full size foam mattress. Upholstered in Herculon fabric, this sofa gives you all the advantages of Herculon - wearability, cleanliness, and colorfastness.

Months To Pay!



POYNOR'S WHITES' STORES INC.





CLASSIFIED ADS

FIND IT QUICK

WANT ADS PH. 272-4536

CLASSIFIED RATES

OPEN RATES

First insertion, per word-9¢
Second and additional insertions-6¢

NATIONAL RATES

First insertion, per word-11¢
Second and additional insertions-7¢

Minimum Charge-

CARD OF THANKS.....\$2.00

Classified Display \$1.12 per col. inch

Double rate for Blind Ads \$1.15 per col. inch for Reverses

DEADLINE FOR INSERTION

Thursday's Muleshoe Journal-Noon Tuesday
Sunday's Bailey County Journal-Noon Friday

The Journals reserve the right to classify, revise or reject any classified ad.

Check advertisement and report any error immediately. Journals are not responsible for error after ad has already run once.

VFW
Walter A. Moeller
Post #8570
8:00 p.m. 2nd & 4th Mondays
VFW Hall
Joe T. Gonzales, Commander

Masonic Lodge
1237 AF & AM
meets the second
Tuesday of each month
practice night each Thursday
Ross Mick WM
Elbert Nowell, Sec.

Jaycees
meets every
Monday, 12 Noon
Max King, Pres.

Kiwanis Club
Meets Every
Wednesday
6am
XIT
Restaurant
R.A. Bradley, President

Lions Club
meets each
Wednesday, 12 Noon
XIT Restaurant
J.W. Coppedge, President

Muleshoe Oddfellows
meets each
Thursday 7:30 p.m.
CLAUDE WILEMON
Grand Noble

Muleshoe Rotary Club
meets every
Thursday at 12:00
DINING ROOM
XIT Restaurant
Kerry Moore, President

2. LOST & FOUND
LOST- One 400 pound Charlois heifer near Clay's corner. Call Keith Menefee, 965-2145.
2-9s-tfc

3. HELP WANTED
OPEN: R.N. Position. 11-7 shift at Memorial Hospital, Clovis, N.M. Call Margaret Dougherty, Assistant Administrator, 505-763-4493 ext. 118.
3-15s-3tc

HELP WANTED: Bookkeeper and work order clerk for Electric and Telephone Cooperative. Job opening June 1. Bookkeeping experience desirable. Equal opportunity employer. Application forms available Bailey County Electric Cooperative, Drawer N, Muleshoe, Texas 79347.
3-15s-2tc

WANTED: Typist, must type 50 words per minute at least. Inquire in person at Journal.
21s-3-1fp

HELP WANTED: Yard men to work yard all summer. Pay good. 307 W. 6th. 272-4669.
3-16t-6tc

HELP WANTED: Need very experienced farm hand. Clovis area. Pay well. Don't apply unless qualified. 505-763-7374.
3-16t-2tp

3. AUTOMOBILES FOR SALE
FOR SALE: 1965 Luxury Sedan 98 Oldsmobile. 35 horse Johnson outboard motor and boat trailer. 272-4109 or see at 709 W. Ave. G.
15-16t-2tc

We're "Farming Out" our Case's!

Rent one by the Day
week or month
Barry & Young Equipment
Muleshoe 272-4236



Loomix Liquid Feed
Contact: C. R. BLACK
Distributor
Phone- 965-2680

12. HOUSEHOLD GOODS
HANNAH's husband Hector hates hard work so he cleans the rugs with Blue Lustre. Rent our Blue Lustre electric shampoo machine. Higginbotham-. Bartlett 215 Main
12-16t-1tc

EXCELLENT, efficient and economical, that's Blue Lustre carpet and upholstery cleaner. Rent our Blue Lustre electric shampoo machine. Perry's 128 Main.
12-16t-1tc

13. MISCELLANEOUS
WANTED: to buy 2 bedroom house. No phone. Write John Bickel, Rt. 1 Muleshoe.
15-16t-1tp

\$100 reward offered for information leading to conviction of anyone damaging Journal Newspaper Stands.
21s-1-1tp

CARD OF THANKS
We wish to express our appreciation for the many kind words, visits, cards and prayers during our Daddys illness and in death.
Especially do we want to thank Dr. McDaniel and all the nurses for their kindness. May God Bless each of you.
The family of J.E. "Ed" Towns.
Mr. and Mrs. Verney Towns
Mr. and Mrs. Vernon Jamison
Doris Towns

KREBBS REAL ESTATE
210 S. 1st PH. 272-3191
FOR SALE: 3 bedroom house, Richland Hill Addition. Call 272-4028 after 5:30.
8-15t-1tc

FOR SALE: Used Tri-Matic's gated, mainline, and sprinkler pipe. Chapman Supply Co. Ph. 272-3473
10-5s-1tc

WE PAY CASH for tractor and equipment of all kinds, Tom Flowers Auction, Inc. Day 272-4145 Night 10-2s-tfc

FOR SALE: Feed lot. Phone 272-4819.
11-44t-1tc.

JAMES GLAZE COMPANY
REAL ESTATE AND FARM & RANCH LOANS
Phone 272-4549 219 S. 1st.
42t-1tc

FOR SALE or RENT: 14x68 two bedroom mobile home, 1970 model. Parking available. Call 272-3756.
8-16t-1tc

FOR SALE: Nice 2 bedroom home with large den, living room, dining room and kitchen. 1460 sq. ft., 12 x 30 garage, Redwood fence, barbecue grill, picnic table and benches. \$15,250. Loan, \$7,700 at 5% if you qualify. 402 West 9th Street. Charles L. Smith.
8-14s-1tc

Services Held Tuesday For Rex Clayton

Rex Clayton, 47, of Earth, died shortly after midnight Monday morning, April 16, in St. Mary's Hospital in Lubbock. He had lived in Earth 12 years, moving from Littlefield. He was co-owner of Earth Pump and Machine Co.
Clayton was born December 24, 1925, in Curry County, N.M. He was a veteran of World War II, serving in the U.S. Navy; a member of the Earth First Baptist Church where he served as a deacon in the church; and a member of the Earth Lions Club.

Funeral services were held at 2:30 p.m. Tuesday in the First Baptist Church at Earth. Rev. David Hartman, minister, and Rev. J.L. Bass, Baptist minister of Odessa, officiated.
Burial was in the Littlefield Memorial Park under the direction of Parsons - Ellis - Singleton, Funeral Home of Earth.

FOR SALE: Used Cornet. Call Bobby Grogan 272-4863.
15-15t-4tc

POODLE GROOMING by appointment. 221 E. 4th, Call 272-5597.
1-28s-1tc

FOR SALE: Caltline Color TV 23" 2 years old, walnut cabinet \$198. Truetone Color TV 23" 1 1/2 years old Spanish style cabinet \$198. Airline Color TV 23" Modern walnut Cabinet \$148. Wilson Appliance. 117 Main. 272-3138.
11-5tc

NOTICE TO ALL PERSONS HAVING CLAIMS AGAINST ESTATE OF SHIRLEY M. MILLER

Notice is hereby given that original Letters Testamentary upon the Estate of Shirley M. Miller, were issued to me, the undersigned, on the 1st day of December, 1972 in the proceeding indicated below my signature hereto. All person having claims against said Estate, in the county below named, are hereby required to present the same to me respectively, at the address below given, before suits upon same are barred by the general Statutes of Limitation, and within the time prescribed by law. My residence and post office address are Route #2, Box 21, Muleshoe, Texas.
Doris I. Miller, Independent Executrix of the Estate of Shirley M. Miller, deceased, No. 1014 in the County Court of Bailey County, Texas.
16t-1tc

Survivors include his wife, Modene; one son, Randy of Earth; three daughters, Mrs. Bill Nichols of Dallas, Mrs. Edward Fourton of Abilene, and Miss Rhonda Kay Clayton of Earth; one sister, Mrs. Jewell Wyatt of Rush, Texas; his mother, Mrs. Winford Clayton of Amherst; seven brothers, Cecil Clayton of Coffman, Texas, Wilson Clayton of San Antonio, Texas, John M. Clayton of Littlefield, Bob and Bill Clayton of Amherst, Jack Clayton of Bovina, and Wendell Clayton of Earth; and two grandchildren.

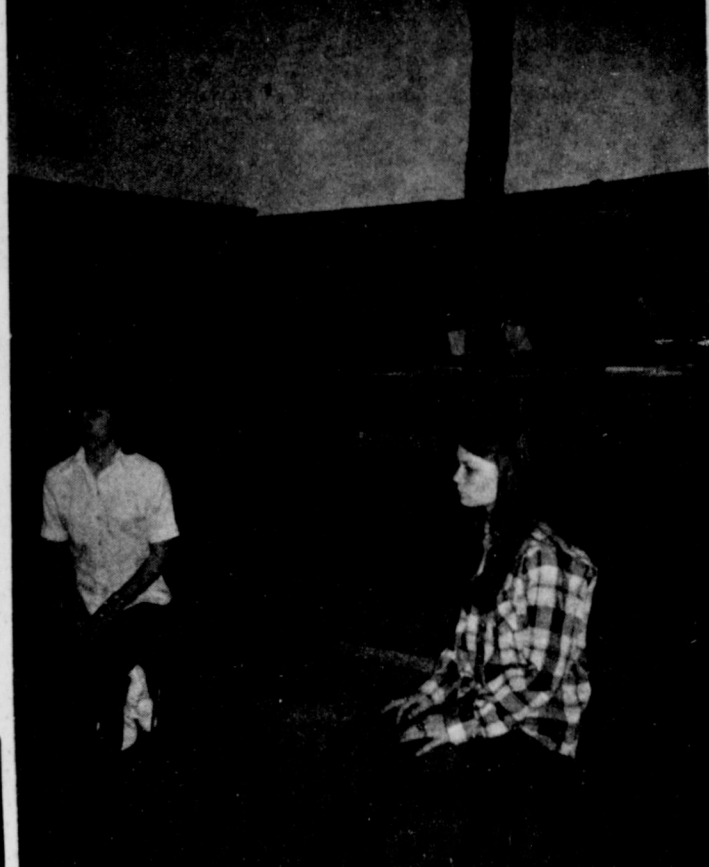
Roy L. Ash, Director of the Office of Management and Budget:
"To have this budget labeled impecunious and insensitive to human needs is simply misrepresentation of the facts."

MULESHOE
MAY 3rd and 6th 8P.M.
Boy Scouts Grounds
CHAMBER of COMMERCE
PRESENTS
FISHER BROS



BUY FX-TODAY!
PREVENT SEPTIC TANK CLOGGING! ONE TREATMENT LASTS FULL YEAR!
Heathington Lumber Co. 814 W. American Blv. Muleshoe, Texas

ATTENTION MULESHOE AREA CATTLEMEN
... In regard to dead stock removal. ...
If you have had a problem with service... whether in the feedyard or on the farm... please give us a chance!
Your local used cow dealer is muleshoe bi-products
farmers ranchers
Gentlemen:
Seven days a week dead stock removal please call as soon as possible
Thank you
Phone-965-2903
Mobil Phone 965-2429



CHANCEL DRAMA SCHEDULED. . . Alta Ramm of Muleshoe and Raylene Poe of Farwell are pictured as they practice at St. John's Lutheran Church, Lariat, for the Good Friday presentation of "At the Foot of the Cross", a contemporary Chancel drama to be presented at 8 p.m. at the church. This is conjunction with Holy Week services at the church.

Services Held Sunday For E. Billingsley

Earl Finis Billingsley, 80, died Friday morning, April 13, in the Parmer County Community Hospital in Friona.
He was a resident of Farwell and had lived in the Farwell area since 1928, moving from Hall County, Texas. He was born January 16, 1893 in Erath County, Texas.

Billingsley was a retired farmer and a member of the Oklahoma Lane Methodist Church.
Funeral services were held Sunday, at 3 p.m. in the Oklahoma Lane Methodist Church. Rev. Oran Smith, minister, and Conda Billingsley, Church of Christ minister from Aberrath, officiated.

Burial was in the Bailey County Memorial Park under the direction of Singleton - Ellis Funeral Home.

PLASTIC IRRIGATION PIPE
Pierce Circle Sprinkler
Pierce Wheel Roll Sprinkler
CALL COLLECT
JOHN HAMMOCK
REPRESENTING
IRRIGATION, INC.
Littlefield, Texas
Local Mobile 965-2312
Nights 272-3109

Announcing
THE 20th ANNUAL STOCKHOLDERS MEETING
Muleshoe Cooperative Gins
Will be held
Friday, April 20th, 7:30 p.m.
At
Muleshoe High School Cafeteria
Bar-B-Que dinner will be served
DIVIDEND CHECKS WILL BE GIVEN
Ben Roming, President
Marshal Head, Vice President
W. M. Bradley, Secretary
Earl Richards, Manager
Directors
Robert Kelton **R.L. Scott**
Doyce Turner **Gene Paul Jarmon**

SURPRISED THIEF
FLINT, MICH. -- After stealing a package from a car, a woman ran into a shopping center where she was checked by a security guard. The package contained a dead cat, and the woman promptly fainted.

SPECIAL PRE-SEASON 7-POINT COOLER CHECK-UP AND PAD CHANGE \$76.00
HERE'S WHAT WE'LL DO:
1. Clean water tank and blower
2. Replace filter pads
3. Check water pump
4. Adjust blower belt
5. Lubricate motor
6. Lubricate blower bearings
7. Check wiring and switches
Save time and money... get your cooler ready NOW! We service all brands and models. All work performed by expert servicemen. All work fully guaranteed.
ALPINE AUTHORIZED DEALER
Wilson Appliance
Muleshoe 272-3138

PIGGLY WIGGLY



WIN FREE JACKPOT CASH!

This Weeks Drawing For
\$150

The people please store



Hop on in to Piggly Wiggly for Easter Values!

DR. PEPPER

8 bottle carton
16 oz. bottle
PLUS DEPOSIT

59c

- Piggly Wiggly Fancy Cut Asparagus Spears 16-oz. Can **57c**
- Fancy, Sweet Le Sueur Peas 17-oz. Can **39c**
- Piggly Wiggly Reg. or Dip Chip Potato Chips 9-oz. Pkg **49c**
- Bell Sour Cream or Party Dips 3-oz. Ctns **\$1.00**
- Baker's Angel Flake Coconut 14-oz. Bag **59c**
- Baker's Chocolate Chips 12-oz. Pkg **49c**



Piggly Wiggly Frozen

Whipped Topping

10-oz. Ctn. **39c**



Piggly Wiggly Florida Frozen

Orange Juice

Limit 6 please

6-oz. Can **17c**

Sara Lee Frozen Apple or

Cherry Pie

33-oz. Pkg. **99c**

- Piggly Wiggly Frozen Broccoli 18-oz. Bag **39c**
- Piggly Wiggly Frozen Asparagus Spears 12-oz. Pkg. **79c**
- Piggly Wiggly Frozen Floret Cauliflower 18-oz. Pkg. **49c**
- Piggly Wiggly Frozen Brussel Sprouts 3 Pkgs. **\$1.00**
- Piggly Wiggly Frozen Cut Corn 20-oz. Pkg. **39c**
- Piggly Wiggly, Grade A Fancy Strawberry Halves 10-oz. Pkg. **\$1.00**
- Sara Lee Frozen Pound Cake 12-oz. Pkg **85c**



Farmer Jones Grade A

Large Eggs

Limit 2 please with \$5.00 or more purchase

49c dozen

- Farmer Jones Ex. Large Eggs Dozen **59c**
- Farmer Jones Fresh Butter Lb **93c**
- Myco Mandarin Oranges 1-oz. Cans **33c**
- Victory Maraschino Cherries 3 10-oz. Jars **\$1.00**
- Chicken Coating Mix Shake N Bake 9 1/2-oz. Box **93c**



Bell

Whipping Cream

8-oz. Ctn. **25c**

- Schilling's Vanilla Extract 2-oz. Btl. **53c**
- Flavor Enhancer Accent 1-oz. Box **35c**
- Asst'd. Flavors Royal Gelatin 3-oz. Box **12c**
- Lipton's Onion Soup Mix 2 Pak Box **47c**
- Kraft Miniature Marshmallows 10-oz. Pkg. **29c**
- Quarters Allsweet Margarine 5 Lb. **\$1.00**
- Borden's Milk Eagle Brand 15-oz. Can **43c**

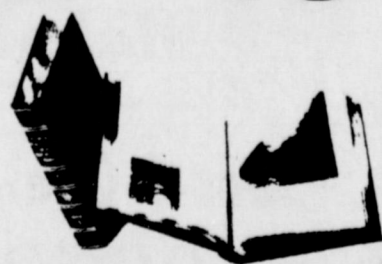
Betty Crocker Layer Varieties

Cake Mix

3 18 1/2-oz. Boxes **\$1**

Farmer Jones Brown & Serve Rolls

2 12-ct. Pkgs. **49c**



The New Funk & Wagnalls Encyclopedia

Volume 1 Volumes 2-25
49c Only **\$199** Each
Featuring Vols. 20 & 21 this week



Holly Granulated

Sugar

5 Lb. Bag **49c**

Limit one with \$5.00 or more purchase

- 30-ct. Daytime or Toddler Disposable Diapers 24-ct. Box **99c**
- Enriched Gold Medal Flour 5-Lb. Bag **69c**
- Betty Crocker Pound Cake Mix 16-oz. Box **51c**
- Duncan Hines Blueberry Muffin Mix 13 1/2-oz. Box **62c**
- Duncan Hines Brownie Mix 23-oz. Box **75c**
- Schilling's Rubbed Sage 1/2-oz. Can **29c**

Piggly Wiggly Fancy Small

Green Peas

4 16 oz. Cans **\$1**

Piggly Wiggly, Fancy Whole

Green Beans

5 16 oz. Cans **\$1**

Piggly Wiggly In Juice

Pineapple

4 15 oz. Cans **\$1**

Reynold's

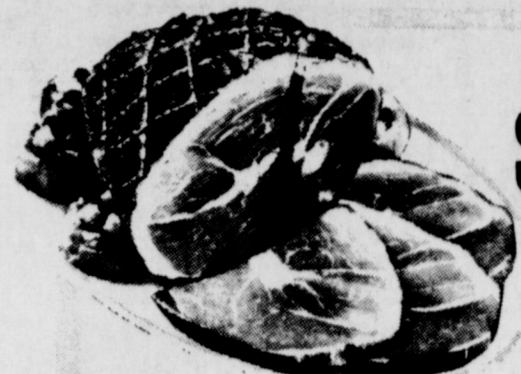
Aluminum Foil

25 Ft. Standard Roll **25c**

- Right Guard Powder Deodorant 5-oz. Can **77c**
- Foil Package Alka Seltzer 36-ct. Pkg **89c**
- Kodak CX126-12 Color Print Film Roll **99c**
- For All X Types & Pocket Instamatic G.E. Magicubes Pkg **\$1.19**
- For All Standard Flashcube Cameras G.E. Flashcubes Pkg **79c**



Miss Breck Hair Spray 13-oz. Spray Can **53c**



Glover Shank Portion

Smoked Ham

Lb. **78c**

USDA Choice Valu Trim

Sirloin Steak

Honeysuckle Self Basting Lb. **\$1.29**

Turkeys

48c

- Piggly Wiggly Sliced Muenster Cheese 6-oz. Pkg **49c**
- Kraft Half Moon Cheddar Cheese 10-oz. Pkg **84c**
- Kraft Sliced American Cheese 12-oz. Pkg **87c**
- Cooper Sharp Stick Cheese 8-oz. Pkg **69c**
- Piggly Wiggly Single Sliced Cheese 16-oz. Pkg **95c**
- Tray Pak Cod Fillets Lb. **99c**
- Tray Pak Haddock Fillets Lb. **\$1.09**
- Chicken O Sea Peeled & Deveined Cooked Shrimp 8-oz. Pkg. **\$1.29**
- Piggly Wiggly Fishsticks 24-oz. Pkg **\$1.05**
- Channel Brand Catfish Fillets 16-oz. Pkg. **99c**

Family Pak Combination of Rib End & Loin End

- ## Pork Chops
- Lb. **98c**
- Boneless Lean Stew Beef Lb **1.09**
 - Armour Star Capons Lb. **97c**
 - Checkerboard White Meat Turkey Roast 24-oz. Pkg. **\$3.29**
 - Thrift T Beef Patties 20-oz. Pkg. **\$1.09**
 - Ranch Hand Boneless Cubed Veal 12-oz. Pkg. **\$1.59**
 - Farmer Jones Sliced Bologna, Pickle Loaf 6-oz. Pkg. **53c**
 - Farmer Jones Sliced Salami or Lunch Meat 12-oz. Pkg **89c**
 - Farmer Jones Water Thin Sliced Meats 3-oz. Pkg **35**
 - Country Manor Boneless Canned Ham 3-Lb. Can **\$4.29**
 - Country Manor Vac Pak Sliced Bacon Lb **\$1.19**
 - Farmer Jones All Meat Franks 12-oz. Pkg **89c**
 - Hormel Little Sizzler Sausage 12-oz. Pkg **89c**

Ranch Style Bulk

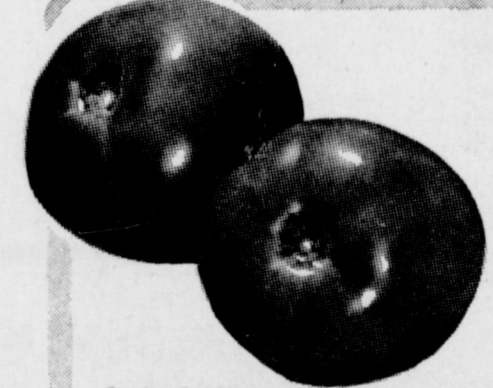
- ## Sliced Bacon
- Lb. **98c**
- Glover Old Fashion Pork Sausage 2-Lb. Pkg. **\$1.95**
 - Lean Ground Beef Lb. **\$1.09**
 - Hormel Cure 81 Half or Whole Boneless Ham Lb. **1.98**
 - USDA Inspected Tub O Chicke Lb **57c**
 - USDA Inspected Combination Pak Breasts Thighs. Legs Fryer Parts Lb **79c**
 - Center Cut Bone In Ham Slices Lb **\$1.49**
 - Fresh Pork Cutlets Lb **\$1.69**
 - Fresh Meaty Pork Spare Ribs Lb **\$1.19**

USDA Choice Valu-Trim Blade Cut

Chuck Roast

Lb. **88c**

Copyright Shop Rite Foods, Inc., 1973 Prices good April 19-22, quantity rights reserved.



Tomatoes VINE RIPE

19c

- Garden Fresh Green Beans Lb **59c**
- Large, Ruby Red Grapefruit Lb **25c**
- Serve with Green Beans New Red Potatoes Lb. **21c**
- From the Islands Fresh Coconuts Ea. **49c**
- Exotic, Sweet Fresh Pineapple Ea. **78c**
- Sweet Juicy Ears
- Cortoful Cherry Tomatoes Pint **99c**
- Nutrition Packed Baking Potatoes 2/35c
- Flavor Packed Fancy White Onions **49c**
- Fancy Sweet Potatoes lb. **39c**
- Cool, Delicious Leaf Lettuce ea. **39c**

Corn-on-the-Cob 3/39c

100 VALUABLE COUPON FREE 100 BONUS S&W GREEN STAMPS
Ground Beef

100 VALUABLE COUPON FREE 100 BONUS S&W GREEN STAMPS
Beef Roast

100 VALUABLE COUPON FREE 100 BONUS S&W GREEN STAMPS
T-Bone Steaks

100 VALUABLE COUPON FREE 100 BONUS S&W GREEN STAMPS
Canned Ham

100 VALUABLE COUPON FREE 100 BONUS S&W GREEN STAMPS
Kraft Longhorn Cheese

50 VALUABLE COUPON FREE 50 BONUS S&W GREEN STAMPS
Franks

50 VALUABLE COUPON FREE 50 BONUS S&W GREEN STAMPS
Corn Dogs

50 VALUABLE COUPON FREE 50 BONUS S&W GREEN STAMPS
American Cheese

