



# THE MULESHOE JOURNAL

The Community of Opportunity-Where Water Makes the Difference

## Weather

	HIGH	LOW
April 8	54	19
April 9	35	19
April 10	43	22
April 11	63	27

Rainfall to date: 5.42

VOL. 51 No. 15

16 PAGES

Published Every Thursday at Muleshoe, Bailey County, Texas 79347

10 CENTS

Thursday, April 12, 1973.

# Large Turnout Sparks Mayor's Race

## Local Draft Board To Move To Plainview

The reorganization of the Selective Service System announced by Colonel Melvin N. Glantz, State Director of Selective Service for Texas, will have an effect on the local draft boards in Northwest Texas.

The number of local board offices in Texas will be reduced from 107 to 63 by the end of 1973. In Northwest Texas only six offices will remain open where there are now 12. A few months ago 15 of

fices served the local boards in this area. During 1972 the office in Perryton was moved to Borger and the office in Dalhart to Amarillo. Early in 1973 the office in Vernon was moved to Wichita Falls leaving only 12 offices currently serving the 15 local draft boards in Northwest Texas. The additional collocation of draft board offices will continue until there are only six offices in Northwest Texas located in Amarillo, Pampa, Plainview, Childress, Lubbock and Wichita Falls.

The Amarillo office will support the Dalhart and Hereford local boards, the Perryton and Borger boards will be supported from Pampa. Records and files in Muleshoe will be moved to Plainview. The local board in Brownfield will have its records moved into Lubbock with Benjamin and Vernon local board records housed in Wichita Falls. The board office in Childress will remain open but on a part time basis. The office in Jayton will be moved to Sweetwater. All of the moves will be completed by December 1973.

The 15 local draft boards in Northwest Texas will continue to function as they have previously with each serving the same counties. Under the stand-by draft situation, local boards will probably meet quarterly rather than monthly. Board

Cont. on Page 7, col. 7

## around muleshoe with the journal staff

Kathy Schuster, daughter of Mr. and Mrs. Jack Schuster of Muleshoe, is a member of the Howard Payne College Symphony Band which will be making a six day tour of north central Texas beginning April 13.

Twelve performance are scheduled during the tour including concerts in Wichita Falls, Hurst, Fort Worth, Conanche, Sulphur Springs, Wylie, Well, Bridgeport, Argyle, and Seymour. A final concert will be performed in Muleshoe, April 19, at the Christian Church.

Kathy Schuster is a 1972 graduate of Muleshoe High School and is a freshman student at Howard Payne College majoring in speech and hearing therapy.

The City of Muleshoe received \$14,948 in Revenue Sharing money this week which has been allocated for street improvements. The money is for the first quarter of 1973.

Work is in the drawing held during the Harvey Bass Cooking School this week were Mrs. C.E. Roark of West Camp, Mrs. Raymond Hill of Muleshoe, and Patsy Williams of Lazbuddie.

Plainview Production Credit Association officers and directors go to Houston April 12 for the Federal Intermediate Credit Bank's annual meeting and 50th anniversary celebration. Cont. on Page 3, col. 5

## Credit Card Theft Is Topic Of Organized Crime Series

(EDITOR'S NOTE: This fourth in a series of stories dealing with organized crime in Texas concerns credit card theft and mob infiltration into legitimate business. The Texas Organized Crime Prevention Council, co-chaired by Attorney General John Hill and Colonel Wilson E. Speir, Director, Department of Public Safety, is mapping an all-out campaign on this relatively new organized crime endeavor in our state.

Credit card companies and innocent merchants are feeling the pinch of organized criminal rines as well as individual operators.

Illinois recently completed an exhaustive three-year investigation into the criminal field. Estimates there are the illicit credit card practices cost companies in that state more than \$20 million during the period under study.

One high-rolling crook bragged he "averaged out around \$50,000 a year" and boasted various credit card companies would verify he had "beat them out of \$30,000 to \$40,000 in cash."

There are no corresponding loss figures for Texas available at this time. The Illinois investigation was under a legislative mandate.

But there is no doubt Texas credit card firms are being bilked, as newspaper stories verify almost daily.

In a North Texas City not long ago police officers seized between 500 to 700 credit cards and identity documents which had been stolen.

Credit card theft is an all too frequent occurrence, as court records throughout the state will show.

The underworld price for a credit card ranges from \$25 to \$100 -- depending on its origin.

Cards stolen from the U.S. mails and bank cards go for the top price.

Stolen cards procured by pickpockets, burglars or prostitutes who "roll" a client are in the cheaper price brackets because their loss is more quickly noticed.

These cards usually are good for a buying spree lasting from two days to a week. Typically, a thief will either purchase merchandise or sell the card outright.

When a card gets "hot" it often will be left in some public place. Smooth operators pick a neighborhood where the finder usually would not be inclined to turn in the card anyway.

When the unsuspecting--and dishonest at heart--finder tries to make a purchase he may not only get caught on his own fraud attempt but may also be left holding the sack for all the previous illegal buys.

Organized crime has eagerly reached into this type of professionalism, adding the aspect of collusion as it refines the process.

One shyster explains "some companies are so interested in giving you credit, they very seldom go into a really thorough check of a card applicant's background."

A credit card obtained through a fraudulent application is considered the "safest" by business.



WINS DISTRICT IN GOLF. . . Kenny Taylor, son of Mr. and Mrs. Bill Taylor of Muleshoe, played in the district meet at Amarillo recently. He was runner-up medalist with a score of 116 for 27 holes. He will now be competing in the regional golf meet in Andrews. Shown with Taylor is Coach Raymond Schroeder, Muleshoe High School Golf coach.

## Board Canvasses Election Returns

The Muleshoe Independent School District Board of Trustees met Monday night, April 9, for their monthly meeting. The board canvassed the returns of the School Board election held Saturday, April 7. The returns were certified as follows:

For the three year term -

Don Harmon, 574; Charles Lewis, 552; Bobby G. Free, 511; Jerry Gleason, 408; Juan Chavez, 57; and Lucy Martinez, 55.

For the one year term - David Stovall, 980; Frand Saldana, Jr., 67; and J.R. Gant (write-in) 2.

The newly elected members, Don Harmon, Charles Lewis, and David Stovall took and signed the oath of office.

An election of officers for the coming year was held and the following were elected: Aubrey Heathington, president; Lewis Wayne Shafer, vice-president; and Ernest Ramm, secretary.

The board then reviewed the balances of each category in the operating fund; checked bank balances of all funds; discussed the deficit in the Lunchroom fund; approved payment of current bills; and heard the current tax collection report which showed that 94.48 per cent of the current taxes have been collected.

The board approved the final application of Foundation Funds that was received recently from the Texas Education Agency, and then discussed a summary of the utility bills.

It was announced that the annual School Board Workshop is to be held at Texas Tech University on Wednesday, April 25, from 1-5 p.m. This workshop is sponsored by the Texas Association of School Boards.

The following enrollment report as of Friday, April 6, was heard with Senior High having 17 less this year than last year; Junior High having eight more; Mary DeShazo Elementary having five more; Richland Hills Primary having 18 more and Special Education having 14 more. The total for 1973 is 1847 which is 18 more than 1972.

Procedures for renewing school property and liability insurance coverage was discussed. After another review of the property values the current policies will be made available to local insurance agents for study in order to make a bid.

The board certified the local Superintendent of Schools to represent the Muleshoe Independent School District on the joint committee of the Education Service Center, Region XVII.

The general factors involved in preparing the 1973-74 school budget were discussed and a special meeting was set up for Monday, April 30, at 8:30 a.m.

## MHS Students Win First In UIL Contests

Seven Muleshoe High School students who won first places in district UIL Contest competition recently, competed in the regional competition at Odessa Junior College Saturday, April 7. Five of the students placed first in Region 1-AAA.

Those students placing first and will be going to the state competition in Austin May 3, 4, 5, and 6, are Perry Hall, boy's persuasive speaking; Chuck Smith, boy's informative speaking; Jennifer Davis, girl's persuasive speaking; Steve Block and Richard Meyers, boy's debate.

Placing second in district competition were Brent Blackman, boy's prose; and Sharon Wrinkle, girl's prose.

Kerry Moore, the Muleshoe High School Speech teacher also attended the contests.

Cont. on Page 3, col. 4

## Babe Ruth Officials Will Meet

Muleshoe Babe Ruth League officials and managers will meet Thursday night, April 12, at 7:30 p.m. in the Corral Restaurant. All coaches and other interested persons are urged to attend.

Also, persons interested in becoming coaches or managers should meet with the officials at this time.

## Record Number Votes In Saturday Election

### Jaycee Easter Egg Hunt Set For April 21

The Muleshoe Jaycees met Monday at noon at the XIT Steak House, with President Max King presiding. Bill Dale, Chaplain, gave the prayer, Kenneth Henry led the pledge and Bill Russell led the Creed. Guests at the weekly meeting were Don Longwell, Ted Barnhill and Ronnie Hanberry. There was one new member present, Joe Davis, making the total present, 38.

Hugh Young reported on the annual Easter Egg Hunt that will be held Saturday afternoon, April 21 behind KMUL in the new city park.

Clarence Christian reported on Youth Basketball and reported that they had played their last games last Friday night. The Super Bowl will be held this coming Friday night.

Max King reported on the State Convention which will be held in Austin on May 10, 11, and 12, and on the President's Conference which will be held June 2 at College Station.

The members voted that the Jaycees will meet at noon Tuesday of Holy Week at the First United Methodist Church.

One of the largest turnouts in many years was recorded Saturday as local citizens went to the polls. The mayor's race sparked the most interest as Alex Williams defeated his opponent, Brian Braddock, by a whopping majority of 895 to 73 votes. His number of votes ever cast for a mayor in Muleshoe. Previous records show that the largest number of votes cast for mayor prior to this year was 521 votes, cast in 1961.

There were also three write-in votes, one for Irvin St. Clair, one for Herbert Griffith and one for Harvey Bass.

Cont. on Page 3, col. 3

## Spring Blizzard Hits Muleshoe

Apparently Texas weather pays no attention to the calendar or to the fact that it is spring.

The second snow storm in a week blew into the area Saturday bringing two to five inches of snow and high winds. Snow drifted up to three and four feet deep in places, stranding motorists in Muleshoe.

Sub-freezing temperatures accompanied the storm with thermometers plummeting to 20 degrees Sunday and Monday.

The wet now played havoc with cattle ranchers as cattle losses rose from the storm. Blooming fruit trees and plants were set back again from the spring storm.

Cont. on Page 3, col. 5

## Local Farmers Union Members Attend District Banquet Friday

Several members of the Bailey County Farmer's Union were in Lubbock Friday night, April 6, to attend the Farmer's Union District II banquet. Those attending from Bailey County were Mr. and Mrs. John Hubbard, Mr. and Mrs. M.L. Fine, Mr. and Mrs. Cecil Jones, Mr. and Mrs. J.D. Rowland, Mr. and Mrs. Delbert Watson, Mrs. Vern Weaver, and Mr. and Mrs. Nolan Harlan.

The National President of the Farmers Union predicted at the banquet that if the Nixon Administration has its way, it could cost Texas cotton and feed grains farmers over \$400 million.

Speaking to the group of Texas Farmers Union members, NFU president Tony Dechant said "That is why the next few months is truly a do-or-die period for the family farmer of the Farmers Union and the nation."

Dechant said the Nixon Administration has a two-pronged attack on farm programs which he said were outlined at hearings before the House Agriculture Committee by Secretary of Agriculture Earl Butz on March 20. First, according to Dechant, Butz called for a phasing out over a three-year period of all government price support payments. Second, Dechant said the Administration wants to do away with the historical allotments and bases for individual commodities.

"This would mean drastic cuts in payments under all commodity programs, and for cotton it would presumably mean the loss of the entire 15 cents per pound direct payment," Dechant said.

Turning to the issue of high meat costs, Dechant said farm prices for beef are now only back to the level of 20 years ago; meanwhile, meat retail prices have more than doubled. "Swiss steak was 85 cents

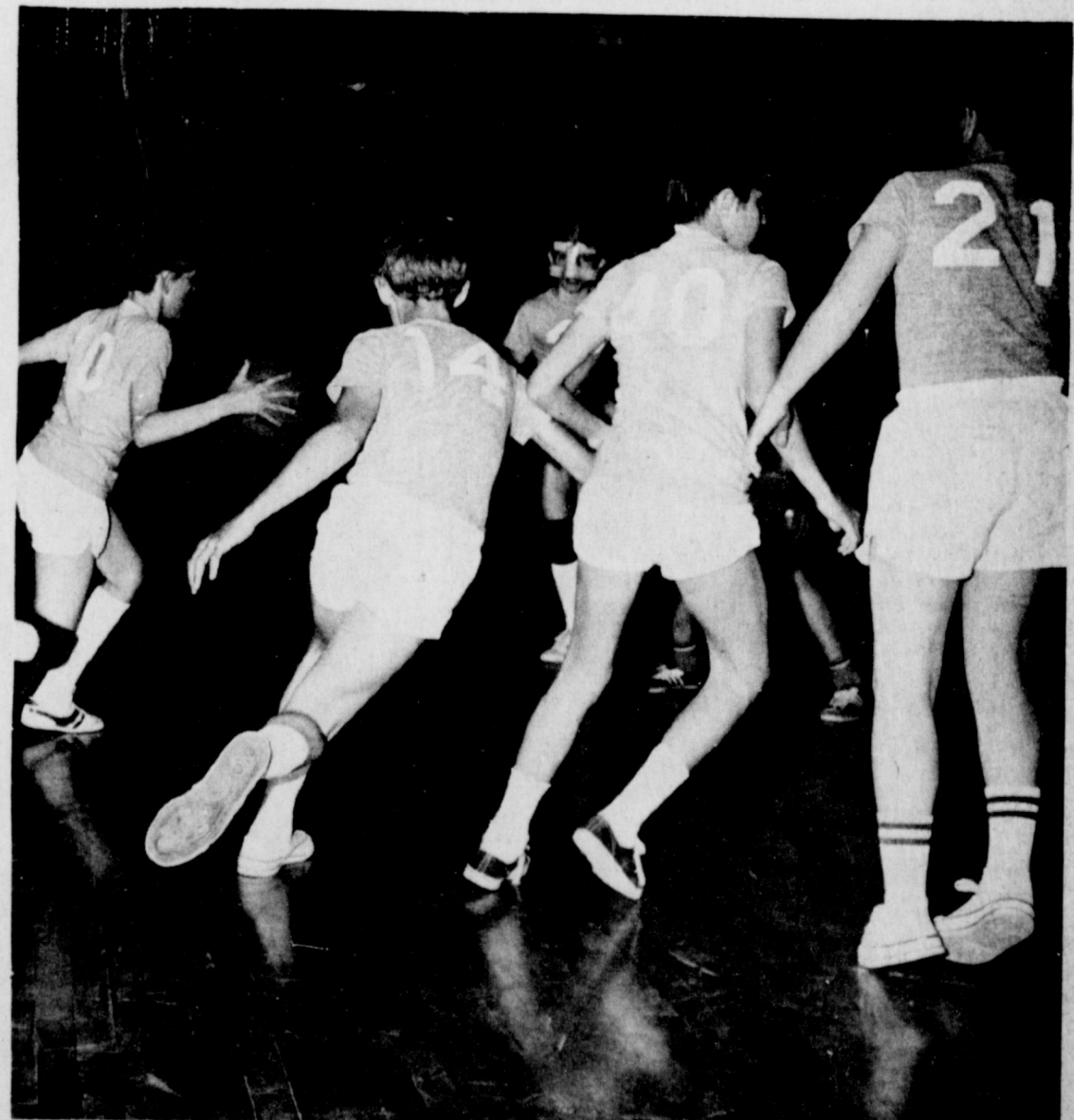
per pound on January 9, 1952; that same Swiss steak was \$1.69 on February 16 of last year," Dechant said.

Dechant said the food chains and others are trying to lay the blame on the farmer to point the finger away from themselves. And Dechant charged the Administration is doing their work for them. Dechant cited a March 21 story which appeared in the Washington Post headlined: "Farmers Get Bulk of Food Price Rise", which used entirely Administration-supplied statistics upon which to base the story.

"The President has done all he can to keep the farmer in the limelight", Dechant said. "When he announced the ceiling on meat, he said 'With the help of the housewife and the farmer, they (the prices) should go down'."

"The President seems to pre-

Cont. on Page 3, col. 5



YOUTH BASKETBALL FINISHES SEASON. . . The Youth Basketball teams, sponsored by the Muleshoe Jaycees, ended their season last Friday night, April 6. The boys and girls played a series of eight games, one a week, for the past eight weeks. This year, both girls and boys teams played in the program. Next Friday night, April 13, the annual Super Bowl of Basketball will be played. Sixth grade boys and girls will be playing in this game.



At Muleshoe Junior High



# MJHS Student Council Attends State Convention In Austin

by: Donita Dale & Patty Pena  
When the Student Council first got a glimpse of Austin, they were fascinated by the tall buildings, and beautiful sights even though it was late at night. They checked in at the Sheraton Crest Hotel on the eighth floor. The following morning, Thursday,

March 29, they went down and registered for the convention. Afterwards, the group spent the afternoon sight-seeing. On Friday, March 30, they attended the first general session in which Marilyn Van Debur, former Miss America, was the main attraction. Then the

students went out and campaigned the rest of the morning. After campaigning they went to Regan High School to attend a luncheon. Entertainment was provided after the luncheon. At 1:30 that afternoon the students divided up and went to "Problem Clinics". In these cli-

nic the students discussed problems that confronted themselves and their school. This lasted until 2:45. Then from 3:00 until 4:30, the students went to the Regan Gym for the political rally. From there, they went sight-seeing again.

On Saturday, they attended the second general session. During this session, they listened to more speakers and voted on the different offices.

The total attendance was over 1800. Outstanding Student Councils and next years officers were



RECEIVES BOOK. . . Mrs. Bertha Cross, 87 years old, received a book from Librarian Anne Camp at the Senior Citizens Day at the Muleshoe Area Public Library Monday. Mrs. Cross was honored for being the oldest person attending the open house at the library. She is a resident of the Muleshoe Nursing Home. Various activities are being held at the library this week in observance of National Library Week.

named during the convention. While in Austin the students did some touring of the famous places in Austin. They toured the L. B. J. Library, the State Capitol, and the Ragan Live Animal Museum. The group enjoyed the touring and learned some interesting and helpful facts.

## Favorite Comics

As you know, many artists spend much of their time trying to make up characters that will please the people that read the comics in the newspaper and people who watch cartoons on television. This week, the journalism staff is taking a survey to see which comic characters the students enjoyed the most. These characters are the favorites of the students.

## Junior High Variety Show Tryouts Held

The try outs for the Variety Show were held Tuesday, April 3. Students from the sixth, seventh, and eighth grades tried out their various acts for Mr. Rogers, Mr. Richardson, and Miss Pewitt.

The ten best acts of those who tried out in addition to a play by the eighth grade speech class and a program by the choir made up the program for the Variety Show.

The Variety Show was put on Monday, April 9 at 7:30 p. m. in the Muleshoe High School Auditorium.

We congratulate all who made it into the Variety Show and thank them for making it a success.

## History Fair Students Go To Plainview

by: Patty Pena  
The Student Council has just completed a weeks worth of work. On Monday, March 26, they sold candy and pickles and made \$37.00. They still had a few candy bars left, they sold the next day, Tuesday, March 27, and made \$9.60.

The Student Council said good-bye to their state delegates as they parted for Austin to attend the State Convention. The Student Council has finalized plans for the "Variety Show" to be held on April 9. Mrs. Scoggin has really put out a lot of effort to get the delegates ready for Austin. We would like to express our appreciation to her for her time and energy.

## Weis' Have New Son

by: Donita Dale  
Mr. Lesly Weis, a coach and science teacher at M.J.H.S., is the proud father of Lance Ryan Weis born on Saturday, March 24, at 6:59 in St. Mary's Hospital at Lubbock. Lance weighed seven pounds, two ounces, and was 22 inches long. Mr. and Mrs. Weis have another son, Stacy, who is four years old.

We congratulate the Weises on their new arrival.

# SHOP & SAVE HERE

**PEOPLE WHO KNOW**

Bake-Rite  
**SHORTENING**  
3 lb. tin  
**69¢**

Armour Star Smoked Sliced Slab  
**Bacon lb. 98¢**

Decker's Texas Cervelat lb. **79¢**

Swift's Premium Proten lb. **1.29**

**Beef Rib Steak** 40 ct. size pkg. **1.29**

**El Jacalito Corn Tortillas** **39¢**

Amour Star All Meat Skinless 12 OZ. Pkg.  
**FRANKS 79¢**

**GLADIOLA FLOUR**  
5 lb. bags  
**49¢**

Greenland Brand Fresh Frozen  
**HALIBUT FILLETS lb. 98¢** **Ranch Steak lb. 98¢**

12 oz. box Nabisco  
**NABISCO VANILLA WAFERS 39¢**

1 lb. box Zesta  
**ZESTA SALTINE CRACKERS 39¢**

Giant size box  
**COLD POWER DETERGENT 75¢**

14 oz. can  
**AJAX CLEANSER 2 for 29¢**

22oz. liquid  
**AJAX FOR DISHES 49¢**

Bath size bar Jergens  
**LOTION MILD SOAP 2 for 15¢**

Big roll Chiffon  
**PAPER TOWELS 3 for \$1**

16 oz. can Hershey  
**CHOCOLATE SYRUP 25¢**

15 oz. can Ajax Window  
**CLEANER and DEFOGGER 49¢**

6 bottle carton plus deposit  
**KING SIZE COKE 49¢**

California Firm Green  
**LETTUCE lb. 25¢**

Mexico Garden Fresh  
**STRAWBERRIES... 3 for \$1**

Mexico Vine Ripened  
**CANTALOUPE..... lb. 23¢**

Hawaiian  
**PINEAPPLES..... each 49¢**

32 oz.  
**VIP FRUIT COBLERS 79¢**

10 oz. box  
**KEITH'S CUT CORN 21¢**

7 oz. pkg.  
**EGG PLANT STICKS 39¢**

6 oz. can  
**DONALD DUCK ORANGE JUICE 25¢**

1 lb. bag  
**MORTON POTATO CHIPS 59¢**

No. 2 1/2 can Van Camp'  
**PORK and BEANS 3 for \$1**

No. 300 can Our Darling  
**CUT ASPARAGUS 39¢**

5¢ pkg. Flavor Aid  
**INSTANT DRINK MIX 6 for 19¢**

32 oz. jar White Swan  
**SALAD DRESSING 39¢**

48oz. Alabama Girl  
**HAMBURGER DILL CHIPS 79¢**

19oz. can no beans  
**RANCH STYLE CHILI 79¢**

No. 300 can East Texas Fair  
**TINY FIELD PEAS 19¢**

3oz. jar (100% pure tea)  
**LIPTON INSTANT TEA 99¢**

9 oz. box Curtiss  
**BABY RUTH NUGGETS 39¢**

**WIN 500 - 1,000 3,000 or 5,000**

**GUNN BROS. STAMPS**

Authorized punch  
**WHEEL OF FORTUNE CASHWAY**

Win 500-1,000-3,000 or 5,000  
**GUNN BROS. STAMPS**

\$120 in purchases completes the WHEEL OF FORTUNE. Then we break the seal to see what you win! GOOD ONLY AT THIS STORE

Early Spring

**Food Savings**

VAN CAMP'S GRATED LIGHT  
**TUNA 6 1/2 oz. can 3 for \$1**

Asst. Flavors Wagner's  
**FRUIT DRINKS 32 oz. jar 3 for 89¢**

WELL, TO BE PERFECTLY FRANK, IT DOESN'T WORK QUITE AS WELL AS A GOOD INSURANCE POLICY WITH Pool Ins

**POOL Insurance Agency**

Joe Smallwood  
Bob Blackwood  
MULESHOE Ph 272-4531

**Spring CAR CARE**

• TIRES  
• SHOCKS  
• BRAKES

Let us help you keep your car in tip top condition. Good tires, shocks & brakes make your driving safer and enjoyable. We are giving special low prices on all three. Come in and save.

**Plains AUTO PARTS**  
P. O. Box 586  
MULESHOE, TEXAS 79347

South Main  
Muleshoe  
Phone 272-4576

**GUNN BROS. STAMPS DOUBLE EVERY WEDNESDAY**

**White's CASHWAY**

Monday thru Friday 7:30 AM to 8:00PM  
Saturday 7:30 AM to 9:00PM  
We Reserve The Right To Limit Quantities

Listen to MULETRAIN over KMUL 10:15 a.m. Sponsored by WHITE'S CASHWAY



### Crime...

Cont. from Page 1

Merchandise obtained with fraudulent credit cards is especially valuable to the thief's "fence" (dealer in stolen goods).

A "fence" doesn't ask where the goods came from. Television sets, shotguns, clothes -- items such as these make up the bulk of hot merchandise found on the fence's shelves. Fraudulent credit cards are used to maintain luxury living habits, to gain funds for legal advice and bail bonds.

Stealing and selling a credit card is a common means for a drug addict to obtain funds to support his habit.

Fraudulent--and legitimate--credit cards often are used by criminals to do everything from getting a gambling debt to keeping his automobiles running.

Some credit card abuses involved collusion with employees or even the merchants themselves. A store clerk will write a fraudulent sales invoice on a "hot" card then give his co-worker half the value of the merchandise which is left on the shelf.

Later, that same crooked employee sells the merchandise to a legitimate purchaser at full value... or sells it to an out-of-town friend or gives it to another merchant at a lower price.

Forgetful customers will go off and leave their credit cards at times, opening the door for dishonest employees to haul in the loot.

This is especially true at service stations where such items as tires or batteries can be charged without knowledge of the credit card owner and later sold to a "fence" for cash.

Crooked transactions such as these are punishable under state laws.

Most Texans are credit card holders from one or more ma-

for companies. Each of these companies has simple reporting systems for lost or stolen cards. Every card holder should maintain his own file of card numbers separate from the cards themselves so that he will have this information for reporting in case his cards are lost or stolen. Missing cards should be IMMEDIATELY reported to the card issuing company to insure minimum risk to the rightful cardholder.

Less easy to pinpoint and reprimand than credit card abuses are some of the more subtle tactics practiced throughout underworld circles to gain footholds in legitimate business enterprises.

Mob infiltration of the business community appears in many disguises.

According to the U.S. Chamber of Commerce, an industry or firm may serve as a front to camouflage the presence of criminal individuals or syndicate operations.

Specifically, organized crime uses commercial enterprises as sources of reportable income. Business fronts are used to siphon off profits through legal and illegal means and to clothe the criminal entrepreneur in an aura of semi-respectability.

Such "legitimate fronts" also are used as a dodge to cover tax gimmicks.

Ultimately, of course, the criminal executive is interested in making money just like his honest counterpart. He just goes about it in a different manner utilizing scare tactics and sometimes "muscle".

Two common racketeering schemes involve criminal monopolies and extortion.

A national task force on organized crime points out the difference in the two methods. A criminal monopoly is a "pure racket" employing strong-arm tactics to keep competition destroyed or scared away to gain business success.

Protection money to the mob once was a way of life--and

still is sometimes--for small businessmen in the large cities of the East. Fail to pay and you get a brick through the window or your store burns down.

This type of extortion doesn't seek to destroy competition as is the case with criminal monopoly.

There are no indications, said the Organized Crime Prevention Council, that Mafia families are operating as such in the Lone Star State.

However, direct links between "home grown" Texas hoods and the organized underworld do exist.

One particular scheme which has shown up in Texas is the planned bankruptcy fraud. A corporation will be set up as a going legitimate concern. It promptly buys all sorts of equipment through credit and then quickly takes voluntary bankruptcy.

The illicit gains are converted to cash quickly and the mob has pocket money.

This particular device was one of the favorite methods of supplying "family" members with

### Election...

Cont. from Page 1

on votes; Dr. Jerry Gleason received 408 votes; Juan Chavez received 57 votes; and Lucy Martinez received 55 votes.

In the race for the one year term, incumbent David Stovall Jr. was named the winner with 980 votes. His opponent, Frank Saldaña, Jr. received 67 votes and a write-in candidate, J.R. Gant, received two votes.

The third election of the day was the election of Bailey County Hospital District Directors. The four incumbents, A.R. McGuire, Ernest Locker, C.G. Grundy Lewis and Mrs. J.G. Arnn, were unopposed on the ballot.

By precincts, the following is a breakdown of the election.

Polling Place One, Bailey County Courthouse, McGuire, 160; Locker, 163; Lewis, 157; and Arnn, 164.

Polling Place Two, West Camp Baptist Church, McGuire, 29; Locker, 29; Lewis, 29; and Arnn, 29.

Polling Place Three, Richland Hills Cafeteria, McGuire, 80; Locker, 79; Lewis, 78; and Arnn, 82.

Polling Place Four, Three Way School, McGuire, 94; Locker, 95; Lewis, 96; and Arnn, 96.

Polling Place Five, Muleshoe High School Cafeteria, McGuire, 73; Locker, 73; Lewis, 72 and Arnn, 70.

Polling Place Six, Bula School, McGuire, 70; Locker, 71; Lewis, 70; and Arnn, 70.

Polling Place Seven, Needmore Community Center, McGuire, 26; Locker, 27; Lewis, 29 and Arnn, 30.

Polling Place Eight, Zion Rest Baptist Church, McGuire, 21; Locker, 21; Lewis 21 and Arnn, 30.

Polling Place Eight, Zion Rest Baptist Church, McGuire, 21; Locker, 21; Lewis 21 and Arnn, 24.

Total votes cast were 553 for A.R. McGuire; 558 for Ernest Locker; 552 for C.G. Lewis; and 564 for Mrs. J.G. Arnn.

their every need during the heyday of the Mafia in New York and Chicago over a period of three decades.

The mind-boggling, whirlwind high-finance arena of stock fraud and stock manipulation really doesn't touch the life of the average Texan--unless he has his life savings invested in a company which is involved. There is evidence of some link to organized crime in specific cases, but for the most part dishonest businessmen are able to operate because there always are potential investors with ideas of quick wealth.

Where organized crime does directly become involved in corporate swindlings, strong-arm tactics are often employed. It is not unknown for a mobster to actually take over a legitimate business and freeze or scare the owner out.

One classic case came to light in South Texas several months ago where the owner of a small incorporated business became involved in creation of a new conglomerate through a legitimate friend.

A "friend" of his friend convinced him to put his business into the conglomerate "because it will double your profits."

To the lasting regret of the honest businessman, he discovered the conglomerate was mob-controlled. They milked his assets bone-dry, even threatening violence at one point, then

### Board...

Cont. from Page 1

to review the first draft of the estimated budget for 1973-74.

The following adjustment in the 1972-73 school calendar, due to the loss of scheduled school days were discussed:

Baccalaureate service will be on May 20 at 8 p.m. in the Muleshoe High School auditorium; Commencement service will be May 22 at 8 p.m. in the Muleshoe High School auditorium; the last day of school will be Tuesday, May 29 and in-service for all teachers will be May 30 and 31.

A maintenance report was heard and included the new gas main installed at Richland Hills Primary School at a cost of \$3,438.17, and a new washer-extractor installed in high school at a cost of \$1960.

An invitation to school board members and administrators to attend School Lay Conference that is to be held in Lubbock on Wednesday, May 2, was announced. The conference will be held at the Holiday Inn Parkway from 10 a.m. until 3:15 p.m.

The morning speaker will be Cecil Morgan and the topic will be "Staff Relations" including negotiation, consultation and/or collection bargaining, litigation, teacher hiring and dismissal, due process, teacher rights and responsibilities, related landmark cases and participants reaction.

Speaker for the afternoon session will be Warren Whitham who's topic will be "Student Relations" including discipline and / or corporal punishment, dress codes, student rights and responsibilities, parental control over students, search and seizure, related landmark cases and participants reaction.

The next regular meeting of the school board will be Monday, May 14, at 8 p.m.

walked away.

This short-term exploitation of the small businessman in Texas is not prevalent, but it can happen to anyone unless prospective new partnerships are carefully checked.

Recognition of the enemy is the best weapon against organized crime for the average Texan.

The public must be constantly aware of and educated to the fact there is organized crime in the areas of theft, prostitution, narcotics, gambling, illegitimate takeovers of businesses, credit card abuse and all the other by-products of criminal activity.

Colonel Speir says "the best defense against organized crime is an educated public, a public unwilling to be victimized." He urges "recognize organized crime for what it is and what it stands for and then illegally-

### Muleshoe...

Cont. from Page 1

tion at the Houston Oaks Hotel.

PCA board member participants include Loyd Widner of Lockney, president; Billy Carthel of Friona, vice president; H.L. Porter, Jr. of Petersburg, A. W. Anthony, Jr. of Friona and Ray Robertson of Dimmitt.

Plainview PCA makes loans to agricultural producers in Bailey, Briscoe, Castro, Floyd, Hale, Lamb, Farmer and Swisher counties.

### Union...

Cont. from Page 1

tend that housewives buy their meat at the farm and the processors, the shippers, the wholesalers and the retailers, who are responsible for the biggest share of the price hike, do not exist," Dechant declared.

During a question and answer session at the District banquet held at the First Methodist Church in Lubbock, Dechant said that there have been no recent developments in the fight to save the county ASCS offices. He re-emphasized the fact that each county would have to keep applying pressure on the Agriculture Department, the Department of the Budget and the congressmen and senators.

based criminal operations won't stand a chance in Texas if the tax-paying citizen is willing to strike with us at the economic threshold of mobdom and help us keep our state clean."

(Next: What Law Enforcement officials Are Doing in Texas.)

George McGovern, Senator (D-SD): "I don't think there is any evidence that the death penalty serves as a deterrent to crime."

Thomas Eagleton, Senator (D-Mo), seeking re-election: "There's certainly no problem of name identification any longer."

**HORIZON ALFALFA**

10 STEPS  
10 (?) TONS  
PER ACRE

Step up to the top - Use all the steps

2 Steps For You  
1 Giant Step For Agriculture

Stack of boxes: CONSULT, HARVEST & STORAGE, CUTTING & CURING, PESTS, LIME & FERTILIZER, WEED CONTROL, PLANTING, "HORIZON" BRAND, SEED, SOIL.

**MILLER SEED CO.**  
(806)364-5250  
Hereford, Texas

Try it... You'll like it!

**HORIZON HYBRID MAIZE SEED**  
#95 - #80 - #45  
IRRIGATED & DRYLAND

**HORIZON HYBRID SORGHUMS**  
MILLER SEED CO.

HEREFORD P.O. 886  
806 - 364 - 5250

HORIZON HYBRIDS have been carefully and thoroughly researched, developed, tested and proved best for:

- Seeding Vigor
- Uniform Blooming and Maturity
- Smut Resistance
- Good Threshing Characteristics
- Good Grain Quality (Including Test Weight and Feeding Value)

These are only a few of the General Characteristics of this FINE Product. SEE US SOON.

For Complete Information, Contact:

**perry's**  
**SPRING DAYS SALE**

100% Cotton  
**Plisse**  
MACHINE WASHABLE **69¢** yd.

100% Cotton  
**Sportswear Duck**  
MACHINE WASHABLE **99¢** yd.

**BETTER QUALITY DOUBLE KNITS**  
**\$2.77** YD.

Perry's Easter fabric Sale is on with 100% polyester double knits! All are 60" wide, machine wash n' dry! Full bolts! This group includes assorted jacquards and crepes in the prettiest brights and pastels you have ever seen! Our Regular \$3.99

**FLOCKED CHECKS**  
45" WIDE  
65% POLYESTER  
35% COTTON  
PERMAPRESS **\$1.99** yd.

**Polyester Crepe**  
100% POLYESTER  
45" WIDE  
MACHINE WASHABLE  
REG. 1.99 **\$1.59** yd.

**MULESHOE JOURNAL**  
Established February 23, 1924  
Published by Muleshoe Publishing Co., Inc.  
Every Thursday at 304 W. Second Box 449  
Muleshoe, Texas, 79347  
Second class postage paid at Muleshoe, Texas 79347

**TEXAS PRESS ASSOCIATION**  
Member 1973

L.B. Hall, President  
Jesse P. Hall, Sec. - Treas.  
L.B. Hall, Managing Editor  
Katie Beckert, News Reporter  
Jesse Gilliland, Society  
Gayle Johnson, Advertising  
Polly Crowl, Business Office

**SUBSCRIPTIONS:**  
Zone 1-Bailey-Farmer-Cochran-Lamb counties: \$4.00 per year, \$4.50 per year by carrier. With Sunday Bailey County Journal, both papers: \$5.50 per year, \$6.00 per year by carrier.  
Zone 11-Chil-d-Territory: \$4.30 per year. With Sunday Bailey County Journal, both papers, \$6.25 per year.  
Monthly, by carrier-25¢; single copies-10¢  
Advertising rate card on application.

**April SALE**  
on all  
Wedding  
Gowns  
and  
Formals

**PENNYRICH BRAS AND GIRDLES**

USE OUR CONVENIENT Lay-A-Way Plan

**Anastasia's BRIDAL SHOP**  
762-0474  
508 Davis Clovis

**PX 50A HYBRID CORN**

harvests early - 14 to 21 days  
quicker than full season hybrids

YIELD CHAMPION  
MATT IRWIN - TEXLINE

Matt Irwin knows that it takes a good corn hybrid for intensive management to produce champion yields. Last spring he went with PX 50A. "The 207.08 bushels per acre is the highest yield I have raised."

On April 10th Irwin replanted 200 lbs. of NH3. Five days later he applies 600 lbs. per acre of 4-10-10 and 1 lb. of boron, 2 lbs. zinc and 3 lbs. of manganese. In mid-July he added 75 lbs. per acre of 28-0-0 to the soil through his pivot sprinkler system. He irrigated 8 times. Weed and insects were controlled with chemicals.

Likes Harvestability of PX 50A.  
"I like the way PX 50A dries down early in the season", (16.2%), stated Mr. Irwin. "Standability was good. It threshes good with no problems. After harvesting was completed on October 18th he let his cattle in the stalks - "for that extra profit".

**Plant the corn the champions plant!**

**NK NORTHROP KING**

PX50A IS AVAILABLE FROM THESE DEALERS

**SHERLEY ANDERSON KELLY GRAIN & SEED CO.**  
Lazbuddie, Tex. Farwell, Tex.

**CURRY COUNTY GRAIN CO. INC.,**  
Clovis N.M.

**FEED & RANCH SUPPLIES, INC.**  
Clovis N.M.





MR. AND MRS. MELVIN MORRIS

## Couple United In Home Ceremony

Miss Vicki Rue Robinson and Melvin Don Morris were united in marriage in a ceremony at the home of the bride's parents on Friday, April 6, at 7:30 p.m. Rev. H.D. Hunter read the double ring vows before an arched candelabra holding blue tapers, accented with daisy palms, greenery and ribbon.

Parents of the couple are Mr. and Mrs. James Robinson of Route Three, Muleshoe and Mr. and Mrs. Arnis Morris of Muleshoe.

Musical selections were provided by Theresa Seaton, organist.

Attending the bride as maid of honor was Debbie Burch of Lazbuddie. Brenda Scott of Muleshoe was bridesmaid. They were attired in light blue Empire - style dresses accented with multi-colored embroidery on the bodices and tie tucks. They carried bouquets of white carnations, yellow roses and blue fiji mums.

Serving as best man was James Morris of Duncan, Okla., brother of the groom. Groomsman was Gary Morris of Friona, cousin of the groom. Candelighters and ushers were Skip Magby of Muleshoe, cousin of the groom, and Jimmy Robinson of Lazbuddie, brother of the bride.

Given in marriage by her father, the bride wore a formal, Empire-style gown of white organza over satin fashioned with a stand-up collar and A-line skirt. The long, cuffed sleeves were Chantilly lace and seed pearls. The bride carried a cascading bouquet of white carnations, yellow roses and blue fiji mums.

A reception followed the ceremony. The serving table, covered with a beige linen cloth accented with blue embroidery, was centered with a crystal

epergne holding blue fiji mums, white daisy palms, white carnations and blue candles. The tiered wedding cake was decorated with stairways of blue flowers and white candles. Presiding at the serving table were Mrs. Derrell Jennings of DeKalb, Mrs. Richard Hawkins and Mrs. Buddy Embry, sisters of the bride; and Mrs. James Morris of Duncan, Okla., sister-in-law of the groom. Guests were registered by Mrs. Bill Russell of Muleshoe.

Following a wedding trip to El Paso and Juarez, Mexico, the couple will be at home at 611 Ashland, Friona.

Mrs. Morris is a 1970 graduate of Lazbuddie High School and a 1972 graduate of South Plains College at Levelland. Morris graduated from Muleshoe High School in 1967 and from Texas Tech University in Lubbock in 1971. He is employed by Hi-Pro of Friona.

Out of town guests attending the ceremony included Mr. and Mrs. Richard Magby of Pickens, Okla., grandparents of the groom; Mr. and Mrs. James Morris, Chandra and Brent of Duncan, Okla., brother of the groom; and Mr. and Mrs. Derrell Jennings and Jonessa of DeKalb, sister of the bride.

## Local Women Attend District Meeting

A local delegation attended the annual District II Texas Home Demonstration Association meeting held on April 15

at the First Baptist Church in Colorado City. Theme for the meeting was "Home -- A Beacon Light".

## Bula Jr. High Banquet Held

The Bula Junior-High banquet was given Saturday evening in the school lunchroom with approximately one hundred students and patrons of the community in attendance. A Mexican theme was carried out in the room decoration, place cards and program books. Mothers of students of the eighth grade class prepared the food, a Mexican supper.

The welcome was given by Ida Davila, and Superintendent James Sinclair gave the invocation. The dinner menu consisted of enchiladas, tacos, hot tamales, mashed beans, rice, fruit salads, avocado salad, tea and coffee.

Following dinner, Carolyn Stroud introduced the speaker, W.C. Risinger, former coach at Bula. He used for the topic of his talk "The Qualities of an Athlete". Risinger listed several qualities that a student must have to make a good athlete, with the first being a Christian. His talk was also mixed with humor.

Following Risinger's talks, Miss Connie Richardson, junior high coach spoke of the accomplishments of the different ball teams during the year and made awards. For basketball king, the award was given to Robert Layton; basketball queen, Ida Davila; Mr. BJHS, Sammy DeLaRosa; Miss BJHS, Ida Davila; Miss Forward, Elnora Peacock; Mr. Offense, Robert DeLaRosa; Mr. Defense, Sammy DeLaRosa; Miss Volleyball was a three-way tie, Sherri Claunch, Marylyn White and Sharon Kay White. Miss Richardson also presented Risinger a gift of appreciation. Sherri Claunch also presented Miss Richardson a gift of appreciation from all the students that she has coached this year.

When whole hams are cut in half and center slices removed, the remaining parts must be labeled either "butt portion" or "shank portion", notes Mrs. Gwendolyn Clyatt, consumer marketing specialist with the Texas Agricultural Extension Service, Texas A&M University.

Most of the smartest sayings that you read are partially true.

## Market Report

COLLEGE STATION--With food prices fluctuating more than usual, efficient shopping requires special effort.

"Make careful observations at grocery stores and check newspapers, television and radio for up-to-the-minute information on supply, quality and prices of foods," advises Mrs. Gwendolyn Clyatt, consumer marketing specialist with the Texas Agricultural Extension Service, Texas A&M University.

"Consider dry beans and peas, peanuts and peanut butter as meat alternatives--they're plentiful and versatile," she continued.

"Generally, look for best beef buys on chuck roasts and steaks, round steaks, certain boneless roasts, and beef and calf liver."

The specialist cited pork values as quarter loin sliced, end-cut loin roasts, shoulder roasts and steaks, pork liver, smoked picnics and hams.

"Egg supplies are plentiful with large sizes currently the best values.

"Fryer chicken prices are a bit lower this week," Mrs. Clyatt noted. "They're excellent meat choices considering quality, nutrition and price."

Fresh fruits and vegetables in best supply at the most economical prices include Navel and Valencia oranges, grapefruit, apples, bananas and pineapples.

Also potatoes, cabbage, celery, carrots, broccoli, asparagus, mustard, collards, turnips and greens, bunch spinach and dry yellow onions.

## BSP Program Has Happiness Theme

Alpha Zeta Phi Chapter of Beta Sigma Phi met Tuesday, April 3, in the home of Mrs. Jerry Don Glover. Mrs. Glover and Mrs. John Neil Agee were co-hostesses for the meeting.

Following the opening ritual, Mrs. Doyce Turner, president, presided over the business meeting. Mrs. Joe King reported that a meeting of the service committee had been held to discuss the service project. Following the recommendation of the committee, members voted to assist in making cup towels to be sent to Girlstown at Whiteface. Mrs. Max King reported that the members of

the scrapbook committee are planning to include family group pictures of each member in this year's scrapbook.

Presenting the program for the evening were Mrs. Tom Jinks and Mrs. Marcia Henry. The title, "To See and To Know", was introduced by Mrs. Jink who led the group in songs following a theme of happiness. Mrs. Jinks shared with the members letters written to the sorority by her class at Richland Hills Elementary School. Mrs. Henry then brought to the members thoughts about a scene that brought out the theme of the program.

Following the closing ritual,

19 members were served refreshments from a serving table decorated in an Easter motif. Those present were Mrs. John Neil Agee, Mrs. Marcia Henry, Mrs. Max King, Mrs. Don Barnes, Mrs. Tom Jinks, Mrs. Eric Smith, Mrs. Travis Bessire, Mrs. Dich Johnson, Mrs. Don Rempe, Mrs. Joe King, Mrs. Doyce Turner, Mrs. Curtis Walker, Mrs. Glen Watkins, Mrs. Jerry Don Glover, Mrs. Spencer Tanksley, Mrs. Ken Box, Mrs. Reagan Cox, Mrs. Bob Finney and Mrs. Kearney Scoggin.

### Smart Discovery

A visitor of the golf club teed up for the first hole, made a wild swing and completely missed the ball.

"It's a good thing I found out from the start," he said. "This course is at least two inches lower than the one I usually play."

# SPECIAL SPORTS COMBO

**3-DAYS ONLY ... THUR. -FRI.-SAT.**

## Choose any SPORT COAT IN STOCK FROM \$35 to \$75

AND YOU MAY SELECT ANY DOUBLE KNIT SLACK IN STOCK UP TO \$25 PAIR

# FOR \$500

Don't pass up this great opportunity!

master charge TEXAS BANKAMERICA

CASH or LAYAWAY

**Anthony's**  
C. R. ANTHONY CO.

Henry Block has 17 reasons why you should come to us for income tax help.

Reason 11. Our average fee for over seven and a half million customers last year was only about 12 dollars.



**HENRY BLOCK**  
THE INCOME TAX PEOPLE

306 West 2nd  
9:00 - 6:00 WEEKDAYS & 9:00 - 5:00 SAT. PHONE 272-3283  
NO APPOINTMENT NECESSARY



MISS RHONDA SALMAN

## Gift Tea Fetes Rhonda Salman

A gift tea, honoring Miss Rhonda Salman, was held Saturday, April 7, in the community room of the First National Bank. Guests called from 3 to 5 p.m. Miss Salman is the bride-elect of Tom A. Little.

Gayla Hooten registered the guests. A special guest was Mrs. Walter B. Little, the groom's mother.

A basket of spring flowers centered the serving table which was covered with a yellow dotted swiss cloth edged in white lace. Thumbprint cookies, with icing in the bride's chosen colors of pastel pink, yellow, blue and green, punch and coffee were served from silver and crystal appointment. Miss Janie Crane presided at the serving table.

Hostesses were Mrs. James Crane, Mrs. Lewis Embry, Mrs. Ross Goodwin, Mrs. Kenneth Precure, Mrs. Irvin St. Clair, Mrs. Alex Williams and Mrs. Ruby Willman.

Try a glass of chilled fruit juice for a "middle-of-the-afternoon lift," suggest Karen Kreipke, foods and nutrition specialist with the Texas Agricultural Extension Service, Texas A&M University.

At least once a month, open the water heater's drain valve and drain off 1-2 quarts of water. This rids the heater of mineral sludge accumulation, explains Lynn Bourland, home management specialist, Texas Agricultural Extension Service, Texas A&M University.

## Friendship Club Meets

The Friendship Club met in the regular monthly meeting on Thursday evening, April 5, in the home of Mrs. O.D. Ray.

Following the meal, a business meeting was conducted by the president, Mrs. Charlie King. Roll call was answered with a verse of scripture or a poem. The minutes were read and approved and the treasurer's report was given.

Mrs. J.W. Witherspoon, program chairman, used as the theme of her devotional, "The Resurrection of Christ". The first nine chapters of Matthew will be the study for the May meeting.

Members attending were Mrs. O.D. Ray, Mrs. Mae Busbice, Mrs. Charlie King, Mrs. Viola Lane, Mrs. Jewell Griffiths, Mrs. W.E. Young, Mrs. George Johnson, Mrs. W.T. Andrews, Mrs. Gladys Darsey, Mrs. Scott Swafford, Mrs. J. W. Witherspoon and Mrs. Ed Johnson.

## St. John's Church To Hold Confirmation

St. John's Lutheran Church, Lariat, will be holding their Day of Confirmation this Sunday, April 15. The service begins at 10:30 a.m. Those to be confirmed include: Greg and Dan Geuther, Cindy and Conny Haseloff, Joe Haseloff, Charles Johnson, Bryan Kube, Sonia Kube, and Linda Gohlke, all of Farwell; Nancy Ramm of Muleshoe; and Mandy Roach of Bovina.

Confirmation in the Lutheran Church is the rite by which a baptized person publicly confesses his faith and is received into communicant membership by the congregation. The rite concludes a period of study of usually no less than two years in the Christian Faith and in Lutheran Doctrine.

taking Holy Communion with their families for the first time Maudy Thursday, the day the church has set aside to remember Christ's Last Supper.

**BUY FX-TODAY!**

**PREVENT ONE TREATMENT LASTS FULL YEAR!**

SEPTIC TANK CLOGGING!

Prevent waste accumulation and detergent pile-up... one safe, easy-to-use application will prevent the periodic mess and expense of clogging. **ANTI-POLLUTION!**

MONEY BACK GUARANTEE!

Heathington Lumber Co.  
814 W. American Blv.  
Muleshoe, Texas

ALL READY for Another Spring!



## RHONDA KING

found just the right thing for Spring, and she thinks it's so nice, she'll just wear it now.

The white body suit & pink skirt is a WIMZEE Jr. by Mr. FINE - 100% polyester

CONGRATULATIONS TO RHONDA ON WINNING THE MULESHOE SPELLING BEE - AND GOOD LUCK

St. Clair's





MISS LINDA THACKERARY

## PTA Donates Money To School Projects

Members of the Muleshoe Elementary Parent-Teachers Association voted Monday to donate \$150 to each of the elementary schools to be used for school improvement projects. Each year the PTA has one or more fund-raising activities with all proceeds going toward improvement projects in the elementary schools. This year Milton Oyler reported that

money would be used at the Richland Hills School to purchase nap mats for a new kindergarten room and for a vacuum cleaner for carpet that was placed in the school library and other areas. Bill Taylor said that the money would be used at Mary DeShazo for gym equipment.

Refreshments of punch, coffee and cookies were served

## Shower Honors Miss Thackerary

Miss Linda Thackerary, bride-elect of Leroy Maxwell, was honored with a bridal shower on Saturday, April 7, from 7:30 to 9:30 p.m. in the home of Mrs. Lester Baker.

Guests were registered by Susan Murray. A special guest was the groom's mother, Mrs. V.E. Maxwell.

The serving table, covered with a white lace cloth over pale yellow, was centered with a yellow candle encircled with yellow daisies. White cake squares with yellow icing roses, pineapple slush punch, mints and nuts were served from crystal and silver appointments. Presiding at the serving table were Pam Vinson and Bonnie Sain.

The hostess gift was a chim-

ing wall clock.

Hostesses for the occasion were Mrs. Jim Carpenter, Mrs. Bob Hardaway, Mrs. W.B. Kirtrell, Mrs. Willie Strong, Mrs. Bay Wilson, Mrs. Claude Coffman, Mrs. Darrell Kennemer, Mrs. Marvin Lewis, Mrs. John Harris, Mrs. Evelyn Moore, Mrs. Lester Baker, Mrs. Jimmy Bruton, Mrs. Lindal Murray and Mrs. Wendell Speck.

## YL 4-H Clubs Have Meeting

The YL 4-H Club and the YL Horse Club had a joint meeting on Monday, April 9, at 7:30 p.m. with 14 members present. Kelly Head presided over the meeting. Shelly McGlaun acted as secretary for both clubs.

Robin Taylor, county Extension agent, gave a program on demonstrations. She encouraged 4-H members to prepare demonstrations and compete in the elimination contest.

It was decided at the last meeting of the club to have a skating party. Paul Harbin announced that the Farwell Skating Rink has been reserved from 7:30 to 9 p.m. on Friday, April 13. Each club member may bring a guest. Those planning to attend will meet at the Bailey County Courthouse at 6:30 p.m. to go as a group.

The leathercraft group and the electricity group are now having meetings. Dan Throckmorton is leader for the leathercraft group and Joe Harbin is leader for the electricity group.

Jack Bates announced the coming county playdays, which are scheduled for May 20 at the roping arena, May 27 at Three Way, and June 10 at the Presley arena. The District Contest will be held June 25 at Post. There will be halter, western pleasure, reining, poles and barrel competition.

Two new members, Leslie and Diane Hawkins, were wel-

coming during Hospitality Time which preceded the 4:15 meeting held in the Mary DeShazo cafeteria. Mrs. Lindy Chancy and Mrs. Clinton Kennedy presided at the serving table.

The meeting was conducted by Mrs. Herbert Ramage, outgoing president. Mrs. John Harris gave the invocation. Mrs. Curtiss Smith read the minutes of the last meeting. The minutes were accepted and filed. Mrs. Smith also gave a report from the executive meeting. The treasurer's report was given by Mrs. Jimmy White, who reported a balance of \$660.74.

Mrs. Curtiss Smith then read a letter of thanks from Mrs. Marvin Armstrong, state president from District 14, for the silver punch cup that the PTA had given her.

It was announced that there will be a school of information meeting for the South Plains Area Council at Springlake on May 1. Mrs. Ramage announced that Spring Conference will be held in Brownfield on April 13. Mrs. Ramage, Mrs. Robert Hunt, Mrs. Jimmy White and Mrs. Tom Flowers will represent the Muleshoe PTA at the conference.

Easter vacation for the Muleshoe School students will be Friday, April 20 through Monday, April 23.



OFFICERS INSTALLED. . . Installed Monday as officers of the Muleshoe Elementary Parent-Teachers Association were, from left, Mrs. Jimmy White, president; Mrs. Butch Vandiver and Mrs. Donald Prather, first vice presidents; Mrs. Eugene Shaw, second vice president; Mrs. Mabel Wolfe and Mrs. Robert Hunt, third vice presidents; Mrs. Lindy Chancy, secretary; Miss Patsy Brown, historian; Mrs. Tom Flowers, third vice president; and Mrs. Herbert Ramage, parliamentarian. Also an officer, but not pictured, is Mrs. Gordon Wilson, treasurer.

Room count was won by Mrs. Cole's second grade room at Richland Hills with a count of six and Mrs. Finley's third grade room at Mary DeShazo with a count of eight.

Mrs. Robert Hunt, outgoing parliamentarian, installed the officers using the theme "Baskets Unlimited". Installed

were: Mrs. Jimmy White, president; Mrs. Butch Vandiver and Mrs. Donald Prather, first vice presidents; Mrs. Eugene Shaw, second vice president; Mrs. Mabel Wolfe, Mrs. Robert Hunt and Mrs. Tom Flowers, third vice presidents; Mrs. Lindy Chancy, secretary; Mrs. Gordon Wilson, treasurer; Miss

Patsy Brown, historian; and Mrs. Herbert Ramage, parliamentarian.

Mrs. White, newly elected president, was presented the president's pin by Mrs. Ramage. Mrs. Ramage was, in turn, presented a past president's pin by Mrs. White. Mrs. White then introduced the chairmen for next year. They are: Mrs. Jessis Gilliland, publicity; Mrs. Joe Rhodes, budget; Mrs. Elmer Downing and Mrs. Frank Wuerflein, membership; Mrs. Charles Bratcher and Mrs. Bill Snell, hospital-ity; Bruce Slayden, safety patrol; Mrs. Carter Reed, life membership; Mrs. Curby Brantley, nursery and Mrs. Cleo Webb, grade representative.

## RECIPE

By Sarah Anne Sheridan

Ham seems to be a symbol of Easter almost as much as the rabbit, eggs, or lily.

Corn Meal Souffle with Ham

- 2 c milk
- 1/3 c yellow corn meal
- 1 T butter
- 3 T grated cheese
- 1/4 t salt
- 1/4 t paprika
- 3 eggs separated
- 1 c cooked ham, ground fine

Bring the milk to the boiling point and stir in the corn meal and butter. Cook until the mixture thickens to the consistency of mush. Add cheese and cook over hot water. Stir in the seasonings and the beaten yolks of the eggs. Cook a minute and cool. Beat the egg whites until stiff and fold into the mixture together with the ham. Place in an ungreased baking dish and bake in an oven 350 degrees for 30 minutes.

combed by the club.

Members attending were Jimmy, Jacinda, Jerry and Jay Gleason; Paul Harbin; Kelly Head; Shelly, Casey and Holly McGlaun; Toby Tucker; Keith and Ricky Woodard; Tamara Gilliland; Gary Hooten and Steve Eubanks.

Adults present were Mrs. Gene McGlaun, Mrs. Norman Head, Mrs. Doyle Eubanks, Lavelle Hawkins, Jessie Gilliland, Mrs. Jerry Gleason and Jack Bates.

\*\*\*\*\*  
When constructing children's pajamas, robes or gowns, use flame-retardant fabrics--as indicated by special information on the bolt end, says Marilyn Brown, consumer education-clothing specialist, Texas Agricultural Extension Service, Texas A&M University.

\*\*\*\*\*  
Separations are more numerous among non-whites than whites, and in urban rather than rural areas, according to Dorothy Taylor, specialist in family life education, Texas Agricultural Extension Service, Texas A&M University.

## Seminar Slated In Lubbock

The Texas Agriculture Extension Service, the American Heart Association, the Department of Food and Nutrition of Texas Tech University, Southwestern Public Service Company and the Texas Tech Medi-

cal School will sponsor a seminar on May 10 from 9 a.m. to 3 p.m. in the Lubbock Municipal Auditorium. Entitled "Eat To Your Heart's Content", the seminar is designed to help homemakers know how to feed their families to help prevent heart disease. Registration fee will be \$1.00.



SENIOR CITIZENS DAY . . . Senior Citizens Day was observed Monday at the Muleshoe Area Public Library as a part of National Library Week. Mrs. Bill Millen of LA Hobbies and Gifts presented a crafts demonstration to those attending. Other activities planned for the week were Children's Day on Tuesday, Homemakers Day on Wednesday, and a Widen Your World with Hobbies Day scheduled for Thursday with Mrs. Delbert Watson displaying her collection of Depression Glass. Also on Thursday members of the ESA sorority will be rounding up used books and paperbacks for the book sale on Friday. Friday there will be a big Bargain Book Bonanza from 1 to 6 p.m. with books and paperbacks to be sold. The Muleshoe Study Club will conduct the sale with proceeds going to buy new books for the library.

## PLASTIC IRRIGATION PIPE

Pierce Circle Sprinkler  
Pierce Wheel Roll Sprinkler  
CALL COLLECT

JOHN HAMMOCK

REPRESENTING

IRRIGATION, INC.

Littlefield, Texas

Local Mobile 965-2312

Nights 272-3109

# Cobb's OF MULESHOE

## Hanes Everyday stretch pantyhose. Free.

Right now, just buy one pair of any Hanes pantyhose (including Hanes Everyday) and pick up a free specially marked package of Hanes Everyday.

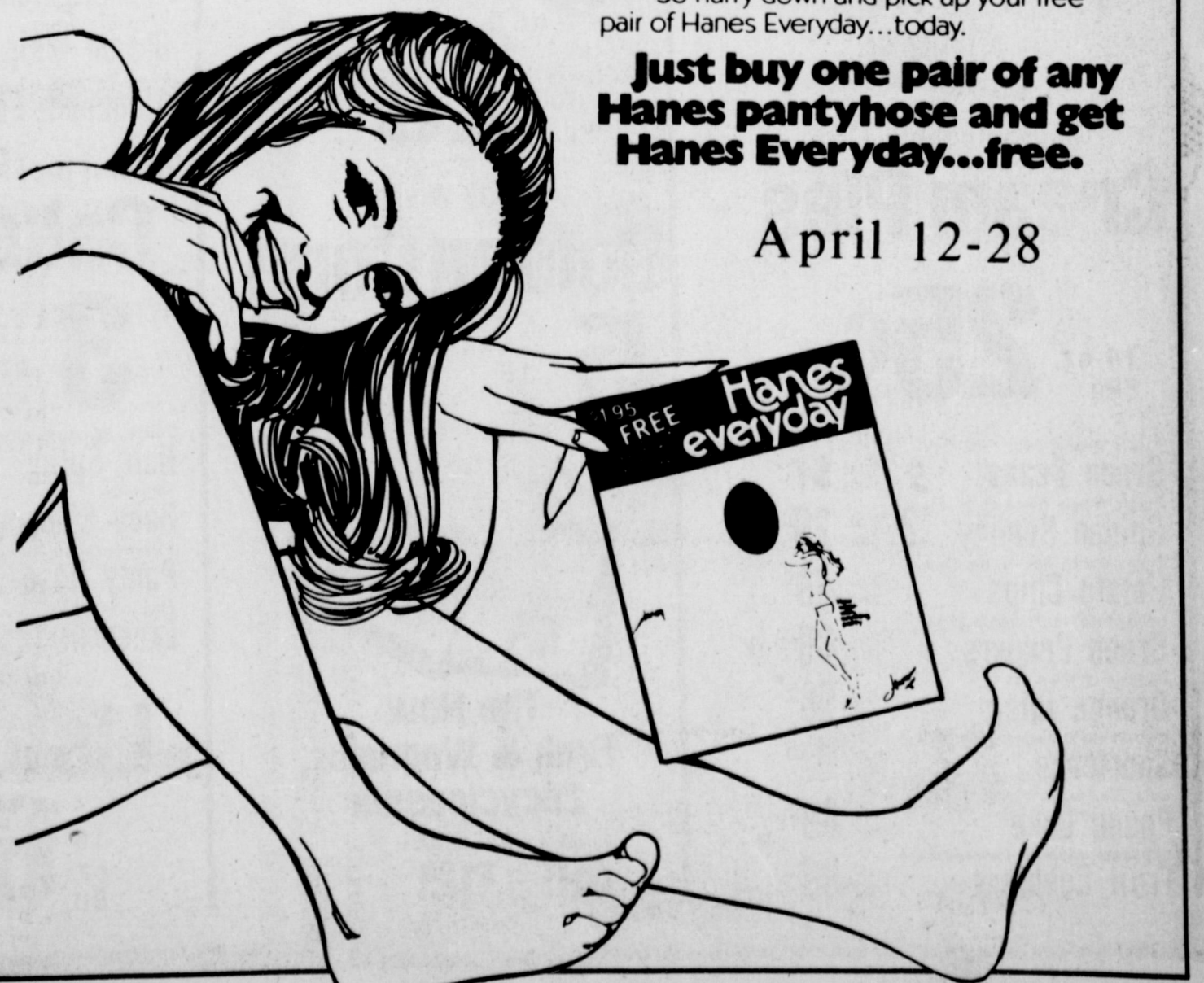
This is stretch pantyhose the way Hanes makes it.

Pantyhose that comes in your size with a stretchy fit that hugs your legs all day.

So hurry down and pick up your free pair of Hanes Everyday...today.

**Just buy one pair of any Hanes pantyhose and get Hanes Everyday...free.**

April 12-28



## If your six year old saw something like this, would he know how to phone for help?

It's too important a question to leave to chance. That's why we're running this ad.

If there are any six- or seven-year-olds around your house, teach them how to report emergencies. Tell them to dial "0", give their name and tell our operator where they are and what's wrong.

With older children, train them to dial emergency numbers direct, since that's the fastest way to call for help.

But don't stop there. Copy down the emergency

numbers listed on the inside front cover or first page of your telephone directory. Add your family doctor's number. And the number of the nearest hospital. Next, tack up the list near your phone.

Then get your kids to memorize it, in case it gets lost.

By the time they're through memorizing those numbers, they're going to have every grownup in the house knowing them, too.

Which is also why we're running this ad.

GENERAL TELEPHONE

The people you can talk to One-to-One.





# PIGGLY WIGGLY JACKPOT CASH!

The people pleasin' store

WIN FREE

Get your card punched today!

This Weeks Jackpot \$100

Holly Granulated

## Sugar 5 Lb. Bag 49c

Limit one please with \$5.00 or more purchase

Piggly Wiggly Pure Vegetable Shortening	3-Lb. Can	83c
Piggly Wiggly Pure Vegetable Oil	24-oz. Btl.	56c
Piggly Wiggly All Purpose Enriched Flour	5-Lb. Bag	49c
Piggly Wiggly Plain or Iodized Salt	26-oz. Box	12c
Piggly Wiggly Pure Ground Black Pepper	4-oz. Can	35c
Morrison Mexican Cornbread Mix	2 6-oz. Kits	33c



Swanson's Frozen

## Dinners 10 oz. Pkg. 59c

All varieties except Beef and Swiss Steak

Morton's Spaghetti & Meat Casserole	8-oz. Pkg.	29c
Swanson Deep Dish Chicken Pie	16-oz. Pkg.	79c



Morton's Frozen

## Cream Pies 14-oz. Pkg. 25c

Piggly Wiggly Cut Green Beans	5 16-oz. Cans	\$1
Piggly Wiggly White or Golden Hominy	2 16-oz. Cans	29c
Piggly Wiggly Reg. or Dip Chips	9-oz. Pkg.	49c
Holland House, Frozen Stuffed Green Peppers	14-oz. Pkg.	89c
Piggly Wiggly Chilled Orange Juice	1/2-Gal. Btl.	98c
Mrs. Smith Strawberry Frozen Shortcake	2-Lb. Box	\$1.35
Sara Lee Frozen Pound Cake	12-oz. Pkg.	89c
Die South, Assorted Flavors Frozen Fruit Cobblers	2-Lb. Pkg.	99c

DR. PEPPER or 7-UP



## 59c

16-oz. bottle  
8 bottle carton  
PLUS DEPOSIT

Piggly Wiggly No Return Bottle Cola Drink 2 16-oz. Btl. 25c

Piggly Wiggly Pekoe and Orange Pekoe Tea Bags 48-Ct. Box 53c

Fireside Assorted Flavors Cookies 3 12-oz. Pkgs. \$1.00

Betty Crocker Chips 12-oz. Box 79c

Frito Bean Dip 10 1/4-oz. Can 39c



Farmer Jones Grade A



## Large Eggs 55c

Dixie White, 9 Inch Paper Plates	150-Ct. Pkg.	99c
Piggly Wiggly, Assorted Colors Facial Tissue	200-Ct. Box	25c
Bonne' Garbage Bags	30-Ct. Pkg.	39c
Piggly Wiggly Macaroni Cheese Dinners	7-oz. Box	23c
Tender Vittles, Assorted Flavors Dry Cat Food	12-oz. Box	57c
Hi-Vi Dog Food	2 15-oz. Cans	27c
Taste-T-Chew Dry Dog Food	10-Lb. Bag	\$1.49

Lady Scott Assorted Colors

## Bath Tissue 2 Roll Pkg. 25c

Piggly Wiggly

## Golden Corn 5 16 oz. Cans \$1



The New Funk & Wagnalls Encyclopedia

Volume 1 Volumes 2-25 49c each

Vols 18, 19 featured this Week \$1.99



## Giant Size Detergent Tide 59c

Limit One Please

Piggly Wiggly Sweetmilk or Buttermilk Canned Biscuits	10-Ct. Can	11c
Pillsbury Orange Danish Rolls	11-oz. Can	49c
Farmer Jones, Sweet Cream Fresh Butter	1-Lb. Ctn.	93c
Piggly Wiggly Frozen Waffles	2 6 1/2-oz. Pkgs.	25c
Nabisco Assorted Flavors Toastettes	3 6 1/2-oz. Boxes	\$1.00

## Chef's Pride Dry Pinto Beans 2-Lb. Bag 25c

Western, Hot or Mild Chow Chow Relish 13-oz. Jar 47c

Piggly Wiggly Tomato Catsup 14-oz. Btl. 29c

## Farmer Jones Hamburger or Hot Dog Buns 8 Count Pkg. 25c

Baker's Chocolate Chips	12-oz. Pkg.	63c
Angel Flake Baker's Coconut	3 1/2-oz. Can	31c
Piggly Wiggly, Assorted Flavors Frosting Mix	13 1/4-oz. Box	35c
Dessert Topping Dream Whip	4 1/2-oz. Box	55c
Arrow Standard Aluminum Foil	25 Foot Roll	27c

Duncan Hines Layer Varieties

## Cake Mix 3 18 oz. Pkgs. \$1

Sudden Beauty Regular or Hard to Hold Hair Spray	12 1/2-oz. Can	49c
Johnson's Baby Shampoo	12 1/2-oz. Btl.	\$1.29
Elite Wonderlon, All Nude Panty Hose	Pair	69c
Effective Excedrin Tablets	100-Ct. Btl.	\$1.19

Antiseptic

## Listerine 14 oz. Btl. 69c

We Give S&H Green Stamps

## USDA Choice Beef Rib Steak 1 Lb. 119

## Sliced Bacon 98c Lb.

Ranch Style Bulk USDA Choice Valu Trim

## CHUCK ROAST Blade Cut 89c Lb.

Tray Pak Fillets Ocean Catfish	Lb.	89c
Tray Pak Whiting	Lb.	87c
Tenda Made Breaded Beef Patties	Lb.	98c
Decker Tender 6 to 8-Lb. Avg. Smoked Picnics	Lb.	63c
Kraft Philadelphia Cream Cheese	8-oz. Pkg.	17c
Franks Farmer Jones All Meat	1 Lb.	98c
Cooper Halfmoon Cheddar Cheese	Lb.	\$1.19
Piggly Wiggly Single Sliced Cheese	12-oz. Pkg.	73c
Kraft Halfmoon Cheddar Cheese	10-oz. Pkg.	89c
Borden Lite Line Single Sliced Cheese	12-oz. Pkg.	99c
Circle T Happy Times Corn Dogs	13 1/2-oz. Pkg.	69c

## All Meat Franks 12 oz. Pkg. 89c

Swift Gravy on Turkey Slices	28-oz. Pkg.	\$1.99
Country Manor Vac Pak Sliced Bacon	16-oz. Pkg.	\$1.19
Chicken O Sea Breaded Shrimp	16-oz. Pkg.	\$1.99
Farmer Jones Wafer Thin Sliced Meats	3-oz. Pkg.	39c
Dine Rite 6 to 8 Lb. Avg. Turkey Breasts	Lb.	98c
Tray Pak Fillets Flounder	Lb.	\$1.39
Tray Pak Crispy Fishsticks	2 Lb.	\$1.19
Mrs. Pauls Buttered Fish Fillets	10-oz. Pkg.	99c
Danish Smoked Salami	14-oz. Pkg.	\$1.29
Ranch Hand Veal Birds	16-oz. Pkg.	\$1.27
Sliced Pork Liver	Lb.	79c
Country Manor Boneless Canned Ham	5-Lb. Can	\$6.89

## USDA Inspected Cut Up Tub-O-Chicken Lb. 59c

Lean Meaty Beef Short Ribs	Lb.	59c
Boneless Lean Stew Beef	Lb.	\$1.09
Center Cut Rib Pork Chops	Lb.	\$1.39
USDA Inspected Cut Up Fryers	Lb.	65c
USDA Inspected Fryer Thighs	Lb.	79c
USDA Inspected Fryer Breasts	Lb.	98c
Farmer Jones Pickle, Olive Loaf, Sliced Bologna	6-oz. Pkg.	53c
Smoked Sliced Pork Chops	Lb.	\$1.79
Roeglein Boneless Canned Picnics	3-Lb. Can	\$3.99



Copyright 1973 Shop Rite Foods, Inc. Prices good April 12-15, 1973. Quality rights reserved.



## Avocados 4 / \$1

Plump Juicy Red Strawberries	Pint	79c
Green Salad Favorite-Fresh Green Onions	2 Bunch	29c
Sweet, Juicy Ears Corn-on-Cob	3 Ear	49c
Large Ruby Red Grapefruit	Texweet Sweet Lb.	19c
Long, Crisp Celery Stalks	Each	25c
Velvet-Textured D'Anjou Pears	Lb.	45c
Mouth-Watering Choice Cantaloupe	Lb.	39c

## Carrots 2 For 33c

Cello Pkgs.





# CLASSIFIED ADS

## FIND IT QUICK

### WANT ADS PH.272-4536

**CLASSIFIED RATES**  
**OPEN RATES**  
 First insertion, per word-9¢  
 Second and additional insertions-6¢  
**NATIONAL RATES**  
 First insertion, per word-11¢  
 Second and additional insertions-7¢  
 Minimum Charge -

**CARD OF THANKS.....\$2.00**  
 Classified Display \$1.12 per col. inch  
 Double rate for Blind Ads \$1.15 per col. inch for Reverses  
**DEADLINE FOR INSERTION**  
 Thursday's Muleshoe Journal-Noon Tuesday  
 Sunday's Bailey County Journal-Noon Friday  
 The Journals reserve the right to classify, revise or reject any classified ad.

Check advertisement and report any error immediately. Journals are not responsible for error after ad has already run once.

**VFW**  
**Walter A. Moeller**  
 Post #8570  
 8:00 p.m. 2nd & 4th Mondays  
**VFW Hall**  
 Joe T. Gonzales, Commander

**JAMES GLAZE COMPANY**  
**REAL ESTATE AND FARM & RANCH LOANS**  
 Phone 272-4549 219 S. 1st. 421-Hc

**LODGE NO. Masonic Lodge**  
 1237 AF & AM  
 meets the second Tuesday of each month  
 practice night each Thursday  
 Ross Mick WM  
 Elbert Nowell, Sec.

**Jaycees**  
 meets every Monday, 12 Noon  
 Max King, Pres.

meets every Tuesday at 12:00  
**DINING ROOM**  
**Muleshoe Rotary Club**  
 Kerry Moore, President

**Lions Club**  
 meets each Wednesday, 12 Noon  
**CORRAL RESTAURANT**  
 J.W. Coppedge, President

Lodge No. 58  
**Muleshoe Oddfellows**  
 meets each Thursday 7:30 p.m.  
 CLAUDE WILEMON  
 Grand Noble

Meets Every Wednesday 6am  
**CORRAL RESTAURANT**  
**KIWANIS CLUB**  
 R.A. Bradley, President

**2 LOST & FOUND**  
 LOST - One 400 pound Charolais heifer near Clay's corner. Call Keith Menefee, 965-2145.  
 2-9s-tfc

**3 HELP WANTED**  
 WANTED: Ranch hand familiar with cattle. Call 272-3056, 3-31t-tfc  
 WANTED: Typist, must type 50 words per minute at least. Inquire in person at Journal. 219-3-tfp

**11 REAL ESTATE FOR SALE**  
 FRIONA APTS, now have available 1, 2, & 3 bedrooms. Call 247-3666 or come by 1300 Walnut Street. 5-29s-tfc

**FOR RENT: 2 bedroom unfurnished apartment.** Phone 272-4838 Smallwood Real Estate, 5-47s-tfc

**FOR SALE: Feed lot.** Phone 772-4819, 11-44t-tfc.

**WE PAY CASH for tractor and equipment of all kinds.** Tom Flowers Auction, Inc. Day 272-4145 Night 10-2s-tfc

**FOR SALE: 3 bedroom house.** Richland Hill Addition. Call 272-4028 after 5:30, 8-15t-tfc

**FOR SALE: Nice 2 bedroom home with large den, living room, dining room and kitchen.** 1460 sq. ft., 12 x 30 garage, Redwood fence, barbecue grill, picnic table and benches. \$15,250. Loan, \$7,700 at 5% if you qualify. 402 West 9th Street. Charles L. Smith. 8-14s-tfc

**IF YOU WANT TO SELL OR buy see Lee Pool or Woody Goforth**  
**Pool Real Estate**  
 P.O. 272-4716  
 214 East American Blvd. 8-44s-tfc

**FOR SALE: Home with Large basement, central heat.** Four furnished apartments, one business building known as Beavers Flowerland. Consider two or three bedroom home as down payment. Layne Apartments-Mrs. C.E. Layne. 11-12s-tfc

**KREBBS REAL ESTATE**  
 210 S. 1st PH.272-3191  
**FOR SALE: 14x68, two bedroom mobile home.** 1970 model. Parking available. Call 272-3756, 8-14t-tfc

**"We're Farming Out" our Case's!**  
 Rent one by the Day week or month  
**Barry & Young Equipment**  
 Muleshoe 272-4236

**FOR SALE: Tri-Matic Sprinkler System.** Length 1180 ft. Waters 180 feet per setting. Also for sale Side Roll Sprinklers. E.O. Baker, Telephone Number 272-4422. Muleshoe, Texas. 11-12s-tfc

**FOR SALE: Used Tri-Matics, gated, mainline, and sprinkler pipe.** Chapman Supply Co. Ph. 272-3473 10-5s-tfc

**Loomix Liquid Feed**  
 Contact: C. R. BLACK  
 Distributor  
 Phone - 965-2680

**GARAGE SALE: Hobby items, few clothes.** 117 E Fir. Friday and Saturday, April 13 and 14. 15-14s-2tc

### WASHINGTON REPORT BY Lloyd Bentsen, United States Senator

**FUEL SHORTAGE** -- For the first time, the United States today faces very serious shortages of natural gas, fuel oil and other forms of energy. In the coming summer months many regions of the nation must cope with an inadequate supply of gasoline.

These shortages are not caused by a lack of domestic energy resources, for there are enough supplies of energy within this country to meet all of our requirements for the foreseeable future.

There are adequate supplies of oil and gas in the United States to care for our needs into the next century -- if we develop them -- and enough alternative sources of energy to carry us well beyond that -- if we develop them.

Geologists assure us that there are large volumes of oil and gas yet to be discovered in the U.S. and on the Outer Continental Shelf.

In addition, we have huge coal reserves in Appalachia and in the West, plus massive oil shale deposits in the West. Geothermal power -- the heat contained in the earth -- could be a major source of energy; and so could nuclear fission and nuclear fusion.

The shortages we have experienced and the shortages that all knowledgeable sources project for the months ahead are a direct result of our failure to anticipate the problems and to develop policies to deal with them.

**RESEARCH NEEDED** -- This is especially true in the area of energy research and development. We have failed to move from the realm of theory into the reality of commercial production.

We have the basic scientific knowledge to convert many of the alternative sources of fuel into usable forms of energy. But we have not developed the technologies to make these sources commercially useful, within acceptable environmental and economic limits.

Why has this not been done? Why has this problem not been solved? For one thing, neither industry nor Government fully appreciated the magnitude of the emerging energy crisis. But even now that it is here, and we all realize the scope of the problem, there is still a reluctance to undertake the all-out research effort that is needed.

I am co-sponsoring legislation to bridge that gap, and provide the necessary impetus to insure that we make full use of all of our abundant, domestic sources of energy.

**ADEQUATE DOMESTIC ENERGY** -- The bill has a clear and specific objective. Its goal would be to allow the United States, by 1983 -- 10 years from now -- to provide for all her energy needs from domestic sources that are environmentally acceptable.

We must have a goal if we expect to establish a properly aggressive program of research and development. It would be too easy to claim technological progress in relation to what has been done before. Progress -- success or failure -- must be measured against a schedule, and a schedule requires a defined objective.

To reach the goal, the legislation would provide the necessary mechanism to establish a coordinated, national program of energy research and development. It would pull together the many far-flung studies now underway, eliminate those that are repetitious and amend those that are working at cross-purposes.

This measure does not claim to be the final answer to the massive energy problems facing the United States. It is, though, a starting point. It will bring

America's scientific resources, intellectual resources and technological capability to bear on the problems.

Many nations of the world have no choice but to rely increasingly on imported petroleum products, and the U.S. has had to increasingly rely on imports because of short-sighted policies that have discouraged exploration. But the United States has the potential to avoid excessive dependence on foreign sources, if we develop that potential.

We have the domestic energy resources. We have the scientific knowledge. We have the technological ability.

And I am hopeful that, through this legislation, we can provide the will that is necessary to put all those ingredients together and begin solving the energy crisis.

**POSTAL INVESTIGATION RESULTS** -- The General Accounting Office recently briefed me on the status of mail service in Texas.

I asked the GAO to study the problem last Fall, after receiving a large number of complaints about poor mail service and after conducting a preliminary test of my own.

Mail problems across the nation have been receiving a great deal of attention in the past several weeks. The Postmaster General has said candidly that service isn't what it should be. And the Senate Post Office Committee has begun an investigation.

And in light of the recent national revelations, it came as no surprise when the General Accounting Office reported that service in Texas has, indeed, deteriorated.

But the GAO probe did much more than simply confirm our suspicions. It told us in factual, statistical terms precisely how bad service has gotten in some areas of the State. It listed several reasons for the deterioration. And it made some recommended actions for change.

The investigation was painstakingly thorough. It involved five months of work and included extensive interviews with hundreds of Texans, both inside and outside the Postal Service. The GAO also conducted test mailings and scoured the records of some 22 post offices in the State.

And the results, though not surprising, should prove helpful in any efforts to correct the problem.

**SERVICE REDUCED** -- It was determined, for example, that the number of mail collections, the number of mail deliveries and the availability of Saturday service have been substantially reduced since 1970.

The GAO also found that the Postal Service falls far short of its promises on delivery of mail within Texas and on mail going into and coming out of the State.

A GAO test mailing of 500 letters within Texas showed delivery up to standards only 88% of the time. This, by the way,

A GAO test mailing of 500 letters within Texas showed delivery up to standards only 88% of the time. This, by the way, is in contrast to postal service tests which claim satisfactory performance 95% of the time. The difference is in the testing methods used, and I am convinced the GAO me-

thods provide far more realistic information than the methods used by the Postal Service.

After pinpointing the nature of declining mail service in Texas, the General Accounting Office also suggested several probable causes for the deterioration.

They pointed out that the amount of mail has increased much more than anticipated by the Postal Service and that the postal budget has been too inflexible to respond to the upsurge.

They noted that the morale of our postal workers is low, for a variety of reasons, one of the main ones being extensive, mandatory overtime caused by reductions in the number of employees. In three

Texas postal centers last October overtime was up by almost 50%.

And another probable cause is the fact that too much mail is being processed in large urban centers rather than in smaller post offices down the line. One result of this is an increased reliance on mechanization that has led to a higher rate of error.

On the bright side, the General Accounting Office reported that the problems seem to have reached their worst point and should begin to gradually get better.

**NO OVERNIGHT SOLUTIONS** -- They warned against expecting better mail service overnight and indicated many basic changes must be made before we will notice a dramatic improvement.

For the interim, the GAO did pinpoint several immediate changes that would speed the flow of mail and reduce the number of errors.

For example, they noted that postal machine operators are now required to sort 90 letters a minute and recommended that simply reducing this number to 60 a minute would significantly reduce the rate of error.

In the near future, I will receive a formal, written report from the General Accounting Office. I intend to make this report available to both the Senate Post Office Committee, which is studying national mail service, and to the U. S. Postal Service.

### Draft...

Cont. from Page 1  
 Meetings will continue to be conducted in the same town where the board has previously met. On occasion, the board members may be called to special meetings at the office sites.

Announcing the reorganization throughout Texas, Colonel Glantz stressed that the local boards themselves will not move, only the employees and records.

There will be a reduction in force of Selective Service employees in Texas from the present 342 employees to 193 full time and 27 part time employees. In the Northwest Texas offices there will be a total of 14 full time and two part time employees. Amarillo and Lubbock will have four each, Pampa and Plainview two each with two full time and one part time employees in Wichita Falls and one part time employee in Childress.

Colonel Glantz reminded the young men of Texas of their obligation under Federal law to register with Selective Service within 30 days before or 30 days after their eighteenth birthday and any young man who is late in registering is urged to do so immediately to avoid the penalty of Federal law for failure to register. Selective Service maintains registrars in each county in North-west Texas allowing young men to register without having to go to one of the local board offices.

Any questions about Selective Service requirements should be directed to one of the employees at a local board office.

**Best Of Press**  
 Convinced  
 Most wives are convinced that their husbands made a better marriage than they did.  
 -Tribune, Chicago.

**Harnessed**  
 He who horses around too much some day may find himself a groom.  
 -Gosport, Pensacola.

Colonel Glantz told newsmen that there are no plans to draft any young men this year. Glantz noted that the Selective Service would continue to function in a standby basis with fewer people working in fewer offices throughout the nation. The agency is being kept "alive" in a standby status to meet any national emergency that may require a military mobilization. If the all-volunteer military concept being attempted by President Nixon does not maintain the necessary strength set by Congress, the Selective Service System may again be required to begin drafting young men.

Colonel Glantz told newsmen that there are no plans to draft any young men this year. Glantz noted that the Selective Service would continue to function in a standby basis with fewer people working in fewer offices throughout the nation. The agency is being kept "alive" in a standby status to meet any national emergency that may require a military mobilization. If the all-volunteer military concept being attempted by President Nixon does not maintain the necessary strength set by Congress, the Selective Service System may again be required to begin drafting young men.

**Out of Orbit**  
  
 WHAT I LIKE ABOUT THIS GAME IS THE ELEMENT OF SURPRISE!

**CATTLE AND LIVESTOCK BUYERS**  
**WE NEED MEN IN THIS AREA.**  
 Train to buy cattle, sheep and hogs.  
 We will train qualified men with some livestock experience. For local interview, write today including complete background, address, and phone number.  
**WESTERN MEAT PACKERS TRAINING, INC.**  
 4318 Woodcock, San Antonio, Texas 78228

**EXCEL WINS!**  
**AGAIN...and AGAIN...and, AGAIN**  
**OFFICIAL TEST RESULTS**

**GRAIN SORGHUM VARIETY TESTS**

★ **GOODWELL** PANHANDLE AGRICULTURAL EXPERIMENT STATION GOODWELL, OKLAHOMA 1972  
 EXCEL BRAND 808 ranked No. 1 in yield of all hybrids tested yielding 12,895 lbs. per acre.

★ **HALFWAY** HIGH PLAINS RESEARCH FOUNDATION, HALFWAY, TEXAS 1972  
 Agronomic Data for 36 Grain Sorghum Hybrids Tested--Irrigated--Planted in Single 40 Inch Rows, Machine Harvested.  
 EXCEL BRAND 811-A produced 8110.6 lbs. per acre which is 1518.7 lbs. above the average of all hybrids tested.  
 EXCEL BRAND 808 produced 8068.4 lbs. per acre which is 1476.5 lbs. per acre above the average of all hybrids tested.  
 THESE WERE THE HIGHEST YIELDS PRODUCED IN ALL GRAIN SORGHUM VARIETY TESTS CONDUCTED AT THE HIGH PLAINS RESEARCH FOUNDATION IN 1972.

★ **CLOVIS-TUCUMCARI** AGRICULTURAL EXPERIMENT STATION RESEARCH REPORT 252  
 Plains Branch Station, Clovis, N.M. and Northeastern Branch Station, Tucumcari, N.M., 1972  
 Agronomic Data for 39 Grain Sorghum Hybrids Tested--Irrigated--Average Yield Both Stations  
 EXCEL BRAND 811-A ranked No. 1 in average yield of all hybrids tested with an average yield of 7812 lbs. per acre.  
 EXCEL BRAND 808 ranked No. 2 in average yield of all hybrids tested with an average yield of 7701 lbs. per acre.

Put these TOP YIELDING hybrids to work for you.  
**SEE YOUR EXCEL DEALER TODAY.**

**EXCEL**  
 BRAND  
**808 & 811-A**  
 HYBRID GRAIN SORGHUM

**ATTENTION MULESHOE AREA CATTLEMEN**

... In regard to dead stock removal. . .  
 If you have had a problem with service. . . whether in the feedyard or on the farm. . . please give us a chance!

**Your local used cow dealer is muleshoe bi-products**

farmers ranchers  
 Gentlemen:  
 Seven days a week dead stock removal please call as soon as possible

Thank you  
 Phone-965-2903  
 Mobil Phone 965-2429