



Muleshoe ISD
school supply lists...
Page 9



Muleshoe, Bailey County
Hometown Heroes...
Page 12



Spinning Rowels:
Horse sense needed...
Page 7



Muleshoe Journal



Striving to be your source for local news

Volume 88, No. 31

www.muleshoejournal.com

Muleshoe, Texas

50¢

August 2, 2007

Park View to be placed back on auction block

By Larry Thornton
Managing Editor

A vote to advertize for bids on Park View Nursing Care Center was approved by the Muleshoe Area Hospital District Board of Directors during a special meeting Monday.

Prior to taking its vote on the issue, the board members held a conference call with Deborah Whitley of Parrish, Moody & Fikes of Waco, the hospital district's auditing firm, who went over the district's most recent audit results with new board members Wayne Pierson and Scott Brown.

Whitley also responded to questions about the impact of Park View on the district's financial stability.

Initially proposed as an executive session because the call had to be held in hospital administrator Ray Mason's office to allow

access to a telephone, the board decided to reopen the meeting to the public.

Much of Whitley's information recapped her Feb. 15 audit presentation,

including her information that the nursing home had caused a strain on the hospital district over the past four years that approached \$2 million. "Essentially, the district is out \$1.8 million in cash flow," she said. "The expenses exceed the gross revenues."

According to Whitley, the nursing home hasn't been meeting its revenue requirements, and when the interest and bond principal from the construction of Park View is taken into account the financial picture is worse, she said.

At one point, Whitley referred back to the board's 2005 decision to attempt to improve the district's financial stability by making the switch from "acute care" to "critical access," noting that under acute care the hospital's cost for providing service was higher than the amount Medicare was reimbursing.

Park View administrator Sandy Sandlin, who was also in attendance Monday, noted that while the nursing home was "doing better on the expense side" it was

hard to determine exactly how much revenue was needed to break even.

Sandlin's preliminary estimates suggested that 55 patients should provide enough revenue to keep the doors of Park View open supplemented by its portion

nursing home's improper billing practices. He said that since he'd started at Park View, the staff has been working on an 18-month Medicare billing backlog.

"I don't know what they were doing over there,"

cleared up and the documentation Medicare and Medicaid require prior to reimbursing a large number of claims would be completed in the near future.

And he said that with proper training on documentation and billing, the nursing home should be able to recover about \$20 per day more than it had in the past.

But while Whitley said the new billing practices would help, she said there were other "inherent problems" at the nursing home that have contributed to the current situation.

"What we're doing is putting the hospital at risk," Whitley said.

"If the nursing home doesn't immediately turn around its operation, both the hospital and the nursing home will be in danger," she said.

For the past two years her company has served as the district's auditor, Whitley said attempts have been made to change the situation.

"How are we going to turn it around?" she asked.

Whitley reminded the board that the district's situation was so serious



Hospital board discusses taxes

By Larry Thornton
Managing Editor

Taxes topped the discussion during the second half of the Muleshoe Area Hospital District's board meeting Monday as members voted to approve a property in transit tax resolution, and also discussed the possibility of a significant tax increase.

Kay Elliott of the Bailey County Appraisal District informed the hospital board the district's effective rate was .3468, noting that figures from Parmer County that are located within the hospital district were included.

She also reported that the district's roll back rate was .3745.

"It wouldn't help the district to adopt the effective rate," MAHD president Ronnie Dent said.

Based upon the district's property valuations, Dent said that setting the rate at the roll back rate would raise about \$90,000 more in taxes for the district.

It was pointed out that if the district chooses to set its proposed rate higher than the rollback rate, it would open the possibility of a rollback election.

However, board member Wayne Pierson suggested this might be the thing to do, adding that a rate set 10 cents higher than the rollback rate would generate an estimated \$300,000, funds that will be badly needed if the hospital district doesn't sell Park View.

"We need this to make sure we can make it," Pierson said.

The hospital board took no action concerning the proposed tax rate at Monday's meeting, but set another special meeting for Tuesday, Aug. 7, at 7 p.m., for further discussion.

Elliott also addressed the board concerning the issue of a transit property tax, such as was passed by the Muleshoe City Council at



Photograph by Larry Thornton

Finding out what's down there...

Before you build on top of it, it makes sense to find out what's underneath first. Dallas Rader and Freddie Rios, employees of White Drilling of Clyde, were photographed taking core samples on the north side of Watson Junior High Monday as part of the Muleshoe Independent School District's upcoming expansion on the campus.

Continued on page 3

Police chief concerned about new credit card requirements

By Larry Thornton
Managing Editor

Muleshoe Police Chief Brian Frieda has joined with other law enforcement officials across Texas who are concerned about the possibility of identity thefts that can be tracked back to businesses printing out improper credit card information on customer receipts.

According to the police chief, federal law passed in December 2006 prohibits the display of the complete credit card number or expiration dates on the customer's receipt, and said his concerns for local merchants arose out of an incident in which federal lawsuits apparently had been filed against restaurants — some of which are based in the Lone Star State — that weren't complying with the new law.

Although the customer's receipt shouldn't display this information, the business' copy — which the customer signs and returns to the clerk — may contain all of the customer's credit card information, Frieda said.

Local Weather

Thursday
S. T-Strms..... 82/59

Friday
S. T-Strms..... 83/59

Saturday
I. T-Strms..... 87/60

Sunday
I. T-Strms..... 91/62

Monday
Pt. Cloudy..... 91/62

Tuesday
Mt. Sunny..... 90/61

Wednesday
I. T-Strms..... 89/59

Give It A Thought

Ask not what you can do for your country... the IRS will let you know soon enough.

Words to ponder from Beverly

Missed your paper?
Call the carrier Bobby Flores at 806-891-3950 (leave a message) or call the Journal at 272-4536, between 8:00 a.m. and 5 p.m.



SHELBY MUSTANG
2007
IN STOCK NOW



1125 West American Blvd.
Muleshoe
272-4251
800-432-7617





Reserved seating tickets

Reserved seat tickets for the 2007 Muleshoe Mules football season will go on sale Monday, Aug. 6. The tickets are \$25 for five home games.

Persons who held reserved seat tickets for the 2006 football season may purchase their seating options at the School district's administration office, located at 514 W. Ave. G, Monday through Friday, during regular business hours.

Beginning Monday, Aug. 27, all remaining tickets will go on sale on a first come, first serve basis.

Any reserved seats remaining after the season starts will be available at a cost of \$6 per game and may be purchased at the administration office on game day.

If you have questions concerning the ticket sales, contact Dana Rasco at 272-7400.

Three Way School Reunion

Former students at Three Way School are invited to take part in a reunion to be held on Aug. 4 at Park Plaza Holiday Inn, 3201 Loop 289 South Lubbock.

There will be an auction of sports trophies, tapes of ballgames, and a few annuals are available. A silent auction will start Saturday morning and end at 4 p.m.

For additional information, contact Jean Abbe of Morton at 806-266-8658, or email questions or address information to granabbe@fivearea.com.

Early registration is Friday, Aug. 3, from 5-7 p.m. Registration will continue on Saturday, Aug. 4, from 8:30 a.m. until noon. The meal will be served at 5 p.m. Tickets are \$40 per adult, and \$25 per child.

Men's softball league forming

The deadline for individuals or teams wishing to join the Muleshoe Men Softball League is Aug. 2. Individuals wishing to sign up or seeking additional information should call Juan Sanchez at (806)729-2353 or Diane Moore at (806)729-3433.

Alzheimer's disease support group

The Bailey County Alzheimer's Disease Support Group will be meeting Thursday, Aug. 9, at 12 noon, at Park View Nursing Home. Lunch will be served.

Kenna Dubberly of Garrison Geriatric Center will present "Caring for the Care Giver."

For more information contact Debbie Crabtree, Bailey County Aging Services, 272-3647, or Mandi Seaton, Bailey County extension agent — Family and Consumer Sciences, 272-4583.

Levelland to host farmers market

The Levelland Main Street Program is ready for all willing and able producers to start selling their goods during its Farmers Market.

The market will start July 18 and will run every Wednesday and Saturday.

If any producers or local crafters want to participate in this year's market please call the Levelland Main Street Office at 806-894-3157.

Alfalfa production workshop

Crop producers, cattle raisers and grass farmers who are interested in alfalfa should mark Aug. 9 on their calendars. That is the date for a regional alfalfa workshop in Farwell, sponsored by Texas Cooperative Extension and New Mexico State University.

"We will cover a wide variety of production topics, from variety selection, fertility and irrigation to weed control, entomology and forage quality," said Calvin Trostle, extension agronomist based at the Texas A&M University System Agricultural Research and Extension Center at Lubbock. "We will also visit a nearby alfalfa field."

The workshop will begin with registration at 8:30 a.m. central time at the Farwell Community Center, 207 Ninth St., two blocks south of U.S. Hwy. 84.

The program will run from 9 a.m. to 1 p.m.

Lunch is included with registration.

Registration costs \$20 per person.

Trostle will present an overview of alfalfa production, followed by a session on weed control. Leonard Lauriault, New Mexico State, will discuss variety selection and the university's alfalfa testing program. Monti Vandiver, extension integrated pest management agent, will provide an insect and pest update.

Those who plan to attend are encouraged to pre-register by Aug. 7, by calling the extension office in Parmer County at 806-481-3619.

Participants will qualify for continuing education units approved for Texas and New Mexico.

For more information, contact Trostle at 806-746-6101; Mark Marsalis, New Mexico State agronomist in Clovis, at 505-985-2292; or the Extension office in Parmer County.

Horned lizard program

The Muleshoe Heritage Foundation is sponsoring an informational program on Texas horned lizards, also known as "horny toads," at 7 p.m., on Monday, Aug. 13, in the Santa Fe Depot of the Heritage Center.

Lee Linam from the Texas Parks and Wildlife Department in Austin, and Dr. Gad Perry of the Texas Tech Department of Range, Wildlife and Fisheries Management, will share a short overview of the current research, habitat needs, tracking and population information of horned lizards throughout the state with a question and answer session afterward.

Children and adults are invited to attend this informal event. There is no admission charge.

Dillman Elementary registration

On Aug. 13-14, from 8 a.m.- noon, and 1-4 p.m., Dillman Elementary will have registration for new students for the 2007-08 school year.

Parent will need to provide the following items to register: Photo ID, a birth certificate, social security card, shot records. For Head Start and Pre-Kindergarten, proof of income will also be necessary.

For additional information, call 272-7382 after Aug. 6.

Don't forget your photographs...

The Muleshoe Journal publishes a large number of photographs — from wedding announcements to obituaries. Sadly, many of these important photographs are never picked up from the news office. If you would like to retrieve a photograph you've left with the newspaper, stop by during normal office hours.

Muleshoe Journal USPS 367820
 Established February 23, 1924. Published by Lambai Publishing LP
 Every Thursday at 201 W. Ave. C, P.O. Box 449, Muleshoe, TX 79347.
 Periodicals Postage paid at Muleshoe, TX.
 POSTMASTER: Send address changes to the Muleshoe Journal, P.O. Box 449, Muleshoe, TX 79347.
 We are qualified members of:
 Panhandle Press Association, West Texas Press Association and Texas Press Association © 2007

Sandra Aven, Publisher
saven@hearstnp.com

Leah Bell, General Manager/Ads
ctyankee@fivearea.com

Larry Thornton, Managing Editor
editor@muleshojournal.com

Bookkeeping/Classified Advertising
classifieds@muleshojournal.com

SUBSCRIPTIONS:
 By Carrier Yearly - \$22.00
 Bailey County — By Mail - \$24.00
 Elsewhere - \$35.00
 By E-mail - \$22.00
 Advertising Rate Cards On Application

Member TPA 2007 TEXAS PRESS ASSOCIATION

PPA Panhandle Press Association

WEST TEXAS PRESS ASSOCIATION

Advertisers should check their ad the first day of insertion. The Journal will not be liable for failure to publish an ad or for a typographical error or errors in publications except to the extent of the cost of the ad for the first day of insertion. Adjustment for errors will be limited to the cost of that portion of the ad where the error occurred.

Store #34
312 W. American Blvd.
Muleshoe, Texas
272-4862

Prices Good Thru 8/11/07

SNICKERS, MILKY WAY, 3 MUSKETEERS, M&M (PLAIN OR PEANUT)
CANDY BARS
 REGULAR SIZE
2 FOR 99¢

HOT, BACON CHEDDAR, JALAPENO CHEDDAR, VINEGAR & SALT OR CHILI CHEESE
TOM'S FRIES
 REGULAR \$1.99
2 FOR \$3

BLUE BUNNY ASST. HALF GAL. OVAL
BLUE BUNNY ICE CREAM
\$3.99

Honcho
 44 OZ. FOUNTAIN DRINK PLUS A FREE BAG OF LANCE'S PEANUTS 1.75 OZ.
99¢

ASSORTED LANCE CRACKERS
2 FOR 89¢

MORE SPECIALS

ALLSUP'S SANDWICH BREAD
 24 OZ. / 69¢ EACH OR **2 FOR \$1.09**

ALLSUP'S WHEAT BREAD
 24 OZ. / 89¢ EACH OR **2 FOR \$1.29**

BLUE BUNNY ICE CREAM SANDWICH
 EACH **49¢**

SHURFINE CHARCOAL
 9 LB. BAG **\$3.29**

SO-DRI PAPER TOWELS
 SINGLE ROLL PKG. **89¢**

SOFT'N GENTLE BATH TISSUE
 4 ROLL PKG. **\$1.19**

ASSORTED MUNCHIES OR QUAKER
Snack Mix
\$1.99
 REGULAR \$2.49

BAR-S 12 OZ. PKG.
COOKED HAM
\$2.29

COMBO MEALS

COMBO NO. 1	BACON/EGG BISCUIT & 16 OZ. COFFEE	\$1.99	COMBO NO. 6	3 TAMALES, HOWLERS & 32 OZ. TALLSUP	\$2.59
COMBO NO. 2	SAUSAGE/EGG BISCUIT & 16 OZ. COFFEE	\$1.99	COMBO NO. 7	2 HOT LINKS WITH BREAD & 32 OZ. TALLSUP	\$2.49
COMBO NO. 3	BBQ SANDWICH & 32 OZ. TALLSUP	\$1.99	COMBO NO. 8	2 CORN DOGS & 32 OZ. TALLSUP	\$2.59
COMBO NO. 4	HOMESTYLE POPCORN CHICKEN & 32 OZ. TALLSUP	\$2.69	COMBO NO. 9	CHIMICHANGA & 32 OZ. TALLSUP	\$2.39
COMBO NO. 5	SPICY POPCORN CHICKEN & 32 OZ. TALLSUP	\$2.69	COMBO NO. 10	2 BEEF & BEAN BURRITOS & 32 OZ. TALLSUP	\$2.59

ALLSUP'S "MOO" GET ONE FREE!
BUY 12 GALLONS OF FRESH ALLSUP'S MILK...
 Collect Self Stick "Moo" Stamps Today & You Could Win FREE Milk For A Year!

Park View... Continued from page 1

about nine months ago that it's total cash flow was only about \$35,000.

Board member Wayne Pierson expressed a similar view. "Increasing the revenue at the nursing home by \$20 a day won't overcome the loss at the nursing home," he said.

Pierson also said his biggest concern was the hospital district's cash flow. It was pointed out that the hospital is currently making the nursing home's insurance and workers

compensation payments, and also helping with its salary.

"I agree with Wayne," Sandlin said. "The bottom line is the bottom line."

"If this community wants a nursing home, they're going to have to support it with tax money," the nursing home administrator said, adding that he didn't believe a private company could successfully operate Park View because it wouldn't have tax dollars on which to fall back.

"You have the obligation to utilize the taxpayers' money in the best way possible," Pierson said, suggesting that retaining ownership of Park View with its financial burdens didn't appear to be a prudent decision for the board or the hospital district.

"Why can't we have a company come in here and make the nursing home a strong facility and the hospital strong also?" Dent asked.

He said a decision about selling the nursing home wouldn't be necessary if it and the hospital were financially strong, but added that he couldn't sit on the hospital board knowing that

if Park View remained part of the district there was a chance both it and the hospital would fail.

"It's a tough decision, and one I wish we didn't have to make," Dent said. "I'm not going to sit here and do nothing if it's going to endanger the hospital."

"We have to base our decision on what we know today," he added.

"I respect the people who say 'don't sell it,' but I wish they'd come to me with a plan to make it work," Dent said.

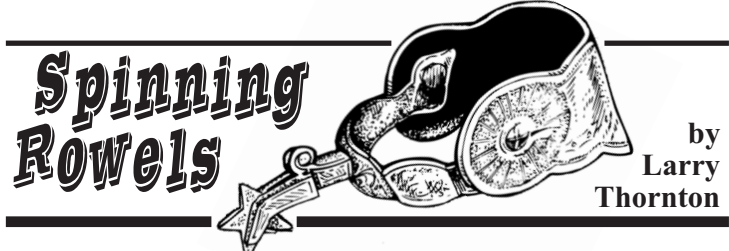
Ultimately, Pierson noted that seeking bids on the nursing home was different from accepting bids, and it was suggested that additional information be gathered about the possibility of keeping Park View while at the same time seeking the bids.

"We owe it to the community to see if there is a purchaser," Pierson said.

In other business related to the nursing home, the board of directors voted to send a letter advising Laurel Healthcare Providers of New Mexico of its intent to withdraw from its administration agreement.

The hospital board also approved contracts with the nursing home's current administrator, Sandy Sandlin, and its director of nurses, Yolanda Mendoza, both of whom had been supplied by Laurel.

The decision to rescind the district's contract with Laurel came after the board learned of the decision to sell the company to Skilled Healthcare Group, Inc.



Horse sense needed...

It's been said that a horse is born looking for a place to die, and something to eat along the way.

This was never more true than Thursday evening when I got a chance to climb onto my horse, only to learn that the break he's had from packing me around during the past month had led to a bit of attitude that started out vertical and ended up horizontal.

Oh, he got up, but not before banging my leg up enough to warrant a trip to the emergency room and a weekend on crutches instead of immediately climbing back on top for an attitude adjustment.

While Thursday's incident didn't include a wide space of air between my bottom side and the saddle's top side, I have to admit that there have been a few occasions in which my morning or afternoon ride has suddenly changed to an opportunity to watch the clouds drift by.

The first such opportunity came when I was a youngster, mounted bareback on a slick-sided little pony that stopped a little sooner than I did.

Since that time, there have been a few battle's I've won, and an occasional loss as well, but through it all, I've learned a couple of things:

- No matter how much you like a particular horse, there will come a time when he, she or it will step on your sore toe. But, that's the way it is with children also.

I remember an incident from many years ago when a friend of the family was nursing his terribly banged up shin — which had arrived at that state through the swift kick of a particularly bad-natured pinto — only to have youngest son slam a baseball bat down on his ingrown toenail. Yes, same foot... different scream.

- No matter how much you like a particular horse, the time will come when the little misses you married will

point out that an afternoon or evening trail ride isn't what she meant when she said she wanted to spend time with you.

In fact, don't be surprised if there's a suggestion thrown in that you have a choice of sleeping in the barn, and you have to choose which filly means the most to you.

If that's the case, let me give you a hint about what to do. Your Paint, Quarterhorse or even your Arabian won't ever cook you a steak dinner.

And you can ask just about every one of the old time silver screen cowboys, they'll all tell you that scripts that suggest they'd rather kiss their horse than their leading lady before riding off into the sunset are pure fiction.

Taxes...

Continued from page 1 its meeting earlier this month.

Without passage of the resolution, Elliott explained that the hospital district would loose about a large amount of tax revenue.

She explained that the resolution wouldn't affect commodities owned by a local company and stored within its own facilities.

Nor would it tax property that was previously exempt.

Last year, Elliott said, the hospital district received about \$76,000 in taxes on property that was temporarily stored in Bailey County.

Due to changes in state law, those commodities couldn't be taxed if the hospital board chose not to pass the resolution.

"I don't see how any entity could pass up these revenues," Elliott said.

Engagement



RHETT GREEN AND KENZI WILSON

Wilson, Green engaged

Terry and DeAnn Wilson of Sudan, along with Gordon and Donna Green of Muleshoe, announce the engagement of their children, Kenzi Delynn Wilson and Rhett Houston Green.

The prospective bride is a 2002 graduate of Sudan High School. She currently holds a degree in dental assisting

and is pursuing a degree as a dental hygienist.

The prospective groom is a 2000 graduate of Muleshoe High School. He attended TCU and is currently attending Texas State University.

The wedding is planned for Aug. 11, 2007 at the historic Allan House in Austin.

CLOSEOUT SALE

Littlefield, Texas

Lyndel Evans — Woodworking Shop
1112 East Waylon Jennings
East of Hwy. 385

FRI. & SAT., AUG. 3 & 4 - 9 AM TO 4 PM
SUN., AUG. 5 - 1-3 PM

Beautiful wood art - office furniture - desk & chairs - recliner - stereo system - TV - sideboard, antique dresser - solid oak desk from old post office - Dirk West SWC prints - old doors from post office boxes - small antiques - old glass, bridle, bits, spurs - riding lawn mower, small trailer, drill press, saw, sander, carpenter tools, nails, screws, etc. - pots & pans, utensils - drill press - welder, air compressor - electric drills, screw drivers - wooden cradle - lots more.

For info, call Bill & JoJo's Estate Sales
806-252-0503

"Listen, my son, to your father's instruction and do not forsake your mother's teaching. They will be a garland to grace your head and a chain to adorn your neck..."

Proverbs 1:8-9, NIV

Thanks for reading!

Trinity Baptist church is raising funds to purchase land

Trinity Baptist Church of Muleshoe, 312 E. Ave. B, will be holding a garage sale on Friday and Saturday to raise funds for the purchase of land at church camp.

Time for new appliances?



WE ARE YOUR HOMETOWN WHIRLPOOL DEALER.

McDaniel's APPLIANCE
1020 Main Street, Clovis, NM
505-762-4481 or 800-682-7891
We now carry Speed Queen!

www.drippi.com

Legacy of Love Hospice

420 Phelps Ave., Littlefield
806-385-9329

www.legacyoflovehospice@valornet.com

What is hospice?

Compassionate care for people facing life-limiting illness or injury. Hospice focuses on caring, not curing and can be provided in the patient's home or in a freestanding hospice center such as Legacy of Love, where we accept patients of any age, religion, race or illness. Hospice care is covered under Medicare, Medicaid, most private insurance plans, HMOs, and other managed care organizations. Although end-of-life care may be painful to discuss, we're here to answer your questions when the time to make this difficult decision arrives.

- We provide palliative & hospice care
- RN on call 24 hrs. a day, 7 days a week
- Pain and symptom management

CALVERT

HOME HEALTH CARE, LTD.

Celebrating 20 years as the choice for quality home health care.

Littlefield Office:

913 Phelps Avenue, Littlefield, TX 79339
Phone: (806) 385-1904
Fax: (806) 385-5905

Main Office:

Calvert Home Health Care, Ltd.
8004 Indiana Avenue, Suite B-15, Lubbock, Texas 79423
Phone: (806) 747-8972
Fax: (806) 747-8965

Grand Court Office:

4601 71st Street, Suite 231
Phone: (806) 785-4006
Fax: (806) 785-4211

Ventura Place Office:

3026 54th Street, Suite 315
Phone: (806) 793-2662
Fax: (806) 793-2636

Carillon Office:

1717 Norfolk, Suite 2105
Phone: (806) 281-6192
Fax: (806) 791-3415

Elmbrook Estates Office:

5301 66th Street, Room 1000, Lubbock, TX 79424
Phone: (806) 783-8878
Fax: (806) 783-8986

Petersburg Office:

1520 Main Street, Petersburg, TX 79250
Phone: (806) 667-1500
Fax: (806) 667-9401

Wedding Showers

Wilkersons honored with wedding shower

Brittni and Kolby Wilkerson were honored with a wedding shower on Saturday July, 21, in the home of Starla Ellis.

The bride is the daughter of Don and Sherry Carter. The groom is the son of Ronnie and Gina Smith.

Hostesses for the event included Debbie Conner, Paulette Foster, Rhonda Myers, Tonda Wood, Janelle Smith, Debbie Walters, Linda Martin,

Tanya Steinbock, Rosa Davis, Shonnie Geissler, Rayann Doshier, Chandia Sanchez, LaDonna Scott, Sherrie Nichols, Leann Gallman, Pam Atwood, Jody Wood, Starla Ellis, Terri Loudder, and Sarah Black.

The hostesses gift was an outdoor grill.

Special guests included Sherry Carter, Opal Tugwell, Sandy Carter, Dawn Childers, Marla Blocker,

Mildred Carter, Gladys Jelexel, Terri Cantrel, Leah Pierce, Maisy Doss, Hailey and Ashley Ballow, Whitney and Mallary Blocker and Gina Wilkerson.

Other special guests included Phyllis Angeley, Katie Wilkerson, Shelley Angeley, Maddie Angeley, Belle Kelley, Cassie Kelley, Kendra Kelley, Katlyn Kelley, Brandi Angeley, Shonnee and Kaitlyn Geissler.



BRITTONI WILKERSON

Publication of Obituaries

Obituaries printed in the Muleshoe Journal are printed free of charge and contain the following types of information: date and details of funeral and place of burial; date and place of birth and parents names; date of marriage; limited biographical information, including the highest level of schooling achieved, service in the Armed Forces, profession (and retirement information if applicable); names of relatives who have preceded the person in death; names of survivors (including husband and wife, parents, in-laws, brothers, sisters, grandparents (only the number of grandchildren, great-grandchildren and great-great-grandchildren) will be included; and where memorials may be directed. We will be pleased to run a one column black and white photo at no charge. A larger photo or a color photo will cause the obit to be paid. Please keep in mind that everything must be submitted by your funeral home.

BAILEY COUNTY DEVOTIONAL PAGE

WESTERN DRUG
& Something Special Gifts
1411 W. American Blvd. 272-3106 Muleshoe

"THE FIVE AREA TELEPHONE COOPERATIVE, INC."
West Plains Telecommunications, Inc.
Five Area Systems, Inc., Plateau Wireless
Five Area Long Distance - Five Area Internet
302 Uvalde Muleshoe, USA (806) 272-5533

MCCORMICK SEEDS, INC.
400 East Ash • 272-3156
Muleshoe, Texas
A COMPLETE LINE OF FIELD SEEDS

United Supermarkets

Farmers Coop Ass'n of Sudan
P.O. Box 120 • Sudan, Texas
227-2461
Mobile: (806) 638-7692 FAX (806) 227-2102
Dennis Flowers, Gen. Manager Email: dflowers@fivearea.com

IRRIGATION PUMPS & POWER
Zimmatic W. Hwy. 84
CENTER-PIVOTS 272-5597

minsa CORPORATION
US Hwy. 84 East
Muleshoe • 272-5545

BCEC BAILEY COUNTY ELECTRIC COOPERATIVE ASSOCIATION
Muleshoe — 272-4504 Morton — 266-8600

MULESHOE PEA & BEAN, INC.
1680 CR 1044, Muleshoe • 272-5589
Ed, Nicky & Chad Nickels

MAPLE COOP GIN
927-5501
Maple, Texas

Deaf Smith County Grain, Inc.
Cliff A. Skiles, Jr.
Jeb S. Skiles

SPARKLE Cleaners
"WE CARE ABOUT YOU"
114 East Ave. C, Muleshoe
272-3570

MULESHOE TIRE
107 Main St., Muleshoe • 272-4594
After Hour Service: 946-7668

BOEHRING DAIRY
690 CR 45, Earth
"MILK - A PART OF EVERYTHING THAT IS GOOD!"

WAYNE COPLEY TRUCKING
CALICHE, SAND & ROCK PRODUCTS
P.O. Box 63 (806) 272-3697
Muleshoe, Texas 79347 Mobile: (806) 946-8072

Headed Homeward by Max Lucado

Aging is God's idea. It's one of the ways he keeps us headed homeward. We can't change the process, but we can change our attitude. Here is a thought. What if we looked at the aging body as we look at the growth of a tulip?

Do you ever see anyone mourning over the passing of the tulip bulb? Do gardeners weep as the bulb begins to weaken? Of course not. We don't purchase tulip girdles or petal wrinkle cream or consult plastic-leaf surgeons. We don't mourn the passing of the bulb; we celebrate it. Tulip lovers rejoice the minute the bulb weakens. "Watch that one," they say. "It's about to blossom."

Could it be heaven does the same? The angels point to our bodies. The more frail we become, the more excited they become. "Watch that lady in the hospital," they say. "She's about to blossom." "Keep an eye on the fellow with the bad heart. He'll be coming home soon."

"We are waiting for God to finish making us his own children, which means our bodies will be made free" (Rom. 8:23).

Are our bodies now free? No. Paul describes them as our "earthy bodies" (Phil. 3:21 MSG). Or as other translations state:

"our lowly body" (NKJV); "the body of our humble state" (NASB); "these weak mortal bodies" (NLT); "our vile body" (KJV); "our simple bodies" (NCV).

You could add your own adjective, couldn't you? Which word describes your body? My cancerous body? My arthritic body? My deformed body? My crippled body? My addicted body? My ever-expanding body? The word may be different, but the message is the same: These bodies are weak. They began decaying the minute we began breathing.

And, according to God, that's a part of the plan. Every wrinkle and every needle take us one step closer to the last step when Jesus will change our simple bodies into forever bodies. No pain. No depression. No sickness. No end.

This is not our forever house. It will serve for the time being. But there is nothing like the moment we enter his door.

From *Traveling Light* Copyright (W Publishing Group, 2001) Max Lucado

This devotional & directory is made possible by these businesses who encourage all of us to attend worship services.

<p>ASSEMBLY OF GOD FIRST ASSEMBLY OF GOD 521 South First Street 272-3017 Jack Stone, Pastor • 272-3984 S.S. 9:45 am, W.S. 10:30 am & 6:00 pm, Wed. 7:00 pm EL BUEN PASTOR 415 E. Ave. F • 272-5455 Pastor Domingo Luna • 272-4542 S.S. 9:45 am, W.S. 11 am & 6 pm; Wed. 7 pm</p>	<p>CATHOLIC IMMACULATE CONCEPTION CATHOLIC CHURCH 805 E. Hickory Leonardo Pahamtang, Min.</p> <p>EPISCOPAL - CHARISMATIC ST. CLEMENTS CHURCH COMMUNION OF CHRIST THE REDEEMER Hwy. 214 South • 272-5954 Father Sergio Leal Sun. W.S. 10:30 am</p>	<p>LUTHERAN ST. JOHN LUTHERAN Lariat, TX • David Symm, Min. S.S. 10:30 am; W.S. 9:30 am</p> <p>METHODIST FIRST UNITED METHODIST 507 W. 2nd St. Spanish Service 8:30; S.S. 9:45; W.S. 11:00 Praise & Prayer 6 PM Pastor Monty Leavell, 272-5517 LAZBUDDIE METHODIST S.S. 9:30 am; W.S. 10:30 am Pastor Ken Peterson 965-2121</p> <p>EL DIVINO SALVADOR U.M.C. 619 E. 5th Street & Ave. G, Muleshoe Javier Careaga, Pastor 272-6888</p>
<p>BAPTIST CALVARY BAPTIST 1733 W. Ave. C. Rev. Jeff Coffman CIRCLE BACK BAPTIST Intersection FM 3397 & FM 298 FIRST BAPTIST 220 West Ave. E Dr. Stacy Conner FIRST BAPTIST Lazbuddie • 965-2126 PRIMERA IGLESIA BAUTISTA 223 E. Ave. E Interim Rev. Troy Smith PRIMITIVE BAPTIST 621 South First Elder Bernard Gowens, Min. PROGRESS BAPTIST Progress, TX PROGRESS SECOND BAPTIST Arthur Hays, Min. - 1st & 3rd Sundays RICHLAND HILLS BAPTIST Bro. Larry Thornton 17th & West Ave. D S.S. 10 am; W.S. 11 am & 6 pm; Wed. 7 pm TRINITY BAPTIST 314 E. Ave. B - Bennie Wright, Min.</p>	<p>CHRISTIAN TRINITY CHRISTIAN CENTER 1723 W. American Blvd. • 272-3877 Reydon Stanford, Pastor Sun. W.S. 10:30 am CENTRO CRISTIANO 117 E. Birch St. Hermanos Barron S.S. 10 a.m.; W.S. 11 a.m. & 6 p.m. Wed. 7 p.m.</p> <p>CHURCH OF CHRIST LARIAT CHURCH OF CHRIST Sam Billingsley, Min. S.S. 10 a.m.; W.S. 11 a.m. & 6 p.m., Wed. 7 p.m. LAZBUDDIE CHURCH OF CHRIST Nathan Crawford, Min. S.S. 9:30 am; W.S. 10:20 am & 5 pm; Wed. 7 pm MULESHOE CHURCH OF CHRIST 22nd & W. American Blvd. S.S. 9:30 am; W.S. 10:20 am & 6 pm; Wed. 7:30 pm 16th & AVE. D CHURCH OF CHRIST Curtis Shelburne, Min. 272-4619 S.S. 9:30 am; W.S. 10:30 am; Growth Gr. 1:30 pm; Wed. 7:00 pm</p>	<p>PENTECOSTAL UNITED PENTECOSTAL LIGHTHOUSE 207 East Ave. G 1-800-454-6051 S.S. 10 am; Thursday, Bible Study 7 pm</p> <p>INTER DENOMINATIONAL NEW COVENANT Plainview Hwy. Steve Claybrook, Pastor W.S. 10 am; Wed. 7 pm MULESHOE COWBOY FELLOWSHIP 710 E. American Blvd., Muleshoe Steve Friskup, Minister 272-5199 Service: 7:30 p.m. Thursday</p>

If your church has a change of information, please call 272-4536.

1ST BANK MEMBER FDIC
202 South First 272-4515

Serve Wholeheartedly as if you were serving the Lord, not men. Ephesians 6:7
MV INC.
2601 W. American Blvd. P.O. Box 631
Muleshoe, Texas
(806) 272-4266
Mobile (806) 946-8763
mvinc@fivearea.com

MULESHOE ANIMAL CLINIC
GENERAL PRACTICE
M S
1430 US Hwy. 84 • Muleshoe Office: 272-3061

MCDONALD'S OF MULESHOE
1315 W. American Blvd. • 272-3333
Open at 5:00 a.m. every day! i'm lovin' it

Lowe's MARKETPLACE
401 W. American Blvd. • Muleshoe • 272-4585

Lazbuddie Feeders, Ltd.
"We make your dairy bull calves worth more!"
Lazbuddie, Texas
965-2435

HENRY INSURANCE AGENCY
Rama Smalling Agent
111 W. Avenue B
P.O. Box 563
Muleshoe, TX 79347
888-658-4581
(806) 272-4581
Fax (806) 272-5892

CENTRAL COMPRESS & WAREHOUSE
SUDAN, TEXAS

PACO FEED YARD, LTD.
Commercial Cattle Feeders
P.O. Box 956, Friona
265-3281
Feller Hughs-Mgr.

Pizza Hut
1412 W. American Blvd.
Muleshoe • 272-4213
Open: Sun.-Mon. 11 AM-11 PM
Lunch Buffet: Sun.-Fri. 11:30 AM-1:30 PM
Monday Night Buffet: 6-8 PM
"Gather round the Good Stuff"

J&S Dairy
1260 CR 1038, Muleshoe
272-7706

Lia's TORTILLA FACTORY
105 E. Ash St., Muleshoe • 272-5772
Phillipians 4: "I can do all things through Christ who strengthens me."

TEXAS FARM BUREAU INSURANCE Co.
1612 W. American Blvd., Muleshoe • 272-4567

LAW OFFICE OF TINA DAVIS
Criminal - Probate - Real Estate - Family Law
101 S. Main, Muleshoe • 272-7776

Interim HEALTHCARE
110 E. Ave. C
Muleshoe 272-5549
www.InterimHealthcare.com
Annette Orcoz • LeAnn Altman • Kristen Meeks, RN-BSN • Myranda Whitte, RN-BSN • Kay Gray
Olivia Barrera • Arlene Brook • Brandi Hamilton • Deena Hamilton • Twila Ratter

BAILEY COUNTY DEVOTIONAL PAGE

Obituaries

Alice Scifres

Church services for Alice Hicks Scifres, 80, of Irving, were held on Friday, July 27, at the Immaculate Conception Catholic Church of Muleshoe, with the Rev. Fr. Leo Pahamtang officiating.

Burial followed in Muleshoe Memorial Park Cemetery.

Scifres died on July 24, 2007, in her residence in Irving.

She was born on Dec. 8, 1926, in Muleshoe, and married Medford Scifres in Muleshoe on Feb. 25, 1949.

She was preceded in death by her parents — A.J. and Cecelia Jesko

Hicks; and two brothers — Jack and Alfred Lee Hicks.

Scifres was raised in Muleshoe, and moved with her husband to Clovis, N.M., for a time. In 1989, they moved to Irving.

She was a registered nurse in various facets of the health care field.

Survivors include her husband — Medford Scifres of Irving; two sons — Alan Jay Scifres of Richardson and Kyle Ray Scifres of Irving

She is also survived by a sister — Ethel Storrs of Lubbock; and a grandson — Michael Andrew Scifres.

Engagement



DANIEL HERNANDEZ AND ROSARIO FLORES

Flores, Hernandez engaged

Rito and Celia Flores of Muleshoe announce the engagement and approaching marriage of their daughter, Rosario Flores, to Daniel Hernandez.

The prospective bride is a 2000 graduate of Muleshoe High School and a 2004 graduate of West Texas A&M University.

She is currently employed with the Texas Department of Family and Protective Services as a social worker, and is pursuing a master's degree in social work through the University of Texas at Arlington and West

Texas A&M University.

The prospective groom is the son of Francisco and Maria Hernandez of Gruver. He is a 2000 graduate of Gruver High School and 2004 graduate of West Texas A&M University.

He is currently employed as an assistant manager for Market Street United in Amarillo.

The couple will exchange vows in a noon ceremony on Aug. 18, 2007 at Our Lady of Guadalupe Catholic Church in Amarillo.

A reception will follow the ceremony.

Horned lizard program set for Aug. 13

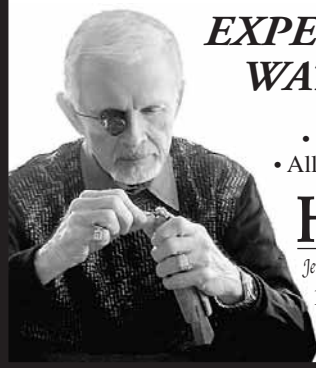
The Muleshoe Heritage Foundation is sponsoring an informational program on Texas horned lizards, also known as "horny toads," at 7 p.m., on Monday, Aug. 13, in the Santa Fe Depot of the Heritage Center.

Children and adults are invited to attend this informal event. There is no admission charge.

EXPERT JEWELRY AND WATCH REPAIRING

- Ring sizing - 2-3 days
- Ring re-mounting • Jewelry appraising
- All makes watch batteries • Faster service

Celebrating 63 years
HOLMBERG JEWELRY
Jewelry Accents - Credit Program, Always 90 Days Same As Cash
1908 N. Prince • Clovis, NM • 762-9376
New Saturday Hours: 9:30 - 12:30



Ramiro Garza

Funeral services for Ramiro Ramos Garza, 54, of Hereford will at 1 p.m. on Friday, Aug. 3, at La Iglesia de San Jose with the Rev. David Contreras officiating. Burial will follow in West Park Cemetery.

Prayer vigils were recited on Wednesday, Aug. 1, and Thursday, Aug. 2, at Rix Funeral Chapel in Hereford.

Garza died on July 30, 2007 at Northwest Texas Healthcare System in Amarillo. He was born on Dec. 16, 1952, in San Juan to Torivio and Gregoria Ramos Garza, and married Susie Sierra on Nov. 17, 1972 in Hereford.

Garza attended school in San Juan and in Hereford, and was employed by Griego Dragline, Barrett-Crofoot and Messer Construction.

Garza was a member of

La Iglesia de San Jose Catholic Church.

He was preceded in death by his parents.

Survivors include his wife — Susie Garza of Hereford; a daughter — Benita San Miguel of Hereford; three sons — Ramiro Garza, Jr. and Tranquilino Garza, both of Hereford and Michael Garza of Dumas; seven sisters — Elvira Gonzales of Houston, Esmeralda Rios, Irma Pena and Maria Mendez, all of Hereford, Juanita Hernandez of San Juan, Mariannita Salinas of Minnesota, Martina Regalado of Muleshoe; five brothers — Guadalupe Irlas of Fresno, Calif., Natividad Garza of New Braunfels, Armando Garza and Cecilio Garza, both of Hereford, Francisco Garza of Dallas; six grandchildren and three step-grandchildren.

Lazbuddie drive results released

According to Coffee Memorial Blood Center, 15 people stopped in to donate blood at the Lazbuddie Community Blood Drive on July 30.

A total of 11 units were received.

Thanks for reading!

Park View Nursing Care Center

"A Commitment to Caring"

- Beautifully landscaped facility
- Two fireplaces to add to the "homey" feel of our facility
- Three sun rooms overlooking the park
- Game & activity rooms
- Spacious private & semi-private rooms
- Certified for Skilled Nursing Care

Call Sandy Z. Sandlin
Administrator

1100 W. Avenue J, Muleshoe • 272-7578

Muleshoe receives airport funds

Approximately \$314,816 has been approved for Muleshoe Municipal Airport by the Texas Transportation Commission at its July meeting.

The funds will be used for improvements planned at the airport, including pavement improvements.

A contract for the project is expected to be awarded this fall.

Project costs will be funded through TxDOT's Aviation Facilities Grant Program, which preserves and improves the state's general aviation system, and the City of Muleshoe.

WATCH FOR FALLING TOTS.

Your Drive-In is about to be remodeled. But don't fret, you can still get your SONIC favorites during all phases of construction!



SONIC

© November 2006 America's Drive-In Corp.

NOW OPEN IN MULESHOE!

D&K Feed & Tire

OPEN 7 DAYS A WEEK - 7AM TO 8PM

Nutrena & MoorMan's Feeds
New & Used Tires

Flats Fixed....\$6⁰⁰
Horse Feed....\$6⁵⁰/bag

509 W. AMERICAN BLVD.
272-6799

2007 Curry County Fair August 13-18



Thursday, Aug. 16 - 8 pm

GRUPO VIDA with Grupo Eclipse



Saturday, Aug. 18 - 8 pm

JACK INGRAM with Liz Carlisle

\$2000 ADDED PRIZE MONEY DEMOLITION DERBY



Thursday Aug. 16 - 7 pm

MIX 107.5 ARENA CROSS

Tickets:
Advance \$14 adults, \$9 child 3-12
At Gate: \$15 adult, \$10 child 3-12
Locations:
High Desert Honda, Cycle City, Fair Office & Extension Office



WRIGHT'S AMUSEMENTS

TUESDAY - FOOD BANK NIGHT
5pm til midnight
(\$20 wristband with 3 cans of food)

WEDNESDAY - HERO'S NIGHT
5pm til midnight
\$5 off wristband with Firefighter, Police or Military I.D.

THURSDAY - THRIFTY NICKEL AMERICAN CLASSIFIED'S READER APPRECIATION NIGHT
5 pm til midnight
(3 wristbands for \$40 with coupon from Thrifty Nickel American Classified's)

FRIDAY AND SATURDAY
5pm til midnight - (\$25 wristband)

Free with Gate Admission



AUG. 13 FIREWORKS

INFO: (505) 762-8827
ccfair@currycounty.org
CurryCountyFair.com



Ladies Golf Assn. News

The Muleshoe Ladies Golf Association met on Wednesday, July 25, at the Muleshoe Country Club.

President Marlene Martin opened the meeting with prayer, led by Deborah Noble.

Treana Matthews read the minutes and called roll. There were 16 members present.

Our July birthdays were Pat Kirk and Marlene Martin.

The treasurer's report was given by Kirk.

As for old business, Judy Wilbanks reported that we had lots of fun and played golf in the rain at the Ruidoso Tournament. The winning team was Deborah Nobel, Helen Templeton and Kay Field.

The Senior Tournament will be Sept. 9-13, at Hereford. Entry fees must be in by Aug. 23. Entry forms can be found in the ladies' locker room at the country club.

Wilbanks, the playday chairperson, handed out balls for best score on June 27, to Sheryl Engelking, Kirk, Field, Wilbanks, Templeton and Jeanette Precure.

The winners of the July 11 longest drive were Kirk and Jerie Flowers. The July 18 award for most pars went to Wilbanks.

The Jennyslipper Tournament will be held on Saturday, Aug. 18. Tee off time will be 9 a.m. Breakfast and lunch will be served by the Ladies Golf Association.

Engelking reported on the Farewell High Plains Tournament was held on July 18. Engelking and Noble one a point each in their flights for low net. Engelking also made an eagle on the fifth hole.

There were seven people competing from Muleshoe — Analita Haley, Templeton, Engelking, Irene Mason, Noble, Kirk and Elinor Yerby.

The next High Plains

Nickels benefit set for Aug. 12

A benefit luncheon for Jayci Joy Nickels, the daughter of Guy and Kimberly Nickels, has been scheduled for Sunday, Aug. 12, from 11 a.m. until 2 p.m., at the Muleshoe High School Cafeteria.

The menu will include barbequed brisket, beans, potato salad, and all the fixings.

Tickets are \$7 for adults and \$5 for children.

Advance tickets are available at Williams General Store. Takeout plates will be available, and delivery in the Muleshoe area can be arranged by calling 272-7306.



Pictured above, from left to right, are the winners of the Ruidoso Scramble — Deborah Nobel, Helen Templeton and Kay Field.

tournament will be held at three teams, with the Clovis Chaparral on winning team being Wednesday, Aug. 8, at 9 Engelking, Templeton and a.m. (Texas time) Wilbanks.

The door prize winner The next luncheon is set was Matthews. for Wednesday, Aug. 15.

The ladies divided into Tee time is at 9 a.m.



Cash winner announced

Vera Callaway of Muleshoe received a \$5,000 check from United Supermarkets Wednesday, part of the store's Monopoly sales promotion. Pictured from left to right are Chad Lovell, Vera Callaway and April Castillo.

Thanks for reading!

Levelland to host farmer's market

The Levelland Main Street Program is ready for all willing and able producers to start selling their goods during its Farmers Market.

The market will start July 18 and will run every Wednesday and Saturday.

If any producers or local crafters want to participate in this year's market please call the Levelland Main Street Office at 806-894-3157.

AFFORDABLE BAIL BONDS
 Bonding available for Parmer & Bailey counties.
806-481-3280
806-481-3281
806-272-6820
 7 days a week!

"Giving of yourself, learning to be tolerant, giving recognition and approval to others, remaining flexible enough to mature and learn - yields happiness, harmony, contentment and productivity. These are the qualities of a rich life, the bounteous harvest of getting along with people."
 —Jack C Yewell

Heroes cross our path every day in some form or fashion. Join us in saluting some of our own..

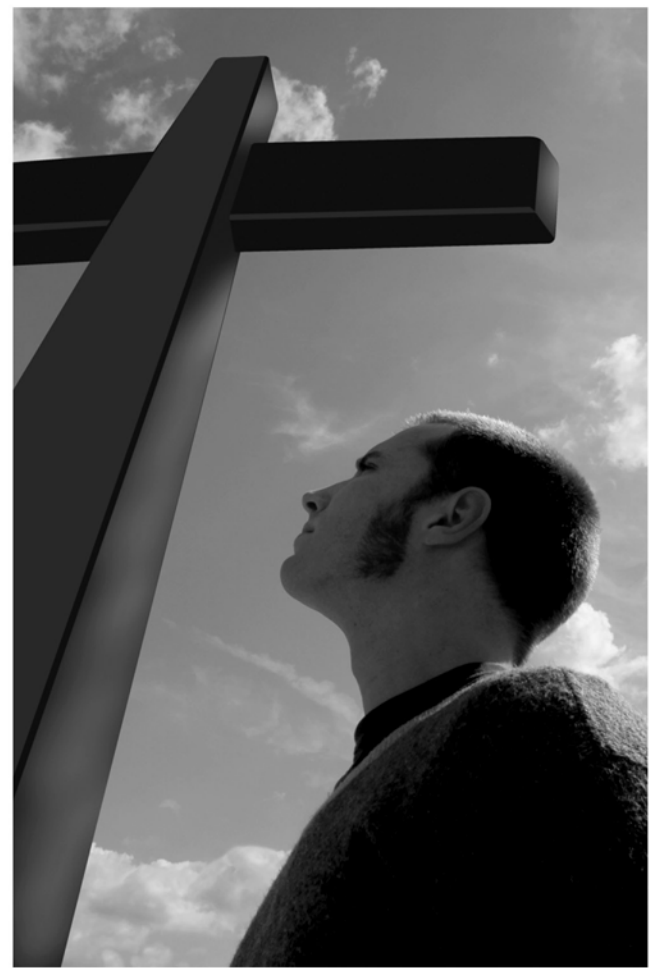
HOMETOWN HEROES

EMERGENCY PERSONNEL
 MEDICAL PROFESSIONALS
 CITY GOVERNMENT & EDUCATORS
 SPIRITUAL LEADERS

In our final week of hometown hero salutes, we take the time to acknowledge the many spiritual leaders of our community and the surrounding area. It is with your strength and guidance that we move righteously forward. Your influence guides other heroes to do what is best for our community. Your leadership guides our community to do what is right in the eyes of God. We're a better community because we can lean on you. We thank you for your patience, compassion and prayers on our behalf. As servants of God, you are our earthly heroes. Know that we too, pray for you and your continued wisdom.

Bailey County Ministerial Alliance - Function - Help those in need, including transits that pass through town (with exceptions) and local transits. Help the elderly when possible. Generate funds for the Hope Chest and Christmas In Muleshoe programs. Food drives for various food pantries, toys for Christmas programs and some churches also participate in coat drives. Around Easter, we try to raise money again for those in need.; Personnel - Numerous volunteers from a combination of churches in Muleshoe.

- | | | |
|--|---|---|
| <p>ASSEMBLY OF GOD
 FIRST ASSEMBLY OF GOD
 521 South First Street
 272-3017
 Jack Stone, Pastor • 272-3984
 S.S. 9:45 am,
 W.S. 10:30 am & 6:00 pm,
 Wed. 7:00 pm
 EL BUEN PASTOR
 415 E. Ave. F • 272-5455
 Pastor Domingo Luna • 272-4542
 S.S. 9:45 am, W.S. 11 am & 6 pm;
 Wed. 7 pm</p> | <p>CATHOLIC
 IMMACULATE CONCEPTION
 CATHOLIC CHURCH
 805 E. Hickory
 Leonardo Pahamtang, Min.</p> | <p>LUTHERAN
 ST. JOHN LUTHERAN
 Lariat, TX • David Symm, Min.
 S.S. 10:30 am,
 W.S. 9:30 am</p> |
| <p>BAPTIST
 CALVARY BAPTIST
 1733 W. Ave. C.
 Rev. Jeff Coffman
 CIRCLE BACK BAPTIST
 Intersection FM 3397 & FM 298
 FIRST BAPTIST
 220 West Ave. E
 Dr. Stacy Conner
 FIRST BAPTIST
 Lazbuddie • 965-2126
 PRIMERA IGLESIA BAUTISTA
 223 E. Ave. E
 Interim Rev. Troy Smith
 PRIMITIVE BAPTIST
 621 South First
 Elder Bernard Gowens, Min.
 PROGRESS BAPTIST
 Progress, TX
 PROGRESS SECOND
 BAPTIST
 Arthur Hays, Min. - 1st & 3rd Sundays
 RICHLAND HILLS BAPTIST
 Bro. Larry Thornton
 17th & West Ave. D
 S.S. 10 am; W.S. 11 am & 6 pm;
 Weds. 7 pm
 TRINITY BAPTIST
 314 E. Ave. B - Bennie Wright, Min.</p> | <p>EPISCOPAL - CHARISMATIC
 ST. CLEMENTS CHURCH
 COMMUNION OF CHRIST
 THE REDEEMER
 Hwy. 214 South • 272-5954
 Father Sergio Leal
 Sun. W.S. 10:30 am</p> | <p>METHODIST
 FIRST UNITED METHODIST
 507 W. 2nd St.
 Spanish Service 8:30;
 S.S. 9:45; W.S. 11:00
 Praise & Prayer 6 PM
 Pastor Monty Leavell, 272-5517
 LAZBUDDIE METHODIST
 S.S. 9:30 am; W.S. 10:30 am
 Pastor Ken Peterson
 965-2121
 EL DIVINO SALVADOR U.M.C.
 619 E. 5th Street & Ave. G,
 Muleshoe
 Javier Careaga, Pastor
 272-6888</p> |
| <p>CHRISTIAN
 TRINITY CHRISTIAN CENTER
 1723 W. American Blvd. • 272-3877
 Reydon Stanford, Pastor
 Sun. W.S. 10:30 am
 CENTRO CRISTIANO
 117 E. Birch St. - Hermanos Barron
 S.S. 10 a.m.; W.S. 11 a.m. & 6 p.m.
 Wed. 7 p.m.</p> | <p>CHURCH OF CHRIST
 LARIAT CHURCH OF CHRIST
 Sam Billingsley, Min.
 S.S. 10 a.m.;
 W.S. 11 a.m. & 6 p.m.,
 Wed. 7 p.m.</p> | <p>PENTECOSTAL
 UNITED PENTECOSTAL
 LIGHTHOUSE
 207 East Ave. G
 1-800-454-6051
 S.S. 10 am; Thursday,
 Bible Study 7 pm</p> |
| <p>LAZBUDDIE CHURCH OF CHRIST
 Nathan Crawford, Min.
 S.S. 9:30 am; W.S. 10:20 am
 & 5 pm; Wed. 7 pm
 MULESHOE CHURCH OF CHRIST
 22nd & W. American Blvd.
 S.S. 9:30 am; W.S. 10:20 am
 & 6 pm; Wed. 7:30 pm
 16th & AVE. D
 CHURCH OF CHRIST
 Curtis Shelburne, Min.
 272-4619
 S.S. 9:30 am; W.S. 10:30 am;
 Growth Gr. 1:30 pm; Wed. 7:00 pm</p> | <p>INTER DENOMINATIONAL
 NEW COVENANT
 Plainview Hwy.
 Steve Claybrook, Pastor
 W.S. 10 am; Wed. 7 pm
 MULESHOE COWBOY
 FELLOWSHIP
 710 E. American Blvd., Muleshoe
 Steve Friskup, Minister
 272-5199
 Service: 7:30 p.m. Thursday</p> | <p>UNITED PENTECOSTAL
 104 W. 9th St., Muleshoe • 272-3120</p> |



We Love Our Hometown Heroes!

MULESHOE ANIMAL CLINIC & VET SUPPLY 1430 US Hwy. 84, Muleshoe • 272-3061/272-4990	LOWE'S MARKETPLACE 401 W. American Blvd., Muleshoe • 272-4585	UNITED SUPERMARKETS 104 W. 9th St., Muleshoe • 272-3120
FIVE AREA TELEPHONE ORGANIZATION 302 Uvalde, Muleshoe • 272-5533	MCDONALD'S OF MULESHOE 1315 W. American Blvd., Muleshoe • 272-3333	BOEHRING DAIRY 690 CR 45, Earth • 965-2997
WEST CAMP GIN 350 FM 1731, Muleshoe • 925-6681	COUNTRY DAISY DESIGN - THE HEINRICHS 1725 W. Ave. B, Muleshoe • 806-632-8098 Cell	MAPLE CO-OP GIN Hwy. 596, Maple • 927-5501
CLAY'S CORNER GIN 558 Hwy. 214, Muleshoe • 965-2176	PANDA CHINESE BUFFET 1820 W. American Blvd., Muleshoe • 272-8999	MULESHOE FORD-MERCURY 1125 W. American Blvd., Muleshoe • 272-4251
BAILEY COUNTY ELECTRIC CO-OP ASSN. 305 E. Ave. B, Muleshoe • 272-4504	Thank You!	MULESHOE JOURNAL 201 W. Ave. C, Muleshoe • 272-4536

Want your paper delivered early?
 Get an electronic subscription to the Journal for only \$24 a year!
 Call 272-4536.

Keeping our promises to our military heroes

Abraham Lincoln best described our everlasting commitment to our soldiers when, on behalf of a grateful nation, he pledged, "to care for him who shall have borne the battle."

Today, caring for the health of those who have fought to defend freedom continues to be one of the federal government's most enduring responsibilities.

The U.S. Department of Veterans Affairs operates America's largest health care system, consisting of nearly 700 medical centers, clinics and residential facilities.

Texas is home to several of these facilities. But we must expand the VA's reach to meet the needs of Texas' growing population of veterans, already one of the largest in the country, as well as address the changing needs of our newest veterans from the Global War on Terror.

And there is also much we can do to improve care at the national level. We must emphasize research in areas such as mental health and modern prosthetic technology, and encourage the study of poorly understood conditions such as Gulf War Syndrome and traumatic brain injury.



Capitol Comment

By U.S. Sen. Kay Bailey Hutchison

The Waco VA hospital, one of our state's premier facilities, is a national leader in psychiatric care and research.

Despite its stellar reputation, federal budget cuts threatened to close the hospital in 2003.

As Chairman of the Military Construction and Veterans Affairs Appropriations Subcommittee in the U.S. Senate, I invited the VA Secretary to visit Waco with me and observe first hand the exceptional care and research at Waco's VA hospital.

Seeing that the VA was prepared to close a mental health facility convinced me that we were going in exactly the wrong direction.

We should be increasing, not decreasing, our commitment to mental health. So in 2005 I helped author legislation that designated the Waco

veterans' facility and two facilities in other states Centers of Excellence for mental health research, expanding the scope of treatment to include areas such as post-traumatic stress disorder, anxiety, depression and substance abuse.

As a result of these efforts and tireless community support, the VA has decided to keep this renowned facility open to serve thousands of veterans throughout the central United States.

The Big Spring VA Medical Center was also kept open to serve veterans across west Texas, and inpatient care and other services there were expanded.

Other challenges remain. In Houston, after recent reports of extensive and, I believe, unacceptable delays in processing the disability claims of

thousands of area veterans the VA sent a management team to the local office to end this backlog.

And we must do more. South Texas veterans, for example, are forced to endure 500 mile, six-hour roundtrip treks to the San Antonio VA hospital for even basic procedures and routine check-ups. Last year, I personally asked VA Secretary Jim Nicholson to conduct a study of veterans' needs in South Texas and to determine the best way to deliver the quality care they deserve.

Our nation's veterans

answered the call to serve, and we must honor our promise to care for their needs after they leave the battlefield. I will continue to work in the Senate on behalf of America's heroes, in recognition of the sacrifices they have made to safeguard liberty at home and throughout the world.

BOOTS Work & Dress SHOES Casual & Athletic CLOTHING Western & Athletic

GENERAL WILLIAMS STORE

SINCE 1963

1405 West American Blvd. Muleshoe, Texas 806-272-MULE (6853)

Welcome to the Half Century Old Club!

We Love You!

Lacie, Shane, Brenda, Brianna, Lacie, Stephanie & Joey

Dillman student registration set

On Aug. 13-14, from 8 a.m.- noon, and 1-4 p.m., Dillman Elementary will have registration for new students for the 2007-08 school year.

Parent will need to provide the following items to register: Photo ID, a birth certificate, social security card, shot records. For Head Start and Pre-Kindergarten, proof of income will also be necessary.

For additional information, call 272-7382 after Aug. 6.

Cotton Market Weekly

Amid slow summer trading, U.S. cotton futures prices fell on the New York Board of Trade Thursday after opening modestly higher on constructive export and consumption news.

U.S. cotton export figures for the week ended July 19 were as most market observers expected with 23,700 bales sold, according to USDA.

Sales to China, Thailand, Mexico, and Japan were partially offset by cancellations for Taiwan and Hong Kong.

Despite a 19 percent drop from the previous week, the figure still was considered healthy as more new crop cotton was sold.

Net sales of 93,000 bales were sold for the upcoming 2007-08 season. Featured buyers were Mexico and China.

Export shipments of 450,300 bales were six percent more than the previous week and nine percent more than the four-week average.

Primary destinations included China, Turkey, Indonesia, and Mexico.

Analysts said the healthy shipment figure suggested shipments still are on target to meet USDA's export projection of 13 million bales for the 2006-07 season that ends on July 31.

The summer doldrums were felt in the spot cotton market this week as online sales by producers in Texas, Oklahoma, and Kansas totaled only 124 bales in week ended July 26

compared to 1,483 bales the previous week.

The average price received by producers was 59.90 cents per pound compared to a range of 33.00 to 60.07 cents per pound the previous week.

U.S. consumption data also was issued this week as the National Cotton Council reported U.S. mills used cotton at a seasonally adjusted annualized rate of 4.95 million bales in June, up slightly from USDA's 4.9-million-bale projection.

The figure compares to 5.56 million at the same time last year.

In other news, cotton consumption continues to grow in China.

The head of the China Cotton Textile Association was quoted as saying that China's cotton consumption will increase to 59.7 million bales by the end of 2007 and to 110 million bales by the end of 2010.

Meanwhile, the condition of the current 2007-08 U.S. cotton crop is steadily improving, according to USDA's crop progress report.

While the crop is lagging behind its normal rate of development, the report showed the U.S. crop was generally in better shape than the week before.

Oklahoma, Georgia, and Alabama are the three states the furthest behind in the squaring category, down 19, 16, and 12 percentage points from their respective averages.

In the boll setting column, Georgia, South Carolina,

and Texas were off 31, 20, and 12 percentage points.

While the crop may be late, it appears to be improving on a week-to-week basis.

The 15 state average continued a five week run of improvement at 96.3 percent normal, up from 95.8 the previous week and 83.7 percent at the same time last year.

"Anecdotal reports have portions of Texas too wet and cold, and parts of the South East still way too dry," a market observer noted.

"I maintain the theory that crop years which start out climatically challenged, tend to finish the season equally unstable," he added.

"Don't look for a 'normal' growing season, or harvest weather for that matter," he concluded.

Have a story or photo ideas? Let us know! 272-4536

Happy 3rd Birthday Aaliyah D. Rey!

Love from Your daddy Daniel Rey, Grandpa Tomas, Grandma Rosa, and your aunts, uncles & cousins

WATER TESTING

Test Your Household Well Water

Take **10% OFF** your water sample test with Servi-Tech Laboratories. (include this coupon with your water sample)

Water samples are only accepted Monday-Thursday. Sampling instructions are included in the Water Test Kit.

Get your Water Test Kit today. www.servitechlabs.com 1-800-557-7509

Servi-Tech Laboratories Results You Can Trust

Amarillo, TX

The Only Way for Imperfect People To Be Saved Is . . .

As members of the fallen human race, we've got a problem. We're always fouling something up, messing something up, shaking, scratching, bumping, breaking, and otherwise mutilating this amazing gift we've been given—the gift we call life.

Even at our best, and we are rarely at our best, we are, as Dr. Joel Gregory writes, "a stumbling, stumbling, falling, faltering, blundering group of folks." Human perfection is not

possible. Not on our own. Not with anything less than divine power working within, and, even then, not completely until heaven. And that brings me—forces me—to this.

The only way to "measure up" to God's standard is to accept by faith, to truly trust in, the sacrifice of the only perfect man who ever lived, God's own Son, Jesus Christ. If my salvation—any of it—is based on my perfection in any area, "on my own head," by my own effort, I'm doomed. I know we can play games with this. It's awfully easy, and miserable, to base our salvation not completely on Christ but on being "right." We can pick and choose from a few pet religious rules we think we can keep, and quoting laws supposedly from Scripture, even if we don't know the spirit of Scripture—or the Spirit, we can pick a few pet rituals. We can look to law (even God's) for salvation. Pharisees always have.



Focus On Faith
Curtis Shelburne

But law has always brought death; the Spirit always brings life. And we must choose. In the final analysis, we can count on ourselves, which is what we do if we count on law, or we can count on Christ, his cross, and the life of the Spirit. (Read Galatians.)

To choose law is to end up being deep-down depressed, guilt-ridden, and devoid of joy. Yes, we're imperfect, and we know it. If we're unwilling to completely put our weight down on Christ's sacrifice, we've got to desperately, sadly, miserably, search all our lives for something we can do to make ourselves acceptable to God. It's fruitless. It's deadly. But it's tempting and any number of religions and supposedly religious people are caught in this damnable cycle.

But if "get over ourselves" and trust in Christ alone, if we love our Father and are sure of his love for us, then we'll rejoice in him as he delights in us as his children and works through us, imperfect as we are, all because of the sacrifice of his only perfect Son.

Steve Brown of Key Life Network once mused about this. Somebody who wouldn't have his job for any amount of money (you know the sort) had been criticizing him for some diddly-do little something. He laughed and said, basically, "Hey, if you knew me better, you'd know I have a whole load of glaring faults far worse than that one. I'm a sinner saved only by grace. But guess what? God's working on me. Besides that," he continued, "when you see a dog playing checkers, you don't criticize his game. You're just pleased and proud that he's playing at all!"

Ain't it the truth?

Lance Insurance

Competitive Rates, Variety of Leading Companies For Home, Auto, Commercial and Crop

806-227-2466

Dr. J.W. Haltom

Family Dentistry & Orthodontics

For A Limited Time **\$50 OFF** Crowns and Bridges

- Emergencies Seen Promptly
- Insurance Accepted
- Patient Financing
- Adults & Children Welcome
- Televisions & Head Phones In Treatment Rooms
- Relaxation Gas

806-385-6935

320 East 8th Street, Littlefield, Texas

One for every charmed moment

PANDORA Jewelry

As seen in Glamour, Oprah & Lucky magazines

Antiques & Fine Things

2104 W. American Blvd., Muleshoe • 272-4217

Bridal Shower Selections

ALVARADO PARTY RENTALS

INFLATABLE BOUNCER
Safe - Affordable Fun For Kids!
BEST PRICES AROUND

272-5588
2 Hrs. \$50 - 4 Hrs. \$75 - 6 Hrs. \$100
8 Hrs. \$125

Birthday Parties • School Functions • Special Events
DELIVERY, SETUP & PICKUP
SE HABLE EN ESPAÑOL EDDIE & RACHEL ALVARADO
DJ SERVICES ALSO AVAILABLE

1105

RED WING SHOES

The Fair Store
120 Main 272-3500

NOW OPEN! NOW OPEN! NOW OPEN!

ADVANCED LUBE & CAR WASH

502 N. 1st, Muleshoe
OPEN AT 8:30 AM

Need an affordable oil change or detail car wash?
We pick up and deliver free of charge within the city limits! Call 272-5842 for service!

"Your One Stop Shop" for Oil Changes, Car Washes & Detail, U-Haul Rental, Boxes, Drinks & Snacks!

T-L Irrigation Systems Dealer

PRECURE ELECTRIC
Carroll Precure - Owner
424 N. 1st, Muleshoe 272-4844

GENERAL ELECTRICAL CONTRACTING
• Residential • Commercial • Irrigation

Decorators Floral & Gifts

616 South First Street
Muleshoe, Texas
806/272-4340
www.decoratorsfloral.com

When the heat gets you down and you're wearing a frown...send yourself a plant, who says you can't?

Rent this space for only \$9-\$11.25 per week!
Call 272-4536 and ask how!

Rent this space for only \$9-\$11.25 per week!
Call 272-4536 and ask how!

Mules fans

Advertise your business here!
272-4536

6 months \$11.25 week
12 months \$9.00 week

**Manicures, Pedicures
Chemical Peels
Facials & Waxing
Family Hair Salon**

115 S. Main • 272-5987
Mon.-Fri. 9ish to 5ish
Pat Young, Sherry Curtis,
& Kayla Claybrook

Carolyn's Christmas Creations

106 E. American Blvd.
Muleshoe, Texas
272-5911
www.visitcarolyns.com
Open Daily

'Tis Always Christmas at Carolyn's!

We like to visit nature centers. What do you learn about there?

Newspaper Fun!
www.newspaperfun.com
Animills LLC © 2007 V4-N30

LOWE'S MARKETPLACE

401 W. American Blvd.
Muleshoe, Texas
272-4585

Summer Slump?

Is summer starting to feel too long? Are your friends all on vacation and are you feeling a bit of a slide into a summer slump? Well, here's a whole page of places to go and fun things to do. You'll be busy in no time!

Connect the dots to see an activity that can put sparkle into your day.

What Fun Can Bubble Up at Home?

What Will You See at the Aquarium?

Free Sheet of Stickers!

Are you looking for a break? Head to the city or country for fun things to drive summertime blues away! **Where will you be visiting when you are...**

- finding a favorite painting or sculpture, trying a science experiment or asking a scientist about his display?
- enjoying plays, movies or magic acts?
- watching sea creatures, and touching and holding small sea animals?
- riding rides, eating cotton candy and screaming in the fun house?
- cheering ball players and eating hot dogs?
- swinging on swings, playing tennis on courts or picnicking?
- swimming, digging in the sand or sunning?
- reading up a storm or learning new computer programs?
- "seeing" the past by visiting homes once owned by famous Americans?
- learning about plants and animals in their surroundings; hiking in woods?

Visit our website to see the answers to the puzzles:
www.readingclubfun.com Set goals and keep reading all year long. Join our new international reading club to help you meet your goals and have fun.

BCEC

BAILEY COUNTY ELECTRIC COOPERATIVE ASSOCIATION

305 E. Ave. B
Muleshoe, Texas
272-4504

SHIPMAN'S BODY SHOP, INC.

410 N. 1st Street
Muleshoe
272-4408

• 24 hr. Wrecker Service
• Complete Collision Repair
• Glass Work

Family owned for over 35 years
Garry Shipman

FARMERS INSURANCE GROUP
Symbol of Superior Service

FARMERS LAURIE WINCHELL
Insurance Agent

Call for a free quote:
**HEALTH • AUTO
LIFE • HOME
BUSINESS**

1602 W. American, Muleshoe
272-7548 • FAX 272-4756

Fun at Home!

If you're stuck at home for a few days you can make your own fun. Clean out that closet, garage or toy room at home to "rediscover" stuff that you haven't used all summer.

Fill in the words with these letters:
K T L E B R
M A C P A C D H F

COLORED CHAL
B_K_S
S_OO_ER BU_BLE WAN_S
ISHING_OLE IN_INE S_ATES
B_LL and J_CKS
_ULA_OOPS JU_P_OPE

Back To Safety!



SCHOOL BUS SAFETY

Safety Advice for Students

School bus safety tips for students:

- Be on time - better yet be 5 minutes early!
- Never run to or from the bus.
- Stay away from the bus until it comes to a complete stop.
- Stay in a group while waiting for the bus. If anyone bothers you, tell a trusted adult such as your parents or teacher.
- Stand back from the curb. Have a safe place to wait for the bus, away from traffic and the street - use the 10 foot rule!
- Don't push or shove.
- Stay in your seat.
- Don't yell or shout.
- Always obey the driver and follow his or her instructions closely.
- Wait for the driver's signal before crossing.
- Pay attention to your surroundings. Although motorists are supposed to stop for school buses loading and unloading, not all of them do.
- Always cross at least 10 feet in front of the bus.
- Never crawl under a school bus.

The numbers:

- Number of public school buses: 450,000.
- Number of miles traveled by school buses annually: 4.3 billion.
- Number of children who ride school buses annually: 25 million.
- Number of school-age children killed annually in motor vehicle crashes during school travel hours: 800.
- Percentage of those school-age deaths involving school buses: 2 percent.
- Number of children killed annually in crashes involving school buses: 20.
- Number of children injured annually during school travel hours: 152,000.
- Percentage of those injuries that involve school bus accidents: 4 percent.
- Percentage of the nation's 40,000 annual motor vehicle deaths that are school-age children during school travel hours: 2 percent.

SOURCES: Transportation Research Board; National Highway Traffic Safety Administration

"Stop On Red, Kids Ahead"
National School Bus Safety Week
 October 22-26, 2007



Illegal Passing: The Problem

The big yellow school bus approaches the intersection of First and Main. Seven or eight elementary school students are waiting near the curb. First the yellow lights come on. Then the school bus comes to a halt. The red lights start to flash. The stop-arm goes out. The school bus driver looks at the traffic behind her and in front of her and thinks, "Will anyone try to pass?"

School buses and motorists. Both have been part of the morning and afternoon landscape for five generations of school children. Although yellow wasn't adopted as the school bus color until 1939, school buses have been around since 1915, about as long as the automobile.

In all that time there has been an uneasy co-existence between school buses and motorists. School buses make frequent stops to load and unload students. It is the nature of their business. By law, when a school bus stops to drop off or pick up students, motorists must stop too. But motorists often don't want to stop. Motorists want to get where they are going, with little interruption and as quickly as they can.

In a recent survey on speeding and other unsafe driving behaviors, 99 percent of the drivers interviewed felt that the most dangerous unsafe driving behavior was passing a school bus with its lights flashing and stop arm extended. Passing a stopped school bus was considered to be more dangerous than any other unsafe driving behavior, more dangerous even than racing another driver, driving through a stop sign or red light, crossing railroad tracks with red lights blinking, passing in a no-passing zone, and speeding.

Don't put a child's life and future on the line just to get where you're going a few SECONDS ahead of time! Stop.

The Number of Persons That Can Safely Sit on a School Bus Seat

Federal regulation does not specify the number of persons that can sit on a school bus seat. The school bus manufacturers determine the maximum seating capacity of a school bus. The manufacturers use this number, which is based on sitting three small elementary school age persons per typical 39 inch school bus seat, in the calculations for determining the gross vehicle weight rating and the number of emergency exits. School transportation providers generally determine the number of persons that they can safely fit into a school bus seat. Generally they fit three smaller elementary school age persons or two adult high school age persons into a typical 39 inch school bus seat.

National Highway Traffic Safety Administration (NHTSA) recommends that all passengers be seated entirely within the confines of the school bus seats while the bus is in motion. Federal motor vehicle safety standard No. 222, "School Bus Passenger Seating and Crash Protection" requires that the interior of large buses provide occupant protection so that children are protected without the need to buckle-up. Occupant crash protection is provided by a protective envelope consisting of strong, closely-spaced seats that have energy-absorbing seat backs. Persons not sitting or sitting partially outside of the school bus seats will not be afforded the occupant protection provided by the school bus seats.

The BUS stops here!



ALWAYS STOP FOR A BUS LOADING OR UNLOADING CHILDREN

Avoiding the danger of handrail snagging

The bus driver's responsibility:

The school bus driver is a trained professional concerned with getting children to school and returning them home safely. Driving a school bus is a demanding task. There is a lot of activity in and around the bus. The bus driver must be aware of ever-changing traffic conditions, the children on the bus, and the children who enter and exit at each school bus stop. Compounding this already complex situation is the need for the driver to maintain the school bus schedule.

The major reason for injury and death due to handrail snagging incidents is the driver's failure to notice that the child's drawstring has become snagged. The driver should observe all children, especially those with long drawstrings, oversized or baggy clothing, or other items that may become snagged in handrails, as they exit. Additionally, to ensure safety at each stop, the driver should cleared the danger should se is a ques- cure the bus and check around and underneath the bus if there tion of whether a child has moved safely away from the bus. Finally, the driver must be alert for warnings as the bus pulls away. In many of the snagging incidents that have occurred to date, someone inside or outside the bus attempted to warn the driver that a child was being dragged by the bus.

Children's and parents' responsibilities

Children and parents must also accept some responsibility for ensuring that a snagging incident does not occur. While oversized and baggy clothing may represent the latest fashion trend, try to avoid choosing any article that may become caught in a school bus handrail or door. The Consumer Product Safety Commission recommends that drawstrings be no more than three inches in length at the waist. Parents should caution children about attaching key rings and other items to their backpacks as these too may become caught on the handrail or door.



This Ad and Information Proudly Sponsored By:



Bailey County Electric Cooperative Association

305 E. Ave. B, Muleshoe • 272-4504
 In Morton 266-8600

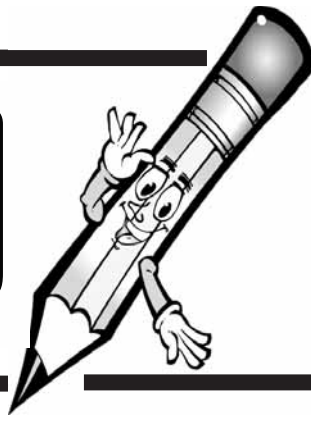


Five Area Telephone Cooperative, Inc.

West Plains Telecommunications, Inc.

302 Uvalde, Muleshoe • 272-5533

Back to school



Doggonit, Have A Good Year!
MULESHOE ANIMAL CLINIC & MULESHOE VET SUPPLY
 1430 US Hwy. 84, Muleshoe • 272-3061

PPCD
 1 complete change of clothes (pants, shirt, socks & underwear)
 If your child uses diapers or pull-ups you will need to bring some to school.
 1 box of Zip-Lock gallon baggies
 2 large boxes of baby wipes
 2 large boxes of Kleenex

Pre-Kindergarten
 1- (4 oz) bottle Elmer's school glue
 2 regular size No.2 pencils
 2 beginner size (Oversized-Husky) pencils
 1 package water based markers-Classic size (primary colors-no neon or fluorescent)
 1 package construction paper 9 x 12 assorted colors
 1 package manila paper
 1 box water colors
 1 box crayons (large-beginner size) 8 colors only (Crayola Brand)
 1 pair student scissors (Fiskar brand) rounded ends

2 boxes tissues
 1 box baby wipes
 2 folders (2 pocket-no brads)
 1 clear water bottle with pop up lid (16 ounce capacity) no sipper cups, please!
 1 (70 page) spiral

Snack suggestions for Dillman Elementary

We eat lunch early in the day and the children get hungry before the end of the day.
 We will ask that you send snacks for the entire class every so often.
 If your child has a food allergy please let us know. We will ask for snacks several times throughout the year.
 If you can send snacks it would be greatly appreciated.
 Suggestions for snacks are:
 • Animal crackers
 • Popped popcorn (\$1 at the dollar store)
 • Graham crackers or sticks
 • Rice Crispies treats
 • Pretzels
 • Chips that are individually wrapped if possible.
 • Dry cereal that has big pieces (Honeycomb, Fruit Loops, Apple Jacks, etc)
 • Cheese crackers
 • Goldfish snack crackers
 • Vanilla wafers
 • Raisins
 • Saltine crackers
 Please make sure if they are individually wrapped that you send enough for the entire class. Check with your child's teacher to see how many are in the class.

notebook
 1 rest mat (folding type)
 1 complete change of clothes in gallon ziploc bag labeled with your child's name: Boys — shirt, pants, underwear and socks; Girls — dress or pants and blouse, panties and socks.

Kindergarten



2 Regular size #2 pencils
 2 (4 oz). Elmer's School Glue (not paste)
 2 Elmer's glue sticks
 2 Boxes of regular size crayons (8 count, Basic count. Colors only-not fluorescent) We do many things with only basic colors and use them to learn to write/recognize color words.

1 Box washable Crayola markers — classic colors large size
 2 Large boxes of Kleenex (We will send notes for more occasionally if supply gets too low.)
 2 Pkg. Construction paper 9x12 Assorted or white

1 Pair metal (Fiskars brand) scissors (right or left, whichever one your child needs.)
 1 Complete change of clothes in gallon zip-lock bag labeled with your child's name): . Boys: shirt, pants, underwear, aud socks . Girls: dress or pants, and blouse, panties, and socks

2 Pocket folders
 1 Vinyl mat for naptime (please keep in mind we have limited space for storage wheu purchasing these. (The thin red and blue ones fit nicely in our

small spaces.)
 1 Box Gallon Ziploc bags (if your LAST name begins with A-L)
 1 Box Quart or Pint Ziploc bags (if your last name begins with M-Z)
 1 Plastic School box (Nix, and Lowe request a zippered pouch.)
 1 Set of Crayola basic color water colors

(please, No little pot paints)
 1 Box wet wipes (please leave them sealed so they won't dry out.)
 1 (24 oz. or smaller) PLAIN water bottle (pop top or screw on lid) 1 large pink eraser and 1 pkg of pencil top erasers 1 (1 inch only) 3 ring binder for journals
 Please use a permanent marker to label each individual item with your child's name. Every so often we may send a note asking you to replenish your child's supply of crayons, glue, or glue sticks.

First Grade

1 package yellow wooden pencils - no mechanical pencils
 1 package pencil top erasers
 6 boxes of 8 crayons only (1 for each 6 weeks)
 1 box of Crayola washable markers
 1 large zippered pouch or supply box
 1 large bottle of Elmer's school glue
 2 large glue sticks
 4 pocket folders
 1 wide-rule 100 page spiral notebook
 1 pair of Fiskar scissors
 1 package of wet wipes

3 boxes of Kleenex
 2 packages assorted construction paper
 1 water color set
 Optional items:
 Stickers
 Snack-size Zip-loc bags
 Snack items — animal crackers, vanilla wafers, etc. No peanut products, please

Due to lack of space, please use child-sized backpacks that are No larger than 10X13 inches. Please label all supplies with a permanent marker.

Second Grade

24 #2 Pencils - no mechanical pencils
 2 package of 25 to 30 pencil end erasers
 1 handheld pencil sharpeners (Conn only)
 4 red pencils
 1 box of Washable Crayola Classic Color Markers
 2 boxes of 24 Crayons
 1 spiral notebook (wide-rule)
 2 bottles of Elmer's School Glue (Ross does not work well)
 1 package assorted construction paper
 2 pocket folders - one red, one blue (no designs)
 1 box of 8 water color paints
 1 boxes baby wipes
 1 box of Ziploc bags: boys bring gallon size; girls bring quart size
 1 pair of Fiskar scissors
 1 boys bring package of paper plates
 1 girls bring 8 oz. plastic solo cups
 4 glue sticks
 3 boxes of Kleenex
 No Trapper Keepers.
 No rolling backpacks.

Third Grade

2 – Packages of pencils - plain wooden #2 (8-12 count)
 2 – Elmer's glue sticks (not ross)
 2 – Packages notebook paper (wide ruled)
 1 – Box crayola brand crayons-24 count or smaller (not 64)
 1 – fiskars brand pointed scissors
 1 – 12 inch ruler (metric/
 Continued on page 11

ALVARADO PARTY RENTALS
INFLATABLE BOUNCER
 HAVE A GOOD SCHOOL YEAR!
 BEST PRICES AROUND! Safe - Affordable
 Birthday Parties • School Functions • Special Events Fun For Kids!
 2 Hrs. \$50 - 4 Hrs. \$75 - 6 Hrs. \$100 - 8 Hrs. \$125
 DELIVERY, SETUP & PICKUP SE HABLA ESPAÑOL EDDIE & RACHEL ALVARADO DJ SERVICES ALSO AVAILABLE
272-5588

Art Loft Galleries & Très Chic Interiors
 Wish all students, teachers, staff and administrators a successful year!
 1529 W. American Blvd. - 272-3485
 Muleshoe, Texas

DON'T DREAD IT... TREAD IT!
 Make Tracks To Success This Year!
Muleshoe Tire
 107 Main Street, Muleshoe • 272-4594

STUDY HARD STUDENTS!
Dr. Robert Lepard, DDS
 121 W. Ave. B
 Muleshoe
 272-3446

We Support Muleshoe Schools, Students & Staff Members!

 Juniors & Seniors interested in starting a Jr. Chamber of Commerce should call our office weekdays from 9 AM to 1 PM at 272-4248!
 The chamber is a community oriented organization whose goal is to promote Muleshoe in a positive manner through sponsorship of events designed to share our town with the citizens of Bailey County and surrounding communities! Help us shape the direction in which Muleshoe advances! Let's make some noise!
MULESHOE CHAMBER OF COMMERCE & AGRICULTURE
 115 E. American Blvd., Muleshoe • 272-4248
 chamber@fivearea.com

Visit our award winning website:
www.muleshoejournal.com

minsa
 Hwy. 84 East of Muleshoe
 272-5545

IT MIGHT SOUND CORNY, BUT WE THINK MULESHOE GROWS THE BEST STUDENTS IN TEXAS! STUDY HARD AND YOU CAN BECOME ANYTHING YOU SET YOUR MIND TO!

R.A.S.S. SECURITY & PRIVATE INVESTIGATIONS
 109 W. Ave. D - Muleshoe, Texas 79347 • (806) 946-6115
 Chief Investigator Julian Dominguez (806) 946-6799
 Security Administrator Ralph Sanchez (806) 946-7189
 Email: rasspi@fivearea.com
Office: (806) 946-6115
 Security Guards for: Weddings, Quinceñeras, Birthday Parties, Dances and any of your other security needs
 Investigations for: Civil & Criminal Investigations, Private & Public Investigations, Repossessions and General Assistance
 Licensed by the Texas Commission on Private Security - License #C12091

Continued from page 10

english) not flimsy, easy to read - flat plastic pocket folders

1 - Zipper pouch (sturdy)

3 - Boxes of Kleenex (we give some to outside teachers))

1 - Spiral notebook (wide ruled, about 70 pages)

1 - Box quart size ziplock bags

2 - Red pens

• Extra supplies at teacher discretion.

• Exceptions to this would be Special Education needs.

• Absolutely "no" backpacks on wheels

• Absolutely "no" 3 ring binders

• Absolutely "no" flip top clipboards or carrying cases These items do not fit in the desks or lockers.

Fourth Grade

2 - Packages clear sheet paper protectors

1 - Set of Crayola brand Map Pencils

24 - Pencils - plain wooden #2

2 - Red pens

1 - Box of crayons

2 - Highlighters

2 - Packages notebook paper (wide rule)

4 - Fabric book covers

1 - Package of eraser tops

1 - Pair of scissors

1 - Spiral notebook (120 Pages)

1 - Bottle of glue or glue stick

1 - Pencil bag (sturdy)

3 - Boxes of Kleenex

6 - Folders (with brads and pockets)

2 - 1 inch, 3-hole binder (one for math and one for other classes)

1 - Protractor

• Extra supplies at teacher discretion.

• Exceptions to this would be Special Education needs.

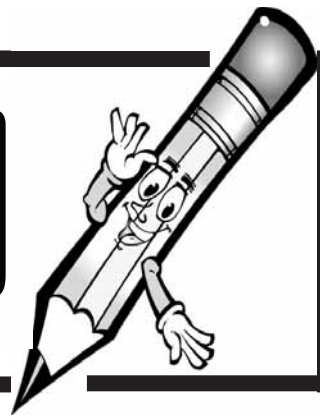
• Absolutely "no" backpacks on wheels.

They do not fit in the lockers.

Fifth Grade

1 - Large set of Crayola brand map pencils

Back to school



(1) pencil sharpener

Eighth Grade

#2 Pencils

(8) pens (blue or black)

(8) folders with brads and pockets

Colored pencils for Social Studies and Science

Graph Paper (Algebra I only)

Regular lined notebook paper

(2) spirals (150 pages)

(1) spiral (2 subject)

(1) spiral (dividers with pockets)

(2) boxes of tissue

(1) ruler

(2) red pens

(1) pencil bag

(1) stick glue

(1) package of 3x5 note cards

(1) package of tabbed dividers

Art Students:

1 (4 oz.) bottle white glue

6 #2 pencils

2 boxes colored pencils

2 erasers

1 pencil sharpener

Spanish class:

(2) pocket folders

12 - Pencils - plain wooden #2

2 - Red pens

4 - Ink pens (blue or black only)

2 - Packages notebook paper (wide rule)

1 - Pair of scissors

3 - Spiral notebooks (120 pages)

1 - (4 ounce) Bottle of Elmer's glue or 1 glue stick

3 - Boxes of Kleenex

• Extra supplies at teacher discretion.

• Exceptions to this would be Special Education needs.

• Absolutely "no" backpacks on wheels.

They do not fit in the lockers.

Sixth Grade

1 - box of colored pencils

Notebook paper, wide ruled

#2 - pencils

2 red pencils

Erasers

1 - pack red pens

1 - pack blue or black pens

2 - boxes of Kleenex per semester

1 - pencil sharpener

Seventh Grade

(2) wide ruled spirals



1 - zipped pencil pouch

1 - binder

1 - transparent ruler

5 - 100-page spirals (wide ruled)

10 - pocket folders with brads

Art students:

1 - (4 oz.) bottle white glue

6 - #2 pencils

2 - boxes colored pencils

2 - erasers

(reading, English)

(1) 2 subject wide ruled spiral (math)

(3) folders with brads and pockets (reading, science, social studies)

(1) set of map pencils (social studies)

(1) set of dividers (math folder)

(1) package of 10 sheets of 11 x 14 poster board (science)

(2) large boxes of

MULESHOE SPORTS ACADEMY FALL REGISTRATION

CLASSES OPEN TO AGE 3 AND UP

AUGUST 10

3 PM-8 PM

AUGUST 18

10 AM-5 PM

**GYMNASIICS
TUMBLING
CHEERLEADING**



MULESHOE SPORTS ACADEMY
2309 West American Blvd.
Muleshoe, Texas
(806) 272-6817
(806) 535-1567

WILLIAMS GENERAL STORE
1405 W. American Blvd., Muleshoe • 272-6853

Back To School Event Sale!
Mon.-Thurs., Aug. 6th thru 9th
Layaway with just 10% down!
Store specials on shoes, jeans, socks & bags.
Fri. & Sat., Aug. 10th & 11th
Super Sidewalk Sale!
Savings galore for kids & adults.

Newton Appliance & Cedar Creek
215 Main St., Muleshoe • 272-3272

**Heating & Air Conditioning
Appliance Sales & Service
Used Furniture & Antique Furniture**
Open: Tues.-Fri. 10-5; Sat. 11-3

Fall Piano Lessons For All Ages!
Call Fran Hamilton @ 272-4759

LAZBUDDIE GARAGE & SUPPLY
Adora, Terry & Lee Scott
P.O. Box 100, Lazbuddie • 965-2188

**It's time to get in gear for another year!
Good luck to all area students!**

Nieman Realty
116 E. Ave. C • George Nieman, Broker
272-5285 or 272-5286

CHECK OUR LISTING INFO., PHOTOS, ETC. ON-LINE AT WWW.NIEMANREALTY.COM
HAVE BUYERS! NEED HOME AND LAND LISTINGS!!

Best of luck to students and school faculty!

Lasting Impressions
Wishes all students, teachers and staff a wonderful year!

516 S. First Street, Muleshoe • 272-4287

COYOTE LAKE FEEDYARD
1287 FM 1731
Muleshoe, Texas
946-3321

**HAVE A GREAT SCHOOL YEAR!
BEST OF LUCK IN '07-'08!**

FIRST UNITED
LITTLEFIELD BANKING CENTER 2003 Hall Avenue • 806-385-7181
EARTH BANKING CENTER Main & Cedar • 806-257-3451
SUDAN BANKING CENTER 200 Main • 806-227-2411

The New Star Of West Texas
- To All Area Students -
Good Luck & Have A Great Year! Study Hard!

Always press forward kids!

BOB STOVALL PRINTING
GRAPHIC ARTS & DESIGN SPECIALISTS
221 E. Ave. B, Muleshoe
272-3373

We're Proud of All Area Students & Teachers!

DODD COTTON GIN
2912 CR 504 • 965-2311

Have a great school year students & school personnel!

United Supermarkets
104 W. 9th St., Muleshoe • 272-3120

We Back Muleshoe 100% LOWE'S MARKETPLACE
401 W. American Blvd., Muleshoe • 272-4585

Bessire wins national trampoline title

Muleshoe Sports Academy recently sent its Acrospirit team to the National Gymnastics Championships of Trampoline and Tumbling. The competition consisted of 2,000 of the finest trampoline and tumbling athletes from across the country.

The Acrospirit team consisted of Shaylee Winchell, Brittany Caddell, Hadlea Geissler, Stormie Fuentes, Daniella Diaz, Adrienne Precure and Baylee Bessire.

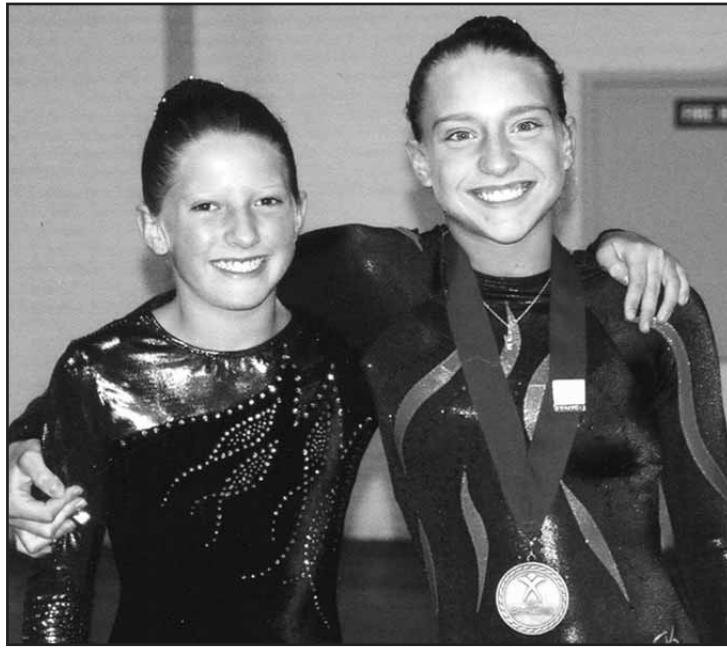
Bessire, Caddell, and Precure competed in the level 10 trampoline competition, but in different age groups.

Bessire dominated her field for the second year in a row to capture the 13-14 ladies crown.

Precure having won level 9 the year before would make finals in the 11-12 age group in individual trampoline, placing sixth.

Caddell had troubles in individual placing 15th in the 11-12 age group, but would come back to win the silver medal with Precure in the synchronized trampoline competition.

The next competition was the level 9 competition in which Fuentes, Winchell, and



Geissler competed in the 11-12 age group of level 9 trampoline.

All reportedly did well, placing 13th, 14th, and 17th out of 60 competitors.

The last to compete was Diaz in level 5 9-10 year old ladies trampoline competition.

Daniella had not won or placed higher than fifth all season but had trained up to 15 hours a week with her teammates all summer

getting ready for nationals.

She won her first medal, the silver in trampoline.

"We were excited for all the girls. The levels get tougher every year and our girls go and do well against the best in the higher levels," Kaitlyn Geissler, the team coach said. "We expect more great things from them all in the future with wins like Baylee's and surprising medals like Daniella's. They are a great group of athletes!"

Don't forget your photographs...

The *Muleshoe Journal* publishes a large number of photographs — from wedding announcements to obituaries. Sadly, many of these important photographs are never picked up from the news office. If you would like to retrieve a photograph that you've left with the newspaper, stop by during normal office hours.

Say HELLO to High-Speed Internet!



SIGN UP TODAY TO GET FREE INSTALLATION

and the 3rd month of service free!

Total savings up to \$169⁹⁵

- 6 Speeds available to fit any need and budget
- Download photos and music quickly and easily
- No busy signals, never have to wait again
- No phone line or cable wire needed to receive service

Service is available in the rural areas surrounding the communities listed above. Call for more details.



Call Today and Save!

1.800.963.4984

Rapid Communications 2007. For new residential customers only. Available services & pricing may vary and not be available in all areas. Credit for the 3rd month of service will be posted to your account and will appear on your third month's bill. Regular retail rates apply thereafter. Download & upload speeds are maximum speeds; they may vary & are not guaranteed. Franchise fees, taxes, installation, restrictions & other fees may apply, the actual amount depending on location & service ordered. If service is cancelled before 12 months, a \$100 service charge will be applied to customer's account. A cable modem or network card may be required at installation. Minimum computer requirements may be required. Offer subject to change. Other restrictions may apply. RAPID0717

MULESHOE FLAG FOOTBALL LEAGUE

7 ON 7 FLAG FOOTBALL



Season Schedule
2 Games per Sunday
15 12-Man Rosters
Referees
80 Yard Field

**PLAYOFFS AT THE END OF THE SEASON!
GET OFF THE COUCH
AND COME PLAY!**

Entry Deadline is Sept. 16
Season Starts Sept. 30
\$450 per Team - Ages 17+

For more information, contact:
**RAY (806) 535-3562 or
ROBERT (806) 566-8959**

For your information...

If your college student is graduating or has made the Dean's or President's List, in order for that information to appear in the *Muleshoe Journal*, we must receive notice from the respective educational institution. Your son or daughter must sign a release so the information can be sent to us. Have them visit their bursar's office to sign a form indicating they wish to share their good news! Once permission to share information has been granted, the college or university should send the info via email to: editor@fivearea.com.

More CLASSIFIEDS

Deadline - 5 PM Monday
272-4536

HELP WANTED

SPC SOUTH PLAINS COLLEGE
EMPLOYMENT OPPORTUNITIES

PART TIME JOB OPENING
SPC MULESHOE EXTENSION CENTER COORDINATOR

- Serve as SPC contact person in Muleshoe
- Assist students w/Admissions, Financial Aid, & advisement

HEALTH OCCUPATIONS
INSTRUCTOR-ADN TRANSITION PROGRAM-EXTENSION CAMPUS
INSTRUCTOR IN ADN - CLINICAL
INSTRUCTOR IN ADN-MED/SURG
PART TIME CLINICAL RESPIRATORY
PART TIME VN CLINICAL
PART TIME ADN CLINICAL

Complete job description & application at:
www.southplainscollege.edu Submit to: South Plains College, HR, 1401 College Ave, Levelland, TX 79336, (806) 894-9611 ex. 2177. AA & EEO Edu. Institution

UNDER NEW MANAGEMENT

NOW HIRING

minsa

MINSA IS ACCEPTING APPLICATIONS FOR 2 POSITIONS IN THE MAINTENANCE DEPT.

Some previous maintenance or welding experience preferred.
Apply in person at Minsa or at WorkSource, 201 S. Main, Muleshoe, EOE.

TFNeh2/23

UNDER NEW MANAGEMENT

NOW HIRING

minsa

MINSA HAS SEVERAL POSITIONS AVAILABLE IN OUR PRODUCTION FACILITY.

We are looking for hardworking individuals to fill several positions. Apply in person at Minsa or at WorkSource, 201 S. Main, Muleshoe, EOE.

TFNeh2/23

The Department of Family and Protective Services is seeking qualified candidates for CPS Substitute Care Specialist and CPS Investigator — positions in Littlefield and Muleshoe. Monthly salary range is 2409.75 - 2817.19. Minimum Qualifications: Four-year degree from an accredited university. Please apply for job posting on-line at <https://hhsjobs.hhsc.state.tx.us>. EO/AA/VP Employer.4ch7-12

Need a Better Job?

Now Hiring GREAT PEOPLE...

Great Benefits for Great People!

- \$6.25 hr. (higher with qualified experience)
- Flexible hours
- Health benefits; life, medical, dental, prescription drug plan
- Paid Vacation, 401k plan & company stock plan

Town & Country

www.TCFS.com

Town & Country is a Going, Growing company...

Elevator Help Needed - The AGP Grain Marketing elevators are in need of elevator help for various locations. Applicants must be at least 18 years of age and must pass a pre-employment physical and drug screen. Must be able to work in grain dust. If interested, please pick up applications at the main office in Bovina or call 806-251-1521 local, or toll free at 866-583-7362.4ch8-2

DirectTV Satellite Installers — Seeking full-time, hard working individuals with a strong customer focus. Excellent wages, benefits, paid training and free DirectTV provided! No experience required. Call 800-411-4374 or go to www.premiercomm.com for further info.4ch7-12

R.A.S.S. Security & Private Investigations is currently accepting part-time employment applications for Security Guards. You may stop by the Security office located at 109 W. Ave. D, Muleshoe, on the following days: Monday, Wednesday & Friday, from 10:00 a.m. to 3:00 p.m. Salary information and other details will accompany the application when picked up.2ch8-2,8-16

SUBSCRIBE!

LHC Family Medicine is accepting applications for an office nurse. Hours are 8:00-5:00, Monday-Friday. Apply at Lamb Healthcare Center, 1500 S. Sunset, Littlefield.1fch7-12

DRIVER

AARTMAN
TRANSPORT CORPORATION

Food Grade Tanker Drivers

LOCAL AND OTR RUNS

- * Medical, Dental, Vision
- * Excellent 401k plan
- * Paid Holidays and Vacation

CDL-A w/tank end. & 1 yr. exp.

888-AARTMAN
EOE

1pd8-2

Yard Maintenance help wanted. Cargill Cattle Feeders is looking for a person to work on yard maintenance performing the tasks of welding, operating heavy machinery and other maintenance tasks. The desired candidate would also be capable of performing electrical, hydraulic and pneumatic repairs. Experience is not mandatory but would be beneficial. For more information on this position contact Brian at 806-225-4400 ext. 34. Or come by Cargill Cattle Feeders to pick up an application.3ch8-2

AZTECA MILLING L.P.

Temporary harvest help needed. Apply in person 1-1/4 miles E. of Muleshoe on Hwy. 84 or call for more info. 272-6701. Positions needed:
**Corn testers
Ticket writers
Truck probers**

3ch7-26

\$2.00 OFF

REGULAR YEARLY SUBSCRIPTION RATES:
CARRIER — \$22.00
MAILED IN COUNTY — \$24.00
MAILED OUT OF COUNTY — \$35.00
ONLINE JOURNAL-D — \$22.00

Present this coupon for \$2 off a new 1-year subscription to the *Muleshoe Journal*!

One coupon per subscriber. Must not have subscribed in the past 60 days to be considered a new subscriber. Not valid with any other offer. Coupon good through August 10, 2007.

CLASSIFIEDS

Deadline is Monday at 5 PM to place a Classified ad. Call 272-4536.

PUBLIC NOTICE

PUBLISHER'S NOTICE

All real estate advertising in this newspaper is subject to the Fair Housing Act which makes it illegal to advertise "any preference, limitation or discrimination based on race, color, religion, sex, handicap, familial status or national origin, or an intention, to make any such preference, limitation or discrimination." Familial status includes children under the age of 18 living with parents or legal custodians, pregnant women and people securing custody of children under 18.

This newspaper will not knowingly accept any advertising for real estate which is in violation of the law. Our readers are hereby informed that all dwellings advertised in this newspaper are available on an equal opportunity basis. To complain of discrimination, call HUD toll-free at 1-800-669-9777. The toll-free telephone number for the hearing impaired is 1-800-927-9275.



PUBLIC NOTICE

Park View Nursing Care Center of Muleshoe is accepting bids for a new roof. Contact Bill Barrett at 806-272-7578 for additional information or to place a bid.

Published in the Muleshoe Journal on July 26 and August 2, 2007.

PUBLIC NOTICE

NOTICE TO BIDDERS

Muleshoe Area Hospital District is seeking Bids to sell, Park View Nursing Care Center, for cash (land and improvements) located at 1100 West Avenue J, Muleshoe, Texas. The subject property is approximately 5.0 acres in size and contains a 90 bed nursing home facility (18 bed separated secure unit), located in Bailey County, Texas. Bids will be due at the Muleshoe Area Medical Center, 708 South First Street, Muleshoe, Texas 79347

Bid Packet
Bid Packets can be requested by calling Lori Davis (806) 272-4524 ext. 104.

To inspect the property, please contact Ronnie Dent (806) 946-9155. Financials will be available upon request after Bidder Information Questionnaire is completed

(available in packet).

Bids will close on September 14, 2007 at 2:00 p.m.

The name of the bidders will be available at that time, but the amounts of Bid for the property will not be available. The result of the Bids will be made available at the regular Board Meeting of September 20, 2007.

The Bid must be presented in a sealed envelope marked, "Bid for Nursing Home: Attention Board Members."

The Board Reserves the right to accept or Refuse any or all bids. *Published in the Muleshoe Journal on August 2 and 9, 2007.*

WANT TO BUY

Want to buy Flintridge China, Bon-Lit, white (rim). Ori. purchased @ Higginbotham-Bartlett in early 1950s. Call 806-786-2745.

REAL ESTATE



Cleavinger & Associates

Hart Farm — These two half sections are 2 miles apart north and west of Hart. The north half section has 3 wells, 2 are 500 gpm and one is 200 gpm. The south section has 3 wells all about 500 gpm. All wells were metered in Nov. '06.

Bailey County Farm — 547 acres setup for cow/calf operation. Four center pivot sprinklers, four different improved grasses, four 200 gpm wells, permanent fencing, and a 2650 sq. ft. house. Adjacent to this property is an additional 160 acres that could be bought and another 160 acres that could be leased.

Muleshoe — 6000 sq. ft. space for lease on American Blvd. next to Dollar General and across the street from McDonald's. As is or build-out would be considered for a long term lease.

Muleshoe Area Farm in Prime Dairy Location — 1149 acres NE of Muleshoe. This farm consists of seven quarter sections that have been very well maintained with newer center pivot sprinklers all packaged for 700 gal/min.

Lazbuddie — 2451 County Road X: House and 8 acres of land two miles N of Lazbuddie. This is a well maintained country home with many updates and additions as well as a 50' x 60' shop building.

Oilton — 160 acres NW of Oilton, valley with 750 gpm pack well, 200 gpm well, and 100 gpm well. Of Oilton both with 7 tower valley sprinklers & 550 gpm packages.

Lazbuddie Farm — 1120 acres with center pivots on all quarters. Two beautiful homes and two miles of highway frontage.

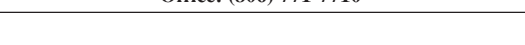
Dodd Farm — 967 acres with center pivots 2 miles E of Dodd in a good water area. A very nice home and barn on the highway.

Muleshoe — 105 acres 3 miles E of Muleshoe. 50 acres under a pivot and 2 wells.

623 W. American Blvd., Muleshoe, TX — A thriving business in a progressive rural city. The business currently includes tree and plant sales, landscaping projects of all sizes, yard sprinkler planning and installation, and yard and tree spraying. Great opportunity!

311 W. American Blvd., Muleshoe, TX — An established business that carries everything for your farm animal needs. Currently, this business carries hay, Hi-Pro feed for large and small animals and a wide variety of animal care essentials. It is located in an area surrounded by feed yards, dairies and farmsteads.

**MIKE CLEAVINGER, ABR
KELLER WILLIAMS REALTY**
4747 S. Loop 289, Suite 110
Lubbock, TX 79424
Cell: (806) 239-5139
Office: (806) 771-7710



FOR SALE



SHIPLEY BROTHERS, INC.
806-894-7212
806-894-8187
806-894-1580

◆New '07 16 wide 3+2. Just \$214.93 monthly* and 1300 down.*Call (800) 830-3515 (se habla español) 24,600 to finance 9.5 APR 300 months WAC*

◆Call our 24 hour credit Hotline to see if you qualify for a Home Loan. (800)375-8739.

◆1st time Home buyers or Single Parent Programs, E-Z Financing. (888) 539-7780 (se habla español)

◆New '07 5+3 only \$524.50 monthly*, just 2400.00 down.*(888) 539-7780 (se habla español) 62,500 financed amount, 300 month 9% WAC*

◆Need A Home Now! We have over 50 to choose from and cheapest prices anywhere! Call Bell Mobile Homes, Everyone's Approved! **Guaranteed!** (800) 830-3515.

PROPERTY FOR SALE

6.2 acres with a circle drive on pavement. Ideal for mobile home, doublewide or good location for a permanent home. Lots of big trees and has its own water well. It has 3 all-metal barns: #1, 105' x 75'; #2 60' x 21'; #3 46' x 24' with a 15' x 24' shop on one end. It also has pens or corals around the big barn. All of this is located 10 miles east and 1/2 mile north of Muleshoe. 806-632-1677.

LAWN SERVICES

FRIESEN LAWN SERVICE
925-6789
Cell: 806-470-0406
JAY FRIESEN

\$149 queen pillowtop orthopedic mattress and foundation, unused with warranty, 806-549-3110.

TWO Twin mattress sets and frames, \$125 each. Never used, 806-549-3110.

BEDROOM SET & mattress, headboard, dresser/mirror, nightstand, new, \$599. 806-549-3110.

Dining room set, NEW cherry lighted china cabinet, table, chairs, \$550. 806-549-3110.

Bed - all new KING set (pillowtop), left in pkg, \$235. 806-549-3110.

LIVINGROOM no stain microfiber Sofa/love. ALL NEW, lifetime warranty, \$499. 806-549-3110.

SELECT your COMFORT Air bed, brand new boxed, 2 controls, separate settings, \$999. 806-549-3110.

Mattress set, both pieces, full/double, brand new in wrap, \$119. 806-549-3110.

ADVERTISE!

MISCELLANEOUS

Rex Lowery Painting

Painting in the Muleshoe area over 40 years!
FREE ESTIMATES
Cell: 789-9142

D&L MOBILE WELDING

Stock Pens - Custom Commercial - Residential Farm Equipment
106 W. 19th, Muleshoe
Home: (806) 272-3803
Cell: (806) 566-5028

REAL ESTATE

• Irrigated farms — Spade, Earth, Levelland, Plainview and 6 at Littlefield, also 3/2 brick, 102 E. 23rd, \$94,750.
• Amherst — 2 irr. labors. 5/2/2 on 2 acres, \$43,000.

FARRAR & ASSOCIATES

806-894-7099

Byrd Realty Ronald Byrd Licensed Broker Crista Bass

228 Main Street, Muleshoe, Texas
www.byrdrealestate.net

Extremely nice country home on highway - 3 bedroom, 1-3/4 bath brick home, fireplace, cent. A/H, built-ins, wood blinds, large utility, den, enclosed swimming pool, sprinkler system, patios, 2 car garage, 40' x 80' barn, separate office, all on 5 acres. This home has too much to describe. Call for more details. Priced to sell!!!

This home will not last long. Spacious 3 bedroom, 2 bath, 2 car garage brick home with 2 car garage, central heat and air, whirlpool tub, large utility room, storage building, sprinkler system, fenced back yard, all on corner lot.

Priced to sell!!! - Nice 3 bedroom, 1-3/4 bath home, central air and heat, appliances, washer/dryer included, FP, wood floors. Storage bldg. and fenced back yard.

Nice 2 bedroom, 1 1/2 bath brick home, cent. heat & air, built-ins, large utility room, washer/dryer included, FP, wood floors. Storage bldg. and fenced back yard.

New Listing - 160 acres on highway includes very nice 3 bedroom, 2 bath brick home. Refrigerated air and central heat. Built-ins, fireplace, large utility and 2 car garage. Has circular sprinkler, 2 wells, 70'x100' hay barn, 24'x25' storage building, and more.

Nice 3 bedroom, 2 bath brick home, sunroom, 2 fireplaces, built-ins, large master bedroom, lots of closet and storage space, indoor grill, finished basement, sprinkler system, storage area building, fenced back yard, plus more.

Spacious - 4 bedroom, 3 bath brick home, built-ins, refrig./central heat, 2 living areas, utility room, sunroom, built-in grill, fireplace, dining room, sprinkler system, fenced back yard, 2 car garage. Plus more!

Lazbuddie area - 2 bedroom, 1 bath brick home, built-ins, refr. air/central heat, 2- car garage, all on approximately 2-3 acres.

NEED HOUSE LISTINGS! HAVE BUYERS! GIVE US A CALL!!

Office: (806) 272-5380 Toll Free: 1-888-999-3846

HOUSE FOR SALE BY OWNER

300 W. 19th-Richland Hills, Muleshoe. 3/2/2 2,630 sq. ft., large corner lot, 2 living areas, fireplace, C/H/A, sunroom and lots of storage. New roof and insulation. Large back yard, 2 covered patios, sprinkler system and large storage house. For more info., call 806-369-7002 or 806-369-7920.

HOUSES FOR RENT

House for rent in Muleshoe - 3 bedroom, 1-3/4 bath. \$725/mo., \$400 deposit. Call for more details, 1-888-999-3846 or 806-481-3846.

For rent - In Lenua/Country Club area, 3 bedroom, 2 bath. Spacious master bedroom. Call 806-729-1924.

THANKS FOR READING!

GARAGE SALES

2 fam./2 day GS, 610 Wilson, Sudan. Aug. 3 noon-5pm; Aug. 4, 9am-? Clothes, furn., baby furn./supplies, jet boat, radial arm saw w/stand, lots more.

REAL ESTATE

Courtyard REAL ESTATE

• 4BR-2BA-2CP-2GA at 401 Hornet Drive in Sudan. Approx. 1900 sq. ft. 2 car garage. Located 2 blocks from Sudan High School. Corner lot - \$59,500. Pictures available at: <http://associates.era.com/montyedwards>.

• 3BR-1BA-1GA, 309 Worth Street, Sudan. Home with app. 1284 sq. ft. living area sits on double lot w/separate detached 2 car garage/workshop. Nice house with lots of potential.

Monty Edwards, Agent
(806) 786-5426

REAL ESTATE

PARMER CO. - Exceptional two-story country home south of Farwell situated on 11,411 surveyed acres. 4 bdrms, 3 1/2 baths, two car garage, lots of storage/closet space, central heat, 81/2 ft. ceilings. You will not believe the hardwood floors in this home!

PARMER CO. - 616 acres +/- west of Bovina, spring irrigated, wells, wood framed house, 2 car garage, barn, various other out buildings with pipe rail cattle working pens, pavement. Excellent dairy location!

CASTRO CO. SECTION - Choice land, strong water, large home, 4 large barns & shop bldgs., sprinklers & wells.

CASTRO/HALE CO. - Choice section, strong water, 1/2 mile sprinkler & irr. wells, pavement.

CRP BUYERS: PARMER CO. - two-480 acre tracts (one with active caliche pit), **SHERMAN CO.** - one section and 379 acres and others. Check our website.

CASTRO/SWISHER COUNTY LINE - 856 acres, sprinkler irrigated, good water.

LAMB CO. - 168 acres improved grass, on pavement, irrigation well. TO SETTLE ESTATE!

LAMB CO. - 480 acres full dev., pvmt. and quarter divided by Hwy. 70.

CHECK OUR WEBSITE for data and pictures of many farms, ranches, feedyards, dairies and choice dairy locations with permits and acreages with homes

www.scottlandcompany.com
Ben G. Scott - Broker 800/933-9698 day/eve

AUCTIONS

LARGE ESTATES AUCTION

Antiques - Antique Firearms - Coins
Saturday August 4th - 10 A.M. Sharp!

HEREFORD, TEXAS

LARGE BULL BARN - Off Hwy 60 - East Of Town - By Veteran's Park

This Great Auction will consist of some of the Finest American Antique, Highly Carved Furniture, Very Unique American Antique Oak, Victorian Pieces, Glassware and other Fantastic items we have seen! Make this a Priority - Do Not miss this Auction. Doors open at 8 am, Auction will begin at 10 am Sharp!

Come early for a good seat & bring your Truck. Everything must be moved day of sale.

Only A Partial Listing: A Fantastic Antique American Victorian Bedroom Suite - Has 9 Ft. Tall Heavy Carved Bed with Matching Massive Carved Deep Well Dresser and Mirror - Never A Better One! The Best and Most Unique Antique American Oak Double Bookcase with Full Carved Lion Heads, Bevel Mirror and Very Rare Curved Glass Center Cabinet - Never Seen One Like It! A Very Rare 'AM' Jukebox with Very Ornate Case and Lights - All Original and Works - Must See! A Rare Antique 'Symphonion' Disc Music Box - Plays Beautifully! A Rare 1930's Original 'Jennings' Indian Front 10c Slot Machine - Works Perfect! A Beautiful Heavy Carved Half Canopy Teaser Bed. An Antique 'Seth Thomas' Figure Clock. A Rare Antique Matching Spc. Victorian Cameo Set in Original Box. A Very Rare Antique American Oak Highboy Chest with Bevel Mirror and Paw Feet in Excellent Original Condition. A Very Rare and Unique Mechanical Automated 'Birds In Cage' Music Box - Works Perfect - So Life Like! A Fantastic Antique American Oak Side By Side Secretary Bookcase with Curved Glass and Bevel Mirror! A Rare Antique Child's Iron and Wood Ride-On Toy - Must See! A Beautiful Massive Carved Horse Headed Bench with Full Carved Horse Heads. A Rare Antique Oak Grandfather Clock. A Very Rare Antique Upright Oak 'Edison' Phonograph. An Antique 'Marx' Commodore Vanderbilt Wind-Up Train Set in Original Box! An Antique American 1930's Carved Cedar Chest. An Outstanding Western Bronze Statue Collection Including the 'Cowboy' by Fredric Remington. Fantastic Framed Western Prints by 'C.M. Russell' and 'Fredric Remington'. Unique Western Oil Lamps. **Antique Guns From Estate** - A Rare Authentic Antique Highly Engraved 'Colt' Single Action Pistol with Full Engravings Everywhere in Great Working Condition - Truly A Must See! A Rare Authentic Antique 1866 'Winchester' Lever Action Rifle in Very Large 45-90 Cal. in Great Original Working Condition. A Rare Authentic Antique 1873 'Winchester' Lever Action Rifle in A Large 44 Cal. in Great Original Working Condition. A Rare Authentic Antique 1887 'Winchester' Lever Action Shotgun in Great Original Working Condition. A Rare Authentic Antique 'Colt' Bisley Single Action Pistol in Great Original Working Condition. **Fantastic Coin Collection** - 1883-S \$20 Gold Coin, 1881 \$10 Gold Coin, 1910 \$5 Indian Gold Coin, 1898 \$2 1/2 Gold Coin, 1853 \$1 Gold Coin, Over 200 Antique Silver Dollars, Very Rare 1889-CC Silver Dollar, Rare 19th Century Framed Coin Set 28pc, 1835 Half Cent, 1831 Half Dollar, 1858 Flying Eagle Cent, 1852 Three Cent, 1830 Half Dime, 1803 Large Cent and Numerous More! Several Very Large Outstanding Diamond Rings! Heavy Cut Crystal, Cobalt Blue Wine Set, Dresden Figure, Beautiful Leaded Glass Lamps, Perfume Bottles, Cast Iron Banks **And Many More Must See Items!**

Bring Cash or Check with Proper I.D. Dealer's Must have copy of Sales Tax Permit or Sales Tax will be added, No Exceptions. Announcements Made Day of Sale Supersedes All Other Advertisement. Make This Auction A Priority! - No Buyer's Premium! - 405-381-3402

Auctioneer - Michael Mears Tx. Lic. # 12703

AUTOMOBILES

2000 Chevy Suburban for sale. Great condition, runs well. 142K miles. Asking \$9,700. Call 272-3072 or 946-7450.

For Sale: 1996 Lincoln Towncar Good condition. 505-799-8137

AUCTIONS

Chance for country living!
REAL ESTATE/HOUSEHOLD AUCTION
SAT., AUG. 11, 2007
1:00 PM CST



5 acres more or less, has own well, w/well house underground, 40x50 barn, house has 1350 sq. ft. more or less, 4 bedrooms, game room den, livingroom 1 bath, kitchen and utility room, vinyl siding and metal roof, has Dual Fuel Heat Pump, lrg. wood deck.



LOCATION: GO WEST OUT OF MULESHOE ON US HWY. 70/84. TURN ON ST. RD. 1028 (WEST CAMP RD.) TO ROAD 123, TURN SOUTH AND GO TO 1038, TURN WEST, GO TO FIRST HOUSE ON SOUTH SIDE OF ROAD. CAN BE SEEN BY APPT. ONLY.

W & J Auction Service, Inc.
4205 South Prince, Clovis, NM
TX. Lic. #11077 and 1557

REAL ESTATE

Vic Coker Land Co.
Agricultural Real Estate

- **Lamb County** - Earth - Beautiful, red brick home. 4 bedrooms, 3 baths, 4 park garage, lots of storage, fenced back yard, sprinkler system, \$130,000. Too nice to pass up.
- **Parmer County** - 480 acres northeast of Farwell on FM 3333. 3 sprinklers, 3 wells, good direct payment.
- **Castro and Lamb Counties** - 637 acres in 3 tracts in Dodd area. Some pavement. 4 sprinklers, 5 wells. Very good direct payment. A clean, well groomed farm.
- **Lamb/Castro County Line** - 316 acres north of Earth, 2 central pivots, 4 wells. Very productive.
- **Lamb County** - Northwest of Littlefield. 5 labors, 5 pivots, good allotment. Growing alfalfa and wheat for hay. A lot of depreciable assets.
- **Bailey County** - 350 acres, joining Muleshoe Wildlife Refuge. Some cubs and some native. Excellent potential to develop as a hunting or recreational place. Financing possible for qualified buyer.

316 Main Street • Muleshoe, Texas
Office: 806-272-3100 Home: 806-965-2468
Website: www.vicoland.com

REAL ESTATE

Nieman Realty

116 E. Ave. C • George Nieman, Broker • 272-5285 or 272-5286

CHECK OUR LISTING INFO., PHOTOS, ETC. ON-LINE AT WWW.NIEMANREALTY.COM
HAVE BUYERS! NEED HOME AND LAND LISTINGS!!

RICHLAND HILLS-PARKRIDGE AREA-HIGHLAND AREA
• VERY NICE 3-2-2 Brick, Cent. A&H, built-ins, fireplace, utility, new paint, carpet, tile, atrium doors, blinds, 7 fans, cov. patio, stor. bldg., fenced yd.!! MORE!! \$145,000!!

• VERY NICE 3-2-5-2 Brick Home, Dual Fuel Heat Pump, built-ins, FP, basement, cent. vac. & humidifier systems, auto. spkrl., workshop/storage, fenced yd., corner lot!! \$169,500!!

• VERY NICE 3-2-2 Brick Home, Cent. A&H, built-ins, FP, fans, basement, cov. patio, 26' x 30' metal bldg. w/A&H, fenced yd.!! \$170,000!!

LENAU - COUNTRY CLUB AREA
• 2-1 Home, 1 car detached garage, wall furn. heat, win. evap. air!! \$11,900!!

• VERY NICE 2-2-2 carport Home, cent. heat, unit, 3 win. refrig. air units, 5 cell. fans, woodburning stove in den, sunroom, hdwood, carpet, & tile, workshop/storage, fenced yd., corner lot!! \$445,000!!

HIGH SCHOOL AREA
• NICELY REMODELED 2-1-2 carport, new electrical, plumbing, fixtures, cabinets, texture & paint, Cent. A&H(elec. heat pump), new shingles & storm windows, workshop/storage!! \$47,500!!

• 4-3 1/2-2 Brick Home, Cent. A&H, built-ins, approx. 3880' lv. area, auto. spkrl., workshop/storage, fenced yd.!! \$170,000!!

• VERY NICE 3 1/2-2-2 Brick Home, Cent. A&H, nice tile & laminate floors, workshop/storage, fenced yd.!!

COMMERCIAL
• ANA'S BEAUTY SHOP - Approx. 1120' bldg., with or without furniture & fixtures!! PRICED TO SELL!!

• 3 office units on 40.6' x 140' lot across from our house!! \$33,000!!

• VERY NICE CHURCH BLDG. WITH PARSONAGE - MAY BE SOLD SEPARATE!! Priced to sell!!

• 100' x 140' tract, corner lot on Hwy. 84, 1760' Bldg., 1076' Bldg., 308' storage, & 2-56' x 22' metal canopies w/paved area!! \$49.5K!!

• FORMER RICHLAND HILLS TEXACO - 1414' Bldg. + 1080' canopy + 16,530' asphalt paving!!

FARMS
• LAZBUDDIE AREA - 3-2-2 Home, Cent. A&H, built-ins, FP, deck, hot tub, cellar, stor. bldgs., on 2 acre tract!! \$95K!! Additional 156 acre farm w/circle sprinkler, 3-20 hp. sub. wells!! \$495 per acre!!

• CLAY'S CORNER - 320 acres, 2 wells, 2 circle sprinklers, 3 bedroom 2 bath, 2 carport home!!

RURAL
• 3 bdrms., 2 bath home on 30 acres, 24' x 36' workshop, 13' x 36' storage, domestic well, irrig. well!! MORE!! \$75K!!

• NICE 4.8 acre homesteads, close to town, deed restricted!! \$17,500!!

• NICE 3-2-5 carport Home on 2 acres, Cent. heat, Cent. evap. air, built-ins, fireplace, fans, utility, cellar, large shop, stor. bldg., MORE!! \$129,500!!

• SUDAN - VERY NICE 2-1-1 carport Brick Home, elec. baseboard heat, window av. air, fans, large utility, approx. 1220' lv. area, cov. patio, 3 car detached carport with storage, corner lot!! \$32,500!!

• CLAY'S CORNER - VERY NICE 3-2-2-5 HOME on 5 acre tract, Cent. A&H (Elec. Heat Pump), built-ins, FP, 1100 sq. ft. new in 2005 plus additional updating w/carpet, tile, paint, fenced yd., cov. patio, 600' workshop/storage Bldg.!! Numerous other amenities!! \$189,500!!

Senior Citizen News

By Laverne Winn

July has come and gone. We trust you all had vacations, company, family reunions, school reunions, and had a wonderful month.

We have several activities scheduled for the center in August.

Mandi Seaton will bring her nutritional program on Tuesday, Aug. 7, during the lunch hour. We really appreciate Mandi taking her time to visit with us each month. She has a great program. Make plans to be

here.

Sandy will be gone Tuesday night, but Dale Allenburg from Clovis, N.M., will be the disc jockey for the dance on Aug. 7. He does a great job. Bring your favorite dish for the pot luck supper and join in the fun and fellowship.

Tuesday, Aug. 14, we invite you seniors and guests to the dance to honor Ray West. Make plans to be here to visit and thank him for his contributions to the community.

The regular board of director's monthly meeting will be Wednesday, Aug. 8, beginning at 1 p.m., here in the center. The meeting is open to the public.

Wednesday, Aug. 15, we invite all you players to come play Bunko with us at the center. Interim Home Health will be hosting this game. So come join in the fun.

Also, on Wednesday, Aug. 15, Girls Gone Styled will be here for a style show. Alice Liles, the sponsor, has a very good program planned for the center.

Make plans to come have lunch with us on that day and see the girls. It should be a great treat. All you parents and grandparents make plans to be here.

We are having good crowds for the Bingo on Thursdays. LeShae will be back to call for us on Aug. 9. Hope she had a great vacation. Remember to bring your can of food for the food bank.

Menu for Aug. 6 - 10:
Monday, Aug. 6 — Beef with vegetables, rice, salad, wheat roll, and shortcake with fruit.

Tuesday, Aug. 7 — Meatloaf, black-eyed peas, steamed carrots, sliced tomatoes, onions, wheat roll and cookies.

Wednesday, Aug. 8 —

Chicken-fried steak, gravy, mashed potatoes, green beans, salad, wheat rolls and fruit cobbler.

Thursday, Aug. 9 — Hamburger on a bun, lettuce tomato, onion, chips, pork and beans and baked apples.

Friday, Aug. 10 — Fish or chicken strips, gravy, beans, coleslaw, cornbread and fruit salad.

Please join us for the
Muleshoe Memorial Park Cemetery
Annual Board Meeting
Tues., August 14, 2007
6:00 PM
Five Area Meeting Room

Check out our website!
www.muleshoejournal.com

Letter to the Editor

Changes of rules, by-laws of High Plains Underground Water District No. 1 questioned

To the Editor:

The High Plains Underground Water District board made a decision to repeal the election and duties of the county committees.

These are the people with the first approval of a well permit you must apply for before drilling a water well that produces over 36,000 gallons of water per day.

The hearings were held on July 10 in Hereford and July 12 in Lubbock. On July 17, the board passed the repeal.

At the hearing on the repeal, it was stated the county committees would not be eliminated but the process of appointment and their duties would be incorporated into the bylaws of the district.

This is where the question arises about the process the board took in making the change. Isn't it required that the language of change receive the same right of comment from the water district constitutes?

As of July 17, the water district has a county board elected by the people with no duties and no process for replacement at the end of their elected term.

I understand the board granted the staff the privilege of writing the appointment and duties that replaces the repealed section of the rules.

Did they do this with review privilege or any thing the staff writes will become the law?

I would hope that more interest would come from the constituents in this and other things the water district is involved in, remember its your property and you still have the right of capture.

Phil Garrett, Muleshoe

From God's Holy Word

"And the Word was made flesh, and dwelt among us, and we beheld his glory, the glory as of the only begotten of the Father, full of grace and truth."
— John 1:14

YOUR FUTURE STARTS HERE
Your future starts here
MULESHOE EXTENTION CENTER

Fall Registration continues online thru Aug. 16

Daytime Classes Offered
Intro to Accounting I, General Psychology, Art Appreciation, Hist. of the U.S. to 1876, and Career & Self Evaluation

Night Classes Offered
Hist. of the U.S. to 1876, College Algebra, American Government, and Composition I

For more information, Contact Stephanie Jones, 806.896.9611, ext 2243

www.southplainscollege.edu

AUGUST BACK TO SCHOOL SPECIAL!

Free Activation with a School Supply Donation!

MOTOROLA RAZR
Only **\$59**

OUR BEST PLAN ONLY \$39.95

- > 1000 Anytime Minutes with **FREE** Nationwide Long Distance
- > **FREE** Unlimited Night and Weekend Minutes with **FREE** Nationwide Long Distance
- > **FREE** Unlimited Mobile-to-Mobile
- > **FREE** Carryover Minutes
- > **FREE** Loyalty Minutes

Bring in three school supplies — valued at \$10 or more — and receive FREE ACTIVATION on a new wireless plan. A \$25 VALUE!

NETWORK EXPANSION
NEW CELL SITE IS LOCATED AT:
■ Corona — Located at 500 Franklin Street in Corona, NM. This site will provide coverage to the town of Corona and along Hwy. 54 in that area.

TEXT MESSAGING ■■■ WEB BROWSING ■■■ PICTURE MESSAGING ■■■ WIRELESS

PLATEAU Wireless

www.plateauwireless.com 877-PLATEAU (752-8328)

Race to any Plateau Wireless store to sign up! Way To Go, Plateau!

Muleshoe Five Area Telephone Coop. 302 Uvalde (806) 272-7700	Muleshoe Connection Warehouse 117 Main St. (806) 272-5532	Frona WT Services 1010 Columbia (806) 250-5555
--	---	--

Contract Term: 2 years. Early termination fees: \$200 per year, maximum of \$400. Night and Weekend hours are Monday through Thursday 7:00 PM through 6:59 AM and Friday 7:00 PM through Monday 6:59 AM. When outside the designated home area, Roaming: \$50 per minute with Free Long Distance. Additional taxes, fees, and surcharges may apply. Carryover Minutes: unused plan minutes are carried over month to month. Loyalty Minutes: 30 minutes after one year of service, 60 minutes after three years of service and 100 minutes after five years of service. Carryover and Loyalty Minutes are removed on the date of disconnect and/or forfeited in the event of suspension/termination for nonpayment. Plan only available on GSM phones. Offer not available in all markets. Certain Restrictions Apply. Offer valid through 8/31/07.

Diga HOLA al internet de alta velocidad!

Rapid Communications
Su conexión local hacia el mundo

FIRME HOY PARA OBTENER LA INSTALACIÓN GRATIS
¡Y el tercer mes de servicio es gratis!

Ahorre un total hasta de \$169.95

- 6 velocidades disponibles para ajustarse a cualquier necesidad y presupuesto
- Baje fotos y música rápidamente y fácilmente
- No hay señales de ocupado, ya no tiene que esperar más
- No necesita línea telefónica o alambrado de cable para recibir el servicio

¡Llame hoy y ahorre!
1.800.963.4984

Rapid Communications 2007. Para clientes residenciales nuevos únicamente. La disponibilidad de los servicios y precios pueden variar y no está disponible en todas las áreas. El crédito por el tercer mes de servicio será puesto en su cuenta y aparecerá en la tercera factura. Después se aplicarán las tarifas regulares. La velocidad para bajar y conectar son a máxima velocidad, éstas pueden variar y no están garantizadas. Hay cargos de franqueo, impuestos, instalación, restricciones y otros cargos pueden aplicarse, el monto actual depende de la ubicación y del servicio ordenado. Si el servicio es cancelado antes de 12 meses, un cargo de servicio de \$100 será agregado a la cuenta del cliente. Un módem para el cable o una tarjeta para la cadena pueden ser requeridos al momento de la instalación. Se puede requerir como requisito mínimo tener una computadora. La oferta está sujeta a cambios. Se pueden aplicar otras restricciones. RAPID07716