



# THE MULESHOE JOURNAL

Dedicated to the progress and development of the great Muleshoe country

VOL. 50 No. 17

10 PAGES

Published Every Thursday at Muleshoe, Bailey County, Texas - 79347

10 CENTS

THURSDAY, APRIL 27, 1972

## around muleshoe with the journal staff

Rotary Club met for a noon meeting Tuesday at the XIT Steak House. Guests were Charles Richards of the Amarillo Globe News and Mike Riley, student guest.

Clinton Kennedy was in charge of the program. He introduced Joe Harbin, who gave a very interesting slide exhibition on the California State Water Plans. This project carries water from the northern part of the state to the southern part of the state. Harbin gave an interesting dissertation along with the slide presentation.

Pvt. Randy Williams is visiting this week with his mother, Mrs. Cieta Williams, his brother, Ricky, and his grandparents, Mr. and Mrs. Buck Creamer. He will leave Friday for a two year tour of duty in Germany.

The children and grandchildren of Mrs. C.A. Watson of Lazbuddie surprised her with a birthday party Friday evening in her home.

Present for the occasion were Mrs. C.A. Watson, Leon Watson of Amarillo, Mr. and Mrs. Preston Cargile and family of Lazbuddie, Mr. and Mrs. Randy Bush of Lazbuddie, Mr. and Mrs. O.R. Chandler and family and Mr. and Mrs. Howard Watson and Troy, all of Muleshoe.

**AMARILLO TEXAS...**April 18, 1972...Stockholders of Pioneer Natural Gas Company, at the annual meeting held today at the Amarillo offices, re-elected the present nine directors of the company.

In a meeting of the board held immediately after the annual meeting the directors declared a quarterly dividend of 20 1/2¢ per share on the outstanding common stock payable June 1, 1972 to stockholders of record on May 15, 1972. In addition action the directors re-

Cont. on Page 3, col. 3

## Televisions Can Tune In Tornadoes

Tuning a television to pick up an approaching tornado may seem strange, but it is a scientific fact that it works.

Newton Weller, a self-taught electronics expert from Iowa, discovered it was possible to tune in a tornado on a television set.

It's a scientific fact, says Weller, that what is known as a pulse generator-actually a tornado still aloft-radiates pulses that can be picked up at about 55 megahertz. And that frequency corresponds to Channel 2 on a television dial.

As the tornado funnel approaches, its "signal" overwhelms the brilliant white light on the screen.

When a tornado watch or warning is issued, follow these simple instructions:

1. Turn on your television set and let it warm up briefly.
2. Turn to Channel 13. Adjust the brightness control knob so the screen is almost black.
3. Turn to Channel 2. Make no further adjustments.
4. Lightning appears on the screen as horizontal streaks or flashes. (A color TV produces colored lightning). These flashes do not indicate a tornado.
5. The tornado signal is an increasingly steady and bright white light over the entire screen. Or, if you are receiving a program on Channel 2 at the time, the darkened picture will become visible and remain visible as a tornado approaches.
6. The bright light over the entire screen is your clue to seek shelter fast. Don't become entranced by what you see and fail to seek cover.

7. A cave or the southwest corner of your basement are the safest places to go in time of a tornado. If you have no basement, take cover under heavy furniture in the center of the house.

A radio, preferably battery-operated in case the electrical power fails, can augment your TV detection system. The procedure is:

1. Set the radio near the TV set.
2. Turn the radio to the low end of the dial-around 550 kilocycles.
3. A tornado is not far away if the radio makes a steady, staccato sound (continuous static.) Take shelter fast.

The major drawback with a radio is that its warning signal-a steady staccato sound-isn't heard until the tornado is dangerously close. Sometimes the tornado will be less than a mile away.

No matter what kind or type of TV set you have, Weller says you can tune in an approaching tornado by following his directions.

There are however some additional instructions for person located in "fringe" areas served by cable television.

Weller stated that it is important to understand that the remote antenna is what sees the tornado, not the home TV receiver.

A tornado could be in your own backyard, and you wouldn't pick it up unless you were located right beside the community antenna.

The solution is to buy an inexpensive pair of rabbit ears to connect temporarily when a storm warning is forecast.

A radio should still be used so you can hear important weather bulletins and pick up a late warning signal if a tornado was approaching.



LIBRARY DEDICATION DIGNITARIES...Pictured left to right are Bailey County Judge Glen Williams, William Gooch, assistant State Librarian, and Mayor Irvin St. Clair. They were all included in the dedication program at the new Muleshoe Area Public Library Sunday afternoon. Gooch gave the main dedicatory address.

## Local Group Seeking Civil Defense Monitor

Tornado season is not approaching, it is right here with us! And, because of the apparent increase in deadly tornadoes in our area during recent years, Gordon (Corky) Green, Civil Defense Director for Bailey County, and a group of interested persons are attempting to do something about the weather.

Green is assisting the wives

of members of the Bailey County Volunteer Fire Department and wives of local law enforcement officers in an effort to secure a "vital" piece of equipment for local citizens' benefit.

Meeting last Friday night, the women's group decided to try to help acquire a Civil Defense Monitor which will immediately warn of local severe weather

or civil defense alerts. A spokesman for the group, Mrs. H.E. Reeder, said the equipment will cost between \$3,000-\$3,500 and will be attached to the cable connection by the local cable antenna company. In the event of a warning or alert, word will be immediately flashed onto all television channels coming into Muleshoe and will inform watchers. "This is an alert (or warning) - tune to your local radio station for further developments."

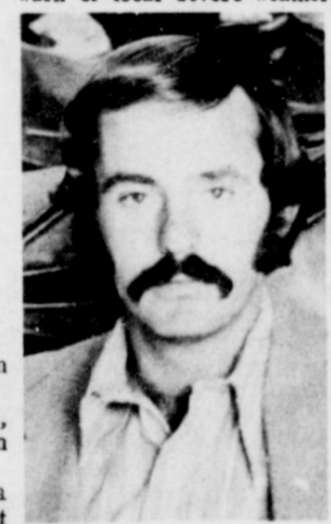
Mrs. Reeder added that the warning system will be utilized

### 20 Receive Certificates In Adult Classes

On April 20, the Adult Education classes ended for the school year 1971-72. It was considered to be a successful year with the enrollment reaching as high as 88 people and several completing their GED tests for their High School Equivalency Diplomas.

Certificates of participation were awarded to those who had completed at least 12 hours in class and one special award was made to Annie C. Ybarra - a Certificate of Perfect Attendance. Mrs. Ybarra came to class every night class was held. Since she holds down a full-time job at the XIT Steak House, this proved to be quite a task in itself. This lady also has a family of three to take care of, but feels like education is of major importance and would not miss a class for any reason.

Cont. on Page 3, col. 2



## Bob Garlington Is Art Director At Astroworld

Bob Garlington, former Muleshoe resident and graduate of West Texas State University, has taken the position of Art Director at Astroworld in Houston.

Cont. on Page 3, col. 4

## Local Men Save Four Boat Accident Victims At Ute Lake

Two local men from Muleshoe were credited Saturday as saving the lives of four Clovis people after their boat capsized on Ute Lake. Three other persons drowned in the mishap.

Fred Mardis reports that he and Murl Brown were on their way to shore in their boat when they ran out of gas. While they were changing tanks on their boat they heard screams and saw someone waving at them. They thought at first that the people had run out of gas and they went towards them to tow them back to shore. When they arrived at the scene they could tell that the boat had capsized and that there was a woman hanging on to the capsized boat. They pulled her into their boat

## Muleshoe Library Dedicated Sunday

### Jaycees Plan OPI Project This Year

The Muleshoe Jaycees met Monday at noon in the XIT Steak House. The Jaycee Installation Banquet that is to be held May 27 was discussed and it was announced that Jaycee President Rick Clayton will be the guest speaker.

The Muleshoe Stegall-Opportunity Plan project was approved for this year. Tickets for the beef and hog to be given away will be available soon. This project adds \$1800-\$2,000 to the fund each year.

This Texas State Jaycee Convention will be held in Corpus Christi this year on May 22. Some 16 couples at this time are planning to attend from Muleshoe.

Present at the meeting were guests, Pat George and Ben Ingham and the following members: Max King, Derrell Oliver, Marlin Mills, Monty Dollar, Eugene Shaw, Gary Shipman, Tommy Black, Joe Young, Richard Lot-

### Band Will Give Annual Spring Concert

The Muleshoe 'Mighty M' Sweepstakes Band will present their annual Spring Concert Tuesday night, May 2, at 8 p.m. in the Muleshoe High School auditorium.

Immediately following the concert, there will be a reception honoring the three time Sweepstakes Band. No other band in this district has won Sweepstakes three years in a row.

The Muleshoe band will present the concert to show their appreciation to all of the people who have shown an interest in the band. Particularly to the people who donated to the new uniforms. The band urges every-

Cont. on Page 3, col. 3

## Dick Johnson Wins Golf Tournament

Dick Johnson was the winner of the Championship Flight during the 20th annual Muleshoe City Golf Tournament held this month. Final matches were played Sunday at the Muleshoe Country Club.

Runner-up was Kenny Taylor and winning consolation was Bruce Chapman.

In the First Flight, Mike Riley was the winner with Jeff Chapman being runner-up and Gene Bartlett winning consolation.

Martin Oliver won the Second Flight, Bob Stovall was runner-up and Sam Fox won consolation.

Glen Watkins was the winner of the Third Flight with Gene Paul Jarman being the runner-up and Jack Young winning consolation.

In the Fourth Flight, Doyce Turner was the winner, Ben Gramling was runner-up and Jerry Harrison won consolation.

Red Johnson won the Fifth Flight with Randy Johnson winning second and Boyd Magby winning consolation.

In the Sixth Flight, Pody Welch won first, Joe Bob Stevenson won second, and Dewitt Precure won consolation.

In the ladies 18 hole flight, Mary Frances Holt won first, Mary Sweetman came in second and Analita Haley won third.

Cont. on Page 3, col. 6



CITY GOLF TOURNAMENT WINNERS...Mayor Irvin St. Clair, right, is shown presenting Dick Johnson with a plaque for winning the Muleshoe City Golf Tournament this year. Runner-up was Kenny Taylor, pictured at left. The final matches in the Tournament were played Sunday afternoon at the Muleshoe Country Club.

Cont. on Page 3, col. 4



Clip this coupon  
Save 42¢

Maxwell House  
Coffee

All Grinds

Lb. Can  
**49¢**

On First can with coupon & purchase of \$5.00 or more excluding cigarettes Coupon good only at Piggly Wiggly April 27 thru April 30, 1972

Mix or Match

Piggly Wiggly or Carol Ann  
**Golden Corn** Cream Style or Whole Kernel 16 1/2 Oz. Cans

Piggly Wiggly or Carol Ann  
**Sweet Peas** Garden Sweet 16 Oz. Cans **5 \$1**

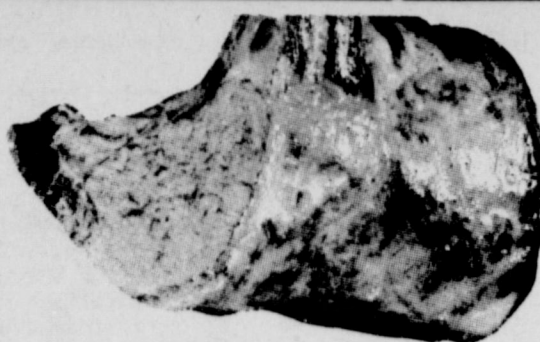
Piggly Wiggly Cut  
**Green Beans** 16 Oz. Cans

Farmer Jones  
**Large Eggs**  
Dozen **3 \$1**

Twin Pet  
**Dog Food** 15 1/2 Oz. Can **6¢**

On First 6 Cans, Price Thereafter 8¢

There's more in store at  
**PIGGLY WIGGLY!**



Full Half or Whole

**Pork Loins**  
Lb. **64¢**

**Lean Ground Beef** (Cookout Special!) Lb. **69¢**  
**Hot Links** Chuck Wagon Brand Lb. **69¢**  
**Chuck Steak** Boneless, USDA Choice Beef, Valu-Trimmed Lb. **98¢**  
**Beef Brisket** Boneless, USDA Choice Beef, Valu-Trimmed Lb. **\$1.19**  
**Smoked Sausage** Hormel 12 oz. Lb. **93¢**  
**Corn Dogs** Circle T Happy Times 5 Count 13 1/2 Oz. **59¢**

Family Pak  
**Pork Chops** Lb. **68¢**



Lean Pork, just right for B-B-Q!

**Spare Ribs**  
Lb. **88¢**

**Boneless Ham** Hormel Cure "81" 4-6 Lb. Avg. Lb. **\$1.49**  
**CHUCK STEAK** Center Cut Lb. **68¢**  
**Loin Pork Chops** Lb. **98¢**  
**Sausage** Home's Little Sizzlers 12 Oz. Pkg. **59¢**  
**Cut Up Fryers** USDA Grade A Lb. **35¢**  
**Fryer Breast** USDA Grade A Lb. **59¢**  
**Fryer Thighs** USDA Grade A Chicken (2 Breast, 2 Thighs, 2 Drumsticks) Lb. **49¢**  
**Combination Pack** Lb. **49¢**

**Sliced Bacon**  
Slab Sliced, Bulk Pak, Ranch Style, 1st Grade Quality Lb. **69¢**

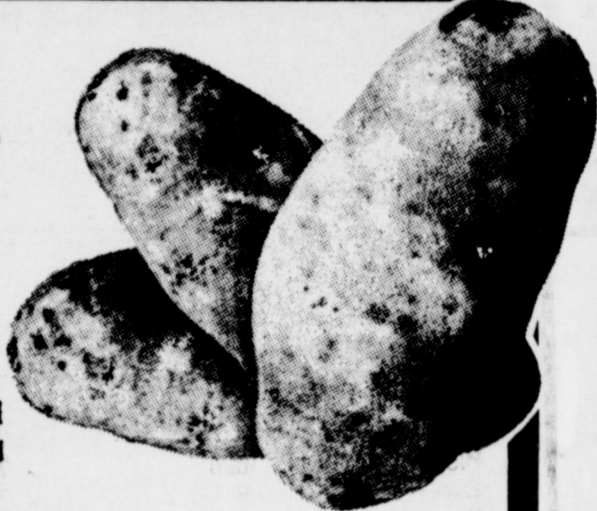
Single Slices Farmer Jones Brand, Save 10¢  
**Cheese Slices** 16 Oz. Pkg. **79¢**

**Chuck Roast**  
USDA Choice Beef, Valu-Trimmed Lb. **64¢**

Lean For B-B-Q  
**Short Ribs** Lb. **39¢**

VALUES GOOD  
April 27, 28, 29  
501 W. American Blvd.  
Muleshoe, Texas

**Potatoes**  
Russet U. S. No. 1  
**10 Lb. Bag 58¢**



**Cucumbers** Long Green Slicers Lb. **39¢**  
**Lemons** Sunkist Full of Juice Lb. **36¢**  
**Red Cabbage** A Salad Favorite Lb. **19¢**  
**Watermelons** Red Ripe Lb. **12¢**  
**Green Onions** Garden Fresh Bunch 3 FOR **29¢**

**Grapefruit** Ruby Red Lb. **17¢**  
**Yellow Squash** Crisp & Fresh Lb. **29¢**  
**Celery** Crisp & Crunchy Lb. **23¢**  
**White Onions** Sweet Mild Flavored Lb. **19¢**  
**Egg Plant** Lb. **39¢**

Sweet Milk filled ears  
**Corn on the Cob** Each **3 FOR 29¢**  
Extra Fancy  
**Red Delicious Apples** **4 Lbs 88¢**

Cala Ripe  
**Freestone Peaches** 29 Oz. Can **29¢**

Carol Ann  
**Pork and Beans** 30 Oz. Can **25¢**

Churngold  
**Soft Margarine** Lb. Tub **29¢**

Piggly Wiggly  
**Liquid Bleach** Gallon Jug **39¢**

BONNE  
**DETERGENT** 49 oz. Box **49¢**

Arrow Ground  
**Black Pepper** 4 Oz. Can **33¢**

Bonne' Asst'd Colors  
**Bath Tissue** Twin Pak **25¢**  
Alcoa Standard  
**Aluminum Foil** 75 Ft. Roll **59¢**

PIGGLY WIGGLY FROZEN FOODS!

Piggly Wiggly or Carol Ann  
**Orange Juice** 6 Oz. Can **19¢**

(All Varieties except beef & ham)  
**Dinners** Frozen Mortons 11 Oz. **38¢**

Low Prices from Piggly Wiggly!

Morton's  
**Mini Donuts** 10 Oz. Pkg. **49¢**

3-Course Morton's  
**Chicken Dinner** 17 Ounce Pkg. **83¢**

Morton's  
**Honey Buns** 9 Ounce Pkg. **39¢**

Birdseye  
**Cool Whip Topping** 4 1/2 Ounce Carton **38¢**

**Bayer Aspirin** 50 Ct. Bottle **39¢**

Health & Beauty Aids!

**Dial Deodorant** 6 Oz. Can **77¢**  
**Alka Seltzer** Foil Wrapped 36 Ct. Pkg. **99¢**

**Topping** Dream Whip 4 Ounce Package **49¢**

**Dressing** Golden Caesar Kraft's 8 Ounce Bottle **53¢**

**Bar Soap** Palmolive Gold Bath Size Bars **15¢**

**Grape Drink** Welchade Chilled 32 Oz. Jar **52¢**

**Hawaiian Punch** Concentrate Quart Bottle **\$1.19**



**SAVE 15¢**  
With This Coupon Off the Regular Price of One Pound Can  
**Maryland Club Coffee**  
Good at Piggly Wiggly Apr. 27 thru Apr. 30, 1972

**SAVE 7¢**  
Off the Regular Price When You Buy Two 15 1/2 Oz. Cans of  
**Puss 'N Boots Shrimp, Salmon or Tuna Cat Food**  
Good at Piggly Wiggly Apr. 27 thru Apr. 30, 1972

**SAVE 8¢**  
With This Coupon When You Buy One Pound Package  
**Mazola Corn Oil Margarine**  
Good at Piggly Wiggly Apr. 27 thru Apr. 30, 1972

**50 EXTRA**  
With This Coupon And Purchase of One 2 Lb. Package of  
**Simplot Tater Gem Potatoes**  
Good at Piggly Wiggly Apr. 27 thru Apr. 30, 1972

**50 EXTRA**  
With This Coupon And Purchase of Two 6 Oz. Boxes of  
**Uncle Ben's Large Grain Wild Rice**  
Good at Piggly Wiggly Apr. 27 thru Apr. 30, 1972

**50 EXTRA**  
With This Coupon And Purchase of One 3-6 Lb. Avg.  
**Hormel Cure 81 Ham**  
Good at Piggly Wiggly Apr. 27 thru April 30 1972

**50 EXTRA**  
With This Coupon And Purchase of One 4-7 Lb. Avg.  
**USDA Choice Beef Rump Roast**  
Good at Piggly Wiggly Apr. 27 thru April 30, 1972

**50 EXTRA**  
With This Coupon And Purchase of One 4 Oz. Bottle  
**Mennen's Protein 21 Hair Conditioner**  
Good at Piggly Wiggly Apr. 27 thru Apr. 30, 1972

## Library...

Cont. from Page 1

Having met and talked with the people of Muleshoe, I am convinced that the new library will indeed receive the continued support it will have to have to keep it the vital part in the life of the Muleshoe community that it enjoys this day.

"During the long history of its evolution, the library has always been a symbol of progress. No longer is it simply a museum of dusty tomes, or a collection of "and-they-lived-happily-ever-after" escapist novels. Today's library has become an indispensable center for independent study and research-or if you will-the nerve center of a space age educational system, a coordinating agency for social, civic and educational development, and the nucleus of information resources and services for scientist, businessmen and students. Today's library is a vital force in every phase of man's experience-intellectual, social and economic."

"It is most refreshing to see visible indication that the community of Muleshoe might share in this interpretation of a public library. For as the physical presence of this beautiful building we dedicate today suggests, a partnership has been established with the library, its governing body, and the community it serves-a partnership which has accomplished the task of erecting a functional structure. This is a structure which could adequately serve as the hub for the educational and cultural development of Muleshoe; one which could provide strong library service to the entire trade area surrounding it; and one which could effectively support its responsibility as a member in the emerging State Library System."

"We say could provide these vital functions because there exists that possibility that something might appear which would dim the prospects of your library fulfilling its role in the life of this community. And we have seen many libraries in Texas suffer and literally die from this same thing. We refer, of course, to the possibility that the motivating energy behind the erection of this building will fade once the new wears off and the most important part of any library, and certainly

this one, its contents, will fail to receive the support it must have if it does not provide good and adequate library service."

"We have now come to the heart of the matter for a public library-its collection. Through the quantity and quality of its materials collection, the public library shows its true worth to the community."

"Your library must provide, through its collection, powerful indispensable agents for bringing enlightenment, new knowledge, encouragement, and inspiration to every person in this community. To achieve this there must be available a wide range of materials on most every subject. With the plethora of new books being published each year, this becomes a formidable task, particularly in light of continuously rising costs and inflation."

"As you will probably agree, good library service does indeed cost money, and it must, of necessity, compete with all other services provided by local government. But we have seen so many times that community which places the public library high on its list of values assures itself a more progressive and attractive ranking in our states growth."

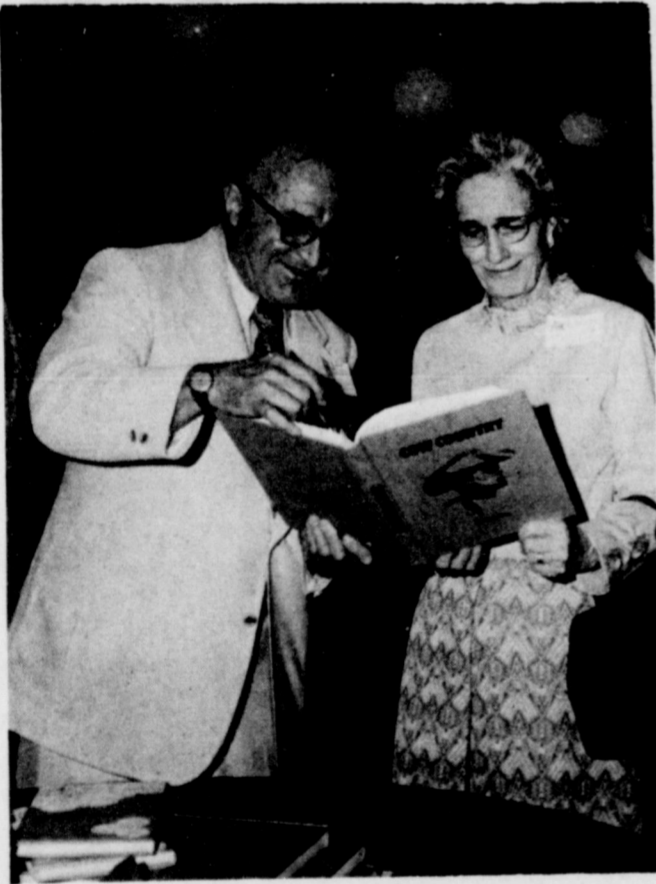
"Thus, we hope that the inspiring partnership which has been engendered by the Muleshoe Library, its governing body and the community it serves will not be allowed to dissolve but rather from this point, continue in a richer and even more productive partnership to insure

## Classes...

Cont. from Page 1

She not only managed to attend class for 138 hours, but she also encouraged others to attend and would even go so far as to go by for them in her car and bring them to class. She was an inspiration to all who participated in the classes, especially to the teachers, Mrs. Milburn, Ben Ingham and Mrs. Pena.

Those receiving certificates of class participation were: Manuel Trevino, Dario Dominguez, Englandia Gonzales, Delia Fuentes, Elaine Estrada, Noelia Flores, Paul Monreal, Rosa Flores, Manuel Balderas, Margie Ybarra, Frances Monreal, Esmeralda Romo, Annie Ybarra, Lupe Yruegas, Stella Fuentes, Bea Campos, Tony Montez, Janie Gonzales, and Luis Saucedo.



LAINE VISITS AT DEDICATION.. Well-known journalist and author, Tanner Laine, is pictured autographing copies of his book "Cow Country" at the dedication of the Muleshoe Area Public Library Sunday. Laine was the visiting author at the dedication. Shown with Laine is Mrs. Jack Hicks of Littlefield.

PUT **Spring-Zing** in your CAR

NOW is the time to get that work done for Spring and Summer Driving!

The car you drive is only as dependable as the service that it gets. We pride ourselves on the fine care we give every car we examine for road preparedness.

**Plains AUTO PARTS**  
South Main  
Muleshoe  
Phone 272-4576

## Accident...

Cont. from Page 1

drowning victims were not wearing life jackets at the time of the accident.

A New Mexico State Police investigation indicates that the rough waters, lack of safety jackets, overloaded conditions of the boat and a bilge plug that was not in place contributed to the mishap.

The boat was carrying seven persons and a large amount of camping equipment.

A local Marina owner said the tragedy shows the need for more stringent safety patrols and precautions. "Safety is not stressed enough," she said.

The incident points to a need for more rigid safety inspection of boats on a lake.

The incident points to a need for more rigid safety inspection.

"This has been bothering us for a long time," the local woman said. The park rangers "make a rigid check on boat registration and titles...they need to make certain people have enough safety equipment and are in condition to handle their boat."

## Garlington...

Cont. from Page 1

in Denver for one year, then moved to Laguna Beach, Calif. While in California, he started Faure Tyme Corporation, a design studio dealing in children's books and various retail designs.

As Art Director of Astro-world, an amusement center the size of Disneyland, Garlington coordinates all color decisions, designs and advertising for the park.

He is a graduate of Muleshoe High School and the son of Mr. and Mrs. W.C. Garlington of Muleshoe.

### Trial And Error

He who never makes a mistake actually never makes a discovery either. -Gospert, Pensacola.

## Jaycees...

Cont. from Page 1

er, Richard Black, Mac Brown, Jim Tucker, Joe Pattie, Jim Crawford, Wayne Peterson, Duane Seay, Corky Green, Bruce Little, Curtis Walker, James Brown, Gene McGuire, Gary Glover, Dick Johnson, Charles Smith, Charles Moraw, Wayne LaGrone, Jeff Smith, Glen Watkins, Bob Finney, Clarence Christian, Ben Bruns, Bill Dale, John Blackwell, Ken Henry, Dwyan Calvert, Paul Wilbanks, Joe Bob Stevenson, Dick Howard, Bill Russell and Frosty Jones.

## Concert...

Cont. from Page 1

one to come and listen to the music that the band played in the contest held April 19, and to see their new uniforms.

The Muleshoe High School "Mighty M" Band will be under the direction of Jim Harvey, band director.

## Muleshoe...

Cont. from Page 1

elected the current slate of officers.

The directors returned to the board by the stockholders are A.F. Cox, J. Harvey Herd, Laurence R. Jones, Jr., M.E. Purnell, Burton P. Smith, A.C. Verner, C.I. Wall, W.E. Walker, Jr., and K.B. Watson.

Manuel Pesina, a senior at Muleshoe High School, enlisted in the Delayed Enlistment Program with the United States Army recently.

The delayed entry program allows a man or woman to enlist now and go up to six months later. Pesina enlisted for the 82nd Airborne Division and will report for boot training after graduation this summer.

## Governor Preston Smith serves.

For you,

- Preston Smith stopped the Sales Tax on food, medicine, and farm equipment.
- Preston Smith stopped an increase in the gasoline tax.
- Preston Smith rejected an unnecessary personal income tax.

For Texas,

- Preston Smith helped provide more funds for industrial development than any two governors before him.
- Preston Smith helped establish more new state colleges and universities than all previous governors combined.
- Preston Smith initiated the first comprehensive program to fight drug abuse in Texas.
- Preston Smith helped develop the most progressive salary schedule for teachers in the nation.

Re-elect

Governor

**Preston Smith**

and help him keep your taxes down.

## Monitor...

Cont. from Page 1

next week in the former 'Sam's Auto Store' location on Main Street. Presently, the group is seeking articles to sell in the flea-market, with all proceeds to go toward purchase and installation of the system. Any contributed articles will be picked up by persons calling Mrs. Edd Edmiston at 272-4196; Mrs. Buddy Black at 272-3732 or Mrs. Pete Black at 272-3292, said Mrs. Reeder.

All types of articles are being sought, she continued, including appliances, both large and small; clothing; dishes; floral arrangements; jewelry; cosmetics; baby and infant clothing and furniture; books and linens, as well as other saleable items.

Also contemplated at this time is mailing a letter to all cable subscribers asking for a minimal contribution as the monitor will serve everyone on the system. An estimated 92 percent of homes in Muleshoe are on the cable, and this represents more than 3,500 people, according to figures obtained from representatives of the cable company. The warning system could conceivably save several thousand lives or prevent injury to several thousand persons in the

event of tornado weather, said the group attempting to have the monitor installed. Once the monitor is installed, it will be maintained by the cable company, said company officials.

Headquarters for the system will be the new civil defense center presently being completed in the basement of the Bailey County Law Enforcement Center. The emergency center will be operated by members of the Bailey County Civil Defense group, the Bailey County Volunteer Fire Department and Bailey County Law Enforcement Center personnel. It will be operated on a 24-hour basis as the need arises, said members of the Bailey County Civil Defense group.

"It will take the help of everyone in the community," emphasized Mrs. Reeder, "but, it will be available to almost everyone in the community. Most of the local civic, social groups and church groups have indicated they will work with us to help get the money we need to have the monitor installed," she concluded.

## Golf...

Cont. from Page 1

In the 9-hole flight, no winner has been announced as of now because one lady still has not completed her game.

## Local "Liars" Can Win Cash At Fiesta

If anyone in the Muleshoe area has a real "far out" story about the Old West passed down in their family, or if they have a lively enough imagination to make up their own, it could be worth money plus a free trip to Truth or Consequences, New Mexico, for the annual Fiesta May 9-14.

Three top "story tellers," selected as finalists on the basis of their entries in the Benson & Hedges Tall Tales Contest, will be brought to Truth or Consequences to appear along with top Hollywood and TV show entertainers in a big stage show emceed by Ralph Edwards and Bob Barker on Saturday, May 13. The winner will receive \$300 while second is worth \$200 and third \$100. They also will enjoy attending other events scheduled for the Fiesta celebrating the city's name change to that of the popular TV show 22 years ago.

Anyone 18 years old and above can enter as many Tall Tales as they like. They may be typewritten, up to 500 words, or recorded on tape, not to

exceed two minutes in speaking length. Mail entries to Fiesta Inc., Box 31, Truth or Consequences, N. Mex. 87901. Entries must be postmarked no later than May 1.



**MULESHOE JOURNAL**  
Established February 23, 1924  
Published by Muleshoe Publishing Co., Inc.  
Every Thursday at 204 W. Second Box 449  
Muleshoe, Texas, 79347  
Second class postage paid at Muleshoe, Texas

**TEXAS PRESS**  
L.L. Hall, President  
Jessica R. Hall, Sec.-Treas.  
L.J. Hall, Managing Editor  
Katie Fuller, 3rd Vice Reporter  
Janice Gilliland, Secretary  
Jan Hekberg, Advertising  
Pauli Gavril, Business Office

**SUBSCRIPTIONS:**  
Zone 1-Bailey-Farmer-Cochran-Lamb counties: \$4.00 per year, \$4.50 per year by carrier. With Sunday Bailey County Journal, both papers: \$5.50 per year; \$6.00 per year by carrier.  
Zone 11-Out-of-Territory: \$4.50 per year; With Sunday Bailey County Journal, both papers, \$6.25 per year.  
Monthly, by carrier-55¢, single copies-10¢  
Advertising rate card on application

# NEW P-A-G 511 sorghum proves you can get high yields with short water

Because of the water shortage, many High Plains farmers planted drought-resistant P-A-G 511 in 1971. Many had higher yields than full season varieties planted under the same or better conditions. In the 1971 High Plains Research Foundation tests at Halfway, Texas, P-A-G 511 ranked number 2 of 40 Hybrids tested in Single Forty-Inch Spaced rows with a yield of 7,740 lbs. per acre.

Seed Company or Brand Name	Hybrid	Yield Lbs./Ac. <sup>2</sup>	Duncan's MRT at 5% Level <sup>1</sup>	Maturity <sup>2</sup>	Days to Half Bloom <sup>3</sup>	Lodging Score <sup>4</sup>	Plant Height (Inches)	Percent Moisture
Asgrow	Double TX	8580	A	ML	75.8	2.6	64.8	11.7
P-A-G	511	7740	AB	M	74.2	1.8	58.4	12.0
DeKalb	F 66 A	7680	AB	L	76.4	1.0	48.4	11.2
DeKalb	X-1656	7520	B	L	77.2	1.4	51.8	11.1
Asgrow	Dorado	7510	B	M	73.6	1.0	46.4	11.8
Asgrow	Dorado M	7470	B	M	76.2	1.4	54.2	11.7
Taylor Evans	X-7131	7430	B	L	77.8	1.0	50.4	11.7
Pioneer	820	7430	B	L	79.2	1.0	54.6	11.7
Excel	811A	7410	B	ML	75.8	2.4	56.6	11.8
Browning	775W	7400	B	L	76.4	1.8	60.0	11.5
Goodpasture	SP-50	7390	B	M	67.0	1.0	45.2	11.3
R. C. Mitchell	Standing Y	7390	B	M	76.6	1.0	45.4	11.8
Niagara	Oro T	7340	BC	ML	74.8	2.8	60.2	11.7
McNair	652	7330	BC	M	72.6	1.6	57.2	12.0
R. C. Mitchell	Bumper-Yellow	7290	BC	ML	74.4	2.8	60.0	11.5
Farmland Ind., Inc.	Coop SG-40	7280	BC	ML	75.6	1.2	48.0	11.6
Taylor Evans	TE-Total	7250	BC	ML	76.4	2.0	56.8	12.1
Red Barn	500A	7240	BC	M	74.2	1.0	44.6	11.3
Funk	766W	7230	BC	L	82.6	1.4	62.0	11.4
Excel	B-52	7090	BC	L	79.4	1.4	54.6	11.5
Excel	808	7080	BC	ML	76.6	1.6	49.6	11.5
Texas	671	7060	BC	ML	71.8	1.0	51.2	10.9
Asgrow	Jumbo L	7050	BC	ML	76.6	1.6	55.2	11.4
Excel	707A	7040	BC	M	72.4	1.4	52.6	11.8
Taylor Evans	X-7018	7030	BC	L	77.8	1.0	54.4	11.8
Golden West	Bonanza	7000	BC	L	81.0	1.4	56.4	11.4
R. C. Young-Surgro	YE 90 L	6950	BC	ML	76.0	2.6	62.6	11.5
Taylor Evans	TE-77	6950	BC	L	79.8	1.4	56.2	12.0
P-A-G	516	6930	BC	ML	71.2	1.6	53.6	11.5
Pioneer	833	6910	BC	L	76.4	1.0	53.0	12.0
Excel	909	6880	BC	L	84.8	1.0	53.8	12.4
Niagara	Oro	6810	BC	M	74.6	1.0	45.8	11.8
Red Barn	701A	6770	BC	ML	74.8	1.8	52.0	11.1
Richardson	X-505	6770	BC	L	84.6	1.0	53.6	12.1
Taylor Evans	TE Y101	6610	BC	M	76.4	1.2	46.6	11.5
McNair	654	6570	BC	M	72.8	2.0	50.8	11.3
R. C. Mitchell	Standing	6570	BC	ML	77.6	1.0	46.4	11.5
R. C. Young Surgro	YE-90	6540	BC	M	75.8	1.0	45.0	11.5
DeKalb	F-66	6070	CD	L	83.0	1.2	45.6	12.9
Texas*	626	5360	D	ME	61.6	1.0	45.0	11.1
Average		7100			76.1	1.5	52.7	11.6

L.S.D. at 5% Level-1017

C.V.-11.4%

Planted: May 13, 1971

Harvested: October 8, 1971

- \* Hybrids with reduced yields due to severe bird damage.
- <sup>1</sup> All data are a mean of five replications.
- <sup>2</sup> Yields calculated at 14% moisture.
- <sup>3</sup> Any two hybrids having a common letter are not significantly different at the .05 probability level.
- <sup>4</sup> Seed Company maturity designation: E = early; M = medium; L = late.
- <sup>5</sup> Number of days from planting to date when majority of heads were in half bloom.
- <sup>6</sup> Score rating 1-5: 1 = none; 5 = severe.

## PROVED ON FARMS IN 1971

Last year many farmers found P-A-G 511 to be more drought resistant and higher yielding than other medium-medium late and some full season varieties. Carl Kleuskens of Hereford won 2nd place in the 1971 P-A-G Yield Contest with New 511 and P-A-G 516 with an average yield of 8,455.9 lbs. per acre on a 100+ acre field.

## BUY NOW & BE SURE OF ALL THE 511 YOU NEED

511 is a medium-medium late hetero-yellow endosperm hybrid grain sorghum with MDM tolerance and smut resistance and has complete seed treatment. No one can predict what the supply will be at planting time, but right now you can be sure of all the P-A-G 511 you need by seeing your P-A-G dealer.

## UP TO \$5,000 REWARD

Get complete details of the 1972 P-A-G Yield Contest and its \$5000 in rewards from your P-A-G dealer.

Sherley Anderson Grain Lazbuddie Farmers Supply, Inc. Lariat, Texas

Ray Griffiths & Sons Muleshoe, Elevator Muleshoe, Texas

Earth Elevator Oklahoma Lane Farm Supply Earth, Texas Farwell, Texas

H.M. Gable Seed & Fertilizer Muleshoe, Texas

Tide Products, Inc. Muleshoe, Texas





MRS. DEWAYNE GABLE, the former Delores Ann Abbott

# Miss Abbott Wed To Dewayne Gable

Delores Ann Abbott of Amherst and Dewayne Gable of Muleshoe were united in marriage in a double ring ceremony performed at the First Baptist Church of Amherst by Rev. Glenn Willson, pastor of the Church. The vows were read at 8 p.m. on April 14.

Parents of the couple are Mr. and Mrs. Eyrle Abbott of Amherst and Mr. and Mrs. F.H. Gable of Muleshoe.

The couple stood before an altar decorated with twin candelabra entwined with greenery and blue bows, flanked by baskets of white gladioli and baby's breath with blue and white bows.

Margie Harmon, organist, and Kyla Harmon, soloist, both of Amherst, provided wedding music, including "The Twelfth of Never" and "Wither Thou Goest."

Attending the bride as matron of honor was Mrs. Gary Morris of Muleshoe. She wore a street length dress of blue crepe with a v-neckline accented with rows of applied daisies. The matron of honor carried a bouquet of white gladioli with blue and white streamers.

Gary Morris of Muleshoe served as bestman. Ushers and candlelighters were Sherwood Abbott of Floydada, brother of the bride, and J.R. Carpenter of Muleshoe.

Given in marriage by her father, the bride was attired in a street length, Empire style dress of white crepe with a v-neckline, accented with rows

of applied daisies with pearl centers. The dress was fashioned with lantern sleeves and fitted cuffs. Her shoulder length veil was attached to a headband of daisies. The bride's bouquet, centered with an orchid, was of French feathered carnations and white streamers. It was placed atop a white Bible.

The bride's mother wore a navy blue and white dress with white accessories and a white corsage. The groom's mother wore an off-white dress and accessories and a red corsage.

A reception followed the ceremony in the dining room of the church.

A reception followed the ceremony in the dining room of the church. The serving table was covered with a white lace cloth over blue and was centered with

an arrangement of white gladioli entwined with blue ribbon. The three-tiered white wedding cake, decorated with blue roses, was topped with a miniature bride and groom. The cake and punch were served from crystal appointments by Jeaneane Huffman of Lubbock and Mrs. Danny Noble of Muleshoe.

For traveling the bride chose an orchid pant suit complemented by the orchid corsage lifted from her bridal bouquet. Following a short wedding trip, the couple is at home at Route 1, Muleshoe.

Mrs. Gable is a graduate of Amherst High School and South Plains College in Levelland.

Gable, a graduate of Frona High School, attended South Plains College. He is currently employed by the Paco Feed Yards in Frona.



MISS PATTI CAMP

## Gift Tea Honors Miss Patti Camp

Miss Patti Camp, bride-elect of Rayndall Cornelison, was honored with a gift tea Saturday, April 22, from 3:30 to 5 p.m. at the First National Bank.

The serving table was covered with a white linen cutwork cloth and was centered with a floral arrangement in the bride-elect's chosen colors of variegated shades of pink. The arrangement was flanked by pink candles in silver holders,

and pink punch and thumb print cookies were served from crystal and silver appointments by Amy Dozier of Snyder and Barbara Agaki of Oilton. Registering guests was Leslie Loyd of Snyder.

Out of town guests included DeAnn Schad of Gruver, Seleta Abbott, Susan Kizer and Gayetta Gable of Canyon, Kathy Morris of Amarillo and Mrs. Woody Keith, Trey and Kecia

of Odessa. Hostess gift was a complete set of stainless steel cookware and the floral arrangement from the serving table.

Hostesses were Mrs. H.A. Douglas, Mrs. C.E. Moore, Mrs. J.W. Roberts, Mrs. F.H. Gable, Mrs. Oscar Rudd, Mrs. Ted Milsap, Mrs. Bobby Nickels, Mrs. Sam Hopper, Mrs. Jess Winn, Mrs. Howard Watson, Mrs. Harmon Elliott, Mrs. Lucille Cherry, Mrs. Larry Jones and Mrs. Bob Walters.

## Library News

By Anne Camp

"HAPPINESS IS HAVING A FRIEND TO LEAN ON"

We leaned heavily on the Friends of the Library all through the years leading up to the dedication and opening of the new Muleshoe Area Public Library--But for the backing and support of a strong, working Friends organization--we would not have the library we have today.

We would not have survived the years of struggle--but each time money was needed; the building payments came due; utilities and other expenses for repairs or improvements; the money was always there--not once were we delinquent on any account--because the Friends of the Library were there--another benefit was held--another membership drive--another project. These projects were almost always successful because individuals, civic clubs, or civic minded businesses--working thru the Friends, channeled necessary funds to keep the library going until public funds were made available. These funds were administered by the Library Board of Trustees--all leading citizens dedicated to library development. Early leaders in the Friends were Olabelle

Lamb, Matilda Stemmmons, Mel Evans, Joe Harbin, and most recent Mrs. L.B. Hall.

Friends were very much in evidence in preparing for the Dedication and Open House Sunday--As sponsors of the event, they enlisted the aid of the Muleshoe Study Club, whose membership is 100% Friends of the Library--a group of ladies whose support of the library has been unflinching thru the years. These ladies took care of mailing 150 invitations out of town in advance of the event.

In turn, the Study Club enlisted other Friends in the E.S.A. sorority to decorate the patio; Friendship club, Beta Sigma Phi and the A.A.U.W.--all helping on the refreshments. The serving itself was done beautifully by the Study Club.

Friends Mrs. Joe Costen and Mrs. Jack Young registered the guests: Blanche Johnson and Martha Young displayed the Library Memorial books while Mrs. Horace Blackburn brought the 3 Vol. set of Library scrapbooks up to date and had them on display--All Friends credit goes to Ruth Hammock for an attractive Bulletin Board.

The Muleshoe Art Association came thru as Friends with a very fine show of Southwestern Art by area artists, to bring added interest to the Open House.

The planning committees for the Memorial plaques; gifts for the Guests of honor; landscaping; publicity program planning--all came thru as good as friends--always do--members being: Mrs. G.L. Splawn, Joe Harbin, Mrs. Jack Rennels, Mrs. L.B. Hall, Jeff Smith, Lois Lenau, Lois Witherspoon, Blanche Johnson and Martha Young.

The Chamber of Commerce, provided the Red Carpet also provided a gift of a Mattie Hicks original Western painting for the Speaker; the Ambassadors served as guides and greeted guests, Owen Jones and Boy Scouts provided flags and served on program, Joe Harbin and Jack Rennels set up the loudspeakers for the program.

We had fine news coverage from both the Muleshoe Journal and Radio KMUL. Many, many sent beautiful floral arrangements--The Library salutes all who contributed in any way to the success of this great day in Library History for Muleshoe. The fine spirit of cooperation was in evidence from start to finish. Yes, Happiness is having a Brand-new Library--How?--Because it had, and has FRIENDS! HAPPINESS IS HAVING FRIENDS!!

## Bridal Shower Honors Miss Cynthia Wrinkle

Miss Cynthia Wrinkle, bride-elect of Terrell Ott, was honored with a bridal shower Saturday, April 22, from 2 to 4 p.m. in the home of Mrs. Bill Loyd.

Guests were received by the honoree and her mother, Mrs. Roy Wrinkle. Registering the guests was Mrs. Tony Young. Special guests were Mrs. Otto Schuster, maternal grandmother of the bride-elect, Mrs. Ar-

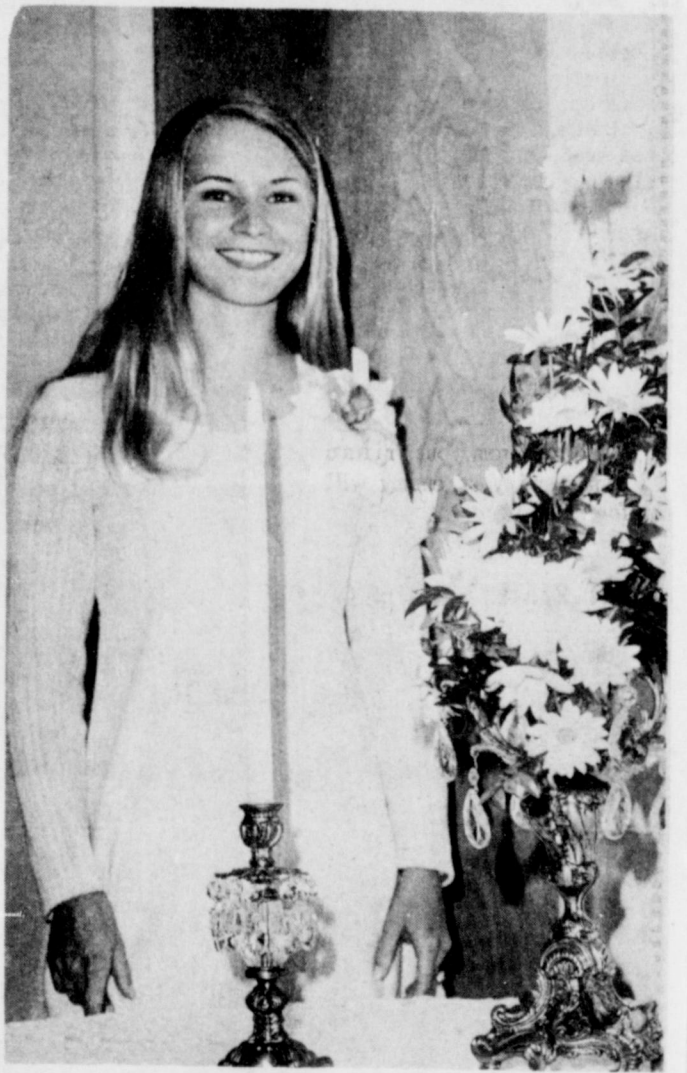
nold Schuster, Mrs. Kenneth Godwin and Diane, all of Tullia, and Mrs. Rayburn Ott and daughters of Lazbuddie.

The serving table was covered with a floor length tablecloth of white lace over white satin and appointed with gold and crystal candelabra and crystal serving pieces. A floral arrangement of daisies with greenery arranged in the candelabra completed the decor.

Presiding at the serving table were Karen Mayhugh and Debra Wagon.

The hostesses presented the bride-elect with an orchid corsage tinted blue. The hostess gift was a stainless steel Mixer.

Hostesses for the occasion were Mrs. Bill Loyd, Mrs. Wilcy Moore, Mrs. Jim Small, Mrs. John Crow, Mrs. W.F. Creamer, Mrs. Bill Wimberly, Mrs. S.P. Stockard, Mrs. Horace Hutton, Mrs. Oscar Allison, Mrs. Chester Yerby, Mrs. Charles Mayhugh, Mrs. Kenneth Precure, Mrs. Don Harmon and Mrs. Oscar Rudd.



MISS CYNTHIA WRINKLE

## Auxiliary Holds Executive Meeting

The Muleshoe Hospital and Nursing Home Auxiliary executive meeting was held Monday morning at the XIT Steak House. Several Committees were set up and some new committee chairmen were named.

Plans for a birthday supper for Dr. McDaniel were discussed. A dedication service and open house for the new day room in the Muleshoe Nursing

Home will be held on Sunday afternoon, May 7.

Those present for the meeting were Mrs. J.E. McVicker, Mrs. Calvin Embry, Mrs. Haney Poyner, Mrs. Gordon Wilson, Mrs. Ivan Woodard, Mrs. Dorothy Green, Mrs. Grace Prater, Mrs. Gene McGlaun, and Mrs. Clarence Mason.

## Jaycee-Ettes Hold Meeting

The Muleshoe Jaycee-Ettes met Monday evening, April 24, at 7:30 p.m. at the First National Bank.

The Jaycee-Ettes voted to have a bake sale at Cashway on Saturday, May 13, beginning at 9 a.m.

The State Jaycee Convention will be held in Corpus Christi May 18-21. Ladies from the Jaycee-Ettes planning to attend are Mrs. John Blackwell, Mrs. Dick Howard and Mrs. Smitty Aylesworth.

Two new members were accepted into the organization. They are Mrs. Ronnie Gustin and Mrs. Smitty Aylesworth. Mrs. Aylesworth was also elected to be the new reporter.

The hostess, Mrs. John Blackwell, served chips and dips and cokes to those attending.

## VFW Elects New Officers

Muleshoe VFW met Monday night, April 24, for their annual election of officers.

Elected Commander was Joe Gonzales, D. T. Garth was elected Senior Vice Commander; Julian Dominquez, Junior Vice Commander; Vernon Bleeker, Quartermaster; Jake Lambert, Post Adjutant; George Thompson, Post Advocate; Ben Higinbotham, Chaplain; Leslie

Mill, Surgeon; and William Pagach, three-year twister.

These officers will be installed May 23, at 8 p.m. at the VFW Post. All other members who haven't been sworn in will be at this meeting.

D. T. Garth will be the installing officer.

## DEEP STEAM CARPET CLEANING Has Come To This Area



Stanton & Agustin Perez OF LITTLEFIELD CARPET SERVICE

HAS RECENTLY PURCHASED THE LATEST EQUIPMENT IN CARPET CLEANING TECHNIQUES.

### DEEP STEAM

The steam cleaning method is the most effective as well as the most sanitary method of carpet cleaning developed to date. Steam cleaning extracts the dirt, soil and residue that other methods leave in and is safe on all types of carpet. It also dries quicker than any known method, so water is no factor.

CALL TODAY LITTLEFIELD CARPET SERVICE 385-4089 - LITTLEFIELD

<b>perry's</b>	<b>DACRON POLY DOUBLE KNIT</b>
FABRIC CENTERS	Flat Fold NEW SHIPMENT
	\$2.99 yd.
<b>OTTO TUCK</b>	Ladies & Childrens
54" Wide	<b>SANDLES \$1.00 pair</b>
87% Arnel Triacetate	
Machine Washable	
REG. \$1.99 yd.	
	<b>20" FAN \$17.88</b>
	3 Speed Switch GE Motor
<b>SPECIAL .99 yd.</b>	<b>SOFT KNIT</b>
	45" to 54" Wide Acetate Blends Values to \$1.99 yd. New Spring Colors
	<b>99¢ yd.</b>

### COW POKES

"Luke, maybe you better take a firmer grip--I'm losin' mine!"

## Muleshoe State Bank

Member FDIC

**'That's wat cement!'**

A pedestrian stumbling into wet cement, falling into an excavation--many liability risks confront a builder every day. Add to this the theft of tools and machinery, and property damage, and you have the need for complete builders insurance from the POOL INSURANCE Agency.

## POOL Insurance Agency

Joe Smallwood Bob Blackwood  
MULESHOE Ph272-4531



MR. AND MRS. CHARLES JULIAN RIDDLE

## Vows Pledged In Circleback Church

Miss Karen Marie Dobbins of Muleshoe and Charles Julian Riddle of Albuquerque were wed in a double ring ceremony performed April 8 at 8 p.m. at the Circleback Baptist Church by Oscar Newell, minister.

Mr. and Mrs. James A. Dobbins of Muleshoe are parents of the bride. The groom's parents are Mrs. Marvin Doss of Taos, N.M., and Winford Riddle of Arlington.

The candlelight ceremony was performed before an altar flanked with pink gladioli, pink candles and greenery.

Musical selections of "O Promise Me" and "More" were presented by Becky Sain of Muleshoe, organist, and Jana Sue Lane of Three Way, soloist.

Maid of honor was Linda Gills of Texarkana, Christine Dobbins of Muleshoe, sister of the bride, was bridesmaid. They were dressed identically in Empire styled dresses of pink and white embossed cotton. The attendants carried nosegays of pom mums and baby's breath.

Candlelighters were Lisa

Collins, cousin of the bride, of Albuquerque, N.M., and Ginger Gore of Circleback.

Serving as bestman was Gary Lackey, cousin of the groom, of Muleshoe. Groomsman was Bill Tarrack of Hereford, Clifford Chase of Albuquerque, N.M., and Charles Williams of Arlington served as ushers.

Given in marriage by her father, the bride wore a Princess empire dress of lace over satin. The dress featured balloon sleeves with pearl buttons and was trimmed with seed and tear drop pearls. The bridal bouquet was of white carnations centered with a pink orchid. The bride borrowed her shoulder length veil, wore a blue garter, a watch belonging to her aunt as something borrowed and her wedding gown as something new. She wore a penny with the date of her birth in her shoe.

A reception in the fellowship hall of the church followed the ceremony. The table was covered with a white lace cloth over pink and was centered with a gold candelabra holding five pink

## Threeway News

By Mrs. H.W. Garvin

The Three Way Junior-Senior Banquet was held Saturday night at the Koko Inn in Lubbock.

Mr. and Mrs. Joe Sowder and Kandice attended the Lions Club Convention in Lamesa Friday and Saturday. Kandice was the Three Way Queen.

Jay Boyce was burned in an accident while at work Thursday. He received treatment at Cochran Memorial Hospital and was transferred to Lubbock University hospital.

J.S. Simpson and W.T. Simpson were fishing at Ute Lake in New Mexico the past week.

Lieutenant and Mrs. James Long and son from Germany spent the past week visiting their parents and other relatives in the community. Lt. Long is stationed in Germany with the U.S. Air Force.

Mrs. Earl Bowers was called to Baytown to be with her daughter who is ill.

Mr. and Mrs. D.S. Fowler from Maple and Kem and Glen Fowler from Morton visited the James Fowlers in Lubbock Sunday afternoon.

1600 N. Prince (505) 763-9521

**ROCKSCAPE LANDSCAPE**

"We Rock Along"

**GARDEN CENTER NURSERY**

Clovis, New Mexico

## From The Journal Files

### 20 Years Ago

The Pleasant Valley Social Club met in the home of Mrs. R.L. Roubinek Wednesday night, April 16.

The meeting was called to order by the president and roll call was answered with helpful tips on growing flowers.

Delicious refreshments were served to Mesdames Gerald Allison, Harold Allison, John West, Leroy Hicks, E.K. Angeley, Oscar Allison and the hostess, Mrs. Roubinek.

The Progress Home Demonstration Club met Tuesday, April 15, in the home of Mrs. Alfred Patterson with Mrs. Edward Little, president, presiding. Roll call was answered with a tip on interior decoration.

The program was on lamp shades. Mrs. Edward Little gave a demonstration on recovering a lamp shade and gave several other ideas for redecorating them.

Refreshments of ice cream and cake were served to one visitor, Mrs. Myrian Shankles, and five members, Mesdames G.T. Maltby, Edward Little, T. Haley, Gordon Murrah and the hostess, Mrs. Patterson.

The next meeting will be May 6 in the home of Mrs. G.T. Maltby. Everyone is asked to come and to attend the district meeting May 7 in Dimmitt, Texas.

A Kidnap breakfast was held Wednesday morning, April 16, in the home of Mrs. Albert Davis. Everyone enjoyed a lovely breakfast of hot cakes and coffee.

The boy who plans his course and completes his job is getting to be a man.

Borrow from your friend today and your enemy will force you to pay tomorrow.

### IT REALLY MATTERS!

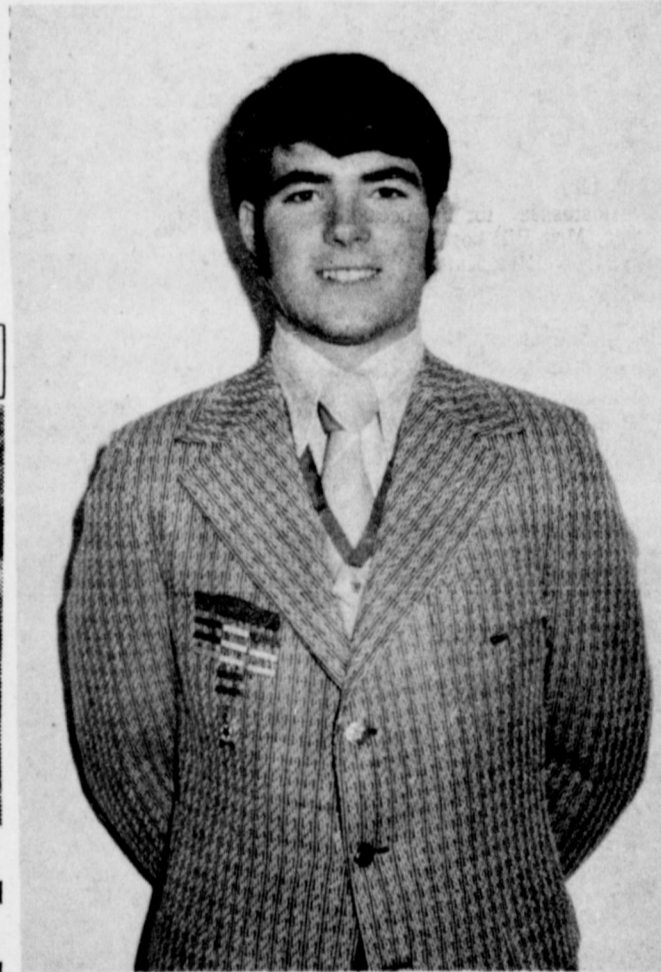


For Tested and Proven Leadership.

JOHN C. WHITE

FOR TEXAS COMMISSIONER OF AGRICULTURE

MAY 6 DEMOCRATIC PRIMARY



DEMOLAY MASTER COUNSELOR...Perry Hall, son of Mr. and Mrs. L.B. Hall of 1812 West Avenue H, will be installed as Master Counselor of the Muleshoe Chapter of DeMolay in an installation ceremony Friday, May 7 at 7:30 p.m. in the Masonic Lodge. The West Texas Area Master Counselor from El Paso and an installing team from Plainview will conduct the installation services. A reception will follow the ceremony. Hall is a junior at Muleshoe High School, having attended Muleshoe Schools for 11 years. He is active in the speech department and is a member of the National Honor Society.

**PATIO BEAUTY SHOP**  
Has A New Beautician

**Pat Clay**

Pat is a graduate of the School of Cosmetology at Altus, Oklahoma. She has experience in all types of hair design, including wigs, wiglets, hair coloring, tinting, or permanents. Pat invites her many friends in the area to call for an appointment, she takes late appointments also

Pat Clay and Faye Montgomery

**PATIO BEAUTY SHOP**

110 W. 6th Muleshoe 272-4318

Anthony's  
**SPECIALS**  
FOR.....

# BABY WEEK

**SHOP CASH-LAYAWAY**

**CRIB MATTRESS**

Regular \$9.

**\$7.**

Charming circus print on vinyl-plastic moisture-proof cover. Heavy gauge inner-spring unit—posture board construction.

**BOYS' & GIRLS' NO-IRON DIAPER SETS**

Reg. 2.29

**\$1.57**

Darling diaper sets for baby in easy-care polyester cotton blend fabric. Soft pastel shades. To fit from birth to 18 months.

**ANCO CONTOUR CRIB SHEETS**

Fits 6 Year Crib Mattress

Reg. 1.19 Ea.

**89¢ EA.**

White and pastel no-iron crib sheets. Soft, easy-care, easy fit

**SIX YEAR CRIB**

Reg. \$27.

**\$20**

Natural knotty pine finish—single drop side locks in up or down position. Plastic teething rails on 2 sides.

**Matching Print All-Around BUMPER PAD**

Reg. 3.99

**\$3. EA.**

**RECEIVING BLANKETS**

1.29 Val. 26" x 34"

Pkg. of 2

**99¢**

Assorted solid or print receiving blankets in pastel shades. Cozy 60% cotton 40% polyester. Two per package

**PETERSON 3-IN-1 FOLDA CHAIR**

Reg. 15.95

**\$13.**

It's a high chair a youth chair—utility chair! Safety lock, adjustable tray, ball glides, and it folds up flat!

**TERRY CLOTH CREEPER-SLEEPER**

Fits 6-12-18 Mos.

Reg. 1.35

**\$1.**

Terry cloth creeper with water-proof bottom, gripper shoulder and crotch. White and pastels.

**INFANSEAT Baby Carrier**

Reg. 3.99

**\$3.**

Strong linear polyethylene shell with correct support for back and head. Adjustable support stand, padded vinyl cushion, and vinyl retaining strap.

**4 Drawer FOLDING DRESSER**

Reg. \$19.95

**\$15.**

Lovely white wicker dresser with thick foam-padded vinyl cover.

**PETERSON STROLLER**

Reg. 18.95

**\$15.**

Four-position reclining seat, Tufflex padded cushion, chrome plated, nylon wheel bearings, and free operated brake. Folds up in 6 seconds!

**27"x27" Dreamland 1st QUALITY BIRDSEYE DIAPERS**

Reg. 2.29/Doz.

**1.69** Dz.

Soft absorbent cotton 27" x 27"

Passion and defiance seldom solve a problem.

Accidents continue to kill careless drivers.

Everyone is happy when everyone is making money.

There has never been anything cuter than your child.

Three of a kind—golfers, fishermen and proud parents.

# SALE

## Quality

### Sensational saving on famous **ZENITH** 1972 models

**Limited time! No floor samples! No trade-ins!**

**16" portable color tv**  
DIAGONAL



**was \$318.00**  
**NOW \$298.00**  
you save **\$20.00** W/T

**The RIDGEWAY C3710**  
Smartly styled color portable. Compact, big-screen. Choice of colors. Handcrafted Chassis. Super Video Range Tuner. Top Carry Handle. 5" x 3" Speaker.

**giant-screen 23" CHROMACOLOR**  
DIAGONAL



**was \$529.95**  
**NOW \$488.00**  
you save **\$41.95** W/T

**The TURNER • C4509W1**  
Grained Kashmir Walnut color with Bark Brown color back. Handcrafted! Super dependable!

**AFC** AUTOMATIC FINE-TUNING CONTROL  
**ATG** AUTOMATIC TINT GUARD

**New Customized Tuning**  
■ Chromacolor Tube ■ Super Gold Video Guard Tuner  
■ Titan 80 Chassis

**giant-screen 23" console! CHROMACOLOR**  
DIAGONAL



**was \$599.95**  
**NOW \$539.95**  
you save **\$60.00** W/T

**WINTHROP-C4517M3**  
-Early American styled, Customized Tuning, Chroma color Picture Tube, Titan 80 Handcrafted Chassis, Automatic Fine-tuning Control, Automatic Tint Guard Control, Automatic Tint Guard Control.

**SOLID-STATE**

*Fine-furniture styling!*  
*Giant-screen 25" Chromacolor 100 picture!*



**was \$699.95**  
**NOW \$628.00**  
you save **\$71.95** W/T

**The DAUMIER C4736M**  
Early American styling

Simulated tambour doors with fluted/corner posts. Overhanging top and contoured bracket feet.  
• Chromacolor 100 Picture Tube • Customized Tuning • 25" diag. Super-Screen Picture • Titan 100 Handcrafted Chassis • Super Gold Video Guard Tuner • Zenith AFC Automatic Tint Guard Control • 5" Round Twin-Cone Speaker.

**CHROMACOLOR 23" tv console**



**was \$599.95**  
**NOW \$539.95**  
you save **\$60.00** W/T

**VALENCIA-C4518-3**  
Mediterranean styled full base console with casters, Chromacolor Picture tube, Titan 80 Handcrafted Chassis, Automatic Fine-tuning Control, Automatic Tint Guard Control.

**25" GIANT-SCREEN CHROMACOLOR 100 CONSOLETTA**



**was \$578.00**  
**NOW \$528.00**  
you save **\$50.00** W/T

**The HALLS • C4707W1**  
Grained Kashmir Walnut color, Titan 100 Handcrafted Chassis, 25" diag. Super-Screen with Glare-Ban Picture Face, Super Gold Video Guard Tuner.

**Gordon Wilson Appliance**

202 MAIN MULESHOE PHONE 272-3138

QUALITY MERCHANDISE  
GOOD SERVICE  
FAIR PRICES



**BARNES COORDINATING COMMITTEE...**A meeting of the Coordinating Committee for Lt. Governor Ben Barnes' campaign for the office of governor was held in Muleshoe recently. Attending were left to right, Harvey Bass, Dwyan Calvert, Corky Green, Judge Glen Williams, Bruce Anderson from Austin, Lyndal Murray, partially shown, Olan Burrows, John Blackwell, Noe Anzaldua, Jack Young and Glen King.

**John Tower**  
**United States Senate**  
**COMMITTEE ON ARMED SERVICES**

This nation has played the major role in man's space explorations, and Texans can be proud of the significant role we are taking in this national effort.

We have done more than simply extend man's horizons; more than simply explore a new frontier. The real benefits—the tangible benefits to those of us who remain at home—are those which come to us as side effects of the research and technological advancements which are spurred by a vigorous space effort.

Of prime importance is the improved health care which is ours as a result of the creation of the life support systems developed for space flight and the precise physiological monitoring devices which are a part of those systems. Much that has been learned in the medical field as a result of space research is now being adapted to the hospital setting, and lives are being saved and made more comfortable as a result.

Transportation safety has been improved by adapting basic guidance and navigation space techniques to use by commercial jetliners, and through the development of new fireproof materials, paints and lubricants.

Improved materials developed first for the space program are also now being utilized in our cookware and in our electrical and battery-operated appliances at home, and even to wrap the meat and cheese we buy at the supermarket. We can now purchase prepared foods which were first developed specifically for the diets of our astronauts or which utilize preparation techniques developed for the space program.

Law enforcement agencies are adapting computer techniques developed through the space program to catalogue and retrieve information which aids in the rapid apprehension and later supports conviction of criminals.

Communications satellites enable us to watch our President make a visit to the other side of the Earth, and is allow-

ing us to expand the number of radio bands usable to aid many businesses.

Weather forecasting is improving with the use of weather satellites, and some of the techniques learned from satellite technology is now being used to locate sources of air and water pollution.

The list is indeed endless. The space program has either provided us with usable technology our society might otherwise have not achieved, or it has hastened the acquisition of that technology; and we can expect it to continue to do so.

Upon the completion of our Apollo program to explore the surface of the Moon, our efforts in space exploration will shift to development of the Space Shuttle.

The program calls for the development of a vehicle which can place into earth orbit satellites, space stations or any other cargo weighing as much as 65,000 pounds. Most important, it will be able to make trips between Earth and near points in space over and over again.

Since we shall not then have to construct a massive launch vehicle every time we wish to enter space, we shall be able to multiply our space research efforts in relation to financial expenditures. In so doing, we should be able to multiply the technological fall-out which benefits our society here at home. And, in developing the Space Shuttle itself, we shall no doubt gain additional technology which can be adapted to terrestrial uses.

The Space Shuttle will also enable comparatively inexpensive development of space stations to carry out a variety of tasks in orbit. These experiments again can be expected to contribute to our lives and tasks here on Earth.

Our State of Texas will play a significant role in the Space Shuttle program, just as it has in previous space programs. The Manned Spacecraft Center near Houston has already been given program control authority. It will oversee over-

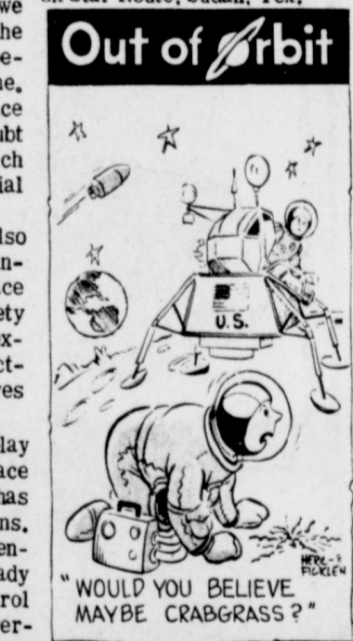
**News of Our SERVICEMEN**

**John Capers**

Army Private First Class John E. Capers III, 20, son of Mrs. Eileen M. Bradley, 2905 E. Brady Ave., Las Vegas, Nev., recently was assigned to the 14th armored cavalry regiment in Germany.

PFC. Capers is an armor crewman in Troop A, 2nd Squadron of the Regiment. He entered the Army in October 1971 and was last stationed at Ft. Knox, Ky.

The private is a 1970 graduate of Cadiz (Ohio) High School. His father, John E. Capers Jr., lives on Route 4, Cadiz, Ohio. The private's wife, Cheryl, lives on Star Route, Sudan, Tex.



**WANTED ALL FARMERS IN AREA WANTED TO ATTEND**

**A Field Demonstration All Models Case Tractors**

**FRIDAY, APRIL 28, 1972**

**On John Young Farm 4 Miles North Of Muleshoe On Friona Highway**

**REWARD OFFERED**

**Breakfast Will Be Served At Demonstration Site 7:00 to 8:00 a.m.**

**"Case" Personnel From Dallas Will Be On Hand**

*to assist with Field demonstration Come See The "Big Power Specialists" In Action*

**BERRY & YOUNG IMP.**

# Vegetable Crop Rotation

High Plains vegetable producers must shift emphasis from one crop to another as market change demands change. Planning proper rotations before planting is necessary for success over the long run.

This is the word from Dr. Roland Roberts, Extension area vegetable specialist at Lubbock. He says growers with diversified cropping systems must consider all factors that might affect the productive potential of the soil.

"For example, the kinds of

vegetables planted regulate to a large extent the population of disease organisms found in a particular soil," Roberts adds. Rotations can be used to depress populations of parasitic nematodes as well as soil insects such as grubs and wireworms.

In addition, the organic matter level and soil structure are influenced by the vegetable crops grown in a single field year after year. Research has shown that many vegetables leave organic residues in the soil that

are toxic to crops that follow. "Certain vegetables feed heavily on available nutrients and thus create unfavorable conditions for other vegetables that are less efficient feeders," the specialist explains.

Roberts says that vegetable producers can use several rules of thumb in designing long-term rotations as well as successions in the same year. He suggests alternating shallow-rooting vegetables such as lettuce and cabbage with deep-rooted such as tomatoes and melons in proper sequence.

"Try to follow a crop which supplies a great deal of organic matter with one that favors the decomposition of organic matter," Roberts adds. It is also best to plant closely spaced crops such as lettuce and carrots after clean-culture

crops such as tomatoes, peppers and summer squash.

"Try to follow a crop which supplies a great deal of organic matter with one that favors the decomposition of organic matter," Roberts adds. It is also best to plant closely spaced crops such as lettuce and carrots after clean-culture crops

"Most importantly, place crops in a compatible sequence, so one will favor, and not inhibit, growth of the next," he emphasizes. He uses the example of lettuce and sweet corn. Decomposition of sweet corn stalks releases organic toxins that can restrict early season root growth of lettuce, Roberts suggests planting corn after lettuce in a rotation. Early season beet greens and green onions are two more crops that will grow poorly if they are planted right

after sweet corn.

Rotation coupled with a preventive fungicide program can control many vegetable diseases. Some diseases can be problems for more than just one season, he adds. Anthracnose and Fusarium root rot will build up in bean refuse unless there is a rest of at least three years between plantings in the same fields.

Cabbage clubroot can live in the soil for up to five years after it becomes established. Tomato bacterial canker will persist for as much as three years.

Roberts says that vegetables fall into several family groups. The same disease will often attack members of the same vegetable family; so growers need to know which vegetables are related.

"Relationships like these are important because broccoli and cabbage are in the same family," the specialist says, "so planting broccoli could aggravate a clubroot disease problem that was introduced into a field by cabbage planted the year before."

W.A. Finn, Jr., and wife, Wilma Jo Finn to Gibson Products Co. of Clovis, Inc. All of Lot Number Eleven, Block Number Seven, Highland Addition to Muleshoe, Bailey County, Texas.

L.E. Warren Sr. and wife, Dorothea D. Warren to John W. Warren and wife, Lynda Warren: East one half of Section Number 18, Block C, Melvin, Blum and Blum Survey, Abstract Number 166, Volume Four, Patent Number 69, Bailey County, Texas, and all of Section Number 19, Block C, Melvin, Blum and Blum Survey, Abstract Number 165, Volume 4, Patent Number 68, Bailey County, Texas.

James B. Glaze and wife, Betty Jo Glaze of Bailey County, Texas, Ross M. Glaze Jr. and wife, Mary E. Glaze of Randall County, Texas, Finis Whitten and wife, Ida Lou Glaze Whitten of Randall County, Texas, and Mary Hester Glaze Branham, a single wo-

man, of Gray County, Texas, to Don Doyle Barnes and wife, Paula Kay Barnes: All of Lot 11 and the westerly Four Feet of Lot Number 12, all in Block Number Four, Highland Addition to the town of Muleshoe, Bailey County, Texas.

Mike Perez Jr. and wife, Mary Frances Perez to Marcos Costilla and wife, Patricia Ann Costilla: All of Lot Number One and all of the East one half of Lot Number Two, in Block Number Three, Harvey Addition, a subdivision of a part of the Northeast Quarter of Section Number 33, in Block Y, W.D. and F.W. Johnson Subdivision Number Two, in Bailey County, Texas.

Samuel B. Gonzales and wife, Engandina Gonzales to Janie B. Gonzales Olivarez, a female sole: A tract 60 Feet by 60 Feet, being all of the Northwest 60 Feet of Lot Number 10, in Block Number One, Murrain Addition to the town of Muleshoe, Bailey County, Texas.

Alfredo Noe Anzaldua, Muleshoe to Mariann Madrid, Muleshoe.

Matilda Marie Stemmmons, individually, and Matilda Marie Stemmmons and Citizens National Bank of Lubbock, trustees of

## Court House News

New Car Registrations; Leonard D. Henderson, 1972 Ford, Muleshoe Motor Co. Joe Bryan Jennings, 1972 Ford, Muleshoe Motor Co. Sam White Jr., 1972 Chev., Crow Chevrolet.

Sam White Jr., 1972 Chev. Pickup, Crow Chevrolet. Mrs. T.M. Stemmmons, 1972 Mercury, Muleshoe Motor Co. Antonio Rivas, 1972 Ford, Muleshoe Motor Co.

Muleshoe Motor Co., 1972 Ford Pickup, Ford Marketing Corp. Harry Waddle, 1972 Buick, Brock Motor Co.

Teddy Harrison, 1972 Buick, Brock Motor Co. MARRIAGE LICENSE Jimmy Weldon Johnson, Muleshoe to Jacquelyn S. MacWhorter Henry, Muleshoe.

Ramon Mendoza, Muleshoe to Carmen Rey Hernandez, Muleshoe. Alfredo Noe Anzaldua, Muleshoe to Mariann Madrid, Muleshoe. WARRANTY DEEDS

## What About Cotton Contracting

LUBBOCK--The choice of how to market a cotton crop is simply one decision in the overall management of a farming enterprise, but it is a darkly mysterious area for many producers.

"Many farmers contracted their crop last year and then saw the cash price exceed their contract price by six cents or more," says Marvin Sartin, Extension area economist at Lubbock.

Contracting is gaining acceptance in the cotton industry, with a large part of the 1972 Lower Rio Grande Valley crop already under agreement. Sartin cautions High Plains producers to base their decision about marketing a crop on their management and financial position.

"Your choice of markets--forward contracting, hedging or the cash market--is not totally unlike your choice of cottonseed or planting pattern," he says. Some farmers will use the same variety or planting pattern every year because of its relatively stable, although not spectacular, yields. Other farmers will base their decisions each year on current economic and climatic factors.

While a forward contract may seem risky, it is actually the method which will minimize risk the most; because once the contract is signed, the farmer knows the price he will receive for his crop. The cash market can be profitable or

disastrous, depending on the situation at harvest time.

The economist says a farmer should decide on his method of marketing by considering factors such as his preconceived opinions, financial status and even goals and objectives in life.

Opinions enter the picture because of a farmer's past experience or the experiences of his neighbors with a certain type of marketing agreement. The influences of personality and emotion on the decision of which marketing path to take cannot be separated when a person's livelihood depends on the profitability of the cotton crop.

The financial position of the farm business is also a very important consideration. A farmer should look at his net worth position and determine if it is secure or if it is based primarily on inflated land values.

"Certainly, an important factor is the size of the operating or short-term debt," Sartin says. The effect of contracting for a guaranteed price on the financial status of a farm business should be compared with the potentially disastrous effects of a price dive on the cash market.

"Contracting is an individual management decision which must be faced by each cotton producer and evaluated relative to his own situation," the economist concludes.

## Narrow-Row Cotton

Narrow-row cotton production at the High Plains Research Foundation in 1971 pointed to the importance of management skills necessary for profitable production.

In the first year of the narrow-row cotton variety test, Dr. Owen said two things became evident. "First, the management aspect of farming narrow-row cotton is more critical than regular row width production and, secondly, there is not yet well adapted variety available to farmers.

"And we cannot over stress the importance of management of cultural practices in narrow-row cotton production," Dr. Owens said. The narrow-row cotton variety test was sponsored by companies with varieties in the test and a grant from Plains Cotton Growers, Inc. Dr. Owen said this test would be continued this year.

Dr. Owen pointed out that narrow-row cotton production means anything planted on less than 40-inch beds. Yields ranged from the top 386 pounds per acre to 197 pounds on varieties in the test. Low yields resulted from excessive fertilizer and moisture combined with unfavorable weather in August and September.

The high yielding performer was the Paymaster dwarf variety which should be available to farmers possibly in another year, Dr. Owen said. He stated there was no significant yield difference among varieties in the test. Top performers currently available to farmers included Paymaster 18, Rilec Stripper N, Blanco 3363, Lockett 4789A, Coker 312, Dunn 119, Tamcot 783 and Belew 5B.

Dr. Owen said cultural practices, especially bed shaping, were more critical for narrow-row production. "Bed shaping

"There are more cotton varieties than the 26 in our test, but only those entered by the various seed companies interested in the performance of their varieties in this area are tested. Therefore, we have no way of judging the performance of those varieties not included in our tests."

## Out of Orbit



**THE HOME OF WHITE STORES INC. GREATER VALUES**

**MANAGERS SALE**

Prices Good NOW Thru Saturday!

4 Convenient Credit Plans! Use Our **EZE CHANGE** (CHARGE!) TAKE MONTHS TO PAY!

**SAVE \$22.95 RANGER 20" ROTARY MOWER**

Permanent Magnesium Mold Deck! Greater Strength! 1/3 Lighter Than Aluminum!

Reg. \$99.95

**\$88**

Powerful 3 1/2 horsepower Briggs & Stratton engine has a convenient vertical pull and go start!

Ranger mower features engine shroud with oil dip stick, & instant 5-height individual wheel adjustments 3/4" to 3-1/2"!

ALL RANGER POWER EQUIPMENT IS ASSEMBLED, SERVICED, & DELIVERED FREE!

**CHARGE IT!**

**Save \$7.00 PER TIRE**

**WHITE WhisperJet 4-PLY POLYESTER XWT WIDE OVAL WHITEWALLS**

SIZE	Exc. Tax	Reg. Price	Sale Price
D70x14	2.31	31.88*	24.88*
E70x14	2.56	33.88*	26.88*
F70x14	2.60	35.88*	28.88*
G70x14	2.77	39.88*	32.88*
H70x14	2.92	42.88*	35.88*
G70x15	2.88	39.88*	32.88*
H70x15	3.00	42.88*	35.88*

\*Plus Tax and Trade In

- 4 Full Plies of Steel Strong Smooth Riding Polyester Cord!
- Extra Wide Tread Face Assures Positive Traction and Braking Plus Improved Stability!

**GUARANTEED 36,000 MILES**

Against All Road Hazards & Wearout!

**TIRES INSTALLED FREE!**

**25" RANGER Supreme Riding Mower**

Reg. \$299.95

**\$277**

- 5-Horsepower Rewind Starter!
- Disc Brakes & Parking Brake!
- "Action Guard" For Safety!
- Rear Engine Mount with 25" Floating Deck!
- Exclusive Cruise Control Automatic Drive!
- Automotive Type Differential for Tight Turns!

**Huge 10'x6' Storage Bldg. \$97**

112"x64"x77" Inside In The Carton

1972 Model is bigger and better than ever! It's totally galvanized, has new foundation system, heavier gauge door jams, gables, and roof trim plus 1-pc. door system. New suntan color, woodgrain trim.

10'x10' Bldg. \$137 10'x14' Bldg. \$187

**SAVE \$15.80 FENTON "SCRAMBLER" Sport Wheels**

Set Of 4 \$88

Months To Pay!

Genuine American made deep dish wide track steel wheel. Heavy Chrome Finish. Fits most late model disc brake applications. Either 4 1/2" to 4 3/4", 5-bolt circle, 14" x 6" only.

**SAVE 33%! Rainbow 10-10-10 Fertilizer**

All Purpose! 50-Lbs.!

Reg. \$2.98

**199**

**Price Cut! 2 Gallon HUDSON SPRAYER**

Reg. \$11.89

**999**

**17% OFF! 50 Ft. HOSE**

2 Ply Green Plastic

3/8" Inside Diameter

Reg. \$1.19

**99c**

**26% OFF! HOSE NOZZLE**

ALL BRASS

Adjustable Spray!

Reg. 89c

**66c**

**YOUR CHOICE! GARDEN TOOLS**

HOE WEEDEE GARDEN HOE BOW RAKE

Reg. \$2.09

**177**

**White 8 MINI TAPE PLAYER**

**SAVE \$15.85**

Reg. \$49.95

**\$34**

- Compact Design for Easy Mounting!
- Tone Balance and Volume Control!
- Illuminated Channel Selector!
- Dust Proofing Cartridge Door!

**SAVE 22%! PENNZOIL Motor Oil**

SAE 20 or 30 Wts.

Reg. 49c

**38c**

**34% OFF! STP Motor Oil Treatment**

Reg. \$1.19

**78c**

**CUT 31%! AC or Champion SPARK PLUGS**

Reg. 98c

**58c**

**SAVE 25%! FAMOUS BRAND TURTLE WAX**

Large 18 oz. Bottle

Reg. \$1.69

**127**

**GIBSON'S DISCOUNT CENTER**

Muleshoe, Texas

These Specials Good Thru Saturday

Open 9 a.m. to 8 p.m. Monday thru Saturday

**VALUABLE COUPON**

Safe Guard Bar Soap 3 for 39c

Bath Size with coupon

3 Bars per Coupon

**ECONOMY vinyl garden hose**

1/2" x 50 Ft.

#505 ..... 1.33

- Brass couplings
- Never kinks or cracks
- Unconditionally guaranteed

**TIDE** King Size \$1.43 ea.

**DASH** Jumbo Size \$2.33 ea.

**SPIC 'N SPAN** Giant Size 79c

**EDGER** Green Light Liquid \$3.97 ea.

**TRIPLE TREAT** 40 lb. Bag \$2.97 ea.

**Lawn Furniture!**

**AIR-LITE Webbing**

**WASHERS**

#120 17" Falls City Minnow \$16

#200C 10 to Pkg. \$9 ea.

**NEW! Rubber Hose \$7.97**

**TEBCO** Balanced Tackle Combination #2490

**FLOATS** Red and White Plastic

YOUR CHOICE

1", 1 1/4", 1 1/2", 1 3/4" \$5 ea.

**TEBCO 33** America's Most Popular Fishing Reel

Known the world over as the finest reel of its type With line \$8.88

**BUCKET** #104 \$1.66 ea.

**LANTERN** #220C \$12.97

**PICNIC JUG** 2 gallon #5502 \$6.37

**SKI BELT** #PML \$2.88

**300 REEL** Garcia Mitchell \$16.97 ea.

**TAPE** 3/4" x 66' \$33

**CREAM WAX** 18 oz. #0512 Top with Applicator \$1.37

**SEALER** DuPont Cooling System \$4.9c

**ANTI RUST** DuPont \$53



CUB SCOUTS WIN BLUE RIBBON... Cub Scout Pack 622, Dens one, two and three, won a blue ribbon on their Early American and Western History Display at the South Plains Council Scout-a-rama held recently at Levelland. Pictured left to right in the back row are Curby Brantley, Stevie Bickel, Gary Cox, Kevin Howard,

Joe Neel, Donald Howard and Mark Green. Front row, left to right, are Kelly McCall, Lynn Moore, Brian Powell, Curtis Hunt, Tommie Sexton, Damon Cooper, Casey McGlaun and Greg Parks. Scoutmaster is Jim Shafer.

# Briscoe Speaks For Rural Income And Farm Prices

UVALDE--Unlike the prophet who was without honor in his own land, Dolph Briscoe, candidate for governor, is well-liked here in his hometown. A person accustomed to the dirty in-fighting and character assassination of other political campaigns finds a wonderland of unbelievability around Uvalde, where Briscoe was born. Just about everybody you talk to likes him.

Charles R. Young, 37, was born in Uvalde, too.

"My family and I are in the furniture business," he says. "We have been doing business with Mr. Briscoe's bank always, and it has always been very good. We probably wouldn't have the growing business we have if it hadn't been for his help."

Don't let Young's name fool you. He's one of the many true Mexican-Americans found in the border country, having the blood of both countries. He is very active in several Mexican-American enterprises including the local Comité Briscoe Para Gobernador (Briscoe For Governor Committee.) He and Santos A. Flores III, the young finance officer of Post 479, American Legion (Uvalde) are hip-deep in a sign project boosting Briscoe's campaign for the Democratic nomination for governor.

Two signs, now on the Uvalde-Eagle Pass and Uvalde-Del Rio Highways, are monstrous 8-by-20 footers, both in Spanish. They read: "Welcome to Uvalde--Vote For Dolph Briscoe, For Governor of Texas."

Young and Flores, aided by volunteers, are planning two more of the large signs on other area highways.

Flores also is another who talks freely of his admiration of the rancher-banker:

"We wanted to raise some money for the American Legion post and decided to have a 'charreada,' a Mexican-style rodeo. But we didn't have enough money to buy the beef

for the barbecue. I went to Mr. Briscoe. Within 10 minutes I had a steer that weighed about 900 to 1,000 pounds. And he has done the same thing for us since.

"The Legion also has several Boy Scout troops in this area and he has always helped them. I would imagine he is the biggest contributor in Texas for the Boy Scouts."

L.G. Paradaux, now in the Western-wear business in Uvalde, is helping Briscoe in a different way. Paradaux is sending--and paying for--advertisements to appear in newspapers in Sherman, where he was born, and in Livingston, Groesbeck and Overton where he coached football from 1938 to 1942. The ads, in the form of a letter, are highly laudatory toward Briscoe.

And then there's Alex Barragan, a retired musician, who admits to a young-looking 73 years. Speaking of Briscoe, Barragan says: "I've known him since he was a little kid, since I came here 42 years ago. He is well-qualified to be our governor and to get down there in Austin and get rid of that bunch who have stunk up the place."

A grizzled rancher, encountered in downtown Uvalde while picking up two-weeks' supplies for his out-of-the-way spread, said he didn't want to be identified "in no newspaper write-up," but admitted he was going to vote for Briscoe.

"There's just two things I want him to do when he gets to Austin," he said. "Get rid of that bunch of....down there, first." Then he scratched his three-day growth of beard, gazed at the blazing sun over the Uvalde County Courthouse, and said loudly: "And second, I want him to pass a bill so's we can get some rain around here!"

What kind of man is Dolph Briscoe?

On the Friday before Easter, Briscoe arose at 5 a.m. for a grueling auto tour of several small towns in the Fort Worth area. He declined the use of a private home in the late afternoon because: "If I lay down to rest now, I'll never get up to make the rest of the appointments." At 10 o'clock that night, after making the feature speech at a Chamber of Commerce banquet in Springtown, Briscoe crawled aboard his 25-year-old leased Lockheed Lodestar for a well-deserved two-day Easter vacation with his family at their ranch near Uvalde. Following drop-off stops, he arrived at the ranch about 2 on Saturday morning. Yet, only a few hours later, he drove by a hotel in Uvalde and dropped off a package for one of his aides.

"I guess they got it mixed up with my stuff early this morning and I thought he might need it," he explained. It was a sack of laundry.

That's the kind of guy Dolph Briscoe is.

"Better farm income" is the single most important and immediate need of rural Texas, said Dolph Briscoe, Democratic candidate for Governor of Texas.

"We have many battles to fight for rural Texas. For example,

Yet, it terms of productivity, farmers have excelled. During that same 20 year period, the output per man hour of farmers has increased by 3.3 times, compared to a 1.7 increase for manufacturing. Today's farmer produces enough food and fiber for about 50 people, freeing those people to make meaningful contributions in other areas of employment.

"There is no more important job than producing food and fiber. People must have food and clothing and the producer should be adequately rewarded for his excellence in providing these needs," Briscoe said.

"Like the city wage earner, the businessman and investor, rural Texans deserve a fair wage for their efforts. One of my goals is to see that farmers, ranchers and rural businessmen do better financially. This will make our countryside, our rural communities and the entire social and economic life in rural Texas much healthier. And that's good. Not only for rural Texans but for all Texans, for the well-being of one group of our people ultimately affects everyone. Further, improved rural income is a vital part of an overall rural-urban development program which I consider necessary," Briscoe said.

"Improving the quality of life for all Texans is a major goal for me. I intend to do all that I can to see that this goal is reached," he said.

## The Sandhills Philosopher



Editor's note: The Sandhill Philosopher on his Johnson grass farm confronts a serious problem this week, then dodges. Probably the effect of listening to the candidates.

Dear editor:

As I understand it, a Washington commission after a year's study on the effect of television on children has reported that America should take a second look at the sort of T.V. fare being served up to its youngsters. Too much violence, crime and that sort of thing.

Aside from the fact that you can indeed get a second look at the programs, now that the season for re-runs has started, I have been thinking about this matter and have come to the conclusion the commission should broaden its investigation.

It should now make a study of the effect of the world on children.

There's far too much violence, crime and that sort of thing going on in the world to allow children to be brought up in it.

How can we expect children to grow up and be as good as we are when today's news is crammed with crime and violence and yesterday's history from the time history began is filled with the same? In this connection it ought to be pointed out that that man who started

a newspaper with nothing but good news in it went broke. Shielding a child from television is one thing, but shielding him from the world presents a problem which I will leave to the next commission, on which I will not have time to serve.

The television problem however is not limited to the United States. I read in a paper last night that Russian parents are complaining about children's T.V. programs over there. They say they aren't interesting enough. Can't keep a kid glued to the set.

One Russian mother said "I saved my money and bought a television set especially so that while I'm at work my son would not pointlessly chase a football outdoors all day--and that with bad children at that. But there are few programs for him and most of them are uninteresting."

This just goes to show how problems can vary around the world. Over here we're trying to cut down on our children's T.V. viewing so they'll get out and play, over there they're trying to increase their children's viewing so they'll stay indoors and not be outside playing football.

I thought so. Who has Russia ever beat in football? Yours faithfully, J.A.

Reasonable Two reasons why women don't wear last year's gowns: They don't want to and they can't.

-Topics, Cuneo, Ia.

**Free copies** of one of the world's most quoted newspapers

Judged the most fair newspaper in the U.S. by professional journalists themselves. A leading international daily. One of the top three newspapers in the world according to journalistic polls. Winner of over 79 major awards in the last five years, including three Pulitzer Prizes. Over 3000 newspaper editors read the Monitor. Just send us your name and address and we'll mail you a few free copies of the Monitor without obligation.

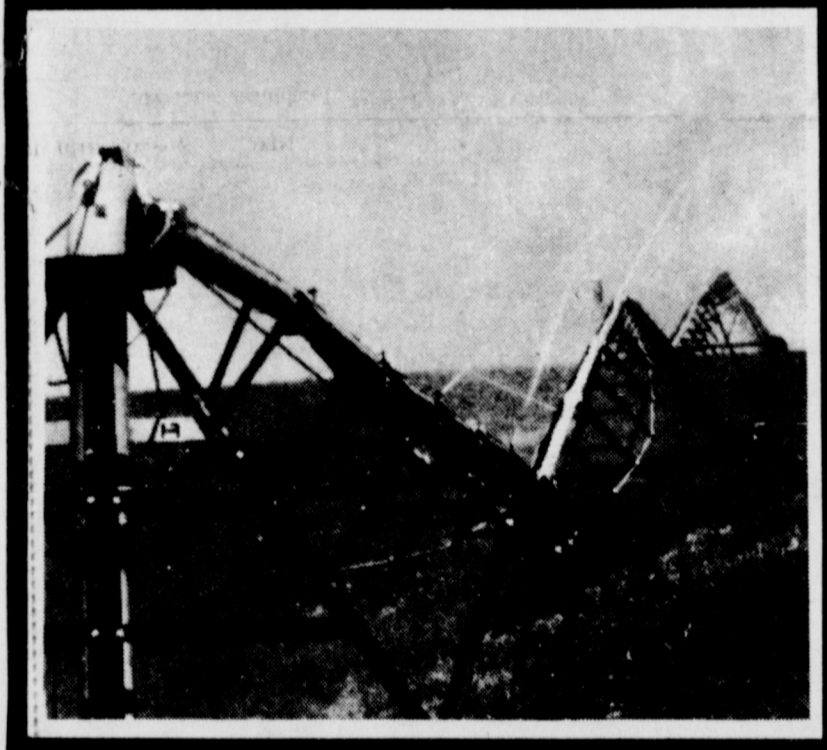
Please Print Name \_\_\_\_\_ Address \_\_\_\_\_ City \_\_\_\_\_ State \_\_\_\_\_ Zip \_\_\_\_\_ THE CHRISTIAN SCIENCE MONITOR Box 125, Astor Station Boston, Massachusetts 02123 ZISA

### Just A Reminder

Voters in Precinct 3  
Voting Boxes 4 & 5  
**ELECT**  
**James Warren**  
For  
**COMMISSIONER**  
May 6, 1972

### Economic Questions and Answers

Q. Does a landlord have to explain to a new tenant or a prospective tenant any difference between the base rent and the rent charged for the unit?  
A. Yes, A landlord must inform a new or prospective tenant of the factual justification for the difference between the rent he proposes to charge and the rent charged for the residence between July 16 and August 14, 1971, or an earlier period during which the base rent was established.  
Q. I regularly defer in incentive bonuses for the supervisors in my firm until a future year. How are such items treated under the PayBoard regulations?  
A. An item of incentive compensation paid to employees covered by an incentive compensation or sales, commission, or production incentive plan or practice during any wage year which was granted to them during an earlier wage year is not considered an item of incentive compensation for such employees for the wage year during which it is paid. Such items would not be subject to the 5.5 percent general wage and salary standard for the year of payment. However, an item of incentive compensation granted to such employees during any wage year and deferred to a later wage year is considered an item of incentive compensation for the year it is granted, and thus subject to the wage and salary standard for that year.

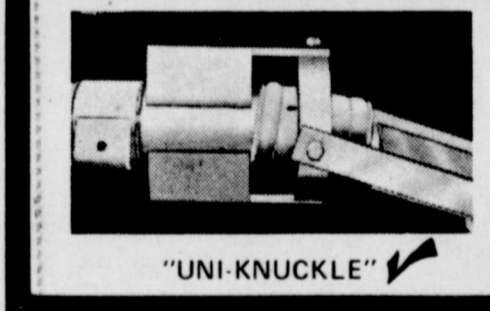


NOW--THE BEST FEATURES OF ALL CIRCLE SYSTEMS HAVE BEEN BROUGHT TOGETHER.

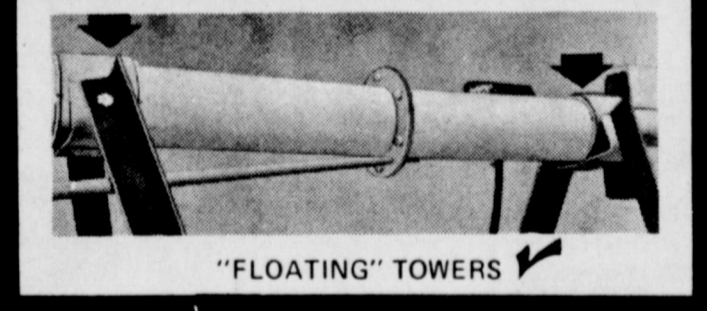
## PIERCE Circle-Master

STANDARD EQUIPMENT

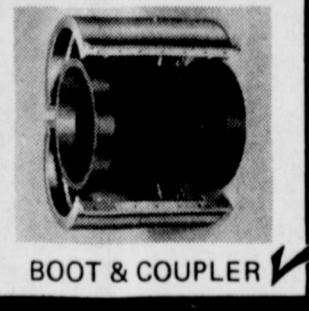
- collector ring
- fiberglas motor covers
- running light



"UNI-KNUCKLE" ✓



"FLOATING" TOWERS ✓



BOOT & COUPLER ✓

✓ Features that make Circle-Master superior:

- ✓ "UNI-KNUCKLE" for strength and flexibility
- ✓ "FLOATING TOWERS" for less stress, twist and torque
- ✓ SPLIT COUPLER & RUBBER BOOT GASKET for no leaks and easy maintenance
- MORE TORQUE for more power
- ENCLOSED WIRING for greater safety and longer life
- BIG TRACTOR TIRES for more traction and high flotation
- FIBERGLASS ELECTRICAL BOXES for preventing condensation
- EXTRA HEAVY PIPE for strength and long life
- COMPUTERIZED NOZZLE DESIGN for uniform water application

- RUGGEDLY BUILT for long life
- HIGHER CLEARANCE for tall crops and rough ground
- ELECTRICALLY DRIVEN for ease and dependability
- ENCLOSED DRIVE for more reliable, longer life
- SPEED CONTROLS for instant and simple operation
- COMPLETELY REVERSIBLE for part circle irrigation
- SAFETY SYSTEM for dependable control
- UNDER-TRUSS DESIGN for strength and rigidity
- FEWER TOWERS for less maintenance
- EXTRA-LONG WHEEL SPAN for greater stability

**IRRIGATION INC.**  
Phone John Hammock  
Day 965-2312  
Night 272-3109  
Muleshoe, Texas

Return this coupon for more information on the Pierce CIRCLE-MASTER. The material you will receive is free of charge and places you under no obligation whatsoever.

Name \_\_\_\_\_  
Box, Route, or Street address \_\_\_\_\_  
City \_\_\_\_\_ County \_\_\_\_\_ State \_\_\_\_\_ Zip \_\_\_\_\_

(Clip out coupon)

### HELP WANTED

Missouri Beef Packers Inc. is now accepting applications for permanent full time employment at our plant in Friona. We offer year around employment and no experience is necessary.

We offer \$2.85 per hour starting rate, paid Holidays paid vacations, and paid group insurance. Apply at personnel office.

## MISSOURI BEEF PACKERS INC.

4 miles west of Friona on Highway 60



# READ and USE

# CLASSIFIED ADS

## WANT ADS PH. 272-4536

### CLASSIFIED RATES

#### OPEN RATES

First insertion, per word-9¢  
Second and additional insertions-6¢

#### NATIONAL RATES

First insertion, per word-11¢  
Second and additional insertions-7¢  
Minimum charge-

CARD OF THANKS.....\$2.00

Classified Display-\$1.05 per col. inch  
Double rate for Blind Ads \$1.15 col. inch for reverses

### DEADLINE FOR INSERTION

Thursday's Muleshoe Journal-Noon Tuesday  
Sunday's Bailey County Journal-Noon Friday

The Journals reserve the right to classify, revise or reject any classified ad.

Check advertisement and report any error immediately Journals are not responsible for error after ad has already run once.

### MISCELLANEOUS

FOR SALE: Yamaha Endura 360 motorcycle. See Harold White or call 272-4028 after 6 p.m., 15-16s-tfc

FOR RENT  
25 X 70 building for rent on Main Street  
Call Vance Wagon, 272-4703,  
15-14-tfc

FOR SALE: 8' X 28' travel trailer  
extra clean, Sleeps four. Day  
272-4596 night 272-4105,  
15-17s-2tc

1970 Glastron-151-Tri-Holl-  
Walk-Thru Window-85 hp,  
Johnson-100 hours old, Trailer  
included, Phone 3813 after  
6 p.m.,  
15-17t-tfc

FOR SALE: Mobil Home, 14' X  
70', 3 bedroom, Has new Maytag  
washer and dryer, new 19  
cubic ft. Westinghouse side by  
side refrigerator with ice maker,  
new Tappan gas range, Call  
272-3138,  
15-12s-tfc

RECORDS SHEET MUSIC  
Accessories  
Guitar Lessons  
VENABLE MUSIC CO.  
213 Ave. B, Muleshoe

Sculptress Bras  
and  
Nupri-Metics  
Bessie Barry  
965-2230

Tomato Plants  
Terry Davis  
1510 Ave. D

FOR SALE: At Baileyboro, Texas  
wind damaged iron clad building  
at gin to be torn down.  
Moved in 30 days. Will be sold  
to highest bidder by May 1.  
Call your bid to 806-272-4761  
or 806-925-3157 after 6 p.m.,  
15-17s-3tc

NOTICE TO ALL PERSONS  
HAVING CLAIMS AGAINST THE  
ESTATE OF OPAL O. BOOTHE,  
DECEASED

Notice is hereby given that original letters testamentary upon the Estate of Opal O. Boothe, Deceased, were issued to me, the undersigned, on the 24th day of April, 1972, in the proceeding indicated below my signature hereto, which is still pending, and that I now hold such letters. All persons having claims against said estate, which is being administered, in the County below named, are hereby required to present the same to me at the address below given, before suit on the same are barred by the general statutes of limitations, before such estate is closed, and within the time prescribed by law. My post office address is Box 1014, Truth or Consequences, New Mexico, Dated this 24th day of April, 1972,

(s) Mrs. Ola O'Donnell Greene  
Mrs. Ola O'Donnell Greene,  
Executrix of the Estate of Opal O. Boothe, Deceased, No. 992,  
County Court, Bailey County,  
Texas,  
17t-ltp

**FARM EQUIP. FOR SALE**

**WATERING NO PROBLEM**  
THE TEX-FLOW towline moves from one set to another in 15 minutes-Threadless, slip out risers, Automatic drain valve-TRADE IN old pipe- for the best system-for the best deal-see or call; H.B. King, Enochs, Texas, 927-3775,  
10-16s-tfc

**HOUSEHOLD GOODS**  
NEED responsible party to take over payments on late model Singer sewing machine equipped to zig-zag, blind hem, fancy patterns, etc. No Attachments to buy. Assume four payments at \$7. Discount for cash. Write Credit Department, 1913 19th Street, Lubbock, Texas.  
12-14t-tfc

FOR RENT: Two Electric Rug Shampooers, clean your carpet now and entertain in an hour with MASTER CLEAN RUG SHAMPOO, Wagon's Grocery, 272-4406,  
12-48s-tfc

It's inexpensive to clean and upholstery with BLUE LUSTRE Rent electric shampooer \$1. Perry's, 128 Main.  
12-50t-tfc

Lost bright carpet colors... restore them with BLUE LUSTRE, Rent electric shampooer \$1. Higginbotham - Bartlett 215 Main.  
12-50t-tfc

FOR LEASE: 2,000 head feedlot complete, 2 miles west of Muleshoe. \$150 per month, Dial 806-763-5323  
13-11s-tfc

BAKER FARM SUPPLY  
W. Hyw. 84 Muleshoe

## Legal Notice

### NOTICE OF INTENTION TO ENGAGE IN WEATHER MODIFICATION ACTIVITIES

Notice is hereby given that Atmospherics Incorporated of 4981 East Dakota, Fresno, California, 93727, who holds License No. 2 of the State of Texas, intends to engage in a weather modification operation designed to decrease hailfall and enhance rainfall, for and on behalf of the Plains Weather Improvement Association located at P.O. Box 1627, Plainview, Texas, 79072, and Better Weather Incorporated, Littlefield, Texas, and will conduct such a program by means of aerial application of artificial nuclei as follows:

1. The area over or in which equipment may be operated shall include portions of the counties of Hale, Crosby, Floyd, Briscoe, Swisher, Lubbock, Hockley, Lamb, Castro, Farmer, Bailey and Cochran.

2. The target area within which hailfall is intended to be decreased and rainfall enhanced, can be described as follows:  
"The boundary of the target area shall be a line beginning at a point of origin at Littlefield in Lamb County, Texas, and running northwest along Highway 84 to a point four miles southeast of Sudan; thence due west to a point one mile west of Road 303; thence due north to the north boundary of Lamb County; thence due east to the intersection of the east boundary of Parmer County; thence due north along the east boundary of Parmer County to Road 145; thence easterly along Road 145 to its intersection with Road 1424 in Swisher County; thence south on Road 1424 to the north boundary line to Hale County; thence due east along the north boundary line of Hale County to Road 378 at the intersection with the north boundary line of Floyd County; thence due west along the south boundary lines of Floyd, Hale and Lamb Counties to the intersection of Highway 84 and the south boundary of Lamb County; thence northwesterly along Highway 84 to the point of origin at Littlefield."

3. The equipment, materials and methods to be used in conducting an operation within this area of approximately 1,000 sq. miles include a 3cm radar system, cloud seeding aircraft, and the application of silver iodide ice nuclei, hygroscopic nuclei or other nuclei considered appropriate to the artificial nucleation of clouds or weather systems.

4. The person in charge of this program shall be Thomas J. Henderson, Atmospherics Incorporated, Fresno, California.

5. The program may be operational at various times throughout the period from May 1, 1972 through October 30, 1972.

6. Any person who feels they may be affected in some adverse way by this program, may file a formal complaint to the Texas Water Development Board, P.O. Box 12386, Austin, Texas, 78711.  
DATE: 25 of March, 1972  
(S) Thomas J. Henderson  
President  
ATMOSPHERICS INCORPORATED

### BRITAIN - SMOKING

London - The College of Physicians has reported that health warnings about cigarette smoking has had its effect on smokers. Sales show that Britons smoked 5 1/2 billion fewer cigarettes last year.

## Tax Deadline For Employers Arrives

A tax deadline that is new to thousands of Texas employers arrives April 30, 1972.

For an estimated 72,000 employers who became "covered" employers by act of the

last legislature, April 30 is the deadline for filing wage reports

with the Texas Employment Commission and paying unemployment taxes for the first quarter of this year.

"Those who have not yet filed this quarterly report should do so at the earliest opportunity," W.S. Birdwell Jr., commissioner representing employers, urges.

Employers who are new to coverage have been notified by mail, and have been sent the forms and instructions for making the employers' quarterly report. Some of the quarterly reports received have omitted the wages list containing employees' names and wages. These must be included, along with the taxes due.

Employers brought for the first time under coverage of the Texas Unemployment Compensation Act by the legislature are mostly those who have one to four employees.

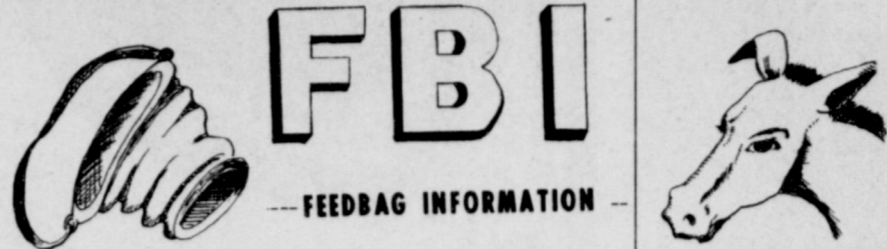
The "new" employers this year receive a tax rate of 1 per cent. The law requires employers who have one or more workers in 20 weeks of a calendar year on the payroll, and employers who pay \$1,500 or more in wages in a calendar quarter, to pay the unemployment insurance tax. Certain nonprofit, charitable and educational organizations are subject only if they have four or more workers.

Wages up to \$9,000 must be reported to the Commission in order to calculate unemployment benefits. The tax, however, is based on wages paid each employee in a calendar year. The tax is due on the first \$4,200 paid to each employee.

Those employers who become liable for the tax for the first time in 1972--with the exception of the successor in a change of ownership--are assigned an entrance tax rate of 1.0 per cent. Within two years, employers become eligible for an experience tax rate which is based on chargebacks to an individual employer's account.

Nixon's Moscow trip is announced for May 22.

## At Muleshoe Junior High



## Spring Fever

By Kacy Sanderlin  
What is spring fever? Here are some of the answers from teachers to that question.  
Coach Whitner, "It's a lazy nonchalant feeling that occurs at the beginning of the warm weather which is usually in the spring."  
Mr. Fox, "That's condition of the body that slows your mind, speeds up your heart, and plays havoc with your chances of being on the honor roll."

Mr. Rogers, "It's when we're tired of school and we want it to be over so we can get out with the flowers and the birds."

Mrs. Sewart, "When a young Mrs. McKillip, "When all young things go a-pe."

Mr. Smith, "A chance to get away from the students."  
Aside from all the above mentioned, spring fever also has a very bad effect on the journalism staff, it makes us not want to type or write our articles. This frustrates our sponsor, Mrs. Johnson, who defines spring fever as "Glug."

## Environmental Poster Contest Winners Named

By Mark Gregory  
Muleshoe Junior High School had an environmental poster contest. There were many entries and they were all very well prepared. They were judged and the best three were chosen. The winners received medals and we should all congratulate them and especially the best three. The three winners were: Paul Torres with first place, Stephen Harvey with second place, and Cindy Morgan with third place. These people worked hard at these posters though it was not required of them, so they should be commended.

## Seen At Junior High

The following is a list of "unusual" things seen at Junior High. The Journalism staff walked through the halls of Junior High looking for unusual and impractical sights. Here is the long list of what they found.  
A giraffe on Mrs. Johnson's desk; One Way sticker on Cheryl Johnson's locker; socks on locker 146; Jesus sticker on locker 53; flower children in the office; alarm clock in library used to wake up Mrs. Griffin so she'll ask herself what she's doing there; Mrs. Patterson wearing tennis shoes; the Lone Star trash can outside; someone singing in girl's restroom; finger nail marks on ceiling; camera box on top of eighth grade locker; pollution poster in the floor polluting halls; clock at 3:30 in the afternoon reading 8:00; boy pushing vacuum in hall; boys filming us; kids carrying stinky water; Journalism class being quiet; poster hanging upside-down in hall; drum stand on top of coke machine; doll house on Mrs. Smith's desk; flowers growing out of wall in library; shopping cart in Mrs. Pettit's room; vase of bluebonnets in Mrs. Beddingfield's room; cokes in Mr. Fox's room; traffic light in halls; protest marches in Mrs. Scoggins' room; pink elephant in Mrs. Seiwerts room, and sunshine in the eighth grade hall.

## Eighth Grade Track Team Wins Second

The eighth grade track team had its winning streak broken Saturday but it did manage to pick up two trophies. The team came in second to Hereford La Plata, who had 59 points to 49 for the Junior Mules. The two trophies were picked up for the 880 relay and a team second place trophy. First places were earned by Rueben Gonzales in the 440 yard dash and by the 880 relay team which consisted of Rueben Gonzales, Randy Norman, Gary Davis and Larry Sexton. The team has been working very hard this year and has had some success in winning the meets they have gone to. They now have a record of four wins and two seconds.  
The Junior Mules will have their last meet of the year Saturday, April 22 at Portales.

## Patriotic Assembly Held

Last week the Muleshoe Junior High went to the High School auditorium to listen to the High School choir sing a patriotic melody. These students have practiced very hard because at the first of the year there were only 5 students! Since Mrs. Hoover took over 17 people have joined the choir and the students were all excellent at what they did.  
The songs were patriotic and sent the message that patriotism is needed to solve America's problems. Each student was very talented and most of them sang a solo and were very good.  
The audience enjoyed the assembly very much and gave them many rounds of applause!!!

## Dear Gabby:

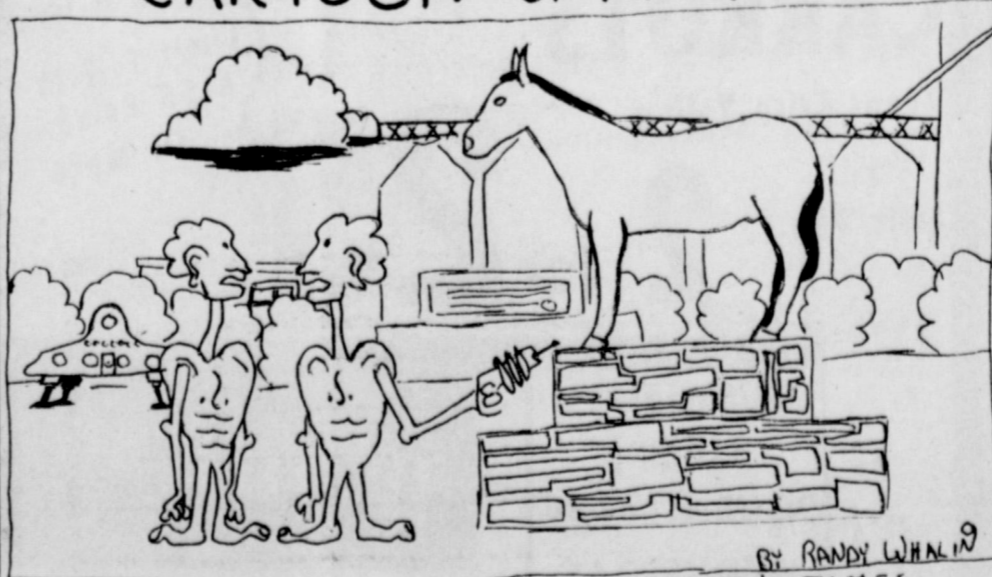
Dear Gabby,  
My boyfriend is coming Thursday for dinner and I don't know what he likes! Do you have any suggestion of what boys like? signed, Worried  
Worried,  
Boy's like short dresses. Wear a short dress and he won't care about food.  
Dear Gab,  
I don't have a girlfriend at all. I would like to have one! Please help!  
X  
Xsy,  
Find a girl what's available and be real nice to her, she'll come through!!!!!!!

## The Journals Political Column

Rate for listing in the Journals Political Column is \$25 for all offices except those for city council and school board offices, which are \$20. This fee includes a front page announcement article and a one-column photograph at the time the announcement is made, in addition to the listing in the Political Column from the date of the announcement until the final election.  
Charges for announcements are cash in advance, and this same policy applies to all political advertising carried in the columns of this newspaper.  
Names for each office will be listed in the Political Column in the order they are received at the newspaper office.  
The Journal has been authorized to announce the following candidates for public office:

- Railroad Commission**
- Byron Tunnell
- Sheriff
- Dec Clements
- Tax Assessor & Collector
- Jean Lovelady
- District Attorney
- Jack Young
- Bailey County Attorney
- Gordon H. Green
- Commissioner Precinct 1
- W.M. Dudley
- Commissioner Precinct 3
- R.P. Sanders
- C.A. Petree
- W.H. (Bill) Eubanks
- James Warren

## CARTOON OF THE WEEK



I'VE ASKED THIS CRAZY GUY FIFTY TIMES TO TAKE ME TO HIS LEADER, BUT ALL HE DOES IS STARE AT ME

**ferti-lome**  
COMPLETE LAWN FOOD  
CONTAINING CHELATED IRON

**the Iron One!**  
Puts necessary iron in lawns deficient in this vital element!

**ferti-lome**  
your ECOLOGICAL choice

BAKER FARM SUPPLY  
W. Hyw. 84 Muleshoe

meets every Tuesday at 12:00  
**FELLOWSHIP HALL**  
Methodist Church  
**Muleshoe Rotary Club**  
Troy Atkinson, President

meets every Monday, 12 Noon  
**Jaycees**  
Jeff Smith, Pres.

meets each Wednesday, 12 Noon  
**Lions Club**  
FELLOWSHIP HALL  
Methodist Church  
W. T. Miller, President

Lodge No. 58  
**Masonic Lodge**  
meets the second Tuesday of each month  
practice night each Thursday  
Fred Horn, WM  
Elbert Nowell, Sec.

**VFW**  
Water A. Moeller  
Post #8570  
8:00 p.m. 2nd & 4th Mondays  
Old Priboth Skating Rink  
George Tompkins, Commander

Lodge No. 58  
**Muleshoe Oddfelloes**  
meets each Thursday 7:30 p.m.  
Lusky Green, Noble Grand

**Fine Art Booster**  
MEETS EVERY FOURTH MONDAY  
8:00 p.m.  
Muleshoe  
High School Band Hall  
DON BRYANT, President

**KREBBS REAL ESTATE**  
210 WEST FIRST  
PHONE 272-3191

HOUSE FOR SALE: New 3 bedroom, brick, fully carpeted, small equity, assume loan, 807 Avenue J. Call 965-2645 or 965-2617.  
8-9t-tfc

FOR SALE: Eleven and one third irrigated acres, 2 miles west of town. Write or call Earl Hicks, 1304 Milwaukee St., Plainview, Texas. Phone 293-1871.  
8-16s-tfc

IF YOU WANT TO SELL OR buy see Lee Pool or Woody Goforth,  
POOL REAL ESTATE phone 272-4716.  
214 East American Blvd.  
8-44s-tfc

**FARM EQUIP. FOR SALE**

**WATERING NO PROBLEM**  
THE TEX-FLOW towline moves from one set to another in 15 minutes-Threadless, slip out risers, Automatic drain valve-TRADE IN old pipe- for the best system-for the best deal-see or call; H.B. King, Enochs, Texas, 927-3775,  
10-16s-tfc

**PERSONALS**

**POODLE GROOMING** by appointment. 221 E. 4th, Call 272-5587.  
1-28s-tfc

**HELP WANTED**

FARM HELP WANTED: To operate sprinklers, good housing, full time, Dial 272-4842.  
3-15s-tfc

Like making friends? Love making money? You can do both as an Avon Representative. It's easy-and fun! For details call collect right now: 296-2526 or write Box 98, Plainview.  
3-17t-tfc

Agriculture and Commercial Salesmen needed: Top company in lubrication field has opening for experienced and inexperienced salesmen with good automobile, above average income-full-time-repeat customers pay full commission. Sales experience knowledge of tractors and machinery helpful. Special training given at company expense. For personal interview mail qualification, name, address, phone number to Murphy White, Dept. 4 spec 7, Box 392, Dallas, Texas 75221.  
3-17t-ltp

**5. APTS. FOR RENT**

FOR RENT: Nice 1 and 2 bedroom apartments. Furnished and unfurnished. Bills paid. Smallwood Real Estate, 272-4838.  
5-5t-tfc

## A History Of Bailey County Pioneer Families



Will Archer, his wife Maggie, daughter Lorene, sons Fred and Arnold came to Bailey County to settle in the Bula community in the winter of 1924. Despite hardships they became successful farmers.

### Mr. and Mrs. W.R. Archer

Pioneer farmer W.R. Archer arrived in Bailey County with his family in 1924. It was December of that year when Archer bought a farm near Bula. At that time, he and his family had been farming near Tahoka.

Moving to Bailey County meant a bumpy, blustery wagon trip for the Archers. After four days by wagon, a snow storm forced them to stop at the wagon yard in Littlefield. Bad weather delayed them there for almost two weeks.

Born December 22, 1884, Archer was a native of Houston. In October of 1894, his wife Maggie Mae Kyle was born near Blum, Texas. To them, three children were born: Lorene Archer Cox Whittenburg, Fred and Arnold.

While snowbound in Littlefield the Archers had more misfortune. One evening their horses wandered off. After a day's search, they were found grazing in the hills of the Yellow House Ranch.

Soon after finding the horses, the Archers were on their way to Bailey County once again.

Daughter Lorene recounts her first impressions of this area: "As far as you could see there were grassy pastures on either side. In the distance off to the left we noticed one new house going up. About the only sound you could hear was that of cowboys rounding up the cattle."

At first, the Archers slept in a tent on the new farm. Before they were able to start building a home, Mrs. Archer received word that her father had died. She returned to Lynn County for several days.

Lorene, then eleven, recalls her sadness at being left alone in the strange, new country. "I cried and cried and felt I couldn't stay in such a place as this. To me, Bailey County was like a desert and such a lonely place."

Soon after the Archers completed their home (which "looked like a box car with an oval top"), people began to move in around them. All of the new neighbors were pioneers to this territory seeking to cultivate the native grassland.

Yet cultivation was far from easy. Clearing away the cat claw, yucca and scrubby mesquite took muscle and weeks of hard work. All this had to be done before the farming work could begin.

When the school at Bula was built, W.R. Archer became one of its first trustees.

Mrs. Archer died in 1946 at age 52, but her husband lived until February of 1966.

This is one in a series of historical biographies of Bailey County pioneer families who arrived here prior to 1930.

### LETTERS TO THE EDITOR

Muleshoe Journal  
Muleshoe, Texas  
Gentlemen:

Inclosed is a clipping from the Albuquerque, New Mexico newspaper of a Muleshoe boy. Thought this may be of interest to Buddy's man friends in Muleshoe to know where he is and what he is doing. We still enjoy hearing from our Muleshoe friends and for that reason would like to renew our Journal subscription.

s/ Mrs. Eddie Lane  
Lubbock, Texas

"Joe Baker, vice president and general manager of Moun-

tain States Agencies, Inc., a wholly owned subsidiary of Mountain States Investment Corp., has announced the appointment of William T. Lane to the post of assistant vice president for the company.

"The company operates in New Mexico, Colorado, Oklahoma, Texas and Illinois.

"Lane, who has been sales manager for Mountain States Agencies, Inc., has been with the company since 1970 after leaving Republic Financial Service.

"A native of Muleshoe, Tex., and spent 11 years in the United States Air Force. He was discharged in 1965.

"A member of the New Mexico Independent Agents Association, Lane and his wife, Jo Ann, have three children"

### 3 Accidents Investigated

The Texas High Patrol investigated three accidents on rural highways in Bailey County during the month of March, according to Sergeant Thurman Keffer, Highway Patrol supervisor of this area.

These crashes resulted in no persons killed and no persons injured.

The rural traffic accident summary for this county during the first three months of 1972 shows a total of 12 accidents resulting in no persons killed, and one person injured.

The rural traffic accident summary for the 60 counties of the Lubbock Department of Public Safety Region for March, 1972 shows a total of 420 accidents resulting in 23 persons killed and 218 persons injured as compared to March, 1971 with 521 accidents resulting in 20 persons killed and 251 persons injured.

The 23 traffic deaths for the month of March, 1972 occurred in the following counties: Montague, four; Hale and Dallam, three each; Briscoe, Gray, Hardeman, Hutchinson, Parmer, Wheeler, Crosby, Floyd, Garza, Hockley, Knox, Lynn, and Young, one each.



the Controller

Controls lawn insects while feeding your lawn in one easy operation.

ferti-lome  
your ECOLOGICAL choice

BAKER FARM SUPPLY  
W. HYW. 84 Muleshoe

# Labor Saving Dishes



...BUDGET SAVING PRICES



Swifts Premium Proton Beef

**CLUB STEAK** lb. **98¢**

Welchs **GRAPE JUICE** 12 oz. Can **49¢**

Keiths Cut **OKRA** 10 oz. pkg. **25¢**

10 oz. Pkg. Checkerboard **PICCADILLY CIRCLES** **69¢**

Mortons Chicken, Turkey, Beef **POT PIES** 8 oz. Box **5 for \$1**

Asst. Flavors **JELLO**  
3 oz. Box  
**2 for 19¢**

We have a good supply of Tomato Plants, Pepper Plants, Pepperoni Plants, Verbena, Petunias, Cactus & Flowers

Swifts Premium Proton Beef **ARM ROASTS** lb. **79¢**

Jimmy Deans Extra Lean Pork **SPARE RIBS** 3 lbs. & under **79¢**

Hormel Black Label Thin Sliced **BACON** 1 lb. pkg. **79¢**

Swifts Premium Proton Beef **RANCH STEAKS** lb. **79¢**

Cudahy's Bar S Skinless All Meat **FRANKS** 12 oz. pkg. **59¢**

Sammy's Pride Single Sliced American **CHEESE** 12 oz. pkg. **69¢**

- 14 oz. Pkg. Keebler Rich 'N Chips **53¢**
- COOKIES** **53¢**
- #303 Can Del Monte **19¢**
- SAUERKRAUT** **19¢**
- #303 Can Del Monte Cut **3 for 79¢**
- GREEN BEANS** **3 for 79¢**
- 16 oz. Jar Best Maid Dill & Hamburger Sliced **3 for \$1**
- PICKLES** **3 for \$1**
- #300 Can Hunts Fancy **19¢**
- SPINACH** **19¢**
- 24 oz. Can Gebhardt's with Beans **59¢**
- CHILI** **59¢**
- 6 Bottle Ctn. King Size -Plus Deposit **39¢**
- DR PEPPER** **39¢**
- 20 oz. Bottle Hunts Tomato **3 for \$1**
- CATSUP** **3 for \$1**
- White Swan "Oven Ready" **6 for 49¢**
- BISCUITS** **6 for 49¢**
- 8 oz. Bottle Wish -Bone DeLux **39¢**
- FRENCH DRESSING** **39¢**
- 4 1/2 oz. Jar Heinz Strained **10¢**
- BABY FOOD** **10¢**
- 24 Count Box Mr. Freeze & Eat **59¢**
- OTTER POPS** **59¢**

Imperial Pure Cane **SUGAR**  
5 lb. Bag Limit 1  
With A \$5 Purchase  
Or More **39¢**

## CHUCK ROAST

Swifts Premium Proton Beef Blade Cut

lb. **59¢**



## CUCUMBERS

Texas Long

Green Slicers

lb. **19¢**

Mrs. Tucker **SHORTENING** 3 lb. Tin **59¢**

California KY's **GREEN BEANS** lb. **29¢**

California Sno-White **CAULIFLOWER** lb. **19¢**

**CARROTS** Texas Crisp Yellow 1 lb. Cello Pkg. **2 for 25¢**

Breeze Giant Size **DETERGENT**  
Limit 1 With A \$5 Purchase  
Or More **59¢**

- #300 Can Austex **SPAGHETTI & MEAT BALLS** **35¢**
- 21 oz. Can Ajax **CLEANSER** **25¢**
- Giant Size Bottle **IVORY LIQUID** **49¢**
- 1/2 Gal. Bo Peep **AMMONIA** **45¢**
- Teri Jumbo Rolls **PAPER TOWELS** **2 for 89¢**
- 200 Count Box Kleenex Facial **TISSUE** **2 for 69¢**
- 1 Lb. Tin Maxwell House All Grinds **COFFEE** **85¢**
- 59¢ Pkg. Morton's Potato Chips **POTATO CHIPS** **49¢**

GUNN BROS.  
STAMPS  
DOUBLE EVERY  
WEDNESDAY

White's **CASHWAY**

We Reserve The Right To Limit Quantities

Listen to **MULETRAIN** over **KMUL** 10:15 a.m. Sponsored by **WHITE'S CASHWAY**