

PAGE ONE

A QUICK READ OF THE NEWS

Principal not amused

Conway (S.C.) High School salutatorian Chris Martin got his diploma a week after school officials interrupted his humorous speech at the school's graduation ceremony.

Principal Rick Maxey said he stopped Martin's speech, which was an impersonation of a Chris Farley character on "Saturday Night Live," because Maxey said he worried some of the audience might be offended.

"This was not the time or place for this type of presentation," Maxey said. The character on the "Saturday Night Live" skit gave sweaty inspirational speeches to at-risk teens by telling his audience they could end up like him, eating government cheese and living in a van down by the river.

Funeral helps robber

A Seattle bank robber caught a lucky break when his getaway was interrupted by a funeral.

Dozens of officers were about to catch the robber at a fast-food outlet when shots rang out nearby. After racing to the scene, officers learned the gunfire came from an honor guard shooting blanks at a veteran's funeral.

The episode began when a man passed a note demanding money to a teller at a Wells Fargo Bank branch, police officer Deanna Nollette said.

He took an undisclosed amount of money and fled in a taxi, Nollette said.

As officers were being told the robber might have left the cab and entered a Jack In The Box outlet, they heard the gun salute from a funeral home down the block. "We all assumed this guy was cranking off rounds somewhere," Nollette said.



Drawing date: Saturday, June 8
Winning numbers: 5-8-19-25-37-42
Estimated jackpot: \$26 million
Winners: 0
Next drawing: Wednesday, June 12
Estimated jackpot: \$32 million

On this date in history

June 11 — The Texas state Treasury is robbed of \$17,000 before outraged citizens drive the bandits away (1865).

June 12 — Big Bend National Park is created (1944).

June 13 — Tan Antonio is founded by Domingo Terán de los Ríos, Father Damian Massanet and a group of soliders (1894).

LOCAL WEATHER

The forecast, as of Tuesday, called for potentially stormy weather through Saturday. Temperatures also should be more moderate during that period, with highs reaching only about 90. Sunday is expected to bring a return to 96-degree temperatures, morning lows of about 60, and partly cloudy skies. Even on stormy days, periods of bright sun will keep the sunburn danger at high levels.

Editor Ronn Smith can be reached at 272-4536 or ctyankee@fivearea.com

Missed your paper? Call carrier Yolanda Martínez at 272-4536 during business hours, 8:30 a.m.-5 p.m.

County officials look at plan for new jail

JOURNAL STAFF REPORT

Members of the Bailey County Commissioners' Court and Sheriff Richard Wills looked over potential plans for a new jail Monday, but seemed less than enthusiastic about expanding to more than 48 beds.

The project consultant, James Parkey of Corplan from Argyle, Texas, had advised county officials to consider 96 beds

for reasons of economy of scale.

The current jail is approved for 22 beds.

Parkey presented a project plan that would include not only the 48-bed unit (to be constructed in the parking lot on the southwest corner of the courthouse block) but also expanding the current jail building to north so that it also would contain 48 beds.

He also presented a third option that would move the county's entire law-enforcement operation to a new site. A fourth was discussed — moving the jail to a new site but keeping the administrative office and two holding cells at the courthouse site.

If the commissioners' court approves some form of the project, the anticipated method of

see **JAIL** on page 2

Father-of-year contest deadline is extended

The deadline for entries in the *Muleshoe Journal* Father of the Year Contest has been extended to 5 p.m. June 13.

The entry requires a photo (made any year) with a one-sentence caption that captures the idea of the photo.

Entries should be brought by the Journal office at 304 W. Second St.

The winner will receive prizes donated by area businesses, and photos will be published in *Journal*.

Two ex-Mules play in all-star bowl game

By DELTON WILHITE
Journal sportswriter

CHILDRESS — Two former Muleshoe football players were among 64 ex-high school all-stars from northern Texas and western Oklahoma who played in Saturday night's Greenbelt Bowl All-Star Classic.

Players from class AAAAA to class A schools are invited to play, with emphasis on showcasing the athletes that might have been overlooked by college scouts. They are divided into North and South teams, not necessarily based on geography, with Muleshoe's Jeffere Skipworth and Lincoln Riley playing for the North.

They came from Stratford in the northern Texas Panhandle to Denver City in the south and from Mangum, Okla., to Muleshoe and east to Rockwall.

As in most all-star games, the defense dominated the running game. In the first half, neither the North or South could manage any offensive yards on the ground and combined for six turnovers.

The South took advantage of its speed, spread the field and cashed in on big plays to win the contest 30-14.

Muleshoe's two representatives, Jeffere Skipworth and Lincoln Riley, turned in performances for the North team that brought smiles and pleasure to their parents and fans in the stands.

Riley was the North quarterback for the first half of the initial quarter, the last half of the third and all the final period.

The North could not break into the end zone until the final period with 7:30 re-

see **GREENBELT** on page 2

Swimming lessons available

JOURNAL STAFF REPORT

Swimming lessons are available at both the Muleshoe Country Club and the municipal pool.

At the country club, lessons are available Monday through Friday beginning June 17-21 at \$30 per child (no age limit).

More information on the country club lessons is available from Rendi Hodge at 946-9097 or the country club at 272-4250.

At the city pool (272-5530), manager Christy Whitt said Tuesday that lessons are also \$30 per child and available Tuesday through Saturday.

City Manager David Brunson was not available for comment Tuesday, but there may be some

miscommunication about the cost at the city pool.

City council members voted June 3 to allow the pool staff to set the price of lessons "up to \$25." Before making that motion, Councilwoman Sharon Grant said she hated to put the cap higher because "the people who use the city pool might not be able to afford to go elsewhere."

Councilman Clifford Black raised an objection, saying "we don't set the rates on what they charge for Cokes or candy," but the motion passed.

Brunson said the city pool had charged \$20 in the past, paid to the city. Grant's motion changed that so the pool staff collects directly.



Journal photo: Beatrice Morin

The last dance

Four-year-old Logan Sowder, son of Janice and Cecil Sowder of Spearman, dances with his aunt, Shannon Calhoun of Goliad, at Saturday night's "Last Bash" at the Three Way School. In the background, Stefanie Calhoun (left) dances with her cousin, 8-year-old Anna Sowder. The dance was part of a reunion marking the end of Three Way's school.

Bone-marrow drive scheduled in Muleshoe

JOURNAL STAFF REPORT

A community bone-marrow drive is scheduled for 1 p.m. to 4:30 p.m. Friday in the United Supermarket parking lot in Muleshoe.

The event is sponsored by the National Marrow Donor Program's Odessa office.

The program is especially seeking a match for 7 1/2-year-old Manny Ybarra of Andrews, who has been needing a bone-marrow match for about 2 1/2 years.

Manny was diagnosed with aplastic anemia, and his condition is such that finding a matching donor is critical, according to

spokeswoman Beki Garcia of the Odessa office.

Since bone marrow's characteristics are inherited, much like hair color, eye color, facial features, etc., the chances of finding a match among Hispanics is greater than among the population as a whole.

The big hurdle for people like Manny is see **DONORS** on page 2



Manny



Journal photo: Beatrice Morin

A little refreshment

Sisters Tyneisha Peterson (left), 9, of Canyon and Kerlee Goodman, 11, of Belton, Texas, operate their lemonade stand in Tuesday's heat on Main Street. The girls are visiting their grandmother, Sandy Peterson of Muleshoe.

AROUND MULESHOE

Nicole Felán to be featured

Nicole Felán of Muleshoe will be among about 25 young models and actors showcased at the Millie Lewis American Modeling and Talent Convention on June 26-30 in Orlando, Fla.

Donations are being taken to help defray expenses. Tickets are being sold at \$1 each for a \$500 gift certificate to South Plains Mall in Lubbock, with the drawing scheduled for June 15. Names of those who contribute \$100 or more will be listed in the convention's program book.

A Mary Kay fund-raiser is also going on.

More information is available by calling 272-3425.

Title I funds available

The Muleshoe School District seeks to learn if there are any eligible private schools in the area that wish to participate in Title I services.

Any interested school should contact Carol Williams, the district's federal program director, at 272-7326 by June 14.

Softball tourney scheduled

Muleshoe Friends of the Library are sponsoring a softball tournament July 12-14 at Rocky Flores Softball Field (the new city park field).

Entries close July 10. This will be a class D and E tournament with a 12-team limit and a team roster of 13.

The entry fee is \$120 per team.

More information is available by contacting Nathan Hill (272-6891), Richard Orozco (272-3576), Robert Orozco (272-6774), Shorty Flores (272-5112) or the library (272-5112).

GREENBELT

from page 1

maining in the game.

Riley moved the North from its own 20 to the South's 21-yard line with a series of roll-out passes. Jerome Green of Rockwall Christian broke free on a counterplay for the final 21 yards. Riley completed a toss to Blane Boswell of Electra for the extra points, to come within 30-8.

After a defensive stand by the North, Riley completed a 40-yard pass that bounced off a defender to Green, who scampered the final 20 yards untouched.

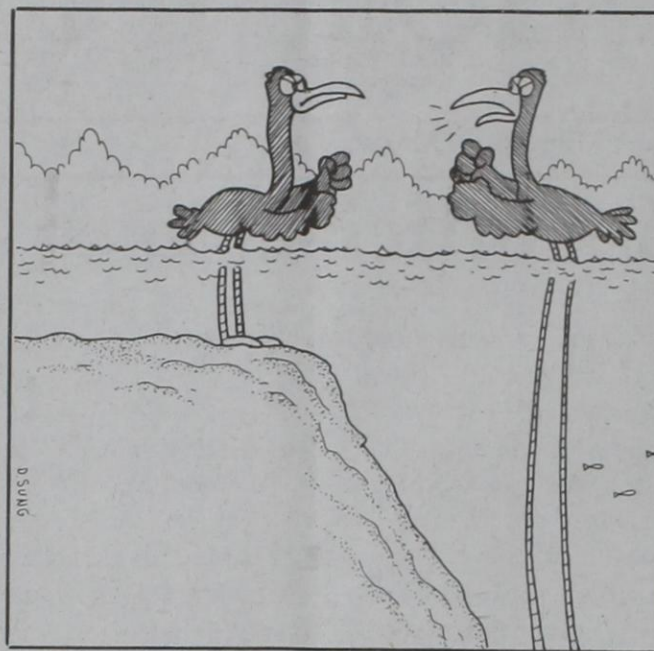
The two-pointer failed.

Without the aid of film, it is difficult to grade a lineman but Skipworth did not appear to have lost his blocking ability. He may be most dangerous as an offside blocker, prowling the defensive secondary looking for a linebacker or defensive back to pancake.

Riley completed 12 of 23 passes for 160 yards and was intercepted twice. Most of his yardage gained on eight carries was eaten up on two sacks, leaving him a total of two yards.

Aminals

By David Sung



"So you think yer pretty tough, eh? Okay tough guy. I dare ya ta take another step at me!"

JAIL

from page 1

financing is through revenue certificates (money generated by housing prisoners for other entities would pay off the debt), backed by county certificates of obligation to lower the interest rate.

Parkey said the annual payment for the 48-bed unit would be about \$225,760 on a cost of \$1.6 million, though if that phase is built alone there would be some additional cost for maintenance on the current jail

DONORS

from page 1

that of about 4.5 million in the bone-marrow registry, 75 percent are Caucasian.

García said registering as a potential donor takes between seven and eight minutes and requires the drawing of a small amount of blood. Potential donors

building.

Commissioner Joey Kindle said he would like to look at building the jail on the site across the street to the south of the courthouse rather than "cluttering up" the space left around the courthouse.

That led to a discussion on what the new building would look like on the outside. Parkey said it would be concrete but could be painted to blend in with the courthouse.

must be between the ages of 18 and 60 and in good general health.

More information is available by calling García at (915) 352-0717.

2233

RED WING SHOES
Made in U.S.A.

The Fair Store
120 Main 272-3500

new balance

Offer good through June 15, 2002!
Lots of other great gift ideas for Dad!

Give Dad Our Best!

With purchase of New Balance "tennies" for Dad, get a FREE thermos mug!

Williams Athletics
1405 W. American Blvd.
272-6853

It's easier to ask forgiveness than permission.

Woody's Jewelry

117 W. 2nd, Portales, 356-5641

Muleshoe Journal USPS 367820
Established February 23, 1924. Published by Triple S Publishing, Inc.
Every Thursday at 304 W. Second, P.O. Box 449, Muleshoe, TX 79347.
Periodicals Postage paid at Muleshoe, TX.
POSTMASTER: Send address changes to the Bailey County Journal, P.O. Box 449, Muleshoe, TX 79347.

We are qualified members of:
Panhandle Press Association, National Newspaper Association, West Texas Press Association and Texas Press Association

WEST TEXAS PRESS ASSOCIATION
PPA Panhandle Press Association

TA MEMBER 2002
TEXAS PRESS ASSOCIATION

Scot Stinnett, Publisher
Lisa Stinnett, Vice-President/Comptroller
Ronn Smith, Editor
Beatrice Morin, Classifieds
Leah Bell, Advertising
© 1990 **Yolanda Martinez, Office Assistant**

SUBSCRIPTIONS: Muleshoe Journal and Bailey County Journal
By Carrier Yearly - \$22.00
Bailey County — by mail - \$24.00
Elsewhere - \$26.00
Advertising Rate Cards on Application

Advertisers should check their ad the first day of insertion. The Journals will not be liable for failure to publish an ad or for a typographical error or errors in publications except to the extent of the cost of the ad for the first day of insertion. Adjustment for errors will be limited to the cost of that portion of the ad where the error occurred.

CUSTOMER APPRECIATION CELEBRATION!

Join us in celebrating **Saturday, June 15th**

99¢ SINGLE BURGERS OR ROUTE 44 FT. DRINKS

49¢ REGULAR FRIES

25¢ REGULAR VANILLA CONES

REGISTER TO WIN COCA-COLA MTN BIKE, FREE SONIC PARTY, BARBECUE GRILL OR FREE FOOD FOR A YEAR!

1633 American Blvd. · 272-3998 · MULESHOE

Register to Win - Sonic Party*, Coke Mtn. Bike, BBQ Grill or Free Food!
Name: _____
Address: _____
City: _____ ZIP: _____
Phone: _____ AGE: _____

*Sonic will host your birthday or class party. Sonic will provide food and fun for up to 30 guests. Return entry to carhop. Winners will be notified by phone.

You could be the missing piece

Each year more than 30,000 people are diagnosed with leukemia or other life-threatening diseases. For many, a marrow or blood stem cell transplant is the only cure. The National Marrow Donor Program works with local donor centers and recruitment groups to educate and recruit people to become committed donors. You could be one of those donors! Patients are counting on you to answer the call to donate. For more information, attend the event below. You can make the difference.

Manny Ybarra, 7 years old

Are you Hispanic, healthy and between the ages of 18-60? If you answer yes to all of these questions you could be my missing piece.

My name is Manny and I am currently waiting for a volunteer donor who is a compatible match with my marrow... This could be you.

Bone Marrow Drive

Friday, June 14
United Supermarkets
Muleshoe
1 p.m. - 5 p.m.

Saturday, June 15
United Supermarkets
Littlefield
10 a.m. - 3 p.m.

Sponsored by **United Supermarkets**

For more information: 915-352-0717

Drought got anyone wanting native plants?

By RONN SMITH
Editor

As an indicator of how serious our rain-fall problem has become, let me just mention that at the Smith farm, there are Persian lilacs from 45 to 60 years old that are starting to show signs of dieback, and I don't believe that ever happened before — even in the '50s when we had such extended drought.

Some parts of the yard are beginning to feel (and look) as if I were living back in the Sonoran Desert of southern Arizona.

I'm thinking that having another dry, hot summer may get more people thinking about the use of native plants, or at least those from similar climates that require very little water. This specialized form of landscaping is called "xeriscaping," referring to the minimal use of water.



This month's xeriscaping newsletter from High Country Gardens (subscribe at www.highcountrygardens.com) makes a number of interesting points.

The author speculates that people generally aren't interested in native plants because "familiarity breeds contempt" — people see the flowers along the road with other "weeds," so they don't think of them as desirable.

Also, there is our continuing idea that a garden is by definition the English garden, using plants that the English use.

Granted, the English garden is the ultimate one, but most of England has a climate that's conducive to tender plant growth. It takes tough foliage to stand up to our wind and drought and blowing sand.

By the way, native plants are not always xeriscapic. Keep in mind that all across the Southwest there are springs, creeks and even "seeps" (where moisture barely reaches the surface of the ground, but not in such quantities as to create flow). In those spots grow plants that may require water, but at least have tough leaves that stand up to the elements.

"Natural landscaping" is the usual term for what we're referring to here. There are other forms of gardening with native plants.

The High Country Gardens column recommends a book titled *Native Gardens for Dry Climates* by Texas authors Sally and Andy Wasowski. (Any gardening book by the Wasowskis is likely to be full of good information and good pictures to guide you along.)

One aspect of "going native" can involve saving species that have been all but wiped out by intensive agriculture. (And don't even start about endangered species: I've pointed out before that if we got penicillin from a cantaloupe mold, there is no telling what good things might come from the next vanishing species if we don't kill it before we have a chance to study it thoroughly.)

Perhaps the outstanding example of this in recent years has been the central Texas native big red sage (*Salvia penstemonoides*), which was thought to be extinct by 1946 but was rediscovered decades later.

The Lady Bird Johnson Wildflower Center near Austin began promoting big red sage, and now it's considered a very desirable garden plant where it's hardy. (It probably wouldn't be hardy in our area, but if it's like other salvias, you could put it in a container and give it just enough water to keep it going through the winter, then place it back outside in the spring.)

Big red sage grows to 5 feet high, so it's big for a salvia. It's easily started from seed, which I assume is available from the Johnson facility. Once you get it started, you can divide clumps and even start cuttings to get more.

Another aspect of native plants is grasses. You might think that our short-grass prairies wouldn't have produced species of interest to gardeners, but blue grama (*Bouteloua gracilis*) is one of the grasses that is generating a lot of interest.

New types are being developed that grow a denser turf — and may well become the familiar lawn of the future, as water becomes more of a problem.

You can mow it two or three times a summer or let it produce the familiar "eyebrow" seedheads.

There will be more on semi-desert plants as the summer heat continues.

Happy planting!
(Questions and comments can be directed to Garden Writer, 571 County Road 1018, Muleshoe, Texas 79347, or e-mailed to ronnsmith@hotmail.com.)

John Roley's AutoCenter

Hot Vacation Specials!



See Our Large Selection of GM Certified Used Vehicles!

Sizzling Summer Special!



#GM149A
2001 Chevy Cavalier 4 Door
4 Cyl, Air, Auto Trans, 34 K Miles
\$9,995
or **\$195** Month.
WAC 8.5%, 60 mo. with \$500 down and TTL



#GM152A
1999 Pontiac Sunfire
2 Door Fun Machine!
\$7,995 or **\$154** Month
WAC 8.5%, 60 Months with \$500 Down And TT&L



#GM142A
2001 Pontiac Grand Am SE
4 Door, V-6, Air, Power Seats & Locks, Just 37K Miles
\$13,995
or **\$277** Month
WAC 8.5%, 60 mo. with \$500 down and TTL



#GM146A
2001 Ford Escort 4 Door
4 Cyl, Air, Auto Trans, 32K Miles
\$9,495
or **\$184** Month
WAC 8.5%, 60 mo. with \$500 down and TT&L



#GM145A
2001 Ford Focus 4 Door
4 Cyl, Air & Power, 33K Miles
\$11,195
or **\$220** Month
WAC 8.5%, 60 mo. with \$500 down and TT&L



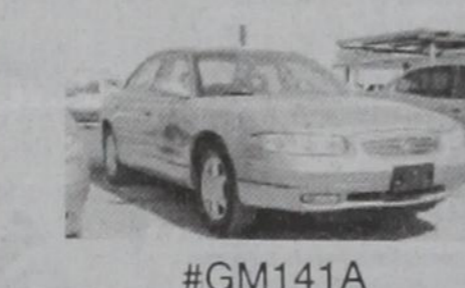
#GM140A
2001 Chevrolet Monte Carlo
V-6, Air & Power, Loaded! Just 30K Miles
\$15,995
or **\$319** Month
WAC 8.5%, 60 mo. with \$500 down and TT&L



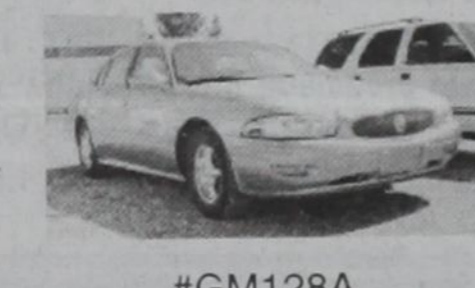
#C2389A
2001 Chevrolet Suburban LT
2WD, 5.3 V-8, Leather, Captain Chairs, Loaded, 17K Miles
\$29,595



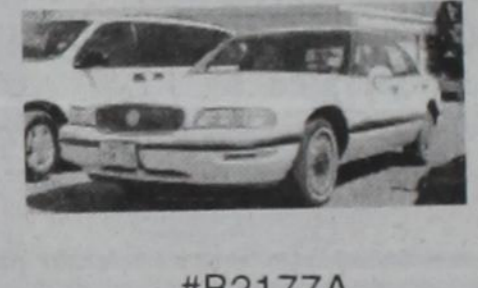
#GM157A
2001 Pontiac Montana Van
V-6, Loaded, 38K Miles
\$17,595



#GM141A
2001 Buick Regal LS
4 Door, Air & Power, Power Seats & Locks, Leather, 24K Miles
\$16,995



#GM128A
2001 Buick LeSabre Custom
4 Door, V-6, Air & Power, Loaded!
\$18,995



#B2177A
1997 Buick LeSabre Custom
4 Door, V-6, Air & Power, Loaded! 53K Miles
\$8,995



#GM165A
2001 Chevrolet Metro
4 Cylinder, Air, 28K Miles Automatic Transmission
\$8,495



#C2605A
2000 Chevrolet Ext. Cab 4x4
V-8, Loaded, 74K Miles
\$19,995



#GM161A
2001 Chevrolet Impala
V-6, Loaded, 32K Miles
\$14,995



#GM162A
2002 Chevrolet Impala
V-6, Loaded, 31K Miles
\$15,995



2000 Ford Ranger XLT Supercab
V-6, Air & Power, Auto Transmission, 40K Miles
\$12,995
or **\$257** Month
WAC 8.5%, 60 mo. with \$500 down and TTL



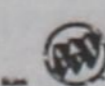
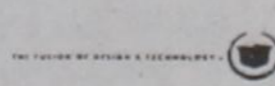
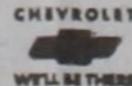
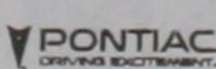
#C2602A
1995 Dodge Grand Caravan
V-6, Loaded, 75K Miles
\$6,995



#BLAIR
1994 Ford F-250 Pickup
Long Bed, 2WD, V-8, Air & Power, Great Work Truck
\$7,495



#GM153A
2000 Ford Ranger XLT Supercab
V-6, Air & Power, Auto Transmission, 43K Miles
\$11,995
or **\$236** Month.
WAC 8.5%, 60 mo. with \$500 down and TTL



All Inventory on line at www.johnrole.com

Financing Available with Approved Credit.

John Roley's
AutoCenter
LITTLEFIELD

E. Hwy. 84

385-6464
747-6904

GOOD OLD DAYS

(EDITOR'S NOTE: This is one of a series of articles being reprinted from the Journal of 50 years ago, when Lubbock acquired the water rights to 80 square miles of Bailey County land.)

May 8, 1952

The Lubbock City Commission Saturday acquired an option on water rights on more than 80 square miles of land which, officials believe, will ensure Lubbock an adequate water supply for 30 years or longer, even though the city's population may increase to 200,000 or more.

The tract lies west by slightly south of Muleshoe, Bailey County, approximately 70 miles northwest of Lubbock in a tongue-shaped region known as the sandhills.

The hills extend eastward from New Mexico across Bailey and Lamb counties into the edge of Hale County, narrowing in width from about 15 miles to the point of their disappearance.

50,000 acres in tract

The option was obtained from L.A. Purtell, Lubbock contractor with various business interests, and covers water rights on more than 50,000 acres in an irregularly shaped tract extending about 15 miles from east to west and seven miles from north to south.

The property includes about 13,000 acres donated by A.L. Wasson, Big Spring rancher and oilman, to the Baptist Foundation several years ago, a approximately 40,000 acres of the VVN Ranch operated by J.L. Birdwell, who resides on the Levelland Highway west of

Lubbock.

Option To Cost \$1

Under the contract signed by Mayor Murrell R. Tripp as authorized at the special meeting of the commission Saturday, the city is to pay Purtell \$1 for the option.

If drilling tests scheduled to be started at once prove that water of satisfactory quality and in sufficient quantity underlies the land; the contract binds the city to pay Purtell not to exceed \$10 an acre for perpetual rights.

The city is committed to pay for rights only upon lands where water may be found.

R.L. Oldham, city director of public works, told the commission that funds to take up the option are available from a water improvement bond issue voted nearly two years ago.

Officials are optimistic

While drilling tests on the tract authorized by the commission will be thorough, officials were unanimous in their expectation that they will prove the presence of good water in large quantity.

This confidence is supported, they said, by experience in existing wells on and surrounding the property.

The contract does not require the city to take up options on land where the thickness of water-bearing strata is less than 70 feet.

The sand from which Lubbock now obtains its present water supply, all from wells close to the city, average about 60 feet in thickness.

Deep sands expected

Oldham predicted, however, that the water-bearing strata in the sandhills will

average more than 100 feet. The sands in some of the existing wells in the region, he added, are approximately 150 feet thick.

But tests are planned on all portions of the optioned property, according to plans. Just how many wells will be drilled will be determined by circumstances, perhaps as many as 20 or more.

A few will be 14 inches in diameter, the size of those now supplying Lubbock with water. These will be subjected to pumping tests to determine just how much water they will produce.

Others will be of smaller diameter to determine the thickness of strata and the quality of any water produced.

May cost \$20,000

These explorations, Oldham estimated, will cost the city \$10,000 to \$20,000.

L.A. Peoples will drill the large-diameter tests under an existing contract with the city. Contract for the smaller bores will be awarded later.

Oldham said, however, that the tests should be completed within the next 60 to 90 days.

In the aggregate, the tests will combine into the first large-scale exploration of the water reserves underlying the sandhills. Authorities' opinions, however, long has been that the quantities in an area virtually untapped are enormous.

As its name implies, the area is one covered almost entirely by sand of considerable depth, rippled into dunes, and with a thick covering of brush, chiefly sage. Agricultural development

has been small and opinions are divided as to whether it could be farmed successfully.

Old wells producing

While emphasizing that the water-producing potential on the tract can be determined by the impending tests, officials pointed out that limited but significant records available support much optimism.

Kuykendall, a resident of Muleshoe from 1914 to 1919, recalled that irrigation wells drilled north of the optioned tract 32 years ago still are "going strong."

He moved to Lubbock in 1924 and founded Kuykendall Chevrolet Co.

Oldham predicted that, as a minimum, the option area covers 650,000 acre feet of water, 50 times the quantity the city will use this year.

Other estimates of the reserve range as high as 2 million acre feet — enough water to last Lubbock more than 150 years at its current rate of use. This is more than twice as much water as the proposed Canadian River project would impound for municipal and industrial purposes, according to engineering estimates.

Development to be delayed

Members of the commission emphasized, however, that resources in the sandhills probably will not be developed for several years, even if the most optimistic estimates are confirmed by the tests.

The expectation of members of the commission and the water board is that in-

creasing requirements for a see **DAYS** on page 5

All-You-Can-Eat Buffet

Includes Salad Bar

11:30 am - 1:30 pm
Sunday - Friday \$4.59

6 - 8 pm
Monday Night \$4.99

Kids Eat for \$1.99

Kids 4 & under Eat FREE! • All plus drink & tax

1412 W. American Blvd. • Muleshoe • 272-4213

FOSSIL

Gift Items for Dad!

- Sunglasses
- Tail & Front Pocket Wallets
- Data Banks • Watches
- Keychains

Williams Athletics

1405 W. American Blvd.
272-6853

Treat Dad to a Fossil!

MULESHOE CHAMBER OF COMMERCE & AGRICULTURE IS REQUESTING YOUR ASSISTANCE IN HELPING TO SELECT OUR MONTHLY CANDIDATES FOR

EMPLOYEE & BUSINESS OF THE MONTH

If you are impressed by the excellent service of someone, or there is a business that you feel has "gone beyond the call of duty," write them down, cut this form out of the newspaper and drop it by our office at 115 E. American Blvd. or mail it to P.O. Box 356, Muleshoe, Texas 79347

Employee of the Month

Business of the Month

REPRESENTATIVE SALES

1125 head of cattle, 117 hogs and 651 sheep and goats for a total of 1,893 animals were sold at the June 8th sale. Market steady on choice stocker and feeder cattle. Still lower market on pairs and Bred cows. Packer cows and Bulls a dollar lower.

The Muleshoe Cattle Market is brought to you each week by Muleshoe Livestock Auction, located east of Muleshoe on U.S. 84. Muleshoe Livestock conducts sales every Saturday, beginning with hogs, sheep and goats at 10 a.m. and cattle following at approximately noon.

FOR INFORMATION ON SALES OR TO CONSIGN CATTLE, CALL (806) 272-4201

| Seller, City | # | Type | Wt. | CWT or PH |
|------------------------------|-------|-----------------|-----------|-------------|
| Reynaldo Nuñez, Plainview | | Hol. Hfr | 285 lbs. | at \$675.00 |
| Marivel Flores, Portales, NM | | 6 Hol. Bulls | 138 lbs. | at \$118.00 |
| Jose Zamora, Portales, NM | | 5 Hol. Strs | 188 lbs. | at \$118.00 |
| Johnny Tapia, Portales, NM | | 2 Hol. Bulls | 200 lbs. | at \$115.00 |
| Roy Lee Criswell, Pep, NM | | 7 Hol. Bulls | 206 lbs. | at \$111.00 |
| Juan Frogoso, Muleshoe | | 3 Hol. Strs | 238 lbs. | at \$109.00 |
| Danny Mirabal, Grants, NM | | 3 Hol. Strs | 280 lbs. | at \$96.00 |
| Danny Mirabal, Grants, NM | | 29 Hol. Strs | 328 lbs. | at \$85.00 |
| Jamie Grey, Littlefield | | Brown Str | 340 lbs. | at \$94.00 |
| Dennis Poole, Gail | | 3 Mxd. Bulls | 352 lbs. | at \$95.00 |
| Randy Johnson, Muleshoe | | 4 Mxd. Strs | 399 lbs. | at \$90.00 |
| Daybreak Farms, Bovina | | 5 Char. Bulls | 482 lbs. | at \$83.50 |
| Kenneth Cox, Rogers, NM | | 3 Blk. Strs | 552 lbs. | at \$75.00 |
| KP Farms, Lubbock | | 18 Mxd. Strs | 585 lbs. | at \$81.50 |
| Maxine Thompson, Friona | | 14 Mxd. Strs | 621 lbs. | at \$76.75 |
| Maxine Thompson, Friona | | 21 XB Strs | 681 lbs. | at \$72.75 |
| Azua Cattle, Sudan | | 39 Mxd. Strs | 713 lbs. | at \$73.75 |
| T-Top Farms, Earth | | 7 Mxd. Strs | 727 lbs. | at \$72.00 |
| Kelly Harrison, Muleshoe | | 29 Mxd. Hfrs | 282 lbs. | at \$105.00 |
| Jamie Grey, Littlefield | | 2 Mxd. Hfrs | 285 lbs. | at \$95.00 |
| Azua Cattle, Sudan | | 10 Red Hfrs | 312 lbs. | at \$93.00 |
| Norris Conklin, Muleshoe | | 2 Mxd. Hfrs | 378 lbs. | at \$85.50 |
| Norris Conklin, Muleshoe | | 3 Mxd. Hfrs | 597 lbs. | at \$73.00 |
| Rudy Tenorio, Bernalillo, NM | | 4 Mxd. Hfrs | 400 lbs. | at \$86.00 |
| Daybreak Farms, Bovina | | 5 Char. Hfrs | 498 lbs. | at \$78.50 |
| Larry Jesko, Muleshoe | | 4 Red Hfrs | 529 lbs. | at \$75.50 |
| Maxine Thompson, Friona | | 13 Mxd. Hfrs | 648 lbs. | at \$70.50 |
| T-Top Farms, Earth | | 12 Mxd. Hfrs | 702 lbs. | at \$70.00 |
| Mike Garcia, Bernalillo, NM | | BWF Pair | | \$580.00 |
| Rudy Tenorio, Bernalillo, NM | | RWF Cow P8 | | \$430.00 |
| 3M Cattle, Muleshoe | | 11 Blk. Cows P6 | | \$660.00 |
| J&M Enterprises, Clovis, NM | | Blk. Cow P5 | | \$425.00 |
| Kelly Harrison, Muleshoe | | Red Cow | 1025 lbs. | at \$38.50 |
| Mark McFadden, Olton | | Red Str | 1945 lbs. | at \$39.50 |
| Tommy Lewis, Morton | | Blk. Cow | 985 lbs. | at \$38.75 |
| Mark Logan, Texico | | Brin. Cow | 1055 lbs. | at \$37.00 |
| 7-C Cattle, Bovina | | Char. Cow | 1005 lbs. | at \$40.00 |
| Meagan Alvarado, Muleshoe | | RWF Cow | 1500 lbs. | at \$37.25 |
| AQU, Morton | | Red Bull | 1800 lbs. | at \$51.25 |

AND COUNTRY JUNCTION
1-800-658-6378
Open: Mon.-Fri. 9-6, Sat. 9-7 MDT

The Very Best
Rodeo Days Sale
Is Happening
Right Here & Now!

RODEO DAYS ARE HERE!

KID'S BOOTS Starting at **\$29**

KID'S BELTS Starting at **\$10**

Several styles

KID'S HATS..... One size fits most young kids

Outfit your little cowboys & cowgirls from Joe's!

SEE YOU AT THE RODEO!

Heritage Days
JUNE 14-15, PORTALES, NM
Chamber of Commerce Rodeo
JUNE 14, TUCUMCARI, NM

& FOR THE GROWN-UPS

13MWZ & 936 DEN **\$19.99**

Wrangler Jeans..

Cinch Jeans **20% Off**



Courtesy photo

What Lola wants, Lola gets

Lola Pylant of Muleshoe shows off the 15-pound yellow catfish she caught in April at Fisherman's Haven in Kingsland, Texas.

HONORS

LUBBOCK CHRISTIAN

Six Muleshoe students have been named to academic honors lists for the spring semester at Lubbock Christian University.

Amy Hooten and Stacy Locker were named to the president's list, for students who earn a 4.0 grade-point average while enrolled in at least 12 semester hours of work.

Audra Clarkson, Stephanie Kirk, Holli Sheets and Joshua

Williams were named to the dean's list, for students who earn a 3.5 or better grade-point average while enrolled in at least 12 semester hours of work.

SHEETS

Heather Sheets of Muleshoe has been named to the dean's honor list for the spring semester at Abilene Christian University.

To make the list, a student must earn a grade-point aver-

TODAY'S RECIPE

APPLE-CELERY DRESSING

2 1/2 cups dried gluten-free bread cubes

1 to 2 tsp. poultry seasoning

1/2 stick margarine or butter

1 large apple, peeled, cored and diced

1 cup diced celery

1/2 cup chopped onion

1 egg, beaten (or 1/4 cup liquid egg substitute)

1 cup chicken broth (more or less)

1 tsp. salt (or to taste)

Place bread cubes in a large mixing bowl; stir in the poultry seasoning.

In a large skillet, melt the

margarine and sauté the apple, celery and onion until the onion and apple are translucent. Add to the bread crumbs with the egg.

Mix in the chicken broth, a little at a time, until the dressing is moist.

If baking separately, a more moist mixture will be preferable; if used to stuff a fowl or place next to a roast, the juices from the meat will add to the moisture and you might wish to use a drier dressing. Salt to taste.

To bake separately, place in a 2-quart greased casserole and bake 1 hour at 375.

"Your Exhaust Specialist Since 1979"

KC Muffler & Mfg., Inc.

425 N. 1st • Muleshoe • 272-5333

High Performance K&N Air Filters

4" Exhaust for Diesel Pickups
Systems In Stock & Ready To Install On The Ford Powerstroke, Dodge Cummins & Chevrolet Duramax!

Performance Exhaust Systems on Domestic & Imports

18th Annual Heritage Days Rodeo & Celebration



Come Join the Activities Friday, June 14

- Pioneer Reception
- Roosevelt County 4-H Rodeo

Don't Miss the Activities Saturday, June 15

- ENMU Automobile Club
- Heritage Days Parade
- Arts, Crafts, Games & Food
- Car Show Poker Run
- Car Show Awards Presentation
- Roosevelt County 4-H Rodeo
- Light Acoustical Guitar Music
- Street Dance



Friday & Saturday, June 14 & 15 Portales, New Mexico

For a schedule of events or additional information call: 505-356-8541 or 1-800-635-8036 or visit www.portales.com



DAYS

from page 4

few years can be met in any of several ways.

The chief hope at this time is that new supplies can be obtained from landowners close to the city on a "royalty" basis.

This would involve the payment of an agreed sum per 1,000 gallons to the landowner for water taken from his land by wells drilled and equipped by the city.

Based on present prices, Oldham estimated that the complete development of the sandhills tract, if water is found, would cost about \$14 million, including \$6 million to \$7 million for a large 70-mile pipeline.

Meanwhile, based on the limited information available, officials were optimistic that tests will confirm that the sandhills tract can be made to produce, as a maximum, an average of 600,000 gallons per section per day when fully developed without seriously depleting the underground reserves.

If expectations are realized, production could fluctuate to quantities as high as 120 to 150 million gallons daily during hot-weather periods of peak demand.

The peak this year is ex-

pected to be well under 40 million gallons.

Soil absorbs rainfall

Oldham mentioned several natural advantages of a large well field in the sandhills. The sandy texture of the soil, he said, means that moisture disappears through the surface speedily.

Precipitation in the area averages about 18.25 inches a year — about 1 inch less than in the Lubbock area.

Evaporation losses in the sandhills are small, and the recharge of underground water strata is much larger than on most portions of the Caprock.

The altitude of the sandhills approximates 3,900 feet, as compared with 3,251 in Lubbock. This means that any water found there would flow to Lubbock chiefly by gravity, although some pumping would be necessary to counteract pipe friction.

The tract under option is about 20 miles west of the approximately 10,000 acres in the sandhills on which Southwestern Public Service Co. acquired water rights recently for about \$20 an acre.

Officials of that company said tests on their tract have shown a water strata thickness

ranging from 30 to 45 feet — abundant for Southwestern's requirements.

Apparently reliable reports were that surface rights on the Wasson tract and other undisclosed considerations were used in a trade for water rights on the VVN Ranch land.

Purtell then investigated the city's interest in obtaining water-rights options in the area, leading to the negotiations completed Saturday.

City officials remarked that "asking prices" for water rights on land within five to 10 miles of the city have ranged from \$200 to more than \$1,000 an acre during the last year.

The said further that development of a sandhills well field would take practically no land out of cultivation, because practically none of it is being farmed now — nor is likely to be in the foreseeable future.

THERE IS NO PLACE LIKE THIS PLACE ANYWHERE NEAR THIS PLACE SO THIS MUST BE THE PLACE

- Quality family eye care - Reasonable cost
- Friendly atmosphere - In Clovis
- Contact lenses - All types

*** NEW MEXICO & TEXAS MEDICAID *** VSP ***
ECPA, MEDICARE, TRICARE *** DAVIS VISION INSURANCES FILED

Call for Appointment
Se Habla Español

Dr. A.R. Ploudre (Optometrist)

1515 GIDDING ST., CLOVIS
505-762-2951

THE GIANT TENT SALE EVENT

Register for FREE PRIZES!

6.9% GM Certified USED CAR SALE

| | |
|--|--|
| 02 IMPALA SEDAN #2832, White List Price 21,815 Bender Disc. -1,000 Rebate -2,000 18,815* | 02 CAVALIER SEDAN #2654, Beige List Price 16,785 Bender Disc. -700 Rebate -3,000 13,085* |
| 02 510 PICKUP #26140 List Price 17,005 Bender Disc. -900 Rebate -3,000 13,105* | 02 SILVERADO SPORTSIDE #26109, Yellow List Price 24,444 Bender Disc. -2,015 Rebate -2,500 19,929* |
| 02 SILVERADO EXT. CAB #26308, White List Price 24,939 Bender Disc. -1,809 Rebate -2,500 20,630* | 02 VENTURE VAN #26045 List Price 27,580 Bender Disc. -1,949 Rebate -3,500 22,131* |
| 02 OLDS ALERO SEDAN #32016 List Price 22,270 Bender Disc. -1,255 Rebate -2,000 19,015* | |

Special prices new & used

JUNE 10-15
Buying a new car or truck at Bender Chevrolet Olds Cadillac IS AS SIMPLE AS 1 2 3

Rebates of \$1,000 \$2,000 = \$3,000

1.9% 2.9% 3.9% Special Interest Rates

PRE-APPROVAL HOTLINE 1-800-311-6273

Benders CHEVROLET OLDSMOBILE CADILLAC
2500 Mabry Drive, Clovis, NM 87619
763-4465 • www.bendersauto.com

Dickerson feted with Muleshoe bridal shower

A bridal shower honoring Kimberly Dickerson was held May 12 at Richland Hills Baptist Church.

The bride-elect is the daughter of Danny and Robin Dickerson of Muleshoe.

The prospective groom is Clifton Harris, son of Kenneth and Charlotte Harris, also of Muleshoe.

Special guests were Barbara Blasingame, the bride-elect's paternal grandmother; Lavonne Davis; Kerry George; Kathy George; Wanda Templar, the prospective groom's maternal grandmother; and Sharon Williams, Cindy Cargile, Denna Bass, Marilyn Gable, Netta Haney and Shari McCorkel, the prospective groom's aunts.

Hostesses were Brenda Lackey, Donna Locker, Joy Stancell, Marie Wilson, Rebecca Lozano,



Kimberly Dickerson pauses during her bridal shower.

Lanelle Skaggs, Gail Wilcox, Judy Moore, Gayla Toombs, Jodi Wood, Christie Whitt, Missy Royal, Paula Cantrell, Anita Johnson, Betty Jo Davis, Hellen Adrian, Delores Harvey and Kim-

berly Beard.

The honoree received individual gifts from the hostesses.

The wedding was scheduled for June 8, also at Richland Hills Baptist Church.

Texas Tech's horse-naming contest to end

LUBBOCK — Texas Tech University's Masked Rider Committee and Wells Fargo Bank are sponsoring a contest to name the new Masked Rider mascot, a black quarter horse.

The contest ends June 21.

Wells Fargo donated the animal to the program, and historically the horses have been given a mascot name in addition to their registered name (in this case, "A Famous Boon").

Entries should include the suggested name for the horse along with the entrant's name, address and telephone number.

Entries can be mailed to Center for Campus Life, c/o Masked Rider Program, Texas Tech University, 250 West Hall/Mail Stop 5014, Lubbock, Texas 79409, or they may be e-mailed to masked.rider@uc.ttu.edu.

Take Dad Out for a Bite

Special Father's Day Buffet June 16th!

Buffet served 11 am - 2 pm

SIRLOIN STEAK

Sautéed with mushrooms, onions & mozzarella cheese

ALSO SERVING TURKEY & DRESSING & OUR WORLD FAMOUS POT ROAST!

\$6⁹⁹

Includes delicious vegetables & a trip to our fabulous salad bar! Drink not included. Plus tax.

2103 W. American Blvd.
Muleshoe • 272-4080
THANK YOU FOR YOUR PATRONAGE!

Cool and Refreshing

Fountain FAVORITES SONIC

HAPPY HOUR!

Buy 1 Get 1 FREE Fountain Drinks 2-5PM Monday - Friday!

Not valid in conjunction with any other specials or offers. Offers good for a limited time, subject to change. Participating locations only.

1633 American Blvd. • 272-3998

South Plains College sets registration for fall

LEVELLAND — South Plains College has announced fall registration dates for the fall 2002 semester.

The Levelland campus will hold registration from 8:30 a.m. to 11:30 a.m. and 1:30 p.m. to 6 p.m. Aug. 21, beginning in the Auditorium Building.

Sign-up at the Reese Center campus, 528 Gilbert Drive in Lubbock, will be from 8:30 a.m. to 11:30 a.m. and 1:30 p.m. to 7 p.m. Aug. 22 in Building 1, Administrative Offices.

Classes begin Aug. 26, with late registration Aug. 26-30. A late fee of \$15 and an add/drop fee of \$5 will be charged.

Fall class schedules can

be access on the Internet at www.southplainscolleged.edu.

A registration permit is required for registration at either campus. Thus can

be obtained by calling the Levelland campus at (806) 894-9611, ext. 2570 or 2375, or the Reese Center campus at (806) 885-3048, ext. 2902 or 4660.

OBITUARY

BLASA A. MONTES

Services were held Wednesday at Immaculate Conception Catholic Church in Muleshoe for Blasa A. Montes, 61, of Sudan. The Rev. Joe Augustine was the celebrant. Burial was in Sudan Cemetery.

Ellis Funeral Home of Sudan handled arrangements.

Mrs. Montes was born Feb. 3, 1941, in Carrizo Springs, Texas. She died Sunday at Covenant Medical Center in Lubbock.

She married Vicente Montes on May 15, 1957, in Carrizo Springs. They moved to Sudan in 1975 from Big Wheels, Texas.

She was a homemaker and a member of Immaculate Conception.

Mrs. Montes is survived by her husband; seven sons, Vicente Montes Jr., Lupe Montes, Alejandro Montes and Roy Montes, all of Sudan, Erny Montes of Littlefield and Raul Montes, David Montes and Billy Montes, all of Amarillo; eight daughters, Estella Andrade of Sudan, Irma Jaramillo of Alamogordo, N.M., Nancy Salinas of County Line, Texas, Emma Montes of Dal-

las and Yolanda Montes, Delma Montes, Olga Padilla, Mary Montes and Anita Montes, all of Amarillo; four sisters, Martha Rodriques of Carrizo Springs, Angelita Cuba of Gibsonton, Fla., Marcelina Pérez of Austin

and Maria Lerma of Delta, Ohio; a brother, Refugio Avila of Chicago; 41 grandchildren; and six great-grandchildren.

She was preceded in death by a son, Richard Montes, in 1961.

You snooze, you lose. Read the news!

HOSPITAL NEWS

Muleshoe Area Medical Center has released the following patient load:

May 31 — Noemí Acosta, Rosa E. Avila, Ronnie N. Davis, Donna Ellis, Norberto Hernández, Virgil Jones, Oscar L. Merriott, Jewel A. Peeler, Betty L. Rector, Lloyd P. Rector, Baby Rivas, Maria P. Valenzuela and Gladys M. Wilson.

June 1 — None reported.

June 2 — None reported.

June 3 — None reported.

June 4 — Fannie M. Black, Corinne W. Burke, Tyshire Devenport, Baby López, Breanna M. Morgan and Albert H. Smith.

WIN

Handy Gifts for Dad

In honor of dear ol' dad, each new customer who is approved for a loan with us through June 13, 2002 will have his/her name placed in a raffle for handy Father's Day gifts to be given away Friday, June 7 & 14!

WHY BORROW FROM US? EXTRA MOOLA ALWAYS COMES IN HANDY!

Continental Credit

Loans \$100 to \$495 • Loans while you wait • Credit Starter Loans
Phone applications accepted • ¡Se Habla Español!
Open: Mon.-Thurs.: 9:00 a.m. to 5:30 p.m., Fri.: 9:00 a.m. to 6 p.m.

206 S. Main Street • Muleshoe • 272-3673

Seventh Annual

BATTLE OF THE DEALERS

Excess National Inventory DISPOSAL SALE

The Great TENT EVENT

OVER 450 VEHICLES ALL AT ONE LOCATION

Prices have been slashed on NEW & USED CARS - TRUCKS - SUVs

0.9% NEW VEHICLE FINANCING

5.7% USED VEHICLE FINANCING

SAVE \$2590

2002 DODGE RAM 1500 ONLY \$17,300 or \$237¹ month

All Credit Apps Accepted

\$2,500 FACTORY REBATES

GUARANTEED HIGHEST VALUE FOR YOUR TRADE-IN

SAVE \$5015

2002 FORD F-150 SUPER CAB XLT ONLY \$21,200 or \$291¹ month

WEDNESDAY-SUNDAY

JUNE 12TH-16TH ONLY

GREYHOUND STADIUM

9AM-9PM WED-SAT NOON-6PM SUN

US Highway 70 halfway between Clovis & Portales

CLOVIS
GREYHOUND STADIUM
PORTALES
Blackwater Draw Museum

Illustrations may vary. All vehicles subject to prior sale. Rebates assigned to dealer. ¹MSRP \$19,890, \$1500 factory rebate, \$300 commercial factory rebate with qualifications, \$190 dealer discount. ²MSRP \$26,215, \$2500 factory rebate, \$300 commercial factory rebate with qualifications, \$2215 dealer discount. ³72 months @ 7.25% apr with 20% down, OAC. ⁴Financing \$27,500 or more for 54 months or less, OAC.

THREE WAY SCHOLARSHIPS

Joal Armendariz received the Carl Pollard Memorial Scholarship (\$375), the Three Way Independent School Scholarship (\$1,000), the Mickey Sowder Memorial Scholarship (\$440) and the Three Way Employee Scholarship (\$100). He plans to attend Eastern New Mexico University in Portales in the fall.

Chase Cannon received the Three Way Independent School Scholarship (\$1,000), the Mickey Sowder Memorial Scholarship (\$440), the Three Way Employee Scholarship (\$100) and a \$500 vocational-school scholarship. He will be attending South Plains College to become an electrician.

Anthony Furgeson received the Three Way Independent School Scholarship (\$1,000), the Mickey Sowder Memorial Scholarship (\$440), the Three Way Employee Scholarship (\$100), the National Honor Society Award (\$250), the UIL Scholarship (\$500), Extracurricular Activities Award (\$300), Ken Eubanks Memorial Scholarship (\$500), Tom and Geneva Alvis Scholarship (\$500) and a salutatorian scholarship to South Plains College. He already has completed 19 hours of college credit at Three Way and plans to go to South Plains, then on to Texas Tech to pursue a medical degree.

Jordan Gray received the Three Way Independent School Scholarship (\$1,000), the

Mickey Sowder Memorial Scholarship (\$440), the Three Way Employee Scholarship (\$500), a state valedictorian award, a valedictorian scholarship to South Plains College, the National Honor Society Award (\$250), the Extracurricular Activities Award (\$300) and the Three Way Administration Scholarship for \$1,000. He plans to attend Texas Tech, where he will major in physical therapy and minor in theater.

Kara Heinrich received the Five Area Telephone Scholarship (\$600), the National Honor Society Award (\$250), and the Extracurricular Activities Award (\$300), the Three Way Independent School Scholarship (\$1,000), the Mickey Sowder Memorial Scholarship (\$440) and the Three Way Employee Scholarship (\$500). She plans to attend Wayland Baptist University in Plainview where she has been accepted on the junior varsity basketball team.

Amanda Kingsley, who finished her course work at mid-term in order to move with her parents, returned to participate in graduation with her former classmates. She received a \$250 Three Way Employee Scholarship to study computer applications.

Ivan Navarro received the Bailey County Electric Cooperative scholarship (\$600), the National Honor Society Award (\$250), the Extracurricular Activities Award (\$300), the Three

Way Independent School Scholarship (\$1,000), the Mickey Sowder Memorial Scholarship (\$440) and the Three Way Employee Scholarship (\$100). He plans to study radiological technology at South Plains College.

Robert Rodríguez received the Five Area Telephone Scholarship (\$600), the Extracurricular Activities Award (\$300), the Three Way Independent School Scholarship (\$1,000), the Mickey Sowder Memorial Scholarship (\$440) and the Three Way Employee Scholarship (\$100). He plans to attend South Plains College.

BIRTH VONDERLIN

Rebecca and Paul Vonderlin of Clovis announce the birth of a daughter, Danielle Alexis, born at 7:43 a.m. June 4 at Plains Regional Medical Center in Clovis.

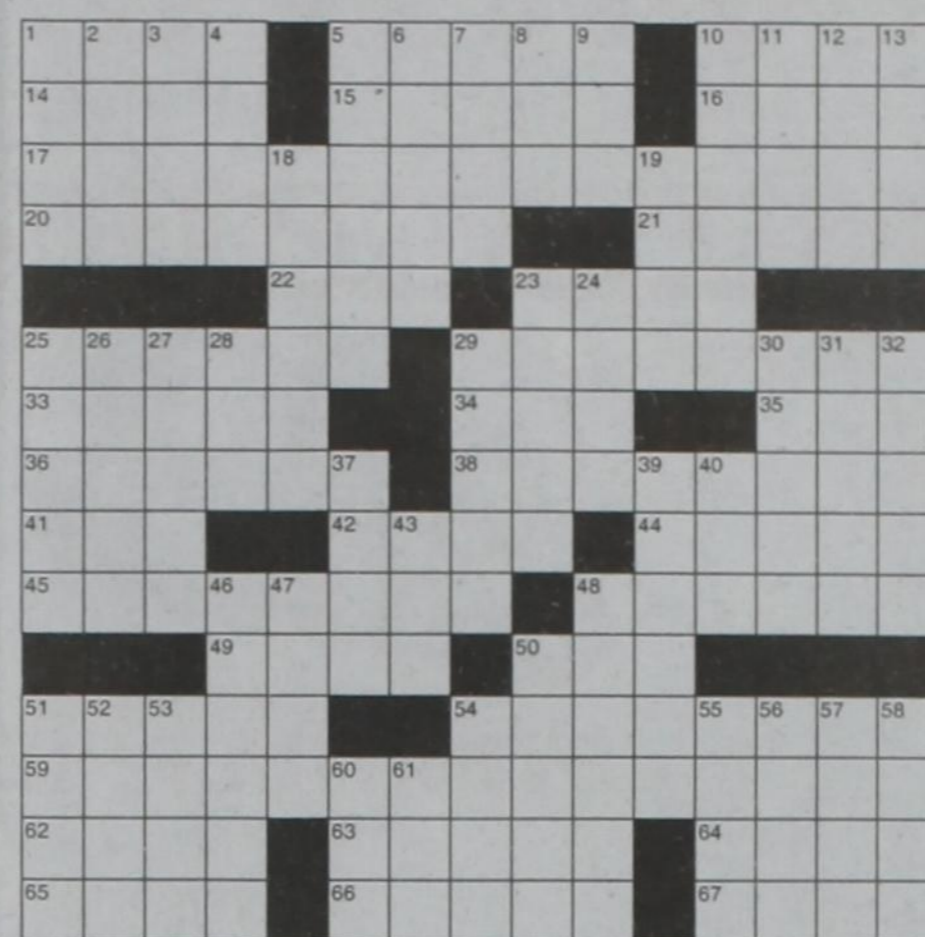
She weighed 7 pounds, 9 ounces and was 19 1/2 inches long.

Danielle has one sister, Ashley, age 3.

Grandparents are Gene and Janice Snell of Muleshoe, Marcy Vonderlin of Burney, Calif., and Larry and Dawn Vonderlin of Sacramento, Calif.

Great-grandparents are Julia Symcox of Farwell, Opal Cain of Clovis, Herman Gallegos Sr. of Manteca, Calif., and Ruth Vonderlin of Santa Clara, Calif.

JUST FOR FUN



10. Any isomeric saturated hydrocarbon
11. Bjorn ___, tennis player
12. Graven image
13. Bargain
18. Part
19. Well-kept
23. Baby carriages
24. Holdfast
25. ___ and Goliath
26. Herbaceous plant
27. Wholes
28. Fasten
29. Appeal
30. Gymnosperm genus
31. Sagacity
32. Superiorities
37. French for "in"
39. For light garden work or plaster work
40. Affirmative
43. Gamble
46. Introduces as logical conclusion
47. Private school in New York
48. Formosa
50. Indiana town
51. Hurry
52. Hurry
53. ___ Erikson, psychologist
54. Antelopes
55. Utter
56. Mental object
57. Oh, God!
58. Used esp. of vegetation
60. Women's ___ movement
61. Malaysian Isthmus

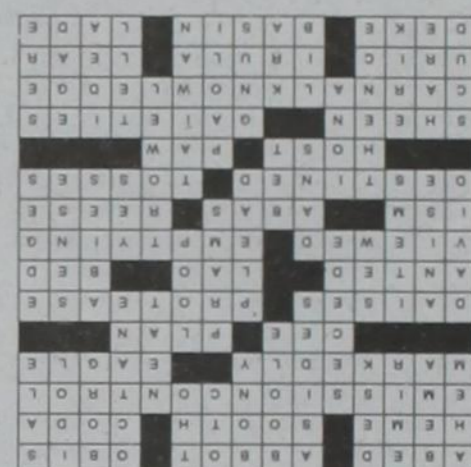
CLUES ACROSS

1. Sleeping
5. Superior
10. Obeahs
14. Pigment containing iron
15. Truth
16. Formal close (music)
17. Auto problem
20. Distinct
21. Bird of prey
22. After B
23. Scale drawing of a structure
25. Platforms
29. Enzyme
33. Bet on
34. Tai
35. Plot of ground
36. Examined
38. Evacuation
41. A doctrine
42. Overgarments
44. Della ___, singer
45. Ordained

CLUES DOWN

48. Flips
49. The owner or manager of an inn
50. Foot
51. Effulgence
54. Levities
59. Garfunkel movie
62. Acid
63. South Dravidian
64. Jet or King
65. Fake
66. Depression
67. Burden
1. Polite interruption sound
2. Construction
3. An independent ruler or chieftan
4. Table
5. Digressions
6. Mathematician
7. Lean
8. Securities market
9. Tai

Crossword Answers



Don't forget dad on Father's Day, June 16

Journal Classifieds

STOP & SHOP

Deadlines are 5 p.m. Monday and Thursday

Call 272-4536

Page 7, June 13, 2002

LEGAL NOTICE

NOTICE FOR BIDS

The Bailey County Commissioners Court will receive bids for the purchase of a new motor grader for Precinct No. 3. Deadline for submission of bids is 10:00 a.m., Friday, June 28, 2002, at which time bids will be opened.

Sealed bids should be submitted to, and specifications for bidding may be obtained at, the County Judge's Office, 300 S. 1st, Suite 100, Muleshoe, Texas 79347. Bids must state the year model being offered, the lump sum gross purchase price, and the net trade difference. Payments will be made from Precinct No. 3, Road and Bridge funds. The Commissioners Court reserves the right to reject any or all bids, to waive formalities, and to postpone awarding of the bids until a later date, if necessary. Published in the Muleshoe Journal June 13, 2002.

CHILD CARE

Need a babysitter? Call me. Drop-ins welcome. 272-8912

FOR SALE

Four cushion couch, green/brown floral with off-white background. In excellent condition. Call 272-4889

Grab a great deal!

PUBLIC NOTICE

CITY OF MULESHOE

TEXAS COMMUNITY DEVELOPMENT PROGRAM

The City of Muleshoe will hold a public hearing at 5:30 p.m. on Monday, June 17, 2002 at City Hall, 215 S. First St., Muleshoe, Texas, in regard to the submission of an application to the Office of Rural Community Affairs for a Texas Community Development Program (TCDP) grant. The purpose of this meeting is to allow citizens an opportunity to discuss the citizens participation plan, the development of local housing and community development needs, the amount of TCDP funding available, all eligible TCDP activities and the use of past TCDP funds. The City encourages citizens to participate in the development of this TCDP application and to make their views known at this public hearing. Citizens unable to attend this meeting may submit their views and proposals to David Brunson, City Manager, at the City Hall. Persons with disabilities that wish to attend this meeting should contact City Hall for assistance. Individuals who require auxiliary aids or services for this meeting should contact City Hall at least two days before the meeting so that appropriate arrangements can be made. For further information, contact David Brunson, City Manager at the City Hall, 806/272-4528. Published in the Muleshoe Journal June 13, 2002.

FOR SALE

1995 Oldsmobile Aurora, 4-Door, Red. Excellent Condition. Call 272-3713.

Horizontal heater

120,000 BTU. Asking \$300. Call 806-771-1406.

BEAUTY EQUIPMENT FOR SALE. INQUIRE AT SANITARY BARBER SHOP

113 MAIN ST.

Take it or leave it!

SPARTAN Transportation is taking applications for full-time and/or part-time drivers in the following cities: Levelland, Lubbock, Morton, Muleshoe, Snyder and Post. Qualifications: High School graduate/GED. Class C Commercial Drivers License w/ Passenger endorsement (or able to get within 45 days of employment). An acceptable driving record, 25 years old (age maybe waived based on driving record.) Prior work experience with passenger transportation service. Ability to do mathematical calculations, maintain files/records, perform vehicle inspections & minor repair and to learn and perform first aid, CPR, emergency vehicle evacuations, passenger assistance techniques and other training. Good communications skills. Compliance with requirements for drug and alcohol testing, criminal background check, motor vehicle record check, and physical examination SPCAA is an EOE. Application forms are available at:

- Texas Workforce Center, 410 Houston Street, Levelland, 79336 ph806/894-5005
- Texas Workforce Center, 1218 14th Street, Lubbock, 79401 ph806/765-5038
- Cochran County Neighborhood Center, 308 W. Taylor, Morton, 79346 ph806/266-5542
- Bailey County Neighborhood Center, 804 W. American Blvd. Muleshoe, ph806/272-7537
- Garza County Multipurpose Center, S. Hwy 84, Post 79356 ph806/495-2329
- Or visit the website www.SPCAA.org.

Completed application and/or resumes should be forwarded to: SPCAA, Attn: Human Resources Dept., P.O. Box 610, Levelland, Texas 79336.

GARAGE SALE

419 W. 7th FRIDAY & SATURDAY JUNE 14-15 9 A.M. TO 6 P.M. Baby furniture, toys, books, videos, TV, bedding, exercise bike, chair, silk greenery, misc. FREE IRISES.

HELP WANTED

Director of Nurses needed in a growing Home Health Agency in Floydada, Texas. This position requires an RN with an enthusiastic spirit and initiative to expand patient services. If you desire a challenge, please send your resume to Beckie Hinze, P.O. Box 50006, Denton, TX 76206, or call 1-800-213-4732 extention 232.

GARAGE SALE

GARAGE SALE Saturday Only! 8 am - 4 pm 1 mile North of Muleshoe on Friona Hwy. Waterbed, PS2 games & children's clothes.

HELP WANTED

SUMMER RUSH 20 Positions FT/PT Flexible Schedule 2100-FT, 1000-PT Call Now 766-7175

M-Pyre Auto Sales is needing someone to handle marketing. No prior experience necessary. Pick up applications at M-Pyre, 1112 W. Amer. Blvd.

No sweat!

HELP WANTED

ATTENTION: WORK FROM HOME \$500-\$2,500/mo. PT \$3,000-\$7,000/mo. FT Free booklet. www.Hand2HandinHealth.com Ph. #1 (800) 891-1585

Make up to \$1,500.00 in 11 days. Looking for enthusiastic adult to manage a firework stand outside Muleshoe June 24 thru July 4. No investment required. Phone 10am thru 5pm for more information. 210-622-3788 or 1-800-364-0136.

Administrative Secretary — Experience preferred. Proficient in Microsoft Word, Publisher, Typing, 10-key calculator. Verbal and written communication skills. Must be responsible and dependable. Duties include typing, filing, screening phone calls, scheduling appointments and meetings, recording meeting minutes, coordinating multiple calendars, medical staff credentialing, work-related injury claims, and more. Applications may be obtained from the Human Resources Office at Muleshoe Area Medical Center, 708 South First St., Muleshoe, TX 79347, 806-272-4524

HELP WANTED

Part-time afternoons, two evenings a week. Computer experience helpful; typing necessary. Apply at Muleshoe Journal, 304 W. 2nd.

1000 CUSTOMERS NEEDED!! LOANS, LOANS! \$100-\$495 CALL 272-3673 CONTINENTAL CREDIT

REAL ESTATE

HOUSE FOR SALE

318 E. Fir Large newly remodeled and repainted home. 2750 sq.ft., 3 large bedrooms, 3 bathrooms, 2 large living areas, kitchen and dining room, large laundry room, large screened-in porch, central heat/air and sprinkler system. Call for appointment if interested. 806-272-3789

FOR SALE

70 Acres, 3 miles North of Muleshoe Call 272-5110

Don't forget to enter dad in our Father's Day Contest. Deadline is Thursday at 5pm. Prizes will be awarded! No fee to enter!!

REAL ESTATE

FOR SALE

3 Bdrm, 2 Bath, Central Heat/Air. 405 W. Ave. E Call 272-5263

640 acres - Lazbuddie. Full allotments, good establish yields, good water, 4 sprinklers, 4 wells, improvements. Call 806-965-2895, mobile 806-946-9413

Home For Sale; 3 Bdrm/1 1/2 Bath/2 Carport, Cent. Air & Heat, All Electric, FP, Storm Windows/Dogrs, Fans, Covered Patio, Lg. Workshop, RV Storage, Covered Storage, Fenced Yd. PRICED TO SELL! Call For Details: 272-5109

Nieman Realty

116 E. Ave. C • George Nieman, Broker • 272-5285 or 272-5286

- RICHLAND HILLS - PARKRIDGE AREA**
- NICE 3-3-1 Brick, Cent. heat, evap. air, built-ins, fans, 2000+ lv. area, fenced yd., patio, stor. bldg! \$57.5K!! RH-1
 - NICE LOTS AVAILABLE, CALL FOR DETAILS!!!!
 - VERY NICE 3-2-1 Brick, Elec. Heat Pump, built-ins, nice carpet, 1680 lv. area, fenced yd., MORE!!! \$60K!! RH-2
- HIGHLAND AREA**
- NICE 2-2-1+2 carport Home, built-ins, FP, Cent. A&H, 1987 lv. area, corner lot, wkshp./storage, fenced yd., MORE!!! \$65K!! HL-2
- LENAU - COUNTRY CLUB AREA**
- IN CONTRACT**
- 3-2 Brick, Cent. heat, evap. air, built-ins, FP, 1,880 lv. area, fenced yd., MORE!!! \$47.5K!! L-1
- HIGH SCHOOL AREA**
- 3-1 Home, corner lot, fl. furn. heat, evap. air, hardwood & carpet, new paint, fenced yd.!! \$24K!! HS-5
 - VERY NICE 3-1-1 Brick, Heat pump, DW, nice carpets, fenced yd., MORE!!! \$37.5K!! HS-1
 - 3-2 Home, corner lot, fl. furn. heat, fenced yd. \$25K!! HS-10
 - HWY. 84-2-1 1/2-2 Brick, Cent. Heat, win. air, built-ins, fans, work-shop/storage, fenced yd., also good office location!! PRICE REDUCED!! 40K!! HS-2
 - 3-1 Home, Fl. furnace, fans, storage & 2 apartments, corner lot!! PRICE REDUCED!! \$30K HS-3
 - 2-1 Home, corner lot, stove, refrig., fans, workshop & storage, fenced yd.!! \$23.5K!! HS-8
 - 3-1 1/2-2 carport Home, wall furn. heat, oven, cooktop, basement, shop/storage!! "AS IS"!! \$16K!! HS-6
 - EARTH - 4-2-2 carport home, Heat Pump, fans, storage-workshop!! \$35K
 - EARTH - VERY NICE 3-2-1 Brick, built-ins, FP, 2770 lv. area, nice carpets, loads of storage, cellar!! MORE!!! \$85K!!
 - VERY NICE 3-2-1 carport Brick, Elec. Heat Pump, DW, Disp., fans, nice carpet & vinyl, fenced yd., auto. sprinkler, shop/storage!! MORE!! \$62.5K!! HS-4
- COMMERCIAL**
- NICE six unit office complex, Cent. A&H, restroom facilities, and also has a nice one bedroom and two bedroom rental units. \$39.5K!!
 - HWY. 84-150' frontage, office, warehouse, truck dock, railroad spur access, with or without fuel storage tanks!! \$30K!!
 - GOOD INCOME PROPERTY - approx. 3490 bldg., paved parking, good net lease!! PRICED TO SELL!!
 - VERY NICE 2300' bldg., Cent. A&H, 175' frontage on Hwy 84 & 70!! MUCH MORE!!
 - 140'x100' tract on Hwy. 84 & 70, 1760' bldg., 1500' storage, 2400' cov. area, paved parking!! \$49.5K!!
 - RANCH HOUSE CLUB/RESTAURANT!! \$70K!!
 - SELL OR LEASE - FORMER DAIRY QUEEN, land, bldg., furn. & fixtures!!
 - Approximately 2,000 shop plus 450' office, cent. heat, evap. air, 250' x 100' tract on Hwy 84!! \$35K!!
- RURAL**
- FIXER-UPPER - 3-2 Home on 5 acres close to town, det. garage/carport, shop, barns, MORE!!! \$35K!!
 - EXCELLENT DAIRY LOCATION-1120 ac., 7 circles, 20 wells, very nice 3-2-3 Home w/basement, 40' x 60' barn w/30' x 40' shed, 3 mil. lb. grain facility, add. 3 bdrm. home, 2 mobile homes, on pavement convenient to Muleshoe, Clovis, Portales, & 5K head permit. Could be split if needed!!
 - PLEASANT VALLEY - 2.5 acres, 2 bdrm. home, 1 bath, 2 car detached garage, on pavement!!
 - W. of SUDAN-NICE 3-3-2 Brick Home, 5 acre tract on Hwy. 298, Cent. Air & Heat, built-ins, large Quonset Barn, MORE!!! \$95K!!
 - PRICE REDUCED - 108 acres or 7 acre tract on Hwy. 70, approx. 2100' office area, 16,900 commercial bldg. w/loading dock, 3,400' warehouse, new well, 2,800' runway!!
 - STEGALL AREA - GOOD 80 acre farm!! PRICE TO SELL!!



Lowe's Marketplace

401 W. American Blvd. Muleshoe, Texas 272-4585

WE RESERVE THE RIGHT TO LIMIT QUANTITIES IN TEXAS

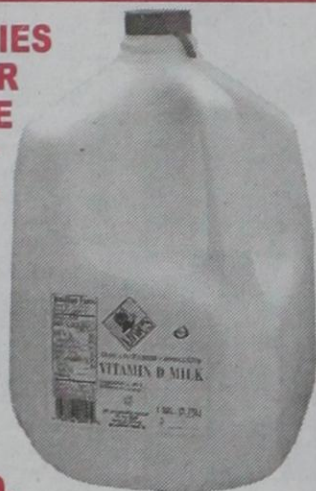
WESTERN UNION MONEY TRANSFERSM
"The fastest way to send money"

AFFILIATED FOODS INC. MEMBER STORE AT PARTICIPATING STORES



SPECIAL X-TRA SAVINGS PRICING GOOD THRU JULY 30, 2002

ALL VARIETIES
LOWE'S OR
SHURFINE
MILK
GALLON

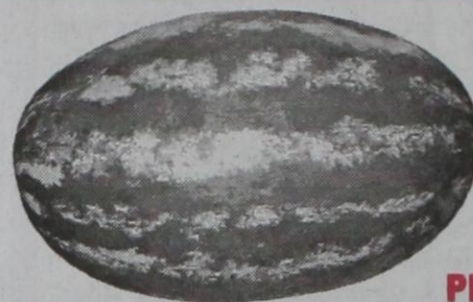


ASSTD.
HILLSHIRE FARM
SMOKED SAUSAGE
1 LB. PKG.



RED RIPE STRAWBERRIES
1 LB. PKG

RED RIPE WATERMELONS
WHOLE



PILGRIM'S PRIDE XTRA LG. EGGS
18 CT.



1¢

EACH WITH 1
REWARD COUPON

SELECT GROUP
MRS. BAIRD'S OR RAINBO
HAMBURGER OR HOT DOG BUNS
6 TO 8 CT.



RG'S BEEF PATTIES
3 LB. BAG



Here's How It Works! Lowe's is giving you deep discounts on many of the items you purchase everyday! For each dollar you spend at Lowe's, we will give you a point. After 50 points (or \$50), you will receive a Lowe's X-tra Savings Reward Coupon. This coupon can then be redeemed for deep discounts on selected items. Each month, Lowe's will select from our most popular items in the store and deeply discount them for our X-tra Savings Reward Coupon holders. Present your coupon and receive incredible savings on selected items.
X-tra Savings Reward Program • Each Dollar You Spend Is Worth ONE (1) Point • After you earn 50 points, you will receive a Lowe's X-tra Savings Reward Coupon • Use your Lowe's X-tra Savings Reward Coupon to get deep discounts on one of the selected items. • Only ONE (1) item can be purchased with each Reward Coupon • Items will be changed monthly.
THE X-TRA SAVINGS REWARD PROGRAM GOOD AT LOWE'S MULESHOE, CANYON AND TUCUMCARI STORES ONLY! Points are not transferable between stores. No substitutions please on X-tra Savings Reward Items. Only one item may be purchased at the special deep discount per Reward Coupon.

McCormick's 13-14 oz. btl.
GRILLING SAUCES

Pre-Priced \$2.29
FRITOS® CORN CHIPS OR CHEE-TOS

3 liter btl.
COCA-COLA, SPRITE OR DR. PEPPER

48 oz. btl. Wesson
COOKING OIL

7 lb.
BAG OF ICE

17-26 oz. jar Ragu
SPAGHETTI SAUCE

24 oz. American Beauty
SPAGHETTI OR ELBO RONI

4 lb. bag Imperial
PURE CANE SUGAR

Bayer 40 ct. Gecaps or 50 ct. Caplets/Tablets
ASPIRIN

Asstd. 13.5 oz. Pert Plus
SHAMPOO WITH CONDITIONER

Asstd. 6.4 oz. Colgate
TOOTHPASTE

4 pack Cello Wrapped
TOMATOES

1¢

EACH WITH
1 REWARD
COUPON

1 ITEM PER COUPON



1 lb. bag Mini, Peeled
CARROTS

8 oz. pkg. Cello Wrapped
WHOLE MUSHROOMS

128 oz. jug Langer's
FRUIT DRINKS

4 lb. bag Casserole
PINTO BEANS

32 oz. bag Comet Long Grain
BROWN RICE

6 ct. pkg. Asstd. Nature's Grain
BAGELS

16 oz. pkg. Johnsonville
BRATWURST

3 lb. Orval Kent
POTATO SALAD OR COLESLAW

128 oz. Sunny Delight
CITRUS PUNCH
10 to 12 oz. box Eggo
WAFFLES

Select Group 8-9 oz. Michelina's
FROZEN ENTREES

6-8 ct. New York brand
GARLIC TEXAS TOAST OR BREAD STICKS

Asstd. 1/2 gal. round Shurfine
ICE CREAM

360 ct. Zee
NAPKINS

32 oz. jar Best Maid Hamburger Sliced
DILL PICKLES

16 oz. jars Pace
PICANTE SAUCE

Kraft 18 oz. squeeze btl.
MAYO OR MIRACLE WHIP

50 ct. 12 oz. Hefty
FOAM BOWLS

Select Group GladWare
STORAGE CONTAINERS

Chinet 25 ct. 9 inch
or 15 ct. 10 inch
PAPER PLATES

MEAT

PREMIUM SELECT BEEF BONE-IN
RIBEYE STEAKS LB **\$3.99**
ASSTD. X-TRA SAVINGS PAK BONE-IN
PORK CHOPS LB **\$1.19**
RAW
TURKEY DRUMSTICKS LB **59¢**
ECKRICH ASSTD. VARIETIES
SMOKED SAUSAGE 14-16 OZ. PKGS **3/\$5**
ARMOUR CENTER CUT
BACON 12 OZ. PKGS **2/\$4**
ECKRICH ASSTD. VARIETIES
LUNCH MAKERS FUN KITS! 10.6-12.2 OZ. PKGS **3/\$5**
MARKET CUT
COLBY CHEESE LB **\$2.49**
MOUNTAIN PASS DICED
GREEN CHILIES ... 4 OZ. CANS **2/\$1**
ASSTD. VARIETIES 6 PK. CANS, 3 LITER
BTL. OR 6 PK. 1/2 LITER BTL.
COCA-COLA, SPRITE OR DR. PEPPER YOUR CHOICE **3/\$5**
SHURFINE 20 LB. BAG REGULAR
CHARCOAL WITH COUPON **\$4.99**
(\$5.99 WITHOUT COUPON. SEE CIRCULAR.)

WEEKLY PRICES EFFECT. JUNE 12-18, 2002

PRODUCE

LARGE, SWEET CALIFORNIA
PEACHES LBS **2/\$1**
FRESH
HONEYDEW MELONS LB **59¢**
RED RIPE
STRAWBERRIES 1 LB. PKG **\$1.88**
NEW CROP SEEDLESS
WHITE GRAPES LB **\$1.49**
RED DELICIOUS
APPLES 5 LB. BAGS **2/\$5**
RED RIPE
ROMA TOMATOES LB **88¢**
CRISP STALK
CELERY EACH **88¢**
CALIFORNIA CELLO
CARROTS 2 LB. PKG **88¢**
GARDEN FRESH
BROCCOLI LB **79¢**
SNO WHITE
MUSHROOMS 8 OZ. PKG **99¢**
SNO WHITE
CAULIFLOWER EACH **\$1.88**
TEXAS 1015
YELLOW ONIONS LBS **2/\$1**
DORITOS®
TORTILLA CHIPS PRE-PRICED \$3.29 **2/\$4**

FROZEN & DAIRY

ASSTD. MR. P'S
PIZZA 6.5 OZ. **2/\$1**
SELECT VARIETIES
VALUE MENU OR SELECT MENU
BANQUET DINNERS 6.7-11 OZ. PKG **99¢**
SHURFINE BUTTERMILK
OR BUTTER FLAVOR
JUMBOS BISCUITS 10 OZ. CAN **99¢**
BLUE BELL
CREME SUPREME 48 OZ. TUBS **2/\$5**
BLUE BELL
BULLETS 24 CT. PKGS **2/\$4**
ASSTD. SHEDD'S SPREAD
COUNTRY CROCK 48 OZ. TUBS **2/\$4**
SELECT VARIETIES NABISCO
HONEY MAID CRACKERS 13-16 OZ. PKGS **2/\$5**
LOWE'S
SPAGHETTI SAUCE 26 OZ. JARS **3/\$5**
LIPTON REG. OR COLD BREW
ICED TEA BAGS 24 CT. FAMILY SIZE **3/\$5**

HEALTH & BEAUTY

ANGEL SOFT
BATH TISSUE 4 ROLL PKG **89¢**
ASSTD. WHITE RAIN
SHAMPOO OR CONDITIONER 15 OZ. BTL **99¢**
PURINA
MAINSTAY DOG FOOD 17.6 LB. BAG **\$4.99**
SHURFINE
VIENNA SAUSAGE 5 OZ. CANS **3/99¢**
QUAKER SELECT GROUP BAGGED
CEREAL 13-18 OZ. BAGS **2/\$3**
LOWE'S WHITE
BREAD 24 OZ. LOAVES **2/\$1**
SELECT VARIETIES BETTY CROCKER
(HAMBURGER HELPER ONLY!)
HAMBURGER HELPER 6.25-8.6 OZ. BOXES **4/\$5**
DEL MONTE SQUEEZE
KETCHUP 24 OZ. BTL **79¢**
SELECT VARIETIES
OLD ORCHARD COCKTAIL 64 OZ. BTL **88¢**
SELECT VARIETIES NABISCO
OREO COOKIES 13-16 OZ. PKGS **2/\$5**