



THE MULESHOE JOURNAL

Dedicated to the progress and development of the great Muleshoe country

Weather

| | HIGH | LOW |
|-----------------------|------|-----|
| January 9 | 65 | 25 |
| January 10 | 60 | 23 |
| January 11 | 68 | 20 |
| January 12 | 60 | 18 |
| Moisture to date 0.05 | | |

VOL. 50 NO. 2

8 PAGES

Published Every Thursday at Muleshoe, Bailey County, Texas 79347

10 CENTS

THURSDAY, JANUARY 13, 1972

Varsity Mules Take District Lead

Scabies Quarantine Affects Other Areas

According to Dr. Bill C. Clymer, area Entomologist, a Federal quarantine is now in effect in 16 Oklahoma counties. This quarantine is the same as the Federal quarantine on Texas, but the state quarantines will vary. The counties involved in Oklahoma include Cimarron, Texas, Beaver, Harper, Ellis, Doodward, Dewey, Roger Mills, Custer, Beckham, Washita, Greer, Kiowa, Harmon, Jackson and Tillman. Besides the Federal quarantine that is in effect, the state of Oklahoma requires that all cattle out of the quarantine are in Texas, except fat cattle for slaughter, be dipped within ten days prior to entry into the state of Oklahoma. Cattle ready for slaughter may enter the state under a special permit and approval of the state veterinarian.

New Trailer Regulations In Effect

Texas also requires that all cattle from Oklahoma coming into Texas from the 16 quarantined counties be dipped before crossing the state line. Arizona has placed an embargo on Texas cattle that includes the 34 county quarantined area plus the two-tier buffer zone along the southern edge of the 34 quarantined counties. This will include the following counties: Cochran, Hockley, Lubbock, Crosby, Dickens, King, Yoakum, Terry, Lynn, Garza, Kent and Stonewall.

around muleshoe with the journal staff

In checking with the Bailey County Democratic Chairman Harvey Bass, two more people have filed for county offices. W.M. (Matt) Dudley filed officially Monday, October 10, for re-election to the office of County Commissioner Precinct one.

Dee Clements also filed this week for re-election to the office of sheriff.

Jerry Hoover has taken the job of Music and Youth Director for the First Baptist Church in Muleshoe. He and his wife moved to Muleshoe from Midland and have two children, Craig, 5, and Mark, 3. Mrs. Hoover is the new choral director at Muleshoe High School and Junior High School.

Among 361 students in the College of Agricultural Sciences at Texas Tech qualifying for the dean's honor list for the fall semester were the following students from Muleshoe: Lathaggar Green, Wildlife Management; Frank H. Hinkson, Animal Science; Bobby D. Redwine, Animal Science; and Melvin Don Morris, Agricultural Education.

Richard Bomer and Robert Bomer, both of Muleshoe, were among 30 members of Oklahoma State Tech's electronics club who participated in a one-day field trip to Dallas, Texas.

Club members toured the facilities of Texas Instruments, a leading manufacturer of electronic equipment. The club promotes field trips during the year so members may visit with top individuals in the electronics industry and tour their company facilities.

Both students are sons of Mrs. Louise Bomer of Muleshoe.

ping cattle are advised to call the point of destination for specific requirements.

The Texas quarantine is directed specifically towards the Psoroptes mite. However, other mites fall under the quarantine restrictions and may occasionally show up on cattle. At the present time at least one group of 4-H club calves is under quarantine for a Chorioptes mite infestation. A Chorioptes mite infestation is not as severe as Psoroptes but does affect cattle movement. Spraying may be substituted for dipping for control of this mite. Any animals suspected as having any type of

Cont. on Page 3, col. 6

Futures Trading Seminar Scheduled

Futures Trading will be thoroughly examined as a marketing tool for producers, grain elevator managers, feedlot managers and feed manufacturers on Thursday, January 20, 1972 at the Community Center in Hereford, Texas, according to J.K. Adams, County Agent.

Dr. Kay Will Be Speaker At Jaycee Banquet

The Muleshoe Jaycee's annual "Bosses Night Banquet" is scheduled for Friday night, January 21, at 7:30 p.m. in the Muleshoe Country Club.

Dr. Kay Will Be Speaker At Jaycee Banquet

The Muleshoe Jaycee's annual "Bosses Night Banquet" is scheduled for Friday night, January 21, at 7:30 p.m. in the Muleshoe Country Club.

John Martin, chairman of the banquet, announced that the guest speaker for the evening will be Dr. C. L. Kay an outstanding speaker from Lubbock Christian College.

During the evening awards will be presented to the Outstanding Young Man of the Year, the Outstanding Young Farmer, the Outstanding Merchant and the Boss of the Year.



TOMATOES IN JANUARY...V. T. Tanner of Progress, who operates this tomato hot house there, reports that he will have red ripe tomatoes by the first of February. This 100 feet by 150

feet hot house which houses 3,000 tomato plants was built last fall by Tanner. The hot house is the only one in Bailey County but are popular in surrounding areas.

Truck Driver Regulations Recommended By Farm Bureau

WACO--(Spl)--Farmers and ranchers have won a clear-cut victory in regard to farm truck driver regulations, according to J.T. (Red) Woodson, president of the Texas Farm Bureau.

Cotton Harvest Winding Up On South Plains

The South Plains cotton harvest was sixty to seventy per cent complete on Friday, January 7th, according to W.K. Palmer, in charge of the U.S.D.A. Cotton Classing Office in Lubbock.

Rotary Meets, Hears Report On Convention

Earl Harris had charge of the program at Rotary Tuesday at noon in the Corral Restaurant. He presented a program of Rotary facts in order to reacquaint Rotarians with some of the basic beliefs and ideals of Rotary.

Harvey Bass gave a report on the International Rotary Convention to be held in Houston in June of 1972. He reported that 40 high school bands and 2,000 Boy Scouts will be present at the Astrodome at the convention opening.

Kerry Moore gave a report to the group on the history and growth of activities related to Rotary International and other activities in which Rotary is involved.

Bailey County Electric Gets \$264,000 Loan

The Journal has received telegrams from both Congressman Bob Price and United States Senator John Tower this week stating that they have received word from the Department of Agriculture approving a \$274,000 loan to the Bailey County Electric Coop Association in Muleshoe.

Varsity Mules Take District Lead

The Muleshoe Mules Varsity Boys beat Tulia Tuesday night, 63-53, extending its district record to 3 and 0. Muleshoe is leading District 1-AAA by two victories. Canyon is ranked second with a 1 and 0 record and Dumas is ranked third with a 1 and 1 district record. For the season, Muleshoe has won 13 and lost six.

Varsity Girls Play Perryton

The Varsity girls played Tuesday night winning their game over Lockney 57-45. Jeanne Putman had 25 points for the Mulettes and Judy Winn had 24.

Score by quarter: Muleshoe 16 22 39 63 Tulia 10 20 38 53

In weekend games this week, the Muleshoe Mules defeated both Perryton and Dumas in district play.

Mules Defeat Tulia, Extend Record 3-0

The Muleshoe Mules Varsity Boys beat Tulia Tuesday night, 63-53, extending its district record to 3 and 0. Muleshoe is leading District 1-AAA by two victories. Canyon is ranked second with a 1 and 0 record and Dumas is ranked third with a 1 and 1 district record. For the season, Muleshoe has won 13 and lost six.

Chamber Sets Banquet For Thursday

The annual Chamber of Commerce Banquet will be held Thursday, January 13, (tonight), at 7:30 p.m. in the Muleshoe High School cafeteria.

Dr. Kenneth McFarland, well-known public speaker and winner of many awards for his speaking ability, will be the guest speaker.

Rev. Doug DuBose will be the master of ceremonies and the Soil Conservation Farmer of the Year Award will be presented to an area farmer by Henry Stoneham.

On the menu will be roast beef, baked potatoes, green beans, cherry cobbler, salad, tea or coffee.

Tickets at \$5 per plate, are available at the Muleshoe Chamber of Commerce office and may be purchased at the door from the Muleshoe Ambassadors who will also be registering guests.

Cont. on Page 3, col. 6



TWO POINTS . . . Johnny Hayes makes a lay-up for two more points in the Muleshoe-Tulia game played Friday night at the Muleshoe Junior High School gym. The Mules won the game 63-53 to expand their district record to 3 and 0.

Cont. on Page 3, col. 6

Cont. on Page 3, col. 6

Piggly Wiggly the popular place!



Clip and save BREEZE

Detergent 10¢ Off Label
38 Oz. Box

63¢

Coupon good only at Piggly Wiggly through January 15, 1972.

Campbell's Soup

Chicken Noodle or Mushroom

6 \$1

10½ Oz. Cans

Facial Tissue

Piggly Wiggly White or Colors

4 \$1

200 Ct. Boxes

Fryers

Whole Taste the Difference USDA Grade A Makes!

29¢

Lb.

Cut-up Fryers Lb. **35¢**

Clip and Save 20¢

Piggly Wiggly

Shortening

All Vegetable

3 Lb. Can **59¢**

Limit 1

Coupon good only at Piggly Wiggly through January 15, 1972.

SAVE 15¢

With This Coupon And Purchase of One (1) 22 Oz. Bottle Of **Dove Liquid Detergent** Limit 1 coupon per family Coupon Good Only at Piggly Wiggly Thru January 16 1972

VALUES GOOD JAN. 13, 14, 15, MULESHOE, TEXAS 501 W. Amer. Blvd.

Fryer Thighs or Drumsticks

59¢

Lb.

Sausage Links Hormel Little Sizzlers' Pork 12 Oz. Pkg. **59¢**

Canned Hams Wilson Certified, Boneless Fully Cooked 1 Lb. 14 Oz. Can **\$1.99**

Fish Sticks Breaded Fisherboy Heat & Eat! 2 Lb. Pkg. **98¢**

Breaded Shrimp Fisher Boy 8 Oz. Pkg. **69¢**

Fish 'N Chips Breaded Fisherboy, Heat 'n Eat 1 Lb. Pkg. **69¢**

Fish Sticks Breaded, Fisherboy Heat 'n Eat! 1 Lb. Pkg. **59¢**

Pork Ribs Lean Country Style Lt **79¢**

Pork Roast Lean Semi-Boneless Boston Butts Lb. **59¢**

Sliced Bacon Farmer Jones 1st Grade Quality 1 Lb. Pkg. **69¢**

Sliced Bacon Farmer Jones 1st Grade Quality 2 Lb. Pkg. **\$1.37**

Franks All Meat Farmer Jones 12 Oz. Pkg. **59¢**

Bologna All Meat Farmer Jones Honeysuckle 12 Oz. Pkg. **59¢**

Turkey Roast All White Roast 1½ Lb. pkg. **\$3.29**

Pork Roast Fresh Picnic Cut Lb. **49¢**

Pork Steak Cut From Lean Boston Butts Lb. **69¢**

Potatoes

Russet U.S. No. 1 **10** Lb. Bag **59¢**

Navel Oranges California **5** Lb. **\$1**

Yellow Onions Mild Flavor **2** Lb. **25¢**

Vegetable Oil Carol Ann 24 Oz. Bottle **49¢**

Salad Dressing Griffin 32 Oz. Jar **39¢**

Bathroom Tissue Bonne' Twin Pak **25¢**

Wagner Drinks All Flavors 32 Oz. Bottle **33¢**

Piggly Wiggly Flour All Purpose 5 Lb. Bag **39¢**

Libby's Ketchup 26 Oz. Bottle **43¢**

Instant Potatoes Carol Ann 15 Oz. Pkg. **49¢**

Carol Ann **Saltine Crackers** Lb. Box **25¢**

Plain No Beans **Wolf Chili** 19 Oz. Can **67¢**

Carol Ann **Table Salt** Plain or Iodized 26 Oz. Box **11¢**

Fresh Frozen Foods!

Fruit Pies Morton's Apple Cherry Peach 20 Oz. Pies **29¢**

French Fries Ida Treat or Cal-Ida Leaf or Chopped 9 Oz. Pkg. **10¢**

Spinach Silverdale 6 10 Oz. Pkg. **\$1**

Dairy Case Values!

Buttermilk Farmer Jones ½ Gal. Carton **45¢**

Orange Juice Kraft Fresh Quart Carton **53¢**

Frozen Pizza Sausage, Cheese or Hamburger Fox Deluxe 14 Oz. Pkg. **69¢**

Cake Mix Duncan Hines Layer Variety 18½ Oz. Pkg. **43¢**

Pancake Mix Aunt Jemima Buttermilk 2 Lb. Box **63¢**

3-Ring **Canned Pears** Irregulars **3** \$1

29 Oz. Cans.

Piggly Wiggly **Golden Corn** Cream Style or Whole Kernel **5** \$1

16½ Oz. Cans

Piggly Wiggly **Whole Tomatoes** Peeled **4** \$1

16 Oz. Cans

Farmer Jones **Canned Biscuits** Sweetmilk or Buttermilk 8 Oz. 10 Ct. Can **10¢**

50 EXTRA With This Coupon And Purchase of One (1) 2 Lb. Bag **White or Yellow, 3 Minute Popcorn** Coupon Good Only At Piggly Wiggly Thru January 16 1972

50 EXTRA With This Coupon And Purchase of One (1) 16 Oz. Pkg. **Pillsbury Instant Mashed Potatoes** Coupon Good Only at Piggly Wiggly Thru January 16 1972

50 EXTRA With This Coupon And Purchase of Two (2) 4-Roll Family Pak **Scott Bathroom Tissue** Coupon Good Only at Piggly Wiggly Thru January 16 1972

50 EXTRA With This Coupon And Purchase of Two (2) Packages of **Oscar Mayer All Meat or Beef Franks** Coupon Good Only at Piggly Wiggly Thru January 16 1972

50 EXTRA With This Coupon And Purchase of One (1) 12 Oz. Can **Biltmore Luncheon Meat** Coupon Good Only at Piggly Wiggly Thru January 16 1972

50 EXTRA With This Coupon And Purchase of One (1) 50 Ft. Roll **Stretch & Seal Food Wrap** Coupon Good Only at Piggly Wiggly Thru January 16 1972

50 EXTRA With This Coupon And Purchase of One (1) 100 Ct. Bottle of **Bufferin Tablets** Coupon Good Only at Piggly Wiggly Thru January 16 1972

50 EXTRA With This Coupon And Purchase of Two (2) Packages of **Oscar Mayer 8 Oz. Braunschweiger or Sandwich Spread** Coupon Good Only at Piggly Wiggly Thru January 16 1972

PIGGLY WIGGLY

You Can Save More!



John Tower United States Senate COMMITTEE ON ARMED SERVICES

This will be my last news-letter for this year and I thought we might take a look over 1971 to see what has been achieved specifically for Texas, and something of the outlook for the next session of the Congress.

School Busing-The Congress is generally beginning to reflect the great public concern evidenced not only in Texas but nationwide against forced massive busing which, in the name of integration, threatens to damage the educational capabilities of our public schools. I am hopeful that hearings will be held next year on the Constitutional Amendment I have co-sponsored in this area. It was encouraging indeed to see the House take a strong stand on this issue in its action on the Emergency School Assistance Program which is a part of Higher Education Act. It has also been somewhat encouraging to see the Administration begin to exhibit some recognition of the difficulties of massive busing in some Texas communities-particularly in Austin and Corpus Christi where Justice Department lawyers have disasso-

this legislation recently and it is now under consideration by the full Senate. Economic controls are not attractive, but we could not stand to allow inflation to grow at its previous rapid rates. We must insure that the money we earn will buy the goods and services we require. Otherwise, income raises will be worthless.

Military-Defense contracts for Texas remained through the year as a considerable part of our state's economy, even though defense spending is going down along with our troop commitments overseas. The Congress approved more than \$20 million in construction projects for Texas military bases and installations. As a ranking member of the Military Construction Subcommittee, the passage of this legislation was one of my concerns, as it will be again next year. Efforts by the Defense Department to close two Texas bases, fortunately, were averted.

Several other legislative efforts met with success this year. Signed into law were several bills I either introduced or co-sponsored, including:

- Establishment of a National Week of Concern for POW's and MIA's
- Expansion of the SBA loan fund by \$900 million
- Provision for relief for owners of lost or stolen U.S. securities
- Final Congressional consent that land acquired from Mexico under the Chamizal Treaty become a part of Texas
- Allowance for expanded U.S. foreign trade through the Export-Import Act
- Provision of medical scholarships to students who agree to begin their practice as doctors in physician-shortage areas

Farmers File SS Reports By January 31

(Dallas, Texas)--Farmers have until January 31 to report Social Security taxes withheld from their employees' wages during 1971, Ellis Campbell, Jr., District Director of Internal Revenue for North Texas, said today.

The reports should be filed on Form 943, Employer's Annual Tax Return for Agricultural Employees.

Mr. Campbell said that any farmer who pays an employee cash wages of \$150 or more a year must withhold Social Security taxes. These taxes must also be withheld on wages under \$150 for any person hired 20 days or more a year.

For tax purposes, a farm employer includes anyone who furnishes and pays workers to perform agricultural labor on his behalf or for someone else, Mr. Campbell said a "crew leader" is an employer under this definition.

The 1971 Social Security tax rate is 10.4 percent of the first \$7,800 of taxable wages paid a farm employee. Half the tax is paid by the farmer and the other half by the employee.

Farmers must give a W-2 wage and tax statement to every worker they pay \$600 or more a year. Employees paid less than \$600 should receive a statement covering their Social Security taxes, Mr. Campbell said.

More detailed information is available in Publication 51 (Circular A), "Agricultural Employer's Tax Guide." Send a post card to District Director, Internal Revenue Service, 1100 Commerce Street, Dallas, Texas 75202 for a free copy.

History Fair Projects To Be At Workshop

On Saturday, January 15, at 9 a.m., a Texas History Awareness Workshop, sponsored by Region XVII Education Service Center, Texas State Historical Association and Texas Tech University, will be presented at the Tech Museum.

The Muleshoe Junior High Historical Society will present winner projects from the History Fair which was held during American Education Week in October of 1971. Posters with colored photographs of all phases of the Fair and publicity posters will be exhibited.

The key theme of the workshop which is made up of Texas history teachers from Region XVII, is the use of local resources to revitalize history teaching. It will show how all these activities presently function within the framework of the Texas State Historical Association's Junior Historian Program.

Muleshoe Junior High Historical Society has 65 members and the sponsors are Mrs. Dorothy Beddingfield and Mrs. Carol Johnson.

Dr. Gwin Morris, Wayland College, Director of Plains American Heritage Foundation, will make the presentation for the Muleshoe Junior Historical Society sponsors.

Mules...

Cont. from Page 1

scored eight points. Mike Riley made one defensive rebound; hit four of seven from the field for 57%; hit one out of one free shots for 100%; committed two fouls and scored nine points.

Larry Mitchell made two defensive and two offensive rebounds hit four of ten attempts from the field for 40%; made four out of five free throws for 80%; no fouls; and made 12 points for the Mules.

Don Heathington made four defensive rebounds and three offensive rebounds; hit two out of five field shots for 40%; made one out of five free throws for 20%; committed one foul and scored five points.

In team totals, Muleshoe had 28 defensive rebounds; 14 offensive rebounds; 25 of 45 for 55% in shooting; made 12 out of 18 attempts for 67 per cent in free throws; lost the ball 18 times; had 16 fouls and 62 points.

Perryton had 17 defensive rebounds; 22 offensive rebounds; 22 of 61 for 36 per cent from the field; made 13 out of 18 free throws for 72%; lost the ball 13 times; committed 18 fouls and scored 57 points.

Score by quarters:
Muleshoe; 17 38 54 62
Perryton; 9 23 40 57

On Saturday, January 8, the Mules played Dumas in Dumas

winning the game 63 to 59. Johnny Hayes was high scorer with 24 points. In individual statistics he had one defensive rebound; 12 of 19 from the field for 63%; 0 of 2 free throws; two fouls.

Randy Field had five defensive and three offensive rebounds; one of two from the field for 50%; 0 of 1 free throws; two fouls and two points.

Mike Riley made five defensive rebounds; was five out of eight from the field for 63%; was 0 of 1 on free throws; committed four fouls; and scored 10 points.

Larry Mitchell had five defensive rebounds; was four out of nine for 44% in field shots; committed three fouls and scored eight points.

Don Heathington had one defensive and two offensive rebounds; made five out of 11 from was one of two from the field

for 50%; had one out of two free throws for 50%; and scored three points.

James Turnbow had six defensive and six offensive rebounds; made five out of 11 from the field for 45%; had six out of nine free throws for 67%; committed two fouls and scored 16 points.

In team totals, Muleshoe had 22 defensive rebounds; 11 offensive rebounds; 28 of 52 for 54% from the field; had seven of 15 free throws for 47%; lost the ball 16 times; committed 13 fouls and scored 63 points.

Dumas had 21 defensive and 13 offensive rebounds; had 25 of 62 for 41% from the field; made 9 of 12 free throws for 75%; lost the ball 12 times; committed 14 fouls and scored 59 points.

Score by quarters:
Muleshoe 16 34 45 63
Dumas 16 30 47 59

The Muleshoe D team also played over the weekend winning both of their games over Dumas and Perryton.

In the Perryton game which Muleshoe won 45 to 36, Roger Williams was high pointer with 14 points. George Mitchell had nine, Perry Stockard had nine, David Wheat had 7, Don Long had three and David Faver had three.

Score by quarters:
Muleshoe 10 21 37 45
Perryton 7 20 27 36

In the Dumas game the Mules scored 43 points to the Dumas team's 30.

Perry Stockard was high pointer with 11 points. Others scoring were Roger Williams with eight; David Wheat with eight; Don Long and George Mitchell each with seven; and David Faver with two.

On Friday night, January 14, the Mules will tangle with Leveland here in the Muleshoe Junior High Gym. The Mules will also play Canyon next Tuesday night, January 18, at Canyon in a district game.

Harvest...

Cont. from Page 1

cent stapled 30 and 19 per cent was 31.

Only four per cent of the cotton "miked" in the Lubbock office was in the premium range of 3.5 to 4.9, 8 per cent "miked" 3.3 and 3.4, 32 per cent 3.0 through 3.2, 41 per cent was 2.7 through 2.9, and 15 per cent was 2.6 and below.

The Consumer and Marketing service of the U.S.D.A. reported increased trading on the Lubbock market but prices were \$5.00 per bale lower. Prices ranged from 30 to 32 1/2 cents with most cotton selling between 31 and 32 cents.

Average prices paid for the most predominant qualities in the 3.5-4.9 micronaire range were: Low Middling, Staple 30-31.80, Low Middling, Staple 31-32.00, Strict Low Middling Light Spotted, Staple 30-32.05, Strict Low Middling Light Spotted, Staple 31-31.85, and Low Middling Light Spotted, Staple 30-31.65 and Low Middling Light Spotted, Staple 31-31.85.

Prices paid farmers for cottonseed ranged from \$40 to \$70 per ton with most prices in the \$48 to \$52 range.

Quarantine...

Cont. from Page 1

mite infestation should be inspected carefully before any movement takes place. Control of these mites on the premises will be much simpler than possibly causing an entire stock show to be tied up because of exposure from one infested animal.

Clymer has had several requests for information concerning the movement of show animals through New Mexico that are destined for the El Paso stock show. In a phone conversation with Lee Garner, Director of the New Mexico Live-stock Services Board, he indicated that his office would issue a permit to move animals across New Mexico that were enroute to another state. The animals would have to be inspected by a licensed livestock inspector to cross the Texas state line. The truck or trailer would also have to be "sealed" with a tag not to be broken until arrival at their final destination. For further information or questions, Clymer can be contacted or Lee Garner, Director, New Mexico Livestock Services Board, Area Code 505 247-2253 in Albuquerque.

Coast Guard Announces New Program

The United States Coast Guard Recruiting Office, Lubbock, Texas has announced the establishment of a new enlistment program whereby, individuals may enlist in the Coast Guard and delay commencement of active duty up to six months. This program intended for, but not limited to, high school seniors who are within six months of graduation.

Monthly pay for a Coast Guard recruit serving on active duty is \$228.00 plus \$105.00 if married. In addition, the Coast Guards Man is furnished food, lodging, medical and dental care, initial uniforms, 30 days annual leave, and numerous other benefits. Further information may be obtained concerning our Nation's oldest continuous seagoing service by contacting your Coast Guard Recruiter at Coast Guard Recruiting Office, Federal Building and Courthouse, 1207 Texas Ave. Room 317, Lubbock, Texas. Telephone 747 3711 EXT: 616.

Openings are available for immediate enlistment of future enlistment.

Driver...

Cont. from Page 1

his employer information relative to items 1 through 4 above, and information relative to his background and experience. The employer is required to file such information.

The Department of Transportation is preparing a leaflet summarizing the revised regulations. These will be distributed by the Agricultural Extension Service.

Trailer...

Cont. from Page 1

electric signal lamps, emergency flasher, license plate lamp, mud flaps if the vehicle has four or more tires on rear axle, two rear red reflectors, a safety inspection certificate if gross weight exceeds 4000 pounds-this is not required on farm or cotton trailers, side marker lamp-one amber half way between front and rear, if length of trailer is 30 feet or more, side reflector-one amber reflector half way between front and rear, if length of trailer is 30 feet or more, two stop lamps and two tail lamps.



"300 of these—and I wanted to be a brand inspector!"

Muleshoe State Bank
Member FDIC

**WANTED:
FEEDER CATTLE**

Immediate Through March
Delivery
Parmer County Feedlot

"Cap" Naegle

Days (806)225-4400
Nights (806)238-4041

MULESHOE JOURNAL

Established February 23, 1924
Published by Muleshoe Publishing Co., Inc.
Every Thursday at 204 W. Second Box 449
Muleshoe, Texas, 79347
Second class postage paid at Muleshoe, Texas 79347

TEXAS PRESS ASSOCIATION
Member 1972

L.B. Hall, President
Jessie P. Hall, Sec.-Treas.
L.B. Hall, Managing Editor
Katie Foster, News Reporter
Jesse Gilliland, Society
Elizabeth Barnett, Advertising
Poly Ottwell, Office Manager

SUBSCRIPTIONS:
Zone 1-Bailey-Parmer-Cochran-Lamb counties: \$4.00 per year, \$4.50 per year by carrier, with Sunday Bailey County Journal, both papers, \$5.50 per year; \$6.00 per year by carrier.
Zone 11-Out-of-Territory: \$4.30 per year; with Sunday Bailey County Journal, both papers, \$5.25 per year.
Monthly, by carrier-\$5; single copies-10¢
Advertising rate card on application

HOT MID-WINTER

January Pre-Inventory Buys!

DON'T BEAT IT! TRADE IT!

NEW 1972 CARS AND PICKUPS

Don't Miss This Once A Year Sale

Let One Of Our Friendly Salesmen Demonstrate A New 1972 Car Or Pickup For You Today!

FORD

Muleshoe Motor Co.
'CAR CAPITAL OF THE WEST PLAINS'

when you trade at...

FIGURE ON SAVING

We Sell Service Install Finance And Guarantee ELECTRIC WATER HEATERS

Modern Electric Water Heating
Phone 272-4578
Muleshoe Texas

VERTICALLY ADJUSTABLE DEEP RIPPER

- ADR Model DEEP RIPPERS will adapt to 2 and 3 bar WF Series frames.
- Clamps bars together for extra strength.
- 1 x 5 Shank with hard surfaced face and forged alloy replaceable point.
- Multi-hole brackets for bolt on mulch blades or fertilizer deposit chutes.

A QUALITY PRODUCT OF **THE Hamby COMPANY** PLAINVIEW TEXAS

SEE THE HAMBY VERTICALLY ADJUSTABLE DEEP RIPPER NOW AT

Cry & Cox INC. & COX
401 S. FIRST MULESHOE TEXAS 79347 PH. 272-4511



OUTSTANDING CLUBWOMAN...Mrs. W. E. Meyers, a member of the Progress Home Demonstration Club, was presented a plaque recently for being the outstanding Home Demonstration Clubwoman for 1971. Mrs. Albert Davis, Bailey County Home Demonstration Council Chairman, presented the plaque on behalf of the Council and the Progress Home Demonstration Club.

Parent-Teachers Assn. Hears Program On Birth Defects

The Muleshoe Elementary PTA met Monday, January 10 in the Mary DeShazo Cafeteria at 4:15 p.m.

The president, Mrs. Robert Hunt, presided over a short business meeting. The resignation of Mrs. Walter Bartholf, third vice-president was accepted. Rev. and Mrs. Bartholf and family are moving to Iowa. Mrs. Robert Hooten will serve as third vice president pro-tem for the remainder of the year and will continue with the projects to be financed by the PTA. The PTA will spend \$500 on projects at the two elementary schools.

The invocation was given by Mrs. Bartholf, and the Pledge of Allegiance was led by Walter Bartholf Jr.

Judy Hood from the Metro March of Dimes Center in Lubbock presented a program on birth defects. She told the group that Bailey County is in this Metro area and that her purpose is to educate the people about the prevention of birth defects, as well as to help them realize the need to know about and to care about birth defects in babies. She further explained that "one out of every 10 families is touched by birth defects and that it happens not only to the individual, but to the family and the community. The March of Dimes can help families having children with birth defects. There are five centers in Texas where these persons can receive help. When contacted as soon as the child is born, the March of Dimes can get the child into a center without cost to the parents. Seven hundred babies are born each day with birth defects and through help obtained at these

FOOD AID HIGH
The Agriculture Department says government food aid to low-income families and needy school children is at a record high. Edward J. Hekman, who administers the food programs, said he expects moderate increases in food-stamp enrollment.

centers, many of these children can be treated and perhaps returned to a normal, healthy life." She asked that if we knew of a birth defective child in our community, to inform the parents of the services offered by the March of Dimes Center. She showed a filmstrip, "More Than Love" which explains birth defects and some of their causes. The filmstrip warned that no pregnant woman should take any kind of drugs or medicine, even aspirin or vitamins, without the advice of her doctor. The filmstrip explained how various diseases could cause birth defects and emphasized the importance of early prenatal medical care.

Literature was distributed

and questions were answered after the viewing of the filmstrip.

The PTA donated \$25 to the Muleshoe Public Library in November. The Librarian, Mrs. Bernis Camp, attended the PTA meeting. She showed those attending a framed poster to be hung at the entry to the library, and thanked the PTA for the donation which made this entry piece possible. Mrs. Camp said that the library would be open and welcomed all to come and see where she planned to hang the entry piece.

The next meeting of the Muleshoe Elementary PTA will be Monday, February 14, at which time the Life Membership Award will be presented.



GUEST SPEAKER...Judy Hood from the Metro March of Dimes Center in Lubbock was a guest speaker at the Muleshoe Elementary P-TA meeting Monday afternoon.



LIBRARY POSTER...Mrs. Bernis Camp, right, librarian, Muleshoe Public Library, is displaying a framed library poster to, from left, Bill Taylor, Mary DeShazo Elementary Principal, Milton Oyler, Richland Hills Elementary Principal and Mrs. Robert Hunt, Muleshoe Elementary P-TA president. The poster was framed and made ready for display with funds donated to the Library by the P-TA. It will be hung in the entry of the library.

Pleasant Valley Social Club Installs Officers

The Pleasant Valley Social Club met Thursday night, January 6 in the home of Mrs. Bonnie Haberer for a salad supper, with Mrs. Kenneth Duncan as co-hostess.

Officers for 1972 were installed by Mrs. R.D. Angeley. The officers are: Mrs. Arland Fyie, president; Mrs. Bonnie

Haberer, vice president; Mrs. Henry Hettinga, secretary; Mrs. Joe Embry, treasurer; Mrs. C.W. Calhoun, reporter; and Mrs. Sena Stevens, historian. Seventeen members and guests attended the installation service. Members attending were

Mrs. Oscar Allison, Mrs. Harold Allison, Mrs. Lillie Wuerflein, Mrs. E.C. Galyon, Mrs. Sena Stevens, Mrs. A.J. Commons, Mrs. Joe Embry, Mrs. Henry Hettinga, Mrs. E.K. Angeley, Mrs. Arland Fyie, Mrs. C.W. Calhoun and the hostesses. Guests attending were Mrs. Sam McKinstry, Mrs. R. L. Roubinek, Mrs. Ken Angeley and Mrs. R.D. Angeley.

Kendra JoLynne Born To Thomsons

Mr. and Mrs. G.L. (Wink) Thomson are the parents of a daughter born January 4 at 7:12 p.m. The baby girl weighed six pounds two and one-half ounces at birth and has been named Kendra JoLynne. The Thomsons live in Burleson, Texas.

Grandparents are Mr. and Mrs. John W. Thomson of Muleshoe.

Bula News

Mrs. John Blackman

Visiting over the holidays in the Tom Bogard home were their daughter and family, Mr. and Mrs. Delbert Roberts and boys, Rance and Kendon of Houston. Also visiting were Mr. and Mrs. Ray Kennison and girls, Kim and Dusty, of Olton and Mr. and Mrs. Jake Bogard and children, Brad and Shell, of Denver City.

W.T. Thomas accompanied by his sister and husband, Mr. and Mrs. Oscar Grusendorf, of Littlefield visited this week at Childress with their brother, Henry Thomas.

The James Sinclair family enjoyed having for the holidays their daughter and family, Mr. and Mrs. Greg Childress and son, Todd, of Midland; also two of Mrs. Sinclair's nephews, Wesley and Wren Phillips from Ralls.

To enjoy New Years dinner with Mrs. E.W. Black were her children, Mr. and Mrs. H.M. Black and children, Mr. and Mrs. Richard Black and children, Kenneth Black and children of Lubbock and Mr. and Mrs. Bill Black of Lubbock.

LOUISA'S LETTER



Dear Louisa,

I had been going with my boy friend for almost two years when we had a quarrel and he stopped dating me. I called him up and we talked things over and started dating again but things were not the same as before. We never seem to agree on anything—he would want to go one place and I would like another. He would criticize my make-up and I didn't like his hair-cut. So he stopped calling me but I always thought he would come back.

But several days ago a friend of mine told me he was going steady with a girl who lives in another town. This made me so angry that I don't know what to do. Would it help if I called her and told her that he was my steady? I don't know what to do.

Dot-Ky.

Answer:
I would do nothing but be pleasant to my former boy friend whenever I saw him, if I were in your place. You say that you had broken off relations with this boy so I would not consider him your steady under the circumstances. It would certainly not serve your purpose to call this other girl unless you wish to cause more friction and bad feelings between you and this boy.

Louisa.
Address your letter to Louisa, P.O. Box 532 Orangeburg, S.C. 29115

County Treasurer's Report

Report of Edith Wilt, County Treasurer of Bailey County, Texas, of Receipts and Expenditures from July 1 to December 31, 1971, inclusive:

| JURY FUND 1st. CLASS | | |
|---|------------|------------|
| Balance last Report..... | | \$2,986.41 |
| To Amount received since last Report..... | \$4,235.42 | |
| By Amount paid out since last Report..... | \$2,103.02 | |
| Amount to Balance..... | \$2,103.02 | \$7,221.83 |
| Balance..... | | \$5,118.81 |

| ROAD & BRIDGE FUND, SECOND CLASS | | |
|---|-------------|--------------|
| Balance last Report..... | | \$152,524.04 |
| To Amount received since last Report..... | \$86,383.06 | |
| By Amount paid out since last Report..... | \$78,973.82 | |
| Amount to Balance..... | \$78,973.82 | \$238,907.10 |
| Balance..... | | \$159,933.28 |

| GENERAL COUNTY FUND 3rd. CLASS | | |
|---|--------------|--------------|
| Balance last Report..... | | \$46,496.86 |
| To Amount received since last Report..... | \$115,150.64 | |
| By Amount paid out since last Report..... | \$91,290.44 | |
| Amount to Balance..... | \$91,290.44 | \$161,647.50 |
| Balance..... | | \$70,357.06 |

| ROAD DISTRICT 1-A INT. & SINKING FUND | | |
|---|------------|--------------|
| Balance last Report..... | | \$169,494.34 |
| To Amount received since last Report..... | \$5,032.28 | |
| By Amount paid out since last Report..... | \$1,725.00 | |
| Amount to Balance..... | \$1,725.00 | \$174,526.62 |
| Balance..... | | \$172,801.62 |

| ROAD BOND SERIES 1961 INT. & SINKING FUND | | |
|---|------------|-------------|
| Balance last Report..... | | \$90,833.88 |
| To Amount received since last Report..... | \$2,329.82 | |
| By Amount paid out since last Report..... | \$1,362.50 | |
| Amount to Balance..... | \$1,362.50 | \$93,163.70 |
| Balance..... | | \$91,801.20 |

| RECAPITULATION | | |
|--|--|--------------|
| Jury Fund Balance..... | | \$5,118.81 |
| Road and Bridge Fund Balance..... | | \$159,933.28 |
| General County Fund Balance..... | | \$70,357.06 |
| Road District 1-A Int. & Sinking Fund Balance..... | | \$172,801.62 |
| Road Bond Series 1961 Int. & Sinking..... | | \$91,801.20 |

The State of Texas, County of Bailey, Before me, the undersigned authority, on this day personally appeared Edith Wilt, County Treasurer of Bailey County, who being by me duly sworn, upon oath, says that the within and foregoing report is true and correct.
signed,
Edith Wilt, County Treasurer
Sworn to and subscribed before me, this 10 day of January, 1972
Hazel Gilbreath, Clerk,
County Court, Bailey County, Texas.

January Clearance

ZENITH

CONSOLE COLOR TV



The RAEBURN • C2983W—Beautiful Contemporary styled cabinet with Zenith quality features: Zenith Titan 80 handcrafted chassis; exclusive Chromatic Brain; Sunshine® picture tube plus AFC (Automatic Fine-tuning Control) and ATG. Buy now and SAVE!
AS LOW AS \$478.00 With Trade



18" decorator compact

C3914W The HOLBEIN \$368.00 W/T

Zenith Handcrafted Chassis Automatic Fine-tuning Control Super Video Range Tuner Sunshine® Picture Tube



The VERMEER C3910W Compact table model in grained American Walnut color. 5" x 3" twin-cone speaker.
\$338.00 W/T

Zenith Handcrafted Chassis Super Video Range Tuner Sunshine® Picture Tube UNBEATABLE VALUE!

Gordon Wilson Appliance

202 MAIN MULESHOE PHONE 272-3138

NORTH COUNTRY

Adventure and entertainment for the whole family!
A RAINBOW ADVENTURE FILM © 1971 AMERICAN NATIONAL ENTERPRISES INC.

TOMORROW ONLY FRIDAY, JAN. 14
Wallace Theatre
Phone 272-3442
Times: 4:30 7:00 9:15
Adults \$1.75 12 and under 75¢

LOOK!

Cobb's JANUARY

CLEARANCE

NOW IN PROGRESS



MRS. MARVIN LEWIS AND AMY LYNETTE

People who accept invitations should sometimes send them out. Be as anxious to help others as you are to accept favors.

Baby Shower Honors Amy Lynette Lewis

Mrs. Marvin Lewis and infant daughter, Amy Lynette, were honored with a shower Monday night, January 10 at the Trinity Baptist Church.

The refreshment table was covered with a white cloth and centered with an arrangement of pink roses and miniature booties. White individual cakes, decorated with pink booties, punch and coffee were served by Gerrie Lumpkin, Mrs. Gene Sisemore and Mrs. Roy Baker.

Table favors were miniature pin diapers filled with mints and nuts. Individual gifts, presented to the honorees by guests and hostesses, were registered by Gerrie Lumpkin.

Hostesses for the occasion were Mrs. Lester Baker, Mrs. Ansel Ashford, Mrs. Ann Newman, Mrs. Roy Baker, Mrs. Luease Bennett, Mrs. Evelyn Moore, Gerrie Lumpkin, Mrs. Gene Sisemore, Mrs. Leon Lewis and Mrs. Derrell Kennemer.

From The Journal Twenty Years Ago

Five members of the Muleshoe FFA Chapter have entered 19 pigs in the boy's division of the San Antonio Livestock Exposition to be held February 15-24 at the Bexar County Coliseum.

Boys and animals entered: Donald Harrison, Jimmie Pruitt and Bill Willis, 3 each; Keith Bray, 4; Alvie Gilliland, 6.

Premiums of \$49,477 are offered in San Antonio's big 10 day stock show, of which \$7,190 is posted for the boys competition.

An innovation for boy contestants in the '52 show, is a neatness award of \$100 being offered to FFA Chapters and 4-H Clubs, which will be presented to the most attractive exhibits. In addition, banners will be awarded personal appearance and conduct of the boys will be one of the factors in the judging.

In the boys' show, the Exposition has added 15 places in three weight classes for Hereford steers, making 15 additional steers eligible for the auction sale.

Mrs. Phillip Garrett, the former Delores Locker, is visiting her parents, Mr. and Mrs. E.W. Locker for a few days. She arrived Tuesday, January 15, and will return to Draughon's Business College in Lubbock Sunday, January 20.

Mr. and Mrs. Bill Bickel became the parents of a 7 lb. 15 oz. boy, David Dwight, Dec-

ember 30 in the West Texas Hospital in Lubbock. Bill Bickel is a student of Tech and is the son of Mr. and Mrs. B.H. Bickel of the Pleasant Valley community.

Ten Years Ago

Four local men received awards from Ford Motor Company recently for outstanding salesmanship in 1961. They are Bob Harvey, Robert Hooten, Jan Wampler and Edd Edmiston, all employees of Muleshoe Motor Company.

The award, called the "300", is based on points earned throughout the year by sales of new and used Ford cars and trucks. Each of these men received 300 or more points for the 1961 year.

In addition to a certificate, each man has received a Ford pin with a diamond for each year's achievement. Wampler and Hooten are receiving the award for the second consecutive year. Harvey has received eight such awards and Edmiston has received seven.

The Pleasant Valley Social Club met Wednesday, January 3 in the home of Eula Calhoun.

The Club accepted the resignation of Doris Jones, who is moving to Olton in the near future, and Sammy Allison was elected to serve as president.

Doris received a lovely set of costume jewelry as a going away present from the club. Present for the meeting were: Doris Jones, Sammy Allison, Ethel Allison, Jean Hardin, Jean Allison, Peggy McMahan and Glenna Buhrman.

Lazbuddie News

Mrs. Richard Engelking

The class of 1962 held a reunion at the E.D. Chitwood home in Muleshoe Sunday night.

Refreshments of sandwiches, chips, dips and punch were served to 12 members out of 17 who graduated from L.H.S. in '62.

Graduates and their husbands and wives attending were: Jimmie Dale Seaton and wife, Kay (Burreson) Seaton, both being graduates; Dick Chitwood and wife, Sandy; James Brown and wife, Diane; Cooper Young and wife, Joyce; Paul Wilbanks and wife, Judy; Dale Vise and wife, Nellie; and John Agee and wife, Sharon.

Out of town graduates were Janice (Darling) Thompson and husband, Darrell of Friona, who being a photographer took several pictures of Class members. He mailed the picture to them later for a nice remembrance for the group. Also Eva Dean (Ivy) and husband, Darrell Stephens of Farwell; Jimmy Brod-hurst and wife, Twana of Oklahoma City, Oklahoma; and Gary Foster and wife, Linda, who just recently returned home from Germany and duty with the Armed Forces.

Holiday visitors in the C.A. Watson home were their sons, Benny, of West Texas State at Canyon and Leon of Amarillo; and daughters and their respective families, the Preston Cargiles and Charlie Chandlers of Muleshoe.

On New Years day, Mrs. C.A. Watson accompanied Harvey and Marie Bass of Muleshoe to Lubbock, where they visited their sister, Mrs. S.B. Gowens and several relatives.

Mr. and Mrs. Junior Matthews enjoyed having all their children home for the holidays. They include Gary and Carolyn Matthews and son, Curtis, of Canyon; Derrell and Treena Matthews of Lubbock; and Angela of the home.

Barbara's brother, Chuck Ivy and family of Roswell were also guests. Their holiday happiness was dimmed by the fact of their grandmother, Mrs. T.D. Reed, was confined to Methodist Hospital very seriously ill, and in a coma for several days, but seemed to regain consciousness, Sunday. Her daughter, Mrs. D.G. (Nola) Ivy, has been down there with her contin-

uously for the past four weeks.

Santa took time off from his busy schedule and visited all the boys and girls at the annual Christmas program and party at the United Methodist Church a week before Christmas. He handed out sacks of candy to all and toys for the little ones.

He also stopped his 'sleigh' at the Claude Gregory Jr. home where little Kim was ill with the Chicken Pox, and on to the Kenneth McGehee home for a visit with Lisa, Amy and new baby brother Kevin. (Thanks for making everyone's Christmas brighter John L.)

Mr. and Mrs. Don McDonald and four children, Mr. and Mrs. Preston Cargile and four children and Mr. and Mrs. Dwain Menefee and their three, visited in their Mother's home, The Otis Elders' of Hub Christmas Day. Afternoon visitors were his daughter and four children, The Connie Dodsons' of Friona.

Congratulations to Mr. and Mrs. David Nelson on their first born, a daughter, Amy Christine, weighing six pounds, nine ounces. She made her arrival

December 27 in Friona's Parmer County Community Hospital.

Paternal Grandparents are Mr. and Mrs. Conrad Nelson of Route one, Farwell, Mr. and Mrs. W. Lyle Donaldson of San Antonio are the maternal grandparents.

Mrs. Vivian Ham enjoyed having three of her four daughters home for Christmas. They were Mr. and Mrs. Pete Oliver (Luther Louise) and three children of Houston, Mr. and Mrs. Jim Delmar (Zella Joe) and son of Garland and The Walter Spences' (Eddie lone) and their two from Odessa.

At a time when we are thinking of the old year and looking forward to the New-Let me tell you about some things that I forgot to print this past year.

It must be a matter of not being able to see the 'Forest for the Trees' When I am writing this column, because it seems I will leave out news of our closest friends. Yep, I forgot to tell you about The Don McDonalds visiting former neighbors, Paul and Lynn Jesko of Beaumont on their trip which

covered several cities of Texas. Back in August, (I'm sorry to say) Mr. and Mrs. Kenneth Hall, Kevin and Karla visited in Lordsbury, New Mexico with his sister and family, Mona and Troy Sharrock.

And a most inortant event in the life of the United Methodist Church occurred in October, when the church library was opened and was named for Miss Greta Paul, longtime member and schoolteacher in area schools for many years. Miss Paul was mainly responsible for the library, giving much time and talent into it's opening.

Also at this dedication service, Miss Paul presented Mrs. Finis Jennings (Alwida) a beautifully bound, complete history of the church, which will be placed in the library. Mrs. Jennings has spent much time compiling the history of the church as she is the only charter member who is now a member, and a very active one, we must say.

Our special congratulations to this fine woman for their great works.

Young men and women.

NOW THE ARMY STARTS YOU AT \$268.50 A MONTH, AND YOU MAY NOT EVEN HAVE TO SPEND IT.

That's because you still get free meals, free housing, free clothing, free medical and dental care, free job-training and education, and 30 days paid vacation a year. If you'd like to serve yourself as you serve your Country, Today's Army wants to join you.

SEE YOUR LOCAL ARMY RECRUITER

Phone 763-7209
CLOVIS, NEW MEXICO

75th Semi-Annual Financial Statement

FIRST FEDERAL SAVINGS & LOAN ASSOCIATION of CLOVIS

DECEMBER 31, 1971

| ASSETS | | LIABILITIES | |
|---|------------------------|-------------------------------|------------------------|
| 1971 | 1970 | 1971 | 1970 |
| First Mortgage Real Estate | | Capital (Savings Deposits)... | \$45,866,847.09 |
| Loans | \$42,730,025.29 | \$40,759,746.15 | \$42,344,078.27 |
| Home Improvement Loans | 45,881.15 | 18,689.42 | |
| Loans to Members, Secured by Their Savings Deposits | 304,863.12 | 221,972.85 | |
| Cash and U. S. Government Bonds | 5,923,491.29 | 4,831,827.72 | |
| Stock in Federal Home Loan Bank | 435,900.00 | 435,900.00 | |
| Office Sites and Buildings | 787,061.06 | 765,240.44 | |
| Furniture and Fixtures | 196,073.80 | 185,626.02 | |
| Prepaid Federal Insurance Premium | 449,577.69 | 460,390.09 | |
| Other Assets | 194,771.91 | 311,818.18 | |
| TOTAL | \$51,067,645.31 | \$47,991,210.87 | TOTAL |
| | | | \$51,067,645.31 |
| | | | \$47,991,210.87 |

OFFICERS

CLYDE RAYL
President
LYNN L. MARTIN
Exec. Vice President
CHARLES RUTLEDGE
Vice President
RUFUS FREEMAN
Vice President
DIXIE HOGG
Ass't V.P. - Sec.
MIKE HARE
Vice President
BILL BOONE
V.P. (Branch Manager)
FAYE FARROW
Ass't. Sec. - Treas.
HAZEL B. TRAUGHBER
Ass't. Sec. (Branch)
DWAYNE YOUNG
Controller

DIRECTORS

CARL RODOLPH, Chairman
K. BARNETT, Jr., Vice-Chairman
CLYDE RAYL
LYNN L. MARTIN
REESE CAGLE
E. C. KELSO
SCOTT McGEHEE
ROY KEETER
ERNEST WHEELER, Jr.
DONALD R. BONNER
DON WILLIAMS

ATTORNEY

ESTHER SMITH VAN SOLEN



HOME OFFICE
801 Pils. St.
CLOVIS, NEW MEXICO



BRANCH OFFICE
2nd and Abilene
PORTALES, NEW MEXICO

SECOND LARGEST & ONE OF THE OLDEST FEDERALLY CHARTERED SAVINGS & LOANS IN NEW MEXICO SINCE 1934

WHERE YOU ALWAYS BUY THE BEST FOR LESS!

GIBSON'S

DISCOUNT CENTER

Muleshoe, Texas

SPECIALS GOOD THRU SAT.

UNFINISHED

BAR STOOL

24" **\$4⁹⁷**

30" **\$4⁹⁷**

Plastic STORM WINDOW KITS
2 to pkg. #P712

23¢

Electric HEAT TAPE
#ATH-30
30 ft.

\$4⁹⁷

Plastic SCREEN DOOR COVER
#P70

53¢

Plastic DROP CLOTH
9' x 12'

10¢

ALL AROUND SHOVEL

ROUND POINT, LONG HANDLE SHOVEL
• Good utility shovel for yard and garden.
• Balanced for less fatigue.
• Sturdy handle!
Arrowhead \$1⁷⁷
#457035

Arrowhead Round Bow RAKE

63-7033

\$1⁷⁷

• Break up clods. Levels soil.
• Picks up twigs and trash firmly—releases quickly!

Arrowhead GARDEN HOE

• Versatile all-around garden aid.
• Chops weeds. Cultivates. Makes Furrows

\$1⁵⁷

66-7013

Plastic BATTERY CHARGER

Electromite 4 AMP

\$9⁹⁷

#WS84

Shamrock WHEEL BARROW OR GARDEN CART

your choice

\$6⁸⁸

Cash Lay-a-way Master Charge

Galvanized GARBAGE CAN

30 gallon

\$3³⁷

KORITE ECONOMY 20 BAGS

ARPROOF PLASTIC TRASH CAN LINERS

Plastic TRASH CAN LINERS

20 to pkg. 26 gallon

97¢

ZEREX

ANTI-LEAK ANTI-FREEZE

53¢

QT.

\$1⁵⁷

GALLON

Buddy L CHARCOAL GRILL

with electric spit #2331

\$10⁸⁸

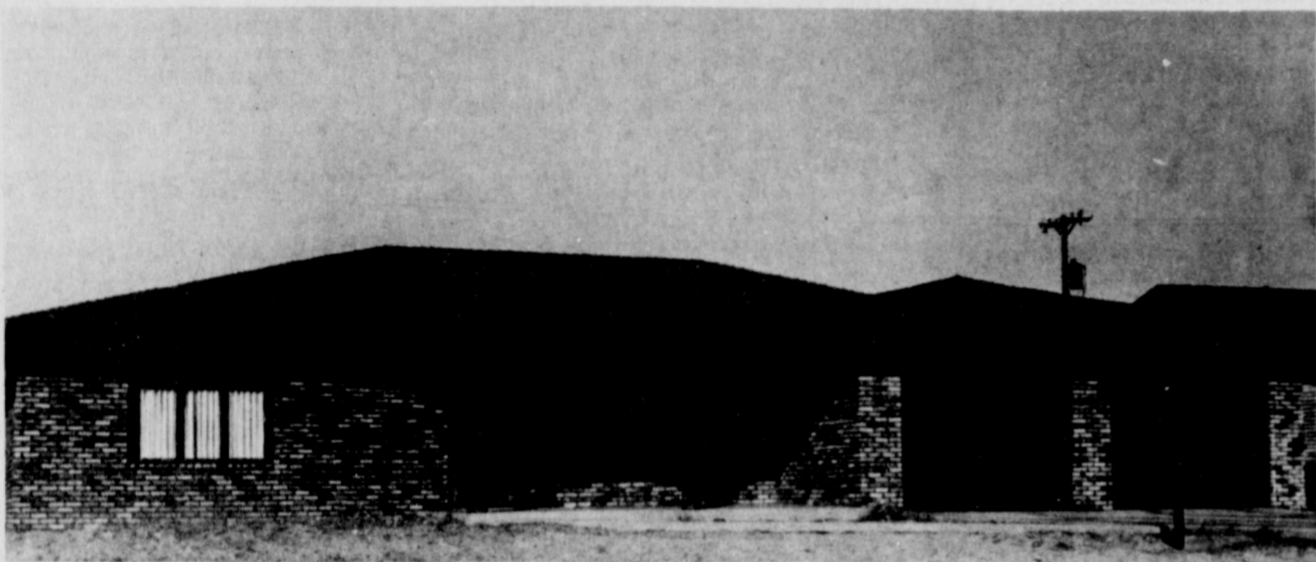
New Construction Continues Into 1972



ANOTHER NEW HOME ON 20th...This new home is being constructed on 20th Street and Avenue G in the Richland Hills Addition. Several new homes have been constructed in this same area this year.



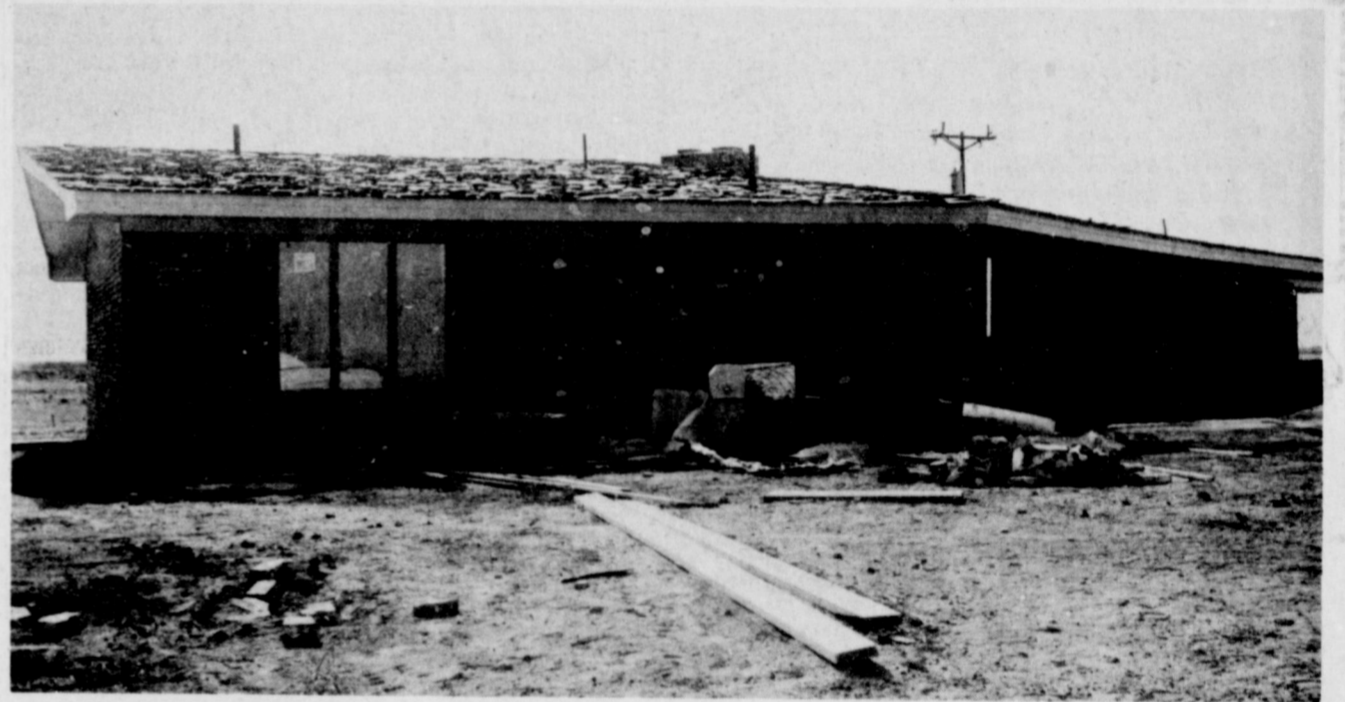
ALMOST COMPLETED...The new home of Mr. and Mrs. Bill Wooley is almost completely finished. The spacious brick home is located on Avenue H, in the Richland Hills Addition.



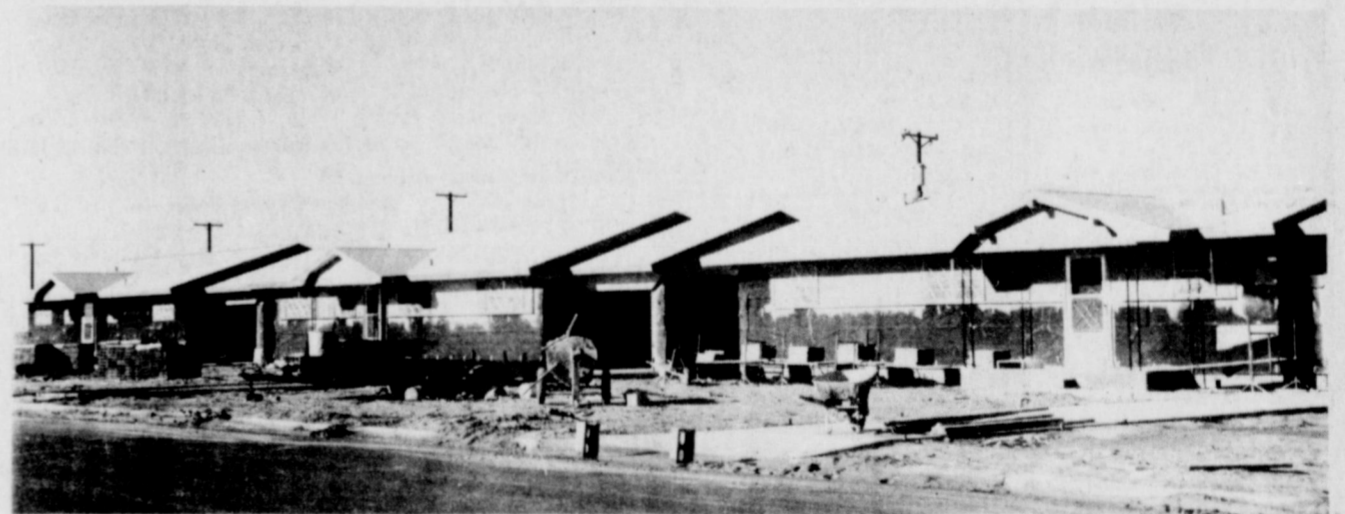
COMPLETED . . . This home was recently completed and the new occupants, Mr. and Mrs. Ben Grambling have moved in. The new brick home is located on 20th Street in the Richland Hills Addition of Muleshoe.



NEW HOMES IN LENAU ADDITION...Several new homes have been constructed this year in the Lenau Addition including these two new brick homes on East Dallas Street.



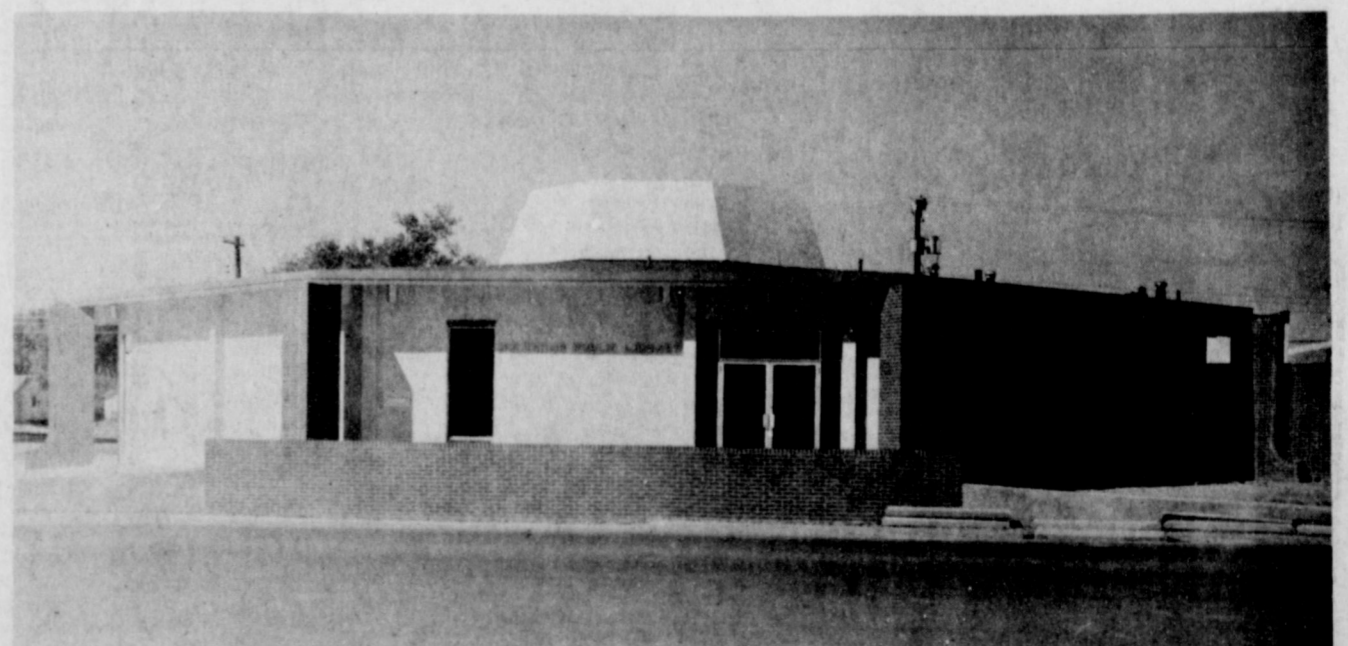
NEW HOME BEING BUILT...Mr. and Mrs. Ed Nickels are building this spacious new home on the corner of 18th Street and Avenue I in the Richland Hills Addition of Muleshoe.



NEW ADDITION..These three new homes are being built on Eighth Street by the new Muleshoe City Park and are nearing completion.



LIBRARY OPENED . . . The Muleshoe Area Public Library opened in December to fulfill the dreams and wishes of many of the local citizens who had worked hard on the project. Muleshoe now boasts one of the most modern libraries in the area.



Muleshoe Area Public Library

WANT ADS DO THE JOB FAST!

WANT ADS PH. 272-4536

CLASSIFIED RATES

OPEN RATES

First insertion, per word-9¢
Second and additional insertions-6¢

NATIONAL RATES

First insertion, per word-11¢
Second and additional insertions-7¢

Minimum charge-75¢

Card on Thanks-\$1.50 Double rate for blind ads

Classified Display-\$1.05 per col. inch

\$1.15 col. inch for reverses

DEADLINE FOR INSERTION

Thursday's Muleshoe Journal-Noon Tuesday
Sunday's Bailey County Journal-Noon Friday

The Journals reserve the right to classify, revise or reject any classified ad.

Check advertisement and report any error immediately. Journals are not responsible for error after ad has already run once.

FOR SALE OR TRADE: 1/2 section fully allotted, paved 4 room house, bath, pump on well. D.e.n, pasture, 1/4 mineral, \$139.50 per acre, \$9,500.00 down. Loan \$12,500-5 3/4%, Bal. 10 yr. 6%. Fisher 408-B West E. 806-272-4752
11-2t-2tc

19. FARM EQUIP. FOR SALE

FOR SALE: Wheelmove Sprinklers, buy direct from factory \$2595. Call Boss Irrigation, 765-5559, Lubbock, Texas. 10-47s-24tc

12. HOUSEHOLD GOODS

FOR RENT: Two Electric Rug Shampooers, clean your carpet now and entertain in an hour with MASTER CLEAN RUG SHAMPOO. Wagon's Grocery, 272-4406. 12-48s-tfc

FOR SALE: Repossessed 1971 model swing needle, zig-zag sewing machine, DELUXE MODEL, sews on buttons, makes button holes, blind hems, fancy patterns. Five payments at \$7.62; Will discount for cash. OR Straight Stitch sewing machine guaranteed at \$14.95. Write Lubbock Sewing Center, 1913 19th Street or call 806-762-3126. 12-48s-tfc

Millions of rugs have been cleaned with BLUE LUSTRE. It's America's finest. Rent electric shampooer \$1 Perry's 128 Main. 12-2s-1tc

GRET'S a gay girl-ready for a whirl after cleaning carpets with BLUE LUSTRE. Rent electric shampooer \$1. Higginbotham-Bartlett, 215 Main. 12-15-tfc

13. PROPERTY FOR LEASE

FOR CASH LEASE. 250 acre irrigated farm. Six year contract. Call 272-3066. 13-52T-1TFC

13. MISCELLANEOUS

BLAGGS SALE: Almost any kind of CB radios and accessories, stereos and tape players. Phone 986-3151 at Springlake, Texas. 15-46s-16tc

CESSPOOLS pumped out. 272-3282 or 272-3036. 15-25s-tfc

JAMES GLAZE COMPANY REAL ESTATE AND FARM & RANCH LOANS
Phone 272-4549 219 S. 1st

PLAINS AUCTION SERVICE RAY BRADSHAW
Farm Sales Liquidations Real Estate Cotton Center Texas
Phone Office 879-2148 Home 879-4753 15-52T-8tc

FOR RENT 25 X 70 building for rent on Main Street
Call Vance Wagon, 272-4703 15-1t-tfc

FOR SALE: German Shepard pups, contact Gary Oursbourn 5 miles west on Lubbock highway. 15-48t-tfc

NOTICE: I have opened an auto repair shop, at 1701 American Blvd., behind Mohawk Auto Parts. Tune up and general over haul. Homer Milsap Motors Phone 272-3511, Muleshoe. 15-52t-4tc

FOR SALE: SPINET PIANO. Rather than return, will sacrifice NEW Walnut Spinet. Cash or reliable party who may assume \$33 per month. Write Music Box, Box 42 Atwood, Colo. Phone 522-1735 15-2t-1tp

CARD OF THANKS We wish to thank the fire departments of Muleshoe and Texico-Farwell who by their speed and skill were able to save some of our house and personal goods. To our neighbors who responded so wonderfully with deeds and words of comfort, we say thank you. The James Ensor Family 2t-1tp

CARD OF THANKS Please accept our thanks for your many kind expressions of sympathy. Sincerely, Mrs. Howard Cox Mr. & Mrs. R.L. Althouse Mr. & Mrs. Roy Dyer & Renee'

FOR SALE Brick Homes No Down Payments \$55 up per month Pantry, 3 & 4 bedroom 1 1/2 baths, Utility Room, attached garage, built in range and oven located in Muleshoe Ault Realtors Phone 372-1276 or 355-2367 Collect Amarillo, Texas

STATE CAPITAL Highlights AND Sidelights
by Bill Boykin
TEXAS PRESS ASSOCIATION

AUSTIN, Tex.--Candidates for the legislature are keeping an anxious eye on a federal court which last week heard massive, consolidated challenges to House and Senate redistricting. The three judges listened to four days of testimony and arguments and took the case under study. A decision is expected in a week or two in order to allow time for appeals to the U.S. Supreme Court before the February 7 filing deadline.

Emphasis in the trial of suits filed in San Antonio, Tyler, Houston and Dallas was on the issue of single member vs. multi-member (countywide) House of Representatives districts for metropolitan areas.

Challengers of the 1971 reapportionment (based on the 1970 census) by a five-member board made these key claims:

*Countywide districts tend to prevent election of blacks, Mexican-Americans and Republicans.

*Elections in the multi-member districts require expensive campaigns which few candidates, other than those backed by big interests, can afford.

*Single member or individual districts for the big counties insure a smaller constituency and thereby make legislators more available, responsive and accountable to the voters.

The state, in defense of the 1971 reapportionment, maintained:

*Multi-member districts are not discriminatory and do not dilute minority group representation.

*Prior Supreme Court rulings have held that either multi-or single-member districts are acceptable as long as they are fairly drawn.

*Single-member districts tend to fragment a county's representation and lessen chances of delegation harmony on key countywide issues.

Federal Circuit Judge Irving L. Goldberg of Dallas, U.S. District Judge William Wayne Justice of Tyler and U.S. District Judge John H. Wood Jr. of San Antonio must make the

decision whether to invalidate the apportionment and draw new lines or let the board's plan stand.

CAMPAIGN REPORTS URGED--Secretary of State Bob Bullock has urged state and county political organization chairmen to report campaign contributions and expenditures as candidates are directed to.

He said 31 other states require such reports by law, though Texas does not. State Democratic Chairman Roy Orr of DeSoto rebuked Bullock for "overreaching" his authority.

Bullock disclosed he is having legislation drafted to require full disclosure by political parties at the state and local levels. Until that legislation can be enacted, he recommended the political organizations make the reports voluntarily on contributions and expenditures after Jan. 1, 1972.

The secretary suggested filing reports on party funds used for county office campaigns with the county clerk, district or state office reports with the secretary of state here and reports of party money spent in local elections with the city secretary or city clerk.

MASS ASSEMBLY RULES STUDIED--Texas Department of Public Safety set a February 29 hearing on proposed rules and regulations and minimum safety and good order standards for mass gatherings.

The 62nd Legislature directed DPS to promulgate such rules which must be met by promoters in order to get official permission to hold mass gatherings, such as out-door rock concerts.

Among the proposed rules

are those governing adequate parking, lighting, access by emergency vehicles and responsibility of the promoter to preserve order within the assigned area.

COURTS SPEAK--The Texas Supreme Court sustained lower court orders stopping sale of 500 magazines, films, books, and cards found by a San Antonio judge to be "obscene". The Fourth Court of Civil Appeals, whose judgement was affirmed, had earlier knocked down that part of the original trial order prohibiting sale of "similar" material.

The Third Court of Civil Appeals upheld the State Board of Examiners of Psychologists and refused to direct certification of a man who holds a doctorate in education and 127 hours of psychology graduate courses.

A Victoria County mother won in the Supreme Court a new trial of her suit to regain custody of five children adopted by grandparents.

AG OPINIONS--Resident aliens are eligible for old age assistance and aid to the blind, Atty. Gen. Crawford C. Martin was held in light of U.S. Supreme Court decisions.

In other recent opinions, Martin concluded:

*A home rule city has authority to form a non-profit, no-stock corporation to acquire and improve land for industrial development.

*A proposed Taylor County junior college district to operate under contract with three private, church-related institutions in Abilene is unconstitutional.

*Motorboats or vessels must have at least one Coast Guard-approved lifesaving device for every person on board.

*A mineral lessee's claim for refund of payments to the state may be paid when coupled with verification by the General Land Office and a legislative appropriation.

*A national bank's reserve for interest collected but not earned and reserve for loans overdue and doubtful may be considered as a factor for ad valorem tax purposes as part of personal property.

*"Riprap" spilled from trucks falls within the definition of loose material prohibited by a new law.

*All price advertising by optometrists is prohibited.

*Tuition for students from another college at state higher educational institutions is at least \$200 per regular semester.

*College faculty members may make only one election as to whether they will participate in the optional retirement program or continue membership in the teacher retirement system.

*Community Centers for Mental Health and Mental Retardation are entitled to election to coverage under Unemployment Compensation act.

*Reserve deputy sheriffs may carry weapons.

*Contempt of a commissioner's court is punishable by fine not to exceed \$25 or imprisonment up to 24 hours.

*The Governor's Commission on Physical Fitness is authorized to purchase a station wagon out of appropriated funds.

SCHOOL FINANCE STUDIES ON--Gov. Preston Smith designated a 12 member task force to advise him on possible state action needed following a federal court decision that the Texas system of financing public schools is unconstitutional.

are those governing adequate parking, lighting, access by emergency vehicles and responsibility of the promoter to preserve order within the assigned area.

COURTS SPEAK--The Texas Supreme Court sustained lower court orders stopping sale of 500 magazines, films, books, and cards found by a San Antonio judge to be "obscene". The Fourth Court of Civil Appeals, whose judgement was affirmed, had earlier knocked down that part of the original trial order prohibiting sale of "similar" material.

The Third Court of Civil Appeals upheld the State Board of Examiners of Psychologists and refused to direct certification of a man who holds a doctorate in education and 127 hours of psychology graduate courses.

A Victoria County mother won in the Supreme Court a new trial of her suit to regain custody of five children adopted by grandparents.

AG OPINIONS--Resident aliens are eligible for old age assistance and aid to the blind, Atty. Gen. Crawford C. Martin was held in light of U.S. Supreme Court decisions.

In other recent opinions, Martin concluded:

*A home rule city has authority to form a non-profit, no-stock corporation to acquire and improve land for industrial development.

*A proposed Taylor County junior college district to operate under contract with three private, church-related institutions in Abilene is unconstitutional.

*Motorboats or vessels must have at least one Coast Guard-approved lifesaving device for every person on board.

*A mineral lessee's claim for refund of payments to the state may be paid when coupled with verification by the General Land Office and a legislative appropriation.

*A national bank's reserve for interest collected but not earned and reserve for loans overdue and doubtful may be considered as a factor for ad valorem tax purposes as part of personal property.

*"Riprap" spilled from trucks falls within the definition of loose material prohibited by a new law.

*All price advertising by optometrists is prohibited.

*Tuition for students from another college at state higher educational institutions is at least \$200 per regular semester.

*College faculty members may make only one election as to whether they will participate in the optional retirement program or continue membership in the teacher retirement system.

*Community Centers for Mental Health and Mental Retardation are entitled to election to coverage under Unemployment Compensation act.

*Reserve deputy sheriffs may carry weapons.

*Contempt of a commissioner's court is punishable by fine not to exceed \$25 or imprisonment up to 24 hours.

*The Governor's Commission on Physical Fitness is authorized to purchase a station wagon out of appropriated funds.

SCHOOL FINANCE STUDIES ON--Gov. Preston Smith designated a 12 member task force to advise him on possible state action needed following a federal court decision that the Texas system of financing public schools is unconstitutional.

Jaycees
meets every Monday, 12 Noon
Jeff Smith, Pres.

Muleshoe Rotary Club
meets every Tuesday at 12:00
FELLOWSHIP HALL
Methodist Church
Troy Atkinson, President

Masonic Lodge
meets the second Tuesday of each month
practice night each Thursday
Fred Horn, WM
Elbert Nowell, Sec.

Lions Club
meets each Wednesday, 12 Noon
FELLOWSHIP HALL Methodist Church
W. T. Millen, President

VFW Water A. Moeller Post #8570
8:00 p.m. 2nd & 4th Mondays
Old Pribok Skating Rink
George Tompkins, Commander

Muleshoe Oddfellows
meets each Thursday 7:30 p.m.
Crispin Green, Noble Grand

Fine Art Booster
MEETS EVERY FOURTH MONDAY
8:00 p.m.
Muleshoe High School Band Hall
DON BRYANT, President

PERSONALS
POODLE GROOMING by appointment. 221 E. 4th. Call 272-5587 15-28s-tfc

\$10 REWARD: for return of drive shaft for shredder. Call C. E. Moore, 272-4157 2-2s-2tp

Mary Daves Income Tax and quarterly reports, 808 Hickory across from Catholic Church. Phone 272-4675 1-2t-tfc

Babysitting and ironing to do. 1833 West B 15-2t-6tc

Fashion Two Twenty Cosmetics NEVA CALVERT
Ph. 272-3708

HELP WANTED
NEED IMMEDIATELY: Full or part time hair stylist. Main Street Beauty Salon. Phone 272-3448 3-3ps-tfc

Enemy supply build-up reported in Laos.

KREBBS REAL ESTATE
210 WEST FIRST
PHONE 272-3191
8-23t-tfc

FOR SALE: 2 bedroom house, 326 Chicago carpeted throughout, kitchen and bath recently remodeled. Nice yard with fenced back. Call 272-3003 or 792-1659 Lubbock. 8-52T-TFC

FOR SALE 18 acres in city of Muleshoe 300 feet of highway frontage. Call 272-3251. 8-52T-16TC

IF YOU WANT TO SELL OR buy see Lee Pool or Woody Goforth.

POOL REAL ESTATE
Phone 272-4716. 8-44s-tfc

HOUSE FOR SALE: Split level, brick, 3 bedroom, 2 bath, livingroom, den, kitchen-built ins and dining area. Call 272-3886. 8-51t-tfc

FOR SALE: Small acreage, close in with good well. Write Box 449 % Journal. 8-46s-tfc

Richland Hills Home For Sale: New paint inside and out. 3 bedroom, 2 full bath, kitchen-den combination, built in cooking, disposal, air conditioned, central heat, and fenced yard. Buy equity at \$1,400 and assume present low interest loan. Phone 272-3732 8-52t-tfc

FOR SALE: 25 unit Motel, Write Box 1427, Hereford, Texas 79045 8-52t-8tp

HOUSE FOR SALE: New three bedroom, brick, fully carpeted, small equity, assume loan, 806 Ave. J, Muleshoe Call 965-2645 or 965-2917 8-52t-tfc

FOR SALE: 1971 Mobile Home, 14 X 68, three bedroom, 1 1/2 baths. Phone 965-2996. 8-2s-8tp

FOR SALE OR LEASE: One section pivot. Sprinkled stock farm, 270 acres Alfalfa, 265 acres small grain pasture, bal-and native grass. On pavement, natural gas, good house, 7 miles from town, Lamb County, De Juan Strickland, 806-293-3343. 8-2t-4tc

Save time and friends--don't try to tell a parent what's wrong with junior.

MRS BAIRD'S

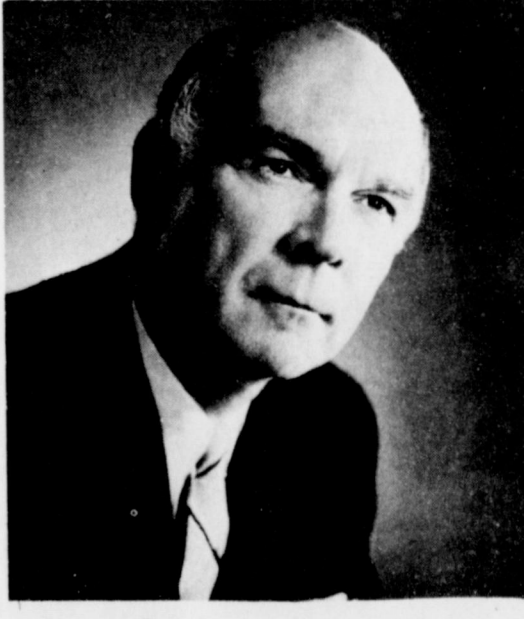
Baked with family pride.

We Urge You To:
SUPPORT THE CHAMBER OF COMMERCE AND ATTEND THEIR BANQUET
Thursday, January 13, 7:30 P.M.
M.H.S. Cafeteria
PRINCIPAL SPEAKER **Kenneth McFarland**

Tickets Available At The Door
BE SURE TO ATTEND

R. A. Bradley, president
Clarence Jones, vice president
Jimmy Crawford, secretary

PLEGDED TO PROGRESS IN 1972
First National Bank
MEMBER FDIC



NEED A HOME LOAN? SEE FIRST FEDERAL SAVINGS
801 Pile St. 762-4417
Clovis, New Mexico

Nominations Sought For Heroism Awards

Would you help Texas honor a Rural Hero?

If you know of anyone who has risked his own life to save the life of some other person, your nomination might win that person a trip to Dallas and a nice plaque on March 20, 1972.

The Rural Heroism Award is presented annually to some deserving person who has performed some act of exceptional bravery during a time of crisis. This rural safety program points up the continuing need for improved safety conditions in our rural areas--at work, at home and at play.

The award may go to a person credited with pulling another from a burning building, saving a drowning person or any other such act of heroism during the past calendar year. Anyone knowing of such an act during 1971, is urged to submit a nomination for this important award.

Nominations should include a narrative of the heroic incident, giving full details. It should include the names of all persons involved. If available, newspaper clippings and pictures should accompany the nomination. The award recipient will be chosen by a panel of judges, based on the material submitted.

Deadline for entries is March 1, 1972. They should be mailed to: Rural Heroism Award Committee, Texas Farm and Ranch Safety Council, P.O. Box 489,

Waco, Texas 76703.

The 1971 recipient of the Rural Heroism Award was Mrs. Martha Cook, a Rising Star, Texas farm wife who saved her mother-in-law from an attack by vicious sows in a barn yard.

News of Our SERVICEMEN

Gary Shankles

Ft. Lee, Va. Gary D. Shankles, son of Mr. and Mrs. Lawrence Shankles, Route 2, Muleshoe, recently completed the defense advanced procurement management course at the U. S. Army Logistics Management Center, Ft. Lee, Va.

The three-week course provides training for officer and civilian personnel in the management aspects of the organization and operation of Department of Defense procurement agencies.

Shankles is a contract specialist with the defense supply service at the Pentagon, Washington, D. C.

He and his wife, Patsy, live at 323 Valley Lane, Falls Church, Va.

Louis Aguilar

SAN ANTONIO--Airman Louis Aguilar Jr., son of Mr. and Mrs. Louis Aguilar of 412 E. Seventh, Littlefield, Tex., has received his first U.S. Air Force duty assignment after completing basic training at the Air Training Command's Lackland AFB, Tex. The airman has been assigned to a unit of the Strategic Air Command at Minot AFB, N.D., for training and duty in the supply field. Airman Aguilar attended Littlefield High School.

George Mahon To Dedicate New Hospital

U.S. Rep. George Mahon of Lubbock will dedicate the new \$1.5 million, 50-bed Terry Memorial Hospital at Brownfield January 15.

Dedication ceremonies will get underway at 4:40 p.m. The subject of Mahon's talk will be the advancement of education in his district with an emphasis on the medical school at Texas Tech and a possible role of the new hospital in the university program.

A reception for the congressman and Mrs. Mahon will begin at 2:30 p.m. in the Brownfield Chamber of Commerce building.

Funds for the hospital came from a \$550,000 bond issue, a matching Hill-Burton grant and \$219,000 in hospital cash reserves.

The bond issue was defeated in 1967 and 1968 but won approval from voters in May of 1969. The hospital was occupied in September.

Hardy Appointed Distributor

For AKCO Inc.

Don Hardy of Floydada, famous custom builder of race cars and racing equipment, has been appointed regional distributor for AKCO, Inc., makers of fiberglass accessories for pickups.

Announcement of the appointment of Don Hardy Race Cars and Equipment, 202 West Missouri Street, Floydada, as ADCC's representative was made in Dallas by Jack Manry, national marketing director for the firm.

Migrant workers worst-housed group in nation.

NOTICE

Since I have moved from Lud Taylors Barber Shop, I invite

all my friends and customers to see me at the

Imperial Barber Shop

next block south. MACK REED

Services Held For Kay Pack

Mrs. Kay Darlene Pack, 24, the former Kay Bush died Sunday in Methodist Hospital following a 10 day illness. She is a former resident of the area.

Funeral services were in Rising Star, Texas with burial in May Cemetery. Survivors include her husband Ray, one daughter, Tammy Denise, her parents, Mr. and Mrs. D.E. Bush of Friona, one sister, Marnita Bush of Friona and two brothers, Paul and Mac, both of Friona.

CAR SERVICE

MID-WINTER CAR-CARE CHECK-UP

The car you drive is only as dependable as the service that it gets. We pride ourselves on the fine care we give every car we examine for winter road preparedness.

Plains AUTO PARTS
P. O. Box 586
MULESHOE, TEXAS
79347

South Main
MULESHOE
Phone 272-4576

JANUARY

Stock Up Sale

Freezer Foods Sale STOCK UP NOW

| | |
|---|-----------|
| Banquet Family Size, Apple, Peach or Cherry | |
| FRUIT PIES | 3 for \$1 |
| 10 oz. pkg. Trophy Sliced | |
| STRAWBERRIES | 4 for \$1 |
| 24 Count Pkg. Keith's | |
| DINNER ROLLS | 3 for \$1 |
| 10 oz. Pkg. Keith's | |
| CUT CORN | 5 for \$1 |
| 10 oz. Pkg. Keith's | |
| LEAF SPINACH | 6 for \$1 |
| 10 oz. Pkg. Keith's | |
| GREEN PEAS | 5 for \$1 |
| 10 oz. Pkg. Keith's | |
| MIXED VEGETABLES | 5 for \$1 |
| 10 oz. Pkg. Keith's Chopped | |
| BROCCOLI | 4 for \$1 |
| 3 oz. Box Banquet, Chicken, Beef or Turkey | |
| POT PIES | 5 for \$1 |
| 12 oz. can Donald Duck | |
| ORANGE JUICE | 2 for 79¢ |
| 12 oz. Pkg. Banquet Beef | |
| ENCHILADA DINNERS | 2 for 79¢ |

SPINACH

HUNT'S #300 CAN



19¢

HORMEL'S ALL MEAT SKINLESS FRANKS 12 oz. pkg. 59¢



SWIFT'S PREMIUM PROTEN BEEF ARM ROAST lb. 79¢ OWEN'S COUNTRY STYLE, READY TO SERVE 1 lb. CHILI roll 79¢

BACON

GLOVER'S CHUCK WAGON THICK SLICED 2 lb. pkg. \$1.37

GUNN BROS. STAMPS DOUBLE EVERY WEDNESDAY



POTATOES

COLORADO WHITE 20 lb. bag 69¢

TEXAS SWEET & JUICY ORANGES lb. 10¢

TOMATOES

GOLDEN RIPE MEXICO SMALL RIPE lb. 25¢ BANANAS lb. 10¢



SUGAR

IMPERIAL PURE CANE



5 lb. bag 39¢ Limit One With \$5 Purchase or More

BUTTERMILK

BORDEN 1/2 Gal.



39¢

BLEACH

W.P. 1/2 Gal. 29¢

JIMMY DEAN'S PURE PORK

SAUSAGE

HORMEL'S LITTLE SIZZLERS LINK SAUSAGE 12 oz. pkg. 49¢

SWIFT'S PREMIUM PROTEN BEEF RANCH STEAK lb. 79¢

SWIFT'S PREMIUM PROTEN BEEF CLUB STEAK lb. 98¢

HOT 2 lb. bag \$1.65 MILD 1 lb. bag 85¢

| | |
|--------------------------------------|-----------|
| 1 lb. box Nabisco Premium | |
| CRACKERS | 39¢ |
| 6 Bottle Ctn, King Size Plus Deposit | |
| DR. PEPPER | 45¢ |
| #300 Can Ranch Style | |
| KIDNEY BEANS | 2 for 35¢ |
| 10 oz. pkg. American Beauty | |
| Macaroni or Spaghetti | 19¢ |
| 1 lb. Tin Richelleu All Grinds | |
| COFFEE | 79¢ |
| GLADIOLA INSTANT | |
| POTATO MIX 10¢ Pkg. | 3 for 25¢ |
| 3 lb. tin Mrs. Tucker's | |
| SHORTENING | 69¢ |
| 4 oz. Box Dream Whip | |
| DESSERT TOPPING MIX | 45¢ |
| 4 Roll Pkg. Charmin | |
| BATHROOM TISSUE | 49¢ |
| Mars Fun Size Pkg. | |
| CANDY BARS | 75¢ |
| Giant Size Box | |
| BREEZE DETERGENT | 75¢ |
| 1 lb. Tub Shedd's Churngold Soft | |
| MARGARINE | 39¢ |
| #303 Can Libby's Cut | |
| BEETS | 15¢ |
| 2 3/4 oz. Box Lipton's | |
| ONION SOUP MIX | 39¢ |
| #303 Can White Swan Cut | |
| GREEN BEANS | 4 for \$1 |

White's CASHWAY

We Reserve The Right To Limit Quantities

Listen to MULETRAIN over KMUL 10:15 a.m. Sponsored by WHITE'S CASHWAY