



THE MULESHOE JOURNAL

Dedicated to the progress and development of the great Muleshoe country

Weather

	HIGH	LOW
Oct. 31	60	29
Nov. 1	68	29
Nov. 2	64	40
Nov. 3	68	29
Moisture for the year	16.18	

VOL. 49 NO. 44

12 PAGES

Published Every Thursday at Muleshoe, Bailey County, Texas - 79347

10 CENTS

THURSDAY, NOVEMBER 4, 1971

County Records First Freeze Sunday

★ ★ ★ Dog Poisonings Upset Citizens ★ ★ ★ Damage To Cotton Reported As Minor

Four Dogs Poisoned Halloween In City

Several concerned citizens of Muleshoe reported the poisoning of dogs in the city Saturday afternoon. The poisonings were reported at about the same time children started going on trick or treat rounds in the city and there was some concern for a while that small trick or treaters would get hold of some of the poison.

Dr. Jerry Gleason, who was called to treat three of the stricken dogs, reported that all were poisoned with strychnine.

One of the dogs who was sickened with the poison, but was able to be saved, was following a group of kids around while they were trick or treating. When they all returned to their home, the dog fell over with the poisoning. Many people in the city were alarmed because if the dog picked up the poison while with the kids then they were not far from the poison.

The dog that was killed by the poisoning was only out of yard for a few minutes and then stayed around the house, went into convulsions and died at about 2:30 in the afternoon.

Several concerned citizens of the city have stated that they are prepared to prosecute when the guilty party is found. A section in the penal code states that a \$200 fine can be given to anyone found guilty of intentionally poisoning a dog. What concerned most of the citizens even more than the poisoning of the dogs was that if a child had gotten hold of the same poison it would have been murder on the part of the "trick or treaters".

Dr. Gleason reported to the Muleshoe Journal that strychnine can only be bought by signing for it and day to a major position on the Texas Baptist board during the

Bulletin

Two Muleshoe men, Jimmy Dale Black and W.B. Harlan, were listed in critical condition in West Plains Memorial Hospital at press time Wednesday morning following a two vehicle wreck Tuesday afternoon around 3:30 p.m. west of Muleshoe.

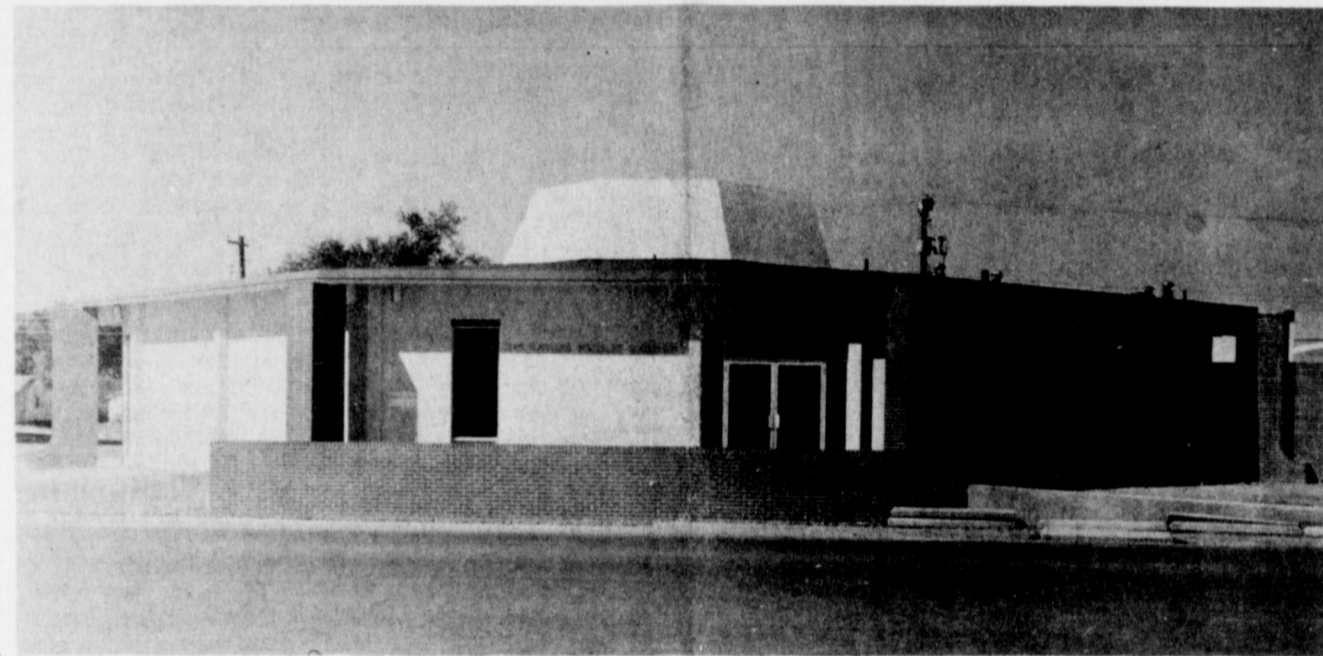
around muleshoe with the journal staff

A surprise birthday party was given Mrs. Ted Millsap Sunday in the home of Pearl Cox. Other guests were Mr. and Mrs. Jake Chastain, Lubbock, and Thelma Loux, Muleshoe. Special guests along with Mrs. Millsap were her husband and daughter, Debbie.

Douglas C. Dubose, pastor of First Baptist Church, Muleshoe, was elected here Thursday to a major position on the Texas Baptist board during the

Cont'n on Page 3, Col. 5

Cont'n on Page 3, Col. 3



NEW MULESHOE LIBRARY . . . The new Muleshoe Area Public Library is nearing completion at the corner of Avenue D and Second Street. The Muleshoe City Council, in a regular meeting Tuesday morning, approved the final payment on the

building. Librarian Anne Camp reports that the old library is now closed while preparations are being made to move into the new building.

City Council Approves New Library Building

The Muleshoe City Council met in regular session Tuesday morning at 8:30 a.m. in the city hall with all members

BAC Meets, Discusses Fund Raising Show

The Business Activities Committee of the Muleshoe Chamber of Commerce met in regular session Tuesday morning at 10 a.m. in the community room of the Muleshoe State Bank.

Bob Stovall, chairman, reported on the candy sale which will be held during intermission of both shows and on the prizes which will be given away in the candy.

Approximately 15 members were present at the monthly meeting.

present.

The final payment for the new Muleshoe Area Public Library now nearing completion was approved in the amount of \$22,859 to Jerry Galley Construction.

The total cost of the library building was \$110,572. Of this amount, \$50,000 was received from the federal government through the state. This is the maximum amount of dollar participation for a library of this size.

The city also passed an ordinance authorizing the issuance of water and sewer bonds in the amount of \$50,000. The total cost of the city's new sewerage plant is estimated to be approximately \$200,000. The city, state and federal government is expected to participate in the sewerage plant and the government portion will be \$110,000.

Present at the meeting was

Joe Smith of First Southwest Company of Lubbock.

Also present at the meeting was Clinton Kennedy, head of the local Federal Housing Administration. He explained that he was present to explain several programs available to the public through FHA.

One of the objectives is to provide housing for rural areas with a population up to 10,000. He explained that the FHA has several housing programs, one of which is an individual housing loan of which approximately eight have been started in Muleshoe. They have issued commitments on six.

Another program is a rural rental housing program for apartments. Application has now been made for an apartment building with 12 units.

Another program is the labor housing program to provide housing for farm workers. A 50 per cent grant and 50 per

cent loan at 5 percent was available. It was discussed that for labor housing construction this type would not pay its way. Congress will allow up to a 90 per cent grant and 10 per cent loan at one per cent interest. A project of this nature,

Cont. on page 3, col. 1

Ernest Perez won the weekly football contest this week only missing one game, New Mexico-Arizona, and being eight points away from the actual tie breaker score.

J.E. McVicker came in a close second missing only one game, New Mexico State and Idaho, and being off 14 points on the tie breaker.

Upping his total points to eight, Gary King again won third place, his second time, by missing only one game, Houston and Florida State. He missed the actual tie breaker score by 16

Cont. on Page 3, Col. 4

Ernest Perez Takes Top Spot In Contest

Ernest Perez Takes Top Spot In Contest

Ernest Perez Takes Top Spot In Contest

Ernest Perez Takes Top Spot In Contest

Ernest Perez Takes Top Spot In Contest

Ernest Perez Takes Top Spot In Contest

Ernest Perez Takes Top Spot In Contest

Ernest Perez Takes Top Spot In Contest

Ernest Perez Takes Top Spot In Contest

Ernest Perez Takes Top Spot In Contest

Ernest Perez Takes Top Spot In Contest

Ernest Perez Takes Top Spot In Contest

Ernest Perez Takes Top Spot In Contest

Ernest Perez Takes Top Spot In Contest

Ernest Perez Takes Top Spot In Contest

Ernest Perez Takes Top Spot In Contest

Ernest Perez Takes Top Spot In Contest

Ernest Perez Takes Top Spot In Contest

Ernest Perez Takes Top Spot In Contest

Ernest Perez Takes Top Spot In Contest

Ernest Perez Takes Top Spot In Contest

Ernest Perez Takes Top Spot In Contest

Ernest Perez Takes Top Spot In Contest

Ernest Perez Takes Top Spot In Contest

Ernest Perez Takes Top Spot In Contest

Ernest Perez Takes Top Spot In Contest

Ernest Perez Takes Top Spot In Contest

Ernest Perez Takes Top Spot In Contest

Ernest Perez Takes Top Spot In Contest

Ernest Perez Takes Top Spot In Contest

Ernest Perez Takes Top Spot In Contest

Ernest Perez Takes Top Spot In Contest

Ernest Perez Takes Top Spot In Contest

Ernest Perez Takes Top Spot In Contest

Ernest Perez Takes Top Spot In Contest

Ernest Perez Takes Top Spot In Contest

Ernest Perez Takes Top Spot In Contest

Ernest Perez Takes Top Spot In Contest

Ernest Perez Takes Top Spot In Contest

Ernest Perez Takes Top Spot In Contest

Ernest Perez Takes Top Spot In Contest

Ernest Perez Takes Top Spot In Contest

Ernest Perez Takes Top Spot In Contest

Ernest Perez Takes Top Spot In Contest

Ernest Perez Takes Top Spot In Contest

Ernest Perez Takes Top Spot In Contest

Ernest Perez Takes Top Spot In Contest

Ernest Perez Takes Top Spot In Contest

Ernest Perez Takes Top Spot In Contest

Ernest Perez Takes Top Spot In Contest

Ernest Perez Takes Top Spot In Contest

Ernest Perez Takes Top Spot In Contest

Ernest Perez Takes Top Spot In Contest

Ernest Perez Takes Top Spot In Contest

Ernest Perez Takes Top Spot In Contest

Ernest Perez Takes Top Spot In Contest

Ernest Perez Takes Top Spot In Contest

Ernest Perez Takes Top Spot In Contest

Ernest Perez Takes Top Spot In Contest

Ernest Perez Takes Top Spot In Contest

Ernest Perez Takes Top Spot In Contest



Jeannie C. Riley To Appear Monday

The popular country and western singer, Jeannie C. Riley, will be making her first appearance in Muleshoe Monday night, November 8, with two performances at the Muleshoe High School auditorium. The first performance will be at 7 p.m. followed by another at 9 p.m.

This is the first time the Business Activities Committee has sponsored a professional fund raising show, as for the past four years, they have sponsored local talent shows.

Miss Riley's appearance will be a rare treat for people in the Muleshoe area since most of the time they have to travel to Lubbock or Amarillo to see a show of this quality.

The junior class at Muleshoe High School is in charge of the ticket sales and will receive a percentage of the profits from the show. They have conducted several door-to-door campaigns in surrounding towns and will have one in Muleshoe on Thursday night, November 4. Tickets can also be purchased from any member of the BAC, at the local Chamber of Commerce, or from several participating businesses. Mail order tickets will be filled through check and money or

der. Prices are \$2.50 for general admission in advance; \$4 for reserve seats; and general admission at the door will be \$3.00. Mail order tickets have already been received from many surrounding towns.

The Junior Class will use their proceeds for the hosting of their annual Junior-Senior Banquet at Muleshoe High School this spring.

The BAC uses their proceeds for the annual Christmas program including the huge tree erected by the Mule Memorial every year, Santa and his workshop, the parade, the manager scene, and annual Fourth of July Celebration.

Also, during intermission of both performances a candy sale will be conducted with prizes donated by local businesses being in many of the bags of candy. Local merchants donating prizes as of now are: Gibson's Discount Center, camera and lady shaver; Sam Fox, Texaco truck; Mohawk Auto Parts, ventilated seat cushion; Interested Businessman, \$5 gift certificate; International House, toy farm machinery; Chapman Supply, sprinkler; Fry and Cox Implement, Anti-Freeze and toy tractors; Wellborn Beauty Shop,

one hair cut, one shampoo and set, one \$15 permanent; Johnson Furniture, furniture polish; Jerry's Standard Chevron Station.

Cont. on page 3, col. 1

Jaycees Donate Potatoes To Girlstown USA

Milton Hill of Girlstown, USA was in Muleshoe Monday afternoon to pick up a load of potatoes donated to Girlstown by the Muleshoe Jaycees.

Bruce Pharr gave the potatoes to the Jaycees and a half of them were taken last week to the orphanage at Portales by Sam Bradley. The rest were picked up by the Jaycees who contacted Marshall Cooper at Girlstown, Texas. Sesame donated the sacks for the potatoes.

The Muleshoe Jaycees donate monthly to Girlstown, USA and last year, they held a radio day with all proceeds going to Girlstown.

Helping Hill load the potatoes Monday afternoon were Jeff Smith, Clarence Christian, Duane Seay and Curtis Walker.



JAYCEES DONATE POTATOES . . . Muleshoe Jaycees donated a load of potatoes to Girlstown USA this week. Left to right are Curtis Walker, Duane Seay, Milton Hill of Girlstown, Clarence Christian and Jeff Smith. Hill was in town on Monday to pick up the potatoes, and extended an invitation to anyone interested to visit Girlstown, USA in Whiteface.

JEANNIE C. RILEY . . . This pert and talented singer will make two appearances in Muleshoe Monday evening at the Muleshoe High School auditorium. The two performances, sponsored by the Business Activities Committee, will be held at 7 p.m. and 8 p.m. Tickets are being sold by the junior class, BAC members, at the local Chamber of Commerce Office and by several participating merchants.

THE AREA'S NEWEST IRRIGATION SUPPLY IS IN OPERATION



PAT BRIGGS



JIM CLARY



JOHN HAMMOCK

MULESHOE REPRESENTATIVE



JAMES MACHA

HAVE JOINED THEIR TALENTS TO BRING TO YOU
THE FINEST IRRIGATION PRODUCTS AND KNOW-HOW
IN THE AREA.

WE OFFER TO YOU

* Pierce IRRIGATION SYSTEMS

* UNIVERSAL COUPLERS AND FITTING
AND

Complete Irrigation Distribution Service NO JOB Will Be Too
Large Or Too Small For Our New Modern Up-To-Date
Equipment.

IRRIGATION INC.

CIRCLE SPRINKLER SYSTEM Pierce WHEEL ROLL SPRINKLER SYSTEM
ALUMINUM PIPE PLASTIC PIPE CEMENT-ASBESTOS PIPE

Levelland Hiway at East 20th
(Across from Crescent House Restaurant)
LITTLEFIELD, TEXAS

Littlefield Office
Phone 385-6037

Night Littlefield
Phone 262-4135

Lubbock Office
Night Phone 792-2337

Day or Night
Muleshoe Phone 272-3109



Muleshoe Jr. High TV Personalities

This week, we are introducing the Junior High T.V. personalities, Journalism class—Getting Together; Mrs. Beddingfield and Mrs. Johnson, Alias Smith and Jones; sixth grade class, The Funny Side; The noon hour, The Good Life; Historical Society display, All in the Family; MJHS Band, Partridge Family; Patty Pena, Joe Namath; Choir class, Hee Haw; The 7th grade science class, The Interns; George C. Scott, Mr. Fox; Debbie Millsap, Carol Burnett; Trent Stewart and Donnann Harman, The Odd Couple; and The Junior High, The Wonderful World of Disney.

Also, seventh grade Math, Sesame Street; Mr. Ethridge, The President; The Mod Squad, Coaches Payton, Whittner and Hayes; The office help, The Bold Ones; The cheerleaders, The Jackson Five; Mr. and Mrs. Smith, The Smith Family; Tommy Horsley, Horton the Elephant; Jamie Small, Tijuana Smalls; Janice Posey, Virginia Slims; and Mrs. Johnson, Doris Day.

Others are, Attorneys at Law, Student Council; Girl's 8th grade

athletics, Petticoat Junction; Carry Sudduth, Earle Bird; The Ross Feagly, Gomer Pyle; Hair Westerners, Eddy Mardis, Gene Bear Bunch, Historical Society; Bray, and Trent Stewart; and

Here Comes the Brides, Patty Pena, Connie Griffin, and Laura Beene.

Top Ten Ratings Based On Power

"Letters . . . we get letters!" Yes, we do! And most of them relate to our ratings of our Top Twenty teams. To explain again: a team's rating is based on its power quotient, not on games won and lost. This is nothing more than the average of its past performance against all opposition. Each of the 640 football teams that we follow receives an adjusted rating each week. This explains why Michigan, for example, can be #1 one week, #3 another week, etc. Although they remain undefeated, their power quotient fluctuates from week to week.

But — the teams in our Top 20 are not all of the major undefeated teams, Calibre of competition prevents some, such as Dartmouth and Toledo, for example, from regularly establishing a strong enough power rating. However, 31-game winner Toledo is very close.

And, as in the case of Southern California, rated 14th, a team can be a three or four-time loser and still be ranked in our Top 20 — Alabama, Oklahoma, and Stanford. Based on their power quotient, they would have to rate as a favorite against 80 percent of the major teams in the country.

So . . . it's just our way of mathematically speculating on the relative power of college football teams. We can be as wrong as anyone (and we are — 25 percent of the time!), but we feel it's as reliable a system as any in determining winners and losers.

And it's time to look at winners and losers for this Saturday. The football spotlight focuses on one game in par-

ticular — Alabama, ranked #3, meets L.S.U., rated 15th. The Crimson Tide is 8 and 0, while L.S.U. is 6 and 2. Another loss for the Tigers who were caught napping last week against Mississippi will eliminate them from the Southeast Conference title race. This seems to be an Alabama year, so we're picking the Tide to beat L.S.U. The spread should be 10 points. Number One and Number Two,

Nebraska and Oklahoma, will remain undefeated as they approach their Thanksgiving Day finale. The Cornhuskers will subdue Iowa State by 29 points, and the Sooners will whip Missouri by 42.

Iowa will find things quite discouraging against 4th-ranked Michigan. The Wolverines will bury the Hawks by 39 points. Penn State, #5, is 38 points stronger than Maryland.

At Muleshoe Junior High

FBI

—FEEDRAG INFORMATION—

Student Council Sells Beat Tags

This year, Muleshoe Junior High Student Council is selling "beat tags" to back the Junior High Mules. On Thursday mornings and at activity period members of the student council make rounds of the rooms selling. This year, the beat tags sell for 15¢ as they are larger and more colorful. So, don't forget, buy a beat tag.

Mule's Injured Players Return

During the Mule-Levelland game Thursday, the Mules A team starting quarterback and starting tackle were missing. Carey Sudduth, the starting quarterback had pains in his side, Joe Bell, the tackle had a broken thumb.

Both players have recovered and are going to play in the Yucca game.

A Team Loses To Yucca

The Muleshoe eighth grade A team lost to a tough Yucca team, 32 to 0. Yucca was, and still is, undefeated. Muleshoe's offense was unable to sustain a drive, and their defense lacked the size and speed to stop Yucca's offense.

The B team won their game 16 to 0. Reuben Gonzales made two touchdowns and Gene Bray and Trent Stewart added the extra points.

Dissection Time

Well, it's dissection" time again at MJHS. But it's different this time. This time the students are getting into pairs, each pair has a frog to dissect. One person dissects while the other does one of four things: faints, gets sick, goes into shock, or wants to help dissect! This is the first year that this has been done. The other classes have dissected before but not in pairs, only by classes. Most of the seventh grades are looking forward to dissecting, but a few turn pale at the thought of it!

MHS Holds Open House

Monday, October 25 was Open House for MHS in participation of American Education Week. There were approximately 250 parents registered. The parents visited with their student's teachers.

Several students for FTA, Art Club and Speech were on hand raising money to support their candidates for the Halloween queen contest.

ON UNFILLED JOBS

An Associated Press survey shows that many blue-collar and other jobs requiring a broad range of technical skills are going begging. Programs in technical and vocational schools are designed to prepare students for immediate employment in specialized positions.

The Harmon Football Forecast

- | | | | |
|--------------|---------------|-----------------|------------------|
| 1-NEBRASKA | 6-GEORGIA | 11-STANFORD | 16-COLORADO |
| 2-OKLAHOMA | 7-AUBURN | 12-WASHINGTON | 17-ARIZONA STATE |
| 3-ALABAMA | 8-OHIO STATE | 13-ARKANSAS | 18-TENNESSEE |
| 4-MICHIGAN | 9-TEXAS | 14-SOUTHERN CAL | 19-HOUSTON |
| 5-PENN STATE | 10-NOTRE DAME | 15-L.S.U. | 20-MISSISSIPPI |

Saturday, Nov. 6—Major Colleges

Alabama	27	L.S.U.	17	Albright	23	Lebanon Valley	20
Arizona State	31	Birmingham Young	15	Alfred	40	Hamilton	0
Arkansas	28	Rice	7	Amherst	27	Trinity	15
Army	31	Rutgers	7	Bowdoin	21	Tufts	20
Auburn	34	Mississippi State	7	Bridgport	31	Glassboro	0
Boston College	23	Syracuse	20	Brookport	22	Curry	6
Bowling Green	28	Arlington	26	C.W. Post	26	Lehigh	13
Cincinnati	27	North Texas	15	Central Connecticut	20	American Intern'l	17
Colgate	20	Bucknell	10	Clarion	30	Shippensburg	7
Colorado	24	Kansas	6	Delaware	27	Delaware	6
Colorado State	22	Wichita	15	Delaware Valley	21	Lycoming	7
Cornell	31	Brown	14	Hillsdale	22	Indiana U.	21
Dartmouth	24	Columbia	12	Hobart	15	Drexel Tech	14
Dayton	23	Xavier	17	Maine	20	Vermont	13
Duke	21	West Virginia	20	Middlebury	24	Union	12
East Carolina	30	Davidson	7	Montclair	30	Jersey City	0
Georgia	35	Florida	7	New Hampshire	28	Springfield	6
Georgia Tech	28	Navy	7	Northeastern	21	Cortland	7
Holy Cross	22	Massachusetts	14	Penn Military	27	Muhlenberg	13
Idaho	24	Memphis State	14	Sigourney Rock	21	Lock Haven	10
Illinois	21	Indiana	8	Southern Connecticut	24	Adelphi	7
Illinois State	17	Marshall	14	Temple	35	Rhode Island	0
Louisville	21	Tulsa	12	Upsala	21	Central	13
**Miami, Fla.	30	North Carolina State	7	West Chester	45	Mansfield	6
Michigan	45	Iowa	6	Williams	27	Westleyan	6
Mississippi	28	Tampa	14	Worcester Tech	24	Norwich	13
Nebraska	35	Iowa State	6				
New Mexico	24	Utah	21				
New Mexico State	20	West Texas	15				
North Carolina	24	Clemson	17				
Northwestern	20	Minnesota	17				
Notre Dame	31	Pittsburgh	6				
Ohio State	42	Michigan State	20				
Oklahoma	49	Missouri	7				
Oklahoma State	17	Kansas State	7				
Oregon	27	Air Force	24				
Oregon State	26	Arizona	14				
Pacific	22	Hawaii	17				
Penn State	43	Maryland	7				
Princeton	27	Harvard	13				
Purdue	21	Wisconsin	17				
Richmond	25	The Citadel	22				
Southern State	26	San Jose State	20				
Southern Cal	33	Washington State	17				
S.M.U.	22	Texas A & M	20				
Southern Mississippi	33	V.M.I.	14				
Stanford	29	U.C.L.A.	14				
Tennessee	21	South Carolina	10				
Texas	40	Baylor	13				
Texas Tech	27	T.C.U.	20				
Toledo	34	Northern Illinois	12				
Tulane	24	Ohio U.	13				
Utah State	25	Wyoming	17				
Vanderbilt	24	Kentucky	23				
Villanova	23	Boston U.	6				
V.P.I.	25	Virginia	13				
Wake Forest	21	William & Mary	14				
Washington	30	California	13				
Western Michigan	21	Miami (Ohio)	17				
Yale	22	Pennsylvania	17				

Other Games—East

Adrian	23	Hope	14
Akron	21	Indiana State	7
Ashland	32	Waynesburg	0
Baldwin-Wallace	38	Capital	0
Bali State	22	Wittenberg	21
Carroll	17	Wheaton	6
Central Methodist	17	College of Emporia	10
Central Michigan	21	SE Oklahoma	10
Central Oklahoma	27	Lawrence	13
Cornell (Iowa)	23	Peru	0
Cuiver-Stockton	19	Anderson	13
Defiance	22	Drake	13
E. Central Oklahoma	26	Langston	6
Eureka	20	Illinois College	19
Franklin	19	Manchester	7
Hamline	26	St. Thomas	13
Kalamazoo	22	Albion	12
Kenyon	20	Hiram	16
Lincoln	25	Central Missouri	0
Michigan Tech	28	Morris	6
Millikin	20	Augustana, Ill.	17
Missouri Valley	20	Missouri	7
Mt. Union	26	DePauw	7
Nebraska Wesleyan	21	Hastings	20
NE Missouri	21	SW Missouri	17
Northern Michigan	32	St. Norbert	7
Northwood	27	Bluffton	0
Ohio Wesleyan	45	Ohio Wesleyan	21
Pittsburg	27	Omaha	21
Ripon	24	Coe	7
St. John's	20	Macalester	16
St. Joseph's	21	Evansville	16
SE Missouri	24	NW Missouri	15
SE Oklahoma	29	NW Oklahoma	12
Valparaiso	23	Butler	22
Wabash	14	Sewanee	7
Washington U.	24	Emporia State	16
Wayne, Mich.	22	U.S.U.	27
Western Illinois	31	Milwaukee	6
William Jewell	23	Baker	7

Other Games—Midwest

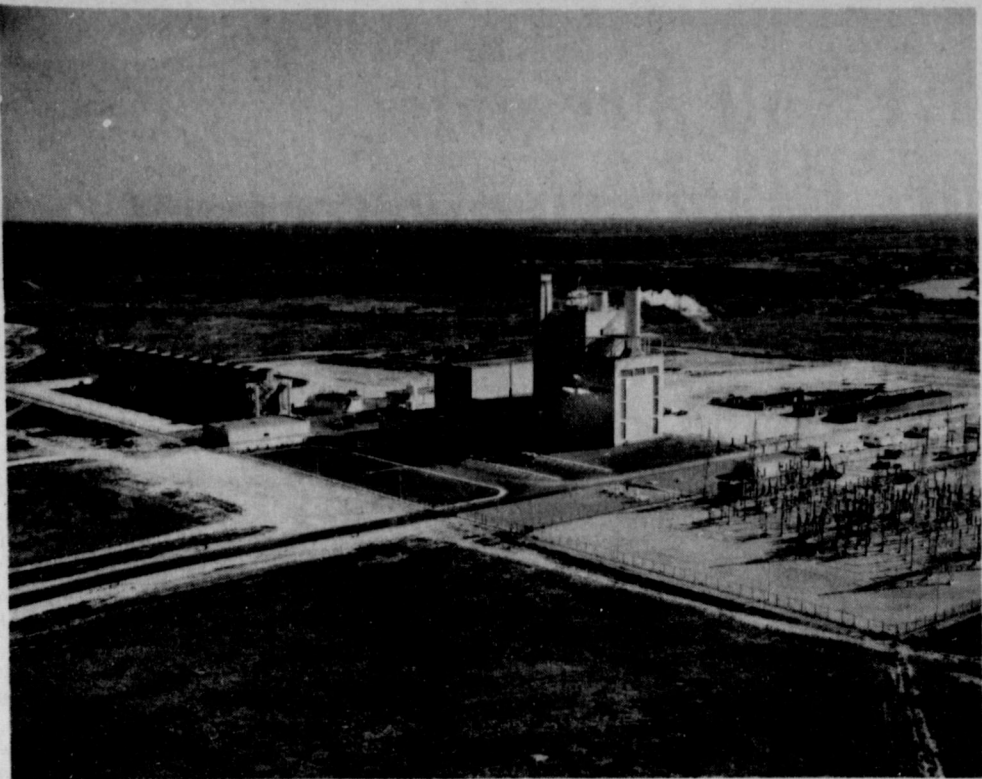
Appalachian	24	Florence	6
Arkansas State	14	SW Louisiana	6
Arkansas Tech	21	Ouachita	12
Austin Peay	17	Murray	15
Carson-Newman	28	Maryville	10
East Texas	27	Sul Ross	9
Eastern Michigan	21	NE Louisiana	10
Furman	29	Concord	7
Glenville	30	Towson	7
Hampden-Sydney	31	Harding	21
Henderson	20	Delta State	20
Livingston	22	Chattanooga	17
Louisiana Tech	23	Troy	4
Martin	20	East Tennessee	6
McNeese	22	Elon	14
Morehead	16	Gardner-Webb	12
Newberry	28	Bridgewater	13
Presbyterian	19	Mississippi College	16
Randolph-Macon	37	William	14
Samford	23	Howard Payne	21
Southern State	20	Ark. at Monticello	15
SW Texas	21	Eastern Kentucky	14
State College Ark.	23	Sam Houston	13
Tennessee Tech	21	Prairie View	22
Texas A & I	20	Lamar	13
Texas Lutheran	23	Southwestern, Tenn.	18
Trinity	21	Fairmont	10
Washington & Lee	22	West Va. State	10
West Liberty	22	Middle Tennessee	19
Western Carolina	30	Catawba	17
Western Kentucky	24		

Other Games—South and Southwest

Boise	24	Northern Arizona	23
Cal Lutheran	26	Sonoma	7
Cal Poly (S.L.O.)	22	Nevada (Las Vegas)	20
Central Washington	23	Southern Oregon	13
Chico State	28	San Francisco State	0
Colorado College	20	Kansas Wesleyan	16
Colorado Western	17	Adams State	7
Eastern New Mexico	30	Rolla	17
Fullerton	33	Riverside	0
Hayward	21	Davis	14
Humboldt	26	Sacramento	20
Long Beach	24	Fresno State	21
Nevada (Reno)	30	San Francisco U.	7
Northern Colorado	28	Northern Colorado	12
Pacific Lutheran	25	Lewis & Clark	13
Puget Sound	14	Simon Fraser	7
Redlands	17	Occidental	7
San Fernando	23	Cal Poly (Pomona)	20
Santa Barbara	30	Los Angeles	6
Southern Utah	30	Western New Mexico	10
Western Washington	22	Oregon Tech	6
Whittier	22	Pomona	6

Presented by "Sports Enthusiast's" Firms.

<h3>JAMES GLAZE COMPANY</h3> <p>General Insurance Loans- Real Estate</p>	<h3>TEXAS SESAME</h3> <p>DIVISION OF PARIS MILLING CO.</p> <p>Bill Wimberly, Mgr.</p>
--	---



NEW PLANT . . . An aerial view of Southwest Public Service Company's Jones Station, southeast of Lubbock. Named for Dr. Clifford B. Jones, president-emeritus of Texas Tech and a Southwest director for more than a quarter-century, the new plant will be dedicated at 11 a.m. on Saturday, November 6. It will be open to visitors from 11 until 7 on Saturday and from 1 until 7 on Sunday, November 7.

Riley...

cont. from page 1

tion, wash and grease job; L and H Grocery, one Timex watch gift certificate; Redwine's Gulf, one wash and grease job; Piggy Wiggy, one five pound ham; Leal's, two Mexican dinners; and Calvert's Grocery, two \$5 gift certificates.

Also, Bailey County Electric, \$10.00 gift certificate; Cobb's, blanket and make-up mirror; Plains Auto Store, automobile seat cover; Lindsey's Jewelers, Supreme stainless flatware; Main Street Beauty Salon, lotion and cologne set and bonnet; St. Clair's Department Store, Samsonite suitcase; C.R. Anthony's, Samsonite suitcase; First Street Conoco, fire extinguishers/ Bitner Tire Company, Oil Filter; Sanitary Barber Shop, Vitalis; Damron's, Camera; Western Drug Store, filled travel case; Allison Shoe Store, purse; Heathington Lumber Company, gallon paint; Williams Brothers Office Supply, stationary; Reihl Car Wash, five wash jobs certificate; Baker's Maytag Laundry, two loads of dry cleaning certificate and XIT, \$5.00 meal certificate.

Others are, Central Texaco, lube job certificate; Wagon's Grocery, \$5.00 grocery certificate; West 6th Texaco, lube ficate; West 6th Texaco (Pedroza), \$5.00 gasoline certificate; Phillips 66, ten gallons gasoline; Ruth's Drive In, six hamburgers; John's Custom Mill, \$5.00 merchandise certificate; Crossroads Phillips 66 (Edelmon), one gallon antifreeze; Muleshoe Machine and Welding, \$5.00 repairs certificate; Shook Tire Company, four electronic-wheel balance certificate; Corral Restaurant, \$2.50 Rib-Eye steak certificate; Muleshoe Elevator, \$5.00 "meals at Leal's" certificate; Mack's Fina, 45 sets of eight glasses; Lambert Cleaners, \$2.50 cleaning certificate; Pioneer Natural Gas, \$10.00 cash; Spudnut Shop, one dozen spudnuts certificate; Dinner Bell Restaurant, merchant's dinner steak certificate; Ready-Mix Concrete, one yard concrete certificate; and Interested Merchant and Businessman, \$10.00 cash.

BAC chairman Bob Stovall announced that Jeannie C. Riley will be accompanied by her four piece band, "Harper Valley Express" who accompany her on all of her many re-

Council...

cont. from page 1

he explained, could be financed by the public, government, farmers organizations, organization of farm workers, but not individuals.

The city councilmen had Kennedy explain various programs for refurbishing old homes, loans to fix up old houses and general FHA activities.

**** This may sound old-fashioned but it still pays to buy at home.

MULESHOE JOURNAL
Established February 23, 1924
Published by Muleshoe Publishing Co., Inc.
Every Thursday at 304 W. Second Box 449
Muleshoe, Texas, 79347
Second class postage paid at Muleshoe, Texas 79347

TEXAS PRESS ASSOCIATION
Member 1971

L.B. Hall, President
Jessica P. Hall, Sec.-Treas.
L.B. Hall, Managing Editor
Katie Foster, Society
Elizabeth Barnett, Advertising
Polly Ottwell, Office Manager

SUBSCRIPTIONS:
Zone 1-Bailey-Parmer-Cochran-Lamb counties: \$4.00 per year, \$4.50 per year by carrier. With Sunday Bailey County Journal, both papers: \$5.50 per year, \$6.00 per year by carrier.
Zone 11-Out-of-Territory: \$4.50 per year; with Sunday Bailey County Journal, both papers, \$6.25 per year.
Monthly, by carrier-\$5; single copies-10¢
Advertising rate card on application

New Regulations To Change Freeze Rules

The Cost of Living Council announced today that the regulations which made the 90-day program a "freeze" will be modified to make the system more effective. George E. Hastings, Regional Director of the Office of Emergency Preparedness in Dallas, stated that there will be no automatic ending on November 13 of present freeze rules on wages, prices, and rents. They will be changed only by the introduction of new regulations, thus preventing a gap that would occur if present rules were allowed to end before new ones had been instituted.

Hastings noted that, as stated in the President's Executive Order of October 15, the provisions of the Economic Stabilization Program which have been in force since August 15 will

continue until they are specifically modified by the Pay Board, Price Commission, or the Cost of Living Council. However, changes will occur only through explicit action taken by competent authority. It is anticipated that initial modifications to the freeze rules will be announced prior to November 13.

The October 15 Executive Order states, in part:

"Pending action under this Order, and except as otherwise provided in Section 202 of the Economic Stabilization Act of 1970, as amended, prices, rents, wages, and salaries are stabilized effective as of August 16,

Dogs...

cont. from page 1

that it is usually quite expensive. He stated that he has checked the poison directory of both drug stores in town, but could find no record of any recent purchases. He also said that the guilty party could have bought it in any of the surrounding towns.

Dr. Gleason concluded by saying "If these people who intentionally and maliciously poisoned these dogs could see the agonizing death that these dogs died with convulsions and actually suffocating, they would see a terrible, most inhumane way to die."

The four poisoned dogs were found in different parts of town, two in Richland Hills addition, one by West Plains Memorial Hospital and another was seen on Fifteenth Street.

Contest...

cont. from page 1

points. Again no one has accumulated more than 10 points in the contest this year.

Donald Roddam missed only one game, but was off on the tie breaker by 18 points, putting him out of the top three places.

Others missing only two games were Donnie McDonald, Mrs. Cecil Buhman, Alton Epling, Bob Nickels, Irene Splawn, Lula Maye Shanks, L.C. Roddam, Ricky King, Kim Smith, Howard Splawn, Mike Perez, Jr., Ruth Briscoe, Lee Pool, Ruth Malone, Earl Richards, C.O. LaRue, and Marilyn Engeling.

Muleshoe...

cont. from page 1

annual meeting of the 1.9 million-member Baptist General Convention of Texas in Houston. Rev. DuBose was elected to the 192-member Executive Board, which is comprised of laymen and ordained church leaders from across Texas and conducts the business of the BGCT between annual sessions.

**** Pfc. Dannie M. Parsons, USMC, is now stationed at the Naval Air Station in Memphis, Tennessee, and is working in the parts department of the Naval Air Technical Training Center.

Farm Economy Viewed In Texas

COLLEGE STATION, --The agricultural economy in Texas has undergone some major changes during the past decade. It's only fitting to reflect on some of these as preparations are in progress for the observance of Texas Food and Fiber Abundance Week, November 15-21, says Charles K. Baker, agricultural economist with Texas Agricultural Extension Service.

Agricultural producers in Texas as elsewhere are caught up in the cost-price squeeze, points out Baker. Production expenses rose 62 percent during the 1960's while realized gross farm income rose only 56 percent. Current operating expenses such as feed, breeding stock, seed, fertilizer, repairs, labor and operating capital accounted for 75 percent of the costs.

During the past five years, production costs have increased 26 percent to hold net income gains to 11.8 percent--about half of the five-year advance in inflation (21.6 percent)

Changes have also taken place with regard to farm credit, explains the economist. Farm debt has increased sharply since World War II and was one of the factors required to bring about great changes in Texas agriculture. There has been a marked shift from farm tenancy to part ownership of farms, a notable increase in the number of larger farms, and a sharp decline in small farms.

With these changes have come an increase in the needs for farm credit and an increase in farm debts. Farm mortgage

debt in Texas has risen from \$314 million in 1946 to \$2 billion in 1970. Non-real estate farm debt has also shown sharp increases, totaling \$1.24 billion in 1970 compared with \$216 million in 1950.

Farm and ranch assets continue to spiral upward and on January 1, 1971, totaled \$29.2 billion, an increase of almost four percent from a year earlier. Increase in value of real estate accounted for most of the gains.

Cub Scout Leader Course Scheduled

The third session of the Cub Scout Leader Training Course in the George White District will be held on Tuesday, November 9 at 7:30 p.m. at the First Presbyterian Church in Levelland, according to the district training chairman, Tommy Dunn.

Two sessions will be conducted at this time; one for Cubmasters, assistant cubmasters and pack committeemen on the subject of "Pack Management" and the other for den mothers and assistants on the subject of "The Den Meeting".

The instructors for the evening will be Program Director Warren Green and District Scout Executive Marc Wittenberg, both on the staff of the South Plains Council.

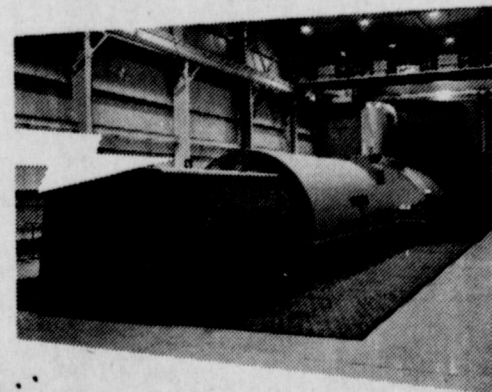
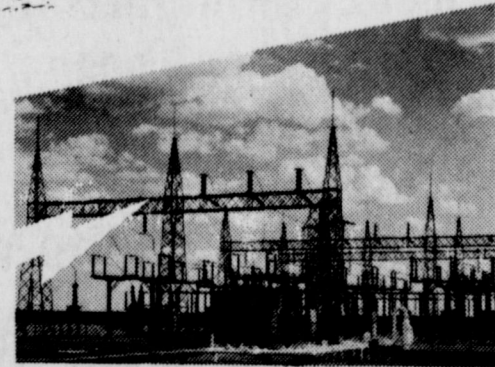
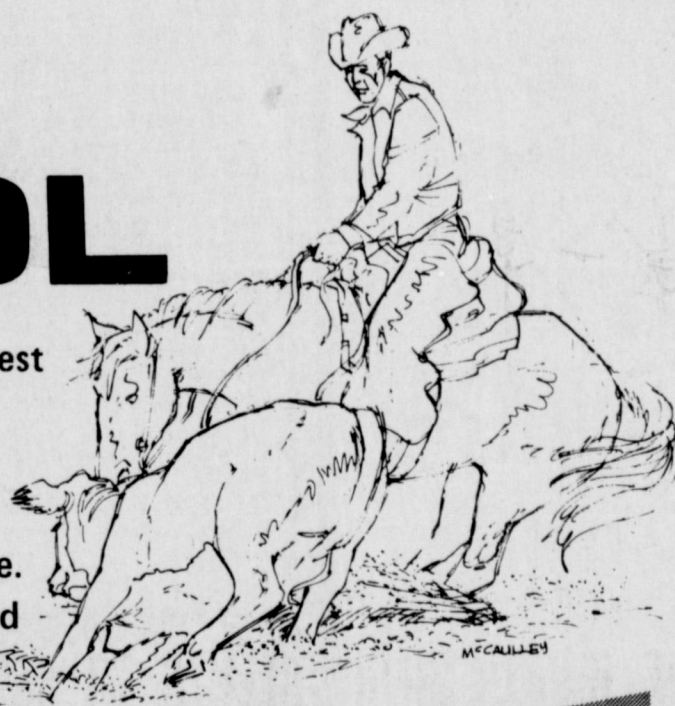
INSTANT CONTROL

Efficient, economical and controlled - that's the story on the largest electric generating unit on the High Plains.

That would be the first unit at Clifford B. Jones Station - Southwestern's new power plant southeast of Lubbock.

It will be open Saturday and Sunday and we hope that you'll come.

You'll see instant control - and a real powerhouse planned for your electrical future.



Don't miss the

OPEN HOUSE

Saturday, November 6 - 11 a. m.-7 p. m.

Sunday, November 7 - 1 p. m.-7 p. m.

Dedication Ceremony - Saturday, 11 a. m.

Jones Station is southeast of Lubbock on Farm Road 3020, just west of the Buffalo Springs Lake Road (FM835). Be sure to dress casually and comfortably for the plant tour and ladies should wear low-heeled shoes.

GOLDEN ANNIVERSARY

The ELECTRIC Company

1921-1971



Reception Hosted For Mr., Mrs. Horn

Mr. and Mrs. Andy Horn, Houston, were given a gift tea and reception on Saturday, October 30, in the home of Mr. and Mrs. Charles Lenau, Mrs. Horn is the former Sylvia Pool. Receiving guests with the couple honored were her parents, Mr. and Mrs. Lee Pool. Guests called between the hours of 4:30 and 7:30 in the evening.

At the guest book were two former classmates of Mrs. Horn; Mrs. Jerry Foust, Big Spring and Mrs. Joe Hughes, Farwell.

Centering the refreshment table, was a velvet runner topped by a pair of Bohemian glass lustres filled with a mixture of fall flowers. Hot apple cider was poured from a tilting silver teapot. Also served from silver appointments were finger sandwiches, pumpkin bread, orange - coconut balls and petits-fours. Mrs. J.K. Adams, Mrs. Jack Wood and Mrs. Mary Reed alternated at the serving table.

Hosting the courtesy, in addition to Mr. and Mrs. Lenau,



MR. AND MRS. ANDY HORN

Baptists Meet At Bovina

Approximately 250 young people and sponsors attended the district Llanos Altos Youth Association meeting Monday night at the First Baptist Church in Bovina.

Special guest speaker, Marge Caldwell, spoke on her experiences as counselor with the youth of Houston. Houston leads the nation in crimes committed by young people.

Special music was provided by Karen Hamilton and Charlotte Wedel, accompanied by Larry Shafer. All are from Muleshoe. Presiding were Gary Wood, youth pastor, Plainview, and Larry Shafer, president of the association.

Attendance records were broken this year, with Lazbuddie Baptist Church and First Baptist Church of Farwell winning attendance banners.

Mrs. Badrow Is Society Initiate

Mr. and Mrs. Jack Beddingfield were in Canyon Sunday to attend initiation ceremonies of Alpha Chi National College Scholarship Society at West Texas State University. One of the initiates was their daughter, Mrs. Alan Badrow. The society is composed of the upper ten percent of juniors and seniors who have attained high scholarship in overall classwork.

Mrs. Badrow is a senior business major. She is a member of Alpha Delta Pi Sorority and has served as secretary and service chairman. She is also a member of Crescents of Lambda Chi.

Mr. and Mrs. W.D. Moore, Muleshoe, also attended the ceremonies.



MRS. J.B. (HOPPY) JENNINGS

Mrs. Jennings Shower Honoree

Mrs. J.B. (Hoppy) Jennings, Jr. was honored at a baby shower Friday, October 29, at 3:30 p.m. The shower was held at the Lazbuddie Baptist Church in the fellowship hall.

On the serving table a pale yellow floral arrangement was used over an off-white and yellow lace cloth. Guests were served small iced cakes and hot spiced tea and coffee from silver and crystal appointments. Hostesses presented Mrs.

Jennings with a high chair and a baby book. Hostesses included Mrs. Errol Johnson, Mrs. Scotty Windham, Mrs. Gene Smith, Mrs. Gary Hicks, Mrs. John Agee, Mrs. Bud Brock, Mrs. Orville Burnett, Mrs. Bob Jones, Mrs. Dale Cain and Mrs. Ted Treider.

Many friends from the Lazbuddie community and Muleshoe called during the afternoon.

Dumas Holds Art Bazaar

The Moore County Arts Association extends a special invitation to everyone to attend their Eleventh Annual Art Bazaar; the festival will be in progress November 12, 13, 14 in the Community Building at 16th and Maddox, Dumas, Texas. The Bazaar will feature work by artists and craftsmen from throughout the Panhandle. Guest exhibitor this year will be Lloyd Cook, well known area artist. Delicious home-cooked food will be served during the Bazaar.

Getting someone else to do your work is the recipe for real "success."

Art Loft Presents Dr. Caballero Here

The Muleshoe Art Loft, 1021 American Blvd., will present Dr. Emilio Caballero at a reception Sunday, November 7 from 2 til 5 p.m. An exhibit of the recent works of the well-known artist will be on display.

WEEKLY RECIPE

Sarah Anne Sheridan

There're days in every homemaker's schedule that leave little time to prepare a meal of several dishes. This is a nourishing and attractive one dish dinner.

One Dish Dinner

3 or 4 onions sliced
3 lbs. ground lean beef
1 can mushroom soup
1 can whole corn
1 c diced celery
1 green pepper diced
1 c noodles
1 can condensed tomato soup
3 T crisco
grated cheese
salt and pepper

In a large skillet lightly brown onions in the crisco. Add ground beef and continue stirring until beef turns dark and is separated. Add mushroom soup, corn, celery and green pepper. Stir often and add a little water if necessary. Cover and simmer until done. Cook noodles in salted boiling water. Add to beef mixture and season. Pour into casserole, cover with condensed tomato soup and cover lightly with grated cheese. Return to oven long enough for mixture to bubble.

The meal is complete with a salad and bread.

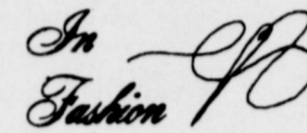


MELANIE BLACKWELL Miss Blackwell Party Honoree

Mr. and Mrs. John Blackwell honored their daughter, Melanie, with a party on her fifth birthday on Saturday, October 30. Guests arrived decked out in Halloween costumes for the event, which was held from 3:30 til 5 p.m.

Refreshments were served to Becky Mardis, Rebecca Barker, Tanya McCall, Wesley and Christie Dale, Brandye and Melissa Albro, Scotty and Kristie Spies, Fantonya Berryhill, Parish and Jimmie Lee. Also Anthony Sizemore, Mike Bynum, Jeremy and Jeff Combs, and Dondi Young, Mr. and Mrs. J.W. Blackwell, Amarillo, Melanie's grandparents were also in attendance.

On Sunday, her other grandparents, Mr. and Mrs. O'dell Brown, Amarillo, also came for a visit.



The short-waisted dress gives girls a longer look and for that reason short women, who like to appear taller than they are, favor the empire styles.



MRS. LARRY WAYNE TUCKER

Mrs. Tucker Honored At Tea

Mrs. Larry Wayne Tucker, the former Miss Connie Lee Pruitt was honored recently with a gift tea in the home of Mrs. Jim Shafer. Other hostesses were Mrs. S.M. Etheridge, Mrs.

Curtis Wellborn, Mrs. R.O. Gregory, Mrs. Raleigh Mason, Mrs. H.A. Douglass, Jr., Mrs. Bernis Camp, Mrs. Bennie Purcell, Mrs. Carl Bamert, Mrs. Bill Woodard, Mrs. J. Lewis Morris and Mrs. Roy Dyer. Also assisting with the hospitalities was Mrs. C.H. Long, Jr.

30 Years Ago

A.H. Wenner, residing a few miles north of Muleshoe, had the misfortune of receiving a painful injury to his thumb Saturday of last week when he attempted to put a chain on a potato machine. The end of his thumb was cut off when caught between a cog on the machine and the chain. He received treatment at the local clinic.

Mr. and Mrs. Joe Damron, and son, Sam, and daughters, Jane and Mrs. John Smith, attended funeral services at Duncan, Oklahoma for Mrs. Damron's mother, Mrs. L.A. Tidwell, who died October 10 at her home in Duncan.

Guests registered at a table covered by a white cloth centered with an arrangement of lavender mums. Completing the decor of the table was a memory plaque and a bride's registry, a gift from Mrs. Tucker's father.

The serving table was covered by a white cloth with lace trim. Highlighting the table was an arrangement of lavender mums and cosmos with silver baby's breath and purple tapers. Spiced tea, coffee, sand tarts and mixed nuts were served from a crystal and silver service.

Registering from out of town were guests from Meadow, Texas and Colvis, New Mexico.

SHUGART'S

"Basket Full of Photos"

1-5x7 SPECIAL
1-3x5
4-wallets
9-midgets
13-minatures
28 pictures for
\$3.49

PHOTO
HOURS
9 A.M. TO
CLOSING

NO
LIMIT

GET PICTURES MADE OF
GRANDPA, GRANDMA, DAD, MOM
AND ALL THE LITTLE ONES
AT THESE SAME LOW PRICES!

**SHUGART
PHOTOS**

Sat. Nov. 6
**JIM'S
Pay & Save**
Muleshoe

Gift Suggestions

**Human Hair
WIGLETS**

**Venicelon
WIGS**

"Expert Styling"

* Jewelry

- * Faberge, for men and women
- * Revlon, for men and women
- * L'Oreal Cosmetics
- * Coty Cosmetics
- * Penegen
- * Beaded & Metal Belts
- * Scarves
- * Handbags
- * Pennyrich Bras
- * Faberge Lace Bikini Panty Hose

"Lay-A-Way For Christmas"

**Main Street
Beauty Salon**

115 MAIN PHONE 272-3448

**HEALTH
AND
BEAUTY**

During the fall and winter months many parents hire baby sitters while they attend social functions. Some time ago the Accident Prevention Committee of the American Academy of Pediatrics issued a word of advice to parents and we think it bears repeating.

For Parents

1. Tell the baby sitter where you will be and leave the phone number.
2. Leave the sitter the phone number of the local police department and the children's doctor.
3. Leave exact instructions as to the care of the children.
4. Review with the baby sitter various escape routes in case of fire.

For Baby Sitter

1. General Instructions.
 - A. Remember that these parents have entrusted you with their most valuable and precious possession. Be sure that your actions justify this faith in you.
 - B. If the children awaken crying and do not feel feverish, tender, loving care will usually work.
 - C. If an infant, burping, changing or feeding may also be necessary.
2. Specific Instructions.
 - A. In case of illness or accident contact the parents immediately and if they're not available, call their doctor. If he's not available, call your own doctor.
 - B. In case of smoke or fire, get the children out of the house immediately.

World's finest
Color TV picture!

Fine-furniture styling!
Giant-screen 25" Chromacolor 100 picture!

The MARTORELL C4738
Mediterranean styling

Squared overhanging top and dramatically flared full-return base. Casters • Chromacolor 100 Picture Tube • Customized Tuning • 25" diag. Super-Screen Picture • Titan 100 Handcrafted Chassis • Super Gold Video Guard Tuner • Zenith AFC • Automatic Tint Guard Control • 5" Round Twin-Cone Speaker.

You really have to see it...to see it

new 1972 **ZENITH**
CHROMACOLOR 100

**GORDON WILSON
APPLIANCE**

202 Main Muleshoe Ph. 272-3138

COW POKES By Ace Reid

"Well, Jake, the question is—do we let her go and get fired or jist quit right now."

Muleshoe State Bank
Member FDIC



MR. AND MRS. A.P. (SHORTY) LAMBERT.

Lamberts Feted On Anniversary

Mr. and Mrs. A.P. (Shorty) Lambert will be honored on their fiftieth wedding anniversary with a reception Sunday, November 7. The courtesy will be held in the community room of the First National Bank from 2:30 until 5 p.m. Hosting the occasion will be the couple's four children and their families. The children are Mrs. F.L.

Rhoades and Mrs. N.J. Good-nough, Lubbock; Zane Lambert, Olympia, Washington and Leslie Lambert of Muleshoe.

The former Miss Alvie Faye Henry and Alfred Paul Lambert were married November 6, 1921 at Ravenna, Texas, and have resided in Muleshoe since 1941. The Lamberts own and operate Lambert Plumbing Company and are members of the First Baptist Church.

Grandchildren of the couple will serve at the reception.

Market Report

One aid to efficient food shopping is making the most of weekly best buys, reminds Gwendolyn Clayatt, Extension consumer marketing specialist.

When shopping the meat counter, look for very attractive pork prices. Loin cuts, including roasts, chops and one-half and one-fourth loins cut into chops, plus semi-boneless hams and bacon are all featured this week. Pork fanciers should enjoy delicious eating from the big variety, she says.

"Beef features are less numerous," Mrs. Clyatt reports. However, markets are featuring hind and fore-quarter cuts this week. Chuck roasts and steaks, round and beef liver should have moderate prices.

Fryer chicken prices are lower this week and are specialized in many markets. The whole bird is selling for a few pennies less per pound, Mrs. Clyatt reports. Egg prices are a bit lower now than a year ago. Grade A large eggs offer the best combination of quality and econ-

omy for your egg money.

In the vegetable section, the specialist says that prices on head lettuce are somewhat higher and will likely continue high for at least a couple of weeks. Cabbage, carrots, turnip greens, mustard, sweet potatoes, hard shell squash, salad tomatoes, potatoes and yellow onions are among the most economical vegetable choices.

Apples highlight most fruit produce counters. Texas grapefruit is also available, but in limited supply. Grapes, bananas, avocados, oranges and pears are good fruit choices, price-wise.

GOLDEN GLEAMS

Every man is best known to himself.

-John Clarke.

All our knowledge is ourselves to know.

-Alexander Pope.



WESLEY COMMUNITY CENTER CHOIR

Choir Featured At Sunday Meet

First United Methodist Church will have a fellowship dinner Sunday, November 7, at 6 p.m. in the fellowship hall.

Featured on the program will be the Wesley Community Center choir of Amarillo, which is sponsored by United Methodist Churches.

The center is a service which sponsors sewing and cooking classes, girl's and boy's clubs, baby care, kindergarten, pre-teen and teenage recreation programs and an employment agency. It has served over 1000 families in this area.

The dinner will be open to the public.

BEST OF PRESS

Jealousy

Girl, describing a newly engaged couple to a friend: "They're nice, except for her."

-Record, Columbia, S.C.

old in 1972.

The next meeting will be Friday, November 12. J.D. Jones will show films on the Holy Land. The meeting will be held at the home of Mr. R.O. Gregory.

The following members were present: Mrs. John Agee, Mrs. Walter Barthol, Mrs. Les Bruns, Mrs. Joe Costen, Mrs. John Farley, Mrs. George Johnson, Mrs. Barry Lewis, Mrs. Mervin Witterding, Mrs. Wilson Witherspoon and Mrs. R.F. Wright. Also Mrs. Gregory, Mrs. Johnson, Mrs. Jennings, Mrs. Neely, Mrs. Splawn and Mrs. LeVina Pitts.

Law For The Woman Is AAUW Program Topic In November

The Muleshoe Branch of American Association of University Women met Monday, November 1 at 7:30 in the country home of Mrs. John Gunter, Jr.

Mr. Robert Hooten was co-hostess and presided in the absence of the president, Mrs. Oscar Rudd.

Correspondence concerning the Fellowships Centennial for AAUW was read. The Association now awards 80 fellowships to women who are completing doctoral requirements, and the goal of the Centennial is to award 20 more fellowships during 1972-73.

Mrs. Neal Dillman, implementation chairman, pre-

sented a tape recording of Mrs. Esther Smith Van Soelen, a Clovis attorney. Her topic was "Law for the Woman."

Mrs. Van Soelen has practiced law for 20 years in Clovis. Since she was called to Federal Court in Roswell, she recorded her presentation and her husband brought it for the Branch meeting.

The hostesses served small sandwiches, pumpkin chiffon pie, tea and coffee to fifteen members; Miss Virginia Bowers, Mrs. Joe Costen, Mrs. Lena Hawkins, Mrs. Tom Jinks,

Mrs. Ed Johnson, Mrs. Kenneth Powell, Mrs. Jack Rennels, Mrs. Robert Sanders, Mrs. Eric Smith, Mrs. John Watson, Mrs. Mable Wolfe, Mrs. D.L. Thompson and Mrs. Dillman.

Gail Barber

Guest Artist

Lubbock Symphony Orchestra will have as guest artist for the second concert of the season a nationally known artist whose home is Lubbock. Mrs. Gail Barber, head of the harp department at Texas Tech University, is not only a skilled performer and musician. She is also a composer and newly elected editor of the American Harp Journal, official magazine of the American Harp Society. When the national society met in Lubbock in June, 1970, she served ably as chairman of arrangements. She organized the Lubbock chapter in 1967 and was its first president. She is the Southwestern Regional Director of the American Harp Society.

Mrs. Barber says she had "never seen a harp" until she started her college work at Baylor University. Within two and one-half years, she was a member of the Rochester Philharmonic Orchestra and had recorded for Mercury with the Eastman-Rochester Orchestra. Two years later, she was touring as harp soloist with the Chicago Little Symphony, a tour which took her to 21 states, Canada and Mexico. A graduate of Eastman School of Music with highest distinction and the performer's certificate in harp, she formerly taught at Baylor University and Furman University. Her publications include "Windmill Sketches," original compositions for harp related to the history of the Southwest. Last summer, she taught at Rocky Ridge Music Center in Colorado and performed on the "Music in the Mountains" concert series in Estes Park.

Lubbock Symphony concert under direction of William A. Harold will begin the second concert of the season at 8:15 Monday evening, November 22, in Lubbock Municipal Auditorium. Advanced tickets may be secured at the Symphony Office, 1416 Avenue Q, telephone 762-4704. Prices are \$5, \$4, \$4.50, \$3.50, \$2, and \$1. All tickets will be sent to Municipal Box Office on Sunday, November 21 and will go on sale 1:00 to 5:00 p.m. Sunday and 9:00 until concert time on November 22.

No man is the worse for knowing the worse of himself.

Used Furniture Wanted

By The House Full Or By The Piece...

Swap Shop

Muleshoe
Call 272-3074



PARTY TIME Mrs. Jackie Tate's nursery school class are shown above as they participated in a Halloween party on Friday, October 29. Class members are Zonell Gatewood, Traci Zoth, Vana Pruitt, Wade King, Robin Short, Steven Eubanks, Alan Finney, Terry Graves, James Christian, Russell Young, Keith Smith, Kristi Dale and Stephanie Brown.

It's simply a matter of Good Taste

GAS COOKING is preferred by almost all master chefs, because a secret of fine cooking, whether it's preparing a gourmet sauce or a simple gravy, is fast, accurate temperature control. Only gas cooking gives you instant on-off heat and precision control with an infinite number of temperature settings. There's no wait for warm-up, no hangover heat, and you can see the flame to adjust it. Gas allows you to cook to perfection and achieve the full, exciting taste and flavor of your special dishes.

See your gas appliance dealer and find out about all the other wonderful features of a modern gas range.

PIONEER NATURAL GAS COMPANY

Golden Value Days SPECIALS

LADIES 100% NYLON PAJAMA AND COAT SET

Guaranteed One Full Year

6⁹⁹ Values • 3-Piece Set
\$5. • No-Iron

100% DuPont nylon tricot. The set includes 2-piece pajamas with classic front, piping trims, notched collar, pocket and short sleeves. Pants have elasticized waist. And sleep coat with button front. In favorite shades.

100% DOUBLE KNIT POLYESTER PANTS AND BLOUSES

Easy Care - Easy Wear

Blouse or Pant

\$9. each

Choose from 100% double knit polyester blouse or pant. The blouse features long sleeve button front shirt. In beautiful prints with status collar. The pant is crepe stitch and features pull-on styling with stitched center crease. . . . Pant in Black, Purple, Brown and Navy. Sizes 8-20. Blouse sizes 10-18.

Anthony's Honor Cash Lay-A-Way

MULESHOE'S ANNUAL "NOTHING TO LOSE. EVERYTHING TO WIN"



The Following Firms Urge
You to Back The "MULES"
& Attend All The Games:

CONTEST

FOOTBALL

You Have Until 5 P.M.
Friday to Enter Contest

Watch for the Official
Entry Blank Each Week

THE FAMILY FUN GAME!



Enter Our Contest Each Week
...Nothing to buy - Just Pick Winners

HERE'S YOUR CHANCE TO

WIN CASH WEEKLY PRIZES!

FIRST PRIZE SECOND PRIZE THIRD PRIZE

\$ 5 \$ 3 \$ 2

GRAND PRIZE \$50 For expenses and
two tickets to the Cotton Bowl at Dallas, Texas. There will
also be a contest and prizes for the Bowl Games!

Read the rules... Start Winning
RULES OF THE CONTEST:

- .Contestant must be 12 years of age or older.
- .Only one entry per person may be made for any one contest.
- .Weekly contests are open to everyone except employees and families of this newspaper.
- .Bring or mail your entries to the Journal office. Mailed entries must be postmarked not later than 5 p.m. Friday.
- .Winners names will be published in this newspaper each Thursday following the close of the weekly contest.
- .Choose the team you think will win.
- .10 Points for 1st. place, 6 points for 2nd place and 4 points for 3rd place determines the Grand Prize Winner.
- .Cash prizes and points will be divided between winners in event of ties.

Please write **FOOTBALL CONTEST** on envelope of mailed entry.
Muleshoe Publishing Company Box 449 Muleshoe, Texas

LAST WEEK'S WINNERS

- FIRST PLACE
Ernest Perez
- SECOND PLACE
J.E. McVicker
- THIRD PLACE
Gary L. King



**WINNERS TO BE ANNOUNCED
IN NEXT WEEK'S PAPER**

OFFICIAL ENTRY FORM
ONLY ONE ENTRY PER PERSON

NAME _____ ADDRESS _____
CITY _____ STATE _____

LSU..... ALABAMA.....
 EAST TEXAS..... SUL ROSS.....
 BROWN..... CORNELL.....
 MICHIGAN STATE..... OHIO STATE.....
 UCLA..... STANFORD.....
 TEXAS A & M..... SMU.....
 OKLAHOMA..... MISSOURI.....
 BAYLOR..... TEXAS.....
 LAMAR..... TRINITY.....

TIE BREAKER

NEW MEXICO STATE SCORE WEST TEXAS STATE SCORE

DON'T MISS ANY OF THE FUN & PRIZES
SUBSCRIBE TO OUR PAPER: CALL 272-4536

COBB'S	
DARI DELITE	
SWAP SHOP	XIT STEAK HOUSE
KING GRAIN CO.	NOWLIN STUDIO
L & H GROCERY	CORRAL RESTAURANT
JAMES GLAZE CO.	JONES FARM STORE
WHITE'S CASHWAY	WESTERN '66' CO.
BAKER FARM SUPPLY	MULESHOE CO-OP GINS
JOHN'S CUSTOM MILL	MULESHOE ELEVATOR
CHOW-TEX FEEDLOTS	SHAFER'S BELL STATION
FIRST NATIONAL BANK	HIGGINBOTHAM-BARTLETT
WHITT, WATTS & REMPE	HENRY INSURANCE AGENCY
RAY GRIFFITHS & SONS	MACK'S FINA STATION
MULESHOE AUTO PARTS	MULESHOE MOTOR COMPANY
R & H MOTORS	LAZBUDDIE SPRAYING SERVICE
STATE LINE IRRIGATION CO.	<i>Plains</i> AUTO PARTS P. O. Box 586 MULESHOE, TEXAS 79347
MAIN STREET BEAUTY SALON	WESTERN DRUG
DINNER BELL CAFE	TEXAS SESAME
WRINKLE WELDING & MACHINE	TRI-COUNTY SAVINGS & LOAN
MORRIS DOUGLASS IMPLEMENT	MULESHOE PUBLISHING COMPANY
BAILEY COUNTY ELECTRIC CO-OPERATIVE ASSOCIATION	MULESHOE IMPLEMENT & SUPPLY
SMALLWOOD REAL ESTATE & INSURANCE	RUTH'S CORRAL RESTAURANT
HEATHINGTON LUMBER CO.	EL JACALITO CAFE & TORTILLA FACTORY

WANT ADS DO THE JOB FAST!

WANT ADS PH. 272-4536

CLASSIFIED RATES

OPEN RATES

First insertion, per word-7¢
Second and additional insertions-5¢

NATIONAL RATES

First insertion per word-9¢
Second and additional insertions-6¢
Minimum charge-75¢

Card on Thanks-\$1.50 Double rate for blind ads

Classified Display-95¢ per col. inch

\$.05 col. inch for reverses

DEADLINE FOR INSERTION

Thursday's Muleshoe Journal-Noon Tuesday
Sunday's Bailey County Journal-Noon Friday

The Journals reserve the right to classify, revise or reject any classified ad.

Check advertisement and report any error immediately. Journals are not responsible for error after ad has already run once.

9. AUTOMOBILES FOR SALE

FOR SALE: 1970 Kawasaki. Good condition. Chopped. Phone 272-3084. 9-44t-3tc

FOR SALE: Previously owned Chrysler Industrial 413, engines complete. Call, Smith L.P. Gas, 272-4678. 44t-tfc

FOR SALE: Plymouth Valiance, good condition, 35,000 miles. Call J.V. Peeler, 508 E. Austin, Muleshoe. 9-44t-3tc

FOR SALE: 1965 Mustang, white, air conditioned, good condition. See three and one half miles east on Plainview Highway, Gary Morris. 9-42s-5tc

10. FARM EQUIP. FOR SALE

For Sale: Two used tri-matic sprinkler. Contact Bill St. Clair 272-4630 on Rt. 3 Muleshoe. tfc-42t

FOR SALE: '70 Ford 540 bailer, excellent shape, \$750.00. John Deere #215 self propelled swather, excellent condition, \$1500. Call 272-4842. 10-41t-tfc

Congratulations To Fair Entries

To the pupils who entered the History Fair. The journalism class is very proud of all of the students that entered their projects and won. All of the projects took a lot of work. There were some very good ideas.

CESSPOOLS pumped out. 272-3282 or 272-3036. 15-25s-tfc

FOR SALE: Honda 70 less than one year old. Half price. 272-4869. 15-44s-8tc

NEED A HOME LOAN?
SEE **FIRST FEDERAL**
FIRST FEDERAL SAVINGS
AND LOAN ASSOCIATION
801 Pile St. 762-4417
Clovis, New Mexico

Seventh Grade Intramurals

The seventh grade football teams played their third game of the season this week. With the Lions playing the Rams and the Vikings and the Colts squaring off in the games. The Rams came out on top of the Lions in the first game by a score of 8 to 0. The lone

score of the game came on a 10 yard quarterback sneak by Tony Vela. The PAT came on a pass from Vela to Mark Slaydon.

In the next game the Vikings beat the Colts 8 to 0. The score came on a pitch out from quarterback Max DuBose to Don

Brown who went in for the score. The PAT came on an identical play.

Progress isn't achieved by following the crowd.

WINTER IS TOUGH ON ANY CAR!

DRIVE IN FOR A COMPLETE MOTOR TUNE-UP

Take winter wraps off that engine. Make a date with us to put zing into your car with a tune-up.

Plains AUTO PARTS
P. O. Box 584
MULESHOE, TEXAS 79347

South Main
MULESHOE
Phone 272-4576

Jaycees
meets every
Monday, 12 Noon
Jeff Smith, Pres.

4. HOUSES FOR RENT
FOR RENT: Nice two bedroom house, 5 1/2 miles out of town, bills paid, reasonable rent. Call 272-3393 4-44t-tfc

6. ROOMS FOR RENT
FOR RENT: Bedrooms, 410 West Second. 6-40t-tfc

8. REAL ESTATE FOR SALE
FOR SALE: Vacant lot, plumbed and wired for a trailer house. Small down payment, will carry balance. Call 272-4932. 8-44s-tfc

JAMES GLAZE COMPANY
REAL ESTATE AND FARM & RANCH LOANS
Phone 272-4549 219 S. 1st

FOR SALE: Two bedroom house. Another room could be used as bedroom, on an acre of land. 2 1/2 miles north on Friona highway. W.W. Evans phone 272-4020 8-43s-4tc

FOR SALE: In West Camp area, one quarter and one 80 acres irrigated. Good. Call 925-3510 8-37t-tfc

KREBBS REAL ESTATE
210 WEST FIRST
PHONE 272-3191
8-23t-tfc

IF YOU WANT TO SELL OR buy see Lee Pool or Woody Goforth.
POOL REAL ESTATE
Phone 272-4716. 8-44s-tfc

FOR SALE: Two bedroom house. Nice location, 818 South First or call 272-3215. 8-44s-2tc

FOR SALE: Business profession for ladies, 18 years of continued clientele. Call 272-3541. 8-43s-2tc

FOR SALE OR TRACE: 480 acres improved, 334 in cultivation, 3-6 inch irrigation wells. Will trade for smaller place or take small down payment on equity and carry lien notes. Has maize and wheat allotments. Good government check. Cash leased at present. For more information call Clyde Henry at 3705 Jefferson St., Austin, Texas, phone 453-2581. 8-42t-6tc

FOR SALE
Brick Homes
No Down Payments
\$55 up per month
Pantry, 3 & 4
bedroom 1 1/2 baths,
Utility Room,
attached garage,
built in range and
oven located in
Muleshoe
Ault Realtors
Phone 372-1276 or
355-2367 Collect
Amarillo, Texas

Muleshoe Rotary Club
meets every
Tuesday at 12:00
FELLOWSHIP HALL
Methodist Church
Troy Actkinson, President

VFW
Walter A. Moeller
Post # 8570
8:30 p.m.
2nd & 4th Mondays
Old Fribolite Skating Rink
Don Rempe, Commander

Masonic Lodge
meets the second
Tuesday of each month
practice night each Thursday
Fred Horn, WM
Elbert Nowell, Sec.

Lions Club
meets each
Wednesday, 12 Noon
FELLOWSHIP HALL Methodist Church
W. T. Millen, President

Muleshoe Oddfellows
meets each
Thursday 7:30 p.m.
Crispin Green, Noble Grand

Fine Art Booster
MEETS EVERY FOURTH MONDAY
8:00 p.m.
Muleshoe
High School Band Hall
DOIN BRYANT, President

PERSONALS

WE WILL NOT be responsible for anyone's debts other than our own. Herman and Rheata White. 1-44t-3tp

Carl's Meat Company smokes turkeys. Bring them to us. Phone 272-4361. 1-44t-5tc

POODLE GROOMING by appointment. 221 E. 4th. Call 272-5587 15-28s-tfc

INCHES GOTTA GO? Then see Nellyne at This and That, 101 Main, Muleshoe. Lose inches the easy way. No exercise! No diets! Guaranteed five to ten inches loss in "one magical hour." Phone 272-4437. 1-43t-tfc

HELP WANTED

NEED IMMEDIATELY: Full or part time hair stylist. Main Street Beauty Salon. Phone 272-3448 3-35s-tfc

JOHN DEERE

4020 D. 1968 \$5850.00
4020 LP 3500.00
720 LP 850.00
1030 Case D. 1968 4500.00
WHITT, WATTS & REMPE
MULESHOE, TEXAS
10-44s-2tc

FOR SALE: 1958 450 IHC tractor, planter, cultivator and crust buster. Will sale together or separate. Call Wilcy Moore at 272-3007. 10-43s-tfc

12. HOUSEHOLD GOODS
Garage Sale: Furniture, dishes antiques. 1901 W. Ave. B, Friday and Saturday Nov. 5 and 6. 12-44t-tfc

FOR SALE: Player Piano, phone 505-356-6651 or write 101 W. 4th, Portales, N.M. 88130 12-44t-tfc

FOR SALE: Good used spinet type piano. Call 272-3973 or 272-3107. 12-44s-4tc

Brace yourself for a thrill the first time you use BLUE LUSTRE to clean rugs. Rent electric shampooer \$1. Higginbotham-Bartlett, 215 Main. 12-50s-ttc

Millions of rugs have been cleaned with BLUE LUSTRE. It's America's finest. Rent electric shampooer \$1 Perry's 128 Main. 12-2s-ttc

EMBROIDERY beautiful designs in minutes. Enjoyment for all ages. This and That, 101 Main, Muleshoe, phone 272-4437. 15-43t-tfc

15. MISCELLANEOUS

THIS AND THAT: What's that? To see at 101 Main, Muleshoe, anytime between 9 a.m. and 5:30 p.m. Monday thru Saturday. Variety of interesting things for entire family. Phone 272-4437. 15-43t-tfc

LEARN TO START your day with God. This and That 101 Main for tapes on Bible study, messages, music, Christian motivation and Bibles designed for each member of your family. Phone 272-4437. 15-43t-tfc

PLAN TO ATTEND the fall Lubbock Antique Show, Friday, Saturday, Sunday, November 5, 6, and 7 in the Texas National Guard Armory, 2901 4th Street Lubbock, Texas. Show times are from 10:00 a.m. to 9:00 p.m. Friday and Saturday and noon to 6:00 p.m. Sunday. The door and merchandise prize will be a 1966 Tailque Annual Plate one of the most sought collectors plate -- worth approximately \$400.00. Admission: \$1.00. 15-44s-3tc

LOOK TO SHOOK FOR

Fall TIRE Savings

During the busy harvest season when time is money, our efficient on-the-farm fire service will prevent costly delays. Just call 272-3420 Muleshoe

LEE OF CONSHOCKEN TRACTOR TIRES

TRAILER TIRES

NEW	9.00-14 6-Ply Tubeless, Plus \$1.25 F. E. Tax	16 ⁹⁵	USED TIRES	14x15 4 ⁵⁰ up
-----	---	------------------	------------	--------------------------

PICK YOUR USED TIRES EARLY WHILE THE SELECTION IS LARGE.

*** TRUCK TIRE SPECIALS ***

8.25 x 20	10 PLY	56.79 6.21
9.00 x 20	10 PLY	67.79 7.22
10.00 x 20	12 PLY	90.79 9.24

Forty-Five Degree angle bars for more traction means better pulling power. Increase the efficiency of your tractor with Lee Tires. Designed for more effective work loads on the farm.

DELCO BATTERIES MONROE SHOCKS

For West Texas' Best Tire Buy...LOOK TO SHOOK

Shook Tire Co. 301 NORTH FIRST

DUAL Wheels and Tires For Your Equipment

We give you **BOTH! LOW, LOW PRICES** plus valuable **S&H Green Stamps!**



FRESH SLICED EGGS BACON

CRISCO
All Vegetable Shortening
59¢
3 Pound Can
1st 3 Lb. Can. T.A. 99¢

Farmer Jones, Grade AA Medium
Dozen
1st 2 Doz T.A. 39¢
29¢

1st Grade Quality, Slab Sliced Bulk Pak, Ranch Style Thick Sliced
55¢
Pound

BONELESS HAMS
Decker's, Cry-O-Vac, Halfs, Lean,
89¢
Pound

Apples 19¢
Red Delicious Pound
Ocean Spray Cranberries Fresh 16 Oz. Bag 39¢
Sweet Yams A Fall Favorite 2 Lb. 25¢
Fresh Celery Long Crisp Stalk Lb. 15¢

USDA Choice Beef, Valu-Trimmed, Blade Cut,
POT ROAST 58¢
Pound

USDA Choice Beef, Valu-Trimmed, Chuck Cut	Boneless Roast	Pound	88¢
USDA Choice Beef, Ranch Style, 7-Bone Cut	Family Steaks	Pound	68¢
Owen's Country Style, Hot or Regular	Sausage	1 Pound Package	79¢
Swift's Lean, Boneless, Fully Cooked	Canned Hams	5 Pound Can	\$4.98
USDA Choice Beef	Rib Steak	Pound	98¢
Hormel, Pure Pork	Link Sausage	12 Ounce Package	59¢
Lean, Center Cut Rib Chops	Pork Chops	Pound	89¢
Lean, Center Cut T-Bone Chops	Pork Chops	Pound	98¢
Farmer Jones, Bologna, Pickle Loaf, Olive Loaf	Lunch Meats	6 Ounce Package	35¢
Morehead's	Potato Salad	12 Ounce Carton	43¢
Farmer Jones, All Meat	Sliced Bologna	12 Ounce Package	59¢
Morehead's Pimento	Cheese Spread	8 Ounce Carton	59¢
Farmer Jones, First Grade Quality, Thick or Thin Sliced	Sliced Bacon	2 Pound Pkg.	\$1.27
Perfect For Chicken Frying	Pork Cutlets	Lb.	\$1.29
Hickory Smoked 6 to 8 lb. avg.		Lb.	39¢
	SMOKED PICNICS	Lb.	49¢
	SLICED PICNICS	Lb.	49¢

BREAD Farmer Jones 33¢
1 1/2 lb. loaf

Bonne Liquid Bleach 1/2 Gal. Jug 25¢
Hamburger Helper Betty Crocker Various Weights One Pkg 59¢
Peanut Butter Carol Ann 2 1/2 Lb. Jar 99¢
New Giant Size Jello 4 Flavors 9 Oz. Pkg 29¢
Ice Cream Farmer Jones Assorted Flavors 1/2 Gal. Carton 59¢

Treesweet
Orange Juice 6 69¢
6 Oz. Can

Applesauce White House 25 Oz. Jar 39¢
Cut Yams Sugary Sam in Syrup 3 22 Oz. Can 89¢
Apple Cider White House 1/2 Gal. Jar 79¢
Frozen Pizza Roman, Sausage, Pepperoni or Cheese 14 1/2-Oz. Pkg. 49¢
Tomatoes Hi Plains 5 16 Oz. Cans \$1

Dairy Case Values!
Prices
CHOCOLATE MILK Qt. Carton 3 FOR \$1

Fresh Frozen Foods!
French Fries Tater Boy Krinkle Cut 2 Lb. Bag 4 FOR \$1
Meat Pies Sparetime Beef, Chicken, Tuna, Turkey, 8 6 oz. pkg. \$1
Strawberries Trophy 5 10 Oz. Pkg. \$1

The Illustrated **Columbia Encyclopedia**
Volumes 2 through 22 \$199 each
Vol. One **49¢**

BONUS
100 EXTRA S & H Green Stamps With \$5.00 Purchase or More
OR 200 EXTRA S & H Green Stamps With \$10.00 Purchase or More
OR 300 EXTRA S & H Green Stamps With \$20.00 Purchase or More
Expires Sunday Nov. 6, 1971
Redeemable only in Piggy Wiggly stores operated by Shop Rite Foods, Inc.

Yogurt Prices 4 8 Oz. Carton \$1
Chip Dips Prices Assorted Flavors 3 FOR \$1
Tasteo Oleo Lb. Quarters 5 FOR \$1
Sliced Cheese Farmer Jones, Individually Wrapped American Singles Lb. Pkg 89¢
Longhorn Cheese Farmer Jones, Half Moon 10 Oz. Pkg 65¢
Swiss Cheese Kraft's Natural Sliced Big Eye 6 Oz. Pkg 57¢
Mozzarella Cheese Signature Natural Chunks 8 Oz. Pkg 55¢

VALUES GOOD NOV. 4, 5, 6 MULESHOE, TEXAS 501 W. Amer. Blvd.

Buttermilk Farmer Jones, Buttery Rich 1/2 Gal. Ctn. 39¢

100 EXTRA With This Coupon and Purchase of ONE (1) YOUR CHOICE ANY ITEM OF **Cover Girl Eye Make-Up**
Expires November 6, 1971

SAVE 35¢ With This Coupon and Purchase of One (1) 2 Lb. Can **Maxwell House Coffee**
Expires November 6, 1971

SAVE 30¢ With This Coupon and Purchase of One (1) 6 Oz. Jar **Maxwell House Instant Coffee**
Expires November 6, 1971

100 EXTRA With This Coupon and Purchase of One (1) 10 to 14 Lb. Avg. USDA Grade A Purina Honeysuckle White **Hen Turkey**
Expires November 6, 1971

50 EXTRA With This Coupon and Purchase of Any Item Of Your Choice of **Sara Lee Frozen Products**
Expires November 6, 1971

50 EXTRA With This Coupon and Purchase of One (1) 84 Oz. Box **Ajax Detergent**
Expires November 6, 1971

75 EXTRA With This Coupon and Purchase of One (1) 18 Oz. Box **Wheaties Breakfast Cereal**
Expires November 6, 1971

50 EXTRA With This Coupon and Purchase of One (1) 5 Lb. Can **Swift Premium Canned Ham**
Expires November 6, 1971

PIGGY WIGGLY
You Can Save More!