

GRAIN FARMERS

here is your opportunity to price your products at a fair price above your production costs.....

Dear Wheat and Grain Farmer:

Farmers in your county have the opportunity to participate in the biggest harvest contract in Farmer's history and the first guarantee in floor prices for millions of bushels of milo and hard red winter wheat. Many farmers who are holding their production out of this contract think they can ride on the shirt tail of their NFO neighbor and get a better price - don't realize three things:

First, this contract guarantees the farmer on 1-6 of his production in commercial storage that he will receive \$1.50 per bushel on wheat and \$2.65 per cut on milo or the market price -- WHICH EVER IS THE HIGHEST.

Second, this contract sets a floor that by every farmer blocking his production together we can market the remaining 5-6 AT AN EVEN BETTER PRICE.

Third, and most important, by not blocking your production together and selling as individuals you only tend to tear down the price that has been built up and in the end you have cut your own throat as well as that of your neighbor.

This contract took the grain trade by surprise and they are hitting us with everything they've got.

First, they are BIDDING UP THE PRICE to divide the block. This won't work, of course, because the contract calls for paying the farmer the floor price OR general market level, WHICHEVER IS HIGHER. The farmer comes out ahead either way.

Second, they are trying to CREATE CONFUSION and to discredit NFO by spreading half facts.

They say a big contract like this won't work, that you will lose control of your grain (what they really mean is THEY CAN'T GET CONTROL OF IT!). They say the company you are working with is broke (tell them to check its top rating with Dun and Bradstreet, as we did). You name it and the opposition is spreading it.

THE FACT IS THAT FARMERS, FOR THE FIRST TIME, HAVE A CHANCE THROUGH THIS NFO CONTRACT, TO BE IN THE DRIVER'S SEAT IN MARKETING GRAIN AT HARVEST TIME.

Farmers must realize many people including attorneys, grain men, farmers and marketing specialists have been working out the details of this contract for more than 9 months. They have negotiated this agreement with the producer's interest foremost in mind.

This letter outlines several things to help you answer questions and to do your job at the county level in fulfilling terms of this contract.

The terms of the contract calls for grain to be delivered to NO. 9 warehouses. WHERE ARE THE NO. 9 WAREHOUSES? The location depends on volume of wheat and milo signed under the special NFO harvest agreement. The company (American Grain

Corp.) will lease facilities in ANY AREA where storage is needed. We expect to locate several in each state.

Once grain is delivered to the No. 9 warehouse, it will issue warehouse receipts and send them to the local elevator that handled the grain. The member will pay local elevator handling and the freight to the No. 9 warehouse. This receipt can then be taken to the local ASCS office and a loan obtained immediately which includes LOAN PRICE, FREIGHT PAID, and LOCAL ELEVATOR HANDLING. This whole process will take no longer than 10 days after it leaves your local elevator. This is an example for a county with a loan rate of \$1.25 a bushel on wheat:

County loan rate	\$1.25 per bu.
Freight to No. 9 warehouse	.20 per bu.
Elevator handling	.05 per bu.
Member receives	\$1.50 per bu.

The farmers should understand that he pays the FREIGHT and LOCAL ELEVATOR HANDLING -- but that HE GETS THIS MONEY BACK IMMEDIATELY by obtaining a loan plus handling at the local ASCS office.

Once the grain is in the No. 9 warehouse, members will receive six or more warehouse receipts and should have a separate ASCS loan made out on each one. This makes it possible for them to be involved in several grain contracts throughout the year.

The above example and explanation concerns the 5-6 of the farmers production that does not come under the guaranteed floor price. This grain will be used to make several contracts during the year as the trade channels need our production. The purpose in handling the grain in this manner is to keep from dumping the entire harvest on the market at one time. This again, IS TO BENEFIT THE FARMER as well as the grain trade.

LET'S BEAT THE TRADE AT ITS OWN GAME! The trade has always bought a large volume of grain at depressed harvest prices and moved it into No. 9 warehouses for storage. The grain was then let out into trade channels as it was needed -- at the depressed harvest price. That's how grain prices are kept down.

NOW LET'S REVERSE THIS. NFO members retain ownership of their grain. They move five-sixth of it into storage in a No. 9 warehouse (ASCS pays the expense in the form of a bigger loan). A floor price or the market price whichever is higher, is paid on one-sixth of the grain, net to the farmer. At this point, NFO members have a block of millions of bushels in commercial storage, plus what they have stored on the farm, to bargain prices up throughout the year. IF THE TRADE CAN USE THIS SYSTEM TO PRICE GRAIN DOWN, FARMERS CAN USE IT TO PRICE GRAIN UP! Do you know of another industry that DOES NOT set its own price on its own product???????

We have the opportunity for the first time in history to price our products to include cost of production plus a reasonable profit on our investment... without your action we will be back in the same old boat begging the trade to take our products at a price they will set.

Final Signup Deadline TUESDAY, JUNE 29, 7 a.m.

At A Breakfast Meeting At The Corral Restaurant, Muleshoe

Council...

Cont'd from Page 1

commissioners, Matt Dudley, Lloyd Stephens, Rudolph Moraw and W. H. Eubanks.

The judge explained that the county now subsidizes the ambulance service provided by Singleton-Ellis Funeral Home \$350 per month on a temporary basis.

He questioned, "Will the city participate in subsidizing the ambulance service?"

Mayor St. Clair commented, "I am extremely pleased with the way the county and city council can discuss area problems with public officials."

He further explained that the area needs basic services such as ambulance service and fire fighting facilities.

Judge Williams pointed out that the county can assist ambulance services. However, he had some reservations as to the extent an ambulance service could be used outside the county.

Mayor St. Clair added that this does present a problem, however, as yet, in cases of emergency, the police have not been restricted in crossing county lines.

Frank Ellis explained that Singleton-Ellis Funeral Home required \$800 monthly to break even on ambulance services. "It is our intention," he said, "to have one fulltime employee and one part time employee."

The subsidy would not be used," he added, "for existing management or personnel."

Ellis continued, "In the event the city or county would like to provide ambulance services to this area, I would be delighted for them to do so."

He pointed out that other counties and cities have found it is far more economical to

subsidize such services than to attempt to operate it themselves. Ellis further explained that the ambulance that is now at Earth will have to be subsidized if it is to remain available for use in that area. Lamb County officials will be approached for a subsidy for Earth, stated Ellis.

Ellis further says that a subsidy is necessary in order to provide adequate services and offset operational costs. He explained that Friona has an ambulance subsidy of \$700 monthly with no additional personnel.

Mayor St. Clair reviewed the city's fire department budget of \$18,125 and said that while they may not use the entire amount, it is an expense item on the budget that other counties generally assist with.

Commissioner Eubanks told the council that it is well known that the fire department is an outstanding one and undoubtedly provides excellent service in this general area, although he does take into consideration the time it takes to arrive further south, in say, the Maple area. He commented, "It's possible the county should be participating in fire department expense."

Commissioner Stephens said that people as a whole are contributing one percent city sales tax, and Mayor St. Clair advised, "It is true that the city does have a one percent sales tax which applies to everyone whether they are from Bailey County or outside the county."

"The city has expenditures," the mayor continued, "such as parks, fire departments to be used by everybody in order to make this area a better place in which to live. The city has a good working agreement with the county on 24-hour police-dispatching service and the people deserve 24-hour fire service and 24-hour ambulance service. It's a real problem that people live inside the city pay both city and county taxes. For the city to participate in ambulance subsidy would be sort of a double tax for city residents."

Stephens added that the city and county must work together in joint spending, because it's everybody's money.

It was decided to consider the various aspects of the situation and make a decision at a future meeting.

Highway parking on U. S. 84 was discussed and a letter read from O. L. Crain, state highway engineer, in which complaints had been registered in respect to signs being located on the highway right of way. City Manager Albert Field was instructed to set up a meeting with Crain in order to arrive at a highway parking and sign location solution.

A motion was made and passed to install concrete barriers on off street parking across from the city hall and city councilmen agreed to pay their proportionate share of an increase in salary for police dispatchers.

Chairman Stevens said he was grateful to everyone who participated in the program and said special thanks go to Chow Tex Feed Lot and Western '66' for contributing the beef and pork and to Vance Wagon for processing the meat.

Has any insurance company yet offered a policy covering the collision of worlds? If not, it's something to think about.

Tax...

Cont'd from Page 1

up to \$162. Letters will be sent to all property owners in the school district in the near future explaining the tax increase and the new cost.

Superintendent Dillman showed several figures to the school

NFO...

Cont'd from Page 1

charges and said all costs are outlined on the contract which the grain producer would sign. The producer would have the option said Austin, of taking \$2.65 per hundred or set higher prices. One third of one sixth of the grain would be placed on the market at intervals to check the reactions and when sold, the producer would be paid for his grain on delivery. Elton Norris, a NFO representative from Tucumcari, told the group that on Tuesday, Secretary of Agriculture Hardin had sent a telegram to all local ASCS officials telling them that all operations and instruments of NFO were legal and above-board, and instructed the ASCS officials to not attempt to hinder or harass NFO operations.

A discussion was held on acquiring trucks to take the grain to a holding elevator at Olton and what charges would be involved. It was stated that for grain to be trucked up to 20 miles, it would cost nine cents; 50-60 miles, 13 cents; and 60-70 miles, 14 cents. Austin said American Grain would pay five cents of the trucking fee.

He added that the contract covered six states, and said that these six states produce 7/8 of the nation's grain and said this area raises approximately one-third of the nation's grain sorghum.

"We're not trying to put anybody out of business in Muleshoe," commented Austin, "we're not mad at anybody, but we want to stay in business for ourselves. If it takes moving the grain to Olton, then we must move the grain to Olton and bypass the local elevators."

"If you want this to work, we've got to have your production. If you want a price, we've got to have your production."

He told the farmers that during a breakfast meeting at the Corral Restaurant next Tuesday, June 29 at 7 a.m., the final sign-up will be held, and explained a full page advertisement in Thursdays (today's) issue of The Muleshoe Journal that outlines the full proposal of NFO to handle and market the area's grain sorghum. A number of grain producers signed NFO grain contracts following the meeting.

board members from other school districts. Muleshoe ranked far below the general school tax structure in this area and Dillman said that even with the new increase in school taxes, Muleshoe still would be among the school districts with lower taxes throughout the entire area. He showed figures that some school districts tax up to 75 percent of the market or assessed valuation of the property, and tax rates equal to or surpassing the figures in Muleshoe.

The new tax rate goes into effect with the next billing by school officials.

In other school board action, Muleshoe State Bank was ap-

proved as depository for school funds after Bill Loyd presented a bid form for the 1971-72 and 1972-73 school years; board members read a letter received from Pioneer Natural Gas concerning a proposed thirteen and a half percent increase in rates; read and studied the superintendent's report and approved the student accident and athletic insurance program. The board decided to continue using the same company as in past years. Insurance rates will be \$20 for year round coverage on a 24-hour basis; \$7 for at school coverage and \$30 for athletic coverage.

They discussed new wage hour regulations and a check-in,

check-out policy for school secretaries, bus drivers, cafeteria workers and janitors in order to conform with regulations.

Board members discussed the financial condition of the school, bills presented for payment, bank balances and tax collections. Approved were the resignations of Marilyn Corn, elementary school teacher; Sharon Jordan, librarian for Richland Hills School and James Morgan, coach and teacher at Muleshoe High School.

It was decided to move Mrs. Charles Glover from her elementary teaching position to librarian at Richland Hills School and a new primary teacher, Karen McKeever, was approved

for employment.

The school board rejoined the Texas Association of School Boards and named Aubrey Heathington, delegate and Carl Bamert, alternate delegate to attend the state meeting in September. They also approved summer school employees who are assisting with the summer migrant school.

The successful will always bear the brunt of envious tongues.

Going to church is a good habit to have along with your bad ones.

Choir...

Cont'd from Page 1

concerts in Colorado Springs, Casper, Wyoming; Three Forks, Montana and Yellowstone National Park.

Moore emphasized that the presentation is non-denominational and urged the entire community to be at the First Baptist Church to hear this exceptional choir. He added that the presentation is one that will be enjoyed by everyone and said it is being presented free of charge.

O.A.S. helps keep peace in Central America.

Winners...

Cont'd. from Page 1

Drawing for the winners was conducted by Stevens last Saturday at the courthouse parking lot. Miss Muleshoe, Treena Bryant, drew the names of the winners from the hopper.

First ticket drawn was purchased by Fry & Cox Implement Co. On the ticket was a notation to auction off the ticket to the highest bidder, with proceeds to be used for the Stegall-Muleshoe Opportunity Plan Inc. In the auction held following the drawings, Lewis Scoggins of the Lariat community purchased the beef half for \$180. Stevens said the beef would retail for more than \$240.

Bill Moore of Muleshoe was the other winner of a beef half; Ted Harrison was winner of a pork half and Girlstown at Whiteface was the other winner of a pork half. The Girlstown ticket had been purchased for them by the First National Bank. The director of Girlstown was contacted Monday and was happily surprised when told they would receive the pork half.

Chairman Stevens said he was grateful to everyone who participated in the program and said special thanks go to Chow Tex Feed Lot and Western '66' for contributing the beef and pork and to Vance Wagon for processing the meat.

Has any insurance company yet offered a policy covering the collision of worlds? If not, it's something to think about.

Chairman Stevens said he was grateful to everyone who participated in the program and said special thanks go to Chow Tex Feed Lot and Western '66' for contributing the beef and pork and to Vance Wagon for processing the meat.

MULESHOE JOURNAL
 Established February 23, 1924
 Published by Muleshoe Publishing Co., Inc.
 Every Thursday at 204 W. Second Box 449
 Muleshoe, Texas, 79347
 Second class postage paid at Muleshoe, Texas 79347

TEXAS PRESS ASSOCIATION
 1977

L.B. Hall, President
 Jessica Perry Hall, Secretary-Treas.
 L.B. Hall, Publisher & Managing Editor
 Cate Williams, News Reporter
 Katie Foster, Society Reporter

SUBSCRIPTIONS:
 Zone 1-Bailey-Purmer-Cochran-Lamb counties: \$4.00 per year; \$4.50 per year by carrier. With Sunday Bailey County Journal, both papers: \$5.50 per year; \$6.00 per year by carrier.
 Zone 11-Clall-Territory: \$4.50 per year; With Sunday Bailey County Journal, both papers, \$4.25 per year.
 Monthly, by carrier-50¢; single copies-10¢
 Advertising rates card on application

TYPEWRITERS...CALCULATORS
ADDING MACHINES
Williams Bros. Office Supply
 319 Main Muleshoe Ph. 272-3113

For Aerial Application Of
INSECTICIDES---FUNGICIDES
HERBICIDES--SEEDING

SEE
OK Spraying Service, Inc.

Route 2 Box 317 Phone (806) 272-4718
 MULESHOE, TEXAS 79347

JIM O'GRADY 806-272-3974
KENNETH HANKS 806-965-2471

QUALITY • VALUE • SAVINGS
• THE FINEST FOODS AT BUDGET PRICES •

VALUES GOOD JUNE 24-30

MEATS
CHUCK ROAST
 BLADE CUT
 USDA CHOICE BEEF
 lb. **59¢**

EGGS
 SHURFRESH
 GRADE "A"
 LARGE 2 DOZ. **79¢**

DR. PEPPER
 6 BTL. CTN.
 KING SIZE
39¢

CRISCO
SHORTENING
 3 lb. can **79¢**

POP UPS TOASTEM
 10 1/2 oz. box **39¢**

CRISCO
35 oz. box
 Cascade Dishwasher
DETERGENT
69¢

SHURFRESH
ICE CREAM
 1/2 gal. **57¢**

CRISCO
SALAD OIL
 24 oz. btl. **59¢**

PRIDE OF THE PRODUCE
CALIFORNIA #1 POTATOES
 LONG WHITE 10 lb. bag **69¢**

CALIFORNIA PLUMS lb. **25¢**
CALIFORNIA PURPLE TOPS
TURNIPS lb. **15¢**
TOMATOES
 HOT HOUSE BUBBLE PACK CARTON of 4 **33¢**

Quart Size Fabric Softner
DOWNY 69¢
 4 lb. box Morton Ice Cream **19¢**
SALT 19¢
 15 oz. can Eagle Brand
MILK 2 for 69¢
 25 lb. bag Purina Chuck Wagon
DOG FOOD \$3.79
 #303 can Del Monte
FRUIT COCKTAIL 3 for 89¢
 #303 can Del Monte Cut
GREEN BEANS 4 for \$1
 Flat can Del Monte
TUNA 2 for 79¢
 28 oz. Jar Peter Pan
PEANUT BUTTER 99¢
 #12 jar(7 oz.) Holum Stuffed
OLIVES 53¢
 18 oz. btl, Kraft
BAR B Q SAUCE 2 for 79¢
 Family Size Close Up
TOOTH PASTE 79¢
 Jumbo Box All Low Suds
DETERGENT \$1.99

Wagnon Grocery & Mkt.
 515 W AMERICAN BLVD. MULESHOE PHONE 272-4406

Miss Rita Reid, Sweeney Married In Littlefield

Miss Rita Jolene Reid and Michael Hugh Sweeney were united in marriage during a double ring ceremony performed Saturday evening, June 12, 1971, at 4:00 p.m. in the First Christian Church in Littlefield. Officiating the ceremony was Rev. John D. Morton of Levelland. The couple stood under an archway entwined with greenery and yellow and white daisies.

Miss Reid is the daughter of Mrs. Ruby Reid of Littlefield and the late Vernon Reid. Sweeney is the son of Mr. and Mrs. Bob Sweeney of Levelland.

Musical selections were presented by the organist, Mrs. Johnny Hall, Bula, cousin of the bride. She accompanied the soloist, Mrs. Thomas Lewis, as she sang "The Twelfth of Never" and "Whither Thou Goest".

The bride, given in marriage by her brother, Gerald Reid, was attired in a formal length gown of white cloud-silk and taffeta faille. The fitted, high rise bodice featured a sheer oval yoke of hand run Alencon lace with a high crown collarlet of lace. The long tapered sleeves were cuffed in the same sheer lace with button and loop

closure. The soft sheer skirt was appliqued in lace medallions and the back fullness formed a chapel length train. The bride wore a mantilla veil featuring lace trimming and a head piece of imported French flowers. The veil and headpiece were both designed by the brides mother. She carried a cascade of daisies and orchids.

Maid of honor was Beverly Tiller, Bula, cousin of a bride. Bridesmaids were: a Risinger, cousin of the bride; Joan Timan of Littlefield; Sweeney of Levelland, sister of the groom; and Beckey Morton of Levelland.

The attendants wore identical formal length gowns featuring an underskirt of pale yellow satin and an overskirt of merimist which was softly gathered to a bodice of lace above the normal waistline. The dresses had low round necklines and long see-through "lantern" sleeves. The attendants carried bouquets of yellow daisy palms with baby's breath and greenery.

Johnny Starch, Levelland, cousin of the groom, was best man. Groomsman were Johnny Beales of Levelland, Mike Click of Big Lake, and John Carr and David Graf, both of

Levelland. The groom wore a formal cut-away coat with striped trousers. Groomsman and ushers wore white jackets with striped trousers.

The bride's mother was fashioned in a formal length dress of yellow crepe with gold accessories and a pale yellow orchid corsage. The groom's mother wore a formal length dress of green knit and a yellow orchid corsage. These gowns carried out the bride's chosen colors of green and yellow.

Following the ceremony a reception was given in the fellowship hall of the church. The reception was highlighted with the cutting of the four-tiered wedding cake, decorated with white and yellow daisies. Lime slush, mints, nuts and crystal and silver completed the table setting. The bride's table was laid with a bridal illusion cloth featuring lace edges over white, centered with the bridal bouquet. The groom's table was also laid in white and centered with the maids of honor and bridesmaids bouquets.

Serving at the bride's table were Diane Crume, Sheila Melin of Bula, Mrs. Kenneth Overland, cousin of the bride, and Jane Murphy, cousin of the

groom. Sandra Carter, Littlefield, registered the guests in the bride's book.

For traveling, the bride wore an A-line sleeveless, spring green dress accented with navy and white squares. The couple traveled to points in New Mexico for their wedding trip. They are making their home at 1202 12th Street in Levelland, where both will be attending South Plains College.

The groom is a 1969 graduate of Levelland High School and has attended South Plains College one year. The bride is a 1971 graduate of Littlefield High School and plans to attend South Plains this summer.

The rehearsal supper was hosted by the groom's parents prior to the rehearsal and was given at the home of the groom's grandmother, Mrs. Dorigh in Levelland, Friday evening.



MRS. CARL (MATTIE) HEARD

Birthday Reception Honors Mrs. Heard

Mrs. Carl (Mattie) Heard was honored with a 70th birthday celebration Sunday, June 20, from 3:00 until 5:00 p.m. at the Muleshoe State Bank community room.

A white lace cloth over yellow covered the serving table. The centerpiece was an arrangement of yellow mums and pom mums Yellow punch and a white three-tiered cake, decorated with yellow roses, were served from crystal appointments. Serving the guests were the honoree's granddaughters Rhonda Robison of Clovis, Sandra Harvey of Clovis, Brenda Pease, Diane Burkhardt, Judy Burkhardt and Faye Burkhardt of Muleshoe. Sherry Burkhardt registered the guests.

Mrs. Heard was born June 23, 1901 in Cannon, Georgia, the daughter of Mr. and Mrs. C. V. Vaughn.

On February 27, 1921, she married Carl Heard in Wood-

stock, Georgia. They came to Texas April 7, 1921, where they lived at Oklaunion, Texas. They moved to Longview Community in Bailey County January 26, 1937. Carl Heard died November 6, 1950 and she moved to Muleshoe December 11, 1951. She has six children, five girls, Mrs. Bernice Owens, Battle Mountain, Nevada; Mrs. Ruth Drake, Woodland, California; Mrs. Sarah Burkhardt, Muleshoe; Mrs. Karl Dean Helker, Muleshoe; Mrs. Allene Harvey, Clovis; and one son, C. T. Heard of Lubbock. Children not able to attend were Bernice Owens and Ruth Drake.

Out of town guests included Mr. and Mrs. W. E. Williams of Oklaunion, Texas; Mr. and Mrs. J. W. Overton, Oklaunion; Mr. and Mrs. Raymond Hanna, Maple; Mrs. O. E. Sherman and son Emmet of Hereford; Mrs. Leon Harvey and daughters Kathy and Cindy of Clovis.



MRS. LARRY HENRY

Passions Of The Mind
by Irving Stone
Williams Bros. Office Supply
319 Main Muleshoe Ph. 272-3113



MRS. MIKE SWEENEY

Surprise Baby Shower Honors Mrs. Henry

Mrs. Larry Henry was honored with a surprise baby shower Friday, June 18, at 7:30 p.m. in the Muleshoe Area Goodwill Center.

Serving the cake and punch to the guests were Mrs. Maggie Flores, Mrs. Paula Hernandez, Mrs. Rosemary Pool, Mrs. Robert Paris and Mrs. Irma Acosta.

The guests played games during the shower. Prizes were dish cloths and bath towels given to the winners. Winning the door prize was Mrs. Dorothy Green who won a portrait of the late President Kennedy and Robert Kennedy.

Lorraine Fulkerson of Plainview, sister of the honoree was a special guest.

Hostesses were Miss Sue Ann Alford, Mrs. Nina DuBose, Mrs. Virginia Estrada, Mrs. Maggie Flores, Mrs. Genero Silguero, Mrs. Irma Acosta, Mrs. Clinton Kennedy, Mrs. Israul Rayna, Mrs. David Hernandez, Mrs. Emilio Estrada, Mrs. Soledad Ontiveraz, Mrs. Roque Puente, Mrs. Andres Gonzalez, Mrs. Lee Pool, Mrs. Hilma Rojas, Mrs. Mariano Hernandez,

Crow, Mrs. France Cavazos, Mrs. David Gutierrez, Mrs. Rosemary Pool, Mrs. Robert Perez, Mrs. Paula Hernandez, Mrs. Dorothy Green and Miss Bell Rodriguez.
Hostess gift was a baby crib.

Choice Quality Beef
Heat & Eat!
BAR-B-QUE 2 lb. \$1.98
STEAK FINGERS Lb. 89¢
CHUCK fresh ground.....Lb. 89¢
Carl's country cured
BACON.....Lb. 59¢
PORK STEAK.....Lb. 45¢
ROUND STEAK first cut Lb. 98¢
ROLLED ROAST boneless... Lb. 89¢
BEEF CUTLETS 6 lb. box\$5.34
BEEF PATTIES 6 lb. box\$3.00
For Your Home Delivery Call 4361, Muleshoe
CARL'S MEAT CO.
Phone 272-4361

CHANGE YOUR TELEPHONE DIRECTORY LISTING NOW OR LIVE WITH IT THE WAY IT IS FOR A YEAR.

This is also the time to let us know if you want an additional listing in this year's directory. One for your wife. Or a separate listing for a newly-grown-up daughter. All it takes is a call.

General Telephone

Cox Drive In Theatre
Wed. Thur. June 23-24 Fri. Sat. June 25-26
"HELL'S BELLES" COLOR
JERRY SLATE ADAM ROARKE JOSELYN LANE
an American International Picture
BEKIM FEHMU RICHARD CRENNIA in **THE DESERTER** Color
Sun. Mon. Tues. June 27-28-29
WALT DISNEY PRESENTS **THE BAREFOOT EXECUTIVE**
JAMES EARL RAYSEL FLYNN MORGAN COX
"VISIT OUR SNACK BAR"
SHOW TIME 9:30 p.m.
Get More ENTERTAINMENT THE BEST IS MOVIES

WHERE YOU ALWAYS BUY THE BEST FOR LESS
GIBSON'S DISCOUNT CENTER
Muleshoe, Texas
SPECIALS GOOD THRU SAT.

Challenger Tapered
6" WOOD LEGS (Unfinished) PKG. OF 4 \$1.07

Ferry Morse **BERMUDA GRASS SEED** 5 lb. box \$6.97

Thompson Twin Circle **LAWN SPRAYER** #70 Gibson Special 53¢

Thompson **TRAVELING SPRINKLER** #625 without shutoff \$10.88

Acme Slide Action **SPRAYER** Gibson Special \$5.77

Acme **TANK SPRAYER** #125 20.95 val. \$11.97

Lawn Chair **RE-WEB KITS** #120 16¢

HEALTH-BEAUTY AID SPECIALS
Gibson Family Size **TOOTHPASTE** 39¢
St. Joseph **ASPIRIN FOR CHILDREN** 27¢
Helen Curtis 13 oz. **SPRAY NET** 59¢
20's **EFFERDENT** 49¢
Softique 17 oz. **BATH OIL BEADS** 59¢
Aqua Velva Ice Blue 4 oz. **AFTER SHAVE LOTION** 59¢
Williams 7 oz. **ELECTRIC SHAVE** 97¢
Hot Shot 13 oz. **FLY & MOSQUITO KILLER** 97¢
Noxzema 10 oz. **SKIN CREAM** 97¢
Orr **INSECT SPRAY** 6.5 oz. 79¢

Green Light **LIQUID EDGER** Gallon \$3.57

Redwood **STAIN SEALER** Gallon \$2.37 ea.

J-Wax **PASTE CLEANER WAX** 10 oz. \$1.07

Champlin **TUBE GREASE** Deluxe Multi-Purpose 23¢ Tube

Champlin Transeason **MOTOR OIL** 36¢ Qt. \$8.27 Case

Hanging **CLOTHES ROD** \$1.57 ea.

DuPont No. 7 **AUTO POLISH AND CLEANER** Pint Can #0111N 77¢

Supersonic airliner called an "economic folly."

Unbeatable buys plus friendly service! at Piggly Wiggly!



CHUNK TUNA

Carol Ann, Light Meat

3 \$1

6 1/2-Ounce Cans
Suzan Salad Dressing 32-Ounce Jar 35c

FRUIT COCKTAIL

Carol Ann

5 \$1

16-Ounce Cans
Farmer Jones Cottage Cheese 16-Ounce Carton 33c

MARYLAND CLUB COFFEE

All Grinds

Pound Can

69¢

Limit One Thereafter 93¢

Farmer Jones Fresh Eggs!

Large Eggs Farmer Jones, Grade AA Dozen 39c
Medium Eggs Farmer Jones, Grade AA Dozen 29c
Small Eggs Farmer Jones, Grade AA Dozen 28c

Shop and Compare these Low Prices!

Unbeatable for saving!

USDA Choice Beef, Blade or Pot Cut

UNBEATABLE PRICE + STAMPS Soft Margarine

Blue Bonnet One Pound Package 47¢

UNBEATABLE PRICE + STAMPS Lipton Tea

1/4-Pound Box 47¢

UNBEATABLE PRICE + STAMPS Oxydol Detergent

25c Off Label King Size 99¢

UNBEATABLE PRICE + STAMPS Wesson Oil

Buttery Flavored 32-Ounce Jar 87¢

UNBEATABLE PRICE + STAMPS Snack Pack

HUNT'S, Diced Peach, Fruit Cup, Applesauce, 4-Pack 5-Ounce Can 69¢

Chuck Roast

48¢

CHICKEN FRIED, Tenda-Made
Beef Patties Pound 89¢
USDA Choice Beef, Waste Free
Boneless Chuck Steak Lb. 88¢
USDA Choice Beef, Round Bone, Shoulder Cut
Swiss Steak BONELESS Pound 89¢
USDA Choice Beef, Waste Free
Boneless Chuck Roast Lb. 88¢

USDA Choice Beef, Excellent for Cook-Outs
Boneless Brisket Pound \$1.09
Lean USDA Choice Beef Cubes
Stew Meat Pound 89¢
Dated to Assure Freshness
Ground Chuck Pound 89¢
USDA Choice Beef, Valu-Trimmed
Rib Steak Pound 98¢

FARMER JONES
Mellorine
All Flavors,
1/2-Gallon Carton
29¢
Carol Ann, Yellow Cling, Halves or Sliced Peaches
2 1/2 can 25c

Frozen Food Specials!
CREAM PIES
Morton's, All Flavors
14-Ounce Pie **25¢**
Breakfast Treat, 6-Pack
Frozen Waffles 5-Ounce Package 10c
Simplet, Frozen
Shoestring Potatoes 3 20-Oz. Pkgs. \$1.00

All Meat Franks Rath, Black Hawk, 12-Ounce Package **39¢**
Family Steak USDA Choice Beef, Ranch Style, Chuck Cut Pound **68¢**
Breaded Shrimp Gulf Gem, Alaskan Tidbits Pound Package **89¢**

Carol Ann
Instant Potatoes 16 1/2-Ounce Package 39c
Orange Drink Mix
Tang 18-Ounce Bottle 89c
3c Off Label, Bonne
Liquid Bleach 1/2-Gallon Jug 32c
20c Off Label
Dishwasher All 50-Ounce Box 79c
Bluebonnet, Whipped, 4c Off Label
Soft Margarine Pound Package 45c

PINEAPPLE JUICE
Carol Ann
3 \$1
46-Ounce Cans
GRAPEFRUIT, Carol Ann
Juice 46-Ounce Can 39c

GREEN BEANS
Cut, Renoum
6 \$1
No. 303 Cans
WHOLE, Carol Ann
Green Beans 5 No. 303 Cans \$1.00

FACIAL TISSUE
Soft Ply, Assorted Colors
5 \$1
200 Count Boxes
COLD OR DRY, Regular 98c
Ponds Skin Cream Medium Size 79c

LOOK WHAT A NICKLE WILL BUY!

Bell Pepper Each **5¢**
Excellent for Stuffing
Cantaloupes Vine-Ripened 4/\$1.00
Neclarines Tree-Sweet Pound 49c
Head Lettuce Fresh, Crisp Pound 19c
Long, Green Slicers
CUCUMBERS Each **5¢**
Garden Fresh, Each Bunch
GREEN ONIONS Bunch **5¢**

Health & Beauty Aids

Macleans Regular or Mint 3.25 OZ. TOOTHPASTE
GIANT SIZE
LIMIT OF ONE PER CUSTOMER
COUPON EXPIRES 6-27-71
VOID WHERE PROHIBITED
Redeemable only in Piggly Wiggly stores operated by Shop Rite Foods, Inc.
39¢
Without Coupon 49c

Vitalis HAIR TONIC 7-Ounce Bottle 99c
Right Guard Spray Deodorant, Extra Dry 15c Off Label, 8-Ounce Can \$1.19
Shampoo Great Body, By Clairol 7-Ounce Size \$1.19
Del Monte Tomato Sauce 8-Ounce Can 10c
Carol Ann Shoestring Potatoes No. 300 Can 10c
Pillsbury Biscuits, 8oz. can 10c

Effective June 24, 25, & 26 Muleshoe, Texas



Enochs News

By Mrs. J.D. Bayless

Mr. and Mrs. Junior Austin and sons visited his sister, Mr. and Mrs. Orphus Tate and children, at Mobbettie Sunday.

Company in the H.B. King home Tuesday night was Mrs. J.D. Howthorne from Lovington, N.M.

Leland Finley was a dinner guest in the J.D. Bayless home Sunday and Larry and Linda returned home with their father.

Dinner guests in the E.N. McCall home Father's Day were Mr. and Mrs. Robert George, Brent and Marthan, Mr. and Mrs. Rusty Rowden and Chris all of Lubbock, and Mrs. Eva Rowden and Susan of Morton.

Mr. and Mrs. G.R. Newman were dinner guests in the home of their son, Mr. and Mrs. Bobbie Joe Newman May 17, to help Bobbie Joe and daughter Judy celebrate their birthday.

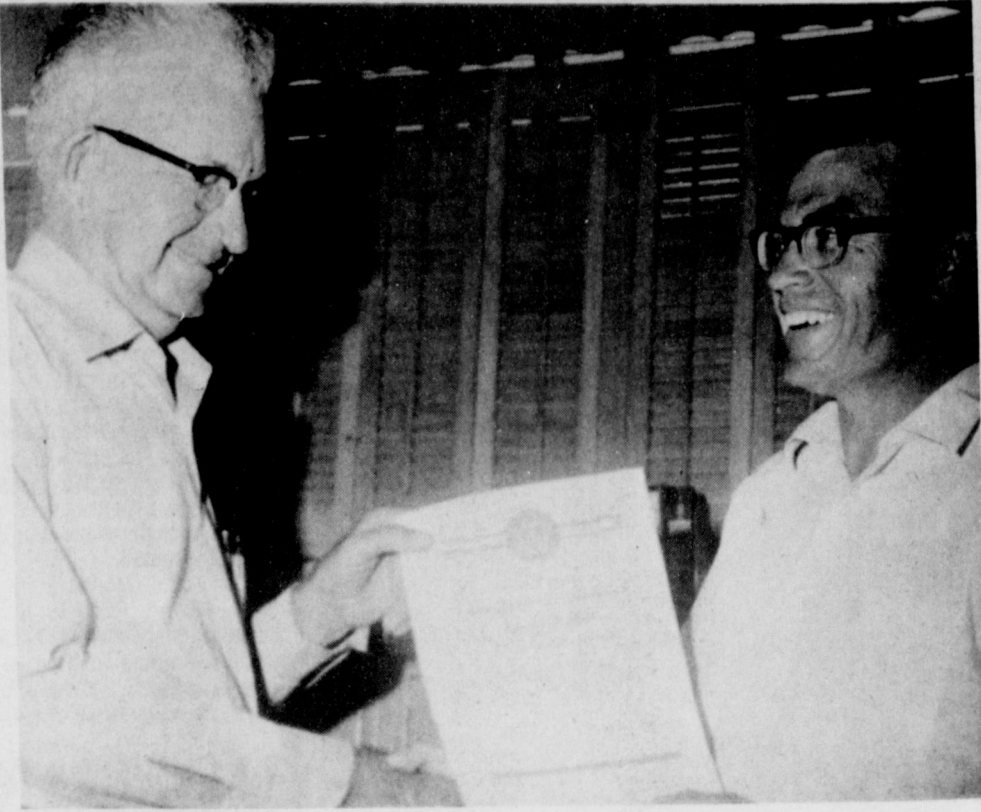
Mrs. W.M. Bryant gave a tea in honor of Mrs. Mavis Pool from Santa Clara, California, who is here for a visit with her son, Mr. and Mrs. John Pool at Morton, Mrs. Pool was a former resident of Enoch's.

Friends attending were Mrs. Inez Sanders, Mrs. Louise McCall, Mrs. Etta Layton, Mrs. Dovie Dane, Mrs. G.R. Newman, Mrs. Essie Seagler, Mrs. L.E. Nichols, Mrs. Olive Angel, Mrs. Alma Altman, Mrs. Ellen Bayless, Linda Finley, Mrs. Pool and Mrs. Bryant.

Ann Blackston is home after a three week visit with her sister, Mr. and Mrs. Lee McDonald at Memphis. Nancy Blackstone has gone for a visit with the McDonalds.

Kathy Whitner and Ann Blackstone will be in Atlanta, Georgia, July 3 until August 13, to attend Massey Junior College, studying modeling and interior decorating.

The TEL Sunday school class met at the home of Mrs. Marion McDaniel for their class party Tuesday night, and presented her with a pin from the class. Those present were Mrs. Rose Nichols, Mrs. Welma Petree, Mrs. La Joyce Pierce, Mrs. Olive Angel and Mrs. Margie Peterson.



CITED FOR SERVICE--Charles Ball, 30 year employee of the Soil Conservation Service, received a certificate of appreciation for his years of service from Henry Stoneham, right, manager of the Bailey County Unit of the Blackwater Valley Soil and Water Conservation Service. Ball has worked with SCS in Muleshoe continuously since 1945.

Shonnye and Cindy Snitker of Amarillo, visited their grandparents, Mr. and Mrs. C.C. Snitker, for several days.

Henry Hardaway of Littlefield, the son-in-law of the C.H. Byars, was unloading cattle out of a two decker truck Friday when he slipped and fell and broke both wrists. Mrs. Hardaway, his wife, his father, Ray Hardaway, and Mrs. C.H. Byars went to El Paso Friday afternoon to be with him at the Ysleta hospital, they brought him home Sunday.

Mr. and Mrs. Jim Byars of Odessa spent Saturday night with Mr. and Mrs. Glenn Lowe and visited at the C.H. Byars home Sunday. Kelley Hardaway returned home with them for a visit.

Bro. W.B. Peterson preached both services at the Enochs Baptist Church Sunday. Following services Sunday night, there was a fellowship for the Marion McDaniel family as they will be moving this weekend to Comanche.

The church presented them with a bedspread and towels. The refreshment table was covered with a white lace cloth over white, centered with a rose colored flower arrangement. Pink punch, coffee and dough-

nuts were served to the group.

Bro. and Mrs. Fred White of Morton were guests in the home of Mr. and Mrs. Harvey Blackstone Sunday. Supper guests were Mr. and Mrs. Michel Abbe of Morton.

Mr. and Mrs. J.W. Hardin of Littlefield visited in the home of their sister-in-law, Mrs. L. E. Nichols, Sunday afternoon.

Mr. and Mrs. Burley Roberts and children and Mr. and Mrs. Arnold Archer visited in Plainview Sunday with his brother, Mr. and Mrs. Norvil Roberts and son Randy. Randy came home with them to spend the week with the Archers.

Mr. and Mrs. G.M. Knipe and Debbie from Great Bend, Kansas visited her parents, Mr. and Mrs. T.A. Thomas recently.

Mrs. L.E. Nichols, Mrs. Rowena Richardson and Miss Vina Tugman were in Plainview Friday. Mrs. Nichols visited her son, Mr. and Mrs. Sammie Nichols, and Mrs. Richardson and Miss Tugman visited Mr. and Mrs. Donald Grusendorf, Mr. and Mrs. Sammie Nichols moved to Denver, Colorado Saturday.

SCS Awards

Charles Ball For 'Service'

Charles Ball, soil conservation technician with the Blackwater Valley Soil and Water Conservation Service, was presented a certificate for 30 years continuous service this week. Making the presentation was Henry Stoneham, manager of the local work unit of SCS.

At the same time, he was presented a 25 year safe driving award for actual driving without an accident. Ball said he began working with soil conservation on

July 19, 1937 with the Civilian Conservation Corps at Littlefield and the U. S. Forest Service in New Mexico. He said he worked with CCC from 1937 until 1941 when he spent four years with the U. S. Army.

Following his tour with the Army, he rejoined the soil conservation service in 1945 and has worked for SCS continuously since that time.

Ball and his wife have two sons, Charles, Jr., who is employed by the United States Post Office in Muleshoe; and Curtis, serving with the U. S. Army in Germany.

When you find you cannot afford something, the best thing to do is to do without it.

Gerald Myers To Instruct Basketball

LUBBOCK--Applications are still available for the Gerald Myers Basketball Camp, the first of its kind in the Lubbock and South Plains area.

Myers, head coach at Texas Tech, has scheduled a day camp to run July 5th-9th and July 19-23rd. The camp is for elementary and junior high school boys who have not graduated from the ninth grade.

The camp is structured to help the advanced player as well as the beginner. Myers will give individual attention to each

boy to insure understanding and development of basketball skills.

Location of the camp will be the gymnasium at the Texas National Guard Armory. The cost of the camp is \$50 per camper and each boy must have a statement signed by a doctor stating he is in good physical condition.

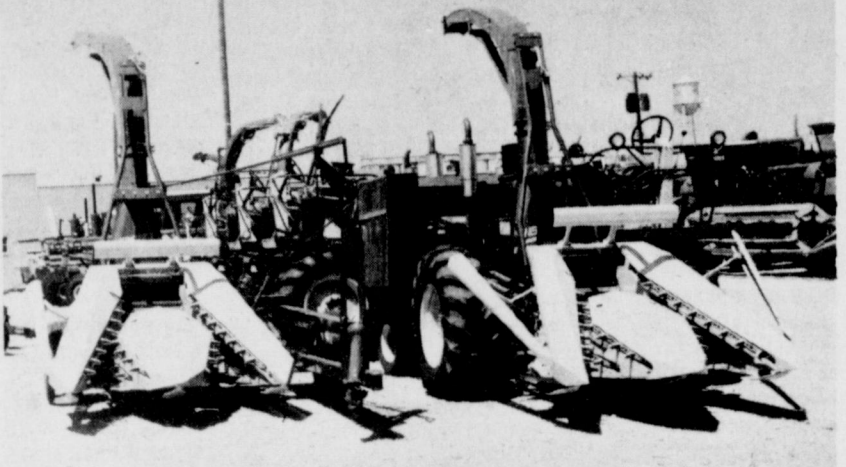
Myers, who took over the job as Texas Tech head coach last year is a former All-Southwest Conference player at Tech. He made the all-SWC team in 1958, his junior year as a Red Raider. He was head coach at Monterey High School, where he compiled a 150-50 record.

Applications for the camp may be obtained by writing Gerald Myers, Box 4199, Texas Tech, Lubbock, 79409.

NEW HOLLAND HELPS YOU Move Stacks Fast

Truck-mounted stack retriever:

- * Picks up a load at a time from a stack, hauls, re-stacks or scatters 54 to 64 bales per trip.
- * Fits 1 1/2 or 2 ton truck chassis.
- * Designed for big hay growers, commercial feeders and stockmen.



Now's the time to buy. **Fry & Cox, Inc.** FARM EQUIPMENT

401 S. FIRST MULESHOE PHONE 272-4511

MICHELIN 'X' RADIAL TIRES



We Say

"THANKS"

To Muleshoe And The Surrounding Area For Making Our Grand Opening A Huge Success!

Michelin makes one grade of tire. The best.

"Free Mounting & Balancing On All New Tires Sold." "Free Rotating & Balancing Every 5000 Miles On All Premium Tires"

40,000 Mile Warranty

MICHELIN

"FOR SAFETY'S SAKE"

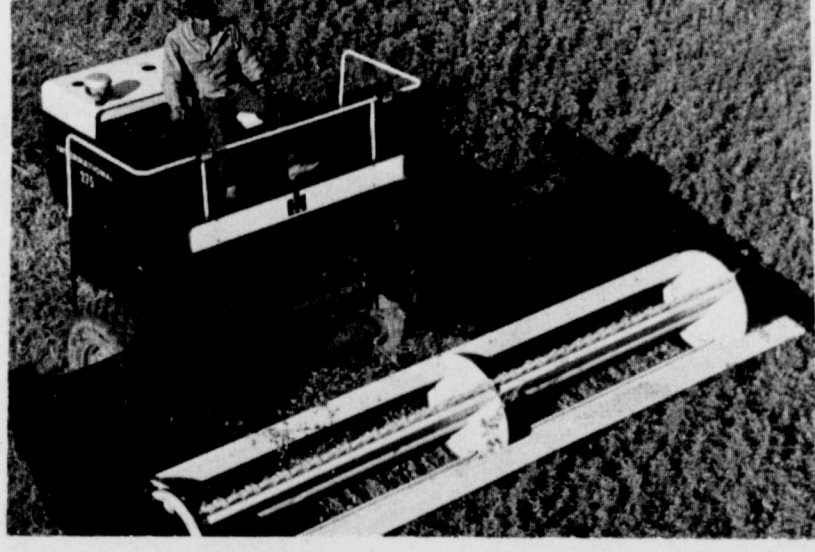
Complete On The Farm Tire Service

Shook Tire Co.

301 N. FIRST MULESHOE PHONE 272-3420

275 VARIABLE SPEED DRIVE

... tough windrower with a gentle touch



THE INTERNATIONAL 275 WINDROWER

WILL DO THE JOB, ADAPT TO MEET YOUR CONDITIONS ... GIVING A BIG DAY'S WORK WITH PERFORMANCE TO SPARE.

WE HAVE:

Parts Service C. T. Discounts

On The Farm Service

Wooley-Hurst, Inc.

522 W. Am. Blvd. Muleshoe Ph. 272-4294

Engine power is transmitted through an exclusive two-stage variable speed V-belt drive that lets you change ground speed without changing engine speed. The propulsion control automatically keeps belt tension constant, regardless of operating speed.

which is scheduled for July 31. Jeff Smith, president of the Jaycees said two more local persons will be chosen to attend the retreat.

One new member was introduced. He is Jim Crawford and a guest Pat Sultenfuss, who is with FHA, was also introduced during the meeting.

Muleshoe...

ship in various church related vocations at widely scattered places in the southwest this week.

Included in the eight are Mr. and Mrs. Gus Taylor. He is the son of Mr. and Mrs. A. C. Taylor, Muleshoe, and Mrs. Taylor is the daughter of Mr. and Mrs. David Wyer of Lubbock, former Muleshoe residents.

They are at Alpine Community Center.

Names of students whose academic achievements qualified them for the deans' list, for the spring semester at Texas Tech University were released this week.

Announcements of honor students were made by the respective deans of the eight colleges and schools at Texas Tech University. They are the colleges of Agricultural Sciences, Arts and Sciences, Home Economics, Engineering, Education, and Business Administration and the Graduate School and the School of Law.

Honor students from the Muleshoe area included Frank H. Hinkson, Bobby D. Redwine, Evelyn Northcutt, Kathy Williams, Betty Harbin, Bruce Purdy, William Taylor, John Gulley, Vallery Moore, Clydene Damron, Patricia Douglass, David Henderson, Debra Burrows all of Muleshoe and Harvey D. Blackstone, Enochs.

It doesn't take an expert to spend money faster than it can be made.

Never forget that the newsboy who delivers your newspaper is a human being.

World progress would move faster if people would talk less and work harder.

STATE CAPITAL Highlights AND Sidelights

by Vern Sanford
TEXAS PRESS ASSOCIATION

By Vern Sanford
Texas Press Association
AUSTIN, Tex., -- Texas 1972 political campaigns jumped off to an early start last week amid earthquake - proportioned new rumblings in the long-running Securities and Exchange Commission stock manipulation case.

Lt. Gov. Ben Barnes announced he will run for governor, and called "loss of faith and confidence in state government" the No. 1 political issue.

Barnes termed the shadows cast by SEC's inquiry into stock trading of state officials one of the reasons for lost confidence by the public.

"I visualize the role of the governor as a much more aggressive role than it has been in the past," he said, Barnes, who is 33, added "a young governor with progressive ideas would be an asset" to Texas.

Barnes said he would aim to make the state Democratic party an "energetic force for sound government, not just a political tool to be used briefly every two years and then discarded. I want Texas to be strong in national affairs."

Atty. Gen. Crawford C. Martin, recovered from a March heart attack, announced he will file as a candidate for a fourth term.

"In the light of the scandals

that have rocked our state government this spring--and the resulting investigation which my office has begun at the request of the Legislature--I feel it a question of duty to Texans to make the race," said Martin.

Dolph Briscoe of Uvalde reportedly retains interest in the governor's race.

Gov. Preston Smith still hints he may run again, brands federal handling of the stock case "political harassment."

OIL ALLOWABLE CUT--State-wide oil production allowable for July has been slashed 260,815 barrels a day from June.

New allowable was set by the Railroad Commission at 68.7 percent of potential or a decrease of 6.7 percent. Reduction is the third straight.

Market demand factor for the coming month is the lowest since during part of August, 1970.

Maximum production is estimated at 3,367,115 barrels daily, but actual production will be closer to 3,273,750 barrels slightly more than major buyers requested.

Eight of 14 major crude purchasers asked the same allowable for July, four sought less and two requested more.

Crude oil stocks were estimated at 108.4 million barrels, an increase of 1.1 million over the 1970 period.

CRIME FIGHT FUNDS APPROVED--Nearly \$4 million in grants to aid criminal justice projects received Criminal Justice Council Approval.

CJC will fund \$2.5 million from federal aid money, with local governments contributing another \$1.5 million.

Houston-Gulf Coast Building Trades Council got the biggest state grant of \$191,800 for New Waverly delinquency prevention program.

Other grants went to Texas-Kana Ark-Tex Council of Governments; East Texas COG, Kilgore; Waco; Alamo Area COG, San Antonio; Wichita County; McLennan County; Bexar County; Austin-Travis County; Harris County Mental Health - Mental Retardation Center; Central Tex COG, Belton; Grayson County; Lower Rio Grande Valley Development Council, McAllen;

Edinburg; Waco Police Department; Fort Worth; Travis County juvenile defender project; Eagle Pass; Lubbock County; City of Dallas; El Paso; Cleveland; regional law enforcement radio communications system; Coastal Bend Regional Planning Commission; Texoma RPC; Heart of Texas cog; Aldine and Midland Independent School Districts.

COURTS SPEAK -- Supreme Court upheld a Tyler court verdict awarding \$5,000 accidental death policy recovery to a widow whose husband was shot to death allegedly after committing man.

High Court set July 14 arguments in a Dallas woman's damage suit claiming negligence by a private plane pilot in an accident which killed her husband four years ago.

Court of Criminal Appeals affirmed the life sentence in a Beaumont rape case.

Austin Court of Civil Appeals reversed a Houston trial court and upheld State Board of Examiners of Psychologists' decision denying Houstonian Joseph D. Farrar a license to practice psychology because his master's degree was not primarily psychological but educational.

AG OPINIONS--Minors can be tried for liquor law violations without notification to parents if court is unable to locate parents or guardians, Atty. Gen. Crawford C. Martin has said.

In other recent opinions, Martin concluded that:

- * A trial judge has discretion to grant probation when satisfied the best interests of the public and the defendant will be served, and the defendant is not under burden to show eligibility for probation, though the judge may require appropriate proof.
- * Board of Private Detectives, Private Investigators, Private Patrolmen, Private Guards and Managers has discretion to decide whether or not license of those within its jurisdiction will be denied because of a conviction for felony.
- * Whether Parks and Wildlife Department executive can retire as a "commissioned peace officer" is a fact question to be of whether he was engaged primarily in criminal law enforcement activities of the department during 10 years.

APPOINTMENTS -- Raymond Vowell of Austin will succeed Burton G. Hackney as Texas Public Welfare Commissioner.

Governor Smith named W. A. Hughes of Decatur 235th district judge, Harry Hopkins of Weatherford 43rd district judge, and William B. Sullivant of Gainesville 235th district attorney.

Smith appointed Hugh O. Wolfe of Stephenville to North Texas State University Board of Regents.

LAND SALE SET--School Land Board will offer 594,132 acres of land in 869 tracts for July 6 lease sale.

For the first time, said Land Commissioner Bob Armstrong, the Land Board has coordinated environmental planning with the Parks and Wildlife Department on all bays and inlets included. PWD reviewed tracts in lease



WIND DAMAGES CROW CHEVROLET--'Biddy' Hicks of Crow Chevrolet is shown picking up pieces of glass where hard winds blew out the large plate glass window last Saturday evening. Looking on is City Police Officer Joe Albros. This was the hardest hit place in the sudden wind. Several tree limbs were blown down and small items which were not anchored down were tossed about. Muleshoe received approximately a .10 of an inch of moisture in the fast storm which slammed through this area.

and reported any possible hazard to the environment if drilling is permitted. Proposed restrictions will be considered by the Land Board.

Other tracts included are submerged lands in the Gulf of Mexico cancelled from the May sale list due to U. S. Army Corps of Engineers' halting drilling on such tracts temporarily. Submerged land acreage is the largest offered for lease since June, 1965, when the state received more than \$17 million for sale of leases.

CONVICTION "TAX" LEVIED--Cost of moving traffic violations and other convictions will go up under a bill signed into law and designed to provide funds for projects to improve the criminal justice system.

In addition to other taxable court costs, \$2.50 will be charged in each misdemeanor conviction in justice of the peace or municipal court. County misdemeanor convictions will be charged an additional \$5 in court costs, and felony convictions, \$10.

SHORT SNORTS
Texas' first bale of 1971 cotton was produced on the Crispin Gamez farm near Pharr in the Rio Grande Valley.

An additional 400,000 workers and 100,000 employers will become subject to unemployment insurance program and tax for the first time on January 1.

Attorney General Martin warns consumers to beware of phony travel promoters who may take their money and run.

Reps. Rayford Price of Palestine, Price Daniel Jr., of Liberty and David Finney of Fort Worth are challenging House Speaker Gus Mutscher for re-election.

Texas will have 7.2 million registered motor vehicles this year, second only to California according to Texas Automobile Dealers Association.

Finest Selection Of Greeting Cards Williams Bros. Office Supply
Muleshoe Ph. 272-3113

ALTERNATOR REPAIR??
YOU BET WE CAN...

Generators- Starters and Distributors, Too...

Our electrical department has the 'KNOW HOW' and 'THE EQUIPMENT' to handle your problem with a minimum of time and cost.

TRY US. YOU'LL SEE!

Plains AUTO PARTS
P. O. Box 584
MULESHOE, TEXAS 79347

South Main
MULESHOE
Phone 272-4576

THE DEAL OF THE CENTURY!

4 for \$82.80

FREE tire safety kit

century 78 whitewalls

- 4 heavy strength Nylon plies
- Tough Polybutadiene rubber
- Wrap-around tread
- Handsome Dual Stripe Whitewalls

Size	Suggested Exchange Prices- 4 White Sidewalls	Plus F.E.T. Each
E 78-14	\$ 78.20	\$2.21
F 78-14	\$ 82.80	\$2.38
G 78-14	\$ 90.80	\$2.55
H 78-14	\$ 99.40	\$2.74
J 78-14	\$113.00	\$2.91
F 78-15	\$ 82.80	\$2.42
G 78-15	\$ 90.80	\$2.64
H 78-15	\$ 99.40	\$2.83
J 78-15	\$113.00	\$2.96
L 78-15	\$117.00	\$3.19

Plus trade-in.

COOP At participating Co-ops where you'll get the BEST DEAL IN THE COUNTRY!

Congressman Bob Price

The bulk of the House floor action last week centered on the \$21 billion military procurement bill for fiscal year 1972. These funds are spent on the procurement of military aircraft, missiles, naval vessels, combat vehicles, torpedoes, and other weapons. Portions of the funds are also spent on defense research, development, and evaluation.

While the bill finally by overwhelming margin, House doves used the occasion to mount an unsuccessful attack on U. S. national defense and Vietnam policies. A series of amendments to the military procurement bill were offered that would have critically weakened national defense preparedness in such vital strategic areas as intercontinental ballistic missiles, and the manned bomber. These were handily beaten back as were another series of amendments designed to cut off operating funds for U. S. forces in Southeast Asia.

I supported the military procurement bill and I strongly and vocally opposed the crippling amendments. I am quite disturbed by the fact that an increasing number of Americans are becoming more willing, and even anxious in fact, to bleed our national defense capabilities in the name of supposedly "reordering national priorities."

Contrary to what some would have us believe, though, determining the size and composition of the defense budget does not really involve assigning relative priorities between national defense and domestic programs, between guns and butter. Rather, decisions on the size and composition of the defense budget should only involve a consideration of the needs of national survival, and nothing more. In this process, the key question that should be raised and raised often is, "What is needed for the survival of our Nation?"

The American people and their public officials must never forget that the ability of this Nation to survive in the future will not depend on how well it has managed its domestic resources and domestic programs. It will depend instead on whether this Nation has been successful in avoiding and frustrating the forces of darkness which would involve us in a devastating war with the Soviet Union or Red China.



It takes thousands of cars to move wheat at harvest time--
Santa Fe is ready!

420-million bushels is the estimated harvest now getting under way in the southwest and midwest wheat belt. This harvest has to be moved from growing areas to elevators and mills, also to ports for export.

Here's how Santa Fe has been getting ready for this big job.

At the start of the year we ordered 800 giant 100-ton covered hopper cars which are ideal for moving wheat, potash and bulk commodities as they can be loaded in twelve minutes and unloaded in about three minutes. During April we added 500 more to increase the order to 1300 cars, so we could have almost 10,000 giant hoppers ready by harvest. We also use box cars and other types of equipment to keep the wheat rolling.

And there are other ways we are ready for this big job. Last year we expanded and automated our Argentine Yard at Kansas City, which is a busy wheat terminal. Our data center at Topeka is prepared to keep constant check on cars to gain the best possible utilization of equipment. Diesel units have been added to our locomotive fleet and older units updated to move the wheat trains.

Now the harvest is starting and Santa Fe people, with their experience and dedication, are ready to handle this big transportation job. All together we are making our strongest effort to move this year's wheat harvest while at the same time keeping all other freight moving across our railway.

Santa Fe

John S. Reed
President—Santa Fe Railway

"To efficiently move huge volumes of wheat at harvest time must depend on fast loading and unloading of cars by shippers, elevator operators and at port terminals. We must also rely on prompt inspection by government agencies. Through cooperation with everyone in the grain industry, Santa Fe is making an all out effort to move this year's wheat harvest without a serious car shortage."

Santa Fe Santa Fe—the railway that is always on the move toward a better way

Support **ASTRO** a sound transportation plan to meet tomorrow's needs.

State Line Butane Co-Op Assn.
MAPLE and NEEDMORE
SALE on GREASE, OIL and TIRES
JUNE 23-24-25

Come In and Visit Us and Register For Pickup Tool Box To Be Given Away on June 25 at 6 p.m.

WANT ADS DO THE JOB FAST!

WANT ADS PH. 272-4536

CLASSIFIED RATES

OPEN RATES

First insertion, per word-7¢
Second and additional insertions-5¢

NATIONAL RATES
First insertion per word-9¢
Second and additional insertions-6¢
Minimum charge-75¢

Card on Thanks-\$1.50 Double rate for blind ads

Classified Display-95¢ per col. inch

\$.105 col. inch for reverses

DEADLINE FOR INSERTION

Thursday's Muleshoe Journal-Noon Tuesday
Sunday's Bailey County Journal-Noon Friday

The Journals reserve the right to classify, revise or reject any classified ad.

Check advertisement and report any error immediately
Journals are not responsible for error after ad has already run once.

Melshoe Rotary Club
meets every Tuesday at 12:00
FELLOWSHIP HALL
Methodist Church
Harvey Bos, President

Jaycoos
meets every Monday, 12 Noon
Derrell Oliver, Pres.

Masonic Lodge
1237 AF AAM
meets the second Tuesday of each month
practice night each Thursday
Roy Cline, W.M.
Elbert Nowell, Sec.

Muleshoe Oddfellows
meets each Thursday 7:30 p.m.
Bill Henckson, Noble Grand

Lions Club
meets each Wednesday, 12 Noon
FELLOWSHIP HALL Methodist Church
Don Harmon, President

VFW
Walter A. Moeller Post # 8570
8:30 p.m.
2nd & 4th Moods
Old Primitive Skating Rink
D. T. Garth, Commander

1. PERSONALS

fashions
Elizabeth Barnett
Phone 272-3304 After 5 p.m.

FOR SALE: RABBITS see J. R. Otwell or phone after 6:00 272-3163, 1-15t-tfp

3. HELP WANTED

WANTED: WAITRESS, apply in person, Corral Restaurant, 3-40s-tfr

WANTED: Waitress' and cooks, Phone 272-4380 or 272-3497, 3-23t-tfc

NEEDED IMMEDIATELY: Full or part time hair stylist, Main Street Beauty Salon, Phone 272-3448, 3-34s-tfc

WANTED PAPER BOY: Must be 12 years or older for paper route in the East part of town. Apply in person at the Journal Office, 3-25t-tfp

4. HOUSES FOR RENT

FOR RENT: Furnished one bedroom house, 209 W. 13th, Phone 4832, 4-24s-tfc

5. APTS. FOR RENT

FRIONA APTS: 1, 2 & 3 bedroom, low rent, utilities paid, 1300 N. Walnut, Friona, Phone 247-3666, 5-13s-tfc

If everyone thought alike this would be a stagnant world.

FOR SALE: Good used aluminum pipe in sizes from 4" through 8". Also good assortment of all kinds of used fittings -- New systems of all types. We will buy or trade for your used aluminum pipe, STATE LINE IRRIGATION -- LITTLEFIELD and MULESHOE, 10-47t-tfc

12. HOUSEHOLD GOODS
Lost bright carpet colors... restore them with BLUE LUSTRE. Rent electric shampooer \$1. Perry's 128 Main, -12-4t-tfc

Brace yourself for a thrill the first time you use BLUE LUSTRE to clean rugs. Rent electric shampooer \$1. Higginbotham-Bartlett, 215 Main, 12-50s-1tc

15. MISCELLANEOUS
Kirby Sales & Serv.
Special Deals
1971 Kirby Classics
CAROLYN DUNCAN
Phone 272-4182

MOUNTAIN VACATION: Fishing, hiking, relaxing. Rent Morphy Lake cabin. Write Mel Hill, 1024 Fifth, Las Vegas, New Mexico 87701. 15-24t-4tp

REDUCE safe and fast with GoBese Tablets and E-Vap "Water Pills". Damron Drug, 15-24t-8tp

Madam Linda
Gifted reader and advisor. Never failing advice on love, courtship, marriage, divorce, business transactions, enemies and bad luck. Open daily, 8 a.m. to 10 p.m. 509 W. 11th, Friona, Texas. Look for Indian head in front of her home. Call for appointment. 15-22s-8tp

FIGHT fatigue with Zippies, the great iron pill. Only \$1.98. Damron Drug, 15-24t-3tp

FOR SALE: Wurlitzer Early American piano. 272-3973. 15-23t-6tp

CESSPOOLS pumped out. 272-3282 or 272-3036. 15-25s-tfc

NOW OPEN: Evalyn's Book Shop, across from post office at 105 First Ave., Sudan, Special 'A HISTORY OF LAMB COUNTY' \$8.50. Books, bottles, western art, family research. Both old and new books, also special orders -- need to lose weight -- let me find the magic recipe. Open daily 9 a.m. to 5 p.m. Evalyn Parrott Scott, Phone 227-3831. 15-24t-tfc

REDUCE excess body fluids with FLUIDEX diuretic tablets only \$1.69 at your drugstore, 15-25t-4tp

CASH FOR YOUR wrecked or burned tractor Bozeman Machinery 122 Idalu Road Lubbock, Texas Phone (806) 762-5133, 15-25t-stfc

BIG FLEA MARKET Swap shop, Main Street Morton, Saturday June 26 and Monday June 28, 15-25t-2tc

WANTED: Someone to mow and cut weeds. 319 W. Ave. E, 15-25t-tfc

FOR SALE: "66 Ford custom 500/ Power and air. Call Terry Wheeler 925-3426, 9-25t-2tp

FOR SALE: Used farm tractor parts, Bozeman Machinery 122 Idalu Rd Lubbock, Texas, Phone (806) 762-5133, 10-25t-stfc

FOR SALE: Used and New Trimmings, Pierce Siderolls, some used pipe, Wagner Endrolls, Olson Pivot Systems, Phone 927-3775, 10-22s-tfc

FLOATING LAKE PUMPS Electric or gas. Efficient, trouble free. Satisfaction guaranteed. Betzen Mfg. 511 Ave. F, Hereford, Phone 364-3149 10-21t-10tp

LEGAL NOTICE

NOTICE TO BIDDERS

1. Sealed bids will be received by the Mayor and City Council, Bailey County, Texas, hereinafter referred to as the "Owner" for Library Equipment as set forth in the Plans and Specifications entitled Library Equipment and Furnishings for the City of Muleshoe, Texas, on or before 10:30 o'clock a.m., Tuesday, July 6, 1971, in the City Hall, Muleshoe, Texas, at which time said bids will be publicly opened and read.

2. All bids must be made on the blank form of proposal furnished in the Specifications.

3. Each bid must be accompanied by a certified check or bidder's bond, payable to the Owner for five per cent of the total amount of the bid. As soon as the bid prices have been compared, the Owner will return the check or bond of all except the three lowest responsible bidders. When the contract is awarded, the checks or bonds of the two remaining unsuccessful bidders will be returned. The check or bond of the successful bidder will be retained until the contract and surety bond have been executed and approved, after which it will be returned.

4. A performance and payment bond in the amount of 100 percent of the contract price with a corporate surety approved by the Owner and Architect will be required for the faithful performance of the contract, and the bidder shall state in the proposal the name and address of the surety or sureties who will sign this bond in case the contract is awarded to him. A maintenance guarantee for the repair of all damage due to improper materials or workmanship for a period of one year after the acceptance of the work by the Owner will also be required.

5. The party to whom the contract is awarded will be required forthwith to execute the contract and a performance and payment bond within ten calendar days from the date when the written notice of the award of the contract is mailed to the bidder at the address given by him. In case of failure to do so, the Owner, may at his option consider that the bidder has abandoned the contract, in which case the certified check or bidder's bond accompanying the proposal shall become the property of the "Owner".

6. The Owner reserves the right to reject any and all bids or to accept any bid. Contractor's proposals shall hold firm for thirty days. Mutually agreed upon extensions of time may be made, if necessary.

7. Before the award of the contract, any bidder may be required to furnish evidence satisfactory to the Owner and Architect of the necessary facilities, ability, and pecuniary resources to fulfill the conditions of the said contract.

8. Should a bidder find discrepancies in or omissions

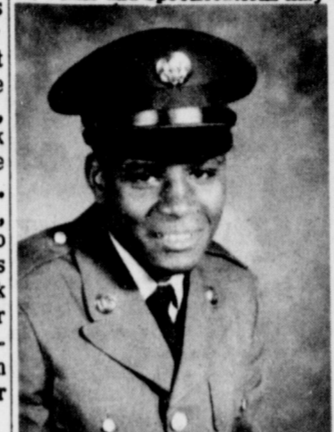
be obtained from Bill W. Cantrell, Architects, Land Planners, Lubbock, Texas.

CITY COUNCIL, MULESHOE, from the plans, specifications, or other documents, or should he be in doubt as to their meaning, he should at once notify the Architect and obtain clarification prior to submitting any bid.

9. Contract to be let will consist of: a. Library Equipment and Furnishings

10. Proposals which are incomplete, unbalanced, conditional or obscure or which contain additions not called for, erasures, alterations or irregularities of any kind or which do not comply with the Notice to Bidders, may be rejected at the option of the Owner.

11. Plans and Specifications may



SOLDIER VISITS--Pvt. DeWayne Williams, son of Mr. and Mrs. Cleveland Williams, has completed eight weeks basic training with the U. S. Army at Fort Polk, La. He visited his family and friends in Muleshoe for the past 14 days before leaving for Fort Knox, Ky. where he will be stationed. He left for his new post on June 22.

TEXAS, OWNER
(s) L. I. St. Clair
Mayor, City of Muleshoe
25t-2tc

News of Our SERVICEMEN

T. J. Shouders

SAN ANTONIO--Airman Terrell J. Shouders, son of Mrs. Irene L. Taylor of Rt. 4, Dimmit, has completed basic training at Lackland AFB, Tex. He has been assigned to Chanute AFB, Ill., for training in the aircraft equipment maintenance field. Airman Shouders at-

Tax Man Sam Sez

TAX MAN SAM SEZ:
If you are a student who is working during the summer and you will not earn enough to owe any income tax (\$1,700), it's not too late to go back and talk to your payroll office about completing a Form W-4E. The "E" stands for exemption. A

recent change in the tax law allows your employer to let you take home all your pay under these circumstances. The new law allows your employer to stop withholding on students who will not earn enough to owe any income tax. It also saves the government the trouble of sending you an income tax refund next January or February.

Most hearing losses appear gradually, which is one reason that hearing loss victims frequently are not aware of their handicap, which advocates everyone have a hearing test at least once a year.

MRS BAIRD'S

Baked with family pride.

SHOOK LEE TIRES

LEE'S All New First Line
Tire **XL-200** With 4 Full Ply Of Nylon

PASSENGER TIRES

650 x 13	\$16.45	F. Ex. Tax \$1.78
700 x 13	\$17.45	F. Ex. Tax \$1.96
775 x 14	\$19.45	F. Ex. Tax \$2.17
775 x 15	\$19.45	F. Ex. Tax \$2.19
825 x 14	\$21.45	F. Ex. Tax \$2.33
855 x 14	\$23.45	F. Ex. Tax \$2.53
885 x 14	\$26.45	F. Ex. Tax \$2.84
825 x 15	\$21.45	F. Ex. Tax \$2.36
855 x 15	\$23.45	F. Ex. Tax \$2.57
885 x 15	\$26.45	F. Ex. Tax \$2.76

LEE'S GS-300 78 RM
Premium

"FREE MOUNTING & BALANCING ON ALL NEW TIRES SOLD"

BUY 1 AT EVERYDAY SELLING PRICE...GS-300 78 RM, GET 2nd TIRE 1/2 price

F78-14	\$31.82	F. Ex. Tax \$2.44
G78-14	\$34.76	F. Ex. Tax \$2.60
F78-15	\$31.76	F. Ex. Tax \$2.40
G78-15	\$34.74	F. Ex. Tax \$2.60
H78-15	\$37.17	F. Ex. Tax \$2.80

USED TIRES

MONROE-MATIC SHOCKS
2 years or 30,000 mile guarantee

YOUR CHOICE WHITEWALLS OR BLACKWALLS
ANY SIZE \$ 3 95 ON OUR RACK GUARANTEED TIRES

COMPLETE ON THE FARM TIRE SERVICE

For West Texas' Best Tire Buy... LOOK TO SHOOK

Shook Tire Co.

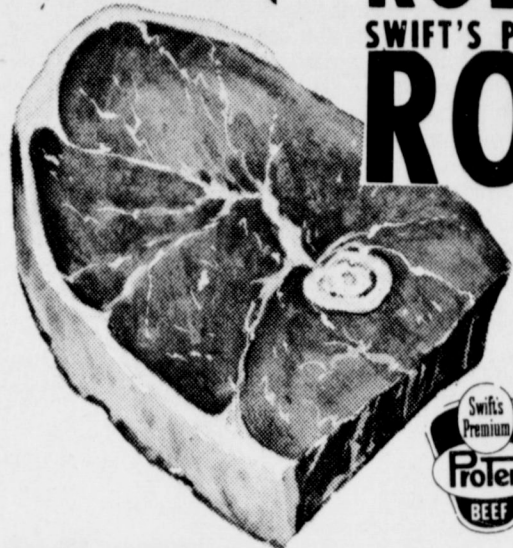
301 N. FIRST, MULESHOE, PHONE 272-3420

Any travel agent who sends you is in the

NEED A HOME LOAN?
SEE FIRST FEDERAL!
FIRST FEDERAL SAVINGS
801 Pile St. 762-4417
Clovis, New Mexico

SPECIAL

Summer Savings LOOK



SWIFT'S PREMIUM PROTEN BEEF
ROLLED ROAST SEASONED READY TO COOK lb. \$1.09

SWIFT'S PREMIUM PROTEN BEEF
ROUNDSTEAK lb. 98¢

SWIFT'S PREMIUM PROTEN BEEF
RANCH STEAK lb. 69¢

GLOVERS CHUCK WAGON THICK SLICED
BACON 2lb. pkg. \$1.19

SWIFT'S PREMIUM PROTEN BEEF
STEAK FINGERS BLUE MORROW'S TENDA MADE FULLY COOKED 79¢

SWIFT'S PREMIUM PROTEN BEEF
STEW MEAT BONELESS lb. 89¢

SWIFT'S PREMIUM PROTEN BEEF
ROAST PIKES PEAK BONELESS lb. 98¢

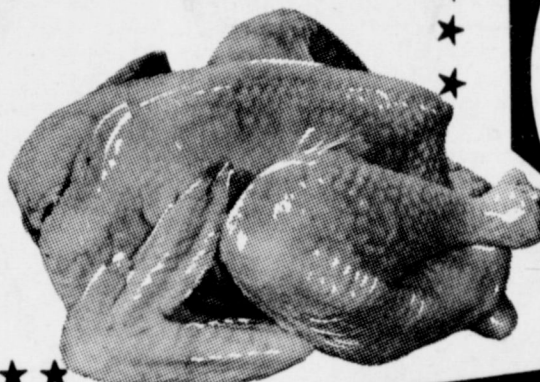
SWIFT'S PREMIUM PROTEN BEEF
SHORT RIBS \$1
3 Lb. For

FRYERS

USDA GRADE A GOLD NUGGET FRESH

DRESSED WHOLE

29¢
lb.



Register At
White's Cashway For!
FREE GROCERIES

- * 10,000 Gunn Bros. Stamps
- * 3 Pc. Travel Luggage
- * 5 Place Setting Pottery Dinnerware
- * 3 Days-2 Nights In Ruidoso, N.M. With \$50 Cash (fun money)

Beginning June 24 through July 10,
register on back of your register tape.
Winners To Be Announced
July 12, 1971

Free KIDS! KIDS!

REGISTER FOR FREE FIREWORKS
TO CELEBRATE THE GLORIOUS
4th OF JULY, JUNE 24-30.

CRISCO
Pure Vegetable Shortening

59¢
3 Lb. TIN

(with a \$5 purchase or more, thereafter 69¢)

FROZEN FOOD SPECIALS

2 lb. Bag Ore-Ida
TATER TOTS 49¢

10 oz. Pkg. Keith's
MIXED VEGETABLES 19¢

10 oz. Pkg. Keith's
BROCCOLI SPEARS 25¢

10 oz. Pkg. Birds Eye
JAPANESE STYLE VEGETABLES 49¢

12 oz. Pkg. Skinner Short Cut Elbow
MACARONI 23¢

14 oz. Pkg. Keebler Pecan Sandies
COOKIES 49¢

3 oz. Jar Lipton
INSTANT TEA 99¢

28 oz. Jar Bama
APPLE BUTTER 39¢

7 oz. Towie Pimento Stuffed
SPANISH OLIVES 49¢

48 oz. Jar Hamburger Alabama Girl
DILL CHIPS 69¢

6 1/2 oz. Flat Can Del Monte Chunk Light
TUNA 43¢

White Swan 46 oz. Can
PINEAPPLE JUICE 3 for \$1

Armour Star 5 1/2 oz.
POTTED MEAT 4 for \$1

#300 Can Libby's
BLACKEYE PEAS 19¢

28 oz. btl. Plus Deposit
PEPSI COLA 4 for 99¢

Decker Quality Stick 1 lb. ctn.
MARGARINE 15¢

Charmin 4 Roll Pkg.
BATHROOM TISSUE 45¢

Jumbo Box ALL Concentrated
DETERGENT \$1.99

15 1/2 oz. Box Duncan Hines Double Fudge
BROWNIE MIX 49¢

22 oz. Btl. Liquid
DOVE 49¢

1 lb. Tin Maryland Club All Grinds
COFFEE 85¢

APPLE SAUCE
APPLE BAY PINK

#303
10¢
CAN

GOLDEN RIPE
BANANAS 9¢
lb.

PEACHES
VAL VITA
YELLOW CLING
SLICES
#2 1/2
CAN
29¢

ORANGE DRINK
HI C
46 OZ.
CAN
25¢

GREEN POD
OKRA GARDEN FRESH lb. 29¢

EGG PLANT TEXAS lb. 29¢

FRESH FLORIDA
ROASTING EARS 5¢
EACH

GUNN BROS. STAMPS
DOUBLE EVERY
WEDNESDAY

White's CASHWAY

We Reserve The Right To Limit Quantities

Listen to
MULETRAIN
over KMUL
10:15 a.m.
Sponsored by
WHITE'S CASHWAY