

FOODWAY
Super Markets

festive food buys

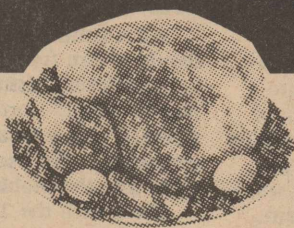
FOODWAY
Super Markets

Shop Early... We Will Be Closed All Day Christmas Day

Specials Good **Thur. Dec. 18**
Thru Sat. **Wed. Dec. 24 1975**

Armour Star USDA Grade 'A'
WHILE SUPPLY LASTS

Turkeys
Hens
11-Lbs. And Up
Lb. **65¢**



8-10 Lbs. **69¢**
Butt Portion Lb. \$1.09

Shank Portion
Smoked Ham
water added
Lb. **98¢**



Frozen Foods

COOL Whipped

Topping
9-oz. Bowl **79¢**



KOLD COUNTRY
12 Oz. CAN
Orange Juice
2 for \$1.00

Featured Special!

PET RITZ

Pie Shells
2 9-In. Size Pkg. **49¢**

"Fields"
Pecan Pies 32 oz. **\$1.89**

SMOKED WHOLE **HAM** Lb. **\$1.39**

MARKET MADE BEEF **PATTIES** Lb. **98¢**

FAMILY PAK ROUND APPROX. 75% LEAN **gr. BEEF** Lb. **79¢**

U.S.D.A. CHOICE BONELESS CHUCK **STEAK** Lb. **\$1.39**

HOLIDAY NUTS WALNUTS-MIX NUTS-ALMONDS **pkg. 89¢**

SMOKED HAM **SLICES** Lb. **\$1.69**

CUDAHY CANNED **HAM** 3 LB. CAN **\$6.69**

OWENS PORK REG. OR HOT Lb. **SAUSAGE** **\$1.75**

U.S.D.A. CHOICE BONELESS STEW **MEAT** Lb. **\$1.29**

Fresh Produce

Washington State Red or Golden Delicious

Apples
Extra Fancy **\$1**
4 Lbs.

"Sunkist"
Oranges 4 Lb. **\$1**

"FANCY"
BANANAS lb. **19¢**

"TEXAS"
ORANGES 5 Lb. Bag **69¢**

Red Delicious **APPLES** 3# BAG **69¢**

All Purpose Russet
Potatoes 20-Lb. Bag **\$1.49**

All Purpose or Self Rising

GLADIOLA

Flour
5-Lb. Bag **79¢**



Del Monte Whole Green **Beans** 4 16-oz. Cans **\$1**

Green Giant Whole Kernel Niblets **Corn** 3 18 OZ. Vac Pak Cans **\$1**

Good Buy
KRAFT **Orange Juice** Half Gal. **99¢**

Halves or Pieces Azar **Pecans** 6-oz. Pkg. **89¢**

KIM WHOLE **Yams** 22-oz. Can **49¢**

BRAWNY TOWELS 2 Roll Pkg. **65¢**

Carnation MILK 3 13 OZ. CAN **89¢**

Del Monte Fruit **Cocktail** 16-oz. Can **39¢**

GANDY'S **Ice Cream** 1/2-Gal. Ctn. **99¢**

Del Monte **Pears** 16 OZ. CAN **39¢**

Folger's COFFEE REG. GRIND **\$1.19** 1 LB. CAN

Good Buy
DEL MONTE Yellow Cling Sliced or Halves **Peaches** 16-oz. Cans **39¢**

KRAFT **MIRACLE WHIP SALAD DRESSING** qt. size **\$1.09**

WE'LL GLADLY REDEEM YOUR USDA FOOD STAMPS

Dairy Products

GANDY'S Whipping Cream 8-oz. Ctn. **39¢**

VELVETA Longhorn **Cheese** 2 lb. PKG. **\$1.69**

GANDY'S Sour **Cream** 8-oz. Ctn. **39¢**
Gandy's Egg Nog Quart Carton **79¢**

EX-LARGE FIELD'S GRADE "A"
Eggs Doz. **75¢**

Crisco 3-Lb. Can **\$1.59**

BETTY CROCKERS **CAKE MIX** Layer Cake only 18 OZ. BOX **59¢**

Deli-Kitchen Features
"SUGAR BARREL"
SUGAR 5 LB. BAG **\$1.19**

"SPECIAL"
Double Luck Cut Green Beans 5 16 oz. can FOR **\$1**

SPECIAL
VELVET Shortening 42 OZ. CAN **1.19**

Kimbell Whole Green **Asparagus Spears** 14-oz. Can **59¢**

OCEAN SPRAY Cranberry **Sauce** Whole or Strained 16-oz. Can **43¢**

The Complete Christmas Place this year is BROWN FURNITURE CO. For those with discriminating taste.

Come in and take a look at 500 mugs swinging from trees and standing from brackets at BROWN FURNITURE CO.

HAYES AUTO REPAIR

1311 AVENUE 'AA'

GENERAL AUTO REPAIR

TRAZELL HAYES - Owner

Formerly with Crockett Automotive

Phone 392-3224

Hwy. Dept. Requests Public's Cooperation

District 7 Engineer D. R. Watson of the State Department of Highways and Public Transportation, San Angelo, is requesting the cooperation of all persons and organizations that provide public transportation in this area. More than 100 Transportation Inventory Questionnaires have been mailed to all known public transportation providers within the thirteen county District. This is the initial planning step on the local level, toward fulfilling the Department's new responsibility to public transportation. Placed into the public transportation field by the last State legislature, the Department is gathering information from transportation providers in an effort to determine how, when, why, and where Texans use public

transportation. This information will be assembled into a computer model in Austin of all known public transportation statewide and will help to reveal both strengths and weaknesses of the present system. From this data, a State Master Plan can then be formulated to aid and promote public transportation in areas of proven need.

According to District Engineer Watson, this is the first attempt on a statewide basis to accumulate such information on all public transportation. "Answers to the questionnaires are purely on a voluntary basis, and require those in transportation to give of their time and knowledge. We believe, however, that to do a good job for the people of Texas, we must have these transportation facts. We will greatly appreciate those of you in transportation taking the time to respond," said Watson.

--0--

Conservation Essay Contest Under Way

"Conserving Our Land After 200 Years" is the title for the 1976 Texas Conservation Awards Program Essay Contest sponsored by the Directors of the Crockett Soil and Water Conservation District. The local contest is part of a statewide contest sponsored by the Fort Worth Chamber of Commerce. Local awards provided by the Crockett District include three for Freshman-Sophomore Division and three for Junior-Senior Division. Awards to be provided by local District are \$30.00 for first, \$15.00 for second, and \$5.00 for third in each Division. The over-all District Champion will receive an additional \$10.00 bonus.

The Essay contest is open to High School boys and girls 18 years and under, and does not jeopardize Texas Interscholastic League eligibility. Up to 300 words are permitted. The District Champion Essay will be forwarded to Ft. Worth to compete for regional and State competition. Awards in each of the five state regions will consist of three trophies in each region. \$100.00 cash and a trophy will be awarded to the state champion.

Last years Crockett District Champion essay was written by Luann Perner. The subject was, "Conservation Key to the Future".

Dating Hours Are Conflict In Families

What time teenagers should return from a date is a "conflicting" issue in many families--and Dorothy Taylor, a family life education specialist, offers some insight into the problem.

She's with the Texas Agricultural Extension Service, The Texas A&M University System.

"The basic issue to consider is why teenagers want to stay out late in the first place."

Miss Taylor explained that people usually stay out late because they think that the longer the date goes on the more fun they'll have.

"But what many young daters don't realize is that a prolonged date may dwindle in interest as time goes on--it's better to end a social activity at its peak rather than wait until it fizzles out," she said.

Also, sometimes teenagers stay out later than is sensible not because they're really having fun, but in an effort to prove to themselves that they are. And usually this effort is unsuccessful. It would be better to end the date and plan another more enjoyable one, she advised.

"How late is too late? There's no magic time when all dates should end. The Cinderella story with a midnight curfew makes dramatic telling, but doesn't make much sense in real life. For some dates, midnight may be too late--and for others it would be too early."

The specialist suggested some guidelines for determining when a date should end.

- How old are the two people involved?
- How responsible are they?
- How do the parents feel about the hour question?
- Where will the date take place?
- Who else is going with the dating couple?
- What time will the planned activity end?
- How long will it take to be served some refreshment?
- How far does the couple have to travel to get home?
- What is considered a reasonable hour in the community?

"Many communities--particularly small ones--determine the appropriate time for young people to return to their homes. Some communities almost 'roll up the streets' by 9 or 10 p.m."

Cosmetics Should Be "Used With Care"

Cosmetics usually enhance attractiveness and self-confidence--but "use with care" should be the watchword, Claudia Mitzel says.

"Occasionally severe allergic reactions to some products do occur. In other cases, consumers may misuse cosmetics and endanger their health," she said.

Miss Mitzel is a consumer education-clothing and textiles specialist with the Texas Agricultural Extension Service, The Texas A&M University System.

To insure safe cosmetic use, she suggested some guidelines which may help consumers avoid contamination and injury.

- Read labels on the containers and packages and follow directions exactly.
- If a reaction occurs, such as redness, itching, swelling, soreness, blisters, stop using all cosmetics that may be affecting that area.
- If the reaction persists, see a doctor immediately. And take the suspect cosmetic along. Write a letter to the manufacturer of the product--whose address is on the packaging. Send a copy of the letter to the Food and Drug Administration, Division of Cosmetics Technology, 200 C Street, S.W., Washington, D. C. 20204.

--To determine possible allergy to a cosmetic, place a small amount on the inside forearm and leave it for 24 hours. For hair products, choose an inconspicuous area on the back of your head and do a patch test following directions in the package. Check for any signs of redness of itching before using the product for the entire area.

--To prevent contamination, keep containers closed tightly when not in use--and wash hands before applying any cosmetic since cosmetics are usually bacteria-free before they're opened.



Hanging pots--new selection just arrived at BROWN FURNITURE CO.

--0--

disastrous freeze losses in Brazil.

"Following the July freeze, the New York cash price for green coffee jumped about 20 cents per pound from the June average of 55 to 65 cents for Arabica coffees. Retail coffee prices may increase 25 to 75 cents per pound during the next three to nine months," speculates McDonald.

Despite the lowered production forecast for the coming crop year, there will be enough coffee to go around, notes the Texas A&M University System economist. However, reserve stocks will be down sharply. U. S. Department of Agriculture officials estimate that Brazil now holds about 21 million bags of coffee in reserve. The country annually exports about 18 million bags and itself consumes another 8 million. So, carryover stocks going into the 1976-77 crop year are highly uncertain at this point and will depend heavily on just how short next year's harvest is in Brazil.

"One thing is for sure, though," says McDonald. "That cup of coffee is going to cost more."

--0--

ATTENTION HUNTERS & TRAPPERS - Fur buyer will be in Ozona at Gulf Service Station highway 290 & Ave. G each Wednesday from 6:45 a.m. till 7:30 a.m., beginning Wednesday, and in Sheffield at Tims' Texaco highway 290 each Tuesday from 7:00 p.m. till 7:30 p.m., beginning Dec. 2, D & W Fur Co., 400 N. Texana St., Ph. 795-6057.

--0--

Exciting is the word for the new Swinger slouch couch. The latest thing in leisure living--priced for any pocket-book. See at BROWN FURNITURE CO.

Price Of Coffe Due To Rise

It's going to cost more to wake up in the morning, at least if you depend on coffee as an eye-opener.

Coffee prices are expected to jump sharply in the coming months due to a July freeze in the top coffee producing states of Brazil, which annually produces about a third of the world coffee crop.

"The freeze is expected to cut in half next year's harvest of coffee beans in Brazil," points out Dr. Russell McDonald, economist in marketing with the Texas Agricultural Extension Service. "Furthermore, this year's world coffee crop is down about 8 per cent from that of last year."

Buyers in the United States generally have small inventories and were anticipating a large coffee crop for the 1975-76 crop year, which would have meant lower prices. But, they must now build their stocks in the wake of the

NOTICE!

I HAVE PURCHASED THE EQUIPMENT AND SUPPLIES OF SIMMON'S UPHOLSTERY SHOP. MR. SIMMONS WILL BE ASSOCIATED WITH US IN THE UPHOLSTERY BUSINESS. A FULL LINE OF FABRICS TO SELECT FROM AND EXPERT WORKMANSHIP WILL BE FEATURED

LILA HOLLAND
THE House of Holland
 INTERIORS
 1113 W. BEAUREGARD PH. 653-2549
 SAN ANGELO, TEX.

It's

TAXPAYING TIME AGAIN

County, State and School Taxes Become Due

1% Discount In December

Discount applies to County and State Taxes Only
 No Discount on School Taxes

Billy Mills
 Sheriff, Tax Assessor & Collector - Crockett County

COUNTRY STYLE ELEGANT LIVING

ALL BRICK CONSTRUCTION **4-BEDROOM 2-BATH**
ALL ELECTRIC **DOUBLE GARAGE**

COUNTRY ESTATES

Jack Wilkins Pete W. Jacoby
 Ph. 392-2554 Ph. 392-3059

"I'd rather explain higher gas bills than why you don't have gas."

Your natural gas bill is higher. And, you have every right to know why.

One reason is lower temperatures brought on by winter.

The main reason, however, is simply that you are paying more for natural gas. Because we are paying more. This chart shows how much:

This increase hurts both you and Pioneer. It adds to your bill and to our cost... a cost for which Pioneer is not entirely compensated. It is passed through without mark-up or additional charge.

Why does gas cost more? Competition... particularly from petrochemical and other industries. The competition for gas has never been so fierce.

We will have to pay more for gas than in the past. But by working together, and without outside interference, you'll have the gas you need today and in the future.

K.B. Watson
 K. B. (TEX) WATSON
 President
 PIONEER NATURAL GAS COMPANY

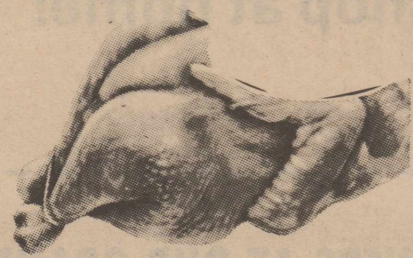
Specials Good - DEC. 18, 19, 20, 22, 23, & 24

JACK'S SUPER MARKET



U.S.D.A. FOOD STAMPS!

Holiday Sale!



Fryers

WHOLE ONLY
Lb.

43^c

HUNT'S FRUIT COCKTAIL

300 CAN

3 FOR \$1

CRISCO

3 Lb. Can

\$1⁴⁹

OCEAN SPRAY CRANBERRY

SAUCE

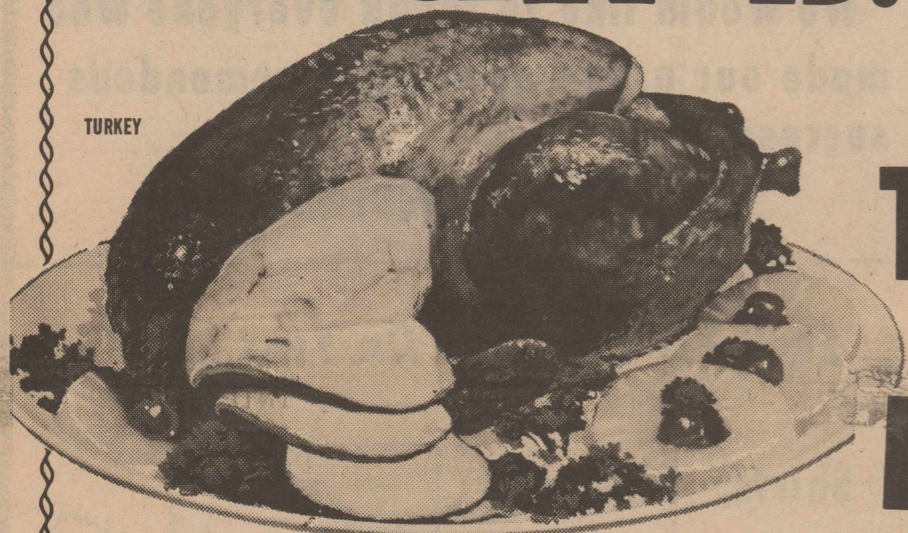
NO. 303 CAN

3 For \$1.00

Pork

Steak LB. 99^c

TURKEY



TOM TURKEYS LB. 59^c

SHOPMADE PAN
SAUSAGE

LB. 99^c

PICNIC HAMS

LB. 79^c

TENDER
BEEF CUTLETS

LB. \$1.69

BONELESS
STEW MEAT

LB. \$1.29

FOODKING

FLOUR

\$2⁹⁸

25 Lb. Bag

SHURFINE

COFFEE

\$1¹⁹

LB. CAN

DOUBLE LUCK CUT
GREEN BEANS

5 16 OZ. CAN \$1.00

BAMA RED PLUM JAM 18 oz. jar 69^c

KOUNTY KIST
CORN 3 for \$1.00

BLACKBURN
WHITE SYRUP 32 oz. 98^c

KOUNTY KIST
GREEN PEAS 3 For \$1.00

BAKERS ANGEL FLAKE
COCONUT 14 Oz. 98^c

PRINCELLA CUT
YAMS NO. 303 CAN 3 For \$1.00

BAKERS
CHOCOLATE CHIPS 12 oz. 98^c

SCHILLING
BLACK PEPPER 4 oz. 59^c

VAN CAMP
CHUNK TUNA can 49^c

REYNOLDS
ALUMINUM FOIL 3 FOR \$1.00 REG. SIZE

SOFLIN FACIAL

TISSUE 200 CT. 39^c

NORTHERN
PAPER TOWELS 49^c

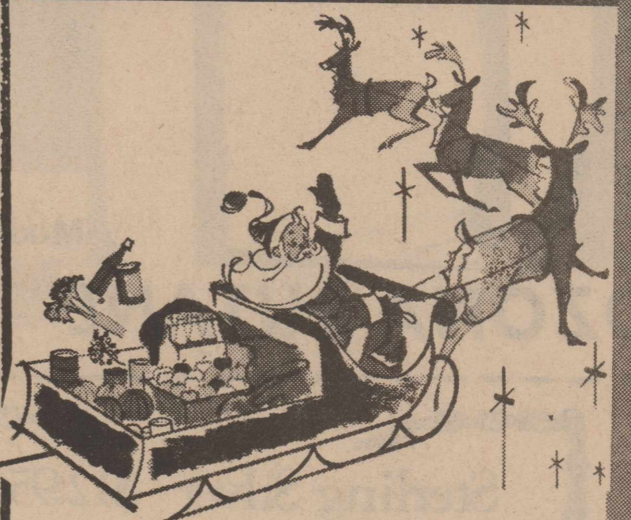
Gandy's

GANDY'S
SOUR CREAM 12 OZ. 39^c

GANDY'S
HALF & HALF PT. 39^c

GANDY'S
WHIPPING CREAM 1/2 PT. 39^c

FROZEN FOODS



BANQUET
PUMPKIN PIES 69^c

BANQUET - CHERRY, PEACH, APPLE
FRUIT PIES 69^c

PET WHIP
TOPPING 10 oz. 59^c

SHURFINE
CAULIFLOWER 3 FOR \$1.00

SHURFINE
CORN 3 FOR \$1.00

Produce

FANCY

BANANAS

Lb.

19^c

YAMS
LB. 29^c

Potatoes

20-Lb. Bag \$1.69

APPLES 3 LB. BAG 59^c

NAVEL ORANGES 4 LB. \$1.00

YELLOW ONIONS lb. 19^c

Gladiola

FLOUR

5 Lb. Bag

89^c

PEPSI COLA

AND

DR. PEPPER

6 PK. CTN.

\$1⁴⁹

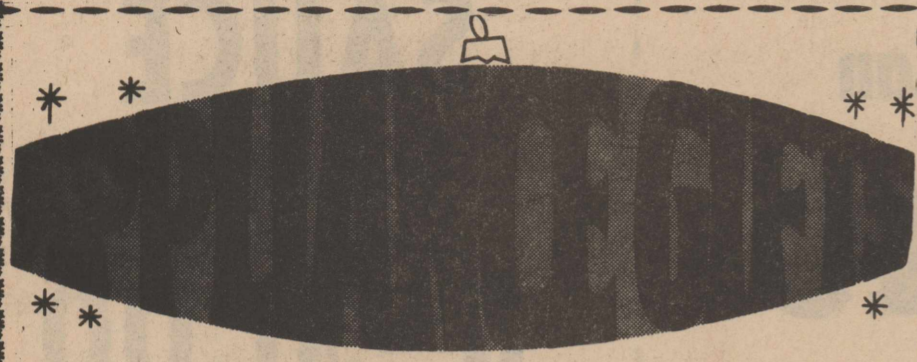
Christmas Shopping Guide

it's lotsa fun to shop at home!



it's handy to shop at home!

SAVE ENERGY - SHOP OZONA



We have a whole section of household appliances.



WHITE'S AUTO

"THE COMPLETE CHRISTMAS PLACE"

- Fine Gift Ware
- Hanging Pots & Brackets
- Unusual Selection
- Mugs
- Wind Chimes
- Wilton Armatele
- Le Creuset Cookware
- much more



Great Gift Ideas

-Free Gift Wrapping

BROWN FURNITURE CO.

PRIZE WINNERS AT OUR GRAND OPENING:

- GRAND PRIZE WINNER (C.B. RADIO) - MRS. BAILEY POST
- 8x12 CARPET - JANE KISER
- 10 PIECES 4x8 PANELLING - JAMES MONTGOMERY
- 4 GALLONS PAINT - RAY VALADEZ, PEGGY WELLMAN, & MORRIS LEE COATES
- WALTHAM WRIST WATCH - MAE LEWIS
- STUFFED TOY - JACOB LARA
- MEASURING DEVICE - JUANITA CHIPMAN & MRS. GEORGE TURNER
- 2 PAINT BRUSHES - RAUL ROSALES
- PAINT BRUSH-GEORGE TURNER, GRACE PEREZ, & PETE VILLERREAL
- AXE - H. W. FELTNER
- IGLOO ICE JUG - DANNY SANCHEZ
- SCREW STARTER - VIRGINIA HUBBARD, DICK KIRBY, SANTIAGO BORREGO & JAMIE CASTILLO

We would like to thank everyone who made our grand opening a tremendous success

SOUTH TEXAS LUMBER CO.

G. E. Appliances Make Great Gifts



Freestanding
Trash Compactor

\$239.95

Model GCG530

OZONA BUTANE

Holiday Sale!

**ALL CHRISTMAS BALLS
HALF PRICE**

RONSON LIGHTERS

Table & Pocket HALF PRICE

C.B. Sets & Cassette Tape Players

VILLAGE DRUG

"THE STORE WITH A SMILE"

Shop For Everyone On Your List

Shirts, Blouses,
Pants, Suits,
wide selection
all sizes



Thurs. Dec. 18

Mon. Dec. 22

Fri. Dec. 19

Tues. Dec. 23

Gifts for all the men on your list

Sorrell's Clothiers

Sterling Silver \$12.95



Shown actual size. Gift boxed, chain extra.

**Reed & Barton's
1975
Christmas Cross®
BAKER JEWELERS**



Just In Time
For Christmas
Gifting

20%

Off on all wool separates

MAE-LU'S FASHIONS

Gifts FOR GOOD SPORTS



- BOOTS
- BELTS
- BILLFOLDS
- HATS
- COATS
- LEE'S
- LEVI'S



OZONA BOOT & SADDLERY

New selection of glassware at BROWN FURNITURE Co. Perfect for Christmas. Interesting copper-type artwork--new at BROWN FURNITURE CO.

I would like to invite all my customers and friends to come by for fruit cake

and coffee
Dec. 22-23-24
Ann Mayfield

San Angelo Savings Association
YOUR FAMILY FINANCIAL CENTER
5 So. Chadbourne / Knickerbocker at Jackson
115 East Main • Sonora / 1002 Avenue E • Ozona



OZONA BOXING TEAM - Four of the five winners who participated in the Coleman Tournament Dec. 13. From left to right they are Rodrigo Cerda, Albert Borrego, Roy Tambunga and Tino Cerda. The other winner was Gino Tambunga. The team will compete at the Del Rio Tournament Saturday, Dec. 20.

Food Prices Up But Consumption Down

Americans are eating less, and it's a good bet that high food prices have something to do with that fact.

"Overall, retail food prices will probably be up about 9 per cent this year," points out Dr. Russell McDonald, an economist in marketing for the Texas Agricultural Extension Service. "Of course, that increase is considerably less than in 1974 when retail food prices rose about 12 per cent."

During the remainder of 1975, McDonald sees slightly lower prices for beef, poultry, fresh fruits and potatoes. However, consumers will see higher prices for most other foods, with pork, eggs, dairy products and fish leading the way.

Turning to the food consumption issue, the economist points out that Americans will eat 1.5 per cent less food in 1975 than last year and that this will be the lowest level in seven years.

"Most of the drop in consumption is showing up in animal-related food products,"

notes the Texas A&M University System economist. "This is due to the fact that prices for fed beef, pork and poultry have been higher. Supplies of these products were restricted due to last year's drought and high-priced feed crops."

What can consumers expect during the first half of 1976? "Food prices will likely average about 7 per cent more than this year," estimates McDonald, "due to a strengthening in domestic demand and increased marketing costs."

Whether or not per capita food consumption will con-

time to decline in 1976 remains to be seen. "Americans are definitely becoming more cost conscious of food items and are paying more attention to their eating habits. These and other factors may entice many to 'push away from the dinner table' just a little sooner," notes the economist.

DEER BRAGGING-----
By Gene Perry

Killed - 12-7-75 - by Gene Perry on the Perry Ranch with 222 cal. 50 grain shot through heart, hunting with Gregg Perry and Shane Fenton. Buck measured 15 points by "inch" rule and 21 points by "ring" rule. Field dressed at 93 pounds. Bucks are plentiful since cool weather.

Expanding Files - A-Z packets, letter size, Stockman Office. 28-tfc

STEEL BUILDINGS GALVANIZED OR COLOR
Limited offer on this building with large double sliding doors included
40X100X12 = \$7347.00
F. O. B. Houston
Prefabricated for easy erection. For more information Call 512-451-0223 COLLECT and ask for Mr. Henry
GRT STEEL BUILDINGS
7701 N. Lamar Suite 121
Austin, Texas 78752

CARD OF THANKS

I would like to express my appreciation to everyone who helped make the 45th Annual Ozona Basketball Tournament a success. Special thanks to the families that provided housing for the visiting teams or offered their homes to these teams. Your help makes this tournament one of the most outstanding in West Texas.

Thanks,
Charles Spieker
--0--

PHONE NEWS TO THE STOCKMAN

Crockett County Hospital News

Patients receiving treatment in Crockett County Hospital week of Dec. 9 to Dec. 15:
Zelma Johnigan
Sally Rodriguez-Sheffield
Yolanda Fonseca-Sonora
Jack Brownrigg
Tammy Garza
Timmy Sanchez
Jack Jones
Milton Wagner
Bill L. Munoz
Adolfo Rodriguez

Robert Gariepy-Sonora
Penly Ramirez
Cecil Hodges
Karl Lovelady
Leonides De La Cruz
Catarino Villareal
*denotes discharged

Births:
Sally Rodriguez - baby girl
Mr. and Mrs. Gregoria Fonseca - baby boy
Care Center Admissions:
Chonita Alvarez
--0--
Just arrived!!!! Hanging basket brackets. Many colors and sizes to choose from-- see at BROWN FURNITURE CO.
--0--

NEWLY REMODELED Buddy's Styling Shop
Brings new haircut techniques to Ozona
Stylist: Buddy Menchaca and Barbara Price
Buddy, a native of San Angelo, is a qualified Roffler hair stylist.
All haircutting will be shampooed, conditioned, cut and blow dried to a style.
Hours: 8 to 6 Tuesday thru Saturday
1302 Ave. E Ph. 392-3513
WHILE AT BUDDY'S, ASK ABOUT THE TRICHOPERM STYLE SUPPORT.

Buy Your Christmas Now!

RING RIOT
3 Days Only
Thur.-Fri.-Sat., Dec. 18-19-20
10 a.m. to 5:30

LARGE SPANISH
EMPERESS DINNER RING
7 STONE DINNER RING
19 STONE CLUSTER
TIFFANY SOLITAIRE
SPANISH PRINCESS
MANS SOLITAIRE
MANS 7 STONE EXECUTIVE

Western Auto
1111 Ave E
\$371 to \$2495
Lifetime Guarantee
Prong Mounted
Hand Set Stones
18K HGE
"Sterling Silver"

ONLY 6 DAYS TILL CHRISTMAS
Bring Your Diamonds See If You Can Tell The Difference

ANNOUNCING . . . GRAND OPENING
December 18-19-20

Meet The Staff

Richard, Howard, Sam, Durwood

Durwood Neville, Owner
"Sam" Dillard, Bookkeeping
Howard Webster, Parts
Richard Le Pes, Mechanic

"Sonora's Oldest Business - Newest Dealer"

Come by for coffee, cookies, punch or to just visit.

DRAWING FOR DOOR PRIZES SATURDAY, 2:00 P.M.

Register while you visit and you do not have to be present to win.

SONORA MOTOR CO.
115 NW Concho
Sonora, Texas Phone 387-3211
"your friendly FORD DEALER"

See The 1976 FORDS

THE CLOSER YOU LOOK, THE BETTER WE LOOK

Steve Hubbard Is Married To Ms. Simonson

Mr. and Mrs. Perry Hubbard announce the recent marriage of their son Steven Michael Hubbard to Ms. Linda Jean Simonson, daughter of Mr. and Mrs. Kenneth Pratt of Salt Lake City, Utah. The couple was married at 7:30 p.m. on Saturday, December 6, 1975 in the sanctuary of the First Baptist Church with Rev. Nelson Lanham performing the ceremony. Following the ceremony a reception was held in the fellowship hall at the church.

Ozona Garden Club Has Christmas Program

Members of the Ozona Garden Club met Monday in the home of Mrs. Joe Boy Chapman for their Christmas program. Mrs. O. D. West and Mrs. Richard Mayfield were assisting hostesses. Mrs. Bob Childress presided over the business meeting and reminded members of the Christmas Lighting Contest which will be judged Dec. 18. Lights should be left on from 8 until 10 p.m. for judging. There will be a Dutch treat supper at the El Sombrero Cafe at 6:30 for members and the out-of-town judges. Following the supper, members will take a Christmas

observation tour of the Bill Black home at 125 Cedar Dr. and the Ozona United Methodist Church to enjoy Christmas music and the Christmas tree. Mrs. Starley Lennamon gave the program on the art of Bonsai, "Creating Landscape in Miniature." The Chapman's new home on Country Club Road was in beautiful Christmas array for the holidays. Christmas cookies, special tea and coffee were served. Others present were Mrs. George Bean, Mrs. Fleet Coates, Mrs. Maggie Crawford, Mrs. L. B. Cox, Mrs. Joe Tom Davidson, Mrs. J. W. Howell, Mrs. Ralph Jones, Mrs. A. S. Lock, Mrs. Bailey Post, Mrs. J. C. Schroeder, Mrs. Charles Williams, Mrs. Ben Bohmfalk, Mrs. Stephen Perner and Mrs. Glenn Sutton.

Christmas Recital Is Thursday

Mrs. Bill Williams will present her students in a Christmas piano recital Thursday, Dec. 18, at 7:30 in the First Baptist Church Auditorium. A reception and presentation of awards will follow the recital in the fellowship hall. Students to be presented are Deena Beth Phillips, Katrina Phillips, Pleas Capps, Glenda Capps, Susan Scott, Kristal Williams, Sarah Falkner, Charla Crites, Cindy Crites, Gayla Bell, Leticia Flores, Sherri Buckner, Michael Mahaffey, Chris Carlisle, Teresa Brown and Lisa Easterwood on the organ. The public is cordially invited to attend.

Grooming Your Lawn Safely

Grooming your lawn is a lot easier today than it was in the days when your outdoor equipment wasn't powered. But whether your latest outdoor power helper is a lawn vacuum to pick up the leaves and dead grass, or a shredder-grinder to reduce all those pruned limbs and



twigs, the Outdoor Power Equipment Institute urges you to treat these machines with respect and good common sense. Here are a few safety tips to cut accidents while you spruce up your yard.

1. Read the owner's manual carefully and become familiar with your equipment before using it.
2. Keep feet and hands well away from the blades and other rotating parts when you use your shredder-grinder, as instructed by your manual.
3. Know your controls. Learn how to stop the machine quickly in an emergency.
4. Stop the engine and disconnect the spark plug before checking on or working on the blades.
5. Discuss with your dealer

proper use and maintenance of your equipment. By following these and all other safety rules you can groom your yard with ease while avoiding being victimized by your own labor-saving device.

Tommy Harris broke his foot in a fall out of a tree at his home Sunday afternoon and will be under the weather a few weeks.

Smith Harold Copy Dr
Smith Ed Durky Av
Smith Edward 286 Public Rd
Smith Fay 37 Ave NW
SMITH HAROLD 239 17th Av
Smith Rhea Medium Av
SMITH ROSETTA 239 17th Av
Smith S First Ave SW
SMITH SANDRA 239-17th Av
Smullen Ann 8404 Highland
Snell Adele 8619 Median Dr
8198 Boudry

It's time your family stopped being just "Smith Harold" in the telephone directory.

The new edition of your telephone directory is going to press soon.

If you have only a single listing, a lot of people are going to have trouble looking up other members of your family.

Certainly, your wife deserves her own listing.

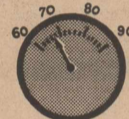
And giving a teen-ager a place in the directory is a nice way of saying "You're growing up."

To add or change a listing just call our business office. They can tell you how little extra an additional listing will cost.

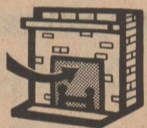
It's as easy as picking up the phone.

GTB GENERAL TELEPHONE

Tips To help YOU to Conserve and Save Energy on Winter Heating



For savings on energy, set the thermostat on the temperature setting that provides adequate comfort. Don't continually switch it up and down. Remember, the lower you set the thermostat in the winter the more money you save on energy.



A wood burning fireplace should be equipped with an efficient damper. Be sure to keep the damper closed when not in use. A chimney with the damper open carries warm air out the house, wasting heat.



To decrease heat loss and reduce energy cost in rooms that are not in use at night or in extremely cold weather, draw the draperies and lower the shades over the windows, glass panels and doors. If the sun is shining on glass areas, open the draperies. The sun shining through the glass will supply additional heat at no cost.

Pick up your FREE copy of "ENERGY CONSERVATION" Booklet from
Frigidaire
Home Environment Division of General Motors.

West Texas Utilities Company
An Equal Opportunity Employer

Remember REDDY Supplies the energy—but only YOU can use it wisely!

Vary The Christmas Menu With Lamb

To vary this year's holiday menu, try juicy, flavorful lamb for a special treat. Mrs. Mary Sweeten, a foods and nutrition specialist, suggests. "The quality of lamb today has improved due to the better breeding, feeding and marketing practices. Lamb is rich in protein, iron, and in B vitamins.

"Today's lamb contains less fat and fewer calories when purchased well trimmed. All cuts of lamb are tender because the lamb is less than one year when marketed."

Mrs. Sweeten is with the Texas Agricultural Extension Service, The Texas A&M University System.

"One holiday favorite is leg of lamb, roasted fat side up resting on a bed of onions. Pierce holes in the meat and stuff a small piece of fresh garlic in them. Season with the family's favorite spices.

"If using a meat thermometer, insert it into the roast so the tip is in the center of the roast but does not touch the bone. Roast the leg of lamb in a 325 degree F. oven until medium to well done."

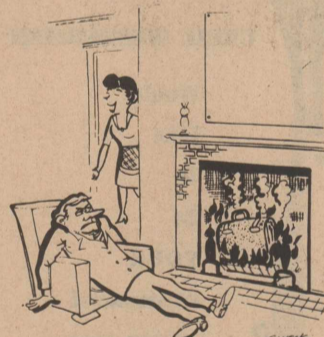
A five to eight pound leg of lamb requires three to four hours of cooking. Boneless lamb roast weighing three to five pounds requires two to three hours, she said.

Remove the roast from the oven when done. Place onions cooked in the bottom of the pan through a sieve and use to flavor a gravy or sour cream sauce.

"The secret in making a smooth gravy is to blend the flour thoroughly with fat or with cold liquid before combining it with hot liquid."

Serve the festive roast leg of lamb decorated with a paper frill at the end for Christmas dinner this year and delight the family with a gourmet's treat, the specialist suggested.

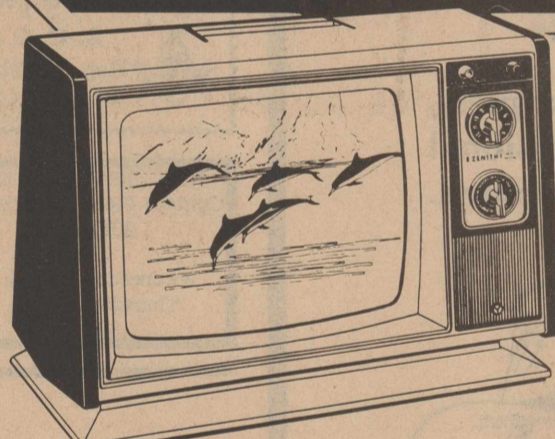
My Neighbors



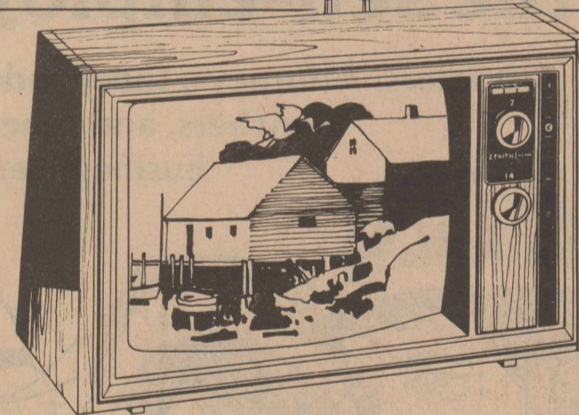
"Well, how was your day, dear?"

Lose weight, melt fat, decrease cholesterol with amazing Kelcithin B capsules - Village Drug.

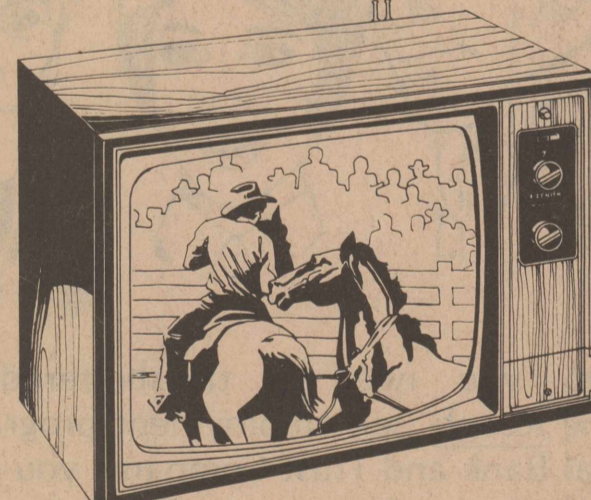
SEE THE BEST ZENITH COLOR PICTURE EVER IN YOUR CHOICE OF FIVE SCREEN SIZES NEW 1976 ZENITH 100% SOLID-STATE CHROMACOLOR II PORTABLE AND TABLE TV



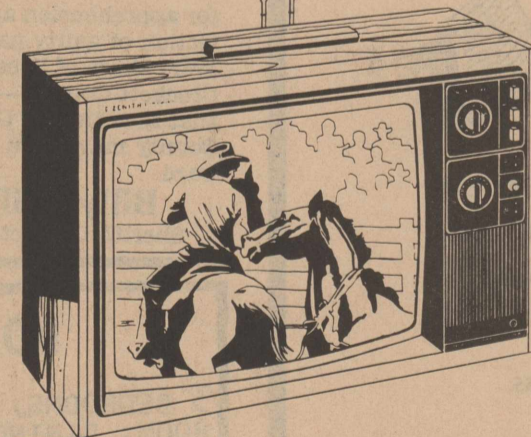
13" DIAGONAL
The OCEANSIDE • G3410C
Slim-line portable with a trim silhouette made possible by use of Zenith's new, short 110" Chromacolor in-line Picture Tube. Ebony color cabinet with Silver color top and base. Solid-State Super Video Range Tuning System.



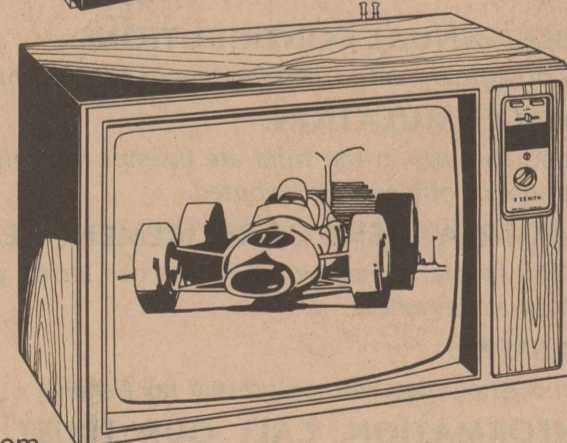
19" DIAGONAL
The SOMERSBY G4025W
Distinctive, compact-size, simulated grained American Walnut color cabinet. Solid-State Super Video Range Tuning System.



23" DIAGONAL
The CARIBBEAN G4541W
Giant-screen table model with sturdy metal cabinet finished in simulated grained Walnut. Solid-State Super Gold Video Guard Tuning System.



17" DIAGONAL
The GRENVILLE • G3855W
Compact, simulated grained American Walnut cabinet with White trim on top. Solid-State Super Video Range Tuning System.



25" DIAGONAL
The HALIFAX G4740W
Giant-screen table model with sturdy metal cabinet finished in simulated grained Walnut. New Solid-State Electronic Tuning System. One-Knob VHF and UHF Channel Selection.

- EVERY ZENITH 100% SOLID-STATE CHROMACOLOR II TV SYSTEM FEATURES:
- Brilliant Chromacolor picture tube
 - 100% Solid-State Titan chassis
 - Patented Power Sentry voltage regulating system

ENERGY-SAVING COLOR TV! Zenith's energy-saving 100% solid-state chassis with its Power Sentry system of voltage regulation needs only 130 watts, or less, of power... less than two 75-watt light bulbs. Many color sets, four or more years old, use about as much power as five 75-watt light bulbs.

FAMOUS ZENITH QUALITY!

FAMOUS ZENITH DEPENDABILITY!

Beautiful SHADY LANE MOBILE PARK



ACCOMODATIONS For 20 Trailer Spaces

Call 392-3000 or 392-2023

OZONA T-V SYSTEM

New selection of contemporary and traditional lamps at BROWN FURNITURE CO. --0--

Oil—

CONTINUED FROM PAGE 1

of shallow oil production in the Clara Couch multipay field and 1-3/8 miles southwest of shallow oil production in the Olson field.

Jumpsuits Big On Fashion Scene

Jumpsuits are "leaping" on the fashion scene and will gain new heights of popularity during 1976, Mrs. Becky Culp, a clothing specialist, reports.

"Detail interests highlight pockets, shirt and mandarin collars, front zippers, drawstring or elasticized waistlines and dropped or raglan shoulder seams," she noted.

Mrs. Culp is with the Texas Agricultural Extension Service, The Texas A&M University System. "The long, lean jumpsuit look flatters many figure types—but at the same time, it's often difficult to fit.

"Neck to crotch length should allow for comfortable sitting, bending and raising the arms over the head. And, as an all-in-one garment, it requires bodice and pants to fit in proportion to the figure."

Easier "adapters" to various figures are designs that feature adjustable shoulder straps or have no waistline seams—belted or unbelted, the specialist added.

"However, matching separates are the easiest route to an all-in-one effect. Separates in the same or different sizes adjust easily to waist length and figure proportions," she said.

FORTY-TWO PARTY
The Earl Acton's were hosts at the Forty-Two Club at the Civic Center Monday, Dec. 15.

The Dee Keilers won high, the Perry Hubbards won low, the Hack Leaths won 84, and the Dave Matneys won the Bingo.

Others attending were the Billy Carsons, the Ivy Mayfields, the Glenn Suttons, and the Jeffrey Suttons.

WANTED ADS

FOR SALE

FOR SALE - Saddles, leather goods, sporting goods, and guns and ammunition. Wholesale prices. 392-2531. --0-- 36-tfc

FOR SALE - Fat goats for barbecuing. Call 392-2174. --0-- 40-tfc

HAY FOR SALE - cane or alfalfa. \$65 per ton for Quemado, Texas. Call ac 512-957-1359. --0-- 40-3tc

FOR SALE - Large Air Conditioner; Antique Oak Side Board; Six Queen Anne Chairs; Empire Couch; and Duncan Phye Table. Phone 392-2473. --0-- 40-2tp

FOR SALE - Merle Norman Cosmetic Shop. Call Darr Thompson 392-3018. --0-- 40-2tc

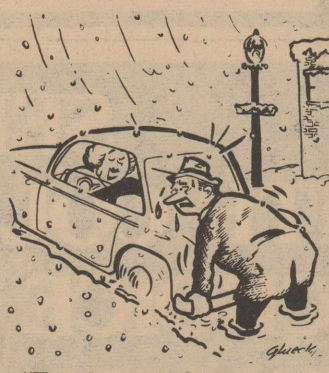
Advice on Apples

If you're baking apples make sure you use firm-fleshed varieties such as Rome, Northern Spy or Winesap.

Use tart or slightly acid apple varieties such as Grimes Golden, Jonathan or Newtown for making pies and apple sauce. --0--

STOCKMAN WANT ADS GET RESULTS

My Neighbors



"True love will find a way!"

FOR SALE - 1974 El Camino. 8,000 miles, loaded, Gem Top camper, A. S. Lock. Ph. 392-2146. --0-- 40-2tc

FOR SALE - Two 1972 Hondas. Excellent condition. Call 392-2656. --0-- 41-1tc

FOR SALE - Frigidaire electric range. Call 392-3208 or come by 301 Ave. G. --0-- 41-nc

FOR SALE - 1969 LeMans. Call 392-3261. --0-- 41-1tp

FOR SALE - AKC Beagle Pups \$50. Call Howard Haynes in San Angelo 655-7570. --0-- 41-1tc

FOR SALE - 1967 Buick Electra \$400 - as is. Call 392-3502. --0-- 41-1tp

We have guns, ammunition, hunting and fishing equipment and license, and sell and install C. B. radios. **OZONA TRADING POST**

SERVICES

ALL-BREED DOG GROOMING - Judy Boykin, 392-2583. Call for appointment. --0-- 29-tfc

FIX IT SHOP
Repair or build to order anything wood. Also soldering, brazing, and painting. 115 Liveoak --0-- 40-4tc

Clean carpets give a healthier, more pleasant atmosphere. Have your carpets been cleaned the "Steamliner" method in the last year? Let us do the hard work. Call 392-2654, MONTGOMERY WARD, Ozona, Texas. --0-- 38-tfc

Miscellaneous

LOST - Female dog, part Chihuahua, part Terrier. Lost 12 miles west of Ozona. Answers to "Sugar". Call 392-2144. --0-- 41-1tp

FOR SOMEONE SPECIAL, give a remote control for Christmas, \$89.95, OZONA TELEVISION SYSTEM. --0-- 41-ttc

WANTED

HELP WANTED - We are now taking applications for a mature person for counter work at the Red Apple Drive-In. Call 392-2641 for appointment or see J. B. Miller at Firestone Store. --0-- 25-tfc

HELP WANTED - Dairy King. Call 392-3161 or 392-3370. --0-- 40-tfc

HELP WANTED - Need part time office help. Experience preferred. Call 392-3242 during day and 392-3500 after 5. --0-- 41-1tc

PETE W. JACOBY
Real Estate
Residential-Business-Commercial
Ranch Properties
Ph. 392-3059 401 Hillcrest

AMERICAN NATIONAL
INSURANCE COMPANY
TOM MONTGOMERY
SPECIAL REPRESENTATIVE

OZONA LODGE NO. 747
A. F. & A. M.
Reg. meeting on
1st. Mon. of mo.

OZONA CHAPTER 287
Order of the Eastern Star
Meeting Night
4th Tuesday in month
Masonic Hall

NEED BIRTH CONTROL?
Contact Planned Parenthood
908 1st St.
OPEN
Wednesday 9-12 & 2-5
Thursday 9-12 & 2-5
392-3522

CECIL WESTERMAN
Would
Like
To
Be
YOUR
Pharmacist
PH 392-2608

NOTICE OF REWARD
I am offering
\$500 Reward
for apprehension and conviction of guilty parties to every theft of livestock in Crockett County — except that no officer of Crockett County may claim the reward.
Billy Mills
Sheriff, Crockett Co.

Western Mattress Company
SAN ANGELO, TEXAS
Mattresses new or renovated. Box Springs - Choice of Sizes and Firmness All Work Guaranteed
392-2031 or 392-2792

HOME FOR SALE
3 BEDROOMS, BATH AND A HALF, LIVING ROOM, DINING ROOM, DEN, KITCHEN AND LAUNDRY ROOM. CARPORT WITH STORAGE ROOMS. NEW GAS CENTRAL HEATING AND COOLING. WOOL CARPET THROUGHOUT EXCEPT DEN, KITCHEN AND LAUNDRY ROOM. WALK-IN CLOSETS.
SHOWN BY APPOINTMENT ONLY.
CALL 392-2551.

When your car is your office... you need a Mobile Phone!
for more information: Call Jeffrey Sutton or Bob Childress
392-3007 392-2820

B & G FEEDS
FEED MINERAL SALT PASTURE AID LIQUID FEED
LIVESTOCK HAULING HAY HAULING
WILL BE DELIVERED OR CAN BE PICKED UP. FEEDERS WILL BE FURNISHED.
GEORGE SCHWIENIG
OFFICE PH. 387-3620 800 GLASSCOCK
RES. PH. 387-2063 SONORA, TEXAS

ADCO WATER WELLS, INC.
MOUNTAIN HOME - SONORA - OZONA
COMPLETE SALES & SERVICE
WINDMILLS - PUMPS
AL THOMERSON WILL BE LOCAL REPRESENTATIVE. PAUL BALLARD WILL BE AN ASSOCIATE.
BUSINESS PH: 392-3535

MECHANIC ON DUTY
7 TO 7
any kind of Auto repair
tune up to complete overhaul
WILLIAMSON ARCO STATION

APARTMENTS FOR RENT
Nice Rooms \$60.00 pr. mo. FURNISHED
Kitchenettes \$90.00 pr. mo. FURNISHED
1-Bedroom \$95.00 pr. mo. FURNISHED
2-Bedroom \$110.00 pr. mo. FURNISHED
3-Bedroom \$125.00 pr. mo.
All Utilities Paid
Phone 392-3437
(Mrs. Kenneth Kramer)
CROCKETT HEIGHTS
5 Miles East of Ozona on U. S. 290
OZONA, TEXAS

James Shell Service
MECHANIC NOW ON DUTY 6 DAYS A WEEK.
MINOR TO MAJOR WORK ON ALL CARS. ALSO DIESEL, DETROIT AND CUMMINS. BILL WAGONER, CERTIFIED MECHANIC.
Thank You

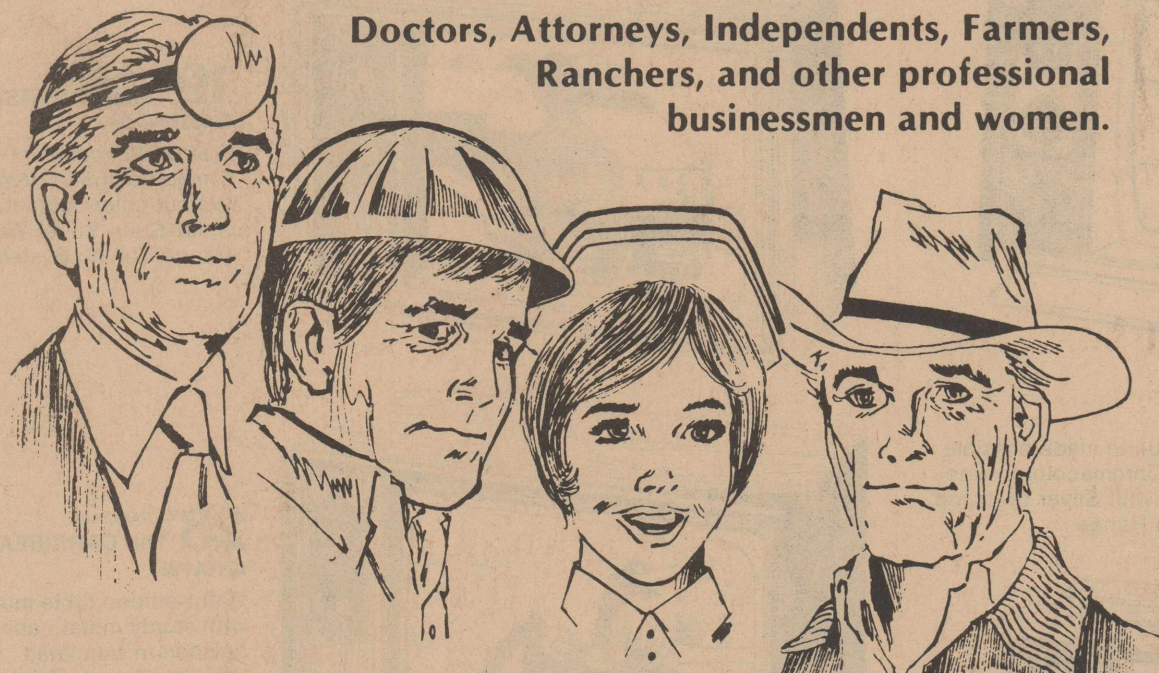
JAY MILLER CONSTRUCTION CO.
GENERAL DIRT CONTRACTOR
Dozer
BRUSH CONTROL
Phone
392-2489 or 392-3243

BIG "O" THEATRE
THURSDAY
Angelica Maria Color
Roberto Jordan
on
El Premio Nobel Del Amor.
FRIDAY AND SATURDAY
EDGAR RICE BURROUGHS THE LAND THAT TIME FORGOT
AN AMERICAN INTERNATIONAL PICTURE
DOUG McCURIE
SUNDAY AND MONDAY
RUN FOR YOUR LIFE! THE GIANT SPIDER INVASION
A Group 1 Release PG
BLAZING COLOR
STEVE BRADIE - BARBARA HALE
TUESDAY AND WEDNESDAY
Closed
For Christmas Holidays
CONCESSION AND TICKET BOOTH OPEN 6:30 P. M.
SHOW TIME - 7:30 P. M.
DRIVE IN & INDOOR THEATRE

2,523 feet.
The No. 1-47 Bean, finaled June 15 for a calculated, absolute open flow of 3.75 million cubic feet of gas daily through perforations at 1,194-209 feet, topped the Seven Rivers at 774 feet Queen, 938 feet; Grayburg, 1,088 feet and San Andres, 1,180 feet on ground elevation of 2,523 feet.
Beacon Energy Corp., Austin, will drill the No. 1-127 Clay Adams as a 3/8-mile west and the same distance southeast outpost on the west side of the Adams-Baggett (Canyon sand gas) field, 25 miles south of Ozona.
Location is 1,320 feet from the north and west lines of 127-O-GH&SA.
Amoy Minerals Corp. re-completed as a third Yates oil producer and a 3/8-mile southeast extension to that pay its No. 7-B J. M. Shannon, former Grayburg-San Andres producer in the Vaughn field, 15 miles northwest of Ozona, to pump 50.2 barrels of 29 gravity oil, plus 10 barrels of water.
Production was through perforations at 1,001-014 feet, which had been acidized with 1,250 gallons and fractured with 13,000 gallons and 1,020 pounds of sand.
Originally drilled to 1,475 feet, it is plugged back to 1,032 feet, with 4 1/2-inch casing set at 985 feet.
Location is 1,050 feet from the north and 990 feet from the east lines of 4-UV-GC&SF.
C. F. Lawrence & Associates, Inc., Midland, will re-enter and clean out to 2,200 feet as a wildcat at the former Texas Oil & Gas Corp., No. 1 Harwood, 5,783-foot failure in the Clara Couch field of Crockett County, 10 1/2 miles southeast of Iraan. It was abandoned July 30, 1975.
Location is 1,490 feet from the south and 674 feet from the west lines of 7-GG-H&OB.
It is 1 1/2 miles northwest

IN 1975 Good News for the self-employed:

Doctors, Attorneys, Independents, Farmers, Ranchers, and other professional businessmen and women.



If you are self-employed, you need a tax-sheltered retirement plan. With the Keogh, self-employment program available at Commercial Bank and Trust Company, you can have:

- TAX DEDUCTIBLE ANNUAL CONTRIBUTIONS:** Deduct up to 15% of your annual earned income or \$7500, whichever is less.
 - TAX DEFERRED ACCUMULATION:** All contributions and earnings in the fund are exempt from income taxation until withdrawn at retirement or otherwise distributed.
 - FAVORABLE TAX TREATMENT OF RETIREMENT BENEFITS:** Lower tax bracket and special averaging provisions can lessen your taxes when you do receive this benefit at retirement.
 - TAX FREE TRANSFERS:** You can transfer an existing plan with no present tax penalty.
- FOR MORE INFORMATION, CALL OUR TRUST DEPARTMENT... BEFORE DECEMBER 31, 1975!

EVERYBODY'S BANK IN A GREAT BIG WAY
COMMERCIAL BANK & TRUST CO.
MEMBER F.D.I.C.
2301 W. WALL
MIDLAND, TEXAS 79701
PHONE 683-5281
MEMBER TEXAS AMERICAN BANCSHARES INC.