

THE OZONA OF CROCKETT COUNTY STOCKMAN

3000 SQUARE MILES
CROCKETT COUNTY
LIVESTOCK TERRITORY



"Out In The West, Where The Air Is Pure, The Climate Agreeable, And The People Friendly ----- The Best Place On Earth To Call Home"

VOLUME 63 OZONA, CROCKETT COUNTY, TEXAS 76943 15 Cents Per Copy THURSDAY, DECEMBER 4, 1975 NUMBER 39

Kitty's Korner

by
Kitty Montgomery

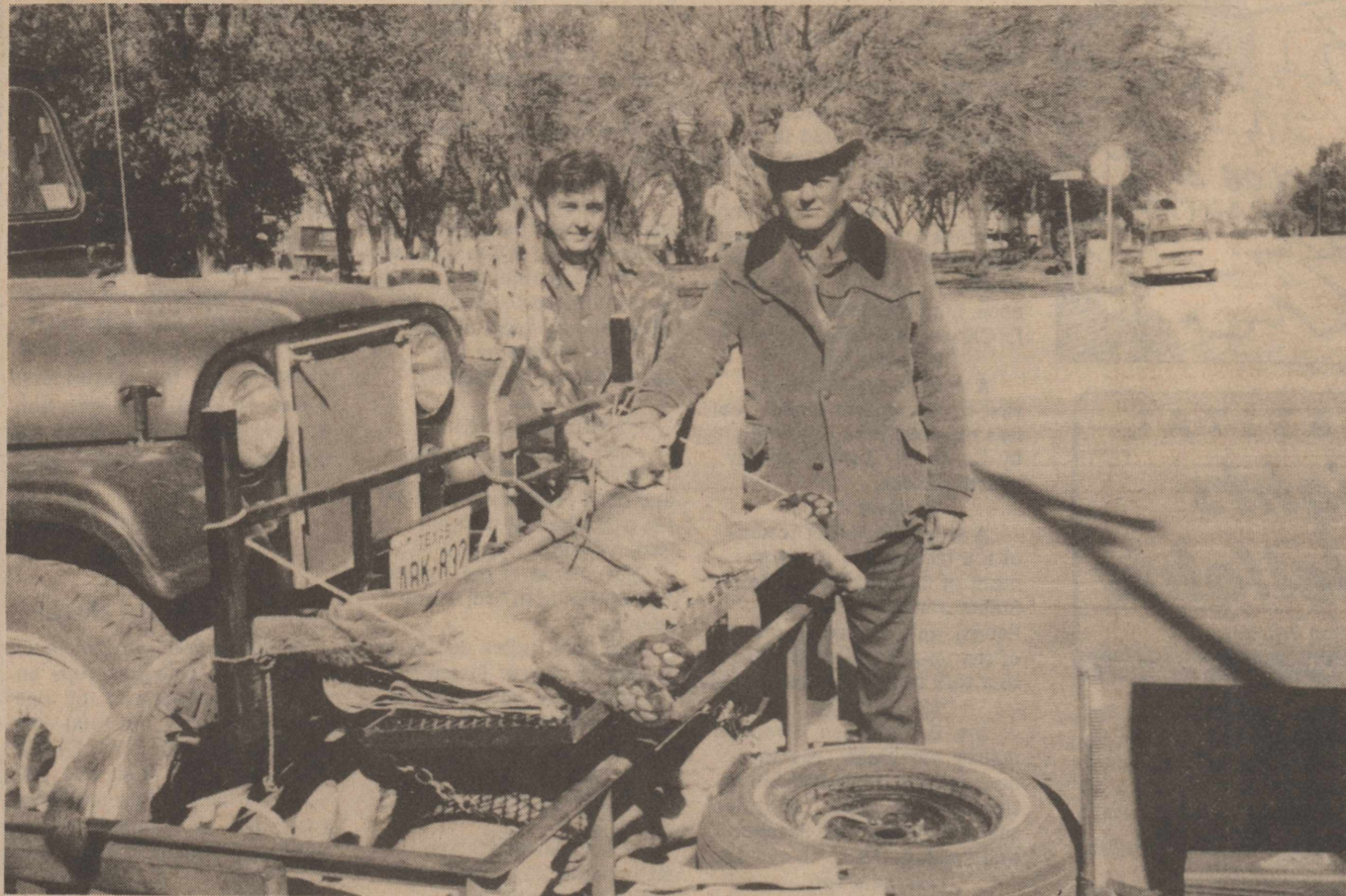
I guess about the only big news this week was the panther, lion or whatever, killed on the Hugh Childress ranch Saturday. I feel sure there is some society or another which would object. I often wonder if officials of the various and sundry organizations really know what they are talking about. It's my considered opinion that if they had to live in this part of Texas and ranch for a living, there would be fewer societies of this type. It's sort of like the laws that cuddle the criminal and the devil take the poor victim. If these people who have the idea that a lamb chop or T-bone is manufactured in the meat market could see some of the damage done by predators to sheep and cattle, I feel sure their opinions might change somewhat.

Of course, this is never going to happen and till the world comes to an end Texas and Texans are going to be regulated by easterners who have no concept of problems in this area, although they think they have all the answers.

My son advised me on Thanksgiving Day that there were eleven scheduled games on television for the four-day period. When they replay every play once and sometimes twice or three times, that makes at least 22 football games a person must sit through if they have football fans in the family. Monday morning I knew that I had seen or heard at least that many football games. I pulled out of the driveway and onto Highway 163 where I blocked the oncoming team of trucks. I made a downfield run to the office and nearly got clipped as I reached the goal line (my usual parking place). As I crossed 290 I got a pass from one of the truck drivers and when I got to my desk I found that I had been penalized severely for the four-day weekend. It was piled high with work I failed to do and here it is paper day and I haven't made a first down yet.

The Ozona business community just continues to expand. South Texas Lumber Company's new store is a stunning addition to the town. I looked around for a few minutes Tuesday, and was just amazed. The spacious store seems to have just about everything. I don't know how much larger it is now, but it seems three times as large as the old, crowded store. It ranks with any big city discount store anywhere, and indeed it is an asset to the community.

I hate to be a spoil sport, but I just realized there are only 17 more shopping days till Christmas. If you've done any Christmas shopping, you're one up on me. If everybody waits till Dec. 24, to Christmas shop, like I do, it's going to be some mad rush.



PANTHER KILLED ON CROCKETT COUNTY RANCH--These Fredricksburg men, Robert Probst and Kermit Eckhardt, were very surprised when they went deer hunting last weekend on the Hugh Childress ranch west of Ozona and bagged a panther along with their quota of deer. The big cat was shot about 4 p.m. Saturday by Eckhardt. He ran wounded into a cave on the ranch.

The men trailed him and when he made his exit from the cave he was shot and killed. The panther weighed approximately 125 pounds and measured about 6 feet from head to tail. This was the second panther in the space of about two years to be killed in the county. The other, also a male, was killed on the Buster Deaton ranch near Pandale and also on the Pecos River.

Cattle Outlook Should Improve By Year 1977

Although 1977 may seem like a long way off, that's the target year when things should start looking up for cattlemen.

A livestock marketing specialist for the Texas Agricultural Extension Service believes that if cow slaughter continues heavy through next year and if replacement heifers are at a low level, then the market outlook for cattle should brighten once again. "We've had too many cows on hand for the past two years, and we must continue to cull our herds to get them back in line with the demand for calves and beef," says Dr. Ed Uvacek. "If cow slaughter continues heavy in 1976, we should have a much smaller calf crop in 1977. By this time, there should also be an expanded demand for feeder calves by feedlots, so the overall cattle outlook should improve."

What can cattlemen do to stay in business for another year or so until prices hopefully improve? "Mainly, producers have got to figure every possible way to cut costs," contends the Texas A&M University System specialist. "They've got to do a lot of belt-tightening. The annual cost of keeping a cow in Texas averages between \$205 and \$210. Of this, about \$75 to \$115 is variable or out-of-pocket costs. If cattlemen can cover these variable costs during the coming year, they may remain in business."

\$324,000 In Funds Approved For County

The State Highway and Public Transportation Commission approved \$324,000 worth of highway construction in Crockett County late last week.

One project approved was improvements for U. S. Highway 290 near the Pecos River Bridge in Crockett County. The engineer-director was directed to proceed with the widening of pavement and other work from the Pecos River Bridge eastward, a distance of approximately 17.0 miles. The work takes in that portion of Highway 290 from the bridge back toward Ozona where several bad highway accidents have occurred during the past few years, due in

part to the narrow bridges and narrow, twisting highway. Estimated cost of the work is \$145,000.

The other project approved was the installation of signing, pavement markets and safety lighting on a section of Interstate 10 in the city of Ozona. The project extends from 0.8 mile west of State Highway 163 eastward a distance of approximately 6.9 miles. Estimated cost of the work is \$179,000. This will take in the part of I-10 recently completed by H. B. Zachry & Co. which runs from about Taylor Box Road to the east of Ozona, through the overpasses through the city area.

Nichols Have New Home On The Island Of Sumatra

Mr. and Mrs. C. E. Nichols are getting settled in their new home on the island of Sumatra in Indonesia. Mr. Nichols is a geophysicist for Caltex Oil Company. He was formerly with Texaco in Danka, Senegal, West Africa. Mrs. Nichols is the former Vicki Applewhite, daughter of Mr. and Mrs. Charles Applewhite of Ozona. Living overseas has given the Nichols many interesting travel opportunities. While in Africa, they toured the desert countries of W. Africa and the game parks of East Africa.

They have visited parts of Europe and South America, and have toured Cairo and Beirut in the Middle East. On their way from Dakar to Sumatra, they spent some time in New Delhi, India, and visited the Taj Mahal and other monuments. From there they flew to Nepal, toured, Bangkok, Thailand and Singapore before arriving at Pekanbaru near the company camp of Rumbali.

The camp is situated in the middle of a dense jungle. Monkeys, gibbons and flying squirrels are a common sight. Tigers, elephant and rhinoceros have also been sighted near the camp. Extension seismic exploration and development drilling are being done in the concession which contains the largest oil field in the Far East. Approximately 1 million BOPD are produced in the area.

Montgomery To Guest On CBS Show

Bryan Montgomery, son of Mr. and Mrs. Beecher Montgomery and Los Angeles restaurateur, will appear in a guest spot on the Barnaby Jones show Thursday night at 9 o'clock. The show may be seen here on channels 4 and 6.

Bryan owns two restaurants in Los Angeles and in his spare time does television commercials and has appeared in several movies and television shows.

Ozona Puts On Christmas Face

Ozona began to put on its Christmas face immediately following the Thanksgiving holiday. Outdoor decorations have been put up all over town and the chore was complete early this week.

Most merchants decorated store windows and put up Christmas decorations inside stores the Friday following the holiday. By Monday Ozonans were Christmas shopping in earnest and gift selections in the various stores were wide and varied. High wind and very cold, dry weather did not deter shoppers. The hunting population was also up over the weekend and there were many rigs on the go throughout the week.

Below freezing weather and high winds stripped leaves from trees and brush, giving the hunter a better chance at his kill, and by all indications hunters reaped a bountiful harvest over the holiday weekend. No accurate count was kept of deer, but at least one panther was killed in the county, and that was on the Hugh Childress ranch about 30 miles west of Ozona.

Although traffic was heavy during the holiday period, there were no traffic fatalities nor hunting accidents in the county.

Lighting Contest Is Set

Members of the Ozona Garden Club urge all Ozonans to get ready for the annual Christmas Lighting Contest. The decorations will be judged by out of town judges the evening of December 18.

First and second prizes will be awarded in three categories. Categories are best door, best window and best overall decoration.

Christmas Mailing Deadlines

Christmas mailing deadlines are coming up according to Postmaster Floyd Hokit. Hokit said all cards should be in the mail by December 15 and all packages by December 10.

Patrons should separate out-of-town and local mail and make them into bundles with rubber bands or string.

45th Annual Ozona Invitational Basketball Tournament Slated

The 45th Annual Ozona High School Basketball Tournament will get under way next Thursday, Dec. 11, with fifteen teams participating. One of the oldest high school basketball tournaments in West Texas, the Ozona tourney is now one of the first of the season for area teams.

Meanwhile, both the varsity and junior varsity were in Lakeview for a double-header with the Chiefs Tuesday night. The Ozona varsity will participate in the San Angelo Lakeview tournament this weekend. Their first game will be Friday at 4 p.m. when they take on Fort Stockton. The junior varsity will be in Sanderson for that school's high school tournament over the weekend. Their first game will be at 3 p.m. Thursday when they play the Wink varsity.

Although brackets have not been drawn up for the Ozona tournament, officials plan to begin play about 11 o'clock Thursday morning. The tournament will end Saturday night with the championship finals. After Thursday's play, there will be two morning sessions, two afternoon sessions and two evening sessions. Trophies will be awarded immediately following the final game Saturday night. A championship trophy will be presented to the winner, the runner-up trophy and the consolation trophy, along with third place, team sportsmanship, and all-tournament team trophies will be given.

Sweetwater, winner of last year's tournament, will not be participating this year. Teams signed up to play are Lake View, Ballinger, Brady,

Sonora, Coahoma, McCamey, Big Lake, Ozona, Stanton, Tankin, Iraan, Wall, Eldorado, Mason and Buena Vista.

Scorekeepers and timers for the tournament include Jerry Ayers, Rip Sewell, Jim Williams, H. O. Hoover, Bob Wallace, Richard Rodriguez, Frank Reavis, Gene Hood, Winston Koerth and Wayne Palmer.

Chick Womack is in charge of ticket sales. Tickets may be purchased in advance for all sessions of the tournament at some savings. Otherwise, tickets may be purchased for each session. Faculty members will take turns at the ticket booth in the front of the gym.

The concession stand will

Lionettes Remain

Undefeated

The Ozona Lionettes continued undefeated, beating Miles again last week 38-31, in the varsity ball game and 34-33 in the junior varsity game.

High point girl for the varsity was Nancy Womack with 14. Karla Fenton had 8 points and Kathy Sewell hit for eight. Lynn Maness had six points for the Lions. In the junior varsity game, Ruth De La Rosa was the only girl in double figures with 14 points. Janice James hit for 8 points.

Both teams played Grand-falls Tuesday night, the score was not available at presstime.

to be open during all sessions and will be worked by the sophomore class and parents under the supervision of Kathy Carson.

Mrs. Earline Jones, high school librarian, is in charge of housing for team members who will need to stay in Ozona overnight. Anyone wishing to furnish rooms for some of the players may call Mrs. Jones at the library or Coach Charles Spieker.

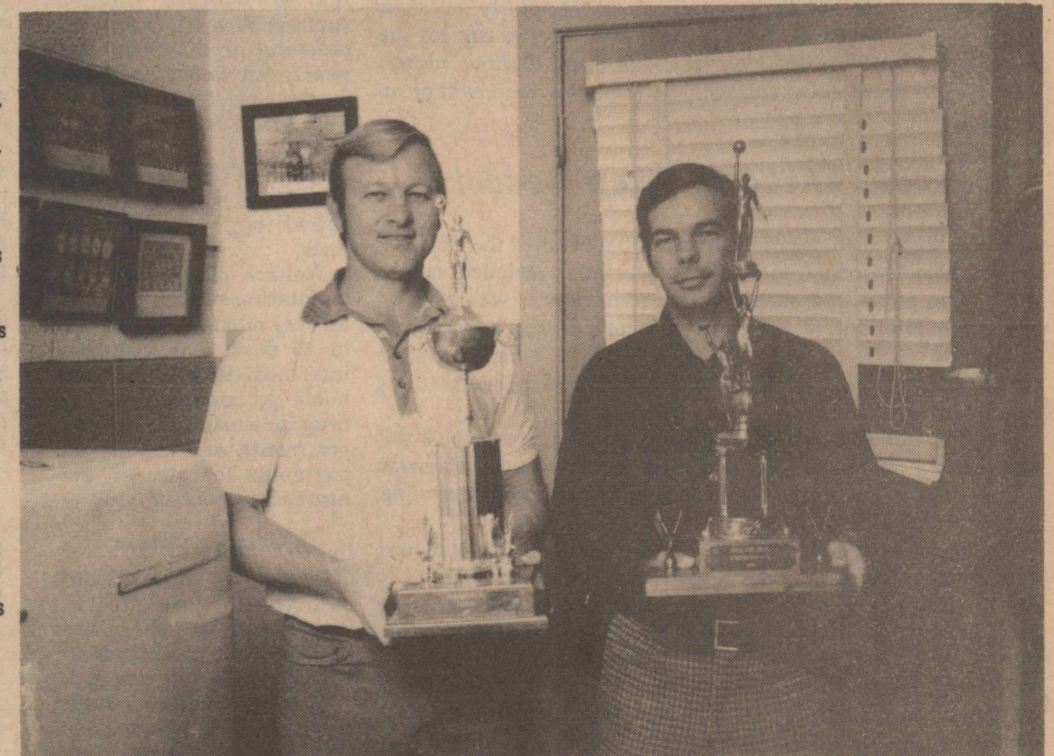
Coach Charles Spieker and Coach Tommy Wilson will be in charge of the tournament overall.

Wildcat Slated

In County

Inexco Oil Co., Houston, will drill an 8,200-foot wildcat in southwest Crockett County, 34 miles southwest of Ozona, 3 1/2 miles southwest of the two-well American (Strawn and Canyon gas) field, 6 1/2 mile north and slightly west of the JM (Ellenburger gas) field, 3/8 mile northwest of the depleted one-well Pandale, North (2100 oil) field and 3/4 mile south and slightly west of the depleted one-well Pandale (Ellenburger gas) field. It is the No. 1 Hoover.

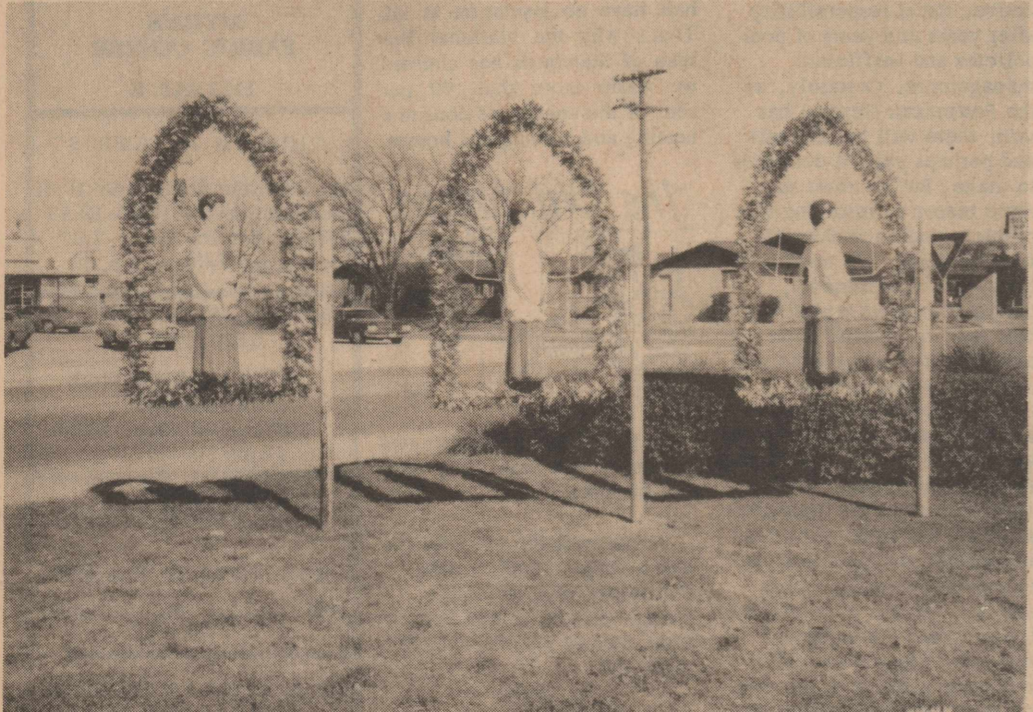
Location is 1,320 feet from the south and 1,220 feet from the east lines of 13-NN) GC&SF. Ground elevation is 2,441 feet. It is also 230 feet west of a 2,304-foot failure and 3/4 mile southwest of a 14, 837-foot failure.



BASKETBALL TOURNAMENT TIME -- Fifteen teams, including the Ozona Lions will be vying for the trophies to be given following the championship game on the final night of the Ozona Basketball Tournament next week. Head coach Charlie Spieker, right, and assistant coach Tommy Wilson unpacked trophies the early part of this week. Spieker holds the championship trophy and Wilson, the sportsmanship trophy. The tournament begins next Thursday.



ANOTHER TROPHY KILL was taken Saturday evening by Dick Webster. The 17-pointer was harvested on the Jack Williams ranch south of Ozona. A great many big bucks were killed last weekend in various parts of the county. Several days of freezing weather contributed to easier hunting conditions, and the deer were on the run.



CHOIR BOYS GO UP IN LIVEOAK PARK -- Christmas decorations went up all over Ozona last week and the early part of this week. One of the final decorations to go up were the lighted choir boys in the little park on Highway 290 near the shopping center. The decorations are, of course, more outstanding at night.

THE OZONA STOCKMAN

Published every Thurs. at Ozona, Crockett County, Texas

Subscription Rates:

\$5.00 Per Year in Crockett County

\$6.00 Per Year Elsewhere

KITTY MONTGOMERY — Editor & Publisher
BEKIE DIAZ — Shop Foreman

Published weekly since 1913 and entered as second class matter April 9, 1913, at the Post Office at Ozona, Texas, under the Act of Congress of March 3, 1879. Published each Thursday.

Notices of church entertainments where admission is charged, cards of thanks, resolutions of respect, and all matters not news, will be charged for at regular advertising rates.

Any erroneous reflection upon the character of any person or firm appearing in these columns will be gladly and promptly corrected if called to the attention of the management.

CLASSIFIED RATES — 10 cents per word. Minimum charge \$1.50 per insertion.



TV Leading To Society's Collapse?

British author and social critic Malcolm Muggeridge has compared the decline of western civilization to that of the Roman Empire, placing a healthy share of the blame on television's doorstep.

Speaking recently in Toronto, Muggeridge said that "western institutions are not working, personal relationships are not working — it's uncannily and obviously just like the collapse of the Roman Empire." The 72-year-old commentator added that Rome didn't fold because of a lack of power or wealth, but because "the moral shape that lies behind all other shapes was breaking up."

"The truth is that unless men have a sense of moral order within themselves and in their universe, they will not be able to build any other kind of order — economic, political, or social."

Muggeridge, a former editor of *Punch*, is internationally recognized as an articulate spokesman against permissiveness and moral laxity. He became a Christian in the late 1960's. Although the medium of television provides an outlet of expression for him, Muggeridge sees little of redeeming value in TV.

"The corruption of our children is absolutely appalling," he said. "On TV they see the family ridiculed, marital fidelity ridiculed and a crass materialism constantly being preached." He added later to newsmen that he uses TV because "I'm a communicator; so I use what's there. It's like a piano player, in a brothel, who from time to time is able to play 'Abide With Me' for the edification of the guests."

Muggeridge, of course, is not the first responsible critic to speak out against the plethora of trash fed us daily over the boob tube. The National Association of Secondary School Principals, for example, has become so alarmed over the effects of TV on teenagers that it recently went on record against TV programming for youth — representing the first time it has spoken out on a subject beyond traditional school affairs.

So long as the networks continue to rely solely on their Nielsen ratings, however, there is only one way we can get the bad programs off the air: stop watching them. Without viewers there will be no sponsor; and without a sponsor there will be no program.

People Ahead Of Their Leaders

It has been noted occasionally that what is called the "Eastern Liberal Establishment" in which sometimes is included various Washington politicians, simply has no realization of what goes on in the minds of the majority of the people in this big country. (Thus, we have been told almost daily that the American people are turned off on anti-communism, national security, and a strong defense for America.)

To find out if this is so, the American Security Council this past spring commissioned the respected Opinion Research Corporation to make a survey. The results were most interesting, to say the least.

On the question of whether the United States should have military strength greater than that of Communist Russia, 76 percent said Yes. Moreover, if it were assumed that Soviet Russia had gained military superiority over the United States, 67 percent would favor spending another 20 billion dollars a year to regain superiority for the United States. And 85 percent believed that we should have a military research and development program at least as large as that of the Soviet Union.

This survey indicated, too, that the American people as a whole seem to be much wiser in the ways of communists than are their leaders. To the question: Do you trust the Soviets to keep the Strategic Arms Limitation Agreement (SALT) even though there is no provision for on-site inspection by either side, 74 percent said No, they do not trust the Soviets to do so.

Another question produced a surprising result. It asked if the American people have a right to be fully informed about the goals and activities of organizations dedicated to the overthrow of the United States government by force and violence. A whopping 92 percent said Yes.

All this surely seems to indicate that John M. Fisher, head of the American Security Council, was right when he said the survey "clearly demonstrates that the American people have different views on national security issues than believed by official Washington."

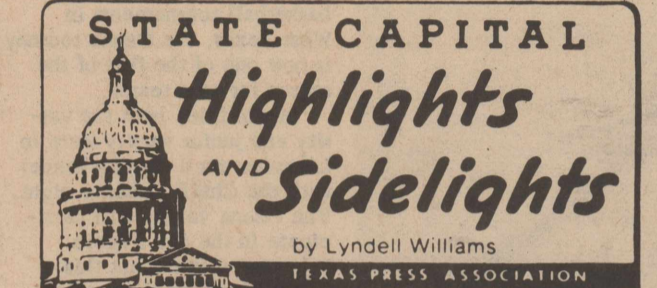
Crime Crisis

It is impossible to view the most recent FBI release of crime statistics in the United States with any degree of tranquility. That the crime rate in America has been climbing is well recognized; but now that the figures for the year 1974 have been compiled and tabulated, it turns out that the actual crime rate is far worse than many people had previously realized.

The record shows that in 1974, criminals killed more than 20,000 people and stole property worth \$2.6 billion. The value of the loot stolen is more than the entire budget for the Department of Justice, and more than twice what it takes to run the City of Chicago for an entire year.

The statistics recorded by the FBI, with the assistance of local police departments throughout the United States, shows that there were increases for all sections of the country and for all seven crime categories measured: murder, rape, robbery, assault, burglary, larceny and vehicle theft. Violent crimes against persons — murder, rape, and assault — accounted for more than one-half million of the reported offenses.

'YOU'LL HAVE TO WAIT YOUR TURN'



AUSTIN — State health programs for the needy may have to be cut back after January 1 unless the State Welfare budget can be altered.

While the department may have \$100 million or more in unspent state and federal funds for 1976-77, the money apparently cannot be transferred from other programs to health services.

Welfare Commissioner Raymond Vowell said a health program deficit in fiscal 1977 may run as high as \$76 million.

Welfare officials said they can operate within the overall appropriations available if they can move funds from program to program. However, the legislature has prohibited such transfers.

The State Board of Public Welfare authorized staff sessions with Gov. Dolph Briscoe and the Legislative Budget Board to seek transfer power.

The alternative, according to Welfare Budget Analyst Wes Hjernevik, is reducing or discontinuing nearly all health services for the aged, blind, disabled and other welfare recipients.

Most of the shortage, Hjernevik said, is due to spiraling medical care costs.

Welfare officials are contemplating reducing hospital stay maximums from 30 to 15 days, discontinuing intermediate care nursing home payments, limiting drug prescriptions to two per month and cutting off payments for glasses, dentures and hearing aids.

Control to State

Texas Air Control Board said the federal government is giving the state management of air sampling programs January 1.

The Board will collect for federal study air samples in 14 places — a job now done by the Environmental Protection Agency.

Amarillo, Beaumont, Corpus Christi, Dallas, El Paso, Fort Worth, Houston, Lubbock, Matagorda County, Pasadena, Tom Green County, Austin, San Antonio and Wichita Falls are sampled areas. City workers will be called on to collect information. The Air Control Board samples air at 100 sites in a state program started seven years ago.

Blue Cross Extended

Blue Cross' Medicaid contract with the state was extended 60 days by the State Welfare Board, though the company won't permit audits of its administrative costs.

A company official indicated the state auditor may be permitted at last to check the "methodology" of its accounting system. But he did not say a real audit of the books would be permitted.

Carrillo Sentenced

District Judge O. P. Carrillo has been sentenced to five years imprisonment, five years probation and a \$22,000 fine for filing false income tax returns.

Carrillo still faces impeachment trial by the Senate (now scheduled to begin January 5) and a removal proceeding before the Texas Judicial Qualifications Commission.

An attorney for Carrillo and his brother, Duval County Commissioner Ramiro Carrillo, also sentenced on an income tax violation, said the conviction will be appealed.

AG Opinions

Waste disposal districts have authority to issue bonds for acquisition, construction and repair of disposal systems subject to review by the attorney general, Atty. Gen. John Hill concluded.

In other recent opinions, Hill said:

A city may grant automatic rate adjustments to a utility.

Contributions to pay expenses of the Southern Governors Conference in Texas do not have to be reported as campaign or lobby expenditures.

A state university cannot use either appropriated or auxiliary enterprise funds to purchase liability insurance for its administrative officers and regents.

The legislature may constitutionally vest control of the Texas School for the Blind in five members of the State Board of Education.

A lease of federal land to get the purchase price of parking facilities on the site conveys to the lessee no separately taxable real property interest in facilities.

Short Snorts

A three-judge federal court in Austin continued an order blocking implementation of Texas, new voter registration law until it is approved by the U. S. Justice Department.

Ernest Angel of Midland, Mrs. William Staff of Dallas and Ray Barnhart of Houston were selected co-chairmen of the Texas Ronald Reagan presidential campaign committee.

A detailed discussion of effects of the new Federal Voting Rights Act on Texas governmental units is scheduled here December 17 under auspices of the House Elections Committee.

Texas has been voted top state for beautification work in the Keep America Beautiful competition.

A record low of 10 new industries settled in Texas during October, but they will have an economic impact of \$46 million a year and directly employ 600 while generating 750 more jobs.

House Speaker Bill Clayton has named a nine-member committee to find alternatives to the property tax for financing public school education.

The State Democratic Executive Committee is scheduled to hold one of its longest meetings yet in Fort Worth December 8 to consider major party rules changes and a variety of other matters.

STOCKMAN WANT ADS GET RESULTS

THE NEWS REEL

A re-run of "The Ozona Story" as gleaned from the files of "THE OZONA STOCKMAN"

Thursday, Dec. 5, 1946
Hard luck dogged the trail of the Ozona Lions, District 8B champions, here Thanksgiving Day and the Robert Lee Steers, District 7B champions, won by a margin of 7-6 for the bi-district championship.

29 years ago
Mrs. Clara Benton Black, 50, wife of Charles Black, Crockett county ranchman and county Commissioner from Precinct 2, died in a San Angelo hospital Wednesday.

29 years ago
Mrs. Ira Carson, Mrs. James Childers and Mrs. Bill Clegg entertained with a tea at the Carson home Tuesday afternoon honoring Mrs. William J. Carson, a recent bride.

29 years ago
A case of scarlet fever, first of the present school year, was reported here this week by Dr. H. B. Tandy, county health officer.

29 years ago
A very interesting resume of the history and development of banking in the United States was given by Scott Peters, active vice president of the Ozona National Bank, in a talk before the Rotary Club.

29 years ago
Joe T. Davidson, Crockett county ranchman, has announced the annual Rodeo at the Davidson ranch, 18 miles south of Ozona, for Saturday and Sunday, Dec. 14 and 15.

29 years ago
Joe W. Cowan, former Concho county agent and vocational agriculture instructor at Paint Rock for the Concho County Veterans School, last week assumed the post as county agricultural agent for Crockett county.

29 years ago
About 20 local ranchmen witnessed a demonstration of bitterweed eradication by use of the new weed killer, 2-4-D, known commercially as Weed-No-More.

29 years ago
Mr. and Mrs. Hillery Phillips, Buddy Phillips, Corinne, Phillips, and Jamie Sue McIntire of Sterling City spent Thanksgiving in Columbia, Mo., where they visited Mr. and Mrs. Phillips' daughter, Bennie Gail, a student at Stephens College.

---0---

SNIPS, QUIPS AND LIFTS
by Lottie Lee Baker

Things always look greener in the other fellow's wallet.

The economy is moving so slow the post office is getting jealous.

Most of the people who are now buying margarine have seen butter days.

The prices of wheat, wool, and corn go up and down, but the price of wild oats stays the same.

Living would be much easier if men showed as much patience at home as they do waiting for a fish to bite.

The three "R's" of life: At 25.....Romance At 45.....Rent At 65.....Rheumatism

Man wants but little here below, he's ready to admit it; if Uncle Sam keeps taxing him, he's pretty sure to get it.

It is wise to hold back on the tongue what never should have been on the mind in the first place.

Time is long enough for those who use it.

A LIFT FOR THE WEEK - Gloom, boredom, and unhappiness make no headway against enthusiasm.

My Neighbors



"Oh, stop grousing, Gertrude! We tossed for the seat and you lost."

THE LIONS ROAR

BELINDA BEBEE & KAREN MOODY

The Lionettes defeated Miles last Tuesday 38-31, and the "B" Team score of 33-32 favoring the Lionettes. They played Grandfalls this Tuesday, in Grandfalls, and will be traveling to Sanderson this Thursday, Friday and Saturday to play in the Sanderson Tournament.

The Lions (varsity & J.V.) played Lakeview Tuesday in San Angelo. The Varsity will be returning to San Angelo to play in the Lakeview Tournament Friday and Saturday. The J.V. will be playing in the Sanderson Tournament also.

LR
Our thanks go out to those who participated in the Band Talent Show. It was successful and very enjoyable. Also, we would like to thank Mr. Clark and 2nd period Speech Class for presenting the assembly last Wednesday.

LR
SHHHHHHHHHHH
By: John L. Henderson
Is it true that Randy Allen and GIGI McKinney were in the same bucket seat together Saturday night?

New Name of the Week: "Medicine Man" to Danny Weant.

Did your turkey decide to fly north, Wayne Bissett? What were you doing standing in the Hall Monday, Ed Hale?

Do you really have a mobile car service, Ronald Koerth?

Got an ailment? Ask Kirby about Mr. Peabody's green and purple pills.

We sincerely hope that

Bob Krueger Reports

U. S. Representative
21st District

I recently learned of a decision by the Postal Service to close large numbers of rural post offices. Although I understand the Postal Service's desire to cut back on labor and administration costs, I must oppose this move which could isolate and inconvenience many rural residents of my district.

For many people in West Texas, the Post Office serves as a community center, a focal point for numbers of widely dispersed, yet close-knit rural community residents. We should not let these traditional institutions fall by the wayside.

The Postmaster General has argued that some 12,000 post offices could be closed without hurting service; frankly, I find this hard to believe. I suspect that the only reason this could be true is because the Postal Service is already so bad that no one would notice if a few thousand offices stopped functioning altogether.

We in Congress have been told that great amounts of money would be saved by these closings; but, as is often the case, Washington has failed to take a larger view of the situation. At the rate the Postal Service is currently losing money, the closing of these additional 12,000 post offices would only save the amount of money lost in a two week period of normal operation. I suggest that a problem of this magnitude is not to be remedied by the elimination of service in areas where it is perhaps most vitally needed.

As frequently happens, we are faced with arguments for immediate, almost retroactive, fiscal responsibility after years and years of poor policies and inefficient management. Certainly, as the Postmaster General has said, there will be difficult and perhaps painful decisions to make. But we must show some reason in resolving this problem and be responsible in our actions. We must carefully, yet determinedly, pursue the course which will best lead to reduced costs and effective management in our vital postal service.

Our government acts best when we have time to analyze and reflect upon our problems; in emergency cases, when quick decisions are mandatory, someone has to take the lead in representing those who are inconvenienced and whose interests are not protected by the proposed "emergency" solution. I intend to fulfill this responsibility in the case of small post office closings, and I welcome any assistance from my constituents in my attempt to represent them and protect their interests in this matter.

GIGI M. and Jeannine P.'s life long dreams come true so that they can become "Teddy bears."

--0--

PAPER TIGER

"Government at all levels spends an estimated \$18 billion each year just to print, shuffle and store all the paperwork it requires. And, at the other end of the red tape, it costs the American people another \$18 billion to fill out this mass of forms. This added expense proves to be the final straw that drives many small firms out of business. And, while larger corporations hire extra accountants and lawyers to deal with this paperwork, they wind up passing the cost along to us, the consumers. There is simply no question that we have to hold back on the growing number of government forms."

—Sen. Lloyd Bentsen Dem.-Texas

Back to School News

As the overall enrollment in schools and colleges drops an estimated one-quarter of one percent this fall, the total cost of education in the United States will rise about \$11 billion over the previous academic year, U.S. Commissioner of Education Terrel H. Bell has predicted.

Spending for public and private education at all levels, the commissioner stated, is estimated at \$119 billion for this school year, as compared with about \$108 billion in 1974-75.

The damage termite cause and the cost of controlling them has been reported worldwide at \$1.2 billion a year.

Rocks Offer Energy Source

The first comprehensive assessment of the geothermal resources of the nation has been prepared by the U.S. Geological Survey (USGS). The report reveals that huge quantities of heat exist in "hot spots" in the western states and in some parts of the Gulf Coast.

The report shows enormous amounts of natural heat are contained in rocks beneath the surface of all 50 states, but only a small percentage of the heat can presently be tapped. More, however, can be made available with increases in value of the energy and with the further development of technology.

According to the USGS, geothermal resources of the nation, which have been identified but for which recoverability costs vary from present levels to more than twice present levels, are potentially capable of producing about 42,000 megawatt-centuries of electricity.

A megawatt-century is equal to the production of one thousand kilowatts of electricity continuously for 100 years. A production rate of one thousand megawatts is the approximate need of a city of about one million people, and is the capacity of a large, modern nuclear or fossil-fueled power plant or a Hoover Dam.

Insulation Lacking In Most U.S. Homes

Nine out of 10 homes are under-insulated and more than half have no insulation at all. That's why the National Bureau of Standards has claimed we waste more than 40 percent of the energy we consume heating and cooling our homes.

The Old Timer



"A friend is one who knows all about you but loves you just the same."

Exciting is the word for the new Swinger slouch couch. The latest thing in leisure living—priced for any pocketbook. See at BROWN FURNITURE CO.

--0--

Fifty percent of all toy sales occur in the last two months of the year, according to *Exchange* magazine.

Ozona Business And Professional Guide

BOOT-SHOE AND SADDLE REPAIR
OZONA BOOT & SADDLERY

A. A. CLUB
Each Monday, 8 p.m.
C of C Bldg.
If you want to drink, it's your business. If you don't, it's ours.
Ph. 392-3489 or 392-2059

TALAMANTEZ GUN SHOP
Reloading, Fishing, Hunting Equipment
Handguns, Rifles, Shotguns
392-2441 or 392-2034

MAXINE'S FLOWER SHOP
Fresh cut—Pot Plants
Artificial Arrangements
Gifts For All Occasions
Ph. 392-2648

STA-PUT CARPET CO.
1110 Ave. E
Ph. 392-3139
All Types of Carpet
Dave Matney
Owner

THIS SPACE
AVAILABLE
\$1.00 PER WEEK

VFW POST 6109
Regular Meetings
Third Tuesday
In Each Month
8 p. m.

CUSTOM FRAMING
MATTING
All your framing needs
RAY BOYKIN
392-2341
After 5:00 call 392-2583.

OZONA BUTANE CO.
PLUMBING & REPAIR
C. E. APPLIANCE
1108 Ave. E Ph. 392-3013

THE LINE
YOUR PARTY MERCHANT
15 mi. E. off I 10
BEER, LIQUOR, WINE

THE BAGGETT AGENCY
INSURANCE!
"Your Protection is Our Profession"
1114 Ave. E Ph. 392-2606

BEAUTIFUL INTERIORS
Designed with
DRAPERY - CARPET
Fine Furniture & Accessories
BROWN FURNITURE CO.

CATERING
"Let Us Serve You"
Banquets-dinners-coffees-teas
Ozona Chapter #287 O. E. S.
Phone 392-2036
Or 392-2335

MEMORIALS OF DISTINCTION
STONE ETERNAL MONUMENTS
LAWRENCE JAMES
Call 392-3202

FABRICS
For All Occasions
MYRA'S
FABRIC CENTER
1112 Ave. E

CHURCH OF CHRIST
Sunday Bible Study 9:45-10:30
Morning Service 10:45-12:00
Evening Service 6:00 - 7:00
Wednesday 7:30-8:30 p.m.

WILLIAMSON ARCO SERVICE
Minor Mechanic Work
Tire Service
103 Ave. E (Hwy. 163N)
Phone 392-2147

J. W. MOTOR PARTS
Auto Parts & Supplies
606 11th St. Ph. 392-2343

B & C AUTOMOTIVE
Complete Auto Repair
& Auto Needs
Ph. 392-2016
Cor. of 11th & Ave. C

TOTAL VALUE Specials Plus Everyday Low Prices

Specials Good
Thur. Dec 4 5 thru
Sat. DEC. 6 1975

FOODWAY

Super Markets

Rights Reserved to Limit
Quantities - No Sales to Dealers

Featured Special!



Boneless Rump

Roast

USDA CHOICE

Lb. \$1.78

USDA CHOICE
BONELESS LOIN TIP
LB.
Steak \$1.69

USDA CHOICE PIKE'S PEAK
LB.
Roast \$1.29

FAMILY PACK
Pork Chops
LB. **\$1.39**

USDA CHOICE

Featured Special!



Round Steak

The Beef People

USDA CHOICE

Lb. \$1.18

Featured Special!



Peyton's Beef Franks

12-oz. Pkg. 79¢

USDA CHOICE
BEEF STEW
BONELESS
LB. **\$1.39**

Asst. Colors
ORCHID
TOILET TISSUE

Featured Special!



GREEN GIANT Niblets

CREAM STYLE

Corn

3 16 oz. Vac Pak Cans \$1

WE'LL GLADLY REDEEM YOUR USDA FOOD STAMPS

Featured Special!



Green Giant Sweet Peas

3 17-oz. Cans \$1

Frozen Foods

"Fields"

Pecan Pies

32 oz. pkg. **\$1.98**

Frosty Acres
Rolls pkg. 49¢

Mr. G French
FRIES 5# BAG 98¢

10 Roll Pkg. \$1.29

Dairy Products

Miracle Whipped
Margarine

1-Lb. Ctn. **59¢**

KOUNTRY FRESH
BISCUITS
8 OZ. CAN
3 for 29¢

Kimbell Unsweetened Grapefruit Juice

2 46-oz. Cans 89¢

Featured Special!

Featured Special!



"The Real Thing"

7-UP - MR. PIBB

Coke

6 32-oz. Btls. \$1.49

Plus Deposit

"SPECIAL"

VELVET 42 OZ. CAN
Shortening 1.39

Carnation
MILK

3 13 OZ. CAN 89¢

Featured Special!

HI-C Drinks

All Flavors

2 46 OZ. CAN \$1

Featured Special!

DOUBLE LUCK
Beans

5 15 1/2-oz. Cans \$1

Featured Special!

Liquid Bleach
Clorox

1/2 gal. 59¢

Family Needs

CRISCO SHORTENING

3 lb. can **\$1.69**

Folger's COFFEE

all grinds

1 LB. CAN \$1.19

LIMIT 2 CANS

Kountry Fresh Grape Jelly

18-oz. Tumb. **69¢**

New Crop Colo.
Yellow Jacket Pinto Beans

10 LB. BAG **\$3.00**

100 LB. BAG **\$29.50**

CHAMBRAY QUEEN
Flour

25 LB. BAG **\$2.59**

Featured Special!



"Lettuce Garden"
Iceberg - Romaine - Boston Red Tip - Green Leaf

Lettuce

Each **39¢**

Kim
Dog Food

7 300 CAN **\$1.00**

Large Head Green
Cabbage Lb. 10¢

'Cello' Fresh
Carrots 1# Bag 19¢

"Sunkist"
ORANGES

Lb. **25¢**

Featured Special!

DEL MONTE
Cocktail

16-oz. Cans **45¢**

Featured Special!

Del Monte
Pears

15-oz. Cans **45¢**

Featured Special!

Kountry Fresh
Soup

Chicken Noodle or Vegetable

5 10 1/2-oz. Cans \$1

TexaSweat Ruby Red

Grapefruit

Red Delicious

Apples 79¢

3# BAG

5# BAG **79¢**

Leta Powell spent the recent holidays visiting relatives in Fort Stockton and Big Lake.

Come in and take a look at 500 mugs swinging from trees and standing from brackets at BROWN FURNITURE CO.

Public Notice

SHERIFF'S NOTICE OF SALE
THE STATE OF TEXAS
COUNTY OF CROCKETT
Whereas by virtue of an Order of Sale issued out of the 112th Judicial District Court of Crockett County, Texas, on the 10th day of November, 1975, in Cause No. 3825, where South Texas Lumber Company of Ozona, Texas, Incorporated was Plaintiff, and Sam Rivera and Celia Munoz were Defendants, on a judgement rendered in said Court against Defendants and in favor of the said Plaintiff, for the sum of \$6,573.84, with interest thereon at the rate of 10 per cent per annum, from date of judgment, together with all costs of suit; I did on the 17th day of November, 1975, at 10 o'clock a.m., levy upon the following described lots, tracts and parcels of land situated in Crockett County, Texas, as the property of Sam Rivera and Celia Munoz

to-wit:

A tract of land situated, lying and being in the County of Crockett and State of Texas, and being 85 feet East and West by 113 feet North and South, of Lots One (1), Two (2), and Three (3) of Herrera Addition to the town of Lima, Crockett County, Texas, as per map or plat approved by the Commissioners Court of Crockett County, Texas, and appearing in Vol. 5, page 95 of the Minutes of said Court, described as follows:

BEGINNING at the Southeast corner of Lot 1 in Block 3 of the Herrera Addition; THENCE South along the West line of Del Rio Street 113 feet; THENCE West parallel with the South line of Block 3, 85 feet; THENCE North parallel to the East line of Block 3, 113 feet to the Southwest corner of Lot 3 of said Addition; THENCE East with the South line of Lots Three (3) and Two (2) and One (1) in said Block Three (3), 85 feet to the place of beginning, together with all improvements thereon.

And on the 6th day of January, 1976, being the first Tuesday of said month, between the hours of 10 o'clock A.M. and 4 o'clock P.M. on said day, at the courthouse door of said County, and I will offer for sale and sell at public auction, for cash to the highest bidder, all the right, title and interest of Sam Rivera and Celia Munoz in and to said above described property.

Witness my hand this the 24th day of November, 1975.
Billy Mills, Sheriff
Crockett County, Texas
The description of the property shall give the number of acres, original survey, locality in the county, and the name by which the land is most generally known, but it shall not be necessary for it to contain field notes.

--0-- 38-3tc

Save Money On House Brand

Consumers should "know" the house brand grocery product before buying large quantities at special sale values. Mrs. Linda McCormack, a family resource management specialist, says.

"House brands are goods that carry the label of the retailer, because the retailer contracted with some producer to buy large quantities of his product to sell under the retailer's name."

She explained that this large volume usually results in a lower price to consumers. But if the product isn't satisfactory, consumers may have a hard time reaching the manufacturer to make their complaints.

"Brand name products, on the other hand, usually provide consistent and dependable quality.

Agriculture Carries Load In U. S. Balance of Trade

Agriculture continues to carry the load as far as the United States' balance of trade is concerned. In fact, it's the only trade area operating "in the black."

While the U.S. agricultural trade balance had a surplus of \$11.7 billion in 1974, the nonagricultural

trade balance showed a deficit of \$14.7 billion, points out Dr. Russell McDonald, marketing specialist for the Texas Agricultural Extension Service.

The U.S. exported \$22 billion worth of agricultural goods last year and imported just over \$10 billion. The increase in exports was due mainly to higher commodity prices, notes McDonald.

Agricultural exports for fiscal 1975 were valued at \$21.6 billion. "Agriculture has enjoyed a surplus in the trade balance every year since 1971," says the specialist with the Texas A&M University System. "Except for a \$1.2 billion surplus in 1973, the nonagricultural trade balance has had a deficit over the past four years."

Trade balance is the difference between the value of exports and imports in one year of trading.

In 1974 nonagricultural imports were worth \$90 billion while exports were worth \$75 billion, says McDonald. This created a deficit of almost \$15 billion compared to a deficit of only \$8 billion in 1973. Over half this increase in the trade deficit was due to higher oil prices. The import value of petroleum and petroleum products jumped from \$7.6 billion in 1973 to \$24.2 billion in 1974.

Where do the agricultural exports come from? In 1974 the U.S. exported 58 per cent of its wheat crop, 56 per cent of the rice crop, more than half the soybean crop and about a third of the tobacco and cotton crops, to name a few, points out McDonald.

"Crops produced on three of every ten acres in this country were shipped abroad last year. As far as Texas

is concerned, the production of an estimated one of every four acres goes to markets overseas," notes the economist.

Just arrived!!!! Hanging basket brackets. Many colors and sizes to choose from-- see at BROWN FURNITURE CO. --0--

The cost of making a sales call in 1963 was slightly more than \$31. Today, the same visit costs a company over \$75, on the average.

\$500 REWARD

FOR INFORMATION LEADING TO THE IDENTITY, ARREST OR CONVICTION OF PERSON OR PERSONS WHO SHOT OUT THE LIGHTS AT THE CEMETERY. PLEASE RELAY INFORMATION TO THE DISTRICT ATTORNEY.

LEGAL NOTICE

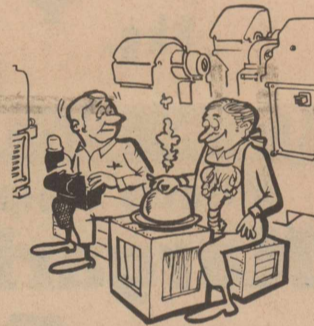
Being certified by the Commissioner of Agriculture of the State of Texas for this purpose, the Mohair Council of America, 516 Central National Bank Building, San Angelo, Texas 76901, proposes a referendum election on February 10, 1976, under provisions of Article 55C, Vernon's Civil Statutes on the proposition of whether or not mohair producers in the following counties shall assess themselves an amount not to exceed 2% cents per pound on all mohair sold to be collected at the first point of sale, and to elect members for a 12-person commodity producers board to administer proceeds of such assessment to be used for advertising, promotion, market and product development, education and research programs designed to encourage production, marketing and use of Texas mohair. Counties included in the referendum are: District 1 — Terrell, Crockett, Pecos, Brewster, Presidio and Jeff Davis. District 2 — Val Verde, Kinney. District 3 — Edwards. District 4 — Bandera, Real, Medina, Uvalde. District 5 — Mason, Llano, Gillespie, Kerr, Kendall, Comal, Blanco. District 6 — Schleicher, Menard, Sutton, Kimble. District 7 — Mills, Hamilton, San Saba, Coryell, Lampasas, Burnet, Hays, Travis, Williamson, Bell. District 8 — Irion, Sterling, Coke, Tom Green, Concho, McCulloch, Coleman, Runnels, Nolan, Taylor, Callahan. District 9 — Brown, Eastland, Comanche, Erath, Stephens, Palo Pinto, Jack, Parker, Hood. The referendum and election will be held by physical ballot with voting place to be at each county ASCS office in the referendum area or in the county courthouse in counties that do not have ASCS office facilities. Polls will be open at 7 a.m. and close at 7 p.m. Producers who will be away from their particular voting box location on election day may obtain an absentee ballot from county agent offices, wool and mohair warehouses or from the Mohair Council of America. Absentee ballots must be mailed in the self-addressed envelope to the central balloting place at P.O. Box 222, San Angelo, Texas 76901, before midnight three days prior to the election date. Any person within this referendum area engaged in the business of producing or causing to be produced mohair for commercial purposes is eligible to vote, including owners of ranches and their tenants and sharecroppers, if such person would be required to pay the assessment proposed.

WANTED

PASTURAGE FOR

13 PAINT MARES WITH FILLY COLTS. PREFER PASTURAGE WHERE REGISTERED. COWS ARE FED WITH 41% CAKE. CALL 392-2287.

My Neighbors

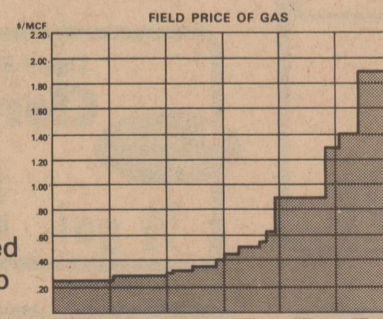


"I'd rather explain higher gas bills than why you don't have gas."

Your natural gas bill is higher. And, you have every right to know why.

One reason is lower temperatures brought on by winter.

The main reason, however, is simply that you are paying more for natural gas. Because we are paying more. This chart shows how much:

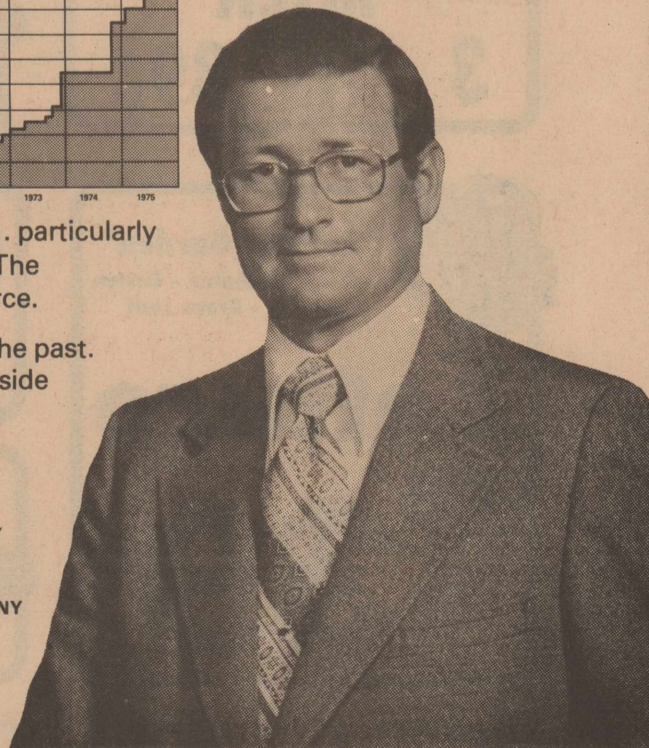


This increase hurts both you and Pioneer. It adds to your bill and to our cost... a cost for which Pioneer is not entirely compensated. It is passed through without mark-up or additional charges.

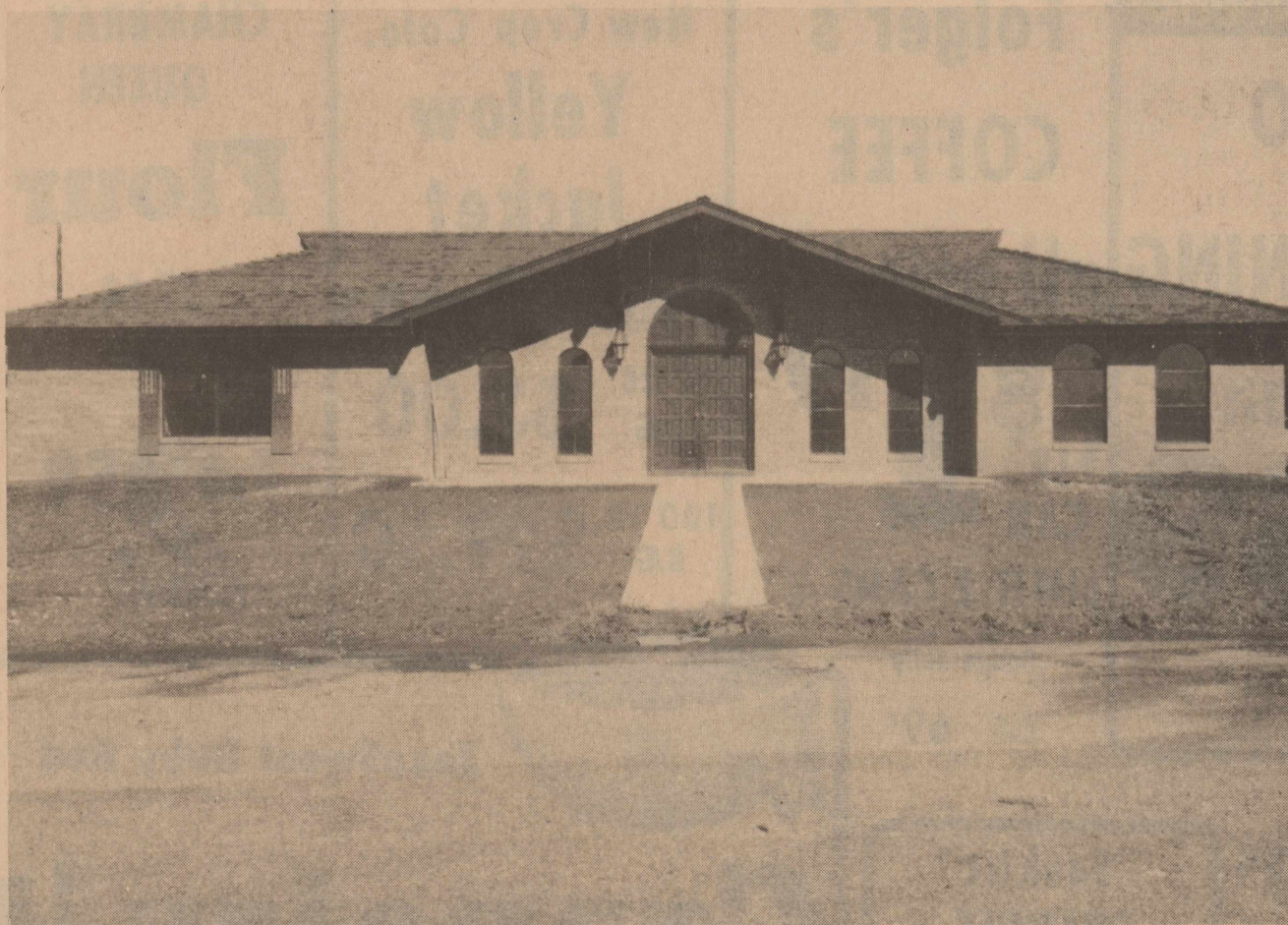
Why does gas cost more? Competition... particularly from petrochemical and other industries. The competition for gas has never been so fierce.

We will have to pay more for gas than in the past. But by working together, and without outside interference, you'll have the gas you need today and in the future.

K.B. Watson
K. B. (TEX) WATSON
President
PIONEER NATURAL GAS COMPANY



COUNTRY STYLE ELEGANT LIVING



ALL BRICK CONSTRUCTION
ALL ELECTRIC

4-BEDROOM 2-BATH
DOUBLE GARAGE

COUNTRY ESTATES

Jack Wilkins
Ph. 392-2554

Pete W. Jacoby
Ph. 392-3059

Javelina Is Texas' Smallest Game

The javelina is Texas' smallest big game animal and probably the most underrated by Texas hunters as well.

Only three states in the United States--Texas, Arizona and New Mexico--have populations of this small, piglike collared peccary or javelina, as it is best known.

In Arizona, considerable value is placed on the javelina as a game animal. The hunting season is usually in February and permits are issued by drawing, with the number based on surveys of the herd.

New Mexico's population is limited to the extreme southwest corner of the state and the season was closed several years following a severe winter that depleted the herd. New Mexico's open season is usually in February, with permits by public drawing and numerous applications for the few that are available.

In Texas, where the largest population of these animals is found, the javelina has not enjoyed the same popularity with hunters or landowners, but it is beginning to become more and more popular as a game animal.

The javelina in Texas once ranged as far north as the Red River and east to the Brazos River Valley. Their range now is limited to West Texas and the Brush Country South of San Antonio. Javelina are numerous in several Trans-Pecos Counties and Val Verde, Crockett and Sutton Counties have good populations of the little animals, with their

range extending north from there into much of the Permian Basin area.

Before 1939, the javelina was hunted commercially in Texas for its hide which made excellent gloves. In 1939 it received game animal status, but still many counties in the state had no closed season and no bag limits. Once considered a nuisance, by ranchers, many now would like to see the javelina reestablished on its former range because of the animal's ability to control cactus.

Javelina prefer areas with dense brush and heavy stands of cactus. Prickly pear pads and roots are among their favorite foods, along with mesquite beans sotol and lechugilla.

The reputation the javelina has as being a ferocious animal, one that will charge a man on foot and put him up the nearest tree, is mostly from folklore and tall tales. An alarmed javelina raises the bristles on its back and pops its teeth, looking and sounding much more ferocious than it actually is. A wounded or cornered javelina, however, should not be taken lightly, as it could do considerable damage.

Probably even now, most of the sport hunting for javelina in Texas is done in conjunction with deer hunting. Some ranchers have offered javelina, more or less, as a bonus to hunters who have leases on their ranches.

The javelina season opened Oct. 1 in regulatory counties that have an open season and will be open through Jan. 4, 1976. More and more ranchers are beginning to offer leases just for javelina, giving hunters an opportunity to hunt these animals, during the longer season, before or after deer season.

A map on pages 12 and 13 of the "Guide to Texas Hunting and Sport Fishing Regulations, 1975-76, published by the Parks and Wildlife Department, shows counties that have open javelina seasons. Hunters interested in obtaining a lease to hunt this animal might try contacting a chamber of commerce in one of the towns in a county that has an open season. They often have lists of landowners who have various hunting leases available.

Mr. and Mrs. Deane Holden of Arlington, left Sunday morning after spending the holiday here with her mother, Mrs. Fred Hagelein.

Mr. and Mrs. Manuel Hartnett and children spent Thanksgiving with his parents in Fort Davis.

Hanging pots--new selection just arrived at BROWN FURNITURE CO.

Carpet your home now with a new number from BROWN FURNITURE COMPANY. Over 1700 samples to choose from in fine carpeting by outstanding mills from all over the United States. Come to BROWN FURNITURE--where quality and service still count.

Some people believe that if you turn your money when you hear the cuckoo, you'll have money in your purse till he comes again.

OHS Students And Faculty To Tarleton

Ozona students and teachers will be among some 650 high school students and 55 public school administrators participating in the annual Tarleton State University College Orientation Conference planned Dec. 3 on the TSU campus.

Mike Leese, director of development and coordinator for the conference, said that Cecil Morgan, Fort Worth attorney and counsel for the Fort Worth ISD, would be the principal speaker at a meeting of school administrators. Morgan will discuss the effects of students fees elimination brought about by a recent state court ruling.

Students will meet in the morning for a general assembly where student life, curricular and student fees will be explained. Also in the morning tours of the campus will be held. The afternoon program will be devoted to academic counseling with TSU faculty members.

Administrators will hear Morgan in a morning session and be guests at noon of TSU President Dr. W. O. Trogdon. The afternoon session will include seminars and discussion groups pertaining to school administrative problems.

Mrs. C. O. Spencer is in Room 403 of St. David's Hospital in Austin receiving medical treatment.



WE FEATURE
WEDDING INVITATIONS
AND SOCIAL ANNOUNCEMENTS
with the
Modern Touch
By NATIONAL ARTCRAFTS

- INVITATIONS
- ANNOUNCEMENTS
- INFORMALS
- ACCESSORIES

Elegant designs in traditional or contemporary styles— finest quality—prompt service

THE OZONA STOCKMAN

Specials Good - Thurs., Thru Sat.



U.S.D.A. FOOD STAMPS!

JACK'S SUPER MARKET

FINE FOODS

PRICED FOR THRIFTY SHOPPERS!



Fresh
WHOLE ONLY
LB.

FRYERS
49¢

shurfresh
Bacon ^{1 LB.} **\$1.49**

HEAVY BEEF
T-BONE STEAK LB. \$1.89
SIRLOIN STEAK LB. \$1.79
Pikes Peak Roast lb. \$1.39

MENUDO 3 LBS. \$1.00

SPECIAL
FREEZER ORDER
HALF BEEF HEAVY
Guaranteed tender LB. 89¢
HINDQUARTER LB. 99¢

SHURFINE
CANNED MILK
4 TALL CAN For **\$1**

SHURFINE
SALT 2 FOR 29¢
SHURFINE
CHUNK TUNA can 49¢
SHURFINE
CAKE MIXES 69¢

SHURFINE
BLEACH
1/2 GAL. 49¢
SHURFINE
DETERGENT
Giant 89¢

OUR DARLING
FLOUR
25 LB. BAG
\$2.59

SHURFINE
SPINACH 4 FOR \$1.00

SHURFINE
TOMATO SOUP 5 for \$1.00

SHURFINE
FRUIT COCKTAIL 2 FOR 85¢

SHURFINE
TOMATO SAUCE 8Oz. 5 For \$1.00

SHURFINE
SAURKRAUT NO. 303 CAN 3 FOR 89¢

SHURFINE
PEACHES NO. 303 CAN 2 For 79¢

SHURFINE
PEARS NO. 303 CAN 2 FOR 79¢

SHURFINE
TOMATO JUICE 46 oz. 59¢

SHURFINE
CHERRIES NO. 303 CAN 2 For 89¢

SHURFINE
APPLE SAUCE NO. 303 CAN 3 For \$1.00

SHURFINE CREAM STYLE
CORN 3 For \$1.00

SHURFINE
APRICOTS NO. 303 CAN 2 FOR 89¢

SHURFINE
GREEN BEANS NO. 303 CAN 3 For \$1.00

RUSSET
Potatoes
20-Lb. Bag **\$1.69**
ORANGES 5 LB. BAG 69¢
APPLES 3 LB. BAG 59¢

SHURFINE
SUGAR
\$1.19
5 Lb. Bag

SHURFINE
ORANGE JUICE
6 oz. can
5 FOR \$1

MORTONS APPLE, CHERRY, PEACH & BLUEBERRY

FRUIT PIES
69¢

SOFLIN FACIAL
TISSUE
200 CT.
39¢

SHURFINE
FLOUR
5 LB. BAG
69¢

Christmas Shopping Guide

it's lotsa fun to shop at home!



it's handy to shop at home!

SAVE ENERGY - SHOP OZONA

Toys for ALL AGES

Bikes
Trikes
and
kiddie wheel toys.



We have 'em all
GIVE THEM WHEELS!

WHITE'S AUTO

"THE COMPLETE CHRISTMAS PLACE"

- Fine Gift Ware
- Hanging Pots & Brackets
- Unusual Selection
- Mugs
- Le Creuset Cookware
- Wind Chimes
- much more
- Wilton Armatele



Great Gift Ideas
-Free Gift Wrapping
BROWN FURNITURE CO.



GIFTS FOR EVERYONE!

WATCH THIS SPACE FOR THE FORMAL
OPENING OF OUR BIG, NEW STORE!

SOUTH TEXAS LUMBER CO.

G. E. Appliances Make Great Gifts



"The Piranha"
Stainless Steel
Disposal® Food
Waste Disposer

MODEL GFC450

- Continuous Feed—toss in scraps, turn on water, flip switch
- Corrosion Resistant—virtually all major metal parts exposed to water are stainless steel or brass
- Low Sound Level—efficient insulation and cushioned mounting
- GE Carboly Cutter—needs no sharpening
- Double Epoxy Motor Housing—for long life
- Twist-Lock Mounting—for easy installation
- Jam-Resistant Impeller—provides outstanding performance
- Permanent Oiled Bearings

\$82.50

OZONA BUTANE

A Wonderful Christmas Gift! cameras

Kodak Instamatic Pocket Cameras

CHRISTMAS SPECIALS

One Only Of Each

Reg. \$195.95 Special \$139.95

Reg. \$114.95 Special \$79.95

VILLAGE DRUG

"THE STORE WITH A SMILE"

NEED HELP?

With your Xmas shopping—
Take or send a smoked turkey.
The ideal family or business gift.

LEFTY'S TURKEY PATCH

Ph. (915) 392-2160

Box 876 Ozona, Tx. 76943

Wts. 7-16 lbs.

Sterling Silver \$12.95



Shown actual size. Gift boxed, chain extra.

Reed & Barton's
1975
Christmas Cross®
BAKER JEWELERS

great to give



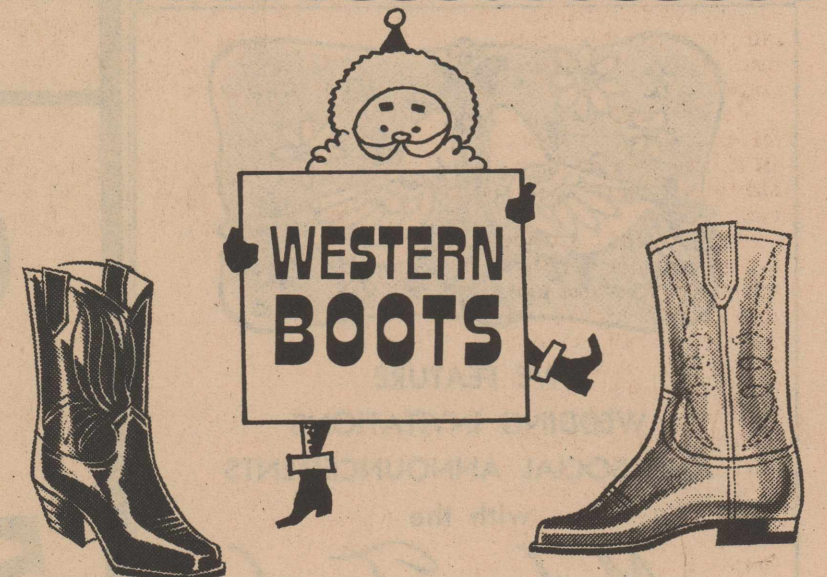
Beautiful

ROBES & GOWNS

sets or separates



MAE-LU'S FASHIONS



FEATURING

Elephant Sharkskin Turtle
Lizard & Other Fine Leathers

OZONA BOOT & SADDLERY

Tips For Gardeners
From the Ozona Garden Club by Mrs. Bailey Post

After the late November wintry blasts, our gardens grow cold and dormant now, and some plants may need protection for several months.

This will give you time for wintertime browsing through many good and interesting garden books. The High School Library has a fine group that you will enjoy reading.

For those of you who have the space and proper growing conditions, many interior decorators are agreeing that living plant material should become a definite part of indoor decoration.

More and more gardeners are selecting bromeliads for house plants. Many of these exotic and colorful plants are suitable and available for house culture. There are plants tiny enough to fit into a dish planting, while others are so massive as to be out of place in the average home or garden. They do not need to be in flower to be attractive, for as foliage plants they have no equal. What is important is that these interesting plants can almost take care of themselves. Get instructions from a nursery or read up on them.

A beautiful Christmas plant worth knowing is the kalanchoe. They put on bright showy flowers in clusters in shades of red, pink, salmon, orange or yellow with thick, green, waxy leaves. If bought in full bloom they should last for a month or more. When the flowers fade, clip them back. Give the plant as much sunlight as possible and enough water to keep soil constantly moist. With a little luck, you should get another flush of blooms by March, though not as spectacular as the first. Repeat for another blooming in December.

To solve some of your Christmas gift problems, you might want to choose trees, shrubs, roses, potted plants, hanging baskets, bulbs, containers, garden books, tools, furniture or ornaments.

Many are taking advantage of our fall clean-up to help our city to be well groomed. We hope everyone will have participated in this project by the end of this week. Thanks to the county for their generous pick-up and mowing.



By Marti Robinson

ARE YOU A FRIEND TO YOUR HAIR? Curls are back in style. That makes the curly-heads happy, especially the ones who used to go to the expense of straightening their hair to achieve the smooth, sleek look that was so much admired. Now the women with really straight hair — those who used to be the envy of their curly-haired sisters — are looking for ways to get curls. Of course, it's not really a major problem, with electric brushes and rollers easily available. Even a perm can be the answer. Besides, no one needs a total mass of ringlets to be in fashion — curls can be soft and subtle, too.

You're your own best friend when you pick a stylish, flattering hairdo. But are you a friend to your hair? I'm not referring to hairdos but to hair care. Without realizing it, you just might be doing unkind things to your hair. It's surprising how myths long disproved still linger on. Remember when you were told it was harmful to wash your hair too often? The truth is, you should shampoo as often as your hair requires it.

One hundred strokes a day — that's another oldie women used to believe about hair brushing, and some still do. Actually, that's too much brushing, and it could damage your hair. Most of us could stand a daily brushing, but fifty strokes is quite adequate. The method of brushing is very important. Bend from the waist, letting the hair fall toward the floor; and brush from the scalp, stroking outward.

Another myth that should be dispelled is the mistaken notion that wearing a wig every day is harmful. The only problem might come from a daily wig that's too tight; it's the pressure that causes trouble. If you wear a fall every day, try to position it slightly differently on your head each day. Make sure the hairpins holding it in place are not

breaking healthy strands of hair, but are simply grasping on to them. Proper hair care starts with shampooing as soon as your hair needs it. Women with oily hair need to lather up much more often than those with normal hair. Without the extra shampooing, oily hair can give a limp, dull look to your hairstyle. Hair that has been tinted or damaged needs special attention, too. Be sure to find the shampoo that's right for your kind of hair.

After the shampoo comes the vexing problem of getting out the tangles — not only a painful event, but damaging to hair when there's too much pulling and tugging with a brush or comb. What spares the vexation — and your hair — is a spray rinse. You just spray it on, and it helps your comb glide through tresses that would ordinarily rebel. (It's a great help in combing out children's hair.)

Finally, find a setting lotion that does not flake. A good lotion can give your hair a lovely bounce without dulling its newly clean shine. And include in your hair-care "wardrobe" a hair spray that will not create a glued-together look, as some sprays do. With sprays and other hair-care necessities, find one brand that meets all your special needs. For example, Merle Norman's "Shape 'n' Shine" collection has various products expertly formulated for specific kinds of hair.

You've probably noticed that when you're ill your hair reflects it, almost as if your hair feels as bad as you do. Yet women who think they're perfectly healthy can have sick-looking hair. That's because those women are not as healthy as they think they are. It's likely that their diets are not balanced ones (some eat junk food), they get too little rest and little exercise. Your life style affects your hair. It's friendly to your hair if you get adequate rest, eat properly and exercise daily.

Dear Mrs. Robinson:
I always wished I had high cheekbones, like the fashion models. Can I create that illusion somehow, even though my cheekbones are not naturally very special?

J.M.

Dear J.M.:
Using a blusher skillfully can create different effects. Fill in under your cheekbones with a blusher. Then place a bit of shine high on the cheekbone. That will give you the illusion of high cheekbones you desire.

Marti Robinson

Marti Robinson has taught beauty to thousands of women across the U.S. Send her your questions at 9130 Bellanca Ave., Los Angeles, CA. 90045.

Debra Says
by Debra Price H. D. Agent

Fabrics for the 1975 holiday dress will be soft, drapable, luxurious light weight knits. Classic softly tailored fabrics for styles that will ensure a longer life will be popular. Black and white will advance as the predominant colors, but coral, mint, silver, rose and blue will be offered as alternatives. Sparkles will be seen with the use of metallic threads instead of sequins. Tailored designs will be seen in plush corduroy and deep pile velvet and velveteen. For Sportswear

Sportswear goes classic for holiday wear with quilting, patchwork, gauze, denim, voile, chino and suede cloth and nylon. Apricot, mint, powder blue, pale aqua, natural, vanilla and mauve pink in clear rich colors enhance designs for special occasions. Denim blues will continue to be popular, but shades of grape, black, vanilla and coral add an interesting note to denim. The naturals for holiday will center around khaki and varying shades of beige and tan with luggage tone of rust as an accent. CUT COST OF HOLIDAY ENTERTAINING

Cut the cost of holiday parties by using "double purpose" decorations—fabric tablecloths and edible centerpieces. For an old-fashioned or Bicentennial holiday party, cut calico material with pinking shears to drape over the table. Then use the material later for a garment. Fill decorative empty bottles with calico flowers to match the tablecloth.

Have the party food serve as the main attraction on the table. For example, buy styrofoam cut in a cone or ball shape. Take parsley and fasten to the styrofoam with hairpins until completely covered. Then place toothpicks over the parsley tree or ball and add cherry tomatoes.

Place the "tree" on a tray and surround with nutritious vegetables such as carrot curls, celery fans, cucumber and zucchini sticks, fresh broccoli and cauliflower. Prepare a favorite vegetable dip.

A festive holiday punch containing cranberry juice, lemonade and club soda with a colorful ice ring afloat will add sparkle to any table. Prepare the ice ring by filling a tube pan or bundt pan with fresh strawberries, green grapes, lemon slices, mint and water tinted with red food coloring. Other party menu suggestions include:

- Thin-sliced smoked meats or sausages in barbecue sauce.
 - A tray filled with fruit cake sliced thinly, fruit cake cookies or peanut butter blossoms.
 - A wedge of cheese with crackers in a basket containing calico napkins.
- Keeping the party foods simple to serve helps the hostess enjoy the party along with her guests.

CAFETERIA MENU

- MONDAY
Mixed Vegetables & Beef
Buttered Corn
Cabbage & Cheese Salad
Fruit Cup
Cornbread
- TUESDAY
Spaghetti & Meat Sauce
Buttered Peas
Carrot & Raisin Salad
Fruit Cup
Hot Rolls
- WEDNESDAY
Pinto Beans
Stuffed Weenies
Spoon Tomato Salad
Plain Cookies
Cornbread
- THURSDAY
Hamburger on Bun
Black Eyed Peas
Lettuce, Tomatoes, & Pickles
Fruit Cup
- FRIDAY
Meat Loaf
Mashed Potatoes
Green Beans
White Cake
Hot Rolls

REASONABLE RATES
Davee Plumbing Co.
BOB DAVEE
Plumbing Supplies Phone 392-3357
PROMPT SERVICE

H & C BUTANE
Ozona & Sheffield
392-3225 - 8362745
Jerry Hayes - Dick Collett

OZONA WATERWELL SERVICE
Randy Upham
Ph. 392-2334 or 392-3056
SUBMERSIBLE PUMP DISTRIBUTOR
PUMP AND WINDMILL
REPAIR AND SERVICE

DITCHING
CALL
GLENN BURNS ELECTRIC SERVICE
392-3063 OZONA, TEXAS
6 8 OR 12 INCH BY 36 IN. DITCHING

from the TAP kitchen

- PECAN CREAM PIE**
- 1/2 cup sugar
4 Tbsp. flour
1 cup whole milk
1 cup condensed milk, undiluted
3 egg yolks, beaten
1/4 cup margarine
1 tsp. vanilla
1 cup Texas pecans, chopped
- heat. Add vanilla and pecans. Pour into Pecan Crust and top with meringue or whipped cream.
- PECAN CRUST**
- 1/2 cup pecans, finely chopped
1-1/2 cup graham cracker crumbs
1/2 cup sugar
1/2 cup butter
- Mix sugar and flour. Pour in whole milk; then add condensed milk. Stir in yolks and add margarine. Cook over medium heat stirring constantly until mixture thickens. Remove from
- Combine pecans, graham cracker crumbs and sugar in pie pan. Melt butter and add to crumb mixture. Press on bottom and sides of pie pan.

Publications Discontinued By Highway Department

The Travel and Information Division of the State Department of Highways and Public Transportation is discontinuing several popular travel related publications. These are: Flower Folder, Land of Contrast Folder, Foreign Language Folders (Spanish, French, and German), Travel Literature Request Card, Map Request Card, and Map Envelope. These materials have been distributed to the public through Department offices and Travel and Information Centers throughout the State—almost six million pieces of these and other materials were given to citizens and travellers in 1974. The Texas Visitor

Industry which contributes an astounding \$4.8 Billion per year to the Texas economy, is based largely upon Texas' 71,000 miles of travel routes, which distribute this income to every corner of the State. The present reduction in travel literature is caused by the rising costs of printing, and the current economic squeeze upon the Department. Action was taken in May of this year by the Department to limit distribution of all maps and brochures to one copy per inquiry. In the past, civic groups, trade associations, etc., holding meetings and conventions in Texas have obtained bulk quantities of such materials for distribution

to their delegates and visitors. District Engineer D. R. Watson of San Angelo says "We regret that we are unable to continue this service to the fine civic and trade organizations of District 7, but we are seeking by every economy at our disposal to preserve the essential maintenance and construction operations on our highways. The dwindling supply of highway funds is keyed largely to inflated costs and the lowest State gasoline tax in the nation of 5¢ per gallon. Gasoline consumption in Texas was reduced 3.1% in 1974 compared to 1973, and even greater reductions will come as Federal fuel efficiency standards take effect.

CALLING ALL HOMEMAKERS
Brought to you By Lillian Brown

How do you go about achieving the right "balance" of furniture in your rooms? The first thing to watch for is that you don't put all the heavy pieces at one end of a room. That makes a room seem to tilt, and it's uncomfortable to look at. Also avoid putting all tall pieces together—be sure that height is properly arranged.

Consider both the horizontal and the vertical lines of all the pieces of furniture, and the windows and doors, too.

Some experts today advise against balancing furniture too perfectly because too-perfect balancing can make a room look stiff and monotonous—but, on the other hand you should have some balance in a room or else it will look helter-skelter, confused and unpleasant.

Symmetrical balance—for example, two of the same chairs on either side of a fireplace is a bit more formal; non-symmetrical balance is more casual, but actually you can use several different types of balance in the same room to achieve a more interesting room.

The main thing is to make the shapes in a room agreeable to the eye. We'll be glad to show you furniture and ideas that'll give your home good balance and the most attractive look possible.



Easy Money

... is the money that your spare dollars earn while they work for you as you worked for them.

Don't let them loaf in your billfold... or in a cookie jar... or unneeded in your checking account. Put them to work in a savings account or certificates of deposit... at today's high wages for working money.

OZONA NATIONAL BANK



- Sunday
Colossians
1:15-18
- Monday
Jeremiah
23:2-6
- Tuesday
Joel
3:16-18
- Wednesday
Psalms
23:1-6
- Thursday
Mark
13:32-37
- Friday
I Thessalonians
3:11-13
- Saturday
Romans
13:12-13



If you are skiing out in the woods with an amiable companion, you can revel in the white beauty of the snow. If, on the other hand, you are on a city street, facing an icy wind, you may feel quite differently about the matter.

Isn't that the way it is with almost everything? The way we react to a situation so often depends upon the way it affects us personally. We aren't to be blamed for this; yet we should stop to think that there are two sides to every story. We should not judge the merit of a viewpoint on whether or not it agrees with our own opinion.

The Church is used to different viewpoints, to controversy. It has lived with changing times and opinions for centuries, and it has never been more involved than it is today. The Church is changing as change is needed, ever ready to investigate and to explore the new. Have you been keeping up with it?

THIS SERIES OF ADS IS BEING PUBLISHED AND SPONSORED BY THE OZONA BUSINESS FIRMS IN THE INTEREST OF A STRONGER COMMUNITY

Rutherford Motor Co.	Ozona Stockman	White's Auto
Ranch Feed & Supply Co.	Ozona Oil Company	Foodway Stores
Brown Furniture Co.	Ozona National Bank	Meinecke Ins. Agency
Ozona Butane Co.	So. Tex. Lmbr. Co. of Ozona	Stuart Motor Co.
Hi-Way Cafe	Ozona TV System	STA-PUT CARPET Co.

Communication A Must In Family Relationships

Open, honest communication is one tool for improving family relationships, Mrs. Ilene Miller, a family life education specialist, says.

"But learning to communicate effectively with loved ones isn't always easy. Differences in values and feelings cause conflict and misunderstanding," she added.

Mrs. Miller is with the Texas Agricultural Extension Service, The Texas A&M University System.

"First, remember that both words and actions communicate. Facial expressions, tone of voice, posture, breathing tempo and many other actions communicate a person's feelings and attitudes.

"Actions should speak the same as words--not louder--for best communication. It's hard to understand when a

speaker says one thing but his actions don't back up his words. For example, it's especially confusing to a young child when his parents tell him 'we don't hit anyone in anger' as they spank him hard for hitting someone else," the specialist said.

She said that sharing feelings--even negative ones--is another way to build good communication within a family.

"Everyone feels angry, frustrated, jealous or sad at times, and it's encouraging to live in a home where expressing these feelings is acceptable. Trusting and sharing problems

or concerns with family is a signal that communication is working well," Mrs. Miller said.

But in order to share feelings, mutual trust and respect are necessary. Communication is improved when family members discard methods that lead to resentment and self-doubt, she added.

"Name calling, constant criticism, threats and accusations tend to break down effective communication among family members. Instead, concentrate on positive feelings and aspects of the situation. Specifically, state your own ideas and feelings, rather than verbally attacking the other person.

"Listen--with understanding--to learn other family members' views of the situation before taking action or responding," the specialist advised.

--0--

Mail Order Shopping Fast & Easy

Mail-order catalogs are one means of turning listless holiday shopping into "less list" shopping, Mrs. Linda McCormack, a family resource management specialist, says.

"Shopping through mail-order catalogs can help consumers quickly check off items on this year's gift list while they also avoid long lines in stores, the push and shove of crowds and wasted time and energy.

"And if a showroom is close by, the shopper can place an order and receive purchases within minutes. But remember to order early so purchases come before Christmas," she said.

Mrs. McCormack is with the Texas Agricultural Extension Service, The Texas A&M University System.

"Catalogs are often ideal for bargain hunters--savings on brand-name merchandise can be substantial," she added.

"Other consumer helpers are catalogs for the 'exceptional' person on a gift list--the left-handed person, the over-sized or undersized person, and even the four-legged 'family members'." Before placing an order, carefully read the company policy on returns and estimated delivery dates. The majority of mail-order merchants are reliable and willing to exchange colors and sizes--or refund money on any item that hasn't been personalized for the recipient, she said.

Hunters Are Not Greatest Threat To Wildlife Today

It is amazing how many people think wildlife populations in this country are at an all time low.

Equally or even more amazing is the number of people who think that sport hunting is responsible for practically wiping out wildlife populations, when actually just the reverse is true. If it were not for the hunter and the funds he has contributed to wildlife management, a number of wildlife species would be endangered or extinct today.

One person who has frequent opportunities to speak to school-age youngsters in one of Texas larger cities always asks the groups, "What is the greatest threat to wildlife today?"

It never takes long for several of the youngsters to come up with the answer, "man."

Further questioning, as to how man is such a threat to wildlife, invariably leads to the same answer from several of the youngsters. "Hunters," they say, "are the greatest threat to wildlife. Hunters kill the animals." This response is generally true from grade school age all the way up to teenagers. Sometimes



Getting Maximum Value

How can you be more sure you're getting the most for your money when you shop?

Little clues may tell you a lot. For instance, if the rolls in a restaurant are fresh, it's an indication that the meat and fish are also first rate. If a store shows sufficient concern for its customers to accept their credit cards, it probably watches out for the customers in other ways, too.



Many people prefer not to carry large amounts of cash and they like the financial freedom that credit cards, such as the American Express Card, offer.

Most quality retailers see the credit card much as they do their heating, rest rooms and lighting, as a customer service that's part of doing business.

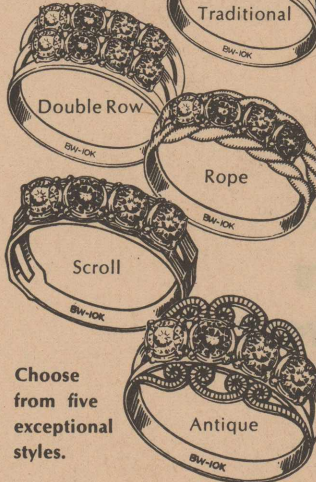
In fact, many merchants accept credit cards because their customers demand that they do. People carry credit cards because they provide written records of all purchases and because they provide great financial flexibility. They are also a safe, secure way of carrying a lot of money.

Basically, the kind of stores that cater to customers this way are the ones to take your custom to.

Gifts galore and free wrapping at BROWN FURNITURE CO.--new arrivals daily.

--0--

A Special Ring For Her



Choose from five exceptional styles. A ring is forever and we make up these beautiful, versatile rings special for the girl in your life. For Mother or Grandmother, colorful birthstones represent each child's birth month. For the pre-teen or teenager, her birthstone set alone is a cherished gift.

FROM ONLY \$39.50

Baker Jewelers

Your Gift Idea Center

Tops Club Meets Tues.

Tops Club #871 held its regular meeting Tuesday, Nov. 25, in the District Court Room of the Court House. Nine members were present with a total weight loss of 10 pounds. Sandy Henry was queen of the week.

Patty Wells won the Squares Contest, and Barbara Davidson was winner of the Spell Tops Contest.

There will be double fines next week to encourage members to continue their diets through Thanksgiving.

--0--

OZONAN'S GRANDMOTHER BURIED IN AMARILLO
Mr. and Mrs. Buddy Phillips and Hope were in Amarillo Monday of last week to attend funeral services for Mrs. Phillips' grandmother, Mrs. A. H. Willborn, 103.

Services were held in the First Baptist Church in Amarillo. Mrs. Phillips and Hope stayed on in Amarillo for the Thanksgiving holiday while Mr. Phillips returned to Ozona.

--0--

Bill (Sonny) Meinecke and children, Mr. and Mrs. Jerry Meinecke and Susan, were here over the weekend for a visit with his family, the James Dockerys and Bud Meinecke.

--0--

ATTENTION HUNTERS & TRAPPERS

Fur buyer will be in Ozona at Gulf Service Station highway 290 & Ave. G each Wednesday from 6:45 a. m. till 7:30 a.m. beginning Wednesday, and in Sheffield at Tims' Texaco highway 290 each Tuesday from 7:00 p. m. till 7:30 p. m. beginning Dec. 2nd.

D & W FUR CO.

400 N. Texana St. Ph. 798-5057

OZONA STOCKMAN

YOUR PRINTING HEADQUARTERS

LOOK NO FURTHER THAN THE OZONA STOCKMAN IN OZONA FOR ALL OF YOUR PRINTING REQUIREMENTS

- | | |
|--------------------|----------------|
| * Letterheads | * Envelopes |
| * Ruled Statements | * Padded Forms |
| * Circulars | * Programs |
| * Business Cards | * Pamphlets |
| * Tickets | * Card Forms |

Wedding Invitations

- * Sales Books
- * Printed Tags
- * Register Forms
- * Business Forms

Also--Rubber Stamps, Adding Machine Paper and Stationery--

The Ozona Stockman

Phone 392-2551

Box 370

Who bailed out the Navy in 1798?



We were still paying off the Revolutionary War. Then we were faced with yet another war, this time on the seas.

How could we afford to build up our Navy?

Well, Congress called for help through the issuance of government securities. And the citizens came through to the tune of \$711,700. Enough to make the down payment on 10 new ships.

Their investment paid off. And you can follow their example today.

When you buy U.S. Savings Bonds at your bank or through the Payroll Savings Plan at work, you're investing in your country.

And as if that weren't enough, you're helping yourself to a safe and generous return.

What better way to stay afloat?

Series E Bonds pay 6% interest when held to maturity of 5 years (4 1/2% the first year). Interest is not subject to state or local income taxes, and federal tax may be deferred until redemption.



Take stock in America.

200 years at the same location.

OZONA BOYS BASKETBALL SCHEDULE
1975 - 1976

DATE	TEAM	PLACE	TIME	TEAMS
Dec. 2	Lake View	There	6:15	V&JV
Dec. 5, 6	Lake View Tournament	There		V
Dec. 9	Lake View	Here	6:15	V&JV
Dec. 11, 12, 13	Ozora Tournament	Here		V
Dec. 16	Eldorado	There	6:15	V&JV
Dec. 19	Rankin	Here	5:00	V&JV
Jan. 8, 9, 10	Big Lake Tournament	There		V
Jan. 8, 9, 10	McCamey Tournament	There		V
Jan. 13*	Crane	Here	5:00	V&JV
Jan. 16*	McCamey	There	5:00	V&JV
Jan. 23*	Sonora	Here	5:00	V&JV
Jan. 27*	Big Lake	There	5:00	V&JV
Jan. 30*	Crane	There	5:00	V&JV
Feb. 3*	McCamey	Here	5:00	V&JV
Feb. 6*	Sanderson	There	6:15	JV&F
Feb. 10*	Sonora	There	5:00	V&JV
Feb. 13*	Big Lake	Here	6:30	V&JV

LIONETTES BASKETBALL SCHEDULE
1975 - 1976

DATE	TEAM	PLACE	TIME	TEAMS
Dec. 2	Grandfalls	There	6:00	A&B
Dec. 4, 5, 6	Sanderson Tournament	There		A
Dec. 8	Mertzon	There	5:30	A&B
Dec. 11, 12, 13	McCamey Tournament	There		A&B
Jan. 6	Sanderson	There	6:00	A&B
Jan. 9*	Big Lake	Here	5:00 & 6:30	A&B
Jan. 13*	Crane	Here	5:00 & 6:30	A&B
Jan. 16*	McCamey	There	5:00 & 6:30	A&B
Jan. 20	Grandfalls	Here	6:00	A&B
Jan. 23*	Sonora	Here	5:00 & 6:30	A&B
Jan. 27*	Big Lake	There	5:00 & 6:30	A&B
Jan. 30*	Crane	There	5:00 & 6:30	A&B
Feb. 3*	McCamey	Here	5:00 & 6:30	A&B
Feb. 10*	Sonora	There	5:00 & 6:30	A&B

*denotes district games

Screwworm Cases In County Number 41

Screwworms continued to infest Texas animals in near record numbers during October, says a U.S. Department of Agriculture official. Crockett County recorded 41 cases during the month.

Dr. James E. Novy of the Animal and Plant Health Inspection Service (APHIS) is director of field operations for the Screwworm Eradication Program. He reports 4,231 cases of this live flesh eating parasite were confirmed by laboratory identification of worm samples submitted by Texas livestock owners during October.

Texas entered November with 13,612 officially proven screwworm cases for the year, while Arizona had 433 on the books. New Mexico's 10-month stands at 254, with 12 confirmed Oklahoma infestations tallied, and only one from California.

Screwworms continued their northward and eastward spread during October, reaching Donley County in the Panhandle, and being found as far east as Trinity, Rusk and Titus counties. The year's first cases were recorded from 25 different Texas counties during the month.

Cool winter weather usually kills screwworm flies in all but the southern portion of Texas, explains Novy. "They overwinter in Mexico and warm areas of South Texas, and their natural movement is northward with warm spring and summer weather."

First line of defense against screwworm infestation of livestock is care by the owner.

Take Precautions Against Bike Theft

Bicycle thefts now exceed sales, which were estimated at 15 million last year, according to Pinkerton's, Inc., the private security firm. It's one of the fastest growing kinds of vehicle crime in the U.S.

The security firm has some suggestions on how to help reduce the number of thefts.

- Use a 5-7 foot wire or chain lock made of hard steel and encased in plastic. Lock it to both front and rear wheels, the frame of the bike and a stationary object such as a telephone pole or lamp post.

- Use an engraving pen to mark your license number or some identifying number on your bike.

- If you carry your bike on a car rack when traveling, lock the bike to the rack and secure the rack to the car.

- Register the bike with a town or municipality.

Planning breeding schedules to avoid calving and lambing during warm months, and avoiding castrating, branding, dehorning and earmarking during those months are basic precautions. Treating all unavoidable wounds with approved insecticides is essential.

The APHIS Screwworm Eradication Program is designed to reduce wild screwworm fly populations even more than can be done by animal husbandry practices. It utilizes nuclear energy to take advantage of a unique factor in the species' reproductive cycle.

Female screwworm flies mate only once in their lifetimes. If that mating is with a sterile male any eggs she produces will not hatch.

Millions of screwworm flies produced in the APHIS

examine the handbook prior to ordering.

insectary are exposed to a carefully measured amount of nuclear radiation during their pupal stage. This leaves them sexually active but sterile.



TEEN TOPICS

To win teenagers back to dental care, a psychoanalyst suggests that the "buddy system" be encouraged for office visits and that they be treated as adults.

Using technical words makes teens and adults feel inferior, the analyst points out. Also, because "teenagers feel invincible about the future, any warnings about the consequences of neglecting their teeth will only go unheeded."

THE LINE LIQUOR STORE

COME IN AND REGISTER FOR 8-GAL. KEG BEER TO BE GIVEN AWAY.

REGISTRATION IS FROM DEC. 8 TO DEC. 20, WITH \$5.00 PURCHASE.

DRAWING WILL BE DEC. 23, 1975.

CANCER ANSWER LINE

American Cancer Society
M. D. Anderson Hospital and Tumor Institute
National Cancer Institute

An avid newspaper reader notes: "I have been reading claims about a drug called laetrile for cancer for a very long time. What's the real story about it?"

ANSWERline: Laetrile is a derivative of apricot pits that has absolutely no value in cancer treatment. In recent months four leading cancer research centers reported studies which concluded that laetrile has no benefit in treating animal or human cancer. It is interesting to note that animals who did not respond to laetrile in these studies did show a response to regular cancer drugs. It is illegal to transport laetrile across state lines.

A career girl asks: "Does a woman's age have anything to do with uterine cancer?"

ANSWERline: From the time she is old enough to bear a child, a woman could get uterine cancer. However, age does seem to make a difference in the place cancer is likely to begin. In young women and those in

the pre-menopausal years, uterine cancer is most often found in the cervix or the neck of the uterus. In older women cancer more often strikes the body or main portion of the uterus. For more information ask your local American Cancer Society for a leaflet entitled "Stay Healthy - Learn About Uterine Cancer."

A grandfather recalls: "When I was young no one even liked to say the word, cancer. Now, people talk about it all the time. How did this change in attitude take place?"

ANSWERline: Cancer was once considered a taboo subject and it was often seen as a punishment for a misdeed or something shameful. Today, we regard it as a disease to be understood, treated and conquered. The change probably began to take place when volunteers from the American Cancer Society and leaders of the medical world appealed to the press and then radio to tell the true story. Then too, as more and more

people were cured of their disease and spoke openly about it, attitudes changed. For example, our brave First Lady, Mrs. Betty Ford, has set a wonderful example in her courageous attitude towards breast cancer.

A movie buff wonders: "Is it true that John Wayne had lung cancer? I thought that's fatal."

ANSWERline: Yes, John Wayne was extremely lucky because he was one of the 10 percent of lung cancer patients who could be saved. Now, in volunteer work for the American Cancer Society, he stresses the fact that a physical checkup helped to save his life because his disease was detected in a curable stage. He urges everyone to have a checkup regularly.

The Complete Christmas Place this year is BROWN FURNITURE CO. For those with discriminating taste.

people were cured of their disease and spoke openly about it, attitudes changed. For example, our brave First Lady, Mrs. Betty Ford, has set a wonderful example in her courageous attitude towards breast cancer.

Question: "Is cancer of the urinary system a rare form of cancer?"

ANSWERline: In 1975 some 43,000 new cases of cancer of the kidney and bladder will be diagnosed. In terms of death rates, urinary cancer accounts for six percent of all cancer deaths among men and three percent of cancer deaths among women.

Take Precautions Against Bike Theft

Bicycle thefts now exceed sales, which were estimated at 15 million last year, according to Pinkerton's, Inc., the private security firm. It's one of the fastest growing kinds of vehicle crime in the U.S.

The security firm has some suggestions on how to help reduce the number of thefts.

- Use a 5-7 foot wire or chain lock made of hard steel and encased in plastic. Lock it to both front and rear wheels, the frame of the bike and a stationary object such as a telephone pole or lamp post.

- Use an engraving pen to mark your license number or some identifying number on your bike.

- If you carry your bike on a car rack when traveling, lock the bike to the rack and secure the rack to the car.

- Register the bike with a town or municipality.

Plant Disease Handbook Now Available

Agricultural producers as well as homeowners are often faced with different plant disease problems and don't know just where to turn. Now there's a handbook available with most of the answers.

The Texas Plant Disease Handbook which was initially published in 1973 has been revised and updated to deal with new disease problems and treatments as well as to give concise information on all the diseases of major Texas crops, ornamentals, trees and turf.

"The information in this handbook represents the most complete discussion on plant diseases in Texas," points out Dr. Wendell Horne, plant pathologist for the Texas Agricultural Extension Service. "The 332-page handbook is filled with descriptions of the various plant diseases, recommendations for chemical control, and resistant varieties that are available."

The handbook is tabbed for easy reference and is arranged according to crops.

"We designed the handbook so that it could be readily used," says Horne. "We feel the information is practical and the disease descriptions are such that an individual should be able to identify a particular disease problem."

Homeowners should especially benefit from the sections dealing with diseases of vegetables, fruit and nut trees, ornamentals and turf, contends the Texas A&M University System specialist.

"Chemical controls outlined in the handbook have proved effective, have been cleared by the Environmental Protection Agency, and are available in Texas. We invite those obtaining the handbook to give special attention to the suggested rates of application of the various chemicals and the waiting periods from time of application to harvest," emphasizes Horne.

The handbook is available from the Department of Agricultural Communications at Texas A&M University at \$7.50 per copy. County Extension agents have an office copy for those who wish to

TOYLAND BARGAINS

The best toys at lowest prices!

<p>Kiss-Me Baby™ Baby That-A-Way™ YOUR CHOICE \$984*</p> <p>#10070 #10071 Black</p> <p>The doll that really kisses you! Gently squeezes her left wrist, put her lips to your face—she gives you a big kiss! Soft-bodied doll has rooted hair and sleeping eyes. In gingham dress, bloomers. 15 in. tall.</p>	<p>Super Gyro Powered Zoom Bike ONLY \$599*</p> <p>#22007</p> <p>Rest 6 1/2 in. long bike into 6 1/2 in. long console with handlebars and wand! Get behind console, rev it up by turning right hand grip, let her go by twisting the left one. Includes bike, figure and console!</p>
<p>Modern Cash Register ONLY \$599*</p> <p>#15404</p> <p>Realistic cash register rings up sales. Includes play money.</p>	<p>Six Million Dollar Man ONLY \$644*</p> <p>#24729</p> <p>Steve Austin, 13-in. poseable figure has Bionic eye!</p>
<p>7 Wizard of Oz™ Figures ONLY \$399*</p> <p>#10476-82</p> <p>Beautifully detailed 8 in. figures are fully poseable.</p>	<p>Batman and Robin Talking Alarm Clock ONLY \$1488*</p> <p>#35879</p> <p>Set alarm, TV and comic heroes give call to action!</p>
<p>The Little Engine That Could ONLY \$799*</p> <p>#15886</p> <p>Plucky little engine chugs along exciting flexible layout.</p>	<p>Malibu Barbie and 10-Speeder ONLY \$599*</p> <p>#10456</p> <p>Realistic bike features wheels that turn plus 11 1/2 in. Barbie!</p>
<p>Disney Cassette Tape Recorder ONLY \$2488*</p> <p>#20005</p> <p>Has Mickey Mouse™ miked Fun for the whole family, easy to operate.</p>	

CHECK THESE LOW TOY PRICES AND MANY, MANY MORE IN WARDS 1975 CHRISTMAS CATALOG

#23315 Evel Knievel with Cycle	9.94*	#11672 Barbie Dream Boat	11.88*
#16103 Fish-Pr. Sesame Street	13.77*	#24595 7 Famous 1776 Figures	1.99 ea.*
#18168 Fish-Pr. Set of 3 Toys	7.77*	#23872 Loop-the-Loop Coaster	8.49*
#23153 Mechanical Walking Robot	5.88*	#14697 Action Bucket Ball Game	3.39*
#20000 Pair of Walkie/Talkies	10.88*	#14994 Hocus-Pocus Magic Set	4.99*
#22444 Children's Bean Bag Chair	12.88*	#24383 Disney Playworld	12.99*
#20043 Holly Hobbie Radio	7.99*	#13158A RRR Rumbler X-3 Chopper	27.88*

*Plus Transportation

ONE STOP... ONE CALL... DOES IT ALL... SHOP WARDS CATALOG

ENJOY WHAT YOU NEED NOW—USE CHARG-ALL CREDIT

Who listens to kids? We do!

PHONE 392-2654 906 11th St INDEPENDENTLY OWNED AND OPERATED
ADDRESS ADCKOCK AGENCY

COMPARE San Angelo Savings' IRA earnings with other IRA plans!

Don't be confused by the variations in Individual Retirement Accounts offered by financial institutions! Compare the amount you will have in a tax-free SASA IRA plan with other plans BEFORE starting your retirement account.

The following chart compares earnings of two IRA plans offered by financial institutions. Both plans are based on the maximum annual IRA deposit of \$1500 and both plans are insured to \$40,000 by agencies of the federal government. The only difference is

very simple... SASA PAYS MORE! So, why take less? Start your SASA IRA account before December 31 and deduct up to \$1500 tax-free from your 1975 income!

AFTER	TOTAL ACCRUED IN 7 1/2 % IRA ACCOUNT	TOTAL ACCRUED IN SASA'S 7 3/4 % IRA ACCOUNT	SASA PAYS THIS MUCH MORE
20 years	\$72,269.76	\$74,646.21	\$2,376.45
25 years	114,592.50	119,490.84	4,898.34
30 years	176,169.11	185,557.30	9,388.19
35 years	265,758.75	282,888.40	17,129.65

San Angelo Savings Association
YOUR FAMILY FINANCIAL CENTER
5 So. Chadbourne / Knickerbocker at Jackson
115 East Main • Sonora / 1002 Avenue E • Ozona

EARNINGS COMPOUNDED DAILY
ANNUAL RATE ANNUAL YIELD*
7.75% 6 Year Cert.—\$1,000 min. 8.06%
7.50% 4 Year Cert.—\$1,000 min. 7.79%
6.75% 30 Mo. Cert.—\$1,000 min. 6.98%
6.50% 1 Year Cert.—\$1,000 min. 6.72%
5.75% 90 Day Cert.—\$1,000 min. 5.92%
5.25% Passbook—\$5 min. 5.39%
*Based on daily compounding of earnings for 12 months
A substantial interest penalty is required for early withdrawal of certificate accounts

Rings 'N Things Of Fort Stockton

December 7th 1-5 p.m.
1002 Henderson Dr., Ozona

Large Selection Of Turquoise Jewelry
Zuni, Navajo, Santa Domingo

\$5 to \$500
Betty Hickman
Nancy Randle



Changes Due In Outdoor Burning Laws By TAC

Agricultural producers, landowners, city officials and others directing outdoor burning operations must soon comply with new regulations set forth by the Texas Air Control Board.

Medicare Deductible To Go Up

The Medicare hospital insurance deductible will be \$104 starting January 1, 1976, according to Franklin Upp, social security district manager in San Angelo.

"A Medicare patient who goes into a hospital and starts a benefit period after December 31 will be responsible for the first \$104 of the hospital bill," Mr. Upp said.

The 1975 deductible was \$92. Under the Medicare law, the amount of the deductible is tied to the average cost of one day's stay in a hospital.

"The increase to \$104 for 1976 is a result of a review of hospital costs during 1974," Mr. Upp said. "However, the present \$92 deductible remains in effect throughout any benefit period that started in 1975 even if the period of hospitalization goes into 1976."

Under the law, the increase in the deductible means there also will be increases starting January 1 in three other amounts Medicare patients pay for covered care.

For a hospital stay of over 60 days, the patient will pay \$26 a day (up from \$23) for covered services furnished on the 61st through the 90th day.

For a post-hospital stay of over 20 days in a skilled nursing facility, the patient will pay \$13 a day (up from \$11.50) for the 21st through the 100th day.

For reserve days used--after 90 days of hospital care in a benefit period--the patient will pay \$52 a day (up from \$46).

Medicare hospital insurance helps pay for hospital stays and certain post-hospital care of people 65 and over, disabled people under 65 who have been entitled to social security disability benefits for 24 consecutive months or more, and many people who have permanent kidney failure.

Medicare is administered by the Social Security Administration, an agency of the U. S. Department of Health, Education, and Welfare.

New selection of glassware at BROWN FURNITURE Co. Perfect for Christmas.

The new outdoor burning regulations which become effective December 5 outline conditions under which burning can be acceptably practiced, points out Dr. John Sweeten, agricultural engineer in waste management for the Texas Agricultural Extension Service.

"Agricultural producers who in the past have burned crop residues and rangeland to enhance production will be particularly affected by the new regulations," says the Texas A&M University System engineer.

"Outdoor burning in these instances will be allowed when no practical alternative exists. However, certain conditions must be met. The wind must be in a direction that will carry smoke away from urban areas, and wind speed must be between 6 and 23 miles per hour. Furthermore, open burning must take place at least 300 feet from residential, commercial or industrial areas. To allow maximum dispersions, burning should only be conducted between 9 a.m. and 5 p.m. insofar as is 'reasonably practical.'"

The new regulations deal with burning of salt marsh grass along the Texas Gulf Coast. Such burning requires prior notification of the nearest regional office of the Texas Air Control Board.

"Several other key items in the new regulations deal with burning of municipal solid waste," notes Sweeten. "The population ceiling on cities and towns that

can use outdoor burning to dispose of garbage and trash has been lowered to 3,000 people. And municipal solid waste disposal sites that are burned must be located at least 300 yards from a public road and one mile from a residential or commercial area. Limits are also placed on the hours during which municipal solid waste may be burned."

The new regulations also authorize outdoor burning to dispose of diseased animals to prevent disease transmission. And, garbage and trash can also be burned at private residences when regular collection service is not provided.

"These regulations are designed to help solve most of the problems associated with outdoor burning while at the same time not imposing economic hardship on landowners," says the agricultural engineer. "In effect, they require both the landowner and Texas Air Control Board staff to make sure that atmospheric conditions for outdoor burning are suitable for pollutant dispersal."

Sweeten encourages anyone interested in studying a copy of the new outdoor burning regulations to contact his local county extension office.

Mr. and Mrs. Tom Cameron and children of Waco spent the holiday weekend here visiting relatives.

Interesting copper-type artwork--new at BROWN FURNITURE CO.

FOR SALE

FOR SALE - 1973 Chevrolet Nova Custom. Air-radio-vinyl top-low mileage. Call 392-3173.

FOR SALE - Saddles, leather goods, sporting goods, and guns and ammunition. Wholesale prices. 392-2531.

FOR SALE - 1969 GTO. Call 392-3173.

STAINLESS STEEL WATERLESS COOKWARE, home demonstration type. Still in box. Terrific Christmas gift. Cost \$449. Sell \$165. Call San Angelo 949-4413 after 5:30 p.m. weekdays, anytime weekends.

FOR SALE - House trailer 1 1/2 yr. old, 4 bdrm., 2 bath, 14x80, \$2,000 down, assume payments of about \$110. Firm. Call 392-2236 or 392-2578.

FOR SALE - Sofa and matching chair. Call 392-2434.

Reduce safe and fast with GoBese Tablets and E-Vap "water pills" - Village Drug.

Lose weight, melt fat, decrease cholesterol with amazing Kelcithin B capsules - Village Drug.

ROPE BURNS - A book featuring cowboy ropers, by Lee and Lela Karr. Pick up your copy at LOTTIES BOOK SHOP.

Come see the pretty patterns in king-size, queen-size and double-size sheets and pillowcases and towels to match at WATSON'S DEPARTMENT STORE.

Guests of Mr. and Mrs. Ivy Smith over the Thanksgiving holidays were Mr. and Mrs. Ivy Smith, Jr. and Gary and Karen of Kermit; Mr. and Mrs. Alton Smith and Samantha and Frank of Lubbock; Mr. and Mrs. Carlton Smith and Buddy and Jeffrey of McCombs; Mr. and Mrs. David Kleinhans of Burnet; and Mr. and Mrs. Perry Graves of Abilene.

Crockett County Hospital News

Patients receiving treatment in Crockett County Hospital week of Nov. 23 to Dec. 1: Douglas Stafford-Sonora* Robert Ramey-Iraan* Dorothy Friend* Cecil Hodges* Chonita Alvarez* Sherry Wise* Andy Hermisillo-Sneider* Dorá Lara* Gloria Simmons* Karl Lovelady* George Marshall, Jr. - Baytown* Frances Borrego* Tully C. Goodman (Cotton)* Brenda Granger-Sonora* Luis Ariape* Dick Kirby* Amy Landin* Florencio Ariape* *denotes discharged

We have guns, ammunition, hunting and fishing equipment and license, and sell and install C. B. radios. OZONA TRADING POST

Music boxes and other ding-a-lings at BROWN FURNITURE CO. Drop in and see at the Complete Christmas Place.

My wife says that cooking my own meals doesn't make me smart. For the best buys and hints on economical cooking, ask at MONTGOMERY WARD - Adcock Sales Agency.

SERVICES

ALL-BREED DOG GROOMING - Judy Boykin, 392-2583. Call for appointment.

Clean carpets give a healthier, more pleasant atmosphere. Have your carpets cleaned the "Steamliner" method in the last year? Let us do the hard work. Call 392-2654, MONTGOMERY WARD, Ozona, Texas.

Christmas is coming faster than most of us would like for it to be here--come in today and select the gift for your special person at BROWN FURNITURE CO.

OZONA LODGE NO. 747 A. F. & A. M. Reg. meeting on 1st. Mon. of mo.

NEED BIRTH CONTROL? Contact Planned Parenthood 908 1st St. OPEN Wednesday 9-12 & 2-5 Thursday 9-12 & 2-5 392-3522

WEDNESDAY 9-12 & 2-5 THURSDAY 9-12 & 2-5 392-3522

NOTICE OF REWARD I am offering \$500 Reward

for apprehension and conviction of guilty parties to every theft of livestock in Crockett County -- except that no officer of Crockett County may claim the reward. Billy Mills Sheriff, Crockett Co.

HOME FOR SALE 3 BEDROOMS, BATH AND A HALF, LIVING ROOM, DINING ROOM, DEN, KITCHEN AND LAUNDRY ROOM, CARPORT WITH STORAGE ROOMS, NEW GAS CENTRAL HEATING AND COOLING, WOOL CARPET THROUGHOUT EXCEPT DEN, KITCHEN AND LAUNDRY ROOM, WALK-IN CLOSETS.

SHOWN BY APPOINTMENT ONLY. CALL 392-2551.

Miscellaneous

NOTICE TO ALL MERCHANTS: Do not accept any checks written in the name of S. B. Byrd or Ethel Byrd, by Sherri Pearson or anyone else.

I was real proud of my pickup until this little kid passed me on his RRRumbler X-3 by Matell. On display at MONTGOMERY WARD.

HELP WANTED - We are now taking applications for a mature person for counter work at the Red Apple Drive-In. Call 392-2641 for appointment or see J. B. Miller at Firestone Store.

New selection of contemporary and traditional lamps at BROWN FURNITURE CO.

OZONA CHAPTER 287 Order of the Eastern Star Meeting Night 4th Tuesday in month Masonic Hall

REWARD \$200 FOR THE RECOVERY OF LADIES DIAMOND RING AND DIAMOND RING GUARDS TAKEN FROM SAM PERNER HOME TUES. NITE NOV. 18. CALL 392-2324 OR 392-3002.

CECIL WESTERMAN Would Like To Be YOUR Pharmacist PH 392-2608

Western Mattress Company SAN ANGELO, TEXAS Mattresses new or renovated. Box Springs - Choice of Sizes and Firmness All Work Guaranteed 392-2031 or 392-2792

B & G FEEDS

FEED MINERAL SALT PASTURE AID LIQUID FEED

LIVESTOCK HAULING HAY HAULING

WILL BE DELIVERED OR CAN BE PICKED UP. FEEDERS WILL BE FURNISHED.

GEORGE SCHWIENING

OFFICE PH. 387-3620 800 GLASSCOCK SONORA, TEXAS
RES. PH. 387-2063

ADCO WATER WELLS, INC.

MOUNTAIN HOME - SONORA - OZONA

COMPLETE SALES & SERVICE WINDMILLS - PUMPS

AL THOMERSON WILL BE LOCAL REPRESENTATIVE. PAUL BALLARD WILL BE AN ASSOCIATE. BUSINESS PH: 392-3535

MECHANIC ON DUTY

7 TO 7

any kind of Auto repair

tune up to complete overhaul

WILLIAMSON ARCO STATION

APARTMENTS FOR RENT

Nice Rooms \$60.00 pr. mo. FURNISHED

Kitchenettes \$90.00 pr. mo. FURNISHED

1-Bedroom \$95.00 pr. mo. FURNISHED

2-Bedroom \$110.00 pr. mo. FURNISHED

3-Bedroom \$125.00 pr. mo. FURNISHED

All Utilities Paid Phone 392-3437 (Mrs. Kenneth Kramer) CROCKETT HEIGHTS 5 Miles East of Ozona on U. S. 290 OZONA, TEXAS

James Shell Service

MECHANIC NOW ON DUTY 6 DAYS A WEEK.

MINOR TO MAJOR WORK ON ALL CARS. ALSO DIESEL, DETROIT AND CUMMINS. BILL WAGONER, CERTIFIED MECHANIC.

Thank You

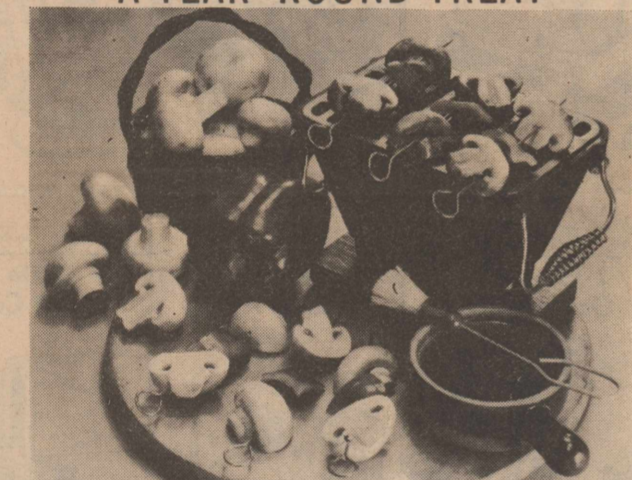
JAY MILLER CONSTRUCTION CO.

GENERAL DIRT CONTRACTOR

Dozer BRUSH CONTROL

Phone 392-2489 or 392-3243

MUSHROOM KABOBS, A YEAR 'ROUND TREAT



Mushrooms, "the vegetable steak," strung on skewers and brushed generously with a nippy sauce, make elegant go-alongs to serve with many main dishes. It takes about five minutes to heat them through and, if desired, vegetables such as green pepper squares, cherry tomatoes or quartered onions can be added.

You can also thread mushrooms on skewers alternately with quick-cooking tender beef or lamb chunks, chicken livers, large shrimp or cubed firm fish. Whenever you want to serve mushrooms with meats which must broil more slowly, better broil the mushrooms separately, starting them five or six minutes before serving time.

GRILLED MUSHROOM KABOBS
1/2 pound medium-sized mushrooms or 2 cans (6 to 8 oz. each) canned mushrooms
1 green pepper cut into 1-inch chunks
3 tablespoons oil
1 tablespoon onion powder
2 teaspoons fresh lemon juice
1/2 teaspoon salt
1/4 teaspoon paprika
1/8 teaspoon ground black pepper

Rinse, pat dry and halve fresh mushrooms or drain canned mushrooms. Arrange 2 fresh mushroom halves or 2 whole canned mushrooms and a green pepper chunk each alternately on several small skewers. Thoroughly combine remaining ingredients. Brush over both sides of mushrooms and green pepper. Grill under a preheated hot broiler or over hot charcoal, turning once and brushing twice more, about 2 to 3 minutes on each side. Serve hot. YIELD: about 12 hors d'oeuvres.

When your car is your office... you need a Mobile Phone!

for more information: Call Jeffrey Sutton or Bob Childress 392-3007 392-2620

PETE W. JACOBY Real Estate

Residential-Business-Commercial Ranch Properties

Ph. 392-3059 401 Hillcrest

AMERICAN NATIONAL INSURANCE COMPANY

TOM MONTGOMERY SPECIAL REPRESENTATIVE

Beautiful SHADY LANE MOBILE PARK

ACCOMODATIONS For 20 Trailer Spaces

Call 392-3000 or 392-2023

BIG "O" THEATRE

THURSDAY Ignacio Lopez Taro Ana Martin on Profeta El Mimi

FRIDAY AND SATURDAY BURT REYNOLDS IS THE HIT IN "MAN-EATER"

SUNDAY AND MONDAY DINO DE LAURENTIIS presents MANDINGO James Mason Susan George

TUESDAY AND WEDNESDAY "Johnny Cash" THE MAN HIS WORLD HIS MUSIC!

2.00 PER CAR NIGHTS CONCESSION AND TICKET BOOTH OPEN 6:30 P.M. SHOW TIME - 7:30 P.M. DRIVE IN & INDOOR THEATRE