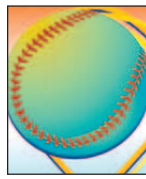




**Mule Moments:**  
*Springtime in Tornado Alley...*  
Page 2



**Muleshoe sports news...**  
Page 6, 10



**Cutest baby contest deadline is nearing...**  
Page 12



# Muleshoe Journal



*Striving to be your source for local news*

Volume 88, No. 13

www.muleshoejournal.com

Muleshoe, Texas

50¢

March 29, 2007

## State sets June execution date set for Reyes

By Larry Thornton  
Managing Editor

After nine years, the brutal death of a Muleshoe woman has taken another step toward its conclusion.

Gilberto "Tito" Reyes, who was convicted of the 1998 rape and murder of his former girlfriend, Yvette Barraz of Muleshoe, now has a June 21, 2007, date with the executioner, according to state officials.

Reyes was convicted of bludgeoning Barraz to death with a hammer after



GILBERTO "TITO" REYES kidnapping her from Leal's Mexican Restaurant in Muleshoe, where she was

employed as a waitress, on the evening of March 11, 1998.

According to law enforcement officials at the time, evidence collected from the parking lot at Leal's indicated Barraz had been forcibly abducted. Her 1996 Mitsubishi Eclipse was also missing.

Early in the morning of March 13, 1998, Barraz' body was recovered from her car after it was discovered behind the Dollar General Store in

Presidio, near the Mexican border.

It was later determined that she had been killed with a claw hammer that was recovered from the vehicle.

In the hours following Barraz' abduction, officials with the Muleshoe Police Department began an active search for her and her vehicle, along with Reyes, her estranged boyfriend, who previously had been arrested for pointing a firearm at her during an incident on Feb.

9, 1998, in Muleshoe.

Although Reyes wasn't apprehended in Presidio, he was questioned and released by U.S. Customs agents in Presidio prior to crossing the border on foot during the early morning hours of March 12.

Reyes was captured in Portales, N.M., three months later after he checked in to the Sands Motel. In July of that year, Reyes was extradited back to Texas to stand trial for murder of the 1997

Muleshoe High School graduate.

Reyes' trail began in January 2000, following the selection of a jury from a jury pool of 500 that gathered at the Bailey County Coliseum instead of the courthouse, under the direction of Dist. Judge Jack Young.

The prosecutor was Dist. Attorney Johnny Actkinson, and the defense attorney was David Martinez of Lubbock.

*Continued on page 7*

## Bandage applied to county EMS

By Larry Thornton  
Managing Editor

Staffing troubles at Bailey County Emergency Medical Services received a temporary bandage on Monday, with the commissioners' court voting to supplement the ambulance service's pay package for paramedic and EMTs.

Monday's vote came during a special meeting called after problems over patient transfers from Muleshoe Area Medical Center to hospitals in Lubbock were brought to the attention of the commissioners court.

Precinct 1 Commissioner Butch Vandiver explained

**"I want the hospital to take over the EMS. They're into emergency medical help, not us..."**

— Judge Sherri Harrison

that he had been contacted by Dr. Bruce Purdy on Tuesday, March 20, concerning the unavailability of a paramedic to transfer a critically-ill patient from MAMC to a Lubbock hospital. And when he looked into the matter, was told a paramedic wasn't available because he was taking a test.

"As far as I'm concerned," Vandiver said, "we don't need a person like that working for EMS."

A second complaint came from Precinct 2 Commissioner C.E. Grant, who said he was contacted about a patient needing to be transferred on Thursday, and said the paramedic on duty reportedly declined to transfer the patient because of a leak in the roof of the EMS building.

In response to the allegation brought by Grant, Winters said he had already spoken to the employee, and had taken care of the situation.

As for the patient on Thursday, Winters said he transferred the patient himself, adding that unlike the complaint Grant had received, the patient wasn't in the critical condition reported by the hospital and that the transfer could have been made by EMTs.

When asked who makes the determination as to whether a paramedic or an EMT is needed for the transfer, Winters said the responsibility falls to the paramedic on duty, unless a contract existed between the ambulance service and the hospital of which he was unaware.

*Continued on page 7*



## Fine Arts' 'Night to Shine'

King Ambrose (Frank Piland) counsels Princess Alissande (Sara Cisneros) in the One Act Play "The Giants' Dance" during Monday's performances. The high school's JV choir, varsity treble choir, and varsity mixed choir, along with the Mighty "M" Band also performed. Additional photographs on the back page.

Photographs by Leah Bell



## Park View: No bids received

By Larry Thornton  
Managing Editor

The bid opening for Park View Nursing Care Center took even less time than expected Monday as the Muleshoe Area Hospital District found itself with absolutely no bid packets to open.

After announcing this fact, board president Ronnie Dent took the board into an executive session to discuss the "continued operation" of the nursing home, which reportedly included a conference call with MAHD's legal counsel.

About an hour later, the board members returned to open session to pass a motion by board member Marilyn Riley, seconded by board member Zona Gatewood, authorizing the hospital district to pursue a management contract with Laurel Healthcare Providers of New Mexico.

After the meeting adjourned, MAHD CEO Ray Mason explained that an unexpected snag arose in

*Continued on page 7*

## MISD board discusses Dillman project costs

By Larry Thornton  
Managing Editor

Estimated costs for the construction project planned for Dillman Elementary took a jump during this week's regular meeting of the Muleshoe Independent School District's Board of Education.

During the project's monthly facility update, a representative of the district's construction management at risk, Lee Lewis Construction, said the current projected costs are about \$5.1 million, an increase of about \$520,000 from last month's projections.

However, it was pointed

out that a large part of the increased bite comes from the estimated cost of equipment for the new cafeteria's kitchen.

Initially, the school district had looked at hiring a "kitchen consultant" with the idea of purchasing the equipment separate from the project being handled by Lee Lewis. At Monday's meeting, Superintendent Gene Sheets said it would be easier to "put the kitchen consultant" back in the contract.

School district officials estimated the kitchen equipment at \$150, while Lee Lewis estimated the cost at \$175,000. In both instances, school officials expect the final cost to be lower because some of Dillman's existing equipment will be used.

"It's a pretty significant change," Sheets said, referring to the total projected cost. "We're going to get there. We just have to decide what's the best items and how we're going to do it."

The school board also discussed the possibility of

meeting, Superintendent Gene Sheets said it would be easier to "put the kitchen consultant" back in the contract.

School district officials estimated the kitchen equipment at \$150, while Lee Lewis estimated the cost at \$175,000. In both instances, school officials expect the final cost to be lower because some of Dillman's existing equipment will be used.

"It's a pretty significant change," Sheets said, referring to the total projected cost. "We're going to get there. We just have to decide what's the best items and how we're going to do it."

The school board also discussed the possibility of

*Continued on page 7*

*Continued on page 7*

**Local Weather**

**Thursday**  
Sunny..... 66/33

**Friday**  
Pt. Cloudy..... 67/35

**Saturday**  
Sunny..... 70/38

**Sunday**  
Sunny..... 75/43

**Monday**  
Sunny..... 79/48

**Tuesday**  
Sunny..... 75/42

**Wednesday**  
Shwrs..... 72/42

---

*Give It A Thought*

**I'm too old to Tango, but too young to care...**

Words to ponder from Beverly

---

**Missed your paper?**  
Call the carrier Bobby Flores at 806-891-3950 (leave a message) or call the Journal at 272-4536, between 8:00 a.m. and 5 p.m.



**Muleshoe Ford-Mercury**  
1125 W. American Blvd.  
272-4251 or 800-432-7617

**ASK US ABOUT THE 2007 FORD RANGER**  
**STARTING AT \$14,315**





## Mule Moments

By Jessica Thornton

### Springtime in Tornado Alley

Texas weather is as unpredictable as Oklahoma's weather can be.

Last weekend, the country outside of Muleshoe and in Clovis experienced some of Mother Nature's wrath and what she can do this time of year.

Muleshoe saw rain, lightning, maybe hail, and heard thunder, and some people apparently caught a glimpse of a tornado or what they thought was one.

Clovis saw the worst part of the weekend storm systems by going through five or six tornadoes, all of them leaving damaged businesses and homes in their wake.

The tornadoes at Clovis remind me of the famous May 3, 1999, tornadoes that struck and damaged a lot of the Oklahoma City area and surrounding cities leaving homes, businesses, and lives destroyed.

I was living in Montana at the time, but returned to Oklahoma later that month. And I remember how almost every national news station broadcast stories about the tornadoes and the damage. I remember how

### Youth Corps applications accepted at NWR

The Muleshoe National Wildlife Refuge is currently accepting applications to fill one enrollee position in the Youth Conservation Corps Program. No prior work experience or special skills are required. The eight week program will be conducted from June 4 through July 27.

To qualify, you must be 15 through 18 years of age and a permanent resident of the United States.

The YCC program is a work-learn-earn program that develops in participating youth an understanding and appreciation of the Nation's environment and heritage.

Applications may be requested by calling the refuge at 806-946-3341 and must be received by April 30. The successful applicant will be chosen in a random drawing.

devastating May 3 was for Stroud, Okla., a community on Hwy. 66, that suffered damage.

When Stroud was hit, the town lost its shopping mall — a valuable part of its economy.

When the tornado took the mall, the town suffered terribly and to this day hasn't fully bounced back from the disaster.

Tornadoes have always scared me ever since I was a kid, and whenever I hear of one that is close, I grow fearful that my town is going to get hit and my house destroyed.

Until recently, I wasn't even able to watch the movie "Twister."

When I finally got up the nerve to watch it with my mom and brother, the little parts of the movie I saw when I was younger still gave me nightmares, but I don't have a problem with that anymore,

I still really don't care for tornadoes. I know it was just a movie, but part of the movie was filmed in Oklahoma and most people know this part of the country is called "Tornado Alley," especially this time of year.

We had a close encounter over the weekend and thankfully Muleshoe didn't see a tornado and I hope we don't, but with the kind of weather we are known to have there is no telling what could happen.

### Posadas named to dean's list

Monica Posadas of Muleshoe was named to the Dean's List at Lubbock Christian University for the spring 2006 semester. The Dean's list requires a student to be taking a minimum of 12 hours and achieve a 3.5 grade point average or better for the semester.

### Meals on Wheels raffle

Bailey County Meals on Wheels is selling raffle tickets to help raise funds for the homebound food program. First place is a painting by a local artist, second place is a quilt and third place is a \$50 cash prize. The tickets are \$5 each, and the drawing is set for May 11. The painting and the quilt are available for viewing at the Bailey County Courthouse Aging Services office.

### AA meeting

Those looking for help with problem drinking can do so at open AA and Al-Anon meetings being held at 7 p.m. each Friday at the First United Methodist Church, at 507 W. Second. Please use the west side entrance. For information about these meetings call 806-965-2870.

### Cancer screening clinic set

The Don and Sybil Harrington Cancer Center Comprehensive Breast Center will conduct a breast cancer screening clinic at Muleshoe Area Medical Center on April 2 and 19.

Funding is available through the Texas Department of Health for Texas residents who qualify for assistance.

Call 806-356-1905 or 1-800-377-4673 for more information or to schedule an appointment.

### April's Holy Week schedule released

The following schedule for Holy Week, April 1-8, in Muleshoe has been released:

Sunday — Community Service at Cowboy Fellowship Church at 6 p.m.

Monday — Noon meal and message at First Baptist Church.

Tuesday — Noon meal and message at First United Methodist Church.

Wednesday — Noon meal and message at First Assembly of God Church.

Easter Sunday — Sunrise service at 7 a.m. at the park by the tennis courts.

Doughnuts, juice and coffee to be served following the service in Richland Hills Baptist Church. In case of inclement weather, the service will be moved to Richland Hills Baptist Church.

### MHS Band Reunion

Former MISD students who were in band under the instruction of Anthony Gibson, and are interested in attending a reunion with him are asked to contact Fabian Martinez at 272-6707.

### Bogus, fraudulent checks

Bailey County Attorney Scott A. Say will be holding a meeting with Bailey County merchants to review changes in policies concerning the collection and prosecution of bogus and fraudulent checks, on April 24, at 3:30 p.m., at the Bailey County Coliseum. Say will also discuss plans to purchase bogus check collection software for the county to increase efficiency and simplify management of the collection process.

### First Assembly of God revival

The First Assembly of God, at 521 S. First, Muleshoe, will be holding revival services with Kurtis Ivey April 1-4. Sunday's morning services will begin at 10:30 a.m., and the weeknight services will begin at 7 p.m. Call 272-3017 for additional information.

### Alzheimer's Support Group

The Bailey County Alzheimer's Disease Support Group will be meeting on a new date and new time this month.

The meeting will be Thursday, April 12, at noon, at Park View Nursing Home. The program will be presented by Roy Puente, a licensed social worker and nursing home consultant. Lunch will be served.

For more information call Debbie Crabtree, Bailey County Aging Services, 272-3647, or Mandi Seaton, Bailey County extension agent — Family and Consumer Sciences, 272-4583.



**Muleshoe Journal** USPS 367820  
 Established February 23, 1924. Published by Lambal Publishing LP.  
 Every Thursday at 201 W. Ave. C, P.O. Box 449, Muleshoe, TX 79347.  
 Periodicals Postage paid at Muleshoe, TX.  
 POSTMASTER: Send address changes to the Muleshoe Journal, P.O. Box 449, Muleshoe, TX 79347.  
 We are qualified members of:  
 Panhandle Press Association, West Texas Press Association and Texas Press Association © 2006

**Jim Moser, Publisher**  
 jmoser@jacksonconews.com

**Leah Bell, General Manager/Ads**  
 ctyankee@fivearea.com

**Larry Thornton, Managing Editor**  
 editor@fivearea.com

**Bookkeeping/Classified Advertising**  
 journal@fivearea.com

**SUBSCRIPTIONS:**  
 By Carrier Yearly - \$22.00  
 Bailey County — By Mail - \$24.00  
 Elsewhere - \$35.00  
 By E-mail - \$22.00  
 Advertising Rate Cards On Application

**TPA Member 2006**  
 TEXAS PRESS ASSOCIATION

**PPA**  
 Panhandle Press Association

**WEST TEXAS PRESS ASSOCIATION**

\*Advertisers should check their ad the first day of insertion. The Journal will not be liable for failure to publish an ad or for a typographical error or errors in publications except to the extent of the cost of the ad for the first day of insertion. Adjustment for errors will be limited to the cost of that portion of the ad where the error occurred.\*

**We're In The Field With You.**  
 So when you need us, we'll be there.

**Farm & Ranch Loans at Competitive Rates**  
 Land Loans • Production Loans • Equipment Loans  
 Cattle Loans • Rural Housing Loans

**Also, Ask About Our**  
 Cash Management Program • Equipment Leasing Program  
 Credit Life Insurance • Crop Insurance • Recreation Loans  
 Young and Beginning Farmer Program

**We Proudly Support Agriculture!**

**FIRST AG CREDIT**  
 FARM CREDIT SERVICES

1601 West American Blvd. Muleshoe 272-3010  
 www.agmoney.com  
 Timely credit, personally delivered.

*Legacy of Love Hospice*

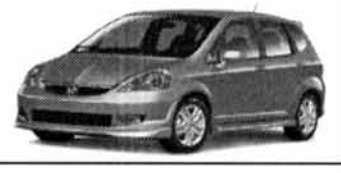


**420 Phelps Ave., Littlefield**  
**806-385-9329**  
 www.legacyoflovehospice@valornet.com

**Can I be cared for by hospice if I reside in a nursing home or other type of long-term facility?**

*Hospice services can be provided to a terminally ill person wherever they live. This means a patient living in a nursing facility or long-term care facility can receive specialized visits from hospice nurses, home health aides, chaplains, social workers and volunteers, in addition to other care and services provided by the nursing facility.*

**WHY IS IT THE BEST TIME TO BUY A NEW CAR FROM BENDER HONDA?**

**Consumer Reports List of Top Picks for 2006 & 2007**

	2007	2006	
<b>Budget car</b>	Honda Fit	None	
<b>Small sedan</b>	Honda Civic	Honda Civic	
<b>Family sedan</b>	Honda Accord	Honda Accord	
<b>Upscale sedan</b>	Infinity G35	Acura TL	

**BEST IN CLASS**

**\*4.9% APR on 2006 and 2007 Honda Accords and Honda Civics**

**WAC thru AHFC Super Preferred source: Automotive News Mar. 5, 2007**

**Bender Honda** VIEW OUR INVENTORY ONLINE AT:  
**3000 Mabry Drive** **WWW.BENDERHONDA.COM**  
**CLOVIS, NM 88101** **505-762-3701 • 888-968-3702**

# SPRING BLOWOUT SALE!

## MARCH 31<sup>ST</sup> - APRIL 7<sup>TH</sup>

www.visitcarolyns.com

# Carolyn's

Christmas Creations

Big Selection  
of Trailer/Parking  
Lot Furniture Up  
To 50% Off!

### 106 E. AMERICAN BLVD., MULESHOE • 272-5911



Round Bevel  
Mirror Buffet  
Reg. \$475  
Sale \$325



Metal Star  
Twin Bed  
Reg. \$285  
Sale \$210



Large Steer  
Bronze  
Reg. \$750  
Sale \$600

All Bronzes & Furniture  
Greatly Reduced!

Western Light  
Fixture  
Reg. \$300  
Sale \$240



All  
Purses  
25%  
Off

All Willow Tree 25% Off



White Curio  
Cabinet  
Reg. \$1,200  
Sale \$950



German  
Grandfather Clock  
Reg. \$650  
Sale \$500



Rustic Desk  
Reg. \$520  
Sale \$430



Wicker  
Rocking Chair  
Reg. \$250  
Sale \$185



Distressed  
End Table  
Reg. \$200  
Sale \$150



Reverse  
Painted Lamp  
Reg. \$250  
Sale \$190



Pheasant  
Bronze  
Reg. \$600  
Sale \$500



Wine Holder  
Reg. \$250  
Sale \$200



Kenneth Wyatt  
Print  
Reg. \$195  
Sale \$146



Round  
Carved Table  
Reg. \$255  
Sale \$175



Marble Top  
Bar w/2 Stools  
Reg. \$2,200  
Sale \$1,500



Wicker  
Tea Cart  
Reg. \$150  
Sale \$100



All Jewelry  
25% Off

All  
Prints  
25%  
Off

All Home Decor  
25% Off

# Muleshoe's Brownie Girl Scouts host mother, daughter tea party

Muleshoe's Girl Scout Little Hut took on a festive air on Saturday afternoon, March 24, as Brownie Girl Scout Troop No. 815 celebrated their annual Mother-Daughter Tea.

The setting was in the early 1900's and the serving table was lace-covered with candles in silver holders. It featured finger sandwiches, blueberry muffins, scones, and pound cake with strawberry or lemon curd sauce.

Cinnamon apple tea was served as well as fruit punch.

Appointments were china and crystal. The music of Mozart completed the setting. Those attending were Marilyn Melendez and



her mom, Amy, Madison Lutz and mom, Angela, Brianna Barron and mom, Raquel, Xina Castillo and mom, Delma, Georgia Taylor and mom, Jennifer, and McKensee Esparza and mom, Denise. Special guest, Nelda

Merriott, Service Unit Chairman, also attended.

The Brownie girls wore pretty hats and white gloves to compliment their attire.

The welcome was given by Troop leader Phyllis Carrion, who wore a white lace apron over her dress

and a white crocheted head piece.

The Girl Scouts helped serve their Moms and escorted them to their chairs which faced the unique puppet theater built for this special occasion.

The Scouts presented

their production of "The Brownie Story" by using puppets, which were a girl, her brother, her dad, her grandmother and a wise owl.

After the play, the Girl Scouts answered questions from the group, about such things as the young ladies in the early years, who wore gloves because of modesty.

The Brownies have earned 12 badges during this year. Some include, sewing, nature, science, Days Gone By, Pets, Around the World, and cooking.

The Brownies have earned three badges in cooking, which includes preparing their own nutritious snacks for their

meetings.

In sewing, they sew their patches on their sashes and are making a pillow to take to camp this summer.

They earned camp money by selling Girl Scout cookies and sincerely appreciate the support of the community.

They have purchased extra cookies and plan to take a box of cookies, including sugar-free, to each resident of ParkView Nursing Home.

**Thanks for reading!**

# BAILEY COUNTY DEVOTIONAL PAGE

**McDONALD'S OF MULESHOE**  
1315 W. American Blvd. • 272-3333  
Open at 5:00 a.m. every day!  
i'm lovin' it

**MULESHOE VALLEY INC.**  
2601 W. American Blvd. P.O. Box 631 Muleshoe, Texas  
(806) 272-4266  
Mobile (806) 946-8763  
mvinc@fivearea.com

**minsa CORPORATION**  
US Hwy. 84 East Muleshoe • 272-5545

**Pizza Hut**  
1412 W. American Blvd. Muleshoe • 272-4213  
Open: Sun.-Mon. 11 AM to 11 PM  
Lunch Buffet: Sun.-Fri. 11:30 AM to 1:30 PM  
"Gather round the Good Stuff"

**MAPLE COOP GIN**  
927-5501  
Maple, Texas

**Lazbuddie Feeders, Ltd.**  
We make your dairy bull calves worth more!  
Lazbuddie, Texas  
**965-2435**

**Little Real Estate & Appraisal Services**  
Residential • Commercial • Farm & Ranch  
Walter B. "Jack" Little  
**272-4805**  
MOBILE: 946-7965 FAX: 272-3729 1913 US 70-MULESHOE

**"THE FIVE AREA TELEPHONE COOPERATIVE, INC."**  
West Plains Telecommunications, Inc.  
Five Area Systems, Inc., Plateau Wireless  
Five Area Long Distance - Five Area Internet  
302 Uvalde Muleshoe, USA (806) 272-5533

**Lazbuddie Garage & Supply**  
Glenn, Adora, Terry and Lee Scott  
Specializing in irrigation motor parts and service since 1957  
AUTO PARTS P.O. Box 100 • Lazbuddie • 965-2188

**HENRY INSURANCE AGENCY**  
Rama Smalling Agent  
111 W. Avenue B P.O. Box 563 Muleshoe, TX 79347  
888-658-4581 (806) 272-4581 Fax (806) 272-5892

**Farmers Coop Ass'n of Sudan**  
P.O. Box 120 • Sudan, Texas  
227-2461  
Mobile: (806) 638-7692 FAX (806) 227-2102  
Dennis Flowers, Gen. Manager Email: dflowers@fivearea.com

**MULESHOE PEA & BEAN, INC.**  
1680 CR 1044 272-5589  
Muleshoe, TX

**Park View NURSING CARE CENTER**  
1100 W. Ave. J - Muleshoe, Texas 79347  
Phone (806) 272-7578 Fax: (806) 272-3514

**PACO FEED YARD, LTD.**  
Commercial Cattle Feeders  
P.O. Box 956 265-3281  
Friona, TX  
Feller Hughs-Mgr.

## I Will Speak to You in Your Language

by Max Lucado

Pilate wrote a sign and put it on the cross. It read: JESUS OF NAZARETH, THE KING OF THE JEWS. John 19:19  
The framer of our destiny is familiar with our denseness. God knows we sometimes miss the signs. Maybe that's why he has given us so many. The rainbow after the flood signifies God's covenant. Circumcision identifies God's chosen, and the stars portray the size of his family. Even today, we see signs in the New Testament church. Communion is a sign of his death, and baptism is a sign of our spiritual birth. Each of these signs symbolizes a greater spiritual truth.

The most poignant sign, however, was found on the cross. A trilingual, hand-painted, Roman-commissioned sign.

Every passerby could read the sign, for every passerby could read Hebrew, Latin, or Greek—the three great languages of the ancient world. "Hebrew was the language of Israel, the language of religion; Latin the language of the Romans, the language of law and government; and Greek the language of Greece, the language of culture. Christ was declared king in them all." God had a message for each. "Christ is king." The message was the same, but the languages were different. Since Jesus was a king for all people, the message would be in the tongues of all people.

There is no language God will not speak. Which leads us to a delightful question. What language is he speaking to you? I'm not referring to an idiom or dialect but to the day-to-day drama of your life. God does speak, you know. He speaks to us in whatever language we will understand.

There are times he speaks the "language of abundance." Is your tummy full? Are your bills paid? Got a little jingle in your pocket? Don't be so proud of what you have that you miss what you need to hear.

Are you hearing the "language of need"? Or how about the "language of affliction"? Talk about an idiom we avoid. But you and I both know how clearly God speaks in hospital hallways and sickbeds.

God speaks all languages—including yours. Has he not said, "I will ... teach you in the way you should go" (Ps. 32:8 NIV)? Are we not urged to "receive instruction from His mouth" (Job 22:22 NASB)? What language is God speaking to you?

And aren't you glad he is speaking? Aren't you grateful that he cares enough to talk? Isn't it good to know that "the LORD tells his secrets to those who respect him" (Ps. 25:14)?

Think a word of thanks to him would be appropriate? And while you're at it, ask him if you might be missing any signs he is sending your way.

(From *He Chose the Nails*. Copyright W Publishing Group, 2001) Max Lucado

This devotional & directory is made possible by these businesses who encourage all of us to attend worship services.

- |  |   |   |
|--|---|---|
| <p><b>ASSEMBLY OF GOD</b><br/>FIRST ASSEMBLY OF GOD<br/>521 South First Street<br/>272-3017<br/>Jack Stone, Pastor • 272-3984<br/>S.S. 9:45 am, W.S. 10:30 am<br/>&amp; 6:00 pm,<br/>Wed. 7:00 pm<br/><b>EL BUEN PASTOR</b><br/>415 E. Ave. F • 272-5455<br/>Pastor Domingo Luna • 272-4542<br/>S.S. 9:45 am, W.S. 11 am &amp; 6 pm;<br/>Wed. 7 pm</p>   | <p><b>CATHOLIC</b><br/>IMMACULATE CONCEPTION<br/>CATHOLIC CHURCH<br/>805 E. Hickory<br/>Leonardo Pahamtang, Min.</p> <p><b>CHARISMATIC EPISCOPAL</b><br/>ST. CLEMENTS<br/>1536 W. American Blvd. • 272-5954<br/>Father Sergio Leal<br/>Sun. W.S. 10:30 am</p> <p><b>CHRISTIAN</b><br/>TRINITY CHRISTIAN CENTER<br/>1723 W. American Blvd. • 272-3877<br/>Reydon Stanford, Pastor</p>  | <p><b>METHODIST</b><br/>FIRST UNITED METHODIST<br/>507 W. 2nd St.<br/>Spanish Service 8:30;<br/>S.S. 9:45; W.S. 11:00<br/>Praise &amp; Prayer 6 PM<br/>Pastor Monty Leavell, 272-5517<br/><b>LAZBUDDIE METHODIST</b><br/>S.S. 9:30 am; W.S. 10:30 am<br/>Pastor Ken Peterson • 965-2121<br/><b>EL DIVINO SALVADOR U.M.C.</b><br/>619 E. 5th Street &amp; Ave. G, Muleshoe<br/>Javier Careaga, Pastor • 272-6888</p>   |
| <p><b>BAPTIST</b><br/>CALVARY BAPTIST<br/>1733 W. Ave. C.<br/>Rev. Jeff Coffman<br/><b>CIRCLE BACK BAPTIST</b><br/>Intersection FM 3397 &amp; FM 298<br/>946-3676<br/><b>FIRST BAPTIST</b><br/>220 West Ave. E<br/>Dr. Stacy Conner<br/><b>FIRST BAPTIST</b><br/>Lazbuddie • 965-2126<br/><b>PRIMERA IGLESIA BAUTISTA</b><br/>223 E. Ave. E<br/>Rev. Greg Guzman<br/><b>PRIMITIVE BAPTIST</b><br/>621 South First<br/>Elder Bernard Gowens, Min.<br/><b>PROGRESS BAPTIST</b><br/>Progress, TX<br/><b>PROGRESS SECOND BAPTIST</b><br/>Arthur Hays, Min.<br/>1st &amp; 3rd Sundays<br/><b>RICHLAND HILLS BAPTIST</b><br/>Bro. Larry Thornton<br/>17th &amp; West Ave. D<br/>S.S. 10 am; W.S. 11 am &amp; 6 pm;<br/>Weds. 7 pm<br/><b>TRINITY BAPTIST</b><br/>314 E. Ave. B<br/>Bennie Wright, Min.</p> | <p><b>CHURCH OF CHRIST</b><br/>LARIAT CHURCH OF CHRIST<br/>Sam Billingsley, Min.<br/>S.S. 10 a.m.; W.S. 11 a.m. &amp; 6 p.m.,<br/>Wed. 7 p.m.<br/><b>LAZBUDDIE CHURCH OF CHRIST</b><br/>Nathan Crawford, Min.<br/>S.S. 9:30 am; W.S. 10:20 am &amp; 5 pm;<br/>Wed. 7 pm<br/><b>MULESHOE CHURCH OF CHRIST</b><br/>22nd &amp; W. American Blvd.<br/>Minister Barry Wiseman<br/>S.S. 9:30 am; W.S. 10:20 am<br/>&amp; 6 pm; Wed. 7:30 pm<br/><b>16th &amp; AVE. D</b><br/><b>CHURCH OF CHRIST</b><br/>Curtis Shelburne, Min. • 272-4619<br/>S.S. 9:30 am; W.S. 10:30 am;<br/>Growth Gr. 1:30 pm; Wed. 7:00 pm</p> <p><b>LUTHERAN</b><br/>ST. JOHN LUTHERAN<br/>Lariat, TX • David Symm, Min.<br/>S.S. 10:30 am; W.S. 9:30 am</p> | <p><b>NAZARENE</b><br/>ROCA DE SALVACION<br/>814 W. Ave. C<br/>Pastor Rafael Quezada<br/>Sunday, S.S./W.S. 10:00 a.m.,<br/>Evening 6 p.m.; Wednesday,<br/>W.S. 7 p.m.</p> <p><b>PENTECOSTAL</b><br/>UNITED PENTECOSTAL<br/>LIGHTHOUSE<br/>207 East Ave. G<br/>1-800-454-6051<br/>S.S. 10 am; Thursday,<br/>Bible Study 7 pm</p> <p><b>INTER DENOMINATIONAL</b><br/>NEW COVENANT<br/>Plainview Hwy.<br/>Steve Claybrook, Pastor<br/>W.S. 10 am; Wed. 7 pm<br/><b>MULESHOE COWBOY</b><br/>FELLOWSHIP<br/>117 E. Birch Street, Muleshoe<br/>Steve Friskup, Minister<br/>272-5199<br/>Service: 7:30 p.m. Thursday</p> |

If your church has a change of information, please call 272-4536!

**Deaf Smith County Grain, Inc.**  
Cliff A. Skiles

**DODD COTTON GIN**  
2912 CR 504, Muleshoe • 965-2311 or call 674-1457  
ROBERT BOOZER, MGR. BEVERLY TURNEY, OFFICE MGR.  
Email: robertb@amaonline.com

**IRRIGATION PUMPS & POWER**  
**Zimmatic** W. Hwy. 84  
CENTER-PIVOTS 272-5597

**United Supermarkets**

**MULESHOE ANIMAL CLINIC**  
GENERAL PRACTICE  
**M S**  
1430 US Hwy. 84 • Muleshoe Office: 272-3061

**MCCORMICK SEEDS, INC.**  
400 East Ash • 272-3156  
Muleshoe, Texas  
A COMPLETE LINE OF FIELD SEEDS  
Tim McCormick

**AG AVIATION**  
2 1/2 miles North on HWY 214  
272-3066 FAX 272-8981  
P.O. Box 68 • Muleshoe, TX

**1ST BANK** MEMBER FDIC  
202 South First 272-4515

**FIRST UNITED**  
LITTLEFIELD BANKING CENTER 2003 Hall Avenue • 806-385-7181  
EARTH BANKING CENTER Main & Cedar • 806-257-3451  
SUDAN BANKING CENTER 300 Main • 806-227-2411

The New Star Of West Texas  
**CENTRAL COMPRESS & WAREHOUSE**  
SUDAN, TEXAS

**BCEC** BAILEY COUNTY ELECTRIC COOPERATIVE ASSOCIATION  
Muleshoe — 272-4504 Morton — 266-8600

**WESTERN DRUG**  
& Something Special Gifts  
1411 W. American Blvd. 272-3106 Muleshoe

**Lowe's MARKETPLACE**  
401 W. American Blvd. • Muleshoe • 272-4585

**Taqueria Guadalajara**  
Specializing in Jalisco Style Mexican Food  
DIFFERENT SPECIALS EVERY DAY!  
Open 7 days a week — 7 AM to 10 PM  
Orders to go: 272-4333 or 272-3328 — Drive-Thru Service  
1201 W. AMERICAN BLVD., MULESHOE

# BAILEY COUNTY DEVOTIONAL PAGE

# Obituaries

## Donald Killough

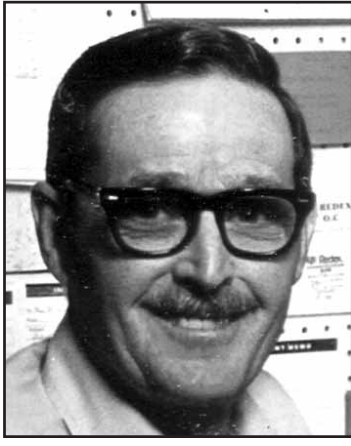
Funeral services for Donald Milton Killough, 80, of Farwell, were held on Saturday, March 24, at Westbrook Baptist Church in Clovis, N.M., with Pastors Fergus Tunnell, Stan White and Kenneth Heck officiating. Burial followed at Lawn Haven Memorial Gardens in Clovis.

Killough died on Wednesday, March 21, 2007, at Good Samaritan Nursing Home in Hobbs, N.M. He was born on May 4, 1926, in Brown County to James and Pearl Pressley Killough.

Killough spent most of his life contracting and building houses. He also worked at Triangle Home Center for 14 years, and farmed.

Killough was preceded in death by his parents; a sister — Kathryn Bush; three brothers — Morris Killough, Weldon Killough and Bill Killough; and a son — Philip Killough.

Survivors include his wife — Nina Ann Killough of the home; three daughters and their husbands — Joanne and Red Byrd of Monument,



DONALD MILTON KILLOUGH

N.M., Donita and Ron Harkey of Lubbock, and D'Ann and Cameron Beavers of Farwell; three sons and their wives — Weldon Marilyn Killough of Clovis, N.M., Bill and Mickey Killough of Los Lunas, N.M., and Johnny and Audrine Killough of Astubula, Ohio; six sisters — Jimmiee Coffey of Midland, Louise Bush of Arlington, Doris Jones of Rising Star, Betty Remmele of Paradise, Ruby Parker of Eastland and Mary Fisher of Brownwood; 19 grandchildren and 16 great-grandchildren.

Memorials may be sent to the Oneita Wagnon Senior Citizens Center.

## Rafael Flores

Church services for Rafael Flores, 100, of Muleshoe, were held on Monday, March 26, at the Immaculate Conception Catholic Church with Fr. Leonardo Pahamtang officiating. Burial followed in Muleshoe Memorial Park Cemetery.

Flores died on March 24, 2007, in his home. He was born on Oct. 24, 1906, in Uvalde, and married Natalia Navejar in Menard on May 16, 1928.

Flores had lived in Muleshoe since 1950, moving from Menard. He worked as a cowboy and

rancher in Menard. After moving to Muleshoe he worked at the Muleshoe and Sudan compresses. He was a member of the Immaculate Conception Catholic Church.

Flores was preceded in death by his wife — Natalia, in 1990; a son — Alfred Flores, in 1986; a sister and two brothers.

Survivors include his daughter and her husband — Inez and Jesus Flores of Muleshoe; four grandchildren; 10 great-grandchildren; 13 great-great-grandchildren and one great-great-great-granddaughter.

## Births



BLAINE RYAN ST. CLAIR



PRESLEY PAIGE ST. CLAIR

## Blaine, Presley St. Clair born

Justin and Roxann St. Clair announce the birth of their son, Blaine Ryan, and their daughter, Presley Paige, on Feb. 22, 2007, at Odessa.

Blaine weighed six pounds, seven ounces at birth and was 19 inches in length. Presley weighed six pounds, 10 ounces at birth and was also 19 inches in length.

The twins have a sister, Mia Grace, 2.

Their grandparents are Tommy and Jana St. Clair of Muleshoe, and Phil and Gwen Warren of Shallowater.

## Publication of Obituaries

Obituaries printed in the Muleshoe Journal are printed free of charge and contain the following types of information:

Date and details of funeral and place of burial; date and place of birth and parents names; date of marriage;

Limited biographical information, including the highest level of schooling achieved, service in the Armed Forces, profession (and retirement information if applicable); names of relatives who have preceded the person in death;

Names of survivors including husband and wife, parents, in-laws, brothers, sisters, grandparents (Only the number of grandchildren will be included); and where memorials may be directed.

We will be pleased to run a one column black and white photo at no charge. A larger photo or a color photo will cause the obit to be paid.

Please keep in mind that everything must be submitted by your funeral home.

## Engagement



HEATHER RENEE ELLIOTT AND MITCHELL TODD MASON

## Elliott, Mason wedding planned

Chris and Michelle Elliott announce the engagement of their daughter, Heather Renee Elliott of Abernathy, to Mitchell Todd Mason of Muleshoe.

The prospective bride is a graduate of Abernathy High School, and is currently attending Lubbock Christian University.

The prospective groom is the son of Ralph and Donna

Mason of Muleshoe.

He is a 2000 graduate of Muleshoe High School and a graduate of Lubbock Christian University. He is currently employed by the Post Independent School District as a math teacher and coach.

The wedding has been set for June 9, 2007, at the Abernathy First United Methodist Church.

## Muleshoe First Assembly of God to host a revival

The First Assembly of God, at 521 S. First, Muleshoe, will be holding revival services with Kurtis Ivey April 1-4. Sunday's morning services will begin at 10:30 a.m., and the weeknight services will begin at 7 p.m. Call 272-3017 for additional information.

### REPRESENTATIVE SALES

**SAT., MARCH 24, 2007**

218 head of cattle, 90 hogs and 378 sheep and goats for a total of 686 livestock sold at the March 24 sale. Fewer receipts due to the rain Thurs., Fri. and Sat. night. Just too wet to get the livestock to market.

The Muleshoe Cattle Market is brought to you each week by Muleshoe Livestock Auction, located east of Muleshoe on U.S. 84. Muleshoe Livestock conducts sales every Saturday, beginning with hogs, sheep and goats at 10 a.m. and cattle following at approximately noon.

FOR INFORMATION ON SALES OR TO CONSIGN CATTLE - 272-4201

Seller, City	#	Type	Wt.	CWT or PH
Jose Beautista, Whiteface	1	Blk. bull cflf	145 lbs.	at \$270
Manuel Ronquillo, Muleshoe	3	Red bulls	252 lbs.	at \$97
James Aldi, Denver City	1	Red bull	300 lbs.	at \$129
Ricky Dale, Muleshoe	1	Blk. bull	400 lbs.	at \$131
Alejandro Perez, Hereford	1	Char. bull	550 lbs.	at \$96
Hockley Co. Cattle, Levelland	1	BWF str	550 lbs.	at \$106
Raul Zamora, Hobbs, NM	1	Char. bull	565 lbs.	at \$94
FM Farms, Brownfield	10	Mxd. hfrs	296 lbs.	at \$380
Raul Zamora, Hobbs, NM	1	Char. hfr	415 lbs.	at \$110
Jose Almanza, Muleshoe	3	Mxd. hfrs	448 lbs.	at \$106
Ricky Dale, Muleshoe	1	Blk. hfr	685 lbs.	at \$96
FM Farms, Brownfield	1	BWF cow P8		\$650
Jerry Askew, Farwell	1	Hol. cow	1260 lbs.	at \$45
Kirk Kirkland, Denver City	1	BWF cow	1065 lbs.	at \$44.50

**Competitive Rates, Variety of Leading Companies  
For Home, Auto, Commercial and Crop**

806-227-2466

## GIRLS FAST PITCH SOFTBALL SIGNUPS

Registration for girls fast-pitch softball will be held on **March 22nd and 29th** from 6:00-8:00 p.m. and on **March 24th** from 10:00 am - noon at the **Jr. High Gymnasium**. The cost will be **\$25**, plus a fundraiser, per player. **2nd-12th** grade girls are invited play. Please bring your birth certificate.

### Dr. J.W. Haltom

*Family Dentistry & Orthodontics*

For A Limited Time

\$50 OFF

Crowns and Bridges

Erika Trotter, Amber Garcia, Jessica Haltom & J.W. Haltom

- Emergencies Seen Promptly
- Insurance Accepted
- Patient Financing

- Adults & Children Welcome
- Televisions & Head Phones In Treatment Rooms
- Relaxation Gas

806-385-6935

320 East 8th Street, Littlefield, Texas

www.muleshoejournal.com

# Say HELLO to High-Speed Internet!

your local link to the world

## FREE INSTALLATION with a one year commitment!

- Loads faster than DSL or dial-up
- Always on connection, and no phone line needed
- Download photos and music quickly and easily
- No busy signals, never have to wait again

Ask about special savings for cable customers!

Call Today and Save!

# 1.800.963.4984

Rapid Communications 2006. For new residential customers only. Available services & pricing may vary and not be available in all areas. Download & upload speeds are maximum speeds; they may vary & are not guaranteed. Franchise fees, taxes, installation, restrictions & other fees may apply, the actual amount depending on location & service ordered. If service is canceled before 12 months, a \$100 service charge will be applied to customer's account. A cable modem or network card may be required at installation. Minimum computer requirements may be required. Offer subject to change. Other restrictions may apply. RAP12604

# Sports

## Mules wrap-up non-district play with Antelope defeat

By Delton Wilhite  
Sportswriter

The Mules wrapped up their non-district season on a high note by defeating the number five state ranked Abernathy Antelopes 6-5. The Mules' district opener was delayed from Saturday to Monday because of rain.

Brant Hamilton was the winning pitcher for the Mules and pitched five complete innings giving up three runs on five hits and recorded four strike outs. Victor Vasquez took the mound in the sixth and gave up a run. Elias Alvarado closed out the Antelopes in the seventh and gave up a single run to preserve the win for the Mules.

"Both teams seemed a little flat when the game started," said Mule coach Gilbert Ramirez. "Brant (Hamilton) did a good job for us on the mound and we fielded the ball well behind him."

"These final six games of non-district should give us a

big confidence boost, especially knocking off a highly rated team like Abernathy. They kept chipping away at us but we managed to hang on for the win. It was a great game but they did make me hold my breath the last two innings," he said.

Hamilton gave up a single to right to the first batter. He stole second and moved to third on a passed ball. Timothy Conner made the grab on a pop fly to first for the first out of the inning.

Garrett Riley moved under a fly to right field but the runner scored on the sacrifice fly. Dusty Clayton moved to his left at second and scooped up a ground ball and tossed to Conner at first for the final out to hold Abernathy to one run.

TJ Brantley was the designated hitter for the Mules and batting second. He blasted a single to left to give the Mules a base runner. Brantley moved to second on a base hit to left by Vasquez

and scored on and line drive to the fence in left by Conner. The Mules could not push another run across but had tied the game at 1-1.

The first Antelope to bat in the second flied out to Matthew Richards in left and Conner scooped up a ground ball and stepped on first for the second out. A tap back to Hamilton on the mound ended the inning when Hamilton tossed to Conner at first.

The Mules sent eight to the plate in the second and scored five runs on three hits to take a commanding 6-1 lead. Marshall Head reached on a throwing error on the short stop to lead off the inning for the Mules.

Caesar Lopez hit a ground ball to short and Head was forced out at second but Lopez beat the double play throw to first. Richards walked on four straight pitches. Dusty Clayton singled left to score Lopez from second.

Clayton took off on the

second pitch to Brantley. Brantley slammed a single to left and Clayton never slowed down until he crossed the plate. Vasquez sacrifice fly to left moved Brantley to second.

Hamilton stepped to the plate and blasted the first pitch over the left field fence to score two runs to push the Mule lead to 6-1. Hamilton's homer ended the Mules scoring.

Hamilton gave up a base hit to the first Antelope batter in the fourth. He stole second and moved to third on a passed ball. Abernathy appeared to be threatening to cut into the Mule lead.

Vasquez charged a lazy fly to short center field and made the grab on the run. He threw in stride to Head at home. Head fielded the ball and made the diving tag at the plate to complete the double play.

Vasquez made the grab on a fly to center to end the inning and hold the Antelopes scoreless in the

fourth. Hamilton struck out three in the fifth inning and gave up one run. The Mules led 6-3 going into the sixth.

Vasquez gave up a base on balls to the first batter he faced. That batter would score before the final out. Clayton made the grab on a pop fly at second for the first out. Hamilton grabbed a ground ball and tossed to Conner for the second out and repeated the feat for the final out. The Antelopes trailed 6-4.

Alvarado's first two pitches were strikes to the first batter he faced. He could not get the batter to swing at a pitch out of the strike zone and with the count at 3-2 the

batter slammed a triple to the fence in left center.

The Mules gave up the run on a ground ball to Hamilton at short but took the out with a throw to Conner at first for the first out. Alvarado came off the mound to field a bunt and tossed to first for the second out. Hamilton ended any hopes Abernathy may have had of a come back by camping under a high fly at short and squeezing the ball a little extra tight to make sure it did not pop out of his glove for the final out.

The Mules traveled to Friona to take on the Chieftains in the district opener for both teams.

## Varsity Mules track team finishes sixth at Levelland

By Delton Wilhite  
Sportswriter

The Mules finished sixth in the Lobo Relays at Levelland with a total of 50 points. Idalou, Lubbock Cooper, Littlefield, Brownfield and Levelland finished ahead of the Mules. Denver City rounded out the field.

Dusty Clayton finished sixth in the 100-meter dash with a time of 11.94 seconds.

Brant Hamilton took the gold in the 400-meter run with a 51.47 and earned the silver medal in the 200-meter dash with a 20.09.

Gilberto Mojica placed 16th in the 800-meter run with a 2:27.90. Colby Carpenter took seventh in the 1600-meter run with a 5:23.13 and Mojica took 10th with a 5:29.00.

The 4x200 relay team of

Clayton, Doc Fullmer, Colton Heinrich and Bradley Branscum finished seventh with a 1:37.47.

The Mule pole vaulters claimed all the medals. Lane Wood took the gold medal with a height of 12 feet six inches. Wes Wood cleared 12-00 for the silver and Austin Wright vaulted 11-00 for the bronze medal.

Victor Vasquez leaped 19-

02.00 in the long jump for the bronze medal. Carpenter was fifth in the triple jump with a distance of 37-06.25.

The Mules will run in the Cub Relays in Brownfield on March 30 and host the Muleshoe relays on April 5. The District 2-2A Meet will be in Tulia on April 10.

## Lady Mules track team takes third place

By Delton Wilhite  
Sportswriter

The Lady Mule track team finished third in the Lobo Relays at Levelland with 81 points. Levelland won their meet and Lubbock Cooper finished second. Denver City, Idalou, Littlefield and Brownfield rounded out the teams entered.

Amelia Clemmons ran fourth in the 100-meter dash with a time of 14.34 seconds and Morgan Smith took seventh with a 14.93. Clemmons took the gold medal in the 200-meter dash with a 29.34.

Starlit Schonasky and Ashley Scolley finished 10th and 11th in the 800-meter run with times of 3:11.25 and 3:11.47 respectively. Sarah Johnson took the gold medal in the 1600-meter run with a 6:14.17 and Caitlyn Durben was 13th with a 7:25.07.

Lupita Andrade earned the silver medal and Johnson took the bronze medal in the 3200-meter run with times of 12:59.93 and 13:28.08 respectively. The Lady Mule 4x100 relay team ran sixth with a 54.71.

The 4x200 meter relay team of Ashley Cisneros,

Kelsey Tipps, Janae Pyle and Kyra Kimbrough took the bronze with a time of 1:56.93. The 4x400 meter relay team of Andrade, Pyle, Cisneros and Smith placed fourth with a 4:37.00.

Kimbrough tied for third in the high jump with a leap of four feet six inches. She took the gold medal in the pole vault with a height of 9-6. Kathryn Owens tossed the shot 32-6.0 for third place.

The Lady Mules will run in Brownfield March 30 and will host the Muleshoe Relays April 5. The District 2-2A meet will be held in Tulia April 10.

**"SUPER WOMAN"**  
NEED A TEMPORARY HOUSEKEEPER?  
LAST MINUTE CHILD CARE?  
GOING ON VACATION AND NEED A PET  
OR HOUSE SITTER?  
CALL "SUPER WOMAN" TO SAVE THE  
DAY!

POW!  
BANG!  
CRUNCH!

ODD JOBS ARE  
MY SPECIALTY.  
WHAT YOU  
NEED DONE I  
CAN DO FOR  
YOU!

WHAT CAN "SUPER  
WOMAN" DO FOR  
YOU? CALL LESLIE  
RADFORD  
(AKA "SUPER WOMAN")  
AT 965-2846  
(LEAVE MESSAGE)  
REFERENCES & OTHER  
SERVICES AVAILABLE.

**Car Buying Made Easy**  
BY TRUE PROFESSIONALS!

<p><b>'02 Buick Century</b> Blue Book Retail* \$9,285 BHN DISCOUNT \$1,285 <b>SALE \$8,000</b> Stk #630961</p>	<p><b>'05 Ford Ranger SXT</b> Blue Book Retail* \$17,750 BHN DISCOUNT \$2,800 <b>SALE \$14,950</b> Stk #790571 <i>Less than 8K miles!</i></p>
<p><b>'05 Chevy Malibu Maxx</b> Blue Book Retail* \$16,925 BHN DISCOUNT \$2,975 <b>SALE \$13,950</b> Stk #7986</p>	<p><b>'06 Nissan Altima 2.5</b> Blue Book Retail* \$20,800 BHN DISCOUNT \$2,350 <b>SALE \$18,450</b> Stk #630061 <i>Less than 9K miles!</i></p>

**BENDER HONDA-NISSAN**  
3000 MABRY DRIVE, CLOVIS, NM • (505) 762-3701 OR TOLL FREE 888-968-3702  
All vehicles subject to prior sale; TT&L extra. \* Kelly Blue Book 2007 March/April edition

## Support the Boosters Who Support Our Teams, Schools and Community!

**LOWE'S MARKETPLACE**  
401 W. American Blvd., Muleshoe

**BAILEY COUNTY ELECTRIC COOPERTIVE ASSN.**  
305 E. Ave. B, Muleshoe 272-4504

**FIVE AREA TELEPHONE COOPERATIVE**  
302 Uvalde Muleshoe, TX 272-5533

**Irrigation Pumps & Power**  
www.drippi.com  
West Hwy. 84 Muleshoe • 272-5597  
**Zimmatic**

**got milk? BOEHNING DAIRY FARMS**  
690 CR 45, Earth 965-2997

**Lal's RESTAURANT**  
1010 W. American Blvd. Muleshoe, Texas 272-3294  
"The Original - Since 1957"

**MULESHOE ANIMAL CLINIC & MULESHOE VET SUPPLY**  
1430 US HWY. 84, MULESHOE 272-3061 OR 272-4990

**MULESHOE VALLEY INC.**  
2601 West American Blvd. Muleshoe • 272-4266

**AGRILIANCE**  
Clovis Hwy. West Muleshoe • 272-4203  
Bruce Bruns, Location Mgr.

**MULESHOE TIRE**  
107 Main Street Muleshoe • 272-4594

**MULESHOE LIVESTOCK AUCTION, INC.**  
PO Box 754, Muleshoe 272-4201

**Chevron DALE OIL CO. INC.**  
413 W. American Blvd. Muleshoe • 272-5576

**WESTCARD 66 Western "66"**  
607 N. 1st St. Muleshoe • 272-4556

**ADVANCE TOWING & RECOVERY**  
Freddie Anzaldua 806-272-4007 or Cell 946-7216 804-A W. American Blvd., Muleshoe

**ALVARADO PARTY RENTALS**  
(806) 272-5588

**CENTRAL COMPRESS & WAREHOUSE**  
205 Railroad Ave. Sudan, TX 227-2388

**Pizza Hut**  
Dine In Carry Out or Have It Delivered!  
Go Mules!  
272-4213  
1412 W. American Blvd. Muleshoe, Texas

**minsa**  
Hwy. 84 E. of Muleshoe • 272-5545

**West Camp Gin**  
350 FM 1731 Muleshoe, Texas 925-6681

# MULESHOE ATHLETES ARE #1!

**United Supermarkets**  
104 W. 9th St. Muleshoe, Texas 272-3120

## Park View... Continued from page 1

the past week concerning Laurel Healthcare's anticipated purchase of Park View.

He said that while Park View is a 90-bed facility, only 60 of those beds are certified by the State of Texas for Medicaid patients. Laurel Healthcare wasn't

aware of this difference between New Mexico's regulations — where Medicare / Medicaid certified beds are interchangeable with private pay beds — and Texas' higher restrictions.

Mason said for Park View to increase its number of

Medicaid beds by 10 percent or six beds, Texas laws require the nursing home to have 54 of its existing beds filled for the nine out of 12 month period prior to applying for the increase.

"We just can't do that at this time," Mason said.


With such a decrease in the availability of prospective Medicaid funds, Mason said Laurel Healthcare wasn't sure about how the "numbers" would work.

Concerning the motion to pursue a management contract with Laurel Healthcare, Mason explained that the management contract would be similar to MAHD's contract for management services at Muleshoe Area Medical Center.

He said the MAHD board

thought Laurel Healthcare would be able to help raise the resident numbers at Park View, and it was also noted that it would allow Muleshoe's citizens the opportunity to become familiar with Laurel's management practices.

BOOTS Work & Dress SHOES Casual & Athletic CLOTHING Western & Athletic



**GENERAL WILLIAMS STORE**  
SINCE 1963

1405 West American Blvd.  
Muleshoe, Texas  
806-272-MULE (6853)

## MAHD... Continued from page 1

payment limits" after Mason explained that it had to do with the hospital's Medicaid reimbursement.

Jim Wurts of Covenant Health Systems noted that Covenant is looking at forming a rural hospital cooperative that would allow them to participate in the federal program that allows hospitals to invest some of their funds for a return of \$1.25 in payment for medical services for every

\$1 the hospital puts into the program.

Wurts said, MAHD "can't participate at this moment," due to MAHD's current cash flow problems, but said it could be something the hospital district may be able to take advantage of at a later date.

Approved the hospital district's new substance abuse policy.

"We feel like what we've presented to you will be a

good substance abuse policy," Mason said.

In response, McElroy said it was important to her that the employees in the district be made aware that help is available for substance abuse problems if they need it.

Approved the minutes from its Feb. 15 regular meeting, and its March 2 special meeting.

Were informed by area resident Bill Lyles that he wished to add his name to the list of candidates being considered for the Place 2 MAHD seat currently held by McElroy.

Later during Thursday's meeting, the board received a certification listing Wayne Pierson as an unopposed candidate for the Place 4 seat held by Marilyn Riley, and approved an order cancelling the May 12 election.

Board president Ronnie Dent said the board would be considering potential candidates Place 2 after Pierson took his seat on the board in May.

Received the monthly financial report and authorized past due accounts totaling \$10,943.15.

## MISD...

Continued from page 1 installing a windmill at Dillman that would reduce the school's annual energy bill by an estimated \$10,000, or 45 percent of the campus' annual electric bill.

"I don't know if we'll have the money up front," Sheets said. "It would be nice to do this when we're under construction."

Sheets said the windmill, which is produced by Integrity Wind Systems, Inc., would cost about \$140,000. However, he said the question is probably moot if the construction costs at Dillman are higher than expected.

In other business, the school board approved a resolution asking the City of Muleshoe to "temporarily" close 19th Street, between Avenue E and Avenue G, twice a day, from 7:15-7:45 a.m., and from 3-3:30 p.m., to load and unload students during the Dillman project.

Time for new appliances?



**WE ARE YOUR HOMETOWN WHIRLPOOL DEALER.**

**McDaniel's APPLIANCE**

1020 Main Street, Clovis, NM  
505-762-4481 or 800-682-7891

We now carry Speed Queen!

## EMS... Continued from page 1

In defense of the situation on Tuesday March 20, interim EMS director William Winters, said he was at school.

"I had nothing to do with it," he added. "It was something beyond my control."

Apparently, on Tuesday, there were three cardiac patients at MAMC needing transferred. One was transferred, leaving one ambulance crew — without a paramedic available — to make the subsequent patient transfers.

Inclement weather in Muleshoe prevented a transfer by air, and ground transportation from other ambulance services in the area was also unavailable. The situation was apparently resolved by transporting the patients one at a time to Sudan where they could be airlifted to Lubbock.

Winters pointed out that at the time he was appointed as interim director he told the court that he had classes on Tuesday and Thursday.

Winters continued by presenting the commissioners court with a long list of ambulance transfers on which the EMS sent paramedics at the hospital's instructions, and noted that the county wasn't being reimbursed for them by Medicare because a

paramedic wasn't necessary.

In response, Grant pointed out that in such situations, the county has always thought about the patient first and reimbursement second.

Winters said much of the staffing problems were the result of the pay levels set by the court for part-time personnel. He suggested the levels be increased to \$250 for paramedics and \$150 for EMTs, both for 24-hour work days.

"If it's going to take \$250 to get the paramedics here, I don't see where we have any other choice," Precinct 3 Commissioner Joey Kindle said.

During the discussion, Vandiver pointed out that the county should pursue a contract with the hospital district, clarifying who would be responsible for what in such situations.

And once again, Vandiver expressed his opinion that the hospital district and not the commissioners' court was better able to manage a health care service, noting that it made more sense for MAHD to take on the responsibility with a subsidy from the county.

"I'm with Butch," County Judge Sherri Harrison said. "I want the hospital to take over the EMS. They're into emergency medical help, not us..."

## Reyes... Continued from page 1

During testimony, it was noted that Barraz had been struck on the head with the hammer repeatedly, strangled and sexually assaulted at least twice during the brutal ordeal that followed her kidnapping.

In the story written by Ronn Smith, and carried in the Feb. 6, 2000, issue of the *Bailey County Journal*, the *Muleshoe Journal's* sister publication at the time, Actkinson was quoted as saying Reyes "not only wanted to kill her but to humiliate her to show he was in control by sexually assaulting her as she died."

On Jan. 31, a Bailey County jury deliberated for about two hours before returning a guilty verdict, and on Feb. 2, after receiving additional testimony during the second — sentencing — phase of the trial, the jury returned to the Bailey County courtroom to recommend

Reyes be given the death penalty.

Efforts to reach members of Barraz' family and officials concerning the March 8 execution order were unsuccessful.

In a news story published in March 1998, in the week's following the murder, the victim's aunt, Blanca Mora, talked about tragedy, and how they would eventually have to explain the details to Yvette Barraz' daughter, Selena, who was four at the time of the murder.

"...We can't let anger and hatred for him (Reyes) overwhelm us," she said in a story written by Teresa Stone of the *Journal*. We just want him to be caught and get what he deserves.

"We aren't looking for revenge because we know that he will eventually have to face what he did," Mora continued. "We know that he'll be judged for what he has done, for God sees all."



**PICK THE COTTON THE ONE TON CLUB PICKS.**

Go with a variety that's been proven to yield a ton of cotton fiber per acre. Ask your seed dealer or visit us at CottonExperts.com for more information.

KEY ONE TON VARIETIES	
FM 958LL	FM 955LLB2
FM 989RR	FM 9060F
FM 960B2R	FM 9063B2F
FM 989B2R	

**FiberMax** cotton seed

FROM THE FIELD TO MILLS WORLDWIDE QUALITY ALL-DOWN-THE-LINE

 Bayer CropScience

©2006 Bayer CropScience, 2 T.W. Alexander Drive, Research Triangle Park, NC 27709. Always read and follow label instructions. For additional product information call toll-free 1-866-99-BAYER (1-866-992-2937) or visit our Web site at www.CottonExperts.com. BCSRFB0617

**PANDORA Jewelry**

One for every charmed moment

As seen in Glamour, Oprah and Lucky magazines

*Antiques & Fine Things*

2104 W. American Blvd., Muleshoe • 272-4217

Bridal Shower Selections

Pandora Easter Bunny & Egg charms have arrived!

## We Can Be Right and Still Be Terribly Wrong

If heaven were not already Paradise, the mere fact that no misunderstanding will mar its joy would make it heavenly.

Drat it, yet again, I've heard of another misunderstanding that has broken relationships, caused deep hurt, and wasted precious energy that could be put to far better use.

Careful, now, lest you think I'm writing about anyone we might both know.

Remember the fellow in England who sent a note as a joke to his prominent acquaintances saying, "Flee! All is discovered!?" Within a week,

Nope, I won't tell you what the issue was, but hearing about the fuss and the fracture made me think.

Even if he was right, he was wrong. His allowing his scruples to fracture the body was far worse than the "issue."

Almost no one else at his church thought the issue as serious as did he, and it's a good church, which warns me that even a fine person can be beset by carnal pride that says, aloud or not, "I'm wiser, more scrupulous, more committed, than all of you; I can even turn my back on you and feel holy."

How desperately we need to learn the truth of Romans 14! Gray areas in which equally committed Christians make different decisions have always been difficult for the church to handle. But St. Paul and God's Spirit in Romans 14 point to the way to deal with precisely such matters, and say plainly: Love each other. Don't judge each other. You are all saved by grace and grace alone. Uniformity of practice is not required. Love is.

Life is too short and the Christian family too precious to be fractured by pious piffle Satan builds up in our minds as being all-important. Even if it is important, precious little of it is as important as celebrating our oneness in Christ.

God can use people with strong personalities. Thank God when they're right. Watch out when they're wrong. "Those readiest to die for a cause easily become those readiest to kill for it."

When we fuss, unbelievers see it and Christ is dishonored. Is the fight worth it? In my experience, almost never.

Oh, Lord, why would you want petty humans like us in your church? Wouldn't angels have caused less turmoil?

*Curtis Shelburne is minister of the 16th & D Church of Christ in Muleshoe.*



**Focus On Faith**

Curtis Shelburne

they'd almost all left the country!

Broken relationships are so common that almost anyone who reads this might think, "Goodness gracious! He's writing about me and..."

No, I'm not. Still, if you're tempted to think that, well...

As I understand the situation, a man—an exceptionally good man—got his feelings hurt. He was disappointed by something that happened in his church (a Presbyterian church, not that the brand matters) with which he disagreed seriously. His disappointment turned to anger when he realized that his pastor and most of the folks in the church felt he'd overreacted, which he then did for sure, effectively cutting himself off from those who thought he'd loved them as family. He had, but this time, his love failed, and the ground became fertile for a crop of bitterness.

The Muleshoe Housing Authority is now accepting applications for housing for agriculture workers.

We are also temporarily renting to all persons without regard to income or farm labor housing requirements.

Handicap units available.  
Gas, electricity, water, sewer and garbage are included.

For more information call **Bea or Rosemary at 806-272-5560.**  
Office hours: Monday thru Friday, 8:00 a.m. to 5:00 p.m.

La Autoridad de Cubierta de Muleshoe ahora está aceptando aplicaciones para viviendas para los trabajadores de la agricultura.

También estamos alquilando temporalmente a todas las personas sin consideración a los ingresos o requisitos de cubierta del trabajo de granja.

Unidades de la desventaja son disponibles.  
El gas, la electricidad, el agua, la alcantarilla y la basura son incluidos.

Para más información, llame **Bea o Rosemary al numero 806-272-5560.**  
Horas de oficina: Lunes por viernes, 8:00 mañana-5:00 por la tarde



**ALVARADO PARTY RENTALS**

**INFLATABLE BOUNCER**  
Safe - Affordable  
Fun For Kids!  
BEST PRICES AROUND

**272-5588**  
2 Hrs. \$50 - 4 Hrs. \$75 - 6 Hrs. \$100  
8 Hrs. \$125

Birthday Parties • School Functions • Special Events  
**DELIVERY, SETUP & PICKUP**  
SE HABLA ESPAÑOL EDDIE & RACHEL ALVARADO  
DJ SERVICES ALSO AVAILABLE

1105

**RED WING SHOES**

**The Fair Store**  
120 Main 272-3500

**Muleshoe Bail Bonds**  
**Anzaldua Tax Service**  
& Advance Towing  
(U-Haul service)  
One location. One office. One phone number.

**272-3001**  
Farwell-481.2245 Morton-891.0445  
804-A W. American Blvd., Muleshoe  
Notary Public service available.

**T-L Irrigation Systems**  
Dealer

**PRECURE ELECTRIC**  
Carroll Precure - Owner  
**424 N. 1st, Muleshoe 272-4844**

GENERAL ELECTRICAL CONTRACTING  
• Residential • Commercial  
• Irrigation

*Decorators*  
*Floral & Gifts*

616 South First Street  
Muleshoe, Texas  
806/272-4340  
www.decoratorsfloral.com

Need your day brightened or just want some company? Buy yourself a plant! They don't judge you. They don't complain and they always grow on you!

Rent this space for only \$9-\$11.25 per week!  
Call 272-4536 and ask how!

Rent this space for only \$9-\$11.25 per week!  
Call 272-4536 and ask how!

**Muleshoe Fans**  
Advertise your business here!  
**272-4536**

6 months \$11.25 week  
12 months \$9.00 week

Manicures, Pedicures  
Chemical Peels  
Facials & Waxing  
Family Hair Salon

115 S. Main • 272-5987  
Mon.-Fri. 9ish to 5ish  
Pat Young, Jamie Smyer, Sherry Curtis, & Kayla Claybrook

*Carolyn's Christmas Creations*

106 E. American Blvd.  
Muleshoe, Texas  
272-5911  
www.visitcarolyns.com  
Open Daily

*'Tis Always Christmas at Carolyn's!*

**LOWE'S MARKETPLACE**

401 W. American Blvd.  
Muleshoe, Texas  
272-4585

**BAILEY COUNTY ELECTRIC COOPERATIVE ASSOCIATION**

305 E. Ave. B  
Muleshoe, Texas  
272-4504

**SHIPMAN'S BODY SHOP, INC.**

410 N. 1st Street  
Muleshoe  
**272-4408**

• 24 hr. Wrecker Service  
• Complete Collision Repair  
• Glass Work

Family owned for over 35 years  
Garry Shipman

**FARMERS LAURIE WINCHELL**  
Insurance Agent

Call for a free quote:  
**HEALTH • AUTO  
LIFE • HOME  
BUSINESS**

1602 W. American, Muleshoe  
272-7548 • FAX 272-4756

Where's Forest? Can you find him?

**Newspaper Fun!**  
www.newspaperfun.com Annimills LLC © 2007 V4-N11

# April Fool's Day Surprises

The first day of April is April Fool's Day. It is a time for lots of fun. People like to play harmless jokes and pranks. One favorite trick is to point out something that is not really there!

April Fool's Day used to be called All Fool's Day. It is thought to have started in France. A long time ago, March 21st was the date of the New Year. A little over a week of parties and fun followed. On the last day of the festivities, April 1st, formal visits were paid and gifts exchanged.

In the 16th century, the Gregorian calendar was introduced. March 21st was no longer New Year's Day and April 1st was no longer the right day to visit and give gifts. News traveled slowly in those early times, so many people continued to celebrate April 1st as the last big day of the holiday season. Many others did not like the change of date and refused to change their ways. People who clinged to the old ways were called April Fools.

Today, on April 1st, you might hear someone call out, "Poisson d'Avril!" They have fooled someone and are calling them an "April fish." The person took the "bait" and was easily "caught." April Fool's Day is a day for tricks that hurt no one. It is a time to share some laughter.

I love to make people laugh!

1. \_\_\_\_\_ gestures  
2. \_\_\_\_\_ understand  
3. \_\_\_\_\_ traveling  
4. \_\_\_\_\_ behave  
5. \_\_\_\_\_ woman  
6. \_\_\_\_\_ tricks  
7. \_\_\_\_\_ first  
8. \_\_\_\_\_ jokes  
9. \_\_\_\_\_ court  
10. \_\_\_\_\_ costumes  
11. \_\_\_\_\_ fortune  
12. \_\_\_\_\_

**Jesters were people who would entertain crowds at marketplaces or festivals. Read the clues below to learn about jesters and to fill in the puzzle:**

When jesters wore pointed, three-colored caps, brightly colored clothing, floppy collars and bells, people could spot them right away. Sometimes, jesters would disguise themselves and surprise people. Jestors entertained, informed and had fun with people. Jestors had many talents and could be many things. **Find and circle the words in the puzzle below that describe jesters and some of their talents or skills.**

Today we have clowns to entertain us.

P K D P E O I W Y T R A G Z L P A S  
R J I J E S T E R P O L N U Y W E N  
A C B U U C N V P A A P O R T Y W O  
N X B U E G X B I U N A S O T T I O  
K W T Y I E G N C O I G H T F B V F  
S T I O E P C L V N M O E Y I F H F  
T I G H T R O P E W A L K E R N V U  
E O I C B W A X Z R L B N V E P O B  
R I H G N Z P T S B T S O T E P W Q  
B X T O A Y J O K E R Y U E A P O T  
T Y W O C J Y T A H A O N U T P O S  
C O N T O R T I O N I S T N E O H W  
N O I S R P O N A Y N B V Y R P O A  
A U R N I I O P Z F E N S S I R P C  
I F O B V N C S T O R Y T E L L E R  
C O T O C Y U K P S O U C T Y E S O  
I P C B V N C U S Q U T E I C S D B  
G P A V E N T E R T A I N E R P O A  
A F J I O E P O H T E V J I O P Y T  
M C O P U P P E T E E R C I O P A S

prankster  
buffoon  
entertainer  
actor  
acrobat  
puppeteer

trickster  
clown  
magician  
jester  
fool  
joker

1. \_\_\_\_\_ jesters entertained the king and queen  
2. \_\_\_\_\_ jesters entertained crowds of people in marketplaces or at festivals  
3. some people thought jesters were "unlucky" and others thought they would bring good \_\_\_\_\_  
4. jesters might wear \_\_\_\_\_ to surprise people  
5. they told stories and \_\_\_\_\_  
6. some jesters used \_\_\_\_\_ or props  
7. sometimes they were allowed to \_\_\_\_\_ in ways that were not allowed for other people  
8. dressed in many kinds of \_\_\_\_\_  
9. sometimes they helped people or even a king to \_\_\_\_\_ what was going on by telling clever stories  
10. a man or a \_\_\_\_\_ could be a jester  
11. the \_\_\_\_\_ day of April is April Fool's Day  
12. it is a day to play fun, harmless \_\_\_\_\_

Aw! C'mon, I'm not that easy to "hook!"

Ask Mom, Dad or another grown-up if it is okay to come to **visit our website to play our fun mini game.**

Visit our website to see the answers to the puzzles:  
**www.readingclubfun.com** Set goals and keep reading all year long. Join our new international reading club to help you meet your goals and have fun.

Hey! A spaceship is landing on the school parking lot! Really? Where?

Boy, little kids are easy to fool!

**All in Good Fun!**

April Fool's Day is a lighthearted celebration. Many countries around the world have special days of fun, with people playing good-natured jokes upon one another. These days almost always occur when the season of spring is coming. Do you think that the sunnier, warmer weather puts people in a lighter mood? Below are some things we like to use to fool or kid our friends.

**Can you match each item to its description?**

1. joke  
2. riddle  
3. hoax  
4. wisecrack  
5. pun

A. a puzzling question or problem posed: the answer is hard to figure out  
B. a "fresh" or "smart" remark  
C. a false story told in such a way as to make people think it is real  
D. something done for fun, a jest  
E. clever use of a word to have more than one meaning





## Muleshoe's Project Graduation receives donation from Farmers Insurance Group

With high school graduation scheduled for late May, Farmers Insurance Group announced this week that a donation has been made to Muleshoe High School's "Project Graduation 2007," a drug and alcohol-free alternative to post graduation parties for seniors.

work and begins a new stage of life. We're pleased to be able to help seniors celebrate graduation in a rewarding and responsible fashion," said Larry Pratt, FIG's Texas executive director.

Farmers Insurance agents live and work in the community and are Project Graduation volunteers. Each agent knows that for most seniors, post

graduation parties are a rite-of-passage.

It's their business to promote good judgment to help make graduation an exciting and memorable time for the right reasons.

Farmers Insurance Group has donated more than \$411,000 to Project Graduation and Farmers' agents have volunteered thousands of service hours to Project Graduation.

## FSA extends DCP enrollment

Bailey County Farm Service Agency Executive Director Kim Hanlin has announced the sign-up deadline for the 2007 Direct and Counter-cyclical Program (DCP) has been extended to Aug. 3.

"The extension is due to issues involving the performance of the Farm Service Agency's web-based computer system," said Hanlin.

The late-file fee of \$100 will only be assessed for farms that are enrolled after Aug. 3 and before Sept. 30. USDA computes DCP payments using base acres and payment yields established for each farm.

Direct payments provide no incentive to increase production of any certain crop, because the payments are not based on producers' current production choices.

Producers receive direct payments at rates established by statute regardless of market prices.

Counter-cyclical payments provide support

counter to the cycle of market prices as part of a "safety net" in the event of low crop prices.

These payments are only issued if the effective price for a commodity — which takes into account the direct payment rate, market price and loan rate — is below the target price for the commodity.

Counter-cyclical payment rates vary depending on market prices.

Enrollment in DCP for the 2007 contract period began on Oct. 1, 2006, and was scheduled to end on June 1 of this year.

Hanlin noted that the extension applies only to the enrollment time frame, and does not extend the DCP contract period.

For more information about DCP and other FSA programs, please contact the Bailey County FSA Office at 806 272 4538 or visit the website at <http://www.fsa.usda.gov>.

**Subscribe!**

## Letter to the Editor

To the Editor:  
Usually I go to Lubbock for health care problems. I woke up Saturday morning, March 4, to find my monitor for blood pressure and pulse registering a pulse rate that alarmed me.

At 7:30 am, my son drove me to the emergency entrance of Muleshoe hospital. I was promptly admitted and placed in an examining room. Dr.

Thornton, filling in for Dr. Sheets, promptly took charge of my problem.

Multiple nurses went into action. Each nurse compassionately and professionally attended to my entrance records and testing needs. The info they gathered was faxed to my cardiologist in Lubbock. In a matter of less than two hours, I was checked

in and out. The immediate attention and care I received could never happen at any larger hospital. Fortunately, I have never before needed immediate care.

I have repeatedly been told of the marvelous care offered by the Muleshoe Area Hospital District staff. Now, I know.

LaVonne McKillip,  
Muleshoe

# Picture Yourself Lucky!

**OUR BEST PLAN**  
ONLY \$39.95

- > 1000 Anytime Minutes with **FREE** Nationwide Long Distance
- > **FREE** Unlimited Night and Weekend Minutes with **FREE** Nationwide Long Distance
- > **FREE** Unlimited Mobile-to-Mobile
- > **FREE** Carryover Minutes
- > **FREE** Loyalty Minutes

### NETWORK EXPANSION

#### NEW CELL SITES ARE LOCATED AT:

- Bell Lake — Located approximately 22 miles WNW of Jal and covers Hwy 128 in that area.
- Milnesand — Located in downtown Milnesand. Provides service to the town of Milnesand and Hwy 206 and 262 in that area.
- Hillcrest — Located near the Hillcrest Zoo in Clovis, NM. Provides increased service and coverage in that area.

Capture a wee bit o' luck this month — with a new picture phone, the best calling plan and **CARRYOVER MINUTES** — available **ONLY** from Plateau Wireless!



Minutes you don't use — you don't lose!

**PLATEAU WIRELESS**  
**CARRYOVER & LOYALTY MINUTES**

Picture Phones Starting at \$29.95

TEXT MESSAGING ■■■ WEB BROWSING ■■■ PICTURE MESSAGING ■■■ WIRELESS

**PLATEAU**  
Wireless

[www.plateauwireless.com](http://www.plateauwireless.com) 877-PLATEAU (752-8328)



Race to any Plateau Wireless store to sign up!

### Way To Go, Plateau!

**Muleshoe**  
Five Area Telephone Coop.  
302 Uvalde  
(806) 272-7700

**Muleshoe**  
Connection Warehouse  
117 Main St.  
(806) 272-5532

**Friona**  
WT Services  
1010 Columbia  
(806) 250-5555

**Friona**  
Pancho's  
611 W. 11th  
(806) 250-2299

Contract Term: 2 years. Early termination fees: \$200 per year, maximum of \$400. Night and Weekend hours are Monday through Thursday 7:00 PM through 6:59 AM and Friday 7:00 PM through Monday 6:59 AM. When outside the designated home area, Roaming: \$.50 per minute with Free Long Distance. Additional taxes, fees, and surcharges may apply. Carryover Minutes: unused plan minutes are carried over month to month. Loyalty Minutes: 30 minutes after one year of service, 60 minutes after three years of service and 100 minutes after five years of service. Carryover and Loyalty Minutes are removed on the date of disconnect and/or forfeited in the event of suspension/termination for nonpayment. Plan only available on GSM phones. Offer not available in all markets. Certain restrictions apply. Offer ends 03/31/07.

## We're proud to offer even more healthcare options.

The primary care providers and staff of Plains Regional Medical Group are proud to offer even more healthcare options to communities in Eastern New Mexico and West Texas.

The providers you know and trust to deliver quality primary care for your entire family are pleased to announce that the Family Practice clinic now has same-day appointments, extended hours and walk-in care. So, whether you have a less than serious illness, minor injury, or need to be seen the same day, our Family Practice staff is available to help.

Our providers are now accepting new patients. To schedule an appointment, call (505) 769-7577 between the hours of 8 a.m. and 5 p.m., Monday through Friday. On-site laboratory and radiology services are available.

**Family Practice**  
Michele Hannagan, DO  
Carol Holland, CNP  
Dana Johnson, DO  
Rajan Mirchandani, MD

**Pediatrics**  
Bryan Vickers, MD  
Kathryn Winters, MD

**Internal Medicine/  
Infectious Diseases**  
Robert Timmons, MD, FACP



Michele Hannagan, DO



Carol Holland, CNP



Dana Johnson, DO



Rajan Mirchandani, MD



Robert Timmons, MD



Bryan Vickers, MD



Kathryn Winters, MD

**Walk-in Clinic Hours**  
Monday - Friday 8 a.m. to 8 p.m.

After 6 p.m., please call the clinic to confirm availability of walk-in hours.

Saturday 9 a.m. to 6 p.m.

2200 W. 21st St. • Clovis • (505) 769-7577

A department of Plains Regional Medical Center and part of the Presbyterian system

Plains Regional Medical Group [www.phs.org/prmc](http://www.phs.org/prmc)

**PRESBYTERIAN**

## Wolf Man Kruse Coming Our Way

Muleshoe has been selected as a host town for the Spring 2007



Wolf Man Cruise. Their designated stop will be Carolyn's Christmas Creations where Carolyn and her staff will host a group party for the cruisers.

The cruise, which consists of classic, hot rods and antique cars will originate in Snyder and travel through the area with stops at points of interest along the way. The final destination is the Route 66 Car Museum in Santa Rosa, N.M. Over 100 cards are expected for this cruise.

Coordinator Bonnie Venton said some 40 to 60 cars should be on board by the time the tour reaches Muleshoe. Arrival time in Muleshoe is scheduled for Friday, March 30, at approximately 3:00-3:30 p.m.

The public is welcome to come to Carolyn's, 106 E. American Blvd. in Muleshoe, to see the cars and visit with the cruisers.

For more information on this event or other cruises, go to [www.lonewolfman.com](http://www.lonewolfman.com) or call Carolyn Johnson at 806-272-5911 or Bonnie Venton at 325-728-8338.



### Pinewood Derby winners

The results from the Muleshoe Cub Scouts, Pack 620, Pinewood Derby, held on Jan. 29, were, pictured from left to right: Front row, Tigers — Bailey Puckett (third place), T.J. Ballard, Joshua Mata, Matthew Olivas, Joseph Rejino (first place), Jacob Kettner, Trenton Angeley (second place), Russell Stroud, Triston Bomer; second row, Wolves — Kamron Newberry, Antonio Lopez, Beto Diaz, Donovan Gutierrez, Roalndo Estrada (third place), Tyler Newberry, Javy Perez, Mario DeHoyos (first place), Christopher Flores; third row, Wolves continued — Billy Tosh, Jesse Leal (second place), Bears — Terran King (first place), Alex Olivas (second place); fourth row, Webelos — Matthew Dickerson (second place), Cristian Mora (third place), Nathan Rejino (first place). Additional awards went to T.J. Ballard (Cubbiest Car), Russell Stroud (Best Paint Job), and Billy Tosh (Most Original Design). Winners of the Pinewood Derby's open race were Nathan Rejino (first place), Joseph Rejino (second), and Clarissa Rejino (third).



## Sports

### Lady Mules take fifth in golf tourney

**By Delton Wilhite**  
*Sportswriter*  
The Lady Mules placed fifth in their first tournament of the season in Friona with a team score of 462. They placed third in a practice tournament in Tulia with a team total of 460. Amberlee Steinbock paced the Lady Mules in Friona with 94 strokes.

Sarah Johnson followed with a 109 and Janae Pyle had a 122. Chelsea Moore posted a 137 total and April Crabtree rounded out the team with a 138. Steinbock was second low individual in Tulia with 98 strokes. Johnson and Kathryn Owens each posted totals of 116. Pyle followed with a 130 and

Jacy Lawrence finished with a 142. Crabtree and Moore competed as individuals and had totals of 142 and 144 respectively. The Lady Mules will open district with their first district tournament in Tulia on Monday, April 2. They will complete district play in Friona, April 11

### Mule team opens season at Farwell tourney

**By Delton Wilhite**  
*Sportswriter*  
The Mules opened golf season in a tournament in Farwell with a second place finish behind the tournament champion Farwell Steers. The Mules posted a team total of 333. They traveled to Tulia for a practice tournament and placed first with an identical team total of 333.

Frieda rounded out the Mule team with 97 strokes. Bri. Poynor took second low individual honors at Tulia with 81 strokes. Cade Smith finished as third low individual with an 82. Precure followed one stroke behind Smith with an 83. Bre. Poynor and Frieda completed the course with

totals of 87 and 100 respectively. The Mules return to Tulia April 2 to open district and will be on their home course for the final district tournament April 11.

## Thanks for reading!

Thanks to everyone who came out to support the fine arts at Muleshoe High School on *Fine Arts Night to Shine!* Special thanks to the MHS Homemaking Department for preparing the delicious desserts and to these area businesses for contributing to the auction:

Burton Service Center	Lasting Impressions
Dale Oil Company	Leal's Restaurant
DeBruce Ag	McDonald's of Muleshoe
Decorators Floral & Gifts	Mohawk Auto Parts
Mary Kay Cosmetics - (Gina Mardis)	Muleshoe Journal
Family Dollar	Muleshoe Metal Art
Family Hair Salon	Muleshoe Tire
Fry and Cox True Value	Robert Lepard, DDS
The Honey Comb	Scott's Car Wash
Just Cuts by Sheri	Southwest Ag Services
Kinder Korner	Southwest Ag Tire Center
	United Supermarkets

### WJHS Students of the Week

Students of the Week for Watson Junior High for the week of March 26, pictured on the left, from left to right, were: Front row — Katelyn Scott, Nimsi Careaga and Jaxiel Lopez; and back row — Lindsay Meeves, Michael Freeman and Steven Durben.

# More Classifieds

Serving Bailey & Lamb Counties

Muleshoe Journal & Olton Enterprise

Deadline - 5 PM Monday  
Call 272-4536 or 285-2631

### HELP WANTED

Fertilizer business in Muleshoe needs general help. CDL preferred but not necessary. Apply in person at Blackwater Agri., Hwy. 84 west of Muleshoe. 4ch3-8

Looking for employment that offers a competitive salary, career opportunities, health, life, dental and vision insurance, an excellent retirement program, employer sponsored training and professional development, and a wellness program? The City of Muleshoe has openings in the Public Works and Police Departments. For requirements and application instructions, contact the Muleshoe City Hall, 215 S. First, Muleshoe, TX or the Texas Workforce Commission. TFNch2-15

**DRIVER**  
**Jim Aartman Inc.**  
**Food Grade Tanker Drivers**  
**HOME WEEKLY**

- Medical, Dental, Vision
- Excellent 401K plan
- Paid Holidays and Vacation

CDL-A w/tank end. & 1 yr. exp.

**888-AARTMAN**  
EOE

**UNDER NEW MANAGEMENT**  
**minsa**  
**NOW HIRING**

MINSA HAS SEVERAL POSITIONS AVAILABLE IN OUR PRODUCTION FACILITY. We are looking for hardworking individuals to fill several positions. Apply in person at Minsa or at WorkSource, 201 S. Main, Muleshoe. EOE. TFNch2/23

Sanderson Grain in Springlake is accepting applications for PT scale/secretary/office help (male or female), and PT outside help from May 1, Dec. 1, 2007. If interested, pick up an application in Springlake or call Brian Sanderson at 806-986-4236. 4ch3-15

Accolade Home Care is currently seeking an enthusiastic/energetic RN to care for our clients in the Muleshoe area who is also interested in professional growth and advancement. We are honored to care for our employees & to serve our patients. We offer competitive salaries, benefit pkgs., supportive work environment, tuition asst. and online CE courses. Opportunities for advancement are offered to all who work hard with a great attitude. Happiness & joy are cornerstones of AHC. Please call Scott at (806)789-2174 or email myerss@fms-regional.com. 4ch3-15

**UNDER NEW MANAGEMENT**  
**minsa**  
**NOW HIRING**

MINSA IS ACCEPTING APPLICATIONS FOR 2 POSITIONS IN THE MAINTENANCE DEPT. Some previous maintenance or welding experience preferred. Apply in person at Minsa or at WorkSource, 201 S. Main, Muleshoe. EOE. TFNch2/23

**SOUTH PLAINS COLLEGE**  
**EMPLOYMENT OPPORTUNITIES**

PART TIME JOB OPENINGS  
\*\* MULESHOE RURAL NETWORK COORDINATOR  
\*\* ITV FACILITATOR

Complete job description & application at:  
[www.southplainscollege.edu](http://www.southplainscollege.edu)  
Submit to: South Plains College, HR, 1401 College Ave, Levelland, TX 79336, (806) 894-9611 ex. 2177. AA & EEO Edu. Institution TFN2-15

Now accepting applications for Assistant Manager and hourly positions. Pay based on experience. Flexible schedule. Great career opportunity with company owning multiple restaurants. Apply in person at Pizza Hut of Muleshoe, 1412 W. American Blvd. EOE. 3ch3-29

FT LVN, 2nd shift and/or 3rd shift. Apply in person at Runningwater Draw Care Center, 800 W. 13th, Olton. 806-285-2677. 2ch3-29

# WANNA MAKE MONEY?

The Muleshoe Journal and Olton Enterprise are seeking a dynamic, positive, self-motivated, outgoing, talkative individual to lead our sales department. The successful candidate will work on a salary plus commission basis with opportunities for monthly bonuses. Area travel is a must so reliable transportation is required. A background in sales is helpful, but not necessary. We will train the right person. You must be organized and work well under a deadline. Benefits include: medical, paid vacations, flexible schedule and paid mileage. Apply in person at 201 W. Ave. C, Muleshoe, M-F 8AM-5PM. TFNch3-15

### LAWN SERVICES

**Cutting Edge Lawn Service** - your local mowing, edging & weedeating specialist! Call Bryan @ 272-4930. First time customer discount! 2ch3-29

**FRIESEN LAWN SERVICE**  
925-6789  
Call: 806-470-0406  
JAY FRIESEN TFNch

Subscribe or advertise by calling: Olton - 285-2631 Muleshoe - 272-4536

Receptionist needed for feedyard. Feedyard experience a plus. Apply in person at Castro County Feeders, 4 miles west of Hart on FM 145. No phone calls please. TFN1-25

### MISCELLANEOUS

WINTER CLEARANCE SALE - Heritage Thrift Shop, 402 Main, Muleshoe. All you can stuff in a brown paper bag for \$3. March 30 & 31. 3ch3-22

### WANT TO BUY FURNITURE

We buy used furniture, appliances and more. We'll take it off your hands and out of your way! Call 505-762-7838 or 505-714-2814. TFN

100 WORKERS NEEDED. Assemble crafts, wood items. To \$480/wk. Materials provided. Free information pkg. 24 Hr. 801-428-4649. 1pd3-29

Park View Nursing Care Center, Muleshoe, is accepting applications for licensed nurses and CNA's. Various shifts available. For more info, contact Jodie Rose, 806-272-7578. TFNch3-29

### STORAGE

OLTON — FOR RENT - Olton Mini Storage, small or large units, 285-2665. TFNch3-17

### MISCELLANEOUS

**Rex Lowery Painting**  
*Painting in the Muleshoe area over 40 years!*  
FREE ESTIMATES  
Cell: 789-9142

\$1,000 REWARD for information leading to the arrest and conviction of the person(s) responsible for the break-in located 1/2 mile south and 1/2 mile west of Olton. Your name doesn't need to be given. Call (515) 975-0602, Randolph Schafer. 3ch3-15

**HENDERSON SERVICE CO.**  
**272-4450**  
*55 years of experience!*  
SERVICE MOST MAJOR BRANDS OF APPLIANCES. 4ch3-22

### Earn Extra Money

Help deliver the new Yellow Book in the following areas: Plainview, Floydada, Abernathy, Brownfield, Crosbyton, Lamesa, Levelland, Littlefield, Morton, Muleshoe, Post, Slaton, Lubbock

**Call Today 1-800-373-3280**  
Monday thru Friday 7:30 to 7:00 pm CST  
**Temporary Positions**

Must have valid driver's license Insured, dependable auto Must be at least 18 years of age  
Equal Opportunity Employer





## Ladies Golf Assn. News

The Muleshoe Ladies Golf association met Wednesday, March 21, at the Muleshoe Country Club, with 24 attending.

Association president Marlene Martin opened the meeting with a prayer, led by Sheryl Engelking. Sammy Hall and Ann McElroy were the special guests attending.

Treene Matthews called the roll and read the minutes. Our March birthdays were Engleking, Lynn Campbell, Claudine Elliott and Judy Wilbanks.

Pat Kirk gave the treasurer's report.

Under new business, we have eight lockers available. The signup list can be found in the ladies' locker room. Hostesses for March are Elliott, Martin and Melody Hettinga.

Due to the 18-hole regulation, we cannot host a Ladies' West Texas Tournament. Therefore, the association decided to sponsor a Tee box.

Engelking gave the High Plains Tournament report. The first tournament will be held in Tullia on April 18. Muleshoe will be hosting the second tournament on May 9, the ladies' golf association and will be responsible for the breakfast. The Muleshoe Country Club will provide the noon meal.

Playday chairperson Judy Wilbanks awarded golf balls to Jeanetta Precurer and herself for the least number of putts on March 7.

On March 14, Helen Templeton and Kay Field were awarded gold balls for their T-shot on hole 5.

We were divided into three teams, with the winning team being composed of Precure, Templeton, Deborah Noble, Analita Haley and Pamela Miller.

Jenny Bamert had the most points among the Feb. 21 Shangphai players; Elliott won the middle of the road on Feb. 21; and Wilbanks won the first pat hand on March 7. Card players on March 21 were Bamert, Neats Foster, Hettinga and Martin.

Templeton drew Jan Fontanilla as the door prize winner.



With a score of 68 — Analita Haley, Deborah Noble, Helen Templeton and Jeanetta Precure. Pam Miller is not pictured.



## 'Night to Shine' continued...

Fine Arts students from Muleshoe, including the high school's art department performed and displayed their artwork and other talents during Monday's event.



## Senior Citizen News

By Laverne Winn

We had a nice surprise at the center Tuesday night for the dance. Six of our senior citizens from Parkview were our guests for the dance. They had a great time listening to the music and visiting with old friends. We are so pleased to have them.

We want to wish Pauletta a speedy recovery. We miss her and hope she is well soon.

We have the center decorated for Easter and it is beautiful. If you need somewhere to have coffee or tea, or just want to visit, we urge you senior citizens to come by the center.

Tuesday has always been our playday, but we have playday here every day. We invite you to come in and enjoy the fun and fellowship.

The senior citizens that have signed to go to Lubbock Saturday, please be at the center between 4-4:30 p.m. We will try to leave by 4:30.

We will go to Furr's for a bite to eat and then on to the Cactus Theater. We have several going so it should be

a fun time.

We are happy to have Phil Provence back with us after his successful hip surgery.

Our birthday party is Thursday, March 26. Pat and W. T. Watson will be entertaining us with their beautiful music.

Menus for April 2-6:

Monday, April 2 — Pork chops with sauce, scalloped potatoes, sweet pea salad, wheat roll, jello and fruit.

Tuesday, April 3 — Sweet and sour chicken, rice mixed vegetables, sala, wheat rolls and baked apples.

Wednesday, April 4 — Chicken-fried steak, gravy,

mashed potatoes, green beans, salad, wheat roll and carrot cake.

Thursday, April 5 — Baked pasta, pinto beans, tossed salad, cornbread and chocolate pudding.

Friday, April 6 — Fish or chicken strips, gravy, tator tots, hush puppies, coleslaw and fruit salad.

**What? You haven't entered me yet? Hurry!!!**



**Winner will receive a \$50 Savings Bond for being selected 2006's Cutest Baby!**

## The Muleshoe Journal's 13<sup>th</sup> Annual Cutest Baby Contest

This year's contestants will appear in the April 12 edition of the Muleshoe Journal. A panel of unbiased judges will pick the MOST ATTRACTIVE PICTURE to be the 2006 Cutest Baby. All baby pictures will be printed in this edition of the paper. Babies need not be born in this area. Journal employees and their families are not eligible to win.

Bring your favorite photo along with \$15 to the Muleshoe Journal office at 201 W. Ave. C, Monday-Friday between 8:00 a.m. and 5:00 p.m. or mail the adjacent coupon along with your child's photo and \$15 to Cutest Baby Contest, c/o Muleshoe Journal, P.O. Box 449, Muleshoe, Texas 79347. You may pick up your baby's picture during office hours after Monday, April 16, 2007. NOTE: Postage must be paid to return photos by mail.

Enter any child born in 2006 who you fell in love with at first sight - children, grandchildren, nieces, nephews, friends, etc.

Please provide phone number or address (it will not be published) so that we may contact you if we need additional information or clarification.

Baby's Name:

Date of Birth:

Weight at Birth:

Length at Birth:

Place of Birth:

Mom & Dad's Name:

Grandparent's Name:

Contact Info:

**ENTRY DEADLINE WEDS., APRIL 4 AT 5 PM**

**Bender**  
GM Certified USED VEHICLES

Hurry Offer Ends April 3!

Rates As Low As **2.9%** for 60 Months!

Plus The All New



Available on all 2002-2006 GM Certified Used Trucks \*



**Bender**

CHEVROLET CADILLAC  
AN AMERICAN REVOLUTION

WWW.BENDERCHEVYCAD.COM

2500 Mabry Drive, Clovis, NM • 505-763-4465

Se Habla Español

\*See dealer for details. Photos for illustration only. All vehicles subject to prior sale • TT&L: On Select Models, subject to lenders approval