

THE MULESHOE JOURNAL

Dedicated to the progress and development of the great Muleshoe country

Weather		
	High	Low
May 10	84	43
May 11	88	45
May 12	91	44
May 13	93	55
MOISTURE		
Total For Year		1.41
Total for May		0.0

VOL. 48, NO. 20

14 PAGES

Published every Thursday at Muleshoe, Bailey County, Texas - 79347

THURSDAY, MAY 14, 1970

Hospital, Bond Election Saturday

\$950,000 Issue

Membership Funds To Assist New Library Faces County Vote

Friends of the Library officials announced Tuesday noon that they were pleased "beyond expectations" with the interest and general cooperation of volunteer workers in this week's annual membership drive. As one "Friend" from the Three-Way area said "That

Record Absentee Ballots Cast

A record number of absentee ballots have been cast in the office of County Clerk Hazel Gilbreath on the upcoming hospital district and bond election this week.

A total of 103 persons had cast absentee ballots by the time absentee balloting had concluded at 5 p.m. on Tuesday, May 12. An additional five ballots were still in the mail to make a total of 108 absentee votes cast.

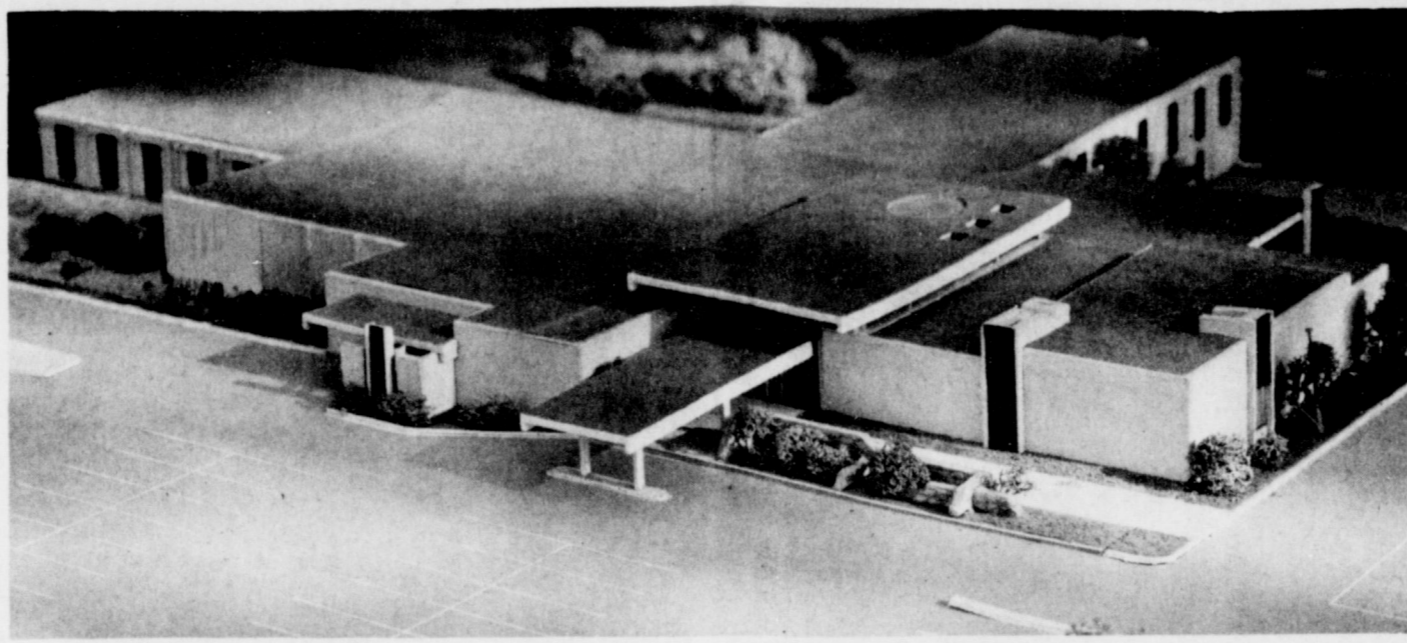
Mrs. Gilbreath said this was a record for a special election, being only surpassed by absentee ballots in general elections in past years.

bookmobile and your library certainly have aided all of us, especially my son, who obtained much help through the library services and went on to win his speech tournaments at State. . . ." (And this father took some membership cards with him to assist the drive!)

Indications are that the house-to-house, block-by-block residential drive in Muleshoe are ready for Thursday (today) when they will officially knock on their neighbors' doors. Some FOL volunteers have reported early in the week that their neighbors have contacted them for memberships already. Jay Harbin, membership chairman, said that anyone who missed this week may purchase their memberships, that is, donations which are tax deductible, at his Farm Bureau office at any time.

Also cooperating in the drive are the Muleshoe, Lazbuddie, Bula and Three-Way Schools. Informational notes are being sent home with each student this week so that families may

Cont'd on Page 2, Col. 1



PROPOSED HOSPITAL FOR BAILEY COUNTY--Pictured above is a model of the proposed hospital for Bailey County. Much interest is evident in the Hospital District and Bond Election which will be held Saturday, May 16. First on the ballot will be

the proposal to create the hospital district and the second item will be for passage of a \$950,000 bond issue to match Hill-Burton funds to construct the facility.

1969 Library Patrons Extended Thanks

As the membership drive for 1970 progresses, Muleshoe Library Board and Friends of the Library officials take this occasion to announce publicly their thanks of the many Friends of 1969, Board Chairman David Sudduth and FOL President Mrs. Larry Hall announced.

"Businesses and organizations who have been supporting patrons in the past year, as well as individuals too numerous to name here, have been loyal and needed Friends of the Library," they continued.

Muleshoe Jaycees, for the \$150 contribution; the Three-Way Lions Club and the Muleshoe Study Club, for their \$100 contributions.

Business and civic organizations who supported the lib-

Cont'd on Page 2, Col. 4

Questions On Hospital Vote

Q. Many times, we poor taxpayers have had emergencies like the ones being sold all over your front page. And many times, we have had to go somewhere else for treatment, because if you're sick and don't have the money it's no good to go to the hospital here in town. Cause they won't admit you (as the poor taxpayers). Unless you show them the money. What we would like to know is, should we get sick and be without money at the time we are taken to the hospital, and if the new hospital is built, are we going to get attended to, or not? We doubt if this will get printed, for the Muleshoe Journal has been backing the new hospital all the way, but everything has two sides, even if all the rich and well to do people here in Muleshoe, Texas support this issue, what of the poor, what of the people that have been turned away when in medical need?

A. Back when the hospitals were privately owned, they had a legal right to refuse admission to any patient. This was done in some instances. The present hospital is organized as a non-profit corporation, and may not refuse admission to anyone who had any type of emergency need. Since September 1, 1968, this hospital has not refused admission to anyone in these circumstances.

Q. Is Hill-Burton Foundation in any way connected with the Federal Government?

A. Yes.

Q. Is it distributed through state control, or controlled by the individual state?

A. Funds to state, distributed thru state health departments.

Q. Why hasn't the public been informed of the "disastrous condition" prevailing in our hospital as officials became aware of the pending 'demise' of the present hospital?

A. We refer to September, 1967, when a series of stories

Cont'd on Page 2, Col. 6

Boys Involved In Dog Burning Tried Monday

Two 16 year old Muleshoe boys were sentenced to the Boy's Training School at Gatesville Monday afternoon in juvenile court. The boys were charged with "wilfully injuring the personal property of others" and "burning the personal property of others" following an incident on Monday, April 27.

The two boys allegedly poured gasoline over a large German Shepherd dog on West American Blvd. and set the dog afire.

Country Club Dining Room In Operation

All facilities are completed in the new addition to the Muleshoe Country Club and the dining room is now open under supervision of Mr. and Mrs. Alton Milstead of Farwell.

The board of directors met Tuesday night and will announce grand opening plans in the Sunday edition of The Journal. Muleshoe Country Club's new golf pro, Pearl Ward and Mrs. Pearl Ward, have arrived from their former post in Lubbock and the new assistant pro, Romi Carpenter, formerly of Lubbock has also arrived at his new post.

On Saturday, May 16, the Country Club swimming pool will open. Hours are from 1 p.m.-7 p.m. There will be a lifeguard on duty.

Postal Increase Asked Of Congress

The Post Office Department today proposed parcel post and catalog rate increases totaling \$ 123 million to help meet the added costs of pay increases in recent years, according to local Postmaster, Spencer Beavers.

The proposed increases--which average 15.4 percent for parcels and 6 percent for catalogs -- must be approved by the Interstate Commerce Commission before adoption by the Department.

Facing a \$2.5 billion postal revenue deficiency in the coming fiscal year, the Administration recently asked the Congress to increase postage rates for first- and third-class mail 33 percent and second-class by 48 percent.

Higher parcel post rates (zone-rate fourth-class mail) are also needed to comply with legal requirements that these services pay at least 96 percent of their fully allocated costs.

No increase has been asked for educational materials (packages containing books and phonograph records.)

Under the proposals, minimum postage for parcels mailed for local delivery would be increased from 50 cents to 60 cents.

For non-local deliveries, the minimum per parcel rate would go from 60 cents to 65 cents. This 5-cent increase would apply on 2-pound parcels going to non-local zones one and two (distances up to 150 miles).

Some typical proposed rate hikes are as follows: a 5-pound parcel from Chicago to New York or other Seaboard cities in the Middle Atlantic states from \$1.05 to \$1.20; and 8-pound parcel going from East Coast cities to West Coast points (zone eight), from \$2.15 to \$2.60; an 11-pound parcel for local delivery, from 65 cents to 80 cents.

The Department estimates that for 46 percent of its parcel post volume, the increases would amount to five or 10 cents per package.

Catalog rates will be increased a flat two cents per piece, both for individual-piece and bulk-rate mailing.

Cont'd on Page 2, Col. 2

Band Concert To End Year This Thursday

Thursday, May 14, will be the last opportunity to hear this years Muleshoe High School Band. The 82 member group has just returned from representing the Muleshoe area at the Six Flags Band Festival in Dallas. The performance will be in the Muleshoe High School auditorium at 8 p.m.

They received a II division there while competing with 15 other AAA bands. To qualify for this contest, each band had to make a I division in the UIL Concert Contest.

"Having just completed performances in Lubbock and Dallas, the band is looking forward to playing for the hometown audience," said bandmaster Jim Harvey. "The support for these students has been excellent and this concert is their appreciation."

The program will include the three numbers which were used in contests this year, along with three selections from "The Sound of Music," "Cherish" and a medley of Civil War

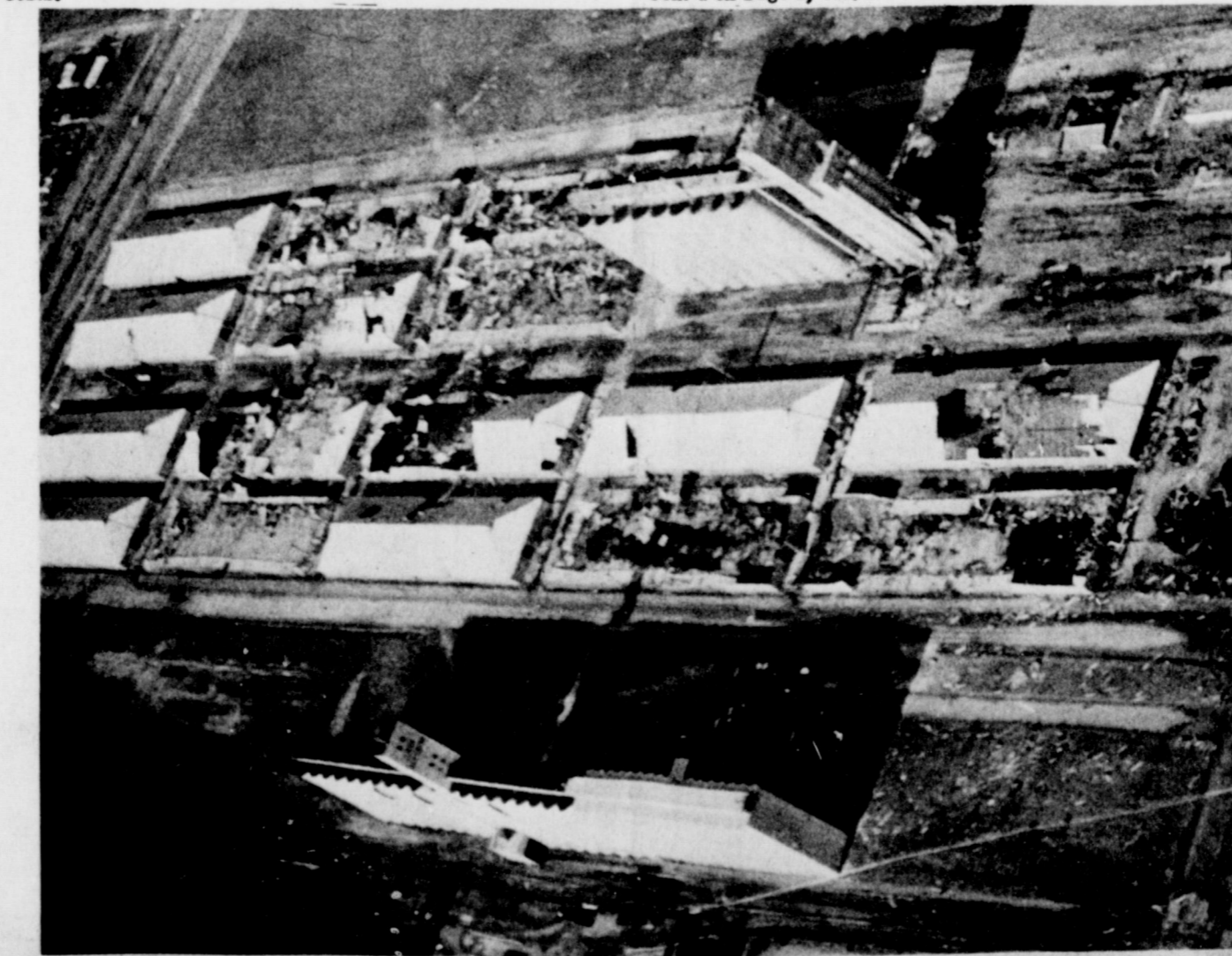
Cont'd on Page 2, Col. 3

Student Council Sets Reception For Miss Paul

Retiring teacher, Miss Greta Paul, of Muleshoe High School, will be honored by the Muleshoe High School 1969-1970 Student Council at a reception Sunday, May 17.

Betty Harbin, of the council, said the reception will be held at 2 p.m. in the Muleshoe High School cafeteria.

Expected to attend the reception are present and former students and community.



LUBBOCK DEVASTATED BY TORNADO--Just a small portion of the vast area of destruction left in the wake of a tornado path in Lubbock Monday night is pictured here. Scattered remains of one of the large elevator complexes is shown here. The tornado killed more than 20 people, injured hundreds. Ambulances, police doctors, nurses and civil defense workers poured into the paralyzed city throughout the night from Texas and Eastern

New Mexico to help. With hospitals overflowing, hundreds of injured persons were taken to churches until they could be seen by doctors and nurses. Hospitals could only treat the more seriously injured as the 9:46 p.m. tornado left strewn debris and wreckage from Texas Tech University in West Lubbock to the airport in northeast Lubbock.

--Journal Photo

Vote At Muleshoe City Hall, Needmore Community Building

On September 1, 1968, a group of interested citizens met together and formed a non-profit group in order to merge the two hospitals in Muleshoe. At the time, Green Memorial Hospital and West Plains Hospital were both in operation. It was felt by the group that a merger was necessary in

Burrell Black Speaks Out On Hospitals

Burrell Black, 40 year Bailey County resident, gave his thoughts and ideas on the upcoming Hospital District and bond election which will be held Saturday, May 16.

The longtime Bailey County farmer said:

"We think our taxes are too high when we go to pay them, and we might not get more doctors with this hospital.

"But, we all know for sure we cannot get doctors if we don't have a good hospital.

"In my opinion, we are going to pay a lot more without the hospital than we will with it.

"If this bond election fails, the property, both farms and city, will depreciate enough to cost a lot more than the tax will be.

"Why would any hands with young families want to stay here?"

"I don't know what price to put on lives. . . do you? Mine isn't for sale!"

"I don't know what price to put on lives. . . do you? Mine isn't for sale!"

"Having just completed performances in Lubbock and Dallas, the band is looking forward to playing for the hometown audience," said bandmaster Jim Harvey. "The support for these students has been excellent and this concert is their appreciation."

The program will include the three numbers which were used in contests this year, along with three selections from "The Sound of Music," "Cherish" and a medley of Civil War

Cont'd on Page 2, Col. 3

Controversy Grows In Hospital Issue

Much interest and much controversy is in evidence in the upcoming Hospital District and Bond election.

One spokesman for an opposition group, Richard E. Black, of the Bula community commented, "This is Muleshoe's problem, we feel that it

Cont'd on Page 2, Col. 7

Private First Grade Possible For Muleshoe

Because of many inquiries concerning the possibility of instituting a private first grade for Muleshoe youth, Rev. Bill Swope of the Muleshoe Children's Center has announced that a survey will be taken in the area to check on the need for such a project.

The first grade would be state accredited, and would be for those youngsters who will be six years of age after September 1 and before January 1 of the following year.

Such youth are ineligible to attend public school, some missing the enrollment by only a few days or weeks.

If it is determined that such a need exists, a private first grade will be instituted, and students successfully completing the private first grade will be eligible to enter the second grade in public school the following year.

Rev. Swope said the school would be open to all students with no regard to religion, race or national origin.

The minister commented that many children, especially those who have had some nursery school or kindergarten training and will be six years of age prior to January 1 are actually ready to begin school.

For further information, call 272-3329.

Clubs, Groups Endorsing Hospital Issue

Because of the great interest created within Bailey County concerning the Hospital District and Bond election which will be held Saturday, May 16, several groups and organizations have endorsed the election.

Passing resolutions endorsing the proposed district and bond election includes the following organizations: Muleshoe Lions Club; Muleshoe Jaycees; Muleshoe City Council; Businessmen's Activities Committee of the Chamber of Commerce; Ladies' Auxiliary of the Chamber of Commerce; the Bailey County Ministerial Alliance and the Muleshoe Area Industrial Foundation.

THE MULESHOE JOURNAL

Dedicated to the progress and development of the great Muleshoe country

Weather

	High	Low
May 10	84	43
May 11	88	45
May 12	91	44
May 13	93	55
MOISTURE		
Total For Year		1.41
Total for May		0.0

VOL. 48, NO. 20

14 PAGES

Published every Thursday at Muleshoe, Bailey County, Texas — 79347

THURSDAY, MAY 14, 1970

Hospital, Bond Election Saturday

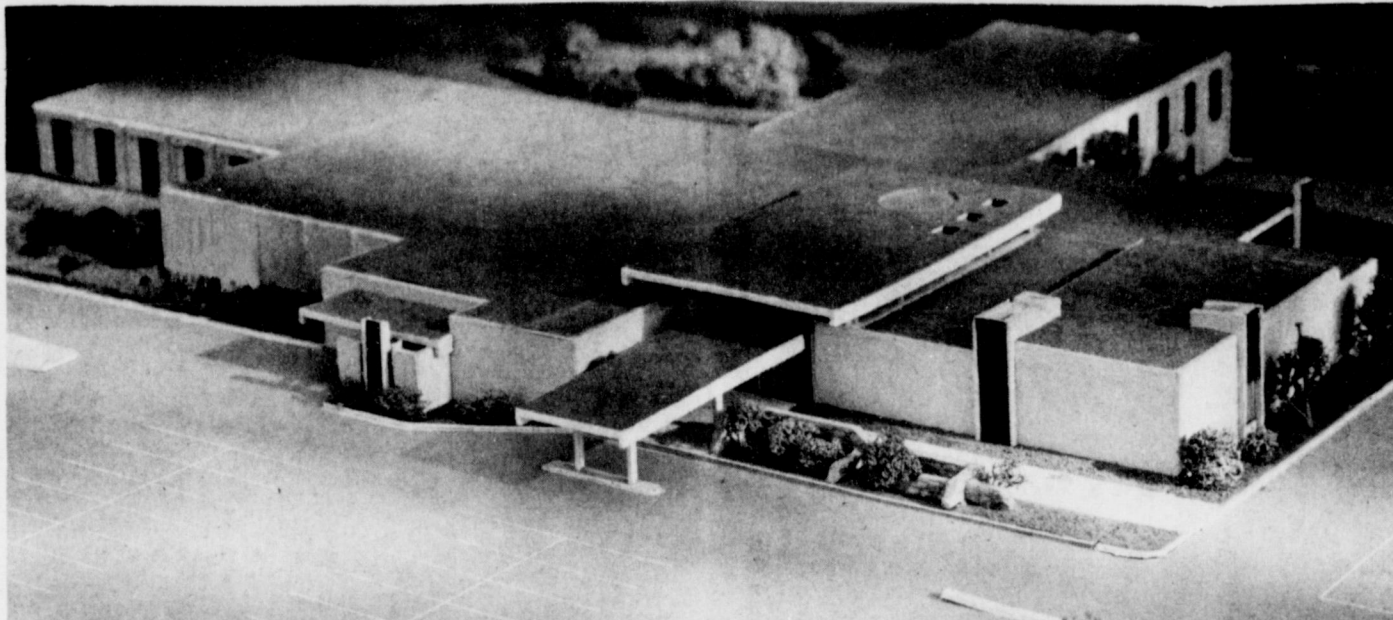
Membership Funds To Assist New Library

\$950,000 Issue

Faces County Vote

Friends of the Library officials announced Tuesday noon that they were pleased "beyond expectations" with the interest and general cooperation of volunteer workers in this week's annual membership drive. As one "Friend" from the Three-Way area said "That

bookmobile and your library certainly have aided all of us, especially my son, who obtained much help through the library services and went on to win his speech tournaments at State. . ." (And this father took some membership cards with him to assist the drive!) Indications are that the house-to-house, block-by-block residential drive in Muleshoe are ready for Thursday (today) when they will officially knock on their neighbor's doors. Some FOL volunteers have reported early in the week that their neighbors have contacted them for memberships already. Jay Harbin, membership chairman, said that anyone who missed this week may purchase their memberships, that is, donations which are tax deductible, at his Farm Bureau office at any time.



PROPOSED HOSPITAL FOR BAILEY COUNTY--Pictured above is a model of the proposed hospital for Bailey County. Much interest is evident in the Hospital District and Bond Election which will be held Saturday, May 16. First on the ballot will be

the proposal to create the hospital district and the second item will be for passage of a \$950,000 bond issue to match will Hill-Burton funds to construct the facility.

Record Absentee Ballots Cast

A record number of absentee ballots have been cast in the office of County Clerk Hazel Gilbreath on the upcoming hospital district and bond election this week.

A total of 103 persons had cast absentee ballots by the time absentee balloting had concluded at 5 p.m. on Tuesday, May 12. An additional five ballots were still in the mail to make a total of 108 absentee votes cast.

Mrs. Gilbreath said this was a record for a special election, being only surpassed by absentee ballots in general elections in past years.

1969 Library Patrons Extended Thanks

As the membership drive for 1970 progresses, Muleshoe Library Board and Friends of the Library officials take this occasion to announce publicly their thanks of the many Friends of 1969, Board Chairman David Sudduth and FOL President Mrs. Larry Hall announced, "Businesses and organizations who have been supporting patrons in the past year, as well as individuals too numerous to name here, have been loyal and needed Friends of the Library," they continued.

Muleshoe Jaycees, for the \$150 contribution; the Three-Way Lions Club and the Muleshoe Study Club, for their \$100 contributions.

Business and civic organizations who supported the library. Cont'd on Page 2, Col. 4

Questions On Hospital Vote

Q. Many times, we poor taxpayers have had emergencies like the ones being sold all over your front page. And many times, we have had to go somewhere else for treatment, because if you're sick and don't have the money it's no good to go to the hospital here in town. Cause they won't admit you (us the poor taxpayers). Unless you show them the money. What we would like to know is, should we get sick and be without money at the time we are taken to the hospital, and if the new hospital is built, are we going to get attended to, or not? We doubt if this will get printed, for the Muleshoe Journal has been backing the new hospital all the way, but everything has two sides, even if all the rich and well to do people here in Muleshoe, Texas support this issue, what of the poor, what of the people that have been turned away when in medical need?

A. Back when the hospitals were privately owned, they had a legal right to refuse admission to any patient. This was done in some instances. The present hospital is organized as a non-profit corporation, and may not refuse admission to anyone who had any type of emergency need. Since September 1, 1968, this hospital has not refused admission to anyone in these circumstances.

Q. Is Hill-Burton Foundation in any way connected with the Federal Government?

A. Yes.

Q. Is it distributed through state control, or controlled by the individual state?

A. Funds to state, distributed thru state health departments.

Q. Why hasn't the public been informed of the "disastrous condition" prevailing in our hospital as officials became aware of the pending 'demise' of the present hospital?

A. We refer to September, 1967, when a series of stories Cont'd on Page 2, Col. 6

Boys Involved In Dog Burning Tried Monday

Two 16 year old Muleshoe boys were sentenced to the Boy's Training School at Gatesville Monday afternoon in juvenile court. The boys were charged with "willfully injuring the personal property of others" and "burning the personal property of others" following an incident on Monday, April 27.

The two boys allegedly poured gasoline over a large German Shepherd dog on West American Blvd. and set the dog afire. Investigating the dog burning incident were officers of the city and county police and the fire department.

County Judge Don Cihak tried the youths.

Country Club Dining Room In Operation

All facilities are completed in the new addition to the Muleshoe Country Club and the dining room is now open under supervision of Mr. and Mrs. Alton Milstead of Farwell.

The board of directors met Tuesday night and will announce grand opening plans in the Sunday edition of The Journal.

Muleshoe Country Club's new golf pro, Pearl Ward and Mrs. Pearl Ward, have arrived from their former post in Lubbock and the new assistant pro, Romi Carpenter, formerly of Lubbock has also arrived at his new post.

On Saturday, May 16, the Country Club swimming pool will open. Hours are from 1 p.m.-7 p.m. There will be a lifeguard on duty.

Postal Increase Asked Of Congress

The Post Office Department today proposed parcel post and catalog rate increases totaling \$ 123 million to help meet the added costs of pay increases in recent years, according to local Postmaster, Spencer Beavers.

The proposed increases--which average 15.4 percent for parcels and 6 percent for catalogs -- must be approved by the Interstate Commerce Commission before adoption by the Department.

Facing a \$2.5 billion postal revenue deficiency in the coming fiscal year, the Administration recently asked the Congress to increase postage rates for first- and third-class mail 33 percent and second-class by 48 percent.

Higher parcel post rates (zone-rate fourth-class mail) are also needed to comply with legal requirements that these services pay at least 96 percent of their fully allocated costs.

No increase has been asked for educational materials (packages containing books and phonograph records.)

Under the proposals, minimum postage for parcels mailed for local delivery would be increased from 50 cents to 60 cents.

Student Council Sets Reception For Miss Paul

Retiring teacher, Miss Greta Paul, of Muleshoe High School, will be honored by the Muleshoe High School 1969-1970 Student Council at a reception Sunday, May 17.

Betty Harbin, of the council, said the reception will be held at 2 p.m. in the Muleshoe High School cafeteria.

Expected to attend the reception are present and former students and community.

For non-local deliveries, the minimum per parcel rate would go from 60 cents to 65 cents. This 5-cent increase would apply on 2-pound parcels going to non-local zones one and two (distances up to 150 miles).

Some typical proposed rate hikes are as follows: a 5-pound parcel from Chicago to New York or other Seaboard cities in the Middle Atlantic states from \$1.05 to \$1.20; and 8-pound parcel going from East Coast cities to West Coast points (zone eight), from \$2.15 to \$2.60; an 11-pound parcel for local delivery, from 65 cents to 80 cents.

The Department estimates that for 46 percent of its parcel post volume, the increases would amount to five or 10 cents per package.

Catalog rates will be increased a flat two cents per piece, both for individual-piece and bulk-rate mailing. Cont'd on Page 2, Col. 2

Band Concert To End Year This Thursday

Thursday, May 14, will be the last opportunity to hear this years Muleshoe High School Band. The 82 member group has just returned from representing the Muleshoe area at the Six Flags Band Festival in Dallas. The performance will be in the Muleshoe High School auditorium at 8 p.m.

They received a II division there while competing with 15 other AAA bands. To qualify for this contest, each band had to make a I division in the UIL Concert Contest.

"Having just completed performances in Lubbock and Dallas, the band is looking forward to playing for the hometown audience," said bandmaster Jim Harvey. "The support for these students has been excellent and this concert is the students' way of showing their appreciation."

The program will include the three numbers which were used in contests this year, along with three selections from "The Sound of Music," "Cherish" and a medley of Civil War Cont'd on Page 2, Col. 3

Vote At Muleshoe City Hall, Needmore Community Building

On September 1, 1968, a group of interested citizens met together and formed a non-profit group in order to merge the two hospitals in Muleshoe. At the time, Green Memorial Hospital and West Plains Hospital were both in operation.

It was felt by the group that a merger was necessary in order to keep a hospital open to serve the Muleshoe and trade area around Muleshoe.

Burrell Black Speaks Out On Hospitals

Burrell Black, 40 year Bailey County resident, gave his thoughts and ideas on the upcoming Hospital District and bond election which will be held Saturday, May 16.

"We think our taxes are too high when we go to pay them, and we might not get more doctors with this hospital."

"But, we all know for sure we cannot get doctors if we don't have a good hospital."

"In my opinion, we are going to pay a lot more without the hospital than we will with it."

"If this bond election fails, the property, both farms and city, will depreciate enough to cost a lot more than the tax will be."

"Why would any hands with young families want to stay here?"

"I don't know what price to put on lives. . . do you? Mine isn't for sale!"

They issued notes and since that time have used profits from the Muleshoe Nursing Home and the pharmacy in the hospital to pay the notes as they become due.

At the time of the merger, which closed Green Memorial Hospital as a hospital, and left West Plains Hospital open to serve the public, Muleshoe was in drastic straits concerning hospitals and doctors, according to a spokesman for the hospital board.

Green Memorial Hospital did not qualify for federal programs because of the structure of the building and West Plains Hospital was down to one doctor. Owners of West Plains Hospital were Dr. B. O. McDaniel, Eddie Faust and the Birdsong Estate, while Green Memorial Hospital was owned by Dr. W. M. Dean, Dr. B. E. Sanderlin, Roy Kelley and Marshall Cook.

Since the one hospital has been in operation, it is presently operating on marginal approval for federal government health programs, said the hospital spokesman.

The present hospital officials have had numerous requests from federal inspectors for improvements to the present hospital in order to keep obtaining federal funds. Cont'd on Page 2, Col. 8

Controversy Grows In Hospital Issue

Much interest and much controversy is in evidence in the upcoming Hospital District and Bond election.

One spokesman for an opposition group, Richard E. Black, of the Bula community commented, "This is Muleshoe's problem, we feel that if

Muleshoe wants a hospital, they should solve it, it is not for Bailey County to solve."

"One-third of the county should not be asked to help pay for a hospital they would never use. We are not against a hospital in Muleshoe, but we are against paying for it," he continued.

Private First Grade Possible For Muleshoe

Because of many inquiries concerning the possibility of instituting a private first grade for Muleshoe youth, Rev. Bill Swope of the Muleshoe Children's Center has announced that a survey will be taken in the area to check on the need for such a project.

The first grade would be state accredited, and would be for those youngsters who will be six years of age after September 1 and before January 1 of the following year.

Such youth are ineligible to attend public school, some missing the enrollment by only a few days or weeks.

If it is determined that such a need exists, a private first grade will be instituted, and students successfully completing the private first grade will be eligible to enter the second grade in public school the following year.

Rev. Swope said the school would be open to all students with no regard to religion, race or national origin.

The minister commented that many children, especially those who have had some nursery school or kindergarten training and will be six years of age prior to January 1 are actually ready to begin school. For further information, call 272-3329. --Journal Photo

"Although Bula was asked to pay their share of taxes, they were not represented on the Hospital District Board."

"Most people from Bula go to a hospital in Littlefield and Maple and Enochs people go to a hospital in Morton," said the spokesman.

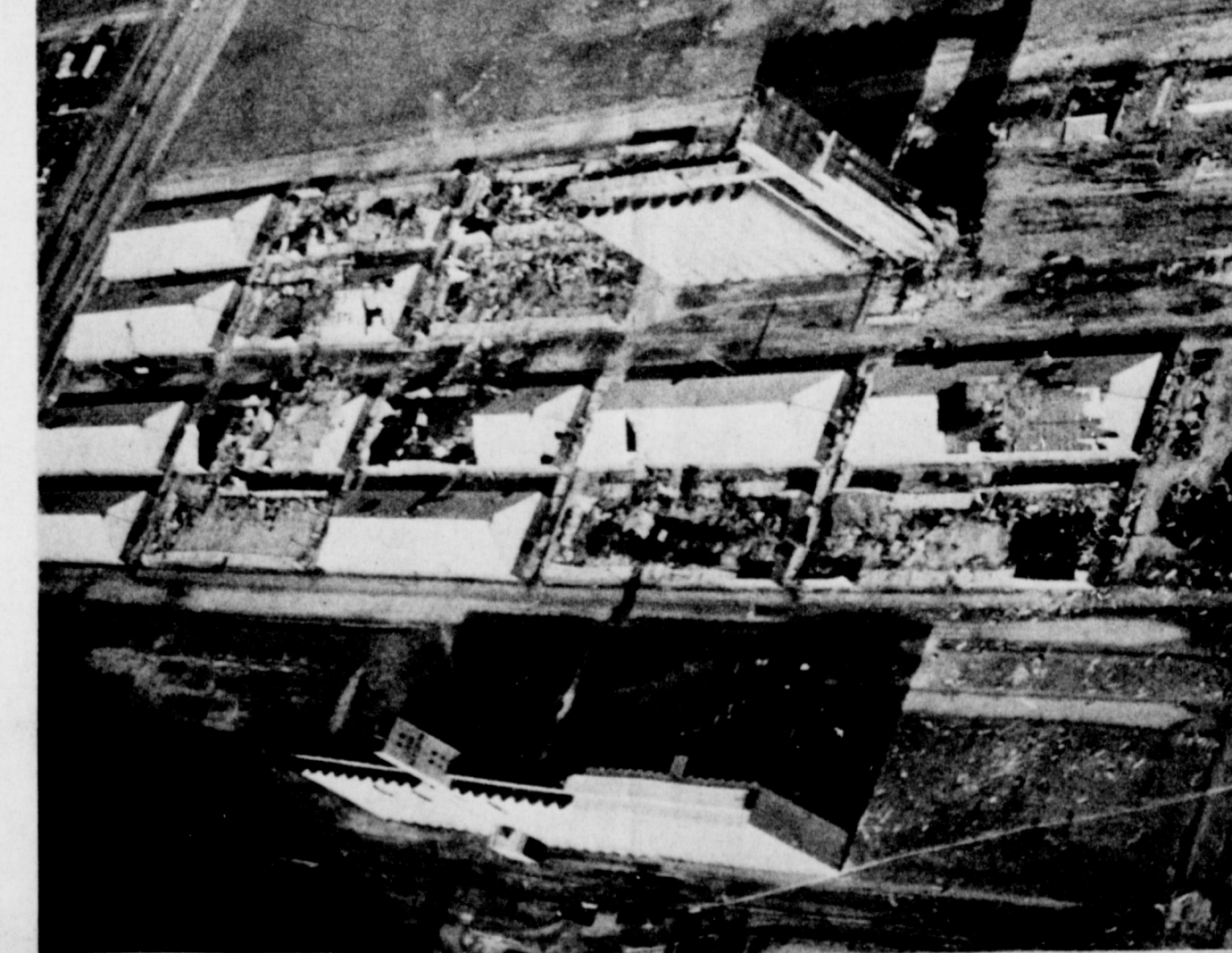
"Our main concern is fairness, we feel that we have been mistreated in the southern area of the county. We don't see why we should be required to help pay for a hospital district through taxes due to our geographical location."

Cont'd on Page 2, Col. 7

Clubs, Groups Endorsing Hospital Issue

Because of the great interest created within Bailey County concerning the Hospital District and Bond election which will be held Saturday, May 16, several groups and organizations have endorsed the election.

Passing resolutions endorsing the proposed district and bond election includes the following organizations: Muleshoe Lions Club; Muleshoe Jaycees; Muleshoe City Council; Businessmen Activities Committee of the Chamber of Commerce; Ladies' Auxiliary of the Chamber of Commerce; the Bailey County Ministerial Alliance and the Muleshoe Area Industrial Foundation.



LUBBOCK DEVASTATED BY TORNADO--Just a small portion of the vast area of destruction left in the wake of a tornado path in Lubbock Monday night is pictured here. Scattered remains of one of the large elevator complexes is shown here. The tornado killed more than 20 people, injured hundreds. Ambulances, police doctors, nurses and civil defense workers poured into the paralyzed city throughout the night from Texas and Eastern

New Mexico to help. With hospitals overflowing, hundreds of injured persons were taken to churches until they could be seen by doctors and nurses. Hospitals could only treat the more seriously injured as the 9:46 p.m. tornado left strewn debris and wreckage from Texas Tech University in West Lubbock to the airport in northeast Lubbock.

--Journal Photo

Membership...

Cont'd From Page 1
show their support of both bookmobile and local library services.

The schools and area Friends are assisting with receiving monies from memberships. Membership cards-receipts will be given to students by FOL workers upon receipt of funds varying from \$1 on up. (It is pointed out that those who are able to contribute only 25 cents as a membership donation to library services will be awarded cards also. The interest is what is most important, officials pointed out.)

Area chairmen are working in Three-Way area; they are chaired by Mrs. Herbert Sower and Mrs. Buck Ragsdale. Friends area chairman in Bula is Marion McDaniel. Working with the Lazbuddie area are Mrs. Bill Brown and Mrs. Wayne Gilliland.

The Muleshoe business drive is being spearheaded by the Ministerial Alliance. The support of all persons wishing to acknowledge their interest in both the bookmobile and public library are asked to join FOL this year especially, Harbin stated. It is stressed that all 1970

funds will go into the new library building in Muleshoe which will house the four-county bookmobile services. The memberships will form an important memo to State Officials of Friends of Library current support in the area; that is why the drive this year is most important, Harbin said.

Postal...

Cont'd From Page 1
To compensate for the extra costs of hard-to-handle parcels, the Department is requesting a 75 - cents per-piece surcharge on parcels more than 36 inches long, or over 84 inches in combined length and girth. This would replace the 10-pound minimum charge now in effect for "balloon" parcels.

The proposal, published in today's Federal Register, invites interested persons to file written statements with the Department by May 25, and participate orally in an informal conference in Washington scheduled for June 1.

After consideration of the views submitted, the Department plans to submit its final proposals to the Interstate Commerce Commission in June for new higher rates.

The effective date of any increases would depend upon ICC action. If the Commission takes no action for 30 days, the proposals would be approved automatically.

However, ICC can elect to institute an investigation of the Department's proposal. In that event, that agency has 180 days from the June filing date to rule upon the Post Office Department petition. The law requires the class mail is breaking even (within four percent) or that he has requested the ICC to approve rate changes and other reformatations which would place the service on a self-sustaining basis.

Full schedules of the proposed rates are available to interested mailers for their consideration. These are subject to change and the final schedules submitted to ICC may reflect revisions.

Concert...

Cont'd From Page 1
Music. Three students, Melanie Precure, Debbie Schuster and Curtis Buhnman will perform a concert.

There will be no charge for this final performance for the 1969-1970 Muleshoe High School band.

Thanks...

Cont'd From Page 1
rary with donations ranging from \$25 or \$50 last year are again thanked for their interest and support of the library. They are:

Muleshoe State Bank, First National Bank of Muleshoe, Epsilon Sigma Alpha Sorority, Williams Brothers Office Supply, Bobo Insurance, Tri-County Savings and Loan Assn., Muleshoe Motor Company, Southwestern Public Service, Fry and Cox Brothers Implement, Cashway Grocery, Kappa Kappa Iota, American Association of University Women, Muleshoe Lions Club, Muleshoe Art Association, Bailey County Cooperative Electric Association, Sam Fox Distributor, James Glaze Insurance Co., Plains Auto Parts and Jayceettes.

The continued interest and support of these, and other, businesses and organizations as groups is a source of local library expansion, officials added in giving their thanks to the 1969 Library Patrons Groups.

It is impossible to enjoy idling thoroughly unless one has plenty of work to do. -Jerome K. Jerome.

Highway Construction John Gulley Slated For County

The Texas Highway Commission today approved development of 7.5 miles of Farm to Market Roads in Bailey County as part of the 1970 Texas Farm to Market Road Program. District Engineer Oscar L. Crain of the Texas Highway Department said the estimated cost of the work is \$345,000. Bailey, from New Mexico State Line, East to FM 1760, 7.5 miles, \$345,000-C; Cochran, from St. 214, 9.0 miles South of Lehman, East to FM 1780, 12.5 miles, \$282,000-C; Crosby, from FM 378, North of Lorenzo, East to US 62, 8.4 miles, \$270,000-C; Lubbock, from FM 2641, South to St. 116 and FM 2378, 4.7 miles, \$123,000-C and Swisher, FM 2301 from FM 1318, South to St. 86, 4.3 miles, \$79,100-C. Total -- 37.4 miles, \$1,099,100-C estimated cost.

The work will be under the supervision of Mr. Rhea Bradley, Supervising Resident Engineer, of Littlefield, Texas. Work authorized in this county is part of 543.1 miles of Texas Farm and Ranch to Market Roads earmarked for development in the new program. The program includes 144 projects in 109 counties. Estimated total cost of the program is \$22 million. New construction totals 377.6 miles, with an estimated cost of \$18.2 million. The remaining \$3.8 million represents additional financing on 165.5 miles of previously designated roads. The additional new mileage brings the designated Farm and Ranch to Market network in Texas to 39.8 thousand miles. This is 1 1/2 times the combined total of all State-maintained highways in the six New England states. Originally planned to help "get the farmer out of the mud," the network has enhanced the social and economic well-being of millions of rural Texans.

Hospital... Is Finalist For Intern

Cont'd From Page 1
ing federal funds under Medicare and Medicaid programs. In mid-summer in 1969 members of the Bailey County Commissioners Court named five persons from various areas of the county to serve on a temporary committee to explore the various possibilities of acquiring needed hospital facilities for the area. Named by the commissioners were Dr. Charles Lewis, Dr. B. Dillman, Don Harmon, Dr. Burel Smith, Mrs. Bernard Phelps, Mrs. J.G. Arm, Sam Dammron, Eddie Beene, and Freddie Parkman. After two years of checking various methods and numerous hospital facilities, the board members decided the only feasible route to acquire facilities for Bailey County would be hospital district.

Stressed throughout the many explanatory talks given in interested groups and clubs, was the fact that no federal funds may be used to remodel or reconstruct existing facilities. In fact, on the day a new hospital opens its doors for business, the doors of an existing hospital must close. The board members said the present hospital, West Plains Memorial Hospital, would be converted to a 100-bed nursing home. Funds from the nursing home would be used to pay off the notes presently due prior owners on the 1967 purchase and consolidation. It was noted that the present balance on the notes is \$380,000. This amount is being paid in monthly payments to the eight individuals who formerly owned West Plains Hospital and Green Memorial Hospital. After the notes are paid off to the prior owners, plans are to use the funds to pay on the hospital bond issue, with the possibility of reducing taxes in the future.

Controversy...

Cont'd From Page 1
"Five other hospitals are nearer people in the southern part of the county than is a hospital in Muleshoe," continued Black. He also said Muleshoe could not afford a hospital such as the hospital proposed in the election. Black suggested the hospital district board was moving too fast and not properly checking operation of other hospitals of the type proposed. The spokesman said the hospital could possibly lose \$118,080 per year if it is not used to full capacity and doubts that such an operation would prove to be successful. During a town hall type meeting Tuesday night, Dr. Charles Lewis, president of the Bailey County Hospital District Board, explained to a group of people, including more than 15 from southern Bailey County, why he felt a hospital district was needed. Numerous questions were asked by several persons who presently reside in southern Bailey County and alternate suggestions given for other routes. Dr. Lewis explained that all possible routes had been exhausted and why the board felt the hospital district was the only way open to the area for improvement in facilities.

Questions...

Cont'd From Page 1
began in the local paper telling of local hospital difficulties. Q. Why was the hospital board so secretive in past meetings? A. All meetings have been a matter of record. Numerous public meetings have been held in the county. It is unfortunate the attendance has been poor. Q. Who decides on the site of the hospital, equipment and other matters pertaining to a hospital under Hill-Burton grants? A. Hill-Burton approves prospective sites. The site must meet specifications, such as certain distance from highway, railroad, soil test and other. Q. In case of any emergency, be evacuated and we would have to extinguish the fire by cooling the liquid sulphur. The sulphur would release deadly fumes until it was cooled into a block form. "Several trucks weekly also go through Muleshoe on Highway 214 carrying the liquid sulphur. I don't know where they are going, but they are headed north." Fire Chief Ladd also said trains are moving through Muleshoe daily, transporting potentially dangerous insecticides and herbicides. They also move explosives and some radioactive materials. The same type of transportation through the city also includes trucks hauling the possibly dangerous materials. The radioactive materials are used in hospitals and in industry, he added, and although they are not dangerous in transit, they could become highly dangerous in the event of a wreck. Other equipment on standby use for the fire department members to use in removing or evacuating victims or possible victims from a danger area include six Scott Air Packs, which can be used for any purpose and 24 army-type masks for other use, including sulphur. "I am proud of the training utilized by the members of my department," concluded the fire chief. "They learn to fight fires, explosions, evacuation, civil defense, how to assist in tornadoes and other emergencies of any type."

Firemen Trained For Emergencies

"In case of any emergency," said Bailey County Volunteer Fire Department Fire Chief Earl Ladd, "my firemen are trained and prepared. This includes much of the necessary equipment needed in various emergencies. For instance, last year, 26 of the firemen received certificates for completing special schooling in radiological monitoring. Basically, this course covered detection of radiological materials if they have been released in the area."

He said the firemen received 10 kits, including necessary detection materials and instruction on how to operate the detectors and information and materials on evacuation of an area when necessary. Also included was a complete instructor's kit. One of the reasons to have such equipment in this area, continued the fire chief, is the fact that four sulphur trains a week travel through Muleshoe enroute to the Houston area.

He said the tank cars on the trains contain liquid sulphur, which is transported at 1,000-1,200 degrees from plants near Carlsbad, N.M. The chief commented that although the tank cars are not like to explode, there is a possibility the train will be wrecked and burn. "In that event, we would have to evacuate a large area because of the deadly fumes. Anyone downwind of the fumes would be evacuated and we would have to extinguish the fire by cooling the liquid sulphur. The sulphur would release deadly fumes until it was cooled into a block form."

"Several trucks weekly also go through Muleshoe on Highway 214 carrying the liquid sulphur. I don't know where they are going, but they are headed north."

Fire Chief Ladd also said trains are moving through Muleshoe daily, transporting potentially dangerous insecticides and herbicides. They also move explosives and some radioactive materials. The same type of transportation through the city also includes trucks hauling the possibly dangerous materials. The radioactive materials are used in hospitals and in industry, he added, and although they are not dangerous in transit, they could become highly dangerous in the event of a wreck. Other equipment on standby use for the fire department members to use in removing or evacuating victims or possible victims from a danger area include six Scott Air Packs, which can be used for any purpose and 24 army-type masks for other use, including sulphur.

"I am proud of the training utilized by the members of my department," concluded the fire chief. "They learn to fight fires, explosions, evacuation, civil defense, how to assist in tornadoes and other emergencies of any type."

MULESHOE JOURNAL

Established February 23, 1924
Published by Muleshoe Publishing Co., Inc.
Every Thursday at 304 W. Second, Box 440
Muleshoe, Texas, 79347
Second class postage paid at Muleshoe, Texas 79347

SUBSCRIPTIONS:
Zone 1-Bailey-Parmer-Cochran-Lamb counties: \$4.50 per year; \$1.50 per year by carrier.
With Sunday Bailey County Journal, both papers: \$5.50 per year; \$6.00 per year by carrier.
Zone 11-Out-of-Territory: \$4.50 per year; with Sunday Bailey County Journal, both papers, \$6.25 per year.
Monthly, by carrier-95¢; single copies-10¢
Advertising rate card on application

GIBSON'S DISCOUNT CENTER
WHERE YOU ALWAYS BUY THE BEST FOR LESS
MULESHOE, TEXAS
Open 9 AM To 8 PM MON. - SAT.
Specials Good Thru Sat.

Use Turf Magic Lawn Food with Chlordane
Once over your lawn with this double-duty lawn food does two big jobs for you. As it feeds grasses, it protects against soil insects that so frequently damage turf. Contains valuable high nitrogen organics - castor meal, blood meal, bone meal, cotton seed meal - combined with chelated iron and Chlordane. Really effective, and the effectiveness lasts and lasts.
50 lb. Bag \$2.77
\$4.50 Value

COOLER PADS For Air Conditioner
Air Conditioner PUMPS Model H-V-3 \$3.88
Sno-Wax Cooler Pads \$77.00
Asst. Sizes Your Choice

Round Bow Garden Rake \$3.00 Value \$1.67 ea. AHB14-4 1/2
Garden Hoe \$2.70 Value \$1.43 ea. AHG6
Long Handle SHOVEL \$3.00 Val. \$1.67 ea. Special
Versatile all-around garden aid. * Chops weeds, Cultivates, Makes furrows!

Heritage House TOMATO FOOD
Organic 5-10-15 formula used by Commercial Growers.
5 lb. box **73¢** ea. 1.19 Val.

100% Polyethylene 50 ft. COOLER TUBING **36¢**
Gold Crest BERMUDA GRASS SEED 1 Lb. Bag **67¢**
5 Lb. Bag **\$2.97**
Kentucky BLUEGRASS SEED 1 Lb. Bag **77¢**

VITA-HUME Bacterially Active Peat 2 Cu. Ft. Bag **87¢**
PEAT

Travel Aire PORTABLE COOLER \$20.97
Lawn Chair WEB KITS \$14.00 ea. Asst. Colors
Gibson's Special
CHARCOAL GRILL Buddy L #2880 \$15.97 \$24.95 Val.

Turf Magic AMONIUM SULPHATE 50 Lb. Bag \$1.37
SPRINKLER HOSE \$1.77
Green Light Liquid EDGER \$3.77
The easy way to kill grass & weeds. \$4.95 Value.....
EXERCISE WHEEL \$2.27

VINYL GARDEN HOSE \$1.27
8 Yr. Guarantee
Acme TANK SPRAYER 3 1/2 Gal. #030 \$7.97 \$14.25 Value

Collapsible Wire Mesh FISH BASKET \$1.73

Shakespeare PUSH BUTTON REEL \$8.47
NO. 1700
Gibson's Special Price
Shakespeare WONDERRODS \$8.77
DOUBLE-BILT FOR POWER!
\$18.95 Value #PBC-120
ZEBCO 202 America's Lowest-Priced Footproof Spinning Reel \$1.27
Stainless steel spinnerhead, nitrate hardened \$6.50 RETAIL
Thumb control button
Constant anti-reverse
75 yds. line

Willis CAT-FISH BAIT \$63
The Original Willis Channel

Gibson's GLASS ROD 5 1/2" #240 \$3.37

ZEBCO 33 America's Most Popular Fishing Reel \$8.88
Known the world over as the finest reel of its type. With Shim.

SAVINGS NOW
CHEVROLET

Bula News

Mrs. John Blackman
 Mrs. Blackman and Enoch Methodist churches were hosts Sunday morning annual charge conference, held at the Bula Methodist Church. Dr. Jordan, district superintendent, from Brownfield, presided and also brought the message Sunday morning. Sunday morning Jennifer Kirk, small daughter of Mr. and Mrs. Tom Kirk and Shelly Lynn Salyer, daughter of Mr. and Mrs. John Salyer were baptised. Lunch was served at the noon hour. The afternoon meeting began at 1:30. A large crowd was in attendance.
Mrs. John Gunter, music teacher at Bula school, presented her pupils in a recital Sunday afternoon at 3:00 o'clock in the school auditorium to a large audience.
 40 pupils took part in the recital. Preceding the program Mrs. Gunter introduced each of her pupils. To open the program the fifth and sixth grades sang "Smiles" and also "God Bless America" for the closing song.
 Mrs. Gunter teaches two full days a week at the Bula school and three days in her home. She has been teaching in the school for 22 years. Other than pupils at Bula she has students from Whiteface, Morton and Three Way.
 Sunday company for the C.L. Cannon were their children, Mr. and Mrs. R.E. Martin and daughter, Beverley of Lubbock, and Mr. and Mrs. Jimmy Cannon and children, Timmy and Janice of Bula.
Pam Layton and Diane Crume, students from Bula that attended the small school seminar at South Plains Junior College, Levelland were in the group of students that drove to Big Springs, Monday and toured the State Hospital. The group went by bus from Levelland and the tour was conducted by their professor.
J.W. Layton spent the weekend with his sister, Mrs. Dovie Long at Possum Kingdom and they attended the McAdams cemetery meeting Sunday.
Judy Snitker was host to a slumber party Friday night at her parents home, Mr. and Mrs. J.C. Snitker, honoring the Senior girls. For entertainment the group enjoyed seeing movies taken of the members of the senior class when they were first graders and also during their entire school years. The

group had lots of fun, and as usual lots of eating and not much sleep.
Raymond Teston visited Sunday with his daughter and family, Mr. and Mrs. Avon Rushing at Snyder.
 The community was grieved to hear of the death of D.T. Johnson of Littlefield, Mr. and Mrs. Johnson and daughter, Sue resided in the Bula community for several years before moving to Littlefield. Several friends of the community were in attendance for his funeral at the Littlefield Methodist Church, Tuesday.

Lazbuddie FHA News

by Debra Jennings
 Recently four girls attended the state FHA meetings in Austin. The girls were Johnee Seaton, Delayne Steinbock, Mary Longoria and Debbie Jennings. Mrs. Jessie Gilliland and Mrs. John L. Seaton also attended the meetings.
 Johnee and Delayne went on their state degrees while Mary and Debbie went on points attained during the year.
 They took the 7:10 a.m. flight to Austin. Upon their arrival they first settled in their rooms at the Terrace Motor Hotel and then they traveled downtown where the girls went shopping. That night Johnee, Delayne and Mrs. Gilliland attended the state degree practice.
 The next day they attended the first general session in the morning and the second general session in the afternoon.
 In the second general session the girls who earned their state degrees were honored. It was at this time Johnee and Delayne received their state degrees.
 The next day they attended the third general session. At this session was held the regular business meeting and then there was the installation of the officers for 1970-71.
 The girls then took the 5:00 p.m. flight back to Lubbock where they were met by their families.
 On Tuesday, May 5 the Lazbuddie FHA held a Tasty Tea and Style Show in the cafeteria. Several different new dishes which the girls made were served. Many girls modeled dresses and pants they had made in Home Economics or for Home Experiences.

Compare these Prices

Golden Ripe BANANAS lb. **10¢**
RADISHES Garden Fresh Bunch 2 for **15¢**
AVOCADOS Extra Large Each **19¢**
APPLES Extra Fancy Washinton Delicious Yellow Banana lb. **19¢**
SQUASH lb. **15¢**

Libby's Cream Style CORN #303 Can
5 FOR \$1
CHUCK FULL of FLAVOR CHUCK ROAST
 Swift's Premium Proten Beef **69¢ lb.**
COCA COLA 8 Bil. Cn. 16 oz. **69¢ Plus Deposit**
Kimbell DETERGENT Giant Size **69¢**

A WONDERLAND OF FROZEN FOODS!
 Family Size Banquet Apple, cherry, Peach
FRUIT PIES.....3 for \$1
 6 oz. Pkg. Sea Pak Breaded
OYSTERS.....69¢
 9 oz. Pkg. Keith's Cut
GREEN BEANS.....19¢
 12 oz. Welch's
GRAPE JUICE.....45¢

BACON Sunray's Sugar Cured Sliced 2 lb Pkg. **\$1.59**
SAUSAGE Jimmy Dean's Pure Pork Hot or Mild 2 lb. Bag **\$1.59**
FRYER PARTS
 Market Cut Gold Nugget "USDA" Grade A
WISHBONES.....lb. 79¢
BREASTS.....lb. 69¢
DRUMSTICKS.....lb. 59¢
THIGHS.....lb. 59¢
WINGS.....lb. 19¢
BACKS & NECKS.....lb. 10¢

ARM ROAST Swift's Premium Proten Beef lb. **69¢**
CLUB STEAKS lb. **98¢**
FISH FILLETS Booth's Precooked lb. **69¢**

10 oz. Box Sunshine Lemon or Cherry COOKIES.....	45¢	2 lb. Tin Kimbell's All Grinds COFFEE.....	\$1.78
40 oz. King Size Top-Job HOUSEHOLD CLEANER.....	79¢	18 oz. Glass KRAFT GRAPE JELLY.....	35¢
Qt. Size LIQUID PLUMER.....	79¢	12 oz. Can Kimbell's LUNCHEON MEAT.....	59¢
Giant Size Spic & Span FLOOR & WALL CLEANER.....	89¢	No. 1 Tall Can Kimbell's DOG FOOD.....	6 for 49¢
1 lb. Box Nestle's QUIK CHOCOLATE.....	45¢	1 lb. Pkg. Gold N Korn OLEO.....	29¢
6 oz. Bag Hershey's CHOCOLATE CHIPS.....	29¢	1 Qt. Jar Heinz Hamburger SLICED DILLS.....	49¢
4 Roll Pkg. Nothern BATHROOM TISSUE.....	49¢	15 1/4 oz. Heinz 57 STEAK SAUCE.....	73¢
12" X 125" Roll HANDI WRAP.....	35¢	5 oz. Heinz WORCHESTERSHIRE SAUCE.....	39¢
4 3/8 oz. Box Jello 1-2-3- DESSERT MIX.....	25¢	16 oz. Jar Kimbell's Pure SALAD MUSTARD.....	25¢
1 lb. Tin Kimbell's All Grinds COFFEE.....	89¢		

CHEVROLET
COMPLETE FRONT END SERVICE

Ray Griffiths
 has switched to Asgrow
PURE SINGLE CROSS grain sorghum

Ask him why

—he knows which Asgrow pure single cross is right for you.

Pure single cross grain sorghums are available from Asgrow. Double TX is the one developed for growing conditions in this area. Double TX combines 5-ton yield capacity with seed purity that's been proven in the world's most critical market. Reserve this pure single cross now for minimum outcross problems. Supplies are limited.

Ray Griffiths & Sons
 Give Ray A Call
 272-4586
 121 W. American Blvd.

GUNN BROS. STAMPS DOUBLE EVERY WEDNESDAY

White's CASHWAY
 We Reserve The Right To Limit Quantities

Listen to MULETRAIN over KMUL 10:15 a.m. Sponsored by WHITE'S CASHWAY

BISCUITS
 8 oz. Can Kimbell's "Oven Ready"
5¢

WE, THE UNDERSIGNED, HEREBY ENDORSE AND RECOMMEND THE BAILEY COUNTY HOSPITAL DISTRICT AND HOSPITAL BOND ISSUE!

Tom Jinks
Ron Upton
Ben Bickel
Bob Badger
D. Harbin
Doris Brown
Earl Harris
Jim Morgan
W.M. Pool II
Curtis Smith
Jim Jennings
Tommy Black
Jerry Hutton
Don Harmon
Jan Stevenson
Curtis Walker
Mae Provence
Betty Jennings
John W. Smith
Gaye Hawkins
Donald T. May
Elizabeth Black
Bobby Newman
Zona Gatewood
Joyce Albertson
Roger Albertson
Wanda Gramling
Thelma Weaver
Mrs. Eva J. Smith
Wayland Ethridge
Joe L. Smallwood
Robert Blackwood
Cozette Blackwood
Mrs. Mary Mendez
Martha McCormick
Mrs. Lindal Murray
Mrs. Loleta Thomas
Bill Jim St. Clair
Mr. V.E. Maxwell
Mrs. V.E. Maxwell
Lauranette Mason
Maye Quesenberry
Mrs. Celia Lopez
Mrs. Roger Gorrell
Mrs. Kenneth Hicks
Mrs. Sherman Inman
Florinda F. Davolos
Mrs. J.O. Mayberry
Sandy Turner
Janie Moraw
Faye Poynor
Bob Stovall
Clay Feagan
E.H. Gatlin
Norma Jo Prather
Mary B. Obenhaus
Connie Hedgecoke
Owetha Finley
Earl Peterson
Lela Allison
Jess P. Winn
Ruby Surratt
Ben Ingham
Kenneth W. Brazell
Albert L. Field
Dollie Sanders
Charles Lenau

Pat Bobo
Max King
Jo Wood
C.F. Jones
J.A. Mills
Pete Guinn
Homer Long
Leona Evans
Bill Kinard
F.L. Snyder
Aurora Mata
J.W. Holmes
Edd Edmiston
R.A. Bradley
W.T. Millen
James Morris
Robert Hooten
Jerrell Otwell
R.B. Chappell
Howard Elliott
Frank H. Ellis
W.M. Pool, Jr.
Ruth McCarty
Gene Caldwell
J.C. Gatewood
Vernon Puckett
Sam Damron
Wanda Harmon
W.H. Knowlton
Neal B. Dillman
Lois Washington
Claude D. Holmes
Mrs. R.A. Bradley
George Washington
Mrs. Robert Hooten
Mrs. Neal B. Dillman
Mrs. Bob Hardaway
Mrs. Bernard Phelps
Mrs. Manuel Balderas
Mrs. D.O. Burelsmith
Dorothy Beddingfield
Christina Campbell
Mrs. Josefina M. Carreon
Mrs. Sherman Sweatman
P.Q. Stickney
Edwina Field
Buck Creamer
Gary Ratliff
Wayne Gore
J.M. Brown
Ben Yeager
Radie Burleson
D.L. Thompson
Colleen Woodard
Berta Combs
Polly Oliver
C.J. Feagley
Katherine Griffin
Jana Stevenson
Gene Paul Jarmon
Genovera De la Cruz
Julian Lenau
E.O. Baker

C. Stout
H. Moore
B.E. Loyd
Sue Nash
H.D. King
Don Rempe
Joe Yruegas
Billye Jones
Fred Mardis
Linda Swint
E.W. Locker.
Mary Moore
W.E. Goforth
Vietos Isaac
Elaine Davis
Tom B. Smith
Gladys Wilson
Mildred Neely
Rickie Bradley
Barbra Milburn
Lindal Murray
B.H. Gramling
Mrs. B.E. Loyd
Raleigh Mason
Leona Patterson
Jessica P. Hall
Delores Orozco
Father O'Leary
Mrs. H.D. King
Troy Actkinson
Sherman Inman
Mrs. E.O. Baker
Mrs. H.D. Hunter
Mrs. E.W. Locker
Manuel Balderas
Alex H. Williams
Jimmie Crawford
Joe Pat Wagnon
Wayne Hardage
Mrs. Lee R. Pool
Geneva Lemons
Darrell E. Turner
Elizabeth Barnett
Rev. Doug DuBose
Mrs. C.J. Feagley
Lonnie Dee Merriott
Mary Janice Brantley
Esther Marie Dillman
Mary Upton
Bobby Graves
Melba Phipps
Juanell Gable
Marlin Mills
Joe Blackwell
Imogene Tiller
Bernard Phelps
F.W. Jones
C.W. Weeks
Manuel Daniel
Letha Patterson
Loyce Killingsworth
Addie Mae Spence
Otis Epperly
Becky Miller
Gary Miller

L.B. Hall
Jim Cox
W.L. Speck
Joe Rempe
Tena Davis
Jack Rials
Keith Bray
Bill Taylor
C.E. Davis
Mac Brown
Joe Harbin
D.S. Vernon
Raul Garcia
Jimmy Luera
Leroy Maxwell
W.B. LeVeque
Paul Poynor
Tony Waters
Buck Johnson
Royce D. Clay
Paul D. Scott
Billie Ratliff
L.I. St. Clair
Pat Christian
M.A. Phillips
Ashley Davis
Roger Gorrell
Brian Maconi
Cleta Williams
Jack Dunham
Haney Poynor
Gordon Wilson
Charlotte Seay
Charles V. Isaac
Narcedalia Vega
Delia G. Garcia
Clarence Christian
Sallie M. Schuster
Ethel Garlington
David Hernandez
Frances Burrows
Mrs. Paul Poynor
Rudolph Moraw
Mrs. C.E. Davis
William Russell
Royce T. Turner
Socorro Cavazos
Mrs. Buck Creamer
Jane Rudd
Mary Mardis
Travis Bessire
Derrell Oliver
Judy Harvey
Billy Taylor
James L. Brown
Edith Henderson
Mabel Wolfe
Janis Phillips
Katherine Sanders
Wilma Smith
Lee Pool
Cleve Bland
E.G. Howard
C. Owen Jones
Sherri Russell
Kenneth Powell

Anthony's
ANNIVERSARY
CELEBRATING OUR 48th YEAR
Starts
Thursday, 8:30 a.m.

OPEN DAILY
8:30 a.m. to 6 p.m.
Sat. 8:30 a.m. to 7 p.m.

SLEEPWEAR SPECTACULAR
100% Nylon
GOWNS PAJAMAS or Dacron & Kodel
SUMMER SLEEPWEAR
2 No Iron Fabrics Ideal Gifts for Grads
SAVE (3 Days Only)
\$2 each

SHORT SETS **\$4** Set
Regular \$5.99
Solids or Stripes
Crew Neck or Tank Top

Graduation Gift Suggestions
New Spring
MEN'S Group I
KNIT SHIRTS **\$2.22** each
Values To \$3.99

Special Purchase "EXPO"
BONDED ORLON **\$2.77** Yd.
Regular \$3.99 Yd.
Over 400 Yds. Spring Colors
3 Days Only

100% Nylon
PETTICOATS **\$1.22** each
Regular \$2.99
SAVE \$1.77

Girls & Ladies'
WIND STOPPER **\$2**
Nylon Jackets

Group II
Values To \$5.50
Crew Neck Roll Neck or Collar Styles
White or Pastels
\$3 ea.

Mens White
DRESS SHIRTS **\$2.33**
Regular \$2.99 & \$3.99
Dacron & Cotton or Polyester

Ladies' 100% Nylon
SHORTS or Low Hip Fancy Print
PANTS **\$2** Ea.
Values to \$5.99

Special Purchase Factory Close Out
GIRDLES **\$2** each
White or Colors
Values Up To \$8.50
SAVE UP TO \$6.50

COLORFUL BRIGHT WHITE SALE
EXTRA BIG SAVINGS FOR YOU NOW!

Our 48th year of value leadership. Famous name brands, quality you know and trust. Shop now for the biggest savings of the year.



Pacific NO-IRON BEDSPREADS

50% FORTREL® Polyester
50% COTTON

8.99 TWIN SIZE **\$7**
9.99 FULL SIZE **\$8**

It's a spread! It's a throw! It's bed-fashion at its best! Your Pacific Decorator—so easy to care for—no ironing necessary—permanent press. Plus shrinkage controlled for permanent fit. A blend of 50% Fortrel® Polyester and 50% cotton for wrinkle free performance.

Girls Nylon
SHELLS **\$1.13**
Regular \$1.99 Value
Save 86¢ each

100% Cotton
BRAS **\$1**
Reg. \$1.00 Value
2 For

Men's Famous Brand
No Iron
PANTS **\$3.87**
Regular \$7.50 & \$8.50 Pr.

Boys No Iron
Jean Style
PANTS **\$3.48** Pr.
Values to \$6.99

PENELOPE Matching Spreads, Sheets and Pillow Cases

OVER 185 Beautiful Spring DRESSES

FROM THE FASHION CENTERS OF THE WORLD



GROUP I **\$13**
Values Up To \$30.00
GROUP II **\$9**
Values To \$18.00
GROUP III **\$6**
Values Up To \$14.00

Entire Stock Girls Early Spring Fashioned
DRESSES & SPORTSWEAR **1/2** Price

"WORLD WIDE" SHEETS

Fine quality. Regular 1.99 and 2.29 Value
Exclusively for Anthony's from one of America's finest mills. Extra savings on 100% cotton sheets.
TWIN SIZE **1.64** FULL SIZE **1.84**
42"x36" CASES . . . 2 for 84¢

Pacific PENELOPE NO-IRON SHEETS

50% FORTREL® 50% COTTON
A real decorator's scoop! Lovely floral sheets to match the bed spread illustrated above. Soft pastel in the most cheery colors imaginable. Save NOW.
2.99 TWIN SIZE 3.99 FULL SIZE
2 FOR **\$5.** 2 FOR **\$6.**
CASES 2.15 PR.

DAN RIVER SALEM STRIPE OR MID-TONE NO-IRON SHEETS

50% Fortrel® Polyester 50% Cotton. They never need ironing. Fine soft luxuriously smooth finish.

Regular 3.79 ea. 81"x104" or full fitted
Twin Sizes. 2 for \$6.



2 **\$6.50** FOR
Matching Cases **2.15** PR.



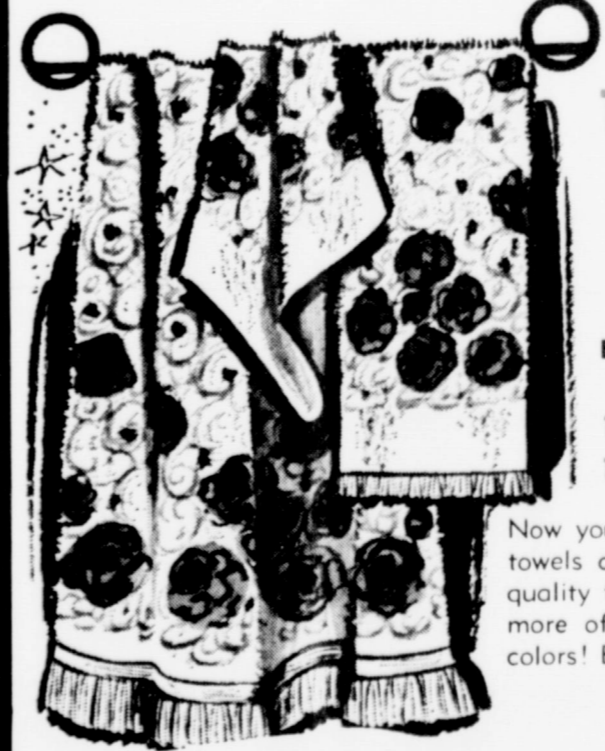
Imagine having these fine sheets at even greater savings now during our Anniversary Sale. Save even more than you could at Anthony's everyday low prices. Dan River quality sheets in Mid-tone solid colors to mix 'n Match with the coordinated Salem stripes. Makes a fine gift idea, too. Select yellow, green, blue or pink.

100% Cotton Sateen
DUSTERS **\$7**
Reg. \$4.99 Size 10 to 16
Save \$2.98 on 2

Ladies' Nylon 1st Quality
HOSE **33¢** Pr.
Reg. 98¢
500 Pr. Only

FUN SHOE SPECIALS
Ladies' Famous Brand Close Out
Canvas OXFORDS **\$1.48** Pr.
Compare At \$2.99 & \$3.99
SAVE \$2.41 Pr.
While They Last

Special Purchase Ladies' Canvas
FUN SHOES **\$2**
Slip On or Lace Style
Wedge Heels or Flats
Values to \$4.99 Pr.

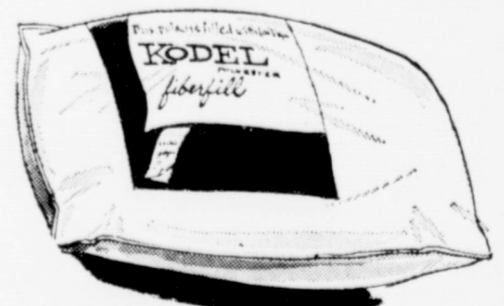


CANNON TOWEL ENSEMBLES

Choose Parisienne a colorful floral pattern, or rich solid colors with dobby border
24" x 46" BATH SIZE **2 FOR \$3.**
16"x28" TOWEL 94¢
12"x12" WASH CLOTH 44¢

Now you can have those big thirsty bath towels at big money saving prices. First quality towels—the kind you'd want more of—and in such pretty colors! Buy a bunch!

MATTRESS PADS
100% Polyester fiber filled
Flat Twin **2.94** Fitted Twin **3.94**
3.59 Value 4.59 Value
Flat Full **3.94** Fitted Full **4.94**
4.79 Value 5.79 Value



*KODEL® FILLED PILLOW
Regular 3.99—So now is the right time to invest in the pillows you need. 100% Kodell® Polyester fiberfill. Anthony's savings especially for you.

OVER 200 PR. MEN'S & YOUNG MEN'S
SAVE \$3.99 Pr.
SURFER SHOES **\$3**
Famous Name Brand Close Out
Compare At \$6.99

Ladies' & Misses Imported Vinyl
SANDLES **\$1.88**
Straps Slides Thongs
Compare At \$2.99 Pr.

24" x 42" THROW RUGS

3 Styles. Regular 2.49 quality
\$1.88

Three styles to select from in an assortment of colors to brighten up any area in your home. Tremendous value NOW.



Kodell Eastman's polyester fiber **2 FOR \$5.50**
Anthony's C.R. ANTHONY CO.

HOSPITAL ELECTION MAY 16

Why Do We Need A New Hospital?

Facing a crisis three years ago, and facing the possibility of having no hospital open in Muleshoe in the near future, a group of concerned men formed a non-profit organization to purchase the two existing hospitals in Muleshoe to keep at least one hospital open.

At the time, Green Memorial Hospital did not qualify for federal medical programs because of the structure of the hospital and West Plains Hospital was reduced to one doctor on the staff following the death of Dr. W.F. Birdsong.

Don Harmon, Olan Burrows, Jack Young, Bill Loyd, Harvey Bass and Alex Williams are the men who formed the West Plains Memorial Hospital Board and consolidated operations of the hospital at the present West Plains Memorial Hospital.

Presently, with \$380,000 owed on the purchase of the two hospitals, the one operating hospital in Muleshoe faces another crisis. Despite constant remodeling and addition of new and updated equipment, federal inspectors term the existing hospital a borderline structure. They cite instances of narrow corridors, rooms too small, no intensive care units, no surgery recovery rooms and other defects which cannot be changed in the existing structure.

The \$380,000 presently owed on the hospital is being paid in monthly payments. Hospital officials remind that neither federal funds nor funds approved by the forthcoming bond election can be used for remodeling or rebuilding an existing hospital facility, including taxes.

In an effort to find a solution to the hospital problem in Bailey County, and to assure future medical attention, another board was named by the County Commissioners Court of Bailey County to work on the hospital situation.

Named to the Bailey County Hospital District Board were Dr. Charles Lewis, president; Neal B. Dillman, Don Harmon, Eddie Beene, Freddie Parkman, D.O. Burel-smith, Mrs. Bernard Phelps, Mrs. J.G. Arnn, and Sam Damron.

The group explored various ways to establish new hospital facilities in Muleshoe. After working for more than two years, and exhausting all possibilities, the Hospital District was decided.

After enabling legislation was passed during the last session of the Texas Legislature to establish the Bailey County Hospital District, an election has been called for May 16 for a dual purpose.

First on the ballot will be a vote for or against creating the Bailey County Hospital District and second will be to pass a bond issue in the amount of \$950,000.

The bond issue would be matched with a Hill-Burton grant which are funds that do not have to be repaid. If the bond issue passes, application will be made for the matching funds in the amount of \$900,000.

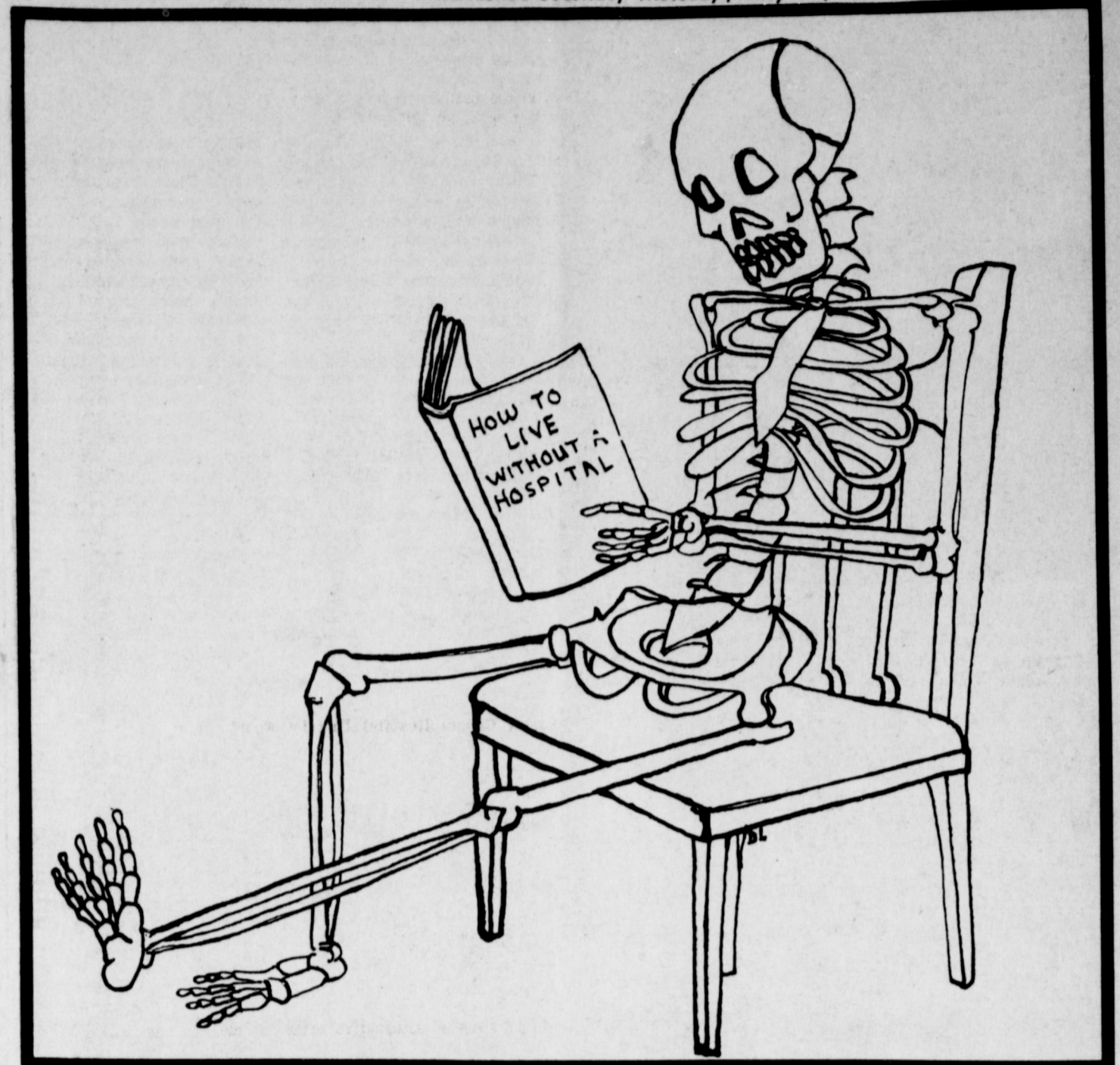
Two polling places have been designated in Bailey County. The two locations are the Muleshoe City Hall and the Needmore Community Building. Boxes were not placed at West Camp, Three Way and Bula because of a lack of funds. The Hospital District Board explained that right now, no funds are available to have more than the two boxes.

Some instances given as examples of why adequate hospital facilities should be obtained and kept in Bailey County include these two recent events which happened:

One Muleshoe non-emergency patient sent to Lubbock had to sit in the hospital lobby for two and one half hours until a patient had been dismissed in order to have a hospital bed and one Muleshoe patient was transferred from one floor to another floor in a Lubbock hospital and it was four days before her doctor found her.

Also, an ambulance trip, one-way, to a Lubbock hospital is \$45.

The Bailey County Hospital District would set up a separate taxing entity and hire their own tax assessor-collector.



citizen in the county, would you vote YES or NO?

A. The Journal would vote NO because this would be an Income Tax.

Q. Does the non-resident tax-payer get a chance to vote, and were they notified?

A. No. Qualified registered Bailey County voters are eligible to vote in the bond election, the same as any bond election. Notices were run in the paper and posted 30 days prior to the election.

Q. Will the ballots be available for a check to see if the non-tax payers vote was counted?

A. Yes, if the election is challenged and persons go through legal channels.

Q. How many of the people that are so anxious for the hospital, own more taxable property than a house?

A. At this time, there is no way to determine an answer to the question.

Q. How long will it take to pay these bonds off, and can our property be sold for back taxes?

A. Twenty years. Yes, it can, the same as city, school, county, state or hospital bond taxes.

Q. If you were a doctor with a promising future, would you consider any hospital in a town the size of Muleshoe without a guaranteed salary?

A. Traditionally, doctors do not move into any location with a guaranteed salary. All doctors expect to start and build up their individual practice. They are not paid by the hospital.

Q. It was stated in the Journal that Muleshoe and Needmore would be the only places to vote since there were no funds available for the other boxes. There is plenty of money available and has been offered free to the community. Why

can't all voting places be open?

A. Money was not offered until after the election notices were posted and that was too late, by state law, to add other boxes without postponing the election.

Questions On A New Hospital.

Q. What will really happen if the hospital bond issue should fail to pass?

A. The way the present hospital is operating, within the next year, or less, there will be no hospital facilities in Muleshoe.

Q. Will we be completely without hospital and doctor facilities?

A. There is a great possibility we will be without hospital facilities and only the individual doctors can answer the question as to whether or not there will be doctor services.

Q. What facilities are we offering the present doctors to induce them to remain in practice in Muleshoe?

A. If you were a doctor with a promising future, would you practice medicine in a county—without an intensive care unit; without a single surgery recovery room; without a complete cardiac care unit; without an equipped emergency receiving room; without an adequate laboratory; without enough x-ray and diagnostic equipment or without a general surgeon, a relief anesthetist, and other vital medical specialists? Presently, we offer our doctors, long hours and a minimum of working equipment.

Q. If the hospital bond issue fails, what are our school children to do if they are injured or become ill and our hospital is closed?

A. We would merely have to hope an ambulance is available to take them to Clovis or Lubbock.

Q. I have elderly parents here, one with a severe heart condition. What are they to do for medical care?

A. Make arrangements with the nearest neighboring hospital and the local ambulance service. The nearest neighboring hospital is at Friona, 29 miles from Muleshoe.

Q. What will happen when the surrounding hospitals necessarily limit referrals because of their own patient overload?

A. We will have no alternative except to call various hospitals until one is found which is willing to accept the patient.

Q. Can you explain why other areas who have voted in hospital districts and built hospitals are still without doctors—re: Brownwood?

A. We are not familiar with the situation at Brownwood. We do not have information as to whether or not the Brownwood facility is under the Hospital District, Authority, City or County hospital.

Q. If it is true that the Hospital District Board has no funds to place more than two ballot boxes, please explain who paid for the printing and mailing of the information sheets and floor plans that were sent out. I understand over 2,000 were circulated; also who paid for the board to fly to view other hospitals?

A. Interested citizens and business firms and organizations made voluntary contributions for information programs and most of the Hospital Boards trips were financed by the individual board member. They provided their own automobiles, travel expenses, food and lodging expenses. An architect did fly some members to a hospital at one time.

Q. If this tax was put on the salary or earnings of every

Hospital Announces Possible Shutdown

As a result of a meeting of the Board of Trustees of West Plains Memorial Hospital Tuesday night, May 5, the following statement was issued:

"The Board of Trustees of West Plains Memorial Hospital, Inc. goes on record as wholeheartedly supporting the upcoming Hospital District vote and issuance of Bonds. We feel compelled as a Board to advise the people that the present hospital facilities are facing an economic crisis. Each member of the Board will do everything possible to keep the present hospital open under any circumstances, but unless the economic condition of the present hospital improves there is a distinct probability that this hospital cannot continue to operate.

"We feel that the only real answer to insure the existence of hospital facilities in the Bailey County Area is the passage of the new Hospital District. We urge all parties interest in our county to vote "FOR" both proposals.

--Donald Harmon
--Bill Loyd
--Jack Young
--Harvey Bass
--Olan Burrows
--Alex Williams"

\$5 puts you in the pilot's seat.

\$5 First Flight Lesson
Want out of the hum-drum? Get into the exciting world of flight. Just \$5 lets you fly a Piper Cherokee with a government-licensed flight instructor. Then get a flying start toward your own pilot license. Try our

\$88 Flying Start Course — Gives you four flying lessons, preliminary ground instruction, your own flight log book.

Piper Cherokee — You'll learn in a Piper Cherokee, the world's most popular airplane with modern low wing—and before you know it, you'll feel at home in the air. Take advantage of one of these money-saving flight plans this weekend.

Muleshoe Flying Service
Muleshoe, Texas
PIPER Flight Center (806)272-3066

The Muleshoe Industrial Foundation IS FOR The Passage Of Both Propositions

(HOSPITAL AND BOND ELECTION)

FOR THE IMMEDIATE AND LONG RANGE FUTURE OF THE MULESHOE AREA

DIRECTORS:

Jim Cox, director

Harmon Elliott, president

Bob Jones, director

Dr. Charles Lewis, director

W.B. LeVeque, secretary-treasurer

Bill Loyd, director

Harold King, vice president



Mrs. Welch Attends Methodist Conference

HOUSTON, Texas--Mrs. W. L. Welch, Star Route, Maple, Texas among 10,000 United Methodist women from all 50 states and overseas who are attending the 1970 Assembly of the Women's Society of Christian Service and Wesleyan Service Guild here May 7-10. The theme of the Assembly is "Choose Life."

TO AUDITION PIANISTS--Mrs. Cornelis Hurlbut of Des Moines, Iowa, adjudicator for the National Guild Auditions, will audition Muleshoe piano students on Friday, May 15 and Saturday, May 16, in the First United Methodist Church. Mrs. Hurlbut is a nationally known judge for the nationwide Guild auditions.

Baby Shower Honors Mrs. Lee Embry

Mrs. Lee Embry was honored with a baby shower given in the community room of the Muleshoe State Bank from 2:30 to 5 p.m. Friday, May 8. Receiving guests with the honoree was her mother, Mrs. Elton Gulley, Mrs. Chester Embry, her husband's grandmothers, Mrs. E.R. Lawhon and Mrs. J.E. Embry.

PV Social Club Hosts Meeting

Members of the Pleasant Valley Social Club met at the Pleasant Valley community building last Thursday night with hostesses, Mrs. John St. Clair and Mrs. Cotton Wells.

Mrs. Bickel Presented Membership Pin

YL WSCS met Monday May 11 at 3 p.m. at the YL Methodist Church to observe "A Call to Prayer and Self Denial". A special offering was taken.

York, associate general secretary of the Women's Division; an address by Mrs. Harrington; a panel on "An Ordered Society With Justice"; special worship experiences prepared by the Rev. Dr. Wayne R. Rood, professor of religious education at the Pacific School of Religion, Berkeley, Calif.;

Treasure Chest Given Away By Llano Estacado

The Llano Estacado Civic Club will give away a treasure chest Saturday May 16 at 3 p.m. in St. Clairs Department Store. You need not be present to win a spokesman said.

Bride Elect Party Honoree

Miss Valentina Costilla was honored Friday night from 8 p.m. to 10:30 p.m. in the Muleshoe State Bank community room with a bridal shower.

Mrs. Berry Monthly Queen

The Jenny TOPS' Club met Thursday night, May 7, in the Bailey County Electric community room with 29 members present.

LCC Students Guests of Church of Christ

Eleven young people from the Lubbock Christian college will be in Muleshoe Saturday May 16 and spend the weekend promoting Vacation Bible School, arranging home study appointments and enrolling people in the free Bible home study course.

Church of Christ Members Attend 'Swap Shop' Meeting

The "Swap Shop" was conducted at Broadway Church of Christ in Lubbock Monday night May 4. There were approximately 1200 in attendance from the South Plains area, 16 from Muleshoe.

The C. Mahans Honored Sunday

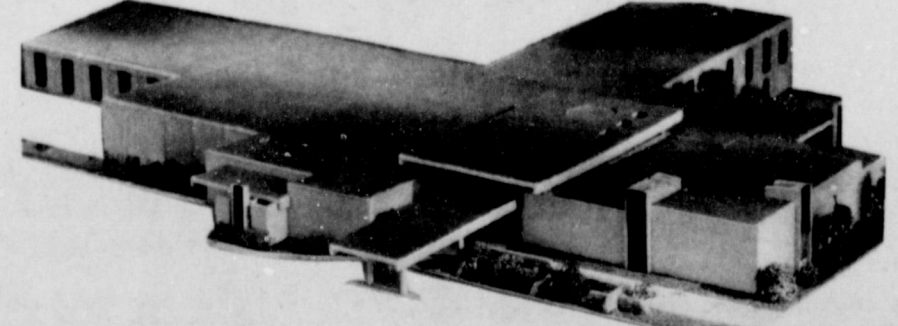
A combined birthday and Mother's Day party was given in honor of Mr. and Mrs. C. McMahan Sunday by their children and grandchildren. It was Mr. McMahan's birthday. The couple was presented a wishing well fountain.

"You can quote me on this!"

I feel a hospital in Muleshoe is a must. A vote against the hospital might save a man money if the issue is defeated. To myself no amount of money can matter when emergency care is needed. Vote YES. --Kenneth Heathington

The quote that counts is your vote

" FOR" both propositions Saturday, May 16



Spring Recital To Be Presented

A spring recital will be presented by Mrs. Sam Damron's piano and organ pupils Saturday May 16 at 8 p.m. in the Sanctuary of the First Methodist Church.

Any wrecking contractor who'll give you a raze is in the Yellow Pages

YOU CAN BANK ON US

TIMES HAVE CHANGED!

BUT WE GIVE "OLD-FASHIONED" FRIENDLY SERVICE IN BANKING

FOR ALL YOUR BANKING NEEDS

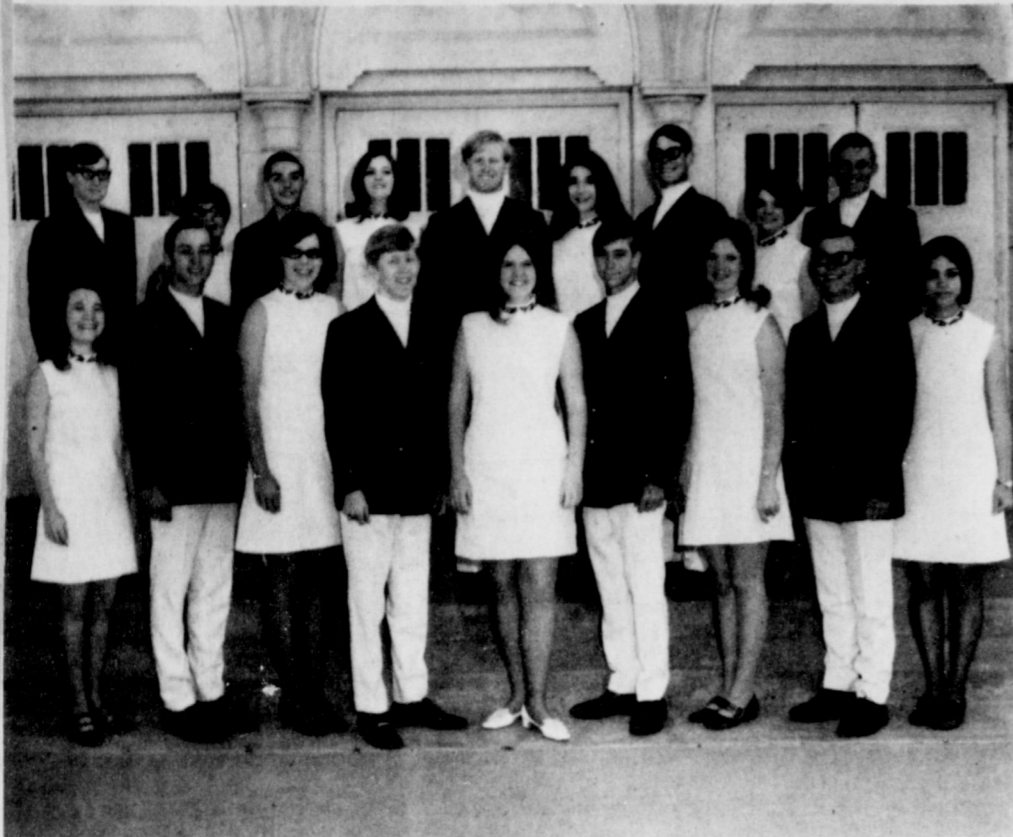
Insured Up To \$20,000

Muleshoe State Bank

MEMBER FDIC

Tri C's Group Tours Midwestern States

Choir Receives Superior Rating



TRI-C's TO TOUR SEVERAL STATES IN JUNE--These youths, under direction of First Baptist Church Youth Director Mack Moore, will travel through several states giving presentations of their music in June. Known as the Tri-C's, the young people are as follows: front row, left to right, Debbie Hancock, Rickey Hamilton, Kathy Schuster, Joe Duke, Martha Jane Chapman, David Faver, Cassie Precure, Buck Taylor and Karen Hamilton. Back row, left to right, David Henderson, Debbie Schuster, Darrell Wilson, Sharen Harris, Keith Turner, Melanie Precure, Greg Little, Lee Ann Harlan and Larry Shafer.

The First Baptist Church select choir, brass ensemble, and drama group plan a summer mission tour throughout the midwestern United States. Leaving on June 9, following an Association-Wide Youth Rally at the First Baptist Church, Dimmitt, the group will drive to Wichita, Kansas, there they will spend the evening in the Holiday Inn. The group will then make appearances in Marshalltown, Iowa; Kenosha, Stevens Point, Wausau, Waupaca and Milwaukee, Wisconsin; Carbondale, Illinois; and will spend the night of June 19 in Magnolia, Arkansas. The tour will return to Texas stopping at McKinney, then at Mesquite. After a brief stopover at Six Flags Over Texas, the group will arrive back home on the evening of June 22. The group will be staying in homes of church members

along the route, with the exception of the two nights in Wichita, Kansas and Magnolia, Arkansas. A choral concert will be given and the drama, "The Cell," presented by the FBC Players. The Tri-C's took their name from their motto Confronted with Christ, Concurring by Christ and Committed to Christ. On each Tuesday at 7 p.m. the combined groups, together with their pastor, Rev. Douglas DuBose, and their Minister of Youth Activities, Mack Moore have rehearsal, Bible study and prayer. On Sunday June 7 at seven o'clock the Tri-C's and Brass Ensemble will present their concert during the evening services. Following, in Fellowship Hall, the FBC players will present "The Cell", a drama depicting a band of early Christians awaiting execution in a

Roman arena. Financing of the tour is being made possible through the sale of recordings of the Chapel Choir, Tri-C's and Brass Ensemble of the church. Cut under the Director label, a subsidiary of RCA Victor, the outcome of the recording will be of the highest quality. Each group was rated superior in their Association Festival this year. Interested parties may still buy the records, due to be received at the church by June 5, for four dollars each. All proceeds will go to the choir fund, commented Mack Moore. Those touring are as follows: Rickey Hamilton, Karen Hamilton, Sharon Harris, Gary Harris, Lee Ann Harlan, Jane Williams, Kathy Schuster, Debbe Schuster, Debbie Hancock, Greg Little, David Henderson, David Bickel, David Faver, Keith Turner, Darrell Wilson, Bucky Taylor, Martha Jane Chapman, Melanie Precure, Cassie Precure, Larry Shafer, Jo Duke, Jennifer

Davis, Nora Webb, Mr. and Mrs. Jim Shafer, Mr. and Mrs. Mack Moore and Terry Shafer, Mascot. *In Fashion* Once, a good many years ago, when floppy hats covered with flowers were the in-thing, a very wealthy woman passed by wearing one of these and my friend remarked that she knew it must have cost a fortune. I found out later that the wearer had trimmed it herself with flowers from a department store. There's a moral to this, but I'll let the reader figure it out. Hungarian blouses and scarfs are popular with the smart set. Irish knits are also a favorite. **Must Save Him** Proud Father--I want our Willie to be a politician. Friend--Why? Father--He's so big and strong I'd hate to have him ruin his physique by working.

The Junior Choir of the First Baptist Church received their rating from the Association Festival held in Amarillo on May 2. They were rated superior, which is the highest rating a choir can receive. There were 14 choirs, from the West Texas area entered in this festival. This choir received an excellence rating from the Association Festival held at Earth in February. They have made a step up in their rating said a spokesman for the group. There were 21 members in the Junior Choir of the First Baptist Church attending. **SCOUTS DO GOOD DEED** Toronto--Two young Cub Scouts, returning from a Scout meeting, found a purse containing \$971. True to their training, they turned the purse over to their father, who called the police. The woman who owned the purse gave each of the boys \$25 reward.

Baptist Youth Attend Rally At Earth

Enochs News

By Mrs. J.D. Bayless

Baptist Youth Rally was held in Earth Monday, May 11 at the Baptist Church there. Johnny Tims from the Lazbuddie Baptist Church spoke to the group and Cliff Harden of Farwell sang. Thirty-four went from the First Baptist Church and six from the Trinity Baptist Church, Earth received the banner for having the most present percentage wise. One monster there is in the world: the idle man. -Thomas Carlyle.

Jerold and Larry Bates of Phoenix, Ariz. are visiting their aunt, Mr. and Mrs. Joe Clark, Route Two, Morton. Mr. and Mrs. Chester Petree met at the home of her sister, the Audrey Hill's in Lubbock, last Sunday for her family reunion. Those attending were, Mr. and Mrs. Charlie Williamsons of Anchorage, Alaska, Mr. and Mrs. L.O. Williams of Amarillo, the Fred Williams of Lubbock, and the Melvin Cowarts of Fort Worth. A Pink and Blue shower was given in the home of Mrs. Chester Petree from 2:30 till 4 p.m. in honor of Mrs. Linda Ogle.

Guests and gifts were registered in the baby book, a gift from Mrs. R.P. McCall, by Mrs. Wayne Gilliam sister-in-law of Linda. Refreshments of cookies, coffee and punch were served to 14 guests. Out of town guests were Mrs. Akin Muleshoe, and Mrs. Wayne Gilliam of Morton. Mr. and Mrs. Jimmie Gilliam and children of Hereford, Mr. and Mrs. Jerry Gilliam and children of Anton, were guests in the home of their parents, Mr. and Mrs. E.C. Gilliam last Sunday. Visitors at the Enochs Baptist Church Sunday were Mrs. L.B. Davis and sons of Shallowater, Mr. and Mrs. Kenneth Millsap and daughter of Clovis, N.M. Mr. and Mrs. Erwin Campbell of Levelland, Mr. and

Mrs. Kenneth Petree of Muleshoe, Mr. and Mrs. Harold Dean Nichols of Idalou, Miss Myrlene Nichols of Lubbock, and Mrs. J.G. Waldrop. L.G. Harris was dismissed from the Methodist Hospital at Lubbock, Wednesday and will be staying with his daughter, Mr. and Mrs. Elmer Riley at Lubbock, for two or three weeks. Mr. and Mrs. Charlie Williamsons of Alaska, spent last Sunday night with her sister, Mr. and Mrs. Chester Petree. They were enroute back to Alaska. Other guests Sunday night were their son, Mr. and Mrs. Dannie Petree and children of Lubbock. Mr. and Mrs. Sammie Nichols of Plainview, visited their parents, Mr. and Mrs. Donald Grusendorf, and Mrs. L.E. Nichols Saturday. Mrs. Olive Angel and Mrs. Harold Layton visited Mrs. Carl Hall at the Methodist Hospital at Lubbock, Saturday. Mr. and Mrs. Kenneth Millsap and daughter, of Clovis, and Mr. and Mrs. Kenneth Coats and family spent Mother's Day with their mother, Mrs. Alma

Altman. Guests in the Harvey Blackstone home Sunday afternoon were their daughter, Mr. and Mrs. James Lee McDonald and daughter Stacy of Anton, Dale Blackstone, of Lubbock, and Lorane Holland of Cooper, and Gary Johnson of Littlefield. Mr. and Mrs. W.R. Adams were dinner guests in the home of their son, Mr. and Mrs. Bobbie Adams Sunday. Home for Mother's Day at the home of the E.F. Campbells were their children, Mr. and Mrs. J.T. Waldrop of Andrews, Erwin Campbell of Levelland, Mr. and Mrs. Bill Sowder of Bula, and Mrs. Gale Simpson. Mrs. Elvin Julian honored her mother, Mrs. George Fine, with a Mother's Day dinner Sunday. Other guests were her brother, Mr. and Mrs. James Fine of Levelland, M.L. Fine, also her sister, Mrs. Erwin Campbell of Levelland. Nature does her best to persuade mankind that this is a pleasant earth.

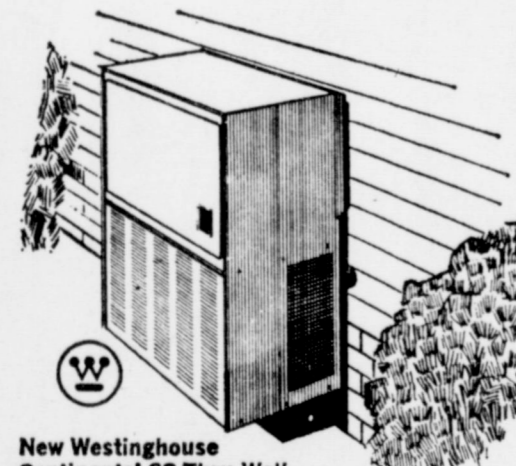
Stays Fresh Longer



Announcing New Westinghouse Dealership In Muleshoe . . . At Gordon Wilson Appliance

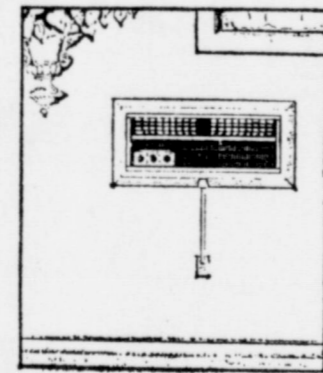
COOL, MAN, COOL!

Westinghouse Room Air Conditioners

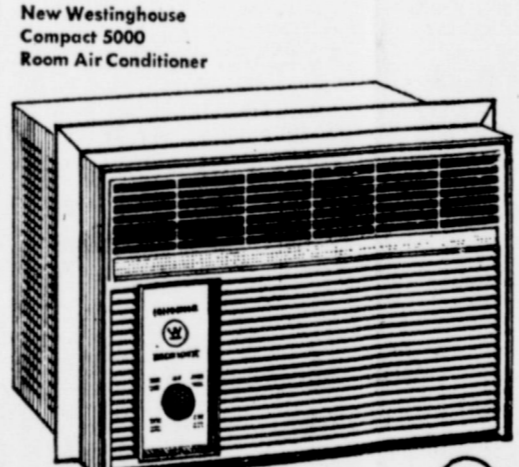


New Westinghouse Continental SS Thru-Wall Air Conditioning System Models MZK156T, MZK111T

- 11,000 and 15,000 BTU cooling capacities
- Silent as a summer breeze -- all the moving parts outside
- Styled to be beautiful -- inside and out
- Decorator control panel flush-mounts conveniently into wall
- 3-speed fan
- High performance dehumidification
- Protected by Westinghouse Nationwide Sure Service
- Comes complete with all hardware and accessories for convenient thru-the-wall installation



There's a Westinghouse room cooler for every need 5000 BTU to 26,000 BTU.



New Westinghouse Compact 5000 Room Air Conditioner Model AC050L7Z

- 5000 BTU cooling power, 115 volts, 7.5 amps
- Plugs in like a lamp
- Lightweight -- only 59 lbs.
- 5-year replacement warranty
- Protected by Westinghouse Nationwide Sure Service

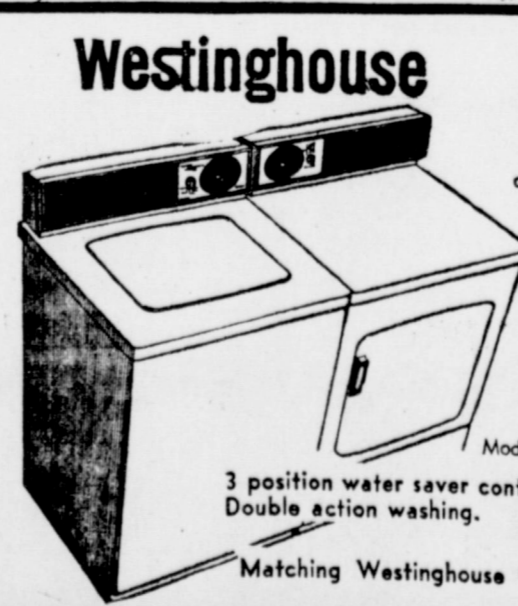
\$119⁹⁵



ELECTRIC 30" RANGE

Simple to cook on. Easiest to clean, highest in quality. Plug out surface unit, 1001 sure unit heats.

NOW \$379⁹⁵

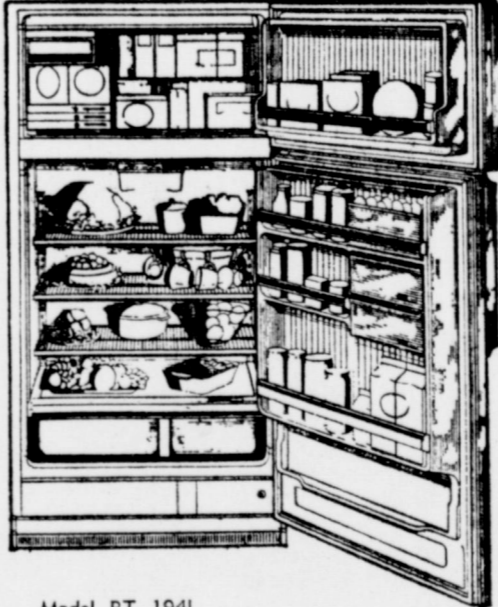


Westinghouse

Model DF46CL True 16 Pound capacity 2 cycle dryer

Model LA360L Agitator Washer 3 position water saver control. 14-pound capacity. Double action washing. Matching Westinghouse Gas Dryers available.

Westinghouse Frost-Free 19" Refrigerator-Freezer



Model RT 194L 19.3 cu. ft. capacity. Only 33" wide. Big 187 lb. capacity freezer. Completely frost-free. Separate controls for refrigerator-freezer. Optional automatic ice-maker and stores over 700 cubes.

Westinghouse "Frost-Free 20" Side-By-Side Refrigerator-Freezer



Model RS 204L 20.0 Co Fl. capacity. Only 33" wide. Big 288 lb. capacity freezer. Completely frost-free. Separate controls for refrigerator and freezer. Optional plug-in ice-maker--buy it now or add it later. 7 day fresh meat keeper.

Westinghouse

HEAVY DUTY

Permanent Press Laundromat® Twins

Stack in only 27" for a complete laundry in a minimum of space!



Westinghouse

HEAVY DUTY 16

Permanent Press Washer and Dryer



WASHER DRYER

Weight - to - save lid. Water saver control with reselected tub. Adjustable auto-setting . . . Stop and soak dry permanent press dry.

Gordon Wilson Appliance

202 Main

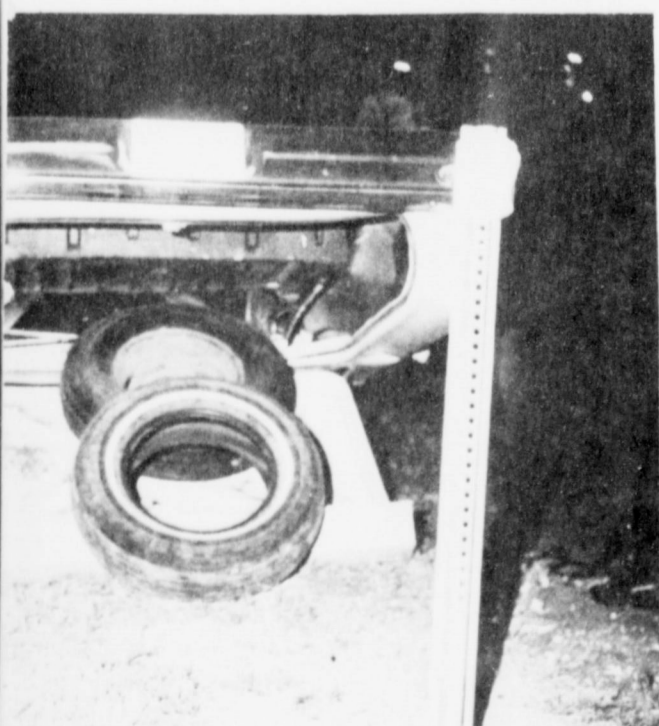
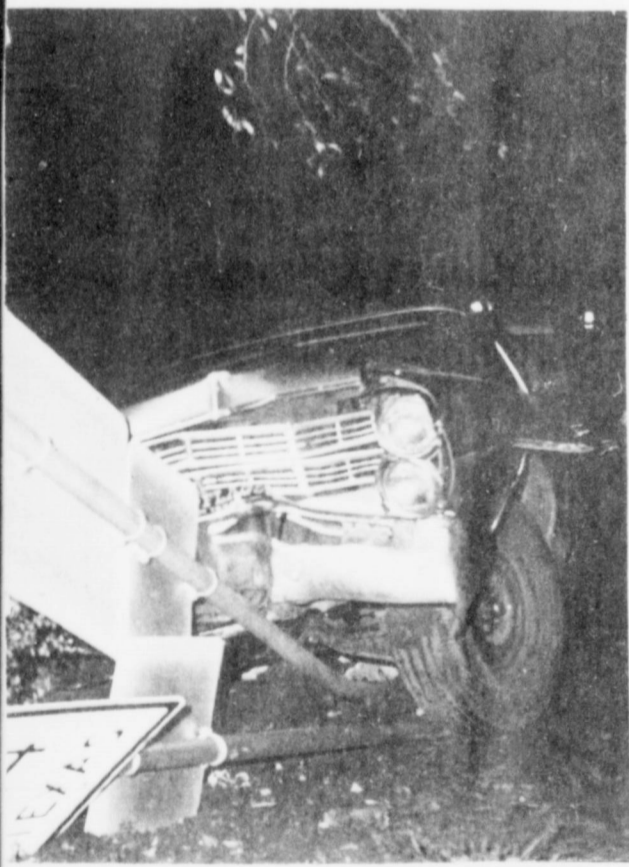
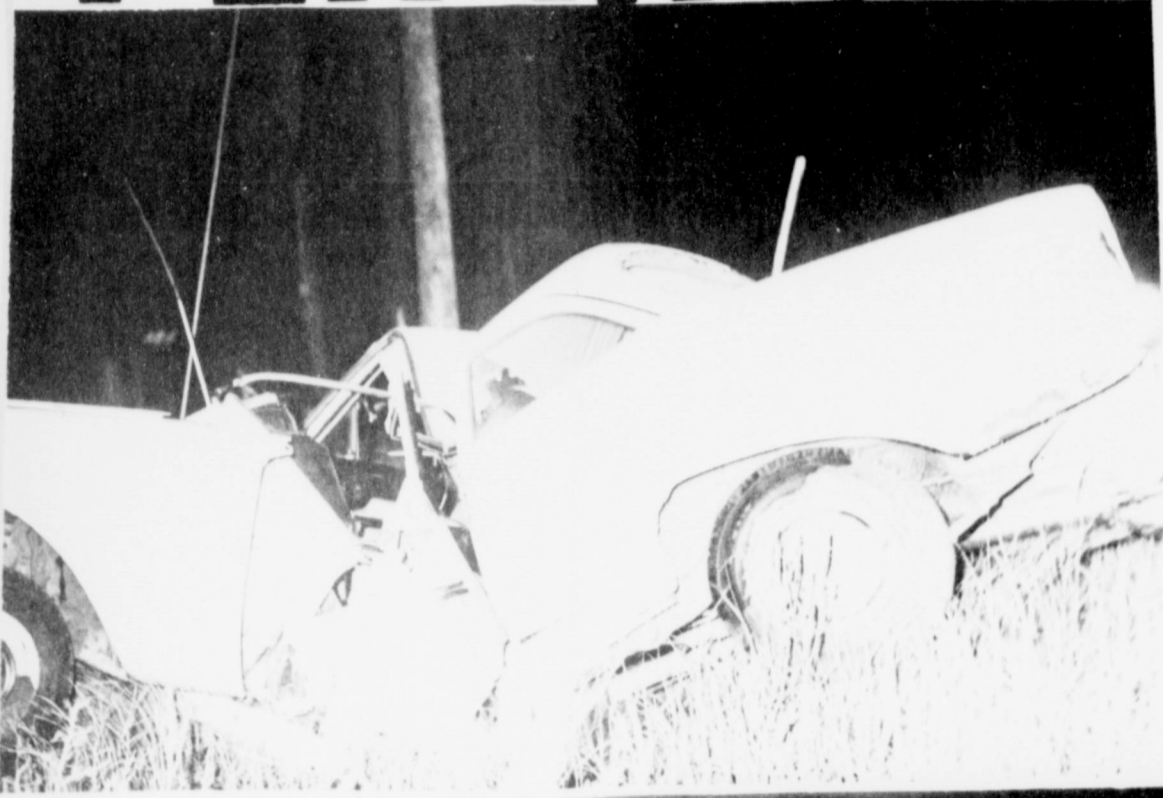
Muleshoe

Phone 272-3138

ACCIDENTS CAN H



OPEN IN OUR AREA!



Bailey County Not In Food Program



SWISHER MEMORIAL HOSPITAL--Facing difficulties because of inadequate hospital services and facilities in Tulia, north of Plainview, Swisher County residents approved a hospital district and bond issue to complete the hospital construction pictured here. The hospital officials feel the hospital district will provide needed immediate hospital facilities through their new hospital which is complete and modern.

AUSTIN, Tex. --U.S. Sen. Ralph Yarborough and State Land Commissioner Jerry Sadler were upset victims in the May 2 Democratic primary to Lloyd Bentsen and State Rep. Robert L. (Bob) Armstrong. Scene of political action now shifts to the general election where Bentsen faces Republican Senate candidate George Bush, Gov. Preston Smith, unopposed in the Democratic primary, is confronted with GOP Paul Eggers. Bush and Eggers won nominations easily over Robert Morris and Roger Martin in the Republican primary.

Atty. Gen. Crawford C. Martin won third term nomination handily over Judge David H. Brown and faces Edward M. Yturri, GOP, in November. Democrat Ben Ramsey had no difficulty with Connie Lawson and is unopposed in November. Truman Roberts defeated Earl W. Smith for Court of Criminal Appeals. James G. Denton appeared to be the Supreme Court contest winner over Matt Davis and Hawthorne Phillips, Lt. Gov. Ben Barnes, unopposed in the Democratic primary, is challenged by Byron Fullerton,

in November. Four other GOP candidates will wagetoken campaigns for statewide office against Democrats.

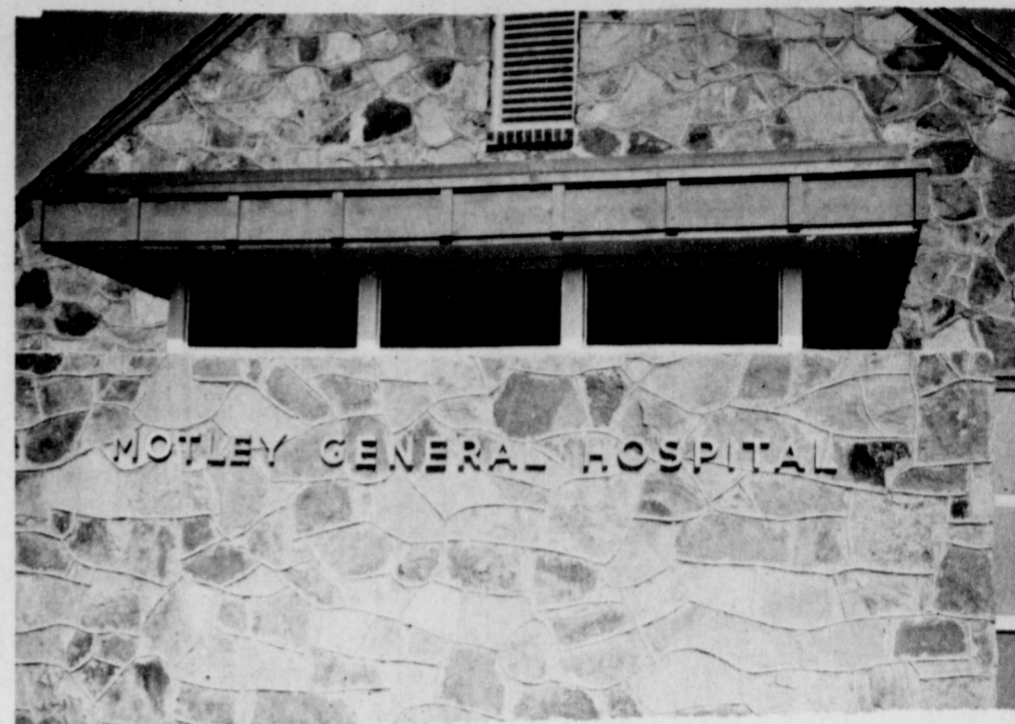
CAPITOL PRECAUTIONS
Tighter security measures may be ordered for the historic state capitol--always wide open to visitors--in the wake of a violent anti-war demonstration there last week.

Three 82-year-old etched glass door panels were smashed when a mob of 200 obscenity-shouting youths stormed through the rotunda. A tear gas grenade was tossed into the north corridor as police chased the demonstrators back through the building and onto the University of Texas campus.

Twice within the next two days, the capitol was evacuated due to telephone bomb threats. Riot-equipped Department of Public Safety officers took up stations inside or patrolled the grounds as demonstrations continued on the UT campus.

Gov. Preston Smith said damage and disrespect may force tougher security, though the capitol has been the scene of many undisturbed peaceful demonstrations in the past.

COURTS SPEAK



MOTLEY GENERAL HOSPITAL--Matador, in Motley County, acquired a hospital through the Hospital District route. The native rock structure has proven to adequately provide medical services for the area around Motley County. It is one of the numerous counties in this part of the state to acquire hospital facilities by this method. The publisher of the Matador Tribune said other possibilities were exhausted before taking the hospital district route.

State Supreme Court agreed with lower courts that 6,972 acres of Victoria County oil land belonging to private owners, not the state, in a prolonged land vacancy dispute. Had plaintiff in the vacancy action been right, Texas might have recovered up to \$100 million in mineral rights.

Dallas grocery chain stores were rejected by the High Court in their effort to obtain a sales tax break due to trading stamps given their customers. Chain wanted to deduct the cost of stamps before figuring the sales tax owed the state.

Third Court of Civil Appeals affirmed \$40,813 in damages to a Temple brakeman injured in Atchison, Topeka and Santa Fe Railroad braking accident, but cut the award \$38,650 below the trial court verdict.

EDUCATION POLICY APPROVED

State Board of Education adopted the policy that contributions of ethnic and racial groups should be taught.

Board also proclaimed that literature books must be free of offensive language and that life science texts will present evolution as a theory rather than a fact.

Per capita state aid to local districts was increased from \$114.40 to \$117.65 per student for the current school year. Board authorized application for \$1.8 million in federal anti-poverty funds to help train 900 migrant workers for city jobs, approved a \$2 million special vocational program for poor students and empowered the Texas Education Agency to seek a \$50,000 federal grant to continue technical assistance to school districts with desegregation and other ethnic problems.

APPOINTMENTS

Governor Smith named Preston H. Dial Jr. judge of the vacant 175th district court in San Antonio after Dial was nominated for that post in the Democratic primary.

Randall B. Wood, native of Edom, is new director of elections in the secretary of state's office, succeeding Mrs. Mary K. Wall who retired.

Governor Smith has named R.L. Thornton Jr. of Dallas to board of regents of Texas Woman's University and Dr. Paul C. Witt of Abilene to State Board of Examiners in Basic Sciences.

Robert A. Hansen of Sioux City, Iowa, will become superintendent of Texas School for Blind on June 1. Fifteen-member state text-

book committee has been picked and held its first meeting May 8 to begin a five-month series of hearings on new textbooks.

President Nixon appointed Byron Fullerton of Austin to national advisory council on education professions.

ATTORNEY GENERAL RULES
State Credit Union Commissioner cannot enter a proposed truth in lending liaison agreement with the Federal Trade Commission, Atty. Gen. Crawford Martin held in a recent opinion.

In other rulings, Martin concluded that:

*State Comptroller can write rules by which Texas Tech University art works can be temporarily exchanged with other universities and museums.

*Texas Tort Claims Act does not cover school districts except as to motor vehicles, but limitation does not apply to Junior College districts.

*Penal code article pertaining to seizure and confiscation of devices prohibited in Espiritu Santo Bay and other waters pending trial, and destruction of the prohibited devices on conviction for possession or use, is constitutional.

NURSING HOMES ASK RAISE
Nursing home operators, claiming they face financial crisis, want authority to levy a \$25 a month supplemental charge for welfare patients in addition to the state allocation.

Plan seeks a six per cent increase in state payments for patients requiring skilled care or a total of \$381 a month. State costs in other categories would decline if families pay the supplemental charge.

Meanwhile, State Board of Public Welfare, which took the request under study, heard new federal family assistance legislation backed by the president would cost Texas \$57 million a year more than present programs.

WELFARE

State Board of Public Welfare announced that only 12 counties have not decided on a course of action on the Dallas federal court order that 90 Texas counties must begin food-aid programs for the poor.

These 12 include Archer, Bailey, Blanco, Castro, Gregg, Kendall, Llano, Mills, Oldham, Parmer, Presidio and San Saba Counties. However, Blanco, Llano, Mills and San Saba County officials reportedly were working actively on the problem.

Another 31 counties had refused to operate food programs, so the State Department of Public Welfare planned to

operate commodity programs federal expense in Aransas Bay, Bosque, Bowie, Cla Collin, Colorado, Coryell, De Smith, Denton, Edwards, Ellis, Fort Bend, Gillespie, Gray Grayson, Hood, Jack, Johnson, Kaufman, Kerr, Lamar, Randall, Refugio, Roberts, Rock wall, Rusk, Uvalde, Wheeler Wise and Wood Counties.

WATER RIGHTS HEARING

Texas Water Rights Commission will present for consideration its proposed rules, regulations and procedures for administering the state water rights adjudication law in a public hearing in Austin at 10 a.m., June 4.

Also to be considered are proposed rules to govern the operation of Amistad Reservoir near Del Rio.

Commission wants persons planning to comment on its proposals to file written statements before May 30, setting forth their reasons and any other pertinent information.

Copies of the rules may be obtained in advance by writing the W.R.C., Austin 78711.

SHORT SNORTS

Texas Animal Health Commission reversed its policy and voted to inspect spayed heifers imported from Mexico.

Lubbock received a \$218,972 child development grant and Laredo \$71,894 for migrant rural action demonstration project.

Texas Turkey Federation has petitioned Agriculture Commissioner John C. White for a May 21 hearing on a statewide referendum for self assessment to promote research, promotion and consumer education.

Governor requested federal disaster aid for tornado-hit Cochran, Hockley, Lamb, Hale, Briscoe, Donley, Gray, Swisher and Parmer Counties.

Appropriate Calling Chump--Yes, I take very naturally to dancing. My business has helped me a lot.

Dolly--What's your business? Chump--Furniture moving.

The Lonely Heart



HURRY! PRICES IN EFFECT

3 Days Only!

THE HOME OF WHITE STORES INC. GREATER VALUES

SAVE \$10.95

WHITE DELUXE 3 H.P.-4 CYCLE 18" Rotary Mower
REG. \$59.95
\$49

CUT \$10.07!

WHITE DELUXE POWER EDGER and TRIMMER
With Automatic Curb Wheel Attachment
Reg. \$74.95
WHITE'S Low Price 6488

ELECTRIC HEDGE TRIMMER
Reg. \$19.95
\$17

Save 18% PHILLIPS 66 FERTILIZER
Reg. \$1.99
139
50Lb. Bag

Save 37% 60-FOOT GARDEN HOSE
Reg. \$2.69
169

20% OFF 6-Leg GYM SET
Reg. \$54.95
\$43

SAVE \$3 PER TIRE

WHITE Service Custom 4-PLY Nylon Cords
650-13 Tubeless Blackwall 735-14 Tubeless Blackwall 775-14 Tubeless Blackwall
988*
1.78 EXC. TAX
1088* 2.04 Exc. Tax
1188* 2.17 Exc. Tax
*PLUS TAX & OLD TIRE

GUARANTEED 15,000 MILES
Against All Road Hazards & Wearout!
• Specially Designed Anti-Skid Tread for Superior Traction!
• Extra Blowout Protection!

Automatic Radio Tape Player
With FM Multiplex Radio
Reg. \$119.95
\$88

WHITE AUTO Air Conditioner
Reg. \$199.95
\$179
Plus Installation

Save 33% AC or CHAMPION Spark Plugs
Reg. 89c
55c

Save 41% POPULAR BRAND Turtle Wax
Reg. \$1.69
99c

ANNOUNCING!

The **VFW SKATING RINK** WILL BE CLOSED

Fraturdays and Saturdays During The Summer . . . Starting Friday 15th

Open Sundays 2:30 to 5 p.m.

We still welcome skating parties, Mon., Tues., Thur., and Fri. nights.

Walter A. Moeller POST #8570

**Del Monte
GARDEN
SHOW!**

FRESHEST PRODUCE IN TOWN!

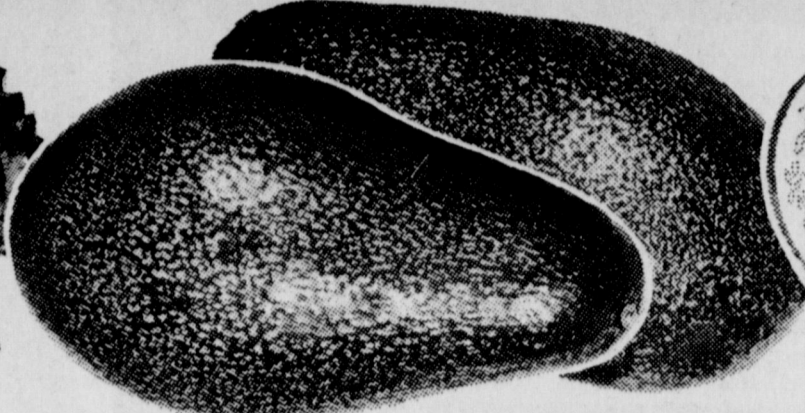


Lettuce

Chiquita Brand,
Cello Wrapped

Pound

15¢

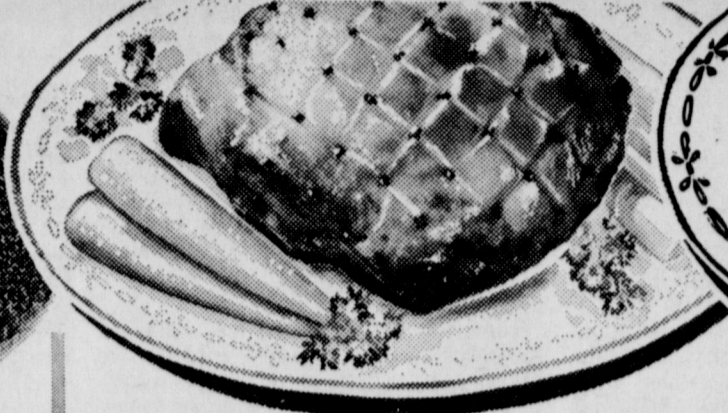


Avocados

Creamy Ripe

Each

19¢

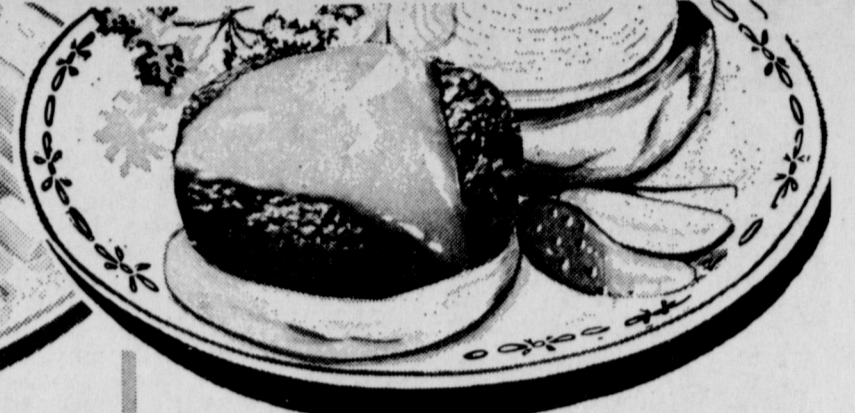


Smoked Picnics

Hickory
Smoked, Whole

Pound

49¢



Ground Chuck

Dated to
Assure Freshness

Pound

79¢

- Instant Potatoes Simplot 1-Pound Bag 39c
- Cauliflower California Snow-White Pound 49c
- Red Cabbage Adds Color to your Salad Pound 29c
- Italian Squash California Fresh Pound 29c
- Apples Red Delicious, Extra Fancy Pound 29c
- Dried Prunes Del Monte 1-Pound Bag 55c
- Rhubarb California Cherry Red Pound 49c
- Radishes California Large Bunches 2 For 29c



Shop Piggly Wiggly's Discount Prices!

Piggly Wiggly fruits and vegetables are always sold at rock-bottom Discount Prices! Always fresh... colorful Piggly Wiggly produce is carefully handled and trimmed by our produce experts. You buy no waste... it's the best in town and always discount priced. See for yourself!

- Swiss Steak Arm Bone Cuts of USDA Choice Beef Pound 98c
- Short Ribs Lean Meaty Cuts of USDA Choice Beef Pound 38c
- Cubed Steak Fork Tender USDA Choice Beef Pound \$1.49
- Sliced Picnic Perfect to Pan Broil or Fry Pound 59c
- Sausage Blue Morrow's All Pork Pound Package 69c
- Calf Liver Rich in Iron Skinned and Deveined Pound 69c
- Boneless Roast Center Cut Chuck USDA Choice Beef Pound 98c
- Perch Fillets Breaded, Pre-Cooked Tray Pack Pound 69c

Cucumbers

Long, Green Slicers

Pound

29¢

Carrots

Texas, 1-Pound Cello Bag

Each

12¢

**TWIN PACK
FRYERS** 29¢
USDA Grade "A"
Pound

Pork Chops

Family Style Package
2½ to 3½ Pound Package

Pound

79¢

- SPECIAL DISCOUNT PRICE!** **Dr Pepper** Plus Deposit 6-Bottle Carton 39¢
BEVERAGES, Rite Good Assorted 3-28-Ounce One Way Bottles \$1
- SPECIAL DISCOUNT PRICE!** **Biscuits** Farmer Jones Buttermilk or Sweetmilk Limit, 12 w/\$5.00 Purchase 5¢
BISCUITS, Harvest Pride 4-5-Count Cans 29c
- SPECIAL DISCOUNT PRICE!** **Golden Corn** Del Monte Cream Style or Whole Kernel 4 No. 303 Cans 89¢
GOLDEN CORN, Carol Ann 5 Number 303 Cans \$1
- SPECIAL DISCOUNT PRICE!** **Sweet Peas** Del Monte, Fancy 4 No. 303 Cans \$1.00
SWEET PEAS, Carol Ann 4 Number 303 Cans 88c
- SPECIAL DISCOUNT PRICE!** **Peaches** Del Monte Freestone 3 No. 2½ Cans \$1.00
PEACHES, Carol Ann, Yellow Cling 3 Number 303 Cans \$1
- SPECIAL DISCOUNT PRICE!** **Potatoes** Del Monte Whole 5 No. 303 Cans \$1.00
POTATOES, Hi Plains Whole 8 Number 300 Cans \$1
- SPECIAL DISCOUNT PRICE!** **Tomato Juice** Del Monte, Fancy 3 46-Ounce Cans \$1.00
TOMATO JUICE, Kern's 3-46-Ounce Cans \$1
- SPECIAL DISCOUNT PRICE!** **Fruit Cocktail** Del Monte, Fancy 4 No. 303 Cans \$1.00
FRUIT COCKTAIL, Carol Ann 4 Number 303 Cans \$1

LOW DISCOUNT PRICE!

Vegetable Oil
Carol Ann Pure 48-Ounce Bottle 89¢

Toilet Tissue
Zee, Assorted Colors 4-Roll Package 39¢

Dog Food
Rusty Brand 3 15-Ounce Cans 27¢

LOW DISCOUNT PRICE!

Chunk Tuna
Carol Ann Fancy Light 3 No. ½ Cans \$1

Shoestring Potatoes
Kobey's 2 No. 300 Cans 27¢

Tomatoes
Del Monte Wedges 5 No. 303 Cans \$1.00

LOW DISCOUNT PRICE!

Ivory Liquid
20c Off Label 1 Quart, King Size 79¢

Spaghetti
R & F Brand 12-Ounce Package 21¢

Cascade Detergent
Dishwasher, 15c Off Label, Family Size Box 98¢

GREEN STAMPS
These Prices Good May 14, 15, 16 in Muleshoe, Texas

We Reserve the Right to Limit Quantities

Meat Pies
Morton, Beef, Chicken, Turkey, Tuna 6 8-Ounce Packages \$1

Low, Low Prices on Frozen Foods!

- Meal Pies** Swanson's, Beef, Chicken, Turkey 3 8-Ounce Packages 87c
- Rice Verdi** Green Giant 12-Ounce Package 53c
- Peas** In Butter Sauce, Green Giant 10-Ounce Package 43c
- Onion Rings** Ore Ida 7-Ounce Package 43c
- Orange Drink** Awake 9-Ounce Can 45c
- Cauliflower** Silverdale 10-Ounce Package 31c

Broccoli
Silverdale, Spears 29¢

Discount Dairy Specials!

- Biscuits** Merico Butter Me Nots 5 9½-Ounce Cans \$1.00
- Dinner Rolls** Pillsbury, Crescent 8-Ounce Can 39¢
- Danish Rolls** Pillsbury, Orange 12-Ounce Can 45¢

Discount Bakery Specials!

- Cookies** Sunshine, Cherry or Lemon Coolers 10-Ounce Box 47¢
- Rich n Chips** Keebler, Cookies 14-Ounce Bag 53¢
- Club Crackers** Keebler 16-Ounce Box 47¢

LOW DISCOUNT PRICE!
Cranberry Juice
Ocean Spray, 32-Ounce 49¢

Joy Liquid
For Sparkling Dishes 12-Ounce Bottle 36¢

Dish All, Detergent
Dishwasher, 12c Off 35-Ounce Box 71¢

Hand Lotion
Jergen's Extra Dry 7-Ounce Bottle 89¢

LOW DISCOUNT PRICE!
Black Pepper
Arrow, Ground 4-Ounce Can 29¢

Liquid Bleach
Bonne, 3c Off Label ½ Gallon 29¢

CHILI with BEANS
Ellis 4 No. 300 Cans \$1.00

Shampoo Breck Concentrate, Regular or Dry 4-Ounce Size Tube 98¢
Crete Rinse Breck, Regular, Fine or Lemon 8-Ounce Size Bottle 69¢
Vaseline Petroleum, 8-Ounce Jar 69¢

LOW DISCOUNT PRICE!
Pancake Mix
Pillsbury, Blueberry 12-Ounce Box 57¢

Applesauce
Del Monte, Cal Reduced No. 303 Can 29¢

Apricots
Del Monte, Halves or Whole - No. 303 Can 39¢

Cotton Swabs Q-Tips 88-Count Package 59¢
Hair Dressing Groom & Clean Large Size \$1.14
Cake Pan Cover, Aluminum by Mirro 12½" x 9" x 2" Each \$1.49

