

The Cotulla Record

VOL. 19, NO. 40

COTULLA, TEXAS, JAN. 10, 1919.

PUBLISHED WEEKLY

45 INCHES RAIN FELL IN 1919.

As far back as there is any record 1919 takes the lead in the amount of rainfall. During the year a total of 45.18 inches fell, which is practically double the average precipitation for this section of the state. The rain was pretty well distributed throughout the year, and very little of it fell in deluges, consequently the ground is soaked deeper than it was ever known to be, even by the oldest settlers.

One notable effect the generous rains has brought about is the reviving the Nueces river to its old time stage. The springs at the head have opened up and the stream is now a bold one with water clear and blue. Years and years ago, before the country settled up it is said that the stream was hardly fordable at any time of the year except at the shallowest crossings. Such a stream it is today. It has been over two months since there was a rise yet it is running half bank full, and indications are it will continue for some time to come. The total rainfall for the year 1919 as distributed by months was as follows:

January	3.03
February	2.90
March	1.83
April	4.01
May	4.69
June	7.40
July	4.69
August	1.65
September	10.40
October	1.85
November	2.01
December	.72
Total	45.18

COLD WAVE HITS STATE.

A cold wave hit the state Tuesday and all over the Northwestern part snow fell to such an extent that railroad traffic was delayed and in some places tied up for several hours. The wave swept the entire state, striking this section Wednesday night and all day Thursday a stiff, cold norther blew. During Thursday night, however the weather moderated some and yesterday morning was not as cold as was predicted. Owing to the snow on the ground to the North of us cool weather may be expected for several days.

Mrs. B. Vesper Dies at Big Wells.

Mrs. B. Vesper, one of Dimmit county's oldest citizens died at Big Wells the morning after Christmas after an illness extending over a period of several years. She was the wife of B. Vesper, for forty years one of Dimmit county's most substantial and respected stockmen. Mrs. Vesper was a native of Texas, having been born in San Antonio and lived in Texas all of her life. She was about 63 years of age.

Deceased is survived by her husband, three sons, Charley, Chris and Richard, and one daughter, Mrs. Y. C. Straight. The bereaved family have the sympathy of their numerous Cotulla friends.

Cloudy, cold weather prevails today with prospects of continuance.

JANUARY OPENS UP WITH RAIN.

The first week in January brought rain. Slow rain fell over this section Monday and Tuesday, in some places amounting to more than an inch, but in this immediate section about half an inch. With the ground soaked it takes only a slight rainfall now to put the roads in a sloppy condition and when the fall was as much as this week it practically stops traffic, especially in the black land best East of Cotulla.

Smaller Number Deer Killed Last Season.

During the deer hunting season which closed with the end of December there was a smaller number of deer killed than for many years past. This is accounted for first by the scarcity of deer in the country as compared with former years and then the difficulty of finding deer this year because of the unusual growth of underbrush and tall grass. Frost did not fall till late and leaves were on the trees until practically the last week of the hunting season.

The good range condition for the fast fifteen was evident in the size of the antlers of the bucks. It was not uncommon for a twenty point buck to be killed this year and some were killed that had as high as thirty or forty points and these were not old deer either. Old deer hunters say the dry years cause a small growth of the deer's horns, while good range conditions cause a large healthy growth.

CENSUS ENUMERATORS ARE AT WORK.

Census Enumerators are at work in La Salle county this week. They are Miss Alice Copp, Walter M. Manly, Miss Eva Mae Shannon, Miss Alice Welhausen and Bonner G. Marsh.

Miss Alice Copp is taking the census in the incorporated town of Cotulla, while the others are taking the country districts and other towns of the county. Complete data on farming and operations of the county is being obtained by the enumerators as well as a tabulation and the number of live stock, poultry, etc.

The enumerators should be given every assistance in this Government work. The data obtained is not to be used for taxation or anything else except for the purpose of which it is being taken. The census of the United States is taken every ten years.

At this particular time many Mexican laborers who live in the incorporated town of Cotulla are out on the onion farms with their families, and enumerators in the outside districts should see that such are enumerated in their proper districts.

Onion Transplanting Is About Completed.

Onion transplanting in this part of the onion belt is nearing the windup. Some farmers completed the work before the first of the year and others would have finished this week had it not been for the bad weather, but the work will now be extended into next week. If the weather is clear practically all transplanting will be finished by the end of the coming week. The rain of this week was of great benefit to the part of the crop that has been transplanted.

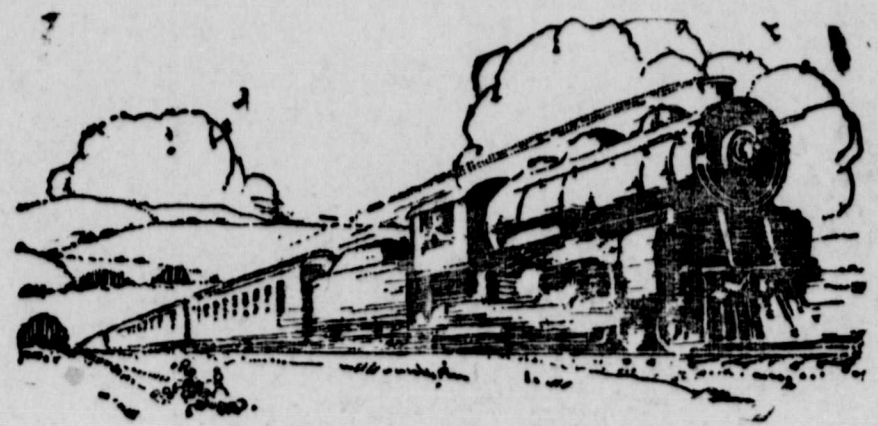
SACKS TO BE USE FOR ONIONS.

We are in receipt of a sample Solin Onion sack, sent us by Cleveland-Akron Bag Company of Cleveland, Ohio. Mr. Housch, representing this firm at two or three weeks in this territory before the holidays interesting the farmers in this container for the marketing of onions the coming season. We understand more than fifty growers purchased these bags and the indications are that a considerable part of this spring's crop will go to market in two bushel bags instead of crates, owing to the almost prohibitive price of the standard crate. Last year the Record advocated the use of bags and we are glad to see some of the farmers with enough nerve to get a-bout from the crate, as the idea has been beaten into them that their onions are shipped in crates they cannot get a fair price for them. We understand that these two bushel bags, which are open mesh, and makes the onions show up splendidly, to be delivered for about 20 cents or perhaps a little less. A one bushel crate will cost the farmer this year 32 1-2 cents. The weight of the crate is about 7 pounds, and freight on this weight in addition must be paid to destination. But not taking them into consideration by the use of the bags one hundred bushels of onions can be put on the market in a container that cost 20 cents against a cost of 32 1-2 cents if the crate is used. Even if shipped into Oklahoma, New Mexico, Arkansas and other close by states can be handled in sacks. On the long hauls a portion of the car can be loaded in sacks by placing a layer of sacks on top of the crates. During the first 30 days of the shipping season onions will carry to any destination in sacks.

We think it advisable for both crates and sacks to be used, but the idea that the crop can be marketed only in sacks is all bosh. Some have the idea that the crate companies are "holding up" the farmers on the price. We don't know anything this. With the high cost of labor and everything else, it may be possible that the standard crate cannot be sold for any less than it is being sold. Granting that to be a fact it is entirely to expensive for a container to carry a bushel of onions to market. The farmer must look for a cheaper container, and we think the bags of the type in question will prove satisfactory.

Testing Eyestrain
By means of suitable glasses is not by any means so simple as it appears. THE NECESSARY SKILL can only be acquired by years of sound close study and experience. THE NECESSARY KNOWLEDGE covers a very wide field and includes Physiology and Anatomy, and Visual Optics in their advanced stages, also a practical knowledge of Lens Grinding and manufacturing glasses in all their forms. MY YEARS OF EXPERIENCE IN COLLEGE AND CLINICAL PRACTICE guarantee this service to you at an honest cost. I am now located in my Office over Gaddis Drug Store with the latest, most modern and up-to-date instruments for eye examination. Consultation FREE. Hours daily from 9 a. m. to 5 p. m.
Dr. M. B. BYRD

This is the paying month. Ten percent penalty after January 31st.



A vast amount of work now remains to be done which the intervention of war has necessarily delayed and accumulated, and the result is that a very large capital expenditure ought to be made to make up for the interruptions inevitably due to the war, and to prepare the railroad to serve adequately the increased traffic throughout the country.
WALKER D. HINES,
Director General of Railroads.

Work more—
Produce more—
Save more—

But we can't continue increasing our production unless we continue increasing our railroad facilities.

The farms, mines and factories cannot increase their output beyond the capacity of the railroads to haul their products.

Railroads are now near the peak of their carrying capacity.

Without railroad expansion—more engines, more cars, more tracks, more terminals—there can be little increase in production.

But this country of ours is going to keep right on growing—and the railroads must grow with it.

To command in the investment markets the flow of new capital to expand railroad facilities—and so increase production—there must be public confidence in the future earning power of railroads.

The nation's business can grow only as fast as the railroads grow.

This advertisement is published by the Association of Railway Executives.

Those desiring information concerning the railroad situation may obtain literature by writing to the Association of Railway Executives, 61 Broadway, New York.

CEMENT WORK

I want to figure with you on Cement Sidewalks, Cemetery Curbing, etc. I have just completed jobs for T. R. Keck, H. C. Fullerton and others and invite your inspection. All work guaranteed and first class.

PAUL BRAY.

Presto Light Battery

THE BATTERY WITH A KICK

The only Battery with a straight twelve month guarantee without REDTAPE. If your car is giving you trouble and you want first class repair work in any line call on our agent at Cotulla.

R. L. Keithley
CITY GARAGE

PREST-O-LIGHT Battery Station 1117 Farragut St.
Phone 530 Laredo, Texas Phone 530.

Gaddis Pharmacy

Will strive as hard
to please its Patrons
1920 as in the past
Years.

"You're Satisfied or We're Not."

Ford

THE UNIVERSAL CAR

The Ford Coupe, with electric self starting and lighting system, has a big, broad seat deeply upholstered. Sliding plate glass windows so that the breeze can sweep right through the open car. Or in case of a storm, the Coupe becomes a closed car, snug, rain-proof and dust-proof. Has all the Ford economies in operation and maintenance. A car that lasts and serves satisfactorily as long as it lasts. Demountable rims with 3 1/2-inch tires all around. For the doctor and travelling salesman it is the ideal car.

Chas. E. Neal's Auto Co.



The Cotulla Record

VOL. 19, NO. 40

COTULLA, TEXAS, JAN. 10, 1919.

PUBLISHED WEEKLY

45 INCHES RAIN FELL IN 1919.

As far back as there is any record 1919 takes the lead in the amount of rainfall. During the year a total of 45.18 inches fell, which is practically double the average precipitation for this section of the state. The rain was pretty well distributed throughout the year, and very little of it fell in deluges, consequently the ground is soaked deeper than it was ever known to be, even by the oldest settlers.

One notable effect the generous rains has brought about is the reviving the Nueces river to its old time stage. The springs at the head have opened up and the stream is now a bold one with water clear and blue. Years and years ago, before the country settled up it is said that the stream was hardly fordable at any time of the year except at the shallowest crossings. Such a stream it is today. It has been over two months since there was a rise yet it is running half bank full, and indications are it will continue for some time to come. The total rainfall for the year 1919 as distributed by months was as follows:

January,	3.03
February	2.90
March	1.83
April	4.01
May	4.69
June	7.40
July	4.69
August	1.65
September	10.40
October	1.85
November	2.01
December	.72
	45.18

COLD WAVE HITS STATE.

A cold wave hit the state Tuesday and all over the Northwest part snow fell to such an extent that railroad traffic was delayed and in some places tied up for several hours. The wave swept the entire state, striking this section Wednesday night and all day Thursday a stiff, cold norther blew. During Thursday night, however the weather moderated some and yesterday morning was not as cold as was predicted. Owing to the snow on the ground to the North of us cool weather may be expected for several days.

Mrs. B. Vesper Dies at Big Wells.

Mrs. B. Vesper, one of Dimmit county's oldest citizens died at Big Wells the morning after Christmas after an illness extending over a period of several years. She was the wife of B. Vesper, for forty years one of Dimmit county's most substantial and respected stockmen. Mrs. Vesper was a native of Texas, having been born in San Antonio and lived in Texas all of her life. She was about 63 years of age.

Deceased is survived by her husband, three sons, Charley, Chris and Richard, and one daughter, Mrs. Y. C. Straight. The bereaved family have the sympathy of their numerous Cotulla friends.

Cloudy, cold weather prevails today with prospects of continuance.

JANUARY OPENS UP WITH RAIN.

The first week in January brought rain. Slow rain fell over this section Monday and Tuesday, in some places amounting to more than an inch, but in this immediate section about half an inch. With the ground soaked it takes only a slight rainfall now to put the roads in a sloppy condition and when the fall was as much as this week it practically stops traffic, especially in the black land best East of Cotulla.

Smaller Number Deer Killed Last Season.

During the deer hunting season which closed with the end of December there was a smaller number of deer killed than for many years past. This is accounted for first by the scarcity of deer in the country as compared with former years and then the difficulty of finding deer this year because of the unusual growth of underbrush and tall grass. Frost did not fall till late and leaves were on the trees until practically the last week of the hunting season.

The good range condition for the fast fifteen was evident in the size of the antlers of the bucks. It was not uncommon for a twenty point buck to be killed this year and some were killed that had as high as thirty or forty points and these were not old deer either. Old deer hunters say the dry years cause a small growth of the deer's horns, while good years cause a large healthy growth.

CENSUS ENUMERATORS ARE AT WORK.

Census Enumerators are at work in La Salle county this week. They are Miss Alice Copp, Walter M. Manly, Miss Eva Mae Shannon, Miss Alice Welhausen and Bonner G. Marsh.

Miss Alice Copp is taking the census in the incorporated town of Cotulla, while the others are taking the country districts and other towns of the county. Complete data on farming and operations of the county is being obtained by the enumerators as well as a tabulation and the number of live stock, poultry, etc. The enumerators should be given every assistance in this Government work. The data obtained is not to be used for taxation or anything else except for the purpose of which it is being taken. The census of the United States is taken every ten years.

At this particular time many Mexican laborers who live in the incorporated town of Cotulla are out on the onion farms with their families, and enumerators in the outside districts should see that such are enumerated in their proper districts.

Onion Transplanting Is About Completed.

Onion transplanting in this part of the onion belt is nearing the windup. Some farmers completed the work before the first of the year and others would have finished this week had it not been for the bad weather, but the work will now be extended into next week. If the weather is clear practically all transplanting will be finished by the end of the coming week. The rain of this week was of great benefit to the part of the crop that has been transplanted.

SACKS TO BE USE FOR ONIONS.

We are in receipt of a sample Colin Onion sack, sent us by the Cleveland-Akron Bag Company of Cleveland, Ohio. Mr. Housch, representing this firm, is here in two or three weeks in this territory before the holidays interesting the farmers in this matter for the marketing of onions the coming season. We understand more than fifty farmers purchased these bags and the indications are that a considerable part of this spring's onion crop will go to market in bushel bags instead of crates, owing to the almost prohibitive price of the standard crates. Last year the Record advocated the use of bags and we are glad to see some of the farmers with enough nerve to get away from the crate, as the idea has been beaten into them that their onions are shipped in crates they cannot get a fair price for them. We understand these two bushel bags, which are open mesh, and makes onions show up splendidly, to be delivered for about 20 cents or perhaps a little less. A bushel crate will cost the farmer this year 32 1-2 cents. The weight of the crate is about 70 pounds, and freight on this weight in addition must be paid to destination. But not taking them into consideration by using the bags one hundred bushels of onions can be put on a market in a container that cost 20 cents against a cost of 32 1-2 cents if the crate is used. Even if the crate is used, it is shipped into Oklahoma, New Mexico, Arkansas and other close by states can be handled in sacks. On the long hauls a portion of the car can be loaded in sacks by placing a layer of sacks on top of the crates. During the first 30 days of the shipping season onions will carry to any destination in sacks.

We think it advisable for both crates and sacks to be used, but the idea that the crop can be marketed only in sacks is all bosh. Some have the idea that the crate companies are "holding up" the farmers on the price. We don't know anything this. With the high cost of labor and everything else, it may be possible that the standard crate cannot be sold for any less than it is being sold. Granting that to be a fact it is entirely to expensive for a container to carry a bushel of onions to market. The farmer must look for a cheaper container, and we think the bags of the type in question will prove satisfactory.

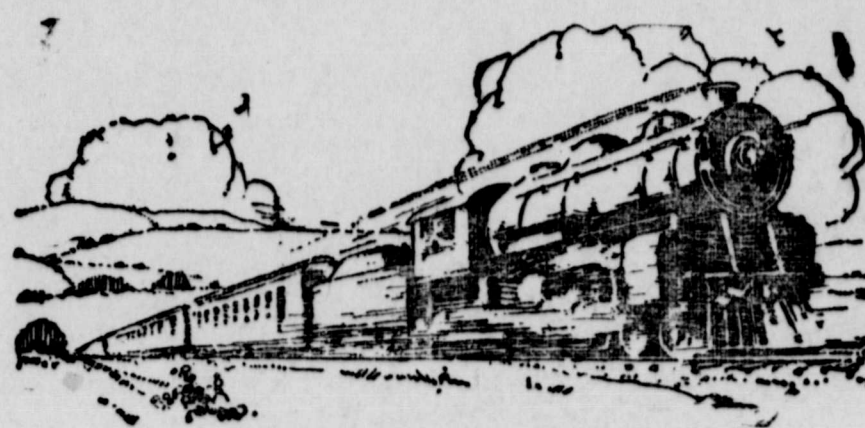
Testing Eyestrain

By means of suitable glasses is not by any means so simple as it appears. THE NECESSARY SKILL can only be acquired by years of sound close study and experience. THE NECESSARY KNOWLEDGE covers a very wide field and includes Physiology and Anatomy, and Visual Optics in their advanced stages, also a practical knowledge of Lens Grinding and manufacturing glasses in all their forms. MY YEARS OF EXPERIENCE IN COLLEGE AND CLINICAL PRACTICE guarantee this service to you at an honest cost.

I am now located in my Office over Gaddis Drug Store with the latest, most modern and up-to-date instruments for eye examination. Consultation FREE. Hours daily from 9 a. m. to 5 p. m.

Dr. M. B. BYRD

This is the paying month. Ten percent penalty after January 31st.



A vast amount of work now remains to be done which the intervention of war has necessarily delayed and accumulated, and the result is that a very large capital expenditure ought to be made to make up for the interruptions inevitably due to the war, and to prepare the railroad to serve adequately the increased traffic throughout the country.
WALKER D. HINES
Director General of Railroads.

Work more—
Produce more—
Save more—

But we can't continue increasing our production unless we continue increasing our railroad facilities.

The farms, mines and factories cannot increase their output beyond the capacity of the railroads to haul their products.

Railroads are now near the peak of their carrying capacity.

Without railroad expansion—more engines, more cars, more tracks, more terminals—there can be little increase in production.

But this country of ours is going to keep right on growing—and the railroads must grow with it.

To command in the investment markets the flow of new capital to expand railroad facilities—and so increase production—there must be public confidence in the future earning power of railroads.

The nation's business can grow only as fast as the railroads grow.

This advertisement is published by the Association of Railway Executives.

Those desiring information concerning the railroad situation may obtain literature by writing to the Association of Railway Executives, 61 Broadway, New York.

CEMENT WORK

I want to figure with you on Cement Sidewalks, Cemetery Curbing, etc. I have just completed jobs for T. R. Keck, H. C. Fullerton and others and invite your inspection. All work guaranteed and first class.

PAUL BRAY.

Presto Light Battery

THE BATTERY WITH A KICK

The only Battery with a straight twelve month guarantee without REDTAPE. If your car is giving you trouble and you want first class repair work in any line call on our agent at Cotulla.

R. L. Keithley
CITY GARAGE

PREST-O-LIGHT Battery Station 1117 Farragut St.
Phone 539 Laredo, Texas Phone 530.

Gaddis Pharmacy

Will strive as hard
to please its Patrons
1920 as in the past
Years.

"You're Satisfied or We're Not."

Ford

THE UNIVERSAL CAR

The Ford Coupe, with electric self starting and lighting system, has a big, broad seat deeply upholstered. Sliding plate glass windows so that the breeze can sweep right through the open car. Or in case of a storm, the Coupe becomes a closed car, snug, rain-proof and dust-proof. Has all the Ford economies in operation and maintenance. A car that lasts and serves satisfactorily as long as it lasts. Demountable rims with 3 1/2-inch tires all around. For the doctor and travelling salesman it is the ideal car.

Chas. E. Neal's Auto Co.



THE COTULLA RECORD

PUBLISHED EVERY SATURDAY

Entered in the Postoffice at Cotulla, Texas as second class mail matter

MANLY & MANLY, PUBLISHERS.

SUBSCRIPTION \$1.50 IN ADVANCE.

1919 A WONDERFUL YEAR

Nineteen Hundred and Nineteen will go down in the history of Southwest Texas as a wonderful year. Following a period of most devastating drouth it was a year of the greatest rainfall and the most bountiful crops in history. It is true that because of too much precipitation and storms much of the crop was lost, but nevertheless the harvest was bounteous.

Not since the early days before the country was cut into pastures by the wire fence, has there been such a coat of grass over the earth, and the cattleman is having no worry over feed bills. The water holes are all full, and cattle are taking on more fat today than they have at this time of the year in many years, and it is predicted they will be ready for market early this spring.

We enter 1920 with every indication for a prosperous year. There is a fine season in the ground and probably the largest acreage the county has ever had will be sown to crops. The conditions could hardly be such that there will be a failure, at least it seems so at this time.

Along the Nueces the acreage in onions, spinach lettuce and other truck crops is looking fine and there is prospects for good prices. 1919 was a wonderful year, but there is every prospect that it will be eclipsed by 1920.

In order to vote in elections this year it will be necessary for those living within the city limits of the City of Cotulla to pay both city and county poll tax. This has been the law all the time, and the Attorney General has ruled that women voters to be qualified must pay both city and state poll taxes in order to vote in the primary election. This, of course applies to women who live in incorporated cities or towns where a city poll tax is collected. Cities usually charge \$1, so all women as well as men desiring to vote this year will be required to possess both poll taxes.

This is tree and shrub planting time and every home in the town should do some beautifying this spring. The long drouth and the war took the pep out of things and very little has been done the past two or three years but it is time we are coming to life again. With the best water in Texas there is no reason on earth why we should not have as beautiful yard as any town. Start in today to do your part. Plant some trees and some flowers.

WHAT WILL YOU LEAVE YOUR BOY?

It is worth while to remember that the boy is the germ of what the man is to be. You cannot change his nature much, but you can develop the best in him till it overshadows the worst. The life of a man at forty will be what was in his heart at twenty-one.

And a father may say to his boys something like this, which is one way or another I have said to thousands of boys in this and other countries:

"Your first duty in life is toward your afterlife. So live that your afterlife—the man you ought to be—may in his time be possible and actual."

"Far away in the years he is waiting his turn. His body, his brain, his soul, are in your hands. He cannot help himself."

"What will you leave for him?"

"Will it be a body unspoiled by lust or dissipation, a mind trained to think and act; a nervous system true as a dial in its response to the truth about you? Will you, Boy, let him come as a boy among men in this time?"

"Or will you throw away his inheritance before he has time to touch it? Will you turn over to him a brain distorted, a mind diseased; a will untrained to action; a spinal cord grown through and through with the might have been shall never be?"

"Will you let him come, taking your place, gaining through your experience, happy in your friendship, hallowed through your joys, building on them his own?"

"Or will you fling it away, decreeing, wantonly, that the man you might have been shall never be?"

"This is your problem in life—the problem vastly more important to you than any or all others. How will you meet it, as a man or as a fool? It is your problem today and every day, and the hour of your choice is the crisis in your history."—American Journal.

HIGH COST OF LEISURE.

The high cost of living is not the only problem before America, according to Thomas B. Marshall, Vice President. The high cost of leisure is also a menace he says. "One of the old ideas of the republic was that the limit of striving for success was the limit of capacity and endurance" declared the vice president recently. "The real evil which we are confronting today is the high cost of the leisure. I speak in a censorious way because I am myself the laziest of the lazy."

"I only beg the thoughtful consideration of younger men who have the good of the republic at heart, seriously to consider the problem as to whether the only way in which to meet the increasing difficulties of American life is not by additional striving to produce more, to earn more, to economize more and save more."

Each man should have the power to follow the vice president's advice, no matter what his condition. No matter what he is able to earn, whether small sum or great, the securities of the government, Thrift Stamps, War Savings Stamps, Treasury Savings Certificates, Certificates of Indebtedness and Liberty Bonds give opportunity to save at least a part of his reward of labor.



The Most Welcome Tire That Ever Came to Market

Men Who Appreciate Superlative Values Prefer The Brunswick

In every great tire factory, the chief question is: "How much can we give for the money?" And the product depends on the policy adopted.

among them has spent less than 20 years in handling rubber.

Every man who has become acquainted with Brunswick Tires knows that Brunswick standards are again evident. This famous concern—noted as a leader in every line it entered since 1845—has once more proved that its policy is right.

Each is a master of his craft. And the new ideas they bring to the attention of Brunswick directors receive sincere consideration.

Every proved betterment is adopted unanimously.

The Brunswick Tire is a combination of acknowledged features—plus Brunswick standards of manufacture.

A perfect tire is simply a matter of knowledge and standards and skill. No secrets nor patents prevent making an ideal tire.

The result is a super-tire, the like of which you have never known before. The kind of a tire you will gladly join in welcoming.

But standards come first. For in tire making there is vast room for skimping, for subtle economies, for hidden shortcomings. Makers without the highest standards don't build high-grade tires.

Yet Brunswicks cost no more than like-type tires.

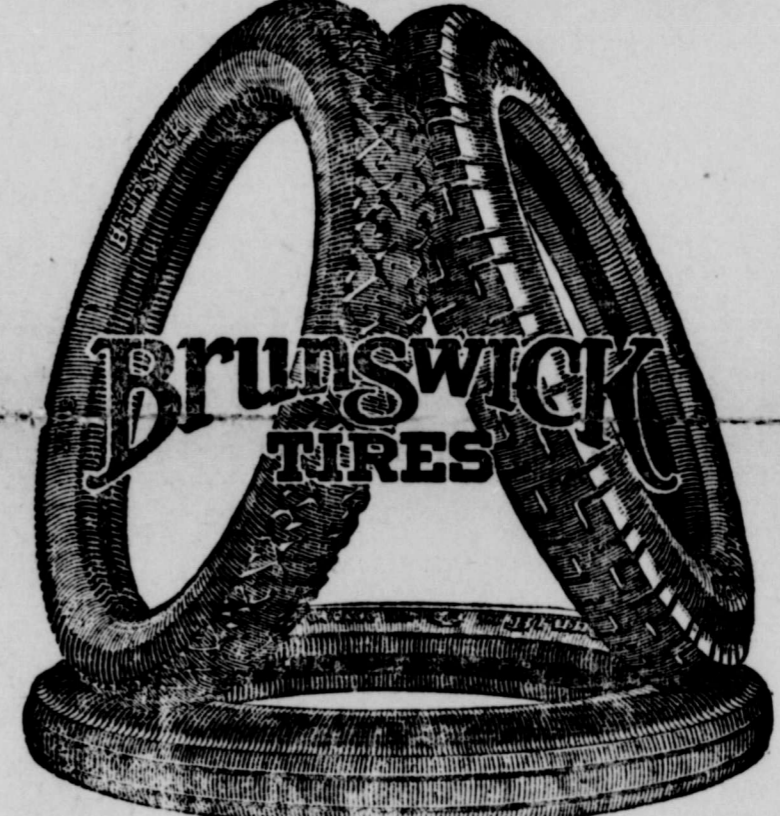
Try ONE Brunswick. We promise a surprise. And we feel certain that you will want ALL Brunswicks.

The Brunswick organization of tire makers includes a brilliant staff of technical experts. Not a man

Then good tires will have a new meaning to you.

THE BRUNSWICK-BALKE-COLLENDER CO. Dallas Headquarters: 611 Main St.

There's a Brunswick Tire for Every Car Cord—Fabric—Solid Truck



Cord Tires with "Driving" and "Swastika" Skid-Not Treads
Fabric Tires in "Plain," "Ribbed" and "BBC" Skid-Not Treads
Solid Truck Tires in all sizes authorized by the Society of Automotive Engineers

Charles E. Neal's Auto Company



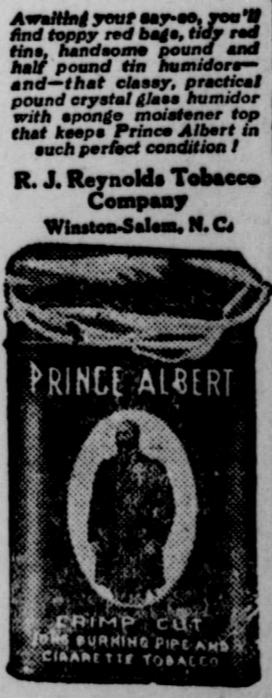
Lay a bet on rolling 'em with PRINCE ALBERT the national joy smoke



ROLLING your own cigarettes with Prince Albert is just about as joy'us a sideline as you ever carried around in your grip! For, take it at any angle, you never got such quality, flavor, fragrance and coolness in a makin's cigarette in your life as every "P. A. home-made" will present you!

Prince Albert puts new smokenotions under your bonnet! It's so delightful rolled into a cigarette—and, so easy to roll! And, you just take to it like you been doing it since away back! You see, P. A. is crimp cut and a cinch to handle! It stays put—and you don't lose a lot when you start to hug the paper around the tobacco!

You'll like Prince Albert in a jimmy pipe as much as you do in a home-rolled cigarette, too! Bite and parch are cut out by our exclusive patented process. You know P. A. is the tobacco that has led three men to smoke pipes where one was smoked before. Yes sir, Prince Albert blazed the way. And, me-o-my, what a wad of smokesport will ripple your way every time you fill up!



P.G. Tailor Shop.

Telephone 90.
Located South of Gilmer Hotel
R. A. Gougers Place
Cleaning and Pressing
Ladies Suits and Skirts
a Specialty.

P. G. CORTEZ

DR. J. N. LIGHTSEY

Physician and Surgeon
OFFICE OVER GADDIS PHARMACY
COTULLA, TEXAS

Snowstorms over Northwest Texas delayed railway traffic in the early part of the week.

FOR SALE—Sixty acres of Altito Ranch Lands, together with six town lots in Altito townsite on the county road near Cotulla, subdivided in six ten acre tracts, numbered 592 to 597. Will sacrifice. Make me an offer.
G. P. Mackey,
1227 West Main St. El Paso, Te

FARM TO RENT. The Peacock School desires to communicate with a good Atascosa County farmer, to cultivate, under usual conditions, 49 acres, already in cultivation, by the Evans Deep Well, one mile North of North Pleasanton, and another farmer renter for nearly 400 acres south of Christine. Also for about 500 acres in Cotulla, Texas. Also good all-around man, with or without family, to work at Peacock School at \$50.00 a month, or more, according to work.

The cold wave Thursday knocked out the train schedules on the North end, causing delays down this way.

Frost-proof Cabbage Plants Ready shipping 25,000,000. 50 acres open field grown. Charleston, Ertry Jersey, Wakefield, Flat Dutch. 100 Cabbage plants 50; 500 \$1.50; 1,000 \$2.50; 10,000 \$2.00; post-paid. Cabbage plants 500, \$1.25; 1,000, \$2; 10,000, \$1.50; express collect. Ask for special price, large quantity.
Georgia-Texas Plant Company, Dallas, Texas

6 Per Cent Money 33 Year Payments

If you need money to operate your farm, or want to buy cattle or anything else, I can make arrangements for you to get as much as you need at 6 per cent and on easy terms. I represent the San Antonio Joint Stock Land Bank in Texas and will be glad to take your applications for the amount of money you want to borrow. Write or phone me.
F. P. CARPENTER
Dilley, Texas

The Farmers and Stockmans
BANK
(unincorporated)
of Cotulla, La Salle County, Texas.
Wants Your Business for 1919.
J. H. ZACHRY Manager J. H. GALLMAN, Assistant Manager

WE LEND MONEY
ON FARMS AND RANCHES
and through our
TRUST DEPARTMENT
Act as Trustees and Administrators
of Estates.
E. B. CHANDLER, San Antonio, Texas.

We Sell for Cash
WE CAN SELL CHEAPER.
GROCERIES AND GRAIN
Bring the Money and Get More.
W. H. FULLERTON & SON

T. R. KECK
Lumber, Hardware, Wagons
Undertaker's Supplies.
Lime, Cement, Brick and all kinds Builders Supplies.
Cotulla, Texas.

CUNTER HOTEL
SAN ANTONIO, TEXAS.
A PLACE TO STOP AT WORTH WHILE
THE HOME OF ALL TEXAS.
PERCY TYRRELL, Manager

Phone 36 **AUTOMOBILE SERVICE!** Phone 35
Anywhere, Anytime, Day or Night.
RATES REASONABLE.
M. H. RUSSELL.

TORNADO INSURANCE
Don't let another Storm catch you unprepared.
WE PAY THE DAMAGE.
THE MANLY AGENCY.

GARDENDALE HOTEL
C. A. TOLLEY, Mgr.
A place to stop at worth while.
Chicken Dinner served on one hours notice.
Gardendale, Texas.

American Barber Shop
W. L. Pease, Proprietor
Service up to date in every Particular.
Agent for White Star Laundry.
Basket shipped Wednesdays

Lost. gold bar pin about three inches long, with diamond center. Mrs. T. H. Poole.

FOR SALE—West Texas Well Machine in good running order. Cheap for cash or will trade for mules. G. A. Manly.

DR. W. C. MORGAN
DENTIST
Pyorrhea and Bridge Work a Specialty
25 Years Experience
Office Over Gaddis Pharmacy

Rafael Carpenter
Expert Tailor.
Clothes Cleaned, Pressed and Dyed. Hats blocked. Repairing skillfully done. Send me your work, I am an old-timer in the business.
Front Street.

John W. Willson
Attorney at Law
Will practice in all Courts
REAL ESTATE AGENCY.
COTULLA, TEXAS.

DR. R. L. GRAHAM
Physician and Surgeon.
Office One Door North Gaddis Pharmacy
COTULLA, TEXAS.

Undecisive Character.
A person of undecisive character wonders how all the embarrassments in the world happened to meet exactly in his way, to place him just in that one situation for which he is peculiarly unadapted, but in which he is also willing to think no other man could have acted with facility or confidence. Incapable of setting up a firm purpose on the basis of things as they are, he is often employed in vain speculations on some different supposable state of things, which would have saved him from all this complexity and irresolution. He thinks that a different course he could have pursued if his talents, his health, his age had been different; if he had been acquainted with some one person sooner, if his friends were, in this or the other point, different from what they are; or if fortune had showered her favors on him. And he gives himself as much license to complain as if all these advantages had been among the rights of his nativity, but refused, by a malignant or capricious fate, to his life.—Rev. John Foster.

Bees Took Carload of Sugar.
Near the station of Fontainebleau, France, a carload of crystallized sugar was held up and within four days the entire load had disappeared in spite of the guards.

Not far from the station of Avon there are large bee farms, and while the bees covered the car in swarms no one supposed that they could carry away the crystallized sugar. Nor could they. But industriously and ingeniously they took themselves to nearby basins and fountains and carried drops of water to melt the sugar! The dampened sugar formed a strup that was easily transported to the hives.

Australia's Pride in Warships.
The Commonwealth is proud of its warships and particularly of its battle cruiser which saved Sydney and Melbourne from bombardment at the outbreak of the war. The Australian Arts club has shown its pride in a practical way by presenting a selection of paintings, drawings and etchings to the ward room of H. M. A. S. Australia. All the gifts were the work of members of the club, which included some of the leading artists of the Commonwealth. In return, Commodore Dumaresq entertained the committee of the club at luncheon on the battle cruiser, which has been stationed in Farm Cove, Sydney harbor, since its return from the North sea.

He Felt Shop Worn.
"Say, boss," appealed a dusky dough-boy convalescent in a recuperation hospital, when a sawhorse came his way, "What ya reckon ya keepin' me here for—no souvenirs?"—Stars and Stripes, Washington.

SHERIFF SALE.
State of Texas, County of La Salle.
Notice is hereby given that by virtue of a certain Order of Sale issued out of the Honorable District Court of La Salle County, on the 4th day of December 1919, by A. U. Knaggs, District Clerk of said La Salle County, Texas, for the sum of Thirty two hundred Seventy two and 50-100 Dollars costs of suit, under a Judgment and closure of a Vendors Lien, in favor of Cotulla State Bank in a certain case said Court, No. 1379 and styled Cotulla State Bank vs Vicente Ramirez, as in my hands for service, I, T. H. Poole, as Sheriff of La Salle County, Texas, did on the 4th day of December 1919, levy on certain Real Estate situated in La Salle County, Texas, described as follows, to-wit:
"114 acres of land off of and a part of Section 17 S. A. & M. G. R. R. Cert. No. 21311, Abstract No. 566, Pat. No. 556, Vol. 7, Dated 2nd 1897; said 114 acres being remaining part of said Section No. 17 of 640 acres owned by J. M. Talbot after he had conveyed to John W. Willson and James C. Reynolds 525.99 acres by deed dated May 25, 1911, being the same land conveyed by J. M. Talbot to James Reynolds et al by deed dated Oct. 23rd, 1912, and recorded in Vol. F. I. Page 595-597 of the Deed Records of La Salle County, Texas, and being the same land conveyed by J. M. Talbot to E. B. Zachry and A. F. Childs by deed dated Mar. 22nd, 1915, and recorded in Vol. O-I, pages 472 to 475 of the Deed Records of La Salle County, Texas, and being the same land conveyed by E. B. Zachry et al to H. B. Miller by deed dated Mar. 22nd, 1915, and recorded in Vol. O-I, pages 470 to 472 of the Deed Records of La Salle County, Texas, being the same land conveyed by J. H. Gent to the Cotulla State Bank by deed dated March 27th, 1916, duly recorded in Vol. R-1, pages 364-6 of the La Salle County Deed Records, to all of which above mentioned Deeds and the given records thereof reference is hereby made for purposes of identification and description.
The right of way ten feet wide from the pumping site in the Nueces River for said 114 acres of land, the said right of way being along and parallel to the pipe line and there is also included the pipe line and roadway extending from said pumping plant to the Nueces River where said pumping plant is now situated and also the pumping plant and all machinery in connection therewith, there being included in the conveyance all of the rights and appurtenances real estate and personal property used for irrigating purposes included in the several deeds hereinbefore mentioned and referred to.
Also the foreclosure of a chattel mortgage, duly filed for record in La Salle County, Texas, on May 25th, 1917, covering the following described personal property:
One (1) onion marker
One (1) lettuce marker
One (1) disc plow
One (1) sulky plow
Two (2) wagons
One (1) level drag
Two (2) mules
One (1) horse (mare)
One (1) hay rake
One (1) mowing machine
One (1) drag harrow
One (1) Georgia Stock
As they existed on the May 10th, A. D. 1917, and that said property be sold as under execution in satisfaction of said judgment.
This sale is made, however, subject to a prior lien now owned and held by one Marberger; said lien being of record in La Salle County, Texas, and levied upon as the property of Vicente Ramirez and that on the first Tuesday in February 1920, the same being the 3rd day of said month, at the County House door of La Salle County, in the town of Cotulla, Texas, between the hours of 10 a. m. and 4 p. m., by virtue of said levy and said Order of Sale I will sell said above described Real Estate at public vendue, for cash, to the highest bidder, as the property of said Vicente Ramirez.
And in compliance with law, I give this notice by publication, in the English language, once a week for three consecutive weeks immediately preceding said day of sale, in the Cotulla Record, a newspaper published in La Salle County.
Witness my hand, this 4th day of December 1919.
T. H. Poole,
Sheriff La Salle County, Texas.
By John Wildenthal, Deputy.

SCHOOL NOTES.

January 5th school reopened after a two weeks holiday. Of course the pupils were rather short on preparation the first day, but doubtless they will be easily worked in.

The Misses Lacey, who have been visiting in Marble Falls, and Miss Anderson, who spent the Holidays in Austin, returned Sunday afternoon. Miss Pearce, however, did not return. She is in the P. & S. Hospital, recovering from an operation. Her pupils hope she will soon be up and ready to take charge of her classes. Unless the Spanish can be carried on by correspondence it will have to be dropped. The English, however, has been divided among the other High School teachers. Here is wishing Miss Pearce a quick and thorough recovery.

High School has one new pupil, Riley Rankins of Woodward. He is in the eighth grade.

Monday, the President of the Senior class called a meeting for the purpose of selecting colors, class flowers, motto and pins. The colors decided upon were old rose and silver; the pins were ordered; and committees appointed to choose the class motto and flower. The class also decided to have a play, Mr. Steele consenting to select one.

During the vacation a series of entertainments were given, complimenting the class of '20. The class unanimously voted thanks for these entertainments. Any others will be received with gratitude.

On Friday night, January 2, Mrs. Gallman entertained the Seniors of 1920 with a Hearts Party. By eight-thirty o'clock the crowd had gathered and tally cards were passed, partners chosen, and the games began. Although many of the participants were not familiar with the game they soon became skillful players, for this game is somewhat similar to a game with the same appellation. Hearts is rather an exciting game for you never know when you will be the loser. About twelve o'clock, although the interest in the game had not sub-

sided, delicious refreshments of chocolate, cake, bon-bons, and other dainties were served. After enjoying some music, the guests departed. Each and everyone acknowledged having had a most pleasant time. Those present were: Mrs. Jonathan Poole, Misses Maurine Dyson, Elvira Robock, Fay Delle Porter, Pauline Aklin, Justice Graham and Esther Burwell. Messrs. Frank Graham, Hobson Wildenthal, William Morgan, Fred Johnson, and Mr. and Mrs. Gallman, the host and hostess.

On December the twentieth, Justice and and Frank Graham sent invitations to the other three members of the Senior Class of '20, bidding them bring a friend to a forty-two party at the Graham home on December the thirtieth. Each girl of the class invited a boy and the boy a girl. As soon as the guests arrived someone suggested that there be some music. After singing awhile, the partners were chosen and the games started. Miss Pauline Aklin and Mr. Fred Johnson were the champion players, scoring five gam s. Mrs. Graham composed a story of the events of the evening, the guests supplying the necessary adjectives. Refreshments of salad, sandwiches, cake and hot chocolate were served. When the refreshments were enjoyed more music was rendered. Maurine Dyson played the piano and Fred and Phil Johnson the cornet and violin. Those present were: Misses Elvira Robuck, Ola T. Porter, Maurine Dyson, Pauline Aklin, Marie Foster and Justice Graham. Messrs. Fred and Phil Johnson, William Morgan, Marion Neeley, Hobson Wildenthal, Frank Graham and the host and hostess, Dr. and Mrs. Graham.

THANKS.
We take this method of thanking our church members and many friends for their Christmas tokens of love and good-will in goods, eats and cash. Many, many thanks.
W. L. Skinner and family.

John P. Guinn has a Moline Tractor down at his place breaking his land. He says that it does splendid work and one thing he likes about it is that crops can be cultivated.

DELCO-LIGHT
ELECTRICITY FOR ANYONE ANYWHERE

Making the Farm Produce
The most important factor in farm production this year is farm labor. Delco-Light adds an extra hand to the farm working force—
And it is the busiest, most efficient workman about the place.
Delco-Light not only furnishes an abundance of clean, safe and economical electric light for house and barn but—
It furnishes power to pump the water, operate the separator and churn, wash the clothes and grind the tools—
It lengthens the working day by making it possible to do the barn chores safely and easily after dark—
It pays for itself in time and labor saved—
And at the same time it adds greatly to the comfort and convenience of farm life.
Delco-Light is a simple, compact, highly-efficient electric plant that requires little or no attention, and that runs on kerosene, gas or gasoline.

LOCAL & PERSONAL

Mrs. Wm. Shaw is seriously ill at her home near Cotulla.

J. K. Williams was a Laredo visitor during the week.

Mrs. C. C. Burr was here from Laredo this week visiting friends.

Arthur Knaggs went up to San Antonio first of the week.

Mr. and Mrs. A. G. Salmon of Artesia Wells were in Cotulla Thursday.

Don't expose your feet this damp weather, buy rubbers at K. Burwell's.

Mr. and Mrs. T. H. Poole returned yesterday from San Antonio.

Mr. and Mrs. Jas. Merriman of Pearsall were in the city Sunday.

Mr. and Mrs. Jack T. Johns were here from Harris Valley during the week.

Mrs. J. W. Coleman is visiting her son, J. A. Coleman in Big Wells this week.

J. M. Dobie came in from the ranch Thursday and took the noon train for San Antonio.

Mr. and Mrs. M. H. McMahon spent Christmas at Asherton with Mr. and Mrs. R. A. Gouger.

Invest now in a Royal Tailored Suit or Overcoat. Special offer good only until Feb. 15th. K. Burwell.

Carroll Womble of Dallas spent Christmas here with his sister, Mrs. Chas. E. Neal.

Mr. and Mrs. John W. Willson returned first of the week from Chester, where they spent the Holidays with relatives.

Mrs. J. F. Daniel and little daughter returned this week from San Antonio where they spent the holidays.

Rev. Hamilton will preach both morning and evening at the Presbyterian Church. Sunday School at 9:45. Bring your Bible.

Concrete Work, Sidewalks, flower beds, water troughs, cemetery curbing, etc.
R. P. BRAY.

A large crowd of visitors were here to attend the New Year's dance. A jazz band from San Antonio furnished music for the occasion.

Misses Genevive and Aleen Kerr, daughters of Mr. and Mrs. L. A. Kerr, were here during the holidays, guests of Miss Alva Gaddis.

The young men and women who are attending colleges over the state and spent the holidays at home have all returned to their duties.

Mr. and Mrs. Roy Adams and children returned first of the week from Devine, where they spent the Holidays with Mrs. Adams' parents.

For Sale—Six high grade Hereford bull yearlings, at seventy-five (\$75.00) apiece. Phone or write for particulars.
Sid Moffett, Dille, Tex.

Rev. Foster and wife returned first of the week from Mineral Wells, where they spent the Holidays with Rev. Foster's sister.

Mrs. Gilmer, who has been seriously ill for two weeks or more is much better the last few days and this information will be pleasing to her many friends.

For Sale—Two large black horses, weight 1100 to 1200, one pair medium size horses, one pair medium size mules, all good work stock. J. R. Burnett's Farm, Gardendale, Texas.

A big meeting of the Masonic Lodge was held Thursday night, third degree work being given to Fred Johnson and Eugene Meckler. Refreshments were served. Several members of San Antonio lodges were present.

R. M. Lowther of San Antonio spent a day or two here this week. He is a brother to Mrs. T. B. Johnson and came down to see the third degree Masonic work given to his nephews, Fred Johnson and Eugene Meckler.

There were a number of bucks killed during December but Wiley Pease has the record of killing the biggest one according to his statement made to the Record. He said he brought down a fourteen point buck dressed 178 pounds.

At a meeting of the City Council Tuesday night Walter M. Manly tendered his resignation as City Secretary, and J. H. Gallman was elected to fill the vacancy. Mr. Gallman will also collect city taxes this year, as well as rentals for water and lights.

J. H. Zachry, of the Farmers & Stockmens Bank was here from Uvalde last Saturday. Mr. Zachry says conditions were better in the Uvalde country than they have been for many years, and he expects a period of prosperity for Southwest Texas never before equalled. He expects to return here within a week or two and remain for several days.

The Record is appreciative of the support given the paper by the business men of Cotulla during the past year. We feel like we have given value received and we hope you feel the same way about it and will continue to give your support to the paper. Without the support of the people of a community a paper cannot exist, and the paper reflects the progressiveness of the town in its columns.

W. H. Meeks, merchant, cotton planter and gin man of Woodward was in the city one day this week. Mr. Meeks said that about 1,000 bales of cotton had been ginned at Woodward and that there would probably be 200 more, if all of the cotton could be picked, but that pickers were getting scarce and the grade of cotton that is coming out now is so low that it hardly pays to pick it. So much cotton this year that the fields to say nothing of the great loss attributed to the September storm. Mr. Meeks said a large acreage would be planted in the Woodward territory again this year, and he looks for a better cotton year than 1919.

COTTON FARMERS

Let us put you on Our Reserve list for some good COTTON SEED at \$2.25 and \$3.00 per hundred. SELECT GIN RUN "BEFORE THE STORM" SEED.

Cotulla Mercantile Co.

BUILDING NEARING COMPLETION.

Chas. E. Neal's Auto Company's new garage building that is being erected on Front street is nearing completion. Work on this building has progressed rapidly considering the bad weather that has prevailed the last two months. The walls are all up, roof on and about all that is lacking is the building of the firewalls. The building is 45x110 feet, and has 28 feet of plate glass windows in the front. Mr. Neal said that material is hard to get but that as soon as available he would begin work on another building where the two story frame now stands. He said that he put in an order for eight carloads of brick yesterday and expected them to be delivered by May. If the order is filled he will begin tearing down the frame about June 1st.

TAX PAYERS NOTICE.

Notice is hereby given the Tax Payers of La Salle County that I will be at the following places on the dates named for the purpose of collecting taxes due for the year 1919.

Fowlerton, Monday Jan. 12th.
Encinal, Monday Jan. 19th.
Millet, Saturday, Jan. 24th.
All persons are hereby warned that after the 31st day of January, 1920, a penalty of ten per cent will be charged on all taxes not paid.

T. H. POOLE,
Tax Collector, La Salle County, Texas.
By John Willenthal, Deputy.

NOTICE.

Notice is hereby given that taxes for the City of Cotulla are now due and payable, and must be paid before the 31st day of January or a ten per cent penalty will be added. Office at Farmers & Stockmens Bank.
J. H. Gallman,
Deputy Collector.

Catarh Cannot Be Cured
with LOCAL APPLICATIONS, as they cannot reach the seat of the disease. Catarh is a local disease, greatly influenced by constitutional conditions, and in order to cure it you must take an internal remedy. Hall's Catarh Medicine is taken internally and acts thru the blood on the mucous surfaces of the system. Hall's Catarh Medicine was prescribed by one of the best physicians in this country for years. It is composed of some of the best tonics known, combined with some of the best blood purifiers. The perfect combination of the ingredients in Hall's Catarh Medicine is what produces such wonderful results in catarhal conditions. Send for testimonials, free.
E. J. CHENEY & CO., Props., Toledo, O.
All Druggists, etc.
Hall's Family Pills for constipation

Strayed or Stolen—One mouse colored horse mule about 13 1-2 hands high. Mexican brand on left hip, A with variations on all points, \$5 reward for information leading to recovery.—H. C. Lane, Millett, Texas.

NOTICE.

Miss Cathrine Cohenour entertained a number of the younger set with a watch party New Year's eve night, at the pretty Cohenour home one mile South of town. Games and music were indulged in until midnight when the party joined in the general celebration of welcoming the New Year. Those present were: Misses Mildred Talbott, Justice Graham, Maurine Dyson, Mildred Manly, Cathrine Cohenour, Fred and Phil Johnson, Roy Pate, Frank Graham, William Morgan, Frederick Binkley and Milton Manly.

The gin will not run any more for two weeks, until all cotton is picked so that it can be ginned out all at one time.

FOR SALE—West Texas Well Machine in good running order. Cheap for cash or will trade for mules. G. A. Manly.

Quite a crowd of young people came down from Millett last night to attend the dance.

See a good Show at the Queen Tonight.

From this date I will collect water and light rentals for the City of Cotulla. These bills are payable on the first of each month and must be paid by the tenth of the month. Office at Farmers & Stockmens Bank.
J. H. Gallman,
City Secretary.

AT THE QUEEN TO-NIGHT

"THE FAILURE"
4 Reels
Featuring John Emerson

"OUT OF COUNT"
Comedy, 1 Reel

Warm, Comfortable house
A GOOD PLACE TO SPEND THE EVENING

MATTRESSES

I will be located in Cotulla for the next two or three weeks and will remake your old mattresses or make new ones. Get in your order at once.

S. M. Wilcox
Center Street Cotulla, Texas.

CITY GARAGE

THE GARAGE FOR SERVICE

Agent For

Chevrolet Cars

REPAIR WORK OF ALL KINDS

R. L. KEITHLEY, Mgr.

DO IT NOW

ORDER A ROYAL TAILORED SUIT



Reduced \$2.50 to \$4.50 per Suit Until Febuary 15th.

—DELIVERED IN 18 DAYS—

Special Reduction on 22 Styles Some Reduced over \$10.00

ALL IN THE FACE OF ADVANCED PRICES. COME AND SEE

K. Burwell

Visit Our Custom Tailoring Department

This store is the authorized resident dealer for The Royal Tailors - Chicago - New York. Royal Tailored-to-Measure Suits and Overcoats at \$25, \$28.50, \$31, \$35, \$40, \$45 and \$50