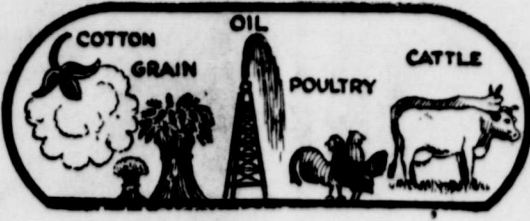


THE HASKELL FREE PRESS



HASKELL, HASKELL COUNTY, TEXAS, THURSDAY MAR. 30, 1950

NUMBER 13

C Directors Meet for Study Work Program for Year

Meetings of the 1950 executive directors of the Haskell Chamber of Commerce were held Tuesday afternoon at the Haskell Hotel when ten of the organization's directors and President J. J. Hattox, Jr., studied plans for the ensuing year to fit community needs, developing a larger membership organization.

Present at Tuesday's meeting were: A. M. Turner, secretary; R. P. Hattox, Jr., president; J. M. Crawford, Harold C. Pierson, S. H. Vaughn, J. M. Gilmore, Joe Thompson, and E. Duncan, secretary.

The regular meeting will be held on Tuesday in each month on the second Tuesday of each month.

Discussions were held Tuesday morning to outline the current year's program which will include community development, related needs of the trade area, including a study of the domestic problems of this city and surrounding communities.

The plan will also continue support and further study of irrigation possibilities in the Basin Dam on the River near Rule.

Assignments announced by President Hattox, Jr. included naming W. O. Holden and Olen W. O. Holden as co-chairmen of the Chamber Committee, and A. C. Coburn as chairman of the Promotion Committee. Members of the committee will be named and President Hattox, Jr. will be appointed on any committee to serve. This, he pointed out, would assure active workers by assignment.

Continuing as head of two standing committees will be Turner on the Agriculture and Livestock panel, and Cecil W. O. Holden as chairman of the membership assignments on two groups are now being organized.

A. C. Coburn was re-appointed chairman of the important Resources Committee of organization, and Alton Middleton and J. M. Byrd were also on this group. Couch, chairman of the Basin Dam, has long been a worker looking toward development and utilization of water resources.

Mrs. Julia Holden Dies Wednesday In This City

Mrs. Julia Evelyn Holden, 76, died of influenza at 3:18 p. m. Wednesday in the Haskell County Hospital here.

The mother of W. O. Holden, Haskell funeral home owner, Mrs. Holden had been in the hospital for two years, suffering with a hip injury.

Funeral has been set for 10 a. m. Friday in the First Methodist Church here with the pastor, the Rev. Vernon N. Henderson, officiating. The body will be taken to Childress for a second service at 4 p. m. in the Newberry Funeral Home there.

She will be buried in the Childress Cemetery.

Born Nov. 11, 1873, in Gurdon, Ark., she moved to Texas with her family when an infant, settling in Lampasas County, near San Saba.

Later, as a young girl, she moved with the family to Collingsworth County and then to Childress, where she lived until she moved to Haskell in 1932.

Mrs. Holden, who was a long-time member of the Baptist Church, was married to the late C. C. Holden Dec. 22, 1892, in Collingsworth County.

Survivors are her son, W. O. Holden of Haskell; two daughters, Mrs. Etta Sartin of Childress and Mrs. Margaret Hill of Grand Prairie; eight grandchildren and two great grandchildren.

Drive for Funds In Cancer Fight Is Scheduled

Mayor Courtney Hunt, county chairman of the annual fund campaign for Cancer Control, sponsored by the American Cancer Society, announced today that Haskell county had accepted a minimum goal of \$1,000 as its share in the nation-wide drive, and that volunteer workers would launch a one-week campaign Friday April 7 in all communities of the county.

Mr. Hunt explained that funds raised were used for study, prevention, and treatment of cancer victims under program approved by the American Cancer Society.

Community chairman will be named in all towns of the county, Mayor Hunt said. A partial list of those already appointed includes:

Mrs. A. C. Knipping, Sagerton; Mrs. Audie Verner, Rule; Mr. Mills, O'Brien; Henry Smith and Troy Ash, Mattson.

A complete list of workers will be published in the next issue of The Free Press.

Mrs. Ben A. Hull, Former Resident, Dies In Dallas

Mrs. Ben A. Hull of Irving, Texas, the former Lucile Wyche, daughter of Mr. and Mrs. H. C. Wyche of Haskell, and who had been a title abstractor for 25 years in Dallas, died Sunday in the Methodist Hospital in that city.

Mrs. Hull was a familiar figure at the County Records Building in Dallas, where she had spent much of her time for many years as an employee of the Security Title Company. She became interested in title work in Throckmorton county during an oil boom thirty years ago.

Mrs. Hull was born in Riesel, McLennan county, and moved to Dallas from Haskell. Her husband is also in the abstract business. They moved to Irving twelve years ago.

Funds for Haskell Airport Included In House Bill

The House Committee on Appropriations has approved a bill which carries a provision for federal assistance to Haskell Air Port. This information was given this week to city and Chamber of Commerce officials by George Mahon, United States Representative from the Nineteenth District.

This is a part of a national program for municipal air port development based upon commercial and military requirements. The bill provides a total expenditure of \$14,200 at Haskell, \$8,000 to be contributed by the federal government and the remainder by the city. These funds are to be used for the acquisition and preparation of the site and paving.

Mahon, who is a member of the Appropriations Committee, stated that he expects the bill to pass the House of Representatives within the next week. He thought there would be little doubt but that the House and Senate would take favorable action on the measure.

At the suggestion of Joe Culbertson, former Hamlin mayor, the meeting at Stamford was delayed until the mid-April date to give new city council elected in each community April 1 an opportunity to pass on the proposal.

Plans for the reduced project were outlined by Harry P. Burleigh, Austin, state planning engineer for the Reclamation Bureau, after other communities had withdrawn from the project because of their greater distance from the proposed reservoir and higher water costs.

Those remaining interested were Haskell, Stamford, Avoca, Hamlin, Hamlin, Rotan, Roby, Throckmorton and Benjamin.

Burleigh stressed that the construction cost would be in the nature of a "loan" and added: "Your own congressmen have told us to push this project if you want it."

Water demand of the nine cities was estimated at 6,000 acre-feet yearly, and the storage capacity of the proposed reservoir 25,000-30,000 acre-feet.

Benjamin's representatives admitted that the city would "almost be willing to pay \$1 per 1,000 gallons for water."

New Officers For Local VFW Post Are Elected

New officers of Haskell Post No. 3966, Veterans of Foreign Wars, were elected at the regular meeting of the organization held Friday night in the courthouse. Further discussions were also held concerning plans for building a clubhouse and permanent meeting place for the local post.

Officers named for the ensuing year were: Roy Frierson, Post Commander; Floyd Rich, Senior Vice Commander; M. B. Cobb, Junior Vice Commander.

A. Coburn, Quartermaster; Royce Adkins, Post Advocate; James E. Crawford, Chaplain; Dr. A. D. Stone, Surgeon; Leon Dodson, Trustee.

Applications of five new members were reported at the meeting, reflecting a continuing growth in membership of the VFW post. Regular meetings of the post are held on the second and fourth Friday nights in each month in the district court room.

District 6-A Track and Field Meet Slated Here Saturday

County Census Start Set For Saturday, April 1st

Uncle Sam's largest tabulation undertaking — the 1950 Census — will get underway throughout the nation Saturday April 1st, and in Haskell county plans are being completed for a prompt count of every person in the county, beginning this week-end, according to R. V. Robertson, County Census Supervisor.

Mr. Robertson, busy with training schools being conducted at the City Hall for enumerators, said today that course of instruction for both city and rural enumerators would be completed on schedule Friday.

Then, Saturday morning the 19 enumerators charged with the Census task in Haskell county will begin their work of listing names, occupation, and other data concerning all residents. The census is due to be completed during April.

Mr. Robertson urged cooperation of every person and organization in assisting the enumerators by giving all information sought in the census. None of the information given census takers will be divulged through any source, he County Supervisor pointed out.

He also explained that every enumerator would have the proper credentials for identification, in order to prevent them being confused with house to house canvassers or salesmen.

96,331 Bales Cotton Ginned In County From '49 Crop

On the basis of figures released by the Department of Commerce, 96,331 bales of cotton had been ginned prior to March 1 from the previous year's crop.

Although the total fell short of the 100,000 bale mark predicted for the county during the season, farmers and local ginners point out that the Government report lists only the cotton ginned in county and does not take into account cotton produced on Haskell county farms and ginned outside the county.

Based on the Department of Commerce report, Haskell county ranked 15th in the State in the number of bales ginned, including irrigated and semi-irrigated farms.

In comparison with dry-land farming, cotton production in Haskell moved into third place in the State on 1949 ginnings. Ellis county with 117,160 bales in first place, Nueces with 101,190 next, and Haskell following with 96,331 bales ginned.

Virgil A. Brown, special agent for the Department of Commerce reports that slightly more than one-fourth of the cotton ginned in the county was processed by Haskell's five gins, with 24,798 bales ginned here.

Two gins at O'Brien processed 19,170 bales. Rule's three plants ginned 17,761 bales, and 15,959 bales were ginned in Rochester. Figures on the number of bales ginned at Jud, Sagerton and Weirnet were not available, with the gins at three places turning out the remaining 18,643 bales, Brown said.

Decision Due On April 14 From Towns To Be Furnished Water By Paint Creek Dam Project

Mayors representing nine cities of the upper Brazos watershed meeting in this city last Friday, agreed to present their "yes or no" answer April 14 at Stamford to the Reclamation Bureau's proposal to build a 25,000 acre reservoir in the Paint and California Creek area southeast of Haskell to supply them with municipal water.

Friday's meeting was called by John A. Couch, president of the 30th Basin Dam Association.

At the suggestion of Joe Culbertson, former Hamlin mayor, the meeting at Stamford was delayed until the mid-April date to give new city council elected in each community April 1 an opportunity to pass on the proposal.

Plans for the reduced project were outlined by Harry P. Burleigh, Austin, state planning engineer for the Reclamation Bureau, after other communities had withdrawn from the project because of their greater distance from the proposed reservoir and higher water costs.

Those remaining interested were Haskell, Stamford, Avoca, Hamlin, Hamlin, Rotan, Roby, Throckmorton and Benjamin.

Burleigh stressed that the construction cost would be in the nature of a "loan" and added: "Your own congressmen have told us to push this project if you want it."

Water demand of the nine cities was estimated at 6,000 acre-feet yearly, and the storage capacity of the proposed reservoir 25,000-30,000 acre-feet.

Light Voting Is Foreseen in City Election Tuesday

Voting in the annual City Election to be held Tuesday, April 4th, will be extremely light, judging from advance interest on the part of eligible voters.

This lack was evidenced in the fact that up to Wednesday night not a single absentee ballot had been cast in the forth-coming election. The 20-day period in which absentee voting is permitted will end Friday night.

Voters will ballot on three City offices, that of Mayor, and three places on the City Council.

On the official ballot, Mayor Courtney Hunt is listed for his first full term as head of the City Government and is unopposed.

Mayor Hunt is now serving an unexpired term of former Mayor W. Q. Casey, who resigned in April, 1949.

With three Aldermen to be elected, four candidates are listed for these places. In the order in which they appear on the ballot, they are: R. P. Hattox and A. M. Turner for re-election; E. R. Low and Alton Middleton.

The election will be held at the City Hall, with Virgil A. Brown as presiding judge, Mrs. C. V. Payne and Mrs. Chas. Quattlebaum, clerks.

Completion of Two Producers Spark Oil Activity

Pick up in Haskell county oil development was indicated this week in the completion of two new producers, one in the Lawson-Humphrey pool east of Haskell.

Location is 467 feet from the north and east lines of the southwest quarter of Section 27, Block 1, H&TC survey. The test is south of the W. P. Crouch No. 1 producer drilled early this year.

Seven miles west of O'Brien, T. P. Coal & Oil Company's No. 1 Julianna McGregor, was reported below 6,300 feet, and projected to the Ellenberger after passing a heavy oil shows at 4,980 and 5,011 feet. On drill stem test, 4,000 feet of oil was recovered at that horizon. The potential discovery is three miles northwest of the Rochester Bogard pool.

West of Rochester, Danciger Oil Co's No. 10 Bogard was reported below 4,000 feet Wednesday.

Thos. D. Humphrey No. 1 Harley Brown, north of the north and east lines of the southwest quarter of Section 27, Block 1, H&TC survey. The test is south of the W. P. Crouch No. 1 producer drilled early this year.

Seven miles west of O'Brien, T. P. Coal & Oil Company's No. 1 Julianna McGregor, was reported below 6,300 feet, and projected to the Ellenberger after passing a heavy oil shows at 4,980 and 5,011 feet. On drill stem test, 4,000 feet of oil was recovered at that horizon. The potential discovery is three miles northwest of the Rochester Bogard pool.

Between 500 and 600 High School students, school officials and athletic coaches from fifteen towns and cities in this area will converge on Haskell Saturday, April 1, for the annual Interscholastic League Track and Field Meet for District 6-A.

Schools to be represented at the meet, which will be held on Indian Field beginning at 9 a. m. Saturday, will include:

Abilene North Side Junior High School, Abilene South Side Junior High School, Colorado City, Roscoe, Merkel, Snyder, Roby, Rotan, Anson, Hamlin, Stamford, Albany, Throckmorton, Munday, and Haskell.

Athletic Coach Jack Roten of Haskell High School will be athletic director for the meet with Assistant Coaches Smith and Overton and co-workers, Jerome Vanoy of McMurry College, Abilene, will be the official starter.

The full schedule of Interscholastic League events will be staged for High School Seniors, with six Junior events scheduled. Ribbons will be awarded first, second and third place winners.

Track and Field events to be run will include:

100 yard dash, 220 yard dash, 440 yard dash, 880 yard run, and mile run. High jump, broad jump, Pole vault, discus throw, shot put, 440 yard relay, mile relay, 120 yard high hurdles, 220 yard low hurdles.

The City Council will meet Friday to consider bids on proposed improvements to the municipal water and sewer system, including extensions and repairs on present installations.

The contemplated improvements will include elimination of existing "dead ends" in the city's distribution system, and the placing of larger mains in some sections where needed to provide service for additional consumers and give more adequate fire protection. Extensions are also contemplated to provide water and sewer service in newly-developed sections of the city, and in other residential and industrial areas.

Members of the Paint Creek FFA Chapter will compete in the contests at Abilene Christian College's annual Field Day today.

More than 500 boys from all of western Texas have been in the contests.

Program will be conducted at A. C. C. agriculture department's Allen Farm.

Members of the Paint Creek FFA Chapter will compete in the contests at Abilene Christian College's annual Field Day today.

More than 500 boys from all of western Texas have been in the contests.

Program will be conducted at A. C. C. agriculture department's Allen Farm.

Members of the Paint Creek FFA Chapter will compete in the contests at Abilene Christian College's annual Field Day today.

More than 500 boys from all of western Texas have been in the contests.

Program will be conducted at A. C. C. agriculture department's Allen Farm.

Car Registrations Expected to Exceed Total for 1949

With the peak rush period over for registration of motor vehicles for the current year, County Tax Assessor-Collector R. A. Coburn said this morning that last year's total of 3,110 passenger cars would likely be reached or exceeded before the deadline March 31.

Up to Wednesday noon, Coburn said that new license tags had been issued for 2,614 passenger cars, and that registrations this week had averaged almost 200 daily. The 1950 license plates are required on all vehicles operated on the highways on or after April 1.

In addition to passenger car license tags had been issued for 201 commercial vehicles 478 farm trucks or pick-ups, 7 truck-trailers, 40 trailers, 5 house trailers, and 14 motorcycles or motorbikes, Coburn reported.

Sam H. Carter, 52, Dies Unexpectedly Early Wednesday

Sam H. Carter, 52, livestock dealer of this city and resident of Haskell county for the past 42 years, died unexpectedly at his home Wednesday at 6 a. m., of a heart attack.

Mr. Carter, apparently in usual good health, had gone about his customary business Tuesday, and had attended a livestock sale at his home on that day, as was his usual custom.

Revival In Progress At Assembly of God Church

A revival meeting, featuring old-fashioned preaching and gospel singing is in progress at the Assembly of God Church in this city, with Rev. S. M. Malone of Fairview, Okla., as the evangelist.

The local pastor, Rev. C. U. McMullen, is assisting in the services. The revival began Monday evening, and Rev. McMullen reports increased attendance and growing interest at each service. The meeting will continue through Easter, with preaching each night at 7:30, with the regular schedule of services each Sunday.

Rev. Malone is bringing a series of old-fashioned gospel messages, and a special feature of the revival is a special musical program preceding the preaching service each evening. Mrs. Pauline Reed is song director.

The public is invited to attend each service possible.

H-SU Cowboy Band Coming To Haskell For Two Performances On April 4

Few groups, if any, of university students travel so many miles to participate in so many varied kinds of programs as the Hardin-Simmons University Cowboy Band members who will appear in Haskell April 4 at the high school auditorium for afternoon and evening performances.

With a mileage total which approaches the 25,000 mark during the past two years, the "world famous" band, directed by Marior McClure, is in its third year of activity since the war, finding it impossible to accept all the requests for its services.

Capable of parading, playing concert music, or in presenting a stage show, and always appearing in their colorful western regalia in their colorful western regalia of abilities which is not a variety of most musical organizations. These four phases of showmanship account, in a large measure, for the nationwide attention which the Cowboys receive.

SON BORN TO CARPENTERS

Mr. and Mrs. J. L. Carpenter, Jr., of Throckmorton are announcing the arrival of a son born March 24th at the Haskell county hospital. The young man weighed 7 lbs. He is the grandson of Mr. and Mrs. J. L. Carpenter, Sr., of Throckmorton and Mr. and Mrs. M. H. (Rody) Sorenson of Haskell.



Marion B. McClure, director of the H-SU Cowboy Band, has been with the internationally famous musicians for 20 years as both member and director of the colorful organization.

WEEK-END VISITORS IN HASKELL

Giles Marion Kemp, student in John Tarleton College, Stephenville, spent the week-end here with his parents, Mr. and Mrs. Giles Kemp. He was accompanied by Curtis Nix of Fort Stockton, also a student at Tarleton.

Truman Nominates M. E. Trice As Rule Postmaster

The nomination of Miles E. Trice for postmaster of the Rule post office has been sent by President Truman to the Senate for confirmation according to advices received from Washington.

Mr. Trice has been Acting Postmaster at Rule since September, 1949. He had previously been a clerk in the Rule office for several years.

HERE FROM FORT WORTH

Harris Robertson of Fort Worth spent the week-end in Haskell with relatives and friends.

FOR EASTER



"SWISS MISS"

To snatch every heart on gay summer doings— it's Jackie Nimble's Flirtatious little dress of tiny dot Swiss with eyelet trimmed apron skirt. The pert little puffed sleeves and the stand-up collar, complete the cool summer vision of you.

The FASHION SHOPPE
MRS. LEONE PEARSEY, Owner



Beltone Hearing Clinic

VISITING IN HARLINGEN

Mrs. Hill Oates is in Harlingen this week, visiting in the home of Mr. and Mrs. Frank Ragsdale. Mrs. Oates accompanied her daughter Betty, student in the University of Texas, to Austin Sunday, going from there to Harlingen.

STARR WELDING SHOP
ALL KINDS OF WELDING
One Block West of Square Haskell, Tex.

Last Chance

Doors Close Sat. Night, Apr.

Wrangler Pants

11 ounce weight

\$2.49

Pants

Mens blue denim, pair

\$1.65

Floor Mats

79c

Dress Shirts

\$1.35 TO \$1.98

Men's Shorts

Full cut and comfortable

3 PAIR \$1.00

Sox

For dress or work

6 PAIR \$1.00

Khaki Pants

Cramerton Army Cloth

\$3.50 PAIR

Khaki Pants and Shirt

Both for

\$4.50

Mattress

For steel cot for only

\$7.00

Cushions

47c

Towels

Soft Absorbent

4 FOR 87c

Boys Shirts

Nine kinds to select from, choice

\$1.25

Hand Truck

Only one for

\$9.00

Steel Table

Only one for

\$10.00

Electric Paint Gun

Only one for

\$57.00

Tarp

12 oz. 18 by 36 feet

\$49.00

Blue Jeans

For boys, pair

\$1.35

Feather Pillows

Good quality, each

\$1.25

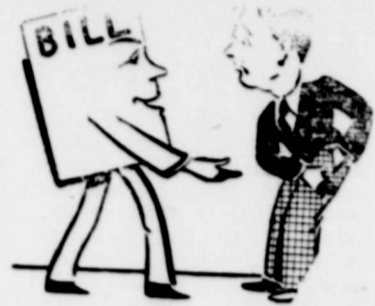
Tennis Shoes

For boys, pair

\$1.97

SHOES PLENTY OF GOOD ONES AT A BARGAIN

John's Dry Goods & Hardware



From Your Pocket?

After a Fire, you may find that the amount of fire insurance on your household goods is not enough to pay for replacing many of the things that were destroyed. Do you want to pay for them from your own pocket because you neglected to carry sufficient fire insurance?

Before you have a loss, go over your policies with

FLORENCE Insurance Agency
Phone 507
Tonkawa Hotel Bldg.
Haskell

Wichita-Brazos Soil Supervisors Inspect Drainage Project

The Supervisors of the Wichita-Brazos Soil Conservation District held their monthly meeting in Munday last Friday. They met in the office of the Production-Credit Administration run by C. R. Elliott. After conducting their meeting they visited the drainage project south east of Munday where the Scott Lake is being drained. This drainage project was staked off by technicians of the Soil Conservation Service assisting the district. The drainage of this lake is but a part of the coordinated conservation plan worked out by the farmers who own the land there, and the local district.

The Board of Supervisors approved the following applications for soil conservation assistance: J. C. Tibbet, W. E. McNeil farm south of Munday, Frank Knapp and Marion Chowning. The conservation plan of Frank Dunman's farm north of Knox City was approved, and also the plan on Floya McGuire's farm.

Grass planting in the district is almost completed. The following cooperators planted grass as a part of their coordinated soil conservation plan: Louis Cartwright, J. C. Elliott, Arthur Smith, Jr., W. E. McNeil, and John Spann, all near Munday; Dwight Key, James Ferguson, and Graham Stewart, east

Things took on a brighter look recently for W. A. J. Hall, 71-year-old Haskell resident, when he was presented a new hearing aid to replace the one he lost when his home and household goods were destroyed by fire several weeks ago. The normally cheerful, hard-working Haskell man, whose friends and neighbors declare they never knew him to be "out of sorts" under any circumstances was doubly handicapped in the found so helpful in overcoming his defective hearing.

Learning of Mr. Hall's loss, W. S. Cochran, Beltone dealer of Wichita Falls, came to Haskell and presented Mr. Hall a new \$17 Beltone Symphonette hearing aid to replace the one he lost in the fire. The elderly Haskell man is shown in the above picture receiving the gift from Mr. Cochran. The presentation was made at the Tonkawa Hotel where Cochran holds a Hearing Clinic on his frequent trips to Haskell.

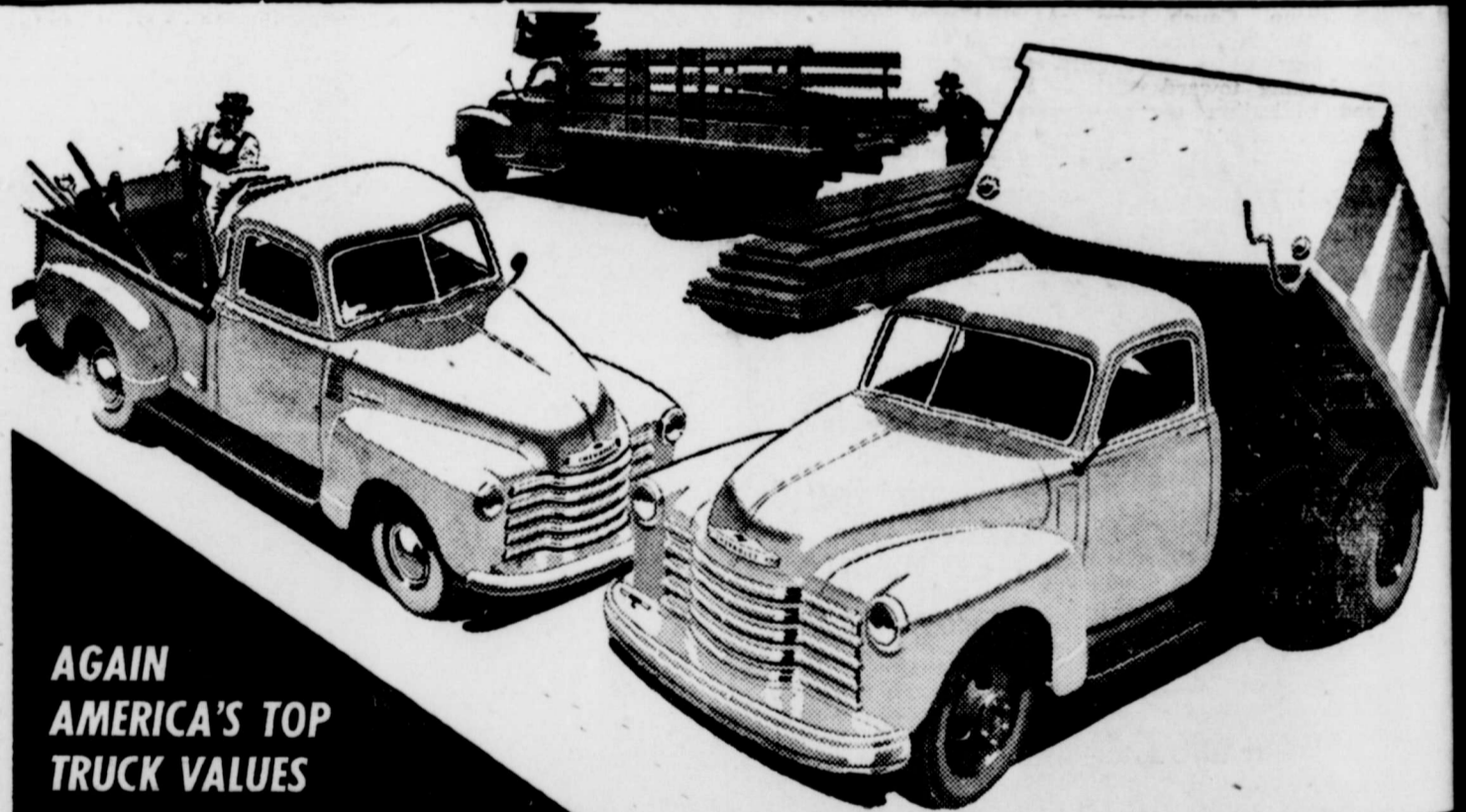
Mr. Hall's wife, a semi-invalid since she was injured in a fall some time ago also uses a Beltone hearing aid.

VISITORS FROM MUNDAY
Mr. and Mrs. Alonzo Cartwright of Munday visited in the home of Mrs. Cartwright's parents, Mr. and Mrs. W. A. Fowler in Haskell last Sunday.

Specials Friday, Saturday

U. S. No. 1, Idaho Russett Potatoes	10 Lbs. 39c	Delight Brand Pure Lard	3 Lb. Carton 39c
Supreme, Premium, of Krispy CRACKERS	2 Lbs. 39c	Hearts Delight or Hunts PEACHES	2 1/2 Size Can 19c
Del Comida GREEN BEANS	2 No. 2 Cans 25c	K. B. Flour	25 Lbs. 1.49
Gradiola or K. E. Meal	5 Lbs. 29c	Charmin, 300 Count CLEANSING TISSUE	Reg. 25c Size 15c
Chicken-of-the-Sea TUNA	Can 29c	MARKET SPECIALS	
Supreme DOG FOOD	Can 5c	Skinless WEINERS	Lb. 35c
TIDE OR OXYDOL	Box 23c	Armour's Dexter Brand, Sliced Bacon 1lb.	39c
Folger's Coffee	2 Lbs. 1.43	Fresh, Lean PORK CHOPS	Lb. 45c
Regular 92c Value BROOMS	Each 79c	Armour's Square CHEESE	Lb. 39c
Fresh Green Shelled BLACKEYE PEAS	No. 2 Can 10c	POGUE'S	

Phone 17-W Free Delivery



AGAIN AMERICA'S TOP TRUCK VALUES

NEW P.L.

ADVANCE-DESIGN TRUCKS

THE PERFORMANCE LEADERS

with 2 More Powerful Truck Engines

America's fastest selling trucks offer stepped-up power and finer performance with two great valve-in-head power plants... a new heavy-duty Load-Master 105-h.p. engine and an improved Thrift-Master 92-h.p. engine. On the hills or on the straightaway, they deliver the goods surely, swiftly, at low cost. Every new Chevrolet P.L. truck gives you high pulling power to eat up hills and rough roads—and on the straightaway, high acceleration to cut down total trip time. Come in and see these great performance leaders today!



Price Leaders First for all-around savings! **Payload Leaders** Costs less to operate per ton per mile! **Popularity Leaders** Preferred by more users year after year!

Burton-Dotson Chevrolet Company

L. BURTON

Telephone 27

OLEN DOTSON

B. C. Chapman Is Director of Program Meeting of Magazine Club Friday

Friday, March 24. The club's study course for the year is The Pursuit of Happiness. Friday's program pondered the question How much is Education contributing to the American pursuit of happiness?

Weinert W. M. S. Meets For Social In Mayfield Home

The Weinert W. M. S. met for a social in the home of Mrs. Clyde Mayfield with Mrs. G. C. Newsom as hostess Monday afternoon.

Rebekahs Lodge Meeting Held Monday Night

Members of the Rebekah Lodge No. 45 met Monday night for their regular meeting at 7:30 with 12 members present.

"Indian Chief" Is Theme of Banquet Feting Seniors

Honoring High School seniors of the Haskell High School, the annual banquet was given by the Women's Missionary Society, in the First Baptist Church Annex Thursday evening, March 16th.

Mrs. T. R. Odell Guest Speaker At PTA Meeting

South Ward P. T. A. met Thursday March 23 at 3 p. m. for its regular monthly meeting.

Mrs. W. A. Lyles Is Speaker At Meeting Of Homemakers

Mrs. W. A. Lyles talked to the Future Homemakers of the Haskell High School at their regular meeting at the cottage Monday night, March 27th.

Card of Thanks

We would like to take this means of expressing our heartfelt thanks to our friends who were so thoughtful of our loved one while she was sick and during her death.

Kiddie Land's Sale

Sat. April 1, Through 8th

Take advantage of this event to save on timely merchandise. Many new arrivals included in sale merchandise.

Jumping Jack Shoes Sizes 2 to 7 Values to \$5.98 **3.98**

Toddlers DRESSES Sizes 1 to 3 regular \$4.00 to \$4.98 value **\$3.50**

Girls DRESSES Sizes 7 to 12 each for sale **\$4.00**

Boys White SUITS Sizes 4 to 6 regular \$5.95 for Easter **\$4.50**

BOYS BOXERS Regular \$1.49 value buy several pair at only **\$1.00**

Our store you will find many other specials in reasonable merchandise that like of room will not permit us to list here. Come in and see and save.

Kiddie Land

Located in the West Side Barber Shop
MRS. DORRIS BURSON, Owner



Introduction to A SECURE FUTURE

The few minutes you spend with your Southwestern Life agent may be your introduction to a financially secure future. Carefully selected, trained, and assisted, he is qualified to offer you competent professional advice in the consideration of any of your life insurance needs. For the protection of your family or in the interest of your business, an interview with him may be a rewarding fifteen minutes.

Yes, your Southwestern Life agent ably represents a sound company, now in its 48th year of service to Texans.

Haskell Representative
WIX B. CURRIE, JR.

Southwestern Life Insurance Company
JAMES RALPH WOOD, PRESIDENT HOME OFFICE • DALLAS

Beware Coughs From Common Cold That HANG ON

Creomulsion relieves promptly because it goes right to the seat of the trouble, to help loosen and expel germ laden phlegm and aid nature to soothe and heal raw, tender, inflamed bronchial mucous membranes. Tell your druggist to sell you a bottle of Creomulsion with the understanding you must like the way it quickly allays the cough or you are to have your money back.



By **Frank C. Scott, M. D.**

SPECIALIST
Diseases and Surgery of the Eye, Ear, Nose, Throat — Fitting of Glasses
Complete Test for Allergic Conditions
OFFICE HOURS: 9:00 to 11:30 a. m. and 2 to 5 p. m. Office: Scott's Clinic

Radio & Appliance Service

Call 25W for prompt service on Radios, Washers, Electric Irons and all small appliances. Also lawn mower sharpening. 22 years in this business in Haskell. Pickup & Delivery Service

WOODSON
Radio & Electric
512 North 1st Street 8t4c

You like coffee? ... really good coffee? ... good coffee?

THEN YOU'LL PREFER

WHITE SWAN
finer coffee!

So Rich • So Mellow • So Fragrant

High Quality Feed and Seeds

Will Put More Money In Your Pocket!

We carry a complete line of the best livestock and poultry feeds obtainable.

Planting Seed Of All Kinds

Planting Seed May Be Scarce This Year—So Order Your Needs Today.

Successor to Courtney Hunt Grain Co.

We Buy All Kinds of Grain

MARKET POULTRY & EGG CO.
A. T. BALLARD - MGR.
Phone 85 Haskell, Texas

Friday and Saturday SPECIALS

Cherry Bell, With Cup & Saucers	25 Lb.	Carnation or Pet	Large Cans 2 for
FLOUR	\$1.68	MILK	25c
K. C.	25 Oz. Can	Small Cans 2 for	13c
BAKING POWDER	25c	No. 1 White or	Lb.
Sunny Brand	Qt. Jar	YELLOW ONIONS	8c
MUSTARD	12c	Cutrite	125 ft. Roll
Kimbell's Pure	2 Lb. Jar	WAX PAPER	25c
APPLE JELLY	34c	Del-Monte	No. 2 1/2 Can
Betty Crocker, 1 Devils Food, 1 Party Cake mix		PEACHES	27c
CAKE MIX	37c	MEATS	
Campbel's	Can	Armour's, Half or Whole	Lb.
TOMATO SOUP	13c	CURED HAM	45c
Regular Price on Imperial	10 Lbs	Armour's	Lb.
SUGAR	5 Lb. 45c	PRESSED HAM	42c
Red Heart or Ideal	Can	Armour's No. 1	Lb.
DOG FOOD	14c	DRY SALT BACON	26c

Plenty of Nice Dressed Fryers at a Good Price

GHOLSON GROCERY

Phone Us Your Orders—We Deliver—Phone 79. All Groceries Sold Quality Guaranteed

Buy, Sell or Trade Through The Want Ads

REAL VALUES

Garza Sheets

Stock up at value savings. 81x99 double bed size Texas made from Texas cotton. Real value.

\$1.79

Combed Cotton

New patterns in checks, stripes, plaids and solids. Extra special.

69c Yd.

Wash Silk

1 lot wash silk, all good patterns. Regular \$1.49 value. Special

98c Yd.

Chambray, Seersucker, and Silk

Large assortment in all wanted materials for spring dresses, skirts and blouses. Value to \$1.29. Special

79c

Cotton Slips

Ladies white cotton slips. Straight cut and lace trim.

\$1.29

Rayon Slips

1 lot slips in white and pink plain and lace trim. Reg. \$1.98 value.

\$1.79

Work Suits

Khaki shirts and pants. Plain and herringbone weave. Gray and Sun Tan color. A real value at suit

\$5.70

Khaki Shirts

1 lot Dickie Khaki shirts. Summer Weight. Extra well made. Regular \$2.75 value

\$1.98

Hope Domestic

Extra fine bleached domestic. Real Value.

3 Yds. \$1.00

JONES DRY GOODS

The Cash Store

Birthday Celebrations Highlight News In Sagerton Community Past Week

Mr. and Mrs. F. A. Ulmer and children visited relatives in Hobbs, New Mexico last week end.

Mr. and Mrs. G. W. LeFevre and children, Dan and Elizabeth, entertained a group of young people with a party in their home Friday night.

Mrs. M. Y. Benton entertained the W. S. C. S. of the Methodist Church in her home Monday afternoon for their monthly social meeting.

Melanie Beth Smith, two-year old daughter of Rev. and Mrs. C. B. Smith, pastor of the Methodist Church, celebrated her birthday Tuesday afternoon, March 21. The little guests were given tiny plastic rabbits as favors and ice cream, birthday cake and pop were served to Melanie Beth and Mike Smith, Larry Quade, Linda Fae Jennings, Linda and Larry LeFevre, and Sandra Elliott of Stamford and their mothers.

Mr. and Mrs. A. L. Gibson and children visited Mrs. Gibson's mother, Mrs. Young and family, in Roby Sunday.

Mrs. F. A. Stegemöller celebrated her birthday Tuesday night, March 21. Games of 84 were played and refreshments were served to Mr. and Mrs. Ervin Diers and children, Mr. and Mrs. Harvey Hahn and Jerry, Mr. and Mrs. August Hahn, Mr. and Mrs. Carl Druessow and daughters, Mr. and Mrs. Glyn Quade and Larry, Mr. and Mrs. Delbert LeFevre and children, Mr. and Mrs. Albert Knippling of Stamford, Mrs. Dan Rinn and daughter of Stamford, Mrs. J. F. Schaake, Erna and Walter of Stamford, Mr. and Mrs. A. C. Knippling and daughter Mr. and Mrs. Frank Boedeker, Mr. and Mrs. Oscar Nienast and Loretta, Mrs. Hilda Nueman and Martha, Mrs. Emma Baitz, and Mr. and Mrs. F. A. Stegemöller.

A number of people of this community are ill with the flu and Doris Franke was a patient at the Stamford Hospital part of last week as a result of flu.

Members of the confirmation class who will be confirmed at the St. Paul's Lutheran Church next Sunday, Palm Sunday, were examined orally in front of the congregation last Sunday by the pastor, Rev. M. C. Hoerman. Those in the class are: Dean Quade, Buddy Letz, Jerry Kainer, Herbert Lammert, Betty Valankamp, Geneva Monse, Adrienne Lehmann, Patricia Kupatt, Eunice Ashorn, Lois Boedeker, Lois Knippling, Doris Franke, Wandlene Nauert, and Marva Ruth Wendeborn.

Guests in the home of Mr. and Mrs. August Balzer Tuesday night, March 24, to celebrate Mr. Balzer's birthday were: Mr. and Mrs. C. E. Stegemöller, Mrs. F. W. Stegemöller, Rev. and Mrs. M. C. Hoerman, Mrs. Thomas Hemphill

and Carol Ann, Lillian Nienast, and Mr. and Mrs. Wil Stegemöller.

Mr. and Mrs. Edd Gray of Stamford visited in the home of Mr. and Mrs. Oscar Manske Sunday.

Mr. and Mrs. Can' Laughlin of Rule visited Mr. and Mrs. Cliff LeFevre Saturday night. Guests in the home of Mr. and Mrs. C. E. Stegemöller Sunday were: Mrs. J. F. Schaake, Erna and Walter, and Mr. Herman Raphael and Lillie Mae, all of Stamford, and Mr. and Mrs. A. C. Knippling and Lois and Mrs. F. W. Stegemöller.

A number of people of this community went to Stamford to hear the Chanters from McMurry in Abilene at the St. John's Methodist Church Sunday night.

The Pioneer Club met in the home of Mrs. Ben Hess on her birthday, March 22. Those present were: Mmes. J. W. Martin of Haskell, Miss Fannie Kay of Haskell, Mrs. R. N. Sheid, Mrs. John Clark, Mrs. Anna Hankins, Mrs. Pete Lusk, Mrs. R. O. Gibson, Sr., Mrs. W. R. Gibson and Mrs. Hess. All the members were present except Mrs. W. P. Caudle, who now lives at Ropesville. Mrs. Jeane Henley and son, Chris, of Spur, Mrs. Hess's grand-daughter, was also present.

Mrs. E. E. Luck and Mrs. Bob Vanderslice of Stamford called on Mrs. Hess Friday afternoon.

Weinert Matrons Club Meets With Mrs. W. A. King

The Weinert Matrons Club met for the regular meeting in the home of Mrs. W. A. King Thursday, Mrs. W. B. Guess was director of the program on the "Apocalyptic Literature Of The Bible."

Easter decorations were used on the refreshment plates served to the following members, Mesdames J. W. Liles, G. C. Newsom, A. Bartell, W. L. Johnson, R. H. Jones, R. C. Liles, V. C. Derr, J. A. Mayfield, W. B. Guess, P. F. Weinert, Fred Monke, and the hostess.

The Weinert Baptist W. M. S. met for the Royal Service program this week, directed by Mrs. Walter Copeland. The program called for each member to open the program with an account of their religious experience. Mrs. J. W. Liles and Mrs. W. B. Guess took part in the program on "Ways To Witness." The following members were present: Mesdames Clyde Mayfield, G. C. Newsom, C. P. Oman, D. E. Jones, T. A. Mayfield, J. W. Liles, W. B. Guess and Mrs. Copeland.

Farmers and ranchmen are urged to be on the alert for possible crasher outbreaks this spring. Get them during the hatching season and before they leave the egg beds.

Concentration of population in urban centers and the shortening of the work week has intensified the need for easily accessible recreational areas.

Political Announcements

The Free Press is authorized to announce the following candidates for office in Haskell County, subject to the Democratic primaries.

For Representative, 113th Legislative District:
Clyde Whiteside. (Second Term)

For District Judge, 39th Judicial District:
Ben Charlie Chapman. (Re-election)

For County Judge:
O. E. Patterson. (2nd elective term)

For District Attorney, 39th Judicial District:
Curtis Pogue.
John H. Banks. (Re-election)
T. R. Odell.

For Sheriff:
R. M. (Bob) Cousins (2nd term)
W. T. Holley.
A. L. (Lloyd) Conner.

For County Superintendent of Public Instruction:
Mrs. Iva Palmer. (Re-election.)

For County Treasurer:
Byron Wright.

For County Attorney:
Royce Adkins.

For County Clerk:
Horace Oneal. (Re-election.)

For District Clerk:
Jesse B. Smith. (Re-election.)

For County Tax Assessor-Collector:
R. A. Coburn. (Re-election.)

For Commissioner, Precinct 1:
Ira Blair. (Re-election)

For Commissioner, Precinct 2:
W. A. (Drew) Leonard. (Second Term)

For Commissioner, Precinct 3:
M. B. Cobb. (Re-election)
Hoyt Perry.

For Commissioner, Precinct 4:
C. L. (Roy) Clark.
D. S. (Dave) Strickland.

For Justice of Peace, Precinct 1:
C. K. Jones. (Re-election)
Eal Treadwell.

For Constable, Precinct 1:
Sterling Edwards. (Re-election)

For Public Weigher, Prec. 1:
George Weaver

For Public Weigher:
Prec. No. 7:
A. A. Cox. (Re-election).

Large areas of shin oaks on the plains and rolling hills of West Texas are called "pigmy forests."

BARNES INSURANCE AGENCY

General Insurance
316 1/2 N. 1st Street
H. F. Barnes G. L. Lewis

OPTIC PRIST

Glasses Fitted
Dr. Arthur Edwards
Magnetic Messer
105 North Ave. D

JASON W. SMITH

Abstracts - Title Insurance
Haskell Texas

Mr. C. L. Fields
of
J. P. Price & Co.
will be at our store
Sat. April 1
to display more than 300 SPRING and SUMMER FABRICS for business and sports wear.
Your selection will be tailored to your individual measurements. We invite you to come in.
514 North 1st

SERVICE CLEANERS

PRESENTING THE ...

CROSLEY

Custom Refrigerator

Come in Friday and see the Demonstration of the Crosley Shelvador refrigerator and also Miss Matilda Cummins economist for the United Appliance Co., will be here to demonstrate the Crosley Electric range, the range with beauty and brains.



Model C. B. 9
\$299.95

The New 1950 Shelvador - The Most Sensational Refrigerator In Shelvador History!

New Design New Features - Bigger Than Ever - More Room In Less Space
More Frozen Storage Space - No Stopping - No Shelf Too Low

Fouts Dry Goods & Variety

Here's your chance to fall in love ...
with an automobile!



Car Illustrated:
Nash Ambassador
Super 4-Door Sedan

Has your heart yearned for the luxury of a truly fine car? Then, here's your chance to start going steady . . . with a 1950 Nash Ambassador! For this beautiful car costs a thousand to two thousand dollars less than other fine cars . . . yet, in many ways, it is most modern and most luxurious! Every day, discriminating people are learning that in no other car can

they match the comfort, ease of handling and spacious luxury of the 1950 Nash Ambassador Airflyte with Hydra-Matic Drive.

Your Nash dealer invites you to drive an Ambassador Airflyte—in either the Custom or Super series. Then you will know why Nash Ambassador owners are in love with their car.

Only Nash Ambassador Owners Enjoy All These Fine-Car Features

Turbo-Head Valve-in-head engine . . . America's highest compression ratio (7.3 to 1) utilizing regular gasoline • 7-bearing, 100% counter-balanced crankshaft • Airliner Reclining Seat • Twin Beds-Weather Eye System-Airflyte Construction. Squeak-free and rattle-proof. Twice as rigid, stays new years longer, adds to resale value.

Now Available in All Nash Ambassadors:

HYDRA-MATIC DRIVE,
AUTOMATIC OVERDRIVE OR
STANDARD TRANSMISSION

Nash
Ambassador
Airflyte

Companion to the Nash Statesman
The Finest Values in Fine Cars
Nash Motors, Division Nash-Kelvinator Corporation, Detroit, Michigan

THERE'S MUCH OF TOMORROW IN ALL NASH DOES TODAY

HASKELL NASH CO.

North First and Ave F

Haskell, Texas

FIRESTONE TRACTOR TIRES

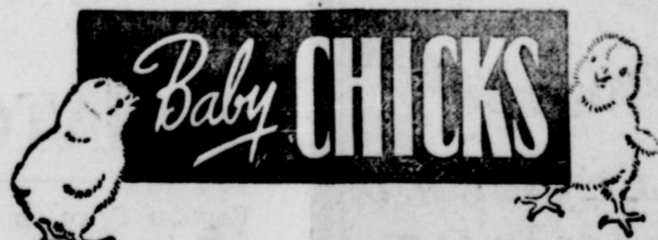
Get the best - At no extra cost

FREE HYDROFLATION SERVICE

With every tire—Anti-freeze extra
We have your SIZE and in most popular brands
THE LARGEST and MOST COMPLETE stock of
TIRES & TUBES in Haskell County
"THE HEADQUARTERS"

Sturdivant Home & Auto Supply

Telephone 87 Haskell (tfe)



If you want better chicks now is the time to get your favorite breed at

Reduced Prices

Our chicks live, 98 per cent livability up to 3 weeks from customer's reports.

PEDIGREE Sired UP TO 338 EGGS

More and more people buy our chicks every year—reason: They are good chicks. They are today

West Texas' Finest Chicks

We also operate a large broodery and have chicks of any breed or sex up to 5 weeks old.

Write for prices or come direct to

Stamford Hatchery & Poultry Farm
Stamford, Texas



Shop With The Following Haskell Merchants And "SAVE As You SPEND"

PIGGLY-WIGGLY

Will Be Offering Green Stamps When Our
New Store Opens

BEN FRANKLIN

5c-10c-25c STORE
Mrs. Carrie Williams, Prop.

BARTLETT SERVICE STATION

Humble Products
"Nig" Bartlett, Prop.

FRAZIER'S RADIO & RECORD SHOP

THE HUB DRY GOODS

"We Try"

BYNUM TEXACO STATION

Thurman Bynum, Prop.

HATTOX HARDWARE & FURNITURE

Everything for the Home and Farm

JOHNSON'S HELPHY-SELFY LAUNDRY

Otta Johnson

LANE-FELKER

Dress Shop

LELAND WHITTINGTON

Gulf Service Station

HELBER JEWELRY

Mr. and Mrs. M. E. Helber

SERVICE CLEANERS

Joe Thomson

"S. & H." GREEN STAMPS MAY BE OBTAINED IN THE FOLLOWING WAY---ONE FOR EACH 10c PURCHASE---10 FOR \$1.00 PURCHASE, ETC---ON ALL CASH SALES---DOWN PAYMENTS---BUDGET PAYMENTS, IF PAID ON OR BEFORE DUE DATE AND OPEN ACCOUNTS IF PAID IN FULL ON OR BEFORE 10, OF MONTH FOLLOWING PURCHASE--BY ORDER, THE SPERRY AND HUTCHINSON CO.



Census of Texas Agriculture To Be Taken In April

Texas farmers and ranchmen will soon be receiving a copy of the 1950 agricultural census ques-

Licensed Chiropractor
Gertrude Robinson
CHIROPRACTIC CLINIC
Highway 277
Office Phone 108. Res. 14
House Calls Day or Night

tionnaire and each is requested to fill it out and have it ready for the census taker when he calls next month.

The questionnaire is being sent to all rural route boxholders and to boxholders in small towns where there are a considerable number of farmers. The copy should not be discarded, says F. W. Martin, County Agent, but should be studied carefully and completely filled in with accurate information. Here's why:

The Census of Agriculture provides an inventory of farms and farm resources. It gives a picture of what is happening in the rural areas of the state and nation and include facts on land use, crop and livestock production, how many

people live on farms, kinds of machinery used, farm home facilities and a large number of other equally important items.

In most states, it provides the major source of county figures on agriculture as well as the basic information on the changes growth and improvements in agriculture in each county. The information taken from the census often is used in planning programs designed to improve farming and rural life and farm organizations likewise base many of their decisions on this information. The annual estimates of the production of crops and livestock products are based upon figures obtained in the nationwide farm census but most important, it provides the basis for the making of allocations among counties of quotas for the acreage of many important farm crops.

Martin says the information you give the census enumerators is confidential and cannot be used for taxation, investigation or regulation. An Act of Congress provides the protection. Every person who fills out a census form or answers the questions asked by an enumerator are likewise required to give accurate and truthful information.

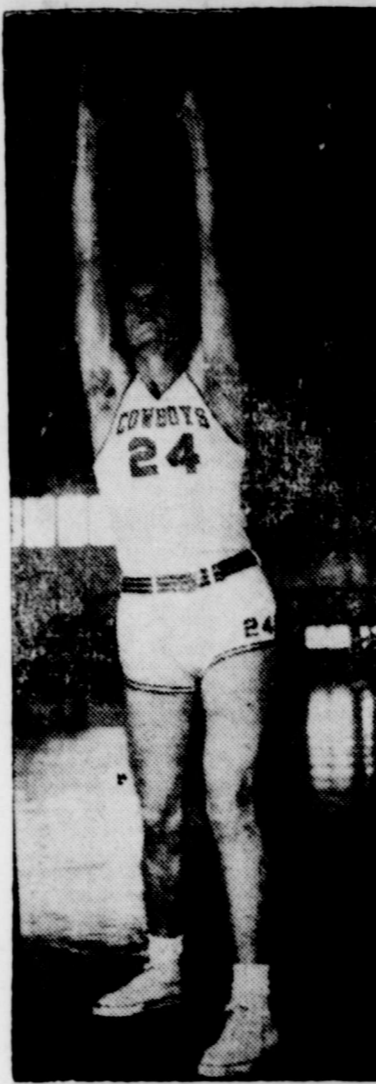
The accuracy of the farm census will depend upon the cooperation of every farmer and ranchman. The accuracy of the county totals depend upon accurate returns from each individual for county totals are obtained by adding the individual reports together.

When you get the agricultural census questionnaire, don't throw it away, but answer every question asked completely and accurately for the farm census is mighty important to agriculture.

FRANK RAGSDALE IN HARLINGEN HOSPITAL

The many Haskell friends of Mr. and Mrs. Frank Ragsdale will

H-SU Letterman



Othella Jay Cox of Haskell established herself as a two-year letterman this season while playing with the Hardin-Simmons Cowboy basketball team. The Haskell player garnered 132 points while playing with the Ranchers this winter. The son of Mr. and Mrs. Seet Cox, he is a graduate of Paint Creek Rural High School.

Sanitary Methods Of Food Handling Gaining Favor

The Texas State Department of Health's program of teaching food handlers sanitary methods of preparing and serving food continues to be very popular, according to Dr. Geo. W. Cox, State Health Officer. It is one method of attack on that great group of respiratory diseases which include influenza, scarlet fever, measles, whooping cough and the common cold, the viruses of which are spread from person to person by the excretions of the nose and mouth.

Restaurant sanitation programs have become more necessary because of changes which have taken place in our national eating

habits. Once upon a time it was customary for most people in Texas and in the U. S. A. to eat three meals a day at their own table. To "eat out" was an unusual and exciting event. Now, all of this family, including the baby, eat out.

In this constant mingling of people to eat and drink there

exists a vast and complicated arrangement perfectly designed for exchange of saliva via cups, glasses, spoons, forks and fingers that go in and out millions of mouths.

There are few hours in the day in any community when these vectors of respiratory and other diseases are not busy.

The prime purpose of restaur-

ant sanitation is to have all and utensils sterilized and all those who handle or serve understand and practice good sanitation every day of the time.

The public in every community needs to be concerned about cleanliness of its public places.

Baby Chicks

From Now Until April 15

White Leghorn Cockerels

\$3.90 Per 100

New Low Prices On All Other Baby Chicks

Market Poultry & Egg Co.



No Strings To These
APRIL 1st.
BUYS

THEY'RE REAL VALUES!

RECIPE OF THE WEEK

By Mary Lee Taylor
Ham and Sweet Potato Dinner

Broadcast: April 1, 1950
2 cups mashed sweet potatoes, cooked
or canned
1/2 teaspoon salt
1/4 teaspoon cinnamon
or nutmeg
1/2 cup Fat Milk

1 lb. smoked ham,
1/4 in. thick
4 slices canned
pineapple, drained
1 tablespoon corn
flake crumbs

Place on oven; set at moderately hot (400° F.). Mix potatoes, salt, cinnamon and milk. Cut ham in four 4-in. squares. Put into shallow pan. Put about half of potato mixture on ham squares. Cover with pineapple slices. Sprinkle with rest of potato mixture. Bake on center rack of oven 30 min., or until ham is tender. Makes 4 servings.

Boiled or broiled ham or lunch meat can be used if baking time is reduced to 20 min.

You will need:
Fat Milk, Sweet Potatoes,
Canned Sliced Pineapple,
and Corn Flakes.

Quality 25 Lb. Sack

FLOUR \$1.59

Aunt Jemima

MEAL 39c

Hostess 2 No. 2 Cans For

PEAS 25c

Our Value, Cut 2 No. 2 Cans For

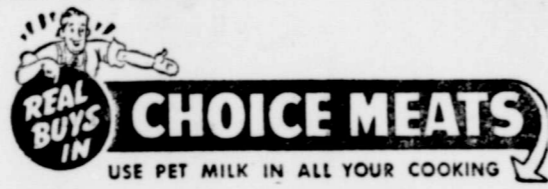
GREEN BEANS 25c

Concho 2 No. 2 Cans For

TOMATOES 25c

2 Cans For

PET MILK 25c



Lb.

STEW MEAT 34c

Lb.

PLAIN STEAK 49c

Lb.

BACON 39c

Head **LETTUCE 15c**

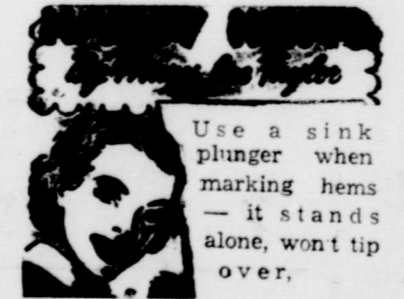
Lb. **ORANGES 10c**

Lb. **CABBAGE 3c**

Lb. **BELL PEPPER 15c**

Lb. **ONIONS 6c**

Lb. **GRAPEFRUIT 10c**



FROZEN **SHRIMP 85c**

FROZEN **CORN 25c**

FROZEN **SPINACH 25c**

FROZEN Lima **BEANS 29c**

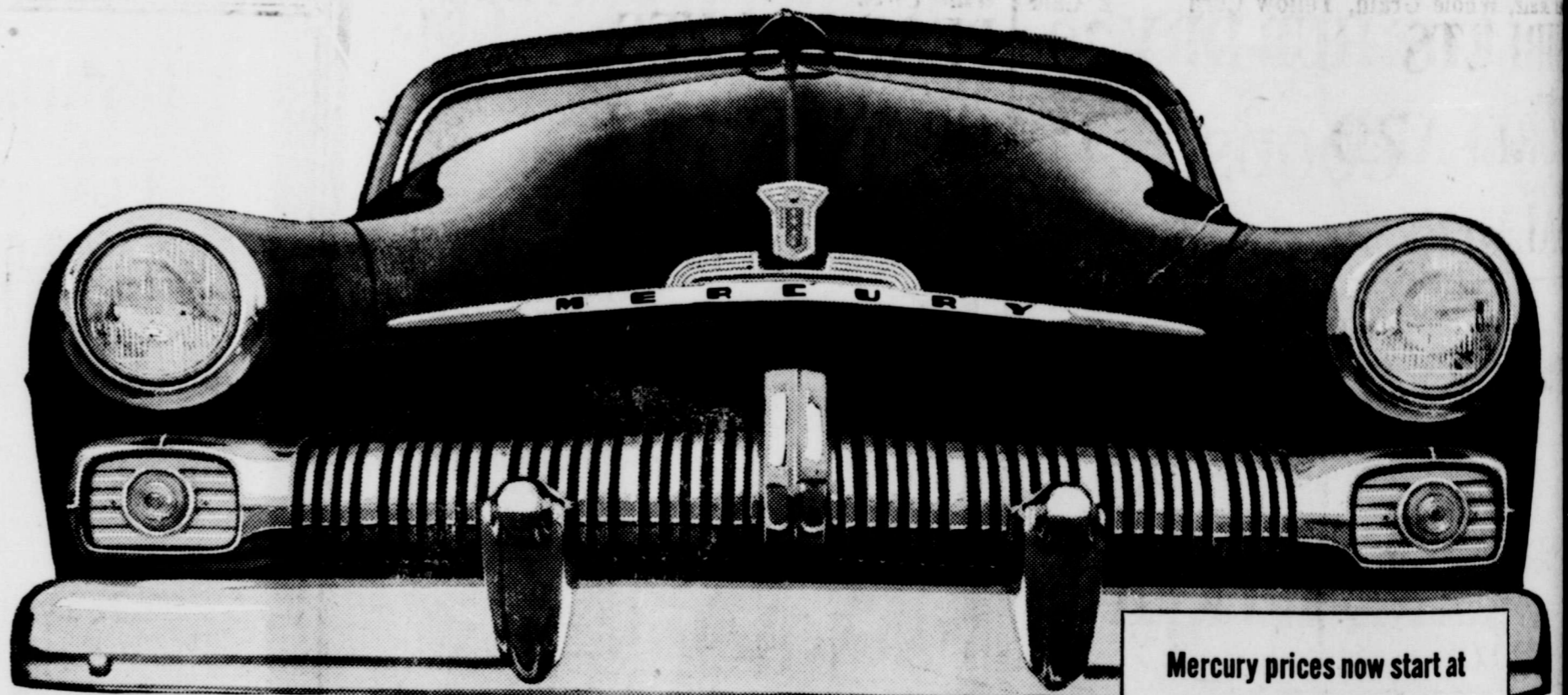
O'Neal's Food Store

PHONE 28

WE DELIVER

HERE'S YOUR BIGGEST NEW CAR VALUE YET!

NEW LOW PRICE FOR MERCURY MAKES IT A "BETTER THAN EVER" BUY!



Mercury prices now start at

\$2100

For big, Six-Passenger Coupe, Model 72A, delivered here. License, State and Local taxes, if any, are extra. Price may vary slightly in nearby communities due to differences in transportation charge.



WHEN you compare them all, it's plain to see which car gives you the most for your money. It's the Mercury for 1950! For Mercury's new low starting price now brings you the better-than-ever new car buy!

And it's miles ahead in value, too. Big! Beautiful! Roomy! Better in styling—with new "Customized"

interiors! Better in comfort—with "Lounging-Rest" foam-rubber cushioned seats! Better in economy—with "Econ-O-Miser" carburetion! Better in performance—with "Hi-Power Compression"! Better to drive—easier to park!

Come in today. See and drive the better than ever new 1950 Mercury yourself. You'll be glad you did!



CHECKERBOARD CHUCKLES From Your Purina Dealer



FEED CHECKER-ETTS FOR BIG, FAST-GROWING CHICKS. You want to get chicks off to a good start in life—help them develop sturdy bodies, big legs, fast feathering. 101 million chicks proved Checkered-ettes grand ration for life and growth. Get Startena Checkered-ettes today.

TRICE HATCHERY

1301 N. Ave I

4-H Club Members Have Outstanding Record of Achievement In Texas

A summary of the reports from the county extension agents in the state show how important the 4-H program is to Texas. 4-H members grew crops on nearly 51,000 acres of land; everything from cotton and corn to soil im-

proving crops; they planted and cared for more than 19,000 acres of home orchards, home gardens and truck crops; they carried out soil and water conservation practices on 27,300 acres and conducted pasture improvement demonstrations on 29,300 acres and conducted pasture improvement demonstrations on 27,300 acres. They owned 58,893 head of livestock and poultry at 212 livestock shows and fairs and sold \$272,000 worth of poultry and eggs from their demonstration flocks. They were just as active in home economics work. In home improvement, they modernized almost 9,000 rooms and made about 36,000 articles that could be used in the home: 31,703 girls planned a lot of meals for their families and friends, 452,492 to be exact and they served a lot more — 519,910; they pressed food too, 15,742 girls canned 504,406 quarts of food, froze 91,322 quarts and froze another 80,936 pounds of other foods; 37,397 chose clothing for their demonstration and during the year they made more than 106,000 garments and remade another 27,566.

You might think that 4-H members do nothing except work but that is not true. They believe in doing the job first, but they also have their fun and recreation programs. They camp, attend meetings, state 4-H Round Ups at Texas A. & M. College, the State Fair, visit the major stock shows, send their representatives to all meetings and for the past two years they have been represented in the International Farm Youth Exchange program. Any good 4-H member will tell you there is a time and place for everything, and they know how to mix things up. 4-H boys and girls are trained in leadership. They are a cooperative group for they know there is strength in numbers and unity of purpose and they are good citizens because they practice democratic procedures in their meetings and participate in community affairs.

4-H members in every section of the state invite you to join with them in the observance of their national week. Visit a member, a local meeting or one of the special affairs they have planned. You'll be glad you did for here is a group that is leading the way to better living for a better world.

VISITOR FROM FORT WORTH
Mrs. E. L. White of Fort Worth, is visiting her sister, Mrs. R. B. Guess of Haskell. She also visited her brother, Roy Weaver of Haskell who has been ill.

Farmers Warned To Be On Alert For Grasshoppers

It may be a little early to start talking about grasshoppers, but farmers and ranchmen are urged to be ready to stop them this year before they leave their egg beds. Once they begin moving out of the areas where they hatch, effective control becomes more difficult, says H. G. Johnston, extension entomologist of Texas A. & M. College and state leader for the grasshopper control program in Texas.

He says recently completed surveys show heavy infestations of grasshopper eggs in at least three areas of the state and warns that hoppers can gain build up to plague proportions. The weather at hatching time will materially affect the situation, he adds.

The surveys show the danger spots to be in the Brazos valley especially in Robertson and Millar counties; in the Trinity valley in Kaufman and south Dallas county and along the Elm Creek Fork in north Dallas county and in the Panhandle. One area in the Panhandle — along the Oklahoma line is termed by Johnston as a threatening area while the other area extending from the northwest corner of the Panhandle southeastward to Amarillo contains infestations of the eggs of the migratory movements. The seriousness of the situation in this area will depend upon the weather conditions at hatching time — late May — says Johnston. He urges farmers and ranchmen in that section to be ready for an all-out fight should the hoppers become a menace to their crops and pastures.

He says the program in Texas will operate the same in 1950 as it did last year. Special emphasis will be placed on the use of insecticides for control rather than on the bait method. Results from last year's program show that toxaphene and chlordane are excellent grasshopper killing chemicals if used at the right time. The use of these chemicals plus neighborhood and community-wide cooperation can make control of local infestations a simple and inexpensive job, he says. Every farmer in infested territory should be ready to spray or dust his field margins, fence rows and roadsides just as soon as the hoppers begin to hatch.

The migratory hoppers must be controlled before they leave the egg beds. They soon scatter over wide areas and thus control becomes a difficult problem.

VISITORS FROM CHILDRESS
Mr. and Mrs. J. D. Watts and family, of Childress, were guests in the home of Mr. and Mrs. M. D. Fairbairn Sunday.

Flowers FOR EASTER



Favorite gift from the Easter Bunny on That Morning! Call us or come in EARLY to place your order. We deliver on Easter Day.

To Be Sure Place Your Order NOW. Visit our Green House and Select Your Plants.

A Be-charming bouquet . . . a personalized corsage . . . a blooming potted plant—each fresh and fragrant from our own greenhouse—is truly the perfect Easter Day remembrance. To please her especially—our messenger will deliver her favorite flower array at your convenience.

We Telegraph Orders Anywhere
Telephone 212 Haskell

Conner Nursery and Floral Company

Remember...

KITTEN'S EAR SOFT ALL THE WAY ROUND FOR THE MOST PURR-FECT FIT YOU'VE EVER FOUND!

THE WONDERFUL NEW **V-ETTE '50**

Whirlpool BY HOLLYWOOD-MAXWELL

You'll positively purr with delight with the utter comfort and freedom you'll feel in this great new bra by Hollywood-Maxwell. It retains all the famous features of the continuous stitch Whirlpool® cups to hold, mold, control—PLUS a band of soft, pliable elastic that hugs the body all the way round. A, B, C cups. In cotton In nylon

Lane-Telker
1st DOOR NORTH OF NATL. BANK
Phone 159 — Haskell, Texas

PRIDE A WHOLE SHOWER of Values

Maiz. Whole Grain, Yellow Corn TABLETS	2 Cans 29c	White Swan PEAR HALVES	No. 2 1/2 Can 31c
Light URELARD	3 Lb. Crtn. 35c	White Swan ORANGE JUICE	46 Oz. Can 38c
Pals ALMON	1 Lb. Can 35c	Procks PORK & BEANS	3 Tall Cans 25c

Meats		Garden Fresh Produce	
PICNIC HAMS Pound 34c	DRESSED FRYERS Pound 56c	Green ONIONS Bunch 5c	HARD HEAD LETTUCE LARGE 4 Doz. Size 10c
DEXTER Sliced Bacon Pound 36c	Chuck Roast Pound 49c	RADISHES Bunch 5c	HEADS
		Large, New POTATOES Lb. 8c	
		YAMS Pound 8c	

aby Ruth 6 Bars
BUTTER FINGER 23c

THAT FRESH, SWEET NATURAL TASTE

CLOVERBLOOM "99" Lb. **45c**

Cortez Can
TUNA 29c

RADIANT	Wapco, Sliced PEACHES No. 2 Can 22c	NEW BRIGHT AND EARLY
Dust Mop	Del Haven TOMATO JUICE 46 Oz. Can 25c	Coffee
Regular Size 65c	Curtie MARSH MELLOWS 10 Oz. Pkg. 18c	1 LB. CAN 65c
	Quart LUSTER WAX 69c	
	Tea Garden, Peach PRESERVES 12 Oz. Glass 22c	

Atkeison Food Store

Phone 99 April 31st May 1st - 3rd 504 North 2nd

Continuing The Fair Store Mammoth Easter Sale

Yes we are continuing this timely mammoth event for a few more days. The response has been so wonderful until we feel that we owe it to our customers to continue this unusual opportunity to save for a few more days. The sale will remain store wide and you can save on new spring merchandise for every member of the family.

Fast Color, 36-Inch PRINTS 4 Yards \$1.00	Large Size TURKISH TOWELS 3 For \$1.00	Mens Genuine LEVI'S \$2.98
Extra Heavy Brown LL DOMESTIC 4 Yds. for \$1.00	Mens SHIRTS and SHORTS 2 For \$1.00 69c Value	Mens DRESS SHIRTS Regular 2.95 Value \$1.98
Garza and Restwell SHEETS Type 128 \$1.84	Mens DRESS SOCKS 4 Pair \$1.00 Regular 49c value	Mens Dress OXFORDS Values to 8.95 \$5.49

The Fair Store

North Side Of Square Your Thrifty Store Phone 471W—Haskell, Texas

Ladies' HALF SLIPS

All colors, Values to 1.95
\$1.00

The Haskell Free Press

Established January 1, 1886
Published every Thursday



Member TEXAS PRESS ASSOCIATION
Jetty V. Clare, Owner and Publisher
Alonso Pate, Editor
Lola Lemmon, Bookkeeper

Entered as second-class matter at the postoffice at Haskell, Texas, under the act of March 3, 1879.

NOTICE TO THE PUBLIC — Any erroneous reflection upon the character, reputation or standing of any firm, individual or corporation will be gladly corrected upon being called to the attention of the publishers.

HASKELL COUNTY HISTORY

Brief Items Taken from Old Copies of The Free Press

29 Years Ago—March 27, 1930
Snow which began falling Wednesday afternoon blanketed this section to the depth of three inches, and provided badly needed moisture.

Construction Engineer Puckett of the State Highway Department was here the first of the week arranging for office quarters to be established here. He will be in charge of construction on Highways 30 and 120.

Miss Naomi Poteet and her roommate, Miss Mary Charles

Taylor of Dallas are here for the Easter holidays from CIA, Denton.

Several hundred dollars damage was caused to the roof of the Eastland Building on the north side of the square by fire Thursday evening. The fire, starting in a defective flue, was quickly extinguished.

The two-story Masonic Building in Stamford, in which was located three business concerns on the first floor, was destroyed by fire Sunday night. The second floor of the building was used as a lodge room.

Eugene Tonn of Fort Worth, spent several days here this week with relatives and friends.

A. L. Blair has leased the filling station north of the square formerly operated by R. E. Pittman, and will operate the business in the future. He plans to establish a reeking yard in connection with the station.

The City Cafe, formerly located on the east side of the square is re-opening this week in their new location on the north side. W. M. and W. C. Tucker are proprietors of the business.

Miss Beryl Boone of Fort Worth is here for a few days visit in the home of her mother, Mrs. J. S. Boone.

40 Years Ago—March 19, 1910
In the county Local Option election held last Monday, a total of 2,081 votes were polled, according to unofficial tabulations. The vote was 1,331 for prohibition and 750 against, giving the drys a decisive majority of 581 votes.

John B. Baker left Thursday to attend the Fat Stock Show at Fort Worth.

W. H. Hurd, who has been a citizen of Haskell county for several years, has traded his property here for land in Gaines county and plans to move to that section.

Ben and George Clifton, Carroll Haswell and Will Hubbard attended the Fat Stock Show in Fort Worth this week.

Cyrus Lindell, who now owns the farm formerly owned by Judge Hamilton in the south part of the county, was here Monday. He reports that he has 150 acres of small grain, some fine Jersey cattle and hogs and is doing well with dairying. He states that seven

stands of bees paid him \$50 last year.

A. T. Crews announced this week that he had withdrawn from the race for Cotton Weigher.

Haskell had an all day rain Wednesday. The season is fine for the farmers, and will put the wheat and oats in good condition.

John A. Lester has announced as a candidate for City Marshal. Two are now listed for that office. J. W. French having previously announced.

Mr. and Mrs. J. E. McGuire of Mexico City are visiting the family of his brother, G. B. McGuire this week.

50 Years Ago—March 24, 1900

R. E. Sherrill and F. G. Alexander visited Rayner Wednesday on business connected with our railroad enterprise. They are leaving no stone unturned to secure the bonus required to bring the railroad here.

The fine rain this week has put an excellent season in the ground and will give our farmers the earliest start they have had in several years.

A. P. McLemore visited Stamford this week in the interest of his telephone line.

Judge H. C. McConnell has been attending Federal Court in Abilene this week.

J. W. Allen of the northwest part of the county this week bought of Geo. Yeiser of Stone-wall county 25 head of stock cattle at \$25 around.

J. H. Cunningham and family of Kent county are visiting the family of J. N. Ellis this week. Mrs. Cunningham and Mrs. Ellis are sisters.

Mont Bowron of Santa Anna arrived here yesterday and will probably remain for some time. He is a brother of Prof. Bowron.

Our shipment of newspaper failed to arrive until Saturday night, hence this issue is delayed in reaching our readers.

F. G. Alexander & Co. have a handsome new delivery wagon. Major Smith returned Thursday from a business trip to Abilene.

Sell Parker of Roby visited his

relatives, the Messrs. Couch, here this week.

Our first installment of spring poetry arrived this week and was put to sleep in the wastebasket.

Henry Alexander went to Galveston this week to see the warships of the North Atlantic squadron.

The brass band will give their next entertainment in about two weeks, and they are busy now rehearsing for the performance.

The ball has started rolling. The prospect of a railroad has started people to planting their money in Haskell county real estate.

W. Scott, one of our leading land agents, reports an offer from R. W. Herren of Navarro county of \$10,000 for the A. H. Tandy 3,289 acre pasture and farm five miles northwest of town, which offer he has submitted to Mr. Tandy. Also a sale of the Killough & Jones farms and ranches by tying from two to four miles southeast of town, embracing 3,816 acres, to J. H. Cunningham of Kent county for \$3.50 per acre.

CITATION BY PUBLICATION

THE STATE OF TEXAS
COUNTY OF HASKELL

TO: Audry Campbell, GREETING: You are commanded to appear and answer the plaintiff's petition at or before 10 o'clock A. M. of the first Monday after the expiration of 42 days from the date of issuance of this Citation, the same being Monday the 24th day of April, A. D. 1950, at or before 10 o'clock A. M. before the Honorable District Court of Haskell County, at the Court House in Haskell County, Texas.

Said plaintiff's petition was filed on the 19th day of October, 1949. The file number of said suit being No. D-1228.

The names of the parties in said suit are: Louise Campbell as Plaintiff and Audry Campbell as Defendant. The nature of said suit being substantially as follows, to wit:

That she is and has been for a period of twelve months prior to filing this petition an actual bona-

VISITORS IN A. Y. CORLEY HOME

Mr. and Mrs. A. Y. Corley had as visitors in their home this week, Mrs. C. A. Corley and E. B. Corley of Stamford Mr. and Mrs. O. W. Loftin of Electra, Mr. and Mrs. Orville Loftin and son Dennis of Fairfield, Ill. and Mrs. R. E. Corley of Evansville, Ind.

The week of March 4-12 is National 4-H Club Week. The theme that 4H members will follow is Better Living for a Better World.

side inhabitant of the State of Texas, and has resided in Haskell County for at least six months next preceding the filing of this petition; that on or about the 27th day of March, 1948, plaintiff was lawfully married to the defendant; that they continued to live together as man and wife until on or about the 24th day of April, 1948, when, by reason of cruel, harsh and tyrannical treatment and improper conduct of the defendant toward plaintiff, she was forced and compelled to permanently abandon the defendant since which time they have not lived together as man and wife.

Plaintiff says that no child or children were born to this union (and that there is no community property to be adjudicated. No child or children were adopted by plaintiff and defendant. Plaintiff prays for judgment for divorce.

Issued this the 11th day of March, 1950.

Given under my hand and seal of said Court, at office in Haskell, Texas, this the 11th day of March, A. D. 1950.

Jesse B. Smith, Clerk
District Court Haskell County, Texas

(Seal) 12-15c

RETURNS FROM HOSPITAL

John McGuire has returned to his home in this city, after undergoing major surgery in Hendrick Memorial Hospital at Abilene recently. Friends will be glad to learn that he is recovering nicely.

IN DALLAS THURSDAY

John Darnell, local dealer for Oldsmobile automobiles, and Sheriff Bob Cousins were business visitors in Dallas Thursday of last week.

Pre-Easter Special!

HATS

Regular \$7.95 to \$17.95

1-2 Price

Gloves

Broken Sizes and Colors

Regular \$1.50 to \$6.95

1-2 Price

The Personality Shoppe

Groves of the largest prolific Magnolia trees world are near Haskell

WATCH REPAIR

All Work Guaranteed
BRONZE BABY



Ideal Gift of An Endless Keepsake
10 Day Service

BASSING JEWELRY

666 GIVE FAST RELIEF LIQUID OR TABLETS

FOR ECONOMICAL HOME PROTECTION

Low Brothers HIGH STANDARD HOUSE PAINT

- Covers solidly more square feet of surface.
- Contains an unusually high percentage of non-evaporating film forming solids.
- Wears down slowly and evenly—leaving an excellent surface for repainting.
- Made to give extra years of protective service.
- All colors STYLE TESTED!

\$5.95 GALLON

HATTOX Hardware Co.

Don't miss IT!
Don't miss WHAT?
The great NEW No-Nox!
Get Gulf's greatest gasoline—specially designed for today's powerful new engines!
It's great for NEW CARS and great for OLDER CARS
GULF
(Good Gulf—our "regular" gasoline—is better than ever, too!)

JOHN KIMBROUGH
Gulf Consignee—Phone 175, Haskell

Easter

Fashioned for Compliments

LeVine ORIGINAL

This LeVine Originale turns an occasion into an OCCASION! Subtle loop-trim... at shoulder... at hip... releasing flattering fullness into a simple, gored skirt. Favorite spring colors in fine rayon Master Sheer. \$22.50

Personality Shoppe

our BIG Annual Spring Food Carnival

TASTE TELLS AND PRICES SELL
Friday and Saturday
FRESH PRODUCE

SALAD MIX	Carton 19c	Firm Pink TOMATOES	15c
Large Size Sunkist LEMONS	Pound 12c	Russet POTATOES	10 Lb. Bag 49c
Kimble's ORANGE JUICE	46 oz. Can 39c	CUT GREEN BEANS	No. 2 Can 15c
Argo or Rio Grande SARDINES	In Mustard or Tomato Sauce Can 19c	DIAMOND PORK & BEANS	Tall Can 10c
Pot Likker BLACKEYE PEAS	Tall Can 10c	Mott's APPLE JUICE	Quart 23c
Woodbury FACIAL SOAP	3 Reg. Bars 27c	Kimbell's BOYSENBERRIES	No. 2 can 15c
Old Bill VIENNA SAUSAGE	Can 10c	Ambassador TOILET TISSUE	Roll 5c
Skinner's MACARONI OR SPAGHETTI	Box 10c	For Infants, S. M. A. FOOD FORMULA	Can 29c

MEN SAY MEAT MAKES THE MEAL

Hormel Sliced BACON	Lb. 39c	Cured HAMS	Lb. 49c
Pork Chops	Lb. 39c	Armour's Star Sliced Bacon	Lb. 49c

WE HAVE OZARK WATER AND DISTILLED WATER
Modern Way Food Store
WE RESERVE THE RIGHT TO LIMIT QUANTITIES

Purex Bleach Quart
2 for 25c

Pimentos Dromedary 4 oz. Can
14c

Spinach Lady Royal No. 2 Can
2 for 25c

Corn Del Monte, Cream Style Tall Can
15c

Close of Contest, Naomi Bible Certains T. E. L. Class Members

of love and esteem result of a contest of the Naomi Bible Class of the First Presbyterian Church. The Naomi Bible Class members, who met at 3 to 5 o'clock, The social began with group singing several religious songs. Then a prayer. Mrs. Whatley, class teacher, gave the welcome address. Two songs were given by the quartet from the Naomi Class: Mrs. Chamberlin, the social chairman, conducted a base ball

game using questions from different parts of the Bible as base balls and the scores were counted. The Naomi Class scored five and the T. E. L. Class made three scores. Several other games were played, including a game of "gossip" I am afraid a good many women learned a lot of things about themselves that they hadn't know before. The Naomi Class really enjoyed having the T. E. L. Class as their

Mrs. O. E. Patterson Hostess at Harmony Club Meeting

Mrs. O. E. Patterson was hostess for the regular meeting of the Harmony Club, Thursday March 23, with Mrs. Tannie Squyres director of the program on Music In The Home. The Life of Nevin was given by Mrs. Robert Wheatley, and Mrs. Roy Everett sang The Rosary and Mighty Lak' A Rose, by Nevin. Music In The Home, Yesterday and Today, was discussed by Mrs. Cooper. A quartet composed of Mesdames Lewis, Clifton, Meadors and Medley sang Easter Parade, Mother Macree, and Bells of St. Mary's, with Mrs. Cadenhead as accompanist. The director, Mrs. Squyres, gave The Life of Howard Payne, and as closing number on the program, members sang Home, Sweet Home. Coffee and cake was served to the following: Mesdames Medley Cook, Florence, Lewis, Meadors, Cousins, Clifton, Cooper, Cadenhead, Wheatley Squyres Everett Harrison, Whiteker, Kimbrough, Mullino, Tooley, Hawkins, Helber and Patterson.

O'Brien H-D Club To Purchase Lot For Building

The O'Brien H. D. Club met March 22 in the home of Mrs. C. C. Hutchinson, with 14 members and two visitors present. The interest in club work is certainly growing in the O'Brien Club. Bible verses, sewing hints, poultry hints and other roll call subjects were commented on. The club voted to buy a lot in O'Brien for a new club house. Members turned in their education and expansion reports. Mrs. Grindstaff gave a talk on "Finding Ourselves." Mrs. Waldrip and Mrs. Mann Elmore directed games during the recreation period. The hostess served refreshments of sandwiches, cookies, pickles and punch to the following: Mesdames Hines, Brothers, D. Johnston, O. S. Johnston, Walsworth, Waldrip, Cox, S. Johnston, Matur, Banner, Mann, Elmore, Grindstaff and visitors Mrs. Brumitt and Mrs. Joe Davis. Pal gifts were exchanged. Club will meet April 12 with Mrs. Bill Matur.

42.76 acres of land. And being the same tract of land described in a deed from J. M. Marshall to D. M. Edge, recorded in volume 17, page 12 of the Deed Records of Haskell County, Texas. Both of the above described tracts of land situated in Haskell County, Texas and containing 160 acres of land. That the Honorable Judge of the County Court of Haskell County, Texas on the 28 day of March, 1950 duly entered his order designating the 8th day of April, 1950 at ten o'clock A. M. in the County Court Room in the Court House of such County as the time and place when and where such application would be heard, and that such application will be heard at such time and place. Pearl Edge, Guardian of the Estate and Person of Peggy Ann Edge, a Minor. 13c

Hundreds Tell Bob Wills Of Hadacol's Numerous Blessings

Bob Wills Hears About HADACOL'S Blessings



of folks, who are every day from taking a trip to the Trianon Building in Oklahoma City to see Bob Wills, famous band leader and his Texas Playboys each noon for HADACOL. Like all my fans are wonderful benefits from HADACOL. "It is a pleasure to broadcast for HADACOL because the folks taking HADACOL are so enthusiastic. I feel like I am performing service for mankind." Bob Wills has told me of the benefits of HADACOL following statement by Lou Lobb, 720 Col. Bethany, a well known good example. "I suffered with gas, indigestion, run down and lost weight. I had tried everything but it didn't help me. I had heard of HADACOL and decided to try it. The wonderful results I had been bringing to my friends. Soon after HADACOL I was feeling better, had no gastric distress, and a wonderful appetite. I am no longer nervous. I am a great deal and I am glad to recommend HADACOL to my friends. I suffered with a dose of B Vitamins and Minerals which HADACOL contains. It is only a small amount of B Vitamins and Minerals which will cause digestive distress. Your food will not upset stomach. You suffer from heartburns, gas and your food will sour on stomach, and you will not eat the things you like of being in misery after many people also suffer indigestion. And while symptoms may be the result of other causes, they are certainly the symptoms of the lack of the

Bob Wills, famous western music band leader, loves to talk with his fans at the Trianon Building auditorium in Oklahoma City about the blessings of HADACOL. In the picture above Miss Betty Lou Lobb, 720 Col. Bethany, Okla., a very promising young singer, tells Bob how HADACOL has helped her. Hundreds of folks who are obtaining rich blessings from the precious B Vitamins and Minerals in HADACOL visit Wills each week for his network broadcast, which is originated from KBYE, Oklahoma City, Oklahoma's western music station, and sent over a leased wire to stations, KRMG, Tulsa; KWHN, Fort Smith; KGLC, Miami, Oklahoma; KLYN, Amarillo, and KWFT, Wichita Falls.

B Vitamins and Minerals which HADACOL contains. And if you suffer from such a disorder, there is no known cure except the administration of the Vitamins and the Minerals which your system lacks. HADACOL contains not only one, but 5 of the B Vitamins. HADACOL contains not only one, but 4 of the necessary Minerals. It comes to you in liquid form, easily assimilated in the blood stream so that it can go to work right away. It is easy to understand, therefore, why countless thousands have already been benefited by

Mrs. Ira Short Hosts Meeting of H. D. Club

The Willing Workers H. D. Club of Jud met Thursday, March 23, in the lovely new home of Mrs. Ira Short. Mrs. E. E. Burlison, the vice president, presided in the absence of Mrs. John Powell, the president. The program opened with the song Follow The Glean. Eleven members answered roll call. Mrs. Clifford Malone joined the club. Mrs. Bill Peters read the T. H. D. A. Marketing Committee Recommendations. The club has sold an order of greeting cards. Education and expansion reports were handed to Mrs. Short, the chairman. Mrs. Yarbrough issued library books. Secret Pal gifts were distributed by the hostess. Mrs. Eugene Wheeler and Mrs. D. N. Powell each directed a very interesting written-word game. Refreshments of cold drinks and pecan pie were served to the twelve members present.

Blue Bonnet H-D Club Has All-Day Meeting

The Blue Bonnet H. D. Club met March 16 in an all day meeting in the home of Mrs. Arthur Williams. A covered dish luncheon was served at noon. In the afternoon Mrs. Raymond Astin introduced Roy Clark, commissioner of Precinct 4. Mr. Clark made an appeal to the club to help organize an association to support a program to build and maintain better rural roads. Quoting Mr. Clark, all gases that come out of the oil and gas wells are gauged. These gases are piped and sent out of the state without being taxed. Haskell county loses \$170,000 each year from out of state taxes. Precinct 4 loses between \$30,000 to \$35,000 tax money that would build 30 to 35 miles of gravel road, he added. School children are forced to miss school during school during bad weather. Mrs. Vee Dee Howle, home demonstration agent, introduced 4-H Club girls from Rule who gave an interesting demonstration on shining your shoes. Mrs. A. C. Denson gave a report on council. The 20th anniversary will be held in the home of Mrs. A. C. Denson April 27. Two old members were welcomed back. Mrs. Oils Macon and Mrs. Sam Jennings.

N.T.S.C. Students Unearthing Pre-Historic Fossils

Remains of a pre-historic elephant, believed buried by a slide 20,000 years ago, are being uncovered by North Texas State College geography students near Denton. Students working under direction of Dr. Walter Hansen of the geography department have already uncovered a five-foot tusk and a large pelvic bone. The bones were first discovered by workmen digging in a gravel pit southeast of Denton.

Announcing

An authorized Singer representative in Stamford.

Come to see Jake at 811 N. Swenson.

Ask for Free Demonstration in your Home.

New or Used 10-14p.

Easter Specials



Dresses New for Spring

See our spring line of wash silk dresses in florals and solids, sizes 12 to 42 priced at

4.95

CLOTH OF GOLD

A large assortment of Cloth of Gold prints in solids and patterns, 36 inch fast color, per yard

39c

5.95

BUTCHER LINEN

Heavy Butcher Linen in assorted colors, 40 inches wide at per yard

98c

CURTAINS

Plastic kitchen curtains, solid colors ruffles with kitchen designs, pair

\$1.19

APRONS

Plastic aprons with pretty patterns you will want several, each

23c

HOB NAIL BED SPREDS 3.49

In red, blue, green and yellow with fringed edges, large size only

New and Used CARS

look your best... look your smartest

- New 4-door Sedan, R&H. White side-wall tires. Black.
- 1949 4-door Ford Sedan, R&H. White tires. Seat covers. Sun visor.
- 1949 Chevrolet Fleetline, 4-door, R&H. White tires. Sun visor.
- 1948 4-door Ford Sedan. Loaded.
- 1947 4-door Ford Sedan. Loaded.
- 1949 Dodge 1/2 ton Pick-Up De luxe cab.
- 1950 Chevrolet 1/2 ton Pick-Up.
- 1947 Chevrolet Tudor. Loaded.
- 1947 Chevrolet Aero. Loaded.
- 1948 4-door Ford Sedan. Loaded.
- 1946 Chevrolet Tudor.

Brown & Percy Motor Company

Phone No. 1 Haskell

All Our Spring Suits, Coats and Toppers 1-2 Price

One Rack Dresses 1-2 Price

Hose, \$1.95 and \$1.50 value \$1.00

The FASHION SHOPPE

Mrs. Leone Pearsey

THIRD DIMENSIONAL FIT

for leg flattery

SHORT SLENDRA for 5'6" or under

TALL SLENDRA for 5'6" to 5'8"

AVERAGE for 5'6" to 5'8"

TALL FULL for 5'9" or over

61 Gauge..... \$1.65
60 Gauge..... \$1.95

Fouts Dry Goods & Variety

West Side of Square Phone 2W Haskell, Texas

look your best... look your smartest

\$8.95

Brown and white, all white, blue, red.

\$8.95

in flattering Pumps by **D&B**

THE BOOTERIE

CHURCH ANNOUNCEMENTS

WEINERT FOURSQUARE CHURCH
Weinert, Texas
Wm. O. Pritchett, Pastor

Sunday School, 10:00 a. m., Roy W. Herricks, Supt.
There is a class for all—the Bible is our textbook in all classes.

FIRST CHRISTIAN CHURCH
(Corner of Ave. F and North 2nd)
Francis F. Nickerson, Minister

9:45 a. m. Bible School Classes for all age groups. Lesson subject, "The Church Suffering And The Church Triumphant" (Matt. 21:1-16; 1 Peter 4:12-9; Revelation 7:9-17).

Away Today? Beginning Wednesday, April 5 7:30 p. m. the Christian Church is offering a 9-week Teacher Training Course (through April and May).

FIRST PRESBYTERIAN CHURCH
N Avenue at Fourth
R. K. McCall, D. D., Minister

Sunday School 9:45 a. m. Morning Worship 11:00 a. m. Communion Service, Communion Meditation.

BIBLE BAPTIST CHURCH
Corner N. 3 and Ave. C
Rev. R. B. Turner, Pastor
Regular services each Sunday: Sunday School—10 a. m.

TRINITY LUTHERAN CHURCH
M. C. Hoermann, Pastor
Sunday, March 19th.
Services at 2:30 p. m., at the First Presbyterian Church.

ASSEMBLY OF GOD CHURCH
400 South Avenue E.
C. U. McMullen, Pastor

9:45 Sunday School. 11:00 Worship and Sermon. 6:30 Young People's Service. 7:30 Evangelistic Service.

FUNDAMENTAL BAPTIST CHURCH
114 Ave. D, South 2nd St.
Rev. S. G. Wallis, Pastor

10 a. m. Sunday School. 11 a. m. Morning Message. 7 p. m. Young People's Service. 7:00 p. m. Evening Message.

FRIENDSHIP BAPTIST CHURCH
Corner South 7th and Ave F
Rev. Joe Scheels, Pastor
O. E. Nuckles, Sunday School Superintendent

Sunday School—9:45 a. m. Preaching Service—11 a. m. and 8 p. m.

THE CHURCH OF GOD
909 South 1st Street, East
Geo. Ivy, Pastor

Sunday School at 9:45 A. M. Message at 11:00 A. M. Preaching Sunday Evening 7:00 P. M.

5TH ST. BAPTIST CHURCH
(Corner 5th St. & Ave. J)
RULE, TEXAS
Jesse Jones, Pastor

9:45 A. M. Sunday School. 11:00 A. M. Preaching Service. 6:30 P. M. Young People's Class.

MATTSON BAPTIST CHURCH
Rev. Bill Austin

10:00 A. M. Sunday School. 11:00 A. M. Preaching Service. 7:45 P. M. Evening Service.

LUTHERAN CHURCH SERVICES
Trinity Lutheran church members will meet at the Presbyterian Church in Haskell on the following schedule:

First Sunday in each month at 2:30. Third Sunday in each month at 2:30 p. m. Fifth Sunday services at 6:30 p. m.

EAST SIDE BAPTIST CHURCH
Rev. W. T. Priddy, Pastor

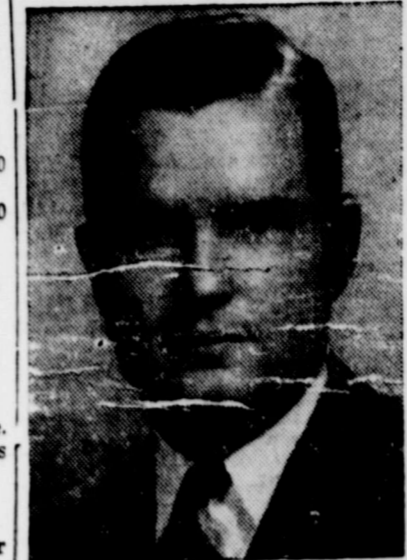
8:30 A. M. Radio Sermon by the pastor, Rev. W. T. Priddy, over station KDWT, Stamford. 9:45 A. M. Sunday School.

CURRY CHAPEL BAPTIST CHURCH
Pastor, Rev. John W. Seay

Sunday School 10 a. m. Morning Service 11:00 a. m. (Sermon by Pastor) Evening Service 7:00 p. m. (Sermon by Pastor)

Dr. Duke McCall Is Speaker for Baptist Radio Hour

Announcement has been made by the Baptist Radio Commission in Atlanta, Dr. S. F. Lowe, director.



that the theme for the Baptist Hour messages during April, May, and June will be "Avenues to Abundant Living." The speaker for this series of sermons will be Dr. Duke K. McCall, Executive Secretary of the Southern Baptist Convention.

Dr. McCall has a world-wide reputation as a speaker, educator and a religious leader. He is a member of the Baptist World Alliance Executive Committee, and Treasurer of the Southern Baptist Foundation. He has spoken on the Baptist Hour several times previously.

CHURCH OF CHRIST
Roy Deaver, Minister

Our Regular Schedule: Sunday: Bible classes for all ages 9:45-10:40 Regular Worship Service 10:45-12:00

FEDERAL LAND BANK LOANS
Time 3 1/2 years. Net interest costs 3.75%
Loans may be paid in part or in full on any day in the year. We have no balloon payments.

ROLL-O-MATIC "Knee-Action" Front Wheels
Now Available for Field Installation on JOHN DEERE "A," "B," & "G" TRACTORS
Now—your John Deere "A," "B," or "G" Tractor can be equipped with Roll-O-Matic.

GILMORE IMPLEMENT CO.
Phone 16
JOHN DEERE Two-Cylinder TRACTORS
First in Modern Design and Proved Performance

We're Proud To Sell The FEED VOTED "BEST" CRUMBLIZED Nutrena CHICK FEED Stepped-Up With Livium
CAMPBELL PRODUCE
208 N. 1st Street Phone 351J (tfc)



FIRE - - How Would it Affect You?

Fire can and has destroyed the life savings of many persons almost in the twinkling of an eye. How tragic for this to happen to any one. Make sure it isn't you by carrying adequate insurance with an agent who represents reliable companies and takes a personal interest in your property values and program—one who is as anxious to see your just claims paid as he is to collect your premiums.

Proof of the fact that we are that type agency is shown in the picture above where we present R. J. Reynolds with a check for his loss seven hours after the fire started and before the smoke cleared away.

W. I. "SCOTCH" COGGINS The Right Insurance Gives The Most Protection.
South Side Square Phone 390



Smart-Refreshing CURLEE SUITS FOR SPRING

Now it is time to shake off the shackles of winter—put away those cold-weather woollens—and step out in a smart, new Curlee Spring Suit. Here, in our new Curlee offerings, you will find all the qualities which make for complete clothing satisfaction: modern, masculine styling; expert tailoring; plus a choice selection of Spring-weight materials, in the season's newest patterns.

FELKER Men's Wear
The Store of Famous Brands

E. R. Clifton Clover Farm

A Most Friendly Place To Trade and Save — We Reserve The Right To Limit —

Table with 2 columns: Product Name and Price. Items include Bama Peach PRESERVES, SARDINES, CORN, PEACHES, BLACKEYE PEAS, GREEN BEANS, PORK & BEANS, SWEET POTATOES, PINEAPPLE, BABY FOOD, SALAD DRESSING, FLOUR, Queen Pride FACIAL TISSUE, NAPKINS, JELLO, TEA, MEAL, OXYDOL, TOMATOES, GREEN BEANS, SPUD, RADISH, BELL PEPPER, GREEN ONIONS.

QUALITY MEATS OUR MOTTO

Table with 2 columns: Product Name and Price. Items include Chuck or Seven ROAST, Armour Star BACON, Long Horn CHEESE, Home Made Pure Pork SAUSAGE, PORK CHOPS, SLICED BACON.

Vertical text on the right edge of the page, including names like 'AN', 'Mary Jo J.', 'Mrs. D.', 'Mrs. J.', 'Mrs. W.', 'Mrs. R.', 'Mrs. M.', 'Mrs. H.', 'Mrs. L.', 'Mrs. K.', 'Mrs. G.', 'Mrs. F.', 'Mrs. E.', 'Mrs. D.', 'Mrs. C.', 'Mrs. B.', 'Mrs. A.', 'Mrs. Z.', 'Mrs. Y.', 'Mrs. X.', 'Mrs. W.', 'Mrs. V.', 'Mrs. U.', 'Mrs. T.', 'Mrs. S.', 'Mrs. R.', 'Mrs. Q.', 'Mrs. P.', 'Mrs. O.', 'Mrs. N.', 'Mrs. M.', 'Mrs. L.', 'Mrs. K.', 'Mrs. J.', 'Mrs. I.', 'Mrs. H.', 'Mrs. G.', 'Mrs. F.', 'Mrs. E.', 'Mrs. D.', 'Mrs. C.', 'Mrs. B.', 'Mrs. A.', 'Mrs. Z.', 'Mrs. Y.', 'Mrs. X.', 'Mrs. W.', 'Mrs. V.', 'Mrs. U.', 'Mrs. T.', 'Mrs. S.', 'Mrs. R.', 'Mrs. Q.', 'Mrs. P.', 'Mrs. O.', 'Mrs. N.', 'Mrs. M.', 'Mrs. L.', 'Mrs. K.', 'Mrs. J.', 'Mrs. I.', 'Mrs. H.', 'Mrs. G.', 'Mrs. F.', 'Mrs. E.', 'Mrs. D.', 'Mrs. C.', 'Mrs. B.', 'Mrs. A.', 'Mrs. Z.', 'Mrs. Y.', 'Mrs. X.', 'Mrs. W.', 'Mrs. V.', 'Mrs. U.', 'Mrs. T.', 'Mrs. S.', 'Mrs. R.', 'Mrs. Q.', 'Mrs. P.', 'Mrs. O.', 'Mrs. N.', 'Mrs. M.', 'Mrs. L.', 'Mrs. K.', 'Mrs. J.', 'Mrs. I.', 'Mrs. H.', 'Mrs. G.', 'Mrs. F.', 'Mrs. E.', 'Mrs. D.', 'Mrs. C.', 'Mrs. B.', 'Mrs. A.', 'Mrs. Z.', 'Mrs. Y.', 'Mrs. X.', 'Mrs. W.', 'Mrs. V.', 'Mrs. U.', 'Mrs. T.', 'Mrs. S.', 'Mrs. R.', 'Mrs. Q.', 'Mrs. P.', 'Mrs. O.', 'Mrs. N.', 'Mrs. M.', 'Mrs. L.', 'Mrs. K.', 'Mrs. J.', 'Mrs. I.', 'Mrs. H.', 'Mrs. G.', 'Mrs. F.', 'Mrs. E.', 'Mrs. D.', 'Mrs. C.', 'Mrs. B.', 'Mrs. A.', 'Mrs. Z.', 'Mrs. Y.', 'Mrs. X.', 'Mrs. W.', 'Mrs. V.', 'Mrs. U.', 'Mrs. T.', 'Mrs. S.', 'Mrs. R.', 'Mrs. Q.', 'Mrs. P.', 'Mrs. O.', 'Mrs. N.', 'Mrs. M.', 'Mrs. L.', 'Mrs. K.', 'Mrs. J.', 'Mrs. I.', 'Mrs. H.', 'Mrs. G.', 'Mrs. F.', 'Mrs. E.', 'Mrs. D.', 'Mrs. C.', 'Mrs. B.', 'Mrs. A.', 'Mrs. Z.', 'Mrs. Y.', 'Mrs. X.', 'Mrs. W.', 'Mrs. V.', 'Mrs. U.', 'Mrs. T.', 'Mrs. S.', 'Mrs. R.', 'Mrs. Q.', 'Mrs. P.', 'Mrs. O.', 'Mrs. N.', 'Mrs. M.', 'Mrs. L.', 'Mrs. K.', 'Mrs. J.', 'Mrs. I.', 'Mrs. H.', 'Mrs. G.', 'Mrs. F.', 'Mrs. E.', 'Mrs. D.', 'Mrs. C.', 'Mrs. B.', 'Mrs. A.', 'Mrs. Z.', 'Mrs. Y.', 'Mrs. X.', 'Mrs. W.', 'Mrs. V.', 'Mrs. U.', 'Mrs. T.', 'Mrs. S.', 'Mrs. R.', 'Mrs. Q.', 'Mrs. P.', 'Mrs. O.', 'Mrs. N.', 'Mrs. M.', 'Mrs. L.', 'Mrs. K.', 'Mrs. J.', 'Mrs. I.', 'Mrs. H.', 'Mrs. G.', 'Mrs. F.', 'Mrs. E.', 'Mrs. D.', 'Mrs. C.', 'Mrs. B.', 'Mrs. A.', 'Mrs. Z.', 'Mrs. Y.', 'Mrs. X.', 'Mrs. W.', 'Mrs. V.', 'Mrs. U.', 'Mrs. T.', 'Mrs. S.', 'Mrs. R.', 'Mrs. Q.', 'Mrs. P.', 'Mrs. O.', 'Mrs. N.', 'Mrs. M.', 'Mrs. L.', 'Mrs. K.', 'Mrs. J.', 'Mrs. I.', 'Mrs. H.', 'Mrs. G.', 'Mrs. F.', 'Mrs. E.', 'Mrs. D.', 'Mrs. C.', 'Mrs. B.', 'Mrs. A.', 'Mrs. Z.', 'Mrs. Y.', 'Mrs. X.', 'Mrs. W.', 'Mrs. V.', 'Mrs. U.', 'Mrs. T.', 'Mrs. S.', 'Mrs. R.', 'Mrs. Q.', 'Mrs. P.', 'Mrs. O.', 'Mrs. N.', 'Mrs. M.', 'Mrs. L.', 'Mrs. K.', 'Mrs. J.', 'Mrs. I.', 'Mrs. H.', 'Mrs. G.', 'Mrs. F.', 'Mrs. E.', 'Mrs. D.', 'Mrs. C.', 'Mrs. B.', 'Mrs. A.', 'Mrs. Z.', 'Mrs. Y.', 'Mrs. X.', 'Mrs. W.', 'Mrs. V.', 'Mrs. U.', 'Mrs. T.', 'Mrs. S.', 'Mrs. R.', 'Mrs. Q.', 'Mrs. P.', 'Mrs. O.', 'Mrs. N.', 'Mrs. M.', 'Mrs. L.', 'Mrs. K.', 'Mrs. J.', 'Mrs. I.', 'Mrs. H.', 'Mrs. G.', 'Mrs. F.', 'Mrs. E.', 'Mrs. D.', 'Mrs. C.', 'Mrs. B.', 'Mrs. A.', 'Mrs. Z.', 'Mrs. Y.', 'Mrs. X.', 'Mrs. W.', 'Mrs. V.', 'Mrs. U.', 'Mrs. T.', 'Mrs. S.', 'Mrs. R.', 'Mrs. Q.', 'Mrs. P.', 'Mrs. O.', 'Mrs. N.', 'Mrs. M.', 'Mrs. L.', 'Mrs. K.', 'Mrs. J.', 'Mrs. I.', 'Mrs. H.', 'Mrs. G.', 'Mrs. F.', 'Mrs. E.', 'Mrs. D.', 'Mrs. C.', 'Mrs. B.', 'Mrs. A.', 'Mrs. Z.', 'Mrs. Y.', 'Mrs. X.', 'Mrs. W.', 'Mrs. V.', 'Mrs. U.', 'Mrs. T.', 'Mrs. S.', 'Mrs. R.', 'Mrs. Q.', 'Mrs. P.', 'Mrs. O.', 'Mrs. N.', 'Mrs. M.', 'Mrs. L.', 'Mrs. K.', 'Mrs. J.', 'Mrs. I.', 'Mrs. H.', 'Mrs. G.', 'Mrs. F.', 'Mrs. E.', 'Mrs. D.', 'Mrs. C.', 'Mrs. B.', 'Mrs. A.', 'Mrs. Z.', 'Mrs. Y.', 'Mrs. X.', 'Mrs. W.', 'Mrs. V.', 'Mrs. U.', 'Mrs. T.', 'Mrs. S.', 'Mrs. R.', 'Mrs. Q.', 'Mrs. P.', 'Mrs. O.', 'Mrs. N.', 'Mrs. M.', 'Mrs. L.', 'Mrs. K.', 'Mrs. J.', 'Mrs. I.', 'Mrs. H.', 'Mrs. G.', 'Mrs. F.', 'Mrs. E.', 'Mrs. D.', 'Mrs. C.', 'Mrs. B.', 'Mrs. A.', 'Mrs. Z.', 'Mrs. Y.', 'Mrs. X.', 'Mrs. W.', 'Mrs. V.', 'Mrs. U.', 'Mrs. T.', 'Mrs. S.', 'Mrs. R.', 'Mrs. Q.', 'Mrs. P.', 'Mrs. O.', 'Mrs. N.', 'Mrs. M.', 'Mrs. L.', 'Mrs. K.', 'Mrs. J.', 'Mrs. I.', 'Mrs. H.', 'Mrs. G.', 'Mrs. F.', 'Mrs. E.', 'Mrs. D.', 'Mrs. C.', 'Mrs. B.', 'Mrs. A.', 'Mrs. Z.', 'Mrs. Y.', 'Mrs. X.', 'Mrs. W.', 'Mrs. V.', 'Mrs. U.', 'Mrs. T.', 'Mrs. S.', 'Mrs. R.', 'Mrs. Q.', 'Mrs. P.', 'Mrs. O.', 'Mrs. N.', 'Mrs. M.', 'Mrs. L.', 'Mrs. K.', 'Mrs. J.', 'Mrs. I.', 'Mrs. H.', 'Mrs. G.', 'Mrs. F.', 'Mrs. E.', 'Mrs. D.', 'Mrs. C.', 'Mrs. B.', 'Mrs. A.', 'Mrs. Z.', 'Mrs. Y.', 'Mrs. X.', 'Mrs. W.', 'Mrs. V.', 'Mrs. U.', 'Mrs. T.', 'Mrs. S.', 'Mrs. R.', 'Mrs. Q.', 'Mrs. P.', 'Mrs. O.', 'Mrs. N.', 'Mrs. M.', 'Mrs. L.', 'Mrs. K.', 'Mrs. J.', 'Mrs. I.', 'Mrs. H.', 'Mrs. G.', 'Mrs. F.', 'Mrs. E.', 'Mrs. D.', 'Mrs. C.', 'Mrs. B.', 'Mrs. A.', 'Mrs. Z.', 'Mrs. Y.', 'Mrs. X.', 'Mrs. W.', 'Mrs. V.', 'Mrs. U.', 'Mrs. T.', 'Mrs. S.', 'Mrs. R.', 'Mrs. Q.', 'Mrs. P.', 'Mrs. O.', 'Mrs. N.', 'Mrs. M.', 'Mrs. L.', 'Mrs. K.', 'Mrs. J.', 'Mrs. I.', 'Mrs. H.', 'Mrs. G.', 'Mrs. F.', 'Mrs. E.', 'Mrs. D.', 'Mrs. C.', 'Mrs. B.', 'Mrs. A.', 'Mrs. Z.', 'Mrs. Y.', 'Mrs. X.', 'Mrs. W.', 'Mrs. V.', 'Mrs. U.', 'Mrs. T.', 'Mrs. S.', 'Mrs. R.', 'Mrs. Q.', 'Mrs. P.', 'Mrs. O.', 'Mrs. N.', 'Mrs. M.', 'Mrs. L.', 'Mrs. K.', 'Mrs. J.', 'Mrs. I.', 'Mrs. H.', 'Mrs. G.', 'Mrs. F.', 'Mrs. E.', 'Mrs. D.', 'Mrs. C.', 'Mrs. B.', 'Mrs. A.', 'Mrs. Z.', 'Mrs. Y.', 'Mrs. X.', 'Mrs. W.', 'Mrs. V.', 'Mrs. U.', 'Mrs. T.', 'Mrs. S.', 'Mrs. R.', 'Mrs. Q.', 'Mrs. P.', 'Mrs. O.', 'Mrs. N.', 'Mrs. M.', 'Mrs. L.', 'Mrs. K.', 'Mrs. J.', 'Mrs. I.', 'Mrs. H.', 'Mrs. G.', 'Mrs. F.', 'Mrs. E.', 'Mrs. D.', 'Mrs. C.', 'Mrs. B.', 'Mrs. A.', 'Mrs. Z.', 'Mrs. Y.', 'Mrs. X.', 'Mrs. W.', 'Mrs. V.', 'Mrs. U.', 'Mrs. T.', 'Mrs. S.', 'Mrs. R.', 'Mrs. Q.', 'Mrs. P.', 'Mrs. O.', 'Mrs. N.', 'Mrs. M.', 'Mrs. L.', 'Mrs. K.', 'Mrs. J.', 'Mrs. I.', 'Mrs. H.', 'Mrs. G.', 'Mrs. F.', 'Mrs. E.', 'Mrs. D.', 'Mrs. C.', 'Mrs. B.', 'Mrs. A.', 'Mrs. Z.', 'Mrs. Y.', 'Mrs. X.', 'Mrs. W.', 'Mrs. V.', 'Mrs. U.', 'Mrs. T.', 'Mrs. S.', 'Mrs. R.', 'Mrs. Q.', 'Mrs. P.', 'Mrs. O.', 'Mrs. N.', 'Mrs. M.', 'Mrs. L.', 'Mrs. K.', 'Mrs. J.', 'Mrs. I.', 'Mrs. H.', 'Mrs. G.', 'Mrs. F.', 'Mrs. E.', 'Mrs. D.', 'Mrs. C.', 'Mrs. B.', 'Mrs. A.', 'Mrs. Z.', 'Mrs. Y.', 'Mrs. X.', 'Mrs. W.', 'Mrs. V.', 'Mrs. U.', 'Mrs. T.', 'Mrs. S.', 'Mrs. R.', 'Mrs. Q.', 'Mrs. P.', 'Mrs. O.', 'Mrs. N.', 'Mrs. M.', 'Mrs. L.', 'Mrs. K.', 'Mrs. J.', 'Mrs. I.', 'Mrs. H.', 'Mrs. G.', 'Mrs. F.', 'Mrs. E.', 'Mrs. D.', 'Mrs. C.', 'Mrs. B.', 'Mrs. A.', 'Mrs. Z.', 'Mrs. Y.', 'Mrs. X.', 'Mrs. W.', 'Mrs. V.', 'Mrs. U.', 'Mrs. T.', 'Mrs. S.', 'Mrs. R.', 'Mrs. Q.', 'Mrs. P.', 'Mrs. O.', 'Mrs. N.', 'Mrs. M.', 'Mrs. L.', 'Mrs. K.', 'Mrs. J.', 'Mrs. I.', 'Mrs. H.', 'Mrs. G.', 'Mrs. F.', 'Mrs. E.', 'Mrs. D.', 'Mrs. C.', 'Mrs. B.', 'Mrs. A.', 'Mrs. Z.', 'Mrs. Y.', 'Mrs. X.', 'Mrs. W.', 'Mrs. V.', 'Mrs. U.', 'Mrs. T.', 'Mrs. S.', 'Mrs. R.', 'Mrs. Q.', 'Mrs. P.', 'Mrs. O.', 'Mrs. N.', 'Mrs. M.', 'Mrs. L.', 'Mrs. K.', 'Mrs. J.', 'Mrs. I.', 'Mrs. H.', 'Mrs. G.', 'Mrs. F.', 'Mrs. E.', 'Mrs. D.', 'Mrs. C.', 'Mrs. B.', 'Mrs. A.', 'Mrs. Z.', 'Mrs. Y.', 'Mrs. X.', 'Mrs. W.', 'Mrs. V.', 'Mrs. U.', 'Mrs. T.', 'Mrs. S.', 'Mrs. R.', 'Mrs. Q.', 'Mrs. P.', 'Mrs. O.', 'Mrs. N.', 'Mrs. M.', 'Mrs. L.', 'Mrs. K.', 'Mrs. J.', 'Mrs. I.', 'Mrs. H.', 'Mrs. G.', 'Mrs. F.', 'Mrs. E.', 'Mrs. D.', 'Mrs. C.', 'Mrs. B.', 'Mrs. A.', 'Mrs. Z.', 'Mrs. Y.', 'Mrs. X.', 'Mrs. W.', 'Mrs. V.', 'Mrs. U.', 'Mrs. T.', 'Mrs. S.', 'Mrs. R.', 'Mrs. Q.', 'Mrs. P.', 'Mrs. O.', 'Mrs. N.', 'Mrs. M.', 'Mrs. L.', 'Mrs. K.', 'Mrs. J.', 'Mrs. I.', 'Mrs. H.', 'Mrs. G.', 'Mrs. F.', 'Mrs. E.', 'Mrs. D.', 'Mrs. C.', 'Mrs. B.', 'Mrs. A.', 'Mrs. Z.', 'Mrs. Y.', 'Mrs. X.', 'Mrs. W.', 'Mrs. V.', 'Mrs. U.', 'Mrs. T.', 'Mrs. S.', 'Mrs. R.', 'Mrs. Q.', 'Mrs. P.', 'Mrs. O.', 'Mrs. N.', 'Mrs. M.', 'Mrs. L.', 'Mrs. K.', 'Mrs. J.', 'Mrs. I.', 'Mrs. H.', 'Mrs. G.', 'Mrs. F.', 'Mrs. E.', 'Mrs. D.', 'Mrs. C.', 'Mrs. B.', 'Mrs. A.', 'Mrs. Z.', 'Mrs. Y.', 'Mrs. X.', 'Mrs. W.', 'Mrs. V.', 'Mrs. U.', 'Mrs. T.', 'Mrs. S.', 'Mrs. R.', 'Mrs. Q.', 'Mrs. P.', 'Mrs. O.', 'Mrs. N.', 'Mrs. M.', 'Mrs. L.', 'Mrs. K.', 'Mrs. J.', 'Mrs. I.', 'Mrs. H.', 'Mrs. G.', 'Mrs. F.', 'Mrs. E.', 'Mrs. D.', 'Mrs. C.', 'Mrs. B.', 'Mrs. A.', 'Mrs. Z.', 'Mrs. Y.', 'Mrs. X.', 'Mrs. W.', 'Mrs. V.', 'Mrs. U.', 'Mrs. T.', 'Mrs. S.', 'Mrs. R.', 'Mrs. Q.', 'Mrs. P.', 'Mrs. O.', 'Mrs. N.', 'Mrs. M.', 'Mrs. L.', 'Mrs. K.', 'Mrs. J.', 'Mrs. I.', 'Mrs. H.', 'Mrs. G.', 'Mrs. F.', 'Mrs. E.', 'Mrs. D.', 'Mrs. C.', 'Mrs. B.', 'Mrs. A.', 'Mrs. Z.', 'Mrs. Y.', 'Mrs. X.', 'Mrs. W.', 'Mrs. V.', 'Mrs. U.', 'Mrs. T.', 'Mrs. S.', 'Mrs. R.', 'Mrs. Q.', 'Mrs. P.', 'Mrs. O.', 'Mrs. N.', 'Mrs. M.', 'Mrs. L.', 'Mrs. K.', 'Mrs. J.', 'Mrs. I.', 'Mrs. H.', 'Mrs. G.', 'Mrs. F.', 'Mrs. E.', 'Mrs. D.', 'Mrs. C.', 'Mrs. B.', 'Mrs. A.', 'Mrs. Z.', 'Mrs. Y.', 'Mrs. X.', 'Mrs. W.', 'Mrs. V.', 'Mrs. U.', 'Mrs. T.', 'Mrs. S.', 'Mrs. R.', 'Mrs. Q.', 'Mrs. P.', 'Mrs. O.', 'Mrs. N.', 'Mrs. M.', 'Mrs. L.', 'Mrs. K.', 'Mrs. J.', 'Mrs. I.', 'Mrs. H.', 'Mrs. G.', 'Mrs. F.', 'Mrs. E.', 'Mrs. D.', 'Mrs. C.', 'Mrs. B.', 'Mrs. A.', 'Mrs. Z.', 'Mrs. Y.', 'Mrs. X.', 'Mrs. W.', 'Mrs. V.', 'Mrs. U.', 'Mrs. T.', 'Mrs. S.', 'Mrs. R.', 'Mrs. Q.', 'Mrs. P.', 'Mrs. O.', 'Mrs. N.', 'Mrs. M.', 'Mrs. L.', 'Mrs. K.', 'Mrs. J.', 'Mrs. I.', 'Mrs. H.', 'Mrs. G.', 'Mrs. F.', 'Mrs. E.', 'Mrs. D.', 'Mrs. C.', 'Mrs. B.', 'Mrs. A.', 'Mrs. Z.', 'Mrs. Y.', 'Mrs. X.', 'Mrs. W.', 'Mrs. V.', 'Mrs. U.', 'Mrs. T.', 'Mrs. S.', 'Mrs. R.', 'Mrs. Q.', 'Mrs. P.', 'Mrs. O.', 'Mrs. N.', 'Mrs. M.', 'Mrs. L.', 'Mrs. K.', 'Mrs. J.', 'Mrs. I.', 'Mrs. H.', 'Mrs. G.', 'Mrs. F.', 'Mrs. E.', 'Mrs. D.', 'Mrs. C.', 'Mrs. B.', 'Mrs. A.', 'Mrs. Z.', 'Mrs. Y.', 'Mrs. X.', 'Mrs. W.', 'Mrs. V.', 'Mrs. U.', 'Mrs. T.', 'Mrs. S.', 'Mrs. R.', 'Mrs. Q.', 'Mrs. P.', 'Mrs. O.', 'Mrs. N.', 'Mrs. M.', 'Mrs. L.', 'Mrs. K.', 'Mrs. J.', 'Mrs. I.', 'Mrs. H.', 'Mrs. G.', 'Mrs. F.', 'Mrs. E.', 'Mrs. D.', 'Mrs. C.', 'Mrs. B.', 'Mrs. A.', 'Mrs. Z.', 'Mrs. Y.', 'Mrs. X.', 'Mrs. W.', 'Mrs. V.', 'Mrs. U.', 'Mrs. T.', 'Mrs. S.', 'Mrs. R.', 'Mrs. Q.', 'Mrs. P.', 'Mrs. O.', 'Mrs. N.', 'Mrs. M.', 'Mrs. L.', 'Mrs. K.', 'Mrs. J.', 'Mrs. I.', 'Mrs. H.', 'Mrs. G.', 'Mrs. F.', 'Mrs. E.', 'Mrs. D.', 'Mrs. C.', 'Mrs. B.', 'Mrs. A.', 'Mrs. Z.', 'Mrs. Y.', 'Mrs. X.', 'Mrs. W.', 'Mrs. V.', 'Mrs. U.', 'Mrs. T.', 'Mrs. S.', 'Mrs. R.', 'Mrs. Q.', 'Mrs. P.', 'Mrs. O.', 'Mrs. N.', 'Mrs. M.', 'Mrs. L.', 'Mrs. K.', 'Mrs. J.', 'Mrs. I.', 'Mrs. H.', 'Mrs. G.', 'Mrs. F.', 'Mrs. E.', 'Mrs. D.', 'Mrs. C.', 'Mrs. B.', 'Mrs. A.', 'Mrs. Z.', 'Mrs. Y.', 'Mrs. X.', 'Mrs. W.', 'Mrs. V.', 'Mrs. U.', 'Mrs. T.', 'Mrs. S.', 'Mrs. R.', 'Mrs. Q.', 'Mrs. P.', 'Mrs. O.', 'Mrs. N.', 'Mrs. M.', 'Mrs. L.', 'Mrs. K.', 'Mrs. J.', 'Mrs. I.', 'Mrs. H.', 'Mrs. G.', 'Mrs. F.', 'Mrs. E.', 'Mrs. D.', 'Mrs. C.', 'Mrs. B.', 'Mrs. A.', 'Mrs. Z.', 'Mrs. Y.', 'Mrs. X.', 'Mrs. W.', 'Mrs. V.', 'Mrs. U.', 'Mrs. T.', 'Mrs. S.', 'Mrs. R.', 'Mrs. Q.', 'Mrs. P.', 'Mrs. O.', 'Mrs. N.', 'Mrs. M.', 'Mrs. L.', 'Mrs. K.', 'Mrs. J.', 'Mrs. I.', 'Mrs. H.', 'Mrs. G.', 'Mrs. F.', 'Mrs. E.', 'Mrs. D.', 'Mrs. C.', 'Mrs. B.', 'Mrs. A.', 'Mrs. Z.', 'Mrs. Y.', 'Mrs. X.', 'Mrs. W.', 'Mrs. V.', 'Mrs. U.', 'Mrs. T.', 'Mrs. S.', 'Mrs. R.', 'Mrs. Q.', 'Mrs. P.', 'Mrs. O.', 'Mrs. N.', 'Mrs. M.', 'Mrs. L.', 'Mrs. K.', 'Mrs. J.', 'Mrs. I.', 'Mrs. H.', 'Mrs. G.', 'Mrs. F.', 'Mrs. E.', 'Mrs. D.', 'Mrs. C.', 'Mrs. B.', 'Mrs. A.', 'Mrs. Z.', 'Mrs. Y.', 'Mrs. X.', 'Mrs. W.', 'Mrs. V.', 'Mrs. U.', 'Mrs. T.', 'Mrs. S.', 'Mrs. R.', 'Mrs. Q.', 'Mrs. P.', 'Mrs. O.', 'Mrs. N.', 'Mrs. M.', 'Mrs. L.', 'Mrs. K.', 'Mrs. J.', 'Mrs. I.', 'Mrs. H.', 'Mrs. G.', 'Mrs. F.', 'Mrs. E.', 'Mrs. D.', 'Mrs. C.', 'Mrs. B.', 'Mrs. A.', 'Mrs. Z.', 'Mrs. Y.', 'Mrs. X.', 'Mrs. W.', 'Mrs. V.', 'Mrs. U.', 'Mrs. T.', 'Mrs. S.', 'Mrs. R.', 'Mrs. Q.', 'Mrs. P.', 'Mrs. O.', 'Mrs. N.', 'Mrs. M.', 'Mrs. L.', 'Mrs. K.', 'Mrs. J.', 'Mrs. I.', 'Mrs. H.', 'Mrs. G.', 'Mrs. F.', 'Mrs. E.', 'Mrs. D.', 'Mrs. C.', 'Mrs. B.', 'Mrs. A.', 'Mrs. Z.', 'Mrs. Y.', 'Mrs. X.', 'Mrs. W.', 'Mrs. V.', 'Mrs. U.', 'Mrs. T.', 'Mrs. S.', 'Mrs. R.', 'Mrs. Q.', 'Mrs. P.', 'Mrs. O.', 'Mrs. N.', 'Mrs. M.', 'Mrs. L.', 'Mrs. K.', 'Mrs. J.', 'Mrs. I.', 'Mrs. H.', 'Mrs. G.', 'Mrs. F.', 'Mrs. E.', 'Mrs. D.', 'Mrs. C.', 'Mrs. B.', 'Mrs. A.', 'Mrs. Z.', 'Mrs. Y.', 'Mrs. X.', 'Mrs. W.', 'Mrs. V.', 'Mrs. U.', 'Mrs. T.', 'Mrs. S.', 'Mrs. R.', 'Mrs. Q.', 'Mrs. P.', 'Mrs. O.', 'Mrs. N.', 'Mrs. M.', 'Mrs. L.', 'Mrs. K.', 'Mrs. J.', 'Mrs. I.', 'Mrs. H.', 'Mrs. G.', 'Mrs. F.', 'Mrs. E.', 'Mrs. D.', 'Mrs. C.', 'Mrs. B.', 'Mrs. A.', 'Mrs. Z.', 'Mrs. Y.', 'Mrs. X.', 'Mrs. W.', 'Mrs. V.', 'Mrs. U.', 'Mrs. T.', 'Mrs. S.', 'Mrs. R.', 'Mrs. Q.', 'Mrs. P.', 'Mrs. O.', 'Mrs. N.', 'Mrs. M.', 'Mrs. L.', 'Mrs. K.', 'Mrs. J.', 'Mrs. I.', 'Mrs. H.', 'Mrs. G.', 'Mrs. F.', 'Mrs. E.', 'Mrs. D.', 'Mrs. C.', 'Mrs. B.', 'Mrs. A.', 'Mrs. Z.', 'Mrs. Y.', 'Mrs. X.', 'Mrs. W.', 'Mrs. V.', 'Mrs. U.', 'Mrs. T.', 'Mrs. S.', 'Mrs. R.', 'Mrs. Q.', 'Mrs. P.', 'Mrs. O.', 'Mrs. N.', 'Mrs. M.', 'Mrs. L.', 'Mrs. K.', 'Mrs. J.', 'Mrs. I.', 'Mrs. H.', 'Mrs. G.', 'Mrs. F.', 'Mrs. E.', 'Mrs. D.', 'Mrs. C.', 'Mrs. B.', 'Mrs. A.', 'Mrs. Z.', 'Mrs. Y.', 'Mrs. X.', 'Mrs. W.', 'Mrs. V.', 'Mrs. U.', 'Mrs. T.', 'Mrs. S.', 'Mrs. R.', 'Mrs. Q.', 'Mrs. P.', 'Mrs. O.', 'Mrs. N.', 'Mrs. M.', 'Mrs. L.', 'Mrs. K.', 'Mrs. J.', 'Mrs. I.', 'Mrs. H.', 'Mrs. G.', 'Mrs. F.', 'Mrs. E.', 'Mrs. D.', 'Mrs. C.', 'Mrs. B.', 'Mrs. A.', 'Mrs. Z.', 'Mrs. Y.', 'Mrs. X.', 'Mrs. W.', 'Mrs. V.', 'Mrs. U.', 'Mrs. T.', 'Mrs. S.', 'Mrs. R.', 'Mrs. Q.', 'Mrs. P.', 'Mrs. O.', 'Mrs. N.', 'Mrs. M.', 'Mrs. L.', 'Mrs. K.', 'Mrs. J.', 'Mrs. I.', 'Mrs. H.', 'Mrs. G.', 'Mrs. F.', 'Mrs. E.', 'Mrs. D.', 'Mrs. C.', 'Mrs. B.', 'Mrs. A.', 'Mrs. Z.', 'Mrs. Y.', 'Mrs. X.', 'Mrs. W.', 'Mrs. V.', 'Mrs. U.', 'Mrs. T.', 'Mrs. S.', 'Mrs. R.', 'Mrs. Q.', 'Mrs. P.', 'Mrs. O.', 'Mrs. N.', 'Mrs. M.', 'Mrs. L.', 'Mrs. K.', 'Mrs. J.', 'Mrs. I.', 'Mrs. H.', 'Mrs. G.', 'Mrs. F.', 'Mrs. E.', 'Mrs. D.', 'Mrs. C.', 'Mrs. B.', 'Mrs. A.', 'Mrs. Z.', 'Mrs. Y.', 'Mrs. X.', 'Mrs. W.', 'Mrs. V.', 'Mrs. U.', 'Mrs. T.', 'Mrs. S.', 'Mrs. R.', 'Mrs. Q.', 'Mrs. P.', 'Mrs. O.', 'Mrs. N.', 'Mrs. M.', 'Mrs. L.', 'Mrs. K.', 'Mrs. J.', 'Mrs. I.', 'Mrs. H.', 'Mrs. G.', 'Mrs. F.', 'Mrs. E.', 'Mrs. D.', 'Mrs. C.', 'Mrs. B.', 'Mrs. A.', 'Mrs. Z.', 'Mrs. Y.', 'Mrs. X.', 'Mrs. W.', 'Mrs. V.', 'Mrs. U.', 'Mrs. T.', 'Mrs. S.', 'Mrs. R.', 'Mrs. Q.', 'Mrs. P.', 'Mrs. O.', 'Mrs. N.', 'Mrs. M.', 'Mrs. L.', 'Mrs. K.', 'Mrs. J.', 'Mrs. I.', 'Mrs. H.', 'Mrs. G.', 'Mrs. F.', 'Mrs. E.', 'Mrs. D.', 'Mrs. C.', 'Mrs. B.', 'Mrs. A.', 'Mrs. Z.', 'Mrs. Y.', 'Mrs. X.', 'Mrs. W.', 'Mrs. V.', 'Mrs. U.', 'Mrs. T.', 'Mrs. S.', 'Mrs. R.', 'Mrs. Q.', 'Mrs. P.', 'Mrs. O.', 'Mrs. N.', 'Mrs. M.', 'Mrs. L.', 'Mrs. K.', 'Mrs. J.', 'Mrs. I.', 'Mrs. H.', 'Mrs. G.', 'Mrs. F.', 'Mrs. E.', 'Mrs. D.', 'Mrs. C.', 'Mrs. B.', 'Mrs. A.', 'Mrs. Z.', 'Mrs. Y.', 'Mrs. X.', 'Mrs. W.', 'Mrs. V.', 'Mrs. U.', 'Mrs. T.', 'Mrs. S.', 'Mrs. R.', 'Mrs. Q.', 'Mrs. P.', 'Mrs. O.', 'Mrs. N.', 'Mrs. M.', 'Mrs. L.', 'Mrs. K.', 'Mrs. J.', 'Mrs. I.', 'Mrs. H.', 'Mrs. G.', 'Mrs. F.', 'Mrs. E.', 'Mrs. D.', 'Mrs. C.', 'Mrs. B.', 'Mrs. A.', 'Mrs. Z.', 'Mrs. Y.', 'Mrs. X.', 'Mrs. W.', 'Mrs. V.', 'Mrs. U.', 'Mrs. T.', 'Mrs. S.', 'Mrs. R.', 'Mrs. Q.', 'Mrs. P.', 'Mrs. O.', 'Mrs. N.', 'Mrs. M.', 'Mrs. L.', 'Mrs. K.', 'Mrs. J.', 'Mrs. I.', 'Mrs. H.', 'Mrs. G.', 'Mrs. F.', 'Mrs. E.', 'Mrs. D.', 'Mrs. C.', 'Mrs. B.', 'Mrs. A.', 'Mrs. Z.', 'Mrs. Y.', 'Mrs. X.', 'Mrs. W.', 'Mrs. V.', 'Mrs. U.', 'Mrs. T.', 'Mrs. S.', 'Mrs. R.', 'Mrs. Q.', 'Mrs. P.', 'Mrs. O.', 'Mrs. N.', 'Mrs. M.', 'Mrs. L.', 'Mrs. K.', 'Mrs. J.', 'Mrs. I.', 'Mrs. H.', 'Mrs. G.', 'Mrs. F.', 'Mrs. E.', 'Mrs. D.', 'Mrs. C.', 'Mrs. B.', 'Mrs. A.', 'Mrs. Z.', 'Mrs. Y.', 'Mrs. X.', 'Mrs. W.', 'Mrs. V.', 'Mrs. U.', 'Mrs. T.', 'Mrs. S.', 'Mrs. R.', 'Mrs. Q.', 'Mrs. P.', 'Mrs. O.', 'Mrs. N.', 'Mrs. M.', 'Mrs. L.', 'Mrs. K.', 'Mrs. J.', 'Mrs. I.', 'Mrs. H.', 'Mrs. G.', 'Mrs. F.', 'Mrs. E.', 'Mrs. D.', 'Mrs. C.', 'Mrs. B.', 'Mrs. A.', 'Mrs. Z.', 'Mrs. Y.', 'Mrs. X.', 'Mrs. W.', 'Mrs. V.', 'Mrs. U.', 'Mrs. T.', 'Mrs. S.', 'Mrs. R.', 'Mrs. Q.', 'Mrs. P.', 'Mrs. O.', 'Mrs. N.', 'Mrs. M.', 'Mrs. L.', 'Mrs. K.', 'Mrs. J.', 'Mrs. I.', 'Mrs. H.', 'Mrs. G.', 'Mrs. F.', 'Mrs. E.', 'Mrs. D.', 'Mrs. C.', 'Mrs. B.', 'Mrs. A.', 'Mrs. Z.', 'Mrs. Y.', 'Mrs. X.', 'Mrs. W.', 'Mrs. V.', 'Mrs. U.', 'Mrs. T.', 'Mrs. S.', 'Mrs. R.', 'Mrs. Q.', 'Mrs. P.', 'Mrs. O.', 'Mrs. N.', 'Mrs. M.', 'Mrs. L.', 'Mrs. K.', 'Mrs. J.', 'Mrs. I.', 'Mrs. H.', 'Mrs. G.', 'Mrs. F.', 'Mrs. E.', 'Mrs. D.', 'Mrs. C.', 'Mrs. B.', 'Mrs. A.', 'Mrs. Z.', 'Mrs. Y.', 'Mrs. X.', 'Mrs. W.', 'Mrs. V.', 'Mrs. U.', 'Mrs. T.', 'Mrs. S.', 'Mrs. R.', 'Mrs. Q.', 'Mrs. P.', 'Mrs. O.', 'Mrs. N.', 'Mrs. M.', 'Mrs. L.', 'Mrs. K.', 'Mrs. J.', 'Mrs. I.', 'Mrs. H.', 'Mrs. G.', 'Mrs. F.', 'Mrs. E.', 'Mrs. D.', 'Mrs. C.', 'Mrs. B.', 'Mrs. A.', 'Mrs. Z.', 'Mrs. Y.', 'Mrs. X.', 'Mrs. W.', 'Mrs. V.', 'Mrs. U.', 'Mrs. T.', 'Mrs. S.', 'Mrs. R.', 'Mrs. Q.', 'Mrs. P.', 'Mrs. O.', 'Mrs. N.', 'Mrs. M.', 'Mrs. L.', 'Mrs. K.', 'Mrs. J.', 'Mrs. I.', 'Mrs. H.', 'Mrs. G.', 'Mrs. F.', 'Mrs. E.', 'Mrs. D.', 'Mrs. C.', 'Mrs. B.', 'Mrs. A.', 'Mrs. Z.', 'Mrs. Y.', 'Mrs. X.', 'Mrs. W.', 'Mrs. V.', 'Mrs. U.', 'Mrs. T.', 'Mrs. S.', 'Mrs. R.', 'Mrs. Q.', 'Mrs. P.', 'Mrs. O.', 'Mrs. N.', 'Mrs. M.', 'Mrs. L.', 'Mrs. K.', 'Mrs. J.', 'Mrs. I.', 'Mrs. H.', 'Mrs. G.', 'Mrs. F.', 'Mrs. E.', 'Mrs. D.', 'Mrs. C.', 'Mrs. B.', 'Mrs. A.', 'Mrs. Z.', 'Mrs. Y.', 'Mrs. X.', 'Mrs. W.', 'Mrs. V.', 'Mrs. U.', 'Mrs. T.', 'Mrs. S.', 'Mrs. R.', 'Mrs. Q.', 'Mrs. P.', 'Mrs. O.', 'Mrs. N.', 'Mrs. M.', 'Mrs. L.', 'Mrs. K.', 'Mrs. J.', 'Mrs. I.', 'Mrs. H.', 'Mrs. G.', 'Mrs. F.', 'Mrs. E.', 'Mrs. D.', 'Mrs. C.', 'Mrs. B.', 'Mrs. A.', 'Mrs. Z.', 'Mrs. Y.', 'Mrs. X.', 'Mrs. W.', 'Mrs. V.', 'Mrs. U.', 'Mrs. T.', 'Mrs. S.', 'Mrs. R.', 'Mrs. Q.', 'Mrs. P.', 'Mrs. O.', 'Mrs. N.', 'Mrs. M.', 'Mrs. L.', 'Mrs. K.', 'Mrs. J.', 'Mrs. I.', 'Mrs. H.', 'Mrs. G.', 'Mrs. F.', 'Mrs. E.', 'Mrs. D.', 'Mrs. C.', 'Mrs. B.', 'Mrs. A.', 'Mrs. Z.', 'Mrs. Y.', 'Mrs. X.', 'Mrs. W.', 'Mrs. V.', 'Mrs. U.', 'Mrs. T.', 'Mrs. S.', 'Mrs. R.', 'Mrs. Q.', 'Mrs. P.', 'Mrs. O.', 'Mrs. N.', 'Mrs. M.', 'Mrs. L.', 'Mrs. K.', 'Mrs. J.', 'Mrs. I.', 'Mrs. H.', 'Mrs. G.', 'Mrs. F.', 'Mrs. E.', 'Mrs. D.', 'Mrs. C.', 'Mrs. B.', 'Mrs. A.', 'Mrs. Z.', 'Mrs. Y.', 'Mrs. X.', 'Mrs. W.', 'Mrs. V.', 'Mrs. U.', 'Mrs. T.', 'Mrs. S.', 'Mrs. R.', 'Mrs. Q.', 'Mrs. P.', 'Mrs. O.', 'Mrs. N.', 'Mrs. M.', 'Mrs. L.', 'Mrs. K.', 'Mrs. J.', 'Mrs. I.', 'Mrs. H.', 'Mrs. G.', 'Mrs. F.', 'Mrs. E.', 'Mrs. D.', 'Mrs. C.', 'Mrs. B.', 'Mrs. A.', 'Mrs. Z.', 'Mrs. Y.', 'Mrs. X.', 'Mrs. W.', 'Mrs. V.', 'Mrs. U.', 'Mrs. T.', 'Mrs. S.', 'Mrs. R.', 'Mrs. Q.', 'Mrs. P.', 'Mrs. O.', 'Mrs. N.', 'Mrs. M.', 'Mrs. L.', 'Mrs. K.', 'Mrs. J.', 'Mrs. I.', 'Mrs. H.', 'Mrs. G.', 'Mrs. F.', 'Mrs. E.', 'Mrs. D.', 'Mrs. C.', 'Mrs. B.', 'Mrs. A.', 'Mrs. Z.', 'Mrs. Y.', 'Mrs. X.', 'Mrs. W.', 'Mrs. V.', 'Mrs. U.', 'Mrs. T.', 'Mrs. S.', 'Mrs. R.', 'Mrs. Q.', 'Mrs. P.', 'Mrs. O.', 'Mrs. N.', 'Mrs. M.', 'Mrs. L.', 'Mrs. K.', 'Mrs. J.', 'Mrs. I.', 'Mrs. H.', 'Mrs. G.', 'Mrs. F.', 'Mrs. E.', 'Mrs. D.', 'Mrs. C.', 'Mrs

WANT AD SECTION

BUYING SELLING TRADING RENTING LOANS SERVICE

ROYCE ADKINS
Lawyer
Office Over Oates Drug Store

HASKELL COUNTY ABSTRACT CO.
Abstracts, Maps
Title Insurance
South Side Square Haskell

For quick results in buying, selling, use the Want Ads.

PENCILS — Writing, Copying, Indelible, Drawing, and Marking Pencils. The Free Press.

BABY CHICKS—
EASTER CHICKS—We will have a limited number of colored chicks for Easter. Trice Hatchery, 12-13p.

SPRAYERS: Hand trombone type, compressed air and power sprayers for every need—Trice Hatchery. 13-14p

BUTTONS COVERED: Belt buckles and belts made. Buckles covered with Maxant button machine. Coffields Shop, south east corner of square. 11tfc.

BABY CHICKS: We have hundreds of baby chicks off each Tuesday—Trice Hatchery. 13-14p

FOR SALE: Boat trailer for 14 ft boat. Made of 1 1/4 new pipe and welded. Good tires, and ball type hitch. Registered for 1950. Priced for quick sale—\$75.00. See Alton Middleton, Haskell, Texas. 13-14c

REAL ESTATE—
FOR SALE OR TRADE: James Adkins Service Station on Stamford Hi-way. 13p

BABY CHICKS — All leading breeds, day old and older. All pullets, all cockrels, or just as hatched, also hybrids. New low prices. Stamford Hatchery and Poultry Farm, Stamford, Texas. 4-tfc

LISTEN: KDWT Mondays and Fridays 7:10 a. m. Farm Bureau Program. 9-15c

FOR SALE: 6 room house, 2 blocks north and 2 blocks east of post office — G. W. Reese, phone 52-3. 12-13p.

NOTICE: Let me spray your pecan trees—25c each tree. G. W. Reese, phone 32-J. 12-13p

FOR SALE: Concrete building blocks in an assortment of sizes. In Stamford on highway 277. 11-14p

GREEN STAMPS—Get yours at Service Cleaners. 12tfc

HOUSEHOLD GOODS—
GREEN STAMPS—Get yours at Service Cleaners. 12tfc

NOTICE: Let me spray your pecan trees—25c each tree. G. W. Reese, phone 32-J. 12-13p

LOTS in east part Haskell, all utilities available. Priced from \$75 to \$300. O. L. Moore. 12-13p

FULLER BRUSH products can be had in Haskell or Stamford by writing a post card to Johnny Wilkins, Box 613 Stamford. Free demonstration upon receipt of request. 12-14p

FOR SALE: Concrete building blocks in an assortment of sizes. In Stamford on highway 277. 11-14p

FOR SALE—Homeplace of Mrs. B. E. Hattox. 6 rooms and bath, stucco house, close in. See Payne or Gaston Hattox at Hattox Hardware Store. 46-tfc.

MISCELLANEOUS—
NOTICE: Would the person who has our John Deere fresno please contact Bill or Jim Alvis. 12tfc

Simplify your record keeping with Card Index Filing System. All sizes, metal, wood, fiber, complete with cards and index. The Free Press.

FOR SALE: 2 houses and 4 lots in Knox City. Located one block from school. See John Rushing. Knox City. 10-14p.

WANT: to buy 4 or 5 room frame house to be moved. See Harve Fry. 10-14-p.

News that is vital to you can be found in the want ads.

FOR SALE: 5 room stucco house on Brick Street. 706 N. Ave. F. Phone 246 or 139W. Dr. J. G. Vaughtner. 11tfc

FEED AND SEED—
FOR SALE: Sudan seed clear of Johnston grass seed. J. H. Montgomery, Haskell, Route 3. 12-13p

Put pep in the pocket-book by putting profitable want ads on the job.

FRYERS—
FOR SALE: Nice Fryers. J. O. Merchant. 506 S Ave. G. 12-13p

FARMERS — Farm Machinery Is In Demand — Sell it Through Want Ads.

FOR SALE: 1947 Model H Farmall Four Row toolbar and two row cultivator, \$1325.00

WILLIAMS CLINIC
Williams, M. D.
M. Frideaux, M. D.
Phone 111
J. Kemp, D. D. S.
Phone 508
HASKELL, TEXAS

USED CARS—
BARGAINS in used cars. Fords and Chevrolets. Thurman Bynum at Texaco Station. 30-tfc.

FOR SALE: 1944 Model A John Deere Four Row tools or Skip row tools

CAHILL & SON
Finance - Bonds
Estate - Rentals
Phone 51-J

FOR SALE: 1947 Model H Farmall Four Row toolbar and two row cultivator, \$1325.00

FOR SALE: 1944 Model A John Deere Four Row tools or Skip row tools

WILLIAMS CLINIC
Williams, M. D.
M. Frideaux, M. D.
Phone 111
J. Kemp, D. D. S.
Phone 508
HASKELL, TEXAS

FOR SALE: 1947 Model H Farmall Four Row toolbar and two row cultivator, \$1325.00

FOR SALE: 1944 Model A John Deere Four Row tools or Skip row tools

WILLIAMS CLINIC
Williams, M. D.
M. Frideaux, M. D.
Phone 111
J. Kemp, D. D. S.
Phone 508
HASKELL, TEXAS

FOR SALE: 1947 Model H Farmall Four Row toolbar and two row cultivator, \$1325.00

FOR SALE: 1944 Model A John Deere Four Row tools or Skip row tools

WILLIAMS CLINIC
Williams, M. D.
M. Frideaux, M. D.
Phone 111
J. Kemp, D. D. S.
Phone 508
HASKELL, TEXAS

FOR SALE: 1947 Model H Farmall Four Row toolbar and two row cultivator, \$1325.00

FOR SALE: 1944 Model A John Deere Four Row tools or Skip row tools

WILLIAMS CLINIC
Williams, M. D.
M. Frideaux, M. D.
Phone 111
J. Kemp, D. D. S.
Phone 508
HASKELL, TEXAS

FOR SALE: 1947 Model H Farmall Four Row toolbar and two row cultivator, \$1325.00

FOR SALE: 1944 Model A John Deere Four Row tools or Skip row tools

WILLIAMS CLINIC
Williams, M. D.
M. Frideaux, M. D.
Phone 111
J. Kemp, D. D. S.
Phone 508
HASKELL, TEXAS

FOR SALE: 1947 Model H Farmall Four Row toolbar and two row cultivator, \$1325.00

FOR SALE: 1944 Model A John Deere Four Row tools or Skip row tools

WILLIAMS CLINIC
Williams, M. D.
M. Frideaux, M. D.
Phone 111
J. Kemp, D. D. S.
Phone 508
HASKELL, TEXAS

FOR SALE: 1947 Model H Farmall Four Row toolbar and two row cultivator, \$1325.00

FOR SALE: 1944 Model A John Deere Four Row tools or Skip row tools

WILLIAMS CLINIC
Williams, M. D.
M. Frideaux, M. D.
Phone 111
J. Kemp, D. D. S.
Phone 508
HASKELL, TEXAS

FOR SALE: 1947 Model H Farmall Four Row toolbar and two row cultivator, \$1325.00

FOR SALE: 1944 Model A John Deere Four Row tools or Skip row tools

WILLIAMS CLINIC
Williams, M. D.
M. Frideaux, M. D.
Phone 111
J. Kemp, D. D. S.
Phone 508
HASKELL, TEXAS

FOR SALE: 1947 Model H Farmall Four Row toolbar and two row cultivator, \$1325.00

FOR SALE: 1944 Model A John Deere Four Row tools or Skip row tools

WILLIAMS CLINIC
Williams, M. D.
M. Frideaux, M. D.
Phone 111
J. Kemp, D. D. S.
Phone 508
HASKELL, TEXAS

FOR SALE: 1947 Model H Farmall Four Row toolbar and two row cultivator, \$1325.00

FOR SALE: 1944 Model A John Deere Four Row tools or Skip row tools

WILLIAMS CLINIC
Williams, M. D.
M. Frideaux, M. D.
Phone 111
J. Kemp, D. D. S.
Phone 508
HASKELL, TEXAS

FOR SALE: 1947 Model H Farmall Four Row toolbar and two row cultivator, \$1325.00

FOR SALE: 1944 Model A John Deere Four Row tools or Skip row tools

WILLIAMS CLINIC
Williams, M. D.
M. Frideaux, M. D.
Phone 111
J. Kemp, D. D. S.
Phone 508
HASKELL, TEXAS

FOR SALE: 1947 Model H Farmall Four Row toolbar and two row cultivator, \$1325.00

FOR SALE: 1944 Model A John Deere Four Row tools or Skip row tools

WILLIAMS CLINIC
Williams, M. D.
M. Frideaux, M. D.
Phone 111
J. Kemp, D. D. S.
Phone 508
HASKELL, TEXAS

FOR SALE: 1947 Model H Farmall Four Row toolbar and two row cultivator, \$1325.00

FOR SALE: 1944 Model A John Deere Four Row tools or Skip row tools

WILLIAMS CLINIC
Williams, M. D.
M. Frideaux, M. D.
Phone 111
J. Kemp, D. D. S.
Phone 508
HASKELL, TEXAS

FOR SALE: 1947 Model H Farmall Four Row toolbar and two row cultivator, \$1325.00

FOR SALE: 1944 Model A John Deere Four Row tools or Skip row tools

WILLIAMS CLINIC
Williams, M. D.
M. Frideaux, M. D.
Phone 111
J. Kemp, D. D. S.
Phone 508
HASKELL, TEXAS

FOR SALE: 1947 Model H Farmall Four Row toolbar and two row cultivator, \$1325.00

FOR SALE: 1944 Model A John Deere Four Row tools or Skip row tools

WILLIAMS CLINIC
Williams, M. D.
M. Frideaux, M. D.
Phone 111
J. Kemp, D. D. S.
Phone 508
HASKELL, TEXAS

FOR SALE: 1947 Model H Farmall Four Row toolbar and two row cultivator, \$1325.00

FOR SALE: 1944 Model A John Deere Four Row tools or Skip row tools

WILLIAMS CLINIC
Williams, M. D.
M. Frideaux, M. D.
Phone 111
J. Kemp, D. D. S.
Phone 508
HASKELL, TEXAS

FOR SALE: 1947 Model H Farmall Four Row toolbar and two row cultivator, \$1325.00

FOR SALE: 1944 Model A John Deere Four Row tools or Skip row tools

WILLIAMS CLINIC
Williams, M. D.
M. Frideaux, M. D.
Phone 111
J. Kemp, D. D. S.
Phone 508
HASKELL, TEXAS

FOR SALE: 1947 Model H Farmall Four Row toolbar and two row cultivator, \$1325.00

FOR SALE: 1944 Model A John Deere Four Row tools or Skip row tools

WILLIAMS CLINIC
Williams, M. D.
M. Frideaux, M. D.
Phone 111
J. Kemp, D. D. S.
Phone 508
HASKELL, TEXAS

FOR SALE: 1947 Model H Farmall Four Row toolbar and two row cultivator, \$1325.00

FOR SALE: 1944 Model A John Deere Four Row tools or Skip row tools

WILLIAMS CLINIC
Williams, M. D.
M. Frideaux, M. D.
Phone 111
J. Kemp, D. D. S.
Phone 508
HASKELL, TEXAS

FOR SALE: 1947 Model H Farmall Four Row toolbar and two row cultivator, \$1325.00

FOR SALE: 1944 Model A John Deere Four Row tools or Skip row tools

WILLIAMS CLINIC
Williams, M. D.
M. Frideaux, M. D.
Phone 111
J. Kemp, D. D. S.
Phone 508
HASKELL, TEXAS

FOR SALE: 1947 Model H Farmall Four Row toolbar and two row cultivator, \$1325.00

FOR SALE: 1944 Model A John Deere Four Row tools or Skip row tools

WILLIAMS CLINIC
Williams, M. D.
M. Frideaux, M. D.
Phone 111
J. Kemp, D. D. S.
Phone 508
HASKELL, TEXAS

FOR SALE: 1947 Model H Farmall Four Row toolbar and two row cultivator, \$1325.00

FOR SALE: 1944 Model A John Deere Four Row tools or Skip row tools

WILLIAMS CLINIC
Williams, M. D.
M. Frideaux, M. D.
Phone 111
J. Kemp, D. D. S.
Phone 508
HASKELL, TEXAS

FOR SALE: 1947 Model H Farmall Four Row toolbar and two row cultivator, \$1325.00

FOR SALE: 1944 Model A John Deere Four Row tools or Skip row tools

WILLIAMS CLINIC
Williams, M. D.
M. Frideaux, M. D.
Phone 111
J. Kemp, D. D. S.
Phone 508
HASKELL, TEXAS

FOR SALE: 1947 Model H Farmall Four Row toolbar and two row cultivator, \$1325.00

FOR SALE: 1944 Model A John Deere Four Row tools or Skip row tools

Tried it?

THE GREAT NEW NO-NOX—DESIGNED FOR TODAY'S POWERFUL NEW ENGINES!

GREAT FOR NEW CARS! GREAT FOR OLDER CARS!



Gulf scientists worked hand-in-hand with leading automotive engineers to bring you this great new gasoline — designed to give peak performance in today's powerful new engines! With the new No-Nox, you'll get whisper-smooth power — thrilling pick-up — quick, safe passing — and unexcelled mileage!

The new No-Nox actually gives smooth new vigor, new pep, and stops knocks in most older cars — even those with heavily carboned engines! If you want to get the very best out of your car — jack-rabbit starts — surging hill power — and plenty of miles per gallon — fill up with the new No-Nox today!

Get Gulf's greatest gasoline — terrific power in every drop!

The New No-Nox



(Good Gulf—our famous "regular" gasoline—is now better than ever, too!)

JOHN KIMBROUGH

Gulf Consignee—Phone 175 Haskell

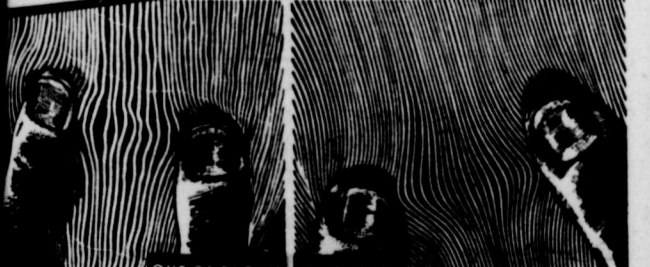
LELAND WHITTINGTON

GULF SERVICE STATION
Tires, Tubes, Accessories

N. 4th & Avenue E

Phone 367-J

B.F. Goodrich
"Rythm Ride"
MORE MILEAGE, SAFETY, COMFORT!



See this great difference in tires yourself. Ask about our liberal trade-in allowance.

PAY ONLY \$15.80
4.00-16 PLUS TAX

CAMPBELL'S TEXACO STATION
First Phone 485

B.F. Goodrich
FIRST IN RUBBER

McMurry Chanters To Give Program Here April 5

The McMurry College Chanters, musical organization of fifty voices, will appear at the First Methodist Church of Haskell next Wednesday evening, April 5th. This well known musical aggre-

gation is under the direction of Mrs. Gypsy Ted Sullivan Wylie, Head of the Voice Department of McMurry College for a number of years. They have appeared in many cities and towns of Texas and New Mexico. The concert here will be composed of familiar Easter music and the public is invited to attend. The concert will begin at eight o'clock.

Junior Class At Mattson to Give Play March 31

Members of the junior class of Mattson High School will present a three-act mystery-comedy, "Lights Out," in the school auditorium Friday at 7:45 p. m. Director of the play is George M. Beard. The cast of the play includes: Joetta McFadin, Bennie Arend, Vernell Klose, Alene Weise, Johnny Wheatley, Naomi Sparkman, Roy Forehand, J. W. Howard, Wayne Peiser, Pat Howard and Barbara Yancey.

David Duncan Will Be Presented In Piano Recital

David Duncan a piano pupil of Mrs. Billie Lou Mayes of Stamford, will be presented in recital at the High School Auditorium in this city Sunday, April 2, at 3 o'clock. He will be assisted by Bobby Seag from the Speech Class of Mrs. Carol Bledsoe, and J. E. Cox from the Voice Class of W. E. Mayes. David, who will celebrate his 11th birthday this week, is the son of Mr. and Mrs. J. Belton Duncan. The public is invited to attend the recital.

Sagerton Lad Is Winner In Cotton Guessing Contest

A Sagerton lad, Bobby Irvin, who estimated that 96,581 bales of cotton would be ginned from the 1949 crop in Haskell county when he visited the Central West Texas Fair last Fall, this week was judged winner of the \$25 award offered by the Chamber of Commerce to the person guessing nearest the correct total. His estimate was 250 bales higher than the 96,331 bales announced this week by the Department of Commerce. Two other near winners—although there was only the one award—were Juanita King of Haskell, who guessed 95,765 bales; and Roland Dendy, Haskell Future Farmer, who estimated the total would be 96,944 bales. More than 1,000 CWT Fair visitors entered the guessing contest, and their estimates were placed in a sealed container and left in the office of County Clerk Horace Oneal until the Government report was released. A committee representing the Chamber of Commerce and the Fair Association, assisted by V. A. Brown checked the estimates Wednesday in determining the winner. Most of the guesses were in the 70-80-90,000 bale bracket, the committee found.

Supper Planned As Courtesy to Four Fire Departments

Haskell Fire Department members will be hosts to firemen from Stamford, Rule and Throckmorton at a supper to be given Monday evening, April 3, in the American Legion Building. The affair is in recognition of the valuable service rendered by neighboring firemen to the Haskell department recently.

The supper was planned and is a courtesy of a group of Haskell businessmen, headed by Hill Oates and they will be special guests, along with city and county officials.

Plans are being made for an attendance of 100 guests. Address of welcome to the visitors will be given by Mayor Courtney Hunt.

Radio Engineers Award Given Son Of Haskell Man

A. V. Bedford of Princeton, N. J., son of J. J. Bedford of this city, was recently awarded a Fellowship by the Institute of Radio Engineers. The award was made at the annual banquet of the Institute held March 9 in Princeton. Bedford was chosen for outstanding achievement in the world of electronics, and he was cited "for his contribution to sound recording and the development of many circuits of basic importance to present-day television." Mr. Bedford has been issued more than 100 patents and is the author or co-author of many technical papers on television. He is a member of the National Television System Committee and the Radio Technical Planning Board. He has received the Modern Pioneer Award of the National Association of Manufacturers.

Smallest, busiest, cheapest workers in town—the Classified

Weinert Voters to Elect Mayor and Two Aldermen

Weinert voters will ballot Tuesday April 4 in that city's annual city election in choosing a Mayor and two members of the Weinert City Council to serve for the ensuing two years.

Official ballot for the election lists four candidates for Mayor, and five are listed for the two vacancies on the City Council.

Listed for Mayor are: R. M. Baldwin, R. S. Edwards, E. C. Lowe, and W. L. Johnston.

On the ballot for Alderman, two to be elected, are: Buck Turnbow, Clyde Mayfield, C. V. Ashley, Roy Ashley, Roy Herreks, and R. N. Mathison.

HHS Students Are Invited to Senior Day Fete at H-SU

Students of Haskell High School are among more than 4,000 students of Texas who have been invited to the 27th annual senior day programs to be held April 29 on the Hardin-Simmons university campus. Schools within a radius of 200 miles of Abilene are expected to send their seniors for the day of entertainment and education. "Senior Day has been held on the campus for a number of years in order to acquaint graduating high school students with life on a college campus," Prof. W. C. Ribble, faculty chairman of the program said. "All training and recreational facilities of the University will be open for their inspection."

Loys D. Barber to Speak At Farm Bureau Meet

Loys D. Barbour of Iowa Park, Director of District 3, Texas Farm Bureau, will be principal speaker at a meeting of the Haskell County Farm Bureau Tuesday, April 4 at 7:30 p. m. in the American Legion building. Barbour will explain the various services under the organization's State Wide Service Program. New officers of the county Farm Bureau will also be presented at Tuesday night's meeting, and all members and their families and friends are urged to attend.

At the recent meeting of directors of the Haskell County Farm Bureau, Chas. M. Conner of this city was elected president, succeeding Clinton H. Herren, and R. C. Couch, Jr., was elected vice president, replacing H. D. Gam-

mill. This change in officers was made at the suggestion of the State office, due to the fact that it is not the policy of Farm Bureau to have their service agents also act in the capacity of officers, it was explained.

Stamford Hosts O. E. S. School of Instruction

Twelve members of the Haskell O. E. S. attended the O. E. S. School of Instruction, District 2, Section 7, at Stamford Friday, March 24th. Mary Lena Wiseman of the local chapter served as secretary for the school. Twenty one chapters, including Haskell, acted as hostess chapter for the school.

Those from Haskell attending were: Alene Wheatley, Stella Joselett, Ruth Currie, Ollie Kelly, Allie Kendrick, Emma Bland, Laura Overton, Mary L. Wiseman, Bertha Pelsue, Trudie Gresham, Wilma Adkins and Nell Royall.

WAIT A MINUTE

If you are a mother or one who loves children and can work full or part time taking orders for our beautiful copper-plated shoes, your time can be very profitably spent. Past experience unnecessary. We train you. Better Plated Products, Box 695, Wichita Falls, Tex.

Just a 15 Min. Drive to the

H-H Drive-In Theatre
On Stamford Hiway
Visit Our Snack Bar For Good Eats!

Fri., Sat., 31-1

Randolph Scott
"RETURN OF THE BADMEN"

Sun., Mon., 2-3

Bing Crosby
—In—
"HOLIDAY INN"

Tuesday—1 Day Only

Errol Flynn
"ADVENTURES OF ROBIN HOOD"
In Color

Wed., Thur., 5-6

Maureen O'Hara
—In—
"FORBIDDEN STREET"

Chick Sale

Friday and Saturday

(March 31, and April 1)

\$14.95 per 100

These are started chicks, up to 3 weeks of age

First Come - First Served

Trice Hatchery

1303 N. Ave. I Haskell

Delco Battery - Any Size

Battery charging, fast or slow. Regulator for all equipment. OILS—we have your brand. Also Generators. Fram elements Plugs, Fan Belts and All Accessories for Car and Trucks. Flat Service. Storage Space.

M. C. Wilfong & Son

OPEN 7 DAYS A WEEK PHONE 50

Our NYLON sport shirt wins on all counts

- Fast Drying!
- Light Weight!
- Good Looking!

Tan - - Grey - - Blue - - Eggshell

Nylon and Acetate Fabric expertly tailored in a short-sleeved Sport Shirt that spells COMFORT!

Sizes 8-14

5.95

SMART SOCKS FOR MEN

... by "Phoenix"

- Long Lasting!
- Distinctive Comfort!

Silky Rayons—smart-looking socks and a smart buy for men seeking real sock value! Distinctive clocks and neat patterns styled in quiet good taste—yet giving an individual look to your ankles.

Sizes 10 to 12

55c

Perkins-Timberlake

by the yard CRISP COTTONS ...take the gamble out of making your own

McCall 7979

You're not gambling when you pick a 1950 cotton... there'll be no squandering of your own precious workmanship; for 1950 cottons are the highest achievement of the fabric art. Finish, color, design have been carried out to the nth degree... you can KNOW these cottons will stay lovely through tubbings... will stay attractive... won't wilt and grow limp ere the summer is over! And you've never seen a more delightful collection than we have here... stripes and prints and wonderful colors in sheers, in textured weaves, in novelties... come see them!

NEWEST SPRING FABRICS

Beautiful WHIPPET CLOTH—a fine, WASHABLE rayon gabardine! For tailoring your new spring weight suits and dresses. Skirts—Slacks—Jackets—Western Shirts... Color fast—42 inch... 1.29 yard

RAYON PRINTS - by "Cohama". Lovely assorted prints, florals, geometrics. Cohama's famous "Lambskin"—with light or dark backgrounds. 39 inch... 1.29 yard

CHAMBRAY by "Stoeffels"—solid colors—guaranteed washable and sanforized! Beautiful deep tone shades and light pastels in helio, oxblood, green, brown, maize, blue, dusty rose. 36" ... 1.00 yard

GINGHAM by "Galey and Lord". Assorted plaids—light and dark grounds. Beautiful, gala color combinations! 40" "Swagger"—sanforized and crease resistant... 1.00 yard 36" "Yardstick"—sanforized and fast color... 89c yard

BUTCHER LINEN—Gas fade proof, luscious solid colors. Twelve beautiful Spring shades. 39" ... 98c yard

TAFFETA by "Burlington"—crisp rayon taffeta in white, pink, navy, rose, blue, yellow, green, brown. 41½" 79c yard

with a fashion-eye on EAST

Black 7.95

Here are the shoes for your Easter wardrobe... exquisitely designed to fit right in with your lovely new clothes... magnificently comfortable... Easter parading is just a pleasant stroll when you are wearing Trim Treds... and they are so wonderfully inexpensive.

DRESS-UP FAVORITE

Easter

For those special, special days there's nothing quite like good-looking Poll-Parrot shoes... and they're pre-tested to give you real value. In soon... let our expert fitters help you out your children's new Poll-Parrots for

Pre-Tested to give you real value!

5.00 to 6.50

According to size and style

Poll-Parrot SHOES FOR BOYS AND GIRLS

ADVERTISED IN LADIES' HOME JOURNAL

Special Group

SALE

Womens Suits

Pre Easter Special event in Women's Suits have selected a group from our regular stock closeout at substantial savings to you.

Values to

\$29.95	Sale	\$18
\$39.95	Sale	\$24

Perkins-Timberlake