



LANE TO RIGHT -- This sign near the Roadside Park at the western edge of the city should be carefully observed. The construction on Highway 84 is underway and workman said this point is the most hazardous detour on the highway due to lack of space to form a curve-type detour.

Business Committee Discuss Various Items

The Business Activities Committee of the Chamber of Commerce met Tuesday morning and discussed additional plans for the day when Muleshoe will again roll back a few years of time to the days when the county's forefathers were plodding the dusty streets.

The event will be the annual 'Sidewalk Sale' scheduled to begin at 10 a.m. Friday, June 30.

Merchants will move wares from their respective stores out onto the sidewalks and work along with their personnel in selling in 'olden day' fashion at 'olden day' prices. They will all be costumed to benefit the occasion.

Recalling last year's festive Sidewalk Sale, the town overflowed with women in their long dresses, carrying parasols and other replicas of what frontier life consisted of. Men donned western attire as well as mustaches, sleeve garters and derby hats while another man appeared to be asleep in a cane bottom chair, holding a rifle over his knee at local western wear shop.

Prizes will be given for the three best costumes. First prize will be \$15; second \$10, and third, \$5. A plaque will be presented to the store for the best costumes for the day.

These prizes will be awarded between the hours of 3 and 4 p.m. that day, instead of at closing time, because of the difference in times set for closing of individual stores.

Mrs. J. Pat Waggoner is chairman of the 'Sidewalk Sales' and will have a more detailed report on the upcoming events and entertainment shortly.

Also on the agenda for discussion was the proposed shopper-type advertising sheet which is being drafted. Chairman of the new-design of advertising for Muleshoe merchants will be Jim Hartline, Jim's pay and Save. Hartline is to appoint his committee to assist in contacting merchants.

Letters are to be mailed Thursday to area merchants, Lyndal Murray, chairman of the Businessmen's Activities Committee said.

The letters will be followed by a personal contact by those of the committee.

The shopper is being designed to carry about 50 items from different stores each week, advertised at a special price.

A proposal was made to the members attending the meeting concerning the idea of a West Plains Fair to be held here which would include other surrounding small towns. The need for a Fair Board was discussed and the dates of September 15-16 named as the most desirable time for the Fair. This would enable winners of the different shows here to enter their show items in the Lubbock and other Fairs.

The idea is to be presented to the Board of Directors of the Chamber of Commerce at the meeting set for June 22 at which time a West Plains Fair Association will be discussed.

The Fair plans are indefinite and yet in the forming stage and will depend largely on what the merchants and public in general want concerning the matter.

Vic Benedict, president of the Chamber commended the Business Activities Committee for the "fine job they are doing and stressed the point that much could be accomplished and the Chamber would be much stronger if all committees worked as they have."

Rowena Watson was presented a plaque as the "Most Courteous" for the month of June. Mrs. Watson is secretary for the Farm Bureau. Ben Cockrell, Bureau manager, was presented the roving business plaque to hang in his office during the month.

Mrs. Watson said "I appreciate being selected to receive this plaque and knowing the people of Bailey County as I do, I do not find it hard to be kind to them."

DeMolay Group Attend Conclave

DeMolays, their sponsors and sweetheart, attended the West Texas Area DeMolay Conclave in Lamesa last weekend.

The conclave began with registration at 8 a.m. Friday with more than 300 DeMolays from Amarillo, Lubbock, Odessa, Midland, Plainview, Muleshoe, Borger, Littlefield, Levelland and O'Donnel attending.

Area officers were elected. See DEMOLAY Page 2

Enoch Baptist Pastor Resigns

Rev. Jimmie Gresham has resigned as pastor of the Enoch Baptist Church, effective Sunday, June 18, at the conclusion of services that day.

The Gresham family will move to Kansas City, Mo., Monday where Rev. Gresham will be attending Mid-West Baptist Seminary.

He was graduated from Wayland College, Plainview, in May and had taught in Plainview public school during the final semester.

Rev. Gresham was pastor of the Circle Back Baptist Church for 3 1/2 years and has been pastor of the Enoch church for the past 18 months.

Farm Home Loans Having Impact

Loans made by the Farmers Home Administration is having a strong economic impact in strengthening the rural economy in Bailey County.

This was pointed out by John C. Kennedy, local county supervisor, when a recent review of the Farmers Home Administration supervised credit program revealed that \$153,230 was loaned for the purchase of fertilizer and other chemicals in Bailey County for this current crop year. This is just one example of the improved farm management practices that is financed by Farmers Home Administration that affects most business firms in every local rural community.

It is estimated that 90% of the total amount of \$1,305,150, loaned this fiscal year by the agency has been spent by borrowers doing business with local merchants in this county. This impact on the local economy is in addition to the added income that will result at harvest time when improved farm management practices will increase total income.

The Farmers Home Administration policy is to strengthen the family farm as well as strengthen the local rural communities.

This policy is being implemented in this area by furnishing credit for improved farming practices and making loans to establish young farmers in the farming business. Kennedy, county supervisor has been busy the past few weeks in making on-the-spot farm visits in an effort to cooperate with all the Farmers Home Administration borrowers in Bailey County in carrying out good farm management practices.

See LOANS Page 2

around  muleshoe with the journal staff

Frank Koistra will speak at the 11 a.m. worship service at the First Christian Church Sunday. His topic will be "Who Are Christians." Mr. Koistra will be accompanied by his wife, Valrie, who has just returned from New York where she completed an educational course at a University there.

T.R. White, owner-manager of White's Cashway left Thursday for Las Vegas, Nev. where he is attending the National Groceries' Convention. White is to return Sunday.

A meeting has been scheduled for Friday, June 16, at 8 p.m. for all mothers of DeMolays. The meeting will be held at L.B.'s Cafe.



MOST COURTEOUS -- Rowena Watson, Farm Bureau secretary (center) was presented a plaque after being selected as 'most courteous' personnel for the month of June. Her employer, Ben Cockrell, left, received the merchant's roving plaque for the month. Harvey Bass is shown at right making the presentations for the Business Activities Committee of the Chamber of Commerce.

Audit Report Approved At City Council Meet

Taxes, paving assessments and the auditor's report for the financial condition of the City of Muleshoe were the major topics of discussion at the Monday afternoon meeting of the City Council.

Attending the meeting Mayor Wilbur LeVeque, City Manager Albert Field, and Councilmen Irvin St. Clair, Rudolph Wiedebush and Matt Dudley.

The report given by Creston Favor, CPA of Williams and Merriman gave the audit report which was approved and accepted by the Council.

In the report, figures show that the City is in better financial condition, over all, than at the close of the fiscal year, March 31, 1966.

A total of 1,500 water meters are now in service within the city compared to 1,550 at the March date last year. City manager Field explained that the meters in service fluctuated rather rapidly, sometimes

more and sometimes less at certain times during each year due to transit labor moving in and out.

A new method of bookkeeping in some departments is being effected, Field told the group. This will enable the City to have at hand a better month by month operation expenditure record, instead of the yearly total in some departments.

For instance, the new recording method will show how many meters, valves and other parts are used on the monthly basis. This will, come out the same as the yearly average, Field explained.

However, the monthly basis will allow a report of such at hand at all times.

Delinquent paving accounts in the residential sector of the city were discussed and the procedure for collection was outlined and decided upon by the Council. Some of the paving accounts date back to 1957.

Curb and gutter to be put down along Highway 84 is to cost combined property owners at total of \$1,811.08 with the City cost set at \$388.92. Letters have been sent out to these property owners.

M.D. Gunstream met with the council on behalf of the Methodist Church to settle paving figure due on the property purchased by the church for the Methodist Spanish Mission which was overlooked at the time the opinion of title was

See AUDIT Page 2

Accident Injures Three In Earth

A mid-afternoon crash Saturday in the downtown Earth sent one person to University Clinic, Lubbock, with a cracked vertebra. Two others in the wreck suffered less serious injuries with minor cuts and bruises.

The accident occurred when Melvin Bock, driving a Ford Bronco towing a 1963 Oldsmobile with Galen Bock at the wheel pulled out to pass a tractor moving alongside the highway.

The young Bock said he could not see what his father, was passing and when he started

to pull back into the lane of traffic the Oldsmobile hit the Bronco which his father was driving. The two vehicles were connected by a chain running through a pipe.

The Bronco turned crossways on the highway and swung the Oldsmobile around and overturned. The Bronco, with one flat tire flipped over on its top.

Ken Bock, riding with his father, and Galen, received minor injuries. The senior Bock was taken to Lubbock by Ambulance.

'Know Your Fish Habits and Water', To Catch Trout



FISHING EQUIPMENT -- Myron Pool (left) had a variety of fishing equipment on display at the Rotary Club meeting Tuesday when he spoke on Trout fishing. Rotarians (left to right) are D.B. Lancaster, Harvey Bass, Alex Williams, James Jennings, Vic Benedict and Earl Harris.

"Know your water and know your fish, is the secret to trout fishing in mountain stream and lakes," Myron Pool told Rotarians at the meeting Tuesday at noon.

Pool explained that trout fishing is different from other types of fishing and is done mostly with wet or dry flies.

The wet fly, he said goes beneath the water surface and three can be used on drop leaders from the line, enabling the fisherman to catch three trout at one time.

"This is done," Pool said, "but two is the most I have caught while using three flies.

The dry fly is treated to float on the water and only one is used on the line. The fish sees the fly floating on the water and strikes...some-time jumping out of the water in the process.

Trout fishing is done by casting up stream and letting the fly travel below you the length of the line, then recasting.

"It is very important to know the water where you are fishing and to learn where the fish are, what they are eating and when. Some think trout fishing is done late in the afternoon and early mornings, however, experience shows this does not hold true. I have seen them striking during noon time as their feeding habits vary from day to day.

"I usually spend my first day fishing in finding out things of this nature and I examine the contents of the first trout's stomach which I catch to see what they are feeding on. That way, I can determine if I am using the proper type fly," Pool continued. "The water has to be searched out to find the fish. Usually in trout fishing, the best place to find the fish is just below or above swift water such as a falls or in deeper holes in the streams. "Sometimes mountain showers and rains keeps the streams

See TROUT Page 2

STATE CAPITAL Highlights AND Sidelights

by Vern Sanford

By--Vern Sanford
Texas Press Association

AUSTIN -- A task force of federal officials, here for a conference on federal-state relations, got an earful from disgruntled state agency officials who complained of poor communication between Austin and Washington.

Gov. John Connally opened the conference by telling the men from D.C. that the federal grant system is characterized "by misunderstanding, disharmony and, in some instances, utter confusion."

Other state officials got down to specifics when the conference broke up into small groups to discuss intergovernmental coordination, health and welfare, education, water development, outdoor recreation, economic opportunity and manpower development.

They said they want to be consulted in advance about proposed programs; they want federal agencies to work through state agencies on local programs; they want block grants which would give state agencies greater latitude in tailoring federal programs

to fit local needs; and they want specific, unconflicting instructions from Washington as to what is expected of them.

Since the federal officials had been through similar sessions in 39 other states, they took the criticism without flinching.

ENOUGH OIL? -- Texas Railroad Commission is keeping an eye peeled on the Middle East Crisis in case it becomes necessary for Texas to help make up for crude oil shortages growing out of the hostilities between the Israelis and the Arab nations.

Commission Chairman Jim C. Langdon said Texas has enough reserves to meet any emergency; but while increasing oil allowances is easy overcoming logistical problems would require ingenuity.

INSTITUTE OF TEXAN CULTURES -- Newest state office to open in Austin is the Institute of Texan Cultures. Its task is to assemble educational exhibit material for the ITC building at the HemisFair in San Antonio.

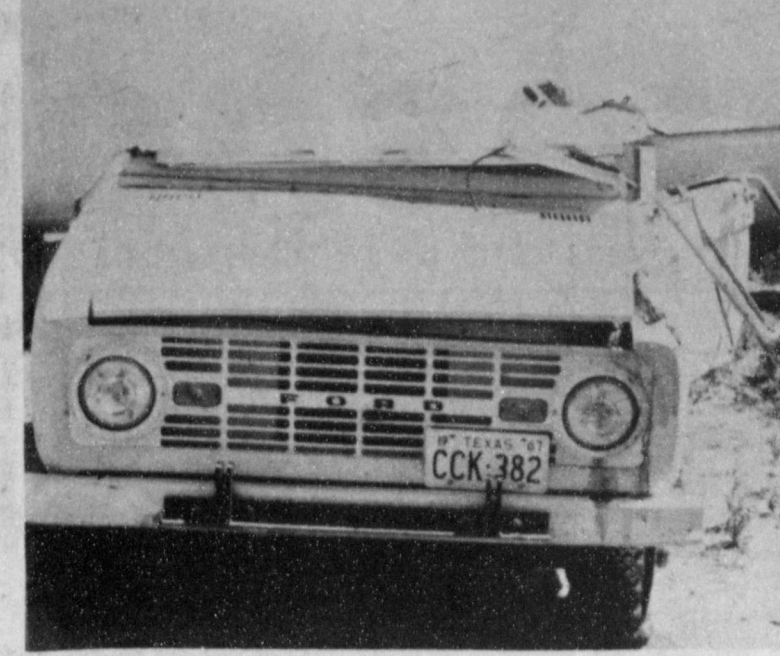
After HemisFair '68 closes its six months' run, the educational program by the State of Texas will be continued there as a permanent feature.

Institute is under the direction of H. Henderson Shuffler, former West Texas newspaperman who has been heading the UT Texana programs for the past five years. Exhibits will portray the colorful history of Texas in terms of the people who made that history.

COURTS SPEAK -- Supreme Court will hear arguments July 19 on whether parents can collect damages for premature birth and subsequent death of a child due to injury of the mother in an accident.



OLDSMOBILE -- This Oldsmobile being towed by Melvin Bock was involved in a downtown accident in Earth Saturday. Driver Galen Bock suffered minor cuts and bruises. See story on Page 1.



BRONCO --- Melvin Bock, driver of this Ford Bronco was taken to University Clinic, Lubbock, where he is being treated for injuries he received when his vehicle overturned in Earth Saturday. See story on Page 1.

In other question the high court:

Agreed to review the \$200,000 judgment favoring a workman who was burned when his bulldozer burst an underground pipeline in Brazoria County.

Upheld a trial court decision awarding damages to a woman who lost her hair from application of a lanolin bath on bleached hair (extending doctrine of strict liability to cases other than foodstuff).

Sharpstown State Bank can purchase a building in Sharpstown Center, Houston, with legal limitations governing bank investment of capital.

SCHOOL ADMINISTRATORS' SALARIES -- By increasing salaries for classroom teachers, the Legislature also raised the pay of administrators, principals and counselors whose base pay is what they would make if they were classroom teachers.

Depending on degrees earned and years of experience, a classroom teacher may, under the new law, be paid anything from \$3,132 to \$6,912 for nine months.

With the same conditions applying, administrative personnel get the same sums, but spread over 12 months for superintendents, 11 months for principals and 10 months for counselors.

On top of the base pay, each superintendent gets a 20 per cent to 40 per cent increment, depending on the size of his school system; each principal get a 20 per cent increment; and each counselor gets a \$300 increment.

Under the new law, the lowest possible salary for a superintendent is \$5,011.20 and the highest possible salary is \$12,902.40. Principals can earn as little as \$4,593.60 and as much as \$10,137.60. Salary scale for counselors will run from \$3,780 to \$7,980.

POLLUTION BOARD TO VISIT -- President's Water Pollution Control Advisory Board will visit Texas June 26 - 29 to survey state pollution problems first hand and study solutions being undertaken.

Nine-member board will visit Dallas, Fort Worth, San Antonio, Corpus Christi, Galveston and Houston. Trip will be climaxed June 29 by a public meeting at the Rice Hotel in Houston.

PAID PAYROLLS -- Governor Connally is keeping state employees and legislators guessing as to whether he will veto a bill which would improve retirement benefits for both.

Connally has made known he is giving serious considerations to a veto because lawmakers tagged benefits for themselves

onto a bill designed originally for state employees.

While retired workers would get a 10 per cent hike in their pensions, credit for five years military time, disability provisions and benefits for widows and dependent children, legislators' retirement from \$100 to \$150 a month for eight years' service. Also, it increases longevity add-ons from \$10 to \$15 a month for each year of service beyond the 10-year mark.

Speaker Ben Barnes has urged the governor to veto the bill. If he does, he will probably submit the employee retirement benefits proposal at the special session next year.

JULY DRAFT QUOTA 974 -- Texas draft boards will be called on to furnish the Army 974 men during July, Selective Service Director Col. Morris S. Schwartz has announced. National call will total 19,900.

Monthly calls from January through June ranged from a low of 674 to a high of 1,110.

In July 155 local draft boards will forward 5,016 men for draft pre-induction examination. It's an increase from 4,000 in June.

AIRBORNE BRIGADE PLANNED -- National Guard reshuffle will bring Texas a new airborne unit and two other brigades.

Adjutant General Thomas S. Bishop said the all-volunteer airborne brigade assignment (originally slated to go to Alabama) still is subject to approval by U.S. National Guard Bureau.

Under reorganization, Texas' 49th armored and 36th infantry divisions will be replaced by a new mechanized infantry brigade and high-priority 36th

Eight in Contest For Miss Muleshoe

Two more entries have been received by the Muleshoe Jaycees for the Miss Muleshoe Contest. They are: Gail Phipps sponsored by Henry Insurance Agency and Paula Carter sponsored by West Plains Hospital.

Gail is the 17 year old daughter of Mr. and Mrs. J.L. Phipps. She is a senior at Muleshoe High school and lives at 208 W. 19th in Muleshoe.

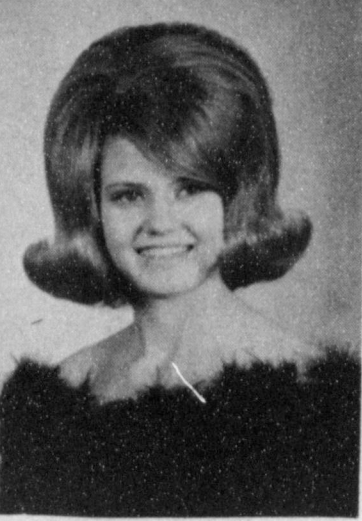
Paula is the 16 year old daughter of Mr. and Mrs. J.R. Carter. She is also a senior at Muleshoe High school and lives at Route 5 Muleshoe.

The emcee also has been announced for the event. He is Bill McAlister, an announcer for radio station KSEL in Lubbock. He is well known throughout this area with his program on KSEL.

The Miss Muleshoe contest will take place on Friday, June 30 in the Muleshoe High school auditorium. All girls from 16 thru 24 are urged to pick up an entry blank and have it filled out before the deadline of June 23. Entry blanks are available at Cobb's Dept. Store or the Corner Drug. Or contact Kenneth Henry at 272-3257 or John Blackwell at 272-4574 who are Co-chairmen of the event.



Paula Carter



Gail Phipps

DeMolay...

Continued from Page 1

Trevor Ford was elected West Texas Junior Deacon.

Sharron Hutton, Muleshoe DeMolay Sweetheart competed in the Conclave Sweetheart contest which was won by the girl representing Odessa DeMolays. She will go to Corpus Christi August 4-5 to compete for State DeMolay Sweetheart.

Attending from Muleshoe were Sharron Hutton, Muleshoe DeMolay Sweetheart, Mrs. Horace Hutton, Mrs. Harold White and DeMolay Advisors: chapter dad, Harold White; advisor chairman, Alton Epting and advisor scribe, Lonnie Bass, DeMolays were Kenneth Taylor; Donnie Thomas, Delton Bass, Richard Fox, Darrel Burge and Kippie Brock.

The women and sweethearts attending were honored with a coffee, sweetheart judging and luncheon and attended the Grand Banquet and Ball.

The DeMolays and Sweethearts were entertained with a swimming party and Hootanney on Friday night, the Grand Banquet and Ball Saturday night.

Trout...

Continued from Page 1

muddy and the flies being small, the fish cannot see them through the murky water, so the tactic has to be changed from flies to lures. For this, the spinner rod is used and most of the time, I have the best luck with the Number 1 or Number 2 Mepps spinner which is gold or silver. Sometimes the Colorado spinner or different color 'spoons' are used.

"If the stream is too muddy, then if the fisherman expects to catch fish, he must move to the mountain lakes which do not get muddy from the rains," Pool concluded.

Most of Pool's fishing trips are to Creed, Col. He fishes for trout in the Rio Grande in a 50 mile radius of the Creed area, but has fished many hours near Aztec, N.M. on Lake Navajo.

He had a display of numerous types of fishing equipment for the Rotarians and guests to view.

Guests were John Spearman, John Blackwell, Mark Benedict, Gary Albertson and Arthur Crow.

Earl Harris had charge of the program.

Dr. Ted Hufford is to have charge of the program for next Tuesday's meeting. Dr. Hufford has arranged for a Captain of the Texas Rangers to present the program.

The MULESHOE JOURNAL
Established February 23, 1924
Published by Muleshoe Publishing Co., Inc.
Every Thursday at 304 W. Second
Larry R. Hall, President
Jessica Perry Hall, Secretary-Treas.
Member Texas Press Association

MEMBER TEXAS PRESS ASSOCIATION
1966

Entered as second-class matter at Muleshoe, Bailey County, Texas 72847 Post Office under Act of Congress, March 3, 1879, postage paid. Member Texas Press Association

Larry R. Hall, Publisher and Managing Editor
Doris Knaue, News Reporter
The Johnson, Society Editor

SUBSCRIPTIONS:
Zone I - Bailey County, Cochran and Lamb counties: \$4.00 per year; \$4.50 per year by carrier. With Sunday Bailey County Journal both papers: \$5.50 per year; \$6.00 per year by carrier.
Zone II - Out-of-Territory: \$5.00 per year With Sunday Bailey County Journal, both papers, \$6.25 per year.
Monday - by carrier - 15¢; Single copies - 10¢
Advertising rate card on application.

Spell Quiz

Which of the Following is Spelled Correctly?

marshull marshall marshal

(Meaning: Police officer.)

See Classified Page for Correct Answer.

Borden's is the milk for children!

BUY BORDEN'S MILK TODAY!

Want a great car deal?

Better start with a great car.

See your Pontiac dealer for a great deal on a great car.

Ladd Pontiac Highway 70 & 84 Muleshoe, Texas

Audit...

Continued from Page 1

given to the church. The matter was settled and the church chose to pay the indebtedness without further action.

Papers were signed by the Councilmen to official close an alley in the Richland Hills addition. The alley was closed by the county earlier and has never been in use. It runs behind the property belonging to Karl Lovelady in the western edge of the city.

Sarah Ruggles doesn't know you use Thiodan and Polyram.

Like anybody else, Sarah wants the best potatoes she can get her hands on.

Her kind of spuds are raised on Thiodan and Polyram, our two compatible products that help you grow consistently great potatoes.

Thiodan's quick kill and long residual action keep 13 different insect pests from cutting your crop.

We recommend that you use Thiodan in your program with Polyram. It fights early and late blight best.

You'll get a higher yield of No. 1 spuds. Perfect for chipping too. And Polyram won't clog spray nozzles.

But together with Thiodan, it will help you turn out great spuds. The kind that turn up in the nicest potato salads.

She just loves your potatoes.

Fairfield Chemicals, Niagara Chemical Division, Middleport, N.Y.
Thiodan® is a registered trademark of Canadian Hoechst Limited.
Polyram® is a registered trademark of Badische Anilin & Soda Fabrik, A.G.

LAND AUCTION!!!

Friday June 30, 1967. Sale Time 2:00 p.m. located on the east side of Muleshoe, Texas. Approximately 29 acres of land to be sold at public auction.

LEGAL DESCRIPTION

Part of tract number 2 of the John DePaup Subdivision of a part of Section 38, 39, 54 and 55 of Block Y.W.D. and F.W. Johnson Subdivision, number 2, Bailey County, Texas.

Sale to be held at the N.W. corner of said premises which is 6 blocks east of the courthouse on Ave. D or just east of Bailey County REA yard.

Terms of sale cash with 10% escrow upon signing of contract with 30 days closing time.

John J. Kirchhoff - owner

Auctioneers

Gene Harris CA 3-4859
Raymond Akin CA 4-7692

Plainview, Texas

"Your Home Owned Discount Store"

POYNOR'S

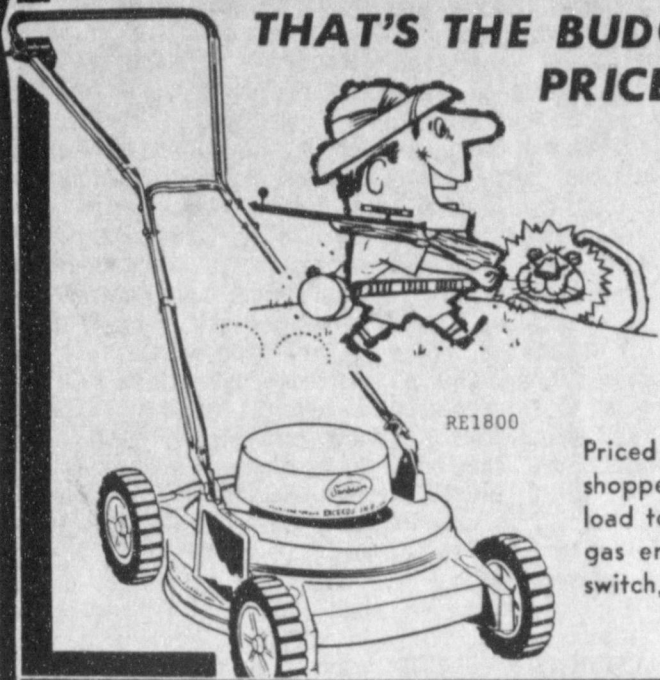
WHITE STORE'S, INC.

303 Main
Muleshoe
Phone 272-3511

SUNBEAM CARAVAN TRAILER WITH ALL SUNBEAM LAWN & GARDEN SUPPLIES WILL BE AT POYNOR'S WHITE STORE FRI. & SAT., JUNE 16-17. COME BY FOR A DEMONSTRATION! 'Service & Satisfaction'

RUGGED AS A LION...

THAT'S THE BUDGET PRICED



ECONOMY 18" ROTARY LAWN MOWER

Priced just right for the cost-conscious shopper. Rugged Sunbeam motor with high-load torque that exceeds three horsepower gas engine. Fast starting with a flip of a switch, swing over handle eliminates turning.

\$74.95

Sunbeam ELECTRIC MOWERS

save you time!
mow faster electrically



STANDARD 16" ROTARY LAWN MOWER
Take it easy this summer with a new Sunbeam 16-inch rotary lawn mower. Starts with a flip of a switch!

Easy tatch grass bag slips on and off in seconds!

\$78.50

Easy Terms!

CIRCUS of values

FOR YOUR LAWN!
from Sunbeam



SAVE TIME 4 WAYS

- ALWAYS READY TO GO! JUST PLUG IN AND MOW!
- STARTS INSTANTLY!
- ELIMINATES TURNING WITH SWING-OVER HANDLE!
- TRIMS UNDER BUSHES!

\$59.95

TURN A LION LOOSE ON YOUR LAWN

mow faster electrically

with a new



ELECTRIC LAWN MOWER

Eighteen inch electric mower with easy attach grass bag and dial master cutting height controls.



SAVE TIME 4 WAYS!

- Always ready to go! No tanks to fill. Just plug in and mow.
- Starts instantly. Just flip the switch.
- Eliminates turning with swing-over handle.
- Trims faster. Low profile lets you trim under bushes.

PRICED AS LOW AS **\$88.50**

We also rent Sunbeam Outdoor Products ASK ABOUT OUR RENTAL PLAN!
Mowers... Sprinklers... Edge-Trimmers... Hedge-Trimmers... We rent them all... by the day or week.

with fold away handle

THE MAGNIFICENT A REAL LION OF A LAWN MOWER

ELECTRIC MOWER

Deluxe twin blade electric mower with stainless steel blades. Starts with a flip of a switch. Easy maneuvering.

only \$89.95

outsines them all in price and value...

\$79.95

Twin blade electric mower with stainless steel blades. Short wheel base makes maneuvering easy. Lightweight — even hangs on a wall.

mow faster electrically

WITH A NEW

ELECTRIC LAWN MOWER

Two way mowing with swing over handle on this economy priced mower.

Applies with American Standard's safety specifications.

\$39.88

Dan River CARPET

White's In Muleshoe, Has Done A Tremendous Business In Carpet Because... *Dan River Carpet, The Name Women Know.

*Prices Women Like, With 500 Store Buying Power.

*Installation By Experts.

*Terms To Fit Any Budget.

No Money Down, Up To 36 Mo. To Pay, Call For Free Estimates.

Reg. \$7.45 All Steel 3 Cu. Ft. LAWN CART

SAVE NOW!

5.44

• 11" Tray Depth
• Reinforced Frame

Oscillating SPRINKLER

SAVE **3.67**

14 Spray Jets A QUALITY SPRINKLER AT ANNIVERSARY PRICES!

- 1600 Square Foot Coverage!
- Four Direction Dial Control!
- Constructed of 1/2" Aluminum Tubing!
- Removable Brass Strainer!
- Delivers Even Spray Throughout Pattern

SAVE NOW ON EUREKA "CORD-A-WAY"

White's Low Price!

\$33

- Automatic Cord Rewind!
- 7-Pc. Set of Attachments!
- 1 HP Motor!
- All Steel Construction!

GIFTS FOR DAD THAT PAY DAILY DIVIDENDS

RELAX-O-LOUNGER

RECLINER \$38

4800 CFM CATALINA DOWNDRAFT COOLER

1/2 hp Motor, Pump & Float Assembly!

SAVE \$23.83 Regular 131.83 NO MONEY DOWN!

\$108

175-678 13-701
175-50 13-750

- Giant 4800 CFM Cooling Capacity!
- Sturdy Squirrel Cage Blower!
- Over 4,000 Sq. In. Cooling Pad Surface!

BIG SAVER

18 CUBE ICE TRAY!

137

SAVE REG. 1.69

- Aluminum!
- Fast Freezing!

BIG SAVER

Reg. 69c SAVE

CHARCOAL BRIQUETS 10 lb. Bag

49c

BIG SAVER

Steel Lawn Rake

SAVE

Reg. 98c

77c

BIG SAVER

Reg. \$1.49 SAVE

PATIO BROOM

1.27

REG. \$11.98

\$10

Shopcraft 1/4 Inch Electric Drill

- Powerful 2.0 AMP Motor!
- Load Speed 1400 RPM!
- Geared Chuck! • 3 Wire Cord!

S.T.P. OIL ADDITIVE

Auto Lite List \$1.08

POYNOR'S DISCOUNT PRICE **66c**

SPARK PLUGS

LOMA 22 x 16 x 9-10 1/2 Qt. Plastic

POYNOR'S DISCOUNT PRICE **47c**

LAUNDRY BASKET **29c**

UTILITY PAIL 10 1/2 Qt. Size **27c**

WASTE BASKET Reg. \$1.59 **29c**

ICE BUCKET 2 1/2 Qt. **19c**

SOFA PILLOWS **49c**



Mrs. Don Blevins (nee...Cynthia Pool)

Society News

BETH SHORT Society Reporter
Phone-272-4536

Cynthia Pool, Don Blevins United in Quiet Ceremony

A quiet family ceremony, held in the parsonage of the First Baptist Church, united in marriage, Miss Cynthia Ann Pool, daughter of Mr. and Mrs. Lee R. Pool and Bari Don Blevins, son of Mr. and Mrs. W.C. Blevins of Spearman, Texas.

The double-ring ceremony was performed Saturday, June 10, at 8:30 p.m. by Reverend Don Murray, Pastor of the First Baptist Church, before an altar formed by impression Cathedral windows, banked with greenery.

Miss Sonja Bass played traditional background wedding music and Processional by John La Mantaine, Robert Garlington read, "How Do I Love Thee." The bride, given in marriage by her father, wore a formal gown of antique ivory satin, with appliques of Chantilly lace re-embroidered with seed pearls. The moulded empire bodice was fashioned with portrait neckline and elbow length chantilly lace sleeves. The slim A-line skirt swept to back fullness forming a chapel-length train. Her finger-tip veil of silk illusion, fell from a matching lace coronet encrusted with seed pearls. She carried an arm cascade bouquet of white roses, Lilly of the Nile and English Ivy.

Following tradition, the bride wore her maternal grandmother's gold antique locket watch, for something old, Parts of her ensemble were new and borrowed, a blue garter, and for luck, a 1947 penny worn in her shoe.

Miss Sylvia Pool of Houston attended her sister as maid of honor. She wore a princess gown of azalea alaskine, fashioned with a wide oval neckline, and sculptured butterfly sleeves accented by small shaped bows. The slim A-line tunic skirt was mode length. She carried a cascade bouquet of azalea florets and English ivy. Her hairpiece was a French rose designed of azalea florets and English ivy.

Dee Blevins, brother of the groom, was best man.

Rosemary Tinney, sister of the bride registered guests from a small table, draped to the floor and accented with one single happiness rose. Presiding at the brides table, were Miss Judy Inman and Becky Mason, classmates of the bride.

The brides table was covered with an imported white linen cloth. It featured an anniversary candle, used during the ceremony; the wedding cake was topped by a lilly of the valley nosegay, and the crystal punch bowl, all entwined with garlands of similas, English Ivy, azalea florets and garrow.

Mrs. Randy Johnson and Mrs. W.M. Pool, cousin and aunt of the bride assisted with the reception.

For a wedding trip to Red River, New Mexico, the bride wore a white silk and linen sheath dress with white linen lace cut-away jacket, white accessories and white orchid corsage. The corsage was worn by her mother for the wedding ceremony which she pinned on her daughter for going away.

The couple will be at home in Spearman for the summer, and plan to continue their education at West Texas State University in Canyon in the fall.

Mrs. Harris Given Shower

The L.W. Chapman home near Three Way, was the scene of a bridal shower Wednesday honoring Mr. and Mrs. Johnny Harris.

The table was laid with Blue lace overlay covering a white cloth. Appointments of crystal and silver were used and the centerpiece was of white and blue mums.

Cake and punch was served to those attending. Hostess gift was a set of teflon cookware. Many pretty and useful gifts were received by the couple.

Hostesses for the event were: Mrs. Tommy Galt, Mrs. Frank Stegall, Mrs. D.V. Terrell, Mrs. Adolph Wittner, Mrs. Leon Dupler, Mrs. B.B. Julian, Mrs. Paul Carlisle, Mrs. Harold Toombs, Mrs. John Sheppard, Mrs. Leon Reeves, Mrs. Earl Bowers, Mrs. Jack Furguson, Mrs. M.L. Fine, Mrs. Baker Johnson, Mrs. Rayford Masten, Mrs. H.O. Huff, Jr. and Mrs. L.W. Chapman.

HOSPITAL BRIEFS

WEST PLAINS HOSPITAL

ADMISSIONS

Ronald Bruns, Mrs. Ona Porter, Felipe Orozoo, Mrs. Mattie Haney, Mrs. Effie Smith, Mrs. Lou Hall, Mrs. Maggie Ruiz, Mrs. Geneva Rush, Mrs. Pauline Chappell, Mrs. Betty Morgan and Mrs. Dorothy Vinson.

DISMISSED

Johnny Tucker (transferred to Lubbock), Mrs. Lupe Espinoza and baby Mrs. Ida Tapp, Freddy Helms, Homer Johnson, L.D. Rochelle, Mrs. Alta Salyer, Mrs. Opal Tucker (transferred to Lubbock), Mrs. Mattie Tucker, (transferred to Lubbock), Moses Fleming, Ronald Bruns, Felipe Orozoo, Amador Gutierrez and Mrs. Lou Hall.

Those having been confined to the hospital for some time are: Robert Clark, Mrs. Ina Creamer, Mrs. Pearl Goforth, William Griffith, Mrs. Malissa Harris, Mrs. Lula Destler, Mrs. Fannie Klump, Mrs. Gil Lamb, Mrs. Lula Livingston and Mrs. Cleo May.

GREEN MEMORIAL

ADMISSIONS

Mrs. Wayland Harris, Mrs. Ailene Moses, Mrs. J.K. Carpenter, Mrs. Truman McCain, Edd Johnson, David Wood, Mrs. Cecil Osborne, J.T. Carpenter, Mrs. Jake Dell, Joe Yruegas, Billy Derrick and Haney Poynor.

DISMISSALS

Mrs. Truman McCain, Edd Johnson and Mrs. Jake Dell.

HEALTH AND BEAUTY

The diet of an older person should be watched carefully to be sure it includes good quality protein foods like milk and meat to protect them against anemia, vitamin deficiencies and so forth.

Nutritionists recommend that older people continue to use a moderate amount of milk—about two glasses a day. Milk is a source of good quality protein, a moderate amount of calcium and a very good supply of riboflavin.

A balanced diet for older people should be composed of meat, milk, yellow and leafy vegetables, fruits and moderate amount of cereals and bread. This group should not let themselves fall into the all too common habit of nibbling biscuits, cakes and other sweets and then not having an appetite for the foods they should get each day.

Get the "Ageless Look"

You can trade your "over 40 look" for an "ageless look" and nobody'll even try to guess your age. Your skin will suddenly look so disarmingly smoother that any thought of your last birthday or your next just won't occur even to people who know you well. They'll just admire you, anew. Nightly application of 2nd Debut and the "ageless look" comes over your face almost before you realize it. Just how 2nd Debut does so much for you in such a short time is our secret; the pleasure of it all, however, is yours. You'll not weep over vanquished skin dryness either. 2nd Debut (with CEF 690) if you're under 40 (\$3.00) or 2nd Debut (with CEF 1200) if you're on your way to 50 (\$5.00). Money Back Guarantee. At good drug or department stores.

ARRIVALS, LTD., CHICAGO, U.S.A.

Homemaking Tips

FROM THE OFFICE OF HOME DEMONSTRATION AGENT

Robin Taylor

WATER: AN IMPORTANT ELEMENT IN YOUR DIET

Talking about water in relation to nutrition may seem a bit odd--- yet water is an extremely important part of your diet.

Water aids digestion, regulates body temperatures, and acts as a tissue building material. Water stimulates the flow of digestive juices, and, as a part of the blood, helps to carry soluble nutrients to the tissues. Many of the chemical reactions between substances of the body cannot take place unless these substances are in solution, and water helps to keep them in solution.

There is a continuous loss of 2 - 2 1/4 quarts of water daily from the body. This amount needs to be replaced if the normal water balance is to be maintained. The body needs about 5 - 6 glasses of fluids each day. This may be taken in the form of water, soup or other beverages.

knits to stretch straps to bikinis. This season look for color coordination in bras with matching briefs, and in embroidered bras that go with spandex panties.

Also consider fashion, as well as hygiene and grooming, in taking care of girdles and bras. Washing after every wearing is important to health and to body cleanliness. It is also important fashion-wise as laundering snags these garments up after a day of wear.

Elasticized foundations should be washed promptly to remove damaging perspiration and body oils. Here's how: Soak them in warm soap or detergent suds about 10 minutes, then swish and squeeze them through clean suds. If necessary, scrub with a well-lathered brush. Rinse well, blot in a towel, ease to shape, and dry away from heat. Most foundation garments are machine-washable and many are also dryer-safe at a cool setting.

Some of the latest panties and girdles are made of sat-in resistant materials, which makes them even easier to wash. Habits learned in teen years can last a lifetime—so make sure your teens learn only the best.

Some of the latest panties and girdles are made of sat-in resistant materials, which makes them even easier to wash. Habits learned in teen years can last a lifetime—so make sure your teens learn only the best.

FOUNDATION FACTS FOR TEENS

Two girls on a shopping spree will probably try on every dress in the store - but not foundations! They may consider it too much trouble to be fitted into a bra or girdle. More often, they are not familiar with foundation sizes, materials, and proportions and hesitate to consult a sales woman.

Actually, any girl who wants to look well-dressed should learn how important skilled fittings are. While undercover fashions don't show, their figure control effects can help turn a duckling into a swan. Each individual has her own problems regarding weight, bone structure and even budgets. When it comes to foundations garments, she should be taught the rudiments of correct fit, good fabrics, special features, coordination with outer wear, and - just as important - proper care.

As for fashion, the latest trend is toward comfort and the young natural look. So consider these factors as well as style-to - match-the occasion, such as long legged girdles for wear under slacks, and low-cut strapless bras and waist cinchers for formal dresses. Popular stretch fabrics are featured in everything from

THE HONEY POT

Rex Harrison heads the cast in the rousing comedy, The Honey Pot, which was written and directed by Joseph L. Mankiewicz.

Harrison, as the suave Mr. Cecil Fox, plans to bring together three of his former mistresses on the pretext that he is dying and may name one of them as his heir. The purpose is to watch their reaction and to see if they have any real concern for his welfare.

Cliff Robertson is hired to deceive the three women who are Susan Hayward, Edie Adams and Capucine. The situation moves along rapidly and there's even a murder to add to the suspense.

The conclusion is amusing and unexpected after several "touching" scenes. Throughout the entire film the musical score is delightful.

Actor Roy Thinnos of TV's The Invaders recently married actress Lynn Loring after a three-year friendship.

Bible School Begins June 19

The Bible Church School of the Enoch Methodist Church will begin June 19 at 9 a.m. and close at 11:30 a.m. each day. The closing program will be Friday night, June 23.

Mrs. W.L. Welch will be the Director. Mrs. John Gunter will be in charge of the music. The workers are Mrs. Jack Reeves, Mrs. Jane Fox, Beginners; Mrs.

Bob Newton, Barbara Clawson, Sheryl Medlin and Mrs. R.P. McCall, primary and Mrs. L.G. Fred and Mrs. C.R. Smelser, Junior. Every one is welcome to attend.

Barbra Streisand has been selected by 20th Century-Fox Studios for the title role of Dolly Levi in the movie version of Hello, Dolly.

MRS BAIRD'S

Stays Fresh Longer

Barbra Streisand has been selected by 20th Century-Fox Studios for the title role of Dolly Levi in the movie version of Hello, Dolly.



Miss Tooke Miss George

JUST IN TIME FOR Father's Day!

Dress **SHIRTS**

Values To \$4.50 **\$1.99** ONLY

Special Group SPORT SHIRTS

Reg. Up To \$10 Value **1/2 PRICE**

ALL NATIONALLY ADVERTISED BRANDS!
Courtesy Gift Wrapping
At **St. Clair's**

Summer Missionaries Arrive in Muleshoe

Miss Leta Belle George, and Miss Carol Susanne Tooke, have been chosen as Summer Missionaries for the area in and around Muleshoe. They arrived in Muleshoe, June 9 for their first visit to Texas. They will be working with the Goodwill Center, helping with Bible Schools and Youth Fellowships and also working with those at the Spanish Mission here in Muleshoe. They are working with the Baptist churches.

They will be visiting different churches in the area and possibly giving programs on Sunday Evenings.

Miss George is the daughter of Rev. and Mrs. Floyd George, Box 68, Rothville, Missouri and is attending Southwest Missouri State College where she is a Junior. She has completed 57 hours of college work, majoring in elementary education. Her tentative vocational choice is Foreign Missionary.

Miss George has had experience in ensemble singing, leading singing, piano and organ. She also studied French, Latin and Spanish and speaks Spanish. She has worked on Revival Teams, Goodwill Centers,

Vacation Bible Schools, and served as GA Camp Counselor and Sunday School teacher.

Miss Tooke, is 21 years old and is a Senior student at Southwest Missouri State College, also. She has approximately 94 semester hours, and her major is Secondary Education with a minor in Religion. Her tentative vocational choice is Foreign Missionary (English teacher in South America).

Miss Tooke sings, plays clarinet and piano, and has participated in B.S.U., Revival teams, Y.W.A., Vacation Bible School, Camps and was speaker for GA House party. She has taken spanish two years and loves people of all races and nationalities.

The girls will be staying in different homes in the area during their visit here. They will be here thru August 18.

SUMMER REFRESHER

Substantial cookies for small fry to enjoy when they take a break from play.

Everyday Cookies Milk Fresh Cherries

Quality Chek

MERIT AWARD PRESENTED FOR EXCELLENCE IN PRODUCT QUALITY CONTROL 1967

Bell ICE CREAM

Family-winning meals deserve award-winning

Extras earned us the Quality Chek merit award. Extra care. Extra effort. Extra quality. You can get that something extra by serving Bell Quality Chek products.

Find it Fast in The Yellow Pages

FINAL CALL

for **New Telephone Directory Changes**

RESIDENTIAL SUBSCRIBERS

Your "Phone Book" listing is important to you and your friends. Won't you check yours, and call us promptly if you wish to make a change.

If you've considered including other members of your family, now is the time to do it. Extra listings cost so little, make it so much easier for your friends.

BUSINESS SUBSCRIBERS

Complete representation in the Yellow Pages will bring more customers to your door. And you can be sure of reaching many more buyers by listing under additional classifications.

Consider also the advantages of having directory representation for key people in your company. This added "exposure" really pays. **But time is short.** To make sure you'll be properly represented in the new Directory, call our Business Office right away.

GENERAL TELEPHONE

A Member of the GT&E Family of Companies

Magann Lamb, Jack Rennels Recite Vows in Garden Setting



Mrs. Jack Rennels (nee...Magann Lamb)

Miss Magann Lamb and Jack Reginald Rennels exchanged wedding vows Saturday morning at 10 o'clock beneath the willow trees in the garden at the home of Mr. and Mrs. Thurman Roscoe White.

A white carpeted aisle flanked by 24 hurricane lamps lead to the willow trees before which stood impression cathedral windows outlined in smilax and magnolia blossoms.

The Rev. J. Frank Peery, pastor of the First Methodist church of Muleshoe, performed the double ring ceremony before a candlebra of hurricane lamps which held the traditional anniversary candle. The tapers on the hurricane candlebra were lighted by little Miss Sharon Day Rumpy of Lubbock.

Miss Virginia Lee Crouse of Canyon provided wedding music at the organ, and accompanied Mrs. Buddy Peeler as she sang "Apple Blossom Time" and "Whither Thou Goest."

The bride is the daughter of Gilbert Payton Lamb and the late Olabelle Singleton Lamb. The bridegroom's parents are Mr. and Mrs. Robert Reginald Rennels of Fr. Sumner New Mexico.

The bride, who was given in marriage by her father, wore a formal length gown of antique ivory Chantilly lace over peau d' ange. The molded bodice was designed with a scalloped portrait neckline and long sleeves that tapered to petal points over the hands. A peau d' ange bias band and rose with long streamers marked the empire lines. A panel of peau d' ange fell from a large bow

at the waist line to form the train.

She wore an imported Chantilly lace mantilla and carried a cascade bouquet of magnolias accented with candlelight satin, pearls, and a handkerchief that her grandmother the late Mrs. James Robert Singleton carried in her wedding in 1905. The bouquet was carried on a white Bible given to her by her late mother.

Mrs. Thomas Lynn Priddy of Austin served her cousin as matron of honor. Another cousin, Miss Martha Clem Atkins of Jefferson, Texas, was maid of honor. The honor attendants wore formal length gowns of georgette cages over A-line sheaths fashioned with bateau necklines, long sheer sleeves, and empire bodices. The A-line skirts extended into extra fullness in the back caught by a bow at the neckline. Mrs. Priddy's dress was of powder blue, and Miss Atkins was dressed in Nile green.

They wore large brim hats of natural straw with matching bands of tulle. Floral clusters held the brims in the back. Their bouquets were of magnolias.

Flower girls were Tyree Wagon and Alison Kay Pool. Little Miss Pool wore a formal length candlelight satin dress made in 1946 by the late Mrs. Lamb for her daughter to wear to a wedding of a cousin, Clementine Wurtsbaugh Sain. Little Miss Wagon was dressed identically. They both carried blue and green parasols which held their flowers.

Charles Alan Priddy of Austin, cousin of the bride, and

Bryan Peeler were ring bearers. Master Priddy carried a white satin covered baby pillow that the bride used when she was a child.

Best man was John Black, and Eugene Howard served as groomsman. Ushers were Dayle Binnion of Midland cousin of the bridegroom, and Mark Rumpy of Lubbock.

The bride's aunt, Miss Mariet Grey Lamb of Los Angeles, California, registered the wedding guests.

At the garden reception the four tiered wedding cake accented with blue agapanthus was topped with a white magnolia. Also on the bride's table was an iced arrangement of blue agapanthus and green grapes. Serving at the table were Mrs. Arthur Rumpy of Lubbock, step-sister of

the bride, Mrs. Joe Pat Wagon, and Mrs. Boyce Hart.

At the groom's table coffee and chocolate cake decorated with fruit were served by Mrs. Francis Harold Gable of Friona, Mrs. Alan Charles Whitmire of Wichita Falls, and Miss Beth Stansell of Dimmitt.

Presiding at the children's table were Little Misses Carla Jo Ethridge and Brenda Wimberly assisted by Misses Deborah Wagon and Jona Kay Goucher.

Also in the house party were Mrs. J.B. Williams, Miss Ola Seales, both aunts of the bridegroom, Mrs. Charles Norman Hoffman of O'Donnell, cousin of the bride, Mrs. Horace Blackburn, Mrs. T. M. Slemmons, and Mrs. Buddy Pool.

For a wedding trip to Santa

Fe, New Mexico, and Colorado the new Mrs. Rennels chose an ice blue, Italian silk dress with matching coat and accessories.

The bride was graduate from Muleshoe High School and West Texas State University in Canyon where she received a Bachelor of Science in speech. The bridegroom received his high school diploma while serving with the U.S. Air Force in Alaska. He is a graduate of Draughn's School of Electronics in San Antonio.

Mr. and Mrs. Jack Rennels will be at home at 405 B West Ave. E in Muleshoe, where he is the equipment technician in the engineering department at the Bailey County Electric and Five Area Telephone Cooperatives. Mrs. Rennels will continue her work in the news department of Radio Station K M U L, where she is the women's director.



BY CECILY BROWNSTONE

FAMILY DINNER

A delightful dessert made with a favorite berry!

Fresh Salmon Potatoes
Green Peas Salad Bowl
Strawberry Upsidedown Cake

STRAWBERRY UPSIDEDOWN CAKE

1 tablespoon plus 1/4 cup butter
1 cup sugar
2 cups ripe but firm strawberries, small or medium size
1 1/4 cups sifted cake flour
1 1/2 teaspoons baking powder
1/4 teaspoon salt
1/2 teaspoon vanilla
1 large egg
1/3 cup milk

In an 8 by 8 by 2 inch cake pan, melt the 1/2 cup butter. Sprinkle 1/2 cup sugar over the butter; shake pan to distribute sugar evenly. Cut hulls from berries and arrange outside down, in neat rows, over sugar; if any berries are larger than others, halve. On wax paper, sift together the flour, baking powder and salt. Cream the 1/4 cup butter with the remaining 1/2 cup sugar and vanilla; thoroughly beat in egg. Stir in sifted dry ingredients in 3 additions, alternately with milk, just until smooth. Spoon and spread batter over berries - don't worry if it doesn't cover all berry tops. Bake in a moderate (350 degrees) oven until a cake tester inserted in center comes out free of batter - 40 minutes. Place cake in pan on wire rack for 4 minutes; invert on serving plate; serve warm or reheat.



Sharon Millen Given Shower

Tuesday June 13, the Muleshoe State Bank Community Room was the scene of a bridal shower given for Miss Sharon Millen, bride-elect of Freddy Payne.

The brides chosen colors of pink and soft brown were carried out in the table decorations with a centerpiece of pink roses, baby's breath and complemented by brown leaves. The bouquet was centered with a pink candle. The table was covered with a pink cloth with a white lace overlay.

Sharon, the honoree, her

mother, Mrs. W.T. Millen received guests during the afternoon.

The hostesses presented the honoree with a carpet sweeper. Hostesses were Mrs. B.H. Wagon, Mrs. Paul Scott, Mrs. Buster Evans, Mrs. R.O. Gregory, Mrs. C.E. Moore, Mrs. Truman Lindsey, Mrs. Harold Allison, Mrs. Elmo Stevens, Mrs. Harvey Bass, Mrs. Russell Buhrman, Mrs. J.E. Embry, Mrs. Kline Buhrman, Mrs. Leon Lewis, Mrs. D.B. Head, Mrs. Kirk Pitts and Mrs. Marshal Head.

Drapery Style Show Set for June 22

Cousins Visit After Long Span

Thursday, June 22, in the Muleshoe High School Auditorium, 8:30 p.m., the Muleshoe Jayettes and the Muleshoe Drapery Club are sponsoring a Drapery Style Show, presented by the American Drapery Dealers Association.

The latest and newest in drapery styles and exciting ideas direct from Los Angeles, Chicago and Dallas Drapery Markets will be shown. Each treatment is designed and created by ADDA Approved Dealers and Decorators throughout the nation.

Thousands of dollars worth of the most Beautiful Draperies in the Country and a beautiful array of colors will be seen.

You will see treatment for all decors, Spanish, Mediterranean, Early American and for every type of room displayed, Living room, bedroom, dining room, kitchen, boys room, girls room and den. All types of cornices, swags and quilted lambrequins will be shown.

Through the efforts of Mrs. Sherman Inman and the two clubs, the show will be given in order to help the Muleshoe Area Public Library, with all proceeds from the show being given to the Library.

An admission of \$1.00 for adults and 50¢ for children will be charged.

Musical Arts Studio Planned by Teacher

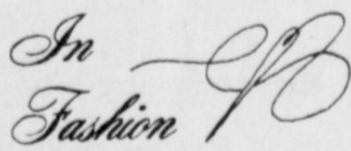
Mrs. Sam McKinstry is announcing the opening of her "Musical Arts Studio" at 318 W. Ave J, for summer classes in piano and organ Monday, June 19.

So many adults have expressed their interest in wishing they could learn to play the piano, that Mrs. McKinstry takes a special interest in saying you are never too old to begin lessons and this could be an excellent time to start and enjoy music. These classes are for both men and women and the classes can be arranged in groups of two if you prefer.

Mrs. McKinstry is being assisted in her studio by Carolyn Allison her granddaughter.

Carolyn is a former student of Mrs. McKinstry and for the past year she has had special training in teaching beginner piano students at Texas Tech at Lubbock.

Call Mrs. McKinstry for information and registration.



Apron fronts are features of some of the summer dresses. These fronts take the form of a panel beginning at the neckline and ending at the bottom of the skirt.

For the visitor travelling

Mr. and Mrs. Lee R. Pool had as their house guests, Sunday and Monday, Mr. and Mrs. Jack Kuykendall of Kendrick, Idaho. Mrs. Kuykendall and Mrs. Pool are cousins who hadn't seen each other since high school days, and Mrs. Kuykendall, who was Clara Cornelius located the former Jewel Hammock by writing to the son or daughter of Will Hammock at Sudan, Texas, where they all lived.

While here they visited the mother of girlhood friend, Mrs. Morrow, in the Muleshoe Nursing home. An uncle, W.A. Elmore, at Circleback, and an aunt, Mrs. Pearl Hammock, of Muleshoe, relatives including cousins, Mr. and Mrs. Lester Elmore, their daughter, Arnetta and grandson, Clint, Mr. and Mrs. Bob Hammock and children of Broadview, New Mexico, came for dinner and slides of the beautiful Idaho scenery.

The Kuykendalls are on a 2 1/2 month tour of the United States, high lighted by a reunion of the 10 Cornelias children and their families in San Angelo.

northward, lovely knitted suits, scarfs and coats are being shown in the shops, stripes are popular and the majority of designs are those which run horizontally around the garments.

Over blouses with pleated skirts continue to be chic. Some of these are quite long in knits, reaching midway of the thigh.

If you're planning A WEDDING

A bride can make a beautiful beginning by sending proper thank-you notes.

To make the bride's job easier, Mrs. Jeanette Lee, design director of Hallmark Cards, has a number of suggestions on bridal thank-you notes.

First, write your notes as soon as gifts arrive. Those arriving too late to answer before the wedding should be acknowledged promptly on return from the wedding trip. Small, conventional note-size paper is preferred. White, cream or delicately hued paper is in good taste.

The only excuse for type-written note: that you've broken your arm, or suffered some other disability that forces you to shun the pen.

Spell out street, avenue and boulevard.

"If you receive a duplicate gift," Mrs. Lee said, "don't breathe a word of it, even in conversation, as it may get back to the donor."

Make the notes to your husband's relatives especially warm and personal, Mrs. Lee

suggested. These help to build future friendships with them.

Delegates

Attend

Convention

Mrs. Ed Johnson, president and Mrs. Joe Costen, treasurer of Epsilon Delta Chapter of Delta Kappa Gamma Society International attended the thirty-eighth annual state convention in the Hotel Texas, Fort Worth, June 8-11, 1967.

The theme of the Convention was "The Builder: Teachers Creative." One of the outstanding speakers was world renowned Lisa Sergio who spoke on "Education: Cornerstone of Freedom." She stressed teaching in depth.

TIPS

Prevent nail polish bottles from overturning by gluing each bottle to a small block of wood before it is opened.

wise buyers look at hot weather performance

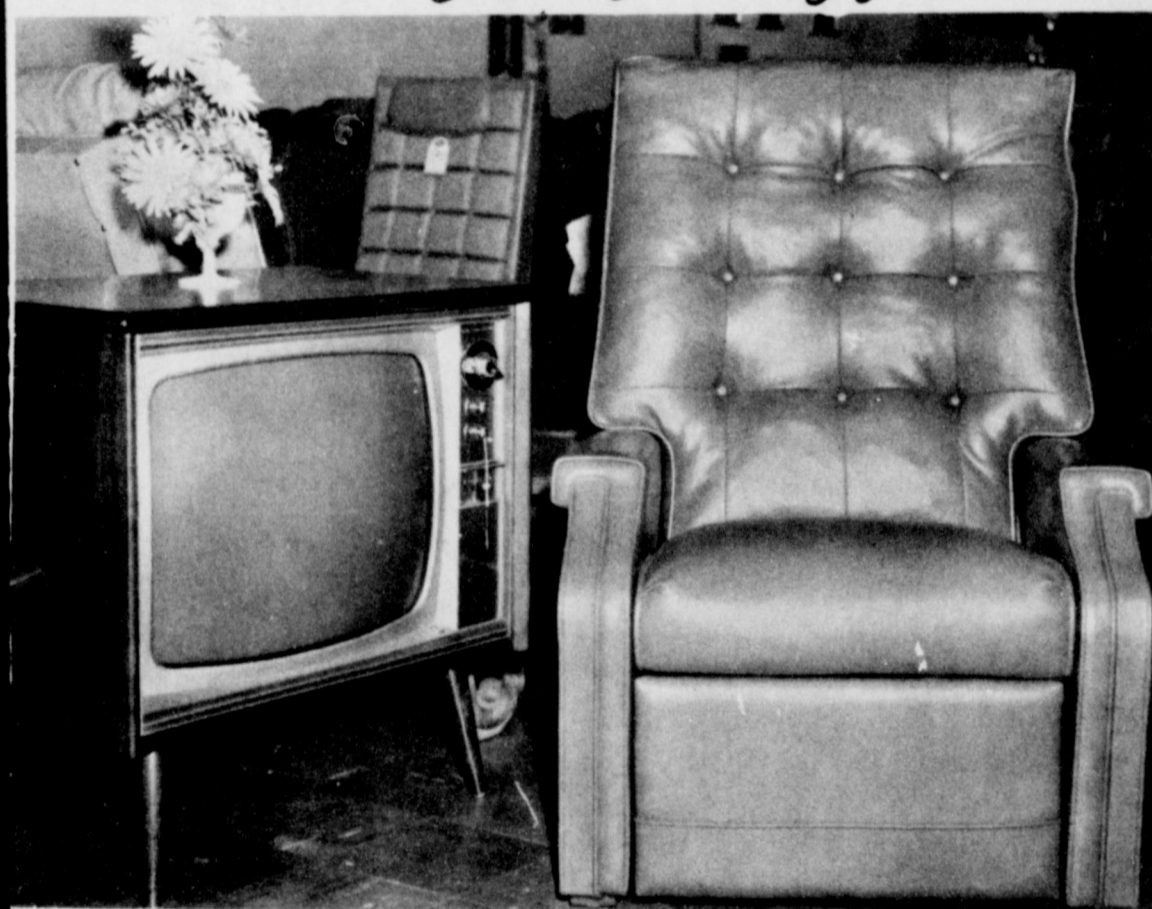
ELECTRIC AIR CONDITIONING KEEPS YOU COOL - EVEN IF THE THERMOMETER GOES OVER 100°!!!

PROVEN BY OVER 30 YEARS EXPERIENCE

INSTALLED AND SERVICED BY EXPERIENCED NEIGHBOR-DEALERS

AS DEPENDABLE AS YOUR ELECTRIC REFRIGERATOR

Father's Day Gift Suggestion



MAKE THIS A HAPPY OCCASION FOR HIM... With A RELAX-O-LOUNGER

Reg. \$89.95 Sale Price \$48⁸⁸

JOHNSON-POOL FURNITURE & APPL.

320 Main Muleshoe Ph. 272-4591

GIFTS FIT FOR A KING!

For Father's Day At Cobb's

FATHER'S DAY FATHER'S DAY FATHER'S DAY FATHER'S DAY

Variety Wheat Available Soon

COLLEGE STATION, --- Fifteen years of breeding work have provided Texas growers with a "shorty" wheat for irrigation and other high-production areas.

The new variety, named Sturdy for its ability to stand up in storms and with heavy loads of grain, will be available after the 1967 harvest from certified seed growers and seedsmen in Texas.

Sturdy was developed cooperatively by the Texas Agricultural Experiment Station and the U.S. Department of Agriculture by a team of researchers at several stations. The researchers are Dr. I.M. Atkins and Dr. O.W. Merkle of Texas A & M University, Dr. K.E. Porter of the USDA Southwestern Great Plains Research Center at Bushland, and K.A. Lahr of the Rolling Plains Soil and Crops Research Station at Chillicothe.

Dr. Atkins said the variety came from a complex cross made in 1951 involving several hard, red winter wheat experimental strains and a short stature type from Japan. "While not related to the famous Gaines wheat, developed

in the Pacific Northwest, it is similar in that it produces a short, sturdy plant that will resist lodging by storms," he said.

Although Sturdy is a hard red winter wheat, Dr. Atkins points out that its adaptation is more limited than most varieties. Regional and state tests have shown that it probably is not winterhardy enough in areas north of Texas.

"Furthermore, without irrigation it may not grow sufficiently tall for normal combine harvesting in very dry season," the agronomist added.

Plants of Sturdy wheat are 6 to 10 inches shorter than present commercial varieties when irrigated or grown under high fertility levels. The trait boosts grain yields and avoids excessive straw production.

"Heavy straw growth is difficult to combine and decays slowly during the summer, sometimes being detrimental to a fall seed crop that follows," Atkins explained. "Sturdy frequently sets three and sometimes four seed per spikelet, and this contributes

to high yields."

The new variety is early maturing, only two or three days later than Triumph wheat. Plants are resistant to present races of leaf rust but not to stem rust.

Milling and baking characteristics of Sturdy,

Atkins said, are superior in all respects for commercial bakery flour. The variety's quality has been approved by state and federal agencies and by the Crop Quality Council, an organization of commercial and public agencies.

Enoch News

by Mrs. J.D. Bayless

Those visiting in the home of Mr. and Mrs. C.R. Seagler, several days last week were Mrs. Terry Turner and children, Kelley and Ronald from Las Cruces N.M. and Tammy Herrington of Lubbock.

Mrs. Turner is a daughter and Tammy a grand-daughter of the Seaglers.

Mrs. E.C. Gilliam's Knee is improving but she is still on crutches.

Jackie and Tracie Parr of Lubbock spent the weekend in the home of their grandparents, Mr. and Mrs. Charlie Byers.

The Byers took Jackie and Tracie home Sunday afternoon, and visited in the home of a niece, Mr. and Mrs. Loyd Frudnerich, where they were having a reunion.

Mrs. Dee Wasson of Level-land spent the weekend in the home of Mr. and Mrs. Zed Robinson.

Mrs. C.P. Childers from Du-

mas visited in the home of her daughter and family last week, Mr. and Mrs. H.B. King.

Mrs. E.N. McCall and daughter Dolores spent Wednesday night in the home of a daughter, Mr. and Mrs. Robert George and family at Lubbock.

Mrs. McCall and Dolores flew to Harlington Thursday for a visit with E.N.'s brother, Mr. and Mrs. Hulet McCall and family.

Dinner guest in the home of Mr. and Mrs. J.H. Mills Thursday was Mr. and Mrs. N.O. Sullivan of Lubbock.

Mr. and Mrs. Dennis Medlin of Lubbock visited their parents over the weekend. Mr. and Mrs. Buck Medlin of Bula, and Mr. and Mrs. R.P. McCall.

Mr. and Mrs. Donnie McCall and family from Muleshoe were dinner guests in the home of his parents, Mr. and Mrs. R.P. McCall Sunday.

Services Held For Alma Mayo

Funeral services were to be held in Petersburg Tuesday for Mrs. Alma Mayo, 89, mother of George Mayo, Muleshoe. Mrs. Mayo died late Saturday at the Medical Center Hospital in Plainview following a lengthy illness.

Born in Tennessee, Mrs. Mayo came with her husband to Petersburg in 1914 from Gordon. The couple were married in 1900 in Palo Pinto County.

Mrs. Mayo's husband preceded her in death in 1941.

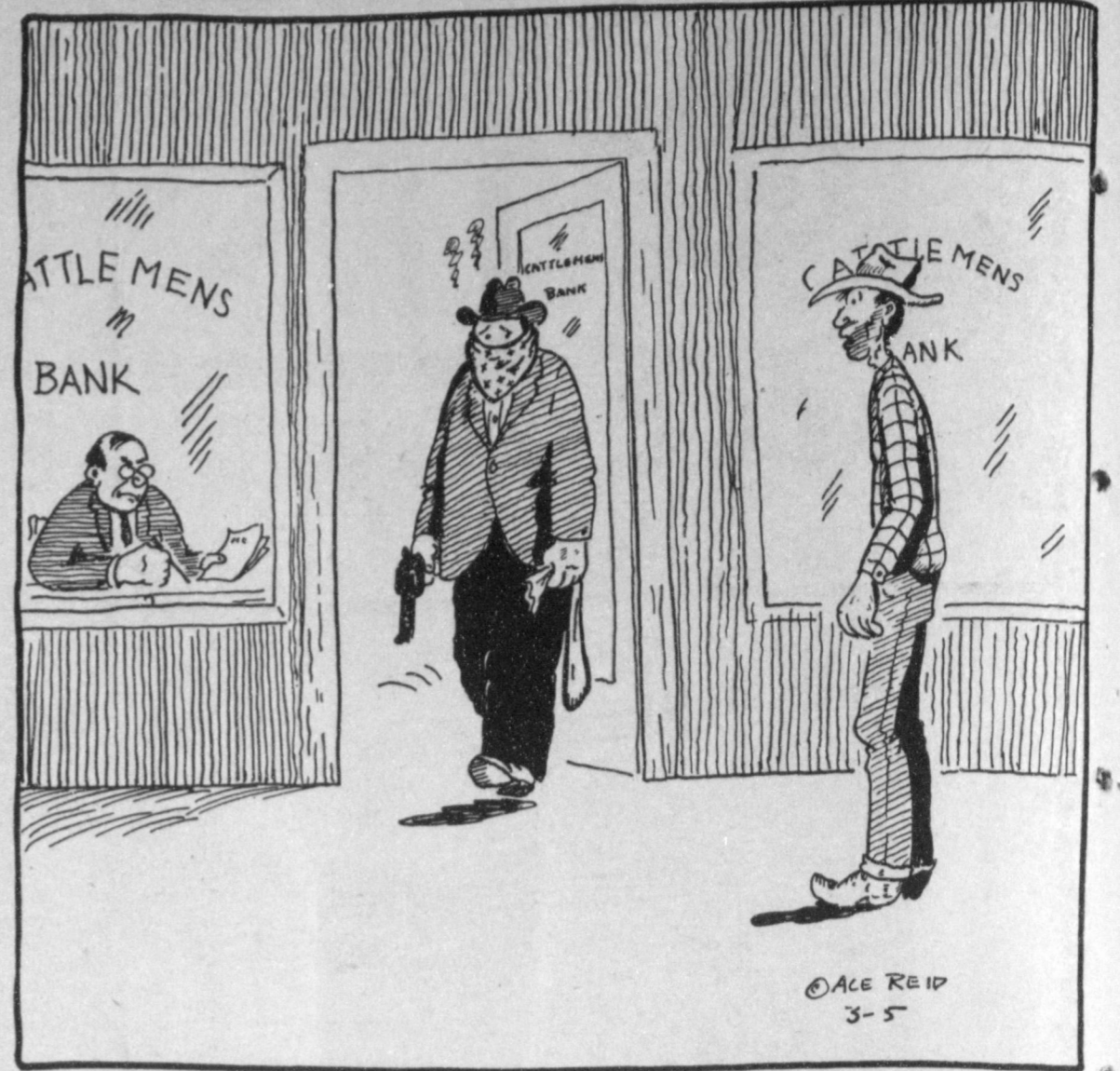
She is survived by three sons, George of Muleshoe, Mike of Green Lane, Pa. and Joe, Petersburg; a daughter, Mrs. Hazel Hughes, Amarillo, five grandchildren and five great-grandchildren.

Officiating for the services which were held at 10 a.m. in the Petersburg First Methodist Church were Rev. Bobby Huffaker, Minister of the Nazarene Church of which Mrs. Mayo was a member.

Burial was in Petersburg under direction of Wood-Dunning Funeral Home of Plainview.

COW POKES

By Ace Reid



"See, jist like I told you, Bankrobber... ol' Tufernal ain't gonna let anybody have any money even at the point of a gun!"

MOTOR OVERHAULING



EXPERT ENGINE REPAIRS

Guaranteed service, new parts will insure better driving mileage. Budget plans arranged.


PLAINS AUTO SERVICE

(ACROSS FROM CASHWAY)

South Main MULESHOE Phone 272-4576

GUARANTEED AUTO REPAIRS

The Sandhills Philosopher




Editor's note: The Sandhills Philosopher on his Johnson grass farm reviews the Middle East situation this week, more or less.

Dear editor:

The thing about listening to news on television and reading it in a newspaper is that you can come out with some interesting notions.

For example last week I spent some time in front of the T.V. listening to the United Nations sessions on the Middle East situation. Incidentally, while it shouldn't be that way, up to now I have always figured turning a big world problem like the Arab - Israel war over

THE FAMILY LAWYER



Speech: How Free?

"I believe in free speech," said a recent letter-to-the-editor. "And anyone against it should be silenced."

There is a nutshell is one of the great dilemmas of our day. We are pulled both ways. We want speech to be free, yet we want to silence speech that we don't like. Where shall we draw the line?

Some call for total freedom, with no limits at all. At the first sign of any restraint, they argue: "The Constitution guarantees freedom of speech, with no ifs, ands, or buts. Freedom means freedom, nothing less."

But our courts don't go that far. They hold that, even though the Constitution doesn't say so, certain implied exceptions cannot be avoided.

Thus, freedom of speech may be limited as to time and place. For example, you have no right to holler through a megaphone at midnight, outside of a hospital.

Furthermore, besides limits as to time and place, the law puts limits on the content of speech. One such limit is on speech that

is defamatory. Without this limit, your neighbor could spread vile rumors about you—with no basis at all except malice.

Another limit is on speech that is obscene. Without this limit, a kindergarten teacher, if so inclined, could read hardcore pornography to her pupils.

Another limit is on speech that is seditious. Without this limit, a speaker could incite a mob to open and violent revolution.

Yet, even in these special areas, the limits on freedom of speech are flexible. Thus: Defamatory statements may be held lawful if honestly made, on a matter of legitimate concern to the speaker.

Gross vulgarity may be held lawful if it has "redeeming social importance."

And wrathful political dissent may be held lawful if it poses no "clear and present danger" of serious evil consequences.


In short, the law says we must have limits on freedom of speech—but we must keep those limits to a minimum. Limits are the exception. Freedom is the rule.

A public service feature of the American Bar Association and the State Bar of Texas. Written by Will Bernard.

Tax Man Sam Sez:

If you were a June Bride -- or a December Bride -- during the tax year (it makes no difference what time of the year you get married) you may need to check on the type of income tax return that you file with your new husband. If your Father provided principal support for you during the year that you get married, and would be entitled to claim you as a dependent, you can help dear old Dad on his taxes. However, you must file a separate return from your husband. You can split the community income, but if you file a joint return your Dad can't claim you.

Meet the Muleshoe State Bank Customer of the Week




Freddie Jack

Muleshoe State Bank's customer of the week is Freddie Jack, State Highway Patrolman. He and his wife, Diana, live on the Muleshoe Ranch, Rt. 2. They attend the Northside Church of Christ. Jack said he had banked at the Muleshoe State Bank over two years - since moving to Muleshoe - and "This is a complete bank. They are nice, friendly and helpful."

Muleshoe State Bank is proud to recognize this customer of the week.

MULESHOE STATE BANK

Member FDIC



to the U.N. was about like trying to stop a bank robbery with a committee from the P.T.A. Maybe I was wrong.

At any rate, after the cease-fire order was given, a representative from the Arab countries, I didn't catch his name, was asked in a television interview what the result would be.

"I can answer that easily," he said. "The result will be that the United States will be the biggest loser in the whole affair."

I didn't understand that at all until I picked up a newspaper I was saving to read while the Ambassador from Syria was talking and read that in the last few years the United States has sent 346 million dollars worth of military aid alone to 10 Arab countries.

Then it began to dawn on me what the Arab representative was talking about. He meant the United States will lose one of its best customers for hand-outs. Naturally this would be a serious blow.

However, I am afraid the Arab mind doesn't understand the resourcefulness of the American mind. What it doesn't know is that while we might have our aid rejected in the Arab nations, we'll find somebody else to take it. You wait and see.

There must be some country on earth we haven't sent aid to yet, although off-hand I can't think of it. If you know of one, please wire Washington at once so we can off-set our losses in the Arab countries.

Yours faithfully,
J.A.

Marines Offer Three Years Enlistment


The United States Marine Corps is again accepting three year enlistments for a limited time only. According to a statement to day by the Non-commissioned officer - in - charge of the Marine Corps recruiting sub-station located at: United States Marine Corps Post Office Bldg. Room 206 Phone No. Po 5-8541 EXT. 330 Lubbock, Texas 79408 High school seniors can also take advantage of the 120 day delay program by joining now and leaving later.

See your Marine Corps representative in your area now and get all the details.

VIETNAM LOSSES HIGH

A U.S. spokesman reports that the American plane loss has reached 500 after two years and two months of bombings in North Vietnam. About 390 American fliers have been killed, captured or are missing over North Vietnam.

Arnold Services Held in Mexia




Funeral services were held in Mexia for Joe Arnold, 89, who died Monday in West Plains Hospital. Interment was at Kosse.

Arnold had made his home here with a son, Clarence Arnold for the past two years, coming here from Mexia.

He was born July 22, 1877 in Robertson County, Texas and was a retired farmer. He was a member of the Masonic Lodge and of the Second Baptist Church, Progress.

Survivors include sons, Clarence and Albert, Muleshoe; Lawrence, Oklahoma City; W.K. Shawnee, Okla.; Walter, Milwaukee, Wisc.; and Carl, Mexia; one daughter, Mrs. Arizona King, Mexia; three grandchildren, four great grandchildren and two great-great grandchildren.

Local arrangements were by Singleton Funeral Home.



Borden's GOLDEN VANILLA FLAVORED ICE CREAM

MADE WITH REAL EGGS

wise buyers look at **total operating cost...**

ELECTRIC AIR CONDITIONING USES ONLY ELECTRICITY ...THERE ARE NO OTHER COSTS!!!

PROVEN BY OVER 30 YEARS EXPERIENCE

INSTALLED AND SERVICED BY EXPERIENCED NEIGHBOR-DEALERS



Comfort ELECTRIC Cooling

AS DEPENDABLE AS YOUR ELECTRIC REFRIGERATOR

BUSINESS DIRECTORY

Robinson's Boot Shop

127 Main — Phone 272-4721

FINE WESTERN WEAR

Men, Women & Children

SHOE REPAIR SHOP

The Robinsons

Serving Muleshoe since 1925.

NEW & USED FURNITURE

WE BUY ANYTHING

Swap Shop

209 AMERICAN BLVD. PHONE 272-3074

Farley Insurance Agency

Real Estate and Insurance

FARM & CITY LOANS

SERVICE BEYOND THE CONTRACT

200 West Avenue B

OIL. Ph. 272-4787 Res. 272-3776



SINGLETON FUNERAL HOME

24 HOUR AMBULANCE SERVICE

PHONE 272-4574 MULESHOE


"WHERE YOU ALWAYS BUY THE BEST FOR LESS"

GIBSON'S

DISCOUNT CENTER

SPECIALS GOOD THRU SATURDAY NIGHT

NEW!



Coleman Dial-Temp Adjustable CATALYTIC HEATER
3,000 to 5,000 BTU's
#513700

\$19⁹⁷

Safe, adjustable heat anywhere you go. Puts out full capacity BTU's at any setting no matter how cold the weather! Flameless, no harmful fumes. Ideal for cabin, tent, boat, duck blind.

Coleman DIAL-TEMP CATALYTIC HEATER
3000 to 5000 BTU's



Auto LUGGAGE RACK

#540

\$5⁹⁷

Get Ready For Your Vacation Buy Now & Save

Coleman SLEEPING BAGS

"Be Ready For Vacation Time"



#8163-531...36" x 81" **DACRON 88 FILLED** 2 Lb. **\$11⁸⁸**

#8163-724...36" x 81" **DACRON 88 FILLED** 4 Lb. **\$15⁷⁷**

#8154-721...36" x 84" **DACRON 88 FILLED** 4 Lb. **\$17⁹⁷**

#8157-731...42" x 86" **DACRON 88 FILLED** 4 Lb. **\$20⁹²**

Coleman 2 Burner Aluminum LP-GAS PICNIC STOVE



PICNIC STOVE

\$12⁵³

#5409

NEAT! A 2-burner gas stove for patio parties, boat or car trips. Uses LP-Gas in throw-away cans. Aluminum with chrome-plated snap-off grills.

CHARCOAL GRILL

With Electric Spit

#6244



\$8⁷⁷

Labels: extra high hood, spit heights, SWING OUT motor (U.L.), Deluxe screw type grid adjustment

Coleman FILTER FUNNEL

53¢

SAVE COLEMAN JUGS

One Gallon



Make your HOLIDAY Complete! **NEW snow-lite JUGS**

UNBEATABLE for keeping beverages frosty cold! Fast-Flo Faucet, inner-lid cup.

#5501B703

\$3⁴⁹

Folding Steel PICNIC TABLE



Easy to Fold—Light to Hold

No. 100

Stores Easily in Car Trunks

Folding Steel PICNIC TABLE

24" X 60"

GIBSON'S PRICE **\$5²³**

CHARCOAL BRIQUETS

Hickory Blended

10 Lb. Bag **46¢**

The Residential Bathroom Seat



Molded wood product can not crack, warp or splinter. No-rust hinges...complete, ready to install in just a few minutes, without special tools. Luxury look and feel.

White Only **\$1⁸⁷**

Long Handle Round Point Shovel

\$1⁴⁷

Welded Bow Rake

\$1³⁷

Forged Garden HOE

\$1³³

OPEN 9 A.M. to 8 P.M. Monday thru Saturday

COLEMAN LANTERN

2 Mantle



\$10³⁷

#220F

GIBSON'S DISCOUNT CENTER

Health And Beauty Aids

CEPACOL MOUTHWASH 97¢ Value **57¢**

Bayer 300 Tablets **\$1.46**

ASPIRIN \$2.19 Value **\$1.46**

Extra Large **GLEEM TOOTHPASTE** 79¢ Value **47¢**

HEAD & SHOULDERS SHAMPOO Med. Jars. \$1 Value **59¢**

ADORN HAIR SPRAY 15 oz Size \$2.25 Value **\$1.28**

SEA & SKI 2 oz, Tube **SUNTAN LOTION** 89¢ Value **59¢**

ANTROL 72% CHLORDENE 8 oz. Size **99¢**

ANTROL DANDELION KILLER Pint Size **36¢**

SCORE CLEAR HAIR CREAM \$1.43 Value **86¢**

BURMA SHAVE 11 oz. Size 99¢ Value **56¢**

"WHERE YOU ALWAYS BUY THE BEST FOR LESS"

GIBSON'S DISCOUNT CENTER

1723 West American Blvd. Clovis Hi-Way MULESHOE, TEXAS

COTTON TALKS

FROM PLAINS COTTON GROWERS, INC.

LUBBOCK--The Texas Crop and Livestock Reporting Service has issued its preliminary county by county report on 1966 Texas cotton production, showing 1,293,700 bales of 500-pound gross weight produced in the 23 High Plains counties represented by Plains Cotton Growers, Inc.

This compares with a 2,227,000 bale revised production figure for 1965. The huge reduction was a joint result of fewer planted acres and adverse weather conditions last year.

Under the Food and Agriculture Act of 1965 producers were required to reduce plantings by 12.5 per cent in order to qualify as "cooperators," and in addition were given the option to reduce up to 35 per cent and receive payments on all acreage diverted from production. High Plains producers cut planting back an average of 32.5 percent below 1965, from 2,170,400 to 1,466,300 acres according to the report.

The production cut however comes to 41.9 per cent. Weather worked two ways to bring the 1966 total down. First, losses to hail, sand and drought resulted in 5.7 per cent less acres being harvested than were planted. In 1965 such losses amounted to 5.3 per cent.

Second, wet, cold weather and an early freeze reduced yield per harvested acre from 519 pounds in 1965 to 449 pounds in 1966.

The High Plains crop last year figured 40.6 per cent of the 3,182,000 bales produced in Texas, considerably below normal. For the past several years this area's production has been between 45 and 50 percent of the state total.

A dollar limit in government payments to individual pro-

ducers of all farm commodities was again narrowly avoided June 6 when the House of Representatives in Washington voted on the Agriculture Appropriations Bill.

Amendments to the bill, proposing that no farmer be allowed to receive more than \$25,000 in government price support and diversion payments for all crops produced, was introduced by Representative Paul Findley of Illinois.

According to Donald Johnson, Executive Vice President of Plains Cotton Growers, Inc., the measure was defeated only as the result of a strong effort by Texas' Nineteenth District Congressman George Mahon and other farm belt leaders in the House.

Johnson said "Too many urban people and their legislators fail to recognize government payments to farmers for what they are -- an inseparable part of the price received by the producer for his commodities, and a part without which in most instances such commodities could not and would not be produced."

He went on to say that limiting the payments that could be made to large producers would be rank discrimination against the agricultural initiative and drive which now feeds and clothes the people of the United States for a much smaller percentage of total income than in any other nation of the world.

"When consumers realize and admit this fact, there will be no more carping about government farm program payments. But until they do, the battle to prevent such limitations will be an unending battle, and one which PCG and other producer organizations in agriculture must be ready to fight at a moment's notice," Johnson stated.

The recent announcement by



FUSSY FELLOW -- This fussy little fellow is a Spreading Adder from the hills of Oklahoma. He was caught by Roger Simpson and Micheal Bennett and will be added to a collection which will go to make up a reptile farm here being opened by the Muleshoe Rattlesnake Club.

The Texas Tech Board of Directors that \$500,000 would be allocated to a new building and additional equipment for the school's Textile Research Laboratories is hailed by Donald Johnson, Executive Vice President of Plains Cotton Growers, Inc., as a move which will mean much to the High Plains cotton industry.

The new building and equipment is expected to give Tech a top role in the investigation of blending possibilities of short staple, low and high micronaire and high micronaire cottons. An initial appropriation of \$275,000 for this study has been approved by the House Agriculture Committee. The project is expected to be assigned to the Southern Regional Research Laboratory at New Orleans, but much of the work can be farmed out of Tech if its facilities are capable of carrying it out.

"In view of the micronaire and staple problems being experienced on the Plains, this study could well lead to a breakthrough in utilization of this area's cotton which would be comparable if not exceed the 1957 discoveries on light spotted cotton," Johnson said.

Studies carried out by PCG through the Textile Research Laboratories at Tech in 1957 and 1958 led to the establishment of the "Light Spot" category in cotton grading, and has meant over \$100 million dollars to High Plains producers through higher prices for each year's crop. The higher prices for light spotted cotton became effective, both in the textile

industry and in the government loan schedule for the first time in 1959.

"It is to be hoped that this is the first step toward making the textile research facilities at Tech among the finest and most complete in the world, capable of researching every textile phase from fibers through finished fabrics," Johnson said.

PCG furnished the original \$45,000 which made possible construction of the building which now contains the Textile Research Laboratories and has since given financial help to climate control in the building, as well as purchased several pieces of equipment which are now on loan to TRL.

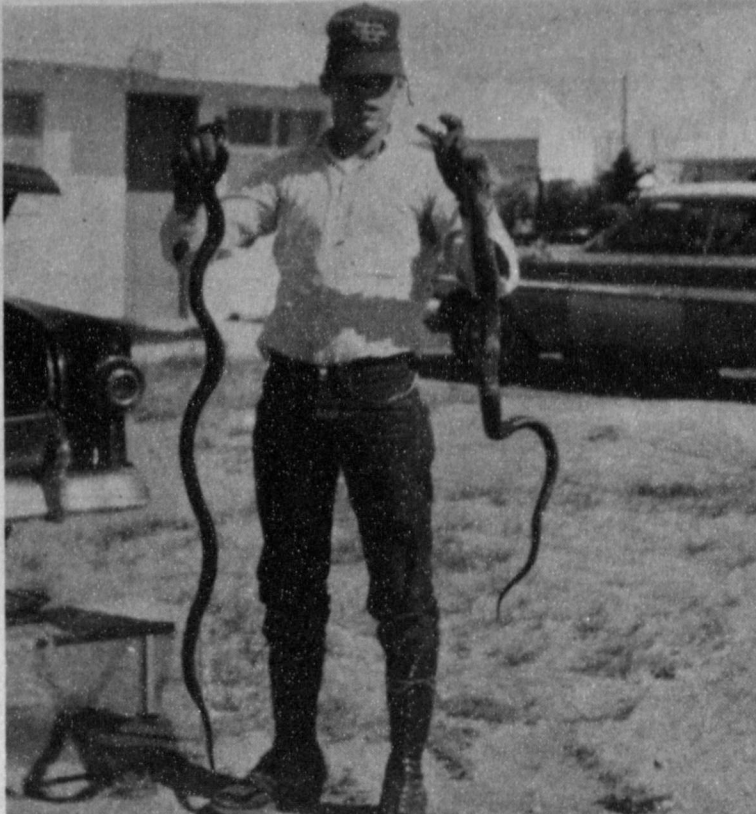
"Whatever we have done to aid the Textile Department at Tech has been with an eye to potential dollar returns to our members many times the cash outlay," Johnson said, adding "We will continue to give full cooperation to college officials in their expansion program, because neither our objective nor our faith in textile research has changed."

Slated for immediate purchase by the college is new blending feeders which will facilitate work on low and high micronaire blending. The new building and its equipment will be for textile oriented chemical studies of bleaching, dyeing, resin treating and other phases of fabric finishing.

In charge of the chemical work will be Dr. William Martin, former Director of Research at the Institute of Textile Technology, Charlottesville, Va.



COPPERHEADS -- Roger Simpson is pictured with three of the Copperheads he and Micheal Bennett caught for the reptile farm they are planning to open here in the near future. These snakes are part of a 30 snake catch the two made while in Arkansas and Oklahoma the past two weeks.



HUNTERS RETURN -- Snake hunters Roger Simpson, his wife and Micheal Bennett have returned from a two weeks snake hunt in Arkansas and Oklahoma. Here Simpson is pictured with a black snake (left) and a Water Moccasin.

Three Way

MRS. H. W. GARVIN

Mrs. D.L. Tucker and son, John Tucker, and Mrs. B.H. Tucker were seriously injured in a car wreck south of Needmore Tuesday morning. All are in fair condition at this time.

Mrs. Earl Bowers and Pattie spent the past few days visiting relatives in Minnesota, Wisconsin and North Dakota. Mrs. Jay Boyce underwent surgery in a Littlefield hospital on Thursday.

Bill Hodnett was a patient in Morton Memorial Hospital Thursday and Friday.

Mrs. Joe Wheeler and children from Paris, Texas and Connie and Janet Wheeler from Lovington, N.M. spent Friday night in the Johnnie Wheeler home.

Tonya and Donica Nichols from Odessa spent the week with their grandparents, the Cecil Courtneys. Mr. and Mrs. Courtney took the girls home and spent the weekend visiting Mrs. Courtney's son and family and a daughter.

Mrs. Paul Carsille attended the funeral of a cousin, G.B. Crumys, in Lovington Tuesday.

Mr. and Mrs. Elmer Lee and children spent the weekend fishing at Ute Lake.

Barbara Warren spent Saturday night with her parents, the Rayford Mastens. Barbara is a beauty operator in Lubbock.

Mr. and Mrs. Allen Sinclair of Tatum visited in the community Sunday.

Mr. and Mrs. Dutch Powell attended a dinner Monday night at the Spot Restaurant in Levelland for the Aviation Club.

Mrs. A.G. Fox and Sharron of McAadoo brought Mrs. Kenneth Fox and children home Friday.

Crops are growing very well in the community now. Wheat harvest has begun. Farmers say wheat will be light. A late freeze and dry weather were hard on crops.

Mrs. Rayford Masten received word her mother, Mrs. Vera Roberts, Phoenix, Ariz. had major surgery but was doing fine.

Mr. and Mrs. Frank Roberson from Houston visited relatives in the community Sunday.

Mr. and Mrs. Jerry Damron and boys from Needmore visited her parents the R.R. Kendles.

Mr. and Mrs. D.A. Williams and son from Sudan visited her parents Thursday night, the George Tysons.

Miss Bobby Gail Durham spent a few days the past week with her grandparents the George Tysons. Bobby lives in Lubbock.

Katherin Masten and Madalyn Galy visited in Levelland Wednesday and Friday.

BIBLE VERSE

"The grass withereth, the flower fadeth; but the word of God shall stand forever."

1. Who was the author of the above statement?
2. What was his position at the time?
3. To whom was he talking?
4. Where may this statement be found?

Answers To Bible Verse

1. Isaiah.
2. He was Israel's most outstanding prophet.
3. To the children of Israel.
4. Isaiah 40:3.

Fighting Army

Two privates were having a fight in the barracks room. The Second Looey rushed in and stopped the scrap cold with excited remark:

"Come, come, men! We can't have fighting men in this army!"

JERRY'S TIRE CO.

Complete
Brake
Service

Complete
Tire
And
Road
Service

Complete Front End Alignment

2015 American Blvd.
Phone 272-3336 After Hrs. or Sun. 272-4885

Borden's
ice milk

THE
GOOD TASTING,
LOW CALORIE
FROZEN
DAIRY DESSERT

While they last - limited quantity produced

GOOD YEAR Thunderbolt

High-Performance
4 Full Ply Nylon Cord Tire
Prices start at a low...

\$18.50

6.50 x 13 black tubeless plus \$1.90 Fed. Ex. Tax No Trade Needed

"Thunderbolt" is not a racing tire, but a high performing quality tire that delivers dependable, "right-now" response plus reassuring safety at turnpike speeds for all cars.

- 6 husky ribs and a deeper tread than comes on most new car tires
- Triple-tempered nylon cord for strength, durability and bruise resistance
- Goodyear's famous Tuleyn rubber for long mileage and extra tough body
- Sizes to fit compact, standard and big cars

Carroll Shelby--famed builder of the Shelby-American A. C. Cobra, tested "Thunderbolt" on his famous Shelby-engineered Ford GT 500 under special racing conditions (extra-size tires at race tire pressure) for 500 grueling miles at over 120 MPH.

Size	Black Tubeless	Price	Reg. Price, Tax, Fee, Road
7.00 x 13		\$19.38	\$1.93
7.35/7.75 x 14 (7.00/7.50 x 14)		\$21.48	\$2.21
8.25 x 14 (8.00 x 14)		\$23.40	\$2.38
8.55 x 14 (8.50 x 14)		\$25.83	\$2.56
7.35/7.75 x 15 (6.50/6.70 x 15)		\$21.48	\$2.23
8.15/8.45 x 15 (7.10/7.60 x 15)		\$25.83	\$2.53
8.85/9.00 x 15 Whitewall (8.00/8.20 x 15) Labelless Only		\$33.81	\$2.86

*Size listed also replaces size shown in parenthesis
Whitewalls also available at low-low prices!

JOHNSON-POOL TIRE CO.

301 N. First Muleshoe Phone 272-4594

READ & USE the
WANT ADS
for BEST RESULTS

DIAL

272-4536

SELL YOUR BOAT

FIND LOST ARTICLES

MAKE AN ANNOUNCEMENT

BUY YOUR OWN BUSINESS

FIND A BETTER JOB

SELL YOUR CAR

FILL RENTAL VACANCIES

FIND RELIABLE HELP

GET CASH FOR HOUSEHOLD ITEMS

The Muleshoe Journal and The Bailey County Journal

"SERVING THE BAILEY COUNTY AREA"

Whoaaaooops!

Splash. Get help on the spot. Find CLEANERS & DYERS fast in the YELLOW PAGES. Where your fingers do the walking.



LIBBY Canned Food SALE at Piggly Wiggly

HEY KIDS!
WIN THOUSANDS OF VALUABLE PRIZES
Worth Thousands of Dollars with
POM POM BUCKS!
Get 'Em at Piggly Wiggly

Watch the Buckaroo 500 TV Show Daily

We've Got 'Em!
NATIONAL BRANDS!
USDA CHOICE BEEF!
UNCONDITIONAL GUARANTEE!
FRIENDLIEST SERVICE!
GREEN STAMPS!
LOWEST PRICES!



THESE PRICES GOOD
JUNE 15-17
IN MULESHOE



Libby's, Cut
GREEN BEANS
4 **88**¢
No. 303 Cans

Libby's Fancy
FRUIT COCKTAIL
4 **88**¢
No. 303 Cans

Libby's
VIENNA SAUSAGE
4 **88**¢
No. 1/2 Cans

Tremendous Values in every Department

Borden's Delicious
BUTTERMILK 1/2-Gallon 49¢
Borden's Top Quality, All Flavors
ICE CREAM Square Carton 1/2-Gallon 69¢

Sliced, Crushed or Chunk
PINEAPPLE Libby's No. 11/2 Can 29¢
Clorox, In Plastic Jug
Liquid Bleach 1/2-Gallon 35¢

Libby's
BEEF STEW Delicious 24-Oz. Can 55¢
Libby's, Fine Quality
POTTED MEAT 5 1/2-Oz. Can 23¢

Golden Cream Style
CORN Libby's 4 No. 303 Cans 88¢
Tomato
CATSUP Libby's Fancy 4 14-Oz. Bottles 88¢

Sirloin Steak
U.S.D.A. Choice, Aged, Heavy Beef
Pound **88**¢

THIS WEEK
GET YOUR **BOONTON MELMAC® SAUCER**
ONLY 29¢
with every \$5 purchase

Libby's, Garden
GREEN PEAS
4 **88**¢
No. 303 Cans

U.S.D.A. Choice, Aged, Heavy Beef Boneless, Thick Cuts
N.Y. STEAK U.S.D.A. Choice Pound \$1.79

U.S.D.A. Choice, Aged, Heavy Beef Chuck Cuts
FAMILY STEAK U.S.D.A. Choice Pound 59¢

U.S.D.A. Choice, Heavy Aged Beef
RIB STEAK Fine for Charcoaling Pound 79¢
U.S.D.A. Choice, Arm Shoulder Cuts
SWISS STEAK Heavy Aged Beef Pound 69¢

No Skin, Even Slices
BABY BEEF LIVER Pound 59¢
Blue Morrow's
PORK SAUSAGE Lean, Fine Flavor Pound 69¢
BEEF MENUDO Fresh Frozen Pound 15¢
CORN DOGS 5 Corn Dogs in Package Package 49¢

T-BONE U.S.D.A. Choice, Aged, Heavy Beef Thick Cuts for Outdoor Cooking Pound **98**¢

Houseware Buy of the Week!
FOOTWEAR
Summer, Zorries, Ladies', Men's and Children's Regular 39¢ Only **33**¢

Health and Beauty Buy of the Week!
HAND LOTION
Jergens', Medium Size Bottle 7¢ Off Label Regular 59¢ Only **28**¢

Frozen Selections for Your Freezer!
ORANGE JUICE Silverdale 6-Oz. Can **12**¢
POTATOES Simplot Shoestring 4 1 1/4 # \$1
DINNERS Patio Combination 12-Oz. Plate 49¢

FLOUR Golden West Enriched 5-Pound Bag 45¢

GLASSES LIBBEY Your Choice 3 Colors **12**¢

Only Grocery Store in Muleshoe That Runs 5 CHECK STANDS

CIGARETTES	Ctn.	\$3.23
All Brands MILK	Gallon	99¢
Lipton Instant TEA	4oz.	64¢
Del-Monte DRINK Pineapple-Grapefruit	Can	20¢
Allen Whole CHICKEN	52oz.	77¢

PLUS S&H GREEN STAMPS & Fast Carry Out Service

"PLUS 3/4 GREEN STAMPS"
Golden Ripe, Chiquitas
BANANAS
Pound **9**¢

Garden-Fresh Fruits and Vegetables! Each
TOMATOES
Red, Ripe, Slicers Plastic Tube **19**¢

ONIONS
Mild Yellow Pound **5**¢

Green Slicers **CUCUMBERS** Pound 19¢
Crisp, Stringless **GREEN BEANS** Pound 19¢

Lowest Prices . . . Greatest Variety . . . always at . . .
Piggly Wiggly

We reserve the right to limit quantities!

Industrial Development Result of Planning

The Chamber of Commerce industrial development program doesn't just happen, it is a result of careful planning, diligent study and the expenditure of considerable sums of money. The responsibility for this planning, work and advancement is no small burden. The agency that takes upon itself this load is facing a job for no mean proportion.

In Muleshoe this responsibility has been assumed by the Chamber of Commerce as a part of their over-all program of community growth and betterment. The Chamber has done so because the individual businessmen that make up our Chamber of Commerce know from their own business experience the need for a strong base to our economy. They know from their personal lives the desirability of keeping our families intact, and they have found in the past that as Muleshoe prospers, they prosper.

At every place it is desirable that this responsibility lie with the Chamber, since the agency that represents us must have comprehensive knowledge of all facets of community life. Our representatives to industry must be able to discuss what our town has, and what it lacks, where it is strong, and where

it is weak, how we live, and why we live that way. Because the Chamber is made up of representatives of all the different kinds of business establishments that go to make up a community, this knowledge is readily available within the organization itself. Further, since the Chamber does represent most of the people in the town, the Chamber representatives can speak for the community, and they will be accepted by our prospects as our true representatives. In their negotiations this acceptance is important, for we must accept the idea that no industrial concerns are going to come to our town for the good that they can do the community, but rather because this is the most advantageous place they can live, and the benefits must go both ways.

Industrial development in Muleshoe is a big job. As our business leaders, through the Chamber of Commerce see it, it is a necessary job. These men can provide the planning, leadership, and the money to do this job, certainly all of us can and should provide the cooperation and the fellowship that will be necessary to get the job done.

Washington Report

From Congressman

BOB PRICE 18TH DISTRICT, TEXAS

1222 LONGWORTH OFFICE BUILDING, WASHINGTON, D. C. • 205-3706

House Republicans in a solid block were joined by enough Democrats to vote down the President's request for a \$29 billion increase in the public debt ceiling last week. The proposed increase was in addition to the \$6 billion increase authorized by Congress less than 3 months ago and would have established a debt authorization of \$365 billion.

Since 1961 the Democratic Administrations have embraced the philosophy of unlimited government spending and budget deficits. Budget subterfuge and gimmickry financing have become the trademark of the Great Society. In spite of repeated and urgent danger signals, the Johnson - Humphrey Administration has refused to place its fiscal house in order. It has consistently underestimated the cost of the war to avoid a cutback in non-essential spending.

In January 1966, the Johnson-Humphrey Administration submitted a \$112.8 billion budget that proposed defense expenditures of only \$60.5 billion. Immediately it became apparent that this was a totally unrealistic figure in view of the massive federal spending, but

Administration stuck to its original Budget. In fact, on September 8, 1966, the President not only reaffirmed the earlier Budget figure but assured the American people that total expenditures would be cut back by at least \$3 billion.

It was not until after the November elections that the American people were finally told the truth. In January 1967, when the Administration submitted its Budget for fiscal 1968, the Administration disclosed that fiscal 1967 expenditures would amount to \$126.7 billion and not the \$112.8 billion previously reported.

Incredible as it may seem, the Johnson - Humphrey Administration is again repeating the same misleading budgetary tactics. Last January, a deficit of \$8.7 billion was forecast. Now the Treasury officially estimates that the deficit for fiscal 1968 will be \$11 billion. However, the Administration is seeking borrowing authority to accommodate a deficit of \$29 billion. Significantly the difference between the \$11 billion estimated deficit and the \$29 billion request is accounted for by the Secretary of Treasury in the



"NOW, LET ME SEE —"

following manner:

"But as I have mentioned, the deficit in 1968 is vulnerable to greater than usual uncertainties, and we must take account of these in determining a prospectively secure debt limit level to carry through fiscal year 1969.

One contingency is that Vietnam spending could bulge well above the current estimate. Another is the timing of the passage of the tax surcharge. And still another is the possibility that corporate tax receipts would fall short of estimates."

It is more than mere coincidence that the "contingencies" alluded to by the Secretary of Treasury add up to \$29 billion alluded to by the Secretary of Treasury add up to \$29 billion if the Administration is also unable to borrow an additional \$5 billion through the sale of participation certificates.

Although the Administration is attempting to justify the fiscal plight of this country on the basis that the Vietnam War is a "costly war," the facts do not bear out this contention. The level of domestic spending in the administrative budget along -- wholly apart from our defense requirements in the war in Vietnam -- has increased

from about \$46 billion for fiscal 1965 to approximately \$66 billion for fiscal 1968. Two-thirds of the \$28.3 billion increase in Federal expenditures from calendar 1963 through 1966 -- as measured in the National Income accounts -- is accounted for by non-defense spending. Moreover, as projected in the January 1967 budget message, over half of the proposed \$37 billion increase in outlays from fiscal 1966 through fiscal 1968 is to be in non-defense programs.

Alarmed by the fact that "red ink" in the federal Budget could "burst all bounds," the chairman of the Ways and Means Committee has stated:

"... We must continually re-evaluate existing expenditure programs in the light of a very objective measurement of the benefits which they convey and the costs which they will impose. Every new program should be viewed not in terms of its first year cost alone, but in terms of what its cost will be five years from now, ten years from now or perhaps fifteen years from now"

The Republican Members of Congress and the Republican Policy Committee have repeatedly called for a cutback in nonessential spending and for honest reporting of anticipated government ex-

penditures. We have opposed increases in the Debt Limit that did not provide basic budgetary reforms. In March of this year, a Republican Resolution was introduced which would return the Budget to the President and request that he indicate the places and amounts where he believes that reductions can be made. It was noted that the passage of a similar Resolution during the 85th Congress resulted in recommended reductions of \$1.342 billion in a Budget of \$73.3 billion. Unfortunately, the Democrat-controlled Congress in 1967 has refused to grant this Resolution any consideration whatsoever.

It is important that the Johnson - Humphrey Administration cut nonessential spending and place before this Congress an accurate estimate of projected defense cost. In addition, the Administration and the Congress may have to find additional sources of revenue that will cut the deficit to a manageable level. A deficit of the magnitude that is now contemplated is intolerable. It would further escalate prices and interest rates in what is already a seriously strained domestic economy. In April, the cost of living increased 0.3%. Another period of "tight money" similar to that

experienced last Fall when interest rates soared to new heights is a grave possibility. The ducking and dodging of the Johnson - Humphrey Administration which is typified by the vague and evasive testimony of the Secretary of Treasury must stop. Hard facts and realistic projections of future spending must be made available. If we are to avoid a runaway economy that will lead to governmental control of wages, prices and credit as well as further increases in taxes, there must be restraint in federal spending and an immediate implementation of expenditure priorities.

During debate on the bill, Rep. John W. Byrnes, ranking GOP member of the House Ways and Means Committee who led the floor fight against the debt increase, said Republicans would go along with an extension past the June 30 deadline of the present \$336 billion ceiling, to enable the Administration to revise its budget and pay its bills.

It was the first time in history that the House had refused to grant a request for a boost in the debt ceiling. So at last the Administration must face up to the fact that Republicans mean what they say about fiscal responsibility.

The Jet Streams

The Weather Bureau has blamed diverted jet streams for spring's curious weather, saying that the two air currents which normally pass over the United States and Canada have moved north.

The jet streams were only recently discovered. They are strong currents which aircraft discovered in the upper altitudes - at 30,000 feet or above. They move swiftly - perhaps a hundred miles an hour - from west to east, and are somewhat akin to the various currents in the oceans, except faster.

The warm air jet stream usually crosses the country from a point above southern California and crosses out over the mid-Atlantic states. The cold air jet stream normally enters over the state of Washington, flows southeast and crosses into the Atlantic only slightly north of the warm air stream.

This year the experts tell us both streams have flowed across North America further to the north, which has upset the normal pattern of spring weather. No one knows why this has happened. But the result has been draught in southern Florida, snow in parts of the West late in the spring and unseasonably hot weather in other parts of the West. Changes in temperature have been rapid.

Despite all our knowledge about nuclear bombs, etc., mother nature keeps many of her weather secrets, reminding man of his limitations, and of the wonders of this planet.

experienced last Fall when interest rates soared to new heights is a grave possibility.

The ducking and dodging of the Johnson - Humphrey Administration which is typified by the vague and evasive testimony of the Secretary of Treasury must stop. Hard facts and realistic projections of future spending must be made available. If we are to avoid a runaway economy that will lead to governmental control of wages, prices and credit as well as further increases in taxes, there must be restraint in federal spending and an immediate implementation of expenditure priorities.

During debate on the bill, Rep. John W. Byrnes, ranking GOP member of the House Ways and Means Committee who led the floor fight against the debt increase, said Republicans would go along with an extension past the June 30 deadline of the present \$336 billion ceiling, to enable the Administration to revise its budget and pay its bills.

It was the first time in history that the House had refused to grant a request for a boost in the debt ceiling. So at last the Administration must face up to the fact that Republicans mean what they say about fiscal responsibility.

WASHINGTON NOTES

FORD ON POLICY

Gerald R. Ford, House G.O.P. Leader, said that he wants no formal coalition with Southern Democratic congressmen. He reported there is an active Republican organization in almost every Southern state. Ford has never said they did not want Democratic votes.

ON NATIONAL GUARDS

Twenty-six National Guard generals contend that to abolish 15 guard divisions would cut down the nation's combat effectiveness and impair the military prestige of our country at this time. They petitioned Congress to study this proposal carefully.

LEGISLATION MOVES SLOW

Reports are that President Johnson's 1967 legislative program is moving slower than was anticipated. Certain administration bills considered certain to pass during this session of Congress are far behind schedule.

RELIEF JOBS AND TAX

The Internal Revenue Service reports that welfare recipients who are required to work under a state work relief program must pay federal income taxes on their earnings. This does not apply to welfare payments in cash or food or other items not attributable to the work performed.

ON SAFETY STANDARDS

The Federal Government has assured automobile manufacturers that a disputed safety standard for the interior of 1968 models would be modified further. The modification will pertain to safety standards of protruding objects inside a car.

SENATE ON GI BILL

The Senate has passed a bill that would expand benefits under the cold war GI Bill of Rights. If approved by the Senate-House conference committee it would add benefits costing \$170 million in the fiscal year beginning July 1.

GOLD STOCK INCREASE

Treasury officials have announced that the U.S. gold stock increased by \$50 million during the month of April. The Federal Reserve Board showed a \$73 million increase in gold during March and April.

ON SECURING ASIA

President Johnson and Prime Minister Harold E. Holt of Australia have pledged joint determination to do all they can to restore security in Asia and to seek reconciliation and peace.

ON EXTENDED DUTY

A possible 3,700 Air Force officers face extended duty according to the Pentagon because the Air Force needs experienced officers. The new order will mean delays in retirements or resignations from colonel on down for up to one year.

PEACE CORPS RECRUITS

The Peace Corps is concentrating its efforts in recruiting college graduates. In the past six years, the proportion of college graduates has increased to 80.3 per cent from 70.6 per cent in 1962.

ABOUT YOUR HOME

Do you drive yourself to "keep up with the Joneses?" If so, you are doing yourself and your family a great disservice. It is an actual fact that attempts to keep up with the Joneses can often lead to the mental hospital.

It is unfortunate that in our society the demand for respect takes so many forms. Most people are constantly striving to obtain all the respect that wealth or position make possible.

We are constantly trying to discover means of scoring prestige points in order to get ahead of competitors having the same income.

We are told that in this department the woman pays the highest price. Women are

especially active in regard to competition, and they quite often pay in terms of mental health.

No home can be happy and normal where so much importance is attached to material things and social position. Children are greatly influenced by this attitude on the part of mother. It affects their feeling of security.

The repercussions do not stop here. Quite often a woman who is putting such tremendous effort into keeping up with the Joneses is the type that feels she is a cut or so above her husband socially. She not only undemands the authority of the male in the house but many create a pathological environment for the children.

CITY OF MULESHOE Muleshoe, Texas

CONDENSED STATEMENT OF CASH RECEIPTS AND DISBURSEMENTS For The Year Ended March 31, 1967

	Total All Funds	General Fund	Water and Sewer Revenue Fund	Social Security Fund	Golf Course Fund	Tax Interest and Sinking Fund	Water and Sewer Pro-Rata Fund	Library Bookmobile
CASH BALANCE APRIL 1, 1966	\$155 470 30	\$ 52 317 66	\$ 73 707 70	\$ -0-	\$ 365 21	\$25 548 28	\$3 531 45	\$ -0-
RECEIPTS								
Taxes, Interest and Penalties	\$109 751 61	\$ 73 731 80	\$ -0-	\$ -0-	\$ -0-	\$36 019 81	\$ -0-	\$ -0-
Utilities and Trash	140 620 72	22 886 00	117 734 72	-0-	-0-	-0-	-0-	-0-
Interfund Transfers	14 000 00	14 000 00	-0-	-0-	-0-	-0-	-0-	-0-
Fines	2 155 00	2 155 00	-0-	-0-	-0-	-0-	-0-	-0-
Utility Franchise Tax	13 288 01	13 288 01	-0-	-0-	-0-	-0-	-0-	-0-
Redemption of Securities	33 416 57	-0-	10 080 00	7 736 57	-0-	15 600 00	-0-	-0-
Water and Sewer Taps	1 855 00	-0-	1 855 00	-0-	-0-	-0-	-0-	-0-
Meter Deposits	50 00	-0-	50 00	-0-	-0-	-0-	-0-	-0-
Other	44 400 44	8 844 43	9 258 85	1 345 43	10 668 28	624 00	-0-	13 659 45
Water Pro-Rata	1 098 55	-0-	-0-	-0-	-0-	-0-	1 098 55	-0-
TOTAL RECEIPTS	\$360 635 90	\$134 905 24	\$138 978 57	\$9 082 00	\$10 668 28	\$52 243 81	\$1 098 55	\$13 659 45
TOTAL FUNDS TO ACCOUNT FOR	\$516 106 20	\$187 222 90	\$212 686 27	\$9 082 00	\$11 033 49	\$77 792 09	\$4 630 00	\$13 659 45
DISBURSEMENTS								
General Government - Operations	\$122 776 76	\$122 776 76	\$ -0-	\$ -0-	\$ -0-	\$ -0-	\$ -0-	\$ -0-
Water and Sewer Operating Expenses	53 763 19	-0-	53 763 19	-0-	-0-	-0-	-0-	-0-
Capital Outlay	24 289 68	12 692 72	11 596 96	-0-	-0-	-0-	-0-	-0-
Interfund Transfers	14 000 00	-0-	14 000 00	-0-	-0-	-0-	-0-	-0-
Bonded Indebtedness - Principal								
Interest and Agents Fees	60 000 15	-0-	23 829 50	-0-	-0-	36 170 65	-0-	-0-
Investments	51 055 28	-0-	24 749 28	9 082 00	-0-	17 224 00	-0-	-0-
Other	18 061 84	-0-	672 25	-0-	10 863 87	-0-	4 193 10	2 332 62
TOTAL DISBURSEMENTS	\$343 946 90	\$135 469 48	\$128 611 18	\$9 082 00	\$10 863 87	\$53 394 65	\$4 193 10	\$ 2 332 62
CASH BALANCE MARCH 31, 1967	\$172 159 30	\$ 51 753 42	\$ 84 075 09	\$ -0-	\$ 169 62	\$24 397 44	\$ 436 90	\$11 326 83

Prepared by Williams & Morrison, C.P.A.'s, Muleshoe, Texas

TRADE CLASSIFIED SELL BUY ADS LEASE

WANT ADS PH. 272-4536

CLASSIFIED RATES

First insertion, per word - 6¢
Second and additional insertions - 4¢
Minimum charge - 65¢
Card of Thanks - \$1.00
Double rate for blind ads
Classified Display: - 85¢ per col inch
95¢ col. inch for reverses

DEADLINE FOR INSERTION

Thursday's Muleshoe Journal - 4 p. m. Monday
Sunday's Bailey County Journal - 4 p. m. Thursday

The Journals reserve the right to classify, revise or reject any classified ad.

Check advertisement and report any error immediately. Journals are not responsible for error after ad has already run once.

SPECIAL OF THE WEEK

REGULAR NOW

4 Row Lilliston Cultivator \$840 **\$650.**
3 Point Johnson V Type Ditcher \$175. **\$120.**

FRY & COX INC.

PHONE 272-4511 MULESHOE, TEXAS

PERSONALS

AVON, Phone 3510, 1-46-tfc

for rent, 15 ft. camper. By day or week. Call 272-3163, 1-35s-tfc

Reduce safe, simple and fast with GoBese tablets. Only 98¢. Damron Drug. 1-15t-20tc

Want to Do Your Painting By Contract or by Hour-Reasonable rates. E. L. Gootman 824 South First, Phone 272-4626. -15s-tfc

CARD OF THANKS

We wish to take this opportunity to thank our many friends and neighbors for every act of kindness shown us during the illness and demise of our husband and father. The beautiful floral offerings the bountiful meals and all those who served them. May Our Lords richest blessings be with each of you.

Mrs. J.A. Young
Mr. and Mrs. A.T. Peterson

SPARE TIME INCOME EXCELLENT OPPORTUNITY. We will appoint a Distributor for this area to service exciting new type coin operated dispenser. 6 to 12 hours a week. Nets excellent income. More full time. NO SELLING and NO OVERHEAD.

To qualify you must: Have good references. Have serviceable car. Have willingness to follow proven program. Have \$800.00 to \$2200 to invest. Secured by inventory.

For personal interview write GREAT SOUTHERN DISTRIBUTORS, Drawer 19645, Dallas, Texas 75219. Include Phone number. 1-24t-ltp

CARD OF THANKS

We take this means to express our deepest appreciation to the doctors and nurses of West Plains Hospital for the attentiveness and care given our loved one, Joe Arnold, while he was in their care and to our many friends who have shown their loving kindness at his death. Each of you shall always be remembered in our prayers.

Carrie and Clarence Arnold
ltp

HELP WANTED

Help Wanted, Apply in Person - Corral Drive in. 3-22s-tfc

Help Wanted; Carhop wanted- Bill's Drive in. 3-23t-tfc

6 ROOMS FOR RENT

2 Bedrooms for rent, 410 West 2nd, 6-23t-tfc

3 REAL ESTATE FOR SALE

FOR SALE OR RENT: 2 and 3 bedroom houses. RENT: 1 and 2 bedroom apartments call D.L. Morrison 272-4886 or 272-3421. 8-13t-tfc

3 Bedroom home, 2 baths, Sell Equity, or Trade for smaller home. Phone 272-4642

8-23t-tfc

For Sale, 2 bedroom, 1 3/4 bath, 1 block from High School. 12X24 insulated storage barn. New fruit trees. Low equity \$60.00 per month. 6% loan Contact S.E. Goucher or call area 405 PL 7-2352.

8-24t-tfc

For Sale: Must Sell Immediately, Owner being transferred Low Equity - 3 bedroom brick 2 bath. Paneled Kitchen and Den Built-in, Draped Landscaped yard, located on Pavement, 906 Ivey Phone 272-4086

8-15s-tfcs

Sale or trade 3 bedroom house. In Muleshoe for property in Hereford W. Buck, Hereford. 8-15s-tfc

For Sale, Home in Richland Hills area, 3 bedroom, 2 bath, cathedral ceiling den, Very low equity and assume loan, phone 272-3686. 8-24t-2tc

8-24t-2tc

Sale or trade 3 bedroom house in Muleshoe for anything of value. Phone 364-2450, Hereford. 8-24t-tfc

8-24t-tfc

For Sale: 2 bdr. on corner lot, low equity take up payments call after five, 3270 8-24s-8tc

8-24s-8tc

FOR RENT OR SALE: Three bedroom house two baths, 822 West Sixth - Contact Charles Bills, Spur, Texas. 4-15t-tfc

4-23s-8tc

For Rent: Three bedroom house, 70 per month, Call Besie Purdy, Sh 4-1730, Lubbock, Texas. 4-24t-tfc

4-24t-tfc

For Rent 3 room furnished house, Call 4080. 4-24t-tfc

FOR RENT: 2 bedroom house newly decorated. Call 272-3038 or see Mrs. Jack Lender-son at 1818 West Ave. D. 4-23t-tfc

4-23t-tfc

For rent, 3 bedroom with car port Curby Brantley 272-4109 4-23s-tfc

4-23s-tfc

3 APTS. FOR RENT

FOR RENT: 3 room and bath furnished apt. See Sam Gholson Sam's Auto Store 5-20s-tfc

For rent-furnished apt. with bills paid, Curby Brantley, ph. 272-4109 5-23s-tfc

For rent: nice clean apartments air conditioned. Layne Apt. next to Beaver's Flowerland. 5-23t-tfc

5-23t-tfc

FURNISHED APARTMENTS

Trailer Space, Briscoe Apartments. Phone 272-3465 5-23t-tfc

For rent: nice clean furnished apartment. Elderly couple preferred. 808 S Ist., 272-4465 5-23t-4tc

5-23t-4tc

FOR SALE OR TRADE My equity in 2 bedroom home, Carport, furnace heat, Located at 305 Birch. If interested contact C.J. Tiller 946-2627. 11-23t-tfc

SALE, TRADE, OR LEASE, Rent almost new, extra nice, 3 bedrooms, large den, carpet, 2 baths, electric heat, fence, near school, 810 W. 6th, Muleshoe Robt. Eddins, owner, 1710 Main, Lubbock, PH. 2-2895 11-24t-tfc

12 HOUSEHOLD GOODS

For "a job well done feeling" clean carpets with Blue Lustre. Rent electric shampooer \$1. Higginbotham-Bartlett. 215 Main, 12-24t-ltc

"TAKE OVER PAYMENTS, in Muleshoe area on 1966 Model Singer Sewing Machine, Automatic Zig-Zag, blind hems, fancy patterns, etc. 4 payments at \$6.74, discount for cash. Write Credit Dept. 114, 19th Street, Lubbock, Texas. 12-23t-tfc

Expert TV technician, 27 yrs. experience. Poynor's White Store, Phone 272-3511. 12-23t-tfc

FOR "a job well done feeling" clean carpets with Blue Lustre. Rent electric shampooer, \$1. Higginbotham - Bartlett 215 Main. 12-24s-ltc

12-24s-ltc

15 MISCELLANEOUS

3 Bedroom Home on 10 acres. Irrigation well all fenced Hog proof out buildings. Will sell or trade on 3 Bedroom Brick House in Muleshoe. See or Call W.F. Harper 965-2635 4 miles East on Hy. 70 1 1/4 miles North Muleshoe 11-23s-3t

For Sale, used clarinet, in good condition, call Cindy Phillips, 925-3510. 11-23s-tfc

For rent: yard roto-tiller hourly & day rates Johnson-Nix, 272-4294. 15-23t-8tc

Have buyer for house with small down payment Cross Real Estate 511 South Ist. 15-21s-tfc

GERT'S a gay girl - ready for a whirl after cleaning carpets with Blue Lustre. Rent electric shampooer \$1. Sam's TV Auto Store, 222 Main St, Muleshoe, Texas. 15-24s-ltc

Wanted Sewing and ironing reasonable 114 West Ave. E. 15-24t-3tp

For Sale, stewing hens on foot, \$25 each, ph 272-3332 or 925-3452. 15-24t-4tc

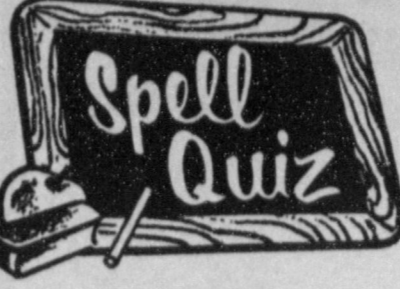
Need someone in this area to assume small monthly payments on spin piano. Write Credit Manager, Southwest Plano Co., Box 3035, Lubbock, Texas 79400 15-24t-4tc

SPOTS before your eyes -- on your new carpet-- remove them with Blue Lustre. Rent electric shampooer \$1. Sam's TV Auto Store, 222 Main St, Muleshoe, Texas. 15-24t-ltc

Hinn Soybeans, combine run, \$2.85 per bushel, C.W. Bradshaw 2 miles east, 1/2 north of Clay's Corner, Phone 965-2797. 17-24s-ltp

REPORT TURNS TOO TRUE

LAWRENCEBURG, Ky. (AP)—A motorist stopped State Trooper Leslie Higgins to report he'd seen a cow on the highway. Higgins investigated but found nothing. An hour later, Higgins received a call about an accident. Arriving at the scene, Higgins found an auto had hit a cow. The driver was the one who turned in the report earlier.



Correct Answer is: marshal

\$5.00 Will Be Given Away
Mr. McEndree, Clovis, N.M. Won The \$25 Last Week
SALE EVERY FRIDAY 8:00p.m.
Furniture, Appliances, Tools & Miscellaneous
We buy & sell anything of value
Your Consignments Welcome
KNOWLES' AUCTION
103 Main Phone 272-4311 Muleshoe

TELEVISION SCHEDULE FOR THE MULESHOE AREA

KING BROS. GRAIN & SEED CO. Complete ELEVATOR SERVICE AND SEED PROCESSING FOR THE Muleshoe AREA	KGNC-TV Amarillo Muleshoe Cable 4 DAYTIME	KVII-TV Amarillo Muleshoe Cable 5 DAYTIME	KFDA-TV (10) Amarillo Muleshoe Cable 6 DAYTIME	KCBD-TV (11) Lubbock Muleshoe Cable 2 DAYTIME	KLBK-TV (13) Lubbock Muleshoe Cable 3 DAYTIME															
	7:00-Today 7:25-News 7:30-Today 9:00-Snap Judge 9:25-NBC News 9:30-Concra, 10:00-Pat Boone 10:30-Holly, Star 11:00-Jeopardy 11:30-Eye Guess 11:55-NBC News 12:00-News 12:10-Irrig. Rep. 12:15-Weather 12:20-Ruth Brent 12:30-Make Deal 12:55-NBC News 1:00-Days of Live 1:30-Doctors 2:00-Another W. 2:30-Don't Say 3:00-Match Game 3:25-NBC News 3:30-Mike Doug. 4:30-Laramie 5:30-H-B Report	8:00 - Fugitive 9:00 - J.Lalane 9:30 - Holly wood 11:30 - Donna Reed 12:00 - News 12:15 - Com. C 10:00 - Super. Sw 10:30 - One in a ml 11:00 - Everybody 1:00 - Newly wed 1:30 - Dream Girl 1:55 - News 2:00 - Gen.Hos. 2:30 - Nurses 2:30 - Dark Shad. 3:00 - Dating Gam 3:30 - Movie 5:00 - News 5:30 - Have Gun 6:00 - News	6:30 - Film Fea. 7:00 - Farm News 7:30 - Tri Report 8:00 - Capt. Kang. 8:25-Report 9:00 - Romper R 9:30 - V 9:30 - Beverly H. 10:00 - Andy 10:30 - Dick Van 11:00 - Love of L 11:25 - News 11:30 - Search T 11:45 - Guiding L 12:00 - News 12:10 - Weather 12:30 -The World 1:00 - Password 1:30 - Art Link 2:00 - To Tell T 2:25 - CBS News 2:30 - Edge of Ni 3:00 - Match Game 3:30 - Can. Cam. 4:00 - Mr. Mim. 5:00 - Lone Rang 5:30 - News 6:00 - News	7:00-Headline 7:05-Farm Report 7:25-Weather 7:30-Today 8:25-Report 9:00-Buckaroo 500 9:25-News 9:30-Concentration 10:00-Pat Boone 10:30-Hollywd. Sq. 11:00-Jeopardy 11:30-Eye Guess 11:55-NBC News 12:00-Report 12:15-Com Closeup 12:30-Make Deal 12:55-News 1:00-Our Lives 1:30-The Doctors 2:00-Another World 2:30-You Don't Say 3:00-Match Game 3:25-News 3:30-Dating Game 4:00-Donna Reed 4:30-Lone Ranger 5:00-Love Beaver 5:30-News	5:55-Sign On 6:00-Sun. Sem. 6:30-Popeye 6:45-Farm Rpt. 7:05-News 7:30-Morn Show 8:00-C. Kang. 9:00-Can. Cam. 9:30-Hillbillies 10:00-Andy 10:30-D.Dyke 11:00-Love of Life 11:30-Search 11:45-Guiding 12:00-n 12:00-News 12:12-Farm Ran. 12:25-Weather 12:30-World Turns 1:00-Fassword 1:30-Houseparty 2:00-Gen.Hosp. 2:30-Edge Night 3:00-Sec. Storm 3:30-Movie 5:00-Rifleman 5:30-CBS News	THURS EVENING 6:00-News 6:15-Weather 6:25-Sports 6:30-Lucy Com. 6:30-Lucy Com. 7:30-Three Sons 8:00-Movie 10:00-News 10:30-FBI 11:30-Riverboat 12:30-Sign Off	THURS EVENING 6:30 - Colliseum 7:00 - Lucy-Desl 7:30 - Three Son 8:00 - Movie 10:00 - News 10:15 - Weather 10:25 - Sports 10:30 - Movie 10:55 - News 11:00 - Movie	THURS EVENING 6:00-News 6:15-Weather 6:25-Sports 6:30-Lucy Com. 6:30-Lucy Com. 7:30-Three Sons 8:00-Movie 10:00-News 10:30-FBI 11:30-Riverboat 12:30-Sign Off	FRIDAY EVENING 6:00-News 6:15-Weather 6:25-Sports 6:30-Tarzan 7:30-U.N.C.L.L.E. 8:30-THE Cat 9:00-Col. Queen 10:00-Report 10:30-Tonight Show 12:00-Sign Off	FRIDAY EVENING 6:30 - Wild West 7:30 - Hogans H. 8:00 - Movie 10:00 - News 10:30 - Movie 10:55 - News 11:00 - Movie	FRIDAY EVENING 6:00-News 6:15-Weather 6:25-Sports 6:30-Tarzan 7:30-U.N.C.L.L.E. 8:30-THE Cat 9:00-Col. Queen 10:00-Report 10:30-Tonight Show 12:00-Sign Off	FRIDAY EVENING 6:00-News 6:10-Weather 6:20-Sports 6:30-Time Tunn. 6:30-H.Heroes 8:00-The Monroe 9:00-Fugitive 10:00-News 10:30-Movie	SATURDAY 7:00-Roy Rogers 8:00-Super 6 8:30-Atom Ant 9:00-Flintstones 9:30-Space Kids 10:00-Sec. Squir. 10:30-Jetsons 11:00-Cool McCool 11:30-Movie 1:00-Sandy Koufax 1:15-Baseball 4:00-Flame Bar. 5:30-Frank McGee 6:00-News 6:15-Weather 6:25-Sports 6:30-Flipper 7:00-D.Eat Daisies 7:30-Get Smart 8:00-Movie 10:00-News 10:15-Weather 10:25-Sports 12:00-Sign Off	SATURDAY 6:45 - Cartoon 7:00 - C. Kang. 8:00 - M. Mouse 8:30 - Under Dog 9:00 - Frankenstein 9:30 - Space Ghost 10:00 - Superman 10:30 - Lone Ranger 11:00 - Road Runner 11:30 - Beazles 11:45 - Tom & Jerry 12:30 - News 1:00 - Blondie T. 2:30 - Soccer 4:00 - Wilborn Bros. 4:30 - Ernest Tubbs 5:30 - P. Waggoner 6:00 - News 6:30 - Jackie G. 7:30 - Mission Imp. 8:30 - Pistol & P. 9:00 - Gunsmoke 10:00 - News 10:15 - Weather 10:30 - Movie 10:55 - News 11:00 - Movie	SATURDAY 7:00-Roy Rogers 8:00-Super 6 8:30-Atom Ant 9:00-Flintstones 9:30-Space Kids 10:00-Sec. Squir. 10:30-Jetsons 11:00-Cool McCool 11:30-Movie 1:00-Sandy Koufax 1:15-Baseball 4:00-Flame Bar. 5:30-Frank McGee 6:00-News 6:15-Weather 6:25-Sports 6:30-Flipper 7:00-D.Eat Daisies 7:30-Get Smart 8:00-Movie 10:00-News 10:15-Weather 10:25-Sports 12:00-Sign Off	SATURDAY 6:55-Sign On 6:00-Sun. Sem. 6:30-Carnival 7:30-Monster 8:00-M.Mouse 8:30-Underdog 9:00-Frankenstein 9:30-Beattles 10:00-Superman 11:00-R. Runner 11:30-Beagles 12:00-Tom & J. 12:30-Bandstand 1:30-Coun. Junc. 2:00-Wrestling 3:00-Ind. 500 3:30-Golf 4:00-US Open 5:00-Ernest Tubb 5:30-Pickin Time 6:00-P. Wagner 6:30-L. Welk 7:30-L. Welk 8:30-Pistols & P. 9:00-Gunsmoke 10:00-News 10:20-Movie 12:30-Late Show	SUNDAY 7:30 - Mod. Educa 8:00 - Silver Wing 8:30 - Hamlet E. 9:00 - King Kong 9:30 - Betales 10:00 - Casper 10:30 - Milton 11:00 - Bugs Bunny 11:30 - Magilla 12:00 - Hoppity H. 12:30 - Bandstand 1:30 - Porky Pig 2:00 - Beany & C 2:30 - M. Dillon 3:00 - Have Gun 3:30 - Golf 4:00 - Wide W.S. 5:30 - Wrestling 6:30 - Dating G. 7:00 - Newley Wed 7:30 - Law, Welk 8:30 - Holly, Pal 9:30 - Rango 10:00 - N.W. & S 10:25 - Movie	SUNDAY 8:00 - Gosp. Hr. 8:30 - Church 9:30 - LaFevers 10:00 - Wills Fam 10:30 - Religious 11:00 - Showcase 1:00 - Science Fic 1:30 - Ice Hockey 3:30 - Westerners 4:00 - Lucy 4:30 - Amateur 5:00 - Zist. Cen. 5:30 - News 6:00 - Lassie 6:30 - About Time 7:00 - Ed Sullivan 8:00 - Smothers B. 9:00 - Can. Cam. 9:30 - W. My Line 10:00 - News 10:15 - Weather 10:25 - Sports 10:30 - Movie 10:55 - News 11:00 - Movie	SUNDAY 8:00-Cartoons 8:30-Glory Rd 9:00-H.o.F.Truth 9:30-Answer 10:00-Discovery 10:30-Cutting Edge 11:00-Faith 12:00-Meet Press 1:00-High Tide 3:00-Dick Powell 4:00-Golf 4:30-GE Bowl 5:00-McGee Rept 5:30-Dragnet 6:00-Report 6:30-Walt Dis 7:30-Let's M. Deal 8:00-Bonanza 9:00-Saint 10:00-Report 10:30-Movie	SUNDAY 6:55-Sign On 7:00-Looney T 7:30-Space G. 8:00-Casper 8:30-Movie 10:15-This is L. 11:45-"Horizons" 12:00-Directions 12:30-Inquirt 1:06-Face Nation 1:30-Soccer 3:30-TBA 4:00-Lucy 4:30-A.m. Hour 5:00-Gill.IIs. 5:30-Lassie 6:00-Voyage 7:00-Ed Sullivan 9:00-Invaders 9:00-Mission Imp 10:00-News 10:30-Movie 12:20-Sign Off

NEWSPAPERS
MAKE A BIG DIFFERENCE IN PEOPLE'S LIVES

Keep up with your HOMETOWN NEWS

SUBSCRIBE NOW!!!!

WESTERN DRUG
Your Walgreen Agency

Prescriptions
Drugs & Supplies
for all your Veterinarian needs
Fountain Service



WHERE DO WE GO FROM HERE? -- Texas Tech freshman coeds Marquita Seaton (l), Lazbuddie, Tex., and Kristine Lackorn, Seguin, Tex., look confused in the rush to register for summer session. They are among the 7,000 students checking into the Tech campus this week for the first six-weeks of the 12 - week summer academic program. (Tech Photo)

Earth News

by Buleah Newton

Mrs. Billy Free and girls of Stevenville have been visiting her sister, Mrs. Fern Bock and mother-in-law, Mrs. Mildred Free and other relatives and friends.

Funeral services for Mrs. J.D. Wheatley, 81, of Haskell, Texas were held Thursday June 8th in the First Baptist Church of Haskell. She was the mother of A.E. Wheatley and grandmother of Tommy Wheatley and Mrs. Larry Tunnell of Earth. Funeral for Mrs. Cora Oxenrider was held at Sayre, Okla. June 9 with graveside rites at the Sayre, Daxycemetery. Mrs. Oxenrider was the last one of the L.B. Ginn family and Mrs. Nannie Ginn is the only living in-law of the generation. Those attending the services from this area were, Mr. and Mrs. C.E. Ginn, Dimmitt; Mrs. Nannie Ginn and Buleah Newton, Earth.

Mrs. Mildred Free underwent eye surgery in Lubbock last week. She is doing fine and is now recuperating at home. Mrs. Dora Bullis is a patient in the Amherst Hospital. It has been reported, she is slightly improved.

"Choir of First Baptist Church has Party"

Choir of the First Baptist Church had a cook out and party in the back yard of the parsonage. It was a birthday party and farewell get-together for Joe Coombes, music director of the church. Mr. Coombes is going to Thailand Island to do mission work this summer. Joe was presented a birthday cake with one candle. The cake was made from card board, then iced and decorated. When Joe cut the cake he was shocked, and pleasantly surprised, to find inside the cake of love of offering of more than \$50.

A delicious supper of fried chicken, potato salad, baked beans and home made ice cream was enjoyed by approximately 40 people from the adult, youth and junior choirs.

After supper those who so desired played volleyball.

Mr. and Mrs. Bill Man and Jimmy have just returned from San Antonio where they had taken Jimmy to a clinic. This is something fairly new for children and some adults who have a brain damage. The Man's are going to have to have help and co-operation from friends and neighbors. It will take 5 people to give Jimmy some of the therapy which is called, patterning. Those who would give of time and effort's give your name and time you can work to Dorothy Wood.

"Joe Salem Speaks at Methodist Church."

Joe Salem, district lay leader of Plainview District, Methodist Church, spoke and showed films in Earth Methodist Church, Sunday night.

Twenty seven preachers and lay leaders toured, spoke and preached in South America. The men were from different parts of the United States, from New York to California. On one occasion in Panama, hungry children were seen on the road. They gave them souvenirs and sang, "The Yellow Rose of Texas." Mr. Salem said the span of life in Asia, Africa and South America was less than one half of ours, due to lack of food and medical care.

In Rio de Janeiro shoe shine was 5 cents. They gave the shoe shine boy a new testament in Spanish and he quit shining shoes to read Gods word.

The second week was spent in Argentina. This is an extremely dry country. They have some canals and irrigation. The people are thrilled to know some one loves and cares for

them. They were told of Jesus love and how he had no earthly possessions and was buried in a barrowed tomb.

They found, hot dog and hamburger stands in Argentina but, the meat was not good. It had a wild taste.

Outside one city was a huge statue of Jesus Christ. A Catholic Priest testified at the altar of the Methodist Church and prayed with them. He went with the group to visit the Hospital. There were 28 patients crowded in one room.

In some areas they pumped water from the streams with water wheels. They ate in the home of Davy Crockett's brother and prayed with the family. As they left Argentina the crowds gathered to say good bye. They sang hymns and prayed.

In Santiago Chile they saw over looking the city a statue of Mary the mother, the people called it the mother of the town. Outside the town were statues of Jesus on the cross and the two Mary's on either side.

Adli Stevenson was with a group of 60 dignitaries who were there for the inauguration of the President.

The last stop was Peru. Here were poor people and poverty. The church has housing projects here. Most of the people are Indians. The tour was well worth while, there were scores of dedications in the, "Win one for Christ" tour.

Mrs. Floyd Davis, of Okla. City, is visiting this week with her sisters, Mrs. Bab McCaskill and Mrs. Clarence Wages. Mrs. Davis is the former Pearl Henderson and grew up in this community.

Visiting in the Clarence Wages home this week is his mother and sister. Clarence seems to be improved. He now weighs 99 lbs.

Vacation church school at the Methodist church ended Sunday night with a sharing program. Everyone toured the class rooms and saw the work the children and teachers had done the passed two weeks. Cookies, coffee and punch was served by the W.S.C.S.

Party Honoring Melodie Brock.

Miss Melodie Brock was honored with a party, before returning to Houston for treatments, in the home of Mr. and Mrs. Jack Angeley. Hostesses were, Mrs. Angeley, Jenny Angeley and Terry Crisp. Melodie was presented with a Sunshine Box, consisting of a gift to be opened each day she is at Houston, which will be seven weeks.

Sandwiches, chips, cokes, and banana-splits were served to Susan Britton, Gay Upchurch, Pat Bryant, Beverly Miller, Melodie Brock, Terry Crisp, Linda Gregory, Gary Kelley, David Templeton, Eddie Jones, David Jacquias, Allen Hatfield, Randy Clayton, Randy Washington, Mike and the hostesses, after which games were played. James Mullis of Littlefield visited friends in Earth Saturday afternoon.

Mr. and Mrs. Abe Griffin visited their son and family, Mr. and Mrs. Larry Griffin, in Abernathy, Sunday.

Earth Order of the Eastern Star Holds installation".

Earth Order of the Eastern Star, Chapter no., 870, held open installation at the Masonic hall, Saturday night June 10th.

Eva Hopping, Worthy matron and Cliff Hopping, Worthy Patron presided, Millie Armstrong was mistress of ceremonies, Musical Prelude, Mrs. Jov Wilson, Reading, Becky Littleton, Musical selections, Con-

nie, Annita and Donita Kelley, presentation of Bible, Jim Laing, presentation of Square and Compasses, Maribeth and Stewart Laing.

Grand installing officers were, Flora Bess Boone, past grand matron; grand installing marshall, Eula Kelley; grand installing chaplin; Hellen Kelley; grand installing organist, Jov Wilson; grand installing secretary, Gayle Littleton. Those installed were, Worthy matron Elizabeth Laing, Worthy patron, George W. Laing; associate matron, Fern Bock; associate patron Melvin Bock; Secretary, Eva Hopping; treasurer Jean Byers; conductress, Oletha Sanders; associate Conductress Madell Simmons; Chaplin, Beth Kelley; Marshall, Ann Kelley; Organist, Lucille Campbell; Adah, Mary Clayton, Ruth, Jean Craft; Esther, Mary Murrill; Martha, LaJuana O'Hair, Eleeta, Joy Runyon, Warder, Wanda Shelley; Sentinel, Jerry Kelley. Jean Craft sang, "His Eye is on the Sparrow" and Jimmy Craft gave the benediction.

Jimmie Savage

In Reserve Training Camp

FT. SILL, OKLA. (AHTNC) --Cadet Jimmie C. Savage, 22, son of Mr. and Mrs. Curtis M. Savage, Route 2, Sudan, is attending Army Reserve Officers; Training Corps summer camp at Ft. Sill, Okla., with his unit from Texas Agricultural and Mechanical University, College Station.

During the encampment, which began June 14, he will receive six weeks of training in leadership, rifle marksmanship, physical conditioning and other military subjects. Upon successful completion of summer camp and graduation from college, he will be commissioned a second lieutenant in the U.S. Army.

Cadet Savage's wife, Kandis, lives on Route 3, Bryan. He is a 1963 graduate of Sudan High School.

David Brinkley

Featured Speaker

David Brinkley, the Washington half of the NBC-TV "Huntley-Brinkley Report," will be the featured speaker at the 15th annual Andrews County Chamber of Commerce Banquet set for January 20, 1968. Brodie Hutchinson, President of the Andrews Chamber of Commerce, announced the 1968 banquet speaker today (Saturday). Brinkley's appearance in Andrews will mark the second consecutive year that a nationally-known personality has been engaged by the Andrews chamber.

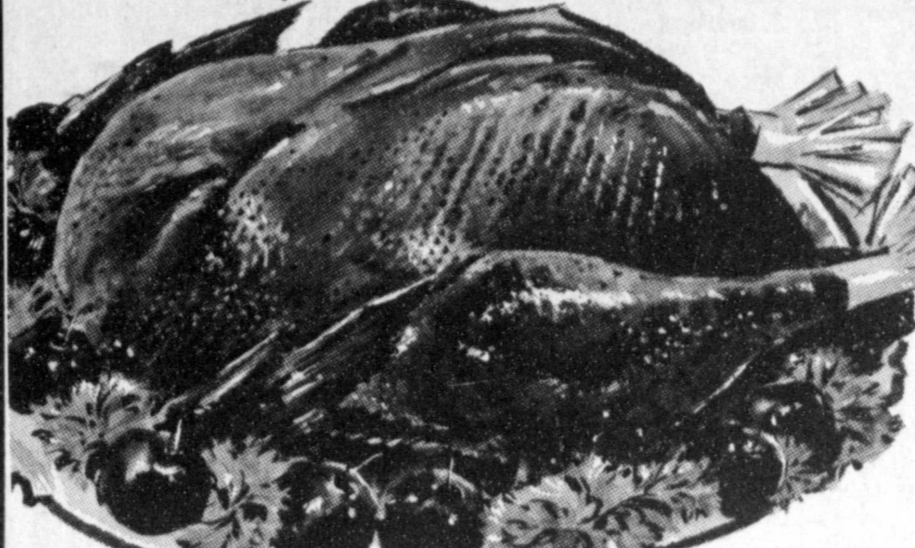
Dr. Norman Vincent Peale, world renowned minister and author, spoke in Andrews last Wednesday at the chamber of commerce banquet. Hutchinson pointed out that the January banquet will be held on a Saturday night because Brinkley is on the air each evening Monday through Friday.

"We feel extremely fortunate to obtain a man of this caliber," Hutchinson said. "We hope that we can continue to bring to West Texas nationally-known men who have a message to meet our needs."

DINING GUIDE

for Father's Day!

TURKEYS



Norbest "USDA" Grade A 14 to 16 Lb. Avg.

Lb. **39¢**

FRYER PARTS

- "USDA" Grade A Fresh Market Cut
- DRUMSTICKS Lb. 49¢
 - THIGHS Lb. 49¢
 - BACKS Lb. 15¢
 - NECKS Lb. 10¢
 - WINGS Lb. 23¢
 - WISHBONES Lb. 79¢
 - BREASTS Lb. 59¢

Delsey 4 Roll Pkg. BATHROOM TISSUE 39¢

- COOKIES Oreo Creme 1 Lb. Cello Pkg. 45¢
- Kraft 7 1/4 oz. Box
- MACARONI & CHEESE DINNER 19¢
- Carnation Light Meat 9 1/4 oz. Family Size Can
- TUNA 45¢
- White Swan #300 Can
- PINTO BEANS 2 for 25¢
- Nestle 100% Pure Tea 3 oz. Jar
- INSTANT TEA \$1.09
- Libby's 1/2's Can
- VIENNA SAUSAGE 5 for \$1.00
- Sunshine Krispy 1 Lb. Box
- CRACKERS 35¢
- Hunt's 46 oz. Can
- TOMATO JUICE 3 for 89¢
- Mission #303 Can
- SWEET PEAS 15¢
- Kraft Pure Peach 18 oz. Jar
- PRESERVES 39¢
- Wish-Bone Thousand Island 8 oz. Bottle
- DRESSING 29¢
- 12 Bottle Ctn. Plus Deposit
- COCA-COLA 79¢
- 1/2 Gal.
- PUREX BLEACH 29¢
- Chiffon Giant Size
- LIQUID DETERGENT 39¢
- 24 oz. Bottle
- WESSON OIL 49¢
- Alpo #1 Tall Can
- DOG FOOD 25¢
- St. Joseph 100 Count Bottle
- ASPIRIN 39¢
- Mennen Reg. Price 79¢
- SKIN BRACER 49¢

REGISTER NOW FOR 1 OF 6 FREE Pony-Bikes ONE GIVEN AWAY EVERY WEEK Winner To Be Announced Each Monday On KMUL Radio

GUNN BROS. STAMPS DOUBLE EVERY WEDNESDAY.

Listen to MULETRAIN over KMUL 10:15a.m. sponsored by WHITE'S CASHWAY

Be Sure To REGISTER For CLOVERLAKE APPRECIATION CONTEST FREE 3 GRAND PRIZES Plus Hundreds Of Gal. Of Free Ice Cream. Register Each Time You Visit Our Store

Pinkney's Sun Ray Sugar Cured Whole HAMS Lb. 49¢

- Pinkney's Sun Ray Sugar Cured BUTT HALF HAMS Lb. 49¢
- Pinkney's Sun Ray Sugar Cured SHANK HALF HAMS Lb. 43¢
- Rodeo's All Meat Skinless FRANKS 12oz. Pkg. 39¢
- Hormel's Red Label Thin Sliced BACON 1 Lb. Pkg. 79¢

DASH \$1.79 Jumbo Size Box

Wapco Crushed #300 Can PINEAPPLE 19¢

COFFEE 59¢

Kimbell's Drip or Reg. 1 Lb. Tin

FROZEN FOOD

- Swift's 12 oz. Pkg. BREADED VEAL STEAKS 69¢
- Banquet T.V. DINNERS 39¢
- Bird's Eye COOL WHIP Pt. Ctn. 25¢
- Bird's Eye 10 oz. Pkg. CHOPPED MUSTARD GREENS 17¢

GRAPEFRUIT Texas Ruby Red Lb. 7¢

- California Sunkist ORANGES 8 Lb. Bag 69¢
- TOMATOES Cello Pkg. Each 29¢
- Texas Garden Fresh CARROTS 1 Lb. Cello Bag 10¢

POTATOES Arizona Reds 10 Lb. Bag 39¢

Whites' CASHWAY

We Reserve The Right To Limit Quantities