

814 6 15 73 12/31/2010
SOUTHWEST MICROFILM
2627 E. YANDELL
EL PASO, TX 79903



THE Lynn County News



VOLUME 101, NUMBER 34

TAHOKA, LYNN COUNTY, TEXAS

THURSDAY, AUGUST 19, 2004

8 PAGES PLUS INSERT

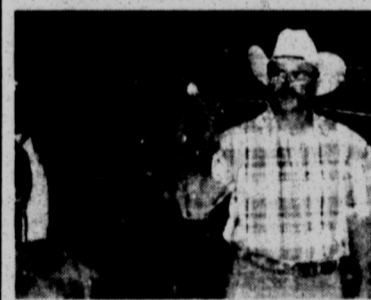
50¢

What's Inside

- **Blood Drive** - pg. 2
- **Garden Tour** - pg. 2
- **TISD Adopts Budget** - pg. 3
- **City Tax Rate** - pg. 3
- **Former Tahoka Doctor Going To Kuwait** - pg. 5
- **City Weed Warning** - Photo, pg. 6
- **Students Must Get Vaccines** - pg. 6

Scrimmage Moved To Friday Night

The Bulldogs scrimmage here against Crosbyton, originally scheduled for tonight (Thursday) has been rescheduled for Friday night, Aug. 20. The scrimmage starts at 5 p.m., and Band Boosters will be offering concession items, including grilled hamburgers.



Unusual Ministry

Area residents are invited to an unusual ministry presentation in Tahoka Sunday night, to be held at the 4-H Arena (behind the baseball complex on South 9th Street in Tahoka) beginning at 6:30 p.m. Named the "Round Pen Ministries," the special service will feature Matt Ray and his horse. Ray is the son of Rev. George Ray, a former pastor of First Baptist Church of Tahoka. (See story, page 8)

Weather

Date	High	Low	Precip.
Aug. 11	80	65	0.05"
Aug. 12	82	62	
Aug. 13	82	62	0.08"
Aug. 14	83	65	
Aug. 15	83	66	
Aug. 16	81	65	
Aug. 17	83	62	

Total Precipitation in Aug.: 2.70"
Total Precipitation to date: 15.76"

Words of Wisdom

"The greatest calamity is not to have failed, but to have failed to try."

Lynn County News

P.O. Box 1170 • Tahoka, TX 79373
Phone: 806-561-4888
Fax: 806-561-6308
e-mail: lcn@llano.net



1617 Main St.
in Tahoka

Open Monday - Thursday
9:00 a.m. - 5:30 p.m.
(Now Open During Lunch Hour)
CLOSED FRIDAYS

Commissioners Propose 11.6-Cent Tax Hike

by JUANELL JONES

Lynn County Commissioners this week settled reluctantly on a tax rate proposal that would increase the county tax rate by 11-1/2 cents, and scheduled a public hearing for next Thursday, Aug. 26 at 2 p.m. to hear public comment on the issue. The hearing will be held in the county courtroom in the basement of the courthouse.

If approved, the new tax rate would be set at \$0.96980 - just slightly under the automatic rollback figures released by the Lynn County Appraisal District recently. Last year's rate of \$0.85345 was a 17-cent increase from the previous year's rate of \$0.67909, so this year's proposal would raise taxes 29 cents in a two-year period. For

2006 electronic voting machines and tabulating systems, but the cost for Lynn County to comply is astronomical, in the \$100,000+ range.

"We have worked and worked with this budget, working with all the department heads and trying to cut back to just the barest requirements, but even with the proposed tax increase the budget we have on the table right now is \$87,000 in the red," said Judge Franklin.

"During our first several budget sessions we included a 3-percent salary increase for all county employees, but we finally had to cut all salary increases," explained Commissioner J.T. Miller.

"If the county left the tax rate at the current rate with this budget, they would be \$317,000 in the red. This new tax rate still does not fund the budget, with an \$87,483 deficit, but it's a lot closer than it would be if they left the tax rate at the current amount."

- Melvin Eaker, auditor for Lynn County

homeowners, the 2004 proposed rate would increase taxes this year by approximately \$61 for a home valued at \$34,455.

Commissioners Don Blair, J.T. Miller, Mike Braddock and Don Morton say they have wrestled with the budget for many hours, along with County Judge H.G. Franklin, County Clerk Susan Tipton, and County Treasurer Janet Porterfield, as well as with assistance from the county's financial auditor, Melvin Eaker. At Thursday's public hearing, commissioners expect to receive public comments on the tax rate proposal. A meeting will be scheduled later for commissioners to vote on the tax rate and approve the official budget.

It's a convoluted issue, but some of the blame is being laid at the door of unfunded or poorly-funded state mandates, which have created cost increases in several areas, including requirements such as electronic voting equipment for counties who in the past have relied on paper ballots and hand-counted ballot tabulations. New mandates require counties to have in place by the year

"We called in every department head and explained to them that we could not keep the salary increases in the budget, and that each office must continue to try to stay within their budget," added Commissioner Mike Braddock.

Budget comparisons released by county officials show the tax base for the county has dropped by \$3 million, and that the rate would had to have increased to \$0.88077 just to get the same amount of funds from taxes as last year. Judge Franklin said that the Lynn County Appraiser explained that while home values increased in many instances this year, all the other valuations decreased, with land, ag and productivity values way down, which created the lower tax base.

"If the county left the tax rate at the current rate with this budget, they would be \$317,000 in the red," explained Eaker. "This new tax rate still does not fund the budget, with an \$87,483 deficit, but it's a lot closer than it would be if they left the tax rate at the current amount."

Commissioner Don Blair said, "We want all the people to know, we have really worked to cut back, but we are still looking at a tax increase. We hate to do it, but the county has to operate."

County officials noted that several mandates are really costing the county, including costs in indigent defense and healthcare for jail inmates, and costs in areas such as housing and feeding witnesses for trials.

"The state used to provide funding for housing and feeding witnesses for trials, but they have cut back drastically in that area," commented County Clerk Susan Tipton. She said there is also no federal aid for providing healthcare for prisoners, and that Texas is the only state that is funded 100 percent by property taxes for indigent health care. Last year's budget listed \$15,000 for medical expenses at the jail, but the new budget's figure is \$35,000.

"The county has to pay for all the medical and dental expenses for county prisoners, and attorney fees for those who can't afford their own attorney to represent them - all that is paid for by the county," Judge Franklin explained.

"Every county department has had to add new software and/or equipment to meet state mandates, and that has impacted the budget. We just don't have any choices when it comes to a lot of these mandates," added Blair. "Plus we've had rising fuel costs affecting the cost of road maintenance, property and liability cost increases - just lots of increases throughout the budget that are frustrating but offer no other options," he said.

2004 Tax Rate Proposal:

96.980 cents per \$100 of property value

2003 Tax Rate:

85.345 cents

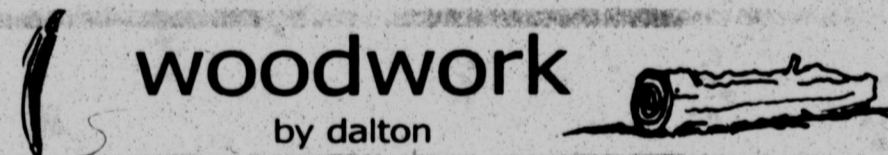
Tax Increase:

11.635 cents

For comparison, last year's budget estimated \$3,000 in election expenses, but the new budget figure is \$97,000 - and that's for the new electronic voting equipment that the county is being forced to provide for elections. Tipton noted that the county has seen one bid to date on the voting equipment, and that was for \$118,000.

Total anticipated revenue (at the proposed 96-cent tax rate) is \$3,395,894, and total anticipated expenditures for the year is \$3,483,377.

The official 2004 budget will be available to the public after it is approved by Commissioners, no later than Sept. 3, at the Lynn County Clerk's Office.



OURS IS A SOCIETY which views being fat as ugly and worships slimmness, a goal unattainable by most of us, since a recent study showed that in the years 1999-2000 two-thirds of people 20 years and older were overweight, and fully one-third of this group were classified as obese.

Billions of dollars are spent annually on diets, most of which don't work for very long, and on stomach surgeries, which are more dangerous to the health of a person than the fat was in the first place.

This assessment of fat as ugly has been going on for years. I remember this verse from a song by Homer and Jethro, to the tune of "Let Me Go, Lover."

"Let me go, let me go,
Let me go, blubber;
Let me scat, like a cat,
Away from you.
You're too fat, in the first place,
You know it's true;

You're too fat in the second place, too."
It's usually some skinny person who tells you that you need to go on a diet. And most overweight people, and just about all really fat people, resent the comments about their size.

Now a group called the National Assn. to Advance Fat Acceptance is mounting a protest against the medical establishment's campaign against obesity and a recent designation of being fat as a disease.

"We're living in the middle of a witch hunt, and fat people are the witches," said a spokesman, who indicated that people deemed overweight are unashamed of their size, fed up with fat jokes and angry at the national obsession with dieting.

Most of the fat-acceptance activists endorse eating healthy food and exercising regularly, but they oppose any fixation on losing weight, and are opposed to stomach-shrinking surgery.

I think it's great to push the idea that it's okay to be fat, or at least heavier than the established medical standards. (The charts show that I am either 20 pounds overweight or 11 inches too short).

Talking to an acquaintance who is almost 6 feet tall, I wondered aloud if there is an activist group for short people.

"Probably," he said. "But they are hard to spot in a crowd."
Models in clothing magazines are never fat. Or short. Or old and ugly. This is despite the fact that most of the women buying clothing look more like Roseanne Barr than Britney Spears, while most of us males look more like Dorf than Brad Pitt.

THE SMART KID on Ave. K says it is easier to get forgiveness than permission.

I GOT CAUGHT DEPT.: Week before last, I talked about Billy the Kid and stated that Lincoln, NM is about 220 miles east of here. One reader called and wanted to know where I was when I wrote that, and I wasn't clever enough to tell him I was in San Antonio, NM. Okay, so I meant to say west of Tahoka. I hate it when people read the paper just to see how many mistakes you make.



FUN AT SCHOOL - The three-year-olds were having fun in their classroom on the second day of school at Tahoka Elementary, as they learned social and educational skills, shown here under the direction of Virginia Herrera, Assistant for the Head Start program. The children are, from left, Nathaniel Resendez, Gabrielle Garcia, Anne Marie Arce, Jaden Garcia and Marisol DeLaCruz. Mrs. Herrera and teacher Shayla Erickson said the children had "less tears" on the second day of school - as did their mothers as they left their children in the classroom. (LCN PHOTO)



COME SEE OUR FOUNTAIN - Tanya Wells and her son, Patrick, are shown beside the fountain in their backyard that is surrounded by blooming flowers. The home of Haney and Tanya Wells, at 1617 North 5th Street in Tahoka, is one of five that will be in the 2004 Garden Tour sponsored by Phebe K. Warner Club on Saturday, Aug. 21. The fund-raiser will be held from 9 a.m. until 11:30 a.m., with all proceeds benefiting the club's youth scholarship program. Admission price is \$5, which is good for all homes in the tour. (LCN PHOTO)

Ballroom Dancers Sought In Area

The U.S. Amateur Ballroom Dancers Assn. is considering a chapter for social or recreational dancers in Lubbock. Members will be enrolled if enough interest is expressed. The association reported that a study in the New England Journal of Medicine found that ballroom dancing helps prevent dementia, referring

to Alzheimer's disease and vascular dementia.

Anyone interested in helping start a dance group should call 1-800-447-9047 or send e-mail to central-office@usabda.org

Questions, Anyone?

Learn more about federal government programs, benefits, and services. Just call toll-free 1-800-FED-INFO or visit www.pueblo.gsa.gov/call. U.S. General Services Administration

Garden Tour Set In Tahoka Aug. 21

A Garden Tour of five homes in Tahoka is scheduled for Saturday morning, Aug. 21, an event sponsored by Phebe K. Warner Club to raise money for college scholarships for local students.

The tour will be from 9 a.m. to 11:30 a.m. and admission fee of \$5 may be paid at any one of the homes as you enter, according to Loretta Tekell of the Phebe K. Warner club, who may be contacted for more information at 998-5040.

Gardens at these homes are on the tour:

Jerry and Sandra Brown, 2114 N. 8th St. (enter at east gate); Rickey and Maritia Hall, 2121 Ave. L (enter through garage); Robert and Sharron Smith, 2505 N. 1st St. (enter at east gate); David and Kathy Hale, 1801 S. 3rd St. (enter front gate); and Haney and Tanya Wells, 1617 N. 5th St. (enter by driveway).

Two Accidents Reported In City

Two accidents in which drivers of vehicles struck stationary objects were investigated by Tahoka Police Dept. during the last week.

On Friday a 2000 Pontiac Grand Am driven by Stefanie Renee Dotson, 21 of Tahoka struck a tree after jumping a curb in the 1800-block of S. 1st St. The driver, who was not injured, told officers she was distracted momentarily by a cell phone ringing.

On Saturday a 2000 Hyundai driven by Naomi Aguirre Ayala, 26 of Tahoka backed out of a driveway into the door of a parked 2001 Nissan Maxima owned by Kent Mason of Lubbock. No injuries occurred.

Police also arrested a homeless man from Colorado on a warrant for parole violation.

Jailed during the week were 12 persons, on these charges: grand jury indictments on possession of controlled substance, theft of a vehicle (California), driving while license suspended, possession of marijuana under two ounces, driving while intoxicated, public intoxication, no liability insurance.

Total jail population as of Wednesday was 45, with 14 of these held for Lubbock County and nine for Garza County.

Blood Donors Needed Today

United Blood Services of Lubbock will have a Donor Coach at Thriftway in Tahoka today (Thursday, Aug. 19) from 4:30 to 7:30 p.m. in response to an urgent appeal for blood donations. Increased use in trauma cases, combined with holiday/summer travel has exhausted all available supplies of O negative blood. All blood types are currently on short supply; hospital orders for O negative are not being filled.

"The demand for blood is constant, even in the summer months," said Rhonda Teal, Community Relations Representative of United Blood Services. "It is important that people remember to take some time out of busy schedules to donate to help maintain a safe and plentiful supply of blood for our communities."

Anyone wishing to donate blood needs to bring a list of medicines they take and a photo ID. All donors will receive a gift. Requirements are simple: be at least 17 years of age, weigh at least 110 pounds, be in good health, and have valid identification. For more information, call United Blood Services at 806/470-4798.



HANS MENSCH and ERIN SEARSY

Couple To Wed September 4

Erin Suzanne Searsy and Hans Eric Mensch, both of San Angelo, announce their engagement and approaching marriage. She is the daughter of Lynn and Patrice Searsy of Ozona, Texas and granddaughter of Nedra Searsy of Denver City, and LeRoy and LaMont Wells of Brady. Mensch is the son of Michael Mensch and Linda Mensch, both of Tahoka, and grandson of Harold and Gayla Hahn of O'Donnell.

The couple plan to marry September 4, 2004 at the San Angelo Museum of Fine Arts.

The future bride is a graduate of Denver City High School and Angelo State University and is employed at Starbucks. The future groom is a graduate of Tahoka High School and Angelo State University and is employed by Gap, Inc.

Tahoka SCHOOL MENU

August 23-27 Breakfast

Choice of milk served with each meal.

Monday: Pancake on a stick, fruit juice, milk

Tuesday: Breakfast burrito, fresh apple, milk

Wednesday: Apple muffin, fresh fruit, milk

Thursday: Donuts, fruit juice, milk

Friday: Fruit cup, wheat toast, milk

Lunch

Caesar salad and PBJ sandwich offered daily as an entrée choice; milk variety offered each meal.

Monday: Pepperoni pizza, chef salad, red grapes, assorted fruit, tossed salad, fries

Tuesday: Turkey w/ gravy, cranberry sauce, wheat roll, green beans, assorted fruit

Wednesday: Baked potato, fruited jell-o, assorted fruit, broccoli florets

Thursday: Spaghetti w/ meat sauce, mix veggies, assorted fruit, garlic bread, tossed salad

Friday: Steak fingers, chef salad, cream style potatoes, garden salad, assorted fruit, wheat roll

Band Boosters Gear-Up For Football Season

The Tahoka Band Boosters would like to invite everyone out to the scrimmage between Crosbyton and Tahoka this Friday, August 20 starting at 5 p.m. The Band Boosters will have a concession stand open with Allen Elrod cooking hamburgers on the grill. The usual Friday night items will also be available in the concession stand. Everyone's support is greatly appreciated.



Reunion Has Good Turnout

There were 52 attending the Weatherby/Snyder Cousin's Reunion held Sunday, Aug. 15 at The Housing Development Center in Tahoka, with cousins coming from Mississippi, New Mexico, Missouri, California, Iowa and Oklahoma as well as Texas.

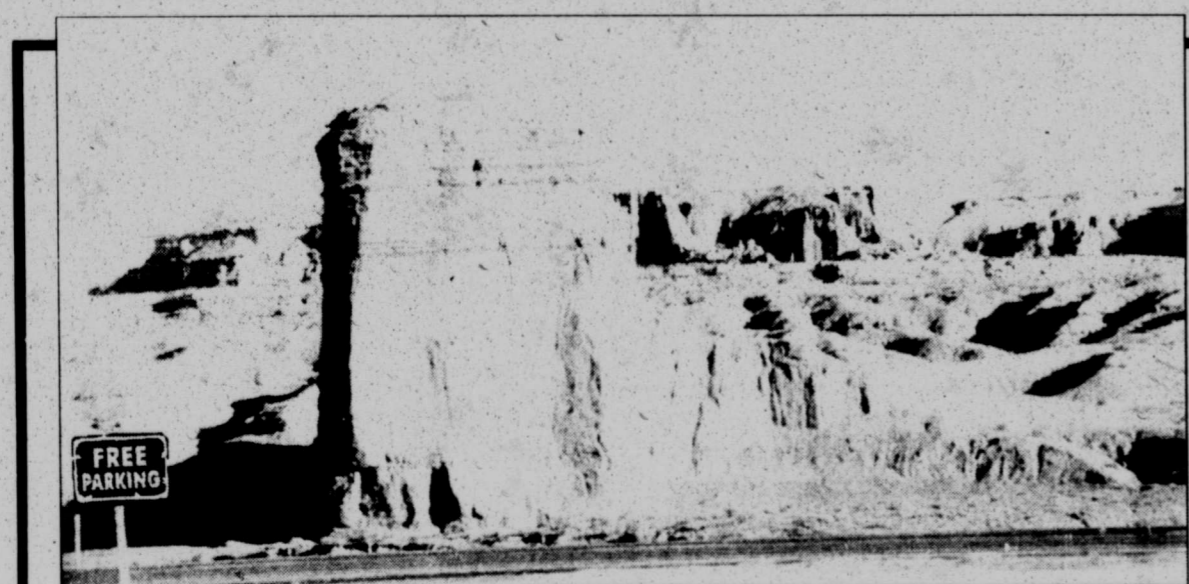
"Mary Lee and I would like to thank each of you who came, brought food, items for the silent auction and stayed and helped clean up afterwards," stated Katie Stone of Tahoka.

Memorials and donations may be made to the **Lynn County Pioneers (Senior Citizens)** 1600 S. 3rd • P. O. Box 223 Tahoka, Tx 79373

STORK REPORT

Chelsea and Charles White-Kelsey announce the birth of a daughter, Cailyn Jean. She was born August 11, 2004, weighed 7 lbs., 4 oz., and was 20 inches long.

Grandparents are Amy White of Arlington, Texas; Tracy White of Lubbock; and Frank and Sandy Kelsey of Garland; great-grandmother is Janet Porterfield of Tahoka.



The best things in life are FREE ... and you can get FREE CHECKING at FNB!

- ✓ FREE checks
- ✓ NO monthly service charge
- ✓ NO minimum balance
- ✓ UNLIMITED check writing
- ✓ FREE check safekeeping
- ✓ WITH Overdraft PrivilegeSM

will cover for you when you make mistakes or write a check for more money than you have in your checking account. Overdrafts covered up to \$500 (\$300 on FREE Checking Accounts) *Overdraft PrivilegeSM. Limits vary by account product.

First National Bank has a full range of services:

- Savings Accounts ➤ Safe Deposit Boxes ➤ Checking Accounts
 - Loans ➤ Certificates of Deposit ➤ Bank by Mail ➤ Direct Deposit
- HOURS: Lobby - 9:00-3:00 Monday-Friday; Drive-Thru - 9:00-6:00 Monday-Friday
ATM - 24 Hours a Day at Town & Country Convenience Store, Tahoka



First National Bank of Tahoka

806 / 561-4511 • Member F.D.I.C.



WALKER & SOLOMON
Insurance Agency

announces the relocation of our offices to

1540 Avenue J • Tahoka

In the same building as Huffaker Law Firm, West side of the square

Our phone numbers remain the same

998-4519 Phone • 998-5328 Fax

P.O. Box 639 • Tahoka, Tx 79373-0639

METHOD fiancée, pastor at Associat bock. Th live in th Bayley a Open Ho the pars and tile

Rippl Service Lubbock v Abbey-Cha Aug. 14. Resthaven officiated. She d 2004. Rip was born M Texas to Venable. S School a University almost 50 primarily bock Scho Strong. Sh gardener. Surviv Jacquely Mildred Jackie Al Nancy Rea son Stuart dren, and r ews.

Toni Grave Brewer, 8 of Midlan Wednesd Cemetery O'Donne White Fu She d 2004. She 1922 in V Christine ried Johr 1039. She tive assi Mobil O her retir moved t former M the state-

THE L Count Texas cal po to The

Lynn Other



SEND-OFF CEREMONY - A send-off ceremony was held in Lubbock recently honoring the Texas Army National Guard soldiers being called into duty, including Spc. Walter R. Hinkle (holding the flag) who was a postal clerk in Tahoka. Hinkle is leaving Friday for training at Ft. Hood to prepare for a tour in Iraq. His wife, Shawnette and son, Zach, live in Calgary.

4-H Golf Tourney Planned Aug. 21

A four-person open scramble golf tournament sponsored by Lynn County 4-H will be on Saturday, Aug. 21, starting at 1 p.m. at the T-Bar Country Club in Tahoka. Cost for the event will be \$120 per team, which includes a meal.

Cash prizes will be paid back to teams along with contests for the longest drive and closest to the pin. More than \$1,200 was paid out to golfers last year. Door prizes and raffle tickets for a 3-day/2-night stay at the Innsbruck Village Condos in Ruidoso will be available. All proceeds will benefit Lynn County 4-H members.

There also will be a putting contest. Contestants will pay \$5 for a chance to qualify for the final putt-off. Five individuals will compete in the finals with the winner receiving \$120 and the runner-up getting \$80. This year's putting contest is sponsored by the Ag Texas Farm Credit Services.

To sign up, or for more information, contact T-Bar Country Club at 998-5305.

Harry Howell Golf Tourney Set For Aug. 28

The annual golf tournament benefiting O'Donnell resident Harry Howell will be held Saturday, Aug. 28 at the T-Bar Country Club in Tahoka.

Entry fee is \$40 per person. Sign up will be from 8-9 am; start time is 9 am. Lunch will be served after the first nine holes and there will be door prizes as well as prizes for the longest drive and closest to the pin.

For more information, contact Cherry at T-Bar Country Club, 998-5305, or Maurice Jackson at 428-3434.

Proceeds from the tournament will go toward living expenses for Howell, who has been wheelchair bound since childhood and is an active resident in the O'Donnell community.

Wilson Mustangs

Aug. 14	Cotton Center/Jayton (scrim.)	Here	10:00
Aug. 20	Dawson (scrim.)	Here	5:30
Aug. 27	Klondike	There	7:30
Sept. 3	Loop	Here	7:30
Sept. 10	OPEN		
Sept. 17	Spur	There	7:30
Sept. 24	Amherst*	There	7:30
Oct. 1	Spade**	Here	7:30
Oct. 8	Ropes*	There	7:30
Oct. 15	Meadow*	Here	7:30
Oct. 22	Whitharral*	There	7:30
Oct. 29	Southland*	Here	7:30
Nov. 5	New Home*	There	7:30

Complete selection of Gift Items

Starting at under \$5 -- perfect for secret pals, birthdays, baby showers, special occasions and more!



STOP IN AND SEE OUR AMSCAN GIFT ITEMS AND A LA CARTE CROSSES!

Remember, your prescription card plan requires you to pay the same co-pay at ALL pharmacies... so, when choosing your pharmacist, make your choice based on our friendly, knowledgeable staff and hometown convenience!

FAMILY-OWNED SINCE 1923

TAHOKA DRUG • 561-4041 • 1610 Main • Tahoka

Notice of Public Hearing on Tax Increase

The City of Tahoka will hold a public hearing on a proposal to increase total tax revenues from properties on the tax roll in the preceding year by 9.487 percent. Your individual taxes may increase at a greater or lesser rate, or even decrease, depending on the change in the taxable value of your property in relation to the change in taxable value of all other property and the tax rate that is adopted.

The public hearing will be held on **Wednesday, August 25, 2004 at 5:30 p.m. at the Tahoka City Hall.**

FOR the proposal: Jay Dee House, Amy Preston, Clara Calvillo, Rudy Fuentes, and Ray D. Box.

AGAINST the proposal: None
PRESENT and not voting: None
ABSENT: None

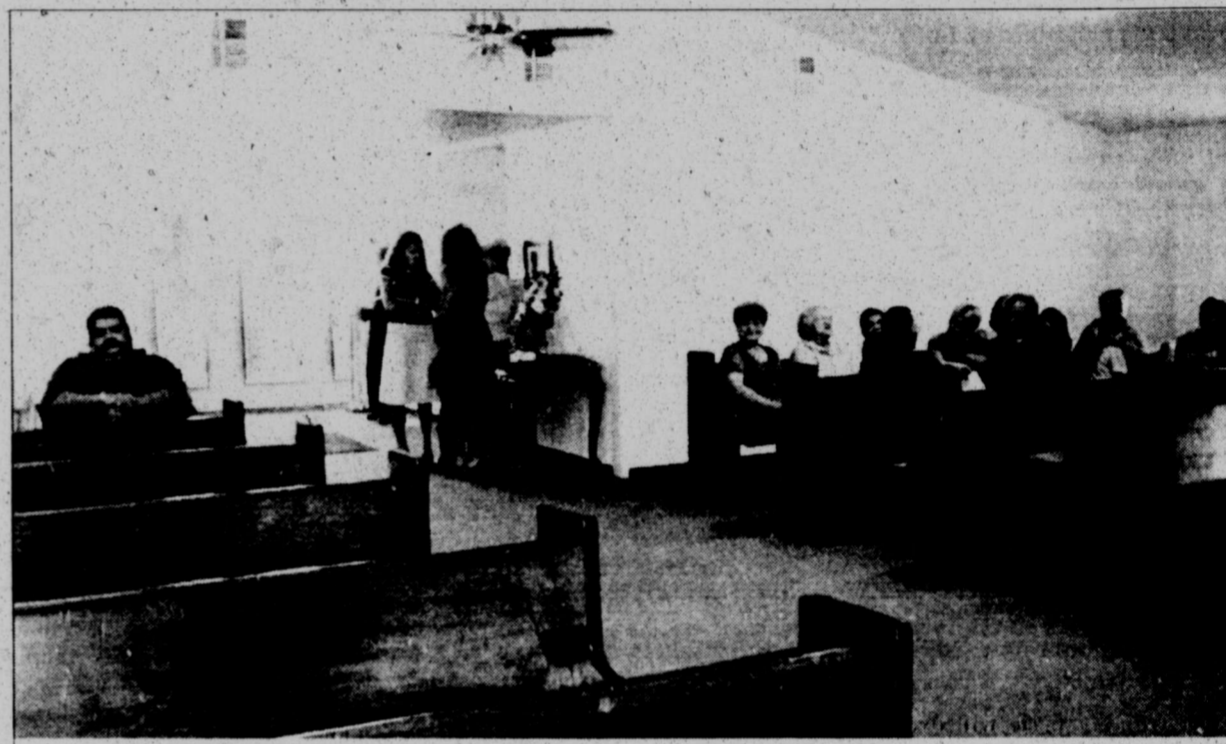
The following table compares taxes on an average home in this taxing unit last year to taxes proposed on the average home this year. Again, your individual taxes may be higher or lower, depending on the taxable value of your property.

	Last Year	This Year
Average residence homestead value	\$30,443.00	\$35,093.00
General exemptions available (amount available on the average homestead, not including senior citizen's or disabled person's exemptions)	\$ -0-	\$ -0-
Average taxable value	\$30,443.00	\$35,093.00
Tax rate	\$0.69500/100	\$0.69500/100 <i>(proposed)</i>
Tax	\$ 211.58	\$ 243.90 <i>(proposed)</i>

Under this proposal, taxes on the average homestead would increase by \$32.32, or 15 percent compared with last year's taxes. Comparing tax rates without adjusting for changes in property value, the tax rate would increase by \$ 0.00 per \$100 of taxable value or 0 percent compared to last year's tax rate. These tax rate figures are not adjusted for changes in the taxable value of property.



DEDICATION SERVICE - Richard Calvillo, left, is shown with several guests who spoke at the dedication ceremonies Sunday for the new Calvillo Funeral Chapel of Lynn County. They are, from left, Rev. Sam Ibarra of Primera Iglesia Bautista in O'Donnell; Rev. James Alan Ehlo, Ph.D., Rector of Immanuel Lutheran Church in Posey; Deacon Frank Aguilar; Rev. Domingo Chapa of Gethsemane Baptist Church in Tahoka; and Rev. Eduardo Teo of St. Pius X Catholic Church in O'Donnell and St. Jude Catholic Church in Tahoka. Several attended the ceremonies and Open House at the new funeral chapel, located at South 4th and Ave. M in Tahoka. (LCN PHOTO)



NEW CHAPEL - The interior of the new Calvillo Funeral Chapel of Lynn County is shown prior to Dedication Services Sunday afternoon. (LCN PHOTO)



CHRISTOPHER TINDELL

Air Force Airman Christopher D. Tindell has graduated from basic military training at Lackland Air Force Base, San Antonio, Texas.

During the six weeks of training, the airman studied the Air Force mission, organization, and military customs and courtesies; performed drill and ceremony marches, and received physical training; rifle marksmanship, field training exercises, and special training in human relations.

In addition, airmen who complete basic training earn credits toward an associate degree through the Community College of the Air Force.

Tindell, a 2003 graduate of Tahoka High School, is the son of Kim Wellman of Tahoka.

Volunteer and help others -- it will do your heart good!

City-County Library
 561-4050 • 1717 Main • Tahoka
 (In the Life Enrichment Center)

HOURS:
 Monday & Wednesday 9 am-5:30 pm
 (Closed for Lunch 12:30-1:30 pm)
 Tuesday & Thursday 2 pm-7 pm
 Saturday 10 am-1 pm

Tahoka Pioneer Museum
 561-5339 • 1600 Lockwood • Tahoka
OPEN:
 Friday & Saturday 10 am-2 pm

SPC Offers Tips For Last-Minute Decisions

It's down to the wire for fall registration Wednesday and Thursday (Aug. 25-26) at South Plains College, and admissions personnel are offering tips for last-minute decision makers.

Prospective students need to pick up a registration time permit in person from the Levelland or Reese campus, depending on which campus they plan to attend this fall, said Andrea Rangel, dean of admissions.

At registration, they need to bring their completed application for admission (which can be found in the college catalog or downloaded at www.southplainscollege.edu) and an official transcript of high school or college work they have completed. "This is very important," said Rangel.

Students who have not yet taken a state-required college skills assessment need to contact the SPC Test-

ing Center at Levelland or Reese as soon as possible for a test date. SPC offers the Quick THEA (Texas Higher Education Assessment) and Accuplacer, a computer adaptive test. Students who have not been tested will be restricted as to the courses they can sign up for, noted Rangel.

SPC's fall registration is 10-11:30 a.m. and 1-5 p.m. Wednesday (Aug. 25) at the Levelland campus, Administration Building, and 8:30-11:30 a.m. and 1:30-6 p.m. Thursday (Aug. 26) at Reese, Building 8, Administrative Offices. Reese registration will also target students attending the Byron Martin Advanced Technology Center.

Classes begin Aug. 30, and late registration is scheduled Aug. 30-Sept. 2.

For testing information, contact SPC's testing centers at 894-9611, ext. 2367 or 2530 or 885-3048, ext. 4631 or 4689.

Football Ticket Sale
TAHOKA BULLDOGS
RESERVED SEAT

Football tickets for the 2004 season are on sale now at the School Business Office (Harvick Educational Building). Last year's season ticket holders have an option on the same tickets again this year. They may pick up these tickets any time until August 27, at which time those seats will be made available to the public. Other reserved seats are available now.

BUY YOUR TICKETS TODAY!
 The general admission price for all games will be \$3.00. Reserved seat tickets for any single game will be \$5.00.

Sept. 3 - Olton 7:30 p.m.
Sept. 10 - Ralls 7:30 p.m.
Oct. 1 - Denver City 7:30 p.m.
 HOME COMING
Oct. 15 - Shallowater 7:30 p.m.
Nov. 5 - Slaton 7:30 p.m.

5 HOME GAMES SEASON TICKET \$20.00
 Available at the SCHOOL BUSINESS OFFICE, 2129 N. Main, Tahoka

FORME (right), Tahoka Kuwait the U.S. years on July and H Krieger

Dr. Of A

Col. ticing pl Hospital comman ties in K Qatar. Col. of the U Mannhei three year in which impleme of the he. of comm praised Dept. Pr Krieger. Dr. July 20. the Lyn would be soon as p located. "Us are allow an excep Middle I Col. for two Army m Saudi Ar Dr. 2001 aft Lynn Co two and Col Oklahoma B.S. in M.D. fro

The t

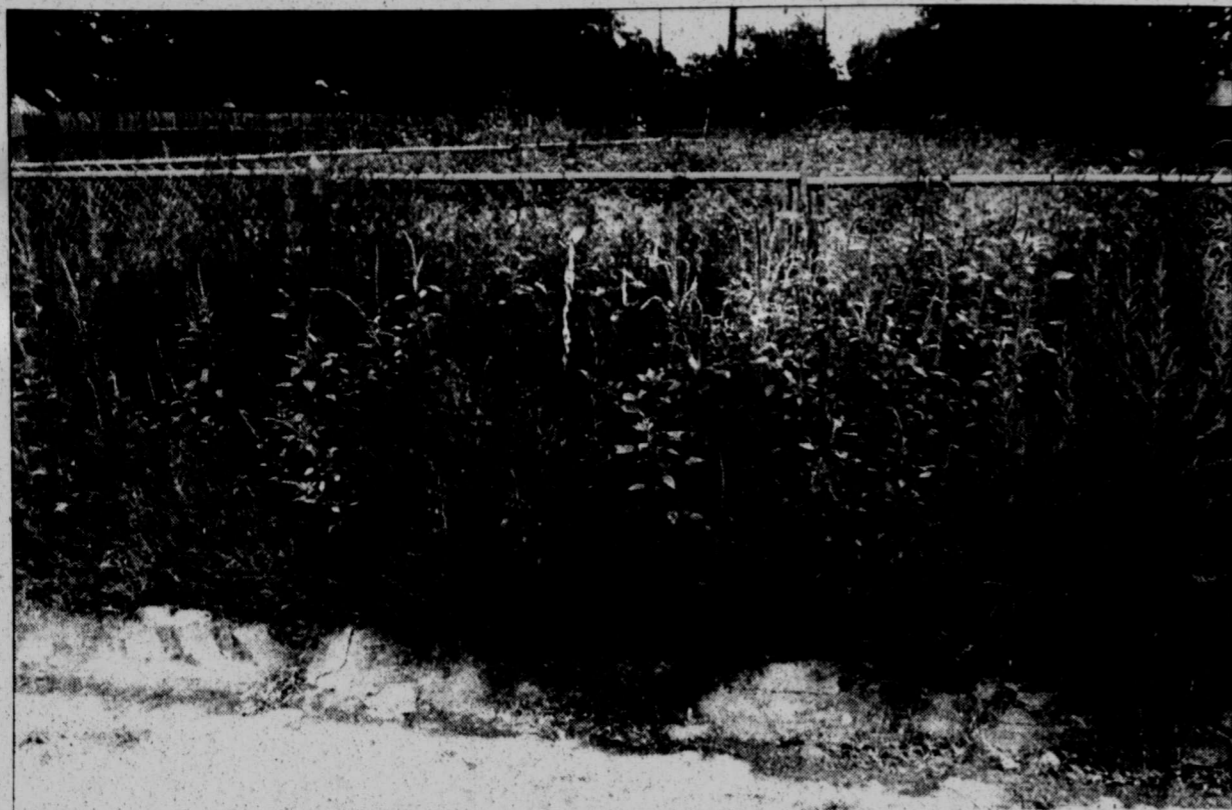
On dergarter August will scri gust 21 5 thade. A K-11 gr will be h To must ch Mcke lowing a check of All new the High

Neving the 2 Septemb The Var invite yo Practice at 8 pm cheerlea cheers at on a had throw. We also bri your hig need m Karon D

W T

\$:

LYNN



WEED WARNING - City of Tahoka officials urge residents to mow weeds in their yards and alleys, especially since the recent rains have boosted a growth spurt and in some cases, as shown at one home in Tahoka, the weeds are nearly taller than the fence. "Weeds are unsightly and unhealthy, and keeping them mowed with help keep the mosquito population down," said City Administrator Jerry Webster. "The city will begin enforcing the city ordinance if necessary, and writing citations, if weeds are not mowed down," he warned. (LCN PHOTO)

TCEQ To Collect Recyclables in O'Donnell Aug. 20

The Texas Commission on Environmental Quality (TCEQ) is offering rural Texans the opportunity to dispose of properly rinsed plastic pesticide containers, used motor oil filters, and lead acid batteries free of charge. The purpose of the Texas Country Cleanup campaign is to offer rural areas the same recycling opportunities as metropolitan areas. In 20 cleanups last year, 1,236 participants recycled 15,962 empty pesticide containers; 17,400 gallons of used motor oil; 35,460 used oil filters; and 1,946 used lead acid batteries.

This collection is from 8 a.m. - noon and will be held at the following location: Friday, August 20 - O'Donnell Co-op Gin, corner of Highway 87 and Southeast 8th, O'Donnell.

Empty plastic pesticide containers must be clean, triple-rinsed, or high-pressure rinsed to be accepted. No hazardous waste or tires will be accepted. There is a two-drum limit per participant on oil filter recycling and filters will not be accepted from businesses that change oil for a fee.

Texas Country Cleanup is co-sponsored by the TCEQ's Small Business and Environmental Assistance Division, Texas Agricultural Extension Service, Texas Department of Agriculture, and USAg Recycling. 872-75739.

These Tahoka Firms Are Sponsoring This
FARM NEWS

**AgTexas Farm Credit Services
(AgTexas FCS) formerly PCA**
Don Boydston

First Ag Credit FCS
Clint Robinson, President

Farmers Co-op Association
No. 1

Lynn County Farm Bureau

Notice of Public Hearing on Tax Increase

The Lynn County Commissioners will hold a public hearing on a proposal to increase total tax revenues from properties on the tax roll in the preceding year by thirteen (13) percent. Your individual taxes may increase at a greater or lesser rate, or even decrease, depending on the change in the taxable value of your property in relation to the change in taxable value of all other property and the tax rate that is adopted.

The public hearing will be held on **Thursday, August 26 at 2:00 p.m. at the Lynn County Courtroom in the Courthouse Basement.**

FOR the proposal: ALL
AGAINST the proposal:
PRESENT and not voting:
ABSENT:

The following table compares taxes on an average home in this taxing unit last year to taxes proposed on the average home this year. Again, your individual taxes may be higher or lower, depending on the taxable value of your property.

	Last Year	This Year
Average residence homestead value	\$32,008.00	\$34,455.00
General exemptions available (amount available on the average homestead, not including senior citizen's or disabled person's exemptions)	\$ -0-	\$ -0-
Average taxable value	\$32,008.00	\$34,455.00
Tax rate	.85345/100	.96980/100
Tax	\$ 273.17	\$ 334.14

Under this proposal, taxes on the average homestead would increase by \$60.97, or 22 percent compared with last year's taxes. Comparing tax rates without adjusting for changes in property value, the tax rate would increase by \$.11635 per \$100 of taxable value or 13 percent compared to last year's tax rate. These tax rate figures are not adjusted for changes in the taxable value of property.

Criminal Justice Mandate (for counties):

The Lynn County Auditor certifies that Lynn County has spent \$0- in the previous 12 months beginning January 1, 2003, for the maintenance and operations cost of keeping inmates sentenced to the Texas Department of Criminal Justice. Lynn County Sheriff has provided information on these costs, minus the state revenues received for reimbursement of such costs.

Enhanced Indigent Health Care Expenditures:

The County of Lynn spent \$200 from January 1, 2003 to September 30, 2003 on enhanced indigent health care at the increased minimum eligibility standards, less the amount of state assistance. For the current tax year, the amount of increase above last year's enhanced indigent health care expenditures is -0-.

LETTERS TO THE EDITOR

Students Must Get Vaccines

Dear Editor,
Texas laws require students to have current health records in order to attend school. Because of this new law, there have been some shortages of vaccines, including local availability during the last week. Because our community was out of some of the needed vaccinations, Tahoka Independent School District allowed students to begin school without current health records.

However, these children must still comply with immunization requirements, and all vaccines are now available at Lynn County Hospital District's Family Wellness Clinic and physicians offices. Students have been notified previously that his/her health records are incomplete. Parents, please make arrangements to have your student's health records current immediately. The school nurse MUST receive verification of all health records by August 30.

Students not having current health records by Monday, August 30, will not be allowed to attend school until the health records are current. Absences by students missing school because their health records are not current will be excused and truancy charges will be filed.

Your student's health records must be current by August 30, 2004.
Sincerely,
Carol Miller, R.N.
Tahoka ISD School Nurse

Kudos to Care Center

I've been wondering how many in our community have noticed we have an old, but at the same time a new "gem" in our midst. I am referring to the Tahoka Care Center. Yes, that's right! The Care Center is not new as far as the building and location are concerned, it has been here awhile, some would even call it old. However, after recently coming under new ownership, it is indeed very new in so many ways.

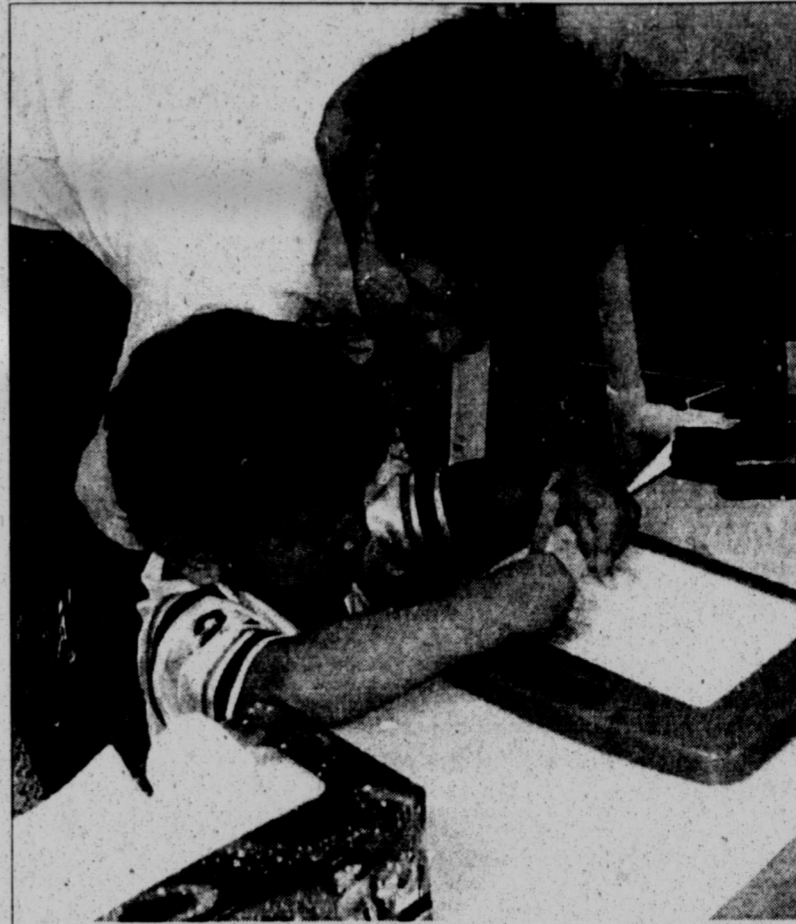
When you enter for a visit, there is a totally new atmosphere. You sense a real joy from the staff in their work, smiles on their faces and friendly greetings. Also you sense a dedication and compassion for the residents, resulting in a spirited glow on some of those faces that had been missing for quite some time.

There is a homey, "grandmother's house" type of feeling so much of the time when I go in.

I credit all these wonderful changes to the caring, dedicated vision of the new owner, Mr. Bruce Burgamy. It seems he has put together a staff from administrators, nurses, to cooks, cleaning and activities that really care for the residents and it shows.

I've personally had four family members that needed extra care. I've dealt with a lot of different circumstances, needs, and facilities; therefore I consider myself qualified to put my own style of "Betty Crocker" approval on the old Care Center that is now new again from attitude to ownership.

I certainly hope to see that our community acts on the sign at the



TRY IT THIS WAY - Shayla Erickson, one of the new teachers at Tahoka ISD this year, heads up the new Head Start program offered for 3-year-old children in the school district. Here, Mrs. Erickson helps Joel Calsoncit as he writes on a magnetic marker board. Fourteen children qualified for the federally-funded program at TISD, attending class from 8:00 a.m. until 2:30 p.m. (LCN PHOTO)

Raw Cotton, Harvest Equipment Movement May Be Restricted

Cotton harvest has begun in the southern parts of the state and will begin soon in other areas. Custom harvesters move from area to area as the season progresses, and growers have to move the harvested cotton to the state's gins for processing.

The Texas Boll Weevil Eradication Foundation would like to remind cotton producers and custom harvesters that the commissioner of agriculture declared several areas of the state to be suppressed or functionally eradicated of the cotton boll weevil, and movement of raw cotton products and harvesting equipment into or through these zones may be regulated.

The Rolling Plains Central zone, surrounding Abilene, and the Southern Rolling Plains zone, surrounding San Angelo, are functionally eradicated. The El Paso/Tran Pecos, Permian Basin, Western High Plains, Southern High Plains Caprock, Northwest Plains, Northern High Plains and Northern Rolling Plains zones are suppressed. These zones make up a large portion of the west-

ern and northern portions of the state's cotton-growing areas.

Harvesting equipment moving from areas outside of either a suppressed or functionally eradicated zone cannot be brought into one of these areas until the equipment has been thoroughly cleaned. Raw cotton cannot be moved into or through suppressed or eradicated zone unless a protection plan has been filed with the Texas Department of Agriculture

TDA has developed a protection plan template for growers who fall under these restrictions and wish to gin cotton in a suppressed or eradicated zone. TDA also has developed guidelines for ensuring harvesting equipment is properly cleaned before entering one of these zones.

Many of these restrictions are placed on the movement of raw cotton and harvesting equipment from a suppressed area to a functionally eradicated area.

Brochures that provide more specific information on the restrictions are available from TDA or from the boll weevil foundation. Contact your local TDA office, or write the foundation at Box 5089, Abilene, TX 79608 to obtain a brochure.

edge of town declaring us "the friendliest small town," embracing Mr. Burgamy and his efforts to fill a much needed gap of service and care for many of our residents. As he strives to make the Care Center a "home away from home," the community, hopefully will extend a friendship toward him, giving him a home away from home also.

Just being new is not always a positive in life: add love to old, stir in compassion and the old becomes very new.

Support the whole community. Our area is very special. Some of our residents have very special needs. I urge you to visit and see for yourself how a new owner with a new attitude changed old to new at the Tahoka Care Center.

Melba Thomas

Does it take a long time to get your newspaper?

You may get faster delivery if you will furnish us with you ZIP + FOUR zip code address (if you don't know it, just ask at your post office). Many times, especially in large cities, this will facilitate faster delivery times from the US Post Office. Just notify us by fax, phone or e-mail.

LYNN COUNTY NEWS
806-561-4888, fax 561-6308,
e-mail lcn@lano.net

LOCKET

WHEAT SEED

\$6²⁵
50# BAG

AVAILABLE AT

NEW HOME CO-OP GIN

924-7556

HOUSE FOR
2 garage Lar
school, front
Call 998-462

COMPLETE
Sale, 2 BR, 1
inside and out
fixtures, carps

Ho
In
A
Very h
Kelle
C

DRIVER. E
in the Post.
benefits Co
driver and c
paid sick da
everyday. B
benefits. Ca

MANAGER
766-7175.

Nur
is su
time |
tive

For i
Ta
com
at 38
1511
133A

SEEKING
clean out he
other opport
p.m.

The Co
on Monday.
information
at Warren C
at 10:00 a.m.
Lynn C
formalities.
By ord

In ac
Abandoned
vehicles:
(1) 1997 F
(2) 1994 F
(3) 1993 F
(4) 1981 F
(5) 1993 F
(6) 1995 F

The v
Street, bet
mailed to
City Hall,
until Augu
cashiers cl
The C

The L.
L.
E.

Ann A
Shawn
Denny
Ray D
Virgin
Dell C
Rache
Daniel
Gwen
Anton
Darler
Orville
Fred E



MINISTRY TEAM - Matt Ray and his horse will present a Christian message at the 4-H Arena in Tahoka Sunday night, at 6:30 p.m. Ray, who founded the Round Pen Ministries, says he tries to illustrate ways in which the Christian walk with the Lord is similar to the relationship between horse and rider. Area residents are invited to attend.

'Round Pen' Ministry To Feature Matt Ray & Horse, Here Sunday

Area residents are invited to an unusual ministry presentation in Tahoka Sunday night, to be held at the 4-H Arena (behind the baseball complex on South 9th Street in Tahoka) beginning at 6:30 p.m. Named the "Round Pen Ministries," the special service will feature Matt Ray and his horse, and will include illustrations and scripture readings, prayer, and a question and answer time, closing with an invitation. Following the service, there will be a fellowship held at the First Baptist Church Fellowship Hall.

According to information in its brochure, Round Pen Ministries is an "illustration of glorifying the Lord in all we do."

Matt Ray, son of Rev. George Ray who is a former pastor of First Baptist Church of Tahoka, founded the ministry with his wife, Debbie. "There was no question the Lord had influenced my life through

horses and horsemen. With my background, it seemed very apparent the Lord wanted me to train horses. So, I began an independent study of other trainers and their methods to increase my knowledge. With 20 years experience in horses and horsemanship as a background, then the Lord laid upon my heart to glorify him and turn my work into a ministry.

"Again, through walking with the Lord and surrounding myself with wise Christian counsel, the Lord showed many ways in which our walk with Him is very similar to the relationship between horse and rider. I am a Christian horse trainer trying to glorify God in all that I do," said Ray.

"Most 50-minute sermons have a 2-minute illustration or story. What we do is about 50% illustration and 50% scripture reading," Ray explained.

Our greatest happiness does not depend on the condition of life in which chance has placed us, but is always the result of a good conscience, good health, occupation and freedom in all just pursuits.

-Thomas Jefferson

Your Floating Check Just Sprung a Leak: New Check Processing Will Access Bank Funds Faster Than In Past

Beginning in October, new legislation becomes effective which eventually may put an end to "floating" checks. At one time or another, many people have probably "floated" a check. Perhaps it was close to the end of the month and they bought groceries on Friday, knowing that the check they wrote couldn't get back to their bank before payday on Monday.

While more people are using debit cards to pay for purchases, many consumers still rely on paper checks taking 2-3 days to clear their banks.

After October 28, this may be more difficult. That is when Check 21 becomes effective. The primary purpose of Check 21 is to provide an alternative to the nation's reliance on processing paper checks. You will still be able to write a check, but once it leaves your checkbook, the banking system will handle it differently. Should our nation experience another tragedy like 9/11, our dependence on moving paper checks could result in serious consequences for our national financial system. This situation was the impetus for the adoption of Check 21.

Another reason for Check 21 is to stifle white-collar criminals who write checks on a regular basis knowing that they have insufficient

funds to cover the transaction.

Currently, it takes 1-5 days from the time a check is written to a retailer to the time the check reaches the bank account for payment. With Check 21, you will write a check to the retailer and the check's image is then transmitted electronically through the system. If your bank is set up to receive electronic images, the transaction reaches your bank account for payment on the same day. If your bank is not set up with electronic imaging, it could take a day for the money to be deducted from your account.

Rather than using paper checks, the new law would permit financial institutions to use "substitute checks"—a digital image of the original paper checks with all of the information contained on the original check. The "substitute check" would be required to contain the words, "This is a legal copy of your check. You can use it the same way you would use an original check."

Although it will take several years for most banks to move to paperless transactions, you can eventually expect to see the end of "float" periods as well as the end of returned paper checks in your bank statement. Rather, you'll receive replicas or images of the original checks, or those payments may appear as electronic withdrawals on your bank statement.

While electronic presentment is not mandated for banks and other financial institutions, it may prove beneficial not only to the bank, but to its customers. Currently, it can take up to five days to access funds on an out-of-state check. Under Check 21, bank customers will be able to access these funds more quickly.

If you have any questions or concerns about Check 21, don't hesitate to contact your local community banker.

REGISTER and Vote!

You must be registered to vote 30 days prior to any election.

Register at the Lynn County Courthouse Tax Office.

- Local, school and hospital elections are May 15, 2004.
- U.S. General Election is November 2, 2004.



HARD EGG TO HATCH - Johnny Adams of Tahoka shows a chicken egg he gathered this week that has a rough, ridged vein-like shell (see inset).

Date	Location	Time
Aug. 27	Borden County	There 7:30
Sept. 3	OPEN	
Sept. 10	Happy	There 7:30
Sept. 17	Sands**	Here 7:30
Sept. 24	Spade*	There 7:30
Oct. 1	Ropes*	Here 7:30
Oct. 8	Meadow*	There 7:30
Oct. 15	Whitharral*	Here 7:30
Oct. 22	Southland*	There 7:30
Oct. 29	Amherst*	There 7:30
Nov. 5	Wilson*	Here 7:30

1900 Main St., Tahoka
561-1777
561-1771

GEORGE'S RESTAURANT & Drive-In

HAMBURGER Quarter Lb. \$4.50

WE SELL PIZZA EVERY DAY!

Breakfast Specials 6-11 A.M. • Daily Menu Specials!

Private Party Room available for birthday parties, anniversaries, meetings and more!

CALL FOR SPECIAL PRICES.

HOMEMADE BISCUITS & GRAVY Choice of Meat	\$3.50
10" Breakfast BURRITOS Start at	\$1.35
BREAKFAST SPECIAL 2 Eggs, Choice of Meat, Hashbrowns and Toast	\$3.75

Store #182
1800 Lockwood
Tahoka, Texas
806 / 998-4048

August 15, 2004 thru August 28, 2004

DIET PEPSI, MOUNTAIN DEW OR
PEPSI
3 LITER BTL.
\$1.49

6 PACKS
3 FOR \$5

BLUE BUNNY 4.25 OZ.
COOL TUBES
REGULAR 89¢
BUY ONE GET ONE FREE

ALLSUP'S "MOO" GET ONE FREE!
BUY 12 GALLONS OF FRESH ALLSUP'S MILK...

TOP 3 OZ. PKG. RAMEN NOODLES
29¢ EACH OR
4 FOR \$1

SHURFINE COTTAGE CHEESE
12 OZ. TUB
\$1.09

BAR-S HONEY COOKED HAM
12 OZ. PKG.
\$2.29

BUY A 32 OZ. TALLSUP FOR 89¢
RECEIVE A 99¢ BAG OF TOM'S POTATO CHIPS FREE

ASSORTED FLAVORS ALLSUP'S ICE CREAM
1/2 GAL. / \$3.79 EACH OR
2 FOR \$5

ALLSUP'S COMBO MEALS

COMBO NO. 1	BACON/EGG BISCUIT & 16 OZ. COFFEE	\$1.99
COMBO NO. 2	SAUSAGE/EGG BISCUIT & 16 OZ. COFFEE	\$1.99
COMBO NO. 3	BBQ SANDWICH & 32 OZ. TALLSUP	\$1.99
COMBO NO. 4	HOMESTYLE POPCORN CHICKEN & 32 OZ. TALLSUP	\$2.49
COMBO NO. 5	SPICY POPCORN CHICKEN & 32 OZ. TALLSUP	\$2.49
COMBO NO. 6	3 TAMALES, HOWLERS & 32 OZ. TALLSUP	\$2.39
COMBO NO. 7	2 HOT LINKS WITH BREAD & 32 OZ. TALLSUP	\$2.39
COMBO NO. 8	2 CORN DOGS & 32 OZ. TALLSUP	\$2.19
COMBO NO. 9	CHIMICHANGA & 32 OZ. TALLSUP	\$2.19
COMBO NO. 10	2 BEEF & BEAN BURRITOS & 32 OZ. TALLSUP	\$2.19

TOM'S ASSORTED CHIPS REGULAR \$1.89 **2 FOR \$3.00**

ALLSUP'S 20 OZ. WIDE MUG FILLED WITH YOUR FAVORITE FOUNTAIN SOFT DRINK EACH **\$2.29**

NISSAN CUP OF NOODLES ASST. FLAVORS 1 CT. / 59¢ EACH OR **2 FOR \$1.00**

ALLSUP'S SANDWICH BREAD 24 OZ. / 79¢ EACH OR **2 FOR \$1.29**

ALLSUP'S WHEAT BREAD 24 OZ. / 89¢ EACH OR **2 FOR \$1.49**

LYNN C
What
Ir
• 4-H
• Ne
Tax
• Me
- pg
• Ho
• Re
• Bic
• Bo
As
• Bu
Ph
• Fo
- p
Little
Try-C
Date
Tal
ball Try
to sign
Aug. 28
west pl
ementar
W
Date
Aug. 18
Aug. 19
Aug. 20
Aug. 21
Aug. 22
Aug. 23
Aug. 24
Summe
Total P
Total P
(Oops -
incorre
Wor
"Ble
who
whic
draw
Lyn
P.O. I
PI
e
Op
(No
C