



## Steppin' Out

Lots of girls had fun at the Cheerleading Clinic this week sponsored by the Tahoka High School Varsity Cheerleading Squad. Here, the girls get into one of the dance routines. THS cheerleader Stacie Green is in the foreground, and Jaci Hammonds is at the back of the group. (LCN PHOTO)

# THE Lynn County News



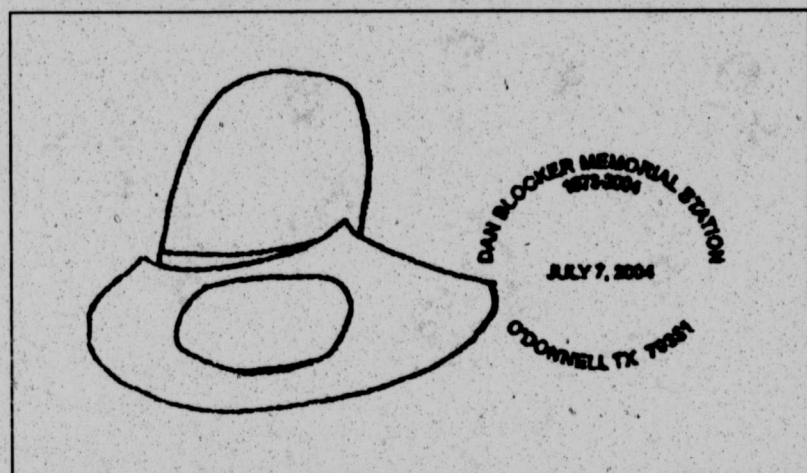
VOLUME 101, NUMBER 26

TAHOKA, LYNN COUNTY, TEXAS

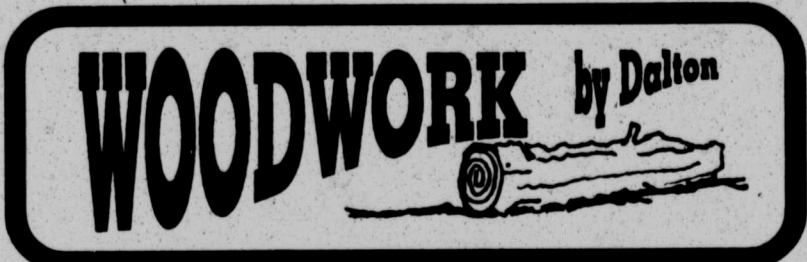
THURSDAY, JUNE 24, 2004

8 PAGES PLUS INSERT

50¢



**DAN BLOCKER PICTORIAL CANCELLATION** - The U.S. Post Office in O'Donnell is offering a pictorial cancellation commemorating the 31st year of the Dan Blocker Memorial. The cancellation will be offered only on July 7, 2004.



IN KEEPING with my policy of writing mostly about things I know nothing about, I decided to pose a question about the game of bridge, specifically about a little feature on bridge which has appeared daily in the Lubbock Avalanche-Journal for the last umpty-nine years.

I noticed one of them on a classified ad page last week. The feature was distributed by Newspaper Enterprise Assn., a syndicate which sells newspapers things to fill spaces which might otherwise be blank. This was written by someone named Philip Adler. Seems to me those things on bridge used to be written by a person named Oswald Jacoby, so maybe he is no longer with us.

(I also remember someone called Bashful Brother Oswald, but I don't think he had anything to do with bridge).

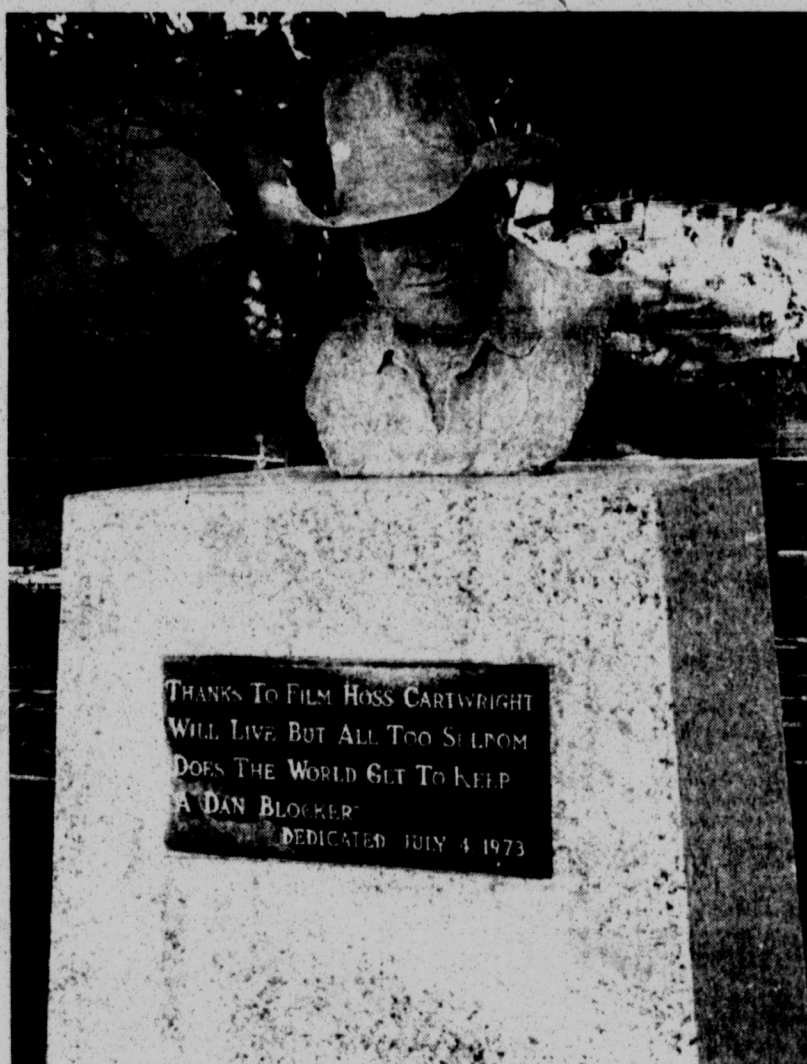
Bridge is a card game which I played a few times years ago and no longer remember anything about, except there are trumps (spades, hearts, clubs, diamonds and Donald). There used to be a bridge club in Tahoka which met weekly, but now there may be only one couple who play, and they play in Lubbock or some other remote place.

Bridge, like any other game or sport, has its enthusiasts, although apparently its popularity has waned considerably in recent years.

Anyway, I wonder if anybody among all the A-J's thousands of readers ever looks at that bridge section, much less studies it to learn strategy. The diagrams show sample hands dealt to four players, called north, south, east and west. Those designations alone would keep a lot of us Texans from identifying with any of the players except the one called south.

I have no idea why the game is called bridge, either. A bridge is something which connects two places together, making it possible to move from one to the other. For those of us who don't play, I can see that it might be called bridge because it goes completely over our heads.

DONALD DUCK's 70<sup>th</sup> birthday was observed a couple of weeks ago, at a Disney facility in France, of all places. Kids found little birthday prizes in boxes of Quackerjacks. Okay, I made that up, but for real, Donald Duck comics reportedly once were banned in Finland because he doesn't wear pants. They thought Disney should have finished the drawing.



**DAN BLOCKER MEMORIAL** - The Dan Blocker Memorial in O'Donnell features a bust of O'Donnell's famous son, who portrayed Hoss Cartwright in the popular television series, "Bonanza."

## Pictorial Stamp Cancellation July 7 To Honor Dan Blocker

A new stamp cancellation honoring O'Donnell's famous son, Dan Blocker, who portrayed Hoss Cartwright on "Bonanza," a popular television series, will be available at the O'Donnell Post Office on July 7, 2004.

The cancellation features a drawing of Blocker's ten-gallon hat and the words, "Dan Blocker Memorial Station, 1973-2004, O'Donnell, TX 79351, and the date, July 7, 2004."

The commemorative cancellation stamp is in honor of the 31st year of the Dan Blocker Memorial located in O'Donnell across from Saleh Park. The memorial depicts a bust of Dan

Blocker with a plaque underneath reading "Thanks to film Hoss Cartwright will live but all too seldom does the world get to keep a Dan Blocker." That memorial was dedicated on July 4, 1973.

Mail-in requests for the cancellation are welcome, according to O'Donnell Postmaster Stella Arguello, who says that requests will be accepted for one month only.

"You can bring a self-addressed envelope or postcard, with postage, to the O'Donnell Post Office and leave it here with us, and we will stamp the cancellation on July 7, 2004 and return it to you," said Ms. Arguello. "To mail a request, send your self-address envelope or postcard (with appropriate postage) to: Dan Blocker Memorial Station, 809 Doak Street, O'Donnell, TX 79351-9998," she added.

## Weather

Date	High	Low	Precip.
June 16	96	70	
June 17	95	70	0.30"
June 18	94	66	0.70"
June 19	85	64	
June 20	93	66	
June 21	94	69	
June 22	78	66	

Total Precipitation in June: 1.40"  
Total Precipitation to date: 11.50"

## Assault On Child Reported Here

The mother of a pre-teen-age girl told Tahoka Police Friday that her daughter had been sexually assaulted by a 15-year-old Tahoka youth earlier that day, and police talked with both principals involved, their parents and other witnesses.

Police indicated the case would be referred to juvenile authorities.

A 42-year-old Lynn County man was named Sunday as a suspect in the theft of \$125 from a Tahoka man in an incident reportedly involving pictures of nude women, police said.

Shannon Cox of Tahoka reported that the rear windshield of her Cadillac had been shattered while it was parked on Ave. K Thursday night or early Friday.

Police answered a domestic violence call Friday in the south part of the city where they arrived to find both parties outside yelling at each

other. The 41-year-old man was arrested and jailed for allegedly striking the woman "because she was snoring too loud."

Lynn County jail was holding 46 persons as of Wednesday, with 13 of these for Lubbock and nine for Garza County. Thirteen persons added to the list during the last week were arrested on these charges:

No drivers license, Kent County warrant on theft over \$1500, failure to appear on charges of driving while intoxicated (DWI) first offense, Lubbock warrants for burglary of a habitation, DWI first offense, capital murder and assault/domestic violence/aggravated robbery, domestic violence, warrant on theft by check of property over \$20 and less than \$500, violation of protective order, nine counts of forgery, traffic warrants and DWI.

## Saturday Breakfast, Auction To Benefit Sr. Citizens Center

A Pancake Breakfast/Auction/Bake Sale will be held Saturday morning at the Lynn County Pioneers Senior Citizens Center, with all proceeds benefiting the center. Area residents of all ages are invited to come eat a breakfast of pancakes, sausage and bacon, from 7-10 a.m. at the cen-

ter located at 1600 South 3rd in Tahoka.

Live music will be presented from 8-10 a.m. by Dalton Wood playing saxophone and clarinet, and Billie Miles of Big Spring playing guitar.

A silent auction will be conducted, with bids written on paper beside each item, and the auction concluding at 10 a.m. Raffle tickets will also be sold for \$1 for chances to win a "Texas Trails" quilt and an electric smoker, and a Bake Sale will also be offered.

All donations are welcome, either for the auction or bake sale, as well as monetary donations for the center.

## July 4th Event Slated In O'Donnell

Area residents are invited to celebrate July 4th at O'Donnell, where several events have been scheduled for Sunday, July 4 at the O'Donnell City Park. Food booths will not be available this year, so people are encouraged to bring their own picnic. Tea, water and ice will be provided by members of the 1946 Study Club.

The evening program will begin at 7 p.m. with a community choir (all invited to participate) and a children's choir presenting musical selections, Michael Summers, interim pastor of First Baptist Church of O'Donnell, will present a message entitled, "One Nation Under God."

A fireworks display will be presented at dusk by members of the O'Donnell Volunteer Fire Department.

## St. Jude's Catholic To Host Dinner

St. Jude's Catholic Church will be hosting an enchilada casserole dinner, Saturday, June 26<sup>th</sup> from 4-7 p.m. This will be carryout only. Proceeds from the dinner will go to the Jamaica Fund. The meal will include enchiladas, rice, beans, salad, and dessert for \$5.00 a plate.

For more information contact Gloria DeLeon at 561-5101.

Memorials and donations may be made to the Lynn County Pioneers (Senior Citizens) 1600 S. 3rd • P. O. Box 223 Tahoka, Tx 79373

## O'Donnell Rodeo Set For July 8-10

The "Biggest Little Rodeo In Texas" will be in O'Donnell on July 8-10 beginning at 8:30 each evening. General admission is \$4.50 in advance, \$5.00 at gate, \$2.50 advance under 12 and \$3.00 at gate under 12.

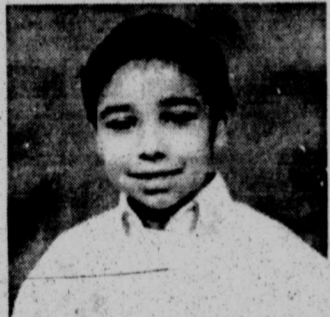
The Rodeo office phone is 806-828-4848 and entries open at 9:00 a.m. and close at 6 p.m. on Monday, July 5.

The Specialty Act will be the "Six White Horses" from Hardin Simmons of Abilene, who will be performing Saturday, July 10 at the Parade and Rodeo. The Parade begins at 6:30 on Saturday, July 10 and for information you may call 806-428-3463.

There will also be a dance on Friday and Saturday nights featuring "Devil Ridge" with an admission cost of \$5.00. Also, after the last event on Saturday night the Pro. Sr. Bull Riders Association will compete and all the proceeds of this event go to FACE (Friends Against Child Abuse Everywhere!) For more information contact Ms. Tucker at 915-388-2658.

**A Gift to the AMERICAN CANCER SOCIETY MEMORIAL PROGRAM strikes a blow against cancer**

**Look who's 9 years old: Christopher Rodriguez**



**You are my pride and joy! Love -- Grandma Mary Helen**

## John Edwards Shop Closes After 60 Years Of Service



**LOOKING OUT FOR THEIR FRIENDS**—John and Mary Bess Edwards stand in the doorway of their John Edwards Shop in New Home, which they closed last month after almost 60 years of service to farmers and others in the community.



**EARLY-DAY BLACKSMITH SHOP**—In this photo taken about 1946 are workers at the J.W. Edwards and Son blacksmith shop, later to be the John Edwards Shop, in New Home. From left are employees J.R. Turner and Pop Munkess, customer Claude Brown and owner J.W. Edwards.

## John Edwards Shop Closes After 60 Years Of Service

After almost 60 years of serving New Home and surrounding communities, the John Edwards Shop closed May 7, 2004.

John and Mary Bess Edwards sent out letters to their customers in June, thanking everyone for their loyal business over the years. "Please know that although the doors to the business are closed, our hearts will remain open to the needs of the members of the community," they said.

The business began as a blacksmith shop in August 1944, operated by J.W. Edwards, father of John. The business soon would be called J.W. Edwards and Son, specializing in blacksmithing and welding, and over the years the business increased, adding such things as water well drilling

and pump setting. Later the drilling rig was sold, but pump repairs and service remained along with blacksmithing, welding and machine shop. And the business even back in the 50s simply became known as "the shop."

In the 1960s, John Edwards purchased half of the business from his father, and in 1976 when he bought the rest of it from his retired father, the sign "John Edwards Shop" went up. John's wife, Mary Bess, began doing office work at the firm in the early 1960s.

John and Mary Bess continued to operate the business for the past 28 years. They hope to continue to be active in community and area affairs.

## THE LYNN COUNTY NEWS

News • Advertising • Printing • Office Supplies

PHONE (806) 561-4888 • FAX (806) 561-6308 • TAHOKA, TEXAS

**We are now OPEN on SUNDAYS!**

**OPEN FOR LUNCH 11:00 A.M. to 2:00 P.M. EVERY SUNDAY**

**WE TAKE ORDERS FROM 10 a.m. to 8:30 p.m. MONDAY-SATURDAY!**

**JOLLY TIME**

**2220 Lockwood in Tahoka • 561-4616**

**No contracts. No hassles. No kidding.**

**Introducing "PrePaid DC" from Digital Cellular! As low as \$25!**

- Free Caller ID! Free Call Waiting!
- Free Nationwide Long Distance!
- Free Basic Voice Mail
- 100 minutes for just \$25
- 250 minutes for just \$50
- 500 minutes for just \$75
- and our best deal...
- 800 minutes for \$100



**Get a Nokia 5165 and 100 minutes for just \$75!\***

If you think a cell phone contract isn't right for you, check out PrePaid DC from Digital Cellular. All you do is decide how many minutes you want to buy in advance, from 100 up to 1,000, and start talking! So you don't have to worry about a monthly bill or a contract. Sign up for PrePaid DC today, and you'll see how easy cell phone service can be. No kidding.

**Digital Cellular OF TEXAS**

DIGITAL CELLULAR YOUR NEIGHBOR IN THE DIGITAL WORLD.

1647 Ave J Tahoka, Texas | 806.561.5600 11.5 miles North of Tahoka on US Hwy 87 Tahoka, Texas | 1.800.662.8805



## Victor Gutierrez

Survived... Gutierrez... held at 10:23 in the Tahoka... officiating... Nevels... Tahoka... Funeral Home... Gutierrez... Gutierrez... 1927 in Hu... Mrs. Gab... Gutierrez... Garcia... Gutierrez... tors Centra... a member... and the Ne... Defiance... con.

Survived... Gutierrez... tor Gutierrez... daughters... ance, Vern... and Virgin... two sisters... and Cecilia... nine grand... grandchild... He wa... parents, fo... ors.

## Kevin

Funer... Penton, 56... New... Wednesd... Englands... Cleve Ken... Eaglew... Fenton... 2004, at U... after a sud... He wa... Lubbock... Wilson st... entire life... city... Fenton... parents, Ja... Stton; a... Wolforth... nephews.

## Sen

Monday... beans; spi... cornbreac... Tuesday... low squa... pie... Wednesday... potatoes... wheat rol... Thursday... gravy, ma... strawber... Friday-S... beans, ch...

## Insu

Ca... Ins... Ask... D...





**AIM AND SHOOT** - These three youth at the Bulldog Football/Basketball Camp held this week at Tahoka High School follow instructions in basketball fundamentals, practicing their shooting skills at one of the goals. Boys in 3rd-8th grades participated in the camp. A Lady Bulldog basketball camp will be held next week, June 28-July 2, at the THS gym from 9 a.m.-12 noon. (LCN PHOTO)

**T-Bar Schedules Red Raider Day, Open Scramble.**

June 25<sup>th</sup> will be Red Raider Day at T-Bar Country Club. Registration is at 12:00 noon and Tee off begins at 1:00 p.m.  
T-Bar also will have a 2-person Open Scramble on June 26-27. For information concerning both events call Cherry at T-Bar, 998-5305.

**NOW AT THE LIBRARY**

**The Murder Room**  
By P.D. James

The Dupayne, a small private museum in London devoted to the interwar years 1919-39, is in turmoil. The trustees - the three children of the museum founder - are bitterly at odds over whether it should be closed. Then one of them is brutally murdered, and what seemed to be no more than a family dispute erupts into horror. And even as Commander Adam Dalgliesh and his team investigate the first killing, a second corpse is discovered. Clearly, someone at the Dupayne is prepared to kill, and kill again. Still more sinister, the murders appear to echo the notorious crimes of the past featured in one of the museum's most popular galleries, the Murder Room.

Available at the City-County Library, located inside the Life Enrichment Center, 1717 Main St., Tahoka.



**LET'S DRAW FOR PRIZES!** - Children at the Summer Reading Program Monday morning at the City/County Library in Tahoka eagerly await the weekly drawing for prizes, as moms and grandmothers wait to take them home following the hour-long session. There is one more Monday session, open to children of all ages, on June 28 from 10-11 a.m. (LCN PHOTO)

**Questions, Anyone?**  
Learn more about federal government programs, benefits, and services. Just call toll-free **1-800-FED-INFO** or visit [www.pueblo.gsa.gov/call](http://www.pueblo.gsa.gov/call).  
U.S. General Services Administration

**Emergency Physicians Warn Injuries Increase With Rise In Temperatures**

Each year, Memorial Day weekend launches months of fun in the sun celebrated with picnics, pool visits and vacations. Beware. As temperatures rise, so do the number of injuries seen in hospital emergency departments across the country, especially in children. The American College of Emergency Physicians (ACEP) encourages you to prepare for the summer by restocking and updating your first aid kit.  
"Emergencies are unpredictable, which is why everyone should be prepared before an incident occurs," said ACEP's President Dr. J. Brian Hancock. "An important first step is to have a first aid kit in your home and automobile. Many people may already have first aid kits, but they need to remember to replenish supplies about once a year and throw away items that are old or expired and replace them with new products."

- \* Difficulty breathing or shortness of breath;
- \* Chest or upper abdominal pain or pressure;
- \* Fainting, sudden dizziness or weakness;
- \* Changes in vision;
- \* Confusion or changes in mental status;
- \* Any sudden or severe pain;
- \* Uncontrolled bleeding;
- \* Severe or persistent vomiting or diarrhea; or
- \* Coughing or vomiting blood.

ACEP suggests the following items be kept in a first aid kit, which should be an easily identifiable, watertight container:

- \* Personal identification, emergency contact numbers and medical history;
- \* First aid manual;
- \* 20 adhesive bandages in assorted sizes;
- \* Six medium sterile bandages;
- \* Two large sterile bandages;
- \* Two extra-large sterile bandages;
- \* Six triangular bandages;
- \* Two sterile eye pads;
- \* Two roller bandages;
- \* Aspirin and ibuprofen tablets;
- \* Disposable gloves;
- \* Instant ice pack;
- \* Nonalcoholic wound cleansing wipes;
- \* Scissors and tweezers;
- \* Pocket mask or plastic face shield for protection when giving CPR;
- \* Six safety pins;
- \* Notepad and pencil to record details and your observations during treatment; and
- \* For outdoor activities: blanket, survival bag to keep a person warm and dry, flashlight (with batteries), and whistle.

A considerable number of the 110 million annual emergency department visits occur during the summer, so it is important to be prepared. First aid kits should contain products that will help you treat injuries such as minor burns, cuts and scrapes and sprains and strains. However, it is imperative to be aware of the types

of injuries that may require further treatment by an emergency physician. Immediate emergency medical attention is needed when a person experiences:

**Down Payment Assistance Available For First-Time Homebuyers**

Hundreds of low-income families living in Texas communities can now realize the dream of homeownership because of \$11,734,341 million in American Dream Downpayment Initiative (ADDI) funding announced today by Housing and Urban Development Secretary Alphonso Jackson. "The single greatest obstacle to homeownership is the downpayment and closing costs," said Jackson. "This program will give first-time homebuyers downpayment assistance grants up to a maximum of \$10,000 or six percent of the home's purchase price, whichever is greater. Not only will these grants help to defray the upfront costs of purchasing a first home, they can also be used to help offset the costs of rehabilitating the property."

To be eligible for this assistance, individuals must be first-time homebuyers interested in purchasing one-to-four-family housing, condominium unit, cooperative unit or manufactured housing. In addition, individuals who qualify for this assistance must have incomes not exceeding 80 percent of area median income.

For information, or to apply, contact the city, county or State office listed on the internet at [www.hud.gov/offices/cpd/affordablehousing/programs/homecontacts/index.cfm](http://www.hud.gov/offices/cpd/affordablehousing/programs/homecontacts/index.cfm).

**Wilson St. John Lutheran Church**  
13th & Dickson • Wilson, TX 79381  
(806) 628-6573  
Sharing Christ's message of forgiveness and salvation with our community and beyond.  
**LEADERS: REV. LEWIS WILKINS TONDA FREITAG, PLM**  
Sunday School (for all ages) - 10 a.m.  
Sunday Worship - 11:15 a.m.

**ATTEND CHURCH IN LYNN COUNTY**

**Wilson First Baptist Church**  
1403 13th St. • Box 67 • Wilson, TX 79381  
(806) 628-6333  
**INTERIM PASTOR: WALTER HUNT**  
Sunday School - 9:45 a.m.  
Sunday Morning Worship - 11:00 a.m.  
Discipleship Training - 5 p.m. Sunday  
Sunday Evening Worship - 6 p.m.  
Wednesday Bible Study & Prayer Mtg-6 p.m., Youth 7 p.m.

**O'Donnell First Baptist Church**  
701 Standefer • O'Donnell, TX 79351  
(806) 428-3236  
**Intentional Interim: Michael Summers**  
Sunday School - 9:30 a.m.  
Sunday Worship: 10:45 a.m. and 5:30 p.m.  
Wednesday Prayer Meeting - 7 p.m.

**Grassland Nazarene Church**  
Rt. 5 Box 360 • Tahoka, TX 79373  
(806) 327-5656, 327-5655  
**PASTOR: ED PORTER**  
Sunday School - 9:45 a.m.  
Sunday Morning Worship - 10:45 a.m.  
Sunday Evening Worship - 6 p.m.  
Youth and Adults: Wednesdays - 7 p.m.

**TAHOKA Church of Christ**  
2320 Lockwood • Box 1177 • Tahoka, TX 79373  
(806) 561-4060 • email: [tcoc@pgka.com](mailto:tcoc@pgka.com)  
**MINISTER: RON FANT**  
Sunday School - 10:00 a.m.  
Sunday Worship - 11 a.m., 6 p.m.  
Bible Classes - Wednesday 7 p.m.

**Draw First United Methodist Church**  
(established 1907)  
P.O. Box 496 • O'Donnell, TX 79351  
Phone (806) 428-3357 or Fern Barnes (806) 327-5583  
**PASTOR: REV. KEN PETERSON**  
Sunday Morning Worship - 9:15 a.m.  
Sunday School following

**New Home Church of Christ**  
St. address • Box 188 • New Home, TX 79383  
(806) 924-7575 • website or email  
**MINISTER: VICTOR ELLISON**  
Bible Class - 9:30 a.m.  
Sunday Worship Service - 10:30 a.m.  
Sunday Evening Service - 6 p.m.  
Mid-Week Bible Study - 7:30 p.m.

**A Message From: Bro. Walter Hunt**  
**First Baptist Church, Wilson**

Do you ever feel worn down, stressed out, beat up by life? Have you ever come to the place where you are sick and tired of being sick and tired?

Jesus Christ has something better. It is life in the Kingdom of God, a new partnership of love, joy and peace with your Creator. And it lasts forever!

Jesus said, "Come to me, all you who are weary and burdened, and I will give you rest." Matt. 11:28

**Gethsemane Baptist Church**  
1421 South 5th • Box 1017 • Tahoka, TX 79373  
(806) 561-4577  
**PASTOR: REV. MINGO CHAPA**  
Sunday School - 9:45 a.m.  
Sunday Worship - 11:00 a.m.  
Free Christian Movies Shown the Last Saturday of Each Month  
Pot Luck Lunch Every Sunday - All Welcome!  
**MATTHEW 11:28**

**Wilson St. Paul Lutheran Church**  
16th & Houston St. • Box 136 • Wilson, TX 79381  
(806) 628-6471 • [www.stpaulwilson.com](http://www.stpaulwilson.com)  
**PASTOR: DAVID W. ROHDE**  
Sunday School - 9:15 a.m.  
Divine Service - 10:15 a.m.  
"Where Christ Serves People"

**Wilson Faith Chapel Evangelical Methodist Church**  
1105 Green St. • Box 18 • Wilson, TX 79381  
(806) 628-6612 • email: [fcpastormichael@aol.com](mailto:fcpastormichael@aol.com)  
**CO-PASTORS: REV. FRANK TAYLOR MICHAEL E. TAYLOR**  
Sunday Services 10 a.m. & 6 p.m.  
Wednesday Youth 7 p.m.

**PLEASANT GROVE BAPTIST CHURCH**  
N. 7th & Ave. D • Box 1523 • Tahoka, TX 79373  
Phone (806) 561-1014 • FAX (806) 561-1014  
**PASTOR: REV. GLORIA MOORE**  
Sunday School - 9:30 a.m.  
Morning Worship - 11 a.m.  
Wednesday Night Bible Study - 8 p.m.

**Greater Antioch Baptist Church**  
1216 N. 7th • Box 62 • Tahoka, TX 79373  
**PASTOR: REV. ROOSEVELT MOORE**  
Sunday School - 9:45 a.m.  
Sunday Worship - 11:00 a.m.  
Bible Study & Prayer Meeting Wednesdays at 7:30 p.m.  
Come and worship with us to lift up the name of the Father, the Son and the Holy Spirit

**TAHOKA St. Jude Thaddeus Catholic Church**  
South 4th & Ave. M • Tahoka, TX 79373  
(806) 561-4436  
**PASTOR: REV. EDUARDO TEO DEACON: FRANCISCO AGUILAR**  
Sunday Mass - 11:00 a.m.

**New Home United Methodist Church**  
350 N. Main New Home, TX 79383  
(806) 924-7549  
**PASTOR: RICK WOLFE**  
Sunday School - 10:00 a.m.  
Sunday Worship - 10:45 a.m.  
Youth Activities

**Tahoka Trinity Church**  
1925 Lockwood • Box 1168 • Tahoka, TX 79373  
(806) 561-5317 • Parsonage 561-5520  
**PASTOR: REV. CHARLIE STICE**  
Sunday School - 9:45 a.m.  
Sunday Morning Worship - 11:00 a.m.  
Sunday Evening Worship - 6 p.m.  
Youth - Sundays at 7 p.m.  
For a ride to Sunday School or Church, call the above numbers

**O'Donnell St. Pius X Catholic Church**  
Nassa Road • O'Donnell, TX 79351  
(806) 428-3490 • Hall 428-3691  
**PASTOR: REV. EDUARDO TEO DEACON CANDIDATE: SIMON RESENDEZ**  
Sunday Mass - 9:00 a.m.

**First United Methodist Church**  
1801 Ave. J • Box 500 • Tahoka, TX 79373  
(806) 561-4503 • [fumctahoka@juno.com](mailto:fumctahoka@juno.com)  
**PASTOR: REV. JEFF RAYLEY**  
Sunday School - 10:40 a.m.  
Sunday Worship - 11:00 a.m.  
Family Fellowship - 6:30 p.m. Wednesdays  
Youth - 8 p.m. Wednesdays  
Adult Activities and Bible Studies  
"For I know the plans I have for you... plans to give you hope and a future!"  
-JEREMIAH 29:11

**Sweet Street Baptist Church**  
1300 Avenue J • Box 751 • Tahoka, TX 79373  
(806) 561-5310  
**PASTOR: LYNN LONG**  
Sunday School - 9:45 a.m.  
(A Bible Study Class for all ages)  
Morning Worship - 10:55 a.m.  
(Uplifting Music - Message from God's Word)  
Evening Worship - 6 p.m.  
(Praise & Worship - Gospel Message)  
Wednesday Night - 7 p.m.  
(Prayer & Bible Study, Children & Youth Ministries)  
**EVERYONE IS WELCOME!**

Reminder to Church Pastors: Please FAX your message for the center section of this Church Directory to The Lynn County News, 561-6308.

**PRAY FOR OUR NATION**

**First Baptist Church**  
1701 Ave. K • Box 1547 • Tahoka, TX 79373  
(806) 561-4557 • [www.fbctahoka.org](http://www.fbctahoka.org)  
**PASTOR: REV. RICHARD HARBISON**  
Sunday School - 9:45 a.m.  
Sunday Morning Worship - 10:55 a.m.  
Sunday Evening Worship - 6 p.m.  
Activities For All Ages - Call For Complete Schedule  
**There's A Place For Me at FBC!**

**OUT OF MEDICINE?**

We're right here in town! Remember, your prescription card plan requires you to pay the same co-pay at ALL pharmacies... so, when choosing your pharmacist, make your choice based on our friendly, knowledgeable staff and hometown convenience!

Family-owned since 1923 **Tahoka Drug** 1610 Main 561-4041 in Tahoka



**KRISTON LAWS  
Kriston Laws Is  
Wayland Grad**

Kriston Laws graduated from Wayland Baptist University, Lubbock campus, on June 12<sup>th</sup> receiving her Master's degree in Education. Kriston graduated with a 3.786 GPA. Kriston currently teaches Kindergarten at New Home Elementary. Kriston and her husband Jeremy live in New Home, Tx. Kriston was honored with a barbecue supper on June 11<sup>th</sup> by her parents, Larry and Karon Durham.

**NursCare Opens Home Health Agency Here; Open House Monday**

A new home health agency has opened its doors in Tahoka, offering medical care in Lynn and surrounding counties. NursCare Home Health Services invites area residents to their Open House on Monday, June 28, from 1:30-3:30 p.m. at the office located at 1511 Conway (the former SPS office building next door to the First National Bank). NursCare, established in 1994, is a family-owned home health agency based out of Lubbock, with agencies in Lubbock and Slaton as well as the new operation in Tahoka, which officially began operating on May 17. Susan Teague, RN, is Clinical Supervisor for the Tahoka office, and Kathy Long is Office Manager. Tami Pehsorth Simmons, RN, is regional Director of Home Health Services. "NursCare is a locally family-owned home health agency that is committed to providing continuity and quality care to Tahoka and Lynn County, and surrounding counties,"

said Mrs. Long. "Also, our staff is local," she emphasized, adding that the agency offers 24-hour, seven-days-a-week RN services. "The agency is working very closely with the local doctors and we can also work with other physicians in the surrounding areas," Mrs. Long said. "If you need home health care, we will be glad to work with your physician in providing the best possible care for you or your loved ones," she added. Services offered by the agency are provided by RNs, LVNs and Home Health Aides, offering physical therapy, occupational therapy and speech therapy, as well as surgical and wound care management. A medical social worker is available, and RN case management is provided on all patients. The agency works with Medicare and Medicaid, and bilingual staff is available if needed. Call 806-561-1115 to contact NursCare Home Health Services.



**CREATIVE ARTWORK** - Youngsters at the Free Summer Camp in Tahoka this week participated in lots of activities, and are shown here preparing to decorate the bright orange caps they each received. The camp was sponsored by several local and area agencies, and headed up by the Lynn County Probation Office. (LCN PHOTO)

**Diabetes Is Leading Cause Of Kidney Failure In USA**

Diabetes is the leading cause of kidney failure in the United States. Because a cure for diabetic kidney disease has not yet been found, treatment involves controlling the disorder and slowing its progression to kidney failure. Current research suggests that control of high blood pressure is a key factor in slowing this disease. Strict control of blood sugar levels and reduction of dietary protein intake also may be important. Treatment to prevent diabetic kidney disease should begin early - before kidney damage develops.

1. In the U.S., 17 million people, or about 6.2 percent of the population, have diabetes. Of these, 11.1 million are diagnosed and 5.9 million are undiagnosed. With one million new cases diagnosed annually, it is expected that by 2025, 8.9% of the U.S. population will have diabetes.

2. Diabetes is characterized by high levels of blood sugar, resulting from insufficient production of insulin or defects in insulin action in the body. Type 2 diabetes (also called noninsulin-dependent diabetes) is far more common than type 1 (insulin-dependent diabetes), accounting for about 90 to 95 percent of the cases of diabetes. Type 2 diabetes is most common in people over 45, but is

increasing among younger people. About 151,000 people less than 20 years of age have diabetes.

3. Gestational diabetes is diagnosed in some women during pregnancy. It occurs more often among African Americans, Hispanic Americans and American Indians. It is also more common among women who are obese or have a family history of diabetes. Gestational diabetes, which occurs during pregnancy, should be treated to prevent complications in the infant. Women who have had gestational diabetes have a 20 to 50 percent chance of developing diabetes in the next 5 to 10 years.

4. Type 2 diabetes is more prevalent in certain ethnic groups. For example, 2 million, or 10.2 percent, of Hispanic Americans have diabetes. On average, Hispanic Americans are 1.9 times more likely to have diabetes than white Americans of similar age. American Indians and Alaska Natives are about 2.6 times more likely to have diabetes than white Americans of similar age. Among American Indians and Alaska Natives receiving care from the Indian Health Service, 105,000, or 15.1 percent, have diabetes. About 2.8 million, or 13 percent, of African Americans have diabetes. They are two times more likely to have diabetes

than white Americans of similar age. Asian and Pacific Islanders are also at increased risk for diabetes. For example, Native Hawaiians are 2.5 times more likely to have diabetes than white residents of Hawaii of similar age.

5. Diabetes is the single leading cause of kidney failure in the U.S., accounting for more than 44 percent of the people who start treatment for kidney failure each year, and nearly 35 percent of all Americans being treated for kidney failure. In 2000, diabetes accounted for nearly 42,000 new cases of kidney failure in the U.S.

6. The risk factors for type 1 diabetes include autoimmune, genetic and environmental factors. Risk factors for type 2 diabetes include older age, obesity, family history of diabetes, prior history of gestational diabetes (diabetes during pregnancy), impaired glucose tolerance, physical inactivity and race or ethnicity.

7. Diabetes damages small blood vessels throughout the body, affecting the kidneys as well as other organs and tissues including skin, nerves, muscles, intestines and the heart. Patients with diabetes can develop high blood pressure as well as rapid hardening of the arteries, which can lead to heart disease and eye disorders.

8. Researchers feel that the presence of high blood pressure may be the most important predictor of which diabetics develop chronic kidney disease. Therefore, the detection and control of high blood pressure are very important in diabetic patients. Specific high blood pressure medicines, such as the angiotensin converting enzyme inhibitors (ACE) and the angiotensin-2 receptor blockers (ARBs), may be the most effective in preventing diabetic kidney disease. About 73 percent of adults with diabetes have blood pressure greater than 130/80 or use medications for high blood pressure.

9. Some of the signs that someone who has diabetes may be developing chronic kidney disease are:

- \* Protein in the urine
- \* High blood pressure
- \* Leg swelling, leg cramps
- \* Increased need to urinate, especially at night
- \* Abnormal blood tests, such as a rise in blood urea nitrogen (BUN) and creatinine tests
- \* Less need for insulin or anti-diabetic pills
- \* Morning sickness, nausea and vomiting
- \* Weakness, pallor and anemia
- \* Itching

10. A cure for diabetic kidney disease has not yet been found; the treatment involves controlling the disorder and slowing its progression to irreversible kidney failure. Some of the treatments that may be effective are:

- \* Controlling high blood pressure to <math>\leq 120/80\text{ mm/Hg}</math>
- \* Controlling blood sugar levels
- \* Reducing dietary protein intake
- \* Avoiding medications that may damage the kidneys
- \* Treating urinary tract infections
- \* Exercise and weight loss (under the supervision of a physician)

**NOW AT THE LIBRARY  
The Taking  
By Dean Koontz**

This is a story of a community cut off from a world under siege, and the terrifying battle for survival waged by a young couple and their neighbors as familiar streets become fog-shrouded death traps. Gripping, heartbreaking, and triumphant in the face of mankind's darkest hour, here is a small-town slice-of-doomsday thriller that strikes to the core of each of us.

Available at the City-County Library, located inside the Life Enrichment Center, 1717 Main St., Tahoka. Open Mon. & Wed. 9-5:30 (closed 12:30-1:30 for lunch); Tues. & Thurs. 2-7 pm; Saturdays 10 am to 1 pm.

**SCORPION!** - This scorpion, shown alongside a quarter for size comparison, was found in the shower at a home on North 3rd in Tahoka this week (okay, it was the editor's daughter who found it hanging from the faucet in the shower, and she about broke her leg trying to get away from it). The stinger is at the end of the long curved tail. Several scorpions have been reported in this area lately, and some have reported getting stung. (LCN PHOTO)

**Assistance First-Time**

Income families... assistance... first-time... grants help... rehabilitation...

or to apply, contact... State office... internet at... programs/home/

card plan... so, based on our... 1610 Main... 561-4041... in Tahoka

**Family Chat Plan**  
Local

**The Family Chat Plan**  
**ONLY \$995**  
per additional line  
(Offer expires July 31, 2004)

**REQUIREMENT:**  
On Local Calling Plans \$40 or greater (Host plan)  
2-year agreement

**INCLUDES:**  
Share host plan's anytime minutes  
Unlimited calls between Cellular One customers (One2One Minutes)  
Unlimited Nights & Weekends  
Free nationwide long distance from home calling area

**CELLULARONE**  
The next best way to say hello.

©2004 Wireless Wireless Corporation. All rights reserved. Cellular One is a registered service mark of The Cellular One Group.

**DVDExpress** 1615-A Lockwood Tahoka • 806/561-5533  
**MOVIE EXPRESS** 212 Main St. • Seagraves 806/387-3513

10. A cure for diabetic kidney disease has not yet been found; the treatment involves controlling the disorder and slowing its progression to irreversible kidney failure. Some of the treatments that may be effective are:

- \* Controlling high blood pressure to <math>\leq 120/80\text{ mm/Hg}</math>
- \* Controlling blood sugar levels
- \* Reducing dietary protein intake
- \* Avoiding medications that may damage the kidneys
- \* Treating urinary tract infections
- \* Exercise and weight loss (under the supervision of a physician)

*Volunteer and help others -- it will do your heart good!*

**Seal of Approval!**

**APPROVED**

**FREE CHECKING is the way to go!**

First National Bank of Tahoka offers FREE checking with:

- ★ NO monthly service charge
- ★ NO minimum balance
- ★ UNLIMITED check writing
- ★ FREE check safekeeping
- ★ FREE wallet style checks with FREE checking account
- and ★ OVERDRAFT Privilege<sup>SM</sup>

We will cover for you when you make mistakes or write a check for more money than you have in your checking account.

Overdrafts covered up to \$500\* (\$300 on FREE Checking Accounts)  
\* Overdraft Privilege<sup>SM</sup> Limits vary by account product.

► Savings Accounts ► Safe Deposit Boxes ► Checking Accounts  
► Loans ► Certificates of Deposit ► Bank by Mail ► Direct Deposit

**HOURS: Lobby - 9:00-5:00 Monday-Friday; Drive-Thru - 9:00-6:00 Monday-Friday  
ATM - 24 Hours a Day at Town & Country Convenience Store, Tahoka**

**First National Bank of Tahoka**  
(806) 561-4511 • Member F.D.I.C.

Independent Bank of Texas  
EQUAL HOUSING LENDER



LET'S PLAY FOOTBALL! - Youth at the Bulldog Football/Basketball Camp Monday morning toss a football to each other, under the guidance of THSD Athletic Director Troy Hinds and other coaches. The camp was held Monday through Thursday this week, for boys in 3rd-8th grades. (LCN PHOTO)

### Booster Club To Organize Golf Tourney

On Monday, June 28 the Bulldog Booster Club will meet at 8:00 p.m. at the Tahoka High School LRC to plan and organize an upcoming golf tournament. Anyone who has a student in Tahoka Middle School or High School is asked to come help out and be involved in the organization. All fundraisers benefit Middle School and High School athletes.

It is heaven upon earth to have a man's mind move in charity, rest in providence and turn upon the poles of truth. —Francis Bacon

Memorials and donations made to the **Lynn County Pioneers** 1600 S. 3rd • P.O. Box 223 Tahoka, Tx 79373 will benefit our local senior citizens center.

### Parents Most Influential in Helping Adolescents Avoid Pregnancy, Says TDH

Whatever the talk is called - the birds and the bees, the facts of life, sex education - the conversation is sometimes a challenge for parents and their children. It also is one of the most important.

"The fundamental message to parents is to talk early, talk often and stay involved with their children," said Cindy Jones, director of family planning at the Texas Department of Health (TDH). "We know that teens want very much for their parents to have open and honest conversations with them about these topics. But talking is not enough. Parents must stay involved in the lives of their adolescents, if they want to help them."

TDH statistics show that the birth rate for Texas teens age 15 to age 19 in 2002 was 64 births per 1,000 less than the 66 births per 1,000 the previous year and down significantly from the 76 births per 1,000 10 years ago. However, while the Texas teen birth rate is declining, it still is higher than the national teen birth rate of 43 births per 1,000 in 2002.

"Young people need to understand that teen pregnancy usually does not lead to living happily every after," Jones said.

Several health, economic and social consequences are associated with teen pregnancy, she noted.

Pregnant teens are less likely to get adequate prenatal care. In Texas, 35 percent of the pregnant women under 17 are likely to have late or no prenatal care, compared with 19 percent for all women who give birth.

Teen mothers are more likely to experience pregnancy and delivery problems and have less healthy babies than older mothers. Infants of teen mothers are more likely than infants of older women to weigh less than 5 1/2 pounds, have underdeveloped organs or be born prematurely.

Parenthood also is a leading cause of high school dropout among

teen girls. On average, teen fathers earn less money and are more likely to quit school than are young men who delay parenting.

"The fact is that one young person in five has sex by age 15," Jones said. "And every 10 minutes, a teen in Texas gets pregnant."

Jones offered parents these ideas to help make conversations about sex easier to have with their children:

- Educate yourself.
- Be clear about your own sexual attitudes and values.
- Be specific when you talk with your children about sex.
- Be a parent with options.
- Know what your child is doing and with whom.
- Know your children's friends and their families.
- Talk with your children about what they are watching, reading and hearing.
- Supervise and monitor your children and adolescents.
- Discourage early, frequent and steady dating.
- Take a strong stand against your child dating someone older.
- Help your teen-ager have options for the future that are more attractive than early pregnancy and premature parenthood.
- Let your children know that you value education highly.
- Talk to sons as well as daughters.

"Research, common sense, public opinion and teens themselves make it clear that family matters a lot to teens," Jones said. "Parents should not overestimate the influence of peers and underestimate their own influence."

For more information and resources on teen pregnancy prevention, check the TDH Website at [www.tdh.state.tx.us/women/teenpreg.htm](http://www.tdh.state.tx.us/women/teenpreg.htm).

The battles that count aren't the ones for gold medals. The struggle within yourself—the invisible, inevitable battles inside all of us—that's where it's at. —Jesse Owens

## Notice

**NOTICE OF ACCEPTING BIDS**  
The Commissioner's Court of Lynn County, Texas will accept sealed bids until 9:00 a.m. on Friday, July 9, 2004 for Precinct 4 to purchase one (1) new articulation motor grader. Lynn County will offer as partial payment, one (1) Caterpillar 140G motor grader which may be inspected by contacting J.T. Miller at 998-4478. Bids will be accepted on a total cost bid basis, with five (5) years or 5000 hours guaranteed repurchase including financial options. For specifications, contact J.T. Miller. Bids will be opened on Monday, July 12, 2004 at 9:00 a.m. Lynn County reserves the right to accept or reject any or all bids and the right to waive formalities.  
By order of the Commissioner's Court of Lynn County.

H.G. Franklin  
Lynn County Judge  
25-2c

**NOTICE:**  
You may notice an increase in the charge on your telephone bill called "Federal Universal Service Charge (FUSC)" that pays for the Federal Universal Service Fund. The FCC has approved an increase in the contribution factor from 8.7% to 8.9% per line for residential and business customers effective July 1, 2004. This charge contributes to the national fund to help keep local telephone service rates affordable for low income customers, customers in high cost rural areas, and to serve customers with disabilities. Centex, ISDN, and Interstate DSL Access Services customers are assessed a different rate. If you have any questions about this charge, please give us a call. Poka Lambro Telephone Cooperative, Inc. - 800-422-2387 Poka Lambro Telephone Company - 888-568-7305 26-1c

**NOTICE TO CONTRACTORS OF PROPOSED TEXAS HIGHWAY IMPROVEMENT CONTRACTS**  
Sealed proposals for highway improvement contracts will be received by the Texas Department of Transportation (TxDOT) until the dates shown below, and then publicly read.

CONSTRUCTION/MAINTENANCE CONTRACT(S)  
Dist/Div: Lubbock  
Contract 0380-02-022 for LANDSCAPE AND SCENIC ENHANCEMENT in HOCKLEY COUNTY, etc will be opened on July 09, 2004 at 1:00 pm at the State Office.

Plans and specifications are available for inspection, along with bidding proposals, and applications for the TxDOT Prequalified Contractor's list, at the applicable State and/or Dist. Div Offices listed below. Bidders must submit prequalification information to TxDOT at least 10 days prior to the bid date to be eligible to bid on a project. Prequalification materials may be requested from the State Office listed below. Plans for the above contracts are available from TxDOT's website at [www.dot.state.tx.us](http://www.dot.state.tx.us) and from reproduction companies at the expense of the contractor.  
NPO: 13410

State Office	Dist/Div Office(s)
Constr./Maint. Division 200 E. Riverside Dr. Austin, Texas 78704 Phone: 512-416-2540	Lubbock District District Engineer 135 Slaton Lubbock, Texas 79408-0771 Phone: 806-745-4411

Minimum wage rates are set out in bidding documents and the rates will be part of the contract. TxDOT ensures that bidders will not be discriminated against on the grounds of race, color, sex, or national origin. 25-2c

**ESL PROGRAM NOTIFICATION**  
New Home School will offer an ESL program for LEP (Limited English Proficient) students during the summer of 2004. The program will be scheduled for a minimum of 120 hours and will conclude prior to August 1, 2004. The program is designed for students who will enter Kindergarten or First Grade in the fall of 2004. Parents of eligible children will be responsible for transportation.

If you know of a child who qualifies for the program, notify Elementary Principal at Box 248, New Home, TX 79383, (806) 924-7542 for a registration form. Complete and return the form by JULY 1, 2004.

DISCLAIMER: New Home School will offer this program only if ten (10) or more students qualify.

**ESL PROGRAMA NOTIFICACION**  
New Home Escuela Primaria ofrecera un ESL programa par LEP (Esperto Ingles Limitado) estudiantes durante el verano de 2004. El programa estara programado por un minimo de 120 horas y conclura previamente de agosto 1, 2004. El programa esta diseado para estudiantes que entrara Jardine de Infantes o Primer Grado en el otoño de 2004. Los padres de niños elegibles sera responsable de (transportacion).

Si usted conociera de un niño que calificara por el programa, notifica a Elementar Principal at Box 248, New Home, TX 79383, (806) 924-7542 para solicitar una forma de registro. Completa y devuelve la forma por julio 1, 2004.

La DENEGACION: New Home Escuela Primaria ofrecera este programa solamente si diez (10) o mas estudiantes califican. 26-1c

**PREKINDERGARTEN NOTIFICATION FOR THE 2004-2005 SCHOOL YEAR**  
New Home School will offer a prekindergarten program during the 2004-2005 school year. The program will be for eligible students who are four years of age on or before September 1, 2004. Students can qualify for the program by meeting at least one of the following requirements: 1) Be economically disadvantaged, 2) Be limited English proficient (LEP), or 3) Be homeless.

If you know a child who qualifies for the program notify Elementary Principal at Box 248, New Home, TX 79383, (806) 924-7542 for a registration form. Complete and return the form by July 1, 2004.

DISCLAIMER: New Home School will offer this program only if fifteen (15) or more students qualify.

**LA NOTIFICACION DE PREKINDERGARTEN PARA LOS 2004-2005 AÑO ESCOLAR**  
New Home Escuela Primaria ofrecera un (prekindergarten) programa durante los 2004-2005 año escolar. El programa estara para estudiantes elegibles que tienen cuatro años de edad o antes de septiembre 1, 2004. Los estudiantes pueden calificar por el programa se encontrando al menos uno de los siguientes requisitos: 1) Esten perjudicado económicamente, 2) Este limitado experto ingles (LEP), or 3) Sea destituido.

Si usted conociera de un niño que calificara por el programa, notifica a Elementar Principal at Box 248, New Home, TX 79383, (806) 924-7542 para solicitar una forma de registro. Completa y devuelve la forma por julio 1, 2004.

La DENEGACION: New Home Escuela Primaria ofrecera a este programa solamente si quince (15) o mas estudiantes califican. 26-1c

# K & B CONSTRUCTION

- Plumbing • Bath Remodels • Metal Roofs
- Storage Buildings • Barns • Carports • Fences

**ALL TYPES OF CONSTRUCTION & REPAIR**

24 Years Experience ★★ All Work Guaranteed!

**KEITH PASCHAL**  
806/998-5104 Mobile 806/548-1014

These Tahoka Firms Are Sponsoring This

## FARM NEWS

**AgTexas Farm Credit Services (AgTexas FCS) formerly PCA**  
Don Boydston

**First Ag Credit FCS**  
Clint Robinson, President

**Farmers Co-op Association**  
No. 1

**Lynn County Farm Bureau**

2010 & 2012 N. 4th St. (Duplex)      2008 N. 4th St. (House)

## HOUSE/DUPLEXES FOR SALE

2008 N. 4th St. (House) / 2010 & 2012 N. 4th St. (Duplex) - Tahoka

**House:** 3200+ sq. ft. Living with 38' x 34' (1250+ sq. ft.) Detached Garage with Storage, Cook Area, and 1/2 Bath - Brick 5 BR, 2.5 B. Living, 2 Dining, Laundry Room. Huge Game Room, New Central Heat and Air, Tile/Carpet, Appliances, Sprinkler System with Well, Landscaped, Fenced with Nice Trees.

**Duplexes:** 2BD, 1B, New Carpet, Heat/AC Leased at \$375/month.

**MUST SEE THIS OFFER**  
*Rentals Could Pay House Note!*

Buy House Only: \$ 109,000      Buy Duplexes Only: \$39,000

**BUY BOTH TOGETHER: \$ 138,000**

Appraised at over \$175,000

CONTACT: JOE BROOKS @ 806-561-4152

## The Miller Program

2 LBS of 12-48-8 at Pin Head Square  
Cost = \$2.20 per acre

2 LBS of 20-20-20 at 1st Bloom  
Cost = \$1.80 per acre

3 LBS of 5-5-41 at Mid Bloom - Mid Boll  
Cost = \$5.40 per acre

**TOTAL COST FOR MILLER PROGRAM = \$9.40**

# WOOLAM GIN

O'Donnell, Texas • (806) 428-3314

Strik  
one of t  
in Tah  
dining,  
heat/  
re-w  
sprink  
corner  
parking  
looks.  
231

FOR RENT  
painted  
References:

COMPLET  
sale. 2 BR.  
inside and ou  
fixtures, carp

HOUSE FO  
2 garage. La  
school. from  
Call 998-46

Own  
B  
You own  
from us!  
of large  
cabins av  
Call to  
Edge," a  
facility a

RE

Brick,  
back y  
well lo

Stucco  
yard,  
down,  
ceptat

Brick,  
fence  
Call.

Stucco  
inside  
or thr  
1-car  
corner

REA  
Vinyl  
den,  
Needs

165 A  
the R  
Tahok  
sale. I

Call

Sout  
180

The C  
2004-05 s  
(2) cleanit  
and equip  
materials,  
fuel, oil ar  
dairy supp  
all bid pac  
each pack  
I.S.D. res  
the bid wh  
2004, at 1

Call

Call





**AT THE HOP!** - New Home Kindergarten students celebrated the end of school with a 50's style musical entitled: "At the Hop!" They were directed by their teacher Mrs. Kriston Laws and teacher's aide Stina Nieman.



### Norwood Awarded Local Scholarship

The 2004 Tahoka Historical Society scholarship in the amount of \$500 has been awarded to Keiva Norwood. She is the daughter of George D. and Mae Dawn Norwood, and a 2004 graduate of Tahoka High School, ranking 20<sup>th</sup> in her class, with a 3.6 GPA.

Keiva's plans are to become a nurse. She is currently enrolled in summer classes at South Plains College in Levelland, taking Chemistry and Sociology the first session. During the second session she will take Accounting and Psychology. She will continue her courses this fall.

### SPC Second Summer Registration Set

South Plains College's second summer term registration is July 5. Classes begin July 6 and late registration is July 6-7.

Sign-up at the SPC Levelland campus will be 1-5 p.m. July 5 in the Administration Building.

Enrollment for summer classes at the SPC Reese Center campus and Byron Martin Advanced Technology Center (ATC) in Lubbock will be 1-6 p.m. July 5 at the SPC Reese Building 8.

A registration permit is required. Online pre-registration using CampusConnect is underway through June 29 for currently enrolled students in compliance with



**LITTLE GIRLS HAVING LOTS OF FUN** - These young "cheerleaders in training" were happy to swing into motion as they tried to follow the moves of the THS cheerleaders at the Cheer Clinic held this week at the school. The two cheerleaders are Haley Hall and Sarah Blaylock. (LCN PHOTO)

the Texas Success Initiative or who are exempt. As part of the initiative, all new students entering Texas colleges and universities are required to take a placement test prior to enrolling in college-level courses. The test assesses the level of their basic college-level skills in reading, writing and math.

A 2004 summer schedule and other information about the college can be obtained online at

[www.southplainscollege.edu](http://www.southplainscollege.edu).

To obtain a registration permit, contact SPC Levelland at 806-894-9611, ext. 2578 or 2572 or SPC Reese at 806-885-3048, ext. 2902 or 4460.

**The Lynn County News encourages you to attend church this Sunday!**

### Fuentes Named To Dean's List

Amanda Lache Fuentes has been named to the Dean's List for the 2004 Spring Semester at The College of Human Sciences at Texas Tech University. She maintained a grade point average of 3.5 or better to achieve the honor.

A graduate of Tahoka High School, Amanda is the daughter of Rudy and Helen Fuentes of Tahoka.

## CONSUMER CONFIDENCE REPORT ON PUBLIC WATER SUPPLY SYSTEM

CITY OF TAHOKA - JUNE 2004

This Consumer Confidence Report is being sent to all Tahoka Public Water Supply System customers as required by the Texas Commission on Environmental Quality.

The majority of our water is purchased from the Canadian River Municipal Water Authority (C.R.M.W.A.). We continue to work with the C.R.M.W.A. to improve the quality of the drinking water. We have also joined with the C.R.M.W.A. in securing additional water rights to ensure future water supplies for our customers.

During peak usage the city will use a combination of purchased water and well water to meet the demands of our water customers. This blending of ground water and surface water increases the quality of the drinking water and decreases the level of nitrates found in ground water.

#### Special Notice for the ELDERLY, INFANTS, CANCER PATIENTS, people with HIV/AIDS or other immune problems:

Some people may be more vulnerable to contaminants in drinking water than the general population. Immuno-compromised persons such as persons with cancer undergoing chemotherapy, persons who have undergone organ transplants, people with HIV/AIDS or other immune system disorders, some elderly, and infants can be particularly at risk from infections. These people should seek advice about drinking water from their health care providers. EPA/Centers for Disease Control and Prevention (CDC) guidelines on appropriate means to lessen the risk of infection by Cryptosporidium and other microbial contaminants are available from the Safe Drinking Water Hotline (800-426-4791).

#### Our Drinking Water Meets or Exceeds All Federal (EPA) Drinking Water Requirements

This report is a summary of the quality of the water we provide our customers. The analysis was made by using the data from the most recent U.S. Environmental Protection Agency (EPA) required tests and is presented in the attached pages. We hope this information helps you become more knowledgeable about what's in your drinking water.

#### En Espanol

Este reporte incluye informacion importante sobre el agua para tomar. Si tiene preguntas o discusiones sobre este reporte en espanol, favor de llamar al tel. 800 561-4607, par hablar con una persona bilingue en espanol.

Where do we get our drinking water? Our drinking water is obtained from Ground and Surface water sources. It comes from the following Lake/River/Reservoir/Aquifer: LAKE MEREDITH. The TCEQ has completed a Source Water Susceptibility Assessment for the drinking water source(s) that we own as well as for the system(s) from which we purchase water. This report describe the susceptibility and types of constituents that may come into contact with your drinking water source based on human activities and natural conditions. Contact our water system for more information about these reports.

Sincerely,  
Jerry W. Webster  
City Administrator

## Consumer Confidence Report 2003

(Drinking Water Quality Report)  
TAHOKA PUBLIC WATER SYSTEM  
PHONE No.: (806) 561-4607

### Public Participation Opportunities

5:00 p.m. • Friday, July 2, 2004

Tahoka City Hall • 1612 Lockwood • (806) 561-4211

#### ALL drinking water may contain contaminants.

When drinking water meets federal standards there may not be any health benefits to purchasing bottled water or point of use devices. Drinking water, including bottled water, may reasonably be expected to contain at least small amounts of some contaminants. The presence of contaminants does not necessarily indicate that water poses a health risk. More information about contaminants and potential health effects can be obtained by calling the Environmental Protection Agency's Safe Drinking Water Hotline (800-426-4791).

#### About The Following Pages

The pages that follow list all of the federally regulated or monitored constituents which have been found in your drinking water. U.S. EPA requires water systems to test up to 97 constituents.

#### Secondary Constituents

Many constituents (such as calcium, sodium, or iron) which are often found in drinking water, can cause taste, color, and odor problems. The taste and odor constituents are called secondary constituents and are regulated by the State of Texas, not EPA. These constituents are not causes for health

concerns. Therefore, secondaries are not required to be reported in this document but they may greatly affect the appearance and taste of your water.

#### DEFINITIONS

##### Maximum Contaminant Level (MCL)

The highest permissible level of a contaminant in drinking water. MCLs are set as close to the MCLGs as feasible using the best available treatment technology.

##### Maximum Contaminant Level Goal (MCLG)

The level of a contaminant in drinking water below which there is no known or expected health risk. MCLGs allow for a margin of safety.

##### Treatment Technique (TT)

A required process intended to reduce the level of a contaminant in drinking water.

##### Action Level (AL)

The concentration of a contaminant which, if exceeded, triggers treatment or other requirements which a water system must follow.

##### NTU - Nephelometric Turbidity Units

MFL - million fibers per liter (a measure of asbestos)

pCi/l - picocuries per liter (a measure of radioactivity)

ppm - parts per million, or milligrams per liter (mg/l)

ppb - parts per billion, or micrograms per liter (µg/l)

ppt - parts per trillion, or nanograms per liter

ppq - parts per quadrillion, or picograms per liter

Year	Constituent	Highest Level at Any Sampling Point	Range of Detected Levels	MCL	MCLG	Unit of Measure	Source of Constituent
2003	Arsenic	3.6	3.3000-3.6000	50	0	ppb	Erosion of natural deposits; Runoff from orchards; Runoff from glass and electronics production wastes
2003	Barium	0.187	0.1850-0.1870	2	2	ppm	Discharge of drilling wastes; Discharge from metal refineries; Erosion of natural deposits
2003	Fluoride	0.7	0.5000-0.7000	4	4	ppm	Erosion of natural deposits; Water additive which promotes strong teeth; Discharge from fertilizer and aluminum factories
2003	Nitrate	11.34	0.0000-11.3400	10	10	ppm	Runoff from fertilizer use; Leaching from septic tanks, sewage; Erosion of natural deposits
2003	Selenium	3.5	2.5000-3.5000	50	50	ppb	Discharge from petroleum and metal refineries; Erosion of natural deposits; Discharge from mines
2002	Gross alpha adjusted	5.8	2.5000-5.8000	15	0	pCi/l	Erosion of natural deposits
2002	Gross beta emitters	8.7	5.5000-8.7000	50	0	pCi/l	Decay of natural and man-made deposits

NA = MCL not applicable - not regulated. Special Monitoring Requirement

Organics NOT TESTED FOR OR NOT DETECTED

Disinfection By-Products NOT TESTED FOR OR NOT DETECTED

#### Unregulated Contaminants

Year	Constituent	Average of All Sampling Points	Range of Detected Levels	Unit of Measure	Reason for Monitoring
1995-2002	Chloroform	4	0.0000-7.2000	ppb	Unregulated contaminant monitoring helps EPA to determine where certain contaminants occur and whether it needs to regulate those contaminants
1995-2002	Bromoform	12.65	0.0000-19.0000	ppb	Unregulated contaminant monitoring helps EPA to determine where certain contaminants occur and whether it needs to regulate those contaminants
1995-2002	Bromodichloromethane	9.4	0.0000-16.0000	ppb	Unregulated contaminant monitoring helps EPA to determine where certain contaminants occur and whether it needs to regulate those contaminants
1995-2002	Dibromochloromethane	18.7	0.0000-29.0000	ppb	Unregulated contaminant monitoring helps EPA to determine where certain contaminants occur and whether it needs to regulate those contaminants

#### Turbidity

Turbidity has no health effects. However, turbidity can interfere with disinfection and provide a medium for microbial growth. Turbidity may indicate the presence of disease-causing organisms. These organisms include bacteria, viruses, and parasites that can cause symptoms such as nausea, cramps, diarrhea and associated headaches.

Year	Constituent	Highest Single Measurement	Lowest Monthly % of Samples Meeting Limits	Turbidity Limits	Unit of Measure	Source of Constituent
2003	Turbidity	0.23	100.00	0.3	NTU	Soil runoff

#### Lead and Copper

Year	Constituent	The 90th Percentile	Number of Sites Exceeding Action Level	Action Level	Unit of Measure	Source of Constituent
1999	Lead	1.5000	0	15	ppb	Corrosion of household plumbing systems; Erosion of natural deposits
1999	Copper	0.5550	0	0.3	ppm	Corrosion of household plumbing systems; Erosion of natural deposits; Leaching from wood preservatives

Total Coliform NDT DETECTED

Fecal Coliform NOT DETECTED

#### Required Additional Health Information for Nitrate

Because the highest reported nitrate level on this report is above 5 ppm, but below the MCL, this information is required by the EPA.

"Nitrate in drinking water at levels above 10 ppm is a health risk for infants of less than six months of age. High nitrate levels in drinking water can cause blue baby syndrome. If you are caring for an infant you should ask advice from your health care provider."