



IT WAS A VERY GOOD YEAR

Good-bye Y2K -- See photos of the Year 2000 In Review, pages 4-5. (If a picture is worth a thousand words, these pictures should be worth a million!)

50¢ PER COPY

MEMBER 2000
TPA
TEXAS PRESS ASSOCIATION

THE Lynn County News

VOLUME 97, NUMBER 52

TAHOKA, LYNN COUNTY, TEXAS

THURSDAY, DECEMBER 28, 2000

8 PAGES PLUS INSERT

Winter Storm Causes Power Losses, Accidents

Rain, snow and ice with frigid temperatures which dropped below 20 degrees with wind chills as low as zero virtually paralyzed Lynn County as well as most of the north part of the state at Christmas.

Ice-covered tree limbs throughout the county broke off, power lines were down in the area, and at least 18 weather-related accidents were

reported in the county and in cities within the county. Injuries were all believed to be minor, with the most serious accident occurring on U.S. 84 where it crosses the corner of Lynn County near Southland.

In that accident Monday afternoon, a Slaton EMS ambulance had been called to the scene of a one-car rollover. The ambulance was parked

on the shoulder of U.S. 84, with two patients and two attendants inside the ambulance. A third attendant, a young woman identified as Tina Pruitt of Slaton, was standing behind the ambulance when an 18-wheeler came on the scene, the driver hit his brakes and the truck jackknifed. His trailer swung around, struck Ms. Pruitt and the rear of the ambulance, causing injury to all five of the persons in and out of the ambulance.

The DPS officer working the first accident called in the second one as a fatality, believing that the young woman had been killed. However, her injuries were relatively minor and she was released from University Medical Center several hours later, after treatment.

A Lubbock EMS ambulance came to the scene to transport the three ambulance attendants and two original injury victims to the hospital. All of the others were treated and released.

DPS officers worked 14 wrecks Monday, two Tuesday and one early Wednesday. Several of the accidents were on U.S. 87 near O'Donnell. In addition, many vehicles skidded off the highways in all directions from Tahoka and some overturned. Many were left in ditches and fields. Passengers were brought into Tahoka where many had to spend the night Monday and Tuesday.

A DPS trooper said in Tahoka Wednesday morning that travel on any roads in and out of the county still is very dangerous. "There's more than an inch of ice on the pavement beneath the snow, and the highways are just going to get slicker. We urge everyone to stay off the roads, and if you absolutely must travel, go very slow," he said.

Two traffic accidents were reported in the city of Tahoka before the winter storm arrived, both occurring last Wednesday. Near the intersection of S. 10th and Ave. O a 1990 Lincoln driven by Miranda Gomez, 15, of Tahoka, struck a utility pole. She was not treated at a hospital and injuries were considered minor.

Earlier that day a 1993 Chevrolet pickup driven by James Calvin Womack II, 54, of Tahoka and a 1990 Buick driven by German Rojo Jr., 18, of Tahoka collided at the intersection of S. 1st St. and Ave. L. Rojo was taken by Lynn County EMS ambulance to Lynn County Hospital emergency room, where he was treated and released.

Tahoka's only motel, the Echo 87, reportedly was very busy Monday and Tuesday nights with customers whose cars had slid off the roads, or whose passengers decided it was best not to try to continue driving, plus some persons forced out of their homes by a power outage caused by the weather, mostly homes served by Lyntegar Electric, which had workers out all night and day throughout Monday and Tuesday. Lyntegar officials said approximately 400 power poles were down, with 200 of these

in Lynn County, mostly in the northern and eastern portions of the county. Lyntegar employees continued working this week to restore power.

In other police activity during the last two weeks, Tahoka Police investigated a report of indecency with a child and another report in which a resident of Tahoka Care Center said \$90 and some papers were missing from his wallet.

A warrant was issued for the ar-

rest of a 43-year-old Tahoka man in connection with the alleged molestation of a young girl on Dec. 16.

In jail during the last two weeks were 16 persons on these charges: expired and invalid drivers licenses, driving while intoxicated, possession of drugs and drug paraphernalia, public intoxication, driving while license suspended, failure to identify to a peace officer, no liability insurance, disregarding warning signs, and failure to provide child support.



I TRY TO CARRY a pen and piece of paper with me everywhere, mainly so that I can jot down any ideas for column topics which may come to me. In conversations with people, reading other newspapers or magazines, watching TV and listening to speakers, I often hear something I maybe can use as column material.

Just the other day I was struck by a thought. Picking myself up, I realized it was a column topic possibility, some ordinary label for a common activity which I suddenly wondered about the origin of (note to English majors: do not attempt to diagram this sentence which ends in a preposition which you're not supposed to end a sentence with).

Unfortunately I didn't have writing materials handy when I thought of this, and now I can't remember exactly what it was, so I will describe a recent experience at a Lubbock car wash instead.

In summertime I sometimes wash my own car, but in cold weather I prefer to have it washed. Last week I was in Lubbock on a semi-warm day and I decided to drive through a new car wash in the south part of town. It took me awhile to figure out how to pay for it. The bill I stuck in the entry thingy kept shooting back out to me. I smoothed it, straightened it and directed verbal abuse at it until the machinery finally accepted it.

Then I drove in and sat there drumming my fingers on the dashboard for the five minutes of wash time. Then a little lighted sign told me to exit. "But I paid to have it dried," I exclaimed. I looked up and the dryer appeared to be blowing like crazy ahead of me, so I figured it was one of those kind which you have to drive out slowly under the dryer, although the sign never said so. (At the car wash I usually use, the dryer moves over the car and back again). About the time I figured that out and started to drive out, the stupid car wash started squirting my car with water again.

I headed out of there anyway, but just as I got under the dryer, it stopped. After it dried all streaky, my dripping car looked worse than before I started.

I was back in Lubbock the next day, and drove it through my favorite car wash on 50th. It dried nicely and looked fine until some jerk splashed me at an intersection where some firemen had been playing around.

Cars always look better if you leave them in the garage. But nobody can see them there.



COLD POPULATION - This photo at the Tahoka City Limit sign shows a population of 3,262 very cold people, as temperatures dropped into the 20s on Christmas Day along with a sheeting of ice making very dangerous traveling conditions and causing power outages in the area. Snow fell throughout the night, with this photo taken Tuesday morning showing a tree draped in ice and snow. Local DPS officers reportedly worked 14 wrecks Monday and three on Tuesday, and law enforcement officers offered assistance to many stranded travelers whose vehicles slid off roads during the icy weather. Electric service employees have been working day and night to restore power to homes throughout the South Plains area, with some homes without electricity since before noon Christmas Day. (LCN PHOTO)

D
E
C

2
8

2
0
0
0

Jimmie McAtee

Services for Jimmie Cile McAtee, 97, of Lubbock were held at 2 p.m. Saturday, Dec. 23, at White Memorial Chapel in Tahoka with Rev. Liz Lewark officiating.

Burial was in Tahoka Cemetery under the direction of White Funeral Home.

She died Thursday, Dec. 21, 2000 in Lubbock.

She was born April 17, 1903 in Indian Territory, Okla. and attended Wellington and Tahoka schools. She moved to Lynn County from Wellington in 1921, to Henryetta, Okla. in 1934, and to Lubbock in 1990. She married James Robert McAtee Jr. May 25, 1925 in Plainview. He died in Oct. of 1975.

She received her teachers certificate from West Texas State College in Canyon and taught at Redwine, Wilson and Lynn County schools. She was a retail clothing store owner before retiring in 1988. She was a member of the Methodist Church.

Survivors include a daughter, Janie of Lubbock; and three grandchildren.

Carrie Brieger

Services for Carrie Ann Brieger, 34, of Slaton were held at 2 p.m. Tuesday, Dec. 26 at St. John Lutheran Church with Rev. Jason Gackle, pastor, officiating.

Burial was in Englewood Cemetery in Slaton.

She died Friday, Dec. 22, 2000 at University Medical Center.

She was born April 21, 1966, in Slaton. She had attended Wilson ISD, Slaton ISD and American Business College. She was a member of St. John Lutheran Church.

Survivors include her mother and stepfather, Juanell and Curtis McMellan of Slaton; a brother, Leland of Fredericksburg; and two sisters, Donna Weaver of Wolfforth and Lana Cross of Wilson.



ONE SLIGHTLY INJURED—The driver of the car at right, German Rojo Jr., suffered injuries believed to be minor as his car and the pickup at left collided at S. 1st and Ave. L on Dec. 20. (LCN PHOTO)

Bobbie Herrin

Services for Bobbie M. Herrin, 84, of Borger, formerly of Tahoka, were held at 2 p.m. Saturday, Dec. 23 at Sweet Street Baptist Church in Tahoka with Rev. Lynn Long officiating.

Burial was in Nevels Memorial Park under the direction of White Funeral Home of Tahoka.

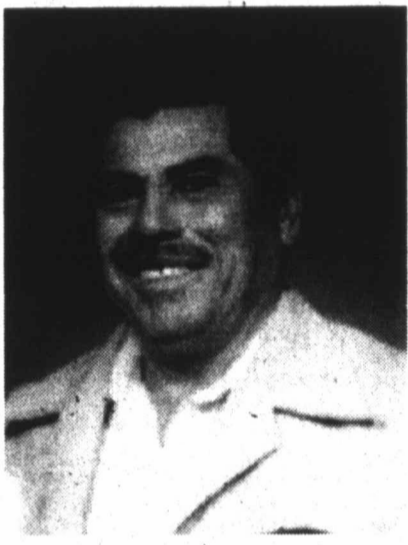
She died Wednesday, Dec. 20, 2000 in Borger.

She was born Nov. 9, 1916 in Stephenville. She attended schools in Stephenville and Tahoka and moved to Tahoka from Stephenville in 1927. She married Grady Loyn Herrin Feb. 21, 1943 in Post.

She was a homemaker and was a charter member of Sweet Street Baptist Church.

Survivors include her husband; two daughters, Sandra Bryan of Amarillo and Kam Harvick of Borger; five grandchildren; and three great-grandchildren.

The family suggests memorials to Sweet Street Baptist Church, P.O. Box 751, Tahoka 79373.



Otiquio Flores Sr.

Services for Otiquio Flores Sr., 68, of Tahoka will be held at 2 p.m. Friday, Dec. 29, at Gethesmani Baptist Church in Tahoka with Rev. Alonzo Garcia officiating.

Burial will be in Nevels Memorial Park under the direction of White Funeral Home of Tahoka.

He died Monday, Dec. 25, 2000 at Lynn County Hospital.

He was born in Cotulla May 14, 1932 and moved to Tahoka from Big Wells County in 1952. He married Ines Benavides Jan. 2, 1960 in Tahoka. He worked as a farmer for 56 years before retiring in 1994.

Survivors include his wife; four sons, Otiquio Jr., Billy, and Ruben, all of Tahoka and Ray of Lubbock; three daughters, Amelia F. Perez of San Antonio and Nancy Zuniga and Diana F. Hernandez, both of Tahoka; two brothers, Mauricio Flores of Lubbock and Roy Flores of Tahoka; three sisters, Janie Carrillo and Ayda Sotelo, both of Lubbock, and Mary Flores of Tahoka; and 11 grandchildren.

Visitation will be at Gethesmani Baptist Church

The covering of the seed referred to as nutmeg is used to make the spice called mace.

Ruby Jones

Services for Ruby M. "Big Mama" Jones, 86, of Levelland were held at 2 p.m. Friday, Dec. 22, in Resthaven's Abbey Chapel in Lubbock with the Rev. Clint Stephenson officiating.

Burial was in Resthaven Memorial Park.

She died Wednesday, Dec. 20, 2000 in Lubbock Hospitality House.

She was born Sept. 25, 1914 in Seymour and was raised on a farm near Draw. She married Glenn C. Jones in 1966 in Clovis, N.M. He died in 1983.

She was a sales clerk at Annette's Dress Shop in Lubbock for many years and had been a resident of Lubbock from 1949 until 1992 when she moved to Levelland. She was a Methodist.

Survivors include a daughter, Marla Wright of Levelland; three sisters, Clodell Aven of Hart, Lois Young of Grand Prairie and Joyce Pebsworth of Tahoka; three grandchildren; six great-grandchildren; and one great-great-grandchild.

The family suggests memorials to the Glenn C. Jones Memorial Scholarship at South Plains College.

David Vieregee

Services for David Henry Vieregee, 89, of Grand Prairie were held at 10 a.m. Friday, Dec. 22 at White Memorial Chapel in Tahoka with Richard Rush officiating.

Burial was in O'Donnell Cemetery under the direction of White Funeral Home of Tahoka.

He died Tuesday, Dec. 19, 2000 in Grand Prairie.

He was born June 25, 1911 in Belton. He moved to Grand Prairie from Lubbock in 1969. He married Lois Vieregee March 26, 1939 in Roby. She died Jan. 25, 2000. He was a mechanic for Pollard Ford in Lubbock and for Reese Air Force Base. He was a member of the Baptist Church.

Survivors include a son, Gerald Vieregee of Grand Prairie; two grandchildren; and two great-grandchildren.

New Home School Menu

Jan. 3-5
Breakfast
Wednesday: French Toast, Milk.
Thursday: Smuckers PBJ Sandwich, Milk.
Friday: Breakfast Taco, Milk.
Lunch
Wednesday: Steak Fingers, Whipped Potatoes, Corn, Fruit Cup, Texas Toast, Milk.
Thursday: Fried Burrito, Lettuce, Tomato, Spanish Rice, Pineapple Slices, Milk.
Friday: Hamburger or Cheeseburger, Lettuce, Tomato, Onion, Pickle, French Fries, Cookie, Milk.

Weather

Date	High	Low	Precip.
Dec. 20	65	21	
Dec. 21	45	22	
Dec. 22	53	22	
Dec. 23	58	27	
Dec. 24	34	28	
Dec. 25	29	26	
Dec. 26	25	20	5" Snow for .55" Moisture

Precip. for December: 0.57"
Total Precip. year to date: 20.82"
Total Precip. this time last year: 19.21"

Lyntegar Employees Working Around The Clock To Restore Power

Lyntegar Electric Cooperative has been experiencing electrical outages since early Monday morning due to an accumulation of ice on the wires and poles during the severe winter ice storm, and employees have been working around the clock to restore power outages. Heavy snow beginning early Tuesday morning over most of the Cooperative's service area added to the already existing problems.

"Progress is being made in restoring service where poles and wires are not down," said Greg Henley, Member Services Advisor for the Coop. "In the areas of extensive damage, the restoring of service may be very slow until some of the snow and ice is gone," he explained.

More than 100 employees are working on the storm damage. The Cooperative operates more than 6,600 miles of line containing almost 100,000 poles. An exact count on the number of poles broken has not been established at this time, but current estimates exceed 400 poles, of which about half is estimated in the northern and eastern portions of Lynn County. A contractor was expected to arrive Wednesday to help with the work, but travel conditions hampered getting their equipment here.

"In the event your power is off, we suggest you make whatever preparations you can to cope with an extended outage period," Henley

said. "If you plan to or if you have already connected a generator to your house, please notify the Cooperative so we can insure that it has been properly connected for the safety of both you and Cooperative personnel," he added.

As the sun comes out and the temperature begins to rise, additional numerous outages are anticipated due to electrical lines bouncing and coming into contact with each other, Henley warned. "So, even if you have power now, expect outages as the ice begins to drop from the lines. Hopefully, most of these outages will not be of long duration. However, we anticipate the Cooperative's telephone lines to be busy," he said.

He also warned residents not to tamper with lines lying on the ground. "Should you come upon an electric line lying on the ground, please do not try to move it yourself. Call the Cooperative at (806) 998-4588 to report the location of the downed electrical lines. As always, think electric safety when around power lines," he reiterated.

"Lyntegar Electric Cooperative would like to apologize for any inconvenience this ice storm has caused and assure you that we are working to restore power as quickly and safely as possible. The Cooperative appreciates your patience and cooperation during this time of inconvenience," said Henley.

STORK REPORT

Mark and Lorrye Roye of O'Donnell announce the birth of a daughter, Madison Breann, born at 7:05 p.m. Thursday, Nov. 16 at University Medical Center in Lubbock. She weighed 4 lbs. 15 oz. and was 18 inches long.

Grandparents are Bruce and Debbie Ledbetter of Post and Joe and Joylene Roye of O'Donnell.

Great-grandparents are Myra Cooper and Mack and Lola Ledbetter, all of Post; Jim and Ruby Anderson of O'Donnell; and Cecil and Patty Roye of Breckenridge.

Steak Finger Dinner Set In New Home On January 9

New Home residents are invited to attend a Steak Finger Dinner on Tuesday, Jan. 9 from 5-8 p.m. in the school cafeteria. The menu consists of steak fingers, gravy, fries, hot rolls, salad and dessert.

Cost of the meal is \$5 per basket. All proceeds will benefit the Accelerated Reading Program.



A piece of undeliverable mail is called a nixie.

FRIENDLY • COMPASSIONATE • QUIET • CARING
TAHOKA CARE CENTER
"Where Your Family Becomes "Our" Family!"
• Home-Like Atmosphere • Medical Director • Licensed 24 Hour Nursing Care • Special Diets
• Extended Family Activities • Biligual Every Shift • Van With Wheelchair Lift
WE'VE BEEN CARING FOR YOUR FAMILIES FOR OVER 20 YEARS!
998-5018 • 1829 S. 7th in Tahoka

The Lynn County News
Tahoka, Texas 79373
THE LYNN COUNTY NEWS (usps 323200) is published weekly by Woodwork, Inc. on Thursday (52 issues per year) at Tahoka, Lynn County, Texas. Office location is 1617 Main, Tahoka, Phone (806) 998-4888. Periodical postage paid at Tahoka, Texas 79373. Postmaster: Send address change to The News, P.O. Box 1170, Tahoka, TX 79373.
FEDERAL TAX NUMBER: 75-1775229
SUBSCRIPTION RATES:
Lynn County Address \$17.00 year
Other Addresses in U.S. \$21.00 year
FAX: (806) 998-6308
NEWS STAFF
Jushell Jones News Editor
Vondell Elliott Managing Editor
Claude Guhn Typesetting/Bookkeeping

Your Satisfaction Is Our Top Priority
Our philosophy is simple: treat people right and they'll become loyal customers.
That means filling your prescriptions quickly and accurately, taking time to answer your questions, and providing you with advice on a whole range of health care needs.
Place your trust in us and discover why so many of your friends and neighbors have made us their pharmacy of choice.
Tahoka Drug is proud to have been serving Lynn County since 1923. We always welcome your business! Call us today.
TAHOKA DRUG
1610 MAIN • 998-4041 • TAHOKA, TEXAS

Need an Invitation?
If you need an invitation for a Baby Shower, Wedding Shower, Birthday Party or anything else, come by the Lynn County News office and let us help you! We have all colors of paper to choose from and can help you customize your invitations ... all at a low price.
For example: 100 Baby Shower post cards - black ink on bright color card is only \$12.
THE Lynn County News
1617 Main Street in Tahoka • 998-4888

You are invited to:
A Birthday Party!
for **DEHLILA BEY**
celebrating her
at the Tr
Sand
Saturday, Apr
24
Secon

You are invited to a
Wedding Shower
honoring
Josi
Sawworth
Saturday, Apr
24
Secon

You are invited to a
Baby Shower
for **Kaitlin D. Jones**
on Sunday, June 18th
from 1:00 pm to 4:00 pm
at the Life Enhancement Center
1717 Main Street in Tahoka
Guests: Jushell Jones, Vondell Elliott, and
Aimee Dumas. We expect you and please
Sincerely: Jushell and Vondell

ROTARY DONATION
cently, with funds raised
Jake Diggs (left) providing
the donation for a gift, noting that the

Southern Mesa Scheduled

"A direct result of a quested educational program the Southern Mesa Agriculture Conference will focus on new policies affecting Texas as well as the BMP's (Management Practices) for cotton, ghum and peanut production. John Farris, County Extension Agent for Dawson County.

This conference will be held Jan. 15 in the DeAnnex Building, local First Street in Lamesa. The registration fee which includes technical door prize ticket, luncheon, educational materials to exhibits, is \$15.11, or \$20 after Jan. 11 forms and fees, payable to County Ag Fund," she said. The Dawson County Extension Agent at P.O. Box 1268, 79331.

The program, sponsored by Texas Agricultural Experiment Station in Dawson, Borden, SeLynn and Garza Counties, features information on production technology for cotton, insect control, grain sorghum, grain sorghum, nuts. Risk Management information will also be provided. Registration forms are available from the Extension Agent. Top quality speakers from the state and the South will make presentations.

R.W. Fenwick
FOR RENT
Call
1-800-368-1603

HOME CARE
OF THE LYNN COUNTY
Lynn County is dedicated to providing physical therapy services. We provide a variety of services that may be needed by our clients.
• We offer 24-hour emergency services.
• We cover Lynn County.
• We are Medicare and Medicaid licensed by the state.
Lynn County
ask for the
2600



ROTARY DONATION - Tahoka Rotary Club made a \$300 donation to the Make-A-Wish Foundation recently, with funds raised from the Tahoka "Christmas On The Square" buggy rides. Lynn County Sheriff Jake Diggs (left) provided the buggy rides for the event, organized by Rotarian Kelly Paris (center). Accepting the donation for the Make-A-Wish Foundation is Traci Cheek, who expressed her appreciation for the gift, noting that the foundation serves children with life-threatening illnesses. (LCN PHOTO)

Southern Mesa Agricultural Conference Scheduled Monday, Jan. 15 In Lamesa

"A direct result of producer-requested educational programming, the Southern Mesa Agricultural Conference will focus on regulations and policies affecting Texas agriculture as well as the BMP's (Best Management Practices) for cotton, grain sorghum and peanut production," says John Farris, County Extension Agent for Dawson County.

This conference will be held Monday, Jan. 15 in the Dawson County Annex Building, located at 609 N. First Street in Lamesa, and will begin at 8 a.m. The registration fee, which includes technical sessions, door prize ticket, lunch, refreshments, educational materials and access to exhibits, is \$15 if paid by Jan. 11, or \$20 after Jan. 11. Registration forms and fees, payable to "Dawson County Ag Fund," should be sent to the Dawson County Extension Office at P.O. Box 1268, Lamesa, TX 79331.

The program, sponsored by the Texas Agricultural Extension Service in Dawson, Borden, Scurry, Mitchell, Lynn and Garza Counties, will also feature information on the latest production technology for crop production, insect control, and weed control of cotton, grain sorghum and peanuts. Risk Management and production outlooks will also be discussed. Registration forms are available at any of the Extension offices in the sponsoring counties.

Top quality speakers from across the state and the South Plains area will make presentations concerning

current research production trials. Producers will have the opportunity to discuss their experiences with experts, specialists and other growers. Also, producers will be able to visit commercial booths throughout the day.

Five Continuing Education Units will be provided for private, commercial and non-commercial applicators for attendance at this program.

Selective Service's New Web Page Allows Access For Address Changes

The Selective Service System has added a change of address page to its web site that will allow young men to update their registration information on-line. Federal law requires that young men, ages 18 through 25, notify Selective Service within 10 days of an address change. The addition of the new web page will make fulfillment of this legal requirement easier and more convenient.

"This initiative corresponds to the Agency's vision of increased customer service," said the Honorable Gil Coronado, Director of Selective Service, who first initiated on-line registration in December 1998.

"For two decades, men could only go to the post office to obtain a Selective Service Change of Address Form; this new web page will make the process more convenient for men who have Internet access," said Coronado. It is also expected to reduce the Agency's printing and pro-

cessing costs, while saving young men the cost of first class postage to mail the change of address form. Any man who is registered and was born after 1959 can update his address information by connecting to the Selective Service web site at www.sss.gov. He clicks on a link to the "change of address" page, types his new information, clicks the Submit button, and he is done. He can also check a box if he wants to receive an updated acknowledgment card by conventional mail.

For more information, contact a local county extension office.

Federal law requires virtually all men to register with Selective Service within 30 days of turning 18. Each year, about 1.8 million men turn 18. All U.S. male citizens, no matter where they reside, as well as male noncitizens residing in the U.S., are required to register. Although late registrations are accepted, a man cannot register once he reaches age 26. Failure to register is a felony.

Selective Service registration is linked to many benefits such as eligibility for federal student loans and grants, training programs under the Workforce Investment Act (WIA), federal jobs in the Executive Branch of the U.S. Government, and jobs with the U.S. Postal Service. More than half of the states have enacted legislation that links benefits such as state tuition assistance and eligibility for state jobs to registration.

Although the U.S. relies on an all-volunteer military today, the Selective Service System and the registration program help America remain prepared to reinstate a timely and fair draft in a future crisis, should a draft become necessary.

For more information, visit the Selective Service System web site at www.sss.gov.

News from the Tahoka Care Center

by Beverly Zuniga

We regret that Jerry Jasper, administrator, will be leaving Friday, Dec. 31. We wish Jerry, Charlotte and the new arrival due in July lots of luck in the future.

Our sympathy to the family of Otiqio Flores, who passed away Dec. 25. We will miss him.

Thanks to everyone in our community, teachers, preachers, family and friends for all your contributions this holiday season.

Tahoka School Menu

Jan. 3-5

Breakfast

Wednesday: Pancakes & Sausage Stick or Cereal & Toast, Fruit Punch, Milk.

Thursday: Donuts or Cereal & Toast, Pineapple Tidbits, Milk.

Friday: Sausage & Toast or Cereal, Orange Juice, Milk.

Lunch

Wednesday: Chicken Nuggets w/Gravy, Cream Potatoes, Green Beans Peach Cup, Hot Rolls, Milk.

Thursday: Grilled Cheese Sandwich, Mixed Salad, Mixed Vegetable Soup, Apple, Milk.

Friday: Hamburger or Cheeseburger, Lettuce, Onion, Pickle, French Fries, Apple Cobbler, Milk.

Senior Citizens MENU

Jan. 2-5

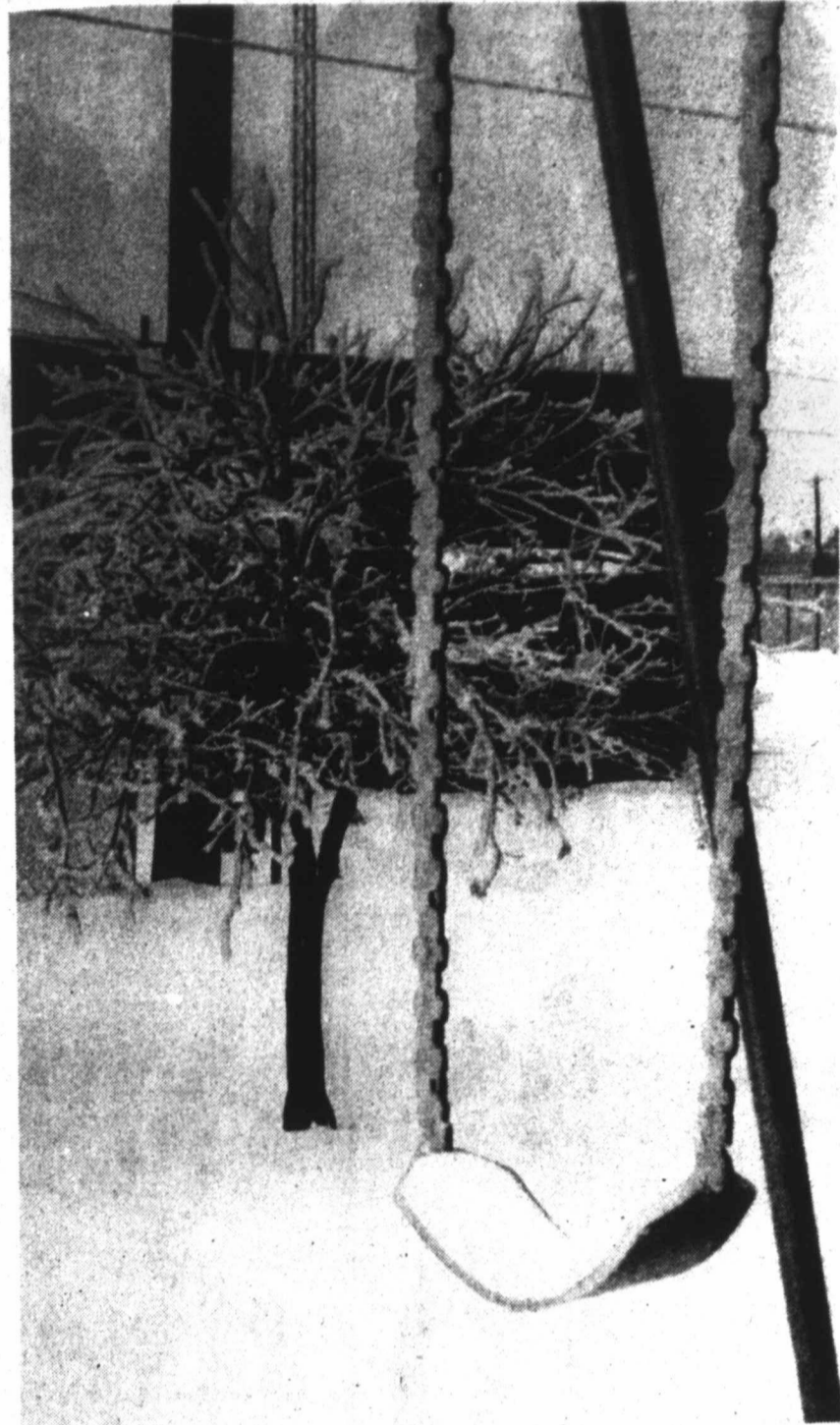
Tuesday: Hamburger, Tater Tots, Three Bean Salad, Peanut Butter Cookies.

Wednesday: Meatballs w/Gravy, Noodles, Turnip Greens, Wheat Roll, Berry Cobbler.

Thursday: Hush Puppies, Macaroni & Cheese, Green Beans, Tossed Salad/Ranch Dressing or Coleslaw, Wheat Roll, Brownies.

Friday: Chopped Beef on a Bun, Parslied New Potatoes, Okra & Tomatoes, Apricots.

English has a larger vocabulary than any other language, featuring more than 600,000 words.



COLD SEAT - It was a bit too chilly for children at the park playground following Christmas Day. This photo shows snow and ice coating the equipment, and, not surprisingly, a playground empty of children. (LCN PHOTO)

Now Open:
Tahoka Barber Shop
 1431 Avenue J
 998-1110
 STYLIST-BARBER:
Yolanda Dotson
 Open 9-6 Tuesday-Saturday

DRIVESAFE'S
"Take-Home" Defensive Driving Video
 NOW AVAILABLE AT:
R.W. Fenton Insurance Agency
 FOR ALL YOUR INSURANCE NEEDS
 Call Kent at 998-4884
 1-806-759-1131 Mobile
 1603 Avenue J • Tahoka

HOME HEALTH SERVICES
 OF THE LYNN COUNTY HOSPITAL DISTRICT
 Lynn County Hospital District Home Health Service is dedicated to providing total home health care.
 We provide comprehensive coordination of all services that may be needed such as skilled nursing services and physical therapy services.
 • We offer 24-hour coverage, 7 days a week
 • We cover Lynn, Dawson, Garza, Lubbock and Terry counties
 • We are Medicare and Medicaid certified and licensed by the Texas Department of Human Services
 Call us for information at
Lynn County Hospital District
 806-998-4533
 ask for the Home Health Department
 2600 Lockwood • Tahoka, Texas 79373

OSFA*

 St. John Lutheran Church, Wilson
 (Block S. of 211, next to the school) 628-6573
 Sunday School 9:30; Worship 10:45
***ONE SIZE FITS ALL**

Get it all. Get it now. Get a great deal!

Get Charter Complete Basic with HBO \$19.95 per month for 3 months

And get it in time for the holidays!

For a limited time get Free Installation* when you donate a new toy valued at \$10.00 or more for a needy child.

Hurry - offer expires 12/31/00!

Charter Cable TV™
1-888-409-7618
*Call for details. Some restrictions may apply.

D
E
C

2
8

2
0
0
0



HEADLINES:
O'Donnell's Jonathan Read Wins Gold At State Track Meet

HEADLINES:
Ground Broken For Construction Of Assisted Living Facility

HEADLINES:
THS "Fly High" Team To Conduct Zero-Gravity Experiments At NAS

PICTURE THIS
2000
A YEAR IN REVIEW

HEADLINES:
Six THS Athletes To Run In State Track Events

HEADLINES:
Dogs End Playoff Run With 2nd Place Regional Trophy

HEADLINES:
The Day The Dixie Chicks Came To Town...

HEADLINES:
Five County In Basketball Playoffs



HEADLINES:
THS "Fly High" Team
To Conduct Zero-Gravity
Experiments At NASA

HEADLINES:
Storm Ravages
O'Donnell

HEADLINES:
THS Band Earns "1"
In UIL Marching
Contest

YOU
may be shown in one of these photos
taken from the 2000 issues of
The Lynn County News

HEADLINES:
Five County Teams
In Basketball
Playoffs

HEADLINES:
Commissioners
To Pursue New
Jail Facilities

HEADLINES:
'Texas Country Reporter'
Visits New Home Couple

**D
E
C

2
8

2
0
0
0**



CHECKING-SANTA'S MAIL - Santa stopped by the News Office to check Santa's Mailbox just before Christmas last week, just to make sure all the letters from area children had been sent on to the North Pole. The News Office Robot (at right) has a letter ready to hand over to the jolly man. (LCN PHOTO)

Hearings Set Jan. 8 On Organic Cotton Rules In Eradication Zones

The Texas Department of Agriculture will hold two public hearings on Monday, Jan. 8 to review the guidelines for organic cotton in active boll weevil eradication zones. The scheduled hearings were included in the rules which were adopted in June 2000.

The hearings will be held at 11 a.m. at the Texas A&M University Agricultural Research and Extension Center at 1002 E. FM 1294 in Lubbock, and at 3 p.m. at the Dawson County Community Center at 910 S. Houston in Lamesa.

The rules cover indemnification eligibility and the method for calculating any compensation for organic growers who may need to destroy crops because of infestation in an active eradication zone.

TDA developed the rules to maintain the effectiveness of the boll weevil eradication programs as well as to protect the integrity of TDA's organic certification standards and the crops marketed under the program.

In the hearings, TDA will take comments on any changes that may need to be made in the regulations for the 2001 growing season.

TDA will take comments for 10 days beginning Jan. 8. Those who wish to comment can write TDA at P.O. Box 12847, Austin, TX 78711 or fax to (512) 463-1104. For more information, call John McFerrin, TDA producer relations specialist, at (512) 463-7593.

quartered in Lubbock. "That participation is important because the High Plains is one big, contiguous production region. Boll weevils don't recognize county lines - they simply spread wherever Mother Nature allows."

Several mild winters in a row, an abundance of overwintering habitat and the weevils' quick adaptation to the Plains climate helped push weevil numbers across the region to unprecedented levels during the past eight years. Boll weevils damage cotton by feeding and laying eggs for successive generations in the plant's immature "squares" and bolls - the fruit which bears high-value cotton lint.

Drought in 1996 and 1998 didn't



FROZEN PECANS - Pecans and anything else unfortunate enough to be outside received a coating of ice Christmas day. Frozen branches were pretty to look at, but the ice storm caused many problems with electrical lines and road conditions. (LCN PHOTO)

slow the weevil's progress. Their rapid spread in the past five years leads Texas A&M University entomologists to conclude that weevils have developed enough cold-hardiness to successfully overwinter just about as far north as cotton can be grown in Texas.

Recent weevil overwintering studies conducted by these scientists indicate as much as 65 percent of overwintering weevils successfully survived recent winters on the Plains. Once these weevils emerge from overwintering sites, they seek nearby cotton fields. Spraying to control weevils can cost growers as much as \$60 per acre or more during the growing season.

"Eradication is a good, long-term investment for the entire region. By assessing themselves a control 'tax,'

growers are trading the uncertainty of high annual control costs for a lower, known control cost for the next few years," said Jim Leser, Extension cotton entomologist at Texas A&M's Lubbock Research and Extension Center. "The effort pays off. We see that when we look at the dramatic decline in weevil numbers in zones where eradication has been underway for one or two years.

"The first year of diapause eradication spraying cuts weevil numbers dramatically. Subsequent spraying in following years then pushes weevil populations down to near zero. That helps put more lint and more dollars back into producers' pockets," Leser added.

The Texas Agricultural Extension Service estimates boll weevil costs the state somewhere between \$25 million to \$50 million annually in lost production before eradication programs were initiated. A 1997 economic impact study of weevil damage on the South Plains projected regional losses of \$500 million from lost production, processing and jobs if weevils were left unchecked.

Eradication programs in regional zones are first approved by producers, and are funded by a combination of farmer assessments and state and federal monies.

More information on boll weevil eradication efforts now underway in Texas is available by visiting the Texas Boll Weevil Eradication Foundation Web site, <http://www.txbollweevil.org>.

High Plains, Caprock Cotton Growers Approve State's Largest Boll Weevil Eradication Zone

The last piece of the puzzle is finally in place for boll weevil eradication on the South Plains. Cotton growers in Cochran, Hockley, Terry, Lubbock, and portions of Crosby, Dickens, Garza and Lynn counties recently voted 2,996 to 732 in favor of establishing the Southern High Plains-Caprock eradication zone.

The Texas Department of Agriculture announced the results of the

grower mail-in referendum recently. The four-to-one ballot approval creates a 1.2 million-acre active control zone in these eight counties - the largest of eight active eradication zones in Texas.

Boll weevil eradication efforts in these zones are operated and governed by cooperative efforts between producers and the Texas Boll Weevil Eradication Foundation. Growers in

the Southern High Plains-Caprock zone also voted to pay \$12 per acre for irrigated land and \$6 per acre for dryland fields to fund their five-year eradication program at a total cost of \$105 million. If all goes well, control efforts will begin next fall.

"The last piece of the boll weevil eradication puzzle is finally in place on the High Plains. In order to get good control of this destructive pest, we now need 100 percent grower participation-cooperation," said Steve Verett, executive vice president of Plains Cotton Growers Inc., head-

QUALITY AUCTIONEERS, INC.

AUCTION: TUESDAY, JAN. 2 -- 10:00 A.M.

LOCATION: Lubbock, TX. From East Loop 289, take 4th Street Exit. Then East on FM 40 1/2 Mile (Acuff Hwy.). Sale Site North Side of Road Between MBCI and Fitz Equipment.

TRACTORS ... HARVEST EQUIPMENT ... BIVOT ...
FARM EQUIPMENT ... HAY EQUIPMENT ... VEHICLES ... TRAILERS
IRRIGATION ... AND MORE.

AUCTION: THURSDAY, JAN. 4 -- 10:00 A.M.

LOCATION: Wolfforth, TX. At the Intersection of US 62/82 and FM 1585, Go 1 Mile West on FM 1585. Sale Site on South Side of Road in Field.

TRACTORS ... HARVEST EQUIPMENT ... HAY EQUIPMENT ...
FARM EQUIPMENT ... LIVESTOCK EQUIPMENT ... IRRIGATION ...
SHOP ITEMS ... TRAILERS ... AND MORE.

FOR MORE INFORMATION:

QUALITY AUCTIONEERS, INC.

(806) 866-4646

JAMES FULLWOOD, BROKER #048140 • (806) 798-0866
CHARLES MACRA, AUCTIONEER #6911 • (806) 894-5758



These Tahoka Firms Are Sponsoring This

FARM NEWS

AgTexas Farm Credit Services (AgTexas FCS) formerly PCA

Don Boydston

First Ag Credit FCS

Clint Robinson, President

Farmers Co-op Association

No. 1

Lynn County Farm Bureau

O'DONNELL INDEPENDENT SCHOOL DISTRICT

COMBINED STATEMENT OF REVENUES, EXPENDITURES, AND CHANGES IN FUND BALANCES
ALL GOVERNMENTAL FUND TYPES AND SIMILAR TRUST FUNDS
YEAR ENDED AUGUST 31, 2000

DATA CONTROL CODES	GOVERNMENTAL FUND TYPES			TRUST FUNDS	TOTALS
	100-199 GENERAL FUND	200-499 SPECIAL REVENUE FUND	500-599 DEBT SERVICE FUND	800-829 EXPENDABLE TRUST FUNDS	98 (MEMO ONLY) AUGUST 31, 2000
REVENUES:	\$	\$	\$	\$	\$
Local, Intermediate, and Out-of-State Investment income	42,188		8,283	1,825	52,296
Other local and intermediate sources	923,526	15	50,382	2,005	975,928
5700 Total Local and Intermediate Sources	965,714	15	58,665	3,830	1,028,224
5800 State Program Revenues	2,361,447	67,902	81,348		2,510,697
5900 Federal Program Revenues	124,356	272,390			396,746
5020 Total Revenues	3,451,517	340,307	140,013	3,830	3,935,667
EXPENDITURES					
Current:					
0010 Instruction and instruction-related services	1,912,027	342,767			2,254,794
0020 Instruction and school leadership	89,592				89,592
0030 Support services - student (pupil)	464,066	4,921			468,987
0040 Administrative support services	146,946	1,000			147,946
0050 Support services - nonstudent based	527,194	800			527,994
0060 Ancillary services				6,889	6,889
0070 Debt Service	86,563		132,336		218,899
0080 Capital Outlay					0
0090 Intergovernmental Charges	22,804				22,804
6030 Total Expenditures	3,249,192	349,488	132,336	6,889	3,737,905
1100 Excess (Deficiency) Revenues Over Expenditures	202,325	(9,181)	7,677	(3,059)	197,762
7020 Other Resources	46,305	9,181			55,486
8030 Other (Uses)	(45,000)				(45,000)
1200 Excess (Deficiency) of Revenues and Other Resources Over Expenditures & Other Uses	203,630	0	7,677	(3,059)	208,248
0100 Fund Balance - September 1, 1999	867,144	0	75,643	37,002	979,789
3000 Fund Balance - August 31, 2000	\$ 1,070,774	\$ 0	\$ 83,320	\$ 38,943	\$ 1,188,037

'Texas Stories' To Be Presented By Tumbleweed Smith

Theatre on the Brazos in Rotan will present "Texas Stories" on Jan. 12 and 13. It features a performance by Texas humorist and storyteller, Tumbleweed Smith.

"Texas Stories" contains the voices, sounds and visual images of people and places he has encountered during 31 years of traveling Texas and interviewing unusual characters for his syndicated newspaper column and radio show.

Tumbleweed has performed his Texas humor in seven states and three foreign countries.

Tickets are \$6 and may be reserved by calling the Theatre on the Brazos box office in Rotan at 915-735-2341. Both performances, on Jan. 12 and 13, begin at 7 p.m.

Lynn County Merchants Appreciate Your Business!

Alcoholics Anonymous and Al-Anon
Meetings held every Monday at 7:30 p.m. at the Tahoka Trinity Church, Lockwood & Ave. N
EVERYONE WELCOME

HOUSE FOR SALE
place, central heat & plumbing and paint. Call in backyard, extra storage the street from school. Call (806) 759-5509.

FOR SALE by owner approx. 4,000 square feet office, dining area, kitchen. Chainlink dog yard approx. 20x30 with RV car, swimming pool with covered cooking area. Sprinkler system. Call 806-998-4549.

HOUSE FOR SALE: room Brick, 1 bath, 1 car remodeled. Storage in back 2906 or 893-7389.

OWN YOUR OWN LESS THAN UPDATED HOME
1913 N. 1st St. All NEW interior a NEW carpet, and NEW laundry areas. 3 bedroom, stove, 6 ceiling fans/heat/air in Jan. '99! All cabinets! Approx. 1200 MOVE-IN COST \$1,050.00 AND TO PAYMENTS (including) UNDER \$350.00. Call 794-2084 page 723-0804

For
• Approx. 1772 sq
• Three Bedrooms
• Two Baths
• Spacious family
• Sunroom (38x6)
• Two car side entry
• 5 acres ... (4 in p
(806) 7

Diabetes

Diabetes is a disease, and there are people in the United States. Each day, approximately 100,000 people are diagnosed with diabetes.

Diabetes is the cause of death in thousands of Americans. Physicians want people to be aware of the warning signs.

There are two main types of diabetes: Type I occurs in children and young adults, and Type II occurs in middle-aged and older people.

Type II diabetes is the most common form of diabetes. It is caused by the body's inability to use insulin properly. It is often associated with obesity and a family history of diabetes.

As the U.S. population increases, the number of people with diabetes is expected to rise. Type II diabetes is becoming more frequent in young people.

Type II diabetes can be prevented or delayed by maintaining a healthy weight, eating a balanced diet, and exercising regularly.

Overweight is a major risk factor for Type II diabetes. Losing weight can significantly reduce the risk of developing the disease.

Older than 10, are in middle to late life, cases of Type II diabetes are increasing. It is often diagnosed in people who are unaware of the disease.

Have a family history of diabetes; Are a member of a racial/ethnic group, such as African Americans, Hispanics, and Native Americans.

Obesity, a condition characterized by excess body fat, is on the rise in the United States and is becoming a major health problem. The number of children in the U.S., about 14 percent, are overweight. Obesity is not only a cosmetic concern, but it is also a serious health risk.

CLASSIFIEDS

Call 998-4888
by Noon Tuesday

THE LYNN COUNTY NEWS DEADLINE FOR NEWS AND ADS IS NOON TUESDAY

Real Estate

HOUSE FOR SALE by owner: 2/2/2, fireplace, central heat & a/c. New water heater, plumbing and paint. Cellar and storage shed in backyard, extra storage in garage. Across the street from school. 2122 North 4th Street. Call (806) 759-5509. 28-tfc

FOR SALE by owner: 4-2-2 brick home, approx. 4,000 square feet. Den, living room, office, dining area, kitchen, utility and game room. Chainlink dog kennels. Work shop approx. 20x30 with RV or boat overhang. Cellar, swimming pool with bath house and covered cooking area. Sprinkler system. By appointment only: call 806-996-5448 or 806-998-4549. 38-tfc

HOUSE FOR SALE: 2000 N. 7th. 2 Bedroom Brick, 1 bath, 1 car garage - completely remodeled. Storage in back, fenced yard. 745-2906 or 893-7389. 48-tfc

Help Wanted

COOK WANTED: Hours 9-3, 30 hrs/week. Must be able to cook for large numbers. Pick up application at Lynn County Pioneers Senior Citizens Center, 1600 S. 3rd. 50-tfc

NEWSPAPER CARRIER needed in Tahoka for the Lubbock Avalanche-Journal. Great part-time job for someone willing to get up early. Looking for honest, dependable person with good transportation. Call Michael Cardenas at 766-8763. 53-3tc

NAIL TECHNICIAN needed. Apply at Tahoka Barber Shop, 998-1110. 52-2tc

Real Estate

REAL ESTATE

We've sold all our property! Let us sell yours!

PEBSWORTH Southwest Real Estate
1801 N. 7th Street • Tahoka
Day 806-998-5162
Night 806-998-4091

Lights... Camera... Courthouses

Texas has more historic courthouses than any other state. Courthouses have been sites for various community events, and in more recent years, popular filming locations for major motion pictures and television movies.

Movie Title	Year Released	County Name	City Name	Courthouse Constructed
Hope	1997	Grimes	Anderson	1893
Lone Star	1996	Maverick	Eagle Pass	1885
Michael	1996	Fayette	La Grange	1891
Powder	1995	Wharton	Wharton	1889
Pointman	1994	Harris	Houston	1910

SOURCES: Carole Keeton Rylander, Texas Comptroller of Public Accounts (www.window.state.tx.us), and The Texas Historical Commission.

Keeping an Eye on Texas

Makeover marvels

Historic preservation efforts create more than \$1.4 billion in economic activity in Texas annually, and support nearly 41,000 Texas jobs. In terms of cost, the rehabilitation of a historic commercial building has almost the same economic impact as building a new one.



\$1 million spent on rehabilitating historic commercial buildings generates:

- \$639,026 of income
- \$52,291 in state taxes
- \$51,056 in local taxes
- \$872,000 increase in the Gross State Product

\$1 million spent on constructing new commercial buildings generates:

- \$637,000 of income
- \$52,000 in state taxes
- \$51,000 in local taxes
- \$873,000 increase in the Gross State Product

SOURCES: Carole Keeton Rylander, Texas Comptroller of Public Accounts (www.window.state.tx.us), The Texas Historical Commission.

RESIDENTIAL - COMMERCIAL

Scott's Heating & Air Conditioning

Sales • Service • Installation
ALL MAKES & MODELS
OFFICE MOBILE
(806) 998-4051 1-877-99PURON
SCOTT STEVENS, Owner • Texas Lic. #TACLBO14652E

FOLLIS

HEATING & AIR CONDITIONING
Specializing in Change-out and Repair Service
Call 628-6371

OSCAR FOLLIS • Licensed and Insured • WILSON, TEXAS

For Sale

- Approx. 1772 sq. ft. living area
- Three Bedrooms
- Two Baths
- Spacious family room (24.2x21)
- Sunroom (38x6)
- Two car side entry garage
- 5 acres ... (4 in permanent grass)

WONDERFUL COUNTRY HOME!

- Heat Pump 5-ton 1997
- 2 hot water heaters - 1996 & 1997
- Water well w/leaded Culligan system
- Metal barn - workshop - storage
- Wood burning fireplace
- Tahoka school district
- Built in 1961

Edwards Realtors
(806) 780-8473 or Pager: 1-800-959-4914

Diabetes: The Silent Killer

Diabetes is a disease that has no cure, and there are 15.7 million people in the United States who have it. Each day, approximately 2,200 people are diagnosed with this disease.

Diabetes is the seventh leading cause of death in the U.S., and the physicians of Texas Medical Association wants people to be aware of the warning signs.

There are two major types of diabetes: Type I occurs when the body does not produce insulin, a hormone that is needed to convert sugar, starches, and other food into energy. Type II, referred to as non-insulin dependent, occurs when the body does not make enough, or properly use, insulin. Type II diabetes is the most common form of the disease, accounting for 90 to 95 percent of diabetes cases. The cause of diabetes is unknown, although obesity and lack of exercise appear to play roles.

As the U.S. population becomes increasingly overweight, researchers expect Type II diabetes to appear more frequently in younger children.

Type II diabetes commonly occurs in children who are:

- Overweight: as many as 80 percent may be overweight at the time of diagnosis;
- Older than 10 years of age and are in middle to late puberty, although cases of Type II diabetes in children as young as four years old have been documented;
- Have a family history of Type II diabetes;
- Are a member of a certain racial/ethnic group, specifically African Americans, Hispanics, or Native Americans.

Obesity, a contributing factor to diabetes, is on the rise in the United States and is blamed for the high number of children with diabetes. In the U.S., about 14 percent of children age 6 to 11 and 12 percent of adolescents age 12 to 17 are overweight. Obesity is not only caused by poor

eating habits, but also by the sedate lifestyle that children are leading. Too often, they entertain themselves in front of a television or computer instead of engaging in some form of physical activity.

People with Type II diabetes often have no symptoms at the onset of the disease although the following symptoms have been attributed to people with diabetes:

- Increased thirst and hunger;
- Increased urination;
- Weight loss in spite of increased appetite;
- Fatigue;
- Nausea;
- Vomiting;
- Frequent infections, specially bladder, vaginal, and skin;
- Blurred vision;
- Breath odor;
- Impotence in men;
- Cessation of menses in women;
- Bleeding gums;
- Ear noise or buzzing;
- Diarrhea;
- Depression;
- Confusion or irritability;
- Cuts and bruises that are slow to heal;
- Tingling and numbness in the hands or feet.

School nurses are helping to identify early warning signs of diabetes. According to Dr. Stanley Fisch, a Harlingen pediatrician, "The Texas Department of Health has a program called ANTES which allows school nurses to look for early signs of diabetes much like they test school children's spines for scoliosis." By identifying early warning signs, more children are getting early treatment for a dangerous disease before it gets out of hand.

Parents need to stress good eating habits to their children. It is never too early to set them on the course of eating nutritious foods low in sugar, fat, and high in fiber. Parents should also encourage their children to be physically active and play outside.

SAM ASHCRAFT CROP INSURANCE

HAIL • MULTI PERIL

998-4660
Mobile • 759-1111

Bruce Fried, M.D.

Board Certified in Family Practice

Lynn County Hospital District Clinic
2600 Lockwood
Tahoka, Texas 79373

For Appointments Call: 998-4602

MOORE CROP INSURANCE AGENCY, INC.

Main Office: 127 W. Broadway, New Home, TX 79363
Branch Office: 101 Brownlee, Whittarrat, TX 79360

Over 30 Years Crop Insurance Experience
• Multi-Peril Crop Insurance • Crop Hail
• All Risk • Crop Revenue Coverage

GID R. MOORE LEE MOORE
New Home - (806) 924-7411
Toll Free 1-800-375-2593 • Fax (806) 924-7413

Edwards Realtors

780-8473

2304 60th Street • Lubbock, TX 79412

JEANEL EDWARDS MELVIN EDWARDS
Broker Sales

Magnetic Fluid Conditioning

Solving Hard Water Problems



J & J Enterprises
JIMMY & JUDY WOODARD
Independent Distributors

Box 1615 • Tahoka, TX 79373 • 806-998-4780

L&R Construction

FREE ESTIMATES

Roofing - New Construction - Remodeling
Add-On (Carports, ext.) - Painting -
Cabinets (Kitchen & Bath)

All Kinds of Carpentry Work Call & Inquire

Ricky Hall Larry Owen
998-5016 998-5079

JEWEL BOX MINI STORAGE

16 New Units • 10x10 and 5x10 Units

24 Hour Access

- Affordable, low monthly leases
- Personal and commercial storage
- Your lock - your key

CALL 998-4635 or 998-4517

City-County Library

998-4050 • 1717 Main • Tahoka, TX

(In the Life Enrichment Center)

Mon. & Wed. - 9 am-5:30 pm (Closed for Lunch 12:30-1:30 pm)

Tues. & Thurs. - 2 pm-7 pm; Saturdays 10 am-1 pm

INTERNET ACCESS AVAILABLE

Tahoka Pioneer Museum
998-5339 • 1600 Lockwood • Tahoka, TX
Open Friday & Saturday 10 a.m.-2 p.m.

Kiko's Woodworking Shop

FRANCISCO VILLEGAS
Owner

East U.S. 87 Access Road & N. 6th St.
P.O. Box 1326 Home (806) 998-6303
Tahoka, TX 79373 Mobile (806) 759-4600

National Farm Life

BILLY W. DAVIS

BOX 207
TAHOKA, TX 79373

BUS. PHONE: 806-998-4645 AGENT FOR:
RES. PHONE: 806-998-5039 NATIONAL FARM LIFE
FAX PHONE: 806-998-5027 INSURANCE COMPANY

- Service To All Faiths -

"We care for yours as we would have ours cared for."

Billie White Everett, Owner

White Funeral Homes

Tahoka • O'Donnell • Floydada • Lockney • Idalou • Lubbock

Tahoka: Phone 998-4433
COMPLETE FUNERAL SERVICE

SPiST Fraternal Life Insurance

DONALD G. (SHORTY) WILLIAMS

Sales Representative

Full Line of Permanent & Term Life Insurance Plans • Annuities

998-4979

P.O. BOX 374 • TAHOKA, TX 79373

Mary Kay Products

Carol Botkin

CONSULTANT

998-5300

HOUSE SETTLING?

- Cracks in brick or walls?
- Doors won't close?

CALL

CHILDERS BROTHERS STABILIZING & FOUNDATION LEVELING

1-800-299-9563 or 806-796-0063
LUBBOCK, TX

Robert E. Abbe Jr.

Bookkeeping and Income Tax Service

Provider for AgriPlan - BizPlan

628-6368

1206 Lumsden Ave. • P.O. Box 21
Wilson, Texas 79381

B & N Flowers, Etc.

NANCY & BOB GUILLIAMS

1615 A Lockwood

P.O. Box 352 • Tahoka, TX 79373

(806) 998-6553

"Floral creations for all occasions"

DK & J Tire Co

Dahlen Hancock

Sales and Service

Office 806-863-2717 or TOLL FREE 1-800-335-1707

Dahlen's Mobile 806-781-6028 or Ronnie's Mobile 806-781-0644

Michael's Mobile 806-998-5622 or Home 806-998-6367

Grassroots Upside Down

A History of Lynn County

by Frank P. Hill & Pat Hill Jacobs

-- is available at --

The Lynn County News Office, 1617 Main,
P.O. Box 1170, Tahoka, TX 79373.

Cost is \$38 - make checks payable
to The Pioneer Museum.

Calvillo Funeral Home

SERVING THE ENTIRE SOUTH PLAINS

RICHARD CALVILLO 609 18th Street
Funeral Director (18th & I-27)
806-765-5555 Lubbock, TX 79401

Professional people with traditional values,
dedicated to personal attention.

BARRY WEAVER

Independent Agent

Group & Individual Health • Life
Cancer • Accidental • Annuities
Crop Insurance

Lubbock, TX Bus. (806) 794-2344
Fax: (806) 798-0227

Need office supplies?

Come to your local

Lynn County News

1617 Main Street, Tahoka
Phone 998-4888

D
E
C
2
8
2
0
0
0

The Lynn County News office will be closed Friday, Dec. 29th and Monday, Jan. 1st for New Year's.

Deadline for next week's issue will be 5:00 p.m. Tuesday for news and ads.

Memorials and donations made to the **Lynn County Pioneers** 1600 S. 3rd • P. O. Box 223 Tahoka, Tx 79373 will benefit our local senior citizens center.



A COLD WINTER'S DAY - Ice and snow blanketed the Lynn County area and much of the South Plains this week, wreaking havoc with travel plans and electrical lines. Officially, five inches of snow fell in the Tahoka area. (LCN PHOTO)



Proud to be your **Good Neighbor** Agent for **26** years.

Harold Bradley
8211 University
Lubbock, TX
806 / 745-2555



Like a good neighbor, State Farm is there.®

State Farm Insurance Companies • Home Offices: Bloomington, Illinois
statefarm.com

Pages From The Past ...

by Vondell Elliott

The following excerpts were taken from past issues of The Lynn County News.

Local Dealers Are Showing 1969 Autos and Trucks Today

Tahoka auto dealers are anticipating good crowds today, for the 1969 showing of new models in automobiles and trucks. The city's four dealers have been busy, readying displays, putting out information folders, mailing invitations and planning exciting things for the show date.

Local dealers include Wharton Motor Inc., Bray Chevrolet Co., McCord Motor Co., and Wayne Waters Ford. All dealers will be showing the new lines today.

Buick Motor Division is introducing its 1969 line of cars with completely new styling for LeSabre, Wildcat, and Electra models. The new models feature several mechanical innovations with new and fresh styling in all the 36 1969 models.

Oldsmobile for 1969 is introducing completely restyled 88's and 98's, a longer and sleeker Toronado with major changes. Styling changes in every 1969 Oldsmobile enhance their traditional appearance of top quality and emphatically designate series identification. Ford for 1969 is "The Going Thing," newly designed from bumper

to bumper with longer, lower lines outside and improved comfort and convenience inside. Be sure to pick up your Value Book while viewing the variety and values of the 21-model 1969 Ford line.

The widest choice of engines and transmissions in automotive history head a parade of exclusive Chevrolet features for 1969. 35 new Chevrolet models in seven distinctive car lines are showing for 1969. The variety and value offered by Chevrolet gives the buyer the opportunity to custom tailor his car's performance and economy.

New styling from the ground up; the latest engineering innovations and added safety are all a part of the 1969 Pontiac story. Sixteen models, offered in three series, have new styling highlights, fresher interiors and new engineering design.

Tahoka dealers are extending an invitation to all to visit the show rooms today and share in their pride of presenting this 1969 automobiles and trucks. - Sept. 25, 1968

Ed Hoskins Story In Life Magazine

Last week, Life Magazine, issue of September 27, carried a feature article by Wally Schirra, commander of the three-man Apollo 7 crew to orbit the earth next month.

The article presented facts about flight preparations and about Ed Hoskins, head of the Flight Crew Support Team, the man the Apollo 7 astronauts couldn't fly without.

Ed Hoskins, grandson of Mr. and Mrs. J.G. Hoskins of Tahoka, heads a team of engineers to handle the technical details before pre-flight. Schirra describes Ed Hoskins as an engineer with ability, ambition and drive.

The article is very interesting and the Lynn County News recommends it for your reading pleasure.

Edwin Wayne was born at Southland and graduated from Lamesa High School. He received his engineering degrees from Texas A&M. - Oct. 3, 1968

Four Pennies Required To Spend Dollar Bill

The beginning of an additional 1 percent state sales tax, recently passed by the legislature, came about Wednesday, October 2, making 4 percent the amount to be collected on the dollar, by local merchants.

Cities, like Tahoka who have adopted a one percent city sales tax are now faces with a four percent levy, instead of the three being used through last week.

The four percent sales tax starts at a one cent tax at 13 cents, through 37 cents. Two cents will be collected up and including 62 cents with three cents stopping at 87 cents. The four cent tax will be collected from .88 to 1.12 with another penny added from 1.13 to 1.37.

As before, the city and state taxes will cover those items taxable under the original 2 percent tax measure.

All merchants should have the new tax charts available as the tax is added at various percentage points. - Oct. 3, 1968

THE LYNN COUNTY NEWS

News • Advertising • Printing • Office Supplies

PHONE (806) 998-4888 • FAX (806) 998-6308 • TAHOKA, TEXAS

WE CAN HELP YOU GET

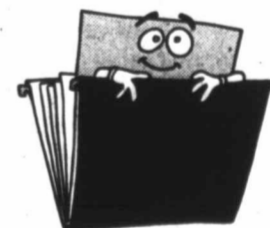
ORGANIZED

FOR THE NEXT MILLENNIUM ...THE YEAR 2001!



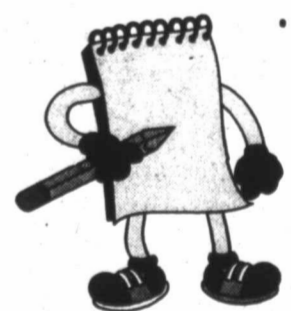
THIS IS THE TIME TO GET ORGANIZED!

If you need file folders, colored file



folders, hanging file folders, storage boxes,

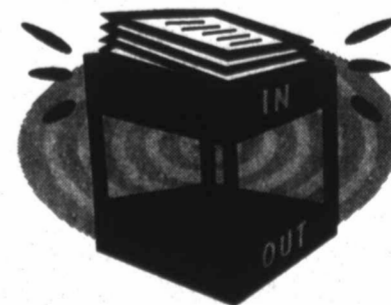
calendars, desk pads, labels, letter trays,



calculators, stacking trays,

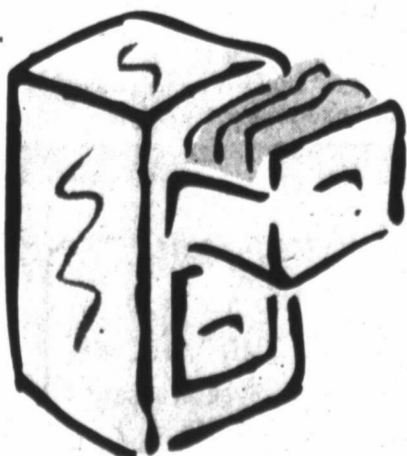


file guides and much more,



then it's time to come see us!

(Open Monday-Thursday 9:00-5:00; Fridays 9:00-4:00. Closed Dec. 29th & Jan. 1st for New Year's.)



THE Lynn County News

1617 MAIN • TAHOKA, TX • 806/998-4888 • FAX 806/998-6308

