

814 5 15 39 01/27/99  
SOUTHWEST MICROFILM  
2627 E. YANDELL  
EL PASO. TX 79903-

MEMBER  
1992  
**TPA**  
TEXAS PRESS  
ASSOCIATION

# THE Lynn County News

**35¢**  
Per Copy

VOLUME 89, NUMBER 33 • TAHOKA, LYNN COUNTY, TEXAS • THURSDAY, AUGUST 13, 1992 • 10 PAGES IN ONE SECTION PLUS INSERT



**SCOUT HUT GOES DOWN**—No, the Scouts didn't get out of hand at the last meeting in the Scout Hut next to Tahoka City Hall. The city contracted to have the old building demolished, and workers did just that over the weekend.  
(LYNN COUNTY NEWS PHOTO by Warren Hardt III)

## Voters Ratify Annexation Into Water Conservation District

Voters residing in the southern portions of Cochran and Lynn Counties ratified the annexation of the remainder of their counties into the High Plains Underground Water Conservation District No. 1 during a special election, Saturday, Aug. 8.

"The Water District is very pleased with the outcome of this annexation election. By filling in the gaps in our service area in these two counties, the Water District can do a better job of providing services to the residents of Cochran and Lynn Counties," said A. Wayne Wyatt, High Plains Water District manager.

The cost-in-water income tax depletion allowance, annual depth-to-water measurements and water education programs are just some of the programs and activities offered to residents within the Water District.

The northern central portion of Cochran County, including Morton, Whiteface, and Lehman was already

within the Water District service area. The newly-annexed area includes the extreme northeastern part of Cochran County, the town of Bledsoe, and the remaining southern portion of the County.

The northern portion of Lynn County, including New Home and Wilson, was already served by the Water District. The annexation takes in the rest of Lynn County, including Tahoka and O'Donnell.

Voters in the two counties also approved the levying of an ad valorem tax for the operation and maintenance of the district at a maximum rate of \$0.5 per \$100 valuation. The newly-annexed territory will be taxed at the same rate as is levied to other property owners within the rest of the 15-county Water District service area.

The 1991 tax rate is .0074 cents per \$100 valuation (\$7.40 for a \$100,000 valuation).

## Lyntegar Has Annual Meet, Barbecue At Football Field

Lyntegar Electric Cooperative, Inc. had its annual barbecue and meeting of members at the Tahoka High School football field Tuesday night, with a total of 2,995 people present for the event.

Three incumbents were re-elected as directors of the cooperative, winning the elections over one opponent each. Weldon Mason won over William Clements for District 1, Billy Weaver won over Mack Terry for District 6, and Leonard Nettles won

over W.R. Steen for District 7. The annual report to members indicated that total revenue for the calendar year 1991 was \$23,963,852, total expenses were \$22,348,632 and operating margins for the year totaled \$1,615,220.

This year, the cooperative issued \$503,932.11 in capital credit refunds, bringing the total capital credit refunds to members to \$11,079,643.47.

## School Days Begin In County Soon

Students in grades K-12 will begin attending classes in two Lynn County school districts next week, with two other districts set to begin classes the following week. O'Donnell I.S.D. leads the group with students beginning Tuesday, Aug. 18, followed by Tahoka I.S.D. on Wednesday, Aug. 19 as the first day of classes for students.

Wilson and New Home school districts both set Monday, Aug. 24 as the first day of classes for students. All Lynn County school districts have staff work days scheduled, and all districts except O'Donnell have scheduled Monday, Sept. 7 as a Labor Day Holiday for staff and students.

## Burglary, Vandalism Reported

A resident of S. 5th St. in Tahoka told officers last week that she would file charges of burglary of a habitation against her former son-in-law who she said entered her home without her consent and took a hammer and saw and damaged a door panel. Charges had not been filed as of Wednesday.

Sheriff's officers answered two complaints of pellet gunshots fired at two vehicles traveling west on FM 211 in the city of New Home about 11 p.m. Saturday. A deputy was investigating a report of shooting of the rear window of a vehicle owned by a Tahoka man when the deputy was advised by a resident of Millsap that the same thing had been done to his vehicle going through New Home.

Tahoka Police Dept. received a report that a Tahoka resident had been cut by a butcher knife during a confrontation involving several young men on the east access road of U.S. 87 last Saturday night. No charges were filed.

In jail during the week were two persons for application to revoke probation on drunk driving charges and another for revocation on charges of marijuana possession. One person each was jailed on charges of criminal mischief, burglary of a habitation, no drivers license, DWI felony charges plus driving while license suspended, no drivers license plus speeding and failure to appear, and another for speeding and failure to appear.

Weather			
Date	High	Low	Precip.
Aug. 5	91	64	
Aug. 6	93	67	
Aug. 7	95	66	
Aug. 8	94	66	
Aug. 9	94	67	
Aug. 10	94	64	
Aug. 11	82	64	
Precip. for year to date: 17.12"			

## Wilson City Council Sets Tax Rate

The Wilson City Council met in a regular meeting on Monday, Aug. 10. Most of the agenda was routine with the major item of interest involving the approval of the property valuations of city property as submitted by the Lynn County Appraisal District. The council then voted to set the city tax rate at \$90 (90 cents) per

\$1 of property valuation. This is a small increase over last year's rate which was \$.885 (88.5 cents) per \$1 of property valuation.

The city also designated Roy Isham to attend the disaster emergency management workshop, which will be held in Lubbock on Aug. 19.

## Woodwork... by Dalton



IN HOLLAND, they are going to take a steel figure of a man, measuring 100 feet, stuff him full of real bread (20,000 loaves), and chunk him into the North Sea.

According to the Associated Press, which reported this plan, environmentalists say it is irresponsible, Christians are calling it sacrilegious and the Dutch government has gone to court to ban it.

Why are they doing it? One of the project's organizers said the gift was conceived two years ago by a group of Dutchmen who see it a "sacrificial statue and an important expression of Holland's cultural identity," adding that "Holland has grown rich from the sea, and a third of the land has been reclaimed from the sea. . . This is a grand gesture and wonderful symbol."

This is also the dumbest project I ever heard of. The cost is \$545,000, raised by public donations. Visitors to the construction site on a big dike north of Amsterdam can sponsor a loaf for \$7.

Aside from the religious objections to a sacrifice to the sea and the purists' objections to polluting the sea with 20,000 loaves of soggy bread, it is just a plain stupid idea.

I don't know if the steel man is 100 feet high or 100 feet wide. I'd guess the latter, if being stuffed with all that bread does to him what bread does to me.

KNOTHOLES in the Woodwork: Elvis died Aug. 16, 1977, and in Memphis there are big observances/celebrations on the occasion. If alive today (as some claim), he'd be 57 years old. Perhaps in tribute, someone should stuff a 100-foot statue of Elvis with drugs and dump it in the Mississippi. . . A federal agency, the Emergency Management Agency, sent us a brochure about how to deal with hurricanes and about how most people don't have insurance to cover hurricane damage. Hurricanes are pretty rare around here. The last recorded big wind in Tahoka was a visit from a political candidate. . . In *The Seminole Sentinel* was a Census report which said that in 1990, people in Gaines County were older than they were in 1980. This is news? Everybody over 10 years old was older in 1990 than in 1980. Actually it meant that the average age of Gaines citizens was more than the average in 1980, but at first glance it sounded a little weird. . . I saw an *Enquirer* - type newspaper on the stand last week which showed a big baby, which they said weighed 265 pounds at age 2. Jimmy Johnson and Jerry Jones probably are interested in this kid.



**ROTARY GOVERNOR VISITS** — Rotary Governor of District 573, Dr. Clifford Breaud (pictured second from left), and his wife, Maggie, (far left) of Lubbock visited the Tahoka Rotary Club last Wednesday and Thursday, Aug. 5-6. Pictured with the Breauds are Tahoka Rotary President Doyle Webb and his wife, Geneva.  
(LYNN COUNTY NEWS PHOTO)

## Lynn County American Cancer Society Qualifies For Award

The Lynn County Unit of the American Cancer Society has qualified for the Challenge Three Award given to units which raise over \$1,000 each in three different fund-raising events during a given year.

The Hale County Unit is the only other unit in the District 3 area, consisting of 13 counties, that has qualified for this award.

The Lynn County Unit raised over \$1,000 at last December's Craft Fair, approximately \$2,000 at the Golf Tournament held in May, and approximately \$1,358 at the Ice Cream "Freeze Out" held last month.

Other fundraising events included the Community Crusade, a door-to-door fundraiser, which raised \$800 and the Lynn County unit continues to receive on-going memorial contributions.

Funds raised for the American Cancer Society by the Lynn County unit go to research and patient services. Approximately 30% of the donations will go for research at

Baylor and M.D. Anderson hospitals and the rest is spent in the Lynn County area for patient services.

A variety of state-wide services are available to all cancer patients, including items such as hospital beds, wheel chairs, walkers, crutches and many other items. These items are either paid for by insurance companies or available on a free-loan basis, no cost is charged to patients.

For more information on patient services, contact Dayton Parker, Patient Services committee chairman.

## Immunization Clinic Offered Here Friday

All immunizations required of school children will be offered in an immunization clinic scheduled by the Health Dept. Friday, Aug. 14 from 9 a.m. to 4 p.m.

Anyone under the age of 18 must be accompanied by a parent.

The Health Clinic is located at 1705 Lockwood, phone 998-4604.

## All Sports Reunion Set For Aug. 22

All ex-Bulldogs are invited to an All-Sports Reunion to be held August 22 at T-Bar Country Club. Those wishing to play golf will tee-off at 10 a.m.

A salad luncheon will be held at noon at Sherri McCord's home. Those attending are asked to bring a salad and something to donate for an auction, for example a hand-made craft item. There will be an auction following the luncheon.

A barbecue dinner will be at 7 p.m. at T-Bar Country Club with Big Band Era music beginning at 8:30 p.m.

Those wishing to attend need to contact Joe Brooks, 998-4152, or Jimmy Williams, 327-5264.





## Martin-Engle Vows Exchanged Here In August 7 Ceremony

Shelley Kay Martin and David Dwain Engle exchanged wedding vows at 7:30 p.m. Friday, Aug. 7 in the First Baptist Church of Tahoka. Rev. Jerry Becknal officiated.

The maid of honor was Cassie Pebsworth of Tahoka. Bridesmaids were Lisa Martin of Lubbock and Robin Martin of Tahoka, cousins of the bride. The attendants wore matching dresses in a soft delicate shellpink. The taffeta tresses were off the shoulder to compliment the wedding gown; a shawl collar was embroidered to match the bridal gown. A basque waistline held the softly gathered teal-length skirt. They wore satin pumps tinted to match.

The flower girl was Britni Engle of Tahoka, niece of the bridegroom. She wore a tea-length white chantilly lace dress accented with a light pink satin sash that tied in a bow in the back.

Michael Saldana of Tahoka was best man. The groomsmen were Ronnie Rivas and Stephen Summers, both of Tahoka. The ringbearer was Chris Engle, nephew of the bridegroom. Jeff Martin, brother of the bride and Jay Pebsworth, both of Tahoka, served as candlelighters and ushers.

Dena Oliphant of Lubbock, sister of the bridegroom, registered guests. Parents of the couple are Mr. and Mrs. Fred Martin and Mr. and Mrs. Dewey Engle of Tahoka.

The bride was escorted down the aisle by her father. She wore an elegant white taffeta gown she selected by the designers of Alfred Angelo bridal.

The gown featured an open off-the-shoulder neckline. The bodice was of an embroidered taffeta with short capsleeves. The fitted basque waistline allowed the full ballgown skirt to float gracefully to the floor and swept into a full cathedral train.

For her hair, she chose a delicate garland of pearls and Austrian crystals. A ripple edge pouff accented the back of the headband and allowed the illusion veiling to cascade over the shoulders. Her accessories were rhinestone pearl drop earrings. The bride's shoes were white satin pumps

accented with sequins and pearl clusters on top.

The carried an arm bouquet of white stock and pink sweetheart roses accented with a large bow.

As something old the bride wore a single pearl earring in the top crease of her ear; something new was her gown; something borrowed was a dainty diamond bracelet belonging to her mother and something blue was her garter. She also wore a 1992 penny, a penny with her birthdate, and a sixpence in her shoes for luck.

Ricky and Merribeth Kahlick of Wilson sang "Parents Prayer," "I Love You Most of All" and "We've Only Just Begun." Merribeth sang "The Lord's Prayer." The pianist was Diane Hawthorne and the organ was played by Donna Stone, both of Tahoka.

Grandparents attending the ceremony were Mr. and Mrs. J. Weldon Martin of Tahoka.

The church was decorated with two spiral candelabrams that stood on each side of a large heartshaped candelabra centered at the altar. They were entwined with fresh greenery and fresh pink flowers. An array of fresh ferns added to the illusion. The unity candle was adorned with fresh flowers and a white bow; large white bows decorated the pews.

A reception was held in the First Baptist Church Fellowship Hall following the ceremony. Diane Hawthorne played background music on the piano.

The bride's table was covered with a white tablecloth over pink draped on the ends with white bows attached to the front corners of the table. It held a three-tiered white cake. Pink iced roses decorated the cake. The top of the cake held triple glass hearts with iridescent netting and lace. Pink slush punch was served from a crystal punch bowl. Two matching crystal heart shaped serving dishes were used for pink and white chocolate mints and mixed nuts. Stephanie Womack, Lanac Bishop and Misty Norwood served at the bride's table.

The groom's table was covered in a tailored white tablecloth. A two-tiered heart shaped chocolate cake



MRS. DAVID ENGLE (nee SHELLEY KAY MARTIN)

with a large chocolate icing rose adorned the top of the cake. A fresh flower arrangement was placed in the center of the table. Coffee was served from a sterling silver coffee service. Sterling silver serving dishes were used to serve cheese balls, assorted crackers, and mixed nuts. Kim Ingle and Misti Lobban served at the groom's table.

The Houseparty included Pat Glisson, Diane Reynolds, Retha Pittman, Jewel Parker, and Jennifer Bingham.

Following a honeymoon to Cloudcroft and Ruidoso, N.M. the couple will live in Tahoka.

The groom's parents hosted a rehearsal dinner at Tejada's on the evening prior to the wedding.

## Belew Wins National FFA Agriscience Scholarship

Jason Belew, of Tahoka, has won a \$1,000 scholarship by being named the Texas state winner in the National FFA Organization's Agriscience Student Recognition Program. Belew, a member of the Tahoka FFA, became eligible for the Agriscience Student Recognition Program when he completed an agriscience project entitled, "When added to Dailey Rations, are Vitamin-Mineral Supplements Containing Aspergillus Oryzae Superior to Yeast Culture in Lowering Body Temperature and Increasing Feed Utilization in Wether Lambs?" as a part of the agriculture curriculum at Tahoka High School.

Eligible FFA members are selected for state, regional and national awards on the basis of research projects involving agriscience skills, applications, and new technologies learned in their high school agriculture classes and applied to their supervised agricultural experience program, as well as academic achievement and school and community activities. Belew will advance to re-

gional competition within the next week.

The Agriscience Student Recognition Program recognizes high school juniors, seniors, and college freshmen who are pursuing an academically challenging course of study focusing on the application of scientific principles and emerging technologies in an agricultural enterprise. The program is sponsored by the Monsanto Agricultural Company of St. Louis, Missouri as a special project of the National FFA Foundation, Inc.

## Rotary Club News

Dr. Cliff Breaud, District Governor, spoke to Tahoka Rotary Club last Thursday about this year's theme, "Real Happiness Is Helping Others."

He also talked about a new tree seedling project offered by Trammell Crow, a real estate developer in Dallas, and about the Youth Exchange Program which is holding a raffle for half a side of beef to be given away next April.

This week, Rachel Givens of United Blood Services will speak at the noon meeting, which will be held at the Fellowship Hall of the First United Methodist Church.

## Public Notice

Southwestern Bell Telephone Company is asking the Public Utility Commission of Texas (PUC) for approval to begin charging \$3.00 per bill, for duplicate paper copies of a customer's bill up to 15 pages. If the customer's bill exceeds 15 pages, an additional five cents per page will apply. If the customer's bill is lost or mutilated for reasons other than negligence by the customer, no charge for a duplicate copy will apply if a customer notifies Southwestern Bell within 60 days of the billing date. The effective date of this application is December 4, 1992.

If approved by the PUC, this application will increase the Company's annual revenues by \$835,000, which is an increase of approximately two one-hundredths of 1 percent (.02 percent) in the Company's adjusted revenue for the 12-month period ending December 31, 1991. The application could affect all of the Company's approximately 4.6 million residence customers and all of its approximately 575,000 business customers should they choose to request duplicate copies of their bills.

Persons who wish to intervene or otherwise participate in these proceedings should notify the PUC as soon as possible. The deadline to intervene is August 7, 1992. A request to intervene, participate, or for further information should be mailed to the Public Utility Commission of Texas at 7800 Shoal Creek Blvd., Suite 400N, Austin, Texas 78757. Further information may also be obtained by calling the PUC Public Information Office at (512) 458-0256 or (512) 458-0221 teletypewriter for the deaf.

This matter has been assigned Docket No. 11223.



Southwestern Bell  
Telephone



I'm going to rub it in, and tell you what a wonderful time we had on our vacation this year, in the cool, crisp mountain air beside a sparkling stream in Red River, New Mexico. The disasters that usually follow us on our vacations stayed behind, unless you count the jeep we rented which died every 14 seconds or so. The rest of the trip was relatively worry-free, disaster-wise.

The jeep sounded suspicious from the beginning, chugging in what we considered an ominous manner. Undaunted, however, we all piled in, glanced at the map outlining all the jeep tours, and chose one that said it took you to the top of Mount Something-or-Other. What it failed to mention, however, was that the road I'd call it a rut, as it wasn't wide enough to be a full-fledged road) wound its way up the side of the mountain in sharp little turns which left you breathtakingly aware of the 200-foot vertical drop only inches away from your tires.

These little jeep trails don't have guard-rails, no-sir-ree. Also, these little jeeps don't have doors, which lends itself to peering straight down the side of the mountain, even if one doesn't especially want an unobstructed view straight down to what could possibly be a very messy death, which could certainly put a damper on one's vacation.

Put that trail together with a contrary jeep and you get a sure-fire combination for a little justified concern. I noticed that our son slumped down in the back seat and refused to look out, and I took an intense interest in looking up the side of the mountain on the other side. My husband was too busy trying to keep the jeep going to worry about the view, and our daughter, who isn't afraid of anything, was having a great time.

We never made it to the top of Mount Whose-Its. We agreed unanimously to head back down and see if we could find another jeep trail which wasn't so... well... adventurous. We thought we were tough and adventurous people, but reality reared its ugly head and showed us what weanies we really are. We tried to be brave... honest.

We chose another trail which claimed to lead us, in a roundabout eight mile trip, to a beautiful lake just teeming with trout waiting to lunge at your fishing line. At the point of origin of that eight-mile trail, we had an hour-and-a-half left in which to return the jeep, which seemed to us a generous time-frame.

Within 100-feet of the turn-off on that trail, my husband remarked that "this road looks really rough" which, as it turned out, was a gross understatement. This "road" was merely an uphill path hacked out of rock, twisting through trees, and crossing the river (not over the river, but through the water) with enough ups and downs to not only keep us from drinking our cokes but from even holding on to our cokes. Throughout this fun ride, let me remind you, the jeep steadfastly refused to run more than a few feet at a time before the engine died.

After about 25 minutes of bone-jarring fun, we calculated we had only traversed about a mile towards our destination and that not only would we never make it to the lake and back in our designated remaining time frame, but quite possibly we would never make it with all our appendages intact, period.

Once again, the Weanie Family voted to turn around, if possible, and bounce back to town. We did manage to turn around, but noticed immediately that the jeep was, unbelievably, running even worse going downhill than uphill. In fact, the engine refused to catch for more than 2-3 seconds at a time before dying again.

At this point, my husband was muttering furious vindictives at the jeep, vainly trying to get it started and steer it around the biggest rocks on the way down. The children and I, in a helpful manner, began chuckling at each other, which soon turned in to full-scale hysterical laughter when my husband gave up on any pretense of keeping the jeep's engine going and resorted to just guiding it downhill, letting gravity and a lot of stomping on the brakes do its job.

We felt sort of like the Flintstone family, and wanted to poke holes in the bottom of the floor, stick our feet out and run with the jeep. By now, even my husband was grinning from ear to ear, as we bounced and jiggled in a curiously silent manner down past hikers going uphill who gave us incredulous looks and shook their heads pitifully at us. At one point where we passed within a few inches of some hikers giving us their full attention, my husband shouted as we passed by, "Runs real quiet, don't it!" which brought peals of laughter from the rest of the family.

By the time we made it back to the beginning of the trail, we only had a half-hour to return the jeep back to town. At that point, however, everyone in the family was more than willing to give up the cantankerous jeep, and when we got the engine to catch, we floored it back to town.

The rest of the time we spent hiking, and just generally enjoying all the touristy things to do in Red River, and especially enjoying the cool weather, and a nice cozy fire in the fireplace in the evenings.

It was great. Wish you were there. Wish you had rented our jeep, and we had gotten a good one.

Quarrel not at all. No man resolved to make the most of himself can spare the time for personal contentions. Better give your pants to a dog than be bitten by him.

—Abraham Lincoln

## TAHOKA CARE CENTER

"Serving the Needs of the Mature Citizen"

Complete Nursing Care  
24 Hours Per Day - 7 Days Per Week

Clean Facilities \* Good Food  
Caring Staff and Homelike Atmosphere  
Volunteer Services \* State Licensed

1829 South 7th 998-4148 Tahoka, Texas

## The Lynn County News Tahoka, Texas 79373

THE LYNN COUNTY NEWS (usps 323200) is published weekly by Woodwork, Inc. on Thursday (52 issues per year) at Tahoka, Lynn County, Texas. Office location is 1617 Main, Tahoka. Phone (808) 998-4888. Second-class postage paid at Tahoka, Texas 79373. Postmaster: Send address change to The News, P.O. Box 1170, Tahoka, TX 79373.

FEDERAL TAX NUMBER: 76-1775226

SUBSCRIPTION RATES:

Lynn County Address .....\$12.00 year  
Elsewhere in Texas .....\$15.00 year  
Out of Texas .....\$16.00 year

## NEWS STAFF

Juanell Jones ..... News Editor  
Betsy Jolly ..... Advertising & Bookkeeping  
Vondell Wood ..... Managing Editor  
Warren Hardt, III ..... Printing

THIS WEEKEND!  
LUBBOCK CIVIC CENTER

ARTS & CRAFTS

Sensational New Selection  
Of Wearable Art Fashions  
For Back To School!

This Is The Show You've Been Waiting For!

SOUTHERN LADY SHOWS

Shop Saturday 10 to 6 • Sunday 11 to 5 • Over 125 National Artists  
Adults \$3 • Good for Both Days • 12 and under FREE • FREE PARKING  
Information 409/866-2725

New Fall Merchandise!

Get ready for fall with  
gorgeous new outfits in name brands  
such as  
Alexander Campbell  
Althuser  
Pueblo  
and new Henry Lee dresses

OUTSIDE SALE SATURDAY  
(WEATHER PERMITTING)

Sirita Kay's

1926 Lockwood • Tahoka • 998-5313

HOURS: Open 9 a.m.-6 p.m. Mon.-Fri., 9 a.m.-5 p.m. Saturday

Public Notice

Southwestern Bell Telephone Company is asking the Public Utility Commission of Texas (PUC) for approval to begin charging \$3.00 per bill, for duplicate paper copies of a customer's bill up to 15 pages. If the customer's bill exceeds 15 pages, an additional five cents per page will apply. If the customer's bill is lost or mutilated for reasons other than negligence by the customer, no charge for a duplicate copy will apply if a customer notifies Southwestern Bell within 60 days of the billing date. The effective date of this application is December 4, 1992.

If approved by the PUC, this application will increase the Company's annual revenues by \$835,000, which is an increase of approximately two one-hundredths of 1 percent (.02 percent) in the Company's adjusted revenue for the 12-month period ending December 31, 1991. The application could affect all of the Company's approximately 4.6 million residence customers and all of its approximately 575,000 business customers should they choose to request duplicate copies of their bills.

Persons who wish to intervene or otherwise participate in these proceedings should notify the PUC as soon as possible. The deadline to intervene is August 7, 1992. A request to intervene, participate, or for further information should be mailed to the Public Utility Commission of Texas at 7800 Shoal Creek Blvd., Suite 400N, Austin, Texas 78757. Further information may also be obtained by calling the PUC Public Information Office at (512) 458-0256 or (512) 458-0221 teletypewriter for the deaf.

This matter has been assigned Docket No. 11223.

Southwestern Bell Telephone

TAHOKA CARE CENTER

"Serving the Needs of the Mature Citizen"

Complete Nursing Care  
24 Hours Per Day - 7 Days Per Week

Clean Facilities \* Good Food  
Caring Staff and Homelike Atmosphere  
Volunteer Services \* State Licensed

1829 South 7th 998-4148 Tahoka, Texas

The Lynn County News  
Tahoka, Texas 79373

THE LYNN COUNTY NEWS (usps 323200) is published weekly by Woodwork, Inc. on Thursday (52 issues per year) at Tahoka, Lynn County, Texas. Office location is 1617 Main, Tahoka. Phone (808) 998-4888. Second-class postage paid at Tahoka, Texas 79373. Postmaster: Send address change to The News, P.O. Box 1170, Tahoka, TX 79373.

FEDERAL TAX NUMBER: 76-1775226

SUBSCRIPTION RATES:

Lynn County Address .....\$12.00 year  
Elsewhere in Texas .....\$15.00 year  
Out of Texas .....\$16.00 year

NEWS STAFF

Juanell Jones ..... News Editor  
Betsy Jolly ..... Advertising & Bookkeeping  
Vondell Wood ..... Managing Editor  
Warren Hardt, III ..... Printing

Benna  
As TS  
The  
Hearing  
nounced  
as Presid  
fessional  
complete  
President  
Marketin  
speech-l  
audiolog  
agnose  
commun  
Ms. A  
language  
tice in E  
employe

S  
A  
SA

This  
Last  
effec  
Con  
tax  
are f  
adju

This no  
the full  
Name o  
Date Pr



### Timmons-Dunn Exchange Vows In Double Ring Ceremony

The marriage of Tobi Lane Timmons, daughter of Kenny and Rhonda Timmons of New Home, and Bryan Webb Dunn, son of Hoyt and Carol Dunn of Lubbock, was officiated by Dr. Charles Murray at Bacon Heights Baptist Church in Lubbock. It was a double ring ceremony at 5 p.m. on Saturday, Aug. 1, 1992.

White roses and English ivy covered the candelabrum across the altar. The bride's aunts, Julia, Pat and Christine Gill sang "The Wedding Prayer" and "We've Only Just Begun." The groom's sister, Rebecca Dunn, sang "As For Me and My House, We Will Serve the Lord."

The candlelighters were Holly Timmons of Amarillo and Clay Ward of New Home, cousins of the bride.

The bride, given in marriage by her father, wore a white Victorian gown adorned with sequins and pearls covering a fitted bodice, high neck and puff sleeves. Pearl strands draped the open back, accented with a large bow atop the cascading train of organza ruffles.

Her shoulder-length veil came from a cluster of organza roses. The bride's bouquet was of white roses sprinkled with bright colors and baby's breath, white satin and silver bow and ribbons. She wore Aunt Sandy's garter.

Tara Jan Lehman of Canyon, sister of the bride, served as Matron of

Honor. The bride's attendants were Rebecca Dunn of Lubbock, Becky Kearney of Sterling City and Brandy Rogers of O'Donnell. Their floor-length dresses were of teal taffeta and they carried nosegay bouquets matching the bride's bouquet. Ashley Gill of New Home, cousin of the bride, carried the flower basket down the aisle in a matching teal taffeta dress with a wreath of baby's breath in her hair.

Randy Jackson of Lubbock served as Best Man. Groomsmen were Torrey Gardner of Pampa, Shan Phillips of Pampa and Dustin Ward of New Home. The couple's ringbearer was Caleb Gill of New Home, cousin of the bride. Martin Gill of New Home and Jason Landers of El Paso, also cousins of the bride, were ushers for the ceremony.

Guests were received in the Fellowship Hall of the church following the ceremony. The bride's table was set with white rose topiary trees atop white pleated linen cloths. Her cake of hearts and roses was accented with English Ivy.

The groom's table was laid with blue cloth overlaid with white lace. His cake was strawberries and chocolate.

The couple went to Arlington for their wedding trip and will resume their studies at Texas Tech, residing in Lubbock.



MRS. BRYAN DUNN (nee TOBI TIMMONS)



BENNA ASKEW

### Benna Askew Elected As TSHA President

The Texas Speech-Language-Hearing Association (TSHA) announced the election of Benna Askew as President of its 4,000-member professional organization. Ms. Askew completed a two-year term as Vice President for Public Information and Marketing in June. TSHA represents speech-language pathologists and audiologists, professionals who diagnose and treat individuals with communicative disorders.

Ms. Askew is currently a speech-language pathologist in private practice in Dallas. Previously she was employed by the Dallas Veterans

Affairs Medical Center in the Audiology/Speech Pathology Clinic. She specializes in the treatment of individuals who have impaired communication resulting from head and neck cancer, strokes, head injuries, voice disorders, and swallowing disorders. In October, she will be expanding her practice to include auditory desensitization training in autistic, attention deficit disorder, and learning disabled individuals.

Following graduation from O'Donnell High School, Ms. Askew attended The University of Texas at Austin where she received her B.A. in Interior Design. Ms. Askew completed her graduate studies at the University of North Texas and received the M.S. degree in Speech-Language Pathology.

Ms. Askew is the daughter of the late Mr. and Mrs. Bertice Askew. She is the granddaughter of the late Mr. and Mrs. P.E. Askew and Mr. and Mrs. C.B. Morrison.

#### VISITS IN TAHOKA

Mary Lou Boggus, daughter of Mrs. Ava Lichey of Tahoka, visited her mother here last week.

**Lynn County Merchants**  
Appreciate Your Business!

**SEEDS FROM THE SOWER**  
Michael A. Guido  
Metter, Georgia

ing yield yourself to God. Resist the devil. Then go forth claiming the Bible promise, "I can do everything through Him who gives me power."

#### Senior Citizens MENU

Aug. 17-21

- Monday- Catfish, Peas, Cauliflower w/Cheese Sauce, Roll, Cobbler.
- Tuesday- Salisbury Steak, Potatoes, Carrot Raisin Salad, Biscuit, Banana Pudding.
- Wednesday- BBQ Sausage, Baked Beans, Broccoli, Coleslaw, Cake.
- Thursday- Beef Tacos w/Cheese, Ranch Style Beans, Green Salad, Cantaloupe Cubes, Cookies.
- Friday- Porkchops, Mashed Potatoes, Fried Okra, Cornbread, Fruit Salad.

### 3RD ANNUAL

## SOUTH PLAINS ARTS & CRAFTS FESTIVAL

AUGUST 22 - 23, 1992  
SAT: 10 AM - 6 PM SUN: 12 - 5 PM  
LUBBOCK MEMORIAL  
CIVIC CENTER

**Free Admission**

An old lady asked a paratrooper, "How many successful jumps do you have to make to graduate?"  
"All of them," he answered.  
If all weren't successful, I guess you could say that's jumping to a conclusion.  
But get into the habit of being victorious. Don't make sin the policy of your life.  
Winning over evil isn't only a sometime thing. Why think of victory only once-in-a-while? Make it the habit of your life to do things right all the time. How?  
When you get up in the morn-

#### Notice of Effective Tax Rate

### 1992 Property Tax Rates in Wilson ISD

This notice concerns 1992 property tax rates for Wilson ISD. It presents information about three tax rates. Last year's tax rate is the actual rate the taxing unit used to determine property taxes last year. This year's effective tax rate would impose the same total taxes as last year if you compare properties taxed in both years. Compare it to the tax rate the taxing unit proposes for this year. This year's rollback tax rate is the highest tax rate the taxing unit can set before taxpayers can start tax rollback procedures. In each case these rates are found by dividing the total amount of taxes by the tax base (the total value of taxable property) with adjustments as required by state law. The rates are given per \$100 of property value.

#### Last year's tax rate:

Last year's operating taxes .....	\$ 221,609.07
+ Last year's debt taxes .....	\$ -
= Last year's total taxes .....	\$ 221,609.07
+ Last year's tax base .....	\$ 49,246,460.00
= Last year's total tax rate .....	\$ 0.45000 / \$100

#### This year's effective tax rate:

Last year's adjusted taxes .....	\$ 218,273.27
(after subtracting value of lost property)	
+ This year's adjusted tax base .....	\$ 38,956,680.00
(after subtracting value of new property)	
= This year's effective tax rate .....	\$ 0.56029 / \$100
x 1.03	
= Maximum rate unless unit publishes notices and holds hearings .....	\$ 0.57709 / \$100

#### This year's rollback tax rate:

Last year's adjusted operating taxes .....	\$ 218,273.27
(after subtracting taxes on lost property)	
+ This year's adjusted tax base .....	\$ 38,956,680.00
= This year's effective operating rate .....	\$ 0.56029 / \$100
x 1.08 (or add \$.08 for schools)	
= This year's maximum operating rate .....	\$ 0.64029 / \$100
+ This year's debt rate .....	\$ -0 / \$100
= This year's rollback rate before adjustment .....	\$ 0.64029 / \$100
+ Rate to recoup lost revenue .....	\$ 0.06574 / \$100
= Adjusted rollback rate .....	\$ 0.70603 / \$100
= This year's rollback rate .....	\$ 0.70603 / \$100

#### SCHEDULE A: Unencumbered Fund Balances

The following balances will probably be left in the unit's property tax accounts at the end of the fiscal year. These balances are not encumbered by a corresponding debt obligation.

Type of Property Tax Fund	Balance
General Fund	\$137,164

This notice contains a summary of actual effective and rollback tax rate calculations. You can inspect a copy of the full calculations at Lynn County Appraisal District, 1636 Avenue J, Tahoka, Texas. Name of person preparing this notice: Dovie Miller. Title: Chief Appraiser. Date Prepared: August 5, 1992

#### Notice of Effective Tax Rate

### 1992 Property Tax Rates in New Home ISD

This notice concerns 1992 property tax rates for New Home ISD. It presents information about three tax rates. Last year's tax rate is the actual rate the taxing unit used to determine property taxes last year. This year's effective tax rate would impose the same total taxes as last year if you compare properties taxed in both years. Compare it to the tax rate the taxing unit proposes for this year. This year's rollback tax rate is the highest tax rate the taxing unit can set before taxpayers can start tax rollback procedures. In each case these rates are found by dividing the total amount of taxes by the tax base (the total value of taxable property) with adjustments as required by state law. The rates are given per \$100 of property value.

#### Last year's tax rate:

Last year's operating taxes .....	\$ 162,519.03
+ Last year's debt taxes .....	\$ -
= Last year's total taxes .....	\$ 162,519.03
+ Last year's tax base .....	\$ 36,115,340.00
= Last year's total tax rate .....	\$ 0.45000 / \$100

#### This year's effective tax rate:

Last year's adjusted taxes .....	\$ 158,246.15
(after subtracting value of lost property)	
+ This year's adjusted tax base .....	\$ 29,450,360.00
(after subtracting value of new property)	
= This year's effective tax rate .....	\$ 0.53733 / \$100
x 1.03	
= Maximum rate unless unit publishes notices and holds hearings .....	\$ 0.55344 / \$100

#### This year's rollback tax rate:

Last year's adjusted operating taxes .....	\$ 158,246.15
(after subtracting taxes on lost property)	
+ This year's adjusted tax base .....	\$ 29,450,360.00
= This year's effective operating rate .....	\$ 0.53733 / \$100
x 1.08 (or add \$.08 for schools)	
= This year's maximum operating rate .....	\$ 0.61733 / \$100
+ This year's debt rate .....	\$ -0 / \$100
= This year's rollback rate before adjustment .....	\$ 0.61733 / \$100
+ Rate to recoup lost revenue .....	\$ 0.05495 / \$100
= Adjusted rollback rate .....	\$ 0.67228 / \$100
= This year's rollback rate .....	\$ 0.67228 / \$100

#### SCHEDULE A: Unencumbered Fund Balances

The following balances will probably be left in the unit's property tax accounts at the end of the fiscal year. These balances are not encumbered by a corresponding debt obligation.

Type of Property Tax Fund	Balance
General Fund	\$388,725.00

This notice contains a summary of actual effective and rollback tax rate calculations. You can inspect a copy of the full calculations at Lynn County Appraisal District, 1636 Avenue J, Tahoka, TX 79373. Name of person preparing this notice: Dovie Miller. Title: Chief Appraiser. Date Prepared: August 4, 1992



## Obituaries

### Prince Smith

Services for Prince Smith, 96, of Tahoka were at 2 p.m. Saturday, Aug. 8 in Pleasant Grove Baptist Church with the Rev. H.R. Brawley, pastor, officiating.

Burial was in Tahoka Cemetery under direction of White Funeral Home.

He died 10:40 a.m. Wednesday, Aug. 5, 1992 in Lynn County Hospital.

He was born Jan. 16, 1896 in Hearne, moved to Lynn County in 1947 and married Mamie Cook in 1935 in Franklin. He was a World War I veteran. He was a farmer and a deacon at Pleasant Grove Baptist Church.

Survivors include his wife, two sons, William C. and Odell, both of Snyder, OK; a daughter, Elnora Kibble of Snyder, OK; a brother, George of Hearne; a sister, Nancy Wheeler of Wichita Falls; five grandchildren; 21 great-grandchildren; and 54 great-great-grandchildren.

Pallbearers were Don Smith, Jimmy Smith, Dennis Smith, Dewaine Smith, W.C. Smith and Barry Blake.

### Odell Head

Services for Christopher Odell Head, 88, of Brownfield were at 2 p.m. Monday, Aug. 10 in Tahoka Road Church of Christ in Brownfield with John McCoy, minister, officiating.

Burial was in Terry County Memorial Cemetery.

He died Saturday, Aug. 8, 1992 in Brownfield Regional Medical Center after a lengthy illness.

He was born in Dunn. He married Myrtle Nellie Pippin on April 14, 1928, in Plains. He attended Snyder schools and graduated from West Texas State University. He taught school for many years in New Home, Wilson, Spade, Ralls, and Brownfield until retiring. He was a contract mail carrier from Brownfield to Plains and Denver City for several years. He was a member of the Church of Christ.

Survivors include his wife; a son, Jerome of Plains; two brothers, Ardith of Sacramento, CA, and Elvis of Bellingham, WA; a sister, Frances Marie Elliott of Cleburne; two granddaughters; and three great-granddaughters.

### Demetrio Gonzales

Services for Demetrio Gonzales, 82, of O'Donnell were at 10 a.m. Thursday, Aug. 6 in Templo Ebenezer with the Rev. Ovidio Martinez officiating.

The Rev. Thomas Estrada assisted, and burial was in O'Donnell Cemetery.

Gonzales died at 4:13 p.m. Tuesday, Aug. 4, 1992 in Lynn County Hospital after a lengthy illness.

He was born in Tamaulipas, Mexico. He married Maria Rodriguez on Dec. 7, 1928, in Eola. She died on Feb. 24, 1981. A daughter, Senoma Pesina, and a son, Lucas Gonzales, both preceded him in death.

Survivors include two sons, Jose D. and Demetrio Jr., both of Lamesa; two daughters, Felipa and Juanita Escobedo, both of O'Donnell; a sister, Olivia Gomez of Kingsville; 32 grandchildren; 80 great-grandchildren; and four great-great-grandchildren.

### E.B. Gaither

Services for E.B. Gaither, 90, of Tahoka were at 11 a.m. Friday, Aug. 7 in First Baptist Church with the Rev. Jerry Becknal, pastor, officiating and the Rev. Terry Fortner, Baptist minister in Clever, MO assisting.

Burial was in Tahoka Cemetery under direction of White Funeral Home.

He died at 12:35 a.m. Wednesday, Aug. 5, 1992 at his residence after a lengthy illness.

He was born July 25, 1902 in Erath County and moved to Lynn County from Artesia, N.M., in 1918. He married Lura May Davis on Sept. 3, 1927, in Lynn County. He was a retired retail salesman and was active in the Boy Scouts of America for many years. He was a member of First Baptist Church.

Survivors include his wife; a son, Bentley of Lubbock; two daughters, Gwen Akin of Lakehills and Wanda Miller of Gordon; 13 grandchildren; and 24 great-grandchildren.

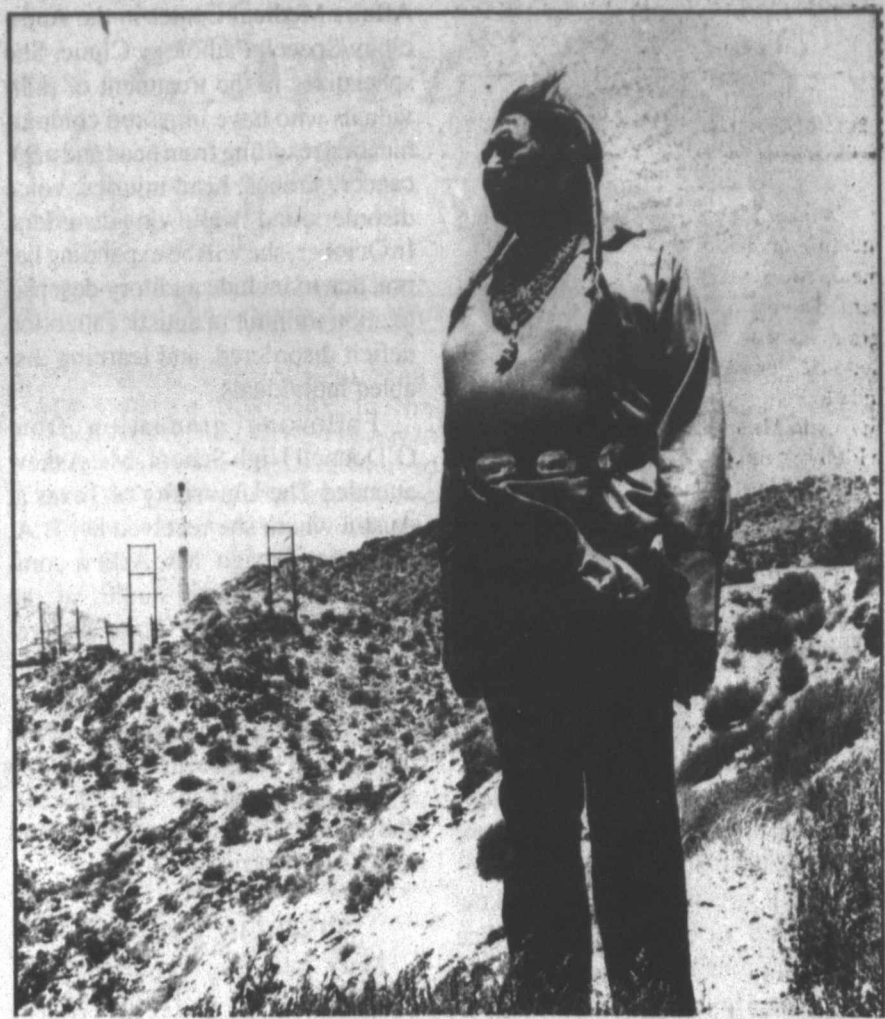
Pallbearers were James Sullivan, Tom Sullivan, Mike Quisenberry, Jack Jaquess Jr., Guy Witt and Monte Witt.

**Q:** I have several cans of very old paint that we'll never use. Where can I take it?

**A:** As in the case of used motor oil, you can start your search on the telephone. Many non-profit agencies or churches can use the paint or know of persons who can.

If you can't find someone who can use it, look for a household hazardous waste collection program. Unfortunately, Austin is the only Texas city with a permanent collection facility. Odessa, Corpus Christi, New Braunfels and Abilene will have sites within 18 months. If you can't wait that long or don't live in or near one of these cities, call Clean Texas 2000 and we'll help. As a last resort, latex paint can be opened in an inaccessible, well-ventilated area, allowed to dry and harden, then placed in your household trash for pick-up.

Your newspaper runs this column as a public service in cooperation with the Texas Water Commission. If you have questions about reduction, reuse or recycling of waste, call the Texas Water Commission Environmental and Recycling Information Center at 1-800-458-9796, or write CLEAN TEXAS 2000, P.O. Box 13087, Austin, Texas 78711-3087.



Lone Star Great Joe Sierra has toured the world representing the Tigua Indian Tribe and the El Paso Convention and Tourist Center. Photo by Elizabeth Grivas, Texas Department of Commerce.

## Planning a Wedding?

We have a nice selection of wedding invitations and napkins to choose from. Come see the beautiful styles and colors, and a wide range of prices from which to choose. We can order any style you desire. Just give us time to send off your order and receive it in time for your very special day.

Let us help you with the details. Call or come by  
**The Lynn County News**

1617 Main Street • P.O. Box 1170 • Tahoka, TX 79373 • (806) 998-4888

### Notice of Effective Tax Rate 1992 Property Tax Rates in O'Donnell ISD

This notice concerns 1992 property tax rates for O'Donnell ISD. It presents information about three tax rates. Last year's tax rate is the actual rate the taxing unit used to determine property taxes last year. This year's effective tax rate would impose the same total taxes as last year if you compare properties taxed in both years. Compare it to the tax rate the taxing unit proposes for this year. This year's rollback tax rate is the highest tax rate the taxing unit can set before taxpayers can start tax rollback procedures. In each case these rates are found by dividing the total amount of taxes by the tax base (the total value of taxable property) with adjustments as required by state law. The rates are given per \$100 of property value.

Last year's tax rate:	
Last year's operating taxes	\$ 62,920.69
+ Last year's debt taxes	\$ 135,422.91
= Last year's total taxes	\$ 198,343.60
+ Last year's tax base	\$ 76,286,000.00
= Last year's total tax rate	\$ 0.26000 / \$100

This year's effective tax rate:	
Last year's adjusted taxes	\$ 193,903.92
(after subtracting value of lost property)	
+ This year's adjusted tax base	\$ 60,394,440.00
(after subtracting value of new property)	
= This year's effective tax rate	\$ 0.32106 / \$100
x 1.03	
= Maximum rate unless unit publishes notices and holds hearings	\$ 0.33069 / \$100

This year's rollback tax rate:	
Last year's adjusted operating taxes	\$ 61,512.29
(after subtracting taxes on lost property)	
+ This year's adjusted tax base	\$ 60,394,440.00
= This year's effective operating rate	\$ 0.10185 / \$100
x 1.08 (or add \$.08 for schools)	
= This year's maximum operating rate	\$ 0.18185 / \$100
+ This year's debt rate	\$ 0.20531 / \$100
= This year's rollback rate before adjustment	\$ 0.38716 / \$100
+ Rate to recoup lost revenue	\$ 0.06667 / \$100
= Adjusted rollback rate	\$ 0.45383 / \$100
= This year's rollback rate	\$ 0.45383 / \$100

### SCHEDULE A: Unencumbered Fund Balances

The following balances will probably be left in the unit's property tax accounts at the end of the fiscal year. These balances are not encumbered by a corresponding debt obligation.

Type of Property Tax Fund	Balance
General Fund	\$300,000.00
Interest & Sinking Fund	\$80,000.00

### SCHEDULE B: 1992 Debts Service

The unit plans to pay the following amounts for long-term debts that are secured by property taxes. These amounts will be paid from property tax revenues (or additional sales tax revenues, if applicable).

Description of Debt	Principal or Contract Payment to be Paid	Interest to be Paid	Other Amounts to be Paid	Total Payment
G. O. Bonds	\$95,000.00	\$29,186.00		\$124,186.00

Total required for 1992 debt service	\$ 124,186.00
- Amount (if any) paid from funds listed in Schedule A	\$ -0-
- Excess collections last year	\$ -0-
= Total to be paid from taxes in 1992	\$ 124,186.00
+ Amount added in anticipation that the unit will collect 100% of its taxes in 1992	\$ -0-
= Total Debt Service Levy	\$ 124,186.00

This notice contains a summary of actual effective and rollback tax rate calculations. You can inspect a copy of the full calculations at O'Donnell ISD, O'Donnell, Texas.

Name of person preparing this notice: Dovie Miller

Title: Chief Appraiser

Date Prepared: 08-04-92

33-110

### Notice of Effective Tax Rate 1992 Property Tax Rates in Tahoka ISD

This notice concerns 1992 property tax rates for Tahoka ISD. It presents information about three tax rates. Last year's tax rate is the actual rate the taxing unit used to determine property taxes last year. This year's effective tax rate would impose the same total taxes as last year if you compare properties taxed in both years. Compare it to the tax rate the taxing unit proposes for this year. This year's rollback tax rate is the highest tax rate the taxing unit can set before taxpayers can start tax rollback procedures. In each case these rates are found by dividing the total amount of taxes by the tax base (the total value of taxable property) with adjustments as required by state law. The rates are given per \$100 of property value.

Last year's tax rate:	
Last year's operating taxes	\$ 89,695.06
+ Last year's debt taxes	\$ -
= Last year's total taxes	\$ 89,695.06
+ Last year's tax base	\$ 89,695,060.00
= Last year's total tax rate	\$ 0.10000 / \$100

This year's effective tax rate:	
Last year's adjusted taxes	\$ 84,654.98
(after subtracting value of lost property)	
+ This year's adjusted tax base	\$ 74,768,790.00
(after subtracting value of new property)	
= This year's effective tax rate	\$ 0.11322 / \$100
x 1.03	
= Maximum rate unless unit publishes notices and holds hearings	\$ 0.11661 / \$100

This year's rollback tax rate:	
Last year's adjusted operating taxes	\$ 84,654.98
(after subtracting taxes on lost property)	
+ This year's adjusted tax base	\$ 74,768,790.00
= This year's effective operating rate	\$ 0.11322 / \$100
x 1.08 (or add \$.08 for schools)	
= This year's maximum operating rate	\$ 0.19322 / \$100
+ This year's debt rate	\$ -0 / \$100
= This year's rollback rate before adjustment	\$ 0.19322 / \$100
+ Rate to recoup lost revenue	\$ 0.06430 / \$100
= Adjusted rollback rate	\$ 0.25752 / \$100
= This year's rollback rate	\$ 0.25752 / \$100

### SCHEDULE A: Unencumbered Fund Balances

The following balances will probably be left in the unit's property tax accounts at the end of the fiscal year. These balances are not encumbered by a corresponding debt obligation.

Type of Property Tax Fund	Balance
General Fund	\$810,000

This notice contains a summary of actual effective and rollback tax rate calculations. You can inspect a copy of the full calculations at Lynn County Appraisal District.

Name of person preparing this notice: Dovie Miller. Title: Chief Appraiser.

Date Prepared: August 4, 1992

33-110

Wilson L... meeting on T... meal, Morris... sent a very... gram on the... state of Texa... side to Sen. J... in Austin. He... a lobbyist and... ence legislati... ents.

The Wilso... cess of putti... gram togeth... carrying arou... have been inc... past, asking t... project.

If your fa... tang booster... have it again... give them \$... would like fo... printed. Ther... farm store an... and Connie... will be happy... this special p...

The Lion... for many year... anyone who... home footba...

First Bap... tiquing with... study. This... Wednesday... of the month... Doctrine of... Shelton at th... tion.

The "PE... Aug. 8 at the... attended the... presentation... program. The... hate with oth... such as the F... such groups... a fall festival... The grou... good number... upon these... their property... impression c... what they see... munity for th... The "PE... group for pe... Wilson, but i... in the Wilso... include any...

This... about... last y... prope... rollba... proce... value... value

+

=

+

+

+

+

=

x

=

+

=

x

=

+

=

+

=

+

=

This not... the full... Name of... Date Pre...



# The Wilson News

by Loretta Abbe • 628-6368

Wilson Lion's Club met in a regular meeting on Thursday, Aug. 6. After the meal, Morris Wilks, of Lubbock, presented a very timely and interesting program on the legislative process in the state of Texas. Wilks, who is a former aide to Sen. John Montford, is a lobbyist in Austin. He spoke about the activities of a lobbyist and how they attempt to influence legislation, on behalf of their clients.

The Wilson Lions Club is in the process of putting the annual football program together. Many of the Lions are carrying around a list of advertisers who have been included in the program in the past, asking them, again, to support this project.

If your family has been on the Mustang booster page and you would like to give them \$5 and tell them how you would like for your family's name to be printed. There are lists at the Cotton Boll farm store and at the Wilson Co-Op Gin and Connie Donald and Bertha Nettles will be happy to receive your money for this special page.

The Lions have put out this program for many years and they furnish it, free, to anyone who attends the Wilson Mustang home football games.

First Baptist Church in Wilson is continuing with its Wednesday night bible study. This group is meeting each Wednesday evening at 6 p.m. for the rest of the month of August to study the topic "Doctrine of the Bible." Contact Bro. Ira Shelton at the church for more information.

The "PEOPLE" group met on Sat. Aug. 8 at the Mercantile. Fourteen people attended the meeting which featured a presentation of the "Main Street U.S.A." program. The group decided to co-ordinate with other groups in the community such as the P.T.O., the Lions, and other such groups for the purpose of organizing a fall festival on Halloween.

The group was pleased to see that a good number of people have taken it upon themselves to clean up and beautify their property, and much of a visitors first impression of a community is based on what they see as they drive into the community for the first time.

The "PEOPLE" group is not just a group for people who live in the city of Wilson, but it is open to anyone who lives in the Wilson "community". This would include anyone who lives in or is in-

involved in business in the Wilson trade area.

Their next meeting is scheduled for Sept. 12 at 9 a.m. in the Mercantile.

The Wilson Mustang football team is actively involved in "two-a-days" according to coach Rex Bilby. Their first session was held at noon on Monday with 16 of the hoped-for 21 team members on hand for the first meeting.

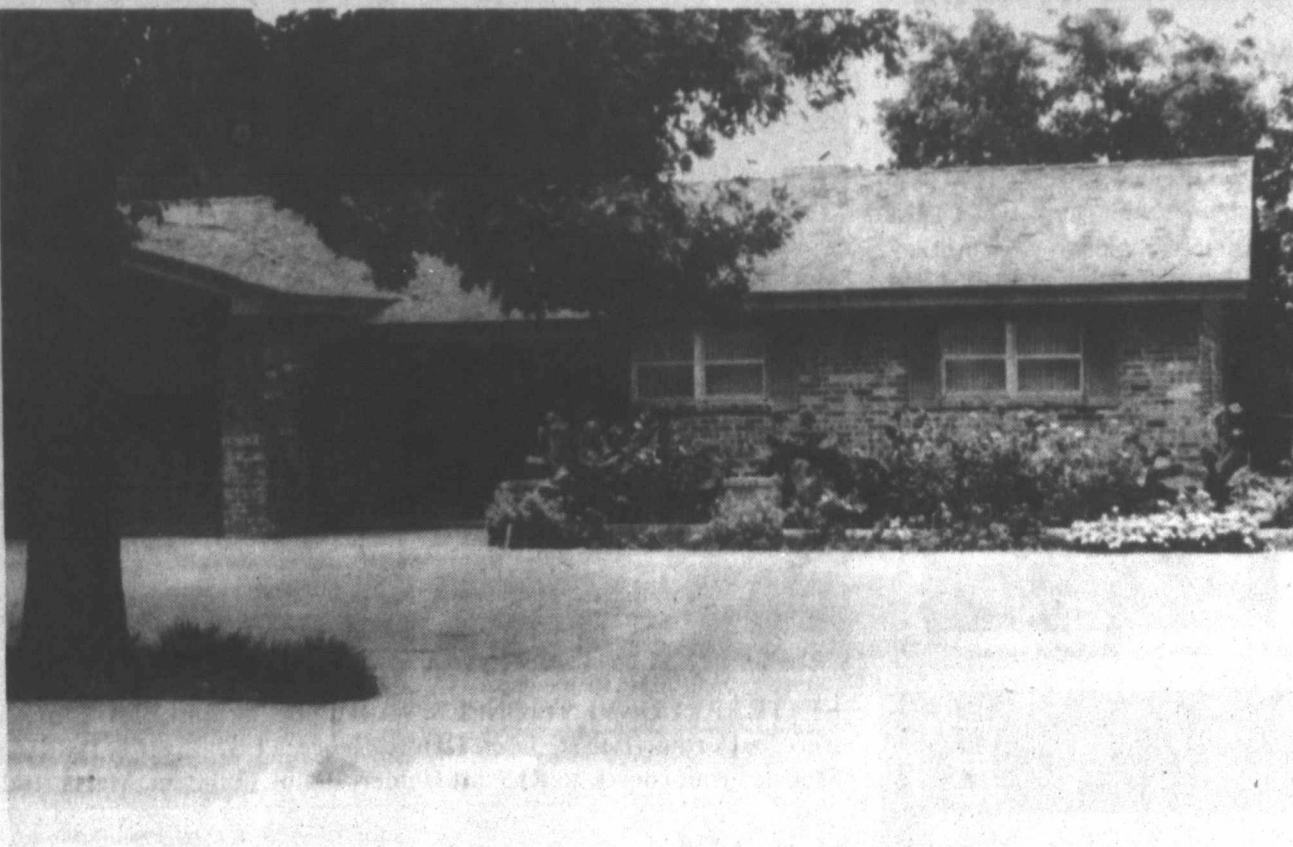
The Wilson Mustangs will have a good number of returning players, including seven seniors from last year, and due to the number of players, coach Bilby is planning for a varsity schedule and a Jr. Varsity schedule. This will be the first time in several years that the Mustangs have played a Jr. Varsity schedule.

Coach Bilby and Coach Hirt are looking for a good, injury-free year for the Mustangs.

High School principal Milton Wright has set high school registration for new students Monday and Tuesday, Aug. 17 and 18. This new student registration will be held in the high school office from 8:30 a.m. to 1 p.m. on these two days. All other Jr. High and High School students who attended Wilson last year are to report to the high school auditorium on the first day of classes which is Aug. 24. They are to meet at 8:15 a.m. for an opening assembly at which time schedules, student handbooks and other material will be handed out.

Wilson ISD is offering a new program this year which will enable some students to attend classes and also work part-time. This co-op training program will be administered through the Wilson vo-ag department but it is not just for vo-ag students. Students who are interested in this program as well as potential employers of these part time workers should contact Bob Williams at the school at 628-6307.

Alan Gregory, band director at Wilson ISD, has announced his plans for the band for the 1992-93 school year. Most of last year's band members as well as those who have scheduled band for the up-coming year have received a letter detailing the pre-school band activities and rehearsal schedule. Any Wilson band student who has not received this letter should contact Gregory at the school. Gregory feels that the band will be about the same size that it was last year and that it will participate in about the same number of activities. He is anticipating three



**YARD OF THE MONTH**— Tahoka Garden Club recently named the yard of Mrs. L.D. (Fleda) Howell at 2416 N. 3rd Street as Yard of the Month. (LYNN COUNTY NEWS PHOTO)

Marching competitions as well as the South Plains Fair parade. Gregory intends that this be one of the most ambitious years for the band and its members. He invites anyone interested to come by and see the band members as they rehearse for their up-coming season. Parents and relatives and interested community people are encouraged to support the band by attending the various marching contests and other performances that the band is involved with.

Mrs. Brenda O'Brein, who is the Wilson ISD homemaking teacher and sponsor of the FHA, has announced that the FHA in conjunction with the 4-H is exploring the possibility of participating in a program entitled "Youth Exchange with Seniors." This program is the result of a pilot program from a couple of years ago and it involves the pairing of students and local senior citizens for various activities. More information on this program as it develops.

Wilson ISD Superintendent, Nancy Templeton has announced that the first day for teachers will be Friday, Aug. 21. This will be the only in-service for the professional staff.

Mrs. Templeton has also requested that anyone in the community who is interested in having their name placed on the list for substitute teaching should do so now. The main requirement for this list is that the person have either a high school diploma or their G.E.D. There is also a

list available for people who are interested in being a substitute bus driver. See Mrs. Templeton for the requirements for this position or call the superintendent's office at 628-6271.

Please remember the special needs of Janessa Lee who is still in critical need of blood platelets. Your gift of a little time and a little inconvenience on your part means life to her. Contact United Blood Services in Lubbock for more information and you must specify that your donation is for Janessa Lee.

**Baseball Trivia**  
Last Week's Question and Answer: What pitcher once struck out 10 consecutive batters? Tom Seaver who struck out the last 10 batters of a game against the San Diego Padres in 1970.

This Week's Question: It has happened only once that two brothers have pitched on the same team in both the

American and National Leagues. Do you know them?

### Golf Scrambler Set

The Popeye and Olive Oil golf scramble will be held August 15-16 at T-Bar Country Club.

For more information, contact Rita Haney at 998-5231 or T-Bar Country Club at 998-5305.

## Wilson ISD Public Hearing Set Tonight

The Wilson ISD Board of Trustees will hold a public hearing at 7 p.m. on Aug. 13, in the Board Room of the Elementary Building for the purpose of taking input into the 1992 budget.

The budget will be on the agenda for adoption at the regular board meeting at 7:30 p.m. Any taxpayer of the District may be present and participate in the meeting.

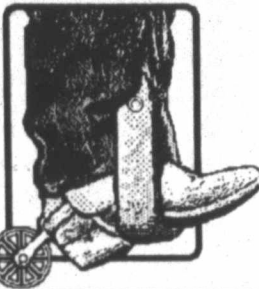
In addition to adopting the budget, trustees are expected to set the tax rate for the 1992-93 school year.

Other items on the agenda for discussion include: set prices for school lunchroom program; approve employee and student handbooks; policy update 41; group health insurance; student insurance; site-based decision making plan; bids for the school lunchroom products; employ personnel; and salary schedules and hourly rate schedules.

### RC&D Committee Meeting Scheduled

The Lynn County Committee of Wes-Tex RC&D will meet Thursday, Aug. 20 at 8:30 a.m. in the Lyntegar meeting room. All sponsors and interested persons are encouraged to attend.

## Boots & Jeans ... You Bet!



Ya'll come to early worship services with us ...

**First United Methodist Church of Tahoka**

8:45 a.m. til 9:30 a.m.

## Notice of Effective Tax Rate 1992 Property Tax Rates in Lynn County

This notice concerns 1992 property tax rates for Lynn County. It presents information about three tax rates. Last year's tax rate is the actual rate the taxing unit used to determine property taxes last year. This year's effective tax rate would impose the same total taxes as last year if you compare properties taxed in both years. Compare it to the tax rate the taxing unit proposes for this year. This year's rollback tax rate is the highest tax rate the taxing unit can set before taxpayers can start tax rollback procedures. In each case these rates are found by dividing the total amount of taxes by the tax base (the total value of taxable property) with adjustments as required by state law. The rates are given per \$100 of property value.

<b>Last year's tax rate:</b>	
Last year's operating taxes .....	\$ 991,244.48
+ Last year's debt taxes .....	\$ -
= Last year's total taxes .....	\$ 991,244.48
+ Last year's tax base .....	\$ 248,432,200.00
= Last year's total tax rate .....	\$ .39900 / \$100

<b>This year's effective tax rate:</b>	
Last year's adjusted taxes .....	\$ 990,325.82
(after subtracting value of lost property)	
+ This year's adjusted tax base .....	\$ 212,686,400.00
(after subtracting value of new property)	
= This year's effective tax rate .....	\$ .46562 / \$100
x 1.03	
= Maximum rate unless unit publishes notices and holds hearings .....	\$ .47958 / \$100

<b>This year's rollback tax rate:</b>	
Last year's adjusted operating taxes .....	\$ 1,000,972.82
(after subtracting taxes on lost property)	
+ This year's adjusted tax base .....	\$ 212,686,400.00
= This year's effective operating rate .....	\$ .47063 / \$100
x 1.08 (or add \$.08 for schools)	
= This year's maximum operating rate .....	\$ .50828 / \$100
+ This year's debt rate .....	\$ .50828 / \$100
= This year's rollback rate .....	\$ .50828 / \$100

### SCHEDULE A: Unencumbered Fund Balances

The following balances will probably be left in the unit's property tax accounts at the end of the fiscal year. These balances are not encumbered by a corresponding debt obligation.

<b>Type of Property Tax Fund</b>	<b>Balance</b>
General Fund	\$156,659.00

### SCHEDULE D: State Criminal Justice Mandate (For Counties)

The LYNN COUNTY Auditor certifies that LYNN COUNTY has spent \$10,647.00 in the previous 12 months beginning APRIL 1, 1991, for the maintenance and operations cost of keeping inmates sentenced to the Texas Department of Criminal Justice.

The LYNN COUNTY Sheriff has provided information on these costs, minus the state revenues received for reimbursement of such costs.

This notice contains a summary of actual effective and rollback tax rate calculations. You can inspect a copy of the full calculations at Lynn County Appraisal District, 1636 Avenue J, Tahoka, Texas. Name of person preparing this notice: Dovie Miller, Title: Chief Appraiser. Date Prepared: August 4, 1992.

### Notice of Effective Tax Rate

## 1992 Property Tax Rates in Lynn County Hospital District

This notice concerns 1992 property tax rates for Lynn County Hospital District. It presents information about three tax rates. Last year's tax rate is the actual rate the taxing unit used to determine property taxes last year. This year's effective tax rate would impose the same total taxes as last year if you compare properties taxed in both years. Compare it to the tax rate the taxing unit proposes for this year. This year's rollback tax rate is the highest tax rate the taxing unit can set before taxpayers can start tax rollback procedures. In each case these rates are found by dividing the total amount of taxes by the tax base (the total value of taxable property) with adjustments as required by state law. The rates are given per \$100 of property value.

<b>Last year's tax rate:</b>	
Last year's operating taxes .....	\$ 527,276.18
+ Last year's debt taxes .....	\$ -
= Last year's total taxes .....	\$ 527,276.18
+ Last year's tax base .....	\$ 249,055,870.00
= Last year's total tax rate .....	\$ 0.21171 / \$100

<b>This year's effective tax rate:</b>	
Last year's adjusted taxes .....	\$ 526,947.52
(after subtracting value of lost property)	
+ This year's adjusted tax base .....	\$ 213,340,250.00
(after subtracting value of new property)	
= This year's effective tax rate .....	\$ 0.24699 / \$100
x 1.03	
= Maximum rate unless unit publishes notices and holds hearings .....	\$ 0.25439 / \$100

<b>This year's rollback tax rate:</b>	
Last year's adjusted operating taxes .....	\$ 526,947.52
(after subtracting taxes on lost property)	
+ This year's adjusted tax base .....	\$ 213,340,250.00
= This year's effective operating rate .....	\$ 0.24699 / \$100
x 1.08 (or add \$.08 for schools)	
= This year's maximum operating rate .....	\$ 0.26674 / \$100
+ This year's debt rate .....	\$ -0- / \$100
= This year's rollback rate .....	\$ 0.26674 / \$100

### SCHEDULE A: Unencumbered Fund Balances

The following balances will probably be left in the unit's property tax accounts at the end of the fiscal year. These balances are not encumbered by a corresponding debt obligation.

<b>Type of Property Tax Fund</b>	<b>Balance</b>
General Fund	\$25,000.00

This notice contains a summary of actual effective and rollback tax rate calculations. You can inspect a copy of the full calculations at Lynn County Appraisal District, 1636 Avenue J, Tahoka, Texas 79373. Name of person preparing this notice: Dovie Miller, Title: Chief Appraiser. Date Prepared: August 5, 1992



**New Home News**

Members of the New Home FFA Chapter attended the State FFA Convention in Amarillo the week of July 13-17. Eleven FFA members along with advisor Dale Schaffner, Barbara Rudd, Sharla and Kaitlyn Schaffner attended the convention. At the convention, Marla Rudd served as Area President; Kara Askew was a Courtesy Corp. Member; Jason Gandy and Blaine Fillingim acted as Voting Delegates; and Scott Holder received a Houston Livestock Show and Rodeo Scholarship. The chapter received the following awards: 100% Membership, 10% growth, the Tri-Star and Golden Horizon Awards.

**New Home '62 Class Reunion Set Aug. 15**

New Home High School Class of 1962 will have their 30-year Class Reunion on Saturday, August 15 at the cafeteria beginning at 9 a.m. They have asked the Classes of 1961 and 1963 to join them.

Anyone wishing to see graduates from those years is welcome to come by.



STATE FFA CONVENTIONEERS- Attending the State FFA Convention from the New Home FFA Chapter were, back row- (L to R) Jason Gandy, Rebecca Liseby, Lee Jay Liseby, Kara Askew, Lanny Zant, Shane Moore. Front row (L to R) Scott Holder, Blaine Fillingim, Marla Rudd, Kary Durham, and John Barley.

you choose to cook some meals and pay more to eat some meals away from home? The answers are different for every family and may be different from child to child. Your goal is to help your children see money as one of several resources the family can use to get the things you need and want.

Encourage your child to begin adding up how much money it takes to get the things he or she wants or needs for a week. At the end of the week, let them share their discovery. Let them share their decisions about when to use money and when to use their other resources to get what they want. Resourceful youth develop a sense that money is not the only resource, but one of many choices they have for reaching their goals in life.

**OUR STOCK IS FRESH!**

On a recent DATELINE, NBC-TV program, it was revealed that pharmacists in other states were buying out-of-date drug samples from unscrupulous drug company salesmen, and reselling them as legitimate prescription drugs to an unwary public. This casts a bad impression on the entire pharmacy profession.

We have worked hard for 70 years to earn and maintain the trust of the good people of Lynn County, and would never do anything to jeopardize that trust. We take extra steps to guarantee to you, that our stock is fresh and potency assured.

We buy our medications from only reputable drug companies. We have no "drug samples" anywhere in our stock. Our entire prescription department of thousands of prescriptions drugs is checked meticulously every three months and all drugs that are expiring within the next three months are pulled and returned to the manufacturer and drug wholesaler.

In addition, each year, an unannounced visit from a compliance officer from the Texas State Board of Pharmacy guarantees that we are doing everything we can legally to serve our people in the best way we know how, and public safety is the most important aspects of our trade. The compliance officer checks our stock, records and computer records and files, along with making sure our pharmacy scales are inspected by the Texas Department of Agriculture, Weights and Measures Division each year.

We hope that pharmacists engaged in illegal activity will stop and the people involved brought to justice. We want our profession clean and trustworthy. We want to have your trust and confidence in us and our store.

**TAHOKA DRUG**

1610 Main Street • Tahoka, Texas  
Phone 998-4041 or 998-4725

**Parents Can Teach Youth How To Manage Time**

Part 4 of a 4 Part Series  
By Donna M. Pugh, CEA-HE

Guiding the development of your child's personal resources builds the greatest resource they will ever have—themselves. As you build your child's confidence in his or her resourcefulness, it is also important to help youth understand that resources have limits. That means that we all have choices to make about how we use our resources.

Making choices begins by helping youth understand the difference between needs and wants. Let your children look up "needs" and "wants" in a dictionary and tell you how the words are different. Then, involve them in deciding what their needs are and their wants. Reinforce the idea that needs and wants are different whenever your child asks for something. Ask if what they asked for is a need or a want and why, and what choices the two of you have for meeting the need or want.

For example, if your son has been learning about building personal energy resources, he may need more exercise, but want to watch TV more. Guide his thinking with questions about the choices he has about playing that could also give more exercise, such as play that involves run-

ning, swimming, or dancing.

By helping children learn the difference between needs and wants and seeing how they make choices in the use of their resources to meet their needs and wants, they begin to see and live with the limits of their resources. Teaching them principles of resourceful living gives them a foundation for thinking about using limited resources to meet unlimited needs and wants as they increase resources to meet unlimited needs and wants as they increase their responsibility for managing money resources and become more aware of the limits of our natural resources. They become resourceful in applying the same principles to living with all resource limitations with greater understanding and less stress.

**Helping Youth Manage Money**

Youth figure out pretty quickly that money is required to get many of the things they want. To help them put money in a resourceful perspective, use activities that help them realize that money is used for goods and services you cannot or do not want to make or perform for yourself.

Choose a discovery time to share with your children. Discover together what your family uses that requires

money and what you can do or get without spending money because you choose to use your time and talent instead. Involve your child in listing things your family bought or used recently, such as toys, books, paper for drawing and writing, groceries, food eaten away from home and gasoline. Discover together what choices your family had about using your talents and time or your money to get these goods and services.

For example, is paper recycled from work for them to use for art activities at home? Are toys "handed down" from child to child within the family? Are books checked out from the library or bought for family reading? What do you use the car to do that family members could do by bicycle or walking instead? Why do

**Tahoka School Menu**

- Aug. 19-21  
Breakfast
- Wednesday- Cereal, Toast, Applesauce, Milk.  
Thursday- Honey Bun, Peaches, Milk.  
Friday- Bacon, Toast, Juice, Milk.
- Lunch
- Wednesday- Hamburger, French Fries, Lettuce, Onions, Pickles, Applesauce Cake, Milk.  
Thursday- Pigs-In-A-Blanket, Baked Potato, Tossed Salad, Cheese Wedges, Milk.  
Friday- Baked Ham, Green Beans, Mashed Potatoes, Hot Rolls, Milk.

**Farm Bureau Insurance**

Insurance For All Your Needs

Life \* Auto \* Fire \* Farm Liability  
Travelers Health Insurance

**FARM BUREAU INSURANCE**

Phone 998-4320 or 998-4591  
PAT GREEN, LUTCF, Agency Manager  
Danny Preston \* G.G. Fillingim

**Notice of Effective Tax Rate  
1992 Property Tax Rates in City of Wilson**

This notice concerns 1992 property tax rates for City of Wilson. It presents information about three tax rates. Last year's tax rate is the actual rate the taxing unit used to determine property taxes last year. This year's effective tax rate would impose the same total taxes as last year if you compare properties taxed in both years. Compare it to the tax rate the taxing unit proposes for this year. This year's rollback tax rate is the highest tax rate the taxing unit can set before taxpayers can start tax rollback procedures. In each case these rates are found by dividing the total amount of taxes by the tax base (the total value of taxable property) with adjustments as required by state law. The rates are given per \$100 of property value.

<b>Last year's tax rate:</b>	
Last year's operating taxes .....	\$ 56,836.17
+ Last year's debt taxes .....	\$ -
= Last year's total taxes .....	\$ 56,836.17
+ Last year's tax base .....	\$ 6,418,540.00
= Last year's total tax rate .....	\$ 0.88550 / \$100
<b>This year's effective tax rate:</b>	
Last year's adjusted taxes .....	\$ 56,836.17
(after subtracting value of lost property)	
+ This year's adjusted tax base .....	\$ 6,480,530.00
(after subtracting value of new property)	
= This year's effective tax rate .....	\$ 0.87702 / \$100
x 1.03	
= Maximum rate unless unit publishes notices and holds hearings .....	\$ 0.90333 / \$100
<b>This year's rollback tax rate:</b>	
Last year's adjusted operating taxes .....	\$ 56,836.17
(after subtracting taxes on lost property)	
+ This year's adjusted tax base .....	\$ 6,480,530.00
= This year's effective operating rate .....	\$ 0.87702 / \$100
x 1.08 (or add \$.08 for schools)	
= This year's maximum operating rate .....	\$ 0.94718 / \$100
+ This year's debt rate .....	\$ -0 / \$100
= This year's rollback rate .....	\$ 0.94718 / \$100

**SCHEDULE A: Unencumbered Fund Balances**

The following balances will probably be left in the unit's property tax accounts at the end of the fiscal year. These balances are not encumbered by a corresponding debt obligation.

<b>Type of Property Tax Fund</b>	<b>Balance</b>
General Fund	\$6,600.00

This notice contains a summary of actual effective and rollback tax rate calculations. You can inspect a copy of the full calculations at Lynn County Appraisal District, 1636 Avenue J, Tahoka, Texas 79373.  
Name of person preparing this notice: Dovie Miller. Title: Chief Appraiser.  
Date Prepared: August 5, 1992

**Notice of Effective Tax Rate  
1992 Property Tax Rates in City of New Home**

This notice concerns 1992 property tax rates for New Home City. It presents information about three tax rates. Last year's tax rate is the actual rate the taxing unit used to determine property taxes last year. This year's effective tax rate would impose the same total taxes as last year if you compare properties taxed in both years. Compare it to the tax rate the taxing unit proposes for this year. This year's rollback tax rate is the highest tax rate the taxing unit can set before taxpayers can start tax rollback procedures. In each case these rates are found by dividing the total amount of taxes by the tax base (the total value of taxable property) with adjustments as required by state law. The rates are given per \$100 of property value.

<b>Last year's tax rate:</b>	
Last year's operating taxes .....	\$ 20,094.93
+ Last year's debt taxes .....	\$ -
= Last year's total taxes .....	\$ 20,094.93
+ Last year's tax base .....	\$ 4,465,540.00
= Last year's total tax rate .....	\$ 0.45000 / \$100
<b>This year's effective tax rate:</b>	
Last year's adjusted taxes .....	\$ 20,094.93
(after subtracting value of lost property)	
+ This year's adjusted tax base .....	\$ 4,452,820.00
(after subtracting value of new property)	
= This year's effective tax rate .....	\$ 0.45128 / \$100
x 1.03	
= Maximum rate unless unit publishes notices and holds hearings .....	\$ 0.46481 / \$100
<b>This year's rollback tax rate:</b>	
Last year's adjusted operating taxes .....	\$ 20,094.93
(after subtracting taxes on lost property)	
+ This year's adjusted tax base .....	\$ 4,452,820.00
= This year's effective operating rate .....	\$ 0.45128 / \$100
x 1.08 (or add \$.08 for schools)	
= This year's maximum operating rate .....	\$ 0.48738 / \$100
+ This year's debt rate .....	\$ -0 / \$100
= This year's rollback rate .....	\$ 0.48738 / \$100

**SCHEDULE A: Unencumbered Fund Balances**

The following balances will probably be left in the unit's property tax accounts at the end of the fiscal year. These balances are not encumbered by a corresponding debt obligation.

<b>Type of Property Tax Fund</b>	<b>Balance</b>
General Fund	\$20,996.00

This notice contains a summary of actual effective and rollback tax rate calculations. You can inspect a copy of the full calculations at Lynn County Appraisal District, 1636 Avenue J, Tahoka, TX 79373.  
Name of person preparing this notice: Dovie Miller. Title: Chief Appraiser.  
Date Prepared: August 5, 1992

Ston  
The s  
given t  
of subs  
prising  
causes  
sigma  
creates  
ulcers.  
Andr  
F.A.C.  
secrete  
to aid d  
corrosi  
stomac  
mecha  
bicarbo  
epithel  
to prev  
backin  
and ca  
Dr. F  
man of  
at the  
Dentis  
Osteop  
N.J.  
He  
these  
allowi  
sore s  
intesti  
there  
- stoi  
duoden  
first 1  
"You  
sympt  
the u  
chest  
"It ms  
3 hou  
out ar  
these  
tempo  
any ty  
"Du  
occur  
simila  
"But,  
withi  
after  
awak  
Dr.  
perie  
assoc  
stool  
grou  
espec  
the n  
physi  
Th  
ulcer  
"U  
one-h  
meal  
occur  
meal  
mout  
Me  
burn  
over



### Commissioners Discuss Budget

Lynn County Commissioners continued discussing the 1992-93 budget during a regular session Monday, Aug. 10, but no action was taken on the proposed budget by commissioners. Commissioners met at 10 a.m., took a lunch break, and reconvened for an afternoon budget session for more discussion.

In other routine business, commissioners approved county officials reports, reviewed election judges, discussed line item transfers in the budget, and was informed of a Texas Department of Transportation meeting in Brownfield that evening.

#### Your HEALTH TIP



DAYTON PARKER

#### DAYTON PARKER HEALTH MART PHARMACY

Phone 998-5531 • PRESCRIPTIONS • Tahoka, Tx.

#### POISONS IN HOME

Consider the great number of poisonous substances which are on hand in most homes: washing soda, drain cleaners, chlorine bleach, polishes, ammonia, lye, insecticides, rat poison, paints and turpentine, sprays, disinfectants. Parents must be careful to keep poisonous substances out of children's reach in a locked cabinet. They should be promptly destroyed rather than stored when the need for each has passed.

ic meals and meals away  
rs are differ-  
l may be dif-  
d. Your goal  
see money as  
is the family  
you need and  
  
ild to begin  
oney it takes  
she wants or  
e end of the  
ir discovery.  
isions about  
l when to use  
get what they  
th develop a  
t the only re-  
choices they  
goals in life.

#### Entire

- 1
- real, Toast,
- Bun, Peaches,
- Toast, Juice,
- Burger, French
- ons, Pickles,
- k.
- 1-A-Blanket,
- Salad, Cheese
- Ham, Green
- es, Hot Rolls,

#### nce eds bility

- e
- l three tax
- year. This
- s taxed in
- tax rate is
- each case
- (property)
- .094.93
- .094.93
- .540.00
- / \$100
- .094.93
- .820.00
- / \$100
- .094.93
- .820.00
- / \$100
- .094.93
- .820.00
- / \$100
- .820.00
- / \$100
- .820.00
- / \$100

end of the

pect a copy of



ANNUAL LYNTGAR EVENT—Lynntgar Electric Co-Op had its annual meeting of stockholders and barbecue at the Tahoka football stadium Tuesday night with almost 3,000 persons served. Shown here is part of the crowd enjoying the festivities.

(LYNN COUNTY NEWS PHOTOS)



## CLEAN TEXAS 2000

QUESTIONS TO THE CLEAN TEXAS 2000 HOTLINE: 1-800-458-9796

Q: Is it too late in the year to start a compost? How do I start?

A: Any time is a good time to start composting. The first step is to pick a location that will work best. That should be a spot that drains well, is out of direct sun, and where you can keep pets and children out of the compost. The best starter materials are leaves, grass clippings, excess vegetation from gardens and flower beds, fruit and vegetable scraps from the kitchen. Start by layering the leaves, grass clippings and vegetation. When you add vegetable scraps, be sure to cover them, either by turning your compost or by adding more leaves or grass. By turning the compost every few days, you should be able to produce dark, crumbly dirt in four to six weeks. Contrary to what you may have heard, a well-maintained compost — one that leaves out meat, fats and dairy products — will not attract rodents.

#### Need office supplies?

Come to your local  
**Lynn County News**  
1617 Main Street, Tahoka  
Phone 998-4888

## HEALTH for the whole family

### Stomach Can Be Its Own Worst Enemy

The stomach is an amazing organ, given the amount and the variety of substances it must digest. Surprisingly, it is not mistreatment that causes the most problems, but the stomach's own digestive process that creates severe ailments such as ulcers.

Andrew A. Pecora, D.O., F.A.C.O.I., F.A.C.G., explains that the stomach secretes hydrochloric acid and pepsin to aid digestion, but these are highly corrosive to the stomach. The stomach must then establish defense mechanisms such as a mucous-bicarbonate barrier or layer and tight epithelial junctions at critical points to prevent the hydrochloric acid from backing up into the stomach lining and causing damage.

Dr. Pecora is a professor and chairman of the department of medicine at the University of Medicine & Dentistry of New Jersey — School of Osteopathic Medicine in Stratford, N.J.

He said that ulcers occur when these defense mechanisms fail, allowing the acids to create a raw, or sore spot on the stomach or small intestinal wall. Dr. Pecora explains there are two types of peptic ulcers — stomach, or gastric ulcers, and duodenal, or ulcers that occur in the first 12 inches of the small intestine.

"You'll recognize gastric ulcer symptoms as burning or gnawing in the upper abdomen or the lower chest near the breastbone," he says. "It may last between 30 minutes to 3 hours and may come and go without any pattern." For some people, these symptoms may be relieved temporarily with milk, antacids or any type of food.

"Duodenal ulcers, or ulcers that occur in the small intestine, produce similar symptoms," Dr. Pecora says. "But, these symptoms usually occur within one-half hour to two hours after eating and they may also awaken the person at night."

Dr. Pecora said that if you experience any of these symptoms, associated with black or tarry-looking stools, vomit that looks like coffee grounds, or persistent, severe pain — especially pain that radiates into the mid-back — you should call your physician.

There are also differences between ulcers and heartburn.

"Ulcer symptoms usually happen one-half hour to three hours after meals. Heartburn almost always occurs within one-half hour after meals and leaves a sour taste in the mouth," according to Dr. Pecora.

Most people experience heartburn occasionally, but one out of every 10 men and one of every 20

women will develop a peptic ulcer, Dr. Pecora says. This gender gap is closing as more women smoke, drink alcohol and enter the stress-filled workplace.

The best way to avoid ulcers entirely is by leading a healthy life and avoiding stress. "Stress, alcohol, cigarette smoking, and caffeine do not cause ulcers," Dr. Pecora cautions. "However, they are irritants and should be avoided or consumed in moderation."

### Notice of Effective Tax Rate 1992 Property Tax Rates in City of Tahoka

This notice concerns 1992 property tax rates for City of Tahoka. It presents information about three tax rates. Last year's tax rate is the actual rate the taxing unit used to determine property taxes last year. This year's effective tax rate would impose the same total taxes as last year if you compare properties taxed in both years. Compare it to the tax rate the taxing unit proposes for this year. This year's rollback tax rate is the highest tax rate the taxing unit can set before taxpayers can start tax rollback procedures. In each case these rates are found by dividing the total amount of taxes by the tax base (the total value of taxable property) with adjustments as required by state law. The rates are given per \$100 of property value.

<b>Last year's tax rate:</b>	
Last year's operating taxes .....	\$ 228,700.93
+ Last year's debt taxes .....	\$
= Last year's total taxes .....	228,700.93
+ Last year's tax base .....	\$ 42,130,450.00
= Last year's total tax rate .....	\$ 0.54284 / \$100
<b>This year's effective tax rate:</b>	
Last year's adjusted taxes .....	\$ 228,700.93
(after subtracting value of lost property)	
+ This year's adjusted tax base .....	\$ 42,015,030.00
(after subtracting value of new property)	
= This year's effective tax rate .....	\$ 0.54433 / \$100
x 1.03	
= Maximum rate unless unit publishes notices and holds hearings .....	\$ 0.56065 / \$100
<b>This year's rollback tax rate:</b>	
Last year's adjusted operating taxes .....	\$ 228,700.93
(after subtracting taxes on lost property)	
+ This year's adjusted tax base .....	\$ 42,015,030.00
= This year's effective operating rate .....	\$ 0.54433 / \$100
x 1.08 (or add \$.08 for schools)	
= This year's maximum operating rate .....	\$ 0.58787 / \$100
+ This year's debt rate .....	\$ / \$100
= This year's rollback rate .....	\$ 0.58787 / \$100

#### SCHEDULE A: Unencumbered Fund Balances

The following balances will probably be left in the unit's property tax accounts at the end of the fiscal year. These balances are not encumbered by a corresponding debt obligation.

<b>Type of Property Tax Fund</b>	<b>Balance</b>
General Fund	\$1,500.00

This notice contains a summary of actual effective and rollback tax rate calculations. You can inspect a copy of the full calculations at Lynn County Appraisal District.  
Name of person preparing this notice: Dovie Miller. Title: Chief Appraiser.

33-1c



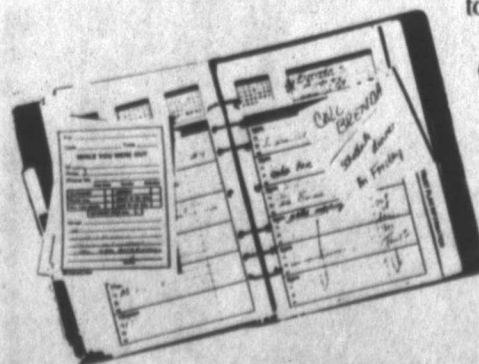
## Putting your friends on the line.

Just because you're on-the-go doesn't mean you have to give up that quality time you used to spend talking with your friends and family.

With cellular telephone service from Digital Cellular of Texas, you can stay in touch and stay on-the-go at the same time. For just pennies per minute a cellular phone from Digital Cellular will put you on the line with your friends, family or even the office, anywhere at anytime.

To find out how you can put your friends on the line, see your local authorized Digital Cellular of Texas agent or call 1-800-662-8805.

McCord Motor Co. 1313 E. Lockwood, Tahoka 998-4547



### Digital Cellular OF TEXAS

We're putting you on the line.

Box 53118 • Lubbock, Texas 79453 • 1-800-662-8805 • 924-5412  
A Division of P.A.C.L. Communications, Inc.



## Irrigation Field Day Set At Leland White Farm

An irrigation field demonstration day, highlighting the latest in water management techniques and equipment, will be held Tuesday, Aug. 18 at the Leland White farm on Farm Road 211 west of New Home. Producers are invited to drop by at their convenience from 9 a.m. to 4 p.m.

A demonstration of the 10-acre drip irrigation system installed at the site by the High Plains Underground Water Conservation District No. 1 will highlight the field day. The drip irrigation project is partially funded by a grant from the Texas Water Development Board in Austin.

Drip irrigation is the slow, frequent application of small amounts of water to the soil area directly surrounding plant roots. Water losses caused by evaporation, deep percolation and runoff are virtually eliminated. Using drip irrigation can save 30 to 40 percent of the water required by most other types of irrigation systems.

"There has been a lot of interest in drip irrigation in the last few years," said Ken Carver, High Plains Water District Assistant Manager.

"This field demonstration day is designed to allow producers to see if the system might be applicable to their farming operation before investing the time, money and labor needed to convert from their existing irrigation system to drip irrigation."

Three 10-acre sites were selected by the Water District for the five-year project. While the demonstration project is designed to gather cotton yield data, Carver added that poor weather conditions early this year forced the planting of soybeans at the drip irrigation site on the Leland White farm.

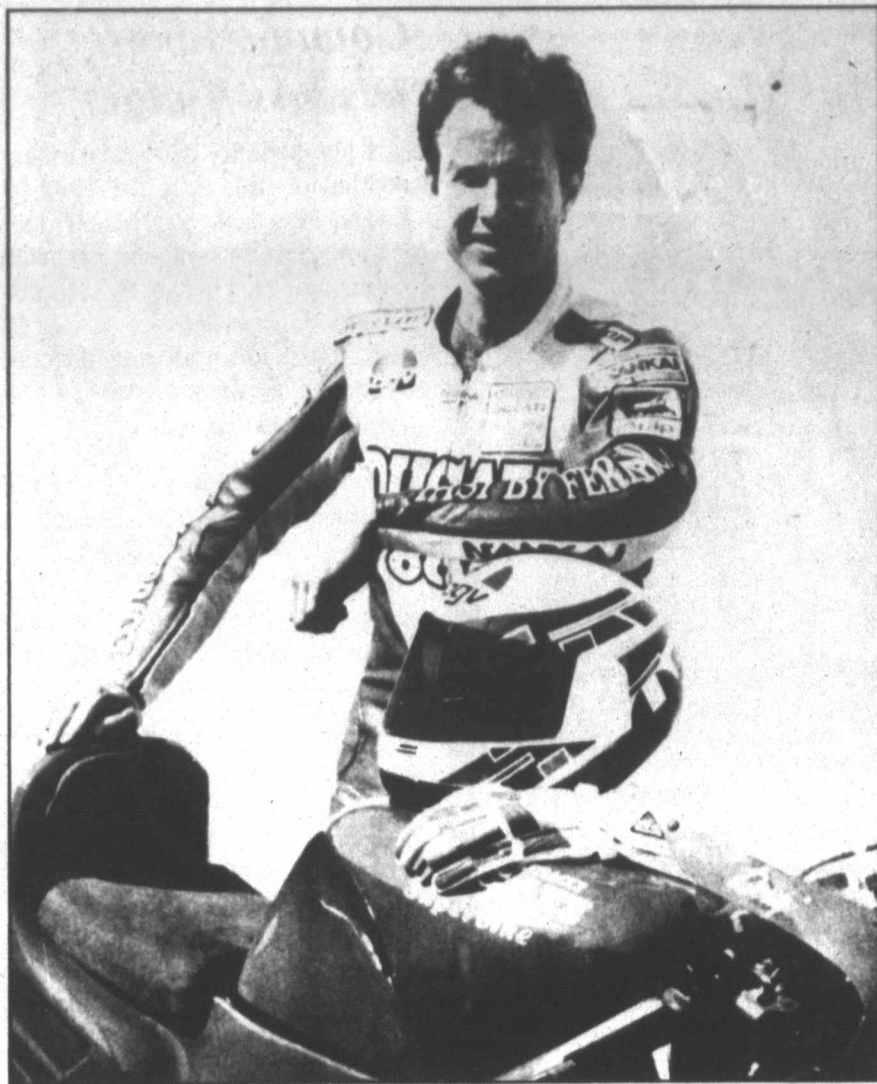
"Due to the unusual weather conditions, the District waived the stipulation that cotton be grown on the site this year, and the producer was allowed to replant crops based upon his individual situation," said Carver.

Wilfred E. "Willie" Crenwelge, USDA Soil Conservation Service Soil Scientist, will demonstrate the neutron moisture meter. Brian Houston, Water District Engineer Technician, will explain the use of gypsum blocks and resistance meters.

Jerry Funck, High Plains Water District Agricultural Engineer, will discuss the irrigation well configuration at the site. He will also address the benefits of irrigation pump plant energy use efficiency testing.

Arnold Huskey, Water District Engineer Technician, will discuss the drip tape, emitters and other drip irrigation hardware installed at the site.

Rodney Duus and Charlie Stice with the Lynn County Soil Conservation Service office will demonstrate the TOPCON land surveying unit and the mobile field water conserva-



Lone Star Great and current World Superbike Champion Doug Polen races around the world but always returns home to Texas. Photo courtesy of Texas World Speedway in College Station.

tion laboratory. Dr. Rose Mary Scymour, irrigation engineer with the Texas Agricultural Extension Service, will discuss evapotranspiration and how to utilize the TAEX Potential Evapotranspiration (PET) Network.

"Producers are encouraged to visit the demonstration site on a come and go basis. We look forward to visiting with everyone and answering any questions they might have regarding drip irrigation or other irrigation management techniques," said Carver.

For more information about the Lynn County drip irrigation field demonstration day, contact Ken Carver, High Plains Underground Water Conservation District No. 1, 2930 Ave. Q, Lubbock, TX 79405 or call him at (806) 762-0181.

When founders first hatch, they have one eye on each side of their heads as do most fish. After it grows a little, however, one eye migrates till both are on the upper side of its head.

## Farmers Can Give Opinion Of Emergency Loan Program

Panhandle and South Plains area farmers will have a chance to voice their opinions on the Farmers Home Administration's (FmHA) Emergency Loan Program on Aug. 24 in Floydada before congressional public hearing arranged by Congressman Bill Sarpalus, (D-Amarillo).

The House Subcommittee on Conservation, Credit, and Rural development will hold this public hearing on Monday, Aug. 24, at 2 p.m. in the District Courtroom of the Floyd County Courthouse and is open to the public.

"The purpose of this hearing is to listen to the farmers and producers of the 13th District," Sarpalus said. "It is a chance for farmers to discuss

their experiences with the Emergency Loan Program and to help Congress understand the difficulties farmers are facing."

This field hearing will focus on the effectiveness of the Emergency Loan Program. Sarpalus added that the committee is also interested in hearing producers' opinions on crop insurance and direct disasters assistance.

Representative Sarpalus invites those who wish to testify to contact his Washington office by Aug. 19 at 202/225-3706. Written testimony of any length may also be submitted by Aug. 21 to the Amarillo office at 817 S. Polk, Amarillo, Texas 79101 or brought directly to the hearing.

**PARENT'S REMINDER:**  
Those Cars Taking Your Students Back To School Need Tires Checked, Oil Changed, Etc.  
**Let Us Put Those Vehicles In Shape!**

**D&H Tire & Supply**  
Hwy. 380 East • Tahoka • Phone 998-5488

**CROP INSPECTION SERVICE**

We are inspecting cotton fields for insects. If you need to be out of town, we can watch your fields and report our findings to whomever is designated.

We are not a chemical dealer and make no recommendation as to spraying chemicals. Our responsibility will be to inspect fields and report to you the type and population of insects we find.

Call Curtis Harvick at Ranger Seed Co.  
998-4935 or 998-4497 or 998-5380

NIGHTS: Call 998-5380 • CURTIS HARVICK • TAHOKA, TX 28-6tc

**TexSCAN**  
Statewide Classified Advertising Network  
Advertise in 309 Texas newspapers for only \$250.  
Reach 3 MILLION Texans. Call this newspaper for details.

**MAKE A FRIEND...FOR LIFE!** Scandinavian, European, Yugoslavian, South American, Japanese high school exchange students...arriving August...host families needed! American International Student Exchange. Call Eleanor 817-467-4619 or 1-800-SIBLING.

**CZECHOSLOVAKIAN HIGH SCHOOL** exchange student, boy 17, needs host family. Likes jogging, tennis, computer-science and cactus growing. **ARRIVING IN AUGUST.** Call Eleanor 817-467-4619 or 1-800-SIBLING.

**GERMAN HIGH SCHOOL** exchange student, boy 16, needs host family. Enjoys basketball, computers, playing the trombone and music. **ARRIVING IN AUGUST.** Call Eleanor 817-467-4619 or 1-800-SIBLING.

**AIRCRAFT MECHANIC CAREER** training secure career, day/night classes, financial aid, relocation services, job placement, high starting pay, call Free 1-800-776-RICE.

**DRIVERS GO TO WORK** immediately Roadrunner Distributions Services, Inc. TX-1-800-285-6267 competitive pay new conventional medical/dental/vacation etc.... Sign on bonus EOE.

**IF YOU SMOKE,** dip or chew tobacco, by CA-7 Herbal Mouthwash. Soothing to bleeding gums and ulcers. No burning, stinging or discomfort. Distributors wanted. 512-249-2140.

**MECHANICS NEEDED KINSEL FORD** Lincoln Mercury, Beaumont, Texas. Salary plus bonus. Paid insurance, vacation and holidays, profit sharing. Call Byron, 1-800-221-2515, ext. 255 EOE M/F.

**193.26 ACRES,** END of road, borders large ranch on three sides. Whitetail, muledeer, quail, javelina, doves. Terral County. \$90/acre, good owner terms and access 512-257-6564.

**CASH FOR CONTRACTS** or mortgages. Why wait years to get all your cash? Lump sum paid for your payments. Call National Fidelity today! 1-800-364-1072.

**NEED MONEY?** Receiving monthly payments, not enough? Sell us the mortgage/trust deed you hold. Full or partial. D.T.S. Funding, 409-963-3528. Long distance call refunded.

**SAVE BIG \$ BY** reducing your utility/mortgage costs. We will show you how. Send S.A.S.E. to: Block Services, Rt. 5, Box 1399, Beaumont, TX 77713

**U.S. POSTAGE STAMP** supply route for sale. REQUIREMENTS: \$4,800 to \$36,000 investment -Car <2-10 hrs. per week. BENEFITS: Excellent financial return. No selling. High income potential. Call 24 hrs. 1-800-545-1306.

**ALUSUN & WOLFFTANNING BEDS** new commercial-home units from \$198. Lamps, lotions, accessories. Monthly payments low as \$18. Call today, FREE NEW color catalog 1-800-228-6282.

**URGENT! MUST LIQUIDATE** now! Dealer cost motorhomes, travel trailers, fifth wheels, Jayco, Four Winds, Skampor, Mallard, Outstream, Shadow

**Cruiser.** Huge inventory, save thousands \$\$\$ 1-800-965-1033.

**DRIVERS: DO YOU** want better pay? Do you want more miles? Then call J.B. Hunt: 1-800-218-HUNT. EOE/Subject to drug screen.

**WE PAY CASH** for owner financed mortgages & trust deeds (nationwide) 713-995-7858 (call refund) Apex Holding.

**HOW TO PLAY** popular piano. New home study course. Fast easy method. Guaranteed. Free information. Studio, 1, 103 - 1054 Ellis St., Kalowna, B.C. V1Y 1Z1. 1-800-667-7497.

**GOT A CAMPGROUND** membership or timeshare? We'll take it. America's most successful resort resale clearinghouse. Call resort sales information toll free hotline 1-800-423-5967.

**FRIENDLY HOME PARTIES** has openings for demonstrators. No cash investment. No service charge. High commission and hostess awards. Two catalogs, over 600 items. Call 1-800-488-4875.

**WE BUY NOTES** secured by real estate. Have you sold property and financed the sale for the buyer? Turn your note into cash. 1-800-969-1200.

**DIETS DON'T WORK! BODYWISE** does! Boost energy. Reduce body fat. Lower cholesterol. Lose unwanted inches. Increase lean muscle. 100% guaranteed. Costs \$5/day 1-800-475-2616.

**IT'S NOT TOO LATE** FOR breast implant victims to file their claims. Call 1-800-833-9121 for free consultation. Carl Waldman. Board Certified Personal Injury Trial Lawyer.

**LEGAL ASSISTANT BILINGUAL.** With Workers' Compensation experience, willing to relocate to Harlingen, TX. Plaintiff's firm. Send resume to Pamela & Larwey, 119 W. Van Buren, Harlingen, TX 78650.

**ENTREPRENEURS WANTED NOW** for U.S. launch of new digital mini-dish satellite technology. The greatest advance in entertainment and communications since the television. Sky-high income potential. Call for free info pack. 1-800-321-6679.

**TIME SHARE REBALES** - camp ground resorts. Save thousands. Nationwide inventory. Call today. 1-800-874-1442. Universal Vacation Services, Inc.

**FREE 24 PAGE BOOKLET** explains how thousands of people are supplementing their income with a concept called Network Marketing. Outstanding opportunity. Call AD-NET 1-800-359-9426 Ex. 12.

**WANTED CAMPING MEMBERSHIP!** Buyer waiting, call today, sell tomorrow. Call 1-800-859-0003.

**ADOPTION: LOVING PROFESSIONAL** couple wants infant to cherish & love. Will provide secure & happy home for your baby. Call Mandy & Steve anytime 1-800-582-5761. It's illegal to be paid for anything beyond legal/medical expenses.

**ADOPTION: AND BABY** makes three. Help us to make a dream come true. Happily married couple wish to adopt. Help make our house a home. Allowed expenses paid. Please call Bev & Al 1-800-948-2458. It's illegal to be paid for anything beyond legal/medical expenses.

These Tahoka Firms Are Sponsoring This **FARM NEWS**

**Production Credit Association**  
Don Boydstun

**Lubbock-Tahoka Federal Land Bank Assn.**  
Jay Dee House, Manager

**Farmers Co-op Association**  
No. 1

**Lynn County Farm Bureau**  
Pat Green, Manager

## BARTLEY GRAIN & FERTILIZER, INC. IS

# READY FOR YOUR GRAIN CROP

## And This Year We'll Serve You With TWO ELEVATORS

We'll open our elevator as usual, and this fall we also will operate the Goodpasture elevator.

We BUY and SELL GRAIN, and we appreciate the opportunity to do business with the farmers of this area.

Bring your grain to

**BARTLEY Grain & Fertilizer, Inc.**

Phone 998-5511  
U.S. Hwy. 380 East

Tahoka



Lynn County Merchants Appreciate Your Business!



# The Classifieds

Deadline For News and Ads - 5:00 p.m. Tuesdays

Fast Results With Want Ads

Call 998-4888

### Real Estate

**HOUSE FOR SALE:** 4 BR, 3 bath, farm h. ne with up to 5 acres in the Tahoka area. Call 797-6840 or 872-3429. 17-tfc

**FOR SALE:** 2 bedroom, 2 bath mobile home. 150-foot lot, R.V. shelter, 2 car carport, refrigerator, air conditioning. 2121 Ave. I. 998-4712. 18-tfc

**FOR SALE:** 3 bedroom, 2 bath house, large concrete area. 1712 N. 3rd. Shown by appointment only. Phone 996-5415 or 996-5333. 22-tfc

**FOR SALE:** House on large lot with 3 bedrooms, 2 baths, office, laundry area, lots of cabinets and closet space, central heat and air, storage shed, pecan trees, double carport, close to schools. Call 327-5474. 27-tfc

**FOR SALE:** 3 bedroom, 2 bath, 2-car garage in Tahoka. Phone 998-4284. Leave message on beeper phone. 24-tfp

**LAND FOR SALE:** 147 acres, approximately 5 miles north of Tahoka on Hwy. 87. Call (915) 676-4103 daytime, or (915) 692-8843 after 5 p.m. 30-tfc

**2BR HOUSE FOR SALE:** to be moved or fold on small acreage near Grassland. Call 983-2676. 33-2tc

### For Rent

**HOUSE FOR RENT:** Call 998-5046 after 5 p.m. 2-tfc

### FOR SALE

**THREE BLOCKS FROM SCHOOL - Affordable 3 Bedroom, 2 Bath, Single Garage. Central Heat/Air.**

**YESTER-YEAR CHARM** in O'Donnell - 3 BR, 1 bath, 2-story, breakfast nook, fireplace, restorer's dream. Owner financing available. \$29,500 or make offer.

**ADORABLE FIRST HOME - 3 BR, 2 bath, 2 carport, nice location.**

**3 BEDROOM, 1-1/2 bath home,** central heat, 4-car carport, metal barn, six city lots in Wilson. Partial financing available.

**COUNTRY HOME, 57 acres,** irrigated, 1/4 mineral. 3-2-2 brick with fireplace, metal barn.

**Edwards Realtors**  
998-4343

### REAL ESTATE

**LOOK AT THIS ONE.** 3 bedroom/2 bath/1 car garage. 1906 S. 1st.

**ONLY \$25,000** for 3 bedrooms, 1 bath, living/dining area. Carport. Outbuildings on large lot.

**LOTS OF ROOM.** Can be used as business or home. 3 bedrooms on 3 lots, Aunt Becky's Place. Let's make a deal! 1812 Lockwood.

**AFFORDABLE 3 bedroom home,** 2 bath, 4 car garage, basement, tenant house on adjoining property also for sale. Located at 1729 N. 1st.

**EXCEPTIONAL OPPORTUNITY.** 3 BR, 2 B, good neighborhood, assumable loan at 8-1/2% interest. 1826 N. 4th. Shown by appointment only.

**TIRED OF RENTING?** 3 BR, 2 B, 1 car garage, fruit trees, cellar on large lot. 2028 N. 6th.

**WONDERFUL STARTER HOME:** Near schools. 3 BR, 2 B. Look at this! 2120 N. 4th.

**NEED ELBOW ROOM?** Well, you'll love it with this 4 BR, 3 B, 2 living areas, sun porch, double carport, large concrete cellar, water well and well-house on large lots. 2329 Ave. J & N. 7th.

**BEGINNER'S DREAM:** 2 BR, 1 B, large living, dining, also large kitchen, separate 2-car garage with storage building attached. 1800 N. 6th.

**CLOSE TO TOWN:** 3 BR, 1 B, 1 car garage and workshop. 1621 Ave. M.

### SOUTHWEST REAL ESTATE

998-5162

### Garage Sales

**GARAGE SALE:** 1819 N 6th Thursday 9 to 5. 33-1tp

**GARAGE SALE:** 1829 Ave. O, Sat. 8 til 5. Microwave, weed eater, boys & girls clothes size 10-16, bedspreads, curtains, etc- lots of other items. 33-1tp

**CARPOR SALE:** Thursday 9-1, 2001 Ave. J, metal folding cot w/mattress, sheepskin, men's luggage, ladies robes. 33-1tc

**GARAGE SALE:** 2514 N. 3rd, Thursday & Friday, 9 to 6. 33-1tp

**YARD SALE:** 1620 N 2nd, Thurs, Fri, Sat., kids clothes, misc. 33-1tp

**YARDSALE:** 1916 N. 1st, Friday 8 a.m. to 5 p.m., and Saturday 8 a.m. til 1 p.m. 33-1tc

**THREE-FAMILY BACKYARD SALE:** 1901 N 1st, (Back of Blue Bonnet Bld) Lots of Men, Ladies, children's, clothes, Misc. Fri. 8 to 1, Sat. 8 to 3. 33-1tp

**GARAGE SALE:** Inside sale, S. 2nd & Ave. J, Jewelry, misc. Fri & Sat. 33-1tp

**GARAGE SALE:** Ladies & children's clothes - good condition, children's toys, Graco stroller, Wicker shelf, lots of misc. Thursday only 9 to 7 1805 Ave. P. 33-1tp

**GARAGE SALE:** Friday/Saturday 9 to 5. 1506 13th Street, Wilson. 3-6 boys & girls clothes, larger women's sizes, men's large. Baseball Cards (6,000), sell and trade; gas dryer; glassware; toys; books - much more. 33-1tp

### Card of Thanks

Thank you so much for the visits, cards, phone calls, food and gifts while I was in the hospital and since I came home.

God Bless You,  
June Chandler  
33-1tp

\*\*\*

The family of E.B. Gaither would like to thank you for all the prayers, cards, flowers, food, phone calls, and other expressions of love and sympathy shown to us during his illness and at the time of our sorrow.

The E.B. Gaither Family  
33-1tp

\*\*\*

Thanks to all those who contributed to the beautiful card shower on E.B. Gaither's 90th birthday on July 25. It meant a lot to him and to all of us.

The E.B. Gaither Family  
33-1tp

\*\*\*

Thanks to each of you for the cards, flowers, food and especially your prayers during my hospital stay. For your thoughtfulness at Ed's death we are very grateful.

God bless you all,  
Margaret and T.A. Stone  
and Family  
33-1tp

\*\*\*

Words cannot express our appreciation for all your love, kindness and comforting words during the illness and loss of our loved one, Darrell (Corkey) Smith.

We want to thank everyone who contributed in any way, for the visits, prayers, cards, flowers, and food. They all mean so much at a time like this.

You have made our sorrow much easier to bear.

God bless each of you,  
The family of Darrell (Corkey) Smith  
Wanda, Brenda & David  
Delinda, Rusty, and Dana  
33-1tc

\*\*\*

We would like to thank each of you who have played such an important part in our lives over the past couple of years and have given us such comfort at the death of our husband, father and grandfather. All of the prayers, food, flowers, cards and telephone calls have been appreciated so much. We would like to say a special "thanks" to the Tahoka Care Center for being so kind and gentle to Ed and for taking such good care of him. We would also like to thank Dr. Wright, Dr. Allas and Dr. Freitag, as well as the nurses and staff at the hospital, for being there when needed. There are so many, we could not possibly name all of you but please know that you have touched our hearts.

The Family of W.E. "Ed" Stone  
Florence Stone  
Joe & Fran Stone  
Nita Perkins  
Grandchildren  
33-1tc

### Business Services

**ALTERATIONS:** All kinds. Jean Curry, 998-4776, 1629 N. 7th. 36-tfc

**DAN'S REFRIGERATION & Appliance Repair.** Refrigerators, freezers, window units. Affordable prices and work that is guaranteed in writing. 998-4525. 31-tfc

**TELEPHONE & CATV jacks installed,** moved, repaired - pre-wired. Call Kirby at (806)998-4832 or (806) 789-1551. 31-4tp

### Notice

**KEEP ELDERLY** in my home. Treat like family. Call Lubbock 796-2425. 32-2tp

**LOTS OF SWEET CORN** ready. Hawthorne Organic Farm. 327-5279. 32-2tc

**WILL DO REPAIR** on old wooden furniture. Don't throw away your broken down antique chairs, let me glue them. Frank Long 1201 Ave. J, phone # 998-5473 (Tahoka). 33-3tp

**NAPKINS AND STATIONERY IMPRINTING**  
For weddings and showers.  
Variety of colors.  
**TAHOKA DRUG - 998-4041** 2-tfc

### Commodity Schedule

Aug. 14 Tahoka Sr. Citizen 9:30 a.m. - 12:30 p.m.

Aug. 18 New Home Ag Building 9:30 a.m. - 11:30 a.m.

Aug. 18 Wilson City Hall 1 p.m. - 3 p.m.

Aug. 19 Tahoka Center 10 a.m. - noon

Aug. 20 O'Donnell Catholic Church 9:30 a.m. - 12:30 p.m.

Aug. 21 O'Donnell Sr. Citizen 10 a.m. - noon

Please bring bags.

### Help Wanted

**RN POSITION AVAILABLE:** Apply in person at Tahoka Care Center. 52-tfc

### For Sale

**FOR SALE:** Early American coffee table. \$70, cash only. 1711 S. 3rd. 33-1tp

**FOR SALE:** piano flaple finish, 10 yrs old, \$600 call 998-4524 after 5. 33-1tp

**FOR SALE:** Pickup bed trailer; 2-wheel utility trailer; fender twin reverb 100-watt amplifier. Call Keith at 998-5104. 32-1tc

**FOR SALE:** Bundy coronet, \$100; white hand shoes size 9 1/2, \$10. Call 998-5107. 33-1tp

**PIANO FOR SALE:** Wanted: Responsible party to take on small monthly payments on piano. See locally. Call Manager at 800-635-7611. 31-3tp

### Autos For Sale

**FOR SALE:** 1983 Ford F-150 V-8, Auto, Air, 64,000 miles, great work truck, \$3,000, 998-4902. 33-1tp

### FOR SALE

80 Acres - 11 miles S.E. of Tahoka. Cat-claw Mesquite land, deep, rich soil. No lakes or obnoxious weeds. Approximately 30 acres minerals. \$450 per acre. If sold in August - Rent goes. 33-2tc

### SOUTHWEST REAL ESTATE

998-5162  
Home 998-4091  
Lynn County Merchants  
Appreciate Your Business!

### Irrigation Systems

**IRRIGATION PRODUCTS, INC.**  
Valley Pivot Systems  
4521 Clovis Road  
Lubbock, Texas  
765-5490 2-tfc

**UNIQUE SALES OPPORTUNITY**  
OFFERING FAST START BONUS PROGRAMS. HIGH COMMISSIONS. TAHOKA. MONTHLY PERFORMANCE BONUSES. INSURANCE AVAILABLE.  
CALL 1-800-999-4712  
E.O.E. 33-1tp

**SALES REP**  
Sales Person to call on Commercial, Industrial, and Agricultural business in the TAHOKA area. Excellent Commissions and Bonuses available. Background in Sales or Mechanical aptitude helpful.  
**HYDROTEX**  
1-800-999-4712  
E.O.E. 33-1tp

**TRANE EQUIPMENT SALES, INSTALLATION & SERVICE**  
**FOLLIS**  
Heating & Air Conditioning  
For Free Estimate - Phone 828-6371  
OSCAR FOLLIS • Licensed & Insured • WILSON, TEXAS

**Donate Blood!**  
TUESDAY, AUGUST 18  
5:00-7:30 p.m.  
1st United Methodist Church  
In Tahoka  
**United Blood Services**  
A DIVISION OF BLOOD SERVICES, INC.  
A NONPROFIT CORPORATION

### West Texas Opry Auditions Scheduled

Auditions for 1993 West Texas Opry shows will be held at 7 p.m., Tuesday, Aug. 25, at the Lubbock Garden and Arts Center located at 42nd and University.

This talent search is open to all entertainers who have not previously performed on the Opry and would be interested in the possibility of an appearance.

A sound system will be furnished, but performers will need to provide their own accompaniment.

One of the purposes of the West Texas Opry is to showcase talent from the West Texas area. For further information contact Maxine Caldwell at 806-747-1540.

## PROFESSIONAL DIRECTORY

**Veterans or widows of all wars who need help or advice in claim benefits, contact:**  
**Welch Flippin**  
SERVICE OFFICER  
Wednesday of each week at the Courthouse - Tahoka, Texas

All Blends Dry Aerial Spraying Liquid Fertilizer  
**HARMONSON FERTILIZER**  
SPRAYING & CHEMICALS  
Box 151 - New Home, TX 79083  
Office: (806) 924-7342 • Hanger: (806) 924-7765  
Tommy Harmonson Mobile: (806) 924-6701  
Leon Harmonson Mobile: (806) 924-6707

*Hometown Hardware and Gifts*  
A True Value Store  
Phone 998-4343 • 1600 Main • Tahoka

**Family Construction**  
Carpentry Add-ons Roofing Repairs  
Painting Dry wall Texturing Vinyl Flooring  
**Rickey Green**  
998-4921  
Quality Old-Fashioned Workmanship

**L&R Construction**  
FREE ESTIMATES  
Roofing - New Construction - Remodeling  
Add-On (Carports, ext.) - Painting - Cabinets (Kitchen & Bath)  
All Kinds of Carpentry Work Call & Inquire  
**Ricky Hall** Lifetime Residents **Larry Owen**  
998-5016 998-5079

*C/W Calvillo-Walker*  
Funeral Home  
SERVING THE ENTIRE SOUTH PLAINS  
RICHARD CALVILLO 809 18th Street  
President (Corner of 18th & E)  
806-765-5555 Lubbock, Texas 79401  
"We Treat You Like Family Because We Care"

**Edwards Realtors**  
Ofc: (806) 998-4343 • Res. (806) 327-5233  
1600 Main  
P.O. Box 550 • Tahoka, TX 79373  
JEANEL EDWARDS Broker MELVIN EDWARDS Sales

**Mary Kay Products**  
Carol Botkin  
CONSULTANT  
998-5300

**Robert E. Abbe Jr.**  
Bookkeeping and Income Tax Service  
628-6368  
1206 Lumsden Ave. • P.O. Box 21  
Wilson, Texas 79381

**Tahoka Care Center**  
1829 South 7th Street  
Tahoka, Texas 79373  
**DIANE RIOJAS**  
Administrator 998-5018

**Vegetables Are Ready**  
at  
**Hawthorne Organic Farm**  
6 miles East of Tahoka  
Phone 327-5279

**Sam Pridmore & Son Aerial Spraying**  
Tahoka Phone 998-5292 Home Phone 998-4640

**SOUTH PLAINS CELLULAR**  
Authorized Agent of  
**LIBERTY CELLULARPHONE NETWORK**  
**Barry Young**  
Gateway Shopping Center  
1319 B Tahoka Rd.  
Brownfield, Texas 79316  
Mobile: 1-899-0809 Toll Free

**Pet Birds**  
Finches to Macaws  
Feed / Cages  
**Warren Hardt III** (806) 998-4711  
**Margaret Hardt** Tahoka, TX 79373

**DESIGN BENEFIT PLANS**  
Jody Edwards  
District Manager  
offered by National Group Marketing National Group Marketing  
3223 S. Loop 289, Suite 130 • Lubbock, Texas 79423  
office: (806) 791-5349  
outside Lubbock: (800) 365-3511  
home: (806) 794-0762

**Printing**  
Fast, Quality Work  
Reasonable Prices  
Shop at Home!  
The Lynn County News  
PHONE (806) 998-4888

*Service To All Faiths*  
"We care for yours as we would have ours cared for."  
**White Funeral Home**  
Phone 998-4433  
COMPLETE FUNERAL SERVICE

**ADVERTISING PAYS ...**  
Call the Lynn County News  
998-4888





CHURCH YOUTH IN TAHOKA—Young persons from the various churches in the New Zeal District Assn. were in Tahoka last Thursday during the 60th annual session of the Women's Convention of New Zeal District, hosted in Tahoka Aug. 3-6 at Pleasant Grove Baptist Church. (LYNN COUNTY NEWS PHOTO)

**INDIVIDUAL NOTICE OF AVAILABILITY OF FREE OR PART PAY MEDICAL CARE**  
LYNN COUNTY HOSPITAL DISTRICT  
2600 LOCKWOOD  
TAHOKA, TX 79373

Lynn County Hospital District will provide at least \$23,000.00 of free and part pay care this fiscal year, October 1, 1992-September 30, 1993. This care is available to individuals who cannot afford to pay for their medical care.

Uncompensated services for Lynn County Hospital District are limited to all inpatient services, all day surgeries, all outpatient diagnostic and radiologic examinations, all emergency room services, and all ambulance services performed by Lynn County Hospital employees at Lynn County Hospital.

To determine eligibility of this care, Lynn County Hospital District uses maximum levels of income, for the appropriate family size, which are established by the CSA Income Poverty Guidelines. The current maximum levels of income are given below: (effective April 14, 1992)

Family Size	Income Guidelines
1	\$6,810
2	9,190
3	11,570
4	13,950
5	16,330
6	18,710
7	21,090
8	23,470

For families with more than 8 members, add \$2,380 for each additional member. The services will be provided to those who first request it until the compliance level is met for this fiscal year.

To make a request for uncompensated services, please contact the administrator or financial officer in the business office. This staff member will make a written determination of your eligibility or non-eligibility for the services within 2 working days of your request.

Lynn County Hospital District

**NOTICIA INDIVIDUAL DE APLICABILIDAD DE PARTE DEL PAO DE CUIDADOS MEDICOS LIBERS**

Lynn County Hospital District  
2600 Lockwood Street Tahoka, Texas 79373

Lynn County Hospital District provee al menos \$23,000.00 de parte de pago de los cuidados gratis de este año fiscal, Octubre 1, 1992-1993. Este servicio es aplicable a aquellos individuos que no pueden pagar la cuenta de sus cuidados medicos.

PARA DETERMINAR ELEGIBILIDAD (eleccion) por este servicio, Lynn County Hospital District usa maximos niveles de sueldo tamano apropiado de la familia, el cual esta establecido por la HHS Income Poverty Guidelines. El corriente (comun) nivel de sueldo son dados de la siguiente manera: (efectivo Abril 14, 1992)

Tamano de la Familia	Niveles de Sueldo
1	\$6,810
2	9,190
3	11,570
4	13,950
5	16,330
6	18,710
7	21,090
8	23,470

Para familias con mas de 8 miembros, agregar \$2,380 por cada miembro adicional. Este servicio sera provisto a aquellos que primero lo requirieran hasta el nivel requerido a llenar por este periodo fiscal.

Para hacer un requerimiento por servicios no compensados, por favor pongase en contacto con administrador o ministrador de credito en la oficina de la negociacion. Este miembro del equip hara un escrito determinado de us requerimiento.

/s/ Louise S. Landers, Administrator  
Lynn County Hospital District  
33-1c

**NON-DISCRIMINATION POLICY OF LYNN COUNTY HOSPITAL HOME HEALTH SERVICE**

Lynn County Hospital Home Health Service will not discriminate in accepting patients on the basis of race, national origin, color, age or handicap in admission or access to treatment in its program and activities. Neither will the Service discriminate in employment on basis of race, color, national origin, age or handicap.

/s/ Louise S. Landers, Administrator  
Lynn County Hospital Home Health Services  
33-1c

**NON-DISCRIMINATION POLICY OF LYNN COUNTY HOSPITAL**

It is the policy of the Lynn County Hospital to admit and treat all patients without regard to race, color or national origin. The same requirements for admission are applied to all and patients are assigned within the facility without regard to race, color or national origin. There is no distinction in eligibility for or in the manner of providing any patient service provided by the hospital. All facilities are available without distinction to all patients and visitors regardless of race, color or national origin. All persons involved in the referral of patients to the hospital or assignment of patients within the hospital are advised to do so without regard to the patient's race, color or national origin.

**POLIZO NO-DISCRIMINATORIA PARA EL HOSPITAL DEL CONDADO LYNN**  
Es La Poliza (o Prudencia) Del Hospital Del Condado Lynn admitir Y tratar Todas Las Pacientes sin atencion al color, raza, o origen de nacionalidad. No hay distincion en las cualidades para ser elegido, o en la manera de proporcionar cualquier servicio del hospital a un paciente. Todas las facilidades estan dispuestas sin distincion a Todas las pacientes Y visitantes sin miramiento al color, raza, o nacionalidad. Todos los personas implicadas en el dirigitamento de pacientes al hospital o implicados en las asignacion de pacientes dentro el hospital se aconsejan qu lo hagan sin miramientos al color, raza o nacionalidad del paciente.

/s/ Louise S. Landers, Administrator  
Lynn County Hospital, Tahoka, Texas  
33-1c

**TO OUR WINNERS!**

ALL PRIZES MUST BE CLAIMED BY AUGUST 15, 1992.  
THE DRAWING FOR THE NEW 1992  
**CAVALIER VL 4 DOOR SEDAN**  
WILL BE HELD ON THURSDAY, AUGUST 20, 1992.

**EASY MONEY**

**\$1,000.00 WINNERS**

- GERALD J. ELLIOTT-CLOVIS, N.M.
- MARGARET M. CHAVES-ALBUQUERQUE, N.M.
- TINA HAUMESSER-DENVER CITY, TX.
- LISA FOWLER-TATUM, N.M.

**\$100.00 WINNERS**

- EDDY CURRY-HOBBS, N.M.
- MIRIAM SANTOS-CLOVIS, N.M.
- ANN CLARK-CARLSBAD, N.M.
- MAURICE LANE-ALAMOGORDO, N.M.
- JOHN M. HERNANDEZ-BORGER, TX.
- KENT PARR-ALPINE, TX.
- RAYMOND GONZALES-SANTA ROSA, N.M.
- JANET POWELL-BORGER, TX.
- KEN ROBISON-CLOVIS, N.M.

**GAS FOR A YEAR WINNERS**

- LUZ CHAVARRIA-ABILENE, TX.
- MARY WESSNER-WHITE DEER, TX.
- KALEENA SOTELLO-MONAHANS, TX.
- FRED McMULLENS-MELROSE, N.M.
- KATHY McCARTY-DUMAS, TX.



PRICES EFFECTIVE  
AUGUST 9-15, 1992

TAHOKA STORE #182

3 MUSKETEERS, SNICKERS,  
MILKY WAY, MARS

**ICE CREAM BARS**

2 FOR 99¢

FAMOUS  
**ALLSUP'S BURRITOS**

BUY ONE GET ONE  
**FREE**

**SAUSAGE, EGG & BISCUIT**

EACH  
**79¢**

ALL FLAVORS  
**INTERSWEET WAFERS**

55¢ EACH OR  
3 FOR \$1

ALL TYPES  
**PEPSI-COLA**

3 Litre  
**\$1.59**

HOMOGENIZED  
**ALLSUP'S MILK**

GALLON  
**\$1.99**

**Gotta Have IT**



STORE SPECIAL

COMBO OF THE MONTH!  
FRESH  
**BAR-B-Q SANDWICH**  
& 16 OZ. COKE

**99¢**  
ONLY



ASSORTED FRITO LAY  
**CRACKER SNACKS**

39¢ EACH OR  
3 FOR \$1

SHURFINE CUT  
**GREEN BEANS**

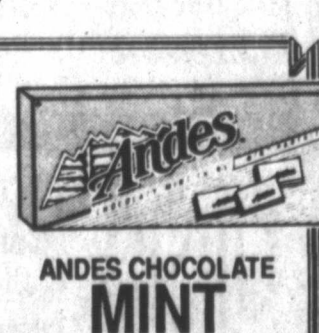
16 OZ. CAN  
3 FOR \$1



ALL PURPOSE  
**FLOUR**

ALL PURPOSE  
**SHURFINE FLOUR**

5 LB. BAG  
**69¢**



**SHURFINE CHARCOAL**

**\$1.59**

**SHURFINE CHUNK TUNA**

6 1/8 OZ. CAN  
59¢ EACH OR  
2 FOR \$1

**ANDES CHOCOLATE MINT THINS**

4.67 OZ. BOX  
**\$1.29**

1.25 OZ. ALL FLAVORS KATJES SUN SLICE 55¢ EACH OR	3 FOR \$1
SURF DETERGENT 39 OZ. BOX	\$1.89
CHEERIOS CEREAL 10 OZ. BOX	\$1.99
SALT & PEPPER COMBO PACK	29¢
WALL STREET 1.5 OZ. CANDY BARS 55¢ EACH OR	3 FOR \$1

SHURFINE - 1 GAL. BLEACH	89¢
VALLEY FAIR PAPER TOWELS	2 FOR \$1.00
SHURFINE - 32 oz. CATSUP	2 FOR \$1.00
FITTI DIAPERS	\$5.99
SHURFINE - 48 OZ. CRANBERRY APPLE DRINK	\$1.89

**2.9% APR**  
On Selected New Cars & Trucks

**EXTENDED HOURS:**  
Open until 4:00 on Saturdays!

**New 1992 Vehicles**

1992 Colet Suburban Loaded, Teal Blue & Silver Sale Price .....	\$24,091	1992 Colet Sportalide Black, Scottsdale Package Sale Price .....	\$13,205
---	----------	--	----------

**Program Vehicles**

1992 Oldsmobile Bravada Black with tan leather interior Sale Price .....	\$19,950	1991 Chevrolet Cavalier Gray with gray interior Sale Price .....	\$7,995
1992 Chevy Corsica White 4 door, loaded Sale Price .....	\$10,995	1992 Chevrolet Lumina APV Van Loaded Sale Price .....	\$16,595
1992 Buick Regal White 4 door, loaded.	Sale Price .....		\$13,650

**Used Cars & Trucks**

1990 Chevrolet Corsica Blue, 4 door Sale Price .....	\$6,995	1988 Chevrolet Camaro 5 Speed, Green w/Gray interior Sale Price .....	\$4,995
1985 Ford F-150 Supercab, XLT Lariat Sale Price .....	\$5,900	1989 Ford F-150 SWB, Tilt, Cruise Sale Price .....	\$4,995

**Service Special Of The Week**

**15% Off** Any Regular  
Labor Charge

Not good with any other service specials.  
MUST PRESENT COUPON, EXPIRES AUG. 20, 1992

**McCord**

BUICK • OLDS • PONTIAC • CHEVROLET



1313 E. Lockwood • Tahoka, Texas • 998-4547 or 998-4566