

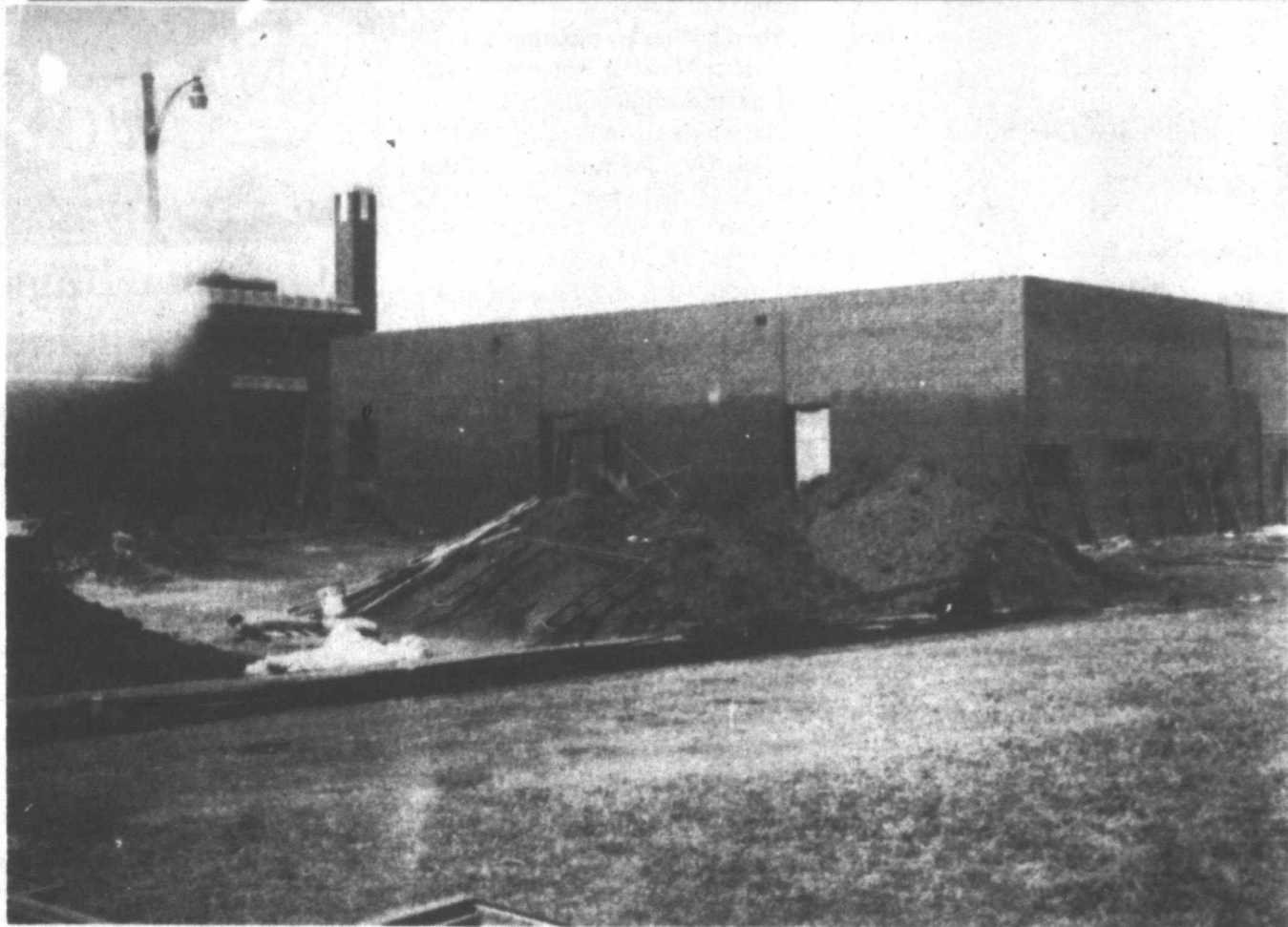
The Lynn County News

25¢
Per Issue

VOLUME 86, NUMBER 31

TAHOKA, LYNN COUNTY, TEXAS • THURSDAY, AUGUST 3, 1989

10 PAGES IN ONE SECTION, PLUS INSERTS



BUILDING IN THE STREET—Workers at Tahoka School now have the walls of a building up in the middle of the street between Tubb and Gardner Elementary schools. The project will join the two campuses. (LYNN COUNTY NEWS PHOTO)

T-Bar Club Championship Tournament Set Aug. 12-13

The annual T-Bar Country Club championship tournament for members will be on Saturday and Sunday Aug. 12-13, with entry fee set at \$30 per person.

The tournament will be individual play only, for both men and women's divisions. Players will be flighted after Saturday's round, with flighting to be based on Saturday's play plus score cards turned in by mem-

bers during the year. A catered meal will be served Saturday night. Non-players will be charged for the meal. Deadline for signing up is 6 p.m. Aug. 10.

"We need every member to make this a good tournament," said James Brookshire, a member of the tournament committee.

Results of the recent in-club partnership tournament also were an-

nounced this week as follows:

Men's Championship

1st- Jimmy Bragg-Jim Chambers, 132

2nd- Steve Qualls-Richard Lopez, 133

3rd- Pat Green-Freddie Kieth, 134

1st Flight

1st- Mike Lankford-Gary Stennett, 137

2nd- Gayland James, Brad Smith, 137

3rd- Buddy Vineyard-Danny Preston, 140

2nd Flight

1st- Mike Nettles-Keith Spears, 144

2nd- Johnny Armes-Jeff Martin, 147

3rd- Joe Calvillo-Brett Cypert, 152

Ladies' Championship

1st- Jeanne McCord, Betty Stennett, 157

2nd- Joy Bragg-Wanda Glenn, 161

3rd- Fran Green-Punk Franklin, 167

1st Flight

1st- Ann Davis-Elaine Lopez, 181

2nd- Joy Brookshire-Novis Curry, 185

3rd- Rita Haney-Mary Louder, 191

Weather

Date	High	Low	Precip.
July 26	85	63	
July 27	89	63	.05"
July 28	91	65	
July 29	93	67	
July 30	95	67	
July 31	96	67	
Aug. 1	95	68	

Precip. for year to date: 8.61"

37 Golf Cart Houses Burglarized At T-Bar

Thirty-seven golf cart houses were broken into at T-Bar Country Club last Saturday, but only a couple of sets of golf clubs and a quantity of beer and whiskey were reported missing.

Officers were called to the club about 9:30 p.m. Saturday on a report that two cart houses had been burglarized, and after checking it was found that no other cart houses had been disturbed at that time. However, early Sunday morning, it was discovered that another 35 cart houses had been burglarized after locks were pried loose. It was theorized that the same persons had returned later during the night and broke into the sheds, but little was stolen. Owners of most of the cart houses broken into said nothing was taken.

Officers questioned two suspects, age 19 and 15, in the break-ins, but no charges had been filed as of Wednesday morning.

A 38-year-old Round Rock woman, Debra Maines, was arrested in Brady last week and returned to Lynn County to face felony charges of passing a check with a forged endorsement at Wilson State Bank in May of 1988. The check was in the amount of \$1170.78, officers said.

She posted \$20,000 bond set by Justice of the Peace H.W. Edwards on the charge. She also was charged with hindering a secured creditor.

A 30-gallon drum of Roundup chemical valued at \$1605 was reported stolen last Thursday at B&B Fertilizer, just west of New Home. The building was entered by removing a lock.

Tahoka Police Dept. investigated an aggravated assault report Sunday at an east Tahoka location where a 30-year-old Tahoka woman reportedly had been struck on the head with a pool stick wielded by a 41-year-old Tahoka man.

Police also investigated a collision Wednesday, July 26, at Main and N. 1st, involving a 1989 Pontiac driven by Emily Rivas Tomlinson of Tahoka and a 1988 Plymouth driven by Yoland Ortiz Dotson of Tahoka. Both drivers and two passengers in the Dotson vehicle were taken to Lynn County Hospital by EMS ambulance. They were treated for minor injuries and released, police said.

On Saturday at Lockwood and Ave. L, police investigated an accident in which a 1985 Oldsmobile driven by Dorothy Waldrep Sisco of

Hobbs, NM, reportedly lost control of her vehicle which struck a utility pole. She was treated at Lynn County Hospital for minor injuries and released.

In jail during the last week were one person each for public intoxication, forgery, theft by check, driving while intoxicated subsequent offense plus no drivers license, public intoxication plus disorderly conduct, and DWI.

Jail Program Makes County Officials Happy

Lynn County commissioners were delighted as they studied financial records of the Lynn County jail since the county started housing federal prisoners on a contract basis as the federal defendants awaited action on their cases in court at Lubbock. Commissioners looked at the records at the regular meeting Monday, with most of the session spent working on a budget for next year.

In five months of housing federal prisoners, the county has made a net profit on the federal program of \$23,588.28, according to the figures presented to the commissioners Monday. It was explained that the normal jail expenditures were increased by \$3,383, while an increase of \$26,972 was paid to the county by the federal government for handling the prisoners.

County Resident Joins FB Board On Washington Trip

Leland White of New Home, a state director of the Texas Farm Bureau, joined other directors of the state organization on a trip to Washington, DC last week. The group met with several members of Congress from Texas and the South Plains to express the Farm Bureau's views on legislation affecting farmers.

During the trip, the directors talked with Sens. Lloyd Bentsen and Phil Gramm and Representatives Larry Combest, Bill Sarpalius, Charles Stenholm, Kiki de la Garza and with Fred McClure, an administrative assistant to the White House.

White said the group suggested to the congressmen in meetings July 25-26 that an overhaul of the federal crop insurance program is needed to make it more feasible for farmers to participate in the program. The Texas group also urged the legislators to support approval of disaster payments for all 1989 crops, an item currently under consideration.

Also, White said, the directors urged all the Congress members to support a Bentsen bill designed to correct the disparity between medicare payments to urban and rural hospitals, a situation which has had rural hospitals receiving less money

than urban hospitals for exactly the same services.

A fourth item discussed with the Washington group was the amount of deduction allowed on federal income tax returns for premiums paid on hospitalization insurance. The Texas group favored a higher amount than the current 25 per cent allowance.



Alligators can close their ears just as camels can close their noses.

Woodwork...

By Dalton

I HAD ALREADY READ about it somewhere, but my interest in a 35-foot limousine available in Dallas was revived by a story in this month's issue of *Dealer News*, a publication in Dallas which serves the swimming pool and spa industry.

Sunset Limousine Service in Dallas had this monstrous vehicle specially designed. Built on a Lincoln Town Car chassis (or maybe a couple of them), it understandably attracts attention wherever it goes. The drivers are specially trained to handle this six-wheel job in traffic, and no, it does not bend in the middle, so cornering takes some practice. It gets a little better than four miles per gallon, and you can rent it for \$150 an hour. It seats 12 people, unless they are all offensive linemen on professional football teams.

The swimming pool publication was interested in the limo because it has a hot tub in the back. The spa can hold two people. It measures three feet by four feet and holds 200 gallons of water. It has heating equipment and uses regular pool equipment. There also is a rumble seat in the back with its own stereo and intercom system.

The spa is hidden under the trunk if a customer doesn't want to use it. It also could be used, they said, to hold about 10 to 15 cases of beer in ice.

So, for \$150 an hour, you can have your own rolling orgy. I guess I probably won't rent it. It would look funny parked in front of the Motel 6.

...
KNOTHOLES in the Woodwork: This is the time of year when retail business and many other activities are sort of put on hold until school reopens. Judging from church the last couple of Sundays, everybody is on vacation except me and the preacher. Only my electric bill seems to be thriving on hot weather. . . John Deere has announced a new lawn and garden tractor with fuel injection "just like a high-quality car." It is supposed to give faster starting in cold weather (except nobody starts one in cold weather), quicker and smoother warmups and improved fuel economy. It probably does the quarter-mile in 14 seconds and you can mow down your flower bed in less than 30 seconds. . . Sitting at my daughter's computer terminal while writing all this, I discovered three packages of cheese crackers in a compartment of her desk. I considered eating one of them, but she probably would remember how many she had.



CLOWN IN TOWN—A "Razzle Dazzle Show" was presented at Tahoka Care Center last Friday morning for the benefit of the residents. The clown show was presented by Colleen Tallant of Odessa and there were refreshments and door prizes. Care Center officials expressed appreciation to businesses which donated prizes and otherwise helped to bring the show to Tahoka. (LYNN COUNTY NEWS PHOTO)



C-C Benefit Softball Game Set Monday

Some muscles which haven't been used recently may come into play Monday night as the Tahoka Chamber of Commerce sponsors a softball game between farmers and business persons, with each team to include both men and women, starting at 7 p.m. at the Little League Park.

An electric cooker will be given away. Cokes, pop corn, hot dogs and brownies will be sold in this project designed to raise funds for the coffers of the impoverished chamber.

Danny Preston, president of the chamber, urged everyone to support the project, the only fund-raiser the chamber has had in recent years.

Lynn County Merchants Appreciate Your Business!

Class Of 1979 Plans Reunion

Members of the Tahoka High School Class of 1979 are asked to contact Cal Huffaker at P.O. Box 419, Tahoka, or by calling (806) 998-4515 as soon as possible regarding a 10-year reunion planned in conjunction with homecoming and the Harvest Festival on Oct. 6.

Huffaker said he does not have all the current addresses of class members and would appreciate any help.

Game Boosts Fund For Wilson Girl, 8

A benefit baseball game was played Tuesday night at Moses Park in Lubbock between employees of United Marketing Service and employees of FM 99 to raise money for Janessa Lee, eight-year-old of Brenda Lee of Wilson. Janessa has been undergoing chemotherapy treatment for leukemia.

Service News

Pvt. Robert Sanchez, 1987 graduate of OHS, has completed basic training at Fort Leonard Wood, Mo.

During the training, students received instruction in drill and ceremonies, weapons, map reading, tactics, military courtesy military justice, first aid, and Army history and traditions.

Sanchez is the son of Lee R. and Elvira Sanchez of O'Donnell.

You can always question the intelligence of the man who boasts of what he knows.

Senior Citizens Menu

AUG. 7-11, 1989

Monday: Beef burrito, beans, turnip greens, cornbread, cobbler, milk

Tuesday: Chicken fried steak, gravy, potatoes, peas and carrots, pickles, roll, fruit cup, milk

Wednesday: Beef brisket, potatoes, cabbage, roll, fruit cup, milk

Thursday: Meatloaf, gravy, mashed potatoes, salad, roll, brownie, milk

Friday: Baked fish, tartar sauce, tomatoes, salad, roll, cobbler, milk

Tuesday Bridge

Duplicate Bridge winners at T-Bar Country Club on July 25 were: First place—James McAllister and Betty Taylor; second place—Ruby Miller and Eddie Morris; third place—Catherine Barham and Fern Leslie; and fourth place—Charley Brown and Sue Gilbreath.

Letter To The Editor

One Person's View Of A Pet Thief: I never worried too much about my little dog. He was always in my back yard. He had his shots. He even had a tag on his collar with my name, phone number and his name on it.

I believed in people. I thought that no one would take a "Live" thing away from its home and family, especially wearing an ID tag.

In my opinion, only the lowest of "Low-Life" would take and keep a helpless little 9-year-old dog. These people have no thoughts about the animal or the family they took him from. They don't know he has a gland



NEW PASTOR AT WILSON- St. John Lutheran Church of Wilson welcomes their new Pastor Walter Kamrath and his wife Jan who have arrived this week from Vista, California. Rev. Kamrath has served in previous congregations in North Dakota, San Bernardino and Hesperia, California. Pastor Kamrath will conduct the worship service Sunday, Aug. 6 at 10:45 a.m. Installation service will be held at 2 p.m. with a reception following. The community is invited to attend both the service and installation and help welcome the Kamraths to the community.

problem and can bleed to death easily. They don't care that his teeth are old, and he has to have soft food. They don't care that he was all I had to come home to.

In my opinion these Low-Life types are so low that I rate them right next to people who sell dope to little kids.

It's one thing to rob or to stand by while some one else does. A living thing is not replaceable.

I even offered \$100 reward, but I guess whoever took my dog sells enough dope to not need the money. It makes you wonder about the rest

of the family. I sure would hate to live close to something that low.

My deepest appreciation to those who tried to help. I won't give up.

Jo Carol

New Home News

Luther Wood was taken by ambulance to Lubbock General Hospital on Monday, July 31. It was reported on Tuesday that he is in stable condition.

Obituaries

Charlie Luttrell

Services for Charlie Eugene Luttrell, 96, of Archer City were held at 10 a.m. Wednesday, Aug. 2, 1989 in First United Methodist Church with the Rev. Larry Ramsey, pastor, officiating.

Burial was in Draw Cemetery under direction of White Funeral Home.

He died Sunday morning, July 30, in Archer Nursing Home in Archer City after a lengthy illness.

She was born on Sept. 20, 1892 in Buffalo Gap and moved from Portales, N.M., to Lynn County in 1915. She married Wesley Thomas Luttrell Oct. 11, 1916, in Portales. He died in 1983. She was a Methodist and a housewife, and a member of Woodmen of the World. A son, Morrow, died in 1939.

Survivors include a daughter, Mrs. J.E. (Mary) Holloway of Olney; three grandchildren; and four great-grandchildren.

Pallbearers were W.J. Kahl, Buck Martin, Gus Sherrill and Harold Green.

Vicente Rodriguez

Service for Vicente Rodriguez, 65, of Floresville were held at 2 p.m. Saturday, July 22, 1989 in San Antonio at Castillo's Chapel.

Burial was in South Side Cemetery in San Antonio.

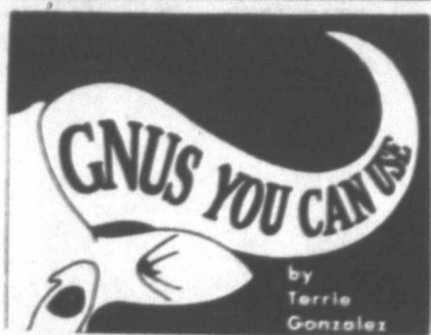
He died Friday morning, July 21, at Santa Rosa Hospital in San Antonio after an illness.

He was born in Waco on April 6, 1924. After moving from Waco, he

had lived in Poth, San Antonio and Floresville. He was a Catholic.

Survivors include his father, Gerónimo Rodriguez of Ackerly; one brother, Pedro Rodriguez of Tahoka; and two sisters, Mrs. Armando Castellon, also of Tahoka and Mrs. Ismael Franco of Ackerly.

Pallbearers were Alex Garcia, Tony Aleman, Pedro Rodriguez, Hildo Morales Jr., Jesse Ybarra and Daniel Franco.



Blame Starlings On Shakespeare

Q. Are starlings native to the United States?

A. Not exactly. In fact, they illustrate the need for tight import/export regulations.

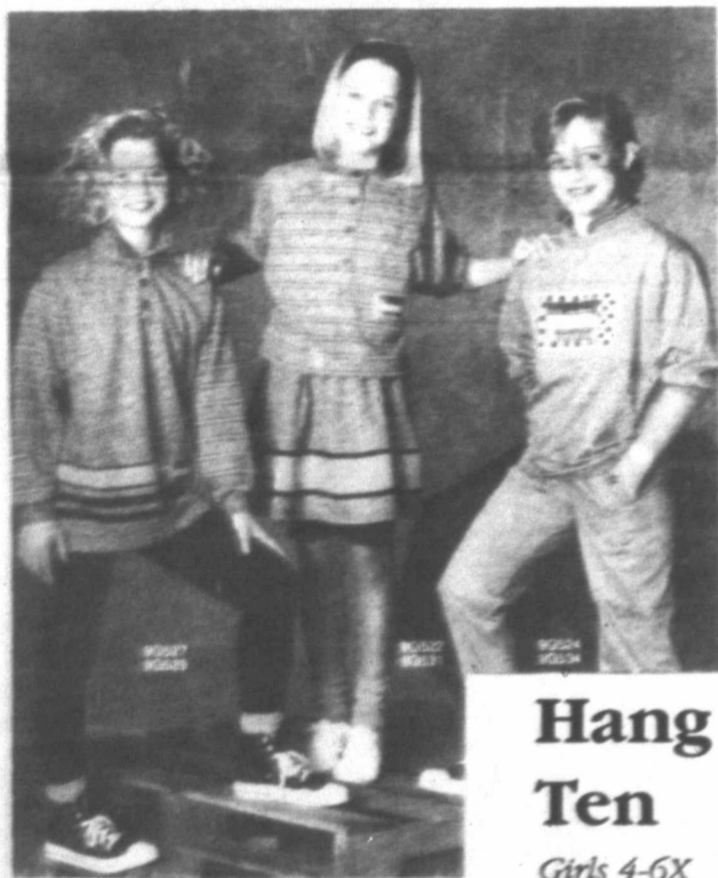
In 1890, a little man in New York was fond of sitting in New York's Central Park and reading Shakespeare.

The late great bard mentioned six species of birds in his writings, and the man wanted them all to be found in North America.

"He managed to acquire 60 starlings from Europe, which he released into the park," said Ray Sutton, wildlife manager of the International Wildlife Park in Grand Prairie, Tex. "They have now multiplied to the extent that they are considered nuisances."

If you have a question about wildlife in this space, write to GNUS YOU CAN USE, 601 Wildlife Parkway, Grand Prairie, Tex. 75050.

Back-To-School



Knits and woven cottons in blue, heather grey and black combo

Hang Ten

Girls 4-6X and 7-14



Kids!

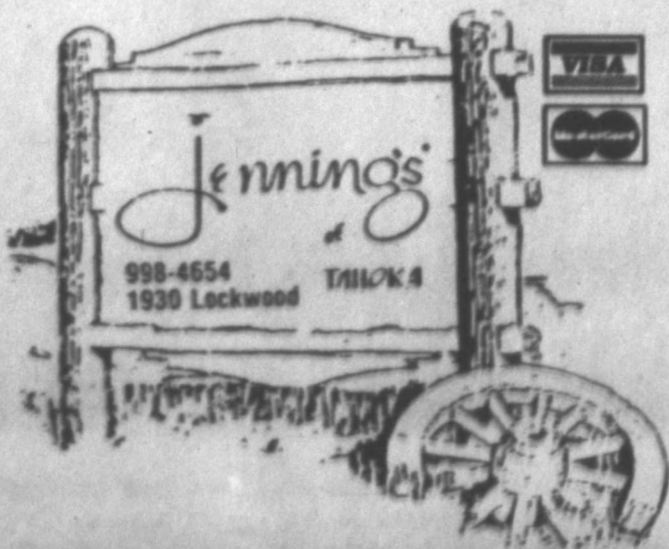
It's Time To Order Your Cheerleader Skirts and Jumpers

Final Clean-Up For Summer Sale Stuff!

\$3-\$5-\$10 BARGAIN TABLES SATURDAY

New Fall Sweaters Arriving Daily by Northern Isles, Design Zone, Eagles Eye and Skyr

Also ... Super Fitting "Rose" Denim Jeans for Juniors



Just Arrived...

Boys **Hobie** Screen Print T-Shirts

Boys **Wrangler** Jeans

Special Back-To-School Price! Prewash Denim **\$10⁹⁸** and **\$13⁹⁸**

NEWS VIEWS

George Bush, President: "I hope the final pullout of Soviet armed forces from Afghanistan ensures 'no more bloodbaths' in the war-torn nation."

James R. Tallon Jr., chairman of the coalitions committee on Medicaid: "We call for a system that truly cares for the needs of the poor."

Noboru Takeshita, Japanese Prime Minister: "I will dedicate myself to the realization of political reform the people strongly desire..."

James A. Baker III, Secretary of State: "Washington and Bonn will continue their discussions about upgrading the Lance and that West Germany will accept a more advanced version..."

Best of Press Tolerance
To permit others to be happy in their own way is tolerance at its highest level.
—Grit.

For Everyone
Notice in a loan office window: "For the person who has everything and hasn't paid for it."
—Enterprise, Lisbon, Me.

How True
Any time you feel you would like to be young again, just think of algebra.
—Tribune, Des Moines.

Clever at Least
Architects cover their mistakes with ivy, doctors with sod, and brides with mayonnaise.
—Booster, U.S.S. Galveston.

Food for Thought
Father to teenage son: "Maybe you should start shifting for yourself now while you still know everything."
—Record, Columbia, S.C.



Enchanted Rock, a bald granite mountain covering 640 acres and stretching 1,824 feet high, is known as Texas' noisiest mountain. Located in northeastern Gillespie County, Indians credited the mountain with having a spirit and offered sacrifices. Weird, creaking, groaning noises emanate from this mountain, especially at night. Geologists logically explain the sound is caused by contractions of the stone during cool evenings after the daytime heat.

The Lynn County News Tahoka, Texas 79373

THE LYNN COUNTY NEWS (usps 323200) is published weekly by Woodwork, Inc. on Thursday (52 issues per year) at Tahoka, Lynn County, Texas. Office location is 1617 Main, Tahoka. Phone (806) 998-4888. Second-class postage paid at Tahoka, Texas 79373. Postmaster: Send address change to The News, P.O. Box 1170, Tahoka, TX 79373.

FEDERAL TAX NUMBER: 75-1775229

SUBSCRIPTION RATES:

Lynn County \$11.25 year
Elsewhere in Texas \$14.25 year
Out of Texas \$15.50 year

NEWS STAFF

Dillon Wood Editor & Publisher
Terry Wood Advertising
Betsy Jolly Advertising & Bookkeeping
Janel Jones Typewriter
Lupe Salinas Typewriter
David Chaps Printing

Card of Thanks

Perhaps you sent a lovely card,
Or sat quietly in a chair.
Perhaps you sent a funeral spray,
If so, we saw it there.
Perhaps you spoke the kindest words,
As any friend could say.
Perhaps you were not there at all,
Just thought of us that day.
Whatever you did to console our hearts
We thank you so much whatever the part.

The Family of Zuma McWhirter

Macky Joe McWhirter and Family
Mittie Hammond and Family
Robbie Gooch and Family
Bertha Nation and Family
Mary Alice Enox and Family
Loyde Westbrook and Family
Jerry Westbrook and Family

SOME INFORMATION ABOUT SNAKEBITE

Venomous snake bite wounds first appear as small white wheals surrounding each of the two punctures. The wheal may progress through color changes of red, blue, green or purple. There can be swelling and an intense burning sensation. There may be shock, a weak, thready pulse, and cold clammy perspiration with faintness.

Much damage can be caused by well-meaning persons whose attempts at first aid may result in excessively deep incisions, and tourniquets applied too tightly for too long a period. The damage here can exceed the bite itself. Get to a doctor or hospital quickly.

"A GREAT MANY PEOPLE ENTRUST US with their prescriptions, health needs and other pharmacy products. We consider this trust a privilege and a duty. May we be your personal family pharmacy?"

PRESCRIPTION CHEMISTS
Phone (806) 998-4041
If Busy Dial 998-4725

TAHOKA DRUG

1610 Main Street Tahoka, Texas

We accept the following Prescription Drug Plans:

Don't Let Lyme Disease Ruin Outdoor Fun

1988 Lyme Disease Incidence

State totals include confirmed presumptions and acquired out-of-state cases. State reporting and confirmation criteria vary.



Source information obtained through individual State Public Health Departments. Provided by the OFF-Biting Insect Research Team.

*States where Lyme Disease is not reportable

Prevention of Lyme disease, caused by the bite of an infected deer tick, remains the most important step in curbing its incidence until a vaccine is discovered. There is no reason to panic. Outdoor lovers should continue to enjoy hiking, camping, barbecuing and other warm weather activities, but should take some simple precautions to protect themselves.

First discovered in Old Lyme, Connecticut, in 1975, Lyme disease was originally mistaken for juvenile rheumatoid arthritis because of similar, painful symptoms.

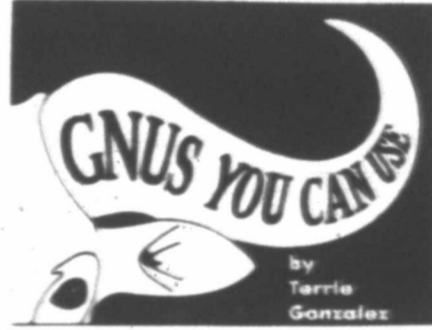
Since the tiny size of the tick can make detection difficult, the OFF! Biting Insect Research Team recommends the following prevention routine to keep ticks from attaching themselves to your body:

- Wear light-colored clothing that makes the dark ticks more visible.
- Tightly woven clothing makes it more difficult for ticks to hold onto you.
- Wear a collared shirt with long sleeves tucked into pants and long pants tucked into high socks to keep ticks from crawling under your clothing when spending time in woods or areas with tall grass.
- Hunters! Wear a hat, gloves and boots, and tape your boots to your pants for extra protection.
- Protect any exposed skin by applying DEET-containing insect repellent thoroughly (avoiding lips and eyes). DEET (N-methyl-p-menthane diolamide) is the only repellent

effective against ticks that can be used both on skin and clothing.

- Use a DEET-containing insect repellent spray labeled effective against ticks (such as Deep Woods OFF!) to help keep ticks off clothing. Avoid spraying synthetic fabrics. Treat clothing openings such as cuffs and arm holes.
- Check frequently for ticks while outdoors. After an outing, look for ticks on your clothing or gear. Take a shower or bath and examine your entire body, especially hair, scalp and back of neck.
- Check pets carefully. They carry ticks into the home.
- To remove an attached tick, remember the following tips:
 - Don't just yank it out, barb-like teeth may remain embedded in the skin.
 - Use blunt, curved forceps or fine tweezers instead of fingers. Grasp the tick's head close to the skin and pull gently.
 - Don't squeeze the tick body. It will inject possibly dangerous bacteria into you.
 - Don't touch the tick with fingers.
 - Disinfect the skin after removal. If it is impossible to keep the tick in a container, crush it (use a bag or other material to avoid touching it) and dispose of it.
 - Save the tick in alcohol and check with your local health department to have the tick checked for infection.

Grand Prairie, Tex. "Most parents are familiar with two of their children's magazines, Ranger Rick and Your Big Backyard."



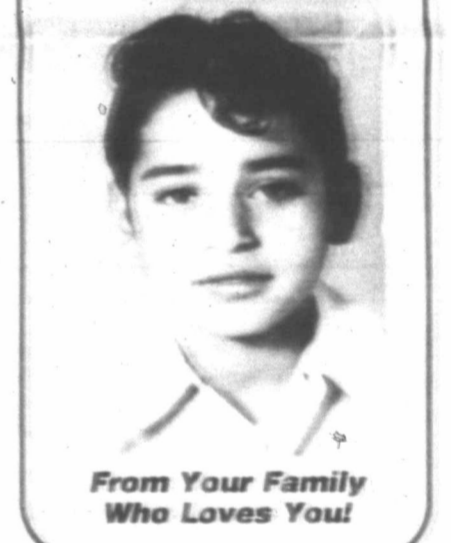
New Book Targets Kids Who Like Spiders & Such

Who would want to cuddle with snakes, slugs, skunks, spiders and the like? A new book published by the National Wildlife Federation, *The Unhuggables*, gives children a fascinating, close-up look at a collection of unique animals.

The 96-page book is chocked full of pictures, and is aimed at children ages six through 12.

"The National Wildlife Federation is a non-profit organization which is actively involved in animal conservation," said Ray Sutton, wildlife manager of the International Wildlife Park in

Happy Birthday Manuel Montemayor



1- 10x13 (Wall Photo)
1- 8x10
2- 5x7
2- 3x5
16- King Size Wallets
8- Regular Size Wallets

30 Color Photos

99¢ Deposit \$10.00 Due at Pick up (plus tax)

\$10.99

WE USE KODAK PAPER

AT Dayton Parker HealthMart Pharmacy 704 South 1st • Downtown Tahoka Monday, Aug. 14

Shugart's inc.

Group charge 99¢ per person

WE USE KODAK PAPER FOR CREATIVE COLOR PORTRAITS



MRS. GERALD WAYNE CRAIG (nee Traci Jan Pearce)

Pearce-Craig Ceremony Read

Traci Jan Pearce and Gerald Wayne Craig were united in marriage July 21, 1989 in the First United Methodist Church at O'Donnell. Rev. Elmer Ward officiated.

A candleabra fan with greenery, blue bows, and hurricane lamps adorned the church sanctuary.

Parents of the couple are Mickey and Sherry Pearce of O'Donnell and Winford and Margaret Craig of Tahoka. Mothers of the couple were escorted to the altar to light the family candles as Brandi Russ sang, "Sunrise, Sunset."

The bride was given in marriage by her father, following with Robin Moore singing "Wind Beneath My Wing." Vows were exchanged in a double ring ceremony and Robin Moore sang, "Up, Where We Belong" as the couple lighted the unity candle.

The bride wore a formal length gown of white satin. It featured a standup collar above a yoke of illusion net with lace motifs adorning the bodice, skirt and sleeves. The lace motifs were enhanced with iridescent sequins and seed pearls. The lego-mutton sleeves extended to the wrists. A basque waistline allowed the full skirt to fall gracefully. Her detachable train was extended from a bustle. She wore a shoulder length veil of silk illusion attached to a beaded head piece. Traci carried a bouquet created by her grandmother, Euna Harris. The bouquet consisted of cymbidium orchids and miniature carnations with pearl sprays. The bouquet was attached to a satin and lace covered hymnal. The hymnal belonged to her great-great-grandmother, Elizabeth Smith. Inside the hymnal, she carried a lace handkerchief that was made and carried by her great-grandmother, Mollie Tred-

way in her own wedding. The hymnal and handkerchief were used for something old, something new was her dress, something borrowed were pearl earrings belonging to her grandmother, Dorothy Pearce and her garter was blue.

The maid of honor was Dawn Crutcher of O'Donnell and bridesmaid was Jennifer Bingham of Tahoka. They wore formal length dresses of royal blue satin. The dresses were fashioned after the bride's, with basque waistlines, puffed sleeves and a bustle adorning the back. They carried bouquets of miniature carnations and pearls atop a white lace fan. The bride and bridesmaids dresses were designed and made by Pat Bingham of Tahoka.

Serving the groom as best man was Jim Bingham of Lubbock and his brother Darryll Craig of Snyder as groomsmen. Mitchell Pearce of Lubbock, brother of the bride and Eddy Schwartz of Lamesa served as ushers.

Laurie Harris of Slaton registered guests. A reception arranged and catered by Kim Doss of O'Donnell, followed the wedding ceremony in the church fellowship hall. The bride's table held a three tier cake decorated with fresh carnations, blue ribbon, hearts and topped with a crystal arrangement of two hearts with wedding bells hanging in the center of them. Serving guests were Wendy Jolly of Lubbock, Terri Pye of Welch and Missy Furlow of O'Donnell.

After a wedding trip to San Antonio, the couple returned to their home in Lubbock where the groom is employed by American General Insurance Company and the bride is a student at South Plains College at Levelland.

A rehearsal dinner was hosted by Winford and Margaret Craig at the Ranch House in Lamesa.

A bridal luncheon was given in the home of Dorothy Pearce in O'Donnell, hosted by Kim Doss and Terri Pye.

noteworthy trends

Let's Do Lunch!

Now that over sixty percent of U.S. workers have access to a microwave on the job, brown bag lunches may become a lot more appealing.

You can have anything from a mini pizza bagel to a stuffed baked potato to last night's leftover grilled chicken.



These paper plates help make microwave ovens big news at lunch-time on the job.

While microwave ovens may be available at most jobs, however, there probably isn't much in the way of microwave cookware at work. While some people bring it from home, few want to wash dishes on the job or tote containers.

One solution is to keep a supply of microwave-safe, disposable paper plates on hand. A good brand to try is Chinex, a line of high quality, sturdy molded fiber plates, bowls and platters. It's made only of heavy duty paper fibers—not foam or plastic—so it's a star in the microwave, absorbing moisture without getting soggy, and staying cool to the touch. It's also 100 percent biodegradable.

Vickers To Be Honored Sunday With Reception

Dr. Lonnie Vickers and wife, Debbie, will be honored with a reception hosted by Tahoka Church of Christ, Lynn County Hospital Auxiliary and the Tahoka Chamberettes, from 2 to 4 p.m. Sunday, Aug. 6, in the Fellowship Hall of the Church of Christ.

All friends of the couple are urged to come by during the reception. Dr. Vickers, who has been practicing medicine in Tahoka since 1985, is closing his practice here July 31. The family plans to move to Del Norte, Colo.



You're Finally "1" Michael Robert (HAPPY BIRTHDAY)



Love ... Grandpa & Grandma Flores, Dad & Mom & Family

Your HEALTH TIP



DAYTON PARKER

DAYTON PARKER HEALTH MART PHARMACY Phone 998-5531 • PRESCRIPTIONS • Tahoka, Tx.

BLOOD PRESSURE

Overweight people with high blood pressure can reduce it dramatically by losing excess weight. Some obese hypertensives reduced their blood pressure to normal by losing only half their excess weight. It is known that the heart has to pump harder in overweight people because the amount of tissue the blood has to reach is greater than in thin persons.

TAHOKA CARE CENTER

"Serving the Needs of the Mature Citizen"

Complete Nursing Care 24 Hours Per Day - 7 Days Per Week

Clean Facilities • Good Food Caring Staff and Homelike Atmosphere Volunteer Services • State Licensed

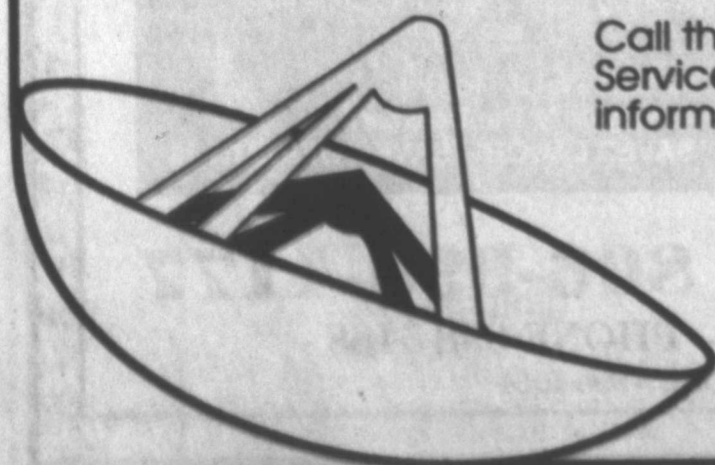
1829 South 7th 998-4148 Tahoka, Texas

YOUR DISH IS WORTH A MILLION!

Now you can buy that Satellite Dish and order your services with us with no hassle!

Cox Satellite Programming has the Best Entertainment Packages at the Best Prices, with Local Service too! Since our parent company is a cable operator, Cox Satellite Programming provides true "one-stop" shopping with more "custom package" flexibility than any other satellite package company. You can get all the best premium channels as well as all available superstation channels and basic cable services with super low-priced monthly or annual billing, and no turn-on or authorization charges!

Call the Cox Satellite Programming Service Center today for more information: (806)793-7381.



COX Cox Cable

LAWN AND GARDEN TIPS

It's amazing how one tiny insect can cause huge amounts of damage. The Japanese garden beetle, for instance, feeds on over 250 different kinds of plants. This bothersome beetle attacks blooms and foliage with zeal. It can devastate an entire landscaped area, including flowering plants, shrubbery and gardens.

To protect your plants and trees from the Japanese beetle, garden experts recommend using a product containing SEVIN® brand carbaryl insecticide. This proven pest fighter also destroys over 500 other insect species. SEVIN® is biodegradable and low in toxicity to fish. In fact, certain formulations of SEVIN® brand are used to control pests on poultry, pets and some species of game birds.

News From ...
Extension Agent
Brett Cypert
 Lynn County Extension Office

Fall Vegetables In Flower Beds

Fresh vegetables are not out of the questions, even if your planting space is limited to a few flower beds around your house.

Many vegetables do well in flower beds and planter boxes with only a little extra care, said Brett Cypert, county agent.

Leaf lettuce makes an ordeal bor-

der plant and it will grow in many areas that receive only partial sunlight. Harvest time for most varieties is 45 to 60 days after planting.

The red-leaf variety, Ruby, not only provides food for the table, but also adds color to your fall flower bed.

Another flower bed vegetable, onions, also does well with limited sunlight. This also applies for chives, leeks and garlic. Parsley is another good border planting fall crop.

For flower beds that receive five to six hours of sun a day, broccoli, cabbage, spinach, beets and carrots will do exceptionally well.

If your beds or boxes receive eight hours or more of sun, tomatoes, eggplants and peppers are a good fall crop, Cypert said.

There are some additional considerations for fall vegetables planted in flower beds. You should plant cold-susceptible crops on the south side of your home for added protection.

Also, water the plants regularly to keep them out of stress, especially during the late summer and fall as the crops near maturity.

Small amounts of fertilizer around the vegetable plants during the season will help produce high yields, as will disease and insect control measures.

The Nose Knows Skunk Perfume

No one will argue that the smell of skunk perfume is potent indeed.

The average human can correctly identify the odor when only .000,000,000,000,071 of an ounce is present in the air.

"Imagine how a skunk must smell to a bloodhound or rabbit," said Ray Sutton, wildlife manager of the International Wildlife Park in Grand Prairie, Tex. "Their senses of smell are measurably greater than ours!"

If you have a question about wildlife you would like to see answered in this space, write to GNUS YOU CAN USE, 601 Wildlife Parkway, Grand Prairie, Tex. 75050.

The Amazon is too wide at many points for a person on one bank to see the opposite shore.



JOHN MONTFORD
Tribute Paid To Montford

Senator John T. Montford (D-Lubbock) was recognized for his work on groundwater issues during the 71st Texas Legislative Regular Session by the Texas Groundwater Conservation Districts Association at their recent meeting in Austin.

Richard Bowers, Manager of the North Plains Water Conservation District, presented the Association's Certificate of Appreciation to Montford during a brief ceremony at the Senator's Austin office.

The Certificate of Appreciation read in part, "The Texas Groundwater Conservation District Association commends you for your outstanding work during the 71st Session of the Texas Legislature. Your desire to ensure that future generations of Texans have an adequate supply of water as demonstrated during the past three sessions by your authorship of legislation directed to accomplish this objective will long be remembered by those of use with similar objectives."

"We especially commend you for authoring SJR 44 and SB 1117, which will extend the Agricultural Water Conservation Equipment Pilot program and SJR 5 and SB 61, which will provide a \$500 million loan fund for public water supplies, wastewater treatment and flood control for towns and cities throughout the State."



Music To Many Ears
 Over 60,000 children have had the advantage of hearing a live symphony orchestra thanks to the educational program of the New Jersey Symphony. The only professional symphonic orchestra in the state, it travels around offering varied audiences a chance to hear beautiful music.

A symphony orchestra which has been receiving growing national recognition will also receive a grant so it can make its music even better known.

Music lovers may be happy to note the orchestra is getting a hand in that endeavor by a grant to the tune of \$570,000 over the next five years. The money comes from the Prudential Foundation a non-profit corporation financed by the Prudential Insurance Co. of America. It has awarded over \$80 million in grants to education, health and urban and community affairs programs since its inception in 1977.

Weight Loss can be a Gain

Losing excess pounds can be a gain in the fight against heart disease.

Together, diseases of the heart and blood vessels, are America's number one killer. But monitoring your weight is a good defense, according to the American Heart Association.

Nearly 66 million people — more than one in four Americans — have some form of heart or blood vessel disease, such as high blood pressure, coronary heart disease, stroke or rheumatic heart disease.

Obesity, 30 percent or more over ideal body weight, is linked to coronary heart disease mainly because of its influence on blood pressure, blood cholesterol and diabetes.

Obesity is also unhealthy because the excess pounds put added strain on the heart.

It's important to check with a physician before deciding to lose weight because he or she can tell if weight loss is necessary and, if so, the best way to do it.

If a diet is necessary, a doctor or dietitian can help select a well-balanced, nutritious eating plan and approve an exercise program.

Avoid fat diets. They don't work and can be dangerous. Successful dieters acquire new eating habits, primarily through behavioral changes. They soon learn to eat when they are hungry and not out of habit.

Food selection and preparation play big roles in weight loss.

The American Heart Association suggests buying meats with the least amount of visible fat and baking or broiling instead of frying.

Avoid high-fat meats such as Bologna, frankfurters, salami and bacon.

To cut cholesterol, reduce your consumption of liver, tongue, kidneys, sweetbreads, heart and brains. Egg consumption should be limited to three egg yolks a week, including those used in cooking.

Remove fat from meat juices before adding them to stews, soups and gravy. Removing the skin from poultry before cooking reduces the fat content.

By monitoring their eating habits most people can lose one to two pounds a week, which is considered ideal.

Most women can shed an average of one to two pounds a week by consuming 1,200-1,500 calories a day. Men can usually lose at this same rate by consuming 1,500-1,800 calories a day.

To lose one pound, you must burn 3,500 calories more than you take in. If you reduce your caloric intake by 500 calories per day for seven days, you can shed a pound a week.

After you reach your goal, you must stabilize your weight. To do so, increase your caloric intake by

AGRICULTURAL MILESTONES

Early interest in improving native Texas cattle by using herd bulls of British breeding gradually evolved into the mistaken belief that the best beef animals could be selected by conformation and color.

One foremost educator and researcher in animal science with the Texas Agricultural Experiment Station told how surprised he was many years ago when demonstrating cutting yields to a class at Texas A&M.

He had selected six calves of superior conformation and six of inferior conformation for the demonstration. These animals were dressed and used in a cutting test for the college meats class. The results were surprising; the animals of superior conformation (short legs, blocky and heavy) didn't yield best.

"Yield" is defined as the percentage of the weight of a carcass found in the boneless, closely trimmed cuts from the loin, the rib, the round and the chuck. It is this closely trimmed roast and steak meat of the carcass that is most likely to be consumed by humans.

The reason the animals of superior conformation had a lower cutting yield of edible meat was that they had more fat. When the researcher reported these facts to his professional society and to producers, the response was somewhat negative. Time and trial, however, would prove him right. This pioneering research led eventually to development of cutability and yield grading as concepts for USDA grading of carcasses from red-meat animals.

Texas Agricultural Experiment Station

approximately 50 or 100 calories a day for the first week. Weigh yourself. Add another 50 to 100 calories a day the following weeks until your weight stabilizes.

Weigh yourself weekly. If you're three to five pounds above your ideal weight, eat less or exercise more (or both) until you lose those extra pounds.

If your goal is to avoid gaining weight, multiply your weight by 15 calories. The total is the average number of calories you burn in one day if

you are moderately active. If you consume this amount of calories per day, you can maintain your weight.

If you're sedentary or get very little exercise, multiply your weight by 13 instead of 15. Less active people burn fewer calories.

Let your weight loss be a gain in the battle against heart disease.

Lynn County Merchants Appreciate Your Business!

These Tahoka Firms Are Sponsoring This Farm News

Lynn County Farm Bureau Pat Green, Manager	Farmers Co-op Association No. 1
Lubbock-Tahoka Federal Land Bank Assn. Jay Dee House, Manager	Production Credit Assn. Don Boydston

YOU make the difference

Donate Blood

Monday, Aug. 7, 1989
 5 p.m.-8 p.m.

Fellowship Hall, First United Methodist Church
 Tahoka, Tx.

500 donors are needed each week to meet the area blood needs! Your blood donation is certainly needed and appreciated.

Those 17 years old wishing to donate can pick up a parent permission form from the Lynn County News.



COFFMAN CUSTOM FARMING 27-12p
CRP SHREDDING
\$6.00 Per Acre
 Night 806-832-5629 Mobile 748-2067

Farm Bureau Insurance
 Insurance For All Your Needs
 Life * Auto * Fire * Farm Liability
 Travelers Health Insurance

 Phone 998-4320 or 998-4591
 PAT GREEN, AGENCY MANAGER

It's just plain horse sense...
 to pay your bills by check.

 That way you have a record of all transactions. If you don't already have a checking account at First National, open one today.

 THE FIRST NATIONAL BANK OF TAHOKA
 MEMBER F.D.I.C.

Thanks!
 To Lynn County and Surrounding Area Farmers for your patronage for over 25 years while I was located at Tahoka Equipment Co. & Taylor Tractor.
Your Support Is Greatly Appreciated!

Jacky Henry

I am now located at
D&H Tire & Equipment
 marketing the **Traction Stabilizer** & new and used farm equipment.
 Come by for coffee and doughnuts!

The Innovative
TRACTION STABILIZER
 Truly an innovation in precision farming. The Traction Stabilizer is one of the most unique ways of reducing operating costs and at the same time becomes a tangible asset.
 Less Tire Slippage and Less Weight To Get Traction Means More Horsepower At The Drawbar
 \$\$ SAVES FUEL - SAVES TIRES - SAVES LABOR - SAVES WEIGHTS \$\$

CALL JACKY HENRY AT: **806-998-4177**
 OR: D&H TIRE - PHONE 998-5488
 HOME PHONE - 998-4964

Texan visitors put on the feedbag for hundreds of feathered friends

(The following story appeared in the "Ruidoso News" on July 20, 1989 written by Carolyn Short)

With summer comes the fresh air, blossoming wildflowers and burgeoning wildlife.

Birds, squirrels, chipmunks and deer begin munching the fresh sprigs of grass peaking up through fallen pine needles and nuts dropped from the tops of giant trees.

And then there are the campers. But Royce and Mabel Skinner from Lamesa, formerly of Lynn County for several years (they lived very close to Wilson), are not the average summer-at-Ruidoso campers.

In addition to the usual supply of camping gear that includes a gas cook stove, lanterns and food, the Skinners also pack in an extra load of sunflower seeds, sugar and Texas pecans.

The Skinners have an average of an extra 100 or so dinner guests visit their campsite every day.

Guests with long needle-like beaks or brown furry faces with over-stuffed cheeks grace the Skinner campsite knowing that a gener-

ous hand will always throw a morsel their way.

"Texicans" Royce and Mabel Skinner return to the same spot at Mountain High RV Park every summer and every summer, the animals return to see them and their bird and squirrel feeders.

Royce said he and his wife of more than 50 years return to Ruidoso because of the amazing beauty of the area and they return to the same RV park because everyone is so friendly.

"Everybody knows everybody. People don't stay strangers very long," Mabel said. "And you could stay here a lifetime and not see everything."

Royce's pride and joy of his little spot on the side of the mountain is a gigantic alligator juniper that occupies a large portion of his front yard.

But Mabel and Royce don't just feed the birds, they study and identify the different varieties that find their way into their campsite.

Royce said they see as many as

ten different varieties in a day and feeding times almost always draw hundreds in a day.

"We get 30 or 40 there at a time," Royce added.

Juncos, grosbeaks, Steller's bluejays and several different varieties of hummingbirds are the most frequent visitors.

Royce said one variety of hummingbird, known as the rufous hummingbird, is a brilliant iridescent orange and is one of the more striking varieties that visits the Skinner's hummingbird feeders.

"He's the mean one, though," Royce said. "I tell everyone he keeps a switchblade under his wing."

He added that the bluejays are the persistent ones.

"They holler if you don't get up and feed 'em."

Royce added that he and his wife don't have any particular reason for feeding the birds and squirrels; "just 'cause they're there," he said. "It's something for us old folks to

street parade, big name musical entertainment and a dance each night. Contact XIT Rodeo, P.O. Box 967, Dalhart 79022 (806/249-5646).

August 12-13 — Antique Sale and Celebration, Calvert. What "chocolate" is to Hershey, PA, "antiques" are to Calvert, TX! Carriage rides, a country western dance, and a visit to the old time soda fountain are features of this annual sale and celebration. Dealers large and small open their doors to "browsers" and "collectors" as they celebrate antediluvian delights. Contact P.O. Box 367, Calvert 77837 (409/364-2933).

August 18-19 — International BBQ Cookoff, Taylor. This could be the best BBQ of the summer. Entries in this annual cookoff compete for showmanship and taste. Categories include beef, pork, poultry, goat, lamb, wild game, and seafood. Open registration begins at 10 a.m. on Friday; judging begins on Saturday. Also, arts & crafts, an egg toss, horseshoe & washer pitch, and more. Contact the Taylor International BBQ Cookoff, P.O. Box 231, Taylor 76574 (512/352-6364).

August 18-19 — International BBQ Cookoff, Taylor. This could be the best BBQ of the summer. Entries in this annual cookoff compete for showmanship and taste. Categories include beef, pork, poultry, goat, lamb, wild game, and seafood. Open registration begins at 10 a.m. on Friday; judging begins on Saturday. Also, arts & crafts, an egg toss, horseshoe & washer pitch, and more. Contact the Taylor International BBQ Cookoff, P.O. Box 231, Taylor 76574 (512/352-6364).

August 18-19 — International BBQ Cookoff, Taylor. This could be the best BBQ of the summer. Entries in this annual cookoff compete for showmanship and taste. Categories include beef, pork, poultry, goat, lamb, wild game, and seafood. Open registration begins at 10 a.m. on Friday; judging begins on Saturday. Also, arts & crafts, an egg toss, horseshoe & washer pitch, and more. Contact the Taylor International BBQ Cookoff, P.O. Box 231, Taylor 76574 (512/352-6364).

August 18-19 — International BBQ Cookoff, Taylor. This could be the best BBQ of the summer. Entries in this annual cookoff compete for showmanship and taste. Categories include beef, pork, poultry, goat, lamb, wild game, and seafood. Open registration begins at 10 a.m. on Friday; judging begins on Saturday. Also, arts & crafts, an egg toss, horseshoe & washer pitch, and more. Contact the Taylor International BBQ Cookoff, P.O. Box 231, Taylor 76574 (512/352-6364).

August 18-19 — International BBQ Cookoff, Taylor. This could be the best BBQ of the summer. Entries in this annual cookoff compete for showmanship and taste. Categories include beef, pork, poultry, goat, lamb, wild game, and seafood. Open registration begins at 10 a.m. on Friday; judging begins on Saturday. Also, arts & crafts, an egg toss, horseshoe & washer pitch, and more. Contact the Taylor International BBQ Cookoff, P.O. Box 231, Taylor 76574 (512/352-6364).

August 18-19 — International BBQ Cookoff, Taylor. This could be the best BBQ of the summer. Entries in this annual cookoff compete for showmanship and taste. Categories include beef, pork, poultry, goat, lamb, wild game, and seafood. Open registration begins at 10 a.m. on Friday; judging begins on Saturday. Also, arts & crafts, an egg toss, horseshoe & washer pitch, and more. Contact the Taylor International BBQ Cookoff, P.O. Box 231, Taylor 76574 (512/352-6364).

August 18-19 — International BBQ Cookoff, Taylor. This could be the best BBQ of the summer. Entries in this annual cookoff compete for showmanship and taste. Categories include beef, pork, poultry, goat, lamb, wild game, and seafood. Open registration begins at 10 a.m. on Friday; judging begins on Saturday. Also, arts & crafts, an egg toss, horseshoe & washer pitch, and more. Contact the Taylor International BBQ Cookoff, P.O. Box 231, Taylor 76574 (512/352-6364).

August 20 — Oasis of West Texas Triathlon, Balmorhea. The beautiful Davis Mountains set the course

for this West Texas Triathlon. 1,000 meter swim at Balmorhea State Park, 10-K run on old highway 290, and a bicycle challenge 10 miles out and back to Balmorhea. T-shirts for competitors; open registration with \$20 fee. Spectators are welcome along the course and volunteers are still needed and appreciated. Contact P.O. Box 251, Balmorhea 79718 (915/375-2323).

August 19 — Old Gruene Market Days, Gruene. Antiques, a farmer's market, arts & crafts, and live entertainment overflow the streets of this historic village. Located four miles north of New Braunfels, Old Gruene Market Days occur the third Saturday of each month, through October. Free admission and lots of fun from 10 a.m.-6 p.m. Gruene also invites you to visit their antique coop, both of their wineries and watch the local potter spin clay into art. And, if your boots need to scoot, historic Gruene Hall (Texas' oldest dance hall) hosts a dance each Saturday night. Contact Larry Lehr, 1720 Hunter Road, New Braunfels 78130 (512/629-2351).

August 24 — Ice Cream Crankoff, Paducah. Say "good bye" to summer on the Paducah town square. Open registration for competition in three ice cream categories. Winners of the "Plain," "Exotic" and "Fruit" flavor specialties win a prize ribbon or trophy. Visitors can compete in the Frog Jump, Turtle Race or Bubble Gum Blowing contests. Lots of food booths and twilight entertainment by the Paducah High School Band. Food booths open at 5 p.m. and judging begins at 7:30. Contact Box 91, Paducah 79248 (806/492-2141).

John F. Kennedy and the Memory of a Nation, The Sixth Floor, Dallas. Because of so many requests for information and a need for understanding, the Sixth Floor is a permanent exhibit which relates the life and legacy of President John F. Kennedy. Through photographs, narrative history and documentary film, visitors to the sixth floor of the former Texas School Book Depository may reflect on a dominant segment of 20th century America. Contact the Dallas County Historical Foundation, 411 Elm Street, Dallas 75202 (214/653-6666).

All month — GOLD!, Fort Worth Museum of Science and History, Fort Worth. This traveling exhibit from France presents the history and fascination of gold. Pan for gold flakes like the prospectors of the

Rush, and see an ingot melted into liquid and then molded again. Economic, artistic and industrial uses are examined; visitors may also see a variety of gold jewelry and objects on display. Contact 1501 Montgomery Street, Fort Worth 76107 (817/732-1631). Continues through September 4.

Through August 27 — Texas State Railroad, Texas State Railroad State Historical Park, Rusk. A ride on the Texas State Railroad is a ride into history. The steam-powered

engine pulls the railroad cars along a track through beautiful East Texas woods. Spring storms have called for necessary repairs and revised schedules, yet visitors may still enjoy a ride on the "iron horse." Trips are out of Palestine, everyday, except Tuesday and Wednesday, through August 27. Advanced reservations are strongly encouraged. Park facilities provide for camping, picnicking, and recreational vehicles. Contact Texas State Railroad, P.O. Box 39, Rusk 75785 (214/683-2561).



August 1989

The following events, selected by Jill Hoffman of the Tourism Division of the Texas Department of Commerce, are but a few of the many excellent opportunities offered by communities across the state.

August 2-6 — Texas International Fishing Tourney, Port Isabel/South Padre Island. Register on Wednesday, enjoy the Family Play Day on Thursday, and fish all day on Friday and Saturday. Go to the catfish supper on Saturday night and be sure to stay for Sunday's award presentation—maybe you'll win something! Contact TIFT, P.O. Box 2715, South Padre Island 78597 (512/943-8438).

August 3, 4, & 5 — Third Annual XIT Rodeo & Reunion, Dalhart. Started as a reunion for former ranch hands of the majestic Texas spread, the annual XIT reunion has grown into a popular event for cowboys and greenhorns alike. World's biggest free BBQ is served along with free "stew feed" & "watermelon feed." Non-pro rodeo includes popular events such as wild cow milking, team roping, and a pony express race. Also, see an antique car show,

street parade, big name musical entertainment and a dance each night. Contact XIT Rodeo, P.O. Box 967, Dalhart 79022 (806/249-5646).

August 3-6 — Texas Folklife Festival, The University of Texas Institute of Texan Cultures at San Antonio, San Antonio. Bring your walking shoes, cameras, and taste buds to the 18th annual Folklife Festival. More than 30 ethnic groups share their unique culture, all having contributed to the singular legend of Texas. Try your hand at crafts & skills, including horsehair rope spinning, basketmaking, and horseshoe hammering. Fifteen acres of foods, entertainment and colorful Lone Star heritage, enough for any Texan. Tickets at the gate are \$6 for adults, \$2 for children 6-12. Friday, Aug. 4, noon to 1 p.m. only, admission reduced to \$1 for adults and free for children under 12. Hours are 5-11 p.m. Thurs., noon-11 p.m. Fri. & Sat. and noon-6 p.m. on Sunday. Contact Texas Folklife Festival, P.O. Box 1226, San Antonio 78294 (512/226-7651).

August 7-12 — 75th De Leon Peach and Melon Festival, De Leon. Peaches and melons, and melons and peaches! De Leon celebrates their prize cash crop with awards to the best. Also, old fiddlers contest, gospel singing, and the crowning of the "Diamond Jubilee De Leon

Furniture, Carpet, Appliances, TVs and VCRs!

Open 9:00 a.m.-5:30 p.m. Monday thru Saturday

Furniture Olé

SW Corner of Square 998-4267 Tahoka, Texas



FIRST BAPTIST CHURCH OF TAHOKA
SUNSHINE SCHOOL
will begin
TUESDAY, AUGUST 29
FOR CHILDREN
1-4 YEARS OLD
PRE-REGISTRATION
IS REQUIRED
FOR MORE INFORMATION CALL:
MARCI GANDY 998-5458
OR THE CHURCH OFFICE 998-4833

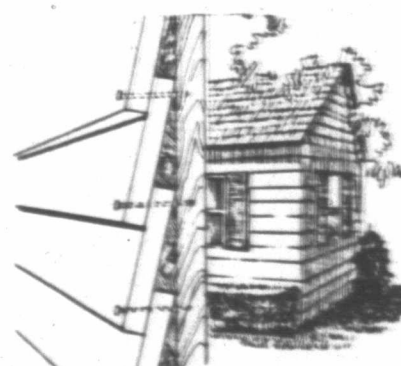


3-DAY-SALE

PRICES GOOD THURSDAY, FRIDAY AND SATURDAY



25-YR. SILICONE ACRYLIC CAULK
White Only
\$1.49 Tube



SIDING
16" HARDBOARD LAP

A grade! Smooth 12" wide siding
\$5.79 PC.

The higher the R-value the greater the insulating power. Ask for a free R-value fact sheet.

KRAFT FACED R-11 FIBERGLAS® INSULATION

Saves money and energy. Offers a strong vapor barrier to seal out moisture.
3-1/2"x15"x70". Covers 88.12 sq. ft. (118809)



\$11.89 Roll



BATHROOM WALL BOARD

White with Gold Fleck 4'x8'

\$9.95

5-PACK BIC SHAVERS SPECIAL 49¢ PK.

HIGGINBOTHAM-BARTLETT CO.

PHONE 998-4000

CASH-MASTERCHARGE-VISA
DISCOVER-AMERICAN EXPRESS

TAHOKA TEXAS

Free Glaucoma Tests Offered

The Sheets Eye Foundation will be conducting free glaucoma tests Tuesday, Aug. 15, between 10:30-noon at the Brownfield Senior Center.

Glaucoma is one of the leading causes of blindness in the United States. There are no symptoms and only with the finding of increased intra-ocular pressure is the diagnosis made. The high pressure in the eye causes damage to the optic nerve. This damage causes changes in the peripheral or side vision known as "visual field defects."

The central vision is not affected until very late in the disease, so the patient may look, see, and feel completely normal until it is too late.



WINS PICKUP—A Ralls farmer, Jimmy Moore, fourth from left, was presented a 1989 Chevrolet 4x4 diesel pickup on July 18 after being chosen the winner from 94,000 entries in the Ruby Premium Diesel contest conducted by Farmland Industries and its 500-member Double Circle Cooperatives in 19 states. The pickup was presented by Abernathy Consumers Fuel Assn., Double Circle Farm Supply in Tahoka, and United Farm Industries in Plainview, at Brunken Chevrolet in Lubbock. From left above are Dub Royal, Abernathy; Darald Norton, manager of Double Circle in Tahoka, Jackie Dane of Farmland Industries, Moore, Tommy Baker of Plainview, and John Cox of Brunken in Lubbock.

For health insurance with old-fashioned personal attention, see me.



Ko Davis
105 N. 10th
Stato, Tx
826-5863

Personal Health Insurance the State Farm way

Like a good neighbor, State Farm is there.

State Farm Mutual Automobile Insurance Company
Home Office: Bloomington, Illinois

Wilson School Board Meeting Held July 24

The Wilson ISD Board of Trustees met Monday night, July 24, in regular session. After the minutes were approved, the superintendent reported to the board on new legislation affecting Texas schools, the auditor's work, the progress of summer work projects, the reassignments of a teacher, and the date for a career ladder hearing.

David Williams then passed out to each board member copies of a preliminary 1989-90 school budget.

The school district had an accreditation visit from the Texas Education Agency in April and the report was received last week. During open session, the board discussed and reviewed the T.E.A. accreditation report. The status of the Wilson school district is "fully accredited," the highest accreditation rating given by T.E.A.

Lester Gickhorn and Bobby Lee were selected as delegates to the TASA/TASB Convention in San Antonio this fall.

The board approved a pay scale for bus drivers who drive to extra-curricular events. They extended the agreement with TASB for

workmen's compensation and approved the lease of copiers for use in the school. In other action, the board approved United Group Insurance Company to handle the student and football insurance.

The board, also, approved Policy Update 34 for the policy manual, discussed the personal property tax, and amended the 1988-89 budget.

Resignations from Jane Graham and Vicki Luckenback were accepted, Nancy Fish and Stacy Flournoy were hired to teach in the elementary.

The next regular board meeting will be at 8 p.m. on Aug. 14, in the elementary board room.

Your Subscription To THE LYNN COUNTY NEWS Expires In August

Mail Your Subscription Fee To:
The Lynn County News • P.O. Box 1170 • Tahoka, Texas 79373

Lynn County	\$11.25 Year
Elsewhere in Texas	\$14.25 Year
Out of Texas	\$15.50 Year

- | | |
|---|------------------------------------|
| Adams, Phil | Jolly, J.W. |
| Aldridge, Charlene | Kollinger, Richard and Toni |
| Aten, James | Lewis, Joe |
| Belaw, Danny and Mary | Long, R.V. and Billie |
| Bell, Lindel and Jean | Luttrell, Morris |
| Bell, Loyd | Martin, Jeff |
| Blankenship, E.L. | Mason, Jack |
| Box, Roy Don and Kathy | Mason, Joe |
| Bragg, Jimmy | Mason, Thomas |
| Brosch, Glenn | Methodist Hospital Medical/Library |
| Brosch, E.L. | Regional Services |
| Brown, Annis | McAfee, Mark and Vivian |
| Bueermann, John R. | McAllister, B.B. |
| Burr, Mr. and Mrs. C.W. | McGinty, Mrs. Fred |
| Cawthron, Mary Lou | McMillan, Mrs. H.L. |
| Clem, Jammie A. | Neules, Edwin |
| Draper, Milt, and Dorothy | Paradis, Frank |
| Durham, JC | Pridmore, Sam |
| Edwards, Cass | Ragen, Mrs. Joe |
| Edwards, John Dudley | Reece, J.B. |
| Edwards, Milton | Reed, Billie |
| Edwards, Robert | Reed, Leon and Tresa |
| Ferguson, Curtis and Kelli | Reed, Veta |
| First United Methodist Church of Tahoka | Renfro, Steve and Jo Beth |
| Fisher, Don | Roberts, Edgar and Vesta |
| Forsythe, Mrs. Mural (L.A.) | Rodriguez, Simon and Sylvia |
| Gardenhire, Billy | Russell, Chloe |
| Gass, F.R. | Saleh, John |
| Guin, Homer F. | Sanders, Mrs. Bob |
| Gurley, W.W. | Schulz, Robert E. |
| Hallmark, Pierce and Connie | Seale, Bland |
| Hamilton, Ed | Sikes, Mrs. Emily |
| Harvick, Joe | Smith, Shirley |
| Havens, Orville and Jeanette | Smith, Wayman |
| Henry, Jacky | Sproules, Ludie |
| Howell, J.B. | Thomas, Frank |
| Huffaker, Brad | Timmons, Delbert |
| Ingle, Mildred | Verner, A.C. |
| Inman, Sherman (S.W.) | Weathers, Ethel |
| Jackson, O.D. | Wheeler, Mr. and Mrs. V.C. |
| James, Gayland and Kay | Wied, C.A. |
| Jaquest, Jackie and Barbara | Wood, Hilton and Gerald Deane |
| Jenkins, Jewel Inez | Yeatts, C.E. |



The average 18-month-old little girl will be just about twice as tall and five times as heavy at the age of 18.

1989 Property Tax Rates in City of Wilson

This notice concerns 1989 property tax rates for Wilson City. It presents information about three tax rates. Last year's tax rate is the actual rate the taxing unit used to determine property taxes last year. This year's effective tax rate would impose the same total taxes as last year if you compare properties taxed in both years. Compare it to the tax rate the taxing unit proposes for this year. This year's rollback tax rate is the highest tax rate the taxing unit can set before taxpayers can start tax rollback procedures. In each case these rates are found by dividing the total amount of taxes by the tax base (the total value of taxable property) with adjustments as required by state law. The rates are given per \$100 of property value.

Last year's tax rate:	
Last year's operating taxes	\$ 49,688
+ Last year's debt taxes	\$ -0-
= Last year's total taxes	\$ 49,688
+ Last year's tax base	\$ 6,289,630
= Last year's total tax rate	\$.79 / \$100

This year's effective tax rate:	
Last year's adjusted taxes	\$ 49,688
(after subtracting taxes on lost property and taxes to correct appraisal roll errors)	
+ This year's adjusted tax base	\$ 6,442,250
(after subtracting taxes on new property)	
= This year's effective tax rate	\$.7712 / \$100
x 1.03	
= Maximum rate unless unit publishes notices and holds hearings	\$.7944 / \$100

This year's rollback tax rate:	
Last year's adjusted operating taxes	\$ 49,688
(after subtracting taxes on lost property and taxes to correct appraisal roll errors and adding taxes lost in court suits)	
+ This year's adjusted tax base	\$ 6,442,250
(after subtracting taxes on new property)	
= This year's effective operating rate	\$.7712 / \$100
x 1.08	
= This year's maximum operating rate	\$.8328 / \$100
+ This year's debt rate	\$ -0 / \$100
= This year's rollback rate	\$.8328 / \$100

SCHEDULE A: Unencumbered Fund Balances

The following balances will probably be left in the unit's property tax accounts at the end of the fiscal year. These balances are not encumbered by a corresponding debt obligation.

Type of Property Tax Fund	Balance
General Fund	\$641.13

This notice contains a summary of actual effective and rollback tax rate calculations. You can inspect a copy of the full calculations at Lynn County Appraisal District.
Name of person preparing this notice: Dovie Miller
Title: Chief Appraiser
Date Prepared: July 26, 1989

1989 Property Tax Rates in Wilson ISD

This notice concerns 1989 property tax rates for Wilson ISD. It presents information about three tax rates. Last year's tax rate is the actual rate the taxing unit used to determine property taxes last year. This year's effective tax rate would impose the same total taxes as last year if you compare properties taxed in both years. Compare it to the tax rate the taxing unit proposes for this year. This year's rollback tax rate is the highest tax rate the taxing unit can set before taxpayers can start tax rollback procedures. In each case these rates are found by dividing the total amount of taxes by the tax base (the total value of taxable property) with adjustments as required by state law. The rates are given per \$100 of property value.

Last year's tax rate:	
Last year's operating taxes	\$ 413,392
+ Last year's debt taxes	\$ -0-
= Last year's total taxes	\$ 413,392
+ Last year's tax base	\$ 51,673,950
= Last year's total tax rate	\$.80 / \$100

This year's effective tax rate:	
Last year's adjusted taxes	\$ 412,924
(after subtracting taxes on lost property and taxes to correct appraisal roll errors)	
+ This year's adjusted tax base	\$ 49,469,560
(after subtracting taxes on new property)	
= This year's effective tax rate	\$.8347 / \$100
x 1.03	
= Maximum rate unless unit publishes notices and holds hearings	\$.8597 / \$100

This year's rollback tax rate:	
Last year's adjusted operating taxes	\$ 412,924
(after subtracting taxes on lost property and taxes to correct appraisal roll errors and adding taxes lost in court suits)	
+ This year's adjusted tax base	\$ 49,469,560
(after subtracting taxes on new property)	
= This year's effective operating rate	\$.8347 / \$100
x 1.08	
= This year's maximum operating rate	\$.9285 / \$100
+ This year's debt rate	\$ -0 / \$100
= This year's rollback rate	\$.9285 / \$100

SCHEDULE A: Unencumbered Fund Balances

The following balances will probably be left in the unit's property tax accounts at the end of the fiscal year. These balances are not encumbered by a corresponding debt obligation.

Type of Property Tax Fund	Balance
General Fund	\$362,352

This notice contains a summary of actual effective and rollback tax rate calculations. You can inspect a copy of the full calculations at Lynn County Appraisal District.
Name of person preparing this notice: Dovie Miller
Title: Chief Appraiser
Date Prepared: July 26, 1989

INTS FOR HOMEOWNERS

Real Estate and Divorce

One of the most difficult aspects of a divorce, aside from the emotional turmoil, is settling the division or distribution of property. Getting an expert, objective appraisal of the property's value is essential in the determination of a fair settlement.



While real estate appraisers cannot give advice on personal matters or on divorce court law, they are knowledgeable about the governing rules and can counsel clients as to the effects of estate taxes, capital gains taxes and the marketability of any particular real property asset.

An appraisal is an impartial estimate of the value of real estate formulated by an expert who knows the factors which comprise the current behavior of the real estate market. The appraisal process follows an established pattern of client consultation, research, property inspection, analysis and evaluation.

After discussing the purpose of the real estate appraisal with the client, the appraiser conducts research using such resources as title and mortgage records, assessment and zoning files and multiple listing services. During the actual property inspection, the appraiser evaluates the physical condition of the property, both exterior and interior. The data is then analyzed to arrive at an estimate of value which can be substantiated and defended.

"In most cases, the client's attorney will be able to recommend an appraiser who is qualified and would be able to serve as an expert witness in a court of law," notes Louie Reese III, SRPA, president of the Society of Real Estate Appraisers.

When an appraiser is being selected, it is important that the client is satisfied with the appraiser's experience in the type of property being contested. If the client's case involves residential and income property, the appraiser should be experienced in both disciplines.

"A professional appraiser will be able to furnish the client with a list of qualifications," comments Reese. "A good indication of the appraiser's qualifications is the professional designation held."

Listed after the appraiser's name, a designation signifies the appraiser's field of expertise. The Society of Real Estate Appraisers, the oldest independent real estate appraisal association with 20,000 members nationwide, awards three designations to appraisers who have passed stringent education and experience requirements.

The SRA (Senior Residential Appraiser) designation is awarded to appraisers who have demonstrated expertise in the appraisal of one-to-four-family residential properties. The SRPA (Senior Real Property Appraiser) designation is given to appraisers with proven skill in appraising residential as well as income producing properties (such as apartments or commercial buildings). The SREA (Senior Real Estate Analyst) designation is awarded for expertise in providing analytic and consulting services to those interested in making real estate investment decisions.

For a free copy of the booklet "What is an Appraisal?" send a long self-addressed stamped envelope to "Real Estate and Divorce," Society of Real Estate Appraisers, 225 North Michigan Avenue, Suite 724, Chicago, IL 60601-7601.



Tourism Division, Texas Department of Commerce
Jill Hoffman
P.O. Box 12008
Austin, Texas 78711-2008
512/462-9191

August 1989

All month — TINWORK: Mexico and New Mexico, Art Museum of Southeast Texas, Beaumont. The legacy of Spanish craftsmen is alive in the handwork of Old and New Mexican artisans. Historically developed as a substitute for intricate and expensive silverwork, tinwork is commonly seen in the form of frames, niches, and candle holders. This exhibit presents a collection of pieces dating 1850-1940 in the form of dance rattles, chandeliers, and as decorative ornaments for religious paintings. Although still practiced today, and recognized as a Spanish craft, tinwork collections are not often seen in American museums. Contact P.O. Box 3703, Beaumont 77704 (409/832-3432). Continues through September 17.

All month — Peruvian Textiles, Old Jail Art Center, Albany. The Lake Titicaca Basin and the Cuzco Regions of Peru are known as home to centuries of fine weaving and beautiful dyes. But you have to travel only as far as Albany to see a collection of these multicolored textiles. On loan from Dallas collectors, Mr. & Mrs.

Tahoka Student Receives Degree

Deirdre Daniell, daughter of Mr. and Mrs. Dean Daniell of Tahoka, was one of 468 students to receive degrees during spring commencement ceremonies at Abilene Christian University.

Daniell received a bachelor of science in education degree in life-earth science education and psychology education.

Cartier Montgomery and Ms. Marita Benavides, the Old Jail Art Center presents many exquisite examples of this Peruvian tradition. Contact Old Jail Art Center, Route One, Box One, Albany 76430 (915/762-2269). Continues through September 3.

All month — Southwest Narrative Painting, San Antonio Museum of Art, San Antonio. Visitors to the Museum of Art will see pictures that tell a story. Contemporary painters from Texas, New Mexico, and Arizona.

Mastering Money Management

If the month seems longer than the money, or you just need some refreshers on money management, then you might want a letter series on Money Management. This series will be mailed from the County Extension Office and will include lessons on net worth, spotting spending leaks, financial success, savings and investments, using credit and record keeping. If you want to receive this money management series, contact the County Extension Office by completing and mailing in the form below or calling 998-4650 by Aug. 4.

I would like to receive the Mastering Money Management Letter Series:

Name _____
Address _____
Telephone _____

Return by Aug. 4 to: Annis Brown, Box 669, Tahoka, Texas 79373

Official Records:
Marriage Licenses
Carl Everett and Mary Jo Jennings
Timothy L. DeVine and Tressie Ann Austem.

News From ...
Home Economics Agent
Annis Brown
Lynn County Extension Office

"Todos Unidos en el Amor" Cruzada de la Comunidad

AGOSTO 13-19 • 7:30 P.M.

La Carpa esta localizada en la tierra de Co-op cerca de Circulo 4, O'Donnell



JOE LOPEZ, Evangelista

¡Todos Bienvenidos!

NENA LEAL
Solista



Bilingual

ADAM ZEPEDA
Evangelista de Canto

Respaldata por la Primera y la
Mision Bautista

"One in the Bond of Love" AREA-WIDE CRUSADE

AUGUST 13-19 • 7:30 P.M.

Tent Located on Co-op yard by Circle 4, O'Donnell

EVERYONE WELCOME

Youth Rally • Concert by Saturday Night

1989 Property Tax Rates in Tahoka ISD

This notice concerns 1989 property tax rates for Tahoka ISD. It presents information about three tax rates. Last year's tax rate is the actual rate the taxing unit used to determine property taxes last year. This year's effective tax rate would impose the same total taxes as last year if you compare properties taxed in both years. Compare it to the tax rate the taxing unit proposes for this year. This year's rollback tax rate is the highest tax rate the taxing unit can set before taxpayers can start tax rollback procedures. In each case these rates are found by dividing the total amount of taxes by the tax base (the total value of taxable property) with adjustments as required by state law. The rates are given per \$100 of property value.

Last year's tax rate:

Last year's operating taxes	\$ 598,006
+ Last year's debt taxes	\$ -0-
= Last year's total taxes	\$ 598,006
+ Last year's tax base	\$ 83,056,490
= Last year's total tax rate	\$.72 / \$100

This year's effective tax rate:

Last year's adjusted taxes (after subtracting taxes on lost property and taxes to correct appraisal roll errors)	\$ 596,390
+ This year's adjusted tax base (after subtracting taxes on new property)	\$ 83,289,560
= This year's effective tax rate	\$.7160 / \$100
x 1.03	
= Maximum rate unless unit publishes notices and holds hearings	\$.7375 / \$100

This year's rollback tax rate:

Last year's adjusted operating taxes (after subtracting taxes on lost property and taxes to correct appraisal roll errors and adding taxes lost in court suits)	\$ 596,390
+ This year's adjusted tax base (after subtracting taxes on new property)	\$ 83,289,560
= This year's effective operating rate	\$.7160 / \$100
x 1.08	
= This year's maximum operating rate	\$.7964 / \$100
+ This year's debt rate	\$ -0 / \$100
= This year's rollback rate	\$.7964 / \$100

SCHEDULE A: Unencumbered Fund Balances

The following balances will probably be left in the unit's property tax accounts at the end of the fiscal year. These balances are not encumbered by a corresponding debt obligation.

Type of Property Tax Fund	Balance
General Fund	\$1,300,000

This notice contains a summary of actual effective and rollback tax rate calculations. You can inspect a copy of the full calculations at Lynn County Appraisal District.
Name of person preparing this notice: Dovie Miller
Title: Chief Appraiser
Date Prepared: July 26, 1989

1989 Property Tax Rates in County of Lynn

This notice concerns 1989 property tax rates for Lynn County. It presents information about three tax rates. Last year's tax rate is the actual rate the taxing unit used to determine property taxes last year. This year's effective tax rate would impose the same total taxes as last year if you compare properties taxed in both years. Compare it to the tax rate the taxing unit proposes for this year. This year's rollback tax rate is the highest tax rate the taxing unit can set before taxpayers can start tax rollback procedures. In each case these rates are found by dividing the total amount of taxes by the tax base (the total value of taxable property) with adjustments as required by state law. The rates are given per \$100 of property value.

Last year's tax rate:

Last year's operating taxes	\$ 646,499
+ Last year's debt taxes	\$ -0-
= Last year's total taxes	\$ 646,499
+ Last year's tax base	\$ 248,653,840
= Last year's total tax rate	\$.26 / \$100

This year's effective tax rate:

Last year's adjusted taxes (after subtracting taxes on lost property and taxes to correct appraisal roll errors)	\$ 646,219
+ This year's adjusted tax base (after subtracting taxes on new property)	\$ 243,161,800
= This year's effective tax rate	\$.26575 / \$100
x 1.03	
= Maximum rate unless unit publishes notices and holds hearings	\$.27372 / \$100

This year's rollback tax rate:

Last year's adjusted operating taxes (after subtracting taxes on lost property and taxes to correct appraisal roll errors and adding taxes lost in court suits)	\$ 646,219
+ This year's adjusted tax base (after subtracting taxes on new property)	\$ 243,161,800
= This year's effective operating rate	\$.26575 / \$100
x 1.08	
= This year's maximum operating rate	\$.28701 / \$100
+ This year's debt rate	\$ -0 / \$100
= This year's rollback rate	\$.28701 / \$100

SCHEDULE A: Unencumbered Fund Balances

The following balances will probably be left in the unit's property tax accounts at the end of the fiscal year. These balances are not encumbered by a corresponding debt obligation.

Type of Property Tax Fund	Balance
General Fund	\$539,826

This notice contains a summary of actual effective and rollback tax rate calculations. You can inspect a copy of the full calculations at Lynn County Appraisal District.
Name of person preparing this notice: Dovie Miller
Title: Chief Appraiser
Date Prepared: July 26, 1989

Out of the Woods . . . by Jewell (Wood) Jones

I have single-handedly, in the past week, brought rain to the state of New Mexico, clarified the question of child-rearing to at least one person I know, and raised serious doubts about the joys of vacationing to me and two others who used to have it -- joy, that is.

This was the one week in the entire year that I have looked forward to with great anticipation. I pored over maps. I read pages of information on various "places you wouldn't want to miss". I made reservations. I hoarded money. I dreamed of the things we would do.

Unfortunately, the day came when these dreams became an ugly reality. "The Vacation" was here. Oh, we didn't think it was so awful when we started out. Our family of four eagerly awaited the arrival of my twin sister who was going to travel with us to the mountains of New Mexico. Little did she know that her worst nightmares were about to begin.

The trip began innocently enough. We poked, pushed and crammed camping gear into every available inch of space in the trunk and on top of the car, and then crammed five cheerful people inside. Everything remained in place until we got to New Mexico, except that the people became less and less cheerful. This was due mostly to the fact that two of the pint-sized people aggravated three of the large-size people. Size counts for nothing when it comes to energy, believe me . . . four-year-olds pack a lot of energy (which mostly comes out in whines and wiggles when forced to remain relatively still in confined places for a time period of anything longer than five minutes).

The five most commonly heard phrases during this trip were: 1) Move over. 2) I'm hot. 3) I'm thirsty. 4) That's mine. 5) You kids quit that. My husband and I are, quite frankly, used to hearing this type of drizzle. My sister, however, is not accustomed to being around small children and the poor thing went

quietly, but directly, to stark raving bonkers without passing go. I believe this happened just before we crossed the state line into New Mexico.

We did manage to get to a camp site just northeast of Santa Fe, where we stopped to ask about campfire restrictions. We had, of course, heard the news reports of how dry the conditions were in New Mexico and Colorado and that open campfires were not being allowed in most areas. We were relieved to learn that these restrictions had been lifted, as some rain had been received in the area just prior to our arrival.

So, we bought a load of wood, set up the tent, blew up air mattresses, lugged out the food, started a fire, and began to enjoy the evening. It was great. At dark, we zipped everybody into a sleeping bag and settled in for the night, listening to the sounds of the Pecos River just a few yards away. It was so peaceful . . . so cool . . . so dark . . . so why couldn't I sleep? I tossed, turned, sighed, and when dawn finally came I was sure I hadn't slept longer than 20 minutes at a stretch. I looked like the Night of the Living Dead when I arose after a night of "fresh air and natural living". I know this because my sister told me how pretty I looked. She's real sweet.

So we cooked breakfast and us girls went off for a hike (keeping our eyes peeled for an actually enclosed bathroom) while the guys hoisted their fishing poles and took off upstream. The day progressed quite nicely until about 3:30 p.m. when it began to rain. We stared at each other in the tent (five of us) until the bickering started. Eventually, we got so stir-crazy that we hunted for our plastic trash bags, cut holes in the bottom of them for our eyes, and became the "trash head people". None of us had thought it likely that we would need rain coats in the drought the state had been experiencing.

So there we were, wandering around in the rain with 20-gallon trash bags over our heads. Nobody talked to each other. Nobody was happy. The rain kept coming. Everybody got hungry. Finally my sister and husband were determined to start a campfire regardless of Mother Nature, dug out some dry wood, lit it, and sent up enough smoke that Smoky the Bear should have come on the run. They tried for over an hour to cook some chicken in the rain, holding another trash bag over the top to keep the rain from dousing the fire. Meanwhile, me and the kids were sitting in the car eating Cheetos and griping.

About 8 o'clock, they gave up trying to cook and wrapped the chicken in some aluminum foil and just set it over the fire. At that point, we decided to drive into a town about a half-hour's

drive away for supper. About a third of the way into town, I told my husband that I really was not looking forward to sleeping in a soggy tent and why didn't we just find a hotel? We discussed that awhile, then decided, by golly, if we were gonna leave we would just go on ahead to Santa Fe, which was our destination anyway (1-1/2 hours away).



So at 9 p.m. we were loading up soggy camping gear into a soggy car. We arrived in Santa Fe about 11 p.m., still wet, hungry and tired. After a very late supper, we made it to our hotel and slept the night away. The next morning, it was still raining. We walked around in the rain to the downtown square, determined to get on with our vacation. The kids kept asking when they could swim in the hotel pool and I kept telling them when it quit raining. Only problem was, it never quit. So the kids went a little stir crazy at the hotel . . . as did the parents and the aunt.

We left a day earlier than planned, tired of the rain. The ride home was worse than the ride up because everybody was tired. When we arrived home, the place was dry as a bone. That cheered us up, didn't it? That night in bed, my husband heaved a big sigh and when I asked him what was wrong, he said, "I'm just trying to decide if the trip was worth it." Yeah. I know what he means.

I asked my sister if she was planning to go with us next year. To give her credit, she didn't run off screaming and howling. She merely smiled and said she would never ever have children and believed she would go off somewhere by herself next year. Preferably, I imagine, where anyone under the age of 18 is not allowed.

Well, that was our dream vacation . . . the one we waited for all year. I'm not planning one for next year. Uh-uh. No way. I sure have been wanting to go to Colorado though.

**Tahoka Care Center
Car Wash & Bake Sale**
SATURDAY, AUG. 5 • 10:00 A.M.-5:00 P.M.
AT FIRST BAPTIST CHURCH
\$7.00 Cars & Trucks (inside and out)

**1989 Property Tax Rates in
New Home ISD**

This notice concerns 1989 property tax rates for New Home ISD. It presents information about three tax rates. Last year's tax rate is the actual rate the taxing unit used to determine property taxes last year. This year's effective tax rate would impose the same total taxes as last year if you compare properties taxed in both years. Compare it to the tax rate the taxing unit proposes for this year. This year's rollback tax rate is the highest tax rate the taxing unit can set before taxpayers can start tax rollback procedures. In each case these rates are found by dividing the total amount of taxes by the tax base (the total value of taxable property) with adjustments as required by state law. The rates are given per \$100 of property value.

Last year's tax rate:	
Last year's operating taxes	\$ 325,058
+ Last year's debt taxes	\$ -0-
= Last year's total taxes	\$ 325,058
+ Last year's tax base	\$ 33,169,200
= Last year's total tax rate	\$.98 / \$100
This year's effective tax rate:	
Last year's adjusted taxes	\$ 324,646
(after subtracting taxes on lost property and taxes to correct appraisal roll errors)	
+ This year's adjusted tax base	\$ 33,348,070
(after subtracting taxes on new property)	
= This year's effective tax rate	\$.9735 / \$100
x 1.03	
= Maximum rate unless unit publishes notices and holds hearings	\$ 1.0027 / \$100
This year's rollback tax rate:	
Last year's adjusted operating taxes	\$ 324,646
(after subtracting taxes on lost property and taxes to correct appraisal roll errors and adding taxes lost in court suits)	
+ This year's adjusted tax base	\$ 33,348,070
(after subtracting taxes on new property)	
= This year's effective operating rate	\$.9735 / \$100
x 1.08	
= This year's maximum operating rate	\$ 1.0829 / \$100
+ This year's debt rate	\$ -0 / \$100
= This year's rollback rate	\$ 1.0829 / \$100

SCHEDULE A: Unencumbered Fund Balances

The following balances will probably be left in the unit's property tax accounts at the end of the fiscal year. These balances are not encumbered by a corresponding debt obligation.

Type of Property Tax Fund	Balance
General Fund	\$76,635

This notice contains a summary of actual effective and rollback tax rate calculations. You can inspect a copy of the full calculations at Lynn County Appraisal District.
Name of person preparing this notice: Dovie Miller
Title: Chief Appraiser
Date Prepared: July 26, 1989

**1989 Property Tax Rates in
Lynn County Hospital District**

This notice concerns 1989 property tax rates for Lynn County Hospital District. It presents information about three tax rates. Last year's tax rate is the actual rate the taxing unit used to determine property taxes last year. This year's effective tax rate would impose the same total taxes as last year if you compare properties taxed in both years. Compare it to the tax rate the taxing unit proposes for this year. This year's rollback tax rate is the highest tax rate the taxing unit can set before taxpayers can start tax rollback procedures. In each case these rates are found by dividing the total amount of taxes by the tax base (the total value of taxable property) with adjustments as required by state law. The rates are given per \$100 of property value.

Last year's tax rate:	
Last year's operating taxes	\$ 417,690
+ Last year's debt taxes	\$ -
= Last year's total taxes	\$ 417,690
+ Last year's tax base	\$ 249,278,180
= Last year's total tax rate	\$.16756 / \$100
This year's effective tax rate:	
Last year's adjusted taxes	\$ 417,610
(after subtracting taxes on lost property and taxes to correct appraisal roll errors)	
+ This year's adjusted tax base	\$ 242,113,620
(after subtracting taxes on new property)	
= This year's effective tax rate	\$.17248 / \$100
x 1.03	
= Maximum rate unless unit publishes notices and holds hearings	\$.17765 / \$100
This year's rollback tax rate:	
Last year's adjusted operating taxes	\$ 417,610
(after subtracting taxes on lost property and taxes to correct appraisal roll errors and adding taxes lost in court suits)	
+ This year's adjusted tax base	\$ 242,113,620
(after subtracting taxes on new property)	
= This year's effective operating rate	\$.17248 / \$100
x 1.08	
= This year's maximum operating rate	\$.18627 / \$100
+ This year's debt rate	\$ - / \$100
= This year's rollback rate	\$.18627 / \$100

SCHEDULE A: Unencumbered Fund Balances

The following balances will probably be left in the unit's property tax accounts at the end of the fiscal year. These balances are not encumbered by a corresponding debt obligation.

Type of Property Tax Fund	Balance
General Fund	None

This notice contains a summary of actual effective and rollback tax rate calculations. You can inspect a copy of the full calculations at Lynn County Appraisal District.
Name of person preparing this notice: Dovie Miller
Title: Chief Appraiser
Date Prepared: July 26, 1989

FAST RESULTS WITH WANT ADS

Real Estate

PRICE REDUCED! House for sale, 2407 North 1st, 2 bedrooms, 2 bath, totally remodeled. Call Richard White at 998-5478 or 998-5262. 6-4c

HOUSE FOR SALE: By owner. 2 BR, 1 Bath, 95x140 corner lot. Call 998-4844 after 6:00 p.m. 6-4c

HOUSE FOR SALE: 2-bedroom, three blocks from school, 2020 S. 1st. Contact Elmer or Ouida Gussels, 998-4756 or 998-4850. 15-4c

REPOS - REPOS - REPOS: 2-and-3 bedroom, finance company desperate to sell. No credit, no problem. We deliver. 806-894-8187. 29-4c

FOR SALE: 2-BR, one bath, double garage, stucco, on two lots near schools, 2020 N. 3rd. Price \$18,500, some terms possible. Call 998-4888 or 998-5369. 29-2d

HOUSE WITH ACREAGE: Approximately one mile North of Tahoka. Three bedrooms, two baths, on 21 acres. Sell together or divide. Call Weldon Garret, The Prudential Pat Ham, Inc. Realtors, 795-9590 or 792-0801. 30-2c

THE HOME YOU HAVE BEEN LOOKING FOR. Extra nice, brick, three bedroom and 1-1/2 bath located 2324 North Fourth. Entire house is in first class condition. Air conditioned. Pretty yard and concrete block fence. Must see to appreciate. 22-4c

NICE 3 BEDROOM AND 2 BATH home located 2017 Avenue M. Good location. New roof. Priced to sell. Clint Walker Real Estate Office 998-4130 Home 998-4197 28-4c

FOR SALE BY OWNER: 2-bedroom, 1 bath home. Close to school. Ceiling fans, large closets, concrete cellar, storage house. 998-4894. Bill Bueemann. 31-2p

LOOKING FOR A HOME: Professor and wife interested in leasing nice country home for two years, possibly with option to buy. Call (806) 792-9853. 31-1c

J.E. "Red" Brown
REAL ESTATE BROKER
IF IT CAN BE SOLD, WE CAN SELL IT!
PH. 998-4930 J.E. Brown
PH. 998-4382 B.F. Sherrod
BOX 615 - TAHOKA, TX 79373

REAL ESTATE

BEGINNER'S LUCK! Newly Marketed - 2BR, 1 Bath, carpet/ storage. Let's Make A Deal! \$15,000.00.

PERFECT HOME FOR GROWING FAMILIES! In Contract. This level home is priced to sell.

DOCTOR'S HOME FOR SALE: 3-bedroom, 2-baths, large fenced yard, good neighborhood, well-located close to schools. Assumable loan.

WALK TO SCHOOL: 3 bedrooms, 1 bath, 1 car garage. Stucco, large fenced back yard.

LOTS OF CHARACTER in this beautifully maintained home in a great location. 2 full baths, 4-bedroom, with isolated master bedroom, 2 living areas, kitchen w/lots of built-ins too numerous to list.

ANOTHER COUNTRY HOME: 3 bdr., 1 bath, rock house on 3 acres, irrigation well. Priced right.

JUST LOOK What Your Money Will Buy! Southwest design, large two story home w/ 3rd floor space. For only \$35,000.00. Check this one out.

EXTRA CLEAN READY TO MOVE IN: 3BR, 1B, single car garage, fenced yard. Nice storm cellar. Has large pecan and fruit trees. RV covered port in back. You must see this one. \$37,500.00.

SUPER DEAL: 3BR, 2B, 1-car garage with carpet. Large lot, with concrete block fence, concrete block cellar.

NEW LISTING: Royal Terrace (Mobil Homes only) located north edge of Tahoka. These are restricted lots, assuring the buyer of certain advance living standards. Owner financed, low down payment, low interest to qualified buyers. Most lots 100x200. Call on these today.

SOUTHWEST REAL ESTATE
998-5162

Notice

HELP WANTED: Easy work! Excellent Pay! Assemble products at home. Call for information. 504-641-8003, Ext. 6545. 29-1p, 31-1p

NURSERY ATTENDANT NEEDED: Sunday mornings and evenings. Call First United Methodist Church, 998-4503 for details. 27-4c

NEED TYPING? Call Juanell Jones, 998-4888 during day, or 998-5031 after 5 p.m. Estimates given. 22-4c

PEST CONTROL: Roaches, mice, termites and other household pests. Will be in Tahoka on Thursdays. Call Charlie Skupin Pest Control, Brownfield, 637-3333. 22-4c

BALLOONS & FLOWERS
Weddings, funerals, floral arrangements - fresh, dried and silk; balloon bouquets. 1644 Main - 998-5518
Dustin, Mistie, Wilms and Jean 22-4c

NAPKINS AND STATIONERY IMPRINTING
For weddings and showers. Variety of colors
TAHOKA DRUG - 998-4041 22-4c

LET ME DO your alterations. Call 998-4776, Jean. Curry. 4-4c

WANT TO BUY: Old coins, old jewelry, old guns. Call 998-4115. 22-4c

WANTED: Person to supervise others in this area. Salary, commission could total \$40,000 1st year...no experience necessary, no age limit. Selected person flown to Dist. Office for orientation. Need \$2,900 deposit (accruated) to cover supplies. For details call: American Products 1-800-633-0902. 31-1p

Card Of Thanks

Thanks to everyone for the cards, prayers, food, flowers and other acts of kindness shown at the loss of our mother loved one and grandmother Ollie Joiner. A special thanks to the staff at Tahoka Care Center and Lynn County Hospital, Dr. Vickers, Dr. Wright and Brother Danny Curry for their special services. We are very grateful to be living in a truly caring community.

Melvin and Thalia Burks
Karen Woodman and family
Becky Parsons and family
31-1p

We would like to thank each person that helped us with the lunch and other ways for the family of Scotty Childress. We had food brought in locally and out-of-town. We still have several dishes at the Church and most of them do not have names on them. We ask that you call 998-4059, 998-4902 or 998-4400 in order to pick up your dishes.

Thanks again,
Sweet Street Baptist Church
31-1p

We would like to thank all the ladies that came in and applied for the jobs in the Tahoka school cafeteria. We have filled the positions: Judy Sanders- Cafeteria Aide and Beverly Wright- Cook.

Thank you again for your participation.
Tahoka I.S.D.
S. Stone
31-1c

TV & VCR REPAIR
ALL BRANDS
Jolly Time Video
1614 Main • Tahoka
OR CALL 1-800-288-2864
20-4c

water
Conserve it
Preserve it
TEXAS WATER DEVELOPMENT BOARD
P.O. Box 13231, Capital Station
Austin, Texas 78711

Misc. For Sale

FOR SALE: Alfalfa hay. Call Lynn Cook, 998-4115. 15-4c

BUSINESS FOR SALE: Dixie Dog Drive Inn, Tahoka. Call 998-4756. 29-4c

PIANO FOR SALE: Wanted responsible party to assume small monthly payments on piano. See locally. Call Credit Manager at 1-800-233-8663. 30-3p

FOR SALE: King Cleveland trombone, okay for student band member, \$80. Call Dalton at 998-4888 or 998-5369. 31-2c

FOR SALE: 25-foot Terry Travel Trailer, fully self-contained, two holding tanks, 2500 watt Honda generator with 460 cu. in. Mercury tow car ordered for the purpose of towing R.V.'s. Fully equipped with leather upholstery. For Sale or Trade for farm tractor and equipment. 806 327-5496. 31-1p

FOR SALE: Two water beds, one king size, one queen size, \$100 each, firm. 2301 N. 1st, 998-4411. 31-1p

Autos For Sale

TAKE OVER PAYMENTS on a 1988 Blue GT Mustang. Call 998-4301 or 998-4068. 31-2p

FOR SALE: 1971 Cutlass Supreme. Restored. Excellent condition. Call 998-5303. 31-1c

For Rent

2-OR 3-BEDROOM house for rent. Call 998-5124 or 998-5016. Hall Construction. 28-4c

KLASSIC KUT has booth for rent. Inquire at: Balloons and Flowers, 998-5518. 22-4c

HOUSE FOR RENT: Call 998-5046 after 5 p.m. 22-4c

Custom Upholstery
Call us for your upholstery needs. We do seat covers as well as furniture.
Route 2 • Post, Texas
495-2295

Garage Sales

GARAGE SALE: 1404 Green Ave., in Wilson. Saturday, Aug. 5, 7 a.m. to 5 p.m. Furniture, misc. decorater items and much more. 31-1p

GARAGE SALE: 12th and Houston in Wilson. Friday, 8 a.m. - 1 p.m., Saturday, all day. Boys' and girls' clothing, size 3-6, adult clothing, misc., toys and household items. Good prices. 31-1p

GARAGE SALE: 2220 N. 4th. Thursday 8 a.m. to 5 p.m. 31-1p

GIGANTIC GARAGE SALE: Jo Anna Thomas, Nan Adams, Becky Henley. 1617 N. 5th, Friday 8 a.m. - 6 p.m. and Saturday until noon. Don't miss it! 31-1p

GARAGE SALE: Friday, 8 a.m. to 5 p.m. and Saturday, 8 a.m. til noon, 1801 Ave. M. Children's clothes, baby bed, lots of other items. 31-1c

GARAGE SALE: Saturday only, 1924 S. 4th. 9 a.m. to 7 p.m. Clothes and miscellaneous. 31-1p

YARD SALE: 1601 Ave. P, Friday, 9 a.m. to 5 p.m. Boys' and girls' bicycles, mimeograph machine, and other misc. 31-1c

YARD SALE: 1916 S. 4th, Saturday only. Clothes and other misc. 31-1p

GARAGE SALE: 2013 Ave. J. Saturday, Aug. 5, 8 a.m. to 5 p.m. Bicycles, clothes, and other misc. 31-1p

GARAGE SALE RERUN: Saturday, 8 a.m. to noon only. Many new items. Reduced prices. Dishwasher and sink, clothing and much more. 1629 N. 6th. 31-1p

YARD SALE: Saturday, 9 a.m. til 7, 1309 Ave. E. Lots of children's, baby's, women's and men's clothing, 15" inch tires, gas heater, cast-iron barbecue grill, and much more! 31-1p

YARD SALE: 2414 N. 2nd. Backyard sale Thurs. and Fri., 9 a.m. to 6 p.m., Sat. until noon. Lots of children's and teenagers' clothing, toys and household items. Reid and Hancock. 31-1p

GARAGE SALE: Thursday, Fri. and Sat. at 1820 N. 5th. Baby swing and lots of other items. 31-1c

MOVING SALE: 1800 N. 8th., Friday and Saturday. D'Linda Valentine. Appliances, dishes, printers' type trays, much more. 31-1p

LEGAL NOTICE
Lynn County Hospital District Board of Directors will accept proposals and bids to renovate the heating and air-conditioning system of Lynn County Hospital until 10:00 a.m. on August 18, 1989. Bids will include new equipment, electrical contracts, and duct modifications as necessary. Bonding and insurance will be required. Bid information may be obtained at the hospital administrator's office, 2600 Lockwood Street, Tahoka, Texas. For more information contact Louise Landers, Administrator, Lynn County Hospital, P.O. Box 1310, Tahoka, Texas 79373 or call 806-998-4533. Sincerely, Louise Landers 31-2c

NOTICE
The City of Wilson will be taking bids to sell a 1982 Dodge Diplomat. 4-door sedan, metallic brown, air conditioner, radio, new seat covers. Bid will be open August 7, 1989 at 8 p.m. The city reserves the right to refuse any or all bids. 30-2c

35 YRS. EXPERIENCE • FREE ESTIMATES 31-8c
ROBERTS CEMENT CONTRACTOR
1305 SOUTH 11TH ST. • SLATON, TEXAS 79364
Walks, Patios, Foundations, Spanish Drag
Stucco & Flat Work, Module Feeder Slabs, Block Work
N.H. ROBERTS PHONE 828-6991

TRANE EQUIPMENT SALES, INSTALLATION & SERVICE
FOLLIS
Heating & Air Conditioning
For Free Estimate - Phone 828-6371
OSCAR FOLLIS • Licensed & Insured • WILSON, TEXAS

A TRUE VALUE STORE
WHITAKER HARDWARE
PHONE 998-4343 • TAHOKA, TX 79373
We Sell Everything - Keep Nothing

HOME SERVICE-REPAIR
NEW CONSTRUCTION - ADD-ONS
PAINTING - ROOF REPAIR
DOORS - WINDOWS - CONCRETE WORK
STORM SCREENS - INSULATION
CARROLL MEANS
Wilson • (806) 628-6321

PROFESSIONAL DIRECTORY

Wally Castillon Welding & Repair Shop Portable & Aluminum Welding 929 Ave. B and South 6th Mobile Phone 777-0210 Home Phone 998-5174	Robert E. Abbe Jr. Bookkeeping and Income Tax Service 628-6368 1206 Lumsden Ave. • P.O. Box 21 Wilson, Texas 79381	C & C Pest Control LAMESA, TEXAS Complete Restaurant, Home, Office and Business Pest Control Also Spray Trees and Lawns Treat For Ticks and Fleas CALL COLLECT (806) 872-5575
Tahoka Care Center 1829 South 7th Street Tahoka, Texas 79373 998-5018 DIANE RIOJAS Administrator	White Funeral Home Billie White Everette, Owner Phone 998-4433 COMPLETE FUNERAL SERVICE - Service To All Faiths - "We care for yours as we would have ours cared for."	WHILEY ELECTRIC HEATING & AIR CONDITIONING 998-4844 - FREE ESTIMATES -
Hall Construction All Types Of Construction & Roofing RICKY HALL - 998-5016 2121 Ave. L Tahoka, Texas	Veterans or widows of all wars who need help or advice in claim benefits, contact: Welch Flippin SERVICE OFFICER Wednesday of each week at the Courthouse - Tahoka, Texas	Carry-Out or Dine-In Apple Dumplin' PHONE 998-4353 Raymon, Doris & Shaun Stotts
Remodeling Plumbing Electrical FREE ESTIMATES New Construction Roofing Concrete J&P Construction Day or Night: 800-4925 James Withers Tahoka, Texas Demolition All Kinds	Moore & Moore Chem-Dry Carpet Care LYNN COUNTY FRANCHISE Residential & Commercial Carpets, Drapes, Upholstery Auto Interiors Evening 637-8842	Sam Pittmore & Son Aerial Spraying NORTH SIDE OF T-BAR AIRPORT AT TAHOKA Tahoka Phone 998-5292 Home Phone 998-4640
LYNN COOK BAIL BOND Tahoka, Texas "Serving Surrounding Counties" Bus.: (806) 998-4906 Res.: (806) 998-4680 Mobile: (806) 924-8610 LYNN COOK Rt. 5, Box 170 Tahoka, Tx. 79379	Paschal Plumbing Journeyman Plumber's License #118005 Phone 998-5104 KEITH PASCHAL Owner P.O. Box 898 Tahoka, Tx 79379	Brownfield Septic Tank and Pumping SERVICE Septic Tanks Installed and Cleaned with High Pressure Washer Grease Traps • Cesspools Cleaned REASONABLE RATES • CALL FOR FREE ESTIMATE Owner: W.A. "Boat" Bell 637-8336

own, I told
sleeping in
discussed
a leave we
destination

gear into a
ret, hungry
hotel and
ining. We
etermined
when they
hen it quit
rent a little
unt.

n. The ride
body was
one. That
nd heaved
said, "I'm
now what

next year.
wling. She
ildren and
next year.
f 18 is not

waited for
No way.
gh.

mation
taxes
mpare
year's
ollback
he total
roperty

il year.

a copy

District 4-H Fashion Show

Eight Lynn County 4-H members competed in the District 2 4-H Fashion Show July 26 at Lubbock Christian University. The theme for the event was "Fashion From the Heart."

In the Senior division was Lanae Monk- Evening Wear Buying; Brandi Barton- Non Tailored Buying; and Eva Gicklhorn- Non Tailored Construction, each receiving a red ribbon. In the Junior 2 division was Lisa Martin- Casual Construction and Lynna Rash- Sports Construction, receiving a red ribbon; Felicia Davis- Specialty Construction and Katy Huffaker- Buying, winning a blue ribbon. Jr. 1 consisted of Robin Martin- Casual Construction, winning a blue ribbon.

Each of the contestants won their division in the local county Fashion Show earlier this summer.

SAVING YOUR SKIN FROM THE SUN

If you set out to get that perfect tan you may get something that's not so good as well: dry skin.

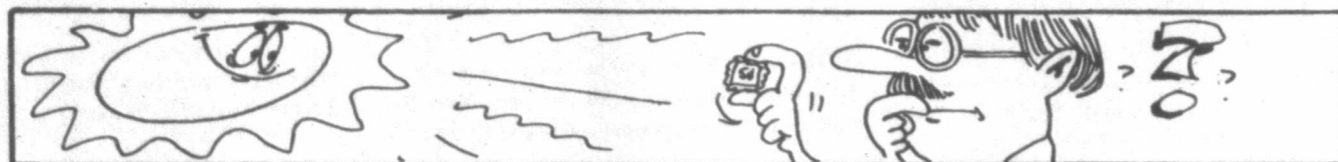
Too much sun can hurt your skin. Sun combined with saltwater, chlorine and air conditioning is a recipe for dryness. Especially vulnerable is the face. Facial skin is highly sensitive and perhaps the most exposed part of the body. Fortunately there are a few things you can do to take care of the skin you're in all season long.

- Clean gently with a non-alkaline, non-soap cleanser such as Dove beauty bar. With one-quarter moisturizing cream, it won't dry skin the way soap can.
- During and after sunbathing and exercise, drink plenty of water or other liquid such as fruit juices to restore moisture. Alcohol, a drying agent, should be taken in moderation if at all, especially during hot weather.
- Maintain a well-balanced diet that includes fruits, vegetables and other foods rich in vitamins and minerals lost through perspiration



but vital to supple skin.

- Limit exposure to the sun to early morning and late afternoon when the rays are not as strong as they are at midday. Build your tanning gradually, starting with ten to 20 minutes a day.
 - Watch out for ultraviolet rays reflected from sand, beach umbrellas and water. These rays also come through water and clouds so use a sunscreen while swimming and cover up even on overcast days.
- Follow these ideas throughout the warm weather months and you'll have a better chance at a healthy complexion the following fall.



A piece of solar surface the size of a postage stamp constantly emits more energy than 500 sixty-watt bulbs and could light up all the rooms in 48 average-sized American homes.

SPS Declares Stock Dividends

The SPS Board of Directors today declared a regular quarterly dividend of 55 cents per share on common stock and regular quarterly dividends on all series of preferred stocks.

The dividend on common stock is payable Sept. 1, 1989, to holders of record at the close of business Aug. 15, 1989. Dividends on preferred stocks are payable Nov. 1, 1989, to holders of record at the close of business Oct. 20, 1989.

The board also today elected Chief Executive Officer W.R. Esler to the additional post of chairman of the board, replacing Bert Ballengee, who is retiring at the end of the month.

The board elected Chief Operating Officer Bill D. Helton to the additional post of president, formerly held by Esler.

Elected vice presidents were John McAfee, who had been group manager of corporate services, and David Wilke, who had been chief engineer.

newsworthy trends

The Geothermal Energy Issue Heats Up

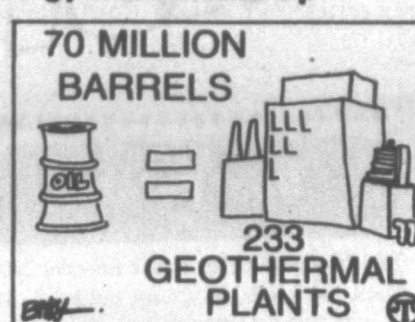
The use of environmentally safe geothermal energy is on the rise, studies show. If the trend towards increased geothermal use continues, the effects will be favorable—both for the air we breathe and electric bills we pay.

In the United States—the world leader in geothermal resource production—the California Energy Company is a leader in geothermal production. Here are some important facts from the company on geothermal production!

• Geothermal energy is heat trapped within the earth's crust. The heat can be brought up to the earth's surface through wells. A generating plant, built at the well site, produces electricity. Transmission lines carry the electricity to the purchasing utility.

• Geothermal energy is an economical, renewable alternate energy source, and there's virtually no pollution involved in its production as there is with the burning of costly fossil fuels such as oil.

• We'd have to burn 70 million barrels of oil a year, at an annual cost of over a billion dollars at cur-



We'd have to burn 70 million barrels of oil to equal the energy output at 233 geothermal plants.

rent prices to replace the geothermal energy now produced at the world's 233 plants.

• Approval of the California Energy Company's Navy II project in Coso Hot Springs by the California Energy Commission, which has the highest environmental regulatory standards in the United States, demonstrates the company's exceptional environmental control technology.

Less expensive, more reliable, cleaner electricity: that's what geothermal energy can bring us now and even more of in the years to come.

SHOP IN TAHOKA!

1989 Property Tax Rates in City of Tahoka

This notice concerns 1989 property tax rates for Tahoka City. It presents information about three tax rates. Last year's tax rate is the actual rate the taxing unit used to determine property taxes last year. This year's effective tax rate would impose the same total taxes as last year if you compare properties taxed in both years. Compare it to the tax rate the taxing unit proposes for this year. This year's rollback tax rate is the highest tax rate the taxing unit can set before taxpayers can start tax rollback procedures. In each case these rates are found by dividing the total amount of taxes by the tax base (the total value of taxable property) with adjustments as required by state law. The rates are given per \$100 of property value.

Last year's tax rate:	
Last year's operating taxes	\$ 171,918
+ Last year's debt taxes	\$ 26,690
= Last year's total taxes	\$ 198,608
+ Last year's tax base	\$ 41,900,580
= Last year's total tax rate	\$.4740 / \$100

This year's effective tax rate:	
Last year's adjusted taxes	\$ 198,608
(after subtracting taxes on lost property and taxes to correct appraisal roll errors)	
+ This year's adjusted tax base	\$ 41,790,150
(after subtracting taxes on new property)	
= This year's effective tax rate	\$.4752 / \$100
x 1.03	
= Maximum rate unless unit publishes notices and holds hearings	\$.4894 / \$100

This year's rollback tax rate:	
Last year's adjusted operating taxes	\$ 171,918
(after subtracting taxes on lost property and taxes to correct appraisal roll errors and adding taxes lost in court suits)	
+ This year's adjusted tax base	\$ 41,790,150
(after subtracting taxes on new property)	
= This year's effective operating rate	\$.4113 / \$100
x 1.08	
= This year's maximum operating rate	\$.4442 / \$100
+ This year's debt rate	\$.0675 / \$100
= This year's rollback rate	\$.5117 / \$100

SCHEDULE A: Unencumbered Fund Balances

The following balances will probably be left in the unit's property tax accounts at the end of the fiscal year. These balances are not encumbered by a corresponding debt obligation.

Type of Property Tax Fund	Balance
General Fund	\$1,500.00

SCHEDULE B: 1989 Debts Service

The unit plans to pay the following amounts for long-term debts that are secured by property taxes. These amounts will be paid from property tax revenues (or additional sales tax revenues, if applicable).

Description of Debt	Principal or Contract Payment to be Paid	Interest to be Paid	Other Amounts to be Paid	Total Payment
G.O. Bond	\$25,000.00	\$3,375.00		\$28,375.00

Total required for 1989 debt service	\$ 28,375
- Amount (if any) paid from funds listed in Schedule A	\$ -0-
- Excess collections last year	\$ -0-
= Total to be paid from taxes in 1989	\$ 28,375
+ Amount added in anticipation that the unit will collect only ___% of its taxes in 19	\$ -0-
= Total Debt Service Levy	\$ 28,375

This notice contains a summary of actual effective and rollback tax rate calculations. You can inspect a copy of the full calculations at Lynn County Appraisal District.
Name of person preparing this notice: Dovie Miller
Title: Chief Appraiser
Date Prepared: July 26, 1989

1989 Property Tax Rates in City of New Home

This notice concerns 1989 property tax rates for New Home City. It presents information about three tax rates. Last year's tax rate is the actual rate the taxing unit used to determine property taxes last year. This year's effective tax rate would impose the same total taxes as last year if you compare properties taxed in both years. Compare it to the tax rate the taxing unit proposes for this year. This year's rollback tax rate is the highest tax rate the taxing unit can set before taxpayers can start tax rollback procedures. In each case these rates are found by dividing the total amount of taxes by the tax base (the total value of taxable property) with adjustments as required by state law. The rates are given per \$100 of property value.

Last year's tax rate:	
Last year's operating taxes	\$ 15,035
+ Last year's debt taxes	\$ 3,165
= Last year's total taxes	\$ 18,200
+ Last year's tax base	\$ 4,044,390
= Last year's total tax rate	\$.45 / \$100

This year's effective tax rate:	
Last year's adjusted taxes	\$ 18,200
(after subtracting taxes on lost property and taxes to correct appraisal roll errors)	
+ This year's adjusted tax base	\$ 4,106,710
(after subtracting taxes on new property)	
= This year's effective tax rate	\$.4431 / \$100
x 1.03	
= Maximum rate unless unit publishes notices and holds hearings	\$.4564 / \$100

This year's rollback tax rate:	
Last year's adjusted operating taxes	\$ 15,035
(after subtracting taxes on lost property and taxes to correct appraisal roll errors and adding taxes lost in court suits)	
+ This year's adjusted tax base	\$ 4,106,710
(after subtracting taxes on new property)	
= This year's effective operating rate	\$.3661 / \$100
x 1.08	
= This year's maximum operating rate	\$.3953 / \$100
+ This year's debt rate	\$.0712 / \$100
= This year's rollback rate	\$.4665 / \$100

SCHEDULE A: Unencumbered Fund Balances

The following balances will probably be left in the unit's property tax accounts at the end of the fiscal year. These balances are not encumbered by a corresponding debt obligation.

Type of Property Tax Fund	Balance
General Fund	\$17,874.06

SCHEDULE B: 1989 Debts Service

The unit plans to pay the following amounts for long-term debts that are secured by property taxes. These amounts will be paid from property tax revenues (or additional sales tax revenues, if applicable).

Description of Debt	Principal or Contract Payment to be Paid	Interest to be Paid	Other Amounts to be Paid	Total Payment
General Obligation	\$2968.75	Included		\$2968.75

Total required for 1989 debt service	\$ 2968.75
- Amount (if any) paid from funds listed in Schedule A	\$ -0-
- Excess collections last year	\$ -0-
= Total to be paid from taxes in 1989	\$ 2968.75
+ Amount added in anticipation that the unit will collect only ___% of its taxes in 19	\$ -0-
= Total Debt Service Levy	\$ 2968.75

This notice contains a summary of actual effective and rollback tax rate calculations. You can inspect a copy of the full calculations at Lynn County Appraisal District.
Name of person preparing this notice: Dovie Miller
Title: Chief Appraiser
Date Prepared: July 26, 1989