

GRAND CHAMPION STEER — Cody Smith, Tahoka 4-H, exhibited the Grand Champion Steer at the Lynn County Stock Show. (LYNN COUNTY NEWS PHOTO)

Livestock Sale Success

BY DEAN BARTLEY
Grand champion honors were bestowed upon five Lynn County youngsters in the annual Lynn County 4-H and FFA Livestock Show in Tahoka last weekend, with good crowds turning out to support the four-day event in the sun-shiny weather.
The barbecue and auction sale on Saturday were highlights of the show and sponsors and workers were pleased by the turnout and cooperation.
Show officials said Tuesday that the total from the sale had reached \$57,000.
Added to the traditional steers,

lambs, barrows, baked goods and broilers, with large numbers in these events, a barrow show for youngsters under 9 years of age was staged with every participant receiving a ribbon.
Cody Smith of the Tahoka 4-H Club exhibited the grand champion steer, a heavy weight cross; Shawn Ballard of the New Home 4-H showed the grand champion lamb, a heavy-weight, medium wool.
In the crowded barrow show, Jason Belew's heavy weight hamshire barrow won the grand champion award for the Tahoka 4-H member.
Brandi Barton of O'Donnell 4-H won the grand and reserve grand

honor in the broiler event with her entries.
Trey Nance of the Tahoka 4-H won the baked goods grand championship with a cake; and Kim Ingle of Tahoka 4-H won reserve championship with yeast bread.
Reserve Champions
Showing the reserve grand champion lamb was Jody Woodard of Tahoka 4-H. The reserve grand champion barrow exhibited by Aaron Miller of Tahoka 4-H and Todd Ballard of New Home 4-H showed the reserve grand champion steer.
Showmanship awards went to Cody

Smith, Tahoka 4-H, steers; Jody Woodard, Tahoka 4-H lambs; and Cory Ballard, New Home 4-H barrows.
Herdsman awards were won by Shawn Ballard, steers; Jason Spence barrows; and Mitchell Hammonds, lambs.
Dean Bartley was presented a plaque for her continuous support of the livestock show. Presenting the award was Ray Ehlers, president of the Livestock Assn.
Winners of the various classes, through fourth places:

See RESULTS Page 6

MEMBER OF TEXAS PRESS ASSOCIATION

25¢

The Lynn County News

VOLUME 81, NUMBER 5

TAHOKA, LYNN COUNTY, TEXAS, THURSDAY, FEBRUARY 2, 1984

10 PAGES IN ONE SECTION



BOOST FOR BOB — Mrs. Mabel Gurley, right, representing the Tahoka Chamber of Commerce, greeted Mrs. Bob Krueger when she came to town last week to campaign for her husband who is a candidate for the U.S. Senate. (LYNN COUNTY NEWS PHOTO)

Jumping Rope, Fund Drive For Heart Set

Plans of the Lynn County branch of American Heart Assn. for February Heart Month include a Jump Rope for Heart event in Wilson and Tahoka schools and a county-wide campaign for contributions, with a goal of \$3,500 set. Exact dates of the events will be announced soon, according to John Krey, Lynn County president of the AHA.

Tahoka Mayor Meldon Leslie, noting that heart disease and stroke would kill about 50,000 persons in Texas this year, has proclaimed the month of February as American Heart Month in Tahoka, urging "all citizens to support the educational and fund raising campaign of the association in the city."

This year's Jump Rope for Heart will be conducted in Tahoka High School, Tahoka North Elementary, Wilson High School, Wilson Junior High, and Wilson Elementary School.

The event is sponsored in Texas by the Texas Association for Health, Physical Education and Recreation and the Governor's Commission of Physical Fitness. It coincides with National Physical Education and Sport Week, and last year's event drew participation from 6,000 schools. One million students nationwide, 70,000 of these in Texas, took part.

Jo Beth Horney, Susan Tipton, Jeanette Lewis, Antha Holt, and

Gay Caule and their students will organize the competition. Pledges collected from sponsors go toward support of the American Heart Assn. programs in research, education and community service in the fight to reduce early death and disability from heart disease.

By encouraging young people to participate, the project promotes a worthy goal of realizing lifelong benefits from regular physical exercise, and demonstrates how teamwork between teachers and students can be used to reach a common goal.

Jumping rope takes only a short length of rope and a very little space. The physical benefits of rope skipping have been tested by many doctors and physical education experts, and it has been concluded that a 10-minute per day rope skipping program is as efficient as a 30-minute daily regimen of jogging, when it comes to improving strength and vitality of the heart.

Jumping rope also helps the jumper lose weight, condition the body, release tension, increase stamina and coordination and even, some say, improve digestion.

But the key is that skipping rope is enjoyable, Krey said. "Once started, few people give up rope skipping. It is obvious why: there is no stiffness or exhaustion, no expensive outfits or equipment, no need for a partner nor any courts to reserve and it takes so little time. Best of all, while some exercise types do not strengthen your heart, rope skipping does."

Dr. Swapnan Banerjee, Public Information Chairman for the AHA in Lynn County, states that cardiovascular fitness is the most valid indicator of a person's relative physical fitness. "If your heart, lungs and circulatory systems are in good shape, the rest of your body is usually in good shape too."

Volunteers for the Heart Assn. will be calling on Lynn County residents in February to ask for contributions for the 1984 campaign, with a goal set at \$3,500.

"The money raised during our campaign goes to support research, professional and public education and community service programs in Lynn County," said Roy Don Box, local chairman of this year's Heart Assn. campaign.

"With costs rising everywhere and because of the tremendous toll in lives and money due to heart disease and stroke each year, it is absolutely essential that we reach our goal," he said.

"Heart disease, stroke and high blood pressure afflict more than 40 million Americans and are responsible for half of all deaths in this country," said Box.

In Lynn County alone, there were 25 heart-related deaths in 1982. On the nearly one million deaths each year from heart disease and stroke, more than 200,000 occur before retirement age. "We need volunteers and contributions to help in the fight for your life, and we ask that you give generously when a volunteer calls on you," said Box.



GRAND CHAMPION BARROW — Jason Belew, Tahoka 4-H, exhibited the Grand Champion Barrow at the Lynn County Stock Show. Shown with Jason is his sister, Kris. (LYNN COUNTY NEWS PHOTO)



GRAND CHAMPION LAMB — Shawn Ballard, New Home 4-H, exhibited the Grand Champion Lamb at the Lynn County Stock Show. (LYNN COUNTY NEWS PHOTO)

Youth Basketball Signup Is Tonight

All boys and girls interested in Tahoka youth basketball will sign up tonight (Thursday) at the Southwestern Public Service Reddy Room from 6:30 to 8 p.m.
The fee will be \$10 per child again

this year. Youngsters must bring proof of their age and their \$10. The younger group consists of those who were ages 8 and 9 by Sept. 1, 1983. The older group includes those who were ages 10 and 11 by Sept. 1.

WOODWORK

BY DALTON



IN LAST week's mail we received a brochure urging support, monetary and otherwise, for a campaign to get a 10 per cent "flat tax" passed by Congress. It told us how much money we could save in taxes and about some other advantages of a flat tax of 10 per cent on income. We could see right quick that not everyone would want to support this move.

Among the things a flat tax would do, said the brochure, are: "Nobody will have to hire a tax expert to do their tax return. You'll be able to use a simple form the size of a postcard instead of all kinds of schedules, agendas, instructions, forms, etc." Also, it said, "The \$5 billion-plus budget of the IRS can be cut to almost nothing. Most of the 82,857 employees of the IRS can return to productive work in the private sector. Tons of paperwork can be eliminated."

I'll bet this proposal will be really popular with the IRS workers and the accountants who prepare all our tax returns every year.

One thing the brochure from the "Committee For a 10% Flat Tax" never mentions is whether such a tax would raise as much money as usual for the federal

government to operate on. Perhaps it would, with some of the savings we'd realize by putting the IRS (and some accountants?) out of business. But I doubt it.

I think the idea of a flat tax on income is great. I don't think it will ever fly in Congress. And if it should, there would be some things that would have to be worked out.

FOR MOST businesses around here, January has been about like January usually is, which is not so great. December, though, was a pretty good month for most, and as a result, we had been considering a couple of purchases, using money we normally don't have. Exxon sent us a list of things they'd like for us to buy on our credit card, including a super accurate, balance-beam doctor's scale. These are great if you need to weigh your doctor.

I resisted that, and finally I had to quit considering any new purchases altogether, because it got down to the decision of whether to buy a new TV set or go ahead and pay my gas and electric bills. The record cold spell we had in December just about gavé most of our bank accounts a terminal illness.

Leland White Joins Race For Commission

Leland White, a lifetime resident of the New Home Community, has announced he is a candidate for the job of commissioner of Precinct 4, Lynn County. The two years and two months remaining on the term of the late E.R. Blakney will be on the ballot of the Democratic Primary May 5.

White is a 1950 graduate of New Home High School and he and his wife, Barbara, now live on their farm west of New Home.

He issued the following statement:

"I have been a resident in the New Home community all my life. I started farming in 1951, and married the former Barbara McNeely in 1954. We have a grown daughter in Hobbs, N.M., and a grown son in Oklahoma City.

"I am a member of the New Home Methodist Church and have served as a trustee and Sunday School superintendent for several years.

"As a landowner and farmer I believe I understand the duties and responsibilities of the commissioner's office. I will appreciate the vote and the support of the people here in Prec. 4 and the support of all the citizens in the county. If I am elected I will try to conduct the business of Prec. 4 and the county the best I can."

Grandparents Brag Pages Featured In Valentine Edition

For our Valentine edition of the Lynn County News we'll repeat a fun feature which in 1983 drew a lot of reader interest. It's a grandparents' Valentine ad which will contain pictures of grandchildren 1 day to 6 years old, inside Valentine hearts with the name of the grandchild and grandparents beneath. Total cost is \$7 per heart.

Grandparents who would like their "Pride and Joy" to be featured in a Valentine heart are asked to bring a photo and necessary information (child's name and grandparents' name) to the News office by 5 p.m. Monday, Feb. 6. The charge of \$7 is to pay for photo reproduction and a portion of the space.

Black and white photos allow better reproduction, although color photos can be used.

The sweethearts are to be featured in the Thursday, Feb. 9, issue.

Suspect Sought In Purse Theft

A warrant has been issued for the arrest of a 21-year-old Mexican female suspect in the Dec. 1 theft of a purse from Genny's dress shop in Tahoka, officers said this week. About \$400 cash was stolen along with other items, some of which were later recovered. Officers said the suspect is a Lubbock resident.

Fred Martin of Tahoka reported golf clubs stolen from a carhouse at T-Bar Country Club Saturday night. The clubs were valued at a total of \$322.50. A Crime Line reward of \$200 has been posted in the case, and anyone with information is asked to call Crime Line, 998-5145.

Joe Medina of 1216 S. 1st told police someone broke windows on his 1982 Ford over the weekend.

In jail during the week were one person each for reckless damage and destruction, no drivers license or proof of liability insurance, driving while intoxicated, second offense and runaway.



Offers

998-5145

\$200 Reward

For information leading to the clearing of a case of theft of golf clubs at T-Bar Country Club on Jan. 28. Owner Fred Martin reported the clubs stolen from a carhouse. Included were 3 and 6 irons with Ben Hogan brand, 3 and 8 irons and pitching wedge of Johnny Miller autograph, and a Sam Snead putter.

City-County Library News

BY LENNIE COX
I received the following letter from the president of the American Library Assn. in regards to a very pertinent issue at this time. I know that some of the citizens of Lynn County are interested in this matter. The letter reads as follows:
Dear Librarian,
The National Highway Traffic Safety Administration (NHTSA) is out to tell the public how to get drunk drivers off the roads. A major part of its campaign is the enclosed guide, "How to Save Lives and Reduce Injuries: A Citizen Activist Guide to Effectively Fight Drunk Driving." This manual will help victims of drunk driver accidents and concerned citizens

find out what they can do to reduce death and injury resulting from alcohol-related crashes.
NHTSA is sending a copy of this guide--with promotional materials-- to libraries. I encourage you to let your community and patrons know of its availability. There's good information here that merits wide distribution.

Sincerely,
Brooke E. Sheldon

I do have this guide available here in the library if anyone would like to read it.

Last week the library received a substantial donation from one of the clubs here in Tahoka. With this money we will be able to get quite a few Newbery Award Winning books for our young readers who have requested them, as well as some new copies of some of the classics.
If you have not visited

Farm Bureau Insurance

Insurance For All Your Needs

Life ★ Auto ★ Fire ★ Farm Liability
Travelers Health Insurance



Phone 998-4320 or 998-4591
PAT GREEN, AGENCY MANAGER

Cowbelles Plan Cookoff

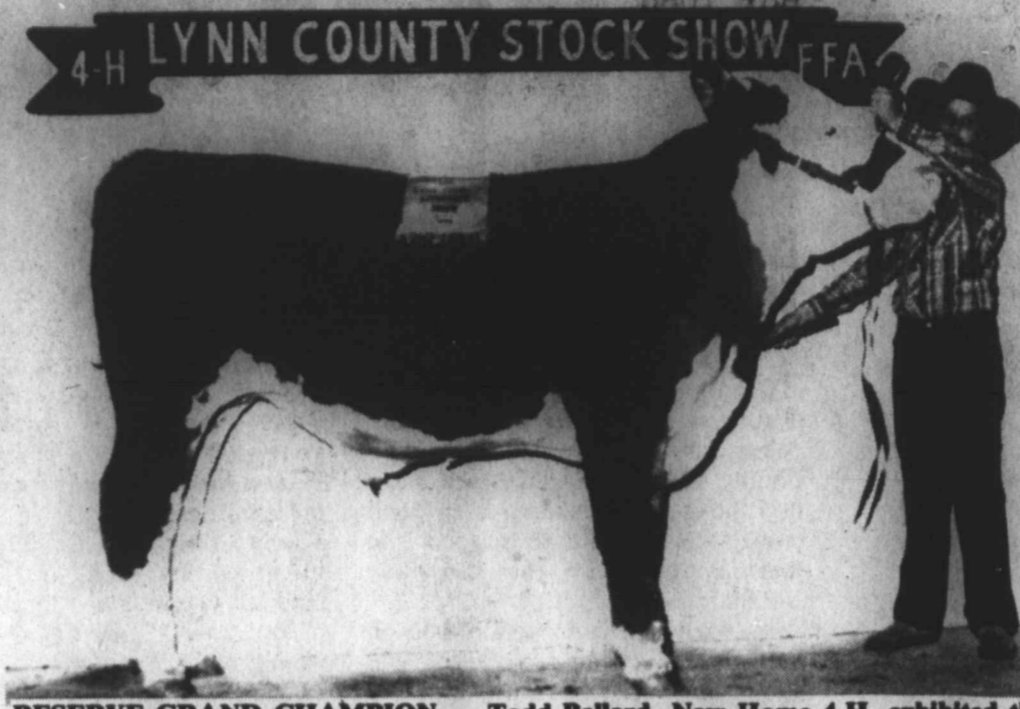
The Texas CowBelles are Planning the 1984 Texas Beef Cook-Off to be held in Lubbock April 27-28. Information on entering is available at the local county Extension office or you may write "Texas Beef Cook-Off, Route 1, Box 152, Colorado City, Tx. 79512. Deadline for entry is March 15.

1944 Grads Seeking Addresses

The THS senior class of 1944 needs addresses of the following members: Edwin Banks, Syble Brower, Lucille Cagle, Ruby Gartman, Jessie Fay Jackson, Hilery Mather, Shelda Patterson, Maurice and Calvin Smith and Eva Woods.

Addresses should be sent to Mrs. Turner Rogers, Box 325, Tahoka, TX 79737 or call 998-4110.

the library lately, we invite you to come in and browse around. We are striving each day to improve it as much as possible.



RESERVE GRAND CHAMPION — Todd Ballard, New Home 4-H, exhibited the Reserve Grand Champion Steer at the Lynn County Stock Show. (LYNN COUNTY NEWS PHOTO)

Shower Honors Nancy Montgomery

Mrs. Nancy Montgomery was honored with a baby shower Monday, Jan. 30, in the home of JoAnna Thomas. Mrs. Montgomery is the Distributive Education teacher at Tahoka High School.

Hostesses for the shower were Pam Vaughn, Leta Pierce, Sue Shaver, Freda Jeffcoat, Hedy Bufe, Leah Taylor, Paulette Brownfield, Nelda Coulston, Jo Beth Horney, Lana Daniell and JoAnna Thomas.

Work Is Progressing On Museum

A number of interested citizens have been donating their time and labor toward completing the annex being added to the Tahoka Pioneer Museum. The outside of the addition is finished, and volunteers have been installing insulation, putting up sheetrock, etc., on the inside of the structure. Winston Wharton and Bill Craig, members of the building committee for the Museum, report that response to requests for help in this work has been very gratifying, and most of the workers have shown surprising skill in this kind of work.

Work sessions have been held on the last two Thursday nights, and the following people have worked hard and accomplished a great deal: Arlys Askew, Melvin Burks, Bill Craig, Lloyd Hamilton, Mark McAfee, Maurice Hufaker, Mel Leslie, Sonny Roberts, Cap whorton, Harold Green, Dayton Parker, Kenneth Durham, Charlie Stice, Winston Wharton.

More work is needed to finish the annex, which has been named Frank P. Hill Memorial Hall in honor of the late Frank Hill, who worked very hard in developing the Museum to its present site. Anyone willing to donate a few hours of work toward this worthy project will be welcomed with open arms.

Another work night will be held Thursday, Feb. 2, at 6:30 p.m. Coffee and cake will be provided, and all volunteer help will be appreciated.

'Jets' Program Started at THS

A new JETS (Junior Engineering Technical Society) program has been established at Tahoka High School. JETS is for any high school student interested in engineering. The main purpose for JETS is to encourage better scholarship and to develop initiative, enthusiasm and interest in projects related to engineering and applied science.

Thursday, Jan. 26, a constitution was drawn up and officers elected as follows: President, Deanna Stanley; vice president, Scott Orr; secretary-reporter, Les'lie Valentine. Other members are Deedie Daniell, Jennifer Ehlers, Shelia Crawford, Russell Roberts, Frankie Alvarez, Charles Ash, and Clark Brazil. The faculty advisor is Jo Beth Horney and engineering advisor is Wes Owen. The club will meet every four to six weeks.

Seven members and sponsor, Jo Beth Horney, attended an engineering conference Jan. 27-28 at Texas A&M University sponsored by the Society for Women Engineers.

County Data Is Presented To Rotarians

A "state of the union" on the county level was given to Tahoka Rotary Club last Thursday by County Judge J.F. Brandon and County Clerk C.W. Roberts.

Brandon reported that the county has a 1984 budget of \$1,107,000, and that the current tax collections are running about 70 per cent. He noted that \$565,000 is anticipated from property tax collections, with other money expected from vehicle registrations, fines and fees and other sources.

He also noted that there are 960 miles of rural roads in the county to be maintained.

Roberts gave some of the history of the county clerks in the county, noting that the first instrument was filed in the county in 1903. He pointed out that neither he nor any other county employee gets a commission or fee for the services they do; all are on a salary.

The English of the 15th to 17th centuries believed that the color red was helpful to the sick. Patients were dressed in red nightgowns and surrounded with red objects.

Look Who's New

Dustin, son of Todd and Rhonda McNeely of Levelland, announces the arrival of a baby brother, Colton Lloyd, weighing 8 lbs. 8 ozs. on Jan. 30 at 12:35 p.m. in Methodist Hospital in Lubbock. Grandparents are Mr. and Mrs. Morris Bingham of Tahoka and Mr. and Mrs. Lloyd Huddleston of Lakeview. Great-grandparents are Mr. and Mrs. C.B. Nowlin of Lakeview.

Computer Open House Is Slated

Thursday, Feb. 9, the Tahoka ISD will host a "hands on" computer worknight for adults only. Everyone interested in learning about computers and/or learning about what is being taught to the students in our computer programs is invited to attend. Tubb Elementary, North Elementary, junior high and high school will have continuous hourly demonstrations from 6:30 to 9:30 p.m.

THE LYNN COUNTY NEWS

TAHOKA, TEXAS 79737
"Oldest Business Institution In Lynn County"
THE LYNN COUNTY NEWS (usps 323200) is published weekly by Woodwork, Inc., on Thursday, (52 issues per year) at Tahoka, Lynn County Texas. Office location is 1617 Main, Tahoka. Phone (806) 998-4888. Entered as second-class matter at the post office at Tahoka, Texas 79737 under act of March 3, 1879. Postmaster: send address change to The News, P.O. Box 1170, Tahoka, Texas 79737.
SUBSCRIPTION RATES
Lynn and Adjoining Counties \$ 9.00
Elsewhere in Texas \$10.00
Out of Texas \$11.00
DALTON WOOD Editor and Publisher
TERRY WOOD Advertising
BETTY JOLLY Advertising and Bookkeeping
VELMA PHILLIPS Compugraphic Operator
JUANELL JONES Compugraphic Operator
DEAN BARTLEY Photographer

FINAL MARKDOWN

AT
genny's

SAVE — SALE — SAVE
ON

Collegian - Donovan - Galvani
Fire Islander - Jeremy & Others

Sportswear
Dresses - Lingerie
ALL

1/2 TO 60% AND 75% OFF!

ODDS & ENDS - \$5 TO \$10

ALL SALES FINAL ★ NO REFUNDS PLEASE
VISA-MASTERCHARGE WELCOME

1531 AVE. "J"
PHONE 998-4001

TAHOKA, TEXAS
WEST SIDE OF SQUARE

Grandparents: Here's a chance to make your children and grandchildren happy!

A Big

Valentine



Send or bring us
a cute photo of
YOUR GRANDCHILD
Ages: 1 day to 6 years
(We promise to return it unharmed)

We'll place it in a heart
including name,

and on

THURSDAY, FEBRUARY 9

(the last paper before)

Valentine's Day

YOUR LITTLE VALENTINE WILL APPEAR
IN OUR PAPER!

THE COST IS ONLY
\$7.00 PER HEART

Hurry, Now!

DEADLINE IS 5 P.M. MONDAY, FEB. 6

The Lynn County News

Fire Fund Set For Armes Family

The Johnny Armes family lost all their possessions in a fire at their home near New Home Friday.

Anyone wishing to help may make donations at the First National Bank at Tahoka.

Admission is \$2 for adults and \$1 for students.

SPC's homecoming queen and king will be crowned during halftime ceremonies of the men's game.

A homecoming dance will be held in the Sun-down Room of the Student Center.

SPC Sets Homecoming

South Plains College will celebrate 1984 homecoming activities Feb. 5-6 on its Levelland campus with a bonfire, pep rally, two basketball games and a homecoming dance.

Feb. 5 a bonfire and pep rally begin at 7 p.m., coaches and members of the men's and women's basketball teams will be introduced.

Feb. 6 the women's game is set for 6 p.m. and the men's game at 8 p.m.

Poetry Contest Slated

A \$1,000 grand prize will be offered in an upcoming poetry contest sponsored by the World of Poetry newsletter. There will be 100 prizes in all, totaling over \$1,000.

For a free brochure of rules and prizes write, World of Poetry, 2431 Stockton Blvd., Dept. G. Sacramento, Calif. 95817.

Lynn County Merchants Appreciate Your Business

New Home School Menu

Feb. 6-10, 1984
BREAKFAST

Monday- Sausage wrap, syrup, apple juice, milk
Tuesday- Cinnamon toast, fruit, milk
Wednesday- Blueberry muffin, applesauce, milk
Thursday- Breakfast Bars orange juice, milk
Friday- French toast, juice or fruit, milk

LUNCH

Monday- Macaroni and beef, tossed salad with dressing, fresh fruit choice, hot rolls, milk
Tuesday- Salisbury steak, brown gravy, whipped potatoes, green beans, hot rolls, milk
Wednesday- Bologna & cheese or pimento cheese sandwich, lettuce, tomato, carrot stick, canned fruit or cobbler, milk
Thursday- Barbecued chicken, potato salad or whipped potatoes, corn, white bread, milk
Friday- Hamburger or cheeseburger, lettuce, pickle, onion, tomato, French fries, catsup, snicker-doodle cookie, milk

TUESDAY BRIDGE

The winners of Tuesday night bridge June 24 were: First, Catherine Barham and Janel Franklin; second, Weesie Carroll and Fern Leslie; third, Marjorie Peltier and Edwina Morris; fourth, Ruth McLaughlin and James McAllister.

TAHOKA STOCK SHOW



GRAND CHAMPION LAMB — Jeff Martin exhibited the Grand Champion Lamb at the Tahoka Livestock Show. (LYNN COUNTY NEWS PHOTO)

TAHOKA STOCK SHOW



RESERVE GRAND CHAMPION LAMB — Jody Woodard exhibited the Reserve Grand Champion Lamb at the Tahoka Livestock Show. (LYNN COUNTY NEWS PHOTO)

New Home News

By Florence Davies — Call 924-7479

Mr. and Mrs. Leonard Nettles were in San Francisco, Calif. last week attending the NRECA meeting, held in the convention center. They left Friday and returned Wednesday. Other area couples attending were Mr. and Mrs. Jim Payne, Mr. and Mrs. Earl Brown, Mr. and Mrs. Billy Weaver, and Mr. and Mrs. Weldon Mason.

Mrs. Fannie Ballentine entered Methodist Hospital Saturday for treatment of pneumonia.

Mr. and Mrs. Virgil Haley spent last weekend in Portales with Mr. and Mrs. A.R. Pool.

Mrs. Danny Nettles is in St. Mary's Hospital for major surgery this Monday.

Mrs. Gail Cox of Ft. Worth spent ten days here with her mother, Margie Morris and Donnie. Her husband, Bill Cox, came by plane Friday and spent the weekend, and they returned home Monday.

E.M. Rudd was in South Park Hospital Monday until Friday for medical treatment.

Mrs. Inez Estrada remains in West Texas Hospital.

Mrs. C.B. Nowlin was in Brownfield this Monday morning for the funeral services for Mrs. Mary Howell. Mrs. Howell, 93, died Friday in the Brownfield Medical Center. Survivors include two daughters, one son, 10 grandchildren, 23 great-grandchildren and 5 great-great-grandchildren.

Mrs. Laverne McAllister attended funeral services for Mrs. Flossie Tidwell, 91, Saturday. Services were in the Central Baptist Church in Lubbock with Dr. John Adams, pastor, officiating. Survivors include three sons, Ira of Plains, Floyd and A.C., both of Lubbock; and one daughter, Mrs. Zellie McAllister of Lubbock.

Mary Ellen James of Lubbock visited here Sunday afternoon with Gayland and family. She had been to Lamesa to see our sister, Mrs. M.M.

A fund was started Sunday in the New Home Baptist Church to help this young family. Anyone wishing to help may contact Rev. Rial, LeRoy Nettles or any of the deacons.

Mrs. Thelma Nunley was dismissed from Methodist Hospital Sunday and is recuperating at their home in Lakeview.

Mickey and Luann Graves and children, Jeff and Christie Tawney, are new residents in our community. Jeff, 14, is an eighth grade student and Christie, 10, is a fourth grader.

Mrs. Jewell Mayfield was transferred from the Lynn County Hospital Sunday to ICU Methodist Hospital.

There are so many ill in our community that we won't try to name them, several we missed last week. Some are still confined to their homes, and many more out. The school reported a large number of pupils out.

Helen Ernst was in Methodist Hospital Thursday-Saturday for chemotherapy treatment.

Mrs. David Martin of Petty is ill at her home with flu and complications.

Scholarship Deadline Is Near

Junior and senior class high school students who are interested in applying for \$1,000 college scholarships should request applications by March 15 from the Educational Communications Scholarship Foundation, 721 N. McKinley Road, Lake Forest, Ill. 60045. To receive an application, students should send a self-addressed, stamped envelope with a note stating their name, address, city, state

and zip code and approximate grade point average. Fifty award winners will be selected on the basis of academic performance, involvement in extracurricular activities and need for financial aid.

WEDNESDAY BRIDGE

The winners of Wednesday afternoon bridge Jan 25 were: First, Mabel Gurley and Jeanne McCord; second, Doris Ashcraft and Auda Norman; third, Fern Leslie and Weesie Carroll.

"Short supper; long life." Serbian proverb



THE COTTON OFFICE

Phone 998-4719

Before you sell your 1983 cotton, bring your recap sheet into our office and compare. You'll be surprised at how well we stack up against Telcot!

1603 AVE. J • TAHOKA, TX

KENT ELLIOTT

KAREN TAYLOR

— Specializing In —
Pedicures ★ Manicures

ORALIA VEGA
Call for Appointment

Delia's Hair Styling

998-4423

"Got to make room for new spring arrivals!"
FINAL MARKDOWN

on Fall and Holiday Apparel

One Rack Jackets - \$10⁰⁰

GIRLS SIZES 7-14

PRE TEEN SIZES 6-14

Lee Jeans \$12⁰⁰ Lee Jeans \$13⁰⁰

Sweaters - Skirts - Cor. Blazers - Blouses
Coordinated Groups

60% Off

Closing Out All Dresses!

75% Off

Many More Savings!

SALE BEGINS THURSDAY, FEB. 2 - FEB. 11

Tahoka Daisy

1926 LOCKWOOD

TAHOKA, TEXAS

USED CARS

1980 Pontiac Grand Prix 2-door Cpe, Silver/Red	\$4795 ⁰⁰
1979 Pontiac Grand Prix 2-door Cpe, Beige	\$3995 ⁰⁰
1979 Ford LTD 4-door Sedan, Blue	\$3995 ⁰⁰
1978 Pontiac Station Wagon Catalina, Silver	\$3295 ⁰⁰
1978 Pontiac Catalina 2-door Coupe, Brown/Tan	\$2695 ⁰⁰
1977 Ford L.T.D. 4-door Sedan, Green	\$1695 ⁰⁰
1977 Ford Green, As Is	\$750 ⁰⁰
1974 Buick Red/White, As Is	\$750 ⁰⁰

USED PICKUPS

1979 Chevrolet 1/2 Ton L.W.B., Blue, 6 cyl., 4 speed	\$2495 ⁰⁰
---	----------------------



McCord Motor Co.

Your One-Stop Dealer For New Buicks, Oldsmobiles, GMCs and Pontiacs, Used Cars, Parts and Authorized Service

★ "We're Here To Serve You" ★

1716 N. MAIN

998-4547 OR 998-4566

TAHOKA, TX

SMILE SALE!

<p>SMILE SPECIAL BORDEN ASSORTED Ice Cream ROUND GAL \$1⁶⁹</p> <p>MOREHEAD PIMIENTO CHEESE SPREAD 7 1/2 OZ. PKG. 89^c</p> <p>U.S. RUSSETT Potatoes 10 LB. BAG \$1²⁹</p> <p>AUSTEX BEEF STEW 24 OZ. CAN \$1⁰⁹</p> <p>SMILE SPECIAL FACIAL TISSUE Kleenex 175 COUNT 69^c</p> <p>GLADIOLA CORNBREAD MIX 4 6 OZ. PKGS. \$1</p> <p>SMILE SPECIAL Money-Orders EACH 29^c</p> <p>POP RITE POPCORN 1 LB. BAG 39^c</p>	<p>TEXACO 10W QT Motor Oil 79^c</p> <p>SMILE SPECIAL SCOTT JUMBO ROLL Towels 69^c</p> <p>ARMOUR STAR 1 LB. PKG. Bacon \$1⁵⁹</p> <p>GLADIOLA ENRICHED FLOUR 5 LB. BAG 99^c</p>
--	--

PRICES EFFECTIVE FEB. 2-8, 1984

If You Catch One Employee That Is Not Smiling, Demand A Free Cup Of Coffee!

THRIF-T-MART

The Home Town Convenience Store

Member Of
Affiliated Food,
Inc.

We're proud to give you more!

Self Service Gas & Oils
Ice
Groceries & Meats

Home Owned
Home Operated

Turner Rogers
W.T. Kidwell

Confused Phone Customers Offered Some Answers

Some General Telephone customers are asking: "Do all the changes mean an end of the telephone business or is it a new beginning? How do the changes affect GTE customers?"

General Telephone Company of the Southwest, his company will still provide customers with traditional end-to-end telecommunications service, if customers desire. "But," he added, "the changes brought by ongoing deregulation and the divesti-

ture Jan. 1, of AT&T and the Bell operating companies are making new options available to customers."

Although there is some frustration among customers and companies as these changes are introduced, customers can now buy or lease telephone instruments, select from a variety of repair and warranty options, install their own house wiring or employ the telephone company or an outside vendor to install it, and subscribe to various long distance calling services.

Langley emphasized that General Telephone of the Southwest is still a full service provider for customers who prefer to have their telephone equipment and services provided by the company. "An over simplified summary of the changes basically means General Telephone and other local telephone companies now provide the network for completing local calls and for connecting customers

to the long-distance carrier," Langley said.

"We are similar to what has been the norm for years with electric, gas and water companies. We provide and are responsible for the distribution network up to a designated point on the customer's premises. The customer is responsible for the lines and instruments beyond that designation point."

Langley summarized and commented on the changes as follows:

Telephone Instruments
Since Jan. 1, 1983 customers have been able to continue leasing telephone instruments from General Telephone, or to purchase their own instruments from the company or other vendors.

Langley said customers purchasing their own telephone should be aware of the warranty and repair procedures provided with any purchased equipment, and should make sure the telephone will be compatible with the local telephone equipment and services.

As examples, he said some push button telephones do not give true touch call tones over the network that are required for some services, and those that do give true touch call pulses will not work on some switching equipment. Another problem is on party line service where exact ringing requirements are needed.

"We urge customers to check with the vendors and telephone company before purchasing equipment," Langley said.

Repair and Warranty
Phones purchased from General Telephone and other vendors have warranties that vary from manufacturer to manufacturer. GTE Phone Marts can perform some

minor repairs on instruments purchased from the company for a charge when the instrument is out of warranty but the repair of purchased phones is the responsibility of the customer and the manufacturer.

Phones leased from the telephone company are repaired without charge, provided they are returned to a designated repair location. A service call charge similar to those assessed by other service companies, such as plumbers, electricians and appliance repairmen, applies when an employee is requested to come to the customer's premises to do repair work.

House Wiring
The wiring from the point of connection at the premises to the telephone can be provided and repaired by the company at a fee as approved by the state commission, or customers can purchase the materials from the company or other vendors and do the work themselves, or arrange for a third party to do the work.

Langley explained the service call charges for sending an employee to a customer's premises and for wiring repair work were required because of the deregulation of these services. "Prior to deregulation, the costs to the company of providing these services were spread over all customers in local monthly service rates," he pointed out. "Under deregulation where some customers provide their own phones and do their own wiring, the costs of providing the services must be paid by those requesting the service rather than all customers."

Long-Distance Service
"GTSW facilities are used to connect customers with various long-distance companies that may provide long-distance service in an area," the president said. "In other words, long-distance calls go through our equipment to reach the facilities of the long-distance companies."

"Except for the long-distance options now available, the long-distance related changes customers are most likely to notice is in the format of the telephone bill. Long-distance calls placed over AT&T long-distance facilities will be shown separately from those long-distance calls made within the local geographic area called a LATA (Local Access and Transport Area) which was established under the court ordered divestiture of AT&T."

"Eventually, customers will have instant access to all long-distance carriers, similar to the single digit long-distance access now used to connect with AT&T facilities."

Pricing Changes
Langley added that some price adjustments will occur because of the changes as competition increases. "For instance, in the past, regulators have established long-distance charges to be higher than the cost of providing long-distance service in order to keep local basic service as low as possible. As long-distance prices are adjusted to the new competitive market, the subsidy will decrease and local rates will increase accordingly," he said.

"The companies and regulators must see that the public is the major beneficiary of the changes taking place. As an example, long-distance rates must be reasonable so that major users will not have need to establish their own networks and bypass the local networks. This would result in a reduction of revenues for telephone companies and drive local rates higher for the remaining customers," Langley said.

Lynn County Merchants Appreciate Your Business

Obituaries

Joseph Lindsey

Services for Joseph Walter Lindsey, 84, of San Angelo and formerly of Ralls were held at 2 p.m. Tuesday, Jan. 31, at Emma Church of Christ with Ray Shave, minister, officiating.

Burial was in Ralls Cemetery.

He died Sunday in a San Angelo nursing home after a lengthy illness. The Muscatine, Iowa, native was a retired farmer and carpenter. He was a member of Emma Church of Christ in Ralls.

Survivors include his wife, Gertrude of San Angelo; a son, James W. of Midland; a stepson, Melvin Burks of Tahoka; a grandson; four great-grandchildren; and two stepgrandchildren. Pallbearers were Billy Bob Wright, Raymond Binder, Curtis Green, Eddie Verett, Cecil Melton and Nelton Chote.

such an important and worthwhile project." Also speaking at the symposium were David Hazelwood from the Lubbock District Attorney's office; Craig Tannehill, a toxicologist employed by the DPS; Mrs. Jimmie Steed, Mothers Against Drunk Drivers; Jackie Black, a Monterey High School graduate who was instrumental in forming the Lubbock group Students Against Drunk Drivers; and Steve, a member of Alcoholics Anonymous.

Other activities included myth posters about the use of alcohol, films from the DPS shown on Thursday to 7th and 8th grade

science classes, and learning kits. In addition, A Bring Your Own Banana (BYOB) party will be provided for students on Friday. The students will be responsible for bringing a banana and Student Council members will help them prepare a banana split. Twelve gallons of ice cream have been donated by Gandy Dairies and the remaining 33 gallons needed were purchased with STUCO funds.

Other on-going projects in other areas include scrapbook competition, safety projects, teacher recognition, and hosting the financial aid workshop held by Mrs. Brownfield, counselor, for the parents of seniors.

ATTENTION VETERANS
Good Lynn County land. Use your opportunity while you can.
Drop by or call today.
J.A. PEBSWORTH, JR.
Office (806) 998-5162 Home (806) 998-4091

PEBSWORTH INSURANCE AGENCY
is now offering
Auto Coverage PLUS
• Fire & Extended Coverage
• Hospitalization
• Medicare Supplements
• Life & Estate Planning
• Crop Hall
• Farm Loans
See Us For Low-Cost Coverage To Fit Your Needs!
Your Business Will Be Greatly Appreciated
J.A. Pebsworth
2206 MAIN ST. • TAHOKA, TX
998-4564 • 998-5160


Plan Now For Your 1984 Vacation
Scandinavian Countries
Includes Denmark, Sweden, Norway for \$1895, 20 meals, hotel accommodations, transportation from Houston, departing May 29, 1984 for 15 days.
Northwest and Canada by Air and Bus
Includes 7 states and Canada. Fly to Las Vegas and return home from San Francisco and ride the bus the rest of the way. \$1169 per person double, plus air fare for 17 days. Departing Aug. 6.
A deposit of \$100 is due at time of booking for either tour
Hawaiian Island Cruise
Regular 7-Day Cruise Price from \$995 pp. dbl. plus low air supplement from Dallas. Departure will be during Christmas holidays - Nice Christmas present for someone! A deposit of 25% of cruise is due at time of booking.
Las Vegas
From \$169.95 from Lubbock for airfare and hotel accommodations for two nights. Can be booked at any time.
World's Fair in New Orleans
Accommodations can be booked at anytime whether going by air, bus, or car. Fair dates: May 12 through Nov. 11, 1984.
For further information, call 998-4908.
LENNIE COX

Come To The Star Drive In
★ Daily Specials ★

MONDAY: Roast Beef, with Vegetables	\$3.25
TUESDAY: Beans & Cornbread	\$1.00
With Chili	\$1.95
WEDNESDAY: Hot Beef w/Toast, Salad, French Fries & Gravy	\$3.25
THURSDAY: Homemade Stew	\$2.25
FRIDAY: Fish w/Salad, Toast & French Fries	\$3.25
SATURDAY: Combination Plate w/2 Enchiladas, Beans, 1 Taco, Salad and Chips	\$3.25
SUNDAY: Fried Chicken or Chicken Fry w/Salad, Toast, Gravy & French Fries	\$3.25

CALL IN 9:30 AM - 10:00 P.M. 998-4465

CONGRATULATIONS!



J. W. Inklebarger
Assistant Cashier & Head Teller

Celebrating 40 years of service to the bank and our customers.

FB
THE FIRST NATIONAL BANK OF TAHOKA
P.O. BOX 1030 / TAHOKA, TEXAS 79373
(806) 998-4511 / MEMBER FDIC

PERRYS FEBRUARY
Valentine Values on Many Items
SALE
The One-Stop for All Your Shopping Needs

VALENTINE GIFTS BRACH'S 1-LB. HEART BOX VALENTINE CHOCOLATES \$5.99 BOX A perfect tribute for your favorite Valentine.	100% ORLON ACRYLIC SAYELLE KNITTING YARN 87¢ 3 1/2 Oz. Solid Colors 3 Oz. Varigated Colors
PACKAGE OF 28 VALENTINES 28 Cards w/Envelopes For Classmates and Teacher. Sale Price 99¢	32-OZ. SUNLIGHT DISHWASHING LIQUID 163
TOWELS 22x42 Velour and Jacquard Borders Fringed or Terry Solids Hemmed 2.97 EACH 7 Dollar Value!	1-GAL. LIQUID BLEACH CLOX 99¢
TWIN PAK BOX CRACKER JACKS 2 Bags Per Box 1.88 Box	VINYL-COATED HANGERS Assorted Colors 8 FOR 88¢

STRETCH

**\$ YOUR FOOD \$
DOLLAR**

BATHROOM TISSUE
Nice 'N Soft \$1.50
6 ROLL PKG.

73% LEAN FAMILY PAK
Ground Beef \$1.09
3 LBS. OR MORE LB.

ALL GRINDS
Folger's Coffee \$2.26
1 LB. CAN

HANDY PAK (AAA) PURE PORK **Sausage** \$1.59
1 LB. ROLL

BEEF SKIRT Fajitas \$1.89
LB.

*1.00 OFF LABEL TWIN PAK
Ivory Liquid \$2.79
32 OZ. BTL.

ARMOUR CHICKEN FRIED **Beef Patties** \$1.49
LB.

WILSON SLICED **Bologna** \$1.19
12 OZ. PKG.

WILSON **Franks** 99¢
12 OZ. PKG.

KRAFT GRAPE JAM OR
Grape Jelly 99¢
2 LB. JAR

LARGE SIZE
Lettuce 39¢
LB.

HEALTH & BEAUTY AIDS
HEAD AND CHEST
Capsules \$2.39
12 CT. PKG.

DAIRY & FROZEN FOODS
KRAFT CHEDDAR OR COLBY
Halfmoon Horns \$2.49
16 OZ. PKG.

LARGE SIZE CALIFORNIA **Lemons** 3 FOR 39¢
WASHINGTON D'ANJOU **Pears** 49¢
LB.

SUPER SELECT **Cucumbers** 29¢
LB.

MARYLAND SWEET **Yams** 39¢
LB.

REG. STRENGTH TABLETS
Tylenol \$3.99
100 CT. BTL.

CONTADINA
Tomato Sauce \$1.00
4 8 OZ. CANS

ORE-IDA
Hash Browns \$1.19
2 LB. BAG

KRAFT AMERICAN
Stack Pack Singles \$2.39
1 LB. PKG.

50¢ OFF LABEL
Cheer Detergent \$2.99
84 OZ. BOX

KEN-L RATION LOVE ME
BEEF, BEEF & CHEESE, BEEF & LIVER
Tender Chunks \$2.49
4 LB. BAG

KRAFT FRESH ORANGE
Juice \$1.99
½ GAL.

BUTTERMILK OR GOOD N BUTTERY
BIG COUNTRY **Biscuits** 89¢
10 CT. CANS

KRAFT MACARONI & CHEESE **Dinners** 89¢
2 7½ OZ. PKGS.

ORVILLE REDENBACHER
Popping Corn \$1.09
15 OZ. JAR

MAZOLA
Corn Oil \$1.69
32 OZ. BTL.

WOLF
Beef Stew \$1.39
24 OZ. CAN

KRAFT POURABLE CATALINA **Dressings** 79¢
FRENCH 8 OZ. BTL.

KRAFT APPLE **Jelly** 79¢
18 OZ. JAR

LEMON FURNITURE POLISH **Favor** \$1.69
14 OZ. CAN

LIQUID SOIL AND STAIN REMOVER **Shout** \$2.39
32 OZ. CAN

KRAFT ASSORTED
Barbeque Sauce 99¢
18 OZ. JAR

SWANSON MEATLOAF OR SALISBURY STEAK
DINNER
Dinner 99¢
10½ OZ. BOX

SUNSHINE 35% MORE BONUS PAK
Cheez-Its 99¢
13½ OZ. BOX

15¢ OFF LABEL PERSONAL **Ivory Soap** 99¢
4 BAR. PKG.

KRAFT STRAWBERRY **Preserves** \$1.49
18 OZ. JAR

CARNATION CANNISTEH MIX
Hot Cocoa \$2.19
20 OZ. CAN

DECAFFEINATED OR FREEZE DRIED REG
Tasters Choice \$2.99
4 OZ. JAR

SUMMITT'S
VENTURE FOODS
2001 Lockwood
TAHOKA, TEXAS
998-5128
PRICES EFFECTIVE JAN. 26-FEB. 1, 1984

the price fighter
Venture FOODS

MEMBER STORE AFFILIATED FOODS INC.

WE RESERVE THE RIGHT TO LIMIT QUANTITIES WE ACCEPT MANUFACTURER'S COUPONS

Lynn County Livestock Scenes and Results



Continued from Page 1

STEERS
ANGUS
 1. Cory Ballard, NH 4-H
 2. Ricky Williams, Tahoka FFA
 3. Ricky Williams
Champion: Cory Ballard
Reserve Champ: Ricky Williams
HEREFORD - Light
 1. Shawn Ballard, NH 4-H
 2. Cody Smith, Tahoka 4-H
 3. Tadd Knight, Tahoka 4-H
HEREFORD - Heavy
 1. Cory Ballard, NH 4-H
 2. Cody Furlow, O'Donnell 4-H
 3. Cody Furlow, O'Donnell 4-H
Champion: Cody Furlow
Reserve Champ: Shawn Ballard
CROSS
 1. Cody Smith, Tahoka 4-H
 2. Todd Ballard, NH 4-H
 3. Tadd Knight, Tahoka 4-H
 4. Brad Snellgrove, O'Donnell FFA
Champion: Cody Smith, Tahoka 4-H
Reserve Champ: Todd Ballard, NH 4-H

GRAND CHAMPION STEER:
 Cody Smith, Tahoka 4-H
RESERVE GRAND CHAMPION STEER:
 Todd Ballard, New Home 4-H
SHOWMANSHIP: Cody Smith
HERDSMAN: Shawn Ballard
GRAND CHAMPION LAMB:
 Shawn Ballard, NH 4-H
RESERVE GRAND CHAMPION:
 Jody Woodard, Tahoka 4-H
SHOWMANSHIP: Jody Woodard
HERDSMAN: Mitchell Hammonds
GRAND CHAMPION BARROW:
 Jason Belew, Tahoka 4-H
RESERVE GRAND:
 Aaron Miller, Tahoka 4-H
SHOWMANSHIP: Cory Ballard, NH 4-H
HERDSMAN: Jason Spence
GRAND CHAMPION BROILER:
 Brandi Barton, O'Donnell 4-H
RESERVE GRAND CHAMPION BROILER:
 Brandi Barton

SHEEP
FINE WOOL - Light
 1. Casandra Brewer, O'Donnell 4-H
 2. D'Anna Womack, Tahoka FFA
 3. Kelly Sanders, O'Donnell 4-H
 4. Jason Spence, Tahoka 4-H
FINE WOOL - Hvy.
 1. D'Anna Womack, Tahoka FFA
 2. Jeff Martin, Tahoka 4-H
 3. Sharla Miller, Tahoka 4-H
 4. Luke Dunlap, Tahoka 4-H
Champion: D'Anna Womack
Reserve Champ: Casandra Brewer
FINE WOOL CROSS - Light
 1. Jason Belew, Tahoka 4-H
 2. Scott Brewer, O'Donnell FFA
 3. Rochelle Reid, Tahoka 4-H
 4. Stephanie Womack, Tahoka 4-H
FINE WOOL CROSS - Heavy
 1. Kris Belew, Tahoka 4-H
 2. Kelly Sanders, O'Donnell 4-H
 3. Luke Dunlap, Tahoka 4-H
 4. Casandra Brewer, O'Donnell 4-H
Champion: Jason Belew
Reserve Champ: Kris Belew
HAMPSHIRE - Light
 1. Brian Upshaw, Tahoka 4-H
 2. Kris Belew, Tahoka 4-H
 3. Tammy Trotter, Wilson FFA
 4. Mitchell Hammonds, Tahoka FFA
HAMPSHIRE - Heavy
 1. Shawn Ballard, Tahoka 4-H
 2. Kelly Sanders, O'Donnell 4-H
 3. Bruce Lehman, Tahoka 4-H
 4. Jeff Martin, Tahoka 4-H
SUFFOLK - Light
 1. Robert Poer, New Home FFA
 2. Heath Brewer, Tahoka 4-H
 3. Heath Brewer, Tahoka 4-H
 4. Scott Brewer, O'Donnell FFA
SUFFOLK - Medium
 1. D'Anna Womack, Tahoka FFA
 2. Jeff Martin, Tahoka 4-H
 3. Monty Witt, Tahoka 4-H
 4. Casandra Brewer, O'Donnell FFA
SUFFOLK - Heavy
 1. Jody Woodard, Tahoka 4-H
 2. Brian Upshaw, Tahoka 4-H
 3. Kris Belew, Tahoka 4-H
 4. Scott Brewer, O'Donnell FFA
Champion Medium Wool: Shawn Ballard
Reserve Champ: Jody Woodard
SOUTHDOWN - Light
 1. Todd Ballard, New Home FFA
 2. Scott Brewer, O'Donnell FFA
 3. Patricia Davis, Tahoka FFA
 4. Jason Belew, Tahoka 4-H
SOUTHDOWN - Heavy
 1. Cory Ballard, New Home 4-H
 2. Shawn Ballard, New Home 4-H
 3. Jason Belew, Tahoka 4-H
 4. Misty Franklin, O'Donnell 4-H
Champion: Cory Ballard
Reserve Champ: Shawn Ballard

BARROW
BERKSHIRE
 1. Blaine Fillingim, New Home 4-H
 2. Sharla Miller, Tahoka 4-H
 3. Rochelle Reid, Tahoka 4-H
 4. Bryan Bednarz, Wilson FFA
Champion: Blaine Fillingim
Reserve Champ: Sharla Miller
CHESTER WHITE - Light
 1. Darrell Paul, New Home FFA
 2. Jody Woodard, Tahoka 4-H
 3. Patricia Davis, Tahoka 4-H
 4. Rolanda Vickers, New Home FFA
Champion: Kurt Bryan
Reserve Champ: Darrell Paul
CROSSBRED - Light
 1. Stephanie Womack, Tahoka 4-H
 2. Ty Askew, Tahoka 4-H
 3. Tamara Knight, Tahoka 4-H
 4. Sharla Miller, Tahoka 4-H
CROSSBRED - Medium
 1. Tadd Knight, Tahoka 4-H
 2. Scott Fillingim, New Home 4-H
 3. D'Anna Womack, Tahoka 4-H
 4. Shane Moore, Wilson 4-H
CROSSBRED - Heavy
 1. Jody Woodard, Tahoka 4-H
 2. Tamara Knight, Tahoka 4-H
 3. Stephanie Womack, Tahoka 4-H
Champion: Jody Woodard
Reserve Champ: Tamara Knight
DUROC - Light
 1. Jason Spence, Tahoka 4-H
 2. Tadd Knight, Tahoka 4-H
 3. Jason Belew, Tahoka 4-H
 4. Mark Burch, Wilson FFA
DUROC - Heavy
 1. Kent Pebsworth, Tahoka FFA
 2. Sharla Miller, Tahoka 4-H
 3. Dan Bessire, O'Donnell 4-H
 4. Nancy Hiracheta, New Home FFA
Champion: Jason Spence
Reserve Champ: Tadd Knight
HAMPSHIRE - Light
 1. Stephanie Womack, Tahoka 4-H
 2. Kris Belew, Tahoka 4-H
 3. Matt Bessire, O'Donnell 4-H
 4. Paul Krause, Tahoka FFA
HAMPSHIRE - Medium
 1. D'Anna Womack, Tahoka 4-H
 2. Justin Bednarz, Wilson FFA
 3. Nancy Hiracheta, New Home FFA
 4. Tray Nance, Tahoka 4-H
HAMPSHIRE - Heavy
 1. Jason Belew, Tahoka 4-H
 2. Jason Spence, Tahoka 4-H
 3. Ty Askew, Tahoka 4-H
 4. Kathy Davis, Tahoka 4-H
Champion: Jason Belew
Reserve Champ: Jason Spence
POLAND
 1. Aaron Miller, Tahoka 4-H
 2. LaShea Kieth, New Home FFA
 3. Stephen Summer, Tahoka FFA
 4. Jay Forsythe, Tahoka 4-H
Champion: Aaron Miller
Reserve Champ: LaShea Kieth
SPOTS - Light
 1. Laura Aldous, Tahoka FFA
 2. LaShea Kieth, New Home FFA
 3. Shane Moore, Wilson FFA
 4. Manuel DeLeon, New Home FFA
SPOTS - Heavy
 1. Cody Smith, Tahoka 4-H
 2. Brad Snellgrove, O'Donnell FFA
 3. Tammy Trotter, Wilson FFA
 4. Brandie Inklebarger, O'Donnell 4-H
Champion: Cody Smith
Reserve Champ: Laura Aldous



YORKSHIRE - Light
 1. Matt Bessire, O'Donnell 4-H
 2. Marty Hammonds, Tahoka FFA
 3. Kathy Davis, Tahoka 4-H
 4. Lance Swinson, New Home FFA
YORKSHIRE - Heavy
 1. Heath Brewer, Tahoka 4-H
 2. Jacqui Lockaby, Tahoka FFA
 3. Justin Bednarz, Wilson FFA
 4. Brandie Inklebarger, O'Donnell 4-H
Champion: Heath Brewer
Reserve Champ: Matt Bessire
BROILERS - Light
 1. Toby Gass, Tahoka FFA
 2. Kris Belew, Tahoka 4-H
 3. Bruce Lehman, Tahoka 4-H
 4. Richard Montez, Tahoka 4-H
BROILERS - Heavy
 1. Brandi Barton, O'Donnell 4-H
 2. Brandi Barton, O'Donnell 4-H
 3. Lisa Zamora, Wilson 4-H
 4. Jody Woodard, Tahoka 4-H

BAKED GOODS

Yeast Breads

1. Kim Ingle
2. Misty Franklin
3. Tim Young
4. Robin Moore
5. Lisa Smith
6. Brandie Inglebarger
7. Melinda Ehlers
8. Shawn Blair
9. Paula Franklin

Cakes

1. Trey Nance
2. Brandi Barton
3. Rusty Hart
4. Jodi Williams
5. Misty Franklin
6. Annetta Pyron
7. Bridgett Miller
8. Robin Moore
9. Tracye Dempsey
10. Kris & Jason Belew

Quick Breads

1. Lisa Smith
2. Brandi Barton
3. Jennifer Bingham
4. Lanae Monk
5. Robin Moore

Cookies

1. Melinda Ehlers
2. Robin Moore
3. Belinda Williams
4. Luke Dunlap
5. Lisa Zamora
6. Trey Nance
7. Brandi Barton
8. Misty Franklin
9. Kristy Franklin
10. Shannon Ash

Pies

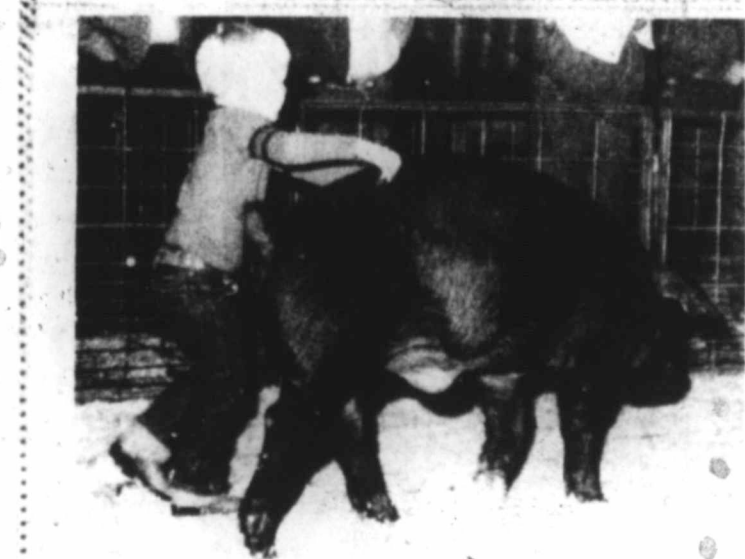
1. Brandi Barton
2. Robin Moore
3. Lanae Monk
4. Phyllis Leonard

GRAND CHAMPION:

Trey Nance - Italian Cream Cake

RESERVE CHAMPION:

Kim Ingle - Cinnamon Rolls



RESER
Woods
Champ

EV

12 O
LIQU

Park
Many

998-

M

Ass

Ask

F

COV

"W
ge



RESERVE GRAND CHAMPION LAMB — Jody Woodard, Tahoka 4-H, exhibited the Reserve Grand Champion Lamb at the Lynn County Stock Show. (LYNN COUNTY NEWS PHOTO)

**CITY OF TAHOKA
TEXAS COMMUNITY DEVELOPMENT PROGRAM**

The City of Tahoka is currently making plans to participate in the Texas Community Development Program. Two public hearings will be held. The first meeting will be held to obtain the views and proposals of citizens, especially low and moderate income persons, regarding community development needs and priorities.

Meeting #1: February 9, 1984 - Thursday
4:00 p.m.
City Hall
Meeting #2: February 20, 1984 - Monday
7:00 p.m.
City Hall

At the second meeting, the Council will make decisions on the proposed uses of fund to be requested. General information on the TCDD program will also be available.

All citizens are encouraged to attend these meetings and present their views on the proposed TCDD application to the Council. Comments on housing and community development needs may be delivered to Carl Reynolds at any time prior to these public hearings. Handicapped individuals who may have difficulty in attending these meetings should contact City Hall to arrange for assistance.

For further information, contact Carl Reynolds, City Manager, City of Tahoka, 1612 Lockwood, Tahoka, Texas 79373 or telephone (806) 998-4211. 5-1tc

**NOTICE OF REVENUE SHARING
BUDGET HEARING**

On Monday February 13, 1984 at 9:00 a.m. the Lynn County Commissioners Court will meet in the County Attorney's office in the courthouse at Tahoka to hold a hearing and adopt a budget for Revenue Sharing Fund in the amount of \$142,400.00 for the period October 1, 1983 through September 30, 1984.

Proposed Use Of Funds

Ambulance Service to Lynn County Hospital District	\$14,400
City-County Library Operations	2,400
Rent on Clinic Building	2,400
City of Tahoka for Solid Waste Disposal	10,000
Fire Prevention	6,000
Tahoka	\$3,000
O'Donnell	1,500
New Home	750
Wilson	750
Senior Citizen Transportation	2,000
Grassland Community Center	500
Improvement to County Buildings	104,700
1983-84 Allotment	\$142,400

Any citizen of Lynn County has the right to make written and/or oral comments on the entire budget and ask questions concerning the relationship of Revenue Sharing to the rest of the budget.

J.F. Brandon
Lynn County Judge
5-1tc

PUBLIC NOTICE

REVENUE SHARING HANDICAPPED REGULATIONS

This notice is published pursuant to the requirements of Section 51.55 of the Revenue Sharing Regulations, as published in the *Federal Register* on October 17, 1983. Section 51.55 prohibits discrimination against qualified individuals because of their handicapped status. Lynn County advises the public, employees and job applicants that it does not discriminate on the basis of handicapped status in admission or access to, or treatment or employment in, its programs and activities.

Lynn County has designated the following (person or office) as the contact to coordinate efforts to comply with this requirement. Inquiries should be directed to:

J.F. Brandon, County Judge
Box 1256, Tahoka, Texas 79373
Phone (806) 998-4222
5-1tc

WILSON NEWS

BY MARGRET CRISPIN

Mr. and Mrs. Jimmy Gickhorn and Tammy of Comanche visited over the weekend with his parents, Mr. and Mrs. Carl Gickhorn.

Mr. and Mrs. Tom McCoy of San Antonio visited Saturday with her grandparents, Mr. and Mrs. Virgil Henderson.

Michael Shipley, son of Mr. and Mrs. John Shipley of Snyder was hospitalized in Snyder Monday. He is the great-grandson of Mrs. Clara Phillips of Wilson.

Cecil Wied underwent surgery at Lubbock's Methodist Hospital Tuesday morning.

Mr. and Mrs. Roy Lynn Kahlich traveled to Los Angeles last week where they boarded the Love Boat for a cruise to Acapulco, Mexico.

Shaun Wied, infant son of Mr. and Mrs. Keith Wied, underwent surgery Monday at Methodist Hospital.

Mrs. Edna Nolte underwent surgery Tuesday at St. Mary's Hospital.

Mrs. Fannie Ballentine was admitted to Methodist Hospital Saturday evening.

Mrs. Clara Phillips lost two nephews in death during the last week. L.E. Moody of Hereford, and Boyd Phillips of Sulphur Springs.

Weekend visitors of Mrs. Clara Phillips were her sister, Mrs. Rae Dooley of Dallas, her nephew, Mr. and Mrs. James Ray Dooley of Duncanville, and her sister, Mr. and Mrs.

W.W. Stansbury of Hereford.

Janessa Lee of Loraine, celebrated her third birthday Sunday with a dinner at her home. Guests included Mrs. Lorain Crowson, Mrs. Margret Crispin Jayson Bartley and Tracy Bartley, all of Wilson; Mr. and Mrs. Mitch Bartley and Ashley of Levelland and Malcolm Chancy of Tahoka.

Tim Burns, 17 year-old son of Mr. and Mrs. Tom Burns of Floydada and grandson of Mrs. Hazel Walker, was hospitalized last week in Lubbock's Methodist Hospital for tests.

**Wilson
School Menu**

Feb. 6-10, 1984
BREAKFAST

Monday- Hot rice, toast, applesauce, milk
Tuesday- Waffle, butter, syrup, orange juice, milk
Wednesday- Cheese toast, diced pears, milk
Thursday- Cowboy bread, mixed fruit, milk
Friday- Cereal, toast, pine apple juice, milk

LUNCH

Monday- Vegetable beef soup, toasted cheese sandwich, diced pears, milk
Tuesday- Roast beef, gravy, cream potatoes, English peas, hot rolls, peach half, milk
Wednesday- Green enchilada - casserole, red beans, scalloped potatoes, cornbread, strawberry shortcake, milk
Thursday- Corn dog, mustard, pork & beans, buttered corn, cowboy bread, milk
Friday- Sloppy Joe, French fries, carrot stick, pickles, peanut butter cookies, milk

**Careful Addressing
is Stressed
By Post Office**

If you want your Valentines to be delivered on target and on time, you can help the Postal Service by addressing them properly. Postmaster Leonard Dunn of Tahoka Post office said. "A return address should be the first address a person puts on an envelope," he said. "If there is a delivery problem, it will allow us to return the letter, card or parcel to the sender."

Both the return address and mailing address should contain complete address information. This includes all of the following elements that apply:
*Full name of recipient.
*Apartment mailbox number or apartment

number.
*Rural route number and box number.
*Street name and number or post office box number.
*City, state and -- very important -- ZIP Code.
Postmaster Dunn also urged use of: legible hand writing, a ball point pen and correct postage (oversized cards require extra postage.)
"Proper addressing is especially important around holidays such as Valentine's Day, when many people do not use their return address in order to momentarily surprise the recipient. But when the card or letter is undeliverable, the one who is surprised is the sender when he or she discovers it was not received," Dunn said. "Use a little care, and we'll get it there."

**Happy 80th Birthday
Granddaddy!**

D'Ann, Danette & Johnna

**Save Money On Your
Homeowners Insurance!**

Fenton Insurance Agency
now offers 35% deviation
(you pay 65% of usual costs and still get full coverage)

All other types of insurance



Call us at 998-4884

FENTON INSURANCE AGENCY

1603 AVE. J • TAHOKA, TX
KAREN TAYLOR KENT ELLIOTT

Every Day Low Prices!



**Maalox
Antacid**
\$2.49

12 OZ. LIQUID

**Maalox
Plus**
\$2.39



12 OZ. LIQUID

Parker's Can Save You Money On These & Many Other Items At Our Regular Low Prices!

**DAYTON PARKER
PHARMACY**



998-4300

TAHOKA

SLATON CARE CENTER

630 S. 19th • Slaton, Texas

Quality Nursing Care
24 hours a day

MEDICAID PATIENTS ACCEPTED PHYSICAL THERAPY AVAILABLE

HOMECOOKED MEALS AND SNACKS

Assistance provided if needed for filling out paperwork for Medicaid patients.

Ask about our reasonable rates for day care and meals.

For information call 828-6268

**St. Joseph's
Wurstfest Set
Feb. 19**

St. Joseph's Wurstfest '84 will be held Sunday, Feb. 19 in Slaton.

The dinner will consist of German Sausage, homemade bread, homemade cakes, and all the trimmings. Tickets are \$5 for adults and \$2.50 for children under 10 years. Dinner will be served from 11 a.m. to 3 p.m.

Funfest will be from 11 am. to 4 p.m. at St. Joseph's Catholic School. German sausage only will be sold for \$2.75 per lb. on Saturday, Feb. 18 from 9 to 12 at St. Joseph's Hall.



If your nose itches, some say, it is a sign that you will have a fight.

**A FULL
SERVICE BANK**

Stuck with money problems? Wilson State Bank is your local independent bank and our financial assistance can pull you out and get you movin' again!

**Wilson
State Bank**

WILSON, TEXAS

Member Federal Deposit Insurance Corporation

COW POKES By Ace Reid



"Well, we're stuck! You run to the house and get help and I'll stay here and keep the motor runnin' so the radiator won't freeze!"

GIFT BOX VALENTINE CANDY ASST. QUALITY CHOCOLATES LARGE SELECTION ALL SIZES \$2.50 UP TO \$13.00 EACH

COOKED FOOD SPECIAL AS FEATURED ON TV. FRESH COOKED & DELICIOUS
CORN DOGS 289¢ FOR

32 OZ. YOUR FAVORITE FOUNTAIN DRINK 39¢ ALLSUP'S PLASTIC REUSABLE CUP WHILE SUPPLIES LAST

BORDENS ASST. FLAVORS ICE CREAM 1/2 GAL. 169¢ **BORDENS HI PRO MILK 1/2 GAL. 119¢**

MONEY ORDERS 29¢ EACH UP TO \$29.99

ALLSUP'S HOT CHOCOLATE 8 OZ. CUP 30¢ **SUGAR FREE, PEPPER FREE, OR SUGAR FREE PEPPER FREE DR PEPPER 6 PAK 12 OZ. CANS \$1.89**

SHURFINE CUT GREEN BEANS 3 16 OZ. CANS \$1 **POST TOASTIES 12 OZ. BOX 79¢**

ALLSUP'S CONVENIENCE STORES

- WHILE SUPPLIES LAST
- SELF SERV GAS
- OPEN 24 HOURS FOR YOUR CONVENIENCE
- PRICES EFFECTIVE FEBRUARY 2 - 4, 1984



RESERVE GRAND CHAMPION BARROW — Aaron Miller, Tahoka 4-H, exhibited the Reserve Grand Champion Barrow at the Lynn County Stock Show. (LYNN COUNTY NEWS PHOTO)

Applications For Farm Loans Now Accepted

Applications for emergency farm loans for losses caused by this summer's drought and extremely high temperatures are being accepted at the Farmers Home Administration (FmHA) office located in Lynn County said FmHA supervisor Curtis Barlow. Lynn County is one of 50 counties in Texas recently named by Secretary of

Agriculture John R. Block as eligible for loans to cover part of actual production losses resulting from the drought.

Barlow said farmers may be eligible for loans of up to 80 percent of their actual losses, or the operating loan needed to continue in business, or \$500,000, whichever is less.

THOMAS YOUNG ON HONOR ROLL

Thomas Young, son of Joe and Nedra Young of Tahoka, has been named to the Dean's Honor Roll for the 1983 fall semester at McMurry College in Abilene.

A student must attain a grade point average of 3.5 or higher and must take at least six semester hours to qualify for the honor.



At the present time, we are adding \$700 million to the national debt each working day. At this rate, the national debt will reach \$2 trillion by 1986. It was \$1 trillion only three years ago.

Terracing

Standard-Parallel-Diversion
All Types Of Dirt Work
& Maintainer Work

HARVEY CRAIG 806-872-2988 (Lamesa)
806-998-4895 (Tahoka)

REGGIE STARK 806-998-4255
Tahoka, Texas

COTTON TODAY

Cotton Use Rises: Textile mill fiber use of cotton rose 12.2 percent during the 1983 calendar year to 5.8 million bales, according to the National Cotton Council.

Use during 1982 was 5.2 million bales. Man-made fiber use jumped 21.7 percent during 1983, reaching 18.8 million bale-equivalents. Synthetics were expected to improve more than cotton as they suffered greater loss during the recession.

Total fiber consumption was 24.9 million bale-equivalents last year—19.4 percent above the 1982 level, the Council reports.

Export Sales Reported: Sales of U.S. cotton for

1983-84 delivery increased a net 122,800 running bales during the week ended Jan. 19, the National Cotton Council reports.

Major buyers were South Korea, 27,500 bales; Taiwan, 13,300; and Japan, 12,000.

China Boosts Cotton Production: High-Ranking Chinese officials report that nation's 1983 cotton crop totaled 20.2 million bales.

Earlier, the U.S. agricultural counselor in Peking reported 1983 cotton production was 18.8 million bales, according to the National Cotton Council.

The U.S. Dept. of Agriculture's Jan. 1 estimate for the 1983 U.S. cotton crop totaled 7.7 million bales.

Soil Moisture Not Up To Expectations

In spite of the heavy fall rains, the southern High Plains does not have as much moisture in the soil as most producers anticipate.

For the third year in a row, the abundantly wet fall weather has fallen short in wetting the total soil root zone profile. This year the annual soil moisture deficit survey team found conditions generally running 60 to 80 percent of field capacity. Approximately 50 percent of field capacity is already the wilting point for soils in our area. The total plant available water now in the root zone is actually as low as 20 percent of a particular soil's potential in the drier areas to only as much as 60 percent in wetter areas. The moisture is evenly distributed throughout the soil profile.

Last year's winter snows blanketed the area and contributed to more uniformly wet soil down to the two foot level with a drier profile below. This year the moisture deficits

vary widely across the entire southern High Plains with the areas of greater need for water generally corresponding to those counties which have received the smallest amount of rainfall since September.

Fall rains came hard and fast with high intensity storms that generally created heavy runoff. As a result, most areas picked up very little deep moisture and lost even more potential deep soil water to hardpans which are so prevalent and increasingly severe this year.

The number of survey sites with serious compaction layers has increased since last year. However, Mike Risinger, Lubbock SCS soil scientist, also commented he is seeing more breaking plows and deep chiseling in operation this year than ever before.

In eighteenth century England eyeglasses were often worn purely as fashionable accessories, not as aid to vision.

Pocket-Sized Moisture Guide Now Available

A free, handy, pocket-sized soil moisture guide for irrigators is available from the High Plains Water District, the Soil Conservation Service or the County Extension Office in each of the 15 counties served by the Water District. From Armstrong to Lynn Counties, each county has its own separate guide. Each one identifies the five main soils in that county, lists their dominant textures, their average soil root zone depths and each soil's water holding capacity for a full profile in the root zone.

That's just half the story. Each plastic card also carries a guide for judging by using the feel and appearance method, how much moisture is available for crops. What good does it do to figure out (a) how much moisture you've got in the ground right now, (b) the water holding capacity of your soil, and (c) the root zone depth of your soil? With this information you can calculate the total amount of water your soil still needs to fill up the soil root zone to field capacity.

These soil moisture guides are another tool to help you make better irrigation decisions and apply water for the most efficient irrigation. They can help avoid over or under watering.

Tahoka School Menu

Feb. 6-10, 1984
BREAKFAST

Monday- Pancakes, syrup butter, orange juice, milk
Tuesday- Sausage, hot biscuits, butter, jelly, grape juice, milk
Wednesday- Donuts, diced pineapple, milk
Thursday- Scrambled eggs, hot biscuits, butter, jelly, apple juice, milk
Friday- Honey buns, sliced peaches, milk
LUNCH

Monday- Chicken fried steak, creamed potatoes, tossed salad, hot roll, pineapple cake, milk
Tuesday- Beef taco, cheese cup, pinto beans, lettuce-tomato salad, corn bread, milk, sliced pears
Wednesday- Fried chicken, green beans, creamed potatoes, hot roll, sliced peaches
Thursday- Corn dog, mustard, cheese wedges, baked potatoes, tossed salad, cherry cobbler, milk
Friday- Hamburgers, French fries, milk, lettuce onions, pickles, peanut butter cake

In the future, if government borrowing doesn't slow soon, interest rates will return to record levels. Businesses will be unable to fund new production. Consumers won't be able to afford homes and automobiles, suggests the National Association of Home Builders. Bankruptcies will increase. Many people concerned about federal deficits are asking their congressmen where they stand on this issue by writing them at the U.S. House of Representatives, Washington, D.C. 20515, and the U.S. Senate, Washington, D.C. 20510.

Basketball Roundup

By SHAWN STOTTS

Cooper

The varsity boys were defeated by the Cooper Pirates 76-43. Johnny Morin and Anthony Justice led the boys with 14 and 13 points. Trey Teaff scored 7 points, Doug Lawson scored 4 points and Danny Hart scored 3 points.

The Lady Bulldogs were upset by the Lady Pirates in a very close game 39-43. Tami Hood was high point with 12, Lela Bailey scored 9, Cynthia Payton 6, Rhonda Nance 4, and Rosie Montemayor 2.

Frenship

The Bulldogs were beaten 54-79 by the Tigers of Frenship. Doug Lawson was the leading scorer with 17 points. Also scoring were Trey Teaff with 14, Johnny Morin and Scott Isbell 7 each, Anthony Justice with 4 and Danny Hart 3.

The girls were more fortunate as they walked away with a 52-45 victory. Leading the way was Tami Hood with 24 points, Lela Bailey helped out by scoring 12, Rhonda Nance and Kim McMillan had 5 each and Cynthia Payton and Rosie Montemayor scored 3 each.

Roosevelt

The boys were defeated by the Roosevelt Eagles as they started the second half of district play 41-79.

Trey Teaff claimed high point honors by scoring 17 points. Anthony Justice scored 8, Doug Lawson 6, Freddie Scott and Johnny Morin, Scott Isbell and Danny Hart scored 2 points each.

The varsity girls were carried into overtime in an exciting game and came out victorious 48-46. Tami Hood was high point with 16 points, but Lela Bailey scored 13 including two free throws at the end of overtime with no time remaining on the clock. Also scoring was Kim McMillan with 8 points, Rosie Montemayor with 5 Deedie Daniell 4 and Rhonda Nance 2.

"To be great is to be misunderstood." Emerson



The banana does not grow on a tree. It grows on an herb—the largest known of all plants without a woody stem or solid trunk.



Wyoming was the first state to allow women to vote.

Apply Now



before you see the weeds

ferti-lome

WHITAKER HARDWARE
TAHOKA

Get Your Office Supplies At Lynn County News

ROBERT HARVICK INSURANCE AGENCY
Fire • Farm • Life • Auto
Crop Hail • Hospitalization
Located in the former Poka-Lambro Building
2129 Main Street in Tahoka
NO MEMBERSHIP DUES
Phone 998-4536

Robert Harvick Home Ph: 628-2841 Billy Davis Home Ph: 998-5039

BARTLEY-WEAVER FERTILIZER CO.



TAHOKA, TEXAS

Come See Us For Your Fertilizer Needs
We Take Soil Samples
And Custom Apply Treflan

CHECK OUR PRICES BEFORE YOU BUY!

"FOR LAND'S SAKE, USE FERTILIZER"

BARTLEY-WEAVER FERTILIZER CO.
P.O. BOX 480 PHONE 998-4717

Farm Machinery Auction Consignment Sale

10:00 A.M. FRIDAY, FEB. 24

(Private Treaty Sale Daily
Except 3 Days Prior To Auction Day)

CALL FOR CONSIGNMENTS

You must have list of equipment that you want to consign by Thursday, Feb. 16 to be advertised.

Sale Conducted By:
GREGG AUCTION SERVICE
of Plainview, Tx.

FOR

We will have a good selection of clean late model tractors and farm equipment!
We offer a complete farm machinery marketing service.

WADE FARM IMPLEMENT CO.

PHONE 998-4558 TAHOKA, TEXAS U.S. 380 EAST

THESE TAHOKA FIRMS ARE MAKING THIS FARM NEWS POSSIBLE

Lynn County Farm Bureau
Pat Green, Mgr.

Lubbock-Tahoka Federal Land Bank Assn.
Jay Dee House, Mgr.

Tahoka Auto Supply
The Hollands

McCord Oil Co.
H.B. McCord Jr.

Production Credit Association
Don Boydston

Farmers Co-Op Assn. No. 1
Tommy Lawson, Mgr.

Thrifty Anniversary Savings!

Take The Pepsi Challenge!



PEPSI COLA
2 LITER BOTTLE **99¢**

ACCENTS/PASTELS



BATHROOM TISSUE
NICE'N' SOFT
4 ROLL PKG. **99¢**

ALL GRINDS COFFEE



HILLS BROS.
1 LB. CAN **\$1.85**

THICK, RICH



HUNT'S KETCHUP
32 OZ. BTL. **89¢**

FABRIC SOFTENER



LIQUID DOWNY
96 OZ. BTL. **\$2.99**

DEL MONTE REGULAR OR NO SALT



VEGETABLES
2 CANS **99¢**

KAHN'S HICKORY GROVE BONELESS FULLY COOKED 12-14 LBS. AVG.



WHOLE HAMS
HALF OR PORTION 4-7 LBS. **\$1.89**

ARMOUR STAR



SLICED BACON 1 LB. PKG. **\$1.59**

BONELESS BEEF-WHOLE IN THE BAG PACKER TRIM HEAVY GRAIN FED BEEF BONELESS LB. **\$1.39**

KAHN'S HICKORY GROVE BONELESS CENTER CUT HAM SLICES LB. **\$2.39**

HILLSHIRE FARM REGULAR OR POLISH SMOKED SAUSAGE LB. **\$1.99**

HORMEL LITTLE SIZZLERS PORK LINK SAUSAGE 12 OZ. PKG. **\$1.19**

ARMOUR BREADED PRE-COOKED CHICKEN FRIED BEEF PATTIES LB. **\$1.49**

COUNTRY SKILLET FARM GROWN FROZEN FRESH CATFISH WHOLE CHANNEL LB. **\$1.99**

PAPER TOWELS



HI-DRI
2 JUMBO ROLL **99¢**

DEL MONTE REGULAR OR LITE SYRUP



FRUITS
CAN **69¢**

PURINA




DOG CHOW
25 LB. PLUS 5 LBS. FREE **\$7.29**

SHELF SPECIALS

HORMEL MILD OR HOT PLAIN CHILI	15 OZ. CAN	99¢
CARNATION EVAPORATED MILK	2 TALL CANS	\$1.00
KRAFT SALAD DRESSING MIRACLE WHIP	32 OZ. JAR	\$1.59
30" OFF LABEL WESSON OIL	38 OZ. BTL.	\$1.69
SUNSHINE HI-HO CRACKERS	12 OZ. BOX	\$1.19
HUNT'S TOMATO SAUCE	2 15 OZ. CANS	\$1.00
HONEY BOY PINK SALMON	15 OZ. CAN	\$1.69
KRAFT ASSORTED BARBECUE SAUCE	18 OZ. BTL.	99¢
KRAFT BACON & BTRMLK. DRESSING	8 OZ. BTL.	89¢
KRAFT STRAWBERRY PRESERVES	18 OZ. JAR	\$1.59
FISHER PARTY PEANUTS	12 OZ. CAN	\$1.79
ORVILLE REDENBACHER POPCORN	15 OZ. JAR	\$1.19

CALIFORNIA SUNKIST NAVEL



ORANGES
3 \$1 LB.

LONG GREEN SLICERS CUCUMBERS LB. **29¢**

CALIFORNIA GOLDEN RIPE LEMONS LB. **39¢**

WASHINGTON D'ANJOU PEARS LB. **49¢**

GOURMET'S DELIGHT MUSHROOMS 8 OZ. PKG. **99¢**

FRESH & TENDER BROCCOLI LB. **59¢**

TOTAL GROCERY SAVERS

KRAFT DINNER MAC & CHEESE	2 7 1/2 OZ. BOXES	99¢
CONVERTED RICE UNCLE BEN'S	2 LB. PKG.	\$1.79
CARNATION ASST. HOT COCOA MIX	12 ENV. PKG.	\$1.49
BETTY CROCKER SUPREME MIX FUDGE BROWNIES	23 1/2 OZ. BOX	\$1.59
KELLOGG'S CORN FLAKES	18 OZ. BOX	\$1.19
QUAKER OLD FASHIONED OR QUICK OATS	18 OZ. BOX	89¢
MARS/MILKY WAY/SNICKERS/3-MUSKETEERS CANDY BARS	6 CT. PKG.	\$1.49
SCHILLING BLACK PEPPER	4 OZ. CAN	89¢
30 GAL. GLAD HANDLE TIE TRASH BAGS	10 CT. PKG.	\$1.59
PURINA ORIGINAL BLEND-75" OFF CAT CHOW	10 LB. BAG	\$5.99
50" OFF LABEL-LAUNDRY DETERGENT CHEER	84 OZ. BOX	\$2.99
\$1.00 OFF LABEL-TWIN PACK IVORY LIQUID	2-32 OZ. BTL.	\$2.99
LEW/ ORIG/ WOOD FURNITURE POLISH PLEDGE	7 OZ. CAN	\$1.49
FOR NO WAX FLOORS BRITE	32 OZ. BTL.	\$2.69
FACIAL TISSUE KLEENEX	175 CT. PKG.	79¢
KLEENEX BOUTIQUE TISSUES	100 CT. PKG.	79¢
KOTEX OVAL PADS LIGHT DAYS	30 CT. PKG.	\$2.69
KOTEX MAXIPADS	30 CT. PKG.	\$2.69

HEALTH & BEAUTY AID SAVINGS

EXTRA STRENGTH TABLETS DATRIL	30 CT. PKG.	\$1.39
NASAL SPRAY AFRIN	1/2 OZ. BTL.	\$2.39
COLD TABLETS DRIXORAL	10 CT. PKG.	\$2.59
RAZOR BLADE CARTRIDGE ATRA	5 CT. PKG.	\$1.99
CHILDREN'S ELIXIR TYLENOL	2 OZ. BTL.	\$2.29
COLD TABLETS CORICIDIN D	24 CT. BTL.	\$2.39
EX. MOIST/ EX. PROTECTION SOFT SENSE	15 OZ. BTL.	\$2.59
REG. OR EX. BODY SHAMPOO AGREE	16 OZ. BTL.	\$2.49

ON SALE THIS WEEK: DINNER PLATE



YOUR CHOICE OF PATTERN **79¢ EACH** WITH EACH \$5.00 PURCHASE

FRESH DAIRY SPECIALS

KRAFT CHEESE VELVEETA	2 LB. BOX	\$2.99
MARGARINE QUARTERS PARKEY	1 LB. PKG.	59¢
KRAFT STACK PACK AMERICAN SINGLES	16 OZ. PKG.	\$2.39
CASINO MONT. JACK-PLAIN/ JALA. CHEESE	8 OZ. PKG.	\$1.39
HUNGRY JACK FLKY. BTRMLK/ FLUFFY/ BTR.	2 5 CT. CANS	69¢

FROZEN FOOD SPECIALS

MORTON FAMILY PACK GLAZED DONUTS	14 OZ. PKG.	\$1.29
PATIO BEEF & BEAN BURRITOS	2 5 OZ. PKGS.	99¢
ORE IDA CORN ON THE COB	4 CT. PKG.	\$1.29
ORE IDA HOME ST.-THN/ PLANKS/ WDG. POTATOES	24 OZ. PKG.	\$1.29
ASSORTED SWANSON DINNERS	10 1/2 OZ. 11 OZ. PKG.	\$1.19

WE GIVE Double S & H Green Stamps Each Wednesday With \$2.50 Purchase Or More

We're proud to give you more!

THRIFTWAY

PRICES EFFECTIVE JAN. 29-FEB. 4, 1984
WE RESERVE THE RIGHT TO LIMIT QUANTITIES
WE ACCEPT FOOD STAMPS