

Be A Good Citizen - - Pay Your Poll Tax

Be prepared to take part in your government - Pay your poll tax before JANUARY 31

# The Muleshoe Journal

DEDICATED TO THE PROGRESS AND DEVELOPMENT OF BAILEY COUNTY AND THE GREAT MULESHOE COUNTRY

VOLUME 38, NUMBER 4

12 PAGES — SECTION I, 8 PAGES

Published Every Thursday At Muleshoe, Bailey County, Texas

10c PER COPY

THURSDAY, JANUARY 29, 1959



MAURICE JONES AND KENNETH STEVENS and their Hampshire and Berkshire barrows which they are showing at the Southwest Livestock Exposition and Fat Stock Show in Ft. Worth this week. —Journal Photo

## FFA, 4-H Boys To Ft. Worth For Fat Stock Show

Five Muleshoe FFA and 4-H club boys left at noon Wednesday with seven animals to show them in the Ft. Worth Fat Stock Show, accompanied by County Agent J. K. Adams and Voc. Ag. instructor Jerry Adams.

Joe Adams took a borrow, representing the 4-H club, while the following FFA boys took animals also:

Bob Lowe, Southdown lamb; Maurice Jones, two Hampshire barrows; Kenneth Stevens, two Berkshire barrows, and Kenneth Williams, Berkshire barrow.

## Only 972 Poll Tax Receipts Issued

With only two days until deadline, only 972 Bailey county residents had paid their 1959 poll taxes at press time today.

Clerks in the office of county tax assessor-collector Dess Stafford said that about 18% of the poll tax receipts were issued from that office in 1958.

Although 1959 is considered an "off year" as far as major political activity is concerned, citizens should pay their poll taxes in order to be prepared to take in any elections which might be called during the year.

## Graveside Rites Saturday For Mrs. W. R. Gore

Funeral services for Mrs. W. R. Gore, 75, were held at graveside Saturday at 2 p.m. at Muleshoe Cemetery.

Mrs. Gore passed away at 7:30 p.m. Friday in West Plains Hospital after an illness of a week.

Bill Tittle, minister of Muleshoe Church of Christ officiated at services under direction of Singleton Funeral Home.

Survivors include her husband; two sons, Tom of Muleshoe and L. W. of Rt. 2; and one daughter, Mrs. Roy Jones of Muleshoe.

## Band Concert Is Tonight at 8:00

The second annual winter concert of the Muleshoe junior and senior high school bands will be presented tonight at 8:00 in the high school auditorium, under the direction of Paul Summersgill.

The concert will feature concerts by the junior high band, the senior high clarinet trio, the senior high stage band and soloists, and the senior high concert band.

Admission prices are 25 cents for students and 75 cents for adults.

## Longtime Morton Resident Dies

Funeral services for Nath Crockett, 65, who died in Cochran County Hospital Sunday afternoon, were conducted Tuesday afternoon in the County Activity Building at Morton.

Rev. J. E. Harrell, pastor of the First Methodist Church, officiated, assisted by Rev. Houston Walker, pastor of the First Baptist Church.

Interment was in Morton Memorial Cemetery under direction of Singleton Funeral Home.

## New Mail Panel At Postoffice

Postmaster Arnold Alcorn and employees of Muleshoe postoffice are proudly showing off a new innovation at the local office to patrons this week.

The new addition is a panel containing slots for four different kinds of mail, replacing the old panel which had slots for only two varieties of mail.

The new panel has a slot for air mail or special delivery, one for out-of-town letters, one for local letters and one at the bottom for bundle mail or newspapers.

Postal personnel installed the panel Tuesday.

## Father Of Local Woman Passed Away

Funeral services for Carl M. Lewis, 72, Rt. 2, Anton, were held Saturday afternoon in the Anton Church of Christ, with John R. Freeman of Lubbock officiating.

Interment was in Anton Cemetery.

Lewis, who had been making his home with a son near Anton, died in a Littlefield hospital of injuries suffered in a two-car collision at Anton Thursday afternoon.

He and his wife moved to Anton from Hollis, Okla.

Besides his wife, survivors include four sons, Ralph and Rufus of Anton, Chester of Midland and Earl of Odessa; two daughters, Mrs. LaNoma Arthur of Lubbock, and Mrs. Reba Hall of Muleshoe; four brothers, a sister, and eight grandchildren.

## Special Series Of Sermons At First Christian

A special series of pre-Easter sermons will begin next Sunday, February 1 at Muleshoe First Christian Church, the minister Frank E. Taylor, has announced, culminating in the Easter Sunday sermon on "The Risen Christ."

The series is based on "the seven words from the cross," and the first word, or phrase is entitled "Forgive Them For They Know Not What They Do."

On February 8, Rev. Taylor will speak on The Word of Assurance, "Today Shall Thou Be With Me In Paradise." On February 15, he will speak on the Word of Comfort, with his sermon titled "Mother Behold Thy Son; Son Behold Thy Mother."

Then on February 22, the sermon will be on the Word of Desolation, entitled "My God, My God, Why Hast Thou Forsaken Me." The following Sunday, March 1 will be on the Word of Suffering, entitled, "The Christ."

The Word of Triumph, entitled "It Is Finished," will be the sermon for March 8, followed by the Word of Commitment, entitled "Father Into Thy Hands I Commend My Spirit."

The sermons are open to the general public, and people of all faiths are welcome to attend any or all of them.

## Mules Make It 3-1 In District Play As They Down Lockney Tuesday Night

The Muleshoe boys' basketball team managed to take the lead only once here Tuesday night—the last time it changed hands—in pounding out a 54 to 48 overtime win against Lockney.

The Muleshoe girls made it a clean sweep by whitewashing the Lockney girls, 79 to 25.

The winning boys, who managed to tie the score four times during the night before knotting the count at 48-48 when the four-quarter gun sounded, trailed by as much as 11 points in the first quarter.

Lockney led at half-time, 29-27.

The Longhorns, used to close decisions in two earlier losses, missed a chance to down the Mules in the last second of the regulation period when forward Oyama Buchanan booted a free throw. His muffed shot was slapped out of bounds and the Mules played ball control to lay in six points while the Longhorns remained scoreless in the overtime frame.

Muleshoe's tying counter in the regular period came with 30 seconds left. The Mules controlled the ball without taking a shot for nearly two minutes in the overtime.

Tuesday's game leaves Coach Wayne Mantooth's Mules with a 3-1 record in District 2AA play—just the reverse of the 1-3 mark owned by the Longhorns and Coach Troy Lemley. The Muleshoe record is shared by Morton—the Mules' opponents Friday night—and by Abernathy.

High scorers in the boys' game were Mitchell, 15, for Muleshoe; and Minter, 14, for Abernathy.

Muleshoe's girls, with freshmen and sophomores carrying the colors after the midway

point in the second quarter, boasted four players in the double-figure scoring column. They were: Gwen Williams, 19; Mary Gross, 14; Nita Schmitz, 14, and Mary Wedel, 13. High pointer for Lockney was Janice Boedecker, with 12.

Muleshoe Coach Bill Taylor threw reserves into the game after his girls had run up a 36 to 16 lead midway in the second quarter. The reserves accounted for 43 points. The Muleshoe boys and girls have identical records, 3-1, as have the Lockney squads, 1-3.

## Mothers March Nets \$370 Wednesday Nite

The annual Mothers March for Polio, a regular feature of the March of Dimes drive, was held here Wednesday night, and chairman Mrs. Blanche Lenderson reports the ladies collected approximately \$370.

Mrs. Lenderson said the entire membership of the ESA sorority turned out to help in the drive as well as a number of other ladies.

## Former Resident Fatally Injured

James (Jimmy) Charles Hudson, 14-year-old son of Rev. and Mrs. J. D. Hudson, former pastor of the Main Street Baptist in Muleshoe, was killed instantly Monday night near Odessa when the car in which he was riding failed to make a turn and rolled over four and a half times.

Four other youths were injured in the accident. John Thomas Luck, driver of the car, is in serious condition with head injuries.

Rudy Carol Pruitt and Ruby Carolyn Pruitt, 15-year-old twins of Mr. and Mrs. W. C. Pruitt, formerly of Muleshoe, are reported in good condition. Carol received multiple contusions and abrasions and a lacerated tongue, and Carolyn received a dislocated hip and possible back injury. Their 12-year-old brother, Howard, was treated for a sprain and contusions of the left ankle and contusions of the lip and nose and released from the Medical Center Hospital in Odessa.

## 3 Bales Cotton Given To CROP

Three bales of cotton have been given to the CROP drive, Rev. Roscoe Trostle, Y. L. Methodist pastor, who is Bailey County chairman for CROP, reports.

Giving the cotton were: Edwards Gin, Muleshoe; Johnny Hubbard, through the two Bula gins; and W. T. Millen, through Muleshoe Cooperative Gin.

Rev. Trostle said those who desire to give cotton or to make donations of money to CROP may still do so through Friday of this week, and are asked to contact him.

## Osborn Named On Five Committees

Speaker of the House Waggoner Carr today named the Committees for the House of Representatives.

Representative Jesse M. Osborn from the 96th District received the following Committee appointments.

Vice-Chairman of Committee on Banking.

Member of Committee on Conservation and Reclamation.

Member of Committee on Game and Fish.

Member of Committee on Peonalties.

Member of Committee on Appropriations.

## Horace Hutton Is Outstanding In Soil District

Horace Hutton, Three Way farmer, received an engraved plaque at the Wednesday luncheon meeting of the Muleshoe Lions club, as the outstanding cooperater in the Blackwater Valley Soil Conservation District.

Superintendent Jerry Kirk made the presentation, telling briefly of some of Hutton's accomplishments in the field of soil and water conservation.

Members of the board of supervisors of the Soil Conservation district were special guests of the club, including work unit conservationist Dale Fischgraebe.

## The Weather

|           | High | Low |
|-----------|------|-----|
| Friday    | 53   | 17  |
| Saturday  | 55   | 18  |
| Sunday    | 65   | 22  |
| Monday    | 73   | 20  |
| Tuesday   | 69   | 21  |
| Wednesday | 50   | 21  |
| Thursday  | 67   | 29  |

## Pioneer Gas Begins New Pipeline Construction Near Here Monday

Construction of the final 10-mile segment of a new eight-inch natural gas transmission pipeline began Monday in the Farwell-Lariat area.

The new line, known as "Line 196", is being constructed by Arey Construction Company, Pampa, under contract with Pioneer Natural Gas Company. It will be used to complete an exchange agreement between Pioneer and El Paso Natural Gas Company.

Line 196, also known as the El Paso-Lariat-Farwell line,

## License Tags To Go On Sale Here February 2

New license plates for 1959 will go on sale in all county courthouses February 2, State Highway Engineer D. C. Greer announced today. The plates will be the reverse of 1958's, and will have black letters and numerals on a white background.

## Robert King, Local Businessman, Died Wednesday; Rites Today

Funeral services for Robert King, 42, well known Muleshoe businessman, were conducted from the First Methodist Church here at 3 p.m. today.

Mr. King was found dead in his room at the Caprock Hotel in Lubbock about 8 a.m. Wednesday by a bellboy. He was seated in a chair at a table where the telephone was off the hook. A Lubbock justice of the peace returned a verdict of death due to natural causes.

"Take your certificate of title and your last year's registration receipt to the tax collector in your home county. Penally for improper registration of a vehicle can be as much as \$200. Don't risk an illegal registration. Remember, too, that a portion of all registration fees stays in your home county to benefit your local community."

will connect El Paso Natural's Dimmitt compressor station to the Southern Union Gas Company transmission system near Farwell.

Southern Union will purchase the gas from El Paso Natural at this point to serve its Clovis, New Mexico customers.

Upon completion of the new line, an exchange agreement between Pioneer and El Paso Natural will be completed, giving El Paso Natural Line 196 and Pioneer the existing Amherst-Farwell and Umberger-Farwell "triangle" transmission lines.

Completion of this exchange agreement will make it possible for Pioneer to serve additional customers and provide better service in the "triangle" area of Deaf Smith, Castro, Farmer, Bailey and Lamb counties.

Completion of the new line is scheduled for February 6. Immediately after the project is finished, Pioneer will begin replacing 21 miles of existing six-inch pipe between

Sudan and Muleshoe on the "triangle" line. Twelve-inch pipe will be used in the replacement project to provide for the additional capacity in the "triangle" area.

Pioneer will also construct an additional five miles of 10-inch line to connect the line near Muleshoe to the Friona-South transmission line.

Neither of the contracts for these two projects has been let.

The "triangle" transmission line was originally constructed by a Pioneer predecessor, West Texas Gas Company, in 1929-30.

The "triangle" was later traded to El Paso Natural in order that the Company could serve Clovis, N. M.

Muleshoe has so increased its population and size in the past 30 years that the city has outgrown the location of the original line. This makes it necessary for Pioneer to de-tour the new replacement segment and relocate the border station now serving that city.

## Contract Let For Bowling Lanes On Clovis Highway

Contract was let Friday to the Ray Lee Company of Lubbock, for construction of the Tri-Co Bowling Center, to be located at West 18th and American Boulevard in Muleshoe, it was announced this week by Senn Slemmons, manager of the new lanes.

Slemmons said the building is to be constructed of cement blocks with a brick front, featuring a planter box. Work is expected to begin this week, and is to be completed within 60 days. The building will be 71x137 feet.

Opening date has been tentatively set for April 15.

The building is large enough for 12 bowling lanes, and will feature all the latest equipment for automatic bowling convenience manufactured by the AMF Co., leader in the field.

In addition to a snack bar, the lanes will have automatic pin spotting devices, under-lane ball return, opaque screen scoring and other new innovations.

Partners in the bowling venture are Slemmons, Harrol Griffiths, and J. E. Hicks.



BOB LOWE and the Southdown lamb he is showing this week at the Ft. Worth Fat Stock Show. Bob is an FFA member at Muleshoe high school. —Journal Photo

For Real Savings Shop Muleshoe Dollar Day Monday





## WANDERING With Waneen

News Briefs About Folks You Know

Waneen Ragsdale  
Society Editor Phone 5400

## Wife Of Former Pastor Finds Busy Life Teaching Chinese

Mrs. H. W. Hanks, wife of the late H. W. Hanks, former pastor of the Muleshoe Methodist Church has been visiting in Muleshoe this past week among her friends. Her visit was anticipated and enjoyed by many as she is a dear friend to many in this area.

After being a useful pastor's wife for 31 years, she is still serving in her new home in Berkeley, Calif. She is very active in working with the Chinese Methodist Community Church in Oakland. This church has Rev. Edwar Lee, an American born Chinese, as pastor and is located in the center of Oakland's Chinatown.

Mrs. Hanks teaches a class of non-English speaking Chinese ladies for a 1 1/2 hour weekly session. These ladies are working on their citizenship papers. Most of them can read and write fairly well, but have difficulty conversing, so the course is mainly English conversation.

Mrs. Hanks related that this church was made up of Cantonese speaking Chinese who originated from the province of Canton. In their services the choir sings in English but the congregation hymnals are in both English and Chinese so both can be sung. Rev. Lee first preaches his sermons in English and then in Chinese. The Chinese are an unburied people and don't mind staying until 12:30. This church is supported by the Methodist churches and our own Muleshoe church had a part in the remodeling program in 1952. Mrs. Hanks declares it is one of the most beautiful churches she has ever been in.

In telling about this congregation, Mrs. Hanks recalled the Christmas party she attended last year. Following the meal, the teenagers quietly went to the kitchen and washed all the dishes while the parents enjoyed the entertainment.

Mary Nell Hanks, daughter of Mrs. Hanks, works at the University of California in the agricultural department for a man who co-ordinates the program for foreign visitors who come there to study the different farming techniques.

Mrs. Hanks is a very busy, happy person who gives of her time for something she believes important and enjoys every moment of it.

From Muleshoe she went to Houston to spend some time with her son, Wyatt, Jr., and family.

## Pack 20 Cubs Awarded Badges

Uniform inspection and court of awards was held in the Scout Hut for Pack 20 of the Cub Scouts on Thursday night, January 22.

Owens Jones opened the meeting with prayer. Each Cub Scout present was dressed in full uniform and was inspected by Lions Club members Gil Lamb, Irvin St. Clair, Roland McCormick and Rufus Gilbreath.

Following uniform inspection awards were given by R. A. Bradley, Teddy Miller and Rex Millsap received Bobcat Pins; Richard Hoybook and Jerry Wayne Hoover earned Wolf Badges, Donnie Thomas, Wolf Badge, and 1 gold arrow point; Kenneth Ellis, Wolf Badge, 1 gold and 2 silver arrow points; Jerry Haskins, 1 gold arrow point; Tommy Jones, Bear Badge; and Lion Badge was presented to Rickie Don Bradley.

Cubs to receive Service Stars were Joe Adams, one year and Jody Mills, two years.

The meeting was closed by Boy Scout Den Chief, Corky Green, who gave the "Scouter's Prayer."

## Rebehahs Meet Tonight At Needmore

The Needmore Rebekah Lodge met on Tuesday night with 14 members present. Beulah Kelton acted as Noble Grand.

On Tuesday night, February 3 at 8 p.m., in the Needmore IOOF Hall the Charters of the Needmore IOOF and Rebekah Lodges will be draped for Roy Brashear. This will be a joint ceremony of the Oddfellows and Rebekah and it is open to the public. The members of the lodges are inviting all friends of Roy Brashear to see this memorial.

February 10 was the date set for the installation of new officers under the direction of District Deputy, Juanice Cook, of Morton.

The Needmore Rebekahs have received applications for membership of two new members. They are urging that all old members come and practice.

They are to serve supper to the Oddfellows Circle 7 meeting at Needmore February 12. Those present were Marie Allen, Mildred Reasoner, B. Kellon, Alex and Thursle Reed, Florence Holmes, Ethel Lee Meason, Maxine Ragsdale, Adele Tompkins, Gertrude Broyles, Ruby Brashear, Thelma and Raymond Gage, and Thelma Panzer.

## Bridal Shower Honors Shafers

Mrs. Donnie Shafer, the former Miss Sandy Moore, was honored Thursday afternoon with a bridal shower in the home of Mrs. W. R. Young. Other hostesses were Mmes. Bob Glass, Rudolph Morrow, and John Young.

Guests were served by Mrs. Glass, Mrs. Don Marlow, and Mrs. Kirk Holt from a table laid with a white cloth and centered with a large bouquet of yellow roses. A white cake decorated with yellow roses, crystal and silver service completed the table decor. An arrangement of yellow pansies decorated the coffee table.

Gifts were displayed by Mrs. J. R. Moore, mother of the bride, and Mrs. Bub Shafer, Donnie's Mother.

## Patricia Inman and Robert Halsell Exchange Vows Here Saturday Night



MRS. ROBERT HALSELL

The Rev. E. K. Shepherd officiated for a double-ring service read at 8 p.m. Saturday at the First Baptist Church to unite in marriage Miss Patricia Inman and Mr. Robert McMahon Halsell. Their parents are Mr. and Mrs. John Inman, Rt. 4, Muleshoe and Mr. and Mrs. John Tucker Halsell of Houston. The ceremony was read before an arch of candelabra against a bank of greenery flanked by baskets of pink gladioli.

Fred Walker, friend of the bride, was soloist and offered "I Love Thee," "Because," and "The Lord's Prayer." He was accompanied by Mrs. Marlon Inman, cousin of the bride.

Given in marriage by her father, the bride wore a gown of imported Chantilly lace over satin fashioned with Sabrina neckline embroidered with iridescent sequins, fitted bodice with long sleeves that tapered to petal points and terminated with point at center front waistline. The bouffant, circular skirt terminated into a chapel train. The bride wore a scalloped crown of pearls from which descended a veil of imported silk illusion. She carried a bouquet of white cadala orchids with stephanotis cascade.

Miss Priscilla Inman, sister of the bride, was maid of honor. Miss Ira Lee Inman, sister of the bride, Miss Donna Sue Nelson, Brownfield; Miss Sue Young, Lubbock; and Mrs. Harold Crooks, Meadow, were bridesmaids. They wore identical dresses of coral chiffon over satin designed with sweetheart necklines, shirred bodices, waltz length skirts, with satin panels extending down the front to the harem hemlines. The attendants' headresses were of matching satin and they wore white kid gloves and carried colonial bouquets of pale pink roses. The maid of honor was dressed like the bridesmaids except her headress had a short veil.

Dr. John T. Halsell, from San Antonio, brother of the groom, was best man. Dick Simmons, Arthur Emery, III, Duncan Simmons, Houston; Don Simmons, Tulsa; and Larry Urban, Corpus Christi, ushered. The candles were lighted by Tony Heldenfers, Corpus Christi, and Chuck Hargon of Bryan.

Glenna Sue Jones was flower girl and Billy Halsell, brother of the groom, was ring bearer. For her daughter's wedding, Mrs. Inman was attired in a mauve rose dress with matching shoes and hat, long white kid gloves, complemented by a corsage of pale pink miniature roses. The groom's mother chose a dress of adele blue lace with matching flower hat, long white kid gloves, beige shoes and wore a corsage identical to that of the bride's mother.

Immediately following the ceremony the wedding reception was held in the church parlor. The bride's table was covered with a pink tulle tablecloth over satin. Miss LaVon Copley served the tea from a silver service and Mrs. William Jones served the wedding cake. Miss Billie Ann Dutton registered the guests. Others assisting with the reception were Mmes. Verney Towns, Vernon Jamison, D. L. Morrison, Eugene Buhman, Ed Hicks, and Misses Evelyn Bratcher, Mozella Ellis, and Nelda Kay Brooks.

After a trip to Denver, Colo., the Halsells will be at home at 5207 Mercer, Houston, where he is to enroll in the University of Houston Law school.

The bride wore a cream wool suit with beige leather accessories for travel. She is a graduate of Baylor University, Waco, where she held memberships in the Peer Club, Interclub Council, Tau Beta Sigma, and was on the Round-Up staff and a member of the Baylor Golden Wave Band.

The husband is a graduate of Texas A&M College. He held memberships in the Marketing Society, Business Society, Pre-Law Club, Singing Cadets and American Society of Military Engineers.

WAN ADS pack a powerful punch in a little space. To place your want-ad dial 7220 or 5400.

## Copley Twins Return Home

Miss LaVon Copley, a student of North Texas State College, Denton, arrived in Muleshoe last week for a visit in the home of her parents, Mr. and Mrs. A. W. Copley. Miss Copley was accompanied home by Miss Jean Peters of Fort Worth, and Miss Shirley Grayson of Seminole. Misses Peters and Grayson are college mates of Miss Copley.

Don W. Copley of Texas A&M College, College Station, arrived home Saturday for a visit between semesters. Mr. Bruce Caskey of Albuquerque, N. M., was a weekend guest in the Copley home.

Don and LaVon Copley were overnight guests in the home of Miss Peggy Vandiver in Hobbs, N. M., Wednesday. Misses Copley and Vandiver are roommates at North Texas State College and are both music majors.

LaVon and Don were dinner guests of Mr. and Mrs. Joe E. Foster of Lockney Monday. The Copleys also visited friends in Plainview.

Madame Chairman—Janet Livingstone, fashion director of Good Housekeeping Magazine, will be chairman of the judging committee which will choose the 1959 Maid of Cotton. Twenty Cotton Belt beauties will compete for the title in Memphis, Tenn., December 21 and 20.



MADAME CHAIRMAN—Janet Livingstone, fashion director of Good Housekeeping Magazine, will be chairman of the judging committee which will choose the 1959 Maid of Cotton. Twenty Cotton Belt beauties will compete for the title in Memphis, Tenn., December 21 and 20.

## Shower Honors Sherill Millers

The Christian Women's Fellowship were hostesses for a wedding shower honoring Mrs. Sherill Miller, the former Ann Bell, held in the Fellowship Hall of the First Christian Church on Saturday, January 24. Miss Bea Aylesworth registered the 22 guest present.

Corsages of white carnations were presented to Mrs. Lona Bell and Mrs. Miller and a yellow gladiol corsage was given to the honoree.

Francine Dunn served the cake, and punch was served by Leanna Montgomery. Martha Aylesworth led the games and awarded the prize of the wedding gifts to Mrs. Sherill Miller.

Donna Baker, Harriett Glaze, Susan Pendergrass, Gail Locker, Carolyn Tiller, Charlotte Seaton, Sandra Scott, Pamela St. Clair and Patti Ragsdale.

## Attend Meeting In Littlefield

The Quarterly Associational W.M.U. meeting was held at the Parkview Baptist Church in Littlefield on Thursday, January 22. There were conferences for each officer and then Rev. J. L. Bass, pastor of the Parkview Baptist Church, gave the principal address.

Those attending from the Muleshoe churches were Mmes. E. K. Shepherd, Verney Towns, I. M. Stinson, J. E. Hicks, M. D. Gaddy, J. R. Harris and Robert Bynum.

## Hi Lo Piano Club Meeting Is Held

The Hi-Lo Piano Club met for their regular monthly meeting on Monday evening at Fellowship Hall. Mrs. McKinstry informed club mem-

bers of the coming music festival to be in Lubbock on February 14. Thirty of her students are to appear in this performance which will be given on 12 pianos.

Following the business, Mrs. Jean Moore introduced the pupils of Mrs. McKinstry who gave the program. The students performing were: Joyce and Joe Adams, Linda Monk, Carla Ellington, Gary Edwards, Ellen Lewis, Cynthia Phillips, Linda Johnson, Marie and Kathy Williams, Val and Kathy Moore, Gail Kitchens, Butch Taber, Rickey Welch, Karraun Brazz, Elaine Gully, Sharon DePauw, Becky Phelps.

Refreshments of white cake and cranberry punch were served by the hostesses, Mmes. Don Schumann, M. L. Stacy, Leon Smith, T. O. Lesley, John Littlefield, Andy Fuqua, E. T. Ford, Bert Gordon, J. R. Harris, Jr., and J. C. Redwine. The hostess gift was an ironing board and steam iron.

Those signing the guest book were Miss Alice Gordon, Pat Cranfill, LuAnn Hardesty, Wynette Seaton, Geneise Bock, Donna Kay Bruns, Toni Bruns, Jane Bruns, and Mmes. Raymond Euler, W. S. Crow, Lee Mason, Lacy Hardage, O. L. Blake, Oley Hines, Jimmy Maynard, Don Bruns, Kenneth Briscoe, J. J. Haun, Bill Woolley, J. V. Bouldin, Dale McGuire and Mrs. Fred Bruns, grandmother of the honoree. Many sent gifts who were unable to attend.

SIX IN JAIL  
Jailees this week in Bailey county jail included three for drunkenness, one worthless check, one removal of mortgaged property, and one for vagrancy.



SOPHISTICATED—Cotton velveteen, richly embroidered in a floral pattern, is used in this handsome cocktail coat by Jean Desses of Paris. Coat has a face-framing collar and yoke of solid black velveteen.

Eyes Examined Glasses Fitted

## BLACK OPTOMETRIC CLINIC

A. J. Black, O.D.

Office Hours: 9:00 to 5:00 Sat. 9:00 to 1:00

113 West 1st. St. Phone 8240 Muleshoe, Texas

DOLLAR DAY SPECIAL

## HEIRLOOM

Oven Proof Dinnerware  
16 Piece Starter Set

\$12.95

## ALASKAN POPPY

Oven Proof - Detergent and Acid Resistant  
16 PC. Starter Set

\$12.95

## Muleshoe Jewelry

Phone 4190 226 Main

## Bridal Shower For Mrs. Watson At Hub Community

A bridal shower at the Hub Community Center Thursday afternoon, January 22, honored Mrs. Howard Watson, nee Judy Bruns, who was married December 27.

The decorations carried out the bride's chosen colors of red and white. Corsages of kitchen utensils were presented to the honoree, her mother, Mrs. Les Bruns, and the groom's mother, Mrs. C. A. Watson.

The serving table was covered with a white cloth and centered with an arrangement of a white church with miniature bride and groom flanked by candelabras with red tapers.

Refreshments of white cake and cranberry punch were

Refreshments of white cake and cranberry punch were

Refreshments of white cake and cranberry punch were

## Dollar Day AT PERRY'S

Monday, February 2

|  |   |
|--|---|
| LADIES BLOUSES<br>New Shipment<br>Assorted Colors<br>DOLLAR DAY only \$1.00                        | WASH CLOTHS<br>Assorted Colors<br>10 for \$1.00                                       |
| MEN'S Short Sleeve Sport SHIRTS<br>Regular 1.39 Value<br>DOLLAR DAY \$1.19                         | VALENTINE BOX CANDY<br>3 Sizes<br>From E. J. Brach<br>69c - 1.59 and 2.35             |
| Hand Towels<br>Size 15 X 26 Assorted<br>Colors By Cannon<br>Regular 39c<br>DOLLAR DAY 4 for \$1.00 | Ladies Rayon HALF SLIPS<br>Small Med. and Large<br>Pastel Colors<br>DOLLAR DAY \$1.00 |
| GLADIOLA BULBS<br>10 Different Colors<br>Large Bulbs<br>DOLLAR DAY 5c bulb                         | KITCHEN TOWELS<br>DOLLAR DAY 5 for \$1.00   |

Classic beauty—unexcelled craftsmanship—LINCOLN FOR 1959

## Never before has so much splendor surrounded so much space inside

CONTINENTAL MARK IV—the most distinguished motorcar of our time

ON DISPLAY HERE NOW

## MULESHOE MOTOR CO.

AT THE CROSSROADS

Phone 2510 Muleshoe

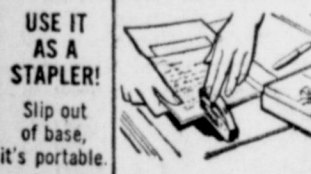
ON or OFF the wall . . . handiest help of all!

Swingline® 77B

HOUSEHOLD STAPLER



USE IT MOUNTED! At your fingertips for so many jobs.



USE IT AS A STAPLER! Slip out of base, it's portable.



USE IT AS A TACKER! Swing the head back, it's a tacker.

Mends, Tacks, Staples without pins, tacks or tape. It's so simple anyone can use it anywhere. Makes the ideal gift. Available in 4 attractive colors: pink, yellow, red and white.

Kestens papers, checks, bills, recipes. Makes bugs, decorations, covers. Tacks shelving, lining, screens. A wealth of household uses!

only \$2.95 Complete with wall bracket and 1,000 staples, FREE.

The Muleshoe Journal  
Phones 7200 — 5400





Piggly Wiggly Stocks Nationally Advertised Brands because we believe that you, our customers, are interested in purchasing food products which have stood the test of time . . . One such famous name is Libby's . . . and this Dollar Day, we are serving up a Dollar Day Carnival of Libby's Products priced to save you money. Consistent with the high standard of quality demanded by your Piggly Wiggly, Libby will always have a place on our shelves. Stock your shelves now . . . and get the usual bonus of S & H Green Stamps with every purchase, Double every Tuesday with \$2.50 purchase or more.

**PORK & BEANS**

|                                      |           |                                     |           |
|--------------------------------------|-----------|-------------------------------------|-----------|
| Libby's Sour or Dills, 22 Oz. Jar    | 3 For \$1 | Libby's with Meat Balls, 16 Oz. Can | 4 For \$1 |
| Libby's Fancy Blue Lake, No. 303 Can | 4 For \$1 | Libby's With Cheese, 16 Oz. Can     | 6 For \$1 |
| Libby's Garden, No. 303 Can          | 4 For \$1 | Spaghetti, 7 Oz.                    | 2 For 25c |
| Libby's No. 303 Can                  | 7 For \$1 | Raisin Wheat                        | 27c       |
| Rosedale, No. 303 Can                | 8 For \$1 | White Swan, With Pork, No. 300 Can  | 12c       |
| Libby's 24 Oz. Can                   | 2 For \$1 | Quart Can                           | 3 For \$1 |
| <b>PICKLES</b>                       |           | <b>SPAGHETTI</b>                    |           |
| <b>WHOLE GREEN BEANS</b>             |           | <b>SPAGHETTI</b>                    |           |
| <b>LIMA BEANS</b>                    |           | <b>SKINNER'S</b>                    |           |
| <b>KRAUT</b>                         |           | <b>SKINNER'S</b>                    |           |
| <b>PEAS</b>                          |           | <b>BLACKEYED PEAS</b>               |           |
| <b>BEEF STEW</b>                     |           | <b>WELCHADE</b>                     |           |



Live Better! SAVE S & H GREEN STAMPS



|                       |                                 |                |
|-----------------------|---------------------------------|----------------|
| <b>Lemons</b>         | California Sunkist Lb.          | <b>12 1/2c</b> |
| <b>Celery</b>         | California Green, 48 Size Each  | <b>10c</b>     |
| <b>Green Onions</b>   | Fresh Large Bunch, Each         | 7 1/2c         |
| <b>Mustard Greens</b> | Fresh Large Bunch, Each         | 10c            |
| <b>ORANGES</b>        | Texas Thin Skin 5 Lb. Bag, Each | 39c            |
| <b>AVOCADOS</b>       | California, Large Size, Each    | <b>10c</b>     |

|                     |  |                |
|---------------------|--|----------------|
| <b>Cut Okra</b>     | Frozen Hills-O-Home 10 Oz. Pkg.            | <b>12 1/2c</b> |
| <b>FRUIT PIES</b>   | Morton's Apple, Cherry or Peach, 24 Oz.    | 49c            |
| <b>WHIP TOPPING</b> | Rich's 7 Oz. Can                           | 39c            |
| <b>PIES</b>         | Chicken or Turkey, Sparetime, 8 Oz. Frozen | <b>19c</b>     |

|                     |   |   |            |
|---------------------|---|---|------------|
| <b>Peaches</b>      | Libby's Yellow Cling, Sliced or Halves, No. 303 Can | 5 | <b>\$1</b> |
| <b>Pineapple</b>    | Libby's Fancy Crushed, No. 2 Can                    | 4 | <b>\$1</b> |
| <b>Tomato Juice</b> | Libby's 46 Oz. Can                                  | 4 | <b>\$1</b> |
| <b>Sugar</b>        | Imperial, Pure Cane, 5 Lb. Bag                      |   | <b>47c</b> |

|                        |  |           |
|------------------------|--|-----------|
| <b>PINEAPPLE JUICE</b> | ibby's 46 Oz. Can                      | 3 for \$1 |
| <b>CORN</b>            | ibby's Cream Style, Golden, No. 303    | 6 for \$1 |
| <b>TUNA</b>            | Lucky Strike, Chunk Style, No. 1/2 Can | 4 for \$1 |

|                   |                                 |           |
|-------------------|---------------------------------|-----------|
| <b>FISHSTICKS</b> | Sea Star, Frozen, 8 Oz. Package | 4 For \$1 |
|-------------------|---------------------------------|-----------|

|                |                    |                  |
|----------------|--------------------|------------------|
| <b>SAUSAGE</b> | Cudahy's Pure Pork | 3 1 Lb. Pkg. \$1 |
|----------------|--------------------|------------------|

|                   |                                   |     |
|-------------------|-----------------------------------|-----|
| <b>HAM</b>        | Butt End Lb.                      | 55c |
|                   | Shank End Lb.                     | 49c |
| <b>BACON</b>      | Rath's Black Hawk, Lb.            | 63c |
| <b>FILLETS</b>    | Icelandic, Catfish, 1 Lb. Package | 49c |
| <b>LOIN STEAK</b> | U. S. D. A. Good Beef Lb.         | 79c |
| <b>SHORT RIBS</b> | U. S. D. A. Good Beef Lb.         | 29c |



|                     |                                 |           |
|---------------------|---------------------------------|-----------|
| <b>CREAM CHEESE</b> | Kraft's Philadelphia 1 Lb. Pkg. | 3 for \$1 |
| <b>SHAMPOO</b>      | Liquid Prell 60c Size           | 37c       |
| <b>SATIN SET</b>    | Revlon Plus Tax                 | 1.35      |
| <b>Bubble Bath</b>  | Charm 12 Oz. Bottle, Plus Tax   | 49c       |
| <b>HAND CREAM</b>   | Melrose 1.00 Size Plus Tax      | 69c       |





Buying

Selling

Renting

Services

Employment

For Best Results

READ AND USE THE

WANT

ADS

Page 4, The Muleshoe Journal, Thursday, Jan. 29, 1959

Want Ads

Minimum charge 50c... All Card of Thanks \$1.00

Personals

WANTED: Sewing, alterations... ANNOUNCING new Electrolux...

WISH High School or grade school at home, spare time...

ANNOUNCING new Electrolux automatic cleaner, Model 90...

ANYONE NEEDING good farm and contact Joe Lopez, Phone 3-9470...

WANTED: Saw filing. All work guaranteed. See Lon Cochran at 502 East 3rd...

WANTED: Good used manure spreader. Ansel Ashford, RR 1, Muleshoe, Phone YO 5-3358...

WANTED: Car Hops at Bill's Drive-In, Clovis Road, Phone 970...

WANTED: 500 more persons to try VX6 Battery Additive...

FOR RENT: 3 room furnished house. Rosie McKillip, 410 West 2nd, Phone 7870...

FOR RENT: 2 bedroom furnished house. Layne Apts., Phone 4960...

FOR RENT: 3 bedroom house, 1/4 miles east of Nickels West Camp Gln. Call WH 6-2457...

FOR RENT: 3 room furnished apartment. 500 month, bills paid, call 5290 or 9-0964...

FOR RENT: 2 room furnished apartment for a couple. Rosie McKillip, 410 W. 2nd, Phone 7870...

8. Real Estate For Sale... FOR SALE: 82 acres, good cotton allotment...

WANTED TO BUY: G. I. farm, 15 acres up, \$7,500 and a little more...

FOR SALE OR TRADE: Store building and fixtures with residence attached...

FOR SALE: 2 bedroom home with good commitment for FHA loan...

REAL ESTATE VALUES... Good bargains in two and three bedroom homes...

BILL'S REAL ESTATE... Bill Collins - Burl Wingo... Office East of Bill's Drive-In...

ERNEST E. HOLLAND REAL ESTATE... Mrs. Holland Salesman... Off. Ph. 3119 - Res. 5449...

Farms & Homes For Sale... 160 A. house, 4 rooms and bath...

Morrison Offers... 160 A. level as a floor. Lamb county, 58 A. cotton...

Need Listings... D. L. Morrison... 121 Ave. C - Phone 9-1630

LANE'S LISTINGS... 160 acres close in. Good 10' well, fair improvements...

5. Apts. For Rent... FOR RENT: 2 bedroom furnished house. Layne Apts., Phone 4960...

6. Rooms For Rent... BEDROOM FOR RENT: 424 W. 2nd, Phone 3524...

FARM LANDS CITY PROPERTY... Two tracts 1/2 section each, \$200 and \$400 per acre...

E. W. JOHNSON Real Estate... Office Next To Imperial Barber Shop

REAL ESTATE... 80 A., small house, 10 in. well, 23 A. cotton...

BILL'S REAL ESTATE... Bill Collins - Burl Wingo... Office East of Bill's Drive-In...

REAL ESTATE OPPORTUNITIES... 320 acres, three 8 in. wells, 2 sets improvements...

ED HICKS REAL ESTATE... GEORGE HICKS, Salesman... Office In Pool Ins. Bldg.

KREBS REAL ESTATE... Box 341 - Phone 5881... 1004 W. 6th Ave. - Muleshoe

SINGLETON FUNERAL HOME... 24 Hour Ambulance Service... Phone 2860 - Muleshoe

LANE'S LISTINGS... 160 acres close in. Good 10' well, fair improvements...

GUARANTY ABSTRACT CO. Phone 2640 - Muleshoe... Complete Abstracts of Title to All Lands...

Clyde A. Bray Realtor... Farm and Ranch Loans, 20 yrs. 5 1/2 %... Complete line of Insurance

EDDIE LANE SEZ: INSURANCE, REAL ESTATE, LOANS... LANE Insurance Agency... Phone 4390 - Muleshoe, Texas

FOR SALE: My equity in a nice two bedroom home... 11. Swap... FOR SALE OR TRADE: Would like to trade for small farm...

10. Farm Equipment For Sale... WE PAY highest cash prices for your JUNK IRON...

DISC PLOWS FOR SALE... 1 5-disc heavy duty Oliver breaking plow, \$600...

FOR SALE... 2 1/2 inch 3-phase 220 volt Peerless pump with 130 ft. shaft...

REGISTERED LANDRACE HOGS... Kenneth Nesbitt... Rt. 2, Muleshoe 17-51-tfc.

18. Seed For Sale... FOR SALE: Gregg cotton seed, \$1.60 bu. Gln run...

PUMPS FOR SALE... 1 160-ft. setting, 10 in. pump with 1 1/2 in. shaft...

MOBILE HOMES... If you are in need of a mobile home see us before you buy...

SEPTIC TANKS, CESS POOLS, CLEANED... Phone Parks at 3600 or 6643

DR. A. E. LEWIS DENTIST... 315 S. 1st. - Muleshoe... Off. Ph. 9-0110 - Res. 6570

CONSTRUCTION BLUE PRINT SERVICE... Photo-start - Reproduction Work... Service Records, Marriage Licenses...

Kelton Barber Shop - BARBERS - Owner Kelton Jimmy Carpenter... SPECIAL PRICES 400 NEW RADIATORS...

WILEY TRAILER SALES... Abernathy, Texas... For Best Results, Use The Journal Want-Ad Page.

FOR SALE: 280 acre farm, 10 miles west, 2 south of Muleshoe... 15. Farm Property To Rent

16. Miscellaneous... WANTED: Cabinet work or small carpenter jobs...

11. Swap... FOR SALE OR TRADE: Would like to trade for small farm...

12. Household Goods For Sale... FOR SALE: Solid Oak office desk, Two swinging rockers...

15. Farm Property To Rent... FOR RENT: 2 bedroom house, 2 1/2 miles west on Clovis highway...

16. Miscellaneous... WANTED: Cabinet work or small carpenter jobs...

17. Livestock For Sale... FOR SALE: Twenty % Landrace gilts, Ansel L. Ashford...

REGISTERED LANDRACE HOGS... Kenneth Nesbitt... Rt. 2, Muleshoe 17-51-tfc.

18. Seed For Sale... FOR SALE: Gregg cotton seed, \$1.60 bu. Gln run...

MOBILE HOMES... If you are in need of a mobile home see us before you buy...

SEPTIC TANKS, CESS POOLS, CLEANED... Phone Parks at 3600 or 6643

DR. A. E. LEWIS DENTIST... 315 S. 1st. - Muleshoe... Off. Ph. 9-0110 - Res. 6570

CONSTRUCTION BLUE PRINT SERVICE... Photo-start - Reproduction Work... Service Records, Marriage Licenses...

Kelton Barber Shop - BARBERS - Owner Kelton Jimmy Carpenter... SPECIAL PRICES 400 NEW RADIATORS...

WILEY TRAILER SALES... Abernathy, Texas... For Best Results, Use The Journal Want-Ad Page.

FOR SALE: 280 acre farm, 10 miles west, 2 south of Muleshoe...

16. Miscellaneous... WANTED: Cabinet work or small carpenter jobs...

LOANS... See us for any kind of Real Estate Loan that you are in need of...

DR. B. Z. BEATY dentist... Office Hours 9-12, 1-5... 115 South 1st...

LAND AUCTION... Time - 2 P. M., Saturday, January 31, 1959... Located 5 miles S of Black, Texas...

16. Miscellaneous... WANTED: Cabinet work or small carpenter jobs...

17. Livestock For Sale... FOR SALE: Twenty % Landrace gilts, Ansel L. Ashford...

REGISTERED LANDRACE HOGS... Kenneth Nesbitt... Rt. 2, Muleshoe 17-51-tfc.

18. Seed For Sale... FOR SALE: Gregg cotton seed, \$1.60 bu. Gln run...

MOBILE HOMES... If you are in need of a mobile home see us before you buy...

SEPTIC TANKS, CESS POOLS, CLEANED... Phone Parks at 3600 or 6643

DR. A. E. LEWIS DENTIST... 315 S. 1st. - Muleshoe... Off. Ph. 9-0110 - Res. 6570

CONSTRUCTION BLUE PRINT SERVICE... Photo-start - Reproduction Work... Service Records, Marriage Licenses...

Kelton Barber Shop - BARBERS - Owner Kelton Jimmy Carpenter... SPECIAL PRICES 400 NEW RADIATORS...

WILEY TRAILER SALES... Abernathy, Texas... For Best Results, Use The Journal Want-Ad Page.

FOR SALE: 280 acre farm, 10 miles west, 2 south of Muleshoe...

16. Miscellaneous... WANTED: Cabinet work or small carpenter jobs...

CARD OF THANKS... The family of Mr. Carl Lewis wish to thank all their friends for the flowers, kind words and deeds...

Legal Notice... NOTICE FOR BIDS ON COUNTY DEPOSITORY... Notice is hereby given that the Commissioners' Court of Bailey County, Texas...

16. Miscellaneous... WANTED: Cabinet work or small carpenter jobs...

17. Livestock For Sale... FOR SALE: Twenty % Landrace gilts, Ansel L. Ashford...

REGISTERED LANDRACE HOGS... Kenneth Nesbitt... Rt. 2, Muleshoe 17-51-tfc.

18. Seed For Sale... FOR SALE: Gregg cotton seed, \$1.60 bu. Gln run...

MOBILE HOMES... If you are in need of a mobile home see us before you buy...

SEPTIC TANKS, CESS POOLS, CLEANED... Phone Parks at 3600 or 6643

DR. A. E. LEWIS DENTIST... 315 S. 1st. - Muleshoe... Off. Ph. 9-0110 - Res. 6570

CONSTRUCTION BLUE PRINT SERVICE... Photo-start - Reproduction Work... Service Records, Marriage Licenses...

Kelton Barber Shop - BARBERS - Owner Kelton Jimmy Carpenter... SPECIAL PRICES 400 NEW RADIATORS...

WILEY TRAILER SALES... Abernathy, Texas... For Best Results, Use The Journal Want-Ad Page.

FOR SALE: 280 acre farm, 10 miles west, 2 south of Muleshoe...

16. Miscellaneous... WANTED: Cabinet work or small carpenter jobs...

For Best Results Use The Journal Want-Ad Page... The Old Timer... "Good food is so plentiful in American households that most of us are thick of it."

Legal Notice... NOTICE FOR BIDS ON COUNTY DEPOSITORY... Notice is hereby given that the Commissioners' Court of Bailey County, Texas...

16. Miscellaneous... WANTED: Cabinet work or small carpenter jobs...

17. Livestock For Sale... FOR SALE: Twenty % Landrace gilts, Ansel L. Ashford...

REGISTERED LANDRACE HOGS... Kenneth Nesbitt... Rt. 2, Muleshoe 17-51-tfc.

18. Seed For Sale... FOR SALE: Gregg cotton seed, \$1.60 bu. Gln run...

MOBILE HOMES... If you are in need of a mobile home see us before you buy...

SEPTIC TANKS, CESS POOLS, CLEANED... Phone Parks at 3600 or 6643

DR. A. E. LEWIS DENTIST... 315 S. 1st. - Muleshoe... Off. Ph. 9-0110 - Res. 6570

CONSTRUCTION BLUE PRINT SERVICE... Photo-start - Reproduction Work... Service Records, Marriage Licenses...

Kelton Barber Shop - BARBERS - Owner Kelton Jimmy Carpenter... SPECIAL PRICES 400 NEW RADIATORS...

WILEY TRAILER SALES... Abernathy, Texas... For Best Results, Use The Journal Want-Ad Page.

FOR SALE: 280 acre farm, 10 miles west, 2 south of Muleshoe...

16. Miscellaneous... WANTED: Cabinet work or small carpenter jobs...

For Best Results Use The Journal Want-Ad Page... The Old Timer... "Good food is so plentiful in American households that most of us are thick of it."

Legal Notice... NOTICE FOR BIDS ON COUNTY DEPOSITORY... Notice is hereby given that the Commissioners' Court of Bailey County, Texas...

16. Miscellaneous... WANTED: Cabinet work or small carpenter jobs...

17. Livestock For Sale... FOR SALE: Twenty % Landrace gilts, Ansel L. Ashford...

REGISTERED LANDRACE HOGS... Kenneth Nesbitt... Rt. 2, Muleshoe 17-51-tfc.

18. Seed For Sale... FOR SALE: Gregg cotton seed, \$1.60 bu. Gln run...

MOBILE HOMES... If you are in need of a mobile home see us before you buy...

SEPTIC TANKS, CESS POOLS, CLEANED... Phone Parks at 3600 or 6643

DR. A. E. LEWIS DENTIST... 315 S. 1st. - Muleshoe... Off. Ph. 9-0110 - Res. 6570

CONSTRUCTION BLUE PRINT SERVICE... Photo-start - Reproduction Work... Service Records, Marriage Licenses...

Kelton Barber Shop - BARBERS - Owner Kelton Jimmy Carpenter... SPECIAL PRICES 400 NEW RADIATORS...

WILEY TRAILER SALES... Abernathy, Texas... For Best Results, Use The Journal Want-Ad Page.

FOR SALE: 280 acre farm, 10 miles west, 2 south of Muleshoe...

16. Miscellaneous... WANTED: Cabinet work or small carpenter jobs...



Good Reading for the Whole Family... News, Facts, Family Features

The Christian Science Monitor... Send your newspaper for the time checked...



WASHDAY WONDER... For the housewife who does her own laundry, ironing shirts is probably the greatest single chore...

DAVE AYLESWORTH & CO. REAL ESTATE... Clovis Road at 20th St. Phone 5290 - Muleshoe 8-2-tfc.

FOR SALE... 1 - 1952 model G with butane 1 - 1949 model G, gasoline 2 - 1952 model A with CM butane...

STARK BROS. NURSERIES... Now is the time to order for spring planting. I am asking my old customers and new prospects to help me...

E. H. KENNEDY... 221 W. 5th Phone 5480 Box 372 - Muleshoe, Texas

For Best Results Use The Journal Want-Ad Page... LUZIER'S COSMETICS, Perfume and Gifts... Free Demonstration - Satisfaction Guaranteed

Bailey County Abstract Co. ABSTRACT SERVICE - LOANS... Mrs. Lela Barron - Mgrs. - L. S. Barron Established in 1900



# CORN

NO. 303 OUR  
DARLING CREAM  
STYLE GOLDEN

**15c**

- CRACKERS Nabisco Premium 1 lb. Box 29c
- Pineapple Grapefruit Drink 46 oz. Can Hi-C 29c
- LUSTERWAX Instant Qt. Can 49c
- GRAPE JUICE Our Value 24 Oz. Bottle 29c
- Morton House Pork and Beans Oven Baked 16 oz. Can 19c
- TANG Instant Orange Drink 7 oz. Jar 33c
- BUBBLE BATH Joy Suds 1 lb. Can 25c
- Spaghetti Dinner Italian Style Kraft 25c
- Tomato Soup No. 1 can Heinz 2 for 25c
- 25 lb. Print Pillowcase Bag Pur-A-Snow-Flour \$1.98
- White Swan Pure 18 Oz. Jar Apricot Preserves 39c
- DILL PICKLES White Swan 22 oz. Jar 25c
- Blackeye Peas White Swan No. 300 2 for 25c
- CLOROX Qt. Bottle 17c
- CAKE MIX Chiffon Betty Crocker Orange or Cocoa 49c
- ALKA-SELTZER 59c Size 39c
- ASPIRIN Bayers 17c Size 10c
- VELVEETA CHEESE Kraft 2 lb. Box 79c

# OLEO

1 LB.  
BLUE BONNET

**25c**

# Week-end SUPER VALUES

Quality  
**MEATS**

Farm-Fresh  
**PRODUCE**

Famous Brand  
**GROCERIES**

# SHORTENING CAKE MIXES

3 LB.  
TIN  
KIMBELL'S

**59c**

CINCH, WHITE, YELLOW,  
DEVIL'S FOOD OR SPICE

**19c**

# PIE APPLES

NO. 2 CAN  
COMSTOCK, SLICED

**19c**

# CHOCOLATE SYRUP

16 OZ. CAN  
HERSHEY

**19c**

# COFFEE

1 LB. TIN  
KIMBELL'S  
DRIP OR REGULAR

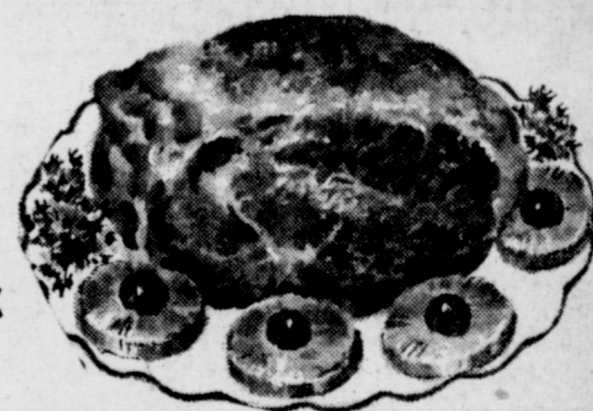
**65c**

# PORK

SWIFT'S PREMIUM EXTRA LEAN

SHOULDER

ROAST lb. **39c**



1 LB. ROLL HORMEL HOT OR MILD PURE PORK

**SAUSAGE . . . 3 FOR \$1.00**

PINKNEY'S HARVEST TIME

**FRANKS 1 LB. PKG. 49c**

BACON Cudahy, Ends & Pieces 5 Lb. Pkg. **\$1.59**

Swift's Premium Braunschweiger SANDWICH SPREAD OR HAM SALAD 8 Oz. Links **35c**

PORK STEAK Lean and Tender lb. **49c**

SLICED BACON Wilson's Corn King, 2 lb. pkg. **99c**

GROUND BEEF Choice Fresh lb. **49c**

HAMS Holiday Fully Cooked, Boneless, Bar-S lb. **99c**

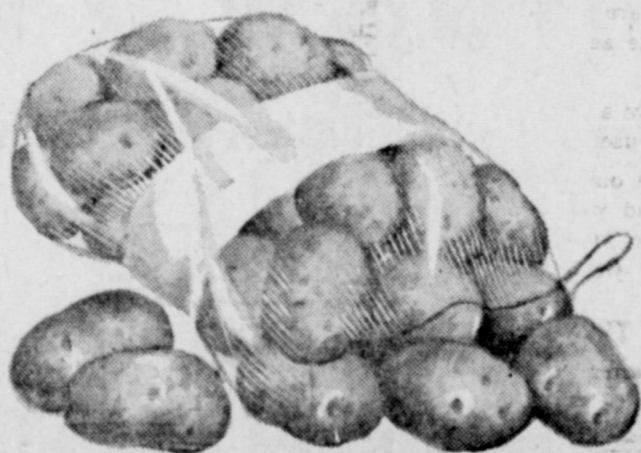
**SAVE GUNN BROS. STAMPS**

**DOUBLE ON TUESDAY WITH \$2.50 PURCHASE OR MORE**

# Potatoes

25 LB. BAG  
COLORADO  
RED

**79c**



ORANGES Texas Juicy lb. **9c**

COLORADO EXTRA FANCY RED DELICIOUS

AVOCADOS California fancy 2 for **25c**

**Apples LB. . . . . 13c**

# CASHWAY

"Where Friends Meet and Prices Talk"

Free Delivery  
Phone 2440 or 2450



## Girl Scout Leaders Plan Neighborhood Organization At Thursday Meeting

The Muleshoe Girl Scout leaders met at the Scout hut Thursday morning for a neighborhood meeting with Miss Mary Anderson, Director of District 1. Jane White, retiring neighborhood chairman, helped conduct the meeting to appoint a new service team to help govern the Muleshoe Girl Scouts. Mrs. White has served four years in that capacity.

Dorothy St. Clair was appointed as the new neighborhood chairman, Arlene Phelps, troop consultant, and Marie Lenau, troop organizer, all members of the service team. It is their job to seek volunteer workers for Girl Scouts, attend all Caprock Council meetings in Lubbock to be informed as to how to govern the local neighborhood in order to have a strong local organization. This team has pledged to make every effort, with the help of volunteer workers, to make Muleshoe Girl Scouts something to be proud of.

## Bridal Shower For Mrs. Shafer In Bills Home

A bridal shower honoring Mrs. Donnie Shafer, the former Sandra Moore, was given January 22 at 7:30 p.m. in the home of Mrs. Charles Bills, 603 Ave. G. Guests were reg-



**PARIS COTTON**—Classic sports dress is smartly styled in wide-wale corduroy for the winter wardrobe by Pierre Billet. The perfectly tailored shirtmaker buttons in the back.

## W. Wofford Birthday Party Kennedy Home

W. B. Wofford was honored on his 85th birthday with a dinner in the home of the daughter, Mrs. E. H. Kennedy, on Sunday, January 25. Also present to help celebrate were Mr. Craig Wofford and son, Mike; Mr. and Mrs. Joe Wofford and daughters of Lubbock; Mr. and Mrs. Frank Wofford, Jane and Martha, and Mr. and Mrs. Harry Wofford of Wheeler, and Mrs. Kennedy's grand-daughters, Judy and Gina Garrison of Pampa.

**THE FIRST CHRISTIAN CHURCH**  
Invites you to worship there

**SUNDAY SERVICES**  
Bible School — 10 A. M.  
Worship Service — 11 A. M.  
Evening Service — 7 P. M.

Morning Message For February 1  
"Father, forgive them; For they know not what they do."

Evening Service  
"The Christian Way"

Wednesday Evening, 7:30  
Prayer Service & Bible Study  
Frank E. Taylor, Minister

## Safe 'n Sound

by W. M. Pool  
DO YOU HAVE ENOUGH?  
Auto insurance that is. Chances are you carry auto liability coverage, do you carry enough to protect you against a heavy judgement that might be awarded against you, if you are held liable for injury or death or damage to another's property. Are you sure you have sufficient amounts? Our experience shows that many motorists fail to keep their liability coverage in line with their financial growth. The results could be disastrous in these days of skyhigh court awards. To be sure you have enough let us review your auto insurance program today.

**POOL INSURANCE AGENCY**  
Farm Loans — Car Financing  
W. M. Pool, Jr., Lee Pool  
Phone 2950 — Muleshoe

istered by Mrs. R. L. Dillard and games were directed by Mrs. Clyde Monk. The bride's mother, Mrs. J. R. Moore of Muleshoe, and the groom's mother, Mrs. Bub Shafer of Needmore, were presented with corsages of pink carnations.

The serving table was laid with the centerpiece were pink carnations between white vases. Mrs. Paul Scott poured coffee and hot tea from a silver service and Mrs. Jess Pendergrass served white cake with a pink and white lace with pink icing.

Hostesses were Meses. Dillard, Monk, Scott, Pendergrass, Bills, W. M. Harmon, Luther Hall, Alvin R. Allison, Clarence Mason, and J. B. Wright. The hostess gift was an electric blanket.

## Mrs. Brantley Is Shower Honoree In Childers Home

The home of Mrs. Morris Childers was the scene of a bridal shower honoring Mrs. Curby J. Brantley, nee Mary Janice Puckett, on Saturday, January 24.

Miss Nan Allison registered the guests and Misses Mary Jo Holt and Doris Jean Childers served white cake and spiced tea from the serving table that was decorated in the bride's chosen colors of red and white; an arrangement of white stock and red roses set on a white cut work cloth over red, complimented by the silver tea service. Assisting in the hospitalities were also Meses Magann Lamb, Sandra Briscoe and Mrs. Marvin Gaddy.

Hostesses were Meses. Bill Moore, Kenneth Briscoe, Clyde Holt, Oscar Allison, Ray Edwards, E. K. Angeley, Jim Shafer, L. D. Cannon, M. D. Gaddy, Gil Lamb and Morris Childers.

## CELEBRATE BIRTHDAY

Magann Lamb was "sweet sixteen" on Monday, January 26. She had plenty of help from her friends in celebrating the event. Mr. and Mrs. Gil Lamb took the girls to Clovis for Mexican food and on their return to Muleshoe served cake and ice cream. The guests all stayed for a slumberless slumber party.

Those sleepy girls on Tuesday morning were Donna Ginn, Carolyn Burge, Doris Ann Gilbreath, Sandra Taylor, Jeanette Cunningham, Jana Goodwin, Janie Sanders, and Sandra Howard of Clovis.



**FOR LOUNGING**—Flattering trant for lounging is designed in cotton flannel by Miss Elaine, St. Louis. Ski-type pajamas are red flannel, white car coat and hood are red and white striped quilted flannel.

## Mrs. Hukill Is Leader For HD Club Meeting

The Muleshoe Home Demonstration Club met January 27 in the home of Mrs. J. E. Day. The meeting was presided over by Mrs. S. C. Caldwell.

The new yearbooks were handed out by the president and each member filled out the date she is to be hostess for the coming year. Also each member selected a subject on which to answer roll call with at each meeting.

Mrs. M. T. Hukill, one of the program leaders, brought the program on "Principles of Work Simplifications". Refreshments were served to Meses. S. L. Robinson, T. F. Maddox, Hukill, C. H. Gillis, C. E. Briscoe, Barry Lewis, Caldwell, C. R. Mayhew, R. E. Williams, D. E. Beller, W. W. Smith and one new member, Mrs. Jake Sligar.

The next meeting will be on February 10 in the home of Mrs. M. T. Hukill at 2 p.m.

**Need Help?**  
Find It Fast In The Yellow Pages

## Service Through Knowledge Is Topic Of Talk at Study Club Meeting

"Good mental health is getting the most 'out of life'", Dr. Mary D. Bublils, assistant director of Psychiatry at Plains Hospital and Clinic, told some fifty women who attended the January 22 meeting of the Muleshoe Study Club, held in the Muleshoe Country Club.

Mrs. Mariette Jackson introduced Dr. Bublils to the group, telling of her qualifications and service to the people of Texas.

Dr. Bublils presented her address on "Service Through Knowledge from four angles: prevention, diagnosis, treatment and rehabilitation, stating that prevention, through knowledge, can be a powerful weapon. She discussed diagnosis, both from the lay person's standpoint and the professional and told of dangers incurred when lay people attempt diagnosis.

Some of the treatments now used in comparison to those formerly employed were explained by Dr. Bublils, using a large key actually used to lock a "closed ward" in a mental hospital.

The purpose of local mental health associations was discussed and those present were instructed how to proceed in organization should they desire to form an association in this county.



**Dr. Mary D. Bublils**

Dr. Bublils, following her talk, held a lengthy and informal question and answer period.

Guests from Morton, Friona, Bovina, Earth and Muleshoe were registered by Mrs. Vernie Towns.

Mrs. O. N. Jennings, Mrs. Arvel White, Mrs. Brick Whitt, Mrs. J. G. Arn, and Mrs. Edlie Lane served dainty sandwiches, candies and coffee from a table adorned by an arrangement of spring flowers.

## Assembly Of Rainbow Girls Install Sherry Allison Worthy Advisor

Miss Sherry Allison is the newly installed Worthy Advisor of the Muleshoe Assembly of Rainbow Girls. She was installed on Thursday evening, January 22 along with the following other officers in a very impressive ceremony at Masonic Hall.

Associate Worthy Advisor, Nelda Redwiler; Charity, Dolores Wagnon; Hope, Kay Brown; Faith, Pat Thomson; Chaplain, Jana Goodwin; Drill Leader, Magann Lamb; Recorder, Jeanette Cunningham; Treasurer, Kay Thompson; Love, Sandra Harris; Religion, Rhonda Johnson; Nature, Doris Ann Gilbreath; Immortality, Eugenia English; Fidelity, LaNell Boothe; Patriotism, Janie Sanders; Service, Shirley Burelsmith; Confidential Observer, Linda Blair; Outer Observer, Kay Davis; Musician, Lynn Lenau, and Choir Director, Davy Jean Anderson.

stalled as the new Mother Advisor, succeeding Mrs. Opal Boothe, who has served for the past two years.

Miss Allison's theme was "Faith" and her motto was "Faith in God and Fellowman". The hall was decorated with two beautiful arrangements of stock in Sherry's chosen colors of orchid and purple.

Installing officers were Nan Allison, Sandy Weeks, and Susan Allison. Melba Johnson registered the guests. Janelle McGuire played piano music throughout the evening and accompanied Miss Alva Lee Shofner who sang "I'll Never Walk Alone", and in closing "May The Good Lord Bless and Keep You". The benediction was given by Rev. E. K. Shepherd.

WANT ADS are as newsy as the front page and high in reader response. To place your want-ad dial 7220 or 5400.

## Baptist Ladies Organizational Meeting Held

The executive members of the W. M. S. of the First Baptist Church met on Wednesday morning at 9:30 to outline the work for the next month. At 10:00, a regular monthly business meeting was held for the entire society. Plans were completed for the Senior Banquet to be held February 12, as well as several other important items of business.

Those present were the president, Mrs. Verney Towns, and

Shepherd. Following the ceremony, cake and punch were served to those attending by Sherry Allison and the outgoing Worthy Advisor, Sandra Allison.

Mmes. B. O. McDaniel, Jack Schuster, Mary Finley, Bob Jacobs, Vernon Jamison, E. K. Shepherd, T. F. Goar, I. M. Stinson, Ed Hicks, W. B. McAdams, and Dorothy Barron.

## TO SHOW AT FORT WORTH

Bailey County will have two exhibitors entered in the Junior Steer Show at the 1959 Southwestern Exposition and Fat Stock Show in Fort Worth January 30 through February 8.

Their entries will be among 285 animals competing for premiums totaling \$4,731 in the junior steer department, \$1,000 more than was offered in the same show last year. Cash awards of about \$195,000 will be offered in the other livestock, rodeo and horse show events at the show.

Bailey county exhibitors are Rita and Sherri Turner, both of Muleshoe.

- Pump Pulling and Setting
- Perforating Casing In The Hole
- Well Cleanouts
- Western Landroller Sales & Service

**REPAIRS ON ALL MAKE OF PUMPS**

**EDWARDS IRRIGATION SERVICE**  
Phone 5670 MULESHOE

**Light UP!**  
FOR SAFETY  
FRIENDLINESS • BEAUTY  
NORMAL INSTALLATION AS LOW AS

**ELECTRIC YARD LIGHT**

**\$47.50**

An electric yard light says "hello" to your guests before they reach the door.

Installation is quick and easy — no muss or fuss — no major construction. Always economical — electric service is your biggest bargain. Give your home that friendly, welcome look with an electric yard light.

**BERRY ELECTRIC**  
PHONE 3750 MULESHOE

**CHOOSE THE BANK THAT GROWS WITH YOU!**

Each year brings with it new needs, problems and achievements for you, your loved ones and our entire community. And, since your bank should be your financial guardian . . . the one to help you in all matters involving money . . . it is vital that your bank keep pace with you. That's why you should make our bank, your bank . . . we are constantly improving our facilities and service to do a better job for you. Come in and get better acquainted with our diversified services right away.

**MULESHOE STATE BANK**  
Phone 2540 Muleshoe MEMBER F. D. I. C.

**BETTER SERVICE 2 WAYS**

These brand new tanks and loading facilities are 1 mile north of Needmore

All our vehicles are now equipped with **TWO WAY RADIOS**  
For Faster, More Efficient Service

DAY PHONE **WA-7-3231**  
NIGHT PHONE **WH-6-2401**

**State Line Butane Co-op Association**  
GEO. TOMPKINS, Manager

**WE NOW CARRY A FULL LINE OF CO-OP TIRES, OIL, GREASE, BATTERIES & TURBINE OIL**  
OFFICES LOCATED AT MAPLE, TEXAS





Believing that with the advent of additional paving, and numerous new homes, there is a growing interest in more beautiful homes and yards. The Journal this week inaugurates a new column on gardening for both men and women, and for indoor and outdoor gardeners.

This is the time of year when a few hours spent in planning your gardening and landscaping, will pay off in weeks and months of pleasure after the weather warms up. Consult the wealth of information to be found in seed catalogues, and talk with seed and feed store operators, many of whom are displaying seeds of annuals and perennials, as well as spring bulbs now.

Incidentally, as unfamiliar words come up in this column, they will be explained for the novice inasmuch as the writer believes that knowledge of scientific names of plants will be of benefit to any gardener. It helps to be able to call a plant by its scientific name, for in that way only can one be sure of getting exactly what one wants. Depending on common names, which vary from locale to locale, frequently results in confusion and disappointment.

ANNUALS: Plants which come up from seed, usually reaching flower growth stage within the season, but which must be replanted each year.

PERENNIALS: Plants which often do not flower the first season from seed, but which come up year after year and do not need replanting under favorable circumstances.

It's almost too late to plant spring flowering bulbs for this year, especially since the weather has been so mild, and since spring bulbs require a period of real cold weather to make root growth.

However, shrubs, shady and fruit and nut trees, and roses can and should be put out now. Most hardy varieties for this area will not be hurt by any possible cold weather we have before spring, and most will begin making a good root system while the ground is still cool.

Pruning of well developed new plants and trees should be carried out, but with care. Pruning forces root growth, and slows down stem and flower growth so the plant gets off to a better start the first year. Remember, if the root system is not adequate, you need not expect a prize plant above ground.

Planting of varieties suitable for the West Plains area should be chosen, in spite of the temptation to try something which would require considerable moisture, acid soil, low summertime temperatures and shady conditions. You'll be less apt to be disappointed if you will choose your plants from those which are acclimated to this area.

NEXT WEEK: Some Varieties Which Do Well Here.

### Mary DeShazo Elementary School Honor Roll For Second Quarter

Mary DeShazo Elementary school honor roll for the second quarter of school has been released this week by principal Fred White. Students on the honor roll have maintained an average grade of 90 or better for the second quarter work.

**Fourth Grade**  
Carolyn Tiller, Jan Hall, Shirley Blair, Connie Connell, Nell Finley, Beverly Phipps, Wetona Kincannon, Billy Baker, Rae Lyn Tittle, Deborah Gross, Pamela St. Clair, Nancy Lee, Marcie Williams, Beverly Wilton, and Doris King.

**Fifth Grade**  
Lana Aduddell, Karen Black, L. T. Green, III, Charles Jones, Larry Durrett, Elizabeth Burris, Sam Johnson, Joe Putman, Gary Edwards, Lynn Barrett, Gloria Baker, Pam Kerr, Judy Burge, Kay Goar, Rita Moore, Shirley Beaty, Joe Adams, Lawrence Green, Sonja Bass, Jan Landers, Ellen English, Gail Darsey, Karen Leigon, and Judy Schmitz.

**Sixth Grade**  
Sandra Spivey, Shirley Hurst.

### BILLY L. BELL ON FURLOUGH

Sergeant Billy L. Bell, wife and two year old daughter, Elizabeth, arrived in Muleshoe January 26 after being in England for the past four years. Billy is the son of Mrs. Lona Bell and the brother of L. M. Ford, Judy Bell and also Mrs. Ann Miller. All of the family were excited about seeing Elizabeth for the first time.

Billy and family plan to spend a month in Muleshoe after that time he will be stationed in El Paso.

### TO DALLAS CLOTHING MART

Mrs. Dorothy Mathiesen and Mrs. Elizabeth Barnett, of The Fashion Shop, are visiting the Dallas clothing market this week to purchase new ready to wear for their store.

### AIRMAN ROY GAMBLE HOME ON LEAVE

A B Roy Gamble has been here for a visit with his parents, Mr. and Mrs. Frank Gamble, and reported Monday for duty at Shepherd AFB, Wichita Falls.

Roy has just finished his basic training, Lackland AFB, San Antonio, having joined the service about six months ago.

### BONNIE DURLANE WOOD WINS CROCKER AWARD

Bonnie Durlane Wood has been named 1959 Betty Crocker Homemaker of Tomorrow at Muleshoe high school.

She received the highest score in a 50-minute written examination on homemaking knowledge and attitudes taken by graduating senior girls in her school. She will receive a homemaker pin manufactured by Josten's, which represents the slogan, "Home is Where the Heart Is". Her examination paper will be entered in competition with those of other school winners in the state to name the state Betty Crocker Homemaker of Tomorrow.

### TO ASSIST IN PLAY PRODUCTION

Texas Tech's speech department will present Tennessee Williams' play "Orpheus Descending" January 29-30 and February 3-5 in the speech auditorium. The large cast will be seen in one of the first of the amateur productions to be presented following the play's New York staging several seasons ago.

Morris Bruns, senior secondary education major and son of Mr. and Mrs. L. F. Bruns of Route 1, Friona, will have charge of the boxoffice. He is a 1956 graduate of Friona high school and will receive his degree from Tech this spring.

### Mary DeShazo Elementary School Honor Roll For Second Quarter

Mary DeShazo Elementary school honor roll for the second quarter of school has been released this week by principal Fred White. Students on the honor roll have maintained an average grade of 90 or better for the second quarter work.

**Fourth Grade**  
Carolyn Tiller, Jan Hall, Shirley Blair, Connie Connell, Nell Finley, Beverly Phipps, Wetona Kincannon, Billy Baker, Rae Lyn Tittle, Deborah Gross, Pamela St. Clair, Nancy Lee, Marcie Williams, Beverly Wilton, and Doris King.

**Fifth Grade**  
Lana Aduddell, Karen Black, L. T. Green, III, Charles Jones, Larry Durrett, Elizabeth Burris, Sam Johnson, Joe Putman, Gary Edwards, Lynn Barrett, Gloria Baker, Pam Kerr, Judy Burge, Kay Goar, Rita Moore, Shirley Beaty, Joe Adams, Lawrence Green, Sonja Bass, Jan Landers, Ellen English, Gail Darsey, Karen Leigon, and Judy Schmitz.

**Sixth Grade**  
Sandra Spivey, Shirley Hurst.

### BILLY L. BELL ON FURLOUGH

Sergeant Billy L. Bell, wife and two year old daughter, Elizabeth, arrived in Muleshoe January 26 after being in England for the past four years. Billy is the son of Mrs. Lona Bell and the brother of L. M. Ford, Judy Bell and also Mrs. Ann Miller. All of the family were excited about seeing Elizabeth for the first time.

Billy and family plan to spend a month in Muleshoe after that time he will be stationed in El Paso.

### TO DALLAS CLOTHING MART

Mrs. Dorothy Mathiesen and Mrs. Elizabeth Barnett, of The Fashion Shop, are visiting the Dallas clothing market this week to purchase new ready to wear for their store.

### AIRMAN ROY GAMBLE HOME ON LEAVE

A B Roy Gamble has been here for a visit with his parents, Mr. and Mrs. Frank Gamble, and reported Monday for duty at Shepherd AFB, Wichita Falls.

Roy has just finished his basic training, Lackland AFB, San Antonio, having joined the service about six months ago.

### BONNIE DURLANE WOOD WINS CROCKER AWARD

Bonnie Durlane Wood has been named 1959 Betty Crocker Homemaker of Tomorrow at Muleshoe high school.

She received the highest score in a 50-minute written examination on homemaking knowledge and attitudes taken by graduating senior girls in her school. She will receive a homemaker pin manufactured by Josten's, which represents the slogan, "Home is Where the Heart Is". Her examination paper will be entered in competition with those of other school winners in the state to name the state Betty Crocker Homemaker of Tomorrow.

### TO ASSIST IN PLAY PRODUCTION

Texas Tech's speech department will present Tennessee Williams' play "Orpheus Descending" January 29-30 and February 3-5 in the speech auditorium. The large cast will be seen in one of the first of the amateur productions to be presented following the play's New York staging several seasons ago.

Morris Bruns, senior secondary education major and son of Mr. and Mrs. L. F. Bruns of Route 1, Friona, will have charge of the boxoffice. He is a 1956 graduate of Friona high school and will receive his degree from Tech this spring.

### Mary DeShazo Elementary School Honor Roll For Second Quarter

Mary DeShazo Elementary school honor roll for the second quarter of school has been released this week by principal Fred White. Students on the honor roll have maintained an average grade of 90 or better for the second quarter work.

**Fourth Grade**  
Carolyn Tiller, Jan Hall, Shirley Blair, Connie Connell, Nell Finley, Beverly Phipps, Wetona Kincannon, Billy Baker, Rae Lyn Tittle, Deborah Gross, Pamela St. Clair, Nancy Lee, Marcie Williams, Beverly Wilton, and Doris King.

**Fifth Grade**  
Lana Aduddell, Karen Black, L. T. Green, III, Charles Jones, Larry Durrett, Elizabeth Burris, Sam Johnson, Joe Putman, Gary Edwards, Lynn Barrett, Gloria Baker, Pam Kerr, Judy Burge, Kay Goar, Rita Moore, Shirley Beaty, Joe Adams, Lawrence Green, Sonja Bass, Jan Landers, Ellen English, Gail Darsey, Karen Leigon, and Judy Schmitz.

**Sixth Grade**  
Sandra Spivey, Shirley Hurst.

### BILLY L. BELL ON FURLOUGH

Sergeant Billy L. Bell, wife and two year old daughter, Elizabeth, arrived in Muleshoe January 26 after being in England for the past four years. Billy is the son of Mrs. Lona Bell and the brother of L. M. Ford, Judy Bell and also Mrs. Ann Miller. All of the family were excited about seeing Elizabeth for the first time.

Billy and family plan to spend a month in Muleshoe after that time he will be stationed in El Paso.

### TO DALLAS CLOTHING MART

Mrs. Dorothy Mathiesen and Mrs. Elizabeth Barnett, of The Fashion Shop, are visiting the Dallas clothing market this week to purchase new ready to wear for their store.

### AIRMAN ROY GAMBLE HOME ON LEAVE

A B Roy Gamble has been here for a visit with his parents, Mr. and Mrs. Frank Gamble, and reported Monday for duty at Shepherd AFB, Wichita Falls.

Roy has just finished his basic training, Lackland AFB, San Antonio, having joined the service about six months ago.

### BONNIE DURLANE WOOD WINS CROCKER AWARD

Bonnie Durlane Wood has been named 1959 Betty Crocker Homemaker of Tomorrow at Muleshoe high school.

She received the highest score in a 50-minute written examination on homemaking knowledge and attitudes taken by graduating senior girls in her school. She will receive a homemaker pin manufactured by Josten's, which represents the slogan, "Home is Where the Heart Is". Her examination paper will be entered in competition with those of other school winners in the state to name the state Betty Crocker Homemaker of Tomorrow.

### TO ASSIST IN PLAY PRODUCTION

Texas Tech's speech department will present Tennessee Williams' play "Orpheus Descending" January 29-30 and February 3-5 in the speech auditorium. The large cast will be seen in one of the first of the amateur productions to be presented following the play's New York staging several seasons ago.

Morris Bruns, senior secondary education major and son of Mr. and Mrs. L. F. Bruns of Route 1, Friona, will have charge of the boxoffice. He is a 1956 graduate of Friona high school and will receive his degree from Tech this spring.

### AURORA BOREALIS

IN THE SOUTHERN HEMISPHERE THEY ARE THE "AURORA AUSTRALIS".

ONE OF NATURE'S GRAND SPECTACLES... FOR ALL ITS BEAUTY, CAN CAUSE SERIOUS TROUBLE ON A TRANS-ATLANTIC FLIGHT BECAUSE OF THE AURORA'S INTERFERENCE WITH THE PLANE'S RADIO.

THE AURORA IS PROBABLY CAUSED BY CHARGED PARTICLES FROM THE SUN DIVERTED TOWARDS THE EARTH'S MAGNETIC POLES. WHEN THEY COLLIDE WITH GASES IN THE UPPER ATMOSPHERE, THEY CHANGE THEIR ELECTRIC CHARGE AND GLOW—MUCH LIKE THE GLOW OF THE CHARGED PARTICLES IN A FLUORESCENT LAMP.

THE AURORA HAS BEEN OBSERVED AS HIGH AS 600 MILES—PROVING THERE IS SOME SORT OF AN AURORAL CURRENT AT THAT ALTITUDE. IT SELDOM OCCURS BELOW 50 MILES!

### Both Cage Teams Lose Friday In Abernathy

Behind the scoring of Phil Guin, the Abernathy Antelopes defeated the Muleshoe Mules 52-35 at Abernathy in a conference game Friday night. The Abernathy girls won over the Mulettes by a 47-45 triumph.

This is the first conference games lost by the Mules, and are tied with Abernathy with a 2-1 record in the district race. The Abernathy girls are unbeaten, but the Mulettes are 2-1 in conference games.

Derrell Oliver was high scorer for the Mules with 10, and Mary Gross with 27 and Gwen Williams with 18, led the Mulettes scoring.

Morton defeated Lockney at Morton 56-54 in another 2-AA game played Friday evening.

### Both Cage Teams Lose Friday In Abernathy

Behind the scoring of Phil Guin, the Abernathy Antelopes defeated the Muleshoe Mules 52-35 at Abernathy in a conference game Friday night. The Abernathy girls won over the Mulettes by a 47-45 triumph.

This is the first conference games lost by the Mules, and are tied with Abernathy with a 2-1 record in the district race. The Abernathy girls are unbeaten, but the Mulettes are 2-1 in conference games.

Derrell Oliver was high scorer for the Mules with 10, and Mary Gross with 27 and Gwen Williams with 18, led the Mulettes scoring.

Morton defeated Lockney at Morton 56-54 in another 2-AA game played Friday evening.

### Both Cage Teams Lose Friday In Abernathy

Behind the scoring of Phil Guin, the Abernathy Antelopes defeated the Muleshoe Mules 52-35 at Abernathy in a conference game Friday night. The Abernathy girls won over the Mulettes by a 47-45 triumph.

This is the first conference games lost by the Mules, and are tied with Abernathy with a 2-1 record in the district race. The Abernathy girls are unbeaten, but the Mulettes are 2-1 in conference games.

Derrell Oliver was high scorer for the Mules with 10, and Mary Gross with 27 and Gwen Williams with 18, led the Mulettes scoring.

Morton defeated Lockney at Morton 56-54 in another 2-AA game played Friday evening.

### Both Cage Teams Lose Friday In Abernathy

Behind the scoring of Phil Guin, the Abernathy Antelopes defeated the Muleshoe Mules 52-35 at Abernathy in a conference game Friday night. The Abernathy girls won over the Mulettes by a 47-45 triumph.

This is the first conference games lost by the Mules, and are tied with Abernathy with a 2-1 record in the district race. The Abernathy girls are unbeaten, but the Mulettes are 2-1 in conference games.

Derrell Oliver was high scorer for the Mules with 10, and Mary Gross with 27 and Gwen Williams with 18, led the Mulettes scoring.

Morton defeated Lockney at Morton 56-54 in another 2-AA game played Friday evening.

### Wildcat Well At Baileyboro Is Called Dry Hole

Another Bailey county wildcat oilwell venture has failed, with the announcement that the No. 1 W. M. Moore, located three miles north of Baileyboro, has been plugged and abandoned at a depth of 4305 feet in shale and lime.

The explorer was the Roy H. King, et al, No. 1 W. M. Moore, located 330 feet from the north and 1100 feet from the east lines of Labor 25, Ledger 176, Motley County School Lands.

### Wildcat Well At Baileyboro Is Called Dry Hole

Another Bailey county wildcat oilwell venture has failed, with the announcement that the No. 1 W. M. Moore, located three miles north of Baileyboro, has been plugged and abandoned at a depth of 4305 feet in shale and lime.

The explorer was the Roy H. King, et al, No. 1 W. M. Moore, located 330 feet from the north and 1100 feet from the east lines of Labor 25, Ledger 176, Motley County School Lands.

### Wildcat Well At Baileyboro Is Called Dry Hole

Another Bailey county wildcat oilwell venture has failed, with the announcement that the No. 1 W. M. Moore, located three miles north of Baileyboro, has been plugged and abandoned at a depth of 4305 feet in shale and lime.

The explorer was the Roy H. King, et al, No. 1 W. M. Moore, located 330 feet from the north and 1100 feet from the east lines of Labor 25, Ledger 176, Motley County School Lands.

### Wildcat Well At Baileyboro Is Called Dry Hole

Another Bailey county wildcat oilwell venture has failed, with the announcement that the No. 1 W. M. Moore, located three miles north of Baileyboro, has been plugged and abandoned at a depth of 4305 feet in shale and lime.

The explorer was the Roy H. King, et al, No. 1 W. M. Moore, located 330 feet from the north and 1100 feet from the east lines of Labor 25, Ledger 176, Motley County School Lands.

### Wildcat Well At Baileyboro Is Called Dry Hole

Another Bailey county wildcat oilwell venture has failed, with the announcement that the No. 1 W. M. Moore, located three miles north of Baileyboro, has been plugged and abandoned at a depth of 4305 feet in shale and lime.

The explorer was the Roy H. King, et al, No. 1 W. M. Moore, located 330 feet from the north and 1100 feet from the east lines of Labor 25, Ledger 176, Motley County School Lands.

### Wildcat Well At Baileyboro Is Called Dry Hole

Another Bailey county wildcat oilwell venture has failed, with the announcement that the No. 1 W. M. Moore, located three miles north of Baileyboro, has been plugged and abandoned at a depth of 4305 feet in shale and lime.

The explorer was the Roy H. King, et al, No. 1 W. M. Moore, located 330 feet from the north and 1100 feet from the east lines of Labor 25, Ledger 176, Motley County School Lands.

### Wildcat Well At Baileyboro Is Called Dry Hole

Another Bailey county wildcat oilwell venture has failed, with the announcement that the No. 1 W. M. Moore, located three miles north of Baileyboro, has been plugged and abandoned at a depth of 4305 feet in shale and lime.

The explorer was the Roy H. King, et al, No. 1 W. M. Moore, located 330 feet from the north and 1100 feet from the east lines of Labor 25, Ledger 176, Motley County School Lands.

### Wildcat Well At Baileyboro Is Called Dry Hole

Another Bailey county wildcat oilwell venture has failed, with the announcement that the No. 1 W. M. Moore, located three miles north of Baileyboro, has been plugged and abandoned at a depth of 4305 feet in shale and lime.

The explorer was the Roy H. King, et al, No. 1 W. M. Moore, located 330 feet from the north and 1100 feet from the east lines of Labor 25, Ledger 176, Motley County School Lands.

### Wildcat Well At Baileyboro Is Called Dry Hole

Another Bailey county wildcat oilwell venture has failed, with the announcement that the No. 1 W. M. Moore, located three miles north of Baileyboro, has been plugged and abandoned at a depth of 4305 feet in shale and lime.

The explorer was the Roy H. King, et al, No. 1 W. M. Moore, located 330 feet from the north and 1100 feet from the east lines of Labor 25, Ledger 176, Motley County School Lands.

### Wildcat Well At Baileyboro Is Called Dry Hole

Another Bailey county wildcat oilwell venture has failed, with the announcement that the No. 1 W. M. Moore, located three miles north of Baileyboro, has been plugged and abandoned at a depth of 4305 feet in shale and lime.

The explorer was the Roy H. King, et al, No. 1 W. M. Moore, located 330 feet from the north and 1100 feet from the east lines of Labor 25, Ledger 176, Motley County School Lands.

### Wildcat Well At Baileyboro Is Called Dry Hole

Another Bailey county wildcat oilwell venture has failed, with the announcement that the No. 1 W. M. Moore, located three miles north of Baileyboro, has been plugged and abandoned at a depth of 4305 feet in shale and lime.

The explorer was the Roy H. King, et al, No. 1 W. M. Moore, located 330 feet from the north and 1100 feet from the east lines of Labor 25, Ledger 176, Motley County School Lands.

### Wildcat Well At Baileyboro Is Called Dry Hole

Another Bailey county wildcat oilwell venture has failed, with the announcement that the No. 1 W. M. Moore, located three miles north of Baileyboro, has been plugged and abandoned at a depth of 4305 feet in shale and lime.

The explorer was the Roy H. King, et al, No. 1 W. M. Moore, located 330 feet from the north and 1100 feet from the east lines of Labor 25, Ledger 176, Motley County School Lands.

### Wildcat Well At Baileyboro Is Called Dry Hole

Another Bailey county wildcat oilwell venture has failed, with the announcement that the No. 1 W. M. Moore, located three miles north of Baileyboro, has been plugged and abandoned at a depth of 4305 feet in shale and lime.

The explorer was the Roy H. King, et al, No. 1 W. M. Moore, located 330 feet from the north and 1100 feet from the east lines of Labor 25, Ledger 176, Motley County School Lands.

### Wildcat Well At Baileyboro Is Called Dry Hole

Another Bailey county wildcat oilwell venture has failed, with the announcement that the No. 1 W. M. Moore, located three miles north of Baileyboro, has been plugged and abandoned at a depth of 4305 feet in shale and lime.

The explorer was the Roy H. King, et al, No. 1 W. M. Moore, located 330 feet from the north and 1100 feet from the east lines of Labor 25, Ledger 176, Motley County School Lands.

### Wildcat Well At Baileyboro Is Called Dry Hole

Another Bailey county wildcat oilwell venture has failed, with the announcement that the No. 1 W. M. Moore, located three miles north of Baileyboro, has been plugged and abandoned at a depth of 4305 feet in shale and lime.

The explorer was the Roy H. King, et al, No. 1 W. M. Moore, located 330 feet from the north and 1100 feet from the east lines of Labor 25, Ledger 176, Motley County School Lands.

### Wildcat Well At Baileyboro Is Called Dry Hole

Another Bailey county wildcat oilwell venture has failed, with the announcement that the No. 1 W. M. Moore, located three miles north of Baileyboro, has been plugged and abandoned at a depth of 4305 feet in shale and lime.

The explorer was the Roy H. King, et al, No. 1 W. M. Moore, located 330 feet from the north and 1100 feet from the east lines of Labor 25, Ledger 176, Motley County School Lands.

### Wildcat Well At Baileyboro Is Called Dry Hole

Another Bailey county wildcat oilwell venture has failed, with the announcement that the No. 1 W. M. Moore, located three miles north of Baileyboro, has been plugged and abandoned at a depth of 4305 feet in shale and lime.

The explorer was the Roy H. King, et al, No. 1 W. M. Moore, located 330 feet from the north and 1100 feet from the east lines of Labor 25, Ledger 176, Motley County School Lands.

### Wildcat Well At Baileyboro Is Called Dry Hole

Another Bailey county wildcat oilwell venture has failed, with the announcement that the No. 1 W. M. Moore, located three miles north of Baileyboro, has been plugged and abandoned at a depth of 4305 feet in shale and lime.

The explorer was the Roy H. King, et al, No. 1 W. M. Moore, located 330 feet from the north and 1100 feet from the east lines of Labor 25, Ledger 176, Motley County School Lands.

### Wildcat Well At Baileyboro Is Called Dry Hole

Another Bailey county wildcat oilwell venture has failed, with the announcement that the No. 1 W. M. Moore, located three miles north of Baileyboro, has been plugged and abandoned at a depth of 4305 feet in shale and lime.

The explorer was the Roy H. King, et al, No. 1 W. M. Moore, located 330 feet from the north and 1100 feet from the east lines of Labor 25, Ledger 176, Motley County School Lands.

### Wildcat Well At Baileyboro Is Called Dry Hole

Another Bailey county wildcat oilwell venture has failed, with the announcement that the No. 1 W. M. Moore, located three miles north of Baileyboro, has been plugged and abandoned at a depth of 4305 feet in shale and lime.

The explorer was the Roy H. King, et al, No. 1 W. M. Moore, located 330 feet from the north and 1100 feet from the east lines of Labor 25, Ledger 176, Motley County School Lands.

### Wildcat Well At Baileyboro Is Called Dry Hole

Another Bailey county wildcat oilwell venture has failed, with the announcement that the No. 1 W. M. Moore, located three miles north of Baileyboro, has been plugged and abandoned at a depth of 4305 feet in shale and lime.

The explorer was the Roy H. King, et al, No. 1 W. M. Moore, located 330 feet from the north and 1100 feet from the east lines of Labor 25, Ledger 176, Motley County School Lands.

### Wildcat Well At Baileyboro Is Called Dry Hole

Another Bailey county wildcat oilwell venture has failed, with the announcement that the No. 1 W. M. Moore, located three miles north of Baileyboro, has been plugged and abandoned at a depth of 4305 feet in shale and lime.

The explorer was the Roy H. King, et al, No. 1 W. M. Moore, located 330 feet from the north and 1100 feet from the east lines of Labor 25, Ledger 176, Motley County School Lands.

### Wildcat Well At Baileyboro Is Called Dry Hole

Another Bailey county wildcat oilwell venture has failed, with the announcement that the No. 1 W. M. Moore, located three miles north of Baileyboro, has been plugged and abandoned at a depth of 4305 feet in shale and lime.

The explorer was the Roy H. King, et al, No. 1 W. M. Moore, located 330 feet from the north and 1100 feet from the east lines of Labor 25, Ledger 176, Motley County School Lands.

### Wildcat Well At Baileyboro Is Called Dry Hole

Another Bailey county wildcat oilwell venture has failed, with the announcement that the No. 1 W. M. Moore, located three miles north of Baileyboro, has been plugged and abandoned at a depth of 4305 feet in shale and lime.

The explorer was the Roy H. King,



## Honor Roll For Second Quarter At Richland Hills Elementary School

The honor roll of pupils on the honor roll for the second quarter at Richland Hills Elementary school was released this week by principal Frank Ford. All pupils on the honor roll had an average of 90 or above.

**Fourth Grade**  
Hal Anderson, Bruce Purdy, Deborah Bryant, Carol Haire, Linda Johnson, Mickey Wilson, Deanna McCain, Linda Timmons, Diane Avery, Renee Howell, Terry Kendall, Carolyn Kirk, Karen MacAllister, Ann Phelps, Penny Stacy, Tommy Jones, Mike Jacobs, Cheryl Peat, Kathy Baker, Terry Lynn Bryant, Donna Heard, and Jeanine Wagnon.

Kathryn West, Ann White, Janie Crane, Jackie Jean Kemp, Melinda Harris, Linda Gross, Dick Goldston,

Elaine Gulley, Marcia Baker, Jan Everett, Mary Lee DePauw, Patsy Angeley, Karen Burelsmith, Darlene Hail, Sandra Harris, Anna Lou Harrison, Wynetta Mullins, Dianne Wilson, Mike Bryant, Glenn Head, Pat Jacobs, Kelly Kenney, Gary Stancell, and Ricky Stevens.

**Sixth Grade**  
Sherry Billingsley, Bill Harbin, Judy Inman, Dan Judd, Sherry Lumpkin, James Pitts, Wilma Puckett, Shirley Smallwood, Tonnyne Welch, Nancy White, Lanelle Spurgeon, Wanda Wedel, Stanley Black, Carol Jarnigan, Dona Phipps, Ramona McMahon, Ann Lois Peel, Ronnie Jones, and Beverly Black.

## Today's Meditation

Read Mark 1:8-15.  
God is faithful, who will not suffer you to be tempted above that ye are able; but will with the temptation also make a way to escape, that ye may be able to bear it. (1 Corinthians 10:13.)

One day a boy came to me with a problem. He was inclined to indulge in some pleasure, but there had been planned a spiritual retreat that would conflict. He realized he would have to choose one or the other. We talked it over, and I pointed out the path he ought to choose, but told him he would have to make the decision.

During the week he called me on the telephone and said he had decided in favor of the spiritual retreat. He had won a victory.

We are often tempted, but we remember that Jesus, too, was tempted of Satan, tempted as we are. Now He sits at the right hand of God to intercede for us that we may be able to stand temptations. He knows our weakness and offers us strength to resist temptation. To be obedient to God means setting aside every desire of lust and self. It means avoiding infection that would, if permitted, ultimately destroy the soul.

**PRAYER**  
Our Father, give unto us unshakable faith. Give us strength to overcome evil and wisdom to live victoriously through faith in the atoning power of Jesus Christ, our Lord and Saviour. In His name. Amen.

## Time To Report Wages Paid To Farm Employees

January 31, 1959, is the deadline for reporting the cash wages paid in 1958 to farm employees, John G. Hutton, Social Security Administration, and Howard Nichols, Internal Revenue Service, stated today.

Farm operators or farm owners who have paid as much as \$150 in cash wages to any farm worker in their employ during 1958 must file an employer's tax and information return for such farm employees. They must also report each farm employee who worked for them on 20 or more days during 1958 regardless of the amount of those wages if they were figured on a time rather than a piece rate basis.

For 1958, the social security tax rate is 4 1/2% (2 1/4% each for employer and employee.) This tax applies to cash wages paid to a farm worker up to a total of \$4200 in the year. The tax amount must be entered on Form 943 (Employer's Annual Tax Return for Agricultural Employees) together with the total amount of cash wages paid to the farm worker. It is requested that the farm employer do this and file the return with the District Director of Internal Revenue at Dallas on or before the due date mentioned above. For 1959, the social security tax rate will be 5% (2 1/4% each for employer and employee.) For 1959 and years thereafter this tax will apply to cash wages paid to a farm worker up to a total of \$4800 in the year.

Hutton and Nichols point out that when a farm employee meets the 20-day a year test the farm employer should count only days for which the employee works for cash wages figured on a time basis. However, if the worker meets this test, the farm employer must pay social security taxes on all cash wages paid the employee during the year (whether on a time, piece-work, or other basis).

## Twirp Week At High School

This past week was the annual Twirp Week at Muleshoe High. On this week each year the girls take the boys out and pay all expenses. To climax this eventful week, kangaroo court was held on Monday morning for all students who violated the rules.

Students taken before the court and Judge Bob Stack, were Nancy Julian and Gary Hicks, Sylvia Pool and Robert Camp, Anita Schmitz and Bob Stack, Sandy Chapel and Jimmy Patton, Jeanette Cunningham and Jerry Garlington, Shirley Henry and Todd Will, Pat Barrett and Joe King, Ronda Johnson and Tommy Thomson, LaQuinta Stone and Max King, Magann Lamb and Mike Barron.

Sandra Allison, Melba Johnson, Sandie Weeks, Alva Lee Shofner, Naomi Watson, Susan Allison, Diane Atkins, Sue Logan, Rosemary Richards, DeLores Wagnon, Eonna Guinn, Kathy Phillips, Robert Robinson, Lyndal Fletcher, Maria Reed, Kay Wisian, and Charles White. All were found guilty and paid their fines.



CASUAL—Comfort and smart styling are combined in this cotton poplin car coat by White Stag. Hardwearing trims collar and cuffs.

## H. D. CLUB Clatter

**When To Prune Shrubs**  
An easy rule to remember is this: If shrubs bloom early, prune them early. The reason is fairly obvious. Early blooming shrubs start forming buds for the next year's flowers right after their petals fall in the spring, and should be pruned just after they bloom.

**Prune Nandinas**  
Now is the proper time to prune Nandina plants. Do the pruning by removing from one to three of the oldest canes of each plant. Cut the canes off at ground level. This type of pruning will encourage new growth from the roots and give the plants good shape.

If you are planning to plant shrubs this spring you may want a copy of the Extension Service bulletin "A Selected List of Woody Plants for Texas." The bulletin is free. Call or come by the Extension Service office and get your copy. **Add Variety In Meals With Quick Breads**  
Steamed Boston Brown Bread and baked beans really go together. If you have not had these two foods together recently, let me suggest that you have them before the weather gets warm. Here is the recipe for the brown bread:

**Boston Brown Bread**  
2 cups whole wheat flour.  
1 cup cornmeal.  
1 1/2 teaspoon soda.  
1 1/2 teaspoon salt.  
1 cup raisins.  
2 cups buttermilk.  
3/4 cup chopped nuts.  
Sift together the meal, soda, and salt. Add to whole wheat flour and raisins and mix well. Mix the buttermilk and molasses. Add to dry ingredients. Stir only enough to wet the dry ingredients. Fill greased cans to one inch of top. Cover the cans with aluminum

foil. Steam for two hours. The water in the container should be at least halfway up the sides of the cans.

Other quick bread recipes can be found in the extension Service bulletin "Quick Breads" and you may have a free copy for the asking.

Other bulletins that I would like to share with you are: "Food and Fun With Friends"; "Let's Eat Turkey";

"Yeast Breads: 'Eat More Peas'; and 'Corn Meal and Grits'." Each of the above bulletins contain some unusual recipes and will help you to introduce variety in your meals.

TRAVEL  
THE HOSPITALITY ROUTE  
U.S. COAST TO COAST

**DR. B. R. PUTMAN**  
OPTOMETRIST  
Muleshoe, Texas  
Glasses Prescribed  
Contact Lenses  
Office Hours: 9-5 Sat., 9-12  
111 East First Box 985 Phone 6560

**Printing**  
Most Usually — A One Day Service  
Or Sooner If Necessary  
No Charge For Prompt Delivery  
**The Muleshoe Journal**  
CALL 5400 — 7220

**REAL ESTATE & INSURANCE**  
**Farley Insurance Agency**  
Over Bank, Muleshoe, Texas  
AUTO FINANCING — FARM AND CITY LOANS  
SERVICE BEYOND THE CONTRACT  
Office Phone 7279 — Residence 9-0343

**REPAIR . . . MODERNIZE YOUR RAINBIRD SPRINKLERS**  
Bring your No. 40 and No. 30 Rainbird Sprinklers to our Lubbock Warehouse no later than February 2 for overhaul and conversion to the TNT bearing. The work will be done at special rates by factory personnel on factory equipment. The Rainbird Factory Portable Repair Shop will be in the area just five days. Don't miss this opportunity!

**BUESCHER IRRIGATION**  
Clovis Road at Quaker Street  
LUBBOCK, TEXAS

**HOG EQUIPMENT**  
SPECIAL PRICES ON ALL SIZES  
**HOG FEEDERS**  
From Creep Feeders To 55 Bushel Self Feeders

**FARM BUILDINGS**  
**AUTOMATIC FEEDERS**  
AUTOMATIC HOG WATERERS  
**MEDICATIONS**  
— FOR —  
SHEEP, CATTLE, HOGS and POULTRY

**BABY CHICKS**  
Place Your Orders Now For February & March DELIVERY

**It's Time To Plan Your Flower Garden Now**  
**We'll Have A Large Shipment Of Fine ROSES In By Feb. 5**  
Come In And Inspect Our Line Of Hog Equipment  
**Jerry's Feed and Seed**  
216 E. Ave. C Phone 9-0029

## CONTROL WEEDS, MULCH SOIL EASIER



Progressive farmers have found a way to increase their crop yields by killing small weeds before they get started. They use the MM Avery Rotary Hoe to produce good mulch, save moisture and restore even the hardest caked ground to excellent growing conditions. The MM Avery Rotary Hoe is available in 2, 4 and 6 row sizes with optional V-type hitch attachments for combining sections to make 3 or 5 row sizes.

### Long-Life Construction Means Bigger Value!

Oil-soaked, easily replaced wood bushings, are designed to assure positive and constant lubrication. Saturated bushings and sturdy hoe teeth are the only wearing parts and are easily replaced to provide long years of low cost and dependable service. A unique stone guard keeps stones from sticking between teeth. This also helps to break soil clods and to pulverize your ground. The wheel is made of two pieces of solid steel bolted together. It will not break or bend.

If ground is unusually hard, weights may be added to the built-in weight box to increase your soil penetration.

Once you see the MM Avery Rotary Hoe in operation and the job it will do for you, you will want it for your farm. Come in and see us today for the complete facts on the Rotary Hoe and other MM Avery farm equipment.

**Fry & Cox Bros.**  
Your Friendly One Stop Farm Service  
Phones 3660 - 8430 Muleshoe

## BE SURE ABOUT Insurance



To be wisely insured, not only should you have fire insurance . . . the coverage must also be suited to your needs. We have insurance to cover home, car, personal belongings, to cover a period of housing costs if you should be burned out, etc. Let's talk over your needs today.

**Alsop Insurance Agency**  
MULESHOE OLDEST  
Phone 3200 109 S. First

## We Recommend

**Garner's Farm Tax Record**  
Completely Meets All Income Tax Requirements  
— Also —  
Ideal Farm Record Books  
AT  
**THE JOURNAL**

**Adventures in ADVERTISING**

**THE FANTASTIC STORY of MUSA-SHIYA HE SHIRTMAKER**  
(Also Sometimes Drygoods Selling)

If the shipping department of a factory had not made an error, the world would never have known of Musa-shiya the Shirtmaker and the most astounding advertising campaign in history would never have been launched.

Following World War I an English textile factory was getting back on a peacetime basis. In error it sent a full five year backorder of shirting material to Musa-shiya, a Japanese shirtmaker who operated a small shop in Honolulu. Business was poor and Musa-shiya was near bankruptcy, when the customs office informed him that certain bales of cloth and a fat bill for duties awaited his pleasure at the port of Honolulu.

When the little shirtmaker realized what had descended upon him, he asked for time and went into the silence for purpose of mental refreshment. Remembering a friend in a big mercantile establishment, he hid himself there and sought counsel. How in the name of the horned prophet of evil was he ever to get rid of all that English shirting? And in the meantime where was he to put it? His little box of a shop wouldn't hold one bale.

"You'll have to advertise," advised his friend. "Leave it to me. I'll have our advertising agents help you out."

This merely compounded the little Japanese shirtmaker's troubles. Advertising to him was an uncharted sea. The advertising agent called on Musa-shiya and suggested \$300 as a modest starter. "Too-o-o much. Maybe I think thirty dollar plenty," said the shirtmaker. He was told that wouldn't even get him in print. The agent explained the costs of various advertisements and finally Musa-shiya agreed to try the plan and what was destined to be the most astounding and far reaching campaign in the history of advertising was launched.

Two column by five inch ads then started appearing regularly in the Saturday Honolulu Star-Bulletin. The ads were written just the way Musa-shiya talked—in colorful pidgen English which is used throughout the Orient. Here is an example of one of Musa-shiya's ads:

"Well here come storek again—but Musa-shiya, the shirtmaker, is able prepare. Wonderful accumulation of baby things in dry goods selling corner of Musa shop. Everything for the baby—especially diaper. Exclusive of storek, which find most easily, many persons not finding little shop of Musa-shiya the shirtmaker in King Street, Makai side, between fish market and river."

Tourists started sending copies of Musa-shiya's ads to their friends in many countries. Soon Musa-shiya was receiving orders from all over the world as well as doing a thriving business in Hawaii.

And that is the story of how a well planned, small advertising campaign made an unknown Japanese shirtmaker not only wealthy but world famous.

Your local newspaper doesn't promise to duplicate this story for its advertisers, but it does take your sales message into the homes of your customers where full and careful consideration is given your suggestions. Who knows, perhaps you too can be a Musa-shiya.

**Texas Press Association**  
1716 SAN ANTONIO ST. AUSTIN, TEXAS

**FARM BUILDINGS**  
**AUTOMATIC FEEDERS**  
AUTOMATIC HOG WATERERS  
**MEDICATIONS**  
— FOR —  
SHEEP, CATTLE, HOGS and POULTRY

**BABY CHICKS**  
Place Your Orders Now For February & March DELIVERY

**It's Time To Plan Your Flower Garden Now**  
**We'll Have A Large Shipment Of Fine ROSES In By Feb. 5**  
Come In And Inspect Our Line Of Hog Equipment  
**Jerry's Feed and Seed**  
216 E. Ave. C Phone 9-0029



## Wayne Bristow To Conduct Program Special Series

"The Challenge", a 30-minute evangelistic program, will be heard for the first time, Sunday, February 1, at 3 p.m. over KZOL, Muleshoe.

Wayne Bristow, Muleshoe, will preach each Sunday on "The Challenge", a program designed to present the challenge of the cross of Jesus Christ to Christians and non-Christians.

Christian music on the program will be presented and directed by Larry Branscum, El Paso, Branscum, experienced evangelistic soloist and member of the Wayland College International Choir, is the music director for the Wayne Bristow Evangelistic Team. The team recently led in a revival at First Baptist Church, Muleshoe.

Bristow, who has just begun his second term as president of the Wayland College Baptist Student Union, has been busy as an evangelist for over three years. His services have centered in dozens of churches across the South Plains, but he has also served in Canada, Washington, Oregon, Colorado, and New Mexico. For the past two summers he has served under the Texas Baptist Student Department as missionary-evangelist in the North-western United States.

## Fay Wall Wins Homemaking Honor Awards

Fay Wall is the 1959, Betty Crocker Homemaker of Tomorrow, selected by General Mills from the 10 candidates of Three Way school, Miss Wall, daughter of Mr. and Mrs. O. F. Wall, was recognized in an assembly by Mrs. Betty Adams, home economics instructor.

She received the highest score in a 50 minute written examination on homemaking knowledge and attitudes. She received a pin which represents the slogan, "Home is Where the Heart Is". Her examination paper will be entered in competition with those of other school winners in the State to name the State Betty Crocker Homemaker of Tomorrow.

Each State Homemaker of Tomorrow will receive a \$1,500 scholarship from General Mills, an educational trip April 4-10 with her school advisor to Washington, D. C., colonial Williamsburg, Va., New York City and Minneapolis, and she will be a candidate for the title of All-American Homemaker of Tomorrow.

## Name Three In Beauty-Beast Contest at School

Jimmy Morrison, son of Mr. and Mrs. D. L. Morrison, Dwaine Merritt, son of Rev. and Mrs. Cone J. Merritt, Rt. 2, and Martha Wuerflein, daughter of Mrs. Lillie Wuerflein, Rt. 1, have been nominated for the annual Beauty and Beast Pageant at Wayland Baptist College, as announced by Doug Boynton, Colorado Springs, Colo., Student Government Association secretary of social affairs.

## Social Security Representative Here February 5

Self-employed persons are reminded by John G. Hutton, district manager of the Lubbock social security office to report their earnings for social security purposes with their income tax return. Generally, these reports must be filed with Internal Revenue Service by April 15, 1959.

Any person engaged in a trade, business, or profession covered by social security who has \$400 or more net profit from his business must report this income for social security purposes. Also, he must pay the 1958 social security self-employment tax on his net earnings on earnings up to \$4,200 for 1958. The tax rate for self employed persons on 1958 earnings is 3 3/8 percent.

Hutton also reminded self-employed persons that the payment of the social security tax is mandatory and not voluntary. Often a self-employed person may have enough exemptions to result in his not owing any income tax, yet the net earnings from his business are \$400 or more, so he must pay the social security self-employment tax.

For further information regarding social security tax questions, consult the nearest Internal Revenue Service office. For information regarding old-age, survivors, and disability benefits, contact the social security office at 2878-33rd St., Lubbock, Texas, or a representative from that office.

A representative of the Lubbock Social Security office will be in Muleshoe on February 5 at 9:30 a.m., at the courthouse and will be glad to assist in all matters pertaining to Social Security.

TRAVEL  
THE HOSPITALITY ROUTE  
U.S. COAST TO COAST

SECTION TWO 4 PAGES  
**The Muleshoe Journal**  
The Muleshoe Journal Thursday, Jan. 29, 1959  
Farm News - Sports  
Editorial Page - Features

## Marine Corps Recruiter Here On February 3

T/Sgt. Lester Schimmel, the local Marine Corps Recruiting Sergeant will visit Muleshoe between 3:45 and 5:00 p.m., on Tuesday, February 3 to interview applicants for Marine Corps Service. While in Muleshoe Sgt. Schimmel will locate at Draft Board office.

Sergeant Schimmel also announced that qualified young men may now enlist in the Marine Corps under a new 120 day delay program. Under the provisions of this program, a young lady or man, enlists in the Corps for three or four years, returns home, and goes on active duty on the date of their choice anytime within 120 days. The delay may be used to give employment notice, complete personal business or in any manner the applicant may select.

For information about this program and the other current enlistment plans, interested applicants should contact Sergeant Schimmel during his visit to Muleshoe, or write the Marine Corps Recruiting Sub-Station, Box 127, Lubbock, Texas.

## Nominated In Beauty Contest

Betty Hallford, daughter of Mr. and Mrs. A. D. Hallford, Enochs has been nominated for the annual Beauty and Beast Pageant at Wayland Baptist College, as announced by Doug Boynton, Colorado Springs, Colo., Student Government Association secretary of social affairs.

Eighty-seven Wayland students have been nominated by their classes and organizations for the most beautiful and most handsome titles. Thirty finalists, fifteen boys and fifteen girls, will be chosen by student body vote January 29 in chapel. A panel of local judges will then choose the Beauty and Beast and two runners-up for each. Presentation of the 30 finalists will be made at the annual Beauty and Beast Pageant February 12. The winners

## Mrs. Haberer Is Fund Chairman Of Two Counties

Mrs. Bonnie Haberer, of the Pleasant Valley community, has been appointed regional fund chairman for American National Red Cross for Cochran and Yoakum counties and will assume her duties in late January.

This appointment was made by J. H. Bond, National Vice-Chairman of the American Red Cross, of Dallas.

Mrs. Haberer has been a member of the Lamb County Chapter board for the past ten years, having served as fund chairman the past two years. She is currently Disaster Co-chairman and a member of the United States Fund Board. She attended the National American Red Cross convention in San Francisco, Calif., in May of 1958.

On her recent European trip, Mrs. Haberer had the rare privilege of visiting English Red Cross building at the Bristol Agriculture fair, and was quite interested in comparing notes of our own Red Cross functions.

Mrs. Haberer will work with local Red Cross in Cochran and Yoakum counties.

## DOMINO PARTY FOR MARCH OF DIMES

Persons living in the Longview, Baileyboro, Circleback and Needmore communities are invited to attend a domino party on Thursday evening, January 29 at the Needmore Community Hall at 7:30. This party is for the March of Dimes benefit. Donuts and coffee will be served.

## WAYNE GARTH'S WERE IN MULESHOE

Mr. and Mrs. Wayne Garth and son Matt, were in Muleshoe this past week on business and visiting friends and relatives. They are planning to move from their present home in Comanche, Okla., to the Friona area in the near future.

and runner-ups will be named at this time.

## Only 89 Percent Of Bond Goal Met During Last Year

Mrs. Inez Bobo, chairman of the Bailey County Savings Bonds committee, announced that 1958 sales in this county totaled \$110,595 which equaled 89.9% of the 1959 goal. December sales were \$1,960.

"December sales in Texas were 15% greater than December 1957. Total state sales for the year were \$171,851,685 or 98.2% of the year's goal. Sales in the nation last year were \$4,689 million. While sales increased 4% last year, redemptions of matured and unmatured bonds decreased 11%," Mrs. Bobo continued.

"The U. S. Treasury Department is grateful to those who gave so much of their time and effort in promoting the sale of bonds. Bankers who sell bonds as a free service to both customers and patron, advertising media who donate advertising, volunteers who are active on the local committees and hundreds of others make this great thrift program possible," Chairman Bobo concluded.

## TO ATTEND STUDENT COUNCIL CLINIC

Student council members from Muleshoe high school are expected for the second annual Panhandle Plains Student Council Clinic February 7 at Wayland Baptist College. Student officers of the clinic are Paul Brown, Pampa high school, Pampa, president; Bill Nix, Canadian high school, Canadian, vice-president; and Susan Cross, Plainview high school, Plainview, secretary.

Sponsored by Wayland's Student Government Association, the clinic is under the direction of Charles Arrendell, Wayland senior from Houston.

## MR. GARTH IS VISITED BY DAUGHTER

Mrs. C. L. Schmitz from Seagraves was here over the weekend to see her father, Mr. G. L. Garth, of the Needmore community and also other relatives and friends.

## Civil Service Jobs Open Now

Apprenticeship and Training Representatives are being sought by the U. S. Department of Labor, the U. S. Civil Service Commission announced today, for filling positions paying starting salaries of \$5,985 and \$7,030 a year. The jobs to be filled are located in Washington, D. C., and throughout the country.

The duties of persons appointed to these positions will be to encourage the development of apprentice training systems and standards among employers and employee organizations and to provide assistance in keeping the systems active.

No written test is required. To qualify, applicants must have had appropriate industrial, trade union, trade association, or governmental experience, of which a part must have been in the development or administration of apprenticeship or training program. Applications for these positions will be accepted until further notice and must be filed with the Board of U. S. Civil Service Examiners, U. S. Department of Labor, Washington 25, D. C.

## Lunchroom Menu

The menu for Muleshoe lunchrooms for the week beginning February 2 is as follows:

- Monday**  
Red beans and pork, Pickles and onions, Lettuce wedges, Buttered corn, Cornbread and butter, Peanut butter cookies, milk.
- Tuesday**  
Vegetable soup, crackers, Peanut butter, Plum cobbler, milk.
- Wednesday**  
Macaroni and tomatoes, Cheese sticks, Lettuce wedges, Mixed greens, Ice cream, cookies, milk.
- Thursday**  
Sausage and gravy, Blackeyed peas, Buttered potatoes.

Rolls and butter, Applesauce cake, milk, **Friday**  
Fish boats, green beans, Carrot sticks, French fries, Brownies, milk.

For best results use The Journal Want-Ads.

## ATTEND WEDDING

Mr. and Mrs. Johnny Moore, Jr., and Miss Elaine Moore went to Amarillo on Friday night to attend the wedding of Joyce Woodard, who is an old family friend of the Moores.



See your nearest Santa Fe agent

# QUITTING BUSINESS GOING AT AUCTION GOING

LOCATED AT THE

**M & M GROCERY STORE**

IN MULESHOE ON SUDAN HIGHWAY

## WEDNESDAY, FEBRUARY 4

10 O'Clock Sharp

TERMS: CASH

To be sold at Public Auction. A \$10,000 stock of good clean and fresh groceries and fixtures.

These groceries will be sold by the case, boxes and sacks full. Be on hand early and purchase a bargain.

- |   |                                    |
|---|------------------------------------|
| 1 - 12 ft. Meat Box, extra good.                    | 1 - Enterprize Meat Grinder.       |
| 1 - 12 ft. Refrigerated Vegetable Rack, extra good. | 1 - Large Meat Slicer, good.       |
| 1 - Electric Milk Storage. Extra large, good.       | 1 - Westinghouse Electric Roaster. |
| 1 - Electric Coke Box. Good as new.                 | 2 - Circulating Stoves.            |
| 1 - Electric Dr. Pepper Box, good.                  | 1 - Meat Block.                    |
| 1 - Set Stempson Scales.                            | 10 - Shopping Baskets.             |
| 1 - Set Dayton Scales.                              | 1 - Lot Hand Baskets.              |
| 1 - Set Toledo Meat Scales. Like new.               | 2 - Large Tables.                  |
| 2 - Large National Cash Registers.                  | 1 - Lot Soda Pops.                 |
| 1 - J. Baum Safe, good.                             | 1 - Lot Brooms and Mops.           |
| 4 - Large Grocery Racks, good.                      | 1 - Lot Gloves.                    |
|   | 1 - Lot Cotton Sacks.              |

This Sale Will Be Held Inside Regardless of Weather  
This Is A Good Line of Groceries  
This Building Can Be Leased For Grocery Store or Other Use. See Bill Miller.

# Roy Murillo

Owner

Auctioneer  
**Col. Dick Doshier**  
Phone MU 3-3337, Clovis

Clerk and Bookkeeper  
**Willie Doshier**

Auctioneer  
**Dean Sanders**  
Phone 2557, Hart

Be our guest for a pleasure test...  
*and let Chevy do its own sweet talking!*

Before you decide on any new car, here's the biggest break you can give your dollars—and yourself: Drive a '59 Chevrolet. You'll find there's no reason to want a car that costs more—and no car you want that costs less!

Here are some of the things Chevrolet will tell you about when you drive it—

**ROOMIER BODY BY FISHER**—more width for seating comfort, more luggage space, and new in

everything but its famous soundness. **MAGIC-MIRROR FINISH**—keeps its shine without waxing or polishing for up to three years.

**NEW OVERHEAD CURVED WINDSHIELD**—and bigger windows—all of Safety Plate Glass.

**NEW BIGGER BRAKES**—deeper drums with better cooling for safer stopping and up to 66% longer life.

**HIT-THRIFT 6**—up to 10% more miles per gallon, more usable horsepower at the speeds you drive most.

**VIM-PACKED V8's**—eight to

choose from, with compression ratios ranging up to 11.25 to 1.

**FULL COIL SUSPENSION**—further refined for a smoother, steadier ride on any kind of road.

**TURBOGLIDE, POWERGLIDE, AND LEVEL AIR** suspension head a full list of extra-cost options that make for happier driving.



See this bright new addition to the Chevrolet line—the Bel Air 4-Door Sport Sedan

now—see the wider selection of models at your local authorized Chevrolet dealer's!

## C & H CHEVROLET CO.

207 MAIN

MULESHOE, TEXAS

PHONE 2720



# The Muleshoe Journal

DEDICATED TO THE PROGRESS AND DEVELOPMENT OF BAILEY COUNTY AND THE GREAT MULESHOE COUNTRY

Published Each Thursday At 304 West Second Street, Muleshoe, Texas

And entered as second class matter at the Muleshoe Post Office under the Act of Congress, March 3, 1897.

TEXAS PRESS ASSOCIATION  
Member 1959

J. M. Forbes, Publisher  
Carroll Pouncey, Editor  
Marion Waggoner, Advertising  
Waneen Ragsdale, Society Editor  
Mrs. J. M. Forbes, Business Office  
Mrs. Polly Otwell, Bookkeeper  
H. B. Flanagan, Mechanical Supt.  
Claude Locke, Ingle Gatewood, Prod. Dept.

Subscription Rates  
Immediate Territory \$3.00 Per Year  
Out of Territory \$3.50 Per Year  
Advertising Rate on Application

## Sandhills Philosopher Says . . . Average Driver Can't Use Enough Gas To Pay For 8-Lane Highway

Editor's note: The Sandhills Philosopher on his Johnson grass farm must be a little tax-conscious, his letter this week indicates.

Dear editor:

I was sitting by the fire the other night flipping through a magazine when I ran into an article saying the United States government is looking for inventors, and it went ahead and listed a long string of things this country need to have invented.

Now I never have invented anything, outside of a few excuses, but I've had a lot of experience trying to keep other people's inventions running, and what impressed me by that list was what it left out. It left out what looks like the Federal government itself ought to be the first to think of and put at the head of the list.

What this country needs, over and above all other gadgets and labor-saving devices and handier hydrogen bombs, is a new source of tax revenue.

It doesn't make any difference whether it's President Eisenhower, in Washington, Governor Daniel in Austin, or the governor of any other state, including Alaska, and the mayors of most cities and towns, everybody is looking for a new source of tax revenue.

ing groceries and clothes, before they'll stop driving their cars.

But I'm afraid they can go too far in this direction. Of course, their argument is that we're building 30 billion dollars worth of new highways across the nation, not counting all the side roads and local highways, and the best way to pay for them is to tax the users.

Well, I'll tell you. You can tax a driver to pay for a simple highway, one he uses every few days, and it makes sense, the user ought to pay, but it's going to be mighty hard to tax a man going one way for three more lanes going in the other. The average man just can't use enough gasoline to pay for an eight-lane highway, unless they make cars that burn eight times as much gas, and I think they're working on that too.

The problem is too big for me, but if a man wants to go down in history two notches ahead of Thomas Edison, Alexander Graham Bell, Robert Fulton, and the Wright brothers, let him invent a new source of tax revenue. And I think he'd better hurry.

Yours faithfully,  
J. A.

## Tax Man Sam Sez:

How to determine the number of income tax exemptions you get shouldn't be too much of a problem for most taxpayers than any other item. The tangled up with the Internal Revenue Service in an audit of

## SENATOR ★ ★ ★ Yarborough's Report

Right now, five million American families are living in below-average homes!

And a few programs set up to help these people into better housing are handicapped because there isn't enough money available to properly do the job. In addition, funds haven't been available at all under past programs for building homes in rural areas, in small towns and on the farms.

Believing that something must be done about these needs as quickly as possible, I have joined in sponsoring The Housing Act of 1959, which I feel will provide for them. It will extend and expand such programs as Federal Housing Administration insurance authorization, contracting authority for public housing, low-rent public housing, a revolving fund for college housing loans, and direct loans to veterans. But the biggest change in the law provided by the bill is the direct loan to veterans provision which provides credit for building homes in small towns and on the farms.

In the past, federal credit for housing has helped force people off the farms and into the small towns and into the cities, simply by furnish-

ing credit for homebuilding in the cities, and denying it in the country. This is more than another housing bill—this is a bill to equalize housing benefits, and give the country man a square credit deal with the big city home buyer.

It will help stop the flight of people from the small towns to the cities by furnishing long time-low interest rate credit for home building in the country.

The need for quick action in these programs is painfully clear. For example, there are now more than 50,000 veterans who have asked for loans to build their own homes, but, because of a lack of money available, haven't had their applications approved yet. These loans can be made only in areas where credit is not available from other sources. This bill, among many other things, proposes 300 million dollars be made available to clear up this backlog and help these veterans and their families get their homes.

A very similar bill passed the senate last year, but lost out in the House. However, considering the changes which have been made in the Congress, I believe a very effective law can be worked out which will meet the urgent needs of the nation's housing problem.



**COX DRIVE-IN**

their tax return over dependents than any other item. The law is liberal on allowing exemptions for children attending schools even though they may have earned enough income to file a return on their own. The taxpayer must make sure that each dependent meets the requirements spelled out in the tax instructions. It pays to carefully study your tax instructions on dependents. You may find you are entitled to some extra \$600 exemptions by reading these instructions. On the other hand you may find that you are not entitled to an exemption and save yourself an audit by Internal Revenue.

## Washington News Letter From Lyndon B. Johnson U. S. Senator

Dear Friend:

This has been a good week, a busy one. Much has been accomplished. But a simple, two-syllable word is causing me increasing concern.

It is called "surplus".

This nation now has on hand about \$9 billion in surplus commodities. That's a lot of food. And it is food that must be put to use.

The cost of not using it comes high.

Just to store this surplus, the Administration estimates that it will be spending by next July 1 at the rate of \$1,027,528,020 a year.

This is a costly luxury. It is one that this nation cannot afford.

The need for action to solve this problem is urgent.

The Congress will have before it a new farm bill.

Within it must be the key to unlock this problem called "surplus."

There is now under study by some very able Senators a broad plan.

Briefly this plan would.

Allow a farmer to plant all he wants to.

Assure him 100 per cent parity for that portion of his crop consumed in this country.

Provide that the portion of his basic crops sold in export would be offered on the open market.

The goals are these: Aid the farmer by easing restraints on his own free enterprise. Lighten the load on the taxpayer. And in doing this, help our friends and allies of the free world to help themselves.

This the Senate intends to do.

**84**  
Drive In Theatre  
AMHERST, TEXAS  
— OPEN ALL WINTER —

Friday and Saturday  
January 23-24  
**Let's Rock**  
Julius LaRosa  
— 3 Cartoons —

SUNDAY & MONDAY  
February 1-2  
**The Saga Of Hemp Brown**  
Elizabeth Taylor  
Paul Newman  
— In Color —

TUESDAY & WEDNESDAY  
February 3-4  
**Imitation General**  
John Mills

THURSDAY  
February 5  
**Spanish Language Picture**

## BABSON DISCUSSES . . . ARE STOCKS TOO HIGH?

Babson Park, Mass., Jan. 29 —The readers of this column really want to know whether stocks will go up further and, if so, how much further. The fact is that nobody knows and any answer is a mere guess. I, however, am absolutely unbiased in my answer. I have never accepted a commission for the sale of a share of stock or a bond, nor have I ever borrowed a penny!

**My Personal Investments**

My personal holdings are now about one third in cash, one third in short-term bonds, and one third in a well-diversified list of common stocks. Therefore, whatever the market does is okay with me. Forgive the above personal reference; but I want to guarantee readers that this week's release is absolutely unbiased.

Moreover, I am not blaming brokers for usually being bullish. They have wages, rents, and private wire costs to pay; and they find that 80% of their customers will trade only on the "up side". Therefore, they must be bullish or get out of the business. Magazine writers and radio news commentators know they can get their material accepted most readily by being bullish. Surely the bureaucrats in Washington know they can keep their jobs only by holding their tongues or by being optimistic. I do not blame any of these; they must eat! I merely want my readers to take "with several grains of salt" whatever they hear and read today about the stock market outlook.

ced investment advisors will tell you that the chances are 60-50, or 50-50, or 40-60, or 30-70 that the market is going up. They will not hedge or straddle; the can honestly be bullish or bearish. But they will talk in terms of chance and not be imperial.

**What About Special Stocks?**

I recently asked the president of one of America's ten largest companies why it is so difficult to get him to give an opinion on his own stock. He replied: "Because I know that for every buyer of my stock, there must be a seller. These buyers and sellers know little about my company, yet they determine the price of its stock. But this is not all. The stock goes up when the buyers are more anxious to buy than the sellers are to sell, and vice versa."

The above means that the price of an individual stock depends upon the impatience of the public to buy or to sell. Impatience truly controls the price of every stock. The total average of this impatience determines the Dow-

## VACATION IN CALIFORNIA

Mr. and Mrs. Russell Buhman left Tuesday, January 27 for a two week vacation in California with relatives and friends.

## NOTICE To Automobile, Truck, Tractor and Irrigation Engine owners

We Invite You To Visit Us  
For Your Needs In  
**PARTS and SUPPLIES**

- Oil Filters
  - Fan Belts
  - Radiator Hose
  - Brake Parts
  - Engine Parts
  - Gaskets & Oil Seals
  - Fuel Pumps
  - Water Pumps
  - Carburetor Parts
  - Spark Plugs
  - Batteries
  - Mufflers & Tail Pipes
  - Ball & Roller Bearings
  - Shaler Rislone
  - Auto-Lite Electrical Parts
  - Delco-Remy Electrical Parts
  - P & D Electrical Parts
  - Oil Lines
  - Shock Absorbers
  - Air Cleaners
  - Battery Cables
  - Hydraulic Valve Lifters
  - Pressure Radiator Caps
  - Hand Tools and
- MANY OTHER ITEMS AT MONEY  
SAVING PRICES
- Arnold Morris Auto Parts**  
Phone 7170 Muleshoe



**You'll Paint with Ease when you Paint with... BPS FLATLUX ONE COAT WALL PAINT**

No other wall finish goes on as easily as Flatlux, the one-coat wall paint that gives you luxury colors at low cost. Easy to apply with brush or roller, Flatlux is fadeproof, fully washable, dries quickly to a beautiful long-lasting finish. Insist on Flatlux today! It can't be beat!

A single gallon does an Average Size Room  
ASK TO SEE THE TREASURE CHEST OF COLORS

**HEATHINGTON LUMBER CO.**  
Phone 7970 Muleshoe

# THANKS A MILLION Sale!

Here's another terrific opportunity for you to own new General Electric Appliances at Celebration Prices during our . . .

## YOUR CHOICE . . .

**\$199<sup>95</sup>**  
WITH TRADE



LA511  
New General Electric Refrigerator . . . 11 Cubic Foot . . . Magnetic Safety Door . . . Butter Keeper . . . Celebration Special . . .



14115  
General Electric Range . . . 40 Inch . . . Completely Automatic Cooking . . . Celebration Special . . .



WA6035  
GE Filler-Flu Washer . . . Top Loading . . . Big Capacity . . . Completely Automatic . . . Celebration Special . . .

# Johnson Furniture Co.

PHONE 5150 • MULESHOE



## Results Of Fertilizer Tests To Be Announced On February 10

Reports on extensive use of fertilizers on test plots of cotton and grain sorghum throughout the High Plains area during 1958 will be announced at the first annual meeting of the South Plains Soil Fertility committee to be held from 9 a.m. to 4 p.m., February 10 in the Caprock Hotel in Lubbock.

This committee is composed of fertilizer manufacturers, chemical dealers, farmers, businessmen, The Plains Cotton Growers, Inc., and the Texas Agricultural Experiment Station. It was organized to foster and promote more efficient and profitable use of fertilizer material in a sound soil and water management program by support of research, education, legislation, and a high standard of ethics.

## LONE STAR AGRICULTURE

### SOME FACTS ABOUT DOG FEEDING

There is one dog for every seven people in the United States, and, because the companionship of men and dogs is one of the oldest and respected of human traditions, our dog population is steadily increasing.

Because of the concern of people for the care and well-being of their dogs, increasing consideration is being given to the problems of dog feeding and nutrition.

The majority of dogs today are primarily maintained by commercial dog feeds, and manufacturers of dog feeds try to incorporate an excess of all essential nutrients needed by a dog. Man has a simple means of detecting the adequacy of such a diet by the outward health of his dog, but he would perhaps do well to know more of the actual facts concerned with dog feeding.

There are several basic factors which should be of primary concern to the nutritional well-being of the dog. In puppies, the most important such factor is nutritional deficiency caused by intestinal parasites such as round worms or ascariids which may appear when the puppies are two to three weeks old. Preventive treatment is often given pups at this time, and attempts at worm elimination are being made through drugs introduced into the diet of the lactating bitch.

Another sign for need of dietary adjustment in dogs is diarrhea, which may be brought about by any of several causes. In puppies, over-eating may bring about diarrhea, just as too much milk in the diet may cause it. In the former case, restricted feeding three or four times daily will usually eliminate diarrhea.

The usual and most reliable guard against diarrhea and constipation in dogs is self-contained in the best commercial dog feeds. This is tomato pumace, the dried residue that remains after squeezing the juice from tomatoes. This product has the power of regulating dogs so that they suffer from neither constipation nor diarrhea, although no one knows precisely the ingredient responsible for this beneficial action.

Among other important elements in the dog's diet are Bone Meal. The ability of the dog to use the proteins of bones has been long known. The protein of raw bones is much better utilized than that of dried or heated bones, so most any dog might well be supplemented with occasional bones.

Fats. The dog utilizes more than ninety per cent of the fats such as tallow. In using fat in the dry feeds given dogs, manufacturers are very conservative and seldom bring the fat level above ten per cent. This seems wise because the table scraps given many dogs in homes are usually rich in fat. If no more table scraps are provided, supplemental provisions of lard (not shortening or margarine) can be well utilized.

Although there is still much to be determined on the nutritional requirements of the canine, it is generally true that commercially prepared diets for dogs are in better balance than most diets enjoyed by man, probably because man does want to "enjoy" his diet just as much as he wants his dog to be healthy.

periment station superintendent has announced. The meeting is open to the public and farmers and others are invited. August Balzer, president, said. One of the future aims of the group is to work on legislative appropriation support for 1959 and future years.

Also at this meeting plans for the 1959 program will be discussed and new officers will be elected. This meeting precedes the Agricultural Chemical conference, sponsored by the West Texas Chamber of Commerce and Texas Tech, which begins the evening of February in Lubbock.

## Parmer County Farm Bureau News

The personnel, officers and directors of Parmer County Farm Bureau wish to express their appreciation to you people who called last Saturday for the open house in your new office. Expression of appreciation for the flowers sent by several businesses and individuals is also in order. No count was taken, but we felt that the reception was wonderful, and more people came by than anyone really expected. If you didn't make it, please come in at your convenience.

Among those visiting was Allen Webb, State ASC board member from Dimmitt. He told us that the board has recently approved a re-seal plan for grain sorghum. This will give farmers an opportunity to hold their grain longer for a possible increase in market price.

Friana's drive chairman for MOD, Frances Euler, brought the dime board from the bank in Friana for open house. She expresses her appreciation for the fine response to that appeal, which netted about \$40 that day. We were out at Black Friday night where they counted nearly \$200 from their bingo pie supper evening. We'll be out at Rhea this Friday night for their MOD pie supper. You're invited too.

The legislative and membership committees met Monday night. We don't have a report on their actions at this time, but will have next week.

We do have weekly reports on Austin legislative activities, including Farm Bureau's efforts to promote legislation requested by the membership last November. Rural roads and REA are two of the most important ones, but there are many others, of course.

Members whose dues come due in March will be billed about two weeks early in an effort to get them in before the drive period. This will save individuals time, gas, and trouble, besides saving some money in the office. If you receive yours in this early billing, please send it in, says Jack Patterson, Chairman of membership.

**CONSIDER THIS: Take away the wicked from before the king, and his throne shall be established in righteousness.**  
Proverbs 25:5.

## Farmers Union Convention In Washington DC.

Alex Diekie, Jr., president, Texas Farmers Union, announced today that the annual Texas Farmers Union Washington Bus trip leaves from the Marchion Hotel in Wichita Falls, Friday morning, January 23 and will arrive in Washington, D. C., Sunday evening, January 25.

The Farmers Union delegates will call on members of the Senate, House of Representatives, and the Department of Agriculture in an effort to pass a realistic bargaining power farm bill for family farmers. The legislation sought by Farmers Union will be along the line of realistic production control to enable farmers to demand and get a fair price for what they do produce.

Another proposal would be for a nation wide, low interest, REA type loan for farmer owned cooperative marketing, and processing plants which would enable the farmer to hang on to his product further along the line. Another approach advocated by the farmers union is direct payment approach on farm commodities.

## Best Quality In History For This Season Cotton Crop

Quality wise, the 1958-59 Texas High Plains cotton crop was one of the best on record. George W. Pfeifferberger, executive vice-president of the Plains Cotton Growers, Inc., reported this week as he released the seventh and final quality report on cotton statistics for this area.

Out of the two million bales harvested on the High Plains—an all-time production record—statistics show that white cotton accounted for 71.3 percent of the crop with 59.2 percent strict low middling white and above.

"Light spotted cotton totaled only 25 percent and 16.5 percent of that was middling light spot and better. Full spotted cotton was only 2.3 percent," Pfeifferberger said. The average staple length

on the Plains 1958 crop was 31/32 inch with 25 percent measuring one inch and longer. Only 8 1/2 percent fell below 15/16 inch.

The micronaire average was 4.0 with 81 1/2 percent above the tenebrable micronaire limit of 3.5 and the majority of the crop, or 51 percent fell between 4.0 and 5.0.

The Pressley fiber strength averaged 74,600 pounds per square inch with 44 percent testing between 75,000 and 90,000 pounds.

Pfeifferberger explained that the quality statistics on this past season's crop were compiled in cooperation with the U. S. Department of Agriculture, Texas Agricultural Experiment Station and Texas Tech. College. Results were based on 65,696 samples for

grade, staple and micronaire and 5,906 samples for Pressley tests.

He concluded that uniformity in grade, staple, micronaire, and Pressley makes this crop much better than even the quality crop of 1956 and one of the best ever produced on the Plains.

## Farmers Union Report

There are men in America today who advocate that the Government keep their hands off agriculture and offer no help whatsoever regardless of the disasters which may prevail. They sneer at any help that might be given as a handout, or brand it as some attempt to attract the farm vote, but labor is organized and maintains fair wages for millions of American work-

ers through organizations for this purpose.

The investors in public utilities, railroads, power companies, airplane companies, shipping lines, etc., are protected by the Government either by a guarantee of fair returns or capital through rates charged or by outright subsidies. Manufacturers are largely protected by "administered prices" or by shutting down production when the demand for its products are low.

The farmer, on the other hand, has not as yet been able to come up with an organization or system for maintaining farm prices. Nor is there such few farmers, yet that their leaders may fit production to market needs and hold up profits. If the farmer cannot use Unions, Government regulations or administered prices, what must he do?

When improved machinery and modern know-how make unlimited production a price threat beyond anything ever

known before. Some people look at our big crops and surpluses and say that production controls have failed, but who knows what our surplus would have been without them. Except for cotton, tobacco and possibly one or two other crops there has never been a real effort to control production. What controls have been implemented and the farm program has been a failure. Farmers Union stands for a strong program for all farmers which will assure a parity of income.

**MULESHOE VISITOR**  
T. L. Watson from Muleshoe, South Dakota is in Muleshoe visiting his father, T. W. Watson.

**BROWNS TOUR COURTHOUSE**  
County Attorney Jack Young was host to Browns Trip 96 on Friday and Bezzie Trip

307 on Tuesday on a tour of points of interest in the county courthouse. Mr. Young made the visit most interesting and stated that it was his belief that more adults should also be interested in the conditions of our courthouse. Sheriff Dew Clements also talked to the troops and instructed them of fingerprinting, etc.

## OUT OF TOWN VISITORS

Visitors from out of town who attended the morning worship services at the First Baptist Church this past Sunday were Mr. and Mrs. Harry Wofford and Mr. W. B. Wofford of Wheeler, Judy and Gina Garrison of Pampa, guests of Mrs. E. H. Kennedy; Mrs. Dale Bell and children of McAbee, visitors of O. E. Lounsbury, and Davie Joyce of Greenwood, Ark., visiting John Lee Howard.

WE STILL HAVE NUMEROUS SAVINGS IN SEVERAL DEPARTMENTS DURING OUR JANUARY SALE. TAKE ADVANTAGE OF THESE SAVINGS NOW!

# BETTER BUYS BIGGER BARGAINS BETTER BUY NOW

# Dollar Days

ONE GROUP

## LADIES DRESSES

Regulars, Juniors and Half Sizes

Cottons, Rayons and wools, In Solids and Prints

REGULAR PRICE 5.98 to 29.95

Dollar Day HALF PRICE



## BED SPREADS

Double and Twin Sizes

Regular 9.98 to 12.98

Dollar Day Only 6.90 to 8.90

## LADIES' HATS

Assorted Styles and Colors



Your Choice DOLLAR DAY ONLY 2.00

## MEN'S KHAKI PANTS

Button Front Regular Price 3.98

DOLLAR DAY ONLY 3.29

## PLACE MAT SETS

Assorted Colors And Patterns

Regular 1.98 to 4.98

Dollar Day Only

1.27 to 2.90

## LADIES' SKIRTS

ONE GROUP

In Solids, Tweeds and Wools.

Reg. 4.90 - 12.98 Values

DOLLAR DAY ONLY HALF PRICE



## LADIES BLOUSES

Mostly Cottons

Assorted Styles and Colors

2.90 to 7.90



ONE GROUP

MEN'S STRETCHABLE

## NYLON SOCKS

2 pair for \$1

## TOWELS

Bath Towels By Cannon

Regular Price 59c

Dollar Day Only

2 for \$1

Cobb's MULESHOE



### THREE WAY NEWS NOTES . . .

## Basketball Teams Beat Bula and Pep

**by Mrs. Frank Griffith**  
The high school basketball teams defeated Pep last week. The boys won over Bula, but the girls lost. Three Way plays Bledsoe this week.

The junior high school boys and girls will begin their basketball tournament February 2. Teams from Bula, Muleshoe, Bledsoe and Pettit are among those to participate.

Mr. and Mrs. Frank Griffith and Mrs. Florence Bailey visited relatives at Shallowater and Anton Sunday.

Bonnie Bateas, a student at Wayland College, spent the weekend with her parents, Mr. and Mrs. Elmer Bateas.

Paula Griffith spent a few days last week with her parents, Mr. and Mrs. Frank Griffith, between semesters at ENMU.

Attending the RA Fellowship program at Wayland College Saturday were Lewayne Bateas, Terry Flaniken, Marvin Wall, Kenneth Petree, J. L. Lemons, and Butch Johnson. Rev. Byron Hardgrove and Bill Wood took the boys. They were treated to a college basketball game and supper.

The Goodland Bible Study club met last week with Mrs. Louis Henderson. They studied Mark 8 and 9. Refreshments were served to 10 women.

The next meeting will be with Mrs. Lewie Jordan.

Mr. and Mrs. Howard Pollard of Lubbock visited his parents, Mr. and Mrs. Carl Pollard the past weekend.

Fay Wall, a senior, was named the Betty Crocker Homemaker of Tomorrow in an assembly program at Three Way recently.

Miss Wall, the daughter of Mr. and Mrs. O. F. Wall, received the highest score in a 50 minute written examination on "Homemaking Knowledge and Attitudes". She was selected by General Mills from 10 other candidates from Three Way.

Her paper will be entered in the state contest.

Mr. and Mrs. Buck Ragsdale visited the past weekend at Spearman with her brother, who had recently undergone surgery.

The Middle East Pilgrimage is the topic of study in the Three Way WSCS. Mrs. Cecil Cole is study leader. The women meet each Monday for the lesson. Mmes. Tommy Gall, Garvin Long, and Cass Stegall were on the program this week.

Mr. and Mrs. R. E. Wittner and son of Lubbock visited their parents, Mr. and Mrs. D. Brinker and Mr. and Mrs. Andrew Wittner.

Mr. and Mrs. John Petty of Lubbock spent the week with her parents, Mr. and Mrs. Cecil Cole.

Visiting Mrs. J. A. Johnson Sunday were Mr. and Mrs. Louis Ponder of Portales.

The grade school basketball team defeated Pep at Three Way Monday evening.

The girls in the Home Economics department of Three Way attended the style show "Around the Clock in Cotton" on the Tech campus Tuesday afternoon.

Accompanying the girls were their sponsor, Mrs. Betty Adams, Mrs. Baker Johnson, Thurl Lemons, and W. C. McElvey.

Mr. Cecil Cole attended the style show at Tech Tuesday.

## Enochs News Events

By Mrs. Jerome D. Cash

Mr. and Mrs. H. H. Snow spent a few days in Hereford last week visiting her sister and family, Mr. and Mrs. James Cash.

Mr. and Mrs. Calvin Coley of Muleshoe spent Sunday afternoon with her brother and family, Mr. and Mrs. J. J. Brackman.

Mr. and Mrs. Murry Alexander of Ft. Worth are visiting this week in the home of her parents, Mr. and Mrs. Cecil Jones.

Betty Hallford of Wayland College of Plainview visited her parents over the weekend, Mr. and Mrs. A. D. Hallford.

The Bula Bulletin sang at the Enochs Methodist Church Sunday morning.

WCS met Wednesday afternoon at 5 o'clock, with five present. Mrs. Willie Welch was the leader. Lesson continued on "Isaiah Speaks".

Mr. and Mrs. John Gunter spent the evening Sunday at Muleshoe visiting their sons and families, John and Byron.

Mr. and Mrs. Bill Dick and son, George, of Portales, N. M., visited in the E. N. McCall home last week.

Mmes. Carl Hall, J. J. Brackman, J. M. Angel, and E. N. McCall attended the WMU Clinic at Parkview Baptist Church at Littlefield last Wednesday.

Mrs. H. H. Snow and Mrs. J. W. Layton were called to the bedside of their sick father Wednesday night at Ranger.

Mr. and Mrs. Harold Layton and girls visited relatives at Crosbyton Sunday afternoon.

Mr. and Mrs. Robert George of Lubbock visited her parents over the weekend, Mr. and Mrs. E. N. McCall.

and relatives.

Mr. and Mrs. Coley I. Duncan and daughters were weekend guests in the home of his parents, Mr. and Mrs. W. E. Duncan.

Mr. and Mrs. Opal Myers and Deanna visited Sunday in the home of Mr. and Mrs. Homer Wimberly of Pleasant Valley.

Mr. and Mrs. E. A. Bass and girls spent Sunday at Morton visiting Mrs. Bass' parents and brother, Mr. and Mrs. Andy Dunlap. They also visited with her grandparents who were visiting at Morton.

Mrs. C. B. Kindred and Bud spent Sunday in Lubbock visiting her son and family, Mr. and Mrs. Bob Kindred and children.

Mr. and Mrs. Jimmie Presley and son visited Friday until Monday in Vernon with relatives and friends.

Mrs. Elizabeth Simmacher and children, Frank, Francine, Ann and Morris, and Faroy and Leon Simmacher of Portales, N. M., visited Sunday in the home of Mr. and Mrs. Tom Simmacher and boys of Floyd, N. M.

Rev. and Mrs. C. C. Lamb went to Lubbock one day last week to Spiritual Life Retreat.

Mrs. Fern Davis, Mrs. C. C. Lamb and Mrs. Johnnie Westbrook went to Oklahoma Lane Tuesday to the WSCS sub-district meeting.

Mrs. O. S. Richards was home Monday visiting.

Fred Otte and Shirley, and Mr. and Mrs. Ingle Gatewood went to Odessa over the weekend to visit Mr. Otte's mother, and the girl's grandmother.

Mr. and Mrs. M. F. Shipp, Janet and Mr. and Mrs. Muddell Shipp and Patty of Lubbock all visited the men's sister and family, Mrs. Exa Cox of Floyd, N. M.

Mr. and Mrs. D. M. Marrow and children spent Sunday at Plains, visiting his brother and family.

Rev. and Mrs. Ralph E. Cooper and baby daughter, Brenda Kay, visited here Thursday and Friday of last week with his parents, Mr. and Mrs. Arthur Cooper and other relatives and friends in this vicinity. The Coopers live near Abilene.

The Intermediate class of Progress Methodist church met at the home of their teacher, Mrs. Arthur Cooper last Saturday night for a party. Those attending were Kathy Gray, Jane and Wanda Wedel, Jerry Rogers, Jim Thomson, Myke Murray and Mrs. Cleburne Gray.

## Maple News

by Mrs. Oran Reaves

Miss Revia Clay of West Texas State College at Canyon, spent the weekend in the home of her parents, Mr. and Mrs. John Clay.

Mr. and Mrs. Albert Smyer and children visited his sister and family, Mr. and Mrs. Wayne Cash and children in Lubbock Saturday.

Mr. and Mrs. Jerry Simpson and Dewain spent Sunday in Lubbock with his cousin.

Some of those on the sick list that we know about this week are Mrs. C. L. Taylor, Sandra and Don Simpson, and Butch and Sheila Reaves.

Mr. and Mrs. Bill Eubanks visited their son and daughter, W. C. and Maudine Eubanks in Lubbock Thursday.

Mr. and Mrs. R. L. Davis visited his mother, Mrs. Davis, in Hale Center Sunday afternoon. Mrs. Davis had to return to the hospital. She had been out of the hospital for a month.

Mr. and Mrs. Tommy Gattis and sons visited her parents, Mr. and Mrs. Gene Pierce Sunday afternoon.

Miss Ruth Gattis of Morton visited her parents, Mr. and Mrs. Guy Gattis Sunday afternoon.

The ladies of the Maple

### BULA NEWS BRIEFS . . .

## FHA Chapter Holds Meeting January 19

The Bula FHA chapter met Monday night, January 19 at 7 o'clock in the luncheon room. The president, Lennell Claunch, had charge of the meeting, which opened with the regular opening rituals.

The program for the evening was entitled "Teenage Consumer Education", and was given in a panel discussion. Girls taking part were Kathy Archer, Ruby Cash,

Church of Christ met with Mrs. Ted Simpson to quilt Thursday afternoon. Those present were Mmes. Cecil Bann, Mrs. Oran Reaves, Mrs. Foy Lewis and the hostess. Refreshments of cake and coffee were served to those present.

Mr. and Mrs. Kenneth Lyburn visited friends in Lubbock Sunday afternoon.

We are happy to have Mr. and Mrs. Deward Wall move back to our community.

Mr. and Mrs. Virles Wall and children visited her uncle in Morton Sunday afternoon, and her grandmother, Mrs. DeBoard of Lubbock came home with them to spend the week.

HOUSE GUESTS OF T. W. GOARS

Rev. and Mrs. W. F. Vandenberg and daughters, Deborah and Denise of Clarendon, were guest in the home of the T. W. Goars this past week.

### Benediction was given by Mrs. Kile.

Present were Mmes. B. L. Blackman, F. L. Simmons, D. J. Johnson, P. M. Lancaster, W. L. Clawson, Joyce White and H. W. Kile.

Visiting Thursday evening in the F. L. Archer home were two of Mrs. Archer's brothers and their families, and also two of her sisters and their families. They were Mr. and Mrs. C. M. Nebrough and children of Fresno, Calif., Mr. and Mrs. Chester Nebrough and girls of Bovina, Mr. and Mrs. J. L. Shive and children of Hart, and Mr. and Mrs. E. O. Johnston of Bovina.

Cracker sandwiches, pickles, and punch were served to 20 members and the hostesses for this meeting. Kathy Archer, Sammye Reynolds, Betty Holt, and Ruby Cash.

Miss Jo Ann Hubbard and Miss Marilyn Doherty of Amarillo spent the weekend here with Jo Ann's parents, the John Hubbards. Both girls are employed by the Pioneer Gas Company in Amarillo.

Mr. and Mrs. Dewayne Neel of Canyon spent Sunday night in the Eugene Bryan home. They are both students at WTSC, Canyon and are enjoying the between semester vacations.

WCS met Wednesday, January 21 at 2:30 p.m., at the church building with seven ladies present. Mrs. T. L. Simmons had charge of the program. The program was opened by the group singing "Stand Up For Jesus" followed by Mrs. Johnson leading in prayer.

Mrs. Blackman read the scripture, reading taken from Luke 10th chapter.

The lesson was taken from the study book topic, "Canada and Their Different Churches". Mrs. Kile brought a story from a supplementary book about a social worker in Canada.

Mr. and Mrs. Jimmy Drake and girls Cindy and Karen visited over the weekend at Oklahoma City with Mrs. Drake's sister and husband.

Mr. and Mrs. Bob Sikes.

Sunday guests in the John Blackman home were Mr. and Mrs. Eugene Bryan, Mrs. B. S. Setliff and son, Chester Setliff. Mr. and Mrs. J. F. Hicks and daughter, June, Mr. and Mrs. Otis Neel and children, Kay, Dale and Gerald of Friona.

Mr. and Mrs. L. H. Medlin and children attended wedding for Mr. Medlin's cousin, Larry Cooper and Miss Mary Ann Walls at the Oklahoma Lane Methodist Church Sunday afternoon.

Sunday guests in the W. B. Adams home were Mr. and Mrs. Richard Pike and Mr. and Mrs. R. Y. Lasister of Lubbock.

Rev. and John Boone and Houston Black drove to Plainview Saturday and carried four RA boys of the Bula Baptist church to a district RA meeting at Wayland College in Plainview. Boys attending were Bill and Allen Black, Zool Cody and Dale Thompson.

Rev. John R. Boone attended a Pastors' and Laymen conference held at Wayland College Monday and Tuesday of this week.

Mr. and Mrs. John Aduddell of Lazbuddie spent Sunday with their daughter and family, Mr. and Mrs. DeWitt Tiller and girls.

Sunday visitors in the C. C. Cleveland home were several of their children. The Raymond and Junior Cleveland families of Whitharral and the Bill Cleveland family of Morton.

### PROGRESS NEWS REPORT . . .

## Business Meeting Held By WMU Ladies

**by Mrs. M. O. Nigh**  
The ladies of the Progress Baptist Church met Monday, January 26 with 10 members, for a business meeting.

The devotional was brought by Mrs. Mary Neal Marrow. The scriptures were I Corinthians 10:13, and I Corinthians 10 through 13.

GA and Sunbeams met at 4:30 and the RA's met Monday evening at 7:30.

J. J. Redwine was sick over the weekend.

Mr. and Mrs. E. W. Clark had as their guests over the weekend, Mrs. Clark's sister and children, Mrs. Delma Norris, Bobbie and Sandra.

Beverly, Brenda and Mark Black spent two weeks visiting the Eugene Black family while their parents, Mr. and Mrs. Carroll Dean Black were away on business.

Visiting in Oklahoma

Mrs. Birda Garrett and Jim visited ten days at Anadarko, Okla., with Mrs. Garrett's sister and husband, Mr. and Mrs. D. H. Willingham, other relatives and friends.

**New Comers**  
The community extends a welcome to Mr. and Mrs. Paul Armstrong and their four children, who have moved to the D. O. Smith farm from Hart, Texas.

Mr. and Mrs. Hopper Ivy visited her parents, Mr. and Mrs. O. M. Self Sunday.

Mr. and Mrs. Doyle Henry and son of Lubbock visited their parents, Mr. and Mrs. J. L. Redwine, Sr., and Mr. and Mrs. Clyde Henry recently.

Mrs. E. W. Locker was sick over the weekend.

Mr. and Mrs. Ted Eason visited their parents, the E. F. Easons and the C. C. Anders over the weekend.

Mr. and Mrs. Allen Doll, Mrs. Harold Marshall and Miss Alta Prince, all of Clovis, visited Mr. and Mrs. C. A. Bishop and Mr. and Mrs. M. O. Nigh Sunday.

Mr. and Mrs. Albert Kube of Wildorado visited Mr. and Mrs. M. O. Nigh Thursday. They also visited other friends

## NEW IRRIGATION ENGINES

**1959 OLDSMOBILE**  
394 cubic inches, truly a water getter. You're ready to roll when you own an Olds. Ready to pump less carburetion.

**\$672** Complete And Delivered

**CHRYSLER INDUSTRIAL**  
56A liberal guarantee. The workhorse of irrigation. Ready to pump less carburetion.

**\$839** Complete And Delivered

**1959 CHEVROLET**  
261 cubic inch. Every piece is brand new and completely guaranteed. Truly the farmer's friend. Complete, less carburetion.

**\$549** Complete And Delivered

**E. A. KENLEY**  
Phone WA 7-3135 Maple, Texas  
2 West, 1/2 mi. South Goodland



**Anthony's**  
G. R. ANTHONY CO.

MULESHOE, TEXAS

# DOLLAR DAY

MONDAY, FEBRUARY 2 ONLY

---

SPECIAL CLOSEOUT

MEN'S WHITE or COLORED

## DRESS or SPORT SHIRTS

Values to 3.98

Broken Sizes Discounted Patterns  
Your Choice While They Last

---

ODD and END CLEANUP

## COWBOY BOOTS

MEN'S and BOYS WHILE THEY LAST

|                         |                          |
|-------------------------|--------------------------|
| BOYS values up to 14.75 | MEN'S values up to 22.50 |
| <b>\$6.00</b>           | <b>\$13.00</b>           |

---

BOYS or GIRLS

## ANKLETS

Regular 29c and 39c Values

Monday Only

8 Pair . **\$1**

---

Boys or Girls Nylon

## STRETCH SOCKS

Irregular or Regular 39c

4 For . **\$1**

---

MEN'S BUCKLE BACK COTTON

## Casual Pants

Red, Tan and Black

Regular 3.98 and 4.98

Sizes 28 to 38

WHILE THEY LAST

MONDAY SPECIAL

Pair **\$2**

---

ENTIRE STOCK

## REMNANTS

MONDAY ONLY,

1/2 Price

Special Purchase

NEW SPRING

## Cottons

Regular 49c

Famous Name

80 Square Percales

In Lovely Spring Prints

3 YARDS FOR

**\$1**

---

ENTIRE STOCK

Ladies Winter

## HATS

Values to 6.00

WHILE THEY LAST

**50c**

---

SPECIAL PURCHASE

## BED SPREADS

Values to 6.95

Monday Only

**\$4.00**

---

Big Thirsty

## Towels

2 for \$1

SPECIAL CLOSE OUT

HIGH COLORED SEAMLESS OR FULL FASHIONED

## NYLON HOSE

Regular 1.15

While They Last

2 Pair . . . . . **\$1**

---

SPECIAL PURCHASE

GIRLS DOUBLE SEAT

## PANTIES

Regular 39c - 49c - 59c

All Cotton and Lace Trim

Rayon with Nylon Trim

And Many Others Your Choice

Sizes 2 to 12 years

3 for . . . . . **\$1**

---

Ladies and Girls

## BLOUSES OR SKIRTS

Values to 2.98

Priced To Clear Quick

SO HURRY

MONDAY ONLY

**88c**

---

75% LAMBS WOOL 25% ORLON

## SWEATERS

Regular 8.95 Value

Special Factory Closeout

Sale Price

Your Choice of Brown or Red

MONDAY ONLY

**\$3**

---

WE WILL CLOSE

7:00 p. m. Saturday 31st. For Inventory

**Anthony's**  
YOUR FAMILY STORE  
MULESHOE, TEXAS