



CASHWAY IS FEATURING 4-H CLUB BEEF

Extra Choice Club Beef
Round Steak Lb. . . **79¢**

Extra Choice Club Beef Chuck
Roast Lb. **55¢** | **Stew** Lb. . **43¢**

Extra Choice Club Beef Boneless
Club Steak Lb. **79¢**

LOIN STEAK	Extra Choice Club Beef	lb. 79c
T-BONE STEAK	Extra Choice Club Beef	lb. 79c
ARM ROAST	Extra Choice Club Beef	lb. 57c
SHORT RIBS	Extra Choice Club Beef	lb. 33c
GROUND BEEF	Extra Choice Club Beef Fresh	lb. 49c
GROUND CHUCK	Extra Choice Club Beef Lean	lb. 59c

CRACKERS	1 Lb. Box Sunshine Krispy	29c
BROWNIE MIX	Betty Crocker	29c
CAKE MIX	Betty Crocker, White-Yellow - Devil Food	29c
BREEZE	With Cannon Face Cloth Large Size	31c
PET MILK	Tall Cans 3 For	45c
COFFEE MUGS	White Cups 2 For	25c
SWEET POTATOES	No. 2 1/2 Squat Cans Steele's	25c
PEARS	No. 303 Libbys Halves Bartlett	25c

Gladiola "Oven Ready" | No. 2 1/2 Libbys Rose-Dale, Sliced or Halves

Biscuits 3 For 25¢ | **Peaches 25¢**

SHORTENING 3 Lb. Tin Swift's Jewel **69¢**

PEAS No. 303 White Swan Fancy Luncheon **19¢** | **CORN** No. 303 Our Darling Cream Style **15¢**

10 Lb. Bag Gold Medal | 1 Lb. Tin White Swan Drip or Regular

Flour 89¢ | **Coffee 79¢**

GRAPE JUICE 24 Oz. Bottle Our Value Pure Concord **29¢**

GRAPEFRUIT JUICE	46 Oz. Can Libbys	29c
FRUIT PUNCH	46 Oz. Can Libbys Tropi-Cal	33c
MARSHMALLOW	10 Oz. Cello Pkg. Curtis White	15c
APPLE JELLY	20 Oz. Glass Tumbler Mrs. Winstons Pure	29c
CHILI CON CARNE	No. 2 1/2 Peter Pan	53c
WAFFLE SYRUP	24 Oz. Decanter Texo-Maid	35c
DR. PEPPER	12 Bottle Carton Plus Deposit	39c
BABY FOOD	Heinz Strained 3 For	29c
DENTAL CREAM	53c Size Colgate	39c

PRODUCE

Fresh, Firm, Green

CABBAGE Lb. . . . **5¢**

Large, Golden Ripe

BANANAS Lb. . . **10¢**

Fresh Winter

TURNIPS lb. 5c

Garden Fresh

RADISHES bunch 5c

Garden Fresh

GREEN ONIONS bunch 5c

DOUBLE

Gunn Bros. Stamps

ON CASH PURCHASES OF \$2.50 OR MORE

EVERY TUESDAY

• FROZEN FOOD •

FISH STICKS	8 Oz. Pkg. Fisher Boy	29c
OCEAN PERCH	1 Lb. Pkg. Booth Frozen	39c
CAULIFLOWER	10 Oz. Pkg. Snow Crop Sno-White	25c
ROLLS	Frozen-Rite 24s Pkg.	29c

CASHWAY

"Where Friends Meet and Prices Talk" | Free Delivery | Phone 2440 or 2450

LISTEN TO THE MULE TRAIN

BROADCAST FROM MULESHOE OVER **KMUL 1380**

MONDAY, WEDNESDAY & FRIDAY, 10 A. M.

Another Service Of Your **CASHWAY GROCERY**

SPRING has sprung (WE HOPE)

THE GRASS IS RIZ... AND HERE IS WHERE THE BARGAINS IS!



Come on Mary, don't be contrary
It's time to make your garden grow.
Shop Piggly Wiggly, where price is no worry
And Green Stamps make your savings grow!

SHORTENING	Armour's Vegetole 3 Lb. Can	69¢
MARGARINE	Golden Mist 1 Lb. Carton Limit 2 To Customer	15¢
PEACHES	Hunt's Halves or Slices No. 2 1/2 Can In Heavy Syrup	25¢
TEA	Lipton's 1/4 Lb. Box	39¢
	TEA BAGS Lipton's 16 Count	27¢

Golden For Your Lawn
VIGORO 50 Lb. Bag **\$3.95**
REG. 10 LB. BAG
VIGORO **99¢**

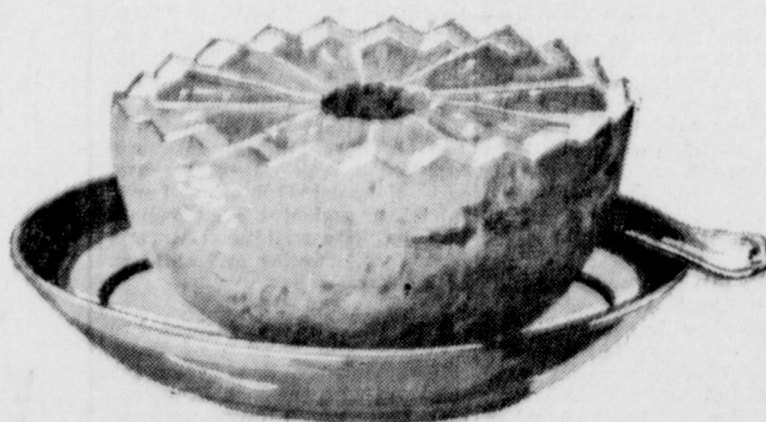
WE HAAVE A COMPLETE ASSORTMENT OF FLOWER AND VEGETALBE SEED

GARDEN HOSE Canton Fully Guaranteed 50 Ft. Length 1/2" Diameter **\$2.49**

Plymouth Premium Hose Guaranteed Vinyl, 50' 1/2" Diameter	3.98	TRIPPLE TUBE, PLYMOUTH, 50'	\$2.89
GARDEN HOSE 8 Oz. Pkg.	98¢	SPRINKLERS	
END-O-WEED Vigoro 5 lb. Bag	73¢	PAR. RED PLUM PRESERVES 18 Oz. Jar	25¢
ROSE FOOD Hunts No. 300	14¢	POTATOES New, Hunts No. 300 Can	13¢
SPINACH Libby's No. 300 Can	25¢	KRAUT Libby's No. 300 Can	15¢
GARDEN LIMAS Nabisco 11 1/4 Oz.	39¢	DOG FOOD PARD, 16 oz. CAN, 2c OFF CAN. NET PRICE	2 FOR 27¢

WE RESERVE THE RIGHT TO LIMIT QUANTITIES

TEXAS SEEDLESS, RED OR WHITE
GRAPEFRUIT Lb. **10¢**
BANANAS Golden Fruit lb. . . . **12 1/2¢**
RADISHES Fresh Large Bunch **5c**
APPLES Washington Delicious, Lb. **12 1/2c**
MUSTARD GREENS Fresh Large Bunch **10c**
GREEN ONIONS **7 1/2c**



ROLLS Frozen Rite 24 Count Bag **29¢**

PEACHES Polar, 10 Oz. **15c**
Frozen Pkg. **15c**

1/2 FRYER, UNDERWOOD'S FROZEN **BARBECUE CHICKEN** **69c**
PATIO, 12 count PKG., FROZEN **BEEF TAMALES** **39c**
CUT, FROZEN POLAR, 9 oz. PKG. **GREEN BEANS** **19c**

JUS MADE, 1/2 GAL. REFRIG. JAR
ORANGE DRINK **39c**
RAISIN BRAND Skinners Large Box **25c**
EVENING IN PARIS, PLUS TAX
DEODORANT 2 For **\$1**

Borden's, New, 15c off instant
COFFEE 2 2 oz. Cans **61c**
PRUNE JUICE Real Prune 24 oz. **25c**
VIENNAS Campfire No. 1/2 Can 100 Count **10c**
ASPIRIN Box **67c**

HENS CHEESE Fat, Tender, Med. Size 3-4 Lb. Average Lb. **29¢**
Wilson's Clearbrook Longhorn Lb. **43¢**

RATH'S BLACK HAWK, READY TO EAT **HAM** Boneless 3 Lb. Can **\$3.69**
BREADED, GULF STREAM **SHRIMP** 10 Oz. Pkg. **59c**
GOLDEN BRAND BONELESS **PERCH FILLETS** 1 Lb. **39c**
U.S.D.A. GOOD BEEF Pinebone **LOIN STEAK** Lb. **89c**
U. S. D. A. GOOD BEEF **T-BONE STEAK** Lb. **93c**
GROUND BEEF Fresh Lb. **49c**

PORK STEAK Lb. **53c**

5+4 GREEN STAMPS DOUBLE EVERY TUES. WITH 25¢ PURCHASE

PLAINS JUBILLE
MELLORINE 1/2 Gallon **29c**

SHAMPOO Lustre Creme \$1.00 Size **69¢**
SCOTTIES 400 Count Box **25¢**

Paper Towels 150 Count Roll Northern **21c**



Farm News

Allen Haley Produced Record High Yield Of Sesame On 37 Acres During Last Year

Allen Haley is a young farmer in the Pleasant Valley Community northeast of here, who does an intensive farming job on his 160 acres of good irrigated land. Last year, he set out to produce the highest per acre Sesame yield in the country, and it is a tribute to his determination that he almost succeeded. Only one farmer, George Sumruld, over in Lea County, New Mexico, made higher yields. Haley threshed 1,075 pounds of clean seed per acre on a 30-acre yield and 700 pounds per acre of Sesame on a seven-

his crop somewhat prematurely. (It should be noted that Sumruld's fine crop was planted on alfalfa sod and had ten more days of growing season.)

His methods this year will include early planting (before the 10th of May, if possible), plus heavy planting of seed (about 4 pounds per acre) to insure a stand, and planting in 30-inch rows.

After growing Sesame for three years, Haley considers it second only to cotton. And last year it actually netted him more money than his cotton, he reports. He now plants all of his maize land to Sesame. Last year in addition to his 37 acres of Sesame, he had 27 acres of alfalfa which returned about \$75 gross per acre. Four acres of cotton which produced 1.2 bales per acre and a gross of only \$120 per acre because of low quality and low price, and seven acres of cucumbers which netted him \$100 per acre. The remainder of his farm was summer fallow.

Haley will produce his fourth Sesame crop this year and is planning to increase his acreage from 37 to 80 acres—half of his productive 160-acre farm.

The Pleasant Valley farmer believes he would have achieved his goal of highest production, if he had had just a little more growing season and had not been forced by the weather to harvest

it four times and hoed it twice. He didn't have to plant but once, but the early planting date probably caused some extra hoeing and cultivating expense. He is convinced, however, that this extra expense pays off in the long run, for it gives Sesame more time to mature.

In addition to the cultivation, he ran his middles twice and irrigated four times. He cautions that Sesame planted in 30-inch rows needs plenty of water.

Haley figures his total production and harvest cost at \$40 per acre, leaving him a net of approximately \$72 per acre on his best Sesame and \$33 per acre on the remainder.

Most of Haley's Sesame was No. 1 quality seed and sold for \$10.41 per hundred pounds as compared to \$10.34 per hundred last year.

He bought a new 10-foot International grain binder late in the summer with which he cut his own crop and about 500 acres of Sesame for friends and neighbors on a custom basis. He found he could cut up to 55 acres of medium Sesame a day and up to 40 acres a day where yields approached 1000 pounds of seed per acre.

Hybrid Corn Yield Results Published From Hi Plains

Four hybrid corn yield tests, each containing 25 hybrids, were conducted during 1957 at the High Plains Station of Texas Research Foundation at Halfway, Texas. Ninety-six hybrids were included, representing 17 different experiment stations and commercial sources. Yields ranged from 24.8 to 105.3 bushels per acre. Maturities of the hybrids varied from late to early, representing almost the full range of hybrids available throughout the entire United States.

Corn has not been a major crop on the High Plains, in spite of the high yields which can be produced under irrigation, as has been demonstrated repeatedly in the past several years. Major problems met in growing corn in the area are reported to include high moisture content of the grain at harvest; stalk breaking at maturity, caused by the corn borer, and damaged grain due to the corn earworm.

The tests were planted on June 12, a delay of four to six weeks due to unfavorable weather. A preplanting irrigation of six inches, and three subsequent irrigations of three inches each, were applied. Rainfall from April 1 to October 1 was 17.4 inches, making 32.4 inches of water available to the growing crop. Thirty-six pounds of nitrogen and 45 pounds of P2O5 were applied at planting time with side-dressing of 75 pounds of nitrogen on July 18. Plants spaced about

Lone ★ Agriculture

By JOHN C. WHITE, Commissioner

Clearing Up A Few Points In The Egg Law

The Texas Egg Law has been in effect since February 17, and already the Texas Department of Agriculture is being flooded with questions concerning its various points.

Greatest concern seems to be whether ungraded eggs can now be sold in the state. Yes! Ungraded eggs can still be sold, but they must be clearly marked "Ungraded" on the package or carton.

Just because eggs have not been graded, it does not mean that the eggs are of poor quality. On the contrary, a display of ungraded eggs may contain a mixture of all egg grades. However, the eggs must be of edible quality or they cannot be offered for sale.

Another point causing some confusion is the fact that certain descriptive terms cannot be printed on egg cartons or used in advertising.

Any eggs below the quality of Grade A must not be labeled as "fresh", "selected", "henery", "freshlaid", "infertile", "cage", or other words of similar import. These terms are confusing and sometimes mislead the consumer on eggs of lower quality. Unless some bans were placed on descriptive phrases for eggs under Grade A, then "fancy phrases" might be used to camouflage the true condition or quality of the product.

And finally, retail egg sellers do not have to renew their license from the Texas Department of Agriculture each year. The retailer's license is good indefinitely until it is recalled, canceled or revoked.

For other segments of the industry however, licenses run only from September 1 through August 31 of the following year. Those required to have a license include: dealers, wholesalers, processors and brokers.

Bailey County Farm Bureau News

by Ewing L. Mathis

We want to invite you Farm Bureau members to come by the office between now and March 27 and look over some of the prizes that will be given away at the annual meeting, 8:00 p.m. Thursday, March 27 at the high school auditorium in Muleshoe. The Bailey county businessmen have given some pretty nice prizes anyone can use. The Muleshoe banks pitched in too. The Muleshoe State Bank gave a \$25 bond and the First National gave 20 silver dollars. The bankers want to give you Farm Bureau members a chance to hear some money jingle in your pockets without signing on the dotted line. Now this looks like a chance of a lifetime. There will be about \$400 worth of prizes.

nine inches apart in 40 inch rows gave a stand of about 18,000 plants per acre, but poor stands in some plots gave a lower overall average stand.

The top four varieties and their yields in late commercial, mid-season, early, and mid-season yield, were as follows: G773—105.3 bu.; TRF 3—99.1 bu.; Con. 1—98.6 bu.; and Texas 28—96.5 bu.; TRF 9—78.4 bu.; TRF 13—71.2 bu.; G704—67.1 bu.; and G33A—66 bu. Min 609—60.2 bu.; Min. 511—57.8 bu.; TRF 13—54.7 bu.; and NK KS 5—50.6 bu.; TRF 1071—70.2 bu.; TRF 1072—68.1 bu.; TRF 1068—64 bu.; and TRF 1077—61.9 bu.

Broilers, Fryers Lead List Of Plentiful Foods

Broilers and fryers are in heavy supply—considerably larger than at this time last year—and take top billing on the April plentiful foods list. So, spring chicken definitely deserves a place on the barbecue pits and on the family food platter in April.

Dried prunes — which headed the March list—are still plentiful and rate a top place among April plentiful foods.

In the vegetable department, green peas and sweet corn will be found in good supply in cans or frozen packages. Stocks of these processed vegetables were

at record heights at the latest count in February. Canned pears are another April plentiful.

Children who like that "after school" sandwich or other members of the family who carry lunches to school or work will be glad to know that honey and peanut butter spreads are also April plentiful.

Milk and other dairy products round out the list. Production continues at record levels and is increasing seasonally.

A. L. DAVIS STRICKEN

A. L. Davis, long time resident of the country, became ill near the end of the services at the First Methodist Church Sunday morning. He was taken at once to West Plains Hospital & Clinic where he soon recovered and now is reported to be doing very well.

1 DAY PRINTING service (nearly always) at The Journal.

CONDENSED STATEMENT OF THE Muleshoe State Bank

Muleshoe, Texas

At The Close Of Business March 4, 1958

RESOURCES		LIABILITIES	
Cash and Due from Banks	\$1,184,590.22	Capital	\$200,000.00
U. S. Bonds	\$1,217,948.81	Certified Surplus	\$200,000.00
New Public Housing Bonds (Gov't. guaranteed)	\$303,228.48	Undivided Profits	\$95,541.99
Warrants & Bonds	\$654,597.73	Reserve for Bad Debts	\$78,589.82
TOTAL CASH QUICKLY AVAILABLE	\$3,360,365.24	TOTAL CAPITAL FUNDS	\$574,131.81
Loans and Discounts	\$3,215,611.90	DEPOSITS	\$6,292,225.49
CCC Loans	\$212,229.03	TOTAL	\$6,866,357.30
Bank Building, Furniture and Fixtures	\$78,151.13		
TOTAL	\$6,866,357.30		

The Above Statement Is Correct — NORMAN L. THOMAS, VICE-PRESIDENT & CASHIER

OFFICERS

DR. ANSON L. CLARK, CHAIRMAN OF THE BOARD
W. Q. CASEY, PRESIDENT
ROBERT H. MIDDLETON, VICE-PRESIDENT
HARRY JAMISON, VICE-PRESIDENT
NORMAN L. THOMAS, VICE-PRESIDENT & CASHIER
TROY MONROE, ASST. CASHIER
ELIZABETH THOMSON, ASST. CASHIER
JO WHITE, ASST. CASHIER
WILLIAM EDD JONES, ASST. CASHIER

DIRECTORS

DR. ANSON L. CLARK
W. Q. CASEY
WANN E. HILL
ROBERT H. MIDDLETON
T. DWIGHT WILLIAMS
HARRY JAMISON
NORMAN THOMAS

Everyone's Excited

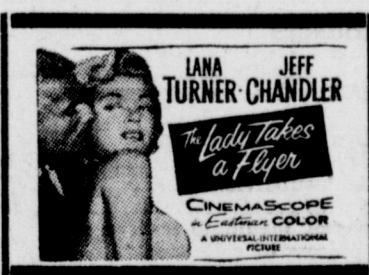
GALA REOPENING

COX DRIVE-IN THEATRE

Saturday, March 22



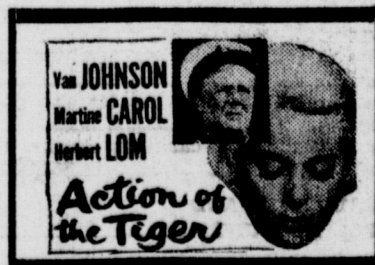
MARCH 22



MARCH 23-24



MARCH 25-26



MARCH 27-28

NO BORING COMMERCIALS

NO BABY SITTERS

NO T. V. SMOG

The robins that sing in the spring tra-la

We finally seen a robin and are opening March 22 for what we believe is our best offering of big, better-than-ever movies!

For Information On

SESAME

Visit Our High Plains

SESAME HEADQUARTERS

At The Elevator In Northeast

MULESHOE

TEXAS SESAME GROWERS, INC.

MULESHOE

PARIS

Planting Seed

Gilbreath Seed & Grain
Muleshoe — Phone 2070

Texas Sesame Growers Inc.
Muleshoe — Phone 8110

