

SCOOP SEZ

By J. M. Forbes

We are indebted to Senn Slemmons for the following excerpt from the book "Main-spring", a book dealing with serious thought, yet 200,000 have been bought:

THE MAINSPRING OF HUMAN PROGRESS

Ours is the only continent on which there has never been a general famine. Aside from the early settlers, few people in America ever have gone hungry. Even in the depths of our worst depression, Americans who were on relief were living better than most of the fully-employed in other countries.

There is more laughter and more song in these United States than anywhere else on earth. In shops, streets, factories, elevators, on highways and on farms—everywhere—Americans are friendly and kindly people, responsive to every rumor of distress. Someone in America will always divide his food and share his gasoline or his tire tool with a person in need.

It would seem that insecurity, the price of freedom, has bred a degree of human sympathy that is without parallel in the history of mankind. It is only in America that rank-and-file citizens, over and over again, have made millions of small sacrifices in order to pour wealth over the rest of the world, to relieve suffering in such faraway places as Armenia, Russia, China and Japan.

With the shortest working hours on earth, we have greater opportunities for self-improvement and personal advancement. But please note that the emphasis is on the word opportunities. The matter of taking advantage of opportunities is up to the individual. It cannot be otherwise. There are no substitutes for self-faith, self-reliance, self-development, individual effort, and personal responsibility.

Tye Young's Mother Passed Away In Arlington Monday

Mrs. J. H. Young, 80, mother of Tye Young of Muleshoe, passed away Monday afternoon in Arlington, Texas, following a lengthy illness.

Funeral services were conducted at Arlington Wednesday afternoon.

Survivors include four sons and six daughters, including Tye Young, of Muleshoe.

Mr. and Mrs. Tye Young, and Mr. and Mrs. Jack Young attended funeral services.

The Muleshoe Journal

DEDICATED TO THE PROGRESS AND DEVELOPMENT OF BAILEY COUNTY AND THE GREAT MULESHOE COUNTRY

VOLUME 37, NUMBER 8 12 PAGES — SECTION I, 6 PAGES Published Every Thursday At Muleshoe, Bailey County, Texas THURSDAY, FEBRUARY 20, 1958

OUTSTANDING SCD SUPERVISOR



SHERMAN INMAN, chairman of the board of supervisors of the Blackwater Valley Soil Conservation District, center, received a certificate of merit from Texas Bank and Trust Co., and the members of the banking committee of the district, at a meeting of the supervisors Monday night. W. Q. Casey, president Muleshoe State Bank, right, and M. D. Gunstream, president First National Bank, at left.

New Administration Building Of School System Now Occupied At Fifth and G

The new school administration office in Muleshoe is now occupied by the school tax department and Superintendent Jerry Kirk. Personnel completed moving into the brick building at West Fifth and Avenue G last weekend.

The building features a setback entry, with a tiled foyer, decorated with illuminating panels of glass on the south entrance. The school tax office is located just to the left of the main entrance.

Behind an L shaped counter, are the desks of Mr. and Mrs. Connie Gupton, and Mrs. Troy Wilkerson. This large room also contains filing room, as well as a large vault where valuable

papers are stored. It is to this office that taxpayers will go to take care of their school taxes in the future. The new building replaces the structure at Avenue C and West Second street.

To the right of the entry in the new building is the reception room of the school superintendent, Jerry B. Kirk, Mrs. Elsie Patterson greets the visitor here. Kirk's office opens off the reception room, and also has another entry to the left. This office is also used for meetings of the board of trustees.

Walls are natural brick, with accents of a light green wall board. Acoustical tile is used in the ceilings.

Tech Stadium Plan For Expansion To Be Told Tonight

Muleshoe area people who are interested in the Tech stadium expansion drive, currently in progress, are invited to attend a meeting tonight (Thursday) at 7:30 at Leigon's.

Lloyd Alsop, chairman of the local part of the drive, has promised that one of the coaches from Tech will be on hand to explain the entire program and offer chance to purchase seat options.

Seat options may be paid for on terms, and need not be fully paid for until April, 1960, completion date for the expansion program.

Committee Of Twenty-Four To Study Local School Problems And Hope To Find Answers

"Next to national survival, the public responsibility of most urgency today is that of providing adequate educational opportunities for all our children." So reads the opening sentence of the study guide for the Hale-Aikin Committee of Twenty-Four, a state wide organization set up to conduct a "grass roots" survey of the problems facing public education, and the methods available for solving them. The Bailey county Committee of Twenty-Four, with County Judge Glen Williams as chairman, will hold an organizational meeting Tuesday, February 25 at 7:30 p.m. in the Muleshoe high school building.

Judge Asks Public Cooperation In Committee Survey

I should like to call the attention of the public to the importance of a study currently being made of the school systems of Bailey county by the Hale-Aikin Committee of 24.

The last Legislature created a State-wide committee known as the Hale-Aikin Committee of 24 in every county in Texas. These local committees are to make a study of the school systems in their respective counties for the purpose of evaluating the school systems of Texas as they are now being operated and to obtain an expression of the people as to the things they want and need in the future. The results of their study will perhaps affect school legislation for years to come.

This is the best opportunity the people have ever had to really understand their schools and to make their opinions and wishes known and in my opinion it might be the last. It is "Grass Roots" opinions and recommendations that the Legislature wants. The County Committee will try to obtain that information and report it to the State Committee of 24.

For this reason the public is urged to cooperate with the committee of 24 and help them in every way possible. You can do this by attending the public meetings, volunteering your help and talking with committee members and others when you have the opportunity.

There will be an organizational meeting in the Muleshoe high school Tuesday, February 25, at 7:30 p.m.

Please free to participate and let's all work together to let the Legislature know what we think and what we want.

GLEN WILLIAMS, Chairman

Funeral Services Held Here Sunday For Mrs. Ross Glaze

Mrs. Ross M. Glaze, Sr., a long time resident of the community, passed away February 14.

Funeral services were conducted from First Baptist Church in Muleshoe on Sunday, February 16, under the direction of Singleton Funeral Home. Rev. E. K. Shepherd officiated at the services.

Special music was furnished by the church choir and a quartet composed of Mrs. Inez Bobo, Mrs. Jean Cox, M. D. Gunstream, and Ed Hicks, accompanied by Mrs. W. T. Andrews.

Ida Hanna was born in Chico, Texas, July 26, 1887, and lived there until October 31, 1913, when she married Ross M. Glaze, Sr., and moved to this community.

To this union were born four children: Ida Lou, (Mrs. Finis Whitten), Mary Hester, (Mrs. John Branham, Jr.), Ross, Jr., and James B.

Mr. Glaze, the four children; two sisters, Mrs. P. W. Dalmont of Seminole, and Mrs. Alice Hughes of Norman, Okla., as well as a brother, W. A. Clime of Clovis, and four grandchildren survive her.

Mrs. Glaze joined the Baptist Church at an early age, and was very active until recent years when her health did not permit.

Approximately 30 Muleshoe teachers, from all grades are expected to attend a mathematics conference at ENMU, Portales, Saturday.

Primary and elementary math teachers will study "Developing Concepts in elementary Math", while junior high and senior high math teachers will discuss new developments in teaching modern math.

Superintendent Jerry Kirk also plans to attend.

The Weather

	High	Low
Friday	59	23
Saturday	45	22
Sunday	47	20
Monday	73	17
Tuesday	54	18
Wednesday	70	24
Thursday	50	36

Local Teachers To Attend Conference At ENMU Saturday

Primary and elementary math teachers will study "Developing Concepts in elementary Math", while junior high and senior high math teachers will discuss new developments in teaching modern math.

Superintendent Jerry Kirk also plans to attend.

IN NEW OFFICE



JERRY KIRK, superintendent of Muleshoe schools, beams proudly in his new office in the recently completed school administration building.

Electric Coop Has Two New Directors Named At Meeting

Two new directors, C. P. Calvert and Joe Harbin, both of Muleshoe, were named to the board of the Bailey County Electric Cooperative Assn. at its annual meeting in Morton Friday.

In a called meeting of the board following the general session, Roy Young of Bula was elected president; R. L. Davis of Maple, vice-president; and Glenn W. Thompson of Morton was re-elected secretary-treasurer.

Holdover members of the board are C. Damon, Needmore, and Thurlio Branscum, Pleasant Valley. Retiring members are Joe Sooter, Muleshoe, president, and R. L. Kimbrough, also of Muleshoe, vice-president. The by-laws of the association specify that a member of the board may serve only two terms.

Featured speakers at the general meeting, which was attended by approximately 600 persons, were Sen. Preston Smith, Lubbock; Sen. Andy Rogers, Childress; Rep. Robert Bowers, Brownfield, and Rep. Jesse Osborn, Muleshoe.

In his annual report to the association, Thompson stated that total assets were \$4,920,542.72 and that net margin at the end of 1957 was \$102,033.64.

Leo Forrest, manager of the Deaf Smith Electric Cooperative at Hereford, advised the membership of a projected 15 per cent increase in cost to the cooperative for electric energy in 1959.

Morton High School band gave a concert preceding the meeting which was held in the Cochran County Activities building. Members of the Morton assembly of Rainbow Girls served coffee and doughnuts.

The area served by the cooperative includes Bailey County, and parts of Hockley, Cochran, Lamb, Castro and Parmer counties.

Weekend Dragnet Places Twelve In County Jail Here

Officers of the city police department, sheriff's office and highway patrol had a busy weekend, resulting in the arrest and jailing of twelve men on a variety of charges.

Included in the sizeable haul were two charged with bootlegging, two DWI charges, four for investigation, two charged with possession for sale, one no drivers license, and one theft.

Tommy Galt, Francis Gilbreath, and Wiley Baker

The county committee represents a cross section of school and lay people in the entire county, and it will be their job with public assistance to conduct the county survey.

A few facts which caused the formation of the committee: Texas ranks 32 among the 48 states in amount spent annually on each pupil during 1956-57. Texas ranks 26th in per capita income in 1955, and 27th in per capita income per pupil. 40,955 teachers are needed as replacements and additions by 1962. More than 10,000 teachers leave their jobs yearly. In 1950-51 there were 7,275 college graduates who were eligible for teacher certificates. In 1956-57 there were only 5,096. Texas ranks second in per cent of teachers holding degrees, with 96 per cent of all Texas teachers holding degrees. Texas ranks 24th in average salary paid teachers.

The public is urged to take an interest in the work of the county Committee of Twenty-Four, and to meet with the committee next Tuesday night.

Horace Holt New Santa Fe Agent For Muleshoe

Horace Holt, long time employee of Santa Fe, is the new agent for the railroad at Muleshoe, replacing H. O. Barbour, who recently retired.

Holt, who calls Muleshoe his home town, has been agent at Amherst for nine years, of the 16 continuous years he has been with Santa Fe.

He started with the road at Muleshoe in 1930, worked here two years and went to Alpine for three years. Then later came back with Santa Fe and went to work at Amherst. When he first worked for the road here, the late H. A. Eckler was agent.

Horace is married and has two married children, a daughter who lives at Amherst, and a son at Tulla.

His parents, Mr. and Mrs. H. C. Holt, and his brother, Clyde Holt live here.

At present, Horace is driving back and forth, but plans to move here in the near future.

Revival Beins February 23 At Assembly of God



A revival meeting will begin Sunday, February 23 at the Muleshoe Assembly of God Church. Evangelist and Mrs. Artie Lee Jones of Tyler, will conduct the services which begin each night at 7:30.

All friends of the church are invited to attend the meeting in the Church at the corner of East Third and Ave. E. R. V. Luna is pastor.

Fourth in a Series Crowded Courtroom, Other Offices Point Up Need For Proposed Addition To Courthouse

EDITOR'S NOTE: This is the fourth and final article in a series designed to call to the attention of the public, the crowded and antiquated conditions in certain parts of the Bailey county courthouse, and the need for more and efficient space. It is earnestly hoped that civic minded citizens of the county will realize the necessity for enlarging the courthouse in order that the important work carried on these may be done more efficiently and economically.

The remainder of the courthouse as it stands, in addition to the departments already detailed in this series, consists of the district courtroom on the second floor, the office of the county agents, the public library restrooms, office of county attorney and justice of the peace, office of the treasurer, Department of Public Safety office, and judge's offices.

Courtroom
The district courtroom, while adequate at the time the courthouse was built, now serves a multiple role in county affairs. In addition to the use for which it was constructed, the room is now a meeting place for any number of private and public groups; including justice court county court, drivers license examinations, farmer group meetings, and public voting.

Even in its original role, the room is notoriously poor in acoustics, making it almost impossible for anyone to hear anything said during a trial. Only one entrance to the room is available for public use, and this creates additional noise and confusion since it opens onto the public corridor.

There is no place where participants in litigation may consult privately with their attorneys. There is no retiring chamber for presiding judges. There

are no jury rooms for either deliberation or overnight confinement during lengthy trials. No provisions are made for keeping either all-male or mixed jury on the premises overnight.

Frequently the jury use the tiny room of the Commissioners' Court, located on the first floor for a deliberation room. But, as is often the case, this room is also used by the Grand Jury when it meets. Such a conflict occurred only a few weeks ago. In addition, the Commissioners were also meeting the same day, and were forced into the small office of the county judge.

It is not unreasonable to assume that deliberation of a trial jury, or interrogation by a Grand Jury could possibly be overheard outside the small room, located as it is in an area where traffic is heavy.

When the district courtroom is used as a drivers license examining room, which is each Wednesday, applicants have no suitable place in which to write their answers, and frequently the number of applicants seriously crowds the room.

But it is when the room is designated a polling place in a public election that its facilities become the most overtaxed.

The Constitutionally granted right of secret ballot cannot be fulfilled in the district courtroom. Granted that few people are curious enough to look over the shoulder of a voter marking his or her ballot, it can easily be done.

Often times more than 300 people stream through the district courtroom during one day of an important election. Again the lack of any place to put a ballot down for marking is disagreeably apparent. Again the single floor creates a traffic problem and adds to the confusion.

Other Rooms
Downstairs, the highway patrol

officers occupy a small room formerly designated as a supply room, but used by them as there is no other place for them. The county treasurer occupies a similarly small room, as does the public library, which is little larger than a closet.

Two public restrooms offer little in the way of privacy, since both open directly onto other offices opposite in the hallway.

The office of the county judge and his secretary are separated by the commissioners court room. Despite extension phones, the arrangement is extremely awkward.

The county attorney and the justice of peace share a pair of rooms near the east entry of the first floor.

The county agent and HD agent share three rooms at the north end of the main floor. In order to provide space for a secretary, also shared by the two agents, it has become necessary to close the north entryway to the building.

The building, while still in a good state of repair, has become too small for the increased work load that a growing county has forced into it. There is no serious thought being given to scrapping the courthouse, but there is considerable thought to adding onto it.

The Commissioners' Court has Add Courthouse

blueprints of how the courthouse would look and be it two 50 foot two-story wings were added at the north and south sides of the present building.

These additional wings would provide space for several additional offices, consulting rooms, dormitory space for both male and female jurors, a revamped and modern jail system, a county courtroom, public meeting places and all the space that would be needed within the foreseeable next fifty years.

An architectural firm has designed the plans so that the exterior will harmonize with the present building. The interior would be arranged so that much of the stair climbing now necessary to transact business in the courthouse would be eliminated.

The jail area would be served by an elevator, and would contain jail space for 32 prisoners, with separate facilities for juveniles and females, as is now required by law. In fact, unless facilities are improved in the jail situation, all indications are that the present jail will be condemned within the next five years.

Of course, any such addition as is now being discussed would be expensive. About \$200,000 in fact. But the final result would certainly be a building of which every citizen in the county could be proud. And officials believe the added facilities would in a measure, pay for themselves in increased efficiency and operating economy of the county government.

A bond issue would be required to finance the added construction, and this in itself presents something of a problem, since the county now is using just about all the income it obtains through taxation, and could not without some revamping of the tax structure, vote any additional taxes. But it could be done if enough people want it done. There are ways, already discussed by county officials in which such a bond issue could be called, and passed, providing enough forward-thinking citizens want it.

The Commissioners have the plans for the proposed additions that are needed. They understand better than most what would have to be done to pay for such additions.

They await only the desire of the citizen taxpayers, for instructions to proceed.

Ladies Set Date For Golf Tourney

The February business meeting of the Ladies Golf Ass'n. Wednesday morning on highway 81 at the east city limits of Muleshoe. The new project will be remodeling the ceiling of the clubhouse. Marie Lenau is in charge of getting ideas and bids. The final annual ladies invitational tournament will be held in June. Final details will be completed this week and literature will be sent to all ladies in the area. After the business meeting was adjourned bridge was enjoyed by most of the ladies.

Two new members, Mrs. Harry Jamison and Mrs. Bill Connell, were present. We extend an invitation to all the members to attend all meetings and play days to help make '58 a more successful year.

Vehicles Involved In Accident Here

Three vehicles sustained damage in a triangular smashup Wednesday morning on highway 81 at the east city limits of Muleshoe.

A pickup truck driven by A. R. Floyd suffered \$150 damage, and a pickup driven by James Garrett was damaged \$700 worth. A late model passenger car, owned by A. Y. Parks of Lubbock was only slightly damaged.

Officers said one of the pickups stopped due to engine trouble, and the other two vehicles ran into it and each other.

Fermin Rosas Rites Tuesday Afternoon

Fermin Rosas, 65, native of Menard, Texas, passed away February 16 at 11:30 p.m. in West Plains Hospital. He was a retired farmer.

Funeral services were held February 18 at 3 p.m. from Immaculate Conception Church, with interment in Muleshoe Cemetery. Singleton Funeral Home directed services.

Mr. Rosas is survived by his wife; three sons, Fermin, Jr., Fernando, and Martin, all of Muleshoe; six daughters, Mrs. Nicolasa Bara, Mrs. Antonio Casanova, Mrs. Carolina Bara, Mrs. Oralia Mendosa, and Misses Margarita and Luisa Rosas, all "Litos" by his father, Felix Rosas of Ulysses, Kans.; three brothers, Pablo Garcia of Mexico, Santos Garcia of Temple, and Benito Rosas of Ulysses, Kans.; three sisters, Mrs. Silvestra Perez and Mrs. Aurora Del Toro of Menard, and Mrs. Maria Sastre

TFWC Leadership Institute Set For February 27

Mrs. Alfred Joseph House, Yoakum, president of the Texas Federation of Women's Clubs has announced that a Leadership Institute will be held in San Antonio at the Gunter Hotel, February 27-28, and that certificates of achievement will be awarded to those who attend the sessions.

The Institute is being co-sponsored by the San Antonio College with its president, Dr. Wayland P. Moody, Dean Clyde Nail, Dean of Women Lois Morris and Professors John Iga, Carl Atkins, Cole Smith, Warren McSwain, Chesley Bowman and William Samuelson participating.

Mrs. John L. Whitehurst, Baltimore, Maryland past president of the General Federation of Women's Clubs, and currently serving as Chairman of the Department of Education will be on hand to evaluate the findings of the Institute.

Sessions will begin on February 27, at 10:00 a.m., and conclude with the Awards Luncheon on February 28.

This is the first Institute of one to be held in Texas where clubwomen may attend meetings and receive accredited recognition for their participation.

Topics to be discussed are various Federation functions, "Women In Today's World", "Understanding Our Time", "Public Relations", "Every Day English", "Speech", "Parliamentary Law", "Spiritual Aspects", and "World Problems". There will be cultural entertainment during the program from San Antonio Artists.

Founders Day Tea Celebrated By Muleshoe P-TA

Founders Day was celebrated last week by the Muleshoe Parent-Teachers Association, with a special program and tea served by third year homemaking class members.

Mrs. Ed Johnson presented a history of the schools in Bailey county, and the Mary DeShazo Elementary school chorus, directed by Faywaye Murphy sang several numbers.

Mrs. Jack Obenhaus presented Jerry Kirk a life membership in Texas P-TA on behalf of the Association.

Past presidents of the local unit were honored.

Mrs. I. W. Haney, first president of the Muleshoe P-TA assisted at the tea table.

Doris Jean Copley To Nurses School

Doris Jean Copley, daughter of Mr. and Mrs. A. W. Copley of Muleshoe, was taken to Lubbock Sunday by her parents, where she will attend a class of 23 other girls, entered Nurses Vocational Training School Monday for a three months training course. Following this training period, Miss Copley will enter either the West Texas or Methodist hospital for practice nursing.

She is a graduate of Muleshoe high school, and attended John Brown University at Siloam Springs, Ark., for three years.

SCHOOL OFFICIALS MOVE

Muleshoe school district tax office moved into the newly completed administration building Friday and Saturday. At the same time, Supt. Jerry Kirk moved his office from the high school into the new building. His old offices is now being used by the high school principal, Bill Parker. D. E. Lumsden, supervisor of guidance and testing then fell help to Parker's old office.

FROM PORTALES

Mr. and Mrs. Joe Duke and children, of Portales, N. M., spent Sunday here with his sister and family, Mr. and Mrs. Blondy Ray and Dixon.

CALLED TO ABILENE

Mr. and Mrs. Roland Matthiesen and Mrs. Montie Willis were called to Abilene Monday due to the serious illness of little Teresa Wallace, daughter of Mr. and Mrs. Bobbie Wallace, former residents of Muleshoe.

White Elected To Head Rotary

Arvel White was elected president of the Rotary Club of Muleshoe at the club luncheon meeting. Other officers chosen are:

Doc Botkins, vice-president; Robert Alford, secretary; Harry Jamison, treasurer. Directors will be nominated at the next meeting of the club. Election of the above officers was by acclamation, the club endorsing the report made by the nominating committee.

The new officers and directors will take office July 1, but are always elected some time in advance of the district conference, which all are expected to attend.

The club voted to purchase a trophy to be awarded in the F. F. A. and 4-H club soil judging contest. Visitors included Sam Cook, member of the Park Cities Rotary Club of Dallas; Rotarian Sam Carroll, Sudan; Horace Holt, who was the guest of his brother, Clyde Holt, Troy Monroe, of Muleshoe State Bank, was introduced as a new member by Arvel White. A resume of the talk made by T. W. Goar is carried in another column of The Journal.

The club will meet in the high school cafeteria March 4 in observance of Public School Week.

Award Honors Alex Wilkins

Alex Wilkins, Muleshoe Cubmaster, received the Scouter Key, an honorary award for three years leadership and training in the Scout program, at the district awards banquet in Levelland February 6.

Wilkins has been in the work for five years, and has completed all his required training, as well as helping to train others.

CHURCHES MAKE PLANS FOR WORLD DAY OF PRAYER

W. S. C. S. of the Muleshoe Methodist Church met Tuesday, February 18, at 2 p.m. with twelve members present.

Mrs. R. T. Stack gave a very interesting discussion of "Other Churches and Faiths", in Japan, and showed slides which her son made while stationed there.

All churches are invited to participate in the World Day of Prayer in the Youth Chapel February 21 at 2 p.m. Our study will be concluded at our next meeting, February 25 with Mrs. Arnold Morris as leader.

Blue And Gold Banquet Set For Thursday Night

The annual Blue and Gold banquet for Muleshoe Cub Scouts, Scout officials and Cub parents will be held February 27 at 7:30 p.m. in the high school cafeteria.

The banquet, which is really a birthday celebration, will feature a talk by district Scout executive Bill Strain, and a slide-illustrated talk on the national jamboree by Joe King and Tommy Thomson.

Awards will be given to up-graded Cubs and den chiefs.

Alex Williams is cubmaster, and R. A. Bradley is his assistant. Den mothers are Mmes. Raymond Green, Houston Hart, Ralph Douglas, Leslie Mills and D. O. Smith.

Den chiefs are Corky Green, Charles King, Tim Mills and Herbert Blair.

Other committee members include Owen Jones, James Fowler, Clarence Jones and Roy Kelley.

Applications For Merit Test Due By March 7

March 7 has been set as the final date for applications from students desiring to take the National Merit Scholarship Qualification Test, according to D. E. Lumsden, school supervisor for guidance and testing.

The test will be open only to juniors this year, Mr. Lumsden said. It was open to seniors last year and was taken by several local students; it will be available only to junior high school students in the future.

Mr. Lumsden will furnish The Journal with a list of applicants after the deadline March 7.

The scholarship test is sponsored by the National Merit Scholarship Corporation, which for this year provided more than \$5 million dollars worth of four-year scholarships.

It was said that all students will receive a report of their scores. These test results will enable students to understand their present academic strengths and weaknesses, will give them facts with which to plan their senior year, will help them decide about going to college, and will enable them to select college courses of study in which they are most likely to succeed.

Dimmitt Teams District Champs

Dimmitt's boys and girls are district 1-AA basketball champions for 1958. The Bobcats defeated Canyon 52-40 while the Bobbies won over Canyon girls 67 to 27 Monday night to clinch the titles. B1-district play will begin later this week.

The Bobcats won 10 conference games, lost none. The Bobbies had to be content with a 9-1 conference record, losing only to Muleshoe's girls in a thriller here last Thursday.

Scout Excutive Speaks To Lions

Bill Strain, district Scout executive, was the guest speaker at the Wednesday luncheon meeting of the Muleshoe Lions Club.

Strain spoke on the organization of Explorer posts and Scout troops in the South Plains Council. James McReynolds introduced the speaker.

MRS. PARIGON ILL

Mr. and Mrs. Arvel White left Tuesday afternoon to be at the bedside of Arvel's maternal grandmother, Mrs. Parigon, 91, of Medill, Okla.

Mrs. Parigon was reported seriously ill, and members of the family were all called Tuesday. No further word as to her condition was available at press time.

Safe 'n Sound

by Leo Pool

A remark I overheard the other day, set me to thinking. "Bad luck never hits me where I'm prepared for it." I'd never thought much about how many ways I could suffer a financial loss if I didn't have adequate insurance protection. How about you? Do you have adequate insurance protection? It's a wonderful feeling that if bad luck hit you you'd have someone to call on. So why not be ready when any misfortune strikes... with adequate insurance protection. Let us insure you, your home, and your business against all hazards. Just call—

POOL INSURANCE AGENCY


Farm Loans — Car Financing
W. M. Pool, Jr. — Lee Pool
Phone 2950 — Muleshoe



COX DRIVE-IN

South Coast Life Insurance Co.

CONGRATULATES



BOB JACOBS

One of this company's outstanding agents is Bob Jacobs of the Pool Insurance Agency. Bob, who is well known in and around Muleshoe, is the newly-elected president of the South Coast Life Insurance Company President's Club. Always alert to his customer's needs, Bob last year was one of the leading agents in Texas.

Your Life Insurance Will Never Again Be As Cheap As Today

South Coast LIFE INSURANCE COMPANY

JOE WOODWARD, President

Home Office: Houston
MULESHOE OFFICE: POOL INSURANCE AGENCY

The Answer To Your Water Well Pump Problems—

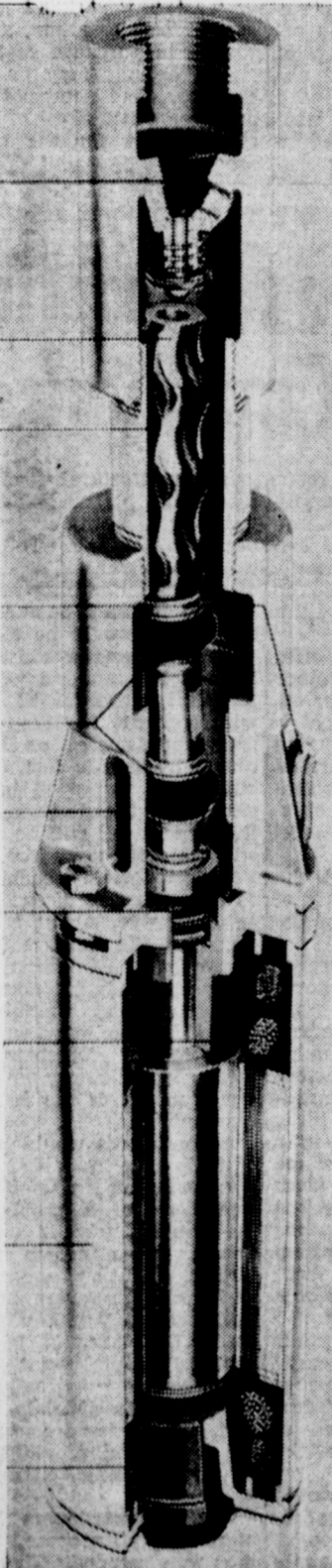
PEERLESS PUMPS

All New DYNAFLO SUBMERSIBLE PUMP

The completely new submersible pump, with the famous PEERLESS HILIFT positive displacement helical rotor action. The PEERLESS HILIFT has been used successfully through this area for more than twenty years.

CONSIDER THESE FEATURES:

1. No impellers or bearings to wear out.
2. All parts completely replaceable in the field. Anyone can make repairs in a few minutes without special tools.
3. Simple design uses only nine parts in entire assembly.
4. No metal to metal contact to cause wear from abrasives.
5. Nothing to lubricate — never needs adjustment.
6. Can be installed in 4" minimum well casing. Available in sizes from 1/2 thru 1 1/2 horsepower.
7. When operating against 40 pounds pressure, will deliver the following capacity and pumping lift:
 - 1/2 HP — 390 GPH — 100 ft. lift.
 - 3/4 HP — 600 GPH — 300 ft. lift.
 - 1 HP — 900 GPH — 300 ft. lift.
 - 1 1/2 HP — 1340 GPH — 400 ft. lift.
8. Price — competitive with other submersible pumps.

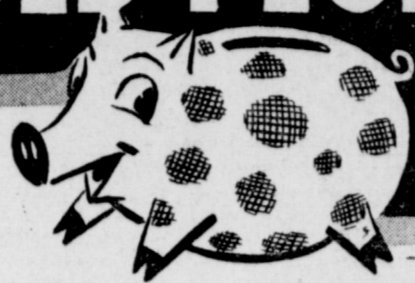


Peerless Pump Division
FOOD MACHINERY & CHEMICAL CORPORATION

Plainview Highway Telephone 3600 Muleshoe



BUDGET-MINDED PEOPLE SHOP HERE!



Here are Values
WORTH SHOUTING ABOUT!

2 Lb. Cello Bag Colorado Pinto **BEANS 19¢** | 2 Lb. Box Kraft Velveeta **Cheese 79¢**

COOKIES 1 Lb. Pkg. Supreme Pecan Sandie 45¢ | FRUIT COCKTAIL No. 2 1/2 Hunts 35¢ | SWEET PEAS No. 300 Hunts Tender Garden 17¢

Softex, Snow White Bathroom **Tissue 4 For 25¢** | 12 Bottle Carton — Plus Deposit **Dr. Pepper 39¢**

PRESERVES 20 Oz. Glass Tumbler Mrs. Winston's Pure Strawberry 49¢ | FLOUR 5 Lb. Bag Gold Medal 49¢ | CATSUP 14 Oz. Bottle Heinz Tomato 25¢ | CRACKERS 1 Lb. Box Sunshine Krispy 29¢

3 Lb. Tin Swift's Jewel **SHORTENING**

1 Lb. Tin White Swan — Drip or Regular **COFFEE 79¢**

SYRUP 16 Oz. Can Hershey Chocolate 19¢
PORK & BEANS No. 300 White Swan 2 For 19¢
BLACK PEPPER 4 Oz. Tin Schilling Pure 29¢
BREEZE Giant Size With Kitchen Towel 79¢
CAKE MIX Swansdown Instant Devil Food 29¢
FLOOR WAX Qt. Can Simoniz Vinyl 89¢

PURPLE PLUMS No. 2 1/2 Westpac 19¢
CHILI No. 2 Can Ireland's 55¢
WAFERS 15 Oz. Jar Shedd's Lady Betty Crisp Cucumber 19¢
SWEET POTATOES No. 2 1/2 Steele's Whole 25¢
PEANUT BUTTER 18 Oz. Refg. Jar Crown 45¢
SOAP Lifebuoy Bath Size 3 For 35¢

SAVE

GUNN BROS STAMPS

THE STAMP THAT GIVES YOU MORE

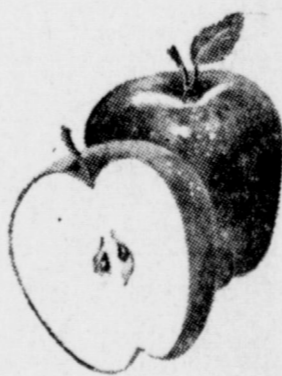
DOUBLE ON TUESDAY

SAVE

10 Lb. Bag Pure Cane **SUGAR 95¢**

TRIMMED RIGHT **MEATS**

PICK O' THE CROP **PRODUCE**



Texas Finest Ruby Red **GRAPEFRUIT . . . lb. 10¢**

Washington Delicious **Apples LB. . . . 10¢**

FANCY CALIFORNIA PASKEL **Celery LARGE STALK EACH 10¢**

Wilson's Corn King Sliced **BACON 2 LB. PKG. 1.19**

Choice Pen Fed Heavy Beef **SIR LOIN STEAKS . . . lb. 89¢** | Choice Pen Fed Heavy Beef **T-BONE STEAKS . . . lb. 89¢**

Choice Pen Fed Heavy Beef **ROUND STEAK LB. 89¢**

Choice Pen Fed Heavy Beef **SIR LOIN TIPS . . . lb. 89¢** | Choice Pen Fed Heavy Beef **CLUB STEAKS . . . lb. 89¢**

Choice Pen Fed Heavy Beef Chuck **ROAST LB. . . . 53¢**

Choice Pen Fed Heavy Beef **Arm Roast . . lb. 55¢** | Choice Pen Fed Heavy Beef **Short Ribs . . lb. 33¢** | Choice Pen Fed Heavy Beef **Ground Chuck . . 69¢**

FROZEN FOOD
LIMA BEANS Snow Crop, Ford Hook 10 Oz. Pkg. 25¢
HOT TAMALES Patio "Shuck Wrapped" (Pkg. 12's) 39¢
BREADED SHRIMP Booth 10 Oz. Pkg. 59¢
OCEAN PERCH Booth "Quick Frozen" 1 Lb. Pkg. 39¢

CASHWAY

"Where Friends Meet and Prices Talk"

Free Delivery Phone 2440 or 2450

LISTEN TO THE MULE TRAIN

BROADCAST FROM MULESHOE OVER **KMUL 1380**

MONDAY, WEDNESDAY & FRIDAY, 10 A. M.

Another Service Of Your **CASHWAY GROCERY**



WANTED ADS

WHERE MORE PEOPLE DO MORE BUYING AND SELLING!



Page 4, THE MULESHOE JOURNAL, Thursday, Fe. 20, 1958

Political Announcements

The Journal is authorized to make the following announcements for public office in Bailey County, subject to action of the Democratic Party primary in July, 1958.

For Representative, 96th Legislative District:
JESSE OSBORN

For District Attorney:
WILLIAM SHEEHAN

For County Judge:
GLEN WILLIAMS

For County Clerk:
HAZEL (MRS. FRANCIS) GILBREATH

For County Treasurer:
EDITH WILT

For Commissioner, Prec. 2:
W. W. COUCH
SHERMAN INMAN

For Commissioner, Prec. 4:
JOHN HUBBARD
P. P. McCALL
P. A. "DUDE" ALTMAN

For Justice of the Peace, Prec. 1:
JOE D. VAUGHN

For Judge, 154th District:
E. A. BILLS

LAMB COUNTY
Precinct 2 Commissioner:
W. W. "WOODY" POWELL

Want Ads

RATES: Minimum charge 50c
1 time, per word 3c
2 times, per word 5c
3 times, per word 7c
4 times, per word 9c
2c per word each additional time.
All Card of Thanks \$1.00

1. Personals

WANTED: Sewing, alterations and button holes. Mrs. Carl Case, 319 W. Ave. E. 1-15-tfc.

Listings of all kinds of real estate appreciated. Emmette Cross, Office Phone 5790. 1-2-tfc.

WANTED: Gleaner-Baldwin or AC SP-100 Self-propelled Combine. Give year and price. Write KT Box 132, Alva, Okla. 1-4-5tp.

FINISH High School or grade school at home, spare time. Books furnished. Diploma awarded. Start where you left school. Write Columbia School, Box 5061, Lubbock. 1-5-52tp.

WANTED: Ironing, Phone 6232. 1-5-tfc.

STRAYED to my place. Two Whiteface calves, 1 mi. east Lazbuddie Butane, right at mailbox, second house. Billy Mack Templeton. 1-7-2tc.

ONE of the finer things of life—Blue Lustre carpet and upholstery cleaner. St. Clair's, your one-stop shopping center. We give S&H Green Stamps. 1-8-1tc.

WANTED: Ironing, quilting. See Johnnie Westbrook, Progress. 1-8-1tp.

3: Help Wanted—

HELP WANTED: Start a Rawleigh Business. Real opportunity now for permanent, profitable work in Bailey County. See Cliff Ford Leake, Bovina, or write Rawleigh's, Dept. TXA-270-K, Memphis, Tenn. 3-4-5tp.

DAY CAR HOP WANTED: Apply Bill's Drive-In. Phone 5970.

WANTED: A beautician. Apply at the Muleshoe Beauty Salon, Phone 4750 or 2383. 3-2-tfc.

4: Houses for Rent

FOR RENT: 4 room and bath house. J. A. McGee Real Estate. 4-2-tfc.

APARTMENT FOR RENT: 2 room, private bath, furnished. Will take children. Call 5290 or 8534. 5-5-tfc.

FOR RENT: 3 rooms and bath unfurnished house, 5 mi. east on Plainview highway and 1 1/2 mi. north. Earl Peterson, Rt. 1, Box 23, Muleshoe. 4-7-3tp.

FOR RENT: 2 bedroom house, 524 East 3rd. G. J. Garth, Phone WH 6-2232, Needmore. 4-7-2tp.

FOR RENT: Furnished house and garage. See Royce Garth at Cross Roads Cafe mornings, or call 6920 in evening. 4-8-tfc.

5. Apts. For Rent:

FOR RENT: Outside apartment, 511 Main. 5-6-2tc.

FOR RENT: 2 room apartment, new rugs. Mrs. Rosa McKillip, 410 W. 2nd. Phone 7870. 5-8-tfc.

FOR RENT: Unfurnished apartment. Three rooms and bath. Very nice. 1306 Ave. B. Phone D. O. Smith, 3375. 5-8-tfc.

FOR RENT: Furnished apartment, private bath, private entrance. Also, front bedroom, next to bath, private entrance, gentleman only. Phone 8120, 323 Ave. E. 5-8-tfc.

FOR RENT: 3 room and bath unfurnished duplex apartment, 121 Ave. J. 5-7-3tp.

6. Rooms For Rent—
FOR RENT: Bedroom in my home for gentleman. Rosie McKillip, 410 W. 2nd., Phone 7870. 4-5-tfc.

FOR RENT: Garage room and bath. Clean, quiet, private. Phone 8160, 602 Main. 6-8-2tp.

8. Real Estate for Sale
FOR SALE: 68 5-inch aluminum pipe; 1 chv. motor; 1-1,000 gal. butane tank, used about 90 days. T. D. Findley, Paducah, Texas. 8-6-4tp.

FOR SALE: 2 6-inch E&J Pumps, 110 ft. setting. One 30 HP head, 1 50 HP head. been used two months. Contact Earl Findley, Paducah, Texas. Phone 410M. 8-6-4tp.

FOR SALE: 4 room and bath brick dwelling, located in Taylor Addition of Earth. \$5500. Has \$3800 loan. Balance terms. See Hopper Ivy at Muleshoe Locker or Jody Blaylock at Muleshoe Sign Co. 8-3-tfc.

FOR SALE OR TRADE: 80 A. good soil, 8" well, pressure pump. Will trade for dryland or sell worth the money. Small down payment. Call L. H. Adams, Midland, Texas, Phone MO 2-9851, Box 908. 8-8-2tp.

FOR SALE: Lot 16 and W 1/2 of lot 17, Highland Addition, 75 ft. front. Contact Ralph Mardis, Box 638, Floydada, Texas. 8-4-10tc.

FOR SALE: 4 room modern house on South Main. See owner at 319 W. Ave. E. 8-6-tfc.

FOR SALE: 10 acres with 3 bedroom brick home. Two baths, double garage, pressure system. Has 6 in. irrigation well. Real close in. For appointment call 8525 or 7880. 8-8-???

9. Autos For Sale
FOR SALE: 1955 Ford pickup or will trade for late model used Tractor. F. Haynes, 2 mi. north on Friona highway and 1/2 mile west. 9-8-2tp.

LOOK AT THESE
320 ACRES: New 3 bedroom brick home, new granary, pressure pump. All improvements are included. 1 1/2" well on natural gas. This is the best water. We have a nice home and a good farm for someone. It is only 2 miles from Hub. We don't get much of the Hub land for sale, and it doesn't last long when we do get it. So if you want a place like this, don't wait, come up and look it over. It has a perfect quarter and one that slopes, but a real buy. Priced at \$275 per acre, good terms on balance.
160 ACRES: Four room house, granary and other outbuildings. Good location, 1-8" well on natural gas, 50 acres of cotton. Priced \$325 per acre, good terms.
160 ACRES: Unimproved, but a choice quarter in a good irrigated district. This is a good buy and we would like to have an offer on this one.
310 ACRES: Within 1 mile of town, 1-8" well, this is heavy water, 40 acres of wheat, some cotton. This is a good buy. It has one good quarter and one sloping quarter. Priced at \$185 per acre, small down payment with terms that the rent would more than pay on the balance.
We do not advertise any place unless we think it is worth the money.

DOUGLAS-BINGHAM LAND COMPANY
Box 535 Friona, Texas
Phone 3151 or 5771
Joe B. Douglas O. D. Bingham

G. I. EQUITY: Two bedroom home, attached garage, 15x24 kitchen-den combination. Living room and hall carpeted, drapes. Brick front. 1 1/2" loan. \$65.00 month. Includes interest, insurance and taxes. 214 Fir (Lenau add.). Spud Thomas, call 7630 for appointment. 8-7-4tp.

TRAVEL

THE HOSPITALITY ROUTE  COAST TO COAST

REAL ESTATE VALUES
* Farm and ranch, with good well and improvements.
* Some small tracts, improved.
* 160 A. choice land. Well improved. Two wells. Joins paved road. Good cotton allotment.
* 4 room modern house, 2 A. land, just north of Shady Rest, at a good price. Has a good loan. Price, \$4250.
* 3 bed room home, new, on West 9th. Priced to sell.
* Need 80's, 160's, and small tracts. Also 2 and 3 bedroom homes.
* For Sale or Trade: Grocery store located on highway. Will trade for farm equipment or cows.
Have some good listings. You should see them.
We Solicit Your Listings

MR. and MRS. ERNEST E. HOLLAND
Off. Ph. 3119 Res. Ph. 5449
Just West of Muleshoe Hotel
28 Ave. B Muleshoe

Farms & Homes For Sale
* 320 acres, 4 rooms and bath, garage; \$7,000. All steel barn, two 8 in. wells, priced \$300 A., 29% cash.
* 320 acres at Hub. One 8 in. well, well and mill, 290 acres in cultivation. At \$210 acre, 29% cash, no imp.
* 160 acres, 4 room house, on pavement. One 8 in. well. At \$200 acre, will carry some.
* 6 acres, 3 room house, 4 in. electric well, on pavement. \$4,500 cash.
See Me For A Sale or Trade

J. E. DAY
At E. 1st St., On Lubbock Hwy

FOR SALE
* 40 John Deere Tractor.
* 60 John Deere Tractor.
* 70 John Deere Tractor.
* 720 John Deere Tractor.
* Tractors Fully Equipped.
* 5 V-8 Chrysler Irrigation Motors.
New.
* New 3 bedroom house. Ready to move into.
* Trailer House.
* 106 Acres, close to town.
* 160 Acres, close to town.
* 10 Acre Tracts.

D. L. MORRISON
Morrison Improvement and Development Co., Inc.
121 Ave. C Phone 3469

8 QUARTER SECTIONS FOR RENT
* 8 quarter section farms, irrigated by sprinkler. Will rent sprinkler also. Can furnish 3 houses. You'll have to act quick, as crop planning time is approaching. We also have some tractors and tools for sale if you want them.
* We also have some quarter section farms for sale on a reasonable basis.
* GI's please note: We have four 40 acre tracts, on pavement, to be financed through Texas Veterans Loan. \$7500 with well.
* We still have a few Muleshoe residences for sale.
* Special deal: We will trade some irrigated land for house in Muleshoe or Lubbock as down payment.

DAVE AYLESWORTH & CO.
1919 Clovis Road
Phone 5290

DYER & BRISCOE Real Estate
* 160 A. imp. dry land, prospects of irrigation. Priced at \$115 per acre.
* 320 A. good, imp. on pavement, cheap at \$90,000.
* 160 A. dry land, good cotton base, \$75 acre.
* 190 A., large new home, good land, \$237.50 acre.
* Some good small places. Several good homes in Muleshoe, priced right. One GI home, small equity.
* 2 houses for rent.
"Happy" Dyer — C. E. Briscoe
George Hicks, Salesman
Phone 3710 Muleshoe Box 277

FORCED TO SELL
* 150 Acres, 8 in. well, full pipe, good land. Priced at \$160 A. Loan of \$14,000 with possession.
* 80 acres, 8 in. well, full pipe. With real good house and small house, just a good little farm. Priced at \$23,000. You can buy this for \$8,000 down with possession. Good terms.
* One of the choicest 80 acre tracts, perfect. New 8" well, 3 bedroom home, outbuildings. Some alfalfa hay. Priced at \$30,000 with only \$15,000 down. Paid \$3,500 rent last year. What do you want for your money?
* Must sell; 320 acres with 8 in. wells, with a \$20,000 home that is new. Land all perfect, clean red land, best of water. Cotton acreage. A steal at \$260 acre. Must sell by March 1, 1958.

CITY PROPERTY
* Have a duplex that has about 1750 feet of floor space and a good 4 room and bath house on same lots that I can sell worth the money or I can trade all of it for some farm machinery or most anything. Has a good loan with First Federal can take up. I have been renting this property. Brings in \$140 per month. Better see this. Priced at \$10,000, has \$5,000 loan.
* Have several good houses for sale. See us for any kind of real estate, large or small. Will appreciate any kind of listings.
* I also have a number of good improved farms and ranches in N. W. Arkansas in the Ozarks that I can trade for good rental property or farms here on the Plains. Some nice ranches in Oklahoma. See us before you buy or trade anything.
We also handle all kinds of rentals such as city houses, farms, and business buildings.

J. A. MCGEE REAL ESTATE
Oldest Firm in Muleshoe
Licensed and Bonded For Your Protection
Pho. 6940 Res. Ph. 2010

LANE'S LISTINGS
* 354 acres, 6 room modern home. Good clean dry land, well located. This will make someone a real buy in good farm. 109 A. of cotton. Priced, \$37,000, will carry a large loan.
* 179 acres in Lamb county. 50 acres cotton. Fair improvements. Priced \$115 per acre.
* 80 acres on pavement, 10" well, 2 bedroom home. \$10,000 cash will handle.
* We have plenty of money to loan on dry or irrigated land. Quick loan service.
City Property
* 3 bedroom home, well located, 2 car garage, priced to sell.
* 2 bedroom home in Lenau Addition. \$1750 cash will handle.
* If you want to build a new home, we are able to finance FHA or Conventional.

EDDIE LANE Real Estate
Phone 4390

POSSESSION NOW
* 80 acres, red land, on highway. Well located, well improved, 10" well, some underground tile, 21 acres cotton, and priced to sell. Possession.
* 80 acres, 5 room house, 30x32' barn, 8" well and a three year contract on Side Oats Gramma grass seed on 50 acres at 50¢ a pound. Priced, \$21,000.
* 160 acres red land, on pavement. Level for flood irrigation, 2 bedroom house, 10" well, 52.2 acres cotton. This place must sell and will sell to a buyer looking for a home.
* 217 acres west of Dalhart, irrigation water at 100', redbed at 300'. This place will make a lot of money when developed. Priced, \$57.50 per acre.

CLYDE A. BRAY REALTOR
Realtor Saleslady
Keith Bray Mrs. Bray
Office 121 Ave. C Muleshoe

CORNER LOT on good street, Cafe Bldg. and equipment. Store Bldg., 7 furnished Cabins. Income \$365 a month. Want to trade \$7,000 equity for small dry farm and equipment or sell for cash. Write owner, Roy L. Conner, 1817 South 16th St., Phoenix, Ariz. 8-7-3tp.

REAL ESTATE & INSURANCE FARLEY INSURANCE AGENCY
Over Bank, Muleshoe, Texas
AUTO FINANCING — FARM AND CITY LOANS
SERVICING BEYOND THE CONTRACT
Office Phone 7279 Res. 5103

CROSS REAL ESTATE AND INSURANCE AGENCY

Get Fire, Lightning, F. C. On Your Farm, Ranch, and City Property
512 American Blvd. Ph. 5790 8-8-tfc.

SOME GOOD FARM BUYS
* 160 acres, has 50 acres cotton. Two wells, good house. This is very good land.
* 160 acres, 8 in. well. Good 2 bedroom home. Price \$350 acre. This place has good loan.
* 310 acres, 70 acres cotton, one 8 in. well on natural gas, 4 room house, \$200 per acre, 29% down, 20 years on balance.
* Some 2 bedroom, also one 3 bedroom house for sale.
We still have some good buys in dry land farms.

Listings Appreciated
If you want to buy or sell, see **ED HICKS**
Office In Pool Ins. Bldg.
10-5-tfc.

10 Farm Equip. For Sale
FOR SALE: 2 30-hp. electric motors, 1 1/2 miles west on FM 1760, Odell Logan, Phone at night 6374. 10-8-4tp.

WE PAY highest cash price for your JUNK IRON. Western Wrecking Co. Clovis highway, Muleshoe, Phone 4809. 16-5-tfc.

FOR SALE: Windmill and tower. Redwood storage tank and heater. One metal storage tank. Heathington Lbr. Co. Phone 7970. 10-5-tfc.

FOR SALE: Add-A-Phase 7 1/2 HP, motor, model No. 55A, type 2S. Also have hegarri bundles for sale. J. R. Carter, 2 1/2 mi. west, 2 1/2 south of Needmore, 10-6-3tp.

FOR SALE: Fifty acres good cane and Atlas Sargo butts for sale. J. M. Pruitt, 4 1/2 east Lariat, Phone Valley 5-2383. 10-7-2tp.

FOR SALE: Three 40 hp electric motors. Complete with switches, \$350 each. Sneed Supply, Phone 4170. Muleshoe. 10-7-tfc.

FOR RENT: Business building on Lubbock highway, 2 blocks east of Main Street. E. O. Baker, Phone 7270. 14-8-3tc.

FOR RENT: 187 acres, 16.5 mi. west of Muleshoe on FM 1760. 1 8-in. well, no house. Call or write W. Dudley Hunter, 416 Lubbock National Bank, or Ph. PO 3-1248. 14-8-2tp.

FOR SALE CHEAP: Sorgo and cane butts. See Bobby Hudson, 4 miles north of Progress. 16-8-2tp.

CARPORTS — PATIO COVERS ONE-HALF PRICE
Most permanent and attractive units made. Delivered and installed. Double Carport, 20x20, no center post, regular \$670, now \$335. Single carport or patio cover 10x20, regular \$335, now \$167. Ornamental porch columns and railings \$12. Aluminum picture window awnings \$19.50. Door awnings \$19.20. Protect, beauty and save. Terms. Write, call or see Virden Perma-Bilt, 2817 Mays Ave., Amarillo, Texas, PL 6-2761. 16-6-4tc.

TYPEWRITER. Adding Machine Repairs. Factory trained mechanic. Parts for all makes. Fast service. Clovis Printing Co., Phone 4531, Clovis. 16-26-tfc.

1 DAY PRINTING SERVICE (nearly always) at the Journal. BOOKKEEPING books and bookkeeper's supplies at The Journal.

COPLEY'S USED CARS
Located between Bill's Drive-In and Aylesworth Real Estate on Clovis Hwy
VISIT US AND GET OUR PRICES BEFORE YOU BUY
We handle any type car you could want — from Edsel down

DR. B. Z. BEATY
dentist
Office Hours 9-12, 1-5
115 South 1st
Closed Saturday P. M.
Off. Ph. 2040 Res. 8511

CUSTOM CORN SHELLING AND HAULING
Contact **JACK BRUNS**
Rt. 1 Muleshoe

INCOME TAX RETURNS
— See —
C.C. GRIFFITHS
— At —
Ray Griffiths & Sons
Muleshoe — Phone 6030

Insured Against Fire For Life
KIRBY SALES & SERVICE
MRS. DALE Buhrman — Dealer
Rt. 1 Muleshoe, Tex.

LOANS
See Us For Any Kind of Real Estate Loan That You Are In Need Of—
Can Almost Guarantee You The Amount of Farm Loan You Need
— Direct Agent For —
KANSAS CITY LIFE INS. CO.
L. S. BARRON
At Bailey County Abstract Co.

Kelton Barber Shop
— BARBERS —
Omer Kelton
Carlos Parker

SEPTIC TANKS CESS POOLS Cleaned
Phone Parks at 3600 tfc.

DR. A. E. LEWIS
DENTIST
315 S. 1st. — Muleshoe
Closed Wed. & Sat. P. M.
Off. Ph. 3040 — Res. 6570

Bailey County Abstract Co
ABSTRACT SERVICE — LOANS
Mrs. Lela Barron — Mgrs. — L. S. Barron
Established In 1900

18. Seed For Sale—

FOR SALE: 2500 lbs. Sorghum Alamu seed, 15c lb., one sack or all of it. At my place, 3 mi. out Clovis highway, 1 mi. north. W. J. McDorman, Rt. 2, Muleshoe, 18-7-3tp.

FOR SALE: Lankart "57" Cottonseed, acid delinted. Good germination, \$16 per hundred. E. K. Angeley, Phone YO 5-3485, Rt. 1, Box 152, Muleshoe, Texas. 10-5-tfc.

FOR SALE: Good quality Weeping Love Grass. Tested and tagged. Call 5069 or 3080, Muleshoe. 18-8-tfc.

FEED FOR SALE
FOR SALE: 20% Protein Chick Starter, \$4.00 Per 100 lbs. John's Custom Mill.
FOR SALE: 16% Dairy Feed, \$3.25 per 100 lbs. John's Custom Mill.
FOR SALE: 36% Protein Hog Supplement, \$4.00 per 100 lbs. John's Custom Mill.
FOR SALE: 36% Protein Poultry Supplement, \$4.50 per 100 lbs. John's Custom Mill.
FOR SALE: Black Strap Molasses, \$2.00 per 100 lbs. John's Custom Mill.

FOR SALE: Custom Grinding and Mixing, 25c per 100 lbs. John's Custom Mill.

STARK BROS. NURSERIES
Thank you for the 1957 business. Now is the time to get your orders in early. I cannot possibly see you all. So why not drop me a card or phone me at home. You just can't buy better than Stark Bros. We have what you want, guaranteed to be the best.

E. H. Kennedy
Muleshoe
Early Orders Mean Early Shipment tfc.

DR. GEORGIA W. STRUBLE
CHIROPRACTOR
511 W. 1st. Phone 3239
(Next door to Church of Christ)
Muleshoe, Texas

DR. GEORGIA W. STRUBLE
CHIROPRACTOR
511 W. 1st. Phone 3239
(Next door to Church of Christ)
Muleshoe, Texas

DR. GEORGIA W. STRUBLE
CHIROPRACTOR
511 W. 1st. Phone 3239
(Next door to Church of Christ)
Muleshoe, Texas

DR. GEORGIA W. STRUBLE
CHIROPRACTOR
511 W. 1st. Phone 3239
(Next door to Church of Christ)
Muleshoe, Texas

DR. GEORGIA W. STRUBLE
CHIROPRACTOR
511 W. 1st. Phone 3239
(Next door to Church of Christ)
Muleshoe, Texas

DR. GEORGIA W. STRUBLE
CHIROPRACTOR
511 W. 1st. Phone 3239
(Next door to Church of Christ)
Muleshoe, Texas

DR. GEORGIA W. STRUBLE
CHIROPRACTOR
511 W. 1st. Phone 3239
(Next door to Church of Christ)
Muleshoe, Texas

DR. GEORGIA W. STRUBLE
CHIROPRACTOR
511 W. 1st. Phone 3239
(Next door to Church of Christ)
Muleshoe, Texas

DR. GEORGIA W. STRUBLE
CHIROPRACTOR
511 W. 1st. Phone 3239
(Next door to Church of Christ)
Muleshoe, Texas

DR. GEORGIA W. STRUBLE
CHIROPRACTOR
511 W. 1st. Phone 3239
(Next door to Church of Christ)
Muleshoe, Texas

DR. GEORGIA W. STRUBLE
CHIROPRACTOR
511 W. 1st. Phone 3239
(Next door to Church of Christ)
Muleshoe, Texas

DR. GEORGIA W. STRUBLE
CHIROPRACTOR
511 W. 1st. Phone 3239
(Next door to Church of Christ)
Muleshoe, Texas

DR. GEORGIA W. STRUBLE
CHIROPRACTOR
511 W. 1st. Phone 3239
(Next door to Church of Christ)
Muleshoe, Texas

DR. GEORGIA W. STRUBLE
CHIROPRACTOR
511 W. 1st. Phone 3239
(Next door to Church of Christ)
Muleshoe, Texas

DR. GEORGIA W. STRUBLE
CHIROPRACTOR
511 W. 1st. Phone 3239
(Next door to Church of Christ)
Muleshoe, Texas

DR. GEORGIA W. STRUBLE
CHIROPRACTOR
511 W. 1st. Phone 3239
(Next door to Church of Christ)
Muleshoe, Texas

DR. GEORGIA W. STRUBLE
CHIROPRACTOR
511 W. 1st. Phone 3239
(Next door to Church of Christ)
Muleshoe, Texas

DR. GEORGIA W. STRUBLE
CHIROPRACTOR
511 W. 1st. Phone 3239
(Next door to Church of Christ)
Muleshoe, Texas

DR. GEORGIA W. STRUBLE
CHIROPRACTOR
511 W. 1st. Phone 3239
(Next door to Church of Christ)
Muleshoe, Texas

DR. GEORGIA W. STRUBLE
CHIROPRACTOR
511 W. 1st. Phone 3239
(Next door to Church of Christ)
Muleshoe, Texas

</

FAST AND TASTY.....

LENTEN MEALS

FROM... **Piggly Wiggly** SUPER MARKETS

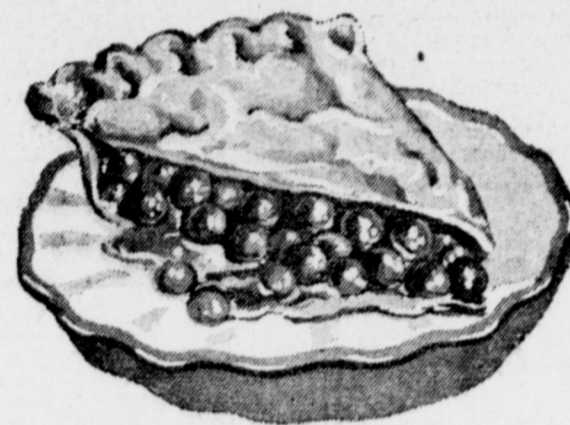


An ocean of Lenten values... fresh and frozen fish, cheese and many others. Piggly Wiggly always keeps a good stock of famous brand foods at the lowest possible prices. A treat to your taste... a delight to your budget! And as usual, you get the extra bonus of S & H Green Stamps with every purchase, DOUBLE every Tuesday!

Borden's 1/2 Gal. Ass't. Flavor
Mellorine ... 39c

Starkist, Chunk Style, Green Label
TUNA No. 1/2 Can..... **27c**

Pick up your Recipe For Tuna Pizza At The Starkist Display



ARMOUR'S
VEGETOLE
SHORTENING
3 Lb. Can..... **69c**

- MILK Pet. Tall Can 15c
- ONION SALT Schilling, 2 Oz. Bottle 19c
- CHILI SAUCE Del Monte, 12 Oz. Bottle 27c
- SOUP Campbell's Cream of Mushroom 2 For 35c
- MACARONI Ronco, 12 Oz. Cello Pkg. 19c
- MEATLESS DINNER La Choy Each 59c
- COOKIES Hydrox, Sunshine 12 Oz. Pkg. 39c
- BEANS Green, Harvest Inn Cut, No. 303 Can 10c

MELMACWARE
Complete Your Sets!
Goes Off Sale March 5
5 Piece Place Setting **\$1.99**

CHERRIES Red Sour No. 303 Can..... **15c**
PEACHES Hunt's Halves or Slices No. 2 1/2 Can..... **25c**

FLOUR Gladiola 5 Lb. Bag..... **49c**
CRACKERS Wertz Saltines 1 Lb. Box..... **25c**
CHILI Austex 24 Oz. Can..... **59c**

BREADED SHRIMP Blue Plate 10 Oz. Pkg..... **59c**
CHEESE SPREAD Nu-Taste 2 Lb. Box..... **69c**

CATFISH Filler's, Booth's 1 Lb. Pkg. 59c
FISH STICKS Booth's 8 Oz. Pkg. 33c
FISH STEAKS Tast-o-sea 10 Oz. Pkg. 45c
PERCH 4-Fisherman 1 Lb. Pkg. 39c
OYSTERS Fresh Select, Pint \$1.09
BISCUITS Ballard's Canned 2 Cans 25c
BACON Sliced, Lb. Wilsons Savory 59c
LOIN STEAK Pinbone, U. S. Choice, Lb. 89c
PARMESAN CHEESE Kraft's 8 Oz. Container, Grated 34c

ARM ROAST U. S. Choice Beef LB..... **59c**

PIES Beef, Chicken or Turkey Frozen, 8 Oz. Pkg. Sparetime..... **19c**

BUTTER BEANS Frozen, Pictsweet 10 Oz. Pkg. 15c
CHERRY PIES Morton's Frozen 24 Oz. Pkg. 49c
BEEF ENCHILADAS Patio Frozen Pkg. 63c
BROCCOLI Polar Cut 10 Oz. Pkg. 2 for 27c



BANANAS Golden Fruit LB..... **12 1/2c**

Fresh Large Bunch **GREEN ONIONS** 7 1/2c
Fresh Large Bunch **MUSTARD GREENS** 10c
GRAPEFRUIT Texas, 5 Lb. Bag 39c
LEMONS Calif. Sunkist LB..... **12 1/2c**

LETTUCE Large Firm Heads LB..... **12 1/2c**

Mennen, 59c Size, Plus Tax
SKIN BRACER 49c

We Have Romaine, Parsley, Endive, Pears, Red Grapes and Salad Mix To Make Delicious Salads!

Modart, 75c Size
SHAMPOO 36c

- SYRUP Country Kitchen 24 Oz. Bottle 39c
- KRAFT DINNER Reg. 18c
- DOG FOOD Hi Vi 50, 26 Oz. King Size Can 15c
- NAPKINS Paper, Northern 80 Count, 2 Boxes 25c
- TISSUE Scot Tissue 1000 Sheet Roll 2 For 29c
- Aluminum, 1 Roll Broiler, Roll Household Both 59c
- KAISER FOIL Both 59c
- BABY FOOD Gerbers 3 Cans 28c
- BUFFERIN 36 Count Box 43c
- PINE SOL Room Deodorant 79c

- LIMA BEANS Seaside No. 300 Can 2 For 25c
- HOMINY Marshall Golden No. 300 Can 3 For 25c
- PEAS Happy Vale No. 303 Can 2 For 25c
- POTATOES New Allen's No. 300 Can 10c
- COFFEE Instant Maxwell House, 6 Oz. Jar \$1.25
- School Days 12 Oz. Jar 39c
- PEANUT BUTTER Refrgi. Jar 49c
- FIG BARS Zion 2 Lb. Pkg. 49c
- PRESERVES Ma Brown, 21 Oz. Pure Strawberry 43c
- PANCAKE FLOUR Aunt Jemima Large Box 36c

HELEN CURTIS SUAVE 59c Size Plus Tax **39c**



Bula Girls Seeks Song Leader Post At District Meet



SHIRLEY COX

Shirley Cox was elected by the Bula FHA chapter to represent them in the race for District I song leader.

Final election will be held at the district FHA meeting in Amarillo on March 1.

Shirley is a junior at Bula high school, and is the daughter of Mr. and Mrs. C. L. Cox.

Sandra Seagler and Shirley will sing in the FHA Sharon Singers choir at the meeting.

Progress HD Club Meets February 13

Progress Home Demonstration Club met February 13 in the home of Mrs. O. M. Self for a talk on insurance by Lee Pool and Bob Jacobs.

Nine members and one visitor, Mrs. Clyde Henry, were present, in addition to the HD agent, Mrs. Brummett.

The next meeting will be February 27 with Mrs. Sherman Sweatman.

Past Noble Grands Honored Tuesday By Rebekah Lodge

Muleshoe Rebekah Lodge met Tuesday night with Noble Grand Evelyn Calder presiding. Past Noble Grands were honored in a special ceremony.

Receiving honors were: Callie Smith, Ona Berry, Barbara Burton, Ina Owen, Grace Kemp, Argille Millen, Ruby Green and Mary Thomas.

Others present were Doris English, Clara Collins, Arlie Thomas, Tom Berry, A. H. Owen, Mary Murrow, and Evelyn Calder.

Refreshments were served, and Ona Berry drew the door prize.

Denver Ceremony Unites Darla Myers and Clifford Walters on February 1



MR. AND MRS. CLIFFORD WALTERS

Darla Layne Myers, daughter of Mr. and Mrs. Ed Myers of Muleshoe, became the bride of A. L. Clifford Walters, son of Mrs. Sally Walters of Providence, R. I., in a double-ring ceremony performed February 1 in Trinity Methodist Church, Denver, Colorado. Dr. William Hubbard officiated at the service.

The bride, who was given in marriage by her father, wore a ballerina length gown of frosty white silk chiffon over taffeta. The molded bodice was fashioned with brief sleeves, a bateau

neckline and crushed silk cummerbund. Soft silk flying panels cascaded over the back of the bouffant skirt. Her shoulder length veil of French silk illusion was held in place by a tiny clip of white rosebuds.

Lynette Gleaves, of Raton, N. M., was maid of honor, and wore a cocktail length frock of turquoise taffeta fashioned with an oval neckline and full gathered skirt.

A 2/c David M. Cornell of San Jose, Calif., was best man, and Robert Pinneo of Denver was

Pollyanna HD Club Hears Talk On Insurance Wed.

Bob Jacobs and Lee Pool presented a program on insurance at the February 12 meeting of the West Camp Pollyanna Home Demonstration club.

Seven members met in the home of Mrs. Mae Busbice. Mrs. Wilma Austin won the hostess gift.

Next meeting will be February 26 with Mrs. Sylvia Couch at 2:30 p.m.

FHA Banquet To Be Held Saturday Nite

The annual Future Homemakers of America banquet of the Muleshoe high school chapter will be held Saturday night in Richland Hills cafeteria, under the direction of homemaking teachers Misses Brock and McCormick.

Superintendent Jerry Kirk will be the principal speaker, and FHA Beau, James Williams, will be guest of honor.

The theme for the banquet is "Loveland", and girls in the homemaking departments are making their own decorations.

Wedding Is Set For March 8



Jeanetta Jo Harrison

Mr. and Mrs. W. F. Harrison of Muleshoe, are announcing the engagement and approaching marriage of their daughter, Jeanetta Jo, to Mr. Carroll Ray Precure, son of Mr. and Mrs. R. D. Precure, also of Muleshoe.

The wedding has been set for Saturday, March 8, in the home of the parents of the bride-elect.

World Prayer Day Friday Afternoon Methodist Chapel

World Day of Prayer will be observed at 2 p.m. Friday (tomorrow) in the Youth Chapel of First Methodist Church in Muleshoe.

Ladies of all denominations are invited to attend, and a nursery will be provided.

Kallsen-Kriegel Wedding Ceremony Held January 26 in Albuquerque Church

The marriage of Betty Kallsen and Arlyn Kriegel was solemnized January 26 at 3 p.m. at the Redeemer Lutheran Church in Albuquerque, N. M.

The bride is the daughter of Rev. and Mrs. E. J. Kallsen of Ocheyedon, Iowa, and the bridegroom is the son of Mr. and Mrs. Alvin Kriegel, of Farwell.

Rev. Kallsen, father of the bride performed the double-ring ceremony, assisted by Rev. Carl Hiller, pastor of the church.

Nuptial music was played by Glen Nelson. Mrs. Donna Kiekhafer sang "Bless This House", and "The Lord's Prayer".

The bride was attired in a white organdy gown with French embroidery encircling the hoop skirt. Her veil was of French illusion, and she carried a crescent shaped arm bouquet of pink roses and white hyacinth.

Mrs. Esther Fleisher, sister of the bride was matron of honor. Her gown was of pink taffeta, and she carried a bouquet of pink camellias and white hyacinth.

Lloyd Kriegel of El Paso, was best man, and Nolan Kriegel was candlelighter. Both are brothers of the bridegroom.

Ushers were Alvin Kallsen, and Kenneth Kriegel.

Mothers of the couple wore navy blue suit dresses with beige accessories, and corsages of pink roses and white hyacinth.

Following a reception at the Officers Club at Kirtland AFB, the couple left on a trip to Phoenix and other points.

They will make their home in Albuquerque where he is employed as an accountant, and Mrs. Kriegel is a medical technician. Their home address is 4210 Mesa Grande Place, S. E.

County HD Council Meets February 17

Mrs. Carrie Huff of Three Way presided Monday afternoon at the regular meeting of the Bailey County Home Demonstration Council. The Council voted to change the time of meeting to the first Wednesday of each month at 2:00 p.m.

Committees were appointed to plan an evening entertainment for the Bailey County Commissioners' Court.

Mrs. Fern Davis of Progress was chosen as county THDA chairman for another year, and Mrs. W. R. Bowers, Mrs. Fern Davis, and Mrs. W. H. Eubanks were selected as delegates to the District Convention with Mrs. Mae Busbice as alternate.

There were 18 present including the presidents of all five of the Home Demonstration Clubs in the county.

EARN WHILE YOU LEARN AT HOME

Thousands of earnest and ambitious men and women 18 to 55 have prepared for better jobs, rapid promotions, future security, through Draughon's famous Home-Study Plan.

- Bookkeeping
- Shorthand
- Typing
- Civil Service
- Accounting
- English
- Management
- Business Law
- Many others

An average of 10 calls per graduate, many offering salaries of \$2,700 to \$3,415 to start. Simply fill in name and address below, for free booklet, "PROVED WAY TO BETTER PAY." Mail Coupon now for Special Offer.

Draughon's Business College LUBBOCK, TEXAS

Name _____ Age _____
 St. Rt. Box _____ P. O. _____



THE CUSTOMER IS KING

• AT •

C & H CHEVROLET CO'S

BIG VALUE SALE

AMARILLO FOLKS HERE

Amarillo visitors in the Major Wood home over the weekend were their daughter and family, Mr. and Mrs. Preston Sechrist and son, Geston.

MOVE INTO NEW HOME

Mr. and Mrs. D. B. Lancaster and family have moved into a handsome three bedroom home on West Avenue D. They purchased the house recently completed by builder John McGuire.

ATTEND FUNERAL SERVICES

Mrs. Clyde Holt and Mrs. Irma Willis attended funeral services for Nuge Rose held in Hereford Monday. He was a brother of Mrs. R. E. Willis. Also attending from Muleshoe area were Mr. and Mrs. T. J. Brantley, a former neighbor of the Rose family when they lived in McAadoo.

Bank Holiday

Saturday, February 22, will be a bank holiday, and both the Muleshoe State and First National banks will be closed in observance of Washington's birthday.

Customers needing payrolls, or having other banking business to transact, are reminded of the closing date.

H. D. CLUB

When to prune shrubs is a problem which concerns many home owners.

An easy rule to remember is: if shrubs bloom early, prune them early—that is, right after the blossoms are gone. Early blooming shrubs start forming buds for next years' flowers right after their petals fall in the spring.

Later blooming shrubs become dormant—or after it freezes in the fall.

Now is the time to prune Nandina plants. Remove from one to three or four of the oldest canes and cut them off at the ground.

If you are wondering how to tell which are the oldest canes look for gray and rough bark.

Cutting a few canes down to the ground will encourage new growth from the roots and will give a growth of leaves just above the ground—this is as a Nandina should look. If this plant is neglected and not properly pruned it becomes a plant that appears to have long legs. Nandinas should be pruned each year and January and February are proper months for pruning them in this part of Texas.

Planting Pfitzer Junipers

Remember that the Pfitzer Juniper will spread. Be sure to plant it where the spreading limbs will not extend over walks or paths. If this happens it will be necessary to cut the limbs off. This type of pruning ruins the shape of the Pfitzer.

Give Shrubs Room to Grow

If you are planting shrubs be sure to give them enough room to grow without being crowded by other plants. Foundation shrubs should be spaced far enough from each other that they do not overlap. Let the grass grow up to the foundation between shrubs.

MR. IRRIGATION FARMER!
 HERE IS THE BEST FARM BUY OF THE YEAR . . .
Gifford-Hill-Western's
ALUMINUM PIPE
 FLOWLINE • GATED • SPRINKLER

- ▲ FIRST QUALITY
- ▲ ROCK BOTTOM PRICE*
- ▲ BUY NOW FOR USE IN THE YEARS AHEAD
- ▲ THE PRICE WILL NEVER BE LOWER

* YOU MAY HAVE READ OR HEARD OF SOME SUPPOSEDLY "LOW-LOW PRICES", BUT WAIT TIL YOU CHECK WITH

Gifford-Hill-Western

LITTLEFIELD - PHONE 87

Speaker Analyzes Reasons Why Only 38 Per Cent Of People Were In Church

Although the percentage of the people of Muleshoe who attend church on Sunday is perhaps not something to boast about, it at least is higher than it is in some of the large cities.

This was one fact brought out by T. W. Goar, educational director of the First Baptist church here, who addressed the Rotary Club on some aspects of religion in Bailey County Tuesday. The speaker was introduced by Rotarian Gordon Doss.

He estimated the population of Muleshoe and immediate environs to be 5,000. Last Sunday,

he said, the churches of Muleshoe were attended by 1900. This is a percentage of 38 per cent in church; it leaves 62% of the people who did not attend one of the many Muleshoe churches.

In Bailey county, there are 13 Southern Baptist churches, with a resident membership of 1822. Average attendance at the Sunday Schools of these 13 churches was 1098 per Sunday, or a little more than 50 per cent of the church's enrollment.

Rev. Goar went on to try to analyze the reasons behind the low attendance at churches:

1. He considers unconcern of parents as one primary cause. He feels that parents ought not to send their children to church and Sunday school, rather they ought to attend and bring the family with them.

2. Unconcern of Christian people themselves. People who profess to be Christians should so live as to encourage others to take more interest in religion and in church attendance.

3. Inadequate facilities in some cases. Some of our churches do not have enough educational capacity.

4. Untrained leaders. Too few are training themselves to be teachers and dedicating themselves to the work of instructing the young.

He feels that men are more apt to be unconcerned about church attendance than are women. But he quoted a verse from Proverbs for Rotarians to ruminate upon: Train a child in the way in which he should go, and when he is old he will not depart from it.

Only One Fourth Motorists Have Safety Stickers

Captain Alan Johnson, service commander of Motor Vehicle Inspection of Region 5 of the Texas Department of Public Safety, announced today that only 30 per cent of the registered vehicles in this region have been inspected to date for the year, 1958.

Captain Johnson pointed out that motorists are subject to a fine of one dollar (\$1.00) to two hundred dollars, (\$200), if they are apprehended operating a vehicle without a valid Safety Inspection sticker.

L. W. Wilhite, Motor Vehicle

Six Thousand Sign Up For Draft In January In Texas

More than 6,000 Texas males of draft age registered at the state's 137 draft boards in January, Colonel Morris S. Schwartz, state Selective Service director, reported Tuesday.

He said about 65,000 men a year, mostly 18 year olds, register with the Texas boards. At the beginning of the current law, 1948-49, rate of registration was about 63,000 a year.

Males reaching age 18 are required to register on their birthday, or within five days thereafter. All males born since August 30, 1922, are legally obligated to register, except those not yet 18.

Membership in the National Guard of any of the uniformed reserves does not excuse a young man from registration, Colonel Schwartz pointed out. He must register even though he gets in the reserves before 18.

If a man joins the armed forces and goes on active duty before he is 18, he is relieved from registration until discharge or relief from active duty. Thirty days after discharge or relief from active duty, he must go to a draft board and register, no matter what his age or length of service.

If a young man is an ROTC student in Texas A. & M. College before he is 18, he is relieved from obligation to register so long as he is an ROTC student there. If he drops out, he must register.

If he completes A. & M. and gets a commission but does not go on active duty, he must register. If he goes on active duty immediately, he does not have to register until relieved from active duty.

This is approved by the Secretary of Defense in only six other schools.

JayCee-ettes Discuss Winter Regional Meet

The Muleshoe JayCee-ettes met February 5 in the home of Bonnie Adcox for a discussion of the trip to the winter tri-regional meeting at Pampa, February 22.

Present were Mmes. Louise Wilson, Punk Bragg, Jean Gillespie, Maria Roark, and the hostess.

Inspection Patrolman for Bailey county, advised that out of 5200 vehicles registered in the county, only 1300 have been inspected to date. This represents only 26 per cent of the total vehicles in this county required by State law to be inspected.

Wilhite stated four State approved Inspection Stations are located in Bailey county and that motorists should have their vehicles inspected as soon as possible in order to avoid a last minute rush to meet the April 15 deadline.

The Muleshoe Journal

DEDICATED TO THE PROGRESS AND DEVELOPMENT OF BAILEY COUNTY AND THE GREAT MULESHOE COUNTRY

VOLUME 37, NUMBER 8 Published Every Thursday At Muleshoe, Bailey County, Texas THURSDAY, FEBRUARY 20, 1958

Tech Conference February 25 On Farm Chemicals

The effective use of agricultural chemicals will be the theme of the fifth annual Agricultural Chemicals Conference to be held at Texas Technological College February 25, 26 and 27, officials of the West Texas Chamber of Commerce said today.

J. C. Porter of Wichita Falls, chairman of the WTCC's agricultural and livestock committee, said the program for the conference features addresses by seven experts on agricultural chemicals, forum discussions and exhibits of equipment used in chemical application.

The conference, sponsored jointly by the WTCC, the Lubbock Chamber of Commerce, Texas Tech and the A&M College System, is expected to attract some 350 agricultural chemical dealers, distributors, processors and manufacturers.

Registration for the conference will begin at 5 p.m. February 25 on the mezzanine floor of the Caprock Hotel in Lubbock. A hospitality hour, sponsored by the agricultural chemicals industry, will begin at 6:30 p.m.

Porter said registration would resume at 8:30 a.m. February 26 in the Student Union building on the Tech campus. The first business session will begin at 9:15 a.m. Loyan Walker of Abilene, manager of the WTCC agriculture and livestock department will make the welcoming address.

ROYAL Portable Typewriters at The Journal.

Maple News

by Mrs. Oran Reeves

The eighth grade from Three Way school held a Valentine skating party at Morton Friday afternoon. Nineteen students and seven parents and sponsors attended.

Mr. and Mrs. Ted Simpson had as their guests Sunday afternoon, Mr. and Mrs. Newman Lusk and Mr. and Mrs. Junior Winfield of Shallowater.

Mr. and Mrs. Foy Lewis were hosts to a "42" party in their home Friday night. Refreshments were served to Messrs. and Mmes. Ed Farris, Alex Reid, Hall and Vurles Wall and children.

Mr. and Mrs. Jerry Simpson and Duane spent the weekend in the home of their parents, Mr. and Mrs. Jim Simpson and Mr. and Mrs. Carl Pollard.

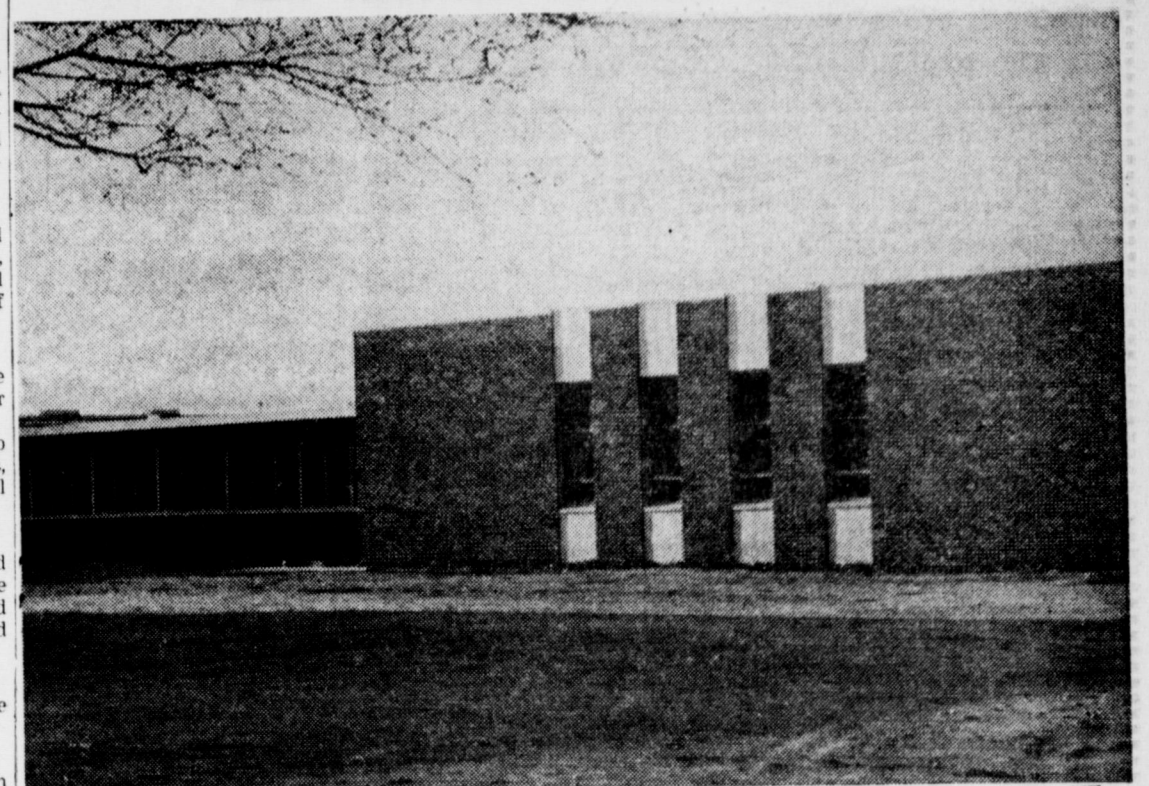
Mrs. Vurles Wall was on the sick list Sunday.

The ladies of the Maple Church of Christ met in the home of Mrs. Vurles Wall Friday afternoon to quilt. Those present were Mmes. Cecil Mann, C. L. Taylor, Deward Wall, Jack Cline and Ted Simpson.

HI-LO PIANO CLUB TO MEET FEBRUARY 24

The Hi-Lo Piano Club will meet in regular session Monday, February 24, at 7:30 p.m., in Fellowship Hall. Students of Mrs. Sam McKinstry will present the program. Visitors are always welcome.

NEW ADDITION TO HIGH SCHOOL



BAND HALL and six class room additions added to the west side of the high school building. All additions are in matching materials, both outside and inside.



SECURITY really means nothing more than planning ahead. Start saving now — and prepare a secure future for yourself and your family. A definite amount deposited each payday can guarantee you a bright future. Open your Hi-Plains savings account today. You'll never regret it. We are currently paying 3 1/2% on Savings, insured up to \$10,000 under FSLIC.

HOME LOANS — HOME IMPROVEMENT LOANS

SEE
BARRY T. LEWIS
313 S. First
Muleshoe, Texas



HI-PLAINS
Savings & Loan Ass'n.
128 East Third
Hereford — Texas



DON'T BE CAUGHT LIKE THIS!

If your property is insured at 1947 price levels, your protection is as inadequate as is this bewildered little fellow's.

If you have made additions or improvements on your home and property, be sure you make these same improvements in your insurance program.

Don't be caught with your sensitive spots exposed. Call your local Capital Stock agent for a complete analysis of your insurance coverage.

He is an expert who represents only SOUND, RELIABLE Capital Stock companies.



BOBO INSURANCE AGENCY

108-E Ave. 1 — Phone 2640



Hale Center, Tex., Man Reports—

"A \$5.60 Investment Netted Me \$54.85 In Cotton."

Jack Shelley, Hale Center, Tex., says: "I put down Phillips 66 Agricultural Ammonia on my irrigated cotton and got an average of 847 pounds of lint per acre. This compared to a yield of 633 pounds on a check plot. My increase netted me \$54.85 an acre. I got more well matured, five-lock cotton bolls, too."

Other Southwestern farmers have discovered that the 82% nitrogen in top quality Phillips 66 Agricultural Ammonia helps them to get more profit per acre, through higher yields and lower production costs.

They have found that, by using Phillips 66 Agricultural Ammonia, they get more cotton that grades out higher at the gin; yields of sorghum grain and ensilage are increased; more marketable vegetables are harvested, and profits on wheat are increased through better forage, and higher yields of grain.

See your Phillips 66 Agricultural Ammonia distributor about profitable Phillips 66 Agricultural Ammonia, the 82% nitrogen fertilizer.



Call your nearest Phillips 66 Agricultural Ammonia Distributor

WESTERN FERTILIZER CO.

Phone 2560

Muleshoe



You Can Win A Wonderful New Ford Fairlane V-8, 4-Dr. Sedan with Fordomatic, Radio, Whitewalls and Heater!

5 NEW 1958 FORDS

To Be Given As Prizes During Western Auto's Win-A-New-Car Contest

Nothing to Buy! No Obligation! Just Follow These Easy Rules . . .

BONUS AWARD!
FREE One Year's Supply (665 Gal.) of Gas if Winning Entry Is Submitted on This Coupon!

1. Use entry coupon here or get one free at your Western Auto or Western Auto Associate Store.
2. Contest is open to any resident of the United States who is 16 years old or older by June 1st, 1958, except employees of Western Auto, Western Auto Dealers, its advertising agencies, and families of these.
3. Final winners will be determined by a drawing and notified approximately six weeks after contest closes. A winners' list will be sent upon request accompanied by stamped, self addressed envelope to Western Auto, 2107 Grand Ave., Kansas City, Missouri.
4. Contest is subject to Federal, State and Local Regulations. Taxes, if any, not included in prizes.

Western Auto's "Satisfaction" Slogan is . . . (Slogan Can Be Found in This Ad)

Name (Please Print) _____

Address _____

Store Address _____

Deposit Coupon at Store Contest Closes Mar. 29, 1958

SHOP OUR COUPON SALE FOR BARGAINS

HEAVY DUTY BRAKE FLUID
1.22 Value

89¢

For greatest braking safety under all driving conditions. Quart

6 or 12 VOLT G. E. SEALED BEAMS
1.85 Value

\$1.29

Replacement type for all '37 to '57 cars. Buy 2!

TERRY CLOTH COVERS

Bright Terry Cloth Seat Covers
Washable—economical—Colorful Terry Cloth fits snug, slips on or off in seconds. Wide choice of colors. For split or solid; back or front seats. N1140-53

\$4.88

Tremendous Savings Now on All Wizard Seat Covers for All Cars In All Colors and Patterns!

COMPARE at \$6.95

DURING THIS SALE ONLY!

ALL TIRES GREATLY REDUCED

GUARANTEED 36 MO. DELUXE 12-VOLT

Group 24S. Reg. 19.95 Outr. Now, with your old battery.

SALE PRICE 14.95

GUARANTEED 36 MO. DELUXE 6-VOLT

Groups 1, 2F, 2L. Reg. 16.45 Outright. Now with your old battery . . .

SALE PRICE 11.45

GUARANTEED 24 MO. Standard Batteries

Guaranteed for 2 full years of top service. 12.95 outr.

Now with your old battery 8.95

The Finest Interior Decorating

Paint you can buy

Wizard Satin Finish

Choice of 17 decorator colors. Dries in 20 mins to satin sheen finish. \$5.29 val. Gal.

\$3.99

Full Size—16 oz. CLAW HAMMER
1.72 value

1.09

Open End-5 piece WRENCH SET
1.42 value

88c

SATISFACTION GUARANTEED OR YOUR MONEY BACK

WESTERN AUTO ASSOCIATE STORE

HOME OWNED AND OPERATED EARL O. HARRIS

1205 Main, Muleshoe

Phone 4720

VINYL BEADING FOR LONGER WEAR
Seat Cushion
Ideal for car, home—
anywhere! Soft cotton
filled.
1.25 Value

77¢

THE MULESHOE JOURNAL
PUBLISHED EACH THURSDAY
At 304 West Second Street, Muleshoe, Texas
And entered as second class matter at the Muleshoe Post Office under the Act of Congress, March 3, 1897.

J. M. Forbes Publisher
Mrs. I. F. Willis Editor
Marion Waggoner Advertising Manager
Mrs. J. M. Forbes Business Office
Mrs. Polly Orwell Bookkeeper
H. B. Flanagan Mechanical Subst.
Claude Locke, Ingle Gatewood, J. C. Gatewood, and Chock Heard, Production Department

BABSON DISCUSSES
Babson Discusses How To Check Unemployment

Babson Park, Mass., Feb. 20—Everyone is aware of the fact that employment has recently been falling off. Despite attempts at rationalization of increasing unemployment as "seasonal" or occurring only in "certain industries," we should face the fact that it is already more general than is healthy for our economy. It is important that this negative movement be checked as soon as possible. Among many suggestions coming to me, I especially recommend the following by one of the Babson Institute professors, Louis Foley.

Good Salesmen Are Required
More than ever before, it is necessary for the salesman to have thorough knowledge of what he has to sell. In many lines nowadays it is indispensable to have an extensive technical acquaintance with the products offered. In order to explain accurately just what kind of service they can be depended upon to render, we have evolved an economy in which success in salesmanship requires an amount of preparation and continuing study that our ancestors would not have dreamed of as requisite for being "mere salesman."

Washington News Letter by Lyon Johnson
Dear Friend: Unemployment in the Nation will reach a total of 5,000,000 workers next month, according to a prediction by Secretary of Commerce Sinclair Weeks. Farm income last year was less than it was in 1956. A public works program will be thrown into high gear by the Administration, says Senate Republican Leader Knowland, if business conditions continue to worsen.

Salesmanship Is The Problem
There is only one way this mounting unemployment can be checked. That is by increasing consumers' demands for the goods and services that industry can produce. Factory wheels can not keep on turning, and jobs for workers cannot continue to exist unless their product is being continually sold. Successful salesmanship is vital to the prosperity of all, including those in occupations not directly connected with selling. So the threat of growing unemployment becomes primarily a problem for salesmen of goods and of advertising.

It is Not So Simple Now
One of the saddest plays ever produced in the theatre was "The Death of a Salesman"—sad, that is, as the story of an individual who went down to utter defeat. Perhaps quite unintentionally, however, it symbolizes something that need not be considered sad at all—the "death" of a certain conception of salesmanship. It makes us realize the day of the "drummer" who depended for success on backslapping, telling funny stories, and being "well liked" is truly past. Not, of course, that personality is unimportant; it has always counted and always will—in salesmanship as in everything else. That, however, must be a factor added to actively intelligent devotion to one's business and all that it requires to be up to date.

These are straws in the economic wind that are being watched carefully by Congress. As I have said before, we are not in a depression. But conditions are not as good as they might be. We should not neglect to take advantage of every sound opportunity to improve them. Water projects are greatly needed, as we know in Texas. In my considered opinion, they have economic justification at any time. And at a time when unemployment is increasing at a rapid rate, serious questions arise as to the wisdom of a policy of refusing to provide adequate funds to keep the projects moving forward. This is the wrong time for a slowdown.

We cannot be saved by "security", which can be only relative and temporary at best. We can be saved only by faith. In the final analysis, it is faith that makes a great salesman—humble faith in his own ability, faith in the value of what he labors to sell, faith in our economy, and most important of all, faith in God. Salesmen may well be

proud of their occupation, for the maintenance of our way of life is dependent upon them. We need more praying salesmen.

These projects provide jobs at the same time that they lead to production of additional wealth. Housing legislation offers a positive means of encouraging a conservation of our resources and a return in business activity. It is the responsibility of Congress to take the initiative and propose appropriate measures in this field. An adequate supply of mortgage funds at reasonable interest rates needs to be provided. The VA home loan guaranty



DR. R. H. GODDARD—AN AMERICAN SCIENTIST WAS ONE OF THE GREAT PIONEERS OF ROCKETRY.

AS EARLY AS 1907 HE WROTE A PAPER SUGGESTING THE USE OF RADIO-ACTIVE MATERIALS IN ROCKET MOTORS FOR SPACE TRAVEL. HIS EXPERIMENTS WITH LIQUID OXYGEN AND HYDROGEN "STEP" ROCKETS RESULTED IN THE FIRST SUCCESSFUL FLIGHT OF A LIQUID FUEL PROPPELLANT ROCKET IN 1926

HOWEVER, ROCKET POWERED ARROWS WITH GUNPOWDER PROPELLANT WERE USED BY THE CHINESE AGAINST MONGOL INVADERS IN THE YEAR 1232!

Defense Too Big For Men, AF Calls For Women Also

The defense of this country is no longer the sole responsibility of the men. The Air Force has sent out the call for women. T/Sgt. Glen K. Ryan, local Air Force recruiter said that the Air Force is offering direct appointment as officers in many different fields and they also offer opportunities for women with over two years of college and over 21 years of age to attend Officer's Candidate School and obtain a commission as second lieutenant. For the high school graduate there are also almost unlimited opportunities as a member of the WAF.

Further information can be obtained by contacting the Air Force Recruiter, Post Office

SANDHILLS PHILOSOPHER ADVISES WASHINGTON
That Feelings Are No Indication For Economic Upswing

Editor's note: The Sandhills philosopher on his Johns-r grass farm reviews the economic situation this week, without any noticeable change in it.

something, but after years of experience I've found that a man's feelings in January and February are mighty sorry barometers about what's going to take place at selling time later on in the year.

a man feels about his crop prospects before he gets his seed in the ground has mighty little loan value at the bank.

I don't know anything about the economic situation, I know when hard times are here and when they're left, but me and the economic experts have never been able to figure out exactly when they're coming or when they're fixing to leave, at least not to the point where we could make any money with our inside dope, so all this talk about a "readjustment" or a "minor recession" leaves me on the outside.

Understand, there's nothing wrong with these first of the year feelings, they're necessary if a farmer is ever going to get any planting done, but they don't have any more bearing on the outcome than wishing for rain if it's dry or for dry weather if it's raining. What I mean is, how

I'm like Washington, if we have got a mild recession, I feel like it'll end by mid-year, but it's pretty hard to feel your way into better times or into outer space or a good crop year. Sometimes you can't even work your way into it, although this is hearsay with me.

Yours faithfully, J. A.

IRRIGATION SALE
Alcoa Welded Aluminum Pipe
Price Includes Couplings
3" x 40' 32c per foot
4" x 40' 40c per foot
5" x 40' 57c per foot
6" x 40' 74c per foot
7" x 40' 1.00 per foot
8" x 40' 1.15 per foot
BROWN SUPPLY CO.
FRIONA HIGHWAY, Muleshoe
Office Phone 2700 Night Phone 4124

who else would work for 22¢ a day?
Can't think of a soul, can you?
And yet 22¢ a day are the wages that Reddy Kilowatt earns from his average residential customer.
Imagine having a servant that's always there — 24 hours a day and charges less than a penny an hour for wages. That's Reddy — working for you.
And Reddy's wages are down from 10 years ago, while the cost of living is up. That's why more people are Living Better Electrically.
SEE YOUR REDDY KILOWATT APPLIANCE DEALER
PUBLIC SERVICE COMPANY

READY TO PITCH INTO YOUR JOB
with new hustle, new muscle, new style!
Watch 'em ride those all-day runs with a lively new kind of heads-up efficiency! Watch 'em keep at it, too—week after week straight through the calendar. Chevy's new light-duty Apache line is loaded with new ways to stay and save on long schedules.
When time means everything—you need a truck with everything. You need a Chevrolet! All Chevy pickups and panels are quick-as-a-whip hustlers in traffic and on the highway. They have Chevrolet's own special brand of built-in muscle—extra-rigid front end sheet metal and hefty frames. They have new contoured fenders, dual headlamps. Big-cargo pickup and panel bodies combine good looks with can-take-it durability.
New Step-Van delivery models complete with bodies
Got a delivery job? Look over Chevrolet's spacious new, feature-packed Step-Vans with walk-in bodies.
Higher powered V8 and 6
Chevy offers the improved fuel-saving 145-h.p. Thriftmaster 6. For more power—with maximum economy—the new 283-cu.-in. 160-h.p. Trademaster V8 is available at extra cost.
WATCH NEW TASK-FORCE MIDDLE-WEIGHTS AND HEAVIES HANDLE ANY SIZE HAUL!
Chevrolet's rugged medium-duty Vikings can move big loads fast. Chevy's heavy-weight Spartans feature the 230-h.p. 348-cu.-in. Workmaster V8—a new kind of engine for a new kind of efficiency and economy. See your Chevrolet dealer soon.
NEW CHEVROLET TASK-FORCE 58
Only franchised Chevrolet dealers display this famous trademark. See Your Local Authorized Chevrolet Dealer

Legal Notice

THE STATE OF TEXAS

TO: American Cancer Fund and its unknown members, shareholders, officers, and representatives, and the persons who own stock or interest in and who constitute American Cancer Fund as an entity, corporation, association, firm, company or partnership, if it be any of such; and to the unknown devisee or devisees under a purported will of Clifford Mooers, deceased, dated September 24, 1956, admitted to probate in Kendall County, Texas, on December 10, 1956, and the unknown owners or claimants of any interest in the estate of such decedent or in any property standing in his name at the time of his death on November 13, 1956, including the lands and interests therein described in such suit and as described and identified in this citation, which are owned or claimed by such unknown claimants as devisee under such purported will. Defendants, each of whose identity and residence are unknown other than claimants American Cancer Society, Inc., a New York corporation, and American Cancer Society, Texas Division, Inc., a Texas corporation, who have been joined as defendants in such suit for personal service.

GREETING: You and each of you are hereby commanded to appear by filing a written answer to plaintiff's petition before the Second 38th Judicial District Court of Kendall County, Texas, in the Courthouse in the City of Boerne, Kendall County, Texas, at or before ten o'clock a.m. on the Monday next following the expiration of 42 days from the date of issuance of this citation, said Monday being the 17th day

of March, 1958, and then and there to answer the original petition of Dolores Mooers, a widow, as plaintiff, filed in said court on the 30th day of January, 1958, against H. B. Fuqua as Independent Executor under a purported will of Clifford Mooers, deceased, and in which suit the other

named defendants are those persons first named in this writ and to whom it is above directed, and other defendants to be cited personally are:

American Cancer Society, Inc., a New York corporation, and American Cancer Society, Texas Division, Inc., a Texas corporation, and Betty Nuss, Chester Green, R. J. Kelly, Mrs. Gladys Van Pelt, Genevieve Conroy, Ralph Dahlstrom, Sven Lundahl, Russell Baughman, Charley McClaskey, Allan H. Ellingson, Paul S. Oles, and Mrs. A. G. Koenig, as executrix under the will of A. G. Koenig, deceased, and the said Mrs. A. G. Koenig, a widow, and Elizabeth Koenig, a female sole, as the only heirs of A. G. Koenig, deceased; John T. Claybourne, Frank Demus, Mrs. C. W. Farley (and husband, C. W. Farley), Tom Walters, Leonard Ward, Bruno Brandt, W. B. Davis, and John W. Clark, individually and as constituting and representative of that class of five-year employees given cash legacies of \$500.00 each under the terms of such purported will of such decedent.

Said suit styled "Dolores Mooers, A Widow, vs. H. B. Fuqua, Independent Executor, et al.," being numbered 1525 on the docket of such court and a brief statement of the nature of the suit being as follows:

Plaintiff seeking equitable review asks to set aside a settlement made with her husband, Clifford Mooers, dated May 1, 1956, and this Court's decree of approval entered the next day in cause No. 1464, styled "Ex Parte: Clifford Mooers and Wife, Dolores Mooers" recorded in the minu-

tes, Vol. 6, p. 636, and asks an accounting and for a declaration fixing the identity of the residuary devisee under a purported will of such husband as admitted to probate December 10, 1956, in which suit it is claimed that plaintiff as the wife of such decedent for 27 years before his death was induced to consent to such property settlement and decree by the fraud of her husband and his agents, consisting of false representations and concealment of material facts as to the nature, extent and value of the community property and plaintiff's true interest therein at such time, and because of further false promises to bequeath and on account of mistake induced by fraud of her said husband and coercion; and it is claimed that a fraud was also practiced by such decedent on this Court, and that the proceedings did not comply with Article 2624a.

It is further claimed in such suit that all or substantially all property in decedent's name at the time of such settlement and at the time of his death was community property, and that the wife received those properties awarded to her in such settlement, such were greatly less than her share at such time, and such contract was grossly unjust and disadvantageous to her, but that there was further material fraud and deceit practiced on her as to those properties which it was recited she was to receive under such settlement because of fraud of title and of consideration in material part and inability to deliver and failure to deliver personal property of the kind and value which it was represented such wife should receive.

Plaintiff offers to do equity and makes a continuing tender to restore that which she has received and asserts that due to her situation, inexperience, ignorance and deception she could not sooner have discovered such fraud and brought this action.

It is further claimed that since such husband's death the defendant H. B. Fuqua, acting as Independent Executor under the purported will of such husband, has come into possession of but has not distributed all of those properties which the husband wrongfully took under such settlement and decree and in which plaintiff had a continuing equitable ownership and interest, and that the other defendants are claiming to own or have some interest in such properties and estate as the respective cash legacies and residuary devisee under such purported will; and that among such properties are lands and interests in lands within the State of Texas including those described, listed and identified in this petition, including the following:

BAILEY COUNTY
1. A 1/2 mineral interest in the NE 1/4 of Sec. 13, Bk. X, W. D. and F. W. Johnson Subdiv.
2. A 1/2 mineral interest in the NW 1/4 of the SE 1/4 of Sec. 24 and the E 1/2 of the NW 1/4 of Sec. 23, both in Bk. X of the W. D. and F. W. Johnson Subdiv.
3. A 1/2 mineral interest in the NE 1/4 of Sec. 32, Bk. Y of the W. D. and F. W. Johnson Subdiv.
4. A 1/2 mineral interest in the E 1/2 of the NW 1/4 of Sec. 21, Bk. Z, W. D. and F. W. Johnson Subdiv.
5. A 1/2 mineral interest in the SW 1/4 of Sec. 31 and the NW 1/4 of Sec. 30, Bk. Z, W. D. and F. W. Johnson Subdiv.
6. A 1/2 mineral interest in the S 1/4 of Sec. 89, Bk. B, Melvin Blum and Blum Survey.
7. A 1/2 mineral interest in Labor No. 4, League 179, of the Motley County School Land Sur-

veys, Vol. 6, p. 636, and asks an accounting and for a declaration fixing the identity of the residuary devisee under a purported will of such husband as admitted to probate December 10, 1956, in which suit it is claimed that plaintiff as the wife of such decedent for 27 years before his death was induced to consent to such property settlement and decree by the fraud of her husband and his agents, consisting of false representations and concealment of material facts as to the nature, extent and value of the community property and plaintiff's true interest therein at such time, and because of further false promises to bequeath and on account of mistake induced by fraud of her said husband and coercion; and it is claimed that a fraud was also practiced by such decedent on this Court, and that the proceedings did not comply with Article 2624a.

THE STATE OF TEXAS:
To The Sheriff or any Constable of any County of the State of Texas, GREETING:
You are hereby commanded to serve the foregoing citation by making publication thereof in some newspaper of legal circulation, published in the County of Bailey for four (4) consecutive weeks, the first publication to be at least 28 days before the return day of the citation.
Herein Fail Not, but on the return day hereinabove named, have you then and there before said court this writ, with your return thereon, showing how you have executed the same.
Issued and given under my hand and seal of said court in Boerne, Texas, this 30th day of January, 1958.
(Signed) LORENE K. HARR, DISTRICT CLERK, KENDALL COUNTY, TEXAS. 6-4tc.

Progress News

by Mrs. M. O. Nigh

Mr. and Mrs. M. L. Shipp attended funeral services for his uncle, Clyde H. Jones of Brownfield February 12 at the First Baptist church at Brownfield.

Mr. James passed away Monday night at 10:30 o'clock at the Tredegar-Daniel Hospital where he had been confined with a heart condition.

Mr. and Mrs. Jimmie Presley and Sherman Weldon visited recently in Vernon with friends and relatives.

Little Jana Garrett, daughter of Mr. and Mrs. Phil Garrett was confined to the West Plains Hospital this past weekend with flu and cold. She has been released and is doing fine.

The Herbert Mead family sold their farm to the Jimmie Presleys. The Mead family have bought near Stamford. Mr. and Mrs. Presley are remodeling and will soon be moving to their farm three miles south of the Progress Gl.

Rev. and Mrs. Bill Watson had as their guests over the weekend, her parents of Lubbock.

Mr. and Mrs. Glen Eason of Amarillo spent Friday night and Saturday with their parents, Mr. and Mrs. E. F. Eason.

The Baptist Junior Training Union class was treated to a supper Friday night by their teacher, Mrs. Sam Blackwell. The group went to the theatre later.

Mrs. E. A. Bass and daughters spent a couple of days in Amarillo last week, with her mother, Mrs. A. C. Dunlap, who is staying in Amarillo for medical care.

Mr. and Mrs. J. D. Gray and sois spent Sunday in the home of Mr. and Mrs. Luke Metcalf of Bovina.

Kenneth Powell spent the weekend at home with his parents, the O. C. Powells.

Mr. and Mrs. Clyde Henry had the pleasure of having all their sons and families home Sunday. Those present were: Mr. and Mrs. Earl Henry and children, Mr. and Mrs. J. R. Henry, Mr. and Mrs. Eugene Henry and children, Mr. and Mrs. Kenneth Henry of Lubbock, Mr. and Mrs. Docky Henry and son of Lubbock and

Mr. and Mrs. J. R. Henry will be leaving soon for Kilgore where they both will attend college.

Mr. and Mrs. E. H. Childs and son Jerry are enjoying a pleasant visit from Mrs. Childs' mother, Mrs. Ava Brown of Lubbock.

Mr. and Mrs. Clarence James, Mr. and Mrs. Lewis Williams, Raymond and Glenn left Monday morning for South Texas, where they intend to try their hand at fishing.

Mr. and Mrs. Owen Rogers spent Sunday at Maple visiting his uncle and family, Mr. and Mrs. W. W. Clark.

The WMU ladies met at 2 o'clock Monday for book study and home mission. Name of the book was "Look, Look, the Cities" taught by Mrs. Mary Marrow and Mrs. Ruth Blair Eleven members were present.

Sunbeams and Junior G. A.'s met at 4 o'clock with their teacher.

Those having Sunday dinner in the home of Mr. and Mrs. M. L. Shipp were, her sister and husband, Mr. and Mrs. Kirby Shannon of Ropesville, and his nephew and family, Mr. and Mrs. Charles Shannon and children, also of Ropesville.

Charles McDonald was lucky in not getting seriously burned when his tractor exploded and burned Monday afternoon.

Mr. and Mrs. Paul McMahan and son, Douglas, of Lubbock, visited last weekend with relatives here.

Mr. and Mrs. Troy Actkinson visited Sunday in Shallowater with their daughter and her husband, Mr. and Mrs. Roy Sotter.

New Son
Mr. and Mrs. Elmer Ray Davis are parents of a new baby boy, Gary Wilson, born February 11 and weighing 5 lbs., 7 ozs. Grandparents include Mr. and Mrs. Albert Davis of Progress, and Mr. and Mrs. A. E. Newson of Lubbock.

The WSCS will meet for a special World Day of Prayer program at 2:30 p.m. Friday at Progress Methodist Church. Everyone is invited.

IN TWU CLASS STUNTS
Texas Woman's University's widely known Class Stunts, in which students write, produce and take the parts in four fast moving musicals, are to be presented Friday and Saturday, February 21 and 22, in the University Auditorium.

Students participating in casts choruses and crews include Elizabeth Ann Farley, daughter of Mr. and Mrs. John Farley of Muleshoe.

Christian Science Services

The fact that all things are possible to God will be brought out at Christian Science services Sunday.

Scriptural passages in the Lesson-Sermon on "Mind" will include the following from Isaiah (40:28): "Hast thou not heard? hast thou not heard, that the everlasting God, the Lord, the Creator of the ends of the earth, fainteth not, neither is weary? there is no searching of his understanding."

From "Science and Health with Key to the Scriptures" by Mary Baker Eddy will be read the following (180:25): "When man is governed by God, the ever-present Mind who understands all things, man knows that with God all things are possible. The only way to this living Truth, which heals the sick, is found in the Science of divine Mind as taught and demonstrated by Christ Jesus."

The Golden Text is from Job

THIS WEEK
—In Washington
With Clinton Davidson
Washington military experts are saying very little publicly about what many of them think may be our most potent "secret weapon" in the event of either a brush-fire or all-out war.

That weapon, we can now reveal, is our stand-by ability to move men and war materials speedily, economically, and safely to a trouble spot anywhere in the world through a well-organized system of airlifts.

Details have been carefully worked out by military and civilian authorities and have been reported to congressional committees investigating our military preparedness. Some of the details, given at closed hearings, still are secret.

Records available to any newsman, as well as to Russian agents here, make reassuring reading to Americans who have been awed by Russian spunkits and ICBMs. We are years ahead of Russia on airlift facilities.

The airlift is another example of how the military and private business can work together closely to strengthen the defense of the democratic free world and, at the same time, save taxpayers billions of dollars.

Nearly \$5,000,000,000 worth of civilian passenger and cargo planes have been earmarked for pooling with military aircraft through an arrangement known as the Civil Reserve Air Fleet. The upkeep of

(36:5): "Behold, God is mighty, and despiseth not any: he is mighty in strength and wisdom."

TODAY'S MEDITATION

We Dedicate Ourselves
Read I Corinthians 3:9-17.
We work with God, and that means that you are a field under God's cultivation. (I Corinthians 3:9, Phillips.)

People approach the Lenten season in different ways. For some this is the period of self-denial, the time to say "No" to some indulgence. For others, Lent is the season in which to practice the cultivation of "our soul's little garden. . . part of the great garden of God," as Evelyn Underhill has expressed it.

The loveliness of a garden and the usefulness of a man's life do not just happen. Pruning, weeding, transplanting—these need to be done in every garden, and from season to season, if beauty is to follow.

Do not a well-kept garden and a man doing God's will both witness to the love and understanding such a fleet alone would "cost the military hundreds of millions a year."

The importance of this large reserve airlift cannot be overestimated. It is the most inexpensive method of providing military emergency lift and should be encouraged to the fullest extent. The airlines have on order more than \$3,000,000,000 worth of additional jet and turboprop planes for delivery in the next three years.

If the Sputniks, through their dramatic impact upon the public, should cause the Congress to concentrate appropriations on missiles to the extent of neglecting airlift, the result would be disastrous.

The responsibility for developing commercial airlift rests upon the Civil Aeronautics Board. It is greatly handicapped in this field, however, because although the activities in commercial aviation are today three times as large as they were ten years ago, the staff of the Board has not been increased. For example, in 1956 commercial air traffic was 360% of that ten years previously. Available seat miles were 355% of the 1947 figure and yet the staff of the C. A. B. in 1957 was no larger than it was ten years previously.

No doubt, the present Congress will cut appropriations of some departments and increase those of a very few. Certainly if any appropriations are to be increased, missiles No. 2 positions. Congress cannot afford to take chances with the effectiveness of our airlift at the time the next war starts, by withholding from it and the agency which supervises it, the sums necessary for proper and effective development.

ing care used in their development? A charming garden proves that man cares; a life in harmony with Christ testifies to the power of God's love.

PRAYER

Eternal God, Father of all men, may we this day choose to walk with Thee. We know it will exact from us strict discipline, but we understand that only so can our lives be made beautiful and useful in Thy kingdom. Thine shall be the glory, through Jesus Christ our Lord, Amen.

THOUGHT FOR THE DAY

The Christian life requires cultivation.
—Edna H. Sardeson (N. Y.)

Hospital News

ADMITTED
Geneva Lemons, Martin Davidson, Doyle Palvado, Mrs. J. M. Gilbert, Letha Patterson, N. N. White, Geneva Whitford, R. O. Jenkins.

DISMISSED
Mrs. Ruby Clark, Mrs. B. J. Estep, Lonnie Bass, Mrs. L. E. Barlow, C. E. Roark, Geneva Lemons, Glenn Williams, Mrs. J. W. King, Donette Mann, Lonnie Henry, Mrs. Carl Tenyson, Doye Strull, Mrs. Lavon Smith, Bobby Lynn Broyles, Mrs. Archie Sowder, Ruth Dunn, Ralph Rogers, M. E. Grimes, Fern Black, Mrs. H. Gammons, Elvin Whitfield, Mrs. B. L. Loftis, Mrs. J. M. Mitchell.

CARD OF THANKS
We wish to express our deepest appreciation and thanks to each one who has been so kind and thoughtful during the illness and passing of our wife, mother and loved one. For the floral tributes, food and cordial hospitality we are deeply grateful. May the Lord richly bless each of you.
The Ross Glaze Family.

REMEMBER WEEK?

by JOHN CROW

In the early weeks of that memorable year, the man was a bum, carrying a living from day to day in Switzerland, hanging around the cafes and plotting with friends. In his brain was the seed of a monstrous plan of revolution.

His name was Vladimir Ilich Lenin. In April of that same year he left Switzerland and arrived in Petrograd, then the capital of Russia. The wheels were set in motion to bring his scheme to reality. The rumbling of revolt began. Soon they grew louder, and open rebellion broke out.

On November 7 of that same year, the revolution which Lenin had fathered toppled the Kerensky government and the Bolshevik revolutionaries became the new rulers of Russia. Thus began a movement which was to change the entire history of the world. This was the end of the Czarist rule in Russia . . . and the beginning of global Communism.

Remember the year? Time has changed everywhere since that year. Those days advertising was pretty conservative . . . and a man buying a car wasn't fooled by "give-away" price claims or confusing figures.

The year was 1917. We don't promise to give our cars away . . . and we wouldn't stay in business if we didn't make a modest profit. But we can promise to meet or beat any legitimate deal on a new 1958 Chevrolet. Come in and let us prove it!

C & H Chevrolet Co.
Phone 2720 — Muleshoe

NOTICE

The Muleshoe School Board will Receive Bids up until 5:00 P.M. March 10th, 1958 on the following property:

1 — Three Room Stucco building to be moved. (Now being used as Colored School Teacherage).

Lot No. 12 Block No. 10, Original Town of Muleshoe, including 1 frame stucco 24'x24' building.

Bid Blanks may be obtained at the Business Office.

The School Board reserves the right to accept or reject any bid submitted, for the best interest of the school.

C. D. Gupton,
Business Manager.



How's your "pick-up"?

If you've not been getting the results you've been hoping for (with your car, that is) may be it's time to change.

(Change your gasoline, that is.)

We'd like to suggest that a tankful of today's Phillips 66 FLITE-FUEL can do wonders for your car's pick-up. And give you easier starting and smoother anti-knock quality in the bargain.

Test Drive today's FLITE-FUEL. You can get it at your nearby Phillips 66 Service Station.



SILICON WATERLESS BATTERY
10 YEAR NON-PRO RATA GUARANTEE

- Efficient in blistering Heat and Sub Zero temperatures
- 100% greater reserve capacity
- Recoups in 60 seconds after complete rapid discharge
- Automatically self-recharging
- Spins engine 10% faster in RPM test
- Gives better equipment operation
- Exceeds SAE overcharge tests by 100%
- Never Needs Water
- Posts and cables remain clean
- Genuine Silicon electrolyte
- Built for 6 or 12 volt systems
- Good for more than 500,000 starts
- Five year guarantee in commercial use

WINN'S BATTERY SALES
Phone 7930 Box 1127 Muleshoe

The WASHINGTON MONUMENT

is built of stone contributed by all nations of the earth to honor the founder of this Republic. From Arlington across the river, where sleep the men who died for freedom, it looks like a giant spike which God might have driven into the earth, saying, "Here stake a claim for the home of Liberty."

Wm. Brown Meloney, V.

LEGAL HOLIDAY
WASHINGTON'S BIRTHDAY
FEB. 22ND

BUY AND BANK IN MULESHOE!
2 1/2% Interest Paid on Savings Accounts!
3% Interest Paid on Certificates of Deposit For One Year

MULESHOE STATE BANK
Member FDIC

WEEK DAY RADIO PROGRAMS OF K M U L MULESHOE

6:00 a. m. — Sign On	10:45 a. m. — Public Service
6:15 a. m. — Weather smry.	11:00 a. m. — Rhythm - Blues
6:30 a. m. — News & weather	11:30 a. m. — Headline News
6:45 a. m. — Trading Post	11:35 a. m. — Dixieland Music
7:00 a. m. — Mulebarn Melodies	12:00-12:15 — Mulest. - State Bat 's Presents The 12 o'clock News
7:15 a. m. — Tex. & World news	12:15 p. m. — Gospel Music
7:30 a. m. — Western Music	12:30 p. m. — Farm Program
7:45 a. m. — Sports Cast	12:45 p. m. — Muletrain News
8:00 a. m. Public Service Program	1:00 p. m. — Easy Listening
8:05 a. m. — Coffee Time Music	1:45 p. m. — P S Program
8:30 a. m. — Headline News	2:00 p. m. — Pop - Western Music
8:35 a. m. — Breakfast Music	3:00 p. m. — Headline News
8:50 a. m. — Morning Devotions	3:30 p. m. — Music Cont
9:00 a. m. — More Coffee Music	4:00 p. m. — Teen Time Parade
9:30 a. m. — Headline News	5:00 p. m. — Dixieland Jazz
9:35 a. m. — Music cont	5:30 p. m. — News
9:45 a. m. — Church of Christ	5:35 p. m. — Twilight Music
9:55 a. m. — Opening Cotton Mkt.	
10:00 a. m. — Muletrain News	
10:20 a. m. — Music - Memories	



YES, were blowing Our Horn About STATION WAGONS!

LOOK HERE

1956 CHEVROLET 4-door, V-8, Powerglide, big Radio, Heater, Tinted Glass, White Tires, Low Mileage.	1956 PLYMOUTH, 4-door, Heater, White Tires, Two-tone Green. Looks like New. Low Mileage.
1956 FORD'S Finest Parklane, 2-door, factory Air Conditioner, Power Seat, Big Radio, Heater, New White Tires, Tinted Glass, V-8, Extra Clean and Low Mileage.	1955 CHEVROLET, 4-door, Blue and White, Powerglide, V-8, Radio, Heater, White Tires, Tinted Glass. You must see and Drive this to appreciate its value.

C & H CHEVROLET CO.
SEE: BIDDY HICKS, FRANK SWINT, Or JOHN CROW
Phone 2720

Farm News

Parmer County Farm Bureau News

by Raymond Euler

Governor Price Daniel proclaimed February 16 to 22 Farm Bureau Week in Texas. Our local membership drive is the week following this, but we consider it an honor for our governor to give special recognition to this effort to strengthen what he referred to as the most powerful organization in Texas. It occurs to us that this is a distinct honor to the farm people of this great state. The general rule is that farmers are considered the least unified group of people anywhere.

Here is a case where the states highest elected official refers to them as the best organized and unified group in the state. With the future of REA and farm to market roads at stake, we hope this strength will be increased by new membership that will assure victory over those who seek to destroy these hard earned rural benefits.

Texas Farm Bureau president, J. Harrell West, of Bishop, was recently elected to the board of directors of the National Council. He is the first Texas Farm Bureau official to serve in this capacity. He was also named to the board of the Cotton Council International. We consider these nominations marks of confidence in the membership's selection of leadership in the state.

Well, if you have bought eggs in the past that had to be broken in a separate dish before you had the nerve to put them into the skillet or your favorite recipe, we believe the new Texas egg law, which went into effect Monday, February 17 will please you. Texas Farm Bureau was the chief supporter of this law, which had a lot of opposition in the last regular legislative session by those who liked to ship rejected eggs from other states, who all had egg laws, to our state. All eggs passing through retail stores will be graded, and you will know what you are getting.

We noted in the paper, Texas Agriculture, that the Farm Bureau at Lamesa had been successful in getting direct phone service from one exchange to the other. We wonder if this might be possible in Parmer county. It seems a little strange that country folks have to pay a toll to talk to a neighbor who happens to live in a different area than the caller, while in city folks can call them all toll free.

CONSIDER THIS: He that covereth his sins shall not prosper; but whose confesseth and forsaketh them shall have mercy. —Proverbs 28:13.

Egg Outlook For 58 Should Be Better

This year, 1958, will likely be more profitable for egg producers than 1957, according to F. Z. Beanblossom, extension poultry marketing specialist.

On October 1, 1957, the number of potential layers was five percent smaller than a year earlier, he adds. During the first half of 1958, this number will probably continue below a year earlier, but in the last quarter, the size of the laying flock will be increased by the addition of pullets.

It appears that there will be a slight increase in the demand for chicks for egg production in the United States, says the spe-

salute their parents but all parents and will recognize the important part that parents play in guiding and influencing youth.

The 111,535 Texas 4-H club members were recognized by Governor Price Daniel in his greeting to them when he said, "As 4-H members you have contributed much to the material wealth of Texas and the Nation in raising the quality of agricultural production, but you yourselves are our richest resource. May you continue to build yourselves, your homes and communities during the coming year, and thus help build a greater America." The Governor also saluted the parents, adult leaders and friends of 4-H for the contributions they have made to the 4-H program in Texas.

The Texas 4-H members last year completed more than 154,000 demonstrations involving practically every phase of farming, ranching and homemaking. They are members of 4,027 local 4-H clubs and received assistance from 10,088 local adult leaders and 3,210 junior leaders. Local county extension agents provide the leadership for 4-H club programs in the counties.

Members of 4-H clubs, individually and as a group, participate in community service activities. Any boy or girl between the ages of 9-21 years of age may become a member by agreeing to follow 4-H ideals and standards. The chief requirement is a willingness to "learn to do by doing," which is the club slogan, and "to make the best better," which is the club motto. Character development and good citizenship are long time goals.

Observances of the special week are being planned in most counties in Texas. The general public is invited to participate in the local observances and to learn more about this great rural youth organization which over the past half century has helped 20,000,000 youth develop into useful citizens.

cialist. Flock replacement chicks produced in December, 1957, were 12 percent larger than in December, 1956. But Texas hatcheries produced only 838,000 egg-type chicks compared to 1,067,000 for the same month in 1956. However, egg-type chick production in Texas will probably pick up during the next three months.

It seems reasonable to expect that the total number of chickens raised in the United States in 1958 will be from four to six percent larger than in 1957, but there will be three or four percent fewer layers on farms. However, increased production per bird will partly offset the decline in layers, and though egg output in the first six or eight months will be slightly below a year earlier, by late 1958, total production will be about equal or slightly above late 1957 levels.

With continued large consumer incomes and about a five percent reduction in per capita egg supplies, prices to farmers in 1958 are likely to increase, says Beanblossom. The rise will be the most pronounced in the first eight months. Little change is likely the last three or four months.

Remember, the Texas Egg Law became effective August 22, 1957, reminds Beanblossom. All licenses should have been obtained before October 20, 1957, and the enforcement began February 17, 1958.

National 4-H Club Week Is March 1-8

The nation's 4-H club members, more than 2,200,000, will observe National 4-H Club Week from March 1 to 8. They will not only

Base Fertilizer Use On Soil Test

The adequate subsoil moisture that is now available as a result of the fall and winter rains indicates an exceptional yield potential for the coming year, accord-

Lone ★ Agriculture

By JOHN C. WHITE, Commissioner

1958 COTTON PLANTING AND PLOW-UP DATES SET

Texas farmers in 106 cotton producing counties will participate in the pink bollworm control program this year. Cotton planting and plow-up dates have been set by Agriculture Commissioner John White in areas where the pink bollworm poses a serious threat to crops. The control zones include counties in South, Central, and East Texas and along the Coastal Bend.

Uniform seeding and harvesting methods help hold down the insect population growth. By delaying the first planting as long as practical in the spring, the insects from hibernation find very few young cotton plants on which to lay their eggs. Early

ing to Bill Bennett, extension soil chemist. With this reserve supply of moisture and increased yield potential would come an increased need for an adequate fertility level, he points out. In drought periods, lack of moisture naturally becomes a limiting factor in crop production. But in periods of sufficient moisture, plant nutrients often become the limiting factor.

So, with chances for sufficient moisture looking good, and since no farmer wants a limiting factor in his crop yield, Bennett advises farmers to apply sufficient fertilizer to supply enough plant nutrients for good growth.

To determine the needs for the coming year, Bennett strongly urges the use of a soil test. The soil test not only will determine the amount of nitrogen, phosphorus, potassium and limestone which will be needed, but it will also determine the proper balance in which the nutrients should be applied. The recommendations based on a soil test are designed to give the yield increase which would result in the most profitable return from money invested in fertilizer.

For more information on how to have a soil test made, Bennett suggests contacting local county agents.

destruction of cotton stalks helps destroy the winter quarters of the pest.

The control area is divided into seven zones, according to weather conditions. Each zone has slightly more than two months during which the farmer can plant the crop. Stalk destruction dates allow ample time for the cotton to mature and be harvested, barring undue interference from bad weather.

Beginning in South Texas, which is generally the site of the first cotton planted annually in the United States, farmers started planting on February 1, and have until March 31 to complete operations. Zone 1 includes Cameron, Willacy and the southern portions of Hidalgo and Starr counties. Plow-up deadline is August 31.

Zone 2 farmers may plant between February 15 and April 20 with the stalk destruction deadline September 25. Counties include Aransas, Brooks, Duval, Jim Hogg, Jim Wells, Kenedy, Kleberg, Nueces, San Patricio, Webb, Zapata, and the northern portions of Hidalgo and Starr.

Zone 3 planting dates are March 5 to May 10 with stalk destruction set for October 10. Counties are Atascosa, Bee, Bexar, Comal, DeWitt, Dimmitt, Frio, Goliad, Jackson, Karnes, Kinney, LaSalle, Live Oak, Maverick, McMullen, Medina, Buegele, Uvalde, Val Verde, Victoria, Wilson and Zavala.

Zone 4 planting dates: March 10-May 20 for planting, and plow-up October 20. Counties are Austin, Brazoria, Chambers, Colorado, Fayette, Fort Bend, Galveston, Gonzales, Harris, Jefferson, Lavaca, Liberty, Matagorda, Orange, Waller, Washington, and Wharton.

Zone 5 planting dates are March 10-May 20, and plow-up October 31. Counties are Bastrop, Caldwell, Comal, Guadalupe, Hays, Lee, Travis and Williamson.

Zone 6 planting dates are March 20-May 31 and plow-up November 30. Counties are Bell, Milam, Burleson, Falls, Robertson, Brazos, Leon, Burnet, Madi-

son, Grimes, Houston, Walker, Montgomery, Trinity, San Jacinto, Polk, Angelina, Tyler, Hardin, Jasper, and Newton.

Zone 7 planting dates are April 1-May 31, and plow-up December 15. Counties are Hood, Johnson, Ellis, Somervell, Bosque, Hill, Navarro, Hamilton, Lampasas, Coryell, McLennan, Limestone, Freestone, Henderson, Anderson, Smith, Cherokee, Rusk, Nacogoches, Panola, Shelby, Sabine, and San Augustine.

Dried Prunes Top Plentiful Foods List For March

Dried prunes are given top billing on the U. S. Department of Agriculture's March plentiful foods list for this area.

A larger than average crop, plus a liberal carryover from last year, assure an abundance of this fruit. Prunes are a perfect food for March "Good Breakfast Month," coupled with cereals or served alone. Other fruits on the list are apples and canned pears.

Eggs return to USDA's plentiful foods list for the first time since last July, as production is expected to reach a seasonal high in March. Also, March is "National Egg Month."

Dairy products are also in plentiful supply. Milk production is increasing seasonally and the 1958 outlook is for record supplies. January 1 stocks of American cheddar cheese were estimated at 372,000 pounds and stocks of butter were above a year ago.

Pork continues to take the spotlight at meat counters as supplies will probably be at their seasonal peak during March. Frozen whitening is plentiful, too. January 1 stocks totaled 18 million pounds—eight million above a year earlier.

Canned and frozen corn and pinto beans are the only vegetables listed as plentiful for March. Production of pinto beans were estimated to be 1,455,000 hundred-weight larger than the year before. Stocks of frozen corn are at a record high.

Peanuts and peanut products complete the plentiful list compiled from a survey of major food suppliers in this area.

Change From Dry Land To Irrigation Should Be Planned

Efficient irrigation systems just don't happen, says R. V. Thurmond, extension agricultural engineer. They are the result of study, planning and engineering.

Thurmond advises that now is an excellent time to plan for the dry summer months ahead. Don't

wait, he says, until the situation is acute before seeking assistance on irrigation problems. An adequate irrigation plan should include an evaluation of the farm's soil and water resources; an evaluation of the present cropping system and the possibilities for growing new crops under irrigation; a thorough study of the costs involved, including capital investment and the annual costs, depreciation, fuel, labor and other expense items.

Too, under irrigation he points out that more machinery is usually required; more fertilizer is needed for maximum production; insect problems are often multiplied; harvesting costs are upped and the increased production could bring on additional marketing problems.

After a decision has been made to make the change to irrigation and Thurmond emphasizes that the switch from dryland to irrigation farming is probably the most important change a farmer will make during his farming

career, a well designed system should be planned before any money is spent for equipment. The plan on paper should show how the plan will operate. It will require a lot of engineering and this should come from a reliable source. County agents and SCS personnel can advise and assist with the planning.

In the high rainfall areas, Thurmond says a drainage system must be a part of the irrigation plan for the farm. It is just as important to get surplus water off of crop land as it is to supplement rainfall with irrigation, says the engineer.

CIVIL SERVICE JOBS OPEN

The U. S. Civil Service Commission announces examinations for inspection specialist at \$3670 to \$7570 a year for employment at Kelly Air Force Base, San Antonio, Texas and other federal agencies in the states of Texas, Louisiana, and New Mexico.

Apply at any post office for application forms or information as to where they may be obtained.

AN OPEN LETTER TO THE PEOPLE OF BAILEY COUNTY AND THE SURROUNDING AREA:

I have been with Fry & Cox Brothers, approximately two years, and I would like to take this opportunity to express my sincere thanks to the many fine people of this community, and the surrounding area, who have given me an opportunity to be of service to them; . . . also, to extend an invitation, to those whom I have not met, previously, to come by for a visit, and inspection, of our shop.

I feel that we have one of the most modern, and up-to-date shops that can be found in this area, and along with this . . . let me say, that our crew of machinists are very efficient, and strive to please each and every patron.

If you have a problem, whether it be large or small, I would certainly appreciate the opportunity to help you with it. . . Likewise, if you are in need of shop made equipment, I will be more than happy to design, or help you design, that piece of equipment . . . and then build it, to fit your specifications.

Again, I would like to extend a cordial invitation to each of you to drop by at any time, and assure you that serving you is indeed a pleasure.

ROY WRINKLE

- L. E. Martin
- Delbert Sprayberry
- Clinton Busby
- Ikey Bayless
- Ocus Pope

These are the men you will find in our Service Department, who will give you the

Finest Service Possible

Please come in and let us have the opportunity to

GIVE YOU SATISFACTION

C & H. CHEVROLET CO.

Phone 2720 Muleshoe
—Equipped to Handle Your Irrigations Motor Needs—



All These..

now come in one policy at a big saving in rates. Ask about our package insurance policy that means so much to your pocketbook.

ALSUP INSURANCE AGENCY

MULESHOE'S OLDEST Muleshoe
Phone 3200

You didn't tell me you got a raise

I didn't, our saving did.



OPEN YOUR ACCOUNT WITH US NOW AND WATCH YOUR BALANCE MOUNT FASTER. — AS WE ADD PROFITS TWICE YEARLY.



Home Office
Fourth & Pile St.
Clovis, N. M.



WESCO KID

"COOKING NOW IS VERY SIMPLE, USE THIS GAS" SAYS DOLLY DIMPLE



WESTERN CO. Phone 4239 Night 6314
MULESHOE LIQ. GAS Co. Phone 3130 Night 2780
LARRIDDIE BUTANE Co. Phone 2810 Night 105-3837

BUILD YOUR CAR CONFIDENCE



With our power-packed gas, you can be confident that your car is receiving all the "get up and go" possible.

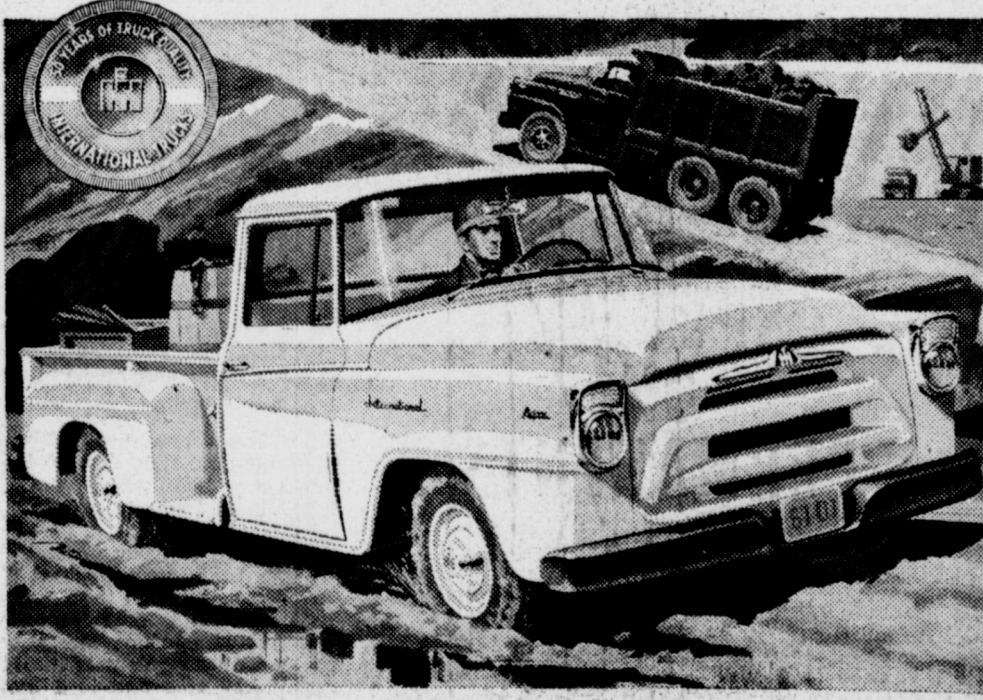


GAS-UP HERE . . . For Fast Starts — Smooth Riding
USE CONOCO ROYAL

BRING YOUR CAR IN

Gordons Conoco Service
At The Crossroads Muleshoe

Come in and "TRACTION TEST" a new Golden Anniversary INTERNATIONAL



Golden Anniversary INTERNATIONAL all-wheel-drive models, range from 7,000 to 33,000 lbs. GVW. Other INTERNATIONALS, to 96,000 lbs. GVW, round out world's most complete line.

Here's the truck that makes its own roads—a new Golden Anniversary INTERNATIONAL with four-wheel-drive!

But seeing is believing. We want you to find out for yourself just how much extra pull those INTERNATIONAL-powered front driving wheels give you.

Come in for our "Traction Test." Take a Golden Anniversary INTERNATIONAL four-wheel-drive truck to the grades you know are tough—to places you've never been able to get through with your rear-wheel-drive truck. And as the INTERNATIONAL carries you on through, remember this:

Over the years, INTERNATIONAL Trucks cost least to own—cost records prove it!

Come take our test soon!

INTERNATIONAL TRUCKS cost least to own!

JOHNSON - NIX

Phone 2940 522 W. American Blvd. Muleshoe

Three Way News

Mrs. Frank Griffith
In the district basketball tournament at Pep last week, Three Way boys came out in second place. They were defeated in the finals by the Pep boys. The girls did not place.

George Taylor and Kenneth Donald made the all-tournament boys team. Leslie Fine received honorable mention. Nan Johnson made the girls all-district team.

Mr. and Mrs. J. L. Bateas and Cindy visited Saturday night and Sunday in the home of Mr. and Mrs. Curtis Smith of Littlefield.

Visiting in the W. C. McCelvey home last week were Mr. and Mrs. Ray Spence of Bula.

On the sick list the past week were Mrs. W. C. McCelvey, Mrs. Cass Stegall, Rev. Hardgrove and Deborah Furgeson.

Birthday Coffee
Mrs. Lewis Henderson was hostess to a coffee in her home Friday morning honoring Mrs. Baker Johnson on her birthday. Coffee, rolls, cookies and cake were served to Mes. Lewis Jordan, Pete Tarlton, Tommy Galt, Leon Reeves, L. W. Chapman, Earl Bowers, Jack Furgeson, Horace Hutton and Johnson.

Among those from this community attending the Bailey County Electric meeting at Morton Friday were Mrs. Louie Jordan, Mr. and Mrs. Lewis Henderson, Mr. and Mrs. Horace Hutton, Fred Kelly, and Bill Eubanks.

P-TA will meet Monday evening with a program by the first and second grades.

Valentine Parties
Valentine parties for the grade school children were given last week. The second grade was entertained at school by the room mothers, Mes. A. G. Taylor, Carl Cunningham, James Kyzer, D. C. Lindley, and Bill Eubanks. Mrs. Morris Gant was a guest.

A skating party at Morton Thursday was given for the fourth grade by their teacher, Mrs. Jones and the room mothers, Mes. Farris, Horace Hutton and T. D. Davis.

The fifth grade went to Morton to skate Friday afternoon. Accompanying them were Mes. Earl Bowers, Jack Furgeson, Reid, Garvin Long, and Doss Terrell.

Accompanying the sixth grade to the skating rink were Mes. Bill Eubanks, Baker Johnson, James Kyzer, Conrad Williams, Thurl Lemons, Berry, Bob Kulte and the teacher, Mr. Adams and wife.

Mr. and Mrs. T. D. Davis and children visited at Lingos Sunday with Mrs. Myrtle Carter.

The Maple Baptist WMS will meet Monday afternoon for a business and stewardship meeting. Mrs. T. D. Davis is president, and Mrs. D. Tucker is stewardship chairman.

Home from Texas Tech the past weekend were Kay Cole and W. C. Eubanks.

Mrs. Gaylon Weaver of Slaton is spending the week with her parents, Mr. and Mrs. Louie Jordan.

Skating Party
The Three Way Baptist Church hosted a skating party at Morton Monday evening for the children

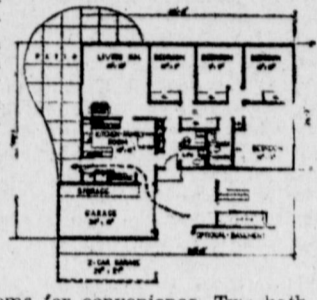
Here's A "Pocketbook Version" Of a Luxury-Class Home



A "pocketbook edition" of a larger, more imposing house by "name designer" Donald Scholz, this contemporary home "Has Everything" in good measure at lower cost. Sacrificing nothing in architectural styling, Scholz has confined building cost savings to smaller floor area, and necessary elimination of some luxury features and appurtenances. In outward appearance and indoor functional plan and charm, however, this home is on a par with many houses in higher cost brackets.

Study the design with particular care if you have a large family and are trying to decide between three bedrooms or four. Here in equal floor space and virtually equal building cost, you'll find the ultimate. Note that the extra bedroom has been obtained by compromising only on the size of two rooms—the living room and one of the original bedrooms. All other rooms and areas remain the same. With either floor plan, the large, well-lighted central foyer features a massive planter for grace and beauty, and easy access to all rooms for convenience. Two bathrooms, a kitchen-family room, and a patio with access through sliding-glass doors are among features that place the home above par in its price range.

Total floor space of the house is 1,240 sq. ft. For further information on this versatile house, write Don Scholz Design Associates, Dept. 104, 2001 N. Westwood, Toledo 7, Ohio.



and young people. About 35 attended the party.

Mr. and Mrs. Jack Hutcheson spent the weekend at Quitaque, Texas visiting relatives.

The Stegall gin finished the season Monday.

Mr. and Mrs. Jack Furgeson visited in Dallas recently with his brother, Dick.

Earl Bowers went to Dallas on business and Mrs. Bowers and Pam spent the weekend with relatives at Lorenzo.

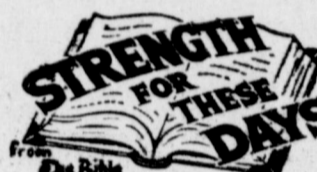
Mr. and Mrs. Thurl Lemons visited recently with Mr. and Mrs. Sam Logan at Sonora, Texas. The Logans were in the states on a vacation from Saudi Arabia. Mr. Logan will be remembered as a former county agent of Bailey county.

Mrs. Hendrix received word from Mississippi last week of the death of her father.

Mr. and Mrs. Elbert Adams and daughter visited his mother

near Abilene the past weekend.

Grandma Tucker was feeling better this week. She is at the home of her daughter, Mrs. Kelly in Maple.



... be transformed by the renewing of your mind, that we may prove what is that good and acceptable and perfect will of God.—(Romans 12, 2)

In our busy days we can get so involved that worrisome details crowd the Lord out of our minds. Then we should stop and, even in an instant of quiet meditation and communion with Our Heavenly Father, renew our soul through the inward flow of His love.

PLEASANT VALLEY VIEWS

Book Review Hi-Lites Social Club Meeting

by Mrs. Leroy Hicks
Pleasant Valley Social Club met at the community center February 13 with Sammy Allison and Eula Calhoun as hostesses. There were further plans made pertaining to the "stag supper" for the club members' husbands on February 22. There were three visitors present. Mrs. Doris Borum, Mrs. Fern Holt and Mrs. Doris Stone. Entertainment for the evening was an interesting book review by Mrs. Stone, based on the book

"The Citadel", by A. J. Cronin. Refreshments were served to the visitors, Mes. Stone, Holt, and Borum; members, Mes. Ruth Lacky, Leona Hicks, Hattie Bickel, Jean Allison, Judy Green, Leah Jones, Gaynell Pitts, Hazel West, Ethel Allison, Lenora Wells, Vera Inman, Jean Hardin, Victoria Hendricks, Eula Mae Calhoun, and Sammy Allison.

Next meeting will be with Mrs. Gerald Allison and Mrs. Kirk Pitts as hostesses.

Mrs. C. W. Riddle and two children from Muleshoe visited last Tuesday evening in the home of her parents, Mr. and Mrs. W. D. Lackey and Walter.

Visiting in the Dub Hardin home last Thursday evening was his sister and husband, Mr. and Mrs. Stone of Amherst.

The community welcomes Mr. and Mrs. Holt as new residents. They live where the Donald Adams formerly resided.

O. K. Angeley of Earth underwent major surgery last Wednesday morning in the Amherst hospital. He is reported to be getting along fine. Mr. Angeley is a former resident of the Pleasant Valley area and is a brotne of Mrs. Bonnie Haberer and E. K. and Jarvis Angeley.

Mrs. Doris Borum and two children from Lubbock spent a few days last week in the home of her parents, Mr. and Mrs. B. H. Bickel and family.

Mrs. J. W. St. Clair reports that her mother, Mrs. J. I. Dyer is home from the Hale-Center hospital and is recovering nicely. Mrs. Dyer suffered a severe heart attack recently and was ill for several weeks.

Organize 42 Club
A "Grandma and Grandpa Forty-two Club" has been organized in the community by the older men and women.

They meet each Friday night and play "42" in their homes.

Mr. and Mrs. O. E. Green were host and hostess at their home for the club members Friday night, February 14.

Mrs. Bonnie Haberer was in Morton last Friday attending the REA meeting. Several others from the community also attended.



SEW and SAVE WEEK

Fabric Festival

Tremendous Savings On Many Fine Quality Nationally Advertised Brands

QUADRIGA PRINTS

Nationally Advertised
Approved by Good Housekeeping
You can buy no finer printed cottons than these Famous Quadrigas at this low price. In spring and summer's most beautiful patterns or solid colors... and they're Needleized... makes them easy to work with... make up beautifully. Approved by Good Housekeeping for your signature of quality. Yards and yards to choose from.

36 Inches Wide **49c** yd.

SEW & SAVE WEEK
SPECIAL PURCHASE
80 Square Percales
Drip 'N Dri Finishes
Printed Cottons.
Polished Cottons
Soft Rose Bud Printed
Fixie Cloth
Just In Time For Spring & Summer Sewing.
ONLY **3 yds. \$1.00**

SHOP ANTHONYS AND SAVE ON ALL YOUR SEWING NEEDS SIMPLICITY PATTERNS COATS & CLARKS THREAD AND TROUBLE FREE ZIPPERS

"Dan River" FINE COMBED GINGHAMS

Wrinkl-SHED with Dri-Don®
THE ULTIMATE IN CAREFREE WASH AND WEAR COTTONS

Select from the newest spring and summer patterns in America's finest gingham... Nationally Advertised Dan River, wrinkl-shed and Dri Don finish which requires little or no ironing. All first quality... Regular 98c value. Buy now... save now... sew now during National Sew and Save Week. Shop... Compare... you'll make Anthony's your fabric headquarters.

Nationally Advertised Stripe **79c** yd.

SPECIAL PURCHASE
44 INCH WIDTH BARKCLOTH
DRAPERY FABRICS
Lovely Printed Designs to Enhance Any Room. Just In Time For Spring House Cleaning.

You'll find so many uses for this lovely 36-inch Sanforized sport denim... Famous for quality. Choose from multi-colored sport stripes. With gold lurex stripes. Use them for sport clothes, drapes, bedspreads, etc. All first quality... outstanding value.

36 Inches Wide **59c** yd.

SPRING COTTONS

Values up to 98c per yard to be found in this exciting group of more expensive cottons. Every yard first quality. You'll get a thrill selecting from the most outstanding collection of spring and summer patterns ever offered. Truly a value for any woman who likes to sew and save. Plan now not to miss this tremendous saving. Choose from 36" Flamingo Striped Drip-Dri Dress Prints, 36" Fancy Printed Drip-Dri Sheer Dress Cottons.

- 36" Printed Everglaze Prints
- 36" Printed Combed Fine Lawns
- 36" Printed Everglaze Prints
- 36" Copacabana Drip-Dri Prints
- 36" Susette Lucia Drip-Dri Prints
- 36" Carosol Solid Color Drip-Dri Cottons
- 36" Spring Peacock Prints
- 36" Printed Everglaze Prints
- 36" Printed Combed Fine Lawns
- 36" Printed Everglaze Prints
- 36" Copacabana Drip-Dri Prints
- 36" Susette Lucia Drip-Dri Prints
- 36" Carosol Solid Color Drip-Dri Cottons
- 36" Spring Peacock Prints

NEW SPRING EVERGLAZED EMBROIDERED COTTON SATIN **\$1.98** yd.

Everglazed polished cotton. Satin Background with matching cotton Embroidery. National advertised High Fashion Fabric.

LOVELY NEW SPRING COTTONS COORDINATE COTTONS **79c** yd.

Solid Skirt Prints With Matching Print Blouse Fabrics. Shop Anthonys and save on all your sewing needs.

Lovely New Spring. 45 Inch SUITINGS By Rosewood Donny-gal Permanent crease resistant Rayon & Acetate Pin Point Tweed Completely Washable in all the New Spring Colors. **\$1.39** yd.

DUNE DECK II ONLY **\$1.49** yd.

111 SILPIONI SUITING By Rosewood Cuponi - Cotton - Silk Blend Washable crease resistant finish full 45 inch with new spring colors Lightweight for spring and summer **\$1.49** yd.

SPECIAL ON PERMANENTS
at
Jeannine's Beauty Shop
— LAZBUDDIE —
February 11 thru April 3

THE CUSTOMER IS KING
• AT •
C & H CHEVROLET CO'S
BIG VALUE SALE