

Scoop Sez

By J. M. FORBES

Ollie Jones, the entrepreneur, soon will have if he hasn't already, some two room apartments on his property east of the hospital there off Main Street. They will help by that much to meet the housing need in Muleshoe. We're willing to give Ollie a free plug here because the town needs small apartments in the worst way. Wish more people could see their way to provide more housing.

Tourist business in the U. S. runs to the handsome and nice sounding figure of \$11 billion dollars and is getting bigger and bigger with every passing year. There are more automobiles on all the highways, and the people who ride in these cars must buy gasoline, oil, food, etc. along the way.

Now this column doesn't believe we can get rich here in Muleshoe off the tourist trade; but the more we get the better off we'll be. One way to get more tourist traffic through Muleshoe is to join the U. S. Highway 70 Association, composed of people in small towns of eight states.

All towns, working together, can provide a fund to publicize and advertise Highway 70; anyone traveling this route is headed for Muleshoe. Might surprise you how much money tourists will spend here in a year, and if they don't spend a lot, just to have them come through and see our wonderful country is worth quite a lot. Some might settle amongst us and become great citizens.

The Journal staff sectioned the city subscription list, making it quicker and easier for the papers to be put into subscribers' boxes. Arnold Alcorn, the P. M. and A. J. Gardner, assistant, said the change would probably effect a man hour saving in a year of 102, and at the high rate of pay they get over there, this would mean a sizeable sum of money saved for the taxpayer.

They didn't exactly promise, but they indicated they would take it up with Washington for a cut in taxes. Other systematizing of the work from time to time will mean further saving. The outlook is mighty good for a nice tax reduction.

We can't picture all the new homes, but we have been attempting to have one write up about new homes each week. Can't keep up at that rate.

It's been a good feature. Carroll Pouncey, chief operator in this department, has the knack of describing the house itself and its furnishings, and we've had lots of favorable comment on the stories. We intend to keep it up. The Lazbuddie Methodist story is being used this week, but we understand we'll be back on new homes next week.

Passing lightly over General Ridgway's criticism of defense department policy (see articles in current Saturday Evening Post) something struck us as a slant on proper philosophy for soldier and civilian as well. He quoted a verse from Post-Housman which he said had motivated his thinking nearly all his life:

Others' thoughts were light and fleeting,
Of lovers greeting or luck or fame;
But mine were of trouble and mine were steady,
And I was ready when trouble came.

As we say, we don't know about the aptness of his criticism (it certainly has and will continue to rouse controversy) but we think that the boy or girl who prepares for life will be most help in time of emergency, crisis, or trouble. And a boy or girl should be taught to think of preparation for life and citizenship, not, at least of luck or idle wishing for fame. Ridgway was ready when it came his time to assume responsibility, fame and good luck took care of themselves.

Joe Sooter Named Board President Electric Coop

Joe Sooter was re-elected president of the board of the Bailey County Electric Cooperative Association at a meeting of the board late last week.

R. L. Kimbrough was named vice president, replacing Tommy Galt, whose term has expired.

Glen Thompson was elected secretary-treasurer, replacing H. E. Schuster, whose term has also expired as a board member.

Other board members include Roy Young, R. A. Axtell, R. L. Davis and C. G. Dameron.

Dameron, and Davis were elected to the board by the membership at their annual meeting last week, and Thompson was re-elected to the board at the same meeting.

D. B. Lancaster is manager of the electric organization.



Lazbuddie Church Opening Is Set

LAZBUDDIE METHODIST church which will be the scene of formal opening and homecoming ceremonies Sunday. (staff photo)

The formal opening of the new Lazbuddie Methodist church building will be held with special services Sunday, January 29, the pastor Rev. Bruce Matthews has announced.

At the 11 o'clock services, Dr. Luther Kirk, the district superintendent will preach a homecoming sermon. This will be followed by a barbecue dinner in the fellowship hall, and a short service at 2:30 p. m. at which time the formal opening will be observed.

During the services, former

pastors and members of the congregation will be recognized. There will be no evening service.

The church building was started in June, 1955, and is of cream brick, and features a sanctuary seating 240, with expansion room for an additional 60 persons.

A pair of cry rooms are in the back of the sanctuary for parents with small children. All furniture in the sanctuary is in lined oak, including the choir stalls and the pulpit.

A fellowship hall is also part of the new building, and this room measures 30x44 feet. Attached to it is the modern kitchen, and the pastors study.

The old church building has been converted into Sunday School classrooms, and two class

rooms are included in the new building.

The invitation and program committee for the homecoming and formal opening includes, Mrs. Finis Jennings, John L. Seaton and Mesdames Frank Hinkson, Joe Bates Jennings and W. C. Williams, Jr.

The hospitality committee includes Mesdames C. D. Gustin and Grady King.

The food committee is composed of Mesdames Vergil Teague, H. L. Ivy, Jan Claire Callman, Al Ewing Jennings and W. C. Williams, Jr.

FALSE ALARM

The city fire trucks were called out late Sunday afternoon on a false fire alarm. No explanation was given for the false alarm.

Grand Jury Session Began Wednesday; May Be Lengthy

An unusually heavy docket of cases to be investigated faced the January Grand Jury which convened here Wednesday.

Although no accurate information was available at press time, court house observers expressed the belief that the Grand Jury might be in session three days or longer.

A report on the cases investigated and bills returned for indictments will be published next week.

The Muleshoe Journal

DEDICATED TO THE PROGRESS AND DEVELOPMENT OF BAILEY COUNTY AND THE GREAT MULESHOE COUNTRY

VOLUME 35, NUMBER 4

16 PAGES — SECTION I — 8 PAGES

THURSDAY, JANUARY 26, 1956



WORKING ON THE NEW GOLF COURSE

last Sunday morning. A large group of local men donated their labor to laying and connecting irrigation pipe on the new golf course. Among those working were (back to camera) Clyde Holt, (pointing) Chief Jones, Elmo Evans and golf pro Joe Lopez. (Staff Photo)

WILL TRY OUT SPRINKLER SYSTEM

Golf Course Nearing Completion

Brief, informal ceremonies this week end will mark the first irrigation sprinkling of the newly constructed nine-hole golf course at the Muleshoe Country Club. The new irrigation system has been installed by volunteer labor of club members, with all materials used having been bought at actual cost prices. A deep well has been dug and approximately 7700 feet of transite pipe laid by volunteer, unpaid labor. The well is expected to deliver 450 gallons per minute.

A total of 94 large sprinkler heads have been installed, each covering an area 180 feet in diameter on the fairways, plus additional sets of four 50-foot diameter sprinklers on each green and on the tee boxes, practice range and putting green.

The nine hole course, with No. 3 hole a dog-leg, will have Bermuda grass fairways and bent grass greens. The club members plan to start planting the greens and fairways in the near future.

Outside observers have commented that the course will be one of the finest green fairway courses in West Texas when present plans are completed.

A residence has been moved in for golf pro Joe Lopez and his family. This building will also contain the pro shop and a ladies lounge. Lopez is now giving golfing lessons.

A storage room for player's clubs has been erected. No plans are presently contemplated for erecting a club house.

The club, of which Houston Hart is president and Elmo Evans secretary-treasurer, now has 59 voting members. Sixteen more voting memberships will be sold, officers said this week, to make a total of 75 voting members. Memberships now sell for \$300 plus \$8 per month dues. Dudley Malone is vice-president of the club.

Directors of the club include

W. Q. Casey, Morris Douglass, Sam Fox, Irvin St. Clair, Gil Wolard and E. W. Evans.

Schuster and Pool Represent County At Cotton Council

Henry E. Schuster and Lee R. Pool of Muleshoe were named to the 36-member board of directors for the newly organized South Plains Cotton Council in Lubbock Tuesday afternoon.

They will represent Bailey county in the new organization being organized to speak for the cotton industry on the South Plains of Texas.

More than 1500 businessmen, farmers and educators were present in the Fair Park Coliseum to hear talks on the need for a representative group to speak for the area in world and domestic markets.

W. O. Fortenberry, Lubbock cotton man was named president of the council. The directors will meet Friday to make plans for future action.

Lamb county representatives on the board of directors include Rip Elms and Paul Lewis.

PLAN CONCERTED MEMBERSHIP CAMPAIGN

Highway 70 Directors Meet In Clovis Monday

More than 50 delegates were on hand for the U. S. Highway 70 meeting, held in the Chamber of Commerce building in Clovis Monday, Jan. 23. They came from several states traversed by the route. Several attended from Arizona, and there was a good representation from Oklahoma, Texas, and New Mexico.

Muleshoe was represented by five men: Harroll Griffiths, Muri Wilson, Butch Baker, Senn Slemmons, and J. M. Forbes.

President Charles H.assing, banker of Hugo Okla., presided during the nearly all day sessions. Present also and assist-

ing in the program was W. E. Schuster, Hugo newspaper and radio man, who is secretary and treasurer.

Principal business of the meeting was to formulate a program for Highway 70's future. Wistfully, the group thought of hiring a general manager, who also would be field man and organizer, but it was felt money in the treasury should go before that move.

There fore, individual groups in the various towns will strive to interest others, and to explain what a larger share of tourist business can mean to a community.

16 Pages Today
10c Per Copy

Funeral Wednesday For Mrs. Childers At Baptist Church

Funeral Services for Bonnie Lois Childers, were held at 3 p. m. Wednesday from Muleshoe First Baptist Church, with Rev. E. K. Shepherd officiating and interment in Bailey County Memorial Park under direction of Singleton Funeral Home.

Mrs. Childers was pronounced dead on arrival at West Plains Hospital here after collapsing with a heart attack at a local drive-in. She had been ill previous to the attack Tuesday.

She was born August 20, 1921 in Turkey, Texas, and was employed as a beautician in Muleshoe.

Surviving are her husband, and her parents, Mr. and Mrs. H. O. Logan of Turkey; two sisters, Mrs. James Brunson of Quitaque and Betty Logan of Muleshoe and two brothers, Odell Logan of Muleshoe and Jack Logan, of San Diego, Calif.

Pallbearers were Oran Childers, Lewis Welch, A. T. Ashford, J. R. Roberts, A. C. Welch and Clarence Grant.

Trenching Machine Purchased Friday By City Aldermen

The City of Muleshoe purchased a Be-Ge trenching machine last Thursday afternoon at a called meeting of the city aldermen, from the Panhandle Supply Co. of Amarillo at a cost of about \$8500. It includes a tractor and all attachments to dig trenches for water and sewer pipe lines.

The machine was put to use Monday when city workmen laid pipe to connect the Palmer Grocery which has been moved to a site near the junior and senior high school buildings.

Wendell Young of the city crew said the machine could dig a trench in 45 minutes that it would take workmen with shovels a day and a half to dig by hand.

FOR POLIO CAMPAIGN FUNDS

Mothers March Friday Night

Jesse M. Osborn To Seek Re-Election As Representative



Jessie M. Osborn, Muleshoe banker this week announced his candidacy for re-election as State Representative of the 96th District.

In making the announcement for re-election, Osborn made the following statement:

"I have lived in the district 32 years, coming here from my native state Arkansas. I am 60 years of age and a veteran of World War I. I have been engaged in farming and banking since 1924 in this area.

"In serving you in the legislature, I have always fought for legislative matters I thought were for the best interests of this district and the State as a whole. I have served two terms on the Conservation Committee, which bears practically all the water legislation and if I am elected, I will ask for this assignment again.

"In the last session of the Legislature, I served as chairman of the contingent expense committee and was vice chairman of the appropriations committee for State hospitals and special schools. I am greatly interested in these institutions as there are currently 24,000 people committed to them, and I feel that we do not take the interest in them we should.

"I will continue to fight for better insurance and security laws.

"I hope to be able to see each of you between now and the election if possible.

"I heartily thank each of you for your help and support in the past and I will appreciate your assistance in the coming campaign."

The Mothers March for Polio will be held in Muleshoe between the hours of 7 and 8 pm Friday of this week for the benefit of the annual Bailey County chapter March of Dimes fund campaign. Bill Wilson and Pinkie Barbour, co-chairman of the fund campaign said the drive will be under the co-chairmanship of Mrs. Bob King, Mrs. George Bragg and Mrs. W. W. Barbour. All residents of Muleshoe are asked to turn their porch lights on to indicate their willingness to contribute to the March of Dimes. The fire siren will sound at 7 o'clock to signal the beginning of the march.

Rotary Ladies' Night Set Monday Evening, Jan. 30

Preparations have been completed for the Rotary Club's ladies night banquet, to be held at the high school cafeteria beginning at 7:30 Monday evening, Jan. 30.

Rev. James Todd will be toastmaster. A group of young ladies, students of the music department of Eastern New Mexico U. P. Portales, will bring the program. They will bring their director and a young man who is their piano accompanist. Their program is described as light and entertaining and very musical.

Another feature of the program will be a short talk by Rigdon Edwards, of Sweetwater, Rotary district governor, who will be accompanied here by Mrs. Edwards.

Luncheon ladies will prepare the banquet and will be assisted in serving by girls of the Homemakers Department of the high school.

The fund campaign is lagging behind, the co-chairman said early this week, and urged public support of the campaign for funds.

Funds are urgently needed, the two men report, for taking care of polio patients for whom the Salk vaccine came too late. Many cases are still hospitalized, and care is expensive. In many cases, all cost of treatment and hospitalization, as well as corrective orthopedics, are borne wholly by the National Foundation for Infantile Paralysis.

The county chapter of the National Foundation retains a portion of the funds collected for taking care of local and area cases. Last year a large portion of the county funds were sent to other areas during the epidemic stages of polio infection. Thus, the county funds are almost depleted, and the need is urgent for funds to care for any cases that might develop during the coming polio season.

The annual March of Dimes dance, originally scheduled for Friday night, has been cancelled due to the fact that the hall could not be obtained.

Vegetable Production Advisory Board Meeting To Be Held In Plainview Jan. 31

In the first formal step toward possible organization of a huge commercial vegetable marketing enterprise on the Texas High Plains, farmers, businessmen, and individuals will assemble in Plainview Tuesday, January 31 for an advisory board meeting.

It will be at this time that the projected development will be examined from the practical viewpoint of organization, production, and marketing.

To lead a discussion on the technicalities of such an operation will be two men who are specialists in their field, J. F. Rosenborough, Extension Horticulture Marketing Specialist of Tyler, will examine marketing aspects.

Dr. George Elle, Assistant Dean of Agriculture of Texas Tech in Lubbock, will study production problems.

Ronald Davis from the Lazbuddie community in southwestern Farmer County, with whom the plan for big-scale vegetable marketing a production has originated, reports that "from twenty-five to thirty Plains communities will be represented" at the meeting.

From each of these communities will be one person who has volunteered to serve on an advisory board. It will be presented

The Plainview auditorium will be the setting for the meeting, which is to get under way at 2 P. M.

Advisory board member for Muleshoe, E. O. Baker.

"We are fortunate enough to have secured men who are the very best in their fields," says Davis. "And they will tell us the facts on whether our plan appears to be feasible."

Beside members of the advisory board, representatives of the press, businessmen, farmers chamber of commerce, agricultural officials, and others have been invited to sit in on the discussion. It is possible that as many as 150 persons will attend the meeting.

"We are fortunate enough to have secured men who are the very best in their fields," says Davis. "And they will tell us the facts on whether our plan appears to be feasible."

Beside members of the advisory board, representatives of the press, businessmen, farmers chamber of commerce, agricultural officials, and others have been invited to sit in on the discussion. It is possible that as many as 150 persons will attend the meeting.

"We are fortunate enough to have secured men who are the very best in their fields," says Davis. "And they will tell us the facts on whether our plan appears to be feasible."

Beside members of the advisory board, representatives of the press, businessmen, farmers chamber of commerce, agricultural officials, and others have been invited to sit in on the discussion. It is possible that as many as 150 persons will attend the meeting.

"We are fortunate enough to have secured men who are the very best in their fields," says Davis. "And they will tell us the facts on whether our plan appears to be feasible."

Beside members of the advisory board, representatives of the press, businessmen, farmers chamber of commerce, agricultural officials, and others have been invited to sit in on the discussion. It is possible that as many as 150 persons will attend the meeting.

"We are fortunate enough to have secured men who are the very best in their fields," says Davis. "And they will tell us the facts on whether our plan appears to be feasible."

Beside members of the advisory board, representatives of the press, businessmen, farmers chamber of commerce, agricultural officials, and others have been invited to sit in on the discussion. It is possible that as many as 150 persons will attend the meeting.

"We are fortunate enough to have secured men who are the very best in their fields," says Davis. "And they will tell us the facts on whether our plan appears to be feasible."

Beside members of the advisory board, representatives of the press, businessmen, farmers chamber of commerce, agricultural officials, and others have been invited to sit in on the discussion. It is possible that as many as 150 persons will attend the meeting.

"We are fortunate enough to have secured men who are the very best in their fields," says Davis. "And they will tell us the facts on whether our plan appears to be feasible."

Beside members of the advisory board, representatives of the press, businessmen, farmers chamber of commerce, agricultural officials, and others have been invited to sit in on the discussion. It is possible that as many as 150 persons will attend the meeting.

"We are fortunate enough to have secured men who are the very best in their fields," says Davis. "And they will tell us the facts on whether our plan appears to be feasible."

Beside members of the advisory board, representatives of the press, businessmen, farmers chamber of commerce, agricultural officials, and others have been invited to sit in on the discussion. It is possible that as many as 150 persons will attend the meeting.

Two Men Fined In County Court

Two men were brought before Judge Glen Williams for trial Tuesday morning in county court here.

One man, charged with DWI, pleaded guilty as charged. Judge Williams fined him \$150 plus three days in jail, and revoked his drivers license.

The other man pleaded guilty to theft of a watch. He was fined \$30 and 10 days in jail.

MONEY IS NEEDED

To promote Highway 70, giving the route advertising showing the many advantages of using it, its scenic attractions, will cost the association money.

About the only way the association can raise money is thru membership. Therefore various towns will attempt to increase the membership, thereby increasing the revenue available for publicity and advertising.

Many men and women in the several states have been devoting a big part of their time to the organization without remuneration.

HIGHWAY IS COMPLETED

Eleven miles of Highway 70 are now being paved; when that work is done, the route will be in good shape from the Atlantic coast of North Carolina, through Tennessee, Arkansas, Oklahoma, New Mexico, Arizona, California, and to the Pacific in the Los Angeles area.

Boy Scouts Mark 46th Birthday



Onward... For God and My Country
46th ANNIVERSARY 1956
BOY SCOUTS OF AMERICA

OFFICIAL BOY SCOUT WEEK POSTER

More than 4,100,000 Cub Scouts, Boy Scouts, Explorers, and adult leaders throughout the nation will observe Boy Scout Week, February 6 to 12, marking the 46th anniversary of the Boy Scouts of America.

Four Delegates From Bailey FB Attend Institute

Four delegates from Bailey County, Mr. and Mrs. Lewis Scroggins and Mr. and Mrs. D. O. Burelsmith, are attending the Texas Farm Bureau Winter Institute for county leaders being held at the Plaza Hotel, in San Antonio January 22-25, according to Bill Millen, president of Bailey County Farm Bureau.

Net \$115 For MOD At Pleasant Valley Musical Program

More than \$115 was donated to the March of Dimes fund campaign Tuesday night, when residents of the Pleasant Valley community met for an old-fashioned evening of musical entertainment.

HOME BETWEEN SEMESTERS

Dale Krebs, son of Mr. and Mrs. K. K. Krebs is home from Texas Tech between semesters, visiting his parents and other relatives and friends.

Wagnon Grocery Grand Opening in New Location

Wagnon Grocery will hold grand opening observance this Saturday in their new building on the Clovis highway. The location is opposite Johnson-Nix and is the building formerly occupied by The Furniture Mart.

All day Saturday, customers will be treated to free gifts and souvenirs. Ladies will be given free orchids, and there will be free balloons, ice cream, candy, suckers and comic books for the children.

Only 4 Offices To Be Filled in 1956 Elections

The year 1956 will not be the local election year that Texans have been accustomed to having in the past, because nearly all officers began a four year term on Jan. 1, 1955.

WERE IN MIDLAND

Mr. and Mrs. Claude Sanders and Mrs. and Mrs. Don Sanders were visiting in Midland the past weekend with Mr. and Mrs. George Neil and new daughter.

EXPECTED HOME

Don Moore, son of Mr. and Mrs. J. M. Moore, is expected home from Tech this week between semesters.

Building Fund Started By CofC

Someday, the Chamber of Commerce will have its own building, if nothing disturbs a plan put into effect early last year.

Polio Victim Gives Lions Club Donation For March of Dimes

Rickie Barbour, eight-year old son of Mr. and Mrs. Pinkie Barbour is 59 inches tall. He is also a former polio patient, now recovering.

JayCee President Speaker Tuesday At Club Luncheon

"Just because you have a small membership in your club is no reason you can't do big things," Texas JayCee president Ed Stumph of Houston told members of the Muleshoe JayCee at their luncheon meeting Tuesday.



TEXAS PUBLIC SCHOOLS WEEK has been proclaimed by Governor Allan Shivers for March 5-10. Receiving the proclamation for the sixth annual statewide observance is John McKee of Dallas (left), who has served as state chairman of the Texas Citizens' Committee for Public Schools Week since the week was inaugurated in 1951.

STRENGTH FOR THESE DAYS

Beware of covetousness, for a man's life consists not in the abundance of the things which he possesses.—(St. Luke 12, 15.)

GUARANTY ABSTRACT CO.

Complete Abstracts of Title to All Lands and Towns in Bailey County, Texas BONDED FOR YOUR PROTECTION Office in Bank Building PAT R. BOBO, Owner

Baptists Gather Here Jan. 27-28

Main Street Baptist church of Muleshoe will be host to the churches of the Plains Missionary Baptist Association when they meet Friday and Saturday, Jan. 27 and 28 in interest of Missions both at home and abroad.

The Saturday morning session will begin at 10 a. m. Principal speakers for the day will be Rev. E. L. Jones of Lamesa, Rev. Roy E. Flippo, of Amarillo, and other pastors of the Plains Association.

The Saturday afternoon business session a missionary will be elected by the messenger body of the local Association to serve in the Plains area of Texas.

End Men Named For JC Minstrel Here February 23

"Captain John's Show Boat" will pull into town February 23 and 24, and members of the crew, otherwise known as the Muleshoe JayCees, will present an evening of minstrel songs, jokes and specialty numbers in the high school auditorium.

Notice:

COTTON PRODUCERS I Can Buy Some Grades and Staples In The 1955 Cotton Loan Equities A. S. STOVALL Muleshoe, Texas Telephone 7960

NEW DODGE & PLYMOUTH CARS

NEW DODGE PICKUPS AND USED CARS — SEE — JOHN DEMPSTER

ARNOLD MORRIS AUTO CO.

YOUR DODGE-PLYMOUTH DEALER Phone 7150 Muleshoe

YOU CAN BUY AN OLDSMOBILE ROCKET IRRIGATION ENGINE

For As Low As . . . \$495 F. O. B. Muleshoe

— SEE THEM AT —

Johnson-Nix

INTERNATIONAL & OLDSMOBILE Phone 2940 Muleshoe

IS YOUR SET ACTING UP?

Call 7370, our experienced Technician CALVIN MILLIGAN Can Take care of any Model or make Television or Radio

JOHNSON-POOL

Here's why you should choose BERKELEY

It is only natural that Berkeley should have more dependable features than all the others, because Berkeley engineers pioneered the Modern Jet Water System.

Berkeley Jet Water Systems are available to you in a full range of sizes—single and multi-stage—lifts down to 200 feet. There's a combination to fit your exact needs!

Ask for our free literature and let us give you particulars on a jet system to do your job. There is no obligation for this service.

E. R. HART CO.

Phone 3300 Muleshoe

A PLEDGE to and a REQUEST of the FARMERS of the SOUTH PLAINS

About eight years ago Gifford-Hill-Western, Inc., entered the South Plains committed to developing satisfactory irrigation systems which would economically and efficiently serve the Farmers of the area for years to come.

In an exacting and complex business we have striven to deserve a reputation for efficiency, integrity and reliability. Further, our Company, which stems from Texas companies with over thirty years' performance in the Southwest, was established to grow with and aid in developing the South Plains. It is our purpose never to misrepresent our products to you; but to explain both their capabilities and limitations to the best of our knowledge.

Our past developments, we hope, justify our being classed as the leader in the irrigation pipe industry in the area in originating products and applications producing increased efficiency and more economical farm irrigation.

It is hoped that most of you know of Gifford-Hill-Western, Inc.—its products, its policies, and some of our experienced personnel! However, for fear some may have the impression that our Company's quality performance and guarantee carries a higher price tag than others,

WE PLEDGE TO YOU:

WE WILL CONTINUE, AS WE HAVE IN THE PAST, TO MANUFACTURE PRODUCTS AND INSTALL IRRIGATION SYSTEMS ONLY ON THE BASIS OF FURNISHING YOU AN INSTALLATION WHICH WILL RENDER SATISFACTORY SERVICE FOR YEARS TO COME, AND,

TO THE VERY BEST OF OUR ABILITIES AND RESOURCES, ALL OF OUR SERVICES — BACKED BY THE G-H-W GUARANTEE AND REPUTATION—WILL BE AVAILABLE TO YOU AT PRICES EQUAL TO OR LESS THAN COMPARABLE COMPETITOR ITEMS.

NOW MAY WE REQUEST OF YOU, WHEN PLANNING AN IRRIGATION SYSTEM, THAT YOU CONTACT ONE OF THE OFFICES LISTED BELOW AND GIVE US AN OPPORTUNITY TO FIGURE WITH YOU.

Sincerely,
GIFFORD-HILL-WESTERN, INC.

Bruce N. Spencer, Jr.
Vice-President

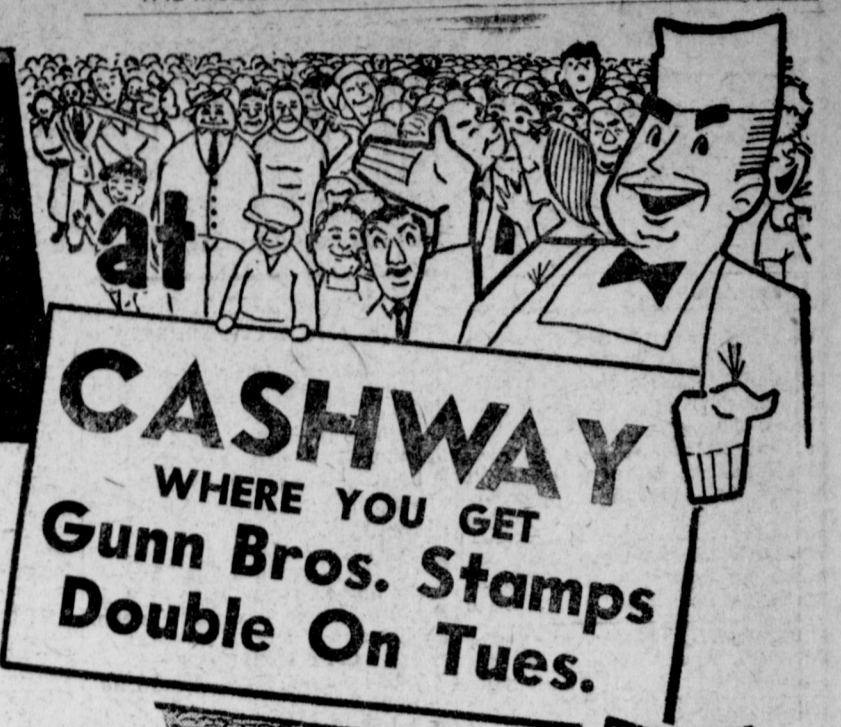
GIFFORD-HILL-WESTERN

LUBBOCK PLAIN-VIEW FARWELL TULIA HEREFORD MORTON MULESHOE AMARILLO DUMAS

LISTEN TO THE 'MULE TRAIN'

BRINGING MULESHOE NEWS
Broadcast From Muleshoe Over KICA 980
MON., WED. FRI. 10 A. M.
Another Service Of Your CASHWAY GRO.

Everybody's going to **FOOD-A-RAMA**



CASHWAY
WHERE YOU GET
Gunn Bros. Stamps
Double On Tues.

THIS is FOOD-A-RAMA! It's stupendous... It's colossal... big in value... the nation's harvest at your fingertips. Panoramic displays of nutrition... a massive show of good health on parade. This is FOOD-A-RAMA!... our store on parade with the best in foods... all for better living. FOOD-A-RAMA... for the best buys of your life!

Featuring SWIFT'S PREMIUM MEATS



SWIFT'S PREMIUM **FRANKS 43¢**
"The Meat Inside Makes the Difference"



Swift's Premium Choice Beef Arm **ROAST 33¢**

STEAKS Fillet Mignon Swift's Premium lb. 97c
PICNICS Ready to Serve 4 Lb., 8 Oz. Can \$3.19
Rolled Roast Swift's Premium Choice Boneless lb. 35c
BEEF Swift's Premium Fresh Ground lb. 29c
CLUB STEAKS Swift's Premium Choice lb. 49c



CLARY'S GRADE A FRESH DRESSED **Fryers** Each... 75c

"The Dream Chicken That Came True"

75c



SLICED - 1 LB. PKG. **BACON... 39¢**

SWIFT'S PREMIUM FULLY COOKED PICNICS LB. **29¢**
FULLY COOKED WHEN YOU BUY IT!



PURE PORK LINK **SAUSAGE... 49¢**
With The Just Right Seasoning
NEW! SWIFT'S PREMIUM BROWN 'N SERVE SAUSAGE PACKAGE TO PLATTER IN 3 MINUTES **Sausage... pkg. 39¢**

NOW! GET "NEW" PURE **Jewel SHORTENING** best for ALL baking and frying
3 lbs. **59¢**
GUARANTEED WHITE, FRESH AND PURE!

PINT JAR KRAFT MIRACLE WHIP **Salad Dressing... 29¢** | TUXEDO - 1/2's **TUNA 17¢**

Swift's **Peanut Butter** (The Wizard of Oz) 2 Lb. 2 Oz. Sand Pail 89c | **BREEZE** Giant Economy Size 69c | **BREEZE** Large Size 29c | **Liquid Detergent** Lux 12 Oz. Can 37c

Swift's Prem 12 OZ. TIN 33¢ | **Allsweet** MARGARINE 4 1 LB. PKGS. \$1 | **Pard** 3 TALL CANS 39¢ | **PANCAKE MIX** SPECIAL OFFER - 20 OZ. BOX PIONEER 15¢

Liquid Detergent Lux, 24 Oz. Can 73c | **SOAP** Lux Bath Size 2 for 25c | **SOAP** Lux Regular Size 3 for 25c

Orange Drink Hi C 46 OZ. C A N... **19¢**

Dole, 46 Oz. Fancy **Pineapple Juice** 29c | Sturgeon Bay, R. S. P. No. 303 **Cherries** Can 19c | Camp Fire, No. 2 1/2 **Pork & Beans** 19c

20 OZ. GLASS TUMBLER ZESTEE PURE **GRAPE JELLY 29¢**

The Sugar Cereal With the Fruit Flavor **TRIX** 23c | **Cherrios** Family Size 23c | **Wheaties** Family Size 23c

FOOD-A-RAMA FRESH FRUITS & VEGETABLES
CALIFORNIA FRESH CRISP GREEN **CELERY** LARGE STALK... **10¢**
CAULIFLOWER California Snow White lb. 10c
STAYMAN'S TART WINESAP **APPLES** LB. **10¢**
Oranges California Sunkist lb. 10c | **GRAPEFRUIT** Ruby Red lb. 10c



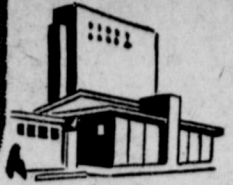
KIDDIES! Be Sure and Register for the "Lone Ranger" Gun and Belt Set to be given away FREE at the Cashway Grocery.

CASHWAY

FREE DELIVERY Phone 2440 or 2450

FROZEN FOODS
STRAWBERRIES Snow Crop 10 Oz. Pkg. 29c
WHIP-CREAM Reddi 49c
POTATOES French Fried 8 Oz. Pkg. 17c
Green Beans Snow Crop, Cut 10 Oz. Pkg. 23c

CLASSIFIED AIDS



1. Personals

WANTED: If you want to sell your 80 or 160 acre irrigated farm please write Neutzler Real Estate, 4223 34th St., Lubbock, Texas. Give price, minerals, improvements, loans, terms, etc. Please hurry. I have two cash buyers. Other listings appreciated. 1-4-2tc

WILL CARE for children in my home by day or week. 1905 N. Main, Phone 4951. 1-4-1tc

BEEF FOR LOCKER: On foot or dressed. R. L. Fields, 7 mi. So. Muleshoe. 1-3-4tc

EXCHANGE SALE: two row M-H P. T. O. Combine 100 ton engine. Need propane tank. Guar Blue Panic seed. J. T. Graham, Rt. 2, Littlefield. 1-3-10tp

WANTED: Sewing, alterations, mending, buttonholes. Mrs. Carl Case, 1212 W. Ave. E., Phone 7569. 1-26-tfc

TAX Returns Filed, Phone 7474 for appointment. 1-52-5tp

CUSTOM Mimeographing let us prepare your inventory forms. Phone 3940. 8-4-4tp

KIRBY SALES AND SERVICE: Repairs for all makes. Call Mrs. Julian Sewing Shop, 5180. 16-43-tfc

FOR SALE: Fresh milk cow and calf. Gordon Murrah, 1/2 mile So. of Progress Gin. 1-1-3tp

WILL MAKE Bedspreads and Draperies. Mrs. Carl Case, Phone 7069. 1212 W. Ave. E. 1-1-tfc

BABY SITTING WANTED: Phone 7090. 1-2-3tp

2. Lost and Found

LOST: Boy's imitation leather jacket. Black and White. W. H. Robertson, Rt. 1, Farwell, or call 5031, Muleshoe. Reward. 2-1-3tp

3. Help Wanted

LADY TO LIVE in home and care for semi-invalid mother. Mrs. E. O. Baker. 3-4-1tc

WANTED AT ONCE: Man with car for Raleigh business in Bailey County. Buy on time. See R. E. Wright, 964 W. 3rd St., Littlefield, Texas, immediately or write Rawleigh's Dept. TXA-270-304, Memphis, Tenn. 3-3-3tp

4. Houses for Rent

FOR RENT: Two bedroom house. No children. Lenau Addition Phone 5340. 4-4-1tc

FURNISHED APT.: Three rooms and bath. Phone 2630. 5-2-tfc

APT. FOR RENT: Rosie McKill, 1117 1017 W 2nd, Phone 2730. 5-4-1tc

FOR RENT: 3 room unfurnished apartment. Clovis Highway & 20th St. Phone 5290. 5-4-1tc

7. Wanted To Rent

NEED 2 or 3 bedroom home, prefer 3. Permanent, excellent references. Ph. 3970 or call Big Spring. 32053, collect. 7-1-tfc

8. Real Estate for Sale

* 320 acres good land, in water belt, improved. 29 per cent down. \$260 acre.
* 240 A. good land, 3 wells, well improved. \$350 acre.
* 240 A. good land, new well, improved. \$275 A.
* 320 A., 4 wells, has got everything. \$400 A.
* 160 A., good land, well imp. \$250 A.
* 160 A. good land, 10 in. well, no imp. \$175 A.
* 80 A., good well, good land. \$12,000.
* 3,000 acres good grass land.
* Some good dry land buys and some good city property. Many other listings.

HAPPY DYER "THE LAND MAN" Of Bailey County Muleshoe, Texas
— Salesman —
C. E. Briscoe & Judd Gaddy Phone 6580 Muleshoe

WEST 6th REAL ESTATE I. M. Stinson
1st House S. Texico Station
FARMS RANCHES CITY PROPERTY
We Make Good Farm Loans
Pho. 3530 or 6330 — Muleshoe

LOTS FOR SALE: In Pool Addition, close to High School. See Pool Insurance Agency. 8-49-12tc

FOR SALE: To be moved, three bedroom house, insulated, sub-floored, U-shaped cabinet. \$3200. 50. The Window Shop, 2427 Baylor St., Lubbock, Texas. Phone Po. 3-3581. 8-50-tfc

LANE'S LISTINGS FARM AND CITY PROPERTY

● 80 acres, 10 in. well on nat. gas, on pavement. \$10,000 will handle.
● 80 A., 8 in. well, a good buy at \$17,000. Will carry a good loan.
● 50 A., good 8 in. well, if you are looking for something close in you will need to see this. Priced to sell at \$21,000.
● 120 A., 2 good wells, 3 bedroom home, a real buy. \$350 A.
● 320 A., near Texline, 5 wells, good home.

CITY PROPERTY
● 2 bedroom home in Lenau addition.
● 3 bedroom home, also in Lenau addition.
● 2 bedroom home furnished—priced at \$5,500.

EDDIE LANE REAL ESTATE
Real Estate Phone 5350
Res. Ph. 44390 John Zahn 7619

RESIDENTIAL LOTS for sale—50x120 on Clovis highway, north of Highland Motel. Phone 4981. 8-4-4tp

FARMS & HOMES FOR SALE
* 160 A., new home, 3 room house, 3 irrig. wells, on pavement, close in. You should see this.
* 160 A., 5 room and bath, basement, good barns, on pavement.
* 40 acres, 6 rooms and bath, 1 good well, on pavement.
* 10 Acres, 5 rooms and bath, 6 in irrig. well.
* 160 A., 2 room house, 10 inch well, new land, at \$225 acre.
* Wheat Drill, 16 disc Oliver Superior with press wheels, good shape at \$100.
If you want to sell, give me your listing, if you want to buy see me.

J. E. DAY Real Estate
on E First St. Lubbock Hwy
IRRIGATED FARM for rent with sale of equipment. D. L. Morrison at Morrison Motel. 10-1-tfc

FOR SALE: Small acreage near Lubbock with railroad trackage. Rent property, lots on 34th street, 2 and 3 bedroom homes. If interested write or call Neutzler Real Estate, 4223 34th St., Lubbock. 8-4-2tc

40 BARAINS IN LAND Listed With Us
— Grass land at \$65 acre.
— 1 place to rent, crop rent.
— 1 place to sell, 253 A., \$150 A.
Dry land, the rent out of crop payments. You put in irrigation.
— 5 160 acre places, perfect land at bargain price. Would do some trading, 1/4 sec. for 80 acres.

FRIONA REALTY
Pho. 2922 — Box 203
Friona Texas 8-4-3tp

STOCK FARM
232 A. Deeded, 160 lease, 159 A. farm under irrigation. Hog pasture, 400 capacity hen house, other bldg. Cheap water rates. Two crops like 1955 will pay for place and all expenses. J. A. Parmer 1302 So. 2nd St. Tucumcari, N. M. 8-52-5tp

REAL ESTATE FARM AND CITY PROPERTY
160 A. 5 room and bath 2, 8 inch wells on elect., \$250 per A. \$16,000 loan.
80 A. good 8 inch well \$17,000.
10 A. irrigated well imp., close in.
160 A. well imp good 8 inch well 20 A. new alfalfa \$26,000, \$6,000 loan.

We Will Appreciate Your Listings
Finley and Carter Farm Bureau Office Muleshoe, Texas

FOR SALE OR TRADE
* 160 to 1280 acres. Good Soil, Shallow Water. In new rapidly developing southwestern New Mexico farming area. 20 sections already sold. Terms to suit if you are ready to start developing. Price \$50.00 per acre.
B. K. MYERS
1805 Highland Ave.
Phone Jackson 4-4320
Las Cruces — New Mexico 10-3-4tc

REAL ESTATE
* 2 labores on pavement, 3 bedroom home, \$58 acre.
* 1 section with 2 wells, good modern house. Good land, \$260 acre.
* 1 section with 2 good wells, on gas. Good land. \$175 acre.
* 160 acres on pavement, lots of improvements, 10 in. and 8 in. wells 65 A. hay. \$350 acre, with good loan.
* 240 acres on pavement, 8 in. and 10 in. wells, lots of improvements, good land.
* 80 acres, good 8 in. well. Shallow water. \$17,000.
Large and small tracts. Business buildings, and lots.
A number of good houses. If you want to buy or sell see us.

ERNEST E. HOLLAND, BROKER
Charlie D. Alexander, Salesman
Off. Ph. 3119 Res. Ph. 5449
Just West of Muleshoe Hotel
908 Ave. B. Muleshoe

FOR SALE: 12x24 one room house, new, to be moved. Contact Bill Caldwell at John Deere House, Phone 2970. 8-4-11tp

FOR RENT
354 A. Dry land farm. 81.3 acres cotton allotment. Modern 5 room house. Must buy equipment: A John Deere 4-row '49 model on butane, with lister, planter and cultivator, also 500 gal. butane tank and '49 model Ford tractor. Two row equipment, lister, planter and 2-row knife attachments. —Price \$2200. Located 5 mi. S. 1 mi. E of Baileyboro, Texas. See me at Elite Hotel, Muleshoe, Texas. 8-3-2tp

FOR SALE: 14x28 modern 2 room house and one single room house, 12x18. Anthony Jesko, 10 1/2 mi. N. Muleshoe. 8-4-3tp.

9. Autos For Sale
1950 PLYMOUTH: Four door, Excellent shape. Ideal second car at a price you can afford. See at 905 W. 5th. 9-2-tfc.

10 Farm Equip. For Sale
FOR SALE: 1951 GMC 2-ton truck. \$650. Wiedebush & Childers. 10-1-4tp

FOR SALE: One 60 HP electric motor with switch boxes, 3 yrs. old. \$1,000. T. R. Smallwood, 11 mi. NW Muleshoe. 10-1-4tp

CASE one-way plow, nearly new. Farmall tractor and planter, numerous other farm tools and equipment. Have rented farm, and selling equipment at private sale. R. L. Fields, 7 mi S. Muleshoe. 10-3-4tc

13. Appliances For Sale
FOR SALE: Servel Electrolux butane refrigerator, freezing unit 1/4 mi. north of airport, Muleshoe. L. K. Dean 13-4-2tp.

FOR SALE: Drop leaf kitchen table and chairs. Roll away bed and pads. Phone 5340. 12-4-1tc.

14. Property For Lease
FOR CASH LEASE: 3 miles from Muleshoe 80 acres all in cultivation, 16.4 cotton in '55. 8" well on natural gas. Phone 732 Levelland, by 8: am, or contact Dale Lavender, 408 Sherman, Levelland. 14-48-tfc

WILL TRADE: Equity in nice 2 bedroom home, west part town, for tractor and equipment. Rent half section dry land or more. Phone 5599, Muleshoe. 11-42tp

160 ACRES FOR LEASE with sale of equipment. 40 A. alfalfa hay, 45 A. cotton allotment. Contact W. C. Crabtree, Idalou, Texas. 14-4-1tp

FOR CASH LEASE: 100 acres, 7 mi. N. and 1 1/2 mi. E of Muleshoe. 8 in. elec. irri. well. Has 4 room modern home. \$20 per acre. See Dee Clements at REA. 14-1-4tp

FOR RENT: Blacksmith Shop and adjoining residence at Dodd, Tex. Johnnie M. Haberer Star Rt. 4, Muleshoe. 14-2-3tp.

TEXACO STATION FOR LEASE: Excellent Lamb County location. See Sam E. Fox, Conisbee, Muleshoe. 14-3-2tp

15. Farm Prop'ty to Rent
FOR CASH RENT: 614 acres with purchase of H and M Farmalls and equipment, at Stegall, 159.6 acres cotton allotment. Alvin Whiteaker, 1 mi. west of Beck Gin, south of Sudan. 15-4-2tp

16. Miscellaneous
FOR SALE: Kimball Upright Piano, \$35. Call 7811. 16-4-1tc

SPECIAL PRICES
On All Radiators, International Farmall Cores \$26 Exchange
STOVALL-BOOHER
Radiator Sales & Service Plainview, Texas

FOR DAILY DELIVERY of Lubbock Morning Avalanche or Evening Journal call Jerry White, Phone 5820. 16-2-1tc.

FOR SALE: 25 acres good hegarri bundles, \$18 per ton. Gordon Murrah, 1/2 mi. S. Progress Gin. 16-11-3tp

REGISTERED DUROC pigs and shoats for sale. 5 mi. north and 4 mi. east Muleshoe. Lloyd Quesenberry. 16-3-3tp

FOR SALE: 125 bales alfalfa hay. Guy Jacobs, 3 mi. NE Muleshoe. 1-4-2tp

REGISTERED DUROC Pigs for sale. Inquire Kelton Barber Shop. 1-4-3tp

Fire Equipment
Red Comet Automatic Fire Extinguishers
13,000 users in West Texas. 75 have had Red Comet save their homes and buildings in their absence.
Free demonstration—Write
JESS T. LEBOW
Box 962 — Hereford, Texas 3-4tp

FARMS RANCHES LOANS
Dave Aylesworth & Co. Phone 5290
Clovis Rd. & 20th — Muleshoe
Read The Journal Want-Aids

INCOME TAX RETURNS
— See —
C. C. GRIFFITHS
— At —
Ray Griffiths & Sons
Muleshoe — Phone 6030

POTATOES FOR SALE
Reds 2c Lb. — Whites 3c
BARRETT PRODUCE
50-tfc

Kelton Barber Shop
— BARBERS —
Omer Kelton
Glen Wilson

DR. B. Z. BEATY
Dentist
Office Hours: 9-12, 1-5
1314 West 1st.
Closed Saturday P. M.
Off. Ph. 2040 Res. 8511

DR. B. R. PUTMAN
OPTOMETRIST
Muleshoe, Texas
1208 East First St.

Brooks Brininstool
PIPELINE CONSTRUCTION
Call Bowen Grocery
Pho. 990-J — 809 Delano
Littlefield, Texas 4-4tp.

SEE US FOR:
● Irrigation Well Drilling, rotary or spudder.
● Water Well Drilling.
● Irrigation Well Clean Out.
● Irrigation well drilling deeper and set liner.
● Casing perforation in well.
● Pulling Casing.
● Pump repair work any make pump.
● Gearhead repair and ratio change.
● Pump installation and pulling.
● Winch work.
● Turnkey estimates on any job large or small.

D. H. SNEED SUPPLY CO.
Distributors of Layne Pumps and Continental Red Seal Engines
Box 925 Muleshoe, Texas

— LOANS —
See Us For Any Kind of Real Estate Loan That You Are In Need Of—
Can Almost Guarantee You The Amount of Farm Loan You Need
F. H. A. Loans At Par Value.
— Direct Agent For —
KANSAS CITY LIFE INS. CO.
L. S. BARRON

Fresh Fruits and Vegetables Received Each Tues. & Friday
POT PLANTS POTTED IVY
Also Potting Soil and Flowers — And —
Flowers To Be Set Out

PICK 'N PACK FRUIT STAND
Muleshoe, Texas
Phone 6080 Box 68
REMINGTON typewriters. Portable and quiet-riters. Easy terms, no money down. Muleshoe Journal.

DR. A. E. LEWIS
Dentist
Off. Ph. 3040 — Res. 6570
East of Courthouse - Mule hoc

WE BUY
Cream, Eggs, Poultry
CUSTOM POULTRY DRESSING
We Feature A Complete Line of
Everlay Feeds
Muleshoe Ice & Produce
Phone 3810
Mrs. Alex Wilkins, Prop. 3-4tc.

Political Announcements
The Journal is authorized to make the following announcements for public office, subject to action of the Democratic party primary in July, 1956.
For Representative, 96th Legislative District:
JESSE M. OSBORN
For Tax Assessor and Collector: Bailey County:
W. E. "Bill" Boothe
For Sheriff, Bailey County:
A. H. (Hugh) FREEMAN
For Commissioner, Prec. 3:
C. A. PETREE
W. H. EUBANKS
D. V. "DOSSIE" TERRELL
For Constable, Prec. 1:
J. J. REDWINE

CARD OF THANKS
May we take this opportunity to thank everyone for the lovely flowers and kindnesses during our recent bereavement.
May God bless each and every one.
Mr. and Mrs. Charles Timmins.
Mr. and Mrs. C. E. Timmins And Family.
Mr. and Mrs. M. L. Jackson And Family.

8 MONTHS OFFER
Ft. Worth Star-Telegram Daily & Sunday \$9.50
By Mail Only
Save \$2.50 over the regular 8 months rate. Subscriptions handled by

THE MULESHOE JOURNAL
Phones 7220 & 5400

CARD OF THANKS
We are truly grateful to the good friends who did so much for us during our recent sorrow. May we take this means of saying thank you for the many comforting expressions of your friendship and affection.
Also, we wish to thank Dr. Green and the nurses at the West Plains Hospital and Clinic for their help and kindness.
L. W. Dalton and children

Cotton Controls To Be Tighter In '56
Until the bacteria-carrying nematodes can be "proven" and mass produced — or until a systemic poison is developed — then mandatory planting and plow-up of cotton fields is still the best present control for the pink bollworm.
The "pinkie" infestation of Texas fields was higher in 1955 than in several previous years. Two factors were responsible:
The insect is gaining firm footholds in fields farther north than previously, and.
Drouth cut back production in many areas, causing a large pink bollworm population to concentrate in fewer cotton fields.
To combat the first factor, another control zone has been created in Central-East Texas where mandatory planting-plow up dates will be enforced. This means seven zones, incorporating 106 counties, will have deadline regulations in 1956.
Shortened Planting Dates
The increased population will be fought by decreasing the optimum planting periods in these zones and by strict enforcement of all regulations.
When the pink bollworm moth emerges from winter hibernation, it must lay eggs on cotton or okra plants. If these plants are not available, the moth dies without reproducing.
Cotton in the infested areas should be planted as late as practical to deprive the early emerging moths of a breeding site. This is the "why" of setting planting dates by law.

Hospital News

ADMITTED:
Mrs. N. W. Lee, surgery; David Peel, medical; Mrs. E. C. Crisp, medical; David Heard, medical; Bettye Maye, medical; Mrs. W. L. Shaffer, surgery; S. T. Williams, medical; Belle Flores, surgery; Don Criswell, medical; Van Rogers, medical; Mrs. D. V. St. Clair, medical.
M. C. Langhorn, medical; Mr. Cooper, medical; Mrs. McDaniels, medical; O. B. Lipps, medical; J. J. Baird, medical; Phil Province, medical; Jane Gover, medical; H. A. Arbuckle, medical; Paul Langford, medical.

DISMISSED:
Mrs. J. V. Grimes, medical; David Bratcher, medical; Mrs. Fan-

ne Clins, medical; Noretta Harrison, accident; Mrs. C. E. Reeves, medical; Annita O'Hair, medical; Beverly Faye Tiner, medical; Steve Browne, medical; A. C. Bell, medical; Annie Tully, surgery; Burris, tonsillectomy; Cathy Broddy, tonsillectomy; George Straskulla, medical; Mrs. C. S. Pike, medical; Oscar Allison, medical; Mrs. V. L. Hotack, medical.

CONGRATULATIONS TO:
Mr. and Mrs. Eliverta Olivarez on the birth of a son, Arman Jan. 23, 1956.
Mr. and Mrs. Charles Timmons on the birth of a daughter, Joy Daphne, Jan. 20 1956.

Mr. and Mrs. Howard Leon Wolfe on the birth of a son, Robert Leon Jan. 18, 1956.
Mr. and Mrs. Leobon Duane Henderson on the birth of a son, Donnie Loyd Jan. 17, 1956.
Mr. and Mrs. Cloys Norman Cowan on the birth of a daughter, Myra Joan Jan. 16, 1956.
Mr. and Mrs. Lawson Charlie Herington on the birth of a son, Rodney Scott, Jan. 16, 1956.
Mr. and Mrs. Inez Amparan on the birth of a son Inez Amparan, Jan. 14, 1956.

Mr. and Mrs. Eliverta Olivarez on the birth of a son, Arman Jan. 23, 1956.
Mr. and Mrs. Charles Timmons on the birth of a daughter, Joy Daphne, Jan. 20 1956.

Mr. and Mrs. Howard Leon Wolfe on the birth of a son, Robert Leon Jan. 18, 1956.
Mr. and Mrs. Leobon Duane Henderson on the birth of a son, Donnie Loyd Jan. 17, 1956.
Mr. and Mrs. Cloys Norman Cowan on the birth of a daughter, Myra Joan Jan. 16, 1956.
Mr. and Mrs. Lawson Charlie Herington on the birth of a son, Rodney Scott, Jan. 16, 1956.
Mr. and Mrs. Inez Amparan on the birth of a son Inez Amparan, Jan. 14, 1956.

Mr. and Mrs. Eliverta Olivarez on the birth of a son, Arman Jan. 23, 1956.
Mr. and Mrs. Charles Timmons on the birth of a daughter, Joy Daphne, Jan. 20 1956.

Mr. and Mrs. Howard Leon Wolfe on the birth of a son, Robert Leon Jan. 18, 1956.
Mr. and Mrs. Leobon Duane Henderson on the birth of a son, Donnie Loyd Jan. 17, 1956.
Mr. and Mrs. Cloys Norman Cowan on the birth of a daughter, Myra Joan Jan. 16, 1956.
Mr. and Mrs. Lawson Charlie Herington on the birth of a son, Rodney Scott, Jan. 16, 1956.
Mr. and Mrs. Inez Amparan on the birth of a son Inez Amparan, Jan. 14, 1956.

Mr. and Mrs. Eliverta Olivarez on the birth of a son, Arman Jan. 23, 1956.
Mr. and Mrs. Charles Timmons on the birth of a daughter, Joy Daphne, Jan. 20 1956.

Mr. and Mrs. Howard Leon Wolfe on the birth of a son, Robert Leon Jan. 18, 1956.
Mr. and Mrs. Leobon Duane Henderson on the birth of a son, Donnie Loyd Jan. 17, 1956.
Mr. and Mrs. Cloys Norman Cowan on the birth of a daughter, Myra Joan Jan. 16, 1956.
Mr. and Mrs. Lawson Charlie Herington on the birth of a son, Rodney Scott, Jan. 16, 1956.
Mr. and Mrs. Inez Amparan on the birth of a son Inez Amparan, Jan. 14, 1956.

Mr. and Mrs. Eliverta Olivarez on the birth of a son, Arman Jan. 23, 1956.
Mr. and Mrs. Charles Timmons on the birth of a daughter, Joy Daphne, Jan. 20 1956.

Mr. and Mrs. Howard Leon Wolfe on the birth of a son, Robert Leon Jan. 18, 1956.
Mr. and Mrs. Leobon Duane Henderson on the birth of a son, Donnie Loyd Jan. 17, 1956.
Mr. and Mrs. Cloys Norman Cowan on the birth of a daughter, Myra Joan Jan. 16, 1956.
Mr. and Mrs. Lawson Charlie Herington on the birth of a son, Rodney Scott, Jan. 16, 1956.
Mr. and Mrs. Inez Amparan on the birth of a son Inez Amparan, Jan. 14, 1956.

Mr. and Mrs. Eliverta Olivarez on the birth of a son, Arman Jan. 23, 1956.
Mr. and Mrs. Charles Timmons on the birth of a daughter, Joy Daphne, Jan. 20 1956.

Mr. and Mrs. Howard Leon Wolfe on the birth of a son, Robert Leon Jan. 18, 1956.
Mr. and Mrs. Leobon Duane Henderson on the birth of a son, Donnie Loyd Jan. 17, 1956.
Mr. and Mrs. Cloys Norman Cowan on the birth of a daughter, Myra Joan Jan. 16, 1956.
Mr. and Mrs. Lawson Charlie Herington on the birth of a son, Rodney Scott, Jan. 16, 1956.
Mr. and Mrs. Inez Amparan on the birth of a son Inez Amparan, Jan. 14, 1956.

Mr. and Mrs. Eliverta Olivarez on the birth of a son, Arman Jan. 23, 1956.
Mr. and Mrs. Charles Timmons on the birth of a daughter, Joy Daphne, Jan. 20 1956.

Mr. and Mrs. Howard Leon Wolfe on the birth of a son, Robert Leon Jan. 18, 1956.
Mr. and Mrs. Leobon Duane Henderson on the birth of a son, Donnie Loyd Jan. 17, 1956.
Mr. and Mrs. Cloys Norman Cowan on the birth of a daughter, Myra Joan Jan. 16, 1956.
Mr. and Mrs. Lawson Charlie Herington on the birth of a son, Rodney Scott, Jan. 16, 1956.
Mr. and Mrs. Inez Amparan on the birth of a son Inez Amparan, Jan. 14, 1956.

Mr. and Mrs. Eliverta Olivarez on the birth of a son, Arman Jan. 23, 1956.
Mr. and Mrs. Charles Timmons on the birth of a daughter, Joy Daphne, Jan. 20 1956.

Mr. and Mrs. Howard Leon Wolfe on the birth of a son, Robert Leon Jan. 18, 1956.
Mr. and Mrs. Leobon Duane Henderson on the birth of a son, Donnie Loyd Jan. 17, 1956.
Mr. and Mrs. Cloys Norman Cowan on the birth of a daughter, Myra Joan Jan. 16, 1956.
Mr. and Mrs. Lawson Charlie Herington on the birth of a son, Rodney Scott, Jan. 16, 1956.
Mr. and Mrs. Inez Amparan on the birth of a son Inez Amparan, Jan. 14, 1956.

Mr. and Mrs. Eliverta Olivarez on the birth of a son, Arman Jan. 23, 1956.
Mr. and Mrs. Charles Timmons on the birth of a daughter, Joy Daphne, Jan. 20 1956.

Mr. and Mrs. Howard Leon Wolfe on the birth of a son, Robert Leon Jan. 18, 1956.
Mr. and Mrs. Leobon Duane Henderson on the birth of a son, Donnie Loyd Jan. 17, 1956.
Mr. and Mrs. Cloys Norman Cowan on the birth of a daughter, Myra Joan Jan. 16, 1956.
Mr. and Mrs. Lawson Charlie Herington on the birth of a son, Rodney Scott, Jan. 16, 1956.
Mr. and Mrs. Inez Amparan on the birth of a son Inez Amparan, Jan. 14, 1956.

Mr. and Mrs. Eliverta Olivarez on the birth of a son, Arman Jan. 23, 1956.
Mr. and Mrs. Charles Timmons on the birth of a daughter, Joy Daphne, Jan. 20 1956.

Mr. and Mrs. Howard Leon Wolfe on the birth of a son, Robert Leon Jan. 18, 1956.
Mr. and Mrs. Leobon Duane Henderson on the birth of a son, Donnie Loyd Jan. 17, 1956.
Mr. and Mrs. Cloys Norman Cowan on the birth of a daughter, Myra Joan Jan. 16, 1956.
Mr. and Mrs. Lawson Charlie Herington on the birth of a son, Rodney Scott, Jan. 16, 1956.
Mr. and Mrs. Inez Amparan on the birth of a son Inez Amparan, Jan. 14, 1956.

Mr. and Mrs. Eliverta Olivarez on the birth of a son, Arman Jan. 23, 1956.
Mr. and Mrs. Charles Timmons on

Piggly Wiggly & Libby's



"BEST BUY DAYS"



S.H. GREEN STAMPS
WITH EVERY PURCHASE
DOUBLE ON TUES.

with \$2.50 Purchase
S & H GREEN STAMPS ARE
GIVEN AND REDEEMED
NATIONWIDE

Make greater savings . . . NOW . . .
with our current money-saving values
featured in our BEST BUY DAYS.
You will find Libby's and other famous
brand foods at such low, low prices
that you cannot afford to miss this
opportunity. Stock up now and save
more of your budget dollar . . . by
shopping during our BEST BUY DAYS.

APPLES Comstock No. 2 Can	25c	PEACHES Libby's No. 303 Sliced	23c
Fruit Cocktail Libby's No. 303	25c	PEARS Libby's No. 303	29c
PINEAPPLE Libby's Crushed No. 2	29c	PLUMS Libby's No. 303	21c

PEACHES

No. 2 1/2 CAN LIBBYS **29¢**

TOMATO JUICE Libby's No. 2 Can	15c
ASPARAGUS Libby's No. 303	45c
GREEN BEANS Libby's No. 303	23c
LIMA BEANS Libby's No. 303	29c
Pork & Beans Libby's 14 Oz. Can	15c
BEETS Libby's No. 303 Cut	14c
CARROTS Libby's No. 303	17c
CORN Libby's Golden C. 5, No. 303	18c
KRAUT Libby's No. 303	17c
PEAS Libby's No. 303 Garden	23c
POTATOES Libby's No. 303 Whole	17c
PUMPKIN Libby's No. 303	14c
TOMATOES Libby's, Stewed No. 303	23c
SPINACH Libby's No. 303	15c
Tomato Sauce Libby's 8 Oz. Can	9c
Tomato Soup Campbell's No. 1 Can	12c
Salad Dressing Salad Bowl Pint	29c

FRYERS SUGAR

POWDERED SUGAR C & H 1 LB. BOX	14c
COCOANUT Baker's 4 Oz. Can	20c
SHORTENING Swift Jewel	69c
CHILI Ireland's No. 2 Can	43c

CLARYS FRESH DRESSED LB. **37¢**

IMPERIAL 10 LB. BAG **89¢**

TISSUE Northern	3 for 25c
PUREX Quart Bottle	17c
KLEENEX 200 Count Box	15c
TOILET SOAP Camay Regular Bar	3 for 25c

COFFEE

FOLGERS 1 LB. CAN **89¢**

ROUND, CHOICE CALF STEAK . . . lb. **69c**

CHOICE CALF, CHUCK ROAST . . . lb. **29c**

CHOICE CALF Loin or T-Bone **.69c**

ARM, CHOICE CALF ROAST . . . lb. **39c**

PURE PORK Sausage .. 4 lbs. **\$1**

PORK CHOPS End Cuts lb. **39c**

PORK CHOPS Center Cuts lb. **49c**

BACK BONE Fresh Pork lb. **39c**

SPARE RIBS Fresh Pork lb. **39c**

HAMBURGER Fresh Ground lb. **19c**

LEMONADE LIBBYS 6 oz. CAN **12 1/2¢**

GRAPE JUICE Libby's 6 Oz. Can 19c POT PIES Libby's 8 Oz. Chicken 2 for 45c

ORANGE JUICE Libby's 6 Oz. Can 15c SPINACH Libby's 10 Oz. Pkg. 18c

LIBBY'S 10 OZ. PKG. Strawberries **25c**

FLOUR GOLDEN WEST 10 LB. BAG **69¢**

CALAVOS Large Calif. 17c CABBAGE Firm Heads lb. **7 1/2c**

LETTUCE Firm Heads lb. 15c CARROTS Fresh Bunch 15c

ONIONS Fresh Bunch 5c RADISHES Fresh Bunch 5c

IDAHO DELICIOUS APPLES LB. **12 1/2¢**

BANANAS GOLDEN FRUIT LB. **12 1/2¢**



TEXAS PRESS NEWS
DEATH TOLL MOUNTS ON TEXAS HIGHWAYS
TEXANS ARE KILLING MORE TEXANS
It's INSANE to be Unsafe!

Farwell Steers Stampede All Three Mule Teams in Saturday Games At Farwell

The Muleshoe varsity five, B team and the Muleshoe freshman team all lost to the Farwell Steers at Farwell Saturday night. The Muleshoe freshman team lost to Farwell 35 to 17, the B boys lost to Farwell's B team 39 to 31, and the Steers trampled the Mules for their largest defeat of the season, 81 to 44.

In the freshman game, Farwell led 9 to 5 at the end of the first quarter, and at the half Farwell was leading 15 to 7. Third quarter score was Farwell 33, Muleshoe 15, and the final score was Farwell 35, Muleshoe 17. Roger Mitchell was Muleshoe's high scorer with 9 points, and Lovelace was Farwell's high scorer with 16 points.

Muleshoe's B team was trailing Farwell 6 to 2 at the end of the first quarter, and half-time score was Farwell 17, Muleshoe 10. At the end of the third quarter, Farwell led 32 to 20, and final score was Farwell 39, Muleshoe 31. Bobby Sanders was the Muleshoe high scorer, making 10 points, and Smith was Farwell's high scorer with twelve points.

The Steers led the Mules 28 to 6 at the end of the first quarter, and at the half the Steers were leading 43 to 21. At the end of the third quarter, the Mules were behind 67 to 32, and in the last quarter the Steers scored 14 points to beat the Mules 81 to 44.

Bert Williams was high scorer for Farwell, scoring 31 points against the Mules, the highest any single player has scored against the Mules this season, and Eddie Witt was high scorer for the Mules, scoring 16 points.

Holt led the Mulettes in scoring, with a total of 15 points, and Alley was Dimmitt's high scorer with 25 points.

MULES VARSITY
 The Mules played a close game against the Bobcats until the last quarter, as Dimmitt had height over the Mules. The Bobcats led the Mules 47 to 11 at the end of the first quarter, and at the half the Mules were trailing 26 to 22. At the end of the third quarter, the Mules were still behind by eight points, 32 to 40. In the final quarter, Dimmitt scored 19 points against the Mules, for a final score 59 to 43. Charles Jennings and Eddie Witt had scoring honors for the Mules, each scoring 12 points, and Cole was high scorer for the Bobcats, racking up 28 points for the night.

School Cagers Take District Losses At Littlefield Gym

Muleshoe's basketball teams lost three to Littlefield Tuesday night in conference games at the Littlefield High school gym. The Mules lost to the Wildcats 55 to 47 and the Mulettes lost by eight points, 60 to 53, and the B boys lost to the Littlefield B boys 32 to 13.

Littlefield's B team was leading the B Mules 6 to 1 at the end of the first quarter, and at the half Littlefield was leading 10 to 4. At the end of the third quarter, Muleshoe was behind by 11 points, 21 to 10. In the final quarter, the Mules were helpless against Littlefield and final score was Littlefield 32, Muleshoe 13. Miles Stephens was high scorer for Littlefield with seven points, and Gerald Shanks was the Mules high scorer with six points.

The Mulettes were behind by seven points at the end of the first quarter, 11 to 4. At the half Littlefield was leading 30 to 20. At the end of the third quarter, the Mulettes were trailing by seven points, 43 to 36, and as the game ended, they were still behind by seven points, 60 to 53.

Shirley Mathieson was the Mulettes' high scorer, with 12 free throws and nine field goals for a total of 31 points. Cowin was high scorer for Littlefield with 16 points.



Pictured above are Mr. and Mrs. Neil Rockey and a few of the many guests who attended the recent open-house held at the Rockey home. The picture was made in the basement of the Rockey home, where trophies and souvenirs of the Rockey's many trips are on display.

Mr. and Mrs. Rockey have extended an invitation to everyone to call on them at any time during the afternoons, between now and February 1, at which time they will leave for Guaymas, Mexico to spend the remainder of the winter.

BWC Circle Met Monday Night In Moore Home

B. W. C. Circle of the Trinity Baptist Church met Thursday, with Mrs. J. E. Moore, with eight members and one new member present, Mrs. E. A. Glenn. We

are glad to welcome her to our Circle.

Mrs. Troy Perkins opened the meeting with prayer. The class sang, "Come Women Wield Your Power," with Mrs. Ruth Dunn at the piano.

Mrs. Janet McDonald taught the lesson on "Habakkuk". Minutes were read by Leola Stroud. Mrs. E. A. Glenn accepted to be our Mission Study chairman. Our next meeting will be Monday, Feb. 7, with Mrs. Leola Stroud.

Meeting was adjourned and refreshments were served to the following: Janet McDonald, C. M. Hinkle, Ruth Dunn, Evelyn Perkins, Leola Stroud, Marie Allen, Faye Moore, Mrs. E. A. Glenn, and hostess Mrs. J. E. Moore.



polio isn't licked yet

Join the MARCH OF DIMES January 3 to 31

TOO LATE TO CLASSIFY
 FOR SALE: '49 U. T. U. tractor. Fully equipped. Extra good condition. Kelley Barnett, Baileyboro. 10-4-21p

BROWN SUPPLY CO.
 LUBBOCK CONCRETE IRRIGATION PIPE. PLAINVIEW
 SURFACE ALUMINUM PIPE.
 "RAIN WAY" SPRINKLER IRRIGATION SYSTEMS
 GATED ALUMINUM PIPE
 — See —
BEN CHAPMAN
 Res. Phone 6859 Muleshoe Office Phone 479 Littlefield

COL. CLAYTON MYERS AUCTIONEER
 BOOK YOUR FARM SALES WITH ME
 Phone 4303 Muleshoe

Teachers Meeting February 11 Is Set

A biennial conference of teachers of the social studies has been set at West Texas State College February 11, with morning sessions climaxed by a luncheon in the Blue Room of the college cafeteria.

Speaker will be Dr. Jack Allen, head of the history department at Georgia Institute of Technology. Dr. Allen is vice-president of the National Council for the Social Studies.

About 100 social studies teachers throughout the Panhandle region are expected for the conference. The morning meetings will be held in the Broadway Iron Theatre. Luncheon reservations may be made with r. Hat-

the N. Anderson, professor of history at W.T.

Dr. Allen, who will address both morning and luncheon sessions, has worked with the National Council in several past years, including a member of the board of directors, member of the publications committee, editor of the 23rd yearbook, "The Teacher of the Social Studies", and as a member of the committee on the statement and Commis-

sion on Teachers Education. Formerly a professor at Eastern Kentucky Teachers College, Dr. Allen is the author of a number of high school government and civics text books and articles in such publications as the NEA Journal, Social Education, and the Journal of Teachers Education.

REMINGTON typewriters. Portable and quiet-riters. Easy terms, no money down. Muleshoe Journal.



She still needs YOUR HELP

Join the MARCH OF DIMES January 3 to 31



POOL INSURANCE AGENCY
 W. M. Pool, Jr. Lee Pool
 Phone 7010 — Muleshoe



MAN OF THE YEAR IN TEXAS AGRICULTURE —

Clinton Harbers, above, is the winner of the Progressive Farmer's award this year. He is an outstanding Fayette Co. farmer.



WOMAN OF THE YEAR IN RURAL SERVICE —

Dr. Jessie Whitacre, Texas Agricultural Experiment Station, has named "Woman of the Year in Service to Rural Families" by The Progressive Farmer magazine.

Program Directed By Mrs. Ship As Dorcas Class Meets

"Love Is Victory" was the theme of the program as the Dorcas Class of the Progress Baptist Church met on January 19, in the home of Mrs. Dora Barber.

Devotional, taken from I John 4:7-21, was given by Mrs. Opal Pugh. Mrs. Minnie Redwine sang "My Jesus I Love Thee". Mrs. Retta Ship was in charge of the program, and the social was under direction of Mmes. Barber and Redwine.

Present were Mmes. Ruth Bishop, Sarah Beller, Jewel Blackwell, Bessie Davis, Opal Pugh, Retta Ship, Selma Redwine, Pauline Walker, Dora Barber, and a visitor, Jewel Atkins.

High School Choir Concert In Canyon

CANYON, Jan. 25 — Three high school choirs have been selected to perform at the fifth annual choral clinic and workshop Feb. 2 at West Texas State College. Some 600 or 700 choral students from the Panhandle Interscholastic League Region XI are expected to participate.

Dr. Warner Imig, dean of the school of music at the University of Colorado, will be guest consultant and conductor of a mass choir. He will criticize the demonstration choirs and point out techniques for improvement in performance.

The demonstration choirs will perform at the morning program, to start at 9 a. m. in the Administration Building auditorium. Registration opens at 8:30 a. m. The program opens with demonstrations of several numbers by the Dumas High School Girls'

CONGRATULATIONS
 — TO —
Wagnon Grocery
 On Your GRAND OPENING
 In Your New Location At 1014 Clovis Road

Bell

Quality Checkd

CONFERENCE SCORE: Won One, Lost One
Mules, Mulettes Lose District Tilts To Dimmitt; B Boys Team Only Victor

The Muleshoe Mules and Mulettes varsity teams lost both conference games to Dimmitt here Friday night, with the Mules' B team winning the only victory for Muleshoe. The B boys beat the Dimmitt B squad 39 to 29, and the varsity Mules lost to the Bobcats by a big margin, 59 to 43. The Mulettes lost to the Bobbies by 19 points, 60 to 41.

The Barron Agency HARTFORD
 L. S. BARRON Phone 3940
 — South Side of Courthouse —
 Fire Insurance Auto Insurance
 Workers' Compensation

A HOLSUM WISH

Holsum
 WHITE ENRICHED BREAD

FOR SUCCESS TO

WAGNON GROCERY
 IN THEIR BEAUTIFUL NEW BUILDING

BROWN SUPPLY CO.
 LUBBOCK CONCRETE IRRIGATION PIPE. PLAINVIEW
 SURFACE ALUMINUM PIPE.
 "RAIN WAY" SPRINKLER IRRIGATION SYSTEMS
 GATED ALUMINUM PIPE
 — See —
BEN CHAPMAN
 Res. Phone 6859 Muleshoe Office Phone 479 Littlefield

COL. CLAYTON MYERS AUCTIONEER
 BOOK YOUR FARM SALES WITH ME
 Phone 4303 Muleshoe

OUR SINCERE CONGRATULATIONS
 — TO —
WAGNON GROCERY
 — ON THEIR —
GRAND OPENING

In their New Spacious Building at 1014 Clovis Road
 MAY YOUR OPENING BE A GRAND SUCCESS
 AND
 YOUR FUTURE BRIGHT WITH PROSPERITY

BEN E. KEITH CO.
 FRUITS, VEGETABLES AND FROZEN FOODS
 LUBBOCK TEXAS

WAGNON'S GRAND OPENING

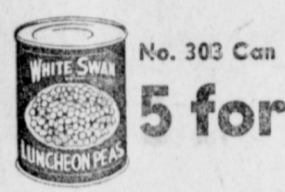
SUPER SERVICE! SUPER VALUES! SUPER SAVINGS! SUPER QUALITY!

Saturday January 28

Our Large Parking Lot On The West Side of Our Store Building Will Provide Plenty of
FREE PARKING SPACE FOR ALL CUSTOMERS

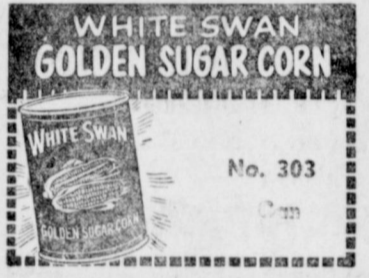
FREE!

FREE orchids for the ladies
 FREE Balloons, Ice Cream, Candy, Suckers, and a 10c Comic Book for the Children.
 FREE Cigars for Dad
 FREE White Swan Coffee will be served free all day Saturday
 FREE 25 Baskets of Groceries
 FREE 4 Sets of Dishes, Service for 6
 Register all this week — you do not have to be present to win!



Luncheon Corn White Swan No. 303 Can 6 for \$1
5 for \$1

White Swan Marshmallow Cream Jr. 2 for 45c



Tomato Sauce White Swan 7 1/2 Oz. Can 12 for \$1
6 for \$1
BEANS Ranch Style No. 300 Can 8 for \$1
PEARS White Swan No. 303 Can 4 for \$1
Crushed Pineapple No. 2 Can 4 for \$1
Pineapple Juice 46 Oz. Can 3 for \$1

Betty Crocker SUGGESTS

GOLD MEDAL FLOUR 10 Lb. Bag 89c
SOFTASILK Lg. Box 47c

Betty Crocker MIXES

BISquick Lg. Box 47c
PIE CRUST Lg. Size 39c
PEANUT DELIGHT 35c

CHOCOLATE MALT 35c
WHITE CAKE 35c
YELLOW CAKE 35c

DEVIL'S FOOD 35c
MARBLE CAKE 35c
HONEY SPICE 35c
BROWNIE MIX 37c
ANGEL FOOD 55c
GINGER BREAD 29c

Betty Crocker FROSTING MIXES

CHOCOLATE FUDGE 35c
CHOCOLATE MALT 35c
PEANUT CREME 35c

Betty Crocker CEREALS

WHEATIES 12 Oz. Box 24c
KIX 9 Oz. Box 25c
CHEERIOS 10 1/2 Oz. 24c
SUGAR JETS Box 25c
Fruit Flavor TRIx 8 1/2 Oz. Box 24c
PICK-A-PACK 35c

CAIROSE ELBERTA, NO. 2 1/2 CAN
Peaches 4 For \$1

FRESH FRUITS & VEGETABLES

ORANGES Sunkist lb. 9c
GREEN ONIONS OR RADISHES lg. bunch 5c
CELERY Fresh Crisp Large Stalk 2 for 25c
ONIONS Spanish Sweet lb. 7c
Potatoes No. 1 Idaho Russett 10 Lb. Poly Bag 55c

LETTUCE FRESH FIRM LB. 7c

FROZEN FOODS

Orange Juice Donald Duck 6 Oz. Can 15c
CUT CORN Bird's Eye 10 Oz. Pkg. 19c
Pot Pies Banquet, Beef, Turkey, Chicken each 21c
Green Beans Bird's Eye, Cut 10 Oz. Pkg. 23c

FROZEN, SLICED — 10 OZ. BOX
Strawberries 19c

CHOICE MEATS

PORK CHOPS Lean & Tender lb. 39c
PORK ROAST Boston Cut lb. 29c

ARMOUR'S STAR
BACON LB. 39c

ROUND STEAK Choice Grade lb. 69c
HAM Cudahy's Puritan 3 lb. can \$2.69

FRESH GROUND
Hamburger 5 Lbs. 98c

CHEESE Colby's Fully Aged lb. 49c
SAUSAGE Vance's 2 lb. bag 89c

CLARY'S GRADE A TURKEY
HENS 6 to 12 Lb. LB. 49c

WHITE SWAN — 46 OZ. CAN
GRAPEFRUIT JUICE 4 for \$1

Apricot Nectar White Swan 46 Oz. Can 39c
Diced Carrots No. 303 Can 2 for 25c



TALL CANS
PET MILK 2 for .25c



WHITE SWAN NO. 303 CAN
SAUER KRAUT 15c

Strawberry Preserves White Swan 20 Oz. Glass 49c
Potatoes White Swan, Whole No. 303 Can New 2 for 29c

WHITE SWAN, WHOLE — NO. 303 CAN
GREEN BEANS 4 for \$1

Turnip Greens White Swan, MUSTARD OR No. 303 Can 2 for 25c
Apricot Preserves White Swan Peach or 20 Oz. Glass 39c



10 Oz. Can
7 for \$1



1 LB. CAN WHITE SWAN
Coffee 87c

WHITE SWAN — 14 OZ. BOTTLE
Catsup .. 19c

GLADIOLA
BISCUITS 6 for 49c

WAGNON GROCERY & MKT.

PHONE 4060 1014 Clovis Road DELIVERY SERVICE Across Street From Johnson-Nix MULESHOE

Tea Is Highlight Of Season For O. E. S. Members

One of the loveliest affairs of the season was a tea given by Muleshoe Chapter No. 792, O. E. S. Sunday afternoon, January 22, in the American Legion Hall, honoring Deputy Grand Matron, Margaret Wilson of Dimmitt, and other Grand Officers.

The hall was beautifully decorated in pink, blue and silver. Large styrofoam stars, sprayed

with silver, and having pink satin streamers, studded with pink carnations at the base, were placed on the lace covered tables.

The serving table was covered with a hand-crocheted cloth over pink, and the center piece was a large star set on a base of pink and blue ruffled tulle, studded with pink carnations. Across the center of the star was "Margaret" in pink letters.

Lorraine Green and Mickey Bryant presided at the silver office and tea service at either end of the table.

The receiving line was composed of: Mrs. Lola Bray, Worthy Matron; W. F. Creamer, Wor-

FAMOUS TEXANS' RECIPES

Imagination Is Key To Creative Culinary Art



E. Waggoner Biggs

Maybe it's surprising that America's top sculptress is planning a cookbook. And maybe it isn't. Certainly, imagination is an important quality, both in bringing moulding clay to life, and in cooking a gourmet's taste. Electra Waggoner Biggs is an artist both in the studio and the kitchen.

Few Texans have not caught their breath on viewing the magnificent 15-foot equestrian statue of Will Rogers and his horse, Soap Suds, which stands in front of the Will Rogers Memorial Coliseum in Fort Worth. Most of them would be amazed at the culinary skill of the petite artist who is at home on the vast Waggoner ranch near Vernon, but who ranges the world collecting interesting art subjects — and recipes.

Scorning the unreal and the abstract, Mrs. Biggs has the superb talent of catching the true qualities of her subjects and translating them in her medium. Comparable is her flair for beef cookery, the herbs and spices she recommends in meat dishes, the distinguished shapes she gives ground beef, and her lack of tolerance for "substitutes." A year of preparation has already gone into her cookbook, prefaced by fifteen years of collecting interesting recipes on two continents.

To Texans, the heroic Will Rogers figure is probably Electra's best known and most loved work. It took five years to complete. From 200 photographs, many sittings and stand-in models of Rogers and Soap Suds, she created a one-foot model. This was then painstakingly enlarged to a four-foot model, and three years later cast in bronze. Only then was the final enlargement to fifteen feet made possible.

The fifteen-foot figure was cast three times; first in plasterine, then in plaster, and finally in bronze.

Mrs. Biggs took up sculpture early in life, studied under Katherine Breese in New York, Arnold Guisbuhler in Boston, and for several summers in France. Her first bust, cut in Paris, won third prize in the Salon d'Automne. Her

works have since been shown in dozens of galleries and exhibitions. Many outstanding images bear the name of the Texas girl who, as Electra Waggoner, for years maintained her own New York studio, and worked with bronze, marble, stones, and gold. Among her portrait plaques and busts are works of President Dwight D. Eisenhower, the late great football coach Knute Rockne, aviatrix Jacqueline Cochran, actress Mary Martin, actor Victor McLaglen, John Nance Garner, and the late Amon G. Carter.

The Texas Beef Council considers Mrs. Biggs' beef recipes works of art also. She encourages homemakers to "dress up" the less romantic cuts of beef, just as she englightens common New York Sauerbraten with red cabbage and potato dumplings in a superb example of imagination in the kitchen.

SAUERBRATEN
(Yield: 4-6)
1 pot roast, family-sized
Onion rings
Carrots, thinly sliced
Bay leaves
1 cup vinegar
1 cup water
1 dozen ginger snaps
2 tablespoons brown sugar

Place beef in bowl and cover with onion rings, carrot slices and bay leaves. Pour over it a hot mixture of vinegar and water. Store in a cool place and soak for three days, turning daily. Drain. Brown over low heat; simmer in ¾ cup vinegar mixture until tender. Remove from pot. Using favorite recipe, make a thick brown gravy. Stir in ginger snaps and brown sugar.

For sweet-sour red cabbage, saute 1 sliced onion in 3 tablespoons shortening, add 1 head shredded red cabbage, salt and pepper to taste, 2 tablespoons each brown sugar and vinegar, 1 sliced apple and a cup of water and steam for 1½ hours.

Potato dumplings are best if the boiled potatoes (about 6 medium ones) are riced or grated — not mashed. To the potatoes, add 1 cup browned croutons, 1 teaspoon salt, 2 well-beaten eggs, 1 cup of flour. Form mixture into dumplings. Boil 12 minutes in salted water. Serve covered with bread crumbs browned in butter.

thy Paton; Mrs. Margaret Wilson, Deputy Grand Matron; and Mr. Wilson; Mrs. Flora Besset Boone, Past Grand Matron and member of Welfare Committee of the General Grand Chapter; Mrs. Thelma McReynolds, of Dallas, Chairman of Welfare Committee of the Grand Chapter of Texas; Pat Boone, Past Grand Patron; Mrs. Anna Lucy McAdams, Associate Matron and Elbert Nowell, Associate Patron.

Mrs. Mary Farley, Secretary of Muleshoe Chapter, presided at the guest register. Corsages were pinned by Miss Elizabeth Harden, Past Matron. Musical selections were rendered during the tea hours, by the talented twins Don and Lavonne Copley and Darla Johnson and Janelle McGuire.

Chapters represented other than Muleshoe, were: Dimmitt, Littlefield, Dallas, Plainview, Hereford, Lockney, Floydada, Friona, Bovina and Clovis.

Assisting with the hospitalities were: Iris Butts, Peggy Childers, Margaret Epps, Hazel No-

well, Clara Lou Jones, Grace Morris, Louise Bushice, Mildred Wings and Myrtle Creamer. About 100 guests attended.

Marvis Shivers Circle Met At Barron Home

Members of the Marvis Shivers Circle enjoyed Bible Study Monday afternoon, at the home of hostess Mrs. Lela Barron, who was assisted by her daughter-in-law, Mrs. L. S. Barron.

The two ladies served delicious refreshments of cake and coffee at the close of the meeting. Opening prayer was led by Mrs. Fay Cox and the program was led by chairman Miss Lillie Williams.

A short business session followed the program. Attending were Miss Lillie Williams and Mmes. Lois Shook, John Watson, Eddie Lane, H. L. Blackburn, H. L. Flanagan, Sarah Payne, A. C. Bray, E. H. Kennedy and Faye Cox.

Needmore HD Club Will Sponsor Candidate Talks

The Needmore community center Home Demonstration Club will sponsor a candidate speaking in the community building at Needmore Friday night, May 1.

All candidates for public office will be notified and urged to attend. The public is invited also.

A program with entertainment on the occasion will be announced later.

Pleasant Valley H. D. Club To Work On Crafts

Mrs. Allen Haley, president of the Pleasant Valley Home Demonstration Club, presided when that organization met in the home of Mrs. C. V. Landers last Thursday, Jan. 19.

A favorite Bible verse or quotation was used in answer to roll call.

By-Laws and constitution for the club, which had previously been compiled by three of the members was adopted by the remaining members of the club.

Mrs. Doyle Turner gave an interesting report as a delegate to the HD Council meeting held recently in Littlefield.

Members are planning to meet for an all day workshop in the Haley home on January 26. They will work on the planters, first project on the club in crafts.

Refreshments were served to Mmes. Elmo Stevens, Alton Taylor, Seaborn Moore, Roy Taylor, A. E. Green, George Wuertlein, Allen Haley, and Doyle Turner. Next meeting will be at 2:30 pm, Feb. 2, in the home of Mrs. B. H. Bickel.

Certificates Rec'd. By OES Members Attending School

Harmony of the Stars Session of Eastern Star School was held in Plainview Thursday, Jan. 19.

Mrs. Mary Farley was School Secretary and she was assisted by Mrs. Wynnie Dunn, Muleshoe Chapter.

Mrs. Lola Bray, Worthy Matron, filled the station of Electa in the morning session, Associate Matron in the afternoon and Adah in the evening. Elbert Nowell, Associate Patron, was director of songs.

The sessions were very interesting and instructive, with a total of 224 certificates of proficiency being issued.

Those from Muleshoe receiving "A" Certificates were: Wynnie Dunn, Viola Layne and Mary Farley. Those receiving B Certificates were: Lola Bray, Elbert Nowell, Hazel Nowell, Anna Lucy McAdams, Myrtle Creamer, Ada Thomson and Jewell Strong.

Other attending from Muleshoe were Mrs. Ruth Dunn and Inez Kennedy, who were on the program at the banquet, served in the Hilton Hotel, and Mrs. Lavonne Hinkson.

One of the highlights of the evening session was a beautiful drill by the Rainbow Girls of



Headed by a newly developed automatic transmission, tubless tires and more powerful eight-cylinder engines, an impressive improvement marks the new Chevrolet trucks. The above half-ton pickup typifies the styling, visibility and convenience of the 1956 line.

Muleshoe H. D. Club To Donate To March Of Dimes

An all day meeting was held by members of the Muleshoe Home Demonstration Club Tuesday of this week, in the Club room.

Attending were Mmes. W. W. Smith, S. C. Caldwell, M. E. Oden, M. L. Oswald, C. H. Gillis, Mary Ratliff, Opal Robinson, Francis Bruns, Laverne Simmons, Bessie Fletcher, C. E. Briscoe, Fred Bruns, Barry Lewis, Jean Landers, Walter Witte, J. E. Day, Alleen Kriegel, W. R. Bowers, D.

Dimmitt Assembly No. 236.

The gifts to the Grand Officers were presented, very charmingly, by Mrs. Anna Lucy McAdams, who recited lovely poems while making the presentations.

At the close of the evening session a tea was given by the hostess Chapter: Plainview, Muleshoe, Dimmitt, Canyon City, Earth, Friona, Olton, Floydada, Happy, Hereford, Leonard, Lockney, Petersburg, Silverton, Tulla, and Bovina.

E. Beller, and H. G. Griffiths. Club voted to donate \$5 to the March of Dimes. The Sunshine committee is to be composed of Mmes. C. E. Briscoe and J. E. Day. Mrs. A. W. Copley was elected nominee to council for T. H. D. A. Chairman. Mrs. S. C. Caldwell was elected nominee to council for delegates to the District Meeting at Lamesa on April 6.

Mrs. Briscoe read a poem about "Toed Homemakers". Hostess award of two towels was won by Mrs. Oswald.

The ladies spent the day making hats, with fourteen being completed. Mrs. Oden, as hostess, served punch and cookies. She was assisted by co-hostess Mary Rat-

liff. Club will meet February 14, at the home of Mrs. Walter Witte.

Visitors were Mmes. Ragsdale, Fawinkle, Anna Jane Rudd and daughter, Fern Davis, O. M. Self, Joe Sinnacher, and T. R. Smallwood.

MY HOME at 1307 West 7th. For Sale Immediately

Vance Wagnon

FABULOUS — MH-50
THE MIRACLE ENGINEERED
BIG 3
333 — 444 — 555
TEXAS MACHINERY CO.
Muleshoe Texas

Those Who Compare Choose REGISTERED Shur-Rane

...with **SHUR-RANE** PORTABLE IRRIGATION

Let our irrigation experts show you how you can have all the water you need at exactly the right time...and still reduce your water and labor costs. Increase profits the easy **Shur-Rane** way. Drop in today and talk over your problems.

Easy to set up and move. Self-locking fittings—finest available. Fits all types of ground—no leveling needed.

BE SURE WITH SHUR-RANE

1. Positive Self-Locking Latch makes connecting and disconnecting of lines easy under all field conditions.
2. Pipe Slides Easily up lip guide into unobstructed coupler entrance. No stooping to fasten or unfasten.
3. No Springs or Gadgets to rust and clog.
4. Raised Foot Pad prevents grass and dirt from entering Coupler.
5. Lines Are Leak Proof under pressure and self-flushing when pressure is relieved. Easy to move and carry.
6. Aluminum Alloy used virtually assures unbreakable Couplers and Fittings.
7. Couplers and Fittings are full size and friction free.

Ask Us About Our Shur-Roll — The Labor Saving Sprinkler System On Wheels

30% Down • 3 Years To Pay
PEERLESS PUMPS

PLAINVIEW HIGHWAY Muleshoe

BPS TINT-N-COLOR

Beats the Rainbow for Colors ...Choice of 3 Finishes, Tool

For Lovely Walls, Ceilings and Trim

NOW you can be sure of the right color... be sure of the right finish. And there's no fuss or bother. No guesswork. Easy to do, fast-drying and long-lasting, too! BPS TINT-N-COLOR assures you the finest in finish. World's loveliest colors—300 to select from! It's the modern way to decorate! BPS TINT-N-COLOR easily applied by brush or roller.

300 New, Exciting Colors

3 Finishes—Alkyd Flat, Alkyd Semi-Gloss, Latex

REDECORATE YOUR HOME — No down payment, 36 months to pay on labor and materials.

HEATHINGTON LUMBER CO.
CLOVIS ROAD Muleshoe, Texas
PHONE 7970

AMERICAN TV RADIO & TV SERVICE

Antenna Repairs and Installations — All Work Guaranteed —

BOB GLASS Technician

Clovis Highway Phone 3400
Across From After 7 p. m.
Griffiths Elev. Phone 7824

ARMY SURPLUS BUILDINGS For Sale CHEAP

ON AIR BASE ROAD WEST OF CLOVIS
PHONE 5501

BENNETT, ESTES AND BOZEMAN
Clovis New Mex.

NOW ANTHONY'S Presents Colorful New Creations In **COTTON** Dramatic New Cotton Dresses Delightful Selection of Styles

One of the most colorful and unusual collections of better cotton dresses we have ever presented at this wonderfully low price. All top quality, all superbly tailored to look so much more expensive. Choose from Floral, Paisley, and Novelty prints, Stripes, Checks or plains. Embossed cottons, Rime-and-Ready no iron cottons. Hundreds of styles in the newest neckline, sleeve and novelty trims. Make plans now to see this exciting array of crisp new cottons.

279

We urge you to be your own comparison shopper. See for yourself one of the greatest cotton dress buys ever. Sizes 9-15, 16-20, 21-24½, 46-52.

Anthony's
C. R. ANTHONY CO.

School Lunchroom Menu For Week of January 30 Listed

The menu for next week at the Muleshoe school lunchroom is as follows:

MONDAY
Pork chops with gravy, cream-potatoes, buttered peas, fruit jello, cake with lemon icing.

TUESDAY
Red beans, baked potatoes, spinach, grapefruit sections, cornbread, and butter.

WEDNESDAY
Creamed tuna with little biscuits, green beans, scalloped potatoes, vegetable salad, hot rolls and butter.

THURSDAY
Weiner on a bun, chili sauce, onions and mustard, white beans with ham hock, fruit salad, peanut butter cookies.

FRIDAY
Fried chicken, green beans, creamed potatoes, lettuce salad, apple cobbler with ice cream, hot rolls and butter.

RECEIVES DEGREE
College Station, Jan. 29 — The following students received advanced degrees at the graduation ceremonies, Jan. 20, at Texas A. & M. College.
Post Graduate, Ernest D. Rivers, Muleshoe.

The Muleshoe Journal

DEDICATED TO THE PROGRESS AND DEVELOPMENT OF BAILEY COUNTY AND THE GREAT MULESHOE COUNTRY

VOLUME 35, NUMBER 4

SECTION II — 8 PAGES

THURSDAY, JANUARY 26, 1956

George Mahon Testified On Cotton Staple Length Before Senate Group

Rep. George Mahon (D-Texas) testified before a recent session of the Senate Agriculture Committee that a proposed plan to base cotton price supports on one-inch staple cotton would bring "widespread dissatisfaction and heavy losses to cotton farmers."

Mahon sharply attacked what he termed a "double-barreled threat" to cotton farmers in two plans which have been incorporated in a suggested bill and which are being actively considered by the Senate Committee on Agriculture.

One of the proposals, which was supported by President Eisenhower in his farm message to Congress, would make one-inch staple cotton the basis for support prices.

The other would provide for 90 per cent of parity on one-inch staple cotton and a lower support on cotton of less than one inch staple.

Regarding the President's proposal, Mahon told the Senators if the support price in 1955 had been based on one-inch staple instead of 7.8 inch as provided by the present law, it would have reduced the price of cotton by 2.85 cents per pound, by \$14.25 per bale and would have meant a loss to Texas cotton farmers of about \$60 million and a loss on the nation's 14 million

bale cotton crop of \$200 million. "Of course, all of the cotton did not go into the government loan," Mahon said, "but the effect on the price was there just the same. The reduction of the price of cotton under the program in 1956 would be 3-46 cents per pound -- that is if the support level is changed from 7.8 inch to one inch."

"That would mean," Mahon continued, "a loss of \$17.30 per bale and a loss of \$242 million on 14 million bales."

The other proposal which Mahon opposed calls for special preference for long staple cotton and a lower parity support for cotton of less than one inch.

Mahon denied that short staple cotton was responsible for the cotton surplus. He explained that 62 per cent of all U. S. cotton in government hands last August 1 was one-inch staple. He said, therefore, that the great

majority of the surplus cotton in government hands is long staple.

Mahon insisted that there was a need for both long and short staple cotton and that the proposal to provide a lower level of parity for short staple cotton was rank discrimination.

"Such action would be a body blow to the cotton farmers of Texas where 79 per cent of all cotton of less than one-inch staple is produced," Mahon testified. He appealed to the Senators to reject this portion of the proposed bill.

Mahon declared that adoption of these two proposals would reduce the income of the cotton farmer far in excess of \$200 million a year.

"It would be hypocrisy for Congress to say it is trying to take care of the problems of the cotton farmer and come up with a law which would reduce

John G. Hutton, Mgr. SS Administration Lubbock, Spoke To Group Here Last Week

John G. Hutton, Manager of the Social Security Administration from Lubbock, spoke to a group of farmers, home demonstration club leaders and other interested persons in the district courtroom in Muleshoe last Thursday afternoon.

Approximately 45 people heard Mr. Hutton discuss the in and outs of social security for farmers. The speaker told the listeners to send for a social security number if they did not already have one. If they had not received the number when the time came to send it in, send the money in without a number. As Mr. Hutton said, "They can fine you for not sending the money in on time, but they can not get mad at you for not sending the number with it then!"

After his talk, the group asked the social security representative many questions. Much interest was evident on the question of paying social security for Mexican nationals. According to Mr. Hutton if a worker was a Mexican national the farmer does not have to pay social security on him. Contract workers were another group brought out in the questioning.

Hutton stated that if you contracted for a group of workers from one man and only paid the money to that one man, he paid social security on the other workers. Another point was brought out regarding farmers now 65 years old or older. They can pay their social security for 1955 then sell as much as \$800.00 worth of crop in 1956 even though it was produced in 1955 and immediately apply for Social Security benefits and start drawing payments about April first.

The social security representative was asked to speak to this group by the county agricultural agent, J. K. Adams and the home demonstration agent, Mrs. Mollie Stinson. The agents felt the need for such a meeting because so many had asked questions recently about social security. The home demonstration clubs will have a program on social security next month and the leaders

will use the information from this meeting.

Delbert Richardson of Maple, after making inquiries, reports that he is informed that Mexican Nationals, with visas or otherwise, must pay income tax on any wages they make in this country in excess of \$500. Such Nationals will not be allowed to pay Social Security on wages earned in the United States.

Even though they do not come under Social Security regulation the income tax must be paid on \$600 earning and over.

Irrigated Pastures Is Title For New A&M Bulletin

Six years of research and demonstration work with grasses and legumes grown under irrigation in South Texas is summarized in a bulletin recently released by the Texas Agricultural Extension Service and the Texas Experiment Station.

The authors E. M. Trew, extension pasture specialist and C. S. Howland, formerly associate agronomist in the lower Rio Grande Valley, say it is possible to produce 1,000 pounds of beef gain or milk equivalent per acre on well managed irrigated pastures in South Texas. Irrigated pastures, they continue, offer good profits in milk or beef production and the best known method of soil improvement.

Many of the pasture plants discussed in the publication are adapted only to the South Texas area, says Trew but the management principle outlined apply to irrigated pastures anywhere in the state. Also that the fertilizer and grazing management is applicable to any fast-growing cultivated pasture plants.

The new bulletin is B-819, "Irrigated Pastures for South Texas" and may be obtained from the local county agent's office or from the Agricultural Information Office, College Station, Texas.

Women Marines To Recruit In Lubbock

Technical Sergeant Anita M. Alence, Woman Marine Recruiter for Dallas and North Central Texas area announced that under a new program now being offered by the local Marine Recruiting Station, young ladies between the ages of 18 and 30 could now enlist in the Marine Corps for a period of three years.

Sergeant Alence, a veteran of 13 years service in the Marine Corps, pointed out that the new program was in recognition of the 13th birthday of the Women Marines, founded on 13 February, 1943.

It was pointed out that in addition to the 30 days vacation with pay, free medical and dental care, and the new attractive uniforms by Mainbocher, Women Marines are now serving at overseas stations such as Hawaii, Germany and Italy.

Sergeant Alence said that Women Marines undergo Basic Training at the world famous Marine Corps Recruit Depot, Parris Island, South Carolina. This training is of 8 weeks.

The Woman Recruiter said the Marine Corps may send you to a school for specialized training which will prepare you for advancement. And you may earn college credits in spare time thru the extension courses of the Marine Corps Institute.

As a Marine, you would be working side by side with Leathernecks in such fields as Aviation, Photography, Personnel Administration, Communication, Disbursing and in many other important positions.

The Marines sum it up in this way: Earn — Learn — Travel.

For more information contact your local Marine Recruiter at Room 200, Post Office Building, Lubbock. He will be happy to answer your questions or arrange a personal interview with Sergeant Alence.

AT STOCK SHOW
Texas 4-H Club members and Future Farmers, to the number of 183, have entries in the junior lamb show of the Southwestern Exposition and Fat Stock Show, Jan. 27 through Feb. 5. The junior show lambs were judged Jan. 28.

Exhibitors are: Muleshoe, Jerry Blaylock, Wayne Cherry, Joe Cross, Jerry Garlington, Don Holmes, Arthur Splawn, Bob Stack, John Vinson.

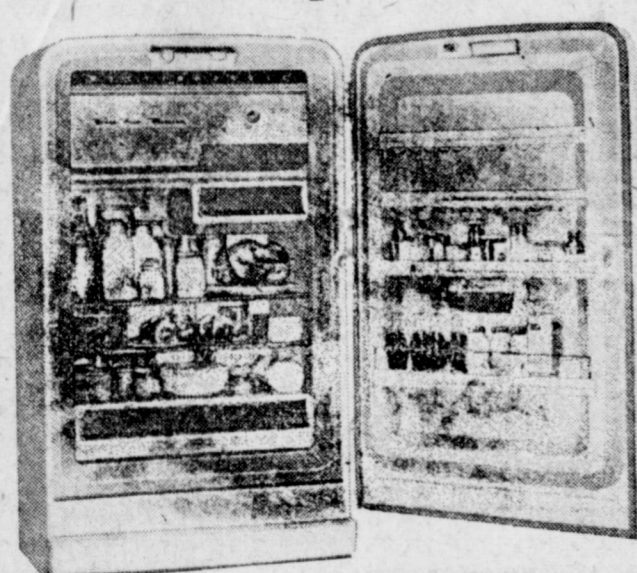
VISITED IN PAMPA
Mr. and Mrs. Guy Jacobs spent the past weekend in Pampa visiting her son J. W. Holt and family.

SIMS HAD GUESTS
Mr. and Mrs. M. M. Morris and Mr. and Mrs. Myrtle Stephens were Sunday guests in the Lee Sims home.

Minneapolis Moline
"NEW" TWO-WAY PLOWS \$312.50
FRY & COX BROS.
Muleshoe Texas

ONLY ONE WEEK LEFT OF OUR BIG SALE

lowest price ever for a genuine 12 cu. ft. FROST-FREE Westinghouse



Fully automatic defrosting REFRIGERATOR
NO defrosting to do in the Freezer
NO defrosting to do in the Refrigerator
NO messy defrost water to empty!

WAS 399.95
NOW 299.95
YOU SAVE 100.00

Exchange On Your Old Refrigerator

NOW...NEW 1956 WHIRLPOOL gives you a new method of AUTOMATIC WASHING

two separate washing actions in one washer!



FOR SHEEREST FABRICS
low speed, short time
New, extra gentle 1/2 lower speed and shorter time for washing, rinsing and damp drying your most delicate fabrics and nylons.

FOR REGULAR CLOTHES
normal speed, regular time
Completely separate, Whirlpool's regular washing action is for gently washing linens, work clothes and all regular fabrics.



WASHER \$309.95
DRYER \$199.95
BOTH FOR \$425 ONLY

Whirlpool
Two-Speed, Two-Cycle
AUTOMATIC WASHER

No other washer gives you all these advantages

- Fully-illuminated, beautiful Guide Lite control panel.
- 3-Level water control automatically saves water.
- 3-Temp water selector with fabric guide.
- Suds-Miser saves over 1/2 cost of soap and hot water.
- 7 Rinses are most thorough yet use less water.
- Ultra-Violet lamp helps sanitize clothes.
- Dual Cycle-Tone tells when washing is finished.
- 5-Year parts warranty on sealed-in transmission.

Talk to the woman who uses a Whirlpool, then come in and see us!

RCA 21-INCH TV
Reg. Price 374.95
NOW ON SALE **299.95**
PLUS TAX

FREE! ANTENNA
AND 40 FOOT TOWER WITH SET

25% OFF ALL DINETTE SUITS
TABLE AND SIX CHAIRS — PLASTIC WITH AIR FOAM CUSHIONS

SLIGHTLY USED **MAYTAG WASHER**
NEW MODEL
90 DAY FREE SERVICE
Reg. Val. \$150.00

NOW ON SALE . . **99.95**
EXC.

20% DISCOUNT ON ALL GIFT ITEMS

Johnson - Pool
TIRE AND APPLIANCE
PHONE 7370 MULESHOE

Irrigation Time

TURNKEY JOBS

- Chrysler Motors
- On Pumps
- Sprinkler Systems
- Motor Overhauls

Check with us for—

BEST SERVICES REASONABLE PRICES
TRAINED MECHANICS WASH & GREASE
FIELD SERVICE MAN

NEW AND USED CARS AT WHOLESALE PRICES

MORRISON MOTOR CO.

D. L. MORRISON, Owner
Phone 4130 Muleshoe

FINANCIAL REPORTS

Muleshoe School Lunchroom Department Serves Nourishing Hot Lunches On Conservative Budget

The Muleshoe school lunchroom department served 112,890 meals to students during the 1954-1955 school year according to information in a financial report released this week by Superintendent Jerry Kirk.

Salaries to employees in the lunchroom totaled \$13,008.50, and groceries and supplies cost \$22,307.08. Phone was \$80.62, while equipment cost \$602.70. Laundry cost the department \$429.21 and miscellaneous other expenses amounted to \$804.06. Returned checks totaled \$28.15, and soap and cleaners cost \$233.33. Freight charges were \$790.73, making the total disbursements come to \$37,684.38, leaving a fund balance of \$21.70 at the end of the school year, March 31, 1955.

Lunchroom employees include Mmes. Jewel White, Sarah Gabbert, J. C. Terrell, Mae Owens, Beulah Kelton, Beulah Gatewood, Anita Dawson, Effie Smith, Lois Shook, Lora Perryman, Della Seals, Alma Hensley, and Martha Carney.

FROM OLTON Mrs. Charles D. Mills of Olton, is here this week visiting her sister, Mrs. Alvin Allison and others.

GUESTS FROM ALABAMA Guests for nine days recently in the home of Mr. and Mrs. Lloyd Alsop were her mother, Mrs. Lillian Batye and her aunt, Mrs. Charles Atkinson, both of Mobile, Alabama.

FROM LUBBOCK Guests Saturday afternoon in the home of Mr. and Mrs. Lloyd Alsop were Mr. and Mrs. Ted Cramer, of Lubbock.

HOME FROM TECH Barbara Douglass, of Texas Tech, was home the past week-end visiting her parents, Mr. and Mrs. Morris Douglass and other relatives and friends.

IT'S A GIRL FOR JAMES FINLEYS Mr. and Mrs. James Finley are the proud parents of a daughter, Kristi Karol, born Friday evening at Clovis Memorial Hospital. The young lady weighed five lbs. and thirteen oz. Grandparents are Mr. and Mrs. R. G. Finley and Mr. and Mrs. W. H. Bunch, of Floydada.

GROWTH AND EXPANSION

SW Public Service Announces Plans For \$12 Million Of New Construction

Continued growth and expansion within its 45,000 square mile service area will make it necessary for the Southwestern Public Service Company to spend more than \$12,000,000 for new construction in 1956.

Some many changes in recent years. Where once this region was almost completely dependent upon agriculture for economic stability, we now have a territory with great diversification, with agriculture, petroleum, distribution, manufacturing, and other natural resources combining to produce a well rounded economic picture.

Large expenditures in the company's 1956 construction program will be made at the new Cunningham Station, west of Hobbs, N. M. \$4,500,000 will be put into this new 96,000 horsepower electric generating station this year. It is scheduled for completion in 1957 at a total cost of nearly \$8,000,000.

Another \$4,000,000 will be spent for service extensions to customers, while \$2,700,000 will go for transmission line and transmission system substation construction. New distribution facilities, the lines which actually provide the connecting link for the customer's service, will involve an expenditure of more than \$1,000,000.

Investment Gains 406% Southwestern Public Service Company's investment in plant and equipment to serve its customers has increased by 406% in the last 10 years, compared to a national increase by electric light and power companies during this decade of 115%. As a result of this recent rapid growth, 80% of the Company's equipment is ten years old or less, one of the highest percentages of new equipment in the electrical industry.

During the same decade, the average cost of a kilowatt-hour of electric service for a residential customer has decreased 14% because of increased use of electricity in the area's homes and improved operating efficiency by the company, which has seen great increases in its operating costs during the same period.

"Our service area has under-

Honor Roll

- NEW SUBSCRIBERS: Guy Jacobs, Rt. 4. Barbara Douglass, Lubbock. James Dickson, Rt. 1. G. M. Ramsey, Clovis. Highland Park Memorial Co., Clovis. R. L. Fields, Rt. 5. W. G. Byars, Morton. Ed Hurst, City. W. A. Pool, Morton. RENEWALS: J. K. Elliott, Littlefield. Bill Fullerton, Maple. C. B. Watkins, Rt. 3. Mrs. J. J. Gross, City. G. M. Devoll, Quanah. M. M. Pantor, Nebraska. J. M. Angel, Enochs. Rufus Aylesworth, California. Lester Howard, Rt. 5. E. V. Bartlett, Rt. 3. Henry Landers, Rt. 4. Anthony Jesko, Rt. 3.

Three-Way News

* Visiting in the Frank Griffith home Sunday were J. D. Choate and his son, Billy, of Pettit.

* J. M. Phillips, who has been quiet ill the past month, is feeling much better and is able to be up several hours a day.

* Mr. and Mrs. Andrew Wittner were visiting in Lubbock last Thursday.

* Rod Copper of Sundown, grandson of Mr. and Mrs. Elmer Bateas, was visiting them the past weekend.

* Three Way grade school basketball teams were host to the Pep ball teams Thursday evening, January 19. The girls lost by a few points, and the boys won just by a few points. The high school teams played at Bledsoe Tuesday evening, Jan. 17. The girls lost and the boys won.

* They played in the Willman Tournament last week but lost their second games to Whiteface. Three Way high school teams will have home games the next two weeks. They play Bala Tuesday, Jan. 24. Smyer, Friday, Jan. 27 and Whittarrel Tuesday, Jan. 31. Game time is 7:30. Admission 25 and 50 cents.

* Don Lowe and Gail Arm are home from Tech for the semester change holidays.

* Kay daughter of Mr. and Mrs. Norman Underwood, of Goodland, was injured in a fall at school Wednesday, January 18. She was hospitalized for several days due to a brain concussion. She was released from the Cochran County Hospital Friday.

* Lynda Lowe was reported to be resting better Saturday afternoon after several bad days. The doctors report that she will not need as much skin grafted on the burns as at first expected, and there is a slight possibility that she will not need any skin grafted.

* Mr. and Mrs. Ira Griffith of Shallowater spent the night recently with their son and family, the Frank Griffiths.

* Mrs. Truitt Smith is on the sick list this week.

* Mrs. Sid Conner, the former Lily Reeves is convalescing at



THE DIRT REALLY FLIES—Eight horses kicking and plunging at one time while two men try to bring each bronc under control so a third cowboy can saddle up and ride—that's the wild horse race which will be a new feature at the world's greatest indoor rodeo, presented during the Southwestern Exposition and Fat Stock Show in Fort Worth, January 27 through February 5.

Patricia Inman Initiated Into Peer Social Club

WACO, Texas -- The Peer social club, for women, recently held its formal initiation in which eight pledges became members. The candlelight initiation was held in North Hall dormitory and pledges were presented their "big sisters" pin after taking the Peer pledge.

Patricia Inman a sophomore English and business student from Muleshoe, is the daughter of Mr. and Mrs. John Inman, Star Route, 1, Muleshoe. A 1954 graduate of Muleshoe high school, she is a member of the Baylor Golden Wave band and Tau Beta Sigma, national music sorority.

MADE BUSINESS TRIP Mr. and Mrs. Dan Smith spent the past weekend in Amarillo on business.

FORMER RESIDENTS HAVE RETURNED Mr. and Mrs. Carroll Goss, Jr., former residents of Muleshoe, who have been residing in Hereford, have returned here to make their home.

They have three children, Susan 9, and Debbie 7, both of whom are in school, and Melan.

VISITED MOTHER WHO IS ILL Mrs. B. H. Dearing spent last week in Amarillo with her mother, Mrs. Mary Kuehler, who was in the hospital there.

VISITED IN LUBBOCK Mr. and Mrs. H. H. Carlyle, and Mr. and Mrs. R. J. Klump spent Sunday in Lubbock visiting with relatives. The Carlyles' grandsons, Hardy, Lynn and Glynn, returned home with them to spend the week.

HERE PAST WEEK Mrs. Lula Rice, of Hereford, has been visiting here the past week with Mr. and Mrs. Claude Farrell and others.

VISITED PARENTS Mr. and Mrs. Arlo Farrell and children, of Lubbock, were visiting here over the weekend with their parents, Mr. and Mrs. R. Q. Whitley and Mr. and Mrs. Claude Farrell.

Miss Jahgha To Speak To W. M. U.

W. M. U. of the First Baptist Church will meet at the Church Friday, January 27, at 2:30 in the afternoon, for a tea honoring Miss Jahgha, of Nigeria, who at this time is a student at Wayland College, Plainview.

Miss Jahgha will speak to the group. All ladies are cordially invited to attend.

TO CALIFORNIA Mrs. Wynnie Dunn, Mrs. Thelma Donaldson and Mrs. Evelyn Autrey, left the past weekend for Los Angeles, Calif., where they will visit with relatives for about ten days.

WERE DINNER GUESTS Mr. and Mrs. L. D. Cannon and daughter Delores, Mr. and Mrs. Leonard McCormick, and Mr. and Mrs. Howard Weaver, of Muleshoe, were dinner guests Sunday in Friona at the home of Mr. and Mrs. E. B. Brannon.

Other guests in the Brannon home included Mr. and Mrs. Gibbie Trigg, of Friona; Peggy McCormick, of Amarillo, and Moreen and Laveda Hand.

NEW EMPLOYEE AT SANTA FE Joe Hoshier, of Hale Center, is now working at Santa Fe depot here, where he will be employed for an indefinite period of time.

FROM SAN ANTONIO H. E. Gatlin, of San Antonio, is in Muleshoe this week visiting his daughter and son-in-law, Mr. and Mrs. James Moore.

Views From Pleasant Valley

PV FARM BUREAU MEETING HELD Regular P. V. Farm Bureau meeting was held at the Community Center, Tuesday evening, January 17, with president Gerald Allison in charge. Paul Lewis, Lamb County F. B. President, gave a report on the County President's meeting which he attended recently at Waco.

MRS. FREE HONOREE OF STORK SHOWER Mrs. Billy Free of the community was honored with a Pink and Blue shower Friday afternoon at the home of Mrs. Edward Jones, of Earth. Co hostesses were Mmes. Tuffy Dent, Hershell Patterson, Harvey Evans, Perry Martin, Cullen Hay, and Wilson Lewis, Jr.

The serving table was centered with a stork on styrofoam, surrounded by white gladiolus and greenery.

A pink rosebud cake was served with coffee and tea by Mmes. Evans and Jones. Plate favors were miniature basinetts of pink net.

Mrs. Bonnie Haberer was a guest in the Jarvis Angeley home Tuesday, January 17. She attended the luncheon and W. M. U. meeting while there.

Mr. and Mrs. Thurlo Branscum returned last week from Dallas, where they visited his brother and sister-in-law, Mr. and Mrs. Otis Branscum. Otis is recovering from recent surgery.

Harry Engelking and Leroy Hicks were in Lubbock and Plainview attending to business the past Friday.

Mrs. George Wuerflein and Mrs. Roy Taylor attended the W. M. U. meeting and luncheon Tuesday, January 17, in the home of Mrs. Jarvis Angeley.

Doyle Turner and sons Royce and Doyle attended the Amarillo Livestock Show this week, where the twins showed three polled Hereford steers, three polled Hereford heifers bred by Lewis Bros., and twelve Duroc swine.

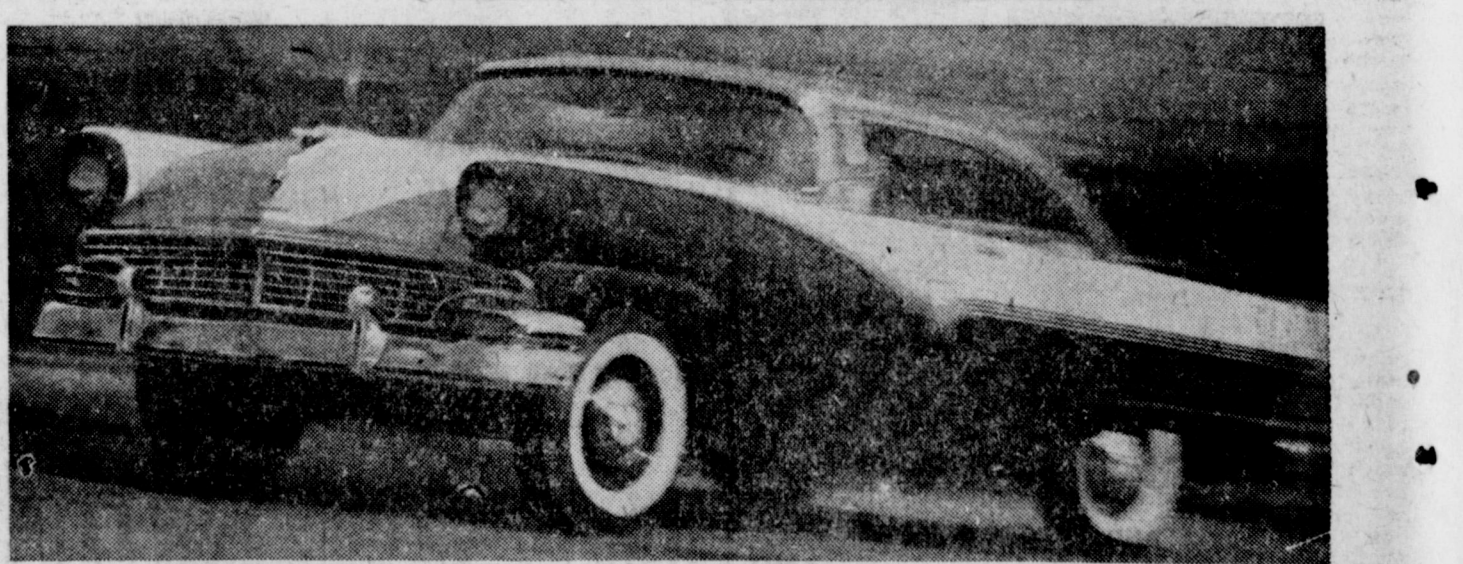
Wayne Loman will show an Angus steer at the Amarillo Livestock Show this week.

FASTEST KNOWN PAIN RELIEF FOR ARTHRITIC, RHEUMATIC VICTIMS—NOW AVAILABLE

Seven "Film-Coated" Ingredients Offer Positive Relief The crippling, torturing, twisting pain of Arthritis and Rheumatism may soon be forgotten, thanks to an exciting new laboratory discovery named Ar-Pan-Ex. Ar-Pan-Ex was perfected by a noted scientist of a world-famed university, working with all known facts about these crippling ailments. The result is a safe, easy to take tablet that promotes the fastest relief known from that stabbing agony. Ar-Pan-Ex is compounded of seven active ingredients including a special new medicine to help provide longer lasting relief. Ar-Pan-Ex is scientifically "Film-Coated" so that ALL the powerful, pain-relieving medicine is released only in the small intestine where it can be quickly carried by the blood stream to every pain-wracked muscle joint and nerve. Swelling, stiffness and soreness may seem to be miraculously eased when Ar-Pan-Ex helps the system throw off excess Uric Acid that can also aggravate pain. Nothing Like AR-PAN-EX Nothing ever offered before can bring results faster, more effectively or with longer lasting benefits than Ar-Pan-Ex. It may mean a renewed life of usefulness and pleasure to millions. Ask for genuine Ar-Pan-Ex today at any drug store for the kind of relief no other product can claim to equal. If your druggist is out of it, he will be glad to order it for you.

Alvin C. Webb Certified Public Accountant Announces The Removal Of Office To New Building Location At 823 LFD Drive Phone 190 Littlefield, Texas

PERFORMANCE made it the Largest Selling "8" in the World...



the FORD V-8

Table with 2 columns: Car Sales and Ford Sales Leadership. Rows include FORD V-8, Car C-V-8, Car P-V-8, Car C-Six, and Car P-Six.

Here's why! People just naturally go for 8 cylinders in the FORD package! And to a world record extent! Just think, in the first 11 months of 1955 alone, 344,496 more people bought Ford V-8's than the two other low-priced competitive eights combined! Of course, the reason the Ford V-8 is the largest selling eight-cylinder car in the world is that more people like its brand of performance—the kind that comes with the car! These people aren't amateurs in judging engines. Nearly 24 years of building Ford V-8's to supply their demand is convincing proof of that. And the Ford V-8 of today is the best yet... by a country mile! Smoother and quieter—you can scarcely hear it, even with the hood up! Sossier—just ask the highway patrol officer who drives one. He knows it takes a Ford to catch a Ford! And, for the very practical question of durability—ask a Ford cab driver. He knows how Fords take it day on end. So, if it's performance that you want—and wrapped like a gift—the '56 Ford V-8 is your baby. Come in... try it today!

MULESHOE MOTOR CO.

WE BUY COTTON And Write Government And Texas Cotton Growers Loans GRACE BENTON Johnson.Pool TIRE AND APPLIANCE PHONE 7370 MULESHOE

Sure Sign of Better Crops... ANOTHER FARM IRRIGATED with McDowell COUPLING PORTABLE SPRINKLER IRRIGATION SYSTEM It's this patented GASKET-COIL PRESSURE LOCK that makes McDowell Couplings work better, easier and faster. In all sections of the country, McDOWELL COUPLING portable sprinkler irrigation systems are proving their superiority. That's because the McDowell Coupling is the simplest, fastest, most efficient method of assembling or disassembling irrigation pipe. In this design, water pressure provides a watertight seal and positive lock automatically—at both high and low pressures. No tools are required. And there are no yokes, latches or gadgets to break or wear out. Free Planning Service! Free Literature! Call MAIL COUPON TODAY!

SOIL CONSERVATION DISTRICT NEWS



OUR SOIL ★ OUR STRENGTH

Progress of the Blackwater Valley Soil Conservation District in 1955 is reported below in the form of the 1955 Report of the Board of Supervisors.

This progressive report, of course, is a report of the District Cooperators, for any progress of the District is their progress. 1955 was a very good year in the Blackwater Valley Soil Conservation District, and its supervisors are well pleased with the accomplishments of the district.

Progress of the District
A. The district assisted in preparing 112 agreements on 74,999 acres this year. There are now 629 agreements in the District totaling 285,233 acres, which represents approximately 53% of the total land in farms and ranches.

The majority of land not under agreement is located in the dry-land part of the district. Soil Surveys were made on 33,460 acres this year and there is 66% of the cultivated land. A total of 152 A. C. P. referrals on permanent type practices were received from A. S. C. and serviced this year.

B. The District, with the assistance of the Soil Conservation Service technicians made the following accomplishments of conservation practices:
(1) 185 District cooperators applied one or more practices during the year.
(2) 260 District cooperators were serviced.
(3) Contour Farming, 3802

ENJOYED TRIP TO DALLAS

Mrs. (Horace) Blackburn and her mother, Mrs. A. C. Bray, returned Sunday from Dallas, where they had been visiting relatives. While there they attended the play "Dillie Spirit", presented by senior students at Woodrow Wilson High School in Dallas, in which Mrs. Bray's granddaughter, and Mrs. Blackburn's niece, Katie B. Bray, played in the leading role. Miss Bray will graduate in mid-term this evening, Thursday.

The two ladies reported the play very enjoyable, and stated that the snow at Ft. Worth and Dallas was beautiful.

WEEKENDED IN EL PASO

Mr. and Mrs. C. E. Mason spent last weekend in El Paso.

Chinese Student Gave Interesting Talk For Rotary

A sample of Chinese wit and humor, as well as information about old China, its customs and institutions, was brought to the Rotary Club Tuesday by Stephen Liu, born near Chungking, China and later a resident of Formosa, now a student at Wayland College, Plainview.

Amusing was his account of how, because of the difficulty of language, he kept eating chicken in American restaurants until he got pretty tired of chicken.

Interesting, too, was his refutation of the Western idea that Chinese worship Confucius and ancestors. Confucius, he said, was not a God; he was a great teacher, and did everything he could to make it possible for Chinese children to go to school.

As for the worship of ancestors, Liu said when our grandfathers arise to admire the flowers placed by loved ones on their graves, his grandfather will arise and eat the food place on his. Both are merely customs and traditions of the two peoples.

When the Communists took over in China, Liu's father and mother, his uncle and aunt were slain, because, since they owned 2 acres of land for each family they were in the landlord class. By this time Liu was in Formosa; he considers he will never return to his homeland, for "the door is closed to me." He said he would probably be put to death because his father was a landlord.

Communists have seen to it that the young boys and girls are indoctrinated in Communism and there is little likelihood that the Chinese people can overthrow their new masters, at least not for 100 years.

There is, too, in his opinion, little chance that an invasion of the Mainland from Formosa can succeed, even with American help, because of the preponderance of manpower available to the Communists. Also, the Communists have developed highways rapidly and are in position to make a stout defense.

Liu is educating himself to be a teacher. He was converted to Christianity in 1949 by a Baptist.

B. A. Dalton had charge of the

Christmas Mail Expediting Due To Cooperation

Public cooperation today was credited with improved handling of a record volume of Christmas mail in this area. George A. Gray, director of the Post Office Department's Texas-Louisiana Region, said reports now being made to his office in Dallas indicate that there was about a six per cent increase in mail over Christmas of 1954. Postal revenues also increased about six per cent while work hours were up only two per cent.

"This increased efficiency, which is reflected in reports from the larger offices of the region, is traceable to the best cooperation from the public the Post Office has ever had", Mr. Gray said.

He cited an unprecedented amount of publicity by newspapers and radio and television stations urging the public to separate, face and bundle letters and to mail early.

"The public responded remarkably", he declared. "Most people with Christmas cards to mail carefully separated them into local and out of town bundles and faced them for quick processing through cancelling machines, speeding up the dispatch of outgoing mail and helping postal workers keep pace with the deluge that gave the Department its biggest volume in history."

The regional official concluded that this public cooperation and the good work of postal employees and transportation companies kept the mail flowing smoothly. "There was no delayed mail in post offices in Texas and Louisiana on Christmas Eve", he said, "and I give a great deal of credit to the publicity by press, radio, and television."

The Post Office "Mail Early" campaign is a continuing thing, he explained, but except at Christmas time it pertains to mailing early in the day.

program. Tom Wilson was the district missionary and his wife on guest of his father, Rotarian Muri Wilson.

School Board To Eat In Lunchroom Next Fri. Noon

Members of the Muleshoe school board have been invited as special guests of the lunchroom department of the schools for next Friday at noon.

The menu that day will feature fried chicken, green beans, creamed potatoes, lettuce salad, apple cobbler with ice cream, and hot rolls and butter.

Play Presented At Study Club Meeting

Community Hall at Needmore was the scene January 19, as members of the Muleshoe Study Club met, with president Mrs. Vance Wagoner in charge.

The club voted to donate \$10. to the March of Dimes. A play, "High Pressure Area," concerning problems of teenagers, was presented by four of the club members; Mmes. John Watson, Mary Hart, Jeanette Kirk, and Maxine Ragsdale.

Hostess Mrs. Maxine Ragsdale served refreshments to Mmes. S. C. Beavers, A. J. Gardner, Mary Hart, H. D. King, Jerry Kirk, Julian Lenau, Buck Ragsdale, Vance Wagoner, John Watson, and Buck Wood.

Half Century To Donate To MOD

With Laura Gilbreath as hostess and Mary Young as co-hostess, members of the Half Century Club gathered at the Gilbreath home last Thursday, January 19, for luncheon and an afternoon of visiting and canasta.

The group voted to donate \$10. to the March of Dimes. On February 2, Mrs. Pearl Moore will be hostess.

Attending were: Pearl Smith, Jennie Panter, Lois Schoenberger, Mattie Duke, Sallie Harden, Hazel Farrell, Mattie Rocky, Bertie Paul, Anna Moeller, Daisy Engram, Frances Williams, Beulah Carles, Lula Kistler, Swee-

the Johnson, Myrtle Harper, Gusie Mardis, Pearl Moore, and a guest, Mrs. Fred Rice.

W-2 DEADLINE
Employers were reminded today that deadline for issuing W-2 withholding statements to employees is Jan. 3, according to John R. Robinson, administrative officer of the Internal Revenue Service office in Lubbock.

If it becomes necessary to correct a W-2 after it has been given to an employee, a corrected statement must be issued and marked "corrected by employer."

ELECTED TO FRATERNITY
Jack Wiltterding of Muleshoe, has been elected into the Tech student chapter of Tau Beta Pi, national honorary engineering fraternity. It is a life membership. New members were chosen from the top fifth of the senior class and top eighth of the junior class.

ATTENDED CONCERT
Miss Roberta Biles, Mrs. A. W.

VISITED SISTERS
Mrs. Mattie Duke visited her sisters in Lubbock, Tuesday.

HERE VISITING SISTER
Mrs. J. L. Shaw, of Tascosa, is here visiting her sister, Mrs. E. O. Baker.

FOR YOUR PRESCRIPTIONS TO BE

- FILLED RIGHT -

- HAVE THEM FILLED BY -

DAMRON REXALL DRUG STORE

WE FILL ANY DOCTORS PRESCRIPTION

THE MOST COMPLETE PRESCRIPTION DEPARTMENT IN WEST TEXAS

Muleshoe Phone 2100

MULESHOE CHIROPRACTIC CLINIC
IN BARON BUILDING
South of Courthouse
Phone 4090

ASTHMA—

Regardless of age, the patient who avails himself of Chiropractic care by removing the cause of asthma can expect relief in varying degrees from relief to complete correction. In chiropractic the procedure is to remove the cause, (nerve pressure allergies, etc.) Our lungs are controlled by the nerves from the brain. In order for the lungs to function freely and without constraint, those nerves must be free to supply the area affected. A stimulant will force temporary relief, but sick tissue must be revitalized. In the case of this woman, age 60, who had suffered from asthma for 20 years, chiropractic brought this relief. Accompanying symptoms were sinusitis, constipation, extreme weakness, and nervous spells. This little lady weighed only 80 pounds, and had "done everything" for her condition — shots, asthma "cure" clinics, etc. She came to the clinic and a spinal examination and spinal x-rays located and revealed the pressure on nerves causing her trouble, and corrective adjustments were begun. This patient began to improve gradually from the beginning of chiropractic service. In a few months her health and strength were restored to such an extent that she was enjoying relief from the attacks of asthma.

BACKACHE—

At this time of the year, many people have pains through the lower back, Lumbago or Sciatica, perhaps the most common forms of rheumatic trouble, affect the lower back. It is a condition in which there is inflammation of the nerves leading to the back, and spasmodic or continuous contraction of the muscles to which they lead. The spine is the main structural beam of the body. It consists of 24 movable segments called vertebrae. The spine rests upon the pelvis which is made up of three movable bones; the hip bones and the sacrum. Trillions of nerves pass from the brain, through the spine and out between the vertebrae. Injury can very easily subluxate (misalign) these joints thus irritating the nerves passing out between them. The result is pain or backache in this region. Falls, jars, or twists or accidents may cause the bones in the spine to slip slightly out of place and irritate the nerves, passing out between them. This is the basic cause of pains thru

The Spine is the Human Switchboard controlling Health and Vigor

Chiropractic releases the energy to heal

the lower back and hips. The irritation in the nerve is always present, but pain becomes noticeable when there is an alteration in the blood due to weather changes, colds, flu. Unless this misalignment is corrected by chiropractic adjustment the condition may progress into various forms of paralysis or some organic disturbance, even though the pain may not be present constantly to warn the person. It is important to remove the nerve interference by adjustments as this man, age 56, who came to the clinic with Sciatica which he had suffered for several years. Accompanying conditions included nervousness, dizziness, sharp pains in the stomach, weak kidneys, and bad eyes. After a period of corrective service for correction of the back ailment, the other conditions also responded. You need a chiropractor if you have a backache, but if it's necessary to have a backache to need a chiropractor.

It Is Not True To Say — "We Did Everything Possible"

Unless Chiropractic Was Included

— OFFICE HOURS —
Monday, Wednesday, Friday

9 a. m. to 1 p. m. — 3 p. m. to 7 p. m.
1 p. m. to 12:00

Tuesday, Thursday, Saturday



By John C. White, Commissioner

HOW TO RECOGNIZE KHAPRA BEETLE INFESTATION

The word, "Khapra" is from an Indian word meaning "brick" and was ascribed to a stored grain pest by natives of India. The insect in the larva stage has a habit of hiding out in the pores of bricks or cracks in storage houses.

Authorities agree that the Khapra beetle is much harder to control than any other known pest of stored grain. It can secrete itself in cracks and crevices where sprays have little effect and can be reached with much difficulty, by fumigants.

Post control workers in California, Arizona, and New Mexico know how tedious it is to kill the beetle. Texas authorities hope they never have to cope with it if present quarantine and inspection measures are successful. Eradication is a time-consuming and costly process. The entire storeroom or elevator must be covered with impervious material, including the ground area for a radius of about 30 feet. Then the interior is fumigated with ethyl bromide allowing plenty of time for the fumes to seep into every crack and crevice of the building.

The insect belongs to the same family as the carpet beetles. It is

usually first noticed because of the presence of its fuzzy larvae, their cast skins, in clusters around the corners of grain bins or in used sacks.

It is spread from place to place in grain, feed, seed or used sacks. It will probably be found only indoors. To determine whether an infestation is present, take a double handful of grain from the corner of a bin and sift it lightly through the fingers. If Khapra Beetles are present, you may find the fuzzy larvae or the cast skins clinging to the skin of your hands. Another method is to take floor sweepings from a recently emptied bin and screen it. Larvae or cast skins usually will not fall through the screen.

Check outer surfaces of bagged grain, seed or other sacked goods for skins or clusters of small insects. Pay particular attention to top seam and inside of the bag ears.

Bin corners are favorite hiding places for the beetle. The larvae leave the grain when ready to pupate and congregate in great numbers in such locations.

Any suspected infestation should be reported to the Texas Department of Agriculture, immediately. Contact John White, Commissioner of Agriculture, Austin, Texas. Failure to do so may mean the loss of an entire storeroom of grain.



Our New 2-Way Radio Enables Us To Give An Even Better Service

WIEDEBUSH & CHILDERS

BUTANE AND PROPANE

PHONE 2810

MULESHOE

JULY IN JANUARY SALE

Yes, we are giving JULY DISCOUNTS on New Mercurys in January! If you want to save HUNDREDS OF DOLLARS you can do it here the balance of this month. We are overstocked and MUST make room for new cars coming in.

NEW MERCURYS

AS LOW AS \$2182.50

UP TO \$600 DISCOUNT ON ANY NEW MERCURY IN STOCK

1 — 56 4 DOOR MONTCLAIR

Green & White Flo-tone, power steering, power brakes, power windows, Mercomatic, Radio & Heater, tinted glass and all the little extras.

FOR EXAMPLE	>	REG. FACTORY PRICE	\$3725.57
		SALE PRICE	3115.00
		YOU SAVE	610.57

Wholesale Prices On Used Cars

'53 PONTIAC CHIEFTAIN, Deluxe, hydraulic drive, radio and heater. Two to choose from.

Only \$795

'53 BUICK SUPER 4-DOOR, Dynaflo Drive, Loaded—

Only \$795

'52 PLYMOUTH 4-DOOR, a clean car

Only \$495

And Many Others at LOW, LOW PRICES

BROWN-WATKINS MOTOR CO

LINCOLN & MERCURY

PHONE 6640

MULESHOE TEXAS

Lazbuddie News

MRS DAVID WHITE FETED WITH SHOWER

Mrs. David White, nee Sherry Steinbock, was feted with a bridal shower Wednesday afternoon in Fellowship Hall of the Lazbuddie Methodist Church.

Hostesses were Theresa Jesko, Mina Jennings, Patsy Weaver, Janice Lawton, Jo Ann Nowell, Shirley Carpenter, and Mary Blackburn.

Carrying out colors of yellow and white, the table was covered with a cloth of white lace over yellow, and centered with a beautiful arrangement of white carnations. A miniature bride and groom surrounded by baby's breath and white stock, flanked by crystal candelabra bearing twisted yellow tapers completed the decorations.

The honoree, her mother, and the mother of the bridegroom were presented with white carnation corsages.

Guests were served cake and punch.

Attending were Mmes. Bob Jones, Ed Steinbock, Raymond

McGehee, Rhiney Steinbock, Clarence Mason, Minnie Carpenter, Willie Steinbock, Max Steinbock, J. D. White, Alfred Steinbock, Alfreda McGeehee, Gene Smith, Finis Jennings, Ronald Davis, Merrill Rundell, Earl Peterson, Bert Gordon, John Gammon;

E. E. Engleking, Richard Engkeling, Frank Hinkson, Virgil Feague, H. H. Briggs, Don McDonald, James Welch, C. C. Graef, Jimmy Seaton, Ben Foster, Dick Scott, W. L. Hanson, Demp Foster, Judal Clark, Jimmy Black, John Agee, J. G. Ward and Misses Jeanelle Floyd, Joy Smith, Juanita Scott, Denny Cargile, Tina Rundell, Earlean Peterson, Freda White, Rosemary Agee, and Carolyn Hinkson. Many who were unable to attend, sent gifts.

Mr and Mrs. Luther Ham visited their daughters in Coleman and Brownwood the last part of the week.

Mrs. Walter Steinbock and Mrs. Sam Layman were visiting Friday in Lubbock.

Mrs. J. W. Crim is in Dallas visiting Mr. and Mrs. Lovell Johnson, who are the parents of a new baby. Mrs. Johnson is the former Miss Lois Crim.

Congratulations to Mr. and Mrs. George Maye on the birth of a son, Monday, January 23. The young man weighed 9 lbs.

Shorty Steinbock, who was injured in an automobile accident on December 17, has been released from West Plains Hospital.

Delbert Hudnall has been in hospital at Amherst with a severe case of flu.

Mae Cox, of Durango, Colo., visited in the home of Mr. and Mrs. Claude Heath from Thursday until Sunday.

Mr and Mrs. Lawrence Tarter, of California visited recently with Mr. and Mrs. D. A. Tarter and other relatives.

Mr. and Mrs. Frank Donald Spitzer have returned home after spending the week in Oklahoma City and Shawnee, Okla., visiting their grandparents.

Bro. Jordan, of Earth, filled the pulpit at the Baptist Church, Sunday, in the absence of the regular pastor.

Those attending the Association Brotherhood meeting in Summerfield last week were Rev. C. K. Roberts, Earl Peterson, Wesley Barnes, Claud Heath, Ed Vanlandingham, Weldon Slayton, and Charlie Bell.

HOUSTON HOME SCENE OF CIRCLE MEETING

Pauline Comstock, Circle of the W. M. U. met in the home of Mrs. Raymond Houston, Monday afternoon for Bible Study. Mrs. Earl Peterson was in charge of the study, "Favorite Scripture Passages."

Delicious refreshments were served to Mmes. W. S. Menefee, J. L. Withrow, D. W. Cargile, Luther Ham, J. C. Redwine, Wesley Barnes, Harold DeLoach, Abe Mallouf, Earl Peterson, Bert Gordon, and the hostess.

BOOSTERS CLUB TO SPONSOR SUPPER

Booster Club will sponsor a Mexican supper Monday evening, January 30. The supper will be served from 5:30 until 7:30. Tickets are on sale now, adults \$1.25 and children 75c.

LAZBUDDIE GIRLS PLAYED BOVINA

Tuesday, January 17, the Lazbuddie girls played the Bovina team in the Lazbuddie Gym. The Longhorns won 64-44. Joy Smith was high point girl with 26, closely followed by Janice Oliver with 21. Mary Ellen Thompson scored 15. Lody was high point girl for the Mustangs with 20, while Richards scored 11 and Moore 6. Pounds had 4.

Immediately following the girls game, the boys played, with the final score ending 69-32 in favor of the Bovina team. Hawkins was high point man on the Mustang team with 16. High

point on the Longhorn team was Jimmy Oliver with 13.

Friday, January 20, the Longhorns lost to Adrain 61-51. In the girls game, the Longhorns won 59-47. This was a very close game until the last quarter. Joy Smith was high point girl with 28. Janice Oliver had 23, and Mary Ellen Thompson had 8. High scorer for Adrain was Pinnell, who was closely followed by Johnson.

Mr. and Mrs. John Littlefield and Carroll were in Clarendon last weekend.

Enochs Events

BRYANTS ARE PARENTS

Mr and Mrs. Duane Bryant, of Lubbock are the parents of a daughter, Linda Ann, born January 19, and weighing 8 lbs. The Bryants are former residents of Enochs. He is an employee of Kirsner's Nursery in Lubbock.

They have a son, Ricky, aged one and one half years.

Great grandparents are Mr. and Mrs. J. H. Hodges, of Littlefield.

UNDERWENT SURGERY

Mrs. Buford Peterson underwent major surgery at Taylor clinic in Lubbock recently. She is recovering at her home near Enochs.

BUILDING HOME

The Wallace family, of Bula, are building a lovely new home on their farm near Enochs. They expect to move to the Enochs Community in the near future. A son Eddie, has graduated from Littlefield High School.

VISITED IN DALLAS

Mr. and Mrs. Zed Robinson visited in Dallas recently with her mother Mrs. Melvin Moore and her sister, Miss Irene Moore. Mrs. Robinson is postmaster at Enochs.

ENOCHS HOMEMAKERS CLUB MEETING HELD

Enochs Ladies Homemakers Club held a meeting January 16, in the home of Mrs. D. T. Johnson. Thirteen members were present for this, the first meeting of the new year.

Mrs. Dyer, Three Way Home Economics teacher gave a demonstration on making and decorating copper plated objects. She was assisted by Sue Johnson, a student. Miss Johnson had on display, a copper plated planter, which she had made. She had also made a wall plaque.

Mrs. Dyer invited the ladies to hold the next meeting at the Three Way School, January 26, where she has equipment which they may use for making copper articles. Materials may be purchased through her also. Ladies are asked to arrive at one o'clock for beginning the work on projects.

Gifts were presented to the hostess, and delicious refreshments of angle food cake, cocoa and coffee were served to Mmes. C. W. Vanlandingham, H. H.

LOCAL MEN TO ELECTRIC COOPERATIVE GATHERING

Bailey County Electric Cooperative Association is represented at the annual meeting of National Rural Electric Cooperative Association by four members of the official board.

The meeting is being held in St. Louis most of this week. Planning to attend from here are D. B. Lancaster, Cooperative manager; Roy Young, Robert Kimbrough, and Glenn Thompson, directors. They made the trip by train, in a special car for representatives of Cooperatives of this area.

A. E. Lewis, et ux, et al. to Morris Childers, all of Labor 14, League 191, Ector County School Lands.

T. W. Berry, et ux, to V. L. Bradley, Jr., et ux, all of Lots 2 and 3, Block 1, Lakeside Addition Number 2.

D. C. Casey and Ray C. Livesay to T. C. Young, all of Section 76, Block Y, Johnson and Johnson Subdivision.

W. M. Stancell, et ux, to Allen J. Stancell, all of the Northeast Quarter of Section 35, Block Z, W. D. and F. W. Johnson's Subdivision.

Estelle Rall Calhoun, et vir, to D. C. Terrell, Labor Number 3 in League 210, Deaf Smith County School Lands.

Roger T. Penn and Wife, Helen Penn, to David Enger, all of the Southeast one-fourth of Section 47, Block C, Melvin, Blum and Blum Lands.

Bud Holdeman to H. D. King, Trustee, all of Tract 4 of the John DePauw Subdivision, a part of Section 38, 39, 54 and 55 of Block Y, W. D. and F. W. Johnson Subdivision, Number 2.

H. W. McCarty, et ux, to Rheward McCarty, a part of the South-west Quarter of Section or Survey Number 33, Block "X", W. D. and F. W. Johnson Subdivision.

New Cars registered Between January 1 and January 26.

H. M. Gable, 1956 Cadillac; D. E. Beller, 1956 Ford; Allen J. Stancell, 1956 Ford; Five Area Telephone Co-op, Inc., 1955 Chevrolet; J. T. Shofner, 1956 Chevrolet; Joe Smith, 1956 Ford; John Holland, '55 Chevrolet; Claude Miller, 1955 Chevrolet; Roland Bigham, 1956 Chevrolet;

L. Duane Bartee, 1956 Chevrolet; L. A. Harrall, 1956 Chevrolet; A. T. Beavers, 1955 Dodge; Bailey County Electric Coop. Ass'n., 1956 Chevrolet; M. E. Simmons, 1956 Ford; C. D. Hoover, 1956 Mercury; E. R. Hawkins, 1955 Chevrolet; I. V. Pierce, 1956 Ford; E. E. Dyer, 1956 Dodge; Gorman Byrd, 1956 Ford; A. M. Pope, 1956 Chevrolet; Jerry R. Kirk, 1956 Pontiac; Dick Wil-

man, 1956 Cadillac; Don Bryant, 1956 Oldsmobile; C. C. Graef, 1956 Ford; Donald Ray Vemet, 1956 Ford Pickup; Mona Ellen Wilhite, 1956 Chevrolet; Howard Cox, 1956 Buick; T. W. Watson, 1956 GMC Pickup; Travis E. Reed, 1955 Buick; Donald L. Smith, 1956 Ford; C. H. Keller, 1956 Ford; J. H. Angeley, 1956 Ford; J. H. Angeley, 1956 Ford; Harold Mardis, 1956 Mercury; Gwyn Gigham, 1956 Pontiac; Mrs. San Winnie Cook, 1956 Buick.

Used Cars Registered Between January 1 and January 26.

Troy R. Sharrock, 1949 Dodge; O. L. Whitley, 1951 Oldsmobile; Glen D. Harris, 1955 Chevrolet Pickup; C. E. King, 1955 Ford; Liddado Alaniz, 1947 Dodge Pick; Vincent De Leon, 1947 Dodge Pickup; T. K. Furguson, 1956 Chevrolet; Robert L. McCauley, 1939 Ford Pickup; Bob Anderson, 1953 Mercury; William F. Burris, 1953 Oldsmobile; W. A. Kemp, 1952 Pontiac; Cecil Atchley, 1955 Chevrolet;

Willie Strong, 1951 Ford; Chas. R. Mayhugh, 1950 Chevrolet Pickup; Paul Holcomb, 1949 Ford; Wade J. Cypret, 1950 Dodge; M. D. Cruse, Jr., 1954 Ford; Everett Kirchmeir, 1952 Studebaker; Tom Hunke, 1947 Chevrolet; J. R. Caskey, 1952 Plymouth; Jim Black, 1946 Cadillac; Floyd R. Huges, 1951 Ford Pickup; Clyde Knight, 1946 Ford; Norman Head, 1952 GMC Pickup; J. C. Broyles, 1953 Mercury; K. G. Masters, 1948 Dodge Pickup; Hoy Lesley, 1941 Chevrolet; Billy W. Johnson, 1953 Plymouth;

E. K. Angeley, 1946 Dodge Truck; M. W. Messer, 1951 Chevrolet; Spencer Beavers, 1955 Oldsmobile; D. W. Clark, 1949 Chevrolet Pickup; Bobby E. Goodwin, 1951 Chevrolet Pickup; C. W. Kimray, 1953 Chevrolet; Frank Kemp, 1952 Dodge; Emanuel G. Lay, 1949 Olds; Donald O. Adams, 1951 Mercury; K. G. Manters, 1948 Dodge Truck; Arlen Simpson, 1953 Mercury; W. C. Atkinson, 1955 Ford Pickup; Ira A. Welch, 1955 Chevrolet; M. D. Gaddy, 1955 Lincoln; R. Q. Whatley, 1954 Oldsmobile; E. E. Tal-

ley, 1951 Hudson; E. C. Stroud, 1954 Ford; O. L. Whitley 1950 Ford Pickup;

R. E. Cook, 1950 Pontiac; J. W. Burkhardt, 1946 Chevrolet; J. E. Sullivan, 1955 Chevrolet; C. D. Noland, 1953 Plymouth; M. G. Killough, 1953 Chevrolet; Robert Kindred, 1949 Mercury; A. R. Floyd, 1951 Ford; Mrs. Lee Kimbell, 1950 Pontiac; Melvin Carter, Jr., 1954 Chevrolet; Walter Riecker, 1941 Ford Pickup; W. Lee Amerson, 947 Dodge Truck; Gene Harvey, 1951 Pontiac; John deGhee, 1952 Chevrolet.

Total New Cars Registered, 35. Total used cars registered, 60.

CARD OF THANKS

Our sincerest thanks and appreciation to our many friends for every expression of sympathy extended to us at the death of our brother.

Mr. and Mrs. Ray Griffiths

RETURN FROM TRIP TO CALIFORNIA

Mr. and Mrs. Bill Jim St. Clair and children and Mrs. Mack Savage, returned Saturday from California, where they have been visiting for the past month, and reported a very enjoyable trip.

Points of interest the group visited included Los Angeles, San Francisco, Bakersfield, and the Sequoia National Park, and on the return trip Las Vegas, Nev.

HOME BETWEEN SEMESTERS

Karlene Towns, will visit her parents, Mr. and Mrs. Vernie Towns and other relatives and friends this week. She will visit Thursday until Monday between semesters at Hardin Simmons, where she is a student.

Man To Man

Only you can teach your youngsters the value of thrift. On this end we'll make a special effort to back you up in every way that we can.

MULESHOE STATE BANK

Member Federal Deposit Insurance Corporation



Man To Man

Only you can teach your youngsters the value of thrift. On this end we'll make a special effort to back you up in every way that we can.

MULESHOE STATE BANK

Member Federal Deposit Insurance Corporation



Nothing without wings climbs like a '56 Chevrolet

Ever level off a mountain with your foot? Nothing to it. Just point this new '56 Chevy uphill and ease down on the gas.

Up you go with a quiet (hydraulic-hushed valve lifters now in all engines—V8 or 6) rush of power. This is the car, you know, that broke the Pikes Peak record. The car that conquered towering grades and vicious switchback turns to prove its superior performance, handling ease and cornering ability.

These are built-in qualities that mean more driving pleasure and safety for you. Chevrolet also offers such safety features as seat belts, with or without shoulder harness, and instrument panel padding as extra-cost options.

There are 19 new Chevrolets—all with Body by Fisher. Drop in and drive one.



C. & H. CHEVROLET CO.

MULESHOE, TEXAS



COURTHOUSE News

REAL ESTATE TRANSFERS

Lewis Stewart, et ux, to J. H. Wimberly, all of the Easterly 20 feet of Lot Number 5 and the Westerly 35 feet of Lot 4, Block 4, Stewart Subdivision, out of Warren's Acreage Addition, Tract Number 3.

H. S. Sanders, Jr., et ux, to Henry L. Barbour, et al, a rectangular tract of land 60 feet by 140 feet, said 60 feet fronting on North Avenue F, said rectangular tract being all of the Northwesterly 35 feet of Lot 2, and all of the Southeasterly 25 feet of Lot 3, all in Block One, Lenau Subdivision.

Jon Holland, executrix, to Harvey Bass, all of the Northwesterly 46 feet, 8 inches of Lots 8, 9, 10, 11, and 12, Block 41.

In case you buy the Brooklyn Bridge

When we say we handle all forms of insurance we mean that if you own a bridge, we can insure it against practically any peril you name—even theft.

Our business is to provide you with the most complete and up-to-date insurance service possible—giving you the benefit of new, broader types of insurance protection and helping you to greater value received for your insurance dollar.

BOBO INSURANCE AGENCY

PHONE 2650

MULESHOE

CROPS NEED WATER

In The Right Place At The Right Time

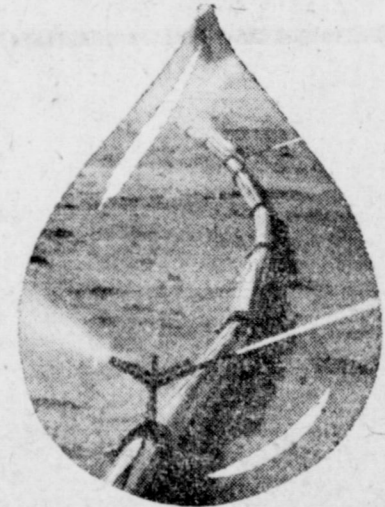
We Now Carry In Stock One Of The Largest And Most Complete Assortments Of Aluminum Surface and Irrigation Pipe On The South Plains.

TERMS

25% DOWN 2 PAY BALANCE

ONLY 4% INTEREST

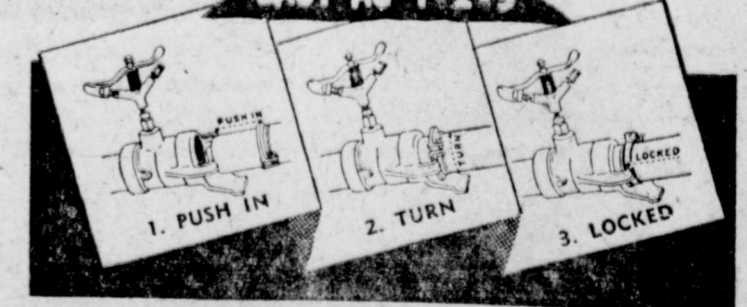
FREE ESTIMATES ON PROPERLY DESIGNED SYSTEM



The Mathieson Sprinkler Irrigation System With The Unique Positive Lock Coupler.

- Each System Engineered To Your Individual Requirements
- Lowers Unit Cost of Production
- Produces Maximum Yields Per Acre.

EASY AS 1-2-3



D. H. SNEED SUPPLY CO.

PHONE 4170

PLAINVIEW HIGHWAY

MULESHOE, TEXAS



THIS & THAT

About Homemakers & Homemaking in BAILEY COUNTY By MOLLIE STINSON Home Demonstration Agent

The following information was worked up from the Agricultural Outlook Charts for 1956. I thought that these on food and housing would be of interest to you.

FOOD OUTLOOK FOR 1956

The food situation for next year closely resembles that of 1955 according to Extension foods and nutrition specialists. Retail food supplies and prices are expected to show little change. With consumer incomes at a record level and an increasing population, food demands should be firm.

The trend for more expensive and highly processed foods indicates higher food budgets, ra-

ther than increased prices or the buying of more food. Consumers are continuing to spend about a fourth of their income for groceries.

The new year starts off with a large number of livestock on farms and heavier supplies of feed. Meat production in 1955 reached a record high. Indications are that production will be matched this year, even though the increased population may mean slightly less meat per capita. More pork but slightly less beef and veal will be available.

Milk production is expected to top the 1955 level by 2 billion pounds. Supplies of poultry products, chickens, turkeys, and eggs will be plentiful.

With the larger carry-over of food grains, cereal products are sure to be abundant but not generally lower. If no more wheat were grown until the middle of 1957, the present supply would be adequate. Other grain supplies are substantial.

Canned, frozen and dried

fruits are expected to be in larger supply with that of processed vegetables about the same. More fresh apples, pears and grapefruit on winter and early spring markets are expected. Fresh supplies are expected to remain about the same. More acres have been planted this winter in fresh vegetables.

More coffee will be available this year, with no expected price increase.

Farm Family Diets Still Need Improvement

Studies of diets of families in southern cotton producing areas show that many diets are inadequate in certain food nutrients as compared with recommendations of the National Research Council. Extension foods and nutrition specialists, say the same may be true of many Texas families. Small studies made of farm family diets in the state point to similar deficiencies.

One third of the diets did not meet the recommended allowance for protein. Fifty nine percent did not come up to the standard in calcium. Many of the families did not produce a home supply of milk and were unable to buy the milk—thus the inadequate supply of calcium.

Seventy nine percent of the diets were low in ascorbic acid or vitamin C. In summer and early fall when vegetables and fruits are available from home gardens and orchards, the diets perhaps improved in ascorbic acid content.

Poor diets may result from a lack of nutritional knowledge, poor eating habits, or lack of sufficient income to buy necessary food.

Careful meal planning and food buying would help families eat well for less.

Changes in Housing Facilities And Equipment in Texas

Many improvements have been made in the rural areas of Texas in housing and equipment facilities, according to Extension home management specialists. Despite this, many rural families still have a long way to go to meet the level of living which is taken for granted in urban areas.

In 1954 census of agriculture shows 292,946 farms in Texas which compares with 331,567 reported in 1950. We now have 111,395 telephones as compared with the 1950 total of 79,437 telephones.

Electrification is a major factor in the progress made in rural housing. The 1954 census shows 92 per cent or 269,215 farms now have electricity.

Television, not shown in the

1950 census, was reported for 90,323 farm homes in 1954. This represents 30.8 per cent of all Texas homes.

Piped running water was available in 199,452 farm homes in 1954.

The 1955 census shows 35 per cent of Texas farms having food freezers. This compares with 14.6 per cent reported for 1950. Other appliances have had a comparable increase in the home.

The need for information and assistance with correct wiring of homes, selection, care and use of home appliances has greatly increased.

Outlook For Furnishings And Equipment

Major household goods were produced at a record rate in 1955. The housing boom and mass media advertising increased demand for these products, according to Extension home management specialists. Increases in prices were more common than reductions. The situation is expected to remain about the same in 1956.

More stores are selling more kinds of merchandise. Some specialize in discounts from advertised list prices for well known brands. Some department stores have increased stocks to include household items. Sales have been stepped up by advertising and liberal credit terms.

There were moderate reductions in retail prices of home furnishings during 1955 in various types of stores. "Off list" pricing has been most wide spread for electrical appliances, including radio and TV sets. Some retailers offer limited service and feature standard brands at off list prices.

The big selection of products and variety of services available is likely to baffle consumers. Home management specialists remind families that in order to get the most for their money in goods and services they will need to plan and shop carefully.

Manufacturers and distributors now provide a great deal of information on furnishings and equipment. Information to guide consumers is also available from county home demonstration agents offices.

VISITED RELATIVES IN LUBBOCK

Mrs. J. E. Perkins visited a few days this week with relatives in Lubbock.

HOME ON LEAVE

Walter Seals, of Elgin Air Force Base, Fla., is home on a thirty day leave visiting his parents, Mr. and Mrs. Bert Seals and other relatives and friends.

Jay Carney Named To 4-H Committee For Bailey Co. Girls

Jay Carney of Muleshoe, Senior 4-H Club, was elected chairman and Sandra Lemons, Three Way 4-H Club was elected secretary. Mrs. Roy Carney was appointed as adult advisor to the group.

The committee met to make plans for the rest of the year. The dairy foods demonstration contest will be held sometime in April at the Community Center in Needmore. The committee appointed to make arrangements for the dairy foods contest include: Mrs. Albert Davis, chairman; Betty Sowder, Mary Carney, Sandra Lemons, Yuvonda aylor, Charlene Coulter; Mmes. D. O. Burelsmith, Polly Clark, Totsy Lemons, and Roy Carney.

The delegates to district camp in Lubbock in June will be selected on the basis of their 4-H records. The judging committee will be composed of 4-H adult leaders: Mmes. Totsy Lemons, Fern Davis, Polly Clark, and Earl Harris, alternate, are the committee members. Delegates to 4-H Roundup will be selected in the same manner.

Those attending the meeting were: Three Way, 4-H Sandra Lemons, Yuvonda Taylor and Mrs. Totsy Lemons; Progress 4-H Shirley Burelsmith, Pat Thomson and Mrs. D. O. Burelsmith; Lucky Clover 4-H Charlene Coulter, Bernice Clark and Mrs. Polly Clark; Starlight 4-H Sandra Harris, Marilyn Green and Mrs. Earl Harris; Green Clover 4-H Mary Sowder, and Betty Sowder, Muleshoe; Senior 4-H Mary Carney and Jay Carney; and the agent, Mrs. Mollie Stinson.

Wesleyan Members Enjoyed Selections By Piano Students

A reading by Mrs. Fred Johnson, president of the Wesleyan Guild of the First Methodist Church, opened the regular meeting, which was held Monday evening of this week at the home of Mrs. Sam McKinstry.

Mrs. Johnson closed her part of the program singing, "My God And I," in prayer form. She was accompanied at the piano by Mrs. Sam McKinstry.

Devotional, "The World Laborer, Worthy Of His Higher," was given by Mrs. Ruth McCarty. Mrs. Butts sang "Dear Lord And Father Of Mankind," and the group sang "Work For The Night Is Coming." Devotional was closed with a prayer by Mrs. McCarty.

The program "The March of Christianity," was given by Mmes. Jim White and Helen Ingle. Mrs. Francis Gilbreath closed with a prayer by St. Francis of Assisi.

Guild members voted to pay \$10. to the March of Dimes Fund.

The Guild members and their husbands will go to Clovis, Tues., Jan. 3 to eat Mexican Food at the El Monterey. Those wishing to make the trip are asked to meet at the Church House at 7:30.

Guild members will serve pancakes and coffee on February 3, Saturday, at Johnson-Nix.

Next meeting will be held February 13, in the home of Mrs. Homer Sanders. The new study will begin at this meeting.

Davie Jean Anderson and Kathy Moore presented several piano selections at the close of the meeting Monday evening. Kathy and her mother, Mrs. C. E. Moore also presented a duet.

Refreshments were served to visitors, Mrs. David Anderson and daughter Davie Jean, Mrs. C. E. Moore, and daughter, Kathy and Mrs. Oscar Allison; and to members, Matilda and Margaret Slemmons, Ruth McCarty, Bess Edwards, Iris Butts, Betty Burkhead, Hazel Gilbreath, Jessie Wright, Mable Dowell, Evelyn Johnson, Ola Belle Lamb, Pearl Stephens, Lois Schoenberger, Ruby Cox, Helen Ingle, Jerrie White and Elizabeth Harden.

IT'S A GIRL FOR THE GEO. NEILS

Mr. and Mrs. George Neil, of Midland, are the proud parents of a daughter, whom they have named Cheryl Ann. The young lady weighed 6 lbs. 1 oz., when she arrived at a Midland Hospital last Friday morning, January 20.

Mr. and Mrs. Claude Sanders, of Muleshoe, are the grandparents.

Pay Your Poll Tax!

GREGORY'S PRESSURE PUMP SERVICE

Clean Outs, Pull, Set and Repairs
Call—
LON MARINT, Operator
R. O. GREGORY, Owner
Phone 3690 — Muleshoe

All Day Meeting Held By Community Center H. D. Club

"Hat Making Workshop" was one of a number of activities enjoyed by members of the Community Center Home Demonstration at the all day meeting Wednesday, January 18.

Hats were made of satin, taffeta, shantung, jersey, prints, and gabardine. Thirteen ladies completed their hats.

At the noon hour a delicious covered dish luncheon was enjoyed.

Four visitors attended the workshop. They were Mmes. La-Trice Garth, Friona; Mary Moore Muleshoe; Margie Barker, Muleshoe; and Sybil Weber, Lubbock.

Others attending were three new members, Mmes. Nell Cooper, Babe Walker, and Fiddle Shafer, and other members Mmes. Dana Arnold, Zeffa Shafer, Sammie Moore, Ruth Shafer, Pat Arnold, Helen Schmitz, Billie Bell, Janie Moraw, and Agent Mollie Stinson.

Next meeting will be February 1, and will be held at the Community Center Building. At this all day meeting, Mrs. G. G. Young will give a demonstration on making "Planters".

Each lady is asked to bring a sack lunch.

TO ENTER TECH

Dorothy Lowery, daughter of Mrs. and Mrs. R. E. Lowery, of Sudan, formerly of Muleshoe, left this week for Lubbock, where she will enroll at Texas Tech for the spring semester.

For the past two years she has been employed at the Muleshoe State Bank.

Donna Sue Fowler Initiated Into Rainbow For Girls

Donna Sue Fowler, daughter of Mr. and Mrs. James Fowler, was initiated into the Order of Rainbow for Girls, in an impressive ceremony at Masonic Hall last Thursday evening at 7:30.

Mary Janice Puckett, Worthy Advisor, named her officers. Public installation will be held the coming Monday evening, January 30, at 7:30 o'clock.

Approximately thirty-eight girls attended the meeting, and six adult leaders, members of the Eastern Star and Masons. Leaders were: Peggy Childers, Jewel Strong, Mr. and Mrs. John Thomson, and Mr. and Mrs. Johnny Johnson.

Refreshments were served by Nelda Redwine, Marcia Dale Red-

Brownies Learned New Songs At Monday Meeting

Brownies of Troop Number One enjoyed games and learned some new songs at their Monday meeting this week.

The Brownie Promise was said in unison by the group, as was The Pledge of Allegiance to the flag.

Attending were the following members: Beckye Mason, Carole Evans, Linda Stephens, Wanda Harris, Wanda Wedel, Jan McVicker, Donna Kelton, Maxine Copley, Judy Putman, Fay Nell Simpson, Shirley Richards, Franke Thomas, Judy Tipton, Jane Culter, Wilma Puckett, Catherine Puckett, Susan Birdsong, and one visitor, Judith Daly.

Refreshments were served by wine and Kay Brown, following the meeting.

SANITARY BARBER SHOP

BARBERS:

JIM LANE
J. W. WATTS, Proprietor

SHINE BOY all The Time

Boys up to 12 yrs. old, Shine..... 15c
Men and Ladies Shoe Shine..... 25c

Shine Boy On Duty Sunday Mornings Before Church



The Best In Pictures Showing

Valley Theatre

IN MULESHOE

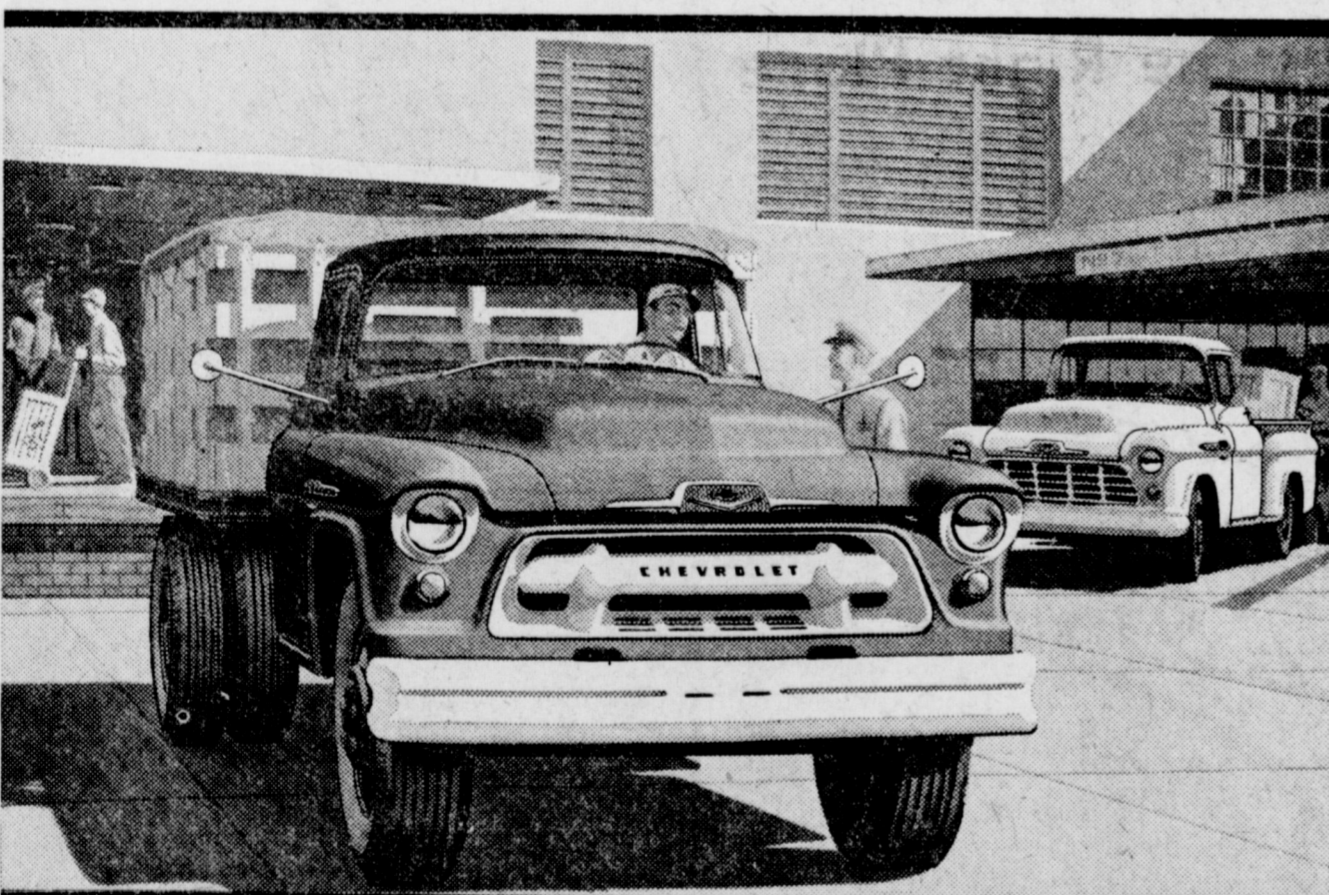
Box Office Opens 7:00 P.M.; Show Starts 7:15 P.M.
— Saturday & Sunday 1:45 P. M., Continuous Showing —

Thurs., Fri., Jan. 26 & 27	Saturday, Jan. 28
I Died A Thousand Times	Billy The Kid
—Starring— Jack Palance Shelley Winters	—Starring— Robert Taylor Brian Donlevy
Sun., Mon. Jan. 29 & 30	Tues., & Wed., Jan 31, Feb. 1
The Second Greatest Sex	The Big Knife
—starring— Jeanne Crain George Nadar	—starring— Jack Palance Shelley Winters

MOTION PICTURES ARE YOUR BEST AND CHEAPEST ENTERTAINMENT

Here They Are!

New Chevrolet Task-Force Trucks for '56!



Now there are more reasons than ever why anything less is an old-fashioned truck!

An automatic transmission for every series! A super-efficient, short-stroke V8 for every model! Higher powered, higher compression 6's! New, higher capacity! Come in and see all the new things that'll whittle down hauling time and slice your costs!

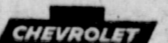
New '56 Chevrolet trucks bring you new power—a short-stroke V8* for every model, and higher compression 6's that pack a bigger power punch than ever!

And you can haul bigger loads! These new Chevrolet trucks are rated up to a hefty 19,500-lb. G.V.W.

Fast Facts About New '56 Task-Force Trucks

A Modern, Short-Stroke V8 for Every Model • More Powerful Valve-in-Head Sixes • An Automatic Drive for Every Series • New Five-Speed Synchro-Mesh Transmission • High-Level Ventilation • Concealed Safety Steps • Tubeless Tires, Standard on All Models • Fresh, Functional Work Styling.

*V8 standard in L.C.F. models, an extra-cost option in all others. Optional at extra cost in a wide range of models.



C. & H. CHEVROLET CO.

MULESHOE, TEXAS

Stop-Look-Save!

GOOD YEAR FARM TIRE SALE

12x38 6 PLY
featuring the famous
SURE-GRIP D-15
Sale priced at only...

\$96²⁸



TOP SPRING PLOWING VALUE!
An outstanding value at the regular price — and now for our big sales event, we give you a wonderful buy on this great Sure-Grip D-15. Hurry — get more PULL, longer wear at this sale price.
SPECIAL LOW PRICES ON OTHER SIZES TOO!

Sensational new "out front" value!
FARM RIB FRONT
by
GOOD YEAR

This new low cost tire is designed to give plenty of trouble-free service. Continuous triple ribs mean longer wear — easier steering. Wider tread means better traction and flotation. Get the Farm Rib Front now — SALE PRICED!
Size 600.16
\$17.45

SPECIAL TUBELESS
670x15

Reg. Price \$30.70
SALE PRICE . . . 19.95

ON-THE-FARM SERVICE — PHONE 7370 WE'LL BE RIGHT OUT

BATTERY by GOOD YEAR
15 MOS.
GUARANTEE
SALE PRICED



9.95
ONLY
EXC.

JOHNSON - POOL

TIRE AND APPLIANCE
PHONE 7370
MULESHOE

Legal Notices

NOTICE OF ROAD BOND ELECTION

THE STATE OF TEXAS, COUNTY OF BAILEY:

TO THE RESIDENT QUALIFIED ELECTORS OF BAILEY COUNTY, TEXAS, WHO OWN TAXABLE PROPERTY IN SAID COUNTY, AND WHO HAVE DULY RENDERED THE SAME FOR TAXATION:

TAKE NOTICE that an election will be held on the 4th day of February, 1956, in Bailey County, Texas, to determine whether or not bonds shall be issued by said County to the amount of \$50,000, for the purpose of the construction, maintenance and operation of macadamized, graveled or paved roads and turnpikes, or in aid thereof, in Bailey County, Texas, and whether or not ad valorem taxes shall be levied on all taxable property in said county, subject to taxation, for the purpose of paying the interest on said bonds and to provide a sinking fund for the redemption thereof at maturity, in obedience to an ELECTION ORDER passed by the Commissioners' Court of Bailey County, Texas, on the 4th day of January, 1955, and which order is in words and figures as follows, to-wit:

ORDER FOR ROAD BOND ELECTION

THE STATE OF TEXAS, COUNTY OF BAILEY:

ON THIS, the 4th day of January, 1955, the Commissioners' Court of Bailey County, Texas, convened in special session, at the regular meeting place thereof in the courthouse at Muleshoe, Texas, the following members of said Court, to-wit:

Glen Williams, County Judge, Presiding; and Tom Morgan, Commissioner, Precinct No. 1; W. W. Couch, Commissioner, Precinct No. 2; E. R. Kindie, Commissioner, Precinct No. 3; R. P. McCall, Commissioner, Precinct No. 4; being present and participating; there came on to be considered the petition of Willie George Wilson and 83 others, for an election to be held in said Bailey County, Texas, to determine whether or not bonds be issued by said Bailey County, Texas, to the amount of \$50,000, for the purpose of the construction, maintenance and operation of macadamized graveled or paved roads and turnpikes, or in aid thereof, in Bailey County, Texas, and whether or not ad valorem taxes shall be levied on all taxable property in said County, subject to taxation, for the purpose of paying the interest on said bonds and to provide a sinking fund for the redemption thereof at maturity; and

IT APPEARING to the said Court that said petition is signed by more than Fifty (50) qualified property tax paying voters

of said Bailey County, Texas and IT FURTHER APPEARING that the amount of bonds to be issued will not exceed one-fourth of the assessed valuation of the real property of said Bailey County, Texas;

IT IS, THEREFORE, CONSIDERED AND ORDERED by the said Court that an election be held in said County on the 4th day of February, 1956, which is not less than thirty (30) days from the date of this order, to determine whether or not the bonds of said Bailey County, Texas, shall be issued in the amount of FIFTY THOUSAND DOLLARS (\$50,000), in conformity with the Constitution and laws of the State of Texas, for the purpose of the construction, maintenance and operation of macadamized, graveled or paved roads and turnpikes, or in aid thereof, in said County, Texas; said bonds to bear interest at a rate not to exceed THREE AND ONE HALF PER CENTUM (3 1/2%) per annum, and to mature serially over a period of years not to exceed ten (10) years from the date thereof; and whether or not ad valorem taxes shall be levied annually upon the property in said Bailey County, Texas, subject to taxation, for the purpose of paying the annual interest on said bonds and to provide a sinking fund for the redemption of said bonds at maturity.

SUBJECT to the authorization of said bonds by the qualified property taxpaying voters, \$25,000 of the proceeds of said bonds will be used to acquire and purchase lands for rights-of-way in respect of Texas State Highway No. 84 and farm-to-market roads in said County; and \$25,000 of the proceeds of said bonds will be used to acquire and purchase lands necessary for rights-of-way in respect of farm-to-market roads in said County.

THE SAID ELECTION shall be held under the provisions of the Acts of the Thirty-ninth Legislature, First Called Session, Chapter 16, as amended.

ALL PERSONS who are legally qualified voters of said Bailey County, Texas, who are resident property taxpayers of said County and who have duly rendered their property for taxation, shall be entitled to vote at said election. THAT THE BALLOTS for said election shall be prepared in sufficient number and in conformity with V. A. T. S. Election Code, adopted by the Fifty-second Legislature in 1951, and that printed on such ballots shall appear the following:

"For the Issuance of Bonds and The Levy of Ad Valorem Taxes in Payment Thereof"

"Against The Issuance of Bonds and The Levy of Ad Valorem Taxes in Payment Thereof"

AS TO THE foregoing proposition, each voter may mark out with black ink or pencil one of such expressions, thus leaving the other as indicating his vote on the proposition; or in the alternative, each voter may vote on the proposition by placing an "X" in the square appearing on the ballot beside the expression of his choice.

THE POLLING PLACES and presiding judges of said election shall be, respectively, as follows:

- Precinct No. 1 Polling Place, The Election House, Presiding Judge, Ernest Kerr.
- Precinct No. 2, Polling Place, Baptist Church, West Camp, Presiding Judge, Partin Austin.
- Precinct No. 3, Polling Place, Longview Church, Mays, Presiding Judge, Bert Seales.
- Precinct No. 4, Polling Place, Schoolhouse Threeway, Presiding Judge, J. G. Ann.
- Precinct No. 5, Baileyboro Gin, Baileyboro, Presiding Judge, Howard Ashler.
- Precinct No. 6, Schoolhouse, Bula, Presiding Judge Roy, Young.
- Precinct No. 7, Schoolhouse, Circleback, Presiding Judge, C. G. Damron.

SPECIAL CANVASSING BOARD:

Barry T. Lewis, Johnnie Johnson, Mrs. Elizabeth Woodley. THE COUNTY CLERK of Bailey County, Texas, is hereby authorized and directed to cause said notice of election to be published once each week for three consecutive weeks prior to said election in a newspaper of general circulation published in Bailey County, Texas, and in addition thereto by posting notice of such election at four public places in Bailey County, Texas, one of which shall be at the Courthouse door of said County, for three consecutive weeks prior to said election.

A COPY of this order, signed by the County Judge of Bailey County, Texas, shall serve as proper notice of said election. THE ABOVE ORDER having been read in full, it was moved by Commissioner Morgan and seconded by Commissioner McCall that the same be passed and adopted. Thereupon, the question being called for, the following members of said Court voted "AYE": Commissioners Morgan, Couch, Kindie and McCall; and none voted "NO".

PASSED AND APPROVED, this 4th day of January, 1955.

Glen Williams, County Judge, Bailey County, Texas.
Tom Morgan, Commissioner, Precinct No. 1.
W. W. Couch, Commissioner, Precinct No. 2.
R. R. Kindie, Commissioner, Precinct No. 3.
R. P. McCall, Commissioner, Precinct No. 4.

IN WITNESS WHEREOF, I have hereunto signed my name officially and affixed the seal of the Commissioners' Court of

Bailey County, Texas, this 4th day of January, 1955, pursuant to authority given by law and the above order of the Commissioners' Court of said County.

GLEN WILLIAMS
County Judge, Bailey County, Texas

ATTEST:
AL GRIFFIN,
County Clerk and Ex-officio
Clerk of the Commissioners' Court of Bailey County, Texas
(COM. CRT. SEAL)

NOTICE OF ELECTION FOR ADDITIONAL COUNTY AD VALOREM TAXES

THE STATE OF TEXAS, COUNTY OF BAILEY:

TO THE QUALIFIED PROPERTY TAXPAYING VOTERS OF BAILEY COUNTY, TEXAS, WHO OWN TAXABLE PROPERTY THEREIN AND WHO HAVE DULY RENDERED THE SAME FOR TAXATION:

TAKE NOTICE that an election will be held throughout BAILEY COUNTY, TEXAS, on the 4th day of February, 1956, for the purpose of determining whether the Commissioners' Court of said County shall be authorized to levy, assess and collect additional county ad valorem taxes, the proceeds thereof to be used for the construction and maintenance of farm to market and lateral roads, or for flood control either, or both, as the Commissioners' Court may determine, a provided by Section 1a of Article 8 of the Texas Constitution, and Article 7048a, Vernon's Annotated Texas Civil Statutes of 1925, as amended, in obedience to an order passed by the Commissioners' Court on the 9th day of January, 1955, and which order is in words and figures as follows:

ORDER FOR ELECTION FOR ADDITIONAL COUNTY AD VALOREM TAXES

THE STATE OF TEXAS, COUNTY OF BAILEY:

ON THIS, the 9th day of January, 1955, the Commissioners' Court of Bailey County, Texas, convened in regular session at the regular meeting place thereof in the courthouse at Muleshoe, Texas, the following members of said Court, to-wit:

Glen Williams, County Judge, Presiding; and Tom Morgan, Commissioner, Precinct No. 1; W. W. Couch, Commissioner, Precinct No. 2; R. R. Kindie, Commissioner, Precinct No. 3; R. P. McCall, Commissioner, Precinct No. 4; being present and participating, when, among other proceedings had by said Court were the following:

Commissioner McCall introduced the following order and moved its adoption by the Court:

WHEREAS, by an amendment to the Constitution of the State of Texas adopted at an election on November 2, 1948, being Section 1a of Article 8 of said Constitution, it was among other

things provided that from and after said date the several county ad valorem tax shall be levied upon any property within the State of Texas for general revenue purposes, and that from and after said date the several counties of said State shall be authorized to levy ad valorem taxes upon all taxable property within their respective boundaries for county purposes, except the first THREE THOUSAND DOLLARS (\$3,000) valuation of residential homesteads, not to exceed THIRTY CENTS (30c) on each ONE HUNDRED DOLLARS (\$100) valuation of taxable property in said county, (until the amount of said maximum tax shall be changed as authorized by law), which tax shall be in addition to all other ad valorem taxes heretofore authorized by the Constitution of the State of Texas, provided the revenues therefrom shall be used for the construction and maintenance of farm to market roads or for flood control; and

WHEREAS, by Chapter 464, Acts of the Fifty-first Legislature at its Regular Session in 1949, being Article 7048a, Vernon's Annotated Texas Civil Statutes of 1925, as amended, the said Legislature made definite and certain the manner and means by which the Commissioners' Court of the various counties of this State should be enabled to place into operation the authority granted by the aforesaid constitutional provisions; and

WHEREAS, it has been found and determined that Bailey County and no political subdivision or defined area therein has heretofore been granted any tax donations by the State of Texas out of or from any state ad valorem tax and;

WHEREAS, upon due consideration and investigation this Court has affirmatively found and determined that it will be to the best interest and general welfare of the county to call an election pursuant to the provisions of the aforesaid Article 7048a for the purpose of determining whether the Commissioners' Court shall be authorized to levy, assess and collect additional county ad valorem taxes, the proceeds thereof to be used for the construction and maintenance of farm to market and lateral roads or for flood control, either or both, as the Commissioners' Court may determine;

THEREFORE BE IT ORDERED BY THE COMMISSIONERS' COURT OF BAILEY COUNTY, TEXAS:

That a special election be held throughout said County on the 4th day of February, 1956, at which election the following proposition shall be submitted to the qualified taxpaying voters who own taxable property in said County and who have duly rendered the same for taxation for their action thereupon:

"SHALL THE COMMISSIONERS' Court of Bailey County, Texas, be authorized to annually levy,

assess and collect ad valorem taxes upon all taxable property within said county, except the first THREE THOUSAND DOLLARS (\$3,000) valuation of residential homesteads, not to exceed THIRTY CENTS (30c) on each ONE HUNDRED DOLLARS (\$100) valuation of taxable property in said county, (until the amount of said maximum tax shall be changed as authorized by law), which tax shall be in addition to all other ad valorem taxes heretofore authorized by the Constitution of the State of Texas, provided the revenues therefrom shall be used for the construction and maintenance of farm to market and lateral roads or for flood control, either or both as the Commissioners' Court may determine, all in accordance with the provisions of Section 1a of Article 8 of the Texas Constitution, and Article 7048a, Vernon's Annotated Texas Civil Statutes of 1925, as amended."

The said election shall be held under the provisions of Chapter 464, Acts of the Fifty-first Legislature at its Regular Session in 1949, being Article 7048a, Vernon's Annotated Texas Civil Statutes of 1925, as amended.

All persons who are qualified property taxpaying voters of Bailey County, who own taxable property therein and who have duly rendered the same for taxation shall be entitled to vote at said election.

IT IS FURTHER ORDERED that the ballots for said election shall be prepared in sufficient number and in conformity with V. A. T. S. Election Code, adopted by the Fifty-second Legislature in 1951, and that printed on such ballots shall appear the following:

"FOR THE TAX NOT EXCEEDING THIRTY CENTS (30c) ON EACH \$100.00 VALUATION"

"AGAINST THE TAX NOT EXCEEDING THIRTY CENTS (30c) ON EACH \$100.00 VALUATION"

AS TO THE FOREGOING proposition, each voter may mark out with black ink or pencil one of such expressions, thus leaving the other as indicating his vote on the proposition; or in the alternative, each voter may vote on the proposition by placing an "X" in the square appearing on the ballot beside the expression of his choice.

THE POLLING PLACES and Presiding Officers of said election shall be respectively as follows:

- Precinct No. 1, Polling Place, The Election House, Muleshoe, Presiding Judge Ernest Kerr.
- Precinct No. 2, Polling Place, Baptist Church, West Camp, Presiding Judge, Partin Austin.
- Precinct No. 3, Polling Place, Longview Church, Mays, Bert Seales, Presiding Judge.
- Precinct No. 4, Schoolhouse, Three Way, Presiding Judge, J. G. Ann.

Precinct No. 5, Polling Place, Baileyboro Gin, Baileyboro, Presiding Judge, Howard Ashley.

Precinct No. 6, Schoolhouse, Bula, Polling Place, Presiding Judge Roy Young.

Precinct No. 7, Polling Place, Schoolhouse, Circleback, Presiding Judge, C. G. Damron.

SPECIAL CANVASSING BOARD, Barry T. Lewis, Johnnie Johnson, Mrs. Elizabeth Woodley.

The County Judge shall cause notice of said election to be posted at a public place in each voting precinct in said County not less than fourteen (14) days next before said election, and to be published on the same day in each of two successive weeks in a newspaper of general circulation published within said County, the date of the first publication to be not less than fourteen (14) full days prior to the date of election.

A substantial copy of this order shall serve as proper notice of said election.

The above order having been read in full, the motion of Commissioner Couch for its passage was duly seconded by Commissioner Kindie.

Thereupon, the question being called for, the County Judge put the motion to a vote of the members of the Commissioners' Court, and the motion carried by the following votes: Commissioners Morgan, Couch, Kindie, McCall, voting "AYE"; and none voting "NO".

PASSED AND APPROVED, this 9th day of January, 1955.

Glen Williams, County Judge, Bailey County, Texas.

Tom Morgan, Commissioner, Precinct No. 1.

W. W. Couch, Commissioner, Precinct No. 2.

R. R. Kindie, Commissioner, Precinct No. 3.

R. P. McCall, Commissioner, Precinct No. 4.

IN TESTIMONY WHEREOF, I have hereunto signed my name officially and affixed the seal of the Commissioners' Court of Bailey County, Texas, this 9th day of Jan. 1955, pursuant to authority given by law and the above order of the Commissioners' Court of said County.

Glen Williams,
County Judge,
Bailey County, Texas

ATTEST:
GLEN WILLIAMS
AL GRIFFIN,
County Clerk and Ex-Officio
Clerk of the Commissioners' Court of Bailey County, Texas.
(Com. CRT. Seal)

3-3tc.

POWER UNITS


FRY & COX BROS.

Minneapolis-Moline
Muleshoe Texas

A DOLLAR SAVED IS A DOLLAR EARNED

CHECK this chart and see how your savings grow at First Federal at 3% compounded semi-annually.

Save Monthly	5 Years	10 Years	15 Years	20 Years
\$10.00	\$ 646.47	\$1,397.41	\$ 2,269.73	\$ 3,283.02
25.00	1,616.17	3,493.52	5,674.32	8,207.55
50.00	3,232.35	6,987.05	11,348.65	16,415.10



For Information In Earth and Muleshoe See—
MILDRED DAVIS
N. F. L. Building
4th AND PILE CLOVIS, N. M.



TEXAS FARM BUREAU

Special Reopening

for FARM BUREAU members

(without the usual 6-month eligibility period!)

- For Those Not Now Enrolled in Blue Cross . . .

here is your Opportunity

TO PREPAY HEALTH CARE COSTS



Blue Cross FOR YOUR HOSPITAL



Blue Shield FOR YOUR DOCTOR

C.I.E. (Catastrophic Illness Endorsement)
For CANCER and 10 Other Dread Diseases

• AVAILABLE TO FARM BUREAU MEMBERS ONLY •

APPLICATIONS MADE NOW EFFECTIVE April 1, 1955 ENROLLMENT

DATES Jan. 1 TO Feb. 15 THIS REOPENING RESTRICTED TO MEMBERS OF BAILEY COUNTY FARM BUREAU.

W. R. (Ray) CARTER

PHONE 6480 MULESHOE

Biggest pickup body!



8-foot FORD Pickup

. . . gives you more room for bulky loads than any other 1/2-ton Pickup—up to 19 cu. ft. more!

Now, Ford offers the biggest 8-ft. Pickup in the half-ton field. This versatile performer has a big 65.4 cu. ft. box that saves you trips! Costs so little extra you'll be amazed. GVW 5,000 lbs.

MORE POWER! The Ford F-100 delivers more horsepower to the rear wheels than any other 1/2-tonner—up to 44% more! This greater usable horsepower gives you more "GO" for your money, even with heaviest loads! Choice of 133-h.p. Six or 167-h.p. Y-8, both Short Stroke.

MORE SAFETY! Only Ford gives you such safety features as the new Lifeguard steering wheel and new Lifeguard door latches. New Ford seat belts available.



Most useful hide in any truck! Full floor rubber, five inches in seat, three inches in seat back . . . and thirteen other deluxe features are yours in Ford's Custom Cab, at low extra cost.

FORD Economy TRUCKS

Ford Trucks Last Longer! Certified by independent life insurance experts for the ninth consecutive year. Studies of fleet losses register data on 10,000 Ford trucks show that Ford Trucks last longer than the other four leading makes.

PHONE 4930

MULESHOE MOTOR CO.

MULESHOE



J. M. Forbes Publisher

Entered as second class matter at the Muleshoe Post Office under the Act of Congress, March 3, 1937.

In Immediate Territory, 1 Year \$2.50
Out of Immediate Territory, 1 Year \$3.00

BABSON DISCUSSES:

BUDGETING AND INVESTING

Babson Park, Mass., Jan. 26. Most people seem to live from day to day irrespective of their pocketbooks. Governmental "womb-to-tomb" social security has caused people to take lightly problems of unemployment and old-age security. Most young people give little or no sound thought to their financial future. They, therefore, never get even the few dollars necessary to get themselves started on the road to successful investment. Surely, the birds who build their nests (homes) before they raise their young set us a good example.

MEN AND MONEY

My father used to tell me that a man who systematically spends less than he gets, automatically becomes an employer; while a man who spends all he earns, automatically remains a wage earner. Father insisted that the business of saving had nothing to do with how much money a person had, or the amount of his salary. "Some people with very large incomes never save anything," he used to say.

It has been my own observation that partners in business and partners in marriage tend to get along well as long as there is no money with which to pay them that troubles begins. The only way to assure financial of marriage success is to tell your dollar where to go instead of asking where it went.

MAIN INVESTMENT PROBLEM: SAVING

Your first step in an investment program is to save some of your income each week. The next step is to make your savings produce some more income. I am firm believer, however, that it is cheaper to pay the grocer than the doctor; hence a budget should be drawn up which puts first things really first. Many of my clients tell me that they are handicapped by spending too much on rent, or its equivalent in taxes, repairs, insurance, etc., on property owned. The best thing that could happen in many households today would be to cut down household labor costs by getting the children to help more with household chores.

To start a budget, one ought to determine from experience and from old bank statements and cancelled checks what his probable expenses will be for the year ahead. My observations through the years are that a man with a family of four who has net income of \$4,000 (after income and security taxes) ought to hold his living expenses to about 75% of the 4,000. About 42% of this would go for food and clothing; 33% for housing and transportation. Right here I think many families, especially in the lower-income brackets, will find that they are paying altogether too much for their transportation in the form of a new automobile which they cannot afford. If they started on a sound investment program, they better pay more cash, and use less credit. 6% is budgeted for benevolence and church; 6% for personal and miscellaneous items. This leaves about 13% or \$545 for insurance, savings accounts, and investments. Let us hope that \$200 dollars of this will go for life insurance premiums. This would leave \$325 a year to save and invest otherwise.

LAN FOR SAVING AND INVESTING

A study of the average men's financial independence is generally shocking to most people. About 30% of the men 35 years of age are not self-supporting. The real tragedy of this situation, as I have seen it, is that the average man made enough money in the ages of thirty and fifty to keep himself and his family in comparative ease for the rest of his life. He just never got around to a definite plan of saving and investing. Does it not seem senseless for you to work hard the best part of your life to get a few dollars if those dollars earn nothing for you after you get them? It is highly important to learn early in life how to budget, save, and invest. Important capital is created only by labor and saving; those who consume less than they produce turn their surplus back into productive channels to increase the nation's store. Investments, plus bank deposits are the way in which capital is increased. Increased capital means increased production. Greater production means more wealth. More wealth means more to be distributed among those who take part in production. Greater production means more consumable goods and service at lower prices for all of us. This is the democratic way of raising our standard of living.

INCOME TAX FACTS

How To Save On Income Tax

This is one of a series of articles on federal income tax filing. The articles are based on information provided by the American Institute of Accountants.

The eve of April 16 will see a mad scramble in many households to put together the necessary facts and figures for the federal income tax returns due on that date. (April 15 falls on a Sunday this year, making April 16 the deadline.)

The last minute rush produces not only long lines at Internal Revenue Service offices but also many careless mistakes by taxpayers.

Most of the errors are very simple. For example, about one million returns are filed every year with signatures missing. (This includes joint returns with only one signature and individual returns with no signature at all.) Little slips in arithmetic last year resulted in overpayments by taxpayers of \$18,000,000. Taxpayers got back these overpayments eventually, after the government discovered the mistakes but the taxpayer cannot rely on the government to save him from all his errors.

The mistakes of arithmetic favoring the taxpayer were even larger—perhaps not entirely by coincidence. All returns are checked, and when an underpayment is discovered the government not only collects the difference, but also charges interest.

OPPORTUNITIES OVERLOOKED

Apart from obvious mistakes, many taxpayers overlook opportunities to claim exemptions and deductions, and other ways to reduce their tax. In order to help you avoid such pitfalls, this newspaper is publishing a series of articles prepared with the help of the national and state organizations of certified public accountants. These articles — if you save them and use them along with the official instructions that come with your tax forms — may save you money.

Your first step is to consider whether you should file at all, and then what kind of a return to file.

For income tax purposes you are not required to file a return if your gross income in 1955 was less than \$600, or if you are 65 or older and had less than \$1200 gross income. But if you had income from self-employment of \$400 or more, the return must be filed for social security tax purposes.

Don't forget that tax on salary or wages may have been withheld during the year by your employer, even if your income was less than \$600, and the only way to get it back is to file a tax return.

KOGHE SEES— THROUGH A GLASS DARKLY

By CARROLL POUNCEY

Now I like dogs as much as the next fellow. Well, maybe not as much as the next fellow, who happens to be a tall Pomeranian, but anyway I like dogs. But, I will also admit that this is a cowardly way to sneak into the subject of there being too many people-gone dogs in our fair city. I absolutely refuse to make the statement that the town is going to the dogs, so you need not expect to find that sentence in this column.

But, there are an awful lot of dogs around here making a nuisance of themselves. In our neighborhood up on West Fifth there are about 8,037 dogs in round numbers, and when one says something they all have to get their two bits worth said too. If someone would take the trouble to teach them to sing Jingle Bells or Way down Upon The Swanee River, it would be a lot more pleasant than when they are just ad libbing at the moon, or holding a jam session about a passing car.

I wish I could offer a suggestion about what to do about them, but our girls absolutely will not consider my suggestion that our Sandy be sent to the country to live, and I guess other people have children and children have dogs and what are you gonna do

Mr. Izzard, the Amarillo (oh, you know who he is) said the other night that things are getting more and more standardized, and he sure is right. He said that if you woke up in a large city hotel you would have to ask someone where your hotel was so much alike these days. I keep wanting to call that man Mr. Wizard. He is one too.

Nevertheless, we note that Connie Hilton has opened a new hotel in Big D which has 1,001 rooms and musically lined elevators. Not only won't you be able to tell what hotel you are in upon waking, but you won't even be able to make yourself heard to ask someone what town you are in. The moral of this, if any, is stay at home. You can always look out the window of the Elite or the Muleshoe Hotels and spot the water tower and right away you know where you are.

In pursuing a daily paper (there are such things) the other night, we were struck or stricken, take your choice, by the kind of jobs being offered in the want ad columns in the big cities. I am a servo computer, or a nuke assimilator or have a degree in mecho-electronic automation, there are lots of jobs waiting you. But if you are a dishwasher with only a B. A. degree, there's not much hope for you unless you happen to be the owner of some Ford stock.

Here's a thing you probably already know. If so, you may now quietly put down the paper and leave the room so as not to disturb the rest of us. Here is:

If you cannot refrain from drinking, start a saloon in your own home. Be the only customer and you will not have to buy a license. Give your wife \$1200 to buy a gallon of whiskey, here are 128 shorts in a gallon.

Buy all your drinks from your wife at 40 cents a snort and in four days, when the gallon is gone, your wife will have \$39.20 to put in the bank plus \$12.00 to start up in business again.

If you live ten years and continue to buy all your booze from your wife, and then die, your snakes in your boots, your widow will have \$35,750.40 on deposit — enough to bury you respectably, educate your children, buy a house and lot, marry a decent man and forget she ever knew you.

Sandhill Philosopher wants Farm Classified As Foreign Soil So He Can Get In On Foreign Aid

Editor's note: The Sand Hills Philosopher on his Johnson grass farm has a unique solution for the farm problem, slanted in his favor, naturally his letter this week reveals. Dear editor:

I was sitting out here by the fire the other night reviewing the proposed United States budget, mostly out of curiosity, as I always like to see what one looks like. I don't use one myself out here on this farm, don't have to, the bank budgets me, and I was reading along letting the figures sift through my mind like sand running through your fingers and carrying about the same meaning, when I realized I'd passed a couple of significant figures and went back and checked.

Sure enough, the figures were for farm aid and foreign aid.

According to the budget, the government proposes spending nearly five billion dollars on foreign aid this year, and not quite three and a half billion on farm aid.

My neighbor claimed what this proves is that it's cheaper to own foreign land than domestic you get more aid and don't have to pay taxes, but I don't agree I'll keep my land in this country.

But I did get to thinking, Understand, I don't know anything about foreign aid, it may be cheaper than fighting a war, although I imagine if you went back far enough you'd find a good many countries we've helped in the fighting us in the last two wars, although ISHH fighting us in the last two wars at least, and I know we're now helping some of the countries we whipped in the last one, but if the experts in Washington say we ought to spend more than ever on foreign aid, it's not my job to disagree. They may be right.

But I was just wondering, Is there any way part of the surplus farm land in the United States could be classified as foreign soil in order to get in on some of that foreign aid? Couldn't Congress pass a law temporarily designating my farm as a part of India until the farm crisis passes? I understand to get in on this foreign aid you've got to be backward, use out-of-date farming equipment, look a little run down at the heels and indicate a willingness to be friendly toward a hand-out, and I believe I could meet those terms satisfactorily.

Of course I wouldn't want to lose my voting privileges, I don't want to be classified as a foreigner myself, but if it would ease the government's conscience any, it would be all right to classify my farm temporarily as foreign soil and remove it from the tax rolls, and I'll carry on as long as the checks keep coming in. After that naturally I'll vote for the other party, or whichever one that keeps the most aid coming in.

Yours faithfully, J. A.

Today's Meditation

The Church at Work in the World Read John 12:20-26.

Sir, we would see Jesus. (John 12:21)

All the idols offered man worship, all the things that for too many become objects of worship, cannot satisfy man. Idols and things do not answer man's longing for the true God. One day two young men came to our Mission Center. They came with a special request. "A few months ago," they said, "we attended evangelistic meetings in our village. The words spoken by the Armenian evangelist gave us new life. We have been reading the New Testament ever since. Now we have come to you to hear and learn more of Christ. We want to see Him. We represent seven villages and ten thousand people. Like us, they need light and more light. Please help us Our spiritual condition is pitiable. The religion we have had no longer satisfies us."

We thank God for the church and its challenge to people everywhere to a higher way of life. We thank God for our opportunities to serve Him by leading others to Christ that He may work His saving power in them.

Annual Telethon For MOD Drive To Be Held Sat.

Muleshoe residents will join an estimated 350,000 West Texas viewers for the year's top local television production Saturday, Jan. 28, when the 1956 March of Dimes Telethon gets underway.

To be held in Lubbock's Fair Park Coliseum at the Panhandle-South Plains Fairgrounds, the professional talent line-up is short of fantastic. Stars of the comedy television show, "Amos 'N Andy" including Amos, Andy, the Kingfish, Calhoun, Sapphire and Mama, will all be on hand for the all-night frolic.

Also headlined will be the singing King Sisters, Skinny Ennis and his orchestra and the "Crewcuts", top recording artists. In addition, almost a dozen other professional stars will be on hand.

Piles of valuable merchandise, contributed by Lubbock and area merchants, will be auctioned off to the highest bidder with the entire proceeds going to the March of Dimes.

Handling the auction block will be popular KDUB-TV personality Jimmy Isaacs and the cowboy cut-up from Abilene, Slim Willis. The "Amos 'N Andy" cast will lend a helping hand from time to time.

The fourth annual Telethon, which is sponsored by KDUB-TV and the Lubbock Exchange Club with its new location, a top array of talent and wonderful merchandise for auction, should be the finest in its history.

February Food Buys Led By Potatoes Pork and Grapefruit

Potatoes, pork, beef and grapefruit top the plentiful food list for February.

Mae Belle Smith, extension specialist in consumer education, says potatoes are being consumed in decreasing amounts because they are thought to be fattening. This isn't true, she says, for a medium sized potato contains about 100 calories. The thing to watch is the butter and snakes in your boots, which commonly eaten with the potato. Potatoes are a good source of vitamin C; contain B vitamins, iron and other minerals besides being a good energy food. They are a good food and good for you, says the specialist.

Red meat supplies for 1956 are expected to equal those for 1955 and a wide variety of kinds and cuts of pork and beef are available. Consumers are asking for leaner pork and producers are responding by trying to produce more meat-type hogs. Pork is a top source of vitamin B as well as iron and phosphorus.

Beef is still plentiful and Miss Smith suggests that the economy

cuts can help keep the food budget low.

Grapefruit, both fresh and processed, are available in large quantities at prices slightly below those of a year ago and are a good buy. Other fresh vegetables include cabbage and celery.

Rice, broilers, fryers, milk and other dairy products, vegetable fats and oils, peanut butter, lard and canned tuna round out the plentiful list for February.

VISITED PARENTS

Dorothy Giles and Rex Robinson visited in Knox City, Benjamin, and Seymour with Dorothy's parents, Mr and Mrs. R. C. Giles and brother Robert, and other relatives and friends.

Pay Your Poll Tax!

CHRISTIAN SCIENCE SERVICES

How spiritual understanding of divine Love enables mankind to make the Golden Rule practical in daily living will be set forth at Christian Science services this Sunday.

Keynoting the Lesson-Sermon entitled "Love" is the Golden Text from I John (4:12): "If we love one another, God dwelleth in us, and his love is perfected in us."

The spiritual basis for brotherhood is brought out in selections to be read from "Science and Health with Key to the Scriptures" by Mary Baker Eddy including the following (518:13-19): "God gives the lesser idea of Himself for a link to the greater, and in return, the higher always protects the lower. The rich in spirit help the poor in one grand brotherhood, all having the same Principle, or Father; and blessed

is that man who seeth his brother's need and supplieth it, seeking his own in another's good."

Scriptural selections will include Paul's love (Galatians 5:14): "For all the law is fulfilled in one word, even in this; Thou shalt love thy neighbor as thyself."

SERVICES HELD FOR BRO. OF MRS. GRIFFITHS

Funeral services for E. J. Freeman, of Yakima, Wash., were held Monday afternoon, January 23, at the First Baptist Church there.

He is the brother of Mrs. Ray Griffiths, of Muleshoe.

WEEKEND GUESTS

Mr. and Mrs. Clyde Bray had as weekend guests in their home,

their son and daughter-in-law, Mr. and Mrs. Dan Bray and family, of Lubbock, and another daughter-in-law, also of Lubbock, Mrs. Keith Bray.

FROM LITTLEFIELD

Mrs. Alice Hood and Mrs. Vic Matthews, of Littlefield, visited Sunday here in the home of their brother and sister-in-law, Mr. and Mrs. C. E. Briscoe.

Other guests in the Briscoe home were their children.

MOVED TO CALIFORNIA

Mr. and Mrs. W. J. Drake and daughter, Janice, moved last Thursday to Salinas, Calif., where he will be employed. They have made their home here for about the past five years.

Read the Journal want ads

BUTANE - PROPANE SALES AND SERVICE



LP AND NATURAL GAS APPLIANCES TWO-WAY RADIO FOR BETTER AND FASTER SERVICE
• Gasoline — Oil — Tires — Batteries
• Plant At Needmore For South Bailey County
• Let Us Convert Your Tractor and Motors to Butane
Muleshoe Liquefied Gas Co. CLOVIS, HIGHWAY PHONE 3130 TEXAS

It's Got All Texas Talking... "The TEXAN" by Dodge
The Texan by Dodge! A handsome, rugged car big as all outdoors, with the surging power of a quarter horse, sweeping lines of a gull in flight, the relaxed touch of push-button driving!
The Texan is built for Texas driving. It skims swiftly along the big broad highways, it rips over hills like a hungry cougar, it takes the bumpiest, roughest, sandiest road and comes back for more. Powered by the mighty engine that busted the AAA record book wide open at Bonneville Salt Flats, it gives you the same superior engineering and design that made Dodge the greatest sales-gainer in the industry in 1955.
Plenty of special features, too... specially designed interior trim, special paint combinations, jaunty twin exhaust pipes, and other smart touches. The Texan's name is proudly blazoned on both rear fenders. Truly a beautiful car to be admired by your fellow-Texans.
Best of all, the Texan is priced right down with the so-called "low-priced three." Yet it's big and powerful and luxurious... rivaling cars costing as much as a thousand dollars more! Visit your nearest Dodge Dealer now and drive the Texan!
SOLD BY YOUR FELLOW-TEXAN—YOUR DODGE DEALER
ARNOLD MORRIS AUTO CO. 1012 Main Street



TELETHON TO FEATURE KING SISTERS — Musical entertainment of the annual Exchange Club — KDUB-TV Telethon, an all-night effort to raise funds for the 1956 March of Dimes, will be highlighted by appearance of the famous King Sisters. The all-star lineup for the show, to be televised on Channel 13, beginning at 8:45 p. m., Saturday, Jan. 28, includes Skinny Ennis and his orchestra, and the cast of the popular "Amos 'N Andy" television comedy.

HAS BEEN ILL

Mrs. T. H. Kent returned home Saturday from Sweetwater where she has been ill and confined to the hospital there. She is feeling much better according to latest reports.

HOME ON LEAVE

Cpl. Claude Locke, of the U. S. Air Force, is home on leave from Kirtland AFB, New Mexico, before an overseas tour of duty. He is the son of Mr. and Mrs. B. C. Locke, of Muleshoe.

Miss Imogne Treider and Joe Cox Wed In Impressive Ceremony At Lazbuddie

First Baptist Church of Lazbuddie was the scene of an impressive ceremony, Sunday, January 15, uniting in marriage Miss Imogne Treider and Joe Cox.

The Rev. Paul Syms, of Albuquerque, N. M., uncle of the bride, read the double-ring ceremony before an altar of white gladioli, stephanotis, greenery and white pom poms, flanked by candleabra. He was assisted by Rev. C. K. Roberts, of Lazbuddie. Mr. and Mrs. Juel Treier, of Lazbuddie are parents of the bride, and the bridegroom's parents are Mr. and Mrs. Guy Cox, of Farwell.

Miss Neely Steinbock sang "Day of Golden Promise", and "The Lord's Prayer." She was accompanied at the piano by Mrs. Ruth Long, aunt of the bride, who also presented the traditional wedding marches and other wedding selections.

Entering on the arm of her father, who gave her in marriage, the bride wore a ballerina length gown of white Chantilly type lace and illusion over satin. A lace jacket designed with long tapering sleeves which came to points over her hands, was worn over the strapless, fitted bodice. The bouffant skirt was designed with three tiers of lace and illusion over satin.

Her fingertip length veil of illusion fell from a satin lattice hat trimmed with rhinestones. She wore satin opera pumps and carried a bouquet of yellow roses atop a white Bible.

Carrying out the tradition, the bride carried a linen handkerchief, which belonged to her great grandmother, for something old; a pearl necklace which was a gift from the groom; a pair of pearl earrings borrowed from her sister, and the usual blue garter.

Bridal attendants wore pastel, ballerina length gowns of crystalline. Their corsages were of white carnations. Maid of honor was Clara Jean Jesko, and bridesmaids were Mary Gosner, and Glenda Hall. Betty Floyd and Wanda Hunt lighted the candles. Cheryl Krey, of Selkirk, Kans., niece of the bride was flower girl. She wore a dress of pastel crystalline and carried a basket of yellow rose petals.

Guy Cox, Jr., of Amarillo, served as best man. Ushers were Paul Jesko, of Lazbuddie and Ansel Dolittle, of Farwell. Terry McGee, of Friona, nephew of the bride, was ring bearer. He carried the rings on an orchid satin pillow.

Mrs. Treider chosen for her daughter's wedding, a dress of turquoise faille with white gunmetal accessories. She wore a corsage of pink carnations. Mrs. Cox was attired in a dress of navy, with pink and navy accessories. Her corsage also, was of pink carnations.

Reception Honors Couple

A reception honoring the couple was held immediately after the ceremony in the home of Pastor and Mrs. C. K. Roberts. The bride's table was covered with

an escur crocheted cloth over blue. A six tiered wedding cake topped with a miniature bride and groom standing under a heart shaped arch of white lace, centered the table.

Assisting in the house party were Mmes. Guy Cox, Jr., Mrs. Treider, Mrs. Wesley Krey, Mrs. Annie Cargile, Mrs. Kenneth Reeves, Mrs. Burke McGee, and Miss Beverly Bruce, of Albuquerque, N. M.

For going away, the bride chose a dress of white faille and black velvet, with black velvet accessories.

Mr. and Mrs. Cox are now at home in Farwell, following a short wedding trip.

Prior to her marriage, the bride was employed by the Albuquerque, N. M., National Bank. She is a 1955 graduate of Lazbuddie High School.

The bridegroom, since his discharge from the Armed Forces, has been employed by the Security State Bank, at Farwell.

Evening visitors from Earth and four from Needmore attended the

installation service. They are as follows: Mms. Henretta Armstrong, Mary Gilmore, Billie Lois Kirby, Doris Baker, Mary Parish, Fay Adrian, Alma Stockstill, Alta Mitchell, Lora Bell Hickman, Helen Hulay, Mildred Kendrick, Thelma Gage, Adele Tompkins, Maxine Ragsdale, and Betty Hopper.

Sixteen Members Attended W. S. C. S. Meeting Monday

One visitor and sixteen members attended the meeting of the W. S. C. S., in the home of Mrs. Jay Weyer, Monday afternoon, January 23, at 2:00 o'clock in the afternoon.

Participating on the program were Mmes. F. B. Pierson, Clay Beavers, H. C. Holt and I. F. Willman. Mrs. Holt presented the chapter, "United Nations In Search For Peace."

The Women's Society of Christian Service will meet on January 30, at 2:00 p. m. with Mrs. Weyer, to continue the third lesson of the study.

Officers Elected For Character Builders Class

New officers for the coming year were elected in a meeting of the Character Builders class of the First Baptist Church, Saturday, January 21, at the home of Alana Evans.

Beth Young is president; Shirley Henry vice-president; Alana Evans, secretary; Donna Guinn, assistant secretary; Joy Autry, treasurer; Louise Stinson, assistant treasurer; Jane Sanders, organist; Bennie McDaniels, assistant organist; Kay Landers, song leader; and program chairman, Lois Kelton.

The group enjoyed games and songs. Refreshments of cakes, sandwiches and cookies were served to the following: Beth Young, Louise Stinson, Bennie McDaniels, Donna Guinn, Joy Autry, Shirley Henry, Alana Evans, and the teacher Mrs. Gaddy.

Committees Are Appointed At Progress Meeting

Mrs. Gladys Haley, hostess of ladies of the Progress Home Demonstration Club, served delicious cherry pie topped with whipped cream, when the club met at her home on January 12.

Committees were appointed, and the group drew for Polly-anna.

A talk was given on "Color Harmony In The Wardrobe", by Mrs. Phebe Gray. Roll call was answered with "My Most Unusual Hat."

Next meeting will be held at 10:00 a. m. January 26, in the home of Mrs. Veta Self.

Attending the meeting were Mmes. Fern Davis, Estell Hill, Veta Self, Myrtle Wells, Ada Murrah, Marie Malby, Bonnie Mead, Elvov Samanher, Mae Simmacher, Alameda McGuire, and Phebe Gray.

Earth-Muleshoe OES Lodges Held Joint Installation

An impressive installation service of the Muleshoe and Earth Eastern Star Lodges was held last Thursday evening at the Masonic Hall here.

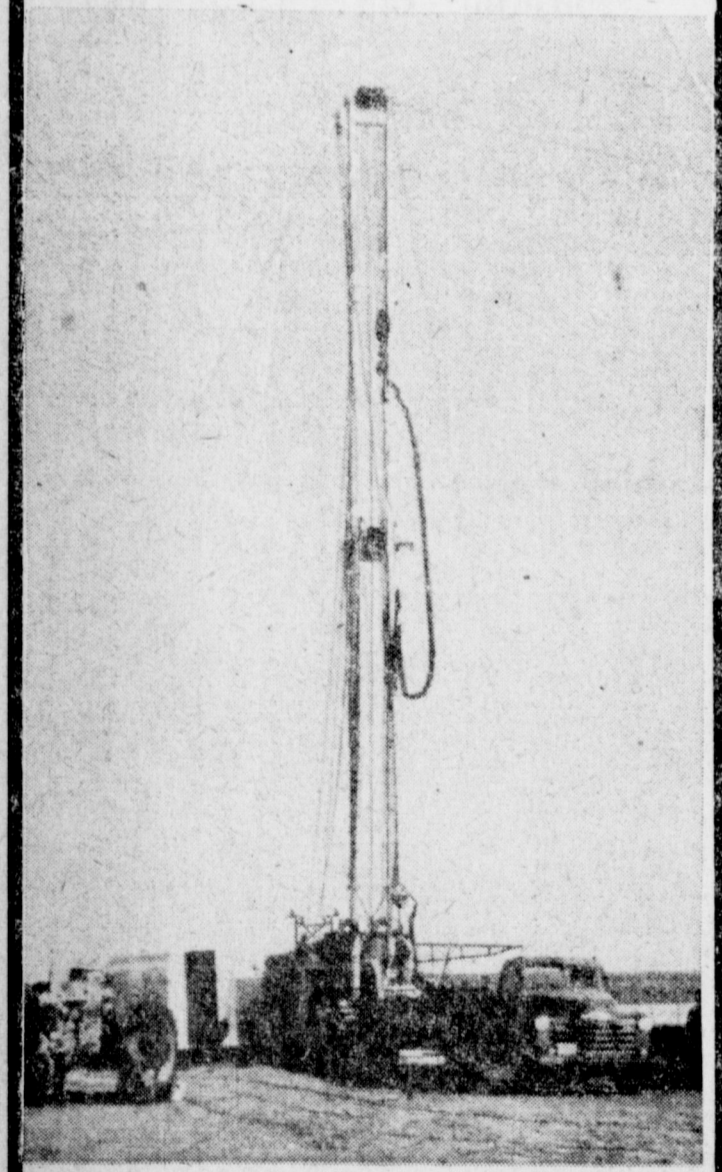
All officers were installed with the exception of the vice-grand and her supporters.

Muleshoe officers are as follows: Grace Kemp, Noble Grand; Ona Berry, recording secretary; Lucille Gross, treasurer; Fern Davis, warden; Bernice Hendricks, conductor; Velma Howell, flag bearer; Fay Lambert, right support to the Noble Grand; Al Noble Grand; Ina Gross, inside guardian; Callie Smith, outside guardian; Myrtle Freeman, Chaplain; Argie Lee Milln, musician and Mary Thomas, reporter.

Installing officers were Faye Lambert, Fern Davis, Barbara Burton, Myrtle Freeman, Allie Snyder, Velma Howell and Argie Lee Millen.

Pay Your Poll Tax !

Irrigation Supply COMPANY
LAYNE & BOWLER PUMPS
 Agriculture's Best Insurance
 SALES & SERVICE



WE NOW HAVE A
New R-4 Wichtex DRILLING RIG
 Capable of Drilling any
 Irrigation Well
 On the South Plains

NECCHI

THE WORLD'S FINEST SEWING MACHINE
HARVEY BASS APPLIANCE
 Phone 4690
 Muleshoe

Anthony's C.R. ANTHONY CO.

BUCKHIDE WORK CLOTHING WEEK LOW PRICES
 on high quality superior made clothing for the working man

Buckhide Matched Sets
 Galey and Lord CRAMERTON Army Cloth

Shirts and Pants in one of the finest fabrics woven. Workmanship that comes up to and even exceeds Army Specifications. Mercerized cotton with lustre that remains permanent. Cut and made for working comfort. Sanforized for lasting fit. We urge you to compare these garments with the finest made, be your own comparison shopper, see for yourself you can save at Anthony's. Shirts in sizes 14 to 17. Pants in sizes 28 to 44. Tan only.

7.47 SUIT
 PANTS \$3.98
 SHIRTS \$3.49

Genuine Twist Twills
 In Tan or Grey

Only first quality J. P. Stevens genuine Twist Twill is used in these Buckhide Work Clothes. Known throughout the southwest for their superb workmanship, perfect fit and long satisfactory wear. Sanforized shrunk. Double seams, deep pockets. Truly the best work clothes buy for your money. Shirts in sizes 14 to 17. Pants in sizes 28 to 44. Choose from Army Tan or Silver Grey.

5.47 SUIT
 PANTS \$2.98
 SHIRTS \$2.49

"You haven't worn the best until you've worn Buckhides"

Men's and Boys' 13 3/4 Ounce Western Jeans

Coarse weave denim, western cut and styled. Double sewn with tough orange thread, bar-tacked and riveted at all points of strain. Wide belt loops, zipper fly, Sanforized, shrunk for lasting fit. Wear them, compare them, you'll find Buckhides are tops in quality. Lowest in price.

2.79
 MEN'S 28-42
2.19
 BOYS' 4-16

Boys' Sanforized "Buckhide" Perma-Knee Jeans
 "Knees Can't Wear Through"
 Regular \$1.69 Value
1.57
 2 PAIR \$3

Perfect fitting blue denim jeans with vulcanized knees for double wear. Double stitched, bar-tacked and riveted, zipper fly. Sanforized shrunk. Boys love them for their perfect fit. Stock them up now at this sale price and save. Sizes 4 to 12. All with the famous Buckhide label, exclusive with Anthony's.

MEN'S CHAMBRAY WORK SHIRTS
 SIZES 14-17 → **94¢**
 Blue chambray, first quality, full cut for working comfort. Double seams, 2 pockets. Dress type collar. Extra well made for neat appearance and long satisfactory wear. Regular \$1.19 value. Save now

Boys' Long Wearing Double Knee JEANS
 Long wearing blue denim with double knees for double wear. Sanforized shrunk, double sewn with tough orange thread, bar-tacked and riveted at all points of strain. Zipper fly. Look at this thrifty Anthony price. Buy several pairs now
\$1.39
 SIZES 4-12