

The Ozona Stockman

3000 SQUARE MILES
OF
CROCKETT COUNTY
LIVESTOCK TERRITORY

Out In The West, Where The Air Is Pure, The Climate Agreeable, And The People Friendly The Best Place On Earth To Call Home.

VOLUME 70

OZONA, CROCKETT COUNTY, TEXAS 76943

25c Per Copy

WEDNESDAY, FEBRUARY 2, 1983

NUMBER 49

Kitty's Korner

by
Kitty Montgomery

Shades of the dark ages—we never had sat down and really thought about the progress made with electricity the last 100 years until we were without it for over an hour Tuesday morning before the deadline. Before going completely off, it cut out a couple of times, losing the lines stored in the computer type-setter. After it was off for about ten minutes, we decided to make up some last minute ads we had already set type for. Wouldn't you know it, our waxer, run by electricity, was completely frozen, leaving us no way to get the type to adhere to the grid sheet.

I decided I would just write my stuff on a manual typewriter. It was several minutes of browsing around before I realized we had not owned a manual typewriter in years. Oh well, I would just write my copy in long-hand. Would you believe it; the electric pencil sharpener wouldn't work. After this I decided to just sit down and have a cup of coffee. However, the electricity had been off so long, the coffee was cold, so that was the end of that.

A new cold spell blew in Tuesday morning and although we have a gas furnace, the fan is electric, so it got pretty cold before we realized the gas heat was not going to operate without electricity.

I don't know what the problem was. The wind blew some before the lights went out, so that's a possibility. It looks like the utility company is going the way of the phone company. The higher the cost, the lower the service. We can manage without the phone, but a power outage on Tuesday is just unthinkable and these come too often lately. Not on Tuesday, of course, but because this happened on Tuesday when we were using everything electrical it seemed more awful than usual, and we feel something should be done to prevent these consistent power cut-offs. We don't even get an explanation anymore. It's either a squirrel in a transformer or a tree limb or truck pulling a line down. Seems to us the company should have a better way to prevent this inconvenience. They don't even knock off some on your bill for the inconvenience.

Mr. Vela Services

Funeral services for Romulo L. Vela, 52, were held Tuesday at 4 p.m. in Our Lady of Perpetual Help Catholic Church, with burial in Lima Cemetery.

Mr. Vela died at 10:30 p.m. Saturday, in Crockett County Hospital.

Mr. Vela was born Dec. 30, 1930 in Ozona. He was married to Chona Martinez Nov. 14, 1954 in Ozona. He was a noted bootmaker and had a shop at his home. He was also a marketing manager at Jim's Foodway. He was a veteran of the Korean War and a member of the Catholic Church.

Survivors include his wife, of Ozona; two daughters, Mrs. Hector DeHoyos, Jr. and Mrs. Kim John Tambunga, both of Ozona; one son, Fernando Vela of Fort Worth; one sister, Mrs. Luis Martinez of Ozona; one brother, Andres Vela of Fort Worth and four grandchildren.



VARIOUS HONORS WERE BESTOWED on this group at the 19th Annual Chamber of Commerce Banquet held here Thursday evening at the Civic Center. From left to right: Genece Childress was named Citizen of the Year. Others honored were Dale Hobson, Jene Wilton, Jr. and Dee Keilers. [See story for details] [Photo by Jene Wilton, Jr.]

At Annual C of C Banquet—

Citizen of the year award to Mrs. Childress

The 19th Annual Chamber of Commerce Banquet was held at the Civic Center Thursday evening with 180 persons in attendance. The Citizen of the Year Award went to Genece Childress. The Young Citizen's Award went to Jene Wilton, Jr. and the Flunky of the Year Award to Dee Keilers. The Ozona Womans Forum was recognized as the Organization of the Year, and special recognition was given to Dale Hobson for the July 4, fireworks display.

Mrs. Childress was chosen for her work in civic affairs, church and Historical Society, plus her steady support of PTA, 4-H and FFA. She has been active in the Sunday school department of First Baptist Church for 20 years. She was instrumental in publishing the Crockett County History Book and is presently president of the Crockett County Museum.

Young Wilton is a senior in Ozona High School where he plays feature trumpet in the OHS band. He is active in First Baptist Youth Group and a member of the Ozona Volunteer Fire Department. He is an assistant scoutmaster and head photographer for the school. He has attained the Order of the Arrow, the highest honor in Boy Scouting.

Hobson has been in the electric and plumbing business in Ozona for the past five years. He recently opened a grocery store and will soon open a restaurant here. He made a substantial donation to the Chamber of Commerce fireworks display July 4, besides attending to the lighting of the fireworks for the display.

The Womans Forum marks its 50th year of community service this year. Through the years it has made many civic improvements through volunteer efforts. Involvement in the community and support of all civic endeavors has been the interest of the club since its inception. The crimestopper program is its most recent contribution to the community. Mrs. Huey Ingram accepted the award for the club.

Dee Keilers was selected

for the new Flunky of the Year award for his ongoing service to the community and individuals. One of the new directors, Johnny Childress, composed and read a clever poem acclaiming Dee's praises. It is printed elsewhere in this paper.

Mrs. Childress was presented an engraved plaque and the other awards were scrolls.

Steve Cannon won the hunting knife in the drawing. The contest was conducted by the Chamber of Commerce during hunting season. George Bijones, Marie Pearson and Lucille Harrell won the car seat covers donated by JW Motor Parts.

After the invocation by Clenton Eastman, pastor of

Calvary Baptist Church, the dinner was served.

Dr. Steve Sessom, recently re-elected to the post of president, made the welcome address and introduced the outgoing directors, Becky Childress, Charles Sizemore, Don Sessom and Ronald Shaw.

New directors were introduced. They are Frank White of Ozona National Bank, Stan Lambert of the Crockett County National Bank, Johnny Childress, realtor, and Gene Lilly of Lilly Construction Co.

Sessom expressed appreciation to all who contributed to the success of this year's banquet, KRCT and the Ozona Stockman for publicity, Maxine's for the floral

arrangements, Peggy Wellman and the Myrtle Post Garden Club for table decorations, Boy Scout Troop 153 for setting up and arranging the tables.

Sessom gave a report on the chamber's activities during the past year, beginning with the April Easter Egg Hunt when several hundred children participated. Candy eggs numbered 2,500 and there were 24 prize eggs. Also, the annual tennis tournament the past summer and the church in the park project also sponsored by the chamber. The fireworks display saw one of the largest crowds in Ozona history gathered to eat watermelon and view the fireworks. And the successful participation by the chamber in the youth rodeo, plus the Halloween carnival in which 13 organizations took part and took in a total of \$1,989. The year's projects ended with the turkey shoot in November. Sessom thanked all those who took part in the conclusion of the year's successful projects.

A preview of the coming year's projects was given, beginning with sponsorship of the blood bank, Feb. 9, the Easter Egg Hunt, April 2; the mile run May 21; the tennis tournament in June, Church in the park and the fireworks display in July, the junior rodeo August 5-6, an art show in September, the Halloween Carnival in October and the turkey shoot in November.

The annual banquet will be held in January of 1984 to mark the 20th year of the organization of the chamber of commerce. Members now number 137. New members this year include R. B. Babbitt, Donuts, Etc., Spencer Welding, Whitehouse Co., De La Rosa Plumbing, Crockett Hotel, Moore Oil, Elizabeth Upham Ins., Strata Well Service, Double T Ranch and the Flower Basket.

Sessom introduced the out of town guests before turning the program over to the guest speaker, Col. Ben F. Swank, Jr. Out of town guests included Bob Diebitsch, Evelyn Diebitsch and Kay Kisor of San Angelo, and Maurine and Mike Werst of Big Lake.

Mrs. Macon was pinned in the car by the motor. After she was freed from the wreckage, she was taken to Crockett County Hospital suffering a compound fracture of the left leg, numerous lacerations and bruises. She was hospitalized and Hollingsworth was treated for minor injuries.

Lions routed by Ballinger 78-49

By-Ross Alexander

In a game marred by sloppy ball handling and poor offensive production, the Ozona Lions fell out of contention for first place honors for the 1st half of district play Friday night, as Ballinger soundly thrashed out a 78-49 victory, improving their record to 2-2, while Ozona slips to 1-3.

The game stats indicate clearly that the competitive matchups which produced such an exciting and close game between these two teams earlier this season in Sonora just were not there, as the potent Ozona offensive punch failed to materialize. The Lions hit on a miserable 16 of 58 shots from the field, and in the second half, only 8 of 33 from the floor...by far the most inadequate offensive production of the season.

"We shot poorly, and turned the ball over too often and the result was a rout, simple as that," an exasperated Coach John Curry said afterwards. "We seemed to come out for the first 2 or 3 minutes pretty good, but they went into a zone and we went flat at that point. We didn't handle their press very well at all."

Ozona managed 42 rebounds but suffered 41 turnovers in 84 total possessions, although Ballinger had 49 turnovers in 79 total possessions.

The inconsistency the Lions seem to be struggling with this season can be seen in the performance of Robert Massey who drew the tough Aaron Keeesee defensively. During the first quarter of play, Massey simply outplayed the high scoring Keeesee, holding him to just 3 points while scoring 4 for the Lions himself. In the later going, however, particularly third period action, Keeesee went to the hoop with deadly frequency, while Massey's attempts from the floor subsided considerably. Dan

Bean had trouble with Ballinger's Halfmann whose 19 points, mostly off-the-boards type baskets made from inside, hurt the Lions' hopes of mounting any comeback effort. Gary Whitehead had difficulty at times with Ballinger's Manley whose 15 points were not matched by Gary's 2 points.

"A team that doesn't have a lot of basketball savvy tends to be rather inconsistent," Coach Curry candidly stated recently. "We had just played a close tough game last week against Colorado City, and whether or not we expended ourselves somewhat emotionally during that game, I'd be reluctant to speculate on. One thing, however, is undeniable...we were flat against Ballinger Friday night."

When Ozona scores only 49 points in a contest, Coach Curry needs someone to rise to the leadership spot, provide the consistently strong

offensive performance and display an efficient field goal percentage in the process. Maybe in this upcoming second half of the district season, we will see some real offensive leadership develop in this kid Sanchez, and get a glimpse of the true dimensions of his game.

"We are very much in the running for a post season playoff spot as the second half commences," Coach Curry insisted. "Each team has an equal chance because each must play the other at least once again. I'll admit that we are at the low point of our season, but there is absolutely nothing that indicates that we can't turn this season completely around and win the 2nd half."

Coahoma comes to Davidson Memorial Gymnasium this Friday night, and Ozona can get the 2nd half off to a successful start right here at the Bulldogs' expense.

Services here today for Elizabeth Perner

Funeral services for Elizabeth (Lizzie) Perner, 93, will be held this afternoon, Wednesday, Feb. 2, at 2:30 o'clock in Ozona United Methodist Church, with burial to follow in Cedar Hill Cemetery.

Mrs. Perner died at 6:15 a.m. Monday in Shannon Hospital in San Angelo.

She was born Elizabeth Odom, the youngest daughter of Mr. and Mrs. J. W. Odom, September 7, 1889, in Callahan County. She moved with her parents to Ozona when she was two years of age. She was married to Paul C. Perner Sept. 7, 1909 in Ozona. She was an active member of the Methodist Church, teaching in the Youth Department for 22 years. She was a member of the Eastern Star, Ozona Womans Club, Ozona Garden

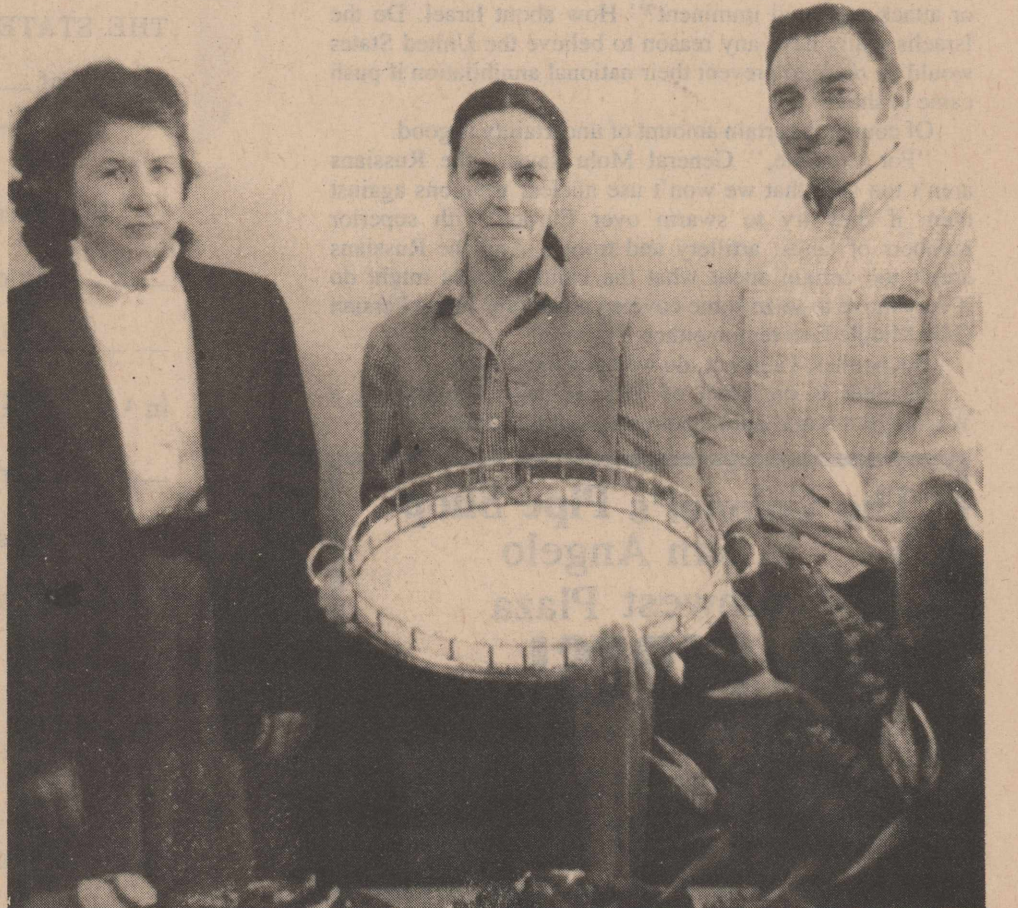
Club and the Music Club.

She is survived by three daughters, Pauline Montgomery of Ozona, Elizabeth Wilson of Odessa, and Mary Daniels of Atlanta, Ga.; one son, P.C. Perner of El Paso; one brother, William Odom of Kingsland; seven grandchildren and nine great grandchildren.

Immunization clinic set

Public Health Nurses will conduct an Immunization Clinic Thursday February 3, at the Civic Center, 10 a.m.-12:00 noon and 1-2:00 p.m.

All children and students can get free immunizations against dangerous childhood diseases. Nurses keep a record for each child and will tell parents what shots are needed.

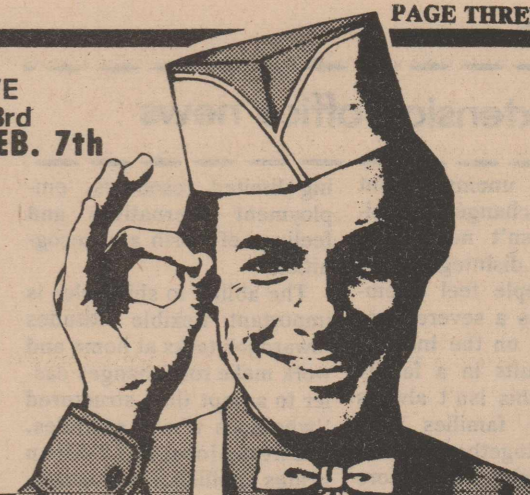


COUNTY AGENT HONORED-Debra Price, Home Demonstration Agent here for the past ten years, was honored with a reception in the newly restored offices at the courthouse here Friday afternoon. Debra and her husband, Bill, have moved to Quannah. She shows the brass tray presented to her by the Extension office. Nancy Hale, secretary and Billy Reagar, county agent pose with Mrs. Price.

JIM'S FOODWAY

You can't buy better.

PRICES EFFECTIVE THURSDAY, FEB. 3rd thru MONDAY, FEB. 7th
LIMIT RIGHTS RESERVED



Hearty Beef Stew

Winter time meals are times for the hearty stews, soups and casseroles with hot breads. One of my favorites is this savory beef stew with lots of hot rolls and butter...

- #### Savory Oven Beef Stew
- | | |
|-----------------------------------|-----------------------------------|
| 2 lb. Chuck Roast | 1 (15oz.) can tomato sauce |
| 1/4 tsp. pepper | 1 (16oz.) can tomatoes |
| 1 tsp. salt | 4 med. carrots, sliced |
| 1/4 c. flour | 1 (10oz.) pkg. frozen peas |
| 2 bay leaves | 2 med. onions, peeled & quartered |
| 2 med. onions, peeled & quartered | 2 med. potatoes, peeled and cubed |
| 1 c. sliced celery | 2 c. water |

Combine flour, salt and pepper. Dredge meat in flour. Brown in small amount of hot fat. Add remaining ingredients. Cover and bake in 300° oven for 2 1/2 to 3 hours. Remove bay leaves, adjust seasoning if necessary. Cut meat into small pieces. Thicken with small amount of flour if desired. Serves 6.

Carol Scroggins
CAROL SCROGGINS
DIRECTOR OF CONSUMER AFFAIRS

Carol Scroggins
Director of Consumer Affairs
P.O. Box 33160
San Antonio, TX 78233

SMOKED-FULLY COOKED
BONELESS HAMS
TV
WHOLE 4-8 LB AVE LB **\$1.89**
HALF HAMS 24 LB AVE LB \$1.99

MEAT or BEEF
GOOD VALUE FRANKS
12-OZ PKG **.89**

USDA CHOICE "P.S." BEEF
CHUCK ROAST
PS PERSONALLY SELECTED
Boneless
\$1.39
PERSONALLY SELECTED

Sunday House
SMOKED TURKEYS LB **\$1.39**
GOOD VALUE-ASSORTED
SLICED MEATS WAFER THIN 2 1/2-OZ PKG **.49**
USDA CHOICE "P.S." BEEF
CHUCK STEAK BONELESS LB **\$1.69**

GOOD VALUE
SLICED BACON 1-LB PKG **\$1.69**

FRESH & LEAN CHUCK QUALITY
GROUND BEEF LB **\$1.69**

LEAN & TENDER
BEEF SKIRTS
FAJITAS LB. **\$1.59**

Special
CUT **GREEN BEANS**
TV
4 **\$1**
15 1/2-OZ CANS

Special
"MIX 'EM or MATCH 'EM"
CANNED **VEGETABLES**
TV
3 **\$1**
16-OZ CANS
*CHAM STYLE or WHOLE KERNEL CORN
*SLICED or WHOLE BEETS
*"LOW SODIUM" SLICED BEETS
CUT or FRENCH SLICED GREEN BEANS
*SHREDDED SAUERKRAUT

Special
"MIX 'EM or MATCH 'EM"
CANNED **VEGETABLES**
TV
5 **\$2**
16-OZ CANS
*"LOW SODIUM" PEAS
*MIXED VEGS.
*WHOLE KERNEL CORN
*CARROTS-REG.
*CARROTS
*WHOLE PEELED TOMATOES

Special
GOOD VALUE DINNERS
MACARONI AND CHEESE
GOOD VALUE
5 **\$1**
7 1/4-OZ BOXES

Aurora
BATHROOM TISSUE 4-ROLL PKG **99¢**
DEL MONTE
PINEAPPLE - ORANGE DRINKS 46-OZ CAN **89¢**

GOOD VALUE
Barbecue Sauce 18 OZ. BOTTLE **43¢**

DEL MONTE
PEAR HALVES 16 OZ. CAN **59¢**

GLADIOLA
FLOUR 25 LB. BAG **\$4.09**
REG. \$5.29

ZESTA
Saltines 1 LB. BOX **79¢**

DEL MONTE
Tomato Catsup 44 OZ. JAR **\$1.59**

Good Value Fluoride
Toothpaste 6.4-OZ TUBE **\$1.09**

VAN CAMPS
Western Style
BEANS 15 1/2 OZ. CAN **3/\$1.00**

GOOD VALUE
SUGAR 5-LB BAG **\$1.39**

GALA
TOWELS LG. ROLL **69¢**

Good Value
Deodorant YOUR CHOICE: 2 1/2-Oz. Stick 3-Oz. Roll-On **.89**

Good Value Balsam Protein
Conditioner *Extra Body 16-OZ BTL *Regular **.99**

Good Value Balsam Protein
Shampoo 16-OZ BTL **.99**

SUPER SPECIAL
EXTRA LARGE WASHINGTON
RED DELICIOUS **APPLES**
Washington
LB **.39**

SWEET-NAVEL **ORANGES** 4 LBS **\$1**
CALIFORNIA-CRISP **CELERY** 3 STALKS **\$1**
U.S. #1 RUSSET **POTATOES** 5-LB BAG **.59**
TEXAS **CARROTS** 4 1-LB BAGS **\$1**
Green **Onions** 4 BUNCHES **\$1**
Red **Radishes** 4 6-OZ PKGS **\$1**

CALIFORNIA **ICEBERG LETTUCE** 3 **\$1**
Texas Large Size **Grapefruit** 4 FOR **\$1**
Sweet Yellow **Onions** LB **.15**

Special
FROZEN **ORANGE JUICE**
TV
2.69
6-OZ CANS

Special
FIELDS GRADE "A"
Extra **LARGE EGGS**
DOZEN **.69**

GANDY'S
Ice Cream 1/2 GAL. **\$1.79**

GANDY'S
Buttermilk 1/2 GAL. CTN. **\$1.29**

GANDY'S
Ice Cream 5 QT. BUCKET **\$4.09**

GANDY'S
Cottage Cheese 24-OZ PKG **\$1.39**

MRS. SMITH-SUPERSPECIAL
Pies ASST. FLAVORS 46 OZ. **\$2.39**

FLEISCHMANN'S 100%
Corn Oil 16-OZ **.99**

KRAFT AMERICAN
Cheese 12-OZ PKG **\$1.49**

Jim's...
FOODWAY
916 11th STREET OZONA, TEX 7:30 AM-6:00 PM MON-THURS.
... HOME OWNED & OPERATED 7:30 AM-6:30 PM FRI-SAT
CLOSED SUNDAY

Extension office news

Although unemployment means some change for families, it doesn't necessarily mean family disintegration.

Many people feel unemployment has a severe negative impact on the individual and results in a family crisis. But this isn't always true.

Studies of families that have adapted to crisis situations point out several ways to avoid additional stress.

Stressful situations are not viewed as unmanageable when families have reserves to draw on, either money put aside for an emergency or possible investment.

Education is a personal resource because it can help the person realistically look at unemployment and analyze possible strategies for job change/relocations.

Another personal resource is health and emotional well-being. When individuals are healthy, psychological threats that often accompany job loss don't affect them as much.

When a family is close and adaptable, a person's response to unemployment is less severe.

Communication within the family unit is valuable. It enables discussion of manag-

ing limited resources, employment alternatives and feelings of worth and recognition.

The ability to shift roles is important: flexible attitudes toward job tasks at home and work make role changes easier to accept than structured "who does what" attitudes.

Unemployment often brings families closer as they look for ways to compensate job and financial losses.

Social supports available to unemployed individuals and their families may be found in community services, federal and state assistance, company or union benefits and neighborhood or group networks.

Although job loss is not always related to performance, the unemployed person often feels vulnerable. Social services reduce the severity of this feeling.

Unemployment is part of the current economic situation, and so is the stress placed on the family of an unemployed individual.

When a family is close and adaptable, a person's response to unemployment is less severe.

Communication within the family unit is valuable. It enables discussion of manag-

Cubettes bring home consolation trophy

The 7th grade Cubettes traveled to Del Rio Friday and Saturday to compete in the Del Rio tournament. In the first game the Cubettes played Del Rio "A" and were defeated 21-14.

Sharon McCrohan had 7 points, Lydia Pena, 5 points; Lacy Miller, 2 points. Lydia Pena was high rebounder with 12 rebounds.

Later the same day the Cubettes played Uvalde and this time came out on the winning side with a score of 26-11. Sharon McCrohan had 10 points, Lydia Pena, 6 points; Eileen Moran, 4 points; Randi Thompson, 4; and Melissa Vallejo, 2 points. High rebounder was Lydia Pena with 12 rebounds and Julie Cantu had 2 assists.

Womans League in meeting

Ozono's Womans League met January 25, in the home of Mr. Hillery Phillips with Mrs. Lane Scott and Mrs. Rick Hunnicutt serving as hostesses.

Mr. John Pounds with the San Angelo Police Department's Crime Prevention Division gave an "eye opening" lecture on "How to say 'no, thank-you' to rape."

High score went to Mrs. Sherman Taylor and second high to Mrs. Evert White. Mrs. Bill Mason won the club bingo and Mrs. Joe Couch the Charlotte Phillips bingo.

Others playing were Mrs. Clay Adams, Mrs. Charlie Black, Mrs. John Childress, Mrs. Gene Lilly, Mrs. Kirby Moore, Mrs. W. E. Friend, Mrs. J. B. Parker, Mrs. Buddy Phillips, Mrs. B. W. Stuart, Mrs. Charles Williams and Mrs. Jack Williams.

ettes returned to Del Rio to play Sacred Heart Christian Academy for consolation. In a close game that was decided by free throws the Cubettes won 19-16. Leading by one point with less than a minute to play Lydia Pena made both shots of a one and one.

Sharon McCrohan had 9 points, 7 were free throws, Lydia Pena had 6 points; 4 were free throws, and Elizabeth Soto had 4 points. Sharon McCrohan had 15 rebounds and Lydia Pena had 2 steals.

Overall the Cubettes had a good tournament bringing home a consolation trophy. The Cubettes have two more games before the track season begins.

Other members of the team are Olga Borrego, Martha Enriquez, Regina Cervantez, Dawn Hanson, Judy Flores, Sylvia Flores, and Ermelinda Mata. Stacie Winkley and Mendy Clay are this years managers.

Mrs. Gillit honored with gift tea

Mrs. Jimmy Gillit was honored with a gift tea Saturday, Jan. 29, from two until four o'clock at the Granny Miller Hall.

Hostesses were Mmes. Charles Farris, Rex Parker, Bobby Knox, Jamie Knox, Bill Dixon, Freddie Nicks, Weldon Nicks, Bill Crowder, Mike Preddy, Charles Preddy, Claude Montya, Willena Holden, Charles Huffman, George Olson, Jeff Owens, Larry Arledge, Bill Watson, Ruth Gilliam, Violet Allen, Cliff Williamson, C. O. Walker and J.B. Miller.

A special guest was Mrs. Serilda Senne, grandmother of the bridegroom.

Out of town guests included Mrs. Maggie Glasscock, Mrs. Anna Rose Gillit and Miss Paula Gillit.

Around 40 guests called during the tea hours.

Tips For Gardeners

From The Ozona Garden Club by Mrs. Bailey Post

This is the month of preparation for outdoor planting:

"The February sunshine steeps your boughs and tints the buds and swells the leaves within."

William Cullen Bryant - Don't delay longer those tasks that could have been done in January and that must be done now if your garden is not to suffer.

The dividing and replanting of perennials that are to be given this treatment should be done before new growth has made much headway.

Dormant sprays should be used now if this has been neglected.

Apply fertilizer to shrubs, trees and evergreens except azalea and camellias which should be done after they bloom.

Trees, shrubs and vines that are espaliered against walls may be pruned now if they are kinds that flower on new growth. If they produce their blossom on last year's growth, delay pruning until after they have flowered.

Winter arrangements may be enjoyed made of spring-flowering ornamentals, such as forsythia, flowering quince, plum, redbud, pussy willow and winter jasmine. Just place the stems in warm water, and there should be flowers in 2 to 3 weeks. For best results, change the water and cut an inch from each stem every 3 or 4 days. Select branches with an abundance of swollen flowerbuds, cutting only those that will not affect the overall appearance of your plant.

The best time to prune roses in our area is from March 1 to March 15. If you prune these too early they will put on new growth which would be damaged by a

freeze. Hybrid teas and bush type roses need to be pruned back severely each year to keep bushes from becoming a tangled mass and flower quality will be poor. To produce show roses, cut the canes to about 6 to 8 inches above the ground. Other wise leave 12 to 15 inches above ground. Retain only 3 to 6 vigorous canes, removing all others down to the graft (swelling at base of plant).

Mr. and Mrs. Oscar Kost spent the weekend in Snyder and Lubbock, returning home Monday before the ice storm hit the Panhandle.

Norma's Kountry Kitchen

Broasted or Fried Chicken

HAMBURGERS—PIZZAS—

SANDWICHES—FISH & FRIES

Chicken Special every Wed.

So. I-10

Ph. 392-3508

Announcing

the association of Ana Smith with MARG'S BEAUTY COTTAGE

1002 Ninth Street 392-3333 effective

Tuesday, January 25, 1983. Ana appreciated your patronage while with the Hair Loft, and hopes to see you soon at MARG'S.

Dale's Electric

Residential-Commercial-Industrial

Ditch Witch Services

We sell Berkley Water Pumps

Refrigeration Repairs

Free Estimates

24 Hr. Service

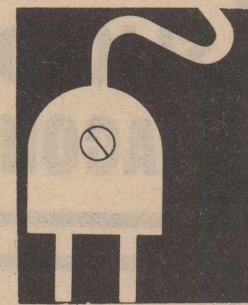
Ph. 392-2801

Day or Night

Fully Insured

Dale Hobson, Owner

1108 Ave. J.



OZONA CHURCH OF CHRIST
1102 11th Ozona

Sunday Morning Class 9:45
Sunday Morning Worship 10:50
Sunday Evening Worship 6:30
Wednesday Evening Class 7:00
KRCT Radio Every 3rd Month

RALPH ANDERSON
Minister
Serving Christ By Serving You

IT'S HERE OZONA!

The Unique Dining Experience

The Old Steak House is opening it's doors to you

Monday, February 7

Come in and enjoy our pleasant atmosphere and delightful surroundings

MENU

-Charbroil Steaks-

-Homemade Bread-

-Plate Lunches-

-Breakfast-

-Salad Bar-

Open Seven Days a Week

5:00 am. - 11:00 pm.

Owners:

Dale Hobson & Terry Lindsey

Phone 392-3482

THE OLD STEAK HOUSE



Sharing the Abundant Life

There was plenty of gasoline during the blizzard. Yet we couldn't go anywhere. So we made the best of it, and tried to help one another.

Our society is changing today. We are learning to cope. To appreciate what we have in abundance. Make do with what's in short supply. Share!

The message of our churches has not changed. They have always reminded us that life should not be measured in terms of material possessions. Christ in his own way offered men an abundant life.

For the Christian believer and worshipper that abundant life is founded on spiritual conviction and commitment. It includes things that blizzards and gas crunches cannot take away.

Come worship this week and share in the abundant life.



Sunday	Monday	Tuesday	Wednesday	Thursday
Matthew	Acts	James	I John	I Timothy
6:5-15	12:1-19	1:1-8	5:6-21	2:1-15
Friday	Saturday	Copyright 1983 Keister Advertising Service P. O. Box 8024, Charlottesville, Virginia 22906		
Psalms	Psalms	Scriptures selected by The American Bible Society		
66:1-20	65:1-13			

This series of ads is being published and sponsored by the Ozona business firms in the interest of a stronger community.

- L-B Motor Co., Inc.
- Ozona National Bank
- Ozona Butane Co.
- Jim's Foodway

- Brown Furniture
- Ozona TV System
- South Texas Lmbr. Co.
- White's Auto
- Ozona Stockman

Crop insurance lowers production risks

Production and financial risks facing Texas farmers in 1983 take on greater significance during the current difficult times for agriculture.

A crop insurance program is one means available to farmers to counteract the production risks they face every year, reminds Dr. James Ahrenholz, economist-management with the Texas Agricultural Extension Service.

"There is a cost for such crop protection, and each farmer will need to look at his particular situation to evaluate crop insurance," Ahrenholz says.

The All-Risk Crop Insurance program is available to provide some protection against reduced crop yields from natural causes. The program allows farmers to choose among three levels of coverage. These are either 50 percent, 65 percent or 75 percent of the yield established for their farm unit, Ahrenholz reminds.

In addition, farmers may choose among three levels of price protection for their insured crop. For example, he emphasized, grain sorghum producers in Texas may choose either \$2.00/bu., \$2.40/bu. or \$2.60/bu. as the settlement price for any loss in production.

Many farmers have indicated that the area yield established for a crop on their farm does not accurately reflect their production and thus the protection they would like to have. The Individual Yield Coverage program addresses this concern. Thus, a farmer with 3 years of verifiable production records may be eligible to have the yield coverage increased for his farm unit by certifying those records with the county Agricultural Stabilization and Conservation Service (ASCS) office at least 15 days before the insurance sales closing date.

Crop insurance coverage will be increased for farmers participating in the recently

announced Payment in Kind or "crop swap" program. Yield coverage increases of 6 percent, 8 percent or 10 percent will apply depending upon the level of a farmer's participation in the Payment in Kind program. These higher yield guarantees are applied with no increase in the crop insurance premium rate, the specialist adds.

To participate in the All-Risk Insurance program, a farmer must sign an application before the established deadline. That deadline has

been set at March 15 for South, West, Central and Northeast Texas and the Gulf Coast. In the Texas Panhandle, South Plains and Rolling Plains, the deadline will be April 15.

Farmers should contact their local All-Risk crop insurance agent about yield guarantee and premium information for their farm unit.

Since these factors vary for each individual situation, insurance is one risk management tool that farmers should carefully evaluate, Ahrenholz suggests.

WTU announces new energy-saving plan

West Texas Utilities Co. has announced a new energy savings plan providing cash incentives to encourage its customers to purchase high-efficiency air-conditioning and home heating equipment.

The program is available for single-family residential customers. Don Welch, vice president and director of customer services, said the purpose of the plan is to urge customers to install higher efficiency equipment to help reduce the peak summer demand for electricity.

"If more of our residential customers install better equipment, we can make more efficient use of our present generating stations and prolong the installation of expensive new units," Welch said. "This would benefit all of our customers in the long run."

The new program provides cash incentives for air-conditioners, both central and window units; heat pumps, heat-recovery units for electric water heaters, and solar-assisted electric heaters in single family homes which are served by WTU.

The homes must meet WTU's energy efficient home requirements, which

involves such things as insulation, weatherstripping, and storm windows.

Cafeteria Menu

Monday
Spaghetti and meat sauce
Buttered Peas
Tossed Salad
Sliced Peaches
Hot Rolls

Tuesday
Hamburger on Bun
French Fries
Lettuce, Tomatoes, Pickles
Applesauce

Wednesday
Burritos
Buttered Corn
Vegetable Salad
Peach Cobbler

Thursday
Spanish Steak
Mashed Potatoes
Cole Slaw
Sugar Cookies
Cornbread

Friday
Fried chicken and gravy
Creamed Potatoes
Buttered peas
Mixed Fruit
Hot Rolls

Perry's Sale

SALE STARTS MONDAY JAN. 31st thru SAT. FEB. 5th

PERRY'S

VISA
Master Charge



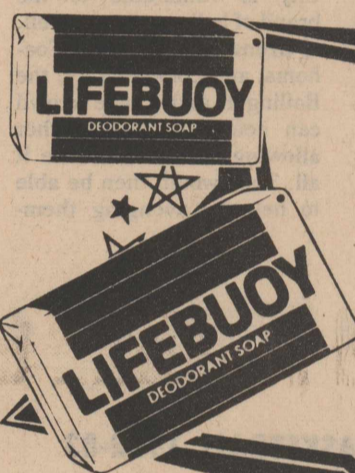
14-OZ
PERRY'S SALE PRICE
39¢

1-LB BROCK CHOCOLATE VALENTINE CANDY

PERRY'S SALE PRICE
3.88

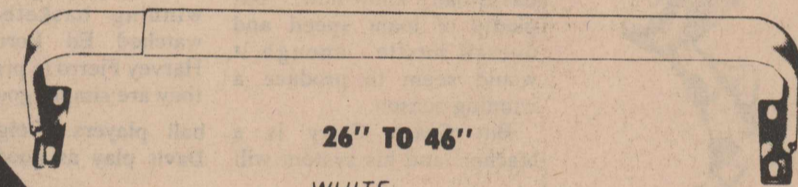


Reg. 4.99



SOAP BATH SIZE

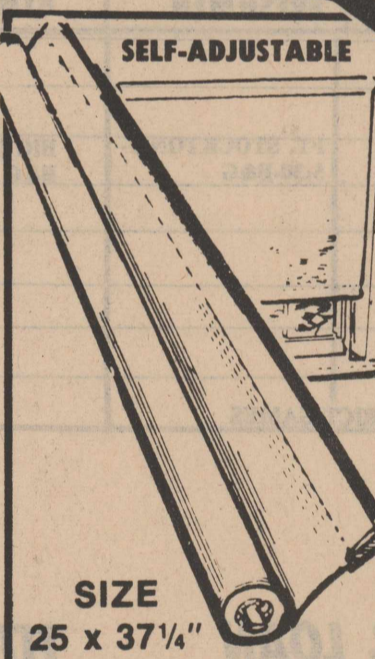
PERRY'S SALE PRICE
34¢



CURTAIN RODS

26" TO 46"
WHITE

PERRY'S SALE PRICE
62¢



WHITE LIGHT FILTERING VINYL WINDOW SHADE

1.88

SIZE 25 x 37 1/4" EACH



64-OZ

PERRY'S SALE PRICE
1.97

TRUEHEAT TH36

- UL Approved
- Heat Circulating
- Optional: Outside Air: Glass Doors
- 36" Firebrick lined Firebox
- 25 Year Limited Warranty

Fireplace, 9 ft. pipe, cap, Flashing, and collar.
Complete
Reg. \$557
NOW \$400.00

HOUSE OF FIREPLACES
1121 S. Chadbourne 653-3140

License rule change for drivers

Joe Miles, DPS, in charge of drivers' license division, announced this week that the department had put a new rule into effect. Instead of renewing a driver's license within 90 days of its expiration date, it may now be renewed up to twelve months.

This option will be available to applicants for duplicate licenses that expire during the next twelve months as well as any license holder desiring early renewal.

The 30-day renewal period of provisional licenses, those under 18-years of age, will remain the same.

Miles is at the DPS office here each Friday for renewal of drivers licenses and driver tests.

BASEBALL EQUIPMENT

BE READY FOR BASEBALL, SOFTBALL AND LITTLE LEAGUE WITH NEW EQUIPMENT & UNIFORMS

NOW AT SUPER SPORTS "THE SPORTS HEADQUARTERS"

FREE CAP
BRING THIS AD TO SUPER SPORTS FOR YOUR CAP

Super Sport Line
San Angelo's Winter Sports Headquarters
Southwest Plaza 944-2014

Fall

BLOUSES & TOPS

25% to 50% off

200 YD.
100% POLYESTER SEWING THREAD

8 \$1.00 FOR SPOOLS

100% ORLON ACRYLIC SAYELLE KNITTING YARN

4-oz. in Solid Colors
3 1/2 oz. in Variegated Colors.

PERRY'S SALE PRICE
87¢

#2-GRADE ROSES BUSHES

• Best selling varieties in colors.

PERRY'S SALE PRICE
\$1.88 EACH

52nd YEAR BASKETBALL 1982 BASKETBALL PREVIEW 1983

Ozona High School



Notes from the locker room - - -

By-Ross Alexander

The iceman melted all over the floor in Ballinger the other night. The usually calm and reserved Lion head coach John Curry drew a technical foul for a particularly expressive outburst of rage (and possibly a bit of despair) at one of the officials in Ballinger's gymnasium. Poor Coach Curry must find this first season's erratic results very exhausting and somewhat disappointing, so far. He is a disciple of the Dean Smith school of basketball who has inherited a team of horses who seem to be most comfortable with a run, run, run, and then run some more type game. Not a lot of real basketball know-how, but plenty of team speed and overall hustle...enough it would seem to produce a winning season.

But Coach Curry is a teacher, and his system will

be absorbed by his underclassmen, and he will have quite a squad before too very long. How many have really stopped and looked at the fine job the J.V. team is doing this season? They must be leading the District, and they are doing it despite the loss of Sanchez, who used to score as many as 30 points a game. (Wouldn't it be terrific if Steve would cut loose for a 25 or 30 point game against Coahoma Friday night?)

David Vargas has shown that he has a touch and Al Ramirez has been very impressive. These two can shoot and play defense. Looking at the J.V. squad, you can see some pretty good athletes playing some solid winning basketball. I've watched Ed Borrego and Harvey Fierro in practice and they are simply good basketball players. Delgado and Davis play as good at their

position as coach Porter could ask.

The girls' J.V. team has the secret success formula on display everytime they hit the floor. Maybe the varsity units can gain something by observing our J.V. girls' team this season. Watch Kim and Donna interact with each other...watch the eye contact that invariably develops between Raedene and Donna...notice how intense the concentration on Vanessa's face sometimes. These kids are winners, and its something that they know, so they just go out and beat people...simple as that. Olga doesn't know how to take it easy when she's in there. Coach Stark has got a team loaded with the top with talented winners. They are an inspiration, as well as exciting to watch.

The Lionettes don't want to set a record for consecutive losses. As it is the 0-1

start isn't such upbeat news, the second half promises to be a tough one for Coach Williams' crew with Marley Wilson out for the season and starting guard Irma Ybarra ailing.

The balance of the district schedule seems to favor Colorado City, but I'm not yet convinced that they have a better team than Ozona, frankly. That game last week in Davidson Memorial Gymnasium raised more questions in my mind than it answered. No question that Coach Curry's brilliant late 4th quarter moves produced a come-from-behind, go-ahead surge, but that Colo. City is vulnerable to the brand of ball we play so well. If Ozona takes Sonora, Coahoma, and Colorado City, the Ballinger and Crane crowd can neutralize one another allowing the Lions to take it all. They would then be able to help by avenging them-

selves against Ballinger at home the last game of the regular district season.

OHS Athletic Director Rip Sewell will address the annual Texas High School

Coaches' Association at their mid-year conference to be held in Odessa this weekend. He will discuss Track and Field, I understand.

This week's trivia question: Which Ozona coach was an outstanding high school basketball player (all-state) who played in, and was selected all-tournament following, the Ozona Annual Basketball Tournament a while back? This fellow went on to college where he excelled in basketball, and was the star quarterback in his senior year!!

All who answered Don Abbott get a free Frankenberry breakfast the 5th Friday in February.



OZONA BASKETBALL 1982-83

DATE	VARSITY	JR. VARSITY	FRESHMEN	8TH GRADE	7TH GRADE
FEB. 1	*SONORA-H-5:00 B&G	*SONORA-H-5:00 B&G			
FEB. 4	*COAHOMA-H-5:00 B&G	*COAHOMA-H-5:00 B&G			
FEB. 7			FT. STOCKTON-T-5:30-B&G	BIG LAKE-T-4:30 B&G	BIG LAKE-T-4:30 B&G
FEB. 8	*CRANE-T-5:00 B&G	*CRANE-T-5:00 B&G			
FEB. 11	*COLORADO CITY-T-5:00-B&G	*COLORADO CITY-T-5:00-B&G			
FEB. 15	*SONORA-T-B	*SONORA-T-5:00 B		FEB. 14 IRAAN-H-5:00 B&G	IRAAN-H-5:00 B&G
FEB. 18	*BALLINGER-H-B	*BALLINGER-H-5:00-B			

*DISTRICT GAMES

Sponsored By These Ozona Businesses:

WOOL GROWERS CENTRAL STORAGE
DE LA ROSA PLUMBING SER.
JAY MILLER CONSTRUCTION
OZONA TELEVISION SYSTEM
OZONA NATIONAL BANK
SIZEMORE FUNERAL HOME
WEST TEXAS WEED WASH
CIRCLE BAR TRUCK CORRAL
ELMA'S ROADSIDE GRO.
OZONA INN OF THE WEST
SOUTH TEXAS LUMBER CO.
THE BAGGETT AGENCY
THORP'S LAUN-DRY

FIRST SAVINGS & LOAN
Ozona Branch
MAYFIELD CONSTRUCTION
OZONA STEAK HOUSE
OZONA QUICK STOP
FENTON'S WATER STA.
SONNY'S DRIVE-IN GRO.
DINA'S POCO TACO
WESTERMAN DRUG
EL CHATO'S RESTAURANT
BROWN FURNITURE
MANESS TEXACO STATIONS
I 10 GULF SELF SERVICE
THORNTON'S SUPERMARKET

TITE BISHOP WELDING
FOXWORTH-GALBRAITH
SKAINS MOTOR CO.
JIM'S FOODWAY
WHITEHOUSE CO.
HAPPY HOLLOW
LILLY WELDING
SMALL FASHIONS
OZONA BUTANE
KYLE KLEANERS
WHITES AUTO
NICK'S CHEVRON
HORSE'S INN

WATSON'S
PEPE'S PIZZA
MOORE OIL
FESCO, INC.
O.J.B., INC.
THE LINE





TRAPPED FOR THIRTY MINUTES in this overturned car was Mrs. Iva Macon, who suffered severe injuries when this small car in which she was a passenger rolled over and hit a tree near here Thursday morning. Ozona firemen spent the

better part of half an hour using the jaws of life to free Mrs. Macon. John Hollingsworth, the driver, escaped with minor injuries.

Wildcat on tap for Crockett Co.

Maralo Inc., Midland, will drill the No. 1 Feisberg, an 11,300-foot wildcat in Crockett County, 3/4-mile southwest of an 11,495-foot failure, 7/8-mile southwest of the depleted opener and lone producer of the Quantos (Ellenburger oil) field and 10 miles north of Iraan.

Location is 1,980 feet from the south and 890 feet from the west lines of 19-HH-GC&SF. Ground elevation is 2,626.5 feet.

The Quantos opener, H.L. Brown Jr. No. 1 Ruth Schlinke, drilled to 11,420 feet, was finished Sept. 3, 1968 for 204 barrels of 44.5 gravity oil, no water, with gas-oil ratio of 451-1, through a 24-64-inch choke and perforations at 11,368-386 feet.

The failure, H.L. Brown No. 1 Mabel Strauss, was abandoned March 26, 1969. The Noelke, West multipay field of Crockett County gained its second Felker gas producer and a location west-northwest extension to that pay with completion of MGMT & Sales Consultants Inc., San Angelo, No. 1 Half-Roberts, 3 1/2-miles southeast of Iraan, for a calculated, absolute open flow of 64,000 cubic feet of gas daily.

Production was natural from 842-848 feet, identified as open hole.

Location is 838 feet from the south and 1,812 feet from the west lines of 70-1-L&GN.

The American multipay

field gained its third Spraberry B gas producer and a 3 1/8-mile north extension to that pay with reclassification of Dameron Petroleum Corp., Midland, No. 1-18 Virginia Hoover-Sec. 18, Block NN, former Spraberry

Agriculture woes is concern for bankers

High production and low prices are plaguing agriculture in the 1980s. Survival of the food and fiber production business and the entire rural community that depends on agriculture is a major concern of commercial bankers of Texas.

The 1983 Texas Farm and Ranch Credit Conference for Commercial Bankers at Texas A&M University, Feb. 27-March 1, is designed to provide persons in the farm credit area with an update on current conditions for the agricultural economy and give insight into dealing with the risks of making credit available during the current times of economic uncertainty, says Dr. Robert B. Schwartz.

Schwartz is a dairy marketing economist with the Texas Agricultural Extension Service.

Conference sessions will be in the J. Earl Rudder Conference Center.

Among headliners will be Phil Gramm, former U.S. congressman and economist at Texas A&M, who will discuss "Economic Outlook." The Hon. Charles Stenholm, U.S. congressman from Stamford and member of the Agriculture Committee of the U.S. Congress, will discuss "Washington's Role in Farm Survival." Jim Hightower, Texas commissioner of agriculture, will speak on the state of the Texas agricultural economy.

Other topics for discussion include evaluating crop insurance for financial risk management and outlook for the major commodities of importance to Texas.

Concurrent sessions, Schwartz said, will deal with row crops, cattle and dairy loans. Other sessions will deal with regional loan problems and opportunities.

For registration information, contact Dr. Richard Trimble, Department of Agricultural Economics, Texas A&M University, College

oil producer, 19 miles southwest of Ozona, for a calculated, absolute open flow of 1,150,000 cubic feet of gas daily.

Production was through perforations at 4,232-80 feet, which had been acidized with

1,400 gallons and fractured with 50,000 gallons and 78,000 pounds of sand.

It originally was finished March 4, 1982 for 20.7 barrels of oil, gravity unreported, no water, with gas-oil ratio of 10,273-1, through a 12-64-inch choke and the above perforations.

Location is 3,000 feet from the north and 660 feet from the east lines of 18-NN-GC&SF.

Station, Tx. 77843 or call (713)845-8012.

An Agricultural Credit Analysis Workshop is scheduled to follow the Bankers' Conference, March 2-3. Assisting the Extension Service in sponsoring the activities are the Texas Agricultural Experiment Station, A&M's College of Agriculture and Texas Bankers Association.

Corduroy is now the most popular fabric, says Becky Saunders, clothing specialist with the Texas Agricultural Extension Service, Texas A&M University System. It is used widely this season in slacks and jeans.

PHONE NEWS TO THE OZONA STOCKMAN.

Shade trees seldom need fertilizer

Shade trees seldom need fertilization although fertilizer is sometimes needed when tree roots are confined by a street, curb or other structure.

Tree fertilization isn't needed more than once every three years (except in extremely sandy soils), says Billy Reagor, county agent with the Texas Agricultural Extension Service.

Fertilize trees during the winter months, Reagor says. But when trees have a restricted root system, another application may be needed in early summer.

Fertilizer recommendations are often based on a tree's trunk diameter without allowing for a confined or limited root zone. Following such recommendations can lead to over-fertilization.

Over-fertilizing forces excessive top growth and makes the tree more vulnerable to storm damage.

The safest method of deciding the amount of fertilizer needed is to determine the number of square feet included in the branch spread of the tree and use 2 pounds of nitrogen for each 1,000 square feet covered, Reagor explains.

For instance, a tree with a 36-foot branch spread covers about 1,000 feet. Twenty-four pounds of a complete fertilizer with an analysis of 8-8-8 supplies the 2 pounds of nitrogen needed.

If the root zone of this tree

is confined to a 22 feet by 20 feet area, fertilizer application depends on the actual root zone--240 square feet.

This is one-fourth of the area in the above example, so only 6 pounds of 8-8-8 fertilizer should be applied.

STANDING KING O ROAN
G & M TRAINING
CHRISTOVAL, TX.
CALL 915-896-2379 OR
915-658-7186
AFTER 6 P.M. WEEKDAYS

NOW THE BEST... FOR LESS!

\$2975⁰⁰ COMPLETE



GUARANTEED 2 FULL YEARS

- Heavy screen mesh for wind load resistance and a transparent appearance.
- Easy assembly requiring only one size nut and bolt.
- Detailed engineering to guarantee built-in parabolic accuracy.
- Computer stamped-out parts that let you convert a 10' system to a 13' system by replacing the 6 petals with a simple turn of the bolt.
- Polar mounts that are easily converted from manual to motorized systems.
- Specialized welding to prevent puckering and gapping in the curve of the screen.
- Baked polymer coating for uniform coverage and maximum weather protection.

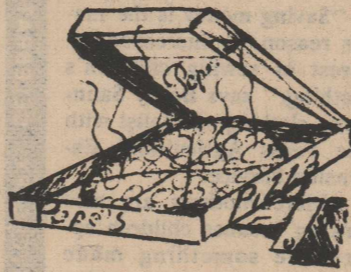
TEXSAN

655-9090

1324 W. BEAUREGARD, SAN ANGELO, TEXAS 76901

Deliveries To Your Door Coming Soon Pepe's Restaurant

Pizzas Hamburgers
Steaks Sandwiches



MOBILE HOME SALE . MOBILE HOME SALE . MOBILE HOME SALE .

Arlington

"Nations No. 1 Manufacturer" by **SKYLINE**
"Bringing America home"

14' x 46' Two Bedroom Mobile Home
Delivered, Set Up and Tied Down.

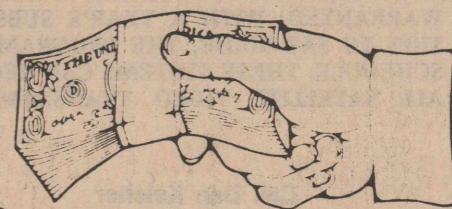
DOWN PAYMENT 10% 15.75% A.P.R.	MONTHLY PAYMENT \$132 ⁰⁰ FOR 144 MONTHS	SALE PRICE \$9880
---------------------------------------------	-----------------------------------------------------------------	-----------------------------

Oakwood Mobile Homes
4422 North Chadbourne San Angelo, Tx.
(915) 658-8569
No. 1 In Service Since 1946 With 49 Locations.

MOBILE HOME SALE . MOBILE HOME SALE . MOBILE HOME SALE .

WTU offers a

CASH BONUS PLAN...



FOR INSTALLING RESIDENTIAL ENERGY EFFICIENT ELECTRIC AIR CONDITIONERS, HEAT PUMPS, AND HEAT RECOVERY UNITS IN A NEW OR EXISTING SINGLE FAMILY HOME.

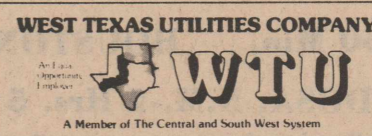
E. S. P. (Energy Savings Plan)

NOW WTU WILL PAY YOU TO SAVE ENERGY. WHEN YOU BUY ENERGY EFFICIENT EQUIPMENT YOU NOT ONLY GET A CASH BONUS, YOU ALSO SAVE MONEY ON FUTURE ENERGY BILLS. WTU WANTS YOU TO BUY ENERGY EFFICIENT EQUIPMENT BECAUSE IT HELPS TO HOLD DOWN DEMAND FOR ELECTRICITY, AND LESS DEMAND HELPS US POSTPONE BUILDING NEW AND EXPENSIVE POWER PLANTS.

Cash Incentives for New or Existing Single Family Homes

HEAT PUMPS SEER/EER 8 and Above	
Central Systems	\$110 Per Ton
Window Units 11,999 BTU and Below	\$ 60 Per Unit
12,000 BTU and Above	\$ 75 Per Unit
AIR CONDITIONERS SEER/EER 8.5 and Above	
Central Systems	\$ 50 Per Ton
Window Units 11,999 BTU and Below	\$ 40 Per Unit
12,000 BTU and Above	\$ 50 Per Unit
Heat Recovery For Electric Water Heating \$100 Per Unit	
Solar-assisted Electric Water Heating \$100 Per Unit	

To Qualify, Your Home must be served by WTU and meet our Energy Efficiency Requirements.



For more information, Get your Free E. S. P. Booklet at any West Texas Utilities Office.

Gifts
for the
Bride and Groom

JENNIFER MARLEY
NAN KIEFER
Bride-elect of R.J. Everett III
KAYE THOMPSON

Have made selections
in housewares at
South
Texas
Lumber Co.

BT'S HAIR DESIGNS
BILLY TURLAND
&
SUSIE DEATON
Open 9:00-Till
Mon. thru Sat.
Specialize in haircuts, perms,
color and sets
Men, Women, & Children

Phone 392-5826 1108 1/2 Beall St.

Grow your own garden transplants from seed

It will be time to set out garden transplants before you know it. Although nurserymen try to stock representative varieties of vegetables and flowers during the spring garden rush, it's just not possible for even the largest nursery to have every variety. For this reason, you may want to start some of your own transplants.

The 1983 mail order nursery catalogs are arriving at a steady rate. View them and make purchases with a purpose. Inexperienced gardeners (or those unfamiliar with the Texas climate) should not waste money on seeds that have no chance of coming to bloom or fruit in Texas. Experienced gardeners may want to try new and different varieties of the old standards. Restraint is not easy when you look at page after page of pure horticultural perfection, but remember that ordering seed is the easy part.

Sow seed for your transplants at the proper time. Some transplants such as cabbage, broccoli, lettuce, green onions and spinach can be set in the garden 4 to 5 weeks before the last frost. Now is the time to sow the

seeds of these early transplants.

Use a soilless or commercial potting mix available at nurseries. Expandable peat pellets also work well. Germination temperatures should be near 75°F. during the day and 65°-70°F. during the night.

Seeds can be started in milk cartons, cake pans, flower pots or almost any container that you are willing to punch holes in for drainage. Thoroughly moisten the planting medium and evenly space the seed on top. Cover lightly, re-water and then enclose the container in a polyethylene bag. Keep the plastic covered container out of direct sunlight or it will overheat.

When seeds begin to sprout, gradually remove the bag during a several day period. This lessens shock. You'll have to water more often when the poly bag is removed.

Most would-be transplant growers make two big mistakes. They start seed too early and they provide insufficient light for the developing seedlings. Both malades allow transplants to become spindly, weak and

yellow. Fluorescent grow lights help overcome the second problem. They must be within 4 inches of newly developing seedling leaves to be of much benefit.

In mid-February sow tomato, eggplant, pepper and flower seeds. You may want to try these tomato varieties in comparison plantings with your usual ones: Spring Giant, Early Girl, Park's Whopper, Floramerica, Big Set, Super Fantastic and Quick Pick. The results may be very enlightening.

Sowing small-seeded annuals directly in the bed usually ends in failure and frustration. For this reason, start your own transplants of alyssum, moss rose, fibrous rooted begonia, petunia, cockscomb, impatiens and coleus. Move your transplants to their final place when they are of adequate size (usually 3-5 true leaves) and conditions are suitable for plant growth outdoors.

Rankin art craft show scheduled

The Rankin Art Association announces a new feature at their fourth annual art and craft show. A youth division will be added this year. There will be three divisions; elementary, middle school and high school. Ribbons will be awarded. Entry fee is free.

The arts and craft show will be held March 17, 18, 19 at the Rankin Park Building. Entries will be accepted Thursday March 17 from 9:00 a.m. to 5:00 p.m. Judging will be the morning of March 18 from 9:00 a.m. to 12:00 noon. Public display will be March 18 from 9:00 a.m. to 12:00 noon. Public display will be March 19 from 1:00 p.m. to 5:00 p.m. and March 19 from 9:00 a.m. to 2:00 p.m. Entries may be picked up March 19 from 2:00 p.m. to 4:00 p.m. Cash awards and ribbons will be given.

There will be a \$3.00 per entry fee for members and a \$5.00 per entry fee for non-members.

Judging the Art division will be Dr. Charles Stewart of Midland. Janet Rogers of Greenwood will judge the craft division.

For more information contact Ann Kelley at 693-2867 or Yvonne Morgan at 693-2763.

Crockett County Care Center News

BY ANN McCARTNEY
DIRECTOR OF ACTIVITIES & SOCIAL CARE

Fourth Sunday services were held by the Church of Christ. They brought a nice worship and song service for our residents.

Monday morning dominoes were played by Paul Cavin, Maude Pettit, and Ola Mills.

Monday afternoon residents were treated to a film presentation given by Lucile Harrell. This program showing her trip to the Holy Land was truly enjoyed by our residents.

Tuesday morning bingo winner of the El Chato dinner for two was Moriana Perez. Volunteers included Dorothy Doll, Alice Ross, Doris Karr, and Liz Mary Pipes. Following the game seven residents took advantage of their certificates and went to El Chato's to eat. Those making the trip included Carol Reed, Juana Hernandez, Paul Cavin, Tomas Ramos, Virginia Russell, Ola Mills, and Maude Pettit. Winning dinners were brought back to Jesus Hernandez and Moriana Perez. Dorothy Doll was once again the volunteer who furnished an extra car for this field trip. Also going and furnishing transportation were Mr. and Mrs. Johnny Tambunga and their daughter Ruby Jean.

Wednesday morning ceramics were once again led by Ruth Hester and Marie Pierson. Residents enjoying the activity included Juana Hernandez, Frances Borrego, Tomas Ramos, Maude Pettit, Ola Mills and Moriana Perez.

Wednesday afternoon crafts were enjoyed by Juana Hernandez, Ola Mills, Moriana Perez, and Maude Pettit. These ladies all made valentines to give to their families. Maude Pettit freshened up valentines that were later hung on all residents doors, a beautiful way of helping decorate for our next

Sewing for children saves

"Saving money is the major reason for increased interest in sewing children's clothing," says Becky Saunders, clothing specialist with the Texas Agricultural Extension Service. "More mothers are also sewing because children appreciate something made just for them," she adds.

Children under six years old usually are not too particular about how a garment fits or how it is made. This gives a mother time to learn or to improve sewing skills, Saunders says. Children's clothing is excellent for learning since it requires less fabric and many unused garments can be remade.

According to Saunders, a recent survey of clothing stores in the south shows the high cost of children's clothing. Dresses bought in a department store range from \$25 to over \$50.

Similar dresses can be made in around three hours for less than \$10 if the home sewer used fashion fabric costing from \$3 to \$7 per yard. Pull-on pants cost about \$20 but can be made for just over \$5 in about one hour, Saunders notes.

A brand for the future



WADE A. MOSLEY
MANAGER
Box 397
Sonora, Texas




Ode to "Flunkey of Year"

Following is the citation making Dee Keilers "Flunkey of the Year" in poetry.

He's a man that's tall,
A man with a grin
His large helping hand
Is there again and again
He's always available
He never says No
He even cooks burgers
at the Junior Rodeo
Whether it's for the Boy
Scouts,
the Blood Bank, or Little
League Games.
He's either helping or teaching;

To him, it's the same.
He carries the load like no
one we know
He relates to all ages whether
young or old.
He's an EMT, a Fireman,
and so much more
A man of great stature, yet
never too large for a
helping chore.

So here's to Dee Keilers,
A greater flunkey there'll
never be
From All of Ozona
We say... "Thank you,
Dee!"
By Johnny Childress



MRS. JIMMY GILLIT
Has made
bridal selections
at
Watson's
Dept. Store

THUMPER BALL BUSTER

SOFTBALL SHOW

INCLUDING
BASEBALL & LITTLE LEAGUE

- * PREVIEW THE '83 UNIFORMS
- * VISIT WITH FACTORY REPRESENTATIVES
- * MANY SHOW SPECIALS

LOCATION:
UNIVERSITY INN
SO. BRYANT BLVD.

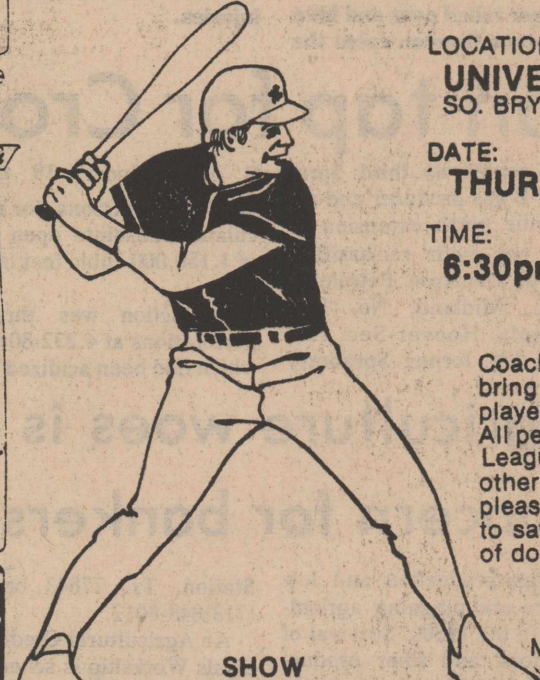
DATE:
THURS. EVE. FEB. 3rd.

TIME:
6:30pm-10:30pm

Coaches don't miss this one, bring your sponsors, bring your players or just bring a friend. All persons affiliated with Little League, Youth Baseball or any other form of Teenage Baseball please don't miss this chance to save your League hundreds of dollars.

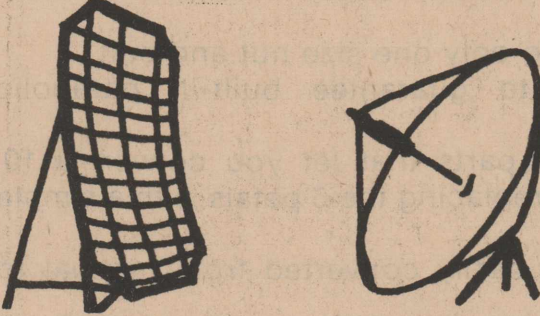
FOR MORE INFORMATION
CALL 658-5437
SAN ANGELO

SHOW SPONSORED by



TRIPLE B ATHLETICS & SILKSCREENING
658-5437
2421 SHERWOOD WAY

KELCO SATELLITE SYSTEMS



SPHERICAL PARABOLIC


LIVE IN THE STICKS? WANT GREAT TV?

As low as
\$1,995

in kit form for you
"do-it-yourselfers."

FROM \$2,650.00, COMPLETELY INSTALLED, WARRANTED, WITH A YEAR'S SUBSCRIPTION TO SAT-GUIDE, THE PROGRAMMING SCHEDULE. THESE SYSTEMS CAN RECEIVE ALL SATELLITE VIDEO TRANSMISSIONS.

Call Dan Keleher
(512) 896-6071 or 866-3452
KELCO SATELLITE SYSTEMS
2210 Junction Hwy., Suite One
Kerrville, Texas 78028



1.00 off a Large Pizza

Plus a pitcher of your favorite Soft Drink (on eat in orders)

Clip & Save this offer

Expires FEB 15 - 1983
One per Pizza

Aero Vac Charter Service



Aero Vac Charter Service lets you set your own schedule. You leave when you want to leave. With Aero Vac there are no parking or baggage pick-up hassles-no layovers or transfers. You save time and money.

For business or pleasure, fly AeroVac.

LUBBOCK-1 Hr. 15 Min.	EL PASO-1 Hr. 55 Min.
SAN ANTONIO-1 Hr. 10 Min.	MIDLAND-42 Min.
DALLAS-1 Hr. 50 Min.	HOUSTON-2 Hrs. 15 Min.
RUIDOSA, N.M.-2 Hrs. 5 Min.	

Call early to insure your reservations

392-3243 392-3619 392-3300

OUR 1st ANNIVERSARY! CELEBRATING OUR 1st ANNIVERSARY! CELEBRATING OUR 1st ANNIVERSARY!

10 lbs. WASN'T ENOUGH!

A Perfect Figure Was Her Goal!

Carolyn Stinson Came To

Pat Walker's

MS. STINSON'S TRUE STORY:

Three years ago at 171 1/4 lbs. I made one of the most important decisions of my life and that was to lose some weight. My original goal was 10 lbs. however, not until I lost 56 1/4 lbs. was I truly happy with my figure.

Through the careful guidance and assistance of the counselors at Pat Walker's, who literally taught me how to eat the foods I like, properly and the firming and toning provided by the Symmetricon, I feel absolutely marvelous, much younger and more energetic than ever.

FREE TREATMENT & FIGURE ANALYSIS

Our treatments are personalized, natural and gentle, without disrobing or rigid diets; in complete privacy you reduce, firm, tone and receive individual counseling. After your free treatment and figure analysis, we will tell you where you'll lose, how many treatments you'll need and exactly how much it will cost you for your figure correction. For 30 years our exclusive program has achieved total figure correction for all ages.

NO OBLIGATION CALL NOW
We have the program to fit your budget.

Carolyn Stinson Before Pat Walker's



211 HWY. 277 NORTH
387-3874
SONORA, TX.
MON.-FRI. 8-8
SAT. 9-1

1105 AVE. A
OZONA, TEXAS
392-3706 or 392-3707
MON.-FRI. 8-8
SAT. 9-1

CELEBRATING OUR 1st ANNIVERSARY!

Loeffler asks repeal of 10% interest-dividend tax

Congressman Tom Loeffler today introduced legislation to repeal the automatic withholding of 10% of interest and dividend income.

This automatic withholding provision was part of the Tax Equity and Fiscal Responsibility Act of 1982 which Congress approved last August.

"I opposed the 1982 Tax Act and have consistently opposed withholding taxes in all my years in Congress," said Loeffler following introduction of his bill. "As you know, the 10% withholding of interest and dividends will not actually take effect until July, 1983. We in Congress have both the opportunity and the responsibility to repeal this provision quickly and spare our citizens and businesses the bureaucratic nightmare this legislation will undoubtedly cause."

Loeffler called the withholding tax provision an affront to honest taxpayers, pointing out that "the IRS already has the mechanism, if not the will, to collect taxes due on interest and dividend income."

"Right now, each and every American who receives interest income receives a Form 1099 annually stating total amounts received. An identical Form 1099 is filed with the IRS. If the IRS is currently disregarding the information already reported in Form 1099, I see no reason to collect the same informa-

tion through automatic withholding."

A 1981 IRS study indicates in fact that when the IRS is given information such as a Form 1099, there is voluntary compliance of 96.7% without withholding.

"In effect, under the new withholding provision, taxpayers are not being permitted to keep their own money to use as they see fit until their tax bill officially comes due on April 15," Loeffler added. "This is the most unfair and insidious effect of the entire provision."

Loeffler called for swift passage of his bill.

Use of wood products to increase in future

Use of wood products will continue to increase for the next 30 years although wood use currently is slack due to a

slowdown in the housing industry.

"Use of wood products will not only increase domestically, but exports to foreign countries should improve," says Dr. Mike Walterscheid, forestry specialist with the Texas Agricultural Extension Service.

The U.S. exported more than \$3.5 billion in wood products in 1981, he notes. According to United Nations studies, world wood demand for other than fuel will double by the year 2000.

Primary world markets will be western Europe and Japan, with other potential markets in the Middle East and Caribbean area, notes Walterscheid. The European market is expected to increase dramatically as wood use increases in houses. Most houses now are of masonry construction.

Japan currently accounts for about half of all U.S. wood product sales abroad.

Asian demand for U.S. wood products should continue to rise because the ready source of southeast Asian woods is being drastically curtailed, notes the specialist.

"The U.S. can be expected to meet increased world demand for wood products because it has large forest resources," says Walterscheid.

This nation boasts 488 million acres of commercial forest land compared to 700 million acres in Canada and 1.9 billion acres in Russia. However, U.S. forest growth per acre far exceeds Canada and Russia, with total growth double that of Canada and nearly equaling that of Russia, the specialist points out.

"The southern U.S., including Texas, is in an enviable position as far as total worldwide wood production is concerned," says Walterscheid. "We have some of the best growing conditions and most accepted timber species. Timber is and will continue to be a good investment opportunity."

CARD OF THANKS

I would like to thank everyone for all the telephone calls and visits I received while I was in the hospital. I would also like to thank everyone for the beautiful floral arrangements and the gifts I received. A special thank you goes to Dr. Carlisle and the hospital nursing staff for making my stay as pleasant as possible.

Thank you,
Mary E. Hill

49-1tp

CONGRESS WANTS A PIECE OF YOUR SAVINGS.

WHAT THEY NEED IS A PIECE OF YOUR MIND.

Recently, Congress quietly passed a withholding law that will cost American savers and investors the use of 10% of their interest and dividends.

In simple terms, effective July 1st, 1983, this new law requires banks and other financial institutions to deduct 10% of the interest or dividends you earn on your savings and investments. That money then goes to the Internal Revenue Service in much the same way as payroll deductions are now handled.

The sponsors of this law have told us it was designed to catch a small minority of Americans who evade taxes on their interest and dividends. But the truth is the law penalizes the great majority of America's savers and investors who pay their taxes faithfully. What's more, the federal government is now receiving all the necessary information to curtail tax cheating.

Though the law does include exemptions for some low income and elderly Americans, if they go through the red tape of filing an application, most savers and investors will forfeit some of the money they could earn in compounded interest.

We urge you to join our efforts by writing letters to your representative in Congress and to the two senators from this state. Tell them you want the 10% withholding tax repealed, because it would impose an unfair penalty on savers like yourself.

For assistance in contacting your representative and senators please ask any of our bankers. If we all act now, Congress will get a clear message from the voters back home, and they will work to repeal this needless law.

Next, The Federal Government Is Going To Withhold Taxes From Your Savings And Interest

Policy Forum



By William H. Kennedy, Jr.
Chairman of the Board
National Bank of Commerce
Pine Bluff, Arkansas
President, American Bankers Association.

Effective July 1, 1983, all financial institutions making interest and dividend payments will be required to withhold 10% to apply against your federal tax obligations.

As a result, savers and investors will lose the use of billions of dollars each year.

The federal government says that its purpose in raiding your savings is to crack down on tax cheaters. Let's look at the facts.

The Internal Revenue Service recently reported an overall taxpayer compliance rate of between 85% and 90% for all interest and dividend payments. Where a match up of the annual 1099 forms (Record of Information Furnished to the Internal Revenue Service) are made against actual interest and dividend tax reporting, compliance is estimated to be in excess of 95%.

Under the same new law the government will be requiring all financial institutions to greatly expand the 1099 reporting process to include virtually all savings instruments that have never been reported before. Consequently, the IRS will soon have all the information needed to enforce almost 100% compliance. This is why we believe the 10% withholding to be entirely unnecessary and very unwise with the economy in the shape that it's in today.

Furthermore, the IRS records show that about three-fourths of individual tax returns end up with refunds. Obviously, most of the money withheld from savers would be ultimately refunded.

Why then, is the government intent on going ahead with its plan?

Quite simply, it is creating a mountain of unproductive paperwork and an inconvenience to you—so that it will have the use of your money as an interest-free loan.

How will this affect you as an individual? Let's say you are due a \$200 interest payment after July, and you plan to leave it in your bank to grow through interest compounding. Under the new law, you will only have the use of, or be able to access \$180 of your money. The other \$20 will be sent to the IRS. Even if the government does return your \$20 months later as part of a tax refund, you will have lost the additional interest you could have been making on it. If it had been left in the bank.

There are more than just the financial

considerations at stake, however. Consider, for example, how this law could change your relationship with your bank.

Most people consider their relationship with their banker a highly private affair. They can conduct the details of their financial lives in confidence. Your banker, like your doctor, or your lawyer, believes that maintaining this relationship of privacy, trust, and confidence is an ethical responsibility.

The new withholding law will violate this relationship by permitting an authority to draw money right out of your accounts. It represents yet another attempt by the federal government to force its way into your everyday life.

With banks already providing the IRS with the information necessary to track down the small percentage of people who fail to report their income from interest and dividends, we propose that the IRS direct their efforts towards doing a more comprehensive matching of the data provided by banks to the tax returns of individuals. This will surely uncover anyone trying to evade the law.

Yet, the government seems to be resisting this fair and equitable solution.

It comes down to the question, should honest taxpayers be required to give up some of their rightful income from savings and investing because the government is unwilling to use administrative procedures to find the few who cheat?

We, the members of the American Bankers Association, do not think so.

We oppose allowing the federal government to stand over your bank teller so that it can reach directly into your bank accounts.

We are actively urging Congress to reconsider, and repeal this misguided and wrong attempt to impose a hidden tax on your savings.

We know that we cannot be successful in our battle on this issue without the help of millions of concerned Americans. This is why we are urging our customers to write their Congressmen and Senators.

The government wants a piece of your savings. Instead, give Congress a piece of your mind.

William H. Kennedy, Jr.

Ozona National Bank

This advertisement written and sponsored by American Bankers Association

If you agree with these comments, please come in and sign a petition to that effect.

WE BUILD • **SELL & DELIVER**
CUSTOM HOMES

The very best construction at the lowest possible price.
SPECIALIZING IN HOME ADDITIONS AND REMODELING.

TOWN & COUNTRY
HOME BUILDERS OF SAN ANGELO
2920 North Bryant Blvd.
(915) 658-6053

"MAKE ME AN OFFER"
It's That Time of Year!
OFFER GOOD TIL THESE TWO SELL

OPEN SUNDAY 14

We've got to clean out our existing stock to make ready for dozens of new homes on order. THIS IS NOT A SALE TO MISS!
NO REASONABLE OFFER WILL BE REFUSED!

14x72 RIVIERA 2 Bedroom 2 bath cathedral ceiling respose ceiling fan stereo shingle roof	14x72 RIVIERA 2 bedroom 2 bath cathedral ceiling ceiling fan stereo shingle roof
WAS. \$26,995	WAS. \$26,995
THEN. \$25,995	THEN. \$25,995
THEN. \$24,995	THEN. \$24,995

NOW MAKE ME AN OFFER

THESE MUST BE SOLD!

\$100 HOLDS ANY HOME
NEW HOMES FROM \$9,995
anything of value accepted as down payment

YOU NAME THE PRICE!
Everything goes!

Brecks, Redmans, Libertys, Melodys, Tidwells, Riviera and more!

DISCOUNT HOMES OF SAN ANGELO
2502 N. Bryant (Hwy. 87) 658-3760
SAMMY FARMER'S PLACE 658-3344

NOW SERVING
Plate Lunches
daily except Wednesday
Beginning at 11:00 a.m.

Choice of Entrees
Choice of Vegetables
dessert and drink
Different Menu daily

EL CHATO'S



THE TRIAL OF MOTHER GOOSE was presented by Mrs. Kirby's third grade Thursday and Friday mornings for parents and friends at Ozona Intermediate School. The entire reading class took part in the play and had speaking parts.

Family structures changing

Family structure is changing and grandparents often aren't as close physically or emotionally to grandchildren as in the past.

"There are several factors that operate against meaningful ongoing interaction

between grandparents and adolescents," says Dee Stegelin, family life specialist with the Texas Agricultural Extension Service.

Today's society focuses on the nuclear family, she explains, which does not include grandparents. Also, grandparents and their adult children have developed a "hands off" attitude where neither is allowed to interfere in the life of the other.

"The result is that many grandparents have no real attachments to their grandchildren," reports Stegelin.

"Another constraint in the relationship is that young people are likely to spend more time with peers and less with family members," Stegelin says.

Yet close grandparent-adolescent relationships can result in a stronger family unit. "The grandparent-teenager relationship is reciprocal," Stegelin comments.

Today grandparents are

healthier and better educated than in the past. They are now able to enjoy shared activities with their grandchildren. Equality in family relationships means, she adds, that grandparents today are less authoritarian and can provide more emotional support for their teenage grandchildren.

"Young people need to understand their family past so they share traditions, rituals and family history with grandparents," says Stegelin.

DUPLICATE BRIDGE

Winners in Duplicate Bridge Club play Saturday at the Country Club were Mrs. Gene Williams and Mrs. John Childress. Mr. and Mrs. Evert White were second.

In play Sunday, Evert White and Mrs. Bill Baggett won the top spot, and Mrs. Robert Cox and Mrs. Buddy Phillips were second.

Supper bridge club meeting

Mr. and Mrs. Bill Baggett and Mr. and Mrs. J. B. Miller were hosts for the Supper Bridge Club Tuesday, January 25, at the Civic Center.

Mr. and Mrs. C. O. Walker won high and Mr. and Mrs. Jim Dudley were second. Mr. and Mrs. L. D. Kirby won bingo.

Others attending were Mr. and Mrs. Oscar Kost, Mr. and Mrs. Evert White, Mr. and Mrs. Billy Carson, Mr. and Mrs. O. D. West, Mr. and Mrs. Dick Kirby, Mr. and Mrs. Jerry Perry, Mrs. Arthur Kyle and Mrs. Robert Cox.

Letters to the Editor

January 31, 1983

Dear Editor,

I would like to make a sincere apology to Stan Lambert, the directors and anyone else connected with Crockett County National Bank.

I inadvertently left the Crockett County National Bank's name off the list of new members of the Chamber of Commerce, announced at the Annual Banquet, Thursday night.

I'm sorry for the mistake and I'll try not to let it happen again.

Sincerely,
Beth Boyd
Manager Chamber of Commerce

Brown's Brides

KAYE THOMPSON
Bride-elect of Jay Hufstедler
NAN KEIFER
Bride-elect of R. J. Everett III
LIDA TILLMAN
Bride-elect of Michael Scharton

have made bridal selections at
BROWN FURNITURE COMPANY

BARBECUE SPECIAL

WEST TEXAS BARBECUE

Every Friday

Begin serving at 6:00 p.m.

All the trimmings and all you can eat

\$4.95

OZONA STEAK HOUSE

OZONA INN OF THE WEST

REPORT OF CONDITION

Consolidating domestic subsidiaries of the

OZONA NATIONAL BANK

OZONA

In the state of **TEXAS**, at the close of business on **DECEMBER 31**, 1982 published in response to call made by Comptroller of the Currency, under title 12, United States Code, Section 161.

Charter number **7748** National Bank Region Number **11**

Statement of Resources and Liabilities

Thousands of dollars

ASSETS			
Cash and due from depository institutions		4,394	
U.S. Treasury securities		1,010	
Obligations of other U.S. Government agencies and corporations		3,436	
Obligations of States and political subdivisions in the United States		10,597	
All other securities		30	
Federal funds sold and securities purchased under agreements to resell		3,800	
Loans, Total (excluding unearned income)	26,621		
Less: Allowance for possible loan losses	239		
Loans, Net		26,382	
Lease financing receivables		-0-	
Bank premises, furniture and fixtures, and other assets representing bank premises		760	
Real estate owned other than bank premises		2,893	
All other assets		1,093	
TOTAL ASSETS		54,395	
LIABILITIES			
Demand deposits of individuals, partnerships, and corporations		13,036	
Time and savings deposits of individuals, partnerships, and corporations		29,573	
Deposits of United States Government		-0-	
Deposits of States and political subdivisions in the United States		3,149	
All other deposits		119	
Certified and officers' checks		290	
Total Deposits		46,167	
Total demand deposits	15,070		
Total time and savings deposits	31,097		
Federal funds purchased and securities sold under agreements to repurchase		-0-	
Interest-bearing demand notes (note balances) issued to the U.S. Treasury and other liabilities for borrowed money		-0-	
Mortgage indebtedness and liability for capitalized leases		-0-	
All other liabilities		1,707	
TOTAL LIABILITIES (excluding subordinated notes and debentures)		47,874	
Subordinated notes and debentures		-0-	
EQUITY CAPITAL			
Preferred stock	No. shares outstanding	-0-	(par value) -0-
Common stock	No. shares authorized	40,000	
	No. shares outstanding	40,000	(par value) 400
Surplus		600	
Undivided profits and reserve for contingencies and other capital reserves		5,521	
TOTAL EQUITY CAPITAL		6,521	
TOTAL LIABILITIES AND EQUITY CAPITAL		54,395	
MEMORANDA			
Amounts outstanding as of report date:			
Standby letters of credit, total		174	
Time certificates of deposit in denominations of \$100,000 or more		15,558	
Other time deposits in amounts of \$100,000 or more		-0-	
Average for 30 calendar days (or calendar month) ending with report date:			
Total deposits		45,969	

We, the undersigned directors attest the correctness of this statement of resources and liabilities. We declare that it has been examined by us, and to the best of our knowledge and belief is true and correct.

John L. Parks
George Burgett

Directors

W. P. SEAHORN, III.

Name

CASHIER

Title

of the above-named bank do hereby declare that this Report of Condition is true and correct to the best of my knowledge and belief.

W. P. Seahorn, III
Signature

January 28, 1983

Date

STAR WARS

THE FORCE COMES TO HBO

HBO

Great Movies Are Just The Beginning.™

PREMIERED FEB. 1 6:30 CST
also showing Feb. 3, 6, 9, 12, 14, 19,
Ozona T.V. System 23, 27
Phone 392-3323

Plant shade trees now

The time is at hand for planting shade trees. Planting shade trees during the winter season offers several distinct advantages, says a horticulturist with the Texas Agricultural Extension Service.

"The root systems of winter-planted trees develop and become well established before top growth starts in the spring," says Everett Janne.

Bare-root trees as well as container-grown or balled-and-burlapped trees are suitable for winter planting.

Choose trees adapted to the area, Janne says, and avoid "fast growing trees" because they are brittle and short-lived.

He offers these guidelines for tree planting:

Dig the tree pit large enough to allow at least six inches clearance on all sides.

The diameter of the pit is generally one-and-a-half times more than the root ball.

Make the pit only as deep as the root ball.

Plant the tree the same depth as it grew in the nursery. The soil line is a discolored ring on the trunk.

Check the soil's internal drainage by filling the hole with water. If it doesn't seep out in 24 hours, the roots could suffer from lack of oxygen. To improve drainage, dig a trench away from the bottom of the pit and fill it two-thirds full of gravel. This lets excess water drain to a lower area.

Place the tree in the hole, handling only the ball. Never carry it by the trunk. Remove any containers before planting.

Fill the hole with a good

topsoil or prepared mixture of soil, sand and peatmoss or pine bark. Water thoroughly to settle the soil and eliminate any air pockets.

Don't fertilize at planting time; wait until after growth starts in the spring and fertilize lightly.

Stake the newly planted tree to stabilize and protect it until the roots become established.

Wrap or protect the trunk from sunscald, drying winds, sand storms and borer attacks.

Water thoroughly whenever the soil becomes moderately dry.

With proper handling and care, winter-planted trees will get off to a good start in the spring, says Janne.



You can prepare delectable macadamia nut cookie squares in about 10 minutes flat. The recipe below uses a prepared pie crust mixture pressed into a pan (it's not necessary to roll it out), a quick filling using canned crushed pineapple, and a topping of elegant macadamia nuts from Hawaii. (They're available these days at your local supermarket.) Macadamia Pineapple Squares are sumptuous served with after-dinner coffee. They'd also make a show-stopping contribution to a dessert party.

MACADAMIA PINEAPPLE SQUARES

- 1 package (9 oz.) pie crust mix
- 2 eggs, divided
- 1 can (20 oz.) crushed pineapple, drained
- 3/4 cup firmly-packed light brown sugar
- 1/4 cup butter or margarine, melted
- 2/3 cup chopped macadamia nuts

Preheat oven to 350 F. In a medium bowl place pie crust mix; stir in 1 beaten egg; mix well. Press into an 8-inch square baking pan. Top with pineapple. In a small bowl beat remaining egg; stir in brown sugar and butter. Pour over pineapple. Sprinkle with macadamia nuts. Bake until firm, 35 to 40 minutes. Cool on a rack. Cut into 2-inch squares. YIELD: 16 squares

Three B to drill outpost

The Three-B Oil Co., Monahans, will drill an outpost and a stepout to the opener and lone producer of the Noelke, Southeast (Queen gas) field of Crockett County, 8 1/2 miles east of Iraan.

Both projects, in 4-Archer CSL, Abst. 1869, are scheduled to 2,100 feet.

The No. 3 Shannon Dee, 3/8-mile east, is 1,980 feet from the north and 6,240 feet from the west lines.

The No. 4 Shannon Dee, 5/8-mile southeast, is 3,960 feet from the north and 6,900 feet from the west lines.

The discovery, the No. 1 Shannon Dee, was finalized May 14, 1980 for a calculated, absolute open flow of 570,000 cubic feet of gas daily, from open hole at 850-2,010 feet.

Anderson Petroleum Inc., Midland, No. 3-56A John Mitchell Estate "A", Canyon sand gas producer in the Ozona multipay field, 30 miles southwest of Ozona, was finalized for a calculated, absolute open flow of 1,325,000 cubic feet of gas daily.

Location is 983 feet from the north and 764 feet from the west lines of 56-MM-T&SL.

Remember Now So You Can Remember Then.

A Professional 8 x 10 Color Portrait For 88 Cents

All ages welcome - babies, adults, and families! Choose from our selection of scenic and color backgrounds. We'll select poses, and additional portraits will be available with no obligation.

One 88¢ portrait per subject or group. Backgrounds may occasionally change. Minors must be accompanied by a parent.

THESE DAYS ONLY

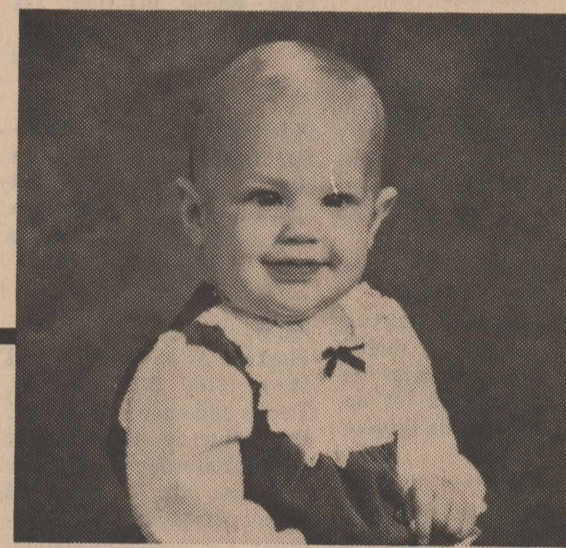
February: Thur. Fri. Sat.
3 4 5

DAILY: 10 am. - 8 pm.

SATURDAY: 10 am. - 5 pm.

910 11th STREET, OZONA

PERRYS



Boy Scouts assist

Boy Scout Troop 153, set up and arranged the tables at the Civic Center Thursday for the annual Chamber of Commerce banquet.

Boys taking part were Kenneth Sessom, Shawn Ballard, Joe Ross, Danny Guitierrez, Joe Hibler, Ricky Burger, Oscar Galindo, Robbie Tambunga, Richard Vargas, Joe Perez, Gary Perez, J. J. Baker, George Wall, Shane Cooper, Keith Fowler, Carlos Galindo, Peter Shacklette, Jason Montgomery, Jene Wilton, Jene Wilton, Jr., Lance Keilers and Travis Burks.

New service offered by Ag. Extension Service

For the latest crop and livestock information, call "TOMI."

TOMI (Telephone Outlook and Market Information) is a service provided by the Texas Agricultural Extension Service, Texas A&M University System, to help farmers and ranchers stay abreast of commodity markets and other information which they can use in planning and managing their operations.

January topics focus on certain decision dates, cattle on feed, grain crop production update, production input price outlook, dairy and cotton updates, the 1983 cattle inventory, and the hog and pig situation.

Information on these topics is available by picking up the telephone and dialing 713/834-TOMI, points out Billy Reagor, county Extension agent. The telephone system operates seven days a week, 24 hours a day.

Messages are prepared by Extension Service economists, using the latest available information.

Joggers out in spite of cold weather

The Ozona Intermediate joggers are still jogging despite the chilly weather and wet ground. Mrs. Abbott's class of 5th grade students is still in the lead with 889 miles. Rosario Ramos is still leading the girls with 68 miles and Luis Rico has 168 miles. Mrs. Debbie Glasscock is leading all 5th grade teachers with 41 miles.

Mrs. Macias' 4th graders are leading all 4th grades with 2,074 miles. Leticia Dominguez has 198 miles and Fleet Worthington has 207 miles. Mrs. Leticia Macias has 185 miles.

Mrs. Spiller's and Mrs. Jacoby's classes are still battling it out for the third grade lead. Mrs. Spiller's class is still leading 1,693 miles but Mrs. Jacoby's is staying close with 1,663. Adrian Vargas has 158 miles and Janet McDaniel has 171.

PHONE NEWS TO THE OZONA STOCKMAN.

TIRED of MOBILE HOME OR APARTMENT LIVING YOUR NEW HOME IS READY

SALE PRICE INCLUDES:

- Moving
- Foundation
- Central Heat & Air
- Septic Tank
- Water & Plumbing
- Hook-ups

SALE PRICE INCLUDES:

- Moving
- Foundation
- Central Heat & Air
- Septic Tank
- Water & Plumbing
- Hook-ups

3 BEDROOM HOMES STARTING \$35,500

11% LOW INTEREST RATES AVAILABLE FOR 15 YEARS WITH FHA-VA FINANCING. 12% RATES AVAILABLE FOR 30 YEARS CONVENTIONAL FINANCING.

MOST MODELS CONTAIN • CATHEDRAL CEILING • FIREPLACES • ISOLATED MASTER BEDROOM • QUALITY CARPETS • KENMORE APPLIANCES

READI BUILT HOMES
BY BUILDERS SERVICE CO.
1700 NORTH PARK (RIVER) DRIVE SAN ANGELO, TX. 653-6965

NOTICE

We Have Added Some More Services To

Bobby's Painting Service

(Cabinets) CARPENTRY IN GENERAL

House Framing - House Re-modeling Additions -
Bathrooms - Kitchens - Carports -
New Houses Built

ROOFING

Woodshingles - Composition, Tile, Spanish,
Gravel Roof - Tin

MASONARY

Brick Laying - Block Fireplaces -
Plastering - Cement Work - Slabs -
Driveways - Ceramic Tile - Tarazzo
Floors For Patios & Sidewalks

We Also Sell Carpet
With Professional Installation
Turn Key Jobs

Free Estimates Phone 392-3183

Pepe's RESTAURANT

Now Serving Daily
NOON SPECIALS
Choice of two Entrees'
Vegetables
Homemade rolls & Desserts
includes iced tea or coffee

ALSO SERVING EVERY SUNDAY
Turkey and Dressing

Closed on
Tuesdays

392-2906

902 AVE. E
OZONA, TEXAS

CONVENIENT WAYS TO BUY: *UNITED CHARGE *LAYAWAY *VISA *MASTERCARD

Inventory Clearance Sale

Super Savings on Fashions

Ladies long Coats
WOOL BLENDS...POLY/COTTON, ZIP-OFF LINING
values to \$89⁹⁵ **\$49⁸⁸**

Junior, leather Jackets
reg. \$129⁹⁵ **\$49⁸⁸**

Ladies Jackets
values to \$39⁹⁵
\$8⁸⁸ to \$29⁸⁸

Girl's Coats
values to \$42⁹⁵
\$12⁸⁸ to \$32⁸⁸

Men's Jackets
BEST OF THE SEASON
values to \$89⁹⁵
\$26⁸⁸ to \$49⁸⁸

Boy's Jackets
values to \$39⁹⁵
\$8⁸⁸ to \$29⁸⁸

For the Entire Family

Men's Levi Jeans
501; FLAIRS IN DENIM **\$15⁸⁸**

Men's Seaters
values to \$16⁹⁵
\$4⁸⁸ to \$7⁸⁸

Ladies Blouses
values to \$22⁹⁵
\$2⁸⁸ to \$8⁸⁸

Ladies Dresses
values to \$32⁹⁵
\$8⁸⁸ to \$18⁸⁸

Girl's Dresses
values to \$19⁹⁵
\$4⁸⁸ to \$12⁸⁸

Children's Shoes
values to \$15⁹⁵
\$3⁸⁸ to \$5⁸⁸

Ladies Shoes
CASUAL...DRESSY
values to \$24⁹⁵ **\$6⁸⁸**

United... "where quality merchandise is sold at affordable prices."

CLASSIFIED ADS

Help Wanted

SITTER WANTED in our home, for 2 pre-schoolers, 6 p.m. to 8:30 p.m. weekdays, part time Saturday and Sunday. Call 392-2341. 48-tfc

NEEDED-Front help, cook and dishwasher for **Red Apple.** Good benefits and added bonuses. Apply to J.B. Miller at Firestone store. 27-tfc

HELP WANTED-Waitress, apply in person at El Chato's Restaurant. 46-tfc

Miscellaneous

EVERYONE LIKES POLLY'S YUMMY CAKES and red heart cookies. Call early to get orders filled. **Polly's Cakes,** 211 Mesquite, 392-3129. 49-2tc

HAVE YOU ORDERED A PERSONALIZED CAKE for the loved one in your life? Call Polly for a delicious and beautiful cake with a message. Phone 392-3129, 211 Mesquite, **Polly's Cakes.** 49-2tc

SEWING IN MY HOME- Specializing in western shirts. Also mending and alterations. Phone Linda Sessom at 392-2171. 50-3tc

NOW OPEN-Ozona Flea Market & Second Hand Store, 1100 Blk. Ave. G. Tables and spaces available. Buy-sell-trade flea market Friday, Saturday and Sunday 8:00 a.m. till. Second hand store open Monday thru Saturday. For more information, call 392-2834. We take consignments. 48-tfc

JESSE Tire Repair Shop
corner of Ave. H & 5th St.
FULL TIME ROAD SERVICE
7 a.m. to 12 p.m.
Ph. 392-3473

IMMEDIATE OPENING
For full-time infant 18 months or younger
Drop-ins welcome till position is filled. **Ozona Day Care Center,** 2-3641. 46-tfc

ALCOHOLICS ANONYMOUS meets each week on Monday at 8 p.m. Methodist Church 40-tfc

STOP SMOKING GUM helps you conquer nicotine craving in one day. Money back guarantee. **Clayton's Village Drug.** 41-tfc

DEER LEASE WANTED for 1983 season. 8-12 hunters, call A.J. Smith at 713-865-5191/713-865-5052. 46-6tp

SEE Duke Owens at Mustang Chevrolet in San Angelo for new and used car needs. 11.9% on all new cars. 45-tfc

For Rent

OFFICE SPACE FOR RENT- Contact Steve Wilkins at 392-3491. 42-tfc

FOR RENT-2400 ft. warehouse, insulated. With office 240 sq. ft. Phone 392-3625. After 6 call 392-2053. 35-tfc

FOR RENT-\$250 month-- Furnished-1 bedroom apt. and furnished 2 bedroom apartment. Call 392-3367 after 5 p.m. 46-tfc

Used Cars

JEEP COMMANDER 4X4- Reg. miles 22,000. Air Conditioner, radio, cassette, 5 snow grip tires, puncture proof tubes. \$5,500. Call 392-3367. 49-tfc

FOR SALE-1972 Ford Grand Torino, \$500. Corner of 4th & G. 392-3104. 49-2tp

FORD MUSTANG-Cobra II for sale. Call after 5 p.m. 392-3417. 49-1tp

FOR SALE-1979 '98 Olds Regency. Excellent condition. Phone 392-3323 or 392-3257. 48-tfc

FOR SALE-1978 Chevy 1/2-ton pickup. Call 392-2011. 48-tfc

Garage Sales

GARAGE SALE-Friday, Feb. 4, 9:00-4:00. #27 Crockett Heights. 49-1tp

Real Estate

FOR SALE-Three bedrooms, two baths, central heating and cooling by gas, insulated, new plumbing and carpet. Carport, utility building, lots of room. Call 392-3067 or 392-3238. 27-tfc

FOR SALE-Three bedroom ranch-style home, 2 years old, 2 1/2 baths, large fenced lot. 392-5841 (day) 392-5047 (evening). 47-3tp

ACREAGE FOR SALE-150 Acs. Hunting--\$175 per acre. 5% down, 15 years owner financing at 9 1/4%. Watering hole for big deer, javelina, and quail. Call 1-800-292-7420. 47-3tp

FOR SALE-Very clean, very comfortable, with many extras is this three bedroom, one bath home. Central heat, refrigerated air, nice den, fenced yard, located in nice family neighborhood. Shown by appointment only. 392-2208. 29-tfc

HAYES AUTO REPAIR

Mechanic On Duty
8 a.m.-6 p.m.
1311 Ave. AA
Phone 392-3224

Business Services

ZAPATA TAX SERVICE - 1703 Walnut. Weekdays, 10 a.m. to 6 p.m. Reasonable rates, prompt. 48-5tp

ATTENTION

Singer Sewing Machine repairman will be at the Ozona Inn of the West, Thurs., Feb. 3, 10 a.m. till 8 p.m. Fri. Feb. 4, 8 a.m. to noon, doing in-home repairs on all brands. Call 392-2663 now for appointments. 47-3tc

MOBILE HOMES moved. Phone 392-2351. 27-tfc

WE BUY DEER HIDES AND PECANS--Beginning Dec. 1 we will be buying furs. Contact Glenn Sutton, 1103 Ave. H. 38-tfc

BLACK DIRT, caliche hauled and right-of-ways built. Ph. 392-2351. 27-tfc

CECIL WESTERMAN
Would Like To Be YOUR PHARMACIST
PH 392-2608

Hunting Leases Exotic Hunts Exotic Game Sporting Goods
Gulf Products Groceries
6:00 A.M. to 10:00 P.M.
WHITE HOUSE COMPANY
P.O. BOX 478
OZONA, TEXAS 76943
(915) 392-2850 - HOME
(915) 392-3912 - OFFICE
PORTABLE WALK-IN COOLERS SOLAR POWERED WILDLIFE FEEDERS
DAVID H. WEANT OWNER

Levon Parker
Tree Dozing - Raking & Seeding
Right-a-way -
Tanking - Fire Guards
P.O. BOX 582 OZONA, TEXAS 76943
TELEPHONE 392-2206

John R. Jones
Real Estate
392-2021 392-2113
Elizabeth Upham-Agent
392-2334
(Lots-Houses-Commercial)
COMMERCIAL BUILDING FOR RENT
Excellent Location-Good Parking

L&D Gas & Groceries
* Fina Gas
* Groceries
* Cigarettes
Fina's Quality Gas \$119.9 Regular 1.23.9 Unleaded
Hrs.: 5:30 a.m.-1:00 a.m. Open: 7 Days a Week
* Ice
* Toiletries
* Ice Cream
WELCOME ALL
1108 Ave. J Ozona, Texas 76943

Pete W. Jacoby
Real Estate
Ph. 392-3059
Homes-Lots-Commercial
Ranch Properties
401 Hillcrest

JAY MILLER CONSTRUCTION CO.
General Dirt Contractor
Oil Field Contracting
Roads, Locations, Pits
Dozers, Dumptrucks, Maintainers
Airplane Service Available
392-3243 Phone 392-2489

JOHNNY CHILDRESS
392-3634
REAL ESTATE
Homes
Ranches
Commercial
Lots
Lake Properties
Appraisals
Steve Stewart-Realtor

Building - Remodeling - Painting
Plumbing Repair - Electrical Repair
Cement Work - patios - Floors - Stem
Walls - Basements - Sidewalks
Commercial or Residential
20 Years Experience
Clyde "Red" Myatt
392-2602 Ozona, Texas

we love cars
And we'd love to keep yours in top condition!
Effective Feb. 1, we will accept Visa and Mastercard
Weekdays 8:00 a.m. to 6:00 p.m.
Saturday 8:00 a.m. to 2:00 p.m.
Tony's Quik
Lube & Tidy Car
Tony Fierro 392-3473
330 Ave. H. Ozona, Texas

For Sale

FOR SALE-Farm, ranch, business and home storage, 7x8 to 14x48 stock buildings and larger custom. Heavy duty steel. We deliver. Morgan, 3220 Sherwood Way, 944-8696. 34-tfc

5% DOWN, good, bad, or little credit required. Owner financing available. 50 homes to choose from. Call Ron or Lanny for appointment. 381-7200. 47-4tc

FOR SALE-Cab over camper sleeps 4. Butane bottle-2 burner stove-ice box. Fair condition. Reasonable price. Also camper shell for 8 ft. bed pickup. Call 392-3533 after 6 p.m. 49-2tp

Repos, Repos, Repos-13 1/2% interest, 5% down. Owner financing. For appointment call Mr. James or Mr. Burnett at 381-7201. 47-4tc

FOR SALE-New Fleetwood Mobile Home, 14x70 located in Sonora, 510 Crockett, never lived in, 2-br. 2-bath, wood siding, shingle roof, storm windows, extra insulation, good carpet, dishwasher, 3 1/2 ton air. Call Buster, 915/387-2373. 48-5tc

FOR SALE-Green Houses, 6 ft. X 8 ft. with storm door and vent. New const.-lumber and fiberglass. Other size by order. Call 392-3296 or see at 212 Ave. M. Will deliver. 48-2tp

FOR SALE-One, 2 bedroom and one 3 bedroom mobile home. Owner will carry papers. Call 333-3928 for appointment. Sa Habla Espano. 48-4tc

FOR SALE-Repos-2 and 3 bedrooms. Good, little or no credit. Low monthly payments. We can put you in the home of your choice. Call 333-4774 for appointment. Sa Habla Espano. 48-4tc

FOR SALE-Kimball Electronic Entertainer Organ. Like new with bench and music books. Ph. 392-2836. 49-1tp

FURNITURE FOR SALE-Couch, chairs, bedroom suite, dinette, tables. Call 392-2283 after 5. 49-1tp

HAYGRAZER HAY for sale. In the barn \$2.00 and \$2.50. In field stack, \$1.50. 16 mile west of Menard, Walter Russell, 915-396-2532, Box 933, Menard, 76859. 41-tfc

Notice of REWARD

I am offering **\$500 Reward** for apprehension and conviction of guilty parties to every theft of livestock in Crockett County - except that no officer of Crockett County may claim the reward.

Sheriff, Crockett Co.

Billy Mills

ELECTRIC SEWERooter
Clears CLOGGED PIPES, DRAINS, SEWERS
NO DIGGING NO DAMAGE
Call **Raul DeLaRosa**
Plumbing & Serv.
Ditch Digging
Ph. 392-2726
1206 Ave. F.

A Friendly Reminder

Your Bank Offers:

1. New safety deposit boxes
2. Variable rate IRA's (good for 1982 tax deductions)
3. Money Market Accounts

and most importantly personnel that will help satisfy all your financial needs

Phone 392-2676, 392-2694, 392-3787

Ozona National Bank

Member of



Main Bank-9 to 12 and 1 to 3
Motor Bank-8 a.m. to 5 p.m.