

# The Muleshoe Journal

DEDICATED TO THE PROGRESS AND DEVELOPMENT OF BAILEY COUNTY AND THE GREAT MULESHOE COUNTRY

VOLUME 31, NUMBER 8

MULESHOE — County Seat of Bailey County — TEXAS

THURSDAY, FEBRUARY 12, 1953

## March of Dimes Reaches Goal

Bailey County's March of Dimes campaign total contributions already have exceeded that for any previous year, and funds from three communities have not yet been reported. W. Q. Casey, drive chairman, said today the county total is \$2,971.19, and it is believed unreported collections will bring the total past the announced goal of \$3,000.

An itemized statement of monies raised by different communities and organizations will be made later. Mr. Casey said, however, that the Dimes dance brought a net of \$335.81, and that the faculty vs. exes basketball game netted \$99.50.

## Labor Meeting Here Saturday

Farmers of the Hub, Bovina, Morton, Baileyboro, Farwell, Maple, Friona, Springlake, Earth, Sudan, Enochs and Muleshoe areas are urged to attend a meeting in the Bailey County Court Room Saturday, Feb. 14, at 2:00 p. m.

The purpose of this meeting is to discuss the labor problems of the farmers in these immediate areas. Within the next few days the demand for irrigation, tractor, and general farm hands will be greatly increased.

Also, the possibility of getting supplemental labor from Old Mexico will be discussed. The possible need for these workers is expected especially for the coming cotton chopping and cotton harvesting seasons.

It is believed that this meeting will be of interest to all farmers in this area so try to be present on the 14th day of Feb. at the Bailey County Courthouse.

## Crow Purchases More Interest In Chevrolet Firm

Arthur Crow, of the C. & H. Chevrolet Company, told The Journal this week that he has bought another one-fourth interest in the local Chevrolet dealership. He had owned a one-half interest and this purchase will give him 75 per cent interest in the firm.

He made the purchase from his long time friend and business associate, L. A. Harral, of Slaton, who has owned a one-half interest, although he has never been active in the business.

The C. & H. partnership was formed by Messrs. Crow and Harral in March, 1941. They bought the Chevrolet dealership for Muleshoe from the late E. R. Hart.

\$2,300 IS THE GOAL

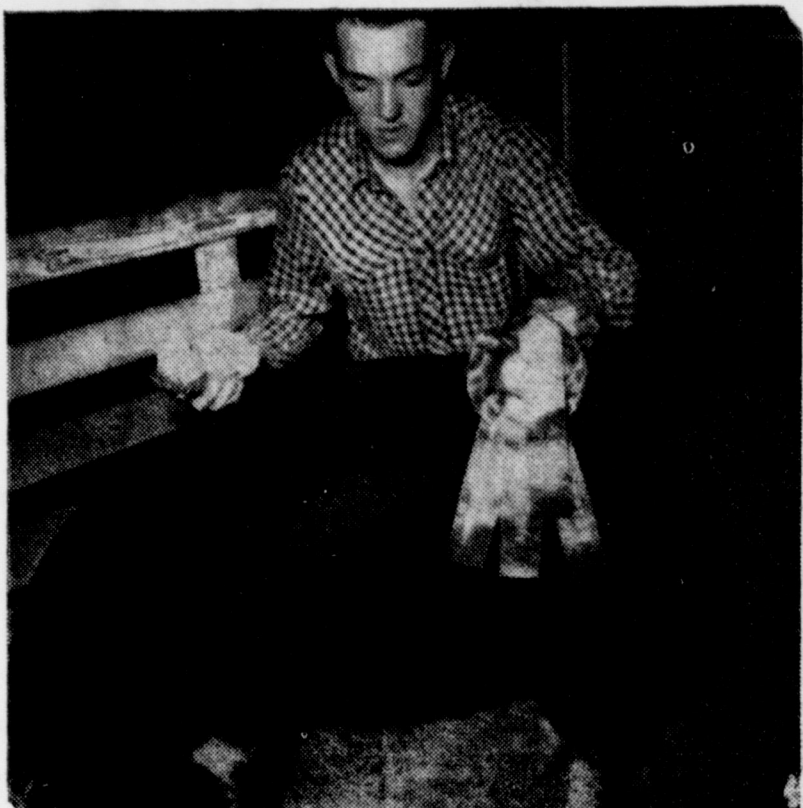
## Bloodmobile To Visit Bailey Co. In April — Red Cross Drive Planned

The Bailey County Red Cross Board met last night in the REA Building to discuss the March Red Cross Fund Campaign. Plans were made to block the county off into divisions, with chairmen in each, and quotas for each. D. B. Lancaster, county fund campaign chairman, announced that the county quota this year would be \$2300. The fund campaign opens March 2.

In announcing the quota, emphasis was put on the expansion of the blood program, not only for blood for defense, but for the new program that the Red Cross has accepted from the Office of Defense Mobilization, that of procuring more blood to make available all the gamma globulin possible for the prevention of paralysis from polio.

Experiments conducted in the past 2 years in Houston, Texas; Provo, Utah; and Sioux City, Iowa have demonstrated the effectiveness of this treatment. The Red Cross provided the gamma globulin used in these experiments without cost.

## Bray Shows Fort Worth Champions



Fort. Worth, February 2 — Keith Bray, 18 year old Future Farmer, son of Mr. and Mrs. Clyde Bray of Muleshoe, exhibited the Light Weight Champion Poland China barrow, the Medium Weight Champion Poland China barrow, and the Champion barrow of the Poland China breed at the Southwestern Exposition and Fat Stock Show in Fort Worth this past week. The breeder of the pigs was Donald Harrison of Muleshoe.

Keith is a member of the Muleshoe Future Farmer Chapter, holding the rank of Chapter Farmer and is in his 4th year in Vocational Agriculture. His Vocational Agriculture teachers are Carrol Wilson and Ed White.

500 IS THE GOAL

## Bailey County Farm Bureau Will Start Membership Drive Feb. 17

Bailey County Farm Bureau's spring membership drive will get under way officially with a big kickoff (supper) February 16, 1953, at 7:30 p. m. at Gerald's Cafe in Muleshoe, according to Mr. Ralph Ethridge, county membership chairman. All who are to take part in the drive are asked to come and bring their wives.

Plans for the county-wide drive were mapped out at a special meeting of community chairmen February 4, in Muleshoe. A quota of 500 has been set for Bailey County.

Lending emphasis to the announcement of the membership campaign was a statement this week by O. C. Thomson, president of the Bailey County Farm Bureau.

"I want to urge everyone in this county who are not already a member to join the Bailey County Farm Bureau. We need all of the strength that we can get."

President Thomson said that the Bailey County Farm Bureau has 450 members at the present. The county organization is affiliated with the Texas Farm Bureau Federation which has 48,650 members.

"A strong farm bureau is especially important now," the president stated, "because this is a legislative year in Austin. In 1951, the Texas Farm Bureau was considered the most influential lobby in Austin."

"A strong effort is expected to be made to tax non-highway gas. If this tax is forced on us, it will mean that the farmers in Bailey County will have to pay highway taxes on gas that they burn in the field. The Farm Bureau alone is responsible for keeping this unfair tax off tractor gas."

"Another issue expected to come up at Austin is the plan to use county funds to help finance a primary highway system. So far, the Farm Bureau and the county judges' and rural letter carriers' association have managed to have the road bond assumption monies that are set aside for county use. If these funds are taken from the county, then other sources of revenue will have to be found to run the county governments."

"The whole rural road program is in jeopardy. Everyone knows that we need better primary highways, but we also need good rural roads. School buses have to travel over about 60,000 miles of dirt roads every day in the week."

"So I want to ask every one living in a rural area who is interested in the welfare of agriculture to join Farm Bureau. Membership in Farm Bureau doesn't cost — it pays."

**Prizes Are Offered in Drive**

Three cash prizes for most members are being offered for both men and women, as follows: 1st, \$25; 2nd, \$15; 3rd, \$10.

## Community Bldg. Is Considered For Progress

People of Progress community are being given the opportunity to decide as to whether a community building will be erected. A committee of local people are sounding out the people to get opinions.

Joe Soeter, a member of the committee, said they will make an effort to see everyone to get their opinion as to whether the building should be built, and as to type, size, etc.

Since the old school building was bought by a Progress church, the community is without a public meeting place. The present survey is to determine whether the people wish to finance such a meeting house, which could be used for many worthwhile purposes.

## Pentecostal Church Revival Held

A revival is now in progress at the United Pentecostal Church, with Rev. C. G. Ward of Monticello, Ark., conducting the services. Healing services are also included in the regular programs which begin at 7:30 p. m. daily.

The revival will continue two weeks until February 17. The public is cordially invited to attend.

## Auditions For J' C Minstrel Show To Be Held Feb. 26

The JayCees search for talent for their annual minstrel show begins in earnest Thursday night, Feb. 26 at the high school auditorium. Auditions will begin at 7:30 p. m. and young and old alike who would like to participate in the minstrel are urged to be present. Any kind of act, singing, dancing and comedy act will be given a tryout for a chance to be a part of minstrel show. Those participating will not be subject to audience criticism as the JayCees are not allowing anyone present who are not directly a part of those auditioning.

The date for the Minstrel show has been set for March 19-20, and work on the show will begin immediately.

All those who participate in the audition will be treated with ice cream and Cokes after the tryouts.

## Mrs. Autry Rites Held At Amherst

Mrs. Murrell Autry, of Amherst passed away Monday night at noon in Amherst Hospital after an illness of some time. She was a sister-in-law of Mrs. Grace Benton, of Muleshoe.

Funeral services were held at 2 p. m. Wednesday in the Amherst Methodist Church. Interment was in Amherst cemetery.

Mrs. Autry, who was 48, leaves her husband and a son, John Osborn Autry, of California. She and Mr. Autry owned a dry goods store in Amherst and have lived there for many years.

## ATTEND CC BANQUETS IN NEIGHBORING TOWNS

Muleshoe was represented at two area Chamber of Commerce annual banquets Tuesday night. Mr. and Mrs. Ray Franz and Mr. and Mrs. H. S. Sanders, Jr., attended the Clovis affair.

At the Littlefield annual banquet were Mr. and Mrs. Lee Pool, Mr. and Mrs. Travis Reed, and Cecil H. Tate.

## HAVE AUSTIN OFFICE

The Texas Farm Bureau has established an Austin office, with C. H. Devaney, vice-president, in charge. The office will be available for advice on proposed legislation now before the Legislature.

## WEEK END IN CANYON

Mrs. John Benson spent the week end in Canyon where she visited her son, Bernice Pierson and family.

## Carrier Exam For Muleshoe Set

The Fourteenth U. S. Civil Service Region has announced examinations for Substitute Clerk-Carrier at \$1.61 1/2 per hour for employment in the Muleshoe Post Office.

Further information and application forms can be obtained from the Commission' Local Secretary, Mr. Walter Witte at the Post Office or from the Regional Director, Fourteenth U. S. Civil Service Region, Room 809, 1114 Commerce Street, Dallas 2, Texas.

## Muleshoe Girls Win 3rd Conference Victory Tues. Eve.

It was just one of those nights as far as the A boys basketball squad were concerned, the starting lineup or any combination of players seemed to be unable to function smoothly. The result, Littlefield won 55 to 46. This was their third conference loss against two wins, however, if they defeat Levelland Friday night and some of the other teams get going there could be a four way tie in the District. High point man for the game was Jones of Littlefield with 24 points while Jimmie Clyde Holt dropped 19 points through the hoop with Nickels a close second for scoring honors for the Mules with 15 points.

In the B boys game, the Littlefield team made 30 points while holding the B Mules to 26. Games high scorer was Shaw for the Mules with 11 points. Pettiet had 9 points for Littlefield.

The Muleshoe girls came through with their 3rd conference win with a 30 point edge over the Littlefield girls. Final score Muleshoe 58, Littlefield 28. Jean Montgomery led the victors with 32 points followed by Graves with 15 and Peele with 9. Alexander had 15 points for Littlefield's high scorer.

Friday night the teams will journey to Levelland for another conference game.

The girls are at present sure of a tie for conference honors.

## Mules Rack Up District Win

Muleshoe's Mules downed the Brownfield Cubs for another conference basketball victory in the Brownfield gym last Friday night, 51 to 47. The victory gave the Muleshoe boys a 2-2 standing in the district race which grows tighter every week.

Brownfield led at the end of the first quarter, 10 to 8, but Muleshoe went ahead and led at halftime 23 to 19 and the Cubs were never able to push ahead again. Several times in the final quarter the Cubs knotted the count, but Muleshoe rebounded each time and had a comfortable margin when the final whistle sounded.

High point men for Muleshoe were Jimmy Clyde Holt, 15 points and Calvin Turner with 12. Holt was high point man for the game.

Spectators said the boys were playing as a team and team work certainly paid off.

In a "B" team game, the Cubs sneaked by Muleshoe 43 to 39. Shaw of Muleshoe tossed in 16 points for his team to lead team and game scoring.

This made things about equal between the Cubs and Mules for the Cubs won over Muleshoe in a hotly contested game here earlier by a single point.

## LOCAL MARKETS

Cream, lb.	64c
Eggs, doz.	36c
Lt. Hens, lb.	12c
H. Hens, lb.	16c
Hogs, cwt.	\$19.28
Kafir, cwt.	\$2.50
Maize, cwt.	\$2.50
Wheat, bu.	\$2.10
Hegeri, cwt.	\$2.50

AT LADIES NIGHT BANQUET

## This City's Intensive Scouting Program Pictured For Rotarians

The extensive Muleshoe Boy Scout program was pictured to a large group of local people gathered in Fellowship Hall Tuesday evening for the Rotary Club's ladies night banquet.

The three groups, Explorer Scouts, Boy Scouts and Cub Scouts had representatives on the program, which was presented by Ernest Kerr, Scout Master of Scout Troop 20. It was a fitting

## P. T. A. To See Scout Program

Another large group of local people will get the opportunity to learn how big the Scouting program is the coming Monday night. Members of the three branches of Scouting here, Cub Pack, Scouts and Explorers will appear before the high school P. T. A., which meets in the high school auditorium.

It will be the same program which entertained members of the Rotary Club, their wives and guests at a ladies night banquet Tuesday night.

It is another event in the observance here of Boy Scout Week.

## Upholstery Class Begins Feb. 17

The Home Economic Department of Muleshoe High School is sponsoring an adult course in upholstery. The first class will be held in the department Tuesday, February 17, from 1 p. m. to 4 p. m., according to Miss Alice Rowan, Home Economics teacher.

Anyone wishing to participate is urged to bring a chair to work on. The first lesson will be on "Measuring and figuring amount of material needed."

Three classes will be held once a week for six to eight weeks.

## JayCees Report Progress In Safety Program

The JayCees regular Monday night meeting held in the West Post Office Cafe was presided over by Pinkie Barbour due to the absence of President Dr. B. R. Putman.

The program for the evening presented by B. A. Dalton, was a film "The Everglades of Florida."

Discussion of the Safety Program proved that the plans laid in previous meetings were progressing better than had been expected.

The group also set the date for their annual Minstrel show to be March 19 and 20.

All JayCees are urged to attend the next Monday night meeting and see a picture of the last years Minstrel Show.

## Irrigation Day Speakers



M. K. THORNTON

Two of the experts who will lead discussion at the fourth annual Irrigation Day to be held in Muleshoe Wednesday, Feb. 25, are pictured here.

Mr. Thornton is agricultural



E. M. TREW

chemist, head of the soil Testing Laboratory, Texas A & M College.

Mr. Trew is Extension Agronomist, Texas A & M Extension Service.

**NEW REGULATION IN EFFECT**

**Application Blanks For Drilling Permits Are Available Here Now**

LUBBOCK, Feb. 10 — A simple letter size application blank, free to everyone, is getting lots of attention this week among actual and prospective water well owners in the 13-county High Plains Underground Water

Conservation District No. 1, in West Texas. It is the new "Application for Water Well Permit" effective February 1. Approval of these applications by local county committees is the basis for regulation of water well spacing in the 13 affected counties.

These free forms may be obtained from four handy sources: (1) county committees, (2) county agents, (3) pump companies, or (4) water well drillers. Completed blanks are to be filled out in triplicate and submitted to the five member committee for action. Approval by 3 of the five member committee is the "go ahead" sign to start drilling.

**DRS. WOODS & ARMISTEAD**  
OPTOMETRISTS  
IRA E. WOODS, O.D.  
B. W. ARMISTEAD, O.D.  
GLENN S. BURK, O.D.  
Phone 328 Littlefield

taxpayers voters in Armstrong, Bailey, Castro, Cochran, Deaf Smith, Floyd, Hockley, Lamb, Lubbock, Lynn, Parmer, Potter, and Randall counties, are now setting up county offices. These are generally located in county agents' or Farm Bureau offices.

**Committeemen are acting as fast as possible to keep abreast of the current rush for drilling approval. When this rush slackens off, they will meet weekly to process future applications. Information on how to fill out application blanks may be secured from committee headquarters, 1101 Lubbock National Bank Building, Lubbock, Texas.**

According to T. J. McFarland, manager of the High Plains Water Conservation District No. 1, this whole plan is aimed at benefitting the individual well owner. He observes, "Wells too close together hurt the owner, his neighbors, and sometimes affect the entire community. This program permits spacing regulations to vary according to the problems of different counties. This seems to be the best way to protect everyone's interests."

The names of the County Committeemen for this and nearby centers are listed below:

**BAILEY COUNTY**  
H. E. Schuster, Muleshoe, Tex.  
Troy Atkinson, Muleshoe, Tex.  
W. T. Millen, Route 1, Muleshoe, Tex.  
Robert F. Byrd, Route 2, Muleshoe, Tex.  
D. V. Terrell, Route 1, Morton, Tex.

**LAMB COUNTY:**  
Gus Parrish, Springlake, Tex.  
A. B. Brown, Route 1, Anton, Texas.  
V. M. Peterman, Route 1, Amherst, Tex.  
Eldon Franks, Box 36, Olton, Tex.

**PARMER COUNTY:**  
Bruce Parr, Friona, Texas.  
Tom Caldwell, Route 1, Farwell, Texas.  
D. B. Ivy, Route 1, Friona, Tex.  
C. V. Potts, Route 2, Friona, Tex.  
Raymond Euler, Friona, Texas.

**TO MEET REGULARLY**  
The Bailey County committeemen have decided to hold regular, stated meetings to consider applications. Date and hour will be announced later, and meantime if a farmer is in a hurry to get started, he may contact one of the committeemen, to expedite matters. Applications may be completed and left in the Bailey County Farm Bureau office in Muleshoe for regular review.

**VISITOR FROM CARLSBAD**  
Bill Moore of Carlsbad, N. M., who recently returned from Japan where he was stationed in the Army visited last week end here with relatives.

**BOSTITCH STAPLERS** and Staples always on tap at The Journal.

**Sudan Farmer Brings In Eight Inch Irrigation Well**

The most jubilant man in the Sudan area this week is Lloyd Robinson. A good eight inch irrigation well was brought in on his farm five miles southwest of Sudan, in a section where it has been doubted there was sufficient water for irrigation purposes but reportedly is some of

the finest farming land in the state.

The well was drilled to a depth of 250 feet and according to Robinson there is a sand and gravel formation of 45 feet. He said they had developed four sands through a depth of 228 feet and there was still another good sand to be developed.

The well was pumped for 30 continuous hours. "It is a good one", Robinson smiled, "and will provide ample water for my entire labor of land." In time of ample rainfall, the land has produced almost a bale of cotton to the acre. With irrigation there is little doubt that this production can be made every year.

The closest irrigation well to the Robinson farm is on the Coleman Terrell place about 3½ miles southeast. Robinson said as soon as time permitted, a new pump would be installed and set back at approximately 235 feet.

The Crawford Drilling Company of Muleshoe were contractors of the job and the pump was furnished by the Davis Pump Company of Lubbock.

**Our Honor Roll**

New subscribers to The Journal this week are:

Southwestern Farm Management Service, Lubbock.  
T. L. Harvey, Jr., Route 1, Wilt's Mink Ranch, Portland, Ore.

Ralph Broyles, Route 1, A-3c James M. Pugh, Wichita Falls, Texas.

A-3c Benjamin E. Garner, Wichita Falls, Texas.  
Old subscribers who have renewed their subscriptions to The Journal this week are:

Royce C. Lowery, Mt. Home Air Force Base, Idaho.  
Barry T. Lewis, City.

John Watson, City.  
L. T. McKillip, City.  
E. E. Holland, City.  
Cecil Tate, City.

E. H. Kennedy, City.  
H. C. Lee, City.  
D. B. Head, Route 1.  
Jack Epps, Route 1.

E. L. Bartley, Route 1.  
D. E. Beller, Route 1.  
Mrs. A. Schroeder, Brady, Tex.

Mr. D. O. Burlsmith, Route 2.  
Rudolph Moraw, Star Route 2.  
J. W. Thomson, Route 2.  
Lonnie Wilhite, Route 2.

J. L. Redwine, Route 2.  
Dee Brown, Route 2.  
J. Lewis Morris, Lubbock.

V. E. Garner, Sudan.  
Perry Fort, Baileyboro.  
F. O. Warren, Sudan.  
J. D. Jordan, Littlefield.  
Mrs. R. C. Panter, Dorchester, Neb.

Herstine Beller, Chico, Calif.  
R. L. Brooks, Lubbock.  
A. J. Bell and Sons, Lubbock.  
Dick Blackshear, New Mexico.  
Bob Beller, Chico, Calif.  
E. J. Calloway, Jr., Goldthwaite, Texas.

**GARNER FARM RECORD** books on sale at The Journal.

**Cecil H. Tate**  
Attorney-At-Law  
Office in Courthouse  
Muleshoe, Texas

**IT'S NOT TOO LATE YET TO HAVE WINTER**

Because a few days of perfect fishing and golfing weather have come along, some of our citizens, especially the newcomers may figure winter is over.

Dave Coulter, who has been here always, is not sure. For he

remembers that on February 21, 1933, 20 years ago next Saturday, the mercury slid down to 21 degrees below zero. He put it down on his calendar and knows this is right.

**ALL ABOUT TEXAS** in the Texas Almanac, on sale at The Journal. Phone 7220, we deliver.

**IT'S SHOWTIME AT THE WARM VALLEY & PALACE**

Box Office Open 6:45 P. M. Show Starts 7:00  
Saturday & Sunday: 1:45 P. M. and Continuous Showing

**VALLEY THURSDAY and FRIDAY**

Dean Martin  
Jerry Lewis

—In—  
**Jumping Jacks**

**SATURDAY ONLY**

Lash LaRue

—In—  
**Vanishing Outpost**

**SUNDAY and MONDAY**

Rory Calhoun  
Gene Tierney

—In—  
**Way of a Gaucho**

Hedy Lamarr  
George Saunders

—In—  
**The Strange Woman**

Motion Pictures Are Your Best and Cheapest Entertainment

**PALACE THURSDAY and FRIDAY**

Kent Taylor  
Gloria Holden

—In—  
**Seeds Of Destruction**

**SATURDAY ONLY**

Claudette Colbert  
Don Ameche

—In—  
**Guest Wife**

**SUN., MON., TUES., & WED.**

Doris Day  
Ray Bolger

—In—  
**April In Paris**

**Thursday**

February 12th, we celebrate the memory of a great man who devoted his life to keeping America strong.

The American Banking System of which we are a member helps to maintain his heritage, today, tomorrow . . . always.



LEGAL HOLIDAY, LINCOLN'S BIRTHDAY, FEB. 12th

**MULESHOE STATE BANK**

Member Federal Deposit Insurance Corporation

**Ask Your Pump Dealer For A System Designed To Meet Your Special Needs**

**GE MOTORS AND CONTROL**

Here is specially designed motor and control built to work as a team and to protect your pump investment.

GE MOTORS AND CONTROL ARE ECONOMIC because they give long life and need very little maintenance. Both motor and control are constructed for out-door operation without additional protection.

GE MOTORS AND CONTROL ARE RELIABLE. They are protected by their inherent design from electrical breakdowns and physical damage.

GE MOTORS AND CONTROL ARE CONVENIENT. The push of a button puts it into operation — no more cranking or start-

ing troubles due to cold weather.

GE Vertical Hollow Shaft motors are designed with NEMA standard pump type bases and will fit almost all deep well pumps without special adapters. For a new pump drive or to replace an existing drive of another type, call your pump dealer and specify a GE system — Motors and Control.

**FREE BULLETIN**  
Here's an information packed publication that shows by picture and story how to determine and specify your electrical equipment. Order it today!

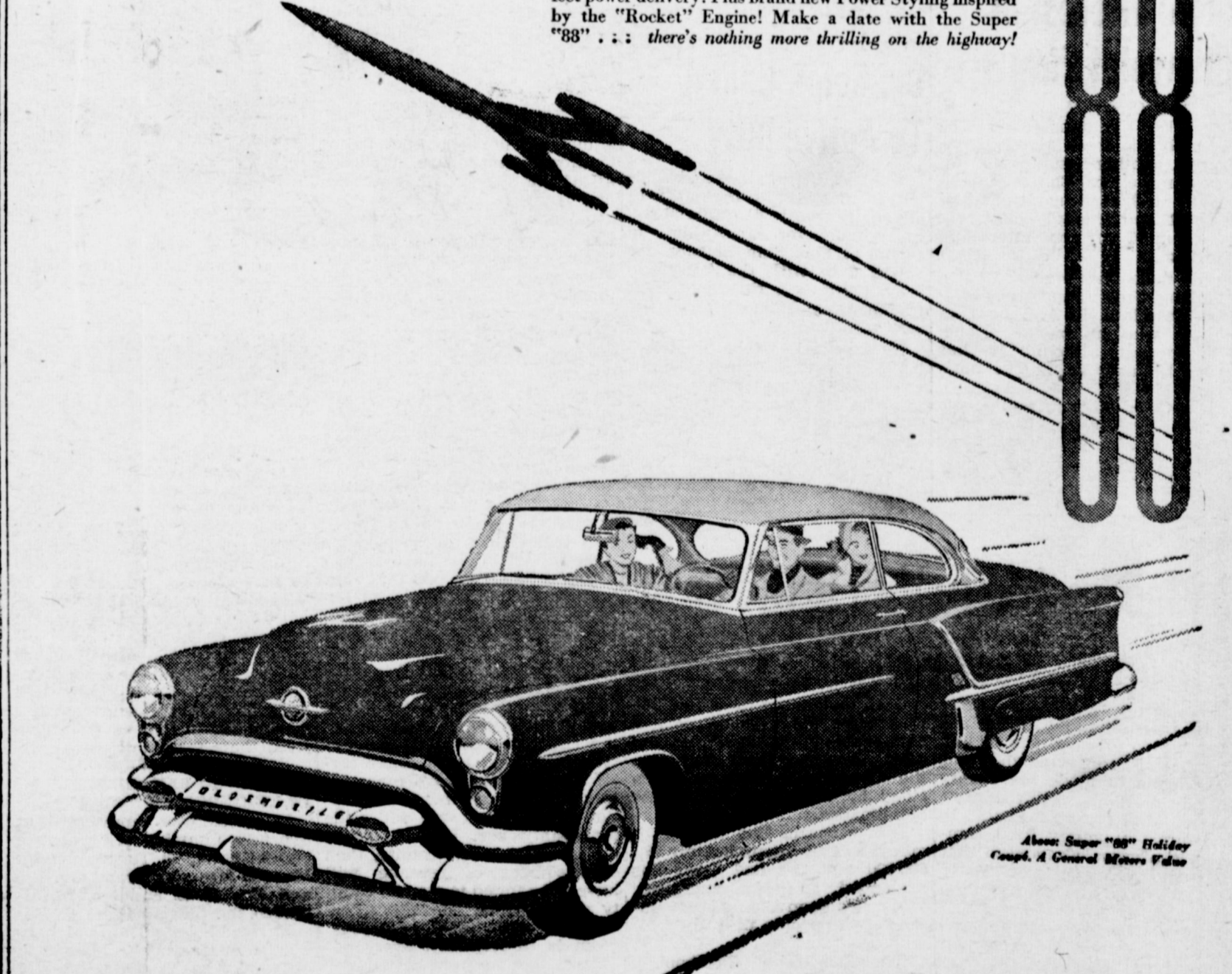
ADVERTISING & SALES PROMOTION  
GENERAL ELECTRIC COMPANY  
1801 NORTH LAMAR STREET  
DALLAS 2, TEXAS

Please send me your free bulletin (GEA-5917) "How to Select and Apply Electric Equipment for Irrigation Wells."

NAME \_\_\_\_\_  
ADDRESS \_\_\_\_\_  
STATE \_\_\_\_\_

**GENERAL ELECTRIC**

**Oldsmobile rockets ahead again in POWER!**



**"ROCKET" ENGINE OLDSMOBILE**

— GET THE GENERAL MOTORS' BETTER HIGHWAYS CONTEST . . . GET FREE FACTS BOOK FROM YOUR OLDSMOBILE DEALER —

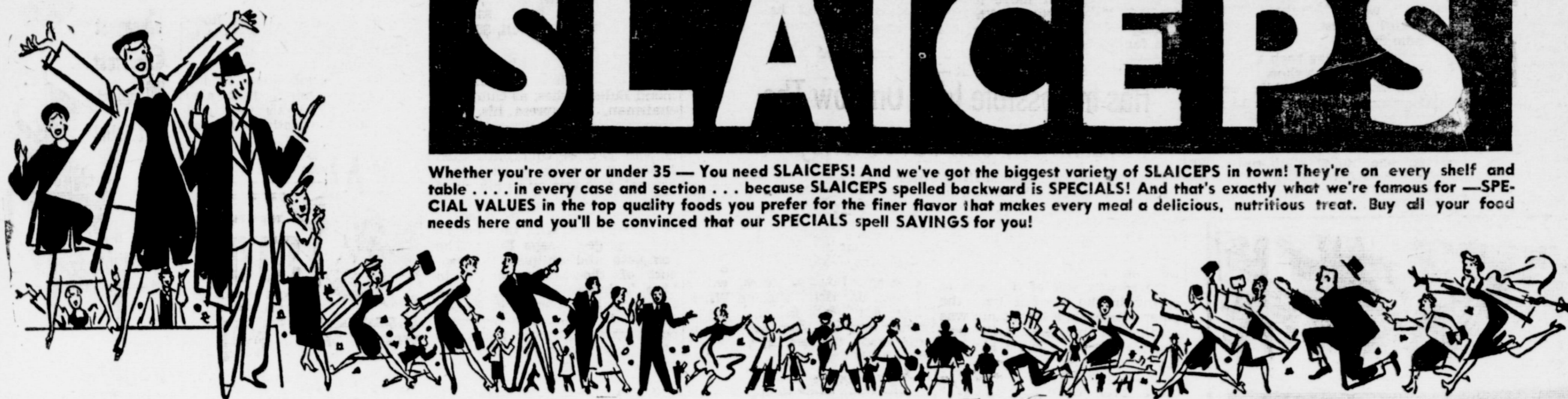
**JOHNSON - NIX**

PHONE 2940 MULESHOE

OH BOY HAVE WE GOT

# SLAICEPS

Whether you're over or under 35 — You need SLAICEPS! And we've got the biggest variety of SLAICEPS in town! They're on every shelf and table . . . in every case and section . . . because SLAICEPS spelled backward is SPECIALS! And that's exactly what we're famous for — SPECIAL VALUES in the top quality foods you prefer for the finer flavor that makes every meal a delicious, nutritious treat. Buy all your food needs here and you'll be convinced that our SPECIALS spell SAVINGS for you!



**Coca Cola** 6-Bottle Carton Plus Deposit **17c**

HI-C 46 OZ. CAN ORANGE DRINK . . . . . 23c      POWDERED OR BROWN SUGAR, lb. box . . . . . 10c

**JELLO** Assorted Flavors . . . . . **3 FOR 17c**

BAMA PURE SEEDLESS GRAPE JAM, Qt. . . . . 45c      KUNER'S SOUR OR DILL PICKLES, qt. jar . . . . . 35c

**CHEER** Large Box . . . . . **25c**

YOUR CHOICE CINCH CAKE MIX . . . . . 35c      LIBBY'S FANCY NO. 2 CAN SPINACH . . . . . 17c

**CATSUP** Del Monte 14-Oz. Bottle . . . . . **15c**

**Choice Meats**

U. S. CHOICE **BEEF RIBS** lb. . . . **19c**

U. S. CHOICE **BEEF SIRLOIN STEAK**, lb. . . . . 49c

**BACON** Wilson Corn King, Lb. . . . . **39c**

FRESH LEAN AND TENDER **PORK CHOPS**, lb. . . . . **43c**      CHOICE **RIB STEAK**, lb. . . . . **39c**



**PURE LARD** Swift's 3-Lb. Ctn. . . . . **39c**

**KLEENEX** Facial Tissue Lge 300 Count . . . . . **19c**

**SAVE 6¢ COMBINATION OFFER**

Both for 29c

**FARM-FRESH Fruits and Vegetables**  
FOR TABLE USE OR CANNING

GARDEN FRESH CALIFORNIA **CARROTS, 2 bunches** . . . . . 15c

FANCY TEXAS **GREEN ONIONS, 2 bunches** . . . . . 13c

GREEN CRISP CALIFORNIA **CELERY**, lrg. stalk . . . . . 15c

FANCY OLD MEXICO **TOMATOES, lb.** . . . . . 17c

1 LB. BOX TOWN HOUSE **CRACKERS** . . . . . 33c      WOODBURY BEAUTY-BATH SIZE **SOAP, 3 for** . . . . . 35c      CURTISS **COOKIES, box** . . . . . 25c

**POTATO CHIPS** Stansell's 20c Pkg. . . . . **15c**

**TIDE** Large Box . . . . . **29c**

— FROZEN FOODS —  
10 OZ. SNOW CROP FROZEN **PEAS & CARROTS** . . . . . 19c  
10 OZ. SNOW CROP FROZEN **BLACKEYE PEAS** . . . . . 29c

DELSEY **TOILET TISSUE 2 FOR 23c**

**CASHWAY**

FREE DELIVERY "Where Friends Meet And Prices Talk" Phone 2440 or 2450



**Travis Edwards**  
Jewelry Co.  
732 Bdwy. Ph. 1155  
Plainview, Texas

### Potter Will Be Sudan Manager For Service Co.

Herbert H. Potter will become Sudan manager for the Southwestern Public Service Company on February 16, replacing Max Houk, who will take over managerial duties at Olton on the same date.

Mr. Potter has been a working foreman at Muleshoe. He has been with the Public Service Company for more than 15 years and is experienced in all phases of electric power operation.

Mr. Potter is a member of the Muleshoe Rotary Club and active in other civic affairs. His wife and three sons will join him in

Sudan as soon as housing is available.

Max Houk has been manager at Sudan since January of 1950. Max has taken part in many Sudan civic activities, including the Rotary Club and Chamber of Commerce. He was a Rotary director and vice president of the business group. He worked with the Boy Scout movement while here, also. Mr. Potter is a past master of Muleshoe Masonic Lodge and is now serving as lodge secretary.

The Houks will move to Olton in the near future, with Max taking on his new duties before the family is moved.

### SAND HILLS PHILOSOPHER — Has Impossible Idea On How The Government Can Save Money

Editor's note: The Sand Hills Philosopher on his Johnson grass farm has an impossible idea this week, as you'll readily agree when you read his letter.

Dear editor:

There was sort of a touch of spring in the air out here the other afternoon, a bright sun was shining, the air was still and peaceful, heard a few birds cutting loose, calves were racin each other over the pasture, my bony cows were warmin their hides in the sun, and I was out wanderin aimlessly around speculatin on whether eight bales of hay would get my cows through the rest of the cold spells this year, when I stumbled on a copy of a newspaper and since a man can speculate as well sittin down as walkin around I sat down and looked it



"J. A."

### Charles Corn In Germany

Wiesbaden, Germany — Chas. E. Corn, son of Fred Corn, Goodland, recently re-enlisted in the Army for three years while serving in Germany.

He is stationed at Wiesbaden as a mechanic in the 63rd Anti-Aircraft Artillery Gun Battalion.

Corn entered the Army in March 1951 and has been in Europe since August of that year.

### Parmer Collects \$2,316.06 For March of Dimes

Though all money is not turned in and reported, the total to date for the March of Dimes is \$2,316.06 in Parmer County. By towns and communities, funds were reported as follows: Rhea, \$233.74; Lakeview, \$89.65; Lazbuddie, \$148.00; Black, \$122.58; Bovina, \$380.37; Farwell, \$644.00; and Friona, \$697.72.

The final total will be published as soon as it is known. Raymond Euler wishes, as campaign chairman, to express his deep appreciation to all city and community chairmen and workers, as well as those who contributed funds. "It is a joy to work in a campaign so worthy as March of Dimes, particularly when practically everyone within the county is concerned with the success of the project", says Euler. The complete and enthusiastic support of the newspapers, State Line Tribune, Friona Star and the Muleshoe Journal in Bailey County, in publicizing the campaign and its progress contributed immeasurably to the success of the drive", added Euler:

#### THEY'RE MOVING BACK

Mr. and Mrs. Jim Burkhead and family are moving back home soon. He will be one of the front men for Morrison Motor Co., Muleshoe Chrysler and Plymouth dealers. During the last year or so they have been living in Sudan.

Yours faithfully,  
J. A.

### GUESTS IN GRAVES HOME

Mrs. Guy Elliot of Odessa and Mrs. Ted Bedillion of Midland visited over the week end in the home of Mr. and Mrs. C. B. Graves.

### CALLED TO LUBBOCK

Mr. and Mrs. W. L. Taylor were called to Lubbock Saturday morning because of the serious illness of a brother-in-law who is not yet out of danger.

### INJURED MAN IS IN CRITICAL CONDITION

Petty Officer 3c Gilbert Rowell, 21, of Lubbock, remained in critical condition early this week from injuries he received in a head on collision last Friday night in Mississippi that also seriously injured his wife and killed their 2 months old baby son.

Mrs. Rowell is the niece of W. L. Taylor of this city.

**THE BEST STOP TO CONTROL YOUR STOCK!**

**International 106 WEED CHOPPER ELECTRIC FENCER!**

This amazing fencer stops all stock... whether it's a big bull... or hard-to-stop sheep! It cuts off weeds and grass instead of shorting out. Controls as many as 50 miles of fencing. High and low control. 110 volts, AC.

**LIFE TIME SERVICE POLICY**

FREE! Without obligation, we'll send you the booklet, "HOW TO BUILD A GOOD ELECTRIC FENCE!"

Write your name and address on margin of this ad.

**JOHNSON-POOL**  
Phone 7370 Muleshoe



### FAMOUS Fashion Designer

TO APPEAR IN LUBBOCK FEBRUARY 17TH

Archie Maye Chapman, designer for Heirline Maternity Apparel of Dallas, will be at The Maternity Shop, 1003 13th Street, Lubbock, February 17th from 9:00 A.M. till 8:00 P.M., with her new collection of maternity fashions.

One of the nation's foremost designers, Mrs. Chapman will hold free consultations on wardrobe planning for mothers-to-be, and will present her latest innovations in maternity apparel. This will be the first showing of Mrs. Chapman's new spring and summer line, and we invite you to attend.

**The MATERNITY SHOP**  
"Efficient... But Not Expensive"

PHONE 3-1825 1003 THIRTEENTH STREET LUBBOCK, TEXAS

### Rogers Receives Important Senate Committee Posts

Senator Andy Rogers has been named to head the Senate committee on Stock and Stock Raising, and received unexpectedly high appointments on two other major committees of the 53rd Legislature.

Rogers, who is 28, is the youngest senator ever elected from west Texas, received appointments rarely given to a newcomer in the Texas Senate.

Beside being named head of the Stock and Stock Raising Committee, Rogers was appointed vice-chairman of the Agriculture and Educational committees; and is a member of committees on Water Rights, Irrigation and Drainage; Military and Veterans' Affairs; Internal Improvements; and Public Printing.

Speaking of the unexpected responsibilities given him, Senator Rogers said, "It is a pleasant surprise to know our district has received so much recognition through my appointment to these important committees."

Each member of the Texas Senate is appointed to several committees, but rarely are such noteworthy appointments given to a newcomer.

In the all-important Agriculture and Education committees, the chairman posts were given to senior senators. It was expected that two other senior senators would be appointed vice-chairman of these committees, Rogers said.

## WE BUY COTTON

And Write

## GOV'T. COTTON LOANS

Through PMA or The Texas Cotton Growers Cooperative Ass'n.

**LET US BID ON YOUR COTTON EQUITIES**

Grace Benton and Ineta Turrentine

Phone 6460 at

### BENTON INSURANCE AGENCY

# MORE SAVINGS FOR YOU ON YOUR FOOD BILL!

## Buy Beef Now

Meat Prices Are Lower Now Than They Have Been During The Past 10 Years. You Can Buy It From Us Or You Can Bring Us Your Own Animal.

### WE HAVE A COMPLETE MEAT HANDLING SERVICE

SLAUGHTERING • DRESSING • PROCESSING  
PACKAGING • RENDERING • COLD STORAGE

You Can Store It In One Of Our Lockers Or In Your Own Home Freezer. You'll Save, And Set A Better Table All Year!

### VANCE'S COUNTRY STYLE SAUSAGE

Get It At Your Favorite Grocery Or Super Market

# Muleshoe Locker

PHONE 7030 MULESHOE

## NECCHI

**MEANS**  
Newest  
Easiest  
Cheapest  
Cleverest  
Handiest  
Unresistible!

Before you buy any sewing machine... find out what a really modern sewing machine can do!

LIBERAL TRADE-INS. EASY BUDGET TERMS.

LOOK FOR **NECCHI**

YOUR GUARANTEE OF NATIONWIDE SERVICE

You Can own a NECCHI for as little as \$1.75

Complete line of smartly styled cabinets and portables.

Never heard of this word? Neither did we—but—how else can we describe NECCHI?

CALL FOR FREE DEMONSTRATION BASS

**FIRESTONE DEALER STORE**

## IF YOU NEED A PICK-UP or a TRUCK

SEE THE NEW 1953

# CHEVROLET

We Have Several On Hand Now!

## C. & H. CHEVROLET CO.

PHONE 2720 MULESHOE

## LaRoy Hawkins In Caribbean

Atlantic Fleet (FHTNC) — A winter cruise in the Caribbean, with visits to Puerto Rico, the Virgin Islands, Guadeloupe, and Antigua, is being enjoyed by LaRoy Hawkins, boatswain's mate third class, USN, son of Mr. and Mrs. F. M. Hawkins of Route 1, Muleshoe, and husband of Mrs. Connie Alene Hawkins of 20 Walnut St., Newport, R. I., while

serving aboard the destroyer USS Dorich. The Dorich is taking part in winter training exercises in the Caribbean. She will conduct training in anti-submarine warfare, anti-aircraft and shore bombardment gunnery, and seamanship before returning to her home port.

### STEERING COMMITTEE MEETS AGAIN FEB. 26

Another meeting of the steering committee for the Will Rogers Memorial Roundup is scheduled to be held the night of Thursday, Feb. 26, Curtis Wellborn, chairman said.

The committee met last Thursday night for the first time this year and explored possible additions to the annual affair, finances, and held other preliminary discussions looking to the organization of this year's event.

### PAT R. BOBO

Attorney-At-Law  
Office In Bank Building  
Muleshoe, Texas

## Boy Scouts Celebrate 43rd Birthday



Official Boy Scout Week Poster

Boy Scout Week, Feb. 7 to 13, marking the 43rd anniversary of the Boy Scouts of America, will be observed throughout the nation by more than 3,250,000 boys and adult leaders. Since 1910, more than 20,200,000 boys and men have been members.

"Forward on Liberty's Team" is the birthday theme and the emphasis is on "The Scout Family" of programs meeting the

interests of boys in three age groups: Cub Scouting for boys 8, 9 and 10; Boy Scouting for those 11, 12 and 13 and Exploring for boys 14 and up.

The high point of Scouting in 1953 will be the third National Jamboree. More than 50,000 Boy Scouts will camp at a 3,000-acre tent city on the Irvine Ranch in the Newport Harbor area of southern California next July 17 to 23.

### OPPORTUNITY FOR GROWTH

We salute the Boy Scouts of America, observing its 43rd birthday during Boy Scout Week, Feb. 7 to 13, with its membership at an all time high of 3,250,000 boys and adult leaders enrolled.

Our nation is all the richer for since 1910 more than 20,200,000 Americans have benefited by the training, fellowship, handicraft skills and high adventure of Scouting, and have been strengthened by the high ideals of the Scout Oath and Laws.

Boy Scout Week this year places a major emphasis on "The Scout Family." This is a two-way recognition. It honors the many fathers of Scouts among the 850,000 adult volunteer leaders in the organization. It salutes the 127,209 mothers who give gen-

### MURRAHS ATTEND BIRTHDAY CELEBRATION

Mr. and Mrs. Wayne Stark gave Sunday in their new home a birthday honoring their son, Otis Wayne and Mrs. Stark's brother, Jesse Murrah, also of Lubbock.

Those present for a delicious dinner and card games during the afternoon were Mrs. Eva Murrah and Jerene, Mr. and Mrs. Gordon Murrah and children, Mr. and Mrs. Claudis Murrah and children, all of Muleshoe, A. L. Murrah of Hadaoel Corner, south of Midland, the honoree and the host and hostess.

GARNER FARM RECORD books on sale at The Journal.

## Lubbock Stock Show Dates Set

LUBBOCK, Feb. 10 — The 1953 South Plains Junior Fat Stock Show will be held here March 16, 17, and 18, Bill Tinney, general chairman of this year's show, has announced.

The general superintendent for the show will be Dave Sherrill, Lubbock County Agent. L. M. Hargrove, of the Agricultural Education Department at Texas Tech, will be assistant general superintendent.

Again this year the show will include the Fat Steer, Fat Barrow

and Fat Lamb Divisions. Only boys, between the ages of 9 and 20 inclusive, who are members of 4-H Clubs or FFA chapters, are eligible to enter animals.

W. B. Griffin, Tahoka, Lynn County Agent, will be superintendent of the Steer Division, and Ollie Linder, Plainview, Hale County Agent, will have charge of the Barrow Division. Other superintendents, assistants and judges will be announced later.

Officials for this 20th annual show have announced that the catalogues will be sent to all vocational agriculture teachers, county agents and other agriculture leaders within a few days.

The show will be held at the Panhandle South Plains Fair Grounds under the sponsorship of the Panhandle Plains Fair Association, Lubbock Chamber of Commerce and Lubbock Board of City Development.

of the Panhandle Plains Fair Association, Lubbock Chamber of Commerce and Lubbock Board of City Development.

**VISITORS FROM ODESSA**  
Mr. and Mrs. W. G. Marquardt and son of Odessa visited Effie and Zefie Childress over the week end.

**ALL ABOUT TEXAS** in the Texas Almanac, on sale at The Journal. Phone 7220, we deliver.

East of Courthouse - Muleshoe  
DR. A. E. LEWIS  
Dentist  
Closed Wed. & Sat. Afternoon  
Off. Ph. 3040 — Res. 6570



You'll be pleasantly surprised at how much an extension adds to the value and usefulness of your present telephone. You'll be pleased, too, with how little an extension adds to your monthly telephone bill — how many steps it subtracts from your daily housework.

No matter where you put it, a second telephone in kitchen, bedroom, den or hallway places service always at your fingertips. Greater convenience encourages greater telephone use — brings you greater value for your telephone dollar. That's true at home and at the office, too.

Just call or come by to order an extension telephone installed right away. It's our pleasure.

\*For a minimum additional charge, we will be glad to install extension wall plugs in several rooms of your home, enabling you to move your extension telephone from one location to another. Ask about this added convenience.



GENERAL TELEPHONE COMPANY  
OF THE SOUTHWEST

## WASHER-WOMAN AT WORK!



...but she's left all the work to Reddy Kilowatt and her automatic clothes washer. Her work is done—she's put the clothes in the washer, that's all there is to it—and now, complete with perky little hat, she's going out for the morning.

You can go to town—perky hat and all—and still be a washerwoman at work, with an automatic electric clothes washer.

THE SYMBOL OF MODERN ELECTRIC APPLIANCES

SOUTHWESTERN  
**PUBLIC SERVICE**  
COMPANY

25 YEARS OF GOOD CITIZENSHIP AND PUBLIC SERVICE

Entirely NEW  
through and through!

# 1953 CHEVROLET



The Thrilling New "Two-Ten" 4-Door Sedan. (Continuation of standard equipment and trim illustrated is dependent on availability of materials.)

—with more great improvements than any other low-priced car!

Entirely New in Appearance with new Fisher Bodies.  
Entirely New Durability with stronger construction.  
Entirely New in Performance with new 115-h.p. "Blue-Flame" high-compression engine\* and a greatly improved 108-h.p. "Thrill-King" high-compression engine.  
New Power—new acceleration—new passing ability!  
New, even finer Powerglide automatic transmission.\*  
New Power Steering. (Optional at extra cost.)  
Entirely New in Comfort with new Curved One-Piece Windshield. New Crank-Type Regulators for Ventipanes. New Foot-Form Clutch and Brake Pedals. And the softer, smoother Knee-Action Ride.

Entirely New in Convenience with new Center-Fold Front Seat Backs (in 2-door models); new ignition-key starting; new Automatic Choke on all models.  
Entirely New in Safety with new Finger-Fit Steering Wheel. Improved Jumbo-Drum Brakes. E-Z Eye Plate Glass (optional at extra cost). And Safety Plate Glass in windshield and all windows of sedans and coupes.  
Entirely New in Economy. More miles per gallon of gas—more over-all economy of operation—and, lowest-priced line in its field! Come in—see and drive this great new car.  
\*Combination of Powerglide and 115-h.p. "Blue-Flame" engine optional on "Two-Ten" and Bel Air models at extra cost.

MORE PEOPLE BUY CHEVROLETS THAN ANY OTHER CARS!

C. & H. CHEVROLET CO.  
MULESHOE, TEXAS

**USE OUR WANT ADS TO... BUY SELL RENT TRADE**

THE MULESHOE JOURNAL, Thursday, February 12, 1953

**1. PERSONALS**

**INCOME TAX PROBLEMS?**  
See  
**Earl Needham**  
Income Tax Consultant At  
**Clyde Bray**  
Real Estate Office

**NOTICE:** Every family should be protected by a Singleton Burial Policy. We write from birth to ninety years; Inquire or call Muleshoe Funeral Home. Home owned and operated. Dial 2860. 1-5-tfc.

**CARPENTERS**

Have all of your saws filed on our precision machine. Mechanically accurate jointing, filing and setting. They'll cut cleaner, truer, faster.

**A. E. SCARBROUGH**  
1305 East Second St.

**SPECIAL PRICES**  
On all Radiators. International Farmall Cores \$25 exchange  
**STOVALL-BOOHER**  
Radiator Sales & Service  
Plainview, Texas

**REDRICK COLLEGE OF BEAUTY:**  
Students tuition cash or terms as desired. 522 Main, Clovis, N. M. 1-10-3tp.

**NOTICE:** When you need belts, buttons, button holes, alterations or sewing, see Mrs. C. D. Julian. 3-9-3tp.

**2. LOST and FOUND**

**LOST, STRAYED or MISPLACED:**  
One Easy Flo Spreader. Reward. Ray Griffiths and Sons. 2-8-2tc.

**3. HELP WANTED**

**SALESMAN WANTED:** Wanted At Once, Rawleigh Dealer in Bailey County. Write Rawleigh's, Dept. TXA-270-F Memphis, Tenn. 3-10-6tp.

**4. HOUSES FOR RENT**

**FOR RENT or SALE:** Three room house. Major Wood at Cone Elevator. 4-8-3tp.

**FOR RENT:** 5 room house and garage. Near high school. Clarence Wilhite. 4-13-6tp.

**FOR RENT:** Modern 1 bedroom house. Willson-Sanders Lbr. 4-8-1tc.

**5. APTS. FOR RENT**

**FOR RENT:** 2 room furnished apartment. Bills paid. \$35 month. L. T. McKillop. 5-8-1tp.

**6. ROOMS FOR RENT**

**FOR RENT:** Front bedroom. 1408 Ave. E. 6-9-2tp.

**8. REAL ESTATE FOR SALE**

**FOR SALE:** Helly-Seiffy laundry, 20x30' building. 6 machines, good well on 150x250' lot with 1,000 gal. butane tank. Glenn Scott. Lazbuddy. 8-6-3tp.

**FARMS AND HOMES FOR SALE**



● 10 acres, located within one mile of town, on Clovis highway. No improvements. Priced to sell. \$8500. Terms.  
● 320 acres improved land at Van Horn. Has one good well, with pump and motor and 32x40 Quonset barn. All in cultivation. Possession upon payment of \$15,000 down. Balance in 10 years at 5%. A steal.  
● 320 acres good red land, located near Springlake, 200 in cultivation, one good 8" well. Fine large house and outbuildings. Balance in good grass. Priced to sell at \$225. Possession.  
● 80 acres, irrigated. Close in. Cheap.  
● 140x100 lot on Clovis Highway. We have plenty of land to sell. See Dave Aylesworth, at the Lone Star Trading Post in the Pool Insurance Building back of Bank in Muleshoe. Phone 5400.

**DAVE AYLESWORTH**

**FOR SALE BY OWNER**  
200 acre irrigated farm. 12 miles from Center in San Luis Valley, Colorado. 3 artesian wells for stock and home. 50 acres in alfalfa, 70 acres in clover, 80 acres in pasture. 3 room rent house, 1 unfinished rent house on the 80 acres. Modern 3 bed room home. Electricity, school bus and pick up truck. Sheep and cow sheds. Storage barn. Oil well being drilled 2 miles from farm. 1/2 oil rights goes with farm. Possession. \$100 per acre.  
**GRADY CHILDRESS**  
Center, Colorado  
Star Route

**8. REAL ESTATE FOR SALE**

**FARM PROPERTY**

● 160 acres, good level land, 10 in. electric irrigation well, clean. Priced at \$250 per acre, \$20,000 cash will handle.  
● 293 acres, good red land, 8 in. irrigation well, 4 room house. You will need to see this. Priced at \$165 per acre, good loan. This is a real buy at this price.  
● 130 acres, on paving, 8 in. electric irrigation well. This is priced to sell at \$235 per acre.  
● 80 acres, close in on paving, new 8 in. irrigation well. Priced \$36,000. 1/2 cash.  
● 160 acres, 2-10 in. irrigation wells, nice home, on the pavement. If you are interested in a real home, you will need to investigate this, possession immediately.  
● 91 acres, red land, no improvements, has a good GI loan, priced at \$125 per acre for quick sale.  
● 10 acres, on paving, 3 rooms and bath house, 7 in. irrigation well. Priced \$9,500. Has good loan.  
● 25 acres, on paving, no improvements, good level land. If you are looking for a good building site, you will need to see this.  
● 640 acres, 8 in. irrigation well, four room modern home. Priced \$125 per acre.

**CITY PROPERTY**

● A nice two bedroom home, on pavement. This is a real buy at \$6,800, good loan.  
● A three bed room home, well located, price \$7,500, has large loan.  
● Two, 2 room houses, priced at \$2,500.  
● Two bedroom home, on paving, well located. For quick sale \$6,500.

**CASH LEASES**

● 160 acres, good clean land, 8 in. irrigation well, \$30 per acre.  
● 160 acres, buy equipment and rent third and fourth, 2 irrigation wells.

**EDDIE LANE**

**REAL-ESTATE & INSURANCE**  
Gene Williams & John Johnson  
Salesman  
PHONE 3630 or 5689  
MULESHOE TEXAS

**TENANT HOUSE FOR SALE:** 3 rooms, to be moved, 17 miles north on Friona highway. Leon Smith. 8-8-2tp.

**FARM PROPERTY**

● 26x28' 4 room frame stucco to be moved. Six years old. 6 miles east and 3/4 miles north of Muleshoe. Priced right.  
● 130 acres, electric pump, 10 in. well on 65 ft. setting. Loan \$6500.  
● 100 acres dry land 3 mi. north of Amherst. \$70 per acre. No improvements except windmill. 1/2 minerals.  
● 160 acres, 3 room and bath, 10 in. irrigation well, new well. Very level. 1/2 minerals, immediate possession. FHA Loan. A perfect quarter.  
● 160 acres level land, 14 inch pump 3 years old. Water setting 70 ft. 4 room house and pressure pump. On pavement. 1/2 minerals.  
● 177 acres dry land in irrigation belt. 3 room tenancy house. On pavement.  
● 80 acres perfect land, 2 wells, dark red land, southeast of Portales, 20 acres in hay, nice out buildings, 4 room house modern. \$16,500.  
● 20 acres close in, an ideal location to build. Priced right.  
● 26 acres with well, four room house, very close in, immediate possession. Te most reasonable acreage in this area.  
● 1 acre with 2 bedroom house, modern, pressure pump, large loan.  
● 3 rooms and bath on 50 ft. lot, apt., with bath on three lots. Priced to sell!  
● 3 room and bath on 50ft. lot. East front on paving, \$4,000.  
● New 2 bedroom, carpeted home in choice location. Immediate possession.

**CITY PROPERTY**

● 2 bedroom home on 11th St., face east. 50 ft. lot. \$3250. We have buyers — Do you have property to sell?  
**BENTON INSURANCE**  
And Real Estate  
North of Courthouse  
Pho. 6460 Muleshoe

The Man To See In '53

**EMETTE CROSS**

Real Estate

PAPER PUNCHES in stock at The Journal.

**8. REAL ESTATE FOR SALE**

**FARMS AND HOMES FOR SALE**

● 80 Acres, 6 room and bath, 10 in. irrigation well, air clean. Ford Tractor with equipment at \$29,000 cash.  
● 160 Acres 5 room and bath, 8 in. irrigation well, some grass, red land, all listed at \$250 per A.  
● 35 Acres, 3 room house, 8 in. irrigation well. \$10,500. will carry some, close in.  
We have lots of places for sale. See us before you buy. Also nice homes in town

**HANOVER & DAY REAL ESTATE**  
On Morton Highway  
Just North Of Courthouse

**HOME-SEEKERS OPPORTUNITY**

**PARMER COUNTY FARMS FOR SALE**

● 160 Acres, on pavement, 2 miles from Bovina. 60 acres grass, 80 acres would be very nice to irrigate. Possession at \$100 per A.

**O. W. RHINEHART**  
Bovina, Texas



**FARMS FOR SALE**

● A good 80 acres on paved road, close to town, good improvements, good irrigating well. Can be bought worth the money. \$30,000. Come see this farm.  
● We have some more good 80 acre farms close in, some good 160 and larger farms. We have any size farm that you would want and some good small ranches, so don't fail to see us for we sell them and get more to sell.

**C. L. "HAPPY" DYER**  
C. E. BRISCOE  
Muleshoe

**FOR SALE:** \$3750 buys new 2 bedroom home completely modern. Floor furnace, blinds, and built-ins. Theron West. 48-1tc.

● 293 acres, 8" 3 stage irrigation well, 160' setting, priced \$190 per Acre.  
● 320 acres level dry land, good cotton land, \$100 per Acre.  
● 350 acres, all in wheat. This is a good level tract, all going at \$80 per acre, except 1/4 mineral reserved.  
● 80 acres, a perfect tract for irrigation, No. 14, 10" electric well. Located on pavement, must sell.  
● 1062 acres stock farm in Bailey Co., priced \$57.50 per Acre. 1/2 minerals reserved.  
● We have stock ranches located in Denton and Lampasas, Texas.

● 21 Unit Apartment Hotel. Port Isabel, Cameron Co., Texas. Very popular resort. Gateway on new causeway to Padre Island, \$1,200 monthly income, expense \$670; price \$85,000. \$35,000 will handle deal.  
● 320 acres good clean land. Located on pavement, improvements: Extra nice 3 bedroom home, irrigation well and shed, good net wire fence.

**CLYDE A. BRAY, SR.**

**REALTOR**  
Box 243 Muleshoe Pho. 2820

**9. AUTOMOBILES FOR SALE**

**FOR SALE:** 1940 Dodge truck, '51 2-ton motor, 5 speed transmission, wench and headcage rack. In top shape. Glen Scott, Lazbuddy. 9-6-3tp.

**10. FARM EQUIP. FOR SALE**

● 1941 Case tractor, recently overhauled; 1 1948 Hancock Tractor Machine. See Budde Blackman, 1112 Ave. E. Pho. 7179.

**FOR SALE:** '51 Model Oliver 88 Tractor, with 4-row equipment, 14 mi. north, 1 west of Muleshoe. H. A. Harvey. 10-8-2tp.

**FOR SALE:** Allis-Chalmers 3-disk breaking plow, plowed 70 acres. Disks just rolled. Kenneth Precure, 8 mi. north, 6 east of Muleshoe. 10-8-2tp.

**FOR SALE:** 1951 model Ferguson tractor and 4-row cultivator. Good shape, n butane. Texas Machinery Co. 10-8-2tc.

**10. FARM EQUIP. FOR SALE**

**FOR SALE:** Good used clean 1949 Model "A" John Deere Tractor with 4-row lister, planter and cultivator with comfort cover and cab. Fry & Cox Bros., Muleshoe. 10-8-2tc.

**11. SWAP**

**FOR SALE:** New L. A. Case tractor full equipment. Butane, power lift, etc. Also new D. C. \$2500. See S. E. Goucher, Pho. 6261. 11-10-3tp.

**13. APPLIANCES FOR SALE**

**USED REFRIGERATORS** — Montgomery Ward and Coldspot electric. Bargains. Harper Appliance. 13-10-3tc.

**15. FARM PROP FOR RENT**

**FOR RENT:** 240 acres irrigated land, 1-3 and 1/4 rent with sale of machinery. Also 2 locker calves. See Roy Bryant at Ladd Pontiac. 10-6-3tp.

**FOR CASH LEASE:** 60 acres irrigated land. See W. L. Tandy, 3 miles northwest of Muleshoe. 15-8-2tp.

**FOR RENT:** 80 A irrigated farm. Has 2 room house, cash rent or renter to buy irrig. motor. See H. H. Briggs, up Y. L. paved road, 2nd house after leaving pavement. 15-8-1tp.

**16. MISCELLANEOUS**

**FOR SALE:** Milk cows, 3 3/4 mi. west of Blondie Puckett Store. G. T. Maltby. 10-8-3tp.

**LOOK!**

Winesap & Rome Beauties Bu. Apples, \$1 to \$2.50

2 Lbs. Nice Tomatoes ---- 25c

Plenty Of Fresh Vegetables

Sweet Potatoes --- \$2.50

Irish Potatoes 50 lb. Sack ----- \$2.00 up

A FRESH LOAD OF VEGETABLES EVERY THURS.

Plenty Of, Fruit, All Kinds PICK 'N PACK FRUIT STAND

Next to Crossroads Cafe Phone 6080 Muleshoe

**WANTED:** 50 head of feeder shoats, 12 to 15c per pound. Thomas Slaughter House. 16-9-4tc.

**FOR SALE:** 157 ft. Sheet Iron, 5, 8, 10 and 12 ft. lengths, barb wire and hog wire. Also 140 ft. 3-8x18 in. Vernon Jamison. G. T. Maltby. 16-8-3tp.

**16. MISCELLANEOUS**

**FOR SALE:** 157 pieces Sheet Iron, 5, 8, 10 and 12 ft. lengths, barb wire and hog wire. Also 140 ft. 3-8x18 in. Vernon Jamison. Lariat. 16-8-3tp.

**FOR SALE:** Grocery stock and fixtures, building for lease. See Alvin Krieger, Shady Rest Gro. 16-10-4tc.

**FOR SALE:** 35 tons of baled alfalfa. 10 miles north of highway 70 on Sudan highway, 1 mile east, 1/2 north. Alfred Scott. 16-9-3tp.

**FOR SALE:** 3 670-15 tires, practically new. \$10 each. Also 1 5 ft. cabinet unit. Howard Griffin, Ave. J and 2nd St. 16-10-3tp.

**FREE BATTERY**

Replacement in Span-O-Life Battery falls under terms of the Guarantee

Guaranteed for the Life of YOUR Car



Authorized Dealer **LADD PONTIAC** Phone 3080

**16. MISCELLANEOUS**

**COTTON SEED FOR SALE:** High germination, good clean Macha Stormproof, from hand pulled cotton. \$2 per bushel. 1 1/4 mi. east of West Camp school. Roy Whitt. 16-9-3tp.

**FOR SALE:** Used windows and frames. See Ira Thomas at Cone Elevator. 16-9-2tp.

**FOR SALE:** Cotton Seed, second year improved Macha, cleaned, treated, well matured, handled with care at gin. Seed carried over from 1951 crop. \$2 per bushel at farm 8 mi west 2 south of Hale Center. E. R. Lindsey. 16-11-4tp.

**FOR SALE:** Registered shorthorn bulls, heifers and milking cows, 3 miles east and 7 north of Muleshoe. F. L. Wenner. 16-10-3tp.

**Dr. Green Is Speaker At Los Planos Club Meet**

The Los Planos Club met Tuesday evening in the home of Mrs. Elmo Evans with Mrs. L. A. Reed as co-hostess.

Plans for the style show which is to be held March 27 at the Legion Hall were discussed. The club voted to buy some playground equipment for the Negro school.

Dr. L. T. Green was guest speaker for the evening. He spoke on "New Drugs in the Conquest of Disease".

The subject of the program was "Women in Science." Special articles given were "The Life of Sister Kenny", by Mrs. B. F. Chapman and "The Life of Madame Currie" by Mrs. Deon Awtry.

Present were Mesdames B. F. Chapman, Jack Schuster, M. F. Blackman, Jake Roberts, Bernard Phelps, A. T. Fowler, L. I. St. Clair, Sam Dameron, Claude Riley, John Smith, Kenneth Grissom, Richard Smith, Earl Schmitz, Willis Farrell, Deon Awtry, and Horace Edwards, and visitors, Dr. and Mrs. Green, Mrs. Sam Hopper and Mrs. Jimmy Reese.

**B-Hi-U Plans Valentine Party**

The B-Hi-U of the First Baptist Church are planning a Valentine party for Thursday evening at 7 o'clock in the church annex.

Activities will be under the direction of Mrs. John Watson and Karlene Towns. All young people are invited to attend.

**ATTEND BIRTHDAY CELEBRATION IN LUBBOCK**

A birthday dinner was given in the home of Mr. and Mrs. H. H. Carlyle of Lubbock Sunday honoring the birthdays of J. T. Harding, Texaco, N. M., Mrs. B. L. Harding, Texaco, N. M., and Mrs. H. H. Carlyle of Lubbock.

Attending were Mr. and Mrs. A. L. King of Lubbock, Mr. and Mrs. R. J. Klump, Muleshoe, Mr. and Mrs. W. J. Matthews, Texico, Mr. and Mrs. N. R. Harding, Farwell, Mr. and Mrs. B. L. Harding, Texico, N. M., Mr. and Mrs. Edd McDaniel, Clovis, N. M., Mr. and Mrs. Warner McNaron, Roton, Texas, Mr. and Mrs. Warren G. Harding and Paula of Lubbock, Mrs. H. H. Carlyle of Lubbock and the host and hostess.

**BOY SCOUTS THANK LOCAL CITIZENS**

The local scouts and their leaders wish to thank the citizens of Muleshoe and vicinity for their co-operation in making the scout traffic regulation day Saturday, a success.

About \$130 was collected and it will be spent for local scout activities.

**VISITED IN PLAINVIEW**

Mr. and Mrs. John H. Farley and daughter, Elizabeth, visited Sunday in Plainview with their daughter, Mrs. Curtiss Brasheir and family.

**Social Club Meets In Home Of Mrs. Allison**

The Pleasant Valley Social Club sponsored a cake walk for the benefit of the March of Dimes at the Community House Friday night.

John Fried's Blackwater Valley Boys furnished the music for the cake walk. Some out-of-town visitors were county agent, Dave Eaton and family and Richard Rodgers and family all of Littlefield. Mr. Rodgers is the farm bureau insurance agent.

Mr. and Mrs. Russel Haberer visited recently in Dallas.

**VISITOR FROM LITTLEFIELD**

Mrs. Katie Crouch of Littlefield visited in Muleshoe over the week end with her daughters, Mrs. Buford Hunt, Mrs. Woodrow Surratt, and Mrs. Eual Hall and their families.

**VISITED AT HUB**

Mrs. Raymond Scott of Anton, Mrs. Woodrow Surratt, and Mrs. Eual Hall visited in the E. C. Chitwood home of Hub Sunday.

**NORMAN W. BAYS**

Attorney-At-Law  
Office In Courthouse  
Phone 2670 Muleshoe

**Robinson's Boot Shop**

● Western Wear

● Boots

● Boot & Shoe Repairing  
1302 Main — Muleshoe

**FOR THE BEST OF**

Service

—Stop At—

**Kelton Barber Shop**

2nd door west of Post Office

We Now Have Another Barber

C. L. MAXWELL

**Dr. C. H. McIlroy**  
Naturopathic Physician

Phone 5350 Muleshoe, Texas 906-MAIN STREET

**HEALTH & DIETARY FOODS**

All National Advertised and National known as the Finest.

I also have Vegetable Fruit Juicers and Stainless Steel Cooking Utensils which you may buy one piece at a time if you wish.

MRS. M. G. BASS — 809 — W. 1st. ST.

**INSURANCE PROTECTION POLICY FOR EVERY NEED**

**Lane Insurance & Real Estate**

**EDDIE LANE, OWNER**

PHONE 3630 MULESHOE, TEXAS

**Clovis Veterinary Hospital**

AT THE STOCKYARDS CROSSING

Facilities for Large and Small Animals

E. E. KRAUS, D. V. M. CHAS. WEBSTER, D. V. M.

104 Hull Phone 5442 Clovis, N. M.

**FARLEY INSURANCE AGENCY**

**REAL ESTATE & INSURANCE**

**AUTO FINANCING — FARM LOANS**

Over Bank, Muleshoe, Texas

Office Phone 7279 Res. 5103

**New Mex-Tex Drilling Co.**

**WATER WELL DRILLING**

Any Size or Depth

STOCK WELLS AND TEST WELLS — OUR SPECIALTY

ALL WORK GUARANTEED TO YOUR SATISFACTION WE GO ANYWHERE

Phone 85387

Clovis, N. M.

Rt. 1

or write

# LIBBY'S 85th BIRTHDAY

PIGGLY WIGGLY CELEBRATES...

3 LB. CAN  
**Crisco 79c**

SUNKIST 6 OZ. CAN **LEMONADE** 17c  
KEYLESS OIL FLAT CAN **SARDINES** 8c  
WHITE HOUSE 32 OZ. BOTTLE **APPLE JUICE** 31c  
STALEY'S WHITE 1 1/2 JAR **SYRUP** 23c  
BETSY ROSS 24 OZ. BOTTLE **GRAPE JUICE** 33c  
SUN SWEET QT. BOTTLE **PRUNE JUICE** 37c

LIBBY'S NO. 303 CAN FRUIT  
**COCKTAIL 22c**

LIBBY'S SOUR OR DILL 22 OZ. JAR  
**PICKLES** 35c

LIBBY'S 14 OZ. BOTTLE  
**CATSUP 21c**

LIBBY'S NO. 1 CAN **VEAL LOAF** 35c

CAMPBELL'S NO. 1 CAN **TOMATO SOUP, 3 for** 35c

VAL VITA NO. 2 1/2 CAN  
**PEACHES .... 23c**

7 1/4 OZ. PKG. **Kraft Dinner** 15c  
GREEN GIANT NO. 303 CAN **Peas** 22c

BAILEY'S STRAWBERRY 2 LB. JAR  
**PRESERVES 53c**

NORTHERN 80 COUNT  
**NAPKINS** 12 1/2c

HI HO LARGE BOX  
**CRACKERS** 27c

**DRESSING**

MORTON'S **SALAD, PINT** 21c

FIRESIDE 14 OZ. PKG. **MARSHMALLOWS** 31c  
**EAGLE BRAND MILK** 29c  
POWDERED MILK, LB. BOX **STARLAC** 41c  
MARSCHINO TOWIE 8 OZ. JAR **CHERRIES** 25c

U. S. GRADED QUALITY MEATS

LIBBY'S NO. 303 CAN  
**LIMA BEANS** 29c

LIBBY'S 16 OZ. JAR 12 COUNT  
**BEETS** 22c

LIBBY'S NO. 303 CAN  
**KRAUT** 16c

LIBBY'S NO. 3 1/2 QUEEN  
**OLIVES** 17c

LIBBY'S 8OZ. SWEET  
**PICKLES** 27c

LIBBY'S NO. 1/4 CAN  
**POTTED MEAT** 9c  
SWANSON'S 16 OZ. CAN  
**Chicken Broth** 14c

**OLEO** 47c  
BLUE BONNET COLORED QTRS. 2 LB. CTNS.

TOILET, WALDORF  
**TISSUE, 3 for** 25c  
Chocolate, Hershey's 16 oz. can  
**SYRUP** 18c

**PUREX** 17c  
BLEACH QUART

RED HEART 1 LB. CAN  
**DOG FOOD** 15c  
Adolph's Meat, 5 oz. Bottle  
**TENDERIZER** 49c

**BEETS**  
LIBBY'S SLICED 303 Can 15c  
LIBBY'S NO. 303 CAN **Garden Vegetables** 19c  
LIBBY'S WHOLE NO. 2 CAN **POTATOES** 21c

**VIENNAS**  
LIBBY'S NO. 1/2 CAN 20c  
LIBBY'S NO. 1/4 CAN  
**DEVILED HAM** 18c  
CORNED, LIBBY'S 16 OZ. CAN  
**BEEF HASH** 32c  
LIBBY'S NO. 2 CAN  
**Beans & Chili** 34c

FRESH FRUITS & VEGETABLES

CALIFORNIA SUNKIST  
**LEMONS** Lb. 15c  
BUNCH 7 1/2c

LARGE FIRM HEADS **LETTUCE** 12 1/2c  
LARGE BUNCH **COLLARDS** 10c  
TEXAS JUICE **ORANGES** 10c  
GOLDEN FRUIT **BANANAS** Lb. 12 1/2c

LB. LARGE BUNCH **RADISHES** 12 1/2c  
BUNCH LARGE GREEN **CELERY, stalk** 19c  
LB. SNOW WHITE **Cauliflower** 12 1/2c

**DOUBLE GREEN STAMPS** **TUES.**

SNOW CROP **Brussel Sprouts** 27c  
SNOW CROP 8 OZ. CUT **CORN** 17c

**Orange Juice** Snow Crop 4 Oz. Can 12 1/2c

**STEAK** Loin Or T-Bone U. S. Choice, Lb. 69c



**TOOTH PASTE** 42c

**BEEF CHUCK, U. S. CHOICE ROAST, lb.** 53c  
**SHOULDER CUT PORK STEAK, lb.** 49c  
**NO. 1 LIGHT SALT PORK, lb.** 33c

**BISCUITS**

FRESH SLICED **PORK LIVER, lb.** 29c  
NU-TASTE 2 LB. BOX **CHEESE FOOD** 86c  
BACK OR NECKS FOR DUMPLINGS **CHICKEN, lb.** 39c

Bordens **Ready to Bake 10 Count Can** 7c



**PEACH SALAD with Miracle Whip**

Disolve 1/2 package strawberry-flavored gelatin in 1/2 cup boiling water. Add 1/2 cup syrup from canned cling peaches and 2 chopped peach halves. Turn into small shallow pan. Chill. Cut into diamonds. Place 2 drained cling peach halves and 2 gelatin diamonds on each finished salad plate. Top with Miracle Whip. Serves 7.

COLGATE'S ECONOMY 75c SIZE  
PAL 10 COUNT SINGLE EDGE **Razor Blades** 25c  
LIFEBOUY BATH SIZE 2 FOR **TOILET SOAP** 25c  
LUX BATH BAR 2 FOR **TOILET SOAP** 25c  
Mennen's Menthol Giant Size **Shave Cream** 43c  
LIFEBOUY REG. BAR 3 FOR **Toilet Soap** 25c  
LUX REG. BAR 3 FOR **Toilet Soap** 25c

WILSON'S ALL MEAT **BOLOGNA, lb.** 39c  
ARMOUR'S STAR 1/2 OR WHOLE **PICNICS, lb.** 39c

**BACON** Mid West Hormel Cello Pkg., Lb. 49c

LIBBY'S NO. 303 HALVES  
**PEACHES** 23c

RAISIN BRAN **SKINNERS** 18c  
MACARONI 7 OZ. BOX **SKINNERS** 12c  
AUNT JEMIMA 1 1/2 LB. BOX **PANCAKE MIX** 18c

**PIGGLY WIGGLY** SUPER MARKETS  
DAVIS & HUMPHRIES OWNERS & OPERATORS

# The Muleshoe Journal

PUBLISHED EVERY THURSDAY AT MULESHOE, TEXAS

Entered as second class matter at the Muleshoe Post Office under the Act of Congress, March 3, 1897.



### SUBSCRIPTION RATES

In Immediate Territory, 1 Year ..... \$2.00  
Out of Immediate Territory, 1 Year ..... \$2.50

J. M. FORBES ..... Editor and Publisher

## BABSON Discusses — Business Cycles

Babson Park, Florida, Feb. 6— I don't believe in A Universal Business Cycle. I do believe in many Business Cycles. Under Newton's Law of Action and Reaction, Business Cycles are inevitable with human nature as it is.

**MANY BUSINESS CYCLES**  
When someone tells you he does not believe in the Business Cycle it is because he pinned his faith on one Business Cycle and tried to make the same Cycle apply to the stock market, interest rate, real estate, labor strikes, building, retailing, manufacturing, etc.

Not only do all the above have their own Cycles, but different industries may have different Cycles. For instance: Wheat has a 9.6-year Cycle; Iron and Steel a 6-year Cycle; Automobiles a 13-year Cycle, etc.

**THE MAIN CYCLES**  
Although there may be a score

of different Cycles, all working at the same time, 90% of the readers of this column are tied up with five main Cycles. These are: (1) The 35-Year Cycle, which applies to agriculture, weather insect pests, etc. Every other 35 years the Cycle is very severe. Hence, some talk also about a 70-year Cycle; and others about a 50-year Cycle.

The Cycle which affects us all is (2) the approximately 9-10 Year Cycle. Every other ten years this Cycle is especially pronounced. Hence, some talk about (3) The 20-Year Cycle. This particularly applies to real estate, new building, wholesale prices and general business — although, as above stated, different lines of business vary as to when their special 20-year Cycle starts and ends. Edward R. Dewey, who is perhaps the best living authority on Cycles, shows that a 9-10 Year Cycle

applies to forestry, fish life, ozone supply, atmospheric electricity and psychological changes in our desires and ambitions.

**STOCK MARKET CYCLES**  
Two other common Cycles are the 42-Month Cycle and the related 6-Year Cycle. This last is the Cycle used in the Addenda of my Autobiography recently published by Harper & Brothers of New York City. Here I show how \$2,000 invested in 1901 in the Dow-Jones stocks, approximately according to this Cycle, could (as subsequently adjusted to include latest data) amount to over \$1,000,000 today without borrowing a penny. This is known as the Chapin Hoskins Cycle and appears in records of barometric pressure, sun spots, tree rings, certain commodity prices and the sales of some 25 leading U. S. corporations.

Of course, all brokers ridicule this Cycle Theory. If too many of their customers bought stocks only once in six years, they would starve to death. Even the Mutual Investment Funds, which last year did a business of \$4,000,000,000, cannot afford to go without dividends for three years while waiting for the market to drop. Besides, their sponsors could not support a sales force under such conditions.

**SELF-CONTROL AND PATIENCE**  
Operating under any Cycle Theory requires great self-control and patience. It requires selling when the Government, brokers and magazines are bullish; likewise, it requires buying when everyone is discouraged and sees no hope for stocks at any price. On the other hand, those who do so operate on this Cycle Theory perform a great public service in helping to level out business and employment conditions.

Some conservative bankers do not believe in any Cycle Theory because it misses once in a while when different cycles conflict. Furthermore, although they admit it might have worked under a Gold Standard, it cannot be depended upon, they claim, with a Planned Economy and Paper Money. My answer to them is that they can operate on an Actual Basis the same as insurance companies do. Stock losses can be averaged the same as can fires, accidents and deaths.

### Today's Meditation

I do not pray for these only, but for those who are to believe in me through their word, that they may all be one. (John 17:20, 21. R. S. V.) Read Ephesians 4:1-6.  
At a certain ministerial association meeting, the members had differed over doctrinal statements and interpretations of Scripture.  
Before the next meeting, a week of prayer services had been held. When the ministers met again, the spirit of controversy was gone. The unity of the Christian forces in town and district had been reestablished. One said, "We differed on man-made,

## The Editor Says —

### BORN 30 YEARS TOO SOON

On a twenty mile stretch of a Plains highway, farmsteads are placed close together on both sides of the road. The editor was skimming along but he observed every farmstead and failed to see a single milk cow, either about the barns or grazing in the fields. And no pig showed his head, although there may have been one about.

**Come to think of it, not a single hen or rooster put in an appearance. We finally did see three Angus steers grazing in the distance.**  
Fields, freshly plowed and made ready for planting, came to within a few feet of most houses and the barns, mostly sheds, had the air of neglect and disuse.

And it isn't any of our business how a farmer makes a living but who of our age can fail to reflect upon the tremendous changes that have come about. Livestock have largely disappeared from the Plains scene, excepting for

argumentative propositions, but the God-made avenue of prayer has brought harmony and peace".

How often we quarrel, find fault, boast of nearer attainment to perfection, but neglect the fellowship to be found in worship before the throne of grace! There only are we made to realize that all are sinners, that all have come short of God's holy purpose. There only are all humbled in the presence of the perfect Lamb of God, who suffered and died and rose again that we might be one in spirit and in truth.

**PRAYER**  
Our Father, we know Thy desire is that we, creatures of Thy creation, become a united family in Christ. Help us through prayer and by practice to find oneness in Jesus Christ. In our dear Saviour's name we pray. Amen.

**THOUGHT FOR THE DAY**  
"Behold, how good and how pleasant is it for brethren to dwell together in unity!"  
David Cavers (Ontario)

the ranches and excepting for an occasional patch of permanent pasture where a few head of livestock graze.

It was about six o'clock, milking time to us, but we saw only one man out doing the chores that used to be customary before nightfall. Can we help it if, born thirty years too soon, we feel a farm is almost uninhabited if there's no livestock about?

The American farmer, if we can use as evidence the farm Bureau's resolution against farm price supports a la Government, want out from under "regimentation" and don't like subsidies for one class of the population and none for other classes. The Bureau's recently adopted resolution to that effect is something to be studied and thought about by the rest of us.

A quotation: "It is not, however, the responsibility of the Government to guarantee profitable prices to any economic group."

And: "Payment for practices which have become a normal and accepted part of farming operations of the area in which a farm is located should be discontinued."

As we get it, the farmer is of the opinion that you can't get something from the Government for nothing; but

We decry Government dictation, too, but we don't want to see farm prices go below the point where a profitable farm program can be carried on. We don't want the individual farmer to decide, on his own initiative,

that it would be profitable for him to plant the whole place in cotton, for instance, then see the price of cotton hit the bottom. We hope the Farm Bureau is on the right track and will watch with interest the reaction of Washington to their recent suggestions.

**THRIFT (?)**  
A young man once found two dollars in the road. From that time on he never lifted his eyes from the ground when walking. In the course of forty years he accumulated 29,516 buttons, 54,172 pins, seven cents in pennies, a bent back and a miserly disposition.

He lost the glories of the sunlight, the smiles of friends, the songs of birds, the beauties of flowers, trees, blue skies, and all there is in life worth living for, the opportunity to serve his fellow man and spread happiness.  
—Exchange

Governor Shivers and most of the members of the Legislature, we are sure, are in favor of passing

the bill recently introduced to raise teachers' salaries by \$600 per year.

Only question is how to raise the money. Our own representative, Jesse M. Osborn, and our Senator, Andy Rogers favor higher salaries for teachers.

Teachers are some of the most influential people in the community and ought to receive adequate pay. This paper hopes that Austin will come up with the right answer, so as to bring it about.

**VISIT IN PLAINVIEW**  
Mr. and Mrs. Fred Horn and family visited Sunday in the home of his mother, Mrs. C. Horn of Plainview.

**KISTLERS HAVE GUEST**  
Mrs. J. D. Thomas of Abilene arrived Tuesday for a short visit with her parents, Mr. and Mrs. W. H. Kistler.

**BOSTITCH STAPLERS** and Staples always on tap at The Journal.

## GET YOUR FARM MACHINERY

In Shape Now  
For The Coming Season

- Welding and Blacksmithing
- Plow Work
- Specializing In Stooditing

### STONE'S WELDING AND BLACKSMITH SHOP

Located Just Behind Bus Depot on E. 2nd Street

**From where I sit... by Joe Marsh**

**Just a Little "Outdated"**

Back in December we sent out our yearly calendar. It listed the last date for renewing drivers' licenses, and things like the dates for registering to vote, when the hunting and fishing seasons open — even suggested you note down the wife's birthday, too.

I figured dates like these were important to keep in mind — and this was a good way to do it. Unfortunately, it now turns out I never really paid close attention to my own calendar!

Not 'til today that is — so here I am not able to drive the car this

weekend until I get my driver's license renewed on Monday!

From where I sit, I guess good advice, like charity, should begin at home. I'm always advising all of you to worry less about your neighbors (what they do, or say, and whether or not they should enjoy a temperate glass of beer) and pay more attention to whether you yourself are doing the right thing. Guess I'll "make a note" to follow my own formula!

*Joe Marsh*

Copyright, 1953, United States Brewers Foundation

## We're trading high, wide and handsome on any size Ford Truck you want!

If you do business with your Ford Dealer right away—you may discover that your old truck is worth much MORE than you think! Don't delay. "Later" may be too late! Get a new Ford Truck now. Full range, from F-1 Pickups to 22,000 lb. G.V.W. Big Jobs! And the day you buy is just the START of your savings with a thrifty Ford Truck!

**FORD TRUCKS RUN FOR PENNIES!**  
In the big Economy Run, 3 out of 4 Ford F-1's ran for less than 2 1/2¢ a mile! (Cost of gas, oil, service—not including fixed expenses such as depreciation, taxes, etc.)

**FORD TRUCKS LAST LONGER!**  
Using latest registration data on 8,069,000 trucks, life insurance experts prove Ford Trucks last longest!

**Come in today— MAKE THE "STEAL" OF A LIFETIME!**

# MOTOR CO.

FORD AUTOMOBILES AND TRUCKS MULESHOE

## nylon and ORLON ...OUR wonderful WIZARDS of ahs

**A**

\$12<sup>95</sup>

**B**

\$12<sup>95</sup>

**C**

\$12<sup>95</sup>

**D**

\$12<sup>95</sup>

**A**

\$14<sup>95</sup>

**B**

\$12<sup>95</sup>

**C**

\$12<sup>95</sup>

**D**

\$12<sup>95</sup>

other Doris Dodson Juniors from \$8<sup>95</sup>

As seen in MADEMOISELLE

# COBB'S

Ah-inspiring wild proof miracle fabrics that wash and dry in a wink, practically iron themselves.

**A.** Waist-whittling middy, all texture and line, shoulders smartly defined with appliqued braided ribbon. Blended Nylon and Orlon sheer with Bemberg. Pink, ecru, blue, aqua, navy, brown, black. 7-15. **\$14<sup>95</sup>**

**B.** The costume look in a crisp, checked Orlon one-piece. Yellow, white, red, royal, green, black. 9-15. **\$12<sup>95</sup>**

**C.** Delectable sleeveless sheer with pert self-bows. Pink striped Nylon and Orlon in peppermint stick, chocolate soda, turquoise, navy. 9-17. **\$12<sup>95</sup>**

**D.** Portrait neckline Nylon sheer shantung in navy, natural, dove-grey, turquoise, brick. 9-15. **\$12<sup>95</sup>**



## Rebekahs Hold Joint Installation

The Muleshoe Rebekah Lodge met in regular session Tuesday night, Jan. 27, with Noble Grand, Hazel Nowell, presiding, Lela Harris, Division Supervisor, was introduced and welcomed. Other



The Maternity Dress that is made right, styled right and priced right.

Comes in Chambray, and pretty pastel colors. \$9.98

The Fashion Shop

Muleshoe Texas

## Mrs. Neutzler Leads WMU Study

The W. M. U. of the Three Way Baptist Church met February 3 at 2:30 p. m. with nine members present. Mrs. Dorothy Neutzler directed the interesting missionary program.

The R. A.'s, G. A.'s and Sunbeams met at 4 p. m. The R. A.'s and G. A.'s enjoyed interesting missionary programs and the Sunbeams enjoyed a flannel graph story of the parable of "The Prodigal Son" given by Mrs. Moore and assisted by Mrs. Nancy Wittner.

Class members who have been lost are Travis, Kelsey and Douglas Branaman, Pecos Finley, Billy Nell and Betty Finley. The Henry Davis family has also moved from the community to Levelland where Mr. Davis has accepted a position in the Levelland schools.

Mrs. Brinker and Mrs. Byers served refreshments of cocoa and sandwiches to 5 R. A.'s, 6 G. A.'s and 9 Sunbeams with 9 sponsors. The regular meeting date has been changed to Monday afternoon instead of Tuesday.

visitors were then introduced and welcomed.

The joint installation of officers for Muleshoe and Earth was held. Officers installed for Muleshoe were: noble grand, Argillie Millen; vice noble grand, Clara Lou Jones; secretary, Fay Lambert; treasurer, Nell Gatlin; warden, Iva Carpenter; conductress, Marie Henderson; inside guardian, Ruby Green; outside guardian, Lela Goodnough; R. S. N. G., Allie Snyder; L. S. N. G., Louise Rucktashel; R. S. V. G., Ruby Shelley; L. S. V. G., Geneva Freeman; chaplain, Myrtle Freeman; right altar bearer, Ina Gross; left altar bearer, Fern Davis; Gene Aylesworth, color bearer; and Allie Snyder, lodge deputy.

Several talks were made by the members and visitors. The Lodge presented Hazel Nowell, outgoing Noble Grand, with a beautiful bracelet and she presented some silver to the Lodge.

Refreshments of sandwiches, cookies, pickles, olives, potato chips, punch and coffee were served by Fay Lambert, Nell Gatlin and Gene Aylesworth to twenty-one members and nineteen guests.

BOSTITCH STAPLERS and Staples always on tap at The Journal.

## Guild Starting New Study Course

The Wesleyan Service Guild of the Muleshoe Church met Monday evening, Feb. 9, in the home of Mrs. Delma McCarty.

The devotional was given by Mrs. Buford Butts, closing with prayer.

Mrs. Alex Wilkins, president, presided over the business session. The banquet to be served Tuesday evening by the W. S. C. S. and Guild to the Rotary Club for Ladies night was discussed. The Guild will serve a banquet Saturday evening for the Wilson-Sanders Lumber Yards in Fellowship Hall and final plans were made for that also.

Several members were absent, some were ill and some out of town.

The new study was began on "These Rights We Hold". Mrs. Mable Dowell presented the introductory and the first chapter in a very interesting manner.

Mrs. Mable Dowell was elected pro-tem vice-president to fill the unexpired term of Mrs. H. S. Sanders, Sr., who is leaving soon for an extended vacation trip.

Next meeting will be in the home of Mrs. Buford Butts, Feb. 24 at 7:30 p. m.

Refreshments were served to Mesdames Clyde Bray, A. S. Stovall, Mable Dowell, Alex Wilkins, Lois Schoenberger, Francis Gilbreath, Buford Butts, H. S. Sanders, Sr., a visitor, Patricia Butts, Elizabeth Harden and the hostesses.

## Mrs. Harvey Hosts Sunshine Club

The Sunshine Club met Thursday, Feb. 5, in the home of Mrs. Cecil Harvey with Mrs. Gene Harvey as hostess. Seven members and two visitors attended.

Officers elected for the ensuing year are: president, Mrs. L. C. Browder; vice-president, Mrs. George Chambliss; secretary, Mrs. C. H. Odom; and reporter, Mrs. Gene Harvey.

Mrs. Albert Davis and Mrs. Dian Reed of the Home Demonstration Clubs met with the group.

The next meeting will be held in the home of Mrs. Bartlett on Thursday, February 19.

## VISITED IN AMARILLO

Mr. and Mrs. Donald Harrison, Norma Graves and Robert Waggoner visited Sunday in the home of Mr. and Mrs. Cleve Bland of Amarillo.

## Mrs. Williams Shower Honoree

Mrs. Johnnie Williams was honored with a pink and blue shower given in the home of Mrs. C. H. Odom on Wednesday, Feb. 4.

Serving as co-hostesses were Mesdames George Chambliss, Ed Harp, H. B. Flanagan, and J. W. Johnson.

Several games were played and refreshments of cake, small candies, cocoa and coffee were served.

Enjoying the afternoon were Mesdames Ella Copley, Marcus Shofner, Louis Reynolds, Ernest Stroud, R. M. Daniel, C. E. Blanscet, Beth Cooley and Helen, H. W. Hackney, Louis Prazak, Wanda Carroll, Dave Coulter, Henry Harvey, Shorty Johnson, Winford Mullins, G. H. Armstrong, and J. W. Williams.

## Nelms-Steward Vows Exchanged

Miss LaWanda Nelms and Mr. Bobby Steward were united in marriage Sunday, Feb. 8, at the Main Street Baptist Church, Rev. M. E. Robinson officiated at the single ring ceremony.

The bride is the daughter of Mr. and Mrs. James Reid and the groom is the son of Mr. and Mrs. King Steward of Muleshoe.

The ceremony was read beneath an arch of fern and pink and white carnations with a background of palms and picardy gladiolus.

Preceding the ceremony, Walter Marie Boness played traditional wedding selections. Given in marriage by her father, the bride wore a light blue tailored suit with pink and navy accessories. She wore a corsage of pink carnations.

Mary Lou Lambert, the bride's only attendant, was attired in a rose linen suit with navy accessories. She wore a red rose corsage.

Franklin Mann served as best man, Bobby Nelms, brother of the bride, and Jerry Steward, brother of the groom, served as ushers.

The couple will make their home in Muleshoe following a brief wedding trip. Mr. Steward is employed by Guy Nickels.

## BOBBY PITTMAN IS ACCEPTED IN AIR FORCE

Bobby Pittman, of Muleshoe, son of Dr. and Mrs. G. A. Pittman, has been accepted for enlistment in the United States Air Force.

Bobby is to report Feb. 19 and expects to be sent to a San Antonio AF base for training.

## H. D. Club Meets In Bowers Home

The Muleshoe Home Demonstration Club met in the home of Mrs. W. B. Bowers February 10. A poem, "The Weaker Sex," was read by Mrs. R. F. Wright and Mrs. Bowers to begin the meeting. Roll call was answered with several helpful household hints.

The Fellowship Hall has been secured for the Commissioner's Banquet which will be given March 13.

The president appointed Mrs. R. F. Wright and Mrs. S. L. Robinson for the Sunshine Committee. Mesdames W. R. Bowers, Roy

Carney, and E. E. Holland were appointed to serve on the park project committee. Mrs. R. F. Wright was elected nominee for the T. H. D. A. chairman.

Mrs. Dian Reed announced there would be an advanced dress making school starting February 20 at the Club room.

The second meeting of the First Aid school will be held February 17 at the club room. Everyone is invited to attend.

The agent, Mrs. Reed gave the program on "Choose and Plant Screening Shrubs". She also stressed the importance of a good breakfast.

Mrs. T. F. Maddox led the group with an interesting game.

A tasty refreshment plate was served to one visitor, Mrs. H. O. Barbour, a new member, Mrs. M. E. Lee, and regular members, Mesdames Walter Witte, Fletcher, R. F. Wright, C. E. Briscoe, A. W. Copley, T. F. Maddox, M. E. Simmons, Dave St. Clair, E. E. Holland, S. C. Caldwell, J. E. Day, Gillis, Dian Reed, S. L. Robinson, and the hostess, Mrs. Bowers.

The next club meeting will be on February 24 in the home of Mrs. John Boydston.

**Valuable Coupon Thru March 10, 1953**  
5% discount — trade in value of your old window screens on the purchase of  
**ALSCO ALUMINUM STORM WINDOWS and DOORS**  
Immediate Delivery — Free Estimates  
ALSCO OF TEXAS CO.

Rt. 3 S. Prince      Clovis N. Mex.

Name \_\_\_\_\_  
Address \_\_\_\_\_  
City & State \_\_\_\_\_

**PEOPLE DO NOTICE YOUR Clothes!**

**FESTIVE FINERY NEEDS THAT EXTRA TOUCH**

Only the finest workmanship can keep those pretty party dresses sparkling fresh and dainty. Our staff gives that extra touch... the difference between ordinary and expert cleaning.

**ALSUP CLEANERS**  
MR. and MRS. CHAS. ALSUP  
Morton Highway — Former Taylor Produce Location

**FOR GOOD GROOMING**

NOW... wonderful  
**LANOLIN laden Tempo**

the oil conditioning permanent by *Heleno Curles*

COMFORT you've never known before! Imagine—it's a permanent that's a pleasure to get!

QUICKER WAVING... You'll even have time left to shop leisurely!

CONDITIONING TREATMENT right during waving! Yes, TEMPO actually conditions your hair... leaves glossier, silken-smooth waves that last and last! You'll love it! Phone for your TEMPO appointment today.

FROM \$10 UP

**WELLBORN BEAUTY SHOP**  
Phone 6130

**Greatest Dollar-for-Dollar Value in Television!**

**21" PHILCO**

WITH **Golden Grid Tuner**

**JUST LIKE A BOOST IN STATION POWER!**

Immediate delivery now—famous "Golden Grid" 21-inch screen with full 245 sq. inch screen at NEW LOW PRICE. Ask to see the Philco Model 2238.

**\$239.95**  
Including Federal Tax and Warranty

**EASY TERMS**

Available with Built-In ALL-CHANNEL UHF

Not partial, but full coverage of any and all of the new UHF stations planned for any area. Don't settle for a "one-or-two station" set.

- America's Best High Fidelity picture reproduction.
- Unmatched performance on All-Channel Built-In Aerial.
- Greatest of all TV sets for auto-free reception.
- Mahogany-finish cabinet.

**Whirlpool**

**WASH DAY WOES VANISH**

With The Famous Academy Award

**WHIRLPOOL WASHER**

**AUTOMATIC WASHER now only \$299.95**

TERMS CAN BE ARRANGED

Now you can start saving even before your first Cliniclean Whirlpool washing! And Whirlpool's exclusive combination of features gives you money back each and every washday.

The only automatic washer with SUBS-MISER\* and the SEVEN RINSES SUBS-MISER—Lets you re-use good sudsy water over and over. SEVEN RINSES—Give clothes the most thorough rinsing known. AERFLOW ACTION—Vitalizes hot sudsy water for total-cleaning. OPTICIDAL LAMP—Washes freshness in as dirt is washed out. CYCLE-TONE SIGNAL—Saves standing-by. Calls when wash is done. 5-YEAR WARRANTY ON TRANSMISSION. Extra assurance of trouble-free performance.

\*Subs-Miser is optional equipment, available at slight additional cost.

On Display At Our store And The Southwest Public Service

**MR. FARMER — MR. BUSINESSMAN!**

You Are Needed In The

**FARM BUREAU**

THE FARM BUREAU STANDS FOR:

- Fair prices for farm products.
- The right of an individual to work.
- Continued support of the National Farm Program to place farmers on a parity with other groups and conserve soil and other natural resources.
- Favors fair prices at the market place instead of direct government payments to farmers.
- Reduction of unjustified spreads between producers and consumers.
- Elimination of overlapping and duplication, and establishing economy, efficiency, and decentralization, in administration of farm programs.
- Favors expanded foreign trade and continued market research.
- Support of county agents, experiment stations, schools, health work, Land-Grant Colleges, vocational agriculture, soil conservation, rural electrification, Veterans Farm Training Program, and other services to farm people.
- More and better farm-to-market roads.
- Support of 4-H Clubs and Future Farmers of America.
- Adequate farm credit at a fair interest rates.
- Equitable freight rates for Texas and the South.
- More widespread private ownership and less Government ownership of farm lands.
- Adequate pay for rural teachers to provide equal educational opportunities for farm children.
- And other policies and actions to make rural life more attractive.

Help Promote This Program — Join The Farm Bureau During Our Membership Drive Beginning Feb. 17.

**Bailey County Farm Bureau**  
OFFICE 3rd. DOOR WEST OF POSTOFFICE  
PHONE 6480      MULESHOE

N. B. — The County Office Will Handle Gasoline Tax Exemptions For All Members.

**DYER** FURNITURE and APPLIANCE

**BERRY ELECTRIC**  
PHONE 3750      MULESHOE

## Mrs. Adams Hosts Philathea Circle

The Philathea Circle of the Methodist Church met in the home of Mrs. J. K. Adams February 5 at 7:30 p. m. Mrs. J. T. Shofner, president, presided during the business session.

Mrs. H. W. Hanks directed the program beginning the study of the book of Acts. Parts given were "Who Wrote the Book of Acts" by Mary Nell Chapman, "What was the Feast of Pentecost" by Dorothy Weyer, and "The Preparation of the Disciples for the coming of the Holy Spirit, Psychologically, Intellectually and Spiritually" by Mildred Mc-

Reynolds.

Members present were Mesdames H. W. Hanks, Doris Johnson, Ida Mae Shofner, Helen Gardner, Mary Nell Chapman, Ruby Faubus, Fern Awtry, Theresa Edwards, Dorothy Weyer, Joy Whitt, Waneen Ragsdale, Mildred McReynolds and the hostess.

The Circle will meet in the home of Doris Johnson Thursday, Feb. 19, at 7:30 p. m.

## MRS. TEMPLAR RETURNS FROM OKLAHOMA

Mrs. George Templar returned Thursday from Elk City, Okla., where her mother, Mrs. A. A. Bishop of Leedee, Okla., underwent an operation. Mrs. Bishop is now much improved and has returned to her home.

## GUARANTY ABSTRACT CO.

BONDED FOR YOUR PROTECTION

Office In Bank Building  
Phone 2640 Muleshoe

Complete Abstracts of Title to All Lands and Towns in Bailey County Texas

PAT R. BOBO, Owner BETTE COWAN, Manager

Announcing . . .

A New Operator

For Our Shop

Tennie Lambert

Enabling Us To Give You A More Prompt Service.

Radio Waves • Manicures • And  
All Types Cold Waving

Phone 4100 For Appointments

*Sue's Beauty Shop*

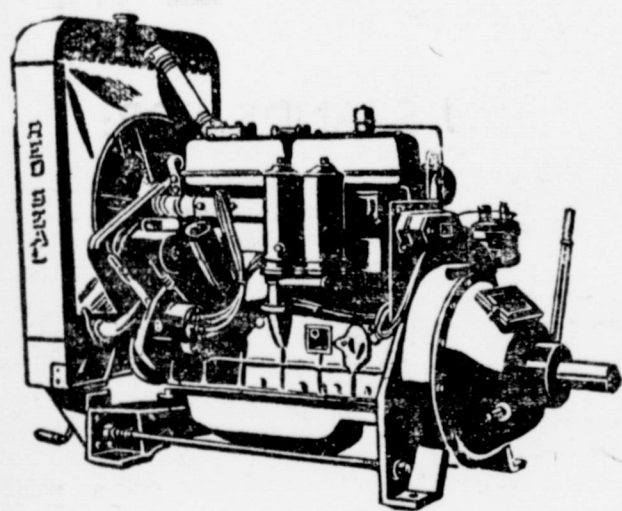
913 Avenue B.

Operators: Evelyn Autry and Tennie Lambert

# CONTINENTAL RED SEAL

IRRIGATION ENGINES

FROM 15 TO 260 HORSEPOWER



Designed And Equipped For Butane, Natural Gas  
or Gasoline.

### FEATURES

- 10:1 Compression ratio.
- Positive rotating exhaust valves. Sodium cooled valves available.
- Silchrome inlet valves and valve stems.
- Stellite-faced exhaust valve seat inserts.
- Aluminum pistons, with chrome top ring.
- Non-corrosive heavy duty bearings.
- Safety controls to protect engine from possible damage.
- Exhaust manifold with dual outlets.
- Cold intake manifold — no heat transfer from exhaust.
- Furnished with wood skid. Metal skid available.
- Friction throttle control. Governor available.
- Top Oilier available.
- Engine furnished with distributor, generator, starter, ignition coil, direct drive power take off, water temperature gauge, oil filter, air cleaner, LPG carburetor and regulator. Available also as an open or closed power unit.

**D. H. SNEED SUPPLY CO.**

Phone 4170

Muleshoe

## Society News

By Mrs. Joyce Shafer

THE MULESHOE JOURNAL, Thursday, February 12, 1953

## Mrs. Precure Hosts Fidelis Luncheon

The Fidelis Class of the First Baptist Church met Thursday, Feb. 5, in the home of Mrs. Raymond Precure with Mrs. C. M. King as co-hostess, for a 1 o'clock luncheon and business session.

Decorations in the valentine motif were dominant throughout the rooms. The serving table was centered with a huge white valentine cake frosted with red roses. An arrangement of valentines in a styrofoam base with tiny cupid figures in many places completed the arrangements.

A covered dish luncheon with cherry ice cream and cake was served to the guests.

Mrs. Clinton Bristow, president, presided over the regular business session. Mrs. Ray Griffiths gave the devotional in the absence of Mrs. A. W. Black.

A very interesting discussion was held on "The World as It Was Yesterday" with Mrs. Ray Griffiths as the affirmative and Mrs. R. L. Jones as the negative sides of the question.

Present were two visitors, Mesdames Jack Cox and Harold Weyer and members, Mesdames C. H. Tate, A. W. Crow, Jeff Peeler, W. M. Pool, G. C. Bristow, N. C. Moore, Roy Brashers, Edgar Broyles, Pat Bulloch, M. F. Green, Ray Griffiths, L. T. Green, T. C. Young, R. L. Jones, the hostess and the co-hostess.

The next meeting will be held in the home of Mrs. Joe Darnon with Mrs. O. D. Ray as co-hostess on March 5.

## Valentine Party Saturday Night

A Valentine Day party will be given the coming Saturday night, February 14, in the American Legion Home in Muleshoe.

The Auxiliary of Ben Richardson Post will give the party for husbands of the members. Each member is invited to bring six sandwiches, olives, pickles, potato chips, etc.

GARNER FARM RECORD books on sale at The Journal.

## Progress Club Held Fun Night

Friday night, February 6, marked another fun night on the calendar of the Progress Home Demonstration Club which was held at the home of the George Stotts.

Supper was spread in the paved barn and served buffet style from tables loaded with baked chicken and all that goes with it. Pictures of the group as they were being served and were eating were taken by the Ross Goodwins.

After the meal, they moved into the living room where four-somes played 42 and canasta while the children enjoyed games out in the spacious yard. At a late hour the guests departed declaring all had a most enjoyable time but with regrets the Stotts family would be leaving the community so soon.

Those present were Mr. and Mrs. T. Haley, Mr. and Mrs. Joe Simnacher, Mr. and Mrs. Edward Little, Gary and Greg, Mr. and Mrs. Alfred Patterson and Lionel, Mr. and Mrs. Ross Goodwin and Jana, Mr. Sid Goodwin of Hobart, Okla., father of Mrs. Self and Ross Goodwin, Mr. and Mrs. Manuel Self, Mr. and Mrs. Gordon Murrah, Judy, Myke and Gary, Mr. and Mrs. D. O. Smith, Mrs. John Thomson, Pat, Kay, Jim and Wink, Mrs. O. C. Thomson and John, Mr. and Mrs. Clark Billingsley, Mr. and Mrs. Wilbur Thomas, Ynda Ann and Daria Sue, Mr. and Mrs. Albert Davis, Lucille and Trudy and Mrs. G. T. Maltby.

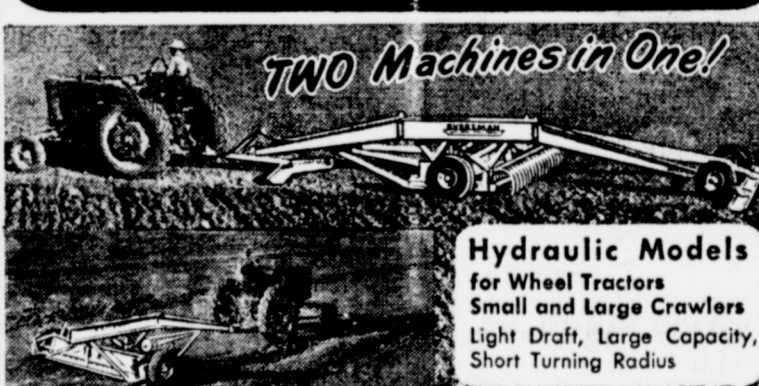
## Progress Breakfast Is Successful

The M. Y. F. of the Progress Methodist Church sponsored a breakfast at the parsonage of the church Saturday morning, Feb. 7. About 35 attended.

Gordon Murrah and Rev. Carroll M. Jones cooked the food which was served by Sue and Donna Atkinson, Mona and Helen Mitchell, and Barbara Jones.

The proceeds which were about \$35 will be spent for recreation facilities for the young people.

## Eversman AUTOMATIC LAND LEVELER AND HYDRAULIC SCRAPER



TWO Machines in One!

Hydraulic Models for Wheel Tractors Small and Large Crawlers Light Draft, Large Capacity, Short Turning Radius

For all "On The Farm" Leveling and Dirt Moving, Smooths and levels land for efficient irrigation. Fills gullies, pot holes for perfect surface drainage. Makes superior seed beds, for better stands and increased yields. Exclusive feature all models—wheels control the blade to cut off high places and fill in low areas AUTOMATICALLY.

Mechanical Models for Two Plow and Three Plow Tractors Springtooth attachment available for hydraulic and mechanical models. Level and harrow in the same operation. Come in today for full details.

## IRRIGATION NEEDS

NOW IN STOCK!

- Eversman Ditchers
- Martin Ditchers
- Chattin Ditchers
- Aluminum Irrigation Tubes
- Canvas and Plastic Irrigation Dams

Rubber Gloves, Boots,  
Shovels and so forth

**E. R. HART CO.**

PHONE 3300

MULESHOE

## Mrs. Thomas Is New President Progress Club

The Progress Home Demonstration Club met Tuesday, February 3, at 2:30 in the home of Mrs. O. C. Thomson for its regular meeting. Called to order by the president, Mrs. George Stotts, the meeting began with the reading of "Luby's Food for Thought on Talk" by Mrs. G. T. Maltby.

Roll Call, "Household Hints", was answered by the 18 members present. Plans were made for the family night party the 6th, and for the extra meeting for Craft work on February 10.

Since the Stotts are leaving the community, Mrs. Stotts tendered her resignation to be effective at the next meeting. Mrs. Wilbur Thomas was elected to fill her place as president. Mrs. Odell Logan's resignation as secretary and treasurer was accepted with regrets and Mrs. Clark Billingsley was elected to be secretary and treasurer.

As has been the policy of the Club in the past, it was voted to give 100% for the Texas Home Demonstration Association's 25c per member fund. To those who do not know this fund, besides paying the expenses of the Association, it also pays two \$500 scholarships for outstanding 4-H club girls and \$100 to each of the 12 districts of the state of Texas.

Mrs. Gordon Murrah was elected as Nominee for delegate to the District 2 Texas Home Demonstration Association meeting April 30 in Lubbock. Mrs. G. T. Maltby was nominated to serve a second year as Texas Home Demonstration Association County Chairman.

Since Mrs. Dian Reed, the Home Demonstration Agent, was not able to be with the club, a round table discussion on choosing screening shrubs was conducted by the president. Pictures in color of different shrubs were viewed.

Mrs. Thomson, the hostess, served an appetizing refreshment plate with coffee or tea to those present; Mesdames T. Haley, Alfred Patterson, Joe Simnacher, Manuel Self, D. O. Smith, Harold Mardis, George Stotts, Arnold Gross, J. J. Gross, Albert Davis, Gordon Murrah, Wilbur Thomas, Clark Billingsley, Odell Logan, Edward Little, Ray Queenberry, and Glenn Maltby.

The next meeting will be at 2:30 Tuesday, February 17, in the home of Mrs. Manuel Self. The program will be on planting of Roses.

## DISTRICT TOURNAMENT TO BE HELD AT TECH

Texas Tech will again be host to the Texas University Inter-scholastic League basketball tournament for conferences in Region I. The tournament will be Feb. 27 and 28.

For district 7-AA, Jerry Kirk, superintendent of Muleshoe schools will be tournament director.

## PLAN STAY IN TUSCON

Mr. and Mrs. Homer Sanders, Sr. and their little grandson, Mike, expect to leave next week for a stay of perhaps several weeks in Tuscon, Ariz.

GARNER FARM RECORD books on sale at The Journal.

## Bailey County Abstract Co.

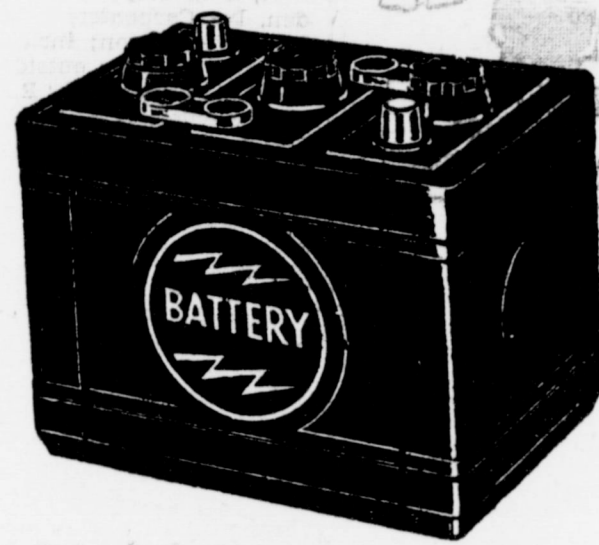
ABSTRACT SERVICE — LOANS  
Established in 1906  
Mrs. Lela Barron — Mgrs. — L. S. Barron

# LAST CALL!

This Great Battery Sale  
Ends Postively

SATURDAY, FEB. 14th

Brand Spanking New  
At New Low Prices!



GUARANTEED 12 MONTHS

One Battery ..... 759

exchange

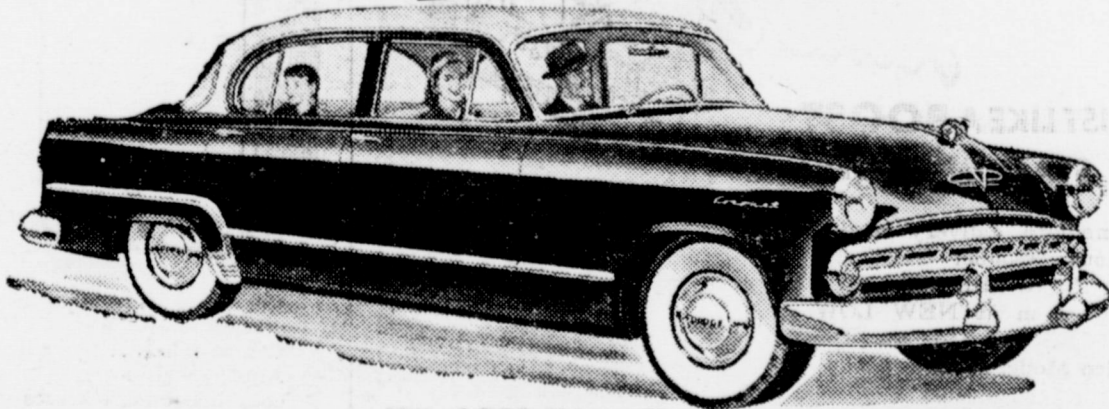
Three or More ..... 729

exchange

YOU MAY, IF YOU WISH, BUY NOW FOR  
FUTURE DELIVERY.

**BASS** Firestone  
Dealer Store

# Put it through its paces!



## Make your own Road Test Rating!

Free check list provided. Rate Dodge yourself on these 12 points:

1. ROOMINESS, VISIBILITY
2. BREAKAWAY ACCELERATION
3. MANEUVERABILITY
4. CORNERING
5. U-TURNABILITY
6. HILL-ABILITY
7. "SCAT" ACTION
8. HIGHWAY HANDLING
9. ROAD LEVELING ACTION
10. BRAKE SAFETY
11. PARKING
12. ALL-ROUND ECONOMY

New-All-New '53

**DODGE**

Take a "Road Test Ride" Today!

**Arnold Morris Auto Co.**

DODGE AND PLYMOUTH DEALERS

PHONE 7150

MULESHOE



By John C. White, Commissioner

**COTTON CULTURAL PRACTICES**

Good crop cultural practices are important to every farmer. For the cotton farmer, good cultural methods are especially important for two reasons:

- (1) they help assure maximum production on the land, and
- (2) they aid in keeping insect infestation to a minimum. The second reason has special significance in view of the continued spread of the pink bollworm in

**GUESTS FROM BORGER**

Mr. and Mrs. Johnny Easter of Borger visited over the week end in the home of her mother, Mrs. A. H. Owen, and other relatives.

**Texas.**

A previous article by Glenn Shelton, farm editor of the Wichita Falls Record News, pointed out the dangers of the pink bollworm. This insect can make cotton growing a losing proposition in Texas unless it is checked. Then what can we do?

The Texas Department of Agriculture, which sets and enforces cotton planting and plow-up controls in certain climatic areas, is co-operating with Mexico on this problem. If the insect can be reduced in the country farm which it spread to the United States, then a big part of the battle is won. The rest is up to farmers in Texas and other infested states, aided by agricultural officials.

A practical five-point cultural program is recommended by the Texas Department of Agriculture this year. The practices involved are meant not only for farmers in heavily-infested pink bollworm areas but all cotton farmers in the state. These practices are:

1. Use all known methods which tend to speed up maturity of the plant and harvest of the cotton. This involves planting the cotton as early as possible and planting fast fruiting varieties when it is practical. It is desirable to use only properly treated and culled high germination tested seed and to leave plants as thick in the drill as soil moisture content will allow. Fertilizers should be used when recommended. It is also especially desirable to protect the plants from early-season damage from the usual insects which would slow development of the plant and allow the pink bollworm to get a better hold.
2. When the cotton has been harvested, destroy the stalks immediately. Early stalk plow-up shortens the breeding cycle of pink bollworm and other insects and helps cut down a carry-over into the next season. Stalk shredders are excellent.
3. In transporting the picked cotton, cover the vehicle with a tarp to prevent loss and possible spread of the insect. Where tarps are unavailable or too expensive, substitutes may be used such as poultry wire, gunny sacks, etc.
4. Use seed which has been sterilized against pink bollworm at the gin.
5. Clean your fields, including the end-rows, fence lines and ditches of all standing cotton stalks, thus destroying the winter nesting and feeding place of the insects.

**Water District Committeemen Are Briefed On Rules, Regulations**

Effective last Sunday, February 1, farmers and land owners in this area which incorporate the High Plains Underground Water District, first to be organized in the state of Texas were faced with a complete new set of laws pertaining to the drilling, deepening or moving of any underground well on any farm or land, probably including even windmills. This latter phase has however, not yet been clarified.

To explain and hear, as well as study the ramifications of the new law, farmers, committeemen, pump men, drillers and others gathered in Lubbock last Thursday for an all day meeting, which took up various phases of the new district and the laws which have automatically gone into effect.

Officers and directors present were unable to answer all of the questions asked, but did supply answers to the majority. At this meeting it was announced that another meeting will be held at Olton within the next 30 days, and all phases of the new regulation not yet clarified can and will be then explained.

W. O. Fortenberry, a director was present and in charge of the program as was Tom McFarland manager of this underground district, and Arthur P. Duggan, attorney for the organization.

"We are here to contribute to the prosperity of the High Plains," Fortenberry said. "We had the choice of taking care of drilling well-spacing problems ourselves, or seeing other organizations move in to do it for us. It is a job that must be done if we are to continue to prosper."

**CAN'T FORBID WELL DRILLING**  
"Every land owner can get a permit to drill a well," he pointed out. "Never tell a man that he can't get a permit to drill, for the law says he can. All that we are to do is to work out well spacing so that one well will not encroach upon the rights of another land owner."

"Normally, we will show a man where he cannot drill, which will be those places which are too close to another well or another piece of property. Then the land owner will have the choice of drilling at any other place on his land that he desires to do so."

**Drilling Logs Explained**  
Fortenberry then pointed out that the drilling logs, which were included in kits given to county committeemen and others who might need them, are to be filled out by the driller and brought back to the county board.

This drilling log will show depth of the well, casing, loca-

tion of the well, and the strata which were drilled through, and the thickness of these strata.

When the general material had been covered, questions from county committeemen and others began to come from the floor.

Fortenberry didn't think so, but suggested that it was often as cheap to drill the well at another place as it would be to

deepen the existing hole, and suggested tact as being helpful.

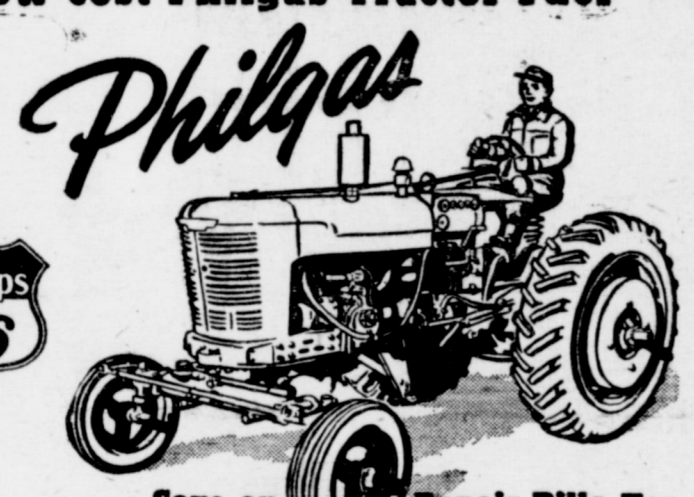
**50 Years Supply Seen**  
George D. Clyde, Logan, Utah, chief of irrigation research for the Soil Conservation Service in 17 Western states, spoke optimistically of about 150 million acre feet of water being available under the High Plains of Texas, and said that it should last for 50 years before there is a serious shortage.

**BOSTITCH STAPLERS** and Staples always on tap at The Journal.

SEE US FOR PROTECTION POLICIES YOU NEED  
**BOBO INSURANCE AGENCY**  
Office In Bank Building  
PHONE 2640 MULESHOE

DANCE  
**Saturday Night**  
— Music By —  
**Hattie Young**  
And The Music Makers  
LA VISTA  
CLOVIS  
● The Plains Finest Dance Spot ●

**Farmers! Make Big Savings! Use Low-cost Philgas Tractor Fuel**



Save on Repair Bills, Too

Convert your tractor! Compared to gasoline, Philgas can save you several cents a gallon. These savings will soon pay the cost of conversion. And Philgas is easy and safe to use. No waste from spilling, overflow or evaporation, because the filling system is completely enclosed.

**Clean-burning . . . thrifty!** Save as much as 50% on engine maintenance costs. No cylinder wall washing. Long ring and valve life. Low cylinder wear. For a thrifty fuel with exceptionally high energy content (100 octane plus), get high-quality Philgas.

**All-purpose fuel!** Use Philgas to heat your home, for cooking, hot water and refrigeration! Use it also for heating stock tanks, chick brooders, and other needs around your farm. Install a central tank for all your needs. Low cost fuel. Convenient, clean, dependable!

**And remember . . .** your local Philgas distributor is fully qualified to make dependable installations, to provide prompt and courteous service. See him today.

Philgas is distributed by  
Phone 3130 Muleshoe  
**Muleshoe Liquefied Gas Co.**

**Many Prizes Offered Winner of District And County Spelling Bees**

The winner in The Lubbock Avalanche-Journal 14 county Spelling Bee to be conducted April 18 in O. L. Slaton Junior High School Auditorium in Lubbock will attend the National Spelling Bee, with expenses paid by the Avalanche-Journal. In addition other prizes will be given in the Avalanche-Journal Bee, as follows:

A 24-volume set of the Encyclopedia Britannica to the first winner in the 14 county district finals in Lubbock.

A plaque to be issued to the county superintendent and to be given to the district winner to keep until the 1954 winner is chosen.

A full year's use of the Britannica film library to the school in which the district winner is a student.

A plaque to the county champion of each of the 14 counties in the Avalanche-Journal Spelling Bee districts.

Cash prizes as follows in the district finals: Second place, \$20;

third place, \$15; fourth place, \$10; fifth place, \$5.

The Muleshoe Journal sponsors the Spelling Bee in this county where prizes of \$10, \$7.50 and \$5.00 are offered. The Bee will be held in the junior high building here at 2:30 p. m. Friday, March 27. The public are invited to attend the spelling match.

**Power To Suit YOUR NEEDS**  
**M-M POWER UNITS**

Easy To Own  
Economical To Operate

We Have Power Units To Suit Your Every Need!  
Talk To Your Neighbor Who Owns One.  
Come In And Let Us Show You How You Can Get The Utmost In Satisfaction, Economy, Service, And Performance.

MINNEAPOLIS-MOLINE POWER UNITS  
ARE THE BEST BUY!

**USED POWER UNITS**

- 1 - Used Case Motor.
- 1 - Used Motor.

PRICED TO SELL!

**FRY & COX BROS.**

PHONE 3660 MULESHOE

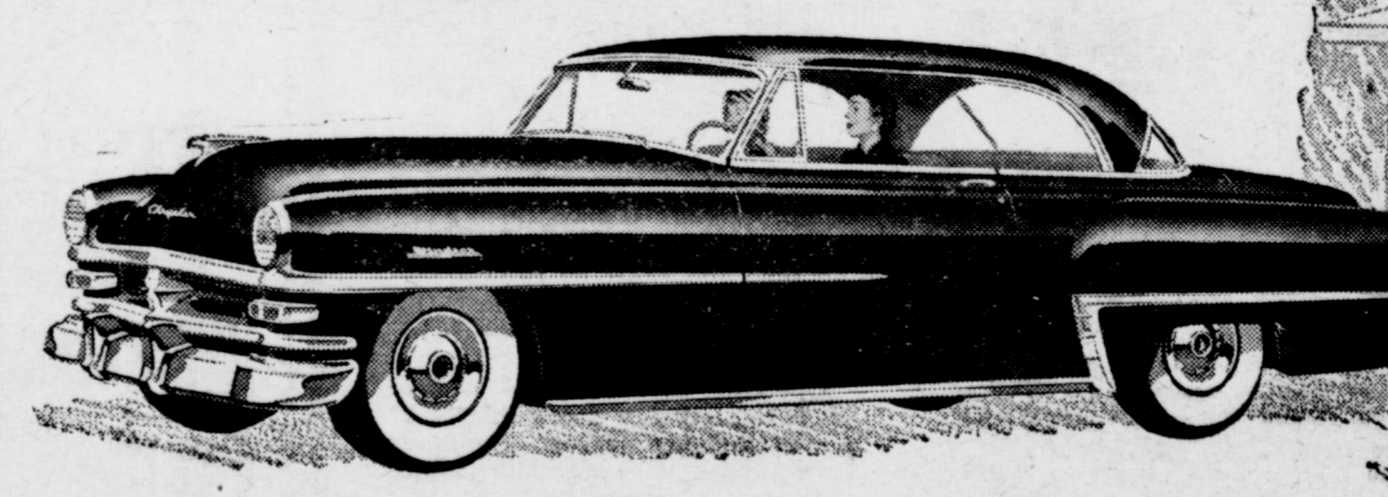
It's A Bearcat In Performance  
**CHRYSLER V-8**  
**And 6-Cyl. Irrigation Motors**

STURDY — DEPENDABLE — BUILT TO LAST.

We Are Prepared To Service Your Irrigation Motor When You Need It.  
FIELD AND SHOP SERVICE

**MORRISON MOTOR CO.** —Phone 4130

It's the very **LOWEST-PRICED** of America's "First Family" of fine cars



- Meet the beautiful new Chrysler Windsor . . . one of America's First Family of Fine Cars!
- It can be yours for little more than a low-priced car with all its extras! Yet see what you get . . .
- Chrysler size, Chrysler safety, Chrysler quality, Chrysler prestige . . . and the finest engineering in any car today!
- New Spitfire engine: most tremendous performer of its kind ever built . . . and full-time Power Steering, if you wish it: last word in steering control!
- New-type shock absorbers that smother all road bumps . . . make riding fatigue as "obscure" as the buggy whip!
- The satisfaction and pride of possession that makes Chrysler owners stay Chrysler owners!
- Stop in today and learn how readily you can own a beautiful Chrysler . . . at surprisingly modest cost!

The beautiful **CHRYSLER WINDSOR**—one of America's first family of fine cars!  
**MORRISON MOTOR CO. - MULESHOE, TEXAS**

### Mar. 1st to Mar. 7th Public Schools Week In Texas

Plans for the third annual Public Schools Week in Texas during the week of March 1st to March 7th were laid at a meeting held Monday night at Gerald's Cafe. The meeting, presided over by H. H. Potter, was attended by representatives of the Rotary Club, Lions Club, Jaycees, P. T. A. and the Masonic Lodge.

Ray Griffiths was elected Chairman and Mrs. L. T. Green was elected Secretary of the committee in charge of drive to get parents to visit the schools during the week of March 1 to March 7. Mr. Griffiths said that he felt that it was not a duty but an obligation for every parent to visit the school or schools in which their children attended.

Programs for the week were discussed but not fully developed at the meeting and will be announced at a later date.

All pastors of the various churches throughout the county are urged to help carry out this program by reminding their congregation of the event.

**BRAYS HAVE VISITORS**  
 Visiting Sunday in the home of Mr. and Mrs. Clyde Bray were J. T. Carpenter of Idabel, Okla., a brother of Mrs. Clyde Bray, Mrs. Claude Price of Thalia, Texas, Mrs. Junior Foster and baby of Thalia, Mr. and Mrs. Leon Blodell of Dimmitt, Mr. and Mrs. Lynn Smith and children of Hereford, Mr. and Mrs. Thompson and daughter of Dimmitt, Mr. and Mrs. Horace McAdams of Amarillo, Mr. and Mrs. Dan Bray and

daughter of Lubbock, Mrs. Clyde Bray, Jr. and children of Pampa, Jimmy Wingo and Miss Howard of Lazbuddie.

Also present were Mrs. Bray's parents, Mr. and Mrs. George Carpenter of Earth, Mr. and Mrs. Jay Alvin Stevens of Dimmitt, and Mr. and Mrs. W. B. McAdams of Amarillo.

**HALLS HAVE GUEST**  
 Billy Crouch of Littlefield spent the week with his sister, Mrs. Eual Hall of the Lazbuddie community.

### Muleshoe Lions Hear Coach Koen Wednesday Noon

The Muleshoe Lions Club inducted four new members at their weekly noon meeting. The new members inducted were Jerry Kirk, W. E. Young, Red Simmons, and W. Q. Casey. The new members were presented to the club and given their pins by Jeff Peeler.

The program for the day consisted of a pair of talks given by Coach Bailey and Coach Koen. Coach Bailey gave a brief resume of why we have not had any basketball tournament here in Muleshoe, the reason largely being inadequate facilities. Coach Koen gave the Lions and visitors an awe inspiring message on "The Forgotten Citizen". After his talk the members gave him a rising vote of appreciation. The program was presented by Noel Woodley.

All Lions and Ladies were given an official invitation by President Bill Moore to be present at the Charter night in Bovina, March 10. The Muleshoe Lions Club are the sponsors of the newly organized club in Bovina.

Visiting the club was State Patrolman James Martin.

**JOHNNY LADD PLEDGES OKLA. U. FRATERNITY**  
 Norman, Feb. 6 — The men of Delta Chi, men's national social fraternity on the campus of The University of Oklahoma, announce with pride the pledging of John Ladd, son of Mr. and Mrs. Earl Ladd, Muleshoe, Dale Reneau, Mountain View, president, announced today.

Ladd is a freshman at Norman and is majoring in O. U.'s famed School of Chemical Engineering. Pledged at the same time with Ladd was Keith Rowland, Odesa.

**BOVINA STYLE SHOW WILL BE SATURDAY**  
 Valentine's Day, Feb. 14, has been set as the date for the annual Bovina Half Century Club Style Show and the latest spring fashions will be modeled by Parmer County men, women and children. The event has been scheduled for 8 p. m. in the Bovina school gymnasium. A Valentine theme will be used in decorations.

**ATTEND ABILENE FARM BUREAU MEETING**  
 A group of Bailey County Farm Bureau members attended a meeting of West Texas Farm Bureau representatives in Abilene last week. Included in the group were O. C. Thomson, Ray Carter, and Bill Millen. The meeting, held Feb. 5 and 6, featured a service program on insurance.

**SNOW TUESDAY LEFT ONLY .04 IN. MOISTURE**

The weather man tried manfully to give this area some moisture Tuesday. There was at first a sprinkle, then sleet and snow fell at intervals, but R. J. Klump, and Mr. and Mrs. W. B. McAdams weather recorder measured only

1/2 inch of snow and only .04 inch of moisture. Lowest temperature for the cold spell, ushered in at 10 Monday night, was 14 degrees above, Wednesday morning.

GARNER FARM RECORD books on sale at The Journal.

**MULESHOE FUNERAL HOME**  
 Ambulance Service Day or Night  
 DIAL 2860 TRAVIS E. REED, Mgr.



Flattering White Pique jacket for you. Sanforized. Styled Right.

only \$5.98

The Fashion Shop  
 Muleshoe Texas

**DR. B. R. PUTMAN OPTOMETRIST**

First Door North of REA Building  
 Muleshoe, Texas Phone 6560

**Mrs. Sam McKinstry**

TEACHER OF PIANO

2 Blocks South of Junior High — 2 Blocks North of High School

P. O. Box 1123 — Telephone 2370  
 902 W. 5th Street — Muleshoe, Texas

8-1tp.

**STOP PROTECT YOURSELF!**

EVERYTHING GONE — BUT YOUR INSURANCE

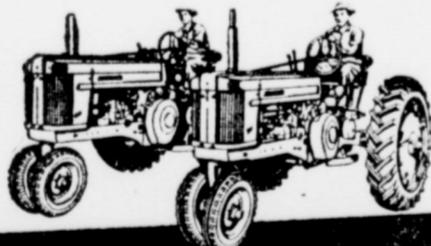
Fire or explosion may rob you of everything you own — but insurance is safe... and so are you when you're insurance-protected.



COMPLETE FIRE COVERAGE  
 FARM LOANS • AUTO FINANCING  
**POOL INSURANCE AGENCY**

W. M. Pool Jr. Lee Pool  
 Phone 7010 Muleshoe

**Another Great Feature of the JOHN DEERE "50" and "60" Tractors...**



**new "LIVE" Power Shaft**

You'll reduce clogging of power-driven machines to the very minimum... cut clutching and shifting time and effort by two-thirds—speed up every PTO job with a John Deere "50" or "60" equipped with the new "live" power shaft.

Operating completely independent of the transmission clutch, this "live" power shaft provides continuous power for operating PTO machines as long as the tractor engine is running. You can stop forward travel at any time, start up again while the power-driven machine continues to operate at full speed without interruption.

An independent clutch completely protects the power shaft and cushions shock loads on equipment. And for extreme conditions, a low gear of 1-1/2 mph lets you creep along taking in heavy crops slowly while the power shaft operates the power-driven machine at maximum capacity.

**OTHER OUTSTANDING FEATURES:**

- Duplex Carburetion • "Live" High-Pressure Power-Trol • Quick-Change Wheel Tread • Effortless Steering • Ultra-Modern Engineering • Greater Convenience • Unexcelled View • Unequalled Two-Cylinder Strength and Simplicity.

**DAVIS - LENDERSON**

YOUR JOHN DEERE DEALER  
 PHONE 2970

MULESHOE

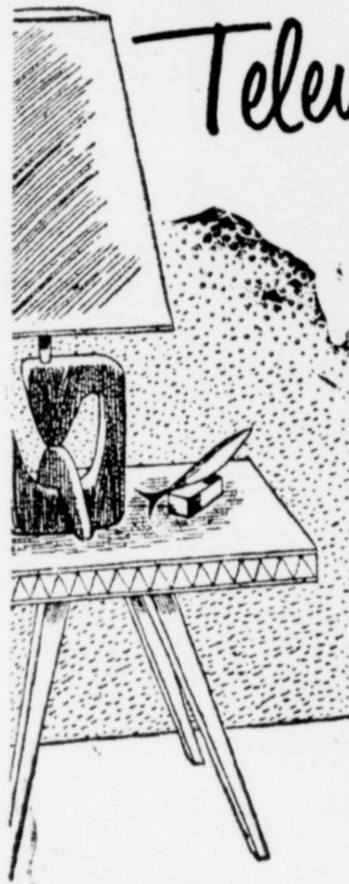


See Your JOHN DEERE Dealer for Quality Farm Equipment

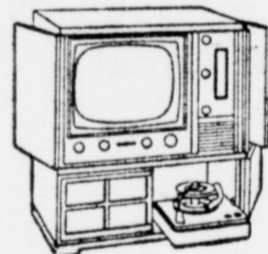
**\$5.00 HOLDS any TV SET**

You'll See more —  
 You'll Hear more —  
 with this lowest-priced 21-inch

**RCA VICTOR**  
 Television Combination



Model 21T242



- ★ 3-way Enjoyment
- ★ 21-inch Television with the Magic Monitor
- ★ Powerful A.M. Radio with 12-inch Speaker
- ★ "Victrola" 3-speed Automatic Record Changer
- ★ "Golden Throat" Tone System
- ★ Record Storage Space

RCA Victor Westland. Luxurious combination for all-round entertainment at a very low price. You'll have the finest listening you've ever dreamed of—RCA Victor's famous "Golden Throat" Tone System brings it to you! And marvelous 21-inch

television is yours, too—clearer, steadier pictures, through the exclusive Magic Monitor circuit system. Handsome Contemporary cabinet finished in mahogany; blond finish slightly higher (Model 21T242)

This set is easily adapted for U.H.F.  
 Ask about the RCA Victor Factory Service Contract

**Enjoy BIG screen, glare-free TV**



Target Tuning  
 Glare-Guard Screen  
 Area Selector Switch  
 Concentrated Power

**Motorola**

20-INCH SCREEN TV

249.95 Plus Tax

\$41.45 DOWN  
 \$3.75 WEEKLY

Smooth Mahogany-color leatherette finish. "Golden Voice" sound. Electro-Lock Focus, Built-in Antenna.

**Motorola**  
 NEW 1952 17" TV



199.95 Plus Tax

\$33.20 DOWN  
 \$3.00 WEEKLY

...with Glare-Guard Screen

Sharp, clear, steady 17-inch pictures with famous anti-reflection Glare-Guard. Instant tuning of both "Golden Voice" sound and picture. Step-up power Area Selector Switch, variable Acoustinator Tone Control, Built-in Antenna. Mahogany plastic modern cabinet.

**JOHNSON - POOL**

Tire & Appliance



TIRE HEADQUARTERS

Phone 7370 — Muleshoe