

The Muleshoe Journal

DEDICATED TO THE PROGRESS AND DEVELOPMENT OF BAILEY COUNTY AND THE GREAT MULESHOE COUNTRY

VOLUME 31, NUMBER 17

MULESHOE — County Seat of Bailey County — TEXAS

THURSDAY, APRIL 16, 1953

FAITH IN THE FUTURE

An Editorial
The Journal hopes that the people of the Muleshoe Independent School District will go to the polls Saturday and vote to authorize the district to issue bonds in the sum of \$80,000 to finance the erection of a physical education building as an adjunct to our fine school plant.

In our opinion the plant, as wonderful as it is, still lacks completion until we have physical education facilities for hundreds more of our 1,400 school children.

We have refrained from a public espousal of some bond issues in the past; we are completely sold on the necessity for this "down to earth" proposition which you will be expected to register an opinion the coming Saturday.

Some of our friends have said they will oppose the authorization of the bond issue at this time. We have no criticism to offer. We simply are for it, we would like to see this needed facility for the development of our boys and girls provided.

Anyone who thinks at all is bound to realize that such improvements and additions cost money. So does the addition to your church, improvements to your home, paved roads and streets, better power, light, sewer and water facilities. Anything that is worth having costs money; that this bond issue will cost YOU an additional tax outlay is highly questionable.

Moreover, additions that cannot be avoided by 1955 will cost money. Certain additions to our school plant will be required in years to come, of that you may be sure; nevertheless, we would like to point out that the Muleshoe Independent School District is a large, growing district, that it is occupied by a prosperous people, a progressive people, and this small outlay for a required facility is small compared to the total assets of the people who live in this district, and small in comparison to the assessed valuation.

But, as important as money is in our daily lives, it surely is not important at all when the proper development of our boys and girls, the country's greatest assets, and the betterment that will come about in community living are considered. As much as this writer believes the coming up generation to be the all-around best, the most wholesome the earth has seen in its long, long history, he can see that more youth can be reached, more boys and girls can be properly trained and directed for the welfare and glory of our country. You have the power to decide Saturday whether more boys and girls will participate in more of the "good things" of school and community life.

Let's demonstrate our faith in the future of Muleshoe district and the future of our country.

— J. M. FORBES

Mystery Farm Drew 40 Guesses

An alert milk plant operator, Dudley Malone, was the first to correctly identify the Mystery Farm last week. The ink was barely dry on the paper when he got it out of the post office and turned in his guesses as the first of a parade of 40 persons to turn in their guesses as to the identification of the place shown.

For out of city guessers, H. D. Holley of Route 2 turned in the first identification, or these two, the Western Fertilizer, which sponsored the picture last week, has two passes each to the Cox Drive-In Theatre.

The place was the State Line Farms, out in West Camp community, located right on the border between Texas and New Mexico. Zee McDaniel is the proprietor of the farm and the big cattle feeding operation carried on there.

Another Mystery Farm picture is carried in this week's paper. See how quickly you can figure out the right identification.

The owner of each farm to be shown in this series has a free print of the picture awaiting him at the Journal office.

Manager Gone Fishing

Red Simmons, manager of the Piggly Wiggly Store, is spending the balance of the week at Possum Kingdom on a little fishing trip. The trip is being sponsored by the Davis and Humphries Piggly Wiggly stores for their store managers.

Bailey Circus Here April 23

MORE ACRES WANTED

Farmers Interested In Castor Bean Growing To Meet Monday

Lion Ladies Nite Set For April 21



BUFF MORRIS

Guest speaker for the Muleshoe Lions Club Ladies night Tuesday, April 21 will be District Governor Buff Morris of Canyon. This will be the second Ladies Night this year. Visitors are expected from the newly organized Bovina club. President Bill Moore got on this reporter for having stated in last week's issue of The Journal that Ladies Night would be April 27, excuse it! The meeting will be held at the Fellowship Hall starting at 7:30 p. m.

Noel Woodley reported on the progress of the committee for the new school gymnasium and urged every Lion to get out and vote and to get the vote out.

Roald Johnson and Bill Willis entertained the club. Roald gave the address that won his first place in the District competitions on declamation. Bill Willis sang several popular songs.

Ray Franz, manager of the Muleshoe Chamber of Commerce, has been appointed Lion at Large by President Bill Moore.

Ann Cole Is Ready Writer Winner

Roy Dykes, English instructor at Three Way high school, entered Mamie Lee Fowler and Ann Cole in the district 6-B Ready Writers Contest at Anton Friday, April 10.

Ann Cole won first place on the topic of "On What Basis Should I Choose My Friends." Second place winner was Nona Faye Ponder of Anton. Ann and Nona Faye will enter the regional Ready Writer's contest to be held at Lubbock next week.

Bass Appliance Starts Consolidation Sale

Bass Appliance Store begins their big consolidation sale Friday, April 17. The sale is being held as a result of Harvey Bass buying out the Harper Appliance Store. In spite of the fact that Harvey is calling this a Consolidation sale, Mr. Harper will not be connected with the Bass establishment.

announced this morning he will take the eleven tracksters who qualified for the regional to Clovis, plus perhaps a freshman or two to give them experience.

Coach Koen wished to remind the fans that the preliminaries will be held Friday afternoon and the finals will be reeled off that night, so that more local sports followers will find it convenient to attend.

The eleven men qualified for the regional meet are first, second and third place winners in the district. The Mules won the district meet Saturday at Lubbock, repeating their win of last year. Ten schools are entered in the Clovis meet, Muleshoe being the only Texas school to enter.

Tom Hutchins, of the Pacific Vegetable Oil Corp., will be here the coming Monday to contract acreage for castor beans in this territory.

He will be at the PMA office from 8 a. m. to 12 noon and invites any farmer who is interested to discuss the various phases of the crop with him.

PMA will not handle the crop this year as they did the past year. Last year, in the territory immediately surrounding Muleshoe, there were about 450 acres planted to castor beans.

PMA local officials said that so far as they could learn, those farmers who produced castor beans last year on a more or less experimental scale, were very well satisfied with the crop. It's fairly easy to cultivate and few insects will take the trouble to bother the stalks or fruit; harvest can be done mechanically and it was said returns compare favorably with those from cotton.

Mr. Hutchins said prospects are that around 1350 acres will be planted to castor beans this year in this neighborhood.

Castor oil is listed as a critical war item by the War Munitions Board. Over 300 million pounds of castor beans are imported annually and large volume markets are assured for the crop.

The Pacific company's bulletin says: In the High Plains area of Texas and New Mexico the optimum time to plant castors is in late April and the month of May. June plantings do not normally yield as much as the earlier plantings.

Mules Second In Golf Tourney

Muleshoe high school won second place in the Interscholastic League district meet held here last Friday. Littlefield's team was first, and these two teams will represent the district in the regional meet.

Muleshoe's golfers were Phil Province, Gaylord Tate, Stanley Fox, and Jimmie Wilkerson. T. J. Bailey, Muleshoe coach, directed the tournament.

Slaton's team was third. Singles placings were: Jack Russel, Morton, 1; Newton, Littlefield, 2; and Burns, Morton, 3.

Local Boy Scouts Attend Camporee

Boy Scouts of troop 20 of Muleshoe left Friday afternoon for a district camporee where they won second place in competitive events with other scouts of this district. They received a blue ribbon and the opportunity to go to Lubbock to a regional camporee.

The boys also won a red ribbon for their high score in camping and competitive events.

Boys who won these were Buddy Peeler, Mike Morgan, Marlin Mills, Dudley Bristow, Pat Childers, Joe King, Clinton Murrah, Mack Hale, Horace Richards, Jim Pat Patterson, Donald McDaniel, Jack Rubinek, Wink Thomas, Thurman Elder, Bobby Robbins, Bob Jennings, Arthur Charles Splawn, Max King, Jimmy Laux, Derald Oliver, and Jerry Berry.

Also attending were senior patrol leader, Jimmy Wilkerson, and visitors from the post, Ralph Ware and Butch Lenau.

Adults attending were assistant scout master, David McReynolds, Cub Master, Alex Wilkins of Muleshoe and Explorer Advisor of Muleshoe, Vernon Baker.

Transportation was furnished by Jeff Peeler, Leo Laux, Robert King, Morris Childers, and by King Brothers Elevator who furnished a pick-up.



Circus Features Elephants, Too!

City Folks Lag In Blood Drive

Muleshoe folks are lagging in signing pledges to give their blood to fight polio and to assist in the recovery of wounded service men in Korea. At the same time rural folks of Bailey County are responding nobly.

This is the word passed on by Buddy Blackman, county blood drive chairman, who is attempting to accumulate 200 pints of the precious fluid when the Red Cross Bloodmobile Unit visits this city Monday, March 27.

Those who do not have the pledge cards, or who will need transportation to the American Legion Home where the bloodmobile station will be, are asked to call one of these:

- Mrs. Arnold Morris.
- Mrs. Buford Butts.
- Mrs. Pauline Middlebrooks.
- Mrs. Dorothy Barron.
- Muleshoe Chamber of Commerce.

200 Pints Blood Is Quota Here

Several committees are working to obtain donor pledges throughout Bailey County for the visit here April 27 of the Red Cross Bloodmobile. Buddy Blackman, drive chairman, announced committees have been named in each community to further the campaign.

This time, the quota assigned is 200 pints of blood. It has been pointed out that the blood accumulated now will be for use in making gamma globulin, basis of an immunization formula to prevent polio. Some of the blood, too, is destined for use by wounded service men in Korea.

Some 155 pints of blood were given by local people when the Bloodmobile last visited here.

D. Warner Will Head Trustees

Muleshoe school board was reorganized at the meeting Monday night. D. Warner was elected president.

The board had previously canvassed the results of the election held April 4 and declared Buford Hunt and M. H. "Chic" Ottwell duly elected. The two men qualified as trustees.

David Anderson was elected vice-president and Jim Cox was reelected secretary.

Two Performances At Rodeo Grounds

The Circus is coming to Muleshoe! Bailey Bros. Circus will be here for two performances next Thursday, April 23. Shows will be at 3 p. m. and 8 p. m.

The Circus will show at the Muleshoe Roping Arena, under auspices of the Muleshoe Junior Chamber of Commerce.

It is a new, modern show, all outdoor, with three rings and a platform, so that plenty of excitement will be going on at all times.

Many advance tickets have been sold and these will be honored at both shows.

Circus people have called special attention to their two aerial ballets, "Home on the Range," and "Lilac Time" and advise these alone will be worth the price of admission. Tommy Comstock directs the music for these ballets.

In all there are 46 acts and 26 displays. The Circus comes by motor caravan from Tulsa, and will show next at Brownfield. Admission prices are \$1.00 for adults 60 cents for children, including all taxes.

New Council Takes Office

The new city commission was organized at the regular meeting Wednesday night. Will Hamper, reelected, Johnny Johnson, and George Mayo, elected for their first term all qualified. W. T. Bovell took over as mayor. The holdover members are N. H. Greer and Sam Fox.

Greer was picked to be mayor pro-tem, to act in absence of the mayor. All city employees were reemployed.

The council voted to advertise for bids for construction of a new city hall, lot for which already has been purchased. Notice of calling for bids will be published in The Journal, probably next week.

G. A. Sahli, auditor, told the council that his audit, nearly complete, shows the city to be in excellent financial condition. He said the city has a nice cash balance, even after paying for the new street sweeper, new fire truck, and buying the lot for the new city hall.

The council said a new "Super-Mist" sprayer, to be used in fighting insects here will be delivered this week at a cost of \$1,700. It can shoot the mist to the very tops of the tallest trees.

BANK CLOSED TUESDAY
The Muleshoe State Bank will be closed Tuesday, April 21, for San Jacinto Day.

More Points For Muleshoe



Calvin Turner shown winning the 440-yard dash at the Interscholastic League track meet Saturday as the Muleshoe lads won the district title.

Muleshoe Track Team Crowned District Champ In Lubbock Meet

By JOE KELLY
In Avalanche-Journal
Muleshoe Mules, defending District 4-A Conference track champions, came from behind in the fading moments of Saturday's district meet at Texas Tech to nose out Brownfield 46½ to 4 5-6 to defend their title and qualify 11 men for the regional tournament.

Littlefield took third in the meet with 28 points, with Morton chalking up 13. Behind these four were Levelland with 10 1-3 points; Tahoka, 7½; and Slaton, 3½.

Muleshoe's victory technically came on the mile relay, the final event of the day. The Mules churned home second, barely staving off a desperate Brownfield finish, to chalk up the winning edge.

But actually, stocky Eugene Buhrman provided the Mules with their clinching margin on a third place finish in the broad jump. That event, started long before the mile relay, wasn't

finished until after the last relay man had crossed the wire. When the results were in, Jackie Stockton of Brownfield, high point man in the meet with 15 1-3 points, and Buck Johnson of Muleshoe had tied for first place. Each leaped 19 feet and a half inch and could do no better.

Along came Buhrman, who had won the 100-yard dash, finished fourth in the 220-yard dash and run on the 440-yard relay. His broad jump leap brought him in third in that event and shot Muleshoe into the lead.

Times Are Slow
Times generally were slow because of a strong cross wind that buffeted the runners, but the meet was close almost all the way. Brownfield took an early lead and at one time held an advantage of 15 points.

But Muleshoe cut into this margin to send the two teams into the home stretch neck and neck, winning out in the final two events.

100 yd. dash — Won by Buhrman, Muleshoe; Northam, Littlefield, second; Smith, Tahoka, third; Moore, Muleshoe fourth. Time—10.6.

220 yd. dash — Won by Murphy, Brownfield; Israel, Levelland, second; Smith, Tahoka, third; Buhrman, Muleshoe, fourth. Time—23.5.

440 yd. dash — Won by Turner, Muleshoe; McIntire, Brownfield, second; Reynolds, Slaton, third; Perkins, Littlefield, fourth. Time—54.8.

880 yd. dash — Won by Holt, Muleshoe; Bailey, Brownfield, second; Kemmerer, Littlefield, third; Elders, Muleshoe, fourth. Time—2:07.6.

Mile run — Won by Johnson, Muleshoe; Kimbrough, Muleshoe, second; Richards, Muleshoe, third; Morgan, Slaton, fourth. Time—4:51.2.

Muleshoe Track Team To Clovis

Muleshoe's district champion Mules track team will seek further honors in the Clovis Invitational Track Meet, to be held Friday of this week. Coach J. C. Koen

WHY WE ARE FOR A Physical Education Building For The Muleshoe Independent School District

1. Present classes in our one building average 40 to 70 students for each of the six school periods. Many of those in the present classes cannot even participate for lack of space.
2. Not more than 300 students can participate in these physical education classes, allowing 50 per class, because of lack of space.
3. There are now over 1400 students in our school.
4. What happens to the other 1,100 students?
5. The State requires Physical Education in accredited school systems. We are not fulfilling that requirement.
6. The proposed new building would be approximately 100'x140' which would give three times the present available space for physical education.

As To Taxes

Our present annual income from taxes, in this school district is approximately \$142,000.

Our school Bonds are being paid off at the rate of approximately \$37,000 per year, principal and interest.

This Bond issue is so set up that it will fit into our present schedule without increasing yearly payments; there being only \$1,000 per year to be paid for the next ten years, plus interest.

We are allowed .50 cents out of

every \$1.50 collected, to go to bond retirement. At present only .40 cents is being used. An additional .10 cents, out of every \$1.50 collected, COULD be used, without any increase in present taxes. (This is approximately \$9,500 annually).

Future Building

As our school continues to grow, additional facilities are going to be necessary.

As the students need more class facilities, and as the town and community grows, we will necessarily have to add to our present buildings.

This summer, we are told, 4 new rooms will be added to the Junior High, from the Maintenance Fund, without increasing taxes.

Last year, a new bus barn, at a cost of approximately \$25,000 was added, from the Maintenance Fund, at no increase in taxes.

EVENTUALLY, as all types of necessary construction is added, there will be an increase in taxes.

We Are Proud Of Our Youth

On them depends the future of this community.

Let's give them a chance physically, as well as in the class room.

LET'S GIVE ALL OF THEM A CHANCE — Not just the ones who are good enough to make the team.

LET'S INVEST OUR MONEY IN OUR YOUTH
INSTEAD OF OURSELVES

PHYSICAL EDUCATION COMMITTEE:

REPRESENTING

Muleshoe Lions Club

Chamber of Commerce

Muleshoe Rotary Club

Muleshoe JayCees

Santa Fe Makes History With Laying Of New 115 Pound Rail

By Kenneth May
Avalanche-Journal Staff Writer

A page out of history is being re-written on the South Plains this spring as the Santa Fe railroad tears up its original rails from Lubbock to Texico, N. M., replacing them with new, heavier steel.

The railroad has declined to release any cost estimates on the gigantic undertaking, but the final outlay undoubtedly will run into the millions of dollars.

With 500 crewmen working daily, it will take until late Aug-

ust for the last rail and the last spike—the same rails that carried the first locomotive northward out of Lubbock—to be replaced.

First Laid In 1913

And, as the rails are torn from their foundations, a link with the days of a bygone era, an era of vanishing rangelands being slowly settled and transformed into a farming mecca, will be lost.

It was in 1913—exactly four decades ago—that these same rails were laid for the first time. It was a period in South Plains

history when the first towns were little more than a general store, a new depot and perhaps a frame hotel; when Lubbock itself was a town of little more than 2,000 population.

But with characteristic pioneer faith in the future, the railroad took a look at the hardy settlers gradually filling the region and built a rail line that would stay. The original grade still carries the daily trains and, until now, the same rails—with the exception of occasional "spot" replacements—have withstood the elements of time and a rapidly-developing region.

Cost Runs High

To the casual observer, the work being done this spring and summer would not appear to be the "million dollar" undertaking which it is. Passing motorists see crews working here and there along the rail line and think little of it.

But, multiply the wages of 500 laborers working five days a week over a period of six or seven months, add the cost of rails, ballast, ties and other materials—and the figure is astronomical.

Spikes alone are reported to cost about six cents each—and there are eight of those in every cross-tie!

87 Miles Of Work

In all, the railroad is re-laying 87 miles of rail, its entire line from the New Mexico border to Lubbock. All along the route, it is throwing out new ballast, replacing worn ties and extending sidings.

Surfacing of the line is being done with volcanic ash imported from Arizona. This superior ballast material is said by railroad men to be so tough that it will dent the steel rails if a train spikes against it. And yet it is a porous material that feels light in the hand.

There are six surfacing gangs employing 374 men and one steel gang employing 125 men—mostly Indians imported from New Mexico—working on the re-lay project. Nonetheless, the work is essentially a mechanical process, with power tools in use to handle rail, adz ties, bolt and unbolt rails, pull and drive spikes, spray creosote, etc.

Old Ballast Removed

With these machines, many of which were designed and developed by Santa Fe's roadway engineers, a few men can handle the same work in less time than it used to take many men to get it done.

A new device, built in railroad shops, is the under-track plow which is in use in the modernization work. Construction of heavy boiler plate, this simple device consists of a flat plow which travels under the ties, pulled by

strong cables attached to outriggers on a work equipment flat car.

As it moves along, the plow completely removes all old ballast from beneath the track structure, a job long an expensive time and labor-consuming process.

Must Reduce Speed

The new rail being laid along the route is larger and heavier than that it replaces. Since workmen lay one rail one day, then back up and lay the other rail the following day, trains are tilted slightly to one side as they pass over the half-completed work. All locomotives reduce speed to from 15 to 20 miles an hour while crossing through the work area.

Officials said that the steel gang will lay one mile of rail on an average day—that's two miles of a single rail, the equivalent of one full mile if both rails were laid simultaneously.

More could be accomplished in a single day but for the fact that the gang must begin stopping work and clearing the track from 30 to 45 minutes before the next train is due.

Track Being Raised

All along the route, the new ballast will be used to raise the track eight inches higher than it now lays. Other improvements will include constructing 8,147 additional feet of siding track at Muleshoe, 1,544 feet at Anton and 1,504 feet at Mill, a siding midway of Muleshoe and Sudan.

Work on the project began at Texico and rail is being laid this week near Sudan, toward the Mill siding. Actual work of the steel gang began Feb. 16 and is expected to be completed in late August or early September. Accumulation of materials and preliminary work started last November.

All the improvement project is under the direction of H. O. Waggoner of Slaton, division superintendent, and R. D. Bisbee, division engineer. The project is similar to one completed two or three years ago between Sweetwater and Lubbock on the same road.

From Texico, the new rails will pass through Lariat, Muleshoe, Sudan, Amherst, Littlefield, Anton, and Shallowater before reaching Lubbock. With upkeep by section hands, the new track is expected to "ride as smoothly as a flying carpet."

And, if the new rails wear as long as the old, children of today's generation may reflect 40 years from now that "new rails being laid from Texico to Lubbock mark the end of a link with the period when this region was just beginning to come into its own and Lubbock was a city of only 95,000 population . . ."

Davis Completes Basic Training

Lackland Air Force Base, Tex.—Harlan E. Davis, 25, son of Mr. and Mrs. J. T. Davis, Star Route 2, Muleshoe, is completing his AF basic airmen indoctrination course at Lackland Air Force Base, the "Gateway to the Air Force."

His basic training is preparing him for entrance into Air Force technical training and for assignment in specialized work. The course includes a scientific evaluation of his aptitude and inclination for following a particular vocation and career.

Doers Class Elects Officers

The Doers Class of the First Baptist Church met Monday night in the home of their teacher, Mrs. A. P. Lambert, to elect officers for the next two months.

Officers elected were: Patty White, president; Sherry Allison, vice-president; Jeanette Harrison, secretary; Sandra Allison, assistant secretary; Billie King and Mozella Ellis, group captains, and Mrs. Lambert, treasurer.

Refreshments of ice cream, cookies and lemonade were served to Patty White, Claudia Cox, Mozella Ellis, Jeanette Harrison, Billie King, Melba Sneed, Sandra Allison, and the hostess, Mrs. Lambert.

Progress W. S. C. S. Begins New Study

"Learning to Know Your Bible" is the text book for the new study course of the Progress Woman's Society of Christian Service.

Mrs. Byron Gwyn, teacher, led a very interesting discussion on this subject at their meeting Thursday, April 9.

Mrs. Gwyn led a brief devotional which included a solo by Mrs. O. S. Richards, a prayer, a hymn and a short talk.

The vice-president directed the business session. Mrs. Troy Actkinson read the minutes and the treasurer's report.

All members are urged to attend the next regular meeting on April 23 from 2 to 4 p. m. at the church. The second lesson of the text will be studied and discussed.

FROM ALBUQUERQUE

Mr. and Mrs. Cecil Spence and family, of Albuquerque, spent the weekend here with their parents, Mr. and Mrs. R. G. Spence and Mr. and Mrs. M. E. Finley.

Farm Bureau News

This legislative session is a busy one, apparently. Every effort is being made by the administration to avoid any new taxes for the next biennium. We think this is good strategy if means can be found for administering efficiently the necessary activities. Texas Farm Bureau strongly recommended increases in appropriations for Texas A. & M. College and extension service and experiment stations.

Production is an important item in assuring a balanced economy, and experimentation is the only method for improving it. Neither the House nor Senate heeded Farm Bureau's recommendations in this case. It is still possible that these vital and necessary increases will be included in the compromise bill to be reported out by the free conference committee.

Of importance to stockmen is S. B. 167 and its companion, H. B. 427, making it illegal to feed raw garbage to swine. These bills were presented in an effort to control vesicular exanthema in swine. Since Oklahoma has passed a similar, but much stronger bill than these, and since most swine from Texas are shipped to Oklahoma, it is very important that these bills be passed as a protection to Texas swine growers.

Unless we have such provisions it is very possible that Texas swine may be barred from entering the adjoining state. Texas Farm Bureau is strongly favoring these bills, in accordance with resolutions adopted at the State Convention last November.

As a result of resolutions approved by Texas members last year, Texas Farm Bureau also favors very strongly S. B. 7, introduced by Senator Grady Hazlewood, authorizing the Railroad Commission to set minimum prices for natural gas in certain areas. Through the opposing interests have made this move look very unfavorable to the consumer, it is a conservation measure that appears necessary if we are to continue to have this economical fuel for Texas use.

These subjects are not in origin, but we feel they are of extreme interest to local agricultural folks.

Consider this: The eyes of the Lord are in every place, beholding the evil and the good. Prov. 15:3.

GARNER FARM RECORD books on sale at The Journal.

Classroom Teachers To Hear Dr. Miller

The Muleshoe Classroom Teachers Association met Monday afternoon, April 13, in the high school building. Mrs. John Watson, president, presided during the meeting.

Dr. James Millar, director of the Good Citizenship Foundation, Portland, Ore., scholar, lecturer and world traveler, who is making a speaking tour of Texas under the auspices of the Texas Classroom Teachers Association, will speak to the association April 23 in the high school lunch room.

Members present were Mesdames Radie Boone, Ed Johnson, H. G. Burchett, Horace Blackburn, Jerry Kirk, Doris Brown, Doris

Johnson, D. B. Lancaster, Ruth Page, Ola Brown, Mabel Dowell, Lucille Shelby, Christine Rutherford, J. Wilson Witherspoon, Miss Effie Childress, Zeffie Childress, Mittie Hill, and Alice Rowen.

NORMAN W. BAYS
Office In Courthouse
Attorney-At-Law
Phone 2670 Muleshoe

FOR ATHLETE'S FOOT A KERATOLYTIC IS A MUST.
What is a keratolytic? An agent that deadens the infected skin. It then peels off, exposing more germs to its killing action. Get T-4-L, a keratolytic, at any drug store. It not pleased in ONE HOUR, your 40c back. Today at DAMRON DRUG STORE.

Mrs. Sam McKinstry

Teacher of Piano

902 W. 5th Street

Muleshoe

Call 2370

CORRECTION

In The Remund-Wilson Ad Appearing Elsewhere In This Paper MEN'S BROAD-CLOTH SHOES — Should Have Read

Men's Broadcloth

SHORTS

Regular 79c Value

59c

Sizes 28 to 42

REMUND-WILSON

Listen Mom Have You Tried MELORINE

The Tastiest Most Delightful Frozen

Dessert You Have Ever Eaten

And . . . It Is Healthful Too. One Quart

Of Melorine Contains . . .

1546 Units of Vitamin A

309 Units of Vitamin D

Get It At Your Favorite Grocery



Malone

MILK COMPANY
Muleshoe

New Low Price!



EASY TERMS

Famous
PHILCO Dairy Bar Refrigerator

with Exclusive
CHEESE KEEPER

Keeps Cheese Fresh for Weeks

Built-in compartment is specially equipped to preserve cheese freshness and flavor as recommended by the U.S. Department of Agriculture.

PHILCO 736—Never before such deluxe features at this low price. Complete Dairy Bar with Cheese Keeper and Butter Keeper. Huge built-in full-width Freezer. Fully Adjustable Shelves • Quick Chiller. Plus the matchless beauty of Philco "Key Largo" color styling. Be sure to see this sensational value.

DYER

Hardware And Furniture

PHONE 2590

MULESHOE

Consolidation SALE!

Never before has there been such a sale in Muleshoe. This sale is the result of our buying out the Harper Appliance and the additional merchandise has made it impossible for us to continue to handle the products we buy from Firestone . . . therefore it is necessary for us to cut prices to the bone in order to make room for the beautiful new Frigidaire Appliances. You'll find things you need at such low prices you can't afford to pass them up.

ALL SALES FINAL - NO EXCHANGES - NO REFUNDS

SALE STARTS FRIDAY APRIL 17 - DOORS OPEN 8 A. M.

| | | |
|---|--------------|-------------|
| G. E. MIXER | Reg. \$39.95 | Now \$31.47 |
| Without Juicer Hamilton Beach Mixer | Reg. \$37.50 | Now \$29.53 |
| Sunbeam Mixer | Reg. \$46.50 | Now \$37.63 |
| Hamilton Beach Mixit | Reg. \$18.75 | Now \$14.17 |
| Cory Automatic COFFEE BREWER | Reg. \$34.95 | Now \$27.96 |
| Automatic Knapp-Monarch COFFEE MAKER | Reg. \$34.95 | Now \$27.96 |
| Sunbeam COFFEEMASTER | Reg. \$36.50 | Now \$29.98 |
| Mirro-Matic Automatic COFFEE MAKER | Reg. \$12.75 | Now \$9.98 |
| Universal COFFEEMATIC | Reg. \$29.95 | Now \$23.47 |
| West Bend FLAVORMATIC | Reg. \$11.95 | Now \$9.98 |
| Universal STROKE-SAVER | Reg. \$13.95 | Now \$10.89 |
| GE IRON | Reg. \$12.95 | Now \$9.95 |
| PROCTOR IRON | Reg. \$12.95 | Now \$9.95 |
| SUNBEAM IRON | Reg. \$14.95 | Now \$11.98 |
| CASCO STEAM IRON | Reg. \$19.50 | Now \$16.14 |
| GENERAL MILLS IRON | Reg. \$14.95 | Now \$11.79 |
| Knapp-Monarch IRON | Reg. \$9.95 | Now \$7.98 |
| General Mills STEAM ATTACHMENT | Reg. \$8.95 | Now \$6.50 |
| PRESTO DIXIE FRYER | Reg. \$39.95 | Now \$32.49 |
| ARVIN ELECTRIC COOK | Reg. \$29.95 | Now \$23.87 |
| Universal COOK-A-MATIC | Reg. \$34.95 | Now \$28.47 |
| Dominion WAFFLE BAKER | Reg. \$10.95 | Now \$8.97 |
| CORN POPPER | Reg. \$9.95 | Now \$7.49 |
| TOW CHAINS | Reg. \$3.29 | Now \$2.73 |
| TOW CABLES | Reg. \$2.98 | Now \$2.03 |
| Seal Beam Tractor Lamps | Reg. \$6.05 | Now \$4.77 |
| GIANT STOP LIGHT | Reg. \$4.25 | Now \$3.17 |
| HORN | Reg. \$6.95 | Now \$4.93 |
| TOP DRESSING | Reg. .55 | Now .21 |
| RATTLE STOP | Reg. .30 | Now .19 |
| HEADLAMP LENS | Reg. \$1.00 | Now .29 |
| PARA WHITE TIRE COATING | Reg. .69 | Now .47 |
| LOCKING GAS CAPS | Reg. \$2.25 | Now \$1.77 |
| WHITE TIRE CLEANER | Reg. .49 | Now .37 |
| KAR FOAM, Firestone | Reg. .76 | Now .23 |
| HANSON SCALES | Reg. \$5.50 | Now \$4.57 |
| VENTILATOR GASKET | Reg. .60 | Now .43 |
| LAMSWOOL SPONGE MITT | Reg. \$2.65 | Now \$2.29 |
| CHAMOIS | Reg. \$5.25 | Now \$3.97 |
| DUST CLOTH | Reg. .39 | Now ?? |
| CHAMOIS | Reg. \$2.59 | Now \$1.73 |
| OIL, RECOIL, LIGHT | Reg. \$1.25 | Now .89 |
| SHOCK ABSORBER FLUID | Reg. \$2.00 | Now \$1.37 |
| TRAILER HITCH | Reg. \$2.80 | Now \$1.73 |
| EAGLE BRAND WATER BAG | Reg. \$1.29 | Now .99 |
| THERMOS FILLER, Pt. | Reg. .98 | Now .77 |
| THERMOS FILLER, Qt. | Reg. \$1.39 | Now .97 |

| | | |
|---------------------------------|--------------|-------------|
| TRAILER CON. | Reg. \$1.49 | Now .93 |
| FOG LIGHT SWITCH | Reg. .79 | Now .43 |
| SAFELITE (lite reflector) | Reg. \$1.95 | Now \$1.23 |
| TRAFFIC LIGHT FINDER | Reg. \$2.75 | Now \$1.93 |
| NO-GLARE | Reg. \$1.00 | Now .37 |
| BODY BRACKET for mirrors | Reg. .75 | Now .47 |
| REFLECTORS | Reg. .55 | Now .39 |
| REFLECTORS | Reg. .89 | Now .57 |
| REFLECTORS | Reg. \$1.10 | Now .69 |
| MARKER LITE ARMORED | Reg. \$1.19 | Now .83 |
| EXHAUST EXTENSION | Reg. \$3.69 | Now \$2.67 |
| GREASE GUN | Reg. \$5.50 | Now \$4.39 |
| SLUMBERIDE | Reg. \$2.19 | Now \$1.00 |
| DAIRY SPRAY | Reg. .98 | Now .27 |
| MOTHPROOFER | Reg. .98 | Now .29 |
| ARM REST COVERS | Reg. \$2.75 | Now \$1.57 |
| STEERING WHEEL COVERS | Reg. \$1.00 | Now .77 |
| FOAM RUBBER CUSHIONS | Reg. \$5.50 | Now \$4.39 |
| FAN BELTS | Reg. \$2.89 | Now .99 |
| CUSTOM TRAY | Reg. \$1.50 | Now \$1.09 |
| SPINNER KNOBS | Reg. \$1.25 | Now .93 |
| CAR RADIO | Reg. \$59.95 | Now \$43.95 |
| Heating Cig-Lite Elements | Reg. \$1.00 | Now .67 |
| CIG-LIGHTER | Reg. \$2.85 | Now \$2.37 |
| Rear Fender Ornament | Reg. \$1.50 | Now .97 |
| HOOD ORNAMENTS | Reg. .75 | Now .37 |
| Owl Hood Ornaments | Reg. \$2.95 | Now \$1.93 |
| VENT MASTER | Reg. \$1.09 | Now .77 |
| FENDER FLAPS | Reg. \$3.50 | Now \$2.67 |
| GLARE SHIELDS | Reg. \$3.95 | Now \$1.97 |
| GLARE SHIELDS | Reg. \$1.98 | Now \$1.29 |
| ENGINEAIR PUMP | Reg. \$5.75 | Now \$4.95 |
| ENGINEAIR 25 FT. HOSE | Reg. \$3.10 | Now \$1.50 |
| LUG WRENCH | Reg. \$1.39 | Now .98 |
| MAC'S-IT-KIT | Reg. \$2.00 | Now \$1.29 |
| STATIC STOP | Reg. .29 | Now .47 |
| COOLING SYSTEM SEALER | Reg. .60 | Now .39 |
| ZORBIT (prevents frozen lines) | Reg. .75 | Now .47 |
| MAC'S STOP LEAKS | Reg. \$1.00 | Now .67 |
| MAC'S 13 | Reg. \$1.00 | Now .67 |
| MAX OIL | Reg. \$1.00 | Now .67 |
| WHIZ | Reg. 50 | Now .31 |
| Hydraulic Brake Fluid (Safeway) | Reg. .65 | Now .33 |
| Hydraulic Brake Fluid (Pioneer) | Reg. .75 | Now .47 |
| Firestone Liquid Wax | Reg. .69 | Now .34 |
| CASITE | Reg. .85 | Now .63 |
| WARNER LIQUID SOLDER | Reg. .75 | Now .47c |
| CLOTHES CARRIERS | Reg. \$1.55 | Now \$1.19 |
| HYDRAULIC JACK OIL | Reg. \$1.20 | Now .93 |
| PATCH CLAMP | Reg. \$8.95 | Now \$5.95 |
| TIRE VALVE CORES, box | Reg. .30 | Now .17 |
| MONKEY GRIP PATCHES | Reg. \$2.50 | Now \$1.95 |
| ROOL PATCH | Reg. \$6.25 | Now \$2.00 |

| | | |
|-----------------|--------------|------------|
| SPARK PLUGS | Reg. .85 | Now .59 |
| TURN SIGNAL KIT | Reg. \$11.75 | Now \$8.95 |
| FUEL PUMP | Reg. \$4.95 | Now \$3.99 |
| MIRROR | Reg. \$2.75 | Now \$1.97 |
| MIRROR | Reg. \$1.98 | Now \$1.43 |
| MIRROR | Reg. \$2.49 | Now \$1.87 |
| MIRROR | Reg. \$3.30 | Now \$2.67 |
| MIRROR | Reg. \$4.85 | Now \$3.27 |

EVERY ITEM A SPECIAL

| | | |
|----------------------------------|------------------------|------------------|
| FUNNELS | Reg. .35 | Now .27 |
| FUNNELS | Reg. .30 | Now .21 |
| FUNNELS | Reg. .25 | Now .18 |
| FUNNELS | Reg. .20 | Now .14 |
| FUNNELS | Reg. .15 | Now .9 |
| LANTERNS | Reg. \$6.95 with batt. | Now \$5.97 |
| TROUBLE LIGHT | Reg. \$2.50 | Now \$1.97 |
| INK CARTERS | Reg. .10 | Now .04 |
| FIRE EXTINGUISHERS | Reg. \$2.59 | Now \$1.97 |
| PERMATEX | Reg. .25 | Now .19 |
| CELLAR WINDOW SET | Reg. .29 | Now .15 |
| WOOD JOINT FASTNERS | Reg. .15 | Now .08 |
| HOSE CONNECTORS | Reg. .25 | Now .18 |
| HOSE CONNECTORS | Reg. .43 | Now .37 |
| LOOSEN ALL | Reg. .35 | Now .28 |
| RULES | Reg. \$2.25 | Now \$1.87 |
| HOSE WASHERS | Reg. .10 | Now .07 |
| PEAK Qt. | Reg. \$1.00 | Now 76c |
| GAS HEATERS | Reg. \$15.45 | Now \$10.95 |
| Heathglow GAS HEATERS | Reg. \$19.50 | Now \$14.50 |
| Super Glow GAS HEATERS | Reg. \$14.95 | Now \$9.95 |
| Thermolair GAS HEATERS | Reg. \$24.95 | Now \$19.65 |
| Bathroom GAS HEATERS | Reg. \$8.95 | Now \$5.77 |
| Bathroom GAS HEATER | Reg. \$7.50 | Now \$6.33 |
| ROASTER CABINETS | Reg. \$27.95 | Now \$19.95 |
| MAGIKAN | Reg. \$6.95 | Now \$5.47 |
| Step on Can porcelain, inset | Reg. \$4.95 | Now \$3.69 |
| Large WASTE BASKETS | Reg. \$1.15 | Now .89 |
| Model Toy Fire Truck | Reg. \$14.95 | Now \$10.00 |
| Model Fire Trucks | Reg. \$12.95 | Now \$8.98 |
| Men & Boys Leather Belts | Reg. \$1.50 | Now \$1.00 |
| Men & Boys Leather Belts | Reg. \$2.00 | Now \$1.33 |
| Men & Boys Leather Belts | Reg. \$2.50 | Now \$1.75 |
| Men & Boys Leather Belts | Reg. \$3.00 | Now \$2.00 |
| Men & Boys Socks | Reg. 25c pr. | Now 6 for \$1.00 |
| CLOTHES RACKS | Reg. .89 | Now .42 |
| Filters for Coffemaker, assorted | Reg. .10 | Now .10 |
| ROASTERS | Reg. \$1.50 | Now \$1.08 |
| ROASTERS | Reg. \$1.25 | Now .89 |
| Rubber Maid Stove Mat | Reg. \$1.50 | Now \$1.00 |
| Rubber Maid Drain Rack | Reg. \$3.98 | Now \$2.78 |

FREE FREE

With The Purchase Of A New Frigidaire, Electric Range Refrigerator or Home Freezer - A New Automatic Toaster or Universal Coffee Maker.

With The Purchase of A Necchi or A Goodhousekeeping Zig-Zag Sewing Machine A New Universal Stroke Saver Iron.

New Goodhousekeeping Portable

SEWING MACHINE \$119.50 Val. Regular **SALE PRICE \$57.95**

| | | |
|-----------------------------|-------------|------------|
| DISH PANS | Reg. \$1.09 | Now .89 |
| WATER BUCKETS | Reg. \$1.15 | Now .89 |
| DIPPERS | Reg. .29 | Now .19 |
| PLATTERS | Reg. .39 | Now .29 |
| BLANCHER | Reg. \$2.85 | Now \$2.00 |
| STORPAK, pts. | Reg. \$3.98 | Now \$3.19 |
| FREEZ TAINER, 16 oz. | Reg. \$3.19 | Now \$2.39 |
| FREEZ TAINERS, 25 oz. | Reg. \$3.49 | Now \$2.65 |
| Thermoex Containers | Reg. .95 | Now .83 |
| Kordite Freez Wrap, 18"x55' | Reg. \$1.69 | Now \$1.34 |
| Freezer Paper, 24"x400' | Reg. \$5.40 | Now \$4.29 |
| Freezer Paper, 18x400" | Reg. \$4.95 | Now \$3.79 |
| Lily Oken Bucket, pt. | Reg. \$1.20 | Now .98 |
| Lily Oken Bucket, qt. | Reg. \$1.20 | Now .98 |

| | | |
|---------------------------------------|--------------|------------|
| 24 Piece Stainless Steel Tableware | Reg. \$10.95 | Now \$9.49 |
| 24 Piece Stainless Steel Tableware | Reg. \$6.39 | Now \$5.69 |
| PRESTO COOKERS | Reg. \$12.95 | Now \$9.97 |
| MUSICAL TEA KETTLE | Reg. \$5.95 | Now \$4.96 |
| JUICE-O-MAT | Reg. \$5.98 | Now \$4.94 |
| COLORAMA TUMBLERS | Reg. \$6.98 | Now \$5.97 |

REVERE WARE

| | | |
|------------------------------|--------------|------------|
| 12 In. Covered Skillet | Reg. \$8.95 | Now \$6.72 |
| 10 In. Covered Skillet | Reg. \$7.00 | Now \$5.25 |
| 8 In. Covered Skillet | Reg. \$5.75 | Now \$4.32 |
| 1 1/2 QT. SAUCE PAN | Reg. \$4.95 | Now \$3.72 |
| 2 Quart Covered Sauce Pan | Reg. \$5.50 | Now \$4.13 |
| 3 Quart Covered Sauce Pan | Reg. \$6.95 | Now \$4.76 |
| 2 Quart DOUBLE BROILER | Reg. \$9.00 | Now \$6.75 |
| 1 1/2 Quart DOUBLE BOILER | Reg. \$7.75 | Now \$5.82 |
| 6 Quart DUTCH OVEN | Reg. \$10.50 | Now \$7.88 |

| | | |
|---|--------------|-------------|
| DEFROSTIT | Reg. \$9.95 | Now \$7.93 |
| Sunbeam Attachment SLICER & SHREDDER | Reg. \$12.95 | Now \$10.98 |
| Sunbeam Egg Cooker | Reg. \$12.00 | Now \$10.97 |
| Sunbeam Baby Bottle Warmer | Reg. \$12.50 | Now \$11.68 |
| TOASTMASTER | Reg. \$23.00 | Now \$18.47 |
| SUNBEAM TOASTER | Reg. \$22.50 | Now \$18.47 |
| DORMYER TOASTER | Reg. \$19.95 | Now \$15.97 |
| CAMFIELD TOASTER | Reg. \$23.95 | Now \$19.95 |
| G. E. TOASTER | Reg. \$22.95 | Now \$18.69 |
| ARVIN TOASTER | Reg. \$21.50 | Now \$17.97 |
| BUG SCREENS | Reg. \$1.39 | Now .65 |
| AUTO BASSINETS | Reg. \$5.75 | Now \$3.75 |

ALL SALES ITEMS CASH ONLY

BASS APPLIANCE

PHONE 4690

FORMERLY BASS FIRESTONE STORE

MULESHOE

| | | |
|------------------------------------|--------------|-------------|
| Car Cool Cushions | Reg. \$4.50 | Now \$2.97 |
| New 12-Months, Exchange BATTERY | Reg. \$11.95 | Now \$6.95 |
| Fulton Sunvisors | Reg. \$27.50 | Now \$19.50 |

| | | |
|------------------------|-------------|------------|
| MIRRORS | Reg. \$7.50 | Now \$3.95 |
| STOP LIGHT (small red) | Reg. \$4.95 | Now \$3.35 |
| HEAD LIGHT RELAY | Reg. .98 | Now .63 |

USE OUR WANT ADS TO... BUY SELL RENT TRADE

FREE . . .

THEATRE TICKETS TO SEE

FREDERICK BRIDSON PRESENTS
Rosalind Russell
Paul Douglas
Marie Wilson

in **"NEVER WAVE AT A WAC"**

SUNDAY & MONDAY
 APRIL 19 & 20

COX DRIVE-IN THEATRE

BE SURE AND ASK FOR YOUR FREE TICKETS

With each PAID-IN-ADVANCE classified ad placed in The Journal, we will give one free ticket.

1. PERSONALS

Lawn mowers sharpened with Foley Electrakren Sharpener. Also saws Automatically and Precision filed. 1 block west of Shady Rest. J. H. Sain. 1-17-4tp.

INCOME TAX PROBLEMS?
 See Earl Needham
 Income Tax Service At Clyde Bray
 Real Estate Office

NOTICE: Every family should be protected by a Singleton Burial Policy. We write from birth to ninety years; Inquire or call Muleshoe Funeral Home. Home owned and operated. Dial 2860. 1-17-1tc.

SPECIAL PRICES
 On all Radiators. International Farmall Cores \$25 exchange
STOVALL-BOOHER
 Radiator Sales & Service
 Plainview, Texas

IRRIGATION BOOTS
 We Got 'em for only \$6.95.
 Russell Supply, Muleshoe. 1-17-1tc

WANTED: Sewing in your home on your machine. Mrs. J. C. Biddy, c-o Shady Rest Trailer Camp. 1-17-1tc.

FOR SALE: Army Surplus Gasoline Cans at Russell Supply, Muleshoe. 1-17-1tc.

3. HELP WANTED
WANTED: Colored woman to clean apartments one day a week. Phone 5370. Call between 7 and 8 p. m. 3-17-1tp.

4. HOUSES FOR RENT
FOR RENT: 2 bed room house near May 1. Phone 5460 or call at 910 Ave. H. 4-17-2tp.

FOR RENT: One 3 bedroom and bath and one 3 bedroom and bath 4 miles out on paving. McGee & Burkett. Phone 6940 or 2010 residence. 4-17-1tc.

FOR RENT: 1 3 room house, 1 2 room house at Bluff Grocery, 3 1/2 miles on Plainview highway. 4-18-2tp.

6. ROOMS FOR RENT
FOR RENT: Bedroom, 1408 Ave. E. 6-18-2tp.

8. REAL ESTATE FOR SALE
FOR SALE: 4 unit apartment house. Across the street from hospital. \$9500. terms. S. E. Goucher. 8-20-6tp.

FOR SALE: 4 room house with bath to be moved. G. A. Pittman on Clovis Hwy. 8-20-4tc.

FOR SALE: 3 room house. Inquire Dyer Furniture or call 2590. 8-19-3tc.

FARMS AND HOMES FOR SALE
 We have good farms nearly any size you want for sale. Some are rented for this year. Can get rent. Nice homes in town with small down payments. Give us your listings if you want to sell or trade.

See us before you buy or trade.

HANOVER & DAY
REAL ESTATE
 On Morton Highway
 Just North Of Courthouse

8. REAL ESTATE FOR SALE

FARMS AND HOMES FOR SALE

EXCLUSIVE.

- 3 bedroom house, located west end. \$8500. Possession NOW. Has loan approved for \$4500.
- 3 bed room home, located close in. \$9,000. Will G. I.
- 80 acres, well located, 4 room and bath, electric irrigation, pressure pump, butane plant. Will take \$8,000 cash down. Possession NOW.
- 200 acres perfect. Well improved. Two irrigation wells. Will sell without possession, but pay rent. Has good farmer on it.

Have some good buys at Van Horn in 100, 160, 320 and 640 tracts. Improved and unimproved. This land makes 2 and 3 bales of cotton.

In Muleshoe See DAVE AYLESWORTH, phone 5400 in the Pool Insurance Building. LONE STAR TRADING POST.

DAVE AYLESWORTH

YOU DON'T HAVE TO GUESS!
 Buy Postal Scales at The Journal. Phone 7220.

FARMS

- 320 acres good wheat land. Will give 1/4 of wheat and grain. This is a real buy at \$65 per acre. \$10,000 will handle.
- 33 acres, 8 inch well, nice small home. A real stock farm or truck farm. Will sell or trade for city property.
- 640 acres in Castro County. Modern home, 8" well, all minerals intact. Price \$225 per acre.

CITY PROPERTY

- Small house on pavement. A real buy at \$3,300, good terms.
- 2 bed room home with a rental, on pavement. A good buy at \$6,750.
- 4 Unit apartment house, all rented. Well located. \$2,000 cash down will handle.

These and many other good buys in houses and lots.

EDDIE LANE

REAL-ESTATE & INSURANCE
 Gene Williams & John Johnson

Salesman
PHONE 3630 or 5689
MULESHOE TEXAS
 14-13-1tc.

For A Better Deal In

FARMS RANCHES CITY PROPERTY

— See —
Emette Cross
 Realtor

FOR SALE: \$3250 buys new 2 bedroom home completely modern. Floor furnace, blinds, and built-ins. Theron West. 48-tfc.

8. REAL ESTATE FOR SALE

FOR SALE: 4 room house with bath to be moved. G. A. Pittman, on Clovis highway. 8-17-4tp.



FARMS FOR SALE

- 1400 acre ranch for sale. 700 acres in grass and balance in cultivation. This is a good buy. Plenty of water and good grass. If you want a good stock farm let us show you this one.

And we have some of the best land for sale that you will find here on the plains, both large and small farms. So if you want a farm come and see some of this land before you buy. It will all carry a good loan so come in and see some of this good land.

C. L. "HAPPY" DYER
C. E. BRISCOE
 Phone 3710 Muleshoe

BEAUTIFUL FARM HOME NEAR BOVINA

- 160 Acres, well located, very highly improved, new six room modern home. Plenty of barns and other out buildings. Nice tenant house, pressure water system. Good 8" irrigation well, all the land in cultivation and very beautiful to irrigate. This is truly a luxurious home for some one. Possession for a limited time, at only \$48,000.

O. W. RHINEHART
 Bovinna, Texas 8-tfc.

10. FARM EQUIP. FOR SALE

FOR SALE: 1952 John Deere automatic hay baler. Priced reasonably. Vivian Arnn, Goodland, or see baler 1 mile north of Stegall. 10-19-4tp.

FOR SALE: Practically new '52 model 4-row knife attachment for Ford Tractor, complete with rotary hoes. Bargain. J. H. Wimberley, Progress. 10-17-2tp.

IRRIGATION BOOTS
 We Got 'em for only \$6.95.
 Russell Supply, Muleshoe. 16-17-1tc.

FOR SALE: Semi-trailer, 33 ft. grain boards, landing dollies, round front. New 9x20 10-ply tires, lights, flaps, etc. Priced to sell or trade for pick-up. Johnnie Graham, 6 miles south of Littlefield. 10-25-8tp.

FOR SALE: One horse trailer with tarp. Almost new. F. H. Gable, 8 mi. east, 4 1/2 north. 10-18-2tp.

FOR SALE: Army Surplus Gasoline Cans at Russell Supply, Muleshoe. 10-17-1tc.

12. HOUSEHOLD GOODS

FOR SALE: 66 inch Youngstown kitchen cabinet, double sink. Johnnie Myers, 822 Main after 1 p. m. 12-18-4tp.

IRRIGATION BOOTS
 We Got 'em for only \$6.95.
 Russell Supply, Muleshoe. 12-17-1tc.

FOR SALE: One 8 in. Windtho pump, 140 ft. setting, Chevrolet motor and spillway for \$1,800. 10 mi. south, 2 1/2 east of Plainview. Write A. T. Matsler, Rt. 1, Plainview, Texas. 10-17-1tc.

FOR SALE: Army Surplus Gasoline Cans at Russell Supply, Muleshoe. 12-17-1tc.

FOR SALE: 2 butane bottles with double regulator. O. D. Troutman. 13-17-3tp.

JUST RECEIVED: New shipment of beautiful lamp shades. All prices and sizes. Dyer Furniture. 12-17-1tc.

FOR SALE: Bendix automatic washer. Good condition. Reasonable. 3rd and Ave. D. 13-17-1tp.

FOR SALE: One antique marble top dresser, round dining table. Royal Rose range. C. S. Otto, 6 miles west of Muleshoe. 12-17-1tp.

FOR SALE: Baby bed and youth bed, both blonde. Lee Mason, 6 miles north of Shady Rest. 12-18-2tp.

16. MISCELLANEOUS

IRRIGATION BOOTS
 We Got 'em for only \$6.95.
 Russell Supply, Muleshoe. 16-16-1tc.

FOR SALE: 14 ft. Chris-Craft boat and trailer. See Dr. McIlroy or call 5350. 16-17-2tc.

16. MISCELLANEOUS

EARLY FOSTER and Hi-Bred Half and Half Cotton seed for sale. \$2.00 per bushel. Joe Sinnagher, Phone 4468. 16-17-4tp.

FOR SALE: Improved Macha cottonseed. First year from white sack. Carefully handled at gin. Cleaned and treated. \$2.50 per bu. Sherman Inman, phone 3392. 16-19-3tp.

FOR SALE: 2 bred gilts. Robert Giles, 2 miles west, 1 north. 16-17-1tp.

FOR SALE: Cottonseed, First yr. Lockett No. 1, Glenn D. Harris, 2 miles south of West Camp. 16-19-3tp.

LOOK!
 Plenty Of Fresh Vegetables Seed Sweet Potatoes --- \$2.50
 Also Irish Seed Potatoes

A FRESH LOAD OF VEGETABLES EVERY THURS.

Plenty Of Fruit, All Kinds

WE HAVE A NICE ASSORTMENT OF SHRUBS & TREES

PICK 'N PACK FRUIT STAND
 Next to Crossroads Cafe
 Phone 6080 — Muleshoe

SORGHUM GRAINS: Registered and certified, Plainsman and Redbine 66. Cox and Downs 2223, 13th Street, Lubbock, Pho. 2-2998. Farm at Anton. 16-16-5tp.

FOR SALE: 10 Universal Vendor's nut machines. Cheap. See Mack Hale or call 7319. 16-17-4tc.

FOR SALE: Choice Oklahoma Alfalfa Seed, 35c lb. S. E. Goucher, Phone 6261. 16-19-4tp.

FOR SALE: Paymaster cottonseed. First year from white sack. Germination 80 per cent. 1200 bushels at \$2.50 per bu. Cecil Hutton, Dimmitt. 16-18-3tp.

FOR SALE: Northern Star and Paymaster cottonseed, first year from certified; Macha, second year from certified. J. A. Harvey, 12 miles north on Friona road. 16-19-3tp.

Upright USED PIANO \$75.00

HUNKE'S ELECTRIC
 Phone 7070
 Muleshoe, Texas 1-17-tfc.

FOR SALE: Army Surplus Gasoline Cans at Russell Supply, Muleshoe. 16-17-1tc.

Good Young Guernsey Milk Cow
 For Sale: Just fresh. L. M. Hardage, 10 mi. north, 1 mi. west of Muleshoe. 16-17-3tp.

FOR SALE: Macha and Lockett Stormproof Cottonseed. First year from white sack. Also have 2 room house to be moved. E. K. Angeley. 16-tfc.

CARPENTERS
 Have all of your saws filed on our precision machine. Mechanically accurate jointing, filing and setting. They'll cut cleaner, truer, faster.

A. E. SCARBROUGH
 1305 East Second St.

We Have Left— 2 Quiet-Riter Portable Typewriters (Remington Rand) Of the 1953 Models To Be Moved At REDUCED PRICES

See Them At THE JOURNAL

ALL ABOUT TEXAS in the Texas Almanac, on sale at The Journal. Phone 7220, we deliver. Staples always on tap at The Journal.

Mrs. Blackwood Is Hostess To Willing Workers

The Willing Workers Class of the First Baptist Church met Monday, April 13, in the home of Mrs. Katherine Blackwood. Mrs. Clarence Wilhite, teacher, gave the devotional on "Foreign Missions."

Plans were discussed for helping Miss Marjorie Stevens, a missionary in Algeria, Africa. Miss Stevens is a niece of Mrs. Byron Griffiths.

Present was one guest, Mrs. Byron Griffiths, and members, Mesdames Ernestine Little, Lydia Wilhite, Viola Brown, Cooke Barnert and the hostess.

Garden Club Meets In Jordan Home

The Garden Club met Monday, April 6, in the home of Mrs. Roy Jordan with Mrs. Robert King as co-hostess for the installation of officers.

The table was decorated with eight candles and a centerpiece of red, white, blue, yellow, and orchid carnations which were presented to each officer installed. Refreshments of spiced tea, and small cakes topped with sweet peas were served to the group.

Officers installed were: president, Mrs. Jack Lenderson; vice-president, Mrs. L. S. Barron; second vice-president, Mrs. E. O. Baker; treasurer, Mrs. Pat Wingo; parliamentary, Mrs. R. F. Wright; librarian, Mrs. Wiley Bowers; and corresponding secretary, Mrs. Roy Jordan.

Those present were Mesdames Jack Lenderson, L. S. Barron, E. O. Baker, Jack Epps, Wiley Bowers, Pat Bulloch, R. C. Mason, R. F. Wright, and the hostess and co-hostess.

ATTEND ORGAN CONCERT

Mrs. Sam McKinstry, Mrs. Harold Allison and daughter, and Mr. and Mrs. A. W. Copley and children attended an organ concert at the First Methodist Church on Sunday afternoon. Mr. Cecil Bolton of Lubbock presented the concert.

During the program, Mr. Harold Dutton rendered vocal solos.

Will Speak At Legion Convention

Snyder, April 14. — G. Ward Moody of Austin, the state adjutant of the American Legion will speak, snappy color guards will compete, high school bands will play and a great time will be had by all at the annual spring convention of the 19th District of the American Legion which will be held here for two days, Saturday and Sunday, April 18 and 19.

Robert Kirk of Littlefield, commander of the 19th District, will preside and his successor for a two year term will be chosen at the business session Sunday afternoon.

Ray Niedecken, commander of the American Legion post here, has with a strong group of local Legionnaire committeemen, arranged an outstanding program for Legionnaires and their ladies from the 19th Congressional District. Registration will begin Saturday morning.

A color guard contest will be held at 3:30 o'clock Saturday afternoon and the post in the district that wins will be presented a set of district colors. High school bands from over the district have been invited to attend and will march in a parade with floats from local civil organizations.

Social high light of the convention will be a dance Saturday evening given by the Snyder Legionnaires in honor of visiting Legionnaires and Auxiliary members.

GLENDA GAY LANCASTER IN SCOTTISH RITE HOSPITAL

Glenda Gay Lancaster, five-year-old daughter of Mr. and Mrs. J. H. Lancaster of Muleshoe, was admitted April 8 to the Scottish Rite Hospital for Crippled Children in Dallas.

The hospital was founded 27 years ago by Texas Masons to provide the best treatment for Texas' crippled children at no extra cost to the patient.

Since that time, the Scottish Rite Hospital has treated more than 15,000 children in the wards and 68,000 clinical patients. An expert staff of doctors, nurses and therapeutic technicians provides the treatment, both corrective and surgical, by means of contributions from the general public.

Young Artists Entertain Club

A group of musical students of the local schools entertained the members of the Rotary Club and their guests at their noon luncheon Tuesday. Arnold Morris was in charge of the program.

The group was composed of Eugene Buhman, piano; Jackie Henderson, guitar and soloist; Betty Shanks, piano; Loretta Sullivan, singer; Lou Ann Agee, piano and singer, and Ellen Allen, all of the high school; Linda Rogers and Naomi Watson, singers of the junior high school. Their program was greatly enjoyed.

Guests included Lee, Leatherman, district manager of the National Alfalfa Dehydrating & Milling Co., and Bobby Greer, of the same firm, both of Plainview.

Five members signified an intention to attend the district forum, to be held in Lubbock April 22.

Minstrel Netted Around \$250

The JayCees cleared about \$250 on their minstrel, given last Thursday and Friday nights in the high school auditorium.

A spokesman for the club estimated that more than 600 saw the home talent production. The JayCees made about \$500, but expenses, including \$60 for the auditorium, for advertising, costumes and supplies, cut the net down considerably.

Fred Johnson was interlocutor for the show, which featured a wider variety than ever of clever acts, songs, dances, etc. It was strictly a home talent, amateur show, that all the home folks could enjoy. This was the third annual event of the kind, and already the JayCees are planning on next year's show, which they hope to stage earlier in the year.

Drs. Woods & Armistead OPTOMETRISTS

IRA E. WOODS, O.D.
 B. W. ARMISTEAD, O.D.
 GLENN S. BURK, O.D.

Phone 328 Littlefield

LUZIER'S
 Fine Cosmetics & Perfumes
 MRS. E. E. HOLLAND
 1101 East 2nd St.
 PHONE 5449

MULESHOE FUNERAL HOME
 Ambulance Service Day or Night

DIAL 2860 TRAVIS E. REED, Mgr.

DR. B. R. PUTMAN OPTOMETRIST

First Door North of REA Building
 Muleshoe, Texas Phone 6560

Dr. C. H. McIlroy
 Naturopathic Physician
 Phone 5350 Muleshoe, Texas 906-MAIN STREET

Bailey County Abstract Co.
 ABSTRACT SERVICE — LOANS
 Established in 1906
 Mrs. Lela Barron — Mgrs. — L. S. Barron

GUARANTY ABSTRACT CO.

BONDED FOR YOUR PROTECTION

Office In Bank Building Muleshoe

Complete Abstracts of Title to All Lands and Towns in Bailey County Texas

PAT R. BOBO, Owner DOLORES GARRETT, Mgr.

Long-term home loans at low cost.

Ask for details...no obligation

LOW-COST...EASY-PAY HOME LOANS

MULESHOE FOR INFORMATION SEE

FIRST FEDERAL SAVINGS AND LOAN ASSOCIATION
 Clovis, N. M. P. O. Box 470

MILDRED DAVIS Western NFLA Building Muleshoe

Reasonably Priced Choice Residence

LOTS FOR SALE

Highland Addition — Across Highway From Shady Rest

TERMS IF DESIRED

JOHNSON BROS.
 1211 Main St. Phone 4140

Mrs. Bristow To Have Visiting Day

Mrs. Mabel Bristow will conduct a visiting day on Friday, April 17, from 9 to 11:45 a. m. at her home at 1305 West Fifth Street where she has a kindergarten. All prospective students for the coming year from four to six years of age are invited.

Contrary to the ideas of many, kindergarten is not for teaching first grade work. It is a school for young children conducted on the theory that education should be begun by gratifying and cultivating the normal aptitude for exercise, play, observation, imitation and construction and emphasizing the necessity of social training.

The means employed are chiefly object lessons, games, songs, social exercises, etc. According to Jean Schrick Grossman, author and lecturer of parent education for the Play Schools Association, children who have play of the right kind have a better chance of developing into better adjusted adults.

Mrs. Caldwell Hosts H. D. Club

The Muleshoe Home Demonstration Club met in the home of Mrs. S. C. Caldwell Tuesday,

April 14, with Mrs. M. E. Simmons conducting the opening exercise and Mrs. W. H. Awtrey directed the games.

Mrs. Dave St. Clair drew the first hostess gift which was a lovely glorified picture painted by Mrs. Caldwell. An interesting discussion was held on what the member had made this year and how we spend our time.

A box will be sent soon for the two patients in the Abilene hospital who are being sponsored by the local club.

Members present for the afternoon were Mesdames Claude Gillis, W. W. Smith, Binham, Claude Sanders, C. E. Briscoe, Roy Carney, T. F. Maddox, J. E. Day, Dave St. Clair, W. H. Awtrey, M. E. Simmons, Glen Fletcher, and J. T. Boydston. Special guest was Mrs. Ebb Randol.

Mrs. White Hosts Dorcas Class

Members of the Dorcas Class of the First Baptist Church met in the home of Mrs. T. R. White Wednesday, April 8, at 3 p. m. for their regular monthly meeting and social hour.

Mrs. Willey Bowers led in the opening prayer. The devotional was given by Mrs. W. E. English using as her theme, "Launching Into the Deep", reading from Luke and Matthew.

The president presided over business meeting. Minutes were read and a treasurer's report was made and accepted.

The meeting adjourned and a social hour followed.

Refreshments of pear salad, whipped jello topped with whipped cream, cookies and punch were served by the hostess to Mesdames T. W. Berry, R. P. Glenn, Byron Griffiths, Willey Bowers, W. E. English, A. W. Blaine, John Watson, and Vernon Jamison.

Society News

By Mrs. Joyce Shafer

THE MULESHOE JOURNAL, Thursday, April 16, 1953

Mrs. Edwards Is Shower Honoree

Mrs. Horace Edwards was honored with a pink and blue shower Thursday afternoon, April 9, in the home of Mrs. Deom Awtrey. Assisting Mrs. Awtrey as hostesses were Mrs. John Smith and Mrs. Richard Smith.

Mrs. Richard Smith led the group in playing several games before the honoree, assisted by her son, Gary, opened the many beautiful gifts.

The lace covered refreshment table was centered with a floral arrangement with the green and white motif. Refreshments of lime punch and white cakes topped with small green shoes were served by the hostesses to the twenty-five guests who attended.

Out-of-town guests were Mrs. Archie Pool of Amarillo, and Mrs. Cleveland Cobb of Abilene.

Mr. Harris Is Study Club Guest

The Muleshoe Study Club met at the Post Office Cafe on Thursday, April 9, with Mrs. Jim Cox as hostess.

Mrs. Buck Wood, chairman, presented the guest speaker, Marion F. Harris, who conducted a symposium on life insurance.

Members present were Mesdames Horace Blackburn, Buck Wood, A. S. Stovall, Glenn Dunn, John Watson, A. J. Gardner, M. F. Green and the hostess.

The next meeting will be held in the home of Mrs. H. D. King on Thursday, May 14, with Mrs. Buck Ragsdale as co-hostess. A one-act play by high school students will be directed by Mrs. Horace Blackburn.

Students To Entertain PTA

The regular session of the high school P. T. A. will be held Monday, April 20, in the high school auditorium.

Mrs. Ola B. Jones will direct the program. About twenty students of the high school will participate showing their various talents. This promises to be a very good program.

ALL ABOUT TEXAS in the Texas Almanac, on sale at The Journal. Phone 7220, we deliver

Gleaners Class Honors Guests

The Gleaners Class of the First Baptist Church entertained a group with a get-acquainted coffee honoring class prospects in the dining hall of the church Saturday, April 11, at 9:30 a. m.

The hall was decorated with spring cut flowers. The table was laid with a lace cloth and centered with an arrangement of tulips. The class colors of white and gold was used in the white napkins inscribed in gold with "Gleaners Class".

Mrs. Jack Schuster presided at the silver coffee service.

Guests present were Mesdames Ogle Lorange, Don Bryant, Polly Ottwell, Alta Mae Ellis, and Gene Harvey. About ten members attended.

Rebekahs Enjoy Social Tuesday

The Muleshoe Rebekah Lodge met in regular session Tuesday night and final plans were made for attending the South Plains Association meeting which will be held at Littlefield Friday, April 17. Everyone is urged to attend.

After the business session everyone enjoyed a social hour and delicious refreshments of steak, potato salad, cake and punch was served by new members, Mr. and Mrs. Fred Kirsten, to all present.

Everyone is reminded that the state president, Georgia Ford, will be at Needmore April 22. Everyone is invited to attend.

Junior-Senior Banquet Apr. 23

The annual Junior-Senior banquet will be held next Thursday night, April 23, in the American Legion Home. The Junior class annually tenders a banquet to the members of the graduating class.

Theme of the banquet will be "Hitch Your Wagon to a Star". Coach J. C. Koen will be principal speaker.

The address of welcome will be given by Jimmy Allison of the Junior class to which Roald Johnson of the Senior class will respond.

Musical numbers will be given by Carolyn Towns, Lou Ann Anee, Betty Shanks, and Bill Willis.

Elementary P. T. A. Elects Officers

The elementary P. T. A. met in regular session Monday, April 6. Officers elected for the coming year were: president, Mrs. Bill Miller; vice president, Mrs. J. T. Shofner; secretary, Mrs. Lynn Connell; treasurer, Mrs. George Templar; and historian, Mrs. John Watson.

Mrs. George Templar, Mrs. Dave Coulter, Mrs. Bill Miller and Mrs. D. L. Morrison were sent as delegates to the district P. T. A. Convention at Littlefield on April 7-8. Mrs. D. L. Morrison was elected vice-president for district 14 which includes Bailey, Lamb and Cochran counties.

Ray Franz, Chamber of Commerce manager, gave an interesting discussion on the relation of the P. T. A. and the Chamber of Commerce.

Clovis Veterinary Hospital

AT THE STOCKYARDS CROSSING

Facilities for Large and Small Animals

E. E. KRAUS, D. V. M. CHAS. WEBSTER, D. V. M.
104 Hall Phone 5442 Clovis, N. M.

DRY CLEANING



QUALITY ALL-WAYS

You just can't FEEL your best in spotted, wrinkled clothes. You'll feel better when you NOW you have a well-groomed appearance.

ALSUP CLEANERS

MR. and MRS. CHAS. ALSUP
Morton Highway — Former Taylor Produce Location

MR. FARMER!

HAIL WILL CUT IT FASTER

SEE US NOW FOR PROTECTION AGAINST HAIL!

FARM LOANS • AUTO FINANCING

POOL INSURANCE AGENCY

W. M. Pool Jr.
Phone 7010

Lee Pool
Muleshoe

SEED - SEED - SEED!

• DELINTED COTTON SEED

LOCKETT STORM PROOF NO. 1
EARLY MACHA
NO. 1 MACHA
NORTHERN STAR
HI-BRED
PAYMASTER CERTIFIED

• CERTIFIED ARIZONA SORGHUMS

MILO and REGULAR and EARLY HEGARI

• CERTIFIED TEXAS SORGHUMS

• CERTIFIED SWEET SUDAN 372

ALFALFA

ARIZONA COMMON TEXAS COMMON

Garden Seed

Lawn Grass Seed

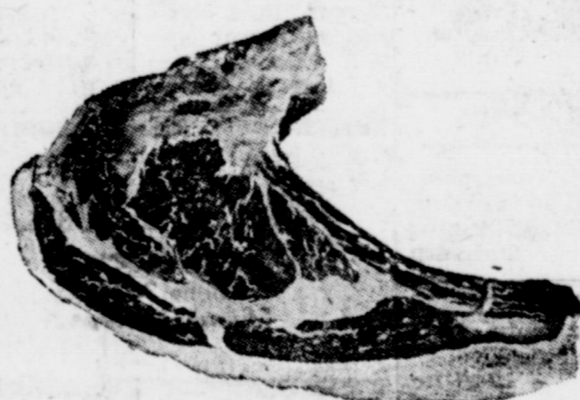
Pasture Grass Seed

JONES FARM STORE

PHONE 5000

Your Local Purina Dealer

MULESHOE



BEEF IS THE

Cheapest Meat You Can Serve If You Buy In Quantities — Bring Us Your Own Animal Or Let Us Sell You Up To A Whole Beef — You'll Be Surprised At The Savings.

We Have A Complete Meat Handling Service.

SLAUGHTERING • DRESSING • PROCESSING
PACKAGING • RENDERING • COLD STORAGE

You can store it in one of our lockers or in your own home freezer. You'll save, and set a better table all year!

VANCE'S COUNTRY STYLE SAUSAGE

MULESHOE LOCKER

PHONE 7030

MULESHOE



Household Items

- SNAP ON LIDS 20 GALLON SIZE
GARBAGE CANS \$2.99
- CASHMERE BOUQUET BATH SIZE
TOILET SOAP, 2 for . 25c
- TOILET TISSUE**
- NORTHERN REG. ROL 3 for 25c
- PINT BOTTLE
GLOROX 10c
- WOODBURY REG. BAR
TOILET SOAP, 3 for . 25c
- OXYDOL, 1ge. box** 31c
- OLD DUTCH Special Pack 3 Cans LARGE BOX
Cleanser, 3 cans 26c **TREND, 2 for** ... 39c

FRUIT DEL MONTE NO. 303 CAN
COCKTAIL 22c

SWIFT'S JEWEL 3 LB. CAN
SHORTENING 59c

- HUNT'S NO. 300 CAN
NEW POTATOES, 2 for 25c
- DEL MONTE NO. 2 CAN
SPINACH 15c
- HEINZ NO. 1 CAN
TOMATO SOUP, 3 for 35c
- DEER NO. 303 CAN
TOMATOES, 2 for 25c
- HUNT'S IN HEAVY SYRUP NO. 2 1/2 CAN

PEACHES 25c

- MARSHALL GOLDEN NO. 300 CAN
HOMINY, 3 for 25c
- GERBER'S
BABY FOOD, 3 for 27c
- LIBBY'S NO. 1/4 CAN
POTTED MEAT 9c
- TUXEDO NO. 1/4 CAN
TUNA FISH 10c

PRESERVES

STRAWBERRY
BAILEY 2 LB. JAR 49c

DOUBLE GREEN STAMPS TUES. WITH \$2.50 PURCHASE OR MORE

Fruits and Vegetables

FIRM HEADS
LETTUCE Lb. 9c

- FRESH BLACK EYE PEAS, lb. 19c
- YELLOW SQUASH, lb. 9c
- SINKIST LEMONS, lb. 15c
- NO. 1 YELLOW ONIONS, lb. 5c

FRESH FLORIDA
Roasting Ears 3 For ... 21c

Graded Meats

BORDEN'S READY-TO-BAKE
BISCUITS Can 5c

- CHOICE CHICK BEEF ROAST, lb. 49c
- BONELESS STEW MEAT, lb. 59c
- FRESH SLICED PORK LIVER, lb. 33c
- FRESH COUNTRY BACK BONE, lb. 59c

ARMOUR'S STAR 1 LB. CFFLO PKG.
SLICED BACON Lb. 69c

- COMMERCIAL LOIN STEAK, lb. 59c
- END & PIECES SLICED BACON, lb. 19c
- FRESH PORK SPARE RIBS, lb. 39c
- CHOICE BEEF ROUND STEAK, lb. 79c

PORK ROAST Shoulder Cut, Lb. 39c

Drug Items

MODART 7 1/2c SIZE
SHAMPOO 27c

- 200 COUNT BOX KLEENEX 12 1/2c
- MEN'S 7 1/2c SIZE BABY OIL 39c
- ST. JOSEPH 1 1/2c TIN ASPIRIN 7 1/2c
- GILLETTE BLUE 10 BLADES RAZOR BLADES 49c

Frozen Foods

YOUNGBLOOD 16 OZ. PKG.
Drumsticks 79c

- SNOW CROP 10 OZ. PKG. GREEN BEANS 24c
- MORTON'S CHERRY OR APPLE 6 Oz. PIES 19c
- SNOW CROP 12 OZ. PKG. STRAWBERRIES 33c
- ARMOUR'S RI-CHEDDAR CHEESE, 2 lb. box 89c

SNOW CROP 10 OZ. PKG. BABY LIMAS 28c

SNOW CROP 12 OZ. PKG. PEAS 17c

PIGGLY WIGGLY SUPER MARKETS DAVIS & HUMPHRIES OWNERS & OPERATORS

Big Crowd Attends 3rd Annual Banquet Of Muleshoe Chamber

"Good Citizenship" was the theme of the address of D. Hodson Lewis, of Dallas, before members of the Muleshoe Chamber of Commerce, their ladies and guests, gathered Tuesday night for the third annual banquet of the organization.

Mr. Lewis, in demand over the Southwest as an after dinner speaker, included close cooperation with the local Chamber of Commerce as one of the attributes of good citizenship. "A few people build a city, the

others just live in it," Mr. Lewis said.

It doesn't matter how many people live in a community, it's the kind of people who live there that counts, Mr. Lewis said. He said a Chamber of Commerce to succeed must have the cooperation of the people; must have leadership; must have officers and directors who will familiarize themselves with the duties of their offices and who will function; and besides this, the Chamber of Commerce members who will work sincerely and earnestly upon any task to which they



AT THE CHAMBER BANQUET D. Hodson Lewis, principal speaker, is shown chatting with a group of Muleshoe CoC officials at the annual banquet of the organization, held Tuesday night. Left to right: Ray Franz, manager; H. S. Sanders, Jr., retiring president; Lewis; George Hicks, new president; Onard Upton; new vice-president. —Picture courtesy Lubbock Avalanche.

WE KNOW THIS SET WILL PLEASE YOU
It's **SYLVANIA TV**
TODAY'S BIGGEST 21" TV VALUE!

The KINGSTON at only

\$279.95



*SYLVANIA TRADEMARK *Optional at extra cost

MAXIMUM PERFORMANCE WHEREVER YOU LIVE!

SYLVANIA'S FAMOUS MOVIE-CLEAR TELEVISION

THRILLING STUDIO-CLEAR SOUND

AUTOMATIC TRIPLE-LOCK FOR STEADIER PICTURES

SLANTED NO-GLARE PICTURE WINDOW

AVAILABLE WITH ALL-CHANNEL UHF-VHF RECEPTION

COME IN... SEE OUR WIDE SELECTION OF SYLVANIA TV

SAM'S RADIO & T-V SHOP

PHONE 3639

SALES AND SERVICE SAM & BRYAN

MULESHOE

Muleshoe Precipitation Record By Months And Years Since 1921

| YEAR | JAN. | FEB. | MAR. | APR. | MAY | JUNE | JULY | AUG. | SEPT. | OCT. | NOV. | DEC. | TOTAL |
|------|------|------|------|------|-------|-------|------|------|-------|------|------|------|-------|
| 1921 | | | | | | | | 1.05 | 3.02 | .00 | .00 | .00 | 4.07 |
| 1922 | .11 | .10 | .31 | 5.15 | 1.90 | 2.17 | 1.92 | .40 | 1.60 | .00 | .33 | .00 | 13.99 |
| 1923 | .09 | 1.42 | 1.51 | 1.83 | .77 | 10.05 | 1.70 | 1.12 | 2.32 | 6.27 | 1.33 | .53 | 28.94 |
| 1924 | .00 | .25 | 1.07 | .37 | 1.07 | 1.67 | 8.13 | 3.39 | .95 | .67 | .45 | .00 | 18.02 |
| 1925 | .00 | .00 | .09 | .08 | 1.69 | 3.96 | 1.46 | 2.78 | 4.14 | .85 | .37 | .00 | 15.42 |
| 1926 | .00 | .00 | 1.62 | 2.42 | 4.33 | .97 | 1.31 | 1.71 | 8.49 | 1.34 | .40 | .94 | 23.53 |
| 1927 | .54 | .00 | .16 | .13 | .00 | 1.71 | 4.61 | 2.03 | 5.16 | .03 | .00 | .55 | 14.92 |
| 1928 | .00 | .40 | .20 | .00 | 3.53 | 1.13 | 2.39 | 2.39 | 1.19 | 4.70 | 2.80 | .23 | 18.94 |
| 1929 | .23 | .00 | 2.25 | .15 | 5.16 | 2.59 | .67 | 2.27 | 3.82 | 1.36 | .57 | .00 | 19.07 |
| 1930 | .00 | .00 | .00 | 3.52 | 1.84 | 2.93 | 1.27 | 1.65 | 2.43 | 2.04 | .69 | .47 | 16.84 |
| 1931 | 1.11 | 1.17 | .15 | 3.46 | 2.41 | .68 | 2.45 | 4.63 | .52 | .72 | 1.41 | 1.46 | 20.60 |
| 1932 | .52 | .52 | .05 | 1.05 | .85 | 4.25 | .30 | 2.70 | 4.58 | .63 | .00 | 1.89 | 17.34 |
| 1933 | .48 | .52 | .69 | .20 | 1.41 | .69 | .95 | 6.27 | .91 | .57 | .86 | .00 | 13.55 |
| 1934 | .12 | .14 | 1.16 | 1.31 | 1.64 | 2.39 | 1.28 | 1.34 | 1.77 | .98 | 2.14 | .14 | 14.41 |
| 1935 | .35 | .28 | .35 | .07 | 1.85 | 4.48 | 2.96 | 1.04 | .89 | .11 | 1.70 | .22 | 14.30 |
| 1936 | 1.24 | .14 | .12 | .19 | 5.66 | 1.36 | 1.80 | .41 | 2.55 | .88 | .12 | .67 | 15.14 |
| 1937 | .08 | .18 | 1.66 | .95 | 5.66 | 2.56 | 1.24 | .51 | 4.41 | 1.28 | .00 | .56 | 19.09 |
| 1938 | .64 | 1.24 | 1.45 | .73 | 1.63 | 7.74 | 1.78 | .54 | 1.39 | 2.93 | .34 | .08 | 20.49 |
| 1939 | 1.96 | .06 | .40 | .57 | 2.06 | 1.79 | .94 | 3.42 | .05 | 1.28 | .18 | 1.34 | 14.08 |
| 1940 | .27 | .65 | .00 | 1.53 | 2.63 | 1.89 | .33 | 3.97 | .37 | .22 | 2.04 | .07 | 13.97 |
| 1941 | .24 | .38 | 3.14 | 1.99 | 11.86 | 5.77 | 6.92 | 2.09 | 3.46 | 6.37 | .47 | .23 | 43.52 |
| 1942 | .02 | .00 | 1.15 | 2.96 | .60 | 2.21 | .98 | 4.50 | 2.29 | 4.94 | .00 | 1.87 | 21.02 |
| 1943 | .00 | .50 | .00 | .28 | 1.67 | 1.74 | 3.13 | .21 | 1.12 | 1.06 | 1.10 | 3.45 | 14.26 |
| 1944 | .57 | .78 | .01 | 1.14 | 2.07 | 4.00 | 2.21 | 3.44 | 4.77 | .12 | .47 | .93 | 20.51 |
| 1945 | .57 | .13 | .17 | .35 | .64 | .00 | 1.68 | 2.50 | 3.79 | 1.17 | .00 | .21 | 11.21 |
| 1946 | 1.18 | .05 | .19 | .14 | .80 | 2.82 | 1.00 | 2.20 | 4.21 | 5.48 | .51 | 1.17 | 19.85 |
| 1947 | .58 | .20 | .67 | 1.36 | 4.23 | .35 | 1.50 | .33 | .44 | .22 | .85 | .58 | 11.31 |
| 1948 | .37 | 1.64 | .50 | .31 | 1.09 | 1.90 | 2.02 | 1.78 | .86 | .23 | .00 | .31 | 11.01 |
| 1949 | 2.34 | .84 | .15 | 1.96 | 7.26 | 4.73 | 2.95 | .71 | 1.81 | 1.23 | .19 | .31 | 25.83 |
| 1950 | .13 | .02 | .18 | .12 | .45 | 1.24 | 1.64 | 4.71 | 4.88 | .07 | .00 | .03 | 19.47 |
| 1951 | .62 | 1.16 | .21 | .11 | 6.86 | 5.34 | 3.48 | 1.34 | .06 | 1.51 | .29 | .36 | 12 |
| 1952 | .80 | .09 | .26 | 1.74 | .47 | 1.59 | 1.64 | 1.60 | .86 | .00 | 1.09 | .80 | 10.44 |

FFA States Big Rodeo Apr. 24

The Muleshoe Roping Club is sponsoring the Second Annual FFA Invitation Rodeo, to be staged in the roping arena here the night of March 24, at 8 o'clock.

The rodeo will be a culmination of Muleshoe schools' annual Western Day activities.

FFA boys from Hart and Springlake will be invited to compete with local boys in the various events.

Events will include bull riding, calf roping, ribbon roping and bareback bronc riding for the larger boys. A barrel race for the girls and pee wee calf roping is scheduled for the grade school boys.

Willis Branscum of Muleshoe has agreed to furnish the rodeo stock again this year. Price of admission will be \$1.00 for adults and 50 cents for school students.

RULES

1. Any active FFA member may participate in any event except the girls barrel race and pee-wee calf roping.
2. A ten second fine will be added to the time, in the roping

4. Each contestant must have a liability waiver signed by his parents before he may participate in any of the events.

5. Entry blanks and waivers may be secured from the Muleshoe Vocational Agriculture department.

6. Ribbons will be given to contestants placing through fifth place in each of the events.

7. The decision of the judges will be final.

8. Every contestant will be required to pay admission at the gate.

NEW BOOKS AND SHELVES ADDED TO LIBRARY

New books recently added to the local public library are "Silver City" by Bradford Scott, "It Boils Down to Murder" by Peiry D. Westbrook, "Range Reckoning" by Dan Kelliher, and "Homecoming in the Sky" by Nell Marr Dean.

New shelves have also been added to the library. They were very badly needed for more book space and for the appearance of the library.

LOCAL MARKETS

| | |
|----------------------|---------|
| Cream, lb. | 61c |
| Eggs, doz. | 40c |
| Lf. Hens, lb. | 16c |
| H. Hens, lb. | 20c |
| Hogs, cwt. | \$21.00 |
| Wheat, bu. | \$2.13 |
| Sorghum Grains, cwt. | \$2.30 |

Feeds Now

Available At

JOHN'S

Custom Mill

Prices are Per Hundred Weib unless otherwise indicated.

| | |
|-----------------|--------|
| Lay Mash | \$4.50 |
| Starfer Mash | \$5.25 |
| Groy Mash | \$5.00 |
| Lay Pellets | \$4.85 |
| Whole Grain | \$3.00 |
| Ground Grain | \$3.10 |
| Whole Corn | \$3.70 |
| Ground Corn | \$4.00 |
| Corn, cob & all | \$3.25 |
| Bran | \$4.00 |
| Shorts | \$4.00 |
| Linseed Meal | \$6.00 |
| Hog Feed, 14% | \$4.00 |
| Supplement | \$6.00 |
| Tankage | \$5.00 |
| Whole Wheat | \$4.50 |
| Whole Barley | \$3.50 |
| Ground Barley | \$3.75 |
| Rolled Barley | \$4.50 |
| Whole Oats | \$4.75 |
| Rolled Oats | \$4.75 |

COTTONSEED MEAL:

| | |
|-----------------------|--------|
| Old Process | \$5.25 |
| New Process | \$4.50 |
| Soybean Meal | \$6.00 |
| Meal & C. S. Hulls | \$3.00 |
| Bonemeal | \$6.00 |
| Cottonseed Cake | \$5.35 |
| Cattle Cubes | \$4.25 |
| Dairy Feed, 16% | \$4.00 |
| Sweet Feed, 9% | \$3.25 |
| Calf Grower | \$5.50 |
| Horsefeed | \$4.75 |
| Limestone | \$1.25 |
| Chick Scratch, 25 lb. | \$1.35 |
| Oyster Shell, 25 lb. | .50 |
| Granite Krit, 25 lb. | .75 |
| Ground Bundles | \$2.65 |

SALT:

| | |
|------------------------|--------|
| Swift Mineral Block | \$2.75 |
| Swift Mineral, 25 lb. | \$1.40 |
| Trace Mineral, 100 lb. | \$2.10 |
| Iodized, Block | \$1.00 |
| Sulphur, Block | .90 |
| White, Block | .80 |
| Molasses, 100 lb. | \$2.50 |

Complete Line Of —

DR. LEGEAR'S

FLY SPRAY

CUSTOM GRINDING

AND MIXING

We Buy Scrap Iron, Brass,

Aluminum and Old Batteries.

"Our best seller" FAIRBANKS-MORSE "...is your best buy"

Look! They've put the pump and motor under the water



If you are putting in a new well that must go deep to get water... if you are replacing your old deep well pump, don't buy a new unit until you have talked to us about this sensational Fairbanks-Morse submersible pump!

Just a few features of the Fairbanks-Morse submersible!

Only ONE pipe of SMALLER diameter used inside well casing • Never needs priming • Motor and pump operate entirely under water • No jets, rods, or shafts to add to cost • Uses smaller motor — saves power • Impeller and motor shafts of stainless steel • Water cooled — water lubricated • Delivers up to 720 g.p.h. at 300-foot settings — more at shallower settings • PERFORMANCE PROVED • QUALITY GUARANTEED!

Call at our store... phone... or write

E. R. HART CO.

Phone 3300 — Muleshoe

The Muleshoe Journal

DEDICATED TO THE PROGRESS AND DEVELOPMENT OF BAILEY COUNTY AND THE GREAT MULESHOE COUNTRY

VOLUME 31, NUMBER 17

MULESHOE — County Seat of Bailey County — TEXAS

THURSDAY, APRIL 16, 1953

School Calendar
Supt. Jerry Kirk announces the following events on the Muleshoe school calendar for the remainder of the term:

- April 17 — Father and son banquet.
- April 23 — Junior-Senior banquet.
- April 24 — Western Day.
- April 27 — Voc. Guidance program.

New Officers Take Over For Muleshoe CoFC

George Hicks, implement dealer here, took over the job of president of the Muleshoe Chamber of Commerce at the annual banquet held Tuesday night. Onard Upton became vice-president and Clyde Holt the treasurer.

The board of directors is now composed of: H. S. Sanders, Jr., retiring president; Noel Woodley, Buford Butts, Onard Upton, E. O. Baker, Clyde Holt, R. L. Mayo, John Gammons, Jim Cox, Travis Reed, George Hicks, and W. T. Millen.

Associate directors are Harold King, Hoyt Morgan, John Fried, W. M. Pool, Jr., and Dr. B. R. Putman.

Ray Franz is manager of the Chamber of Commerce and Betty C. Burkhead is secretary. Retiring directors are Ross Goodwin, O. D. Ray, J. V. Peeler, and Morris Childers.

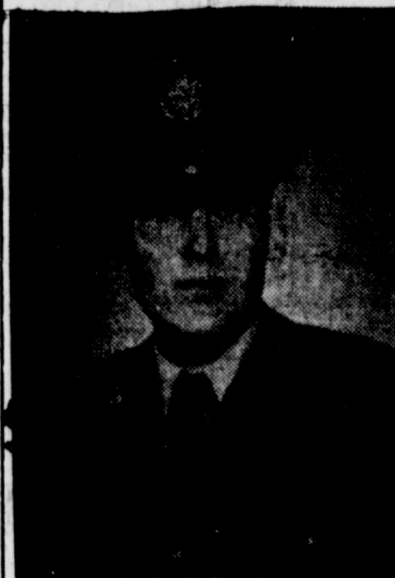
Three Way Honor Roll Announced

Odeil McCoy, principal of Three Way elementary school, announces those on the honor roll for the past six weeks:

Betty Baue, Janelle Garvin, William and James Tarlton, fifth grade; Lorena Long, sixth grade;

- May 17 — Baccalaureate services.
- May 21 — Eighth grade graduation.
- May 22 — Commencement.

Foster Completes Air Force Basic



FOSTER

Lackland Air Force Base, Tex.—James E. Foster, 20, son of Mr. and Mrs. Ben Foster, Rt. 1, Muleshoe, is completing his AF basic airmen indoctrination course at Lackland Air Force Base, the "Gateway to the Air Force."

Lackland, situated near San Antonio, is the world's largest air force base, site of Air Force basic training, for men and women, headquarters of the Human Resource Research Center, and home of AF's Officer Candidate School.

His basic training is preparing him for entrance into Air Force technical training and for assignment in specialized work. The course includes a scientific evaluation of his aptitude and inclination for following a particular vocation and career.

MRS. GREEN IS DELEGATE TO HEREFORD CONVENTION

Mrs. M. F. Green, delegate of the Muleshoe Study Club, attended a convention of the Texas Federation of Women's Clubs which was held at the Jim Hill Hotel at Hereford on April 10. Accompanying her was Mrs. Glenn Dunn, and Mrs. Naomi St. Clair. They reported a very outstanding meeting.

Kay Cole, Janice Baker, Janelle Sedgwick and W. C. Eubanks, eighth grade.

Those in high school on the A honor roll were: Paula Griffith, freshman; Maudine Eubanks, sophomore; and Yvonne Mitchell, senior.

Letters to the Editor . . .

J. R. HENRY THANKS HIS FRIENDS HERE

Newport, R. I.
April 10, 1953

Dear Editor:
How is everything in good old Bailey County and Muleshoe? It is raining here. We made the trip in a little over 4 days. We found J. R. looking pretty good, but he still can't sit up or write but very little.

He wanted me to tell you that he enjoys the paper and the other boys get a big kick out of it too. He said he wished you would express his thanks to his many friends for their gifts, cards, flowers, and letters. He also has hopes of being closer home in 6 or 8 weeks and able to do more writing. Anyone wishing to write him, his address is: J. R. Henry, SN

Naval Hospital,
Newport, Rhode Island.

He would appreciate very much to get letters from anyone down here at it would help him to pass the time and get his mind off of other things. He still is paralyzed from his chest down, has lost lots of weight. They are building up his blood in order to cure his bedsores which have developed since he has been here.

Well here's hoping we have had a rain down there by now. We saw lots of pretty country on the way but none looked as good as West Texas. Some of it we couldn't see for hills, houses, and rocks. Well so much for the nonsense. Hoping to see you soon.

CLYDE HENRY

P. S.: Oh, yes, I forgot to mention the fact that we have met some wonderful people down here among these Yankees. So all the good people are not in West Texas.

Muleshoe Students Win Top Honors In League Literary Meet Friday

Muleshoe students took top honors in the annual literary meet of the Interscholastic League, held in Brownfield last Friday. They shared the top spot with Levelland students.

Wayne Bristow won first in extemporaneous speech. Roald Johnson was first in senior declamation. Myra Hogan continued the match of firsts by winning the shorthand competition.

Besides these firsts, local students had these winnings:

Bruce Simmacher, third in ex-

temporaneous speaking. Luvonne Krueger was second in senior girls declamation. Barbara Steward was third in junior girls declamation and Bobby Nelms won third place in junior boys declamation.

Levelland students had firsts in girls team debate, senior girls declamation, and in spelling and plain writing.

The district, No. 4-A includes Tahoka, Slaton, Post, Plainview Junior High, Slaton Junior High of Lubbock, Muleshoe, Morton,

Littlefield, Levelland, Brownfield, Hutchinson Junior High of Lubbock, Carroll Thompson Junior High of Lubbock, and R. W. Matthews Junior High of Lubbock.

WEEK AT HOT SPRINGS

Mr. and Mrs. Vance Wagner are spending the week at Hot Springs, N. M.

WOLIARDS HAVE GUESTS

Mrs. U. B. Porter and Mrs. Lotie Wilburn of Sudan visited Saturday in the home of Mr. and Mrs. Gilbert Wollard.

ALL ABOUT TEXAS in the Texas Almanac, on sale at The Journal. Phone 7220, we deliver. GARNER FARM RECORD books on sale at The Journal.

Thanks To All

It is a pleasure to us to say "Thank You" to the good people of Muleshoe territory for their friendship and patronage during the more than 6 years that we operated the Frigidaire Dealership.

We have sold the dealership to Mr. Harvey Bass and we know he will give you the best of service at all times.

Again We Say "Thank You"

Mr. and Mrs. Will Harper

Come In And See Our New 4 Row WD Tractors

Factory Equipped For Butane

4-Row Lister Planters

4-Row Cultivators

NOW IN STOCK

— At —

MULESHOE IMPLEMENT and SUPPLY CO.

PHONE 3080

MULESHOE

FARM HEADQUARTERS

FOR

Ferguson Tractors

Ferguson Equipment

Layne Pumps

Continental Motors

R & J Crust Busters

Armor Ditchers

Westate Plows and Land Levelers

New Idea Farm Equipment

Love 4-Row Cultivators for

3-Point Attachments

Fairbanks-Morse Submersible Electric Pumps

Phares-Wilkens Knife Attachments

— SALES and SERVICE —

D. H. SNEED SUPPLY CO.

MULESHOE

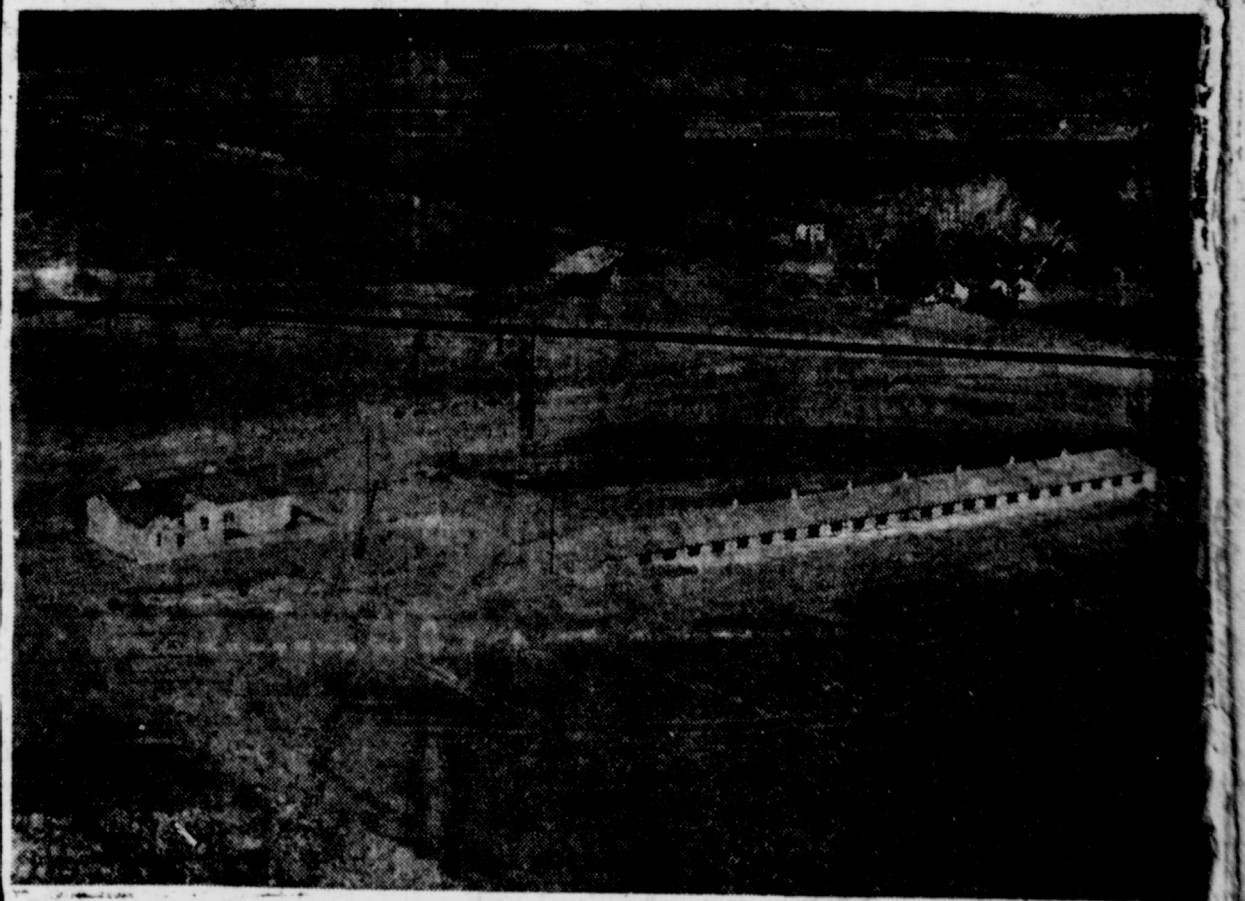
PHONE 4170

TEXAS

MYSTERY FARM? MYSTERY FARM? MYSTERY FARM? MYSTERY FARM?

CAN YOU IDENTIFY THIS FARM?

This is part of a series of 52 ads to appear in The Muleshoe Journal. Prizes will be two pair of theatre tickets to the Cox Drive-In Theatre. One pair of tickets will be given to the first person living in the city limits who identifies the farm. One pair of tickets will be given to the first person living outside of the city limits of Muleshoe who identifies the farm. Phone or write your entry to the Muleshoe Journal. Winners may pick up their tickets at the sponsor of this ad.



Let Us Take Care Of The Mysteries That Confront You On The Operation Of Your Motor Vehicle —We Have A Complete Body Shop Now In Operation With Expert Mechanics!

MULESHOE MOTOR COMPANY
PHONE 4930 FORD AUTOMOBILES AND TRUCKS
MULESHOE

COURTHOUSE RECORDS

REAL ESTATE TRANSFERS
 J. D. Nall and wife to Guy J. Sanders, SW-4 Section 12, League 108, Fisher County School Land, \$20,000.
 Marion A. Springstube and wife to H. G. Harvey, E-2 of NW-4 Section 31, Block Y, \$25,000.
 Ernest Kube, and wife to Eddie Ramm and wife, NE-4 Section 47, Block Z, \$44,000.

L. E. Testerman and wife to J. D. Sullivan, Lots 4 and 5, Block 34, O. T. of Muleshoe, \$1,500.
 J. D. Sullivan and wife to E. E. Dyer, Lots 4 and 5, Block 34, O. T. of Muleshoe, \$10.
 McPherson & Cates Land Company to J. G. McPherson and O. S. Cates, SE-4 of Section 100, Block A, \$10, and other valuable considerations.
 Julian E. Lenau, et al to Woodrow Lambert, Lot 17 and SE 5 feet of Lot 18, Block 3, Lenau Subdivision, \$1482.50.

SEE US FOR PROTECTION POLICIES YOU NEED

BOBO INSURANCE AGENCY

Office In Bank Building
 PHONE 2640 MULESHOE

DANCE

Saturday Night

— Music By —

Hattie Young
 And The Music Makers

LA VISTA

CLOVIS
 The Plains Finest Dance Spot

TIME FOR '66 SERVICE'

It makes your car more fun to drive!

Get your car ready for summer! It's time for a check-up of all the points covered by "66 Service". See your Phillips 66 Dealer today.

He'll put your car in trim for pleasurable warm weather driving. He'll use reliable Phillips 66 Gear Oils and Greases. And he'll fill your car's crankcase with new, improved Phillips 66 Heavy Duty Premium Motor Oil, the oil that provides Lubri-tection... lubrication plus engine protection! Get "66 Service" at the station where you see the famous orange and black Phillips 66 Shield.



Get "Lubri-tection"

make your own banking hours...



It's Safe and Convenient to **BANK-BY-MAIL**

MULESHOE STATE BANK

Member Federal Deposit Insurance Corporation

W. C. Thomas and wife to Florine Block, East 35 acres of N-2 of SW-4 Section 32, Block Y, \$10 and other valuable considerations.

Lowell Irvin St. Clair and wife to Billie Jim St. Clair, Lots 7, 8, 9, 10, 11 and 12, Block 1, Hilltop Addition, \$1.00 and other valuable considerations.

Billie Jim St. Clair and wife to Lowell Irvin St. Clair, Lots 1, 2, 3, 4, 5 and 6, Block 1, Hilltop Addition, \$1.00 and other valuable considerations.

Billie Jim St. Clair and wife to S. D. Clements, Lot 10, Block No. 1, Hilltop Addition to Muleshoe, \$750.

Julian E. Lenau, et al to Muleshoe Homes Incorporated, Lot 1 and the SE 25 feet of Lot 2, Block 1, Lenau Subdivision, \$1,200.

C. M. Evans and wife to Charlie Gatlin, 7 acres out of SE-4 Section 33, Block X, \$1,450.

Dale L. Phillips and wife to First National Bank of Amarillo, Labor 23, League 192, Foard County School Land, \$10 and other valuable considerations.

W. T. Millen and wife to Fred S. Barrett, East 50 feet of a tract out of Section 54, in Block Y, \$500.

H. H. Whitney, and wife to N. H. Ratliff, 350.2 acres of land out of Tracts One and Two, League 187, Swisher County School Land, \$13,125.

Julian E. Lenau, et al to Sam E. Fox, 2.4 acres out of SW-4 Section 53, Block Y, \$2,400.

OIL, GAS AND MINERAL LEASES

M. C. Street and wife to Gulf Oil Corporation, Tracts 98, 99, 100, 101, 102 and 103, League 181, Floyd County School Land.

Wilce Embry, et al to E. N. Cain, NE-4 and W-2 of SE-4 Section 51, Block Z.

MARRIAGE LICENSE

James Vernon Gillentine, Rt. 4, Hico, Texas to Miss Anna Jewell Garvin of Maple, Texas, Issued April 4, 1953.

BIRTHS REGISTERED IN BAILEY COUNTY FOR MARCH, 1953

Donna Jean Waggoner, daughter of Mr. and Mrs. Marvin J. Waggoner, born March 1, 1953.

Thomas Charles Taylor, son of Mr. and Mrs. August G. Taylor, born March 1, 1953.

John Gwyn Walker, son of Mr. and Mrs. Otie Joe Walker, born March 3, 1953.

Michael Joe Sowder, son of Mr. and Mrs. Archie L. Sowder, born March 3, 1953.

Jerry Wesley Hargett, son of Mr. and Mrs. James W. Hargett, born March 3, 1953.

Rhonda Diann Mardis, daughter of Mr. and Mrs. Cecil C. Mardis, born March 4, 1953.

Michael Gene Dunlap, son of Mr. and Mrs. Wayland G. Dunlap, born March 4, 1953.

SISSY BRITCHES



This eye-catching cotton swimsuit gets the name "sissy britches" from its ruffles—which are back in fashion this year. The one-piece swimsuit, with a matching beachcoat is designed in Skillman's wave-length pique by Brigance. The beauty who wears the "sissy britches" is enjoying the sunshine from a terrace overlooking the Caribbean Sea.



THE BEST STOP TO CONTROL YOUR STOCK!
International 106 WEED CHOPPER ELECTRIC FENCER!
 This amazing fencer stops all stock... whether it's a big bull... or hard-to-stop sheep! It cuts off weeds and grass instead of shorting out. Controls up to 50 acres of fencing. High and low control. 110 volts, AC.

LIFE TIME SERVICE POLICY
FREE! Without obligation, we'll send you the book, "HOW TO BUILD A GOOD ELECTRIC FENCE!"
 Write your name and address on margin of this ad, and we'll send you the book.

Johnson-Pool
 Phone 7370 Muleshoe

Texas Bob Lang, Bluebonnet Lover, Visits Our Town

Alfred H. Lang of Mason, better known as "Texas Bob" was a visitor in Muleshoe this week. Texas Bob was formerly a cowboy, working on ranches around Mason. He had the misfortune of losing his right leg in 1939 in a horse riding accident, but he still manages to support himself and enjoys life. He says "The only place a man can be handicapped is under his hat."

Texas Bob is engaged in a most unusual occupation, probably the only one in Texas or the United States selling bluebonnet seeds, the state flower. His motto is "Bluebonnets in every yard in Texas." He got the idea of selling the seeds three years ago when he saw tourists stop along the roads to pick the bluebonnet seeds. Since then he has been constantly traveling, selling his seeds. He doubts that he will ever stop. "I enjoy meeting people and making friends too much ever to settle down," he says.

Mr. Lang raises the seed himself and they are all hand gathered, so stray seeds will not be in the packages.

Texas Bob says the bluebonnet will grow in any section of the state and he proudly says he has proved it. The fall of the year, preferably in October, is the best time to plant the seeds. They should not be covered too deeply and the ground must be kept well watered.

"It was mighty rough going for awhile," Bob reports. And he was too proud to beg. But in these four years of traveling he has become well known and has

lap, born March 4, 1953.

Eva Mae Porter, daughter of Mr. and Mrs. Jessie D. Porter, born March 6, 1953.

Nelda Joyce Ware, daughter of Mr. and Mrs. Erman B. Ware, born March 13, 1953.

Rosanna June Stovall, daughter of Mr. and Mrs. Earl E. Stovall, born March 13, 1953.

Patricia Ann Duncan, daughter of Mr. and Mrs. Glen D. Duncan, born March 15, 1953.

Maxine Delayne Steinbock, daughter of Mr. and Mrs. Rex L. Steinbock, born March 16, 1953.

Donna Kay Vandever, daughter of Mr. and Mrs. Clarence Vandever, born March 19, 1953.

Jimmy Dale Pierce, son of Mr. and Mrs. Donald F. Pierce, born March 21, 1953.

Dorothy Jean Lansdale, daughter of Mr. and Mrs. Raymond I. Lansdale, born March 22, 1953.

Ronald Allen Ramm, son of Mr. and Mrs. Fred Edward Ramm, born March 30, 1953.

Charlene Vandever, daughter of Mr. and Mrs. Francis Vandever, born March 22, 1953.

MRS. HOLT'S BROTHER PASSED AWAY

Rev. J. R. Bateman, a brother of Mrs. H. C. Holt, passed away Monday at Munday, Texas, where he had lived for many years. Rev. Bateman was a retired Methodist minister, who had preached for more than thirty years. One of his pastorates was at Whiteface.

Mr. and Mrs. Holt and their son, Clyde Holt, attended funeral services, conducted Tuesday afternoon. Interment was in Munday cemetery.

many friends.

He does... make a boose to house contact selling his seeds but asks people to send mail orders to him at Mason, Texas. Price of the seed is 50 cents a package.



ENSIGN
Butane-Propane
CARBURETION

...FOR LOW COST FARMING

With Butane-Propane you can cook and heat the home. You can also run the tractor, irrigate, generate electricity and fuel your trucks. Equip your various engines with ENSIGN Carburetion for Butane-Propane and make very substantial savings in fuel costs and engine maintenance. Engines burning Butane-Propane run three to four seasons without overhaul or valve grind.

The carburetion you buy and its method of application is the key to successful engine operation. Ensign carburetor specialists for 36 years, pioneered Butane-Propane Carburetion and has perfected the finest equipment for easy starting, power, economy and safety. Consult your local ENSIGN Dealer. He is a specialist on Butane conversions and will gladly inspect your engines and advise on the feasibility and cost of the installation. Call or write him for free bulletin on the use of Butane-Propane in tractor, truck and pumping engines.

WIEDEBUSH & CHILDERS

PHONE 2810

MULESHOE

Our Honor Roll

New subscribers to the Journal this week are:
 Pete Freeman, City.
 O. L. Woody, Route 1.

Old subscribers who have renewed their subscriptions to the Journal this week are:
 Lee Pool, City.
 Buck Creamer, City.
 C. D. Gupton, City.
 Heathington Lumber Co., City.
 H. O. George, City.
 Horace Edwards, City.
 Muleshoe Liquefied Gas Co., City.
 Union Compress & Warehouse, City.
 Mrs. C. A. Horsley, City.
 E. H. Baugh, Route 1.

J. W. Bickel, Route 1.
 B. H. Porter, Route 1.
 J. D. Rucktashel, Route 1.
 Tom Watson, Route 2.
 Cecil A. Davis, Star Route 2.
 J. W. Wimberley, Route 2.
 Joe Sooter, Route 2.
 Jack Barbour, Washington, D. C.

EXCLUSIVE!

MAGIC MONITOR SCREENS OUT TV PICTURE STATIC!

● Television's first double-shielded tuner and a completely shielded chassis filter out "haywire" pictures before they reach your screen!
 ● The new "Magic Monitor" circuit system steps up power automatically. Weak signals are amplified, brightness held constant!

21" RCA VICTOR TV See it today!



RCA Victor Brookfield (Model 21T27)

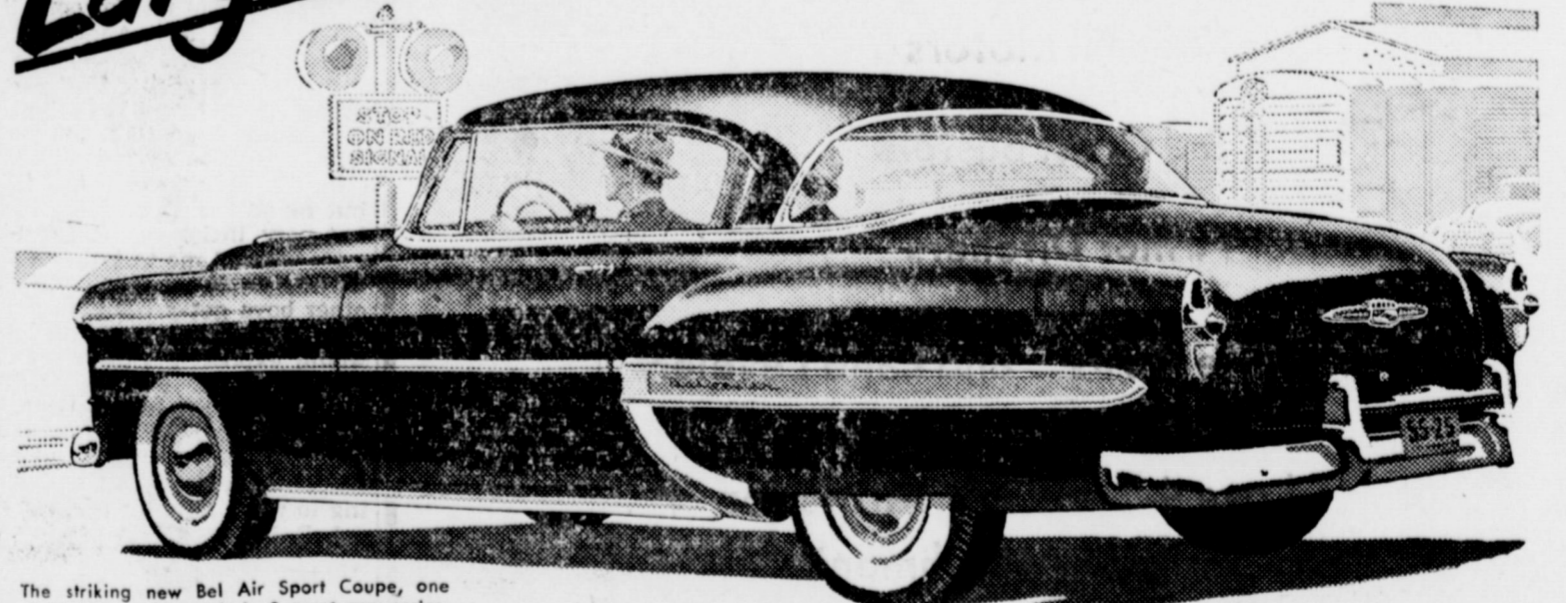
● This smart, contemporary cabinet is a perfect blend of clean, sweeping lines. Mahogany or walnut finish. Stand finish slightly higher.
 ● 21-inch television—clear, steady pictures—with the "Magic Monitor." Ask about the RCA Victor Factory Service Contract covering expert television installation and maintenance... available only to RCA Victor owners.

Johnson-Pool
 Phone 7370 Muleshoe

... and for your safety

Largest Brakes in its field!

with easier action, too!



The striking new Bel Air Sport Coupe, one of 16 beautiful models in 3 great new series.

Chevrolet's improved Velvet-Pressure Jumbo-Drum Brakes give maximum stopping power with maximum ease of application



Entirely NEW through and through!

Chevrolet owners have long been convinced that they have the safest as well as the largest brakes on any low-priced car. And that is even more true in 1953. This year you will find much smoother, more responsive brake action... up to 23% less pedal pressure... and a softer, more velvety feel of operation.

Realize, too, that here is the only low-priced car with sturdy Fisher Unisteel Construction, Safety Plate Glass in wind-

shield and all windows of sedans and coupes, extra-easy Power Steering* and many other important safety factors, and you'll understand why owners rate the new Chevrolet tops.

Come in; see and drive this thrillingly advanced car, and we believe you'll place your order now! *Optional at extra cost. Power Steering available on all models. Continuation of standard equipment and trim illustrated is dependent on availability of material.

MORE PEOPLE BUY CHEVROLETS THAN ANY OTHER CAR!

C. & H. CHEVROLET CO.

MULESHOE, TEXAS

Texas First Grain Elevator Act Passed By State Senate

The Journal is indebted to Senator Andy Rogers for a timely explanation of the Grain Elevator Act. We'll let him tell you about it, himself:

Texas' first definite Grain Elevator Act has been passed by the State Senate and endorsed by the State Farm Bureau and State Association of Grain and Feed Dealers.

Senate Bill 215, called the Grain Warehouse Act, was introduced by Senator Andy Rogers of Childress to close up all exist-

ing loopholes in the grain warehouse laws.

The Grain Warehouse Act sets definite standards and measures of enforcement on all provisions of present warehouse laws which are not being enforced, and establishes several new provisions to protect the farmers and grain warehousemen against embezzlement, or fraud or unavoidable loss of stored grain and field seed.

Following is a brief description of the Grain Warehouse Act:

Sec. 1. Defines certain terms used in the bill in order to clarify the meaning of these terms.

Sec. 2. Provides that the Commissioner of Agriculture shall enforce the provisions of the Act, and empowers the Commissioner to appoint warehouse inspectors and other necessary personnel, fixing the duties and salaries of these appointed officials.

Sec. 3. States that it shall be unlawful for any person to op-

erate a public grain warehouse unless he has obtained a license issued by the Commissioner. Cost of the license will be \$10 each. Money from such license fees will be deposited in a State Department of Agriculture Grain and Field Seed Warehouse Inspection Fund. No license will be issued until the applicant has filed with the Commissioner a corporate surety bond of not less than \$5,000 and not more than \$50,000, the amount to be prescribed by the Commissioner to be sufficient to afford adequate protection to the public. Provides that persons injured by violation of the terms of the bond may recover damages to the amount of the bond and suit may be filed by the injured person. Each license must be renewed annually, and the license may be revoked by the Commissioner if the license violates the provisions of this Act.

In event a warehouseman operates more than one warehouse unit located on the same general site as the licensed unit, he shall be entitled to a permit for operation of each additional unit upon application to the Commissioner. Annual fee for such a permit will be the same as the original license (\$10). The permit shall run concurrently with the license of the principal unit and one bond will cover all the units as a whole.

(Continued Next Week)

Maj. Weaver In Europe Command

With U. S. Forces In France — Army Maj. Richard W. Weaver, whose wife, lives at 105 E. Cypress, Edna, Texas, is now serving with the European Command Communications Zone in France. The Zone is responsible for the transportation of men and supplies from French ports to U. S. forces in Germany. Its Headquarters is in Orleans, France, and it maintains a base section at La Rochelle.

A member of the 7966th Headquarters Group, Weaver entered the Army in 1935. He holds the Bronze Star Medal, European-African-Middle Eastern Theatre Ribbon, and Korean Service Rib-

Reese Prepares For Armed Forces Day On May 16

The Reese Air Force Base Armed Forces Day committee, headed by Major William W. McDannel, held a preliminary meeting this week to discuss plans for the base's part in the nationwide celebration of Armed Forces Day, May 16.

The Reese committee will be primarily concerned with the planning of an "open house" at the base, and will work in close cooperation with Lubbock community leaders.

Major McDannel announced that the official slogan for this fourth annual Armed Forces Day observance will be "Power for Peace". Displays and demonstrations of all kinds from all three services will be open to the public when Reese hangs out the welcome sign on May 16.

In each of the seven geographical areas corresponding to the continental Army commands, one military service has been given primary responsibility for all Armed Forces Day activities. Reese is in Area I under the jurisdiction of Major General Gabriel P. Disosway, Commanding General, Flying Training Air Force at Waco.

Because of the increased interest in equipment for national defense, it is anticipated that the Open House attendance this year will be between 20,000 and 25,000. Last year's celebration was hampered considerably by rain and cold weather.

In addition to the many displays and demonstrations, several types of Air Force and Naval aircraft will be on display, including helicopters. The public will witness flyovers of two types

bon. His parents, Mr. and Mrs. Donald Weaver, live at 1217 High St., Beatrice, Neb.

of jet aircraft, the T-33 and F-86, and formations of B-25's and T-28's. Included in the aerial show will be demonstrations of precision tactical flying. Several national celebrities have been contacted to be guests at this year's Armed Forces Day observance; however, no official confirmation has been received.

Roberts Ends Basic Training

Lackland Air Force Base, Tex.—D. F. Roberts, 19, son of Mr. and M. F. Roberts, Muleshoe, is completing his AF basic airmen indoctrination course at Lackland Air Force Base, "The Gateway to the Air Force."

Lackland, situated near San Antonio, is the world's largest air force base, site of Air Force basic training for men and women, headquarters of the Human Resource Research Center, and home of AF's Officer Candidate School.

His basic training is preparing him for entrance into Air Force technical training and for assignment in specialized work. The course includes a scientific evaluation of his aptitude and inclination for following a particular vocation and career.

Daniels With St. Clair Stores

R. Daniels, formerly of Canton, Texas, has been employed by the St. Clair Variety Stores in a general managerial capacity and has assumed his duties here. St. Clair's operate two stores here and stores at two other Plains towns.

Mr. Daniels is an experienced variety store executive. He is moving to Muleshoe with his wife and their two sons, the oldest of school age.

Staples always on tap at The Journal.

Goodland Gets Irrigation Wells

Several farmers of the Goodland community have been fortunate in bringing in irrigation wells on their places in recent weeks.

O. C. Kirk, who farms north of Muleshoe and still owns a labor 1 mile east and 1/2 mile north of Goodland, last week brought in a well on his place and by Thursday it was already in use, irrigating land for planting. An 8 inch pump was installed and a good pipe of water was flowing from the well. The hole was drilled to 197 feet, pump set at 180 feet. Kirk's son, Dargan, farms the place.

Kirk said wells recently have been brought in by his neighbors: Baker Johnson, A. G. Taylor, L. D. Sanderson, and C. A. Bundreth, the latter having two wells on his land.

Land owners in the opposite corner of the county, around Enochs and Bula, have spent considerable time and money try-

ing to bring in irrigation wells, but so far have not been too pleased with their efforts. Quite a few irrigation wells already have been brought in around Maple, and even more around Needmore.

ALL ABOUT TEXAS in the Texas Almanac, on sale at The Journal. Phone 7220, we deliver.

GREEN Hospital & Clinic

Muleshoe, Texas

Dial 2250

FOR THE BEST OF

Service

—Stop At—

Kelton Barber Shop

2nd door west of Post Office

FREE ESTIMATE ON EXPERT....

- CUSTOM LINOLEUM TILE VINYL INLAYS.
- PAINT CONTRACTING
- WALL PAPERING

We Contract All Types Floor Covering & Tile — Also Painting, Residential or Commercial.

HOUSE OF COLOR

413 W. 7th

Clovis, N. Mex.

Phone 9046

Coming Next Thursday — One Day Only!

Thurs., April 23

MULESHOE JAYCEES

— PRESENTS —

BAILEY

★ BROTHERS ★ CIRCUS



THE ALL-STAR SHOW FROM THE LONE STAR STATE

FASTEST GROWING CIRCUS IN AMERICA ★ MORE OF EVERYTHING THAN EVER BEFORE

POPULAR PRICES: ADULTS \$1.00 — CHILDREN 60c, Incl. Tax
DOORS OPEN 3 P. M. AND 8 P. M.

MULESHOE RODEO GROUNDS

46 ACTS ● 26 DISPLAYS

- Gentry's Performing Elephants.
- Sylvia Gregory — Aerialist.
- Duke Family — Jugglers.
- Ramano Rajaro — Slack Wire.
- Marice Mamala — Unicyclist.
- Joe Hodgini — And his Congress of Clowns.

And Many, Many Other Big Circus Acts

It's Spring in TEXAS



Make SURE your car gets

CONOCO "Spring Tonic" Service!

More than just an oil change
A COMPLETE "SPRING TONIC" FOR YOUR CAR!

Available only at your CONOCO Dealer



DRAIN AND REFILL WITH CONOCO Super MOTOR OIL

While the engine is hot, he'll drain your gritty, winter-worn oil. He'll recondition air and oil filters, and, most important of all, he'll refill your crankcase with the right grade of Conoco Super—the motor oil with Oil-Plating® that helps your engine eat less—run better—live longer!

CONOCO Super IS A HEAVY-DUTY OIL

FREE BATTERY CHECK-UP

Your Mileage Merchant will clean battery terminals and make sure your battery is in top condition.

FREE RADIATOR SERVICE

He'll lighten hose connections, flush radiator if you wish, and see that your cooling system is set for warm-weather driving.

CONOCO CHEK-CHART LUBRICATION

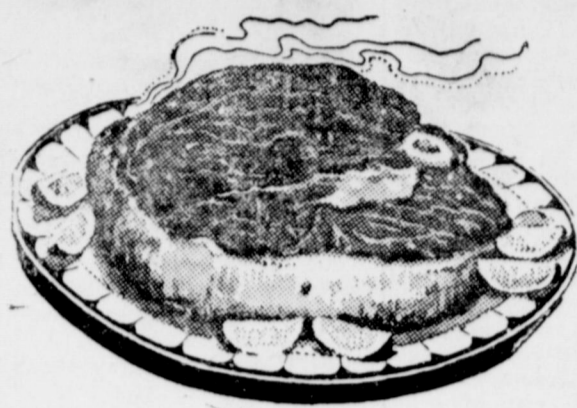
Using Conoco's special Chek-Chart for your make of car, he will get to every single lubrication point, assuring smooth, squeak-free riding. And he'll replace winter-worn transmission and rear-axle lubricants with correct Spring-grade Conoco lubricants for quiet, wear-free operation.

-P.S. Don't forget to fill your tank with CONOCO "Spring-Tailored" gasoline!



Treat the Family to the Best in

FINE MEATS



Choice Beef

ARM ROAST Lb. **37^c**

Lean and Tender Fresh

Pork Roast Lb. **49^c**

Choice Beef

RIB STEAK Lb. **55^c**

Lean and Tender Fresh

PORK STEAK Lb. **53^c**

CHOICE BEEF

CHUCK ROAST lb. **43^c**

CHOICE BEEF

SHORT RIBS lb. **25^c**

OLEO

All Sweet
1 Lb. Carton

19^c

PREM

Sw
12

Swift's Premium

PEANUT BUTTER

20 Oz. Jar **49^c**

Mellorine
FROZEN DESSERT

1/2 Gal. **49^c**

15 Oz. Box

Minute Rice **39^c**

Haase's Imported
STUFFED OLIVES

24-Oz. Jar **79^c**

Haase's
STUFFED OLIVES

10-Oz. Bucket Jar **49^c**

NORTHERN LUNCHEON

NAPKINS 80 count pkg. **15^c**

Pure Gold

BROOMS

Each **\$1.69**

Post's Sugar Crisp and

RAISIN BRAN

Both For **29^c**

DID YOU KNOW IN A SUP

6 OZ. PYREX **CUSTARD CUPS** ..

16 OZ. **ICE TEA GLASSES**

80 OZ. **ICE TEA PITCHERS**

7 PIECE CRYSTAL GARDEN **JUICE SET** ..

REFRIGERATOR QUART SIZE **WATER JUGS** ..



DEL MONTE GARDEN SHOW SALE



THE LIVELIEST TASTING CATSUP EVER — DEL MONTE

CATSU



DEL MONTE



Fruit Cocktail
No. 303 can **25^c**

DEL MONTE



Tender Peas
No. 303 can **17^c**



CRUSHED PINEAPPLE

No. 2 can **25^c**

DEL MONTE MARY WASHINGTON

ASPARAGUS no 303 can **37^c**

CASI


FREE DELIVERY 'Where Friends M



P 2 14 Oz. Bottle **25c**

DEL MONTE
 **Yellow Corn**
 No. 303 can **17c**

DEL MONTE
 **Tomato Juice**
 46 oz. can **25c**

PRUNE JUICE
 Quart Bottle **29c**

DEL MONTE
PINEAPPLE JUICE 46 oz. can **35c**



Top Quality VEGETABLES for LESS MONEY!



California Fresh

CORN 2 Ears **9c**

California Fancy

CARROTS 2 Bunches **9c**

South Texas Yellow or White

ONIONS 2 Lbs. **9c**

Fancy Texas Fresh

GREEN ONIONS 2 Bunches **9c**

GARDEN FRESH RADISHES 3 bunches **9c** **FLORIDA LONG GREEN CUCUMBERS** lb. **9c**

Gift's
 Oz. Can **39c**

39c LARD

Pinkney's
 Pure, 4 Lb. Ctn. **49c**

YOU CAN FIND THESE EVERY MARKET?

..... 2 for **19c**
 **17c**
 **59c**
 **\$1.19**
 2 for **29c**

Our Value Elberta
Peaches No. 2 1/2 Can **25c**

Haase's
QUEEN OLIVES
 10 Oz. Bucket Jar **39c**

Delsey
BATHROOM TISSUE
 2 rolls for **23c**

LIPTON'S TEA, orange pekoe 1/2 box **59c**



KRE-MEL
 POWDER FOR PUDDING
 3 Packages **19c**

DIAL SOAP
 BATH SIZE **19c**

- FRESH FROZEN FOODS - STOCK UP! -

CRISTIES FROZEN ASSORTED SEA FOOD DINNER ... 8 oz. pkg. **59c**

CRISTIES FROZEN TENDERLOIN of GULF TROUT ... 12 oz. pkg. **89c**

HIWAY

Meet And Prices Talk" Phone 2440 or 2450



Levelland To Open New Hotel

Levelland, April 14 — Levelland residents today were setting the stage for the grand

opening of the city's new ultra-modern Hotel Cal Boyken here on April 25.

The opening of the two-story, forty-room structure will mark the culmination of community-wide work and planning which has extended over a period of more than four years. The build-

INSURANCE PROTECTION POLICY FOR EVERY NEED

Lane Insurance & Real Estate
EDDIE LANE, OWNER

PHONE 3630

MULESHOE, TEXAS

Now! Save!

prices reduced
on all models... up to \$201⁸⁰



All New
'53 Dodge
V-EIGHT OR SIX

Specifications and equipment subject to change without notice.

Come! Compare! See How Much More You Get!

MORE ROOM . . . extra head, leg and elbow room.
MORE COMFORT . . . restful chair-high "Comfort Contour" seats, "Oriflow" ride. **MORE VISIBILITY** . . . curved "Pilot View" windshield, wrap-around rear window. **MORE DRIVING EASE** . . . "snugs down" on curves, parks where others pass by. **MORE DEPENDABILITY** . . . unchallenged for 38 years.

Come In... Or Call

Arnold Morris Auto Co.

Phone 7150

Muleshoe

Speaking of Her Clothes Dryer, Mrs. Juanita Brnum, of Amarillo, says:

"It's the most CONVENIENT appliance I have ever owned!"



"I just couldn't get along without my electric clothes dryer. I save many steps every washday, and I can plan my washday without worrying about the weather," Mrs. Brnum adds

Try a clothes dryer, electric, of course, in your home, and you'll agree with this modern homemaker—"It's the most convenient appliance I've ever owned."



SOUTHWESTERN PUBLIC SERVICE

COMPANY

ing represents an investment of almost \$300,000.

Open house will be held from 2 p. m. to 5 p. m. after ribbon-cutting ceremonies are completed. A banquet session, with outstanding speakers and a variety of entertainment, will follow in the evening.

The building of modern design, besides 39 guest rooms reached through a panel glass entrance-way, will have a banquet hall seating 225 persons and a modern kitchen and coffee shop to be operated by local restaurateur, Wayne Lewis.

The front of the building, including the coffee shop designed with an attractive stair-step window, is finished in red Roman brick with an overhanging stainless steel awning. The remainder of the building is finished in cream face brick with Roman trim.

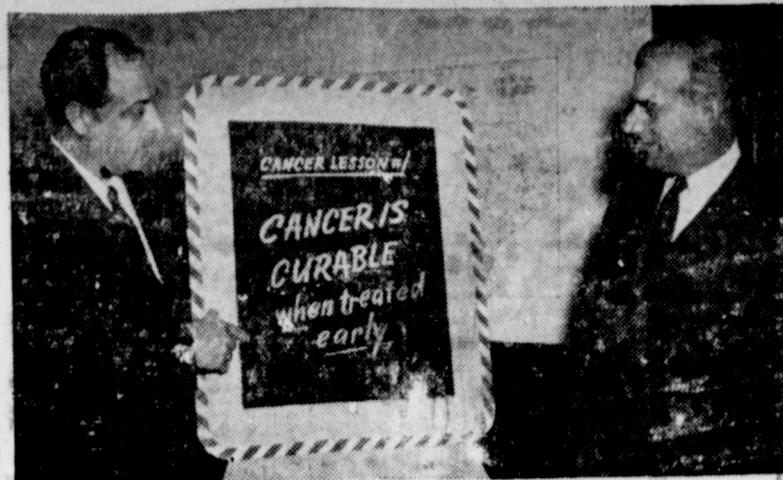
Bill Shirley Honored By TCU

FORT WORTH, April 11 — W. M. Shirley, West Texas rancher and grainman from Lubbock, has been named chairman of the athletic committee of the TCU Board of Trustees. The committees were announced this week by Milton Daniel, Breckenridge, new chairman.

INDIAN-INSPIRED



Vivacious Alice Carr, 1953 Maid of Cotton, shows one of the exotic cotton play ensembles from her famous all-cotton wardrobe. This sports costume, inspired by the rich colors of Indian madras, is designed by Korday in plain and multi-color striped denim by Cone. The ensemble consists of halter and pants, plus a cotton-fringed stole.



"CANCER CAN BE CURED" — Lt. Gov. Ben Ramsey hears from Steve R. Wilhelm, left, during Texas Cancer Crusade kick-off ceremonies at the State Capitol. Mr. Wilhelm, Houston radio and advertising executive, told how cancer caused him to lose his voice in 1949. He has since learned how to speak without vocal chords. "Supporting the American Cancer Society, during its April Cancer Crusade, will help to save lives, and may include your own," he said.

Taller Signs For Texas Highways

The Texas Highway Department has reached a new height in highway signing, D. C. Greer, State Highway Engineer, announced today. Greer said existing signs will gradually be replaced by taller ones 3 1/2 feet high measured from the pavement level to the bottom of the sign. The present signs range from 18 to 24 inches in height.

The reason for this change-over, Greer continued, is to reduce the maintenance cost and to increase readability and visibility, especially during the growing season when native flora often interferes with or partially covers the present low signs if not moved frequently. In the spring, for example, we sow and cultivate wild flowers along the roadside and in order for these flowers to reseed, it is necessary to permit them to reach maturity. However, this is impossible in areas where low signs are in use since the flowers would hide the signs. Greer said that in wet weather, vehicles continually splashed mud on the present low signs, causing an expensive maintenance cleaning problem.

Greer added that within the next two or three years this change-over should be completed throughout the state. There are 208,000 signs on the 42,206 miles of state-maintained highways and when replacement is necessary, the new height sign will be used. This gradual change-over will enable the department to erect the new signs at no extra cost to the taxpayers.

He pointed out that when three or more signs are to be mounted on a post, the bottom sign will be 2 1/2 feet from the pavement level so that the top sign will not be too high for easy readability. In the areas where the new signs have been tried, the results have been most gratifying. The higher signs are more visible to motorists and have greatly reduced maintenance cost, Greer said.

PAT R. BOBO

Attorney-At-Law
Office In Bank Building
Muleshoe, Texas

Jones Completes Pre-flight Course

Lackland Air Force Base, Texas — Edward N. Jones, 21, son of Mr. and Mrs. L. H. Jones, Muleshoe, has successfully completed the pre-flight phase of his pilot training at Lackland Air Force Base, San Antonio, Texas.

He was graduated in informal ceremonies of the 3740th Pre-Flight Training Group, commanded by Col. Wm. F. Stewart. This group is one of the largest military training organizations of Lackland, the Gateway to the Air Force base, commanded by Brig. Gen. Wycliffe E. Steele. It provides initial aviation Cadet Training for both pilot and aircraft observer students.

With the first twelve weeks of the program that will lead to the wings of an Air Force flying officer behind him, he will enter basic flying training upon leaving the San Antonio base. Many of the graduates will receive a delay en-route to their new training base which will enable them

to take a brief home leave.

Although predominantly American, the pre-flight graduating class included a number of cadets enrolled as Allied nationals under provisions of the Mutual Defense Assistance Pact against enemy aggression. These cadets qualified under the program from the nations of Norway, Denmark, France, Belgium, the Netherlands and Italy.

DR. A. E. LEWIS
Dentist
East of Courthouse - Muleshoe
Off. Pho. 3040 — Res. 6570
Closed Wed. & Sat. Afternoon

CECIL H. TATE
Attorney-At-Law

Office In Courthouse
Muleshoe, Texas

THE JOURNAL is the place for your Office Supplies, paper of all kinds, Phone 7220.

COX

DRIVE-IN THEATRE

Program
OF FINE ENTERTAINMENT!

Sun., & Mon., April 19 & 20
NEVER WAVE AT A WAC
Rosalind Russell & Paul Douglas

Tues. & Wed., April 21 & 22
TRY AND GET ME
Frank Lovejoy & Richard Carlson

Thurs. & Fri., April 23 & 24
THE GOLDEN HAWK
Rhonda Fleming & Sterling Hayden

Saturday Only, April 25
OKLAHOMA ANNIE
Judy Canova

MULESHOE

TEXAS

It's A Bearcat In Performance

CHRYSLER V-8

And 6-Cyl. Irrigation Motors

STURDY — DEPENDABLE — BUILT TO LAST.

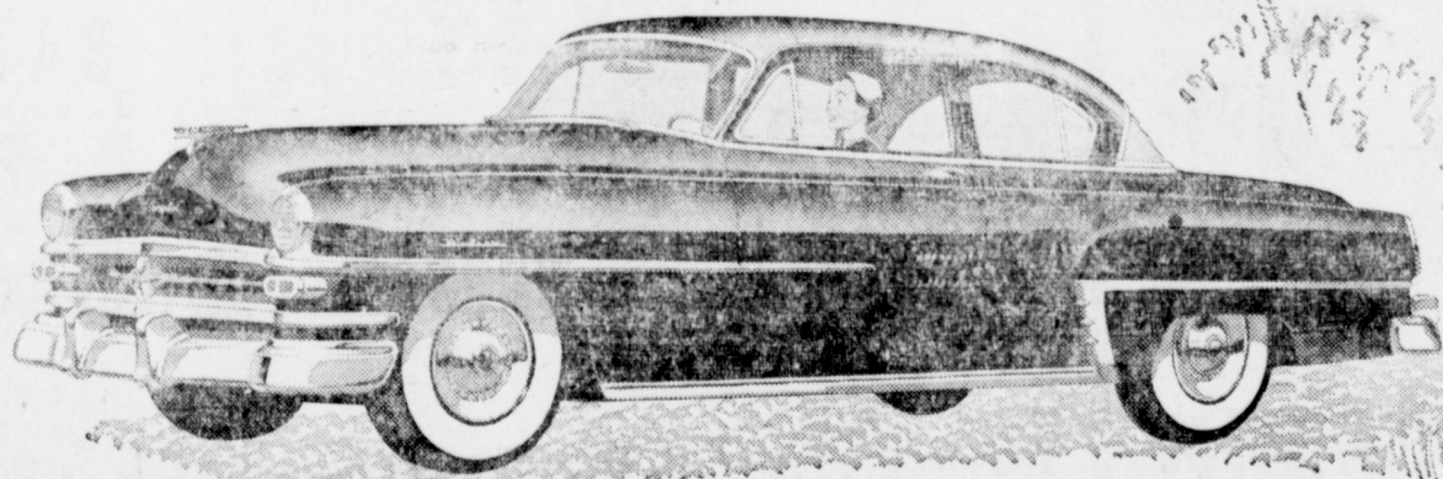
We Are Prepared To Service Your Irrigation Motor When You Need It.

FIELD AND SHOP SERVICE

MORRISON MOTOR CO. —Phone 4130

Here's **CHRYSLER QUALITY**

for little more than a low-priced car!



- It's a fact! . . . you can own this superb Chrysler Windsor for little more than a low priced car with all its extras!
- Chrysler size and comfort . . . quality . . . prestige . . . safety. All here at surprisingly modest cost.
- Famous Spitfire engine gives you power and performance that will thrill you every mile!

- Full-time Power Steering, optional, lets you turn easier and safer than ever. With fewer turns of the steering wheel!
- New double-strength Oriflow shock absorbers really banish bumps and bounce!
- Here is money's-worth that must be driven to be appreciated. Call on your Chrysler-Plymouth dealer soon!

CHRYSLER WINDSOR at NEW LOW PRICES due to greater production and demand for Chrysler cars
MORRISON MOTOR CO. - MULESHOE, TEXAS

The Muleshoe Journal

PUBLISHED EVERY THURSDAY AT MULESHOE, TEXAS

Entered as second class matter at the Muleshoe Post Office under the Act of Congress, March 3, 1897.



SUBSCRIPTION RATES

In Immediate Territory, 1 Year \$2.00
Out of Immediate Territory, 1 Year \$2.50

J. M. FORBES Editor and Publisher

BABSON Discusses — Higher Interest Rates

Babson Park, Fla., April 16. — Last December on my way from Massachusetts to Florida, I found almost all of my Wall Street friends were bullish on stocks.

WALL STREET CONFUSED
Today, owing to the Korean Peace outlook, the sentiment is now bearish. In fact, the bulls are confined to those who still believe War III is more likely than when Stalin lived. They hold "War Babies" which they fear would suffer by peace.

Impartial observers are very confused and uncertain as to the future. They are thankful that Eisenhower is President; and are glad for Stalin's death. Wall Street, however, believes that Malenkov is not Stalin's real successor and that we will see a change to someone else. They further feel some one of the Satellites may kick over the traces and that China may be the one.

ALL AGREE ON INTEREST RATES

The only thing Wall Street now agrees upon is that money rates will stiffen. This will be due to the increase in the Government Bond rates and in installment buying, or the over building of homes and other causes. Here is good news for small investors! You will soon be able to buy 3 1/2% U. S. Government Bonds. This is the first time in 20 years that you have been able to do this. Loaners of money are also getting "choosier" about their loans. They are turning down many applications which they would have accepted a year ago. Banks are waiting to see what the future will bring forth. This hesitancy automatically increases interest rates.

The interest yield of bonds is also an important factor. When good bonds yield little, banks and trustees loan money more freely on mortgages; but today the yield of good bonds is increasing. Many of these bonds are nontaxable as to Federal Income, due to the vast amounts being issued for constructing super-highways.

INTEREST PAYMENTS ALREADY HIGH

Although a bank will tell you that its rate has not increased, yet to you it has increased in terms of purchasing power. A

manufacturer who now pays 3 1/2% interest to buy machinery which runs only 40 hours a week is really paying more now than he was paying when the rate was 4% and his machinery operated 48 hours per week. You are already paying more for mortgage money now than when building costs were much less than present costs because you must borrow more money now to build a home. Those who now buy cars and merchandise on installments are today paying 8% or more.

Any attempt to raise wage rates faster than the increase in hourly productivity is equivalent to an increase in interest rates. The most practical solution to present high prices is to abolish the 40 hour week. Otherwise, we must curtail spending which would result in unemployment. To refer again to interest rates, these must increase to check a return of inflation. "We cannot have our pie, and eat it too!"

WHAT ABOUT COFFEE PRICES?

This brings me to say another word about retail prices. Since the controls have been lifted, hundreds of complaining letters have come to me. Most of these refer to the price of coffee. Let me say that the price control was taken off of coffee to help our "good neighbor policy" in Central and South America. Therefore, when you pay more for coffee, just remember you are truly helping millions of very poor people working on the coffee plantations.

If you don't want to help these poor South Americans by paying more for coffee you can reduce the cost of coffee by drinking less of it. We don't need to buy so much coffee. Just reduce one cup a day and you will more than offset the recent increase in price; while your health will be better and you will live longer. Coffee is not a food; it is only a temporary stimulant at best. The present growing habit of many office employees to demand a cup of coffee in the middle of the morning not only increases the price of coffee for everyone, but, by reducing efficiently, is helping to bring on a business depression.

SAND HILLS PHILOSOPHER SAYS — New Pill To Ward Off Effects Of Atom Bomb Is Big Mistake

Editor's note: The Sand Hills Philosopher on his Johnson grass farm apparently has his tongue in his cheek this week, although there's always the possibility it could be something else, say chewing tobacco.

Dear editor: The trouble with scientists is that they're always working against each other and for every step one of em makes toward progress another one of em takes a step to head him off. We don't get anywhere.

Take the atom bomb. Here we had a fine instrument of civilization, you might say the peak of civilized ingenuity in so far as eliminatin more people at one time is concerned, civilization these days you know bein measured not only by the greatest good for the greatest number but the greatest number bumped off in the shortest time.

The atom bomb, you might say, was the ultimate dream of the first cave man who dropped a rock off a cliff on the head of his neighbor. It multiplied a man's power so many times he could now eliminate people by cities instead of handfulls. It looked like we might be gettin somewhere toward scarin the daylight out of each other and cowerin us into final world peace.

And what happens? We spend billions of dollars and endless hours of scientific research to get it perfected and then what?

Some scientist not willin to let well enough alone gets busy and invents a pill to counteract the effect of the atom bomb's most valuable aspect, its ability to send mysterious rays out and kill people merely by radiation. Accordin to an account I read in

a paper yesterday, all you have to do now is take this pill before an atom bomb goes off and if you're out of the immediate vicinity where the thing explodes, you're safe from the devastating radiation that used to make the bomb such a masterful instrument of slaughter.

I tell you, that pill has set us back twenty-five years. Now we've got to start all over again and work out something to add to the bomb that'll overcome the effects of the pill, and as sure as we do some scientist will develop another pill to overcome that, and civilization will be right back where it was before. I wish scientists would make up their minds. We'll never get anywhere this way.

Yours faithfully,
J. A.



WOODLEY TO ATTEND NATIONAL FLA MEETING

Mr. and Mrs. Noel Woodley are to attend a meeting in Houston first of next week of Texas National Farm Loan Association secretaries, scheduled for April 20, 21, and 23.

The couple hope to spend Sunday and Sunday night with the family of Walter Cunningham, former superintendent of schools here, now superintendent in Galena Park, a Houston suburb city.

CHRISTIAN SCIENCE SERVICES

The Golden Text of the Lesson-Sermon on "Doctrine of Atonement" to be given in Christian Science churches this Sunday is from I John 1:3: "That which we have seen and heard declare we unto you, that ye also may have fellowship with us: and truly our fellowship is with the Father, and with his Son Jesus Christ." The lesson points out that Christ Jesus' mission on earth was to demonstrate for all people in every age that the understanding of man's at-on-ment with God overcomes sin and suffering of every sort. This Bible passage will be read: "All things are of God, who hath reconciled us to himself by Jesus Christ, and hath given to us the ministry of reconciliation" (II Cor. 5:18).

Further discussing the subject of atonement, this passage will be read from "Science and Health with Key to the Scripture" by Mary Baker Eddy, the Discoverer and Founder of Christian Science: "The atonement is a hard problem in theology, but its scientific explanation is, that eventually both sin and suffering will fall at the feet of everlasting Love" (p. 23).

WEST TEXAS COFC MEN VISIT MULESHOE
Alden L. Cathey, and Ralph E. Duncan, staff members of the West Texas Chamber of Commerce were business visitors in Muleshoe last Thursday. While here they held conference with Ray Franz, local chamber manager and W. M. Pool, Jr., local

THE MULESHOE JOURNAL, Thursday, April 16, 1953

director on the WTCC official board.
Cathey heads the public relations department of the regional chamber with Duncan heading the community services of the organizations that serves the 132-county area of West Texas.

BOSTITCH STAPLERS and Staples always on tap at The Journal.

ALL ABOUT TEXAS in the Texas Almanac, on sale at The Journal. Phone 7220, we deliver. GARNER FARM RECORD books on sale at The Journal.

IT'S SHOWTIME AT THE VALLEY & PALACE

Box Office Open 7:15 P. M. Show Starts 7:30
Saturday & Sunday: 1:45 P. M. and Continuous Showing

| VALLEY | PALACE |
|---|--|
| THURSDAY and FRIDAY Rene Deltaen Angelica Hauff —In— Tromba Tiger Man | THURSDAY and FRIDAY John Derek Barbara Rush —In— Prince of Pirates |
| SATURDAY ONLY Gene Autry —In— Apache Country | SATURDAY ONLY Gloria Graham Robert Sterling —In— Roughshod |
| SUN., MON., TUES. & WED. Tyrone Power Piper Laurie —In— Mississippi Gambler | SUNDAY and MONDAY Anne Baxter Montgomery Clift —In— I Confess |
| | TUESDAY and WEDNESDAY Hugh Herbert Estelita —In— Havana Rose |

Motion Pictures Are Your Best and Cheapest Entertainment

24 HOUR NURSING CARE

Elderly persons
Heart patients
Diabetics
Arthritis patients
Internal Cancer
Mentally Senile
Paralytic Stroke patients

WE HAVE Solid Brick Firesafe Building. Excellent Food. Any Type of Medication. Complete Nursing Care.

Sloan's Convalescent Home
1508 Ave. Q Phone 5-5612
Lubbock, Texas

Today's Meditation

ACTS OF THE APOSTLES

When they saw the boldness of Peter and John, and perceived that they were unlearned and ignorant men, they marvelled; and they took knowledge of them, that they had been with Jesus. (Acts 4:13) Read Acts 5:38-42.

Once a friend gave me a piece of luminous cloth. It glowed in the dark. But it would not shine unless it was first held up to the light.

The lives of the apostles glowed with a strange and wonderful radiance. It was always a borrowed glow. It came from Christ. They had so exposed their lives to the Light of the world that He had passed on to them His luminous faith.

When men looked at the apostles, they were amazed. There was something about them that showed unmistakably that they had been with Jesus. They were courageous people. Others could tell from the way they were living that they had been in companionship with Him.

In order for Christ to make a great difference in our lives, it is necessary for us to spend time with Him every day. Then our words and acts will be the working of the Holy Spirit in us, and others will know with certainty that we have been with our Redeemer and Master.

PRAYER

Father, lift up our minds and hearts into daily fellowship with Thee. May we have such intimate contact with the mind and spirit of Christ that He will leave His indelible imprint upon our lives. In the Master's name we pray. Amen.

THOUGHT FOR THE DAY

Will the world see Jesus in me today? James R. Webb, Jr. (Ga.)

TELEVISION

— that will come through when others fail!

See The

ZENITH

—At—

SPENCE RADIO SHOP

Phone 7020

make a date with a "rocket 8"!

OLDSMOBILE

'ROCKET' ENGINE
SEE YOUR NEAREST OLDSMOBILE DEALER
JOHNSON-NIX
MULESHOE

SUPER "88" HOLIDAY COUPE
A General Motors Value

DON'T WAIT another day to drive Oldsmobile's dynamic new Super "88"! It's the most thrilling car ever built—you'll feel the difference the moment you take the wheel! There's spectacular action from the mightiest "Rocket" Engine of all time! You go with silken smoothness—with a tremendous burst of power in emergencies—but always with scarcely a whisper from under the hood! **POWER STEERING*** makes every turn of the wheel delightfully easy—makes parking a pleasure! And with **POWER BRAKES***, feather-light pedal pressure is all that's needed to bring this big, powerful car to a quick, sure stop! But you won't care to stop for long. The Super "88" is designed for action! It's even **POWER STYLED**, with sparkling new beauty to match its fabulous performance! Stop in today for a demonstration!

*These Power Features and New Autronic-Eye are optional at extra cost.

\$261.00

Lift the receiver

of your telephone and you have at your command many thousands of dollars worth of equipment. Call long distance and those thousands of dollars are multiplied into millions. For, behind each telephone in your block, your neighborhood, your city, the telephone company has \$261 worth of equipment and facilities to provide your telephone service.

Only about 10% of this figure is invested in the telephone instrument itself—the part you see each day. The balance represents land and buildings, switchboards, connecting equipment, poles, cable and wire. In addition to this investment per telephone of \$261, the company must then add the everyday, every-year expenses of wages and salaries, operation and maintenance.

All this is at your fingertips when you reach for the telephone. All this makes it possible for you to call across town or across the nation with similar ease. All this makes it so true—telephone service is a valuable part of your life. Enjoy its full value. Use it often... use it well.

GENERAL TELEPHONE COMPANY OF THE SOUTHWEST

VISIT FRIENDS HERE

Mrs. Bob Herrington, of Cozad, Neb., and her son, Kirk, visited here a part of the week with friends. Kirk has just completed "boot camp" in the Navy at San Diego and won a short leave.

CARD OF THANKS

We wish to express our sincere appreciation to our friends for their expressions of sympathy and the beautiful flowers during our hour of sorrow.
Mr. and Mrs. D. Warner

Epsilon Chi Chapt. Elects Officers

The Epsilon Chi Chapter No. 1216 held its regular meeting in the Bailey County Electric Co-operative Association building Wednesday evening, April 8, with Mrs. James Glaze and Miss Gwyneth Bigham as hostesses.

Mrs. Jack Epps brought the program on "Making a Summer in Your Back Yard."

Officers who were elected for the new year are: Mrs. Bill Jim St. Clair, president; Miss Mary Frye, vice-president; Mrs. Don Bryant, corresponding secretary; and Mrs. Bill Don Barbour, treasurer. Twelve members were present.

Society News

By Mrs. Joyce Shafer

THE MULESHOE JOURNAL, Thursday, April 16, 1953

Mrs. J. W. Witherspoon, president, presided over the regular business session.

The State Convention will be held in the Baker Hotel in Dallas on May 22-24. Two delegates will be elected to attend at the next meeting.

The Mother-Daughter banquet will be given in the home of Mrs. Naomi St. Clair on Friday, May 1. Mesdames Harold and Oscar Allison will be hostesses at the next regular meeting which will be held in the home of Mrs. Harold Allison on Monday, May 4.

ler, Birdie Paul, Clara Willman, Frances Williams, Sally Harden, Mattie Duke, Mary Finley, Hazel Farrell, Ellen Spence, Leota Wilterding, Beulah Carles, Jennie Panter, Mary Young, little Claudia Huber, the hostess, and the co-hostess.

The next meeting will be held in the home of Mrs. Charles Lennau with Mrs. Holly Bucy as hostess and Mrs. Snow Davis as co-hostess.

Miss Harden Is Guild Hostess

The Wesleyan Service Guild met in the home of Elizabeth Harden, Monday evening April 13.

Mrs. Alex Wilkins, president, presided over the meeting. A nominating committee composed of Mrs. Francis Gilbreath and Elizabeth Harden was appointed to select the new officers for next year.

Plans for the Lions Ladies night banquet to be held Tuesday evening, April 21, at Fellowship Hall were discussed; the W. S. C. S. and Guild will serve the banquet.

Mrs. Ray Edwards brought the devotional, "Steadfast Faith", closing with prayer.

Mrs. A. S. Stovall gave "Living Abundantly" from the study, "These Rights We Hold"; Mrs. Mable Dowell gave "Tomorrow", which concluded the study.

The next meeting will be April 27, the place to be announced later.

A salad plate was served to one visitor Mrs. Mervin Wilterding, members, Mesdames A. S. Stovall, Mable Dowell, Ray Edwards, Alex Wilkins, Delma McCarty, Francis Gilbreath and the hostess.

VISITORS FROM LUBBOCK

Mr. and Mrs. William J. Pierson of Lubbock visited in the home of Mr. and Mrs. F. E. Pierson Sunday.

GUESTS FROM LUBBOCK

Messrs. Cecil Bolton and Harold Dutton of Lubbock were Sunday guests in the home of Mr. and Mrs. A. W. Copley and family. Mr. Bolton was guest at the Muleshoe Methodist Church and accompanied Mr. Dutton in a vocal solo.

WSCS Honors Miss Dottie Wilterding

The Woman's Society of Christian Service of the Y. L. Methodist Church met in the home of Miss Dottie Wilterding on Tuesday, March 24, for a surprise covered dish birthday dinner. Mrs. Mervin Wilterding made a lovely cake with 62 candles for Miss Wilterding.

Mrs. Oleta Buhman, president, presided, during the regular meeting. The song, "What a Friend We Have in Jesus", was followed by prayer by Mrs. Mooney. Roll call was answered with Bible verses.

Miss Wilterding expressed her appreciation for the remembrance on her birthday and for the lovely dinner.

The next regular meeting will be held in the home of Mrs. L. D. Jones.

A play was presented by Mesdames Ryan, Buhman, Moore, Oleta Buhman and Miss Wilterding on "Evangelism". After a prayer by Mrs. Buhman, a song "Have Thine Own Way", was sung by the group. A list of interesting questions was then given to each one present for discussion.

Those present were Miss Dottie Wilterding, the honoree, and Mesdames Mae Wilterding, John Thomas Helm, Leota Wilterding, Marie Helm, Jessie Lewis, Gladys Moore, Ruth Lackey, Oleta Buhman, Mable Ryan, Aloma C. Deibler, L. D. Jones, R. E. Lowery, Lois Norwood, Hattie Mae Bickel, Lola Bryant, June Buhman, Della Mooney, Muriel Lewis, and Ellen Lewis.

Mrs. Boydston Hosts Enochs Club

An interesting reading was given and a discussion was led by Mrs. L. G. Harris on "Effects of Narcotics" as the Enochs' H. D. Club met in the home of Mrs. J. S. Boydston on April 9.

Guests answered roll call by telling "Something I have made this year." Fourteen members and two visitors, Mrs. Guy Sanders of Enochs and Mrs. C. E. Spence of Post were present.

Mrs. T. J. Sullivan donated a 50 foot garden hose for the year's project, "cemetery improvement", and Mrs. E. N. McCall announced that the cemetery association is buying an additional 150 feet of hose. The hose is to water shrubs and flowers which have recently been set out, others to be planted in the near future.

Mrs. Dian Reed, county agent, will attend the next meeting because of her absence at this meeting due to the death of her father. The next meeting will be held in the home of Mrs. Ed Awtry on April 23. Members will answer roll call with "my favorite childhood toy."

Half Century Club Plans Bake Sale

The Half Century Club met Thursday, April 9, in the home of Mrs. Pearl Moore with Mrs. Alpha Julian as co-hostess.

The group visited and enjoyed several games and songs. During the short business session, the club decided to have a bake sale on Saturday, May 9. Other details will be completed later.

Those present were Mesdames Laura Gilbreath, Lillie Wimberley, Sweetie Johnson, Lula Kist.

FREE BATTERY

Replacement of Span-O-Life Battery fails under terms of the Guarantee.

Guaranteed for the life of YOUR Car



Authorized Dealer
LADD PONTIAC
Phone 3089

FARLEY INSURANCE AGENCY
REAL ESTATE & INSURANCE
AUTO FINANCING — FARM LOANS
Over Bank, Muleshoe, Texas
Office Phone 7279 — Res. 5103

NOTICE

CASTOR BEAN FARMERS
A Representative Of
Pacific Vegetable Oil Corp.
Will Be At The PMA Office
Monday April 20
From 8:00 to 12:00 — To Contract Acreage of Castor Beans
PACIFIC VEGETABLE OIL CORP.
Tom Hutchins, Field Representative

Get **NEW-ENGINE Performance**

Authorized RECONDITIONED FORD Engine

at a **NEW LOW PRICE!**

'49 to '53 \$169.50
Up to '49, \$159.50

V-8 or 6 cyl. installed—Includes labor, grease and oil. Exchange basis.
LOW BUDGET TERMS
(State and Federal taxes extra.)

EXCHANGE your worn engine for this Authorized Reconditioned Ford Engine and save!

NEW GENUINE FORD TIMING GEAR
NEW GENUINE FORD PISTONS, PINS AND RINGS
NEW GENUINE FORD CONNECTING ROD BEARINGS
NEW GENUINE FORD CRANKSHAFT BEARINGS

GUARANTEE SAME AS NEW ENGINE. Backed by Reconditioner's Guarantee against any defects in workmanship or material for F.D.A.F. 4,000 miles or 90 days, whichever occurs first.

MULESHOE MOTOR COMPANY
PHONE 4930 FORD AUTOMOBILES AND TRUCKS MULESHOE

Men's Ribbed Cotton UNDER SHIRTS
Large Size WASH CLOTHS
Extra Special 14 for \$1.00
Sizes 36 to 46
3 for \$1.00

Men's Full Cut Sanforized OVERALLS
Blue or Stripe — Pair \$2.79

Men's Broadcloth SHOES
Sizes 28 to 42
Regular 9s blue **59c**

Men's WORK SHIRTS
Full Cut, Sanforized. Blue or Gray
Chambray
Sizes 14 to 17
Each **\$1.49**

36 Inch By-The-Yard PLASTIC
Several Colors Reg. 35c Val. Yd. 25c
Flowered Reg. 49c Val. Yd. 35c
EXTRA! EXTRA! EXTRA! Non-Skid
BATH SETS
7 Colors — New Patterns. Toilet Seat Cover and Mat
Per Set **\$1.00**

PLISSE CREPE
White, Blue, Green, Pink and Yellow
Specially Priced At **33c yd.**

TRAINING PANTIES
White, Blue, Pink, Yellow
8 For **\$1.00**

REMUND - WILSON
YOUR POPULAR PRICE STORE
Next Door Palace Theatre Muleshoe

ON THE JOB and IN YOUR LEISURE TIME -
to **LOOK your LEVEL best.**



WEAR **TUF-NUT** MATCHED SHIRTS & PANTS



Type I Army Cloth
Pants \$4.95
Shirt \$4.49
Type IV Army Cloth
Pants \$3.95
Shirt \$2.95



LOOK INSIDE
THE BEST POCKET IN THE BEST MADE PANTS IN AMERICA
Demand TUF-NUT SHIRTS • PANTS • OVERALLS • JEANS

REMUND-WILSON

YOUR POPULAR PRICE STORE
Next Door To Palace Theatre — Muleshoe