

The Muleshoe Journal

PUBLISHED EVER THURSDAY AT MULESHOE, TEXAS

Entered as second class matter at the Muleshoe Post Office under the Act of Congress, March 3, 1897.



SUBSCRIPTION RATES

In Immediate Territory, 1 Year \$2.00
Out of Immediate Territory, 1 Year \$2.50

J. M. FORBES Editor and Publisher

Today's Meditation

SALVATION
If God be for us, who can be against us? (Romans 8:31.) Read Psalms 18:30-32 or Romans 8:31-39.
What does it mean that God is for us? I am sure that God under all conditions is not for our economy, for many a saint has had to walk through the dark valley of poverty. God is not always for our career. God cannot in all circumstances be for our health, though I know He is our great Healer and the good Physician. Some of the most saintly Christians I ever met have been subject to lifelong illness or some other sufferings.
What, then, does it mean that God is for us? God is always for

our salvation. If a solid economy, a good career, or unbroken health really profit our salvation, He will perhaps allow these things to come our way. God knows us better than we know ourselves. He seeks to direct us to a knowledge and conviction that nothing is of more value than our salvation. The costs to us, the price we pay for it, can never be too high.
PRAYER
O God, help us to give up all those things which are contrary to Thy peace or that are not according to Thy will. We know that only so canst Thou be for us, and our salvation becomes a reality. We pray in our Saviour's name. Amen.
THOUGHT FOR THE DAY
"Tht best of all, God is with us."
—John Wesley
Helge Alm (Sweden)

BABSON Discusses — A New Industry

Babson Park, Fla., Feb. 27 — The constantly increasing shorter hours, combined with higher prices, which are largely the result of shorter hours, are developing a new industry, namely the "Do It Yourself" industry.
HOUSE DECORATIONS
For a time the manufacturers of paint, wallpaper, etc., in order to protect the local painters and paperers, refused to advertise their products for the housewife to use herself. Now, however, you will find large advertisements in leading magazines urging people to "short-circuit" the local artisan.

To further this "Do It Yourself" movement, manufacturers now sell wallpaper already to hang, with the blank margins cut off. They are selling paint rollers to take the place of brushes and a new paint with a rubber base for quick and perfect application. What Gillette did to the old fashioned razor, this new movement is doing to brushes and paints.

HOMES AND FURNITURE
For several years families have been able to buy unpainted and knocked-down furniture; but the prices were high on the latter. Today, however, one needs to buy only ply-board and certain metal clamps from a lumber dealer. For a small fee the lumber dealer will cut the pieces as needed for tables and chairs.
The big development has been in young people building their own homes. Two couples will buy adjoining lots, make joint contracts for the foundations, and then go ahead with different plans. These plans can be bought with complete details for ordering, cutting and erecting the house. For heavy work, when two men are needed, they help each other. The only outside help needed is a plumber. This may explain why a prominent columnist stated "The new President's Cabinet consists of eleven millionaires and one plumber!"
PRACTICAL HOBBIES
Physicians are now prescribing hobbies instead of pills. In fact, hobbies are now so used that most drug stores sell Hobby Magazines. These magazines urge useful hobbies and show how furniture, toys and other things may be made at home. They are great boosters of the "Do It Yourself" industry.
Not only does the hobby industry benefit the nation's health, but by it parents set a fine example to their children. It not only is better for the kids to see their Dad working, instead of playing golf, but it enables the father and boy to work together and become better acquainted. Hence, the social and educational advantages.

NEW STORES WILL OPEN
I believe you will see "Do It Yourself" stores open. If I were a young chap and wanted to open a small specialty store, I would enter this field, combining some sporting goods with it. The same factors of shorter hours etc.

ATTENDED DISTRICT BAPTIST MEETING
Mr. and Mrs. J. C. Shanks and children and Mr. and Mrs. R. T. Atchison, Carolyn and Leon, attended the quarterly district young people's training union meeting held at McAdoo last week end. They were delegates from the Main Street Baptist Church.

WEEK END IN LUBBOCK
Kay Lenderson, daughter of Mr. and Mrs. A. J. Lenderson, spent the week end in Lubbock visiting a friend, Katherine Ever-

and higher costs are forcing many families to indulge in inexpensive and healthful sports. Another suggestion is that you become a salesman on commission for some lumber dealer to sell "Build It Yourself" houses. It would interest almost every young couple to at least hear your story. It also might be combined with the real estate business. Before building a house, one must secure the land.
SOMETHING TO CONSIDER
I have often wondered why house builders do not sell furniture and home furnishings. Or why furniture dealers do not sell houses. This is a combination which should appeal to many customers and should be advertised in the local newspapers.
In fact, as I look into the future, I expect to see much more local advertising of this "Do It Yourself" idea. Many newspapers are afraid to push it for fear of offending the local builders, painters, furniture dealers, and other present advertisers. I, however, believe this to be short sighted because the future of every newspaper and every present advertiser depends ultimately on the growth of the community, which depends on the adoption of all new ideas.

SINGING CONVENTION AT LUBBOCK MAR. 16
There will be a joint singing convention composed of the Assembly of God singing circles at the First Assembly of God Church on 34th street in Lubbock on Monday night, March 16. The singing will begin at 7:30 p. m. Rev. Fred Volger, of Springfield, Mo., assistant general

superintendent of the General Council of the Assembly of God will be present. Singers from many places will be there, including a male quartet from the Southwestern Bible Institute of Waxahachie.
BOSTITCH STAPLERS and Staples always on tap at The Journal.

IT'S SHOWTIME AT THE WARM VALLEY & PALACE

Box Office Open 7:15 P. M. Show Starts 7:30
Saturday & Sunday: 1:45 P. M. and Continuous Showing

VALLEY THURSDAY and FRIDAY Ginger Rogers David Niven —In— Bachelor Mother	PALACE THURSDAY and FRIDAY Robert Young Betsy Drake —In— Second Woman
SATURDAY ONLY Andy Devine Guy Madison —In— Yellow Haired Kid	SATURDAY ONLY Dead End Kids —In— Mobtown
SUN., MON., TUES. & WED. Loretta Young Jeff Chandler —In— Because Of You	SUNDAY and MONDAY Robert Ryan Mola Powers —In— City Beneath The Sea
	TUESDAY and WEDNESDAY Jose Ferrar Kim Hunter —In— Anything Can Happen

Motion Pictures Are Your Best and Cheapest Entertainment

SILAGE - SILAGE

We Will Want to Fill Our Silos This Year If the Feed Is Available.

Field Cutters Will Be Furnished at a Contract Price Per Ton or Per Acre.

We Prefer Atlas Sorgo, Red Top Cane or Hegari.

SUDAN LIVESTOCK & FEEDING COMPANY

BEN H. DAVIDSON

SUDAN, TEXAS

SAND HILLS PHILOSOPHER — Glad The President Is Keeping His Farm Even If It Isn't Paying Off

Editor's note: The Sand Hills Philosopher on his Johnson grass farm is off on topics he doesn't know much about again this week, which is customary with him.
Dear editor:
Last week in my letter to you I was talkin' about the school teachers' problem, how there was a shortage of teachers in Texas due to the fact the profession apparently has been under-paid and is failin' to attract enough young people, all the smart ones want to go into something that pays better, and how a lot of people believe the solution is to give the teachers an increase in pay.
This may be right, but I'm afraid the request comes anywhere from fifteen to thirty years too late to help the present adult population.
You can look around you now and see that what this country needed thirty years ago, add or subtract a few years, was an increase in teachers' pay in order to attract a lot better class of teachers, that is, just judgin' by the amount of education you and me and a lot of others I could name absorbed.
The argument for more teachers and better teachers and more money to attract em is pretty plain, when you examine the state of a lot of grown people's education. I ain't sayin' if they'd paid my teachers more money they'd had any better luck with me, but I reckon I'm gettin' close to sayin' it.
But I didn't start out to discuss the teachers' problems, what I started out to say is everybody has problems. For example, before he had any notion of runnin' for President, Eisenhower bought a farm up in Pennsylvania and the newspapers were full of his plans about it. He and a partner were goin' to operate it and split the profits fifty-fifty.
Well, the other day I noticed in a newspaper that up to now there haven't been any profits to split and that President Eisenhower has decided he hasn't got time to be President and look after a farm too.
I know what he means. Run-

nin a farm is a full-time job and the day never was made with enough hours in it to run a farm and the Presidency too.
But I notice Eisenhower is holdin' on to the place, and I'm glad of it. Just because a farm don't show any profit is no reason for sellin' it. If it was, the real estate people in this country would get rich on commissions.
Yours faithfully,
J. A.

DEALER NAME brings you ... **Emerson TV** THE WORLD'S MOST COMPACT TV SET

1953 SPACE-SAVER EMERSON gives you — **21" PICTURE ON NEW ALL-SCREEN FRONT**

WOOD CABINET WITH MAHOGANY SCRATCH-RESISTANT EMERSONITE FINISH (NOT PLASTIC, NOT METAL)

- ★ 21" KING-SIZE PICTURE in the "SPACE-SAVER" CABINET
- ★ One-Knob Simplimatic Tuning.
- ★ Illuminated Channel Selector for Easy Reading
- ★ Pre-Tuned Built-In Antenna
- ★ Super-Powered Long-Distance Circuit

MODEL 736

at the amazing low price **259.95**

Emerson Exclusive... SIDE CONTROLS
Only Emerson's "Space-Saver" cabinet is shorter in height ... narrower in width!
The front is practically ... **ALL-SCREEN** area!

MODEL 731-17" TV-PHONO-RADIO. CLOCK CONSOLE. LARGEST PICTURE IN THE MOST COMPACT 4-WAY COMBINATION

- ★ Super-Perfection 17" Screen
- ★ Automatic 3-Speed Record Changer
- ★ Super-Sensitive Radio
- ★ Built-In Electric Clock
- ★ Exclusive "Slide Controls"
- ★ Ready For DMR
- ★ Built-In Pre-Tuned Antenna

\$369.95

Only 3 feet high—only 20 inches wide ... ideal for small apartments and homes

Of the 5 Leading Brands: Emerson Leads the Field in Performance... at the Lowest Price of All!

E. R. HART CO.
PHONE 3300 MULESHOE

J. A.

East of Courthouse - Muleshoe
DR. A. E. LEWIS
Dentist
Closed Wed. & Sat. Afternoon
Off. Pho. 3040 — Res. 6570

FOR THE BEST OF Service —Stop At—
Kelton Barber Shop
2nd door west of Post Office

we brought you the NECCHI.....
the most advanced cabinet machine in the world

NOW we bring you the most advanced portable in the world

Factory performance guarantee with each machine.

the **NEW ELNA PORTABLE**

No attachments to screw on—no dials or levers to operate!
You can literally sit with your hands in your lap, while the ELNA's Magic Discs do the most complicated sewing completely automatically.
Without doubt this is the most advanced portable in the world.
Come in and try it—Don't wait another day!

BASS FIRESTONE Dealer Store
"YOUR NECCHI SEWING CIRCLE"



FRUITS AND VEGETABLES FRESH FROM THE GARDEN

COLORADO RED

SPUDS 50-Lb. Sack **\$1.49**



ORANGES 5-Lb. Mesh Bag **29c**

LARGE JUICY
GRAPEFRUIT
8-Lb. Mesh Bag **39c**

FANCY
TOMATOES
Cello Pkg. **19c**

CALIF. FANCY
CELERY
Large Stalk **10c**

IDAHO RUSSET
POTATOES
10-Lb. Plastic Bag **59c**

LEMONS California Sunkist, Lb. **10c**

GREEN ONIONS Garden Fresh Per Bunch **5c**

Green Peppers Florida Fancy Bell Peppers lb. **19c**

Del Monte

Catsup

14-Oz. Bottle **10c**

O-SO-WHITE TOILET BOWL CLEANER

New and It Really Works
Quart Bottle With Mop **\$1.39**

TIDE

Large Box **25c**

46 OZ. ADAMS
Orange Juice **29c**

NO. 1 TALL TWIN HARBOR
SALMON **39c**

PARD
DOG FOOD, 2 for **29c**

2 LB. BOX
CRACKERS **45c**

NO. 2 CAN KIMBELL'S
BLACK EYE PEAS **15c**

Pinkney's

PURE LARD **59c** | **KLEENEX** Large Size 300 Count **15c**

4-Lb. Carton **59c** | **DIAMOND PEANUT BUTTER, 24 oz. jar** **49c**

NESTLE'S COOKIE MIX, pkg. **35c**

- ALWAYS CHOICE MEATS -

ARMOUR'S STAR **PICNIC HAMS** READY TO EAT lb. **45c**

WILSON'S CORN KING **SLICED BACON** lb. **43c**

CHOICE BEEF **ARM ROAST** lb. **35c**

CHOICE BEEF **SHORT RIBS** lb. **27c**

FRESH FROZEN **PERCH FILLETS** lb. **39c**

BLACKBURNS **SYRUP, 1/2 gal.** **53c**

LUSTREWAX
Quart Can **59c**

CHEERIOS
Family Size Box **24c**

BEST YETT (Beautiful Tea Glass FREE)
TEA, 1/4 lb. pkg. **35c**

• FROZEN FOODS •

SNOW CROP FROZEN **GRAPE JUICE, 6 oz. can** **15c**

SNOW CROP FROZEN **LEMONADE, 6 oz. can** **15c**

SNOW CROP FROZEN **Chopped Spinach, 14 oz. pkg.** ... **23c**

CASHWAY

FREE DELIVERY

"Where Friends Meet And Prices Talk"

Phone 2440 or 2450

Mrs. Wilhite Hosts Winsome Class

The Winsome Sunday School Class of the First Baptist Church met in the home of Mrs. Doc Wilhite Monday evening, for a regular business and social meeting. Mrs. Hoyt Morgan, president, presided.

A very inspiring devotional was given by Mrs. Hazle Wimberley on soul winning.

New and old business was discussed. A lunch is planned for

March 28, and husbands of the members will be guests. Invitations will be sent for further details.

The meeting was dismissed by Mrs. Melvin Lee and a very enjoyable fellowship hour followed.

Delicious refreshments of coffee, apple pie, topped with ice cream and St. Patrick cherries were served to Mesdames Len Bratcher, Lela Barron, Melvin Lee, Hazel Wimberley, Troy Perkins, Vernal King, Hoyt Morgan, Verney Towns, the hostess and co-hostess, Mrs. Doc Wilhite and Mrs. Jack Obenhaus.

Mrs. Holt Leads W. S. C. S. Study

The Woman's Society of Christian Service met in the sanctuary Monday, March 2, at 2:30 p. m. with Mrs. H. C. Holt as leader of study, "These Rights We Hold".

The opening song was "I Would Be True". The lesson theme was "God Loves Us All". Mrs. Holt led in prayer followed by the devotional. Mrs. Roy Bayless offered a prayer for mission work at home and abroad.

Bible scriptures taken from "The Sermon on the Mount" were read by Mesdames O. N. Jennings, H. W. Hanks, Lucy Layne, F. B. Pierson, Tom Smallwood, and C. R. Farrell.

"Sources of our Freedom" was presented by Mrs. H. C. Holt. Five articles of the Universal Declaration of Human Rights of the U. N. were read in unison.

The story "Tony Writes a Letter" was presented by Mrs. H. C. Holt. Corinthians 13 were then read aloud by the group.

Prayer closing the meeting was for local church work and mission work by Mrs. H. W. Hanks and for good will and understanding by Mrs. H. Jay Wyr.

The president, Mrs. Pierson, presided during the business session and minutes of the previous meeting were read and approved.

Present were Mesdames H. C. Holt, F. B. Pierson, H. Jay Wyr, Roy Bayless, J. C. Wollard, H. W. Hanks, C. R. Farrell, Tom Smallwood, Lucy Layne, I. F. Willman, O. N. Jennings, Arnold Morris and little Claudia Huber, Jenta Nickels and Gary Edwards.

Past Officers Honored By Eastern Stars

A regular meeting of the Muleshoe chapter of the Order of the Eastern Star met Tuesday evening, March 3, at 7:30 p. m. in the Masonic Hall. Viola Layne, worthy matron, presided over the business session.

The past matrons and past patrons were honored. A quartet composed of Mesdames Margaret Epps, Alice Bulloch, W. F. Creamer and C. E. Layne sang "Silver Threads Among the Gold" and dedicated it to the past officers.

Gifts were presented to Billie Mathis, conductress, from the Worthy Matron to each past officer present. They were Elizabeth Harden and Mesdames Beulah Carles, Elizabeth Gardner, Wynnie Dunn, Margaret Collins, Bettie Burkhead, Clemmie Ladd, Ruth McCarty, R. J. Klump, Glenn Dunn, and W. F. Creamer. The past officers thanked the Worthy Matron for the honor bestowed upon them.

Invitations were read from Sudan, Earth and Hereford chapters inviting the Muleshoe chapter to attend their friendship night on March 10, 16, and 23. Several voted to attend these meetings.

The chapter voted to contribute \$10 to the living orchid fund sponsored by the Worthy Grand Matron, Mildred Garlitz. Instead of the customary gifts, she has asked all Eastern Stars to contribute their money to a fund for buying two iron lungs for each district.

Jewell Strong, mother advisor, invited more Stars and Masons to attend the Rainbow meeting, which are held each first and third Thursday evenings of each month at 7:30 p. m. On March 19 initiation will be held and Mrs. Gladys Laing of Earth, grand Rainbow officer, will be present or her official visit.

The Muleshoe chapter will have Friendship Night at their next regular meeting on April 7 at 8 p. m. All chapters in the district will be invited.

Lime sherbert, nuts and cookies were served by the refreshment committee, Mesdames Grace Morris, Eunice Evans, Jewell Strong and Clara Kelly, to those present. The St. Patrick motif was dominant in the decorations and refreshments.

Study Club Meets In Hart Home

The Muleshoe Study Club met in the home of Mrs. Houston Hart Thursday evening, Feb. 26, at 8 o'clock for a regular session.

Mrs. John Watson was chairman of the program on "Federation". She discussed the points which make a good club woman emphasizing her statement with posters. She was assisted by Mrs. A. J. Gardner.

Mrs. M. F. Green, president, presided over the business meeting. Plans were made for the lavender and lace party to be given in March. The club voted to donate to the Red Cross fund.

Refreshments were served to members, Mesdames John Watson, A. J. Gardner, H. D. King, Julian Lenau, Horace Blackburn, Irvin St. Clair, Glen Dunn, Vance Wagon, Buck Wood, Milton Forbes, Buck Ragsdale, Jim Cox, M. F. Green, Mary Hart and Roxana Hart.

Officers elected for the coming year were: president, Mrs. Buck Ragsdale; vice-president, Mrs. H. D. King; secretary and reporter, Mrs. Lee Pool; corresponding secretary, Mrs. Jim Cox; treasurer and librarian, Mrs. J. M. Forbes; parliamentary, Mrs. Glenn Dunn; critic, Mrs. Vance Wagon, and historian Mrs. E. R. Hart.

TEL. Class Meets In Finley Home

The T. E. L. Class of the First Baptist Church met March 3 in the home of Mrs. Mary Finley in a business and social meeting.

The president, Mrs. Allene Dyer, presided over the meeting. The opening prayer was led by Mrs. Birdie Paul in the absence of Mrs. Evans. Mrs. Finley brought the devotional from Ephesians. Minutes were read and approved and several reports were given.

The meeting was dismissed with a prayer by Mrs. Dora Riddle.

Members present were Mesdames Beulah Motheral, Birdie Paul, D. W. Winn, Hinkle, Riddle, Shook, Snow, Perkins, Dyer, Spence, one visitor, Mrs. Myrtle Alsup.

Lovely refreshments of sandwiches, cake, coffee, and mints were served by the hostess, Mrs. Finley.



Domestic SEWMACHINES

BIG REDUCTION ON 1952 MACHINES TO MAKE ROOM FOR 1953 MACHINES

LIBERAL DOWNPAYMENT CREDIT ON YOUR OLD MACHINE

YOU GET THESE ADVANTAGES

This modern Domestic gives you forward and reverse sewing, for backtacking seam ends, mending—hinge foot that sews over pins and bulky fabric folds—4 point feed to guide seams straight—easy numbered regulators for tension and stitch length—automatic bobbin filter—sew light—quiet, powerful electric motor.



WITH EVERY DOMESTIC

You'll get a big set of attachments for ruffling, shirring, hemming, binding, quilting, cording, edgestitching, braid decorating right on your sewing machine.

SEE IT DEMONSTRATED TODAY!

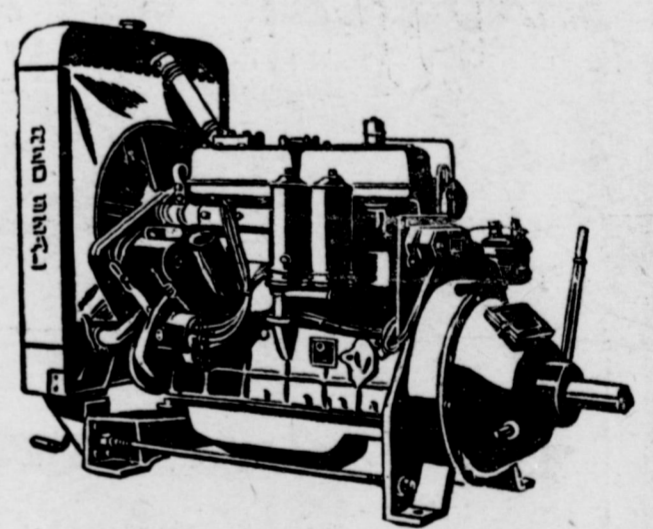
Free For the Asking—This new book, "How to Make Curtains, Draperies, Slipcovers".

DYER

Hardware & Furniture

CONTINENTAL RED SEAL

IRRIGATION ENGINES FROM 15 TO 260 HORSEPOWER



Designed And Equipped For Butane, Natural Gas or Gasoline.

FEATURES

- 10:1 Compression ratio.
- Positive rotating exhaust valves. Sodium cooled valves available.
- Silchrome inlet valves and valve stems.
- Stellite-faced exhaust valve seat inserts.
- Aluminum pistons, with chrome top ring.
- Non-corrosive heavy duty bearings.
- Safety controls to protect engine from possible damage.
- Exhaust manifold with dual outlets.
- Cold intake manifold—no heat transfer from exhaust.
- Furnished with wood skid. Metal skid available.
- Friction throttle control. Governor available.
- Top Oiler available.
- Engine furnished with distributor, generator, starter, ignition coil, direct drive power take off, water temperature gauge, oil filter, air cleaner, LPG carburetor and regulator. Available also as an open or closed power unit.

D. H. SNEED SUPPLY CO.

Phone 4170 Muleshoe

Bailey County Abstract Co.
ABSTRACT SERVICE — LOANS
Established In 1906
Mrs. Lela Barron — Mgrs. — L. S. Barron

DR. B. R. PUTMAN
OPTOMETRIST
First Door North of REA Building
Muleshoe, Texas Phone 6560

MULESHOE FUNERAL HOME
Ambulance Service Day or Night
DIAL 2860 TRAVIS E. REED, Mgr.

FARLEY INSURANCE AGENCY
REAL ESTATE & INSURANCE
AUTO FINANCING — FARM LOANS
Over Bank, Muleshoe, Texas
Office Phone 7279 Res- 5103

Clovis Veterinary Hospital
AT THE STOCKYARDS CROSSING
Facilities for Large and Small Animals
E. E. KRAUS, D. V. M. CHAS. WEBSTER, D. V. M.
104 Hull Phone 5442 Clovis, N. M.

Garden Club Elects Officers

The Garden Club met in their regular meeting at the Legion Hall Monday, March 2, with Mrs. Dorothy Barron and Mrs. B. Whitt as hostesses.

Drs. Woods & Armistead
OPTOMETRISTS
IRA E. WOODS, O.D.
B. W. ARMISTEAD, O.D.
GLENN S. BURK, O.D.
Phone 328 Littlefield

PAT R. BOBO
Attorney-At-Law
Office In Bank Building
Muleshoe, Texas

Dr. C. H. McIlroy
Naturopathic Physician
Phone 5350 Muleshoe, Texas 906 MAIN STREET

COTTON SEED
For Sale
Good, Pure Locket Storm Proof and Macha Improved, first year from White Sack. Gin Run Seed.
TOM WATSON
2½ Miles West of Progress 9-tfc

GUARANTY ABSTRACT CO.
BONDED FOR YOUR PROTECTION
Office In Bank Building Muleshoe
Phone 2640
Complete Abstracts of Title to All Lands and Towns in Bailey County Texas
PAT R. BOBO, Owner DOLORES GARRETT, Mgr.

Long-term home loans at low cost. Ask for details..no obligation

We are anxious..
to help responsible, local families who want to buy or build a home.

LOW-COST...EASY-PAY **HOME LOANS**
—in—**MULESHOE**
FOR INFORMATION SEE
MILDRED DAVIS Western NFLA Building

FIRST FEDERAL SAVINGS AND LOAN ASSOCIATION
Clovis, N. M. P. O. Box 470

DANCE
Saturday, March 7
9 till 12:30
FIRST AND THIRD SATURDAY OF EVERY MONTH HEREAFTER
— AT THE —
American Legion Hall
MULESHOE, TEXAS
Admission: \$1.25 Per Person
MUSIC BY
LLOYD ALSUP
And His Orchestra
Sponsored By
Ben Richardson American Legion Post

Legislature Studies Several Bills That Would Affect Water Supply

Months of intensive study by Governor Shivers' Statewide Water Committee of 100 members and its five sub-committees is being translated into action by the House of Representatives with eight bills being introduced carrying out the policies agreed upon by the citizens' group named last September by the chief executive to study the State's water needs.

Likewise the Senate is studying a bill by Senator John Bell of Cuero which would, if approved by a Constitutional Amendment provide funds from present water users for a State dam building program.

House bills embodying the water program agreed upon by the Governor's Committee headed by J. B. Thomas of Fort Worth as Chairman, and with the blessings of the Texas Water Conservation Association of which Judge Guy C. Jackson of Amarillo is President, have the following sponsors: Two by Rep. Frank Carpenter of Sour Lake; two by Rep. Douglass Bergman of Dallas; one each by Rep. Morris Cobb of Amarillo, John Kimbrough of Haskell, Fred Meridith of Terrell and Joe Kilgore of McAllen.

The Carpenter measures,

GREEN

Hospital & Clinic

Muleshoe, Texas

Dial 2250

WE BUY COTTON

And Write

GOV'T. COTTON LOANS

Through PMA or The Texas Cotton

Growers Cooperative Ass'n.

LET US BID ON YOUR COTTON EQUITIES

Grace Benton and Ine'a Turrentine

Phone 6460 at

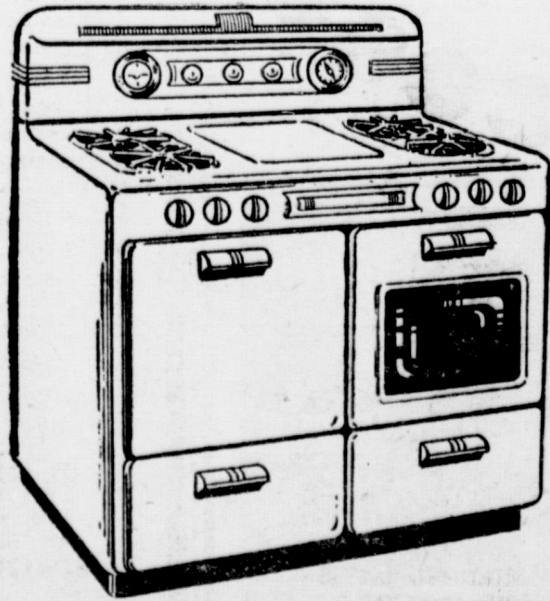
BENTON INSURANCE AGENCY

Only Gas

gives you so much oven for your money

in wonderful new automatic ranges

See — automatic clock control turns oven on and off, cooks dinner while you're busy elsewhere.



Plus — space enough for 35-pound turkey in the new Gas ovens. That's because there are no protruding parts with Gas. You get more height, more space, more oven than you do with any other kind of fuel.

See — automatic lighting, without matches, at the turn of a knob. Not only the oven, but the broiler and top burners, too!

West Texas Gas Company

HELPING BUILD WEST TEXAS SINCE 1927

See Your Gas Range Dealer

COURTHOUSE RECORDS

REAL ESTATE TRANSFERS

E. L. Wills and wife to C. H. Smith and W. R. Young, NE-4 Section 100, Block A, Melvin Blum and Blum, \$13,940.

E. L. Wills and wife to McPherson & Cates Land Company, SE-4 of Section 100, Block A, Melvin Blum and Blum, \$10,000 and other valuable considerations.

Clarence L. Murray and wife to Mrs. Pauline Peel, NW-4 of Section 43, Block Z, \$55,000.

John W. Henderson and wife to Orville E. Johnson, N 50 acres out of the W-2 of NW-4 Section 32, Block Y, \$10,000.

Jack Stallings and wife to Jim Williams, Part of Lot 13, Gatlin Addition to Muleshoe, \$400.

Raymond G. Keeling and wife to A. L. Davis, Lot 5, Block 2, Warren Addition No. 3, \$7500.

R. S. Gatewood and wife to Richard E. West, Labor 24, League 209 and Labor 4, League 210, Deaf Smith County School Lands, \$41,000.

E. A. Davis and wife to J. O. Redwine, Lots 16 and 17, McCain's Addition to Muleshoe, \$1,000.

George A. Stotts and wife and Emma C. Stotts to C. L. Taylor, N-2 of SW-4 Section 13, Block Z, \$35,000.

Dan O. Carpenter and wife to Weldon E. Bryant, E-2 of Section 24, Block C, \$10 and other valuable considerations.

E. K. Warren & Son to Fred Barrett, Part of Section 54, in Block Y, \$4,280.

Thomas A. Peel, et al to Fairfax Heathington, All of Section No. 13, Block B, \$48,000.

E. W. Johnson and wife and George G. Johnson and wife, to F. L. Snyder, Lots 1, 2, 3, 16, 17 and 18, Block 1, Highland Addition to Muleshoe, \$800.

OIL, GAS AND MINERAL LEASE

F. O. Bennett and wife to Mid-Continent Petroleum Corporation, Labors 15, 16, and 18, League 124, Childress County School Land.

MARRIAGE LICENSES

Jimmie Dewyane Burkhead of Muleshoe, to Miss Betty Carol Dalton of Muleshoe, Issued February 17, 1953.

James Reid De Voss of 803½ Kentucky, Roswell, N. M., to Miss Barbara Jean Klutts of Muleshoe, Issued February 21, 1953.

RETURNED FROM AMARILLO

Mrs. Bill Lambert has returned home from Amarillo after spending 5 weeks in Dr. Hill's clinic of Amarillo. She will be home for two weeks, then go back for another month's treatment. She is much improved.

VISITORS FROM CLOVIS

Mr. and Mrs. S. E. Cieren of Clovis, N. M., visited in the home of Mr. and Mrs. W. B. McAdams over the week end.

problems and continue in existence as long as needed.

Naval Reserve Denver Airlift

Naval Reserve aviation personnel will be air-lifted from Clovis, N. M., to Denver one week end per month to drill with pay units of the reserve, according to Captain H. K. Edwards, USN, commanding officer of Naval Air Station, Denver.

Pilots especially are needed, but ground officers and enlisted personnel also are desired, Captain Edwards said today. Enlisted men in non-aviation rates may change to comparable rates in the aviation branch. Also, former Air Force enlisted men may enlist in comparable rates in the Naval Reserve.

NAS Denver expects to convert from conventional fighter planes to jets within a month. Training billets also are available for pilots of multi-engine aircraft.

The air-lift will leave Clovis Air Force Base on Friday of the last week end of each month at 7 p. m., returning about the same time the following Sunday evening. Twin-engine B-47s (DC-3) are used for the air-lift at present, but four-engine B-52s (DC-4) will be used in the near future. The same plane also will pick up personnel at Albuquerque. The next flight will leave Clovis at 7 p. m. on March 27. Nine reservists from the Clovis-Portales area went on the first air-lift, on February 20. They were Lt. Cdr. Dee C. Blythe, Ens. T. L. Harvey, Ted Williams, IM-1, and Hallie M. Davidson, PNI-2, all of Clovis; Lt. John Wilkinson and Lt. John H. Cantrell of Portales, N. M.; James M. Craft, FN, Star Route 1, Muleshoe; Harry L. Sheets, AN, of Texaco, N. M.; and Buddy Wiseman, SN, of Fawell.

For drilling one week end a month, the reservists will receive four days' pay. Drill pay ranges from \$11.09 to \$40.77 per month for enlisted men, plus flight pay of \$15 to \$30 per month. Officers' drill pay varies from \$31.60 for ensigns with more than two years' service to \$65.20 per month for commanders with over 12 years' service, plus flight pay ranging from \$13.33 to \$24 per month.

Membership in a pay unit of the Naval Reserve does not increase a reservist's vulnerability to recall to active duty. In fact, such membership enables him to work off his period of obligated service at twice the rate he could if he were in the inactive reserve. Pay units may

include both standby and ready reservists.

Reservists interested in taking advantage of the air-lift should contact Lt. Cdr. Blythe, Room 203, Barry Bldg., Clovis, N. M., or Lt. Wilkinson, 117 S. Main Ave., Portales, N. M., and in Muleshoe, Lt. Marion F. Harris. Further information may be obtained by addressing a post card to the Command Liaison Office, Naval Air Station, Denver, Colo.

CIVIL SERVICE EXAMS

The Fourteenth U. S. Civil Service Region has announced examinations for Junior Professional Assistant, Organizational and Methods Examiner, Position Classifier and Training Specialist for filling Federal jobs in Texas paying \$3410 to \$5940 a year. Further information and ap-

plications forms can be obtained from the Post Office or from the Regional Director, Fourteenth U. S. Civil Service Region, Room 809, 1114 Commerce Street, Dallas, Texas.

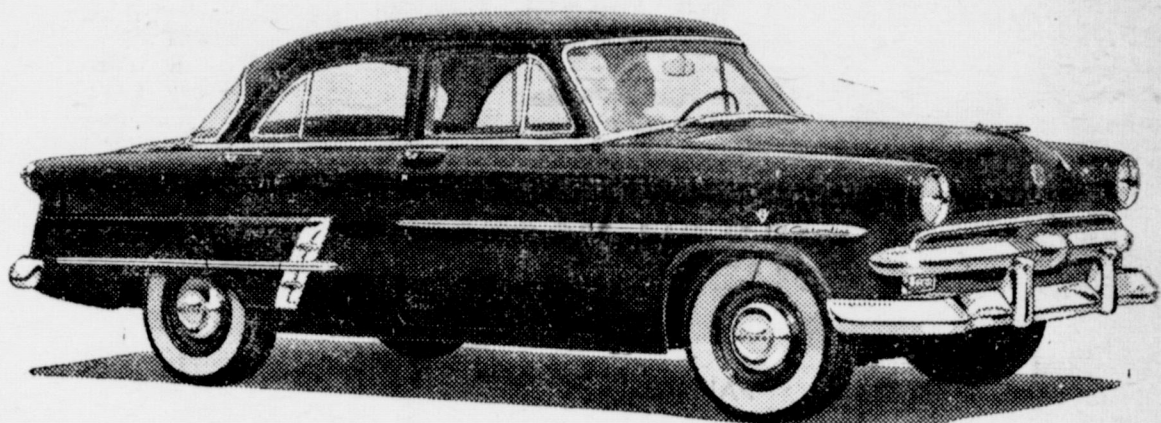
GARNER FARM RECORD books on sale at The Journal. Staples always on tap at The Journal.

Ford sets the style for '53

It's lower-looking, longer-looking, wider-looking... and Ford's

Crestmark Bodies are the most beautiful in any low-priced car—best built, too!

It's hard to believe that Ford is one of America's lowest priced cars when you see that huge, curved one-piece windshield... and those smartly styled interiors, blended with outside colors! It's even harder to believe when you take a Test Drive and feel the comfort of Ford's amazing new Wonder Ride.



It will stay young for years! Yes, years from today, your '53 Ford will command admiring glances. For it's styled ahead—and built for keeps. Your eyes will tell you the quality of the beautiful Baked Enamel finishes... finishes that will keep their new-car complexion for years. Your fingertips will tell you that there is seamless construction where many other cars have seams. Bodies are hull-tight to seal out weather, dust and noise.

Ford



MOTOR CO.

PHONE 4930

FORD AUTOMOBILES AND TRUCKS

MULESHOE

EXCLUSIVE!

MAGIC MONITOR SCREENS OUT TV PICTURE STATIC!



- Television's first double-shielded tuner and a completely shielded chassis filter out "haywire" pictures before they reach your screen!
- The new "Magic Monitor" circuit system steps up power automatically. Weak signals are amplified, brightness held constant!

21" RCA VICTOR TV See it today!



RCA Victor Brookfield (Model 21T217)

- This smart, contemporary cabinet is a perfect blend of clean, sweeping lines. Mahogany or walnut finish. Blend finish slightly higher.
- 21-inch television—clear, steady pictures—with the "Magic Monitor."

Johnson-Pool
Phone 7370 Muleshoe

Notice!

WE ARE NOW ISSUING
1953 LICENSE PLATES

Remember!

WE MUST HAVE
YOUR TITLE AND 1952
LICENSE RECEIPT BEFORE
WE CAN ISSUE YOUR
1953 LICENSE PLATES

PLEASE HELP US WITH THIS MATTER

Hugh Freeman

TAX COLLECTOR and ASSESSOR

GRAND OPENING

Come Early!

WE ARE OPENING WITH A LARGE NEW COMPLETE STOCK OF POPULAR PRICED SPRING MERCHANDISE. HAVING MOVED HERE FROM CANTON, OKLAHOMA, WE WANT TO TAKE OUR PLACE IN THE COMMUNITY . . . IN A CIVIC, CHURCH, AND SOCIAL WAY. IN OTHER WORDS, WE'RE JUST PLAIN FOLKS HERE TO MAKE OUR HOME. WE INVITE YOU TO COME IN AND GET ACQUAINTED.
Mrs. B. B. Remund — Mr. and Mrs. Murl T. Wilson

Stay Late

SAVE!

51 GAUGE — FULL FASHIONED

NYLON HOSE

OPENING SPECIAL PAIR **49c**

FULL FASHIONED

51-15

SPRING SHADES

NYLON HOSE

OPENING SPECIAL PAIR **69c**

SALE!

LADIES SHEER

NYLON PANTIES

OPENING SPECIAL PAIR **69c**

WHITE or PINK

LADIES

RAYON PANTIES

BLUE — WHITE — PINK — MAIZE

SPECIAL OPENING PAIR **19c**

SAVE!

FANCY COLORED HAND

TOWELS

5 EACH For **98c** 20c

TO MATCH FANCY COLORED

WASHCLOTHS

6 EACH For **39c** 7c



EVEN AND HALF SIZES

DRESSES

COTTONS — NEW FOR SPRING

TAFFETIZED WASHABLE CHAMBRAY **\$7.95**

FULLER FABRICS WASHABLE **\$7.95**

EVERGLAZE — WASHABLE WRINKLE RESISTANT **\$9.98**

RAYONS — NEW FOR SPRING

FUTURE FASHIONS ITALIAN PRINTS, WASHABLE **\$3.95**

"WASH-A-BURL" BURLINGTON FABRIC **\$7.95**

RAYON AND COTTON PRINTS

DRESSES **\$14.99**

GABARDINES AND NOVELTY WEAVE

TOPPERS **\$9.99** **\$14.99**

RAYON GABARDINE

SUITS **\$14.99**

COTTON HOUSE DRESSES

VAT DYED — FAST COLORS — SANFORIZED

\$1.98 — \$2.98 — \$3.95 — \$5.95

CHILDRENS COTTON PANTIES

OPENING SPECIAL PAIR **19c**

CHILDRENS "FANCY PANTS" RAYON PANTIES

OPENING SPECIAL PAIR **19c**

OPENING

81x99 CC

SHEER

BLUE — PEACH — MAIZE

\$1.98

CASES TO MATCH, each

MUSIC

BLEACHED

Yard **19c**

Yard **24c**

Yard **29c**

DISH CLOTHS

EACH

PLISSE CREPE

MANY COLORS

OPENING SPECIAL, YD. **33c**

SEERSUCKER

BEAUTIFUL PATTERNS AND SOLIDS

OPENING SPECIAL, YD. **49c**

PRINT

FAST COLOR SPRING PATTERNS

36 INCH

OPENING SPECIAL

4 yds. 89c

BLISTERED COTTONS

BEAUTIFUL COLORS

OPENING SPECIAL, YD. **59c**

REMUND

MULESHOE

"YOUR POPULAR PRICE STORE"

DRY GOODS — CLOTHING

NG

THURSDAY

March 5, 9 a. m.

PRINT
FAST COLOR

To The First 25 Ladies Who Enter Our Doors Saturday Morning.

4 Yds. ----- **69c**

FRIDAY, MARCH 6 9 A. M.

SATURDAY, MARCH 7 8 A. M.

ate!

DRESSES
FAST COLOR PRINTS **\$1.78**
SATURDAY ONLY!!

DRESSES
FAST COLOR PRINTS **\$3.49**
SATURDAY ONLY!!

SPECIALS

COLORED

ETS
ZE — ROSE — AQUA
Each
PAIR \$3.89

INS
UNBLEACHED
Yard 17c
Yard 21c
Yard 23c

THS
7c

MEN'S STRIPE FULL CUT SANFORIZED — SAVE!
OVERALLS pair **\$2.79**

MEN'S GRAY CHAMBRAY
WORK SHIRTS **\$1.39**

**USE OUR LAY-AWAY
PLAN
ALL SALES CASH**



BEAT THIS ONE!
MEN'S TYPE 1 REEVES ARMY CLOTH
KHAKI PANTS **\$3.98**
SHIRTS TO MATCH **\$3.49**



MEN'S TYPE 4 KHAKI TWILL
PANTS **\$2.98**
SHIRTS **\$1.98**

BOY'S 8 OZ. ZIPPER FLY SANFORIZED
BLUE JEANS

SIZE 1 TO 5 PAIR \$1.49
SIZE 6 TO 10 PAIR \$1.69
SIZE 12 TO 16 PAIR \$1.98

SALE!

MEN'S RIBBED COTTON
UNDERSHIRTS
OPENING SPECIAL EACH **39c**

MEN'S COTTON
BRIEFS, ea. **39c**

MEN'S GRIPPER FLY, ELASTIC SIDE SANFORIZED BROADCLOTH
SHORTS, ea. **52c**

SAVE!

OPENING SPECIALS!
MEN'S DRESS **SHIRTS**
Opening Special **\$1.89**
MEN'S NYLON SHORT SLEEVE **Sport Shirts**
Opening Special **\$3.95**

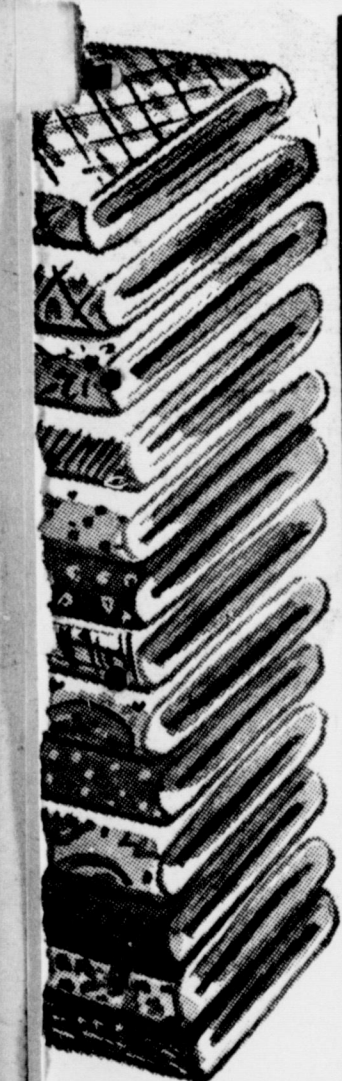
MEN'S PLISSE CREPE, SHORT SLEEVE
SPORT SHIRTS **\$1.49**
COOL "SKIP DENT" SHIRTS **\$1.69**

SALE!

MEN' WHITE HEMMED
Handkerchiefs **7c**
DOZEN **83c**

MEN'S ELASTIC TOP RANDOM
Work Sox, pr. **18c**

MEN'S WHITE COTTON
T-SHIRTS **39c**
REG. 29c BOYS CELLO WRAPPED
Ankle Sox, 4 pairs **89c**



SHOES

WE HAVE A COMPLETE STOCK FOR THE ENTIRE FAMILY

LADIES LEATHER **MOCCASINS** **\$2.98**

ONE TABLE LADIES and CHILDRENS **SHOES** **98c**

CASUALS **\$2.98 - \$3.95 - \$4.95**

YOUR POPULAR PRICE STORE

SHIRTS

Gray Chambray, Reg. \$3.95

\$3.49
SATURDAY ONLY!!

WILSON

ING — SHOES

"YOUR POPULAR PRICE STORE"

NEXT DOOR TO PALACE THEATRE

RETURNED FROM CALIFORNIA

Mr. and Mrs. Earl Luttrell, Jr., of Amarillo visited in the home of Mr. and Mrs. R. E. Luttrell over the week end. They were returning from a vacation in California.

RETURNED FROM KOREA

Jack Wilterding arrived home to visit his mother, Mrs. Leota Wilterding, after serving in the U. S. Air Force about a year. After a 30 day furlough, he will report to Rapid City, S. D., for further duty.

Hawaii Citizen Tells Rotarians About Homeland

Rotarians learned more concerning Hawaii in a few minutes at their Tuesday noon luncheon than they could have assimilated in months of reading. They were addressed by Paul Gima, of Honolulu, a student in Wayland College, Plainview and he answered many questions about the islands asked by curious members.

As a result, those present may have gained some first hand information on a pressing political development — the proposed admission of the Territory of Hawaii as the 49th state of the United States of America.

Asked the direct question as to whether the population of the islands, being of many races and mixtures of races, can and will carry on the democratic process, Gima pointed out that the people have already carried on the American traditions and forms for many years since gaining territorial status; that there is no illiteracy in the islands, the average income and the living standards are fairly satisfactory; he believed there is no barrier to approval of statehood on the part of citizens of the other 48 states.

There is little racial rivalry or antagonism, he said, in fact he believed the races live there in more harmony and understanding than anywhere else in the world.

It's hard to own land in the islands, since a few companies have gained control of most of the land for their sugar plantations and other agriculture enterprises. Under statehood, he said, it may be possible to have more people buy the land they need and want.

Gima, himself of Japanese ancestry, said Japanese racial people comprise about 50 per cent of the population; Caucasians are the next most populous group, or about 23 per cent, with Portuguese, Chinese, Puerto Ricans and natives forming large minorities.

To learn to know a man is to learn to like him, Gima asserted. To learn a race, one should learn to know an individual of that race, and not judge a whole race by one individual. He believes this furnishes a key to worldwide racial understanding that eventually will eliminate wars brought on in large part by racial animosities.

Onard Upton introduced the speaker. The program was furnished by O. D. Holton, whose brother, Bud Holton, a former member of the local club, is a fellow student with Mr. Gima at Wayland.

Visitors included Jimmie Holt, outstanding high school student; Murl Wilson, co-owner of a new dry goods store here; and Ken Kenderick, KICA, Clovis. They were introduced by Cayle Reed.

VISITORS IN TAYLOR HOME

Visiting Monday in the home of Mr. and Mrs. J. L. Taylor were Mr. and Mrs. Tom Hudson of Bovina, Carolyn Bradley of Roswell and Carter Taylor, son of Mr. and Mrs. Taylor. Mrs. Hudson is a sister of Mr. Taylor's.

New Type Sewing Machine Now At Bass Firestone

A radically new Swiss-made lightweight portable sewing machine, which is expected to revolutionize the home sewing machine industry in the United States, was revealed today by Bass Firestone Dealer Store, the local Necchi-Elna dealer.

Harvey Bass declared that the new Elna portable is the most modern and scientific portable sewing machine yet seen in the world. An entirely new concept in sewing machine design has been incorporated in this portable machine, he said.

Utilizing a unique system of slip-on plastic discs, this machine, known as the Elna Supermatic, is the first automatic portable zig-zag sewing machine on the market. Without any attachments, the Supermatic can sew straight stitches, zig-zag, sew on buttons, make buttonholes, sew elastic seams on knitted fabrics, do blindstitching, make monograms; and make scores of ornamental stitches automatically. "This revolutionary portable has taken all of the guess work out of home sewing", he observed.

A compact built-in precision "brain" known as the "Elnagraph" makes this lightweight machine fully automatic. The "brain" is controlled by the plastic discs.

Explaining the slip-on disc system, he said that this is the first time any home sewing machine has ever operated under this principle. Each disc, the size of a half dollar, represents a different stitch design. By inserting a disc, a home sewer can sew a decorative stitch almost indefinitely. She can adjust the stitch to any size that she desires. He said that the discs are as easy to change as a record on a phonograph machine.

Harvey said that the machine and parts will be available at his store and each machine will carry a lifetime guarantee.

Turner Named On All-District Five

Calvin Turner, center on the Mules basketball team, was named on an all district team, along with nine other district players. Brownfield won the district championship and placed four boys on the team.

One sports writer, Jimmie Chapman of the County Wide News, Littlefield, cast a vote for six men and included Jimmy Nickels of the Mules.

Every one of the ten boys named for all-district honors is a senior.

GARNER FARM RECORD books on sale at The Journal.



CHRISTIAN SCIENCE SERVICES

In the first chapter of Genesis, man is referred to as the "image and likeness" of God — terminology which implies that man, like his Maker, is good. This is

the view of Christian Science, as brought out in the Lesson-Sermon entitled "Man" which will be read in this Sunday's church services.

Guernsey Sets A State Record

Petersborough, N. H. — Ralph Harbin, Muleshoe, has made a Guernsey state champion record with his registered Guernsey cow, Bluff View Philosopher's Bona. Her production of 12,001 pounds of milk and 624 pounds of butterfat is the highest Herd Improvement Registry record for a senior three year-old. "Bona" was milked 730 times while on test.

The sire of this cow, Woodacres Royal Philosopher, owned by L. H. Smokler, Dallas, has 15 daughters and one son in the Performance Register of The American Guernsey Cattle Club.



"Anyone for boating?" asks this pretty miss who is enjoying winter sunshine at a southern coastal resort. For her outing she wears a striking print swim suit made of cotton bags! Her fashionable two-piece suit is made from three 100-lb. cotton feed bags in a colorful rust, brown, yellow, and white print, the National Cotton Council reports.

we are sufficient of ourselves to think any thing as of ourselves; but our sufficiency is of God."

The following will be read from the Christian Science textbook by Mary Baker Eddy: "Man reflects infinite Truth, Life, and Love. The nature of man, thus understood includes all that is implied by the terms 'image' and 'likeness' as used in Scriptures" (Science and Health with Key to the Scriptures, p. 94).

BOSTITCH STAPLERS and Staples always on tap at The Journal.

EVERLAY FEEDS

- CHICK STARTER
- CHICK GROWER
- LAY MASH
- LAY MASH SUPPLEMENT
- LITTER — GRIT
- OYSTER SHELL
- HOG SUPPLEMENT
- RABBIT PELLETS
- TRACE MINERALS
- MINERALS
- DOG FEED

MAKE THEM PAY WITH EVERLAY

J & J PRODUCE

Phone 3810

ADMIRER



BECAUSE....

She always looks so sparkling fresh and beautifully dressed on a limited budget. Her secret? She keeps her clothes fresh and new looking with our fine cleaning.



ALSUP CLEANERS

MR. and MRS. CHAS. ALSUP
Morton Highway — Former Taylor Produce Location

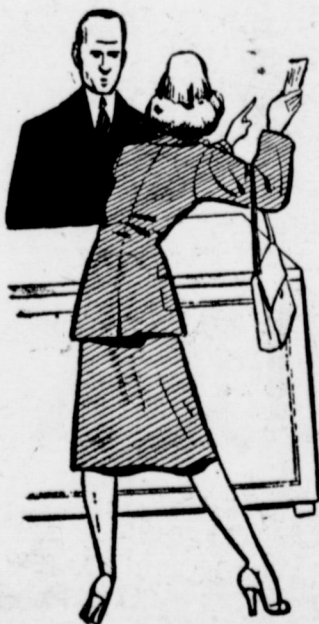


IT costs a lot to be an American. But not too much. The American principle of personal and economic liberty provides more opportunity and more good for more people than any other system devised by man. Privately owned and operated industry is the American principle at work.

In America, private industry pays its own way. Pays the lion's share of taxes necessary to support our government. Were it not for private, tax-paying industry your individual tax would be much greater — for the burden of government would rest entirely on your shoulders.

Paste this in your hat. And when you file your income tax return, take off your hat to the American way of life.

GENERAL TELEPHONE COMPANY
of the Southwest



HERE'S THE PROOF!"

And so ends the argument over the payment of a bill when you show your cancelled check. That's why you're wise to pay by check and check on the Muleshoe State Bank. It's just good business.

MULESHOE STATE BANK

Member Federal Deposit Insurance Corporation

OPEN NOW
IN
TIME FOR
Easter
SHOPPING



A SHOP FOR CHILDREN'S AND BABIES CLOTHING AND ACCESSORIES.

This Is Our Invitation To You To Come By And Visit Us And See The Many Lovely Things We Have For The Youngster

FREE BALOONS FOR THE KIDDIES!

We Have Storks And Other Items For Baby Showers

JACK N' JILL SHOPPE

LOCATED BETWEEN BASS FIRESTONE AND CITY CLEANERS

Terrific Values.

SOUR RED PITTED NO. 2 CAN
CHERRIES . . 17c

ARMOUR'S NO. 2 CAN
BEEF STEW 39c
ARMOUR'S NO. 2 CAN
CORNED BEEF HASH 32c

ARMOUR'S 9 1/2 OZ. JAR
PEANUT BUTTER 28c
NO. 1 1/2 BOTTLE
WHITE KARO 23c

LIMIT 12 OZ. PKG.
STARCH 15c

GEBHARDT'S NO. 300 CAN
TAMALES 25

PUSS 'N BOOTS 16 OZ. CAN
CAT FOOD 14c

GERBER'S 8 OZ. BOX
Baby Cereal 17

GEBHARDT'S NO. 1/4 CAN
Sand. Spread 15c

HEINZ 3 P
Baby Food 27

at **PIGGLY WIGGLY**

EVERLITE 10 LB. BAG
FLOUR

Everlite
10 Lb. Bag **78**

HEINZ 16 OZ. CAN
BAKED BEANS 15c
LA CHOY MEATLESS NO. 2 CAN
CHOP SUEY 39c

HERSHEY'S 8 OZ. CAN
COCOA 27c

CASCO 5 LB. BAG
BAKING CHOCOLATE 41c

HERSHEY'S 1/2 LB. BLOCK
DOG MEAL 75c

PURE GOLD
BROOMS \$1.89

4 OZ. BOTTLE
O CEDAR POLISH 25c

MORTON HOUSE 1 LB. CAN
BEEF & GRAVY 57c

LA CHOY NO. 2 CAN
BEAN SPROUTS 19c

LIBBY'S QUEEN 3 OZ. JAR
OLIVES 22c

LIBBY'S SWEET 8 OZ. JAR
PICKLES 27c

LIBBY'S NO. 1/2 CAN
VIENNA SAUSAGE 19c

HOLLANDALE COLORED QUARTERS
Margarine

Lb. **17c**

TWENTY MULE TEAM
BORAX, 5 lb. 73c

AUNT ELLEN'S 9 OZ. BOX
PI DO 15c

DROMEDARY, WHITE, 16 OZ. BOX
CAKE MIX 33c

DROMEDARY 16 OZ. DEVILS FUDGE
CAKE MIX 29c

LARGE BOX
CHEER 31c

1 LB. CAN
CRISCO 33c

LARGE BOX
DREFT 31c

LARGE BOX
DUZ 29c

MEDIUM BAR
LAVA SOAP, 3 for 25c

YOUNGBLOOD 16 OZ. PKG.
DRUMSTICKS 77c

U. S. GRADED QUALITY MEATS

BALLARD'S, NO LIMIT, CAN
BISCUITS 5c

CUDAHY WICKLOW'S SLICED, CELLO PKG.
BACON 49c

FRESH COUNTRY
BACKBONE, lb. 59c

FRANKS Swift's Premium Cello Pkg. **39c**

CHOICE BEEF
LOIN STEAK, lb. 69c

LEAN AND MEATY
SPARE RIBS, lb. 49c

CHOICE BEEF
CHUCK ROAST Lb. **39c**

RUMP OR PIKES PEAK
BEEF ROAST, lb. 49c

BONELESS
PERCH FISH, lb. 49c

LONGHORN, WISCONSIN STATE
CHEESE Lb. **39c**

NORTHERN TISSUE, 3 for 25c

SCOT TOWELS, roll 19c

FROZEN MAID 10 1/2 OZ. PKG.
STRAWBERRIES 25c

LIBBY'S NO. 2 CAN
SPINACH 15c

TUNA
BUCKY STRIKE
NO. 1/2 CAN **29c**

See **RED RYDER**

and **LITTLE BEAVER**

KDUB-TV CHANNEL 13
EVERY SUN. 5 to 6 P. M.

**Double-
D.N. GREEN STAMPS
Tues.**

LIBBY'S SLICED NO. 303 CAN
BEETS 15c

LIBBY'S NO. 303 CAN
BABY LIMAS 29c

LIBBY'S 14 OZ. BOTTLE
CATSUP 17c

MODART 75c SIZE
Shampoo 27c

QUART BOTTLE
PUREX 17c

VERNELL'S 7 OZ. PKG.
BUTTER MINTS 37c

SKINNER'S 14 OZ. PKG.
MACARONI 24c

CAMPFIRE NO. 300 CAN
BLACKKEY PEAS 12c

SKINNER'S 5 OZ. BAG
EGG NOODLES 13c

LARGE BOX
RITZ CRACKERS 29c

CHAMBERLAIN'S 50c SIZE
HAND LOTION 29c

DEL MONTE, QUART
PRUNE JUICE 37c

REMARKABLE NO. 2 1/2 CAN
PEARS 31c

WELCH 24 OZ. BOTTLE
GRAPE JUICE 39c

DEER NO. 1 CAN
TOMATOES 11c

SWEET TREAT CRUSHED NO. 2 CAN
PINEAPPLE 25c

MARSHALL NO. 300 CAN
PORK & BEANS 10c

BANANAS Lb. **12 1/2c**

NO. 1, 1 LB. CELLO PKG.
WALNUTS 39c

FRESH BUNCH
Green Onions 7 1/2c

FIRM HEADS
LETTUCE 12 1/2c

CALIFORNIA GREEN LARGE STALK
CELERY 15c

FLORIDA
ORANGES 10c

CALIFORNIA
CARROTS 10c

PIGGLY WIGGLY
DAVIS & HUMPHRIES OWNERS & OPERATORS

Teacher Bill Raises Local Taxes

VISITED IN SANTA FE
Mr. and Mrs. DeWitt Precure

visited in the home of Mr. and Mrs. Stanley Robinson of Sante Fe, N. M., over the week end.

Farmers! Make Big Savings! Use Low-cost Philgas Tractor Fuel



Save on Repair Bills, Too

Convert your tractor! Compared to gasoline, Philgas can save you several cents a gallon. These savings will soon pay the cost of conversion. And Philgas is easy and safe to use. No waste from spilling, overflow or evaporation, because the filling system is completely enclosed.

Clean-burning . . . thrifty! Save as much as 50% on engine maintenance costs. No cylinder wall washing. Long ring and valve life. Low cylinder wear. For a thrifty fuel with exceptionally high energy content (100 octane plus), get high-quality Philgas.

All-purpose fuel! Use Philgas to heat your home, for cooking, hot water and refrigeration! Use it also for heating stock tanks, chick brooders, and other needs around your farm. Install a central tank for all your needs. Low cost fuel. Convenient, clean, dependable!

And remember . . . your local Philgas distributor is fully qualified to make dependable installations, to provide prompt and courteous service. See him today.

Philgas is distributed by

Muleshoe Liquefied Gas Co.

Phone 3130

Muleshoe

H. B. 3 Would Raise Salaries By \$240 A Year

A proposed \$10 million increase in local fund assignment of the Minimum Foundation School Program has been introduced in the State Legislature through House Bill 3. The bill would raise the minimum local school fund assignment from the present \$45 million to \$55 million for the state during the 1953-54 school year. After that time, according to House Bill 3, the flat \$10 million increase would be replaced by a local total fund assignment of 25 per cent of the total cost of the foundation program for the preceding year.

To gain the minimum local fund assignment from individual school districts in 1953-54, each school district in the state would have its fund assignment increased in such a way as to increase the total fund assignment to the proposed \$55 million or a \$10 million increase.

The "25 per cent provision" would cause the districts of the state to assume one-fourth of any increased cost in the total Foundation Program while the state would provide the other 75 per cent of the provision. Although this provision is meant to replace the present assignment of \$45 million per year, it would mean local fund assignments totaling more than \$55 million.

The bill would entitle teachers to a \$240 per year pay increase, but would limit base wages to \$2640 per year. (House Bill 3 is not the teachers' pay raise bill endorsed by the Texas State Association.) A comparatively simple calculation determined the local fund assignment for 1953-54 because \$55 million was an established figure, but no effort has been made to estimate what they would be for other future years.

Although the state has many sources available to raise the funds, House Bill 3 prescribes that the increases should come from local funds. This would mean heavier taxing of property, the only source of increase available for local school districts.

According to state-wide figures, many smaller school districts could not stand an increase in property taxes. This is especially true in the case of areas suffering from drought, such as West Texas.

The bill would mean that the total local funds for fifteen counties of Senatorial District 30 would be raised from \$1,266,068.91 to \$1,521,870.98, an increase of \$255,802.07. The increase would be much higher than this after the "25 per cent provision" went into effect.

Figures showing increases in local taxes for the four school districts of this county entailed by the above described bill recently were furnished to The Journal by Jesse M. Osborn, representative of this district in the Legislature, and are summarized as follows:

MULESHOE DISTRICT
Cost of teachers' pay raise, \$240 per teacher \$14,160.00
Amt. of local taxes now needed \$64,447.77
Amt needed under H. B. 3 78,768.06
INCREASE of local taxes 14,320.29

BULA DISTRICT
Cost of teachers' pay raise 2,400.00
Amt. of local taxes now needed 7,392.81
Amt. of local taxes needed under H. B. 3 9,035.49
INCREASE of local taxes 1,642.68

CIRCLEBACK DISTRICT
Cost of teachers' pay raise 480.00
Amt. of local taxes now needed 6,216.60
Amt. of local taxes needed under H. B. 3 7,597.93
INCREASE of local taxes 1,381.33

THREE WAY
Amt. of local taxes now needed 19,447.34
Amt. needed under H. B. 3 23,768.54
INCREASE of local taxes 4,321.20

Cotton Support Price Is 30.8

The Agriculture Department has announced it will support grower prices of 1953 crop cotton at a national average of at least 30.80¢ a pound, gross weight for the base grade of middling cotton.

This compares with the 1952 crop average of 30.91¢. By comparison, farm prices averaged 29.7¢ in mid-January, the last date for which an average sales price is available.

Support aid will be provided by means of loans on cotton withheld from the market and stored under government regulations.

The loan rate is designed to reflect 90 per cent of the current parity price of cotton. Parity is a price designed to be fair to farmers in relation to prices they pay.

The Department said that in the event the parity price is higher next Aug 1—the beginning of the 1953 market season—then at present, the support rate will be increased accordingly.

Farm law requires the Department to support prices at not less than 90 per cent of parity as of the beginning of the marketing year. Premiums and discounts for the various grade and staple-length combinations will be announced later.

ALL ABOUT TEXAS in the Texas Almanac, on sale at The Journal. Phone 7220, we deliver.

THE BEST STOP TO CONTROL YOUR STOCK

Johnson-Pool
Phone 7370 Muleshoe

Our Honor Roll

New subscribers to The Journal this week are:

- Carl Biggers, Beaumont, Tex. Texas Outlook, Austin.
- R. F. Wright, City.
- J. R. Moore, Jr., City.
- G. L. White, City.
- G. A. Montgomery Sudan, C. J. Darby, Route 2.
- C. K. Roberts, Lazbuddy.

Old subscribers who have renewed their subscriptions to The Journal this week are:

- A. J. Hicks, City.
- A. W. Copley, City.
- C. M. Brown, City.
- C. R. Middlebrook, City.
- B. H. Dyck, Route 1.
- W. M. Staas, Route 1.
- L. E. Ogletree, Star Route 2.
- C. D. Black, Route 1.
- J. H. Puckett, Route 2.
- T. H. Clem, Star Route 2.
- Albert Kube, Route 2.
- J. E. Moore, Maple.
- H. E. Musson, Norman, Okla.

TWO LOCAL STUDENTS PLEDGE SOCIAL SORORITY CANYON, Feb. 28 — Currently pledging Tau Phi social sorority at West Texas State College are two students from Muleshoe, Wilma Lee and Marilyn Gupton.

THE MULESHOE JOURNAL, Thursday, March 5, 1953

student and is the daughter of Mr. and Mrs. C. D. Gupton of 1112 West Third St., Muleshoe.

Miss Lee, a transfer student from Odessa Junior College, is a sophomore majoring in business administration. She is the daughter of Mr. and Mrs. W. H. Lee of Muleshoe.

Miss Gupton is a freshman

Mr. and Mrs. Arthur Crow have gone to Warwick, Va., near Norfolk, for a visit with their son, Second Lt. John Crow, stationed there in the Army and his wife.

DANCE
Saturday Night
— Music By —
Hattie Young
And The Music Makers
LA VISTA
CLOVIS
● The Plains Finest Dance Spot ●

FOR BETTER PERFORMANCE
LONGER LIFE — GREATER
COMFORT and SAFETY

HAVE YOUR CAR SERVICED REGULARLY

- Lubricate Chassis
- Change Engine Oil
- Change Oil Filter
- Clean Air Cleaner
- Tune Motor
- Adjust Brakes
- Rotate Tires

And Don't Forget, The Front Wheels Spin 7,000,000 Times Every 10,000 Miles So Be Sure To Have Those Bearings Checked And Packed With New Grease At Least Every 10,000 Miles.

"CARE WILL SAVE YOUR CAR"

ARNOLD MORRIS AUTO CO.
DODGE — SALES — PLYMOUTH
PHONE 7150 SERVICE MULESHOE

It's A Bearcat In Performance

CHRYSLER V-8
And 6-Cyl. Irrigation Motors

STURDY — DEPENDABLE — BUILT TO LAST.

We Are Prepared To Service Your Irrigation Motor When You Need It.

FIELD AND SHOP SERVICE

MORRISON MOTOR CO. —Phone 4130

IF YOU NEED A
PICK UP or a TRUCK

SEE THE NEW 1953
CHEVROLET

We Have Several On Hand Now!

C. & H. CHEVROLET CO.
MULESHOE, TEXAS

OUR NEIGHBOR TOLD US ABOUT...
FLATLUX

HERE'S WHAT WE DISCOVERED!

- ★ A REAL OIL PAINT THAT COVERS WALLPAPER IN ONE COAT...
- ★ A REAL OIL PAINT THAT DRIES FAST TO A BEAUTIFUL WASHABLE FINISH
- ★ A REAL OIL PAINT WITH NO UNPLEASANT ODOR
- ★ A REAL OIL PAINT THAT RESISTS DIRT AND SOIL

You can paint your walls and ceiling with FLATLUX in the morning and use the room the same day. Goes on smoothly. Apply with the Flatlux Brush or a Roller Coater.

The modern trend is to color-match walls and woodwork. ● Use BPS Identically Matched Colors of FLATLUX ● SATIN-LUX ● GLOS-LUX.

Ask for descriptive folder.

There is Only One FLATLUX and ... it's MADE WITH OIL

PATTERSON-SARGENT BEST PAINT SOLD

HEATHINGTON LUMBER CO.
ON CLOVIS HWY
PHONE 7970

