

The Ozona Stockman

3000 SQUARE MILES
OF
CROCKETT COUNTY
LIVESTOCK TERRITORY

Out In The West, Where The Air Is Pure, The Climate Agreeable, And The People Friendly The Best Place On Earth To Call Home

VOLUME 67 OZONA, CROCKETT COUNTY, TEXAS 76943 25c Per Copy WEDNESDAY, JANUARY 2, 1980 NUMBER 44

Chandler services Saturday

Funeral services for Mrs. E.H. (Tommy) Chandler, 63, were held Saturday afternoon at 3 p.m. in Ozona United Methodist Church, with burial in Cedar Hill Cemetery.

Mrs. Chandler died at 2:15 p.m. Friday in Crockett County Hospital after a long illness.

Mrs. Chandler was born Feb. 13, 1916, in Ozona, the daughter of Mr. and Mrs. Tom Smith. She was married Dec. 31, 1936, to Earle H. Chandler, in Ozona. Mrs. Chandler was a graduate of Ozona High School and attended Texas Tech and Texas State College for Women.

She was a lifetime resident of Ozona and active, with her husband in extensive ranching interests until becoming ill.

Survivors include her husband of Ozona; two daughters, Mrs. Bill (Suzy) Black of Ozona and Mrs. Don (Gracie) McFarland of Seguin; two sons, Erby Chandler and Fred Chandler, both of Ozona; one sister, Mrs. Gene (Toots) Williams of Ozona, and six grandchildren.

Mr. Pena buried Friday

Funeral services for Miguel (Mike) David Pena, 84, were held at 4:00 p.m. Friday in Our Lady of Perpetual Help Catholic Church with burial in Lima Cemetery.

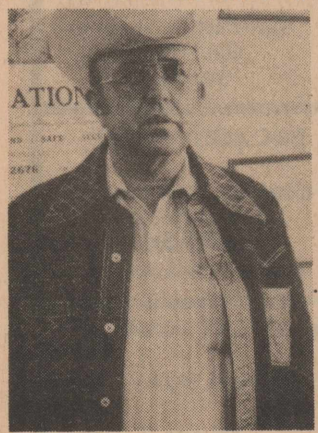
Mr. Pena died Wednesday afternoon in Crockett County Hospital. He was born Nov. 29, 1895 in Cerralvo Nuevo Leon, Mexico. He was married to Elvira Rios Oct. 11, 1932 in Ozona.

Survivors include his wife; 5 daughters, Mrs. Stanley (Bonifacia) Najar, Sr., Ramona Pena Ramirez, and Mrs. Robert (Angelina) Daniels all of Ozona, and Clotilde Rivera of Stockton, Calif., and Mrs. Larry (Anna) Gilley of Garland; two sons, Venancio Pena of Fort Worth and Abdon Pena of Ozona, and numerous grandchildren and great grandchildren.

Sheriff Mills to run again

Billy Mills, long time Crockett County sheriff, this week authorized The Stockman to announce his candidacy for re-election to that office, subject to action of the Democratic primary in May, 1980.

Sheriff Mills will be seeking his seventh term in the office of Sheriff of Crockett County. He was first elected and assumed the office on



SHERIFF BILLY MILLS



READY FOR THE PARTY-Marshall and Pauline Montgomery received congratulations on their 50th wedding anniversary Monday, from around 700 friends, relatives and

acquaintances, during an all-day party at the Civic Center Monday. The foyer was strictly Western decor, complete with camp fire. [see inside for story]

Income tax packages mailed to residents

Approximately 374,471 Federal tax packages are on their way to West Texas taxpayers this week. The IRS sends taxpayers either a 1040 or 1040A package, depending on the form the taxpayer filed last year. Taxpayers who need to file a different form this year because of a change in tax status, can pick up the proper form and schedules from their local IRS office, or from one of many post offices which stock them. Extra forms are also available by using the order blank in the back of the tax package.

Whether taxpayers use the form the IRS sends them, or order a different one, the IRS encourages use of both the peel-off label and pre-addressed, coded, return envelope provided in the originally mailed tax package. If used, both the label and envelope speed up processing the return, lessen the chance of making mistakes, and produce a faster refund for the taxpayer.

The peel-off label, which should be placed at the top of the return, contains the

name, address and Social Security number of the taxpayer and, like the return envelope, is specially-coded to speed up the sorting process.

If there is a mistake on the label, or if the envelope is marked with the incorrect form number, the IRS said

Meybin services Thursday

Funeral services for Mrs. R.J. (Dixie Davidson) Meybin, Jr., were held Thursday at 4:00 p.m. in Ozona United Methodist Church with burial in Cedar Hill Cemetery.

Mrs. Meybin died at her home in Sewickley, Pa. Sunday, Dec. 23. She had been in ill health about two years.

Mrs. Meybin was the daughter of Judge and Mrs. Charles E. Davidson. She was reared in Ozona.

Survivors include her husband of Sewickley; two sons, Maj. R.J. Meybin, III, of Richmond, Va. and Charles E. Meybin of Sewickley; one sister, Mrs. Beth Garver of Fort Worth, and numerous nieces and nephews.

Aliens reminded to report

Richard M. Casillas of the San Antonio Immigration and Naturalization Service has again reminded all aliens to report their addresses during January.

Cards with which to make the reports are available at Post Offices and offices of the Immigration and Naturalization Service throughout the country. The reports must have a 15c stamp affixed to the card.

Parents or guardians are required to submit reports for alien children under 14 years of age.

Mr. Richard M. Casillas urges all aliens to report before the end of January, as willful failure to do so may lead to serious penalties.

the taxpayer should simply make necessary changes in ink.

The step-by-step and more spacious format of the tax forms, retained from last year, should make it possible for most taxpayers to complete their returns with the aid of their instructions, according to the IRS. The instructions take the taxpayer through each step of return completion and are number-coded to correspond to the lines on the return.

Taxpayers who need additional information before deciding what credits, deductions, or deductions they should claim can order any of some 70 specialized IRS publications by using the same order blank used to order forms. These publications are also available from most IRS offices.

1980 dog tags now on sale

The 1980 dog tags are now on sale at the Tax Assessor-Collector's office in the courthouse annex. Pet owners should be aware that dogs need to be registered annually.

Tags may be purchased for \$1, with regulations the same as in past years. Proof of rabies shots must be presented before tags are purchased. Dogs running loose in the daytime must have tags fastened to collars and dogs running loose at night are required to be muzzled as well as tagged to avoid being picked up by the animal control officer and placed in the pound at the Ozona Veterinary Clinic.

Mrs. Ray's services in Odessa

Services for Gladys Thornberry Ray, 66, were held at 4:00 p.m., Sunday, Dec. 23, in Friendship Baptist Church, with burial in Sunset Memorial Gardens under direction of Hubbard-Kelly Funeral Home in Odessa.

New law benefits elderly

New tax law changes mean good news for older Americans. One of the concerns of everyone is whether or not he or she is required to file a return. Single people 65 and over do not have to file a tax return unless their gross income for 1979, excluding Social Security and Railroad

Retirement payments and public assistance, was \$4,300 or more. That figure goes up to \$6,400 for a couple with one spouse 65 and over and \$7,400 for a couple with both spouses 65 and over. Of course, even if you are not required to file, if you had tax withheld, you should file to get any refund you may have coming.

In addition to the higher filing requirement, the "Tax Credit for the Elderly" provides another tax benefit for some older taxpayers with some taxable income and a tax liability. There are limitations, however; persons who receive the maximum Social Security payments, for example, would not be eligible.

A further benefit is the once-in-a-lifetime \$100,000 exclusion of the gain on the sale of a personal residence. Taxpayers who are at least 55 before they sell their residence which they owned and lived in at least 3 of the 5 years prior to the sale can exclude \$100,000 of the gain realized.

NEWS FLASH!

Mr. and Mrs Douglas Moore are the parents of a daughter, born late Tuesday, Jan. 1, 1980, in a San Angelo hospital. The baby was the first for 1980 in San Angelo, and the first for an Ozona couple.

Details next week.

Stockman
Want Ads
Pack Power

For West Texas-

WTU studies solar energy

The possibility of using solar energy to generate electricity at one or more of West Texas Utilities Company's power plants will be examined in a study being conducted by the Company's Plant Operation Department in cooperation with the Energy Systems Group of Rockwell International.

The study will take nine months and will be completed in June or July, 1980.

Targeted for the study is Unit Number Four at WTU's Paint Creek Power Station, which is located on Lake Stamford, between Haskell and Stamford. The unit was completed in 1971 and is the largest and newest of Paint Creek's four generating units. All are presently powered by natural gas, with oil used as a back-up fuel.

If results of the study are favorable, a proposal will be submitted to the Department of Energy for a grant to aid in constructing the equipment needed to re-power the unit with solar energy. WTU officials, however, emphasized that the program in its current stage is strictly a research project.

"At best, the project is several steps away from becoming a reality", said Randall Meador, WTU Vice President and Director of Engineering.

Meador said six similar studies are being made with United States Department of Energy funding and support, and that only two projects will be granted funds to aid in construction. The cost of constructing the two projects will be shared by DOE and the winning utilities.

By funding these demonstration plants, the DOE hopes to lower the cost of the solar equipment by mass production to make solar electric generation economically feasible in the near future. The selection of the projects to be granted construction funds will be based on the percentage of the cost to be shared by the utility and the engineering quality of the repowering system.

Paint Creek Unit Number Four has a generating capacity rated at 110,000 kilowatts. For purposes of the study, the unit would be converted to allow 60,000 kilowatts. For purposes of the study, the unit would be

converted to allow 60,000 kilowatts to be generated at full load on solar power, with the remaining 50,000 kilowatts generated with natural gas or fuel oils. This would allow about 55 percent of the electrical output of the unit to be generated on solar power during the day.

The solar system developed by the Energy Systems Group of Rockwell International consists of a solar collector system, a solar receiver, and a heat exchanger system. The solar collector system consists of more than 9,000 mirrors, or heliostats, which would be installed in an area of 385 acres surrounding a 410-foot solar receiver tower.

The heliostats would be computer controlled to track the sun and reflect the rays of the sun onto the solar receiver located at the top of the 410-foot tower. The reflected sunlight would heat liquid sodium within the solar receiver vessel to a temperature of 1100 degrees Fahrenheit. The hot sodium would be pumped from the solar receiver vessel to the plant, where the sodium

would be used in heat exchangers to heat water into steam. The steam would power the existing turbine generators.

The Paint Creek study will be WTU's first in-depth look at solar power generation, although the Company has been involved in other areas of research. For many years WTU has contributed to nuclear fusion research by the Texas Atomic Energy Research Foundation at the University of Texas. With other members of the Central and South West Corporation, its parent company, WTU is involved in a coal gasification project in South Texas, and in geothermal research in West Texas.

All eight of WTU's existing major generating units use natural gas as a primary fuel with oil as a backup fuel. WTU is beginning to diversify its fuel resources as preliminary environmental and engineering work is now being done for Oklahoma Power Station, a proposed coal-fired plant near Vernon, which is scheduled for commercial production in 1987.

Planning saves tax dollars

Farmers and ranchers have only a few more days to make decisions that could affect their 1979 income tax situation.

"Year-end planning can help save tax dollars," says Dr. Ashley Lovell of Bryan, area economist with the Texas Agricultural Extension Service.

He suggests that farmers and ranchers follow a systematic procedure in making end-of-year tax management moves.

"First, decide what your tax management goals are. Commonly, the goal is to save income taxes, but check the impact of this goal on social security retirement income.

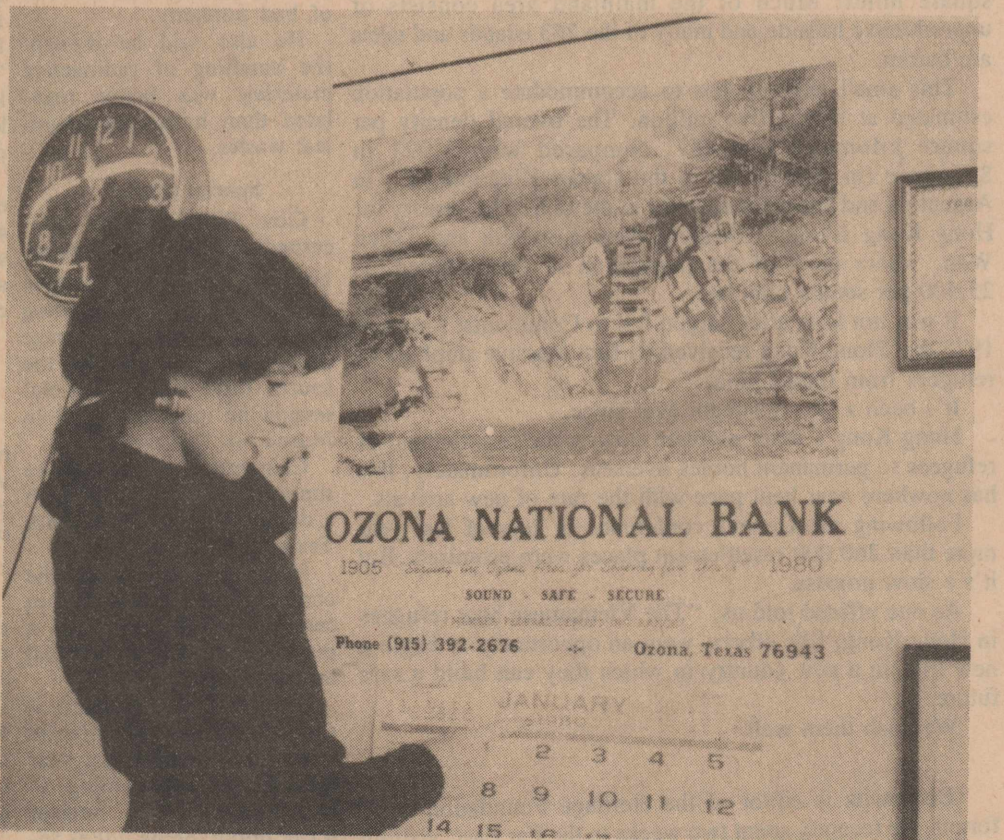
"After defining your tax management goals, it's time to make some estimates," points out Lovell. "Calculate 1979 net farm profit, taxable non-farm profit, and total tax due. Estimate the same items for the 1980

tax year."

By comparing 1979 and 1980 taxable income estimates, decide whether to increase or decrease this year's taxable income (especially net farm profit) relative to next year's. Depending on estimated taxable income, you may want to buy fertilizer and other supplies and machinery or to postpone additional sales of crops and livestock.

"This systematic procedure in reaching end-of-year tax management decisions provides a review of 1979 and another appraisal of expectations for 1980," says Lovell.

So determine your 1979 income tax status and also get a quick look at 1980. When the new decade arrives, the cash basis taxpayer loses much of the present flexibility because many income tax management strategies are no longer available for the 1979 tax year.



NEW CALENDAR GOES UP-The traditional new year's calendar, courtesy of Ozona National Bank, went up in the Stockman office Monday. Doing the honors this year is Debbie Dardaganian, a visitor from Dallas.

THE OZONA STOCKMAN

Published every Wednesday at Ozona, Crockett Co., Texas

Subscription Rates:

\$6.50 Per Year in Crockett County
\$10.50 Per Year Elsewhere

KITTY MONTGOMERY-Editor & Publisher

BEKIE DIAZ-Shop Foreman
WILLA PERRY-Classified & Circulation

Published weekly since 1913 and entered as second class matter April 9, 1913 at the Post Office at Ozona, Texas, under the Act of Congress of March 3, 1879. Published each Wednesday.

Notices of church entertainments where admission is charged, card of thanks, resolutions of respect, and all matters not news, will be charged for at regular advertising rates.

Any erroneous reflection upon the character of any person or firm appearing in these columns will be gladly and promptly corrected if called to the attention of the management.

CLASSIFIED RATES-12 cents per word. Minimum charge \$1.65 per insertion.

MEMBER 1980
TEXAS PRESS ASSOCIATION



HERITAGE NEWS FORUM

FROM THE HERITAGE FOUNDATION • WASHINGTON, D.C.

REFUGE FOR VIET BOAT PEOPLE

By Herb Berkowitz

HONG KONG — Mending broken lives is the daily lot of Dorothy Lee, executive director of Caritas-Hong Kong, the Catholic relief agency responsible for the Kai-Tak East Transit Center here.

Kai-Tak is one of the several camps in the Hong Kong area overcrowded with Vietnamese "boat people" — the more than 73,000 lucky ones who have made their way to the safety of Hong Kong's harbor in the past 12 months.

As of late December, some 60,000 were still making Hong Kong their temporary home, awaiting resettlement.

In the meantime, they are tightly crowded into camps like Kai-Tak, which housed 9,436 people in 25 barracks when we visited on December 11.

Obviously, when it is necessary to squeeze 400 people into a building that is just a dozen paces wide (about 30 feet) and 25 paces in length, you build up, not out. So bunk is stacked upon bunk, three high — and this is home.

One would expect to find despair and bitterness among the Vietnamese. Instead, one finds life. Driven from their homes by the Communists, the Vietnamese here all have risked their lives on the high seas, many of them making the 600-700 mile voyage in floating hell-holes. Then they were quarantined in the floating villages that dotted Hong Kong harbor during the summer of 1979 — with as many as 1,000 new refugees arriving daily during some stretches of the summer.

After all that, Kai-Tak is easy to endure. The children at Kai-Tak are animated and aggressive, smiling even. Sixty percent of the adults of employable age have jobs.

In part, this has contributed to the overcrowding, because the money these refugees earn goes into the local economy for electric cooking appliances, extra clothes, food, and other personal items — all of which takes up space. So bunks once reserved for people are now cluttered with things.

Hong Kong is a city that knows overcrowding well. The land area is only 1,056 square kilometers, or 404 square miles. Much of the mainland area consists of unproductive hillside and many of the 263 islands and islets are barren.

This small territory has to accommodate a population estimated at nearly five million. The overall density per square kilometer is 4,487, compared with 3,921 in Singapore (in 1976), 230 in the United Kingdom, 8.1 in Argentina and approximately 22 in the U.S. The density for Hong Kong Island, Kowloon, New Kowloon and Tsuen Wan, where most of the population is concentrated, is 25,400 per square kilometer.

It was not long after Saigon fell to Communist forces in 1975 that Hong Kong received its first massive shipload of refugees from Indo-China.

It's been a steady stream ever since.

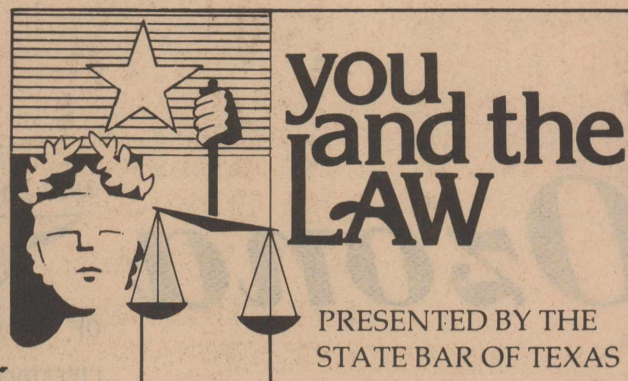
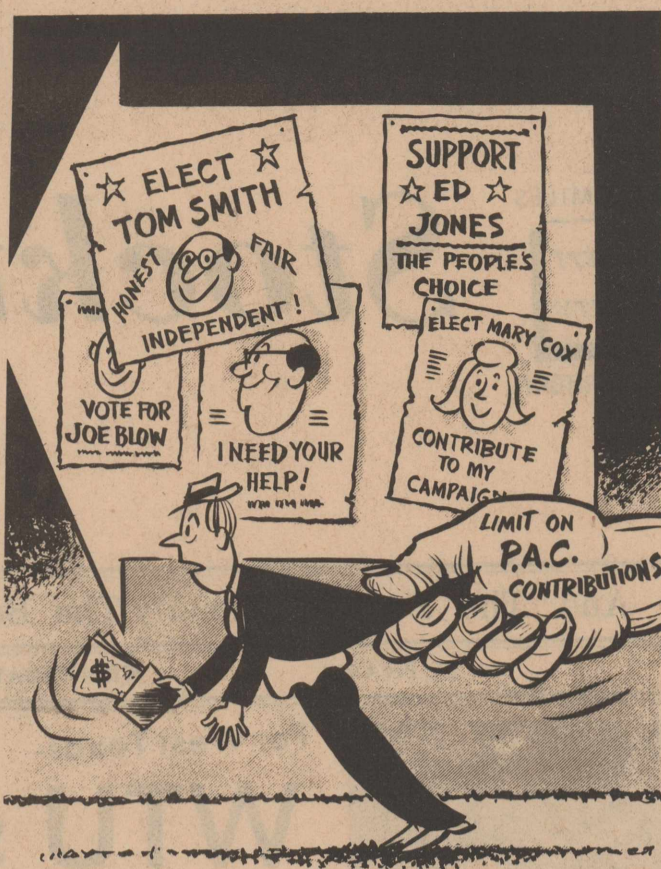
Hong Kong's main problem now is the resettlement of refugees to permanent homes overseas. Unfortunately, this has nowhere near kept pace with the rate of new arrivals.

Following the Geneva conference in July of last year more than 260,000 resettlement places were promised. But it's a slow process.

As one official told us, "The Vietnamese boat refugees in Hong Kong, like others, want an opportunity to begin a new life, in a new country in which they can build a safe future."

We wish them well.

(Berkowitz is editor of the Heritage Foundation news forum. He recently spent two weeks in the Far East, visiting with government and military officials in Taiwan and Hong Kong.)



Q: If my ex-wife has our child's name changed to that of her present husband, do I still have to pay child support?

A: Yes, you do, and remember that only the Court has the authority to give you permission to stop child support payments and this happens very rarely.

Q: Well, one more thing, since both she and her husband work, can I have my child support payments reduced?

A: Child support payments can be reduced by the Court after a hearing. But whether the Court will do so depends on whether you can show such a change in circumstances as to require a reduction.

Q: Within the city limits of an incorporated town in the State of Texas is it standard procedure and legal for a city policeman to escort a motorist with out-of-state plates to a police station and hold him until he pays the fine for running a stop sign?

A: Texas has adopted the Uniform Act regulating the traffic on highways and this Act is applicable to all public roads. This includes traffic control devices. No local authority may pass or enforce any rules or regulations in conflict with the Act, but local authorities may pass rules which are not in conflict. There would appear to be no conflict with the Act if local authorities make provisions for immediate hearings for an out-of-state motorist who wishes to contest a ticket.

Q: Several years ago, we bought some country acreage. The county engineer said that if we had the survey done, he would see to it that a county road was built giving our neighbor and us access to the property. Now that we've spent money on the survey, he refuses to do anything about it. Is there anything we can do to either get the road built or get our money back from the county?

A: The only governing body authorized to build a road to your property would be the county commissioners. The county engineer has no such authority. We suggest that you take the matter before the Commissioners Court.

Q: Before my marriage, I bought a home with funds I inherited from my grandfather. We're moving to another city now and I'm interested in having the proceeds from the sale of the house kept separate because my wife and I are experiencing some personal problems. How can this be done and how can my original equity be kept from becoming community property if it's used to buy a new home?

A: A spouse's separate funds used to purchase a home may be kept separate from the couple's community funds when the home is sold by having the sale proceeds paid directly to the spouse and then depositing them in a separate account. The separate identity of these funds can be maintained if used to purchase a new home by a provision in the deed.

Q: My wife and I are planning on buying a new house that is presently under construction. The builder promised us he'll complete the house in 90 days if we'll sign the purchase contract. How can we protect ourselves and make sure he keeps his promise?

A: A promise for a particular completion date should be included in the written purchase contract. Further protection can be achieved by insisting that a damage clause be included in the contract, to provide for alternatives in the event he failed to meet the completion deadline. Your lawyer could draft a damage clause to either give you the option of rescinding the contract or collecting damages for the contractor's breach of promise.

STATE CAPITAL HIGHLIGHTS
By Lyndell Williams
TEXAS PRESS ASSOCIATION

AUSTIN—State Capitol halls were decked out in the Christmas spirit last week, but government slowed to an idle as employees left for the holidays. While taxpayers are mulling the benefits of one week of "less government," they can also enjoy a couple of Christmas presents from the state.

State Treasurer Warren G. Harding announced the treasury received an extra \$189 million from interest earned during the fiscal year ending Nov. 30. It was a nice present for Harding, too, since he campaigned on a theme of better money management practices and increased earnings from state cash funds.

Another half-plus for citizens is a State Insurance Board staff proposal to lower premiums on credit life, accident and health insurance.

If the proposal becomes policy, premiums would drop 14 percent on credit life and 10 percent on credit accident and health. Consumers could save \$25 to \$120 on a typical 2- to 5-year loan, the staff said.

Radioactive "Incidents"
A Department of Health official last week said Texas has had about 300 "incidents" involving radioactive materials, with about 45 involving transportation of the materials.

Ed Baily, administrator of the Radiation Control Branch, defined an "incident" as a case of overexposure of radiation, improper packaging of radiation source shipments, loss of such materials, or anything "out of the ordinary" that calls for special investigation. Baily spoke at a seminar to inform users, shippers, transporters and receivers of such materials about regulatory requirements.

Baily said reporting of transportation incidents was "very good," but that some licensees were hesitant in reporting incidents from fear of bad publicity. He also said he thought the handling of radioactive materials was better regulated than hazardous chemical wastes.

Special Session
Gov. Bill Clements, concerned about the recent large buildup of radioactive waste in Texas, said creating a nuclear waste storage dump in Texas may be the fourth topic for the special session he intends to call in March or September. Clements has also said he supports the creation of such a dump in New Mexico, not Texas.

In general, debate on the controversial subject is not centered on the need for a dump, but on its eventual location. Clements' late concern is an apparent turnaround from his statement last year that Texas was willing to accommodate a nuclear waste dump. Some 2,000 55-gallon drums of waste per month brought into the Galveston area this fall have

caused many state officials to rethink the issue. Lt. Gov. Bill Hobby thinks any special session would be a waste of tax money. Interviewed on the Capitol Eye radio-television program, Hobby slammed all of Clements' reasons for wanting to bring the Legislature back to Austin.

—Hobby thinks initiative and referendum is a bypass of the legislative process of examination and compromise. Clements is a strong advocate of I&R.

Public Notices

CONTRACTOR'S NOTICE OF TEXAS HIGHWAY CONSTRUCTION
Sealed proposals for contract mowing on various tracts in Crockett County, will be received at the State Department of Highways and Public Transportation, San Angelo, Texas, on January 15, 1980, until 10:30 a.m. and January 17, 1980, until 2:30 p.m. and then publicly opened and read.

Plans, specifications, and proposals are available at the office of Charlie F. Low, Senior Maintenance Engineer, San Angelo, Texas. Usual Rights Reserved. 44-2tc

CONTRACTOR'S NOTICE OF TEXAS HIGHWAY CONSTRUCTION
Sealed proposals for constructing 108.252 miles of Seal Coat on Various Highways in Kimble, Glasscock, Tom Green, Runnels, Reagan, Schleicher, Concho, Coke, Crockett and Sterling Counties covered by CSB 35-7-18, CSB 69-2-17, CSB 69-7-67, CSB 158-1-43, CSB 158-2-41, CSB 494-10-8, CSB 1923-2-9, CSB 2006-3-5, CSB 2010-1-6, CSB 2010-2-6, CSB 2010-4-7, CSB 2298-3-4, CSB 2843-1-4, CSB 2969-1-5 & CSB 3462-1-3 will be received at the State Department of Highways and Public Transportation, Austin, until 9:00 a.m., January 15, 1980, and then publicly opened and read.

Plans and specifications including minimum wage rates as provided by Law are available at the office of James R. Evans, Resident Engineer, San Angelo, Texas, and State Department of Highways and Public Transportation, Austin. Usual rights reserved. 44-2tc

SAFETY SENSE
Safety Caps
When it comes to protecting youngsters from accidentally taking an overdose of an otherwise beneficial medicine, few things can top safety caps in the hands of responsible parents.

The Proprietary Association, the Washington trade association representing the makers of nonprescription medicines, points out that while these protective caps may be inconvenient at times for adults, they are well worth it since they help keep children from harm.

Even with this safety feature, all medicines should be kept well out of reach of children, and young people should not be permitted to administer medicines to themselves.

Parents, pharmacists and pharmaceutical manufacturers are joining hands to put a lid on danger to children from accidental ingestions of medicines.

Leon Drago of Houston spent the holidays visiting his parents and brother, Mr. and Mrs. Leonard Drago and Leroy, of Ozona.

Cafeteria Menu

- Thursday
Luncheon Loaf
Macaroni & Cheese
Buttered Peas
Fruit Cup
Hot Rolls
- Friday
Fish
Mashed Potatoes
Green Beans
Fruit Cup
Hot Rolls
- Monday
Spaghetti & Meat Sauce
Buttered Peas
Vegetable Salad
Fruit Cup
Hot Rolls
- Tuesday
Pinto Beans
Pork Sausage
Cabbage Salad
Fruit Cup
Cookies
Cornbread
- Wednesday
Hamburger on Bun
French Fries
Lettuce, Tomatoes, Pickles
Fruit Cup
- Thursday
Fried Chicken
Buttered Carrots
Vegetable Salad
Fruit Cup
Hot Rolls
- Friday
Meat Pot
Mashed Potatoes
Green Beans
Fruit Cup
Hot Rolls

THE NEWS REEL
A re-run of "The Ozona Story" as gleaned from the files of "The Ozona Stockman"

Thursday, Jan. 4, 1951

The W.S.C.S sponsored an editorial contest among high school students on the subject "Our Town." Winners were June Perner for girls and Joe Bailey for boys.

29 yrs. ago
Mr. and Mrs. Charlie Coates are here from Karval, Colo., for a visit with friends and relatives.

29 yrs. ago
93.84 percent of taxes paid by year's end.

29 yrs. ago
A free barbecue will feature the annual 4-H Club Show.

29 yrs. ago
Nathan Donsky has announced that he will donate a watch to be sold for the benefit of the Crockett Co. 4-H Club trip fund.

29 yrs. ago
Julia Faye Perdue and D.C. Ratliff, Jr. were married.

29 yrs. ago
Buddy Phillips and Frank McMullan, Jr., were among a group of 20 recruits signed up by the U.S. Air Forces shipping from San Angelo the first of the week.

29 yrs. ago
J.G. Hufstader has returned to resume studies at Texas Tech after a holiday visit.

29 yrs. ago
William Meinecke, Ben Conklin, and Roy Harrell all students at Schreiner in Kerrville were among Ozona students spending Christmas here.

29 yrs. ago
Mr. and Mrs. Ray Piner had two of their children Ray, Jr. and Edith Lou home from North Texas State this week.

29 yrs. ago
Judy White returned to Dallas Tuesday night to resume her work at SMU.

29 yrs. ago
William Meinecke, Ben Conklin, and Roy Harrell all students at Schreiner in Kerrville were among Ozona students spending Christmas here.

29 yrs. ago
Mr. and Mrs. Ray Piner had two of their children Ray, Jr. and Edith Lou home from North Texas State this week.

29 yrs. ago
Judy White returned to Dallas Tuesday night to resume her work at SMU.

29 yrs. ago
William Meinecke, Ben Conklin, and Roy Harrell all students at Schreiner in Kerrville were among Ozona students spending Christmas here.

29 yrs. ago
Mr. and Mrs. Ray Piner had two of their children Ray, Jr. and Edith Lou home from North Texas State this week.

29 yrs. ago
Judy White returned to Dallas Tuesday night to resume her work at SMU.

29 yrs. ago
William Meinecke, Ben Conklin, and Roy Harrell all students at Schreiner in Kerrville were among Ozona students spending Christmas here.

29 yrs. ago
Mr. and Mrs. Ray Piner had two of their children Ray, Jr. and Edith Lou home from North Texas State this week.

29 yrs. ago
Judy White returned to Dallas Tuesday night to resume her work at SMU.

29 yrs. ago
William Meinecke, Ben Conklin, and Roy Harrell all students at Schreiner in Kerrville were among Ozona students spending Christmas here.

29 yrs. ago
Mr. and Mrs. Ray Piner had two of their children Ray, Jr. and Edith Lou home from North Texas State this week.

29 yrs. ago
Judy White returned to Dallas Tuesday night to resume her work at SMU.

29 yrs. ago
William Meinecke, Ben Conklin, and Roy Harrell all students at Schreiner in Kerrville were among Ozona students spending Christmas here.

29 yrs. ago
Mr. and Mrs. Ray Piner had two of their children Ray, Jr. and Edith Lou home from North Texas State this week.

29 yrs. ago
Judy White returned to Dallas Tuesday night to resume her work at SMU.

29 yrs. ago
William Meinecke, Ben Conklin, and Roy Harrell all students at Schreiner in Kerrville were among Ozona students spending Christmas here.

29 yrs. ago
Mr. and Mrs. Ray Piner had two of their children Ray, Jr. and Edith Lou home from North Texas State this week.

29 yrs. ago
Judy White returned to Dallas Tuesday night to resume her work at SMU.

29 yrs. ago
William Meinecke, Ben Conklin, and Roy Harrell all students at Schreiner in Kerrville were among Ozona students spending Christmas here.

29 yrs. ago
Mr. and Mrs. Ray Piner had two of their children Ray, Jr. and Edith Lou home from North Texas State this week.

29 yrs. ago
Judy White returned to Dallas Tuesday night to resume her work at SMU.

29 yrs. ago
William Meinecke, Ben Conklin, and Roy Harrell all students at Schreiner in Kerrville were among Ozona students spending Christmas here.

29 yrs. ago
Mr. and Mrs. Ray Piner had two of their children Ray, Jr. and Edith Lou home from North Texas State this week.

29 yrs. ago
Judy White returned to Dallas Tuesday night to resume her work at SMU.

29 yrs. ago
William Meinecke, Ben Conklin, and Roy Harrell all students at Schreiner in Kerrville were among Ozona students spending Christmas here.

29 yrs. ago
Mr. and Mrs. Ray Piner had two of their children Ray, Jr. and Edith Lou home from North Texas State this week.

29 yrs. ago
Judy White returned to Dallas Tuesday night to resume her work at SMU.

29 yrs. ago
William Meinecke, Ben Conklin, and Roy Harrell all students at Schreiner in Kerrville were among Ozona students spending Christmas here.

29 yrs. ago
Mr. and Mrs. Ray Piner had two of their children Ray, Jr. and Edith Lou home from North Texas State this week.

Ozona Business And Professional Guide

FRED MAHANNAH
SAW SHARPENING
1027 Hereford Drive
392-2312 after 5:00 and on weekends

H & C BUTANE CO.
Jerry L. Hayes
P.O. Box 908
OZONA, TEXAS
Ozona 392-3225
Sheffield 836-4355

JAY'S AUTO UPHOLSTERY
Complete Furniture Upholstery
403 11th St.
Ph. 392-3817

MAXINE'S FLOWER SHOP
Fresh Cut-Pot Plants
Artificial Arrangements
Gifts For All Occasions
Ph. 392-2648

THE CAMERAS TWO PHOTOGRAPHY STUDIO
Sandra Childress
Chris Weant
Call for Appointment
392-2256

WINDMILL & PUMP SERVICE
Oxygen and Acetylene
Al Thomerson
Box 116
Ph. 392-2577

VFW POST 6109
Regular Meetings
Third Tuesday
In Each Month
8 P.M.

OZONA BUTANE CO.
Plumbing & Repair
Lennox Heating & Cooling
1108 Ave. E
Ph. 392-3013

THE LINE
Your Party Merchant
15 Mi. E off I-10
Beer-Liquor-Wine
Ph. 387-2956

THE BAGGETT AGENCY
Insurance
Your Protection is Our Profession
1114 Ave. E 392-2606

HILL'S INSULATION SAVES ENERGY NON-COMBUSTIBLE
Free Estimates
Phone 392-3436

OZONA CHAPTER 287
Order of the Eastern Star
Meeting Night
4th Tuesday in Mo.
Masonic Hall

Fiberglass Tanks WINDMILL AND PUMP SERVICE
392-2577
Gasoline storage and livestock storage tanks

"THE GIFT HORSE"
Carol Hunnicutt
1102 Ave. E
Gallery and Hand-Crafted Gifts

CHURCH OF CHRIST
Sunday Bible Study-9:45
Morning Service-10:45
Evening Service-6:00
Wednesday 7:30 p.m.

VOGUE & BUTTERICK PATTERN ORDER SALES
Lou Deaton
392-2506

J.W. MOTOR PARTS
Auto Parts & Supplies
606 11th St.
392-2343

B&C AUTOMOTIVE
Complete Auto Repair & Auto Needs
Ph. 392-2016
Cor. of 11th & Ave. C

MARY KAY COSMETICS
Ruth Hester
205 Ave. J
Ph. 392-2051

If anyone can help you save on your food bill ...

we can

JIM'S
FOODWAY

WEEK-LONG ADVERTISED SPECIALS
PRICES EFFECTIVE THRU MON., JANUARY 7th
QUANTITY RIGHTS RESERVED

USDA GRADE "A" - HOLLY FARMS

Fryer Parts

MIXED FAMILY PACK



- Fryer Breasts USDA Grade "A" Holly Farms LB \$1.19
- Legs & Thighs USDA Grade "A" Holly Farms LB \$1.09
- BAKING HENS Continental Farms LB. 79¢
- Chicken Franks Holly Farms 12-OZ PKG 69¢
- Fryer Wings USDA Grade "A" Holly Farms LB 59¢
- Chicken Livers USDA Grade "A" Holly Farms LB 59¢
- Corn Dogs Hickory House 25-OZ PKG \$1.89
- Sliced Beef Liver Prime Brand LB 99¢

GOOD VALUE - WHOLE HOG
PORK SAUSAGE
MILD or HOT
99¢
1-LB ROLL

USDA CHOICE "P.S."
BONELESS CHUCK ROAST
\$1.69
LB

CHUCK STEAK
LUNCH MEATS
MEAT WIENERS
SLICED BACON

- BONELESS USDA CHOICE "P.S." BEEF LB \$1.89
- GOOD VALUE ASSORTED 1-LB PKG \$1.39
- OSCAR MAYER 1-LB PKG \$1.39
- Reg. only 1-LB PKG \$1.29

ASSORTED COLORS
GALA TOWELS
10¢ OFF LABEL
59¢
JUMBO ROLL

COMPLETE NUTRITION
PURINA DOG CHOW
PURINA CAT CHOW 10-LB \$4.29
\$5.79
25-LB BAG

ALL PURPOSE
GOOD VALUE SHORTENING
\$1.39
3-LB CAN

WASHDAY MIRACLE
CLOROX BLEACH
69¢
GAL JUG

- GOLDEN CORN** PRIDE WHOLE KERNEL or CREAM STYLE 4 16-OZ CANS \$1
- SWEET PEAS** GOOD VALUE 3 16-OZ CANS 89¢
- PEELED TOMATOES** GOOD VALUE 3 16-OZ CANS 89¢
- MACARONI & CHEESE** GOOD VALUE DINNERS 4 7½-OZ BOXES 89¢
- Paper Napkins** Gala Assorted PKG of 140 69¢
- Pampers** Convenience Pak 60-Ct Extra Absorbent 48-Ct Toddlers YOUR CHOICE \$6.99
- Facial Tissues** Puffs Assorted BOX of 280 89¢
- Air Freshener** Glade Assorted Aerosol 7-OZ CAN 79¢
- Waffle Syrup** Blackburn 32-OZ BTL 99¢
- Wisk Liquid** Detergent 10¢ Off Label 32-OZ BTL \$1.39
- Crisco Oil** 100% Vegetable 48-OZ BTL \$2.39
- Tomato Juice** First Pick 46-OZ CAN 69¢
- Apple Juice** Lucky Leaf 48-OZ BTL \$1.39
- Vanilla Extract** McCormick 2-OZ BTL \$1.23
- Thin Spaghetti** Skinner 24-OZ PKG 99¢
- Final Touch** Fabric Softener 25¢ Off Label 64-OZ BTL \$1.87

- Plain Chili** LIBBYS 15 OZ. CAN 79¢
- Chili/Beans** LIBBYS 15 OZ. CAN 69¢
- PICKLES** VLSIC KOSHER DILLS OR POLISH DILLS 32 OZ. JAR \$1.09
- TUNA** STAR KIST 6½ OZ. CAN 79¢

MIX or MATCH
TV BUTTERMILK or SWEETMILK
BISCUITS
6 \$1
8-OZ TUBES

FROZEN ASSORTED
TOTINO'S PIZZA
PARTY STYLE - CRISP CRUST
99¢
12-OZ CTN

- SOFT MARGARINE** GOOD VALUE 1-LB TUB 59¢
- POTATOES** TV FROZEN SHOESTRING 20-OZ BAG 39¢
- Yogurt** TV "Swiss Style" Assorted 8-OZ TUB 33¢
- Cheese** TV Sliced American Singles 12-OZ PKG \$1.49
- Margarine** BLUE BONNET Quarters 1-LB CTN 59¢
- Orange Juice** TV Pure Chilled ½-GAL BTL \$1.49
- Coca Cola - Fresca**
- 7-UP - Rondo** 87¢
- Mr. Pibb** 2 liter btl.

U.S. No. 1 RUSSET
Potatoes
FRESH RED RIPE TOMATOES
39¢
LB 8-LB BAG

88¢

- TEXAS CARROTS** CRISP 5 1-LB BAGS \$1
- NAVEL ORANGES** CALIFORNIA 3 LBS \$1
- DELICIOUS APPLES** WASHINGTON EXTRA FANCY RED or GOLDEN LB 59¢
- Yellow Onions** Medium LB 19¢
- Green Cabbage** Crisp LB 17¢
- Grapefruits** or Oranges Your Choice 5-LB BAG \$1.59
- Cucumbers** Large EACH 29¢

Jim's...
FOODWAY
916 11TH STREET OZONA, TEX.
... HOME OWNED & OPERATED

UNITED SUPERS

STORE HOURS
7:30 AM - 6:00 PM MON-SAT
CLOSED SUNDAY

Tips for Gardeners

From the Ozona Garden Club
by Mrs. Baily Post

Trusting the New Year will bring you many of your last year resolutions fulfilled, and looking forward to another successful planting season for your gardening. I so hope you are having a fine rain as we are here in Houston.

In tribute to the state's trees and forests, Texans observe Arbor Day on the third Friday of January each year (Jan. 17 this year). To observe Arbor Day, you need only plant a tree-one adapted to our area.

Winter is the time to make hardwood cuttings from trees and shrubs you may wish to propagate-pyracantha, dogwood, weigela, forsythia and others. Make cuttings about 4 inches long, and root them in a cold frame or pot in a mixture of equal parts perlite and peat moss.

To promote larger, longer lasting blooms on your crepe myrtle trees next summer, remove seed capsules from the end of branches while the plants are dormant. It is also a good time to prune off dead or weak wood, to pull weedy vines out of the plants, and prune to keep as a shrub rather than a tree.

Cut back pampas grass to within 6 inches of the ground now that winter cold has killed last year's foliage. If you wait until spring, you must take special care not to damage new growth. Left unpruned, your pampas grass will look ragged next year because of the dead foliage left on the plant.

When your Christmas cactus blooms start to wilt, remove the faded blooms. Discontinue feeding every

two weeks after the blooms have faded-usually in mid-January.

A fast-growing running rose that blooms throughout the summer is the Don Juan and Blaze, Climbing Crimson Glory, Etoile de Hollande, three of the best older varieties.

Shield newly bought shade trees from strong winter winds by planting them on the south side of a wall, fence, building or windbreak planting wind-tolerant plants, such as oleander, Japanese black pine, and Yupon of several varieties. I'll be in Glendale, California if nothing prevents when you receive this Stockman.

SON TO PARKERS

Mr. and Mrs. Rex Parker are the parents of a son born December 28 at 7:53 p.m. in Shannon Hospital in San Angelo. The baby weighed 8 pounds and 5 1/2 ounces and has been named Eric Sean.

Grandparents are Mr. and Mrs. Levon Parker and Mr. and Mrs. Buryl Ruthardt.

GIRL TO CONNERS

Mr. and Mrs. T.R. Conner, Jr., are the parents of a daughter born Dec. 21, in Community Hospital in San Angelo. The little girl weighed 6 pounds and 12 ounces and has been named Robin Kate. She has one brother, Tommy, 2.

Grandparents are Mr. and Mrs. T.R. Conner, and Mr. and Mrs. Dempster Jones.

Wool sweater care

Wool sweaters keep the fashion scene warm this winter, says Nancy Brown, a clothing specialist.

However, clean them frequently to help them retain their shape and good looks, she advises.

Follow the recommended care instructions on the care label. Hand wash unless otherwise stated.

To hand wash wool sweaters, use a mild detergent in warm water.

Lay the sweater in the warm, soapy water, and soak about 10 minutes turning occasionally.

If the sweater is heavily soiled, gently squeeze the suds through the sweater. Do not rub or twist the sweater.

Gently squeeze out dirty, soapy water. Again, do not twist.

Rinse the sweater in a pan of clean, warm water several times or until rinse water comes clean, she continues.

Gently lift sweater out of water. Do not pull, as it can stretch.

Lay the sweater flat on a bath towel (one that does not fade).

Cover with another towel and gently roll the sweater and towels up, pressing gently as you roll to get out extra water.

Lowell Littleton has been transferred to a Houston hospital following a stroke Christmas Eve. He was in the Crockett County Hospital several days before being transferred.

Alma Laxson is recuperating in St. John's Hospital in San Angelo from a stroke she suffered recently. She is in Room 325.

Remove wet towels, and lay on a dry towel. Allow sweater to dry flat in a warm, airy place. Do not dry in the sun or near a heater.

To prevent stretching or ill-shaping a wool sweater, make an outline of the dry sweater on a piece of plain paper, Miss Brown suggests.

After washing, block the sweater by shaping it to the drawn size. You may need to reshape it several times as it dries, she adds.

Cancer Memorials

Mrs. Stephen Perner in memory of Mrs. Mary Miller, Mrs. Madden Read, Mr. Leslie Baker.

Mr. and Mrs. Weldon Maness in memory of Mrs. Madden Read, Rufus Ward, Lightening Dorris, Mary Miller.

Mrs. R.C. Ward in memory of Mrs. W.E. Hiatt.

Mrs. Pat Aiguier in memory of Lee Fawcett.

Mrs. Babe Womack in memory of Lee Fawcett.

Mr. and Mrs. M.E. Nicholas in memory of Lee Fawcett, Lightening Dorris.

E.E. Johnson in honor of Eva M. Johnson.

Ann Mayfield in memory of Mrs. Madden Read.

Mr. and Mrs. T.R. Conner, Jr. in memory of Mrs. Quien Cogburn.

Mr. and Mrs. Jack Brewer in memory of Mrs. Madden Read.

Mr. and Mrs. Bob Falkner, Mr. and Mrs. J.D. Falkner, Mr. and Mrs. Fred Falkner in memory of John W. Daniel.

Memorials Chairman
Jane M. Black

Debra Says

by Debra Price

Beware of fraud in so-called "business opportunities."

Be especially careful about ads that say something like, "Earn up to \$15,000 a year working part-time. Be a distributor for a nationally known product with great earning potential."

Also be careful when you're asked to meet at a motel for more details. This may indicate a lack of roots in a particular community. At these kinds of meetings, you may be asked for a sizable amount of cash—several thousands of dollars, perhaps—in order to become a distributor.

They present the product in a very favorable light—with elaborate brochures and pictures.

Be suspicious if the fee is way out of line when compared to the business.

For example, why should you pay \$5,000 just so you can sell a \$200 vacuum cleaner door-to-door?

On the other hand, there are legitimate business opportunities, so don't confuse deceptive schemes with distributorships offered by reputable companies.

To investigate before you invest, take these precautions:

1. Find out who owns the company or holds most of the stock.

2. Check on the company's reputation with your local Better Business Bureau or Chamber of Commerce.

3. Get names, addresses and telephone numbers of distributors of the product in your area, and check with them to find out if they're satisfied with their investment.

Find out if there's a limit on the number of sales-

people to be recruited in your community. A limit generally means you'll have a better chance of selling to people who have not already been approached by another salesperson.

Be very suspicious if the company uses high-pressure tactics and makes fantastic income projections.

6. Never sign any agreements until you take several days to think over the proposal.

Don't fall for the "now or pitch."

Make sure the company will guarantee to buy back any product you order but don't sell.

G. DIXON MAHON

(announces the formal association of)

WILLIAM S. MASON

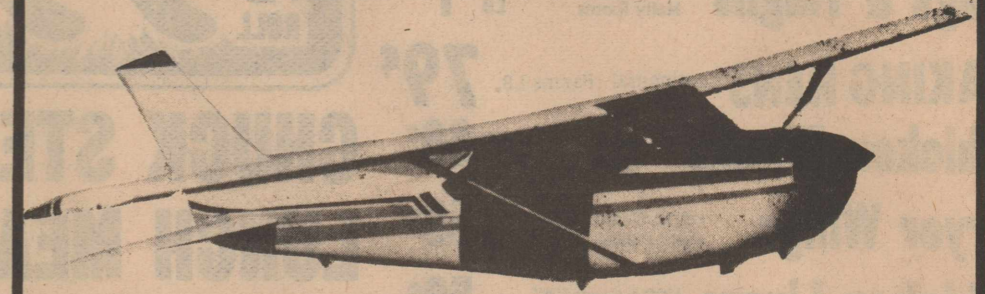
as a member of the law firm which will henceforth do business as

MAHON and MASON

Incorporated

As of January 1, 1980, Mr. Mahon's personal weekly hours in the office, except for scheduled court appearances, will end on each Thursday noon. No other change in his practice is contemplated.

AEROVAC CHARTER SERVICE



AEROVAC CHARTER SERVICE LETS YOU SET YOUR OWN SCHEDULE. YOU LEAVE WHEN YOU WANT TO LEAVE. WITH AEROVAC THERE ARE NO PARKING OR BAGGAGE PICK-UP HASSLES-NO LAYOVERS OR TRANSFERS. YOU SAVE TIME AND MONEY. FOR BUSINESS OR PLEASURE, FLY AEROVAC.

SAN ANTONIO—1 Hr. 10 Min. DALLAS—1Hr. 50 Min.
LUBBOCK—1Hr. 15 Min. HOUSTON—2 Hrs. 15 Min.
MIDLAND—42 Min. EL PASO—1 Hr. 55 Min.
RUIDOSA, N. M.—2Hrs. 5 Min.

PHONE
392-3243 392-3619 392-3300
CALL EARLY TO INSURE YOUR RESERVATIONS

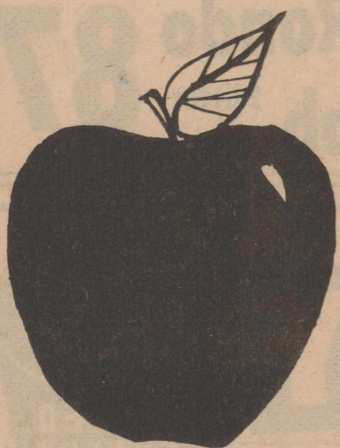
JANUARY THAW SALE

1/3 off

on all fall and winter fashions

sale starts

Thursday, January 3



the Teacher Store



Through the Centuries



Through cold, snow-covered fields, underneath ice-encrusted trees, the river runs its course.

This brings to mind the Christian Church. It was founded upon the teachings of Jesus who lived His life and did His work unperturbed by the coldness of many of His fellowmen and of the ruling officials. He knew that His work would stand because it was founded upon truth. It not only stood, but has flowed steadily

on for centuries. It is still going on today in His churches.

If you do not attend church services why not go this coming Sunday, and identify yourself with this steady flow of the best for which life stands?

There is always room in the river for one more drop of water. There is always room in the Church for one more worshipper.



Scriptures selected by The American Bible Society

Sunday	Monday	Tuesday	Wednesday	Thursday	Friday	Saturday
John 18:36-37	Revelation 1:4-8	Revelation 1:12-16	Colossians 1:15-18	Jeremiah 23:2-6	Joel 3:16-18	Psalms 23:1-6

This series of ads is being published and sponsored by the Ozona business firms in the interest of a stronger community.

Ozona Stockman
Ranch Feed & Supply Co.
Ozona Butane Co.
Ozona Fina
L-B Motor Co., Inc.

Ozona National Bank
South Texas Lmbr. Co.
White's Auto
Jim's Foodway
Ozona TV System

COPYRIGHT 1979
KEISTER ADVERTISING SERVICE
P. O. BOX 8024
CHARLOTTEVILLE, VIRGINIA 22906

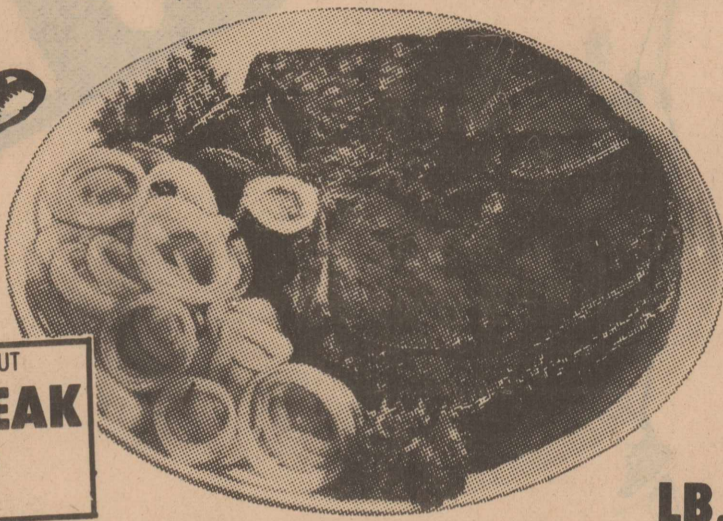


THORNTON'S *WE NEVER STOP TRYING*

SUPERMARKET TO BRING YOU LOWER PRICES, TO OFFER YOU TOP QUALITY AND TO IMPROVE OUR FRIENDLY SERVICE!

YOUR THRIFTWAY STORES SELL & FEATURE ONLY FINE QUALITY AMERICAN GROWN GRAIN FED BEEF, FRESH PORK & QUALITY POULTRY.

HEAVY GRAIN FED BEEF **ROUND STEAK**



\$1.99
LB.

BONELESS CENTER CUT **ROUND STEAK**
LB. **\$2.19**

ALL PURPOSE **RUSSET POTATOES**



10 LB. BAG **89¢**

WRIGHT'S HICKORY SMOKED SLAB

SLICED BACON LB. **99¢**

HEAVY GRAIN FED BEEF

SIRLOIN STEAK LB. **\$2.39**

HEAVY GRAIN FED BEEF EXTRA LEAN **STEW CUBES** LB. **\$1.89**

HEAVY GRAIN FED BEEF **TIP ROAST** BONELESS SIRLOIN LB. **\$2.39**

RAMIREZ FRESH CORN **TORTILLAS** 32 OZ. PKG. **69¢**

HEAVY GRAIN FED BEEF **CUTLETS** TENDERIZED LB. **\$2.49**

GLOVER'S MEXICAN STYLE **HOT LINKS** LB. **99¢**

TENDA MADE CHICKEN FRIED BEEF **FRITTERS** 1 LB. PKG. **\$1.29**

HEAVY GRAIN FED BEEF **T-BONE STEAK** LB. **\$2.98**

THE ORIGINAL CHILI BOWL WITH THE REAL MEXICAN FLAVOR LB. **\$1.89**

LITTLE BOY BLUE **CORN DOGS** 12 OZ. PKG. **\$1.19**

FLORIDA RUBY RED **GRAPEFRUIT** LB. **29¢**

WASHINGTON DELICIOUS **GOLDEN APPLES** LB. **39¢**

FULL OF JUICE FLORIDA **ORANGES** 5 LB. BAG **\$1.19**

TEXAS GREEN TABLE **CABBAGE** LB. **15¢**

RICH TOMATO **HUNT'S KETCHUP**
44 OZ. BTL. **99¢**

DEL MONTE 16 OZ. CUT GREEN BEANS OR CREAM STYLE OR WHOLE KERNEL **GOLDEN CORN**
3 17 OZ. CANS **\$1.13**

ALL PURPOSE ENRICHED **SHURFINE FLOUR**
5 LB. BAG **69¢**

2 PLY BATHROOM **MARINA TISSUE**
4 ROLL PKG. **89¢**

HILLS BROS. ALL GRINDS COFFEE **HILL'S BROTHERS** 1 LB. CAN **\$2.79**
TRAPPEY'S WITH BACON **BLACKEYES** 15 1/2 OZ. CAN **39¢**

BOUNCE FABRIC SOFTENER **BOUNCE SHEETS**
20 CT. BOX **\$1.09**

TOTAL GROCERY SAVERS
PIONEER MIX WHITE OR YELLOW **CORNBREAD** 24 OZ. BOX **59¢**
SHURFINE DRIED **BLACKEYES** 1 LB. BAG **39¢**
HUNT'S PUDDINGS & FRUITS **SNACK PAK** 4-5 OZ. CANS **89¢**
QUAKER REGULAR OR **QUICK OATS** SMALL BOX **69¢**
FRANCO AMERICAN **RAVIOLIOS** 14 3/4 OZ. CAN **59¢**
OVEN CLEANER **EASY OFF!** 16 OZ. CAN **\$1.59**
LIQUID DETERGENT **WOOLITE** 16 OZ. BTL. **\$1.39**

SHURFINE SALTINE **CRACKERS** 16 OZ. BOX **59¢**
NO BEANS **SWIFT'S CHILI** 15 OZ. CAN **79¢**

SKIN CARE CREAM **ROSE MILK** 2 PAK 12 OZ. BTL. **\$1.69**

DAIRY VALUES
MORTON MEAT **POT PIES** 3 8 OZ. BOXES **\$1.00**
TOTINO'S COMBINATION **CLASSIC PIZZA** 20 OZ. BOX **\$2.29**
MINUTE MAID FROZEN **ORANGE JUICE** 16 OZ. CAN **\$1.29**

FROZEN FOODS
SHURFRESH **COTTAGE CHEESE** 24 OZ. CTN. **\$1.19**
SHURFRESH **BUTTERMILK** 1/2 GAL. CTN. **89¢**
SHURFRESH QUARETRS **MARGARINE** 1 LB. BOX **49¢**

HEALTH & BEAUTY AID SAVINGS
PLOP PLOP FIZZ FIZZ 25 CT. BOX **ALKA-SELTZER** **89¢**
NASAL SPRAY **SINE-OFF** 1/2 OZ. BTL. **99¢**
COTTON **Q-TIP SWABS** 300 CT. BOX **\$1.19**
LAXATIVE GUM **FEEN-A-MINT** 16 CT. BOX **79¢**

Coca Cola-7-Up
Mr. Pibb-Rondo
2 LITER PLASTIC BOTTLES **88¢**

3 BEAUTIFUL PATTERNS 7 PIECE SET **DANYA COOKWARE** BY POINTERWARE

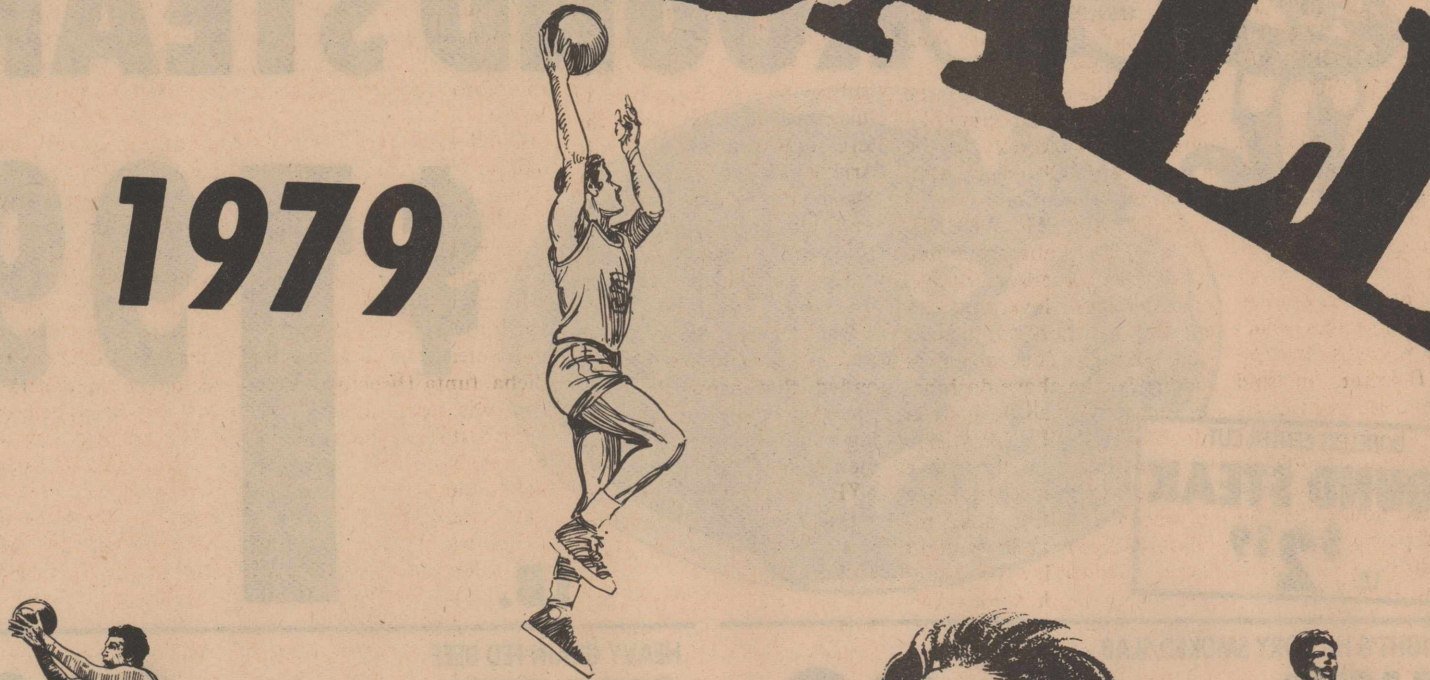
SHAMPOO **MISS BRECK** 7 OZ. BTL. **\$1.09**
BRECK CREME RINSE 7 OZ. BTL. **99¢**

ANTACID **GAVISCON TABLETS** 32 CT. BTL. **\$1.49**
FOR RELIEF **ROLAID TABLETS** 3 ROLL PAK **67¢**

THRIFFTWAY WE ACCEPT FOOD STAMPS. PRICES EFFECTIVE DEC. 30-JAN. 5, 1980

BASKETBALL

1979

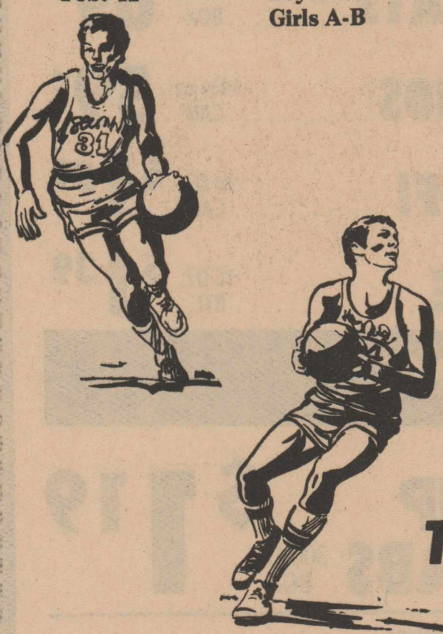


1979-80 BASKETBALL SCHEDULE

OZONA HIGH SCHOOL

DATE	TEAM	OPPONENT	SITE	TIME
Nov. 20	Boys A	Menard	Ozona	A-8:00
Nov. 27	Girls A-B	Menard	Ozona	A-6:30--B-5:00
	Boys A-B	Big Lake	Big Lake	A-8:00--B-5:00
Nov. 29,30,Dec.1	Girls A-B	Big Lake	Big Lake	A-6:30--B-5:00
	Boys A-B-F	SONORA TOURNAMENT		
Nov. 30	Boys A-B-F	Wall	Ozona	A-7:30-B-6:00-F-4:30
Dec. 3	Boys A-B	Junction	Junction	A-8:00--B-5:00
	Girls A-B	Junction	Junction	A-6:30--B-4:00
Dec. 4	Boys F	Ft. Stockton	Ft. Stockton	F-5:30
Dec. 6,7,8	Boys A-B-F	OZONA TOURNAMENT		
	Girls A-B	MCCAMEY TOURNAMENT		
Dec. 11	Boys A-B	Junction	Ozona	A-8:00--B-5:00
	Girls A-B	Junction	Ozona	A-6:30--B-5:00
Dec. 13	Boys A-B	Iraan	Ozona	A-8:00--B-6:30
Dec. 15	Boys F	MCCAMEY TOURNAMENT		
Dec. 17	Boys F	Wall	Wall	F-6:30
	Girls F	Wall	Wall	F-5:30
Dec. 18	Boys A-B	Lakeview	Lakeview	A-7:30--B-6:00
Dec. 20	Boys A-B	Wall	Wall	A-8:00--B-5:00
	Girls A-B	Wall	Wall	A-6:30--B-5:00
Jan. 3,4,5	Boys F	Big Lake	Ozona	F-5:00
	Girls F	Big Lake	Ozona	F-3:30
Jan. 3,4,5	Boys A	BIG LAKE TOURNAMENT		
Jan. 8	Girls A	ELDORADO TOURNAMENT		
	Boys A-B-F	Big Lake	Ozona	A-8:00--B-5:00--F-3:30
Jan. 11	Girls A-B	Big Lake	Ozona	A-6:30--B-5:00
	Boys A-B	Crane	Crane	A-8:00--B-5:00
Jan. 14	Girls A-B	Crane	Crane	A-6:30--B-5:00
	Boys F	Big Lake	Big Lake	F-5:30
Jan. 15	Girls F	Big Lake	Big Lake	F-4:30
	Boys A-B	Lakeview	Ozona	A-8:00--B-5:00
Jan. 18	Girls A-B	Lakeview	Ozona	A-6:30--B-5:00
	Boys F	McCamey	McCamey	F-5:30
Jan. 21	Boys A-B	Kermit	Ozona	A-7:15--B-5:15
	Girls A-B	Iraan	Iraan	A-8:00--B-6:30
Jan. 22	Boys F	Big Lake	Big Lake	F-5:30
	Girls F	Big Lake	Big Lake	F-4:30
Jan. 24	Boys A-B	Greenwood	Greenwood	A-8:00--B-5:00
	Girls A-B	Greenwood	Greenwood	A-6:30--B-5:00
Jan. 25	Boys F	Ft. Stockton	Ozona	F-5:30
Jan. 24,25,26	Boys A-B	Sonora	Sonora	A-8:00--B-5:00
	Girls A-B	Sonora	Sonora	A-6:30--B-5:00
Jan. 29	Boys F	ELDORADO TOURNAMENT		
	Girls A	Rankin	Rankin	A-8:00
Feb. 1	Boys A-B	Rankin	Rankin	A-6:30--B-5:00
	Girls A-B	McCamey	Ozona	B-6:30--F-5:00
Feb. 5	Boys A-B	Crane	Ozona	A-8:00--B-5:00
	Girls A-B	Crane	Ozona	A-6:30--B-5:00
Feb. 8	Boys A-B	Iraan	Iraan	A-8:00--B-6:15
	Girls A-B-F	McCamey	McCamey	A-8:00--B-6:30-F-5:00
Feb. 12	Boys A-B	Kermit	Kermit	A-7:15--B-5:15
	Girls A-B	Greenwood	Ozona	A-8:00--B-6:30
Feb. 12	Boys A-B	Sonora	Ozona	A-8:00--B-5:00
	Girls A-B	Sonora	Ozona	A-6:30--B-5:00

BASKETBALL



The following business firms are backing the Lions all the way:

- | | | | |
|-----------------------|------------------------|-------------------------------|------------------|
| MONTYA EXXON | LILLY WELDING & CONST. | RAUL DE LA ROSA PLUMBING SER. | OZONA T-V SYSTEM |
| WATSON'S DEPT. STORE | CARLISLE MOTOR CO. | TITE BISHOP WELDING SERV. | HAPPY HOLLOW |
| B & C AUTOMOTIVE | WESTERMAN DRUG | CIRCLEBAR TRUCK CORRAL | MOORE OIL |
| C.G. MORRISON CO. | JAY MILLER CONST. | CROCKETT WELDING & ROUST. | THE LINE |
| SOUTH TEXAS LMBR. CO. | EL CHATO'S RESTAURANT | NICK'S CHEVRON STATION | L-B MOTOR CO. |
| OZONA NATIONAL BANK | CROCKETT CO. WATER | THORP'S LAUN-DRY | DINA'S POCO TACO |
| M & M CAFE | ELMA'S ROADSIDE GRO. | GULF SELF SERVICE | ADOBE MINI MART |
| BAGGETT AGENCY | OZONA QUICK STOP | OZONA BUTANE CO. | KYLE KLEANERS |
| | | | DAIRY KING |

Public Notice

NOTICE OF WATER CONTROL AND IMPROVEMENT DISTRICT DIRECTORS ELECTION

THE STATE OF TEXAS
CROCKETT COUNTY

TO THE RESIDENT QUALIFIED VOTERS OF CROCKETT COUNTY WATER CONTROL AND IMPROVEMENT DISTRICT NO. 1

TAKE NOTICE that an election will be held on the 19th day of Jan., 1980, at the places, in the manner, and for the candidates for the office of said district, as set forth in the attached copy of an order for directors' election, duly entered by the Board of Directors of said above mentioned district on the 15th day of November, 1979. Said attached Order for Directors' Election is made a part of this notice for all intents and purposes.

Lowell Littleton
President, Board of Directors
Mary K. Friend
Secretary, Board of Directors

ORDER FOR DIRECTORS ELECTION THE STATE OF TEXAS COUNTY OF CROCKETT

On this the 15th day of November, 1979, the Board of Directors of Crockett County Water Control and Improvement District No. 1 convened in Special session open to the public with the following members present, to-wit: Lowell Littleton, President; Gene Williams, Vice-President; J.W. Johnigan, Frank McMullan, Jr., Mary K. Friend, Secretary and the following absent: 0, constituting a quorum, and among other proceedings had by said Board of Directors was the following:

Whereas on the 19th day of January, 1980, there will be elected 2 directors for this district;

Whereas this Board by order dated the 15th day of November, 1979 established the procedure for candidates who desire to file for said election;

THEREFORE, BE IT ORDERED BY THE BOARD OF DIRECTORS OF CROCKETT COUNTY WATER CONTROL AND IMPROVEMENT DISTRICT NO. 1: That an election be held in said district on the 19th day of January, 1980, for the purpose of electing 2 directors to the Board of Directors of said District;

That said election shall be held at the following places

Courthouse in said District, and the following named persons are hereby appointed officers for said election.

1. For Election at Courthouse Building, in Ozona, Texas, within said District with JOHN S. KENLEY as Presiding Judge, and Mildred Fields, Dolores Sanchez, Roberta Cooper and Sibyl Howell, Clerks.

The polls at each of the above designated polling places shall on election day be open from 7:00 o'clock a.m. to 7:00 o'clock p.m.

ELIZABETH APPLEWHITE is hereby appointed Clerk for absentee voting, and Rebecca Meyer appointed Deputy Clerk for absentee voting. The absentee voting for the above designated election shall be held at the WATER OFFICE within the boundaries of the above named district and said place of absentee voting shall remain open for at least eight hours on each day for absentee voting which is not a Saturday, a Sunday, or an official State holiday, beginning on the 20th day and continuing through the 4th preceding the date of said election. Said place of voting shall remain open between the hours of 8:00 a.m. and 5:00 p.m. on each day for said absentee voting. The above described place for absentee voting is also the absentee clerk's mailing address to which ballot applications and ballots voted by mail may be sent.

The following named persons have duly filed as candidates for said election in accordance with the above mentioned order for election procedure in Directors Election passed by this Board.

Lowell Littleton
J.W. Johnigan

Notice of said election shall be given by publication of a copy of this order once a week for three consecutive weeks in a newspaper of general circulation published in the county in which the district is located, or if none is published in said county, in the nearest county thereto; the first publication shall be not less than 21 days prior to the date of election, and not more than 35 days prior thereto. Immediately after said election has been held, the officers holding the same shall make returns of the result thereof in triplicate, one being retained by the Presiding Judge, one delivered to the President of this Board, and one delivered to the Secretary. The ballot box and other election rec-

ords and supplies shall be delivered to the Secretary at the office of the District and be preserved as provided by law in said office.

It is further found and determined that notice of the date, place and subject of this meeting was posted in accordance with the terms and provisions of Art. 6252-17 at least 72 hours preceding the scheduled time of this meeting and that the terms and provisions of said Article 6252-17 have been compiled with and copies of said postings and return shall be attached to this order and become a part thereof.

The above order being read, it was moved and seconded that same do pass. Thereupon, the question being called for, the following members of the Board voted AYE: Lowell Littleton, Gene Williams, J.W. Johnigan, Mary K. Friend, Frank McMullan, Jr.

PASSED, APPROVED AND ADOPTED this the 15th day of November, 1979.

Lowell Littleton
President, Board of Directors of Crockett County Water Control and Improvement District No. 1

ATTEST:
Mary K. Friend
Secretary

AVISO del DISTRITO de CONTROL de AGUAS MEJORAS ELECCION de DIRECTORES

EL ESTADO DE TEXAS
CONDADO DE CROCKETT

A LOS RESIDENTES VOTANTES CAPACITADOS DEL CONDADO DE CROCKETT DISTRITO NUM. UNO CONTROL DE AGUAS Y MEJORAS:

TOMEN NOTA que se llevara a cabo una eleccion el dia 19th de Enero de 1980, en los lugares, en la forma, y por los candidatos al puesto de dicho distrito, como lo indica la copia anexa de la orden de eleccion de directores, debidamente asentada por la Junta Directiva del arriba mencionado distrito el dia de Nov., 15th de 1979. Dicha Orden de Eleccion de Directores anexa se considera en todo caso ser parte de este aviso.

Lowell Littleton
Presidente, Junta Directiva
Mary K. Friend
Secretario, Junta Directiva

Orden de Eleccion de Directores

EL ESTADO DE TEXAS
CONDADO DE CROCKETT

En este dia 15th de Nov. de 1979, La Junta Directiva del departamento de Control de Aguas y Mejoras del Condado de Crockett, Distrito Num. 1 se convoco en reunion especial, abierta al publico con los siguientes miembros presentes, a saber:

Lowell Littleton, Presidente
Gene Williams, Vice Presidente

J.W. Johnigan
Mary K. Friend
Secretario
y los siguientes ausentes: 3, constituyendo un quorum, y entre otras actas tomadas por dicha Junta Directiva se encontro la siguiente:

En vista de que en este dia 15th de Noviembre, de 1979, seran elegidos 2 directores para este distrito.

En vista de que esta Junta por orden fechada el 19th dia de Enero, de 1980, establece el procedimiento a seguir por los candidatos que deseen clasificar en dichas elecciones;

POR LO TANTO, SE ORDENA POR LA JUNTA DIRECTIVA DEL DEPARTAMENTO DE CONTROL DE AGUAS Y MEJORAS DEL CONDADO DE CROCKETT DISTRITO NUM. 1.

Que se lleve a cabo una eleccion en dicho distrito el 19th dia de Enero de 1980 con el proposito de elegir 2 directores a la Junta Directiva de dicho Distrito;

Que dicha eleccion se lleve a cabo en los siguientes lugares Courthouse en dicho Distrito, y que las personas a continuacion se nombran son designadas oficiales para dicha eleccion.

1. En el Edificio Courthouse en Ozona, Texas, dentro del mismo Distrito con John S. Kenley, como Juez Presidente, Mildred Fields, Dolores Sanchez, Roberta Cooper, Sibyl Howell, clerks.

2. Los sitios de votacion en cada uno de los lugares arriba designados se mantendran abiertos el dia de elec-

cion de las 7:00 a.m. a las 7:00 p.m.

A Elizabeth Applewhite se le designa Secretario para Votacion Ausente, y Rebecca Meyer, como clerk son designados Secretarios Delegados para Votacion Ausente. La Votacion Ausente para la eleccion arriba citada se llevara a cabo en Water Office dentro de los limites del mencionado distrito y dicho lugar de votacion ausente permanecera abierto por lo menos ocho horas diarias para votacion ausente no siendo sabado o domingo o dia festivo oficial del Estado, principiando 20 dias y continuando hasta el cuarto dia anteriores a la fecha de dicha eleccion. Dicho lugar de votacion permanecera abierto entre las horas de 8:00 a.m. y 5:00 en cada dia de votacion ausente. El lugar arriba descrito para votacion ausente, es tambien la direccion postal del secretario ausente a la cual podran ser enviadas por correo las solicitudes para boletas electorales como tambien regresar las boletas con votos.

Las personas nombradas a continuacion se han registrado debidamente como candidatos para dicha eleccion de acuerdo con un sorteo que se llevo a cabo por el Secretario de esta Junta en el siguiente orden:

Lowell Littleton
J.W. Johnigan

Aviso de dicha eleccion se hara por medio de publicacion de una copia de esta orden una vez por semana durante tres semanas consecutivas en un periodico de circulacion general publicado en el condado en que se encuentra este distrito, o si no se publica ninguno en dicho condado, en el condado mas cercano; la primera publicacion debera ser por lo menos 21 dias anteriores a la fecha de elecciones, y no mas de 35 dias anteriores a la misma. Inmediatamente despues de que se haya hecho dicha eleccion, los oficiales a cargo de la misma deberan reportar los resultados de las mismas en trip-

licado, una copia la debera retener el Juez Directivo, una copia sera entregado al Presidente de esta Junta, y una copia sera entregado al Secretario. La urna electoral y demas documentos electorales y provisiones seran entregadas al Secretario en las oficinas del Distrito para ser conservadas como lo estipula la ley en dicha oficina.

Ademas se ha encontrado y determinado que aviso de esta junta fue colocado de acuerdo con los terminos y provisiones del Articulo

6252-17 por lo menos 72 horas anteriores a la hora programada para esta junta, y que los terminos y provisiones de dicho Articulo 6252-17 han sido confirmados y que copias de dichos avisos y resultados seran anexadas a esta orden y forman parte de la misma.

Habiendose dada lectura a la orden arriba mencionado, se hizo la mocion y fue secundada para ser aprobada. Despues, al llamado sobre esta pregunta, los siguientes miembros de la Junta votaron afirmativa-

mente:
Lowell Littleton, Gene Williams, J.W. Johnigan, Mary K. Friend, Frank McMullan, Jr., y los siguientes votaron negativamente:
PASO, APROVO ADOPTO este 15th dia de Noviembre de 1979.
Lowell Littleton
Presidente, Junta Directiva del Distrito de Control de Aguas y Mejoras del Condado de Crockett Distrito Num. 1
CERTIFICA: Mary K. Friend
Secretario

ACCOUNTANT

INDEPENDENT GAS OPERATOR TAKING APPLICATIONS FOR POSITION IN SONORA DISTRICT OFFICE. OIL AND GAS ACCOUNTING EXPERIENCE PREFERABLE BUT NOT NECESSARY.

WRITE OR CALL:

Windsor Gas Corporation

P.O. Box 927
Sonora, Tx 76950
Attn: F. Ramirez
(915)387-2624

2300 Niels Esperson Bldg.
Houston, Tx 77002
Attn: L.B. Hendrick
(713)224-3930

OZONA QUICK STOP

I-10 AT DEL RIO ST.

Hunting Licenses —

Ammunition

Groceries — Ice

Exxon Gasoline

OPEN 7 DAYS A WEEK 6A. M. - 11P. M.

"Everything you need in one stop"



Sports Fans

I BET YOU DIDN'T KNOW

By Jerry Lay

Here's a tough question...When was the last time a Big Ten team did NOT play in the annual Rose Bowl game?...Answer is 1946 when the Rose Bowl matched Southern Cal against Alabama.

Has an Ivy League team ever won the Rose Bowl?...Two Ivy League schools have done it...In the 1920 Rose Bowl, Harvard beat Oregon, 7-6... And in the 1934 Rose Bowl, Columbia beat Stanford 7-0.

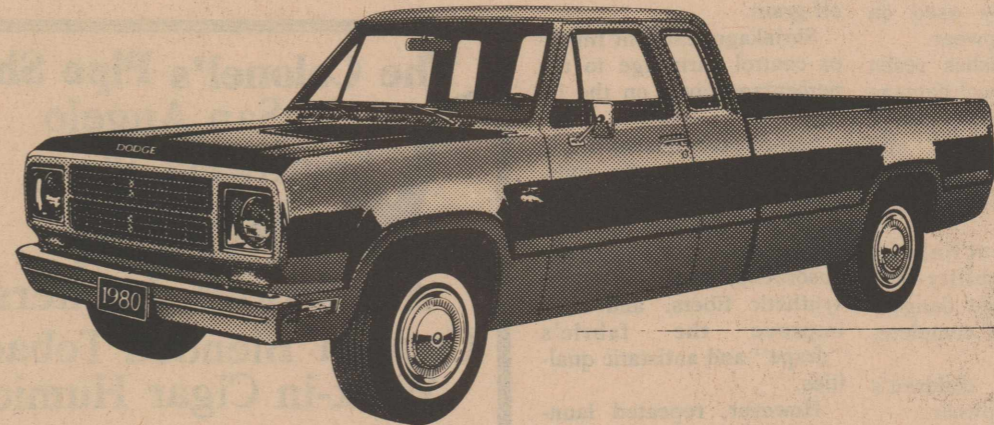
Although you know that the Rose Bowl is the oldest of the post-season football bowl games--do you know which is second oldest?...It's the Orange Bowl which started in 1933...Next came the Sugar Bowl, which started in 1935, and the Cotton Bowl, which had its first game in 1937.

I bet you didn't know...L-B Motor Co. knows how to help you make your selection for the new car you will be needing for the new year. Come by and we will help you with your selection.

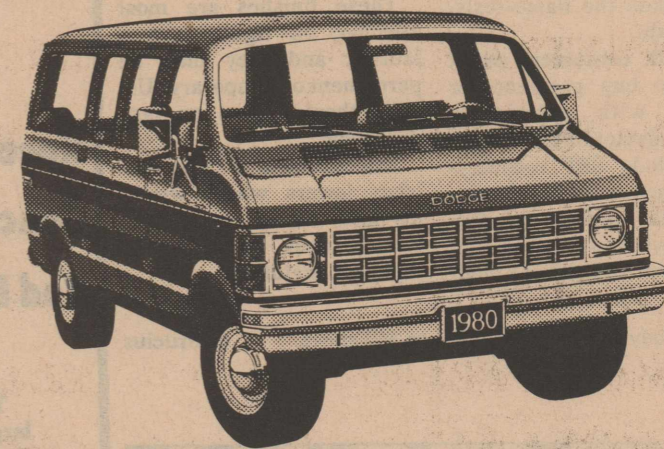
L-B Motors

516 9th St. Ozona, Tx.

NOT ALL HARD WORKERS HAVE TO WORK HARD ...ALL OF THE TIME



1980 DODGE TRUCKS ARE RAM TOUGH... AND FUN!



CARLISLE MOTOR CO

Phone 392-3110

Ozona, Texas

AUTHORIZED DEALER CHRYSLER CORPORATION



807 - 11th

It's
TAXPAYING TIME AGAIN

County, State and School taxes
Become Due October 1 Through
January

1% Discount In December

Discount applies to County and State Taxes
only—No Discount on School Taxes

TOM STOKES

Tax Assessor & Collector Crockett County

CAKE WITH A MAGIC FORMULA



A feast for the eyes and the palate, this Double Strawberry Cake is made easily with kitchen-friendly ingredients. A package of strawberry flavor gelatin and a packaged cake mix provide the magic formula. Part of the gelatin is added right to the cake mix, the balance used in the creamy frosting and the fruited glaze.

DOUBLE STRAWBERRY CAKE

- 1 package (2-layer size) white cake mix or pudding-included cake mix
- 2 packages (3 oz. each) or 1 package (6 oz.) Jell-O strawberry flavor gelatin
- 1-1/2 cups boiling water
- 1 package (10 oz.) frozen quick thaw strawberries, partially thawed
- 1 container (8 oz.) frozen whipped topping, thawed

Prepare cake mix as directed on package, adding 3-1/2 tablespoons of the gelatin to the mix before beating; bake in two 9-inch layer pans. Cool cakes in pans 10 minutes; then remove from pans and finish cooling on cake racks.

Dissolve remaining gelatin in boiling water. Measure 2/3 cup; set aside. Chill remaining gelatin until slightly thickened. Add strawberries with syrup to measured gelatin, and stir gently until fruit thaws and separates. Let stand at room temperature to thicken. Blend thickened gelatin into 1 cup of the whipped topping; spread between cake layers. Frost sides of cake with remaining whipped topping, spooning or piping a decorative border around edge of top layer. Spread gelatin-strawberry mixture on top layer, inside the border. Chill until glaze is set, at least 2 hours.

In high altitude areas, for either cake mix, increase egg whites to 3 and water to 1-1/2 cups; add 2/3 cup all-purpose flour; bake at 375° for 30 minutes.

Know garment or fabric finishes

Know about garment or fabric "finishes"—since they affect performance and appearance, says a clothing specialist.

Finishes can make a fabric flame-resistant or wrinkle-resistant, along with other performance or appearance benefits.

However, each finish may have drawbacks, too, says Becky Culp. Mrs. Culp is with the Texas Agricultural Extension Service.

Before shopping for garments or fabrics, know some basics about finishes, she advises.

Antistatic finishes reduce clinging, and they are lost after repeated laundering. They are mainly used on lingerie and sleepwear.

Antiseptic finishes resist bacteria and prevent damage and decay from perspiration. They are permanent and often are found on socks, underwear, shoes-and luggage.

Flame-resistant finishes reduce flammability—but they don't prevent dangers and risks of fire completely.

Most are on children's clothing and sleepwear.

Drawbacks include stiffening fabric, and a reduction of the fabric's strength, absorbency and abrasion resistance.

Also, repeated laundering can weaken the flame-resistant finish.

Instead, consumers might prefer to buy garments or fabrics with inherently flame-resistant fibers. Examples include SEF modacrylic, Nomex aramid, Cordelan, Kynol novoloid and Valren, Leavil and Tevion vinyls. Wool and silk are mod-

erately flame resistant.

Mildew-resistant finishes prevent growth of mildew and mold. They're available on rayon, cotton and linen.

Permanent-press finishes aid in easy-care and reduce wrinkling.

Often, they're used on cottons and cotton blends. Drawbacks include added fabric stiffness, odor, unevenness of color and frosting of color at creases and folds.

For homesewers, this finish may pose difficulties, since it may be impossible to press out center folds in fabric or straighten grainlines if a fabric is finished off-grain.

Shrinkage-resistant finishes control shrinkage to the percentage given on the label.

Soil-release finishes aid in the removal of oily soils. They are used with permanent-press finishes.

They also provide greater absorbency and comfort for synthetic fibers, and they improve the fabric's "drape" and antistatic qualities.

However, repeated launderings will reduce their effectiveness.

Water-repellent finishes shed water while allowing air flow for comfort.

Fabrics can become wet, however, if subjected to unusual amounts of water.

These finishes are most effective on tightly woven fabrics, and they may be permanent or temporary. Usually they're used on outdoor wear.

Effectiveness of these finishes lowers where wrinkles and creases occur—and soil reduces their water-repellent feature.

"To go beyond is as wrong as to fall short." Confucius



"Yankee Doodle" is a song thought to have originated during the French and Indian War. By the time of the Revolution, it had hundreds of verses.

Washable suede the real thing

Today's machine-washable suede leather brings the "real thing" back to the fashion scene in easy-care form at reasonable prices, says a clothing specialist.

In fact, it's often lower priced than synthetic suedes, says Beverly Rhoades with the Texas Agricultural Extension Service.

New washable suedes are actually soft, pliable lambskins.

They come in several colors including camel, gray, blue, brown and tan.

Styling is somewhat limited with washable suedes, since lambskins are small.

For example, in jackets, consider using princess lines, because the small pattern pieces will fit the small pieces of suede better.

Also, remember that you can make pants only if you add a decorative seam at the knee—to cover the "splice" of suede pieces, since lambskins are not long enough to make a continuous pant leg.

When buying skins, take the pattern with you for a trial layout so you'll know how many skins to buy.

In laying the pattern on the skins, use the lengthwise "grain" for major pattern pieces.

"Grain" on the skin runs parallel with the animal's backbone.

For the best results, place the top of the pattern piece at the neck section of the hide. Be sure all pieces run the same direction.

To sew washable suede, you need no special equipment.

Use all-purpose cotton-

covered polyester thread, long-staple polyester or cotton thread.

Use a sharp or universal, medium-sized needle (size 11 or metric size 75-80).

Set the machine at 8-12 stitches per inch, and adjust the thread tension and presser-foot pressure as needed for a balanced, smooth stitch.

You might need to loosen top-thread tension a bit and reduce the presser-foot pressure slightly.

Sew with traditional "leather" techniques or use conventional methods.

Sew seams with right sides together and finger press them open.

Glue the seam allowances open with rubber cement and pound them lightly with a smooth-surface mallet.

For a conventional seam, lap suede "wrong side to right side" at the seam line and topstitch at the seamline and again one-fourth inch away—for the tailored look of a mock flat felled seam.

After topstitching, trim the seam allowances. Edges will not ravel.

When you sew suede, tie the ends of seams rather than backstitching which tends to weaken the seam.

For curved seams, as in pockets or hems, notch the fullness from the curved area in the seam allowance. Sew the facing or adjoining piece "right sides together" and turn.

Or cut a second piece or facing with the same curve and place the two "wrong" sides together. Double topstitch along the seamline. Then trim away the seam allowance for a neat curve.

Or you can finish edges with no facing or stitching—for a soft, drapable appeal.

For example, a scallop hem edge is great for vests and other such items, especially if it's decorated with numerous tiny holes for a lacy look. You can do this with a leather punch.

In working with darts, you can finger press them to one side and glue them down.

If darts are wide, cut them open and glue down each side, as in regular seams.

Finally, never throw away "leftover" pieces of hide. They make great patches, necklaces or purses.



When it's time to get into the holiday spirit, it's time to watch for special gift ideas.

For that someone special, a wrist watch can offer just the right combination of function, fashion and flair. Here are some guidelines to help you:



Today's watches tell time—and considerably more!

• Analog watches: They display time using conventional minute and hour hands—an ideal choice for the traditionalist.

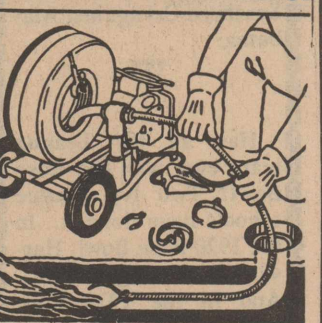
• Digital display watches: They appeal to the modernist—sleek and smart, with easy-to-read format and futuristic design.

• Multi-function watches: They offer a combination of information—a perfect choice for anyone with a busy schedule. For example, the Digi-Ana Alarm, manufactured by Citizen Watch Co., shows the time in two time zones, and, in addition to showing the date, has an alarm and a sports timer accurate to one-hundredth of a second.

To be sure the watch you give will perform effectively and maintain its good looks over time, Citizen advises consumers to shop in reliable jewelry stores or fine department stores.

Prevent ring-around-the-bathtub by adding a few drops of detergent or bubble bath to the bath water.

ELECTRIC SEWERROOTER
Cleans CLOGGED PIPES, DRAINS, SEWERS
NO DIGGING NO DAMAGE



Call Raul DeLaRosa Plumbing & Serv. Ph. 392-2726 1611 Hwy 163S.

IT'S THE LAW!

Did you know that a woman cannot be disqualified for a loan because she is pregnant? That public assistance benefits are considered income and cannot be discounted when applying for a loan?

Did you know that elderly people cannot be denied a loan simply because of age? Or that a creditor cannot require reapplication or terminate an account because of a change in the applicant's marital status or retirement?

Did you know that if you are turned down for credit you have the right to know why?

CUMIS Insurance Society, Inc., thought you should know the facts. You as a consumer do have rights. Consumer legislation is designed to help, but, unfortunately, many people do not know or cannot keep up with all the regulations.

As the world's leading



provider of credit union bond insurance, CUMIS is doing something about it. It has been conducting consumer legislation seminars designed to keep credit union personnel abreast of the latest legislative changes. This way, consumers can be assured of their rights when they come to a credit union. Last year over 1,000 attended the sessions. This year even more attended as the seminars moved to such places as New York City and Minneapolis, Minnesota.

Know the facts before you sign. The heartache you save may be your own!



The idea for jet propulsion apparently dates back at least to the first century A.D. when Hero of Alexandria, Egypt, is said to have built an engine called an aeolipile.

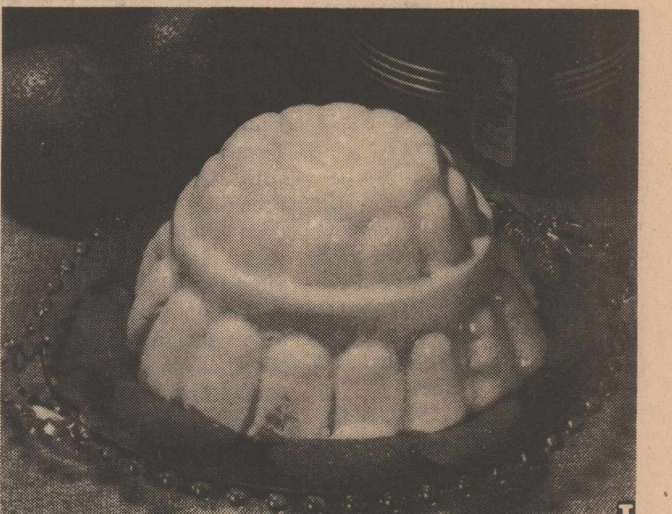
NORMA'S KOUNTRY KITCHEN
WEDNESDAY ONLY
CHICKEN
10 PC. BOX \$3.99
WE ALSO HAVE FISH AND FRIES SANDWICHES PIZZA
TO GO OR TO EAT IN OUR DINING ROOM
903 MAPLE ST. 392-3508

The Colonel's Pipe Shop
in San Angelo
Southwest Plaza
PIPES!
Accessories, Lighters
Custom Blended Tobaccos
Walk-in Cigar Humidor
Nat Sherman Premium Cigarettes
Imported Cigarettes
Phone 944-3322 Mail Order Service

WANTED RAW FURS
Raccoon Grey Fox Badger Skunk Nutria
Bobcat O'possum Civit Cats Coyote Mink
Red Fox Ring Tails Deer Hides Muskrat Otter
Tired of guessing what your furs are worth? Bring your pelts to one of the largest fur companies west of the Mississippi River. Lone Star Fur Company's Direct European and Canadian Markets enables us to give you the highest possible price for your fur.
Premium prices for all X-tra large, good colored coons. Let me bid on your pelts, I'll be stopping at
Johnny Vercher Lone Star Fur Co. every Monday from 10:30 to 11:00 a.m. Centerville, Tx. 214-536-2012

cooking hints

AN OLD FAVORITE REVISED



Do-ahead recipes are always popular. When the recipe is easy, good tasting, low in calories and nutritious it's even better. Spanish Cream is an old recipe dating back to grandmother's day. It's a simple, yet elegant, gelatinized dessert garnished with your favorite fruit. The new twist to this old recipe is that it's flavored with McCormick/Schilling Imitation Vanilla Extract, a new high quality imitation vanilla which tastes like pure vanilla and is easy on your budget.

SPANISH CREAM

- 2 envelopes unflavored gelatine
- 1 quart milk
- 3 eggs, separated
- Dash salt
- 1/2 cup sugar
- 1 tablespoon McCormick/Schilling Imitation Vanilla Extract

Dissolve gelatine in 1/2 cup of the milk. Beat egg yolks, salt and 1/4 cup of the sugar and stir into remaining milk. Heat mixture until it comes almost to a boil. Add softened gelatine and stir until dissolved. Remove from heat; add vanilla. Cool. Beat egg whites until foamy. Continue beating, slowly adding remaining sugar. Fold into milk mixture. Pour into 2-quart mold and refrigerate until set. Remove from mold. This will have separated into two layers. Garnish with orange slices, tangerine slices, sliced peaches, raspberries or blueberries.

TALK of the TOWN
Brown Furniture
Drapery Dept.
CUSTOM DRAPERY
WINDOW SHADES
Regular-Custom-Laminated
WOVEN WOODS
Kirsh-Del Mar-Joanna-O'Kreut
MINI BLINDS BY LEVELOR



"Dixie," written by Daniel D. Emmett, was composed in the North for a minstrel show.

OZONA STOCKMAN
YOUR PRINTING HEADQUARTERS
LOOK NO FURTHER THAN THE OZONA STOCKMAN FOR ALL YOUR PRINTING REQUIREMENTS
★ Letterheads ★ Envelopes
★ Ruled Statements ★ Padded Forms
★ Circulars ★ Programs
★ Business Cards ★ Pamphlets
★ Tickets ★ Card Forms
Wedding Invitations
★ Sales Books
★ Printed Tags
★ Register Forms
★ Business Forms
Also-Rubber Stamps, Adding Machine Paper and Stationery-
THE OZONA STOCKMAN

Pauline and Marshall married 50 years-

Montgomerys celebrate 50th wedding date



Montgomerys greet guests in Civic Center at 10 a.m. Monday.

People came from miles around, literally, to help Pauline and Marshall Montgomery celebrate their 50th wedding anniversary December 31.

Pauline Perner and Marshall Montgomery were married in the Ozona Methodist Church at 6 o'clock in the evening Dec. 31, 1929. The church building is presently the courthouse annex. Rev. J.H. Meredith performed the ceremony.

The festivities got underway with the recreation of the rehearsal dinner Sunday night at the Circle Bar dining room when some 70 friends, relatives and out-of-town guests gathered to celebrate. Hosting the dinner were Mr. and Mrs. James Dockery, Bud Meinecke, Mr. and Mrs. Bill Melton, Mr. and Mrs. Bill Meinecke, Charlotte Montgomery and their respective families.

Members of the original wedding party were seated at the head table, which was centered with a ram's head and other ranch paraphernalia arranged with red carnations and greenery. Cacti and cedar with dried red wildflowers decorated the other tables. After a broiled chicken dinner with all the trimmings, the 50-year bride and bridegroom were toasted with champagne.

Hugh Childress, who served as best man in the wedding 50 years ago, began the congratulatory toasts with an amusing description of his lifelong friendship with the two Montgomerys and other toasts followed. Members of the wedding party were introduced.

Saturday Mr. and Mrs. Montgomery hosted an all-day party at the Civic Center. Members of the house-party began serving coffee at 10:00 a.m. and over 600 persons were served barbecue dinner during the noon hour, and stayed to watch Pauline and Marshall cut a replica of the wedding cake. Following the cake-cutting, couples took to the dance floor as Jamie Knox and his band played many old-fashioned waltzes and western tunes. Dancing and visiting continued until 4 p.m. when the party ended. The celebration continued



Charter members of Las Amigas Club have reunion



Couples line up for barbecue and beans during noon hour. Over 650 were served.



Couples present who have celebrated 50th anniversaries in past years with Pauline and Marshall in center.

with participants meeting again at the Ozona Country Club for the traditional New Year's Eve dance.



Pauline treats Marshall to bite of wedding cake before serving the crowd.

STORAGE BOXES

SIZES 12"X15"X10" — EXTRA STRONG

Records-Clothes-Toys-Stuff Compact-Portable
Hats, Blankets, Remnants, Seasonal, Use Materials
Extra Strong-Made of New FIBRE-COR

WITH 100 AND 1 USES

Use it to store Household or Office Records, Clothes

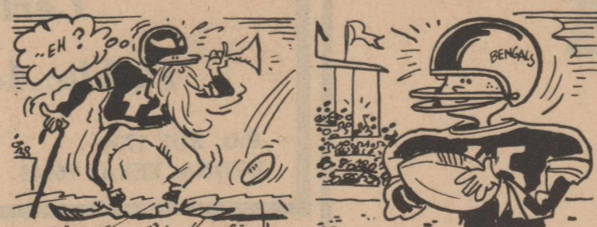
Holds up To 150 Pounds
Both Letter or Legal Size Record Storage

\$2.50

At The

STOCKMAN

Football Follies



The oldest active NFL player is Jim Marshall, Minnesota Vikings' defensive end, who will be 42 in December.

The youngest player in the NFL is the Cincinnati Bengals' Steve Kreider. The rookie wide receiver from Lehigh was 21 on May 12th.



Jackson leads the NFL's list of most popular last names with 17. Williams is next with 15, followed by Jones with 13, and White with 11.

According to A-T-O Inc.'s Rawlings Sporting Goods Company, the first numbered football jerseys were worn in 1908 when Washington and Jefferson played Pittsburgh.

First of the year FABRIC SALES!

PERRYS JANUARY JAMBOREE OF SAVINGS!!

LOOK AT THESE MONEY SAVING SPECIALS—SAVE UP TO 50%

TERRY KNITS
100% Poly-Poly/Cotton Blend
Dressmaker Lengths 1-3 yards
Fashion Solid Colors
\$3.99 value if on bolts
\$1.97 yard

DRESSMAKER FABRICS
Assorted Poly/Cotton Blends
Big selection to choose from
Dressmaker Lengths
Regular \$1.29
Shop early and save
97¢ yard

STRETCH GABERDINE
100% Polyester
Finest Quality — 60" Wide
Solid Color Selection
Our Regular \$3.99
\$2.97 yard

INTERLOCK KNITS
100% Polyester
60" Wide
Dressmaker Lengths 1-4 yards
Prints & Solids
97¢ yard

POLYESTER INTERFACING
Made by Pellon
20" Wide
Regular 59¢ yard
Limit 12 yards
19¢ yard

SPINNERS CLOTH
50% Polyester 50% Cotton
45" Wide on Bolts
Bottom Weight Solids
Regular \$2.49
\$1.97 yard

CREPE DE CHINE
100% Polyester
45" Wide
Fashion Solid Colors
Our Regular \$1.99
\$1.47 yard

ONE TABLE KNITS
ALL ON BOLTS **\$1.89**
VALUES TO \$3.99
NOW ONLY

PERRYS CHARGE IT...USE BANK-AMERICARD
STORE ADDRESS
If you want variety, we have it...

NEED HELP? LOOK AT WANT ADS

1980 beef cattle short course set

Texas A&M University's 1980 Beef Cattle Short Course is set for April 7 and 8, announces Dr. Dennis Herd, short course chairman and beef cattle specialist with the Texas Agricultural Extension Service.

"The 1980 short course will be the 30th to be held. The program will center around interests of cattlemen at current prices. Herd health programs to keep more high value animals alive, bull and heifer selection, and pastures and range management programs will be among topic highlights," the specialist says. More complete details of the conference will be forthcoming soon, Herd adds.

As a part of the Texas Animal Agriculture Conference at A&M, the Beef Short Course will feature a wide array of state and national speakers from many segments of the livestock industry.

Besides the Beef Short Course, the Texas Animal Agriculture Conference also will include the 38th Annual Dairy Short Course, to be held at A&M and at several other locations around the state; 29th Annual Swine Short Course, to be held at A&M and at a Texas Panhandle site; 17th Annual Horse Short Course; an exhibit and trade show; and the 24th Annual College of Agriculture convocation for students and faculty.

Animal Agriculture Conference sessions will be in the J. Earl Rudder Center on the A&M Campus.

"During the two-day session, producers, scientists, educators and industry representatives will hear more than 70 subjects of interest to all segments of the animal agriculture industry," says L.A. Maddox, overall conference chairman and Extension beef cattle specialist and project leader.

Cooperating with the Extension Service in planning and presenting the Texas Animal Agriculture Conference are the Texas Agricultural Experiment Station, also an integral part of the

Texas A&M University System, A&M's Colleges of Agriculture and Veterinary Medicine.

CARD OF THANKS

CARD OF THANKS
Thank you for the many kindnesses shown our mother, Tommy Chandler and our family during her illness and death. The food, visits and many floral gifts were greatly appreciated. This thoughtfulness will long be remembered by the family.

A special thank you to Dr. Owensby, Dr. Carlisle and the nursing staff at the hospital for their genuine concern for the comfort and care of our loved one.

Early Chandler
Fred Chandler
Erby and Janie Chandler
Susie and Bill Black
Gracie and Don McFarland

For Sale
LIVE OAK TREES FOR SALE. Delivered. Call 392-3528. 40-tfc

FOR SALE-Mini-Bike. Call 392-2054. 41-tfc

USED CARS

FOR SALE-1978 Chrysler New Yorker. Phone 392-2676 from 8:00 a.m. to 5:00 p.m. 34-tfc

FOR SALE-1978 F-100 Ford pickup. 24,000 mi. Take up payments. Call 392-3454 from 8 to 5 or 2-2874 after 5 p.m. 44-2tc

FOR SALE-1977 Ford 3/4 ton PV 460 dual tanks. Call 392-3679 44-2tp

MOBILE HOMES

FOR SALE-28x65 1978 Chica Doublewide Mobile Home on 84X150 lot. 3 bdr., 2 full baths, utility room. Call 392-3416 after 5:00 p.m. 42-3tp

Real Estate

HOUSE FOR SALE-114 Ave. E, Ph. 392-2280. 2 bdr., 1 bth, nice yard, large pecan trees, call Jim Burnett after 7 p.m. 30-tfc

FOR SALE-3 bdr., 2 bath, fireplace, good location in Ozona. Call 512/966-3419. 43-tfc

FOR RENT

FOR RENT STORAGE SPACE
Suitable for Household Goods etc.
Call Brown Furniture 392-2341
34-tfc

FOR RENT-Trailer House, 1 bdr. furnished, \$125.00 mth. See manager in trailer #5 at Albers Trailer Park behind Carlisle Motors. 41-tfc

TRAILER SPACES now available at Circle Bar Truck Corral, 1-10 and Taylor Box Rd. Ph. 392-2637. (PO #4745) 32-tfc

FURNISHED trailer house for rent. 2 bdr., 2 king-size beds, cent. heat. \$150 mth. See manager in trailer #5 behind Carlisle Motors. 41-tfc

HELP WANTED

HELP WANTED at Norma's Kountry Kitchen. 4-10 p.m. shift. Call 392-3508. 44-2tc

HELP WANTED AT CARE CENTER-Need nurses and nurses aides for 3 to 11 shift and 11 to 7 shift. Good salary, full county benefits, hospitalization, retirement, vacation pay. Apply to Sonny Kirklen at hospital or Elvira Farris at care center. 34-tfc

HELP WANTED-Cashier and stockman for full or part-time. Good references. Call Thornton's Supermarket 40-tfc

BUSINESS OPPORTUNITIES

FOR SALE-Montgomery-Ward Catalog Sales Agency. Inquire after 7:00 p.m. Ph. 392-2381. 40-tfc

BUSINESS SERVICES

PROFESSIONALLY clean your carpets with lightweight RINSENVAC steam cleaner. Rent at Perry Bros. 44-1tc

A good buy-give it a try. Blue Lustre America's favorite carpet shampoo. Rent electric shampooer at Perry Bros. 44-1tc

SAND & GRAVEL-Delivered free-lance trucking. Dump truck service. Call 392-3528. 40-tfc

Desks, chairs, files, safes, large selection. Save 20%-50%. Cash and carry. 9:00 to 5:30. Monday-Friday. VALUE CITY, 117 W. Two-hig, San Angelo, Tex. 15-tfc

WE BUY aluminum cans and deer hides. Also other furs. 1103 Ave. H. Glenn Sutton. 43-tfc

FOR YOUR Rinsenvac Cleaner come to South Texas Lumber Co. 25-tfc

WESTERN MATTRESS COMPANY SAN ANGELO, TEXAS
Mattresses new or renovated
Box Springs-Choice of Sizes and Firmness
All Work Guaranteed
Ph. Jack's TV at 392-2524

Fireplaces are our specialty

M&S Construction

BRICK, ROCK, CONCRETE, & ROOFING
Free Estimates
Local References
Ph. 392-3528 for Mike Jester

FOR INFORMATION LEADING TO THE IDENTITY, ARREST AND CONVICTION OF PERSON OR PERSONS PLACING OR CAUSING TO BE PLACED POISON ON PROPERTY OTHER THAN THEIR OWN. RELAY INFORMATION TO DISTRICT ATTORNEY'S OFFICE.

REGIONAL VARIETY STORE CHAIN
We are taking Applications for MANAGER-TRAINEE

QUALIFICATIONS:
Retail Experience - Good Health
WE OFFER:
Generous Starting Salary - Training Program - Paid Vacation - Life & Hospital Insurance - Retirement Program - Paid Holidays - Employee Discount on Purchases - Five - Day Work Week

Excellent Opportunity For Advancement
CONTACT:
JIM ADAMS
PERRY BRO. #124
P.O. Box 1516
Ozona, Texas 76943

JOHN STOKES
Certified
Public Accountant
P.O. BOX 1739
OZONA, TEXAS 76943
PHONE 915/392-3711

ROOFING DO IT NOW
RESIDENTIAL ROOFING & REPAIR
FREE ESTIMATES
CONTACT:
T. H. WELLMAN, CONTRACTOR
392 3264

HAYES AUTO REPAIR
Mechanic On Duty
8 a.m.-6 p.m.
1311 Ave. AA
Phone 392-3224

JESSE Tire Repair Shop
corner of Ave. H & 5th St.
Spare Time 6 pm-12
Ph. 392-3473

Ozona Waterwell Service
Dennis Clark
392-3056
Submersible Pump Distributor
Pump and Windmill Repair and Service

Nationally Advertised
Morning Glory
Back Relief Mattresses
famous for Quality since 1903
Brown Furniture Co.

\$1,000 Reward
For information leading to the arrest and prosecution of vandals at Cedar Hill and Lima Cemeteries. Relay information to District Attorney's Office or Sheriff Billy Mills.

PETE W. JACOBY
Real Estate
Residential-Business-Commercial
Ranch Properties
Ph. 392-3059 401 Hillcrest

JOHN R. JONES
REAL ESTATE LIVESTOCK
Elizabeth Upham-Agent
392-2334
LOTS-HOUSES-COMMERCIAL
Buy and Sell
392-2021 392-2113

Custom Gunsmiths
COLLETT AND SON
1004 1/2 Ave E
392-2330
OZONA, TEX. 76943
We buy, sell, trade, and repair all makes and types of guns.

GAS WELL GAUGERS

SONORA-OZONA AREA

INDEPENDENT GAS OPERATOR TAKING APPLICATIONS, MALE OR FEMALE. GAS WELL GAUGING EXPERIENCE PREFERABLE BUT NOT NECESSARY.

WRITE OR CALL:

Windsor Gas Corporation

P.O. Box 927
Sonora, Tx 76950
Attn: F. Ramirez

2300 Nield Esperson Bldg.
Houston, Tx 77002
Attn: L.B. Hendrick

(915)387-2624

(713)224-3930

MADE IN IOWA



In most years one of every five hogs in the U.S. is raised in Iowa.

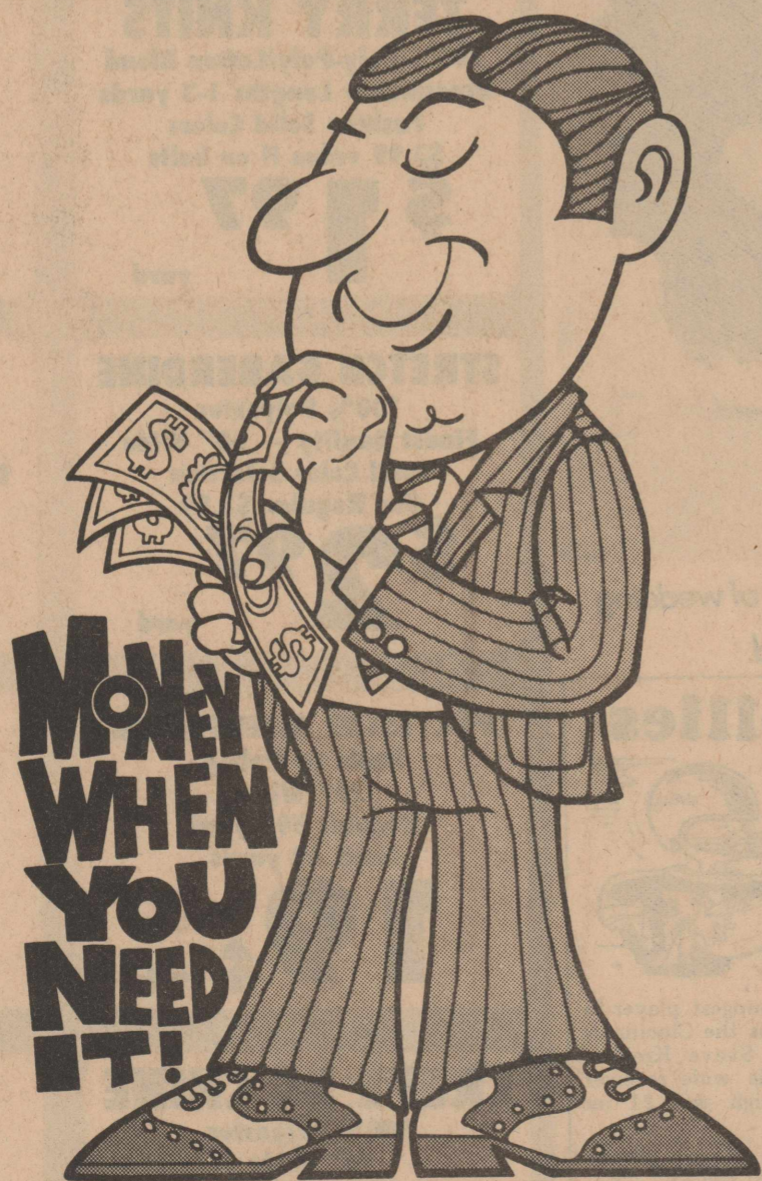
HERE AGAIN!
Aloe Vera Juice & Ointment
LION PHARMACY
CLAYTON ROBINSON
PH. 392-2864

CECIL WESTERMAN
Would Like To Be YOUR PHARMACIST
PH 392-2608

Notice of REWARD

I am offering **\$500 Reward** for apprehension and conviction of guilty parties to every theft of livestock in Crockett County - except that no officer of Crockett County may claim the reward.

Sheriff, Crockett Co.
Billy Mills



Ozona National Bank

Member of **FDIC**
FEDERAL DEPOSIT INSURANCE CORPORATION