

The Muleshoe Journal

DEDICATED TO THE PROGRESS AND DEVELOPMENT OF BAILEY COUNTY AND THE GREAT MULESHOE COUNTRY

VOLUME 30, NUMBER 32

MULESHOE — County Seat of Bailey County — TEXAS

THURSDAY, JULY 31, 1952

Jesse Osborn, Muleshoe Banker, Is Chosen Legislative Representative



JESSE M. OSBORN

Voters of the newly constituted five county 96th Legislative District gave Jesse M. Osborn a large majority over Karl L. Lovelady in the Democratic Primary Saturday. Osborn's total was 7,924 against 3,547 votes cast for his opponent. Both men live in Muleshoe.

Mr. Osborn, Muleshoe banker, carried all five counties. He carried this county about two to one and he carried his former office the first of next year when the new Legislature meets.

Mr. Osborn came here in the home county, Farmer, nearly six to one. Bailey County never before has had a representative in the Legislature.

The nominee gave credit to his friends for the victory. Mr. Osborn, who is president of the Muleshoe State Bank, will take height of the depression, in 1934, and successfully guided the bank through lean and good years. He recently sold controlling interest in the bank, but he will continue to use an office in the bank and will be available in an advisory capacity.

The box score by counties in Saturday's primary follows:

County	Osborn	Lovelady
Parmer	1150	433
Castro	1182	688
Bailey	1309	973
Deaf Smith	1675	1260
Lamb	2808	1260
TOTALS	7924	3547

Bloodmobile Coming October 15

UNOFFICIAL RETURNS FROM BAILEY COUNTY PRIMARY ELECTION, JULY 26, 1952

	Senator	Representative	Sheriff	Treasurer	Com. Prec. 1	Com. Prec. 2	Com. Prec. 3	Com. Prec. 4	Prec. 1
Muleshoe	581	430	403	674	502	591	348	753	406 371 328
Absentee	27	35	16	48	26	42	16	50	16 15 16 2 0 5
Mays	15	12	9	25	7	29	17	18	12 23
West Camp	115	61	44	152	58	140	79	123	46 157
Three Way	108	88	54	159	65	157	111	117	149 80
Bula	103	127	97	141	51	193	42	199	24 50 180
Baileyboro	54	26	30	58	43	46	19	70	57 6 28
Circleback	43	41	35	52	23	68	15	81	73 0 26
TOTALS	1046	821	688	1099	775	1266	647	1411	422 386 344 60 180 154 86 156 56 241 329 433 213

150 Pints Is Minimum Goal

Plans were made at a meeting Tuesday night for the visit to Bailey County of the Red Cross Bloodmobile, scheduled for October 15. Thirty persons, representing the county Red Cross chapter, the service clubs and women's clubs and organizations, attended the meeting.

Dr. B. R. Putman was named blood chairman, and he will announce his assistants soon, as well as other plans.

Dr. Putman announced that the Ben Richardson Post, American Legion, of Muleshoe has tendered the American Legion home for use as the blood center.

Mrs. Ernest Kerr was elected volunteer service chairman, to head the group of 25 women who will staff the blood center. She named as co-chairman Mrs. Dian Reed, Bailey County HD Agent.

Miss Jean Fitzsimmons, of Lubbock, general field representative, met with the local group and will return here in September to help make final arrangements. On September 30, all women who will help will be present for an orientation meeting at 2:30 p. m. in the Legion Home.

Miss Fitzsimmons said that the minimum quantity of blood wanted here is 150 pints. A little later a call will be issued for volunteer blood donors.

Blood collected by the Red Cross Bloodmobile is used solely for defense purposes, so those who give their blood may feel that it will be used for possible use by a wounded American boy.

All the blood collected will go to Korea. After it is collected in Muleshoe, it will be taken by panel truck directly to Reese Air Force Base in Lubbock and then flown directly to the North Texas Defense center in Ft. Worth hence to the Armour & Company laboratories where it is processed into plasma.

Exceptions as to who can be donors are those who have had yellow jaundice and the donor must weigh as much as 110 pounds. The ages are 18 to 60 but persons from 18 to 21 must have written permission of their parents. The donor must not have eaten anything excessively fat for the previous four hours.

The Armed Forces monthly quota for blood is 300,000 pints per month, the Ft. Worth district is 4300 pints per month. The minimum quota for Muleshoe is 150 pints to be given in the six hour period of operation here.

While the operation of the bloodmobile is directly under the supervision of the Red Cross, it has also been given an official OK by State Medical Department as well as local medical authorities of the Green Hospital.

Included in the staff of technicians are 7 registered nurses, a medical doctor and 2 custodians. Pledge cards are in the processing at the present time and will soon be ready for signatures.

SOFTBALL PLAYER HAS A BROKEN ANKLE
William James, shortstop on the Muleshoe Printers softball team, broke an ankle bone when he slid into second base in the first inning of a game Monday night against an Earth team here. He is a son of Mr. and Mrs. William James.

The Printers have won 7 games, lost 4. The team is sponsored by The Journal.

GUESTS IN AMARILLO
Mrs. Boots Bryant and children, Bo, Jane, Jim and Carol Ann, visited in the home of J. B. Bryant and family of Amarillo, last week. They plan to visit friends in Silverton this week end.

LOCAL MARKETS

Hogs, cwt.	\$22.00
Kafir, cwt.	\$2.00
Maize, cwt.	\$2.00
Hogari, cwt.	\$2.00
Wheat, bu.	\$2.04
Cream, lb.	.58
Eggs, doz.	.33

Selection Of Roundup Queen Will Get Underway Coming Saturday

Who will be Miss Muleshoe of 1952? That question was asked last night by the executive committee of the Chamber of Commerce musical show "Muleshoe Frolics of 1952", an outstanding event that will be presented as part of the "Will Rogers Memorial Roundup", August 14, 15, and 16.

The queen, when selected, will reign over all the festivities of the Muleshoe celebration and shall be given the title of Miss Muleshoe of 1952, Queen of the Will Rogers Memorial Roundup. The next four highest girls will constitute a court of honor, and will be presented with the Queen at each "Frolics" performance, as well as at each public function during the three day celebration.

An elaborate coronation ceremony is being planned and will take place during the first performance of the sparkling musical show "Muleshoe Frolics". A wide variety and bulk of publicity is being planned for use during the campaign and each contestant will be allowed to share equally in all the committee secured promotions.

A number of nominations have already been received by the committee, and any other girls that wish to enter are cordially invited. A nominating coupon appears in this newspaper, and any girl between the ages of 14 and 28 is eligible to be nominated. She may be nominated by herself, a friend or relative, or any sponsoring group. Many valuable awards will be presented to the queen. These awards will be on display in a prominent downtown location within the next few days. Rules of the contest are as follows:

PURPOSE OF THE CONTEST
To determine by popular vote who shall be Queen of the Will Rogers Memorial Roundup for 1952. The girl receiving the highest number of votes shall be crowned Queen of the Will Rogers Memorial Roundup. The four receiving the next highest number of votes will constitute her special court of honor.

Duration of Contest
The contest begins at 4 p. m., Sat., Aug. 2 and ends August 12 promptly at 10:00 p. m.

Eligibility
Any girl between the ages of 14 and 28, married or single, who is acceptable to the nominating committee.

Sponsors
Each contestant is encouraged to secure the sponsorship of a reliable service club, church or fraternal organization, although such sponsorship is not a condition of the contestants participation. Contestants and sponsors are encouraged to employ every means of promoting a contestant's candidacy.

Any additional information about the contest or its rules may be had by calling Miss Lee at the Chamber of Commerce.

Nominations that have already been received by the committee are as follows:
Bea Lambert, Gay Sanders, Jeri White, Leatrice Martin, Mona Smith, Marilyn Gupton, Barbara Douglass, Marion Clark Harris, Helen Stovall, and Quineil Elliott.

County Officers Are Reelected

Two county officers who had opponents in the Democratic primary Saturday were renominated. Sheriff Hugh Freeman defeated W. F. "Buck" Creamer, 1266 to 775. Freeman, running for reelection, carried all seven boxes.

Box	Freeman	Creamer
Muleshoe	591	502
Absentee	42	26
Mays	29	7
West Camp	140	58
Three Way	157	65
Bula	193	51
Baileyboro	46	43
Circleback	68	23
TOTAL	1266	775

Miss Helen Jones was reelected county treasurer over Mrs. Leona Mason, 1411 to 647. She also carried each voting box. The vote

Box	Mason	Jones
Muleshoe	348	753
Absentee	16	50
Mays	17	18
West Camp	79	123
Three Way	111	117
Bula	42	119
Baileyboro	19	70
Circleback	15	81
TOTAL	647	1411

F. Simmacher Dies in Phoenix

Frank Simmacher, 80, a pioneer resident of Roosevelt County, died in a Phoenix, Ariz., hospital Monday morning, according to word received here.

Simmacher was injured in an automobile accident in Phoenix last Saturday night. The accident occurred while he was on a trip to visit some friends.

The body will be brought to Roosevelt County for funeral services and burial.

Survivors of the Roosevelt County pioneer include a daughter, Mrs. Ed Wotipka of Roosevelt County; and six sons, Leo and Mathis, both of Roosevelt County; Thomas of Morton, Texas; Lewis and Joe, both of Muleshoe, and Frank, Jr., and Phillip Simmacher, both of Papp, Texas.

He was born in Munsterhaven, Germany, December 28, 1877, and came to the US in 1893 aboard the Swedish ship "Germania". He was married in 1901 to Miss Wilhelmina Bruggeman of Taylor, Texas, who preceded him in death in 1929.

All Kinds of Paper, Office Sale at The Journal Office.

Two Run-off Contests In County

Old timers who have worked with elections held in this county for many years say that Bailey County cast her biggest vote the past Saturday, in the Democratic party first 1952 primary. An unofficial count showed 2115 persons went to the seven voting places in the county and marked a ballot. Of these, 1115 were cast in No. 1 voting place, Muleshoe.

It was a hot, clear day and the election went off smoothly. Returns were gathered promptly and posted on a public board here in Muleshoe. Large crowds watched the posting of returns until midnight, when most of the races had been decided.

At 12:30 most of those who had worked with the election went home and went to bed; members of the county executive committee and workers at No. 1 voting box remained on the job until 5:30 a. m. Sunday to get a final and complete check.

Tabulation of the way that Bailey Countians marked their ballots at the voting places may be found in other parts of this paper.

The county vote showed a majority in the main for those candidates who were made favorites by the voters elsewhere; they voted for Governor Shivers, Price Daniel, John Ben Shepperd, Ben Ramsey, and other winners. This county gave a plurality for John Lee Smith, of Lubbock County, in the race for Congressman at Large, in which Martin Dies led.

Two Run-Off Campaigns

There will be 2 run-off contests in Bailey County at the run-off primary to be held throughout the state on August 23.

In Commissioners Precinct No. 1, Tom Morgan and M. E. Finley will be the contestants. They were the highest two in a three man race. Morgan had 422, Finley 386, and L. T. McKillip received 344. McKillip was running for reelection.

Another precinct race centers around Muleshoe: In Constable Prec. No. 1, J. N. James had 433 votes, C. W. Perkins 329, and Earl E. Willeford had 213. James and Perkins will enter the run-off primary.

As will be shown elsewhere, Bailey Countians gave a majority to Jesse M. Osborn, running against Karl L. Lovelady for Legislative Representative, 96th district. The vote was Osborn 1309; Lovelady 688.

Also, Bailey voters gave a majority to Andy Rogers, who received the nomination for State Senator in the 30th Senatorial district, defeating Harold LaFont. Both men were representatives in the Legislature. The vote here was Rogers 1046, LaFont 821.

Ernest O. Northcutt received the high vote in the race for Associate Justice, 7th District Court of Appeals, Amarillo, with 720; Harry Bunnenberg had 195; Hal Houston 246; and Joe S. Moss 383.

Mahon Renominated

George Mahon was renominated for Congress without opposition. He received 2,043 votes in Bailey County. John Ben Shepperd had 1382 votes in this county against 389 for Curt Siles in the race for Attorney General. Shepperd was nominated.

Frank P. Culver had the highest vote in this county, 652, for Supreme Court Associate Justice, Place 1 and Graham B. Smedley got 939 votes to lead in this county for Place 2 Associate.

In the race for judge of the Court of Criminal Appeals, Kenneth K. Woodley had 611 votes to 967 for Jesse Owens. The county gave Olin Culrain 1220 votes to 422 for Joe Laird in the race for Railroad Commissioner. Bascom Giles led 898 to 721 for Guy Paterson in the race for Land Commissioner. The county gave John C. White a whopping majority in his race against two opponents for reelection as Commissioner of Agriculture.

Muleshoe voting box is estimated to have cast 1115 ballots; 69 absentee ballots were filed. Mays had 34, West Camp 206, Three Way 230, Bula 257, Baileyboro 92, and Circleback 97.

Few Changes Seen

There will be only one change in the membership of the Commissioners Court as the result of Saturday's primary: L. T. McKillip failed to get into the run-off and the voters will choose between Tom Morgan and M. E. Finley August 23. In No. 2, W. W. Couch was renominated;

likewise, Robert Kindie in Precinct 3, and R. P. McCall in No. 4 received the nomination for another term in office.

Few changes will be seen around the courthouse. Cecil Tate, County Judge; Melvin Bass, County Clerk; and Norman Bays, County Attorney, were unopposed for reelection. Sheriff Hugh Freeman was renominated, and Miss Helen Jones won the nomination for County Treasurer.

In the race for judge of the Court of Criminal Appeals, Kenneth K. Woodley had 611 votes to 967 for Jesse Owens. The county gave Olin Culrain 1220 votes to 422 for Joe Laird in the race for Railroad Commissioner. Bascom Giles led 898 to 721 for Guy Paterson in the race for Land Commissioner. The county gave John C. White a whopping majority in his race against two opponents for reelection as Commissioner of Agriculture.

Muleshoe voting box is estimated to have cast 1115 ballots; 69 absentee ballots were filed. Mays had 34, West Camp 206, Three Way 230, Bula 257, Baileyboro 92, and Circleback 97.

Few Changes Seen

There will be only one change in the membership of the Commissioners Court as the result of Saturday's primary: L. T. McKillip failed to get into the run-off and the voters will choose between Tom Morgan and M. E. Finley August 23. In No. 2, W. W. Couch was renominated;

Franz Elected C of C Manager

Raymond E. Franz has been employed as manager of the Muleshoe Chamber of Commerce, H. S. Sanders, Jr., announced this week. He will assume his duties here about September 1.

Mr. Franz at present is with the Quality Biscuit Company, working on sales statistics and sales promotion and administration, departments which he inaugurated as control of production and distribution of products. He is well known in the southwest where his work has been for some time.

He is 31 years old and he and Mrs. Franz have three children, aged 4, 6 and 8 years.

Mr. Franz was educated in Wisconsin University, where he studied business administration, accounting, and advertising. He is a veteran of World War II, serving from August 1942 to December 1945, as a staff sergeant.

Meanwhile, the Chamber of Commerce in the Elliott building, across from the bank, is open every day and Miss Lillie Lee, office secretary, is on the job at all times to carry on the work of the organization. Mr. Sanders and other officers or directors also are in the office during a part of every day.

NOMINATION BLANK

I wish to nominate _____

as a contestant for Miss Muleshoe of 1952, Queen of the Will Rogers Memorial Roundup.

Contestants Phone No. _____

Wyer Funeral Services Today

W. G. Wyer, father of H. Jay and Harold Wyer, passed away Wednesday morning, July 30, in the home of his daughter, Mrs. L. V. Hennington, in Hereford.

Funeral services were to be held at 2 o'clock this afternoon, Thursday, in the Dimmitt Methodist Church, with Rev. H. W. Hanks, of Muleshoe, officiating. Interment will be in the Dimmitt cemetery by the grave of his wife.

William Grant Wyer was born March 12, 1869, at Salem, N. C. He was married August 27, 1884, at Jefferson City, Iowa, to Emma Stiles, who preceded him in death January 12, 1950.

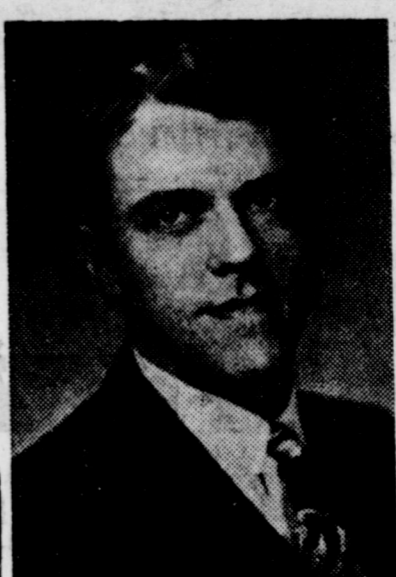
Mr. Wyer is survived by the following children: Emerson Wyer, Dimmitt; Mrs. L. V. Hennington, Hereford; Mrs. J. O. Turnbow, Los Angeles, Calif.; H. Jay Wyer, and Harold Wyer, Muleshoe. All were present when death came excepting Mrs. Turnbow.

GUEST IN BOONE HOME

Mrs. Evelyn Boone, of Graham visited here last week in the home of her sister-in-law, Mrs. Radie Boone. She is a teacher of home economics in Graham schools.

RETURNS FROM VACATION

Estelle Ramm and Holly Ann Cox from Muleshoe, and Lucille Ramm and Wanda Fry from Levelland returned home last Saturday evening from a two week tour of New Mexico, Arizona, Nevada, Oregon, Washington, and California. It was reported that they had a wonderful time.



THE WINNER—Andy Rogers, of Childress, had a margin of about 4,000 votes over Harold LaFont of Plainview, in their contest for State Senator in the new 30th Senatorial district.

PRECINCT OFFICERS

R. J. Klump was reelected justice of the peace in Prec. 1; Harold Mardis, Prec. 2; F. L. Stovall, Prec. 3; and Ray Carter, Prec. 4. Constables nominated are: C. W. Perkins and J. N. James, in run-off primary in Prec. 1; Prec. 2, Ross Goodwin; No. 3, Tommie Galt; No. 4, A. V. Patton.

RAY IS REELECTED

O. D. "Blondy" Ray was reelected Bailey County Democratic chairman. Precinct chairman are No. 1, Eddie Lane; No. 2, Roy Sheriff; No. 3, George Tyson; No. 4, Henry Damron.

ARE IN CALIFORNIA

Mr. and Mrs. Kenneth Farr and family left last week for California and possibly will make their home there. Kenneth is the son of Mr. and Mrs. Albert Farr of Muleshoe.

FUNERAL SERVICES FOR MRS. CORA HICKS

Mrs. Cora Hicks, 76, mother of George and Ed Hicks of Muleshoe, passed away Monday night at her home in Spur. Her death came unexpectedly. She had been down town on a shopping errand Monday afternoon.

Families of the two sons living here and many friends attended funeral services held Wednesday afternoon in the Afton Baptist Church. Interment was in the Afton cemetery. Mrs. Hicks is survived by nine children.

LONE STAR Agriculture

Released by The Texas Department of Agriculture

TEXAS MARKET NEWS SERVICE
Market price information is the keynote to the most profitable and efficient trading in agricultural products.
The farmer should not be dependent on prices quoted to him by his prospective buyer. He should have the advantage of knowing what the products are bringing in other sections of the state and nation.
Until a year ago, the Texas farmer did not have his own

yardstick" for determining the best price he should receive for his goods. He had to rely on quotations from markets which, in many cases, were so far away that they did not reflect the true picture in his own area.
In October, 1951 the Texas Department of Agriculture concluded an agreement with the United States Department of Agriculture which established a market news service in the state. The

expenses was to be shared jointly, and the service got underway on a budget of \$20,000.

The poultry industry in Texas was the first to be afforded daily price quotations. Previously, very limited information was available and market process were based on transactions in the Northwest Arkansas broiler area. Today, the poultryman can compare his prices with those in all areas of the state as well as nationally.

Fruits and vegetables provide a larger portion of the income of many farm families and information was also lacking in this field. Only the more intense truck crop areas in the Rio Grande Valley are currently covered in the state, but quotations are also available from Florida, California, and other producing areas.

Market reporting in these two fields of agriculture is now well advanced and, pending availability of funds during 1953, plans are underway to increase the service to grain sorghums, wheat, rice, and other products important in Texas farm economy. The information is sent out by mail, radio, telephone and through the state newspapers.

Briefly, the market news contribute to a free, informed, competitive, and hence efficient, marketing of products. The farmer benefits from expanded marketing outlets and increased returns because of lower marketing margins. The consumer also benefits from better buys, steadier supplies and a greater selection. And finally, the efficient marketing market benefits from a larger and steadier volume of business.

Daily fruits and vegetables and poultry quotations can be obtained by any person in Texas through a request to Agriculture Commissioner John C. White, State Land Office Building, Austin, Texas.

How To Obtain And Use Mexican Labor To Be Told At Littlefield

LITTLEFIELD, July -- Farmers and ranchers may learn from the most authoritative sources how legally to obtain and use Mexican national workers under the 1952 U. S.-Mexico labor agreement in a meeting to be held in the High School Auditorium here Tuesday, August 5, beginning at 1:30 p. m. All interested persons are invited.

Following their remarks, the speakers will join a panel to answer questions from the audience.

W. Q. Fortenberry of New Deal, a director-at-large of the West will preside. He is a former president of both the state and national unions.

Opening remarks and welcome will be made by Nelson Naylor, president of the Littlefield Chamber.

Other speakers and their subjects will be William S. Tyson, Washington, solicitor of the U. S. Labor Department, "Amendments to the Migrant Labor Agreement and Work Contract of 1951"; Mrs. Matt McCall, Lamesa, "The User's Responsibility"; and Henry LeBlanc, Austin, Chief, Farm Placement Division, Texas Employment Commission, "Certification and Processing Procedures."

Robert M. Fielder of Abilene, Chairman of the WTCC Agriculture and Livestock Committee, will conduct the question and answer session.

Joining the speakers on the panel will be Sam N. Brien, president of the Texas Cotton Ginners Association; Vaughn M. Bryant, Austin, Executive Director of the Texas Good Neighbor Commission and three other representatives of the Labor Department, P. D. Riley, Dallas, Investigation Supervisor, Wage and Hours and Public Contracts Division; Carol Holley, Washington, Assistant Chief, Farm Placement Division, and W. B. McFarland, Dallas, Regional Farm Placement representative.

This will be one of seven such conferences to be held in the West Texas Chamber of Commerce territory in August. That organization's Livestock and Agriculture Department Manager, Logan H. Walker, is acting as coordinator of them.

Other speakers and their subjects will be William S. Tyson, Washington, solicitor of the U. S. Labor Department, "Amendments to the Migrant Labor Agreement and Work Contract of 1951"; Mrs. Matt McCall, Lamesa, "The User's Responsibility"; and Henry LeBlanc, Austin, Chief, Farm Placement Division, Texas Employment Commission, "Certification and Processing Procedures."

Robert M. Fielder of Abilene, Chairman of the WTCC Agriculture and Livestock Committee, will conduct the question and answer session.

Joining the speakers on the panel will be Sam N. Brien, president of the Texas Cotton Ginners Association; Vaughn M. Bryant, Austin, Executive Director of the Texas Good Neighbor Commission and three other representatives of the Labor Department, P. D. Riley, Dallas, Investigation Supervisor, Wage and Hours and Public Contracts Division; Carol Holley, Washington, Assistant Chief, Farm Placement Division, and W. B. McFarland, Dallas, Regional Farm Placement representative.

This young lady is wearing the latest in summer styles—not bathing suits but evening fabrics. This spring, woven and painted canvas appears in bright new colors with hundreds of decorative possibilities for dressing up windows and doorways. The fashion forecast: gay awnings in solid colors and stripes. The weather forecast: cool and shady.

Joining the speakers on the panel will be Sam N. Brien, president of the Texas Cotton Ginners Association; Vaughn M. Bryant, Austin, Executive Director of the Texas Good Neighbor Commission and three other representatives of the Labor Department, P. D. Riley, Dallas, Investigation Supervisor, Wage and Hours and Public Contracts Division; Carol Holley, Washington, Assistant Chief, Farm Placement Division, and W. B. McFarland, Dallas, Regional Farm Placement representative.

Phone Company To Change Name

The name of Southwestern Associated Telephone Co., with General Offices in Dallas, Texas, will be changed to General Telephone Company of the Southwest on August 1, 1952, it was announced today by Mr. Roy Autry, Company President.

As in previous announcement, Mr. Autry pointed out that the name change would in no way affect the present operation of the Company or provide for any organizational change.

"The idea of changing the Company name is to have all operating companies of the General Telephone System carry the name 'General' in their respective titles," said Mr. Autry. "This plan for making uniform the names of all operating companies will bring wider knowledge of the General Telephone System and assist in marketing our securities, as well as bringing about many economies of operation."

Southwestern Associated Telephone Company is the largest of the independent (non-Bell) telephone companies in the Southwest serving nearly 130,000 telephones in Texas, New Mexico, Arkansas, Oklahoma, and Louisiana. The Company employs approximately 2,200 people and has its largest operations at Texarkana, Texas-Arkansas; Baytown, Texas; Hobbs and Carlsbad, New Mexico, as well as a considerable number of towns around Lubbock, Texas including Levelland, Littlefield, Brownfield, Lamesa and Tahoka.

Hunke's Tables



"Dat's nuff o dem Lou, now here's da kitchen sink."

Air Conditioners—Refrigerated & evaporative, \$39.95 & up.

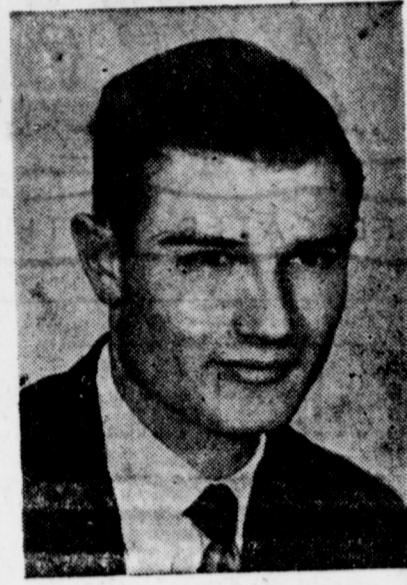
Hunke's ELECTRICAL SUPPLIES
Offer Records Tropical Fish
MULESHOE PHONE 7070

Y. L. Church To Conduct Revival

The Baptist Church of Y. L. will conduct a revival beginning

Sunday, August 3 to August 10. Services will be held at 10:30 a. m. and 8:30 p. m. daily.

Rev. M. D. Durham of Bovina will be the evangelist and Rev. James Tidesburg, pastor, will direct the services.



R. M. "Bob" Gregory
REPRESENTATIVE OF
Great National Life Insurance Company
LIFE INSURANCE FOR YOU & YOURS
P. O. Box 743 706 N. Ave. E
Phone 2769

FARLEY INSURANCE AGENCY
REAL ESTATE & INSURANCE
Over Bank, Muleshoe, Texas
Office Phone 7279 — Res. 5103

Abstracts — Title Insurance
Real Estate
Complete Abstract And Title Service
Muleshoe Abstract Co.
Barry T. Lewis Tel. 7320



BUTANE — PROPANE
CARBURETORS — STOVES — APPLIANCES
Phone 2810 For Prompt Service

Mrs. Wilson Of Maple Community Dies Sunday

Morton, July 28 — Mrs. R. M. Wilson, 95, of the Maple community northwest of Morton, died about 9 a. m. Sunday in Cochran County Hospital in Morton where she had been a patient the past week.

Funeral services will be held near Cross Plains and the body will be taken there by the Singleton Funeral Home.

Survivors are two daughters, Mrs. H. C. Brashear, Maple, and Mrs. G. A. Hunt, Bluffdale; 12 grandchildren, 14 great grandchildren and two great great grandchildren.

Go to New England, and visit the domestic firesides, if you would see the secret of American Independence. Religion has made them what they are. —Thomas Mosquere.

BULLETIN TO ALL DRIVERS:
SAFETY INSPECTION DEADLINE SOON!
On or before September 6th all cars and trucks in Texas must pass a rigid state safety inspection. Ford Dealers invite you to come in for a special safety check regardless of make or type of motor vehicle you are now driving. Stop in today!

One out of three NEEDS THIS SERVICE!
According to preliminary reports on a nationwide Safety Check made last May, nearly one out of every three of the nation's motor vehicles (32.5%) is unsafe! Of over 300,000 passenger cars checked, 31.4% were in need of service. Of over 45,000 trucks checked, 39.7% were found unsafe! Brakes, lights and steering headed the list of parts most usually found defective.

<p>HERE'S WHAT WE DO If you come in for safety service:</p> <ul style="list-style-type: none"> ★ CHECK BRAKES ★ CHECK FRONT LIGHTS ★ CHECK REAR LIGHTS ★ CHECK STEERING ★ CHECK EXHAUST SYSTEM ★ CHECK TIRES ★ CHECK WINDSHIELD WIPERS ★ CHECK GLASS ★ CHECK HORN ★ CHECK REAR VIEW MIRROR <p>AT A SPECIAL LOW PRICE! F.D.A.F.</p>	<p>HERE'S WHAT YOU GET If service is needed:</p> <ul style="list-style-type: none"> NEW-CAR SAFETY NEW-CAR PERFORMANCE NEW-CAR DEPENDABILITY NEW-CAR ECONOMY <p>AT A SPECIAL PRICE!</p>
--	---

LET US CHECK YOUR CAR... CHECK ACCIDENTS!

MOTORCO.
PHONE 4930 FORD AUTOMOBILES AND TRUCKS MULESHOE

U.S. ROYAL SPECIAL TRADE-IN OFFER

The Tire of the Century!
U.S. ROYAL MASTER
NOW EASIER TO OWN THAN EVER!
For a limited time—during this unusual event only—you enjoy the BIGGEST savings in years on the one tire in the world with Royaltex Tread, Everlasting Whitewalls, Renewable Safety!
Don't miss your chance—COME IN TODAY!

UP TO \$18.59
TRADE-IN ALLOWANCE for each of your present tires—old or new—on 8.00-15 White-wall U. S. Royal Master.
Equally generous allowances on other sizes. PLUS BIG ALLOWANCES ON YOUR PRESENT TIRES.

EXTRA!
Sensational NEW Tire Value!
U.S. Centipede Grip Special LOW Price!
WAS \$15.95 NOW \$12.95 plus tax exchange 6.00/16
Never before such outstanding tire performance at such a price! This completely new safety tire—the only tire in its field introduced in 1952—gives you stopping power, mileage economy, tire beauty beyond all former popular-price standards!
See us right now—while they last!

H. C. HOLTS CLYDE
PHONE 4880 MULESHOE, TEXAS



Beat the Heat With **HEINZ** Values from Piggly Wiggly

SAH
GREEN
STAMPS
DOUBLE
EVERY
TUES!

- HEINZ 15 OZ. CAN **SPAGHETTI** 15c
- HEINZ 15 OZ. CAN **BABY FOOD, 3 for** 27c
- HEINZ BOSTON, 16 OZ. CAN **BAKED BEANS** 16c
- HEINZ 15 OZ. CAN **SOUP, 3 for** 35c
- HEINZ 20 OZ. SOUR OR DILL **PICKLES** 34c
- HEINZ 14 OZ. BOTTLE **KETCHUP** 25c
- MACARONI 12 OZ. PKG. **SKINNERS** 23c
- 14 OZ. CELLO PAG. SPAGHETTI **Skimmers Italian** 25c
- 8 OZ. JAR SAUCE **Skimmers Spaghetti** 48c
- KRISPY 1 LB. PKG. **CRACKERS** 26c
- HEINZ QT. WHITE **VINEGAR** 23c
- ARMOUR STAR 9 OZ. JAR **PEANUT BUTTER** 23c
- VERNALL'S PKG. **BUTTER MINTS** 35c

- GEBHARDT'S MEXI STYLE NO. 300 **BEANS** 13c
- LA CHOY No. 2 CAN **BEAN SPROUTS** 15c
- LIBBY'S 16 OZ. CUT **BEETS** 21c
- LIBBY NO. 300 CAN **Beans, Chili & Spaghetti** 32c

- NIBLETS 12 OZ. CAN **MEXICORN** 21c
- HUNTS NO. 2 CAN **SPINACH** 15c
- HUNTS NO. 300 CAN **TOMATO JUICE** 10c
- HUNTS NO. 300 CAN **PEACHES** 18c
- HUNTS NO. 2 CAN **GREEN BEANS** 21c

- ## SHORTENING
- LIBBY'S NO. 1/2 CAN **POTTED MEAT** 15c
 - LIBBY NO. 1/2 CAN **VIENNA SAUSAGE** 21c
 - LIBBY 16 OZ. CAN **CORNED BEEF HASH** 39c

- Bakerite **3 Lb. Can** 69c
- DEL MONTE NO. 303 CAN **FRUIT COCKTAIL** 25c
- WHITE HOUSE NO. 303 CAN **APPLE SAUCE** 16c
- MARSHALL NO. 300 CAN **PORK & BEANS, 3 for** 29c

- ## COCA COLA 17c
- 6 BOTTLE CARTON **SUNKIST LEMONADE** 17c
 - LIBBY'S NO. 3 1/2 QUEEN **OLIVES** 17c
 - LIBBY'S NO. 5 STUFFED **OLIVES** 31c
 - ASSORTED FLAVORS **KOOL AID, 6 for** 25c
 - LIPTON'S 1 LB. BOX **TEA** \$1.35
 - LINIT **STARCH** 14c

- ## HAM
- Pinkney Sunray **Butt Ends, lb.** 63c
 - Shank **Ends, lb.** 59c
 - PICKLE & PIMENTO, FRESH SLICED **LUNCH MEAT, lb.** 55c
 - Kraft Pimento or Pineapple, 5 Oz Jar **CHEESE SPREAD** 26c
 - FRESH PORK SHOULDER **ROAST, lb.** 39c
 - ALL MEAT SKINLESS **FRANKS, lb.** 98c
 - VEAL CUTLETS **STEAK, lb.** 49c
 - BONELESS FISH **PERCH, lb.** 39c

- ## CHOPPED HAM 41c
- OSCAR MAYER 12 OZ. CAN **PALMOLIVE, 3 for** 25c
 - REGULAR BAR **DIAL SOAP, 2 for** 37c
 - BATH SIZE **AJAX CLEANSER, 2 for** 25c
 - LARGE CAN **CASHMERE BOUQUET, 2 for** 25c
 - BATH SIZE **FAB** 31c
 - REGULAR BOX **VEL** 31c
 - REGULAR BOX **HALO SHAMPOO** 69c
 - COLGATE 50c SIZE **DENTAL CREAM, 2 for** 69c
 - GIANT SIZE **HAJO SHAMPOO** 69c
 - SCHICK INJECTOR 20 BLADES **RAZOR BLADES** 69c

- ## Corn 25c
- FRESH HOME GROWN **6 Medium Size Ears** 25c
 - FRESH LARGE HEADS **LETTUCE, lb** 12 1/2c
 - FRESH CRISP **CUCUMBERS** 12 1/2c
 - FRESH NO. 1 CALIFORNIA **TOMATOES, lb** 19c
 - CALIFORNIA NO. 1 **CANTALOUFES** 12 1/2c
 - SNO-CROP 6 OZ. CAN **ORANGE JUICE** 19c
 - SNO-CROP 5 OZ. CAN **LEMONADE** 19c
 - SNO-CROP **CHOPPED SPINACH** 27c
 - SNO-CROP 12 OZ. PKG. **GREEN PEAS** 27c
 - SNO-CROP 10 OZ. PKG. **SQUASH** 25c
 - SNO-CROP 4 OZ. PKG. **WAFFLES** 25c

- ## TOILET TISSUES 3 For 25c
- NORTHERN 650 SHEET ROLL



PIGGLY WIGGLY

DAVIS & HUMPHRIES OWNERS & OPERATORS



GET A 1952 FOOTBALL SCHEDULE AT OUR CHECKING STAND TODAY - OUR HIGH SCHOOL SCHEDULE ON ONE SIDE - TEXAS TECH ON THE OTHER... **FREE!**

Mrs. Matie Griffin At Mission School

A large group attended the Progress W. S. C. S. meeting last Thursday. After a short business session, Mrs. Harry Musson gave the devotional.

The opening hymn was "Love Divine" followed by prayer by Mrs. Mitchell. The hymn, "All People That on Earth Do Dwell" was sung and a prayer was then led by Mrs. Musson. Mrs. Richards had charge of the text book, "The Family, A Christian's Concern".

A skit, "How Fare Our Children" was presented at the conclusion of the meeting. The Society was then dismissed by Mrs. Byron Gwyn.

Cookies and punch were served to Mesdames Carol Jones, Eva Murrah, Harry Musson, James Wedel, Cleburne Gray, Mattie Griffin, Troy Atkinson,

O. S. Richards, George Mitchell, Byron Gwyn, and visitors, Mrs. Harold Mardis, Mrs. A. L. Davis, and Mrs. Joe Walker. Children present were Jeanne, Kathy and John Gray and Carolyn Wedel. Mrs. Mattie Griffin is attending the mission school being held in Lubbock this week.

HOME AFTER TRIP

Mrs. M. F. Green and sons, Jim and Bob, have returned home after a two weeks visit in Benton, Ill., with her parents, Mr. and Mrs. C. N. Harrelson. Mrs. Green also attended her wedding of a niece in Chicago.

Rainbow Girls Enjoy Trip To Palo Duro Canyon

Rainbow Girls of Muleshoe Assembly No. 161, enjoyed an overnight trip to Palo Duro Canyon, July 28 and 29.

The girls and their sponsors left Muleshoe Monday morning at 6:00 o'clock, in a large truck, provided by Johnnie Johnson, a member of the Advisory Board, and with their bed-rolls and camping equipment, went to Palo Duro Canyon, where they camped out and cooked over a camp fire in true Western style. Hiking, kodaking and other out-door activities were enjoyed, along with all the beauties of this lovely spot. The group went

Society News

By Mrs. Joyce Shafer

THE MULESHOE JOURNAL, Thursday, July 31, 1952

Miss Drinkard And Mr. Crow Are Married

The marriage of Miss Mary Drinkard, 2000 Clover Lane, Ft. Worth, daughter of Mr. and Mrs. Tom Drinkard of Muleshoe, to John Crow, son of Mr. and Mrs. Arthur Crow of Muleshoe, took place at 8 p. m. Saturday in the chapel of Broadway Baptist Church in Ft. Worth.

Rev. Ray Rozell married the couple after pre-nuptial solos by E. A. Scarbrough, who was accompanied by Mrs. Paul Joyce, organist, who played the wedding marches.

Miss Lil Marik of Megargel was maid of honor, and Miss Tommie Ann Drinkard of Muleshoe was her sister's bridesmaid. Both wore ankle-length frocks, the former of powder blue and the cade bouquets of frenched carnations tied with satin lover's knots. Center, where they enjoyed ping-pong, music and games.

into Canyon for swimming, tennis and relaxation in the beautiful and spacious Methodist Youth

A tour of the Museum climaxed this enjoyable trip and the girls headed back for Muleshoe, Tuesday evening, tired, but happy with their much desired sun-tan.

Those making the trip were: Marilyn Gupton, Jo Addine Waggon, Jean Louise Gammon, Elizabeth Farley, Darla Myers, Barbara Douglass, Bettie Collin, Paula Province, Barbara Hinkson, Lou Anna Agee, Charlene Graef, Norma Graves, Marlon Clark, Norma Harris, Bobbie Collins, Mamie Freeman, Tommie Bovell, Ginger Gaede, Opal McLaurey of Corpus Christi, Texas and Jeanette Gaede of Memphis, Tenn. Jeanette is Musician in Memphis Assembly No. 1. Sponsors were: Mr. and Mrs. John Thomson and family, Mrs. Frank Hinkson and Mrs. John Farley.

Abby Rose Drinkard of Muleshoe also the bride's sister, was flower girl.

James Crow of Muleshoe was his brother's best man. Lowell Hausler of Kerrville was groomsmen. Dan Terry of Lamesa, Jack Steele of Waco and Earlean Collins lighted the candles and ushered.

The bride was given in marriage by her father. She wore a white satin gown overlaid with white nylon tulle, with a long sleeved bodice and a full ankle-length skirt. Her fingertip illusion veil was attached to a calot, and she carried white gardenias surrounded by Stephanotis.

Afterward a reception was held at the church. The house party included Misses Leone Newby and Sue Cornelius, who served punch and cake, and Mrs. James Crow of Muleshoe, who presided at the guest book.

When the bridal couple left for Colorado, Mrs. Crow wore a gold suit with navy accessories and a gardenia corsage. They will live in Muleshoe until the bridegroom leaves to report to Fort Eustis, Va., Sept. 1 where he will be a second lieutenant. He is a member of Acacia fraternity at the University of Texas, of which he is a graduate. Mrs. Crow attended TSCW.

Marriage Vows Are Announced

(From Vernon Record) Judge and Mrs. R. D. L. Kil-lough announce the marriage of their daughter, Ann, to Lt. Robert E. McNairy, son of Mr. and Mrs. M. V. McNairy of South Lockett.

The double ring ceremony was performed in the parsonage of the Methodist Church at Catonsville, Md., by the pastor, Rev. Trago W. Lloyd, on the evening of July 19.

The bride wore an imported Milgrim suit of cinnamon toast silk with brown accessories and carried an orchid topped Bible. She also carried a family heirloom handkerchief, hand made of exquisite white lace.

Mrs. McNairy graduated from Vernon High School in 1949 and attended Hockaday Junior College at Dallas. She was a student in Midwestern University, Wichita Falls, at the time of her marriage.

The groom, also a Vernon High School graduate, with the class of 1947, received his BS degree from New Mexico Military Institute, and has recently been attached to an armored division of the U. S. Army, stationed at Fort Knox, Ky.

Following a honeymoon trip to Baltimore, Md., and New York City, Lieutenant McNairy sailed on the General G. D. Sturgess for a period of duty in Germany. Mrs. McNairy has returned to Vernon to make preparations for joining her husband there when he has been permanently located.

Lt. McNairy is a nephew of Mrs. Ike Robinson of Muleshoe.

FAMILY PICNIC IS HELD FRIDAY

The Gupton, McLaury, and West families enjoyed a picnic at the road, side park Friday evening. It reported a good time.

Paw: Nancy's boy friend is in the parlor. Isn't it about time he was going?

Maw: Oh now, Paw, you remember how it was when we were courting.

Paw: That settles it, he's going now.

All Kinds of Paper, Office Sale at The Journal Office.

LOCAL PEOPLE TO VISIT THE BAHAMAS

A group of Muleshoe people, members of three families, next week will be basking in the old world flavor of old Nassau, in the Bahamas, which are British possessions. The islands are off the east coast of Florida in the Atlantic.

Mr. and Mrs. Noel Woodley and daughter, Anne, Mr. and Mrs. Sam Fox and son, Stanley, and Mr. and Mrs. Pat R. Bobo will travel on their separate ways and meet there about Monday, according to plans.

The Woodleys went down state for visits with relatives before going to Miami, Fla., where they will emplane for the islands. The Foxes will go by train to Miami and fly over. The Bobos will go to Houston by train, then fly to New Orleans, where they will visit a day or so, fly to Miami for a day's stay, and still report at Nassau about the time the others reach the rendezvous. They'll be there about two weeks and ought to have plenty to tell their friends about during the long evenings of next winter. It

CHRISTIAN SCIENCE SERVICES

Our love for our fellowman measures our love for God, and our understanding of Him, the Bible confirms this in these words: "He that loveth not knoweth not God; for God is love" (I John 4:8). This is the Golden Text of the Lesson-Sermon to be read in Christian Science Churches this Sunday, August 3, on the subject "Love".

In answer to the lawyer's question, "What shall I do to inherit eternal life?" Christ Jesus replied, "Thou shalt love the Lord thy God with all thy heart, and with all thou soul, and with all thy strength, and with all thy mind; and thy neighbor as thyself" (Luke 10:27). Then he established for all time the definition of neighbor with his parable of the Good Samaritan.

Illustrating the fact that individual salvation cannot be oblieth it, seeking his own in a neighbor, Mary Baker Eddy, the Discoverer of Christian Science, says this, which is included in the Lesson-Sermon: "The rich in spirit help the poor in one grand brotherhood, all having the same Principle, or Father; and blessed is that man who seeth his brother's need and supplieth it, seeking his own in another's good" (p. 518).

Hospital News

Mrs. J. L. Redwine, a surgical patient, is resting well. Jaquita, daughter of Mr. and Mrs. Virgil Nowell, a surgical patient, has gone home.

Robert, son of Mr. and Mrs. Buford Hunt, has been discharged.

Mrs. Albert Carroll, a medical patient, has gone home.

Mr. and Mrs. O. S. Sheppard were medical patients and they have returned home.

Mrs. F. W. O'Donnell, a medical patient, has returned to her home.

Mrs. S. F. Davis, a medical patient, has been released.

Linda, daughter of Mr. and Mrs. Henry Landers, has been a medical patient but has returned home.

Mrs. Robert Harvey is in for medical care, and is resting well.

Mrs. Frank Mier is a surgical patient and is resting well.

Mrs. James Warren is in for medical care. She is resting well.

Congratulations To:

Mr. and Mrs. Vernon Wolf on the birth of a son, Tommy Dean, born July 24, 1952.

Mr. and Mrs. Efron Zambrano on the birth of a son, Efron Hingosa, Jr., born July 26, 1952.

Mr. and Mrs. David Pedroza on the birth of a son, David, Jr., born July 28, 1952.

Mr. and Mrs. Esidoro Salazar, on the birth of a son, Ricardo, born July 29, 1952.

able to get a word in edgewise and daughter, Texann, and Mr. in summer conservation here, and Mrs. Roy Bounds left Sunday for Arkansas where they will visit for a few days. They will return the latter part of the week.

ON VACATION TO ARKANSAS Mr. and Mrs. Bud Holdeman

Supplies at The Journal. BOOKKEEPING SYSTEMS, Etc.

Farmers! Make Big Savings! Use Low-cost Philgas Tractor Fuel

Philgas



Save on Repair Bills, Too

Convert your tractor! Compared to gasoline, Philgas can save you several cents a gallon. These savings will soon pay the cost of conversion. And Philgas is easy and safe to use. No waste from spilling, overflow or evaporation, because the filling system is completely enclosed.

Clean-burning... thrifty! Save as much as 50% on engine maintenance costs. No cylinder wall washing. Long ring and valve life. Low cylinder wear. For a thrifty fuel with exceptionally high energy content (100 octane plus), get high-quality Philgas.

All-purpose fuel! Use Philgas to heat your home, for cooking, hot water and refrigeration! Use it also for heating stock tanks, chick brooders, and other needs around your farm. Install a central tank for all your needs. Low cost fuel. Convenient, clean, dependable!

And remember... your local Philgas distributor is fully qualified to make dependable installations, to provide prompt and courteous service. See him today.

Philgas is distributed by

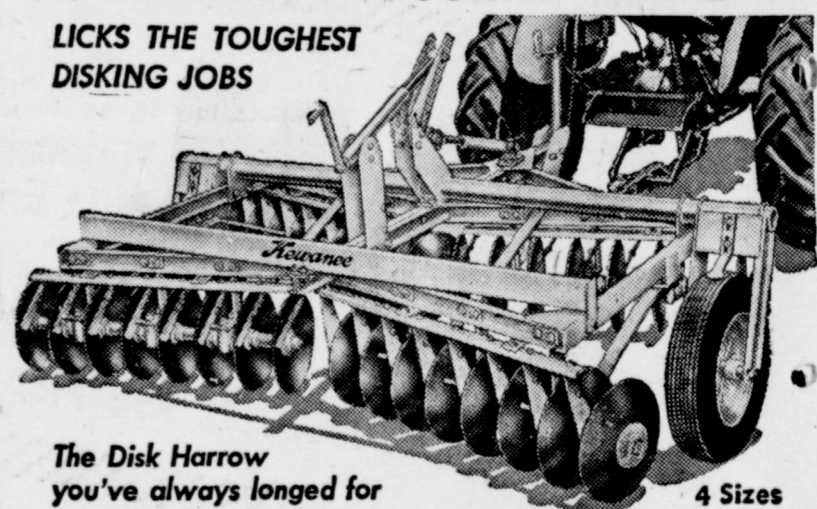
Muleshoe Liquefied Gas Co.

Phone 3130

Muleshoe

Kewanee WHEEL MOUNTED DISK

LICKS THE TOUGHEST DISKING JOBS



The Disk Harrow you've always longed for

4 Sizes

Operation is easy, simple and "non-stop." You merely touch the hydraulic lever to raise or lower disk blades and accurately control depth of disking.

Raises over wet spots or grass waterways "on-the-go" or lifts clear for sharp U-turns at row ends or travel on the road. You go from job to job in minutes... no wear on disks on concrete or gravel roads. No heavy lifting into truck or trailer or unloading in the field.

Heavy, rugged construction and fixed-angle gangs give you maximum cutting and thro mixing of the soil from 1 inch to hub deep.

Ask to see a Demonstration

FOR LEASE OR SALE

INTERNATIONAL

ALFALFA DRILL

20-14 Inch Spacing

ALFALFA SEED COSTS MONEY — PUT YOUR ALFALFA SEED IN RIGHT.

SAVE \$5.00 or MORE PER ACRE

ON THE COST OF SEED

Be Assured of A Good Stand

JOHNSON-NIX

INTERNATIONAL & OLDSMOBILE

Phone 2940

Muleshoe

WANTED

Someone to sell Burial Insurance, either man or woman.

Contact us at —

Muleshoe Funeral Home Phone 2860 32-2tp

TO THE VOTERS OF BAILEY COUNTY....

I want to thank each and everyone of you for your vote and influence shown me in last Saturday's election.

I hope I can prove myself in a way that will meet with all's approval during the next two years. I will try to run the office on a fair and impartial basis and want very much to treat my opposition with every courtesy shown to those that I know have supported me. I want to be "Everybody's Sheriff, NOT just a special few".

Thanks a million,
Your Sheriff,

HUGH FREEMAN

TO THE VOTERS OF PRECINCT 1 BAILEY CO.

Thanks, one and all for the fine support you gave me in my race for Commissioner, July 26.

I am still in the race and will appreciate your vote on August 23.

M. E. FINLEY

You'll find no safer place for your savings to work, and few that are as profitable.

SAFETY INSURED up to \$10,000. for each saver

FOR INFORMATION — In — MULESHOE SEE MILDRED DAVIS

Western NFLA Building Muleshoe FIRST FEDERAL SAVINGS AND LOAN ASSOCIATION Clovis, N. M. P. O. Box 470

THANKS.....

To The Voters of the 96th Legislative District:

Please accept my sincere thanks and appreciation for the large majority given me in Saturday's Primary.

Sincerely,

Jesse M. Osborn

THANKS.... TO EVERYBODY!

I would like to express my sincere thanks to everybody for the support and help in the election last Saturday. I cannot express how I feel, but I will say that if it had not been for my many friends I would not have made it. There is a value to most everything but a friend is invaluable.

So, with the second primary coming up August 23, with your help I will be your next commissioner. And I still pledge myself to be for everything that is right and against everything that is wrong.

Thanking you again,

Tom Morgan

New GI Law Provides Five Benefits For US Veterans Of Korean Conflict

The President on July 16 signed into law a new GI Bill for veterans who served in the armed forces any place in the world since the start of the Korean conflict on June 27, 1950.

The new law provides five benefits, all designed to assist veterans in their return to civilian life. Included are education and training; guaranteed or insured loans for homes, farms and businesses; unemployment compensation; mustering out pay; and job finding help.

The education and training provisions allow a veteran one and one half days of training for each day in service after the outbreak of the Korean fighting, regardless of where the service was performed, up to a maximum of 36 months.

However, veterans who have previously trained under earlier veterans' training laws, the World War II GI Bill or Public Laws 16 or 894 for the disabled, may get up to 48 months, minus whatever time they've already spent in training under those earlier programs.

A veteran may train in school or college, on the job or on the

farm, so long as the school or training establishment has been approved by an appropriate State Approving Agency and meets other qualifications of the law. Only one change of course program is allowed, except under certain conditions determined by the Veterans Administration.

Veterans in GI Bill training will receive an education and training allowance each month from the Government, to meet part of the expenses of their training and living costs. Tuition, fees, books, supplies and equipment will not be paid by the Government; instead, they will have to be paid out of the monthly allowance.

Rates for veterans in full time training in schools and colleges are \$110 a month, if they have no dependents; \$135 if they have one dependent, and \$160 if they have more than one dependent. Those in training less than full time will receive lower monthly rates.

Top monthly amounts for on the job trainees are \$70 without dependents; \$85 with one dependent, and \$105 with more than one dependent. The maximum for institutional on farm trainees are \$95, \$110, and \$130, respectively. The law requires that on job and on farm rates be reduced, at four month intervals, as the training progresses and the veteran's own earnings increase.

The law also specifies that veterans taking institutional on farm training must devote full time to their program.

The new GI Bill places a \$130 a month ceiling on job training, regardless of dependency status. Should a veteran's training allowance plus his earnings as a trainee exceed this amount, VA will reduce the allowance accordingly. There's no ceiling, however, on what he may earn.

A veteran will get his monthly allowance some time after the end of each month of training completed. Before the VA can pay him, the law requires a certification from both the veteran and his school or training establishment, that he was enrolled in and pursuing his course during that period.

This new method of payment differs from procedures followed under previous veterans' training laws. Under earlier laws, VA paid tuition and other costs directly to schools, and also paid eligible veterans a monthly subsistence allowance.

Although the new law takes effect July 16, no training allowance may be paid for any period prior to August 20.

The new GI Bill contains important deadlines that post-Korea veterans should keep in mind, VA said.

Education and training, for post-Korea veterans, must be started by August 20, 1954, or two years after release from active duty, whichever comes later. No

Plains Farmers Fear City Demands On Water To Endanger Irrigation

LUBBOCK, July 29 — The problem of meeting the long range water needs of both High Plains farmers and city dwellers is the one most frequently presented, by both farmers and city officials, to the Hi-Plains Underground Water Conservation District, reports Tom McFarland of Lubbock, manager.

Lubbock and Amarillo, the Plains' population centers, are using or planning to use, water wells in rural areas of Potter, Randall, Deaf Smith and Bailey counties, according to current reports.

Farmers in these five counties have told the water district that they are afraid the demands of big cities on rural water supplies will cause a lowering of water levels and consequent difficulty in pumping and depreciation of land values.

Among hardship cases already reported was one in Deaf Smith county, where the real estate value of an irrigated farm was reduced to that of a dry land farm when insurance loan investigators discovered big city wells operating on the property, McFarland said.

And, while some provisions, are being made for water conservation, the farmers fear that the day to day pumping over even three or four sections in a county will take its eventual toll on the underground water levels.

At the same time, McFarland explained, the farmers recognize the fact that the cities are obliged to insure a plentiful and economical supply of water, and on a long run basis, for their homes and business places. But they hope that this can be accomplished in such a way that it will not work a hardship on the country's agricultural interests.

From an economic standpoint, they suggest, it would be much less costly, in both money and water, to develop water fields in training may be given beyond either seven years after discharge or seven years after the end of the current emergency, whichever is later.

In contrast, for most World War II veterans, the GI Bill cut-off date for starting has already passed, and training may not extend beyond July 25, 1956.

Eligibility requirements for education and training benefits include: (1) a discharge under conditions other than dishonorable; (2) active service any time after June 27, 1950, and (3) at least 90 days' total service, unless discharged sooner for a service connected disability.

such a way that the same wells can be pumped, perhaps alternately, over a period of many years, thus saving the cost of drilling new wells and the waste of pumping one section of land dry and then moving on to another area.

Local Girl On TSCW Honor Roll

DENTON, Tex., July 28 — Miss Mary Irene Shanks of Muleshoe is one of 276 girls honored on the Dean's List at Texas State College for Women.

Released this week (July 28) by Dean W. H. Clark, the List recognized students who maintain exceptionally high scholastic averages during the spring semester.

Daughter of Mr. and Mrs. R. A. Shanks, Route 2, Muleshoe, Miss Shanks is majoring in music education at TSCW where she is a member of the college chorus and chapel choir.

Musical Revue Plans Disclosed For Local Clubs

Eddie Ball, of Geller Productions, Hollywood, here to direct the three night musical revue that will be staged as a part of the Will Rogers Memorial Round-up August 14, 15, and 16, was the principal speaker at the Rotary Club Tuesday, telling of his plans for the musical, which will

include the crowning of Miss Muleshoe, the Roundup queen.

Mr. Ball has had wide experience in the direction of such productions. He called for the wholehearted cooperation of members of the Rotary Club. He will visit other clubs of the city during the week to report on his plans and the progress that is being made.

Horner Sanders, Jr., accompanied Mr. Ball and told other details of the musical and urged the cooperation of everyone to make the show a great success. Myron Pool, club president, also urged the cooperation of everyone to help make the Roundup and the musical show, a great and permanent success.

Mr. Pool called attention to the fact that the Rotary Club is the official keeper for the life size picture of Will Rogers, a beautifully framed piece of work that has been loaned to the Roundup by Will Chapman of Paducah, Chapman is an associate of Willis Branscum in furnishing saddles and other equipment for the rodeo. The Crow Chevrolet company show window was selected as the proper place for the display of the picture. It will be floodlighted, Arthur Crow said, and shown in a prominent spot for all to view.

Guests included C. V. Singleton and Travis Reed, of Muleshoe Funeral Home, Ett Evans,

LUZIER'S
Fine Cosmetics & Perfumes
MRS. E. E. HOLLAND
1101 East 2nd St.
Phone 5449

Cecil H. Tate
ATTORNEY-AT-LAW
Office in Courthouse
Muleshoe, Texas

Bailey County Abstract Co.

ABSTRACT SERVICE — LOANS
Mrs. Lela Barron — Mgrs. — L. S. Barron
Established in 1900

Clovis Veterinary Hospital

AT THE STOCKYARDS CROSSING
Facilities for Large and Small Animals

E. E. KRAUS, D. V. M. CHAS. WEBSTER, D. V. M.
104 Hull Phone 5442 Clovis, N. M.

Lowery Mallory, and G. A. Sahli. **CARD OF THANKS**
Rev. and Mrs. Patrick and daughters of the Church of the Nazarene at this time wish to thank everyone who helped us

in our time of distress and injury received from our accident. I believe God spared our lives to be able to tell the old, old story of Jesus. God bless you all.
Rev. and Mrs. Sidney Patrick and daughters

DR. E. L. PUTMAN

OPTOMETRIST

First Door North of REA Building

Muleshoe, Texas

Phone 6560

Dr. C. H. McIlroy

Naturopathic Physician

906 MAIN STREET

Phone 5350

Muleshoe, Texas

INSURANCE PROTECTION POLICY FOR EVERY NEED

Lane Insurance & Real Estate

EDDIE LANE, OWNER

PHONE 3630

MULESHOE, TEXAS

MULESHOE LIVESTOCK AUCTION

H. K. Freeman

Hugh Freeman

Cattle Sale Each Saturday

Col. Dick Doshier

Auctioneer

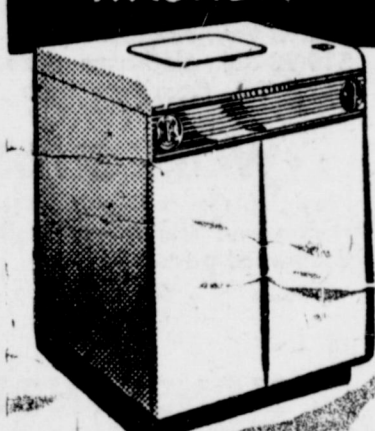
All Farm Sales 5% — Bills Paid

To Book Farm

CALL HUGH FREEMAN—PHONE 2230 or 3770

DR. B. Z. BEATY
DENTIST
Across From Muleshoe Motor
Office Hours:
9 - 12 a. m. — 1 - 5 p. m.
Closed Saturday Afternoons
Office Ph. 2040 Res. Ph. 5020

WORLD'S FINEST
AUTOMATIC
WASHER



BLACKSTONE

We'll demonstrate its superiority right before your eyes. Weekly payments as low as

\$2.50

Johnson-Pool
TIRE & APPLIANCE

Dial 7370

Muleshoe

IT'S

SHOWTIME

AT THE **COOL**

VALLEY & PALACE

VALLEY

THURSDAY and FRIDAY

Stuart Granger
Eleanor Parker

—In—

Scaramouche

SATURDAY ONLY

Rocky Lane

—In—

Fort Dodge Stampede

SUNDAY and MONDAY

Bud Abbott
Lou Costello

—In—

Jack & Beanstalk

TUESDAY and WEDNESDAY

Ann Sheridan
John Lund

—In—

Just Across The Street

PALACE

THURSDAY and FRIDAY

George Raft
Dorothy Hart

—In—

Loan Shark

SATURDAY ONLY

Roy Acuff

Home In San Antonio

SUNDAY and MONDAY

Joseph Cotton
Shelley Winters

—In—

Untamed Frontier

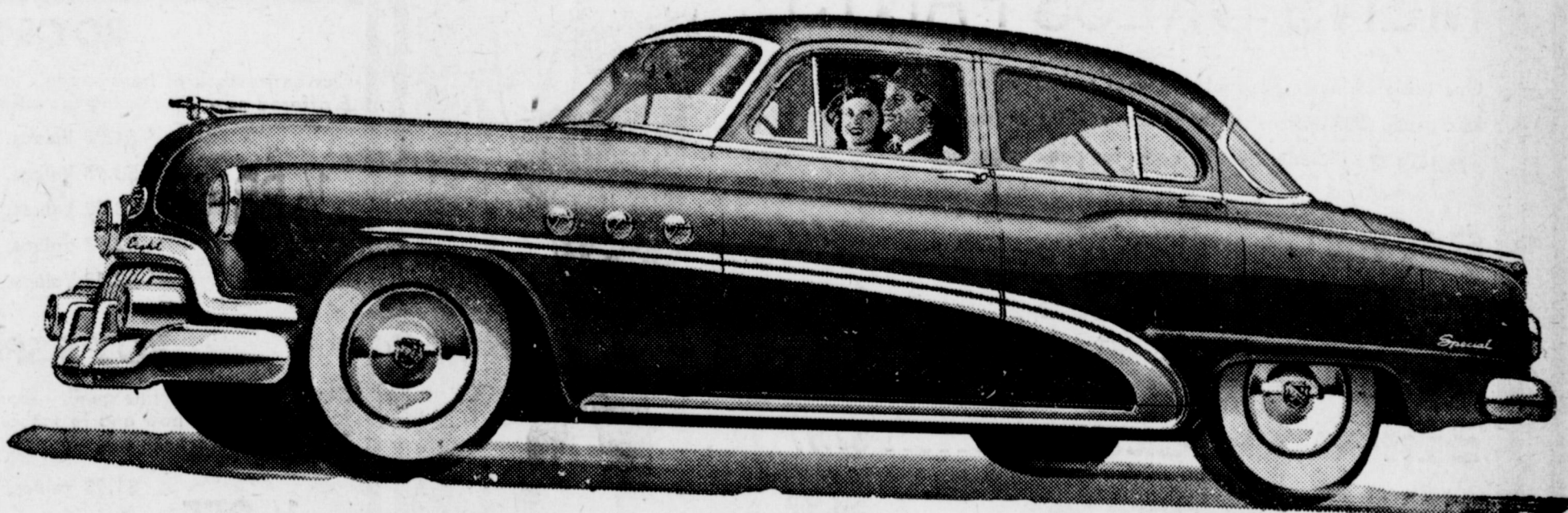
TUESDAY and WEDNESDAY

Lauren Bacall
Walter Brennan

—In—

To Have Or Have Not

Motion Pictures Are Your Best And Cheapest Entertainment



BIG BANG for the Bored Car Owner

Have you ever driven a Buick SPECIAL?

Do you know how it feels to touch off the most powerful engine you'll find in any car of its pounds and price?

Do you know that it almost steers itself — holds its course like an airliner on the beam — even comes back on course after taking a turn?

Do you know that there's silken magic in its Dynaflo Drive*?

Do you know how many miles it can get from a gallon of gas?

Do you know that it has a Million Dollar Ride?

Mister, if you haven't found out such things, you're missing a lot of fun every mile you drive.

You're missing the fun of bossing around a big hoodful of high-compression, valve-in-head Fireball 8 Engine.

You're missing the fun — and comfort — of riding on four big, soft, easy-acting coil springs.

You're missing the fun of feeling daisy-fresh with half-a-thousand thrilling miles behind you.

You're missing, in short, the fun of owning a Buick.

And it's nobody's fault but yours because — at the prices we're asking for this beauty — you can afford a Buick if you can afford any new car.

How about checking up on what you've been missing?

Equipment, accessories, trim and models are subject to change without notice. *Standard on Roadmaster, optional at extra cost on other Series.

Sure is true for '52

When better automobiles are built **BUICK** will build them

Muleshoe Automobile Company

Highway 70 & North Ave. B

Phone 4830

Muleshoe, Texas



DICKIES OVERALLS

8 oz. Sanforized, "Wear-N-Forced 3 ways" denim.

Clearance Sale Price

\$2.98

TEX-N-JEANS

Sanforized denim, trim, snug fit and zipper fly.

- SIZES 1 to 6 \$2.29
- SIZES 7 to 16 \$2.59
- Double Knee Sizes 1 to 6 \$2.49
- Double Knee Sizes 7 to 14 \$2.78
- Heavy 11 oz. Sizes 7 to 14 \$3.47

DICKIES Shirts & Pants

8.2 Carded Army Twill, Suntan Sanforized Shirts and Pants. Stock up on your work clothes at this big saving. Shirt sizes 14 to 17½, pant sizes 28 to 44.

Clearance Sale Price **\$3.38**

BLUE Chambray Shirts

Two pockets, sanforized, full cut. Regular and longs in sizes 14 to 17.

Clearance Sale Price

\$1.38

COBB'S



Customers of COBB'S have learned that when we have a SALE it is a REAL SALE — This bought for this summer it seemed good judgement to BUY HEAVILY. WE BOUGHT T LOW COST on hundreds of items. This is NEW SEASON MERCHANDISE. We believe mothers: You will find many things your children will need when school starts in this sa

BEGINS THURS



½ PRICE

MENS SUITS

These are truly beautiful suits and they won't last long as this very low price. One and two pant suits included. Curlee Summer and year around worsteds tailored of 100% wool.

- \$75.00 Val., Clearance Sale \$37.50**
- \$59.75 Val., Clearance Sale \$29.88**
- \$49.50 Val., Clearance Sale \$24.75**

MENS DRESS PANTS

One table of men's all wool and wool and rayon pants going out at half price. Our entire stock of men's summer slacks, and tropical worsteds are included. Come early for peak selection.

- \$7.98 Val. Clearance Sale \$3.99**
- \$9.98 Val., Clearance Sale \$4.99**
- \$12.98 Val., Clearance Sale \$6.49**
- \$15.95 Val., Clearance Sale \$7.97**
- \$17.95 Val., Clearance Sale \$8.97**



SUMMER DRESS SHIRTS

Famous brands of dress shirts in cool sheer open weave in colors and white. Our entire stock to go at great reduction. Regular \$3.95 —

Clearance Sale Price **..... \$2.28**

MEN'S SUMMER STRAW

Our entire stock of fine quality summer straw hats to go at a great reduction. They are priced for quick clearance and you'll have to hurry for there are only a few left.

- \$1.98 Values, clearance sale price 99c**
- \$2.98 Values, clearance sale price \$1.49**
- \$3.98 Values, clearance sale price \$1.99**
- \$5.00 Values, clearance sale price \$2.50**
- \$7.50 Values, clearance sale price \$3.75**

MEN'S FELT HATS

A special group of fine felt hats in broken sizes and colors. Regular \$4.98 o \$10.00 values going at the extra low price of —

\$1.88

Men's Long Sleeve Sport Shirts

- One table of long sleeve sport shirts in all sizes tailored in most beautiful colors.
- \$3.98 Values, clearance sale price \$1.99**
- \$4.98 Values, clearance sale price \$2.49**
- \$5.98 Values, clearance sale price \$3.97**
- \$6.95 Values, clearance sale price \$3.97**

Men's Short Sleeve Sport Shirts

- One table of men's short sleeve sport shirts in fine cottons and rayons. Assorted patterns and beautiful colors. These will go fast so come early.
- \$2.98 Values, clearance sale price \$1.49**
- \$3.49 Values, clearance sale price \$1.75**
- \$3.98 Values, clearance sale price \$1.99**

MEN'S T-SHIRTS

Men's fine quality T-shirts Regular 69c and \$1 values, in all sizes, color of white. While they last, clearance sale price —

48c

MEN'S NYLON SOCKS

Men's short elastic top nylon socks, 100% nylon in assorted colors. Regular \$1 values, sizes 10 to 12. This is a clearance sale extra —

58c pair

MEN'S FLANNEL SHIRTS

- Our entire stock of men's cotton flannel shirts, in broken sizes and colors.
- \$2.98 Values, Clearance sale price \$1.49**
- \$3.98 Values, Clearance sale price \$1.99**

BOY'S SPORT SHIRTS

One big table of boys famous brands of long sleeve sport shirts. Sanforized, fast color, in gabardines, cottons and rayons, plaids and solid colors. Stock up now on this wanted item. Values to \$3.98 Sizes 6 to 20 Clearance Price.

\$1.99

MEN'S AND BOY'S SWIM SUITS

Our entire stock of boxer and brief style swim suits offered now at great reduction. They're priced for fast clearance.

- \$1.95 Value, Clearance sale price 97c**
- \$2.49 Value, Clearance sale price \$1.25**
- \$2.95 Value, Clearance sale price \$1.47**
- \$3.95 Value, Clearance sale price \$1.97**
- \$5.00 Value, Clearance sale price \$2.50**

MEN'S TIES

One group of men's ties, values from \$1.50 to \$2.50, your choice during our clearance sale —

88c

BOY'S SANDALS

Our entire stock of boys sandals in sizes 4½ to 12, 12½ to 3 and 3½ to 6 offered now at amazing reduction.

½ PRICE

- \$4.98 Values, clearance sale price \$2.49**
- \$3.98 Values, clearance sale price \$1.99**
- \$3.49 Values, clearance sale price \$1.75**
- \$2.98 Values, clearance sale price \$1.49**
- \$2.49 Values, clearance sale price \$1.25**

BOY'S SPORT SHIRTS

Our large stock of fine quality short sleeve sport shirts are truly a wonderful buy for wear now and to school. Sanforized and fast color in sizes 6 to 20. Gingham, broadcloth and seersucker materials. Priced for quick clearance.

½ OFF

- \$1.98 Values, clearance sale price 99c**
- \$2.49 Values, clearance sale price \$1.25**
- \$2.98 Values, clearance sale price \$1.49**

BOY'S PAJAMAS

Summer cool seersucker short sleeve pajamas in sizes 4 to 12. A regular \$2.98 value. Sale Price —

\$1.88 pair

MEN'S SUMMER SHOES

Our entire stock of men's two tone ventilator shoes in various colors and styles are offered at great reduction.

- \$12.98 Val., clearance price \$7.**
- \$10.98 Val., clearance price \$6.**
- \$9.98 Val., clearance price \$5.1**

WORK SHOES

Men's plain toe work shoes with strong and sturdy composition sole. Clearance price —

\$4.88

HOUSE SHOES

One group of ladies' and children house shoe in broken sizes and colors. Values to \$4.50. Clearance price —

\$1.38 pair

TOWELS

Size 20x40 fine quality turkish towels. Clearance price —

43c

TOWELS

Large size Cannon turkish towels in an extra good grade. This is a regular \$2.95 towel in No. 1 seconds. Clearance price —

\$1.44

TOWELS

Solid color size 19x36 turkish towels in slight seconds. Clearance price —

33c

CURTAINS

One group of fine window curtains. Made of organdy in assorted colors. This is a close out.

- \$7.98 Val., clearance price \$3.99**
- \$9.98 Val., clearance price \$4.99**
- \$14.98 Val., clearance price \$7.49**

**ALL SALES FINAL
NO ALTERATIONS
NO EXCHANGES
NO REFUNDS
PLEASE**

COB

MULESHO

MI-ANNUAL

Clearance!

SALE

COME EARLY FOR
BEST SELECTIONS

year, more than ever that is true. We ARE OVERSTOCKED. We admit it. When we
OO MUCH SUMMER MERCHANDISE. Now we have SLASHED PRICES WAY BE-
you will agree this sale will be YOUR GREATEST MONEY SAVING EVENT. A tip to
le.

FRIDAY, JULY 31

We have literally thousands of items in stock that are also marked down which are not included in this ad. Shop again and again during this gigantic Clearance Sale. You'll save as never before.

NYLON HOSE

First quality, 15 denier, 51 gauge in beautiful new summer shades. Clearance price —

78c pair

NYLON PANTIES

Ladies 100% nylon brief style panties in sizes 5, 6 and 7. Clearance price —

99c

NYLON SLIPS

One table of ladies Nylon Slips in broken sizes and colors. A real clearance value. Better come early for your size. Values to \$9.98. Clearance price —

\$3.88

Foundation Garments

One huge table of Bra's, girdles, etc. Values up to \$12.95 are included in group of broken sizes.

Clearance price —

88c each

Handkerchiefs

Made of fine quality hemmed white handkerchiefs reduced for this clearance sale.

8c each

Men's Undershirts

Made of fine quality ribbed combed yarn. Sizes 34 to 46. Regular 69c value. Clearance price —

44c

Wash Cloths

8c each

Bedspreads

One group of double bed size spreads of rayon and cotton and solid colors of chenille.

\$4.98

SHEETS

Fine quality Garza sheets, type 128.

Size 81x99 \$1.97

Size 81x108 \$2.27

PIECE GOODS

Our entire stock of summer piece goods reduced in half. Tissue Chambray, tissue gingham and cotton voiles priced for fast close out.

Reg. 98c yd., clearance price **49c**
Reg. \$1.19 yd., clearance price **60c**
Reg. \$1.49 yd., clearance price **75c**

PRINTS

Fast color 80 square prints, ideal for back to school dresses.

Reg. 59c yd., clearance price **38c**

BROADCLOTH

Fine quality sanforized fast color broadcloth, 39 inches wide in very beautiful colors.

Reg. \$1.19 yd., clearance price **60c**

LADIES' PLAY SHOES

Our entire stock of summer play shoes which include casuals, flats, wedges both open and closed toes. Whites and pastel colors. A big bargain at great saving.

\$7.98 values \$3.99
\$6.98 values \$3.49
\$5.98 values \$2.99
\$4.98 values \$2.49
\$3.98 values \$1.98

LADIES' DRESS SHOES

Our entire stock of ladies summer dress shoe in low, medium and high heels. Whites and colors. All are reduced 1/2 in price. We're sure to have a style for you.

\$9.98 values \$4.99
\$8.98 values \$4.49
\$7.98 values \$3.99
\$6.98 values \$3.49
\$5.98 values \$2.98

GIRLS SANDALS

Our entire stock of girls summer sandals in white and colors. Sizes 3 1/2 to 12 and 12 1/2 to 3. These will go fast.

\$3.98 values \$1.98
\$3.49 values \$1.75
\$2.98 values \$1.49

Ladies Kedettes

This group is priced for quick clearance and they'll go in a hurry. Broken sizes and colors. Values from \$2.98 to \$6.98.

1/2 Price

LADIES' DRESSES

New Summer Dresses

FAMOUS BRANDS

Mary Lee — Doris Dodson —
Nelly Don — Claire Tiffany
and others

Several Hundred Fine Combed Chambrays, Gingham, Dimity's, Muslins, etc.

ALL GO DURING OUR
CLEARANCE SALE

\$5.98 Values Sale Price ... **\$2.99**
\$7.98 Values Sale Price ... **\$3.99**
\$8.98 Values Sale Price ... **\$4.49**
\$9.98 Values Sale Price ... **\$4.99**
\$12.98 Values Sale Price ... **\$6.49**
\$14.98 Values Sale Price ... **\$7.49**



LADIES' BLOUSES

One group of rayon and cotton blouses at —

1/2 OFF

\$3.98 Values ... **\$1.99**
\$4.98 Values ... **\$2.49**
\$5.98 Values ... **\$2.99**

LADIES' SHORTS AND SHORT SUITS

Entire stock at one-half price. Sizes 12 to 20.

\$2.98 Values **\$1.49**
\$3.50 Values **\$1.75**
\$3.98 Values **\$1.99**



OUR ENTIRE STOCK OF CHILDREN'S SUMMER DRESSES

KATE GREENWAY
SHEERS
COLOR FROCKS
CHAMBRAYS
GINGHAMS

1/2 PRICE

\$2.98 Values Sale Price ... **\$1.49**
\$3.98 Values Sale Price ... **\$1.99**
\$4.98 Values Sale Price ... **\$2.49**
\$5.98 Values Sale Price ... **\$2.99**
\$6.98 Values Sale Price ... **\$3.49**

LADIES AND CHILDREN COATS

1/2 PRICE

One rack of ladies and children winter, 100% wool coats. These are famous brand names tailored from beautiful materials and fine workmanship.

\$14.98 Values, clearance sale price **\$7.49**
\$19.98 Values, clearance sale price **\$9.99**
\$29.75 Values, clearance sale price **\$14.88**
\$39.75 Values, clearance sale price **\$19.88**
\$49.75 Values, clearance sale price **\$24.88**
\$69.75 Values, clearance sale price **\$34.88**

LADIES SKIRTS

One group ladies' Cotton, Rayon, Gabardine, and Strutter Cloth Skirts. Sizes 24 to 30. Buy several at these close-out prices!

\$5.98 Value Now **\$2.99**
\$7.98 Value Now **\$3.99**
\$9.98 Value Now **\$4.99**

BB'S

DE, TEXAS

COME EARLY

STORE OPENS

9:00 A. M.

The Muleshoe Journal

PUBLISHED EVERY THURSDAY AT MULESHOE, TEXAS
Entered as second class matter at the Muleshoe Post Office under the Act of Congress, March 3, 1897.



SUBSCRIPTION RATES
In Immediate Territory, 1 Year \$2.00
Out of Immediate Territory, 1 Year \$2.50

J. M. FORBES Editor and Publisher

BABSON DISCUSSES

The 1952 Crop Outlook

Babson Park, Mass., July 25. — Mother Nature surely smiles on the Democrats by giving the U. S. good crops for 1952. This total crop production now promises to be second only to the record of 1948. Here are a few highlights.

BUMPER CORN CROP — IF

Barring unfavorable weather from now on, the nation's 1952 corn outturn may reach the huge figure of 3,365,089,000 bushels—the second largest corn crop on record. This should be good news to livestock producers, since it points to more favorable feeding ratios this fall and winter. The barley crop probably will be the smallest since 1936, in contrast to an indicated oats crop well above the ten-year average. A large total hay crop, of good quality, also is in the cards.

Bean eaters—and they are by no means all in Boston—will draw on a smaller total crop of dry edible beans this year than last.

The indicated outturn of 15,747,000 bags (100 pounds each) is down materially from 1951 as well as the ten year average production. The much loved Irish potato, which recently has been spotlighted because of Government maneuverings, will be somewhat more plentiful this year than last. The indicated national potato outturn of 339,048,000 bushels is 4% larger than the short crop of 1951, but years, plus the low carryover, 18% below the 1941-1950 average will mean considerable stringency.

The margin may be none too

wide. I expect about an average production of commercial truck crops, and a slightly below average outturn of deciduous fruits in 1952.

COTTON AND OLSEED PROSPECTS

Although it is too early to forecast as to the probable size of the 1952 U. S. cotton crop, it is likely to fall short of the 1951 outturn of 15,068,000 running bales. I base this forecast solely on the fact that indicated acreage now in cultivation is 7% under that of a year ago. Weather and insect damage between now and harvest time could further cut yields; but otherwise the cotton crop and the financial returns therefrom will be satisfactory.

Another oilseed crop also promises to be large. I refer to the versatile soybean. But here, again, I have nothing to go on but the expected 42% indicated increase in acreage. This could result in topping last year's 280,512,000 bushels—the second largest crop on record. Although flaxseed and peanut prospects are materially under 1951, total supplies of oilseeds and their products will again be sufficient.

ANOTHER GOOD YEAR FOR FARMERS

America—the Bountiful as well as the Beautiful—should thank God and her farmers for the munificence of her harvests—past, present, and currently indicated. There has never been a real famine in the land, and I pray that there never will be. From present prospects, 1952 will be another good year for the farmers, despite the rising trend of production costs. Prices, for the most part, should be well maintained, allowing for the usual seasonal variations. Sales opportunities in the farming areas should continue excellent, provided sellers stress quality and price their goods fairly.

Our Honor Roll

New subscribers to the Journal this week are:

- Dale Buhman, Route 1, Mrs. Earl Lee, Hobbs, N. M.
- R. H. Dorn, Lawton, Okla.
- Garvin Long, Morton, Tex.
- Lynn Long, Star Route 2, Mrs. James R. Hobbs, Lovington, N. M.

Old subscribers who have renewed their subscriptions to The Journal this week are:

- Harold Newsom, City.
- L. I. St. Clair, City.
- J. H. Farley, City.
- B. L. Jackson, City.
- Ottis Blaylock, City.
- Howard Elliott, City.
- W. B. LeVeque, City.
- Mrs. W. Q. Casey, City.
- J. W. Maddox, Route 1, Roy Carney, Route 1, F. L. Shelby, Star Route 1, E. A. Seaton, Route 1, R. J. Steinbock, Route 1, J. M. Murrah, Route 2, Partin Austin, Route 2, G. L. Splawn, Route 2, G. W. Mayben, Bovina, Lariat Elevator, Lariat, L. J. Sanders, Baileyboro.

RETURNS FROM TOUR OF NEW MEXICO AND COLORADO

Mr. and Mrs. Murrell Brown and daughter returned last week end from a tour of many places in New Mexico and Northwest Colorado, which included Colorado Springs, Delta, Pueblo, and on their return trip, Red River and Ruidosa.

VISITORS FROM ARKANSAS

Mr. and Mrs. George Thornton of Little Rock, Ark., spent a few days last week in Muleshoe visiting friends and relatives.

SAND HILLS PHILOSOPHER Doubts The Hoe Is Gonna Be Improved Regardless Of Who Gets Elected

Editor's note: The Sand Hills Philosopher on his Johnson grass farm mut have listened to the Democratic Convention, his letter this week indicates.

Dear editor: Now that the Democrats have nominated their man, I'll say this for a national political convention, those delegates keep some of the longest hours I've ever heard of, don't believe I'd care for that kind of work, the advantage of listenin by radio instead of attendin in person is that you can get a break from the speeches occasionally by



listenin to the commercials, but what I started out to say was that now that the Democrats have nominated their man and the race has leveled off to a contest between Stevenson and Eisenhower, I do not intend to get over-heated in the coming campaign months. I don't have any idea which candidate is gonna win, but I have an idea that Johnson grass out here is gonna grow just as rank under either party.

Also, regardless of who gets elected, I do not believe that:

Taxes are gonna be outlawed. Russia is gonna start tellin the truth.

Crop pests are gonna decrease.

Parkin places are gonna increase.

Rainfall is gonna be controlled to where you can tell it.

Radio programs are gonna be much different.

Usin a hoe is gonna be made more delightful.

Fillibusters are gonna get better.

Women drivers are gonna get better.

Bank loans are gonna get easier for me.

Spinach is gonna taste different.

Monthly payments are gonna come around less often.

Gasoline is gonna be sold on down payment plan.

The international situation is gonna change.

In short, while there's lots that the next administration can do, there'll still be a lot it'll never get around to doin and it's still gonna be up to the individual to do the best he can, which in my case don't make too good a showin but it suits me. I've never enjoyed swingin a hoe, regardless of who's President.

Yours faithfully,
J. A.

TODAY'S meditation

THE WORLD'S MOST WIDELY USED DEVOTIONAL GUIDE

Cher Upper Room
© THE UPPER ROOM, NASHVILLE, TENNESSEE

REVERENCE

This is the day which the Lord hath made; we will rejoice and be glad in it. (Psalms 118:24.)
Read Psalms 118:19-29 or 1 Thesalonians 5:5-13.

Last night it rained. Then the stars looked down Upon an earth sweet, clean and glistening, And saw, as did God, that is was very good.

Before long God drew aside the curtains of night. Day dawned, and the rays of the sun poured A glory upon the land, the sea, the sky. — — — — — Soon God gave the day to man and said, "Rejoice and be glad in it."

But man was willful, sinful, unthankful for it. He took the God-given day, misused it, polluted it. At eventide the sun gathered up The remaining glory of the day and sank Behind the western horizon. Night dropped her mantle over the world.

As the Creator-Father declared out of love, "I will give mankind another good day tomorrow." But the wicked men, men blind to God, saw No glory of God in the air, the earth, or the sun. Only the lovers of God, the Christlike in heart, Humbled themselves in reverence that day.

PRAYER

Our gracious God and Father, we thank Thee for each new day and the privilege of living. Lead us by Thy Holy Spirit to make the highest and holiest use of every day in work and in worship. Glorify Thyself in us, through Christ. Amen.

THOUGHT FOR THE DAY

That day is lost which is not lived for God.
Herbert B. Johnson (N. C.)

ZENITH RADIOS

ALL MODELS IN STOCK

— At —

Spence Radio Service Shop

Phone 7020
Muleshoe, Texas

Service On Any Make Radio

GUPTON'S HAVE GUEST Marilyn Gupton this week.
Opal McLaurry of Corpus Christi is a guest in the home of Office Supplies at The Journal

HAY WANTED

TOP MARKET PRICE
I want To Buy Your Baled Hay

Sikie Watkins Hay Co.

Phone 6290
NORTH OF KING BROS. ELEVATOR MULESHOE

WATER WELL DRILLING

AND
REPAIR WORK

WE SELL AND SERVICE
REDA SUBMERSIBLE PUMPS

TWIN CITY DRILLING CO.

MORTON HIGHWAY MULESHOE, TEXAS

STOP Check Your Coverage!

Have you considered replacement costs of what you own in the light of today's prices? We shall be glad to consult with you on all your insurance problems . . . no obligation.

FARM LOANS • AUTO FINANCING

POOL INSURANCE AGENCY

W. M. Pool, Jr. Lee Pool
Phone 7010 Muleshoe

MINNEAPOLIS-MOLINE GENUINE PARTS

PERFECT FIT FOR NEW PERFORMANCE

PROTECTION PACKED TO REACH YOU CLEAN AND NEW

Insist on MM genuine parts for real economy. Precision made parts of finest material packed and protected against rust and grit greatly reduce repair costs. You'll enjoy the convenience and courtesy extended by your MM dealer.

FRY & COX BROS.

PHONE 3660 MULESHOE

NOW ON DISPLAY

Ford TRACTOR

Ford Engineered for FASTER FARMING

Do more and better farming . . . with less work. Ford Tractor has many advantages. 4-speed transmission, Hydraulic Touch Control. Get the most for your tractor dollar . . . see the Ford Tractor.

Hicks Tractor Co.
Phone 6020 Muleshoe

ASK FOR A DEMONSTRATION on your farm; no obligation

DO YOU KNOW —

all that your present life insurance will do for you? Without obligation, let me show you, today.

Marion F. Harris

REPRESENTING
Southwestern Life
Insurance Company
JAMES RALPH WOOD, PRESIDENT HOME OFFICE • DALLAS

HAVE YOU

HAD YOUR CAR INSPECTED AS REQUIRED BY THE NEW TEXAS MOTOR VEHICLE INSPECTION LAW?

TIME IS GROWING SHORT

The DEADLINE IS SEPTEMBER 6

AVOID THE LAST MINUTE RUSH AND HAVE YOUR CAR INSPECTED NOW.

C. & H. Chevrolet COMPANY

CHEVROLET CARS & TRUCKS

Phone 2720 Sales and Service Muleshoe

PLAY SAFE

GET YOUR **Dearborn NOW!**

Get your Dearborns in time . . . buy them on time! Select now while our stock is complete, while models and sizes you want are readily available. Buy now—have them paid out when the first norther hits!

STAY SAFE WITH Dearborn.

World's Finest, Safest Gas Space Heater

Famous **COOL SAFETY CABINET** never gets hot on top, sides, back or bottom—can't scorch walls or drapes—permits against-the-wall installation. Gas-saving High-Crown Burner and famous Glo-Brite Radiants give you more for your money—more heat and comfort at less cost!

Come in - Select your Dearborns NOW!

Muleshoe Liquefied Gas Co.

Phone 3130 Muleshoe

Use Our Lay-Away Plan NOW AND SAVE

We Have Been Approved As A Motor Vehicle

Inspection Station

We are ready to inspect your motor vehicle and affix stamp as required by law. We have plenty of service men to make

Prompt, Efficient Inspection

Keep in mind that

September 6 Is The Deadline

MORRISON MOTOR CO.

Chrysler & Plymouth Sales & Service

PHONE 4130 MULESHOE

UNOFFICIAL RETURNS FROM BAILEY COUNTY PRIMARY ELECTION, JULY 26, 1952

	Governor	Lt. Gov.	U. S. Senator	Comm. Agriculture	Land Comm.	Judge Court of Crim. App's	Railroad Comm.	Congressman-at-Large
Muleshoe	735	252	40	734	192	778	127	78 590 175 90 499 386 345 522 661 239 324 8 23 3 101 4 47
Absentee	42	14	4	48	7	47	9	2 32 15 4 26 24 26 26 41 12 18 2 1 3 3 0 30
Mays	27	8	1	16	10	25	2	4 19 6 1 12 11 13 13 14 12 7 0 0 0 2 0 12
West Camp	129	50	6	111	44	153	15	9 90 29 22 78 66 50 86 97 48 47 1 3 2 24 0 75
Three Way	162	45	3	159	39	159	29	21 119 42 11 110 75 67 109 148 37 60 3 2 2 8 0 106
Bula	136	97	3	160	51	170	31	23 132 34 27 96 104 60 138 154 47 67 1 3 2 13 2 111
Baileyboro	47	32	8	60	17	47	17	11 47 17 4 45 26 26 42 55 16 25 1 4 0 8 0 32
Circleback	46	39	1	55	14	60	9	6 45 9 8 32 29 24 31 50 11 27 1 0 0 3 0 31
TOTAL	1324	537	65	1382	374	1439	239	154 1074 327 167 898 721 611 967 1220 422 575 17 36 12 162 6 814

Wily Moore With Dallas Club

The Dallas Eagles of the Texas League have called in Wily Moore from their Longview club in order to strengthen their outfield defense and to aid in holding on to the top spot in the league.

At this writing the Dallas Club was 4 1/2 games ahead in first place. Wily Moore the fleet centerfielder who formerly roamed the Clovis free-way in the West Texas-New Mexico League is currently batting a lofty .342 and has hit 18 homers for the season.

It is easy to understand why Wily would add a good deal of strong defense down the middle and what with his power

THE MULESHOE JOURNAL, Thursday, July 31, 1952

stick he could do a great deal of good offensively. Wily is certainly to be congratulated for his fine season and he has the best wishes of all the people of the Muleshoe area for a continued successful career in baseball and it is the hope of everybody that he will soon see his name on the roster of some big league team.

Private Baths • Reasonable Rates

INN BY THE ROAD

OVERLOOKING THE RIVER

Telephone 48-11 Ruidoso, New Mexico 29-8tp.

Bailey County Abstract Co.

ABSTRACT SERVICE — LOANS

Mrs. Lela Barron — Mgrs. — L. S. Barron

Established in 1900

PMA Committeemen Will Check Every Farm In County Under ACP Plan

Every farmer in Bailey County is to have an opportunity to cooperate in the 1953 Agricultural Conservation Program extended to him through a personal visit by a PMA community committee.

Blacksmithing — Welding
Stooditing

See Us For Prompt Service

Stone Blacksmith Shop

1318 E. 2nd — Muleshoe
Just South Of Bus Station

THANKS TO ALL!

I wish to express my appreciation to the people of Bailey County for the nice vote given me in the race for County Treasurer in Saturday's Democratic Primary.

It is always my aim to give you a faithful and efficient service.

Sincerely,

HELEN JONES

Many Helped On Election Party

No one person and no one organization can do all the work connected with the holding of a successful election party such as the one held here Saturday. The Journal worked at it, but got many an assist.

We remember to thank the following, among others: The judges and clerks of the various voting places for their hard work and promptness in reporting.

The county executive committee, including Bloddy Ray, chairman, and Connie Gupton, secretary, for their work in compiling the ballots and their courteous reporting.

Higginbotham-Bartlett company for use of their shed to place the election boards, use of their electricity, ladders, truck, etc., and for the technical advice and actual hard work of Corky Estes of the Higginbotham-Bartlett Company and others of that firm.

E. R. Hart Company for use of tools, etc. King Bros. Grain & Seed Co. and Harold King for technical assistance, use of a truck, electrical line, etc.

Conservation Stepped Up

In all of the counties where community committeemen contact farm-by-farm contacts this year, there has been a stepping up of conservation and a definite trend to the more-permanent type practices such as terraces, pasture improvement, bench leveling, and irrigation reorganization.

One of the first things the community committeemen does when he visits a farm is to help the farmer determine the farm's conservation needs. The use of each field or piece of ground for the crops for which it is best suited and in such a way that it makes its greatest contribution to meeting production goals is to be a guide in determining conservation needs.

Gullies, sheet erosion, breakdown of soil structure, and other indications of deterioration will be checked and conservation practices suggested to meet these problems. Assistance available under the Agricultural Conservation Program will be directed to meeting the most urgent needs.

Where special assistance is required for some of the more technical conservation practices, the Soil Conservation Service will be called on for help. The Extension Service, Farmers Home Administration and other Federal and State Agencies will be asked to cooperate where their services are needed.

RETURNS HOME

Miss Ollie Lou Bowen, of Gustine, Calif., who has been visiting here in the home of her aunt, Mrs. J. W. Bowen, left yesterday for a brief visit in Oklahoma City before taking a plane for home.

NORMAN W. BAYS
Attorney-At-Law

Office In Courthouse
Phone 2670 Muleshoe, Texas

Dear Editor:

... the letters start. Then many readers of THE CHRISTIAN SCIENCE MONITOR tell the Editor how much they enjoy this daily world-wide newspaper, with such comments as:

"The Monitor is the most carefully edited newspaper in the U. S. . . ."

"Valuable aid in teaching . . ."

"News that is complete and fair . . ."

"The Monitor surely is a reader's necessity . . ."

You, too, will find the Monitor informative, with complete world news . . . and as necessary as your HOME TOWN paper.

Use this coupon for a Special Introductory subscription — 3 MONTHS FOR ONLY \$3.

The Christian Science Monitor
One, Newry St., Boston 15, Mass., U. S. A.
Please send me an introductory subscription to The Christian Science Monitor—76 issues. I enclose \$3.

(name) _____
(address) _____
(city) _____ (state) _____ (zip) _____

Drs. Woods & Armistead
OPTOMETRISTS

IRA E. WOODS, O.D.
E. W. ARMISTEAD, O.D.
GLENN S. BURK, O.D.

Phone 328 Littlefield

NEW WAY TO RAKE HAY

faster... better!

SIX-BAR OFFSET REEL MAKES A BIG DIFFERENCE

The Ferguson Side-Delivery Rake is designed specifically for tractor operation. It greatly reduces leaf-shattering . . . safeguards the quality and value of your hay!

This rake is truly unique. New six-bar offset reel handles hay gently. No pitching, kicking and tossing even at high speeds. Instead, your hay is lifted gently, up and over into light fluffy windrows with the precious leaves turned inward.

True "sideward" raking action reduces the distance from swath to windrow by 50 per cent. There is far less rolling and churning . . . no sudden jarring.

Tractor-mounted . . . power take-off driven . . . Finger Tip Controlled. And it's surprisingly low in price.

D. H. SNEED SUPPLY CO.

"YOUR FERGUSON DEALER"

Muleshoe — Texas

FREE demonstration on your own farm!

FERGUSON TRACTOR and Ferguson System Implements

IT IS Time to Phone BRAY

SPOT CASH
when you list with **BRAY**

Don't ask Which Realtor.

Phone **BRAY**
Dial-2820 • Res.5690
1318 West 1st

VACATION-BOUND?

Play SAFE all the way!

If you're headed for the horizon, now's a good time to head to the Muleshoe State Bank. Let us protect your valuables in a safe deposit box, and convert your travel cash into American Express Travelers Cheques. You sign them when you buy them and again when you spend them. Your matching signatures are the only identification you ever need to spend these cheques like cash anywhere. And you get a quick refund if they're lost or stolen. Only 75c per \$100 . . . 40c for \$50 or less.

MULESHOE STATE BANK

Member Federal Deposit Insurance Corporation

Headquarters.. for SPRAYER REPLACEMENT PARTS

INSECTICIDES And WEED KILLERS

TOP QUALITY BRANDS ONLY
INCREASE YIELDS — — —
DECREASE LABOR COSTS

—ANNOUNCING—
FREE ENTOMOLIGY SERVICE

MR. NEIL TIBBET
of Texas Tech

SEE US FOR —

DUSTING & SPRAYING

Either Aerial or Ground Equipment

WESTERN FERTILIZER CO.

PHONE 2700 Muleshoe, Texas

Society News

By Mrs. Joyce Shafer

THE MULESHOE JOURNAL, Thursday, July 24, 1952

Rehearsal Dinner For Jane Stovall

A rehearsal dinner for Miss Jane Stovall and Norman Durham was given Friday evening, July 25, in the Fellowship Hall by the Wesleyan Service Guild of the Muleshoe Methodist Church at 8 p. m. Mr. and Mrs. Harold Durham were host and hostess for the dinner.

Decorating the tables was a miniature wedding party approaching the minister beneath an archway of blue ribbons intertwined with plumosis and stephanotis. Blue candles and nut cups mounted with wedding bells completed the table arrangements which carried out the bride's chosen colors of blue and white.

Among the dinner guests were Mr. and Mrs. A. S. Stovall of Muleshoe, parents of the bride-elect, Mr. and Mrs. H. H. Durham of Eastland, parents of the groom-to-be, Mr. and Mrs. Charles Harris and Jill of Amarillo, Miss Gwyneth Bigham, Mr. and Mrs. Pat Bobo, Mr. and Mrs. W. P. Jones, Wilson, Mr. and Mrs. O. H. Willoughby of Bronte, Mrs. Clyde Davis of San Angelo, Mr. and Mrs. Ray Morgan of Sterling City, Mr. and Mrs. Worth B. Durham, Drew, Barbara and David of Sterling City, Mr. and Mrs. Curtis Rambin, Ft. Worth, Heinz Berger of Austin, Joan Cota of Ft. Worth, Helen Stovall, Terry Watson of Port Arthur, and Mr. and Mrs. Jed Hornung of Wichita Falls.

Mrs. Spivey Hosts Wesleyan Guild

The Wesleyan Service Guild met Monday evening at 8 p. m. with Mrs. Curtis Spivey.

Mrs. Buford Butts brought the devotional "By A New and Living Way". Elizabeth Harden gave "Fruits of Evangelism". Mrs. Alex Wilkins gave "The Van Dykes Bring the World to Their Door."

Next meeting will be August 11 with Mrs. Delma McCarty. Those who did not bring their clothing to be sent to Korea are asked to take it to Mrs. Homer Sanders, Jr., the box will be sent some time in August.

Refreshments were served to Elizabeth Harden, Mesdames Buford Butts, Delma McCarty, A. S. Stovall, H. W. Hanks, Alex Wilkins, Homer Sanders, Sr., Homer Sanders, Jr., and the hostess.

VISITORS FROM CORPUS CHRISTI

Mr. and Mrs. Cecil McLauri and family of Corpus Christi visited the past week in Muleshoe with Mrs. McLauri's parents, Mr. and Mrs. C. M. West, and other relatives and friends. They left Saturday afternoon to go to Lubbock and Abilene where they will visit before returning to their home.

They marveled at the cool nights and pleasant days here.

Family Night Held At Schuster Home

The Fidelis Class of the First Baptist Church enjoyed a lawn party and basket supper at the H. E. Schuster home Thursday night, July 24, which was family night.

Games were directed by Mrs. Ray Griffiths and Mrs. Bert Mathis. Watermelons were furnished by Mrs. Ray Griffiths and Mrs. Raymond Précuré.

Those attending family night were Mr. and Mrs. J. V. Peeler and James D. Mrs. R. D. Précuré, Mr. and Mrs. A. W. Black, Mr. and Mrs. Lester Howard, John Lee and Bill, Mr. and Mrs. Pat Bulloch, Mr. and Mrs. Roy Brashear, Mr. and Mrs. Bert Mathis, Alan and David, Mr. and Mrs. Clinton Bristow, Mr. and Mrs. Joe Damron and grandson, Gary Smith, Mr. and Mrs. W. E. Young, Mrs. Lila Spence, Mrs. L. T. Green, Jr., and boys, L. T. III, and Lawrence, Mr. and Mrs. Arthur Crow, Mr. and Mrs. Guy Nickels, Mrs. Faye Cox and daughter, Claudia, and neice, Patsy Rivers, Mr. and Mrs. Ray Griffiths, Mrs. Charlie King, Mr. and Mrs. Eddie Lane, and the host and hostesses, Mr. and Mrs. Schuster and Joannah.

Bass-Farley Vows Exchanged

Greenwood, Ark. — Mr. and Mrs. Herby Bass of Greenwood, Ark., formerly of Muleshoe, announce the marriage of their daughter, Charlene, to Roy Lee Farley, son of Mr. and Mrs. Roy Farley, also of Greenwood. The wedding was solemnized with a double ring ceremony at the Methodist parsonage at Greenwood with the pastor, Rev. Verlie Harris officiating. Relatives and close friends attended.

The bride wore a street length dress of white all over lace with a small matching hat of lace. Her corsage was of blue carnations. Miss Mary Hukill, maid of honor, wore a light blue dress frosted batiste. Her corsage was of white carnations. G. L. Webb of Fort Smith was the best man.

The bride was a member of the 1952 graduating class of the Greenwood high school. The groom graduated from the Greenwood high school in 1951. He is a member of the Fire Fighting and Crash Rescue Squadron of Airforce stationed at the Memphis Airforce Base. He has been with the Air Force since June, 1949.

Mr. and Mrs. Farley left immediately after the ceremony for Memphis, Tenn.

TO ATTEND BEAUTY SCHOOL AT FT. WORTH

Mrs. Alton Cherry will leave the latter part of the week to attend a post graduate course on hair styling and cutting at the Vernon Isbell's University of Beauty Culture in Ft. Worth. She will return in about two weeks.

Office Supplies at The Journal

Pleasant Valley Club To Have Float

The Pleasant Valley Social Club met in the home of Mrs. Mary Andreas Wednesday, July 16. The meeting was called to order by the president.

It was decided by everyone to have the hostess gift. The club is to have a special meeting Monday afternoon, July 28, to discuss plans for a float for the Memorial Roundup Parade.

Mrs. Leona Hicks gave a demonstration on making rag rugs.

Refreshments were then served to two visitors, Mrs. Adreas, Sr. and Mrs. Snookneke, and members, Mesdames Oscar Allison, Harold Allison, Gerald Allison, Sena Stevens, K. Turner, R. L. Roubinek, Jim, Grizzle and J. West.

Garden Club Makes Annual Pilgrimage

Ten members of the Muleshoe Garden Club and four guests met at 9 a. m. July 23, to go on the annual pilgrimage which is one of the requirements of the Federated Garden Clubs. Mrs. Stotts and Mrs. Locker served coffee before leaving.

The first stop was at Midway in New Mexico to see the landscape project there. Besides many flowers and shrubs, there are also 300 varieties of dahlias and many named gladioli. This is well worth anyone's time to see.

The next stop was for a trip through the Clovis Floral Co. green house. Each guest received a beautiful red carnation.

The Crain Nursery at 212 Rencher St. proved to be very unusual. Mr. Crain has about one-fourth of a block of property on which he does experimental gardening. Mrs. Crain served ice cream to each guest.

After enjoying a Mexican lunch at the El Monterey, the group went to the Sunken Garden at the Clovis Park. They then returned to Muleshoe.

The Muleshoe Garden Club wishes to express their appreciation and thanks to Mrs. Fox at Midway, to the Clovis Floral Co., and to Mr. and Mrs. Crain for their hospitality and courtesies extended to them.

Those making the pilgrimage were Mesdames Roy Jordan, Neill MacAllister, Bob King, H. S. Sanders, Jr., Pat Bulloch, Bill Moore, George Stotts, Morgan Locker, O. M. Self, Joe Damron, Harold Mardis, Harry Musson, O. W. Thomson, and Jack Epps.

BOUNDS FAMILY HAS GUESTS

Mr. and Mrs. S. G. Preston, two children, Larry and Connie of Farwell, and Mr. and Mrs. J. T. Russell and children of Shallowater were guests of Mr. and Mrs. A. R. Bounds Sunday. Mr. Preston is employed by the Piggly Wiggly Store of Farwell and Mr. Russell farms near Shallowater.

Mr. and Mrs. Bounds are parents of Mrs. Preston and Mr. Russell.

VISITING NEAR DENVER, COLORADO

Mr. and Mrs. Thurman White and Clifford are visiting the Elmer Gollehons near Denver, Colo., this week.

CASHWAY

FREE DELIVERY

PHONE 2440 or 2450

"Where Friends Meet And Prices Talk"

THESE SPECIAL PRICES IN EFFECT THROUGH AUGUST 7th

COCA COLA 6 Bottle Carton Plus Deposit **17c**

QUART, DIAMOND, SOUR OR DILL PICKLES **25c**

KRAFTS SALAD DRESSING MIRACLE WHIP .. qt. ... **49c**

POWDERED OR BROWN SUGAR 1 lb. box **10c**

STOKELYS 46 OZ. TOMATO JUICE **25c**

SHORTENING Kimbell's 3 lb. Carton **57c**

STOKELYS NO. 2 CAN STEWED TOMATOES .. **25c**

KRAFT'S 1 LB. PKG. CARAMELS **29c**

NORTHERN TOILET TISSUE 3 for **21c**

TEANAP 80 COUNT NAPKINS 2 for **25c**

FACIAL TISSUES, 300 COUNT KLEENEX **19c**

\$1.00 SIZE JERGENS LOTION **79c**

FLOUR Gold Medal 25 lbs. **1.79**

MA BROWN 12 OZ. Strawberry Preserves .. **33c**

ASSORTED FLAVORS KOOL-ADE 6 for **19c**

PRODUCE

BANANAS Golden Ripe lb. **9c**

FRESH YELLOW SQUASH lb. **9c**

WHITE OR YELLOW ONIONS lb. **9c**

CARROTS Garden Fresh Bunch **9c**

MARKET

VANCES PURE PORK SAUSAGE lb. **43c**

CUDHAY'S ALL MEAT BOLOGNA lb. **49c**

CHUCK ROAST Choice Beef Lean & Tender lb. **59c**

PAULGERS ALL MEAT FRANKS, 1 lb. cello pkg. **49c**

FROZEN FOOD

BREADED Uncle George Ready To Fry, 10 Oz. Pkg.

SHRIMP **69c**

SNO-CROP 10 OZ. FROZEN CUT GREEN BEANS **25c**

Mr. Cotton Farmer GET BIGGER CROP YIELDS & LESS INSECTS

WE ARE PREPARED TO HELP PROTECT YOUR COTTON AGAINST ALL INSECTS WITH THE FOLLOWING:

DUST ----- 10 - 40
3 - 5 - 40
2 - 10 - 40
20 - 40

WE HAVE A COMPLETE LINE OF ORTHO GARDEN DUST AND LIQUID SPRAY

FREE ENTOMOLOGY SERVICE

LIQUID ----- ALDRIN PARATHION 20% DDT EMULSIFIABLE B H C 6 LB. TOXAPHENE 2 - 1 MIXTURE 9 - 15 MIXTURE

WE HAVE AERIAL DUSTING AND SPRAYING SERVICE AVAILABLE

CENTURY ROW CROP SPRAYERS FOR SALE 6 - 8 - 10 ROW EQUIPMENT

Jones Farm Store

PHONE 5000

MULESHOE, TEXAS

GUESTS IN HUNT HOME

Mr. and Mrs. Newkirk and children, Betty, Roy and Johnny of Shamrock were guests in the Buford Hunt home for a few days last week.

SPENT WEEK IN SURRATT HOME

Billy Crouch of Littlefield and boy friend, D. H. Gregg of Seminole, spent last week in the Woodrow Surratt home.

SPENT WEEK END AT NEEDMORE

Mrs. Katie Crouch of Littlefield spent last week end visiting her daughter, Mrs. E. H. Hall of Needmore.

Office Supplies at The Journal



SCHEDULE OF SERVICES

UNITED PENTECOSTAL

Sunday School 10 a. m.
 Preaching Service 11 a. m.
 Young People's Service 7 p. m.
 Thursday Evening Bible Class 7:30 p. m.

PROGRESS BAPTIST CHURCH

Rev. C. C. Morgan
 Sunday School 10 a. m.
 Mid-week Prayer Service 7:30 p. m.
 Wednesday 7:30 p. m.
 Evening Worship 8:30 p. m.
 B. T. U. 7:30 p. m.
 Morning Worship 11 a. m.

ASSEMBLY OF GOD CHURCH

Rev. Lee F. Stokes, Pastor
 Sunday School 9:45 a. m.
 Worship 11 a. m.
 Tuesday Night Young People 7:45 p. m.
 Thursday Night Bible Study 7:45 p. m.
 Public Invited To Attend All Services

FIRST BAPTIST CHURCH

Rev. A. W. Blaine, Pastor
 Sunday School 9:45 a. m.
 Morning Worship 10:50 a. m.
 Training Union 7 p. m.
 Evening Worship 8 p. m.
 Prayer Meeting, Wednesday 8 p. m.
 Officers and Teachers, W. M. U., Monday 3 p. m.
 Choir Rehearsal, Wednesday 8 p. m.
 Thursday 8 p. m.

Y. L. BAPTIST CHURCH

First and Third Sundays
 Rev. James Tidengerg
 Sunday School 10 a. m.
 Morning Worship 11 a. m.
 Training Union 7:30 p. m.
 Evening Worship 8:30 p. m.
 Services every 3rd Sunday Starting at 10:30 a. m.

ANTIOCH PRIMITIVE BAPTIST CHURCH

Across Street From Hospital
 Elder Jimmie Bass, Pastor
 Services every 1st and 3rd Sundays and Saturday before 3rd Sunday.
 Singing every Sunday night except 3rd Sunday.

Office Supplies at The Journal

PAT R. BOBO
 ATTORNEY-AT-LAW
 Office In Bank Building
 Muleshoe, Texas

FIRST BAPTIST CHURCH

Lazbuddie, Texas
 Sunday School 10 a. m.
 Morning Worship 11 a. m.
 Training Union 6:45 p. m.
 Evangelistic Service 7:45 p. m.
 "Not forsaking the assembling of yourselves together."
 —Heb. 10:25

FIRST METHODIST CHURCH

H. W. Hanks, Pastor
 Sunday School 9:45 a. m.
 Morning Worship 10:50 a. m.
 M. Y. F. 6:30 p. m.
 Juniors 6:30 p. m.
 Evening Worship 8:00 p. m.
 W. S. C. S., Mon. 3:00 p. m.
 Wesleyan Service Guild, 2nd. & 4th Mon. 8:00 p. m.
 Stewards Meeting, 1st. Mon. 7:00 p. m.
 Choir Practice, Wed. 8:00 p. m.
 Philathea Circle, 1st. & 3rd. Thurs. 8:00 p. m.

FIRST CHRISTIAN CHURCH

Avenue G and West 2nd.
 Johnny Moore, Pastor
 Sunday School 9:45 a. m.
 Morning Worship 11 a. m.
 Evening Worship 7:30 p. m.
 Communion Services each Lord's Day.

FIRST BAPTIST CHURCH

WEST CAMP
 Rev. T. L. Pond, Pastor
 Sunday School 10 a. m.
 Morning Worship 11 a. m.
 B. T. U. 7 p. m.
 W. M. U., Thursday 2 p. m.
 Evangelistic Service 7:45 p. m.

METHODIST CHURCH

Lazbuddie, Texas
 Rev. Harmon Keelm, Pastor
 Sunday School 10 a. m.
 Church Service 11 a. m.
 Evening Service 8:30 p. m.
 Mid-week Prayer and Song Service 8:40 p. m.

Y. L. METHODIST CHURCH

L. J. Helm, Pastor
 Second and Fourth Sundays
 Church School 10 a. m.
 Preaching Service 11 a. m.
 Bible Study Group 7:30 p. m.
 Evening Preaching 8:30 p. m.
 Prayer Meeting, W. S. C. S. First and Third Thursdays 2:30 p. m.

PRIMITIVE BAPTIST CHURCH

At Friendship
 8 Miles South of Sudan
 Second Sunday and Saturday before, Elder V. J. Lowrance, pastor.
 Fourth Sunday and Saturday before, Elder Jack West, pastor.

OKLAHOMA LANE BAPTIST CHURCH

Mayo D. Carpenter, Pastor
 Sunday School 10 a. m.
 Morning Worship 11 a. m.
 Evening Worship 8 p. m.
 Prayer Meeting, Wed. 8 p. m.
 W. M. S., Thurs. 3 p. m.

The first South American railway was constructed in Chile in 1852.

NORTH SIDE CHURCH OF CHRIST

Worship each Lord's Day 10:30 a. m.
 Evening Service 8 p. m.
 Tuesday Evening 8 p. m.
 You Are Welcome.

PROGRESS METHODIST CHURCH

Carrol M. Jones, Pastor
 Sunday School 10 a. m.
 Morning Worship 11 a. m.
 Evening Fellowship 8 p. m.
 Classes 8:45 p. m.
 Evening Worship 8:45 p. m.
 W. S. C. S., 2nd and 4th Mondays

MAIN STREET MISSIONARY BAPTIST CHURCH

M. E. Robinson, Pastor
 Sunday School 10 a. m.
 Morning Worship 11 a. m.
 Training Union 7 p. m.
 Evening Worship 8 p. m.
 W. M. U., Wed. 2:30 p. m.
 Mid-week Prayer Service, Wednesday 7 p. m.

BAILEYBORO BAPTIST CHURCH

Arthur L. Nunn, Pastor
 Sunday School 10 a. m.
 Training Union 8 p. m.
 Evening Service 8:45 p. m.
 Everyone Welcome.

ST. JOHN'S LUTHERAN CHURCH

W. B. Gummelt, Pastor
 Lariat, Texas
 Sunday School and Bible Class 10 a. m.
 Divine Services 11 a. m.
 Sunday School Teachers meet every Wednesday 8 p. m.
 Ladies' Aid meets first Thursday of each month 2:30 p. m.
 Walther League meets first Sunday of month 8 p. m.
 A cordial welcome awaits you at St. John's.
 "Let the Word of Christ dwell in you richly." —Col. 3:16.

THREE WAY BAPTIST CHURCH

J. E. Moore, Pastor
 Sunday School 10 a. m.
 Morning Worship 11 a. m.
 Training Union 7 p. m.
 Evening Worship 8 p. m.
 W. M. U., Thursday 2:30 p. m.
 Brotherhood, first Thursday of each month 7 p. m.
 Mid-week Prayer Service and Bible Study 7 p. m.

LONGVIEW BAPTIST CHURCH

Sunday School 10 a. m.
 Preaching Services 11 a. m.
 B. T. U. 8 p. m.
 Preaching Services 8:30 p. m.
 WMS, Monday 2:30 p. m.
 All Church Night, Wednesday 7:30 p. m.

CHURCH OF THE NAZARENE

Sidney Patrick, Pastor
 Sunday School 10 a. m.
 Morning Worship 11 a. m.
 Evening Worship 7:30 p. m.
 N. Y. P. S., Tues. 7:30 p. m.
 Mid-week Service, Wednesday 8 p. m.
 Come and Worship With Us.
 Interest is growing in our Sunday School. The lessons are on the Bible and sound religion.

CHURCH OF CHRIST

Muleshoe, Texas
 Ebb Randol, Minister
 Bible Classes for all 10 a. m.
 Preaching 10:50 a. m.
 Communion 11:45 a. m.
 Preaching 8 p. m.

WATSON BAPTIST CHURCH

Rev. W. O. Wilson, Pastor
 Special Prayer Service 9:45 a. m.
 Sunday School 10 a. m.
 Morning Worship 11 a. m.
 Training Union 7 p. m.
 Evening Worship 8 p. m.
 Bible Study and Prayer Service, Wednesday 7:30 p. m.
 WMU, Monday 2:30 p. m.

AT HOME GLAMOUR



Oh, la, la, but any woman would feel glamorous greeting guests in this French ensemble by Jean Dessas for Raymodes. It is really separates, consisting of shiny white pique pants and blouse, covered by a full overskirt in a gay tulip print and a high empire - type waistband in flame red felt buttoned tautly for slimsness.

VISITING BARRONS

Mr. and Mrs. L. S. Barron have as guests, her mother, Mrs. A. J. Carr, of Lamesa, and Mrs. Barron's brother, Ernest Carr and family of Dallas.

PAPER & OFFICE Supplies at the Journal.

Office Supplies at The Journal

IN FT. WORTH TO ATTEND WEDDING

Mr. and Mrs. Arthur Crow and Mr. and Mrs. James Crow were in Ft. Worth the latter part of last week to attend the wedding of John Crow and Mary Drinkard.

AT SHORT COURSE

Mrs. Roy White has been attending a two weeks short course being held at Texas Tech.

DR. BILLY PAINE

REFLEXOLOGIST
 Across The Street From John Deere Implement Co.

GUARANTY ABSTRACT CO.

BONDED FOR YOUR PROTECTION

Office In Bank Building
 Phone 2640 Muleshoe

Complete Abstracts of Title to All Lands and Towns in Bailey County, Texas

PAT R. BOBO, Owner BETTE COWAN, Manager

SEE US FOR PROTECTION, POLICIES YOU NEED

BOBO INSURANCE AGENCY

Office In Bank Building
 PHONE 2640 MULESHOE

THE MAYTAG AUTOMATIC GETS CLOTHES CLEANEST!

- Famous Gyrateam washing action
- Fully automatic
- No holding down



JOHNSON-POOL

Tire & Appliance
 Dial 7370 Muleshoe, Texas



TIRE HEADQUARTERS

You'll JUMP for Joy..



When you check the **LOW** prices of the **BIG '52 DODGE** Arnold Morris Auto Co.

Phone 7150 Muleshoe

... the CLEAN kitchen — of Course it's Electric!



Yes, and it's a completely clean kitchen, too. Walls and curtains spotless and bright, free of grease and grime. Wallpaper or paint keeps looking lovely longer—that keeps redecorating costs down. Your pots and pans—and the range elements themselves—always bright and shiny. Yes, there's a clean—spotlessly clean—way to cook. Of course, it's electric.

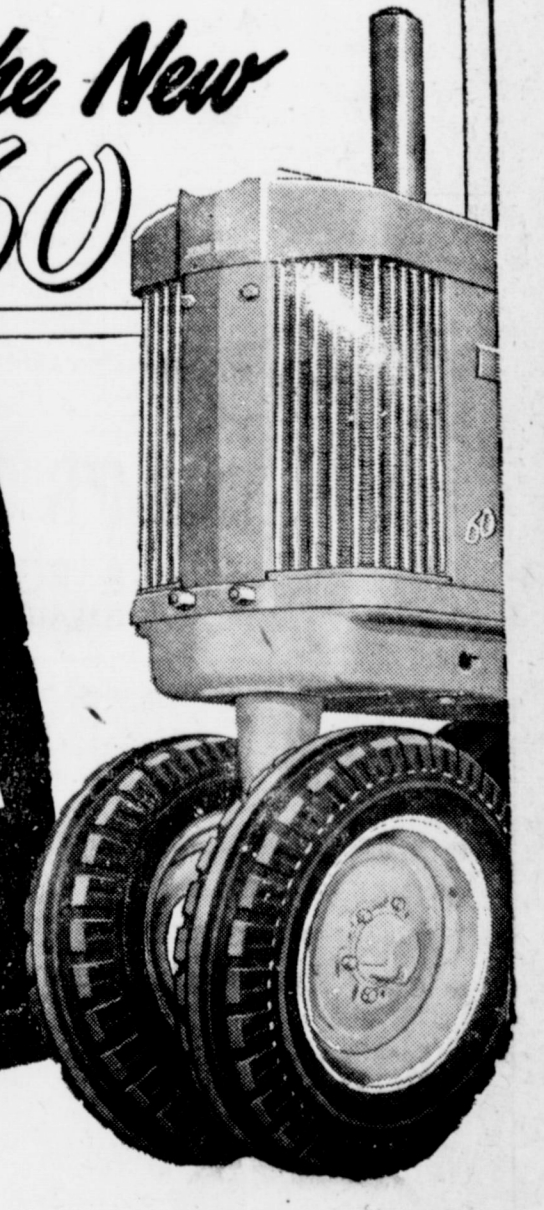
SEE YOUR MODERN ELECTRIC APPLIANCE DEALER

SOUTHWESTERN PUBLIC SERVICE COMPANY

27 YEARS OF GOOD CITIZENSHIP AND PUBLIC SERVICE

It's Here... the New **JOHN DEERE 60**

...with Duplex Carburetion
 ..."Live" Power Shaft
 ..."Live" High-Pressure Power-Trol
 ...Quick-Change Wheel Tread
 ...Effortless Steering, and Many other new features and major improvements



We're proud to announce the all-new John Deere "60" and "50" Tractors—successors to the famous Models "A" and "B." We have a "60" on display now. Come in and inspect it. The harder you are to please, the more impressed you're going to be and the sooner you'll want to get your hands on the wheel and put one of these tractors through its paces in the field. That's when you'll know they're truly great new tractors.

DAVIS - LENDERSON

PHONE 2970

MULESHOE, TEXAS

USE THE CLASSIFIED FOR RESULTS

THE MULESHOE JOURNAL, Thursday, July 31, 1952

FOR SALE



I have sold the lots on the Clovis Highway but I still want to sell —

* 1/2 block in Lakeside addition. These lots are level and are a BARGAIN. I will sell them on YOUR TERMS. Come look at them.

* One of the best residences in Muleshoe. Well located. On paved street. Will carry a large loan. Possession NOW. \$9,000.

* HAVE SECTION AT VAN HORN. Plenty Irrigation Water. The cotton there has plenty bolls on it now. Waist high. This land is level and is priced to sell at only \$75. acre, with \$30. down. You can buy 160 acres or more on these terms. Buy NOW as you can get pump put in cheaper in the summer than in season.

* 2 lots, well located on Southeast corner of block. These lots are 75 ft. each and can be bought worth the money.

* 640 acres good red land, with fair improvements in irrigation belt. This is a good clean farm and owner is going to sell it. If you want a good section, better look at this for only \$95 per acre.

* 6 acres, on pavement, small house, irrigation well, pressure pump and natural gas and electricity. This is a bargain at only \$3500. Will carry part.

* 10 acres 1 mile from Muleshoe. Has grade A dairy barn no house. Priced to sell NOW.

* 320 acres at Van Horn. Has one 8" pump, rent goes. Has 100 acres cotton. \$12,000 loan. Priced at only \$200. per acre. Possession.

SEE

DAVE AYLESWORTH

At The Muleshoe Nursery On The Clovis Highway. Lone Star Trading Post in Muleshoe.

BUSINESS SITE FOR SALE OR LEASE

One of the best business sites in Muleshoe. 339 ft. Clovis highway frontage between Fred Johnson's warehouse and corner facing Dr. Pittman's.

Ideal for Tourist Court, Drive-In or Super Service Station. Low down payment, owner will finance if sold or will give long term lease.

Write
H. A. PHILLIPS
709 West Second
Portales, N. M.

FOR SALE: 1-1949 Ford cylinder truck. A-1 condition, priced reasonable. Muleshoe Motor Co. 32-2tc.

WE BUY Old Brass, copper, radiators, scrap iron, batteries, etc. JOHN'S CUSTOM MILL, Phone 5730. 5-tfc.

Rates: Minimum 40c; per word one time, 3c each additional time 2c. Strictly cash. Read your ad. Report any error immediately. The Journal will not be responsible for more than one incorrect insertion. All classified ads are strictly cash. Please pay for it at time it is ordered run.

FOR SALE

CITY PROPERTY

* 1 bedroom home, will sell to Veteran on G-1 Plan, well located. Price \$4000. Will give possession on signing of contract.

Eddie Lane

Real Estate & Insurance
Phone 3630 or 5689

FOR SALE: 1-1949 Ford cylinder truck. A-1 condition, priced reasonable. Muleshoe Motor Co. 32-2tc.

FOR SALE: 360 acres of valley land, running water, nice modern home, two good barns large size, well fenced, six acres mow land, three miles from U. S. Highway with good hard surface road to ranch, six miles from city, located in Scott County. Twenty thousand dollars buys this, good title. Hawkins Realty Co., Realtors. Springdale, Ark. 31-2tp.

FOR SALE: 4 unit apartment, \$9,500, \$2,000 down. 2 two-bedroom houses on same lot, \$9,000, \$2,000 down. 2 bedroom house, \$4,000, \$1,000 down. These are all nearly new houses, modern, on paved streets. Balance can be paid in monthly payments like rent. S. E. Goucher. 31-6tp.

SMALL TEXAS RANCH FOR SALE

Located: Dublin, Texas, a small Cow Ranch, a 50 cow unit. Paved road, school bus, mail route and R. E. A.

Soil: Heavy black land, extra good grass land, plenty of good water for stock and at house. Improvements: New Ranch style home just completed a year ago. Out-Buildings: Granary, hay barn, corrals and loading chute. Will trade for an 80 or 160 acre irrigated farm here. Ranch Price: \$37,500., will carry \$12,500. loan at 5% interest.

CLYDE A. BRAY, SR.
REALTOR
Box 243 Muleshoe Phone 2820

FOR ATHLETE'S FOOT A KERATOLYTIC IS A MUST

What is a keratolytic? An agent that deadens the infected skin. It then peels off, exposing more germs to its killing action. Get T-4-L, a keratolytic, at any drug store. It not pleased in ONE HOUR, your 40c back. Today at DAMRON DRUG STORE

FOR SALE

FARMS AND HOMES

FOR SALE

We are in this business to sell you a home. Come to see us when you are ready to buy. We have nearly any size farm you want and homes in town. Give us your listings if you want to sell.

HANOVER & DAY

REAL ESTATE
On Morton Highway
Just North Of Courthouse

NEW

OLIVER 8 row Sprayer.
DIESEL & Gas row crop "88" Tractors.
OLIVER 14 ft. Self-Propelled Combines.
OLIVER automatic Wire Tie Hay Baler.

"99" WHEAT Tractors.
4-RW Oliver cultivators.
4-RW listers and planters.
GAS 77 Tractors.
GAS 66 Tractors.
OLIVER Cotton Harvesters.

USED
3-RW front type lister for Oliver 70 \$50
JOHN DEERE D. late model \$1250

12-ft. Oliver Combine \$2250
12-ft. Baldwin Combine \$1500
"D" John Deere Tractor \$450
One Oliver Row-Crop "70" \$350
6-ft. Case Combine \$250
16-ft. International Combine, \$250
12-ft. Oliver Combine \$750
2-row Oliver cultivators, \$125 ea.
16x10 Oliver Drill \$300
Oliver 9 ft. Combine \$150
Genuine Oliver parts with guaranteed service; pickup & delivery.

MOORE OLIVER CO.
"Dutch" & "Pete" MOORE
822 W. 7th Dial 6133
Clovis, N. M.

SPECIAL PRICES

On all Radiators. International Farmall Cores \$25 exchange
STOVALL-BOOHER
Radiator Sales & Service
Plainview, Texas

REAL ESTATE For Sale



● 292 acres good dry land, well imp. well located south of town. Priced at \$100 per acre.

● 80 acres imp. irrigated, close in, \$28,000.

● 80 acres imp. shallow water, close in, \$21,500.

● 160 acres, best of land, irrigated, close in, \$42,500.

Some good small tracts priced to sell.

If you figure on buying it will pay you to look over our listings.

C. L. "HAPPY" DYER
C. E. BRISCOE
Phone 3710 Muleshoe

SAWS, LAWN MOWERS SHARPENED with automatic equipment. Our precision electrical equipment will sharpen saws, and lawn mowers to perfection. Our prices are reasonable and all work is guaranteed. JOHN SAIN, 1 block west of Shady Rest on Clovis Highway. 28-5tp.

FOR CASH LEASE: 80 acres, 6 miles northeast of Muleshoe, near Y. L. schoolhouse. Mrs. C. C. West. 30-3tp.

Combination Rhinestone and covered buttons, Rhinestone buckles, contour belts, jewel type snap fasteners, Mildred Sneed, 1 block east of locker. 30-5tp.

BARGAINS IN IRRIGATION PUMPS

130'-160' Used 6" Western pump. 180'-220' Used 8" Western pump. Both in A-1 condition. For information call Lubbock, 2-3848 or 3-8618.

WESTERN IRRIGATION CO., INC.
Lubbock, Texas 32-tfc.

FOR SALE: 1-1949 Ford cylinder truck A-1 condition, priced reasonable. Muleshoe Motor Co. 32-2tc.

FOR SALE: Fresh home made honey at W. H. Awtrey farm, 3 miles west, 1 mile north of Muleshoe. 32-1tp.

FOR SALE: 1 completely modern 4 room house. New, with floor furnace and blinds. On 50 ft. lot. \$4,000. Theron West. 31-3tc.

WANTED

SALESMAN WANTED: Unexpected change causes vacancy. Opportunity for man with car to supply demand for Rawleigh's Products in Bailey County where the Products have been sold 25 years. No capital needed. Write Rawleigh's, Dept. TXH-270-201, Memphis, Tenn. 31-6tp.

WANTED: Job of hoeing. Call 6911 after 4 p. m. 32-1tp.

I am back in my sewing room and ready to do your sewing, alterations, buttonholes, buttons, belts, etc. Mrs. C. D. Julian. 613 W. 1st. 32-3tc.

WANTED: Wish to locate a steel guitar teacher. Contact Mrs. G. T. Branaman, Star Rt. Goodland. 32-3tp.

SALESMAN WANTED: Here is a splendid opportunity for a qualified man. You must have a car, enjoy meeting people, getting around in a healthful work. You'll be your own boss with job security, no depressions or layoffs. Build yourself a future in a business where age is no handicap. Write Rawleigh's, Dept. TXG-270-FF, Memphis, Tenn. 32-3tp.

Custom hauling, stacking hay, etc. H. D. Ramage. Phone 5223. 32-2tp.

LOST: 2 billfolds, 1 navy blue, 1 red. Return to Journal office. Mrs. Ray White. 32-1tp.

FOR RENT

FOR RENT: Unfurnished apartment, 3 rooms and bath. Mrs. C. S. Holland. 28-tfc.

FOR RENT: 3 business rooms, 24x140, 12x30 and 24x40. Mrs. Moeller. 11-tfc.

FOR RENT: Furnished bedroom, living room and kitchenette. Mrs. Faulkner. 32-1tc.

FOR RENT: Furnished apartment, 1212 West Ave. E. Adults only. 30-2tp.

FOR RENT: Duplex 3 rooms and bath, \$35 water paid. Phone 6261. 31-3tp.

FOR RENT: 5 room modern house, 1211 W. 2nd. Call 4292. 31-2tp.

FOR RENT: Nice 3 room apt. unfurnished. See Spencer Beavers. Bovell Motor Supply. 31-2tc.

Mr. Muleshoe . . .

By J. M. FORBES

Outlying communities and towns in Bailey County (outlying, that is from the Hub or County Seat, which is Muleshoe) might at some far distant date consider how fire protection is obtained in Dallas County in small towns outside the county seat, Dallas.

We just read in The Dallas News that each small town's fire department had received \$1,500 to help them to fight fires and they will divide another \$7,500 at the year's end. These small town fire departments had answered no less than 325 calls in the first 6 months of this year.

Many rural homes and barns are burned down because there is no fire protection. Fire losses are not as high as they were several years ago, but they are still high. As we said in the beginning, it will be a long time before Bailey County will be ready for any such approach to the fire protection problem; still, we thought this a suitable time to put the idea in people's minds so they can begin to think about it, subconsciously. But we shudder to think what the reaction of the commissioners court members will be to these paragraphs.

I have set, or sat, out in the yard for many's the night lately, searching the skies with ferret-like eyes, seeking to spot a few flying saucers. I haven't seen one, but I advise the innumerable readers of this column to do likewise—look out for flying saucers. It will, if you spot one, add to our information about these things that the scientists now acknowledge that people have seen. But, if you phone the Amarillo News, and photographers are alerted to take a picture of same, you may win \$500. Besides the thrill of having seen one.

The vote over Texas for Mr. Martin Dies for Congressman at Large from Texas clearly indicates that most Texans want the former member of the House from Texas to go back to Washington. The man who could have opposed him, John Lee Smith, of Lubbock, one of the greatest orators in this state and a former lieutenant-governor has said publicly he doesn't want to run against Dies "in view of his splendid victory Saturday." John Lee was the runner-up and Mr.

Dies did not quite get a majority. We would like to say in passing that Mr. Smith's attitude is indicative of a democratic spirit and this revelation of his character makes us feel that we are not sorry for having supported him in campaigns of the past.

Another banker, Odell Gillham, of Levelland will keep Jesse Osborn, nominated in this district, company in the Texas Legislature next session. Concerning his election, Jesse told this writer: The people did it, I realize my name meant nothing to voters in some counties.

Mr. Osborn is president of the Muleshoe State Bank and indulges in farming and breeding fine Herefords. It is the first time that the new county of Bailey has had a county man to represent the district. Jesse is strong on soil conservation, water conservation, and other agricultural problems, through his intimate association with the people of Farmer and Bailey Counties, where agriculture is the big thing.

Let all your views in life be directed to a solid, however moderate, independence; without it no man can be happy, nor even honest. —Junius.

The moral progression of a people can scarcely begin till they are independent. —James Martineau.

There is often as much independence in not being led, as in not being driven. —Troy Edwards.

The word independence is united to the ideas of dignity and virtue; the world dependence, to the ideas of inferiority and corruption. —Jeremy Bentham.

Pleasant Valley News

Members of the Pleasant Valley Social Club who went to Littlefield Wednesday, July 23 to

donate blood were Mrs. Leroy Hicks, Mrs. Gerald Allison, Mrs. Oscar Allison, and Mrs. R. L. Roubinek. Mrs. George Wuertlein accompanied them to drive.

Mr. and Mrs. Gerald Black and sons and Mrs. E. E. Lamunyon from Laverne, Okla., have been visiting in the home of Mr. and Mrs. Leroy Hicks. Mrs. Black is a sister of Mrs. Hicks and Mrs. Lamunyon is Mrs. Hicks' mother. Mr. and Mrs. Black and family left Sunday but Mrs. Lamunyon is remaining for a longer visit.

Needmore News

Mr. and Mrs. Earl Schmitz and Anita and Judy went to Dallas last night. They will stay over the week end and watch Dallas play Beaumont four games in three days.

Beverly Kay Arnold has been visiting Mrs. Wilcy Moore in Longview this last week. She and Mrs. Wilcy Moore and little daughter, Dana will return Monday with the Earl Schmitz family.

Crops are good in the Needmore community, however, some farmers are poisoning their cotton for leaf worms.

Mrs. Don Moore and children have been visiting in the N. C. Moore home. She will be moving back to Muleshoe next month to get ready for the next school term. She has been living in Pampa this summer while Don is playing baseball with the Pampa Oilers.

Rudolph Morow, manager of the Needmore Gin, has been to South Texas, he brought back some Mexicans to help through the ginning season.

MOVE TO MULESHOE

Mr. and Mrs. Carl Huber and daughter of New York City have moved to Muleshoe where he will be employed by the Morrison Motor Company. Mrs. Huber is the former Wanda Farrell, daughter of Mr. and Mrs. C. R. Farrell of this city.

' THANKS TO ALL

I wish to express my appreciation to all those who supported me in my race for Sheriff.

Although I did not win, it will always be a source of pride to me that so many of the people voted for me.

BUCK CREAMER

For TERRACING And BENCH LEVELING

—SEE
CECIL BLANSCET
501 South Main

YOUR PULLETS

Will Do BETTER . . .

When Fed On EVERLAY

"Double Duty" Feeds Fortified With Vitamin B-12 And Anti-

biotic Feed Supplement

- 18% Gro Mash \$5.35
- 18% Gro Crumbles \$5.45
- 18% Egg Crumbles \$5.00
- 18% Egg Mash \$4.90

The "EXTRAS" in Everlay Feeds COST NO MORE

but GIVE YOU the EXTRA PROFITS!

CUSTOM CHICKEN DRESSING

Completely Processed, Ready For Locker

WE BUY — CREAM EGGS All Kinds Poultry

J & J PRODUCE

Phone 3810

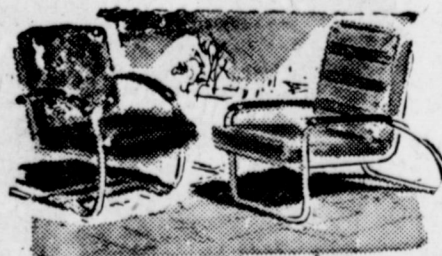
Muleshoe

SUMMER CLEARANCE OF LAWN & PORCH FURNITURE AT GREATLY REDUCED PRICES

TWIN GLIDERS

- ALL METAL
- STURDY CONSTRUCTION
- TUBULAR STEEL
- BALL BEARING SWINGS
- CONTOURED FOR COMFORT

A Beautiful Piece of Furniture You'll Be Proud of.

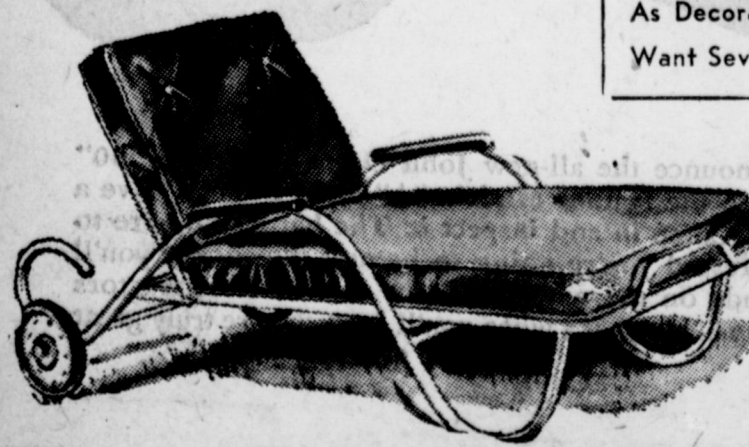


PORCH & TERRACE CHAIRS & ROCKERS

As Decorative As It is Useful — You'll Want Several Of These.

CHAISE LOUNGE

The One Piece Of Furniture You'll Really Appreciate. 6 Inch Innerspring Pad, Plastic Leather Cover, Tubular Steel Construction, Wheels & Adjustable Back.



DYER'S

PHONE 2590

MULESHOE

Polio . . . Insurance

Our old line Legal Reserve Polio Policy pays up to \$10,000 to each insured for aggregate treatment of dangerous disease. Polio and 9 other dread diseases: Typhoid fever, Leukemia, Encephalitis, Rabies, Scarlet Fever, Small Pox, Diphtheria, Tetanus and Meningitis.

\$12.00 is total cost for \$10,000 protection. This policy includes an Accidental Clause providing benefits for accidental dismemberment of any member of the family. Come in and let us explain this policy to you.

POOL INSURANCE AGENCY

PHONE 7010

MULESHOE