







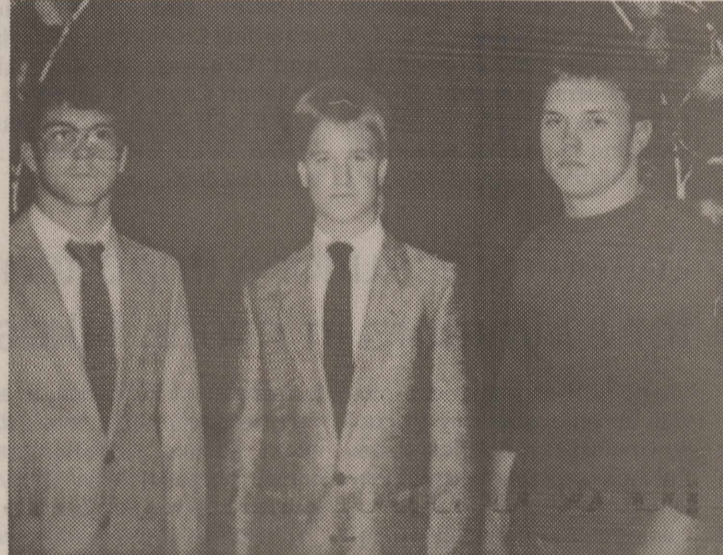


# Meet Old Friends At Homecoming

September 13, 2003



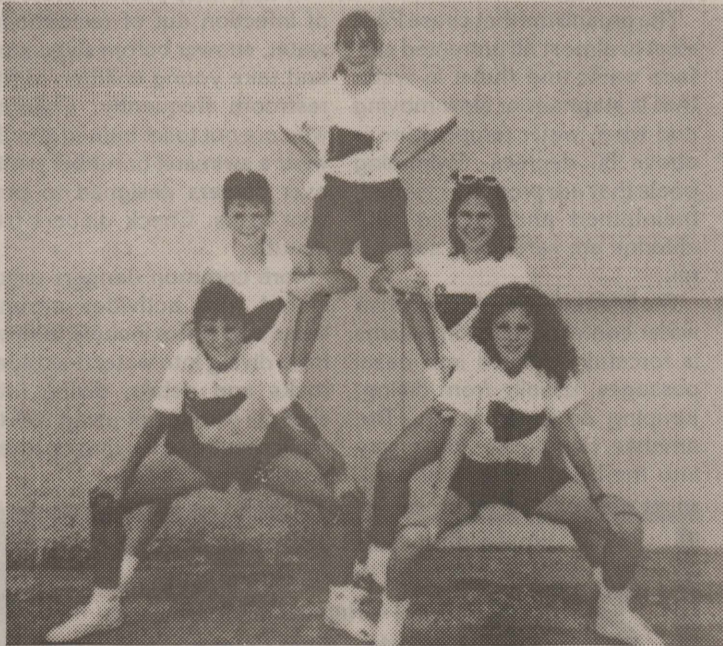
CROSS PLAINS SCHOOL LUNCHROOM EMPLOYEES EARLY 1950's— Linnie Brashear (from left), Mary Hutson, Vesta Bond and Katie Oliver.



MOST HANDSOME



LIVESTOCK JUDGING TEAM



CROSS PLAINS JUNIOR HIGH CHEERLEADERS



LOCAL BEAUTIES



IT'S A SMALL WORLD—Cecil and Mary Barton (from left) and Mary Ann and Richard Chaffin, all residents of Cross Plains, met in Washington and took a logging tour in the Olympic Forest near Forks, Washington.

## Master Gardener training to begin in September in Taylor County

Master Gardener training in Taylor County begins in September, applications are now being accepted. For the first time, the training will be held in the morning during the week. Master Gardeners are members of the local community who take an active interest in their lawns, trees, shrubs, flowers and gardens. They are enthusiastic, willing to learn, help others, and able to communicate with diverse groups of people. What really sets Master Gardeners apart from other home gardeners is their special training in horticulture. In exchange for their training, persons who become Master Gardeners contribute time as volunteers, working through their cooperative Extension office to provide horticultural-related information to their communities.

For additional information, or to receive an application, contact the Taylor County Extension office at 325-672-6048. Extension programs serve people of all ages regardless of socioeconomic level, race, color, sex, religion, disability, or national origin.

## LETTERS TO THE EDITOR

Dear Vanda,

I want you to know that the *Cross Plains Review* has the best Editor in the State of Texas. You do such a great job and we appreciate it.

This year's Cross Plains High School Homecoming will be the finest one ever. Our graduation Class of 1939, that we refer to as the 39ers, hope to be well represented.

I am enclosing some homemade cards to let you know we still love Cross Plains and hope to be there on September 13.

Give my best regard to Wanda Ruth and Joe.

Sincerely,  
A Distant Relative  
Granvel L. Pierce

Dear Editor,

When our forefathers came to this country they brought gifts to the Indians of blankets which had been used by those who died of smallpox. Indians developed funny spots on their skin. Many Indians die. (The introduction of biological warfare.)

Indians brought gifts of big leaves for peace pipes of forefathers. Forefathers developed funny spots on lungs. Many forefathers die. (The introduction of chemical warfare.)

Were these possible the first use of weapons of mass destruction? Incidentally, the word "gift", in Swedish, means "poison".

Curtis Hoskins  
7615 St. Hwy. 36 East  
Cross Plains, Tx. 76443

## Star Gazing Party Ft. Griffin State Park

Fort Griffin State Park is having a Star Gazing Party on Saturday, August 23, at dusk and you are invited. Did you know that the planet Mars is soon going to be closer to Earth than it has been in over 60,000 years?

Don't miss your chance to see Mars up close! Join the Star Gazing Party hosted by the Fort Worth Sidewalk Astronomers and Fort Griffin State Park and see all the amazing sites of our dark West Texas night sky.

For more information call (325) 762-3592. Fort Griffin State Park is located 15 miles north of Albany on U.S. Highway 283. Be there!

## ABILENE REGIONAL MEDICAL CENTER



*It didn't take long for me to realize my heart surgery was successful. The afternoon following my surgery, I told my mother I was already better. I could feel the blood circulating again. It was great! I received excellent care at ARMC and recommend their Heart Program without hesitation. If you're having chest pains like I was, my suggestion is — get out to Abilene Regional and have it taken care of!*

— Shelle Stautzenberger  
Insurance Agent

**ABILENE REGIONAL**  
Heart & Vascular Institute

6250 Hwy 83/84 • Abilene, TX 79606  
325-695-9900 • www.amc.info

## Don't Miss a Beat!

**Be good to your heart...and don't miss a beat!** Think Abilene Regional Medical Center for heart care. Our Abilene Heart & Vascular Institute is a specially designed cardiac services program providing comprehensive heart care from a family of cardiologists, cardiovascular surgeons and specially trained medical technicians.

Since 1985, we have performed thousands of open heart surgeries, diagnostic cardiac catheterizations and stent placements. Our outcomes for coronary bypass surgery have consistently been better than those experienced statewide or across the nation.

In addition, we offer complete Cardiac Rehab Services for patients following surgery. Our Cardiac Rehab Program begins right after surgery and continues through graduation. All our Cardiac Rehab is carefully monitored so that every patient builds up their stamina in a safe and healthy way. Call us or talk to your doctor. You'll be glad you came to ARMC.





Renovations Underway At Bivins Hall At Cisco Junior College Campus



Site Of The New Cisco Junior College Baseball/Softball Complex

# Cisco Junior College Campus Experiencing Renovations and New Construction

Building improvements and construction at the Cisco Junior College campus continue as the CJC community prepares for the fall semester. Cisco Junior College President John Muller said that major paving and street work have been completed. "All streets have been repaired, and the parking lots have been sealed and striped," Muller said. The renovation of Bivins Hall as a residence hall continues. This

two-story building was constructed in 1927 and is approximately 14,000 square foot. It served as a dormitory to thousands of young men, but has been unoccupied for several years. According to Muller, Bivins is the oldest structure on the Cisco campus. Earlier this summer a contract for \$1,404,835 for the renovation of Bivins Hall was awarded to Rose Builders, Inc. of Abilene, and construction crews continue to work on the site. Much of the building's interior has been stripped, and the portico has been reopened. The brick has also been repointed making the architectural detail more visible. "Bivins Hall is a significant building that links the present with the past, and its restoration will also give us the dormitory space needed with our new programs," Muller said.

Other building improvements completed this summer are painting the outside of Schaefer Hall, the CJC Gymnasium, Nance Hall and the Harrell Fine Arts Building. Other campus buildings have been painted inside; the restrooms in Schaefer Hall are currently being renovated, and new tops have been ordered for the lab tables in the Science Building. With construction projects well underway at the main campus, work still continues on the Abilene Educational Center located at the corner of Loop 322 and Industrial Blvd. Muller said that the new facility is scheduled to be open for summer classes in 2004.

Like improvements at the Cisco campus, funding for the new Abilene facility was generated by the sale of general revenue bonds. "From the beginning, we were determined that the new Center and construction at CJC's main campus would be funded by sources other than local taxes," Muller said. With fall classes beginning Wednesday, August 27, students will greatly benefit from the enhanced facilities and Cisco Junior College's ongoing growth. Registration at the main campus in Cisco will be Monday, August 25, from 5:30 p.m. to 7:30 p.m. and Tuesday, August 26, from 8:30 a.m. to 2:30 p.m. The first class day at both locations is Wednesday, August 27.

In addition to the new construction, other building improvements completed this summer are painting the outside of Schaefer Hall, the CJC Gymnasium, Nance Hall and the Harrell Fine Arts Building. Other campus buildings have been painted inside; the restrooms in Schaefer Hall are currently being renovated, and new tops have been ordered for the lab tables in the Science Building.

## Western Heritage 2004 Dates Announced

ABILENE—Dates for the 20th annual Western Heritage Classic are set for May 6-8, 2004. The Western Heritage Classic is cosponsored by Budweiser and the Expo Center of Taylor County and is a three-day weekend celebration that honors and preserves real life in the West. Tickets will go on sale Saturday, April 24, 2004, 10:00 a.m.-5:00 p.m. For more information call 915-677-4376 or go to [www.westernheritageclassic.com](http://www.westernheritageclassic.com).

Selected events are designed to reflect true ranch life. The Western Heritage Classic's Ranch Rodeo will feature historic ranches competing in five events for the top honors awarded Saturday night. The weekend showcases the art and skill of the participating cowboys. The 2003 Champion was the Guita Ranches of Abilene, winning a second year in a row. The Western Heritage Classic also plays host to the Invitational Ranch Horse Sale. The registered Quarter Horses available for sale are from some of the southwest most historic ranches. The horses will be demonstrated and sold beginning at 10:00 a.m. Saturday, May 8, 2004.

Other events are held throughout the weekend including the National Finals for the Ranch Horse Association of America's (RHAA) Working Ranch Horse Competition, Chuckwagon Cook-off, the World's Largest Bit and Spur Show, Matched Horse Races, Horse Training Clinic, Western Art Show as well as various Children's Events and Entertainment.

## Happy Birthday!

- AUGUST 23**  
Kenneth Given  
Mrs. Elvin Hutchins  
Andy Meiron  
DeAnna (Besselaar) Zell  
Brandon Self  
Steven Nickerson  
Roy Larkin  
Verna McCowen  
Jordan Duran

- AUGUST 26**  
Shaun Muniain  
Mrs. James Hall  
Charles Lee  
Dee Perry  
Mrs. Edwin Weiss  
Brenda Lewis  
Rocky Callaway  
Kevin Shane Singleton  
Bertis Letney

- AUGUST 24**  
Bobby Dale Payne  
David Morales, Jr.  
Debra Ann Hollis  
Kathy Chesshir  
A.S. Harlow  
Barbara Ann Black  
Mrs. Lester Mannering  
Eddie Neizke  
Sherry Sheryl Erwin  
Harold Reed  
Dr. Toby Irwin  
Cory Barron  
Alicia Duran

- AUGUST 27**  
Elisabeth (Cavanaugh) Weide  
Michael Cowan  
Mrs. Doyle Lovell  
Monty Champion  
Vicki Dillard  
China Dillard  
Bea Kay (Bell) Jackson

- AUGUST 25**  
Mrs. Morris Odom  
Benny Free  
Dorothy Johnston  
Mrs. James W. Lindsey  
Belinda Hefner  
Rick Hines  
Daynelle Johnson

- AUGUST 28**  
Rex Tackett  
Aaron Jason Pope  
Billy Dolgener  
Wade Odom  
Dawn (Strength) Hilburn  
Mrs. Freddy Tatom  
Kim Gregory  
Marcia Hoover


- AUGUST 29**  
Grady Christensen  
Susan Coppinger Cohn

## Sen. Troy Fraser named to chair committee on rock crushers & quarries

AUSTIN—Governor Rick Perry today announced the creation of the Advisory Committee on Rock Crushers and Quarries and named Senator Troy Fraser of Horseshoe Bay as chair. The committee will advise the Texas Commission on Environmental Quality (TCEQ) on issues related to the regulation and permitting of rock crushers and quarries. Committee members will study TCEQ's authority to adequately address citizen concerns about the construction and operation of rock crushers, including rock crushers operating in association with quarries. The governor named three state senators and representatives to the committee: Sen.

Frank Madla, D-San Antonio; Sen. Kenneth Armbrister, D-Victoria. Rep. Dennis Bonnen, R-Angleton, Rep. Byron Cook, R-Corsicana, and Rep. Edmund Kuempel, R-Seguin. Perry also appointed three public members to the committee: • James Oakley, of Spicewood, is a Burnet County commissioner. • John V. Lattimore Jr. is the president and CEO of Lattimore Properties Inc. in McKinney. • John Richard Weisman is president of Hunter Industries Ltd., in San Marcos. The committee will submit a full report of its findings and recommendations to the governor and the 79th Texas Legislature no later than Dec. 31, 2004.

Cross Plains Review  
7  
August 21, 2003




**The One You Can Count On!**

- ✓ PROTEIN
- ✓ ENERGY
- ✓ MINERALS
- ✓ VITAMINS

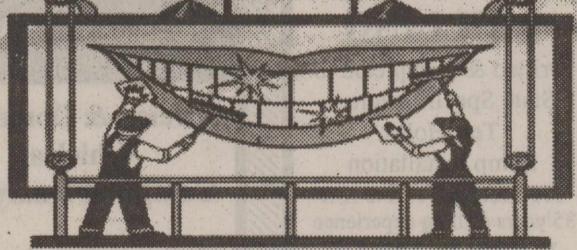
Try our NEW All-In-One 30% (with veins). You will get lower consumption.

Also inquire about the NEW "LICK IT" Mineral Tub and IGR for fly control.



Positive Feed, Inc.  
Cross Plains  
Grain & Peanut  
(254) 725-7345

"If you don't measure it - you can't manage it!"



Gentle Family Dentistry  
Experienced, caring personnel • Pain-free methods

**Joe K. Reed, D.D.S.**  
in Baird accepts  
**CHIP, MEDICAID**  
& most dental insurance.

116 W. 3<sup>RD</sup> • Monday-Friday 8am-5pm  
Accepting New Patients!  
(915) 854-1173 • 1-866-854-1173

## NOTICE OF PUBLIC HEARING ON BUDGET

The board of directors of the Callahan Appraisal District will conduct a public hearing on the proposed 2004 budget. The hearing will be held at 7:00 p.m. in the appraisal district offices at 132 West 4th Street in Baird, Texas, on Monday, September 8th, 2003. The 2004 budget proposal follows:

Total Proposed Budget	\$273,746
This represents a 0% increase over the 2003 budget of \$273,746	
Number of employees compensated in 2003	5
Number of employees compensated in 2004	5

The Callahan Appraisal District is supported solely by payments from the local taxing units served by the district. If approved by the appraisal district board of directors at the public hearing, this proposed budget will take effect automatically unless disapproved by the governing bodies of the county, school districts, cities and towns served by the appraisal district. A copy of the proposed budget is available for public inspection in the office of each of those governing bodies.

Bun Barry, R.T.A., R.P.A., C.T.A.  
Chief Appraiser, Callahan Appraisal District







# Stanley Coppinger Appointed to New Position at LeTourneau

LeTourneau University in Longview has announced the recent appointment of Dr. Stanley Coppinger to Vice President for Academic Affairs. Dr. Coppinger came to LeTourneau to teach English two years ago and will retain faculty rank as Associate Professor of English. He received a B.A. degree in Biblical Studies from Biola University, an M.A. in English from Tarleton State University, and a Ph.D. in English from Baylor University. He served as Assistant Professor of English at Howard Payne University for six years before

coming to LeTourneau. The University news release stated, "Dr. Coppinger is an excellent faculty member and has been very popular with his students. While we regret losing his expertise in the classrooms, we are excited about the personal and professional qualities that he brings to academic administration here at LeTourneau University." Stanley's wife Sharon has recently joined the LeTourneau staff as an Admissions Counselor. Stanley is the son of Joe and Delma Coppinger of Cross Plains.



**WHAT A REUNION**—Ruby Lee (from left) and her sister, Gloria Holdsworth, and her brother, Larry Force, were so happy to see each other after so many years.

# FSA County Committee Election Announcement and Requirements

(Baird, TX) August 14, 2003 -- The mission of the Farm Service Agency (FSA) of the U. S. Department of Agriculture is to help ensure the well being of American Agriculture and the American public through efficient and equitable administration of the federal farm programs. These programs are administered by local county office employees. In addition to the local county employees the agency utilizes a farmer elected county committee in the program administration. The County Committee is a grass roots approach to give farmers and ranchers a much needed say in how federal actions affect their communities and individual operations. The County Committee system goes back to the 1930's, when Congress set up a system in which federal farm programs were administered locally. The members on the committee are nominated and elected by local producers who are eligible to participate in FSA programs. Annually the Farm Service Agency conducts an election process to elect a committee member from one of 3 Local Administrative Areas (LAA's) to a three year term. This year the election will be held in LAA # 1, which is the Clyde, Eula, and Oplin area. Jack Farmer currently represents this area and is eligible to serve another term. To be eligible to hold office as a county committee member, a person must:  
• Be of legal voting age and be eligible to vote as an individual

or member of a general partnership or joint venture in the LAA in which the person is a candidate. Or Represent a legal entity, other than a general partnership or joint venture, that is eligible to vote in the LAA in which the person is a candidate.  
• Reside in the LAA in which the person is a candidate.  
• Must not have been:  
• Removed or disqualified from the office of county committee member, alternate or employee  
• Removed for cause from any public office or have been convicted of fraud, larceny, embezzlement, or any other felony.  
• Dishonorably discharged from any branch of the armed services.  
Nominations are now being taken in the office. The deadline for nominations is close of business on September 5, 2003. FSA encourages voters to nominate individuals they feel would best serve their community. In order to achieve diversity on the County Committee, FSA is soliciting nominations from groups representing producers who are fairly representative of agriculture producers in the county. FSA is also actively seeking female, minority, and producers from under-represented groups for nominations. If you have any questions regarding the County Committee election process please call the Callahan County FSA Office at (325) 854-1049 ext. 2.

# Local Lady Visits with Siblings After 40 Years Apart

Ruby Lee of Cross Plains visited with her brother, Larry Force of Topeka, Kansas, and sister, Gloria Holdsworth of Lindsborg, Kansas, for the first time in forty years. The wonderful reunion took place in Gloria's home on June 16-20.

Wilma, of Comanche, made the visit possible. The couple drove her to Kansas to be with her loved ones. Ruby's brother is suffering from cancer and she had been concerned for him. They enjoyed several days of reminiscing as the cameras were flashing.

Ruby was quick to report that her son, Richard and his wife,

This will be a trip to remember for the entire family.

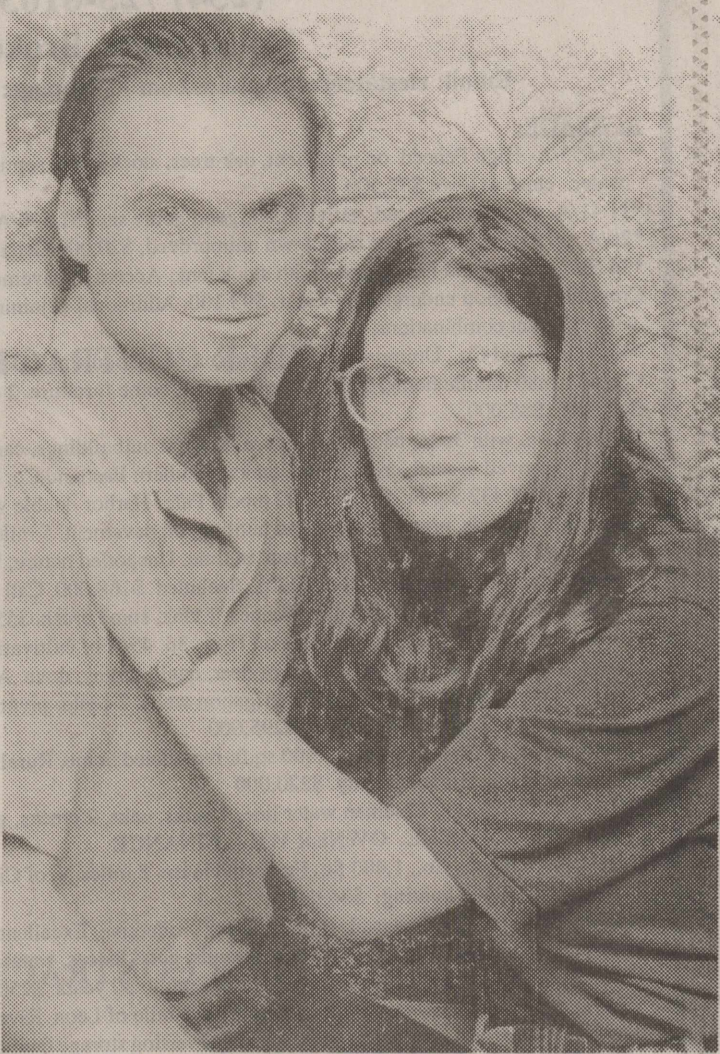
# A tree grows in Texas (But do you know what species it is?)

COLLEGE STATION—For many years you've gazed at that tall, leafy tree in your front yard and wished you knew its species. For then, you would be able to nurture the tree to ensure its health, be mindful of diseases that might attack it, and know how to attract colorful birds and butterflies to its branches. Or perhaps you're landscaping a new home and simply want to know which trees will do well with your particular soil and climate.

have done a commendable job in producing Trees of Texas. "Crisscrossing this enormous state, they found and photographed a vast array of fascinating species and share the results of that quest with their readers," the Tvetens say. "Here beginner and experienced naturalists alike can learn to identify most Texas trees while, at the same time, delve into the folklore, history, and wildlife ecology of the Lone Star State."

Because Texas boasts about one-third of the tree species native to the entire continental United States, making heads or tails of each variety, especially for the beginner, can be a bewildering and difficult task. But now in *Trees of Texas: An Easy Guide to Leaf Identification*, Carmine Stahl and Ria McElvaney allow novices and experts alike to identify more than two hundred of Texas' most common native and naturalized trees using actual scanned images of leaves, fruit, flowers, nuts, acorns, cones, and bark. Readers simply choose a leaf from their tree in question, match it to a key of leaf shapes—whether paddle, heart, or compound—and compare their leaf to the suggested photo to find a match.

Stahl and McElvaney's images accompany a regional guide to growing trees; information on the potential size and growth rate of trees valuable for landscaping; a list of native and non-native trees; species descriptions that include height, growth rate, commercial or wildlife value; family; vegetation region of the trees; and captivating folklore and interesting cultural and historical annotations. "We hope this method of organizing the book, together with the clear, life-sized illustrations, will help you to identify Texas trees and will launch you on a voyage of discovery," the authors write. "As you press forward with your explorations, you will find that these apparently mute and stoic beings scattered here and there throughout your yard, neighborhood, and beyond tell stories of Indian lore, of explorers and conquistadors, of frontier medicines and deadly poisons, of animal uses and archaic tools and weaponry." For the more knowledgeable reader who may not need help with actual identification, scientific and common names appear in the index. And just for fun, the authors have added appendices containing wild edible recipes, light and water requirements, and a list of butterfly host trees, making *Trees of Texas* perfect for people who want to learn to identify trees without wading through confusing technical terms. Naturalists John and Gloria Tveten say Stahl and McElvaney



**TAMI LEE HALL & SHAWN ANDERSON**  
...couple to marry September 20, 2003 in Cross Plains

# Hall-Anderson Announce Their Engagement and Approaching Wedding

Dana Hall of Cottonwood and Ernest Hall of Clyde are proud to announce the engagement and approaching marriage of their daughter, Tami Lee Hall, to Shawn Anderson, the son of Randy Anderson of Corpus Christi and Deborah Sue Canipe of Marble Falls. The couple will be united in marriage on September 20, 2003 at Living Water Ministries in

Cross Plains at 2:00 p.m. The bride-elect is a 2002 graduate of Cross Plains High School. She is the granddaughter of Mr. and Mrs. Darvin King of Baird. The prospective bridegroom is employed at Wal-Mart in Brownwood. He is the grandson of Colleen Anderson of Cross Plains and Carlyn Canipe of Marble Falls.

**REED CONSTRUCTION**  
"When In Need — Call Reed"  
Concrete - Barns - Painting  
New Homes - Additions - Remodling  
Tape & Bed & Texture - Metal & Shingle Roofs  
We've Been a Local Business Since 1980  
**Local References - FREE Estimate**  
"Bring Me a Legitimate Estimate And I Will Beat It!"  
**We'll Be Here After Work Is Done**  
**Work is Guaranteed**  
Home 254-725-7363    Pager 325-734-0932



**Dorothy Odom**  
is a Beautiful  
**80 Years Young**

Please come help her family and friends  
celebrate on  
**Friday, August 22**  
at the home of Cliff and Connie Kirkham  
Come & Go **6 - 7:30 p.m.**  
Appetizers & Cake  
**Your Presense Is Gift Enough!**

## PIONEER FARMERS COOP

Monday - Friday	7:00 to 5:00
Saturday	7:00 to 12:00

(254) 725-6564                      (254) 725-7546 FAX

<b>Bradberrys Chicken Scratch 50lb .....</b>	<b>\$5.75</b>
<b>Sweet "10" Horse &amp; Mule 50lb .....</b>	<b>\$5.50</b>
<b>Strong Point Small Bite Dog Food 40lb .....</b>	<b>\$10.99</b>
<b>Western Chunks Dog Food .....</b>	<b>\$8.99</b>
<b>Patriot Performance Horse Feed 50lb .....</b>	<b>\$7.49</b>
<b>Show Finisher 50lb .....</b>	<b>\$7.50</b>
<b>N-Terminator - Show Goat Feed 50lb .....</b>	<b>\$8.99</b>
<b>Sheep &amp; Goat Feed 50lb .....</b>	<b>\$6.25</b>
<b>Kid Grower 50lb .....</b>	<b>\$6.25</b>

Special Blended  
10-10 Loose Mineral  
For This Area  
**\$11.50**  
50 lb. Bag

White, Sulfer  
& Iodine Salt  
Blks.  
**\$4.30**

**Come See Tony, Angie, J.R. and Howard  
For Your Farm & Supply Needs**