

Basketball games

HASKELL
JVG-B, VG-B vs Stanton
 Fri., Jan. 18, 4 p.m.
 at Stanton
7th-8th Girls
Munday Tournament
 Sat., Jan. 19, at Munday
7th-8th Boys
Munday Tournament
 Sat., Jan. 19, at Goree
7th-8th Girls vs Colo. City
 Mon., Jan. 21, 5 p.m.
 at Colorado City
7th-8th Boys vs Colo. City
 Mon., Jan. 21, 5 p.m.
 at Rochester
JVG-B, VG-B vs Anson
 Tues., Jan. 22, 4 p.m.
 at Anson
PAINT CREEK
VG-VB vs Roby
 Fri., Jan. 18, 6:30 p.m.
 at Roby
JH G-B vs Roby
 Mon., Jan. 21, 6 p.m.
 at Roby
VG-VB vs Aspermont
 Tues., Jan. 22, 6:30 p.m.
 at Aspermont
RULE
JVB, VG, VB vs Aspermont
 Fri., Jan. 18, 5 p.m.
 at Aspermont
JH B Rule Tourney
 Sat., Jan. 19 at Rule
JH G-B vs Lueders-Avoca
 Mon., Jan. 21, 6 pm.
 at Lueders-Avoca
VG, VB vs Trent
 Tues., Jan. 22, 6:30 p.m.
 at Rule

Calendar

Food distribution

The Haskell County Ministerial Alliance Food Distribution Center will distribute food Sat., Jan. 19 from 10 a.m. til 11:30 a.m. at 206 S. 2nd (building east of Civic Center) in Haskell.

Pack meeting

Haskell Cub Scout Pack 136 will hold a pack meeting Tues., Jan. 22 at 7 p.m. at the Haskell National Bank Community Room.

Youth basketball

Paint Creek Youth Basketball will enroll children in Pre-K (4 years old) through sixth grade to participate in the Paint Creek Youth Basketball program through Fri., Jan. 18. Cost is \$15 and is open to all area children. Students do not have to attend Paint Creek schools to participate. Call Stacy Medford 940-864-3842 or 325-660-5250 or Tamera Hearn 940-256-0099 for more information.

Art Association

The Brazos West Art Association will meet Mon., Jan. 14 at 6:30 p.m. at the Haskell National Bank Community Room. Paul Friske, well-known Abilene artist, will present an oil demonstration. Guests are welcome.

Revival

Trinity Baptist Church, 114 S. Ave. D in Haskell, will conduct revival services Sun., Jan. 27 through Wed., Jan. 30. Sunday services are at 10:45 a.m. and all evening services are at 6:30 p.m. Pastor Russell White, pastor of Victory Baptist Church in Stephenville and son of Pastor Larry White of Haskell serve as evangelist and song leader.

Little Dribblers

Haskell Little Dribblers will sign up Jan. 23 from 5 to 6 p.m. at Haskell City Hall. Students in the third through sixth grades are eligible. Cost is \$10. For more information call Missy Burson at 864-8161 or Terri Klose at 864-3801.

Index

Obituaries..... Page 2
 Out of the Past..... Page 4
 Menus..... Page 8
 Classifieds..... Page 9

Haskell Jr. Livestock Show results inside

The Haskell Free Press

VOL. 122—NO. 3, ©JANUARY 17, 2008

"The People's Choice"

10 PAGES—ONE SECTION—75 CENTS



GRAND CHAMPION STEER—Chase Gibson is holding his English steer entry that took the Grand Champion Steer honors during the Haskell Jr. Livestock Show held last weekend. Gibson shows with the Haskell Jr. 4-H Club. Helping him with his entry is Kourtney Gibson and Ryan Rathmann, steer judge.

Photo by Bill Blankenship

Library project shows progress

The library is progressing nicely thanks to the following organizations that have helped to support it financially:

Fields Foundation of Haskell; Priddy Foundation Of Wichita Falls; Dian Owens Grave Foundation of Abilene; Wichita Falls Area Foundation; Meadows Foundation of Dallas; Helen Jones Foundation of Lubbock; Hillcrest Foundation of Dallas; Dodge Jones Foundation of Abilene; and Thornton Foundation of California.

By the end of February, the new library building should be finished. A grand opening will be announced. After the library has relocated, a book sale of books that were not moved to the new library will be held.

The meeting room will be available in the daytime and evenings and can accommodate 20 people for a meal or 40 people for a meeting. A screen and powerpoint projector will be available for presentations. The kitchen has a microwave and warming ovens. There will be no charge for using the meeting room and it is available for civic organizations.

The library is looking for volunteers to help place books on the shelves at the new library and also to help with the book sale. Donations are still needed to help furnish the children's room and meeting room.

For more information, call Joan Frazier at 864-2747.

January sales tax receipts reported

Comptroller Susan Combs announced that the state collected \$1.83 billion in sales tax revenue in December, up 9.1 percent compared to December 2006.

Combs sent cities, counties, transit systems and special purpose taxing districts their first sales tax allocations of 2008—\$448.3 million, up 7.3 percent compared to January 2007.

"Since the state's 2008 fiscal year began last September, sales tax collections are up 7.3 percent

compared to the same point in fiscal 2007," Combs said. "While increases have moderated compared to those of the past two years, solid sales tax growth continues."

Comptroller Combs sent January sales tax allocations of \$303.2 million to Texas cities, up 7.4 percent compared to January 2007. Texas counties received sales tax payments of \$26.8 million, up 5.7 percent compared to last January.

December state sales tax collections and January allocations to local governments represent sales that occurred in November.

Haskell County had a 12.46 percent increase for January 2008 of \$31,230.15 in comparison to \$27,767.68 for January 2007.

The City of Haskell had a 11.83 percent increase for January 2008 of \$29,164.47 in comparison to \$26,077.09 for January 2007.

The City of O'Brien had a 54.18 percent decrease for January 2008 of \$52.03 in comparison to \$113.56 for January 2007.

The City of Rochester had a 23.82 percent increase for January 2008 of \$399.76 in comparison to \$322.84 for January 2007.

The City of Rule had a 19.68 percent increase for January 2008 of \$1,348.87 in comparison to \$1,127.04 for January 2007.

The City of Weinert had a 108.43 percent increase for January 2008 of \$265.02 in comparison to \$127.15 for January 2007.

Disaster eligibility date extended

The eligibility criteria for 2007 livestock and crop year losses has been expanded, for farmers and ranchers who suffered recent livestock and/or crop losses caused by natural disasters, announced Glenn R. Brzozowski, Executive Director for the Haskell County Farm Service Agency (FSA).

On Dec. 26, 2007, President George W. Bush signed the Department of State, Foreign Operations and Related Programs Appropriations Act, 2008 (2008 Act). The 2008 Act amended the previous Feb. 28, 2007, date and now allows for crops planted for harvest prior to Dec. 31, 2007, to be included for loss purposes under the Crop Disaster Program (CDP).

Similarly, under the Livestock Indemnity Program (LIP) and the Livestock Compensation Program (LCP), the 2008 Act extends the date livestock and livestock feed losses could have occurred in a primary or contiguous county named in a Secretarial or Presidential disaster declaration to Dec. 31, 2007.

"This date change does not make 2008 crops planted in 2007 eligible for CDP, however it does benefit farmers in that it expands the eligibility criteria to include

crops planted in 2007 that were intended for harvest in the same crop year, and it adds 10 months to the amount of eligible time livestock losses can be considered for the new programs," said Brzozowski.

Producers should visit their local USDA Farm Service Agency office to apply for benefits under these new disaster assistance programs, added Brzozowski.

Sign-up for livestock disaster assistance under LCP and LIP

began Sept. 10, 2007. Sign-up for crop disaster assistance under CDP began Oct. 15, 2007, and applies to farmers who suffered quantity losses to their crops. Ending dates for the sign-up period have not yet been determined.

For more information about LCP, LIP and CDP, contact the Haskell County FSA at 940-864-2617 ext. 2 or online at <http://www.fsa.usda.gov>; under "Disaster Assistance Programs."

Haskell FD elects officers

Members of the Haskell Volunteer Fire Department held an election of officers Mon., Jan. 7.

Randy Shaw was elected Fire Chief. Felix Rodriguez will serve as Assistant Chief.

Eddie Klose, Donald Cunningham and Claude Payne will serve as captains. Lieutenants are Mathew Cunningham, A.J. Shaw and Mike Alsbrook.

Jason Torres is the safety officer. Tim Wilson will be the assistant safety officer.

Steven Wright will serve as chaplain. Wes Alsbrook, Mike Alsbrook and James Martin were elected trustees.

Mathew Cunningham is training officer. Charlotte Arendall will serve as assistant training officer.

Mike Alsbrook is equipment manager. Randy Shaw is the public information officer.

Tony Haynes is the secretary-treasurer. Bobby Scheets will serve as the assistant secretary-treasurer.



VOLUNTEER RETIRES—Randy Hise was honored for his 20 years of dedicated service to the Haskell County Junior Livestock Show and Premium Sale during the event held last weekend. Hise is retiring and received a plaque in appreciation of his years of service to the organization.

FOR NEWS ITEMS OR TO SUBSCRIBE, CALL 864-2686

Obituaries

Wanda Sue Zarelli



WANDA ZARELLI

Wanda Sue Zarelli died Fri., Jan. 4 at St. Francis Hospital in Tulsa, Oklahoma.

Born Sept. 29, 1933 in Prairie Grove, Arkansas, she was the daughter of Birdie and Mac Mason. She graduated Prairie Grove High School in 1951 where she was editor of the yearbook, a class officer, cheerleader, and honor student who received the American Legion Merit Award.

In the early 1960's, she moved to Hollywood, California and began an illustrious career as a hairstylist and business woman. She was the first licensed female barber in the state of California.

She was once recognized as the top hairstylist in Los Angeles and appeared on a national radio show for this award.

In 1975, in Beverly Hills, California, she opened 'Zarelli Look' hairstyling salon. She was a resident of Beverly Hills and a member of the Chamber of Commerce. Wanda had an impressive client list during her career as a hairstylist. Some of the names on that list included actors Lucille Ball, Barbara Eden and Vince Edward; The Lawrence Welk Show and Branson, Missouri, singer Tom Netherton, Jockey Willie Shoemaker, William Morris Talent Agency, moguls Sam Weisborg, and Norman Brokaw' renowned real estate developers Melvin Simon and Jerry Wolman. Wolman was a former owner of the Philadelphia Eagles.

Wanda moved back to Prairie Grove in 1985. She worked for ten years in the dining hall department at the University of Arkansas.

In 1993, she developed breast cancer. She did most of her treatments in Tulsa, at the Cancer Treatment Centers of America. She represented the State of Arkansas at the groundbreaking

of the new cancer treatment center hospital in Tulsa in 2005. She celebrated fifteen years of cancer survival in 2007.

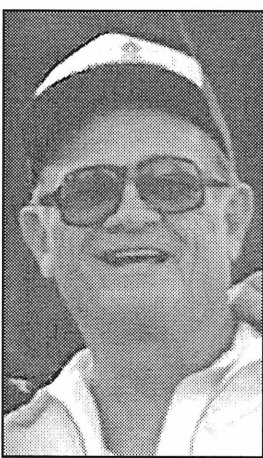
In her later years, Wanda enjoyed cooking, traveling abroad, having lunch with her friends, singing in the church choir, genealogy, and visiting her grandchildren. She was a member of the Prairie Grove Methodist Church. She was a member of the Eastern Star and the United Daughters of the Confederacy.

She was a very talented and beautiful woman who lived an extraordinary life, and along the way, she made many friends and touched many lives.

She was preceded in death by her parents; two husband, Joe Robison and Leandro Zarelli; one sister, Polly; and one brother, Bob.

Survivors include two sons, Marcus Joe Robison and his wife, Leslie of Haskell and Jonathan Shawn Robison of Prairie Grove; one sister, Peggy Lou Karnes of Fort Smith; one brother, L.H. Mason of Wichita, Kansas; two grandchildren, Macy Kate Robison and McCauley Joe Robison of Sulphur, Louisiana. PD. NOTICE

Roy Pittman



ROY PITTMAN

Funeral services for Roy Pittman, 85, of Haskell were held

Sat., Jan. 12 at First Christian Church in Haskell with Pastor Richard Barr and Pastor Dusty Garrison officiating. Burial was in Willow Cemetery under the direction of Holden-McCauley Funeral Home of Haskell.

Mr. Pittman died Tues., Jan. 8.

Born June 5, 1922 in Haskell County, he was the son of the late Riley Franklin Pittman and Emma Kate Thompson. He married Jewel Holt July 9, 1944 in Haskell. He served in the United States Army from Oct. 20, 1942 to Feb. 13, 1943. He spent the next 52 years as owner and operator of Haskell Butane.

He was preceded in death by his parents; three brothers and two sisters.

Survivors include his wife, Jewel Pittman of the home; sons, Roy David Pittman and wife, Diane of Lubbock, Rex Allen Pittman and wife, Camin of Olney; daughter, Betty Murrell Chandler of Colmesneil; grandchildren, Joe Ammons, Taresa Ruddock, Eric Pittman, Cody Chandler, Cole Pittman, Ross Pittman, Callen Pittman; and seven great grandchildren.

Pallbearers were grandsons, grandson-in-law, Jim Ruddock and friend, Judo Johnson. Honorary pallbearers were all of the coffee drinkers at the Double A Drive Inn.

Memorials may be made the First Christian Church, 104 N. Ave. F, Haskell, Texas 79521.

PD. NOTICE

Elvira Espinosa Castillo



ELVIRA CASTILLO

Funeral mass for Elvira Espinosa Castillo, 70, of Goree will be held Thurs., Jan. 17 at 2 p.m. at St. George Catholic Church in Haskell. Burial will follow in Weinert Cemetery under the direction of Holden-

McCauley Funeral Home of Haskell. Rosary was held Wed., Jan. 16 at the church.

Mrs. Castillo died Sun., Jan. 13 in Wichita Falls.

Born Aug. 19, 1937 in a small community near Poteet, she was one of eight children of the late Gregorio Espinosa and the late Santa Garcia Espinosa. She married David Castillo Aug. 11, 1954. She worked as a CNA at local nursing centers for several years. She enjoyed sewing, fishing and playing games, including cards. She was a member of St. George Catholic Church.

She was preceded in death by her son-in-law, Ricardo 'Rick' Sosa.

Survivors include her husband of 53 years, David Castillo of Goree; sons, David Castillo Jr. and wife, Theresa of

Olivia, Minnesota, and Scott Castillo and wife, Sammie Jo of Anson; daughters, Gloria Lerma and husband, Oscar of Burleson, Eloisa Sosa of Munday, Nora Andrada and husband, Carlos, Irene Castillo and Jesse Nava, all of Haskell, Brenda Arismendez and Tino Serbantez, both of Brownfield, and Nancy Bergsma and husband, Michael of Grand Rapids, Michigan; 19 grandchildren; 10 great grandchildren; brother, Marcello Espinosa and wife, Josie; sisters, Dora Mendez and husband, Rey, Carmen Velasquez and husband, Manuel, Eloisa Espinosa and husband, Elia, Mary Ellen Stevens and husband, Greg, all of San Antonio, Isabel Balderas and husband, Domingo of Poteet, Rosa Cordova and husband, Max of Devine; and many friends.

PD. NOTICE

Calendar

Burn ban issued

A burn ban is in effect for Haskell County. The use of combustible materials in an outdoor environment by any person is prohibited. Combustible materials specifically include, but are not limited to, fireworks, camp fires, welding and any other pyrotechnic material, which in the manner or means of its use could result in a wildfire. The ban will continue until conditions warrant otherwise, stated Haskell County Judge David C. Davis. A person who knowingly or intentionally violates this order commits a Class C misdemeanor, punishable by a fine of up to \$500.

Immunizations

The Texas Dept. of Health in Stamford will hold an immunization clinic Thurs., Jan. 17 at the Haskell National Bank Community Room in Haskell. Clinic times are from 1 to 4 p.m. For more information call 325-773-5681.

Storm sirens

The City of Haskell will test the storm sirens at noon on Fridays.

Storytime

Storytime at Haskell County Library is held on Wednesdays at 10 a.m. Stories, crafts and snacks are offered. Paula Rennegarbe is the storyteller.

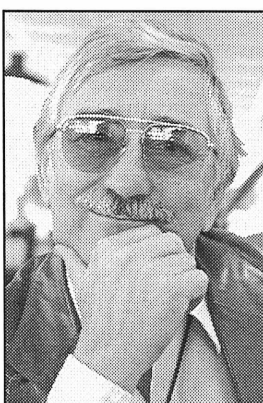
Haskell Co. Gin Report

Jan. 14, 2008

Haskell	
Haskell County Gin	7,600
Haskell Co-op Gin	12,290
O'Brien	
O'Brien Co-op Gin	22,860
Rule	
Rule Co-op Gin	10,343
Weinert	
Griff's Gin	5,383
Weinert Gin	7,810
Total bales	66,286

BURN BAN IN EFFECT

Hassell E. Hunter



HASSELL E. HUNTER

Funeral services for Hassell E.

Hunter of Houston were held Sat., Jan. 5 in the Woodlawn Funeral Home Chapel in Houston. Graveside services followed in Woodlawn Garden of Memories. Military honors were conducted by the American Legion Post 586 and Randolph Air Force Base.

Mr. Hunter died Dec. 31 in Houston.

Born in 1923 in Haskell, he was the son of Eugene Clark Hunter and Willie Audrey Key Hunter. He served in the United States Army Air Corps as a Staff Sergeant and radio operator, participating in the Normandy invasion and numerous other

actions. He was an employee of the Atomic Energy Commission at the Nevada test site for 10 years and retired from Conoco Oil Co.

He was preceded in death by his wife of 30 years, Thelma Lucille Williams Hunter.

Survivors include his daughter, Karen Hunter and husband, Eric Bolmer of Houston; son, Russell Hunter of Houston; step sister, Geri Garner; step nephew, Sam Garner; and cousins, J.E. Hunter, Juanita Hunter and Flora Lee Floyd, who still reside in the Haskell, Munday areas where the family was raised.

PD. NOTICE

Sylvia Lenora Green Gibbs



SYLVIA GIBBS

Funeral services for Sylvia Lenora Green Gibbs, 83, of Haskell were held Wed., Jan. 16 at Trinity Baptist Church in

Haskell with Bro. J.C. Amburn and Bro. Larry White officiating. Burial was in Willow Cemetery under the direction of Holden-McCauley Funeral Home of Haskell.

Mrs. Gibbs died Sun., Jan. 13 in a Haskell hospital.

Born Feb. 11, 1924 in Newcastle, she was the daughter of Elmo Green and Elizabeth Moore Green. She married Howard Pool Gibbs June 2, 1945 in Stamford. He preceded her in death Jan. 15, 1958. She later married Kenneth Gibbs May 5, 1961. He preceded her in death Nov. 26, 1984. She has been a resident of Haskell County her entire life, being a homemaker and later working as a cook at

the Experienced Citizens Center for six years. She was a member of Trinity Baptist Church.

She was preceded in death by her parents; husbands; daughter, Donna Maurycy Gibbs Martin on March 5, 2002; son-in-law, Ricky Martin; sisters, Lena Dovie Green Overcash and Lorene Lindley; and brothers, Leonard Green and Nolan Green.

Survivors include her children, Beverly Gibbs Decker and husband, Sammy, Howard Eugene Gibbs and wife, Debra, Tammy Lynn Gibbs Villa and husband, Juan, all of Haskell; eight grandchildren; 12 great grandchildren; sister, Helen LaFaye Moeller of Haskell; and a host of friends.

PD. NOTICE

Christine Marie Curran



CHRISTINE CURRAN

A memorial service for Christine Marie Curran, 58, of Haskell was held Fri., Jan. 11 at Assembly of God Church in Haskell with Pastor Richard Barr officiating. Services were under the direction of Holden-McCauley Funeral Home of Haskell.

Mrs. Curran died Fri., Jan. 4. Born Dec. 24, 1943 in Muncie, Indiana, she was the daughter of James Morehead and Louise Swank Morehead. She married Clifford C. Curran Aug. 28, 1967.

She was a member of Church in the Wind of Haskell.

She was preceded in death by her parents; two brothers and two sisters.

Survivors include her husband, Clifford Curran of Haskell; sons, Clifford Curran II, and James William Curran, both of Nevada; daughters, Cheri Evans, Terry Bridges and Amanda Curran, all of Haskell; and eleven grandchildren.

PD. NOTICE

BERNARD E. GODLEY, INC.
TAX SERVICE AND BOOKKEEPING
 Specializing in Farm, Ranch & Agri-business
 Over 35 Years Experience
940-889-8809
 98 Hill Drive • Seymour, Texas
 Fax 940-889-4908

FARMERS INSURANCE GROUP
FARMERS
 Gets you back where you belong.

Auto + Home
 •Renters •Mobile Homes
 •Commerical •Boats
 •Motorcycles •RV's

•Easy Payment Plans
 •Package Discounts up to 55%

Charlotte Culpepper
 LOCAL AGENT
 810 N. Ave. B
 Haskell, Texas
 940-864-2358
 1612 N. Swenson
 Stamford, Texas
 325-660-2958

TAX PLANNING
 Written By
James E. Rodgers, CPA

IRS WARNS ABOUT VEHICLE DEDUCTION ERRORS

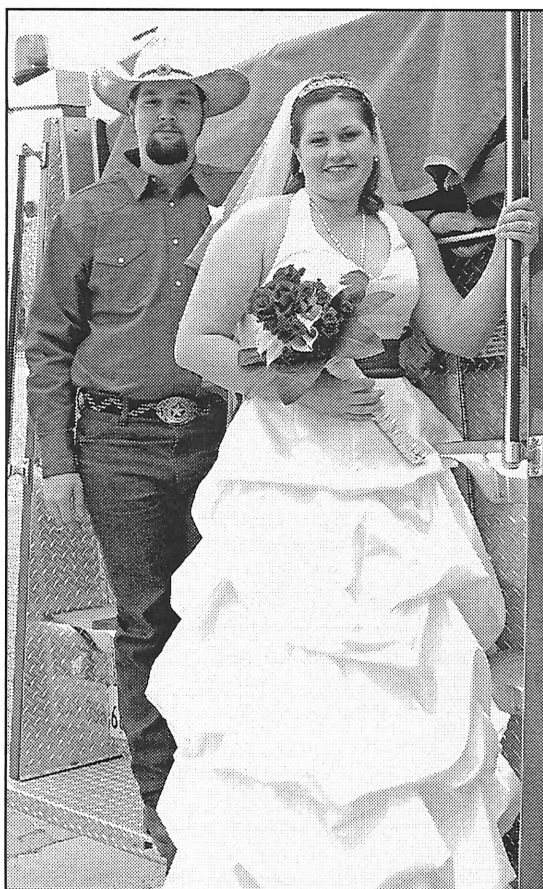
The IRS recently announced that more than \$30 billion in taxes are lost annually due to overstating deductions. One of the deductions the IRS believes is being overstated is the deduction for business vehicles. The IRS has issued a fact sheet reminding taxpayers about the business vehicle deduction rules that you can read on the IRS Web site. Here are some of the highlights.

- Vehicle use.** Not all travel is deductible. Driving from your home to your office is generally nondeductible commuting. Deductible travel includes driving from one work location to another, visiting clients or customers, attending business meetings, or driving to a temporary workplace.
- Standard mileage method.** Certainly the easiest method to use to deduct your vehicle expenses is the standard mileage method. You receive a flat rate deduction (48.5 cents a mile in 2007) for every business mile traveled. You can use this method even if you lease your automobile.
- Actual costs method.** Using this method for your vehicle deduction will likely generate a larger deduction if your vehicle is expensive to operate, but it also requires more documentation. To use this method, you divide your business miles by the total miles driven for the year. That computation gives you a business-use percentage. You then use this percentage to deduct the actual expenses that you incur to operate the vehicle, such as gas, repairs, insurance, depreciation, and in some cases interest expense.
- Recordkeeping requirements.** Regardless of the method you use, you're required to maintain a log of business miles traveled. If you choose to use the actual method, you'll also have to maintain records for all of the actual auto expenses incurred during the year. You can claim 75% of the use of a car or light truck as business use without any records if you used the vehicle during most of the normal business day directly in connection with the business of farming. Understand that you can use whichever method provides the larger deduction.

The business vehicle deduction rules can be complicated. Don't lose your deductions under IRS audit by poor recordkeeping or a misunderstanding of the rules. For any assistance you need, contact our office.

RODGERS & COMPANY
 Certified Public Accountant
 20 Southwest Third Street
 Hamlin, Texas • 325-576-2356

Don't Miss Out ~ Subscribe Today!
The Haskell Free Press
Call 940-864-2686



MR. AND MRS. A.J. SHAW

Davidson, Shaw wed Dec. 29

Sarah Nichole Davidson and A.J. Shaw, both of Haskell, were united in marriage in a double ring ceremony Sat., Dec. 29 at First United Methodist Church in Haskell with Keith Davidson, father of the bride and minister of First Christian Church of Olney, officiating. Tom Long, pastor of First United Methodist Church of Haskell assisted.

The bride is the daughter of Keith and Carol Davidson of Loving. She is the granddaughter of Clarence and Lucia Bishop of Iowa and Fred Davidson of Iowa.

The groom is the son of Randy and Lisa Shaw of Haskell. He is the grandson of A.M. Stocks and Vivian Shaw, both of Haskell.

Nelda Lane, organist, and Betty Odell, violinist played traditional wedding selections.

The church pews were tied with red ribbons holding floral sprigs of red roses and white calla lilies.

The bride was presented in marriage by her father. She wore a white satin ball gown featuring a pickup skirt accented with a red satin ribbon falling into a train from her waist. A rhinestone encrusted tiara held her fingertip illusion veil, trimmed along the edge with red satin ribbon and embossed with red floral designs above the ribbon. She carried a bouquet of red roses and white calla lilies.

Opal Pierce of San Angelo, sister of the bride, was matron of

honor. Bridesmaids were Sara Shaw of Abilene, sister-in-law of the bride, and Jenny Davidson of Euless, sister-in-law of the bride. The bridal attendants wore red dresses and carried bouquets of red roses and white calla lilies.

Ringbearer was Graham Davidson of South Lake, nephew of the bride. Flower girl was Caitlin Davidson of South Lake, niece of the bride.

Kris Isbell of Haskell served as best man. Groomsmen were Jason Shaw of Abilene, brother of the groom, and Joseph Felty of Haskell. Ushers were Brian Davidson of Euless and Marty Davidson of South Lake, brothers of the bride.

A reception followed in the fellowship hall of the church. The houseparty included Alice Ballard, Tammy Cunningham and Jo Ann Watson. The couple left the reception aboard a fire truck driven by Randy Shaw, father of the groom.

The bride is a 2005 graduate of Stamford High School and attends Cisco Junior College pursuing a nursing degree. She is employed by Cadenhead Rural Health Clinic in Haskell.

The groom is a 2004 graduate of Paint Creek High School. He is a 2005 graduate of Texas State Technical College in Sweetwater with an Automotive Collision Repair certificate. He is employed by Steele Fire Apparatus in Haskell.



MR. AND MRS. TED JENNINGS

Couple to celebrate 50th anniversary

Ted and Mary Jennings of Haskell will be honored with a 50th wedding anniversary reception Sat., Jan. 19 from 2 to 4 p.m. at the Haskell Church of Christ annex.

The reception is hosted by their children Todd and Holly Jennings, Kenzie and Jace of Fredericksburg and Jill and Doug Hall, Jackson and Juliann of Dallas.

Ted and Mary were married Dec. 24, 1957 at her parent's home near Sagerton. Both are 1957 graduates of Old Glory High School.

Ted attended school at Seymour and served in the Aviation branch of the U.S. Army from 1957-60 in Korea. He retired from GTE Telephone Company after 32 years of service.

During Ted's employment with GTE, the couple lived in Seymour, Booker, Aspermont, Shattuck, Oklahoma and in Haskell for 37 years.

Mary is retired from the Texas Department of Human Services. They are members of the Haskell Church of Christ.

Births

Chan and Bridget Guess of Haskell announce the birth of their daughter, Cami Brynn Guess, born Dec. 14 at 5:38 p.m. weighing 6 lbs. 15 oz. She was 20 inches long.

She was welcomed home by big sister, Jacee Guess, age 9.

Grandparents are Mike and Beth Guess of Haskell and Ronnie and Shere Forbes of Brownfield. Great grandparents are Gentry and Mavis Middleton, and Mary Sue and Pat Henry, all of Haskell.

Justin and Megan Cox of Haskell announce the birth of their son, Ryan Jeffery Cox, born Dec. 12 at 9:49 p.m. at Abilene Regional Medical Center weighing 7 lbs. 5 oz. He was 18-1/2 inches long.

He was welcomed home by big sister, Kenley Grace Cox.

Grandparents are Jeff and Melinda Kennedy of Franklin and Dan and Esther Cox of Stamford.

E-mail your news and photos to The Haskell Free Press at hfp@valornet.com

Looking for something new and different? So are we! Gone to Market!

The Carousel Gift Shop
Erlinda Mayfield
Open M-F 10 to 5:30 • Sat. 10 to 4
Southside of the square in Haskell • 864-2069

CLEARANCE SALE
continues
Buy 1 Pair of Shoes at Regular Price & Get 2nd Pair **1/2 off**
Newly Reduced!
40 to 50% off
Fall and Winter Clothes
Large group of Sportswear and Dresses
Personality-Slipper Shoppe
940/864-2501 • 864-3051
South Side of Square Haskell, Texas

Entire Stock of **21st Century Vitamins and Supplements**
20% off
REGULAR PRICE
Sale prices good January 17, 18 & 19

Baby Shower Registry
Lacey Stephens and Bret Siegfried

THE DRUG STORE
AUTOMATIC REFILL PROGRAM
Now your refills will **ALWAYS** be ready... all on the same day!

We know how hard it can be to keep track of multiple medications and coordinate their different refill dates. In order to save you multiple trips to the pharmacy, we've created **The Drug Store Automatic Refill Program.**

It's easy! **The Drug Store** works directly with you and your doctor to coordinate all your refills. Plus, you'll have peace of mind knowing **The Drug Store** is not just coordinating your dosing schedule but keeping watch on your total medication interaction. In other words—you will always have the right medications at the right time. And we'll bill your insurance for any co-pay.

REMEMBER: There is no additional charge for your refill coordination!

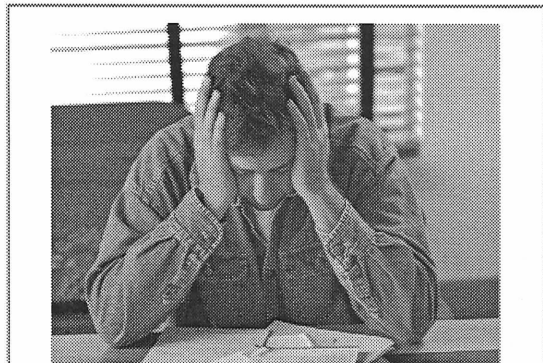
By tracking your prescribed medications, **The Drug Store** is able to monitor for adverse medication interactions, for multiple prescriptions of similar medications, and is also able to determine medication compliance. If there are any signs of noncompliance with your medication regimen, **The Drug Store** will counsel you on frequency, dosage and side effects of your medicine.

The Drug Store accepts *Medicaid *Medicare *Most Insurance Drug Cards

Remember: your co-pay is the same anywhere but the personalized care you get at **The Drug Store** is NOT!

This program will save you **TIME and GASOLINE and IT'S FREE!**

THE DRUG STORE
Haskell • 864-2673



Interest rate too high?

Find out how our great rates and flexible loan programs can help you. We offer competitive *refinancing* for agricultural, rural real estate, country home and agribusiness loans.



550 South 2nd
Haskell, Texas 79521
940-864-8565

DOUBLE Patty Melt
American cheese, grilled onions & mayo
\$3.89 PLUS TAX
TRY IT WITH A FRESHLY BREWED CRANBERRY ICED TEA

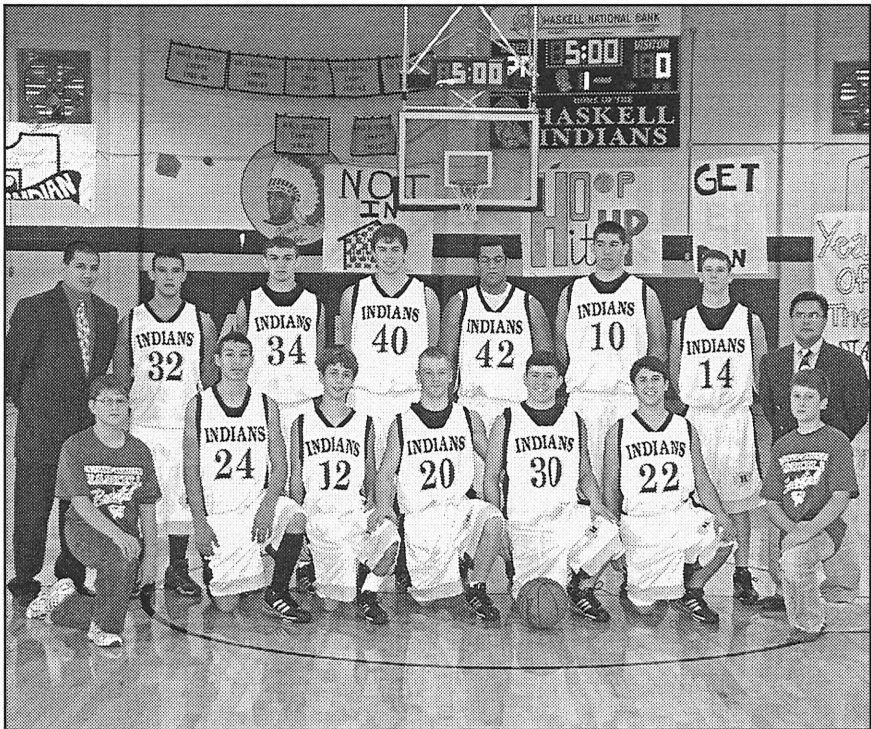
SONIC
America's Drive-In.
No Waiting
Call In Orders
864-8533
Limited Time Only!
Only at participating SONIC Drive-Ins. ©December 2007 American's Drive-In Brand Properties LLC

Haskell INDIANS

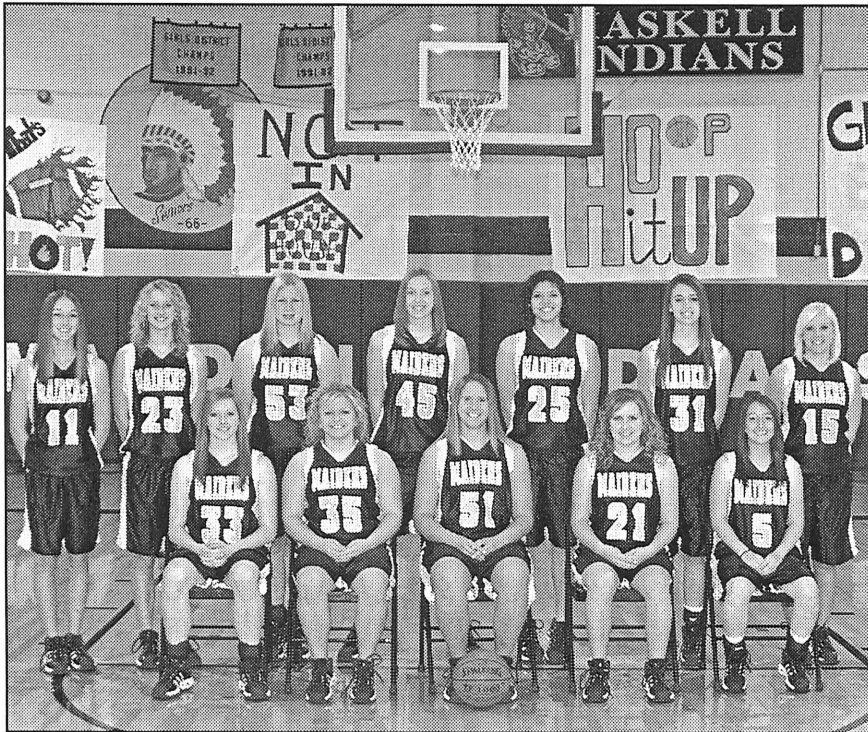


Fri., Jan. 18 • 5 p.m.
JV & Varsity Boys
vs Stanton
at Stanton

Tues., Jan. 22 • 5 p.m.
JV & Varsity Boys
vs Anson
at Anson



HASKELL INDIANS—Front row, l-r, Andrew Sammons, A.J. Alvarez, John English, Travis Adams, Greg Guzman, Austin Marshall and Luke Terry; back row, Coach Lolo Martinez, Stephen Guevara, Aaron Rodriguez, Samuel Bitner, D.J. McCulloch, Derek Agraz, Weston Rutkowski and Coach Toby Villa.
 Photo by Bill Blankenship



HASKELL MAIDENS—Front row, l-r, Hope Reid, Lauren Newton, Lacey Peiser, Paige Adams and Claire Isbell; back row, Aubrey Bassett, Ashton Rutkowski, Miranda Johnson, Lisa Rodgers, Molly Agraz, Hanna Wallace and Aerial Thane.
 Photo by Bill Blankenship

Haskell MAIDENS

Fri., Jan. 18 • 4 p.m.
JV & Varsity Girls
vs Stanton
at Stanton

Tues., Jan. 22 • 4 p.m.
JV & Varsity Girls
vs Anson
at Anson



Go

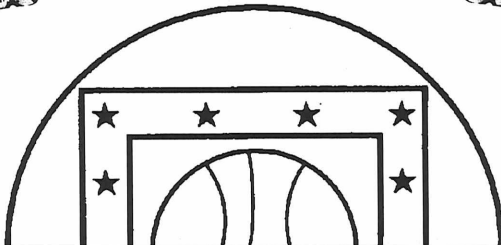


H H S



Go

Indians!



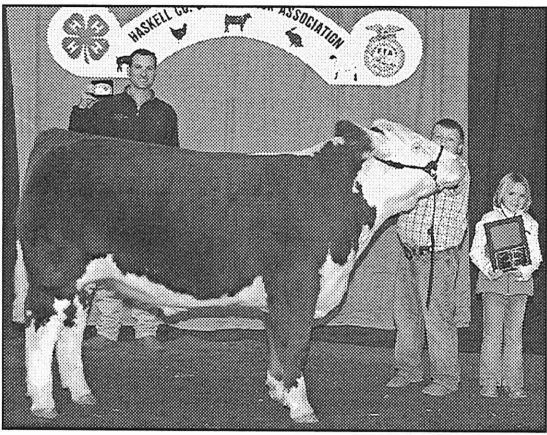
Maidens!

This Page Sponsored By The Following Indian and Maiden Boosters

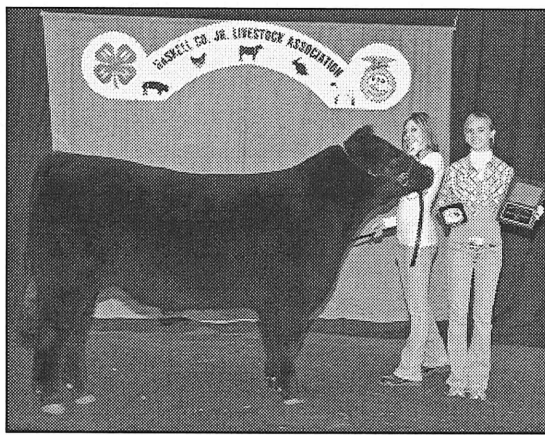
Big Country Electric Cooperative
Cecil's Country Meat Mkt. & Grocery
Richardson TrueValue & NAPA Auto Parts
Brian Burgess State Farm Insurance
Personality-Slipper Shoppe
Haskell Tire & Appliance
Haskell County Insurance Agency
Modern Way Food & Fuel

Haskell Free Press
Haskell National Bank
Hanson Paint and Body
Haskell Save-A-\$
Larned Sales Center
Matlock & Associates
Smitty's Auto Supply
D & S Aerial

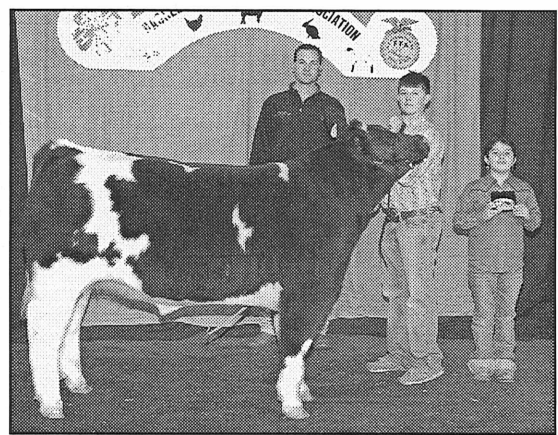
2008 Haskell County Junior Livestock Show



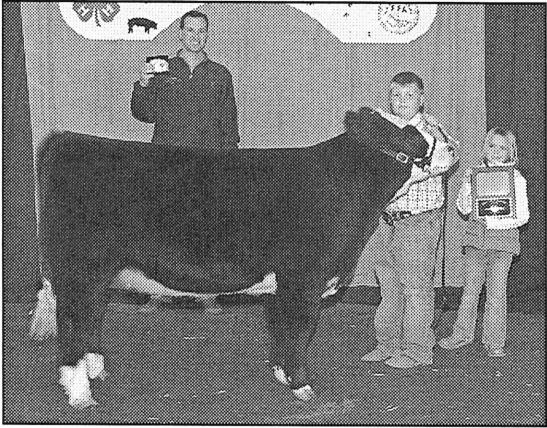
GRAND CHAMPION STEER—CHASE GIBSON



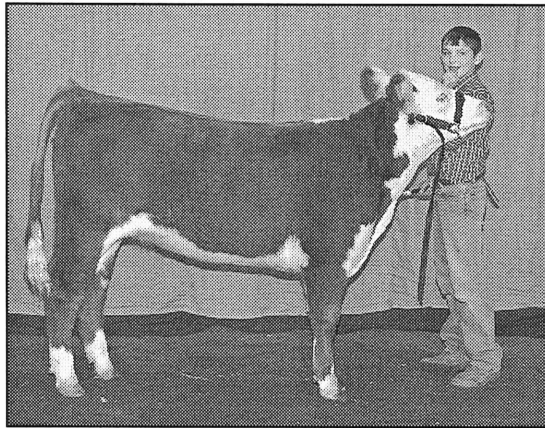
RESERVE CHAMPION STEER—SHELBY DUNNAM



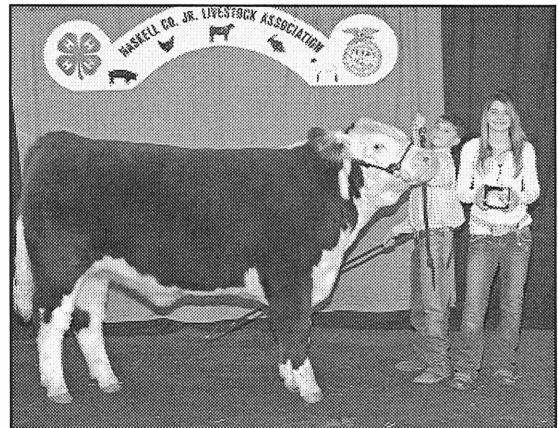
SENIOR BEEF SHOWMANSHIP—JAMES WILLIAMS



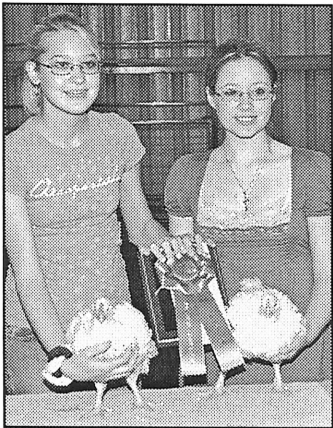
GRAND CHAMPION HEIFER—CHASE GIBSON



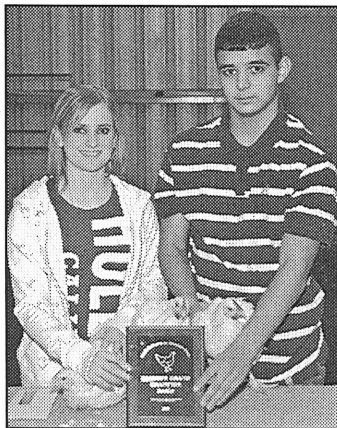
RESERVE CHAMPION HEIFER—STEWART URICH



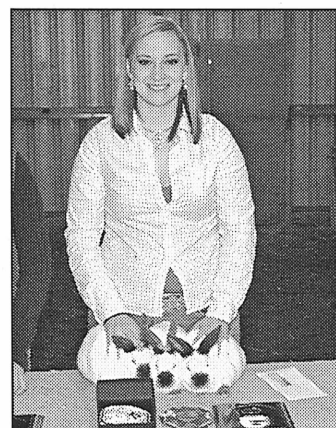
JUNIOR BEEF SHOWMANSHIP—KYLE KIMBROUGH



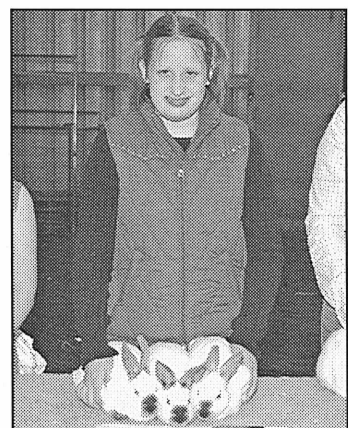
GRAND CHAMPION POULTRY
CANDACE HILL, left



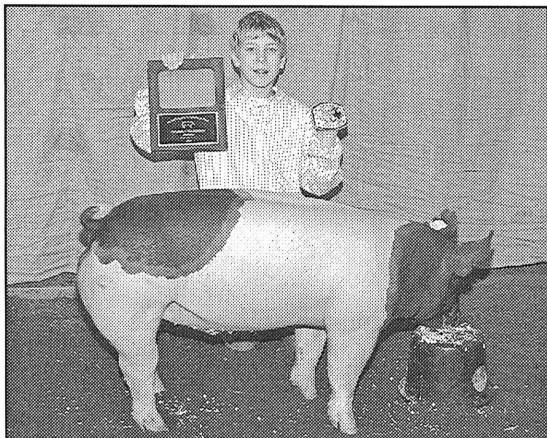
RESERVE CHAMPION POULTRY
RICKY BARRETT, right



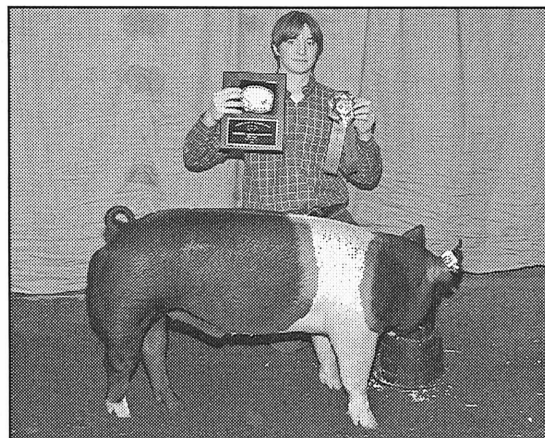
GRAND CHAMPION RABBITS
KELSIE MILLER



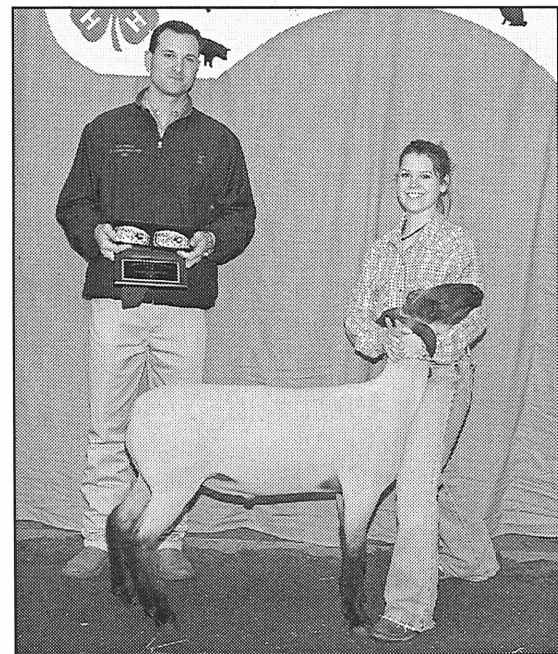
RESERVE CHAMPION RABBITS
TILLIE MCGUIRE



GRAND CHAMPION BARROW—DAVID NEWTON



RESERVE CHAMPION BARROW—COLTON YOUNG

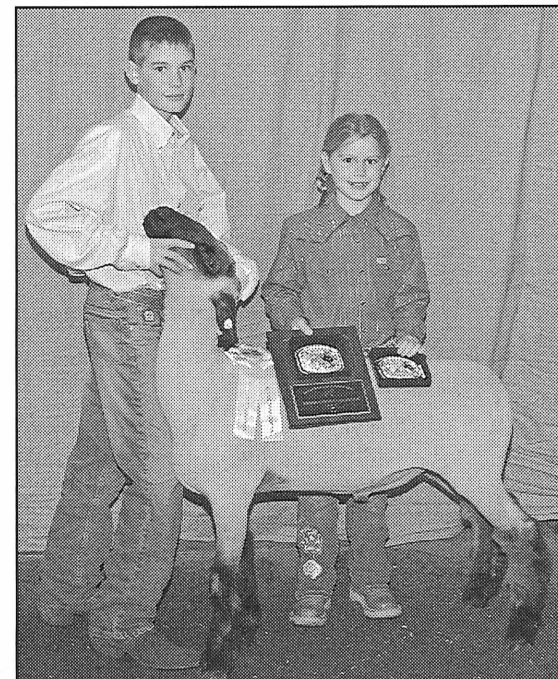


GRAND CHAMPION LAMB & SENIOR SHOWMANSHIP
BROOKE BULLINGER, right

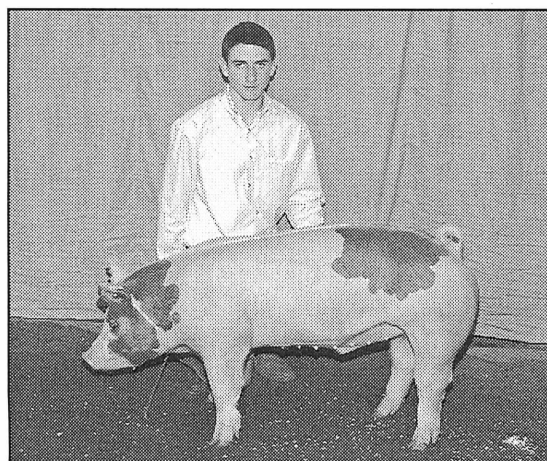


GRAND CHAMPION GILT—LAUREN NEWTON

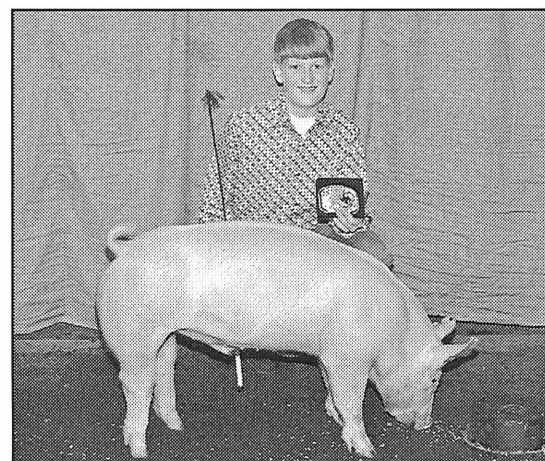
This page
and photos
sponsored by
Bill Blankenship
and
**The Haskell
Free Press**



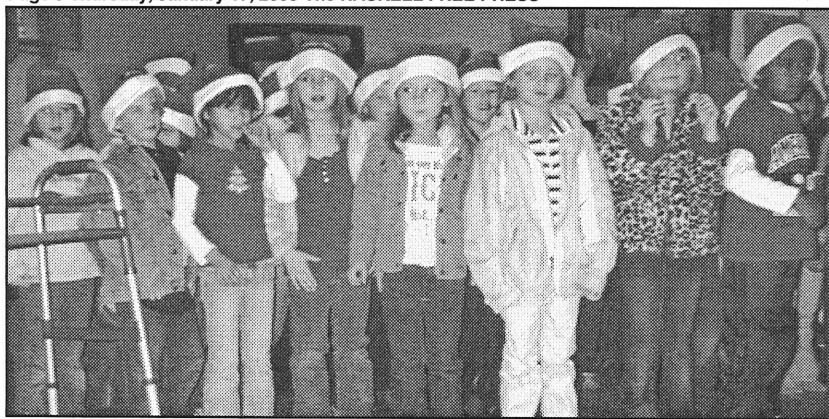
RESERVE CHAMPION LAMB & JUNIOR SHOWMANSHIP
RIVER MCTASNEY, left



SENIOR SWINE SHOWMANSHIP—PAYNE UTLEY



JUNIOR SWINE SHOWMANSHIP—MAX WEISE



HOLIDAY CAROLS—Haskell Elementary Kindergarten students visited Haskell Healthcare Center and the Experienced Citizens Center in Haskell to sing Christmas carols. Singing in the front row, l-r, are Halee Alsabrook, Caius Tramel, Kobie Walker, Skylar Layman, Autom Gibbs, Lauryn Crane, MaKayla Arendall and Luis Hermasillo. Kindergarten teachers are Kristi Gibson, Susan Cox, Rhonda Lisle and Judy Washburn. Pam Gibson is the music teacher.

Barbecue to benefit Knox City museum

Sun., Feb. 3 will be a big day for several hundred Knox County residents and friends. First, they will be attending the annual barbeque and fund-raiser in Benjamin from the Wichita Brazos Museum, from 11 a.m. to 1:30 p.m., at the Benjamin Memorial Building. At the meal, the usual brisket, sausage, turkey, deviled eggs, beans, onions, pickles, homemade potato salad, coleslaw and desserts will be served.

Knox County 4-H members will be on hand to help anyone who needs a plate carried. The silent auction tables will be set up by 11 a.m. for people to place their bids. Bidding will close at 1:30. The auction has included everything from a postage stamp to a small appliance to antiques. On sale at tables, on the north side of the room, will be the "2008 Ranching Calendar," with

photographs of working Knox County ranchers and cowboys. Also available will be the calendars from 2005 through 2007, Knox County Heritage Cookbooks, and the 1909 Southwestern Journal with news articles of Knox County citizens. The museum will be open from 1 to 3 p.m. Knox County folks and surrounding area friends, have helped build the museum, by eating their way

through hundreds of pounds of brisket, countless hamburgers and unknown quantities of homemade ice cream. Kenneth Roberts, the computer wizard, without whom the Museum could not have been built, and others will be on hand to answer questions. Brisket, dessert and other items will be sold after everyone is served.

Announcements begin at 11:45 a.m. followed by lunch.

ECC Menu and Calendar

Mon., Jan. 21
Lunch—Meatballs, brown gravy, mashed potatoes, English peas, yeast rolls, Coke cake, milk, tea, or coffee

Wed., Jan. 23
Lunch—BBQ sausage, potato salad, pinto beans, onions, pickles, garlic toast, apple crisp, milk, tea, or coffee

Fri., Jan. 25
Lunch—Chicken and macroni, onions, pickles, green beans, carrot salad, cornbread, jello, cookie, milk, tea, or coffee

Study club holds 'quilting bee'

The Progressive Study Club met Thurs., Jan. 10 at the Haskell National Bank Community Room. President Julia Harrell welcomed seventeen members. Lynn Dodson read the Club Collect.

Billie McKeever presented an interesting and informative program on the Crime Stoppers organization. The non-profit organization consists of citizens against crime and a Crime Stoppers Program named Clear Fork Crime Stoppers recently organized including Haskell, Jones, Fisher and Shackelford counties. McKeever noted that all tips received remain anonymous. Anyone furnishing information that leads to an arrest may receive a cash award and also remains anonymous. The Clear Fork Crime Stoppers phone number is 1-800-222-TIPS (8477). The organization accepts donations which are tax deductible.

Pam Norton spoke about domestic violence and the Noah Project. Club members made blankets to be donated to the Noah Project in a old-fashioned 'quilting bee' while the business meeting continued. Nancy Toliver gave the Federation Counselor's report and noted that all reports are due

Feb. 1. An invitation was read from the Pierian Club in Stamford inviting club members to their 100-year celebration to be held Jan. 12.

Club members voted on the outstanding program for the year. The April 12 program on wellness and health was selected.

Dorothy Hartsfield was selected as Outstanding Club Volunteer.

Names submitted for the officers for the coming year included: Dorothy Hartsfield, president; Pam Norton, 1st vice president; Tinka Nelson and Julia Harrell, 2nd vice president; Oleta Cornelius, recording secretary; Jeanie Richards, corresponding secretary; Bettie Wainscott, treasurer; Evelyn Cobb, historian; and Julia Harrell, board member.

Nominating committee members for the coming year include Katherine Schonestedt, Janis Brzozowski, Francine Johnson, Billie McKeever and Bettie Wainscott.

Keeping the 'quilting bee' theme, club members were served old-fashioned box lunches by hostesses Katherine Schonestedt, Charlene Brothers, Julia Harrell, Tinka Nelson and Doris Reeves.

This Week's Devotional Message:



Those of us who pray regularly know how easy it is to turn a prayer into a 'wish list' of material advantages, and then we are disappointed when our wishes aren't granted. All too often we pray for silly, trivial things, or things that would be harmful to us, or even those that would benefit us at the expense of others. For example, we may pray that our team will win the game

tomorrow, when our opponents have just as much right to a victory. We should pray for good health, wisdom, and self-improvement, some of which may require a little cooperation on our part. The best prayer simply affirms our belief that God knows what's best for us and will provide it. We can learn this at our house of worship, or wherever we happen to be.

ATTEND CHURCH THIS SUNDAY

HASKELL

- East Side Baptist Church**
Dr. Jim Heflin, interim pastor
Sun. 9:45 a.m., 11 a.m., 6 p.; Wed. 7 p.m.
600 N. 1st East, Haskell
- Christian Church**
Richard Barr, minister
Sun. 9:45 a.m., 10:45 a.m.; Thurs. 7 p.m.
107 N. Ave. F, Haskell
- Church of God**
Bruce Ray, pastor
Sun. 10 a.m., 11 a.m., 6 p.m., Wed. 7:00 p.m.
714 North First East, Haskell
- Trinity Lutheran Church**
Ron Rennegarbe, pastor
Sunday School 9:30 a.m., Worship 10:30
Hwy 380 East, Haskell
- Iglesia Bautista El Calvario**
Art Flores, Interim pastor
Sun. 9:45 a., 10:45 a.m., 5 p.m.; Wed. 7 p.m.
607 S. 7th, Haskell
- First United Methodist Church**
Rev. Tom Long, pastor
Sun. 9:45 a.m., 10:50 a.m. 6 p.m.; Wed. 6 p.m.
201 N. Ave. F, Haskell
- First Assembly of God**
Rev. J.C. Amburn
Sun. 9:45 a., 10:45 a.m., 6 p.m.; Wed. 7 p.m.
1500 N. Ave. E, Haskell
- St. George Catholic Church**
Father George Roney
Sat. Mass 7 p.m.; Sun. Morn. 9:00 a.m.
901 N. 16th, Haskell
- Church of Christ**
Philip Sims, minister
Sun. 9:30 a.m., 10:30 a.m., 6 p.m.; Wed. 7 p.m.
510 N. Ave. E, Haskell
- First Presbyterian Church**
Kelly Pigott, interim pastor
Sun. Morn. 9:30 a.m.
306 N. Ave. E, Haskell
- Trinity Baptist Church**
Larry White, pastor
Sun. 10 a., 11 a., 6:30 p.m.; Wed. 6:30 p.
114 S. Ave. D, Haskell
- Hopewell Baptist Church**
Rev. Tom Collins, pastor
Sun. 9:30 a.m., 11:00 a.m.; Wed. 7 p.m.
908 N. Ave. A, Haskell

Greater Independent Baptist Church

- Sun. 9:30 a., 11:00 a., 6:30 p.; Wed. 7 p.
301 N. 3rd St., Haskell
- New Covenant Foursquare**
Bill and Renee Glass, pastors
Sun. 10 a.m., 11 a.m., 6:30 p.m.; Wed. 7 p.
200 S. Ave. F, Haskell
- Mission Revival Center**
Rev. William Hodge
Sun. 10 a.m., 11 a.m., 6 p.m.; Tues. 6 p.m.
1600 N. Ave. B, Haskell
- First Baptist Church**
Greg Gasaway, pastor
Sun. 9:45 a., 10:55 a., 6 p.m.; Wed. 6:30 p.m.
301 N. Ave. E, Haskell
- Church in the Wind**
C.C. Curran, pastor
Sun. fellowship 5 p.m. Church 5:30 p.m.
Tues. Bible Class 7:30 p.m.
203 S. 1st East, Haskell
- Cornerstone Fellowship Baptist Church**
Morris R. Johnson, pastor
Sun. 9:30 a.m. 10:45 a.m., 6 p.m., Wed. 7 p.m.
1600 N. First St., Haskell

SAGERTON

- Sagerton Methodist Church**
Stephanie Gilkey, pastor
Sun. Morn. 9:45 a.m.
Sagerton
- Faith Lutheran Church**
Curtis Baker, pastor
Sun. 9:30 a.m., 10:30 a.m.
Sagerton
- First Baptist Church**
Russell Stanley, pastor
Sun. 9:45 a., 11:00 a., 5 p.m.; Wed. 7 p.m.
1001 Union Ave., Rule
- Primitive Baptist Church**
Dale Turner Jr., pastor
First & Third Sundays 10 a.m.
Corner of 8th & Robins, Rule
- Church of Christ**
John Greeson, minister
Sun. 9:45 a., 10:40 a., 6 p.m.; Wed. 7 p.m.
811 Union, Rule
- First United Methodist Church**
Tom Long, pastor
Sun. Morn. Worship 8:30 a.m.
1000 Union Ave., Rule
- Primera Iglesia Bautista**
Alfa y Omegs
Manuel Marin, pastor
Sun. 10 a., 11:00 a., 5 p.m.; Wed. 6 p.m.
500 Elm Street, Rule
- Sweet Home Baptist Church**
Larry Neal, pastor
Sun. 10 a.m., 11 a.m., 5 p.m.;
Gladstone Ave., Rule
- West Bethal Baptist Church**
Rev. Clovis Dever
Sun. 10 a., 11 a., 8 p.m.; Wed. 7:30 p.m.
300 Sunny Ave., Rule

PAINT CREEK

- Paint Creek Baptist Church**
Sun. 10:00 a.m., 11:00 a.m., 6 p.m.
Paint Creek

O'BRIEN

- O'Brien Baptist Church**
Jim Reid, pastor
Sun. 9:45 a., 11 a., 5 p., 6 p, Wed. 6 p.m.
O'Brien

WEINERT

- First Baptist Church**
Dan Bullock, pastor
Sun. 10 a.m., 11 a.m., Wed. 7 p.m.
Weinert
- Weinert Foursquare Church**
Rev. Robert Harrison
Sun. 10 a.m., 11 a.m. Wed. 7 p.m.
Weinert

ROCHESTER

- Church of Christ**
Steve Willis, minister
Sun. 9:45 a., 10:45 a., 6 p.m.; Wed. 6 p.m.
West on Main Street, Rochester
- First Baptist Church**
Fred Garvin, pastor
Sun. 11:00 a.m., 6 p.m.; Wed. 6:00 p.m.
500 Main, Rochester
- Union Chapel Baptist Church**
Clovis Dever
Sun. 9:45 a., 10:45 a., 6 p.m.; Wed. 7 p.m.
Rochester
- Faith Chapel of Rochester**
Randy Hollingsworth, minister
Sun. 10 a.m., 11 a.m., Wed. 6 p.m.
Hwy 6, Rochester

Haskell School Menu

Jan. 21-25
Breakfast
Juice and milk are served daily on the breakfast menu.
Monday: Banana nut muffin, Cheez-its
Tuesday: Breakfast bagel
Wednesday: Cereal, Teddy Grams
Thursday: Chorito Lil' Bites
Friday: Cheese omelet

Lunch
Milk and iced tea are served daily at the Secondary campus. Milk is served daily at the Elementary School. Secondary campus: choice of entree or baked potato

with cheese and ham.
Monday: Steakfingers, gravy, mashed potatoes, California blend mixed veggies, hot roll, pineapple tidbits
Tuesday: Chili cheese hotdogs, pickle spears, tater tots, orange wedges
Wednesday: Pepperoni pizza, corn, coleslaw, apple slices
Thursday: Beef enchiladas, pinto beans, chips, Spanish rice, garden salad, peaches
Friday: Cheeseburger, lettuce, tomatoes, pickle slices, french fries, strawberry or raspberry Gogurt

Rule School Menu

Jan. 21-25
Breakfast
Juice and milk are served daily.
Monday: Cereal
Tuesday: Poptarts
Wednesday: Sausage patty, biscuit, gravy
Thursday: Oatmeal, buttered toast
Friday: Muffin choice, graham crackers

Lunch
Milk is served daily.
Monday: Nachoes grande, tossed salad, blushing pear
Tuesday: Steak fingers, mashed potatoes, gravy, hot roll
Wednesday: Pizza choice, whole kernel corn, tossed salad, apple half
Thursday: Beef burritos, refried beans, Spanish rice, pudding cup
Friday: Sloppy joe, chips, tossed salad, cookie

Paint Creek School Menu

Jan. 21-25
Breakfast
Juice and milk are served daily.
Monday: Toast or cereal
Tuesday: Biscuits, gravy
Wednesday: Pancakes
Thursday: Eggs, toast
Friday: French toast

Lunch
Milk is served daily.
Monday: Spaghetti, green

beans, garlic bread, salad, cake with cranberry sauce
Tuesday: Ham, mashed potatoes, peas, salad, applesauce cake
Wednesday: Tacos, refried beans, corn, salad, rice krispy bars
Thursday: Chicken strips, mashed potatoes, broccoli, fruit
Friday: Hamburgers, cheese, lettuce, tomatoes, onions, pickles, tator tots, cake

Cattle Market Report

The market at the Haskell Livestock Auction was on a run of 579 head of cattle at its sale on Sat., Jan. 12, according to B.D. Rainey, reporter.

228 head steers. 223 head heifers. 119 head cows and bulls.

Cows: fat, 38-42; cutters, 42-48; canners, 28-35.

Bulls: bologna, 62-64, feeders, 77-88.

Steers: medium and large frame No. 1 200-300 lbs., 105-115; 300-400 lbs., 100-105; 400-500 lbs., 95-105; 500-600 lbs., 97.50-106; 600-700 lbs., 92.50-97.50; 700-800 lbs., 92.50-94.50; 800-up lbs. 84-94.50 lbs.

Heifers: medium and large frame No. 1 200-300 lbs., 95-100; 300-400 lbs., 100-105; 400-500 lbs., 95-105; 500-600 lbs., 92.50-95; 600-up lbs., 85-92.50.

Bred heifers: medium frame 600-700.

Bred cows: young to middle aged 700-800; aged or small, 450-550.

Cows with calves: medium frame No. 1 young and middle aged, 800-930; aged or small, 600-700.

Sonic Drive-In
1402 N. Ave. E
864-8533
Managers: Leon & Carolyn Herring

Steele Machine
Hwy. 280 • 864-2208

Modern Way Food Store
1202 N. Ave. E • 864-3763

HANSON PAINT & BODY SHOP
207 S. 1st • 864-3631
Professional Auto Body Repair
Glass Installation • 24 Hour Wrecker Service

Rule Co-op Gin & Elevator
301 Adams • Rule • 996-2421

Smitty's Auto Parts
107 N. 1st East • 864-2607

The Haskell Free Press

"The People's Choice"

420 N. First Haskell, Texas
940-864-2686

Serving Haskell County Since 1886

Clear Fork Crime Stoppers 1-800-222-TIPS



Shop The Haskell Free Press CLASSIFIEDS



864-2686

ALL DEADLINES MONDAY 5 P.M.

864-2686

For Sale

FOR SALE: White round dining table with leaf and four chairs. 325-660-8011. 47tfc

FOR SALE: Cragar SS mag wheels. 14"x7" for Ford car. 5 bolt. \$150 OBO. 325-660-8011. 47tfc

FOR SALE: 16 ft. and 8 ft. garage doors, sectional with all hardware. \$200 for both. 325-660-8011. 47tfc

WINDBREAK TREES AVAILABLE: Evergreens and hardwoods. For varieties and information, call the Haskell Soil & Water Conservation District 940-864-8516 ext. 4. 2-3c

LIKE NEW: Thomasville furniture, 5 piece Queen bedroom set \$495; green and burgundy floral sofa bed with cherry wood end tables \$295. 940-256-1400. 3p

FOR SALE: Corner PC desk with hutch, CD/DVD storage and keyboard drawer. Light colored wood, like new. 940-864-2865. 3c

Public Notices

REQUEST FOR PROPOSALS
Texas Community Development Block Grant (STEP) Program

Haskell County is requesting separate proposals for management services and for engineering services for the implementation of a Texas Community Development Block Grant (STEP) Program for water system improvements in the Sagerton community. Separate contracts for management services and for engineering services will be awarded. Please submit your Proposal of Services and Statement of Qualifications per the proposal format to Haskell County, County Courthouse, Haskell, Texas 79521.

Proposals must be received no later than 4:00 p.m., January 28, 2008, to be considered. The County reserves the right to negotiate with any and all firms that submit proposals, per the Texas Professional Services Procurement Act and OMB Circular A-102.

Haskell County is an Affirmative Action/Equal Opportunity Employer. 3cp

Real Estate

IN RULE: Lease purchase. 2 bedroom. \$200 down, \$275 month. 1110 Adams. 325-721-1906. 3-4c

For Rent

FOR RENT: Furnished rooms for rent. Nightly, weekly. Call Lone Star Lodging 864-2424. 21tfc

Help Wanted

THE NEW SONIC Drive In in Haskell is now taking applications for all positions. Apply in person. 44tfc

GIBSON CARE Center, Aspermont needs CNAs for all shifts. Call Melissa Prew, ADON at 940-989-3526. E.O.E. 9tfc

PERSONAL CARE ATTENDANTS needed for part-time hours in Haskell. Must be mature, dependable and have a clean criminal history. Call Community Care, Monday-Friday, 9 a.m. to 4 p.m. for further information. 1-800-695-5462. 52tfc

COMMUNITY CARE CENTER of Stamford now has an opening for full time LVN, 6 p.m.-6 a.m. Also hiring PRN LVN's for both shifts, 6 a.m.-6 p.m. and 6 p.m.-6 a.m., as well as full time CNA for 6 p.m.-6 a.m. Call Brandi Abernathy, RN, DON at 325-773-3671 for more info and new pay scale. 52-3p

DRIVER/PRODUCTION ASSISTANT needed: Must have a CDL license with Hazmat. Must be willing to handle physical labor. Prefer someone that is mechanically inclined. Call Jeff Fox at Agrilience in Knox City, Texas at 940-657-3585. 2-5c

WES-T-GO now accepting applications for cashier. Apply in person at store. 400 N. Ave. E. 3-10c

HASKELL HEALTHCARE Center is looking for CNAs. Must have good people skills and positive attitude. Must be able to speak and read English. Pay is well above minimum wage. Call Cindy or Paulette, 940-864-8537. 3-4c

Jobs Wanted

OLD MAN'S farm and ranch custom plowing. Clayton Pannell 940-849-3030 leave message. 1-13c

Miscellaneous

HOUSE LEVELLING and foundation repair. No payments until work is satisfactorily completed. David Lee & Co. 325-675-6369. 1-888-486-8588. 6tfc

Life is like a coin—you can spend it any way you like but you can only spend it once. Check out our special purchase sofas. Kinney Furniture in Stamford. 3c

NOTICE
The deadline for Classified Advertising is 5 p.m. on Mondays.
Haskell Free Press

Nanny

Plumbing, Inc.
301 S. Ave. E • Haskell
940-864-3043
Sales and Service for Residential Plumbing and Heating/Cooling, Pump Installer and Sprinkler Systems.
License numbers available upon request.

Dodson

Concrete Construction
Commercial - Residential
David Dodson
704 N. Ave. F • Haskell
940-864-2038
Over 20 Years in the Business
FREE ESTIMATES

GIRLING HEALTH CARE

Providers

We have part-time positions for caring and dependable people to work in the homes of the elderly and disabled in your area. We offer flexible schedules. Must be 18 years old with no criminal background. No experience or certification required.

Send Resume referencing Ad #7378
Fax to 325-643-9679 • Call 1-800-665-4471
E-mail to opportunities@girling.com
E.O.E. M/F/D/V

HASKELL COUNTY, TEXAS

Approximately 454 acres in Haskell County, located five miles east of Stamford, Texas. Has 235 acres in farm land and 218 acres in pasture with four tanks. Has deer, birds, turkey and hogs. Excellent hunting. Has electricity on property. Priced at \$995 per acre.

1102 N. 7th St., Haskell. Spacious masonry home, custom built, 3 bedrooms, 2 baths, living room, den. 2 auto carports. CH/A.

Call: **Bill Jackson Realtors**
Bill Jackson: 432-557-3366
G.W. Clark 325-669-8691
1501 West Illinois - Midland, Texas 79701
www.billjacksonrealtors.com

NOW OPEN!

In Haskell ~ A great place to call:
homePROREALTORS®

4 Ave. D, Haskell, Texas 79521
940-863-4360 (Haskell)
940-256-2724 (Cell)
Fax: 325-573-5624

homeprorealtorstexas.com

Brandy Miller, Real Estate Agent
Seller & Buyer Representation Available
Qualify for Financing - Down Payment Assistance Programs Available
One Stop Shopping for all your Real Estate Needs

Debby Miller, Broker/Owner
ABR®, C-CREC®, RECS
2002 REBAC Hall of Fame Recipient
Licensed Texas Loan Officer
Real Estate Instructor



Langford Roustabout Services, LLC

8348 U.S Hwy 277 N.
Haskell, TX 79521

Scott Langford
Owner
940-256-0535

Doug Sorrells
Supervisor
940-256-0536

Office
940-864-3490



Fax
940-864-3491

Haskell Cub Scout Pack 136 would like to thank everyone that purchased popcorn from a Cub Scout for your support. With your help, we were able to receive \$1,140 to be used to send our young men to camp this summer. We would also like to thank the Haskell Free Press for helping us get the word out. Without the support of family, friends, and the entire community, Haskell Cub Scouts would not be possible.

Haskell County Realty

103 N. Ave. E • 940-864-2665

Bridget Guess
Broker

Chan Guess
Agent

Hess Hartsfield
Agent

FEATURED LISTINGS

101 N. AVE. E LOOK WHAT WE FOUND: HISTORIC BUILDING. Two story, open downstairs area, office areas upstairs. Step down cement safe area. Great location, corner lot. Price reduced.

A HUNTER'S DREAM. 138 ACRES. PURE PASTURE LAND. Approximately 8 miles southwest of Haskell. Lots of brush, fenced with water. Great for hunting, deer, hog, quail, dove.

1557 U.S. HWY. 380 WEST: COUNTRY LIVING with ACREAGE. 4 bedrooms, 2 bath, brick home, living room, large kitchen open to nice size dining room, great for entertaining, wonderful storage throughout house, utility room, patio area, 2 car carport, beautiful yard, shop with attached carport. Property sets on approximately 9 acres of cultivated land.

"Where we make You our #1 Priority"

Residential, Commercial, Land

www.haskellcountyrealty.com

The Betty Dodson family wishes to thank you for your prayers, phone calls, food, cards, flowers and memorials sent to our family during the illness and passing of our loved one. A special thanks to Dusty and Kathy Garison, Richard Barr and Patsy Blakley for a beautiful service. Thank you ladies and friends of the First Christian Church for such a delicious meal. May God bless you.

David "Dobber" and Lynn Dodson and Hilee Benny & Lu Ann Williams, Courtney, Logan and Weiss

RIKE REAL ESTATE

Mary Rike, Broker John Rike, Agent
411 1/2 S. First Street
Haskell, Texas 79521
940 864 2411 940 864 2332
mjr@dtmspeed.net
www.rikerealestate.com



600 N. AVE. F. Large older three-bedroom, two bath brick home on a large lot. Rustic interior has wood floors and nine foot ceilings, living with mock fireplace, dining, large kitchen with dining area and a corner window. Yard has a water well and the attached two-car garage is oversized.

275 CR 208. Very spacious brick home on 40 acres with several porches and nestled among large trees. There are three bedrooms, two baths, living, dining, kitchen with heavy beams and fir floors. Living room is large and has nine foot ceilings and original oak door facings, doors and baseboards and wood floors. Other amenities include C/HA, large basement, city water with filter system, well for irrigation of coastal grass, fenced, barn and pens for livestock.

905 N. AVE. D. Older two bedroom, one bath home on a very large lot. Dwelling has large utility room with washer/dryer hook up, window air conditioner, and heaters. Lot has large pecan trees.

Come by Rike Real Estate for a complete list.

DONATIONS NEEDED!

Haskell Volunteer Fire Dept.

is accepting donations to build
Fire Station #2
at 300 S. 1st

to house pieces of donated Texas Forest Service firefighting equipment and provide a larger training facility. If you would like information on making a donation or how you can help, contact Fire Chief Randy Shaw 940-864-2023; A.J. Shaw 940-256-0653 or ask any Haskell fireman for details.

Donations may be mailed to:

Haskell Volunteer Fire Dept.

301 N. First St., Haskell, TX 79521

EXPERT AUTO WORK

REASONABLE RATES



See us for all your auto mechanic needs.
20 years experience.
We do it right the first time.
US 277 South • Haskell

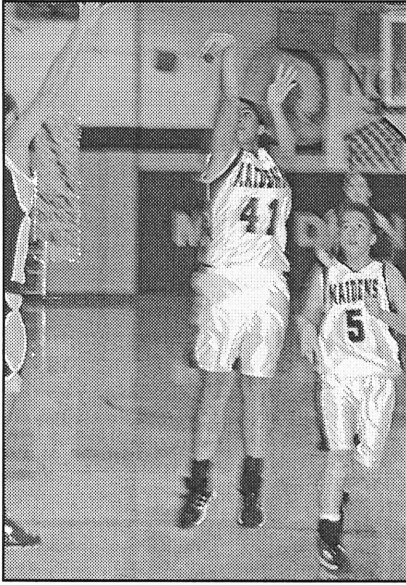


Photos and Photo Pin Buttons

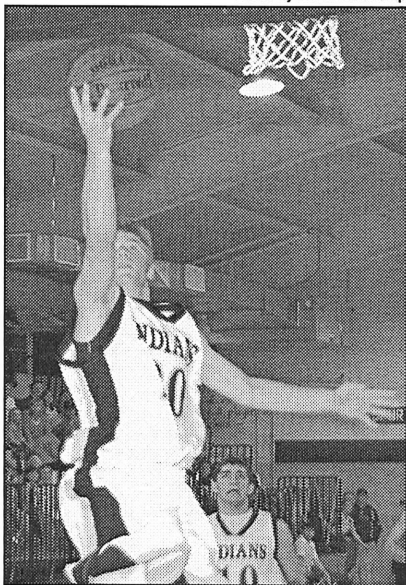
Available upon request.
Sports Athletes
Other Activities also.
Contact
Bill Blankenship
940-864-3535



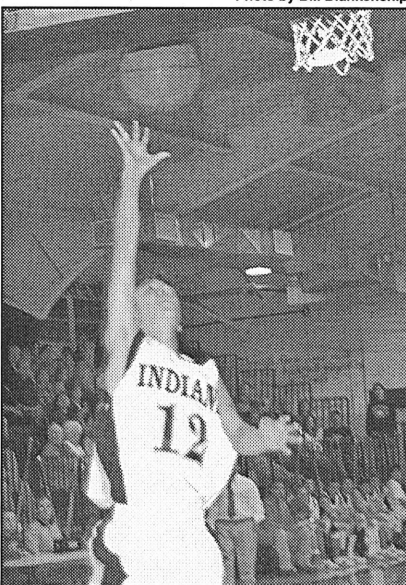
TRYING FOR POINTS—Haskell Maiden #51 Lacey Peiser makes an attempt to score during the Maidens game against Merkel Jan. 11. The Maidens lost 23-38.
Photo by Bill Blankenship



LONG SHOT—Haskell Maiden Bri Torres tries for a long shot to add points to the Maidens score against Merkel Jan. 11. Claire Isbell looks on as she shoots.
Photo by Bill Blankenship



INDIAN WIN—Haskell Indian #20 Travis Adams adds two points during the game against Merkel Jan. 11. Derek Agraz looks on as Adams scores.
Photo by Bill Blankenship



TWO POINTS—Haskell Indian #12 John English makes two points for the Indians in the Merkel game. The Indians won 65-33.
Photo by Bill Blankenship

City Council report

The Haskell City Council met in a regular meeting Mon., Jan. 14 with Mayor Ken Lane, Mayor Pro tem Sue Medford, Councilmen Chan Guess, Randy Bowers, Bob Smith and Jason Hall in attendance.

Mayor Pro tem Medford called the meeting to order and gave the invocation.

The motion approving the Zoning Board's recommendation for the request from Robert Tribbey to change 1400 N. Ave. A, Frisco Addition, Block 42, Lot 1, from residential to commercial for the purpose of a billboard was passed.

A bid from Haskell National Bank was accepted to serve as the City's depository.

Action concerning the modification of a contract from North Central Texas Municipal Water Authority was tabled.

The prison R.F.P. was discussed. Bids are due Jan. 28.

The contract with Keeter Flying Service was discussed. Keeter has purchased the old airport on the west side of Highway 277.

A special warranty deed to Jim and Mattie Upham for the North 30 feet of Lot 13, Block X, Tandy and Pinkerton Addition was approved for the agreed upon price and legal fees.

The 2008 holiday calendar was approved.

In the report given by City

Administrator Brandon Anderson:

•The bids for the La Vista Place, assisted living facility, would be opened at City Hall on Jan. 22 at 2 p.m.

•Anderson will travel to London, Ontario, Canada to look at the landfill compactor the City is considering for purchase.

•Consideration for a credit/debit card machine for the municipal judge and water bills

is pending.

•The audit has been delayed due to a software problem. The problem is being fixed.

•Other items discussed included the lack of signs at the Housing Authority's south location, the tearing down of a house, and the disposal costs of the city.

•New rates at the landfill became effective Jan. 1.

EEA members attend District Training meeting

The TEEA Fall Training meeting for District 3 was held Nov. 27 in Mineral Wells. Attending from the Haskell County TEEA were club chairman, Joetta Burnett; vice-chairman, Jane Smith; Pat Jenkins, treasurer; and agent, Jane Rowan. In charge of registration was Palo Pinto County. TEEA members from Parker County were in charge of hospitality and refreshments.

District Director, Ola Culwell distributed new revisions to the TEEA Procedures Manual. Culwell also conducted club chairman and vice-chairman officer training. Changes in club procedures were discussed in

detail for officers to carry back to their clubs.

Kathy Smith presented a program titled "Putting Pizzazz in Your Meeting." Smith gave new and innovative ideas to keep interest and involvement in club meetings.

The afternoon session continued with Culwell giving the Credentials Report and encouraging members to subscribe to the TEEA Messenger, the official state publication of TEEA Clubs of Texas.

Members were told that the District 3 Spring Meeting and Cultural Arts would be held March 25.

Area Basketball scores

Girls

Haskell 43, Stamford 38
Scoring for Haskell: Peiser 10, Wallace 9, Rodgers 9, Bassett 8, Reid 3, Rutkowski 2, Newton 2.
JV: Stamford 36, Haskell 30.

Merkel 38, Haskell 23
Scoring for Haskell: Torres 8, Peiser 6, Bassett 4, Reid 2, Rodgers 2, Rutkowski 1.
JV: Merkel 26, Haskell 20

Rule 52, Lueders-Avoca 37
Scoring for Rule: Muniz 13, M. Dudensing 9, Johnson 8, Messenger 7, Scheets 5, Petty 5.

Roby 58, Rule 18
Scoring for Rule: Scheets 2, Messenger 4, Benavides 3, Muniz 2.

Boys

Haskell 65, Stamford 37
Scoring for Haskell:

McCulloch 31, English 9, Adams 7, Rutkowski 6.

JV: Haskell 29, Stamford 20

Trent 67, Paint Creek 28
Scoring for Paint Creek: Groves 13, Myers 9, McDonald 5.

Rule 92, Lueders-Avoca 28

Scoring for Rule: Spitzer 28, Wolfe 21, Rincon 12, Baisido 10, Pace 8, Hall 6, Clark 5, Simpson 2.

Rule 63, Roby 23
Scoring for Rule: Spitzer 16, Pace 16, Saucedo 11, Rincon 7, Hall 5, Clark 4, Wolfe 2, Simpson 2.

Paint Creek ISD seeks students for G/T program

Paint Creek ISD offers a Gifted and Talented (G/T) Program in addition to regular education programming for grades K-12. The G/T Program is designed to meet the needs of students demonstrating exceptional skills in academic and creative areas.

To nominate a child for this screening, come by the office at Paint Creek School Wed., Jan. 16 to Thurs., Jan. 31 between the hours of 8 a.m. and 3:30 p.m. and pick up a G/T nomination packet.

Nominations will be accepted until 3:30 p.m. Thurs., Jan. 31, 2008. For further information, contact Valiene Bullinger during school hours at 940-864-2868.

**BURN BAN
IN EFFECT**



Misty Gibson
RN, BSN

**HERE'S TO YOUR
HEALTH... AT HOME!**

Brought to You By:

**Haskell Home
Health Agency**

**Home Safety & Fall Prevention Tips
Personal Safety Activities**

- If you need glasses, wear them, but never walk around with glasses that are meant only for reading.
- If you are even slightly unsteady on your feet, use a cane. Do not hesitate to use a walker either inside the house or outdoors.
- Always turn lights on and use adequate wattage light bulbs to brighten the room.
- Wear wide-base, low heel shoes with corrugated soles to help prevent slips and falls.
- Do not wear flimsy or slippery-soled shoes or slippers.
- When getting up a night, first sit on the edge of the bed to make sure you are awake and steady, then turn on a light before walking to the bathroom or around the room.
- Always wear clothing with short sleeves when cooking. Never reach over a hot burner on the stove.
- Have a safety plan to call for help or to get assistance.
- If you take medication that makes you dizzy or weak, discuss these symptoms with your health care provider. Being dizzy or weak when you get up to walk or go down stairs may increase your risk of falling.

What questions regarding home care do you have for the nurse? Send your questions to Haskell Home Health Agency, 417 S. First, Haskell, TX 79521 or call 940-864-5074 or 1-877-864-5074.

HERE'S TO YOUR HEALTH—AT HOME is brought to you by Haskell Home Health Agency providing home care services in *Haskell, Knox, Stonevall, Throckmorton and Jones Counties*



Home Care: Keeping Texans Proud & Independent

HOMESTEAD EXEMPTIONS REDUCE PROPERTY TAX BILLS

Homeowners can reduce their property tax bills in 2008 by taking advantage of homestead exemptions. Application forms are available at the Haskell County Appraisal District.

Property owners who have not received the general homestead exemption on their homes in which they were living on January 1, 2008, and those who became totally disabled or turn 65, must apply this year to receive their exemptions for 2008.

For the general homestead exemptions, homeowners must own and live in their homes on January 1, 2008. Homeowners 65 years of age and older and those who become disabled don't need to own their homes on January 1 to qualify for the age 65 and older or disabled homestead exemptions. State law provides that they may apply as soon as they turn 65 or become disabled, own the home and live in the home as their principal residence.

State law also allows that if the age 65 and older spouse dies before applying for the age 65 and older exemption, the surviving spouse age 55 or older may apply for the age 65 and older exemption for the deceased spouse. The same filing deadlines apply.

If a homestead is located in a taxing unit that overlaps into two or more counties, the homeowner must apply at each county appraisal district.

A homeowner's principal residence and land are considered the homestead. It can include up to 20 acres of land and improvements. Improvements include the house, a swimming pool, greenhouse or any other structures, as long as the owner uses them for residential purposes.

Property must meet four tests set by law to qualify for the residence homestead exemption. The person or persons claiming the exemption must own the property on January 1 (homeowners 65 and older or disabled need not own the property on January 1 for the age 65 and older or disabled homestead exemptions only); the property must be designed or adapted for human residence; the owner must use the property as a residence; and the property must be the principal residence of an owner who qualifies for the exemption.

A mobile home, even on leased land, can qualify for the exemption if it meets the four tests.

A property owner can still qualify for the homestead exemption if part of the residence is rented out or used for other purposes, such as a home business. The home will not lose its exemption if the owner moves away temporarily for a period of less than two years, so long as he or she intends to return and doesn't claim another homestead exemption elsewhere. A property owner may continue to maintain the residence homestead exemption if the owner is absent from the property for more than two years due to military service outside of the country or residency in a facility proving health, infirmity, or aging service.

Texas law provides several types of exemptions for homeowners. For school tax purposes, all homeowners may receive a \$15,000 general homestead exemption and homeowners 65 and older or disabled receive an additional \$10,000 exemption.

The school tax exemption for those homeowners 65 and older or disabled provides a special property tax "ceiling" for school taxes. While the market value of an elderly or disabled person's home may fluctuate with the market, the school taxes cannot increase above the tax amount in the first year that person qualified for that homestead for the age 65 and older or disabled exemption.

The tax ceiling can increase, however, if the owner adds an improvement, other than normal maintenance or repair. When the owner adds a new improvement, such as a room or garage, the new improvement is taxed at its current market value and the current tax rates. The new taxes are added to the previous tax ceiling to create a new ceiling.

Homeowners 65 and older or disabled may transfer the same percentage of tax savings to a new home. The homeowner transfers the percentage of school tax paid on the former home, based on the last year the homeowner qualified that home for the tax ceiling, to the new home. The new tax ceiling is calculated to give the homeowner the same percentage of tax paid as on the former home. The homeowner may not claim two different homes in the same year.

For example, if the homeowner had a school tax ceiling of \$100, but would pay \$400 in school taxes without the tax ceiling, the percentage of tax paid is 25 percent. If the school taxes on the new home are \$1,000, the new tax ceiling would be \$250, or 25 percent of \$1,000. The homeowner may request a certificate from the appraisal district where the former home was located that gives information about the tax ceiling. The homeowner gives this information to the appraisal district where the new home is located.

If the elderly homeowner dies, the surviving spouse may apply to keep the school tax ceiling if the surviving spouse was at least 55 years of age when the qualified spouse died. The surviving spouse also may transfer the tax savings with the school tax ceiling to another homestead, as discussed above.

The county, city or junior college district may decide to set a tax ceiling provision for homeowners 65 and older or disabled. Each taxing unit's governing body may decide to grant the tax ceiling provision or the local citizens in a taxing unit may petition for an election to vote on granting the tax ceiling provision in that taxing unit.

Homeowners should notify the chief appraiser when they no longer qualify for the general, age 65 and older or disabled homestead exemptions. A 50-percent penalty is added to delinquent home taxes if homeowners fail to notify the appraisal district and receive homestead exemptions to which they are not entitled.

Different types of taxing units—counties, cities and special districts—may offer different homestead exemptions. Counties must offer a \$3,000 general homestead exemption on the portion of the county tax levied for farm-to-market roads or flood control.

Any taxing unit's governing body may grant an additional optional exemption on the homesteads of disabled or elderly residents, or both. This optional exemption may be no less than \$3,000 from the home's appraised value and has no limit on the maximum amount.

Taxing units may also offer a local option exemption based on a percentage of a home's appraised value. In 2008, any taxing unit can exempt up to 20 percent of the value of each qualified homestead. No matter what percentage of value the taxing unit adopts, the dollar amount of exemption for any home must equal at least \$5,000.

For more information, homeowners may contact the Haskell County Appraisal District at 604 N. 1st St., or by calling 940-864-3805.