

Baseball games

Haskell V vs Quanah
Fri., March 31, 4 p.m.
at Haskell
Haskell JV vs Rotan
Sat., April 1, 11 a.m.
at Haskell
Haskell V vs Vernon N. Side
Mon., April 3, 4:30 p.m.
at Vernon North Side

Softball games

Haskell V vs Ralls
Thurs., March 30, 5 p.m.
at Haskell
Haskell V vs New Deal
Sat., April 1, 10 a.m.
at New Deal
Haskell JV vs Eula JV
Mon., April 3, 4:30 p.m.
at Eula
Haskell V vs Aspermont
Tues., April 4, 4:30 p.m.
Game Forfeited

Track

Indians and Maidens
Greyhound Relays at Knox City
Sat., April 1

Golf

Indians & Maidens
at Cow Country Invitational
Throckmorton Country Club
Tues., April 4, 10 a.m.

Calendar

Bunny review

The Easter bunny will be in the yard of Bob and Darlene Smith, 1801 N. First St., Haskell, this week. Come by and look.

Chamber banquet

The Haskell Chamber of Commerce banquet is set for Thurs., April 13 at 7 p.m. at the Civic Center. Jill Watson, warden of Rolling Plains Correctional Facility will speak. This year's theme is 'Passion for Haskell.' Tickets for the banquet and brisquet dinner are \$10. Citizen of the Year and Volunteer Person of Group of the Year will be announced.

Lodge meeting

The Sons of Hermann Lodge meeting will be held Sun., April 2 at the Pit & Grill restaurant at 2 p.m.

Sr. Citizen banquet

The annual Haskell County Senior Citizen banquet will be held Sun., April 2 from 11 a.m. to 1 p.m. at the Haskell Civic Center. Haskell County residents age 60 and older will eat for free. Tickets are \$5 for all others. Baked ham, green beans with potatoes, garden salad, hot rolls, punch bowl cake and iced tea will be served. Tickets are available from Haskell Co. Commissioners, County Judge, Experienced Citizens Center, Billie McKeever or at the door. The banquet follows the Haskell CISD Junior-Senior banquet.

City cleanup

Haskell will conduct a city wide cleanup April 22-29. Landfill hours will be on Sat., April 22 and 29, 9 a.m. to 3 p.m. and weekdays April 24-28, 8:30 a.m. to 4 p.m. Two trailers will be available during the week, half day only for those not having a trailer. All items must be secured when hauling. No chemicals, tires, batteries, things with Freon, asbestos, roofing materials or paint will be accepted. Bulky items will be picked up if placed by the dumpster by making arrangements by calling City Hall at 864-2333.

Youth baseball

Tryouts for Haskell Youth Baseball will be held Sat., April 8 at 10 a.m. at the Little League field. Signup forms are available at Sport-About. For more information call Kevin Leach at 864-2626 or Tyke Meinzer at 864-3664.

Index

Obituaries Page 2
Around Town Page 3
Out of the Past Page 4
Menus Page 8
Classifieds Pages 8-9

Car Show set for Saturday downtown

The Haskell Free Press

VOL. 120-NO. 13, ©MARCH 30, 2006

"The People's Choice"

10 PAGES-ONE SECTION-75 CENTS

Car enthusiasts looking for good weather on Saturday



CAR SHOW RESCHEDULED—The Haskell County Courthouse makes a stunning background for this Oldsmobile Cutlass 442 displayed at last year's Haskell Fire Department Car Show. The 2006 edition of the Car Show will be held around the square on

Sat., April 1. Poor weather condition forced the firemen to reschedule their annual show. Vendors will have merchandise and food venues available during the show. Kids will be involved in the Hot Wheels car race and the Kids' tractor pull.

City, school candidates announced

Haskell County residents filing for offices in the upcoming city and school elections as of the filing deadline, Mon., Mar. 13, have been announced.

City of Haskell: For mayor, incumbent Ken Lane and Dan Hoover. For city council member, Lonnie Meredith, Bobby Neil Smith, Jason Hall, incumbent Jerry Stocks,

Scott Langford and Sam Rodriguez. Haskell CISD Board: Single District #4 Rochester, incumbent Susan Turner and Larry Short. Single District #5, no incumbent, Paula

Garcia, Terri Klose, Tyke Meinzer. Single District #7, incumbent Steve McGuire.

The City of Rochester and City of Weinert elections have been cancelled.

City of Rule: For mayor, James Marquis and Bailey Anne Foster. For city council, incumbent Patrick Pace, David Springs, Kathy Rolls and Robert Saffel.

The Rule Independent School Dist. election has been cancelled.

The Paint Creek ISD election has been cancelled.

The 10th annual Haskell Volunteer Fire Dept. Car Show has been scheduled for Sat., April 1 in downtown Haskell around the Haskell County Courthouse square.

"Weather caused the Fire Dept. to cancel the show on Sat., March 18," said Randy Shaw, Public Information Officer for the Dept. "We are hopeful that this Saturday's weather is pleasant and that everyone joins us on the square for a day of good family fun."

The popular event is expected to again bring many entries and visitors to the city. Those with car entries have said they plan to attend.

Other activities will include Hot Wheels Races for Kids (with an entry fee of \$1 per car) to begin at 11 a.m. and the Kids' Tractor Pull set for 1 p.m.

Hamburgers and french fries will be served on the southeast corner of the square during the noon hour by members of the fire department.

Vendor spaces will be located around the square in front of business for \$15 each. Vendor information is available by contacting Lisa Shaw at 864-2686 or 864-2023.

Classes for this year's car show are:

Cars Pre-'64; Cars '65 and up; Antique Cars, Trucks thru '50; Street Rods Pre-'49; Race Cars; Older Pickups Pre-'84; Pickups '85 and up; Motorcycles; Restoration in Progress; and Scooters.

First, second and third places in each class will receive a trophy. Entries are \$20 each. Judging will be held at 12:30 p.m., with a trophy presentation at 3:30. Trophy and cash will be given for Best of Show and People's Choice, and a trophy will be given for Farthest Distance Traveled.

Registration forms for the show or vendors may be obtained from any Haskell Volunteer Fireman. For more information, call Randy Shaw at 940-864-2023 or e-mail: haskellfdcarshow@hotmail.com.

Cowboy breakfast to be held on Palm Sunday

The annual Tom Hairgrove "Cowboy Breakfast and Church Service" will be held on Palm Sunday, April 9, at the First United Methodist Church in Haskell, with

everyone in the community, both 'cowboys and cowgirls,' invited to attend to enjoy the food, fellowship and spiritual message.

Breakfast will be served in the

Fellowship Hall at 7:15 a.m., with a church service beginning at 8:15, and concluding in ample time for everyone to go to their own respective Sunday school classes and church services.

Special speaker for the event will again be Cody Cochran, pastor of Bethel Assembly of Anson.

Born and raised in Abilene, where he now lives with his wife and two young sons, Cochran's first love was always punching cows until he answered the call on his life to preach the gospel.

With a working background experience of punching cattle on several ranches throughout West Texas, in 2002 Cochran began pastoring Bethel Assembly in Anson. With a strong desire for the Lord, and passion for the gospel, his work and the congregation have grown.

The cooking of the meal will be headed up by men of the First United Methodist Church.

City wide clean-up week set Apr. 22-29

A City Wide Clean Up Week has been set for Haskell the week of Sat., April 22 through Sat., April 29.

During this week, the landfill will be open for dumping from 9:00 a.m. to 3:00 p.m. on both Saturdays and from 8:30 a.m. to 4:00 p.m. on Monday through Friday.

Two trailers will be available during the week, half day only, for those who do not have their own trailer. Personal trailers and trucks hauling loose trash must have a tarp. Bulky items, lumber, tin, etc., must

be tied down.

Things that will not be accepted during clean-up week are chemicals, tires, batteries, anything with Freon, asbestos, any roofing materials and paint.

Bulky items will be picked up if they are put by the dumpster, but only if arrangements have been made through City Hall, 864-2333.

This service is provided for citizens in the city limits of Haskell only. Proof of residence, such as a water bill, may be requested.

Sr. Citizens banquet to be held Sun., April 2

The annual Haskell County Senior Citizen Banquet will be held Sun., April 2, from 11:00 a.m. to 1:00 p.m. in the Haskell Civic Center.

This special event is scheduled for the day following the Haskell CISD Junior-Senior banquet, and provides an opportunity for all to enjoy the beautiful decorations that are set up for the school banquet.

Haskell residents age 60 and older

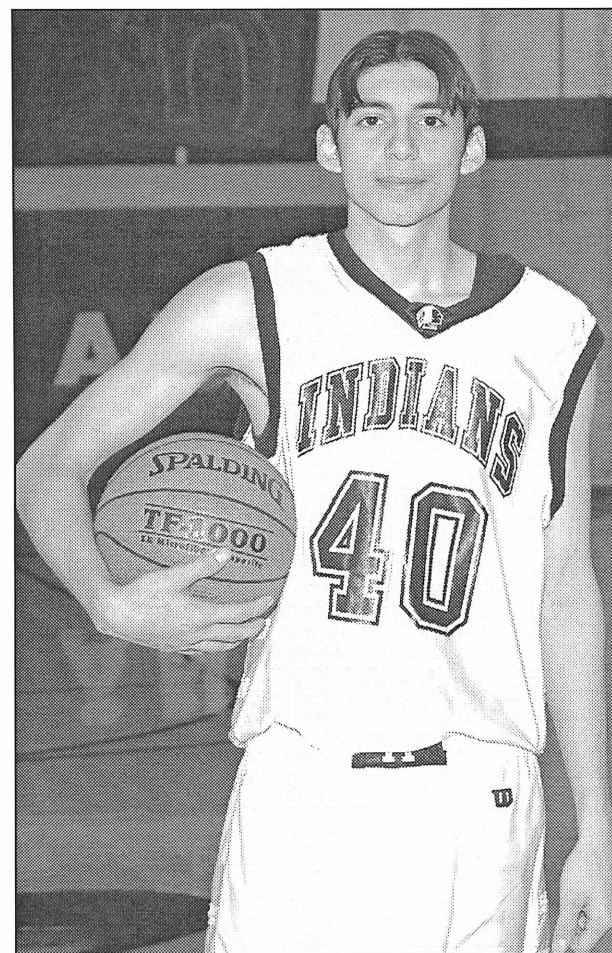
will be special guests and will eat free. Tickets are \$5.00 for all others. A menu of baked ham, green beans with potatoes, garden salad, hot rolls, punch bowl cake and iced tea will be served.

Tickets are available from the Haskell County commissioners, County judge, Experienced Citizens Center or Billie McKeever. Tickets will also be available at the door.

Chavez named to All-Region

Haskell basketball coach, Toby Villa, announced Tues., Mar. 21 that Haskell Indian, Miquel Chavez has been selected and named to the All-Region, Region 1 Team by the Texas Association of Basketball Coaches.

The Haskell Indian basketball team was selected No. 6 in the state by vote of the Texas Association of Basketball Coaches.



MAKES ALL-REGION—Haskell Indian, Miquel Chavez was recently named to the All-Region, Region 1 Basketball Team.

Photo by Bill Blankenship

FOR NEWS ITEMS OR TO SUBSCRIBE, CALL 864-2686

Hairgrove, Leedy named to Commission for Women

Governor Rick Perry has announced the appointment of 13 women to the Governor's Commission for Women for terms to expire Dec. 31, 2007. The commission promotes opportunities for women through outreach, education, research and referral services.

Peggy Hairgrove of Haskell is a child protective services specialist for the Texas Department of Family and Protective Services in Abilene. She worked as a teacher for more than 29 years, 22 of which were in the Haskell Consolidated Independent School District. She is a member Delta Kappa Gamma Society International and is involved in the First United Methodist Church of Haskell as a musician. A graduate of Texas Tech University, Hairgrove received master's degrees from Texas Tech University and Abilene Christian University.

Christie Leedy, D.D.S., of Abilene, formerly of Haskell, who is being reappointed, is a practicing dentist and co-owner of Abilene Dental. She is a member of the 17th District Dental Society, the American Academy of Cosmetic Dentistry and founder of the Angel Smiles program. Leedy is a member of the NOAH Project board of directors, the YWCA and the Abilene Chamber of Commerce. She is also a teacher for the Young and Motivated Youth Leadership Program. Leedy attended Tarleton State University Western Texas College, and received her doctor of dental surgery degree from the University of Texas Health Science Center San Antonio Dental Branch.

Others appointed include Keely Appleton of Fort Worth, Wendy Bengal of El Paso, Sue Chiang of Sugar Land, Cynthia Tyson Jenkins of Irving, Lisa Lucero and Connie Weeks, both of Austin, Becky McKinley of Amarillo, Carmen Pagan of McAllen, Carol Peterson of Alpine, Tresa Rockwell of El Paso and Daisy White of Houston.

WELCOME TO THE CAR SHOW

C&S Flooring and Lumber Yard
 105 N. 1st • Haskell • 940-864-3753
 742-4021 Home • 325-338-3048 Cell
 Conrad and Sylvia Saucedo, Owners
 Swine Show Feed 273 and 11148 in stock.
 Now Taking Orders for:
 Show Calf Feeds • Show Goat Feeds • Rabbit Feeds
 Moorglo Horse Pro-Vita-Min Tub
 Proud Paws Dog Food
 MoorMan s Shavings • Pig Feeders
Countertops, Tile, Laminate
 Kelly Moore Paints, Roofing, Lumber, Insulation, Hardware, Plumbing, Sereen Repairs
We can help with all your installation needs!

VALOR TELECOM
 Local & Long Distance Phone Service
 High-Speed DSL Internet Service and
 DISH Network® Satellite TV available
 Come by and visit with our VALOR Authorized Agent in Haskell at the WILD HORSE TRADING POST or call local 864-2200

Coffee shop talk.

Wylie Sprayers Eagle Rewards Program

At Wylie Sprayers we value our customers who trust us enough to make major investments in our equipment. So in appreciation, we've established the Eagle Rewards Program. And any customer who purchases a new premium Wylie Sprayer valued at \$20,000 or more will be automatically eligible to join free of charge and receive unbeatable perks.

Perks during the sale

- Trimble Precision Ag® and Raven™ technologies.
- Guidance from knowledgeable sprayer experts.
- Personalized financing.
- Extended warranties.

Perks after the sale

- Free delivery, set up and training.
- Extensive parts discounts and delivery services.
- Free warranty inspection.
- Optional uptime equipment examination.
- The scoop on new and upcoming equipment.



Manufacturing | Distribution | Marketing

888.249.5162

Corporate Office: 702 East 40th Street
 Lubbock, Texas 79404
 wyliesprayers.com

Obituaries

Bob Elbert Mapes



BOB ELBERT MAPES

Funeral services for Bob Elbert Mapes, 77, of Haskell, Oklahoma were held Wed., March 15 at First Baptist Church with Rev. Jerry Don Abernathy and Rev. Henry L. Stahl officiating. Burial was in Haskell Cemetery under the direction of Dowdy Funeral Home.

Mr. Mapes died Sun., March 12 at his home.

Born Aug. 23, 1928 in Haskell,

Texas, he was the son of Elbert and Floyetta (Atchison) Mapes. He accepted Jesus at the age of 13 and joined the Robert Community Church in Haskell County, Texas.

After graduation from Mattson High School, he worked for General Geophysical Co. for 12 years as a seismographer. On March 29, 1952 he married Elizabeth Dean of Porter, Oklahoma at the home of Mr. and Mrs. G.W. Piland in Haskell, Texas with the Rev. Max Copeland officiating. He began his business career in Haskell as the owner of the Texaco station. He then relocated his family to Haskell, Oklahoma in 1966 where he became a prominent businessman in the community, owning and operating Gobble Gas, Country Corner Cafe, Mapes Bulk Fuel and Mapes Car Wash. Retiring after over 30 years, Bob became an avid gardener and continued his love for fishing. He shared many happy times with his beloved fishing buddies: Andy Walters, Lon Applegate, Bob Drake and the late Eugene Treat and Doyle Goodall. He was a quiet and gentle man who

provided a role model for his children and grandchildren. He loved his church family, fellow deacons, and members of the men's class #2 at the First Baptist Church of Haskell, Oklahoma.

He was preceded in death by his parents; brother, Gene; sister, Wanda Newton; and brother-in-law, M.C. Piland.

Survivors include his loving wife of over 53 years, Elizabeth (Sally) of the home; two sons and daughters-in-law, Mike and Pearlina Mapes of Haskell, Oklahoma and Steve and Debbie Mapes of Bixby, Oklahoma; daughter and son-in-law, Linda and Rocky Purdom, of Haskell, Oklahoma; sister, Frieda Piland of Haskell, Texas; brother-in-law, Everett and Linda Dean of Porter, Oklahoma; sister-in-law, Billy and Arnold Walker of Porter, Oklahoma; brother-in-law, Leon Newton of Haskell, Texas; sister-in-law, Ann Mapes of Lubbock; eight grandchildren; six great grandchildren, several nieces, nephews, cousins, and many precious friends. PD. NOTICE

Broadband grants announced

Bryan Daniel, USDA Rural Development State Director, has announced \$8.9 million in broadband grant funds are available for connecting essential community facilities to high-speed telecommunications in rural towns and communities where broadband service does not exist.

"The expansion of these technologies will better equip our rural communities to enhance opportunities for overall economic development," said Daniel. "The funds from this program will provide community-oriented broadband transmission service that delivers enhanced educational, health care and public safety services for rural Texas communities."

More than \$39 million in four years have been invested by USDA Rural Development through the Community Connect Broadband Grant Program. To date, 109 communities have participated in the program to connect essential services of police and fire protection, local government, hospitals, libraries and schools to broadband service. For their part of the project, the communities will make at least 10 computers available to the public with set hours and instructions available for use on the internet.

Broadband transmission service is

vital to the economic development, education, health and safety of rural Americans. The purpose of the Community Broadband Connect Grant Program is to provide grant funds to eligible applicants that will provide currently unserved areas with broadband transmission services. Incorporated organizations, federally recognized Indian tribes, state, or local governments, profit and non-profit corporations are eligible to apply. Grant funds may be used for the construction, improvement, or the expansion of a community center that furnishes free access to broadband Internet service.

The minimum award per grant is \$50,000, and there is no maximum. Applications must be completed and submitted no later than May 15, 2006, to U.S. Department of Agriculture, 1400 Independence Avenue, SW, Room 2844, Stop 1559, Washington, DC, 20250-1599. For more information on the Community Connect Broadband Grant Program, please contact Paco Valentin, Community Programs Director, 254-742-9789, or visit the website at <http://www.rurdev.usda.gov/rus/telecom/commconnect.htm>.

USDA Rural Development's mission is to deliver programs that will increase economic opportunity and improve the quality of life of

rural residents. As a venture capital entity, USDA Rural Development has invested over \$50 billion since the beginning of the Bush Administration to provide equity and technical assistance to finance and foster growth in homeownership, business development, and community and technology infrastructure. As a result, over 800,000 jobs have been created or saved through these investments.

Further information on rural programs is available at a local USDA Rural Development office or by visiting the website at <http://www.rurdev.usda.gov>.

Burn ban issued

A burn ban has been issued for Haskell County. The use of combustible materials in an outdoor environment by any person is prohibited. Combustible materials specifically include, but are not limited to, fireworks, camp fires, welding and any other pyrotechnic material, which in the manner or means of its use could result in a wildfire. The ban will continue until conditions warrant otherwise, stated an order from Haskell County Judge David C. Davis. A person who knowingly or intentionally violates this order commits a Class C misdemeanor, punishable by a fine of up to \$500.

Nitragin

CLOSER EXAMINATION REVEALS ROOM FOR IMPROVEMENT.

LOOK NO FURTHER THAN OPTIMIZE LIFT

The most effective way to get higher peanut yields is to give your plants a strong start. *Optimize LIFT*® with *LCO Promoter Technology*™ features a signal molecule that accelerates growth processes immediately after planting, independent of soil or weather conditions. It provides the earliest, strongest start for healthier plants throughout the season. This improvement results in higher yields and grade. *Optimize LIFT* also encourages earlier maturity – an important harvest management benefit. For stronger, healthier peanut plants right from the start, improve your crop with *Optimize LIFT*.

Optimize LIFT

Call 1-800-558-1003, visit Nitragin.com or ask your dealer for more information.

NIT-PNT-TX-2446 LCO Promoter Technology is a trademark. Optimize and LIFT are registered trademarks of Nitragin, Inc. © 2006 Nitragin, Inc. 9306

Choosing a long term care facility requires much study

by Jane Rowan
CEA/FCS, Haskell County

The face of long-term care has changed significantly in recent years and continues to evolve to meet the needs of today's older adults. While many people wish to remain in their homes throughout their life, that is not always possible. It is very important to make an informed decision when choosing a long-term care facility.

An independent living facility may resemble an apartment complex or a hotel.

These units provide personal living spaces while accounting for some of the extra needs you may have as you get older, such as railings in the bathrooms, wider doorways and other universal design elements. Many independent living facility units include a small kitchen and laundry room. Depending on the facility, additional services may be provided at a premium, such as a meal service. Size of the units, cost of living and additional services offered will depend on the particular facility you choose.

An assisted living facility may be appropriate for those who need more

help than can easily be gotten at home or in an independent living setting. Assisted living facilities may help as needed with daily living, but offer only some nursing care or none at all. The facility usually will provide meals, cleaning services, activities and transportation services. Depending on the facility, living arrangements may be private or semi-private.

When more care is needed, the next choice in long-term care is skilled nursing care a nursing home. Nursing home care is usually reserved for people who need help with meals, bathing, personal care, medications and moving. Nursing homes usually provide 24-hour services and supervision, including medical care and some physical, speech and occupational therapy, depending on the facility.

One of the newer choices in long-term care is a Continuing Care Retirement Community (CCRC). CCRCs often provide independent, assisted and nursing care living in the same locale. Having multiple levels of care on the same "campus" provides many benefits to residents, including standardized services

available and ease of transition as condition worsens.

Choosing a facility may be the most difficult part. The American Association of Homes and Services for the Aging (AAHSA) recommends:

•Ask questions. Find out about what is available in your area. Talk to trusted friends, family, neighbors, health providers, etc., to determine their experiences with various facilities.

•Investigate. Texas maintains a "report card" for state-licensed facilities, the Quality Reporting System (QRS): <http://facilityquality.dhs.state.tx.us/>. You can use QRS to obtain information about a long term care facility or to compare facilities. However, the system is not meant to serve as the only basis for choosing a particular provider.

•Call. Once you have a list of possible places, get in touch with each one. Ask basic questions about

openings and waiting lists, number of residents, costs and methods of payment.

•Visit. Make plans to meet with the director of nursing and director of social services. Medicare offers a nursing home checklist: <http://www.careplanner.org>. Ask yourself if you would feel reassured leaving your loved one there.

•Visit again. Make a second visit without an appointment, maybe on another day of the week or time of day. See if your first thoughts are still the same.

Many people believe that Medicare will pay for long stays in a nursing home, but it does not. Medicare and Medicare supplemental insurance only cover short times of home health or nursing home care. They pay for a short stay in a nursing home for someone who is getting better after leaving the hospital.

Medicaid may be used to pay for

nursing home care but only after certain income and asset requirements are met. Many people start paying for long-term care with their own money and later may become eligible for Medicaid. Keep in mind that applying for Medicaid takes at least 3 months. Also, new financial requirements for Medicaid allow a 5-year look-back period for finances. This means that assets and income from the last five years may be considered when determining eligibility.

Long-term care insurance is a private insurance policy you can buy years before you think you might need it. While each policy is different, long-term care insurance is

usually less expensive when purchased at a younger age. The Texas Department of Insurance provides information for evaluating and purchasing a long-term care insurance policy at <http://www.tdi.state.tx.us/>.

Planning for long-term care is not easy. Individual needs change over time as do the rules about programs and benefits. Be sure to include your family in your decision to move to a long-term care facility, no matter what the level of care. By the same token, if you are a caregiver considering placing a loved one in a facility, be sure to involve that loved one in the decision-making process as much as possible.

Rule church to celebrate anniversary with fellowship

April 15-16, the First Baptist Church of Rule will celebrate its 100th anniversary.

The festivities will begin at 6:00 p.m. Sat., April 15, with a light supper served in the church's fellowship hall. Following supper, the group will gather in the sanctuary for congregational singing and individual/group music specials.

Easter Sunday morning will begin with Sunday school at 9:45, and worship service at 11:00 a.m.

Immediately after the morning worship, a catered lunch, provided by

the church, will be served at the Rule ISD Cafeteria.

Following lunch, the meeting will reconvene in the church sanctuary, with more singing and the sharing of testimonies and memories.

Those wishing to attend, or to share in music and testimony, are asked to contact the church office at 940-997-2321 or Pastor Josh Stowe at 940-996-0171. Those planning to eat with the group are asked to reserve a plate for the Saturday supper and/or Sunday lunch.

Larned achieves highest level in career program

Joy Larned, RN, of Fort Worth, daughter of Dora Bergstrom of Haskell, and the late Eric Berstrom, was recently recognized for having achieved the highest Level IV of the clinical career ladder in the ASCEND (A Successful Climb Enriching Nursing Delivery). The program is offered through magnet status facilities, which provide, maintain

and support the best quality of professional nursing care.

Of the 5000 hospitals in the nation, Harris Methodist Hospital of Fort Worth is one of the 114 recognized as a magnet facility.

A registered nurse at Harris Methodist Hospital for the last 25 years, she presently continues her nursing career there.

Texas wildflower hotline available

Motorists searching for the best wildflower locations along Texas highways have help at their fingertips.

The Texas Department of Transportation's wildflower hotline, 800-452-9292, and Internet site, www.dot.state.tx.us, give users information on the best spots to find wildflowers along the Texas highway system.

The wildflower hotline, available as part of the menu for the road conditions hotline is active through early May. The hotline has a recording available 24-hours-a-day telling where wildflowers are by selecting option two. Travel counselors are also available as a new hotline feature from 8 a.m. until 6 p.m. Monday through Friday. The counselors can be reached by selecting options three, four or five. Spanish-speaking Texans may also press option five for a Spanish translator.

To make it easier to find wildflowers in bloom, hotline callers may request information by seven regions of the state: Big Bend, Gulf Coast, Hill Country, Panhandle, Piney-Woods (East Texas), Prairies and Lakes (North Central Texas), and Southwest Texas.

Information on the hotline and Internet comes from TxDOT's maintenance offices, chambers of commerce and parks officials.

"Unfortunately, wildflower growth will probably be below average due to the drought and warm winter across much of the state," said Dennis Markwardt director of TxDOT Vegetation Management.

April is considered the prime month for blooming wildflowers.

TxDOT spreads more than 33,000 pounds of wildflower seeds along Texas highway rights of way each year. Each pound contains 30 or more varieties of wildflowers.

The statewide locator map for wildflower blossoms is available on

the TxDOT webpage at www.dot.state.tx.us and clicking on the "Where are Wildflowers Blooming in Texas?" banner.

This area has a written summary of wildflower growth as well as an enlargeable map featuring "wildflower-power" sites, marked with colored circles representing wildflower varieties.

The department's wildflower program is part of a vegetation-management program encouraging the growth of native species that require less mowing and care.

Area events calendar

Always Patsy Cline

The Hamlin FFA Booster Club along with the Albany Mainstreet Playhouse has rescheduled the performance of Always Patsy Cline. All tickets will be honored for Sat., April 8 at 7 p.m. in the Hamlin High School auditorium. Proceeds benefit the FFA Booster Club. Tickets are \$10 and will be available at the door, first come, first served. For ticket or other information, call Melinda Guadaluca 325-576-3603 or Melissa Lee 325-669-6127.

Concert

The Long Beach Southernairs quartet singers of Long Beach, California will be in concert at Anson High School auditorium Sun., April 16 at 5 p.m. The doors will open at 4 p.m. The Southernairs bring a sweet Southern sound of good old-fashioned gospel quartets and have performed with many well-known groups. Tickets are available at the AHS auditorium. For more information, call Dee Shellman at 325-823-4066.

Food management training classes available in May

by Jane Rowan
CEA/FCS, Haskell County

A two-day Food Protection Management training for food service managers in the Big Country area will be held May 15 and 22 from 8 a.m. to 5 p.m. at the Taylor County Extension Office in Abilene.

The training will allow food service establishments permitted by Texas Department of Health to meet their certification requirements if they pass the state exam. The class covers twelve food safety concepts related to personal hygiene, cross

contamination, time and temperature, sanitation, pest management, foodborne illness and related areas. The course is sponsored by Texas Cooperative Extension in Taylor, Jones and Nolan Counties; the Abilene-Taylor County Health District and Texas Department of Health.

Registration deadline is April 24. Registration information is available by calling the Taylor County Extension Office at 325-672-6048 or the Jones County Extension Office at 325-823-2432.

Carla's Sweet Shop

Lunch Menus for April 5-6. Serving 11-2.
All meals include dessert and drink.

<p>~Wednesday~ Chalupas, Tacos, Beans, Salad</p>	<p>~Thursday~ Fried Chicken, Mashed Potatoes, Green Beans</p>
---	--

507 N. Ave. E • Haskell • 864-2711

Spring Cleaning Scrapbook Sale

Making room for new products!!

Thurs.-Sat., March 30-April 1
Weekdays: 1 to 6 p.m. - Sat., 10 a.m. to 4 p.m.

<p>50% off</p> <p>All Stickers Metal & Other Embellishments Glass Paints Solid Colored 12 x 12 Cardstock</p>	<p>25% off</p> <p>Adhesives • Albums Patterned Paper Rubber Stamps Inkpads • Chalk • Pens</p>
---	--

75% off Bin of miscellaneous products!

Rainey's Scrapbook Store
408 N. First • Haskell, Texas • 940-864-5119

Around Town

By Joyce Hawkins

Lona Mae Phelps returned home Sunday after a week of visiting her family. Her sister, Sue Cox of Naples, came and to take her to a church conference in Tulsa, Oklahoma. They stopped in Weatherford for a visit with their brother, Jacky, Sandra and Jacklyn Sanders. They went to Fort Worth with Sandra to visit with sister, Marie and B.D. Kirkland, Tammy

and Tom Farrison and Jacky D. Kirkland. Then on to Naples to visit with Sue's children and their families, Brenda, Casey, Austin and Sally Sartain, Deborah, Zane, Anna and Danielle MacKay, Jr., Christi, Kade, Drew and Macy Cox. On Thursday, Walter and Sue Cox and Mrs. Phelps went to Tulsa for the conference and workshop.

Kountry Kids
Preschool and Daycare

Emmalee Phemister,
Owner
Vickie Josselet,
Director

**Opening Soon
Now Registering
Ages Newborn and Up**

3 S. Ave. P
Haskell, Texas

**Call 940-864-3320
for an appointment**

MOIE
GALLERY

play on™

Buy 2 Get 2 Free
Movies

Red Dot Movies

Look for the Red Dot!

\$5 each

500 N. 8th St. • Haskell • 940-864-3522
Hours: Mon.-Thurs. 11 a.m. to 9 p.m.
Fri. & Sat. 10 a.m. to 10 p.m.
Sunday noon to 9 p.m.

GRILLED CHICKEN WRAP

Flour Tortilla filled with Grilled Chicken, Lettuce, Tomato & Light Ranch Dressing

America's
Drive-In.

No Waiting Call In Orders

864-8533

Only at participating SONIC Drive-Ins. ©2005 American's Drive-In Corp.

Wildfire preparedness begins at home

During the midst of a record-breaking wildfire season in Texas, state fire officials uncovered a disturbing trend: 85 percent of the large fires occurred within two miles of a community. More than 400 homes have burned in the state since Dec. 27—far surpassing any previous fire season.

Texas Forest Service wants to remind Texans that “wildfire preparedness begins at home,” which is the theme of Texas Wildfire Awareness Week, April 1-8.

“We want to emphasize that individuals can take several simple steps well in advance of a wildfire that could make a difference in whether or not a home survives,” said Texas Forest Service Director Jim Hull. “Waiting until a wildfire is

bearing down on your home is not the time to try to save it. Prepare in advance, and that might save your home as well as your life.”

Communities and neighborhoods at risk for wildfires can work together to make sure they can withstand a wildfire by becoming a Firewise Communities/USA (information available at www.firewise.org) or by implementing a Community Wildfire Protection Plan (CWPP), <http://texasforestservice.tamu.edu/shared/article.asp?DocumentID=1209>. The CWPP empowers communities to take the lead in developing a plan which reduces risks before a wildfire occurs.

“Because so many people are moving to once-rural areas, firefighters face increasing

challenges to protect lives and property during a wildfire,” Hull said. “Texans can do their part by ensuring their homes and communities are Firewise.”

Texas Wildfire Awareness Week events are scheduled throughout the state that teach Firewise principles and provide tips on how to protect

your property from wildfires.

For events in your area or to contact TFS staff, log on to <http://texasforestservice.tamu.edu/shared/article.asp?DocumentID=1056>. For wildfire preparedness and prevention tips, visit <http://texasforestservice.tamu.edu/shared/article.asp?DocumentID=412&mc=education>.

TBWEF sets 2006 assessment rates

The Texas Department of Agriculture has established the 2006 assessment rate, due date and discount date for the Rolling Plains Central zone of the boll weevil eradication program which includes Haskell County.

The assessment for 2006 is \$5.50 per land acre. The commissioner approved the reduction in the assessment based on the recommendation of the zone’s grower steering committee and the foundation Board of Directors.

Assessment notices will be mailed by Aug. 10, and payment is due Sept. 15. Growers who pay by Aug. 31 are eligible to receive a 2 percent discount on their assessment.

The Texas Boll Weevil Eradication Foundation is a nonprofit, grower-initiated and funded organization dedicated to eliminating the cotton boll weevil from the state in the most cost-effective and environmentally responsible manner possible.

From the AG

By Greg Abbott

Guard Against Credit Card Abuse: Check Your Receipts

A credit card receipt with your full account number and expiration date on it can be just as dangerous to your financial security as losing your credit card. A stray receipt in the hands of a capable criminal could cost you money, not to mention countless hours and resources trying to clear your name.

In response to this threat, the Texas Legislature in 2003 enacted a safeguard to protect consumers against credit card abuse by requiring businesses to conceal all but the final four digits of the account number on all receipts for goods or services paid for with credit or debit cards.

The deadline for all Texas retailers to comply with the law, which also prohibits the printing of a card’s expiration date on the receipt, was Dec. 31, 2005.

The law does make an exception for transactions in which the sole means of recording the credit card or debit card number is by handwriting or by an imprint or copy of the card. Merchants also are allowed to keep a copy of the receipt with the full credit card information in order to process your transaction.

However, business owners who continue to print the entire credit or debit account number on consumer receipts are breaking the law and may be penalized up to \$500 for each month of noncompliance. My office and local prosecutors are responsible for enforcing this law.

If you notice that a receipt generated after Dec. 31, 2005, contains more than the last four digits of your credit or debit card number, you should file a consumer complaint with my office. Complaints can be filed on the Attorney General’s website at www.oag.state.tx.us or by calling 800-252-8011.

However, you must do more than securing your receipts in order to protect your identity. When using your credit or debit card, for example, keep visual contact with the card at all times to be sure no extra imprints are made. Also, do not allow a salesperson to write down your driver’s license or Social Security number.

Beware of crooks who might tamper with your mail or trash. Destroy any unused credit card

applications you may receive in the mail notifying you of “pre-approval.”

You should also check catalogues and magazine subscriptions to be sure your card number is not on the cover or mail order form. If it is, contact the company and request it be removed.

Never give out your credit card number over the telephone unless you initiated the call and know the company is reputable. Legitimate companies and financial institutions never call you to ask for or to verify a credit card number.

Examine your bank and credit card statements carefully each month. If you suspect your account number has been compromised, immediately contact the credit or debit card company and cancel the card.

Early detection of fraud is extremely important. The Fair Credit Billing Act ensures that if you report the loss of a credit card before it is used, the card issuer cannot hold you responsible for improper charges. If your card is used before you report it missing, you will only be responsible for \$50 of the unauthorized charges. You should also contact the three primary credit reporting agencies (Experian, Equifax and Trans Union) to have a security alert or freeze placed on your report.

It may also be a good idea to request a copy of your credit report from the Annual Credit Report Request Service and review it for unauthorized account activity. Report any unauthorized charges and accounts to the appropriate credit issuers.

Remember, the fraudulent use of credit cards is not limited to the loss or theft of actual credit cards. A scam artist only needs to know your credit card number to fraudulently make numerous charges against your account. Consumers and law enforcement must work together to fight credit card fraud.

WELCOME TO THE CAR SHOW

Tower Drive-In Theatre

Hwy 6 North, Rule - (940) 997-0137

NOW PLAYING:

She’s The Man - PG-13

Show starts at 7:30! Open Friday, Saturday & Sunday
Adults \$4; Ages 6-12, \$2; 5 and Under Free

Jones-Haskell Eye Clinic

Dr. Trussell Thane, O.D.
Therapeutic Optometrist

Appointments Available • Monday through Friday

Dr. Thane provides comprehensive eye care including the diagnosis and treatment of eye disease. Dr. Thane offers complete evaluation for eyeglasses and contact lenses.

Various contact lens packages available.

MEDICARE, BLUE CROSS AND BLUE SHIELD AND FIRSTCARE ACCEPTED.

1501 Columbia • Stamford
325-773-2083

Hours: M.-Th. 8:30 to 5; Fri. 8:30 to 1

switch to america’s largest network*

so reliable, you stay connected or we pay you back

Most Advanced RAZR Only \$99.99

after \$100 mail-in rebate with 2-year service agreement
1.3 Megapixel Camera/Video
Bluetooth®
Motorola RAZR V9c



1500 anytime minutes

\$49.99/mo
additional charges apply. see below.**

Switch today Get \$50 credit limited time offer

limited time offer phones you’ll love – just 99¢ each



Audiovox CDM8910



Kyocera SoHo



Samsung R330

Camera phone
Voice-activated dialing
Speakerphone

Color screen
External caller ID
Speakerphone

Unique pop-up screen
Speakerphone

come and get your loveSM



for exclusive online deals shopalltel.com

1-800-alltel9

Retail Stores

Abilene
4149 Southwest Dr.
(325) 437-0800

Graham
1221 Hwy. 18 S.
(940) 549-1885

Snyder
4109 College Ave.
(325) 573-7907

Vernon
807 Hillcrest Dr.
(940) 553-1885

Abilene
Cellular Connection
1150 S. Broadway Blvd.
(325) 872-3841

Trio Wireless
4310 Buffalo Gap #K1110
(325) 892-5195

Trio Wireless
4565 S. 1st St.
(325) 692-5776

Aspermont
Trinity Cellular
612 E. Broadway
(940) 989-2543

Wireless 4 U
4310 Buffalo Gap Rd.
(325) 691-9900

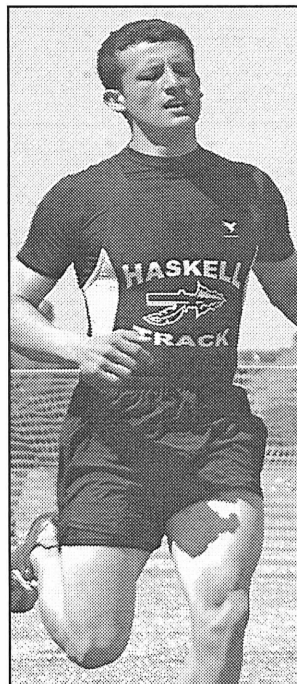
Breckenridge
Trio Wireless
3732 W. Walker
(254) 559-5045

Colorado City
Lone Wolf Cellular
1044 Hickory
(325) 728-9000

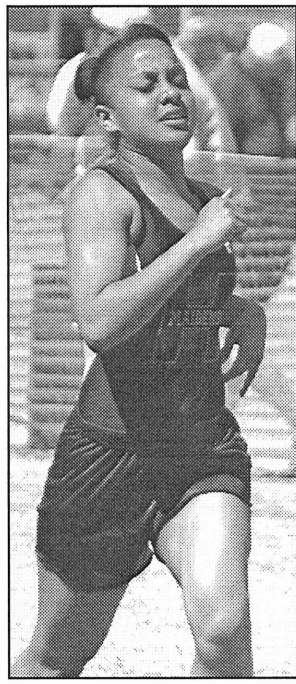
Snyder
Trio Wireless
4515 College Ave.
(325) 573-8240

Sweetwater
Sierra Satellite Systems Inc.
1102 A Lamar
(325) 235-5445

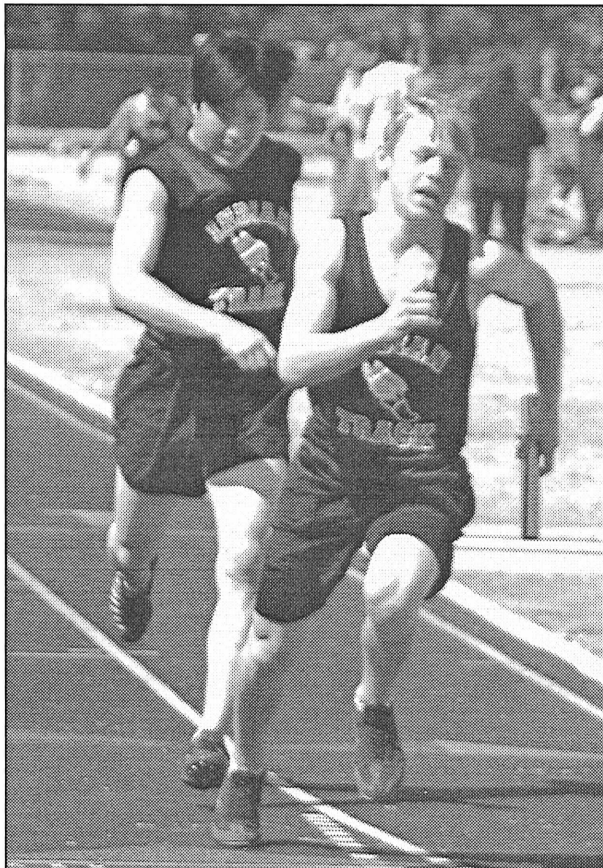
*Largest Network Claim: Claim based upon independent research analysis in December 2005, which compared marketed coverage patterns at the time of their creation of each wireless carrier without allowance for variations due to electrical interference, customer equipment, topography & each carrier’s translation & defined preferences of their own internal engineering data. **Federal, state & local taxes apply. In addition, Alltel charges a monthly connectivity, regulatory & administrative surcharge up to \$1.70; federal & state Universal Service Fund fees (both vary by customer usage); & a 911 fee of up to \$1.94 (where 911 service is available). These additional fees may not be taxes or government-required charges & are subject to change. Stay Connected: An automatic one-minute credit will be provided for any dropped voice call on the Alltel network. Not available on prepaid plans. No action is required by the customer to receive the credit. Total dropped calls will be reflected on the current month’s billing statement. Dropped calls will not be credited when outside the Alltel network. Program may be discontinued at the discretion of Alltel. Coverage: Promotional minutes apply within the Greater Freedom calling area. Actual coverage area may vary. See coverage map at stores.alltel.com for details. Usage outside of your calling plan is subject to additional roaming, minute & long-distance charges. \$50 Credit: Credit available for a limited time to new customers switching to Alltel in any former Western Wireless market with activation of a qualifying rate plan \$39.99 & higher & existing customers in former Western Wireless markets adding an additional line of service with a 2-yr service agreement. One credit per account, per billing period. Must be a customer for 30 days to receive credit. Credit will appear on customer’s bill. Phone Promotions: Phones available at sale prices to new customers & eligible existing customers. Requires activation of a qualifying Alltel rate plan. Contact Alltel to determine if you are eligible. Phone Details: Phones & applicable rebates available for a limited time, while supplies last, with activation of a qualifying rate plan. Limit 1 rebate per qualifying purchase. Phone cannot be returned once mail-in rebate certificate has been submitted. Customer pays applicable taxes. See rebate certificate for details. Additional Information: Limited-time offer at participating locations. While supplies last. Credit approval & approved CDMA handset & PRL required. \$20 non-refundable activation fee applies per line. \$200 early termination fee may apply per line. Offers are subject to the Alltel Terms & Conditions for Communications Services available at any Alltel store or alltel.com. Samsung Telecommunications America, L.P. Samsung is a registered trademark of Samsung Electronics America, Inc. & its entities. All product & service marks referenced are the names, trade names, trademarks & logos of their respective owners. Screen images are simulated.



INDIAN TRACKSTER—Josh Rodriguez runs the 300 meter hurdles in the meet at Munday.



MAIDEN RUNNER—Haskell’s Jasmine Thomas runs the 400 meter at the Munday track meet.



INDIANS ON THE RUN—Greg Guzman hands the baton to Travis Adams in the 400x2 relay at the Munday track meet, Sat., Mar. 25.

Maidens defeat Seagraves, Hamlin

The Seagraves Lady Eagles came to Haskell Mar. 21 for a District softball game.

The Haskell Maidens and Lady Eagles both struggled in the first inning, with neither team able to score.

Then, the Maidens scored four in the second inning, four in the third, and three in the fourth. The Lady Eagles could only answer with one run in the fourth inning.

The game ended on a run rule in the sixth after Haskell scored one more in the sixth to bring the score to 11-1 in favor of the Maidens.

Kellye Tidrow pitched a complete game, allowing two hits, one walk and struck-out ten.

The Maidens spread out thirteen hits over six innings, with seven walks and one strike-out. Chambray Bartley, Kellye Tidrow and Ashton Rutkowski all had multiple hits.

This win moved the Maidens to 3-0 in district.

Fri., Mar. 24, the Haskell Maidens

Softball team traveled to Hamlin to take on the Hamlin Lady Pipers. The Maidens got off to a quick start, scoring three in the top of the first inning, but Hamlin answered with three of their own in the bottom of the first. That would be all of Hamlin's scoring for the day.

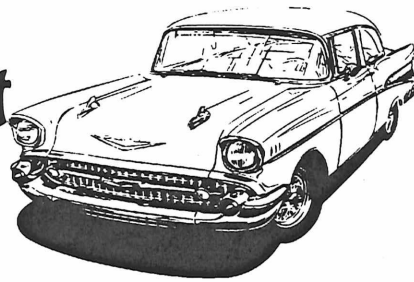
The Maidens then scored four in the second, two in the third, and eight in the fourth, to defeat the Lady Pipers in a run rule victory in the fifth inning by a score of 17-3.

Kellye Tidrow again threw a complete game, giving up five hits, 5 strike-outs and two walks.

Leading the Maiden offense were Kayla Tidrow and Ashton Rutkowski, both with four hits; Alexa Roberts and Chambray Bartley each with three hits; Kellye Tidrow and Jerrica Escobedo, both with two hits. The Maidens put together a 20 hit game, with eight walks, and only one strike-out.

The Maidens will play Ralls here, Thurs., Mar. 30.

10th Annual Haskell Volunteer Fire Department CAR SHOW



April 1, 2006

Around the Courthouse Square, Downtown Haskell

Enter 8 a.m. to 11 a.m. at the Fire Station

First, Second & Third Places in Each Class receives a Trophy!

Classes include:

- A. Cars Pre-'64
- B. Cars '65 and up
- C. Antique Cars, Trucks thru '50
- D. Street Rods Pre-'49
- E. Race Cars
- F. Older Pickups Pre-'84
- G. Pickups '85 and up
- H. Motorcycles
- I. Restoration in Progress
- J. Scooters

Entries Judged on:
Presentation, Cleanliness
Paint Quality
Interior Quality

Entries \$20
Judging at 12:30 p.m.
Trophy presentation: 3:30 p.m.

Trophy and cash for:
Best of Show
People's Choice (Selected by the Public)
Trophy for Farthest Distance Traveled
Hot Wheel Races for Kids \$1
Trophies for 1st and 2nd places!

KIDS
TRACTOR
PULL

WELCOME TO THE CAR SHOW!

Lowest Prices in the Big Country on Stainless Steel Appliances



Haskell Tire & Appliance

206 S. Ave. E • 864-2900

Welcome to the Car Show!

WILD HORSE TRADING POST
Haskell's General Store and

RadioShack
All new single Music CDs \$7.95
AirSoft Gun Headquarters

See our selection of guns, ammo, unique gifts, guitars and ladies clothing!

419 S. 1st, Haskell
864-2200
Hours: M-F 9-6; Sat. 9-3



HERE'S TO YOUR HEALTH... AT HOME!

Brought to You By:

Haskell Home Health Agency

Misty McMeans
RN, BSN

Dear Misty,

What is Pneumonia?

- It is an inflammation of the lung.
- It causes hardening of the lung tissue as fluid collects.
- Pneumonia can be caused by bacteria, viruses, fungi, inhaling foreign substances (such as food), or radiation.

Risk Factor:

- Smoking and air pollution
- Upper respiratory infection
- Lack of mobility
- Poor nutrition
- Chronic diseases (diabetes, heart disease, cancer, renal disease, etc.)
- Exposure to intense cold, damp weather
- Inhalation of noxious substances
- Age (very young or very old)
- Frequent intoxication from alcohol

Signs and symptoms:

- Chest pain
- Fever and chills
- Cough (may be productive)
- Green, yellow, or rust-colored sputum
- Fatigue
- Loss of appetite
- Rapid pulse and breathing

What questions regarding home care do you have for the nurse? Send your questions to Haskell Home Health Agency, 417 S. First, Haskell, TX 79521 or call 940-864-5074 or 1-877-864-5074.

HERE'S TO YOUR HEALTH—AT HOME is brought to you by Haskell Home Health Agency providing home care services in Haskell, Knox, Stonewall, Throckmorton and Jones Counties



Home Care: Keeping Texans Proud & Independent

Giant Sidewalk Sale Sat., April 1

Savings You Won't Believe on Athletic Shoes!

Mens Lo Tops Nike
Ladies Hi Tops Reebok
Children Sandals Other Brands

Youth Sizes	One Group	One Group
\$15	\$25	\$35

Some Lower!

Where Winners Shop

Sport-About of Haskell



940-864-3891
402 N. 1st

NAPA AUTO PARTS

Pennzoil Conventional Motor Oil

1.99 HD 30, HD 40, 20W50, 5W30, 10W30, 10W40, 5W20, #3539, 3549, 3569, 3609, 3619, 3653, 62439
Sale price does not include applicable taxes or recycling fees.



PB Blaster Penetrating Catalyst

1.99 After Mail-in Rebate 16 oz. #16PB
Sale Price \$2.99
Less Mail-in Rebate -\$1.00



NAPA Lawn & Garden Tractor Batteries

17.99 As low as \$17.99 WITH EXCHANGE (165 CCAs, Group U1L) #8221



RICHARDSON'S

Hwy. 277 N. • Haskell
940-864-8551

WE KEEP AMERICA RUNNING.

Sidewalk Sale

Sat., April 1
See our newly stocked food section!

New for Boys
Bow & Arrows
Pea Shooters
Stilts

New for Girls
Room D cor
Jewelry
Colored Rhinestones
Autograph Poodles

Cajun Food
Flavored Coffees
Bolero
Wafer Sticks
Wind Willow Snacks

New Selection of Crosses

Bridal Selections for
Angela Brown and Justin Stewart
Misty McMeans and Paul Gibson

Baby Shower selection for
Kaki Stapleton Cooper

The Carousel Gift Shop
Erlinda Mayfield
Open M-F 10 to 5:30. Sat. 10 to 4
Southside of the square in Haskell • 864-2069
Shop with us through lunch!

Sidewalk Sale

SATURDAY ONLY

\$10-\$20 & \$50
Rack of Clothes

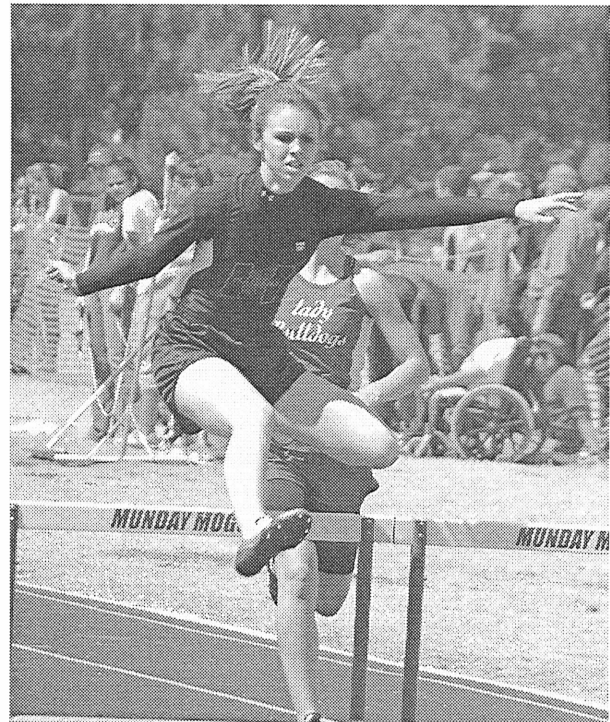
30% off Handbags
(Select Group)

1/2 price Shoes
(Select Group)

New Spring Sportswear
by Koret, Graff, Sharon Young, City Girl and More

1/2 price Jewelry
(Select Group)

Personality-Slipper Shoppe
940/864-2501 • 864-3051
South Side of Square Haskell, Texas



CLEARING THE BAR—Haskell Maiden, Hanna Wallace, runs in the 100 meter hurdles at the Munday track meet held Sat., Mar. 25.

Indians defeat Paducah 21-0

The Haskell Indian baseball team opened district play Fri., Mar. 24 by hosting the Dragons from Paducah. Haskell was able to jump out to a 5-0 lead after one inning of play, and never looked back. Final score was

21-0. Gary Frierson had one of his best outings of the year on the mound, holding Paducah to two hits for the first inning and allowing no runs. Paducah was not able to generate any hits the rest of the game.

Josh Barbee came in to close in the fifth inning. Jeff Silba had an outstanding game behind the plate, throwing out one of two trying to steal.

Top offensive honors went to Cameron Short, Billy Lusk and Jeff Silba. Short went one for one with a double, hit by pitch and two walks. Lusk went three for four with a double. Silba went two for three with a walk.

This leaves Haskell with a 3-2 overall record and 1-0 district record.

Car Show Savings

We feature **WIX FILTERS**
#1 in NASCAR

Lucas Fuel Treatment	\$2.99
K&N Air Filters	Starting at \$54.99
Lucas Oil Treatment	\$7.75 qt.

Prices effective March 16-March 25, 2006

Smitty's Auto Supply
107 N. 1st East • Haskell
East of Rodriguez Inn
864-2607

WELCOME TO THE CAR SHOW!

\$1.99 SALE

Your Choice!

- * Swingline Tot Stapler with 1000 staples
- * Johnson's 9 oz. Baby Powder
- * Spring Fresh. Assorted Fragrances Dusting Powder 5 oz.
- * Medicated Cuticura Antibacterial Bar Soap
- * 300 count Q-tips Cotton Swabs
- * American Flag Playing Cards
- * 30 Count Assorted Band-Aid Flexible Fabric Bandages
- * Duracell AA Batteries 2 pk.
- * St. Joseph 81 mg Safety Coated Aspirin 36 count
- * Ezy-Dose Tablet Cutter
- * Regular Strength Antacid Tums 3 roll/36 tablets Peppermint
- * Cross of Faith Cross Suncatcher with Charm

WELCOME TO THE CAR SHOW

SANTA ROSA Telephone Cooperative INC.

~ Established in 1951 ~
Representatives of SRTC will be in Munday at the Chamber of Commerce at 121 E. B St. Thursdays and Fridays from 9:30 a.m. until 3 p.m.
Questions? Call 889-1125

Welcome to the Car Show!

New Item!

Grilled Chicken Sandwich Basket
with fries and 24 oz. fountain drink **\$4.29**

Deli Fried Pies	Bean & Chili Burritos	Crystal Point Water 20 oz.
2/\$1	2/\$1	2/\$1

Deli Grill Open til 10 p.m.!

STAR STOP

706 N. 1st • Haskell • 864-2062

Doctor's Day ~ March 30

Say Thank You to your favorite Doctor with a gift from our large selection

Mark Your Calendar!
Health Screenings
Performed by Calvert Home Health
Friday, April 21
8 a.m. to 3 p.m.

- *Cholesterol Testing
- *Bone Density Testing
- *Body Fat Composition
- *Cardiovision
- *Liver Function Tests
- *PSA testing for men
- *Thyroid Testing

*New! Blood Type and Diabetic HgB A1C
Call 940-864-2673 or come by for prices and to make an appointment.

Baby Shower Registry
Kaki and Ryan Cooper
Laramie and Terry Letz

Prices good March 30, 31 and April 1
www.haskelldrugstore.com

THE DRUG STORE

Haskell • 864-2673

"The Perfect" Merger

You've got the spirit, dedication, and know-how to manage a successful farming operation. We've got the financial resources to help keep your operation going . . . and growing. Together we make a perfect team.

First National Bank Haskell

200 South Avenue E Haskell, Texas 79521
940-864-8555

FDIC

Other Convenient Locations to Serve You:
First National Bank Munday - Stamford - Rochester

BURN BAN IN EFFECT

OVERWEIGHT?

Joe Lost 125lbs!

BEFORE

AFTER

- Lose up to 3-5 Lbs Per Week
- Eat In Restaurants
- Eliminate Cravings
- Increase Metabolism & Energy

1/2
PRICE
SPECIAL

We can help you too!
CALL NOW!



325-692-6992

Individual Results
May Vary

Coming every Thursday 1:30 to 5:30 p.m.!

Haskell School Menu

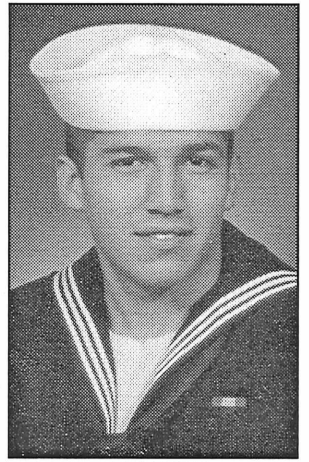
April 3-7 Breakfast
Juice and milk are served daily on the breakfast menu.
Monday: Breakfast pizza
Tuesday: Glazed french toast
Wednesday: Cereal, cheez-its
Thursday: Breakfast on a stick
Friday: Pig in a blanket

Lunch
Milk and iced tea are served daily at the Secondary campus. Milk is served daily at the Elementary School. Secondary campus: choice of entree or baked potato with cheese and ham.

Monday: Steak fingers, gravy, mashed potatoes, green beans, hot rolls, peaches
Tuesday: Corndogs, ranch style beans, macaroni and cheese, baby carrots, ranch dressing, fresh fruit
Wednesday: Pepperoni pizza, corn, fried squash, Oriental coleslaw, peanut butter pie

Thursday: Chicken quesadillas, salsa, chips, queso, garden salad, pinto beans, pineapple tidbits
Friday: Cheeseburger or tuna fish, lettuce, tomato, pickles, french fries, chocolate chip cookie

In the Service



BERT DIAZ

Humberto (Bert) Diaz of Olmito, formerly of Haskell, completed Navy Basic Training Dec. 30 at the Great Lakes Naval Training Center in Great Lakes, Chicago, Illinois.
Finishing further aviation training in Pensacola, Florida, Diaz received his orders and is stationed in Jacksonville (Mayport), Florida.
Diaz is the son of Isabel Diaz of Knox City and Humberto Diaz of Olmito.

Paint Creek School Menu

April 3-7 Breakfast
Juice and milk served daily.
Monday: Toast or cereal
Tuesday: Biscuits and gravy
Wednesday: Pancakes
Thursday: Cinnamon roll or donuts
Friday: Toast or cereal

Monday: Spaghetti, green beans, salad, garlic bread, chocolate cake
Tuesday: Tacos, lettuce, tomatoes, refried beans, corn, rice krispy bars
Wednesday: Chicken strips, mashed potatoes, peas, rolls, apple crisp
Thursday: Mac & cheese with ham, fried okra, salad, rolls, fruit cups
Friday: Hamburgers, lettuce, tomatoes, cheese, pickles, fries, cookies

ECC Calendar and Menu

Mon., April 3
Lunch—Meatloaf, cheese potatoes, buttered corn, pinto beans, yeast rolls, banana pudding, milk, tea, or coffee
Wed., April 5
Lunch—Chicken spaghetti, green beans, glazed carrots, sliced onion, garlic toast, apricot cobbler, milk,

tea, or coffee
Fri., April 7
Lunch—Beef stew, tuna and pimento sandwiches, onions, pickles, coleslaw, cherry jello and honey cookie, milk, tea, or coffee
Announcements begin at 11:45 a.m. followed by lunch.

Haskell varsity golf teams play in Baird

Competing in the Baird Invitational Golf Tournament, Tues., Mar. 21, the Haskell girls' team finished 5th with the score of 421. Candace Brister took first place medalist in a three hole playoff, with the score of 79.

The Haskell boys' team finished in 7th place with the score of 386. Blake Foley had the low round for the Haskell team with the score of 89. David Middleton is the Haskell golf coach.

This Week's Devotional Message:



During our childhood, we were often so carried away with April Fool jokes that we continued them the next day. Then, someone would admonish us with the little two-liner, "April Fool is past; you're the biggest fool at last!" However, after we grew up, we learned that fools are not hard to find, and that we don't have to wait for a special occasion but can see them all the year 'round. They are the ones who consider attending their house of worship a waste of time, because things are going well for them at the moment. So don't be a fool, but start now—if you haven't already—to seek God's help and guidance. Then, when something does go wrong, you'll be better prepared to solve it or cope with it. It's the wise thing to do.

ATTEND CHURCH THIS SUNDAY

HASKELL
East Side Baptist Church
Danny Manross, pastor
Sun. 9:45 a.m., 11 a.m., 6 p.; Wed. 7 p.m.
600 N. 1st East, Haskell
Christian Church
Dusty Garrison, minister
Sun. Morn. 9:45 a., 10:45 a., 6 p.m.; Wed. 7 p.m.
107 N. Ave. F, Haskell
Church of God
Bruce Ray, pastor
Sun. 10 a.m., 11 a.m., 6 p.m.; Wed. 7:00 p.m.
714 North First East, Haskell
Trinity Lutheran Church
Ron Renegarbe, pastor
Sunday School 9:30 a.m., Worship 10:30
Hwy 380 East, Haskell
Iglesia Bautista El Calvario
Art Flores, Interim pastor
Sun. Morn. 9:45 a., 10:45 a.m., 5 p.m.; Wed. 7 p.m.
607 S. 7th, Haskell
First United Methodist Church
Rev. Daniel Echols, pastor
Sun. Morn. 9:45 a.m., 10:50 a.m. 6 p.m.; Wed. 6 p.m.
201 N. Ave. F, Haskell
First Assembly of God
Rev. J.C. Amburn
Sun. Morn. 9:45 a., 10:45 a.m., 6 p.m.; Wed. 7 p.m.
1500 N. Ave. E, Haskell
St. George Catholic Church
Father George Roney
Sat. Mass 7 p.m.; Sun. Morn. 9:00 a.m.
901 N. 16th, Haskell
Church of Christ
Jim Yates, minister
Sun. Morn. 9:30 a.m., 10:30 a.m., 6 p.m.; Wed. 7 p.m.
510 N. Ave. E, Haskell
First Presbyterian Church
Kelly Pigott, interim pastor
Sun. Morn. 9:30 a.m.
306 N. Ave. E, Haskell
Trinity Baptist Church
Tony Grand, pastor
Sun. Morn. 10 a., 11 a., 6:30 p.m.; Wed. 6:30 p.
114 S. Ave. D, Haskell
Hopewell Baptist Church
Sun. Morn. 9:30 a.m., 11:00 a.m.; Wed. 7 p.m.
908 N. Ave. A, Haskell
Greater Independent Baptist Church
Sun. Morn. 9:30 a., 11:00 a., 6:30 p.; Wed. 7 p.
301 N. 3rd St., Haskell

New Covenant Foursquare
Bill and Renee Glass, pastors
Sun. Morn. 10 a.m., 11 a.m., 6:30 p.m.; Wed. 7 p.
200 S. Ave. F, Haskell
Mission Revival Center
Rev. William Hodge
Sun. Morn. 10 a.m., 11 a.m., 6 p.m.; Tues. 6 p.m.
1600 N. Ave. B, Haskell
First Baptist Church
Greg Gasaway, pastor
Sun. Morn. 9:45 a., 10:55 a., 6 p.m.; Wed. 7 p.m.
301 N. Ave. E, Haskell
Church in the Park
Rev. Tim and Suzann Townsend
Sun. Morn. 10:30 a.m. Wed. 7 p.m.
Gazebo or Pavillion
Cornerstone Fellowship Baptist Church
Dr. Larry Nail, pastor
Sun. 9:30 a.m. 10:45 a.m., 6 p.m., Wed. 7 p.m.
1600 N. First St., Haskell
Cross of Christ Fellowship
Joe and Loretta Stullir, pastors
864-5404
Sun. 10:30 a.m.
455 CR 410, Haskell
WEINERT
First Baptist Church
J. C. Baker, pastor
Sun. Morn. 10 a.m., 11 a.m., Wed. 7 p.m.
Weinert
Weinert Foursquare Church
Rev. Robert Harrison
Sun. Morn. 10 a.m., 11 a.m. Wed. 7 p.m.
Weinert
ROCHESTER
Church of Christ
Steve Willis, minister
Sun. Morn. 9:45 a., 10:45 a., 6 p.m.; Wed. 6 p.m.
West on Main Street, Rochester
First Baptist Church
Jim Davis, pastor
Sun. 11:00 a.m., 6 p.m.; Wed. 6:00 p.m.
500 Main, Rochester
Union Chapel Baptist Church
Clovis Dever
Sun. Morn. 9:45 a., 10:45 a., 6 p.m.; Wed. 7 p.m.
Rochester
Faith Chapel of Rochester
Katherine Byrd, minister
Sun. Morn. 10 a.m., 11 a.m., 7 p.m.
Hwy 6, Rochester

First United Methodist Church
Rev. Daniel Echols, pastor
Sun. Morn. 9:00 a.m., 11:00 a.m.
Rochester
SAGERTON
Sagerton Methodist Church
Terry O'Rear, pastor
Sun. Morn. 9:45 a.m.
Sagerton
Faith Lutheran Church
Deborah Nissen, pastor
Sun. Morn. 9:15 a.m., 10:30 a.m.; Wed. 7 p.m.
Sagerton
RULE
First Baptist Church
Josh Stowe, pastor
Sun. Morn. 9:45 a., 11:00 a., 5 p.m.; Wed. 7 p.m.
1001 Union Ave., Rule
Primitive Baptist Church
Dale Turner Jr., pastor
First & Third Sundays 10 a.m.
Corner of 8th & Robins, Rule
Church of Christ
John Greeson, minister
Sun. Morn. 9:45 a., 10:40 a., 6 p.m.; Wed. 7 p.m.
811 Union, Rule
First United Methodist Church
Terry O'Rear, pastor
Sun. Morn. 11 a.m., 8:30 a.m.
1000 Union Ave., Rule
Primera Iglesia Bautista
Alfa y Omega
Manuel Marin, pastor
Sun. Morn. 10 a., 11:00 a., 5 p.m.; Wed. 6 p.m.
500 Elm Street, Rule
Sweet Home Baptist Church
Bill Trice, pastor
Sun. Morn. 11 a.m., 5 p.m.; Wed. 5 p.m.
Gladstone Ave., Rule
West Bethel Baptist Church
Rev. Robert Sweet
Sun. Morn. 10 a., 11 a., 8 p.m.; Wed. 7:30 p.m.
300 Sunny Ave., Rule
PAINT CREEK
Paint Creek Baptist Church
Sun. Morn. 10:00 a.m., 11:00 a.m., 6 p.m.
Paint Creek
O'BRIEN
O'Brien Baptist Church
Jim Reid, pastor
Sun. 9:45 a., 11 a., 5 p., 6 p, Wed. 6 p.m.
O'Brien

Shop the Haskell Free Press
CLASSIFIEDS
864-2686 864-2686

Public Notices

NOTICE OF SHERIFF'S SALE THE STATE OF TEXAS § COUNTY OF HASKELL §
By virtue of an Order of Sale issued out of the Honorable 39th Judicial District Court of Haskell County, on the 8th day of March, 2006, by the Clerk thereof, in the case(s) styled as follows:
Cause No. 10,891. Styled: Haskell County Appraisal District v. John Williams, Deceased. Legal description: 1. Lot 5, Block 1, Harrell Addition to the City of Haskell, Haskell County, Texas.
2. Lot 5, Block 1, Outlot 13 Patterson Montgomery Addition to the City of Haskell, Haskell County, Texas.
Cause No. 10,897. Styled: Haskell County Appraisal District v. Marvin Williams, Deceased. Legal description: 1. Lot 5, Block 1, Harrell Addition to the City of Haskell, Haskell County, Texas.
2. Lot 5, Block 1, Outlot 13 Patterson Montgomery Addition to the City of Rule, Haskell County, Texas.
Cause No. 11,196. Styled: Haskell County Appraisal District v. Alex Martinez. Legal description: 4. Lot 8, South Half of Lot 9, Block 58, Original Town Addition to the City of Rule, Haskell County, Texas.
Cause No. 11,260. Styled: Haskell County Appraisal District v. Paulina Carmack, Deceased. Legal description: 5. West Half of Lot 13, Lot 14, Block 8, Highland Addition to the City of Haskell, Haskell County, Texas.
Cause No. 11,262. Styled: Haskell County Appraisal District v. R.D. Lewallen, Deceased. Legal description: 6. North 8' of Lot 2, South 25' of Lot 3, Block 1, Baldwin #2 Addition to the City of Haskell, Haskell County, Texas.
Cause No. 11,264. Styled: Haskell County Appraisal District v. Joseph W. Smith. Legal description: 7. Lot 10, 11,

Block "B," McConnell, #85 Addition to the City of Haskell, Haskell County, Texas.
Cause No. 11,271. Styled: Haskell County Appraisal District v. Joseph Johnson, Deceased. Legal description: 8. Lot 1, Block 43, Frisco Addition to City of Haskell, Haskell County, Texas.
Cause No. 11,273. Styled: Haskell County Appraisal District v. Gena Woodard. Legal description: 9. Lot 5, 6, Block 9, Brown & Roberts Addition to the City of Haskell, Haskell County, Texas.
Cause No. 11,308. Styled: Haskell County Appraisal District v. Emma L. McCown Clopton. Legal description: 10. Lots 5, 6, Block 2, A.B. Carothers Addition to the City of Rochester, Haskell County, Texas.
Cause No. 11,309. Styled: Haskell County Appraisal District v. Marvin Franklin Jones. Legal description: 11. Lot 13, Block 40, Original Town Addition to the City of Rule, Haskell County, Texas.
and to me, as Sheriff, directed and delivered, I will proceed to sell, at 10:00 o'clock a.m. on the 4th day of April 2006, which is the first Tuesday of said month, at the South door of the Courthouse of Haskell County, in the City of Haskell, Texas.
Levied on the 8th day of March, 2006, as the property of said defendants, to satisfy the judgment rendered in the above styled and numbered cause, together with interest, as 12 percent per annum, and all costs of suit in favor of each jurisdiction.
"ALL BIDDERS MUST NOW DISPLAY PROOF OF COMPLIANCE WITH 34.015 OF TEXAS TAX CODE."
Given under my hand this 8th day of March, 2006.
David Halliburton
Sheriff, Haskell County, Texas
11-13c

Go Maidens! Go Indians!

Attend Church
This Sunday

The Haskell Free Press

"The People's
Choice"

420 N. First
Haskell, Texas
940-864-2686

Serving
Haskell County Since
1886



Sonic Drive-In

1402 N. Ave. E
864-8533
Managers: Leon & Carolyn Herring

Steele Machine

Hwy. 280 • 864-2208

Modern Way Food Store

1202 N. Ave. E • 864-3763

Smitty's Auto Parts

107 N. 1st East • 864-2607

HANSON PAINT & BODY SHOP

207 S. 1st • 864-3631
Professional Auto Body Repair
Glass Installation • 24 Hour Wrecker Service

Rule Co-op Gin & Elevator

301 Adams • Rule • 997-2421

Rice Springs Care Home, Inc.

1302 N. 1st • 864-2652
Medicare • Medicaid • Therapy

Committed To Excellence
In Service

Debbie Tanner serves as Haskell Postmaster

Debbie Turner, who became postmaster of Haskell in June 2005, said she is very glad to be postmaster here, and feels that she has come home.

Born in Haskell, she grew up in Rule, where she and her husband, Kenny, graduated from high school. They married the next year while he was in college, and she was in business school. She completed a business course at Commercial Business College (now American Business College) in Abilene.

They moved back to Rule after the birth of their son, and operated Tanner grocery for 25 years. Caught in the decline era of the small family-owned grocery store in the 90's, they had to find new careers.

Kenny went into insurance and now manages Haskell County Farm Bureau Insurance Agency. Debbie joined the Postal Service in 1994 as PMR in Rule. In 1995 she was hired as a distribution clerk, working nights at the Mail Processing Center in Abilene. Within a year she was transferred to a clerk/carrier position in Stamford. She was promoted to her first Postmaster position in Old Glory in 1999. She was promoted to postmaster in Wingate in 2001, and

postmaster of Lueders in 2004. From 1999 to 2004, she also served as officer-in-charge of Sylvester and Knox City, and as a temporary supervisor in Abilene Main Post Office and Sweetwater. During 2002 she served on the Forth Worth District BPI/AWPS team that did evaluations of work load vs. work hours in the District's post offices. Most of that year was spent in Fort Worth, Lubbock, San Angelo and Abilene offices and the surrounding areas.

The Tanners have two married children and five grandchildren. Son Jason and wife, Amy Tanner, live in Ketchikan, Alaska, where he is a rural carrier for the Postal Service. Daughter Kenna, and husband, Brian West, live in Lubbock, where he is an electrical instructor with Texas Careers Vocational College. The Tanner's grandchildren are Braden and Avery Tanner and Dylan, Madison and Molly West.

Tanner, who has known and worked with many of the employees at the Haskell Post Office, expressed appreciation of their hard work and dedication to providing good customer service to Haskell area residents. The team consists of Nancy



DEBBIE TANNER

Snelling, senior clerk; W. L. Wolf, clerk; Cindy Kendall, City Carrier; Jeff Claterbaugh, PTF City Carrier; Conrad Roewe, Rural Carrier; Edward Gordy, Rural Carrier; Norva Smith, RCA; Teresa Briles, HCR Carrier; Reba Chaney, custodian and Brian Gomez, PTF Carrier.

The Tanners have been an involved part of their community and the surrounding area for many years, and say they look forward to the opportunity to continue to do so as they live and work in Haskell County.

Alzheimer's Association to form local support group

The standard work week in the United States is 35 hours. For a growing number of people, however, their work week consists of 24 hour days, seven days a week. These people are caregivers for the 4.5 million persons in the United States who have Alzheimer's disease, which causes brain deterioration for which there presently is no cure. They must cope with the stress of the physical, behavioral, emotional, legal and financial issues that accompany this devastating disease. The role of caregiver can be overwhelming.

To help caregivers, as well as other family members and friends who have a loved one affected by Alzheimer's disease, the Alzheimer's Association-North Central Texas Chapter plans to begin a family support group to serve families in Haskell, Throckmorton and Jones Counties. The group hopes to reach out to caregivers who are caring for loved ones affected by Alzheimer's

disease or other related forms of month. Participants will receive emotional support, practical assistance in coping, and the latest information available for their benefit. The family support group meetings are typically held once a

If you are interested in being a part of this family support group or any of our other services, contact Libby Connally, Regional Director at 325-672-2907 or 1-800-272-3900.

PIT AND GRILL

1308 N. Ave. E, Haskell • 864-5348
HOURS: Sun.-Fri. 11-2; Mon.-Sat. 5-9

March Special

Hamburger, Fries & Drink

\$6

RIBS ARE BACK!
per plate

~ Noon Buffet Daily ~

Catfish Served on Fridays

Come join us for lunch!

D. L. & Shelly Cooper ~ Owners ~

Calendar

Car show-new date

The 10th annual Haskell Fire Department's Car Show has been rescheduled for Sat., April 1 around the courthouse square in Haskell. Entries are \$20. Registration will be held from 8 a.m. to 11 a.m. at the Fire Station. Judging will be as 12:30 p.m. followed by a 3:30 p.m. trophy presentation. Hot Wheel races and a kids tractor pull will be held for the kids. For more information contact Randy Shaw at 864-2023. Vendors wanting booth information should call Lisa Shaw at 864-2686 or 864-2023. Vendor spaces will be available for \$15.

Society to meet

The Haskell County Historical & Genealogical Society will meet Mon., April 3 in Haskell City Hall at 6 p.m.

Food aid

The Haskell Experienced Citizens Center will help any older person who needs food with a meal. Call Jennabeth Kimbrough at 864-3875 for help.

Church anniversary

The First Baptist Church of Rule will celebrate their 100th anniversary April 15-16. A light supper will be held Sat., April 15 in the fellowship hall followed by congregational singing and music specials in the sanctuary. Easter Sunday morning, Sunday school will be held at 9:45 a.m. followed by worship at 11 a.m. A catered lunch will follow at the cafeteria of Rule ISD. After lunch, singing and sharing of testimonies and memories will be held in the church's sanctuary. If you would like to share music or testimony, call the church at 940-997-2321 or Pastor Josh Stowe at 940-996-0171. Please call for reservation for either meal so that adequate preparations may be made.

Story time

Story time will be held at the Haskell Co. Library each Thursday morning at 10:30 a.m. Stories, songs, activities, crafts and story telling by Paula Rennegarbe will be featured for children.

Elderly adoption

Jennabeth Kimbrough of the Haskell Experienced Citizens Center is forming an 'adopt the elderly' program for those lonely at home or in the care home. Many of the local elderly have no family to visit and this program is designed to fill that need. Call 864-3875 for more information.

Cobbler sale

Peach and apricot cobblers are available for \$15 by calling the Haskell Experienced Citizens Center at 864-3875.

6.70%

- VARIABLE RATE
- LONG TERM FARM & RANCH LOANS
- IMPROVEMENT LOANS
- FIXED RATES AVAILABLE
- RATES PRICED WEEKLY
- NO PRE-PAYMENT PENALTY

Federal Land Bank Association of Texas, FLCA
550 S. 2nd • Haskell, Texas • (940) 864-8565
www.flbatexas.com

Annual percentage rates from 6.8068% APR to 6.7959% APR depending on length of contract. APR based on rates for specified prime indexed variable rate during week of March 28, 2006 - April 3, 2006. Rates subject to change without notice.

EQUAL HOUSING LENDER

Another reason DQ® just tastes better.

That's What I Like About Texas.®

Available for a limited time at participating DQ® restaurants. Blizzard, DQ and the Hungry Buster are trademarks of DQ, Inc. © 2006. All rights reserved. DQ, Inc. All rights reserved. © 2006. All rights reserved.

310 West California Street
Seymour, TX 76380

Phone: (877) 889-1125
Fax: (940) 889-1190

Property Access Form

This form is for construction purposes only.

7110 HWY 287 East
Vernon, TX 76384

Phone: (888) 886-2217
Fax: (940) 886-2025

This form allows the construction crew to put a drop to the locations - actual Service Request will be completed at a later date at your request for service.

Name _____ Physical Address _____

Mailing Address _____

City _____ State _____ Zip _____ Home Phone Number _____

Directions to Location (include street names and county road numbers):

Ms _____ Mr _____
Work or Contact Number 8:00am to 5:00pm Cellular Numbers _____

Property Access

The undersigned hereby agrees to grant unto Santa Rosa Telephone Cooperative, Inc. the right to excavate, install, replace, maintain and use a strip of land not to exceed three feet (3') in width of the property occupied by the undersigned, for the purpose of laying, maintaining and operating any wires or cable for telephone services or IPTV.

Signature _____ Date _____

Date Received by office _____ Date Drop Installed _____ Initials _____

PLANT USE ONLY

LINE	PED/HH	F#	FIBER COUNT	PON#	MAP#

Please leave completed form at:
Haskell Chamber of Commerce or Haskell City Hall