

## Basketball games

### HASKELL

JV-V G-B vs Roscoe  
Fri., Feb. 3, 4 p.m.  
at Roscoe  
JV-V G-B vs Munday  
Tues., Feb. 7, 4 p.m.  
at Haskell  
\*\*\*

### PAINT CREEK

JV-V G, V B vs Rule  
Fri., Feb. 3, 5 p.m.  
at Paint Creek  
JH vs Knox City  
Mon., Feb. 6, 5:30 p.m.  
at Knox City  
JV-V G, V B vs Jayton  
Tues., Feb. 7, 5 p.m.  
at Paint Creek  
\*\*\*

### RULE

JH G-B vs Knox City  
Thurs., Feb. 2, 5:30 p.m.  
at Rule  
JVB vs Quannah  
Thurs., Feb. 2, 7:30 p.m.  
at Rule  
JV-V G-B vs Paint Creek  
Fri., Feb. 3, 5 p.m.  
at Paint Creek  
JV-V G-B vs Aspermont  
Tues., Feb. 7, 4 p.m.  
at Rule

## Calendar

### Committee to meet

The Haskell Festivals Committee and the Haskell Health Net Committee will meet Thurs., Feb. 2 at 6 p.m. at the late Ermine Mullino home, 600 Main in Rochester to discuss a name for a joint committee, develop a mission statement and plan additional events to be held during the Wild Horse Prairie Days weekend. Individuals are being sought from each Haskell County community to participate. Those interested in joining the committee should contact Susan Cockerell at 864-2851 or Megan Cox at 864-8505.

### Lodge meeting

The Sons of Hermann Lodge meeting will be held Sun., Feb. 5 at the Pit & Grill in Haskell at 2 p.m.

### Noah Project

The Noah Project-North Advisory Committee will meet at the jury room of the Haskell County Courthouse Fri., Feb. 3 at noon to finalize plans for the dinner and silent auction to be held Sat., Feb. 11.

### Valentine dinner

A Valentine dinner and silent auction will be held Sat., Feb. 11 beginning at 6 p.m. at the Haskell Civic Center to benefit the Noah Project-North. The 'Imitation Stats' of Seymour will perform. Tickets are \$10 and may be purchased at the Noah office, from any Advisory Committee member or at the door. Brisket and all of the trimmings will be served at 6:30.

### Bass club reorganizing

The Haskell Bass Club is reorganizing. Those interested in joining should attend a meeting Thurs., Feb. 9 at 7 p.m. at the Red Rooster Restaurant. For more information contact, Jay Miller 864-2182, Brad Dubent 989-3515 or Allen Morrow 864-5228.

### Garage sale

Haskell Gifted/Talented Program will join Taylor's Team in hosting a garage sale Sat., Feb. 4 from 8 a.m. to 2 p.m. at the Medford Buick-Pontiac building at 200 N. Ave. E, Haskell. The sale will benefit the National Alliance for Autism Research (NAAR). Students hope to exceed last year's total of over \$7000. To donate items, contact Debbie Miller by calling 864-2654 or 864-3010 as early as possible. Items will be accepted Feb. 3. Help us exceed our goal by contributing to the sale.

## Index

Obituaries ..... Page 2  
Around Town ..... Page 3  
Menus ..... Page 3  
Out of the Past ..... Page 4  
Classifieds ..... Page 11

# Voting machines to be demonstrated across County

# The Haskell Free Press

VOL. 120-NO. 5, ©FEBRUARY 2, 2006

"The People's Choice"

12 PAGES-ONE SECTION-75 CENTS



**WILDLAND FIRE PROTECTION**—Haskell Volunteer Fire Department equipment officer, Tony Haynes, left, distributed wildland personal protective firefighting gear to, l-r, Mathew Cunningham, Claude Payne, Tim Wilson and other members of the department last week. Twenty sets of personal protective

wildland gear were made available through a 90-10 percent grant from the Texas Forestry Service. A.J. Shaw, right, wears the flame retardant Nomex coveralls, wildland hard hat and wildland gloves. The lightweight safety gear is designed to protect firefighters while working grass and brush fires.

## New voting machines to be demonstrated

With the enactment of the Help Americans Vote Act of 2002 (HAVA), Haskell County is required to have an accessible voting machine in each voting precinct for voters with disabilities.

Although these machines do not have to be used by every voter, everyone is welcome to see a demonstration on how the machine voting process will work for them.

With the goal of educating the voters about using the machines, Haskell County officials are going to be demonstrating the machines in the county communities. The times are flexible and additional hours can be requested if needed.

The schedule planned thus far is as follows:

Feb. 6, Sagerton Community Center from 6:00 to 8:00 p.m.

Feb. 8, 3rd floor of the Court House in the kitchen 11:00 a.m. to 2:00 p.m.

Feb. 17, Rule City Hall from 11:00 a.m. to 2:00 p.m.

Feb. 20, Rochester Fire Hall (time to be determined).

O'Brien (to be determined).

Weinert (to be determined).

Paint Creek, Lake Stamford (to be determined).

For any information or changes, contact the County Judge's Office at 940-864-2851.

## Emergency responders need public's help for safety

By Mary Kaigler

There is probably nothing as alarming or that gets more immediate interest and attention of the public than a fire within our city, an accident on the highway, or a health crisis requiring transport. All of these events are not the norm. We are concerned, and we want to know about them and to witness them.

However, this can be a deterrent to those emergency responders whose job it is to put out fires, save lives and property. Passing, following or obstructing fire apparatus or an ambulance can cause delay, and in an emergency, minutes can mean the difference between life and death. For instance, in our hurry to be on the scene, driving over the unprotected fire hose of a fire department on a street or private driveway, cutting off the supply of water, can be a danger to a fire fighter's life.

To address this, laws have been passed concerning driver response to emergency vehicles, including those used by law enforcement, fire departments and emergency medical services.

When you realize how important the Haskell Volunteer Fire Department is to our health and welfare in the way they have done double duty in fighting and controlling fires in our city and countryside just in the last few months alone, it seems that our response to their needs and right-of-way in the line of doing their job,

should be seriously considered. Because they care, these men donate hours of their time away from families and salaried jobs, taking exhaustive, extra training, and responding day or night to every call.

On the part of all of us, the following rules should be practiced, with the Fire Department being within its right to take note of and report anyone violating the rules of safety. Violation of the laws is punishable by a fine.

According to the Texas Criminal and Traffic Laws:

On the immediate approach of an authorized emergency vehicle using audible and visual signals, or of a police vehicle lawfully using only an audible signal, a driver, unless otherwise directed by a police officer, shall: 1. Yield the right of way; 2. Immediately drive to a position parallel to and as close as possible to the right-hand edge or curb of the roadway clear of an intersection; and 3. Stop and remain standing until the authorized vehicle has passed.

When an emergency vehicle is approaching, the Texas Dept. of Transportation says to stay calm. Listen for the direction in which the vehicle is coming. Put on the right-turn signal, and begin to move to the right if possible. Pull off to the right-hand side of the roadway, and turn on the vehicle hazard flashers. Remain stopped.

After an emergency vehicle passes, turn off the vehicle hazard flashers and turn on the left turn

signal. Begin to merge back onto the roadway when it safe.

Do not follow within 500 feet of a fire truck answering an alarm, or an ambulance when the flashing red lights are on, or drive into or park in the block where the fire apparatus has stopped to answer a fire alarm. Do not drive or park where an ambulance has been summoned for an emergency call, in a manner intended

to interfere with the arrival or departure of the ambulance.

Without the consent of the fire department official in command, do not drive over an unprotected hose of a fire department if the hose is in a street or private driveway, and is intended for use at a fire or alarm of fire. The life of a fireman may be in danger if the water supply to the hose is cut off. Damage to the hose causes

extra expense for the department.

Courteously keeping these rules in mind by all of us will keep our firemen from having to spend extra time in trying to avoid hitting us on the way to answer their call.

The National Highway Traffic Safety Administration's advice is to take sirens seriously and make way for all emergency vehicles. After all, next time it could be us.

## Cemetery receives donations

Two recent gifts to the Haskell Willow Cemetery from families with ties to this area, have resulted in a new east entrance being erected, and the completion and opening of an additional grave space section.

Dee and Ruth Larned of Haskell felt the need to replace the dilapidated entrance on the east, and through their ingenuity they designed and made arrangements for its construction. Bill Russell, formerly of Haskell, was contacted to help, and the project began to take shape. Of steel and stone construction, it now stands completed.

Russell is the son of the late Mr. and Mrs. Cub Russell, long time area residents. His wife, Valeria, is the daughter of Doris Darnell and the late Burl Darnell of Haskell. Together, the Russell's own and operate their business, A-Cut Above in Brownfield.

Speaking of the new entrance, the cemetery association president, Charles Chapman, said, "The Haskell Willow Cemetery Association is very grateful to the Larned and Russell families, and want to thank them for their interest, their effort and donations of labor, design and setting of the Austin Stone columns."

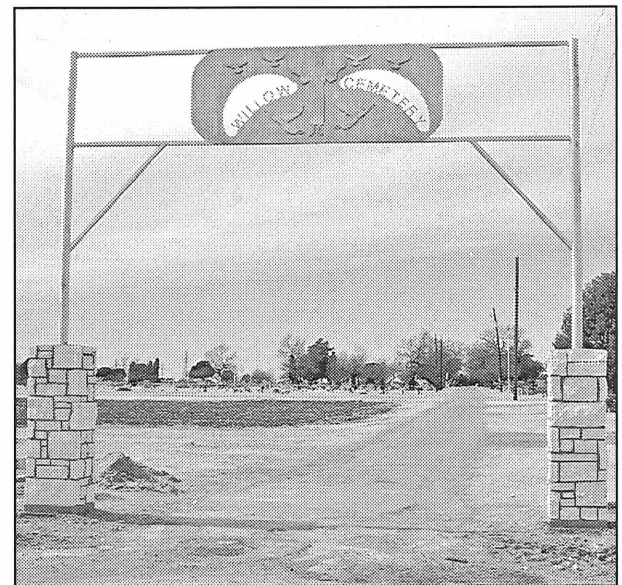
In an area just inside and south of the new entrance, work is nearing completion on the recently opened section of Willow Cemetery, which will be known as the Cobb Section.

A donation by the Patsy Pate Cobb Estate has made possible the opening of grave spaces on the east side of the cemetery. The curbing and water connections are now in place.

Cobb, who worked in sales at Lane-Felker, was the daughter of Mr. and Mrs. Lon Pate, longtime residents of Haskell. He was editor of the Haskell Free Press and she

headed the alteration department at Lane-Felker. Patsy Cobb's, sister, Sue Pate, who preceded her in death, was manager of West Texas Utilities in Haskell.

The Willow Cemetery Association has expressed their appreciation for the generous gift that has enabled the addition of these grave spaces.



**NEW EAST ENTRANCE**—Made possible by a donation gift, the new ornamental gate at the Willow Cemetery entrance at S. Ave. H, was constructed of steel set into columns of Austin stone.

FOR NEWS ITEMS OR TO SUBSCRIBE, CALL 864-2686

## Area Events

### Museum dinner

A fund-raising dinner will be held Sun., Feb. 5 from 11 a.m. to 1:30 p.m. at the Benjamin Memorial building. The lunch will consist of brisket, turkey, sausage, beans, coleslaw, potato salad, deviled eggs and dessert. Cost is \$7 for adults and \$4 for children 12 and under. Takeouts will be available. A silent auction will close at 1:30 p.m. Proceeds will benefit the Knox County

Museum.

### Always Patsy Cline

The Hamlin FFA Booster Club along with the Albany Mainstreet Playhouse will present Always Patsy Cline Sat., March 4 at 7 p.m. in the Hamlin High School auditorium. All proceeds will benefit the FFA Booster Club. Tickets are \$10 and will be available at the door, first come, first served. For pre-ticket information, call Melinda

Guadalcazar 325-576-3603 or Melissa Lee 325-669-6127.

## Haskell Co. Gin Report

Jan. 30, 2006  
Haskell

Haskell County Gin	6,550
Haskell Co-op Gin	16,099
<b>O'Brien</b>	
O'Brien Co-op Gin	26,600
<b>Rule</b>	
Rule Co-op Gin	10,868
Sagerton Gin	2,100
<b>Weinert</b>	
Griff's Gin	9,109
Weinert Gin	14,092
<b>Total bales</b>	<b>85,328</b>



**EDDIE MAE ROBISON**  
Funeral services for Eddie Mae Robison, 87, of Abilene were held Sat., Jan. 28 at Crescent Heights

## Obituaries

### Eddie Mae Robison

Baptist Church with Rev. Mike Chancellor and Rev. Butch Pesch officiating. Burial was in Elmwood Memorial Park directed by Elliott-Hamil Funeral Home of Abilene.

Mrs. Robison died Thurs., Jan. 26 at an Abilene nursing home.

Born June 24, 1918 in Munday, she was the daughter of Mollie (Harris) and Chester A. Robertson. She moved from Haskell to Abilene in 1955 where she married Otis O. Robison in January 1956. She completed LVN nursing school and was a nurse at Hendrick Medical Center for over 20 years. She was a member of Crescent Heights Baptist Church.

She was preceded in death by her husband, Otis; her parents; a son,

John W. Patton; two sisters and five brothers.

Survivors include daughters, Frankie Linda Wilson of Plant City, Florida, and Mollie Smith and husband, Dewayne of Spring; a son, Mike Patton and wife, Sharon of Arlington; a brother, Chester Robertson of Joshua; two sisters, Doris Danell of Haskell and Eva Lee Cooper of Abilene; eight grandchildren, Jill Wilson, Heather Watkins, Wendy Marquardt, James Patton, Todd Smith, John Robison Patton, Lane Patton and John David Patton; and eleven great grandchildren.

Memorials may be made to the donor's favorite charity.

PD. NOTICE

**GONZALES CARPET CLEANING**  
Carpet Cleaning • Upholstery Cleaning  
Emergency Water Extraction • Expert Floor Care  
Waxing Polishing & Cleaning  
Residential & Commercial  
(325) 773-2667 • (325) 773-2258  
Robert Gonzales  
P. O. Box 929  
Stamford, TX 79553

**BERNARD E. GODLEY, INC.**  
**TAX SERVICE AND BOOKKEEPING**  
Specializing in Farm, Ranch & Agri-business  
Over 35 Years Experience  
**940-889-8809**  
98 Hill Drive • Seymour, Texas  
Fax 940-889-4908

**PIT AND GRILL**  
1308 N. Ave. E, Haskell • 864-5348  
HOURS: Sun.-Fri. 11-2; Mon.-Sat. 5-9

**February Specials**  
Sandwiches **3 for \$10**  
Sandwich, Chips & Drink **\$5**  
~ Noon Buffet Daily ~  
Catfish Served on Fridays

Come join us for lunch!  
D. L. & Shelly Cooper ~ Owners ~

by Jane Rowan  
**CEA/FCS, Haskell County**  
When disaster strikes, chaos reigns. Taking care of the safety of loved ones takes first priority, but recovery may also include rebuilding financial and personal data.

"We rarely give thought to the important documents and personal records in our lives," said Nancy



Present this ad for a **Free Guest Pass.**  
Members: Bring a friend FREE!  
**SR. CITIZEN DISCOUNT**  
Added Bonus: 1 week of Sauna at no charge for new and existing members

**GOOD TIMES**  
Workout Express  
940-864-6133  
512 N. 1st

Granovsky, Texas Cooperative Extension family economics specialist. "But when we lose them or they are ruined by water or wind, our first concern is to have to replace them."

When it comes to replacing these documents, Granovsky recommended visiting the Federal Deposit Insurance Corporation's Web site at <http://www.fdic.gov/news/katrina/tips.html>. These are some of the FDIC's suggestions:

- To replace a Texas driver's license or state identification card, contact the Texas Department of Public Safety Austin headquarters, 512-424-2600 or go to the Web at <http://www.txdps.state.tx.us/> or call the issuing county office of the department.

- To replace checks, credit cards, ATM and/or debit cards, or to check on safe deposit boxes, contact your financial institution or get contact information from the FDIC at 877-275-3342. (For the hearing impaired call 800-925-4618 from 8 a.m.-8 p.m., Monday through Friday.)

- To replace credit cards contact the issuing institution:

American Express at 800-992-3404 or <http://home.americanexpress.com/homepage/katrina.shtml>;

Discover at 800-347-2683 or <http://www.discovercard.com/discover/>

data/customer;

MasterCard at 800-622-7747 (for the hearing impaired, call 636-722-3725) or <http://www.mastercard.com/cgi-bin/emergserv.cgi>;

Visa at 800-847-2911 or [http://www.usa.visa.com/about\\_vis/newsroom/katrina.html](http://www.usa.visa.com/about_vis/newsroom/katrina.html).

- To get credit reports from any of the major credit bureaus:

Equifax, Experian or TransUnion call 877-322-8228 or go to <http://www.annualcreditreport.com/>.

- To replace Social Security cards, another form of identification, such as a driver's license, will be required. For information, call 800-772-1213 (for the hearing impaired, call 800-325-0778) or visit the Web at <http://www.socialsecurity.gov/> and click on "Your Social Security Number and Card."

Other information on replacing items and documents:

- Mutilated currency can be replaced by the Treasury Department. For information on what bills will be replaced and how the replacement process works, call the Mutilated Currency Division at 866-575-2361 or write to Department of the Treasury, Bureau of Engraving and Printing, Office of Currency Standards, P.O. Box 37048, Washington, D.C. 20013.

- To replace fused, melted or mutilated coins, contact Superintendent, U.S. Mint, P.O. Box 400, Philadelphia, Pennsylvania. 19105.

- To replace birth certificates or marriage licenses, contact the state's Department of Disaster Recovery May Include Replacing Personal Documents State Health Services. In Texas, the Web site for that agency is <http://www.dshs.state.tx.us/vs/default.shtm>

- A "Keep It With You" personal medical information form to be used as a temporary and voluntary personal medical record can be downloaded Extension's Family and Consumer Sciences Web site at <http://fcs.tamu.edu/>. Click on Health and go to Family Health and Medical Records or go to the Centers for Disease Control and Prevention's Web site at <http://www.bt.cdc.gov/disasters/hurricanes/katrina/kiwy.asp>

- Medicare replacement cards can be requested at the Social Security

Online Web site: <http://www.socialsecurity.gov/medicarecard/> or by calling 800-772-1213 or visiting the local Social Security office.

- To replace a lost or stolen passport, contact the U.S. Department of State, Passport Services, Consular Lost/Stolen Passport Section, 1111 19th Street NW, Suite 500, Washington, D.C. 20036 or call 202-955-0430.

- To replace damaged, destroyed or missing savings bonds, contact the U.S. Department of the Treasury, Bureau of Public Debt, Executive Director, Administrative Resource Center, 200 Third Street, Avery 5th Floor, Parkersburg, West Virginia 26106-5312, fax number 304-480-8445.

Copies of federal income tax returns can be obtained by contacting the Internal Revenue Service. Request Form 4506, Request for Copy of Tax Return. This form is available online at <http://www.irs.gov/pub/irs-pdf/f4506.pdf>. Complete the form and mail it to the IRS office listed on the form.

- Federal civilian and military records also can be replaced. For replacement of military records, go to <http://vetrecs.archives.gov/>. For civil service records, former federal employees can fax full name, Social Security number, name of agency of employment and dates employed to 314-801-9269. The request should be signed and a fax number or address where the records are to be sent should be included. Current federal employees should contact the Office of Personnel Management at <http://www.opm.gov/>

Extension's publication, "Personal and Family Financial Records Inventory" (B-1330), has places to list important financial information, such as names of financial advisors, numbers of accounts and names of financial institutions and insurance companies. This publication available through the TCE Bookstore at <http://tcebookstore.org/>.

Many of these replacement steps include the use of online resources. If personal computers are not available, Granovsky said, public libraries and other agencies may have computers available to the general public.

## Switch to America's Largest Wireless Network

now is a good time to be you

you-friendly coverage

america's largest wireless network

covering more of the country than any other company

you-friendly deals

**Greater Freedom\***  
1000 anytime minutes  
unlimited nights & weekends  
unlimited mobile-to-mobile

**\$39.99** mo.  
additional charges apply. see below.\*

Switch to America's Largest Wireless Network  
**Get \$50** credit  
limited time offer



"My Alltel service is awesome. Switch today and get a \$50 credit. How cool is that? And did you know with Alltel's Anytime Plan Changes you can change your rate plan whenever you need without extending your contract?"

Ty Pennington

[alltel.com/youfriendly](http://alltel.com/youfriendly) 1-866-alltel8

available at these **CELLULARONE** locations

**Retail Stores**

**Abilene**  
4149 Southwest Dr.  
(325) 437-0800

**Graham**  
1221 Hwy. 16 S.  
(940) 549-1885

**Snyder**  
4108 College Ave.  
(325) 573-7807

**Vernon**  
807 Hillcrest Dr.  
(940) 553-1885

**Breckenridge**  
1822 W. Walker St.  
(254) 559-1885

**Haskell**  
10 Ave. D.N.  
(940) 864-8585

**Sweetwater**  
1418 Haisley St. Ste. C  
(325) 235-0300

**Authorized Agents**

Equipment & promotional offers at these locations may vary.

**Abilene**  
Cellular Connection  
1150 S. Treadway Blvd.  
(325) 672-3841

**Trio Wireless**  
4310 Buffalo Gap #K1110  
(325) 692-9195

**Trio Wireless**  
4555 S. 1st St.  
(325) 692-5776

**Wireless 4 U**  
4310 Buffalo Gap Rd.  
(325) 691-9900

**Aspermont**  
Trinity Cellular  
612 E. Broadway  
(940) 989-2543

**Breckenridge**  
Trio Wireless  
3732 W. Walker  
(254) 559-5045

**Colorado City**  
Lone Wolf Cellular  
1044 Hickory  
(325) 728-8000

**Snyder**  
Trio Wireless  
4515 College Ave.  
(325) 573-8240

**Sweetwater**  
Sierra Satellite Systems Inc.  
1102 A Lamar  
(325) 235-5445

**Trio Wireless**  
407 N.E. Georgia Ave.  
(325) 235-1210

\*Federal, state & local taxes apply. In addition, Cellular One charges a monthly \$1.70 regulatory & administrative surcharge. This additional fee is not a tax or a government-required charge & is subject to change. Largest Network Claim: Based upon analysis by an independent research company in July 2005, which compared marketed coverage patterns at the time of their creation of each wireless carrier without allowance for variations due to electrical interference, customer equipment, topography & each carrier's translation & defined preferences of their own internal engineering data. Anytime Plan Changes: Does not apply to certain business accounts. Plan changes may not become effective until beginning of your next billing cycle. Plan Details: Usage outside of your calling plan/coverage area is subject to additional roaming, minute & long-distance charges. Nights are Mon-Thurs 8:00pm-5:59am. Weekends are Fri 8:00pm-Mon 5:59am. Mobile-to-Mobile Minutes apply to calls between Cellular One wireless customers that begin & end in your plan's calling area. Call forwarding, 411 & voice mail calls excluded. \$50 Credit: Credit available for a limited time to new & existing customers with activation of a qualifying rate plan \$39.99 & higher or an additional line of service & 2-yr service agreement. One credit per account, per billing period. Must be a customer for 30 days to receive credit. Credit will appear on customer's next bill. Phone Promotions: Phones available at sale prices to new customers & eligible existing customers. Contact Cellular One to determine if you are eligible. Phones & applicable rebates available for a limited time, while supplies last, with activation of a qualifying rate plan. Limit 1 rebate per qualifying purchase. Phone cannot be returned once mail-in rebate certificate has been submitted. Customer pays applicable taxes. See rebate certificate for details. Additional Information: Limited-time offer at participating locations. Credit approval & approved CDMA handset & PRL required. \$20 non-refundable activation fee will apply per line. \$200 early termination fee may apply per line. TalkWATCH customers may be required to pay a non-refundable program fee & recurring administration fee. Offers are subject to the Cellular One Service Agreement available at any Cellular One store. All product & service marks referenced are the names, trade names, trademarks & logos of their respective owners. Screen images are simulated.



*In Loving Memory of*  
**Sesarea Lopez Arredondo**  
July 11, 1929 ~ Jan. 31, 2005

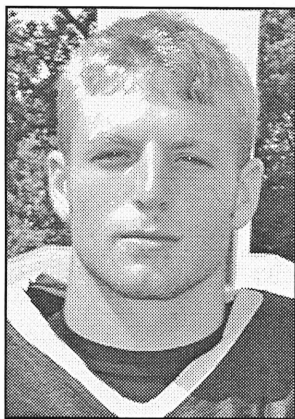
A year has passed by and maybe words can never fulfill just how much is in our hearts. We want you to know that we learned so much about compassion and love for others from you. The love you gave us and the beautiful memories you left us will remain in our hearts forever. The memories of an exceptional wife, mother, grandmother, great grandmother, sister and friend, always loving and caring. Silently, we will always reflect with smiles and grateful tears. May God be with you and protected by the Angels. We shall all see you when we leave this world, and we shall meet again.

We love you and miss you  
With all our hearts.

Husband: Vicente Arredondo  
Sons: Armando, Alberto and Alfredo Arredondo  
Daughters: Lelia Rodriguez, Guadalupe Rivera,  
Ophelia Arredondo, Erlinda Potilla and Jane Arredondo  
Brothers, Sisters, Sons- and Daughters-in-law,  
all Grandchildren and Great Grandchildren



SHANNON HARLAN



JOSH BARBEE

## Students visit Rotary Club

Shannon Harlan is the daughter of Yvette Harlan of Haskell.

She attends First Baptist Church. In school she has been active in basketball, journalism, softball, tennis, track and color guard.

Special awards and recognitions she has received include Most Likely to Be Tardy, UIL State Publication Award Honorable Mention Feature Photo and Yearbook recognition.

Among her favorite things to do are using the phone, riding around, going out of town and shopping.

After finishing high school she plans to continue working hard, saving her money for future college expenses. She plans to attend Northwood University in Dallas and

then transfer to Fayetteville University in Arkansas.

\*\*\*  
Josh Barbee is the son of Tommi and Larry Barbee of Haskell.

He attends East Side Baptist Church.

In school he is active in football, track and baseball.

Special awards he has received include being named District Most Valuable Player, Big Country Most Valuable Player and Super Team running back.

His favorite leisure time activities include lifting weights, playing football on weekends and hunting.

After finishing high school, he plans to play college football at a college he has not yet chosen.

## Phelps honored with birthday party

The children of the late Jack and Sallie Sanders family, longtime residents of Weinert, hosted an 81st birthday celebration for their oldest sister, Lona Mae Phelps of Haskell, Sat., Jan. 21 at the Haskell National Bank Community Room. The family had hosted an 80th birthday party there for their mother, Sallie Sanders, Oct. 12, 1984.

Several members of the family had met at the Circle 5 Ranch of their brother, Jacky Sanders and his family on Friday, and went back out there for the weekend after the party.

Attending the party on Saturday were her family, Kenneth and Elaine Campbell, Karen Mitchell, Kendall and Allison, and her friend, Vicente Solana, all of Haskell, Travis and Wilma Sanders of Coleman, Ethelyne Slade of Eagar, Arizona, her daughter, Paula Kreamer of Phoenix, Arizona, Martha and Bill Maupin, William and Denise Maupin and Mark, and Loretta Maupin of Odessa.

Marie and B.D. Kirkland of Fort Worth, Jacky D. and Barbie of Weatherford, Sue and Walter Cox of Naples, Brenda, Austin and Sallie Sartain of Omaha, Jacky and Sandra Sanders of Weatherford and Rocky Sanders of Abilene. Andy, Marline Sanders, Netha Carruth, ReNetha and Johnny Ballew of Cross Plains had visited with the family at the Ranch on Friday.

Two cousins at the party were Audra Schundler of Abilene, and Evelyne Ellington of Muleshoe. Other family and friends attending were Chick and Opal Tidrow, Gaston and Willie Faye Tidrow, Claude and Sally Payne, Mary Nell and Gerald McCoy, Wallace Cox, Mrs. Richard Freely, Lyla Mary Isbell, Rev. and Mrs. J. C. Amburn, Margaret Sartere, Travis and Alma Solomon, Earnest and Zella Mae Moeller and Becky Howeth, all of Haskell, and Frances Mahan and daughter, Ruby LaRoque, of Weinert.

## ECC Menu and Calendar

**Mon., Feb. 6**  
Lunch—Beef spaghetti, buttered corn, garden salad, green beans, garlic toast, apple crisp, milk, tea, or coffee

**Wed., Feb. 8**  
Lunch—Meatballs, pinto beans, cheese potatoes, buttered carrots, yeast rolls, strawberry cake, milk, tea, or coffee

**Fri., Feb. 10**  
Lunch—Beef stew, tuna and pimento sandwiches, onions, pickles, jello, peanut butter cookies, milk, tea, or coffee

Announcements begin at 11:45 a.m. followed by lunch.

## Around Town

By Joyce Hawkins

Sammie and Peggy Hawkins and children, Michael and Brittany and Melinda and children attended a birthday party for Peggy and Melinda's mother in Aspermont Sunday evening. Approximately 30 attended.



Soup, Salad, Potato, Dessert, Drink \$5.95  
Salad only with Drink & Dessert \$4.95

Sr. Citizens 10% OFF  
Workout Express Members 10% OFF  
Ask about our weekly drawing for 'lunch on us.'

**Good Times CAFE**  
512 N. 1st  
940-864-6133

**Valentine's Day is Tues., Feb. 14th**

- Bud Vases
- Valentine Roses
- Blooming Plants
- Candy Baskets
- Fresh Arrangements
- Stuffed Animals
- Silk Arrangements
- Russell Stover Candy
- Balloons
- Balloon Bouquets
- Green Plants

Come by and place your order early or call 325-773-2005!

**Stamford Floral**  
102 S. Swenson, Stamford  
We accept all major credit cards.

## Beta Chi Chapter meets

Christmas was in the air at the Dec. 3 meeting of Beta Chi Chapter of Delta Kappa Gamma Society when they met for a luncheon in the home of member Ida Jo Owens of Munday.

Mary Jane Loftin, Language Arts teacher of Munday Junior High, presented the program. Emiliano Lara, son of Mr. and Mrs. Ramiro Lara, and Taylor Stewart, son of Kim and Michael Bowman and Mark and

Christy Stewart, presented readings from the Bible and from *A Teacher's Night Before Christmas*.

Special guests included Kay Adkinson of Rochester, and Sandy King of Munday.

After the program, a salad luncheon was served. A short business meeting followed. A door prize was won by Erma Liles of Weinert.

## Haskell School Menu

**Feb. 6-10 Breakfast**  
Juice and milk are served daily on the breakfast menu.  
**Monday:** Muffin  
**Tuesday:** Breakfast on a stick  
**Wednesday:** Cereal, munchies snack mix  
**Thursday:** Cheese omelet  
**Friday:** Pig in a blanket  
**Lunch**  
Milk and iced tea are served daily at the Secondary campus. Milk is served daily at the Elementary School. Secondary campus: choice of

entree or baked potato with cheese and ham.  
**Monday:** Beefy nachos, garden salad, pinto beans, sliced peaches  
**Tuesday:** Chicken nuggets, gravy, mashed potatoes, green beans, hot rolls, fruit salad  
**Wednesday:** Enchiladas, garden salad, Spanish rice, chips, salsa, pineapple tidbits  
**Thursday:** Pepperoni pizza, corn, coleslaw or salad, banana pudding  
**Friday:** Chicken on a bun, lettuce, tomato, pickles, french fries, shape up juice bars

## Paint Creek School Menu

**Feb. 6-10 Breakfast**  
Juice and milk served daily.  
**Monday:** Cereal or toast  
**Tuesday:** French toast  
**Wednesday:** Biscuits and gravy  
**Thursday:** Toast or cereal  
**Friday:** No school  
**Lunch**  
**Monday:** Spaghetti, green beans, salad, garlic bread, applesauce cake  
**Tuesday:** Stew, cornbread, fried

okra, apple crisp  
**Wednesday:** Enchilada casserole, pinto beans, corn on the cob, salad, pudding, cookies  
**Thursday:** Ham or turkey sandwiches, lettuce, tomatoes, cheese, chips, cookies  
**Friday:** No school

To Subscribe, Call 940-864-2686

Lordy, Lordy Sylvia's 40!

Love, Scott, Amber and Macy

Buy a Chicken Strip Dinner And Get a **FREE Medium Soft Drink**

**Diet Dr Pepper**

**SONIC**  
America's Drive-In.  
No Waiting  
Call In Orders  
**864-8533**

Limited Time Only!  
Offer good February 1-28, 2006.  
Only at participating SONIC Drive-Ins. ©2005 American's Drive-In Corp.

**Carla's Sweet Shop**  
Lunch Menus for Feb. 8-9. Serving 11-2.  
All meals include dessert and drink.

~Wednesday~  
Beef Enchiladas, Beans, Rice, Salad

~Thursday~  
Fried Chicken, Gravy, Mashed Potatoes, English Peas

507 N. Ave. E • Haskell • 864-2711

Remember Your Valentine with a gift from The Carousel Gift Shop

Bridal Selections for Shannon Jordan and Drew Deen  
Dinnerware by Denby  
Glassware by Noritake

Erlinda Mayfield  
Open M-F 10 to 5:30. Sat. 10 to 4  
Southside of the square in Haskell • 864-2069

**Valentine's Day** Tuesday, February 14

**Russell Stover Candy**

**Fragrances**  
Large selection of Ladies' and Men's Fragrances

**Balloons**  
Send a Beautiful Balloon Bouquet

**Jewelry**  
Just arrived! New shipment of Jewelry

**Stuffed Animals**  
Add one to a balloon for a great gift

**Cards**  
Send along some love with a little help from American Greetings Cards

**Necco Sweethearts**  
1.25 oz. 5 for 99¢

**Valentine Exchange Cards**  
Assorted Themes. 32 count Your Choice 99¢

**Valentine Tootsie Roll Pops**  
11 oz. \$1.49

**Cella's Chocolate Covered Cherries**  
8 oz. \$1.99

**Hershey's Valentine Kisses**  
13 oz. \$2.69

**Disney Heart Box with Candy**  
2 oz. 99¢

**Valentine's 'Kiss Me' Frog**  
11 inch \$5.99

**Krazy Valentine Straws**  
6 count \$1.99

Bridal Selections for  
Shannon Jordan Kristin Cypert  
Bride-elect of Andrew Deen Bride-elect of Russell Bishop

Prices good through February 8  
www.haskelldrugstore.com

**THE DRUG STORE**  
Haskell • 864-2673

# OPINION

TEXAS PRESS ASSOCIATION

State Capital



## HIGHLIGHTS

By Ed Sterling

### Federal hurricane aid falls short

AUSTIN—Despite requests by the governor and other ranking officials, Texas has not received the level of federal financial aid expected in the aftermath of hurricanes Katrina and Rita.

And whether the Lone Star State ever will receive adequate help seems to be in question.

In late January, U.S. Department of Housing and Urban Development Secretary Alphonso Jackson said Texas would receive only \$74.5 million.

The statement prompted an outcry from Texas' four top elected officials: "We sought close to \$1 billion. The HUD verbally committed to hundreds of millions of dollars, and instead they gave us little more than the change from their couch cushions," Gov. Perry said, adding that \$74.5 million is less than 10 percent of the hurricane-related costs incurred by Texans.

"Critical repairs to schools, hospitals, universities, electric grids, ports, and water and sewer lines will go unfunded unless HUD revisits this," Perry added.

Lt. Gov. David Dewhurst, who presides over the Texas Senate, and U.S. Sens. Kay Bailey Hutchison, R-Dallas, and John Cornyn, R-San Antonio, joined Perry in expressing disappointment in the federal government's hurricane relief response.

Mississippi and Louisiana bore the brunt of Hurricane Katrina Aug. 29. Rita's eye struck Sabine Pass on the Texas-Louisiana coast and moved to inland counties and parishes on Sept. 24.

**AG chases phone record resellers**  
Texas Attorney General Greg Abbott on Jan. 26 launched an investigation into allegations that certain Internet sites are selling Texans' personal cell phone records. "This is a serious breach of personal privacy," Abbott said. "The business of using trickery to obtain consumers' cell phone records amounts to nothing more than the illegal trafficking of private information."

Abbott said online data marketers are charging \$50 to \$200 for obtaining records of specific cell phone calls, usually those made over the previous 30 days, and some

companies falsely tell their customers that these records are public information.

**State will cover drug benefit**  
More than 320,000 Texans qualify for help in paying for prescription drugs under federal Medicare entitlement or through Medicaid, the state health coverage program reimbursed by the federal government.

On Jan. 1 entitled individuals were automatically enrolled in a new federal drug program that in many cases stopped paying for life-sustaining medications.

Medicare officials said the agency expects to fix drug benefit errors, eventually. Gov. Perry on Jan. 25 directed the state Health and Human Services Commission to cover the cost of those medications as a stop-gap measure.

**Agency awards hog study grants**  
Settlers introduced domestic pigs to Texas more than 200 years ago. Escapes were not uncommon.

Agriculture Commissioner Susan Combs said Texas has the dubious distinction of being the feral hog capital of the United States, with up to 2 million wild porkers running loose.

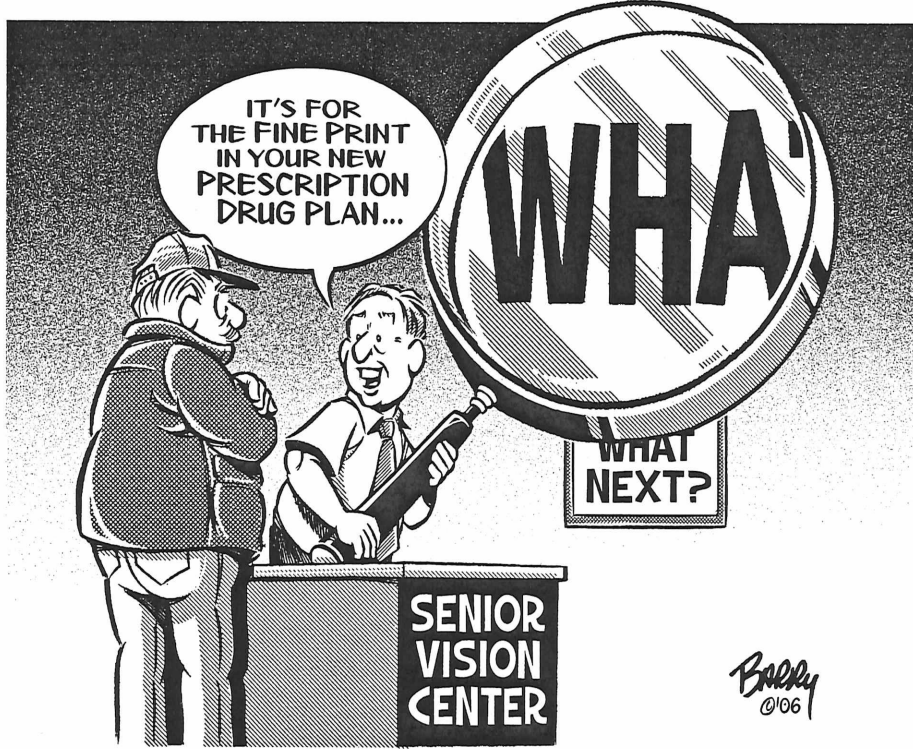
They run in packs, root and wallow. They can be aggressive toward other animals and humans, spread disease, ruin a picnic, foul a water supply and destroy pasture, fence and crop. Hunters have said feral hogs have humanlike intelligence.

Combs' agency has awarded half a million dollars in grants to Texas A&M University and Texas Tech University to research the problem and suggest solutions.

**Perry visits troops in war zone**  
Gov. Perry was one of four governors to take a U.S. Department of Defense junket to visit troops stationed in the Middle East in late January.

Perry first met with active and reserve soldiers and sailors in Kuwait, next visited Texas troops in Tikrit, Iraq, and later met with military officials in Baghdad.

Accompanying Perry were governors Mike Huckabee, R-Arkansas; Dave Freudenthal, D-Wyoming; and Jim Doyle, D-Wisconsin.



## From Out of the Past

From the files of The Haskell Free Press

### 10 Years Ago February 1, 1996

Matt Pace showed the grand champion steer and Mindy Howard showed the reserve champion at the Haskell County Junior Livestock Show.

The Haskell boys varsity basketball team wound up in a three-way tie for first place with Anson and Rotan for district. Team members were Greg Rodriguez, Matthew McCord, Justin Lisle, Jason Briles, Mik Everett, Cody Cooley and Carl Riley.

Eric Robinson, Justin Carter, Cory Robinson, Denise Wilson and Kacy Baitz, team members from Rule High School, captured the Sweepstakes trophy in the Small School Division at the annual South Plains College Math-Science Invitational.

Amy Turner of the Haskell County 4-H showed a first place heifer in the Junior Hereford Division at the Centennial Edition of the Southwestern Exposition and Livestock Show.

### 20 Years Ago February 6, 1986

Nine Haskell band students were selected for the zone band. Members include John Halliburton, Robin Parker, Diana Jarred, Lynn Dewey, Michael Rodriguez, Missy Phemister, Davis Chapman, Kyle Darden and Pam McGee.

Denise Young was chosen Haskell High School basketball sweetheart and Ponciano Lopez was named hero.

The Haskell Maidens clinched the 6-AA district title with a 45-41 victory over Hawley as Denice Young scored 16 points and Tamala

Randle added 10.

Brad Bevel of Rochester exhibited the first place steer in the 46" to 48 3/7" division during the annual Sandhills Hereford Show in Odessa. H.V. (Woody) Woodard caught 24 pounds of striper bass at Lake Stamford. One of the fish weighed 12 lbs. 2 ozs. and the other 11 lbs. 2 ozs.

### 30 Years Ago February 5, 1976

First place winners in the essay contest of the Wichita-Brazos Soil and Water Conservation District were Debra Robertson of Weinert and Dickie Greenwood of Rochester.

Mr. and Mrs. Wallace Cox Sr. were honored at an open house given by their son in celebration of their 50th wedding anniversary.

Danny Giles Hartsfield, a student at the University of Texas, earned the distinction of the Dean's Honor List.

Linda Jean Caddell of Haskell, a student at Angelo State University, was listed on the Dean's Honor Roll.

### 40 Years Ago February 3, 1966

Debby Wiseman was chosen as Haskell High School's Betty Crocker Homemaker of Tomorrow.

Bill W. Farrell, son of Mr. and Mrs. Willie Farrell of Haskell and nephew of Haskell County Sheriff Garth Garrett, received a Superior Accomplishment Award from the Commanding Officer of the Naval Air Test Center, U.S. Naval Air Station, Patuxent River, Maryland.

Larry Cunningham was named Weinert High football hero and Ruby Rainey football sweetheart.

Mr. and Mrs. A.C. Boggs Sr.

celebrated their 60th wedding anniversary with an open house at their home.

Alana Williams, junior at Rochester High School, was selected for the All-State band.

### 50 Years Ago February 2, 1956

The Haskell Indians took the District in a game against Albany. The Indians won 64-44.

The Haskell Fire Department purchased bunker coats for all members at a cost of \$720.

Brisk demand is reported for 1956 license plates with the first one sold to Harvey Baxter.

Jimmie L. Medley, of Haskell, was among a group of University of Texas senior pharmacy students making an inspection trip to the manufacturing and wholesale companies in Waco.

### 100 Years Ago February 3, 1906

Earnest Southerland went to Dallas this week to purchase an up to date line of fixtures for his barber shop.

Captain W.A. Craddock returned a few days ago from a trip to the eastern part of the state.

Caleb Terrell returned from Baird this week to remain permanently in Haskell.

O.E. Patterson, the real estate man, says he expects a large number of new settlers to move into this part of the state in the spring, judging from inquiries he is receiving.

Carroll Gibson, who has been employed at Terrell Drug Store for some time, has accepted a position in an Aspermont drug store.

## Top 10 stolen vehicles listed

Pickups are not only popular among Texas drivers, they are also the top targets for Texas vehicle thieves. The Texas Department of Public Safety has released its final report on the top vehicles reported stolen in Texas during 2005, and as has been the case for several years, the Chevrolet pickup holds the number one stolen vehicle position.

Coming in at a close second is the Ford pickup. In the number three position, the Dodge pickup also remains a popular target for Texas thieves. The Honda Accord and the Honda Civic round out the top five stolen vehicles. The remaining vehicles on the list list includes: 6. GMC pickup; 7. Chevrolet Tahoe; 8. Ford Taurus; 9. Toyota Camry; and, 10. Ford Mustang.

Vehicles are stolen for a variety of reasons, and contrary to popular belief, the most stolen vehicles are several years old. Some are stolen and stripped for parts. Others are stolen and resold by the thief to another party. Many vehicles are stolen for joyriding, transportation, use in committing other crimes, to support drug habits, or to perpetrate insurance fraud. And vehicle theft costs Texans more money than any other crime—over \$757 million in 2004.

The Texas Automobile Theft Prevention Authority (ATPA), a division of the Texas Department of Transportation (TXDOT), has funded law enforcement programs specializing in vehicle theft investigation, recovery, prevention and prosecution since 1991 when Texas reached an all-time high for vehicle theft. Since then, Texas has realized a 43% reduction in the vehicle theft total and a 56% reduction in the vehicle theft rate. Throughout the years, ATPA has worked closely with local, state, and national agencies to reduce auto theft. ATPA funds 32 grant programs, allowing over 150 law enforcement officers throughout Texas to focus exclusively on the resolution of vehicle theft cases.

## Consumer choices for ribeyes

by Wesley Uley  
CEA-Ag/NR, Haskell Co.

South Dakota researchers investigated the effect of size of ribeye steaks on consumer choice.

Five different sizes of steaks were placed in a retail meat case. All steaks were 1.0 in thick, aged for 10 days. Average ribeye size/steak weight were: 10.7 sq in/0.54 lb; 11.8 sq in/0.65 lb; 13.5 sq in/0.70 lb; 15.3 sq in/0.76 lb; 17.0 sq in/0.78 lb.

As reported in the 2000 National Beef Quality Audit, these represent the following percentages of the U.S. fed beef harvest: 5%; 27%; 43%; 21%; and 4%.

Consumer preference was based on how long steaks remained in the case before being purchased. There was no significant difference among steak sizes in consumer preference; there was a slight tendency for larger steaks to be preferred.

Consumers 30 to 45 years old purchased larger steaks than younger or older buyers. Steaks cut from the middle and rear (closest to the loin) of the boneless rib roll were preferred.

In a second trial, comparisons were made between average steaks (13.2 sq in), large steaks (17.3 sq in), and large steaks cut in two portions. Steaks were auctioned to a group of 75 consumers. Buyers paid an average of \$0.68/lb more for large over average steaks, but discounted large steaks cut in half by \$0.46/lb compared to average steaks.

Note: South Dakota consumers may or may not be representative of other areas.

## From the AG

By Greg Abbott

### Consumers Struggle with Mortgages, Foreclosures

My office often receives complaints involving home mortgages. Many of those complaints come from consumers who encounter a foreclosure scam. For example, con artists have been known to purchase lists of homeowners who are facing foreclosure. The frightened consumers are then peppered with offers of assistance to "save" or "rescue" their home.

Be aware that many consumers have signed what they believed to be paperwork for a "home rescue" loan only to discover that they have sold their homes for a fraction of the fair market value. Do not sign a contract you do not fully understand.

Last year, my office shut down City Mortgage Services, Inc. (not connected to CitiBank or CitiMortgage) for running a "debt reduction" scam in which homeowners made payments to the company thinking the money would be used to pay off their mortgages ahead of schedule. Instead, City Mortgage, which had offices in

Austin, Dallas, Fort Worth and Houston, simply kept the consumers' house payments and allowed their mortgages to go into default.

We have also heard about companies that claim to be able to get your mortgage "released" by the holder for a fee of \$2,000. Needless to say, your mortgage cannot be dismissed for a fee that is less than the amount remaining to be paid on your loan.

These cases often start when the consumer goes through a period of financial difficulty and misses a house payment. Once the consumer has missed a payment, the mortgage company may begin to charge late fees. If a late fee or penalty is deducted from your next payment, you may fall short again, earning yet another penalty. The situation can quickly spiral out of control.

Most mortgage companies will make an effort to work with homeowners to develop a plan for catching up after they fall behind. Some lenders may not be so helpful.

The most important thing to remember is that you simply must, if at all possible, make that mortgage

payment on time. In most cases where homeowners end up losing their homes, the whole problem began with a single missed payment.

In many cases, homeowners' loans change hands and the new mortgage company raises the payments or adds new fees and different requirements that the consumer neither expects nor agrees to.

If you feel you have been deceived or cheated in your negotiations with a mortgage company, you should file complaints with my office, the Federal Trade Commission, and the U.S. Department of Housing and Urban Development (HUD).

Homeowners with problems that could result in mortgage default or foreclosure on their property should also consider contacting a HUD-approved housing counseling agency.

If you are involved in a dispute with your mortgage company, you should not deliberately withhold your mortgage payment. File a complaint and consult a private attorney, but do not default on your loan. You could lose your home.

# BURN BAN IN EFFECT

## The Haskell Free Press

Established January 1, 1886  
PUBLISHED EVERY THURSDAY  
420 North First Street • P. O. Box 555  
HASKELL, TEXAS 79521  
Phone 940-864-2686 • Fax 940-864-2687  
hfp@valornet.com

John McDougal ..... Publisher  
Lisa Shaw ..... Business Manager  
Mary Kaigler ..... Editor  
Doris McDougal ..... Production  
Bill Blankenship ..... Staff Photographer

Periodical Paid Haskell, Texas 79521  
(USPS 237-040)

### SUBSCRIPTION RATES:

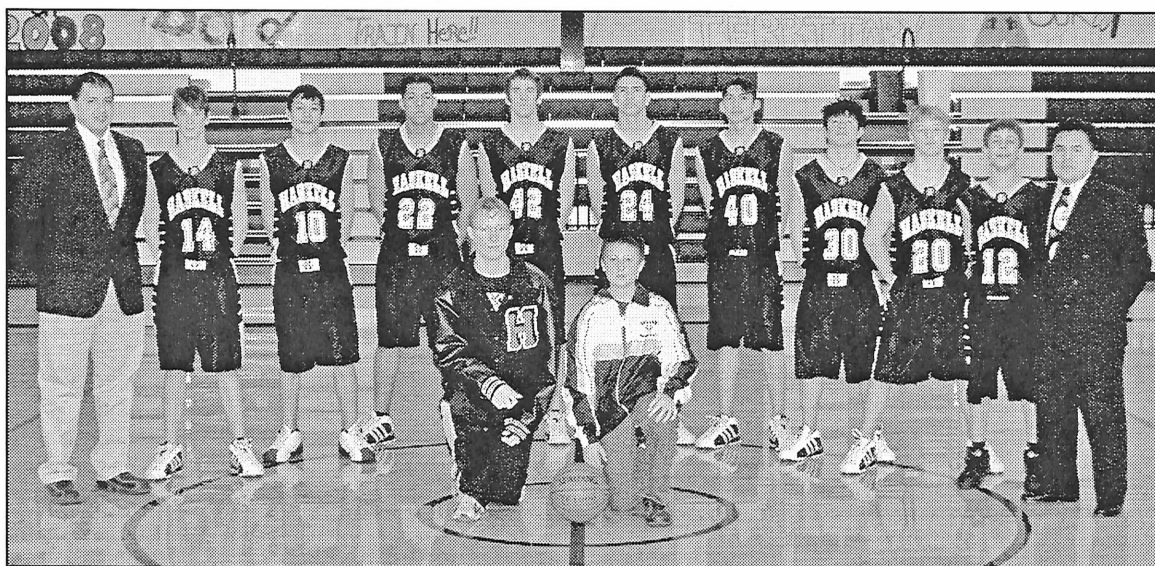
Haskell County, one year, \$25.00.  
Outside of Haskell County, one year, \$34.00.

NOTICE TO PUBLIC—Any erroneous reflection upon the character, reputation or standing of any firm, individual or corporation will be gladly corrected upon being called to the attention of the publisher.  
POSTMASTER: Send address changes to The Haskell Free Press, P.O. Box 555, Haskell, TX. 79521-0555.



This issue mailed Wed., Feb. 1, 2006

# Haskell Indians



HASKELL INDIANS: L-r: Coach LoLo Martinez, Weston Rutkowski, A.J. Alvarez, D.J. McCulloch, Jeremy Sorrells, Augustene Lara, Miquel Chavez, Greg Guzman, Travis Adams, John English and Coach Toby Villa. Kneeling, Jared Webb and Luke Terry.

Photo by Bill Blankenship



**Fri., Feb. 3 • 5 p.m.**

**JV & Varsity Boys vs Roscoe at Roscoe**

**Tues., Feb. 7 • 5 p.m.**

**JV & Varsity Boys vs Munday at Haskell**

# Haskell Maidens



HASKELL MAIDENS: Front, l-r: Mollie McKnight, Jasmine Thomas, Roxanne Chavez and Lindsay Pannell; middle, Kimberly Medford, Lacey Peiser, Samantha Rodriguez and Robbyn Tribbey; back, Victoria Armenta and Kerri Newton.

Photo by Bill Blankenship

**Fri., Feb. 3 • 4 p.m.**

**JV & Varsity Girls vs Roscoe at Roscoe**

**Tues., Feb. 7 • 4 p.m.**

**JV & Varsity Girls vs Munday at Haskell**

*This Page Sponsored By The Following Indian and Maiden Boosters*

Carla's Sweet Shop  
Haskell Co-op Gin  
Haskell Free Press  
Haskell National Bank  
Double A Drive Inn  
Valor Telecom

Haskell County Insurance Agency  
Big Country Electric Cooperative  
Santa Rosa Telephone Cooperative  
Cecil's Country Meat Mkt. & Grocery  
Richardson TrueValue & NAPA Auto Parts  
Brian Burgess State Farm Insurance

Hanson Paint and Body  
First National Bank  
Haskell Save-A-\$  
Larned Sales Center  
Matlock & Associates  
Personality-Slipper Shoppe

# Emergency CRP grazing approved

In continuing response to this year's widespread drought, Glenn R. Brzozowski, County Executive Director for the Haskell County Farm

Service Agency has announced approval for emergency haying and grazing of Conservation Reserve Program (CRP) acreage in Texas.

"Texas continues to experience severe drought conditions and a severe shortage of forage," said Brzozowski. "The authorization of emergency CRP haying and grazing will provide forage for livestock and help producers in areas most severely impacted by these drought conditions reducing the potential need to liquidate herds."

Emergency haying of CRP is authorized until May 1, 2006 and emergency grazing is authorized until June 1, 2006. Producers must file a request to hay or graze CRP acreage and visit the Natural Resources Conservation Service to obtain a modified conservation plan prior to haying or grazing the acreage.

"CRP annual rental payments will be reduced 25 percent times the number of acres actually hayed or grazed times the per acre annual rental payment," said Brzozowski. Other restrictions and limitations also apply.

CRP participants who do not own or lease livestock may rent or lease the haying and grazing privilege to an eligible livestock producer located in an approved county.

"In light of recent weather patterns, it is imperative that USDA offer the Emergency CRP haying and grazing program to Texas producers. Availability of forage is literally a matter of survival in the unpredictable and often unforgiving agriculture industry," said Brzozowski.

CRP offers annual rental payments and cost-share assistance to establish long-term, resource-conserving cover on eligible land. USDA will monitor producers to ensure the land is hayed or grazed without damaging conservation covers.

USDA offers additional programs to assist drought-stricken producers, including emergency farm loans, the emergency conservation program and the noninsured crop disaster assistance program.

For more information and eligibility requirements, producers should contact the local FSA office at 940-864-2617 or visit FSA's website at <http://www.fsa.usda.gov>.

# Ag economic survey to help measure farm financial health

Texas farmers and ranchers will have the opportunity to "let their voice be heard" by participating in the 2005 Agricultural Resource Management Survey. This survey provides vital statistics about the economic condition of production agriculture. Most importantly, these statistics are used by members of the agricultural community and their legislators when making important decisions that impact the future of America's farmers and ranchers.

Data collected will present an objective, and accurate picture of the financial well being of Texas farm operators. For Texas producers, "school tax re-form" is still a major unresolved issue as is the "Trans-Texas Corridor." At the National level, frequent discussions include

the 2007 farm bill as well as Country of Origin Animal Identification, and trade agreements. This report will provide producers, industry leaders, and policy makers the unbiased data needed to measure the impact of these programs.

Agricultural producers chosen to participate in this report will represent 50 to 100 fellow producers, and will therefore make an important contribution to the overall welfare of America's farmers and ranchers. All individual data collected are held strictly confidential by law (Title 7, U.S. Code). Only statistical totals are published for selected geographic regions and the Nation.

Results from the report will be used by farm and ranch operators, farm organizations, commodity


groups, lenders, university researchers, news media, local USDA agencies, farm suppliers, and others to compute prices paid, evaluate economic challenges facing America's food and fiber producers, determine the need for farm assistance, measure the cost of agricultural production, and assess the ability for producers to maintain sustainable farms.

Farm Production Expenditures, the first report with results from this survey will be released Aug. 3. For a copy of the finished report or to obtain other agricultural statistics, visit the National Agricultural Statistics Service website at [www.usda.gov/nass/](http://www.usda.gov/nass/) or call 1-800-626-3142.



**SANTA ROSA Telephone Cooperative INC.**

**Facts about Santa Rosa Telephone Cooperative**  
Our Local Calling Area for Haskell will include: Abilene, Aspermont, Benjamin, Hamlin, Knox City Munday/Goree, Rochester, Rule, Seymour Stamford, Throckmorton and Weinert  
**Questions? Call 889-1125**



**David C. Davis**  
for  
**County Judge**

My roots in Haskell County go back for four generations. My parents, Joe and Joyce Davis, provided me an example of commitment and service to the community. The years prior to being elected Judge, I served on the City Council, was a School Board Trustee, active with Haskell Chamber of Commerce and volunteered with the Haskell Fire Department. For twenty years, I was a local business owner. I have worked for and with the people of Haskell County in many and varied activities.

As your Judge, for the past nine years, I have focused on what was best for our County and Communities. Ever mindful of what the people's needs are: stable County Government, appropriate use of County dollars, seeking job opportunities for the citizens and providing needed services for all.

I want to continue to be your County Judge. I am asking you to give me your vote of approval on March 7th so that I may continue to serve the people of Haskell County.

PAID POLITICAL AD BY DAVIS C. DAVIS, CAMPAIGN TREASURER

# Ag issues conference set Feb. 7

by Wesley Utley  
CEA-Ag/NR, Haskell Co.

Texas Cooperative Extension county offices of Baylor, Haskell, Knox and Throckmorton will host the 2006 Ag Issues Conference Feb. 7 at the First United Methodist Church basement in Throckmorton starting at 1 p.m.

The following topics will be

discussed:

"Impact of Increased Fuel and Fertilizer How much does this really effect my profit?" by Justin Gilliam, County Extension Agent of Throckmorton County; "Is making a profit in 2006 really an option?" and "Lease Arrangements, Do I really have the best one for me?" by Stan Bevers, Professor and Extension

Economist of Vernon; and "Wildlife—How can I utilize wildlife in my current operation?" by Terry Utley, County Extension Agent of Knox County.

Pesticide applicator licences holders may also receive 2 general CEUS for attending this meeting.

For more information contact Brad Easterling, County Extension Agent of Baylor County at 940-889-5581; Wes Utley, County Extension Agent of Haskell County at 940-864-2658; Justin Gilliam, County Extension Agent of Throckmorton County at 940-849-3321; or Terry Utley, County Extension Agent of Knox County at 940-459-2651.

# Restricted hay feeding to cows

by Wesley Utley  
CEA-Ag/NR, Haskell Co.

In some areas, cows are wintered essentially with free-choice feeding of hay. Such feeding often wastes hay, can result in over consumption, and may increase manure output.

Illinois researchers studied limit feeding of Simmental-cross cows in three trials. Hay used in the three trials was legume-grass mix averaging approximately 13% to 17% crude protein.

In Trial I, lactating cows were allowed access to round bales for 24,

8, or 4 hours/day. Longer access to hay increased manure production, increased hay consumed, increased hay waste, reduced loss of Body Condition Score, and tended to reduce loss of cow weight, but did not affect milk production or calf weight.

In Trial II, dry, bred cows were allowed access for 7, 5, or 3 h/d and a fourth group was fed ground hay at 90% of estimated nutritional requirement. Longer access reduced loss of cow weight, increased hay consumed, tended to increase manure produced, but did not affect hay waste. Feeding at 90% was intermediate in hay consumed and hay waste.

In Trial III, lactating cows were fed ground hay at 80%, 90%, or 100% of requirement. Level of feeding had no significant effect on any cow or calf factors. It appears that limit feeding of hay may reduce feed cost without reducing production.

# Cattle Market Report

The market at the Haskell Livestock Auction was a run of 811 head of cattle at its sale on Sat., Jan. 28, according to Bill Cox, reporter. 68 sellers and 39 buyers were present.

Packers \$2-3 higher. Stockers 500 lbs. and up, \$1-3 higher. Feeders steady. Stocker cows \$10-25 lower. Cows: fat, .42-.48; cutters, .40-.50; canners, .30-.39.

Bulls: bologna, .52-.61; feeders, .84-.95; utility .48-.57.

Steers: medium and large frame No. 1 200-300 lbs., 1.40-1.75; 300-400 lbs., 1.30-1.55; 400-500 lbs., 1.20-1.38; 500-600 lbs., 1.15-1.34; 600-700 lbs., 1.05-1.24; 700-800 lbs., .98-1.15; 800-up lbs., .88-1.05.

Heifers: medium and large frame N. 1 200-300 lbs., 1.25-1.60; 300-400 lbs., 1.20-1.40; 400-500 lbs., 1.10-1.30; 500-600 lbs., .95-1.20; 600-up lbs., .75-1.10.

Bred heifers medium frame, 675-825.

Bred cows young to middle aged 750-950; aged or small, 525-675.

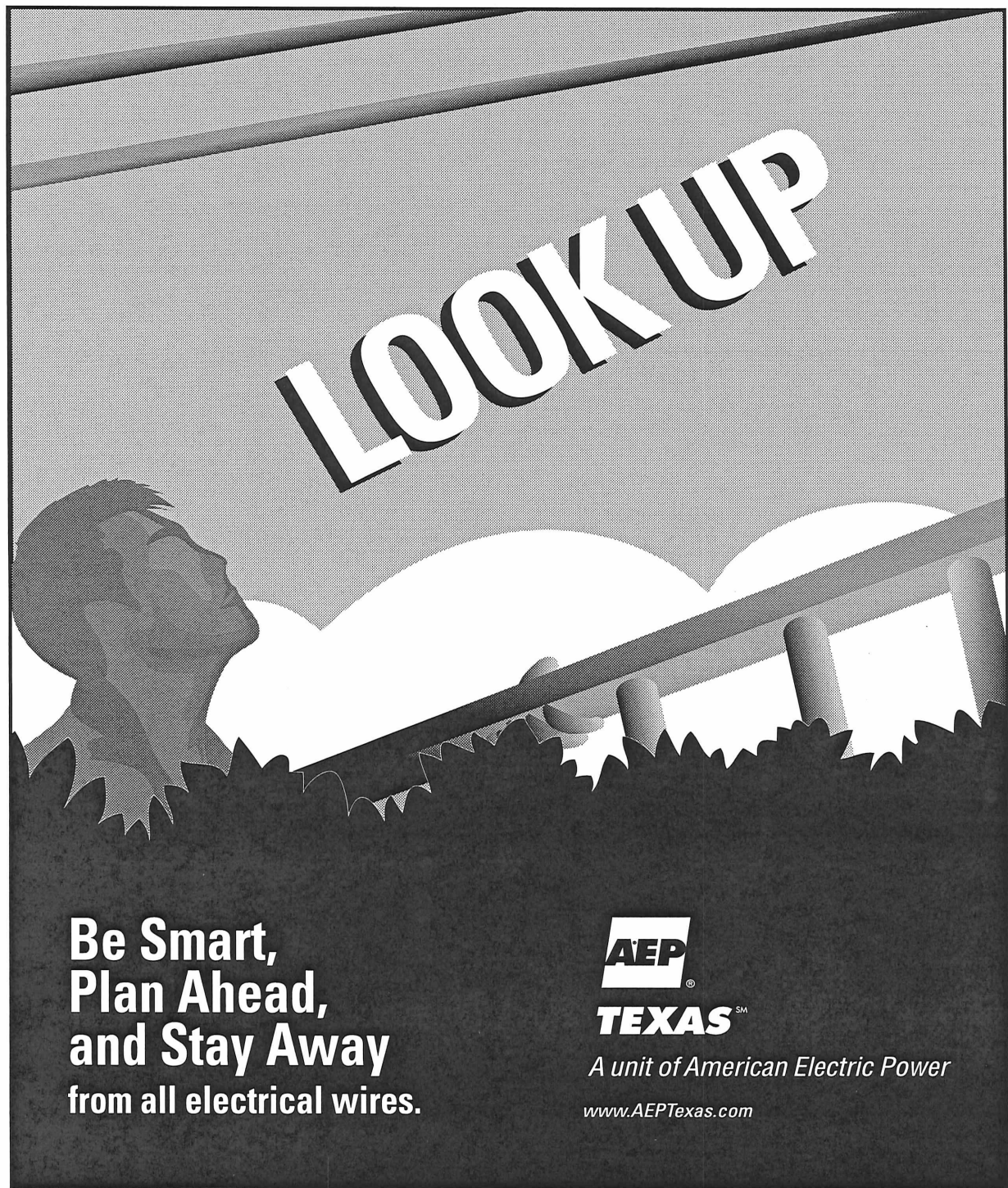
Cows with calves: medium frame No. 1 young and middle aged, 900-1225; aged or small, 720-850.

# Student in the News

Kolt S. Kittley of Rule was among 299 students named to the West Texas A&M University President's List for the fall 2005 semester.

The sophomore is a Sports/Exercise Sciences major.

To make the President's List a student must have a grade point average (GPA) of 4.00 and carry a minimum class load of 12 undergraduate hours.



**LOOK UP**

**Be Smart, Plan Ahead, and Stay Away from all electrical wires.**

**AEP TEXAS**  
A unit of American Electric Power  
[www.AEPTexas.com](http://www.AEPTexas.com)



**Gifts from the Heart**  
\$10 and under

Great Selection

**New Merchandise**  
Fruit of the Spirit Candles  
Angelic Candles  
New selection of Crosses  
Variety of fun Valentine Gifts for all

**Wedding Selections**  
for  
Shannon Jordan and Drew Deen  
Kristin Cypert and Russell Bishop

**Good Times UNLIMITED**  
512 N. 1st  
940-864-6133



**C&S Flooring and Lumber Yard**  
105 N. 1st • Haskell • 940-864-3753  
742-4021 Home • 325-338-3048 Cell  
Conrad and Sylvia Saucedo, Owners  
Swine Show Feed 273 and 1148 in stock.  
Now Taking Orders for:  
Show Calf Feeds • Show Goat Feeds • Rabbit Feeds  
Moorglo Horse Pro-Vita-Min Tub  
Proud Paws Dog Food  
MoorMan s Shavings • Pig Feeders  
**Countertops, Tile, Laminate**  
Kelly Moore Paints, Roofing, Lumber, Insulation, Hardware, Plumbing, Screen Repairs

**We can help with all your installation needs!**

# February's hearts reminder to get a heart check-up

by Jane Rowan  
Haskell Co. Extension Agent  
Mention the month of February and images of hearts immediately come to mind.

Our thoughts turn to Valentine's Day and possibly a gift for that special someone in our lives. However, we need to spend more time thinking about hearts—our real hearts, not the paper Valentine type.

February is American Heart Month and what greater gift could you give your Valentine than a heart-health check-up?

Heart disease is the leading cause of death for American men and women. However, with diagnosis and treatment, many persons suffering from heart disease can live a full and active life. Let's look at some of the most common conditions that fall in the "heart disease" category:

**Coronary Artery Disease (CAD):** Better known as narrowing or hardening of the arteries.

Arteries supply your heart with the Oxygen and nutrients that it needs to keep pumping. Build-up of a substance known as plaque may cause the arteries that supply your heart to harden, narrow or close completely. When blood flow to the heart is slowed or interrupted, the heart muscle will be unable to function properly and may begin to hurt—a condition known as angina.

Angina can be described as burning, discomfort, heaviness, or squeezing that is usually felt in the chest, but may also be felt in the left shoulder and arm. Other symptoms may include shortness of breath, irregular heartbeats and weakness. If blood flow is so little that heart muscle cells begin to die, you may experience a heart attack.

Symptoms of a heart attack are similar to those associated with angina, only more severe. However, some people may experience a heart attack and not have any symptoms at all.

CAD may be diagnosed by your healthcare provider and successfully treated in most cases by medication, medical intervention or both.

The key to successful treatment of this disease is to recognize the symptoms and seek medical attention for them. In some cases, simple lifestyle changes, such as stop smoking, dietary and physical activity changes, may greatly reduce your risk for developing CAD or may slow its progression.

**Heart Valve Disease (HVD):** Another common condition that may be considered "heart disease" concerns the valves that are present inside your heart. Your heart has four valves within it that help force the blood through your body when the heart contracts and prevent any blood from flowing backward. Some people have HVD when they are born and others may develop it sometime later in life. Things such as a heart attack, coronary artery disease, rheumatic fever and syphilis, to name a few, may cause HVD.

Symptoms of this disease include shortness of breath, dizziness, swelling of the feet and sudden weight gain; yet, some may not experience any symptoms associated with HVD.

Your healthcare provider may be able to diagnose HVD by listening to your heart as well as examining you for physical symptoms, such as signs of poor circulation. He or she may also order diagnostics tests that may be able to show improper function of your heart valves.

In many cases, HVD may be treated with medications to improve blood flow and reduce swelling that may occur as a side-effect of the disease. More severe cases may require surgical intervention to correct the problem.

**Cardiomyopathy:** When the heart muscle itself is diseased, the condition is called cardiomyopathy. This condition results from the heart becoming so enlarged or stiff that it is not able to pump blood adequately. When this happens blood may build-up in the lungs and the heart muscle itself may fail.

Cardiomyopathy may be inherited but also may be caused by coronary artery disease, alcoholism, diabetes and heart valve disease, among other things.

Symptoms of cardiomyopathy include chest pain, dizziness, fatigue and swelling of the arms and legs.

Once identified, your healthcare provider may be able to recommend lifestyle changes that may slow the progression of your cardiomyopathy diet and exercise may be recommended in some cases to help improve the strength of the heart muscle.

Your healthcare provider may also choose to treat it with medications or by medical intervention.

Many other diseases and conditions are considered "heart disease" and each one is very serious. If you experience the symptoms mentioned above, you should contact your healthcare provider immediately or call 9-1-1.

Your healthcare provider has many tools that may be used to help diagnose heart disease, ranging from heart rate and blood pressure to diagnostic tests that measure the heart's ability to pump blood to surgical interventions.

With regard to lifestyle changes associated with heart disease, it is a good idea to lower your total cholesterol, stop smoking, stop drinking alcohol, lower the amount of stress in your life and adopt a regular exercise routine.

Of course, before making significant changes to your diet and exercise, you should always consult with your healthcare provider.

We give little thought to our hearts on a daily basis yet our hearts work constantly for us. During this month you will see hearts everywhere you look to remind you of Valentine's Day. Use those hearts as a reminder to get your heart checked.

## Weather Whys

### Hard Freeze

Q: What exactly is a hard freeze?  
A: There are several types of freezes, explains Brent McRoberts of Texas A&M University, and they are classified according to their severity.

"In general terms, a hard freeze occurs when the air temperature is 26 degrees or lower for at least four hours. Because of the cold temperatures, it usually means that many types of plants and most seasonal vegetation will be destroyed."

Q: What are the other types of freezes?

A: A light freeze occurs when the temperature gets between 29 to 32 degrees, and this kind of freeze can kill tender plants but not harm others, McRoberts adds.

"A moderate freeze occurs at 25 to 28 degrees and this can destroy most types of vegetation, especially fruit plants. All freezes are tough on plants, but a hard freeze is the worst. It is often called a 'killing freeze' but it kills most of the plants affected. Hard freezes are common in northern states and higher altitudes, but usually only several each winter will occur in most parts of Texas."

## Students in the News

Haskell area students at Midwestern State University, named to honor rolls for the Fall 2005 semester, included Kristin Camille Cypert, who was named to the President's Honor Roll, and Leon Jordan Lewis Goudeau, who was named to the Provost's Honor Roll.

To make the President's Honor Roll, a student must complete a semester schedule of at least 12 hours with no grade lower than an A (4.0).

To make the Provost's Honor Roll, a student must complete a semester of at least 12 hours with a grade point average of 3.75 to 3.99

and no grade lower than a C.

\*\*\*  
Three Haskell students were named to the Dean's Honor Roll at Abilene Christian University for the fall 2005 semester. To make the Dean's Honor Roll, a student must complete at least 12 semester hours and earn a 3.45 or higher grade point average.

Tammi Hawkins is majoring in Applied Studies.

Bradley Blanks is an undeclared major.

Jillian Thomas is majoring in Computer Science.

## Effects of rotation grazing

by Wesley Utley  
CEA-Ag/NR, Haskell Co.

Arkansas researchers evaluated, over three years, fall-calving pairs (of primarily Angus genetics) managed on fescue overseeded with clover, lespedeza, and crabgrass. Fescue hay was offered if dictated by reduced forage density, and a corn-soybean meal supplement was provided during the breeding season.

Calves were weaned in either mid April (A, average age of 189 days) or early June (J, average age of 243 days). April calves were backgrounded in drylot for 3 weeks and then grazed on bermudagrass until the June calves were weaned. Pairs were rotated among

paddocks either twice monthly (M) or twice weekly (W). Rotation frequency did not significantly affect cow weight, hay consumed, milk production, calving interval, calf birth weight, actual weaning weight, or 205-day adjusted weight.

Monthly cows were significantly higher (0.3 units) in body condition score at breeding. June calves weighed significantly more than April (by 130 lb) at weaning, and in mid-June (by 74 lb). However, 205-day adjusted weight did not differ among April and June calves.

Finally, rotation time and weaning date had no significant effect on forage quality or forage species composition.

## Hauling effects on cows

by Wesley Utley  
CEA-Ag/NR, Haskell Co.

Australian researchers used yearling Bos indicus steers to study effects of hauling on the immune system. Steers had been vaccinated 8 weeks before hauling for five types of clostridial organisms.

Steers were hauled over paved roads for 72 hours with no rest stop for 3570 miles (approximately equivalent to a haul from Miami to Seattle). Blood analyses were made 2 days before, immediately after, and 6 days after hauling.

Some immune system indicators were significantly lower immediately after hauling, but recovered after 6 days. So, the authors noted that the

cattle may have been vulnerable to infection during that recovery period.

**BURN BAN IN EFFECT**

The Public is Invited to A Free Program on Evaluation Criteria, Treatment Options, and Comorbidities of Attention Deficit Hyperactive Disorder Thursday, February 9 at 7 p.m. at the Haskell High School Auditorium Presented by: Tori Caparoon, RN, BSN Midwestern State University

**5-C BBQ & CATERING**  
1503 Adams St., Rule • 940-997-2459  
RAY DON CAMPBELL  
Custom BBQ and Catering for Banquets, Parties, Weddings or any event. BRISKET, RIBS, HAM OR SAUSAGE WITH ALL OF THE TRIMMINGS. ~ Very Reasonable Prices ~ Let us do the cooking for your next event!

**BIG COUNTRY DANCE**  
FEB. 6 • 7:30 P.M.  
NOLAN COUNTY COLISEUM ANNEX  
SWEETWATER  
LIVE MUSIC  
FEATURING MUDDY CREEK  
GOOD WHOLESOME FUN IN A SMOKE-FREE ENVIRONMENT  
GREATEST IN COUNTRY MUSIC  
NO RESERVATIONS REQUIRED  
FOR MORE INFORMATION CALL 800/658-6757 \$4 EA

Come Eat with us at  
**Bud's Cafe**  
709 E. Main Street  
Knox City  
Serving 7 days a week  
6 a.m. to 9 p.m.  
Full menu offered!  
Featuring:  
Grilled Steaks Thurs., Fri. & Sat.  
24 oz. Sirloin for 2: **\$13.95**  
10 oz. Ribeye: **\$11.95**  
10 oz. New York Strip: **\$10.95**  
12 oz. Sirloin: **\$9.50**  
Catfish Friday night  
All you can eat! **\$7.95**  
Call in orders welcome!  
**658-5100**  
Bud Conner welcomes you!

**SANTA ROSA Telephone Cooperative INC.**  
310 West California Street  
Seymour, TX 76380  
Phone: (877) 889-1125  
Fax: (940) 889-1190  
7110 HWY 287 East  
Vernon, TX 76384  
Phone: (888) 886-2217  
Fax: (940) 886-2025

**Property Access Form**  
This form is for construction purposes only.

This form allows the construction crew to put a drop to the locations - actual Service Request will be completed at a later date at your request for service.

Name \_\_\_\_\_ Physical Address \_\_\_\_\_  
Mailing Address \_\_\_\_\_  
City \_\_\_\_\_ State \_\_\_\_\_ Zip \_\_\_\_\_ Home Phone Number \_\_\_\_\_  
Directions to Location (include street names and county road numbers): \_\_\_\_\_  
\_\_\_\_\_

Ms \_\_\_\_\_ Mr \_\_\_\_\_  
Work or Contact Number 8:00am to 5:00pm Cellular Numbers \_\_\_\_\_

.....  
**Property Access**  
The undersigned hereby agrees to grant unto Santa Rosa Telephone Cooperative, Inc. the right to excavate, install, replace, maintain and use a strip of land not to exceed three feet (3') in width of the property occupied by the undersigned, for the purpose of laying, maintaining and operating any wires or cable for telephone services or IPTV.

Signature \_\_\_\_\_ Date \_\_\_\_\_  
Date Received by office \_\_\_\_\_ Date Drop Installed \_\_\_\_\_ Initials \_\_\_\_\_

**PLANT USE ONLY**

LINE	PED/HH	F#	FIBER COUNT	PON#	MAP#
NID			TAIL		LOSS
DATE	INITIALS	DATE	INITIALS	DATE	INITIALS

Please leave completed form at:  
Haskell Chamber of Commerce or Haskell City Hall

## Pipeline safety meeting set Feb. 21

The Pipeline Group's annual "Public Education—Contractor Awareness Program" will be held at 6:30 p.m. Tues., Feb. 21, at the Abilene Civic Center, 1100 N. 6th St. in Abilene. The program will be sponsored by a group of companies with a common goal of preventing accidents and damages to underground pipelines and utilities. A free dinner will be catered for all persons involved in excavation related activities in Callahan, Eastland, Fisher, Haskell, Jones, Nolan, Shackelford, Stonewall, and Taylor counties. Following the dinner, a brief safety program will be presented which stresses the importance of accident prevention by identifying pipeline and utility rights of way, use of one-call systems, and the importance of working with pipeline and utility companies to safely excavate in the vicinity of underground facilities. The Texas law

requiring notification to a one-call system before excavating will be discussed. Sponsors will provide promotional materials; including notification information for their companies, safety related brochures and other safety reminders.

Each year many lives are injured or lost, plus millions of dollars in repairs and lost products are incurred due to "third party" incidents—someone digging into a pipeline. Thousands of communications, some life-threatening, may be disrupted when expensive fiber-optic cables are damaged or severed. These types of excavation can be financially devastating to the responsible party. This safety program is an attempt to help those who do excavation work to avoid such situations.

For more information call 800-982-8752 or visit our web site at [www.pipelinegroup.com](http://www.pipelinegroup.com).



**RAISING OLD GLORY**—Freddie Estrada, 8th grade student who lives in Weinert, puts up the flags at Rochester Jr. High, which is his daily job.

## Paint Creek School releases semester lists

Paint Creek ISD has announced the names of those who were the school's honor students for the first semester.

Named to the "A" Honor Roll were:

- 1st grade: Catherine Lemond, Samatha Martinez.
- 2nd grade: Jordan Davis.
- 5th grade: Katie Jones.
- 6th grade: Katrina Buerger, Caleb McCord, Haley Myers.
- 7th grade: Shana Armstrong, Curtis Bishop.
- 9th grade: Caleb Whitfield.
- 10th grade: Kailey McCord.
- 11th grade: Paula Isbell.

Named to the "A/B" Honor Roll were:

- 2nd grade: Sarah Edwards, Taylor Hunt.
- 3rd grade: Tyler Hall, Brad Winterstein.
- 4th grade: Justin Bailey, Kadie McCord, Caitlin Medford, Shawn

Myers.

- 5th grade: Cheyenne Buerger, Charitie Winterstein.
- 6th grade: Daren Wilson.
- 7th grade: Briana Wigley.
- 8th grade: Cody Baker, Brennan Medford.
- 9th grade: Ariel Blair, Sidney Jordan, Lacey Stephens.
- 10th grade: Miranda Powell, Rusty Rogers.
- 11th grade: Malinda Brueggeman, Cassidy Cooper.
- 12th grade: Michael Bailiff, Cyle Brown, Penny Harris, Cayla Henthorne, Rebecca Hope, Jessica Messenger.

Named to Perfect Attendance List were:

- PK: Chase Thompson.
- 2nd grade: Sara Edwards.
- 3rd grade: Christopher Elias.
- 4th grade: Justin Bailey.
- 6th grade: Payne Utley, Damien Winterstein.

## Area students named to National Honor Roll

Seven students from the area were qualified for induction into the Spring 2005 National Roll, which recognizes high-achieving high school and middle school students.

All of the students attend Paint Creek ISD.

Inductees were: Crystal Alvarado and Hali B. Wolsch, both of Stamford; Alice Blair, Cassidy Cooper, Jeremy De La Cruz, Tara D.

Myers and Taylor A. Williams, all of Haskell.

"Young people like our inductees, who work hard to attain academic success, deserve to be congratulated," said Lynn Romeo, publisher of the National Honor Roll. "Honoring their achievements provides motivation and encourages them to continue striving. We're proud to include them in the National Honor Roll."

## Big Country Electric Co-op Youth Tour Speech Contest

Big Country Electric Cooperative has announced sponsorship of the 2006 Texas Government-In-Action Youth Tour to Washington, D.C., June 8-16. \$1000 scholarships are included in the awards package.

The Government-In-Action Youth Tour has more than a thousand high school students going to Washington, D.C. every June, year after year, from towns and small cities all over rural America. They come because their rural electric cooperatives think education is important—education about rural electricity and education about America.

The tour provides an opportunity for outstanding young people to better understand the value of rural electrification and to become more familiar with the historical and political environment of the nation's capitol. This is achieved through visits to monuments, government buildings and cooperative organizations. Also, the opportunity to visit elected officials allows youth to better understand how the federal government works.

In the beginning, the Youth Tour was inspired by then Senator Lyndon Johnson when he addressed the National Rural Electric Cooperative Association (NRECA) Annual Meeting in Chicago in 1957. "If one thing goes out of this meeting," the Senator declared, he hoped it would be "sending youngsters to the national capitol where they can actually see what the flag stands for and represents."

Beginning that year, 1957, and for several more years, some of the Texas electric cooperatives sent groups of young people to Washington to work during the summer in Senator Johnson's office, to learn more about government in action.

The next year, 1958, rural electric people in Iowa sponsored the first group of 34 young people on a week-long study tour of the nation's capitol. Later that same year, another bus load came to Washington from Illinois. The idea grew, and other states sent bus loads of young people throughout the summer. In 1959, the Youth Tour had grown to 130 youths.

In 1964, NRECA began to coordinate the program and suggested that the states arrange to be in the city the same week. The first year of the coordinated tour included some 400 young people from 12 states. The idea has continued to grow, and today more than 1,500 young people and chaperones participate in the tour each year.

The Rural Electric Youth Tour is sponsored by local cooperatives, statewide, and NRECA. Local cooperatives select a student who will attend the tour by means of a speech contest, essay and various other methods. Statewides organize the trip to Washington, D.C. They arrange for transportation, chaperones, the tour schedule and coordinate with NRECA on group events such as Youth Day activities. On Youth Day, all tour participants meet together to listen to prominent speakers and

wind up the day with a dinner and dance. NRECA coordinates hotel space for the tour, run a Youth Tour office, hire a nurse, coordinate group events such as Youth Day and the Co-op educational seminars. NRECA also arranges for insurance for the tour participants.

Many people are involved to give youth the opportunity to grow and experience many things that may never be offered to them again. Although few are chosen, many do go that would not have been able to otherwise. Many youth of Texas and across the nation will enjoy the best of Washington, D.C., tour the Smithsonian Institute, Mount Vernon and more, experience the sight of Arlington National Cemetery, the Vietnam Memorial, and the changing of the guard at the Tomb of the Unknown Soldier, visit their Congressman's office and find out face to face what's going on in National Government. Congressmen will meet with students from their districts and answer questions about current governmental issues.

The speech contest is open to any student who is enrolled as a Sophomore, Junior or Senior at any of the high schools in the Big Country Electric Cooperative service area. The entry deadline is Feb. 17 at 5:00 p.m. Contestants will be required to give a 6-8 minute speech on: "Energy Conservation, What Can I Do?." Each speaker will be asked one question by the judges. The questions will be taken from the "Questions & Answers" furnished to each entrant. The contest will be held at the Roby High School Auditorium at 6:30 p.m. Feb. 23. More detailed information is available through each participating school or from Ron Acosta at the Roby office of Big Country Electric Cooperative, 325-776-3903.

If you or someone you know is eligible to enter this contest, give it a try! The winner(s) and runner-up will receive a \$1000 scholarship and will have a chance to meet more than 1,500 youth from around the nation while they enjoy the trip to D.C. Winners will meet people who will become friends for life. The Youth Tour has continued to grow and this year, 1,500 or more young people and chaperones from the U.S. are expected to participate in the tour.


## Students in the News

Three Haskell area students at Angelo State University were named to Angelo State Dean's List for the 2005 Fall Semester.

The honorees were: Jacklyn I. Escobedo, accounting; Christopher Eugene Hobbs, chemistry; and Breanna Lachele Marquis, kinesiology/teacher certification.

To be eligible for the Dean's List, students must be enrolled full-time and maintain a 3.25 grade point average on a 4.0 scale.

**Valentine's Day Special**  
 Good through February 28!  
**Lowest Prices of the Year on Stainless Appliances**  
 Shop early for Pre-Vacation Voucher with any purchase of any appliance, mattress or set of four tires.  
**Haskell Tire & Appliance**  
 206 S. Ave. E • 864-2900

**Together**  
  
**We Can Do It!**  
 Concerned about your financial future? See us. We have the money you need to get things growing!  
 Our agriculture financing professionals understand your concerns and needs. They know it takes a lot of hard work and careful planning to make a farm grow and prosper. They can help you yield more from your labor and harvest with sound agricultural financial advice and planning.  
 Talk to one of our financial experts today for a bumper financial harvest year after year. Grow with us.  
**First National Bank Haskell**  
 200 South Avenue E Haskell, Texas 79521  
 940-864-8555  
 Other Convenient Locations to Serve You:  
**First National Bank Munday - Stamford - Rochester**

**SHANE HADAWAY**  
 A HARD WORKING,  
 FULL TIME CANDIDATE FOR  
**DISTRICT JUDGE**

As your District Judge, I pledge to seek the fair and impartial application of justice to all citizens of the 39th Judicial District. I pledge to work hard in all four counties of the 39th Judicial District. I can assure you that I will give you an honest day's work and I will be prepared and available to hear matters before the Court. I am not afraid of working hard. I will come early and stay late to get the job done.

I am aware that County budgets are stretched thin. The citizens of the 39th Judicial District can be assured that I will conduct the Court's business in a manner that will conserve tax dollars. I will work with elected officials, law enforcement, and the legal community to ensure that cases are disposed of in a timely manner.

I am further aware that a citizen's time is valuable. I can assure you that your time will not be wasted while serving on juries, grand juries or appearing before the Court.

I have worked hard and have dedicated myself to getting the job done as Haskell County Attorney, Throckmorton County Attorney Pro Tem, and in my private practice. I will practice the same work ethic and dedication as your District Judge.

Political advertising paid for by Shane Hadaway in compliance with the voluntary limits of the Judicial Campaign Fairness Act. Shane Hadaway subscribes to the Code of Fair Campaign Practices. Amanda M. Hadaway, Campaign Treasurer.

**★ VOTE ★**  
**SHANE HADAWAY**  
 for 39th Judicial District Court  
**JUDGE**

**Vote for**  
**Kathy Decker**  
 for Haskell County Judge  
**March 7**

I, Kathy Decker, would like to announce my candidacy for Haskell County Judge. After living in Haskell for eleven years, I currently live in Sagerton with my husband Rick.

While living in Haskell I worked as a dispatcher for the Haskell County Sheriff's Department and also for the Haskell County Probation Department. As County Judge I will actively stand behind our law enforcement agencies and appreciate what they do to ensure the safety of Haskell County.

From 1998 to October of 2005 I worked for two long term health care facilities as their financial manager and as an Assistant Administrator. These positions gave me experience in Medicare and prescription plans, guardianships, and care services for the concerns of the elderly. I worked with the Department of Veterans Affairs and Health and Human Services on safety, funding, and medical care for the elderly and disabled and their spouses. As financial manager of these facilities I was in charge of managing the company's budget including state, federal and private funds. These positions also gave me the opportunity to work with the offices of Charles Stenholm, Representative Rick Hardcastle, and Congressman Randy Neugebauer on issues concerning government funding and elderly rights.

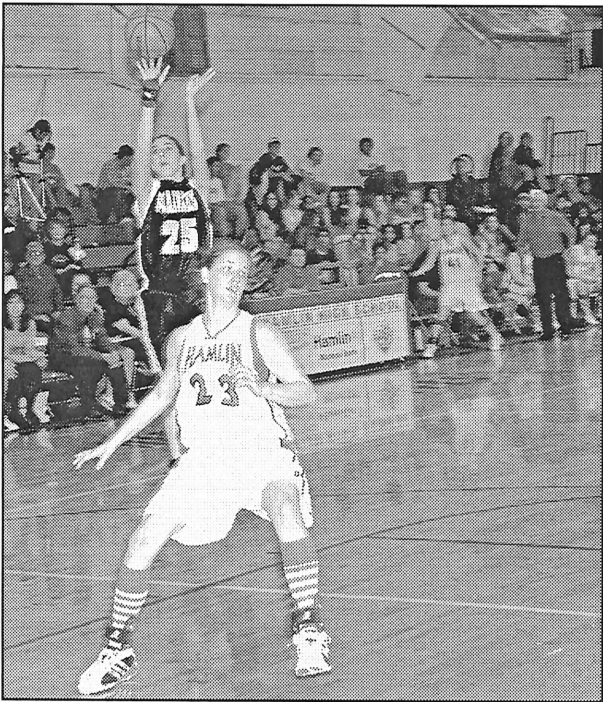
As your elected County Judge I will be available full time to help with your concerns and needs. I will work hard in supporting all of Haskell County, making sure that the financial support is properly sought out for the needs of our smaller communities as well as the city of Haskell and follow through when financial help is available. I will strive for what is needed for Haskell County to prosper and grow and will support the County Commissioners in their efforts to serve their constituents and maintain their precincts.

I would appreciate the opportunity to serve the people of Haskell County and ask for your vote on March 7th.

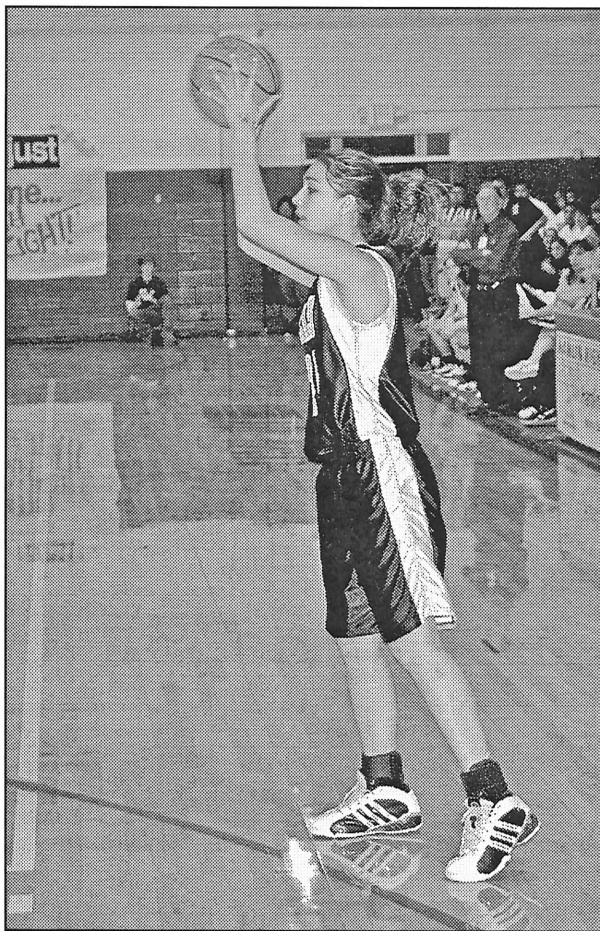
Thank you, Kathy Decker

Paid Political Advertising Paid for by Lori G. Combs, 815 CR 493, Sagerton, Texas 79548, Campaign Treasurer.

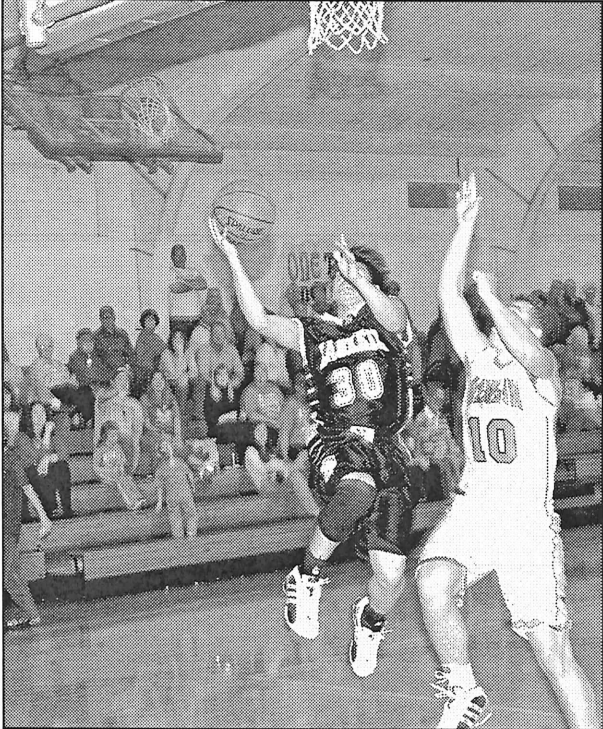




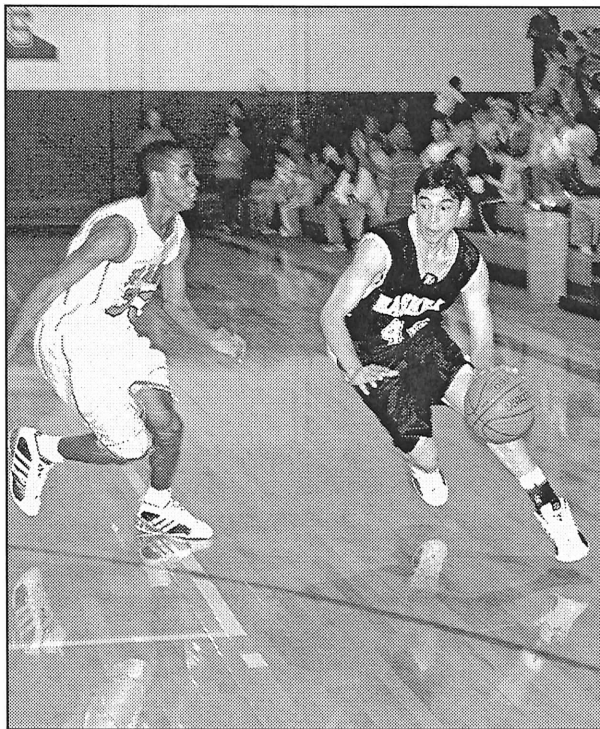
**LAYING UP COUNT**—Haskell Maiden, Mollie McKnight (#25), stretches to make the basket, and score a total of 22 points in the 50 to 39 game with Hamlin, Jan. 24. Photo by Bill Blankenship



**POISED TO SCORE**—Haskell Maiden, Samantha Rodriguez (#21), adds more count, and a total of 9 points, in the Haskell teams' winning game with Hamlin, Jan. 24. Photo by Bill Blankenship



**RISING TO WIN**—Haskell's Greg Guzman (#30), goes up against Hamlin, scoring a total of 4 points in the Indians' winning game with the Pipers, Tues., Jan 24. Photo by Bill Blankenship



**GOING IN TO SCORE**—Haskell Indian, Miguel Chavez (#40), takes the ball in to score again, and totaled 17 points in the close, 37 to 35 winning game with Hamlin, Jan. 24. Photo by Bill Blankenship

## Student in the News



**LESLI WHARRY**

Nursing major, Lesli Isbell Wharry, formerly of Paint Creek, was recently inducted into the Redlands

Community College Alpha Beta Upsilon Chapter of Phi Theta Kappa during their fall induction ceremony.

To be inducted into Phi Theta Kappa, students must be enrolled at a regionally accredited two-year college, must have earned at least 12 credit hours towards an associate's degree, and have a minimum grade point average of 3.5.

Wharry is the daughter of Roy and Becky Wilson of Paint Creek and Tony and Crete Isbell of Stanton. She is the granddaughter of Jack and Letha Isbell of Haskell, Lee Roy and Frances Wilson of Rule, and Bob and Carylton Veretto of Levelland.

To Subscribe,  
Call 940-864-2686

## Jones-Haskell Eye Clinic

**Dr. Trussell Thane, O.D.**  
Therapeutic Optometrist

Appointments Available • Monday through Friday

Dr. Thane provides comprehensive eye care including the diagnosis and treatment of eye disease. Dr. Thane offers complete evaluation for eyeglasses and contact lenses.

Various contact lens packages available.

MEDICARE, BLUE CROSS AND BLUE SHIELD AND FIRSTCARE ACCEPTED.

1501 Columbia • Stamford  
325-773-2083

Hours: M.-Th. 8:30 to 5; Fri. 8:30 to 1

## Area basketball scores

### Girls

Haskell 50, Hamlin 39

Scoring for Haskell: McKnight 22, Rodriguez 9, Tribbey 9, Newton 6, Peiser 2, Pannell 2.

JV score: Haskell 32, Hamlin 22

\*\*\*

Knox City 75, Paint Creek 12

Scoring for Paint Creek: Barr 6, McCord 4, Hope 2.

JV score: Knox City 28, Paint Creek 23

\*\*\*

Paducah 55, Rule 46

Scoring for Rule: Smith 12, Lehrmann 10, Ky. Scheeth 10, Murray 5, Lisle 5, Gary 2, Ke. Scheeth 2.

JV score: Paducah 42, Rule 28

\*\*\*

### Boys

Haskell 37, Hamlin 35

Scoring for Haskell: Chavez 17, McCulloch 9, Guzman 4, Adams 4, Sorrells 2, Rutkowski 1.

JV score: Haskell 58, Hamlin 26

\*\*\*

Knox City 75, Paint Creek 27

Scoring for Paint Creek: Brown 15, Bryant 8, Whitfield 3, Rogers 1.

\*\*\*

Paducah 84, Rule 41

Scoring for Rule: Simpson 11, Pace 11, Dudensing 8, Brown 7, Kittle 2, Spitzer 2.

## HERE'S TO YOUR HEALTH... AT HOME!

Brought to You By:

## Haskell Home Health Agency



Misty McMeans  
RN, BSN

### Coronary Artery Disease

The heart is the hardest working muscle in the body. Every day it beats an average of 100,000 times and pumps about 2,000 gallons of blood throughout the body. To handle this enormous amount of work, the heart muscle requires a continuous supply of oxygen and other nutrients from the blood. To get enough nourishment, the heart muscle has its own circulation, the right and left coronary arteries.

The coronary arteries form a network of blood vessels on the outside of the heart. If these arteries become narrowed, the heart muscle is deprived of some of its blood supply, which eventually damages the heart muscle. This is referred to as a heart attack, or myocardial infarction.

### What causes coronary artery disease?

Cholesterol and other material can collect on artery walls, causing the arteries to narrow. This condition, called **atherosclerosis**, prevents the passage of normal amounts of blood through the arteries. As a result, two events can occur: (1) these deposits build up over time until they clog the artery so that little or no blood can pass; or (2) blood cells cling to the rough deposits, forming a clot (**thrombus**). The thrombus may grow until it completely blocks the artery, or it can break away and travel to a smaller artery, where it lodges, completely closing off circulation.

What questions regarding home care do you have for the nurse? Send your questions to Haskell Home Health Agency, 417 S. First, Haskell, TX 79521 or call 940-864-5074 or 1-877-864-5074.

HERE'S TO YOUR HEALTH—AT HOME is brought to you by Haskell Home Health Agency providing home care services in Haskell, Knox, Stonewall, Throckmorton and Jones Counties



Home Care: Keeping Texans Proud & Independent

So good, just thinking about 'em makes your mouth water

**\$3.99**  
4 pc. Chicken Strip Country Basket®  
For a limited time only.

**Choco Cherry Love**  
BLIZZARD® FLAVOR TREAT

**DQ**  
dqtx.com

**That's What I Like About Texas.®**

Available for a limited time only. Offer good at participating DQ Restaurants. Blizzard®, DQ and the swirl shaped logo are trademarks of Am. D.Q. Corp. © 2005. © King, U.S. Pat. & M. Off. in U.S. & Can.

**HEY! Little Dribblers**  
Be A Winner –  
Come To Sport-About for all  
Your Basketball Needs

**FREE!**  
Little Dribbler  
T-shirt with each pair of  
basketball shoes purchased

**Basketball Checklist**

- Shorts
- Sweats
- Goals
- Shoes
- Team Color Socks
- Sweat Bands
- Knee Pads
- Balls—all sizes

Little Dribblers  
Get 'R' Done

Where Winners Shop

Sport-About of Haskell

940-864-3891  
402 N. 1st

# CLASSIFIEDS

## Public Notices

### ADVERTISEMENT FOR MANAGEMENT AND/OR PROFESSIONAL SERVICES

Haskell County has received a contract award #1000407 from the Texas Department of Housing and Community Affairs (TDHCA) for Owner Occupied Home Rehabilitation Assistance through the HOME Investment Partnership Program. The award includes \$500,000 for hard and soft costs and \$20,000 in administrative costs. Accordingly, the Contract Administrator is seeking to contract with a qualified professional management consultant to implement and administer the HOME contract activities. Please submit your proposal of services and a statement of qualifications for these proposed services to Attn: Rhonda Moeller, County Courthouse 1 Ave. D, Haskell, Texas 79521. A copy of the proposal format is available at County Courthouse 1 Ave. D, Haskell, Texas 79521. The Contract Administrator must receive proposals no later than Feb. 10, 2006 to be considered. The Contract Administrator reserves the right to negotiate with any and all firms that submit proposals, per the Texas Professional Services Procurement Act and the Office of Management and Budget Circular A-

102. Haskell County is an Affirmative marketing/Equal Opportunity Employer and encourages Historically Underutilized Businesses to submit proposal. 4-5c

### TO THE CITIZENS OF HASKELL COUNTY:

With the enactment of the Help Americans Vote Act of 2002 (HAVA) Haskell County is required to have accessible voting machine in each voting precinct for voters with disabilities. These machines must be available but do not have to be used by the voter. Everyone is welcome to see a demonstration on how the voting process will work for them. County officials are going to be in the communities demonstrating the voting machines. The times are flexible and additional hours can be requested if needed. Contact the County Judge's Office for any information or changes, 940-864-2851.

The schedule thus far is as follows:  
 February 6, 2006: Sagerton Community Center from 6:00 until 8:00 p.m.;  
 February 8, 2006: 3rd floor of the Court House in the Kitchen 11:00 a.m. until 2:00 p.m.;  
 February 17, 2006: Rule City Hall from 11:00 a.m. until 2:00 p.m.;  
 February 20, 2006: Rochester Fire Hall (to

be determined);  
 O'Brien (to be determined);  
 Weinert (to be determined); and  
 Paint Creek, Lake Stamford (to be determined).  
 Our goal is to educate the voters of Haskell County. 5-7c

### TEXAS COMMISSION ON ENVIRONMENTAL QUALITY NOTICE OF RECEIPT OF APPLICATION AND INTENT TO OBTAIN AIR PERMIT PROPOSED AIR QUALITY PERMIT NO. 77757

APPLICATION CMM Grain Company, Inc. dba Charlie Myers Grain Co., has applied to the Texas Commission on Environmental Quality (TCEQ) for issuance of Air Quality Permit No. 77757 which would authorize continued operation of the Grain Elevator located at 203 East Bevers Street, Weinert, Haskell County, Texas. The facility will emit the following air contaminant: particulate matter including particulate matter less than 10 microns in diameter. This application was submitted to the TCEQ on January 06, 2006. The application is available for viewing and copying at the TCEQ central office, the TCEQ Abilene regional office and the Haskell County Courthouse, 1 Avenue D, Haskell, Haskell County, Texas. The

facility's compliance file, if any exists, is available for public review in the Abilene regional office of the TCEQ. The TCEQ executive director has determined the application is administratively complete and will conduct a technical review of the application.

**PUBLIC COMMENT/PUBLIC MEETING** You may submit public comments, a request for a public meeting, or request a contested case hearing to the Office of the Chief Clerk at the address below. The TCEQ will consider all public comments in developing a final decision on the application. **The deadline to submit public comments is 30 days after newspaper notice is published.**

The purpose of a public meeting is to provide the opportunity to submit comments or ask questions about the application. A public meeting about the application may be held if the executive director determines that there is a significant degree of public interest in the application or if requested by a local legislator. A public meeting is not a contested case hearing.

If only comments are received on the application, the response to comments, along with notice of the executive director's action on the application, will be mailed to everyone who submitted

comments or is on the mailing list for this application. If a hearing request is timely filed, the executive director will complete the technical review, issue a preliminary decision on the application, and a Notice of Application and Preliminary Decision will be published and mailed to those who are on the mailing list for this application. That notice will contain the final deadline for submitting public comments.

**After the final deadline for public comments following any required Notice of Application and Preliminary Decision, the executive director will consider the comments and prepare a response to all relevant and material, or significant public comments. If comments are received, the response to comments, along with the executive director's decision on the application, will then be mailed to everyone who submitted public comments or is on a mailing list for this application.**

### OPPORTUNITY FOR A CONTESTED CASE HEARING

You may request a contested case hearing. A contested case hearing is a legal proceeding similar to a civil trial in state district court. Unless a written request for a contested case hearing is filed within 30 days from this notice, the executive director may approve the application. If no hearing request is received within the 30-day period, no further opportunity for hearing will be provided. A contested case hearing will only be granted based on disputed issues of fact that are relevant and material to the Commission's decision on the application. Further, the Commission will only grant a hearing on those issues raised during the public comment period and not withdrawn.

A person who may be affected by emissions of air contaminants from the facility is entitled to request a hearing. If requesting a contested case hearing, you must submit the following: (1) your name (or for a group or association, an official representative), mailing address, daytime phone number, and fax number, if any; (2) applicant's name and permit number; (3) the statement "[I/we] request a contested case hearing;" (4) a specific description of how you would be adversely affected by the application and air emissions from the facility in a way not common to the general public; (5) the locations

and distance of your property relative to the facility; (6) a description of how you use the property, which may be impacted by the facility. If the request is made by a group or an association, the one or more members who have standing to request a hearing, and the interests which the group or association seeks to protect, must also be identified. You may also submit your proposed adjustments to the application/permit which would satisfy your concerns. Requests for a contested case hearing must be submitted in writing within 30 days following this notice to the Office of the Chief Clerk, at the address below. If a hearing is timely filed, additional notice may be provided. Following the close of all applicable comment and request periods, the executive director will forward the application and any requests for contested case hearing to the TCEQ Commissioners for their consideration at a scheduled Commission meeting. If a hearing is granted, the subject of a hearing will be limited to disputed issues of fact relating to relevant and material air quality concerns raised during the comment period. Issues such as property values, noise, traffic safety, and zoning are outside of the Commission's jurisdiction to address in this proceeding.

### MAILING LIST

In addition to submitting public comments, you may ask to be placed on a mailing list to receive future public notices for this specific application mailed by the Office of the Chief Clerk by sending a written request to the TCEQ Office of the Chief Clerk at the address below. **INFORMATION** Written public comments or requests for a public meeting or contested case hearing should be submitted to the Office of the Chief Clerk, MC-105, TCEQ, P.O. Box 13087, Austin, Texas 78711-3087. For more information about this permit application or the permitting process, please call the Office of Public Assistance, Toll Free, at 1-800-687-4040. Si desea informacion en Español, puede llamar al 1-800-687-4040. General information regarding the TCEQ can be found at [www.tceq.state.tx.us](http://www.tceq.state.tx.us). Further information may also be obtained from CMM Grain Company, Inc. dba Charlie Myers Grain Co., P.O. Box 1076, Seymour, Texas 76380 or by calling Mr. Kelley Green, P.E., Director of Technical Services at (512) 476-8388. Issuance Date: January 24, 2006. 5c

## This Week's Devotional Message:



### FAITH WILL REVEAL THE JOY OF FORGIVENESS

If you are burdened with a feeling of resentment against someone who has wronged you in the past, you are bringing far more unhappiness to yourself than to the person whose action you resent. The Bible tells us to love one another; and to love is to forgive, no matter how serious the offense. If the Son of God, whose

teaching you follow, was able to forgive those who had subjected Him to the most heinous crime in all history, you can forgive someone a far lesser offense. Go to your church and learn how love brings peace and happiness, while resentment can cause only misery to yourself and those around you.

### ATTEND CHURCH THIS SUNDAY

#### HASKELL

- East Side Baptist Church**  
 Danny Manross, pastor  
 Sun. 9:45 a.m., 11 a.m., 6 p.; Wed. 7 p.m.  
 600 N. 1st East, Haskell
- Christian Church**  
 Dusty Garison, minister  
 Sun. Morn. 9:45 a., 10:45 a., 6 p.m.; Wed. 7 p.m.  
 107 N. Ave. F, Haskell
- Church of God**  
 Bruce Ray, pastor  
 Sun. 10 a.m., 11 a.m., 6 p.m., Wed. 7:00 p.m.  
 714 North First East, Haskell
- Trinity Lutheran Church**  
 Ron Rennegarbe, pastor  
 Sunday School 9:30 a.m., Worship 10:30  
 Hwy 380 East, Haskell
- Iglesia Bautista El Calvario**  
 Art Flores, Interim pastor  
 Sun. Morn. 9:45 a., 10:45 a.m., 5 p.m.; Wed. 7 p.m.  
 607 S. 7th, Haskell
- First United Methodist Church**  
 Rev. Daniel Echols, pastor  
 Sun. Morn. 9:45 a.m., 10:50 a.m. 6 p.m.; Wed. 6 p.m.  
 201 N. Ave. F, Haskell
- First Assembly of God**  
 Rev. J.C. Amburn  
 Sun. Morn. 9:45 a., 10:45 a.m., 6 p.m.; Wed. 7 p.m.  
 1500 N. Ave. E, Haskell
- St. George Catholic Church**  
 Father George Foney  
 Sat. Mass 7 p.m.; Sun. Morn. 9:00 a.m.  
 901 N. 16th, Haskell
- Church of Christ**  
 Jim Yates, minister  
 Sun. Morn. 9:30 a.m., 10:30 a.m., 6 p.m.; Wed. 7 p.m.  
 510 N. Ave. E, Haskell
- First Presbyterian Church**  
 Kelly Pigott, interim pastor  
 Sun. Morn. 9:30 a.m.  
 306 N. Ave. E, Haskell
- Trinity Baptist Church**  
 Tony Grand, pastor  
 Sun. Morn. 10 a., 11 a., 6:30 p.m.; Wed. 6:30 p.  
 114 S. Ave. D, Haskell
- Hopewell Baptist Church**  
 Sun. Morn. 9:30 a.m., 11:00 a.m.; Wed. 7 p.m.  
 908 N. Ave. A, Haskell
- Greater Independent Baptist Church**  
 Sun. Morn. 9:30 a., 11:00 a., 6:30 p.; Wed. 7 p.  
 301 N. 3rd St., Haskell

- New Covenant Foursquare**  
 Bill and Renee Glass, pastors  
 Sun. Morn. 10 a.m., 11 a.m., 8:30 p.m.; Wed. 7 p.  
 200 S. Ave. F, Haskell
- Mission Revival Center**  
 Rev. William Hodge  
 Sun. Morn. 10 a.m., 11 a.m., 6 p.m.; Tues. 6 p.m.  
 1600 N. Ave. B, Haskell
- First Baptist Church**  
 Greg Gasaway, pastor  
 Sun. Morn. 9:45 a., 10:55 a., 6 p.m.; Wed. 7 p.m.  
 301 N. Ave. E, Haskell
- Church in the Park**  
 Rev. Tim and Suzann Townsend  
 Sun. Morn. 10:30 a.m. Wed. 7 p.m.  
 Gazebo or Pavillion
- Cornerstone Fellowship Baptist Church**  
 Dr. Larry Nail, pastor  
 Sun. 9:30 a.m. 10:45 a.m., 6 p.m., Wed. 7 p.m.  
 1600 N. First St., Haskell
- Cross of Christ Fellowship**  
 Joe and Loretta Stulir, pastors  
 864-5404  
 Sun. 10:30 a.m.  
 455 CR 410, Haskell
- WEINERT**
- First Baptist Church**  
 J. C. Baker, pastor  
 Sun. Morn. 10 a.m., 11 a.m., Wed. 7 p.m.  
 Weinert
- Weinert Foursquare Church**  
 Rev. Robert Harrison  
 Sun. Morn. 10 a.m., 11 a.m. Wed. 7 p.m.  
 Weinert
- ROCHESTER**
- Church of Christ**  
 Steve Willis, minister  
 Sun. Morn. 9:45 a., 10:45 a., 6 p.m.; Wed. 6 p.m.  
 West on Main Street, Rochester
- First Baptist Church**  
 Jim Davis, pastor  
 Sun. 11:00 a.m., 6 p.m.; Wed. 6:00 p.m.  
 500 Main, Rochester
- Union Chapel Baptist Church**  
 Clovis Dever  
 Sun. Morn. 9:45 a., 10:45 a., 6 p.m.; Wed. 7 p.m.  
 Rochester
- Faith Chapel of Rochester**  
 Katherine Byrd, minister  
 Sun. Morn. 10 a.m., 11 a.m., 7 p.m.  
 Hwy 6, Rochester

- First United Methodist Church**  
 Rev. Daniel Echols, pastor  
 Sun. Morn. 9:00 a.m., 11:00 a.m.  
 Rochester
- SAGERTON**
- Sagerton Methodist Church**  
 Terry O'Rear, pastor  
 Sun. Morn. 9:45 a.m.  
 Sagerton
- Faith Lutheran Church**  
 Deborah Nissen, pastor  
 Sun. Morn. 9:15 a.m., 10:30 a.m.; Wed. 7 p.m.  
 Sagerton
- RULE**
- First Baptist Church**  
 Josh Stowe, pastor  
 Sun. Morn. 9:45 a., 11:00 a., 5 p.m.; Wed. 7 p.m.  
 1001 Union Ave., Rule
- Primitive Baptist Church**  
 Dale Turner Jr., pastor  
 First & Third Sundays 10 a.m.  
 Corner of 8th & Robins, Rule
- Church of Christ**  
 John Greeson, minister  
 Sun. Morn. 9:45 a., 10:40 a., 6 p.m.; Wed. 7 p.m.  
 811 Union, Rule
- First United Methodist Church**  
 Terry O'Rear, pastor  
 Sun. Morn. Worship 8:30 a.m.  
 1000 Union Ave., Rule
- Primera Iglesia Bautista**  
 Alfa y Omegs  
 Manuel Marin, pastor  
 Sun. Morn. 10 a., 11:00 a., 5 p.m.; Wed. 6 p.m.  
 500 Elm Street, Rule
- Sweet Home Baptist Church**  
 Bill Trice, pastor  
 Sun. Morn. 11 a.m., 5 p.m.; Wed. 5 p.m.  
 Gladstone Ave., Rule
- West Bethal Baptist Church**  
 Rev. Robert Sweet  
 Sun. Morn. 10 a., 11 a., 8 p.m.; Wed. 7:30 p.m.  
 300 Sunny Ave., Rule
- PAINT CREEK**
- Paint Creek Baptist Church**  
 Sun. Morn. 10:00 a.m., 11:00 a.m., 6 p.m.  
 Paint Creek
- O'BRIEN**
- O'Brien Baptist Church**  
 Jim Reid, pastor  
 Sun. 9:45 a., 11 a., 5 p., 6 p, Wed. 6 p.m.  
 O'Brien

## The Haskell Free Press

READ BY MORE PEOPLE IN HASKELL COUNTY THAN ANY OTHER NEWSPAPER.



## TAX PLANNING

Written By James E. Rodgers, CPA



### STREAMLINE YOUR RECORDS LIKE THE PROS

Organizing your personal financial records is like exercising. It's not always fun, and you're never quite sure if you're doing enough. Just as advice from a professional trainer might improve your routine, here are a few tricks used by accounting pros to stay organized.

First of all, add structure to your recordkeeping. Many accountants organize their filing system to align with a client's financial report. The same can true at home. Create a list of your important assets. Then organize your files in the same sequence as your list. For example, if item number four is your life insurance policy, then the fourth section of your filing system would be statements and correspondence related to that policy. Such a system will make document retrieval a snap.

Accounting professionals also know what to save and for how long. As guidance, keep a copy of your latest tax return handy and review the categories of deductions and income. If a bill or receipt does not support a line on your tax return, perhaps it can be tossed after a few months.

While the IRS has specific rules for tax records retention, none of the rules specify that these files must be kept under foot and in your way. Do what the pros do—box up old record and store them offsite. For you, "offsite" might mean the basement or attic.

Finally, many accountants keep a three-ring binder of important documents close at hand for quick reference. Your binder might contain back account, insurance, and other important information. Not only will this be handy for you, but also it could prove essential for your family in an emergency.

Organizing your financial records need not be burdensome. Exercising your filing "muscle" a little each day will keep your records in good shape come tax time.

### RODGERS & COMPANY

Certified Public Accountant  
 20 Southwest Third Street  
 Hamlin, Texas • 325-576-2356

### Sonic Drive-In

1402 N. Ave. E  
 864-8533  
 Managers: Leon & Carolyn Herring

### Steele Machine

Hwy. 280 • 864-2208

### Modern Way Food Store

1202 N. Ave. E • 864-3763

### Smitty's Auto Parts

107 N. 1st East • 864-2607

### HANSON PAINT & BODY SHOP

207 S. 1st • 864-3631  
 Professional Auto Body Repair  
 Glass Installation • 24 Hour Wrecker Service

### Rule Co-op Gin & Elevator

301 Adams • Rule • 997-2421

### Rice Springs Care Home, Inc.

1302 N. 1st • 864-2652  
 Medicare • Medicaid • Therapy

Committed To Excellence  
 In Service

### Attend Church This Sunday

## The Haskell Free Press

"The People's Choice"

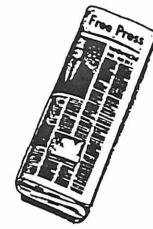
420 N. First  
 Haskell, Texas  
 940-864-2686



Serving Haskell County Since 1886



# Shop The Haskell Free Press CLASSIFIEDS



864-2686

ALL DEADLINES MONDAY 5 P.M.

864-2686

### For Sale

WINDBREAK TREES still available for order. Call Haskell SWCD at 864-8516 ext. 4. 5c

### Garage Sale

BENEFIT GARAGE SALE for Taylor's Team: Sat., Feb. 4, 8 a.m. to 2 p.m., Medford Buick-Pontiac building, 200 N. Ave. E, Haskell. Items for sale: piano, toy chest, changing table, bassinet, shuffleboard table, exercise equipment, bar stools, Christmas décor, cookware, adult and children's clothing, computer monitor and keyboard and more. 5p

GARAGE SALE: 304 N. 1st. Across from fire station. Sat., Feb. 4, 8 to 3. 5p

### Estate Sale

ESTATE SALE: Fri., Feb. 3, 700 N. 16th (Gibson). V.P. girls. 996-2428. Early sales. 4-5c

### Miscellaneous

HOUSE LEVELLING and foundation repair. No payments until work is satisfactorily completed. David Lee & Co. 325-675-6369. 1-888-486-8588. 6fc

### Jobs Wanted

SPRIGS and sprigging. 940-742-3347, 940-256-2729. 3-5c

### Wanted

WANTED: Long term hunting lease. 817-907-8774. 48-5p

### For Rent

FOR RENT: Furnished rooms for rent. Nightly, weekly. Call Lone Star Lodging 864-2238. 21fc

FOR LEASE: 3 bedroom, 1 bath, house and furnished/unfurnished apartments. 864-2238. 21fc

RENT TO OWN or cash offer. 303 N. 11th. 325-480-0678. 4-5c

FOR LEASE: 503 N. Ave. G. 2 bedroom, 1 bath. CH/A. 864-3762. 5c

### Real Estate

FOR SALE: Remodeled, brick 3 bedroom, 2 bath, CH/A, water well, large lot. 1203 N. Ave. L. Call Jolanda, 864-2604. 49fc

RENT TO OWN or cash offer. 303 N. 11th. 325-480-0678. 4-5c

FOR SALE by owner. 2 or 3 bedroom. Water well. Fireplace. Good condition. 940-864-2544. 5-6c

### Help Wanted

NOW TAKING applications for all positions at Sonic Drive In, Haskell. Apply in person. 25fc

WES-T-GO now accepting applications for cashier. Apply in person at store. 400 N. Ave. E. 50-5c

RICE SPRINGS Care Home is making a difference. We are taking applications for LVNs and CNAs. Contact Shandra at 864-2652. 5c

WANTED: Someone to remove bricks and clean for re-use. Call 940-673-8364, 864-8602. 4-5c



**Photos and Photo Pin Buttons**  
Available upon request.  
Sports Athletes  
Other Activities also.  
Contact  
**Bill Blankenship**  
940-864-3535

### Help Wanted

GIBSON CARE Center, Aspermont. Nurse aids needed. All shifts. CNA class starting soon. Learn while you earn! Call Mike, 940-989-3526 E.O.E. 4-5c

CORNERSTONE FELLOWSHIP Baptist Church is seeking a part-time secretary. Hours are negotiable. Please send resume to: Cornerstone, P.O. Box 3, Haskell, Texas 79521 4-5p

HASKELL CISD is now accepting applications for the position of District Technology Coordinator. Applications can be picked up at the Haskell CISD Administration office at 605 North Avenue E, Haskell, Texas 79521, or you can call the Haskell CISD Administration Office at 940-864-2602. Applications should be submitted on or before 3:00 p.m. February 24, 2006. Haskell CISD is an Equal Opportunity Employer. All applicants for all positions are considered without regard to race, color, national origin, age, religion, sex, marital or veteran status, the presence of a medical condition, disability, or any other legally protected status. 5-6c

CAPROCK HOME HEALTH attendant needed, with no criminal background, in Rule. Call Brenda 1-800-658-9569. 5-6c

### Public Notices

TEXAS COMMISSION ON ENVIRONMENTAL QUALITY

NOTICE OF RECEIPT OF APPLICATION AND INTENT TO OBTAIN AIR PERMIT PROPOSED AIR QUALITY PERMIT NO. 77698

APPLICATION CMM Grain Company, Inc. dba Charlie Myers Grain Co., has applied to the Texas Commission on Environmental Quality (TCEQ) for issuance of Air Quality Permit No. 77698 which would authorize continued operation of the Grain Elevator located at 202 North Avenue A East, Haskell, Haskell County, Texas. The facility will emit the following air contaminant: particulate matter including particulate matter less than 10 microns in diameter.

This application was submitted to the TCEQ on December 27, 2005. The application is available for viewing and copying at the TCEQ central office, the TCEQ Abilene regional office and the Haskell County Courthouse, 1 Avenue D, Haskell, Haskell County, Texas. The facility's compliance file, if any exists, is available for public review in the Abilene regional office of the TCEQ.

The TCEQ executive director has determined the application is administratively complete and will conduct a technical review of the

A guy with money to burn—should find a gal that likes to play with fire. We made a special purchase of quality sofas starting at \$449. We still offer free delivery, and small town personal service. Kinney Furniture in Stamford. 325-773-2232. 5c

application.  
**PUBLIC COMMENT/ PUBLIC MEETING You may submit public comments, a request for a public meeting, or request a contested case hearing to the Office of the Chief Clerk at the address below.** The TCEQ will consider all public comments in developing a final decision on the application. **The deadline to submit public comments is 30 days after newspaper notice is published.**

The purpose of a public meeting is to provide the opportunity to submit comments or ask questions about the application. A public meeting about the application may be held if the executive director determines that there is a significant degree of public interest in the application or if requested by a local legislator. A public meeting is not a contested case hearing.

If only comments are received on the application, the response to comments, along with notice of the executive director's action on the application, will be mailed to everyone who submitted comments or is on the mailing list for this application.

If a hearing request is timely filed, the executive director will complete the technical review, issue a preliminary decision on the application, and a Notice of Application and Preliminary Decision will be published and mailed to those who are on the mailing list for this application. That notice will contain the final deadline for submitting public comments.

After the final deadline for public comments following any required Notice of Application and Preliminary Decision, the executive director will consider the comments and prepare a response to all relevant and material, or significant public comments. If comments are received, the response to comments, along with the executive director's decision on the application, will then be mailed to everyone who submitted public comments or is on a mailing list for this application.

**OPPORTUNITY FOR A CONTESTED CASE HEARING You may request a contested case hearing.** A contested case hearing is a legal proceeding similar to a civil trial in state district court. Unless a written request for a contested case hearing is filed within 30 days from this notice, the executive director may approve the application. **If no hearing request is received within the 30-day period, no further opportunity for hearing will be provided.** A contested case hearing will only be granted based on disputed issues of fact that are

relevant and material to the Commission's decision on the application. Further, the Commission will only grant a hearing on those issues raised during the public comment period and not withdrawn.

**A person who may be affected by emissions of air contaminants from the facility is entitled to request a hearing. If requesting a contested case hearing, you must submit the following: (1) your name (or for a group or association, an official representative), mailing address, daytime phone number, and fax number, if any; (2) applicant's name and permit number; (3) the statement "[I/we] request a contested case hearing;" (4) a specific description of how you would be adversely affected by the application and air emissions from the facility in a way not common to the general public; (5) the locations and distance of your property relative to the facility; (6) a description of how you use the property, which may be impacted by the facility. If the request is made by a group or an association, the one or more members who have standing to request a hearing, and the interests which the group or association seeks to protect, must also be identified. You may also submit your proposed adjustments to the application/permit which would satisfy your concerns. Requests for a contested case hearing must be submitted in writing within 30 days following this notice to the Office of the Chief Clerk, at the address below.**

If a hearing is timely filed, additional notice may be provided. Following the close of all applicable comment and request periods, the executive director will forward the application and any requests for contested case hearing to the TCEQ Commissioners for their consideration at a scheduled Commission meeting. If a hearing is granted, the subject of a hearing will be limited to disputed issues of

fact relating to relevant and material air quality concerns raised during the comment period. Issues such as property values, noise, traffic safety, and zoning are outside of the Commission's jurisdiction to address in this proceeding.

**MAILING LIST** In addition to submitting public comments, you may ask to be placed on a mailing list to receive future public notices for this specific application mailed by the Office of the Chief Clerk by sending a written request to the TCEQ Office of the Chief Clerk at the address below.

**INFORMATION** Written public comments or requests for a public meeting or contested case hearing should be submitted to the Office of the Chief Clerk, MC-105, TCEQ, P.O. Box 13087, Austin, Texas 78711-3087. For more information about this permit application or the permitting process, please call the Office of Public Assistance, Toll Free, at 1-800-687-4040. Si desea información en Español, puede llamar al 1-800-687-4040. General information regarding the TCEQ can be found at www.tceq.state.tx.us.

Further information may also be obtained from CMM Grain Company, Inc. dba Charlie Myers Grain Co., P.O. Box 1076, Seymour, Texas 76380 or by calling Mr. Kelley Green, P.E., Director of Technical Services at (512) 476-8388.

Issuance Date: January 18, 2006. 5c

### PUBLIC NOTICE

Haskell CISD has purchased property at the northwest corner of Avenue A and North 11th Street in Haskell, formerly owned by Haskell County Gin. There are currently several old cotton trailers parked on the property. The school district respectfully requests the owners of the trailers to remove them from the property prior to February 28, 2006. Owners of the trailers, please be advised that Haskell CISD will begin disposing

**Dodson Concrete Construction**  
Commercial – Residential  
David Dodson  
704 N. Ave. F • Haskell  
940-864-2038  
Over 20 Years  
in the Business  
FREE ESTIMATES

**I BUY HOUSES**  
Quick cash and closing on homes \$25,000 or less.  
Call Jim at 325-518-8128

**LANGFORD ROUSTABOUT SERVICE**  
SCOTT LANGFORD  
Roustabouts  
Backhoes  
Winch Trucks  
Dump Trucks  
Welders  
Specializing In:  
Oilfield Repair,  
Maintenance & Construction  
Mobile: 940-256-0535  
Office: 940-864-3490  
Home: 940-864-2565  
8348 N. Hwy. 277  
Haskell, Texas 79521

**EXPERT AUTO WORK**  
REASONABLE RATES  
  
See us for all your auto mechanic needs.  
20 years experience. We do it right the first time.  
305 South Ave. E • Haskell

**"I HAVE A HOUSE AND TWO CARS. IS THERE SUCH A THING AS ONE-STOP INSURANCE SHOPPING?"**  
**YES. CALL ME ABOUT OUR HOME AND AUTO DISCOUNTS.**  
CHAN GUESS  
P O BOX 617  
HASKELL  
(940) 864 2665  
P.S. Call or stop by for a free quote  
  
Allstate.  
You're in good hands.  
Discount and insurance offered only with select companies and subject to availability and qualifications. Discount amount may be lower. Allstate County Mutual Insurance Company and Allstate Texas Lloyd's; Irving, TX © 2003 Allstate Insurance Company.

**Haskell Volunteer Fire Dept.**  
  
is accepting donations to build Fire Station #2 at 300 S. 1st  
to house donated Texas Forest Service firefighting equipment and provide a larger training facility. If you would like information on making a donation or how you can help contact Fire Chief Bill Steele 940-864-2208; Sam Watson 940-864-3655; Randy Shaw 940-864-2023; or ask any Haskell fireman for details.  
Donations may be mailed to:  
**Haskell Volunteer Fire Dept.**  
301 N. First St., Haskell, TX 79521

of the remaining trailers on March 1, 2006. 5-8c

### NOTICE

The Haskell Memorial Hospital District Board of Directors will be accepting sealed bids until February 17, 2006, at the office of the Administrator at 1 North Avenue N, Haskell, Texas 79521, for the purchase of a 60x100 foot metal building complete with bathrooms, kitchen facilities and storage areas.

Specifications can be picked up at the main office at the Hospital, located at 1 North Avenue N, Haskell, Texas.

The Board of Directors reserves the right to accept or reject any or all bids.  
Haskell Memorial Hospital  
Board of Directors 4-7c

### POL CALENDAR

The Haskell Free Press is authorized to make the following announcement for the political office in Haskell County, subject to the action of the 2006 Primaries.

Unless otherwise specified the candidates listed paid for the announcement, and have designated themselves as campaign treasurer.

All political advertising and announcements are cash in advance.

**Dist. Judge 39th Judicial Dist.**  
John Fouts  
Shane Hadaway  
(Pd. by Amanda M. Hadaway, 309 Bonnie Lane, Haskell, Texas 79521, Campgn. Treas.)  
**Haskell County Judge**  
David C. Davis

**HASKELL 2 BR OWNER FINANCE**  
Fenced yard with trees, garage, carports, spacious home. See at 1403 Ave. K. Easy terms.  
Call Jim at 325-518-8128

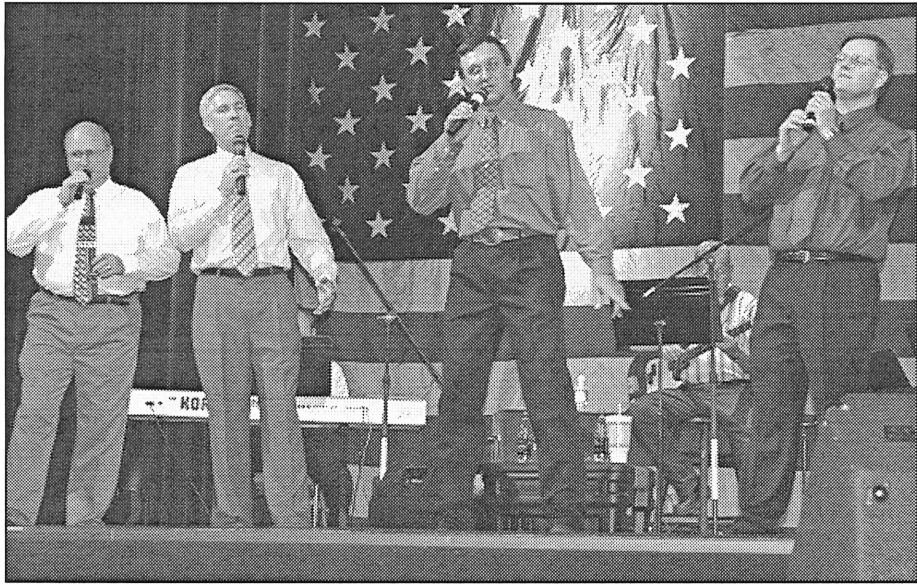
**Wes-T-Go in Stamford**  
is now hiring a **Store Manager**  
Apply in person at 512 E. Hamilton in Stamford or  
Call 325-672-8573

**Nanny Plumbing, Inc.**  
301 S. Ave. E • Haskell  
940-864-3043  
Sales and Service for Residential Plumbing and Heating/Cooling, Pump Installer and Sprinkler Systems.  
License numbers available upon request.

**RULE 2 BR RENT TO OWN**  
Corner lot with trees. Needs TLC.  
Call Jim at 325-518-8128

**Haskell County REALTY**  
  
1206 N. AVE. J. 3 bedroom, 2 bath. Large two car garage. Fenced. Corner lot with water well. \$59,900.  
206 N. AVE. M. 3 bedroom, 2 bath. Fenced yard with dog run. \$39,900.  
1104 N. 8TH ST.: Newly remodeled, 4 bedroom, 2 bath. Beautiful brick home. Large open living area. Enclosed sunroom. Fenced backyard with water well. Many more amenities.  
BRAND NEW HOME: 3 bedroom, 2 bath. Call for details.  
13 AVE. K EAST: Immaculate home. 3 bedrooms, 3 baths. Large living area.  
104 N. AVE. M. 2 bedroom, 1 bath. Open kitchen and dining room. 1 car garage. Fenced backyard. Priced to sell.  
75 ACRES approximately 7 miles from Haskell off of FM 618 South in southeast Haskell County. 25 acres cultivated. 50 acres pastureland. One tank. City water availability.  
103 N. Ave. E  
940-864-2665  
1-800-658-6342  
or call  
Bridget or Chan Guess 864-6142  
Hess Hartsfield, Broker 864-2004

**RIKE REAL ESTATE**  
Mary Rike, Broker John Rike, Agent  
411 1/2 S. First Street  
Haskell, Texas 79521  
940 864 2411 940 864 2332  
mrike@dtntspeed.net  
www.rikerealestate.com  
  
**RULE: 702 12th St. 3-2-1.** Nice home with large living, wood paneling, comes **SOLD** above, washer, dryer, refrigerator, freezer. C/HA.  
1007 N. 8TH. Large beautifully decorated three-bedroom, 2 1/2 baths, story and one-half. Downstairs has two bedrooms, **SOLD** breakfast area, center island, formal living and dining, utility room, large master bedroom with sitting area. Upstairs has large open area with room divider for two beds, dormer area, bath and storage. Yard has well and sprinkler system and detached garage. Property is in immaculate condition.  
1007 N. AVE. D. 2-1-carport, unique home with wrap-around porch, living, **SOLD** window unit and heater. Owner will sell furnished or unfurnished.  
*Come by Rike Real Estate for a complete list.*



**IMITATION STATS**—The popular singing group will be in concert at the fund-raiser benefit for the Wichita-Brazos Museum, Feb. 12 in Knox City. From the left are Curtis Priddy, Sid Winn, Royce Miller and Tim Nix, who will present the music, fun and sound of the famous Statler Brothers.

## Concert to benefit museum

As a fund-raiser for the Knox County Museum, sponsored by the Friends of Knox County Historical Commission (KCHC), the Imitation Stats of Seymour will be in concert at the Knox City High School Auditorium, Sun., Feb. 12.

Using all Statler Brothers songs, and patterning after their concerts, which has the approval of the original Statler Brothers Group, the program

presented by the Seymour group will also include songs they have never presented before.

The popular Seymour group, made up of local musicians with other jobs, holds to a busy concert schedule of six to eight events a year.

With concerts which may draw crowds ranging from 200 to 400 people, their traveling tours are close enough to home for them to make it

to their Seymour jobs the next day. Beginning with a few Seymour men years ago, other members have been added to the group that enjoys the music and fun as much as the people in their audiences.

The concert will be from 3:00 to 4:30 p.m. No charge will be made for the program. Donations will be accepted.

## Calendar

### Burn ban issued

A burn ban has been issued for Haskell County. The use of combustible materials in an outdoor environment by any person is prohibited. Combustible materials specifically include, but are not limited to, fireworks, camp fires, welding and any other pyrotechnic material, which in the manner or means of its use could result in a wildfire. The ban will continue until conditions warrant otherwise, stated an order from Haskell County Judge David C. Davis. A person who knowingly or intentionally violates this order commits a Class C misdemeanor, punishable by a fine of up to \$500.

### Storm sirens

The City of Haskell will test the storm sirens at noon on Fridays.

### Story time

Story time will be held at the Haskell Co. Library each Thursday morning at 10:30 a.m. Stories, songs, activities, crafts and story telling by Paula Rennegarbe will be featured for children.

### Rule C of C banquet

The annual Rule Chamber of Commerce banquet will be held Thurs., March 2 at 7 p.m. at Rule ISD.

### Society to meet

The Haskell County Historical & Genealogical Society will meet Mon., Feb. 6 in Haskell City Hall at 7 p.m. Jill Watson, warden at Rolling Plains Regional Jail and Detention Center, will be the guest speaker.

### ADHD program

Tori Caparoon, RN, BSN of Midwestern State University will present a free program on evaluation criteria, treatment options and comorbidities of Attention Deficit Hyperactive Disorder Thurs., Feb. 9 at 7 p.m. at the Haskell High School Auditorium.

### Cookbook sale

The Friends of Old Glory School committee has reordered the cookbook, 'Amazin' Grazin,' and will have them for sale at the Old Glory 50 Star Stop beginning Fri., Feb. 10 at 5 p.m. For more information, call Suzie 989-2983, Phyllis 989-2965, Carm 989-2794, Sharon 989-2697, Dorthy 996-2179 or Florence at 989-3153. Proceeds benefit the repair fund for the Old Glory school building.

## Wildfire

continued from page 1  
safe conditions."

Burn bans in 221 counties remain in effect.

Citizens are urged to continue a common sense approach to wildland fire prevention:

Observe burn bans; use the vehicle ashtray; be careful when using equipment or welding outdoors; avoid driving or parking on tall grass; and remember that almost any heat source can start a fire under these conditions. Anyone who observes smoke or flames is asked to call 911 immediately.

Homeowners can take steps to protect their property by ensuring vegetation is thinned enough to prevent flames from finding a way to the structure. They should remove other burnable material at least 30 feet around their homes. Helpful tips can be found online at <http://www.firewise.org/>.

A toll free hotline has been established for anyone who has information regarding possible arson starts. The Texas Arson Hotline is 1-877-4FIRE45 (817-434-7345).

Shop Haskell first

**STAR STOP**  
706 N. 1st • Haskell • 864-2062

**Hamburger Baskets**  
with fries or tots and 24 oz fountain drink

**Steakfinger or Chicken Strip Baskets**  
with fries, gravy, Texas toast, and 24 oz fountain drink

**\$1.00 off**

  
Go Indians!



## Elect JOHN FOUTS FOR District Judge

*I have the experience and background to be your District Judge*

- Assistant Criminal District Attorney, Lubbock County
- Practice of Law for 28 Years
- District Attorney, 39th Judicial District, 16 Years
- Tried Contested Cases – both Civil and Criminal
- Tried over 60 Jury Trials — both Civil and Criminal
- Impaneled 193 Grand Juries
- Won numerous Appellate Cases including the writing of briefs
- Presented Oral Arguments to Appellate Court Justices

Pd. Pol. Adv. Pd. for by John Fouts, Campgn. Treasurer

## ATTENTION PROPERTY OWNERS!

Property owners have certain rights that may reduce their property tax burden.

### HOMEOWNERS

Persons who own their residence on January 1, 2006, may claim their home as a residential homestead. The filing of this document is only necessary if the homeowner has changed homesteads since January 1, 2005, or has become eligible for additional exemptions since last year. Homeowners may also defer the portion of the tax on their residence homestead if the value of the home was raised more than 5% above the previous year. Although the tax collection is deferred, interest continues to run on the unpaid portion of tax at a rate of 8% per annum and the deferred tax remains a lien on the property. To apply for the deferral, the owner should contact the appraisal district which appraised the property in question and complete an application.

### DISABLED PERSONS

Persons who are disabled under Social Security law are entitled to additional exemptions on their residential homestead. Disabled applicants must apply with the appraisal district and furnish a determination letter from Social Security. Disabled persons now receive all benefits on their home that are available to over 65 persons (see below).

### PERSONS WHO ARE OVER 65 YEARS OF AGE

Persons who are over 65 years of age or disabled persons may file for additional exemptions and a ceiling on school taxes for their residential homestead. They will receive a prorated amount of the exemption amounts for the part of the year that any owner is 65. Over-65 persons should apply for this exemption at the appraisal district office in their area. Over-65 persons are also eligible to defer paying the tax on their residential homestead as they wish. The taxes continue to accrue during the deferral along with an interest rate of 8% annually, but no attempt will be made to force payment during the deferral. Details and an application may be obtained from any appraisal district of the State Comptroller.

### DISABLED VETERANS

Persons who have been declared disabled by the Veteran's Administration are eligible for additional exemptions on property they own. The declaration letter from VA is mailed annually, but the appraisal district only needs a copy in the first year of eligibility or if the percentage of disability changes.

### FARM AND RANCH OWNERS

Farmers and ranchers may be entitled to receive an alternate method of appraisal determined by the farm income to the property. This method is available to farms and ranches commercially raising crops or livestock or which are used as a wildlife habitat under State guidelines. An application for agricultural use value and additional information is available from your appraisal district. Re-filing is only necessary if requested to do so by the Chief Appraiser.

### EXEMPTION APPLICATIONS

Exemption applications for all property tax exemptions including total exemptions for charitable, religious, and other total exemptions may be obtained from an appraisal district nearest you or through the State Comptroller's Office at 1/800-252-9121.

### BUSINESS PERSONAL PROPERTY OWNERS

State law now requires the filing of a rendition declaring what types of business personal property that a person or company owns. Failure to file the rendition will result in a 10% penalty. If a fraudulent rendition is filed, a 50% penalty is mandated. A rendition can be obtained from the appraisal district office where the property is located. A 30 day filing extension is available by written request.

This is a public service announcement by the following appraisal district:

## Haskell CAD

P. O. Box 467 • Haskell, Texas 79521 • 940-864-3805

## Brighten your home this winter with your perfect color.

### E-Z Kare® Acrylic Latex Interior Paint

- One-coat coverage
- Excellent scrubability
- Fast drying
- Easy to clean
- 25-year warranty

**18<sup>99</sup>**  
Gal. Flat  
K 354 217 F4

**20<sup>99</sup>**  
Gal. Eggshell  
K 463 851 F4

**21<sup>99</sup>**  
Gal. Satin  
K 258 916 F4

**22<sup>99</sup>**  
Gal. Semi-Gloss  
K 358 556 F4

E-Z Kare Interior Latex Primer  
18.99 Gal. K 388 058 F4



**\$3** Your choice  
E-Z Kare 9" Smooth  
or Semi-Smooth  
Roller Cover  
K 178 134, 175 812



Find just what you need for your paint projects, all in one helpful stop!



Sale ends February 28, 2006

**True Value.**  
Help Is Just Around The Corner.

Hwy. 277 North • Haskell, Texas

Phone 940-864-8551

Store Hours:

Mon.-Fri. 7:30 to 5:30; Sat. 7:30 to 5