

## Football games

**HASKELL**  
7th-8th-JV vs Knox City  
Thurs., Nov. 3, 5 p.m.  
at Rochester  
Indians vs Knox City  
Fri., Nov. 4, 7:30 p.m.  
at Knox City  
\*\*\*

**PAINT CREEK**  
Jr. High vs Spur  
Thurs., Nov. 3, 5:30 p.m.  
at Spur  
Pirates vs Spur  
Fri., Nov. 4, 7:30 p.m.  
at Paint Creek  
\*\*\*

**RULE**  
JV Blue/White  
vs Throckmorton  
Thurs., Nov. 3, TBA  
at Rule  
JH vs Jayton  
Thurs., Nov. 3, 5:30 p.m.  
at Jayton  
Bobcats vs Jayton  
Fri., Nov. 4, 7:30 p.m.  
at Jayton

## Basketball games

**HASKELL**  
VB Scrimmage vs Snyder/AHS  
Mon., Nov. 7, TBA  
\*\*\*

JV-V G vs Throckmorton  
Tues., Nov. 8, 5 p.m.  
at Haskell  
**PAINT CREEK**  
Pirates vs Lueders-Avoca  
Tues., Nov. 8, 6:30 p.m.  
at Lueders

## Calendar

### Office closed

The Haskell Free Press office will be closed Thurs. afternoon, Nov. 3.

### Society to meet

The Haskell County Historical & Genealogical Society will meet Mon., Nov. 7 in Haskell City Hall at 7 p.m.

### Dressing, desserts

The Experienced Citizens Center in Haskell will bake dressing or desserts in time for Thanksgiving dinner. To order dressing or cobblers, call 864-3875. Orders may be picked up Tues., Nov. 22 after 3 p.m. at the center.

### Chicken fajita lunch

A chicken fajita plate lunch will be served Sun., Nov. 6 from 11 a.m. to 1 p.m. at the Haskell High School Cafeteria to benefit a medical fund for Zella Moeller. Plates will be \$5 each.

### Veterans lunch

A free lunch to honor all veterans will be served Fri., Nov. 11 from 11 a.m. to 1 p.m. at the Church of Christ gym, 510 N. Ave. E in Haskell. First Christian Church and the Church of Christ will host the lunch for all veterans and their families in honor of their service to our country.

### Yard sale

The youth of the New Vision Worship Center, East Hwy. 380, Haskell will host a fund-raising yard sale Sat., Nov. 5 from 8 a.m. to noon to benefit the upcoming Winterfest.

### Decorating help

Christmas decorating at the courthouse will begin right away. Those who would like to help should call Bob or Darlene Smith at 864-2995. The 'Adopt a Deer' program is still underway. See Abe Turner at the Chamber office to participate.

### Veteran's breakfast

Haskell CISD invites all veterans to a flag raising ceremony and breakfast Fri., Nov. 11 from 8:30 to 9:30 a.m. at the Haskell Elementary School.

### Story time

Story time will be held at the Haskell Co. Library each Thursday morning at 10:30 a.m.

## Index

Obituaries .....Page 2  
Out of the Past .....Page 4  
Menus .....Page 8  
Classifieds .....Page 9

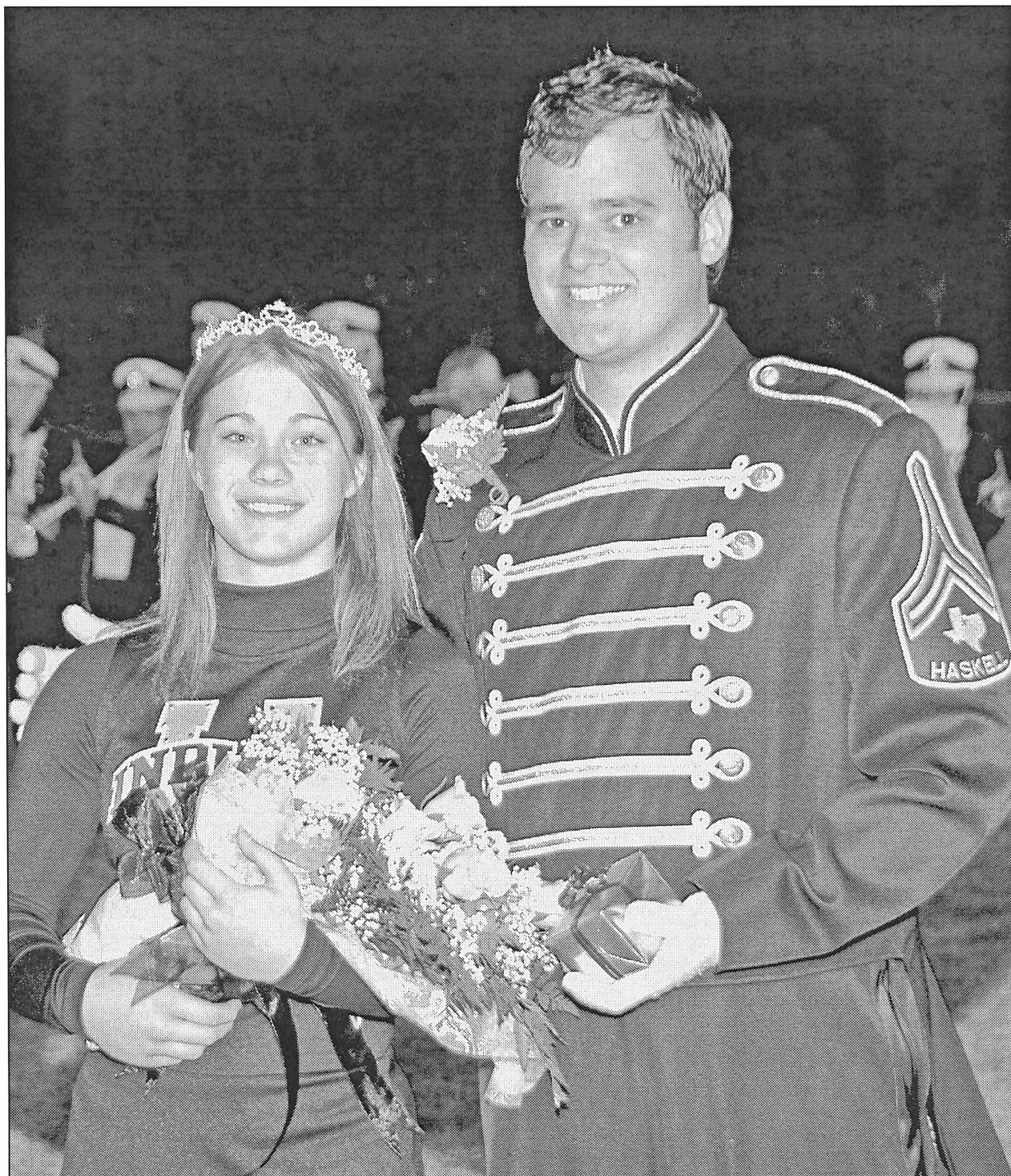
# Vote Tuesday

# The Haskell Free Press

VOL. 119-NO. 44, ©NOVEMBER 3, 2005

"The People's Choice"

10 PAGES-ONE SECTION-50 CENTS

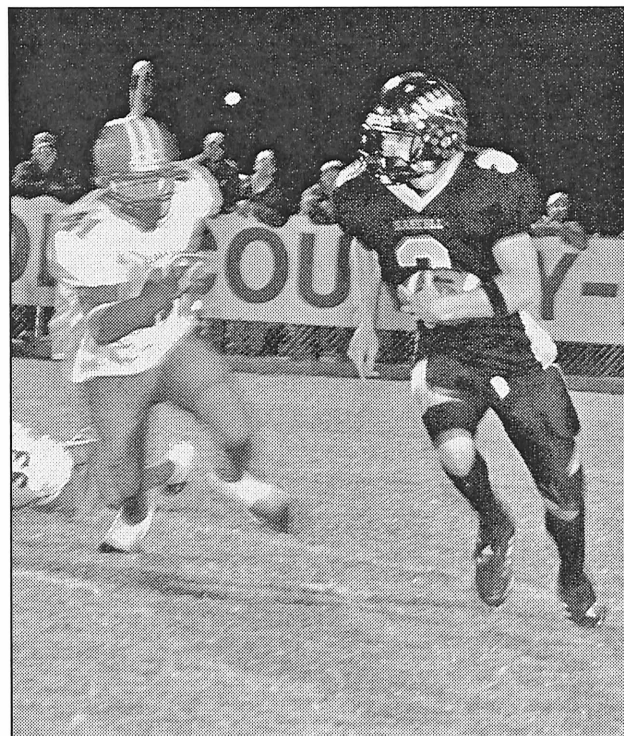


**INDIAN BAND FAVORITES**-Haskell students, Kerri Newton and Caleb Hudgens, were named Band Beau and Band Sweetheart at

the Indians' game with Albany Lions, Fri., Oct. 28.

Photo by Bill Blankenship

## Albany Lions roar over Indians, 28-14



**OUTRUNNING A LION**-Haskell Indian #3, Josh Barbee is chased by an Albany Lion in their game, Oct. 28. Photo by Bill Blankenship

Albany's first play of the game, Friday, was a 5 yard penalty. The second play of the game gave the Lions a loss of 5 yards. The third play of this important District 9-A football game gave Haskell the football via the pass interception by defensive back, Jeremy Sorrells.

On the Indian's first play, Josh Barbee got the 6-yard TD run to carry the football into the north end zone to give Haskell a 6-0 lead. The try for the 2 point conversion failed.

Neither team could get much going the rest of the first half, until the 1:11 mark, when Haskell scored on a beautiful run of 68 yards by running back, Barbee. The 2 point conversion try of a pass from QB Matt Brown to running back, Travis Adams, found its mark. Haskell 14, Albany 0 at the intermission.

The intermission brought new life to the Lions. Scoring 3 times in the third quarter of play, the Lions finally got the lead, 21 to 14. Albany scored their 3rd TD of this quarter at the :32 seconds mark, to go ahead by 7 points. On the ensuing kick-off, Albany was able to recover the football on Haskell's 29 yard line.

Five plays later, the Lions scored their last TD of the evening to put

the final score, Haskell 14, Albany 28.

Albany used a balanced attack both on the ground and in the air to knock Haskell from the undefeated rank. With only one game remaining, Albany stands to get the Lions' share of District 9-A. The Haskell Indians are still in the play-off picture.

QB Brown had 7 carries for 13 yards. Running back Barbee got 83 yards on 10 carries and 2 TDs. Running back Cameron Short had 63 yards on 8 carries, and running back Josh Rodriguez had 2 carries for 19 yards.

Albany's sub-varsity teams defeated the Haskell sub-varsity teams on Thursday in Albany. The Lion's 7th grade won 30 to 12, their 8th grade won 26 to 6, and their JV won 34 to 8.

The 8th grade Warriors will play Knox City in Rochester, Thurs., Nov. 3 at 4:00 p. m. The 7th grade warriors will play Hamlin in Rochester at 5:00 p.m. and the JV Indians will travel to Ranger to play at 5:00 p.m.

To close out their regular 2005 season, the Varsity Indians will travel to Knox City, Friday. Kick off time is 7:30 p.m.

## Election set for Nov. 8

A special election will be held in Texas, Tues., Nov. 8 on nine proposed amendments to the Texas Constitution. Hours of voting are from 7:00 a.m. to 7:00 p.m.

Location of Haskell County polling places are as follows:

Box 1: St. George Catholic Church, 901 N. 16th St., Haskell

Box 2: Assembly of God Church, 1500 N. Ave. E, Haskell

Box 3: Extension Building, S. Ave. D, Haskell

Box 4: Experienced Citizens Center, S. 1st St., Haskell

Box 5: Rule High School Gym, 1100 Union Ave., Rule.

Box 6: Rochester Fire Department, Main Street, Rochester

Box 7: O'Brien City Hall, Grand Central Ave., O'Brien

Box 8: Weinert School Building, Hilmer Street, Weinert

Box 9: Paint Creek School Library, FM Road 600, Paint Creek

Box 10: Sagerton Community Center, Garfield Ave., Sagerton

Early voting by personal appearance will continue weekdays during regular working hours through Fri., Nov. 4, at the Haskell County Clerk's Office at the County Courthouse in Haskell.

All voters are reminded that they must bring their registration card, drivers license or other form of identification when they come to vote.

## Study lists Haskell CISD in top 25

According to a report of results of a study published in the Oct. issue of "TACS Today," by the Texas Association of Community Schools, Haskell Independent School District is one of the districts in their enrollment classification of 1A ranked in the top 25 in the state.

Academically, Haskell CISD was ranked number 24 in Class 1A classification in the study. Goldthwaite CISD was ranked number 13. They were the only Big Country area 1A districts named to the listing. The ranking was based on 15 factors, including test scores and graduation and dropout rates.

The report was based on a recent study by former Tarleton State University professor Dr. Jimmy Byrd and two doctoral students, who are superintendents. Identifying the best academic schools and studying the strategies superintendents use to improve student performance, the researchers reported finding that superintendents of the best schools emphasized academic performance and also focused on accountability and data-driven decision making. According to Byrd, who is now teaching at the University of North Texas, most of the districts have low superintendent turnover.

The findings of the study are similar to results from a similar study made three years ago.

Haskell CISD Superintendent Eddie Bland has been with the Haskell CISD since June, 1999.

FOR NEWS ITEMS OR TO SUBSCRIBE, CALL 864-2686



Like what you're reading?  
Call 940-864-2686  
to subscribe.

**GONZALES CARPET CLEANING**  
 Carpet Cleaning • Upholstery Cleaning  
 Emergency Water Extraction • Expert Floor Care  
 Waxing Polishing & Cleaning

Residential & Commercial  
 (325) 773-2667 • (325) 773-2258

Robert Gonzales  
 P. O. Box 929  
 Stamford, Tx  
 79553

**BERNARD E. GODLEY, INC.**  
**TAX SERVICE AND BOOKKEEPING**  
 Specializing in Farm, Ranch & Agri-business  
 Over 35 Years Experience  
**940-889-8809**  
 98 Hill Drive • Seymour, Texas  
 Fax 940-889-4908

**Brooke Insurance**  
 Auto • Home • Commercial  
 has moved to  
**1 Avenue E • Haskell**

Please note that we have moved to better serve your insurance and financial needs.  
**940-864-2629**

We appreciate your business!  
 Our number will remain the same so feel free to call with any questions or concerns.  
 www.BrookeAgency.com

**Jones-Haskell Eye Clinic**  
 Dr. Trussell Thane, O.D.  
 Therapeutic Optometrist  
 Appointments Available • Monday through Friday


Dr. Thane provides comprehensive eye care including the diagnosis and treatment of eye disease. Dr. Thane offers complete evaluation for eyeglasses and contact lenses.

Various contact lens packages available.  
 MEDICARE, BLUE CROSS AND BLUE SHIELD AND FIRSTCARE ACCEPTED.

1501 Columbia • Stamford  
 325-773-2083  
 Hours: M.-Th. 8:30 to 5; Fri. 8:30 to 1

**TAX PLANNING**

Written By  
**James E. Rodgers, CPA**



**IT'S TIME TO GET SERIOUS ABOUT 2005 TAX PLANNING**  
 Interested in saving taxes? Now's the time to act. Reviewing your business or personal situation before year-end can help lower your 2005 tax bill. Here are some strategies to consider.

Keep an eye on your tax bracket. Moving upward from bracket to bracket costs you at least two percent higher tax on the additional income. Knowing when to take—or delay—earnings such as bonuses or commissions allows you to control your tax bracket. If you're a business owner, think about adjusting your salary between years.

Boost contributions to your 401(k) or other retirement plan. The benefits are two-fold: current taxable income is reduced, and you enjoy tax deferral on the plan growth.

Delay sales to qualify for long-term rates. The tax rate for most long-term capital gain assets is 15% (5% for those in the lower two tax brackets). Short-term gains are taxed at ordinary income rates, which can be as high as 35%. Consider holding assets long enough (more than 12 months) to qualify for the lower rates.

Elect the installment method. If delaying an asset sale is not an option, you still might be able to defer the income and related tax. For sales of certain property, you can choose installment reporting.

Regulate your investment income. Delay interest income until 2006 by purchasing a certificate of deposit (CD) or other security that matures after year-end.

If you've made a loan that you're now unable to collect, you may be entitled to a bad debt deduction. It's important to be able to show that you tried to collect, so take the necessary steps before year-end.

More tax-savings strategies to implement before year-end include transferring assets to children, making charitable contributions, bunching itemized deductions, and taking advantage of increased business asset expensing amounts. For details and assistance in your year-end tax planning, call us.

**RODGERS & COMPANY**  
 Certified Public Accountant  
 20 Southwest Third Street  
 Hamlin, Texas • 325-576-2356

# Haskell cheerleaders win NCA awards

The Haskell High School cheerleading squad recently won several awards at the National Cheerleading Association (NCA) camp held at Wayland Baptist University in Plainview. The camp attracted over 300 cheerleaders from the surrounding towns.

Cheerleaders were evaluated by NCA staff each day and received blue ribbons, which represent a superior rating, at every evaluation. All nine squad members were nominated to try out for All-American for their display of strength and excellence in jumps, tumbling, motions, and/or leadership. Of those nine, Kerri Newton, Amber Bingham, Allison Mitchell and Ashton Rutkowski were all selected for the All-American team. Caleb Hudgens was selected into the All-American Mascot Team.

Other awards won by the entire squad include:

The Herkie TEAM award, named after NCA's founder L. R. Herkimer, is awarded to squads who exemplify the qualities upon which NCA was founded including leadership, values and teamwork. Haskell was awarded the "Stunt Smart" award for having outstanding effort in spotting and learning in stunt class.

Spirit Stick presented to the squad showing the most sincere spirit and enthusiasm throughout the entire week at camp. Haskell won a spirit stick on three out of four nights at camp.

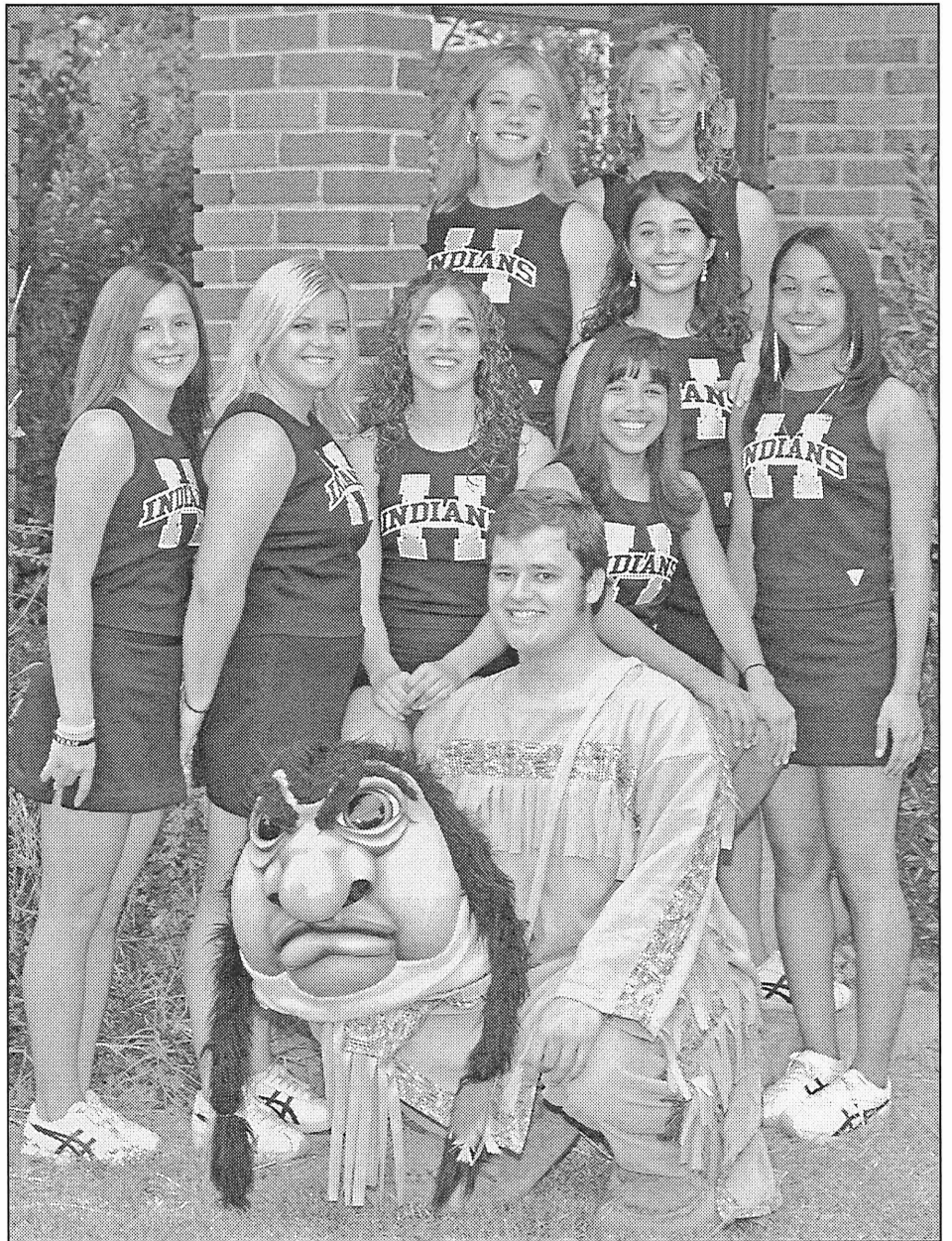
Technical Excellence for displaying superior skills in technique during NCA evaluations. Haskell was selected for this award twice during the week for their excellence in motions.

Top Team Finalist for teams who exemplify superior technical and crowd involvement skills. Haskell was one of five varsity squads allowed the opportunity to compete for the overall Top Team.

Champion Chant competition held on the last day of camp with a chant learned during the week. Technical skills as well as the ability to lead the crowd are judged to select the winner. Haskell competed against 10 other squads for this award and won the trophy.

By winning Champion Chant, the Haskell High School Cheerleaders qualified their entire squad for the opportunity to perform in the pre-game show at either the Orange Bowl held in Florida or the Maui Bowl held in Hawaii. The squad will not be able to attend, but they definitely deserve the praise for such an outstanding award.

Members of the Haskell High cheerleading squad for 2005-06 are Kerri Newton, Caleb Hudgens, Mascot, Amber Bingham, Stephanie Grand, Allison Mitchell, Haley Chavez, Lauren Newton and Ashton Rutkowski.



**INDIAN CHEERLEADERS**—Haskell High School cheerleaders this year are: kneeling, Caleb Hudgens, mascot; front row, l-r, Allison Mitchell, Laren Newton, Stephanie Grand, Haley Chavez and Jasmine Thomas; back, Kerri Newton, Amber Bingham and Ashton Rutkowski. Photo by Bill Blankenship

## Obituaries

### Santos Carrasco

Funeral services for Santos Carrasco, 70, of Rochester were held Sat., Oct. 22 at St. George Catholic Church in Haskell with Father Juan Buastamante officiating. Burial was in O'Brien Cemetery in O'Brien under the direction of Smith Funeral Home of Rochester.

Mrs. Carrasco died Wed., Oct. 19 at her Rochester residence.

Born Nov. 1, 1934 in Yancy, she was the daughter of Domingo and Juanita Cabrera Gomez. She married Rodrigo Carrasco Sr. in December 1953 in Haskell. She was a homemaker.

She was preceded in death by her parents; her husband; and grandson, Olivido Perez.

Survivors include her daughters, Sandra Carrasco of Rochester, Elizabeth Perez of LaPorte and Janie Peralez of Victoria; sons, Johnny Carrasco of San Antonio and Rodrigo Carrasco Jr. of Hondo; fifteen grandchildren and sixteen great grandchildren; sisters, Rosa Gonzales of Hondo, Lupe Martinez and Luz Garcia, both of Bandera; brothers, Juan Guajardo of Levelland, Robert (Beto) Gomez of Hondo, Casimiro Guajardo and Ramon Guajardo.

PD. NOTICE



SANTOS CARRASCO

**Modern Way Deli** ~ NEW HOURS ~  
 7:30 a.m. til 8 p.m.

Now at Modern Way  
 Every Wednesday  
**Mexican Food Lunch**

Complete Mexican Food Lunch To Go **\$3.69**

And Always! **Chester Fried Chicken**

3 pc. Dinner 2 Veggies Dessert, Roll **\$3.69**

**Modern Way**  
 202 N. AVE. E • Haskell, Texas  
 864-3976

**Go Indians!**

Come Eat with us at  
**Bud's Cafe**  
 709 E. Main Street  
 Knox City


Serving 7 days a week  
 6 a.m. to 9 p.m.  
 Full menu offered!

Featuring:  
 Grilled Steaks Thurs., Fri. & Sat.  
 24 oz. Sirloin for 2: **\$13.95**  
 10 oz. Ribeye: **\$11.95**  
 10 oz. New York Strip: **\$10.95**  
 12 oz. Sirloin: **\$9.50**

**Catfish Friday night**  
 All you can eat! **\$7.95**

Call in orders welcome!  
**658-5100**

Bud Conner welcomes you!







MR. AND MRS. TOBY JOHNSON

## Couple married in Tennessee

Alexandra Eleni Adamopoulos and Toby Jerrell Johnson were united in marriage Aug. 5, at the First United Methodist Church in Lexington, Tennessee. Officiating was Jim Reinbolt, minister of the First United Methodist Church of Aspermont.

The bride is the daughter of Mr. and Mrs. Nick Adamopoulos of Lexington, Tennessee. She graduated from Lexington High School.

The bridegroom is the son of Mr. and Mrs. Gary Johnson of Aspermont, and the grandson of Mr. and Mrs. Elbert Johnson of Haskell. He graduated from Aspermont High School and attended South Plains College in Levelland.

Escorted in marriage by her grandfather, Deloy Looper, the bride chose a formal designer gown of white silk satin, featuring a molded beaded bodice complemented by a strapless neckline and featuring an empire waist which gently flared to a slipper length hem and a chapel length train. Her veil was of soft white illusion, hand beaded with crystal and pearls.

Maid of honor was Jessica Wood of Lexington. Bridesmaids were Megan Parker of Jayton, Katie Long, Jessica Robertson, Kristen Lawler and Casey Austin, all of Lexington, Tennessee. Flower girl was Selena Salas of Lexington.

Best man was the groom's father.

Groomsmen were Christos Adamopoulos, brother of the bride, and Dustin Robertson, both of Lexington, Brandon Kolb of Snyder, Tim Haag of Lubbock, Blake Oliver of Aspermont and Tanner Ray of South Texas. Ring bearer was Blade Johnson of Aspermont, brother of the groom.

Vocalists were Jessie Wood and Tanner Ray.

Out of town guests included the groom's grandparents, and his namesake uncle, Jerrell Elbert (Judo) Johnson of Haskell and the bride's uncle, Van Looper of Cookeville, Tennessee.

A rehearsal dinner for the wedding party was hosted by the groom's parents in the church annex on Aug. 4.

Following their wedding trip to Nashville, Tennessee and Key West, Florida, the couple is at home in New Orleans, Louisiana, where the groom is a catastrophic insurance claims adjuster, and will be assisted by his wife. They plan to make their home base in Aspermont.

## Rule 4-H Club sponsors Operation Shoebox project

The Rule 4-H Club will again sponsor this Christmas project through Samaritan's Purse for needy overseas children. Those who wish to participate must find an empty shoebox, or a plastic shoebox with a lid, and fill it with gifts suitable for a boy or for a girl age ranges 2-4, 5-9, or 10-14.

Boxes can be delivered to the Rule superintendent's office, the Haskell County Extension office or brought to the next 4-H meeting on or before Thurs., Nov. 17. The boxes will be taken to Abilene to a collection point at the First United Methodist Church Sun., Nov. 20. If you are able, include a check for \$5 made payable to Samaritan's Purse to help with shipping costs.

Items may include: small toys, cars, balls, dolls, stuffed animals, kazoos, harmonicas, yo-yos, small Etch-A-Sketch, toys that light up or make noise (send extra batteries), Slinky, etc. School supplies: pens, pencils and sharpener, crayons or markers, stamps and ink pad sets, coloring books, chalk, writing pads or paper, solar calculators, etc. Hygiene items: toothbrush,

toothpaste, bar soap, comb, washcloth, etc. Other hard candy, lollipops, mints, gum, sunglasses, flashlights with extra batteries, ball caps, socks, T-shirts, toy jewelry, hair clips, watches, small picture books, etc. You may send a note to the child and a photo of yourself or your family. If you include your name and address, the child who receives your box may write you back.

Do not include: used items; toy guns, knives, or other war-related items; chocolate or perishable food items (Tootsie Rolls, canned food, crackers, cookies, M&M's, etc.); liquid of any kind (shampoo, lotion, bubbles, etc.); medicines of any kind (vitamins, cough drops, etc.); breakable items (china dolls, snow globes, etc.)

Put a rubber band around the shoebox and lid before it is turned in.

The boxes will be sent to children around the world who are affected by war, poverty, disease and disaster.

Anyone may participate as long as items are turned in on time. For more information, call Renee at 996-2738.

*Shop Haskell first*

**Carla's Sweet Shop**

Lunch Menus for Nov. 9-10. Serving 11-2.  
All meals include dessert and drink.

~Wednesday~ <b>Beef Enchiladas, Beans, Rice, Salad</b>	~Thursday~ <b>Smother Steak, Mashed Potatoes, Green Beans</b>
---	--

507 N. Ave. E • Haskell • 864-2711

<p style="font-size: small;">Texas Tech vs Texas A&amp;M</p> <p style="text-align: center;"><b>All Collegiate Items</b></p> <p style="text-align: center; font-size: large;"><b>25% off</b></p> <p style="text-align: center; font-size: small;">REGULAR PRICE</p>	<p style="font-size: small;">Sudacare Nighttime Vapor-Plug Mini Waterless Vaporizer</p> <p style="text-align: center; font-size: large;"><b>\$6<sup>99</sup></b></p>
<p style="font-size: small;">Kleenex 160 ct. Tissues</p> <p style="text-align: center; font-size: large;"><b>99¢</b></p>	<p style="font-size: small;">From the makers of Tylenol <b>Simply Sleep</b> Nighttime Sleep Aid</p> <p style="text-align: center; font-size: large;"><b>\$3<sup>99</sup></b></p> <p style="font-size: x-small;">24 Mini-Caplets</p>

*Just Arrived!*

**New Sequin Purses**

New Colors! New Sizes!

**Veteran's Day**

Friday, November 11

We have flags of all sizes, perfect for homes, cemeteries and businesses.

**PHOTO DEPARTMENT**

Bring your HALLOWEEN film to  
**The Photo Department**

**2 for 1 Prints Everyday!**

See store for details.  
OR

Bring in your digital media or CD and try our  
**Touch Prints Automated Photo Machine!**

4"x6" Prints only 29¢ each or  
Transfer your cards to CD for only \$4.95  
(Plus the cost of the CD)

*Bridal Registry*

Braid Sharp <small>Bride-elect of Jeff Blanks</small>	Mary Jane Short <small>Bride-elect of Nathan Buerkle</small>
--	---

*Baby Shower Registry*

Erika and Wes Holmes

**Do you have Medicare Prescription Benefit Questions?**

*We can help you pick the plan that best fits your needs.*

-Dates To Remember-

Website Live: Soon

Enrollment: November 15, 2005

Benefits Begin January 1, 2006

Call us.

**Health Screenings**

Wed., November 17

8 a.m. to 3 p.m.

We will be offering health screenings for:

*Cholesterol Levels	*Arterial Elasticity Screening
*Body Fat Composition	*PSA for Men's Prostate Health
*Liver Functions Test	*Bone Density Screenings
*Thyroid Testing	*NEW! Diabetic Hemoglobin A1c
	*NEW! Blood Typing

*Call now for an appointment!*

Prices will be discounted during the health fair.  
Health screenings will be performed by  
Calvert Home Health Care of Lubbock.

Prices good November 3, 4 & 5  
Texas Toll Free # 1-800-962-0743  
www.haskelldrugstore.com

**THE DRUG STORE**

Haskell • 940-864-2673

To Subscribe,  
Call  
**940-864-2686**

*Weekly Special*

**All Plush Bears \$5 each**

*Bridal Selections for*  
*Braid Sharp and Jeff Blanks*  
*Mary Jane Short and Nathan Buerkle*

*The Carousel Gift Shop*

Erlinda Mayfield  
Open M-F 10 to 5:30. Sat. 10 to 4  
Southside of the square in Haskell • 864-2069

*Shop with us through lunch!*

*Yesterday's Memories*

418 N. First • 864-5365 • Haskell

**Antiques and Collectables with Old Time Soda Fountain**

Come enjoy our sandwiches, soups and salads or any of our other menu favorites.

**Every Friday**

**Beans & Cornbread**

Enjoy an Old Fashioned Soda while browsing through our booths and showcases.

Hours: Tues.-Fri. 10:30 to 5 Sat. 10:30 to 4 p.m.  
Closed Sunday and Monday

*New*

**TUSCAN**

*Grilled Chicken*

GRILLED CHICKEN BREAST, ASIAGO CHEESE, LETTUCE, TOMATO AND PESTO MAYO ON A CIABATTA BUN

**\$3.49**

**SONIC**

**America's Drive-In.**

No Waiting  
Call In Orders **864-8533**

Limited Time Only!  
Offer good October 1-31, 2005.  
Only at participating SONIC Drive-Ins. ©2005 American's Drive-In Corp.

**Huge Silk Flower SALE**

Containers, Baskets, Christmas Trees, Christmas Decorations, Crafts, Needlework

New Framed Prints  
New Iron Designs

*Art Stall & Frame Shop*

114 Central • Knox City • 940-658-3092

**WANT TO BUY**

Collector/dealer, new to area, is wanting to buy antiques/collectibles.

I am not in need of large furniture pieces at this time. I am especially interested in the following old items in good condition:

*kitchenware/glassware/pottery	*paintings/prints
*select toys & games	*militaria
*photo albums (with photos), 1860's-1930's	*pre 1920 postcards
	*large vintage textiles

Other antique/vintage items would be considered.

For inquires or further information, please phone  
**940-256-1775**



# OPINION

TEXAS PRESS ASSOCIATION

State Capital



## HIGHLIGHTS

By Ed Sterling

### Former comptroller heads governor's school finance, tax panel

AUSTIN—Former state Comptroller John Sharp, newly appointed chair of the governor's panel on property tax and school finance reform, spoke to the Texas Association of Business in Austin Oct. 28.

Sharp, also a former member of the Texas House and Texas Railroad Commission, said the panel will work closely with every member of the Texas Legislature.

Although members of the panel Sharp is chairing have yet to be named, Sharp said that when their work is finished, "I will tell who was naughty and nice."

Regardless of differences that have stood in the way of a bipartisan solution to school finance and tax reform for the last two regular and three special legislative sessions, Sharp, a Democrat, expressed confidence that the panel's efforts will be successful.

Lawmakers and panelists will find reasonable ways to relieve the property tax burden and adequately fund education, but a personal income tax will not be considered, he said.

One thing for sure, he said, is "We're not going to get more revenue from the present system (of taxation)" because so many Texans already pay the maximum property tax.

Sharp predicted that when the Texas Supreme Court rules on the pending case over the constitutionality of the school finance and property tax laws, those laws will be found unconstitutional.

The ruling will trigger a special session and lawmakers will huddle up to work on both problems. The state's high court heard oral arguments on the subject July 6, and the case has been pending since then.

### Enrollment below expectations

Texas public and private colleges and universities recorded lower than expected enrollment this fall, according to a report released Oct. 27 by the Texas Higher Education Coordinating Board.

This year's total enrollment of 1,192,243 is only a 19,134-student increase over the fall semester 2004. This causes concern, because enrollment growth is not trending in tandem with the state's population, which is growing more rapidly than

anticipated.

State demographer Steve Murdock of the University of Texas at San Antonio said Texas is now 35th in the nation in the percentage of people with college degrees. In 1990, Texas ranked 23rd.

### Money back, comptroller says

Texas Comptroller Carole Keeton Strayhorn urged Gov. Rick Perry to call a three-day special session of the Legislature so lawmakers could vote to give every homeowner in the state a check for \$260.

When Strayhorn closed the books on the biennium that ended Aug. 31, she found enough unanticipated surplus tax revenue to give taxpayers the rebate. But the governor's office dismissed the idea.

### Miers withdraws as nominee

Under pressure from her own political party, Harriet Miers withdrew as President George W. Bush's nominee to replace retiring associate justice Sandra Day O'Connor on the U.S. Supreme Court.

Miers, a Republican, was appointed commissioner of the Texas Lottery by then-Gov. Bush. She held the post for more than four years.

Miers will retain her present position of White House counsel.

### Judge upholds smoking ban

U.S. District Judge Sam Sparks upheld a smoking ban passed by Austin voters last year.

No smoking is allowed in public buildings, including restaurants and all but a few bars.

The lawsuit that prompted Sparks' ruling was brought by businesses that questioned the constitutionality of the ban. Only about a dozen bars in Austin can legally allow smoking.

### Judge to eye venue motion

U.S. Rep. Tom DeLay and his lawyers filed papers alleging potential bias on the part of state District Judge Bob Perkins, who is slated to preside over the Sugar Land Republican's trial on charges of money-laundering and conspiracy to violate Texas election laws.

On Nov. 1, retired judge C.W. "Bud" Duncan of Killeen, a Republican, is to review the motion to move the trial away from Austin to what the former U.S. House majority leader believes will be a fairer court. One of DeLay's objections to Perkins is the judge's membership in MoveOn.org, a grassroots political organization.



## From Out of the Past

From the files of The Haskell Free Press

### 10 Years Ago November 2, 1995

The average winners of the Jackpot Roping held at the Haskell Arena were Kirk Mayberry, B roping; Todd Whatley, open roping-3 head; and Kirt Keen, open roping-2 head.

Kaki Stapleton won champion fine wool, reserve champion medium wool and overall reserve champion medium wool; B.J. Opsahl, reserve champion southdown; and J.J. Comedy, champion fine wool cross at the Livestock and Project Show at the King County Fair.

Chris and Trevor Topham, Mary and Tom Kaigler, Anita Herren, Erma Liles, Mary Martin, Betty and R.S. Sanders, Helen and George Fouts, Benny Melton, Doris and Hoyet Toliver, Joylene Carter, Lois Jones, Nancy and Bailey Toliver made a trip from Haskell to Branson Missouri seeing entertainers and the Ozark Mountains.

Nathan and Lisa Macias were crowned Rule Football Hero and Sweetheart.

### 20 Years Ago November 7, 1985

Kay Fischer, escorted by her father, Gene Fischer, was crowned Paint Creek Homecoming Queen and Mabel Overton was crowned as the Homecoming Association's choice as the Coming Home Queen.

Ryan Olson, Bobbie Cothron, Jamie Hodgins, Wesley Alsbrook, Mik Everett, Casey Larned, Justin

Lisle, Chris Silvas and Scott Albuquerque, members of the Den 5 Cub Scouts, with its Mean Green Machine, won first place in the Sweetwater pushmobile contest.

Michael Grant, nephew of Margaret Ratliff of Haskell, columnist for the San Diego Union, dropped the name of Haskell in a column on "thangs."

Matt Perry of Cub Scout Den 2 smashed a cream pie into the face of his father, Bill Perry, during the father-son cake bake and auction.

Kevin White, Barry Walker and Shannon Forehand, members of the Weinert FFA Farm Radio Team, placed second at the Double Mountain District leadership contest.

### 30 Years Ago November 6, 1975

Christie McAdams was selected as the Haskell Homecoming Queen and was escorted by Mike Turner.

William James Kemp D.D.S. of Haskell, a member and former president of the Texas State Board of Dental Examiners, was elected vice-president of the American Association of Dental Examiners.

Charles Chapman of Haskell was appointed as member of a regional committee to screen applicants for admission to the State Bar.

The Rule Jr. High Football team won their second district championship with a 46-0 win over Woodson. Dennis Briles is head coach.

Joe David (Jody) Mickler of Haskell was inducted into the Ross Volunteers at Texas A&M University.

### 40 Years Ago November 4, 1965

The Velvetens; Jill Fannin, Nan Jones, Susan May, Penny Davis and Jennie Ruth Lisle, entertained the Haskell County Sheriff's Posse at their regular meeting.

Melissa Patterson, daughter of Rev. and Mrs. J.V. Patterson, was inducted into Wahdaysee women's service organization at McMurry College.

Army Specialist Four Jerry D. Spinks, son of Mr. and Mrs. William R. Spinks of Haskell, participated in a Short Notice Annual Practice exercise with his unit, Battery A of the 67th Artillery's 1st Battalion from Darmstadt, Germany, at the McGregor Guided Missile Range.

James Ivy, a former Haskell High School football player, was starting fullback on the North Texas State University freshman team.

Michael E. Overton, son of Mr. and Mrs. Merritt Eugene Overton, was named Distinguished Military Student at Texas A&M University.

### 50 Years Ago November 3, 1955

The Haskell High School band was among fifteen junior and high school bands which were asked to participate in the annual North Texas State College Homecoming events.

Mr. Frank Oman and Mrs. W.B. Guess of Weinert attended the Homecoming game at Midwestern University. Scotty Oman was a member of the M.U. team of cheerleaders.

Lee Norman, prominent Rule landowner, is the youngest old-timer in the Rule community, having come to Haskell County in a covered wagon back in 1895 before there was a Rule.

Rosalie McCall, Austin College junior from Haskell, was one of the thirty-eight students named on the Dean's honor list for outstanding scholastic honors.

Kenneth Lane, son of Mr. and Mrs. Noah Lane of Haskell, was among 14 pledges of Pi Kappa Alpha at Texas Tech.

## Letters to the Editor

Dear editor:  
We would just like to thank the residents of Rule and Haskell that "treated" the Noah Project—North with canned goods and other items. Thank you for being so generous. Donations are greatly appreciated, especially at this time when most donations are going for other needs.

We would like to say thank you very much to each and every 4-H member from Rule and Haskell that went door to door gathering all of the food and other items. You did an

awesome collection job! We appreciate your leaders helping to make this possible. It is wonderful to know that our young people are so caring and want to help others.

Again, thank you very much.  
Donna Sue Anders  
Janis Brzozowski  
\*\*\*

Dear editor,  
Haskell Pre-K, Head Start and Early Childhood would like to thank the local businesses for the wonderful Halloween treats received while treat-or-treating Fri., Oct. 28.

## Cattle Market Report

The market at the Haskell Livestock Auction was on a run of 784 head of cattle at its sale on Sat., Oct. 29, according to Bill Cox, reporter. 56 sellers and 40 buyers were present.

Packers \$1-2 lower. Stockers \$2-3 lower. Feeders steady.  
Cows: fat, .38-.45; cutters, .35-.48; canners, .28-.37.

Bulls: bologna, .55-.62; feeders, .80-.94; Utility, .50-.60.

Steers: medium and large frame No. 1 200-300 lbs., 1.40-1.80; 300-400 lbs., 1.20-1.48; 400-500 lbs., 1.15-1.30; 500-600 lbs., 1.10-1.24; 600-700 lbs., 1.00-1.20; 700-800 lbs., .95-1.10; 800 lbs. and up, .78-1.04.

Heifers: medium and large frame No. 1 200-300 lbs., 1.30-1.70; 300-400 lbs., 1.20-1.35; 400-500 lbs., 1.12-1.30; 500-600 lbs., .92-1.20; 600 lbs. and up, .75-1.07.

Bred heifers medium frame, 725-975.

Bred cows young to middle aged 900-1125; aged or small, 575-750.

Cows with calves: medium frame No. 1 young and middle aged, 950-1450; aged or small, 775-1050.

### 100 Years Ago November 4, 1905

J.T. Lawley was preparing to build a residence in the north part of town.

Capt. W.H. Craddock was out hunting and killed an immense black eagle, its wing spread was 8 feet long and its feet had a reach of 7-7/8 inches with the longest claw measured at 4 inches.

R.B. Williams was in town with 1,600 pounds of seed cotton that turned out a bale weighing 545 pounds and stated that he has gathered 10 bales so far.

L.E. Marr was building a residence in the north part of town, east of the school house.

Mrs. Hubbard's two-story residence in the southeast part of town was nearing completion.

## Sept. sales tax receipts reported

Texas Comptroller Carole Keeton Strayhorn said recently that the state took \$1.33 billion in sales tax in September, a 14.2 percent increase over September 2004.

Strayhorn sent \$363.5 million in monthly sales tax payments to Texas cities, counties, transit systems and special purpose taxing districts, up 11.3 percent compared to last October. So for in 2005, local sales tax allocations are 7.8 percent ahead of last year.

September state sales tax collections and October allocations of local tax revenue represent sales that occurred in August. Since Hurricane Katrina struck the Gulf Coast on Aug. 29, and Hurricane Rita struck on Sept. 24, these sales tax figures do not reflect the impact of the two storms. The impact will begin to be seen when businesses report their September sales tax to the Comptroller later this month, and November sales tax allocations are sent to local governments.

The double-digit increase in tax revenue in this report can be credited to the continued strength of the Texas economy, notably the mining and construction sectors, and reflects the three-day Sales Tax Holiday that annually packs stores with Texans and out-of-state shoppers who splurge on taxable items along with tax-free clothing and shoes.

Strayhorn sent sales tax allocations of \$247.1 million to Texas cities, 11.3 percent more than October 2004. Calendar year-to-date, city sales tax rebates are up 8.1 percent. Texas counties received October sales tax rebates of 21.6 million, up 11.6 percent compared to a year ago. Calendar year-to-date, county sales tax allocations are 8.9 percent higher than last year.

Ninety-nine special purpose taxing districts around the state received \$10.3 million in sales tax, up 19.4 percent compared to last October. So far in 2005, sales tax allocations to special purpose districts are up 12.7 percent compared to 2004. Ten local transit systems received \$84.3 million in October sales tax rebates, up 10.3 percent compared to a year ago. Year-to-date, transit sales tax revenues are up 6.3 percent.

Haskell County had a 12.02 percent increase for October, 2005 of \$29,001.32 in comparison to \$25,888.43 for October, 2004. 2005 payments to date of \$325,034.75 reflect a 9.83 percent increase over 2004 payments to date of \$295,937.80.

The City of Haskell had a 13.01 percent increase for October, 2005 of \$27,013.80 in comparison to \$23,902.15 for October, 2004. 2005 payments to date of \$301,866.49 reflect a 10.20 percent increase over 2004 payments to date of \$273,915.74.

The City of O'Brien had a 6.22 percent increase for October, 2005 of \$20.98 in comparison to \$19.75 for October, 2004. 2005 payments to date of \$474.92 reflect a 39.67 percent decrease over 2004 payments to date of \$787.31.

The City of Rochester had a 34.58 percent decrease for October, 2005 of \$512.02 in comparison to \$782.70 for October, 2004. 2005 payments to date of \$6,406.85 reflect a 3.85 percent decrease over 2004 payments to date of \$6,663.82.

The City of Rule had a 7.43 percent increase for October, 2005 of \$1,228.30 in comparison to \$1,143.29 for October, 2004. 2005 payments to date of \$14,152.76 reflect a 5.52 percent increase over 2004 payments to date of \$13,412.28.

The City of Weinert had a 458.01 percent increase for October, 2005 of \$226.22 in comparison to \$40.54 for October, 2004. 2005 payments to date of \$2,133.73 reflect a 84.15 percent increase over 2004 payments to date of \$1,158.65.

Vote Tues., Nov. 8

## The Haskell Free Press

Established January 1, 1886  
PUBLISHED EVERY THURSDAY  
420 North First Street • P. O. Box 555  
HASKELL, TEXAS 79521  
Phone 940-864-2686 • Fax 940-864-2687  
hfp@valornet.com

John McDougal ..... Publisher  
Lisa Shaw ..... Business Manager  
Mary Kaigler ..... Editor  
Doris McDougal ..... Production  
Bill Blankenship ..... Staff Photographer

Periodical Paid Haskell, Texas 79521  
(USPS 237-040)

### SUBSCRIPTION RATES:

Haskell County, one year, \$20.00.  
Outside of Haskell County, one year, \$28.00.

NOTICE TO PUBLIC—Any erroneous reflection upon the character, reputation or standing of any firm, individual or corporation will be gladly corrected upon being called to the attention of the publisher.  
POSTMASTER: Send address changes to The Haskell Free Press, P.O. Box 555, Haskell, TX, 79521-0555.

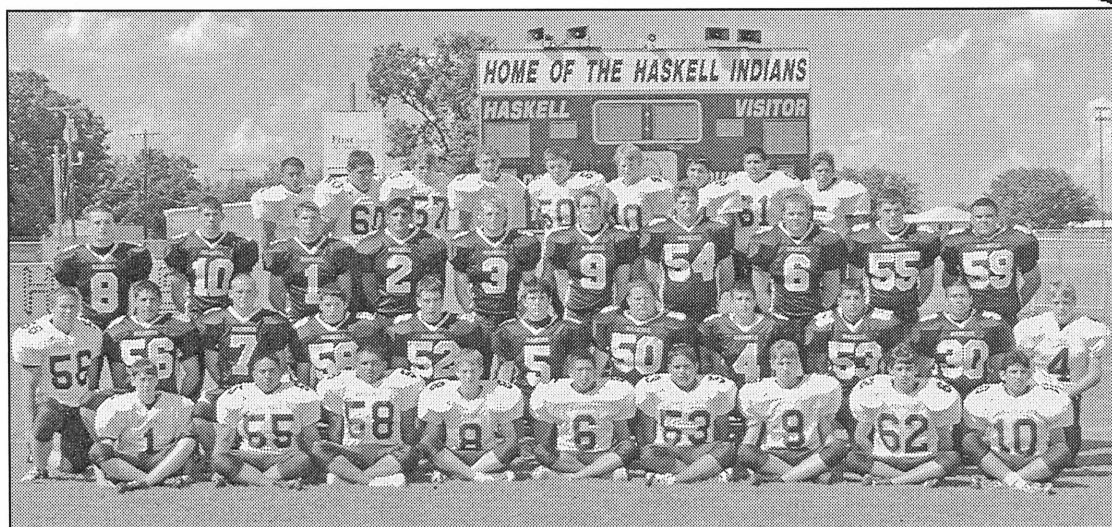
This issue mailed Wed., Nov. 2, 2005



Go Indians!

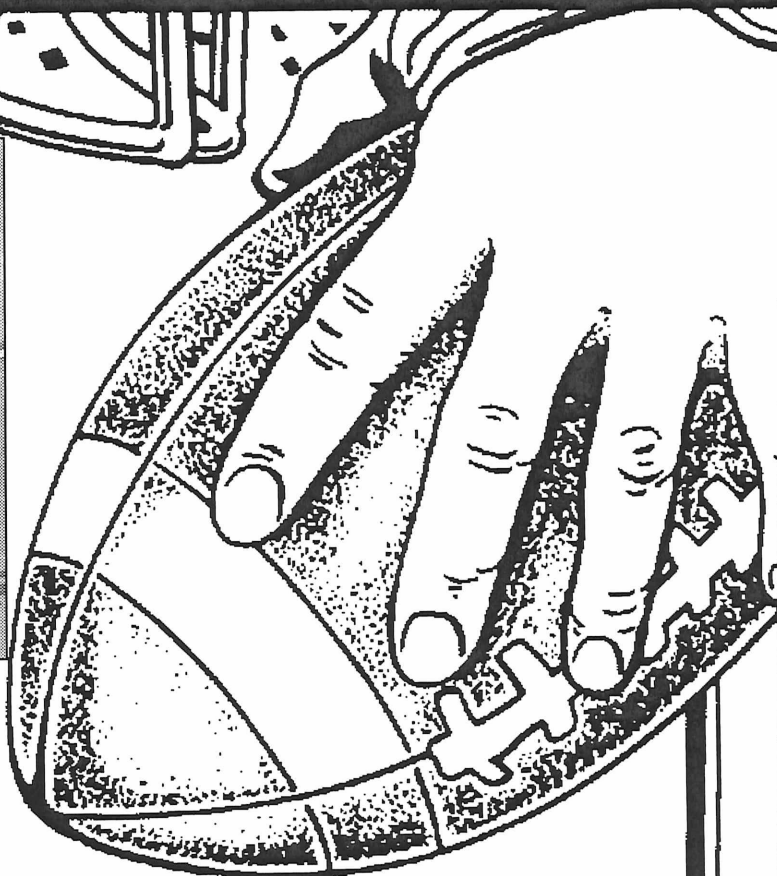


# HASKELL INDIANS vs KNOX CITY GREYHOUNDS



2005 HASKELL INDIANS: front row left to right, Weston Rutkowski, D.J. Rodriguez, Adam Pena, Steven Fillmon, Chris Graciano, Gerardo Torres, Brandon Wilson, Justin Meier, Magdiel Gonzales. Second row, Randall Pace, Scott Agraz, Joseph Landreth, Moses Munoz, Josh Kimmel, Greg Guzman, Rylie Tatum, Anthony Hernandez, Vicente Solano, Josh Rodriguez, Travis Adams. Third row, Justin Rodriguez, Derek Agraz, Matt Brown, Vicente Castillo, Josh Barbee, Jeremy Sorrells, Doug Carroll, Cameron Short, Gary Frierson, Billy Lusk. Back row, Larry Arebalos, Justin Amaro, Douglas Moore, Aaron Rodriguez, Clyde Frierson, Blake Foley, Brett Seigfried, Ruben Robledo and Chris Jones.

Photo by Bill Blankenship



## FRI., NOV. 4, 7:30 P.M. at KNOX CITY

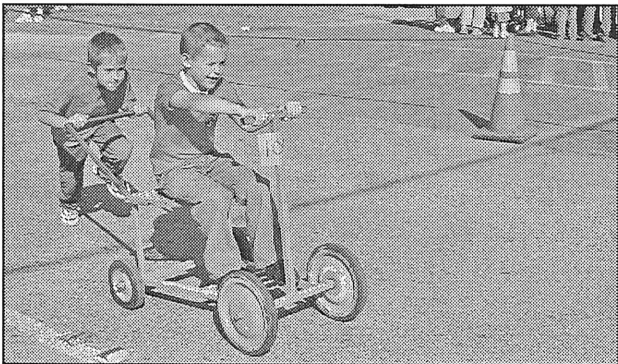
THIS PAGE SPONSORED BY THE FOLLOWING INDIAN BOOSTERS

**Cecil's Country Meat Mkt. & Grocery**  
**Personality-Slipper Shoppe**  
**Brian Burgess State Farm Insurance**  
**Haskell Free Press**  
**Haskell County Insurance Agency**  
**Double A Drive Inn**  
**First National Bank**  
**Hanson Paint and Body**  
**Big Country Electric Cooperative**  
**Modern Way Food & Fuel**  
**Richardson TrueValue & NAPA Auto Parts**  
**Boggs & Johnson Furniture**  
**Haskell Tire & Appliance**

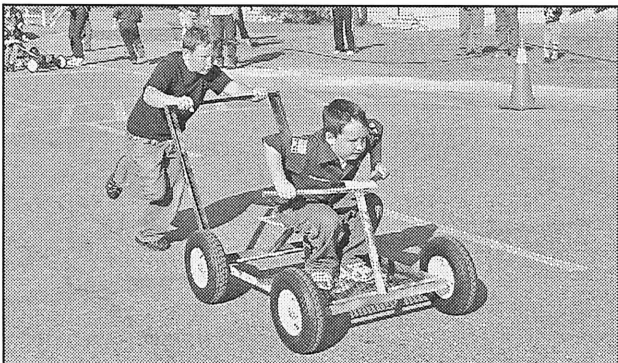
**Haskell National Bank**  
**Haskell County Gin**  
**Martha's Beauty Center**  
**Haskell Livestock Auction**  
**Matlock & Associates**  
**Haskell Save A \$**  
**Larned Sales Center**  
**Carla's Sweet Shop**  
**Haskell Co-Op Gin**  
**Nanny Plumbing**  
**Smitty's Auto Supply**  
**Valor Telecom**



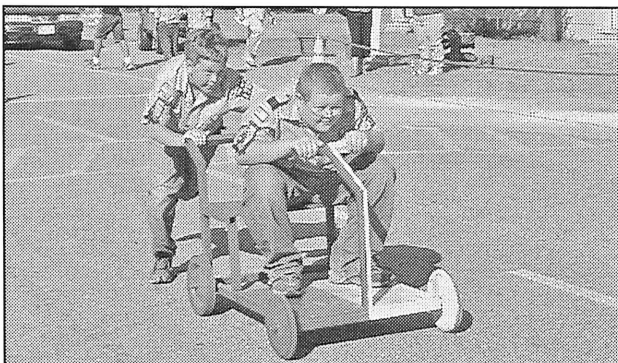
# PUSH



**TIGER DIVISION**—Haskell Cubs entered in the Tiger Division were, l-r, Jonathan Primm and Hayden Hudson.



**BEAR DIVISION**—Haskell Cubs, l-r, Pryce Stewart, pushing, and Harrison Jarred, riding, competed in the Bear Division.



**WEBELOS DIVISION**—Hunter Jordan, pushing, and Preston Morrow, steering, entered the Webelos Division.



**SWEEPSTAKES WINNERS**—Haskell Cub Scouts taking first place with Bear Cub car #302 in the 2005 Double Mountain Pushmobile Contest, Sun., Oct. 30, at Haskell Elementary School, were: l-r, front row, Seth Rock, Braeden Alves, Aaron Waggoner and Micah Thomas. Back, Gus Estrada, Zachary Tatum, Jarred Escobedo and Colton English. Their car also received the "Best Design" award.

# MOBILE

## Area Cub Scouts meet for pushmobile races

Twenty eight Haskell Cub Scouts met with Scouts from Abilene, Breckenridge, Hamlin and Merkel to compete in the 2005 Double Mountain Pushmobile contest Sun., Oct. 30 in front of Haskell's Elementary School.

The Haskell Tiger Cub car #101 won first place in the Tiger division as well as 4th place in the overall

finals competition. Abilene's Pack #215 won 2nd place in the Tiger Division.

Hamlin's Pack #201 won first place in the Wolf division as well as 2nd place in the overall finals competition. Breckenridge's Pack #81 won 2nd place in the Wolf Division. Pack #81 received the "Good Sportsman" award for

coming to the aid of another Pack by loaning of one of their cars when mechanical difficulties occurred during a race. They also received the "Most Unusual Car" award.

The undefeated Haskell Bear Cub car #302 won first place in the Bear division as well as 3rd place in the overall finals competition. Haskell's Bear Cubs also received the "Best

Design" award for their newly constructed car for this year's competition. Merkel's Pack #220 and Abilene's Pack 215, tied for 2nd place in the Bear division with Abilene's Pack 215 earning the "Best Scout Built" car award.

Haskell's fourteen Webelos Scouts were divided into two teams. The eight members on car #401 won first

place in the Webelos division as well as 1st place in the overall finals competition. The remaining six Webelos scouts' car #402 received 2nd place in the Webelos division, as well as 3rd place in the overall finals.

Haskell Cub Scouts participation in the competition were:

Tigers: Dylan Brunson, Lane Burson, Chase Gibson, Hayden Hudson, Jonathan Primm and Alec Roewe;

Wolves: Seth McCormick, Pryce Stewart and Garret Tatum;

Bears: Jonah Caddell, Harrison Jarred, Cedar McIlwain, Riley Meinzer and Ryan Pace;

Webelos: Braeden Alves, Colton English, Jarred Escobedo, Gus Estrada, Levi Grand, Hunter Jordan, River McTasney, Preston Morrow, Trevor Reese, Seth Rock, Zachary Tatum, Micah Thomas, Aaron Waggoner and Max Weise.

Special thanks to Haskell Boy Scout Troop 136 members A. J. Benton, Ethan Frierson, Tucker McCormick, Stephen Pace, Tyler Reese and Luke Terry for their help in making the races run quickly and easily. Also thanks to parents and family members who attended and volunteered their time and talents.

## Armyworms on the march in Central Texas areas

by Wesley Utley  
CEA-Ag/NR, Haskell Co.

Armyworms are invading Central Texas, and there is no end in sight.

Two species, fall armyworms and true armyworms, have significantly increased populations in recent weeks.

They are stripping pastures and hayfields, destroying green grass

crops and causing problems for area producers. Extension recommends looking for armyworms in the crowns of plants and under debris on the soil surface.

Producers are encouraged to apply an insecticide licensed for use on fall armyworm and true armyworm species.



Pre-Thanksgiving

# SALE

All Appliances  
Marked Down

Come in and Save at

## Haskell Tire & Appliance

206 S. Ave. E • 864-2900

Sale ends Fri., Nov. 18, 2005

## USDA announces 2005 DCP payments

The U.S. Department of Agriculture has announced first partial 2005-crop year counter-cyclical payments for wheat, corn, sorghum, barley, oats, soybeans, upland cotton, rice and peanuts. The 2002 Farm Bill requires counter-cyclical payments to be made in October when possible.

USDA determines counter-cyclical payments using the October World Agriculture Supply and Demand Estimates (WASDE), effective Oct. 12. WASDE provides the most current supply and demand information available.

Producers in USDA's Direct and Counter-cyclical Payment Program (DCP) may receive counter-cyclical payments when "effective" prices for eligible commodities are less than respective "target" prices set in the 2002 Farm Bill. The 2005-crop year projected annual payment rates and first partial payment rates, equal to 35 percent of the total amount, are:

Corn, bushel, 0.40 projected rate, 0.1400 rate; sorghum, bushel, 0.27 projected rate, 0.0945 rate; barley, bushel, 0.15 projected rate, 0.0525 rate; upland cotton, pound, 0.1373 projected rate, 0.0481 rate; rice, hundredweight, 0.55 projected rate; 0.1925 rate; peanuts, short ton, 104.00 projected rate, 36.40 rate.

Producers of wheat, oats, soybeans and other oilseeds are ineligible for a first installment payment as effective prices equal or exceed respective target prices.

To calculate the counter-cyclical payment rate multiply 85 percent of the farm's base acreage by the farm's counter-cyclical payment yield.

The counter-cyclical payment rate is the amount by which the target price of each commodity exceeds the effective price. The effective price equals the direct payment rate plus the higher of either: (1) the national average market price producers received during the marketing year; or (2) the national loan rate for the commodity. Producers may receive partial installments of counter-cyclical payments in October, a second in February and then at the end of the marketing year for each crop.

The first partial payment may be up to 35 percent of the total counter-cyclical payment projection. The second payment cannot exceed 70 percent of the counter-cyclical payment projection less any payments already received. USDA determines each crop's final counter-cyclical payments at the end of the marketing year. The end of the 2005-06 marketing year for each commodity is:

- \*Wheat, barley and oats, May 31, 2006
  - \*Rice, upland cotton and peanuts, July 31, 2006 and
  - \*Corn, grain sorghum and soybeans, Aug. 31, 2006.
- More information on DCP is available at local FSA offices and on FSA's Web site at: [www.fsa.usda.gov](http://www.fsa.usda.gov).

OUR CHICKEN STRIPS TASTE LIKE A MILLION BUCKS!

RIGHT NOW, THEY'RE JUST

# \$3.99



4-piece Chicken Strip Country Basket\*



Pumpkin Pie



dqtx.com

That's What I Like About Texas.®

Available for a limited time at participating DQ® restaurants. Blizzard, DQ and the orange shaped logo are trademarks of Ice, Q.D. Corp. All rights reserved. © 2005. ® Reg. U.S. Pat. & TM Off. To 800, Op. Conn.

Plan ahead for peace of mind



Texas Hermann Sons Fraternal Insurance

### SENIOR ADULT FINAL EXPENSE PLANS

Immediate cash for funeral expenses

Call today for information!

LOCAL REPRESENTATIVES:  
Elma Weise • 940-864-3564  
Beunice Vahlenkamp • 940-989-3609

Serving Texas Families Since 1890

Order of the Sons of Hermann in Texas  
San Antonio, Texas  
[www.texashermannsons.org](http://www.texashermannsons.org)



HERMANN SONS  
**HSFI**  
FRATERNAL INSURANCE



## Greg Gasaway now serving Haskell FBC

By Mary Kaigler

When Greg Gasaway came to Haskell as pastor of Haskell First Baptist Church this summer, he was met with a number of unforeseen happenings that stretched his experience as a young minister.

Soon after he arrived, the flooding situation came to the Lake Stamford area. In the early days afterward, his church and its building facilities were greatly involved, along with other relief agencies and church groups, in feeding victims and workers, registering and assessing needs. All are requirements not often handed to young pastors in their initial period of becoming adjusted to their new congregation and community.

Yet, in this, as with other unexpected crisis times in his young life, he expressed belief that "God never puts us in a situation where He can't teach us, and prepare us to grow and be prepared for what He has in store for us in the future."

Citing his background, he said the two positions he has had of coming into pastoring, were a varied combination of youth and education, being in charge of Sunday school, leading worship, and being in charge of all the choirs. Experience in all of these has given him insight into all aspects of the ministry. "It's not in our ability that God uses us, it's in our availability," he said.

Growing up in Odessa, after living in Borger until he was 10, he went to junior high and graduated high school there. The young man whose background included a grandfather who was a Nazarene pastor for 60 years in Munday and Borger, was raised in a Christian home and family that was active in church.

He earned a bachelors degree at Wayland Baptist University in Plainview, spent one year at Southwestern Seminary and then decided to go back to work in Plainview at the Wayland registrar's office. He had started dating his future wife, Lyndee, when she was a freshman at Wayland and he was a senior there, and he decided that being with her was more important than getting a seminary degree at that time. "I can always get a masters' degree but I only have one shot at the love of my life," he decided,

and he still considers it a very good choice. The couple has two children, daughter Moriah, age 5 and son Garrett, age 3.

After working at the registrar's office in Plainview just about a year, he got his first full time ministry position at Second Baptist Church at Levelland, where he stayed for almost eight years.

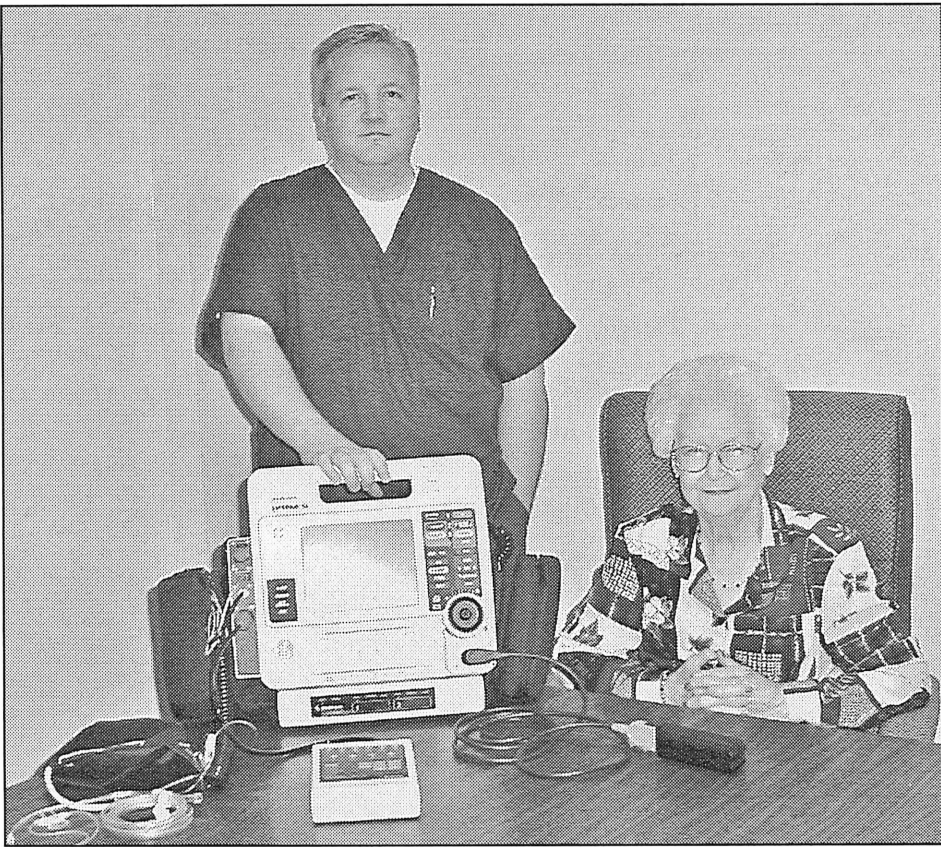
They moved to Pampa in June, 2003 where he was the minister of youth and music for two years. While there, he preached for eight and a half months in the absence of the regular pastor, and worked with the interim preacher, gaining valuable on-the-job experience in many pastoral activities such as hospital visits, baptisms and funerals. Although he says he never expected to be a pastor, at that time God began to change his heart about it, and to teach him.

From Pampa he came to Haskell, which he says his family loves. It's a great change of pace for his family, not as hectic as the larger place. "We spend a lot of time here staying at home together, and enjoy not being on the run

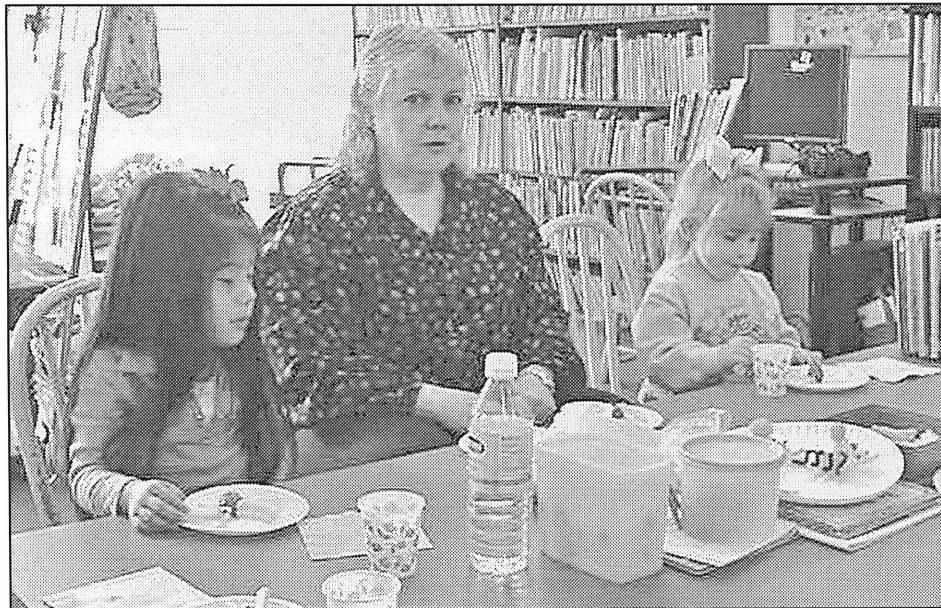
so much," he said. His wife, Lyndee, is an 8th grade math teacher at Stamford, where they were pleased to find a good day care center for son, Garrett. "My daughter is just loving being in kindergarten here," he said, "and has already made friends."

Loving sports, Greg played basketball in high school and refereed for a number of years in Levelland. He does the color commentary for radio station KVRP for local basketball games, and hopes it goes all the way into the playoffs. His family are all big Texas Tech fans, and he likes to play golf.

He says that his work and association with Haskell First Baptist Church is a "dream situation to come into." Citing the fact that the church is looking forward with willingness and openness to making some changes to the facilities and ways for greater service to the community and for God, he said they have also been understanding and good to him. "They realize that I am a work in progress," he said.



**INSERVICE EDUCATION**—Keith Mann, Hospital Sales Consultant for Medtronics of Lubbock, returned to Haskell Memorial Hospital, Oct. 19 to provide an inservice education meeting on the Lifepak 12 Biphasic Defibrillator/Monitor Unit, that was purchased and donated to the hospital's emergency department by the Hospital Auxiliary in Oct. 2004 at a cost of \$20,452.40. With him is Ruby Martin, retired LVN, Pharmacy Technician and president of the Haskell County Auxiliary, who was the honored guest at the meeting. Mann reviewed and educated hospital and EMS personnel on the equipment's diagnostic monitoring capabilities in lifesaving support for patients. Haskell County EMS has an identical monitoring unit which the auxiliary also helped to purchase.




**STORYTIME AT THE LIBRARY**—Enjoying the stories, activities and crafts at the Haskell County Library recently were, l-r, Heavenly Perez, their story teller, Paula Rennegarbe and Chambray Phemister.

## Sagerton Hobby Club Bazaar to be held Sat.

The Sagerton Hobby Club will host their twenty-third annual bazaar Sat., Nov. 5 from 9 a.m. to 2:30 p.m. at the Sagerton Community Center. Proceeds will be used for community projects.

Arts, crafts, baked goods, candies and Thanksgiving and Christmas items will be offered for sale. Lunch will be served.

Booths are available by calling 940-997-2103 or 325-773-3832. Admission is free.



# Haskell Wildgame Processing

900 North First • Haskell  
940-864-3861

Smoked Sausages  
and Jerky

## ATTENTION FARMERS

Harvest time is here and HASKELL COUNTY GIN is ready to serve your ginning needs.

Don't let your cotton sit on the gin yard for a month waiting to be ginned.  
*Every day will cost you money!*

Cotton in the Autauga or TIGMA pools can be ginned at any area gin.

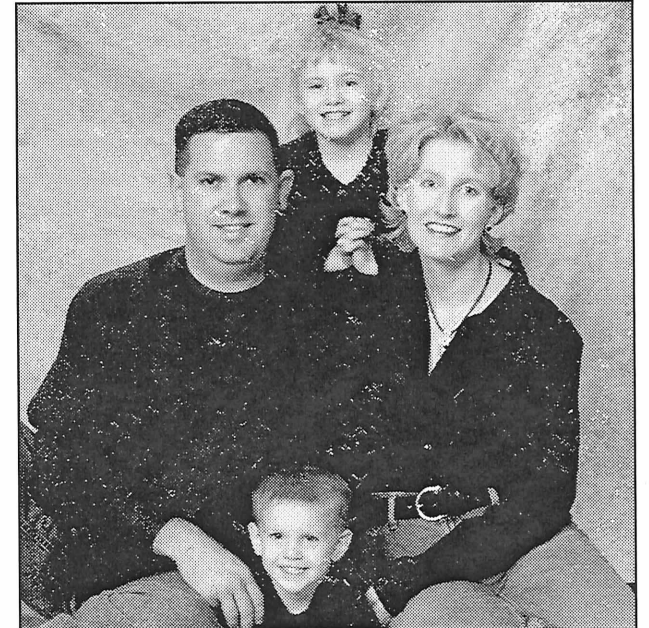
*We will tarp and haul your modules FREE and PAY you a \$2 per bale module builder rebate at the time of ginning.*

\*We also gin trailers\*

So come by or call us at 940-864-2358.

# Haskell County Gin

We appreciate your business!



**BAPTIST PASTOR AND FAMILY**—Now working with First Baptist Church Haskell, are Pastor Greg Gasaway, wife Lyndee, daughter Moriah and son Garrett, who moved to the city early in the summer.

"I'm back with TXU Energy,  
and I won't switch again."

*Julia*

MESQUITE, TX



## Trust TXU Energy for real value.

Thousands of customers like Julia have learned from experience. With TXU Energy, you get dependable customer service at a competitive price. TXU Energy has a power outage reporting hotline you can depend on 24/7. And starting in January, we will offer a new price protection plan to help our customers avoid future price increases. Enjoy peace of mind with the worry-free choice—TXU Energy.

The power of peace of mind.™



REP Certificate #10004



# The Haskell Free Press

READ BY MORE PEOPLE IN HASKELL COUNTY THAN ANY OTHER NEWSPAPER.



## Haskell School Menu

### Nov. 7-11 Breakfast

Juice and milk are served daily on the breakfast menu.

- Monday:** Muffin
- Tuesday:** Egg and sausage burrito
- Wednesday:** Cereal and toast
- Thursday:** Cinnamon glazed French toast
- Friday:** Pig in a blanket

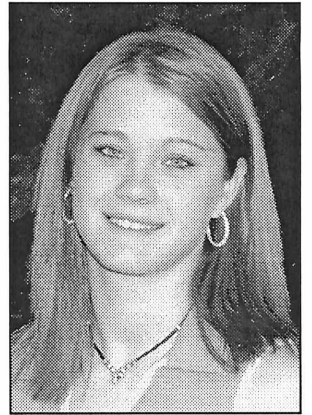
### Lunch

Milk and iced tea are served daily at the Secondary campus. Milk is served daily at the Elementary School. Secondary campus: choice of entree or baked potato with cheese and ham.

- Monday:** Chicken spaghetti, green beans, fried squash, breadstick, pineapple
- Tuesday:** Chili dogs, cheese, tator tots, pickle spears, fresh fruit
- Wednesday:** Popcorn chicken, gravy, mashed potatoes, English peas, hot rolls, fruit salad
- Thursday:** Beef and bean burrito, salsa, garden salad, Spanish rice, cake with strawberries
- Friday:** Cheeseburger, lettuce, tomato, pickle, french fries, fresh fruit



ROBBYN TRIBBEY



KERRI NEWTON

## Students visit Rotary Club

Robbyn Tribbey is the daughter of Robert and Lynette Tribbey of Haskell.

Her church affiliation is First Baptist Church Haskell.

School activities for her include president of the National Honor Society, twirler, Student council member, varsity basketball and golf, class officer, UIL prose and current events, Spanish Club reporter and band.

Her hobbies are going to the lake, singing, cooking and hunting.

Special awards and recognitions she has received are: twirling solo and ensemble state qualifier 2003, 2004, 2005; golf 2nd place district medalist and regional qualifier 2004, 2005; UIL prose 3rd place district and regional qualifier 2005; Wild Horse Prairie Days Queen 2004; Highest Ranking Student; Presidential Award for Academic Excellence; Texas Junior Miss Representative; 4-H Gold Star Recipient 2003; Kodak Young Leaders Scholarship and Best Dressed.

After finishing high school she plans to attend Hardin-Simmons University and Texas Tech University. She plans to major in

psychology and become a marriage counselor.

\*\*\*

Kerri Newton is the daughter of Phillip and Fonda Newton.

She is a member of the Haskell Church of Christ.

Her school activities include Student Council president, National Honor Society secretary/treasurer, Spanish Club, varsity basketball, head cheerleader, band vice president, Fellowship of Christian Students chaplain, class treasurer, UIL currents events and science, senior class officer.

Her hobbies include showing animals, gymnastics, youth group activities and riding roller coasters.

Special awards and recognitions she has received are: All American Cheerleader 2002, 2003, 2004, 2005; Miss HHS, A Honor Roll; 2004 4th place National Ag Issues team, Presidential Award for Excellence; 2004 football sweetheart; Citizenship Award and All District basketball team.

After finishing high school, she plans to attend Abilene Christian University and major in sports medicine to become an athletic trainer.

## This Week's Devotional Message:



### WE WELCOME GOD'S MOST COLORFUL SEASON OF AUTUMN

When summer fun begins to pall  
And cooler winds pervade the night,  
The temperatures will start to fall  
And frost will paint a brilliant sight,  
In which the leaves turn red and gold;  
A truly colorful display  
That signifies a year grown old,  
Against a sky of cloudy gray.

It's harvest time from tree and field,  
For food on which we all rely;  
By reaping what the earth will yield,  
Before the snow begins to fly.  
Our house of worship makes it clear:  
God shows His love in many ways,  
From indications that appear  
With autumn's beauty all ablaze.

—Gloria Nowak

### ATTEND CHURCH THIS SUNDAY

#### —HASKELL—

- East Side Baptist Church**  
Danny Manross, pastor  
Sun. 9:45 a.m., 11 a.m., 6 p.; Wed. 7 p.m.  
600 N. 1st East, Haskell
- Christian Church**  
Dusty Garrison, minister  
Sun. Morn. 9:45 a.m., 10:45 a.m., 6 p.m.; Wed. 7 p.m.  
107 N. Ave. F, Haskell
- New Vision Family Worship Center**  
Dan Kinjorski, pastor  
864-3465  
Sun. 11 a.m., 6 p.m.; Wed. 7:00 p.m.  
East Hwy 380, Haskell
- Trinity Lutheran Church**  
Ron Renegarbe, pastor  
Sunday School 9:30 a.m., Worship 10:30  
Hwy 380 East, Haskell
- Iglesia Bautista El Calvario**  
Art Flores, Interim pastor  
Sun. Morn. 9:45 a.m., 10:45 a.m., 5 p.m.; Wed. 7 p.m.  
607 S. 7th, Haskell
- First United Methodist Church**  
Rev. Daniel Echols, pastor  
Sun. Morn. 9:45 a.m., 10:50 a.m. 6 p.m.; Wed. 6 p.m.  
201 N. Ave. F, Haskell
- First Assembly of God**  
Rev. J.C. Amburn  
Sun. Morn. 9:45 a.m., 10:45 a.m., 6 p.m.; Wed. 7 p.m.  
1500 N. Ave. E, Haskell
- St. George Catholic Church**  
Father George Roney  
Sat. Mass 7 p.m.; Sun. Morn. 9:00 a.m.  
901 N. 16th, Haskell
- Church of Christ**  
Jim Yates, minister  
Sun. Morn. 9:30 a.m., 10:30 a.m., 6 p.m.; Wed. 7 p.m.  
510 N. Ave. E, Haskell
- First Presbyterian Church**  
Kelly Pigott, interim pastor  
Sun. Morn. 9:30 a.m.  
306 N. Ave. E, Haskell
- Trinity Baptist Church**  
Tony Grand, pastor  
Sun. Morn. 10 a., 11 a., 6:30 p.m.; Wed. 6:30 p.  
114 S. Ave. D, Haskell
- Hopewell Baptist Church**  
Sun. Morn. 9:30 a.m., 11:00 a.m.; Wed. 7 p.m.  
908 N. Ave. A, Haskell
- Greater Independent Baptist Church**  
Sun. Morn. 9:30 a., 11:00 a., 6:30 p.; Wed. 7 p.  
301 N. 3rd St., Haskell

- New Covenant Foursquare**  
Bill and Renee Glass, pastors  
Sun. Morn. 10 a.m., 11 a.m., 6:30 p.m.; Wed. 7 p.  
200 S. Ave. F, Haskell
- Mission Revival Center**  
Rev. William Hodge  
Sun. Morn. 10 a.m., 11 a.m., 6 p.m.; Tues. 6 p.m.  
1600 N. Ave. B, Haskell
- First Baptist Church**  
Greg Gasaway, pastor  
Sun. Morn. 9:45 a., 10:55 a., 6 p.m.; Wed. 7 p.m.  
301 N. Ave. E, Haskell
- Church in the Park**  
Rev. Tim and Suzann Townsend  
Sun. Morn. 10:30 a.m. Wed. 7 p.m.  
Gazebo or Pavillion
- Cornerstone Fellowship Baptist Church**  
Dr. Larry Nail, pastor  
Sun. 9:30 a.m. 10:45 a.m., 6 p.m., Wed. 7 p.m.  
1600 N. First St., Haskell
- Cross of Christ Fellowship**  
Joe and Loretta Stulir, pastors  
864-5404  
Sun. 10:30 a.m.  
455 CR 410, Haskell
- WEINERT—**
- First Baptist Church**  
J. C. Baker, pastor  
Sun. Morn. 10 a.m., 11 a.m., Wed. 7 p.m.  
Weinert
- Weinert Foursquare Church**  
Rev. Robert Harrison  
Sun. Morn. 10 a.m., 11 a.m. Wed. 7 p.m.  
Weinert
- ROCHESTER—**
- Church of Christ**  
Steve Willis, minister  
Sun. Morn. 9:45 a., 10:45 a., 6 p.m.; Wed. 6 p.m.  
West on Main Street, Rochester
- First Baptist Church**  
Jim Davis, pastor  
Sun. 11:00 a.m., 6 p.m.; Wed. 6:00 p.m.  
500 Main, Rochester
- Union Chapel Baptist Church**  
Clovis Dever  
Sun. Morn. 9:45 a., 10:45 a., 6 p.m.; Wed. 7 p.m.  
Rochester
- Faith Chapel of Rochester**  
Katherine Byrd, minister  
Sun. Morn. 10 a.m., 11 a.m., 7 p.m.  
Hwy 6, Rochester

- First United Methodist Church**  
Rev. Daniel Echols, pastor  
Sun. Morn. 9:00 a.m., 11:00 a.m.  
Rochester
- SAGERTON—**
- Sagerton Methodist Church**  
Terry O'Rear, pastor  
Sun. Morn. 9:45 a.m.  
Sagerton
- Faith Lutheran Church**  
Deborah Nissen, pastor  
Sun. Morn. 9:15 a.m., 10:30 a.m.; Wed. 7 p.m.  
Sagerton
- RULE—**
- First Baptist Church**  
Josh Stowe, pastor  
Sun. Morn. 9:45 a., 11:00 a., 5 p.m.; Wed. 7 p.m.  
1001 Union Ave., Rule
- Primitive Baptist Church**  
Dale Turner Jr., pastor  
First & Third Sundays 10 a.m.  
Corner of 8th & Robins, Rule
- Church of Christ**  
John Greeson, minister  
Sun. Morn. 9:45 a., 10:40 a., 6 p.m.; Wed. 7 p.m.  
811 Union, Rule
- First United Methodist Church**  
Terry O'Rear, pastor  
Sun. Morn. Worship 8:30 a.m.  
1000 Union Ave., Rule
- Primera Iglesia Bautista**  
Alfa y Omegas  
Manuel Marin, pastor  
Sun. Morn. 10 a., 11:00 a., 5 p.m.; Wed. 6 p.m.  
500 Elm Street, Rule
- Sweet Home Baptist Church**  
Bill Trice, pastor  
Sun. Morn. 10:00 a., 11:00 a., 6 p.; Wed. 7 p.m.  
Gladstone Ave., Rule
- West Bethal Baptist Church**  
Rev. Robert Sweet  
Sun. Morn. 10 a., 11 a., 8 p.m.; Wed. 7:30 p.m.  
300 Sunny Ave., Rule
- PAINT CREEK—**
- Paint Creek Baptist Church**  
Sun. Morn. 10:00 a.m., 11:00 a.m., 6 p.m.  
Paint Creek
- O'BRIEN—**
- O'Brien Baptist Church**  
Jim Reid, pastor  
Sun. 9:45 a., 11 a., 5 p., 6 p, Wed. 6 p.m.  
O'Brien

## Paint Creek School Menu

### Nov. 7-11 Breakfast

Juice and milk are served daily.

- Monday:** Pancakes
- Tuesday:** Biscuits and gravy
- Wednesday:** Cereal or toast
- Thursday:** Breakfast burritos
- Friday:** Cereal or grilled cheese sandwiches

### Lunch

Milk is served daily.

### Monday:

- Enchilada casserole, refried beans, salad, chips, fruit cups
- Tuesday:** Spaghetti, green beans, salad, garlic bread, chocolate cake
- Wednesday:** Chicken strips, mashed potatoes, peas, rolls, peach cobbler
- Thursday:** Western burgers, fries, pickles, carrots sticks, jello cake

**Friday:** Childogs, chips, cheese, relish, onions, cookies

## ECC Calendar and Menu

### Mon., Nov. 7

Lunch—Salisbury steak, onion gravy, black eyed peas, cheese potatoes, yeast rolls, pineapple cake, milk, tea, or coffee

### Wed., Nov. 9

Lunch—Enchiladas, Spanish rice, pinto beans, garden salad, chips,

### salsa, Coke cake, milk, tea, or coffee

### Fri., Nov. 11

Lunch—Meatballs, gravy, cream potatoes, buttered corn, green beans, garlic toast, peach cobbler, milk, tea, or coffee

Announcements begin at 11:45 a.m. followed by lunch.

### Sonic Drive-In

1402 N. Ave. E  
864-8533  
Managers: Leon & Carolyn Herring

### Steele Machine

Hwy. 280 • 864-2208

### Modern Way Food Store

1202 N. Ave. E • 864-3763

### Smitty's Auto Parts

107 N. 1st East • 864-2607

### HANSON PAINT & BODY SHOP

207 S. 1st • 864-3631  
Professional Auto Body Repair  
Glass Installation • 24 Hour Wrecker Service

### Rule Co-op Gin & Elevator

301 Adams • Rule • 997-2421

### Rice Springs Care Home, Inc.

1302 N. 1st • 864-2652  
Medicare • Medicaid • Therapy

Committed To Excellence  
In Service

### Attend Church This Sunday

## The Haskell Free Press

"The People's Choice"

420 N. First  
Haskell, Texas  
940-864-2686

Serving Haskell County Since 1886



## Car Loan Options



# A PUZZLE?

Then come in today and let us make it all fit together!

Talk to one of our friendly loan officers for straightforward advice on car-buying decisions.

## First National Bank Haskell

200 South Avenue E Haskell, Texas 79521



940-864-8555



Other Convenient Locations to Serve You:  
First National Bank Munday - Stamford - Rochester





# Shop The Haskell Free Press CLASSIFIEDS



864-2686

ALL DEADLINES MONDAY 5 P.M.

864-2686

### For Sale

**CERTIFIED SEED WHEAT** for sale. Baker Farms, Munday. 940-422-4763, 256-8533 or 256-8564. 42-45p

**LOOSE-FITTING**, non-binding socks for everyone. Especially diabetics. 4 colors. Busy Hands and Feet. 864-3536. 44c

**FOR SALE:** Headboard, footboard, metal rails, and slats for a full size bed. Matching nine drawer dresser with mirror, side table. \$100 Good condition. Call 940-864-6108. 44c

### Garage Sale

**GARAGE SALE:** Sat., Nov. 5. 8 to 5. 1200 8th St., Rule. Refrigerator, dishes, Christmas items, ceramics, clothes, luggage, cassettes. 44p

**YARD SALE:** Nov. 5. 8 a.m. to 1 p.m. 713 S. 10th. Jr. girl's clothes, women's clothes, Roper lace up boots, Dearborn heater with thermostat. Lots of misc. 44p

**GARAGE SALE:** 1102 7th St. Corner of 7th & Elm, Rule. Fri., Nov. 4, and Sat., Nov. 5. 8 a.m. to 2 p.m. Rain or shine. 44p

**GARAGE SALE:** Thurs. and Fri. 103 5th St., Rule. 8 til ? Lots of misc. 44c

**YARD SALE:** Sat., 8 to 1. 1105 N. 7th. Rain day Nov. 12. 44c

**CARPOT SALE:** Sat. 505 N. Ave. F. 8 to 4. Winter clothes, Christmas, blankets, heaters, furniture, etc. Priced cheap. 44p

**ESTATESALE:** Fri., Nov. 11. Ann Crawford Estate. 702 12th. St. Rule. 44-45c

**GARAGE SALE:** Sat. only, Nov. 5. Christmas tree, Christmas decorations, clothes for everyone, electric saw, baby bed, lots of baby items, crafts. Everything must go. Cleaning out storage. 201 S.E. 4th St., Knox City. 44c

### Help Wanted

**NOW TAKING** applications for all positions at Sonic Drive In, Haskell. Apply in person. 25tfc

**WES-T-GO** now accepting applications for cashier. Part time or full time. Apply in person at store. 400 N. Ave. E. 37-44c

**NEEDED:** Pusher with experience. Call 940-657-4333. Ask for David. 42-44c

**WAIT STAFF** needed at Red Rooster Restaurant. Apply in person. 1006 S. Ave E. Haskell.

**LICENSED NURSE.** Charge nurse position available. Please apply in person at Brazos Valley Care Home, 605 S. Ave. F, Knox City. 43tfc

**THE CITY OF STAMFORD** will receive applications for the position of Water Distribution and Sewer Maintenance Worker. Applications will be received until position is filled. Salary D.O.Q. For further information or to pick up an application and job description contact the City Secretary at 325-773-2591 or City Hall, 201 E. McHarg. The City of Stamford is an Equal Opportunity Employer. 43-44c

**THE CITY OF STAMFORD** will receive applications for the position of Water Plant Operator. Applications will be received until position is filled. Salary D.O.Q. For further information or to pick up an application and job description contact the City Secretary at 325-773-2591 or City Hall, 201 E. McHarg. The City of Stamford is an Equal Opportunity Employer. 43-44c

**WORKERS NEEDED** at Sagerton Gin, Sagerton, Texas. Call 940-997-2445 or 325-773-3712. 43-46

**HELPWANTED:** Apply in person. Hanson Paint and Body, Haskell. 44-45c

**RICE SPRINGS** Care Home is making a difference. We are taking applications for PRNs or part time CNAs. Contact Shandra at 864-2652. 44c

### Real Estate

**FOR SALE:** Brick, 3 bedroom, 1 bath. CH/A. Cellar, water well. Large lot. 940-864-2264. 37tfc

**FOR SALE:** Recently remodeled, brick 3 bedroom, 2 bath, large living room with cathedral ceiling and fireplace. New CH/A. Attached garage with opener. Great location on large lot with water well, sprinkler system, beautiful yard and large pecan trees. 1203 N. Ave. L. Can see by appointment only. Contact Jolanda at 864-8531, day or 996-2016, night. 42tfc

### For Rent

**FOR RENT:** Furnished rooms for rent. Nightly, weekly. Call Lone Star Lodging 864-2238. 21tfc

**HOUSE FOR RENT:** 3/2, C/HA, workshop, carport. \$450 per month. 1405 N. Ave. H. 254-559-7117. 43tfc

**FOR RENT:** 1107 N. 10th. 2 bedroom apartment. CH/A. 864-3762. 44c

**HOUSE FOR RENT:** \$525 per month. First and last month's deposit. References and employment verification required. Non-smokers. No indoor pets. 1206 N. Ave. M. Call Kimberly 325-725-3806. 44tfc

### Miscellaneous

**HOUSE LEVELLING** and foundation repair. No payments until work is satisfactorily completed. David Lee & Co. 325-675-6369. 1-888-486-8588. 6tfc

**WILD HORSE** Trading Post is your RADA Cutlery dealer. We're a cut above the rest! Come see our selection! 41-51c

### NOTICE

**The Haskell Free Press reserves the right to edit and/or delete all news stories and locals for length and liability and to refuse to print anything deemed not newsworthy.**

### Public Notices

**NOTICE**  
Haskell County Commissioners' Court will accept sealed bids until 10:00 a.m. on November 10, 2005, at the office of the County Judge in Haskell County Courthouse for the purchase of a 1989 GMC 1/2 Ton, 5 speed, long bed Pickup from Precinct #1, a 1975 Tempte Belly Dump Trailer and 1989 Chevy Crew Cab 3/4 ton Pickup from Precinct #4.  
Haskell County reserves the right to accept or reject any or all bids.  
David C. Davis  
County Judge 43-44c

### NOTICE TO CREDITORS

Notice is hereby given that original Letters of Guardianship of the Person and Estate of Elna Hargrove were issued on October 27, 2005, in Cause No. 27G pending in the County Court of Haskell County, Texas: Covenant Outreach, LLC, Guardian of the Person and Estate of Elna Hargrove.  
The mailing address of the Guardian is in Taylor County, Texas, as follows:  
Covenant Outreach, LLC, c/o S. Clinton Nix, P.O. Box 59, Abilene, Texas 79604.  
All persons having claims against this Estate which is currently being administered are required to present them within the time and in the manner prescribed by law.  
Dated October 28, 2005  
Bradbury, Nix & Fowlkes, LLP  
P.O. Box 59  
Abilene, Texas 79604  
325-673-7317 phone  
325-673-3833 fax  
By: Clinton Nix  
S. Clinton Nix  
State Bar No. 15043300 44c

### Dodson Concrete Construction

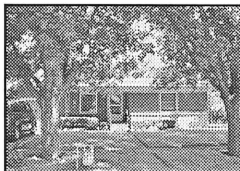
Commercial - Residential  
**David Dodson**  
704 N. Ave. F • Haskell  
**940-864-2038**  
Over 20 Years  
in the Business  
FREE ESTIMATES

### LANGFORD ROUSTABOUT SERVICE

**SCOTT LANGFORD**  
Roustabouts  
Backhoes  
Winch Trucks  
Dump Trucks  
Welders  
Mobile: 940-256-0535  
Office: 940-864-3490  
Home: 940-864-2565  
8348 N. Hwy. 277  
Haskell, Texas 79521  
Specializing In:  
Oilfield Repair,  
Maintenance & Construction

### RIKE REAL ESTATE

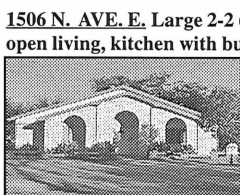
Mary Rike, Broker John Rike, Agent  
411 1/2 S. First Street  
Haskell, Texas 79521  
940 864 2411 940 864 2332  
mrike@dtmspeed.net  
www.rikerealestate.com



**104 N. AVE. M.** 2-1-1. Nice two bedroom, one bath with one-car garage. Home has new windows, C/HA, living, large dining, kitchen, water well, fenced with great backyard.



**704 N. AVE. H.** 3-2-1, living, kitchen-dining, window units for cooling and panel heat, good carpet, outside has siding, fence, water well and storage.



**1506 N. AVE. E.** Large 2-2 (can be three bedroom), large open living, kitchen with built-ins, large downstairs bath with tub and shower. Half story has one large bedroom with skylight and bath. Property has outbuildings and is fenced for farm animals.

Come by Rike Real Estate for a complete list.

### ZERO DOWN

Land-Home with low interest rate.  
**NO CREDIT NECESSARY**  
**325-673-8488**

If 4 out of 5 people suffer from diarrhea...does that mean one enjoys it? Check out our recliners by the pair sale. Get 2 La-Z-Boy recliners starting at \$499. Kinney Furniture in Stamford. 325-773-2232. 44c

### EXPERT AUTO WORK

REASONABLE RATES  
  
See us for all your auto mechanic needs. 20 years experience. We do it right the first time.  
**305 South Ave. E • Haskell**

**Full time secretary needed for home health agency. Healthcare experience and typing/computer skills required.**  
Apply in person at 417 S. 1st, Haskell

### RULE 2 BR RENT TO OWN

Corner lot with trees. Needs TLC.  
**Call Jim at 325-518-8128**

### Nanny Plumbing, Inc.

301 S. Ave. E • Haskell  
**940-864-3043**  
Sales and Service for Residential Plumbing and Heating/Cooling, Pump Installer and Sprinkler Systems.  
License numbers available upon request.

### I BUY HOUSES

Quick cash and closing on homes \$25,000 or less.  
**Call Jim at 325-518-8128**

### "IN CASE I DON'T WIN THE LOTTERY, HOW CAN I SUPPLEMENT MY SOCIAL SECURITY?"

**A LOT OF PEOPLE ARE CONCERNED ABOUT HOW THEY'RE GOING TO PAY FOR WHAT SOCIAL SECURITY DOESN'T. CALL ME. I CAN HELP YOU FIND THE RIGHT PRODUCTS TO MEET YOUR NEEDS.**

Chan Guess  
Haskell  
940-864-2665  
P.S. Appointments to fit your schedule



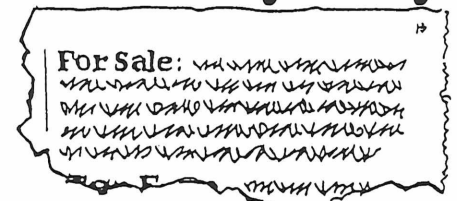
Allstate Life Insurance Company, Home Office, Northbrook, IL. Securities offered by Personal Financial Representatives through Allstate Financial Services, LLC. Registered Broker-Dealer. Member NASD, SIPC. Main Office: 2920 South 84th Street, Lincoln, NE 68506. 877-525-5727. © 2004 Allstate Insurance Company.

### The Hard Way.



Sure, you can stand in the street in the middle of a major intersection every day for a week with an item you want to sell, put a couple of huge signs on it, and hope someone takes you up on the offer. It might just get the job done. Or you might just end up looking foolish.

### The Easy Way.



Or, you can place a Classified Ad with us and have people from all over the area clamoring to take your unwanted items off your hands for a handsome profit. Quickly and easily. And for a very small investment. So what are you waiting for? Call now!

### The Haskell Free Press

P. O. Box 555  
420 N. First Street  
Haskell, Texas 79521  
Serving Haskell County for over 100 years

### LARGE ANTIQUE ESTATES AUCTION SATURDAY, NOVEMBER 5 • 11 A.M. \* \* \* \* SWEETWATER, TEXAS \* \* \* \* \*

Nolan County Coliseum Annex, Newman Park  
1699 Cypress. Viewing 1 Hour Before Sale.


This will be a Fantastic Auction of Fine Antique Furniture, Collectibles from various estates, Consignments and other items to be sold ONE DAY ONLY! Plan now to attend! There will be plenty of seating and parking. Everything must be moved Day of Sale.

A Partial List! A beautiful antique 4 pc. walnut Victorian bedroom suite with matching wardrobe, M-T dresser, high back bed and M-T nightstand. A rare antique "kalliope" metal disc music box with 20 original disc-plays beautiful! A great burled walnut antique Victorian Eastlake secretary bookcase. A rare antique "Hale" lawyers stack bookcase. An unusual antique American Tiger Oak hallseat. A beautiful antique upright phonograph. A fabulous antique American oak curved glass china cabinet in mint original condition. A great antique "Ingraham" clock-came out of railroad station. A very unusual antique American oak sideboard with curved glass doors, bevel mirror and pawfeet. A beautiful pair of antique American walnut highly carved matching twin beds. A fabulous antique oak side by side secretary with curved glass, bevel mirror and pawfeet-highly carved-must see! A rare antique "Edison" cylinder phonograph with large painted Morning Glory horn and original records! GUN COLLECTION! A rare authentic antique 1873 "Winchester" lever action oct. barrel 38-40 cal. rifle in great original condition. A rare authentic antique "Colt Lightning" rifle slide action. 32-20 cal. rifle in great original condition. A large Western "stagecoach" bronze statue on marble base by "C.M. Russell"-must see! A very rare antique spinet desk with large column legs and full interior. A beautiful bronze lady statue lamp with unique glass flame shade. ANTIQUE COINS: 1908 twenty dollar gold coin. 1898-S ten dollar gold coin. 1901-S five dollar gold coin. 1853 large cent. Over 20 antique silver dollars and many more. Beautiful gold and diamond jewelry. Antique "Hummels." Antique 1890's "Wave Crest" dresser box. Leaded glass lamps, cut crystal, Dresden, cookie jars, pickle castors, tea sets, leaded glass windows and much more! Don't miss this sale! Bring cash or check with proper ID. Auctioneer's note: These are some of the nicest items we have ever had the chance to sell, therefore, we sincerely hope you will take time to see for yourself.

Auctioneer: Michael Mears Tx Lic. #12703  
No Buyers Premium! 405-381-3402

**CUTE LITTLE HOUSE**  
Very affordable. Call 325-673-7353

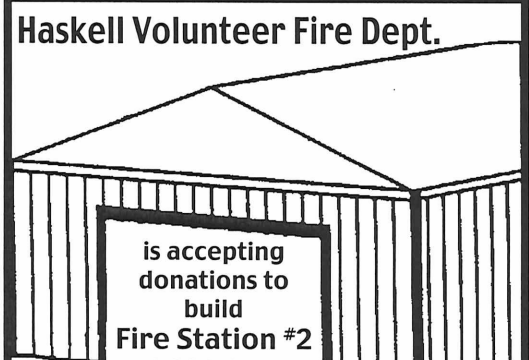
**NOTICE**  
The deadline for Classified Advertising is 5 p.m. on Mondays.  
Haskell Free Press



**ROCHESTER:** 4 bedroom, 2 bath lovely brick home. Sets on four lots. Large living area. Beautiful hardwood floors throughout house.  
103 N. AVE. M. Clean, newly remodeled 4 bedroom, 2 bath. One car garage, fenced yard, cellar.  
75 ACRES approximately 7 miles from Haskell off of FM 618 South in southeast Haskell County. 25 acres cultivated. 50 acres pastureland. One tank. City water availability.

**13 AVE. K EAST:** Immaculate home. 3 bedrooms, 3 baths. Large living area. 1602 DERRICK DR. Beautiful brick home. 3 bedroom, 2 bath. Newly updated interior. 2 car garage. Privacy fence. Great price.  
103 N. Ave. E  
940-864-2665  
1-800-658-6342  
or call  
Bridget or Chan Guess 864-6142  
Hess Hartsfield, Broker 864-2004

### Haskell Volunteer Fire Dept.



**is accepting donations to build Fire Station #2 at 300 S. 1st**

to house donated Texas Forest Service firefighting equipment and provide a larger training facility. If you would like information on making a donation or how you can help contact Fire Chief Bill Steele 940-864-2208; Sam Watson 940-864-2355; Randy Shaw 940-864-2023; Jerry Stocks 940-864-3455 or ask any Haskell fireman for details.

Donations may be mailed to:  
**Haskell Volunteer Fire Dept.**  
301 N. First St., Haskell, TX 79521



# FSA to issue loans for flood damage

"Applications for emergency farm loans caused by excessive rain and flash flooding that occurred Aug. 9-15 are being accepted at the Farm Service Agency (FSA) office located in Haskell," Larry P. McDaniel said recently.

"Haskell County is one of eight in Texas recently named by the Secretary of Agriculture eligible for loans to cover part of actual production losses resulting from excessive rain and flash flooding that occurred Aug. 9-15."

"And, applications for emergency farm loans caused by excessive rain and flash flooding that occurred Aug. 14 and continuing, are also being accepted," McDaniel said.

"Haskell County is one of 13 in Texas recently named by the Secretary of Agriculture eligible for loans to cover part of actual production losses resulting from excessive rain and flash flooding that occurred Aug. 14 and continuing."

McDaniel said, "Farmers may be eligible for loans of up to 100% of their actual losses or the operating loan needed to continue the agricultural business, whichever is less. For farmers unable to obtain credit from private commercial

lenders, the interest is 3.75 percent."

"As a general rule, a farmer must have suffered at least a 30 percent loss of production to be eligible for a FSA emergency loan," McDaniel said. Farmers participating in the Federal Crop Insurance program will have to figure in proceeds from those programs in determining their loss.

"Applications for loans under the emergency designation will be accepted until June 19, 2006 but farmers should apply as soon as possible. Delays in applying could create backlogs in processing and possibly over into the new farming season," McDaniel said.

FSA is a credit agency of the United States Department of Agriculture. It is authorized to provide disaster emergency loans to recognized farmers who work at and rely on farming for a substantial part of their living. Eligibility is extended to individual farmers who meet U.S. citizen requirements and to farming partnerships, corporations or cooperatives in which U.S. citizenship requirements are met by holding a majority interest.

The FSA office in Haskell is open from 8:00 a.m. to 4:30 p.m., Monday through Friday.

# Sr. 4-H Club holds meetings, elects officers

Nine Haskell Sr. 4-H Club members met Sept. 20 for a program on CPR given by Cindy Rodgers of Haskell.

Election of 2005-06 officers was held. Officers elected were Candace Brister, president; Brooke Bullinger, vice president; Aubrey Bassett, secretary; Caleb Hudgens, reporter; Lauren Lampe, refreshment chairman; and Brooke Bullinger, phone committee. Representing the County Council will be Brister and Bullinger. Andrea Anderson will serve as alternate. Brister and Bullinger will also represent Haskell in the District 4-H Council.

The Haskell Sr. 4-H Club met Oct. 23 and went "Trick or Treating" for

non-perishable foods to be collected for the NOAH Project in Haskell. The five 4-H'ers attending held a short business meeting and enjoyed some refreshments before adjourning.

The canned goods collected by the Sr. Club were delivered to the NOAH office Mon., Oct. 24.

Upcoming 4-H events include the Haskell County 4-H Food Show Mon., Nov. 7 in Rochester; District 4-H Roundup, Nov. 9 in Vernon; major stock show sign-up night Nov. 15; and Gold Star Banquet, hosted by Haskell County 4-H Clubs on Nov. 21.

To join 4-H, contact the Haskell County Extension Office at 940-864-2658 or 864-2546.

# Christmas for kids project to start Nov. 6

The Haskell County Welfare Board is holding their annual fundraiser for the annual "Christmas for Kids" project. Each year this project provides clothing and toys at Christmas for needy children in Haskell County.

Last year 55 families and 130 children were provided Christmas through this project.

This year, members of Haskell County churches will again have an opportunity to donate the amount

they wish on the designated Sundays of Nov. 6 and 13. The goal of the board is to have at least one dollar a person donated on these dates. Any church that has not been contacted and is interested in taking part, is asked to contact Betsy McManamon at 864-2194.

Anyone not affiliated with a local church is welcome to send donations to the Department of Family and Protective Services (CPS office) at 500 S. 10th St., Haskell, Texas 79521.

## Calendar

### Sagerton bazaar

The Sagerton Hobby Club will host their twenty-third annual bazaar Sat., Nov. 5 from 9 a.m. to 2:30 p.m. at the Sagerton Community Center. Arts, crafts, baked goods, candies and Thanksgiving and Christmas items will be offered for sale. Lunch will be served. Booths are available by calling 940-997-2103 or 325-773-3832. Admission is free.

### Flu shot clinic

The Texas Dept. of Health will hold a flu shot clinic Mon., Nov. 14 at the Rule School Library in Rule. Clinic times are from 10 a.m. to 12:30 p.m. and 1:15 to 3 p.m. Those six months or older are eligible. Flu vaccine is \$10 unless you bring your Medicare or Medicaid card. Youth 17 years and under must be accompanied by a parent, legal guardian or relative over age 18.

### First bale

Russell Beakley ginned the season's first bale of cotton at Rule Co-Op Gin in Rule. The bale weighed 528 lbs.

### Candlelight memorial

Hospice of the Big Country will hold a candlelight memorial service Thurs., Nov. 10 at 6:30 p.m. at Logsdon Chapel at Hardin-Simmons University in Abilene commemorating the lives of the patients served by the hospice Nov. 1, 2004 to Oct. 31, 2005. Names of those who died will be honored with the lighting of a candle in their memory. For more information call 325-793-3421 or 325-793-5450.

### Flood donations

The Haskell Ministerial Alliance is collecting monetary donations for local flood relief. Donations may be made to P.O. Box 411, Haskell, Texas 79521. 100% of these donations will go directly to help the local flood victims.

## STAR STOP

706 N. 1st • Haskell • 864-2062

Blue Bell Ice Cream Sandwiches Fudge Bars Double Fudge Bars Country Cones Vanilla Cups	Bean and Chili Burritos Beef-n-Bean Burritos Pig in a Blanket Chicken Wings Chicken Legs Deli Fried Pies
---	---

2/\$1

### Wedding Selections

for

**Braid Sharp and Jeff Blanks**

Cobalt blue acrylic dinnerware and drinkware  
Grilling Accessories  
Home Decor

*Phone orders welcome!  
Gift bag included with purchase. Free delivery.*

**Good Times**  
 UNLIMITED  
 512 N. 1st  
 940-864-6133

VALOR TELECOM

Local & Long Distance Phone Service  
High-Speed DSL Internet Service and  
DISH Network® Satellite TV available

Come by our new store in  
Seymour at 400 N. Main or for more  
information, call 1-866-478-9026

## Choosing a color?

Save yourself frustration,  
time and money.

\$5<sup>00</sup> off

your next paint purchase  
of \$20 or more.

With coupon. Regular-priced items only.  
No rainchecks, no exceptions, no substitutions.  
One coupon per customer per visit.

Expires Nov. 12, 2005

True Value.

If you need an excuse to visit True Value's paint department featuring Color Made Simple, here you go. Our exclusive color selection tools and Certified Color Experts have just what you need to choose your perfect shade. You can feel at ease knowing expert advice is as close as your neighborhood True Value. Finding your color is simple.

## COLOR

made simple

True Value.

FARM RANCH HOME AUTO  
CASE IH True Value. AMP AUTO PARTS

## True Value

Help Is Just Around The Corner.

Hwy. 277 North • Haskell, Texas  
Phone 940-864-8551  
Store Hours:  
Mon.-Fri. 7:30 to 5:30; Sat. 7:30 to 5

## IF YOU ARE A TRUE INDIAN FAN

IT'S GOOD TO  
BE A PROUD  
INDIAN FAN

Meet at the Courthouse  
at 5:30 p.m.  
to have car  
windows painted and  
streamers added  
to antenna.  
Leave in a  
caravan at  
6:15 p.m. to  
travel to  
Knox City to  
**SUPPORT our INDIANS.**

If you have car chalk, please bring.

WE BELIEVE!!!  
IN THE  
HASKELL INDIANS

Shake those Cans  
Rattle those Bells  
Blow those Horns  
**WHILE THE  
INDIANS**  
Shake, Rattle and Roll  
The Greyhounds!

BEAT 'EM  
SCALP 'EM  
GO INDIAN GO

## BEAT KNOX CITY!

From: PROUD INDIAN FANS