



**SPORT ABOUT**  
402 N 1 ST  
HASKELL, TX.

**FRIDAY**  
**MAY 30**

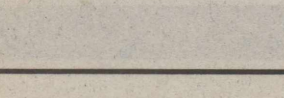
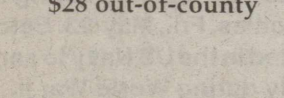
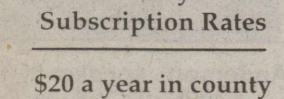
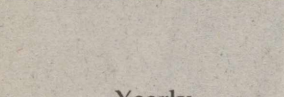
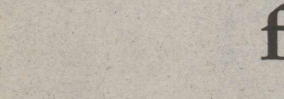
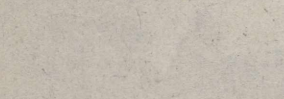
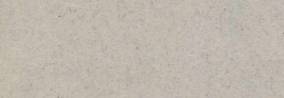
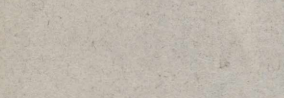
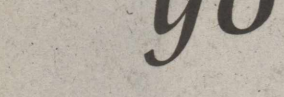
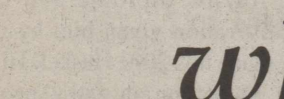
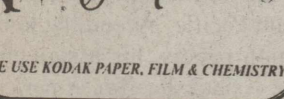
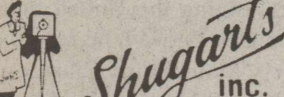
**PHOTO HOURS**  
9:30-3:30

**\$ 12<sup>99</sup>**

plus tax  
due at pick-up  
**\$1.99 sitting fee**  
per person

1 - 10X13  
1 - 8X10  
2 - 5X7s  
2 - 3X5s

16 King Size Wallets  
8 Regular Size Wallets



# Beef

continued from page 1  
decade. A cow in Alberta tested positive for the disease after tests were taken from the cow after slaughter. The meat did not enter the food chain, Canadian officials said. BSE are found only in the brain and spinal cord.

Faries noted some important facts about the surveillance systems and about mad cow disease:

Surveillance systems in the U.S. and in Canada have been in place to monitor cattle for diseases and unwholesomeness. Surveillance testing reassures the U.S. beef supply is safe.

All cows that show neurological signs, weak or thin body condition are tested at slaughter. These cows do not enter the food chain.

The beef itself isn't infected with BSE, only the brain and spinal cord. No evidence of infection detected in milk or muscle tissue.

No brains or spinal cords are ground in hamburger meat in the U.S.

Surveillance testing, the ban on feeding ruminant protein to ruminants (feeding rendered cattle, sheep, goat or deer meat or bone meal back to beef cattle) and the prohibition on importing animals and meat products from BSE-affected countries has provided assurance that the U.S. and Texas will have healthy animals and wholesome meat products.

The U.S. Department of Agriculture (USDA) has closed the border to the importation of Canadian cattle and meat products.

The eight-year-old Canadian cow that tested positive for the disease was part of a 150-head herd. The affected herd would be tested and depopulated, Canadian officials said.

In January, the cow was condemned due to unwholesomeness on slaughter and brain tissue was submitted for laboratory testing under the BSE surveillance program. Tests conducted at a laboratory in the United Kingdom confirmed infection of BSE in the cow's brain after initial tests were run at a Canadian laboratory.

"These cows are regularly tested and taken out of the food chain," Faries explained. "No brains or spinal cords are ground for hamburger here in the U.S. Continuous surveillance is the means to detect possible cases of disease like we've seen happen in Canada. Mad cow disease is not in the U.S. and not likely to occur due to the compliance of the regulatory biosecurity measures currently enforced by USDA and the Texas Animal Health Commission."

For more information about mad cow disease, go to <http://www.aphis.usda.gov/lpa/issues/bse/bse-overview.html>.

**Open**  
**May 31st!**  
**Old Fashioned**  
**Snowcones**  
Hours: Thurs.-Sat.  
2 to 7 p.m.  
**HISE**  
**ICE**

# Obituaries

## Emily Jane Reynolds



EMILY JANE REYNOLDS

Funeral services for Emily Jane Reynolds, 3, of Abilene were held Sat., May 24 at First Baptist Church in Haskell with Fred Sandlin officiating. Burial was at Mount Olive Cemetery in Aspermont under the direction of Holden-McCauley Funeral Home in Haskell.

Emily died Wed., May 21 at Hendrick Medical Center in Abilene.

Born Aug. 14, 1999 in Seymour, she was a very special little girl. She brought joy, sunshine and smiles into everyone's life with whom she came into contact. She had a difficult life because of her medical problems, but she continued to smile and fight hard for the people she loved. She never gave up and expected the people

around her to never give up. Her perseverance touched people's lives wherever she went. She was a treasure and will be dearly missed by all.

Survivors include her parents, John Henry and Dixie Jane Reynolds of Seymour; foster parents, Fred and Wanda Vinson of Abilene; maternal grandmother, Juanette Martin of Granbury; half brother, John Dustin Reynolds and half sister, Kayla Dawn Rose Reynolds, both of Graham; three foster brothers, Kobe, Freddie and Junior; five foster sisters, Vontese, Pramy, Reagan, Shawn and Jennifer, all of Abilene; and a foster niece, MacKenzie Earl of Abilene. PD NOTICE

## Teresa Martinez



TERESA MARTINEZ

Funeral services for Teresa Martinez, 62, of Haskell were held Sun., May 25 at St. George Catholic Church in Haskell with Father Michael Melchor officiating. Rosary was held Sat., May 24 at Holden-McCauley Funeral Home in Haskell. Burial was in Willow Cemetery under the direction of Holden-McCauley Funeral Home.

Mrs. Martinez died Thurs., May 22 in Haskell.

Born July 1, 1940 in Austwell, she

was the daughter of Augustine and Julia Acuna Guzman. She married Frank Martinez Aug. 1, 1959 in Benjamin. She was a seamstress and caregiver.

Survivors include her husband, Frank Martinez of Haskell; son, Eddy Martinez of Minnesota; brothers, Ramon Guzman of Arizona and Roy Guzman of Oklahoma; grandchildren, Victoria Maria, Christopher, Juliana, Edward II and Alexia. PD NOTICE

# Advice for air-cleaning devices

Decisions, decisions...Clearing the air can take some doing. Especially when the air to be cleared is inside a well-sealed and insulated building.

That's why so many consumers are looking for air-cleaning devices to help with this process. But choosing which device to use can be confusing.

Janie Harris, Texas Cooperative Extension housing and environment specialist, offers some advice. In order of effectiveness, she said, the three ways to clean indoor air are: source control, ventilation and air cleaning.

"Source control is generally the most effective strategy to reduce pollutants in indoor air since it eliminates individual sources of pollutants or reduces their emissions," she said. Controlling the source includes keeping pets outdoors or at least out of the bedroom, and keeping the house as dust-free as possible.

"Ventilation brings outside air indoors," Harris said, which is both good and not so good. "Costs for heating or cooling incoming air can be significant, and outdoor air itself may contain undesirable levels of contaminants."

That leaves air cleaning, which, Harris said, is only effective as a supplemental cleaning method since air-cleaning devices by themselves can't do the job if source levels of pollutant are high and ventilation is inadequate. And besides, she added, air-cleaning devices used alone cannot remove all the air pollutants

in a room because "not all the air in the room goes through the air filter."

Plus, Harris said, air-cleaning devices: (1) can't be proven to reduce rates of asthma or allergies; (2) can't remove non-airborne particles; (3) probably won't eliminate odors; and (4) provide no protection against carbon monoxide or radon.

And that's why air cleaning devices alone aren't enough. "Since no air-cleaning system is currently available that will remove all pollutants from indoor air, the use of air cleaners should only be considered as a supplement when the use of other methods to reduce indoor air pollutants are not successful in reducing certain pollutants to acceptable levels," she said.

The decision whether or not to use air cleaners is up to the individual, Harris said. However, consumers interested in using air cleaners should know "the American Lung Association suggests choosing one that ensures high efficiency over an extended period of time and does not produce ozone levels above 0.05 ppm (parts per million)."

Once a decision to use an air cleaning device is made, the next step is figuring out which is the right one. Several types are available, Harris said. For example:

- Table top units: These devices "generally have limited air flow and inefficient panel filters," Harris said. "Most reports have shown these units to be relatively ineffective."

- Room-size air cleaners: These units, which can be moved from room to room, use either HEPA filters or electrostatic precipitation. The American Household Appliance Manufacturers recommend all doors and windows be closed in a room being treated with one of these devices.

- "In-duct" units: These units are installed in central heating or air conditioning systems of the residence, or in an HVAC system. "For these types of units to be effective," Harris said, "the HVAC

fan must be in constant operation for air cleaning to occur since the airborne contaminants must be captured and carried back to the centralized filter ..."

The technology used in these air-cleaning devices differs too. Some use mechanical filters, electronic air cleaners, hybrid filters, gas phase filters or chemical processes.

However, Harris quoted the American Lung Association's word of caution: "Because of documented negative health impact of ozone, especially for persons with asthma, and the lack of evidence for its ability at low concentrations to effectively 'clean' the air, the American Lung Association suggests that ozone generators not be used."

In fact, the American Lung Association has found "little reason to endorse the use of inexpensive tabletop, appliance-type air cleaners, regardless of the technology they employ," Harris said.

Consumers who choose to use portable air cleaners should follow manufacturer's directions for cleaning and use.

To help clear up some of the confusion that comes from wanting to clear the air, Harris offered these suggestions. When it comes to buying an air cleaner, consider:

- Efficiency: Look for mechanical filters (such as HEPA filters) and electronic air cleaners that can effectively trap particles.

- Clean air delivery rate: Overall effectiveness of these devices depends the amount of air drawn through.

- Air discharge patterns: The flow of air through the device also affects its general effectiveness.

- Price: Check on the cost of replacement filters and maintenance of the device, in addition to its initial purchase price.

For more information contact your county Extension agent and ask for fact sheet on "Air Cleaning: A Strategy for Reducing Pollutants in Indoor Air."

## SWIM LESSONS

**JIMMY LISLE, Instructor**  
**June 16-21**  
**AT CITY POOL**

**Cost \$35**

**Classes Begin at 5 p.m.**

To register call 864-3820 & leave message

**CLASSIFIED**  
**SELLS**  
**CALL 864-2686**

*Like*  
*what*  
*you're*  
*reading?*



**School's out-**  
**Watch for**  
**children**  
**playing**

**We'll send it to you each week**  
**for just \$20 a year.**  
**(in Haskell County)**

Yearly  
Subscription Rates  
\$20 a year in county  
\$28 out-of-county

Name \_\_\_\_\_  
Address \_\_\_\_\_  
City \_\_\_\_\_ State \_\_\_\_\_ Zip \_\_\_\_\_

Clip and Mail Coupon, Along with Check or Money Order to:

**The Haskell Free Press**  
P. O. Box 555, 420 N. First, Haskell, TX 79521

**Why pay**  
**someone to**  
**check your**  
**cotton?**

**ATTENTION**  
**COTTON FARMERS**  
**Petty Flying Service**

will provide an experienced  
entomologist/crop consultant to watch your  
dry-land cotton for **FREE!**

For irrigated cotton, we only charge \$5.00 an acre.  
All you have to do is let us do your spraying!  
For more information just call

**1-940-203-0015 or 1-940-422-4511**



MR. AND MRS. DOUG CLARK

## Bennett, Clark wed in San Angelo

Becky Bennett and Doug Clark were united in marriage, Mar. 29, at Holy Angels Catholic Church in San Angelo, with the Rev. Charles C. Greenwell, Ed., D. officiating.

The bride is the daughter of Barry and Janice Bennett of San Angelo. Her grandparents are Tom Vandeventer and the late Dorothea Vandeventer of Rankin, and the late L. V. Boots and Elizabeth Braden.

The bridegroom is the son of Douglas Clark III of Farmers Branch and Bill and Judy Campbell of Eden. His grandparents are Gertrude Wittenborn and the late Otto Wittenborn of Haskell, Douglas and Peg Clark of Burleson and the late Kitty Lou Clark. He is the nephew of James and Melyn Wittenborn of Haskell.

Matron of honor was Jennifer Harben of Dallas. Best man was Shannon Allen of San Angelo.

Given in marriage by her father, the bride wore a white full-length halter style gown, adorned with beads and lace on the bodice and along the waist and hemline. Her veil was attached to the back of her hair by a beaded barrette. She carried a bouquet of spring flowers and roses in shades of purple.

The matron of honor wore a full-length sleeveless dress of plum colored satin taffeta, and carried a bouquet of spring flowers.

A reception following the ceremony was held at the Parish Hall. Guest tables were covered with white cloths and held a white cowboy boot filled with spring flowers and a candle.

A white trellis with greenery and candles, and wagon wheels with candles, provided a background for the serving tables which were covered with white cloths and adorned with spring flowers. The bride's and groom's cakes were designed and made by Karen Sawey, aunt of the groom. The four-tiered bride's cake of strawberry and vanilla layers, had strawberry filling with the sides of each layer decorated with white chocolate in a strawberry leaf trellis design. Atop the cake and around the bottom, were spring flowers and strawberries.

The groom's German chocolate cake was decorated with strawberries and chocolate molds of fish and worms, and held a replica of the groom's boat, depicting a Saturday afternoon at the river fishing. Serving platters held dark and white chocolate-dipped strawberries.

Serving guests were Katie Perez, the groom's aunt, friends Jo Allen and Kathey Kahoutek, and Diane Ohlemacher, cousin of the bride.

Wedding pictures were taken by Drew Dozier, aunt of the groom.

The bride is a graduate of San Angelo Central High School. She received a bachelor's degree in marketing from Angelo State University, and is employed by Stroman Abstract and Title Company.

The bridegroom is a graduate of Eden High School. He is employed by Concho Valley Electric.

Following a wedding trip to Lake Tahoe, the couple is residing in San Angelo.



REV. AND MRS. JIMMY TURNER

## Turners to celebrate 50th anniversary

Bro. Jimmy Allen and Sammy Turner of Azle, formerly of Haskell, will be honored on their 50th anniversary at a family dinner hosted by their children and grandchildren in June at a time when they can all join together to celebrate the event.

Jimmy Turner and Sammy Lee Harris were married May 30, 1953 at First Baptist Church of Rising Star.

Their children are David Turner of Andrews, Stacy Turner of Perth,

Australia, and Patti Cloe of Tahoka. They have seven grandchildren and 2 great grandchildren.

Bro. Jim Turner served as pastor of Haskell First Baptist Church for several years before moving to Azle.

The family requests that anyone wishing to send cards or notes to the couple please mail them to Patty Cloe at P. O. Box 1237, Tahoka, TX, 79373.

## Weinert FBC plans VBS June 9-13

The Weinert First Baptist Church will host Vacation Bible School Mon., June 9 through Fri., June 13 from 5:30 to 8 p.m. each evening. Children ages 3 through grade 6 are invited to join the church at SonHarvest Country Fair.

"We're ready for a Vacation Bible School children will never forget," said Mary Murphy, VBS director.

"SonHarvest County Fair is a fun and exciting place where children learn to apply Biblical teaching to their lives. Children will have a great time singing, watching skits, creating crafts, playing games and discover Bible truths about growing the fruit of God's spirit.

For more information, call 940-673-8269.

### ECC Calendar and Menu

#### Mon., June 2

Lunch—Oven-baked chicken breasts, cream gravy, mashed potatoes, green beans, buttered corn, yeast rolls, cherry cobbler, milk, tea, or coffee

#### Wed., June 4

11:00 a.m. Outreach Health Services blood pressure check  
Lunch—Meat balls, brown gravy with onions over macaroni, lima

beans with ham bits, Spanish cabbage, sliced tomatoes and onions, cornbread, milk, tea, or coffee

#### Fri., June 6

Lunch—Chicken and dumplings, chili beans, fresh garden salad, cornbread, brownies/fruited Jello milk, tea, or coffee

Announcements begin at 11:45 a.m. followed by lunch.

To Subscribe, Call 940-864-2686

## BURGER & SHAKE SPECIAL\*



No Waiting  
Call In Orders  
**864-8533**

\*No. 1 or No. 2 Single Patty Sonic Burger and Regular Size Shake  
Limited Time Only!

Offer good May 1-31, 2003. Not valid with any other offer. Only at participating Sonic Drive-Ins. ©2003 America's Drive-In Trust®

## Births

Joshua Stocks and Ashley Howerton of Vernon announce the birth of their son, Kyle Blaine, born May 20 at 6:54 p.m. in Wichita Falls. He weighed 6 lbs. 9 oz. and was 20 1/2 inches long.

Grandparents are Danny Stocks of Haskell, Joe and Rheasa Onder and

Hal and Susie Howerton, all of Vernon.

Great grandparents are Audie and Wanda Stocks and Olen and Thelma King, all of Haskell; Fred and Maxine Reddell of Fort Worth, Peggy and Danna Howerton and Cleta and Harris Howard, all of Groom.



### The Carousel Bridal Registry

Selections for  
Melinda Latham and Paul McGuire  
J. Heather Hazelwood and Kevin McSmith  
Vanessa Miller and Jason Shiplett  
Lesli Isbell and Tony Wharry

415 S. 1st 864-2069

## FLATLANDS

"essential elements for the way we live"

### Bridal Selections available at Flatlands

**Karmen Adkins**  
bride-elect of Jason Chance

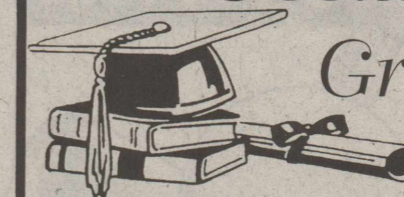
**Jill Watson**  
bride-elect of Chad Hammack

**Jennifer Landreth**  
bride-elect of Wade Mize

**Vanessa Miller**  
bride-elect of Jason Shiplett

Open Monday - Friday 9 a.m. - 6 p.m.  
Saturday 10 a.m. - 4 p.m.  
Located on the west side of the square in Haskell  
940.864.5777

## Gifts for all Occasions!



### Graduation

Many area seniors have made selections.

Call or come by to purchase gifts for all the seniors on your list. We will contact each graduate to pick up his or her gifts.

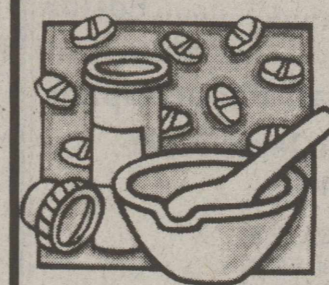
## Father's Day—June 15

We have gifts Dad will love!

### Bridal Registry:

- |   |   |
|---|---|
| Karmen Adkins<br>Bride-elect of Jason Chance    | Melinda Latham<br>Bride-elect of Paul McGuire     |
| Jill Watson<br>Bride-elect of Chad Hammack      | Heather Hazelwood<br>Bride-elect of Kevin McSmith |
| Vanessa Miller<br>Bride-elect of Jason Shiplett | Jennifer Landreth<br>Bride-elect of Wade Mize     |
| Lesli Isbell<br>Bride-elect of Tony Wharry      | Jennifer Vacek<br>Bride-elect of Pidi Castaneda   |
| Kristen Rodela<br>Bride-elect of Gavino Ortiz   |   |

### Baby Shower selections: Myra & Mark Casey



### Is Nail Fungus a problem for you?

If so, we have a unique therapy for you. Ask us. We can help.

## THE DRUG STORE

Haskell 864-2673  
www.haskelldrugstore.com

### Haskell Summer Lunch Menu

#### June 2-6 Lunch

Milk is served daily.

**Monday:** Pizza, corn, cheese stick, grapes

**Tuesday:** Popcorn chicken with gravy, mashed potatoes, fried okra, hot rolls, apple crisp

**Wednesday:** Corndogs, macaroni with cheese, pickle spear, pork and beans, ice cream with topping

**Thursday:** Ham and cheese sandwich, assorted chips, baby carrots, strawberries

**Friday:** Taco, pinto beans, salad, sour cream, jello

**The Haskell Free Press**  
IS READ BY MORE PEOPLE IN HASKELL COUNTY THAN ANY OTHER NEWSPAPER.

### BUSY HANDS & FEET

Melba Lowrance

Licensed Nail Technician

**MAY SPECIALS**

**Solar Nails \$25**

**Dreamers Candles 2 for \$25**

**Jewelry 25% off**

701 N. Ave. E, Haskell

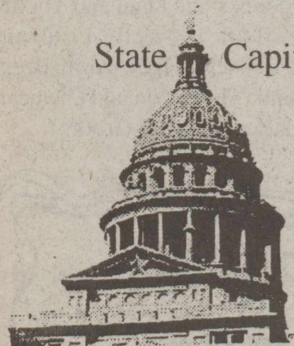
940-864-3536

Artificial Nails    Reflexology  
Manicures            Pedicures

# OPINION

TEXAS PRESS ASSOCIATION

State Capital



## HIGHLIGHTS

By Mike Cox

### DPS destroys records on missing Democrats search

AUSTIN—For a time last week, the world's longest windmill blade rested on a trailer parked in front of the Capitol.

Made for General Electric in Gainesville, the blade is seen by those in the growing electrical-generation-by-wind industry as a symbol of the future.

But even an unusual object more than a third of the size of a football field failed to capture much attention as fallout from the Killer/Chicken D's episode continued to generate its own electricity.

Texas Democrats, already torqued over news reports that the Department of Public Safety attempted to use the federal homeland security apparatus to find the missing House Democrats, became airborne over news that the DPS had ordered the destruction of all records pertaining to its search for the House members.

That news blew all the way to Washington, where Texas Democrats in Congress called for an investigation at the national level. And in Austin, the Travis County District Attorney's Office hinted at a possible grand jury investigation.

The DPS issued a short statement that it had destroyed the documents in accordance with federal regulations that prohibit "keeping intelligence information that is not related to criminal conduct or activity."

With all that taking up most of the spotlight, both houses continued trying to pass or block legislation as the regular session drew closer to the June 2 final gavel.

### Gone fishing...

Despite all the fast-moving action

going on in the Capitol, on a fine spring day, if you like to fish, it's hard to fight the urge to pack your rod and reel and head to the closest good water.

If you've caught a lot of fish in your lifetime, it may be hard for you to remember your first fish, but for a newer generation of Texas anglers, the Parks and Wildlife Department is extending that opportunity.

Through TPWD's Angler Recognition Awards, a fisherman can get an award for a first fish, a big fish, for catching and releasing and for what practically every person who ever wet a line hopes for, a record.

You have to fill out an application for any of the above, and there are rules to follow involving how a possible record fish is weighed and photographed, but that seems a small effort to go through to get official proof that you're an accomplished fisherman.

Of course, the new program is going to make exaggeration harder. Still, there will always be that big one that got away....

For more information about the program, check the department's Web site at [www.tpwd.state.tx.us](http://www.tpwd.state.tx.us).

### Space roads update...

Efforts to rename the El Paso portion of Interstate 10 for Star Trek creator Gene Roddenberry blew up on the launch pad this session, but two Houston area lawmakers may have better luck in getting NASA Road 1 renamed.

Assuming Gov. Rick Perry signs House Bill 1049 into law, effective Sept. 1 a 15-mile stretch of roadway variously known as Parkwood Avenue, NASA Road 1, and FM 528 will become NASA Parkway.

The scenic corridor stretches from Alvin to Seabrook.



[www.barrycartoons.com](http://www.barrycartoons.com)

## A KOFFEE KLATCHER ATTEMPTS TO DIET...



## From The Inside Out

By Mary Kaigler

### Who is this Mystery Reader?

I was born in Temple, Texas. I have been married 49 years and have two children.

I attended Temple High School, Texas Tech University, Texas A&M, University of Texas and South West Texas State University.

No one knows that I was once Paul Harvey's—"the rest of the story." My favorite TV show is "Wheel of Fortune."

My favorite type of music is gospel. My favorite song is "Precious Memories."

I like to watch the Haskell Indians and Maidens in everything they participate in.

The last book I read was *The Beginning Years*, by Jimmy Johnson. I am now reading *A Hot and Sultry Night for Crime*, a collection of short stories by various authors.

My favorite place in Texas is San Antonio. My favorite vacation spot in the world is Branson, Missouri.

My best quality is having a sense of humor. My worst quality is having no sense of direction.

I hate it when people chomp on ice or smack gum. My greatest personal accomplishment is having received five advanced degrees from different colleges; four of them after I was 38

years old.

For me, the best thing about Haskell is the wonderful people; even the few old grouchy ones are pretty good people.

Watch next week for the identity of this reader—and "the rest of the story."

### Update

Last week's Mystery Reader was Melba Lowrance of Haskell, owner and operator of "Busy Hands and Feet," a multifaceted business resulting from her spirit of entrepreneurship.

Growing up on a dairy farm in Winnsboro, one of five children, she learned a work ethic early on, and to appreciate and respect the things of nature, as the family raised their own food.

She met and married Jerry Lowrance in Lubbock. Their son Lyndal, of Lubbock, is married and has one daughter. Their daughter Melissa, of Houston, has two sons.

In 1979, Melba and Jerry moved to Haskell where he went to work for A. C. Richardson. Their "family" here now includes two dogs; 7-year-old Simba and 7-month-old Xena.

Before opening her present business, Melba worked for years in

the medical field, doing office work including insurance, receptionist, and hospital admissions. Before her "retirement" she also worked at Haskell National Bank for 15 years.

One year into her retirement, Jerry had a stroke, restricting him somewhat. When Jerry's parents, Alice and W. E. (Billy) Lowrance of Knox City, became too infirm to look after themselves, Melba and Jerry brought them here to live with them, building on to their house to accommodate everyone.

After the parents passed away, Melba found she needed to work, but also needed to stay near to home. She opened "Busy Hands" in their backyard apartment, selling handmade arts, crafts, jewelry and candles.

Wanting to expand her business, this past year, at age 54, she attended Texas College of Cosmetology, taking lessons in the art of pedicure, manicure, artificial nails and safety precautions. She also took classes in reflexology, the ancient art of massage. In January she took her state exams and passed the board, becoming a certified reflexologist.

In March, she opened "Busy Hands and Feet," offering not only the nail care services, but also the Egyptian pain-free method of massage to the pressure-points of hands and feet connecting to the entire body, relieving pain.

Along with the new therapy service, she still maintains the gift shop, with Jerry as her right-handman and secretary.

Melba's own personal therapy for relaxation has long been her extensive butterfly garden and feeding the native birds. Lately she has had many whitetail doves and smaller mourning doves visiting her yard. At this time she also has Swallowtail butterfly caterpillars and some Gulf Fritillaries showing up.

Of her love for growing things and nature, Melba said her Dad had a love for nature, and passed it on to his kids. Teaching them to be thrifty, he also taught them never to kill anything except for food, or if it was of harm to you. "You just can't take the farm out of the girl, even if you take the girl off of the farm," she said, adding that she didn't miss the dairy farm part, though.

The Lowrances enjoy being involved with the Walk to Emmaus. Through the years, they have attended the Believers Chapel in Munday, although they are seeking a church "home" here.

Seeing how older people especially seem to benefit from the relaxing and calming effect of hands and feet massage, and having had one physician already suggest it, Melba says she may soon extend her service to people in the nursing homes.

### A Thought for the Week

"Our workaday lives are filled with opportunities to bless others. The power of a single glance or an encouraging smile must never be underestimated." G. Richard Rieger

## From Out of the Past

From the files of The Haskell Free Press

### 10 Years Ago May 27, 1993

Haskell's sixth annual Fly-In and Pilots' Breakfast was held at the Haskell Airport. Members of the Haskell Fire Department cooked the breakfast and a shuttle service with golf carts escorted the incoming pilots to the hanger.

Presidential Academic Fitness awards were given to Brooke Baker and Nichole Cothron.

Highest ranking students in junior high were Anna Rieger 7th grade, Sarah Cothron 8th grade, Marci Elmore 7th grade, and Shelly Palacios 8th grade.

### 20 Years Ago May 26, 1983

The Texas Tech University Dads Association awarded scholarships to 50 undergraduates. Recipients included Cynthia Everett.

About 40 Haskell merchants sponsored the second in a regular series of Dollar Days promotions with the logo "Haskell-Hub of the Rolling Plains."

Mrs. Corbet Lytle was honored with a reception hosted by her children and grandchildren at the Corral building in observance of her 80th birthday.

### 30 Years Ago May 24, 1973

Honor students for the Carney Independent School District of O'Brien were valedictorian Mague Rochas and salutatorian Debbi Rowan.

Timothy R. Everett of Haskell was awarded a Bachelor of Science degree at Angelo State University.

Terry Chapman was honored by the Southwestern Co. in Nashville, Tenn. He won special recognition for individual effort by winning the Gold Award.

Keith Chapman received his Master of Agriculture degree in Agriculture Economics from A&M.

Over 100 friends and schoolagers honored Mrs. Lester (Kathi) Hutchinson with a surprise Citizenship party at Weinert High School. Mrs. Hutchinson, who moved to Weinert in 1961 from Roth, Germany, passed her citizenship test and was sworn in.

### 40 Years Ago May 30, 1963

Haskell's dilapidated depot, which holds memories for many, was sold to the people of Haskell for a consideration of one dollar.

Haskell High School was selected by the University of Texas as one of 12 schools in the area served by the West Texas Utilities Company to send a student and teacher to the third annual Atomic Energy Symposium.

Scotty White, a senior, and Dolores Stryker, a junior, were presented awards of honor for citizenship at the Rule High School graduation.

Four members of the Senior Class at Mattson High School returned from an intriguing trip to Acapulco, Mexico. They were Roger Moeller, Curtis Darden, Carolyn Klose and Shirley Moeller.

### 50 Years Ago May 28, 1953

Mrs. Jean Elliott and Mrs. Edd Hester attended the 57th annual convention of the National Congress of Parent and Teachers in Oklahoma City as delegates from Haskell.

W. L. Medford, Vocational Agriculture teacher at Weinert resigned to take similar position at Paint Creek.

Three members of the Haskell chapter, Future Farmers of America went to Alpine to a meeting. They were Bobby Stone, Kenneth Lane and Bill Thomas.

Mr. and Mrs. W. L. Price of this city had their children and several grandchildren at home for the observance of Price's 75th birthday.

### 100 Years Ago May 30, 1903

Perry Clark and wife of Munday were in Haskell. Clark is a cattle inspector on the quarantine line.

Major Smith returned from the Devil's River country, where he has been seeing after his extensive sheep interests.

Eddie Taylor of Kaufman arrived on a visit to the family of her uncles, Capt. W. W. and R. B. Fields.

## Keeping an Eye on Texas

### Go for the Green

Bermuda grass may soon become a thing of the past on Southern golf courses and playing fields.

A turf grass called seashore paspalum, originally from South Africa, may be the new king of the links. The grass uses about 50 percent less water than more traditional Bermuda grasses, and requires less pesticide and fertilizer.

It is currently used at the Houston Astros' Minute Maid Park and at the Kings Crossing golf course in Corpus Christi, Texas.

SOURCES: Texas Comptroller Carole Keeton Strayhorn ([www.window.state.tx.us](http://www.window.state.tx.us)) and the University of Georgia College of Agricultural and Environmental Sciences.

## High fiber foods important to diet

by Lou Gilly

### Haskell Co. Extension Agent

It sounds easy enough, but studies show that many Americans aren't consuming enough high fiber foods each day. New recommendations from the National Institutes of Health now say women should be getting at least 25 grams a day, and men 38 grams a day. Chances are, according to experts at the American Dietetic Association, you may not be getting this amount.

"When I ask my clients to keep a food journal to chart how much fiber they've consumed each day, most of them are only consuming 10 grams or less each day," says Pittsburgh-based registered dietitian Leslie Bonci, an American Dietetic Association spokesperson.

"Fiber is a key nutrient for the body. It may help reduce the risk for some chronic diseases, it aids in digestion and helps keep you regular but a person needs to eat the recommended amount to really reap the health benefits fiber can bring to your diet," says Bonci.

"You can add fiber to recipes by

tossing in some brown rice or bulgur wheat to casseroles, using whole-wheat flour, sprinkling some fresh or dried fruit on your cereal in the morning or adding some nuts or seeds to a salad."

The American Dietetic Association suggests some simple ways to incorporate dietary fiber into your diet. Figures are for total grams of fiber.

Apple, 3.7 grams; 1/2 cup baked beans, 6.3 grams; banana, 2.7 grams; 1/2 cup lentils, 7.8 grams; 1/2 cup blueberries, 2.0 grams; 1/2 cup soybeans, 5.4 grams; orange, 3.1 grams; whole-wheat bread slice, 2.0 grams; 1/2 cup raspberries, 4.2 grams; 1/2 cup brown rice, 1.8 grams; 1/2 cup broccoli, 2.8 grams; 1 ounce 100% bran cereal, 9.7 grams; 1/2 cup brussel sprouts, 3.8 grams; 1 ounce bran flakes, 4.7 grams; carrot, 2.2 grams; 1/2 cup oatmeal, 2.0 grams; tomato, 1.4 grams; 1/4 cup peanuts, 3.4 grams; 3 cups air-popped popcorn, 3.6 grams; 1/4 cup sunflower seeds, 3.4 grams.

With nearly 70,000 members, the Chicago-based American Dietetic Association is the nation's largest organization of food and nutrition professionals. ADA serves the public by promoting optimal nutrition and well-being.

For more information on how to reach a registered dietitian in your area, call 800/366-1655 or log on to [www.eatright.org](http://www.eatright.org).

All deadlines are 5 p.m. Monday

## The Haskell Free Press

Established January 1, 1886  
PUBLISHED EVERY THURSDAY  
420 North First Street  
P. O. BOX 555 HASKELL, TEXAS 79521

John McDougal ..... Publisher  
Lisa Shaw ..... Business Manager  
Mary Kaigler ..... Editor  
Doris McDougal ..... Production  
Bill Blankenship ..... Staff Photographer

Periodical Paid Haskell, Texas 79521  
(USPS 237-040)

### SUBSCRIPTION RATES:

Haskell County, one year, \$20.00.  
Outside of Haskell County, one year, \$28.00.

NOTICE TO PUBLIC—Any erroneous reflection upon the character, reputation or standing of any firm, individual or corporation will be gladly corrected upon being called to the attention of the publisher.  
POSTMASTER: Send address changes to The Haskell Free Press, P.O. Box 555, Haskell, TX, 79521-0555.

This issue mailed Wed., May 28, 2003



# Eating on the run? Try these healthy food choices

by Lou Gilly

## Haskell Co. Extension Agent

Increasingly, consumers want fast, easy, and good tasting foods to fit a busy lifestyle. Whether it's fast food, take out, or a sit down restaurant, eating out has become part of the American lifestyle. Today, food is available almost everywhere we go—schools, businesses, drugstores, convenience stores, bookstores, supermarkets, vending machines, sports and cultural events and recreation centers.

The following tips will help you make wise food choices for "Healthy Eating, Healthy You."

- Take time to look over the menu and make a careful selection.

- Choose fried foods only sometimes—go for grilled, broiled, or steamed foods more often.

- Order the regular or kid-size portion. Mega-sized servings are probably more than you need.

- Make milk or a low-fat shake your beverage for an extra calcium boost.

- Try a side salad instead of fries.
- Split your order. Share fries or an extra large sandwich with a friend.

- Boost the nutrients in all kinds of sandwiches by adding tomato, peppers and other vegetables.

- In place of fries or fried onion rings, order corn on the cob, green beans or baked beans, or rice.

- A baked potato offers more fiber and fewer calories than fries, just go easy on the sour cream and butter. Top your potato with broccoli, a small amount of cheese or salsa.

- At the deli or sub shop, choose lean beef, ham, turkey or chicken on whole grain bread.

- For a lighter meal, order an appetizer for your entrée.

- Go easy on condiments, special sauces and dressings on sandwiches and salads. Ask for mustard, catsup, salsa or low-fat spreads and dressings.

- Enjoy ethnic foods such as Chinese stir-fry, vegetable-stuffed pita or the Mexican burrito. Go easy on the sour cream, cheese and guacamole.

- At the salad bar, pile on the dark leafy greens, carrots, peppers and other fresh vegetables. Lighten up on mayonnaise-based salads and high fat toppings.

- Restaurant portions too large? Take home half the main course for

another meal.

- Order salad with dressing on the side so you can control how much is added.

- Eat your lower-calorie food first. Soup or salad is a good choice.

- Pass up all-you-can-eat specials, buffets and unlimited salad bars if you tend to eat too much.

- If you do choose the buffet, fill up on salad and vegetables first. Take no more than two trips and use the small plate which holds less food.

- Try a smoothie made with juice, fruit and yogurt for a light lunch or snack.

- For dessert, choose fresh fruit or a container of fruit chunks if available. Or, share dessert with a friend.

- Load up your pizza with vegetable toppings. If you add meat, make it lean ham, Canadian bacon, chicken or shrimp.

- Look for a sandwich wrap in a soft tortilla. Fillings such as rice mixed with seafood, chicken or grilled vegetables are usually low in fat.

- For the fastest breakfast of all, go with dry cereal and milk. Make the cereal whole-grain or bran and you'll get fiber along with B vitamins and complex carbohydrates.

- Build a better breakfast sandwich—replace the bacon or sausage with Canadian bacon or ham and order your sandwich on an English muffin, bagel or bun.

- Instead of a doughnut, order an English muffin, bagel or a plain soft baked pretzel. Lightly spread the cream cheese or margarine—or just use jam or jelly.

- Refrigerate take-out or leftovers if the food won't be eaten right away. Toss foods kept at room temperature for more than two hours.

- Be size-wise about muffins, bagels, croissants and biscuits. A jumbo muffin has twice the fat grams and calories as the regular size.

- Look for yogurt and fruit for a quick on the run breakfast to start your day.

- Tuck portable, nonperishable foods in your purse, briefcase or backpack for on-the-go snacking. For example, crackers and peanut butter, small boxes of cereal, dried fruit, pretzels, or plain popcorn.

- Fresh fruit is already packaged to go. Try a variety of seasonal fruits.



**WINNER AT STATE FESTIVAL—Pianist Brooke Hall of Haskell shows her ribbon won in the Solo Primary 3 Division at the Texas Federation of Music Clubs 28th Annual State Festival. She placed second and received the only "outstanding" in her group.**

## Brooke Hall places at state contest

Brooke Hall of Haskell recently competed in the Texas Federation of Music Clubs Twenty-Eighth Annual State Festival at Texas Christian University in Fort Worth.

Competing in the Solo Primary 3 Division against fourteen other pianists from all over the state of Texas, she placed 2nd, receiving the only "Outstanding" rating in her group. Her solo piece was "Wanda's Waltz."

To qualify for the State Festival, she had to perform at the Annual Pastoral Festival at Lubbock Christian University in March. There she played her solo piece as well as another piece, "Ooga Booga Boogie." Receiving a "Superior" rating, she moved on to compete at the state level.

Brooke also recently auditioned for the National Piano Guild Association, playing six required pieces of music by memory along with her scales and cadences. She received a "Superior" rating in every

judging criteria, making her a member of the NPG for the 4th year in a row. At the end of year awards ceremony, she will be given an NPG Gold pin and a certificate of membership for this accomplishment.

Also, Brooke will be awarded her Gold Cup this year for having performed in the Pastoral Festival for three consecutive years and for having received "Superior" ratings for three years consecutive years. A "Superior" rating is the highest rating a student can be given at this level.

Young Brooke is the daughter of Tra and Angela Hall of Haskell, the granddaughter of Mr. and Mrs. Robert E. Hall of Jayton and Mrs. Sally Hucks of Lubbock, and the great-granddaughter of Mr. and Mrs. Robert G. Hall of Jayton and Mrs. Billie Stanford of Sundown. She is a fourth year piano student of Lynn Baldwin, Baldwin Studio of Music in Snyder.

**GONZALES CARPET CLEANING**  
 Carpet Cleaning • Upholstery Cleaning  
 Emergency Water Extraction • Expert Floor Care  
 Waxing Polishing & Cleaning  
 Residential & Commercial  
 (915) 773-2667 • (915) 773-2258

Robert Gonzales  
 P. O. Box 929  
 Stamford, TX  
 79553

**THIGPEN ROOFING**  
 Quality roofing at the right price  
 for all your roofing needs.

\*Free Estimates\* **Joseph Thigpen**  
 Owner

605 N. 5th  
 Haskell, Texas 79521

Phone: 940-864-2517  
 Cell Phone: 915-660-5547

**BERNARD E. GODLEY, INC.**  
**TAX SERVICE & BOOKKEEPING**  
 Computerized • Tax Returns & Bookkeeping  
 98 Hill Drive • Seymour, Texas  
**940-889-8809**  
 Office Hours: 9 to 12 and 2 to 5 Monday - Friday

**PUBLIC AUCTION**  
 Approx. 305 acres plus home. Land has approx. 120 acres of pasture with the rest in cultivation. Located about 3 1/2 miles from Haskell, Texas on paved road. Home is 3 bedroom, 1 1/2 bath, central H/A, 2 car garage and outbuildings, plus all mineral rights. Water to home is from Paint Creek Water District. To be offered at Public Auction, on Sat., June 28, 2003 at approx. 2 p.m.  
 OWNER HAS RIGHT TO ACCEPT OR REJECT BIDS ON REAL ESTATE.  
**Open House on Sunday, June 15, 2003 from 1 to 5 p.m.**  
 FOR MORE INFORMATION OR TERMS OF AUCTION  
 PLEASE CALL 1-325-728-8292.  
**AUCTIONEER: GRADY W. MORRIS, TXS 6785**  
**P. O. BOX 592 • COLORADO CITY, TX 79512**

**NOTICE OF GAS RATE INCREASE REQUEST**

TXU Gas Company (the "Company"), in accordance with the Gas Utility Regulatory Act as set forth in the Texas Utilities Code, hereby gives notice of its intent to implement a new schedule of rates for natural gas service to be charged to all of the customers served by the Company in the incorporated municipalities and unincorporated areas in the Company's statewide gas utility system (the "System"). The proposed revisions to the respective rate schedules will impact all classes of service and all fees and charges presently being assessed by the Company on its transmission and distribution systems. As of the filing date of the Company's Statement of Intent to change rates, the proposed rates are expected to approximately produce a \$69,524,311 or a 7.24 percent increase in the Company's annual revenues from customers in the System. The proposed change will affect approximately 1,344,030 residential, 125,603 commercial, and 1,441 industrial sales and transportation customers in the System. The proposed change constitutes a "major" change as that term is defined by Section 104.101 of the Texas Utilities Code. The proposed changes will have differing impacts on individual customers, depending on consumption and current applicable rate schedules. The proposed changes in rates will not become effective for environs customers until similar changes have become effective within the nearest incorporated city or town. A residential customer receiving a bill for 6 Mcf will see a bill of approximately \$41.69, which would constitute an average increase of approximately \$3.59 per month or a 9.4% increase. A commercial customer receiving a bill for 30 Mcf will see a bill of approximately \$173.04, which would constitute an average increase of approximately \$13.91 per month or a 8.7% increase. The effect of the proposed changes to rates and services for industrial sales and transportation customers, which may be significant for individual customers, will vary depending on type of service and consumption. The proposed change would constitute an increase of \$0.00 or a 0% increase in annual revenues to the Company for industrial sales and transportation customers. A complete copy of the Statement of Intent, filed with the Railroad Commission of Texas and all of the System cities and towns on May 23, 2003, is available for inspection in the Company business office located at 1601 Bryan St., Dallas, Texas 75201. Persons with specific area questions or who want information about this filing may contact TXU Gas Company at 1-800-460-3030. Any affected persons located inside of the city limits of a municipality served by the Company may file written comments or protest concerning the proposed change in rates with their respective municipality. Any affected persons located outside of the city limits of a municipality served by the Company may file written comments or protest concerning the proposed change in rates with Docket Services Section of the Legal Division, Railroad Commission of Texas, P.O. Box 12967, Austin, Texas 78711-2967, but have a limited time to do so. Pursuant to the Rules of the Railroad Commission of Texas, Title 16 of the Texas Administrative Code Section 7.230, any affected persons may file written comments or a protest concerning the proposed change in the environs rates with the Docket Services Section of the Railroad Commission of Texas, at any time within 30 days following the date on which the change would or has become effective. The Company is proposing to have these proposed rates become effective on June 27, 2003.

Este es un aviso para informar a los clientes de TXU Gas Company (la "Compañía") que la Compañía está solicitando un aumento en la tarifa de gas. Este aumento afectará a todos los consumidores de gas de la Compañía en el estado de Texas. Si usted tiene alguna pregunta con respecto a este aumento, por favor llame a TXU Gas Company al 1-800-460-3030.

## Kidney stones

Kidney stones are one of life's more painful disorders and have been around for at least 7,000 years, as discovered in an Egyptian mummy.

Modern lifestyles, however, can exacerbate kidney stones, which can contain a variety of substances, most commonly, calcium and uric acid. Dr. Orson Moe of UT Southwestern Medical Center at Dallas says there are ways to prevent kidney stones from forming.

In general, drinking up to 12 full glasses of water daily will help to dilute or flush away substances that form stones, says Moe, associate professor of internal medicine. Avoiding excessive protein intake can also reduce the risk.

It is estimated that 10 percent to 20 percent of Americans at some point will have a kidney stone, which can be as small as a grain of sand or as big as a golf ball. Stones occur more frequently in men, but the number of women afflicted has been increasing. Kidney stones strike most people between the ages of 20

and 40. Moe says signs of a possible kidney stone include extreme pain in the back or side that will not go away, blood in the urine, fever and chills, vomiting, urine that smells bad or looks cloudy, and a burning feeling during urination. If you are experiencing any of these symptoms, Moe says, see your physician as soon as possible.

**Like what  
you're  
reading?  
Call  
940-864-2686  
to Subscribe.**

**Jones-Haskell  
Eye Clinic**  
**Dr. Trussell Thane, O.D.**  
 Therapeutic Optometrist  
 Appointments Available • Monday through Friday

Dr. Thane provides comprehensive eye care including the diagnosis and treatment of eye disease. Dr. Thane offers complete evaluation for eyeglasses and contact lenses.

Various contact lens packages available.

MEDICARE, MEDICAID, BLUE CROSS AND BLUE SHIELD AND FIRSTCARE ACCEPTED.

1501 Columbia  
 Stamford, Texas  
 915-773-2083

**GOALS**

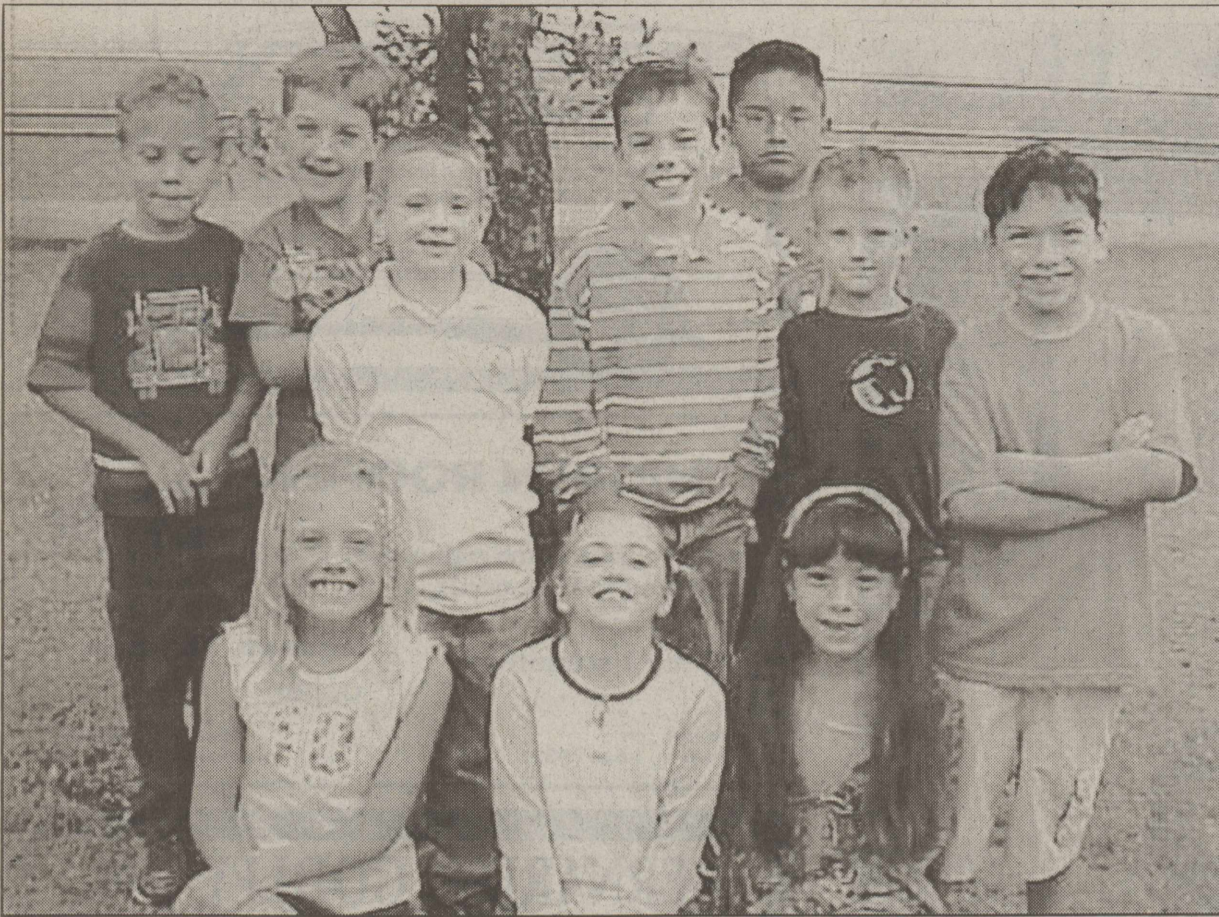
Those of you graduates just beginning to reassess, think and resettle your future, come in and talk with one of our bank officers. A savings plan geared to your specific aims—a home or vacation loan or a car loan, are just some of the services we can offer you.

To you new graduates, congratulations and, we offer you our experience and counsel, just as we have to community neighbors and friends in the past.

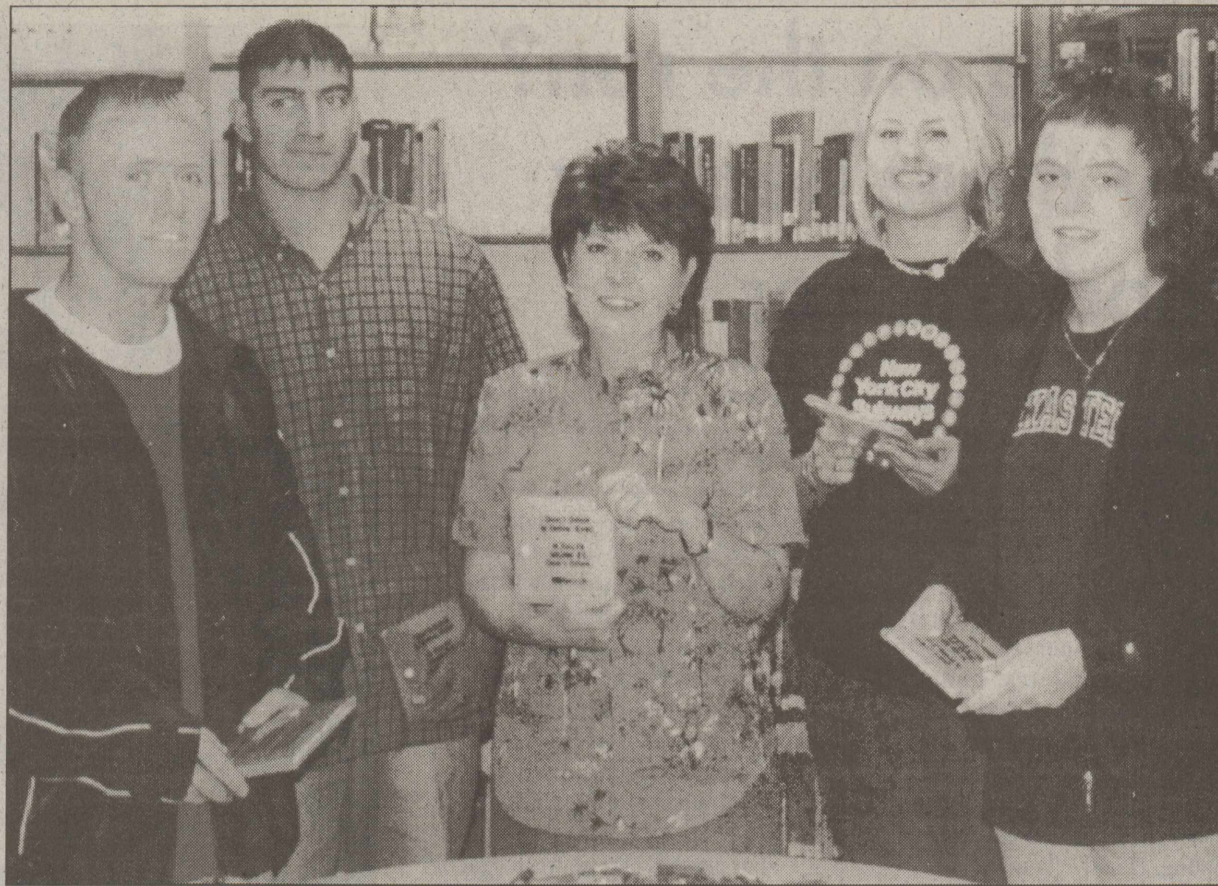
**First National Bank Haskell**  
 200 South Avenue E Haskell, Texas 79521  
 940-864-8555

FDIC

Other Convenient Locations to Serve You:  
**First National Bank Munday - Stamford - Rochester**



**ACCOMPLISHED READERS**—First grade students at Haskell Elementary who reached 100 Accelerated Reading points were entitled to a pizza party for the entire class. Reading over 200 books each were: back, I-r, Robert Williams, Aaron Waggoner, Zachary Tatum, Shelton Toliver, Daniel Contreras, Micah Thomas and Hector Ramirez; kneeling, Kaley Mathis, Emily Fouts and Dana Rodriguez.



**TxDOT MEMENTOS**—Brenda Mitchell, center, Abilene District's Traffic Safety Coordinator, shows Haskell High School seniors mementos the Texas Department of Transportation donated for the students' Project Celebration. In addition to the mementos, Haskell also received a \$350 mini-grant to help defray costs of the graduation party. Seniors are, I-r, Wade Cothron, Manuel Gonzalez, Wendy Proctor and Katie McKnight.

## This Week's Devotional Message:



### THE BIBLE CANNOT HELP YOU UNLESS YOU READ IT

Since man first learned to put his thoughts down on something like paper, there have been innumerable books written containing advice on how to live a good life; but none has ever come even close to the Bible, with its divinely inspired words of wisdom, for all the guidelines we will ever need. Copies of it are available at any bookstore, starting at very reasonable prices; but getting

people to BUY it has never been much trouble. The real problem lies in getting them to take the time to READ it. If you don't already own a copy of this priceless work, obtain one that is appropriate to your faith and start reading it, a little at a time. It will give you a better understanding of your faith; and as a result, your entire life will be a much more rewarding experience.

### ATTEND CHURCH THIS SUNDAY

#### —HASKELL—

- East Side Baptist Church**  
Dr. Jim Helfin, interim pastor  
Sun. 8:30 a.m., 9:45 a.m., 11 a.m., 6 p.; Wed. 7 p.m.  
600 N. 1st East, Haskell
- Christian Church**  
Dusty Garrison, minister  
Sun. Morn. 9:45 a., 10:45 a., 6 p.m.; Wed. 7 p.m.  
107 N. Ave. F, Haskell
- New Vision Family Worship Center**  
James Rincker, pastor • 864-5438  
Sun. 9:45 a.m., 11 a.m., 6 p.m., Wed. 7:00 p.m.  
East Hwy 380, Haskell
- Trinity Lutheran Church**  
Gary Bruns, pastor  
Sunday School 9:30 a.m., Worship 10:30  
Hwy 380 East, Haskell
- Iglesia Bautista El Calvario**  
Art Flores, Interim pastor  
Sun. Morn. 9:45 a., 10:45 a.m., 5 p.m.; Wed. 7 p.m.  
607 S. 7th, Haskell
- First United Methodist Church**  
Allen Brooks, pastor  
Sun. Morn. 9:45 a.m., 10:50 a.m. 6 p.m.; Wed. 6 p.m.  
201 N. Ave. F, Haskell
- First Assembly of God**  
Rev. J.C. Amburn  
Sun. Morn. 9:45 a., 10:45 a.m., 6 p.m.; Wed. 7 p.m.  
1500 N. Ave. E, Haskell
- St. George Catholic Church**  
Father Michael Melcher  
Sat. Mass 7:15 p.m.; Sun. Morn. 9:00 a.m.  
901 N. 16th, Haskell
- Church of Christ**  
Brett Anderson, minister  
Sun. Morn. 9:30 a., 10:30 a., 6 p.m.; Wed. 7:30 p.m.  
510 N. Ave. E, Haskell
- First Presbyterian Church**  
Steve Beatty, pastor  
Sun. Morn. 9:30 a.m.  
306 N. Ave. E, Haskell
- Trinity Baptist Church**  
Tony Grand, pastor  
Sun. Morn. 10 a., 11 a., 6:30 p.m.; Wed. 6:30 p.  
401 S. Ave. D, Haskell
- Hopewell Baptist Church**  
Sun. Morn. 9:30 a.m., 11:00 a.m.; Wed. 7 p.m.  
908 N. Ave. A, Haskell

#### Greater Independent Baptist Church

Sun. Morn. 9:30 a., 11:00 a., 6:30 p.; Wed. 7 p.  
301 N. 3rd St., Haskell

#### New Covenant Foursquare

Bill and Renee Glass, pastors  
Sun. Morn. 10 a.m., 11 a.m., 6:30 p.m.; Wed. 7 p.  
200 S. Ave. F, Haskell

#### Mission Revival Center

Rev. William Hodge  
Sun. Morn. 10 a.m., 11 a.m., 6 p.m.; Tues. 6 p.m.  
1600 N. Ave. B, Haskell

#### First Baptist Church

Kevin Hall, pastor  
Sun. Morn. 9:45 a., 10:55 a., 6 p.m.; Wed. 7 p.m.  
301 N. Ave. E, Haskell

#### Church in the Park

Rev. Tim and Suzann Townsend  
Sun. Morn. 10:30 a.m. Wed. 7 p.m.  
Gazebo or Pavilion

#### —PAINT CREEK—

#### Paint Creek Baptist Church

Sun. Morn. 10:00 a.m., 11:00 a.m., 6 p.m.  
Paint Creek

#### —WEINERT—

#### First Baptist Church

Chris Powell, pastor  
Sun. Morn. 10 a.m., 11 a.m., Wed. 7 p.m.  
Weinert

#### Weinert Foursquare Church

Rev. Robert Harrison  
Sun. Morn. 10 a.m., 11 a.m. Wed. 7 p.m.  
Weinert

#### —ROCHESTER—

#### Church of Christ

Steve Willis, minister  
Sun. Morn. 9:45 a., 10:45 a., 6 p.m.; Wed. 6 p.m.  
West on Main Street, Rochester

#### First Baptist Church

Jackie Brem, pastor  
Sun. 11:00 a.m., 6 p.m.; Wed. 7:00 p.m.  
500 Main, Rochester

#### Union Chapel Baptist Church

Rev. Clarence Walker  
Sun. Morn. 9:45 a., 10:45 a., 6 p.m.; Wed. 7 p.m.  
Rochester

#### —O'BRIEN—

#### O'Brien Baptist Church

Kyle Gulledege, pastor  
Sun. 9:45 a., 11 a., 5 p., 6 p. Wed. 6 p.m.  
O'Brien

#### Faith Chapel of Rochester

Katherine Byrd, minister  
Sun. Morn. 10 a.m., 11 a.m., 7 p.m.  
Hwy 6, Rochester

#### First United Methodist Church

Dolan Brinson, pastor  
Sun. Morn. 10:00 a.m., 11:00 a.m.  
Rochester

#### —SAGERTON—

#### Sagerton Methodist Church

Melissa Bemis, pastor  
Sun. Morn. 9:30 a.m.  
Sagerton

#### Faith Lutheran Church

Deborah Nissen, pastor  
Sun. Morn. 9:15 a.m., 10:30 a.m.; Wed. 7 p.m.  
Sagerton

#### —RULE—

#### First Baptist Church

Josh Stowe, pastor  
Sun. Morn. 9:45 a., 11:00 a., 5 p.m.; Wed. 7 p.m.  
1001 Union Ave., Rule

#### Primitive Baptist Church

Dale Turner Jr., pastor  
First & Third Sundays 10 a.m.  
Corner of 8th & Hobins, Hule

#### Church of Christ

John Greason, minister  
Sun. Morn. 9:45 a., 10:40 a., 6 p.m.; Wed. 7 p.m.  
811 Union, Rule

#### First United Methodist Church

Tommy Wilson, pastor  
Sun. Morn. Worship 10 a.m.  
1000 Union Ave., Rule

#### Primera Iglesia Bautista

Alfa y Omega  
Manuel Marin, pastor  
Sun. Morn. 10 a., 11:00 a., 5 p.m.; Wed. 6 p.m.  
500 Elm Street, Rule

#### Sweet Home Baptist Church

Bill Trice, pastor  
Sun. Morn. 10:00 a., 11:00 a., 6 p.; Wed. 7 p.m.  
Gladstone Ave., Rule

#### West Bethal Baptist Church

Rev. Robert Sweet  
Sun. Morn. 10 a., 11 a., 8 p.m.; Wed. 7:30 p.m.  
300 Sunny Ave., Rule

## TxDOT provides grant for Project Celebration

Haskell High School is among 29 high schools in the Abilene District receiving a mini-grant for their graduation activities. Called Project Celebration, the Texas Department of Transportation is providing these high schools a \$350 mini-grant each for Project Celebration 2003.

"I am delighted that TxDOT once again agreed to support graduation activities across Texas," Brenda Mitchell, Abilene District traffic safety coordinator, said.

"As TxDOT endeavors to inform the public of the importance of safe and sober driving habits, it's essential that we do our part to help

communities provide a safe and sober occasion graduating students can cherish for a life time," Mitchell said.

Mitchell also visited each high school and presented the Project Celebration chairperson mementos for each of the graduates who attend their high school event. Those mementos bear the slogan, Drink, Drive Go to Jail and Don't Drink & Drive Ever.

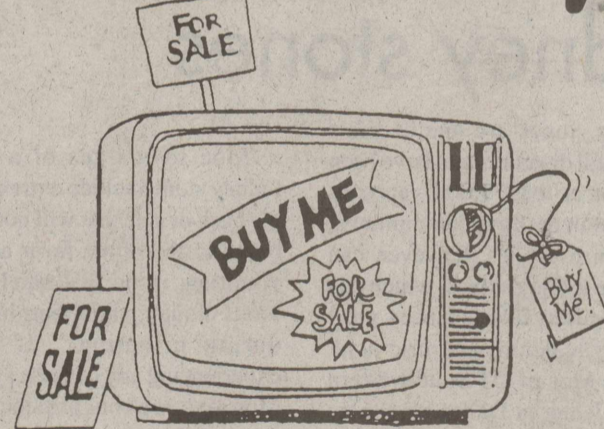
These graduation souvenirs are designed to be a reminder to the students to remain drug and alcohol-free not only around prom and graduation time, but always, Mitchell said.

## Students in the News

Western Texas College of Snyder held its graduation ceremony May 2. Jeffrey Murray, a 2001 graduate of Rule High School received an Associate of Applied Science in Landscape and Golf Course Technology. Murray is a member of Phi Theta Kapp International Honor Society and the son of Ed and

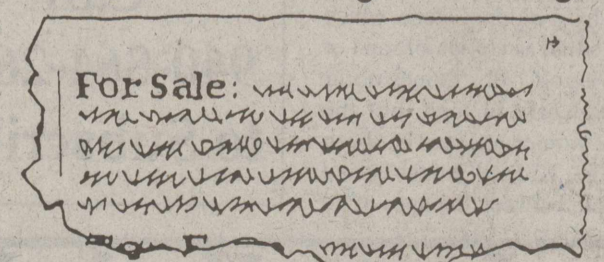
Charlene Murray of Rule. \*\*\*  
Western Texas College of Snyder announced the Dean's Honor List for the spring semester. Named to the list is Jeffrey Murray, a 2001 graduate of Rule High School. He is the son of Ed and Charlene Murray of Rule.

## The Hard Way.



Sure, you can stand in the street in the middle of a major intersection every day for a week with an item you want to sell, put a couple of huge signs on it, and hope someone takes you up on the offer. It might just get the job done. Or you might just end up looking foolish.

## The Easy Way.



Or, you can place a Classified Ad with us and have people from all over the area clamoring to take your unwanted items off your hands for a handsome profit. Quickly and easily. And for a very small investment. So what are you waiting for? Call now!

## The Haskell Free Press

P. O. Box 555  
420 N. First Street  
Haskell, Texas 79521

Serving Haskell County for over 100 years

### Sonic Drive-In

1402 N. Ave. E  
864-8533  
Managers: Leon & Carolyn Herring

### Steele Machine

Hwy. 280 • 864-2208

### Modern Way Food Store

1202 N. Ave. E • 864-3763

### Smitty's Auto Parts

107 N. 1st East • 864-2607

### HANSON PAINT & BODY SHOP

207 S. 1st • 864-3631  
Professional Auto Body Repair  
Glass Installation • 24 Hour Wrecker Service

### Rule Co-op Gin & Elevator

301 Adams • Rule • 997-2421

### Rice Springs Care.Home, Inc.

1302 N. 1st • 864-2652  
Medicare • Medicaid • Therapy

Committed To Excellence  
In Service

### Personality Slipper Shoppe

413 S. 1st (South Side of Square)  
864-2501 and 864-3051  
"One Stop Shopping"

### McGee's Lumber Yard

105 N. 1st

### The Haskell Free Press

"The People's Choice"

420 N. First • Haskell  
940-864-2686

Serving Haskell County  
Since 1886





# Shop The Haskell Free Press CLASSIFIEDS



864-2686

ALL DEADLINES MONDAY 5 P.M.

864-2686

### For Sale

FOR SALE: Four Chevy 15x7 aluminum stock mag wheels for a pickup. \$150. Call after 5 p.m. 864-2023. 101stc

FOR SALE: 1978 45 foot Temple level floor grain trailer. Cotton seed extensions, roll tarp, aluminum floor with traps, 50% tires and 50% brakes. \$5500. Call 940-997-2612. 19-22p

FOR SALE: 1997 Prowler travel trailer. 31 feet long, bumper pull, fiberglass exterior. Excellent condition. \$9500. Call 940-997-2612. 19-22p

### Help Wanted

NOW TAKING APPLICATIONS for all positions at Sonic Drive In, Haskell. Apply in person. 251tc

RICE SPRINGS Care Home is accepting applications for full time RNs and LVNs; and a relief RN. Call Karen at 864-2652 for information. 161tc

TEAKWOOD MANOR has an opening for 3-11 LVN. \$15 per hour. Please come by 1003 Columbia, Stamford: 325-773-3671. 181tc

MANAGER position available at Munday DQ. Looking for friendly, customer service leader. Above average base pay for above average person with bonus incentive. Holiday and vacation pay. Smoke and drug free work environment. Drug test and background check required. Call District Manager, Angie Jordan 940-585-8586. 20-25c

WES-T-GO now accepting applications for cashier. Apply in person at store, 400 N. Ave. E. 21-24c

MEDICATION AIDE needed for correctional facility in Haskell. Good hours and benefits. Contact Debbie at 940-864-5789. EOE. 21-22c

DQ OF MUNDAY now accepting applications for day and night help. Flexible full and part time help needed. Drug and smoke free work environment. Drug test required. Apply in person today to Manager, Marilyn Maberry. 21-24c

One thing you can't recycle is wasted time. Our La-Z-Boy recliners are a real bargain right now during our 2 for 1 sale. Get a pair starting at \$499 for 2. Kinney Furniture in Stamford still offers easy terms, free out of town delivery, and small town personal service. 22c

**RULE OWNER FINANCE**  
Cozy 2 bedroom at 511 Central. Corner lot, carport, big trees. Low down, low monthly.  
Call Jim at 325-518-8128 or Teri at 325-660-2122 11c

**Guadalcazar Roofing**  
Daniel or Lupe  
325-665-7060  
940-864-5009  
Free Estimates.  
All Types including Metal roof installation.

**EXPERT AUTO WORK**  
REASONABLE RATES.  
  
See us for all your auto mechanic needs. 20 years experience. We do it right the first time.  
305 South Ave. E • Haskell

### Garage Sales

GARAGE SALE: Video cabinet, videos, albums, books, clothes, craft paints and misc., potty chair. Friendly Village seasonal dishes, toys, glassware and many misc. 1412 N. Ave. K. Sat., May 31. 8 to 1. Weather permitting. 22p

GARAGE SALE DAY in Munday. Munday, Texas (Hwy. 277). Sat., June 7. Over 40 sales throughout the town. Also, a giant "Book Sale" to benefit the City/County Library. Map at Chamber office Sat., June 7, 8 a.m. For more information, call 940-422-4540. Our office hours are M-F, 9 a.m. to 3 p.m. 22-23c

BACKYARD SALE: 905 N. 5th. May 30, 5 to 9 p.m. Lots of boys clothes, infants thru 2. 22p

**NOTICE**  
The deadline for Classified Advertising is 5 p.m. on Mondays.  
Haskell Free Press

**Dodson Concrete Construction**  
Commercial - Residential  
David Dodson  
704 N. Ave. F • Haskell  
940-864-2038  
Over 20 Years in the Business  
FREE ESTIMATES 181tc

### Real Estate

FOR SALE: Brick home. Smoke-free. 3 bedroom. 1 bath. Attached garage. CH/A. Corner lot 150x132. Storm cellar, water well. Price reduced. Call 940-864-2264. 401tc

HOUSE and 12 lots for sale. 807 Railroad St., Rochester. Call J. C. Gholson at 940-989-2233. 211tc

### Miscellaneous

HOUSE LEVELLING and foundation repair. No payments until work is satisfactorily completed. David Lee & Co. 915-675-6369. 61tc

**Medicare Supplement Insurance too high?**  
For very competitive rates call Hess Hartsfield at 864-2665 or 864-2004. 61tc

**HASKELL 3 BEDROOM SPECIAL FINANCING**  
1005 N. Ave. K.  
2 living areas, fireplace.  
Low down-low monthly.  
Damaged credit Ok.  
Call Jim at 325-518-8128 or Teri at 325-660-2122 211tc

### Lost & Found

LOST: Tea cup Chihuahua. If found, please call D. L. and Shelly Cooper 940-997-2212. 22p

### For Rent

FOR RENT: 1107 N. 10th. 2 bedroom apartment. CH/A. 864-3762. 22c

When good luck comes to you—know what to do with it. We have a great new pillow top "never turn" bed from Spring Air in all sizes. This bed is foam encased for no side sway and no sag edge. Queen sets only \$499 with a free set of percale sheets. Other queen sets only \$299. Kinney Furniture in Stamford. 22c

I thank you for everything they have done for me, whether it was sending a card, flowers or a gift basket, giving a concerning call to the hospital, remembering me in their powerful prayers or just having me in their thoughts. Also I want to thank everyone who made a generous donation to the medical fund, it is really going to help out tremendously. I am truly thankful to everyone, you all helped lift up my spirits during this difficult time in my life and I will never forget all that you have done for me. Thank you again.  
Sincerely, Tabitha Coker

### Home. Auto. Life. Me.

Haskell County Insurance Agency  
103 N. Ave. E  
Haskell, TX 79521  
940-864-2665



In Texas Substitute:  
Allstate County Mutual Insurance Company Allstate Texas Lloyd's. Home Office: Irving, Texas. Allstate Life Insurance Company, Home Office: Northbrook, Illinois. ©2002 Allstate Insurance Company.

**J. T. TIDROW CONSTRUCTION**  
ROOFING 25 years experience  
PAINTING  
FENCES  
Free Estimates! CARPENTRY  
HASKELL 940-864-2109 TEXAS

The Hertel family would like to express our sincerest appreciation to all those who shared in the most unexpected loss of our beloved Sue—wife, mom, grandmother, great-grandmother and friend. We would like to thank you for your thoughts, prayers and most especially your love during our time of sorrow.

Butch Hertel  
David Hertel and family Kevin Hertel and family  
Charles Hertel and family Ronald Hertel and family

We would like to thank our many Haskell friends for your prayers, beautiful cards, flowers, phone calls, visits and words of encouragement while I was in Hendrick Medical Center. Haskell is a great place to call home.

Ladelle and Milbert Opitz

**FOR SALE**

**RIKE REAL ESTATE**  
NEW LISTINGS

805 N. 3<sup>RD</sup> EAST, 3-2-1, brick, C/H/A, on one and one-half lots, vaulted ceiling with built-in entertainment, sun room. All in excellent condition.  
504 S. 8<sup>TH</sup>, One-bedroom, one bath cottage perfect for single or couple. Apartment or storage building in rear.  
804 SE 1<sup>ST</sup>, Large 3 or 4 bedroom brick, two baths, den with fireplace, large built-in kitchen, C/H/A, well, outside storage and room for Club animals.  
1407 N. AVE. J, 3-2-carport, living, dining, kitchen, C/H/A, and utility, fenced yard. Good for couple or growing family.  
207 SE 4<sup>TH</sup>, Single-wide mobile home, new condition, C/H/A, 3-2, washer, dryer, well, on three lots (room for animals).

411 1/2 South First Street  
Box No. 853  
Haskell, TX 79521  
(940) 864-2411 (940) 864-2332  
FAX (940) 864-3686  
Mary Rike, Broker John Rike, Agent  
mrrike@wrtex.net

**The Haskell Free Press**  
read by more people  
in Haskell County  
than any other print media.



ROUSTABOUTS WINCH TRUCKS WELDERS BACKHOES DUMPTRUCKS

**LANGFORD ROUSTABOUT SERVICE**  
SCOTT LANGFORD  
Mobile: (940) 256-0535 Home: (940) 864-2565  
East 380 • Haskell, Texas

**AFFORDABLE QUALITY HOME REPAIR**  
Commercial & Residential Roofing  
GAF TAMCO ELK  
Commercial - 10 yr. warranty  
Residential - 20 & 30 yr. warranties  
composition, metal & wood

Plumbing & Electrical, Add-ons, Drywall  
Paint, Kitchens and Bathrooms  
Countertops, Ceramic Tile.  
~ ALL WORK GUARANTEED ~  
Michael Moore 940-422-4436  
211 West Main • Munday, TX 76371

**NOTICE TO CONTRACTORS OF PROPOSED TEXAS HIGHWAY IMPROVEMENT CONTRACTS**  
Sealed proposals for highway improvement contracts will be received by the Texas Department of Transportation (TxDOT) until the date(s) shown below, and then publicly read.  
CONSTRUCTION/MAINTENANCE CONTRACT(S)  
Dist/Div: Abilene  
Contract 6100-06-001 for INSTALL MBGF, SGT'S AND BRIDGE RAIL in JONES County, etc. will be opened on June 17, 2003 at 2:00 p.m. at the District Office for an estimate of \$173,875.50  
Plans and specifications are available for inspection, along with bidding proposals, and applications for the TxDOT Prequalified Contractor's list, at the applicable State and/or Dist/Div Offices listed below. Bidders must submit prequalification information to TxDOT at least 10 days prior to the bid date to be eligible to bid on a project. Prequalification materials may be requested from the State Office listed below. Plans for the above contract(s) are available from TxDOT's website at www.dot.state.tx.us and from reproduction companies at the expense of the contractor.  
NPO: 9914  
State Office: Constr./Maint. Division, 200 E. Riverside Dr., Austin, Texas 78704. Phone 512-416-2540.  
Dist/Div Office(s): Abilene District, District Engineer, 4250 N. Clack, Abilene, Texas 79604-0150. Phone 915-676-6800.  
Minimum wage rates are set out in bidding documents and the rates will be part of the contract. TxDOT ensures that bidders will not be discriminated against on the grounds of race, color, sex, or national origin. 21-22c

**STOP**

If you read this  
you have just been exposed  
to the dynamic effect of  
newspaper advertising.

Put it to work for you—  
You'll know it works!

Call us today!

**The Haskell Free Press**

P. O. Box 555, 420 N. First, Haskell, TX 79521  
940-864-2686



**IN ALL-STAR GAME**—Diana Ann Gonzales of Haskell, has been selected to represent Paint Creek ISD in the Texas Six Man All-Star Basketball Game, to be held at Lubbock Christian University, Sat., July 19. She is the daughter of David and Rosa Gonzales of Haskell.



**WINNING READERS**—Third grade awards winners for the school year, l-r, Brady Leach and Sasha Walker hold the bikes they won in a drawing of students scoring an average of 80% on Accelerated Reading tests during each six weeks. With them is their teacher, Melodee Christian.

## Weathers Whys: Global Warming

Q: There seems to be a constant buzz about global warming. What is it exactly?

A: "Simply put, global warming is caused by the atmosphere trapping in more radiation than it lets out," states Dr. Renyi Zhang of Texas A&M University. "Some say that

global warming is a myth, but it is very real.

Statistics show that global surface temperatures have increased by approximately 0.6°C since the late 19th century, and about 0.4°C over the last 25 years. These statistics

alone are enough to disprove those who don't believe the earth is getting warmer.

However, statistics also show that while the earth's surface temperatures have risen, the air in the low to mid troposphere has shown very little, if any change in temperature. So while global warming is valid, it is not the rumored 'polar-ice cap-melting' calamity that will one day end the world."

Q: Is there anything we can do to counteract this problem?

A: We can help the problem by not releasing so many chlorofluoro carbons (CFCs) and other greenhouse gases into the atmosphere, Zhang explains.

"Carbon dioxide is probably the biggest player of all the gases. While

statistics show that humans play a fairly big role in global warming, individuals can help by being more energy conscious. The less energy we consume, the less the demand is for harmful fossil fuels such as coal, oil, and natural gas. Burning these fuels releases carbon dioxide into the atmosphere. As you may notice, they are also three of the largest sources of energy across the globe. In 1996 a law was passed banning the release of CFCs into the atmosphere because they cause ozone depletion in the stratosphere. This sets a good standard for people to invent new ways to harness energy. Innovation is a great combatant to global warming," Zhang adds.

### Students in the News

Destiny Bell of Haskell has been named to the Dean's List at Lubbock Christian University for the spring semester of 2003.

To be considered a candidate for the Dean's List, a student must be taking a minimum of 12 semester hours and achieve a 3.5 grade point average or better for the entire semester.

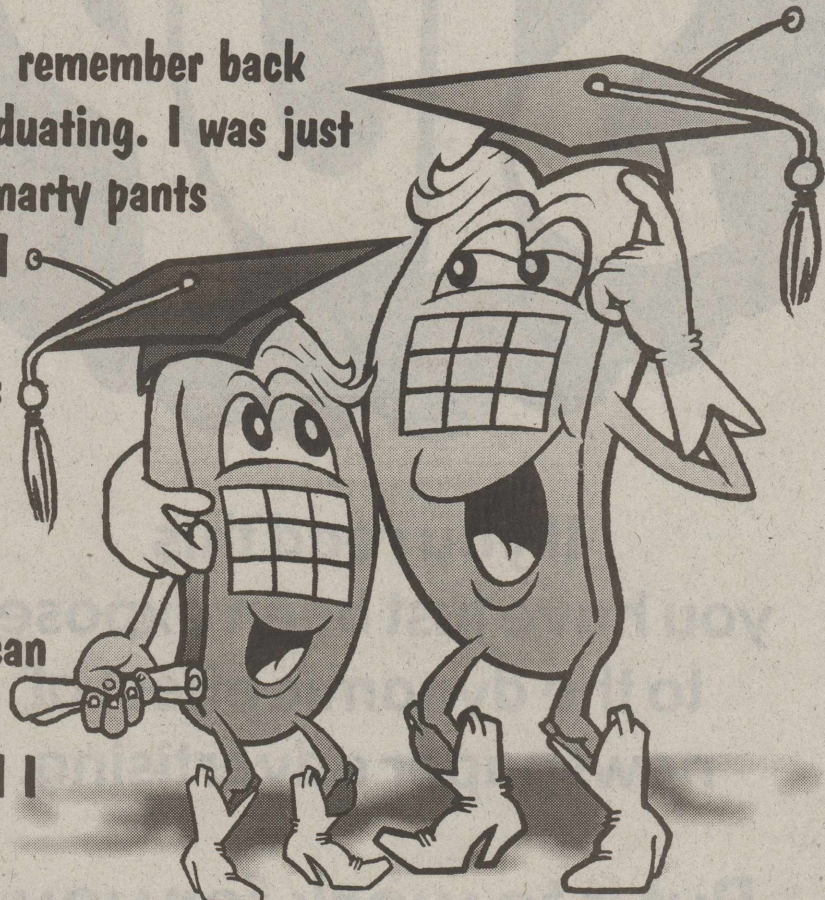
interdisciplinary studies student and Katy M. McDaniel, a journalism/secondary certification and English/secondary certification student have been named to the Dean's List for the 2003 spring semester at Angelo State University in San Angelo.

To be eligible for the list, a student must be enrolled full-time and maintain a 3.25 grade point average on a 4.0 scale.

\*\*\*  
Gloria M. Aguinaga, an

# stay in touch with your little graduate.

Yeah my boy...I remember back when I was graduating. I was just an all analog smarty pants transistor model back then. Didn't have this new-generation digital stuff like we do now. These days we can keep in touch alot easier...and I hope we will.



For only \$15 extra per month you can keep your graduate in touch by adding an extra phone to your existing plan and sharing the plan's minutes! Plus, enjoy **Texas Toll Free** and **Nationwide Toll Free** on some Digital Plans when calling from the Texas Cellular Home Area!

Some restrictions apply. See agent for details.

**We Take Care Of Our Neighbors.**



and as always...  
**TXC**  
first 2 incoming minutes  
**FREE**

Visit your friendly Texas Cellular agent today.

**IN HASKELL:** Haskell Tire & Appliance  
206 S. Main Street  
940-864-3269

**IN ALBANY:** Albany Communications  
500 S. Main Street  
325-762-2333

**IN SWEETWATER:** 1113 Lamar  
325-235-2853  
Sierra Communications  
1901 Bristol  
325-235-4377



©MMIII TTI



**8 pc. Chicken \$6.99**

**Chicken Breasts or Thighs 99¢ ea.**

**Chicken Wings 3/\$1**

**Chicken Legs 2/\$1**

**parrot-ice**  **TEXAS LOTTERY**  
Play The Game Of Texas™

**Deli Grill Open til 10 p.m.!**

## Get Connected . . .

- Local Internet Access
- Local Tech Support
- Free Software
- Multiple Free E-mail Accounts
- Free Home page
- No set-up fee
- Unlimited Access

\$19.95 per month or \$16.95 per month if paid annually

### West Texas Internet

Locally Owned and Operated  
864.8124 • www.westex.net • administrator@westex.net  
Haskell

## Property Tax Protest and Appeal Procedures

The law gives property owners the right to protest actions concerning their property tax appraisals. You may follow these procedures if you have a concern about:

- the market or special appraised value placed on your property
- the unequal appraisal of your property
- the inclusion of your property on the appraisal roll
- any exemptions that may apply to you
- the qualification for an agricultural or timber appraisal
- the taxable status of your property
- the local governments which should be taxing your property
- the ownership or property
- the change of use of land receiving special appraisal
- any action taken by the chief appraiser, appraisal district or appraisal review board that applies to and adversely affected you.

**Informal Review:** Taxpayers are encouraged to make an appointment with an appraiser to discuss their property value. This may be done by calling (940) 864-3805. They should bring information to substantiate why they feel that their property value is incorrect. The appraiser will discuss their property and may recommend an adjustment to the Appraisal Review Board. If the taxpayer is satisfied with the adjustment, he does not have to appear before the ARB.

**Review by the Appraisal Review Board:** If you can't resolve your problem informally with the appraisal district (CAD) staff, you may have your case heard by the appraisal review board (ARB).

The ARB is an independent board of citizens that review problems with appraisals and other concerns listed above. It has the power to order the CAD to make the necessary changes to solve problems. If you file a written request for an ARB hearing (called a notice of protest) before the deadline, the ARB will set your case for a hearing. You'll receive written notice of the time, date, and place of the hearing. If necessary, you may request a hearing in the evening, Saturday or Sunday. Prior to your hearing, you may ask to review the evidence the CAD will use to uphold their determination. The CAD may ask you for a copy of the evidence you plan to present. The hearing will be informal. You or a designated agent may appear in person to present evidence or you may send notarized evidence for the ARB to review at your hearing. The CAD representative will present evidence about your case. You may cross-examine the CAD representative. The ARB will make its decision based on the evidence presented. The CAD has the burden of establishing the property's value by a preponderance of the evidence presented. You can get a copy of a protest form from the appraisal district office at 604 North First, Haskell, Texas.

Note: You shouldn't try to contact ARB members outside of the hearing. The law requires ARB members to sign an affidavit saying that they haven't talked

about your case before the ARB hears it.

**Review by the District Court:** After it decides your case, the ARB must send you a copy of its order by certified mail. If you're not satisfied with the decision you have the right to appeal to district court. If you choose to go to court, you must start the process by filing a petition within 45 days of the date you receive the ARB's order.

**Tax Payment:** If you appeal and your case is pending, you must pay the lesser of the amount of taxes due on the portion of the taxable value not in dispute or the amount of taxes due on the property under the order from which the appeal is taken.

**More information:** You can get more information by contacting your appraisal district at Haskell County Appraisal District 604 North First • P.O. Box 467 Haskell, Texas 79521 (940) 864-3805

You can also get a pamphlet describing how to prepare a protest from the appraisal district or from the State Comptroller's Property Tax Division, P.O. Box 13528, Austin, Texas 78711-3528.

### Deadline for filing protests with the ARB\* Usual deadline

On or before May 31 (or 30 days after a notice of appraised value was mailed to you, whichever is later).

Late protests are allowed if you miss the usual deadline for good cause. Good cause is some reason beyond your control, like a medical emergency. The ARB decides whether you have good cause.

Late protests are due the day before the appraisal review board approves records for the year. Contact your appraisal district for more information.

### Special deadlines

For change of use (the appraisal district informed you that you are losing agricultural appraisal because you changed the use of your land), the deadline is before the 30th day after the notice of the determination was mailed to you.

For ARB changes (the ARB has informed you of a change that increases your tax liability and the change didn't result from a protest you filed), the deadline is before the 30th day after the notice of the determination was mailed to you.

If you believe the appraisal district or ARB should have sent you a notice and did not, you may file a protest until the day before taxes become delinquent (usually February 1). The ARB decides whether it will hear your case based on evidence about whether a required notice was mailed to you.

\*The deadline is postponed to the next business day if it falls on a weekend or holiday.