

CPL. ALVIN DALTON TO REPLACEMENT DEPOT
Maxwell AF Base, Ala. — Cpl. Alvin R. Dalton, son of Mr. and Mrs. B. A. Dalton of Muleshoe, Texas, recently received orders to report to an Air Force Overseas Replacement Depot, it was announced today by Col. Leslie G.

Mulzer, Maxwell commander. Corporal Dalton was previously assigned to the 3801st Supply Squadron at Maxwell. He attended Muleshoe High School and entered the Air Force March 10, 1951.

Attend The Church of Your Choice Sunday

We are sure they were rightfully chosen because they have both attended Muleshoe school their entire school days. They are now both seniors and a credit to their class.

Mrs. Grandy And Pupils Entertain Rotary Members

Mrs. C. W. Grandy, teacher of music and voice, and three of her pupils entertained members of the Rotary Club and their guests at their noon luncheon Tuesday.

Don and LaVon Copley pleased their listeners with a piano duet. Keith Gaede sang, "Harbor Lights" and "My Heart Cries for You," with the group joining in the chorus. As an encore he sang "Because of You". All three young artists show definite talent, and the Rotarians were proud to have the opportunity to hear them. Onward Upton was in charge of the program.

Guests included Mrs. Upton and Al Hall of Muleshoe; Rotarians F. M. Smith, football coach, Raymond Nix, president, and Glen Gatewood, secretary of the Sudan club; H. H. DeLozier, of the Clovis Club; and Marvin Paul, of the Amarillo Club.

Wayne Bristow, son of Mr. and Mrs. Clinton Bristow, was introduced as Junior Rotarian of the Month, by Chief Jones. Wayne is an outstanding member of the freshman class of Muleshoe high school. The club will have as a guest one high school student each month, selected by high school authorities.

The club voted to join other local organizations in sponsoring the visit of Santa Claus this year and in decorating the town for the Yule season. Two road signs will be purchased by the club to be placed on highways leading into town to inform visitors where and when the club meets.

Attend The Church of Your Choice Sunday

Draft Boards Ordered To Reclassify All Married Men Without Children

Austin, Oct. 2 — Texas draft boards today were called upon to reclassify all married registrants without children as available for military service unless they are eligible for some other deferred classification.

Brig. Gen. Paul L. Wakefield, state Selective Service director, said he received authority from national Selective Service headquarters to order the move. Local boards were urged to complete these reclassifications "as soon as possible."

The man to be reclassified under these new regulations will be drawn from a state pool of men with dependents which on August 31 stood at 71,000. A more up-to-date figure will not be available until around October 15.

How many of this pool are men with only wives is not known, General Wakefield said. He said that State Selective Service headquarters at present shows all men with dependents in one class, with no breakdowns as to number of dependents.

Cases To Be Reopened
In his communication to 137 Texas local boards, General Wakefield asked local board chairmen to act "with your characteristic speed" in reopening the cases of married men who only have dependent wives.

He requested boards to report the number of such men they reclassify by age groups as soon as board action is completed. Until these reports are completed, it will not be known how many men are affected in Texas.

When these reports are received, local boards will be sent orders to have these men physically

and mentally examined by armed forces joint examining and induction stations in their area.

"The number found acceptable will, in the majority of instances, be inducted early," General Wakefield commented, "since many of them will be in the older age groups."

Under the law, among examined and acceptable registrants, the oldest men take their turn for induction first when calls are received. Because of this provision, examined and acceptable married men in many cases will be inducted ahead of single men who have been examined and acceptable for many months.

If a registrant has an unborn child, new regulations provide that he be deferred, provided he files with the local board the certificate of a licensed physician stating that the child has been conceived, and further provided that he does this prior to the time the local board mails him an order to report for induction.

Texas December Call Very Small

Austin, Oct. 11 — State Selective Service headquarters has received the smallest state draft call since beginning of the United Nations military action in Korea.

The call, for December, asked for only 382 men, Brigadier General Paul L. Wakefield, state Selective Service director, said. Previously, the smallest call was for 367 men, levied in July.

State draft headquarters at the

same time received an upward adjustment of its November call from 575 to 665. General Wakefield said he understood the Marines had asked for more men for November.

MR. AND MISS MULESHOE HIGH CHOSEN

The student body of Muleshoe High school chose J. Ann Wyr as "Miss Muleshoe High" and Robert Waggoner as "Mr. Muleshoe

High" for the school term of 1951-52. This is indeed an honor bestowed upon J. Ann and Robert.

LUZIER'S
Fine Cosmetics & Perfumes
1101 East 2nd St.
MRS. E. E. HOLLAND
Phone 256-W

ELIZABETH WOODLEY INSURANCE

Nat'l Farm Loan Office Bldg.

Phone 83

NOW AVAILABLE

New!
High Speed OLIVER COTTON HARVESTER



NOW

Is the time to get your present machine in working order. We have a complete stock of cotton Harvester Parts.

McDonald Implement Co.

PLAINVIEW HIGHWAY MULESHOE, TEXAS

Cochran Bros. Inc.

Cotton Buyers

Next To Blackburn Food Store In Muleshoe.

See Us Before You Sell — Everything to gain and nothing to lose.

WE ARE COTTON BUYERS

ABSTRACTS REAL ESTATE

COMPLETE ABSTRACT SERVICE LISTINGS ON ALL TYPES OF REAL ESTATE

MULESHOE ABSTRACT CO.

Barry T. Lewis, Prop.

Phone 352-J

WE WILL BE CLOSED FRIDAY OCT. 12

COLUMBUS DAY

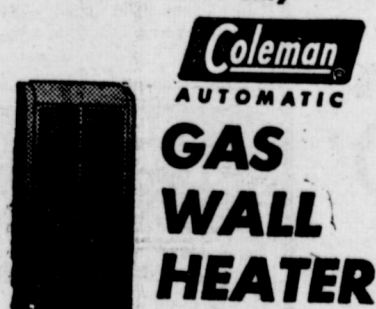
MULESHOE STATE BANK

Member F. D. I. C.

Ready Your Home for Winter Comfort!

Any Type of Heating Unit You May Want. The E. R. Hart Co. Has It. Whether You Use Gas, Electricity, Oil, Wood or Coal, We Can Supply Your Needs. Save On Each Stove!!!

Limited time only



Coleman AUTOMATIC GAS WALL HEATER

A complete heating unit. Fits in wall. These models supply heat for as many as 1 to 8 rooms.

Approved by American Gas Association

COLEMAN BLEND-AIR

The COLEMAN BLEND-AIR is the latest in automatic heating equipment. This new unit will take fresh air from the outside, heat it, and blend it with the air now on the inside of your rooms. You can heat your entire home or one room with the new Coleman Blend-Air and you are assured of clean, fresh air 24 hours a day. See this unit demonstrated at our store today.

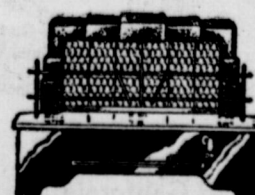
COLEMAN FLOOR FURNACES

SPACE HEATERS
All Sizes and Designs

BATHROOM HEATERS

ELECTRIC HEATERS

ASBESTOS BACKED HEATERS



COAL STOVES

KEROSENE HEATERS

KEROSENE RANGES

BACHELOR HEATERS

WOOD STOVES

E. R. HART CO.

Phone 23

Muleshoe, Texas

"THE BLINDFOLD TEST REALLY AMAZED ME



—bumpy roads felt smooth as highways!—

Says MRS. MARGUERITE GUNN— "The Dodge Oriflow Ride is really velvet-smooth! I took the Blindfold Test, and only after the blindfold was removed could I believe I'd been over such a rough, bumpy road."



Blindfold Test Proves Amazing Smoothness of Dodge Oriflow Ride . . . Let Us Show You Today!

Come in . . . let the Dodge Blindfold Test prove that the new Dodge Oriflow Ride takes the bump out of bumps. Blindfolded, you travel a stretch of rough, bumpy going. Yet with the new Dodge Oriflow Ride you float along without pitch or bounce. You can't believe the bumps are there until your blindfold is removed!

Oriflow is just one of the many extra-value features Dodge gives you. There's "Watchtower" visibility for greater safety. Interiors that give you full head,

leg and shoulder room—so you can ride in comfort. Fluid Drive smooths all your starts and stops. Yes, you could pay hundreds of dollars more and not get all Dodge gives you. Come in today.

The Big Dependable

DODGE

Drive in a Dodge and You'll Know It for Yours

Arnold Morris Auto Co.

1012 MAIN STREET

MULESHOE, TEXAS

Tech Plays TCU Saturday Night

Lubbock, Oct. 11 — A boy can come from a small town and still play big-league football - even as a freshman.

That's the case when a 17-year-old from Hale Center calls signals for the second time this year against a Southwest Conference university, as Texas Tech meets Texas Christian University here Saturday night.

Jerry Johnson, a Class B high schooler last year, is doing a great job of mastering the intricate split-T offense of the Red Raiders. Jack Mitchell, an all-time standout quarterback for Oklahoma University, rates Johnson as potentially one of the great ball handlers of the Southwest. Mitchell is one of Tech's new coaches.

Against Texas A & M in Dallas Cotton Bowl, Johnson equally shared quarterbacking duties as Tech fought the seventh ranked Aggies to a 20-7 decision. His next crack at a Southwest Conference school will come against the pass happy Horned Frogs. A week

later, he'll get a chance at Baylor University in Waco.

Malvin Fowler and Gil Bartosh will quarterback the SWC team.

TCU last week downed Arkansas 17-7 while Tech was dropping a 6-0 struggle to University of Houston, currently the class of the Missouri Valley Conference. Border Conference play for Tech does not begin until Homecoming, Oct. 27, against Arizona.

Mules To Watch Tech-TCU Game

Muleshoe high school football squad will get to see the Texas Tech - Texas Christian U. grid game in Lubbock Saturday night thanks to a group of business men team supporters, who this week contributed to a "kitty" to pay for use of a T. N. M. & O. bus, and to pay game entrance fees. It was believed there would be enough left to pay for some eats before game time.

The boys will get to see two of the state's top teams go about their blocking and tackling chores.

Tech athletic authorities are charging the Mules only the tax on admission.

Mules Defeated Sundown Roughnecks 18 To 6 Friday As Offensive Clicks

Muleshoe's Mules slipped by Sundown's Roughnecks in a non-conference football game here last Friday night, 18 to 6. They held the visitors scoreless until the final minutes or so of the game, when an intercepted pass gave them the ball on Muleshoe's 40.

The Roughnecks were not long in capitalizing on the break. Charlie Mann got 1 yard, and R. L. Oden went to a first down on the Muleshoe 12. Danny Stark, quarterback, ran to the Muleshoe 7, then went over on a left end run. The kick was no good and the final whistle sounded immediately.

Muleshoe got into a winning stride after several minutes had elapsed in the first quarter. With Johnson, Harvey, and Benny Bickel carrying the ball, the Mules made it first down on the Sundown 9. A pitch out to Road Johnson to Aubrey Heathington carried to the Roughnecks' 1 yard line, then Heathington bulldozed over for the score. Dewayne Burkhead for extra point was blocked.

After an exchange of punts, the Mules had the ball on their 30. Burkhead punted when it was fourth down and 11 to go, and the ball went out of bounds on Sundown's 45. The alert Mules recovered a Sundown fumble squarely on the 50. Bobby Seid got 2. Johnson got 2, but Seid lost 4 and another punt was called for. Sundown took the punt on their

15 but two passes failed and it was 4th and 7. A short kick, fielded on the 24 set up the next touchdown.

Freddie Harvey caught a pass on the Sundown 14 and Seid raced to the 11 and a first down. Heathington plunged through to the 2 then made it first down on the Sundown 1. Seid recovered a Mule fumble on the Sundown 3 and after Johnson hit the line for no appreciable gain Seid went over for the second TD. Extra point try was no good, in fact on four touchdowns made during the night, no conversion was made.

This ended the first half scoring with the Mules 12, Sundown 0. Sundown's eleven staged a spirited comeback in the second half. They threatened in the third, after recovering a Mule fumble on the Muleshoe 35. A pass, Stark to Billy Waygood gave them a first down on the Mules 7 yard line and it was third and 3. Stark got 4 yards and the Roughnecks seemed poised for a certain touchdown on the Mules' 2. More was to come for another play put the ball on the 6 inch line. But it wasn't in the cards. The Mules rose up and stopped any further progress and the threat was over for the time being.

A little later Burkhead kicked to the Sundown 45 year line and Stark returned to the Mules' 42. After a series of plays Stark landed on the Mules' 20 but a penalty of 15 yards put them back to the 35. Don Greer of the Roughnecks drove to the Mules 30, but the Mules again held on their 21, and took over from that point. Burkhead's next punt went out of bounds squarely at midfield and Sundown moved to a first on the Mules 35. Here Stark uncorked a pass that carried them down in Mules territory again, to the 15 for a first down. But four plays failed to gain and the Mules took over on their 20.

The Mules got in some hustle at that point on their own. Aubrey Heathington raced to a first

down on the Mules 40 and raked up 7 more yards right through the center as the quarter ended.

WAGGONER IS NAMED STAR OF THE WEEK

The Amarillo News has named Robert Waggoner, star guard on the Mules football eleven, as its article signed by Dick Kranz, grid "Star of the Week." In an sports writer for the paper, it was pointed out that Waggoner has now scored 3 touchdowns for the Mules. He scored first in the game with Hereford, did it again in the Crosbyton game, and Friday night again proved to be the backfield's fifth man when he took a lateral from Bobby Seid and raced 30 yards for the score.

"Aside from his amazing touchdown record, Waggoner also does a fine job on defense and as a blocking guard on offense," the News declared. People in the Muleshoe territory are mighty proud of Robert, too, as well as everybody else on that Mules squad.

Sundown put on a nice offensive thrust and finally Stark made it first down on the 30, Mann ran

to the 35 and C. Wood went across the midfield stripe to the Mules 47. Stark knocked off 7 but on the next play was thrown for a loss by the Mules' hustling center, Johnny Ladd, on the Mules 45.

Stark kicked to the Mules 22 where the ball went out of bounds. On the second play, Seid exploded for another touchdown, although he didn't make it. Bob-

by tore out from the 22, went around left end and it looked as if he was loose for a score, but the Roughnecks hemmed him up on their 30, after he had gained more than 40 yards. Seid lateraled off as he was being tackled to Robert Waggoner, a star guard, who raced the remaining distance to the goal for the Mules third touchdown.

IRRIGATION SUPPLY CO.

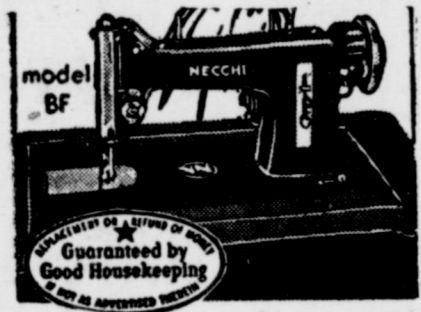
Muleshoe, Texas

USED GEAR HEADS
and
ELECTRIC MOTORS

IMMEDIATE DELIVERY ON
NEW PUMPING EQUIPMENT
and POWER UNITS

Thanks

... To the many people visiting our booth at the Bailey County Fair and seeing the NECCHI SEWING Machine Demonstration.



If you did not get to see this marvelous machine demonstrated stop by our store at any time and we will be happy to give you a complete demonstration.

Bass Firestone Dealer Store

"YOUR NECCHI SEWING CIRCLE"

Phone 296-J

Muleshoe, Texas

Stop Taking Harsh Drugs for Constipation

End Chronic Dosing! Regain Normal Regularity This All-Vegetable Way!

Taking harsh drugs for constipation can punish you brutally! Their cramps and griping disrupt normal bowel action, make you feel in need of repeated dosing.

When you occasionally feel constipated, get gentle but sure relief. Take Dr. Caldwell's Senna Laxative contained in Syrup Pepsin. It's all-vegetable. No salts, no harsh drugs. Dr. Caldwell's contains an extract of Senna, oldest and one of the finest natural laxatives known to medicine.

Dr. Caldwell's Senna Laxative tastes good, acts mildly, brings thorough relief comfortably. Helps you get regular, ends chronic dosing. Even relieves stomach sourness that constipation often brings.

Try the new 25¢ size. Money back if not satisfied. Mail bottle to Box 280, N. Y. 18, N. Y.

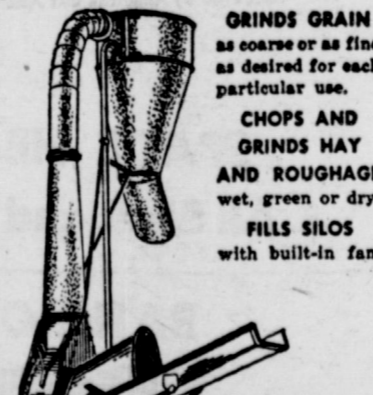
DR. CALDWELL'S SENNA LAXATIVE
Contained in pleasant-tasting Syrup Pepsin



The "take-it-easy" years beckon invitingly to farm people who have built up a retirement fund in United States Defense Bonds. As the only large group of Americans not covered by group security or pension plans, farmers find Defense Bonds are ideal kind of retirement fund. Defense Bonds are absolutely safe—backed by the full resources of this great country—and they pay a good rate of interest—\$75 invested today becomes \$100 in 10 years and \$133.33 in 20 years. U. S. Treasury Department

SAVE GRAIN IN YOUR FEEDING PROGRAM

Don't let roughage go to waste! Chopped and ground with a Wetmore Knife-Type Hammer Mill, it makes palatable, nutritious feed to replace or supplement valuable grain.



GRINDS GRAIN as coarse or as fine as desired for each particular use.
CHOPS AND GRINDS HAY AND ROUGHAGE wet, green or dry.
FILLS SILOS with built-in fan.

WETMORE KNIFE-TYPE HAMMER MILL
19 YEARS A LEADER

35 SUPERIOR FEATURES
Let us show the many features of design and construction responsible for the Wetmore Mill's outstanding performance . . . simple, fast operation . . . long, trouble-free life.

FREE DEMONSTRATION
See the Wetmore Mill in operation. We'll gladly arrange a demonstration . . . on your own farm, if you wish. Just drop in or phone . . . no obligation.

Fry & Cox Bros.
Phone 35 Muleshoe, Texas

SPECIAL PURCHASE

Chrome DINETTES

Virtue
PRODUCTS OF CALIFORNIA

This double extension chrome dinette suit by Virtue of California is one of the buys of the season. Finely constructed of gleaming chrome and stainless, heat resistant plastic tops. Chair backs and seats are covered in easy-to-clean plastic. Your choice of sizes and designs in colors of red, gray, blue, yellow, and green. Priced from . . . **79.50 up**

DYER HARDWARE & FURNITURE

Phone 151 Muleshoe, Texas

BARGAINS IN USED FARM EQUIPMENT

- * 1-1950 John Deere wheat drill 16x8 on rubber press wheels.
- * 1-1950 A-C Combine in perfect condition.
- * 1-1947 A-C Combine above average condition.
- * 1-1946 Oliver Row Crop 70 Tractor with 4-row lister, planter and cultivator.
- * 1-1945 Oliver Row Crop 80 Tractor with 4-row lister, planter and cultivator.
- * 1-1939 A-C Tractor with 2-row equipment.
- * 1-1950 Boone Cotton Stripper, really worth the money.
- * 1-1950 58 h. p. industrial engine on butane, clutch and radiator.

McDonald Implement Co.

PLAINVIEW HIWAY MULESHOE, TEXAS

Here's why Fordomatic puts them all in the past!

For the past year, automotive writers, engineers and owners have been raving about a new kind of automatic driving . . . and here's why you get it only in Ford Cars:

All the power you need when you need it!

Some automatics have this It gives you instant "GO"! It practically drives itself!

The automatic drive some cars offer you is a torque converter which multiplies torque without the use of gears. Its advantage is a smooth flow of power. Its disadvantage is a smaller range of torque multiplication which requires more power from the engine and an uneconomical axle ratio which increases costs.

Some automatics have this But Fordomatic has both. Yes, Fordomatic has a torque converter plus automatic gears. It brings you only the advantages of both drives. Unlike cars with only a torque converter (which start and cruise all in one drive gear), Fordomatic starts fast and smooth in Intermediate Gear then shifts itself into Drive Gear.

Other cars offer an automatic drive that uses automatic gears (as illustrated in simplified form at right) instead of a torque converter. The advantage here is more "go," more control and greater economy. The disadvantage is that this system is not as smooth, nor as jerk-free as a torque converter.

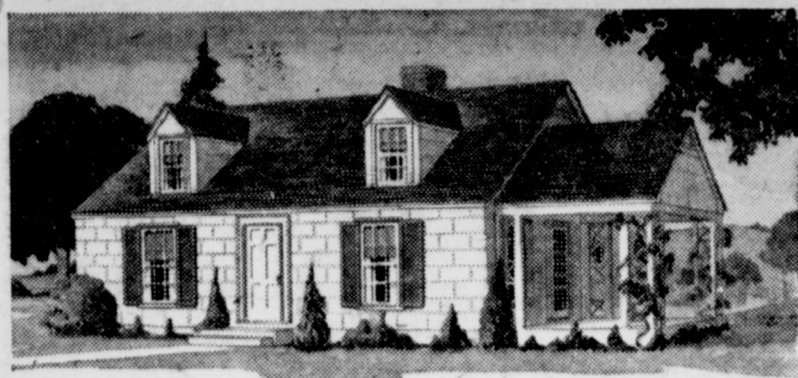
See our selection of **A-1 USED CARS**

Fordomatic FORD MOTOR CO.

Fordomatic Drive optional on V-8 models at extra cost. Equipment, accessories and trim subject to change without notice.

MOTOR CO.
Muleshoe, Texas

Phone 33



Expandable, Two Bedroom House

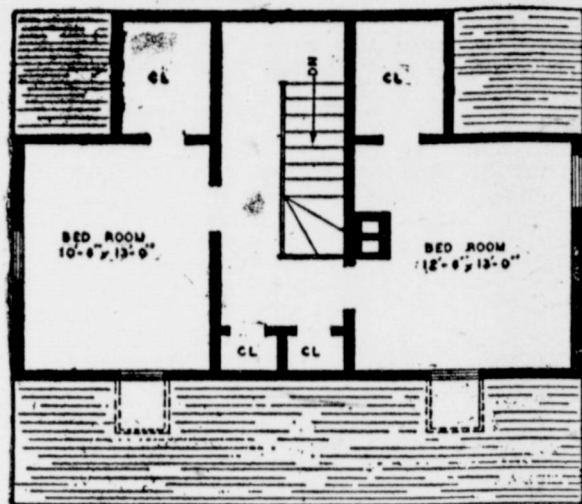
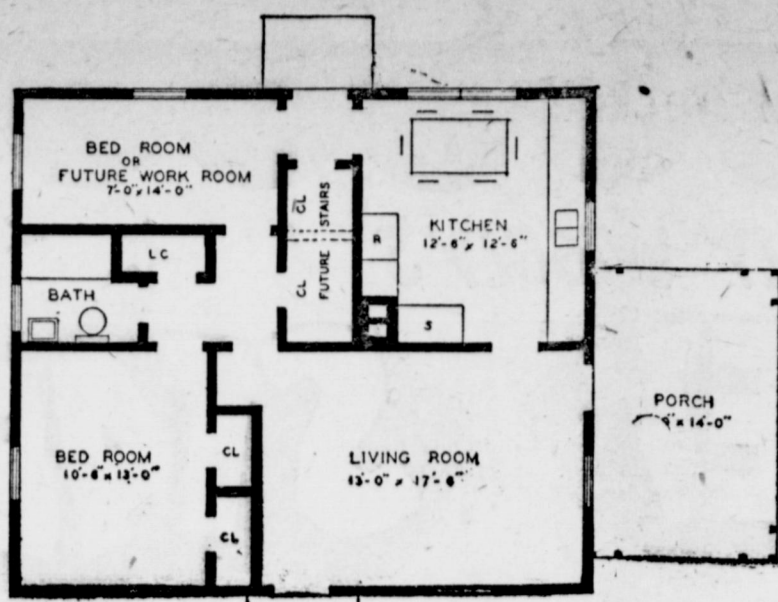
If your family is small or large, here is a plan that offers you a lot of house for a small initial cost. If the family is still small, only the first floor need be completed when the house is built. When more space is needed, the two closets on the first floor can be removed and there is adequate room for a stairway which will provide convenient access to the second floor. You will be amazed at the small amount of money required to complete the two bed-

rooms and large closets on the second floor at some future date. This house was designed to hold the winter fuel bill down. Any heat lost through the ceiling of the first floor will help warm the rooms above and the compact arrangement prevents any excessive heat loss through the walls. A full or part basement can be very conveniently made under this house. If the basement is used, a gravity flow furnace could be certainly located and the minimum of metal or duct work would be required.

The kitchen is provided with three windows to make it a light and pleasant place to work. There is a lot of work counter and storage space. The chimney in the kitchen will not only serve for a furnace in the basement but can also serve the kitchen stove or for a space heater which might be placed in the living room.

The small bedroom or future workroom on the first floor will make an ideal space for a freezer chest, laundry equipment, or for storage after the two bedrooms on the second floor have been finished.

The porch at the end of the



living room will serve as a every comfortable spot on summer evenings and will also make the living area seem larger during warm weather. It can be screened without detracting from the appearance of the house.

You can obtain blueprints for this Muleshoe Journal Farm & Ranch Plan No. 4913 and a handy list of materials by which you can figure your construction cost accurately. Send \$1 to Building Editor, Farm & Ranch, Dept. L-36, Nashville 10, Tenn. Blueprints are adequate for any farm carpenter or any farmer handy with tools.

PARMER BUREAU INVITES COMMISSIONER WHITE

John C. White, State Commissioner of Agriculture has been invited to speak at the annual meeting of Parmer County Farm Bureau. Mr. White's reply has not been received, but the Directors insist that there will be an outstanding speaker for the occasion.

Two community directors will be elected and the President and Vice-President.

Billie Sudderth is the retiring director at Bovina and Melvin Sachs at Rhea. The term of office expires for Bruce Parr, president and James Roach, Vice-president.

ATTEND STONE FUNERAL

W. H. Kramer, secretary and treasurer, and E. K. Warren, president, of the Warren Estate, of Three Oaks, Mich., flew here to attend funeral services for A. P. Stone. Other out of town friends here for services were Tom and Bob Cobb, Lubbock, owners of Cobb Department Stores.

Paper Supplies of all kinds at the Journal office. Phone 54.

CARD OF THANKS

We would like to express our sincere appreciation to all those who have helped during the illness and death of our husband and father.

Mrs. A. P. Stone,
Mrs. H. R. Pierce, Jr.

VISITED DAUGHTER

Mr. and Mrs. Edgar Broyles spent the weekend with their daughter, Patricia, who is a student in Baylor University, Waco. They were accompanied by their

THE MULESHOE JOURNAL, Thursday, October 11, 1951

sons, Ralph and Dean, and daughter, Mrs. Lavonne McKillip.

HOME FOR WEEK END
Baylor University students Wal-

ter Seales, son of Mr and Mrs. Bert Seales, and Charles Roark, son of Mr. and Mrs. Everett Roark, spent the weekend here with their parents.

AIRWAY SANITIZER DEALER

New & Used Vacuum Cleaners

PARTS AND SUPPLIES
ALL MAKES REPAIRED

Free Demonstrations In Your Home

T. P. SMALLWOOD

1306 - 6th Street

Phone 248-W

Muleshoe

BERRY ELECTRIC CO.

Refrigeration Service

Electric Appliance
Repairs

Wiring & Repairs

Phone 78

Muleshoe

TAKE IT FROM ME...



PATTERSON-SARGENT

BPS HOUSE PAINT

COVERS MORE FOR LESS... GIVES
EXTRA YEARS OF PROTECTION!

Famed BPS House Paint gives you a big Paint Bonus... a bonus that means extra years of beauty and protection at no extra cost! Make your home the envy of your neighbors by giving it the best in paint... BPS House Paint!



NOW... MORE THAN EVER... USE A PROVED PAINT!
HEATHINGTON LUMBER COMPANY

PHONE 297-J

LOCATED ON CLOVIS HIGHWAY

MULESHOE, TEXAS

ZENITH RADIOS

ALL MODELS IN STOCK

— At —

Spence Radio
Service Shop

Phone 270-W

Muleshoe, Texas

Service On
Any Make
Radio

COX DRIVE-IN THEATRE

Program OF FINE ENTERTAINMENT!

SUN. & MON., OCT. 14 & 15

AT WAR WITH THE ARMY

Dean Martin & Jerry Lewis

TUES. & WED., OCT. 16 & 17

KEY TO THE CITY

Clark Gable & Loretta Young

THURS. & FRI., OCT 18 & 19

GOODBY, MY FANCY

Joan Crawford & Robert Young

SATURDAY ONLY, OCT 20

COPPER CANYON

Ray Milland & Hedy Lamarr

MULESHOE

TEXAS

DON'T MISS IT

CLARK GABLE & LORETTA YOUNG

—IN—

Key To The City

—WITH—

Marilyn Maxwell • Frank Morgan

James Gleason • Lewis Stone

October 16 & 17

COX DRIVE-IN THEATRE

PROCEEDS WILL GO TO

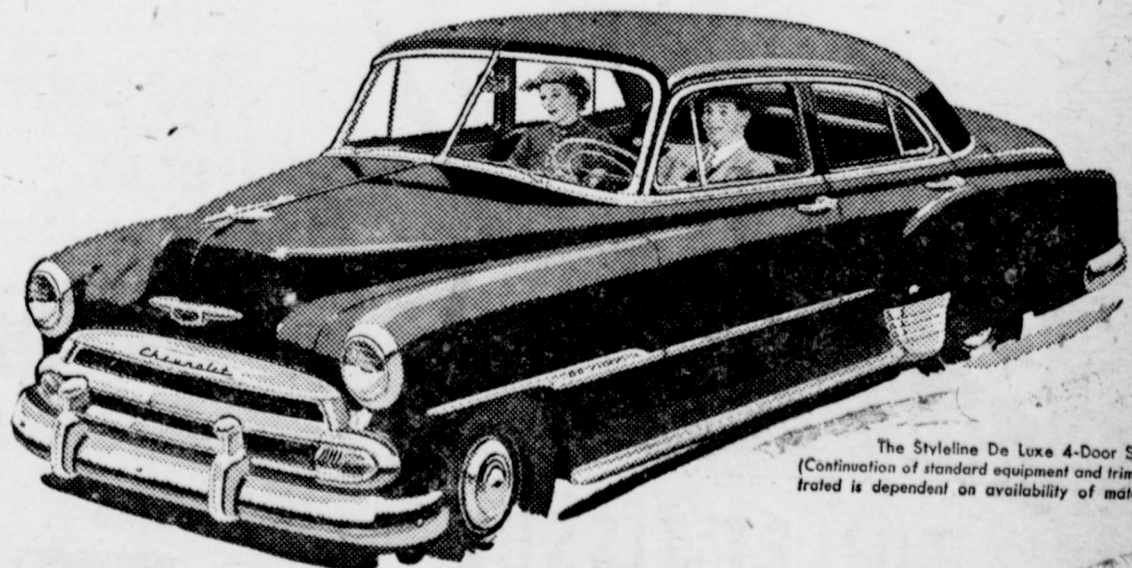
MULESHOE SCHOOL BAND

Size it up and you'll see why
**More People Buy Chevrolets
Than Any Other Car!**

Longest of the Lot
Chevrolet looks longest, Chevrolet is longest... a swank and sweeping 197 1/4 inches over-all that tops any other car in the low-price field. Size up Chevrolet's greater length, and you'll find it hard to settle for less.

Most Road-Hugging Weight
Gives you more road-hugging, road-smoothing weight... a hefty 3140 pounds* in the model illustrated that no comparable car in the field can match. Get the feel of this big car, and you won't settle for less. (*Shipping weight.)

Widest Tread in Its Field
Here's the steadiness of the widest tread in the field... 58 3/4 inches between centers of rear wheels. Once you've known the better roadability of Chevrolet's wider tread, you wouldn't settle for less.



The Styline De Luxe 4-Door Sedan (Continuation of standard equipment and trim illustrated is dependent on availability of material.)

Finest Comfort Features
Luxury of Body by Fisher... cradled ease of unitized Knee Action... smooth control of Center-Point Steering!

Biggest Brakes of Any Low-Priced Car
Big, powerful Jumbo-Drum brakes—largest in the low-price field! Use the car's own momentum to increase stopping power.

Way Ahead with Valve-in-Head
The trend's to valve-in-head. And Chevrolet's had it for nearly 40 years! Get sparkling performance and real over-all economy.

Join the Shift to No-Shift **POWER GLIDE** Automatic Transmission*

Sensationally smooth! Excitingly easy! It's a new experience in driving, the modern way to drive. Costs little more—or even less than many a car with standard gearshift!
*Combination of Powerglide Automatic Transmission and Engine optional on De Luxe models at extra cost.

America's Largest and Finest Low-Priced Car!



C. & H. CHEVROLET CO.
MULESHOE, TEXAS



PRESENTING PIGGLY WIGGLY'S
BUDGET STARS!

CHASE AND SANBORN
COFFEE LB. **84c**

ARMOURS, LARGE CAN MILK	13c	GREEN GIANT, 7 OZ. CAN PEAS	17c	HEINZ, WHITE VINEGAR, qt.	23c
WHITE HOUSE, NO. 303 CAN APPLE SAUCE	14c	VEL, lg. box	32c	P & G SOAP, bar	8c
HEINZ BABY FOOD, 3 for	27c	TIDE, lg. box	32c	SPIC & SPAN, box	25c
				LAVA, BATH SIZE SOAP, 2 for	29c

SPAGHETTI & MEAT
 SWIFTS PREMIUM NO. 2 CAN
 SWIFTS NO. 2 CAN
HASH
 24c | 38c || NO. 1/4 CAN SARDINES | 8c | |

U. S. GRADED QUALITY MEATS

FRESH DRESSED & DRAWN
FRYERS, lb.

ARMOURS STAR, SUGAR CURED, SLAB
BACON LB. **49c**

WHITE TROUT FISH, lb. 23c
 KRAFT LONGHORN CHEESE, lb. 49c
 BOSTON BUTTS PORK ROAST, lb. 65c

ASSORTED LUNCH MEAT, lb. 55c
 CHUCK ROAST, lb. 74c
 WILSON PLAIN SLI. BACON, lb. 39c

SKINNERS LARGE BOX RAISIN BRAN

 17c || SKINNERS, 7 OZ. BOX SPAGHETTI | 11c |
| MARSHALL NO. 300 CAN, 3 FOR PORK & BEANS | 27c |
| OSCAR MAYER MUSTARD WEINERS | 46c |

H I C 46 OZ. CAN
Orange Ade 28c

SALMON ALASKAN CHUM NO. 1 TALL CAN

 37c |

PATIO CHICKEN, NO. 300 CAN TAMALES

 29c || PATIO, NO. 300 CAN CHILI | 50c |
| PATIO BEEF NO. 2 CAN ENCHILADAS | 51c |
| SWIFTS PREMIUM NO. 1/4 CAN POTTED MEAT | 9c |

OSCAR MAYER, 12 OZ. CAN
LUNCH MEAT 44c

HUNTS NO. 2 CAN SPINACH, 2 for

 25c || NO. 2 CAN TOMATOES | 16c |
MARSHALL NO. 2 CAN HOMINY	11c
DELMONTE 14 OZ. BOTTLE CATSUP	23c
EAGLE BRAND MILK	29c
DURKEE 4 OZ. BOX COCONUT	18c
SIoux BEE, 1/2 GAL. CAN HONEY	98c

FRESH FRUITS & VEGETABLES

GOLDEN FRUIT
Bananas LB. **12 1/2c**

TOMATOES, lb. 19c
 WHITE ONIONS, lb. 10c
 GREEN ONIONS, bu. 10c
 BELL PEPPER, lb. 19c
 CELERY, stalk
 19c || DELICIOUS APPLES, lb. | 17c |
| YELLOW SQUASH, lb. | 9c |

ORANGE JUICE
 SNOWCROP 4 OZ. CAN
 SNOWCROP 12 OZ. PKG.
STRAWBERRIES 43c
 SNOWCROP 10 OZ. PKG.
ASPARAGUS 33c

HOLLANDAILE COLORED, QUARTERS
Margarine LB. **24c**

HUNTS 1 LB. JAR PEACH PRESERVES

 19c || 6 OZ. BOTTLE JOY SUDS | 32c |
| TUXEDO NO. 1/2 CAN TUNA FISH | 20c |
| OLD BILL NO. 1/2 CAN VIENNA SAUSAGE | 9c |

TOOTH PASTE
 TEPSEDENT 50c TUBE

 32c || BABY POWDERS | 43c |
| VICKS SALVE | 33c |
| MENNENS MENTHOLICED LATHER SHAVE | 47c |

TOILET TISSUE
 NORTHERN TISSUE 3 for

 25c |

DOUBLE THE GREEN STAMPS EVERY TUESDAY!

PIGGLY WIGGLY



DAVIS & HUMPHRIES OWNERS & OPERATORS

The Muleshoe Journal

PUBLISHED EVERY THURSDAY AT MULESHOE, TEXAS
Entered as second-class matter at the Muleshoe Post Office under
the Act of Congress, March 3, 1897.



SUBSCRIPTION RATES

In Immediate Territory, 1 Year \$2.00
Out of Immediate Territory, 1 Year \$2.50

J. M. Forbes Editor and Publisher

BABSON DISCUSSES

Woodlands

New Boston, N. H., Oct. 5. — Every investor is justified in owning some growing timber. This applies especially to those in the higher brackets who are not too much interested in income, the most of which must be paid back to Uncle Sam I say this because only 25 per cent of the profits on woodland need be paid in taxes.

WOODLAND PROFITS SURE
In areas protected against fires, woodland profits should be slow, but sure. With the demand for timber increasing more rapidly than the growth, it is evident that the price must constantly increase. This increase in demand is due both to the constant increase in population and also to the new use for pulpwood and other species.

A few years back pulpwood was used only for newsprint, wrapping paper, etc. Today it is used for plastics, cabinets, cellophane, and even wearing apparel. These new uses are increasing very fast. Hence, the two most valuable woods today are spruce for pulp and pine for timber. Hardwoods are also becoming valuable for use in connection with furniture, tools, and various utensils. In fact, the largest profit may be in stands of hard woods because they are now so very cheap.

GRAFTING OF TREES
The grafting of fruit trees is very common. This applies particularly to apple, pear, and orange trees. The best orange trees are Valencia grafted on lemon roots. Now experiments are being carried on to graft timber trees to get more valuable varieties and quicker growth. For instance, after cutting down an 18" pine tree, instead of permitting the stump to waste, a hole will some day be bored in the stump and a healthy ten year old graft will be inserted. This gives the new tree the benefit of the large root system of the old tree which has just been cut. This method has a great future.

With free gravity power, it will sometime be possible to irrigate woodlands. The growth of trees is

very dependent upon the moisture. When a tree is cut, it will be seen that some "growth rings" are over an inch thick, which was the growth during a rainy year. Other rings will be only one quarter inch thick, which shows the growth in a dry year. If woodland could be cheaply irrigated, the time required to grow good timber or pulpwood could be cut in halves.

MORE MEDICAL USES COMING

The sap of very few hard wood trees is now used. The outstanding example of useful sap is that of the maple tree from which maple sugar is obtained. We, however, use this maple sap merely because it is sweet. Sometime it will be found that the bitter saps of other trees contain valuable medical qualities. These may help people suffering from high blood pressure, arthritis and similar diseases. Who knows but the key to the cancer problem will be found in the sap or bark of some hard wood tree. Today the bark is used mostly for tanning or dyeing.

Looking into the future, we must not forget the leaves of trees. We know how valuable are the leaves of the tea trees of China, Malay, and India. At one time the leaves of the mulberry were needed to raise silk worms. Yet, today not one hundredth of one per cent of the billions

SAND HILLS PHILOSOPHER

He Favors Plan For Making Weeds And Vines Fit For Human Consumption

Editor's note: The Sand Hill Philosopher on his Johnson grass farm is still looking for the easy way out, his letter this week reveals.

Dear editor:
It is always a pleasure to me to find scientists catchin up with us common folks.

Yesterday I was plannin on burnin a wasp nest down as a sort of birthday present for my wife, the nest was right at the back door and while me and the wasps ain't never bothered each other, live and let live is our policy, they sort of made her nervous and so I agreed to the undertakin and had a newspaper rolled up with the end flared ready to put a match to it and



"J. A."

of our hard wood leaves are utilized. I forecast that cutover land will some day be valuable merely for the leaves of the remaining brush.

Marvelous new discoveries are ahead in connection with the use of grasses and other forms of vegetables which are now wasted.

SOMETHING TO THINK ABOUT

Just a thought in closing. Has it ever occurred to you that trees can do something which you cannot do? Trees can draw up food through their roots. We humans must lift our food up to our mouths and let it pass down through our bodies by gravity. The branches and leaves of a tree take their food up from the ground through their "feet" against the pull of gravity. This means that they have some undiscovered elements or vitamins which have a great responsibility. Don't put all your money into any one thing; but don't go through life without owning a few trees.

CHRISTIAN SCIENCE SERVICES

Because God is the only creator and creates only good, He is not the maker of sin, disease, and death, asserts the Lesson-Sermon to be read in Christian Science churches, Sunday, October 14, entitled "Are Sin, Disease, and Death Real?"

Corroborating this assertion the Golden Text reads (Psalms 118: 14, 17): "The Lord is my strength and song, and is become my salvation . . . I shall not die, but live, and declare the works of the Lord." And from the Bible text (Psalms 27:1): "The Lord is my light and my salvation; whom shall I fear? The Lord is the strength of my life; of whom shall I be afraid?" Continuing the theme, these passages from "Science and Health with Key to the Scriptures" are cited: "The procuring cause and foundation of all sickness is fear, ignorance, or sin" (p. 411). "Disquisitions on disease have a mental effect similar to that produced on children by telling ghost-stories in the dark . . . As frightened children look everywhere for the imaginary ghost, so sick humanity sees danger in every direction, and looks for relief in all ways except the right one. Darkness induces fear. The adult, in bondage to his beliefs, no more comprehends his real being than does the child; and the adult must be taken out of darkness, before he can get rid of the illusive sufferings which through the gloaming. The way in divine Science is the only way out of this condition" (p. 371).

For Results Read The Journal Want Ads

DR. B. Z. BEATY
DENTIST
Across From Muleshoe Motor
Office Hours:
9 - 12 a. m. — 1 - 5 p. m.
Closed Saturday Afternoons
Office Ph. 249 Res. Ph. 253-W

For Results Read The Classified Page

Yours faithfully,
J. A.

TODAY'S Meditation

The Upper Room
© THE UPPER ROOM, NASHVILLE, TENNESSEE
THE WORLD'S MOST WIDELY USED DEVOTIONAL GUIDE

THE LORD'S SUPPER
This is my commandment. That ye love one another, as I have loved you." (John 15:12.) Read I Corinthians 13.
A Missionary was presented with a beautiful leopard skin to carry home to America. After the missionary had expressed wonder and delight over the beauty of the present, the giver said, "It is neither entirely black nor entirely white. It is prettier so!" The blending of dark and light shades is what made the skin so beautiful.

I like to think of the human race in these terms. If we could have a blending of the fine relationships of all peoples; black, white, yellow, and brown, it would check international tension and make this world a better place in which to live.

It is a fact that the word brotherhood is often given but lip service. Race, creed, and social strata are huge gaps among peoples. Since we often do not know one another, how much

less can we love one another! We need to try to understand other peoples in every opportunity that we have and show love to them, even as Christ has loved us. This was Christ's command at the Last Supper.

PRAYER
Make us channels of blessing today, dear Lord. Help us to act always in obedience to Thy commandment that we love one another. Use us to help in giving meaning to the words, love and brotherhood. In the name of Christ. Amen.

THOUGHT FOR THE DAY
"In Christ there is no East or West." Carmela Rebolledo (Philippines) West."

NORMAN W. BAYS
Attorney-At-Law
Office In Courthouse
Phone 27 Muleshoe, Texas

INSURANCE and REAL ESTATE
FIRE, CASUALTY, POLIO, AUTO FINANCING
City and Farm Property
Small, Medium and Large, Dry and Irrigated Farms
WE NEED YOUR LISTINGS
Farley Insurance Agency
Over Bank, Muleshoe, Texas
Office Phone 375-W Res. Phone 242-W

POOL INSURANCE AGENCY

COMPLETE INSURANCE COVERAGE

- LOW COST FARM LOANS
- AUTO LOANS
- IRRIGATION WELL LOANS
- Dependable and Friendly Service

LEE POOL MYRON POOL
Phone 113 Muleshoe, Texas

We Will Pay
TOP MARKET PRICES
For All Your
Sweet Sudan Seed

We Are Ready To
Buy or Store
Your Grain Sorghums

for CCC Loans, issuing WAREHOUSE RECEIPTS promptly as we have in the past.

900,000 Bushels Storage Capacity

King Bros.
GRAIN & SEED CO.

H. D. King and Robert King

Phone 134 & 350

Muleshoe

Easiest wheel you ever turned!

Safest wheel you ever held.

Come try it yourself . . .

Chrysler's
new

Hydraguide Power Steering!

Chrysler this year introduces the first power steering ever offered on an American passenger car. Many owners tell us it is the greatest advance in car driving since the self-starter! To a person who hasn't tried it, it is actually impossible to describe what a difference it makes. Driving becomes a new and wonderful experience. At your touch on the wheel, hydraulic power instantly provides four-fifths of the energy needed to steer the car. Gone is all sense of tug, strain, tension. In its place you find a wonderful sense of absolute front wheel control with almost no effort on your part. Hydraguide is regular equipment on Crown Imperials, optional at extra cost on other 8-cylinder models. Whatever car you're driving now, we invite you to . . .

Come TRY Chrysler Hydraguide . . .
First power steering ever offered on an American passenger car!

Come TRY Chrysler FirePower . . .
180 Horsepower, finest and most powerful passenger car engine on America's highways today!

Come TRY Chrysler Power Braking . . .
Power from the engine helps apply the brakes . . . cuts foot pressure required as much as two-thirds!



NEW EASE! No more whirling or twirling, tugging and straining. The littlest lady you know can actually park the biggest Chrysler with her thumb and one finger on the wheel . . . drive all day with new freedom from arm-and-shoulder fatigue!

NEW CONTROL! Hydraguide gives your hands on the wheel a new feeling of complete command at any speed. In city traffic . . . on awkward drive-ways . . . in snug-fitting garage entrances . . . you never felt such steering control in any car before!

NEW SAFETY! Even off the road onto a soft shoulder, Hydraguide helps keep your car steady and . . . takes almost no effort . . . braces the seat and strain out of control on ruts, snow, or wet . . . makes steering many times safer than ever before!

COVIN MOTOR CO.

1021 WEST 1st STREET

MULESHOE, TEXAS

COURTHOUSE RECORDS

REAL ESTATE TRANSFERS
 Walter Q. Gwyn, et ux to Mrs. Lud Taylor, 2-9 Interest in SE-4 Section 22, Block Y, \$2,000.00.
 J. B. Landers, et ux to K. F. Martin, SE-4 of SE-4 Section 4 Block X, \$10.00 and other considerations.
 M. L. Jackson, et ux to K. B. Martin, SE-4 of SE-4 Section 4 Block X, \$10.00 and other valuable considerations.
 Susie C. Jesko, et ux to Vernon H. Baker, et ux SE-4 of SE-4 Section 4, Block X, \$11,000.00.
 K. C. Moser, et ux to Ellen Frances Moser, SW-4 Section 15, League 107, Fisher County School Land.

Buel H. Wagnon, et ux to Lealand Mounts, et ux, 80 acres out of N-2 Section 93, Block Y, \$6,500, and other valuable consideration.
 Cornelia Williamson to B. R. Putman, Lot 19, Block 3, Original town of Muleshoe, \$8,000.00.

MARRIAGE LICENSE
 Eddie Wayne Beene, Star Rt. 2 Muleshoe, Texas to Miss Patricia Ellen Weeks of Morton, Texas. Issued October 3, 1951.

BIRTHS REGISTERED FOR SEPTEMBER, 1951
 Stanley Ray Bureson, son of Mr. and Mrs. Robert Bureson, born Sept. 7, 1951.
 Vicki Lynne Burris, daughter of Mr. and Mrs. Hermon Lee Burris, born Sept. 8, 1951.
 Terry Lynn Parker, son of Mr. and Mrs. Edd Crawford Parker, born Sept. 10, 1951.
 Theresa Jean Barlow, daughter

of Mr. and Mrs. T. C. Barlow, born Sept. 11, 1951.

Bienda Kay Truelock, daughter of Mr. and Mrs. Glen W. Truelock, born Sept. 11, 1951.
 Joe Valencia, son of Mr. and Mrs. Manuel Valencia, born Sept. 12, 1951.

Chester Clay Beavers, son of Mr. and Mrs. Spencer Beavers, born Sept. 12, 1951.

Prentice Lee Griffiths, son of Mr. and Mrs. Herbert Griffiths, born Sept. 12, 1951.

Tommy Glenn Wilson, son of Mr. and Mrs. Harold E. Wilson, born Sept. 14, 1951.

James Clarence Vandever, son of Mr. and Mrs. Clarence Vandever, born Sept. 17, 1951.

Susan Lee Coleman, daughter of Mr. and Mrs. John B. Coleman, born Sept. 19, 1951.

Janice Delaine Burris, daughter of Mr. and Mrs. William O. Burris, born Sept. 19, 1951.

Carol Edward Shaw, son of Mr. and Mrs. Calvin Shaw, Jr., born Sept. 21, 1951.

Patricia Cathryn Camp, daughter of Mr. and Mrs. Bernis Camp, born Sept. 21, 1951.

Leatrice Marie Gallman daughter of Mr. and Mrs. Fred O. Gallman, born Sept. 23, 1951.

Ronnie Gale Totten, son of Mr. and Mrs. Rexal Garland Totten, born Sept. 24, 1951.

Blinda Kay Thornton, daughter of Mr. and Mrs. Ray Thornton, born Sept. 27, 1951.

Mrs. Ware Hosts Sunshine Club

The Sunshine Club met in the home of Mrs. L. E. Ware Oct. 4. Each member present brought a covered dish. They had a very nice chicken dinner with all the trimmings.

At the next meeting a box is to be packed for Martha Apperson, who is ill. Those who have not already sent gifts will bring them for the box.

It was decided to bring all quilt blocks that have been made and start another quilt top.

Mrs. Wilkins will have the next club meeting Oct. 18 in the home of Mrs. Barnhouse. Everyone is urged to come.

Mrs. Motheral Is Class Hostess

The Homemakers Class of the First Baptist met Oct. 8 at 2:30 p. m. in the home of Mrs. Beulah Motheral to install class officers. The installation was conducted by Mrs. Presta Hale.

The following officers were in-

cluded: "Friendship Ship", which is to sail from Houston November 30 for Korea and Japan.

called: president, Mrs. Beulah Motheral; vice-president, Mrs. Bessie Harlan; secretary and treasurer, Mrs. Vivian Morris; assistant secretary and reporter, Mrs. Lois Shook; stewardship, Mrs. Mary Evans; fellowship, Mrs. Myrtle Harper; class minister, Mrs. Hope Flanagan; pianist, Mrs. Grace Will; group captains, Mrs. Allene Dyer and Mrs. Lovie Benson.
 Refreshments were served to Mesdames Presta Hale, Emile Snow, Allene Dyer, Mary Evans, Claude Kinkle, Grace Will, Lovie Benson, Lois Shook, Beulah Motheral, Bessie Harlan, and one visitor, Mrs. Lucy Layne.

Sudan Study Club Operetta Nov. 5

The 1935 Study Club of Sudan will present the "Wedding of the Flowers" November 5 in the Sudan high school auditorium.

The one-act play operetta includes children from four to ten years of age, and the scene depicts a flower garden. The bride is a Lily-of-the-Valley and the bridegroom is a Johnny-Jump-Up.

The children will be costumed in crepe paper, representing different flowers.

Songs, dances and music will be featured during the "wedding."

Many State Jobs Are Open Now

The Merit System Council is announcing a new series of examinations for positions with the State Department of Public Welfare and the Texas Employment Commission. Examinations will be given for the positions of stenographer, typist, clerk, key punch operator, tabulating equipment operator, senior child welfare worker, and farm placement interviewer.

The examinations for these positions will be given on November 17, 1951. Applicants must be postmarked not later than midnight, October 27, 1951.

Admission to these examinations vary from high school graduation with special training or experience, to advanced college training. In all cases it is possible to substitute experience for at least a part of the required schooling.

Employment may be obtained in almost every section of the state. Vacancies which now exist or will occur in the future may be in any county. The greatest number of vacancies occur for positions as stenographer and typist.

F. H. A. & G. I. LOANS TITLE INSURANCE
BAILEY COUNTY ABSTRACT CO.
 MRS. LELA BARRON L. S. BARRON
 ABSTRACTS — LOANS
 Established in 1900

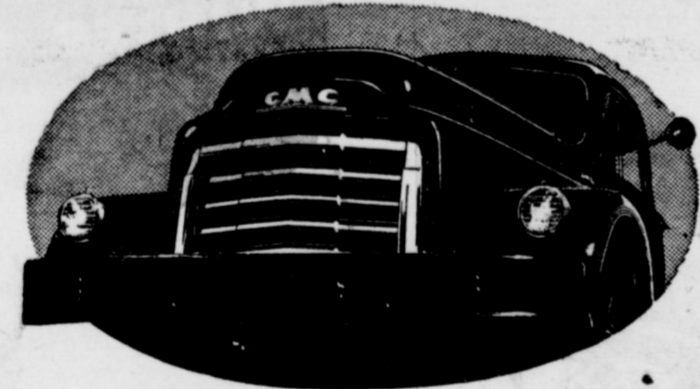


WAREHOUSE

Fiber of Defense
YOUR COTTON FOR GOVERNMENT LOANS

The first step in obtaining government loan is to place your cotton in an approved warehouse. You will receive a negotiable warehouse receipt for each bale. Your warehouse will furnish correct weights, pull samples for classing, and certify loan papers requested by the government for completing your loan.
 Cotton farmers, who placed 3,800,000 bales in the 1948 loan, realized an extra profit of \$17.50 per bale. Only through a time tested and proved efficient system of warehousing and marketing could these millions of bales have been stored, protected and preserved to bring cotton growers this \$67,000,000 profit.
 Take care of your crop from boll to bale, and you can depend on your warehouse to take care of your cotton from bale to spindle and to the most profitable market for you.

UNION COMPRESS and WAREHOUSE CO.
 DON MOORE, Supt.



What's the fastest-growing line of trucks in America?

LOOK around you—in cities, on farms, at terminals and loading docks—wherever goods are moved on wheels.

More and more, the pay load's packed on a GMC.

You see those letters on medium and heavy Diesels, the most economical workers in their field. For GMC means first in Diesel power.

You see gasoline-powered GMC's front-running the highways of America—pace-setting delivery of the necessities of peace and war.

You see nimble bantamweights of the family—the highest-powered ½- to 2-tonners made—outpulling, outhauling every other truck in their class.

Ever wonder why GMC is gaining a greater percentage of the industry than any other truck-maker?

Ask the truck drivers themselves. See the confident way they talk of

the power plants, the broad-shouldered chassis—the way a GMC handles.

Ask about the tons they've hauled, the miles they've logged—the nip-and-tuck schedules they've licked time and again.

Ask these cost-wary haulers why they've made GMC the fastest-growing fleet in the land.

They'll tell you it's because GMC is the finest motor truck made.

If you'll come in, we'll show you why we think they're right.



Davis - Lenderson

HIGHWAY 70 & 84

MULESHOE, TEXAS

SEE US FOR PROTECTION POLICIES YOU NEED
BOBO INSURANCE AGENCY
 Office in Bank Building
 PHONE 97 MULESHOE

Super SALE
 HURRY WHILE THEY LAST

COTTON HARVEST NEEDS

COTTON SACKS

14-ft. 43-4 lbs. Sanforized Duck \$4.50
 12-ft. 4 lbs. Sanforized Duck \$3.85

KNEE PADS

Tough Leather. Padded Inside. Reg. \$1.10 Pair.
 Now Only 89c

SCALES COTTON

Accurate Weight Up To 160 lbs. Now Only —
\$3.85 each

FOR A LIMITED TIME ONLY



\$50.00 TRADE-IN ON ANY RADIO ON ONE OF OUR CONSOLE MODELS!!!

Your choice of Model and Nationally Advertised Brands. Beautiful cabinets and finishes. Radio and record player combined.

**MOTOROLA
 RCA VICTOR**

**WESTINGHOUSE
 STEWART-WARNER**

Johnson - Pool
 MULESHOE, TEXAS



TIRE HEADQUARTERS

Awards Announced In Flower Show Held In Connection With Co. Fair

Awards in the Flower Show held in connection with the Bailey County Fair in Muleshoe last Friday and Saturday have been made public by officers in charge. An unexpectedly large entry list was reported. Awards were as follows:

- Any Beautiful Arrangement**
 First - Mrs. Jack Epps.
- Our modern home loan plan allows you to pay off the loan with rent-money**
- Prompt service**
- FOR INFORMATION SEE — MULESHOE**
- Mildred Davis
 Western N.F.L.A.
 Building
 Muleshoe
FIRST FEDERAL SAVINGS AND LOAN ASSOCIATION
 Clovis, N. M. P. O. Box 470
- First - Mrs. L. S. Barron.**
 Second - Mrs. Noel Woodley.
 Third - Mrs. H. S. Sanders, Sr.
- Fall Basket Arrangements**
 First - Mrs. Jack Lenderson.
 Second - Mrs. Noel Woodley.
 Third - Mrs. W. D. Moore.
- Church Arrangements**
 First - Mrs. Gene English.
 First - Mrs. Lee Pool.
 Second - Mrs. W. D. Moore.
 Third - Mrs. Ebb Randol.
- Dinner Table Arrangements**
 First - Mrs. George Stotts.
 Second - Mrs. Ross Goodwin.
- Coffee Table Arrangements**
 First - Mrs. George Stotts.
 First - Mrs. Jack Lenderson.
 Second - Mrs. Jack Epps.
 Second - Mrs. Ross Goodwin.
 Third - Mrs. Lee Pool.
- Pot Plants**
 Poinsettia - First - Mrs. Arnold Morris.
 Rubber Plant - First - Mrs. W. D. Moore.
- Horticulture**
 Double marigold - First, Mrs. I. F. Willman.
 Double marigold, First, Mrs. Jack Epps.
 Dwarf marigold, First, Mrs. Gene English.
 Dwarf marigold, Second, Mrs. I. F. Willman.
 Double marigold, Third, Mrs. J. M. Moore.
 Dwarf marigold, Third, Mrs. Gene English.
 Zinnias (3 in group) First, Mrs. Jack Epps.
 Giant zinnia, First, Mrs. Jack Lenderson.
 Cactus zinnia, Second, Mrs. H. W. Hanks.
 Giant zinnia, Third, Mrs. Jack Epps.
 Giant zinnia, Third, Mrs. H. W. Hanks.
 Shasta daisy, First, Mrs. H. W. Hanks.
 Shasta daisy, Second, Mrs. J. M. Moore.
- Pompom dahlia, First, Mrs. Jack Epps.
 Ball type dahlia, First, Mrs. W. D. Moore.

- Dahlia, Infarmal decoration
 Second, Mrs. Jack Epps.
 Single dahlia, Second, Mrs. W. Hanks.
- Pompom dahlia, Third, Mrs. I. F. Willman.
- Pompom dahlia, Third, Mrs. Gene English.
- Single dahlia, Third, Mrs. H. W. Hanks.
- Dahlias, formal decoration, Third, Mrs. Lela Barron.
- Dahlia, formal decoration, third Mrs. Jack Epps.
- Rose (two-tone), first, Mrs. L. S. Barron.
- Rose (two-tone), first Mrs. Jack Epps.
- Rose (white), first, Mrs. Jack Epps.
- Tube rose, first, Mrs. Jack Epps.
- Rose (pink), second, Mrs. Geo. Stotts.
- Rose (black garnet), second, Mrs. Arnold Morris.
- Roses (3 in group), third, Mrs. Jack Epps.
- Gladiolus, first, Mrs. Jack Epps.
- Snap Dragon, first, Mrs. Jack Epps.
- Corn flower, first, Mrs. D. L. Morrison.
- Asters, first, Mrs. Jack Epps.
- Cockscomb, first, Mrs. D. L. Morrison.
- Cockscomb, second, Mrs. Lela Barron.
- Tithonia, second, Mrs. Jack Epps.
- Chrysanthemum, third, Mrs. Jack Epps.
- Hollyhock, third, Mrs. J. M. Moore.

Garden Club In Meeting Oct. 1

The Muleshoe Garden Club met Monday, October 1, at the Legion Hall for a program on planting spring flowering bulbs, storing bulbs for the winter, and winter care for rose bushes.

Plans were made for taking part in the Bailey County Fair with Mrs. Robert King in charge of flowers at the fair.

Mrs. Delma McCarty's resignation was accepted and Mrs. R. (Red) Wright was elected to fill the vacancy.

Members present were: Mrs. John W. West, Miss Dian McClurkin, Mrs. Sam E. Fox, Mrs. Lee R. Pool, Mrs. W. D. Moore, Mrs. M. S. Childers, Mrs. W. E. English, Mrs. Roy Jordan, Mrs. N. H. Greer, Mrs. Joe Damron, Mrs. E. O. Baker, Mrs. E. E. Dyer, Dorothy Barron, Blanch Lenderson, Mrs. H. S. Sanders, Jr., Mrs. Ross Goodwin, Mrs. Robert King and Mrs. D. L. Morrison.

VISITING ENGRAMS

Mr. and Mrs. L. C. Pepper and Mrs. William Root of Portland, Oregon, came in Wednesday. Mr. Root is visiting in the home of her parents, Mr. and Mrs. J. E. Engram and Mr. and Mrs. Pepper are visiting in Lubbock.

Attend The Church of Your Choice Sunday

Birthday Party Honors Bob Green

The home of Dr. and Mrs. M. F. Green was the scene of a colorful birthday party in honor of their son, Bob, on his sixth birthday, Sunday, October 7.

The guests were greeted at the door by a small receiving line that gradually increased as new arrivals appeared.

Miss Joan Green and Elaine Evans presided at the guest book and assisted with hospitalities, alternating at the punch bowl.

The Halloween motif was used with favors of yellow broom stick hats, horns, and snappers. Orange punch, ice cream cones, cake and jelly beans were served.

Pictures were taken of the group, and Bob received many gifts of toys and pleasant surprises.

Those present were: Patricia Ann Tucker, Sharon Cummings, Vick Spivey, Gary Dan Middlebrook, Everett and Julie McAdams, Rowland Barnes, Gary Smith, Donna Sue Robertson, Juanita Burkett, Randy Beaty, Nancy Wilkins, Larry Allison, Charles King, Tommy Turrentine, Dixon Ray, Randy Johnson, Barbara Jones, Lawrence Green, La Thagger Green, Marilyn Green, Jim Green, Bill Green from Texas Tech at Lubbock, Mr. and Mrs. L. T. Green, grandparents from Littlefield, Texas, and the guest of honor, Mrs. W. D. Moore.

Those sending gifts and unable to attend were very special friends, Fred Johnson, Kay Lenderson, and Mrs. E. H. Kennedy.

PREACHED AT AMARILLO

Jack King preached at Amarillo last Sunday morning at the new Missionary Baptist church.

Public Installation Of Rainbow Assembly Was Held Here Sunday

In a public installation of the Muleshoe Assembly No. 161 of the Order of Rainbow for Girls held Sunday, Sept. 30, J. Ann Weyer was installed as Worthy Advisor. Her colors were yellow and white. The decoration theme carried out these colors with yellow roses at the east and a single white rose at the other stations. In the east as a background was a rainbow of the proper colors. Season flowers in vases around the room added color to the scene. J. Ann chose as her motto, "Service" and her flower, rose. Her dress was of yellow taffeta with a white corsage. She wore white pumps.

After the installation ceremonies J. Ann's parents were presented for introduction. J. Ann presented her mother with a red rose corsage and her father with a red rose boutonniere. Mrs. Don Cook, the former Dixie Lee Jennings dedicated a lovely song, "A Rose for You", to J. Ann, her friend since childhood and presented her with a beautiful red rose.

The installing officers, Mrs. Grandy and Dixie were given gifts of appreciation by J. Ann.

In the absence of Mary Morton, past worthy advisor, Jacques Bovell protomed as installing officer. Other officers were installed as follows:

Worthy assistant advisor, Jacques Bovell; Charity, Marilyn Gupton; Chaplain, Jon Ann Thomson; drill leader, Norma Graves; Love, Tommie Bovell; Religion, Betty Shook; Nature, Sammie Carroll; Immortality, Bettie Collins; Fidelity, Elizabeth Ann Farley; Con. observer, Gynell Workman; Outer observer, Ann Woodley; Musician, Pat Morgan; Choir, Rita Peeler.

Refreshments of orange punch and cake were served to members and visitors.

Mrs. Phelps Hosts Los Planos Club

Los Planos Study Club met Tuesday night at the home of Mrs. Bernard Phelps. Mrs. Sam Damron was co-hostess.

Mrs. F. W. Jones, program director for the meeting, gave a talk on "Being A Gracious Hostess." "The gracious hostess," she said, "thinks of the comfort and desires of her guests rather than of her own."

Miss Dian McClurkin gave a demonstration lecture on table setting and serving for a tea, a buffet supper, and a bridge luncheon.

Members present were: Miss Dian McClurkin, Mesdames Dear Awrey, L. S. Barron, M. F. Blackman, B. F. Chapman, Howard Cox, Sam Damron, Horace Edwards, Ett Evans, Elmo Evans Alvin Farrell, F. W. Jones, Joe Jones, Ernest Kerr, Horace McAdams, Bernard Phelps, John Smith, Richard Smith and L. I. St. Clair. Mrs. Ray Keeling was a guest.

Mrs. Raney Is Shower Honoree

The home of Mrs. M. O. Nigh was the scene of a pink and blue shower, Sept. 28, in honor of Mrs. George Raney.

Several interesting games were conducted by Mrs. Vernon Raney. Mrs. George Raney won the bingo prize, which was a huge box of gifts.

Refreshments of cake and punch were served.

Those present were: Mesdames Minnie Klepper, D. O. Smith,

Keith Stewart, Bert Hudson, Doll Cooper, Reta Richards, Davis Cutley, Eugene Horner, Jack Riels, M. D. Caddy, Dave Brooks, Carl Kindred, Miss Ruby McLaughan, and the honoree, Mrs. George Raney. The hostesses were Mrs. M. O. Nigh, Mrs. C. McMahan and Mrs. Vernon Raney.

KING REUNION HELD

Jack King and family and J. M. King and family attended the King family reunion at the San Jacinto Park in Amarillo, Sunday. It was their father's 82nd birthday. There were ten children and all were present.

Attend The Church of Your Choice Sunday

GUARANTY ABSTRACT CO.
 BONDED FOR YOUR PROTECTION
 Office In Bank Building
 Telephone 97
 Muleshoe, Texas

Complete Abstracts of Title to All Lands and Towns in Bailey County, Texas

PAT R. BOBO, Owner ANN H. HOWELL, Manager

Entertainment At Your Local

Theatres

Muleshoe, Texas

Week Days Open 7:15 p. m., Starts 7:30 p. m.
 Saturday and Sunday Open at 1:45, Starts at 2:00
 and Continuous Showing

Admission: Adults 36c Children 9c

<p>VALLEY</p> <p>THURSDAY and FRIDAY Rex Barker —In— Tarzan's Peril</p> <p>SATURDAY ONLY Gene Autry —In— Gene And The Mounties</p> <p>SUNDAY and MONDAY George Montgomery Gale Storm —In— Texas Rangers</p> <p>TUESDAY and WEDNESDAY Tokyo File 212 — and — Roberson-Turpin Fight Of Sept. 12</p>	<p>PALACE</p> <p>THURSDAY and FRIDAY Estelita Warren Douglass —In— Cuban Fireball</p> <p>SATURDAY ONLY William Lundigan Shirley Ross —In— Sailors On Leave</p> <p>SUNDAY and MONDAY Margaret Arness —In— Thing From Another World</p> <p>TUESDAY and WEDNESDAY Blondie and Dagwood —In— Blondie Takes A Vacation</p>
---	---

Motion Pictures Are Your Best And Cheapest Entertainment

Fashion Note!

Claussner
Kleer-Line
 NYLONS

Point on least to damage.

A glamorous idea for fashionable discriminating women. See them today in beautiful fall and winter shades with colored foot.

\$1.98

Cobb's

CHILDREN'S FEET NEED SPECIAL PROTECTION

doctors recommend...

JUMPING-JACKS®
 FLEXIBLE SHOES FOR HARD WEAR

From that very first faltering step, your youngster needs the special protection of Jumping-Jacks. Only Jumping-Jacks assure flexible, sturdy support.

\$4.75

TRADE MARK

Good Housekeeping PARENTS' CHOICE

COBB'S

LONG
 on Comfort
LONG
 on Trimness
LONG
 on warmth

Jockey LONGS

Thumb your nose at the cold this winter... keep warm and comfortable with Jockey Longs in spite of the thermometer.

Snug and warm all the way to your ankles, Jockey Longs have those special Jockey features that can't be copied... Y-Front no-gap opening, protective cradled pouch, smooth no-bulge seams, shape-retaining waistband.

Come in now and buy a supply of this famous Coopers product for a warm, warm winter.

2.15
 Jockey Contoured Shirts to Match

1.25
COBB'S

WINTER WARMER

Tom SAWYER

A Sur-jacket with gathered waist is just the thing for winter playtime warmth. 8 ounce wool lining and water repellent "Timton" fur collar help it ignore bad weather. Sizes 4-12.

\$14.98

Cobb's



SCHEDULE OF SERVICES

Y. L. METHODIST CHURCH
L. J. Helm, Pastor

Second and Fourth Sundays
Church School 10 a. m.
Praying Service 11 a. m.
Bible Study Group 7:30 p. m.
Evening Praying 8:30 p. m.
Prayer Meeting,
W.S.C.S. First and
Third Thursdays 2:30 p. m.
NORTH SIDE CHURCH OF CHRIST
Worship each Lord's
Day 10:30 a. m.
Evening Service 8 p. m.
Tuesday Evening 8 p. m.
Mid-week Prayer
You are welcome.

PROGRESS BAPTIST CHURCH
Rev. C. C. Morgan

Sunday School 10 a. m.
Morning Worship 11 a. m.
R.T.U. 7:30 p. m.
Evening Worship 8:30 p. m.
Midweek Prayer Service
Wednesday 7:30 p. m.

FIRST CHRISTIAN CHURCH
2 Blks. West, 1/2 Blk. North
Shuay Rest

Bible School 9:45 a. m.
Morning Worship 11 a. m.
Mid-week Prayer Service
Wednesday 8 p. m.
"We are Workers Together With
God"—Paul.

WATSON BAPTIST CHURCH
Rev. W. O. Wilson, Pastor

Special Prayer Service 9:45 a. m.
Sunday School 10 a. m.
Morning Worship 11 a. m.
Training Union 7 p. m.
Evening Worship 8 p. m.
Bible Study and Prayer
Service, Wednesday 7:30 p. m.
W.M.U. Monday 2:30 p. m.

WEST CAMP
FIRST BAPTIST CHURCH
Rev. T. L. Pond, Pastor

Sunday School 10 a. m.
Morning Worship 11 a. m.
B.T.U. 7 p. m.
Service 7 p. m.
W.M.U., Thursday 2 p. m.
Evangelistic Service 7:45 p. m.

MAIN STREET MISSIONARY
BAPTIST CHURCH
M. E. Robinson, Pastor

Sunday School 10 a. m.
Morning Worship 11 a. m.
Training Union 6:30 p. m.
Evening Worship 8 p. m.
W.M.U., Wednesday 2 p. m.
Mid-week Prayer Service,
Wednesday 7 p. m.

PROGRESS METHODIST CHURCH
Carrol M. Jones, Pastor

Sunday School 10 a. m.
Morning Worship 11 a. m.
Evening Fellowship
Classes 8 p. m.
Evening Worship 8:45 p. m.
W.S.C.S. 2nd and 4th Mondays

LONGVIEW BAPTIST CHURCH
Rev. J. E. Moore, Pastor

Sunday School 10 a. m.
Praying Services 11 a. m.
B. T. U. 8 p. m.
Praying Services 8:30 p. m.
W.M.S., Monday 2:30 p. m.
All Church Night,
Wednesday 7:30 p. m.

FIRST METHODIST CHURCH
H. W. Hanks, Pastor

Church School 9:45 a. m.
Morning Worship 10:55 a. m.
M. Y. F. 6:30 p. m.
Evening Worship 7:30 p. m.
Choir Practice
Wednesday 8:00 p. m.
Young Women's Bible
Study, Tuesday 7:30 p. m.
Wesleyan Service Guild,
2nd and 4th Mondays 7:30 p. m.
W.S.C.S., Wednesday 2:30 p. m.
Steward Meeting First
Monday each month 7:00 p. m.

BAILEYBORO BAPTIST
CHURCH
Arthur L. Nunn, Pastor

Sunday School 10 a. m.
Training Union 8 p. m.
Evening Service 8:45 p. m.
Everyone Welcome.

UNITED PENTECOSTAL
Mrs. Maggie Aken, Pastor

Praying Service 11 a. m.
Evening Service 8 p. m.
Tuesday Evening 7:30 p. m.
Friday Evening 7:30 p. m.
Everyone invited to our services.

ANTIOCH PRIMITIVE
BAPTIST CHURCH
Across Street From Hospital
Elder Jimmie Bass, Pastor

Services every 1st and 3rd Sun-
days and Saturday before 3rd Sun-
day.
Singing every Sunday night ex-
cept 3rd Sunday.

ST. JOHN'S LUTHERAN CHURCH
Lariat, Texas
W. B. Gummelt, Pastor

Sunday School and Bible
Class 10 a. m.
Divine Services 11 a. m.
Sunday School Teachers meet
every Wednesday 8 p. m.
Ladies' Aid meets first Thurs-
day of each month 2:30 p. m.
Walter League meets first
Sunday of month 8 p. m.
A cordial welcome awaits you at
St. John's.
"Let the Word of Christ dwell in
you richly."—Col. 3:16.

Y. L. BAPTIST CHURCH
First and Third Sundays
Rev. James Tidengerg

Sunday School 10 a. m.
Morning Worship 11 a. m.
Training Union 7:30 p. m.
Evening Worship 8:30 p. m.
Evening Worship 8:30 p. m.
Services every 3rd Sunday
Starting at 10:30 a. m.

FIRST BAPTIST CHURCH
Rev. A. W. Ebdine, Pastor

Sunday School 9:45 a. m.
Morning Worship 10:55 a. m.
Training Union 6:30 p. m.
Evening Worship 7:30 p. m.
Prayer Meeting
Wednesday 7:30 p. m.
Officers and Teachers,
Wednesday 8 p. m.
W.M.U. Monday 3 p. m.
Hour Rehearsal,
Thursday 8 p. m.

OKLAHOMA LANE BAPTIST
CHURCH
Mayo D. Carpenter, Pastor

Sunday School 10 a. m.
Morning Worship 11 a. m.
Evening Worship 8 p. m.
Prayer Meeting, Wed. 8 p. m.
W. M. S. Thursday 3 p. m.

CHURCH OF THE NAZARENE
Sidney Patrick, Pastor

Sunday School 9:45 a. m.
Morning Worship 11:00 a. m.
N.Y.P.S. 7:30 p. m.
Evening Worship 8:00 p. m.
Mid-week Service
Wednesday 8:00 p. m.
Come and Worship With Us.

METHODIST CHURCH
Lambudde, Texas
Rev. Harmon Koellin, Pastor

Sunday School 10 a. m.
Church Service 11 a. m.
Evening Service 8:30 p. m.
Mid-week Prayer and Song
Service 8:40 p. m.

PRIMITIVE BAPTIST CHURCH
At Friendship
8 Miles South of Sudan
Second Sunday and Saturday
before, Elder V. J. Lowrance, pastor.
Fourth Sunday and Saturday be-
fore, Elder Jack West, pastor.

FIRST BAPTIST CHURCH
Lambudde, Texas
Sunday School 10 a. m.
Morning Worship 11 a. m.
Training Union 6:45 p. m.
Evangelistic Service 7:45 p. m.
"Not forsaking the assembling of
ourselves together." Heb. 10:25

CHURCH OF CHRIST
Muleshoe, Texas
Ebb Hordol, Minister

Bible Classes for all 10 a. m.
Praying 10:50 a. m.
Communion 11:45 a. m.
Praying 8 p. m.
Wednesday
Ladies Bible Class 3 p. m.
Bible Study and Singing 8 p. m.

ASSEMBLY OF GOD CHURCH
Rev. Lee F. Stokes, Pastor

Sunday School 9:45 a. m.
Worship 11 a. m.
Tuesday Night Young
People 7:45 p. m.
Thursday Night
Bible Study 7:45 p. m.
Public invited to attend
all services.

NEW TEXAS ALMANACS
AT THE JOURNAL
Have you seen a copy of the

bigger and better and more in-
formative than ever Texas Alma-
nac? These comprehensive com-
pendiums of capacious Texas
have arrived and are for sale at
The Journal. One could, if he
could get the operator, just call
The Journal at 54 and get one or
more delivered. They're \$1.25 each
in paper binding.

ATTENTION
Sandy Land Farmers

See Me For

Deep Breaking

New D-8 Caterpillar Tractor With Towner 48 in. Disc
Plow.

H. E. Newsom

902 W. 9th.

Muleshoe

MULESHOE FUNERAL HOME

LOYD ROBERTS
FOR AMBULANCE SERVICE CALL
47

Electric Cooking Is



... as MODERN women

WILL SEE!

At Muleshoe's 1st ALL ELECTRIC Cooking School

FREE!

Door Prizes
Every Day

\$200 VALUE
Grand Prize

Where?

High School Auditorium

When?

October 23 & 24

Time?

2 P.M.

SOUTHWESTERN

PUBLIC SERVICE

COMPANY

27 YEARS OF GOOD CITIZENSHIP AND PUBLIC SERVICE!

FIRST ANNIVERSARY
SALE!

TAKE YOUR CHOICE

for a limited time only

\$100.00
FOR YOUR
OLD SINK

OR

FREE! ... A \$119.50*
Youngstown Kitchens
FOOD WASTE DISPOSER**

... when you buy a new

Youngstown Kitchens

JET-TOWER DISHWASHER

*Not installed. Slightly higher in the West.
**Where use not contrary to current local ordinances or state laws.

Come in soon ... See the

Youngstown Kitchens

ELECTRIC SINK

Features famous Jet-Tower
Dishwashing! Fifty-eight
jets of piping-hot, booster-
heated water shear off all
food soil in less than 10 min-
utes. Vigorous, top-to-bot-
tom Hydro-Brush Action.



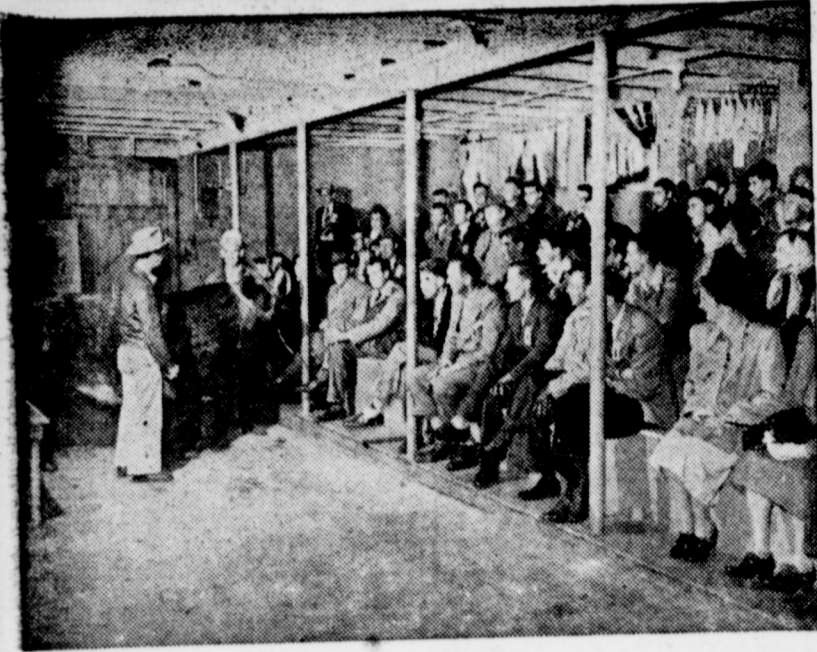
And See the Youngstown Kitchens
FOOD WASTE DISPOSER

Banishes garbage forever. Three ways best:
(1) Takes continuous feed, (2) self-cleaning,
(3) self-reversing action means longer life.

NO DOWN PAYMENT

WILLSON - SANDERS

Phone 93 Muleshoe, Texas



Calves at the Ralston Purina Research Farm at Gray Summit, Mo., are testing show calf programs to develop fast, low-cost gains and top show finish. Purina baby calves on the 738-acre Research Farm have been graded almost 100% prime and have dressed out at an average of 66%. These steers were of particular interest to the owners from this locality who visited the Farm last week.

Local Men Visit Purina Research Farm

Livestock and poultry feeders from this locality including Joe K. Jones, Carl Bamert, G. A. Barnett, were recent visitors at the Ralston Purina Research Farm at Gray Summit, Missouri. The 738 acre farm demonstrates normal, average farm conditions and the visitors were shown how grade animals and poultry can be raised profitably under typical farm conditions. Among the practical operations inspected were the hog farrowing and fattening units, the dairy cattle project, dry lot and show calf feeding, broiler installation, laying flocks, ducks, turkeys, rabbits, dogs, goats, game birds, and fur bearing animal units. Following the day long farm tour, the visitors were entertained at the general offices of the Ralston Purina Company in St. Louis and the next day toured the Research Laboratories and saw how various types of Chows are manufactured in the St. Louis Purina Mill.

PRINCE AND PRINCESS OF FRIENDSHIP CHOSEN

The Prince and Princess of Friendship were elected recently for the school year of 1951-52 in Muleshoe High School. They are "Prince Bobby Seid" and "Princess Jo Addine Wagnon". We Sincerely congratulate these two fine young students.

VISIT IN LAS VEGAS

Mrs. Jerry Angeley and her grandparents, Mr. and Mrs. J. W. Kelley of Earth, visited Mrs. Angeley's brother, Jerry Davenport in Las Vegas, N. M. Jerry is being sent to Sherman with the Air Force.

MOVE TO NEW HOME

Mr. and Mrs. Jerry Angeley and family have moved to their new home.

PARKERS VISIT PARENTS

Mr. and Mrs. George Parker spent the week end with her parents, Mr. and Mrs. H. E. Reed.

Willing Workers Install Officers

The Willing Workers Sunday School class of the First Baptist church met Monday night, Oct. 8, in the home of Mrs. Horace McAdams with Mrs. Wilma Davis as co-hostess. The group noted their annual installation dinner. An assortment of covered dishes, fried chicken, hot rolls, coffee, pie and cake were enjoyed by all. The installation service was conducted by Mrs. Lela Barron, a guest and former teacher of the church.

New officers installed are: Teacher, Mrs. Clarence Wilhite; vice president, Mrs. Horace McAdams; A. E. Redwine; fellowship, Mrs. Willard Hedges; stewardship, Mrs. Faye Weems; personal ministries, Mrs. F. W. Jones; secretary, Mrs. Billie Latimer; assistant secretary, Mrs. Bob Jones; reporter, Mrs. Clifton Griffiths; group captains, Mrs. Davis, Mrs. Bob Jones and Mrs. Elmo Evans.

Cooking School Oct. 23 & 24 Being Sponsored By Several Local Firms

Muleshoe Electric appliance dealers and the Southwestern Public Service Company will be co-sponsors of the Muleshoe's first all-electric cooking school on October 23 and 24. Each session of the two day event will get under way at 2 p. m. in the Muleshoe High School Auditorium.

The school will be conducted by Miss Clydie Little, Public Service Company Home Service Advisor for this area. Miss Little is already well known to many Bailey County residents because of the help and assistance she has rendered in home calls to electric appliance users in the territory. Miss Little has conducted several cooking schools in the area since joining Public Service a little over a year ago.

Assisting Miss Little will be Miss Patricia Sterns of the Plainview office of the Southwestern Public Service Company. Miss Sterns is a veteran cooking school conductor, and she and Miss Little have worked as a team many times before. Their most recent appearance together was at Floydada.

Prizes galore will be awarded both days by your Electrical Appliance Dealers in Muleshoe. The food that is prepared plus frozen pies and cakes will also go to the lucky ones who are in attendance. There is still more, the

grand prize winner on the final day will receive a \$200.00 credit slip that may be applied on any one major electric appliance selected from any of the merchants listed below. If the winner selects an appliance costing more than \$200.00 he will, of course, be asked to pay the difference.

Muleshoe merchants co-operating in the cooking school which is all free are:

- H. S. Sanders Lumber Co.
- Berry Electric Company.
- Bass Firestone Store.
- Dyer Hardware & Furniture.
- Johnson & Pool Tire & Appliance.
- Muleshoe Implement & Supply Company.
- Johnson Furniture.
- Harper Appliance.
- E. R. Hart Company.

Luncheon Held In Marrs Home

The Muleshoe HD Club met Tuesday 9 in the home of Mr. Sun-E. E. Marrs for an all day meeting and covered dish luncheon. Mrs. Ray Edwards gave a demonstration on making glorified glass pictures and a large number of pictures were made.

A business meeting was held in the afternoon, and new officers for the coming year were elected. Those elected were: Mrs. Leon Jones, president; Mrs. Dave St. Clair, vice-president; Mrs. S. C. Caldwell, secretary-treasurer; Mrs. Joe Smallwood, reporter; Mrs. J. E. Day, council delegate; and Mrs. E. E. Holland, alternate council delegate. Another meeting will be held in the home of Mrs. C. E. Briscoe on Tuesday 16, in the afternoon, to complete pictures.

OFFICE MACHINES

SALES & SERVICE

ALL SERVICES GUARANTEED

MULESHOE JOURNAL

Phone 7220

Muleshoe, Texas

DANCE TO THE MUSIC OF —

CLYDE MILLER
AND HIS SUNSHINE VALLEY BOYS

Saturday Night, Oct. 13

AT

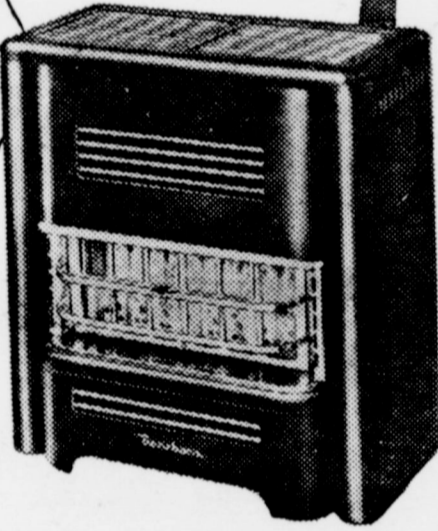
PRIBOTH ROLLER RINK

Admission \$1.20 person

Muleshoe, Texas

IT'S FULLY AUTOMATIC
THE FULLY VENTED
Dearborn
GAS HEATER

\$99.95



The famous Dearborn automatically guards your comfort and safety—24 hours a day—keeps temperatures at the level you want. Lights automatically... 100% safety pilot shuts off gas should flame be extinguished. Burns any type gas, efficiently and at exceptional economy. Gives you comfort and peace of mind—all of the time!

MULESHOE LIQUEFIED GAS CO.

Phone 125

Muleshoe, Texas

Watch for the
Fall Opening
- of the -
Verna Jo Shoppe
featuring
LADIES' & CHILDREN'S
Ready - To - Wear
Newest Fall and Winter Fashions
of Nationally Advertised Brands
Located on Ave. B, Between Bovell Motor Supply and
Gilbreath Seed & Grain Co.
MULESHOE, TEXAS

YOU JUST CAN'T BEAT OUR PRICES OR OUR QUALITY...

SHOP AT CASHWAY
SAVE EVERY DAY

NO. 1 SMALL LEAN, LB. Pork Chops 65c	WILSONS CORN KING BACON LB. 49c	NO. 1-2 CAN TUXEDO TUNA 19c
--	---	---------------------------------------

HEY MOM!
LOOK AT THESE SAVINGS!

25-LB. BAG CASHWAY
FLOUR \$1.69

DELSEY 1000 COUNT, 2 ROLLS Toilet Tissue 23c	QT. JAR BESTYET Salad Dressing 39c
ASSORTED FLAVORS JELLO, box 5c	25c PKG. LOOSE LEAF Notebook Paper 15c
25c PKG. SUNBEAM Vanilla Wafers 17c	12 OZ. CAN KUNERS VACUUM PACKED CORN, 2 for 29c

46 OZ. CAN HI-C
ORANGE-ADE 19c

CALIFORNIA STRAIGHT NECK, LB. Yellow Squash 7c	GOLDEN RIPE, LB. BANANAS 11c	10 LB. MESH BAG POTATOES 49c
--	--	--

WE RESERVE THE RIGHT TO LIMIT QUANTITIES

Cashway Gro. & Mkt.

Phone 139 or 246 For Free Delivery

Muleshoe, Texas

"WHERE FRIENDS MEET AND PRICES TALK"