

1/1/01
Baze Book Binding
514 W 7th St
Amarillo TX 79101-2212

AMARILLO TX 791
ZZXXXXXXXXXXXX

Attend the Chamber banquet tonight

The Haskell Free Press

VOL. 114-NO. 7, FEBRUARY 17, 2000

"The People's Choice"

10 PAGES-ONE SECTION-50 CENTS

Baseball games

Haskell V-JV vs Stamford
Fri., Feb. 18, 4:30 p.m.
Scrimmage at Stamford

Softball games

Abilene Tournament
Feb. 18 & 19
at Abilene

Calendar

Haskell Chamber banquet Feb. 17

The Haskell Chamber of Commerce annual banquet is set Thurs., Feb. 17 at the Haskell Civic Center at 7 p.m. An old fashioned political rally with each candidate for office having a short period to speak will be the program. Tickets are \$10 and may be purchased from Chamber members. The dinner is barbecued brisket with all the trimmings.

Steak dinner

The youth group of the Haskell Church of God will serve a steak dinner at the church Sat., Feb. 19 from 5:30 to 6:30 p.m. The meal will include an 8 to 10 oz. steak, baked potato, beans and drink. Tickets are \$6. Proceeds will help with expenses for a trip to attend a Youth Conference at Pensacola, Florida in July.

Domino night

All domino players are invited to bring a partner or come as a single to a Domino Game Night at the American Legion Hall in Rochester Tues., Feb. 22 beginning at 7 p.m. Games will include 42, 84, Nello or spinner dominos. No admission will be charged and games will end at 10 p.m. Soft drinks will be available. Alcoholic beverages will not be allowed.

Rule Chamber banquet set March 6

The Rule Chamber of Commerce banquet will be held Mon., March 6 at 7 p.m. in the Rule School cafeteria. Prayer-E-Strings will provide the entertainment. The Junior Class will cater the meal. Tickets are \$8.

Paint Creek Seniors to hold dinner

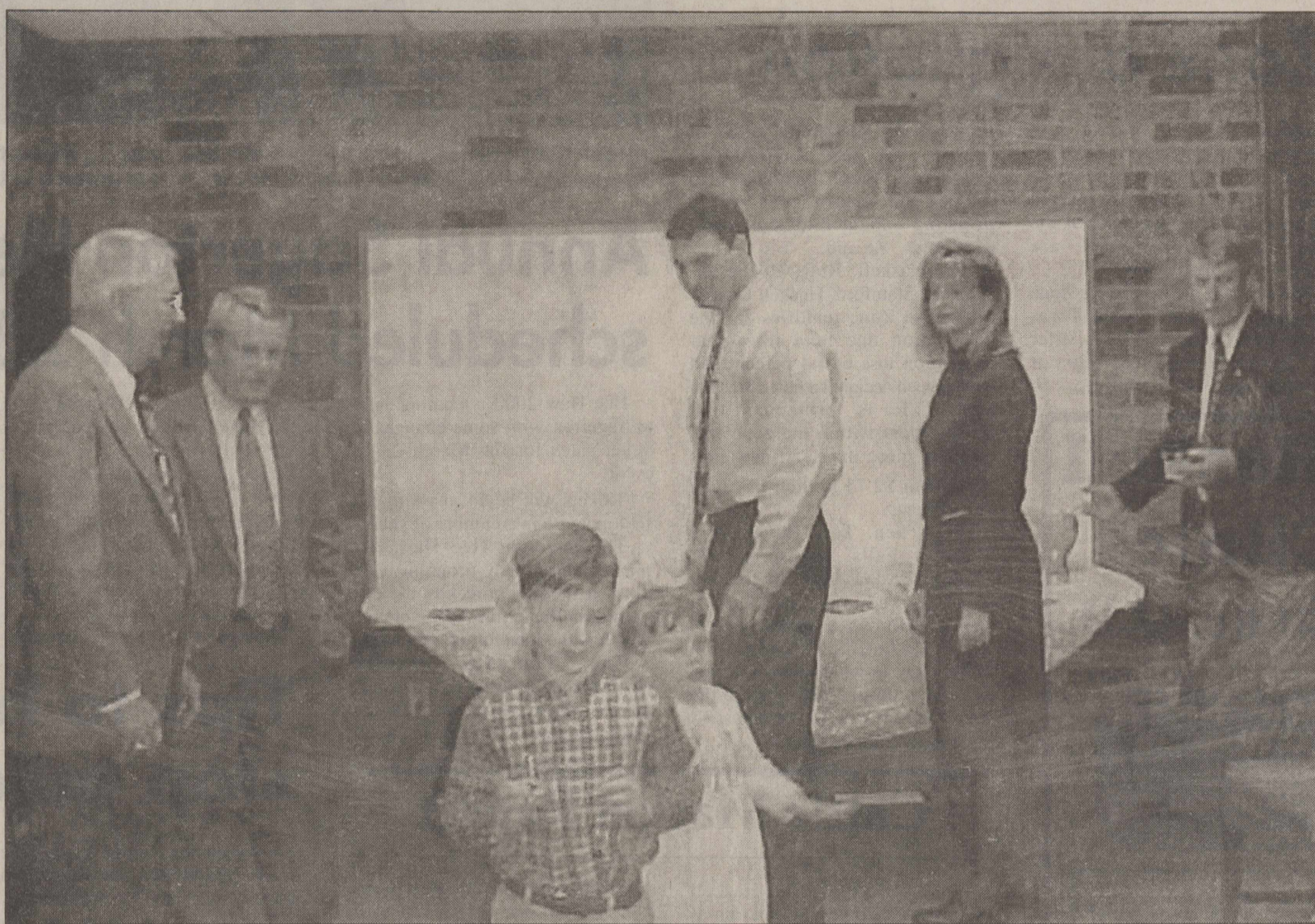
The Paint Creek Seniors will hold a chicken fried steak dinner Sun., Feb. 27 from 11:30 a.m. to 2 p.m. at the Paint Creek School cafeteria. Tickets are \$5 for adults and \$4 for children. Contact any Paint Creek Senior student for tickets or call Mrs. Shackelford at 864-2782. Tickets are available at the door.

Immunizations

The Texas Dept. of Health in Stamford will hold an immunization clinic Thurs., Feb. 17 at the American Legion Hall in Haskell. Clinic times are 1 to 4 p.m. For more information, call 915-773-5681.

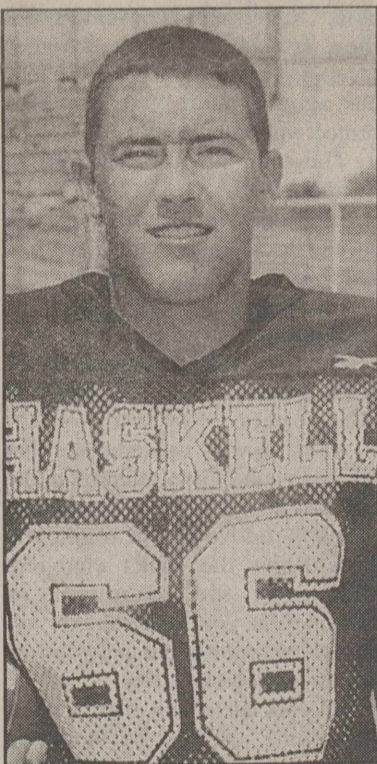
Index

ObituariesPage 2
Area basketball scores .Page 10
Out of the PastPage 4
Sagerton NewsPage 8
Around TownPage 3
MenusPage 8
ClassifiedsPage 9



BANK OPEN HOUSE-Officials and employees of the Rule Banking Center, a branch of Hamlin National Bank, greeted customers

and friends during an open house reception held by the bank Sun., Feb. 13, to thank them for their continued loyalty.



JUSTIN TEAGUE

Teague to play in All-Star Classic

Haskell Indian, Justin Teague, has been named to the North team in the inaugural Big Country All-Star Football Classic game to be played Sat., June 3, at Shotwell Stadium in Abilene.

The son of Jeff and Lisa Teague, Justin was one of 70 players representing 38 area schools who were introduced at a press conference at the Ramada Inn Sat., Feb. 12.

They were selected from among 100 players nominated by their head coaches from schools from an approximate 75 mile radius around Abilene, to participate in the all-star game which will benefit the Big Country Chapter of the Fellowship of Christian Athletes.

The selection committee was comprised of the eight all-star

coaches, former McMurry College coach, Wilford Moore, retired *Abilene Reporter-News* sports writer, Bill Hart, and radio sportscaster, Jimmy Pogue.

The two 35-man squads will include eight players from Class 5A, twelve from 4A, seventeen from 3A, fourteen from 2A, seventeen from Class A and two players from Abilene Christian High School's six-man team. Sixteen additional players were selected as alternates and will participate if a roster spot becomes available due to injury or other circumstances.

The North team will be coached by Steve Warren of Abilene High and assistants Hank Dowell of Sweetwater, Denny Faith of Albany and Gerald James of Colorado City.

Hugh Sandifer of Abilene Wylie will be the head coach for the South, along with assistants Steve Freeman of Brownwood, Randy Quisenberry of Abilene Cooper and Danny Slaughter of Ballinger.

Teams will report for two-a-day workouts on Tues., May 30. A Sharing the Victory Banquet honoring the players and local FCA huddle members will be held Friday night, June 2.

Hall of Fame coach, Gordon Wood of Brownwood, will present two Gordon Wood Most Valuable Player Awards, honoring the top players in the game.

The game will be televised and shown on delay tape by KTAB-TV of Abilene. A live radio broadcast will be produced in Abilene by KWKC 1340 AM and will be heard throughout the area on the Big Country All-Star Classic Radio Network.

Emergency CRP grazing to begin

Congressman Charlie Stenholm announced that the U. S. Department of Agriculture has authorized emergency grazing of certain Conservation Reserve Program (CRP) acreage in Callahan, Coke, Concho, Fisher, Haskell, Howard, Jones, Knox, Mitchell, Nolan, Runnels, Sterling, Stonewall, Taylor and Young Counties.

Emergency grazing has been authorized from February 4 through April 30, 2000. The required payment reduction is 10 percent of the per acre annual rental payment times the number of acres totally grazed in FY 2000.

"Given the drought, low price and all the other problems facing producers these days, I am pleased that the Department has taken this action and I am hopeful this will bring some relief to the folks who are struggling to hang on until conditions improve," said Stenholm.

Those counties contiguous to an approved county are not approved for CRP grazing and only livestock operations located within an approved county are eligible for emergency grazing of CRP acreage. CRP participants with acreage in an approved county may lease grazing privileges to any livestock producer located in an approved county.

All CRP participants in an approved county are eligible to graze eligible CRP acreage regardless of the degree of production loss suffered by the individual producer.

Emergency grazing shall be confined to the acreage physically located within an approved county regardless of where the headquarters for the farm is located. An entire CRP field, which is partially located in an approved county and partially located in another county, may be grazed.

CRP participants must either leave at least 25 percent of each field or contiguous fields ungrazed for wildlife, or graze all of the acreage at no more than 75 percent of the stocking rate, as determined by the Natural Resources and Conservation Service (NRCS).

Anyone interested in participating in this program should contact their local Farm Service Agency (FSA) office.

Car Show to include many events

The 4th Annual Haskell Volunteer Fire Dept. Car Show and Swap Meet will be held on Sat. and Sun., March 18 and 19, sponsored by Bailey Toliver Chevrolet and Bill Wilson Ford Motor Company. With good early response already coming in, the event is shaping up to be a major show, promising something of interest and fun for everyone. There will be no charge for spectators to view the show.

To accommodate the large number of entries expected this year, the site for the event has been moved to the Haskell County Fairgrounds.

Along with the twelve classes of vehicles included in this year's show, there will be various vendor booths, a Kids Tractor Pull, Hot Wheel Races for Kids, with trophies awarded for first and second places, and a raffle for a kid-sized miniature pedal drive truck with "Haskell Fire Dept." painted on the side. Tickets for chances for the custom vehicle are \$5.00 each or five for \$20.00. Games such as "piston toss" are planned for the older spectators on Saturday.

An added treat for viewers will be a "cruise" by all of the car show entries on Saturday evening from 5:00 to 7:00, taking them through parts of Haskell and on a circle tour of neighboring towns of Munday, Knox City, Rochester, Rule, Stamford and back to the Haskell County Courthouse square for refreshments.

Booths for any type of merchandise to sell or swap will be available for \$20.00 each and are to be set up at 8:00 a.m. Saturday.

The National Kids Pedal Tractor Pullers of Wichita Falls will bring the kid-sized tractors here for the youngsters competition which begins at 10:00 a.m. Saturday.

Registration for entries in the Car Show on Sunday, will be from 8:00 to 11:00 a.m., south of the Civic Center. The fee for entries is \$15.00.

Judging will be at 1:30 p.m., with trophies awarded at 3:30 p.m. Sunday. Plaques and cash will be given for Best of Show, \$250.00; People's Choice (selected by the public) \$125.00; Farthest Distance Traveled, \$125.00. First, second, third and fourth place trophies will be awarded in each class. Altogether, over \$4,000.00 will be awarded in cash and prizes.

The entry classes for this year's Car Show are:

Cars Pre-'64; Cars '65 and up; Antique Cars, Trucks thru '50; Street Rods Pre-'49; Race Cars; Older Pickups Pre-'73; Pickups '74 and up; Antique Tractors; Motorcycles; Restoration in Progress; Jr. Dragsters; and Mini Trucks.

Registration forms for the show may be obtained from any Haskell Volunteer Fireman. For more information, call Coy Scoggins at 940-864-3694, or Randy Shaw at 940-864-2023.

Maidens, Lady Cats in play-offs

The Haskell Maidens basketball team, runner-up in District 9-2A season play with a record of 21-7, was paired to meet Paradise at 8:00 p.m. Tuesday in Class 2A play off at Cisco High School. Results were not available at press time.

Clinching the District 9-2A title with a 22-8 record, the Olney girls team had a bye in the play-offs.

The Rule girls basketball team, first-half winner of District 23-A, lost to Benjamin in a playoff in Seymour, Thurs. night to determine first and second place in the district. As second place winner the Rule team met District 24-A Champion, Throckmorton.



FAVORITES-Nikki Wallace was named Basketball Sweetheart and Craig Cunningham was named Basketball Hero during the Indian's game Friday. Photo by KIS

FOR NEWS ITEMS OR TO SUBSCRIBE, CALL 864-2686

Obituaries

Hazel Mae Thomas

Funeral services for Hazel Mae Thomas, 81, of Haskell were held Thurs., Feb. 10 at First Baptist Church in Haskell with Rev. Kevin Hall officiating. Burial was in Willow Cemetery.

Mrs. Thomas died Tues., Feb. 8 at a local nursing home.

Born Dec. 25, 1918 in Lueders, she was the daughter of G. C. and Verona McCown. She married Adell Thomas Aug. 18, 1964 in Bronte. He preceded her in death. She worked as a hairdresser and homemaker. She was a member of First Baptist Church, Lydia Sunday School

Class and Josselet Extension Homemakers Club.

Survivors include one son, Thomas Wayne Williamson of Wichita Falls; three brothers, A. K. McCown of Thrall, John McCown of Knox City and a twin Harold McCown of Wichita Falls; two sisters, Juanita Hughes of Abilene and Katherine Locke of Wichita Falls; one grandson, Nicholas E. Williamson and one granddaughter, Rebecca K. Williamson of Wichita Falls.

Memorials may be made to the Hospice of the Big Country. PD.ADV.

County-wide area receives Enterprise Zone designation

The Texas Department of Economic Development has approved an application from the cities of Haskell, Rule, Rochester, Weinert, Stamford and Haskell County to designate areas of the communities as a joint enterprise zone.

Jeff Moseley, the department's executive director, said the seven-year designation will allow the communities to offer incentives to

businesses to locate or expand in the zone in exchange for investing capital and creating new jobs. At least 25 percent of the jobs created must be filled by residents of the zone or people who are economically disadvantaged.

Moseley said the Enterprise Zone program was created by the Texas Legislature as a means to offer incentives to attract new or expanding businesses to

economically distressed areas of Texas. "In turn, the program encourages these businesses to create and retain jobs while investing capital into their local economies," he said.

The Haskell, Rule, Rochester, Weinert, Stamford, Haskell County Enterprise Zone qualifies for the designation due to a three-year population loss of 4.4 percent and having been declared a federal disaster area. It is projected that development within the zone will result in more than 150 new jobs and about \$2.75 million in capital investment.

State Sen. Tom Haywood of Wichita Falls, whose district includes Haskell, said, "These cities have worked long and hard to nurture their own economic growth. The Texas Enterprise Zone program is one way in which they will now be able to do just that. I hope that this program will be a catalyst for such growth in the future."



RECEPTION—Friends and officials of the Rule Banking Center visit and enjoy refreshments during the Sunday afternoon reception held by the bank in appreciation of their loyal customers.

Annual Sagerton Hee Haw scheduled March 23-25

Hee Haw 2000 is coming soon to Sagerton with some changes in ticket sales for the March 23-25 event.

Tickets will be \$4, marking the first increase in a number of years.

The Sagerton Hee Haw is a music and comedy program in its 30th year with proceeds used to maintain the community center, which is the location for the show.

The Thursday evening performance is reserved for senior citizen organizations and groups. The cafeteria will offer sandwiches,

pies and drinks on Thursday. A plate lunch will be served Friday and Saturday nights.

The cafeteria opens at 5:30 p.m. Music and singing starts at 7 p.m. in the auditorium and the program begins at 8 p.m.

Tickets for the senior citizen night go on sale at 9 a.m. Feb. 24 via telephone (940-997-2688).

Tickets for Friday and Saturday

nights go on sale at 5 p.m. March 7 at the community center. Telephone calls will not be taken March 7, but will be accepted March 8.

Mail requests for tickets should not be postmarked before March 1. Requests may be sent to Dorothy Toney, Rt. 2, Box 10A, Sagerton, Texas 79548.

Jones-Haskell



Eye Clinic

Dr. Trussell Thane, O.D.

Appointments Available • Monday through Friday

Dr. Thane provides comprehensive eye care including the diagnosis and treatment of eye disease.

Dr. Thane offers complete evaluation for eyeglasses and contact lenses.

2 pair of clear daily wear contact lenses **\$159.00**

Disposable lens packages and contacts to change your eye color available.

MEDICARE, MEDICAID AND FIRSTCARE ACCEPTED.

1501 Columbia Stamford, Texas 915-773-2083

Cattle Market Report

The market at the Haskell Livestock Auction was on a run of 1,224 head of cattle at its sale on Sat., Feb. 12, according to Gary Tate, reporter.

Stocker cattle 2-5 higher; feeder cattle steady; packer cows steady; stocker cows 15-20 higher.

Cows: fat, .34-.38; cutters, .36-.42; canners, .25-.32.

Bulls: bologna, .45-.52; feeder, .68-.76; utility .38-.44.

Steers: medium and large frame No. 1 200-300 lbs., 1.25-1.40; 300-400 lbs., 1.10-1.38; 400-500 lbs., .95-1.30; 500-600 lbs., .85-.96; 600-700 lbs., .83-.94; 700-800 lbs., .81-.86; 800-up lbs., .68-.74.

Heifers: medium and large frame No. 1 200-300 lbs., 1.00-1.18; 300-400 lbs., .90-1.05; 400-500 lbs., .82-.95; 500-600 lbs., .78-.87; 600-up lbs., .58-.85.

Bred Heifers: medium frame, 450-550.

Bred Cows: young to middle aged, 575-680; aged or small, 430-550.

Cows with calves: medium frame No. 1 young and middle aged, 650-740; aged or small, 600-675.

Rath City is Society topic

The Haskell County Historical and Genealogical Society held its meeting Feb. 7 at the First National Bank Community Room. Bill Neely spoke on Rath City in Stonewall County. The city contained a trading post and hide yard for the buffalo hunters in the period around 1876 to 1879.

Attending the meeting were Wanda Ham, Johnny and Teresa Scoggins, Son and Eula Peters, Jack and Margaret Kittley, R. S. and Betty Sanders, Bill Neely, Dolin Hughes, Jerri Buerger, Maxine Miller, Martha Jarred, Ernestine C. Herren and June White.

Tips to help stop auto theft

Auto theft can strike at any time in any community, but using good judgment can help lower that risk.

The costs of theft are an unfortunate occurrence that your auto insurer is equipped to handle. An industry-wide annual cost of \$72 million is estimated in Texas alone. Regrettably, consumers feel those costs in the form of higher insurance rates. By protecting your car against theft you can also protect your pocketbook.

These simple tips can aid in avoiding theft.

- Starting with the obvious, you should lock your doors and take your keys. Many vehicles are stolen because of this type of carelessness.

- Do not hide a second set of keys. Thieves know all the good hiding places.

- Park in well lighted areas and attended lots. Give attendants the ignition/door key only. If that key opens the glove box or trunk, you should get the locks changed. Limiting the amount of information you let strangers see about you, your home and your car will increase your safety.

- Do not leave valuables or items you don't want to be stolen in open view and seal all windows

when you park. You don't want to tempt crooks.

- File the title to your car at home and keep your registration in your wallet. Leaving documentation in your car give thieves the appearance of legitimacy when they attempt to sell your car.

- Never leave your car running while you slip away — a thief only needs a few seconds to steal a car that is unlocked and running.

- Drop business cards or identification inside vehicle doors to aid police in identifying you as the real owner of the vehicle. You can also engrave personal information on expensive accessories like car stereos.

- Put your VIN number on different parts of your vehicle with an engraving tool or marker to help police trace parts of your stolen vehicle.

If your car is stolen, contact the police immediately. Ask if someone witnessed the crime and make sure the police gets names and statements of those who saw the incident. Notify your insurance representative to report your stolen vehicle and seek steps to recover your vehicle.

Students in the News

Diplomas were awarded to approximately 3,500 Texas A&M University graduates during fall commencement ceremonies.

Among those receiving degrees were: Philip Blake Henshaw and

Jennifer Donene Comedy. Both received a Bachelor of Science degree in Agricultural Development and are from Haskell.

Texas A&M University has named its honor students for the 1999 fall semester, recognizing several thousand students for outstanding academic performance.

The Dean's Honor Roll recognizes students taking at least 15 semester hours who have maintained at least a 3.75 grade point ratio (GPR) out of a possible 4.0 during the most recent grading period.

Included on the Dean's Honor Roll is Bree Burgess, a freshman biology major from Haskell.

A second designation, "Distinguished Student," recognizes students who earned a 3.25 to 3.75 GPR while taking at least 12 hours.

Among those recognized is Tiffany Cadenhead, a freshman biology major from Haskell.

Richard Brown from Haskell has been named to the Dean's Honor List for the fall 1999 semester at South Plains College, Levelland.

Students named to the Dean's Honor List must maintain a minimum 3.25 GPA or full-time college-level work with no failing grades.

SAVE 55%-70%

when you take an extra 40% off all red & green-ticketed clearance storewide!

SAVE EVEN MORE WITH THE COUPON BELOW

VALID FEBRUARY 17-21 ONLY!

TAKE AN EXTRA 20% OFF YOUR ENTIRE PURCHASE

of red & green-ticketed clearance items

No other discounts apply. Not valid on regular-priced or sale items; gift certificates; payment on credit accounts. Relinquish at time of purchase.

PLUS, SAVINGS ON NEW SPRING ARRIVALS STOREWIDE!

Total savings off original prices. Interim markdowns may have been taken. Selections vary by store.

CHARGE IT! GET 10% OFF ALL DAY WHEN YOU OPEN A NEW STORE ACCOUNT. Excludes may apply. Subject to credit approval.

BEALLS

For the store nearest you, call 1-800-324-1313 or log on at www.beallsstores.com

Unlimited Internet Access

\$19.95 per month

NO: Long Distance Connect fees Extra charges Limits on E-mail

West Texas Internet

Locally Owned and Operated

864.8124 • www.westex.net • administrator@westex.net

Haskell

Around Town

By Joyce Hawkins

Visiting with George and Faye Gray on Sat. was their daughter Judy Hicks of Abilene.

Kay Henry, Estalynn Liles, Carol Grand and Ernestine Herren went to Albany on Thurs. They visited the museum, had lunch at the Bee Hive Cafe and had a very enjoyable day.

Mr. and Mrs. Wilda Medford visited her sister, Jeanebeth Keraham, in Galveston over the weekend.

We are glad to hear that David Carver, husband of Sharla Drinnon Carver and their son are improving at home after their accident.

Mr. and Mrs. Horace Woodard went to Abilene on Sat. to visit their daughter and family. They watched granddaughter Lauren Mue Franks play basketball. She attends Franklin Middle School.

Dr. Barry O'Neal of Irving visited two days with his mom Gladys and took her to Wichita Falls to visit her sister Francis Lees.

Mr. and Mrs. Arvil McFadden visited his brother and wife C. W. and Linda Gail McFadden in Bryson on Sun. They came back by Graham to visit his mother Lorene McFadden at the Oaks Care Center.



MILAN MATIC - JANA PAYNE

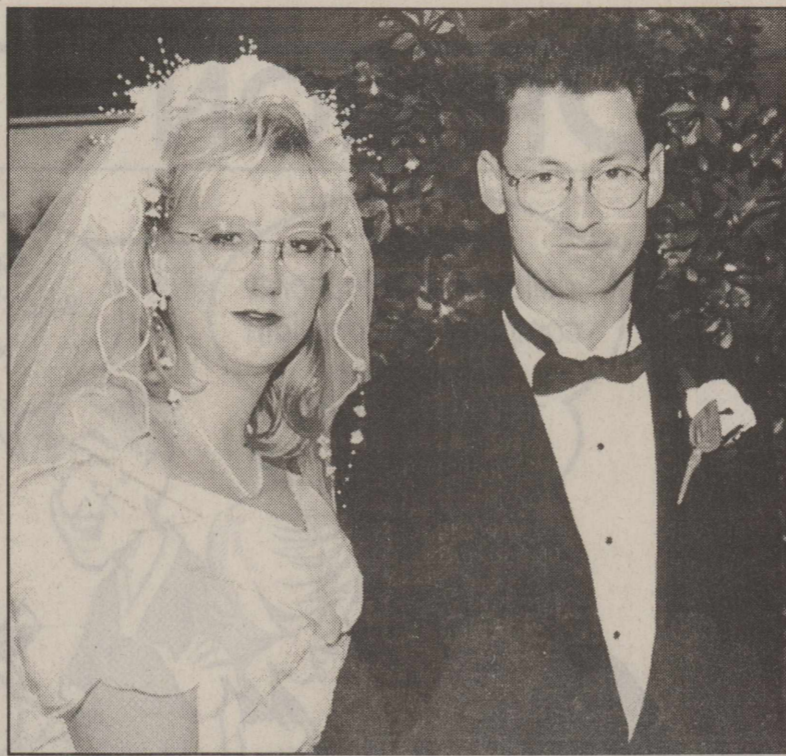
Payne, Matic to marry April 29

Jana Diane Payne of Lubbock and Milan Matt Matic of Austin, have announced their engagement to be married April 29, in a ceremony inside the 4 Bar K, at the Kershner Ranch.

Parents of the bride are Claude Payne and Janice Payne, both of Haskell. She is a graduate of Haskell High School and received an Associate Degree in Radiologic Technology from Midwestern State University. She is employed by

the University Medical Center in Lubbock.

The bridegroom's parents are Matt Matic of Los Angeles, California, the late Rose Matic-Leigh and David Leigh of Clemson, South Carolina. A graduate of Daniel High School in South Carolina, he attended Texas Tech University, where he received a Bachelor of Science Degree with a double major in Computer Science and Electrical Engineering. He is employed in Austin by Seolection.



MR. AND MRS. EUGENE BUTLER

Patrick, Butler repeat vows

Nikki Michelle Patrick and Clarence Eugene Butler, both of Abilene, were married Dec. 19 at the Logsdon Chapel at Hardin-Simmons University, with Mike Greenfield of Abilene First Baptist Church officiating.

Parents of the bride are Mr. and Mrs. Harold Patrick of Abilene. Grandparents are Edward Scott and Dorothy Patrick of Waco.

The bridegroom is the son of Doris Butler and the late Gene Butler of Haskell. Grandparents are Mr. and Mrs. William Butler of Haskell.

Maid of honor was Hsiao Chang of San Angelo. Bridesmaids were Tyra Lloyd, sister of the bride, and Jennifer Beall, both of Abilene.

Lauren Prewitt of Weatherford was the flower girl. Laken Patrick of Abilene was the book attendant. Both are cousins of the bride.

Serving the groom as best man was Zachary Martin of Haskell. Groomsmen were the groom's

brothers, Terry Butler of Knox City and Tommy Butler of Haskell. The ring bearer was Harrison Martin of Haskell.

Ushers were Rob Lloyd of Abilene, brother-in-law of the bride, and Michael Bailey of Weatherford, cousin of the bride.

Larry Wolz of Abilene was the organist.

The bride is a graduate of Cooper High School. She received a Bachelor of Science Degree in Chemistry from Hardin-Simmons University in 1994 and is working toward a Master of Education degree. She is employed by the Abilene Independent School District.

The bridegroom is a graduate of Haskell High School, and is currently attending Hardin-Simmons University. He is employed in Abilene by Avis Lube and Second Baptist Church.

The couple will reside in Abilene.

Homespun Club meets

The Homespun Family and Community Education Club held its meeting in the County Extension Kitchen with ten members, one guest and Agent Lou Gilly present.

The business meeting included details about cookbook sales, District Spring Meeting in Weatherford and Tri-County Rally Day.

The group going to Weatherford will leave Haskell on March 3 at 6:30 a.m. from the extension office. Contact Lena Tidwell to pre-register.

The group enjoyed an informative presentation by Lou Gilly, entitled "I Have the Right to Decide." Those who feel they have their business in order in case of an unforeseen event, may need to check twice, as sometimes it comes as a shock in an emergency. You need a durable power of

attorney for health care as well as a living will. If you have directives written down somewhere, be sure the family members know of this, as a survey shows 70% of family knows, whereas 30% have no idea of your wishes. should an emergency occur. Car wrecks, injuries, accidents or strokes can leave you with life-threatening consequences, so all members of the family need to know what procedures you desire and that your wishes will be carried out. You do not need a professional to write these directives and a copy can even be found on the Internet, but the time is now for action on your part.

Refreshments of homemade pies were served by Frances Fischer, using the Valentine theme.

The next meeting will be March 9 and all interested persons are invited.

Becky Tubbs brings Art Club program

The Brazos West Art Club met Tues., Feb. 8 at the Community Room.

Becky Tubbs, Anson artist and hometown girl, was the guest artist. She used watercolors with pastels.

A short business session was held by the president, Martha Spitzer.

If you are interested in art, please come to the lessons; they

are interesting and free. The group meets once a month at the Community Room.

Those present were: Dorothy Brown, Betty Berry, Martha Spitzer, Clara Gholson, Fern Livengood, Jenny Lyckman, Bobbie Harrison, Doris Reeves Jordan, Anita Herren, Ruth Ann Klose and Gladys O'Neal.

Births

Robert and Cathy Bartley of Haskell and Misti Bartley of Lubbock are proud to announce the birth of their first grandson and nephew, Caleb Josselet Wheat.

Caleb was born Wed., Feb. 2 in Wichita Falls. He weighed 8 lbs., 2 oz. and was 21 inches long.

Caleb's proud parents are Chad and Christi Wheat of Wichita

Falls. Maternal great grandmothers are Jerry Josselet and Katherine Bartley of Haskell.

Paternal grandparents are Kitty and Gary Arrington of Wichita Falls and Mike and Nora Wheat of Burkburnett. Paternal great grandmother is Novelle Havis of Burkburnett.

Mrs. Hearn to celebrate 102nd birthday Sunday

Mrs. Minnie Matilda Hearn, formerly of Rochester and now a resident of Haskell Healthcare Center, will celebrate her 102nd birthday Feb. 20.

Friends and family are invited to come by from 2 p.m. to 4 p.m. Sun. afternoon to wish her a happy birthday and share birthday cake and punch.

Hospital

Admissions
Sylvia Roberts, Haskell
Julia Ruiz, Haskell
Juanita Bevel, Haskell
Dismissals
Charles Smith, Exa Penman,
Henry Baxter, Mildred Graves,
Clara Gary, Annie Lusk, Mattie M. Felker

Like what you're reading?
Call 940-864-2686 to Subscribe.

Are you 65?

We Have Medicare Supplements.

*Plan F 74.46

*Plan G 72.60

*Male 65 Non tobacco
\$25 initial application fee

FFF Insurance Services
Don & Marla Hawkins, Agents
940-658-3041 Knox City, Texas
Life, Accident, Disability Income, Annuity,
Care Home, and Medigap Policies

Meet us at the Haskell Dairy Queen

Sale good Mon., Jan. 31 thru Sun., Feb. 20!

Chocolate Rock 99¢

Sale good Mon., Jan. 31 thru Sun., Feb. 20

Steak Finger Country Basket \$1.99 4-piece

Senior Citizens get half price for all regular priced items all day every Tuesday. Everyone gets half price for all regular price items on Wednesdays from 5-9 p.m.

Breakfast served 7 a.m. to 10:30 a.m.

Open at 7 a.m. until 9 p.m. daily
PHONE IN ORDERS WELCOME! Call 864-3732 and we will have it ready for you!

Chicken Strip Dinner & Drink*

ONLY \$3.99 PLUS TAX

SONIC America's Drive-In

No Waiting Call In Orders
864-8533

Offer good February 1-29, 2000. Not valid with any other offer. Only at participating Drive-Ins.
©2000 American Dairy Queen System, Inc. *Sonic, America's Drive-In and the Double Delta are trademarks of American Dairy Queen System, Inc.

Inspect playgrounds for child's safety

A fort. A castle. The jungle. Wide open spaces. Just plain fun. That's a playground in a child's eye.

But for adults looking over play equipment at schools or in parks, their gaze should be focused on safety, according to the Texas Department of Health (TDH). Nationwide, more than 200,000 children need hospital care for playground-related injuries each year. About 15 youngsters may die annually.

"Most injuries—up to 60 percent—occur when a child falls from play equipment onto hard surfacing," said Mike Ward of TDH's Product Safety Division. "Adequate protective surfacing under and a minimum of 6 feet around the edge of playground equipment is probably the most critical safety factor on playgrounds."

According to Ward, hard surfacing materials such as asphalt or concrete are not suitable for use under and around playground equipment of any height. Earth surfaces such as soil and hard-packed dirt also are not recommended. "Engineered wood fibers, double-shredded bark mulch, wood chips, fine gravel, fine sand or safety-tested material such as rubber mats are types of surfacing materials that offer the best protection," Ward said. "But depth of the loose fill surfacing is also extremely important."

Other safety issues include poorly designed playgrounds, inadequately maintained equipment and play areas not suited to the size and age of children using them.

Product Safety staff has developed a public playground safety audit form that includes 31 major playground hazard areas. One major hazard area, for instance, is head entrapment. "Openings in equipment should measure less than 3 1/2 inches or more than 9 inches to prevent a child's body from passing through but trapping a child's head," said Terry Johnson of TDH's Product Safety Division.

Other problems to look for include:

- Equipment placed too close to each other, to fences or to walkways;
- Open S-hooks on swings or gaps at the top of slides that could catch children or clothing;
- Broken or unstable play equipment;
- Sharp points, corners or edges on equipment;
- Parts of equipment that could pinch or crush the fingers or toes of a child;
- Rust, rot, cracks or splinters;
- Equipment that needs handrails, guardrails or protective barriers to prevent falls;
- Trash on the ground such as broken bottles, tree limbs or sharp objects a child could fall on and be injured.

The TDH Product Safety Division recently started a statewide Public Playground Safety Train the Trainer program. Through this new training program, staff hopes to put a large trained force of knowledgeable public school district maintenance personnel on school playgrounds.

"The intent of this program is to provide classroom instruction to Texas public school district maintenance supervisors along with information about using the TDH Playground Safety Audit form," said Charles Branton, director of the Product Safety Division.

"Completion of the Train the Trainer instruction, including information on how to identify major playground hazards and how to correctly use the TDH audit form, should allow school district maintenance supervisors to train their school district maintenance staff in inspecting playgrounds and eliminating hazards."

These half-day sessions are being conducted through the Texas Education Agency and the Regional Education Service Centers around the state over the next year. The training, which includes a slide show illustrating equipment and field hazards, is based on the CPSC Handbook for Public Playground Safety.

State law requires that playground equipment and surfacing purchased with public funds after Sept. 1, 1997, be substantially compliant with the

1994 CPSC Handbook for Public Playground Safety. No current regulations require fixing hazards on playgrounds installed before that date. "However," Ward said, "we believe that through teamwork with trained public school district personnel, the removal of playground hazards, regardless of date of installation, will go a long way toward protecting Texas school children."

Individuals can use the CPSC Handbook to spot problems areas at school, in the neighborhood and at parks. If potential hazards are found, people should contact the owner of the playground. For a free copy of the CPSC Handbook for Public Playground Safety, publication number 325, send a postcard with your name, address and name of publication to U. S. Consumer Product Safety Commission, Washington, D. C. 20207; call the CPSC at 1-800-638-2772; or visit the CPSC Web site at www.cpsc.gov.

10-Point Public Playground Safety Checklist
Use this simple CPSC checklist to help make sure your local community or school playground is a safe place for children to play.

1. Make sure surfaces around the playground equipment have at least 12 inches of wood chips, mulch, sand or pea gravel or mats made of safety-tested rubber or rubber-like materials.

2. Check that protective surfacing extends at least 6 feet in all directions from play equipment. For swings, be sure surfacing extends, both in back and front, twice the height of the suspending bar.

3. Make sure play structures are more than 30 inches high are spaced at least 9 feet apart.

4. Check for dangerous hardware such as open S-hooks or bolt ends that stick out.

5. Make sure spaces that could trap children, such as openings in guardrails or between ladder rungs, measure less than 3 1/2 inches or more than 9 inches.

6. Check for sharp points or edges on equipment.

7. Look for tripping hazards such as exposed concrete bases, tree stumps and rocks.

8. Make sure elevated surfaces such as platforms and ramps have guardrails to prevent falls.

9. Check playgrounds regularly to see that equipment and surfacing are in good condition.

10. Carefully supervise children on playgrounds to be sure they are safe.



RESERVE CHAMPION DUROC—Cody Byrd, a 4-H member from Rochester, exhibited the champion in the Jr. Barrow Show at the Southwestern Exposition and Livestock Show in Fort Worth.

Pre-paid calling cards have benefits

by Lou Gilly
Haskell Co. Extension Agent

At almost any check-out counter, consumers can buy pre-paid calling cards. Now consumers can go to the Web and create a virtual pre-paid calling card where the buyer decides how many minutes they want to buy for the various rate options presented.

Pre-paid calling cards have several benefits. They can be used on any touch-tone phone and they help consumers budget their long distance calling expenses. Some avoid a monthly service charge for making long distance calls from home or when away from home. Calling cards can make great gifts for children going to camp or leaving for school or careers. They can be gifts for parents or grandparents who enjoy phone visits but won't spend money for long distance calls.

Consumer protection agencies are taking a look at ways to protect against calling card problems.

Look for key information on the card or Web page before making a purchase. What is the maximum charge per minute? Is there an approved surcharge for linking to the host 800 number? Is there an expiration date? If so, will you use the total calling time before the

expiration date. If not, you lose the money paid for remaining minutes. What are their recharge policies?

Consumers should treat a pre-paid calling card like cash. If you lose it, you cannot get your money reimbursed. Someone watching you use the card can note your pin or personal identification number and use the card if they steal it from you.

Technology is bringing many new consumer options to the market place. Using new technology can be a satisfying or dissatisfying choice. Before buying a new product or service, know your needs, the amount you are willing to spend and how the product could benefit you or create challenges for you. For help with consumer problems related to calling cards, contact the Federal Trade Commission.

To Subscribe,
Call 940-864-2686

Make your home fall-proof

Studies indicate that falls are the leading cause of hospitalization and emergency room visits for children—but they can be prevented.

"Never leave your baby unattended on a couch, bed or changing table," said Dr. Donna Sutherland, an emergency-room physician at Texas Children's Hospital in Houston. "Also, remember to strap children into highchairs and strollers."

Use safety gates at the top and bottom of stairs to protect infants and toddlers. Avoid accordion gates with large openings that can trap a child's neck.

Keep children away from balconies, porches and fire escapes by locking doors and windows. Never leave windows open from the bottom. Children under 10 can slip through an unguarded window that is open only five inches.



Come see us for your
Multi-Peril Crop Insurance
needs.
CALL DONNA or KATHY AT 940-997-2218
CAMPBELL INSURANCE AGENCY
611-A 5th Street, Rule, Texas

LONE STAR HEARING SERVICES
FREE HEARING TESTS
HEARING AND SERVICE CENTER
Tuesday, February 22
from 9 a.m. to 4 p.m.
In Home Testing Available
•Service on all makes and models
•Batteries & accessories
Call for an appointment!
Lone Star Hearing Services
105 N. Ave. D • Haskell
800-549-9074
HASKELL HOME HEALTH

TAX PLANNING

Written By
Richard E. Rodgers, CPA



WHEN CAN YOU DEDUCT MEDICAL EXPENSES?

Medical expenses are deductible only to the extent that they exceed 7.5% of your adjusted gross income. If your adjusted gross income is \$40,000, for example, only unreimbursed medical expenses in excess of \$3,000 will be deductible.

Generally, a medical expense deduction is allowed for your out-of-pocket costs incurred in treating or preventing illness. When you pay these expenses for yourself, your spouse, and your dependents, they are deductible within the limits stated.

You may also be able to deduct medical expenses paid for a parent, child, or certain other relatives even if you are not entitled to claim them as dependents. Divorced or separated parents are allowed to deduct medical expenses paid for a child even though the other parent is entitled to the dependency exemption for that child.

Also, if you are providing over half of the support for someone but are not entitled to claim the dependency exemption because that individual has taxable income in excess of the personal exemption (\$2,750 for 1999, \$2,800 for 2000), you are still allowed to deduct medical expenses that you pay for that individual. To illustrate, suppose you provided over half of your father's support in 1999, but you are not entitled to claim him as a dependent because he had over \$2,750 of taxable income. You are still allowed to deduct medical expenses that you paid on his behalf.

If you claim a dependency exemption for an elderly parent under a "multiple support agreement," you can include in your medical expense deduction the amount of medical expenses actually paid by you on behalf of your parent. In this situation, let others pay non-deductible expenses and you pay the deductible medical expenses.

Married couples usually find it advantageous to file joint tax returns. However, if one spouse has large medical expenses, filing separately may boost those expenses beyond the 7.5% limit. If you're in this situation, compare joint and separate filing to see which gives the lower tax bill.

For more information or assistance with finding all the tax deductions you're entitled to, contact our office.

RODGERS & COMPANY
Certified Public Accountant
20 Southwest Third Street
Hamlin, Texas • 915-576-2356



MESSAGE TO VOTERS

To the Voters of the
39th Judicial District:

I would like to take this opportunity to ask for your vote, on March 14th in the Democratic Primary, for the office of District Attorney for the 39th Judicial District. I am a native of the 39th District, and was reared south of Rule near the community of Sagerton, Texas. I am a 1984 graduate of Rule High School, a 1988 graduate of Texas Tech University with a B.S. in Agriculture Education, and a 1991 graduate of the Texas Tech School of Law. I have been married to Kris Fouts for seven years and we have two children, Emily, age 4, and Sam, age twenty months. We are also expecting our third child in June. For the past four years, we have made our home south of Rule. I want to raise my children in a community where they are safe, and I give you my word that, if elected as your District Attorney, I will work to ensure our communities are safe for your children and mine.

Since 1991, I have worked for the Scarborough Law Firm with offices in Abilene and Stamford. I have gained a tremendous amount of experience in the field of criminal law. I have handled countless criminal law matters throughout this part of the state. I have tried over twenty felony jury trials including, three capital murder trials, and many more misdemeanor jury trials.

From my experience, I have gained a perspective of the requirements for an effective District Attorney's office. It is my belief that our American system of justice works best by obtaining a timely disposition of criminal cases. If I am elected as your District Attorney, I pledge to you that cases will be handled in a timely manner. A District Attorney deals with felony cases that often involve serious crimes against our society. It is my pledge to prosecute crime vigorously and aggressively. Through my experience, I have demonstrated that I am not intimidated by the courtroom, and that I am willing and have the proven ability to take a case to trial.

I want to be your District Attorney. If elected, I will dedicate myself to the effective and aggressive prosecution of criminal cases throughout the entire 39th District. I can assure you that I will handle all matters with unquestionable fairness and indisputable ethics.

I am taking the opportunity prior to the primary election to meet as many residents of the 39th District as possible. I want to listen to your comments and concerns and to answer any questions you have for me. If I am unable to meet you personally, I would like to take this opportunity to ask you for your vote on March 14th in the Democratic Primary for District Attorney of the 39th Judicial District.

VOTE MIKE FOUTS FOR DISTRICT ATTORNEY

Pd. Pol. Adv. By Kris Fouts, Campaign Treasurer, for Mike Fouts Campaign

All deadlines are
5 p.m. Monday

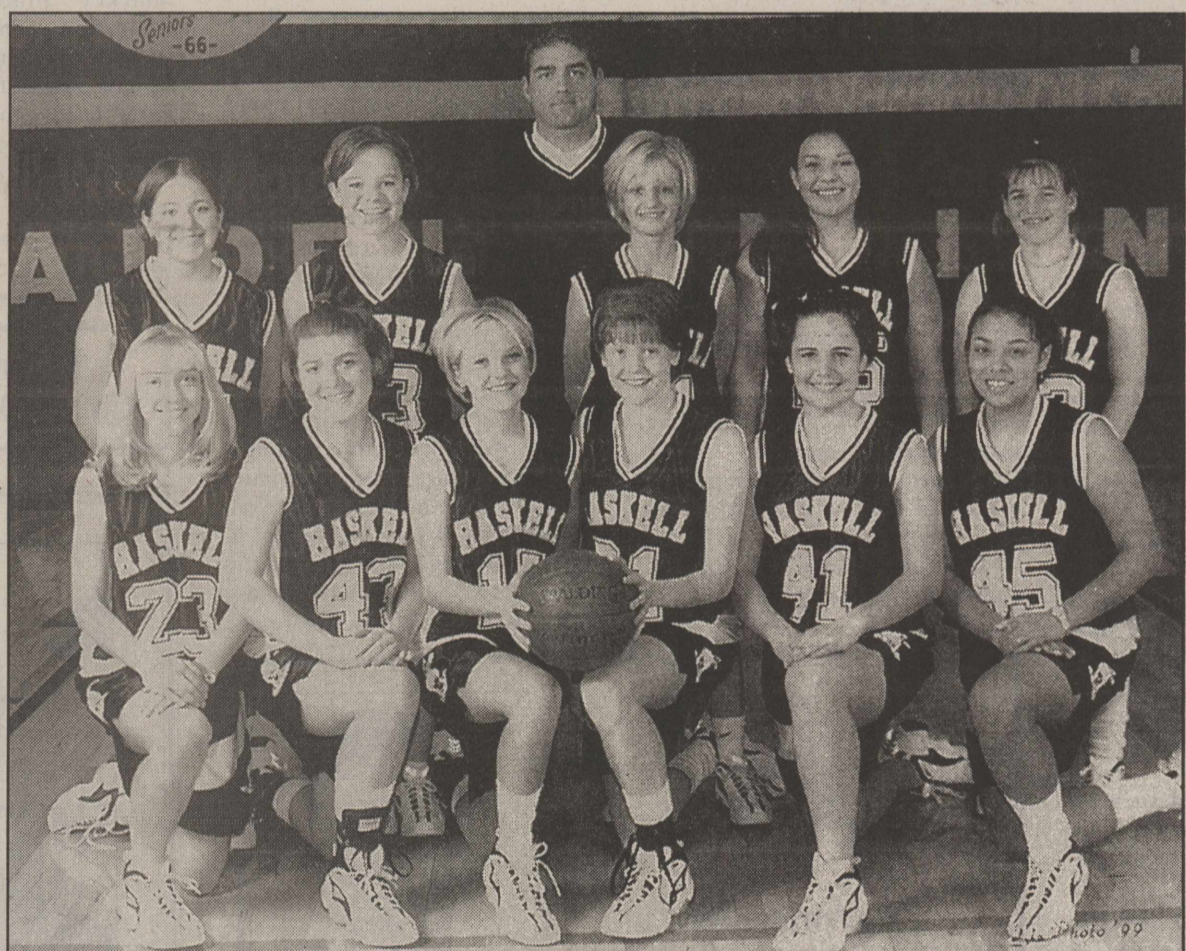


Congratulations! Maidens



HASKELL VARSITY MAIDENS

DISTRICT RUNNERS-UP



HASKELL JV MAIDENS

Photos by KIS Photo

BEST WISHES IN THE PLAY-OFFS!

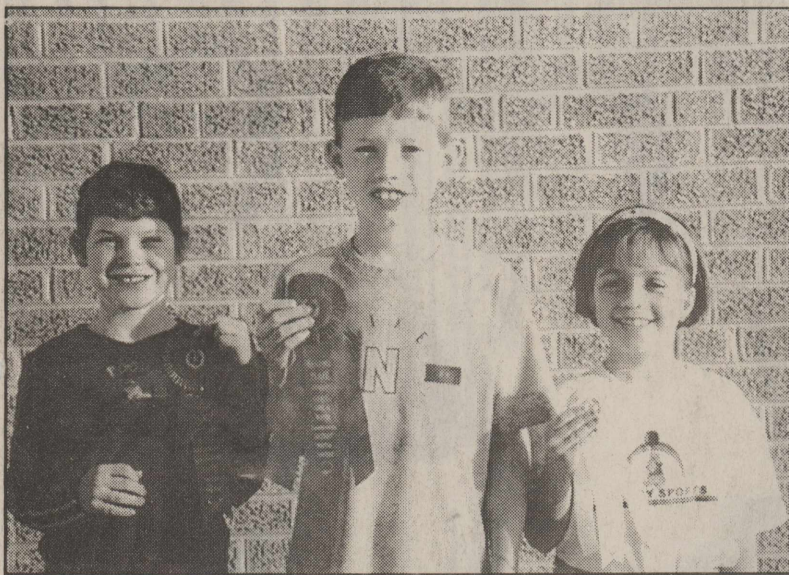
This Page Sponsored By The Following Maiden Boosters

Steele Machine
Larned Sales Center
Haskell Co-op Gin
Personality-Slipper Shoppe
Haskell Free Press
Jay's Tire Center
Brian Burgess State Farm Insurance
Haskell County Insurance Agency

Double A Drive Inn
Hanson Paint and Body
McGee's Lumber Yard
Medford Buick-Pontiac-GMC
Sport-About
Bill Wilson Motor Co.
Modern Way Food & Fuel

Richardson Case-IH-NAPA
Burkett's Family Restaurant
Rice Springs Care Home
Haskell Tire & Appliance
Davis and Wardlaw Oil Co., Inc.
G & G Carpets
Haskell National Bank
Haskell Save-A-\$

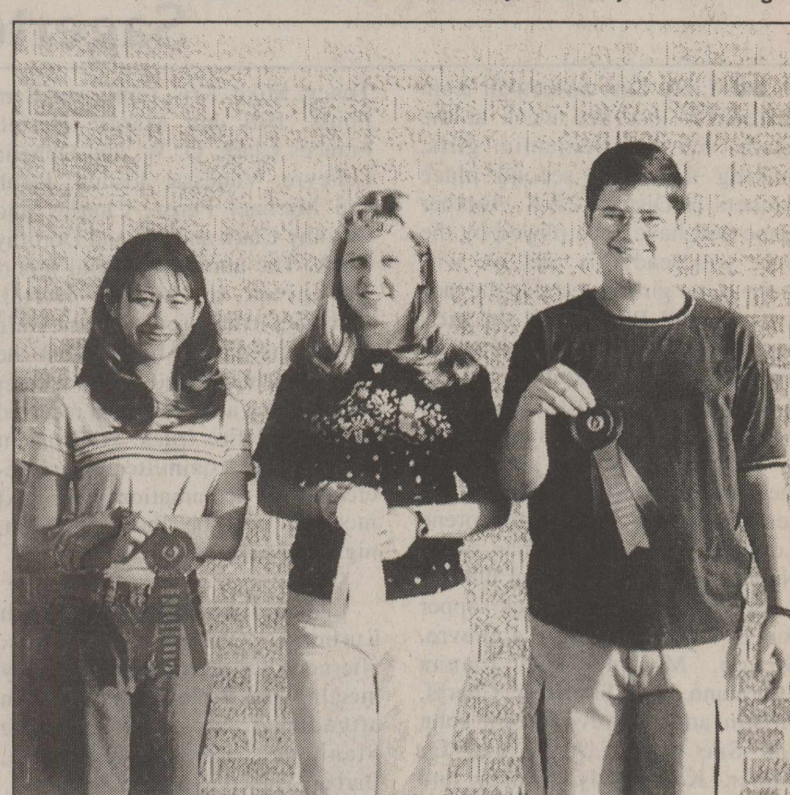




SECOND GRADE WINNERS—Overall second grade Soil Conservation Poster winners were Haskell students, Brooke Bullinger, first place; Brennan Medford, second place; and Judith Isbell, third place.



THIRD GRADE WINNERS—Overall third grade winners in the poster contest were Haskell students, I-r, Faith Silvas, first place; Samantha Rodriguez, second place; and Hannah Wallace, third place.



WINNING SIXTH GRADERS—Overall sixth grade winners in the Soil Conservation Poster Contest were Haskell students, I-r, Nancy Ruiz, second place; Robbyn Tribbey, third place; and Caleb Hudgens, first place.

Haskell SWCD poster contest winners named

February is the time for children in the local schools to participate in the Haskell Soil and Water Conservation District Poster Contest.

The District Winners are: First Place - Abel Cisneros, Paint Creek; Second Place - Callie Thomasson, Paint Creek; and Third Place - Tyler Manske, Rochester. These winning posters will be sent to Temple for further judging.

Local winners from Haskell are: Second Grade, Mrs. Griffith: 1. Brooke Bullinger 2. Brennan Medford 3. Judith Isbell.

These contestants also won in the same order best overall in the whole 2nd grade.

Third Grade, Mrs. Christian: 1. Laura Garcia 2. Paige Adams 3. Megan Bailey

Third Grade, Mrs. Huff: 1. Faith Silvas 2. Brittany Martinez 3. Meghan Rabb

Third Grade, Mrs. Waggoner: 1. Samantha Rodriguez 2. Hannah Wallace 3. Shayla Session

Third grade overall winners were: 1. Faith Silvas 2. Samantha Rodriguez 3. Hannah Wallace.

Sixth Grade, Mrs. Cypert: 1. Robbyn Tribbey 2. Miguel Chavez 3. Shannon Harlan

Sixth Grade, Mrs. Earles: 1. Caleb Hudgens 2. Shannon Bird 3. Cody Kretschmer



DISTRICT WINNER—Tyler Manske, third grader from Rochester, won third overall in the Soil Conservation poster contest.

Sixth Grade, Mrs. Newton: 1. Nancy Ruiz 2. Jeremy Sorrells 3. Noe Rivera

Sixth grade overall winners were: 1. Caleb Hudgens 2. Nancy Ruiz 3. Robbyn Tribbey.

Paint Creek winners: Kindergarten: 1. Caleb McCord 2. Kelli Pitcock 3. Dalton Barnett

First Grade: 1. Kailey Jones 2. Kelsey Ansley 3. Shanda Pelton

Second Grade: 1. K. C. Fikes 2. Adan Rivera 3. Zach Trussell

Third Grade: 1. Marty Hall 2. Jeffrey Wade 3. Steven Fillmon

Fourth Grade: 1. Kailey McCord 2. Barrett Thomasson 3. Bryson Trussell

Fifth Grade: 1. Abel Cisneros 2. Kristen Barr 3. D. J. Hall

Sixth Grade: 1. Justin Hannsz



DISTRICT WINNERS—Fifth grader, Abel Cisneros, won first overall for his poster, and sixth grader, Callie Thomasson won second place overall. Both are students at Paint Creek.

2. Callie Thomasson 3. Todd Emert

Rochester winners: Kindergarten: 1. Stewart Ulrich 2. Jo Angel Martinez 3. Paige Glover

First Grade: 1. Marissa McGhee 2. Michael Wilburn 3. Leah Tibbets

Second Grade: 1. Amy Muniz 2. Chloe Strickland 3. Lisa Rodgers

Third Grade: 1. Tyler Manske 2. John English 3. Lauren Newton

Fifth Grade: 1. Shana Nicholson 2. Teddy Sue Harris 3. Paden Brown

A total of 221 students participated in the poster contest.

**Don't Miss Out
Subscribe Today!
864-2686**

The Haskell Free Press

BERNARD E. GODLEY, INC.

TAX SERVICE & BOOKKEEPING

Computerized • Tax Returns & Bookkeeping

98 Hill Drive • Seymour, Texas

940-888-3986

Office Hours: 9 to 12 and 2 to 5 Monday - Friday

LANCO INSURANCE COMPANY
510 N. 1ST • HASKELL, TEXAS



864-2629



Relax. We don't have any salesmen at our agency.

LANCO INSURANCE COMPANY
510 N. 1ST • HASKELL, TEXAS

Have you ever wanted to talk with an insurance agent, but didn't because you were afraid he'd try to sell you something?

Free Texas Cellular Phones!

Love is in the Air!

Texas Cellular's phones are free, so you can call me...

There's our Shared-Minutes Plan... Now you and yours do your sweet-talkin' hand-in-hand.

"Ahhhhh, love is bliss..."

1st 2 INCOMING MINUTES FREE

Certain restrictions apply. See agent for details.

We Take Care Of Our Neighbors.



TEXAS CELLULAR

A service of Taylor Telecommunications, Inc.

9796 N. I-20 • MERKEL, TX • 79536
915-928-3200

For More Information, Call Us at 800-424-7182 or Contact Your Local Texas Cellular Agent.

IN HASKELL:

Haskell Tire & Appliance
206 S. Avenue E
940-864-3269

IN ALBANY:

Albany Communications
500 S. Main Street
915-762-2333

**ATTENTION
AREA FARMERS
Haskell County Gin**

(formerly Farmers Co-op Gin)

wants to invite area farmers to Haskell Country Club on **February 23, 2000 at 7 p.m.** for a supper and Autauga Cotton Pool meeting.

We also invite you to stop by the gin for coffee and meet with the new owner, Mike Gage



INDIAN ALOFT—Haskell Indian, Michael Lindsey, goes up for the ball during the game with Archer City. Photo by Kis



REACHING UP—Haskell Maiden, Misty Rodela goes up to send one in during the game with Seymour. Photo by Kis

Area basketball scores

GIRLS
 Paint Creek 58, Rochester 47
 Scoring for Paint Creek: Isbell 21, Salinas 11, Medford 8, Hearn 8, Gonzalez 7, Hope 3.
 Scoring for Rochester: Williams 18, Garcia 8, A. Stoddard 8, Penman 6, M. Stoddard 5, Reyes 1, Buerkle 1.
 Rochester 74, Paint Creek 34
 Scoring for Rochester: Byrd 15, Ruiz 15, Aguilera 13, Taylor 8, Hearn 8, Hasty 6, Sanchez 4, Herode 4, Rodriguez 1.
 Scoring for Paint Creek: Biba 11, E. Hobbs 9, C. Hobbs 6, Hope 5, Hodges 3.

BOYS
 Seymour 40, Haskell 39
 Scoring for Haskell: Riley 14, Lindsey 12, Huff 7, Cunningham 4, Hunt 2.

 Archer City 55, Haskell 52 (OT)
 Scoring for Haskell: Riley 19, Hunt 8, Huff 8, Lindsey 6, Earles 5, Druesedow 3, Guadaluca 3.
 JV score - Archer City 33, Haskell 30.

MAKE A BUNDLE
CALL 864-2686
SELL THOSE UNWANTED ITEMS
 The Haskell Free Press

Haskell CISD awarded 'Expanding Breakfast' grant

Billie McKeever, superintendent, said Monday that Haskell School District is expanding its breakfast program, thanks to the help of a \$1900 grant from Dairy MAX, Inc. The improved program, started January 3, is based on a "grab 'n' go" concept. Students pick up their breakfasts in a bag as they enter the foyer between 7:30 and 8:20 a.m. They are permitted to eat the breakfast in the classroom or outside the building.

equipment necessary for this expansion," McKeever said. "We look forward to providing a service that can have such a profound effect on those who participate."

Citing the fact that a number of studies show that students who have eaten breakfast score significantly higher on standardized achievement tests, Tammie Potts, consultant for Dairy MAX said "In many classrooms, the more demanding subjects are taught in the morning. Students who skip

breakfast may have headaches, be disruptive or stop paying attention to the lesson when they are hungry. The school breakfast program provides the nutrients necessary to ensure they are ready to learn every school day."

Potts said that Dairy MAX's interest in seeing breakfast programs grow, with the milk that is provided through them, is rooted in a national "calcium crisis."

Pointing out that the decline in calcium intake begins early in a

child's school years, Potts said the shortage is especially prevalent among teenagers. "Nine out of 10 girls are not getting the recommended 1,300 milligrams of calcium they need each day, and seven out of 10 teenage boys are deficient," she said.

Dairy MAX oversees the aid for school food services in a four state area. All activities are funded through an assessment of about a penny on each gallon of milk produced by dairy farmers.

GREAT MOMENTS IN CHARTER CABLE TV HISTORY. JAN. 12, 2000

BY WATCHING A PROGRAM ABOUT WORLD WAR II, ARNOLD WAS ABLE TO CORRECTLY ANSWER QUESTION #8 ON HIS HISTORY TEST.

THERE'S SO MUCH TO LEARN FROM CABLE TV. AND UNLIKE A SATELLITE DISH, YOU CAN GET CABLE ON MORE THAN ONE SET IN YOUR HOME FOR ABOUT THE SAME PRICE AS ON JUST ONE TV. SO WHILE DAD WATCHES THE GAME IN ONE ROOM, ARNOLD CAN WATCH HISTORY IN ANOTHER. PLUS, WHEN YOU GET CABLE TV FROM CHARTER, LOCAL BROADCAST CHANNELS ARE NO ADDITIONAL CHARGE—UNLIKE A DISH. SO CALL TODAY, ESPECIALLY IF YOUR CHILD HAS A TEST NEXT WEEK.

Charter COMMUNICATIONS
 A W. W. RED WORLD COMPANY

For a limited time only
\$6.95 Installation
 Save up to \$33.00
 Installation offer includes up to 2 TVs in your home!

Call Today
773-3391
1-800-527-4331

Offer expires 2/29/00 and valid for new customers in wired, residential, serviceable areas only. Offer applies to standard installation in residential units of up to two outlets per household. Installation special excludes drop-bury fee for new underground construction and custom or wall fish installation. Additional installation and equipment charges may apply. Additional equipment may be required. Taxes and fees not included. Other restrictions may apply. Some networks listed may not be available in all service areas.

ON TIME GUARANTEED.
 © 2000 CHARTER COMMUNICATIONS, INC.

Best Deals on Wheels!

(Pre-Owned Cars & Trucks)

Use Your Income Tax Return as a Down Payment!

SEVERAL CARS UNDER \$200/mo \$0 DOWN
 Call for Selection

ZERO DOWN! WAC

Call Ahead!

1. Get Your Credit Pre - Approved
2. Save Time!

1-800-749-5576

TRUCKS 864-2611 **CARS**

1997 Ford F150 R/C XLT 23,000 miles
 1998 Ford F150 S/C XLT
 1997 Ford F150 S/C XL
 1996 Toyota T-100 Ext. Cab V-6 Automatic
 1996 Chevy Astro LS Van
 1997 Ford F150 R/C XL 16000 Miles
 1997 Chevy Suburban LS

1997 Escort 4 DR LX
 1994 Mercury Sable GS
 1992 Ford Tempo 4DR
 1995 Mercury Gr. Marquis GS
 1998 Ford Cr. Victoria LX Leather, Low Miles
 1999 Ford Ford Taurus SE
 2 to Choose From - Program Cars
 1994 Chrysler Concord Leather

GREAT DEALS - GREAT SELECTION!

Bill Wilson MOTOR COMPANY
FORD MERCURY
HASKELL TEXAS



CHUCKWAGON COOKOFF - WILD HORSE PRAIRIE DAYS

Congratulations

Haskell Chamber of Commerce

You've had a
Great Year in '99

Continued Success
for the Future

Complete Catering Service ~ Pizza Pro ~ Full Line Deli ~ Fuel

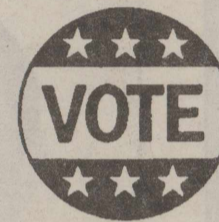
Modern Way

1202 North Avenue E

Haskell, Texas

FEBRUARY 17, 2000

64th Annual
Haskell Chamber of Commerce
Banquet



**Old-Fashioned
Political Rally**



Thursday, Feb. 17, 2000
7:00 p.m.

Haskell Memorial Civic Center

Program

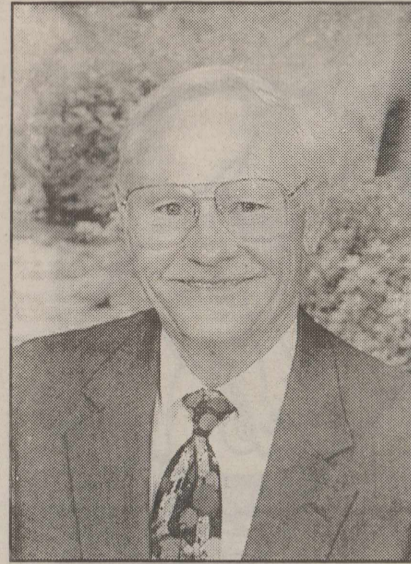
Music	Lindo Guess
Master of Ceremonies	Monty Montgomery Development Corporation of Haskell, Executive Director
Welcome	
Brisket Dinner	Gil Richardson and Chuckwagon crew
Invocation	Brett Anderson, Minister Haskell Church of Christ
Introduction of Out-of-Town Guests	Monty Montgomery
Chamber Officers and Directors/Retiring Directors	Sammy Larned
Recognition of Past Presidents	Monty Montgomery
Special Music	Lindo Guess

Citizens of the Year Award

Political Rally

Closing..... Sammy Larned

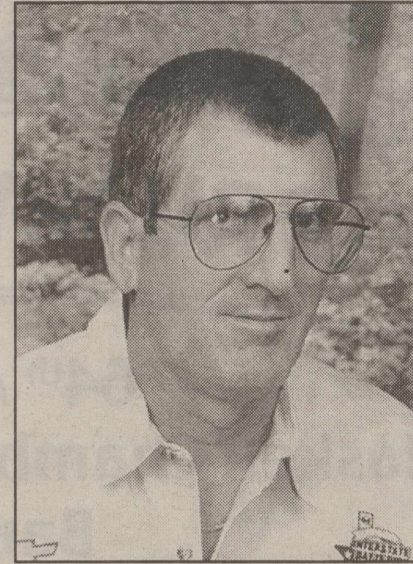
Haskell Chamber of Commerce Board of Directors



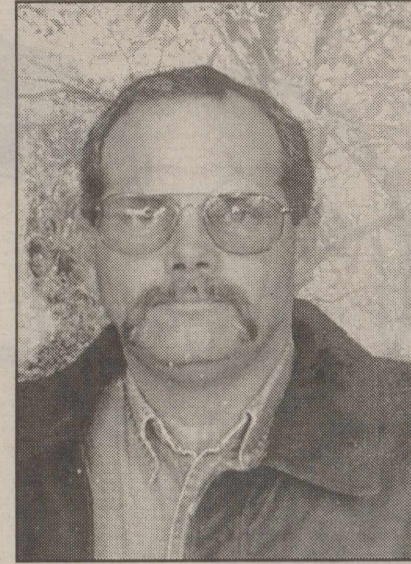
ABE TURNER



SAMMY BITNER



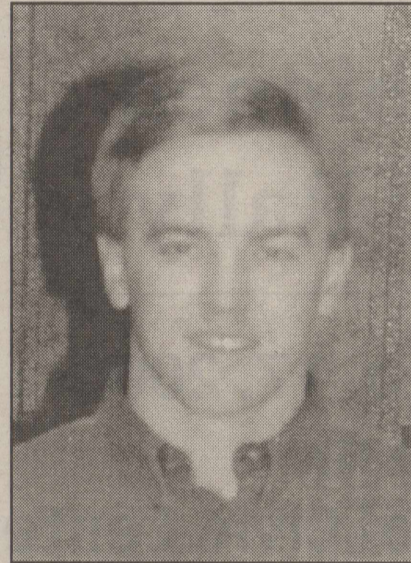
TREY BURSON



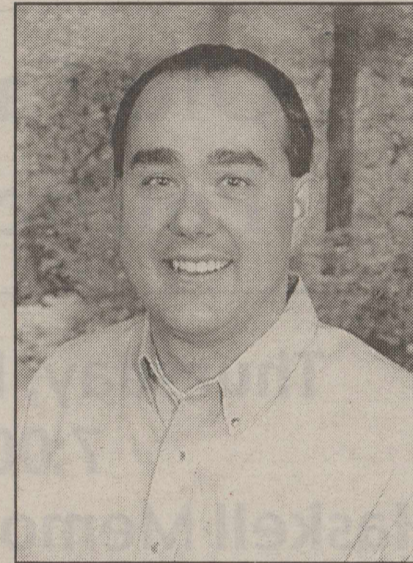
RUSSELL CARAWAY



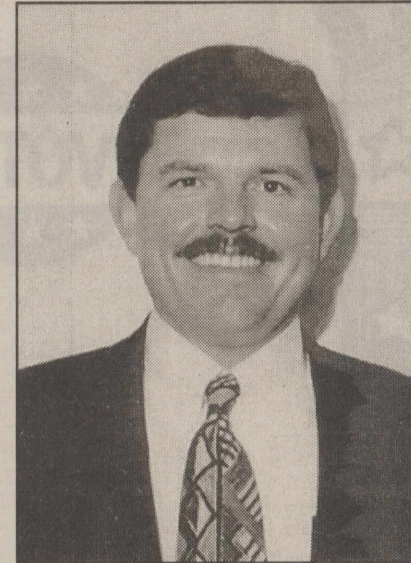
JANET EARLE



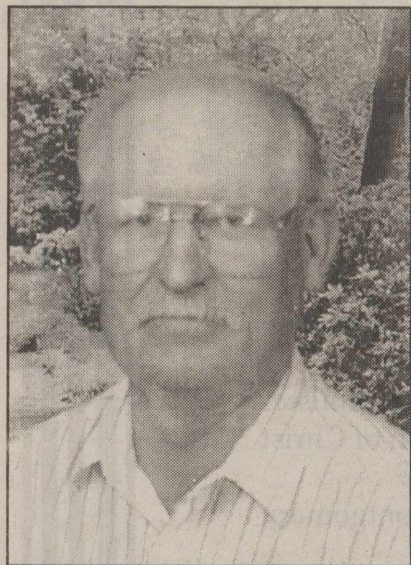
CHAN GUESS



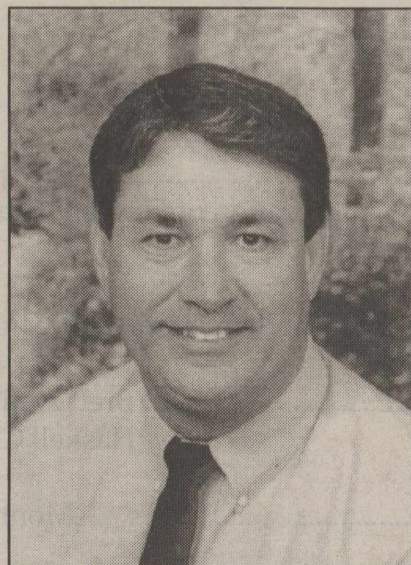
SHANE HADAWAY



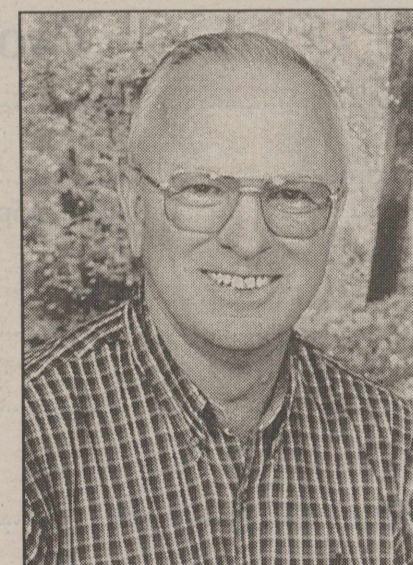
FRED HERNANDEZ



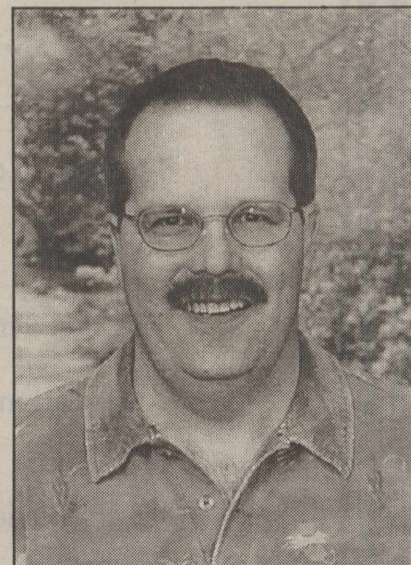
SAMMY LARNED



JIMMY LISLE



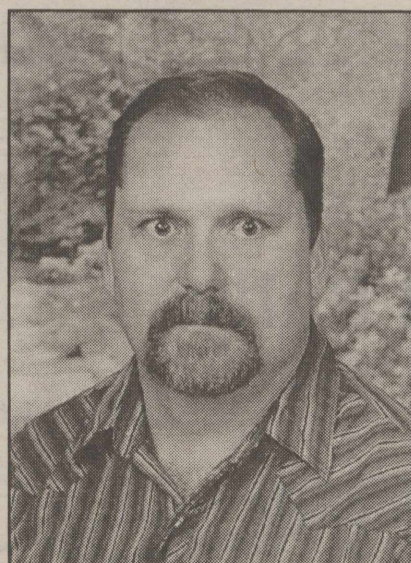
MAX McMEANS



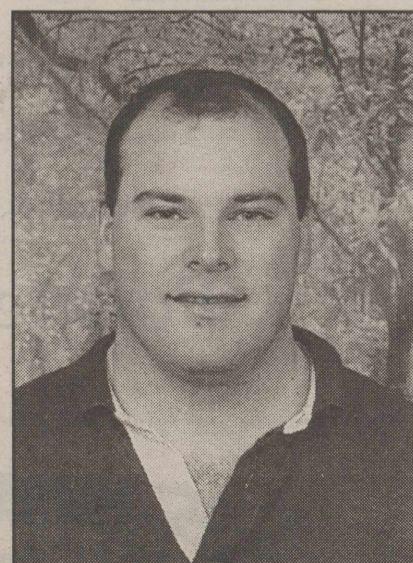
MONTY MONTGOMERY



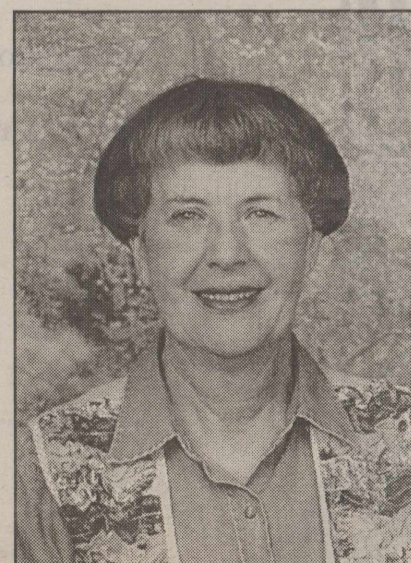
DEANNE MORGAN



GIL RICHARDSON



ROGER ROEWE

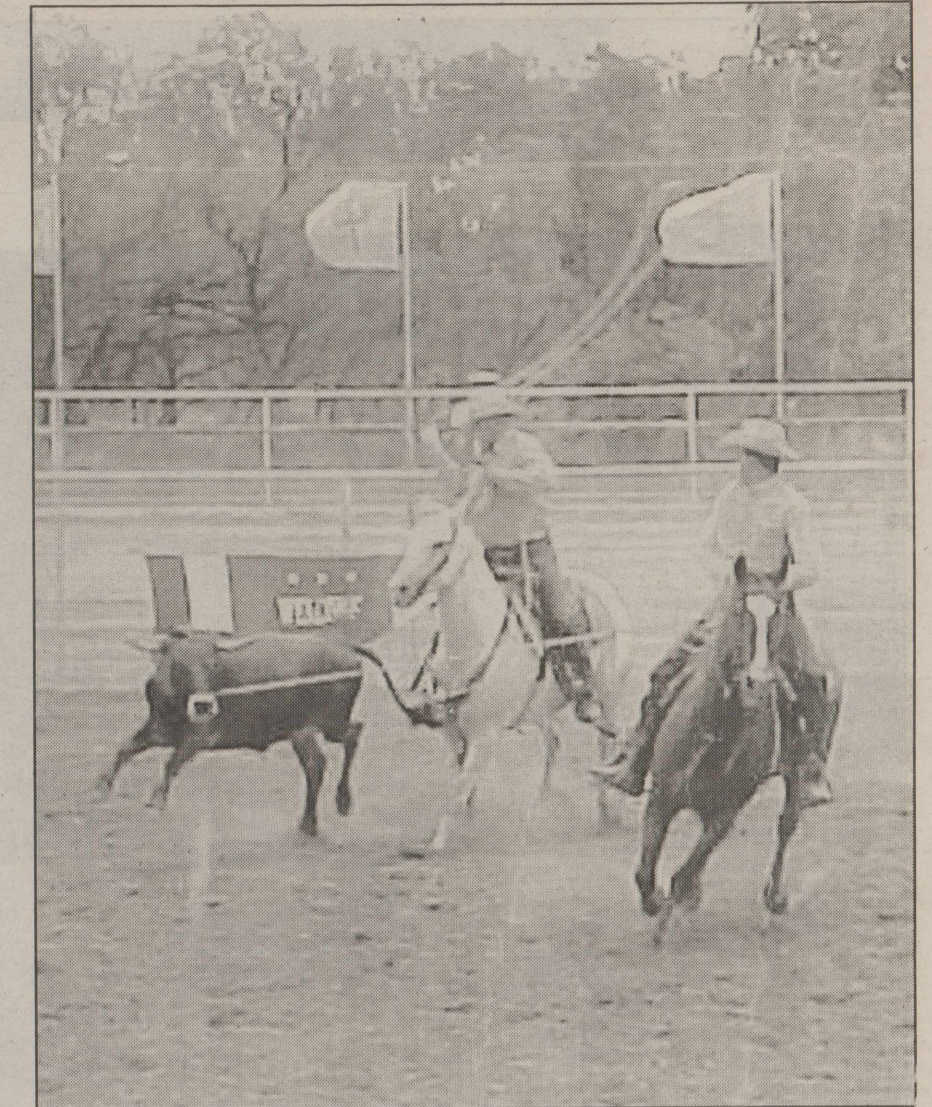


RUBY TURNER

PHOTOS BY KIS PHOTO



WILD HORSE PRAIRIE DAYS



ROPING EVENT - WILD HORSE PRAIRIE DAYS

We would like to take
this opportunity to salute the
Haskell Chamber of Commerce

*Congratulations on a year
of outstanding achievements.*

Personality-Slipper Shoppe

One-Stop-Shopping!

South Side of Square • Haskell, Texas
940-864-2501 or 864-3051

*The Haskell
Chamber of Commerce
is looking good!*

**HASKELL MEMORIAL
HOSPITAL**

864-2621 • 1 North Ave. N

We are proud
to be a part of a
progressive Chamber
Congratulations

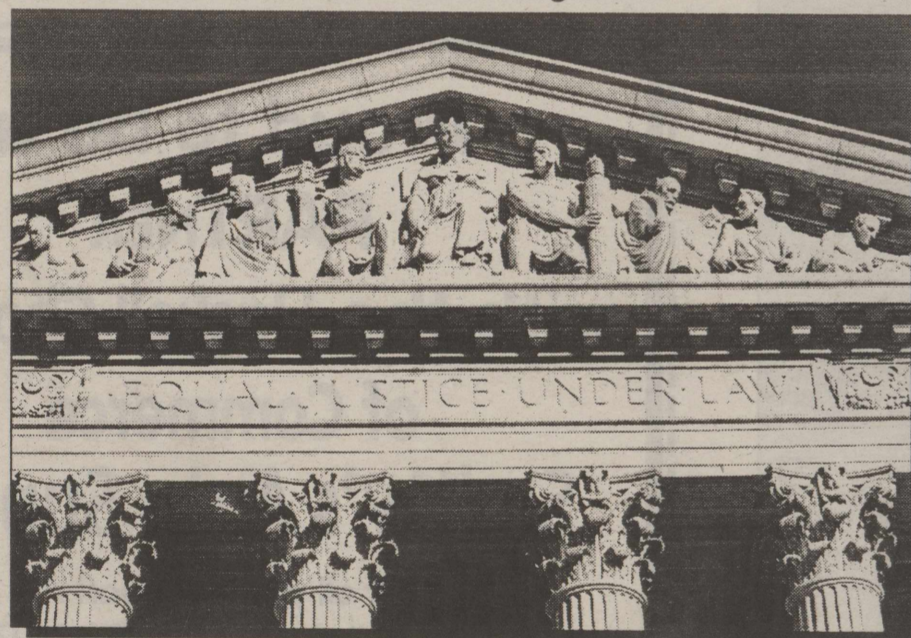
Fieldan Inn

Haskell's Finest Downtown
115 A. Ave. E, Haskell
864-2251 or 864-2568



CAR SHOW - HASKELL VOLUNTEER FIRE DEPT.

That's the
Spirit
of Community Pride!



"Everyone in our community..."

We are here to serve the financial needs of everyone in our community regardless of race, religion, social or economic background. We make the loans and investments that are needed by the individuals, families and businesses in our community. We believe in this community. We're a community bank. *That's the spirit of community pride.*



Member FDIC

First National Bank

200 South Avenue E • 864-8555 • Haskell

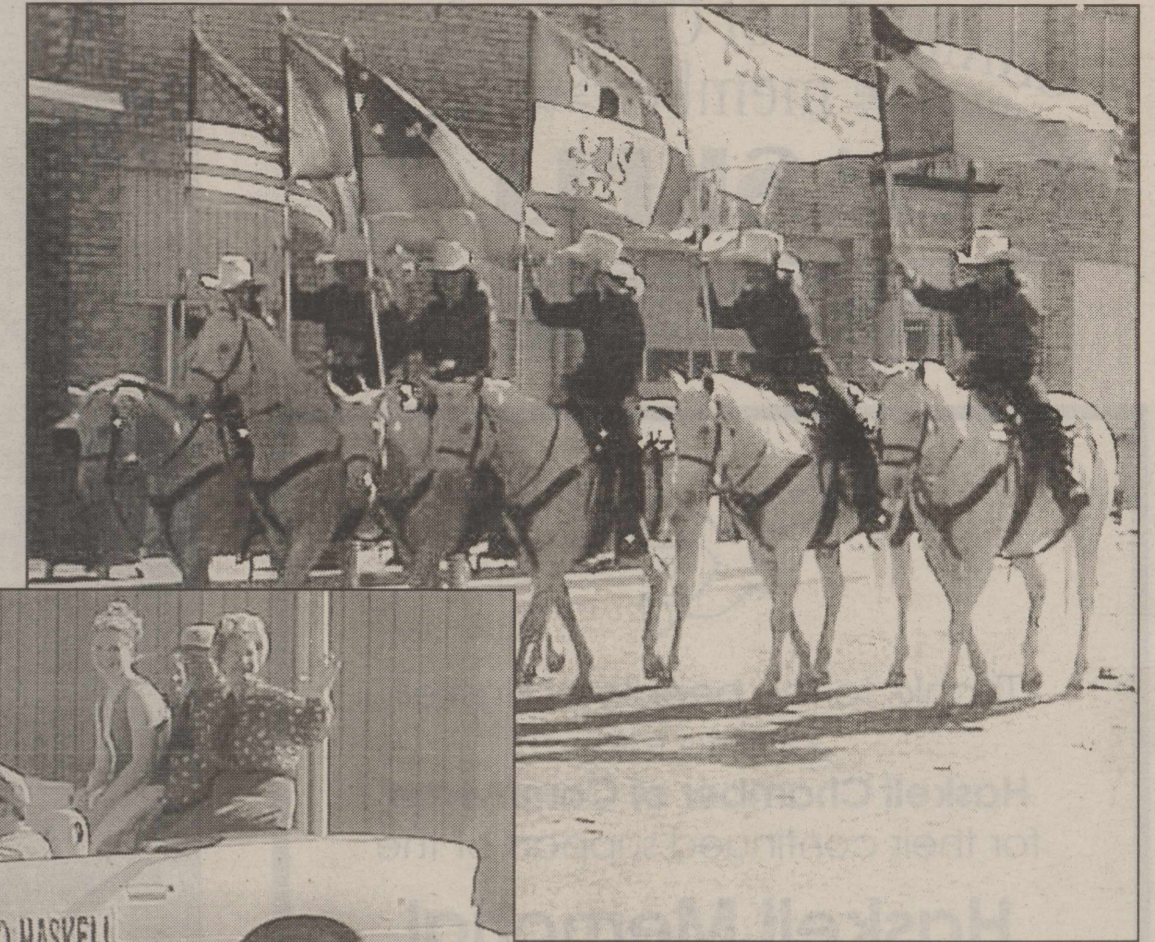
© 1993 Michaels

**2000 Haskell
Chamber of Commerce
Members**

- Bob Baker
- Band Booster Club
- Bealls
- Big Country Electric Cooperative
- Brian Burgess Insurance
- Burkett's Family Restaurant
- Cadenhead Rural Health Clinic
- CellularOne
- Charles Chapman
- City of Haskell
- Computer Solutions
- The Drug Store
- Development Corporation of Haskell
- Jill Druesedow
- Dulaney Abstract Co.
- Fieldan Inn
- First American Bank
- First National Bank
- John Fouts Law Office
- Woodrow Frazier
- Mattie Felker English
- Grand Central Place
- Hanson Paint & Body Shop/
H & R Block
- Haskell Abstract & Title Co. &
Andrew Ottaway, Lawyer
- Haskell CISD
- Haskell Co. Insurance Agency, Inc.
- Hartsfield Realty & The Carousel
- Mike and Julia Harrell
- Haskell Butane Co., Inc.
- Haskell Free Press
- Haskell Healthcare Center
- Haskell Memorial Hospital
- Haskell National Bank
- Haskell Tire & Appliance
- Haskell Veterinary Clinic
- Heads or Tails Western Wear
- Holden-McCauley Funeral Home
- Home State Bank
- Hospital Clinic
- Leon and Delight Jones
- Kay's Cleaners & Laundry
- KVRP Radio
- Lanco Insurance
- Frances Lane
- Lane-Felker
- Larned Sales Center
- Letz Builders Supply
- TXU Electric & Gas
- Medford Buick-Pontiac-GMC Trucks
- McGee's Lumber Yard
- Modern Way IGA
- Nanny Plumbing, Inc.
- Mr. and Mrs. Lynn Pace, Jr.
- Sue Pate
- Cliff Ray, DDS
- Carolyn and Sonny Reynolds
- Rice Springs Management Partnership, Ltd.
- Richardson's True Value
- Rike Real Estate
- The Slipper Shoppe/
Personality Shoppe
- Smitty's Auto Supply
- Sport-About
- Texas Cellular
- Joseph Thigpen
- Bailey Toliver Chevrolet/Olds
- Martha Toliver
- Tribbey's Real Estate/Classic
Cuts/Texaco Star Stop
- Abe and Ruby Turner
- Video Mania
- West Texas Utilities Co.
- Bill Wilson Motor Co.



**WILD HORSE PRAIRIE
DAYS PARADE**



*We Salute the
Haskell Chamber of Commerce*

**Haskell County
Insurance Agency**

In continuous operation since 1892

**417 South 1st • Haskell, Tx
940-864-2665**

**Sharing in the challenges and
responsibilities of building for the
future and perfecting the present,
we salute the members of**

**Haskell's
Chamber of Commerce**

Haskell Tire & Appliance Co.

206 S. Ave E • 864-2900

Haskell Chamber of Commerce

**...Making a positive statement
for our future**

*Congratulations on over 60
years of service to Haskell*

THE DRUG STORE

100 S. Ave. E • Haskell • 864-2515

**Congratulations
to the
Haskell Chamber of Commerce**

**on another outstanding year.
We're proud to be a part
of this fine organization.**

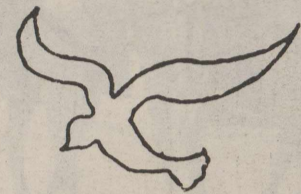


**HEADS OR TAILS
WESTERN WEAR**

707 S. Ave. E

864-3320

CHAMBER of COMMERCE
member
HASKELL
2000



Thanks to the people of Haskell
and to the
Haskell Chamber of Commerce
for their continued support of the
**Haskell Memorial
Civic Center**



SANTA CLAUS - CHRISTMAS PARADE SPONSORED BY CHAMBER

Congratulations

to an aggressive
and progressive
Chamber of Commerce

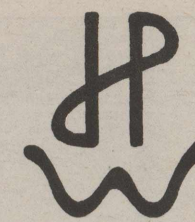
Haskell Livestock Auction

Stamford Hwy. • 864-2624 • Haskell, Tx.

You're a Credit
to the Community
and
We appreciate you!

James Castagna & Jeff Gregg
Certified Public Accountants

Seymour Office 115 W. McClain Street 940-888-5539	Haskell Office 312 N. 1st 940-864-3931
---	--



CHILDREN'S STICK
HORSE RODEO



Proud to be a
PARTNER
with the Haskell Chamber
of Commerce
Smitty's Auto Supply

"For all your auto parts"
204 N. 1st 864-2607

**We salute the
Haskell Chamber
of Commerce**

**Nanny Plumbing
Heating & Air Conditioning**
Serving Haskell Since 1949
301 S. Ave. E Haskell 864-3043

Congratulations
to
Haskell
Chamber of Commerce

The Haskell Free Press
Serving Haskell County since 1886

HASKELL

We are
proud to
be a part
of the
Haskell
Chamber of Commerce

Burkett's Family Restaurant
1006 S. Ave. E • Phone 864-8048

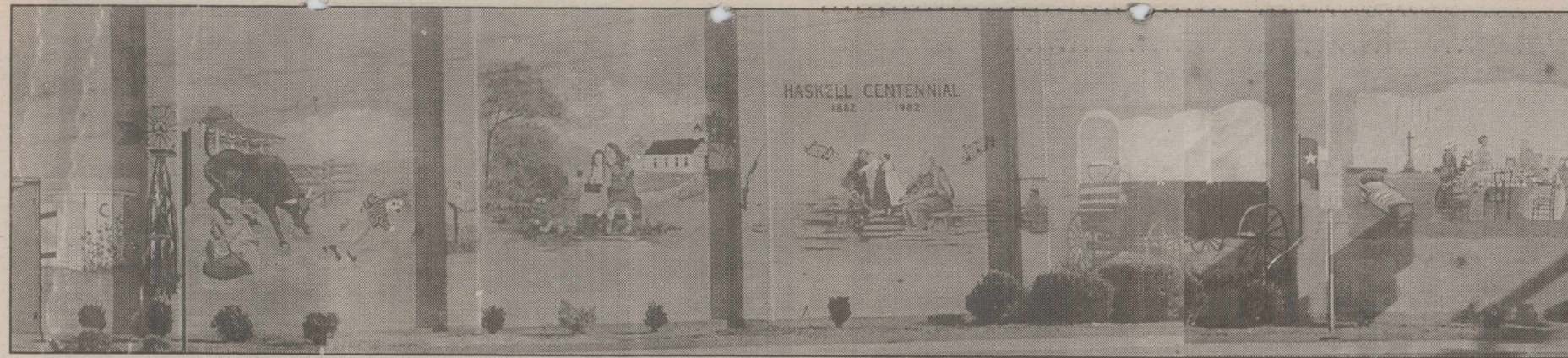
Celebrating our 55th Year in Haskell

**Congratulations to
Haskell Chamber of Commerce**
We're behind you all the way.

Ford, Lincoln, Mercury

Mon.-Fri. 8 to 5:30 Saturday 9 a.m. til noon	Bill Wilson MOTOR COMPANY FORD MERCURY HASKELL TEXAS	Visit us on our Website www.billwilson haskell.com
--	--	---

209 S. Ave. E, Haskell • 864-2611 • www.billwilsonhaskell.com.



HISTORICAL SCENE MURAL - SPONSORED BY BRAZOS WEST ART CLUB

We would like to take
this opportunity to salute the
Haskell Chamber of Commerce

*Congratulations on a year
of outstanding achievements.*

Home State Bank

Member FDIC
1-800-343-3511

410 Carruthers • Rochester • 940-743-3511
610 Columbia • Stamford • 915-773-2122

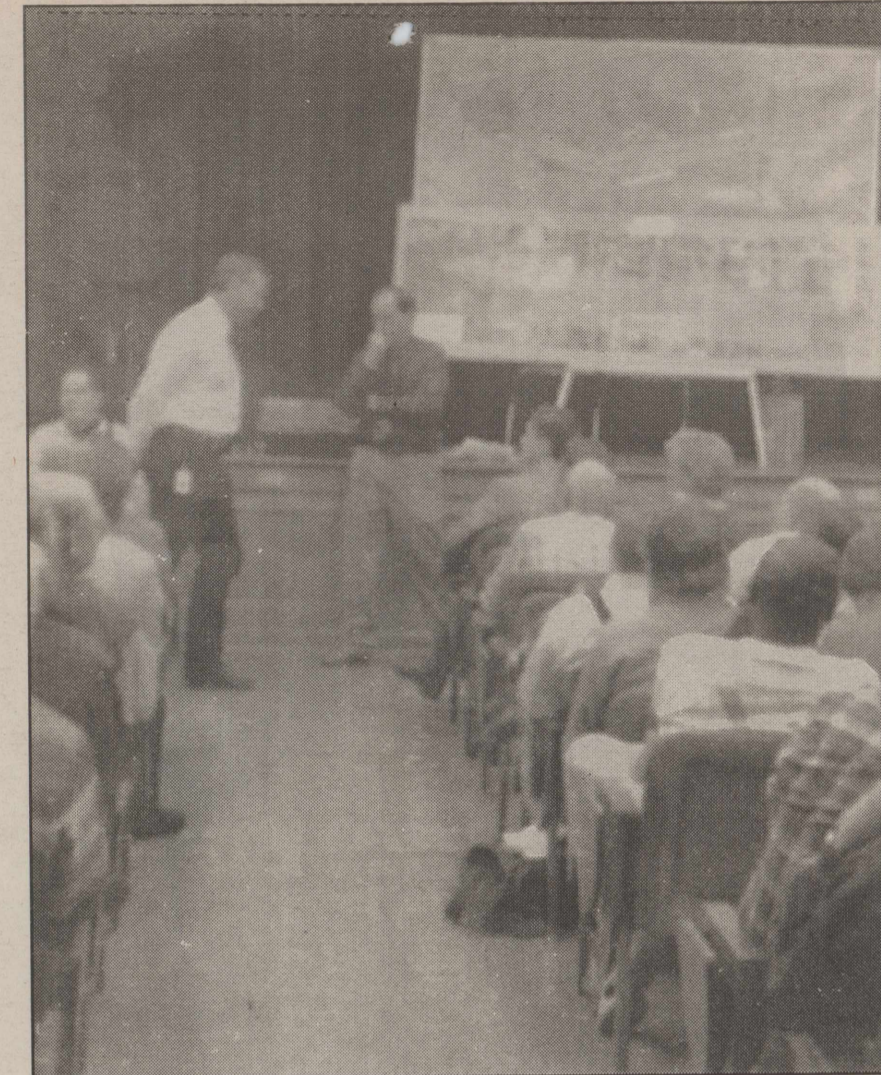
**Congratulations
to the
Haskell Chamber of Commerce**



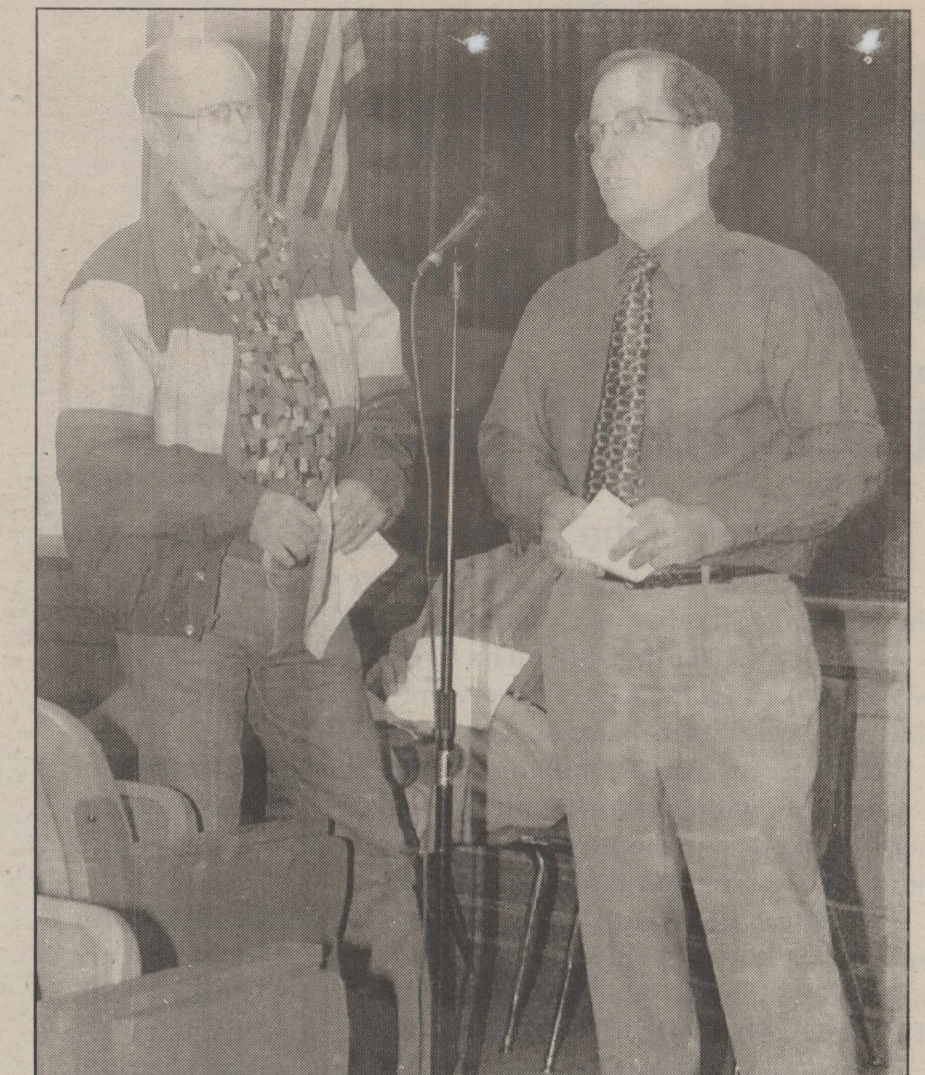
Stamford Branch
915-773-3684

Roby Branch
915-776-2244

Snyder Branch
915-573-3161



PROPOSED REROUTING MEETING FOR HWY. 277



SAMMY LARNED AND JOE HIGGINS AT REROUTING MEETING

**The Haskell
Chamber of Commerce
is #1
with us!**

"Where Winners Shop"

Sport-About
of Haskell



940-864-3891
402 N. 1st

**We are proud
to have a
Business
in the
Most Progressive Town
in the
Big Country.**



The Bevers House

on Brick Street

311 North Avenue F • Haskell, Texas 79521

940-864-3284

Abe & Ruby Turner, Innkeepers

Take a Bow!

Your deserve it along
with our best wishes!

Keep up the Good Work!

Kay's Cleaners

516 North 1st • Haskell

We're proud to be a
Part of the

**Haskell Chamber
of Commerce**

Haskell Butane Company, Inc.

Stamford Highway ~ Haskell, Texas

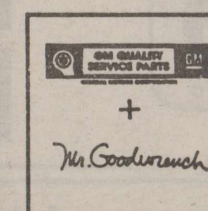
*Congratulations
to the
Haskell Chamber of Commerce*

~ We are Home Owned and Operated ~

Dulaney Abstract Company

318 North First • 864-2301

**We salute the
Haskell Chamber of Commerce**
for their continued
leadership and service
in our community.



Medford

Buick-Pontiac-GMC

200 N. Ave. E 864-2644

Thanks and congratulations
to the Haskell Chamber
of Commerce

"Plowing the way for progress"

NAPA AUTO PARTS

True Value
HARDWARE

CASE IH

Richardson Case-IH/True Value

Hwy. 277 North 864-8551

Remarks from Sammy Larned, incoming president

"Haskell is the Crossroads of Texas"

As the 21st Century has arrived here in Haskell, Texas, the Haskell Chamber of Commerce is looking for a big year for our city. Haskell is still "The Crossroads of Texas." Yes, we are very much "Alive!" We were Yesterday. We are Today. And we will for sure be Tomorrow.

We, the Board of Directors of the Haskell Chamber of Commerce, want to work with each entity in our fine city to help Haskell to become a better place to live and bring in other businesses and families to Haskell.

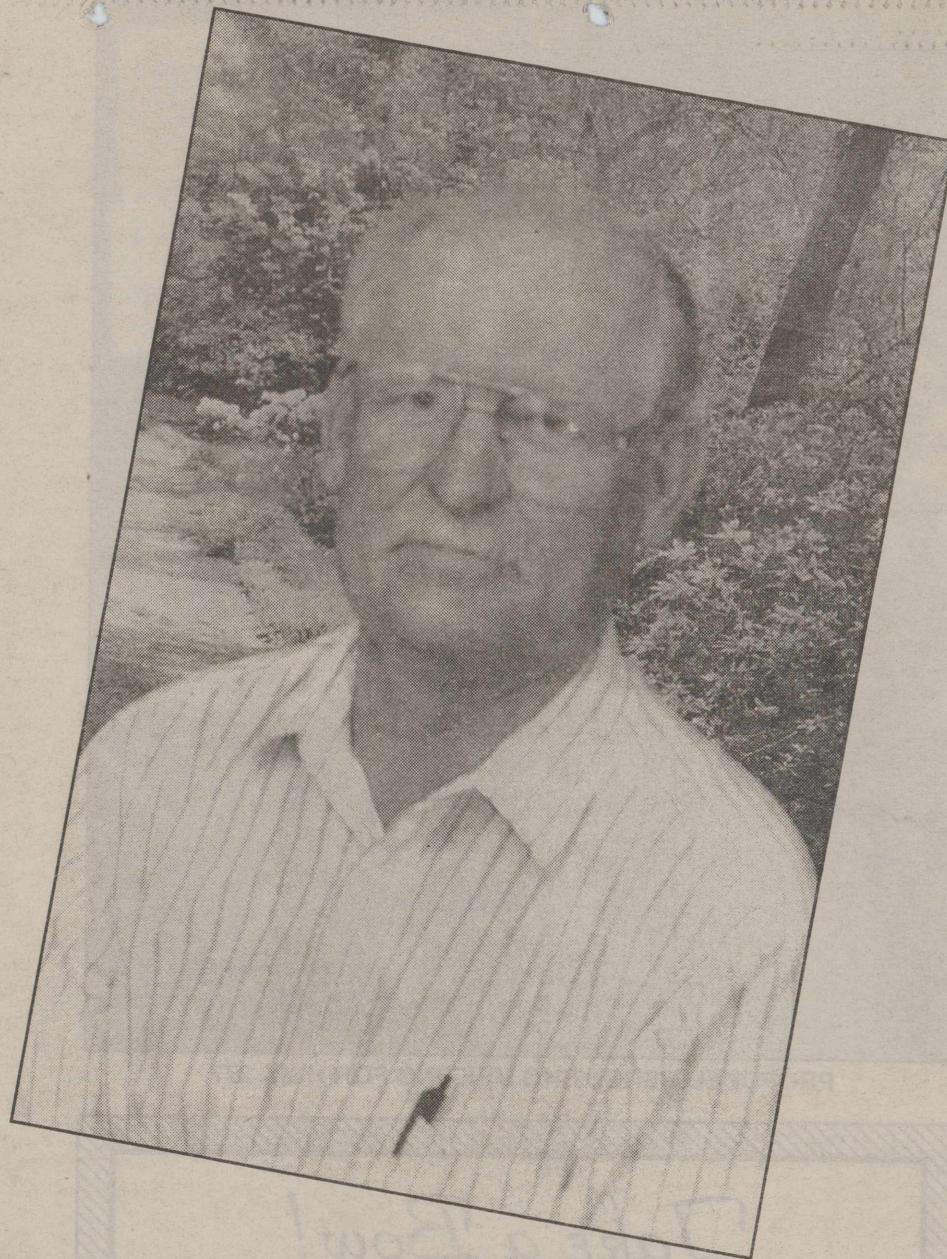
We have decided to have a good, old political rally for our annual banquet this year. This gets our political leaders and candidates to share their views about their office with the public. We also will have a good time in fellowship.

This year is another challenge for Haskell. Yes, the drought does affect everyone. But with all of us working together for one purpose in making Haskell the "Best Place" to live, yes, we will survive. The car show and Wild Horse Prairie Days have grown to become huge events for our community. We want your input for other events that would help bring more folks to Haskell.

Haskell will be the leader of many small towns this year because you, the citizens, want it that way. As you drive around in this fine city, you will find some neglected old houses, buildings and lots cleaned off by our city employees. Our county employees continue to help clean up our city and surrounding areas. Yes, we all work together for one purpose: to become a nicer place to live.

Welcome new businesses to Haskell! We want you here to be a part of us. We want you to join with us in being the place to raise your family and bring your friends. This is "The Place" to live Today and Tomorrow.

As your new president of the Haskell Chamber of Commerce, I ask each and everyone of you to get more involved in making Haskell the "Best Place" in Texas and the United



States, to live in as one huge family of citizens. I say "God Bless" to the present and future citizens of Haskell, Texas.



MISTI HENSON - WILD HORSE PRAIRIE DAYS QUEEN RUNNER-UP



BREE BURGESS - 1999 WILD HORSE PRAIRIE DAYS QUEEN

Haskell National Bank

PROUD SUPPORTER OF
The Haskell Chamber of Commerce

*Banking on the Future
Since 1890*



**Haskell
National Bank**



864-2631 • 601 N. 1st • Haskell, Tx 79521 Member FDIC

*We would like to take this
opportunity to salute the
Haskell Chamber of Commerce.*

*Congratulations on a year
of outstanding achievements.*

Larned's Sales Center

806 S. Ave. E • Haskell • 864-2749

*Everyday the
Haskell Chamber of Commerce
is working for You.*

**We're looking forward
to the future together!**

West Texas Utilities

407 South 1st • 864-2642
Haskell, Texas