

## Prather Rites Held In El Paso

Funeral services for Oscar Singleton Prather, for several years a resident of Muleshoe, were conducted in El Paso Monday. Mr. Prather, who was 63, was found dead in his bed in a hotel room in Clarendon, Texas, where he was employed in a cleaning plant. Mr. Prather's employer found the body about 7 a. m. Saturday morning and it was believed death came about 4 p. m. the day before.

He had left here about a month ago to go to work in Clarendon. He has been employed here several years with the City Cleaners and has made his home in the home of Mr. and Mrs. R. J. Klump, who were close friends.

Mr. Prather was a cousin of J. F. Prather of Muleshoe. A son, Carl, is manager of the Hilton Hotel in El Paso. A daughter also survives.

## Work Program Is C. C. Objective

The board of directors of the Muleshoe Chamber of Commerce will face a heavy agenda when convenes for its regular monthly meeting Tuesday night, September 17.

Among the decisions to be reached will be the naming of associate directors who will be the department heads for the various divisions of work to be carried out during the year, establishing a preliminary budget, and determining the next major project to be undertaken by the new organization.

The meeting has been called for 8 o'clock Tuesday night in the offices of Chamber of Commerce when W. M. Pool, Jr., president will preside.

A plan to departmentalize the chamber's activities will be presented to the board. This plan will propose that no standing committees be named but that an associate director be named to outline a program of work to promote agriculture, retail trade, wholesale trade, industrial promotion, improve transportation facilities and services, civic development and membership. Each of the associate directors have been accorded full voting powers by the board and President Pool expected to present his nominations for the seven posts for board approval Tuesday night.

A tentative budget will be presented for consideration. With no past experience on which to base estimates, the figures will be flexible for the first year, until the actual needs of the various departments have been ascertained. However, at the present time it appears that each department will be apportioned \$1000 with unused funds transferable to the departments needing additional resources.

Commenting on the need for board decision on the next major activity of the chamber, President Pool stated that his office had been besieged with requests that the chamber undertake numerous projects. "It will be up to the board to determine what shall be next on the calendar." (Continued on Back Page)

## Price Specialist Coming Wednesday

Price Specialist Sam Blake of the Lubbock district OPS office will be here next Wednesday morning, September 19 to assist business men who handle toys, games and Christmas decorations in amending their pricing charts. The deadline for filing this addition to the charts is September 29. It should be filed with the district OPS office, 1202 Texas Avenue, Lubbock, Texas.

While here, he also will assist other types of merchants who may need help or information in complying with the federal price regulations.

Under the co-sponsorship of the Office of Price Stabilization and Muleshoe Chamber of Commerce, he will maintain offices in the District Court Room; but he will make personal calls of merchants if they will get the request to him.

Merchants of this area are invited to call on the OPS representative for the information they need. Present plans call for a day of each week throughout the month to be held here on the same September.

LOCAL MARKETS	
Cream, lb.	63c
Eggs, doz.	38c
Hogs, cwt.	\$20.00
Light Hens, lb.	16c
Heavy Hens, lb.	19c
Kafir, cwt.	\$1.90
Wegari, cwt.	\$1.90
Maize, cwt.	\$1.90
Wheat, bu.	\$2.10

# The Muleshoe Journal

DEDICATED TO THE PROGRESS AND DEVELOPMENT OF BAILEY COUNTY AND THE GREAT MULESHOE COUNTRY  
Volume 29, Number 38 MULESHOE — County Seat of Bailey County — TEXAS Thursday, September 13, 1951

## Chamber Of Commerce Lists Many New Members - Budget \$10,000 Year

**John Gammons and Lee Pool carried off top honors in the whirlwind membership drive conducted by the Muleshoe Chamber of Commerce last Friday.**

Working as a team, Gammons and Pool signed up 16 new members who pledged a total of \$1,100 in the drive that netted 48 new members and added almost \$3000.00 to the operating budget.

Jim Cox and Herb Covin ran the leaders a close race to capture second place with 15 members enrolled for pledges totaling \$798.00.

Closely bunched behind the leading teams were Houston Hart and Loyd Roberts who won the distinction of signing the largest single pledge received during the short intensive campaign.

Working to raise the annual budget of \$10,000.00 the five teams succeeded in raising over 75 percent of the amount requested by the Budget and Finance Committee.

"Although the teams tried hard to contact every prospective member in the few hours they worked, we still have approximately 40 more business houses and concerns to contact," President W. M. Pool, Jr. stated as he congratulated the teams on the fine work accomplished.

**Response Gratifying**  
"The response these workers received was most gratifying," Pool added, "it justified the opinions of the organizers of the present chamber of commerce, who felt that an organization such as we are now building was urgently needed if Muleshoe was to continue to grow and develop."

"We still feel that \$10,000.00 is needed to carry on a program the size we want, and do it without the necessity of repeated special fund campaigns. We are in hopes that we can raise our full budget in a short drive each year, so that we can utilize our manpower for civic development."

"After all," he concluded, "the chamber of commerce is a service organization, not a fund raising agency, and we want to devote our time and efforts to carrying out a program of work that will benefit the entire county."

Included in the companies not contacted or enrolled as members were many concerns with out of city headquarters or home offices. These are being contacted by mail through their local representatives.

All of the members working on the drive were confident that before the final reports were in that the goal would be reached.

**Members Are Listed**  
A complete list of chamber of commerce members is as follows: Alsop Insurance Agency, S. D. Anderson, B. Z. Beaty, Blackburn Food Market, Bob Burkett, C. & H. Chevrolet Co., City Cleaners, Bill Collins, Covin Motor Co., Damron Drug Store, J. E. Day, Morris Douglass Implement, Edwards Gin, The Fashion Shop, Fry & Cox Bros., Gilbreath Seed and Grain.

L. T. Green, Jr., Ray Griffiths Elevator, Harper Appliance Co., E. R. Hart Co., Higginbotham-Bartlett Lumber Co., Holton Oil Co., Hunke's Gift Shop, Johnson Furniture Co., Jones Farm Store, Kingery & Shelby, Eddie Lane Real Estate, Leo Laux Welding Co.

Bailey County Abstract Co., Bass Firestone Store, Benton Food Market, Bovell Motor Supply Co., Cashway Grocery, W. A. Chittwood, Cobb's Dept. Store, S. E. Cone Elevator Co., Cross Roads Cafe, Davis & Lenderson, Double R Garage, Dyer Hardware Co., Evans Oil Co., Sam E. Fox, John Gammons.

Goss Conoco Service, R. M. Gregory, Guinn's Body Shop, Marlon F. Harris, Heathington Lumber Co., H. C. Holt Oil Co., C. E. Howard, John's Custom Mill, Johnson & Pool, James W. Kelley, Lambert Cleaners, Lariat Gin, Charles L. Lenau Lumber Co.

A. E. Lewis, J. A. McGee, Malone Milk Co., Arnold Morris Auto Co., Muleshoe Compress and Warehouse, Muleshoe Food Market, Muleshoe Implement and Supply Co., Muleshoe Laundry, Muleshoe Locker Co., Oliver Equipment Co., Piggly Wiggly, Pop's Cafe.

Ray's Service Station, Russell Supply Co., D. H. Sneed Supply Co., St. Clair Stores, Sue's Beauty Shop, Wagon Grocery Co., West's Post Office Cafe, Western Drug, Western Jewelry Co., Willson & Sanders Lumber Co., Wood Drug Store.

McCormick Upholstering Co., Mack's Barber Shop, Moore's Laundry, Muleshoe Abstract Co., Muleshoe Canning Co., Muleshoe Floral Co., Muleshoe Funeral Home, Muleshoe Journal, Muleshoe Liquefied Gas Co., Muleshoe Motor Co., Paymaster Gins, Muleshoe Automobile Co.

Pool Insurance Agency, Dr. B. R. Putman, I. H. Robinson, Sikes Motor Co., Southwestern Public Service Co., Strong Garage, Cecil H. Tate, Wellborn Beauty Shop, Western Auto Store, Western Fertilizer Co., Wiedebush and Childers, Woodley Insurance Agency, Yellow Jacket Inn, Muleshoe State Bank, Nelson and Vaughn Service Station, Berry Electric.

## St. Clair Is City Golf Champ, Tournament To End Next Wed.

Lowell I. St. Clair won the city golf championship Wednesday by defeating Rex Carroll, of Earth, 1 up in the Muleshoe golf tournament that is underway here now. St. Clair is the first to win this crown, since it is the first tournament staged here by the newly organized Muleshoe Golf Club.

Noel Woodley won medalist honors by winning over Carroll.

## Our Honor Roll

- New subscribers to The Journal in the last few days are: Tom P. Smallwood, city. A. H. Davis, Kentucky. Jim Johnson, Evanston, Ill. G. W. Lebow, city. Mrs. John Barnes, Maine. Charles Roark, Baylor U. Old subscribers who recently have renewed their subscriptions are: N. L. Saylor, Route 2. E. A. Seaton, Route 1. Albert R. Davis, Route 2. Joe Shipman, city. J. M. Murrah, Route 2. Oscar H. Davis, Rt. 3, Lubbock.

Read The Journal Want Ads

## School Paving Bond Election Sept. 22

### Poland China Gilt Show Scheduled Here Friday Afternoon at 5 O'clock

### Junior High To Play Littlefield

The Muleshoe Junior High and the Littlefield Junior High football teams are scheduled to clash this afternoon at 3:30 p. m. at Littlefield, with approximately 48 or 50 players from Muleshoe making the trip.

Coach Ted Cummings announced the starting line-up as: Player Pos. Wt. John Gilbreath C 122 Bob Nelms RG 124 R. L. Gabert LG 141 Charles Peace RT 157 Phillip Jennings LT 152 James Elder RE 160 Lewis Blaylock LE 150 Eugene Shaw QB 102 Keaton Sneed FB 154 Charles Waggoner LH 137 Tony Pierce RH 125

Manager of the squad is Jimmy Pruitt.

### Blocked Punt Leads To Loss First Game - Mules Play Hereford Friday

The hard-fighting Muleshoe Mules dropped their first opening game of the 1951 grid season to the Olton Mustangs here Friday night before a crowd of some 2,000 people in the Benny Douglass Stadium.

Friday night the Mules will tangle with Hereford. The Mules are expected to show a rugged defense as well as new spark on the offensive after this week's practice and the nervousness of the first game has worn off.

The Mules and the Mustangs held each other scoreless during the first half of the game, with the Mules holding the upper edge and never allowing the Mustangs past the 50-yard marker. Muleshoe threatened to score several times, penetrating the Mustangs 20 yard line twice in the first half.

Rain in the first half of the game caused a slippery field and ball in and in the third quarter the Mules attempted to punt out of a tight spot on their own four yard line and fumbled the ball. Bobby Copeland, right end for the Mustangs, recovered the ball for six points behind the Mules goal line.

The Mules line held solid during the remainder of the game, although the rainy weather wrecked an aerial offense started earlier in the game.

### High School PTA To Meet Monday

High school P. T. A. will meet Monday night, September 17, at 8 o'clock in the high school auditorium.

Parents are urged to attend this meeting because some important business concerning the year's projects will be taken up. Projects for the year for the organization will be discussed. Mrs. Noel Woodley will be the principal speaker.

### Rotary Governor Will Visit Here

The Rotary Club of Muleshoe on October 27 will be host to P. F. Bridgewater, of Midland, Governor of the 183 District of Rotary International, who will be making his annual official visit to each of the 37 clubs in this West Texas district.

Mr. Bridgewater will attend the luncheon of the club at noon and that evening will be the speaker at a meeting of the club members and their guests.

During the day he will confer with President Bud Holton and other officers and directors and committee chairmen. Each committee chairman will have a report of the work that he has done and that is planned.

Mr. Bridgewater is secretary and treasurer of Midland Federal Savings & Loan Association and is a member of the Rotary Club of Midland. He is one of 203 Rotary District Governors supervising the activities of some 7,300 Rotary Clubs which have a membership of 350,000 business and professional executives in 83 countries and geographical regions throughout the world.

Mules	First Downs	Ofton
9	9	9
143	Yds. rushing	145
3 for 115	Punts	2 for 60
9	Passes att.	5
7 for 55	Penalties	7 for 65

## First Bale For '51!

### Hospital News

Mrs. R. J. Tinney of Albuquerque was in for minor surgery. She has gone to the home of her sister, Mrs. Joe Embry.

Thurston Barnett was in for medical care. He has gone home.

Arthur Charles Splawn, son of Mr. and Mrs. Howard Splawn was in for observation. He has been discharged.

Mrs. C. S. Otto is still here and doing about the same.

Mrs. Matilda Neal is improving and will soon go home.

Johnnie Angel of Enochs was in several days with an infected hand. He has gone home.

Bailey County's first bale of cotton from the 1951 crop will be auctioned off at a public sale to be conducted on Main Street in Muleshoe the coming Saturday, Sept. 15. A local cotton classifier will sample and class the bale prior to the auction.

Alex Reid, who farms about 4 miles southwest of Baileyboro, is the grower of the first bale to reach a gin in this county this season. The bale was ginned at the Shafer & McDonald Gin 3 miles west of Baileyboro on Wednesday of this week.

Mr. Reid had 1700 pounds gross which yielded 455 pounds of lint cotton. Lewis Shafer of the gin company said he thought that the bale would grade strict middling and that the staple length would be about 13 sixteenths.

The bale was grown on dry land and the heat of recent days probably helped opening along.

**NEW DRIVE-IN CAFE OPENS THIS WEEK**  
Ginger and Bill Toombs, formerly of Midland, Michigan, are announcing the opening of the "Rainbow Drive-In" on the Morton highway, north of the courthouse.

The Rainbow will feature complete curb service, lunches, steaks, short orders and all drinks.

Mr. Reid, who farms on the Hale County School Lands, has about 400 acres of cotton, some of it believed to be capable of yielding one third of a bale to the acre.

As has been the custom for several years, Reid will receive recognition and a special bonus for his achievement.

At the request of the ginner, Shafer and McDonald, and several of the business houses in Muleshoe, the chamber of commerce will arrange the presentation event.

This will be in the form of an auction sale to be conducted at 4 o'clock Saturday afternoon on Main Street. At that time qualified cotton buyers will grade the sample and bid in the bale at its true market value.

**Auction Explained**  
Then the representatives of participating business houses will raise the price a cent or more a pound, paying only the difference between their bid and the price immediately preceding their bid. In other words, for each cent a pound increase, the bidder will contribute \$4.55 to the bonus fund Reid will receive. When the bidding is closed any other cash, merchandise or service contributions will be presented to the Reid family.

Lewis Shafer is conducting the fund raising campaign and at press time it appeared that the fund would raise the price to more than 50c a pound.

W. M. Pool, Jr. Chamber of Commerce president and other civic leaders are expected to participate in the presentation ceremonies. Musical entertainment will be furnished by the Muleshoe Range Riders, local string band that did much to publicize the recent round-up.

**BIG WHEELS**  
SEE PAGE 5

# Annual Flower Show Sept. 20

"The Garden Gate" will swing open Thursday afternoon, Sept. 20, at 3 o'clock in the American Legion Home and will remain open until 8 p. m. Tickets are priced at 50 cents for adults and 25 cents for children.

Using the theme "A Day in the Garden," the show will be divided into four major classifications: an educational exhibit, junior exhibit, flower arrangement, and horticulture.

Mrs. Robert King, president of the Garden Club, hopes the local people will help to make the

show a success by entering an exhibit. Out of town judges have been secured and the following schedule will be used:

### RULES FOR THE SHOW Exhibitors:

1. Entries are open to the public. Men are especially invited.
2. All members of the Muleshoe Garden Club are required to enter at least on arrangement.
3. The Junior Division is open to those under 18 years of age.
4. Juniors are encouraged to enter any other classes in the

show, in regular competition.

### Plant Material:

5. All plant material must have been grown in Muleshoe Trade Territory.
6. All horticultural entries must have been grown by the exhibitor or have been in her possession two months.
7. No artificially colored plant material may be used.
8. Arrangements may not be removed from the display room before 8:00 p. m. but must be removed by 9:00 p. m.
9. Correct variety names should be given in all possible cases.

### Judging And Awards:

10. Exhibits will be scored according to the standard system of judging, with only one first, one second, and one third place possible in each class.
11. Sweepstakes ribbons will be given to the best arrangement in the show; to the exhibitor scoring highest on horticulture (blue, 3 points, red 2 points, and white one point) and to the best Junior exhibitor.
12. During the judging, only these officials will be admitted to the show room: Judges, clerks,

chairman of judges committee; awards chairman; and flower show chairman.

### Entries:

13. Entries must be brought to the Legion Home between 8:00 a. m. and 10:00 a. m. Sept. 20, 1951. Late entries will not be judged.
14. The Entry and Classification committee will make final decisions as to whether plant material is eligible for competition.

### Containers And Accessories:

15. The club will furnish uniform containers for all horticultural entries.
16. Exhibitors must furnish containers for the flower arrangement and will be responsible for them.
17. Plant supports and aids may be used in arrangement classes if inconspicuous, and if they are harmonious also use of accessories where suitable, is encouraged in all arrangement classes.

### DIVISIONS OF THE SHOW

- I. Special Exhibits and Educational Features - Non-competitive.
- A. Display by Home Demonstration Agent and County Agricultural agent.
- B. Local Florist Display.
- C. Commercial Display.
- Collectors and Hobbies Corner.
- II. Junior Exhibits - Competitive.
- A. Arrangement made by elementary school pupil unassisted.
- III. Potted House Plants - Competitive.
- A. Potted Ivy. Must have been in exhibitor's possession for at least one year.
- B. Any other house plant grown by exhibitor or in her possession for one year.

### IV. Flower Arrangement.

#### A DAY IN THE GARDEN

- A. Down the garden path in the morning . . . . .
  1. Mist of white - all white flowers in white container.
  2. Novices - open class - any type of arrangement.
  3. Monochromatic - foliage permitted.
- B. Mid-morning by the pond. Brunch.
  1. Centerpiece arrangement suitable for table seating eight, to be viewed from both sides.
  2. Companion arrangement in sugar and cream pitcher.
  3. Coffee table arrangement.
  4. Arrangement in an ash tray 6 to 14 inches for smoking stand.
- C. Afternoon
  1. Roses-in silver or glass container, suitable for formal tea table.
  2. Tea cart arrangement using only one flower (foliage permitted).



From where I sit ... by Joe Marsh

## Easy Makes His "Cat" Tread Lightly

Driving home on Three Ponds Road yesterday, I was flagged down by Easy Roberts' boy Skeeter. "Take it slow," he advised. "Dad's crossing this road with our tractor, just beyond the bend."

Around the curve I saw why Skeeter stopped me. Easy had laid two rows of old truck tires across the road, and was driving his new "Cat" tractor over them!

"More trouble this way," Easy explains, "but it does keep those tank tracks from tearing up the asphalt when I have to cross over to our other fields. After all, the

roads belong to all of us—and I guess I'd get mad if someone else chewed them up."

From where I sit, Easy is my kind of citizen. He doesn't just give democracy lip service. He honestly believes it's his duty to consider the other fellow's interests. Whether it's the right to use the public highways or the right to enjoy an occasional glass of beer, Easy's out to protect his neighbor's "right of way."

Joe Marsh

Copyright, 1951, United States Brewers Foundation

# Attention

## Muleshoe Automobile Co.

Wholesale Distributors In This Area

### Amalie Oils & Greases

See Us For Your Lubrication Needs

Plainview Hiway, N Ave. B Phone 271-J

**Our modern home loan plan allows you to pay off the loan with rent-money**

**Prompt service**

FOR INFORMATION SEE  
—In—  
**MULESHOE**

Mildred Davis  
Western NFLA  
Building  
Muleshoe

**FIRST FEDERAL SAVINGS AND LOAN ASSOCIATION**  
Clovis, N. M. P. O. Box 470

## Texas Trends

dallas fashion center



Chaiken of Dallas ties his green velvet slip jacket in with a me... wear striped skirt by using a flange belt of green velvet. The separates make a suit with a crisp bow blouse of taffeta. Also in black with a white blouse.

## COURTHOUSE RECORDS

A. M. Green, dba Green Supply Co. to Dan Hall, et ux, lots 5 thru 8, blk 4, Original town of Enochs... \$10 and other valuable considerations.

G. H. Davenport to J. E. Lew-Richards, W 1/2 lots 1 and 2, blk. 18, Original Town of Muleshoe, \$3350.

G. H. DDavenport to E. Lew-Allen, E 45 ft. of lots 22, 23, and 24, blk. 16, Original Town of Muleshoe, \$2950.

G. A. Sahli to John Bell, S 1/2 of SW 1/4 Sec. 30, blk. Y, \$1.00 and

other valuable considerations. Morris Douglass to H. D. King, lot 3, blk. 5, Hillcrest addition No. 2, Muleshoe, and SW 25 ft. lot 2, Tate's subdivision, block 5, \$1,700 and other considerations.

Lee R. Pool to J. C. Terrell, lot 33, out of Lathy's Acres, \$10 and other considerations.

Rufus N. Gilbreath to Guy Nickels, lots 1 to 12, blk. 1, Bule-shoe, a 290 by 726 ft. tract out of Sec. 54, blk. Y, W. D. & F. W. Johnson subdivision No. 2, \$10 and other valuable considerations.

Guy Nickels to Rufus N. Gilbreath, E 1/2 of NE 1/4 Sec. 23, blk. X, \$20,000.

## Increase Draft Quota For Texas

AUSTIN, Sept. 12.—State Selective headquarters was notified to increase the Texas draft call for October from 742 to 807 men, Brig. Gen. Paul L. Wakefield, state director of Selective Service, said.

Notification came by telegraph from national Selective Service headquarters.

"Our increase for October is only 65 men," General Wakefield commented, "and will be easily filled. We are ready for much bigger increases if the nation needs men."

The increase of 65 men is the Texas share of a national increase of 3,600 men. Original October call for the nation was 41,000. Adjusted call is 44,600.

As a result of adjustment in the state call, 15 local boards in 11 Texas cities are scheduled to receive a slight adjustment in their October calls.

Boards to receive an increase are located in San Antonio, Ennis, Galveston, Baytown, Beaumont, Prot Arthur, Lubbock, Waco, Bowie, Sweetwater, and Orange. Adjusted calls are scheduled to be mailed today by state headquarters.

General Wakefield explained that such a small increase in a call cannot be equitably divided among 137 local boards and that adjustments have to be made later.

# I SELL

## NEW and USED VACUM CLEANERS

ALSO  
**REPAIR ANY MAKE**

ALL WORK GUARANTEED

T. P. SMALLWOOD — PHONE 248-W  
1306 6th Street Muleshoe

**COX**

## DRIVE-IN THEATRE

Program  
OF FINE ENTERTAINMENT!

Sun. & Mon., Sept. 16 & 17  
**BORN YESTERDAY**  
Judy Holliday & William Holden

Tues. & Wed., Sept. 18 & 19  
**THE FURIES**  
Barbara Stanwyck & Wendell Corey

Thurs. & Fri., Sept. 20 & 21  
**JACKPOT**  
James Stewart & Barbara Hale

Saturday Only, Sept. 22  
**KANSAS RAIDERS**  
Audie Murphy & Brian Donlevy

**MULESHOE TEXAS**

# largest in its field!

Longest in its field (197 1/2 inches) . . . Heaviest in its field (3140 pounds in the model illustrated) . . . Widest tread in its field (58 1/2 inches between centers of rear wheels) . . . all of which means extra comfort, extra safety and extra durability for you and your family.

†Styleline De Luxe 4-Door Sedan shipping weight.



The Styleline De Luxe 4-Door Sedan (Continuation of standard equipment and trim illustrated is dependent on availability of material.)

# finest in its field!

# lowest-priced line in its field!

With all its finer quality and finer features, Chevrolet offers the lowest-priced line in its field—extremely economical to operate and maintain. Come in, see and drive America's largest and finest low-priced car—now!



**CHEVROLET**

MORE PEOPLE BUY CHEVROLETS THAN ANY OTHER CAR!

... and finest no-shift driving at lowest cost with

## POWER Slide

Automatic Transmission\*

Chevrolet's time-proved Powerglide Automatic Transmission, coupled with 105-h.p. Valve-in-Head Engine, gives smoothest and finest no-shift driving at lowest cost—plus the most powerful performance in its field!

\*Combination of Powerglide Automatic Transmission and 105-h.p. Valve-in-Head Engine optional on De Luxe models at extra cost.

# C. & H. CHEVROLET CO.

MULESHOE, TEXAS



## Amazing Mileage!

Round up more mileage! Corral more power! Don't depend on a maverick brand, when you can get bronco getaways—pure-bred pep and performance with Conoco N-tane Gasoline. It's easy riding! Try it!

For Amazing Mileage, see your Conoco Mileage Merchant for CONOCO N-tane GASOLINE



CONTINENTAL OIL COMPANY

Copyright 1951, Continental Oil Company

CONOCO AGENT

## R. R. "Bud" HOLTON

CALL 28 COLLECT MULESHOE

### Marines Had Big Time At Muleshoe During Round-Up

Col. Albert F. Metzke, who headed a party of Marine officers and non-commissioned officers that attended and took part in the Will Rogers Memorial Round Up here Aug. 30 has written Chief Jones a letter telling of the keen enjoyment of all of them of their visit here. Especially they enjoyed being selected to pick "Miss Muleshoe" as his letter attests: Capt. Forrest W. Jones, USMCR, Muleshoe, Texas. Dear "Chief": Many thanks again for all the parties which were extended to me and the officers and men who accompanied me to Muleshoe for the Will Rogers Memorial Round Up. Nothing could have made our trip more enjoyable and

I regret that it was impossible to stay for the second day of the Round Up. All members of the party have more than once remarked on how much they enjoyed the entire proceedings. I would like to extend my personal appreciation to all the many grand people we met in Muleshoe during our stay and especially to those responsible for extending the invitation to the Marines to assist in putting the first edition of the Round Up over with a bang. We all considered the show a great success and shall be ready to lend any possible assistance on any future editions you might plan. Being a Marine yourself, you can appreciate the enjoyment Col. Johns, Major Bale and myself derived from being selected as the judges in choosing "Miss Muleshoe of 1954." Our only regret is that we only had one "Miss Muleshoe" to pick for you. To those who must have been disappointed in not winning the title, we can, however, offer them another honor and that is an enlistment in

### Shower Honoring Jayne Damron Given Thursday

Miss Jayne Damron, bride-elect of Jimmie Reese, was honored with a shower Thursday evening in the home of Mrs. O. D. Ray. Hostesses were Mesdames R. L. Jones, George Johnson, W. B. Wagnon, W. B. McAdams, Naomi St. Clair, R. L. Hobbs, Jesse Osborn and O. D. Ray. The serving table, laid with a lace cloth, was centered with an arrangement of pink and purple asters, flanked by candles. Fresh cut flowers were throughout the entertaining rooms. Mrs. John Smith and Miss Billye Jones served. Mrs. Naomi St. Clair presided at the guest book.



This scene is repeated every five minutes on some American farm.

Here a barn goes up in flames. On another farm it is the home, and all too frequently, it is the entire farmstead.

Losses totaled \$105,000,000 and 3,500 people died in fires on farms last year, and the same pattern of destruction and death is being repeated in 1954. The National Fire Protection Association, sponsor of Fire Prevention Week, October 7-13, says the tragic thing about this heavy loss of life and property is that 90 percent of all farm fires can be prevented by eliminating ordinary hazards.

- 1. Careless smoking habits. Don't smoke in barns or in bed. Don't throw away a burning match or cigarette.
- 2. Dirty and defective chimneys and heating plants. Repair promptly and clean at least once a year.
- 3. Flammable wood shingles. When re-roofing, use fire retardant roofing material such as asphalt shingles, asbestos or metal which resists flying sparks.
- 4. Defective wiring and appliances. Check capacity of the system before adding a range in the kitchen or another motor in the barn. Keep electric motors and fuse boxes clean. Make repairs promptly. Replace frayed extension cords.
- 5. Lightning. Protect main buildings with lightning rods and inspect periodically to be sure connections are tight.
- 6. Flammable liquids. Don't store gasoline or kerosene in or near main buildings.
- 7. Rubbish. Don't store rags, papers or magazines in closets, attics or barns. Clean out and turn in for salvage.
- 8. Spontaneous ignition. Don't put damp hay in the mow—only properly cured hay. Keep oily rags in metal containers.

### West Plains Baptist Ass'n Meets The Coming Monday In Amherst

The twenty-fourth annual session of the West Plains Baptist Association of Texas will be held with the First Baptist Church in Amherst the coming Monday, September 17, with morning, afternoon and evening sessions. Moderator is Rev. A. W. Blaine, pastor of the Muleshoe First Baptist Church.

The convention will be organized at 9:20 a. m., following a song service and invocation. After recognition of messengers, new pastors, and visitors, officers for a new year will be elected.

Rev. Bruce Giles will give the annual sermon at 11:30 and the church will serve lunch at noon. In the afternoon W. M. U. and board meetings will begin and a song service will be led by Joe Dunn, after which the business session will begin at 2:10. Rev. Lee Hemphill will make the nominating report. Wayne O. Perry will give the treasurer's report and a report on the next meeting

place will be made by Ernest Hock. Adjournment is set for 4:50. Supt. W. D. Kay will lead in a song service to begin the evening session. Dr. Guy Newman will give an address at 7:30 with the subject, "We Give You: Literature." The evening sermon will be given by Rev. A. Hope Owen, pastor of the First Baptist Church of Plainview.

Here is some sound advice—in making a regular purchase of U. S. Defense Bonds you help protect America, and help in making your dreams come true. May is Defense Bond Month. This is the month when you get out into the open and dream of those things you would like to have or to do. "If I only had the money" you say! Millions of Americans can give you the answer—"Sign up at your company's pay office for the regular purchase of Defense Bonds today!" U. S. Treasury Department

**INSURANCE**

AUTOMOBILE - TRUCK - FIRE  
POLIO - HOSPITAL - ACCIDENT - LIFE

**EDDIE LANE**  
PHONE 306

Office west of Western Drug

### Hi-A... beauty

brassiere by Marja



Light as a fairy's wand

Airy as a summer breeze

Strong as Nylon

Marja combines crisp nylon taffeta with nylon marquisette... a cool approach to summer. Now, and right for this years silhouette, are the rounded cups, the wider front and back, and the comfortable tubular straps. White, shell pink, black.

A cup, sizes 32 to 36

B and C cups, sizes 32 to 40

\$3.50

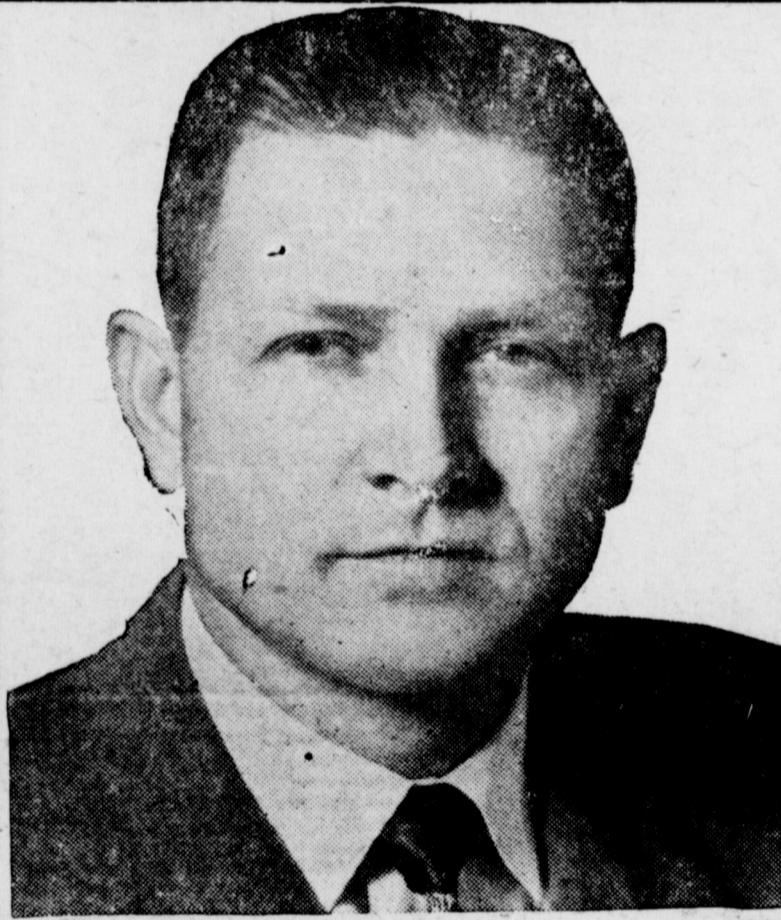
# COBB'S

### LAZBUDDIE

Mr. and Mrs. James Welch, Mrs. E. R. Lawhorn, Janice, Mr. and Mrs. Chester Embry, Carolyn and Lee, took dinner and joined Mr. and Mrs. J. C. Griffin, Tom and Alice Griffin at the MacKenzie State Park in Lubbock Sunday and all had a swell time. Mrs. Alice Griffin accompanied them home to stay a while.

Mr. and Mrs. Carson, of Olton, visited in the Clayton Graef home Tuesday night. E. R. Lawhorn is taking treatment at the Green Hospital & Clinic.

the Women Marines. All those lovely girls would make grand looking Marines. With warm personal regards, ALBERT F. METZKE, Colonel, U. S. Marine Corps.



ROY STEWART

### DIVINE HEALING CAMPAIGN

BEGINNING FRIDAY, SEPT. 14

BIG FLAME PROOF TENT

One Block North of Signal Light

On Plainview Highway

Muleshoe, Texas

Nightly At 8 o'clock

The Lame Walk, The Deaf Hear, The Blind See — Come See For Yourself.



## Best way to get a move on

ASK any GMC owner about hauling performance.

For when it comes to packing home a pay load—he's got a lot of solid experience.

He knows what the right kind of horsepower can do for trucking profits. Whether he powers his load with a gasoline pickup model—or requires one of the sensational new GM-Diesel "Million-Milers"—he's right in the driver's seat for performance unexcelled by any other carrier in its class.

But he's not just "riding an engine."

He'll tell you the way his GMC shoulders the load, year after year, is proof of perfect teamwork of axle, chassis and frame—truck-engineered to outlast anything on the roads today.

Want to profit by the same long-time benefits of GMC's truck-building experience? Let us recommend the right combination of hauling performance to fit your particular needs. For GMC's are made in the widest variety of engine-chassis-axle combinations, from 1/2 to 20 tons.

### 1951-52 Government CCC Cotton Loan

Lubbock Territory

	13-16	7-8	29-32	15-16	31-32	1"
<b>WHITE—</b>						
Good Middling	30.36	30.81	31.36	32.21	32.51	32.96
Strict Middling	30.31	30.76	31.26	32.11	32.41	32.86
Middling	29.66	30.21	30.71	31.46	31.71	32.11
Strict Low Middling	27.71	28.11	28.56	29.06	29.31	29.61
Low Middling	26.21	26.76	27.16	27.66	27.71	27.86
Strict Good Ordinary	24.51	25.31	25.76	26.31	26.36	26.41
Good Ordinary	23.16	24.01	24.46	25.01	25.06	25.11
<b>SPOTTED—</b>						
Good Middling	28.16	28.61	29.26	29.91	30.06	30.31
Strict Middling	27.96	28.41	29.06	29.66	29.86	30.11
Middling	26.26	26.86	27.46	28.01	28.16	28.36
Strict Low Middling	24.76	25.36	25.91	26.41	26.46	26.61
Low Middling	23.01	23.66	24.21	24.66	24.76	24.86
<b>TINGED—</b>						
Good Middling	25.41	26.16	26.66	27.21	27.21	27.31
Strict Middling	25.11	25.91	26.41	26.96	26.96	27.06
Middling	23.71	24.51	25.01	25.51	25.51	25.61
Strict Low Middling	21.86	22.81	23.31	23.81	23.81	23.91
Low Middling	20.81	21.61	22.11	22.56	22.61	22.71

## A. S. STOVALL

COTTON BUYER

At The Cross Roads

Muleshoe, Texas

# Davis - Lenderson

HIGHWAY 70 & 84

MULESHOE, TEXAS

### Style Show And Dinner Is Friday

An outstanding event of the fall season will be the Dinner-Style Show which will be held at La Vista show room in Clovis, N. M., on the 14 of September at 7 p. m. (MST). Tickets are \$2.00 per person.

The show is featured by Thelma's Shoppe and the benefits will go to the Texico-Farwell Women's Club. Husbands and friends are extended a cordial invitation. Models from Muleshoe, Texico-Farwell, Bovina, Clovis and Portales will be featured in the show.

Mrs. John Porter, of Farwell, is publicity chairman.

### Winsome Class Meeting Held

Members of the Winsome Sunday School Class of the First Baptist Church met Monday night, September 10 in the home of Mrs. Alton Epting.

A business meeting was held and officers for the coming year were elected.

Refreshments were served to the following: Mesdames Verney Towns, Lela Barron, Troy Perkins, Hoyt Morgan, Vernal King, C. C. Renfro, Travis Porter, Curtis Wellborn, John Watson, M. E. Lee, Lynn Bratcher, H. E. Wimberly, and Alton Epting.

### Gleaners Class Met In Lane Home

Members of the Gleaners Sunday School Class of the First Baptist Church met Friday, September 7 in the home of Mrs. Eddie Lane for a 1 o'clock covered dish installation luncheon.

The luncheon was served buffet style and the table was centered with a large bouquet of gladioli.

**CECIL H. TATE**  
ATTORNEY-AT-LAW  
Muleshoe, Texas  
Office In Courthouse

which is the class flower. On each of the card tables from which the guests ate, was centered with a small flower holding a floating gladiola.

A short business meeting was held after the luncheon and Mrs. Carroll Wilson was elected Vice-president for the ensuing year.

At this time the meeting was turned to the installation officer who was Mrs. Ray Griffiths. A lovely installation program was rendered by her. Her theme was "The touch of the hand of God". A flower was presented to each officer as she was installed. Those installed were president Mrs. Jack Schuster, vice-president Mrs. Carrol Wilson, fellow-ship vice-president Mrs. Charles Edgerston and Mrs. Boyd Burelsmith, personal ministers vice-president Mrs. Leroy McDonald and Mrs. James Crow, Secretary and historian Mrs. Edward Little, treasurer Mrs. James Harris, teacher Mrs. Eddie Lane.

Sunshine friends were revealed after the program.

Those attending were: Mrs. Mrs. Jack Schuster, Mrs. Carrol Wilson, Mrs. Charles Edgerston, Mrs. Boyd Burelsmith, Mrs. Edward Little, Mrs. Herbert Griffiths, Mrs. Bill Jim St. Clair, Mrs. Charles King, Mrs. Ray Griffiths, and the hostess.

The first meeting with our new officers in charge will be October 1 at 8 o'clock in the home of Mrs. Boyd Burelsmith with Mrs. Murray Lemons as co-hostess.

#### IN COLORADO

Mr. and Mrs. Pat Bobo are spending the week in Pogas Springs, Colorado and other points. They will return the latter part of the week and will then go to California to visit Mr. and Mrs. Hal Neff of Los Angeles.

#### SISTER VISITS

Mrs. Howard Kilpatrick and children of Plainview, visited in the home of her sister, Mrs. R. A. Gross last week returning home Friday.

#### VISIT IOWA AND NEBRASKA

Mr. and Mrs. J. J. Gross and son, R. A. returned Friday from a trip to Carrol, Iowa and Loup City, Nebraska where they visited relatives. They reported a lot of rain in these states.

Journal Want Ads Pay.

### Sunshine Club Plans For Fall

The Sunshine Club met in the home of Mrs. M. M. Stinson, Sept. 6 with 10 members and two visitors present. Mrs. Chambliss, vice-president, presided over the meeting and each answered roll call with a verse from St. Matthew.

A short program was given and plans for our club work this fall were discussed.

Refreshments were served to Mesdames: J. O. Crawford, George Chambliss, N. W. Lee, Barnhouse, L. D. Tipton, O. C. Kirk, Lewis, and the hostess, Mrs. Simmons, Mrs. H. D. Crawford, and we were glad to have Mrs. L. E. Ware and Mrs. Hattie Ware, of Littlefield as visitors.

Next meeting will be with Mrs. L. D. Tipton Sept. 20. All members are urged to come and visitors are welcome. Secret pal gifts will be exchanged at next meeting.

### Progress Club With Mrs. Gulley

The Progress Home Demonstration Club met Tuesday, September 4 in the home of Mrs. Elzada Gulley.

Mrs. Fern Davis, president, presided during the meeting. Bill call was answered with sewing tips.

Council-report was given by Mrs. L. E. Bratcher. Civil Defense was the main discussion. There is to be a training school in Lubbock September 17 through the 21. Mrs. Richard Smith has accepted the job of council Defense leader for the club.

Mrs. Maltby offered her resignation as council delegate, which was accepted. Mrs. P. Haley is now council delegate with Mrs. Odell Logan as alternate delegate.

Mrs. Verna Stotts gave an interesting report of her trip to College Station as one of the State H. D. A. delegates.

Miss McClurkin gave the program on Landscaping. After the program she led a game "bottle cap and knife", enjoyed by everyone.

Refreshments were served to eleven members, two visitors, Mrs. Tom Smith and Mrs. Joe Smith and Miss McClurkin.

The next meeting will be Tuesday, September 18 in the home of Mrs. Odell Logan. The program will be on Flower arrangement. Roll call will be THDA news.

#### IS AT HOME

Mrs. A. P. Lambert who underwent surgery August 25 at the Green Hospital and Clinic is now at home and is steadily improving.

### JIM GAEDE IS OUT FOR BERTH ON RED RAIDERS

Jim Gaede, of Muleshoe, is a candidate for a tackle berth on the Red Raider football squad of Texas Tech, Lubbock. Jim, a sterling tackle for Muleshoe high in the last few years, has been awarded a football scholarship at the college. Bill Gaede, also a veteran player for the local high school team, has enrolled at Tech and will come out for basketball. They are sons of Mr. and Mrs. Raymond Gaede, of Muleshoe.

#### THANKS TO ALL

The Band Boosters wish to thank the people of Muleshoe territory for their generous assistance in securing additional band uniforms.

We collected \$257.60 at the football game, including a \$50 donation by the JayCees. This does not include a donation of one uniform by the Rotary Club. Let's all work together to build our band.

Verney Towns  
President

#### GUESTS FROM CARLSBAD

Mrs. I. P. Murphy and Mrs. J. K. Reid of Carlsbad, N. M. were visitors over the week end in the Dudley Malone home.

**KARL L. LOVELADY**  
ATTORNEY-AT-LAW

So. Side of Square  
Muleshoe - Texas

### DAWSON SPOKE AT THE FIRST CHRISTIAN CHURCH

G. E. Dawson, principal of the O. L. Slaton junior high school of Lubbock, was the principal speaker for the First Christian Church of Muleshoe on Sept. 9. Mr. Dawson also is the superintendent of the Sunday School of the First Christian Church of Lubbock.

Mr. F. C. Rector, president of the Christian Men's Fellowship of District 2 of Texas, accompanied Mr. Dawson.

#### SMILIN' JACK'S ADDRESS

Smiling Jack DeShazo has sent the editor his U. S. Navy address with the request that The Journal say hello to all the girls. So, here is his address, girls and boys and we imagine these service boys would like to hear from their old friends: Thomas Jack DeShazo, Req. 14, Co. 772, Great Lakes, Ill.

### TALMAGE McKILLIP

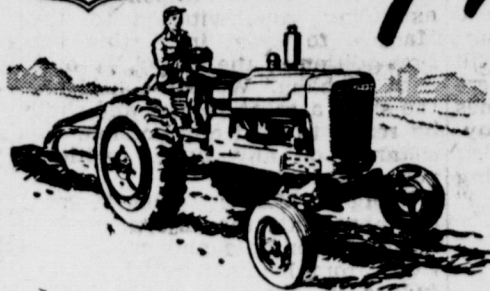
Factory Representative  
**ELECTROLUX**  
Cleaner & Air Purifier  
SALES & SERVICE

2812 N. W. 2nd  
Phone 3-8246 - Amarillo  
Box 571 Muleshoe

### MAKE BIG SAVINGS! RUN YOUR TRACTOR ON



# Philgas



You can save several cents a gallon by running your tractor on Philgas. The savings you make by converting to Philgas can pay conversion costs quickly! Philgas, a high-energy, all-purpose fuel, is safe and easy to use. Automatic filling

system is completely enclosed to prevent overflow, spilling or evaporation! Power . . . 100 octane plus!

Saves up to 50% on overhaul and repair bills, too! Philgas burns clean! No cylinder wall washing. Long ring and valve life. Low cylinder wear!

All-purpose fuel. A central tank can supply Philgas for home heating, cooking, automatic water heating, refrigeration and many other uses. You'll be surprised at the amazingly low cost of Philgas.

And remember . . . your local Philgas distributor is fully qualified to make dependable installations, to provide prompt and courteous service. See him today!

Philgas is distributed by

### WIEDEBUSH & CHILDERS

Clovis Hiway

Muleshoe, Texas

SEE US FOR PROTECTION POLICIES YOU NEED

### BOBO INSURANCE AGENCY

Office In Bank Building

PHONE 97

MULESHOE



# "I took the Blindfold Test

-that new Dodge Oriflow Ride sure opened my eyes!"



Come in! Try it!

FEEL HOW NEW ORIFLOW RIDE MAKES ROUGHEST ROADS BOULEVARD-SMOOTH!

Here's something new and wonderful in riding smoothness you notice from the very start!

Blindfolded you ride over a bumpy road. You're told the ruts are there - but you don't feel them! Gone is the pitch, bounce and you experience in other cars as the new Dodge Oriflow Ride levels out the rough spots. And with

blindfold off you'll be amazed you traveled over such bumps and chuckholes.

Words alone can't tell it all! That's why we invite you to take this daring "Blindfold Test" today. You could pay up to \$1,000 more for a car and still not get all the extra roominess, ease of handling, famous Dodge dependability!

Says DANIEL F. HOWARD, JR. of New York City: "The Blindfold Test convinced me! The new Dodge Oriflow Ride really levels out the worst kind of bumps and ruts," continues Mr. Howard. "No ride has ever been so smooth."



## The big, dependable DODGE

Drive it 5 minutes...and you'll drive it for years!

Specifications and equipment subject to change without notice

### ARNOLD MORRIS AUTO CO.

1012 MAIN ST.

MULESHOE, TEXAS

Everything that's New in Fall Coats

MARY LANE...

AMERICA'S FAVORITE



"RAMBLER COAT" .... The coat that goes everywhere ... every season of the year! A real wardrobe standby hand-somely man-tailored with convertible collar and smart front yoke detailing. Available with or without zip lining. Created in 100% Wool Gabardine in Taupe Brown.

Size 8

\$55.00

POPULARITY PLUS! Here's a coat hit for fall that has great appeal! Adorable little boy collar with "shoe string" necktie and full, fashion-perfect cuffed sleeves. Rich 100% Wool Pebble Suede .... so smart! Autumn's most beautiful shade ... Drum Red.

Size 12

\$49.75.



BUY NOW .... USE OUR LAY-AWAY PLAN

# Cobb's



**SCHEDULE OF SERVICES**

**Y. L. METHODIST CHURCH**  
L. J. Helm, Pastor  
Second and Fourth Sundays  
Church School ..... 10 a. m.  
Preaching Service ..... 11 a. m.  
Bible Study Group ..... 7:30 p. m.  
Evening Preaching ..... 8:30 p. m.  
Prayer Meeting,  
W.S.C.S. First and  
Third Thursdays ..... 2:30 p. m.

**FIRST METHODIST CHURCH**  
H. W. Hanks, Pastor  
Church School ..... 9:45 a. m.  
Morning Worship ..... 10:55 a. m.  
M. Y. F. ..... 6:30 p. m.  
Evening Worship ..... 7:30 p. m.  
Choir Practice  
Wednesday ..... 8:00 p. m.  
Young Women's Bible  
Study, Tuesday ..... 7:30 p. m.  
Wesleyan Service Guild,  
2nd and 4th Mondays 7:30 p. m.  
W.S.C.S., Wednesday ..... 2:30 p. m.  
Stewards Meeting First  
Monday each month 7:00 p. m.

**UNITED PENTECOSTAL**  
Mrs. Maggie Aken, Pastor  
Preaching Service ..... 11 a. m.  
Evening Service ..... 8 p. m.  
Tuesday Evening ..... 7:30 p. m.  
Friday Evening ..... 7:30 p. m.  
Everyone invited to our services.

For Good Results, Feed —  
**MOORMAN'S**  
MINERALS AND  
PROTEIN CONCENTRATE  
See  
**H. D. Holley**  
Phone 909-F2 — Muleshoe  
I will be at the Muleshoe  
Sale Barn each Wednesday

**ANTIOCH PRIMITIVE BAPTIST CHURCH**  
Across Street From Hospital  
Elder Jimmie Bass, Pastor  
Services every 1st and 3rd Sunday  
and Saturday before 3rd Sunday.  
Singing every Sunday night except  
3rd Sunday.

**PROGRESS METHODIST CHURCH**  
Carroll M. Jones, Pastor  
Sunday School ..... 10 a. m.  
Morning Worship ..... 11 a. m.  
Evening Fellowship  
Classes ..... 8 p. m.  
Evening Worship ..... 8:45 p. m.  
W.S.C.S. 2nd and 4th Mondays

**NORTH SIDE CHURCH OF CHRIST**  
Worship each Lord's  
Day ..... 10:30 a. m.  
Evening Service ..... 8 p. m.  
Tuesday Evening ..... 8 p. m.  
Mid-week Prayer  
You are welcome.

**MAIN STREET MISSIONARY BAPTIST CHURCH**  
M. E. Robinson, Pastor  
Sunday School ..... 10 a. m.  
Morning Worship ..... 11 a. m.  
Training Union ..... 6:30 p. m.  
Evening Worship ..... 8 p. m.  
W.M.U., Wednesday ..... 2 p. m.  
Mid-week Prayer Service,  
Wednesday ..... 7 p. m.

**CHURCH OF THE NAZARENE**  
Sidney Patrick, Pastor  
Sunday School ..... 9:45 a. m.  
Morning Worship ..... 11:00 a. m.  
N.Y.P.S. ..... 7:30 p. m.  
Evening Worship ..... 8:00 p. m.  
Mid-week Service  
Wednesday ..... 8:00 p. m.  
Come and Worship With Us.

**LONGVIEW BAPTIST CHURCH**  
Rev. J. E. Moore, Pastor  
Sunday School ..... 10 a. m.  
Preaching Services ..... 11 a. m.  
B. T. U. ..... 8 p. m.  
Preaching Services ..... 8:30 p. m.  
W.M.S. Monday ..... 2:30 p. m.  
All Church Night,  
Wednesday ..... 7:30 p. m.

**OKLAHOMA LANE BAPTIST CHURCH**  
Mayo D. Carpenter, Pastor  
Sunday School ..... 10 a. m.  
Morning Worship ..... 11 a. m.  
Evening Worship ..... 8 p. m.  
Prayer Meeting, Wed. .... 8 p. m.  
W. M. S. Thursday ..... 3 p. m.

**PRIMITIVE BAPTIST CHURCH**  
At Friendship  
8 Miles South of Sudan  
Second Sunday and Saturday  
before, Elder V. J. Lowrance, pastor.  
Fourth Sunday and Saturday before,  
Elder Jack West, pastor.

**BAILEYBORO BAPTIST CHURCH**  
Arthur L. Nunn, Pastor  
Sunday School ..... 10 a. m.  
Training Union ..... 8 p. m.  
Evening Service ..... 8:45 p. m.  
Everyone Welcome.

**FIRST BAPTIST CHURCH**  
Luzbuddie, Texas  
Sunday School ..... 10 a. m.  
Morning Worship ..... 11 a. m.  
Training Union ..... 6:45 p. m.  
Evangelistic Service ..... 7:45 p. m.  
"Not forsaking the assembling of  
yourselves together." Heb. 10:25

**METHODIST CHURCH**  
Luzbuddie, Texas  
Rev. Harmon Keelin, Pastor  
Sunday School ..... 10 a. m.  
Church Service ..... 11 a. m.  
Evening Service ..... 8:30 p. m.  
Mid-week Prayer and Song  
Service ..... 8:40 p. m.

**Y. L. BAPTIST CHURCH**  
First and Third Sundays  
Rev. James Tidengerg  
Sunday School ..... 10 a. m.  
Morning Worship ..... 11 a. m.  
Training Union ..... 7:30 p. m.  
Evening Worship ..... 8:30 p. m.  
Evening Worship ..... 8:30 p. m.  
Services every 3rd Sunday  
Starting at 10:30 a. m.

**PROGRESS BAPTIST CHURCH**  
Rev. C. C. Morgan  
Sunday School ..... 10 a. m.  
Morning Worship ..... 11 a. m.  
B.T.U. ..... 7:30 p. m.  
Evening Worship ..... 8:30 p. m.  
Midweek Prayer Service  
Wednesday ..... 7:30 p. m.

**CHURCH OF CHRIST**  
Muleshoe, Texas  
Ebb Randol, Minister  
Bible Classes for all ..... 10 a. m.  
Preaching ..... 10:50 a. m.  
Communion ..... 11:45 a. m.  
Preaching ..... 8 p. m.  
Wednesday  
Ladies Bible Class ..... 3 p. m.  
Bible Study and Singing ..... 8 p. m.

**FIRST CHRISTIAN CHURCH**  
2 Blks. West, 1/2 Blk. North  
Shaay Rest  
Bible School ..... 9:45 a. m.  
Morning Worship ..... 11 a. m.  
Mid-week Prayer Service  
Wednesday ..... 8 p. m.  
"We are Workers Together With  
God"—Paul.

**WATSON BAPTIST CHURCH**  
Rev. W. O. Wilson, Pastor  
Special Prayer Service ..... 9:45 a. m.  
Sunday School ..... 10 a. m.  
Morning Worship ..... 11 a. m.  
Training Union ..... 7 p. m.  
Evening Worship ..... 8 p. m.  
Bible Study and Prayer  
Service, Wednesday ..... 7:30 p. m.  
W.M.U. Monday ..... 2:30 p. m.

**ST. JOHN'S LUTHERAN CHURCH**  
Lariat, Texas  
W. B. Gummelt, Pastor  
Sunday School and Bible  
Class ..... 10 a. m.  
Divine Services ..... 11 a. m.  
Sunday School Teachers meet  
every Wednesday ..... 8 p. m.  
Ladies' Aid meets first Thursday  
of each month ..... 2:30 p. m.  
Walther League meets first  
Sunday of month ..... 8 p. m.  
A cordial welcome awaits you at  
St. John's.  
Let the Word of Christ dwell in  
you richly.—Col. 3:16.

**WEST CAMP FIRST BAPTIST CHURCH**  
Rev. T. L. Pond, Pastor  
Sunday School ..... 10 a. m.  
Morning Worship ..... 11 a. m.  
B.T.U. ..... 7 p. m.  
Evangelistic Service ..... 7:45 p. m.  
Service ..... 7 p. m.  
W.M.U., Thursday ..... 2 p. m.

**ASSEMBLY OF GOD CHURCH**  
Rev. Lee F. Stokes, Pastor  
Sunday School ..... 9:45 a. m.  
Worship ..... 11 a. m.  
Tuesday Night Young  
People ..... 7:45 p. m.  
Thursday Night  
Bible Study ..... 7:45 p. m.  
Public invited to attend  
all services.

**VISIT IN JOPLIN**  
Mr. and Mrs. Russell Bearden  
and son, Keith, and Mrs. Eva  
Murray visited last week in Joplin,  
Missouri, with Don Bearden,  
Raymond Evans, and the Foy E.  
Waltrip family. While there they  
attended a musical recital at  
Pittsburg, Kansas, where Don is  
instructor of Hawaiian music.  
They also visited Mr. Bearden's  
aunt in Tarlequah, Okla., and Mr.  
and Mrs. Leon Kroff of Jane, Mo.

**BERRY ELECTRIC CO.**  
Refrigeration Service  
Electric Appliance  
Repairs  
Wiring & Repairs  
Phone 78 Muleshoe

**OIL LEASES & ROYALTIES**  
**CLYDE A. BRAY, SR.**  
YOUR STATE LICENSED DEALER IN  
MINERAL, OIL LEASES & ROYALTIES

**Letters to the Editor . . .**

**LIKED OUR ROUND-UP**

Dear Sirs:  
We were down there and saw the Will Rogers Memorial Round-Up on August 30. We could not stay for the events of the next day, we had to start home. What we would like to know, would you send us the paper covering the rodeo? We will buy it for a month or year whichever way you sell it. You people were so friendly to us. It is a very nice town. We liked it very much. We all liked the rodeo, it was the first one for our boys, they have fiding horses, too. Thank you very much.

Yours Truly,  
Mrs. Fred B. Wagner  
Phalanx Station, Ohio

**VISIT IN LONG HOME**  
Mr. and Mrs. Fred Long and family spent Sunday in the home of his parents, Mr. and Mrs. C. H. Long.

**THREE BAILEY COUNTY BOYS ENROLL AT BAYLOR**

Baylor University, Waco, got three new students from Bailey County with the beginning of the new term. The following boys are to enroll.

Charles Roark, son of Mr. and Mrs. C. E. Roark; Walter Seales, son of Mr. and Mrs. Bert Seales; Charles Hornbrook, son of Mr. and W. L. Hornbrook. All will live in Kokernot Hall. Other students from this county include Howard Tate, son of Judge and Mrs. Cecil Tate; and Hershel Harding, son of Mr. and Mrs. N. R. Harding.

**VISIT GRANDPARENTS**

Brenda and Kay Yeary are spending the week with their grandparents, Mr. and Mrs. Russell Bearden.


**VISIT DOWN STATE**

Mr. and Mrs. B. W. Yeary and A. L. Murrah are visiting in Fort Worth and Dallas this week.

**NORMAN W. BAYS**  
Attorney-At-Law  
Office in Courthouse  
Phone 27 Muleshoe, Texas

**ELIZABETH WOODLEY**  
**INSURANCE**  
Nat'l Farm Loan Office Bldg. Phone 83

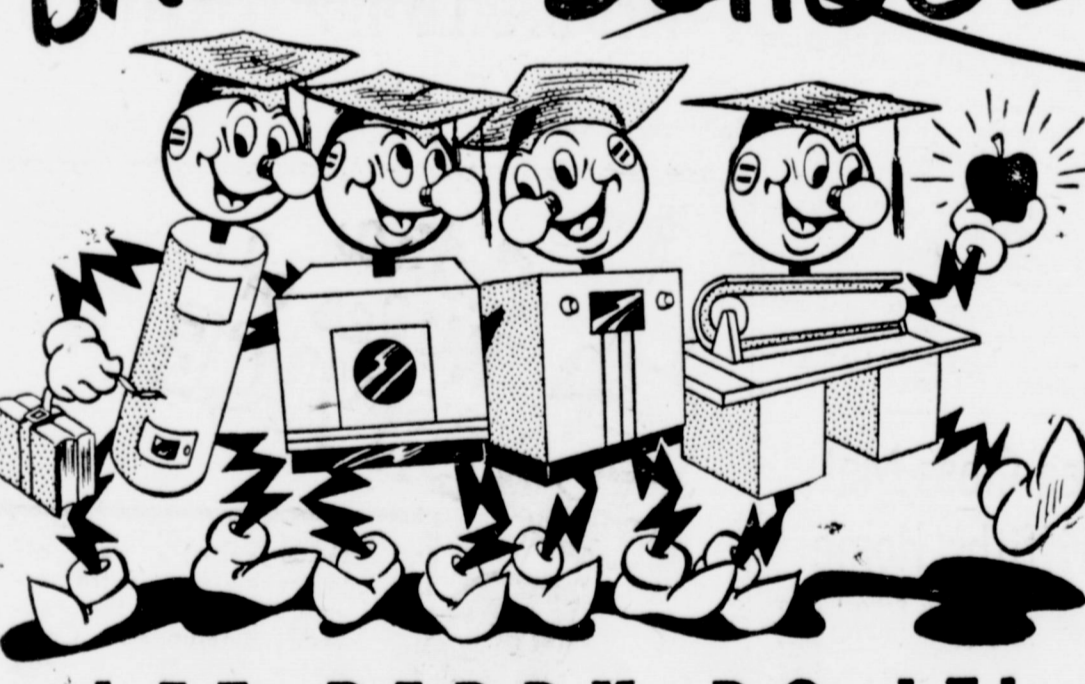
**R. M. "Bob" Gregory**  
REPRESENTATIVE  
OF  
Great National  
Life Insurance  
Company  
LIFE INSURANCE  
FOR YOU & YOURS  
P. O. Box 187 No. Ave. D.



for **PRE-PAID** Retirement  
Today's earnings can buy tomorrow's retirement with a Southwestern Life policy.

**MARION F. HARRIS**  
Representing  
**Southwestern Life Insurance Company**  
JAMES RALPH WOOD, PRESIDENT HOME OFFICE • DALLAS

**WASHING BACK TO SCHOOL**



**LET REDDY DO IT!**

Yes, when it's "Back To School" for the children, it's "Back To Big Washings" for Mother. But there's no reason to break your back with hand scrubbing wringing or hanging the clothes on the line. Let Reddy Do It.

Reddy's wash day team, automatic washer, clothes dryer, ironer and electric water heater, will carry all the heavy wash day load for you. They make washing simple, if not downright easy—and they leave you fresh for many other household duties

Reddy's back is strong — it's electrified — put your washday work on him.

**WASHER • DRYER • IRONER WATER HEATER**

SEE YOUR *Electric* APPLIANCE DEALER

**SOUTHWESTERN PUBLIC SERVICE COMPANY**  
27 YEARS OF GOOD CITIZENSHIP AND PUBLIC SERVICE

**IT'S A FIREBALL ENGINE**



**What are the Dollar Signs Saying?**

**NO OTHER CAR PROVIDES ALL THIS:**  
DYNAFLOW DRIVE\*  
FIREBALL ENGINE  
PUSH-BAR FOREFRONT  
WHITE-GLOW INSTRUMENTS  
TORQUE-TUBE DRIVE  
4-WHEEL COIL SPRINGING  
DUAL VENTILATION  
DREAMLINE STYLING  
BODY BY FISHER  
When better automobiles are built BUICK will build them

Maybe you've noticed that dollars don't seem to talk as loud as they used to in a lot of places. But you ought to hear what they say about this Buick.

They say—here's the big thrill—big mileage—big power of a valve-in-head Fireball Engine—eight-cylinder performance at the price you'll pay for most sixes.

They say—here are size and room and comfort that are hard to match at anywhere near the price tag this Buick SPECIAL is wearing.

They say—here are such things as an oil filter, air cleaner, vacuum booster, built-in summer ventilation—not as "extras" but yours at no extra charge.

They say that "smart buy's Buick"—by a wide measure.

But a smart buyer will also let this dashing darling speak for itself.

He'll take the wheel and feel how it snugs to the road on turns—holds its course on the highway with big-car assurance.

He'll touch off the power of its Fireball Engine and get firsthand the lift of its nimble response.

And he'll find out how coil springs on every wheel level out what he thought were bumpy roads.

Want to know more? How about coming in first thing tomorrow?

*Equipment, accessories, trim and models are subject to change without notice. \*Standard on ROADMASTER, optional at extra cost on other Series.*

**"Smart Buy's Buick"**  
Your Key to Greater Value

MULESHOE AUTOMOBILE CO.  
HIWAY 70 & 84 AND AVE. B

## Mr. and Mrs. H. N. Nivens Sunday Celebrated Golden Wedding Anniversary

Mr. and Mrs. H. N. Nivens celebrated their 50th wedding anniversary Sunday, August 26, in their home in Muleshoe. Dinner was served to a large number of relatives. A gold and white tiered wedding cake was baked by a sister-in-law, Mrs. Oda Thorn. The occasion also was honoring Mr. and Mrs. W. Q. Thorn on their forty-fourth anniversary.

Mr. Nivens was born in Missouri in 1876, moving to Wise County in Texas when he was a young boy. Mrs. Nivens was born in Smith County, Texas in 1878, as Berlie Mae Thorn.

The couple were married in Wise County in 1901, and engaged

in stock farming a number of years. They moved to Collingsworth County in 1924, later to Hale County before moving to Bailey County in 1931, where they have lived since.

They have two children, a daughter, Mrs. Cecile McMath, of Dallas, and a son, Claude, of Artesia, N. M., also five grandchildren.

Those attending were: Mr. and Mrs. W. Q. Thorn, Mr. and Mrs. Albert Thorn, Joyce and Albert Jr., of Canadian; Mr. and Mrs. Oda Thorn, Mr. and Mrs. A. L. Jackson, Mr. and Mrs. Claude Nivens and children, Carrolton Shirley Ann, Nelva Dean, Irene,

and Dennis, all of Artesia, N. M.; Mr. and Mrs. A. O. Brewer, Mr. and Mrs. Raymond Kitchens, and Pamela, of Abernathy, Mr. and Mrs. John Thomas, John D., Eva Nell and Billie Dar, of Prisma; Mr. and Mrs. George Thompson, of Littlefield; Mr. and Mrs. W. A. Bryan, Pearl and Joe Bryan, Mr. and Mrs. Bernice Bryan and Janet, and Mr. J. A. Nivens, all of Hale Center.

The couple received many lovely gifts. Mrs. Wilemon sent a beautiful bouquet of flowers.

### TIMELY TIPS FROM YOUR H. D. AGENT

By Miss Dian McClurkin

**KITCHEN DOORS**  
Doors often are a drawback to an efficient kitchen, as a result of studies of many different kitchen arrangements, including those in old farmhouses. Needless time and effort, was caused by too many doors, placed where they broke into the line of work by separating equipment or bringing in traffic or doors that opened in an inconvenient direction.

Modern kitchen designers generally aim at just two doors, one to the interior and the other to the outside, with both, if possible, at the same end of the room where they will not interrupt the smooth working line of equipment. In remodeling an old kitchen, there is the possibility of closing off a door or two and using the space for needed cupboards. If the room is large, it may be possible to save steps by placing some equipment in an "island" or peninsular arrangement in the center of the kitchen instead of having it scattered about the walls.

One of the first guides to convenient arrangement is: Try to have no doors between your pieces of equipment. This is easy with an L-shape or U-shape arrangement. Every time you have to go past a door to get from one piece of equipment to another, you walk five or six feet farther than if there were no door. The two and a half or three feet width of a door may not seem very much, but, doubled, this distance can add up considerably while you are getting just one meal. Every time you have to dodge other people coming from door to door through the kitchen, work is more difficult.

The direction in which doors open also deserves consideration, especially the doors of refrigerators and standing floor cupboards. Each working center needs a counter, and refrigerator and cupboard doors should open toward that counter to save steps and time. Place refrigerator and standing floor cupboards so that the door handle is nearest the counter. Then supplies may be stacked or held conveniently while the door is opened.

Though most refrigerators are made with the hinges of the door on the right and the handle on the left, some models open in the opposite direction. This is a point

## Mrs. Bristow Hosts Fidelis SS Class

The Fidelis Sunday School class met Sept. 6 in the home of Mrs. Clinton Bristow for their regular business and social meeting.

Mrs. C. M. King gave the devotional. The regular meeting date was changed from the first Thursday to the second Thursday in each month.

One visitor, Mrs. Roy Brasher, attended the meeting: Refreshments were served to the following: Mesdames Brasher, W. B. McAdams, Pat Bulloch, L. C. Roddam, R. D. Precure, R. L. Jones, C. M. King, Faye Cox, G. C. Bristow, C. P. Merriman, C. A. Barnett, W. C. Moore, L. T. Green, Jr., Ray Griffiths, M. F. Green, J. V. Peeler, and T. C. Young.

## Lazbuddie Will Greet Teachers

People of Lazbuddie community will have the opportunity to meet all teachers of the school when the P. T. A. meets the coming Monday night, September 17, in the school building.

It will be the first meeting of the year. Games and recreation are planned.

**SPEND WEEK AT COWLES**  
Miss Norma Pierson, of Norman, Okla., has been visiting here with her brother, Finley Pierson and family. During her stay she and Mr. and Mrs. Pierson, Mr. and Mrs. Horace Edwards and Gary spent the week in the mountains at Cowles, N. M.

to check in planning a kitchen or buying a refrigerator. If the hinge is next to the counter, you will have six feet of unnecessary walking every time you go to the refrigerator.

**SCRATCHES AND DENTS**  
Once the smooth plate of an electric iron is scratched or the edge dented, it will never iron so well again. As it moves over fabric, it is likely to catch and pull or snag.

This is why you should never scrape off sticking starch with a knife or other sharp tool.

To clean the plate while the iron is hot, rub it back and forth over dry salt on a sheet of paper. When the iron is cool, starch may be removed by rubbing with very fine steel wool or mild scouring powder on a damp cloth. On a hot iron steel will or damp cloth becomes hot to handle, and scouring powder sticks.

Most housewives know that a little paraffin applied to the hot plate during the ironing of starched clothes protects against sticking starch. But once the starch has scorched on, paraffin will not remove it.

Dents and rough places at the edge of the plate often result when the iron takes a tumble. Any remedy for scratches and dents? Have a new sole plate put on.



Judy Hatula, of Detroit, prepares to release "pillow balloon" in the nationwide Crusade for Freedom which seeks to enroll 25,000,000 new American members and to raise \$3,500,000 for additional radio stations to penetrate Iron Curtain Europe and Asia. The 1951 station wagon is one of 49 which the Chevrolet Motor Division has provided for Motorcades to visit principal cities in every state. Balloons used in Crusade dramatize millions of "Winds of Freedom" messages sent to people of Soviet satellite countries. The word "Wolnosc" on the balloon is the Polish word meaning "Freedom."

**Hair Styling Individual**

**All Types Of Beauty Service**

SPECIALIZING IN HAIR CUTTING, SHAPING AND STYLING

**WELLBORN BEAUTY SHOP**  
Call 240 613 W 1st.

**FAST FILM SERVICE**  
PRINTING - DEVELOPING

**Cline's Studio**  
Next To Blackburn Food Muleshoe, Texas

**NOW OPEN....**

GINGER & BILLS  
RAINBOW DRIVE-IN  
Morton Hiway North Of Courthouse

CURB SERVICE  
LUNCHES - STEAKS - SANDWICHES  
SHORT ORDERS - COFFEE

**Prompt & Courteous Service**

Designed for 2-plow tractors!

**5 reasons for selecting DEARBORN-WOOD BROS. COMBINE**

- 1—Straight-through balanced design
- 2—6 ft. cut. Straw-walker type rack
- 3—Oversize cylinder; quick speed changer
- 4—Easy adjustments
- 5—Finest construction. Priced right

See us for complete information on this great combine. Genuine parts, expert service on Ford Tractors and Dearborn Implements.

**Harvest Time Will Soon Be Here**  
**Complete Parts and Service**  
**Dearborn Farm Wagons**

Just Right For All Your Farm Wagon Needs. One Of The Most Sturdy Constructed Wagons on The Market.

**HICKS TRACTOR CO.**  
CLOVIS HIGHWAY MULESHOE, TEXAS

**POOL INSURANCE AGENCY**

COMPLETE INSURANCE COVERAGE

- LOW COST FARM LOANS
- AUTO LOANS
- IRRIGATION WELL LOANS

Dependable and Friendly Service

LEE POOL MYRON POOL  
Phone 113 Muleshoe, Texas

**EASY TO APPLY... EASY ON THE EYE!**  
PATTERSON-SARGENT

**FLATLUX**  
THE WONDER ONE-COAT WALL PAINT MADE WITH OIL

**PROVED WASHABLE! PROVED DURABLE!**

Buy and try this greatest of all flat wall paints today! Made with oil, Flatlux goes on smoothly, easily... dries fast to a beautiful washable finish. Covers wallpaper in one coat.

ASK ABOUT COLOR VISION

**NOW... MORE THAN EVER... USE A PROVED PAINT!**  
**HEATHINGTON LUMBER CO.**  
Phone 297-J Located on Clovis Hiway Muleshoe, Texas

**Missing Banners Sought**

Several of the "Welcome" banners used to decorate store fronts during the recent Will Rogers Memorial Round-Up have not been returned to the Chamber of Commerce offices.

These decorations were rented from the Clovis American Legion for the occasion and must be returned or replaced. "We secured these banners for a nominal fee and rented them to the merchants at just enough to cover the actual cost," C of C officials pointed out. "We need to get them back in order to save paying something like \$15 apiece for them."

If you haven't returned your banner yet, you are urged to do so at once. Just phone 67-J and someone will come by and pick it up.

**MULESHOE FUNERAL HOME**  
LOYD ROBERTS  
FOR AMBULANCE SERVICE CALL 47

**Breakfast Honors Miss Jayne Damron**

Miss Jayne Damron, bride-elect of Mr. Jimmie Reese, was honored Tuesday morning with a breakfast given by Mrs. Sam Damron. Crysanthemums and marigolds were used to carry out a color scheme of yellow and green. The centerpiece on the serving table was a miniature car filled with crysanthemums, on the back of which was "just married" sign and with old shoes attached. A sign pointed to "Northwestern University."

Breakfast of tomato juice, waffles with maple syrup, sausage, bacon, and coffee was served. The hostess presented the guest of honor with a gift of kitchen gadgets, each with verses attached, giving her tips for the double role of housewife and co-ed.

Guests present other than the honoree were Mrs. Joe Damron, Joe Mack Wagon, Pete Jenkins, and Misses Jane Stovall, Joyce Blackburn, Gwyneth Bigham and William Ed Jones.

**BIG WHEELS!**

Big wheels on Oliver Drills won't drop into little holes. These big wheels enable you to plant in straighter lines because they avoid slip, slide and bounce.

The double-run force feed measures the seed far more accurately.

See these outstanding drills in a size for your needs today.

**McDONALD IMPLEMENT CO.**  
"YOUR OLIVER DEALER"  
Plainview Highway Muleshoe, Texas

**Dorcas Class Met In Griffiths Home**

The Dorcas Sunday School class of the First Baptist Church met in the home of Mrs. Truma Griffiths Tuesday afternoon, September 11 at 3:30 p. m. The meeting was called to order by the president, Pauline Jamison.

Opening prayer was led by Mitsy B. Humphrey. A very interesting devotional on "Other Gods" was given by Effie Hicks. Hazel West was assistant chairman of the yearbook committee.

Rita Johnson and Margarette Marshall were appointed group captains.

Our class will have a tea for Miss Blanche Groves during her visit in Muleshoe and invite the ladies of the church.

Meeting date was changed to the second Wednesday of each month at 4 p. m. Plans were made to place a container for clothing to be given to the needy. Gene Cox was named to secure the container. Interesting games were played.

Delicious refreshments were served to Mitsy B. Humphrey, Effie Hicks, Pauline Jamison, Dorothy Bowers, Hazel West, Edith Elaine, Minnie L. Jones, Margarette Marshall, Gene Cox, Doris English, and the hostess.

**Extra Miles of SERVICE**

Good car-care pays off in trouble-free, extra service. Drive in for that necessary tune-up, now. Complete lubrication, change of oil; battery, radiator, lights, and wheel bearings checked.

**Accessories**

See our complete line of seat covers, auto lights, horns, heaters, and other accessories for driving safety, comfort, and pleasure. Reasonable prices.

**C. & H. Chevrolet**  
Phone 12 Muleshoe, Texas

TO WACO  
H. A. Douglass and Fred Clements were week-end visitors in Waco, Texas.

FOR SALE—

FOR SALE—4 room efficiency 2 bedroom home on 50x140 ft. lot. West part of town. Phone 3487. 25-tfc

FOR SALE: Outstanding value in 6 ft. Servel refrigerator. Muleshoe Liquefied Gas Co. 37-tfc.

FOR SALE: 14 x 32 building to be moved. See Postmaster at Lariat. 37-2tc.

USE THE CLASSIFIED FOR RESULTS

CLASSIFIED AD RATES
The minimum for any classified ad is 35c; 2 1/2 cents per word for one insertion; 1 1/2 cents per word for additional insertions. All classified advertising is strictly cash in advance.

THE MULESHOE JOURNAL, Thursday, September 13, 1951

ALL REAL ESTATE SERVICES

Automobile business in another town. Garage building and wells, 40 acres alfalfa, 60 acres, permanent pasture, and 50 acres of grass. 2 sets improvements. Can be cut in quarter sections or 80 acre tracts.
Well Improved 320 acres on pavement. Irrigated.
160 acres irrigated farm on pavement. Well improved.

FARMS AND HOMES FOR SALE
We have 160 acre places for sale at \$175. per acre and up to \$300. per acre and we have 80 acre places at \$160. per acre and up to \$500. per acre. This is all irrigated.
We have dry land farms lots cheaper. Homes in town for sale. Nearly any kind you want. We need listings now, so if you want to sell give us a listing on your place and we will do our best to sell it for you.

M. B. BLAYLOCK
At Benton Food Store

FARMS AND HOMES FOR SALE

320 A. The best of land improved. Good irrigation well. Priced to sell. \$160. per acre.
160 A. well improved land. Good well. Close to town. Priced to sell.
160 A. south of Farwell at \$80 per acre.

C. L. 'HAPPY' DYER
C. E. BRISCOE
Phone 13 Muleshoe, Texas

REAL ESTATE FOR SALE FARMS

160 acres good new land, irrigation well, on pavement. \$200 acre.
354 acres on pavement, 4 rooms and bath, REA, priced at \$45 an acre.
160 acres on pavement, small house, good irrigation well. \$250 per acre.

CITY PROPERTY

3 bedroom home, 2 baths, this home is priced to sell at \$8,750.
2 bedroom home, GI loan, \$1600 will handle.
75x140 ft. lot on pavement, good business property. \$4,000.

Eddie Lane Real Estate
West of Western Drug
Phones 306 or 24-W

Get your Car Ready for FALL DRIVING
CONOCO GASOLINE
CONOCO MOTOR OILS
BATTERIES
TIRES & TUBES
ACCESSORIES
FLATS FIXED
STATION MANAGED BY ED MYERS
REPAIR SERVICE
MOTOR TUNE-UPS
COMPLETE OVERHAULS
BRAKE SERVICE
IGNITION SERVICE
GENERATOR & STARTER SER.
DEPENDABLE WORK
REPAIR DEPARTMENT MANAGED BY HOMER MILLSAP
SIKES MOTOR CO.
Phone 53 Muleshoe, Texas

We Are In The Market For Your Sweet Sudan Seed
and will always offer TOP MARKET PRICES
We Are Ready To Buy or Store Your Grain Sorghums
for CCC Loans, issuing WAREHOUSE RECEIPTS promptly as we have in the past.
900,000 Bushels Storage Capacity
King Bros. GRAIN & SEED CO.
H. D. King and Robert King
Phone 134 & 350 Muleshoe

WANTED: Windmill and water well work and storm cellars. Brooks, Progress. 35-4tp.

WANTED: Washing and ironing. 816 E. 1st. Mrs. Johnney Coleley. 38-4tp.

HOUSE WANTED: Want to rent 2 or 3 bedroom house. See S. O. Workman at Lumber Yard. 33-tfc.

FOR RENT
FOR RENT: Bedroom. 903 W. 3rd. and Ave. F. Phone 274-W. 31-tfc.

FOR RENT: Unfurnished house. Three room and bath at 921 West 1st. See I. H. Robinson. 32-tfc.

FOR RENT: Nice 3 room apartment. See Spencer Beavers at Bovell Motor Supply 32-tfc.

FOR RENT: 3 rooms and bath. Furnished. 807 S. Main. Mrs. Clara Truelock. 37-2tp.

FOR RENT: Three room furnished apartment, upstairs. 1112 9th Street. 38-1tp.

FOR RENT: 2 bedrooms, private bath. Men preferred. Mrs. Faulkner, Phone 8. 38-tfc.

FOR RENT: Furnished apartment, private bath. Mrs. Faulkner. Phone 8. 38-tfc.

FOR RENT: 2 bedroom unfurnished house. Modern. Possession Oct. 1. Phone 274-W. 903 West 3rd. 38-2tp.

NOTICE: Will the party who borrowed the land leveler from D. H. Sneed Supply Co. please return it. 38-3tc.

NOTICE: I will not allow any hunting on either of my ranches or the Halsell pastures in Bailey County. I don't like to prosecute my friends so please know where you are going. Jno. S. McMurtry. 37-2tp.

NOTICE: Jack's Fruit Stand is moving between the Cross Roads Cafe and Chet Lane Shop. 38-1tp.

WE BUY Old Brass, copper, radiators, scrap iron, batteries, etc. JOHN'S CUSTOM MILL, Phone 124-W. 5-tfc

WANTED: Year round TOP farm hand, experienced in tube irrigation, who knows and can handle and CARE FOR all kinds of machinery. Preferably, man with 15 or 16 year old boy who would work when needed. TOP wages will be paid to right party. References required. Three room and bath modern house, butane and electricity. On school bus route. See Finis Jennings, 12 mi. N. E. Muleshoe or 5 mi. S. W. Lazbuddie. 37-tfc.

WANTED: Mr. Farmer would you like to make a change and supply the people in Bailey County with Rawleigh Products. No lay offs. Direct from factory service. Big profits. I know for I am a Rawleigh Dealer. Let me tell you about it. See Clyde Sparks, Rt. 2, Texico, N. M. or for personal interview write Texas Sales Manager, J. L. King, c/o Rawleigh's Dept., Memphis, Tenn. 4-tp.

WANTED: 30 head of stock to pasture. 7 mi. east and 1 mile north and 1/4 mile east. H. E. Reeder. 37-2tp.

WANTED: Two mechanics. Hydraulic transmission, experience preferred. Arnn Motor Co. Pontiac Dealer, Morton, Texas Telephone 2961. 38-2tp.

SHOWER FRIDAY TO HONOR THOMAS FAMILY
A miscellaneous shower will honor the Cliff Thomas family, whose home was completely destroyed by fire last Friday night, at 8 p. m. Friday evening in the home of Mr. and Mrs. Dave Aylesworth. Gifts of any kind or money may be left at the Fellowship Hall Friday afternoon.

Members present were Messdames Deon Awtry, L. S. Barron, M. F. Blackman, B. F. Chapman, Howard Cox, Sam Damron, Horace Edwards, Eit Evans, Elmo Evans, Alvin Farrell, Willis Farrell, Arch Fowler, Mrs. F. W. Jones, Ernest Kerr, John Murphy, Horace McAdams, Bernard Phelps, Jack Schuster, John Smith, Richard Smith, and L. I. St. Clair. Mrs. John Coleman of Portales was a guest.

Come in... Pick a Color from the Rainbow!
Color-Keyed to Your Kitchen!
INTERNATIONAL HARVESTER Refrigerators
An IH exclusive! Interchangeable door handles in a rainbow of ten vivid shades, to match or contrast with your color scheme.
7 Sizes; Prices Start at
they're feminine. \$21995
JOHNSON & NIX IHC AND OLDSMOBILE SALES AND SERVICE
PHONE 166.. MULESHOE & CLOVIS HIGHWAY

The Muleshoe Journal

PUBLISHED EVERY THURSDAY AT MULESHOE, TEXAS. Entered as second-class matter at the Muleshoe Post Office under the Act of Congress, March 3, 1897.



SUBSCRIPTION RATES: In Immediate Territory, 1 Year \$2.00; Out of Immediate Territory, 1 Year \$2.50. J. M. Forbes, Editor and Publisher

BABSON DISCUSSES THE BRITISH OUTLOOK

New York City, Sept. 7. — Of the three top leaders of British Socialism in recent years, only one is in office today. Mr. Attlee still heads the Labour Government of Great Britain, but is plagued with a duodenal ulcer which has already hospitalized him. This ulcer could conceivably force him to follow his former right hand man, Sir Stafford Cripps, into retirement. Sir Stafford was in several ways the brightest luminary in the British Labour movement; an eminent lawyer, and an intellectual of the first magnitude. A few months back he had to retire as Chancellor of the Exchequer for reasons of health. He suffers from colitis. Early this year the third man in the Labour Government, Ernest Bevin, suffered an illness that forced him to retire as Foreign Secretary. Shortly thereafter he died at the age of 70.

I am not exulting over casualties among top-ranking British Socialists. I consider Attlee, Cripps and Bevin men of the highest integrity and the noblest intentions. Were they rogues paying lip service to Socialism, in order to further personal ambition, all three might now be in good health, riding high on the road to more power! At least this is what I learn here in New York.

Socialism A Cruel Hoax To my way of thinking, Socialism as set up today constitutes a cruel hoax. Socialists discover that many evils can be traced back to individual private greed. This is true. But Socialists conclude, all too quickly, that private greed or private enterprise should be outlawed. They then nationalize the big private enterprises and turn them over to the government. They "sink the ship

to rid it of rats". But the hoax is that the coming of Socialism to power brings frustration, stagnation and finally the need for "austerity". Only individual incentive provides the spark and fuel of human endeavor. When honest Socialists, like the big three of England's Labour movement, gain control of the government, they discover that the noble doctrines to which they have dedicated their lives do not work out as expected. Socialism, unfortunately, distributes poverty not riches.

Tragedy of Honest Socialists An honest Socialist in power soon finds himself experiencing an intense inner struggle, the struggle between loyalty to socialism and the realization that individual incentive must be liberated if the people are to enjoy maximum prosperity. There are two possible outcomes of such an inner struggle within the heart of the honest Socialist, either a nervous breakdown or a desertion of Socialism. Attlee and Cripps are honest Socialists and so was Bevin; but Bevin has died and Attlee and Cripps have ended up with poor health approaching a nervous breakdown. They will not, however, surrender their Socialism, although they see only collapse or a dictatorship ahead. Mussolini was an aggressive Socialist in early life; but as he rose to power he became an undisguised autocrat. He did not permit the fallacies of Socialism

DR. B. R. PUTMAN OPTOMETRIST, First Door North of REA Building, Muleshoe, Texas, Phone 342-J

to ruin his health! He switched to personal autocracy and then went back to antiquity to find an ethical sounding name for it, calling it "Fascism". Hitler paid lip service to Socialism by calling his autocracy "National Socialism."

Who Will Be "Big Brother"? Britain's fourth Socialist leader, Aneurin Bevan, not to be confused with the late Ernest Bevin, has the demagogue's appeal, the opportunism and the violent demeanor. This fits him to become the English counterpart of Mussolini or Hitler. Aneurin Bevan recently deserted Attlee for motives which some observers believe were to increase his own power. Straw polls and local elections foreshadow the fall of the Attlee government. I wonder whether Attlee's successor will be able to proceed with the present governmental machinery. Or will revolution and dictatorship be the outcome of Britain's experiment with Socialism? As for me, give a country with a democratic-capitalist Government like our own, that seeks workable compromise between collective needs and individual incentive.

JayCeess Have Ladies Night

The Muleshoe Junior Chamber of Commerce held a ladies night program Monday night at the American Legion Home. This was the climax of an attendance contest and the losing team treated the winning side. Captain of the winning team was Roy Howard and Buddy Blackman was captain of the losing side. Tootie Middlebrook, club president, was in charge of the program and introduced the guests for the evening. About 50 JayCeess, their wives and guests attended.

HALF CENTURY CLUB TO MEET WITH MRS. KISTLER

The Half Century Club will meet with Mrs. W. H. Kistler on Sept. 29 and will honor her birthday at this time. Everyone is invited to attend this meeting as a trip is to be planned.

SAND HILLS PHILOSOPHER He's Willing To Try Special Session To Work On Texas Water Shortage

Editor's note: The Sand Hills Philosopher on his Johnson grass farm is misconstruing the news, again, his letter this week reveals. Dear editor: I was out here the other afternoon wonderin when it was gonna rain again, don't believe I ever saw a summer as hot and dry as this one has been, when I noticed a little whirlwind in my direction and since gettin a little ain't no worse than usin up a lot of energy tryin tododge the thing, I sat still and let it hit me and when it was past I noticed it had dropped a newspaper right at my feet and since I was sittin down and could reach it without any trouble I sorted it out from the trash, ain't no trouble to do at all when you've had experience, and picked it up and read where a Texas Representative is urg'n a special session of the Legislature to deal with the state's critical water shortage.

As I understand it, he wants to call the Legislature together to solve the water problem, and I'm all for it. My well has been gettin lower and lower and if the Texas Legislature can do something about it, what are they waitin for? Of course, there are a good many angles about the rain shortage I haven't figured out how the Legislature can help on, but when a man gets desperate he'll try anything, and if a special session is all that's standin between us and more water, I say call it right now. While it's hard to see for example how the Legislature can



"J. A."

help a place like Temple, where the city reservoir is gettin lower and lower and the city more worried and worried, it's possible that if the entire membership of both houses all piled in the reservoir at one time it would raise the water level, the same as droppin rocks in a fruit jar will send the water at the bottom up to the top, although I guess technically speakin it don't really increase the total amount of water, although there might be some psychological advantage in seein the reservoir brim full, even if it meant havin the entire Legislature at the bottom, except when they come up for air or to vote.

And also there may be some people who doubt the Legislature can have much effect on rainfall, but there are others who claim rain-makin and law-makin takes about the same amount of know-how coupled with wild guessin, and a special session might be the very thing. At any rate, you can't deny the Legislature certainly couldn't make the water situation any worse, and when a well gets as low as mine, a man likes to see some action. I'm callin on Rep. LaFont to make rain the water level in my well the first order of business, House Bill No. 1. Yours faithfully, J. A.

Drs. Woods & Armistead OPTOMETRISTS, IRA E. WOODS, O.D., B. W. ARMISTEAD, O.D., GLENN S. BURK, O.D., Phone 328 Littlefield

ABSTRACTS REAL ESTATE COMPLETE ABSTRACT SERVICE LISTINGS ON ALL TYPES OF REAL ESTATE MULESHOE ABSTRACT CO. Barry T. Lewis, Prop. Phone 352-J

TODAY'S meditation The Upper Room THE WORLD'S MOST WIDELY USED DEVOTIONAL GUIDE

OBEDIENCE TO GOD'S WILL "His mother saith unto the servants, Whatever he saith unto you, do it." (John 2:5.) Read John 2:1-11.

whom we love. But Jesus is above everyone. He could not follow human prompting, not even His mother's, but only God's. "Whatever he saith unto you, do it."

PRAYER

O Father, give us the spirit of Jesus. Teach us to be in accord with Him in our lives. Enable us to know His will and to act accordingly. May Thy will be done on earth as it is in Heaven. In our Redeemer's name we pray. Amen.

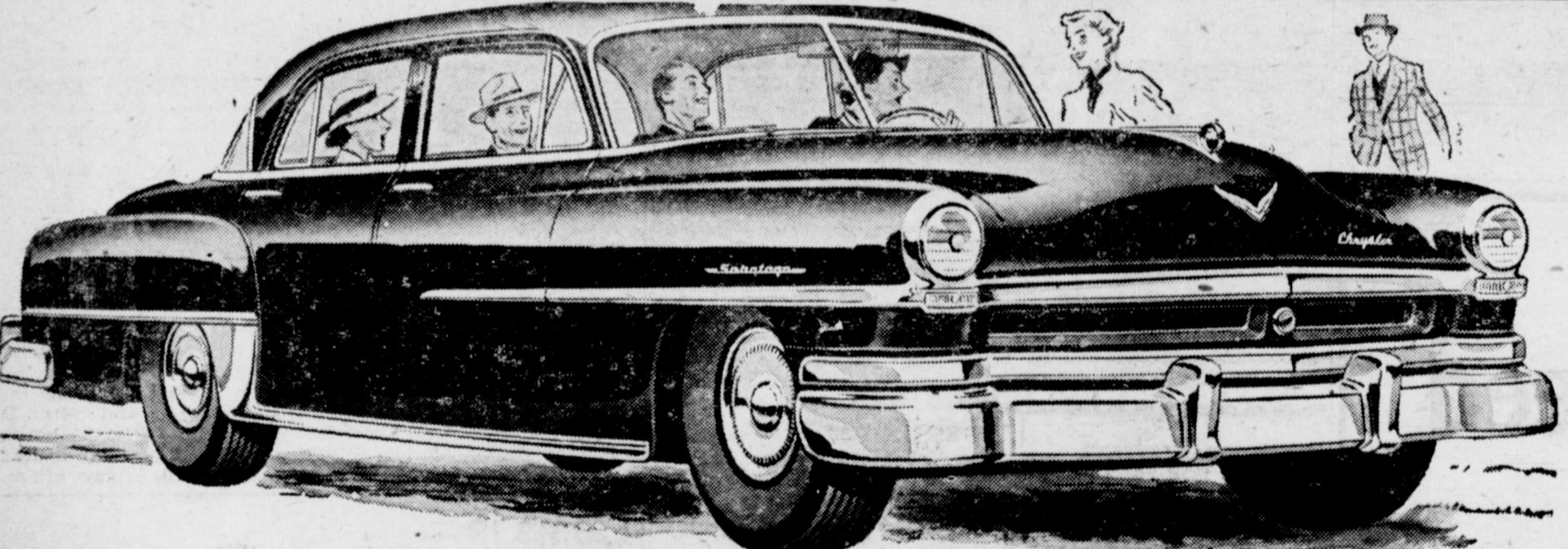
THOUGHT FOR THE DAY

I derive happiness from obedience to God. Raguel S. Rahator (India)

PAT-R. BOBO ATTORNEY-AT-LAW Office In Bank Building Muleshoe, Texas

GUARANTY ABSTRACT CO. BONDED FOR YOUR PROTECTION Office In Bank Building Telephone 97 Muleshoe, Texas Complete Abstracts of Title to All Lands and Towns in Bailey County, Texas PAT R. BOBO, Owner ANN H. HOWELL, Manager

Be sure to see the NECCHI Before you buy! YOU'VE NEVER SEEN A SEWING MACHINE LIKE NECCHI BEFORE! NEEDS NO ATTACHMENTS FOR: Sewing on buttons! Blind-stitching hems! Making buttonholes! Embroidering! Monogramming! Appliqueing! THE NECCHI DELUXE FOR QUIET PERFORMANCE Compare the features of the practical, precision-built Necchi deluxe model with any other sewing machine. Easier to run... easier to clean. Sews over pins, sews all fabrics from finest silk to heavy leather. Easy-to-use Necchi attachments for all special sewing needs included in the price. LIBERAL TRADE-INS EASY BUDGET TERMS CALL FOR FREE DEMONSTRATION LOOK FOR Necchi YOUR GUARANTEE OF NATIONWIDE SERVICE AND PARTS Bass Firestone Dealer Store Phone 296-J Muleshoe, Texas



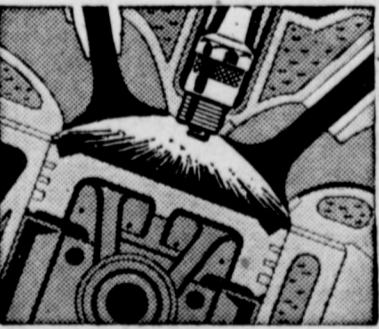
Introducing the new 180 h.p.

Chrysler Saratoga

A lower-priced member of the

Fire Power V-8 family...

- 1 180 Horsepower... 125 1/2-Inch Wheelbase... Come drive it today!... The mighty Fire-Power engine gives this new Chrysler Saratoga line the greatest power per pound of car weight ever offered in an American passenger car!
2 Performance Unequaled at Any Price... Even on non-premium grade gas, the revolutionary new Chrysler FirePower engine's smooth acceleration and power-in-reserve easily outperform any other passenger car engine.
3 Power Braking... Oriflow Shock Absorbers... Swift, smooth stops with up to 2/3 less pedal



Hemispherical Combustion Chambers the engineering reason why no other American passenger car engine today can match FirePower performance.

- pressure!... Steadiness even on roughest roads that gives comfort and safety never possible before!
4 Fluid-Matic Drive... The safe, easy, flexible driver-controlled automatic transmission which millions of owners today call the most satisfactory of all modern transmissions.
All in the New Saratoga at No Extra Cost... All the above, plus Waterproof Ignition, Chassis Undercoating, Electric Windshield Wipers, Safety-Rim Wheels, many features other cars will have "some day"... yours on Saratoga now!

NOW ON DISPLAY COVIN MOTOR CO.

1021 WEST 1st STREET

MULESHOE, TEXAS

Phone 296-J Muleshoe, Texas





# Presenting PIGGLY WIGGLY and Rapide of Stars ARMOUR



ARMOURS NO. 1/2 CAN  
**POTTED MEAT** ..... 17c  
ARMOURS STAR 16 OZ. CAN  
**BEEF STEW** ..... 47c  
ARMOURS 12 OZ CAN  
**CHOPPED HAM** ..... 57c

**Milk** ARMOURS TALL CAN ..... **13c**

BATH SIZE  
**DIAL SOAP, 2 for** ..... 37c

**VIENNA SAUSAGE**  
ARMOURS NO. 1/2 CAN ..... 22c



CLEAR SAILING  
**GREEN BEANS** ..... 11c  
REMARKABLE, NO. 2 1/2 CAN  
**PEARS** ..... 33c



MENNENS  
**BABY OIL, lg. bottle** ..... 49c  
**LIP ICE, VASELINE** ..... 10c  
COLGATE 50c SIZE

**Dental Cream** ..... 31c

BREAST OF CHICKEN, NO. 1/2 CAN  
**TUNA FISH** ..... 32c  
GERBERS  
**BABY FOOD, 3 for** ..... 27c  
DROMEDARY 7 1/2 OZ. PKG.  
**PITTED DATES** ..... 23c  
MARSHALL NO. 300 CAN  
**HOMINY** ..... 8c  
JUNKET  
**FUDGE MIX** ..... 33c



**Bananas** GOLDEN FRUIT, lb. ..... **12 1/2**

**LEMONS, lb.** SUNKIST ..... 15c

ARMOURS STAR  
**Sliced Bacon** lb. .... 59c

ARMOURS STAR, 4 1/2 lb. CAN  
**PICNICS** ..... \$4.49  
ARMOURS STAR, PICKLED, 9 OZ. JAR  
**PIG FEET** ..... 39c  
ARMOURS STAR, CHEDDAR  
**CHEESE, lb.** ..... 73c

ARMOURS STAR, CELLO PKG.  
**FRANKS, lb.** ..... 65c

BONELESS  
**PERCH FISH, lb.** ..... 43c

CHOICE CHUCK  
**BEEF ROAST, lb.** ..... 72c  
FRESH DRESSED AND DRAWN  
**FRYERS** LB. .... 59c

**Peanut Butter** ARMOURS 91-2 OZ. JAR ..... **10c**

**Free Shortening** ARMOURS 3 LB. CARTON ..... **74c**

1 Can No. 2 Red Pitted Cherries with purchase of 3 lb. Carton of Armour's Vegetole.

AUNT ELLENS 9 OZ. PKG.  
**PIDO** ..... 15c  
HUNTS, NO. 2 CAN  
**SPINACH, 2 for** ..... 25c

WOLF NO. 2 CAN  
**CHILI** ..... 65c  
EAGLE BRAND  
**MILK, can** ..... 29c

LIBBYS SOUR, 22 OZ. JAR  
**PICKLES** ..... 35c  
KEYLESS OIL, NO. 1/2 CAN  
**SARDINES** ..... 8c

**Peaches** HUNTS NO. 21-2 CAN ..... **29c**

**SCOT TISSUE, 2 rolls for** 25c DEL MONTE, LARGE BOTTLE **CATSUP** ..... 23c HUNTS, NO. 2 1/2 CAN **APRICOTS** ..... 29c

**Treet** ARMOURS 12 OZ. CAN ..... **48c**

PATIO, NO. 2 CAN  
**BEEF ENCHILADAS** ..... 51c  
PATIO, NO. 300 CAN  
**CHICKEN TAMALES** ..... 29c  
SKINNERS, 4 OZ. CELO BAG  
**MACARONI** ..... 23c  
SUPREME, 1 LB. BOX  
**SALAD WAFER,** ..... 31c  
CHURCH 24 OZ. BOTTLE  
**GRAPE JUICE** ..... 35c

**FRESH FRUITS AND VEGETABLES**

CALIFORNIA, GREEN **CELERY, stalk** ..... 18c SUNKIST **ORANGES, lb.** ..... 10c  
CALIFORNIA **CANTALoupes, lb.** 10c CALIFORNIA, NO. 1 **TOMATOES, lb.** ..... 15c

SNOW CROP 14 OZ. PKG.  
**SPINACH** ..... 23c  
SNOW CROP  
**ORANGE JUICE** 4 OZ. CAN ..... 12c  
SNOW CROP, 12 OZ. PKG.  
**STRAWBERRIES** 43c  
CLOROX, qt. .... 17c  
**CHEER, lg. box** ..... 32c  
P & G  
**LAUNDRY SOAP, bar** ..... 8c  
**DUZ, lg. box** ..... 32c  
**DREFT, lg. box** ..... 32c



**PIGGLY WIGGLY** SUPER MARKETS

DAVIS & HUMPHRIES OWNERS & OPERATORS



