

The Muleshoe Journal

PUBLISHED EVERY THURSDAY AT MULESHOE, TEXAS

Entered as second-class matter at the Muleshoe Post Office under the Act of Congress, March 3, 1897.



SUBSCRIPTION RATES

In Immediate Territory, 1 Year \$2.00
Out of Immediate Territory, 1 Year \$2.50

J. M. Forbes Editor and Publisher
Travis Barnett Advertising Manager
Mrs. J. M. Forbes Business Office
Gay Sanders Local News and Society
H. B. Flanagan, Marion Waggoner, and Bobby Pittman, Mechanical Staff.

Babson Discusses

"MERCHANDISING"

New Boston, N. H., July 20. I have invested the bulk of my savings in the stocks of merchandising companies. This probably is because of the advice of my good father who once owned the leading "dry goods and variety store" in Gloucester, Mass.

MY FATHER'S ADVICE

"Don't be a manufacturer and be dependent upon one location and one product with accompanying labor troubles. Don't be content to be always working for others. Start out by being a salesman of investments, insurance or merchandise with the ultimate goal of having a business of your own. In other words, be a middleman or shopkeeper, free to grow and to serve."

The above was my father's advice and he would sometime add, "The live merchant who cleans up his bank loans once each year and puts half his profits back into the business can't help but to succeed. But remember, Roger, that the best floor covering for a successful store consists of the footprints of the owner."

WHAT ABOUT MERCHANDISE INVESTMENTS?

First, I would advise a young man to have a store in a small city. Likewise, I advise investors to put their money into helping to build up a local independent store, rather than in the stock of any big department store of some large city. If you can't invest money in such a local store, then buy stock of one of the good chain stores operating in your town.

It may be one of the grocery chains like the A & P, or one of the variety stores like Penney, Woolworth, Kresge, Grant, McCrory, McLellan, Newberry, Murphy or Green, although some of these stocks seem pretty high priced to buy now.

Large department stores have prospered the past few years through the sale of furniture, electric refrigerators, television sets and other household goods which are not carried by the variety stores. When, however, hard times or a crop failure come, department store sales fall off sharply; while the variety store sales often increase. Besides, having stores in many different

states, a do the chain stores, goes the advantage of diversification both of merchandise and locality. Most such chains have excellent management and no debt. The stock of all are listed on a Stock Exchange; if you buy into one which has a store in your own community, you can keep an eye on what it is doing.

WHAT ABOUT INFLATION

Dollars may decline in purchasing power until they reach 25 cents. If World War III should come, dollars could be even lower. Hence, it is common sense to have your money in good merchandise rather than in cash or government bonds. But, insist upon investing in these stores with an annual turnover of four to seven times a year, and which charges off to zero every article held more than one year.

The live merchant, chain or independent, has nothing to fear if he follows the above rules, using his profits to improve his store and buying only quick-selling goods.

Or, he can use his profits to open another store in an adjoining community, putting in charge thereof the best clerk in his present local store. This not only makes a success of the new branch, but also serves as an incentive to all employees. Such a policy will soon make you a chain owner.

A WORD TO CHILDREN

Let me add a word of advice to young people, boys and girls whose fathers has a good store. Learn to know and serve in your father's store. Follow my example and work there during vacations and Saturdays. This is the way I started and today, with my savings alone, apart from my regular business of writing and advising on investments, I am the largest owner of a chain of over 200 stores, the stock of which is listed on the New York Stock Exchange.

At your father's death he can leave you a good store, free of debt and with "good will" established by extensive advertising and good service. Such a store is a safer and more profitable investment than any bonds or mortgages that your father may have in his safe deposit box. Re-

Sand Hills Philosopher Wants Meat Selling Congressman To Try Out In A Few Other Lines

Editor's note: The Sand Hills Philosopher on his Johnson Grass farm has a glimmer of an idea this week, for a change.

Dear editor:

My neighbor went into town yesterday mornin just before the mail carrier arrived and since nobody in this country believes in suppression of knowledge I helped myself to his newspaper and carefully put it back in the box after I got through with it, but one of the things I read in it before I did was about a Congressman in New Jersey who put on an apron and got behind a meat counter to find out what housewives think about the price of meat.

Now, while I ain't never heard of a woman who complained because the meat in the market wasn't high priced enough, good times or bad, inflation or deflation, this Congressman got his name in the paper pretty prominently because he found women are hoppin mad at the present price of meat, and according to him this proves the government ought to roll back the price.

I ain't sayin necessarily that a lot of Congressmen would be of more service to their country behind a store counter than behind a desk in the halls of Congress, but if Congressmen are gonna go into this matter of what people think of high prices, I don't see no sense in stoppin just with meat.

I'd like to have some Congressman work a while in an implement store and hear what farmers think about the high prices of tractors and tractor parts, tires and innertubes. While he was workin there, another one could be behind a drygoods counter and hear what farmers think of the price of work pants and shoes. Also, ought to be a good opportunity behind a counter in a feed and seed store to hear what they think of the price of

member what happened to the poor cow who was always seeking the green hill in the distance.

plantin seed, fertilizer, poison, etc. Shouldn't leave out the drug counter, or the fillin station, or the lumber yard, appliance store, barber shop, cafe, etc.

In fact, if Congress wants a complete picture, they might as well adjourn and hire out, and when they get back in session after a few months of workin behind counters and listenin, they gonna find out meat ain't the only thing that's high in this country. Seems like everything in this country has gone up except my bank account.

Yours faithfully,
J. A.

MOVED BACK TO MULESHOE

Mr. and Mrs. Bobby Goss who moved back to Muleshoe, Bobby is now employed at the Goss Station.



"J. A."

TODAY'S meditation

Chelupper Room
THE WORLD'S MOST WIDELY USED DEVOTIONAL GUIDE

The Character of Job
"I have heard of thee by the hearing of the ear; but now mine eye seeth thee". (Job 42:5) Read Job 42:1-16.

Across the centuries the character of Job has amazed, astonished, bewildered, and satisfied the soul of mankind. The story of Job begins with a good but untested man. It concludes with the same man standing victoriously on the other side of the most severe tests.

By adversity, loss, illness, and heartache, he was moved away from the traditions of men concerning God. He was brought face to face with Him in all His majesty and sustaining power and care. "I have heard of Thee", he exclaimed in effect, "but now I see thee".

As a result of his new understanding of the majesty and power of God, Job truly humbled himself and repented for

Lazbuddie To Begin Revival

A revival meeting will begin August 5 at the Lazbuddie Church of Christ and continuing through August 12.

Services will be held twice daily at 10:30 a. m. and 8:30 p. m. Rev. LeRoy Thompson, of Macon, Ga., will be the evangelist. Rev. Denton Thompson, the regular minister will direct the singing.

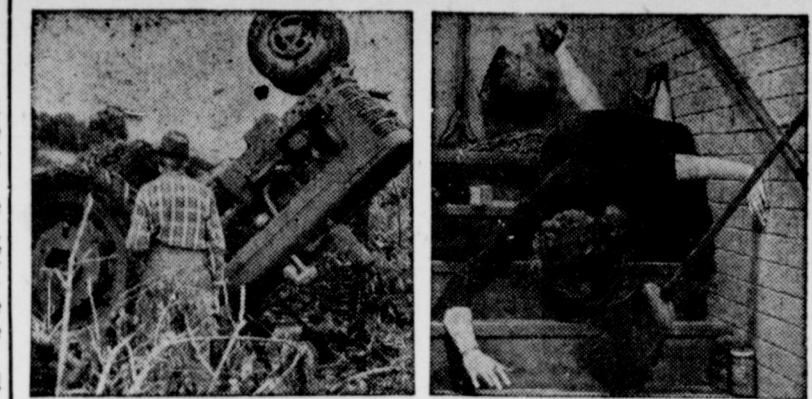
Everyone is invited to attend the meeting.

Paint, Body Shop Open For Business

Muleshoe Motor Company this week announced the opening of their paint and body repair shop. The shop is completely equipped with the latest type of equipment and tools, to do auto painting, body repair, polishing, etc.

O'Neil Rockey of the motor firm said the company has em-

1/2 Million 4-H'ers Helping Reduce Farm Accidents



A recent survey of 2,000 farm accidents shows that 248 involve machinery. In other types, more farm people are injured by falls—476—than in any other kind of accident.

FARM FOLKS, as a general rule, give little thought to safety until a member of their family or a neighbor's is hurt or killed, or fire destroys their home or barn. Then they start doing something about safety.

This year it is particularly important that every farm family should do something about practicing safety, because even though there is a shortage of labor on farms, and new equipment is hard to get, food production must be boosted. That means the present manpower and machinery on

farms must be guarded against accidents.

An average of 47 farm people are accidentally killed every day.

Helping to reduce rural casualties are a half million boys and girls taking part in the National 4-H Farm and Home Safety Program. More than \$10,000 in awards for the best records of accident prevention and education are being provided by General Motors for the seventh consecutive year.

The program is directed by the Cooperative Extension Service.

ployed Fred Moore, an experienced paint and body man, who comes here from Graham, Texas. Mr. Moor has had twenty years experience in this line of work. Mr. Rockey said all work done by the shop will be guaranteed. Mr. and Mrs. Moore have moved here to make their home.

ZILPHA ZIMMER
903 West 2nd St.
RETAILER
Look and Feel Better in Individually Designed "Spirilla" Natural Support Free Demonstration

From where I sit... by Joe Marsh

What's So Funny?

Just finished reading a magazine article that "proves" you and I don't know what's funny.

A bunch of psychologists came to this sad conclusion after telling jokes to college students. Very often they would give out with what they considered a side-splitter—and not get even a chuckle in response. Other times the students would laugh their heads off at stories that weren't considered really funny.

Maybe I'm wrong, but what makes a psychologist such a better judge of humor than the rest of us? If a man gets a kick out of a joke that proves it was funny to him—doesn't it?

From where I sit, when psychologists try to set up a standard for a sense of humor they're getting too serious for me. Stands to reason that different people laugh at different things, just as they have different tastes for most everything. I'm partial to a glass of beer with meals myself—but I promise not to make any "wise-cracks" if you prefer tea.

Joe Marsh

Copyright, 1951, United States Brewers Foundation

Did You Know

That We Have The Most Complete and Modern Blacksmith and Machine Shop

To Be Found Anywhere and That We Can Do All Your Pump Work, Blacksmithing Welding and Machine Work

We CAN and WILL if you will bring your jobs here and give us a chance to prove to you that no job is too small or too large

NOT ONLY THAT but we carry the largest stock of STEELS, SHAFING, PLATES, ANGLES CHANNELS and a complete line of WELDING EQUIPMENT.

FRY & COX BROS.
M-M Farm Machinery
Your Friendly One-Stop Farm Service
Phone 35 Muleshoe, Texas

How much of "TOMORROW" would you like **TODAY?**

- 180 HORSEPOWER...** here today, not "coming sometime!" Chrysler FirePower owners today have the most powerful engine ever put in an American passenger car... and enjoy incomparable performance on non-premium grade fuel besides!
- HYDRAGUIDE POWER STEERING...** now for the first time in any American passenger car! Automatic hydraulic power now gives steering ease, safety and car control under all conditions such as you never felt before!
- POWER BRAKING...** not "in the laboratory stage" but under your toe right now! Regular equipment on all Chrysler New Yorkers, Imperials, and extra-wheelbase Windsor models. Power braking assures smoother, safer braking.
- HEMISPHERICAL COMBUSTION CHAMBERS...** On the left you see the Chrysler engineering reason why no engine, in any other American passenger car today can match FirePower's fuel efficiency or its 180 horsepower performance... Plus new Oriflow Ride Control... Waterproof Ignition... Safety Rim Wheels... Cyclebond Brake Linings... Ignition Key Starting... Come see and feel for yourself how much that other cars may have "some day," you can have now in Chrysler! See it and drive it!

CHRYSLER
finest engineered cars in the world

COVIN MOTOR CO.
1021 WEST 1st STREET
MULESHOE, TEXAS

TIMELY TIPS FROM YOUR H. D. AGENT By Miss Dian McClurkin

SEATED EFFICIENCY

Sit-down ironing has been recommended to the housewife ever since efficiency experts began applying to housework rules learned in industry for saving effort, fatigue and time. Why, then, do most women continue to stand while they iron yet report that ironing is one of their most tiring jobs because of long hours of standing.

The answer is that most ironing equipment in the average home is not suited to sit-down work. Most homes have the folding ironing boards with criss-cross supports which lack space underneath for the knees of the seated worker. Many of the older irons still in use are too heavy, too tall, or poorly shaped for the seated worker, or have cords that drag, catch and get in the

way. Few homes have chairs convenient for sitting at the ironing boards.

Studies at the Vermont Station of 25 women at the job or ironing showed that when seated comfortably at a board of the right height, women use different and less tiring motions than when standing. When standing, they tend to exert unnecessary pressure on the iron or grasp the handle tightly. When sitting, they use an easy sliding motion which irons just as well with less effort.

The studies showed that the ideal height of the board for a seated woman just clears her lap, and the ideal chair is a comfortable, armless office chair, just high enough to let the feet rest easily on the floor with a swivel seat, adjustable backrest and castors so that she can swing around to reach clothes basket or rack or move along the board for fast and easy work. The Station found that with such equipment women can iron for long hours without fatigue and with high efficiency.

Most women voted for an adjustable board which could be

raised or lowered to suit different workers and both stand-up and sit-down ironing. Most preferred a board 58 inches long and 14 inches wide with a tapering end. Engineers at the Station designed two types of homemade boards for sit-down ironing. The one that proved most satisfactory was a built-in, fold-up, wall board with only one slanting room. The other was a folding board which had a straight "leg" under its wide end and a second leg slanting out toward the tapered end of the board, supported by a brace. Commercially made sit-down ironing boards have been for sale in recent years.

Though the adjustable office chair on castors proved ideal for ironing, the Vermont specialists realize that it would be expensive for many families. So they remodeled plain kitchen and dining room chairs for ironing use by cutting down legs to a convenient height for the worker, padding seat and back for support and comfort, and adding castors.

As for the iron, the tests showed that the newer lightweight irons (about 3 to 3 1/2 pounds) were best for seated ironing. Also, they showed the advantage of a low handle, easy to hold, a tapered end to fit into gathers, a beveled or slanting edge to go around buttons and other fastenings.

An iron with a large sole plate had the advantage of covering a larger area, thus saving time and motions.

The cord of the iron, they found should come down from above for efficient use of the iron.

Soils Test Shows Fertilizer Needed

COLLEGE STATION, July 24—Farmers in Cooke county are using larger amounts of commercial fertilizer this year as a result of having their soils tested at A. & M. College, says County Agent B. T. Haws.

Haws reports that some farmers who had been using 100 lbs. are now using 400 pounds of commercial fertilizer per acre under corn and peanuts.

For good production of corn grain sorghum or sudan grass under normal rainfall conditions approximately 150 pounds of nitrogen, 60 pounds of phosphoric acid, 150 pounds of potash and 800 pounds of calcium oxide are needed per acre, according to M. K. Thornton, Extension agricultural chemist of A. & M. College.

"After we test a sample of soil, we can predict with reasonable degree of certainty what the limiting nutrient will be in crop production under normal rainfall," says Thornton.

The agricultural chemist points out that fertilizer recommendations are affected by other conditions in addition to the amount of plant nutrients present. Some of these conditions are soil type and soil characteristics, amount of leaching, soil structure, the preceding crop or the crop on the land, the crop to be grown, previous soil treatment and seed

Senate Passes Bill To Increase Old Age Benefits By \$3 A Month

Washington—The Senate has passed a bill which, if the States take full advantage of it, will increase old age pensions \$3 a month beginning October.

The bill is in the form of an amendment to the Social Security Act sponsored by Senator Ernest W. McFarland of Arizona. Senators Tom Connally and Lyndon B. Johnson of Texas, and 20 other Senators. It must still be approved by the House.

The \$3 monthly increase would also apply to payment to the blind. Federal contributions to States for aid to dependent children would be increased an average of \$2 per month recipient.

"These small increases are overdue and are more than justified by the rising cost of living," Senator Connally declared. "When the bill was before the Finance Committee, I urged and voted for increases of \$5 a month for the aged and the blind and of \$3 a month for dependent children. Average old age assistance payments in Texas in May were only \$32.74, which is obviously not enough to live on."

The bill also passed by the Senate included a provision requiring the States to maintain their present payments so that the full amount of the increased federal contributions would be passed along to the recipients.

In the case of Texas, this should mean a \$3 a month increase for 90 per cent of the 2-22,155 old persons receiving pensions; if the Texas Department of Public Welfare makes appropriate adjustments in its standards of judging needs. Ten per cent of the pensioners are already receiving the State's maximum of \$50 a month and would get the increase only if the maximum is lifted to \$55.

The bill also makes it possible for Texas to give a \$4 a month increase to recipients of aid to dependent children by increasing the state payment only by \$1 a month. This would bring the average payment up from a little less than \$12 a month to about \$16 a month. Under the present law, the State puts up \$3 and the federal government \$9. Under the Senate bill, if the State put up \$4, the federal government would put up \$12.

VISITING FROM LOS ALAMOS

Mr. and Mrs. Robert Giles and little son, Richard, of Los Alamos, N. M. are here visiting a few days with Mrs. Giles parents, Mr. and Mrs. C. M. King.

SUDAN BAND DIRECTOR TAKES POST AT OLTON

Band director Don Williams has resigned his position with the Sudan high school to take the post of band director at Olton.

The school superintendent said that all other teaching posts for the schools had been filled.

bed preparation.

Thornton suggests that farmers contact their county agents for instructions for having their soils tested.

Marine Office Open Every Day

LUBBOCK, July 24—The Marine Corps recruiting station in room 200 of the Lubbock Post Office building has been put on a seven day week schedule, following receipt of orders Saturday from Lt. Norman D. Phillips, district assistant recruiting officer at Dallas.

The office will remain open from 8 a. m. until 4:30 p. m. each day, until further notice. Lubbock recruiters have an unlimited quota and are accepting men in all categories.

Men from the ages of 17 and 31 are eligible for enlistment in the regular Marines for a three or four year period or the Marine Corps Reserves for the duration of the present emergency.

Volunteers can be married or single regardless of the number of dependents. Through July 32

PROMOTED TO CORPORAL

Jesse "Pesky" Winn, a Muleshoe boy, has been promoted to Corporal in the Air Force. Mr. and Mrs. Winn and their little daughter, Bobbie Shawn, have been visiting here with his parents, Mr. and Mrs. W. D. Winn. He is stationed at Roswell Air Force Base.

ALFALFA MEN HERE

Lee Leatherman, Plainview, a district manager of the National Alfalfa Mill & Dehydrating Co., and Floyd Stow, Lamar, Colo., the company's production manager, visited here at the Muleshoe mill of the company Tuesday.

TO AMARILLO

Fred Johnson was a business visitor in Amarillo Wednesday.

TO LUBBOCK

Mrs. W. R. Bowers and daughters, Louise and "Shorty" were Lubbock visitors Wednesday.

VISIT PARENTS

Mr. and Mrs. Marshall Morris are visiting his parents, Mr. and Mrs. Arnold Morris this week.

The office is accepting men who have received their pre induction physical examinations under Selective Service.

GUARANTY ABSTRACT CO.

BONDED FOR YOUR PROTECTION

Office in Bank Building

Telephone 97

Muleshoe, Texas

Complete Abstracts of Title to All Lands and Towns in Bailey County, Texas

PAT R. BOBO, Owner

ANN H. HOWELL, Manager

COX

DRIVE-IN THEATRE

OF FINE ENTERTAINMENT

Sun. & Mon., July 29 & 30
DALLAS
Gary Cooper & Ruth Roman

Tues. & Wed., July 31 & Aug. 1
SORROWFUL JONES
Bob Hope & Lucille Ball

Thurs. & Fri., Aug. 2 & 3
WOMAN OF DISTINCTION
Ray Milland & Rosalind Russell

Saturday Only, Aug. 4
SIERRA PASSAGE
Wayne Morris & Lola Albright

MULESHOE

TEXAS

French Limoges

RAYNAUD & CIE



Carrousel

PATTERN NO. 2057

(The above pattern in open stock)

FOR THE BEST IN CHINA SEE OUR ATTRACTIVE PATTERNS IN —

SYRACUSE

BAVARIAN

ENGLISH BONE

(All Open Stock)

See our selections in —

SHARPS & BRYCE CRYSTAL

GIFTS FOR ALL OCCASIONS

Dyer Hardware & Furniture

Phone 151

Muleshoe, Texas

WE GIVE S & H GREEN STAMPS



Philgas

**Brings a Revolution in
Farm and Town Living!**




For Home Heating... With dependable Philgas you can heat your whole house or a single room. You can enjoy a central heating system with automatic temperature controls... or install an instant lighting, space-saving wall heater to get the bathroom warm in seconds. Philgas, a remarkably high-heat fuel, is thrifty to use!




For Tractor Fuel... Philgas can save you several cents a gallon on fuel cost compared with gasoline... and big savings on engine maintenance, too!

For Water Heating... An automatic water heater for Philgas operates at least 3 times as fast as electricity. All the hot water you need costs but a few cents a day!




For Cooking... Philgas is an ideal fuel! Fast! Clean! Automatic! Gives the exact heat you need, not just a few variations.

For Dependable Service... Your local Philgas distributor is fully qualified to provide the best in gas systems beyond the mains... dependable installations, prompt and courteous service. See him today!

Philgas is Distributed By

WIEDEBUSH & CHILDERS

CLOVIS HIWAY
PHONE 16 MULESHOE



GIBSON HOME FREEZER

Now is the time to buy your GIBSON HOME FREEZER. Saves hours of time and dollars on food bills. Easy accessibility and large capacity insures you the best in home freezers. We have the size to fit your need.

JOHNSON FURNITURE CO.

Phone 116 Muleshoe, Texas

Auto Service




NEW RINGS

CARS POLISHED




TIRE REPAIR

RADIATOR REPAIR

COMPLETE REPAIR SERVICE ON ALL MAKES OF AUTOS, TRUCKS AND TRACTORS

AUTO PARTS AND ACCESSORIES

CONOCO GASOLINE AND MOTOR OILS

THE BEST PLACE IN TOWN TO BUY NEW AND USED CARS

SIKE'S MOTOR CO.

Phone 53 Muleshoe, Texas

Local Wheat Loan Established At \$2.04, Representing 90% Parity

A local loan rate of \$2.04 for 1951 wheat has been announced by the Production Marketing Administration office. A higher parity price on July 1 is responsible for higher price supports on the 1951 crop of wheat, B. F. Vance, chairman of the State PMA Committee said.

Supports for both the 1951 and 1950 crops represented 90 percent of parity at the beginning of the marketing year.

"Parity" represents the commodity's fair purchasing power in relation to price of the things the farmer must buy. July 1, 1951 wheat was \$2.42 a bushel; for the same date last year the

wheat price parity was \$2.21. Wheat eligible for supports must grade No. 3 or better, or No. 4 or 5 because of test weight or because it contains wheat of the classes Duram and Red Duram.

Mr. Vance also reminds farmers that there will be no acreage allotments and no marketing quotas on the 1952 wheat crop. Supplies are expected to be below the level at which quotas must be proclaimed and the continuing need for food in the uncertain world situation makes wheat allotments for 1952 inadvisable, he said.

How Mrs. Always-Broke Balanced Her Budget

SHE NEVER USED TO KNOW WHERE HER MONEY WENT

Who could blame her husband for getting cross once in a while? She never seemed to know just where the household money went. It just went.

How different now! When hubby asks about the finances, she confidently reaches for the old check book. There in the stubs is the whole story—a businesslike record of the months expenditures.

It is so simple to balance your budget when a checkbook record is kept of each expenditure.

Too, a cancelled check is always a good receipt. It also provides a safe and easy way to send money through the mail.

Come in today and open a checking account.

MULESHOE STATE BANK

Member F. D. I. C.

Entertainment at Your Local THEATERS

MULESHOE, TEXAS

Week Days Open 7:45 p. m., Starts 8:00 p. m.
Saturday and Sunday Open at 1:45, Start at 2:00
and Continuous Showing

Admission: Adults 36c Children 9c

VALLEY

THURSDAY and FRIDAY

Red Skelton

Sally Forrest

— in —

Excuse My Dust

SATURDAY ONLY

Whip Wilson

— in —

Canyon Raiders

SUNDAY and MONDAY

Jeff Chandler

Debra Paget

— in —

Bird of Paradise

TUESDAY and WEDNESDAY

Jungle Cast

In

Kon Tike

PALACE

THURSDAY and FRIDAY

Forrest Tucker

Adele Mara

— in —

California Passage

SATURDAY ONLY

Viveca Lindfors

— in —

Gypsy Fury

SUNDAY and MONDAY

William Holden

Judy Holiday

— in —

Born Yesterday

TUESDAY and WEDNESDAY

Linda Darnell

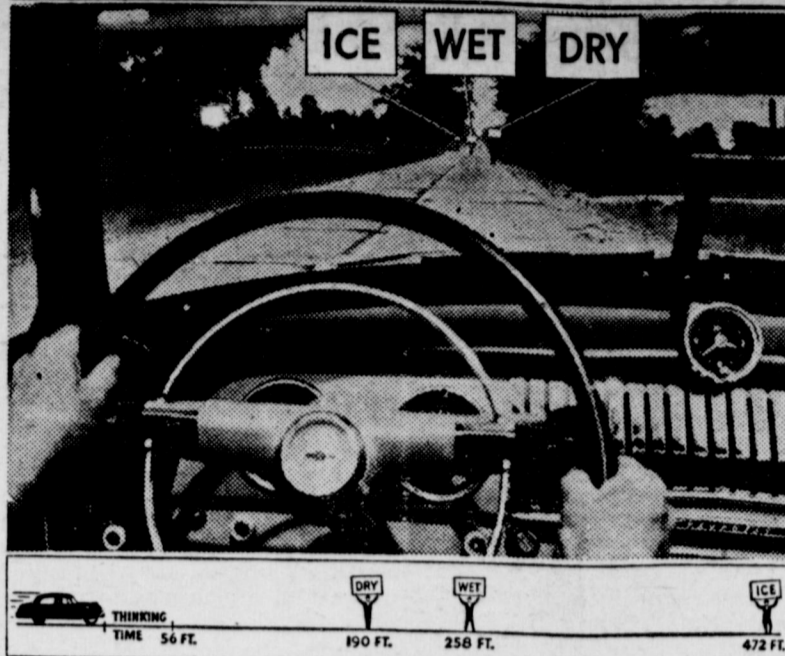
Charles Boyer

— in —

The 13th. Letter

Motion Pictures Are Your Best And Cheapest Entertainment

Safe Braking Margin Varies



Importance of driving in accordance with highway conditions is illustrated by this diagrammatic view prepared by Chevrolet in the interest of traffic safety. Standard braking tables reveal 190 feet is required for a stop at 50 miles an hour, allowing three-quarters of a second for a driver's reaction to an emergency. When the pavement is wet, however, the distance increases to 258 feet. On icy pavement 472 feet will be covered before a car brakes to a complete stop.

NEARLY \$19 MILLION PRICE OF MATADOR RANCH

NEW YORK — The fabulous Matador ranch has been sold. Lazard Bros. & Co. Ltd. would say only this today: the buyers are a group of several U. S. Corporations.

The price for the estimated 812,000 acres is nearly \$19 million.

Lazard Brothers, a banking firm of New York, London and Paris, said it has obtained 90 percent of the stock. Most stockholders were Britons.

The Matador, ruled since early days by the Matador Land and Cattle Company, lies northeast of Lubbock and stretches almost to the southwest tip of Oklahoma. Also a part of the deal was the Alamositas ranch, in Oldham and Hartley counties on the New Mexico border in the northern part of the Texas Panhandle. Further, the switch from British to American hands involves more than 4 thousand acres south of Malta, Montana.

The only thing retained by the Matador company stockholders is 50 per cent of the mineral rights, a valuable withholding in oil and gas rich Texas. Both ranches are under lease for oil exploration.

Some overseas stockholders will receive their money in dollars on Aug. 2; others will be paid in pounds Aug. 8. The Lazard offer of \$23.70 a share will remain open until Aug. 16.

Previous dispatches had said Lazard Brothers counted themselves among the buyers.

A Lazard spokesman said the 17 newly formed "cattle companies" were set up by American financial interests for the sole purpose of buying Matador properties.

In Denver, John Mackenzie, the general manager of the Matador Land & Cattle Company, said he was advised that under British law, Lazard can force owners of the remaining 10 percent of the stock to sell at the same price paid for the 90 percent.

Mackenzie added that no personnel changes were contemplated. John Stevens is manager of the Matador ranch.

VACATION LAMENT

Little bankroll ere we part, Let me press you to my heart. All the year I've clung to you, I've been faithful, you've been true, Little bankroll in a day, You and I will start away, To a good vacation spot, I'll come back, but you will not. —Santa Fe Magazine.

COTTON ALLURE



Three cool cotton separates by Susan Thomas promise all-around summer allure. The cotton lace overskirt lends a dancing note to a skirt and camisole top of Soap 'n Water "Everglaze" Taffa. The fabric is a washable, wrinkle-resistant cotton. National Cotton Council fashion experts report.

COMFORT SPRAYERS

- 6 & 8 - Row Sprayers
- Fits Ford and Any Other Make of Tractor
- Easily Mounted
- Easily Detached
- Permits Easy Turning
- High Clearance
- Adjustable Nozzles
- Economical

NEW HOLLAND HAY BALERS

This revolutionary new hay baler is the need to all of your haying problems.

See it on display at —

HICKS TRACTOR CO.

Clovis Hiway

Muleshoe Texas

ANNUAL SUDAN FALL FESTIVAL BACK FROM SEATTLE

SCHEDULED FOR SEPT 14 & 15
SUDAN, July 24.—Dates for this year's annual Sudan Fall Festival have been set for Sept. 14 and 15 with a rodeo already planned and a horse race in the planning stage.

The Sudan Roping Club will sponsor the rodeo, which will be preceded by a street parade in which floats will compete for \$225 in prizes.

The general committee for the festival includes Drew Watkins, Joe Salem, and Reed Markham.

Mr. and Mrs. Arnold Morris are home after a long trip visiting and sightseeing in the Northwest. They visited with their son and wife, Mr. and Mrs. Marshall Morris

in Seattle, Wash., and they returned here with them. Mr. Morris made up his attendance in the Rotary Club, attending the meeting in Seattle of a club which has nearly five hundred members.

DR. B. R. PUTMAN OPTOMETRIST

First Door North of REA Building
Muleshoe, Texas Phone 342-J

Announcing The Opening Of Our Paint & Body Shop

and the employment of

Mr. Fred Moore

Formerly of Graham, Texas

who has 20 years experience in this work

OUR SHOP is fully equipped to do your

PAINTING - BODY REPAIR

POLISHING

Give Us A Trial - All Work Guaranteed



MOTOR CO.

Your Ford Dealer

Phone 33

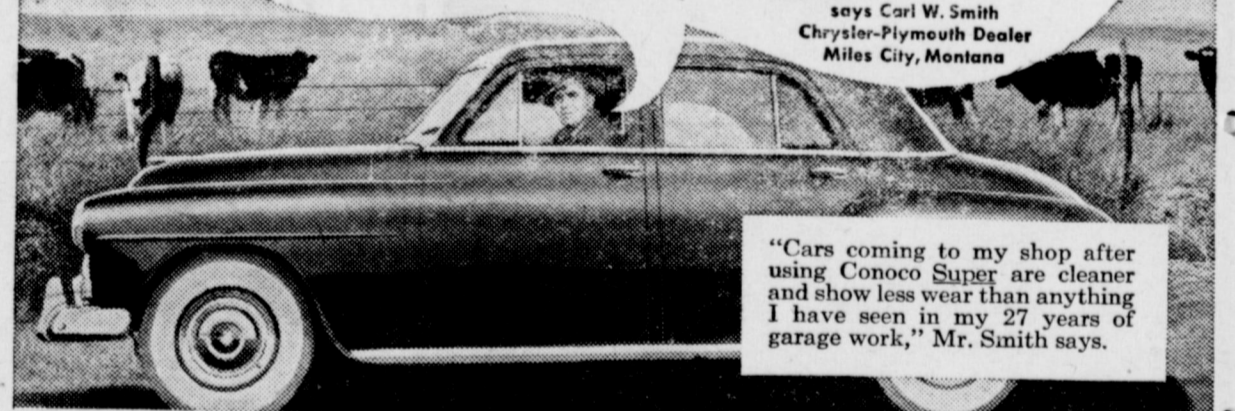
Muleshoe, Texas

"I got the story on

50,000 Miles-No Wear

and changed to New Conoco Super Motor Oil"

says Carl W. Smith
Chrysler-Plymouth Dealer
Miles City, Montana



"Cars coming to my shop after using Conoco Super are cleaner and show less wear than anything I have seen in my 27 years of garage work," Mr. Smith says.

"50,000 Miles-No Wear!" Proved Here:

After a punishing 50,000-mile road test, with proper drains and regular care, engines lubricated with new Conoco Super Motor Oil showed no wear of any consequence; in fact, an average of less than one one-thousandth inch on cylinders and crankshafts. AND gasoline mileage for the last 5,000 miles was actually 99.77% as good as for the first 5,000!



TRAVELING SALESMAN

"My car is my meal ticket," admits R. C. Eberhart, Travelingman, Flagler, Colo. "I average 2,800 miles a month. Since changing to new Conoco Super, my operating cost has been reduced and the performance is much smoother."



DELIVERY FLEET

"Repair work has been cut 50% since I started using Conoco Super in all our delivery vehicles," writes George Lange, Laundry Partner, Muskogee, Okla. "One has run over 30,000 miles on Conoco Super, without any mechanical work."

Ask Me About
"50,000 Miles
No Wear!"



This is a
HEAVY DUTY
OIL

CONOCO AGENT

R. R. "Bud" HOLTON

CALL 28 COLLECT

MULESHOE

Report On Defense Bill And War Situation

By GEORGE MAHON

For the past 11 weeks I have been conducting committee hearings in Washington on the appropriation bill for the Army, Navy and Air Force for the current fiscal year. I expect to present the bill to the House of Representatives for passage during the second week in August. I think some facts about the bill may be of interest. Because of the confidential nature of much of the testimony, the hearings were not open to the press. However, about two-thirds of the testimony has been printed and is available to Members of Congress, the press and public. Four volumes containing 3,500 pages, totaling nearly three million words, were required to print the testimony of the 500 witnesses who testified.

A lot of words and witnesses were involved in the hearings. The issue before us, however, was the 56 billion dollar appropriation bill for the Army, Navy and Air Force, one of the largest appropriation bills to be submitted to Congress in the history of the Nation. Generally speaking, one-fifth of the money would be required to pay, feed and clothe the men in service. An additional one-fifth would be required to maintain the installations, aircraft, ships, etc. One-half of the sum would be used for research and development and many other purposes. We will make savings and reductions wherever reasonably possible. It appears that a minimum reduc-

tion of at least one billion dollars can be made safely.

Our civilian and military experts are by no means infallible, but it was interesting to note that most of them who would not be a global war in 1951. Some of them expressed the idea that the danger of war with Russia would be greater in 1952 and 1953 as the Russian atomic stockpile increases. Many of our military people feel that war between the United States and Russia is inevitable, but our top military leaders do not agree with this conclusion.

The world situation is confusing, complex and explosive. My own view is that some incident or unforeseen development might precipitate a shooting war between the United States and Russia at any time. I think the best hope for peace lies in our military preparedness effort and in the over-all strengthening of our nation and the other free nations of the world. We do not know the Russian timetable, but we know they seem to understand the language of strength.

Remarkable Strides Made
What may happen in the Korean war is still not clear, but in my opinion it would be dangerous and inexcusable for us to let down our guard or disband our military forces by reason of the cease fire in Korea. The truth is



Erwin Ray, 9, of the famous Boys' Ranch near Amarillo, Texas, tries on Colorado Governor Dan Thornton's Stetson for size. Erwin and Troy Black, 17, were elected outstanding citizens of Boys' Ranch and awarded a two-day flying trip to Denver, Colorado. They were the guests of Wolf Roberts, prominent Denver businessman.

Two slightly dazed by happy boys returned recently to the famous Boys' Ranch near Amarillo from a two day trip in Denver, Colo. The boys, Erwin Ray, 9, of Berger, and Troy Black, 17, of Mason, won the trip in a special citizenship election conducted by all the "cowhands."

Erwin and Troy were chosen the best all around citizens and most popular boys at the ranch. With this honor went the chance to fly to Denver and spend two days just seeing and doing everything possible.

The boys stayed at the re-

nowned Brown Palace hotel as guests of Mr. Wolf Roberts, a prominent Denver businessman. They were officially welcomed by Governor Dan Thornton in his office, taken on tours of amusement parks and places of interest, and were guests of honor at a special banquet attended by presidents of all the Denver Civic clubs.

It is hoped that this will be the start of an annual event at the Ranch. Both Troy and Erwin feel that their is a very special honor because they were the first to be elected "Best Citizens of Boys' Ranch".

we are not now prepared for war. Our military build-up is just getting in high gear. We must be strong over a long period of years if there is to be any real hope for stability and peace. On the other hand, we cannot afford to bankrupt ourselves in reckless and wasteful spending.

During the progress of the hearings I was invited to go to the Pacific for the atomic bomb tests and also to Europe to confer with Eisenhower, but my work

here was such that I could not leave Washington at the time. Suffice it to say that we have made remarkable strides in the field of atomic warfare, and

PAT R. BOBO
ATTORNEY-AT-LAW
Office In Bank Building
Muleshoe, Texas

POOL INSURANCE AGENCY

COMPLETE INSURANCE COVERAGE

- LOW COST FARM LOANS
- AUTO LOANS
- IRRIGATION WELL LOANS

Dependable and Friendly Service

LEE POOL

Phone 113

MYRON POOL

Muleshoe, Texas

First Christian Meeting To Be Held In August

P I First Christian

A. G. Abbott, of Ft. Worth, Texas, State Evangelist for the Texas Christian Missionary Society, will conduct an evangelistic meeting for the First Christian Church of Muleshoe beginning on August 12 and continuing through August 19. All services will be held in the building of the First Christian Church, beginning at 8:00 each evening, except Saturday.

Evangelist Abbott has been in the active ministry for twenty-eight years, and during this period he has always directed a most enthusiastic evangelistic

other highly significant developments are in the offing. Of course Russia is making progress in weapons development too. For example, the Russian-made jet fighter which has been used against us in Korea is comparable to our best fighter aircraft.

I am supporting the request of our military people for large sums of money to expand our guided missile program. Guided missiles would play a major part in any future war. Of course, the hope of every thoughtful American is that our military preparedness program will be instrumental in preventing the outbreak of a general war.

program in the churches he has served. He resigned his ministry with the church act Electra in July, 1947, to enter the field of evangelism. Evangelist Abbott is a faithful proclaimer of the Gospel, cordial and cooperative. All people of the community are invited to attend the services, with the assurance that they will be challenged and strengthened spiritually through the influence of these meetings.

DON'T BORROW your neighbor's Muleshoe Journal any longer. A subscription for a year costs only \$2.00.

CECIL H. TATE
ATTORNEY-AT-LAW
Office In Courthouse
Muleshoe, Texas

SAVE 15%
Limited time only

Coleman
AUTOMATIC
GAS WALL HEATER

A complete heating unit. Fits in wall. These models supply heat for as many as 1 to 5 rooms.

Approved by American Gas Association
E. R. HART CO.
Phone 23 Muleshoe, Texas

ELIZABETH WOODLEY
INSURANCE

Nat'l Farm Loan Office Bldg.

Phone 83

U. S. To Continue Drive On Child Labor In Agriculture In School Hours

DALLAS, July 23 — When the school bell rings this fall, Federal officials here are going to be making efforts to see that employment does not interfere with education.

Employment of children under 16 years of age in agriculture during school hours is unlawful under the Federal Fair Labor Standards Act. William J. Rogers, Regional Director of the Wage-Hour and Public Contracts Divisions of the U. S. Department of Labor in Dallas, says his staff plans to enforce the law this fall as it did last year. His region includes Texas, Arkansas, Louisiana, Oklahoma, and New Mexico.

He pointed out today that the law applies directly to farmers whose crops or products, either directly or indirectly, go into interstate or foreign commerce. He

illustrated the matter with the case of a farmer who sends his products outside the state or delivers his product to a gin, processor, canner, or dealer who will send it outside the state, either in its original form or as part of another product.

The law does not apply to a farmer's own children working on their parent's farm, he said. But if farmers hire other under age children during school hours, the farmers themselves are responsible, he declared.

By "school hours" is meant the hours when school is in session for the district where the employed children under 16 currently are living, he explained. That includes children hired either as individuals or as part of a family group directed by labor contractors, processors, or others. It includes both citizens and alien children.

The Federal law sets no minimum age for the employment of children in agriculture before or after school hours on any school day, or at any time on school holidays, or during school vacations. But most states have school attendance laws and whichever statute, Federal or state, sets the higher standard governs the matter in any given state, he says.

Any person who willfully violates the child-labor provisions of the Federal law is subject to a maximum fine of \$10,000, or after a second conviction for similar offense, a maximum fine of \$10,000 or an imprisonment for as much as six months, or both, he said.

KARL L. LOVELADY
ATTORNEY-AT-LAW
So. Side of Square
Muleshoe - Texas

DRS. WOODS & ARMISTEAD

OPTOMETRISTS

IRA E. WOODS, O.D.
B. W. ARMISTEAD, O.D.
GLENN S. BURK, O.D.

Phone 328 Littlefield

MULESHOE FUNERAL HOME

LOYD ROBERTS
FOR AMBULANCE SERVICE CALL 47

ABSTRACTS REAL ESTATE

COMPLETE ABSTRACT SERVICE
LISTINGS ON ALL TYPES OF REAL ESTATE

MULESHOE ABSTRACT CO.

Barry T. Lewis, Prop.

Phone 352-J



R. M. "Bob" Gregory
REPRESENTATIVE OF

Great National Life Insurance Company

LIFE INSURANCE FOR YOU & YOURS

P. O. Box 187 No. Ave. D.



If you've got the **PRICE** of a car — you can afford this **BUICK**

HAVE you taken a good look at a 1951 Buick SPECIAL?

Have you checked it against the field—for room and power and ride and handling—and all the things that go with a really great automobile?

Do you know what gas mileage owners are getting from its F-263 Fireball Engine—newest of Buick's famed valve-in-head power plants?

Do you know that this is the most powerful engine you'll find in any automobile of the same size and price?

Do you know what headroom and legroom and trunk space this big and beautiful bargain gives you?

Do you know that this SPECIAL has the road-steady ride of soft-action coil springs on every wheel—and the firm keel of Buick's torque-tube drive?

Do you know the lift that you'll get behind the wheel of this trim and talented traveler—as it steps away from a traffic light or rolls up the miles on the open road?

Fact is—by every check, including price—this Buick's a buy too good to miss.

Come in, look it over, and you'll agree.

Equipment, accessories, price and models are subject to change without notice.



WHEN LETTER AUTOMOBILES ARE BUILT BUICK WILL BUILD THEM
MULESHOE AUTOMOBILE CO.

PHONE 375-J

"BETTER BUY BUICK"

MULESHOE



DICKIES MATCHED SUITS
 Army twill. Pants and shirts to match. 8.2 corded Army fast color. Sun Tan. Sanforized.
 Shirts, Sizes 14 to 17½
clearance sale \$3.77
 Pants, Sizes 28 to 44
clearance sale \$3.77

MEN'S TIES

One Group WEMBLEY and ARROW men's ties. \$1.50, \$2.00, and \$2.50 Values. All for the extra low price of—

68c each

BOYS' and MEN'S SWIM SUITS

Entire stock at reduced prices. Sizes 28 to 38. Boxer- and brief styles. \$3.98 values.

\$1.88

BACHELOR FRIEND

WORK SOCKS. 6 months wear or six new pairs free.

3 Pairs for \$1.00

MEN'S White Handkerchiefs
 Hemmed. Clearance Sale.
7c each

**We Will Be Closed Wednesday
 Preparing For This Big Event**

JULY CLEAR

Customers of COBB'S have learned that when we have a SALE it is a REAL SALE — They bought for this summer it seemed good judgement to BUY HEAVILY. WE BOUGHT LOW COST on hundreds of items. This is NEW SEASON MERCHANDISE. We believe mothers: You will find many things your children will need when school starts in this sa

BEGINS THURS

Men's Suits

CURLEE and SEWELL men's suits with one and two pairs of pants. All wool. Summer and winter weight.

- \$37.50 Value Clearance Sale .. \$21.88
- \$39.75 Value Clearance Sale .. \$23.88
- \$45.00 Value Clearance Sale .. \$27.88
- \$49.50 Value Clearance Sale .. \$29.88
- \$59.75 Value Clearance Sale .. \$33.88
- \$65.00 Value Clearance Sale .. \$37.88
- \$75.00 Value Clearance Sale .. \$39.88



MEN'S DRESS PANTS

One group. An EXTRA Clearance Sale Value. Light weight. Gabardines and Worsteds.



- \$8.98 Values \$4.49
- \$10.98 Values \$5.49
- \$12.98 Values \$6.49
- \$14.98 Values \$7.49

MEN'S DRESS SHIRTS

ARROWS. Cool, lightweight mesh. Entire stock of summer dress shirts must go. Clearance Sale—

White and Solid Colors **\$2.28**



MEN'S Stetson Straw Hats
 Genuine Panama. Entire Stock must go. Priced for a quick close out.

- \$5.00 Value ... \$2.50
- 1/2 PRICE \$7.50 Value ... \$3.75
- 12.50 Value ... \$6.25

Men's Short Sleeve Sport Shirts

Solid White and Colors Cool mesh and broadcloth. ARROW, MCGREGOR, and other famous brands.

- 1/2 PRICE \$2.98 Values .. \$1.49
- \$3.98 Values .. \$1.99
- \$4.50 Values .. \$2.25

Long Sleeve Sport Shirts

Famous ARROW and McGregor brands. All sizes. Summer Mesh. Broadcloth and gabardines.

- 1/2 PRICE \$4.50 Values .. \$2.25
- \$4.98 Values .. \$2.49
- \$5.98 Values .. \$2.98

MEN'S STRAW HATS

Men's Dress Straws. Entire Stock at Reduced Prices. Sizes 6 5-8 to 7 1/4.

- 1/2 PRICE \$1.98 Values ... \$.99
- \$2.98 Values .. \$1.49
- \$3.98 Values .. \$1.99



MEN'S BRIEFS
 Knit, all-elastic waistband. Regular 69c value July Clearance Sale—

34c Pair

MEN'S SPORT HOSE

Sizes 10 to 13. Slightly irregulars of 69c hose. Cotton. Fancy Patterns.

23c pair

MEN'S SPORT COATS

Rayon, Gaberdine and 100% Wools, and Worsteds. Sizes 35 to 44.

- \$16.95 Value Clearance Sale \$9.98
- \$22.95 Value Clearance Sale \$12.88

TOM SAWYER PAJAMAS

Boys seersuckers. Sizes 2 to 12. All elastic waistband. Long legs and short sleeves. \$3.50 value. Clearance Sale for only—

\$1.99 pair

TEX-N-JEANS

Zipper fly. 8 oz. sanforized denim.

- Sizes 1 to 6 \$2.29
- Sizes 7 to 16 \$2.59

We also carry the 11-oz double knees.

CHAMBRAY WORK SHIRTS

Blue and gray. Sanforized. Two button pockets. Regular \$1.79 Value. In this great sale only—

1.38

Boys' Seersucker Overalls

Sizes 1 to 6. Colors blue and tan. July Clearance Sale at 1/2 Price.

\$1.98 Value 99c

BOYS' SPORT SHIRTS

Knit short sleeves. Fancy patterns. Sizes 12 to 20. Close out during our big July Clearance at—

- 1/2 OFF \$1.98 Values \$.99
- \$2.49 Values \$1.25

Short sleeves. Fancy patterns. Prints, Cottons, and Seersuckers. Sizes 2 to 20. Priced for a quick clearance.

- 1/2 OFF \$1.98 Values99
- \$2.49 Values \$1.25
- \$2.98 values \$1.49
- \$3.98 values \$1.99

Broken sizes. Close out at—

- 1/2 OFF \$2.49 Values \$1.25
- \$1.98 Values \$.99

WESTERN KHAKI PANTS

9 oz sheer Army cloth. Waist sizes 32 to 38. \$6.98 values. July Clearance Sale—

\$2.88 pair

MEN'S SUMMER SHOES

Entire stock on Sale. FREEMAN woven leather, Nylon mesh and perforated. July Clearance Sale. \$15.95 & \$19.98 values \$9.98

\$14.98 & \$13.98 values \$7.88

\$10.98 values \$5.88

SHEETS

GARZA, Size 81x108. Quality. Clearance Sale

\$2.48

SHEET

Size 81x99. Typ. Quality. Clearance

\$2.

PILLOW CASE

Size 36x36. GARZA. Sale Price

48c

CURTAIN SCR

Priced for a quick close 59c and 69c values. Only—

19c yard

CANNON TOWELS

Turkish towels. Solid Col. Size 20x40. 69c values. Clearance Sale—

41c each

WASH CLO

Colors. Rose, Yellow, Bl. Green Clearance Sale Price

8c each

LADIE'S HAND BAGS

One Group. Values to \$10.9. Close out at—

\$1.88 tax included

LADIE'S HATS

Values to \$12.98. Close out at—

\$1.88

GIRLS' STRAW HATS

Entire Stock closing out at—

97c each

ALL SALES FINAL

NO ALTERATIONS

NO EXCHANGES

NO REFUNDS

COBB

MULESHOE

SALE

This year, more than ever that is true. We ARE OVERSTOCKED. We admit it. When we TOO MUCH SUMMER MERCHANDISE. Now we have SLASHED PRICES WAY BE- you will agree this sale will be YOUR GREATEST MONEY SAVING EVENT. A tip to le.

DAY, JULY 26



You Will Find Many, Many More Outstanding Values In Our Store.

LADIES' NYLON HOSE

First Quality. \$1.50 to \$1.95 Values. Close out on all summer shades at—

97c pair

LADIES' NYLON HOSE

Regulars of \$1.95 values. Beautiful colors.

67c pair

BOYS' SANDALS

Broken sizes 3 1/2 to 8, 8 1/2 to 12, and 12 1/2 to 3.

1/2 OFF \$2.98 \$1.49
\$3.49 \$1.75
\$3.98 \$1.99

BOYS' TU-TONE OXFORDS

In broken sizes, 5 1/2 to 12, 12 1/2 to 3, and 3 to 6. Brown and white and tan and beige.

1/2 OFF \$6.98 values \$3.49
\$5.98 values \$2.99
\$4.98 values \$2.49
\$3.98 values \$1.99

Piece Goods

PRINTS

80x80 fast colors. "Topmost" and "Quadriga." 59c value.

41c Yard

We are selling our entire stocks of summer piece goods. Dotted Swiss, Organdy, Fine Lawn, Muslin, and Bastiste.



DOTTED SWISS, Colors, Permanent Dots, 79c value 38c yd.
WAFFLE PIQUE, Colors and white. Pre-shrunk, fast colors, 98c val. 49c yd.
IMPORTED DOTTED SWISS, Colors, Permanent Dots, \$1.20 val. 60c yd.
STOFFLE'S La CHIEN Fine Printed Muslin, Sanforized, 98c val. 49c yd.
CHAMBRAY, Solid colors, combed mercerized. Sanforized, 98c 49c yd.
BROADCLOTH, Printed, Combed, Sanforized Fast colors, 98c val. 49c yd.
GINGHAMS, Small and large checks. Fast colors, 79c val. 39c yd.
EYELET EMBROIDERY, Solid Colors, \$1.98 val. 99c yd.

Ladies' Dresses

New Summer Dresses FAMOUS BRANDS

Martha Lee — Doris Dodson — Nelly Don — Claire Tiffany and others

Several Hundred Fine Combed Chambrays, Ginghams, Dimity's, Muslins, etc.

ALL GO DURING OUR BIG JULY CLEARANCE SALE

\$5.98 Values Sale Price \$2.99
\$7.98 Values Sale Price \$3.99
\$8.98 Values Sale Price \$4.49
\$9.98 Values Sale Price \$4.99
\$12.98 Values Sale Price \$6.49
\$14.98 Values Sale Price \$7.49

DRESSES --- SILKS & RAYONS

LINENS and OTHER FAMOUS MATERIALS ... PAUL SACHS FRANKLIN — MARLENE JUNIORS — DORIS DODSON — And Many Other Famous Brands.

\$9.98 Values Sale Price \$4.99
\$10.98 Values Sale Price \$5.49
\$12.98 Values Sale Price \$6.49
\$14.98 Values Sale Price \$7.49
\$16.98 Values Sale Price \$8.49
\$19.98 Values Sale Price \$9.99
\$24.75 Values Sale Price \$12.38
\$29.75 Values Sale Price \$14.38



\$41
\$59
\$65
\$75

SLIPDRESSES AND SUITS

Selling at reduced colors. Sizes

..... .99
..... \$1.39
..... \$1.49

AND SUITS

at half price.

..... \$1.49
ARROWS \$1.75
summer dr \$1.99

White at HOUSES

White, Solid Sizes 30 to

..... \$0

FOR ITEMS FROM WHICH TO CHOOSE

CHILDREN'S SANDALS

Sizes 3 1/2 to 8, and 8 1/2 to 12, and 12 1/2 to 3. Red, tan, and white. A big saving at—
\$3.98 value \$1.99
\$3.49 value \$1.75
\$2.98 value \$1.49

LADIES' CASUAL SHOES

Entire stock is going at one-half price. Wedge heels, a wonderful buy! You can afford several pairs at this price. "Connies" and "Hollywood Skooters".

\$8.98 value \$4.49
\$7.98 value \$3.99
\$6.98 value \$3.49
\$5.98 value \$2.98
\$4.98 value \$2.49
\$3.98 value \$1.98

LADIES' SUMMER DRESS SHOES

Entire stock of ladies' summer dress shoes on sale. Leather, Nylon Mesh and Patent. Price for a quick close out.

\$9.98 value \$4.99
\$8.98 value \$4.49
\$7.98 value \$3.98
\$6.98 value \$3.49
\$5.98 value \$2.99
\$4.98 value \$2.49
\$3.98 value \$1.99



LADIES' SKIRTS

One group ladies' Cotton, Rayon, Garbardine, and Strutter Cloth Skirts. Sizes 24 to 30. Buy several at these close-out prices!

1/2 OFF \$5.98 Value Now \$2.99
\$7.98 Value Now \$3.99
\$9.98 Value Now \$4.99

OUR ENTIRE STOCK OF

CHILDREN'S SUMMER DRESSES

KATE GREENWAY SHEERS
COLOR FROCKS
CHAMBRAYS
GINGHAMS



\$2.98 Values Sale Price \$1.49
\$3.98 Values Sale Price \$1.99
\$4.98 Values Sale Price \$2.49
\$5.98 Values Sale Price \$2.99
\$6.98 Values Sale Price \$3.49

OUR ENTIRE STOCK OF

SUN DRESSES



\$6.98 Values Sale Price \$3.49
\$8.98 Values Sale Price \$4.49
\$10.98 Values Sale Price \$5.49
\$12.98 Values Sale Price \$6.49

LADIES' BLOUSES

One group of rayon and cotton blouses at.

1/2 PRICE \$3.98 Values \$1.99
\$4.98 Values \$2.49
\$5.98 Values \$2.99

WASH DRESSES

New Shipments. 80x80 prints. Fast colors Sizes 12 to 20, 38 to 52, 14 1/2 to 24 1/2 and 9 to 17. Big Clearance Sale Value.

\$2.47

BB'S

DE, TEXAS

COME EARLY

STORE OPENS

AT 8:30 A. M.



Tailor - Made For Changes

Many farm families have wanted to add to their homes but they discovered too late, that it couldn't be done without making major alterations in the framing. This house is designed to eliminate that extra expense; the floor plans can be developed step by step, thus enabling you to adjust your income and your building plans to conform to each other.

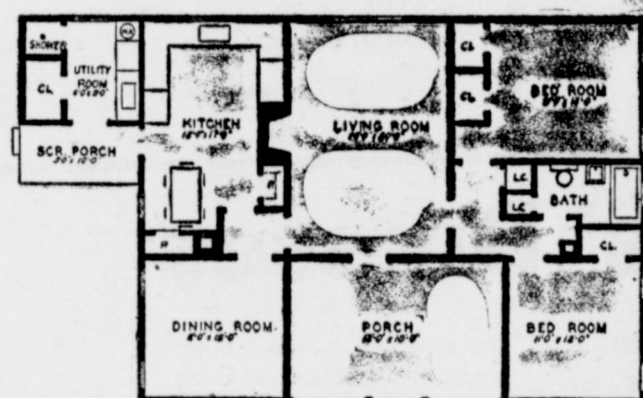
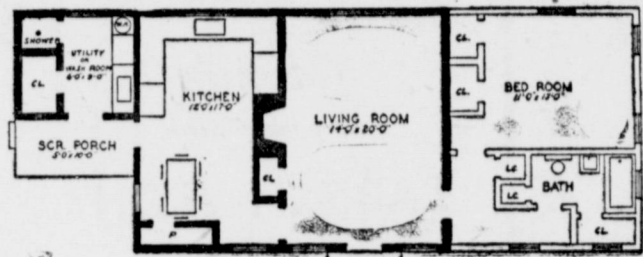
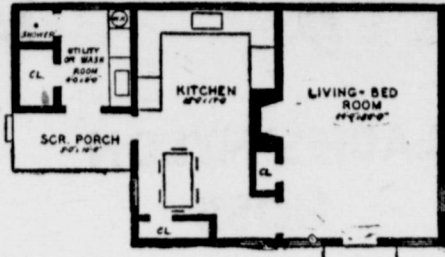
Each step has been planned so that your house will be attractive at all times, as convenient as possible and will not require any structure or framework changes when you are ready to make the alterations that you decide are necessary.

For instance, in every case, windows in the original house are replaced by doors in the new addition. The window sizes were selected so the windows could be removed and the doors set in their places. The lines of the room were kept as simple as possible, thus eliminating any tearing out of its parts when your addition is made.

The back porch and utility room are optional. Ample provisions are made for chimneys to heat the living room, bedroom, and dining room. The dining room chimney does double duty since the kitchen stove pipe goes through it, thus saving the cost of another chimney and eliminating smoke from the stove going into the chimney.

Waste lines are divided in two groups. One carries wash water from the kitchen and washroom, and can be disposed of with a grease trap and tile line. When the bathroom is added, this will reduce the size of the septic tank and disposal area.

You can obtain blueprints for this THE MULESHOE JOURNAL FARM AND RANCH Plan No. 48 02 and a handy list of materials by which you can figure your construction cost accurately. Send \$1 to Building Editor, FARM & RANCH SOUTHERN AGRICULTURIST, Dept. L-36, Nashville, Tenn. Order by number. Plan No. 4802. Blueprints are adequate for any farm carpenter or for any farmer handy with tools.



Antelope Hunt Permits Issued

AUSTIN, July 23.—As applications for the 1951 antelope hunting permits began arriving, the Chief Clerk of the Game, Fish & Oyster Commission announced additional data for sportsmen.

The exact number of permits to be issued has not been determined because the antelope herd census is still underway.

Persons who were assigned a permit last year in the impartial drawing for the 426 licenses issued have a low priority this year.

Second priority will go to the person who failed to get a permit last year. Next comes those who held a valid 1950 permit and then, last, persons under 18 years of age and non-resident.

The first step in the procedure to seek a permit, according to the Chief Clerk, is to write the department for an application blank.

COURTHOUSE RECORDS

REAL ESTATE TRANSFERS

Cecil H. Tate, et ux to Morris Douglass. All of Lot 3, Block 5, Hill Crest Addition No. 2, and SW 2 to Muleshoe, \$375.00

Copley Gin Company to Rufus N. Gilbreath. Lots Nos. 1 to 12, inclusive, Block 1, and 290' x 7 26' tract out of Section 54, Block Y, \$10.00.

Burford Butts et ux to Albert Carroll. Lot 3, and S 20' of Lot Number 2, in Block 3, Lake Side Addition to Muleshoe, \$1500.00.

M. E. Robinson et ux to M. S. Childers. Lot 6, Tate's Subdivision, Block 5, Hill Crest Addition No. 2 to Muleshoe.

Leona Bartley to Union Compress & Warehouse Company of Lubbock, Texas. S 35 acres of West 40 acres of the NE 1/4 of Section 40, Block Y, \$8000.00.

OIL and GAS LEASES
W. I. Plunket, et ux to Phillips Petroleum Company. Labors 14 17, League 177, Motley County and 17, League 177, Motley County School Land.

C. E. Maedgen, Sr. et al to United States Smelting Refining and Mining Company. All of Labor 25, League 122, Childress County School Lands.

C. E. Maedgen, Sr. et al to United States Smelting Refining

Then the applicant is sent literature describing the drawings and regulations for the hunt, as well as a blank to fill out for return with his \$5 hunting fee. The Chief Clerk pointed out that no remittance should be forwarded until the routine data is received from the game department.

It was emphasized that members of hunting parties have a better opportunity of being assigned to the same ranch for antelope hunting if their applications are submitted clipped together.

The antelope hunt will be conducted in three consecutive 3-day periods beginning October 1 and ending October 9. The limit is one male antelope.

NORMAN W. BAYS

Attorney-At-Law
Office in Courthouse
Phone 27 Muleshoe, Texas

CAR OWNERS

Are you familiar with the new Financial Responsibility Law? Let us explain it to you.

DEPENDABLE, FRIENDLY & COURTEOUS SERVICE

POOL INSURANCE AGENCY

LEE POOL Phone 113 MYRON POOL Muleshoe, Texas

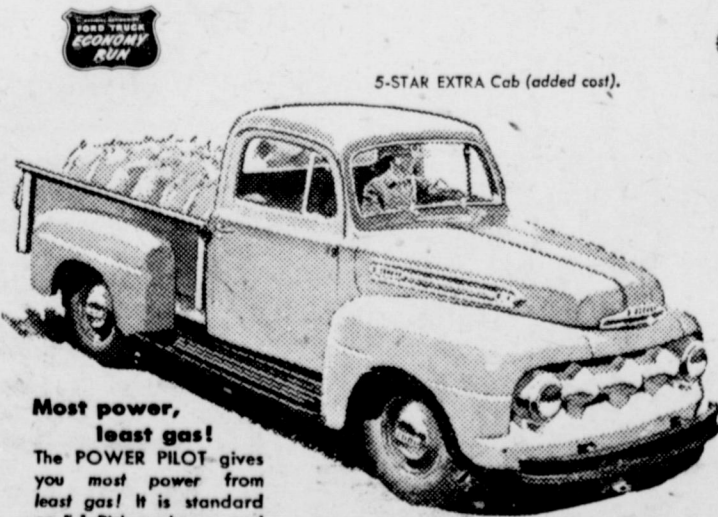


"My 2-ton dump hauls tough loads for less than 3 1/2¢ a mile!"

L. C. Clingan, of Lawton, Oklahoma, is a sand and gravel operator. He drove his Ford F-6 in the big Ford Truck Economy Run. He says, "In six months, I traveled 25,271 miles with an average load of 13,500 lbs., made 1,566 stops. Total spent for gas, oil and service was \$882.49—or 3.49 cents per mile."



Actual on-the-job records show... FORD TRUCKS COST MIGHTY LITTLE TO RUN!



Most power, least gas! The POWER PILOT gives you most power from least gas! It is standard on F-1 Pickup shown, and on all Ford's 180 models!

"I haul hay stacked high for only 2.34 cents a mile!" Stockman Alex Forshee, Jr. of San Marcos, Texas, says, "Hauling loads of 3,200 lbs., my F-5 Stake cost me only 2.34 cents a mile!"

Availability of equipment, accessories and trim as illustrated is dependent upon material supply conditions.

FORD trucking costs less because Ford Trucks last longer!

Using latest registration data on 7,318,000 trucks, life insurance experts prove Ford Trucks last longer!

MOTOR CO.

Phone 33

Muleshoe, Texas

SCOUTS CLOSE SWIMMING POOL AT CAMP POST

Dr. F. B. Malone, Council President, announced today that the Swimming Pool at C. W. Post Memorial Scout Camp at Post, Texas, has been closed for the summer.

This action was taken as a precautionary measure due to several cases of Polio in the nearby City of Post.

The Scout Camp will remain open for the use of Scout Troops for Camping purposes without swimming facilities. Scout Troops are reminded to get their Camping Permits from the Council Office in Lubbock before going to Camp Post.

and Mining Company. All of Labor 5, League 123, Childress County School Lands.

Conrad Williams, et al to Crown Central Petroleum Co. S2 Section 22, Block B.

Mary E. Hart to J. W. Greene. N2 of Section 6, Block B.

J. W. Richardson, et ux to S. L. Parham. E2 Labor 24, League 198, Lubbock County School Lands.

MARRIAGE LICENSES

Harvey Leavell Coffman of Arch Route, Baileyboro, Texas to Miss Jo Maxine Nall of Route 2, Morton. Issued July 19, 1951.

TALMAGE McKILLIP

Factory Representative
ELECTROLUX

Cleaner & Air Purifier

SALES & SERVICE

2812 N. W. 2nd
Phone 3-8246 — Amarillo
Box 571 Muleshoe

AYLESWORTH PROMOTED

Camp Crowder, Mo., July 16.—Pvt. David Aylesworth has been promoted to the grade of Private First Class, along with thirty other men of the 5421 Army Service Unit, Reception Center, at Camp Crowder.

Pfc. Aylesworth is Protestant Assistant to Post Chaplain Major Gerald C. Dean, and organist at Camp Crowder religious functions.

Aylesworth is the son of Mr. and Mrs. D. R. Aylesworth of Muleshoe.

"COLONEL" ALSUP NOW

News has been received here of the promotion of Hershel Alsup, a son of Mr. and Mrs. T. L. Alsup, from the grade of Major

TO TOUR COLORADO

Mr. and Mrs. Ray Griffiths and Mr. and Mrs. W. M. Pool are leaving Saturday to tour Colorado. They will do some fishing around Durango, and will attend the Sky High Rodeo in Monte Vista.

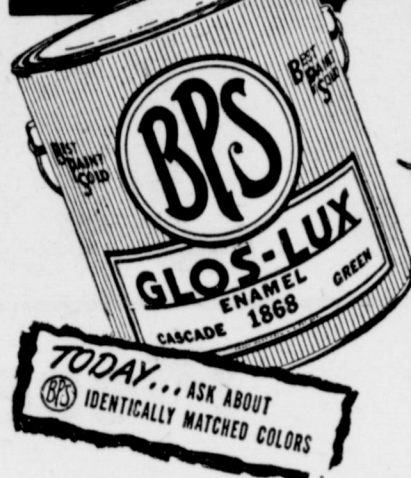
to that of Lieut. Colonel. Col. Alsup is stationed at Ft. Sam Houston, Texas.

LEGAL BLANKS, Notes, Mortgages, Deeds, etc., at The Journal.

DR. B. Z. BEATY
DENTIST
Across From Muleshoe Motor Office Hours:
9 - 12 a. m. — 1 - 5 p. m.
Closed Saturday Afternoons
Office Ph. 249 Res. Ph. 253-W

WASH IT! SCRUB IT! You can't dull its Lustre! PATTERSON - SARGENT

GLOS-LUX QUALITY HIGH-GLOSS ENAMEL



PER GALLON
Easy flowing, smooth spreading Glos-Lux makes kitchen and bathroom walls and woodwork glisten like new. Fast drying and non-fading. Glos-Lux can be had in a wide range of gorgeous colors. Buy it! Try it... today!

HEATHINGTON LUMBER CO.

CLOVIS HIWAY MULESHOE, TEXAS



We're proud as a peacock to present the...

MARVELOUS MOTORLES SERVO

Prices as low as
\$ 289.95
BIG REPLACEMENT ALLOWANCE

Like magic... bigger inside, smaller outside

Look at the big Freezer Compartment in the only refrigerator with no motor to wear out grow noisy! Plenty of room for meats, fruits, vegetables—even ice cream by Quick-Release Trays—no juggling.

Quick-Change Shelves easy to store bulky foods, extra tall bottles. There's even a clutter-saving "Odds and Ends" Tray! And the marvelous, motorless, new Servel is bigger inside, smaller outside, gives more useful space in same floor area.

ANNON OWELS
Jewels. Solid Gold. 10. 69c values. Only 19c each

SH CLO...
Rose, Yellow, Bl...
Clearance Sale Price 8c each

DIE'S HAND BAGS
Group. Values to \$10.9
Just at—
\$ tax included

DIE'S HATS
\$12.98. Close out at \$1.88

WOMEN'S STRAW HATS
Closing out at...
For any-size family—
for any-size kitchen

TEN-YEAR GUARANTEE

Come look, come listen, come see the world's finest refrigerator today



COMPARE BOTH TYPES...YOU'LL CHOOSE
Servel
The GAS Refrigerator

MULESHOE LIQUEFIED GAS CO.

MULESHOE, TEXAS

BERRY ELECTRIC CO.
Refrigeration Service
Electric Appliance Repairs
Wiring & Repairs
Phone '88 Muleshoe

Our modern home loan plan allows you to pay off the loan with rent-money

Prompt service

MULESHOE FOR INFORMATION

SEE Mildred Davis Western NFLA Building Muleshoe

FIRST FEDERAL SAVINGS AND LOAN ASSOCIATION
Clovis, N. M. P. O. Box 470

Bridal Shower Honors Kay Malone

A bridal shower honoring Miss Kay Malone, bride-elect of Bobby Joe Kimbrough was held Friday, July 20 in the fellowship hall.

Mrs. Dudley Malone, Miss Kay Malone and Mrs. R. L. Kimbrough stood in the receiving line and greeted the guests.

The guests were registered in the bride's book with Miss Barbara Douglass presiding.

The hostesses for the occasion were: Mrs. Buck Wood, Mrs. Vance Wagon, Mrs. Howard Elliott, Mrs. Julian Lenau, and Mrs. Raymond Gaede.

Misses Leatrice Martin; Sondra Wagon, Gay Sanders, Billie Faye Graves, Donna Kimbrough, and Jeri Nell White, who will be members of the bridal party, served the refreshments.

Refreshments of little cakes, with Kay and Bobby written on them and punch were served from a table laid with white cloth and centered with a crystal center piece filled with daisies and matching candle holder with blue candles in them and other table appointments were of crystal. Donna Kimbrough served the cakes and Billie Faye Graves poured the punch.

Many beautiful gifts were received and many unable to attend sent gifts. Those attending were: Mrs. Morris Douglass, Mrs. Charles Lenau, Mrs. Claude Sanders, Mrs. Tommie Sullivan, Mrs. Finis Kimbrough, Mrs. Billy Don Barbour, Mrs. Joe Mack Wagon, Mrs. C. A. Ross, Miss Grace Paul, Miss Greta Paul, Mrs. Glenn Splawn, Mrs. Alton Epting, Mrs. Chet Horsley, Mrs. J. S. Horsley, Mrs. Jeff Peeler, Quinell Elliott, Mrs. C. B. Graves, Mrs. J. M. Forbes, Jeatonne Willingham, Mrs. Dee Throckmorton.

Mrs. Pat Bobo, Mrs. Ray Keeling, Mrs. Eddie Lane, Mrs. Marie White, Mrs. Elizabeth Barnett, Mrs. J. J. DeShazo, Ginger Gaede, Mrs. W. E. English, Mrs. Snow Davis and Mildred, Mrs. A. J. Gardner, Mrs. Cecil Tate, Mrs. Noel Woodley, Mrs. W. B. LeVeque, Mrs. Jack Holland, Miss Elizabeth Harden, Mrs. Jerry Kirk, Mrs. Curtis Spivey, Mrs. Robert Howell, Mrs. Jim Burkhead, Mrs. A. J. Lenderson, Mrs. St. Clair, Shirley and Clara Higgs, Mrs. Houston Hart, Mrs. Helen Gardner, and the hostesses.

TO BEAUTY SCHOOL
Curtis Wellborn is in Ft. Worth attending a beauty school featuring the latest hair styles and fashions. He will return the latter part of next week.

TO LUBBOCK
Dr. B. R. Putman was a business visitor in Lubbock Wednesday.

Society News

THE MULESHOE JOURNAL, Thursday, July 26, 1951

Engagement Announced

Mr. and Mrs. J. F. Akin, formerly of Muleshoe announce the engagement of their daughter, Willa Faye, to James Wilson, son of Mr. and Mrs. Bob Wilson of Plainview.

The bride-elect is a graduate of Muleshoe high school and attended Eastern New Mexico University in Portales, N. M.

The bridegroom-to-be is a graduate of Petersburg high school, attended Texas Tech in Lubbock and a commercial art school in Dallas. He is a partner in the Mayo and Wilson Agency in Petersburg. The wedding will be read October 7, in Petersburg Methodist church.

McGuyer - Beller Vows Exchanged

Miss Mary Lou McGuyer, daughter of Mr. and Mrs. M. Y. McGuyer, of Muleshoe was married to Jim Beller, son of Mrs. Sue Bradley, also of Muleshoe, June 22, 8 p. m. at the Longview Baptist Church, Rev. H. W. Hanks officiating.

The ceremony was performed under a white bridal arch decorated with fern and white wedding bells tied with a satin ribbon. Bouquets of white gladioli and white lighter tapers were also decorated. White satin bows marked the bridal aisle.

The bride wore a street length white pique dress trimmed with lace. She wore white gloves trimmed with lace and her lace veil was crowned with gold sprinkled carnations. She carried a white Bible on which lay a bouquet of gold sprinkled carnations and white satin streamers holding tiny buds.

The bride carried out the traditional custom, by wearing a brooch which her mother wore when she was married, for something old, for something borrowed and new she wore an engagement ring of her sisters, on her right hand, and for something blue she wore blue garters.

Miss Doris Dement attended the bride as maid of honor. She wore a pink nylon dress and a pink carnation corsage. Best man was James Mitchell. Ushers were, J. L. Wall, of St. Vrain, N. M., and Pete Collins of Hobbs, N. M.

Miss Maxine Black, pianist, played pre-nuptial selections, "I Love You Truly", "My Happiness" and the wedding march.

The bride's mother wore a navy blue dress with white accessories, and a corsage of white orchids. The groom's mother wore a navy blue suit with white accessories and a corsage of white orchids.

From the church steps the bride threw her bouquet and Miss Estelle Dawson caught it.

The reception was held after the ceremony in the home of the bride's sister, Mrs. Bud Holdeman. The lace covered table was decorated with white candles and wedding cake decked with lovebirds and the miniature bride and groom. After the first piece was cut and shared by the bride and groom the cake was served by the bride's sister, Mrs. Charlie Wall of St. Vrain, N. M., and the punch was poured by Mrs. Ray Bownds of Muleshoe, also the bride's sister.

The couple left immediately following the reception for a honeymoon in Ruidoso. The bride wore a pink suit with white accessories as her going away suit.

The couple will make their home in Levelland, where Jim is employed with United Geophysical Company.

Progress W. M. U. In Regular Meeting

The Progress W. M. U. met in their regular meeting Monday, July 23, at 3 p. m. in the church with Mrs. Locker, President, presiding.

The meeting was opened with a song, "Take The Name of Jesus With You," led by Mrs. Redwine with Mrs. Taylor as pianist. Mrs. Shipp led in prayer.

Minutes were read and approved. One new member, Mrs. Ray, was enrolled.

Mrs. Shipp, Mrs. Taylor, and Mrs. Redwine was appointed for the nominating committee.

Mrs. Morgan gave the last chapter of our Foreign Mission book, "So This Is Africa". This has been a very interesting and educational book.

An interesting Bible study was conducted by Mrs. Redwine for week 6. At the end of the study she led the group singing, "God Be With You", Mrs. Henry dismissed the meeting with a prayer.

Those present were Mesdames: E. W. Locker, E. L. Gouge, J. J. Redwine, Newman, C. A. Bishop, Clyde Henry, Vernon Raney, M.

Kitchen Shower For Kay Malone

A kitchen shower was given for Kay Malone, Saturday afternoon, at 5:30, with Jeri Nell White and Billie Faye Graves as hostesses.

Refreshments of cake, nuts, mints and punch were served to the following guests: Mary Marton, Pat Broyles, Donna Kimbrough, Wanda Kimbrough, Gay Sanders, Pat King, Sondra Wagon, Norma Gay Graves, June Free, Bobbie Collins, Carolyn Kirk, Frances Totten and the hostesses.

DON'T BORROW your neighbor's Muleshoe Journal any longer. A subscription for a year costs only \$2.00.

F. H. A. & G. I. LOANS TITLE INSURANCE
BAILEY COUNTY ABSTRACT CO.
MRS. LELA BARRON L. S. BARRON
ABSTRACTS LOANS
Established in 1900

SEE US FOR PROTECTION POLICIES YOU NEED
BOBO INSURANCE AGENCY
Office in Bank Building
PHONE 97 MULESHOE

LET'S SWAP...

NEW EQUIPMENT

Oliver 8' One Way, 26" Discs	\$565
Oliver 7' Tandem Disc Harrow	\$321
Oliver 7' Hay Mower	\$330
Oliver 4-Bar Hay Rake	\$365
Oliver No. 38 16 X 10 Grain Drill	\$595
Oliver No. 38 12 X 10 Grain Drill	\$479
2 Bottom 14' Moldboard Plow	\$255
16' Grain Augar, Less Motor	\$140

USED EQUIPMENT

1948 Case Hay Baler (Just Overhauled)	\$645
1940 Model 15 Oliver 6' Combine	\$300
1944 Massey-Harris 101-R, & 2 Row Equip.	\$495
1945 Oliver 70 Row Crop & 4 Row Equip.	\$1,495
1940 H Farmall and 2-Row Equip.	\$835
1939 Allis-Chalmers and 2-Row Equip.	\$450

McDONALD IMPLEMENT CO.

Plainview Highway "YOUR OLIVER DEALER" Muleshoe, Texas

INSURANCE and REAL ESTATE

FIRE, CASUALTY, POLIO, AUTO FINANCING

City and Farm Property

Small, Medium and Large, Dry and Irrigated Farms
WE NEED YOUR LISTINGS

Farley Insurance Agency

Over Bank, Muleshoe, Texas
Office Phone 375-W Res. Phone 242-W

Attention

Muleshoe Automobile Co.

Wholesale Distributors In This Area

Amalie Oils & Greases

See Us For Your Lubrication Needs

1013 Main St.

Phone 375J

Rainbow Holds Initiation

In a beautiful and impressive initiation ceremony held Thursday evening, July 19, Patricia Morgan and Mamie Lee Freeman became members of the Muleshoe Assembly No. 161 Order of Rainbow Girls.

Mary Morton, Worthy Advisor and Hattie Griffiths, Mother Advisor presided. A number of guests from the Order of Eastern Star and the Maconic Lodge, including the Worthy Matron and Worshipful Master, witnessed the ceremony.

At the conclusion of the meeting, refreshments were served in the banquet hall.

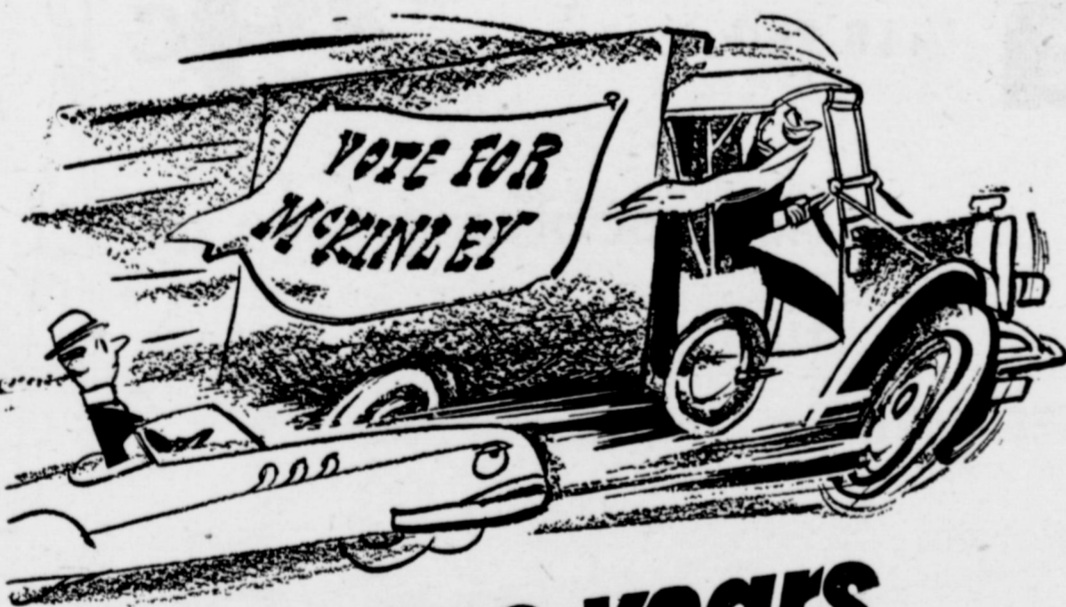
Mrs. Bobo Hostess At Breakfast

Mrs. Pat Bobo was hostess Sunday morning for a breakfast given in honor of Kay Malone and her bridal party to be. Those attending were: Leatrice Martin, Donna Kimbrough, Jeri Nell White, Billie Faye Graves, Gay Sanders, Barbara Douglass, Sondra Wagon and Wanda Kimbrough.

The room was beautifully decorated having three card tables covered with aqua net over a white cloth and tied at each corner with a purple bow, those being the colors of the bride's dress, the maid of honor, and the brides maids.

The table was beautifully set with silver and crystal. Soft music played during and while the meal consisting of: eggs, ham, jelly, cinnamon rolls and coffee was being enjoyed.

Rice in little bags of aqua net tied with a purple ribbon were the favors. Everyone enjoyed the breakfast very much.



Want more years from your truck?

HERE'S service that's thrifty for truckers 3 ways—paying off in extra hauling profits that will mean plenty to you in the uncertain years ahead!

By bringing your present equipment in to us at regular intervals, our veteran mechanics can clean up those "truck trouble points"—catch the little things before they grow into major breakdowns.

You can save costly repairs, maintain

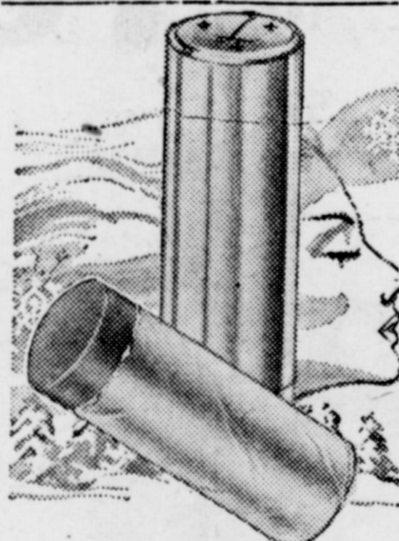
"on-time" schedules without time down for overhaul—keep hauling years longer with the truck you now own.

But that's not all. You get the benefit of careful estimates, honest workmanship, and the satisfaction of knowing the work's being done right—by men who pride themselves on giving you a better-running truck for the money you spend!

Get more 'run' for your money!

DAVIS - LENDERSON
Muleshoe, Texas

SALES AND SERVICE HEADQUARTERS FOR GMC TRUCKS
< GASOLINE and DIESEL—4 to 20 TONS >



Fragrance in a Glacier of your Own
for warm summer days!

Lentheric ICICLE*

PURSE ICICLE, in Tweed or Miracle
Just sweep it over your skin and you'll feel degrees cooler.
Purse size, in treasured, \$1.25 goldtone case. . . . plus tax

LARGE ICICLE, in Tweed only
Fragrant coolness in a crystal clear bottle—icicle patterned \$2.00 golden capped. . . . plus tax
*trademark registered

Damron Drug
Muleshoe, Texas

Electric Cooking Is



...as MODERN women KNOW!

Modern Women know you can cook the MODERN way for seven cents a day—less for smaller family units. Truly, electric cooking is economical. It saves your food dollar—for there is less food shrinkage when you cook electrically. It saves your cleaning dollar—for there is no cooking method that approaches the cleanliness of electric cooking. It saves your time and labor—for electric cooking is automatic and constant—you set your electric range at the heat desired and you know that's the heat you'll have. There are no flickering flames to watch—electric cooking is flameless, constant, matchless.

Yes, electric cooking is economical. It's fast, automatic, dependable, clean, efficient, cool and convenient, too... as modern women know! See your electric appliance dealer now.

with a plus value—It's COOL, too!



SOUTHWESTERN
PUBLIC SERVICE COMPANY

31 YEARS OF GOOD CITIZENSHIP AND PUBLIC SERVICE



Four consistent selection of these fine foods won them the right to be featured on our Hit Parade of Better Buys! We just lined them up for your convenience and priced them to parade right into your shopping basket for hit savings!

HIT PARADE OF BETTER BUYS

Peaches Halves In Heavy Syrup -- Hunts No. 2 1-2 Can **28c**

- Clear Sailing No. 2 Can **GREEN BEANS** 11c
- Libby **PEARS** 30c
- Libby **BABY FOOD 3 for** 27c
- Campbells No. 1 Can **TOMATO SOUP 3 for** 33c
- HIC 46 oz Can **ORANGE ADE** 34c
- Marshall No. 300 Can **PORK & BEANS** 10c
- Heart O' Plains No. 2 Can **GREEN BEANS** 22c
- Rosedale No. 303 Can **PEAS** 15c
- Libby's No. 303 Can **FRUIT COCKTAIL** 24c
- Harvest Inn No. 303 Can **CORN** 15c
- Stokelly's No. 300 Can **ASPARAGUS** 30c
- Libby 46 oz. Can **APRICOT NECTAR** 39c
- Deer No. 1 Can **TOMATOES** 13c

- Lg. Can Eagle Brand **MILK** 29c
- Libby's 14 oz. Bottle **CATSUP** 23c
- Beast of Chicken Chunks **TUNA No. 1-2 can** 32c
- Welch's 24 oz. Bottle **GRAPE JUICE** 38c
- Lipton's **FROSTEE** 13c
- Assorted Flavors **KOOL AID 6 for** 25c
- Colonial 2 lb. Jar **PEACH PRESERVES** 39c
- Armour's Cloverbloom **OLEO, qtr's, lb.** 35c
- No. 1/2 Can **SAMOLETS** 39c
- Swanson **CHICKEN SPREAD** 31c
- 3 lb. Can **BAKERITE** 85c
- Heinz Qt. **CIDER VINEGAR** 26c
- Heinz **BABY FOOD 3 for** 27c

Crisco **91c**

- Sno-Crop 4 oz. Can **GRAPE JUICE** 10c
- Sno-Crop 8 oz. pkg. **PEAS** 17c
- Sno-Crop 12 oz. Can **STRAWBERRIES** 43c
- Sno-Crop 8 oz. pkg. **CUT CORN** 21c

QUALITY MEATS

PABST-ETT CHEESE **69c**

- Sunvale **BACON** 53c
- Sugar Cured **BACON SQUARES lb.** 39c
- Skinless **FRANKS, lb** 49c
- Dallards Canned **BISCUITS, can** 14c
- Fresh Sliced **PORK STEAK lb.** 59c
- Dry Salt **BACON, lb.** 35c

Roast **72c**

FRESH FRUITS & VEGETABLES

Lettuce **10c**

- Large Stalk **CELERY** 18c
- Fresh **GREEN ONIONS** 10c
- Large Bunch **RADISHES 2 for** 15c
- Black Diamond **WATERMELLONS, lb.** 2c
- Santa Rosa **PLUMS, lb.** 19c
- Fresh **PEACHES, lb.** 19c
- Fresh **CANTALOUPEs, lb.** 10c
- California Sunkist **LEMONS, lb.** 15c

PEACH PRESERVES **39c**

- Gillete Thin 4 Blue **RAZOR BLADES** 10c
- Chamberlans \$1.00 Size **HAND LOTION** 79c
- Dental Cream 50c Size **COLGATES** 31c
- Mennen's **QUINSANA** 49c
- Luster Creme, 4oz. Jar **SHAMPOO** 49c
- Pint Bottle **REAL KILL** 69c
- 1/2 Gallon **PUREX** 32c
- Reg. Box **FAB** 33c
- Palmolive Bath **SOAP 2 for** 27c
- Cashmere Boquet **SOAP, reg. bar 2 for** 19c

Tea **29c**

- Tall Pet **MILK** 14c
- Skinners 7 oz. Box **MACARONI** 11c
- Hershey 1 lb Can **CHOCOLATE SYRUP** 18c
- Pillsbury **HOT ROLL MIX** 28c

TOILET TISSUES 1000 sheet, 2 rolls for 25c

- Libby 22 oz. Jar **PICKLES, sour or dill** 35c

OPEN UNTIL 8:00 p. m. ON TUESDAYS

- Bama 12 oz. Jar **APPLE JELLY** 15c

- Diamond 80 count **NAPKINS** 15c

- Diamond Roll **PAPER TOWELS** 19c

- Hunts Pure Peach 1 lb Jar **PRESERVES** 19c

- TREND, 2 lg. boxes** 43c

Hollandale Colored quarters

MARGARINE **23c**





SCHEDULE OF SERVICES

Y. L. METHODIST CHURCH
L. J. Helm, Pastor
Second and Fourth Sundays
Church School 10 a. m.
Reading Service 11 a. m.
Bible Study Group 7:30 p. m.
Evening Preaching 8:30 p. m.
Prayer Meeting, W.S.C.S. First and Third Thursdays 2:30 p. m.
CHURCH OF CHRIST
Muleshoe, Texas
Ebb Randol, Minister
Bible Classes for all 10 a. m.
Preaching 10:50 a. m.
Communion 11:45 a. m.
Preaching 8 p. m.
Wednesday
Ladies Bible Class 3 p. m.
Bible Study and Singing 8 p. m.
UNITED PENTECOSTAL
Mrs. Maggie Aken, Pastor
Preaching Service 11 a. m.
Evening Service 8 p. m.
Tuesday Evening 7:30 p. m.
Friday Evening 7:30 p. m.
Everyone invited to our services.

FIRST METHODIST CHURCH
E. W. Hemka, Pastor
Church School 9:45 a. m.
Morning Worship 10:55 a. m.
M. Y. F. 6:30 p. m.
Evening Worship 7:30 p. m.
Choir Practice
Wednesday 8:00 p. m.
Young Women's Bible Study, Tuesday 7:30 p. m.
Wesleyan Service Guild, 2nd and 4th Mondays 7:30 p. m.
W.S.C.S., Wednesday 2:30 p. m.
Stewards Meeting First Monday each month 7:00 p. m.
WATSON BAPTIST CHURCH
Rev. W. C. Wilson, Pastor
Special Prayer Service 9:45 a. m.
Sunday School 10 a. m.
Morning Worship 11 a. m.
Training Union 7 p. m.
Evening Worship 8 p. m.
Bible Study and Prayer Service, Wednesday 7:30 p. m.
W.M.U. Monday 2:30 p. m.

WEST CAMP
FIRST BAPTIST CHURCH
Rev. E. L. Minor, Pastor
Sunday School 10 a. m.
Morning Worship 11 a. m.
B.T.U. 7 p. m.
Evangelistic Service 7:45 p. m.
Service 7 p. m.
W.M.U., Thursday 2 p. m.

MAIN STREET MISSIONARY BAPTIST CHURCH
M. E. Robinson, Pastor
Sunday School 10 a. m.
Morning Worship 11 a. m.
Training Union 6:30 p. m.
Evening Worship 8 p. m.
W.M.U., Wednesday 2 p. m.
Mid-week Prayer Service, Wednesday 7 p. m.

CHURCH OF THE NAZARENE
Sidney Patrick, Pastor
Sunday School 9:45 a. m.
Morning Worship 11:00 a. m.
N.Y.F.S. 7:30 p. m.
Evening Worship 8:00 p. m.
Mid-week Service 8:00 p. m.
Wednesday 8:00 p. m.
Come and Worship With Us.

LONGVIEW BAPTIST CHURCH
Rev. J. E. Moore, Pastor
Sunday School 10 a. m.
Preaching Services 11 a. m.
B. T. U. 8 p. m.
Preaching Services 8:30 p. m.
W.M.S., Monday 2:30 p. m.
All Church Night, Wednesday 7:30 p. m.

DENTIST
DR. A. E. LEWIS
Downstairs - McCarty Bldg.
Office Hours
9 a. m. to 12 - 1 to 5 p. m.
Office Pho. 131 - Res Pho. 220-J

NORTH SIDE CHURCH OF CHRIST
Worship each Lord's Day 10:30 a. m.
Evening Service 8 p. m.
Tuesday Evening 8 p. m.
Mid-week Prayer
You are welcome.

PROGRESS BAPTIST CHURCH
Rev. C. C. Morgan
Sunday School 10 a. m.
Morning Worship 11 a. m.
B.T.U. 7:30 p. m.
Evening Worship 8:30 p. m.
Midweek Prayer Service
Wednesday 7:30 p. m.

BAILEYBORO BAPTIST CHURCH
Arthur L. Nunn, Pastor
Sunday School 10 a. m.
Training Union 8 p. m.
Evening Service 8:45 p. m.
Everyone Welcome.

FIRST BAPTIST CHURCH
Luzbuddie, Texas
Sunday School 10 a. m.
Morning Worship 11 a. m.
Training Union 8:45 p. m.
Evangelistic Service 7:45 p. m.
"Let us forsake the assembling of ourselves together." Heb. 10:25

ANTIOCH PRIMITIVE BAPTIST CHURCH
Across Street From Hospital
Elder Jimmie Bass, Pastor
Services every 1st and 3rd Sundays and Saturday before 3rd Sunday.
Singing every Sunday night except 3rd Sunday.

FIRST BAPTIST CHURCH
Rev. A. W. Blaine, Pastor
Sunday School 9:45 a. m.
Morning Worship 11 a. m.
Training Union 6:30 p. m.
Evening Worship 8 p. m.
Officers and Teachers, Wednesday 7 p. m.
W.M.U. Monday 3 p. m.
Choir Rehearsal, Thursday 7 p. m.

FIRST CHRISTIAN CHURCH
2 Bks. West, 1/2 Blk. North Shady Rest
Bible School 9:45 a. m.
Morning Worship 11 a. m.
Mid-week Prayer Service
Wednesday 8 p. m.
"We are Workers Together With God"—Paul.

METHODIST CHURCH
Luzbuddie, Texas
Rev. Harmon Keelin, Pastor
Sunday School 10 a. m.
Church Service 11 a. m.
Evening Service 8:30 p. m.
Mid-week Prayer and Song Service 8:40 p. m.

ASSEMBLY OF GOD CHURCH
Rev. Lee F. Stokes, Pastor
Sunday School 9:45 a. m.
Worship 11 a. m.
Tuesday Night Young People 7:45 p. m.
Thursday Night Bible Study 7:45 p. m.
Public invited to attend all services.

ST. JOHN'S LUTHERAN CHURCH
Luziet, Texas
W. E. Gummelt, Pastor
Sunday School and Bible Class 10 a. m.
Divine Services 11 a. m.
Sunday School Teachers meet every Wednesday 8 p. m.
Ladies Aid meets first Thursday of each month 2:30 p. m.
Walthers League meets first Sunday of month 8 p. m.
A cordial welcome awaits you at St. John's.
"Let the Word of Christ dwell in you richly."—Col. 3:16.

PRIMITIVE BAPTIST CHURCH
At Friendship
8 Miles South of Sudan
Second Sunday and Saturday before, Elder V. J. Lowrance, pastor.
Fourth Sunday and Saturday before, Elder Jack West, pastor.
You are welcome.

PROGRESS METHODIST CHURCH
Carrol M. Jones, Pastor
Sunday School 10 a. m.
Morning Worship 11 a. m.
Evening Fellowship 8 p. m.
Classes 8 p. m.
Evening Worship 8:45 p. m.
W.S.C.S. 2nd and 4th Mondays

Y. L. BAPTIST CHURCH
First and Third Sundays
Rev. Lavender, Pastor
Sunday School 10 a. m.
Morning Worship 11 a. m.
Training Union 7:30 p. m.
Evening Worship 8:30 p. m.
Services every 3rd Sunday
Starting at 10:30 a. m.

CHRISTIAN SCIENCE SERVICES
The understanding of Truth, God, establishes man's dwelling place, heaven, harmony, here and now according to the Lesson Sermon titled "Truth" to be read in all Christian Science Churches on Sunday, July 29. The Golden Text, taken from Isaiah, describes this dwelling place. "We have a strong city; salvation will God appoint for walls and bulwarks. Open ye the gates, that the righteous nation which keepeth the truth may enter in." This citation to be read from psalms carries on the theme: "Beautiful for situation, the joy of the whole earth, is Mount Zion, on the sides of the north, the city of the great King" (Psa. 48:2). And from the Christian Science textbook, "Science and Health with Key to the Scriptures" by Mary Baker Eddy, will be read this statement: "Mighty potentates and dynasties will lay

RAIN OR SUN COTTON



New style note for men is combined with rain-or-shine practicality. The jacket with slash-inset pockets is of Dan River Wrinkle-Shed cotton poplin with Zelan water-repellent finish.

down their honors within the heavenly city. Its gates open towards light and glory within and without, for all is good, and nothing can enter that city, which "defleth, . . . or maketh a lie".

LUZIER'S
Fine Cosmetics & Perfumes
1101 East 2nd St.
MRS. E. E. HOLLAND
Phone 256-W

Methodist Youth Met At Y. L. Church

The Methodist Youth Fellowship held their regular monthly meeting at the Y. L. Church last Thursday night. The young people spent an hour in recreation, followed by a period of worship with Irene Head and Emily Jernagin giving the devotional using the theme "Christ Is the Light of the World" then a short business session with Kiel Quesenberry, vice president, presiding in the absence of the president, John Montgomery. The next meeting will be a banquet held at the Bovina Church, at 8 o'clock on August 8, and the goal is 100 plates. Marilyn Gupton gave a wonderful declamation and Mrs. Noel Woodley a grand talk both centering on the thought of "Conquerors and Real Conquerors".

A period of fellowship and visiting took place while refreshments were being served to about 95 including the Sub-District Counselor, Mrs. Elsie Bock of Earth, local Counselors and pastors.

TO MARKET AT ST. LOUIS
Mr. and Mrs. Lowell Irvin St. Clair left Saturday July 21, for St. Louis, Mo., where they will attend market. They will be back Friday, July 27.

For Good Results, Feed — MOORMAN'S MINERALS AND PROTEIN CONCENTRATE
See H. D. Holley
Phone 909-F2 — Muleshoe
I will be at the Muleshoe Sale Barn each Wednesday



Your neighbor will tell you what the ALL-CROP Harvester does for him

Give us a ring while the harvest season is still on. We will call for you at your farm and drive you to a field where an All-Crop harvester is working. You can talk to the owner, look at the grain and straw for yourself. The All-Crop harvester handles more than 100 different crops from feathery grass seeds to large beans. Full 5-foot cylinder handles the crop in a thin stream, just as it comes off the sickle. Let us show you. No obligation. ALL-CROP is an Allis-Chalmers trademark.

Enjoy the NATIONAL FARM AND HOME HOUR—NBC—Every Saturday.
ALLIS-CHALMERS SALES AND SERVICE
Muleshoe Imp. & Supply Co.
"Your Allis-Chalmers Dealer"

GREEN
Hospital & Clinic
Muleshoe, Texas
Telephone 142

YOU CANNOT AFFORD —
To neglect to adequately protect your family and your investments. Insure with the Farm Bureau Insurance Companies. Dividends reduce the net cost of protection for members of the Farm Bureau. The Companies are Owned and Operated by Farmers to furnish Insurance at COST.
LIFE — FIRE — ACCIDENT
See Your Agent
W. R. CARTER
Muleshoe, Texas
Star Route 2

Muleshoe Livestock Auction
H. K. FREEMAN HUGH FREEMAN
Re-Opens
SALE EACH WEDNESDAY
Kenneth Bozeman
Auctioneer
All Farm Sales 5% — Bills Paid
To Book Farm Sales
CALL HUGH FREEMAN — PHONE 11 or 278-J
Or 2-5133 LUBBOCK

Dollar for Dollar
you can't beat a Pontiac



You Couldn't Make a Smarter Buy!
BEFORE you make any deal on a new car, remember this: One of the most important things you buy when you buy a new car is its name! Just think for a minute what the Pontiac name means: It means a car so thoroughly good it will give you years of carefree pleasure. It means performance so fine you will look forward to every minute behind the wheel. It means a car so beautiful it stands apart from everything else on the road. The name Pontiac on your car means you are buying from a dealer who takes pride in the car he sells, the service he provides and his place in the community. Come on in and talk deal—see how easy it is to own a Pontiac.
America's Lowest-Priced Straight Eight
Lowest-Priced Car with GM Hydra-Matic Drive (Optional at extra cost)
Your Choice of Silver Streak Engines—Straight Eight or Six
The Most Beautiful Thing on Wheels Unsteel Body by Fisher
Davis - Lenderson
HIGHWAY 70 & 84
MULESHOE, TEXAS

Gospel Meeting
July 27 - Aug. 5
EVANGELIST
CARROL CHRISTMAS
of Phonex, Ariz.
SINGING DIRECTED BY LOCAL TALENT
BRO. CARROLL CHRISTMAS IS AN OUTSTANDING EVANGELIST HAVING CONDUCTED MEETINGS THROUGHOUT THIS SECTION OF THE COUNTRY - IN CALIFORNIA, OKLAHOMA, AND KANSAS COME OUT AND HEAR HIM!
Services Daily - 8:30; Sundays 10:30 - 8:30
Come and Bring Your Friends
NORTH SIDE CHURCH OF CHRIST
Muleshoe, Texas

USE THE CLASSIFIED FOR RESULTS

RENT TRADE BUY SELL LOAN

CLASSIFIED AD RATES

The minimum for any classified ad is 35c; 2 1/2 cents per word for one insertion; 1 1/2 cents per word for additional insertions. All classified advertising is strictly cash in advance.

THE MULESHOE JOURNAL, Thursday, July 26, 1951

FOR SALE—

FOR SALE— 2 bedroom home, carpeted wall to wall, floor furnace, venetian blinds, freshly redecorated. Good location. 1107 West 6th. Call 94 or 117-W. 28-tfc

FARMS AND HOMES FOR SALE



80 A. Well imp. good land. irrigated. \$30,000.

160 A. imp. good land. A good buy at \$32,000.

Have some good listings on wheat land, any size.

Give us your listings on wheat land, any size.

Give us your listings if you want to sell.

C. L. "HAPPY" DYER
C. E. BRISCOE

Phone 13 Muleshoe, Texas

MULESHOE READY BUILT HOUSE

Co. No job too big or too small. Special—12x14, \$575; 14x28, \$789; 26x28, \$2495; 28x32, \$2995. Clovis Hiway, Muleshoe, Texas. 29-tfc

FOR SALE— 4 room efficiency 2 bedroom home on 50x140 ft. lot. West part of town. Phone 348L. 25-tfc

FOR SALE: One section of good wheat land. \$75.00 per acre, 1/2 cash, S. E. Goucher. 29-tfc

SPECIAL PRICES

On all Radiators International Farmall Cores \$25 exchange.

STOVALL-BOOPER

Radiator Sales & Service Plainview, Texas 13-tfc

FOR SALE— One five-room house and one three-room house on paved street near school. Immediate possession. 1209 West Fifth St. Phone 51. D. L. Morrison. 22-tfc

FOR SALE: 7 ft. International tractor mower. Fred Vay, 4 1/4 miles on Friona Hi-Way. 30-2tp

Insurance

All Kinds
Hail - Casualty - Fire
Life
Old Line Stock Companies
E. H. KENNEDY
— with —
J. C. RAWLINGS AGENCY
Dimmitt, Texas
Phone 299W Muleshoe, Texas

See me if you need or want to sell —

REAL ESTATE

We have some good farms and city property for sale. And we solicit your listings.
Same old place on Sudan Highway.

EMETTE CROSS

CITY PROPERTY FOR SALE

● Choice business lot on Hi-Way. 75 x 140 foot, the 140 feet on pavement. For quick sale priced at \$4,000.

● 2 houses on same lot on pavement. Priced at \$10,500.

● 3 bedroom house to be moved. This is a good buy. Priced at \$4,800.

Other Good Homes and Rentals

EDDIE LANE Real Estate

West of Western Drug
Phones 306 or 24-W

FOR SALE OR TRADE— John Deere 12-A Combine, IHC two way single bottom plow, Trade for Hens, Pigs, Calves, Hay, or what have you? J. G. Thompson, 6 mi. E., 1 mi. north of Muleshoe. 29-3tp

FOR SALE: Used gas ranges, heaters, and refrigerators. Priced to sell. Muleshoe Liquefied Gas Co. 49-tfc

FOR RENT—

FOR RENT: Two room furnished apartment. See L. T. McKillip. 31-1tp

WANTED—

FOR BUILDING AND REMODELING, cabinet work, stucco, tile fence, walks, and roofing, see Z. N. Burris and Sons. Right on the job, Right on the price, and Right on the corner of E. 4th and Ave. C. Phone 317J. 29-3tp

WANT TO BUY: 80 to 160 acre farm in Muleshoe area. Leland Mounts, Earth, Texas. 31-2tp.

WE BUY Old Brass, copper, radiators, scrap iron, batteries, etc. JOHN'S CUSTOM MILL, Phone 124-W. 5-tfc

AVON Cosmetics: Need attractive ambitious woman who needs to earn good income. Write Box 1054, Amarillo, Tex. 31-6tc.

LEGAL BLANKS, mortgages, bill of sale, etc. At The Journal.

YOUNG MEN WANTED: No experience needed. You don't need Job experience in today's U. S. Army and Air Force. You can build an exciting, satisfying career with travel and adventure unlimited. Continue your education on the job. You will earn while you learn. Good pay, excellent retirement plan. See T-Sgt. Gerald F. Cutsall, your U. S. Army and Air Force recruiting sergeant today. 110 West 5th. Street, Littlefield Texas 31-1tp.

SEWING, ALTERATION, Little girls dresses \$1.25 and up. Womens \$2.00 and up. Five years experience. Mrs. Butler Stevens, across from Liquefied Gas Co. on Clovis Hi-Way. 31-1tp.

Calendar of Events

LIONS CLUB— Each Wednesday noon at Gerald's Cafe.

IOOF-LODGE— Each Thursday night at Odd Fellows lodge.

MULESHOE REBEKAHS— Each Tuesday night at Odd Fellows hall at court house.

CANTON— Second Friday night of each month at Odd Fellows hall.

JAYCEES— Every Monday night at the Cross Roads Cafe.

COMMISSIONERS' COURT— Regular meeting each second Monday at court house.

FIRE DEPT.— Second and fourth Wednesday night of each month.

EASTERN STAR— First Tuesday night of each month at Masonic hall.

MULESHOE TRUSTEES— Meet on Monday nearest 10th of month.

RAINBOW GIRLS— First and third Thursday nights of each month at Masonic Hall.

WESLEYAN SERVICE GUILD— Second and fourth Monday nights of each month, in homes of members.

MULESHOE STUDY CLUB— Second and fourth Thursday nights in homes of members.

EPSILON CHI— Regular meetings each second and fourth Wednesday nights.

ROTARY CLUB— Each Tuesday non at Post Office Cafe.

AMERICAN LEGION— First and third Wednesday nights at Legion home.

MASONIC LODGE— Second Tuesday night of each month at Masonic hall. Practice each Monday night.

CARD OF THANKS

We wish to thank all our friends and neighbors for their kindness and sympathy and for the beautiful flowers.

The Hinkson Families.

POLIO—HOSPITAL—ACCIDENT INSURANCE

Trip Insurance— If you plan to take a trip, insure before you leave. The cost is very little. Will insure you for a trip from 3 days to 180 days.

Polio— 2 years for the Family for \$10.00.

Accidental Death Automobile policy, \$10 per year for the Family.

The above policies will be written in one of the largest Insurance Companies in the Nation and they will pay off.

EDDIE LANE
Muleshoe, Texas 29-2tc

WE ARE STILL SELLING THAT GOOD VAN HORN LAND



Yes, we are still showing and selling that good Van Horn Land. Several of your neighbors have bought down there. This is cotton country, but you can grow anything.

Van Horn has a good climate, plenty cheap labor, and fine neighbors. The land is cheap and you can afford to own it. Let us tell you about it.

P. S.: We MIGHT have something here you would like to look at. Come to see us.

DAVE AYLESWORTH

See me at my home—Muleshoe Nursery, Muleshoe, Texas.

FOR SALE: Registered Duroc Boars. Loyde Quesenberry, 5 miles north and east. 31-1tc.

NEW FARM WAGONS FOR SALE at a special price. Good for cotton trailers, fertilizer trailers, buses, etc. See these at CONSUMERS FUEL & SUPPLY. 14-tfc

FOR SALE

—245 Acres west of Bovina, 230 A. in cultivation. Medium good imp., including Grade A dairy barn and only one quarter mile to paved road to Clovis. This is a nice little home for someone. All the land is in row crop and all goes until Aug. 1, at \$110 acre.

ALSO—

—320 acres west of Bovina, very nice modern improvements, about all the land in cultivation; 2 0 A. in row crop, and 1-3 of the row crop goes until Aug. 1. This is a TOP QUALITY HALF, and will irrigate beautifully. Somebody is going to be mighty proud of this at only \$125 per acre.

All Kinds of Property Insurance

O. W. Rhinehart

BOVINA, TEXAS 30-tfc

FARMS AND HOMES FOR SALE

● 369 A., 5 room house, barns, chicken houses and garage. Two water wells, 350 A. in cultivation, 1/2 minerals goes and rent for this year if sold soon. This place is near Needmore.

● 190 A. on highway, 6-room modern home, with barns, and mighty good land, with one irrigation well. You should see this place if you want to buy.

● 200 acres well improved, two irrigation wells, clean. This is an ideal home on Highway 84.

● 80 acres, 3 room house irrigation well, pressure water, REA, with crop included at \$325 acre. We need more listings. If you want to sell, see us.

HANOVER & DAY REAL ESTATE

On Morton Highway
Just North Of Courthouse

ALL REAL ESTATE SERVICES

● Well Improved 320 acres on pavement. Irrigated.

● 160 acres irrigated farm on pavement. Well improved.

● 80 acres irrigated and well improved.

● 480 acres, well improved. 3 wells, 40 acres alfalfa, 60 acres, permanent pasture, and 50 acres of grass. 2 sets improvements. Can be cut in quarter sections or 80 acre tracts.

● I have many nice selections of homes and other city property.

M. B. BLAYLOCK
At Benton Food Store

FOR SALE: \$450 New Holland bale loader. Used 1/2 day. (less 2 16-in. tires) \$175. Hubert Glaze, Sulphur Bluff, Texas or Phone 529RX. Littlefield. 31-2tp.

FOR SALE: 640 acres of land on pavement in 30 minutes drive of Hereford, well and windmill, corals and outbuildings, five room modern house, there is 600 acres in feed, place got inch of rain yesterday. Price \$48,000.00 buyer to get two thirds of feed crop M. A. Crum, Friona, Texas. 31-1tp.

FOR RENT: 3 rooms and bath apartment, unfurnished. See Pauline Griffin, Pool Insurance Agency. 30-tfc

FOR RENT: Unfurnished Duplex. S. E. Goucher, phone 232-W. 29-tfc

FOR RENT: Unfurnished house. See Ira H. Robinson at Shoe Shop. 30-2tp.

HOUSE FOR RENT: 3 rooms and bath unfurnished. 920 West 1st. See I. H. Robinson. 31-2tp.

FOR RENT: Three room apartment and bath. 1108, 12th, and Ave. C. 31-2tp.

FOR RENT: 2 bedroom house on pavement. See S. E. Goucher, 705 W. 2nd. St. 31-tfc.

FOR RENT— Bedroom with outside entrance. Close to bath, innerspring mattress. 1201 E. Third Street 31-3tp

FOR RENT: Bedroom. 903 W. 3rd, and Ave. F. Phone 274-W. 31-tfc.

FOR RENT: Bedroom. 903 W. 3rd, and Ave. F. Phone 274-W. 31-tfc.

\$12,000 POLICY PAYS

● Doctor Bills ● Hospital Bills ● Nursing Bills ● Ambulance Service ● Iron Lung ● Braces ● Transportation and Physiotherapy.

On 12 Dreaded Diseases—Tetanus, Scarlet Fever, Leukemia, Encephalitis, Tularemia, Typhus Fever, Rabies, Small Pox, Spinal Meningitis, Polio, Diphtheria, and Cholera

EDDIE LANE **LAMOND LANE**
At Lane Real Estate Office At Hale Barber Shop
Muleshoe, Texas

"Bitter Rice"

"Silvana Mangano is NOTHING SHORT of a SENSATION!... full-bodied and gracefully muscular. It is not too excessive to describe her as Anna Magnani minus fifteen years, Ingrid Bergman with a Latin disposition and Rita Hayworth plus twenty-five pounds."
—BOSLEY CROWTHER, N. Y. Times—

"Bitter Rice" A LIFE RELEASE

ENTRY BLANK

Muleshoe Chamber of Commerce
Box 846, Muleshoe, Texas

Dear Sirs:

My suggestion for the name of Muleshoe's annual celebration is:

Name _____
Address _____
(Contest closes at 5 p. m. Wednesday)

TEXANS TO FIGHT COMMUNISM



Texas Crusade for Freedom Chairman Lieut. General Preston A. Weathered, left, points out spot in Europe where Radio Free Europe stations are making great strides in refuting Soviet lies and propaganda to L. D. Whiteley, Texas Jaycee president. The Texas Junior Chamber of Commerce adopted the 1951 Crusade for Freedom, a gigantic drive by Americans to halt Communism everywhere, as a statewide project.

GRAND PRAIRIE, July 24— The Texas Junior Chamber of Commerce has adapted the 1951 Crusade for Freedom as a statewide project. Jaycee President L. D. Whiteley of Lubbock, announced today.

The Crusade for Freedom is a gigantic program to erase communism everywhere.

The 1951 campaign seeks to enlist 25 million Americans who want to destroy communism and protect the American way of life in this country. It will be kicked off Labor Day and run the entire month of September.

Jaycees in the 137 local units will strive to reach Texas' goal of 862,500 participants.

The Crusade supports Radio Free Europe, a network of radio stations pin pointed along the Soviet orbit to broadcast truth and hope to people enslaved behind the Iron Curtain and refute lies of the Reds.

Purpose of the 1951 Crusade is to expand the freedom network in Europe and establish a similar operation in Asia to counteract propaganda and distortions of the Bolsheviks in the far East.

"Truth is the only weapon which will subdue Communism", Whiteley said. "And the Crusade stations is a proved method of placing the truth before the people who need it most, those imprisoned behind the Iron Curtain."

Jerry Sanders of Levelland, Texas, State Americanism Chairman for the Jaycees, will be coordinator of the freedom drive. The Crusade will be the first program under his committee's 1951 theme: "Americanism on the offensive."

displayed a number of beautiful pieces she had painted.

The club fun night will be Monday night, August 20, in the home of Mrs. C. D. Julian. Everyone bring a basket lunch and cake or ice cream.

There will be a covered dish luncheon in the home of Mrs. S. C. Caldwell, Tuesday July 1. The day will be spent doing China painting.

Refreshments were served by the hostess to visitors, Mrs. Dorothy Sneller, Mrs. Don St. Clair, Mrs. Kittie Lawson, and Mrs. M. C. Lowery and to the following members: Mesdames E. H. Bough, J. T. Boydston, Dave St. Clair, S. C. Caldwell, Olen Dutton, A. D. Stancell, Nyle Bowers, A. W. Copley, C. H. Gillis, E. E. Marrs, C. E. Briscoe, Kenneth Burton, Leon Julian, Don Burns, Roy Carney and M. A. Cooper.

Mrs. McLowery gave some pointers on china, what kind is best for hand painting; she also

H. D. Club Plans Picnic At Lubbock

"What is a Boy?" was read by Mrs. A. W. Copley for the opening exercises for the Muleshoe H. D. Club in the home of Mrs. Ernest Holland on July 24.

Roll call was answered with "Your Hobby". Mrs. Wylie Bowers and Mrs. A. W. Copley gave a report on the State 4-H dress review at A. & M. College.

The Bailey county club ladies will have a picnic at the park in Lubbock, August 10 at 10:00 o'clock a. m. The Muleshoe club will meet at the court house and leave at 7 o'clock a. m.

Methodist WSCS Met July 19

The Methodist W.S.C.S met Thursday, July 19 in the Y. L. Church for a regular meeting. There were five members present. The meeting was opened by a prayer by Mrs. Quesenberry. Mrs. Lewis presided in the absence of the president and vice president.

The lesson was on health. Mrs. Helm gave a very interesting talk on "He cured their many infirmities". Mrs. Dottie Wilberding also gave an interesting talk on how the hospitals have been modernized to take care of the sick.

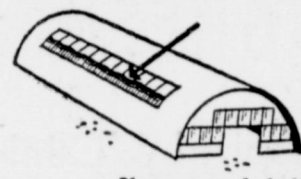
Mrs. Quesenberry gave the devotional taken from St. Matthew 11:28.

IN MULESHOE

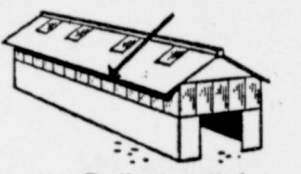
Bill Erickson, of Denver, Colo., is spending a few days in Muleshoe on business this week.

Corrulux

The new corrugated panel with 1,000 uses
Saves up to 50% in construction cost



Shatterproof skylights and front walls for corrugated buildings.



Easily installed in existing buildings for skylighting or wall lighting.



Beautiful, decorative for room partitions, porches, screens.



Ideal for shower doors, or wash room partitions.

Willson-Sanders

• Permanent
• Shatterproof
• Translucent

This new corrugated panel is available in six colors. For full facts about Corrulux phone or write ...

—Phone 93 Muleshoe—

SPECIAL!

WRENCHES	SOCKETS — SETS
5x7 — 10-oz. One Piece Canvas Dam	\$4.45
5x8 — 10-oz. One Piece Canvas Dam	\$4.95
5x9 — 10-oz. One Piece Canvas Dam	\$5.50
5x10 — 10-oz. One Piece Canvas Dam	\$6.05
6x7 — 10-oz. One Piece Canvas Dam	\$5.25
6x8 — 10-oz. One Piece Canvas Dam	\$5.85
6x9 — 10-oz. One Piece Canvas Dam	\$6.45
6x10 — 10-oz. One Piece Canvas Dam	\$7.15
Long Handle Shovels	\$1.50
Rubber Gloves	\$1.35
5"x2" Irrigation Tubes, Plastic,	
While They Last	\$1.65

RUSSELL SUPPLY CO.

ARMY STORE

Muleshoe Texas

OIL LEASES & ROYALTIES

CLYDE A. BRAY, SR.

YOUR STATE LICENSED DEALER IN
MINERAL, OIL LEASES & ROYALTIES

15% OFF Coleman Floor Furnaces

Assure yourself of a better-heated home next winter at a big saving
OFFER LIMITED... COME IN TODAY!

(This discount applies only to retail price of furnace)

E. R. HART CO.

Phone 23 Muleshoe, Texas