

Costs at the perspective are The doors, A ed. lease ation Ray

Amarillo--33333 zzzxxxxxxxxxxxxx
AMARILLO TX 791

1/1/99
Baze Book Binding
514 W 7th St
Amarillo TX 79101-2212

Basketball games

Haskell
JV-VBG vs Archer City
Fri., 4 p.m. at Haskell
JV-VGB vs Electra
Tues., 4 p.m. at Electra

Haskell 7th, 8th & 9th
Haskell vs. Electra
Mon., 4:30 p.m.
Girls There, Boys Here

Paint Creek vs Rule
Fri., 6:00 at Rule
Paint Creek vs Rochester
Tues., 6:00 at Paint Creek

Paint Creek Junior High
Paint Creek vs. Rule
Fri., 6:00 at Rule

Calendar

Art club meeting

The Brazos West Art Club will meet Feb. 9 at 7 p.m. at the Haskell National Bank Community Room. Richard Harvey will be the guest artist.

Sr. 4-H to meet

The Haskell Senior 4-H Club will meet Sun., Feb. 8 at 2 p.m. at the homemaking cottage. Scott Williamson, TSWCR Brand Inspector will present the program. Upcoming spring events will be discussed.

Tamale sale

The St. George Catholic Church will hold a tamale sale Fri. only Feb. 6 until 2 p.m. Advance orders may be placed by calling 864-3171 and leaving a message. Tamales are \$6 a dozen. Proceeds benefit the church.

Special meeting

The Phillips Family will be in service at the Foursquare Church, Tues., Feb. 10 at 7 p.m. The church is located at 200 S. Ave. F in Haskell.

Jr. 4-H meeting

The Haskell Jr. 4-H Club will meet Mon., Feb. 9 at 5:30 p.m. at the Extension Office. Juniors must be in the third grade and eight years old as of Sept. 1 to become a 1997-98 member. Contact Lynette Tribbey, 864-3301 or 864-2956, Cara Thomasson, 864-6158, or the Extension Office 864-2658 or 864-2546 for more information.

Partners for Children

Partners for Children will hold a meeting Feb. 10 at the Elementary School at 7 p.m. Topic for the meeting is Treats for Your Sweet Cookie Exchange. Each person is asked to bring one dozen home-made cookies, individually wrapped and the recipe. Cookies will be exchanged and recipes will be copied. You will take home a dozen cookies and as many recipes as guests. Free babysitting is available by calling the Elementary School. Transportation is being provided for those needing a ride by calling Cindy McCulloch's office at 864-8007.

Social Security

A representative from the Social Security Administration will be in Haskell at the City Hall annex today, Thurs., Feb. 5 at 9:30 a.m.

Silent Auction

Donations are being accepted for a Silent Auction to be held Sat., Feb. 14 to benefit victims of family violence. A variety show will feature area talent along with a brisket supper. Tickets for the Dinner Theatre are available from any Advisory Committee member or at the door. Call the Noah Project-North office at 864-2551 or 1-800-586-0023 to have a Noah Project volunteer pick up your auction item.

Index

- ObituariesPage 2
- Around TownPage 3
- Sagerton NewsPage 3
- Out of the PastPage 4
- School menusPage 7
- Stock Show resultsPage 6-7
- ClassifiedsPage 8-9

Jr. Livestock Show results inside

The Haskell Free Press

VOL. 112-NO. 6, FEBRUARY 5, 1998

"The People's Choice"

10 PAGES-ONE SECTION-50 CENTS



A TREE GROWS IN HASKELL—County Judge David Davis was on hand Wed., Jan. 28, when the twelve foot Austrian Pine was planted on the Courthouse lawn by the Chamber of Commerce.

Chamber plants Christmas tree

What could be better than having a beautiful tree on the Courthouse square at Christmas than having one there all year? The Haskell Chamber of Commerce has taken care of that for us by recently planting a permanent twelve foot tall Austrian Pine on the northwest lawn at the Courthouse.

For the last four years, the Chamber has been cutting down, installing and decorating a tree donated by David Frierson. After the holidays each year it was taken up and discarded. This month they voted to purchase a growing tree from Big Country Sales in Abilene, to be a permanent addition to the

Courthouse grounds, eliminating the extra labor and expense of using a temporary tree. Chamber manager, David Middleton, said the new tree and labor to install is guaranteed for three years, if properly cared for by watering once a week in winter and twice a week in summer. He added that Nick Ortiz, is doing a good job of looking after its care. With permission of the County Commissioners and Judge David Davis, the tree was installed on Jan. 28. Middleton said the only extra needed for using the tree at Christmas will be one more joint of electric conduit. Sammy Decker has been donating all electrical work involved with the tree lightings.

School to implement School-to-Work program

Administrators and teachers of Haskell CISD are aware of the importance of students understanding that skills they are learning in school today are practical tools, applicable to the jobs or careers they may pursue later. Through a funding grant, a new program to help equip them to be productive in the workplace is now being implemented.

The Haskell CISD, Abilene ISD, Brown County Consortium, Snyder ISD and the Sweetwater Pathways Education Council have taken the lead in providing all youth in their areas the opportunity to acquire the knowledge, skill and attitudes necessary to pursue meaningful, challenging, productive pathways in their transition from school to promising, rewarding careers.

The School-to-Work Committee of the West Central Texas Development Board (WCTDB) has approved funding in the amount of \$249,000.00 to the five area groups for assistance in building their local School-to-Work programs. The funding is provided to the WCTDB by means of a Federal Opportunities Implementation Grant, coming to the region through the Texas Workforce Commission.

Locally, under the direction of Billie McKeever, plans are being developed to emphasize the importance of such job skill basics as dependability, honesty, punctuality and cleanliness. A series of business breakfasts is planned as a time for fifth and seventh grade students to meet with business people who will present to them the qualities needed for doing their jobs. Members of the Haskell

Economic Development Corp. will be the first group to share this partnership with the school's program. Students attending the breakfasts will have their tuition paid to a week long Summer Career Camp. Mornings at camp will concentrate on researching career choices. Afternoons will be spent "job shadowing" at local businesses. The current funding is intended for first year School-to-Work activities only. Additional funding will be made available later for future years. McKeever said that the Haskell CISD will submit requests for additional programs funding at the appropriate times.

Car Show set March 7

During the classic car show, being hosted by the Haskell Volunteer Fire Department on Sat., Mar. 7, trophies will be awarded for first, second and third places in 9 classes.

Included are: Late Great-64, Street Machines, Hot Rods, Older Pickups-73, Pickups '74 and up, Cars '65 and up, Antique Cars and Trucks '50 and down, Antique Tractors, and Motorcycles. Best of Show and People's Choice will also be awarded.

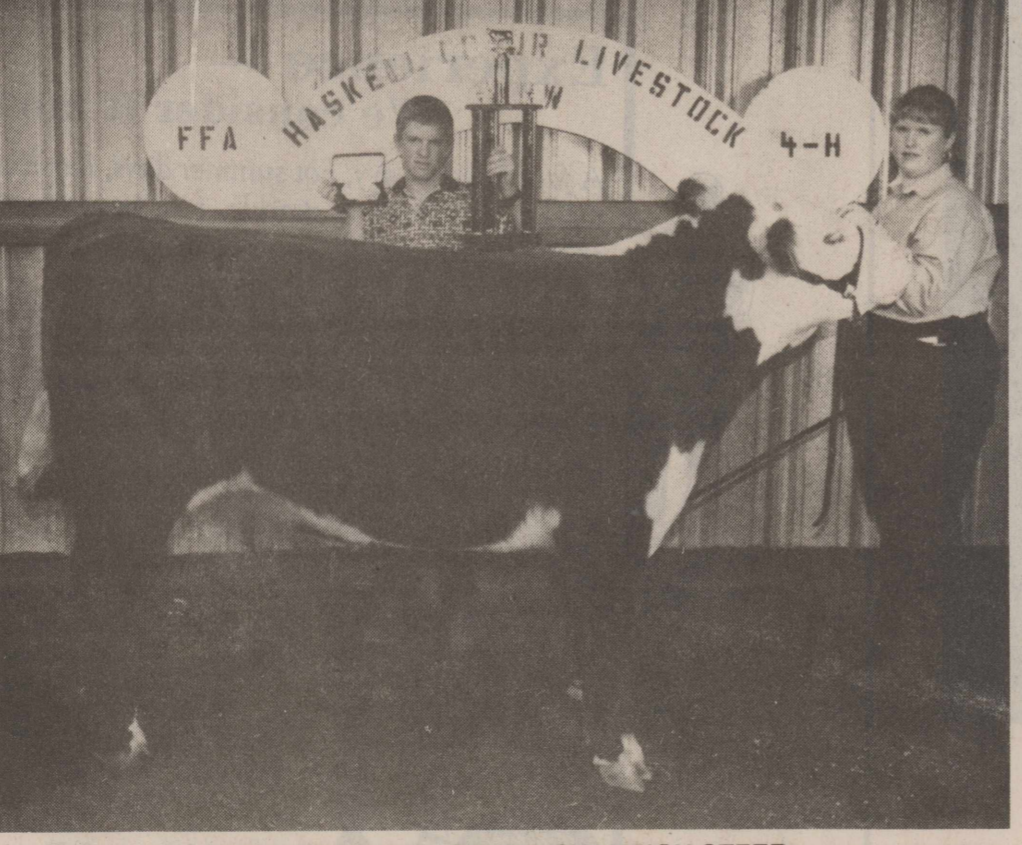
A Hot Wheels race will be held for the kids. Food will be available. Entry fee is \$15.00. Late entries on show day will be \$18.00. For information call Coy Scoggins at 940-864-3694.

Haskell CISD to host Town Hall meeting

Every day in the United States eight teenagers are killed in alcohol related accidents. School officials in Haskell are concerned about the rise in alcohol and drug use among our young people during the past few months. Also of concern is the availability of such products to young people and the increase in use by the very young. Haskell CISD will host a Town

Hall Meeting on the continuing problem of underage drinking, Thurs., Feb. 12, at 7:00 p.m. in the Haskell High School School Auditorium. The Town Hall Meeting will offer information on how we can all work together to address these problems. Every interested person is invited to come hear Taz Wallace of Texas Alcohol Beverage Commission discuss the new zero tolerance laws,

and the dangers of underage drinking. The meeting is endorsed by Haskell City Council, Haskell County Commissioners Court, Haskell County Probation Office, local law enforcement agencies, and is supported by area ministers. Efforts are being coordinated by these agencies and individuals to keep our young people safe.



MINDY HOWARD - GRAND CHAMPION STEER

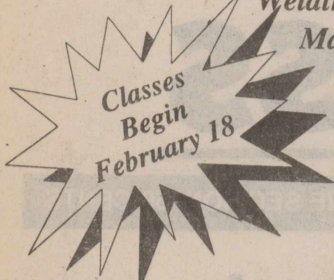


MARY BELLE TURNER - GRAND CHAMPION HEIFER

FOR NEWS ITEMS OR TO SUBSCRIBE, CALL 864-2686

Vernon Regional Junior College at Wichita Falls 1998 Spring Semester

Register for
Cosmetology • Computer Aided Graphics
Office Technology • Electronics
Criminal Justice • Legal Assisting
Welding • Machining
Manufacturing



Registration Date
Thur., February 12
10 a.m. - 6 p.m.
4105 Maplewood



FMI: Call (940) 696-8752 or 766-3369
See schedule on VRJC website: www.vrjc.cc.tx.us

Providing Sales & Service



For Over 50
Years

Clearance of '97
Pick-ups
Great Selection!

Bill Wilson
MOTOR COMPANY
FORD MERCURY
HASKELL TEXAS

209 S. Ave. E Haskell 864-2611

Farm & Ranch Show set Feb. 10-11

When the 6th annual Big Country Farm and Ranch Show opens on Tues., Feb. 10 a number of local and regional agribusinesses will be present to showcase their products and services to the 10,000+ producers who will attend the event. Companies from the Haskell area participating in the Farm Show are Big Country Ag Journal, of Stamford; Bronco Seed Co., of Stamford; and Paymaster Cottonseed, of O'Brien.

These companies will be joined by more than 300 other companies as they meet and discuss the 1998 growing season with the farmers and ranchers. The Big Country Farm and Ranch Show is the region's most complete show of new products and services. The show also offers educational seminars conducted by several organizations.

The Rolling Plains Cotton Growers Association will be holding their Annual Meeting in conjunction with the 6th Annual Big Country Farm and Ranch Show. The meeting is scheduled for Tues., Feb 10.

The organization's meeting will be held on Feb. 10 from 10:00 a.m. to 1:00 p.m. in the Display Building at the Taylor County Fairgrounds. Vernon native Senator Robert Duncan, who is largely credited with rescuing the Texas Boll Weevil Eradication program in 1997 is the scheduled keynote speaker.

Additional educational programs include: CEU sessions offered by Taylor County Extension on Tues., Feb. 10 at 1:30 p.m. and Wed., Feb. 11 at 1:00 p.m.; and a Futures/Options session offered by DTN on Wed., Feb. 11 at 3:00 p.m.

The 1998 Big Country Farm and Ranch Show is scheduled for Tues., Feb. 10 and Wed., Feb. 11 at the Taylor County Fairgrounds in Abilene. Sponsors for this year's event include the Abilene Reporter News, KTAB-TV, VSA Radio Network, Taylor County Ag Extension Service and the Rolling Plains Cotton Growers. Admission is free. For more information, call (612) 894-8007.

Obituaries

Christine Poteet

Funeral services for Christine Reynolds Poteet, 74, of Haskell were held Tues., Feb. 3 at East Side Baptist Church with Pastor David Page and Sequoyah Reynolds officiating. Burial was in Knox City Cemetery under the direction of Holden-McCauley Funeral Directors.

Mrs. Poteet died Sat. Jan. 31 at a local hospital. Born March 8, 1923 in Knox City, she married Harley O. Poteet July 11, 1939 in Haskell. He preceded her in death Jan. 8, 1998. She was the Food Service Director for Haskell Memorial Hospital for over 20 years. She had lived in Haskell for the past 28 years and was a member of the East Side Baptist Church.

She was preceded in death by one son, Roy R. Poteet. Survivors include two sons, Harley Gene Poteet of

Artesa, N.M. and Michael David Poteet of Haskell; one daughter, Anita Faye Poteet Goode of Throckmorton; eleven grandchildren, Brad Poteet, Steve Poteet, Richie Poteet, Lisa Poteet, Jimmy Goode, Cory Goode, Sherry Jackson, Kira Poteet, Travis Poteet, Kevin Madina and Kamie Scott; 15 great grandchildren; two brothers, Harvey Reynolds of Abilene and Bud Reynolds of Knox City; two sisters, Cleo Collins of Knox City and Pat Strahan of San Antonio.

Pallbearers were grandsons. Honorary pallbearers were Christy Riggs, Viola Brueggeman, Zora Medford, Mary Moeller, Dr. Bill McSmith, Jamie Caldwell, and the staff at Outreach Home Health Care.

Nina Opal Dunnam

Funeral services for Nina Opal Dunnam, 82, lifelong resident of Haskell, were held Tues., Feb. 3 at East Side Baptist Church with Pastor David Page officiating. Burial was in Willow Cemetery under the direction of Holden-McCauley Funeral Directors.

Born Jan. 15, 1916 in Haskell, she was the daughter of the late E. W. Kreger and Florence Wilson Kreger. She married J. B. Dunnam Nov. 5, 1932 at the Haskell County Courthouse. She enjoyed sewing, gardening, baking and watching her grandchildren. She was a member of the East Side Baptist Church.

She was preceded in death by three brothers, Raymond, Odie and Jess Kreger and one sister, Ruby and

her husband, Ernest Marion. Survivors include her husband, J. B. Dunnam of Haskell; one son and daughter-in-law, Jerry Doyle and Jean Dunnam of Haskell; two grandsons, Ricky Dunnam and his wife, Sharie, and Micky Dunnam and his wife, Michelle, all of Haskell; two great grandchildren, Colin and Shelby Dunnam; one sister, Bertha (Mrs. Jim) Marion of Walsh, Colo.; one brother, E. W. Kreger, and his wife, Elsie, of Blanco; and two sisters-in-law, Susie Kreger and Venita Kreger, both of Haskell.

Pallbearers were Jerry Davis, Cecil Bingham, Kenneth Patton, David Frierson, Hollis Callaway and Frank Jenkins.

Courthouse now smoke-free

Court voted unanimously to ban smoking inside the Courthouse effective immediately, making it one of the growing number of smoke free government buildings.

Conversely, the Court lifted the County-wide burn ban which had been in effect for several months.

It was announced that county

interest income for the first quarter of the year was up \$1,005.00 from the last year's investment income for the same period.

Plans were announced for for a smoked brisket dinner on Feb. 22, to benefit the Experienced Citizens' Center. With tickets sold in

advance, it will be the first of several fundraisers for the ECC.

In other ECC business: the vacancy left by Lyla Mary Isbell as head cook has been filled by Dawn Rodela. Assistant head cook is now Bennie Faye Shelton. A Green Thumb worker will be hired to work in both the front and the kitchen.

Commissioners decided to restore the Dept. of Human Services Building property to the tax rolls when the ten year tax exempt status given to the owner expires in 2001.

Letters from the County Attorney will soon be sent to those people behind on fine payments. Non-payment will result in warrants being issued.

Commissioner Bill Hester asked the court to consider paying workman's compensation insurance on the rural volunteer firemen. No action was taken. Other commissioners and County Judge David Davis expressed the opinion that the cities of Rule and Rochester should consider adding the firemen to their existing policies.

A Court resolution was made to oppose the area to which Haskell County has been assigned in the newly formed State Water Board. This area runs south along the Brazos River basin and includes municipalities such as Waco. Adjoining counties to the area contain Houston, Austin and San Antonio. Saying that anyone with even a water well in their yard should have an interest in who has access to our ground water, the concern was expressed that it is feasible that any of these municipalities could buy water rights from any landowner and pump our wells dry.

In other business: the MHMR wiring was done by Decker Electric; the County investment report was approved; time warrants on the new motor graders were issued; the contract for the Anchor was approved.

Pending acceptance, the names of Roger Roewe, Hollis Callaway and Chan Guess were drawn to serve on the Grievance Committee.

It was announced that bids will be taken for a county auditor, with bids to be opened on Feb. 24.

Students visit Rotary Club

Cody Caraway, son of Russell Caraway, plans to attend Texas Tech University, major in pre-medicine and become an orthopedic surgeon.

Active in band and tennis, his hobbies are basketball and music.

He is a member of the National Honor Society and the A Honor Roll. Special recognitions for him have included being named to District, Regional and Area Bands.

He is a member of the Church of Christ.

Landon Terry, who is active in Band and Agriculture judging teams, likes to show calves and go hunting.

Son of Leland and Pam Terry, he is a member of East Side Baptist Church, an Eagle Scout and has been named in Who's Who.

After high school, Landon would like to attend West Texas A&M at Canyon.

Paul McGuire is the son of Steve and Phoi McGuire. His school activities include tennis, National Honor Society, Fellowship of Christian Athletes, and Clean State Organization.

McGuire's hobbies are computer and accounting.

After finishing high school, he plans to attend Texas Tech and work in the computer field.

CLEARANCE ALL FALL & WINTER MERCHANDISE

50% OFF

ORIGINAL PRICES

NEW REDUCTIONS TAKEN ON:

- MISSES' & JUNIORS' SPORTSWEAR & DRESSES
- SPECIAL SIZES • INTIMATE APPAREL
- SHOES • ACCESSORIES • CHILDREN'S APPAREL
- MEN'S DRESS CLOTHING & SPORTSWEAR

Total savings off original prices. Interim markdowns may have been taken. Styles, sizes and colors may vary by store.

www.beallsstores.com

CHARGE IT!
GET 10% OFF
ALL DAY
WHEN YOU OPEN A NEW STORE ACCOUNT.
Exclusions may apply. Subject to credit approval.

BEALLS

We're all about you!



of Modern Way

UNLIMITED TOPPINGS EXCLUDING CHEESE

PIZZA PRO

LARGE PIZZA

2 For \$13.99

OPEN 'TIL 9 P.M.

CALL IN ORDERS
PHONE 864-3976

Experience — We consider it money in the bank.

A face lined by dry, hot summer days, harsh winter, and seven-day work weeks. But there is sparkle, too, remembering warm spring sun or gentle rains and acres of cotton.

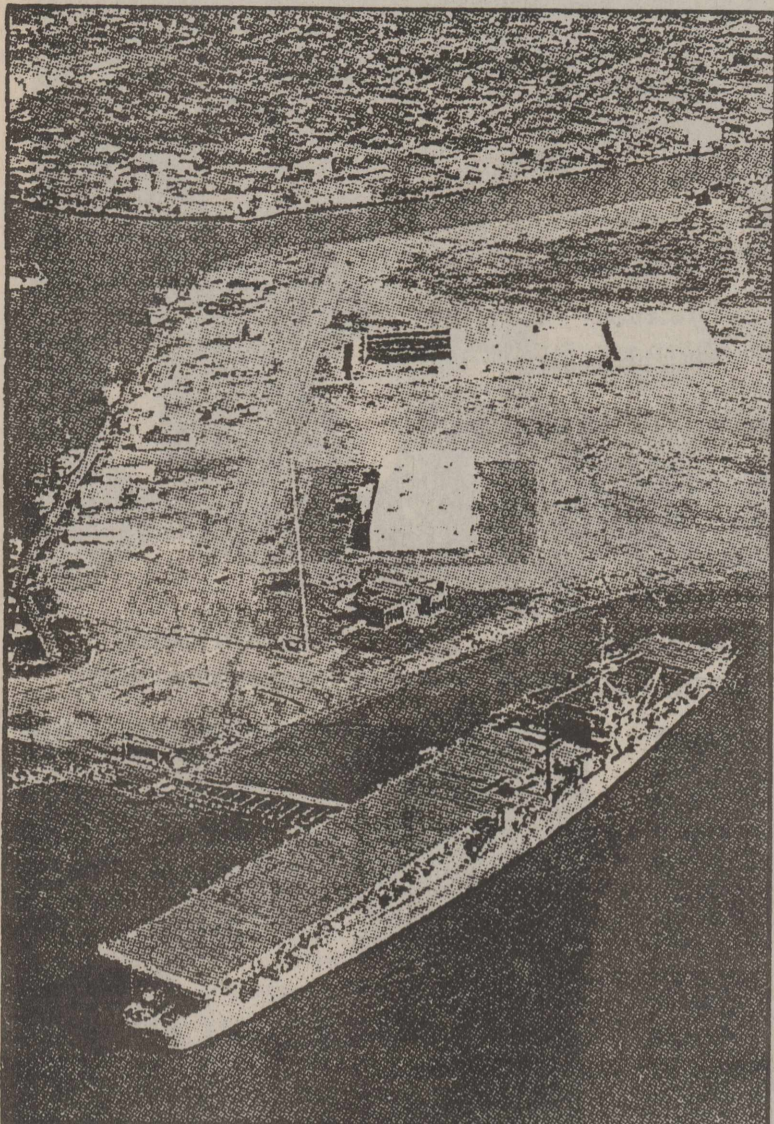


Back when he started farming, a man's labor represented the majority of his investment in the farm. Over the years, when he's had to invest in land and equipment, he's turned to his Land Bank Association for competitive, long-term financing. At the Land Bank we not only place value on a man's farm, but his experience, too.

So, if you need help growing, talk to a neighbor you can bank on — your Land Bank Association.

Federal Land Bank Association of Texas

Haskell Office • Dale Bullinger — Pres. • Phone 864-8565



DESTINED FOR SCRAP YARD—The USS Cabot, a World War II wartime carrier is likely headed for scrap yard.

Kuenstler to join ship's last voyage

Fifty-four years ago, during World War II, Haskell County native, Rev. Truett Kuenstler, who grew up and now lives in the Paint Creek community, served as Shipfitter, 3rd Class, on the aircraft carrier USS Cabot.

The carrier survived direct hits by kamikaze pilots, dodged Japanese submarines and dive bombers, weathered deadly typhoons in the South Pacific and hurricanes in the Atlantic.

Nicknamed the "Iron Woman" by famed war correspondent Ernie Pyle, the Cabot is the last of nearly 100 fast, light carriers that helped win the war. Earning an

outstanding record taking part in nearly every major naval battle in the Pacific, including the famous Marianas Turkey Shoot, the battle of Leyte Gulf and the invasion of Iwo Jima, the Cabot's pilots shot down 252 enemy aircraft, destroyed 96 on the ground and sunk or damaged 265 Japanese ships. Its gun crews downed another eight attacking aircraft.

Now moored in a channel at Port Isabel, its hull still ringed with anti-aircraft guns and radio and radar antenna, the retired ship's future is undecided and may include a final trip to a scrap yard.

Some fiercely loyal veterans and others are interested in preserving the carrier as a museum. But red-tape, non-existent funds and appropriations plague the effort. At this point, only one hope remains for saving the Cabot: A planned lakeside museum in Chicago wants to make it a centerpiece of an American industry exhibit.

Failing that, the Cabot will make its last voyage to the scrap yard at nearby Port of Brownsville, to be disassembled.

Members of the former crew have been invited for the short 15 mile ride to the Cabot's final destination. When the date is announced, Rev. Kuenstler, who is retired after 45 years pastoring Southern Baptist churches, plans to be on hand to make this trip.

Haskell Co. Gin Report

January 31, 1998
Haskell

Farmers Co-op Gin	7132
Haskell Co-op Gin	15,050
O'Brien	
O'Brien Gin	14,222
Rochester	
Rochester Co-op Gin	2740
Rule	
Rule Co-op Gin	6156
Sagerton	
Sagerton Gin	3525
Weinert	
Paymaster Gin	4799
Weinert Gin	5561
Total Bales	59,185

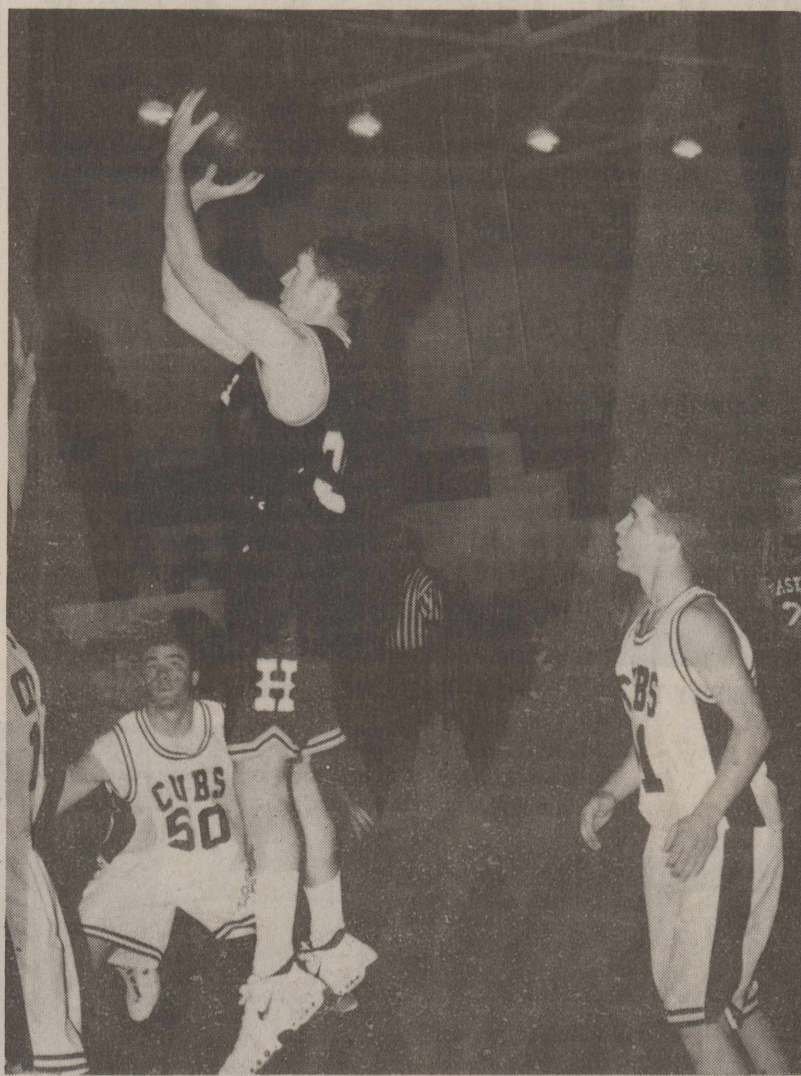


A message from the ABILENE EYE INSTITUTE & CATARACT SURGERY CENTER DEDICATED TO EXCELLENCE

We specialize in cataract surgery with intraocular lens implant and routinely use the small incision phacoemulsification technique. We have 2 modern, fully equipped operating rooms each with its own Zeiss operating microscope and Phacoemulsifier. We also have an observation room so that family and friends may view the surgery while it is happening. Our ambulatory surgery center is State licensed and Medicare approved. We have performed over 3,000 cataract implant operations since 1987. Our doctors accept Medicare Assignment and we think you will find our fees very competitive with most hospitals. Our friendly, dedicated staff is available to answer any of your questions. If you need transportation, we can help.

Robert W. Cameron, M.D., F.A.C.S.
Paul B. Thames, M.D., F.A.C.S.
Mark J. Phelan, M.D.
Vincent J. Priestner, M.D.
Kerry C. Preston, O.D.

2120 Antilley Road, Abilene, TX 79605
3/10 mile west of Humana Hospital
915-695-2020 or 1-800-692-2020



IN FOR TWO—Haskell Indian Trey Cheyne (32), puts in two points in the 57-45 win over the Olney Cubs. Photo by Bill Blankenship

Inform IRS of any address changes

by Lou Gilly
Haskell Co. Extension Agent
According to the Internal Revenue Service (IRS), some \$62 billion worth of refund checks have not been delivered to taxpayers. The IRS indicates that some checks are for more than \$10,000.

Why? Because taxpayers have not informed the IRS of a new address, said Dr. Lynn White, a consumer/family science specialist with the Texas Agricultural Extension Service. Simply filling

out an address change with the post office will not assure forwarding of documents that could involve money, such as documents from the IRS or a bank or other financial institution, White said.

If you think you are due a refund you have not received, call 1-800-TAX-FORM for IRS Form 3911, Taxpayer Statement Regarding Refund. To notify the of a new address, file Form 8822, Change of Address. To locate IRS forms on the Web, search for [ftp://ftp.fedworld.gov/pub/irs-pdf](http://ftp.fedworld.gov/pub/irs-pdf).

Students in the News

A student from Haskell County was named to the Honor List for the fall 1997 semester at South Plains College, Levelland.

To qualify for the President's Honor List, students must be enrolled in at least 12 semester hours of college-level work and earn a 4.0 grade point average.

Named to the President's Honor List is Brian L. Manske, Sagerton.

Four Haskell area students attending Angelo State University

in San Angelo, are listed on the Dean's List for the Fall semester at the University.

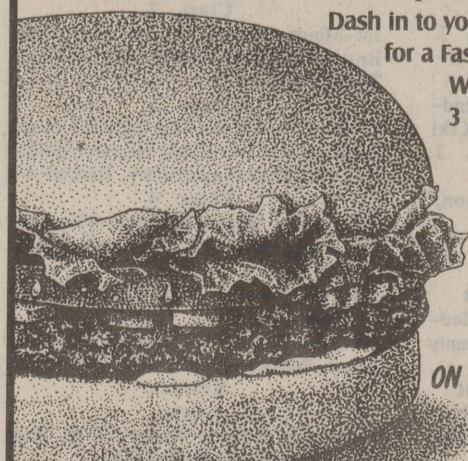
Those listed include Hans Overton, an undecided major, from Paint Creek; Jeremy Futch, a Business major, and Mary Kay Watson, an undecided major, from Haskell; and Jerry Kole Sanders, a Finance-Real Estate option major from Weinert.

To be eligible for the Dean's List, a student must be enrolled as a full time student and have at least a 3.25 grade point average.

LUNCH IN 3 MINUTES

FAST & FRESH! OR WE'LL THROW IN A SUNDAE
Dairy Queen 3 MINUTE LUNCH FREE!

AND ... A BURGER FOR A BUCK!
1/6-lb. Homestyle Burger \$1



Dash in to your local Dairy Queen® store for a Fast & Fresh 3-Minute Lunch! Where you get your lunch in 3 minutes*, or we throw in a 5-oz. Sundae, absolutely FREE! Plus right now, you can grab a big 1/6-lb. Homestyle Burger for just \$1. You always get more burger for your buck — at Dairy Queen! ON SALE FEBRUARY 2-22, 1998.

Dairy Queen

*3 Minutes from the time you pay. 11 a.m. - 2 p.m. Sundae is 5-oz. size. At Participating Stores.

©Reg. U.S. Pat. & TM Off. D.Q. Corp. Reg. U.S. Pat. & TM Tx. D.Q. Op. Coun. ©Tx. D.Q. Op. Coun. †Pre-cooked weight.

For YOUR INSURANCE Needs

For Health, IRA, Annuity, Auto, Home or Life Insurance, call today.

HELPING YOU is what we do best.

SANDY FOREHAND

508 N. 1st
940-864-2647
940-864-3504



FARM BUREAU INSURANCE

Texas Farm Bureau Mutual Insurance Co.
Texas Farm Bureau Underwriters
Southern Farm Bureau Casualty Insurance Co.
Southern Farm Bureau Life Insurance Co.

FISH

Now is the time for Pond and Lake Stocking of Hybrid Bluegill, Florida Hybrid Bass, Channel Catfish, Fathead Minnows, Triploid Grass Carp and Black Crappie.

A PERMIT IS REQUIRED FOR TRIPLOID GRASS CARRP.

The Hybrid Bluegill can REACH the weight of 2 1/2 to 3 lbs.

We furnish your Hauling Containers. We guarantee live delivery.

Supplies - Fish Feeders, Turtle Traps, Fish Traps, Liquid Fertilizer, Spawning Mats, Pond and Lake Surveys, and Gift Certificates.

Delivery will be Saturday, February 14, at the times listed for the following towns and locations.

Aspermont - D & D Feed & Seed	989-2994	8:00-9:00 a.m.
Haskell - Richardson's	864-8551	10:00-11:00 a.m.
Knox City - Benjamin Fertilizer	658-3642	12:00-1:00 p.m.
Crowell - Borchardt Purina Chow	684-1866	2:00-3:00 p.m.
Quanah - Quanah Farm & Ranch	663-5949	4:00-5:00 p.m.



To Place Your Order Call: 405/777-2202 Toll Free: 1-800-433-2950
FAX # 405-777-2899 Or Contact Your Local Feed Dealer

Fishery Consultant available.
Discounts and Free Delivery are available on larger orders.

Dunn's Fish Farms, Inc.
P.O. Box 85 • Fittstown, Ok. 74842

FEBRUARY 10 & 11, 1998

Tuesday and Wednesday
9:00 am - 5:00 pm

Taylor County Fairgrounds
ABILENE, TEXAS



Big Country FARM & RANCH SHOW

Over 350 Exhibits

Ride and Drive

FREE
Dinner
FOR INFORMATION CALL
800/827/8007

DON'T MISS:
New Products Showcase
CEU Hours
Demonstrations
Educational Meetings

Sponsored by:
Abilene Reporter-News
Rolling Plains Cotton Growers Assn.
KTAB

Produced by Champion Farm Shows, Part of The Champion Farm & Ranch Show National Series

TAX PLANNING

Written By
James E. Rodgers, CPA



WHAT'S NEW IN TAX-CUTTING FOR 1998?

Last year, Congress enacted a new tax law, and many provisions first take effect in 1998. While you are pulling together your tax information for 1997, it's not too early to start planning for this year.

If you have children in college, you could be in line for some significant tax breaks. The new "Hope" tax credit is worth up to \$1,500 per child during freshman and sophomore years, and the "lifetime learning credit" (which becomes effective July 1, 1998) can provide up to \$1,000 per year thereafter. Since academic years and tax years seldom coincide, you may need to start planning early to ensure proper timing of your tuition payments.

If tax considerations have kept you from selling your home, 1998 could be the year to act. Couples are now eligible to exclude up to \$500,000 of home-sale profit, while singles may be able to exclude up to \$250,000.

For each child under age 17, you may be eligible for a tax credit of up to \$400. By filling out a new Form W-4 as soon as possible and giving it to your employer, you may be able to adjust your withholding and receive a portion of your credit in each paycheck. Otherwise, you won't see the benefit until next year when you file your 1998 tax return. (You can also adjust your withholding if you expect to claim either of the education credits discussed above.)

A number of new tax breaks are subject to income limitations, including the education and child credits. You might want to start planning to defer some income from 1998 to 1999, if possible, in order to meet this year's limits.

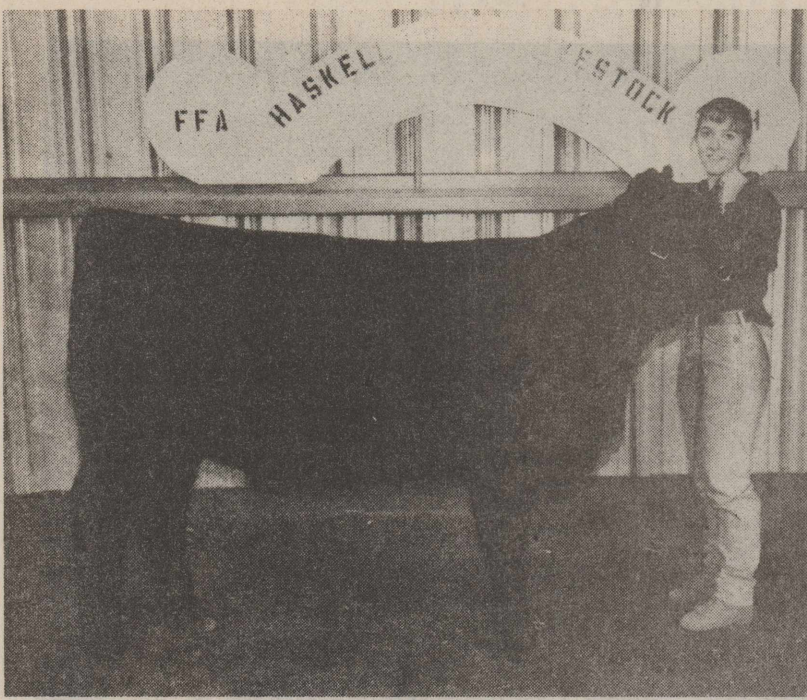
For ideas and assistance with your 1998 tax planning, contact our office. We're here to help you find and utilize every tax break the law allows.

RODGERS & COMPANY

Certified Public Accountant
20 Southwest Third Street
Hamlin, Texas • 915-576-2356



JEREMY HAGER - RESERVE CHAMPION STEER



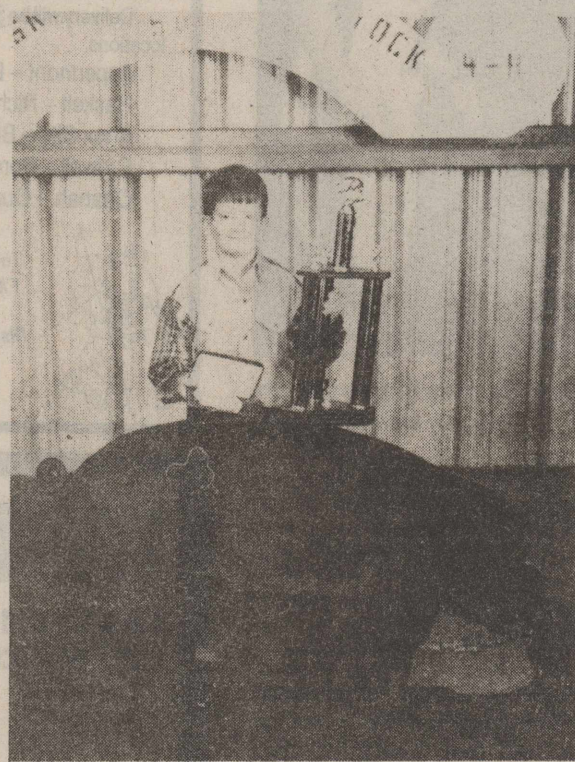
MISSY TEAGUE - RESERVE CHAMPION HEIFER



BREE BURGESS (left) - GRAND CHAMPION RABBIT
COURTNEY BUERGER - RESERVE CHAMPION RABBIT



HEGAN LAMB
GRAND CHAMPION SWINE



ROSS SHORT
RESERVE CHAMPION SWINE



MAGGIE BRZOZOWSKI
GRAND CHAMPION CHICKEN



BREE BURGESS
RESERVE CHAMPION PEN OF RABBITS



B. J. OPSAHL - GRAND CHAMPION LAMB



ROSS BULLINGER - RESERVE CHAMPION LAMB



CRYSTAL BURTON - GRAND CHAMPION PEN OF RABBITS

Haskell County Junior Livestock Show results

Total sales at the Haskell County Junior Livestock Show, held Jan. 29-31, at the Haskell County Show Barn were at least \$4,500.00 more than last year's. Joey Kimbrough, president of the Livestock Show Association, reported that the total sales figure, as of Mon., was \$52,500.00.

Ninety-eight Haskell County youngsters participated in the show, and eighty-eight animals were sold in the show ring.

Dale Bullinger told the *Haskell Free Press* that the good turnout of kids entering and interested spectators attending was supportive and encouraging, helping to make the show a success.

Congratulations are extended to everyone who entered. The results of judging and the winners are listed below by class and division.

Rabbit Division
Breeding Rabbits
Overall Grand Champion—Bree Burgess, Haskell FFA
Overall Reserve Grand Champion—Courtney Buerger, Paint Creek 4-H

White Does
Senior
1st—Kami Baitz, Rule FFA; 2nd—Kami Baitz, Rule FFA.

Junior
1st—Crystal Burton, Haskell 4-H; 2nd—Bree Burgess, Haskell FFA; 3rd—Crystal Burton, Haskell 4-H; 4th—Mckenna Smith, Rochester FFA; 5th—Jeffrey Rodriguez, Rochester FFA

Pen of Fryer Rabbits
Grand Champion—Crystal Burton, Haskell 4-H

1st—Bree Burgess, Haskell FFA; 2nd—Crystal Burton, Haskell 4-H
Breed Champion—Bree Burgess, Haskell FFA
Reserve Breed Champion—Crystal Burton, Haskell 4-H

Colored Does
Junior
1st—Crystal Burton, Haskell 4-H

Senior
1st—Crystal Burton, Haskell 4-H
Breed Champion—Crystal Burton, Haskell 4-H
Reserve Breed Champion—Crystal Burton, Haskell 4-H
Grand Champion—Bree Burgess, Haskell FFA

Reserve Champion—Kami Baitz, Rule FFA

White Bucks
Junior
1st—Kami Baitz, Rule FFA; 2nd—Kami Baitz, Rule FFA; 3rd—MacKenzie Miller, Rule 4-H

Senior
1st—Crystal Burton, Haskell 4-H
Breed Champion—Kami Baitz, Rule FFA

Reserve Champion—Crystal Burton, Haskell 4-H

California Bucks
Junior
1st—Crystal Burton, Haskell 4-H; 2nd—Robbyn Tribbey, Haskell 4-H

Senior
1st—Courtney Buerger, Paint Creek 4-H; 2nd—Bree Burgess, Haskell FFA; 3rd—Crystal Burton, Haskell 4-H

Pen of Fryer Rabbits
Grand Champion—Crystal Burton, Haskell 4-H

Reserve Champion—Bree Burgess, Haskell FFA
1st—Crystal Burton, Haskell 4-H; 2nd—Bree Burgess, Haskell FFA; 3rd—Crystal Burton, Haskell 4-H; 4th—Mckenna Smith, Rochester FFA; 5th—Jeffrey Rodriguez, Rochester FFA

Pen of Broilers
Grand Champion—Maggie Brzozowski, Haskell 4-H
Reserve Champion—Jenny Brzozowski, Haskell 4-H; 2nd—Maggie Brzozowski, Haskell 4-H; 3rd—MacKenzie Miller, Rule 4-H

Sheep Division
Finewool
1st—Kaki Stapleton, Haskell 4-H; 2nd—B. J. Opsahl, Haskell 4-H; 3rd—Lucas Hisey, Rule FFA

Breed Champion—Kaki Stapleton, Haskell 4-H

Reserve Breed Champion—B. J. Opsahl, Haskell 4-H

Finewool Crosses
1st—Kaki Stapleton, Haskell 4-H; 2nd—B. J. Opsahl, Haskell 4-H; 3rd—Kaki Stapleton, Haskell 4-H; 4th—B. J. Opsahl, Haskell 4-H
Breed Champion—Kaki Stapleton, Haskell 4-H

Reserve Breed Champion—B. J. Opsahl, Haskell 4-H

Medium Wool Lightweight
1st—Ross Bullinger, Haskell 4-H; 2nd—Kaki Stapleton, Haskell 4-H; 3rd—Jenny Hisey, Rule FFA

Medium Wool Middletweight
1st—Ross Bullinger, Haskell 4-H; 2nd—Kaki Stapleton, Haskell 4-H; 3rd—Hattie Walton, Haskell 4-H

Medium Wool Heavyweight
1st—B. J. Opsahl, Haskell 4-H; 2nd—Hattie Walton, Haskell 4-H; 3rd—Benny Bundy, Rule FFA
Breed Champion Medium Wool—B. J. Opsahl, Haskell 4-H
Reserve Breed Champion—Ross

Bullinger, Haskell 4-H
Southdown
1st—B. J. Opsahl, Haskell 4-H; 2nd—Ross Bullinger, Haskell 4-H
Breed Champion—B. J. Opsahl, Haskell 4-H

Reserve Breed Champion—Ross Bullinger, Haskell 4-H
Overall Grand Champion—B. J. Opsahl, Haskell 4-H

Overall Reserve Champion—Ross Bullinger, Haskell 4-H
Junior Showmanship—Ross Bullinger, Haskell 4-H
Senior Showmanship—Kaki Stapleton, Haskell 4-H

Steers
Class 1
1st—Jeremy Hager, Weinert 4-H; 2nd—Rusty Howard, Haskell 4-H; 3rd—Angela Hager, Weinert 4-H

Class 2
1st—Mindy Howard, Haskell 4-H; 2nd—Brittany Bartley, Haskell 4-H; 3rd—Levi Terry, Haskell 4-H

Class 3
1st—Ben Pace, Rule 4-H; 2nd—Eric Hager, Weinert 4-H; 3rd—Mindy Howard, Haskell 4-H; 4th—Chambray Bartley, Haskell 4-H

Class 4
1st—Angela Hager, Weinert 4-H; 2nd—Eric Hager, Weinert 4-H; 3rd—Landon Terry, Haskell 4-H

Overall Grand Champion—Mindy Howard, Haskell 4-H
Overall Reserve Champion—Jeremy Hager, Weinert 4-H

Helpers
Angus
1st—Missy Teague, Haskell 4-H; 2nd—Justin Teague, Haskell 4-H

Hereford
1st—Mary Belle Turner, Rochester 4-H; 2nd—Amy Turner, Rochester 4-H
Overall Grand Champion—Mary Belle Turner, Rochester 4-H
Overall Reserve Champion—Missy Teague, Haskell 4-H

Junior Showmanship—Rusty Howard, Haskell 4-H
Senior Showmanship—Brittany Bartley, Haskell 4-H

Swine
Lightweight Hamp
1st—Jonathan Hisey, Rule; 2nd—Laci Townsend, Rochester; 3rd—Brian Lehmann, Rule; 4th—Tara Lisle, Rochester; 5th—Laci Townsend, Rochester; 6th—Wes Harrison, Paint Creek; 7th—Chambray Bartley, Haskell; 8th—Kortney Kupatt, Rule; 9th—Maggie Brzozowski, Haskell; 10th—Jeffrey Murray, Rule

Mediumweight Hamp
1st—Cody Byrd, Rochester; 2nd—Cody Byrd, Rochester; 3rd—Kerri Newton, Rochester; 4th—Caitlin Frierson, Haskell; 5th—Mike Casey, Rule; 6th—Dusty Haste, Rochester; 7th—Amy Hisey, Rule; 8th—Nicky McCulloch, Haskell; 9th—Tandi Townsend, Rochester; 10th—Gary Frierson, Haskell; 11th—Brandy Gardner, Haskell

Heavyweight Hamp
1st—Kerri Newton, Rochester; 2nd—Ashley Lisle, Rochester; 3rd—Joanna Lehmann, Rule; 4th—Cassie Lamb, Paint Creek; 5th—John Mark Hodgins, Haskell; 6th—Mathew Cunningham, Haskell; 7th—Amber Bingham, Haskell; 8th—Stephanie Stocks, Haskell; 9th—Crystal Hill, Paint Creek

Hamp Breed Champion—Jonathan Hisey, Rule
Reserve Hamp Breed Champion—Cody Byrd, Rochester

Lightweight Duroc
1st—Jennifer Murray, Rule; 2nd—Dusty Haste, Rochester; 3rd—Amy Aycock, Haskell; 4th—Kayla Allison, Rule; 5th—Aaron Caldwell, Rochester; 6th—Kortney Kupatt, Rule; 7th—Jacob Manske, Rule; 8th—Mathew Cunningham, Haskell; 9th—Amy Hisey, Rule; 10th—Laci Townsend, Rochester; 11th—Brady Standefor, Rule; 12th—Tara Lisle, Rochester; 13th—Nick

Hild, Rochester; 14th—Cassie Lamb, Paint Creek; 15th—Richie Culpepper, Rule

Mediumweight Duroc
1st—Keli Smith, Rule; 2nd—Ashley Lisle, Rochester; 3rd—Ross Short, Rochester; 4th—Jenny Brzozowski, Haskell; 5th—M'Lynn Lehmann, Rule; 6th—Laci Standefor, Rule; 7th—Cody Byrd, Rochester; 8th—Jodi Thigpen, Haskell; 9th—Kerri Newton, Rochester; 10th—Ross Short, Rochester; 11th—Brittany Bartley, Haskell; 12th—Cody Byrd, Rochester; 13th—Caitlin Frierson, Haskell; 14th—Amanda Muhle, Rochester; 15th—Ryan Mueller, Paint Creek; 16th—Wendy Gray, Haskell

Heavyweight Duroc
1st—Ross Short, Rochester; 2nd—Cody Byrd, Rochester; 3rd—Marcie Stoddard, Rochester; 4th—Tandi Townsend, Rochester; 5th—Chase Cockerell, Rochester; 6th—Ross Short, Rochester; 7th—Chase Cockerell, Rochester; 8th—Candace Everhart, Paint Creek; 9th—Mike Casey, Rule; 10th—Trey Kitley, Rule; 11th—Turner Frierson, Haskell; 12th—Gary Frierson, Haskell

Duroc Breed Champion—Ross Short, Rochester

Reserve Duroc Breed Champion—Kelli Smith, Rule

Lightweight Cross
1st—Jonathan Allison, Haskell; 2nd—Kerri Newton, Rochester; 3rd—Michelle Stegemoeller, Rule; 4th—Caitlin Frierson, Haskell; 5th—Brian Lehmann, Rule; 6th—Jennifer Lehmann, Rule; 7th—Kayla Allison, Rule; 8th—Chambray Bartley, Haskell; 9th—Amy Hisey, Rule; 10th—Selina Salinas, Haskell; 11th—Mathew Cunningham, Haskell; 12th—Cliff McGuire, Haskell; 13th—Amanda Muhle, Rochester; 14th—Kortney Kupatt, Rule; 15th—Amanda Muhle, Rochester

Head Start Menu

Feb. 9-13
Milk served daily with breakfast. Menus subject to change without notice.

Breakfast
Monday: Cream of wheat, fruit cocktail
Tuesday: Waffle w/syrup, pineapple slice
Wednesday: Cheese toast, strawberries
Thursday: Cinnamon toast, applesauce
Friday: Banana muffin, pear halves

Lunch
Milk served daily with lunch.
Monday: Chicken and rice, English peas, carrots, orange slices

Tuesday: Hot dog, pork and beans, apricots
Wednesday: Chicken nuggets, dinner roll, mixed vegetables, apple slices
Thursday: Hamburger stroganoff over rice or noodles, baked sweet potatoes, green beans
Friday: Ham/cheese sandwich, cucumber slices, orange slices

Snacks
Monday: Banana, milk
Tuesday: Ritz cracker, orange juice
Wednesday: Animal crackers, milk
Thursday: Peanut butter cookies, orange juice
Friday: Graham crackers, apple juice

Haskell School Menu

Feb. 9-13
Breakfast
Juice or fruit and milk are served daily on the breakfast menu.
Monday: Cereal, buttered toast/jelly
Tuesday: Breakfast burrito
Wednesday: Pancakes with syrup
Thursday: Biscuits/gravy, sausage
Friday: Cereal, cinnamon toast

Lunch
A choice of baked potato with choice of topping or a salad bar are offered daily at the High School.

Milk and juice are served daily at the Elementary School
Monday: Enchiladas, refried beans, chips/hot sauce, tossed salad, apple
Tuesday: Chicken nuggets with gravy, creamed potatoes, blackeyed peas, buttered hot rolls, ice cream
Wednesday: Fish scrod/dles/hush puppies, pinto beans, cornbread, pineapple tidbits
Thursday: Steak finger with gravy, scalloped potato, green beans, hot rolls, orange wedges
Friday: Hamburgers, curly fries, hamburger trimmings, Valentine cake

ECC Calendar and Menu

Monday, February 9
Lunch—Steak/gravy, potatoes, spinach, pears, cookie, milk, tea or coffee
1:00 p.m. China painting
Wednesday, February 11
10:30 a.m. Exercise
11:00 a.m. Blood pressure check
Outreach Health Services
Lunch—Roast, brown gravy, potatoes, harvard beets, frozen English peas, fruit cobbler, milk, tea or coffee

Friday, February 13
Lunch—Fish patties, cabbage/apple salad, baked beans, Valentine cake, cornbread, milk, tea or coffee

Saturday, February 14
Happy Valentine's Day
All over 60 are invited to come and eat. Call 864-3875 for transportation to the center or for home delivered lunches for the sick or disabled.

Paint Creek School Menu

February 9-13
Breakfast
Milk and juice are served daily.
Monday: Cereal
Tuesday: Toast, jelly
Wednesday: Ham, eggs, toast
Thursday: Waffles, sausage
Friday: Donuts

Lunch
Milk is served daily.

Monday: Chicken strips, gravy, green beans, bread, peaches
Tuesday: Corn dogs, tator tots, salad, chocolate brownies
Wednesday: Pizza, corn on the cob, salad, apple cobbler
Thursday: Beans, tacos, lettuce, cheese, onions, hot sauce, pears
Friday: Hamburgers, fries, cheese, onions, pickles, ice cream

Basketball scores

GIRLS
Haskell 59, Seymour 38
Scoring by quarters: 13, 18, 20, 8.
Individual Scoring: Gray 3, McCulloch 3, Tatum 2, Gonzales 4, Tidrow 2, Burgess 6, Rodela 5, McKenzie 28, Bartley 6.
Records: Haskell 13-12, 1-1.
JV Score: Haskell 38, Seymour 13.

Rochester 71, Paint Creek 44
Scoring by quarters: Paint Creek, 6, 14, 7, 17. Rochester, 18, 13, 12, 28. Individual Scoring: Paint Creek; Medford 16, Isbell 12, Walton 2, Salinas 6, Rodriguez 6, Gardner 2. Rochester: Nicholson 22, Jackson 16, Hearn 6, Slaughter 15, Strickland 8, Turner 4.
JV Score: Rochester 23, Paint Creek 10.

District Standings

9-2A				
	W	L	W	L
Holliday *	1	0	19	5
Archer City	1	0	12	11
Olney	1	0	11	12
Electra *	0	1	14	13
Haskell	0	1	12	12
Seymour	0	1	3	19

*Tied for first-half title

15-A				
	W	L	W	L
Throckmorton	3	0	23	1
Rule	2	1	13	11
Rochester	1	2	9	13
Paint Creek	0	3	4	14

BOYS

Haskell 66, Seymour 38
Scoring by Quarters: 20, 10, 17, 19. Individual Scoring: Spells 6, McGuire 2, Nichols 10, Briles 20, Ortiz 8, Cheyne 9, Everett 2, Steele 9.
Records: Haskell 15-9, 1-0
JV Score: Seymour 43, Haskell 40.

Paint Creek 66, Rochester 55
Scoring by Quarters: Paint Creek: 14, 14, 19, 19. Rochester: 10, 17, 12, 16.

Individual Scoring: Paint Creek: Lamb 15, Martinez 15, Goss 10, Davis 6, Hearn 5, Shackelford 2, Reel 13. Rochester: Lopez 7, J. Byrd 5, Adkins 13, Gonzales 2, C. Byrd 15, Aguilera 11, Strickland 2.
JV Score: Rochester 50, Paint Creek 27.

District Standings

9-2A				
	W	L	W	L
Haskell	5	0	13	10
Holliday	4	1	15	5
Electra	2	3	10	15
Archer City	2	3	5	16

The Haskell Free Press

IS READ BY MORE PEOPLE IN HASKELL COUNTY THAN ANY OTHER NEWSPAPER.

Jones-Haskell Eye Clinic

Dr. Trussell Thane

Appointments Available • Monday through Friday

Dr. Thane is Board certified in the diagnosis and treatment of eye disease. Dr. Thane offers complete evaluation for eyeglasses and contact lenses.

2 pair of clear daily wear \$159⁰⁰ contact lenses

Disposable lens packages and contacts to change your eye color available.

MEDICARE, MEDICAID AND FIRSTCARE ACCEPTED.

1501 Columbia Stamford, Texas 915-773-2083

TOTAL LIQUIDATION All RCA & Zenith Camcorders

IN STOCK



COST \$10 PLUS

F & D Electronics

512 N. 1st • Haskell, TX • 864-2536

HAPPY VALENTINE!

"We're Love-struck!"

TO OUR SPECIAL TEXAS CELLULAR VALENTINES:

"Ahem...Roses are red, Violets are blue - this month we're giving 28 free minutes of airtime to you."

"That's right! To show our love and devotion, all Texas Cellular customers will receive 28 free extra love-struck minutes of airtime. So, call your sweetie and talk to your heart's content!"

Some restrictions apply.

WE TAKE CARE OF OUR NEIGHBORS.



TEXAS CELLULAR.

A service of Taylor Telecommunications, Inc.
9796 N. I-20 • MERKEL, TX • 79536
915-928-3200

FOR MORE INFORMATION, CALL US AT 800-424-7182 OR CONTACT YOUR LOCAL TEXAS CELLULAR AGENT

IN HASKELL:
F&D ELECTRONICS
512 NORTH FIRST STREET
940-864-3269

IN ALBANY:
ALBANY COMMUNICATIONS
500 S. MAIN STREET
915-762-2333

Valentine Gift Ideas

Say I Love You with a Gift from The Drug Store

Pangburn Candy

Choose from delicious

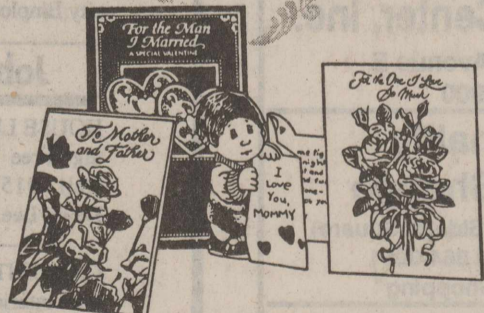


- Millionaires Sugar Free
- Millionaires Soft Centers and Others

Her Favorite Candy

CARDS

SAY IT FROM THE HEART...



With the Perfect Valentine Card

Jewelry

Large selection of Jewelry including Sterling Silver

- Necklaces
- Earrings
- Bracelets
- Pendants

Balloons

Send a Balloon Bouquet or a single balloon tied to a stuffed animal or a coffee mug



Fragrances

Surprise Your Valentine with His or Hers favorite fragrance.

- Perfumes
- Colognes
- Beautiful to Youth Dew
- Aramis to Stetson

THE DRUG STORE

Hours: 8-6 M-F; 8-5 Sat.; Sundays & Holidays 8:30-9:30
940-864-2673

Shop The Haskell Free Press CLASSIFIEDS

864-2686

ALL DEADLINES MONDAY 5 P.M.

864-2686

Garage Sales

GARAGE SALE: 1501 N. Ave. H. Fri. & Sat. 10 to 5. 6c

YARD SALE: 1102 N. Ave. J. Sat. 9 to 5. Furniture, misc., baby items, clothes. 6p

Public Notices

RAILROAD COMMISSION OF TEXAS OFFICE OF GENERAL COUNSEL
Oil and Gas Docket No. 7B-0218376

IN RE: Conservation and Prevention of Waste of Crude Petroleum and Natural Gas in the State of Texas

Austin, Texas
January 22, 1998

NOTICE OF HEARING ON THE APPLICATION OF BRIDWELL OIL COMPANY TO CONSIDER UNITIZATION AND SECONDARY RECOVERY AUTHORITY FOR THE RULE WEST UNIT RULE WEST (STRAWN) FIELD HASKELL COUNTY, TEXAS

Notice is hereby given to the public and to all interested persons that under the legal authority and jurisdiction of Title 3, Oil and Gas, Subtitles A, B, and C of the Texas Natural Resources Code, Chapters 26, 27 and 29 of the Texas Water Code, and TEX. GOV'T CODE ANN. art. §§ 2001 et seq. (1998), the Railroad Commission of Texas will hold a hearing on February 26, 1998, at 9:00 a.m. at the William B. Travis State Office Building, 1701 N. Congress Avenue, Austin, Texas. This hearing will be conducted in conformity with the TEX. GOV'T CODE ANN. art. §§ 2001 et seq. (1998). For room assignment, on the date of the hearing please check the bulletin board in the 1st Floor lobby. Persons planning to attend this hearing are urged to contact the applicant (see service list) immediately prior to the hearing date to be sure that the hearing will proceed on the scheduled date.

This hearing will be held to consider the application of Bridwell Oil Company for unitization and secondary recovery authority for the Rule West Unit, Rule West (Strawn) Field, Haskell County, Texas. As of this filing, approximately 98.5% of the royalty interests have executed the unit agreement, and 97.5% of the working interests have executed the unit agreement and operating agreement.

If you have questions regarding this application, please contact the Applicant's representative, Lloyd Muenkink, at (512) 478-6623. If you have any questions regarding the hearing procedure, please contact the Railroad Commission, Office of General Counsel, at (512) 463-6848.

IF A CONTINUATION IS NECESSARY, this hearing will proceed at the William B. Travis State Office Building, Austin, Texas, and, to the extent possible, subsequent working days. The room number and exact time of the continuation will be announced on the record in this proceeding and recorded with Docket Services, Office of General Counsel, Railroad Commission of Texas.

PURSUANT TO SAID HEARING, the Commission will enter such rules, regulations, and orders as in its judgment the evidence presented may justify.

ANY REQUEST FOR POST-

92 piece Noritake china dinnerware. "Colburn" pattern #6107. Not a chip or a blemish. New at \$1200. Call Wallace at 915-677-5283 or 940-864-2957. 5-7c

—INCOME TAX—
Get an instant refund that last for years!
For details see **Boggs and Johnson Furniture**
... Hey, it's your money! 5-9c

PONEMENT of this hearing must be received no later than five (5) working days prior to the scheduled date shown above. Copies of such request must be forwarded to all parties shown on the service list.

TO APPEAR IN SUPPORT OF OR IN OPPOSITION TO THIS PROCEEDING, a party other than the applicant must file with Docket Services, Office of General Counsel, at least five (5) working days in advance of the hearing date, a notice of intent to appear.

IF ANY PARTY DESIRES A WRITTEN TRANSCRIPT of the hearing, that party should notify the Court Reporter's office at (512) 463-6926, at least five (5) working days in advance of the hearing date. If a written transcript is requested, the commission may assess the cost of the transcript to one or more parties. Unless any party requests a written transcript, the record will be made by audio tape recording.

ANY INDIVIDUAL WITH A DISABILITY who needs auxiliary aids and services in order to have an equal opportunity to effectively communicate and participate in this hearing must request such aids or services at least two weeks prior to the scheduled hearing by notifying the Personnel office of the Railroad Commission of Texas by mail at P. O. Box 12967, Austin, Texas 78711-2967, or by telephone at (512) 463-7327 or TDD No. (512) 463-7284.

All exhibits filed as a part of the record in this cause must be submitted in duplicate. Data in Commission records may be incorporated by reference, but the reference must be specific, and if it includes exhibits filed in prior proceedings before the commission, a copy of such exhibit properly identified shall be submitted for this record.

This hearing requires notice by publication. 5-8p

NOTICE OF REPORT OF TRANSFER OF THE ASSETS, LIABILITIES, AND CERTIFICATE OF CONVENIENCE AND NECESSITY—OF B-K ELECTRIC COOPERATIVE, INC. TO TRI-COUNTY ELECTRIC COOPERATIVE, INC.

Tri-County Electric Cooperative, Inc., an electric utility headquartered in Azle, Texas, has on December 5, 1997, filed a report of the transfer of the assets, liabilities and certificate of convenience and necessity of B-K Electric Cooperative, Inc. to Tri-County Electric Cooperative, Inc., as further set out on the Commission-prescribed form of sale, transfer or merger. A copy of the completed Commission-prescribed form is kept at the offices of Tri-County Electric Cooperative, Inc., 600 N. W. Parkway, Azle, Texas 76020, and is available for review during normal business hours. After the transfer, some of the members of Tri-County Electric Cooperative, Inc. and some of the current members of B-K Electric Cooperative, Inc. will receive and pay for service at rates that may be higher or lower than they are currently paying.

The case has been assigned Docket No. 18443. The deadline for intervention is March 2, 1998.

Persons with questions about the consolidation may contact the Cooperative at 600 N. W. Parkway, Azle, Texas 76020. Persons

"Honest is the first chapter in the book of wisdom." Thomas Jefferson. Most of us wish that all the politicians in Washington still thought this way, even though it would be hard on the comedians. Come see our honest values at Kinney Furniture in Stamford. 6c

who wish to intervene or otherwise participate in or comment upon this proceeding should contact the Public Utility Commission, P. O. Box 13326, Austin, Texas 78711-3326 and the telephone number of the Public Utility Commission's Office of Consumer Affairs is (512) 936-7120. Hearing- and speech-impaired individuals with text telephones (TTY) may contact the Commission at (512) 936-7136.

B-K Electric Cooperative, Inc., 419 North Main Street, Drawer 672, Seymour, Texas 76380, (940) 888-3441.

Tri-County Electric Cooperative, Inc., 600 N. W. Parkway, Azle, Texas 76020, (817) 444-3201 or (817) 523-7231. 6-7c

NOTICE OF SHERIFF'S SALE THE STATE OF TEXAS COUNTY OF HASKELL

By virtue of an Order of Sale issued out of the Honorable 39th Judicial District Court of Haskell County, on the 29th day of January, 1998 by the Clerk thereof, in the case(s) styled as follows:

Cause No. 9502. Styling: Haskell County Appraisal District v. Chano Garcia. Legal Description: 1. The west 100' of Lot 4, Block 70 of the Original Town of Haskell, Haskell County, Texas.

Cause No. 9784. Styling: Haskell County Appraisal District v. Ricky Gutierrez. Legal Description: 2. Lots 7-8, Block 79, Carney Addition to the City of O'Brien, Haskell County, Texas.

Cause No. 9887. Styling: Haskell County Appraisal District v. L. C. Johnson Jr. Legal Description: 3. Tract 8, 80x140, Block C, Original Town Outlot 96, Haskell County, Texas.

Cause No. 9904. Styling: Haskell County Appraisal District v. William L. Feemster. Legal Description: 4. Northwest corner 80x180 Outlot 96, Tract 7, Block B, Original Town of Haskell, Haskell County, Texas.

Cause No. 9911. Styling: Haskell County Appraisal District v. Irene Jenkins, deceased. Legal Description: 5. Lot 6, Block 35, Brown & Roberts Addition to the City of Haskell, Haskell County, Texas.

Cause No. 9968. Styling: Haskell County Appraisal District v. L. G. Sanders, deceased. Legal Description: 6. Lots 1-2, Block 28, A. B. Carothers Addition to the City of Rochester, Haskell County, Texas.

Cause No. 9976. Styling: Haskell County Appraisal District v. Roy Trussell. Legal Description: 7. Lot 4, South 25' of Lot 5, Block H, T & P Addition to City of Haskell, Haskell County, Texas.

Cause No. 10,139. Styling: Haskell County Appraisal District v. Jackie Betts. Legal Description: 8. Lots 11, 12, Block 5, South Side Addition to the City of Rule, Haskell County, Texas.

Cause No. 10,151. Styling: Haskell County Appraisal District v. Teresa Torres. Legal Description: 9. West 120' of Lot 3, Block 69, Original Town of Haskell, Haskell County, Texas.

Cause No. 10,311. Styling: Haskell County Appraisal District v. Johnny Trailer. Legal Description: 10. Lot 7, South half Lot 8, Block 2, East Side Addition to the City of Rule, Haskell County, Texas.

—INCOME TAX—
Get an instant refund that last for years!
For details see **Boggs and Johnson Furniture**
... Hey, it's your money! 5-9c

Cause No. 10,378. Styling: Haskell County Appraisal District v. Lavonta Ward DBA. Legal Description: 11. (Building on leased land) B. J.'s Camp (store only). L. Duchess Survey 46, Abstract 118, Lot 1B, Haskell County, Texas. 12. (Building on leased land) B. J.'s Camp (house only) L. Duchess Survey 46, Abstract 118, Lot 1A, Haskell County, Texas.

Cause 10,489. Styling: Haskell County Appraisal District v. Dovie Cain, deceased. Legal Description: 13. Lots 2-3, Block 42, of the Frisco Addition to the Town Haskell, Haskell County, Texas. 14. Lots 7, 8, 9, and 10, Block Block 15, Frisco Addition to the Town of Haskell, Haskell County, Texas. 15. Lots 1, 2, Block 5, of the College Heights Addition to the town of Haskell, Haskell County, Texas. 16. Lot 5, Block 42, of the Frisco Addition to the town of Haskell, Haskell County, Texas. 17. Lots 7, 8, Block 42 of the Frisco Addition to the town of Haskell, Haskell County, Texas.

Cause 10,496. Styling: Haskell County Appraisal District v. Haskell Properties Inc. Legal Description: 18. Lots 2-7, Block 21, Highland Addition to the City of Haskell, Haskell County, Texas.

Cause 10,499. Styling: Haskell County Appraisal District v. Joe Luis Lopez. Legal Description: 19. Lot 10, Block 51, of the Original Town of Rule, Haskell County, Texas.

Cause 10,505. Styling: Haskell County Appraisal District v. Joe Navarrete. Legal Description: 20. North half of Lot 8, Lot 9, Original Town of Rule, Haskell County, Texas.

Cause 10,628. Styling: Haskell County Appraisal District v. Jose Contreras, deceased. Legal Description: 21. North half of Outlot 34, of the Brown & Roberts Addition to the City of Haskell, Haskell County, Texas.

Cause 10,629. Styling: Haskell County Appraisal District v. Don Kruger. Legal Description: 22. Lot 5, Block 15, of the Southside Addition to the City of Rule, Haskell County, Texas.

and to me, as Sheriff, directed and delivered, I will proceed to sell, at 10:00 o'clock A.M. on the 3rd day of March, 1998, which is the first Tuesday of said month, at the south door of the Courthouse on Haskell County, in the City of Haskell, Texas.

Levied on the 29th day of January, 1998, as the property of said defendants, to satisfy the judgment rendered in the above styled and numbered cause, together with interest, at 10 per cent, per annum, and all costs of suit in favor of each jurisdiction.

Given under my hand this 29th day of January, 1998.

Johnny L. Mills
Sheriff, Haskell County, Texas 6-8c

EXPERT AUTO WORK
REASONABLE RATES

See us for all your auto mechanic needs. 20 years experience. We do it right the first time.
117 North Ave. E - Haskell, TX



EXPERT AUTO WORK
REASONABLE RATES

See us for all your auto mechanic needs. 20 years experience. We do it right the first time.
117 North Ave. E - Haskell, TX

Dodson Concrete Construction
Commercial - Residential
David Dodson
704 N. Ave. F - Haskell
940-864-2038
Over 20 Years in the Business
FREE ESTIMATES 18c

For Your Sheet Metal Work
Water Storage Tanks
All Kinds of Metal Duct Work
See or call:
Guinn Sheet Metal & Plumbing
940-658-3341 L.C. Guinn Knox City, TX

Rock/Blues Band
seeks male singer. Send description of: Age, Music Preference, Phone number and Tape if possible to:
P. O. Box 682
Knox City, TX 79529 6p

MEDICAL OFFICE SUPERVISOR
The Stamford Medical Clinic is looking for an Office Supervisor. Qualified candidates must have previous medical office experience (including medical terminology) and is preferred to possess Rural Health experience.
Interested and qualified candidates should apply immediately at:
Stamford Medical Clinic
Attention: Margaret Smith
1303 Mabee Drive - Stamford, Texas 79553
915-773-5733 6c

WE'VE GOT IT!
ACCO FEEDS
RICHARDSON'S
 Hwy. 277 N. - Haskell - Open All Day Saturdays
940-864-9551

"Happiness is a journey, not a destination." You will have a happy journey through life if you start sleeping on a new Spring Air mattress set from Kinney Furniture in Stamford. All bedding now at special sale prices. We stock all sizes in six different models. Too many numbers to list here. Come in or just give us a free call at 800-256-2232. 5c

Frances Arend Real Estate & Insurance
ROCHESTER: 4 bedroom, 2 bath, H/A, carport, on 3 lots.
Two bedroom, 1 bath frame, carport.
608 S. Ave. E. For sale or rent.
Medicare Supplement Life Insurance
Long Term Care - Annuities
408 N. 1st
940-864-3880 6c

SELLING HASKELL FOR OVER 25 YEARS
Hartsfield Realty
South Side of Square
864-2665
See us first for your real estate needs.
Hess Hartsfield, Broker 864-2004
Chan Guess, Agent 864-6142
Esther Conn, Agent 658-3904

JOHNSON REAL ESTATE
5 AVE. E - HASKELL, 864-2951
LORAIN JOHNSON, BROKER TIM JOHNSON, AGENT

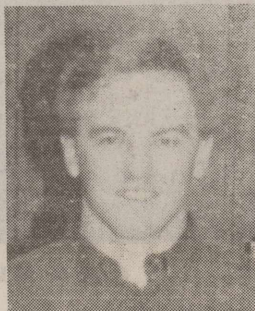
RIKE REAL ESTATE
411 1/2 S. FIRST ST.
940/864-2411 940/864-2332
Mary Rike, Broker
e-mail: mrike@nts-online.net

DREAM COTTAGE Full of charm. Spotless three bedroom, one bath, living, den with woodburning stove, brick floor. 1005 N. Ave. K. DON'T MISS THIS ONE! Large three bedroom, two bath, living, den, carport, fenced yard with water well. Must see inside. 304 N. Ave. D. UNIQUE! UNIQUE! rock with full basement. Large split-level design, apartment in rear. Lotta house for a low price. 807 N. Ave. E. GET DOUBLE INCOME from home, convert into duplex, or purchase as three bedroom, 2 bath, 1107 N. 5th. RULE LISTING Large three bedroom two bath, beautiful kitchen cabinets, living, dining combination, sprinkler system, garage and carport. All for only \$26,000. 601 Loyal. LOOKING FOR RENTAL with good Water well? Great yard comes with This 2 - 1 and carport. 506 S. Ave. F.

NEED SMALL HOME or rental on quiet street? Two bedroom, one bath, one car garage. 1102 N. Ave. J. LAND - 70 ac. Tract edge of Haskell, with city conveniences available. \$700. 580 ac. Southwest of Haskell, 200 Ac. pasture and 380 cultivated. \$333/ac. DON'T MISS THIS ONE! Very large 4-2, office, central heat and air, leaded glass front entry, mock fireplace, sprinkler system, basement, garage and carport. New everything with two living areas. 307 N. Ave. H. STYLE AND CHARACTER! Large historical 3-3 with two living areas, two fireplaces with original oak mantels, sprinkler system and pool. Perfect condition. 1001 N. Ave. E. ROOM TO ROOM with great setup for horses. Four bedroom, three bath, central heating and cooling, water well. Immaculate inside and ready for new owner. Great garden area. 1208 N. 3rd.

Allstate
You're in good hands.

Nobody's Perfect.

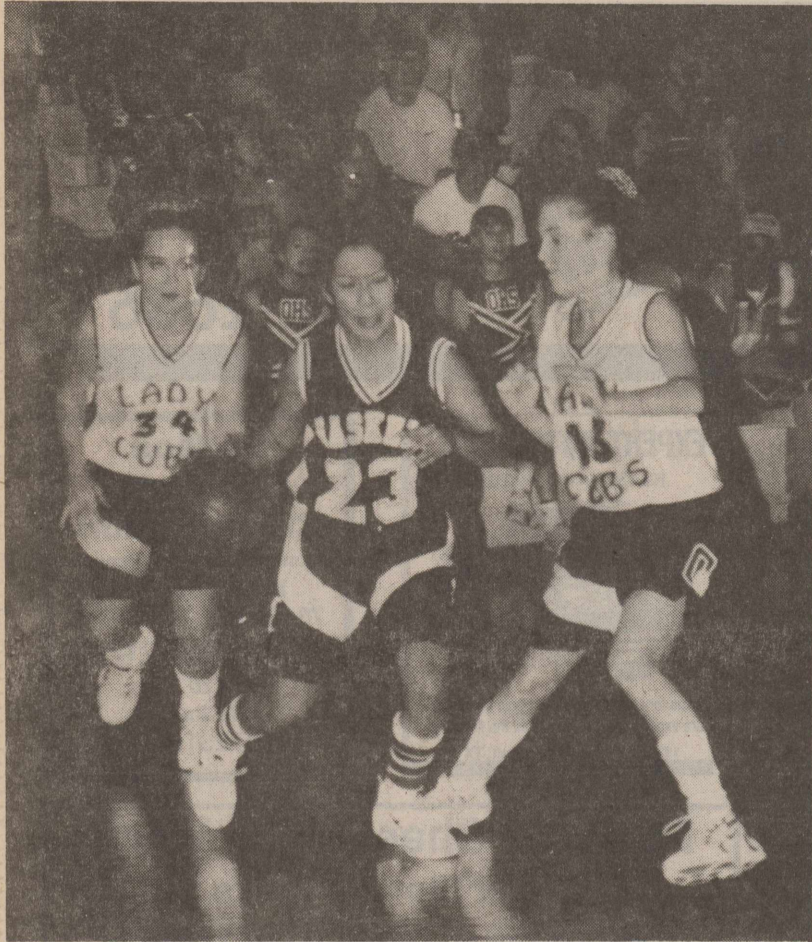


CHAN GUESS

For less than perfect drivers —
Being in good hands is the only place to be!

Haskell County Insurance Agency
417 S. 1st St.
Haskell, TX 79521
940-864-2665

© 1996 Allstate Country Mutual Company, Irving, Texas. Subject to availability and qualifications. Other terms, conditions and exclusions apply.



MAIDENS AND LADIES—Indian Maiden Melanie Alvarez (23), drives baseline against Olney Lady Cubs. Photo by Bill Blankenship

Free soil testing offered to farmers, gardeners

The Natural Resources Conservation Service and the Texas Agricultural Extension Service are sponsoring a free soil testing program for farmers, ranchers, and gardeners in Haskell and Knox Counties for the Seymour Aquifer Water Quality Project.

Since 1992 the number of soil samples submitted during the free soil sampling programs have shown an increase from 115 samples were sent in the first year to 316 samples submitted in 1997. The soil sample should be taken from a uniform area of the field. Take 10 to 15 small sample cores to a depth of six inches for each field to be tested. Mix the samples

in a composite sample to be sent in for analysis.

Be sure to fill out an information sheet to send in along with the sample. The information sheet asks about the type of crop to be grown and the yield goal of the crop.

The soil sample will be tested for pH, nitrogen, phosphorus, potassium, calcium, magnesium, sodium, sulfur, and salinity.

Soil sample bags and information sheets can be picked up at the Seymour Aquifer Project office, 900 South Ave. E in Haskell. For additional information call at (940) 864-3334 or 864-3583.

Turner heifer places first

Mary Belle Turner of Haskell County showed a First Place Hereford in the Junior Beef Heifer Division at the Southwestern Exposition and Livestock Show in Fort Worth.

The Stock Show's Junior Division posted some 8,800 entries by the youth of Texas as the culmination of year-long agricultural educational projects in various areas of livestock production. Junior Show premiums exceeded \$62,000.

The Junior entry list is part of

the overall record count of more than 20,700 head of cattle, sheep, seine, horses, mules, donkeys, llamas, goats, poultry, pigeons and rabbits.

Total prizes and premium money at this year's show was in excess of \$775,000. In conjunction with the livestock events, the schedule also included 30 performances of the World's Original Indoor Rodeo, featuring a record 900 cowboy champions and cowgirl barrel racers in the various action-packed rodeo events.

Green Thumb

By Gladys O'Neal

If ever a month needed a scapegoat, February does. We've been so blessed to have some nice sunny days in January. The cold sometimes chills us to the very marrow. If it were close to March we would blame it on "Sir Groundhog." We can be consoled by the thoughts of a well-worn sweater and a well-stocked pantry warming the bleak days of winter.

It is time to remember that the sooner trees and shrubs are planted, the stronger they will be when they leaf out to withstand summer heat.

Now you can plant and prune rose bushes, and apply dormant spray; also plant root vegetables, as asparagus, rhubarb, and horseradish. It is also time to feed your azaleas and add peat moss as a mulch.

Of we are given a few warm days to soften the frozen crust; it is a good time to turn the compost pile. Build your compost by the season, not a book. Heap it as the garden delivers stems of irises, excess tomatoes or squash. You can toss in a few sticks for aeration during the pruning time in early spring.

You may think where the passerby turns up his nose, the gardener smells goodness and a healthy future.

If all the things that can make your garden a success is to loosen the soil, and to cultivate it. Before you plant your seeds and plants, trees or shrubs, make sure your soil is in the best possible condition.

The soil must be dry before you work with it. Wet soil cannot be turned. To test the soil, pick up a handful and squeeze it in your palm. Then drop it. If it breaks up, you can work it. If it doesn't break, you had better wait.

Lift and turn the soil over with a fork. Organic matter, such as sphagnum peat compost, chopped leaves, and pine straw does a good job of loosening the soil when worked in.

Take your soil and have it tested. The County Extension Agent will tell you what to do.

By the end of February or middle of March, prune your everblooming roses, such as hybrids, teas and floribundas. In our area March is a good time. Remove dead or weak canes, leave 3 to 5 healthy canes, and cut them back to about 18 to 24 inches. Wait until after spring blooming has finished to prune climbers and once blooming types.

The last of February is a good time to set out petunias for spring and summer blooms.

Coleus, begonias, and geraniums thrive during the cool months of late winter and early spring. So plant now or soon.



JEREMY O'HEARN

O'Hearn admitted to West Point

Jeremy Mark O'Hearn, son of Mr. and Mrs. Dennis O'Hearn of Tulsa, Okla. and grandson of Leonard and Laura Rose of Haskell, was recently offered admission to the United States Military Academy in West Point, N.Y.

O'Hearn is a 1996 graduate of East Central High School in Tulsa, and is currently attending Wentworth Military Academy in Lexington, Missouri where he serves as the Battalion Commander of the 118th Corps of Cadets. He maintains a 4.0 grade point average at Wentworth where he is an engineering major. His plans include a double major at West Point in Celestial Mechanics and Astrophysics.

O'Hearn plans to graduate with the bicentennial class of 2002 after completing his studies at West Point.

Team Roping to benefit Rehab

The West Texas Rehabilitation Center announces the first annual Team Roping for Rehab will be Sat. and Sun., Feb. 7 and 8 at the Taylor County Horse Barn. All proceeds will benefit the Rehab/Abilene and San Angelo. Ropers will compete for cash prizes along with Ryon's saddles for the high money winner of each roping. Buckles will be given to the first place average winners of each roping.

Books open at 8 a.m. Saturday

for #3 1/2 and #2 1/2 ropers. Cost for 3 head is \$30. Roping begins at 9 a.m. On Sunday at 8 a.m. the books open for #6 and #5 ropers. Cost is 3 head for \$40, and roping begins at 9 a.m. All ropings are progressive after one. The numbering systems are by Coors, Bud Light and 1/2 U.S. A negative Coggins test is required.

For more information please call the West Texas Rehabilitation Center at (915) 793-3507 or Ray Douglass at (915) 993-4503.

NOTICE

M-System Customers

If you do not receive the M-System Grocery circular in your Haskell Free Press, you may pick one up at M-System Grocery Store or at the Haskell Free Press.

We are sorry for any inconvenience this may have caused you.



ALLSUP'S ALWAYS Low Prices

ALLWAYS OPEN • ALLWAYS FAST

The Grocery Store for People on the GO!!!

MONEY SAVING COUPON



\$1.79 BBQ Beef Sandwich, Potato Wedges & a Tallcup Combo With Coupon

Regular Price \$1.99 February 1 till 14, 1998

CLIP AND SAVE

Coupon good at all Allsup's locations. ONE PER COUPON Offer expires FEB. 14, 1998 HASKELL FREE PRESS 4 00001 19059 3

MONEY SAVING COUPON



\$1.09 Bar S Bacon 12 OZ. With Coupon

Regular Price \$1.29 February 1 till 14, 1998

CLIP AND SAVE

Coupon good at all Allsup's locations. ONE PER COUPON Offer expires FEB. 14, 1998 HASKELL FREE PRESS 4 00001 19060 9

PEPSI 12 oz 6 pk. cans **\$1.79**
3 Liter **\$1.99**

NEAPOLITAN ICE CREAM SANDWICH 6 FL OZ (177ml)
BLUE BUNNY VANILLA OR NEAPOLITAN Ice Cream Sandwiches 6 OZ. **2 FOR \$1**

FRITO LAY Grab Bag REG. 75¢ **2 FOR \$1**

8 Pieces Fried Chicken \$5.99	Angel Soft Bathroom Tissue 4 roll pkg \$1.29	Coronet Paper Towels roll 69¢	Frito Lay Bean Dip 2 3 1/2 oz \$1
--------------------------------------	---	--------------------------------------	--

CHECK YOUR FRIENDLY ALLSUP'S STORE FOR ADDITIONAL MARKDOWN SPECIALS! HASKELL #153 RULE #91

PRICES EFFECTIVE FEB. 4-18, 1998 • OFFER GOOD WHILE SUPPLIES LAST

Value You Can See Value You Can See Value You Can See Value You Can See

Harmon Cable Communications

PRESENTS

6TH ANNUAL ESPY AWARDS

LIVE FROM RADIO CITY MUSIC HALL ON FEBRUARY 9TH

Channel 16 7:00 p.m. **ESPN**

Call & Subscribe Today! **800-527-4331**

Value You Can See Value You Can See Value You Can See Value You Can See