

Cooler weather ushering in the fall season

The Haskell Free Press

VOL. 110-NO. 38, ©SEPTEMBER 19, 1996

"The People's Choice"

10 PAGES-ONE SECTION-50 CENTS

Football games

Haskell Indians vs Stamford
Friday, 8 p.m.
at Stamford

Paint Creek Pirates vs. Guthrie
Friday, 7:30 p.m.
at Paint Creek

Calendar

Rule Jubilee

The Rule Jubilee will be held Saturday, Sept. 28. All businesses and interested individuals are asked to be planning an entry for the parade for this year's Jubilee. For further information, contact John Pike at 997-2197 (parade/floats), John Greeson at 997-2141 (entertainment), and Joyce Hester at 997-2756 (booths). There will also be a 3-on-3 basketball tournament, entries must be in by Sept. 25. Contact Gail Logan at 997-2303-day and 997-2562-evenings.

Plainview/McConnell

Plainview (Haskell Co.) and McConnell Homecoming will be Saturday, Oct. 5, beginning with registration, coffee, snacks, fun and fellowship at 9 a.m. at the VIP Center in Stamford. A catered meal will be served at noon. For further information, contact Alvin Ulmer, Rt. 2, Box 1C1, Sagerton, TX 79548, phone 817-997-2577.

C.C. championship

Haskell Co. Country Club championship scheduled Sept. 21-22 at 1 p.m. \$10 entry fee, men, women, senior and junior divisions. Contact Country Club at 864-3400 or Rodney Goss at 864-3995.

Spaghetti dinner

The Paint Creek Senior Class will have a spaghetti dinner on Sunday, Sept. 22, from 11:30 a.m. to 1 p.m. at the Paint Creek cafeteria. Adults \$5, Children \$3.50 (12 and under). Take out is available.

Benefit tournament

The Knox County American Heart Assn. will hold its annual benefit tournament on Saturday, Sept. 21, at the Knox City Country Club with Two Person Scramble tee time at 1:30 p.m. Entry fee is \$20 per person and includes one mulligan per nine. Prize for first place in three flights. Supper following. To enter, call 817-658-3816 or 658-3484.

Weinert homecoming

The 1996 Weinert Homecoming is scheduled for Oct. 4, 5 and 6. Activities will begin Friday, Oct. 4 with a bonfire and hotdog supper at 7 p.m. at the school grounds. Saturday, Oct. 5—Registration, 8 a.m.; refreshments, 8-10; parade, 10:30; lunch, 11:30-1:30; program, 2 p.m.; barbecue, 5:30; bingo, 7 p.m.; Dance, 9 p.m.—1 a.m. at Macias Ballroom. Sunday, Oct. 6—Church Service, 10:30 a.m. at First Baptist in Weinert.

Calf roping

A Calf Roping will be held at the Haskell Co. Arena on Sunday, Sept. 22 at 1 p.m. Open-3 for \$60 and B-3 for \$45. For further information, call 817-864-2493.

Pancake supper

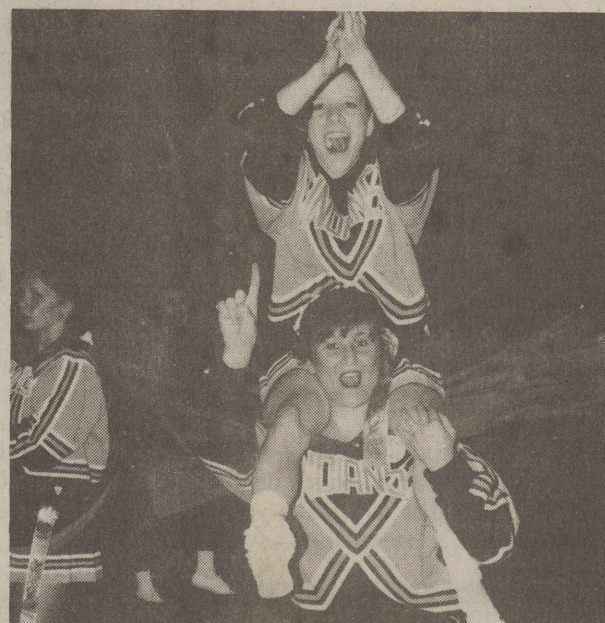
The Haskell Lions Club will host an All-You-Can-Eat pancake supper on Friday, Oct. 4, from 5 to 8 p.m., at the Haskell High School cafeteria, prior to the Cisco-Haskell football game. The meal will consist of pancakes, sausage, bacon, coffee, milk and all the fixin's. Meal tickets will be \$5 for adults and \$3 for children 12 and under. Tickets are available from any Lions Club member.

Photo history album

A photo history album filled with pictures of Haskell County cities and places dating from the turn of the century up to 1950 will soon be available at the Haskell Co. Library for public viewing at the library (not to be checked out). Photos are provided by the Haskell Co. Historical Society.

Index

Obituaries.....Page 2
Around Town.....Page 3
Out of the Past.....Page 4
Sagerton News.....Page 5
School menus.....Page 8
Classifieds.....Page 9



INDIANS HOLD THEIR OWN IN QUANAH GAME—The Haskell Indians tied up the score 13-13 in the third quarter and held that score, keeping Quanah from scoring again. Photo at left, No. 22 Turner Frierson makes a touchdown run of 48 yards. Photo at right, Haskell cheerleaders, Mistl Henson and Nikki McCulloch cheer the Indians on to victory. Free Press photos by Bill Blankenship

Indians tie up score 13-13 on Friday, 13th

In their second game of the season on Friday the 13th, the Haskell Indians tied Quanah by a score of 13-13. Both teams were scoreless in the first quarter, but Turner Frierson ran a 48-yard touchdown in the second quarter for the first score of the evening. Chris McSmith kicked the extra point, giving Haskell a seven point lead.

13-7 at the end of the second quarter. In third quarter play, Will Trammell made a touchdown on a six yard run, tying the game up 13-13. The extra point attempt failed.

Both teams remained scoreless in the fourth quarter, ending up with 13-13 final score. Turner Frierson led the rushing with 106 yards on 16 attempts, IV Burson gained 38 yards on nine attempts and Will Trammell gained 31 yards on nine attempts. Will

Trammell punted six times for 208 yards.

Score by Quarters			
	Haskell	Quanah	
Haskell	0	7	6
Quanah	0	13	0
Scoring Summary			
	Haskell	Quanah	
First Downs	16	16	
Yards rushing	259	198	
Yards passing	40	16	
Passes	5-2	10-2	
Interceptions	1	1	
Punts	3-33.3	6-34.7	
Fumbles lost	3	1	
Yds penalized	8-80	5-35	

Haskell City Council sets tax rate

At the Sept. 10 meeting of the Haskell City Council, Mayor Ken Lane presented former Councilman David Davis with a plaque in appreciation for his service to the city as a Councilman. Davis resigned at the Aug. 27, meeting to take over the job of Haskell County Judge. He served on the City Council from May, 1994 through August, 1996. Mayor Lane went over the

proposed 1996-97 budget and the proposed tax rate of .2733, an increase of 3 percent, over the existing tax rate.

Added to the new budget are funds for a new patrol car for the city; additional funds put into the street paving expense; additional funding for the park budget to include repaving the walking track and overhauling the swimming pool; one third of the cost of a new

ambulance; the cost of three new drying beds at the sewer plant; and a mosquito sprayer and two new mowers for the park.

The Council met in a special session on Friday and approved the new budget.

Don Kretschmer was appointed to replace David Davis on the City Council and the Municipal Judge was reappointed.

Rule Cemetery Assn. adopts by-laws

On Saturday, Sept. 7, the Rule Cemetery Association met at the Rule School auditorium for a reorganizational meeting, with Mayor Malcolm Herttenberger presiding. 39 people were in attendance.

Nona Norwood, Bobby Robinson and Eugene Rhoads assisted the Mayor in opening the ballots for the adoption of by-laws for the Cemetery Association. The counting of the ballots were done by Nona Norwood, Malcolm Herttenberger and Marsha Vasquez. Results were as follows: three against and 142 for. These ballots will be kept on file at the Rule City Hall for public viewing.

Mayor Herttenberger then asked for nominations for Cemetery Board members. It was explained that each person that was nominated and agreed to serve would be on the ballot. Once elected, the board would determine the office holders.

The Mayor asked for nominations from the floor. Nominated were: Marsha Simpson, Bill Matsyaik, Howard Brass, Weldon Norman, Eugene Rhoads, Jerry Cannon, A.B. Arnett, Oleta Cornelius, Richard Mathis, Gail Logan, Mike Rhoads, Helen Pinkard and Jack Davis. Seven board members will be elected. Ballots will be mailed out and counted at the next scheduled

Cemetery Association meeting on Tuesday, Oct. 8 at 7 p.m. at Rule City Hall.

Local men compete in TxDOT roдео

Chris Medford and Bennie Harvey, Haskell County maintenance section employees, recently competed in the Abilene district's second annual roдео.

Medford and Harvey, both maintenance technicians for the Texas Dept. of Transportation, earned the right to compete at district level by taking first and second place respectively in the Haskell County Roдео.

Sheep referendum to be conducted

On Oct. 1, the Department of Agriculture will conduct a second referendum on the sheep and wool promotion, research, education and information order. This referendum is being carried out under the authority of the sheep promotion, research and information act of 1994.

The order will go into effect if it is approved in this referendum by sheep producers and feeder, and importers of sheep and sheep products. If the order is approved, it will become final and a nationwide program will go into effect to collect assessments from the sheep and wool industry to carry out research and promotion activities to benefit the industry.

A referendum on this same issue was conducted Feb. 6, but the Secretary determined that the results were invalid because the procedures were applied incorrectly and inconsistently.

In-person voting will take place in the County CES Offices on Oct. 1. Voters who wish to vote absentee may request an absentee ballot from the County CES Office that serves the voter's residence or, if the voter is a business entity, the office that serves the entity's main office or headquarters.

Requests for absentee ballots may be made from Aug. 26 through Sept. 17. CES Offices will only fill requests from Aug. 26 through Sept. 17. Completed absentee ballots must be received in the County CES Office by close of business on Sept. 27. Ballots will be counted on Oct. 16.

To be eligible to vote in this referendum, you must have a "person" engaged in the production, feeding, or importation of sheep or sheep products during calendar year 1994. In this referendum, the term "person" means an individual or a legal entity (for example, a corporation, partnership, estate, etc.), or a group of individuals with a joint ownership interest in sheep (for example, a family, a cooperative, an association, etc.).

In this referendum, each eligible "person" has one vote. Spouses

who jointly own sheep are considered to be a "family" (i.e. a "group of individuals"), and are not entitled to two votes even in community property states.

No one is authorized to register or to vote on behalf of an individual voter.

Questions about voter eligibility (who can and cannot vote), verifying volume of production, challenges (the process by which a voter's eligibility is officially questioned), the challenge resolution process, appeals of eligibility determinations, ballot counting, reporting and related topics should be made to County FSA Offices.

Questions about voting procedures (e.g., absentee voting, how to obtain ballot materials, where and when to vote) should be made to the County CES Office. Any other questions about the referendum should be referred to Kenneth R. Payne, at the Agricultural Marketing Service, Washington, D.C., at 1-888-265-8110, beginning on Aug. 12.

If approved, the program would be funded by a mandatory assessment on domestic producers, feeders and exporters of live sheep and greasy wool of one-cent-per-pound on live sheep sold and two-cents-per-pound on greasy wool sold.

Importers would be assessed one-cent-per-pound on live sheep, the equivalent of one-cent-per-pound of live sheep for sheep products as well as two-cents-per-pound of decreased wool or the equivalent of decreased wool for wool and wool products.

Correction

In the County Commissioners story in last week's paper, the \$124,035 reported as revenue for the Commissioner's Court should have been expenditures. Also, Judge Davis did not recommend that the County Treasurer's mileage be left as is, as was reported. We apologize for the error and any inconvenience it may have caused anyone.

New administrator at Rice Springs Care Home

Rice Springs Care Home of Haskell announces the appointment of a new Administrator, Ann Decker of Haskell. She began her duties on Monday, Sept. 16.

Decker is replacing Ruth Ann Klose who is retiring October 1, after 28 years at Rice Springs, 24 years as Administrator.

Decker was born in Albuquerque, New Mex., but has been a resident of Texas for 20 years. She graduated from Texas Tech University in Lubbock in 1983. She and her husband Rick, moved back to Haskell in 1995. Since that time, she has been employed at Sweetwater Health Care Center for the past year and a half.

Decker is looking forward to working in Haskell and not having the long drive everyday commuting to Sweetwater. She said, "I feel this is the opportunity of a lifetime, because Rice Springs has had such a good reputation with their care for



patients. Ruth Ann has really worked hard and done an excellent job over the years. I feel very privileged to have this opportunity and to be here in Haskell and become a part of this community."



RODEO PARTICIPANTS—Chris Medford (left) took 1st place in the Haskell Co. Rodeo competition and earned a spot in the TxDOT's district event in Abilene where he placed 2nd. He will be competing in the state meet. Bennie Harvey (right) receives a certificate from Maribel P. Chavez, Abilene Dist. Eng., for his participation in TxDOT's Abilene district roдео. Harvey finished 2nd in the Haskell Co. competition, earning the right to compete at district level. TxDOT photos by Mary Beth Kilgore and Bill Leach

Green Thumb

By Gladys O'Neal

This is the ideal time to dig and divide daisies, iris, day lilies and other perennial flowers. Set out bedding plants of dianthus and snapdragon. If set out in the fall, their blooms next year will be larger, with much sturdier stems for cutting.

Order spring-flowering bulbs now. You'll need to chill them in the refrigerator for six weeks before planting.

Don't just admire fall from a distance. Move into the heart of the color, and you will find that the season touches certain trees, branches and even single leaves in truly wondrous ways.

Appreciating autumn for all that it can be is a matter of changing our perspectives. The fall season with its shorter days and cooler temperatures is not as fleeting as poets would have us believe.

When you prepare your garden

beds, remember that the ideal soil is both well drained and fertile. Good drainage is critical to plant health. Roots are living tissue and they need the oxygen in the pore spaces of the soil. They will suffocate in the soil that is hard or water logged.

Organic matter can help hold moisture in sandy soils while improving drainage in clay soils. Adding composted manure, rotted sawdust, garden compost, or leaf mold will help loosen the soil. It will then drain better.

If you do plan to rework your bed, add a layer of organic mulch. Apply about an inch of composted manure over the surface along with fertilizer, and turn the soil with a fork or tiller.

When your caladiums have died down, dig up the tubers and remove all the soil. Dust them with garden sulfur to prevent rot; then store them in a mesh bag, like an onion or potato sack and place in a cool dry place for the winter. The same treatment can be used for elephant's ear, gladioli and cannas.

After your chrysanthemums have finished blooming this fall, cut them back to a six inch height. After the ground has frozen, add several inches of mulch and remove it in early spring. They will always be queen of the fall garden.

An excellent way to rid the garden of mealybugs is to place a few halves of white potatoes, preferably ones with sprouts in the area of infested plants. The bugs will go to the potatoes and after they accumulate, kill them by dropping the potato pieces into a bucket filled with water and bleach.

To control webworms, take a can of wasp and hornet spray and spray to penetrate the webs and destroy the entire colony. Be sure it's a still day to avoid drift.

Keep your fingernails clean while working in the garden by scraping them over a bar of soap before starting. Your nails will be full of soap so dirt can't get in. When finished, just wash thoroughly and brush out the soap.

Store your folding lawn chairs in a large plastic trash or leaf bag. They won't need scrubbing in the spring.

Plant for fall color and you'll be treating yourself to a kaleidoscope of color that will make you eager for fall's shortened days.

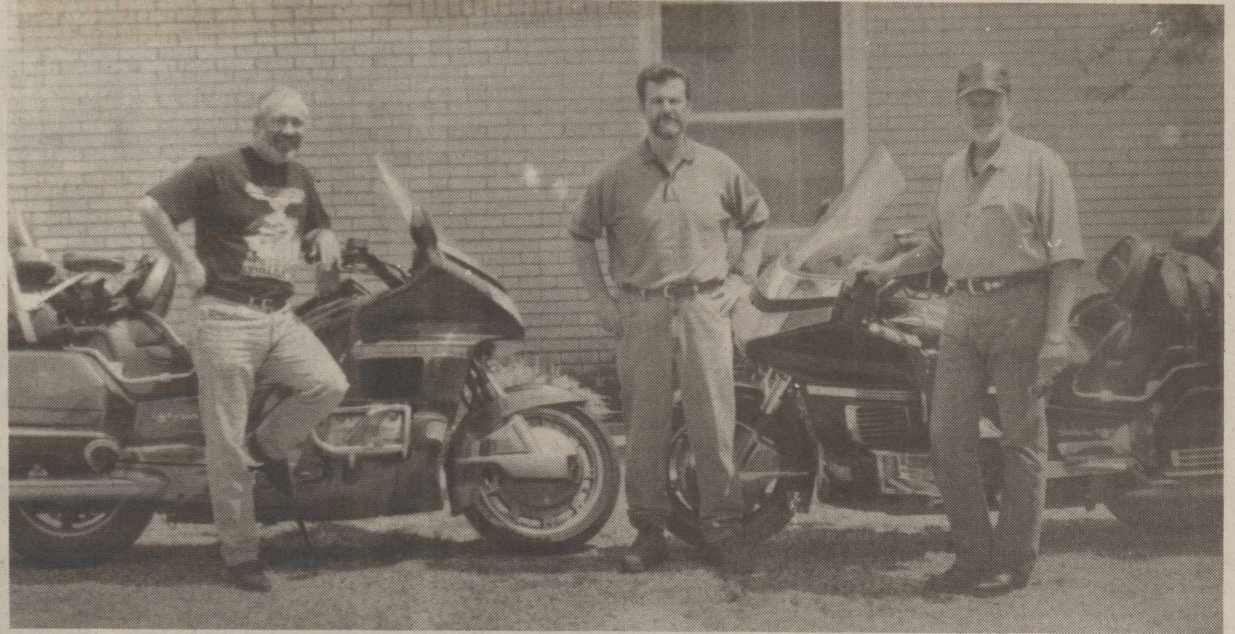
Rule homecoming

The 1996 Rule Homecoming is set for Nov. 8 and 9 with the activities beginning Friday night, Nov. 8, with the football game, Rule vs. Benjamin, scheduled at 7:30 p.m.

Saturday's activities begin at 9:30 a.m. with coffee and registration at the Rule School administration building. Lunch will be served beginning at 11:30 a.m. in the school cafeteria and at 1:30 p.m., the general assembly will be held in the school auditorium with class and faculty recognition plus entertainment.

If you know of a classmate or an ex that did not receive a letter for the last homecoming or that has moved in the last two years, please give the current address to Clayton Stegemöller, Tami Baitz, Larry LeFevre or Debbie Tanner.

For additional information, contact the Rule High School office at 817-997-2521 or the Homecoming Committee, RR 2, Box 68, Sagerton, TX 79548.



PRAYER SERVICE ON WHEELS—This trio passed through Haskell recently on the last leg of a 10,500-mile motorcycle trip that included 29 states. (From left) Maury Davis, Jim Guinn and J. Don George, toured the 29 states just to see America and also to hold special prayer services in the communities and cities they passed through. George is the son of Rev. and Mrs. Roy F. George of Haskell.

10,500 mile motorcycle trip in 25 days

J. Don George, the son of Rev. and Mrs. Roy F. George of Haskell, and two other men stopped in Haskell recently on the last leg of a 10,500 mile motorcycle trip.

George, who is the Senior Pastor of Calvary Temple Church in Irving, Maury Davis, the pastor of Cornerstone Church in Nashville and Jim Guinn, a CPA in Irving visited 29 states, which included the four corners of the United States, on their trip.

They left Dallas on Aug. 5, and motored to Key West, Fla., then

traveled up the east coast to the most northern tip of Maine, at Madawaska, then turned west and traveled across the northern states to Blaine, Wash. From there, they traveled down the west coast to San Ysidro, Calif. and then turned east and began their last leg of the trip back to Texas.

George said the purpose of the trip was twofold; just to see American and see parts of the country they had not seen before and to hold special prayer services

for communities and cities they passed through. "It is very important in this election year, that Americans seek the Lord in prayers."

The trio said they traveled the backroads of America and stayed away from the interstates. They also did not patronize food chains, but rather ate in locally owned cafes and restaurants.

George's brother, Ken who lives in Albuquerque, met them in San Francisco and traveled back to New Mexico with them.

PIZZA

2 LARGE THIN CRUST

PIZZA

UNLIMITED TOPPINGS

\$13.99

Pan Pizza \$1 extra
Expires September 30, 1996

2 MEDIUM THIN CRUST

PIZZA

UNLIMITED TOPPINGS

\$11.99

Pan Pizza \$1 extra
Expires September 30, 1996

Roma Pizza

864-8525

Jones-Haskell

Eye Clinic

Dr. Trussell Thane

Appointments Available • Monday through Friday

Dr. Thane is Board certified in the diagnosis and treatment of eye disease. Dr. Thane offers complete evaluation for eyeglasses and contact lenses.

2 pair of clear daily wear \$159.00 contact lenses

Disposable lens packages and contacts to change your eye color available.

Medicare and Medicaid Accepted.

1501 Columbia
Stamford, Texas
915-773-2083

PIZZA PRO

of Modern Way SINGLE TOPPING PIZZA PRO

LARGE PIZZA

\$7.99

Get Second Pizza with Same Toppings \$4.00

REGULAR OR DIET

PEPSI

2

6 pk.
20 oz.
ctns

\$5.00

PRICES GOOD THRU SAT., SEPT. 21

CALL IN ORDERS

PHONE 864-3976

FOR SENIOR AMERICANS

★ MEDICARE SUPPLEMENTS ★

Several Plans at Competitive Rates. Open Enrollment Period. 6 Months Prior to Age 65.

LONG TERM CARE.
HOME HEALTH CARE.

★ MAJOR MEDICAL ★

Several Plans Available. Written Individually with Group Rates.

FINAL EXPENSE BENEFITS

Plan Now So Your Family Will Not Be Burdened Later.

ANNUITIES

Tax Benefits. Competitive Interest. Monthly Income You Cannot Out Live. Does Not Go Through Probate. Great for IRA Rollovers.

Together

We Can Do It!

Concerned about your financial future? See us. We have the money you need to get things growing!

Our agriculture financing professionals understand your concerns and needs. They know it takes a lot of hard work and careful planning to make a farm grow and prosper. They can help you yield more from your labor and harvest with sound agricultural financial advice and planning.

Talk to one of our financial experts today for a bumper financial harvest year after year.

Grow with us.

FDIC

The Farmers
NATIONAL BANK

Post Office Box 10
Phone (817) 997-221
Rule, Texas 79547

Obituaries

Dora Montgomery

Services were held for longtime Haskell resident, Dora Montgomery, 84, on Saturday, Sept. 14, at the First United Methodist Church with Rev. Sid Parsley officiating. Burial was in the Belvieu Cemetery in Rotan under the direction of Holden-McCauley Funeral Directors of Haskell.

Mrs. Montgomery died Thursday at her home in Haskell. She was born in February of 1912 in Indian Territory, Ariz. She married Miller Montgomery in December of 1932 in Robert Lee. She had been a

resident of Haskell for 43 years, previously living in Rotan and McCamey. She was a member of the Menifee Sunday School Class and the First United Methodist Church, where she worked as a secretary for many years. She was also very active at the Experienced Citizens Center, and quilted with the Quilting Group.

She is survived by her husband of 63 years, Miller Montgomery of Haskell; two sons, Frank Montgomery of Grand Prairie and A.W. "Bud" Montgomery of Olney; one daughter, Bettye

Montgomery of Grand Prairie; seven grandchildren; and 12 great-grandchildren.

Heather Nicole Becker

SWEENEY—Heather Nicole Becker, 9, was struck by an automobile Thursday, Sept. 5, as she waited for the school bus. She died that same day in the Galveston Hospital in Galveston. She was born Oct. 13, 1986 in Galveston.

She is survived by her parents, Wendell and Stephanie Becker of

Sweeney; one brother, Jack of Alvaredo; three sisters, Michelle, Chelsea and Hannah, all of Sweeney; her grandparents, Judy and James Dunlap of Haskell; aunt, uncle and cousins, Jacklyn and Lynn Wheatley, Brianna, Paige and Kalyn, all of Haskell; and numerous other relatives of the coastal area.

Albert D. English

ROCHESTER—Services were held for lifetime Haskell Co. resident, Albert D. English, Jr. 82, on Saturday, Sept. 14, at the First United Methodist Church in Rochester with Rev. Dolan Brinson and Rev. James Patterson and Cary Headstream officiating. Burial was in Willow Cemetery in Haskell, under the direction of Smith Funeral Home Directors.

Mr. English died Wednesday, Sept. 18, as a result of injuries sustained in a tractor accident. He was born Oct. 29, 1913, in Haskell. He had lived his lifetime in Haskell Co. and was married to the former Audrey Green. He was a farmer and had a gravel business. He was a member of the First Methodist Church in Rochester and

served as an Elder. He served on the Rochester School board for over 20 years. He was awarded the Purple Heart in World War II, serving in the U.S. Army.

He is survived by his wife, Audrey English of the home; one son and daughter-in-law, Tommy and Jana English of Rochester; one daughter, Nancy English Adkins of Rochester; one sister, Frances Wilson of Merkel; six grandchildren; and one great-grandchild.

Pallbearers were David Epley, Eddie Leonard, John Ben Glover, Larry Short, R.A. Shaver, III, Eddie Bland, Kenny Cockrell and John Headstream

Memorials may be sent to the First Methodist Church, Rochester.

INSURANCE ASSURANCE

Your One Stop Insurance Agent

Don Welch
dba
LANCO INSURANCE CO.

Helen Templeton, Joyce Ramirez, Cherie Hutchinson

P.O. Box 558
Haskell, Texas 79521

510 North 1st
817-864-2629

LIFESTYLES

Comedy places at State 4-H Fashion Show



ATTEND STATE PPE CONVENTION—Eight members of the Haskell network of Practical Parent Education attended the State PPE Convention held in Austin recently and were presented the Joe Collins Outstanding Award for new programs. From left, Janice Browning, Linda Billington, Betty Martin, Rhonda Hanson, Lisa Phell, Michelle Howard, Cathy Bartley and Ruth Enriquez.



J.J. COMEDY

By Lou Gilly
Haskell Co. Ext. Agent-FCS
J.J. Comedy of Haskell received 4th place honors in the formal category of the Construction division during the State 4-H Fashion Show held this summer during State 4-H Roundup. J.J., the 15-year-old daughter of Don and Nene Comedy, constructed a purple crepe back satin formal for her entry.

The 4-H Fashion Show provides opportunities for members to exhibit skills in modeling and presentation of themselves and their garments, good grooming and poise, fashion interpretation and understanding of style, clothing construction or comparison shopping, and application of

knowledge of fibers and fabrics to wardrobe selection.

The Fashion Show has two divisions, buying and construction. The four categories in each division are casual, dressy, formal and speciality.

County winners in each garment

category in both divisions and in other categories determined at the local and district level, may compete at district. Senior district winners in each category in both divisions compete at the state level. The Fashion Show is held each year during State 4-H Roundup.

Around Town

By Joyce Hawkins

Thelma Henson, Mae Lou Yeldell and James Ford Sr. were in Stamford on Sunday evening at the Solomon Temple Baptist Church's ninth appreciation service for Rev. and Mrs. L.W. Hutchinson. Guests were New Light BC of Abilene—Dr. Leo Scott, New Fellowship of Abilene—Rev. Webb, Macedonia BC of Abilene—Rev. J. Knight, New Mt. Zion BC of Seymour—Rev. F. Stevenson, Mt. Moriah BC of Abilene—Rev. J. Mathis. Honorary guests were Abilene Ministerial Alliance, Jones, Knox and Haskell Counties area churches.

Visiting with Willie Leo Thomas from Dallas was granddaughter, Dorothy Carey and great-granddaughter, Burshell Ervin. Mae Lou Yeldell, Sammie Aldridge, Lorene Henson, Florene Session and James Ford Sr. were in Abilene on Friday, had dinner at Luby Cafeteria and visited with Mrs. Lou Ella Phillip who lived in Haskell for many years.

The Greater Independent Baptist Church family invites everyone to come and help celebrate the

Simmons reunion

The Simmons family met for a reunion on Aug. 31 and Sept. 1, at the Haskell National Bank Community room.

Those attending were: Delma Howell, Lela Pack and Milton Simmons of Knox City; Mariah Pace, Robert Wayne Pace and Samuel Pace from Clarksville, Ark.; G.L. Pack, Linda Pack and Amber Pack from Kilgore; Rayford Pack from Boonsville, Ark.; Ray Simmons, Jack H. Simmons and Jack R. Simmons of Houston;

Stella Story and Jessica Jackson of Breckenridge; Linda Scheets Burks of Lancaster; Delton, Janice, Clay and Mary Francis of Perrin; Ray Howell of Abilene; Gladys Barley of Wichita Falls;

and Angela Carroll, Savanna Carroll, Janice Smith, Laura Wilson, Johnny Ray Wilson, Jasmine Elizebeth Wilson, Brandon Isbell, James C. Isbell, Wallace Aycock, Ima Jean Aycock, Juanita Wilson, Greg and Debbie Brister, B.J. and Candace, all of Haskell.

church's 64 years on Sunday afternoon at 3 p.m. Elder Leon Ward, COGIC of Knox City will bring the anniversary message.

Anna Rose Hays of Gresham Ore. has returned home after spending quite some time with her sisters, Mrs. Alvis Bird and Jo Marie Barnes who have been very ill, but are improving. Ann Rose had lunch at the ECC on Friday.

Mr. and Mrs. Eddie De La Santos and girls of Henderson visited in Haskell with her parents, Mr. and Mrs. Joe Ruiz and his parents, Mr. and Mrs. De La Santos and other relatives over the weekend.

Sandra (Jetton) Stafford from Great Falls, Minn. is visiting her parents, Mr. and Mrs. Ted Jetton and had lunch with them at the ECC on Monday.

Roy and Jimalee George were in Levelland Friday to attend the funeral service for his cousin, Hazel Epperson, a long time resident there. They were accompanied by his sister, Ethel Reed of Abilene and her son, Rev. Bob Reed, who assisted in the memorial service.

Helen Boykin of Weinert accompanied her brother and wife, Hugh and Norma Plemister of Montague on a two week trip through Oklahoma, Arkansas and on to Branson, Mo. where they attended many shows and having a wonderful time.

Bernice Hilliard and her daughter, Patricia Shaw of Snyder, went to Odessa, spent a night with son Ron Hilliard who took them to the airport where they boarded a plane to Dallas and was met there by Kenneth Hilliard of Marlin. They all flew to Minneapolis, Minn. to spend a week with Bernice's brother and family, Joe Kalasa. While there, they attended a beautiful wedding of her niece, Karon Kalasa. Coming back by Odessa, they attended the Permian Basin Fair, and then on to Abilene where they went square dancing and line

dancing in Tye. Leon Ivy was caller for the square dance and Maxine was director of the line dance.

Fannie May Barton's birthday was Sept. 10, but the celebration began on Monday, Sept. 9, when she arrived at the Experienced Citizens' Center and found two large Happy Birthday Fannie Mae cakes and a vase of yellow roses. The group sang Happy Birthday to her and the cakes, which were compliments of Erma Liles, were shared with everyone at the noon meal. The yellow roses were also given by Erma Liles, her husband Paris Barton and their children.

On Monday, Sept. 9, Erma, Paris and Fannie May journeyed to Mineral Wells, where they were joined by their daughter, Kaye from Ft. Worth and her husband Kip Derrick and grandson and wife, Kirk and Tiffany Derrick and great-grandson, Cody Derrick for a delicious birthday dinner. Fannie May was honored with another birthday cake, "chocolate" which is Cody's favorite, along with birthday greetings and numerous gifts. A good time was shared by all.

Births

April and Lee Willis are proud to announce the birth of Zackary Wayne, who was born Friday, Aug. 30, at 7:31 p.m. at Hendrick Medical Center in Abilene. He weighed 7 lbs., 14-1/2 oz. and was 21 inches long.

He is welcomed home by his big brother, Joshua. The proud grandparents are Ronnie and Patricia Baccus of Abilene, Cliff and Colleen Shriver of Abilene, Ron Willis of S. Fork, Colo., and Ron Bales of Dallas.

The proud great-grandparents are Rita Willis of S. Fork, Colo. and Patrick O'Keefe of Austin and formerly of Haskell.

Burger AND Rings



Perfect Pair

Famous No. 1 or No. 2 Single Patty Burger and Regular Onion Rings

for only \$2.49 PLUS TAX

SONIC

No Waiting Call In Orders 864-8533

Minnie O. Holt

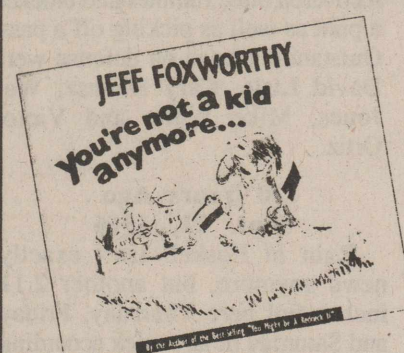
4-25-14 - 9-7-91

In this hour,
You are gone,
In this silence,
You are gone.
On this earth you no longer walk.
Because we miss you.
There will be tears.
(Lots of them)
Because I love you, Mama
I will cry.
I close my eyes
I hear your voice.
As I listen,
You will always be with us,
In the brilliance of sunsets,
In the magic of the night skies,
In my laughter, in my heart,
You will be with us.

For in this hour,
You are in forever beauty.
On eagles wings you were carried.
On rainbows trail you travel,
In fields of sacred sunflowers,
In perfect light,
You will forever walk.

With love,
Charlene (Sister) Harris

NEW! NEW! NEW! JEFF FOXWORTHY AT HIS BEST



*You Might Be A Redneck If...

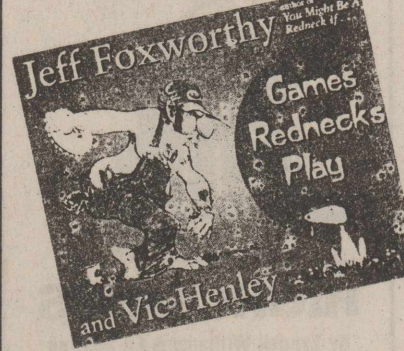
*Red Ain't Dead

*Hick is Chic

*Check Your Neck

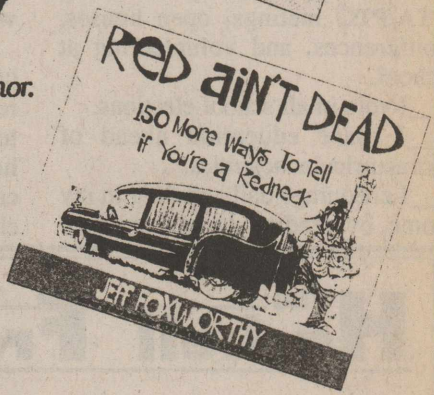
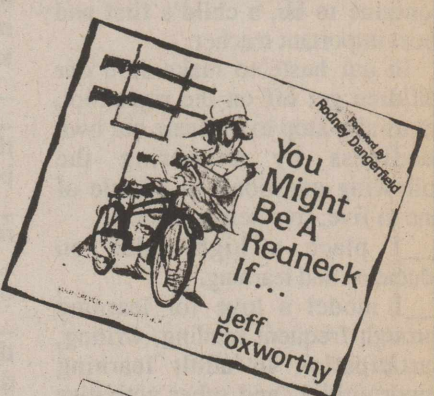
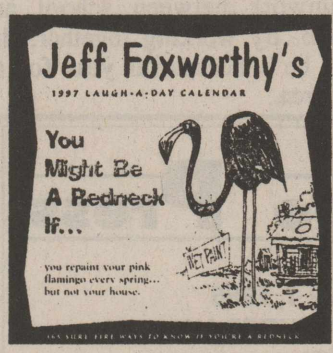
*Games Rednecks Play

*You're Not a Kid Anymore...



Plus Jeff Foxworthy 1997 Laugh-A-Day Calendar.

A daily dose of Redneck Humor.



-CLEARANCE SALE CONTINUES-

NUPRIN
50 COATED TABS
Reg. \$5.29 **\$3.00**
Coca Cola
6 pk. cans **\$1.59**

Large Selection of Gift Items
TAKE AN EXTRA **10% OFF**
OUR ALREADY LOW SALE PRICE

FINAL TOUCH
40 fl. oz. or 100 Ct. Sheets
Reg. \$3.89 **\$2.00**
Baby Shower Selections
Taylor Renee Watson
daughter of Bo & Tina Watson
Baby Girl Shower for
Amanda Abila

Mon.-Fri. 8-6
Sat. 8-5
Sundays & Holidays 8:30-9:30
THE DRUG STORE
Haskell, Texas
1-800-962-0743
Phone
817-864-2673

CLUBS



4-H SCHOLARSHIP WINNER—Myrtle Phemister, 4-H chairman of the FCE Council presents Melanie Michaels with the 4-H scholarship for 1996 from the Council.

FCE council

By Dolores Medford Reporter

Haskell Co. Family and Community Education Council met Aug. 21, in regular session with Chairman Jane Smith presiding. Weinert club member Estalynn Liles read "Master of Degree" for recreation.

Minutes were read by secretary Betty Sanders and approved as read. A treasurer's report was given by Lennie Blankenship. The club presidents gave reports from their club meetings to council.

Lena Tidwell reported that the yearbook committee needs an update on all members and their addresses.

TAFCE Chairman Joetta Burnett reported on the Cultural Arts Retreat at Brownwood. She said that everyone enjoyed the retreat and that Haskell Clubs came home with some blue ribbons. She reported that four club members were planning to go to state convention at Tyler in September and that a raffle for a 4-H afghan will be held at the state meeting.

Jane Smith reported on the 4-H Award covered dish luncheon, where Nisha Patel was named the Gold Star recipient. Nisha is the daughter of A.K. and Usha Patel.

Mildred Robertson reported on the reception for Max Stapleton and how everyone enjoyed it. She said that it was good to see agents and friends there honoring Max. He was given a 4-H afghan by the 4-H'ers.

The clubs were reminded to start work on Information Day, which will be held Sept. 18, at the Community Bank Building. Reports from state convention will be given and the Club Woman of the Year will be recognized at that time. Theme will be "Out With the Old—In With the New."

4-H Chairman Myrtle Phemister presented the 4-H Scholarship for 1996 from the Haskell FCE Clubs to Melanie Michaels. Melanie's parents, Steve and Betty Michaels and grandmother, Ophelia Newsom attended the presentation. Melanie is attending Texas Tech.

Refreshments were served to eleven club members and three guests by the Weinert FCE Club.

Homespun

By Lennie Blankenship Reporter

The Homespun FCE Club met at the County Extension office kitchen on Aug. 8, with eight members and one guest present.

President Ophelia Newsom called the meeting to order and each member answered roll call to, "My Most Fun Time Is—". Some pretty funny answers were given. Treasurer Betty Hook gave the treasurer's report.

A discussion was held about using our funds available to paint the cabinet in the kitchen a different color to make the new carpet bright and cheery.

Members voted for Rookie and Club Woman of the Year for the Haskell Co. FCE. Those votes will be counted along with other Haskell Co. members and will be announced at Information Day in September.

New officers for next year were elected: Dolores Medford—Pres.; Lennie Blankenship—V. Pres.; Peggy Burnett—Sec./Treas.; Ophelia Newsom—Reporter; Joetta Burnett—Del.; and Jane Smith—Del.

Our president introduced the guest speaker, Myrtle Phemister, who presented a very interesting talk entitled: A SMART ONE:

- A—Attitude
- S—Stay focused
- M—Make it positive
- A—Attention to details
- R—Reward—1/2 way mark
- T—Think Team—we-us
- O—Opportunities
- N—Now is the time
- E—Be effective

Autograph party

Gail Logan will host an Autograph Signing party at B.J.'s Small Mall in Rule on Friday, Sept. 20, from 2 to 4:30 p.m. "These Things I Remember," written by Faye Dunnam, will go on sale at that time for \$6 each.

Dunnam gave some family history, Rule history and school history in the book. She taught school in Rule for 26 years, retiring in 1976. During her teaching career, she helped sponsor 14 senior trips, was senior sponsor for 14 years and directed the one-act play for 23 years.

Sagerton News

By Dorothy M. Clark

A Sagerton student has started the current school year off with a place at the ACU track meet last weekend. Jennifer Lehrmann placed second in Cross-Country at the meet in Abilene, behind the first place state winner for last year. Congratulations, Jennifer. We'll be watching you this coming year as you represent Rule High School.

Odene Dudensing was in Lubbock last Saturday to watch a soccer game that her grandson, Bryan Hobratschk of Littlefield was in. Bryan is the son of Carol and Larry Hobratschk. Emory and Abby Dudensing accompanied their grandmother to Lubbock. The Hobratschks and Odene were Saturday night supper guests of Lynn Dale and Rene Dudensing and family and on Sunday, they were all over at Odene's.

Helen and Clancy Lehrmann, Delbert and Joyce LeFevre and Wilma Teichelman hosted the monthly community supper Tuesday night. The menu consisted of casseroles, salads and ice cream for dessert. Those attending included John L. Brooks, Herbert and Christine Stremmel, Alvin and Alice Bredthauer, J.J. Gellner, Mary Neinast, Sylvia Crowe, Joe and Dorothy Clark, Pastor Jeff and Marie Zell, Bruce, Michelle, Tarah, and Clay Toney, J.B. and Dorothy Toney, John and Sue Guinn, Dub and Ophelia LeFevre, Jack and Peggy Tabor, Jennifer, Brian, M'Lynn and Joanna Lehrmann, Jill, Kinsey, Tully and Cade Brown, Danny, Helen and Brittany Lamert, Frances Clark, Emmalee Bivins and Charles and Dorothy Clark.

The ladies of Faith Circle met at the church with Dorothy Toney leading the Bible study and Helen Lehrmann serving refreshments. Others in attendance were Laverne Stanhope, Loretta Connally, Mary Neinast, Isabell Mrzak, Barbara Nauert, Pastor Jeff and Marie Zell.

The Ladies breakfast was held at the community center on Wednesday morning with Dorothy Toney, Frances Clark and Joyce LeFevre acting as hostesses. Those present included Anita Dozier, Edna Diers, Hazel Letz, Bernice White, Mittie Dunham and Bernice Rhodes, all of Old Glory and the local ladies; Wilma Teichelman,

Odene Dudensing, Mary Neinast, Helen Lehrmann, Peggy Tabor, Yvonne Swofford and Dorothy Clark.

The community will be missing the smiling face of Sylvia Crowe at some of our social activities since

she will be moving back to Hillsboro. Sylvia grew up in our community as Sylvia Neinast and has been living in Haskell for the past nine years. She is a regular performer in the Sagerton Hee Haw and is featured in the band as she plays her harmonica. We will miss her and hope that she can come back at Hee Haw time.

Karen Lehrmann who is employed by the Boll Weevil

Eradication Program in Haskell Co. has been giving progress reports to the local farmers each Wednesday morning at their breakfast. She presents a very informative program and the farmers appreciate the work that the program has been doing.

The course of true love never did run smooth.

—William Shakespeare

Looking For An Easier Way To Balance Your Budget?

Try Our Average Monthly Payment Plan.

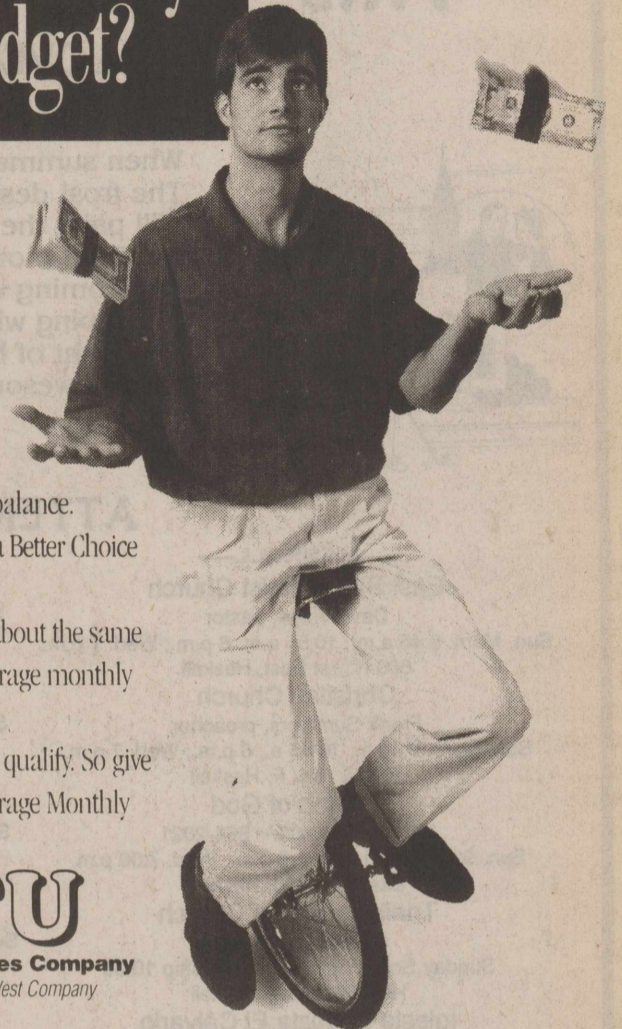
Monthly electric bills. They go up; they go down—depending on the highs and lows of each month's weather. And that can throw any household budget off balance.

AMP, our Average Monthly Payment Plan, gives you a Better Choice in bill payment.

With AMP, you pay about the same amount each month, all year—depending on your average monthly usage. And that makes budgeting a whole lot easier.

Best of all, AMP is free. Any residential customer can qualify. So give yourself a break from the monthly juggling act. Try Average Monthly Payment instead. For more information, simply give us a call.

WTU
West Texas Utilities Company
A Central and South West Company



ANTHONY'S®

Family Apparel & Shoes

KID'S WEEK

Boys' & Girls' Levi's Jeans

Boy's 550*
8-14, Student
& Husky

17.99

ANY SIZE

Girls' 512*
& 550*
Sizes 7-16

HASKELL FANS SUPPORT YOUR INDIANS AS THEY INVADE STAMFORD FRIDAY, 8:00PM

Especially For You
For Mom or Grandma

~Necklaces~

- 24" Sterling Chain \$8.00
- Birthstone Babies \$6.00
- 6 mm Sterling balls 80¢
- Also, hearts, etc.
- Y Necklaces \$15.00

Also Silver Jewelry Sale Table 50% off

Lee Burson
Call for appointment or leave message.
817-864-3316

ENTIRE STOCK
Girl's 4-14 Screen T-Shirts,
Reg. 12.99 **7.99**

BONUS COUPON!
take **25% off**
any one regular price
Children's Fashion Item

Excludes Denim Jeans and Shorts, Dr. Martens, Mia Shoes, and Special Order Items. May not be used in conjunction with any other offer. May not be used on existing layaways or toward the purchase of gift certificates. Good thru 09/22/96 #757

ENTIRE STOCK
Boys' 4-20 Screen T-Shirts,
Reg. 11.99 **7.99**
Reg. 14.99 **9.99**

Girl's 4-6x 2-Pc. Pant Sets,
Reg. 19.99 to 24.99 . . . **14.99**

Boys' 4-20 Nylon Pants,
Reg. 11.99 **7.99**
Navy, Black, Hunter & Royal

Newborn, Infants & Toddler 2-4T 2-Pc. Sets,
Reg. 16.99 to 24.99 . . . **14.99**

Superior Cellular Service

Texas Cellular is making it easier for you to enjoy the benefits of cellular service.

- Great values on State-of-the-art cellular equipment!
- Custom rate plans all the way to Lone Star!
- Texas-sized coverage!

Call today and let us ease you into cellular, the Texas Cellular way!

TEXAS CELLULAR.
A service of Taylor Telecommunications, Inc.

Call Anytime.

Haskell 512 North 1st (817) 864-3269
Albany 500 South Main (915) 762-2333

SALE PRICES GOOD THRU SEPT. 22ND

Bruns awarded scholarship

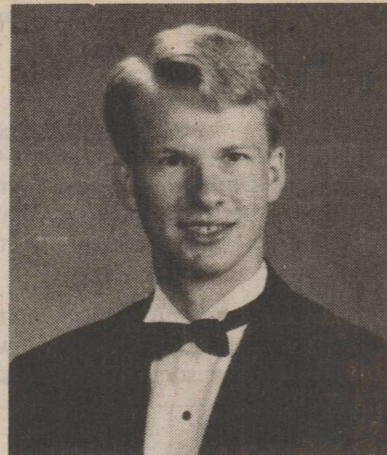
David Bruns of Old Glory has recently been awarded a \$1,000 college scholarship by the publisher of Who's Who Among American High School Students.

Bruns will attend Texas Lutheran University in Seguin. He has received many awards for academic and leadership achievements. He is one of 150 outstanding students selected to receive financial awards for college expenses this year by Educational Communications Scholarship Foundation.

The Foundation, funded by the publishers of Who's Who, has awarded \$150,000 for college scholarships this year and over \$1,767,000 to date.

Davis is the son of Gary and Martha Bruns of Haskell.

**CLASSIFIED
ADVERTISING
PAYS
864-2686**



DAVID BRUNS

Beef giveaway

Directors of Haskell Co. Farm Bureau are selling chances for a half of beef to be given away on Oct. 8. The cost of the tickets are \$2 each for 3 for \$5. Tickets may be purchased from the directors, the Haskell Co. Farm Bureau Office or Pogue's Meat Processing.

The beef weighs about 250 pounds, is locally grown and will be processed by Pogue's Meat Processing.

Proceeds from the project will go to benefit the Haskell Junior Livestock Premium Sale.

Food for thought

By Charles H. Spurgeon
"Let me now go to the field, and glean ears of corn."—Ruth 2:2.

Downcast and troubled Christian, come and glean today in the broad field of promises, which exactly meet thy wants. Take this one: "He will not break the bruised reed, nor quench the smoking flax." Does not that suit thy case?

A reed, helpless, insignificant and weak, a bruised reed, out of which no music can come; weaker than weakness itself; a reed, and that reed bruised, yet, He will not break thee; but on the contrary, will restore and strengthen thee.

Thou art like the smoking flax: no light, no warmth, can come from thee; but He will not quench thee; He will blow with His sweet breath of mercy till He fans thee to a flame.

Would thou glean another ear? "Come unto me all ye that labor and are heavy laden, and I will give you rest." What soft words! Thy heart is tender, and the Master knows it, and therefore he speaks so gently to thee. Will thou not obey Him, and come to Him even now?

Take another ear of corn: "Fear not, thou worm Jacob, I will help thee, said the Lord and thy Redeemer, the Holy One of Israel." How can thou fear with such a wonderful assurance as this?

Thou may gather ten thousand such golden ears as these! "I have blotted out thy sins like a cloud, and like a thick cloud thy transgressions." Or this, Thou your sins be as scarlet, they shall be as white as snow; though they be red like crimson, they shall be as wool."

Or this, "The Spirit and the

Bride say, Come, and let him that is thirsty come, and whosoever will let him take the water of life freely."

Our Masters field is very rich; behold the handfulls. See, there they lie before thee, poor timid believer!

Gather them up, make them thine own, for Jesus bids thee take them.

Be not afraid, only believe! Grasp these sweet promises, thresh them out by meditation and feed on them with joy.

Submitted by Sam Bitner.

Photo exhibits

A Photography Exhibit with four divisions will be a part of the Jones County Fair in Anson this year. Photography entries will be grouped and judged in the following divisions: Youth, Amateur, Professional (landscapes/wildlife and nature/people/general), and the Selective Category with the Pied Piper Elevators as the topic.

Four places will be awarded (1, 2, 3 and honorable mention); the photo must be unframed and may be in black and white or color. The exhibit, no smaller than a 5x7 or no larger than a 11x14 must be brought in and registered from 2 to 6 p.m. on Thursday, Oct. 17, at the Extension building.

There will be a \$2 fee per entry for adults and no fee for youth, 15 years and under and single. Exhibits will be judged by points and only ribbons will be awarded with all ribbons to be given on the final decision of the judge. One-half of the entry fee will be paid for the Best of Show winner.

This Week's Devotional Message:

GOD'S LOVE APPEARS IN THE FLAMING COLORS OF AUTUMN



When summer's heat has taken flight,
The frost descending in the night
Will paint the trees with colors bright,
That morning will unfold;
And coming with the cooler days,
In keeping with this yearly phase,
The sight of branches all ablaze
Is awesome to behold.

On countryside or in the town,
Those leaves that later fade to brown
Proclaim, as they come drifting down,
The year is growing old.
Our House of Worship's lessons show
The love of God, that we should know
From autumn's beauty, all aglow
With shades of red and gold.

ATTEND CHURCH THIS SUNDAY

HASKELL
East Side Baptist Church
David Page, pastor
Sun. Morn. 9:45 a.m., 10:55 a.m. 6 p.m.; Wed. 7 p.m.
600 N. 1st East, Haskell
Christian Church
Frank Summers, preacher
Sun. Morn. 9:45 a., 10:45 a., 6 p.m.; Wed. 7 p.m.
107 N. Ave. F, Haskell
Church of God
Eric Clark, pastor • 864-2021
Sun. 9:45 a.m., 11 a.m., 6 p.m., Wed. 7:00 p.m.
East Hwy 380, Haskell
Trinity Lutheran Church
Gary Bruns, pastor
Sunday School 9:30 a.m., Worship 10:30
Hwy 380 East, Haskell
Iglesia Bautista El Calvario
Vergil Smith, interim pastor
Sun. Morn. 9:45 a., 10:45 a.m., 6 p.m.; Wed. 7 p.m.
607 S. 7th, Haskell
First United Methodist Church
Sidney Parsley, pastor
Sun. Morn. 9:45 a.m., 10:50 a.m. 6 p.m.; Wed. 6 p.m.
201 N. Ave. F, Haskell
First Assembly of God
Rev. J.C. Amburn
Sun. Morn. 9:45 a., 10:45 a.m., 6 p.m.; Wed. 7 p.m.
1500 N. Ave. E, Haskell
St. George Catholic Church
Father Michael Melcher
Sat. Mass 7:15 p.m.; Sun. Morn. 9:00 a.m.
901 N. 16th, Haskell
Church of Christ
Dale Huff, minister
Sun. Morn. 9:30 a., 10:30 a., 6 p.m.; Wed. 7:30 p.m.
510 N. Ave. E, Haskell
First Presbyterian Church
Jasper McClellan, pastor
Sun. Morn. 9:45 a.m., 11:00 a.m.
306 N. Ave. E, Haskell
Trinity Baptist Church
Rev. Kenneth Blair
Sun. Morn. 10 a., 11 a., 6:30 p.m.; Wed. 7:30 p.
401 S. Ave. D, Haskell

Hopewell Baptist Church
John Lewis, pastor
Sun. Morn. 9:30 a.m., 11:00 a.m.; Wed. 7 p.m.
908 N. Ave. A, Haskell
Greater Independent Baptist Church
Rev. Camellia Wade, pastor
Sun. Morn. 9:30 a., 11:00 a., 6:30 p.; Wed. 7 p.
301 N. 3rd St., Haskell
New Covenant Foursquare
Freddy Perez, pastor
Sun. Morn. 10 a., 11:00 a., 6:30 p.; Wed. 7 p.m.
200 S. Ave. F, Haskell
Mission Revival Center
Rev. William Hodge
Sun. Morn. 10 a.m., 11 a.m., 6 p.m.; Tues. 6 p.m.
1600 N. Ave. B, Haskell
First Baptist Church
Jim Turner, pastor
Sun. Morn. 9:45 a., 10:55 a., 6 p.m.; Wed. 7 p.m.
301 N. Ave. E, Haskell
PAINT CREEK
Paint Creek Baptist Church
Sun. Morn. 10:00 a.m., 11:00 a.m., 6 p.m.
WEINERT
First Baptist Church
Werth Mayes, pastor
Sun. Morn. 10:00 a., 11:00 a., 6 p.; Wed. 7 p.m.
Weinert
Weinert Methodist Church
Rev. James Patterson
Sun. Morn. 9:45 a.m.
Weinert
Weinert Foursquare Church
Rev. Joyce Goossen and Rev. Diane Crownover
Sun. Morn. 10 a.m., 11 a.m. Wed. 7 p.m.
Weinert
ROCHESTER
Church of Christ
Jim Pratt, minister
Sun. Morn. 9:45 a., 10:45 a., 6 p.m.; Wed. 6 p.m.
West on Main Street, Rochester
First Baptist Church
Ed Buerkel, pastor
Sun. 11:00 a.m., 6 p.m.; Wed. 7:00 p.m.
500 Main, Rochester
Union Chapel Baptist Church
Rev. Andrew
Sun. Morn. 9:45 a., 10:45 a., 6 p.m.; Wed. 7 p.m.
Rochester

Faith Chapel of Rochester
Katherine Byrd, minister
Sun. Morn. 10 a.m., 11 a.m., 7 p.m.
Hwy 6, Rochester
First United Methodist Church
Dolan Brinson, pastor
Sun. Morn. 10:00 a.m., 11:00 a.m.
Rochester
SAGERTON
Sagerton Methodist Church
Daniel Ramey, pastor
Sun. Morn. 9:30 a.m.
Sagerton
Faith Lutheran Church
Jeff Zell, pastor
Sun. Morn. 9:15 a.m., 10:30 a.m.; Wed. 7 p.m.
Sagerton
RULE
First Baptist Church
Rev. Troy Culpepper
Sun. Morn. 9:45 a., 11:00 a., 6 p.m.; Wed. 7 p.m.
1001 Union Ave., Rule
Primitive Baptist Church
Dale Turner Jr., pastor
First & Third Sundays 10 a.m.
Corner of 8th & Robins, Rule
Church of Christ
John Greeson, minister
Sun. Morn. 9:45 a., 10:40 a., 6 p.m.; Wed. 7 p.m.
811 Union, Rule
First United Methodist Church
Daniel Ramey, pastor
Sun. Morn. 10:50 a.m., 6 p.m.
1000 Union Ave., Rule
New Life Baptist Mission
Jesus Herrera
Sun. Morn. 10:00 a.m., 11:00 a.m.
Elm Street-Hwy 380 E, Rule
Sweet Home Baptist Church
Matt Herrington, pastor
Sun. Morn. 10:00 a., 11:00 a., 6 p.; Wed. 7 p.m.
Gladstone Ave., Rule
West Bethal Baptist Church
Rev. Robert Sweet
Sun. Morn. 10 a., 11 a., 8 p.m.; Wed. 7:30 p.m.
300 Sunny Ave., Rule

**UPSHAW & UPSHAW
INSURANCE AGENCY**

**DON'T PAY TOO MUCH FOR
AUTO INSURANCE**

**CALL & COMPARE
1-800-992-7900**

E-Z DOWN PAYMENTS ID CARDS ISSUED
UPSHAW & UPSHAW INS. AGENCY

**TAX
PLANNING**

Written By
James E. Rodgers, CPA

**TAX LAW CHANGES INCLUDED
IN RECENT LEGISLATION**

During the first week of August, Congress hurriedly passed several pieces of legislation and then recessed for the summer. The bills included a small business tax bill and health insurance reform. The centerpiece of the small business bill is a provision increasing the expensing election for equipment purchases made by small businesses. Currently, businesses can deduct up to \$17,500 of equipment costs in the year of purchase. That limit will be raised to \$18,000 in 1997 and then gradually increased to \$25,000 by 2003. The bill increases the minimum wage to \$4.75 effective October 1, 1996, with an additional increase to \$5.15 scheduled for September 1, 1997.

A group of expired tax breaks were extended by the bill. Some of the rules that apply to S corporations will change, including an increase in the number of shareholders allowed.

The bill also delays for six months the effective date for full implementation of the requirement that businesses make federal tax deposits electronically. Employers who deposited more than \$50,000 in taxes in 1995 were scheduled to begin electronic deposits by January 1, 1997. That deadline has been moved to July 1, 1997.

Beginning in 1997, deductible IRA contributions of up to \$2,000 will be allowed for each spouse (including a homemaker who does not work outside the home) if the combined compensation of both spouses is at least equal to the contributed amount and the contributions otherwise qualify.

The health insurance reform bill increases the amount that self-employed individuals can deduct for the cost of health insurance. The current 30% deduction limit increases to 40% in 1997 and then gradually increases to 80% by 2006.

Tax breaks are provided to encourage the purchase of long-term care insurance, and the bill also establishes a four-year pilot project to test tax-deductible medical savings accounts.

If you'd like details on these changes and how they might affect you, contact our office.

RODGERS & COMPANY
Certified Public Accountant
20 Southwest Third Street
Hamlin, Texas • 915-576-2356

Sonic Drive-In
1402 N. Ave. E
864-8533
Managers: Leon & Carolyn Herring

**First National Bank
of Haskell**
200 S. Ave. E • 817-864-8555
Member FDIC

**Steele
Machine**
Hwy. 280 • 864-2208

**Modern Way
Food Store**
1202 N. Ave. E • 864-3763

Jay's Tire Center
506 N. 1st East • 864-2908
"See You In Church"

**Smitty's Auto
Parts**
204 N. 1st St. • 864-2607

**Rice Springs
Care Home, Inc.**
1302 N. 1st • 864-2652
Medicare • Medicaid • Therapy
Committed To Excellence
In Service

The Sweet Shop
507 N. Ave. E • 864-2711
Hebrews 10:25 - "Not forsaking the
assembling of ourselves together"

Farmers Gin Co.
P. O. Box 250 • Rochester
743-3527

**HANSON PAINT
& BODY SHOP**
207 S. 1st • 864-3631
Professional Auto Body Repair
Glass Installation • 24 Hour Wrecker Service

**Rule Co-op Gin
& Elevator**
301 Adams • Rule • 997-2421

**B & B Automotive
& Parts**
201 N. 1st • 864-2688

**The Carpet
Express**
15 S. Ave. E • 864-8128

Wal-Mart
1608 N. Swenson
Stamford, Texas
915-773-2775

**Haskell Tire &
Appliance Center, Inc.**
206 South Avenue E
864-2900

**Personality
Slipper Shoppe**
413 S. 1st (South Side of Square)
864-2501 and 864-3051
"One Stop Shopping"

**McGee's
Lumber Yard**
105 N. 1st

**The Farmers National
Bank of Rule**
P. O. Box 10 • 817-997-2216
Member FDIC

**Haskell
Healthcare Center**
Sandra Givens, Adm. • 864-8537

**Sport About
of Haskell**
864-3891 • "Where Winners Shop"

**Bill Wilson
Motor Co.**
864-2611
FORD
MERCURY
LINCOLN
"Come See The New Team"

HASKELL vs STAMFORD

AT STAMFORD – FRI., SEPT. 20TH – 8 P.M.



1996 HASKELL INDIANS

Front row: 62—Tony Fuentes, 81—Josh New, 17—Lyle Fouts, 36—IV Burson, 80—Matt Blanks, 60—Chris McSmith, 48—Tim Masias, 11—John Abila. Middle: 61—Billy Bible, 10—Will Trammell, 88—Kevin Billington, 20—Philip Huff, 71—Brandon Rodela, 21—Jim Crawford,

22—Turner Frierson, 44—Jason Hobgood. Back: 25—Cory Breckel, 73—Michael Rodriguez, 85—Eric Guadalcazar, 82—Jason Briles, 64—Chancey Pogue, 34—Elvis Gonzales, 66—Joseph Andress, 75—Shane Steele.

This Page Sponsored By The Following Indian Boosters

Steele Machine
Larned Sales Center
Haskell Coop Gin
Pogue's Meat Processing
Cecil's Country Meat Mkt. & Groc.
Video Mania
Sonic
Country Daizie
Personality-Slipper Shoppe
Nemir's
Fieldan Inn
Haskell Free Press
Jay's Tire Center
Haskell Tire & Appliance
Boggs & Johnson Furniture
Brian Burgess State Farm Insurance

Hartsfield Insurance Agency
Rodela Plumbing
Double A Drive Inn
First National Bank
Hanson Paint and Body
Haskell Butane
Haskell National Bank
M-System Supermarkets
McGee's Lumber Yard
Medford Buick-Pontiac-GMC
Holden-McCauley Funeral Home
F & D Electronics
Sport-About
The Sweet Shop
Bill Wilson Motor Co.
Lane-Felker
Haskell Save A \$

Eddie Briles-Lindsey Insurance
Modern Way Food Store
B & B Automotive
Richardson Case-IH
Jordan Claims Service
G & G Carpet
Burkett's Family Restaurant
Eddie's Welding
Heidenheimer's
Josset Farms
Hatahoe
Rice Springs Care Home
Haskell Healthcare Center
Carousel Gift Shop
Wal-Mart
TeePee Taco

AGRICULTURE

Boll Weevil eradication program begins

The days of the costly, cotton boll weevil eating crops and profits in the Rolling Plains Central are numbered. Beginning the second or third week of this month, the Texas Boll Weevil Eradication Program will start treating some of the fields in the 22-county zone to reduce the number of weevils entering diapause, or a hibernation state.

"This is the best chance we've had in years to begin eradicating the boll weevil at the lowest cost to growers," said Woody Anderson, cotton grower and chairman of the Texas Boll Weevil Eradication Foundation. "The kick-off of the program in our area is the result of a lot of hard work by growers in the area who are determined to

eliminate the boll weevil as an economic threat to our cotton industry," he said.

During the first year of an eradication program, the diapause phase is designed to treat individual fields based on the stage of the cotton crop—killing diapausing weevils and setting the stage for the long-range benefits of eradication,

said Frank Myers, executive director of the Texas Boll Weevil Eradication Foundation.

Fields are treated if a minimum of 50 percent of the plants in individual fields have open bolls. Initially, these fields are treated on a weekly basis and as environmental factors, like the temperature, change, treatment schedules are adjusted to 10 and later 14-day cycles. Treatments end with the first frost.

The Rolling Plains Central Zone, approved by growers in December, 1994, is now made up of 22 counties since cotton growers in Brown, Comanche and Erath Counties voted unanimously to join the zone last month. Approximately 3 million cumulative acres will be treated this fall.

Drought hurts dove and quail season

You'd better do your bird hunting in Texas early in the season. There are not as many dove and quail this year because of the drought.

Texas Parks and Wildlife Biologist David Rideout says lack of rain means less green vegetation and fewer insects for the birds to feed on.

He predicts the first few weeks will be good hunting, but then it will drop off. However, he says there will be areas of the state that will see good hunting throughout the season because they've had more rain.

Dove season is the first hunting period to open. It runs from September to January with the

north and central parts of the state opening first.

So dove hunters will be the first to try out a new computerized licensing system. Stamps are printed on the license. You can also order a license over the phone.

A hunting license is \$19 or you can buy a combination hunting and fishing license for \$32. The toll free number to order your hunting or fishing license is 1-800-TX LIC 4 U (1-800-895-4248).

Submitted by Lou Gilly, Haskell Co. Ex. Agent.

Crop insurance deadline

Wheat, oats and barley producers in Haskell Co. are reminded that Sept. 30, 1996, is the final date to purchase your 1997 coverage for 1997 small grains. If you had catastrophic insurance (CAT) last year, you will automatically be covered and you will be required to pay the administrative fee for the applicable crop.

To be eligible for price support, a producer must have at least the catastrophic level of insurance for

each crop of economic significance grown in the participating county.

Producers do have the option to purchase catastrophic (CAT) or buy-up coverage (multi-peril insurance) elsewhere, by the sales closing date. If you do not intend to continue your CAT coverage through the FSA Office, you must cancel your policy, in writing, by Sept. 30, 1996.

Submitted by Haskell County CFSA.

Cattle Market Report

The market at the Haskell Livestock Auction was on a run of 906 head of cattle at its sale on Saturday, Sept. 14, according to Gary Tate, reporter.

The market was \$1 to \$2 higher on all stocker and feeder cattle. Bred cows and pairs were fully steady on very good demand. Packer cows and bulls were steady.

Cows: fat, .28-.34; cutters, .25-.35; canners, .20-.32.

Bulls: bologna, .40-.46; feeder, .45-.55; utility, .35-.40.

Steers: medium and large frame No. 1 200-300 lbs., .71-.81; 300-400 lbs., .63-.76; 400-500 lbs., .57-.69; 500-600 lbs., .59-.66; 600-700 lbs., .60-.65; 700-800 lbs., .57-.64; 800-up lbs., .56-.62.

Heifers: medium and large frame No. 1 200-300 lbs., .58-.66; 300-400 lbs., .55-.63; 400-500 lbs., .51-.59; 500-600 lbs., .53-.67; 600-up lbs., .53-.62.

Bred Heifers: medium frame, \$300-\$400.

Bred Cows: young to middle aged, \$375-\$540; aged or small, \$300-\$375.

Cows with calves: medium frame No. 1 young and middle aged, \$525-\$675; small or aged, \$425-\$525.

WANTED

.... The Best Brands
Around, We Have Yours

- *Wranglers
- *Justin
- *Olathe
- *Rockies

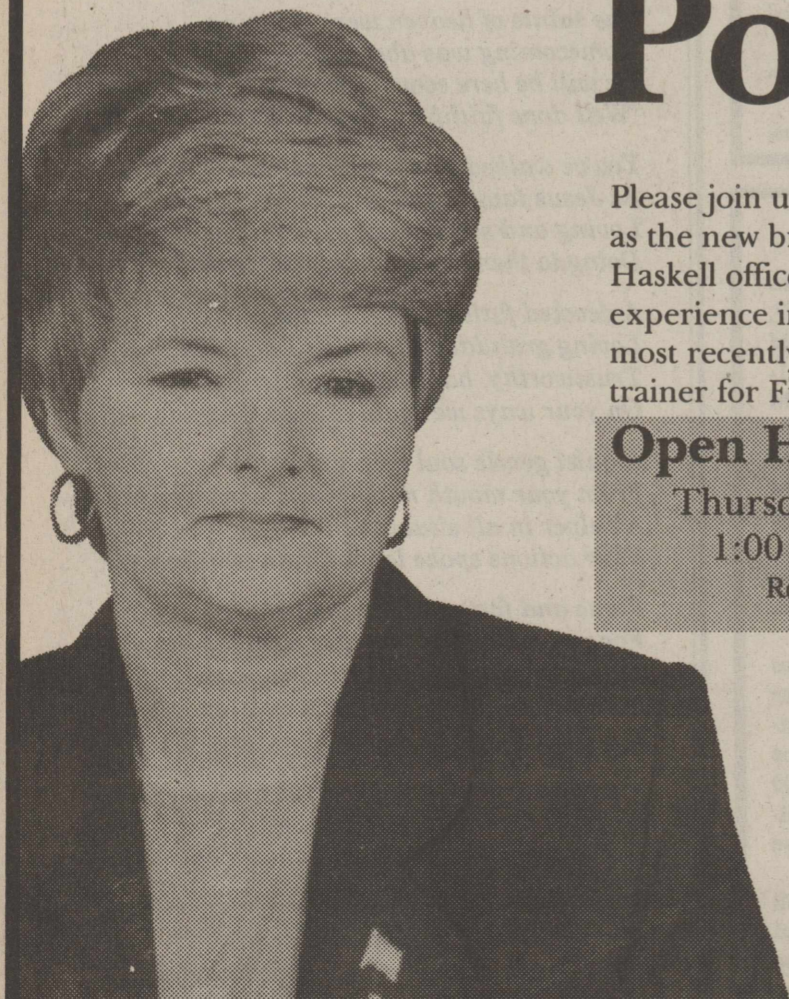
And We Have Many Other Famous Brands

OUTLAW ATTITUDE

Western Store

109 N. Swenson Stamford 915-773-3477

Meet Carol Posey



Please join us in welcoming Carol Posey as the new branch manager of our Haskell office. She has 15 years experience in the banking industry and most recently served as a regional trainer for First American Bank.

Open House Reception
Thursday, September 19th
1:00 p.m. to 3:00 p.m.
Refreshments • Gifts



518 South Second, Haskell • 864-8577

Member FDIC

Haskell Eye Clinic VisionCare ASSOCIATES

Thomas Labbe', O.D.
Russell Kuempel, M.D.

- Comprehensive Eye Exams -
- Contact Lens - Over 500 Frames To Choose From -

Save \$50⁰⁰
on complete pair of glasses

OUT PATIENT SURGERY
Including Cataracts with Implants
"RK" Radial Keratotomy - Glaucoma Surgery
Medicare & Medicaid Accepted

For Appointment Call • 817-864-3104
530 S. 2nd • Haskell, TX 79521

Customer Appreciation Days September 1-30, 1996

40th ALLSUP'S

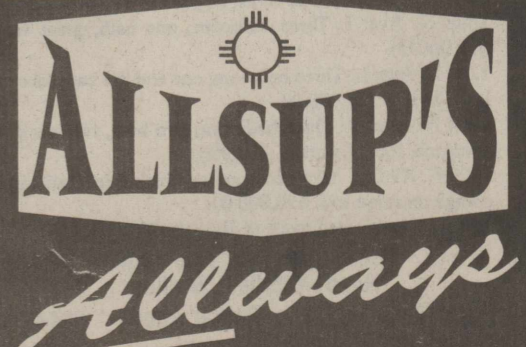
1956 - 1996 *Always*

<p>"ALL VARIETIES" Doritos® \$1.49 REG. \$2.09</p>	<p>"ALL PEPSI BRANDS" 6 PACK 12 OZ. CANS PEPSI \$1.49</p>	<p>COMBO MEAL RIB-B-QUE Sandwich Potato Wedges & Tallsup \$1.99</p>	<p>MRS. FRESHLEY'S Cinnamon Rolls 8 CT. PKG. 11 OZ. 89¢</p>
<p>"ALL VARIETIES" ALLSUP'S Ice Cream 1/2 GALLON \$1.59</p>	<p>ALLSUP'S Homogenized Milk GALLON \$1.99</p>	<p>ALLSUP'S Chimichanga EACH 89¢</p>	
<p>THORN APPLE VALLEY Sausage 12 OZ. PKG. 89¢</p>	<p>ALLSUP'S Sausage & Biscuit EACH 79¢</p>	<p>ALL SUP'S FLOUR 5 LB. BAG 99¢</p>	
<p>SHURFINE GRADE A Large Eggs DOZEN 89¢</p>	<p>SHURFINE GRAY OR CHUNK Dog Food 20 LB. BAG \$4.69</p>	<p>LANCER Cashews & Pistachios 1 1/2 OZ. BAG 79¢</p>	

40th ANNIVERSARY SPECIALS!

<p>ALL VARIETIES Sunny Cookies REG. 2 FOR \$1.00 40¢ EA.</p>	<p>FRITOS®, LAYS® OR WAY LAYS® Grab Bags REG. .75 40¢</p>	<p>WELLS blue bunny REG. .84 40¢</p>	<p>VANILLA & VARIETIES Champ! Cones REG. .84 40¢</p>
<p>You'll find all this and more at your Allsup's store</p>	<p>ALLSUP'S Fresh Coffee 12 OZ. CUP 40¢</p>	<p>OZARKA Spring Water 24 OZ. SPORT CAP BTL. 40¢</p>	<p>MRS. FRESHLEY'S Honey Buns 3 OZ. PKG. 40¢</p>
<p>HASKELL #153</p>	<p>RULE #91</p>	<p>SPRING WATER</p>	
<p>Hunt's BBQ Sauce 18 oz. \$1.09</p>	<p>Paper Towels Valley Fare 50¢</p>	<p>Toilet Tissue Valley Fare 4 roll pkg. 89¢</p>	<p>Ajax Liquid Detergent \$1.49</p>

LOW PRICES,
GREAT PRODUCTS
24 HOURS A DAY



PRICES EFFECTIVE SEPTEMBER 15-21, 1996 OFFER GOOD WHILE SUPPLIES LAST