

**Methodist Church  
spring revival begins**  
Page 6

Obituaries ..... Page 2  
School lunch menus ..... Page 3  
Out of the Past ..... Page 4  
Happenings ..... Page 1B  
Church Directory ..... Page 3B  
Classifieds ..... Pages 6B & 7B

**Memories in photos  
of by gone days**  
Page 2B

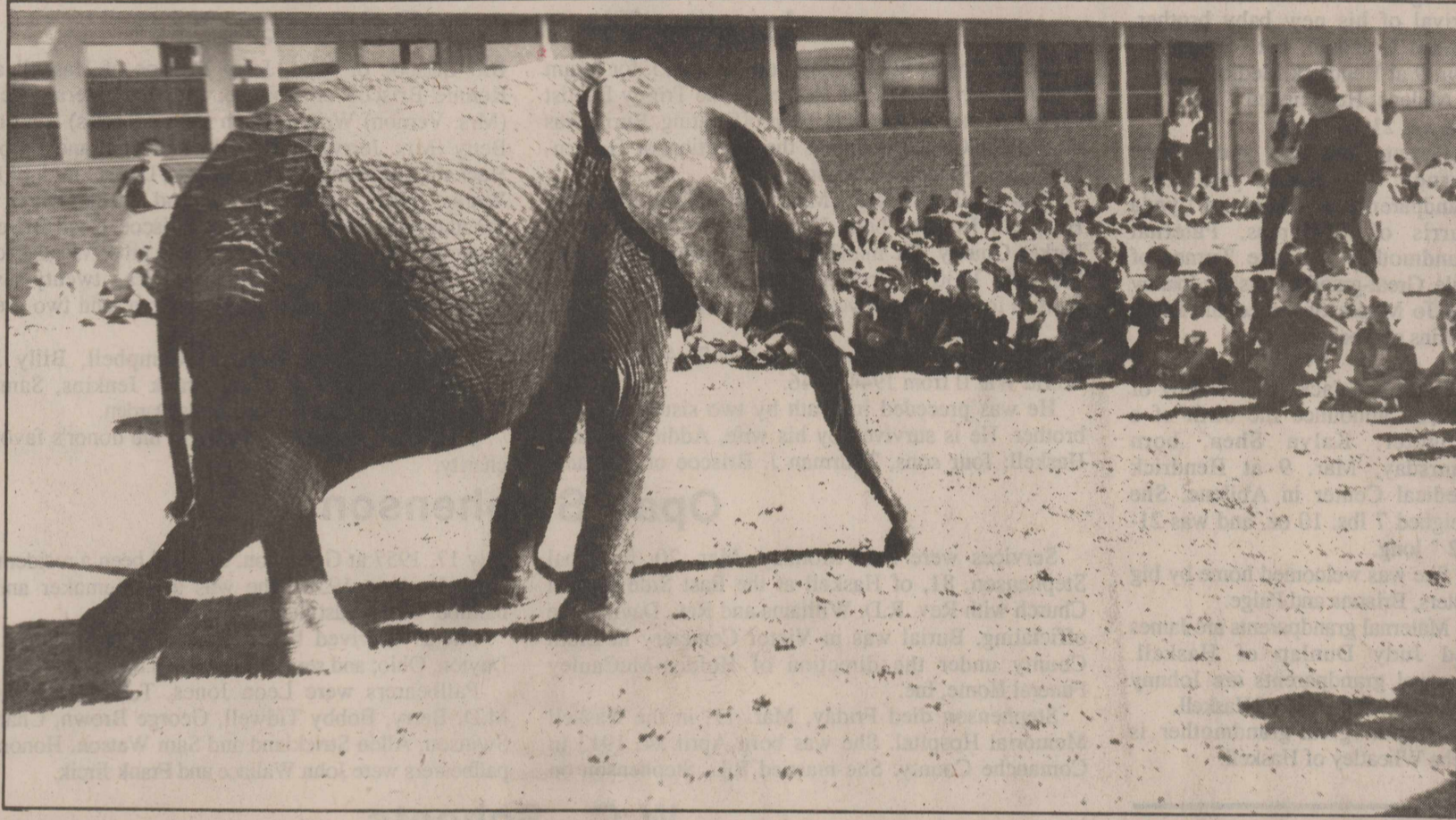
# The Haskell Free Press

VOL. 109--NO. 12, ©MARCH 23, 1995

"The People's Choice"

16 PAGES--TWO SECTIONS--TWO INSERTS--50 CENTS

## The circus is coming



Lisa, the baby elephant with King Royal Brothers Circus was in town on Monday. Lisa made a stop at the elementary school to entertain the children. The circus will be in Haskell on Saturday,

April 15, at the soccer park across from the park. Show times are at 3 and 7 p.m. The circus is sponsored by the Haskell Rotary Club with proceeds going to the Haskell Scholarship Fund.

## Bart McDougal named Advertising Manager

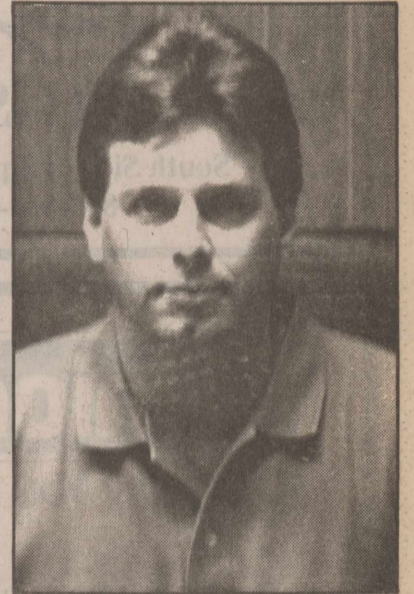
The Haskell Free Press announces the association of Bart McDougal as Advertising Manager and a partner in the company. He is the son of the publisher, John, and wife, Doris McDougal.

McDougal moved to Haskell from Sulphur Springs, Ar. where he was employed with Ozark Electronics and also operated his own consumer electronics business.

He is a 1981 graduate of Sweetwater High School in Sweetwater and a graduate of Metropolitan Community College in Omaha, Neb.

McDougal started in the newspaper business working in the circulation department at The Glasgow Daily Times, in Glasgow Kentucky in 1978. He also worked in the circulation department of The Sweetwater Reporter from 1979 to 1981.

McDougal and his wife, Nellie, have two daughters, Rachel, a



BART McDOUGAL

freshman at Haskell High School and Chea, a third grader at Haskell Elementary School and one son, Kelton, age 2.

## Extra! Extra! Fourteen months for the price of twelve months

In today's edition of The Haskell Free Press, you will find a coupon entitling subscribers to 14 months of the paper for the price of 12 months. Anyone in Haskell County or the surrounding counties of Shackelford, Jones, Stonewall, King, Knox, Baylor and Throckmorton who subscribes will receive two free months for only \$15. That's 14

full months or 60 issues. For those who have just renewed your subscription, you can still take advantage of this great offer. We will extend your expiration date an extra 14 months for only \$15 (in the above counties). So take advantage of this offer today and receive 2 full months free of informed news and advertising coverage.

## Sales tax rebate up 28.83% over same period in '94

"Texas employment has risen by over 331,000 jobs in the last year, to stand at 7.9 million jobs, for another new all-time high," State Comptroller John Sharp said recently as he delivered a total of \$122.6 million in March sales tax rebates to 1,073 Texas cities and 111 counties.

Local city sales tax rebates for March are \$110.9 million, 12.2 percent above the payments one year ago of \$98.8 million. The rebates of \$11.7 million to Texas counties reflect a 9 percent increase

over the \$10.7 million payments of March, 1994.

This month's payments include local sales tax collected in January and reported by businesses filing monthly returns in February.

The city of Haskell received \$16,288.59 in tax rebates, compared to \$12,387.11 for the same period in '94; a 28.83% increase. 1995 payments to date have been \$81,513.64 in comparison to \$63,762.65 for 1994 payments to date; a 27.83% increase.

O'Brien, Rochester and Weinert all had a small increase in tax rebates for the month for 1995, but Rule had a 13.66% decrease.

O'Brien showed a 28.15% increase for the year to date rebates, but Rochester, Rule and Weinert all had decreases in year to date rebates.

## Tickets are now on sale for Chamber banquet

Tickets are on sale now for the 59th Annual Haskell Chamber of Commerce Banquet. The banquet will be held at the Haskell Civic Center on Saturday, April 1 at 7 p.m. Enjoy a steak dinner with all of the trimmings and a delightful evening with Ray Stone, producer of the Dallas Cowboy Report. Tickets for the full evening are \$7 in advance and \$8 at the door.

Highlights of the evening will be the presentation of Haskell's 'Outstanding Citizen,' special awards and introductions of the directors and officers of the Chamber.

The Chamber will have a drawing for an autographed 'Dallas Cowboy Football,' complete with a trophy case. Donations for tickets are \$1 each or 6 for \$5. Tickets for both the banquet and the football may be purchased at the Chamber office, First National Bank, Haskell National Bank, First American

Bank, Sport About, The Drug Store or from any Chamber director. Come and enjoy an exciting evening on April 1.

## Two basketball players named to All-Big Country Super Team

Cody Cooley, a junior at Haskell High School and Leigh Ann Reel, a junior at Paint Creek High School were both named to the Abilene Reporter-News All-Big Country Super Team for the year 1994-95.

Cooley was also named District 7-2A Most Valuable Player and Class 2A Abilene Reporter News All Big Country Team Player of the Year. Cooley averaged 19 points a game overall. He shot 50 percent from the field and 80 percent at the foul line and also averaged 2.5 steals, 5.6 rebounds and 3.1 assists.

Cooley contributes his winning

honors to having eight good teammates. He is the son of Richard and Judy Cooley of Haskell.

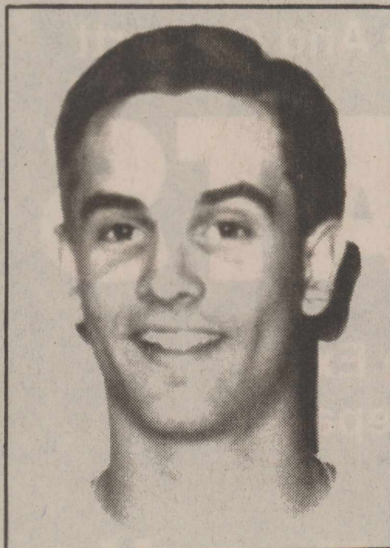
Reel was also named Most Valuable Player in District 20-A and was also named to the Class 1A Abilene Reporter News All Big Country Team first team.

She averaged 25 points and 18 rebounds a game, helping Paint Creek qualify for the playoffs as the runner-up in District 20-A. She shot 56 percent from the field overall.

She is the daughter of Brenda and Ronnie Reel of Paint Creek.



LEIGH ANN REEL



CODY COOLEY

## Council denies WTU rate hike

Fred Hernandez, manager of the Haskell WTU office appeared before the City Council at the Tuesday night, Mar. 14 meeting and asked the council to take action on the WTU rate case. He asked the council to deny the rate increase and to cede jurisdiction of WTU to the Public Utility Commission.

Hernandez said, "We can't price ourselves out of business, we have reevaluated our prices, we know there is a possibility that we will have some competition in the future, so we want to stay competitive."

The council denied the request for a rate increase and approved a motion to cede jurisdiction of WTU to the PUC.

## FNB Abilene branch holds ribbon cutting

The Farmers National Bank of Rule branch office in Abilene held a ribbon cutting ceremony on Friday, Mar. 17, with members of the Abilene Chamber of Commerce on hand to welcome them to Abilene.

The branch office opened in Abilene on the south Winters Freeway on Mar. 6. The office is staffed with six employees; one employee was moved from Rule

and four are from Abilene. Gail Browning of Abilene is Vice President.

Bank president, Patrick Pace said, "We decided that we wanted to open a branch office in Abilene to offer the same service to Abilenians as we do at Rule and we wanted to get closer to the people we were already serving from Abilene. We wanted to make it easier for them."

Pace said that the branch office would offer the same services as at Rule.

Banking hours are 9 a.m. to 3 p.m., Monday through Thursday and 9 a.m. to 5 p.m. on Friday, in the lobby. The drive through hours are 8 a.m. to 6 p.m., Monday through Friday and 9 a.m. to 1 p.m. on Saturday.



NEW BRANCH OFFICE - Farmers National Bank of Rule opened up a branch office in Abilene on March 6 and held their formal ribbon cutting ceremony on Friday, March 17. Bank President Patrick Pace and Vice President Gail Browning cut the ribbon as other bank employees of both Abilene and Rule, and members of the Abilene Chamber of Commerce observe the ceremony.



## Haskell School Menu

### Haskell Elementary School Breakfast

Juice or fruit and milk are served with all breakfast menus.  
**Monday:** Cereal and buttered toast with jelly  
**Tuesday:** Breakfast burrito  
**Wednesday:** Pancakes with syrup  
**Thursday:** Sausage, gravy and biscuits  
**Friday:** Breakfast pizza

### Lunch

Milk and juice are served with all lunch menus  
**Monday:** Soft taco, grated cheese, refried beans, tossed salad and sliced pineapple  
**Tuesday:** Sliced turkey with gravy, creamed potatoes, green beans, buttered hot rolls and chocolate chip cookies  
**Wednesday:** Lasagna, buttered corn, spinach, garlic bread and shape-ups  
**Thursday:** Chicken fried steak on bun, tater tots, lettuce and tomatoes and diced pears  
**Friday:** Hamburger, French fries, hamburger trimmings and ice cream  
 Menus subject to change.

### shape-ups

**Thursday:** Chicken fried steak on bun, tater tots, lettuce and tomatoes and diced pears

**Friday:** Chalupas with cheese, buttered corn on cob, lettuce and tomatoes and ice cream  
 Menus subject to change.

<b>\$ VALUABLE COUPON</b> CLIP AND SAVE Two Thin Crust Large 15" Pizzas Unlimited Toppings Pan Pizza \$1 extra each <b>\$13.99</b>	<b>\$ VALUABLE COUPON</b> CLIP AND SAVE Two Thin Crust Medium 13" Pizzas Unlimited Toppings Pan Pizza \$1 extra each <b>\$11.99</b>
<b>Roma Pizza</b> Phone 864-8525	



**COMANCHES** - Members of the Little Dribbler's Comanches team (in random order) are Aaron Segura, J.R. Rodriguez, Jason Biba, Jay Walling, Joshua Webb, Ross Bullinger, Rudy Alvarez, Scott Kennedy, Trent Richardson and Zac Coker. Coaches are Jerry Coker and Marc Thane.

## Old McDonald farm goes urban

Old McDonald had a farm, e-i-e-i-o. Only now his farm is in the city, e-i-e-i-o.

Show animals continue to increase in popularity among urban FFA members. Through their animals, students learn many lessons.

Wendy Page, agricultural science teacher at Klein Forest High School in Houston, said, "The best thing is (a livestock project) teaches is responsibility. The animal depend on the student for all its needs."

She points out pride of ownership and a genuine affection for animals as reasons students choose to show livestock.

Klein Forest students showed about 700 animals this season. Page said students in urban areas are especially interested in livestock projects because it "is something

totally new to them and something they would not otherwise have a chance to do."

Larry Vinklerek, advisor of the McNeil FFA Chapter in Austin, agrees that livestock projects give a definite amount of responsibility to the students.

McNeil FFA members wash, clip, clean and feed their 85 animals regularly. Vinklerek said show animals receive blankets, shelter and bedding during cold weather. Animals in a normal feedlot situation do not receive such special care, he said.

Robert Cooper, agricultural science teacher at Tascosa High School in Amarillo, said the weather of the High Plains dictates the care of Tascosa students provide to show animals. "Water has to be checked and ice has to be broken every morning."

Students show livestock projects to fulfill the requirements of the Supervised Agricultural Experience Program. The SAEP helps students develop skills necessary for employment by teaching them the considerations involved in starting and maintaining a business.

To earn credit for the SAEP, students must keep detailed records of their activities, income and expenses.

Through caring for their animals, students experience how different skills are linked in business operations. Keeping financial records, rationing feed and managing time employ distinct abilities. Yet they work together to promote a healthy operation.

### Haskell High School Mar. 27-31

Juice or fruit and milk are served with all breakfast menus.

**Monday:** Cereal, buttered toast with jelly  
**Tuesday:** Breakfast burrito  
**Wednesday:** Pancakes with syrup  
**Thursday:** Sausage and gravy with biscuits  
**Friday:** Breakfast burrito

### Lunch

A choice of hamburger, salad bar or baked potato with ham and cheese, plus milk and tea are offered on all lunch menus.  
**Monday:** Soft tacos, grated cheese, refried beans, tossed salad and sliced pineapple  
**Tuesday:** Sliced turkey with gravy, creamed potatoes, green beans, buttered hot rolls and chocolate chip cookies  
**Wednesday:** Lasagna, buttered corn, spinach, garlic bread and

## Paint Creek School Menu

### Mar. 27-31 Breakfast

Juice and milk are served with all breakfast menus.  
**Monday:** Biscuits with gravy  
**Tuesday:** Toast with jelly  
**Wednesday:** Cinnamon toast  
**Thursday:** Cereal  
**Friday:** Donuts

### Lunch

Milk or tea is served with all lunch menus.  
**Monday:** Corn dogs, tater tots, corn-on-the-cob and applesauce cake  
**Tuesday:** Stew, cheese toast, pea salad and peach cobbler  
**Wednesday:** Bar-b-que on bun,

fries, tossed salad, onions and Jello with fruit

**Thursday:** Beans and tacos, lettuce, onions, cheese, hot sauce and cornbread  
**Friday:** Ham, pimento cheese or peanut butter sandwiches, pork and beans, lettuce, chips and ice cream

## Chicken & Tots

Breaded Chicken Sandwich & Order Of Tater Tots

**ONLY \$1.99 PLUS TAX**

OFFER GOOD MARCH 1 THRU MARCH 31, 1995.

**No Waiting Call In Orders 864-8533**

NOT VALID IN CONJUNCTION WITH OTHER OFFERS.

## Little League baseball clinic

A Little League Baseball Regulation and Playing Rules Clinic will be held Friday, Mar. 24 from 7 to 10 p.m. and Saturday, Mar. 25 from 8 a.m. to 3 p.m. at the Rose Park Recreation Center, 2601 S. 7th St. in Abilene (The old Monkey house).

The clinic is for anyone interested in learning Little League baseball rules and regulations. It is required for Little League umpires who wish to become certified umpires and to coaches or board

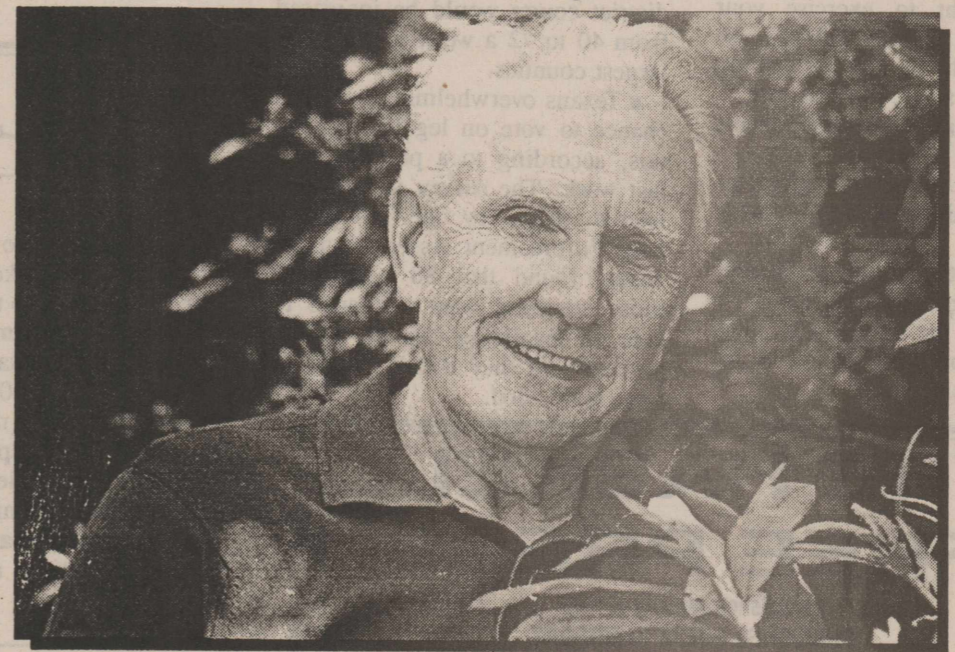
members wishing to learn the playing rules.

A test will be given to all umpires wishing to become certified at the end of the clinic.

The cost is \$10 for anyone wanting to learn the rules. For anyone who wants to become a certified umpire, the cost is \$20; this cost also includes membership in the Abilene Umpires Association.

For further information, call Greg Akin, 915-695-4657.

That's the *Spirit* of Community Pride!



"...ten years earlier."

When you retire, don't find yourself in the position of wishing you had opened an IRA ten years earlier. With a long term investment program like an IRA, every year you wait makes a tremendous difference. There's a multiplying effect that happens when interest accumulates

over time. Open your IRA today. The quality of your retirement depends on it. Substantial penalty for early withdrawal.

That's the spirit of community pride.



## First National Bank

Member FDIC

200 South Avenue E • 864-8555 • Haskell

## We're As Close As Your Phone!

### THE DRUG STORE

In Haskell

- + Fast, Friendly Service at a Competitive Price
- + Open 365 Days a Year
- + 24 Hour Emergency Prescription Service
- + Computerized Records for Insurance and Tax Purpose
- + Pharmacists Available to Discuss Your Medications
- + Drive-In Window
- + Senior Citizen Discount

(817) 864-2515 or 2673

Nights

Lonnie (817) 864-3950

Doyle (817) 864-2815

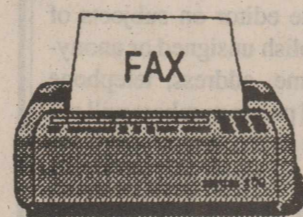
Elbert (817) 864-3439

Mobile (817) 256-2155

Toll Free Number

1-800-962-0743

Fax (817) 864-3731





## FCE club members attend Tri-County Rally Day

By Myrtle Phemister

Twelve Haskell County FCE club members attended the 1995 Tri-County Rally Day hosted by Baylor County FCE club members on Thursday, Mar. 16, in the FCE club house in Seymour.

The theme for the day-long program was entitled "Find the Luck of the Irish in Seymour," and green was the color of the day in the gayly decorated club room.

Registration began at 9:30 a.m. with coffee, punch and snacks served by the host clubs. At 10 a.m. guests were welcomed by Baylor County Judge, Robin Smajstria, of Seymour. Estalyn Liles of Haskell gave the response. Knox County was responsible for a devotion welcoming the women from the three counties, Baylor, Knox and Haskell. The Tri-County Rally is an annual tradition.

Each person brought a 'Show and Tell' gift of hand crafted items and decorated shirts and jackets. Crocheted items, quilts and other crafts were displayed with patterns and instructions being shared with everyone.

A fun time that included skits and readings from each club preceded the next part of the program. Erma Liles also entertained with a medley of well-remembered piano selections of by-gone days.

Barbara Wright gave a very interesting demonstration on 'Window Treatments' as she presented new ideas for rejuvenating

rooms with seasonal window curtains, coverings and shades.

A 'Parade of Fashions,' featuring fashions from Casey's of Seymour, was modeled by several lovely ladies during the covered dish luncheon.

Ann Latham, a registered dietitian with the WIC program gave a dramatic demonstration on 'Your Family's Health.' She demonstrated, on a poster, the amount of fat in a bologna and cheese sandwich; then she measured the amount of fat by teaspoons from a can of Crisco to show how much is consumed from a single sandwich with chips and a glass of whole milk.

Latham distributed leaflets and encouraged everyone to eat a balanced diet of fruits, vegetables and other low-fat foods.

Sammye Chapman of Seymour presided as Chairman of the Rally and at a business meeting at the end of the day. Knox County was designated as host county for the Rally in 1996. Lula Batey was elected chairman; Jeanette Phillips, vice-chairman; and Eileen Rola, secretary for the 1996 event.

Those attending from Haskell County clubs included Mildred Robertson and Dorothy Trussell of Josselet; Jane Smith, Joetta Burnet, Lena Tidwell and Lennie Blankenship of Eager Housewives; Erma Liles, Faye Jetton, Estalyn Liles, Alice Yates, Betty Sanders and Myrtle Phemister of the Weinert Club.

## Rhineland observes centennial

The community of Rhineland will observe their centennial with a two day celebration on Saturday, Sept. 2, and Sunday, Sept. 3. The community extends a warm welcome to everyone to join them

in this celebration. Plans have been made for all day festivities on Saturday and spiritual celebration on Sunday.

The schedule of events on Saturday include:

9 a.m.—registration; 10 a.m.—parade; 11 a.m.—museum, arts, country store, crafts, souvenir booth, foods, carnival games, carriage ride tour, volleyball and horseshoe tournaments; 2 p.m.—fun run races; 4 p.m.—program; 5 to 7:30 p.m.—catered meal; dusk—fireworks display; and 8:30 p.m. to 12:30 a.m.—dance.

Sunday's scheduled events include:

9 a.m.—registration; 10 a.m.—mass; 11 a.m. to 2 p.m.—catered meal; and 11 a.m. to 4 p.m.—socializing and visiting on the grounds.

Anyone interested in arts, crafts, food booth space, horseshoe and/or volleyball tournaments entries, or interested in parade entries, should contact Annette Welch at 817-422-4501 (W) or 817-422-4828 (H) or Mary Birkenfeld at 817-422-4496.

## Spring cleaning for the kitchen

If it's time to take on spring cleaning, don't overlook the pantry. Adopting a "first in, first out" policy for all your foods will help you maintain quality. When cleaning out the freezer, remember that meats are best used before four to six months of age, but other foods can last up to a year. As for the kitchen cabinets, check all usage dates, and be sure that staples such as flour and sugar are in covered containers and show no signs of insect infestation. Extension nutrition specialist Dr. Peggy Van Laanen says now is also an important time to check some non-food items in your kitchen. Make sure that expiration dates have not been passed. And check for bubbles in canned goods or for even small pin holes in boxes or cans that can invite spoilage. Van Laanen also warns that you should not overload your freezer so that certain parts maintain a higher temperature. This can cause foods to thaw and refreeze, creating a safety hazard.

## Volunteer program

Anyone interested in volunteering while learning about public and private benefits is encouraged to become a counselor with the benefits counseling program.

This program is a free counseling service for senior Texas and there is absolutely no selling involved.

Volunteers participate in a training program where they learn the ins and outs of public and private benefits, like Medicare, Medicaid, private insurance, and legal issues. Once trained, counselors help clients who may have questions regarding their benefits. Volunteer counselors are then asked to help counsel seniors in the community on the information they've learned.

Those interested in volunteering can contact Jena Price at The Area Agency on Aging of West Central Texas Council of Governments at 915/672-8544 or 1-800-928-2262.

This program is jointly sponsored by the Texas Department on Aging in conjunction with, The Texas Department of Insurance, and The Texas Legal Services Center. This program is a state-operated service.

I've never any pity for conceited people, because I think they carry their comfort about with them. —George Eliot

## Sagerton News

by Alice Bredthauer

Those who attended the breakfast held in the Fellowship Hall of Faith Lutheran Church were Marchel Nauret of Aspermont, Lewis Corzine of Stamford, Keith Corzine, Kenneth Corzine and son, Leroy Nehring, J. F. Dozier, Clancy Lehmann, Franklin Mrazek, David Letz, Alvin Bredthauer, Clayton Stegemoeller, Leon Stegemoeller, Marvin Stegemoeller, Eugene Teichelman, Melvin Baitz, Pastor Zell, Dean Quade and Jack Jones.

The Faith Circle met in the Fellowship Hall of Faith Lutheran Church last Tuesday with Mrs. J. B. Toney having the topic. Attending were Mrs. Mary Neinast, Mrs. Marchel Nauret, Mrs. Clancy Lehmann, Mrs. J. B. Toney, Mrs. Alvin Bredthauer, Pastor Zell, Mrs. Marie Zell, and Mrs. Glyn Quade.

Mr. and Mrs. Charles Clark, Mrs. M. Y. Benton went to Abilene to do some shopping and meet the Bob Clarks to have lunch with them.

## Video program presented at child care meeting

Haskell Jones County Child Care Providers met in Stamford at the City Hall on Monday, Mar. 13. A pot luck meal was enjoyed by 24 members. President Sandra Rhea presided over the short business meeting. Several door prizes were awarded.

Mary Daniel, Training Coordinator of People for Progress/Child Care Training Services of Sweetwater, presented a two hour orientation on the "Caring for Children," video series.

"Caring for Children" is a series of 12 to 30 minute programs which describes the stages of development in children from birth through age 12. The six other topics included deal with health, safety, enhancing self esteem, effective teaching techniques and building a partnership with parents. A six hour video was provided for each member to view on their own. A follow-up three hour class will be held in May.

## Seeking information on married couples

The Haskell Free Press is seeking information on the oldest married couples (the longest number of years) in the county. If you think, you might be one of these couples, or have information on a couple, please contact us at 817-864-2686 or drop us a letter at Box 1058, Haskell, TX 79521 and let us know.

Mr. and Mrs. Jack Tabor have been gone to help take care of their grandchildren in Little Elm.

A big crowd attended the Sons of Hermann Hall fish fry on Sunday. The afternoon was spent in playing cards and dominoes.

Greg Teichelman spent the weekend in the home of his parents, Mr. and Mrs. Jimmy Teichelman.

Mr. and Mrs. Franklin visited in the home of Mr. and Mrs. Leo Monse.

Work has begun preparing the community for the visitors that will be attending the Hee Haw show. Workers were G. W. LeFevre, Mrs. G. W. LeFevre, Alvin Ulmer, Johnny Guinn, Shonda Apple, Eunice Guinn, Charles Clark, Karen Lehmann, Joe and Dorothy Clark.


Mrs. Glyn Quade, Mrs. Lottie Bell Parks visited in the home of Mrs. M. Y. Benton.

Those attending from Haskell were Laura Adress, Lois Howard, Vickie Josselet, Donna Kimbler, Missy Lewis, Lesa Meier, Sue Carol Mullen and Jo Ann Williams. Attending from Rule were Judy Andrews and Mary Messenger.

Attending from Stamford and Hamlin were Emilee Alvarado, Alma Barrera, Jeanie Bennett, Shelley Bogle, Marlene Collins, Dorthey Decker, Denise Dennis, Skeet Dennis, Julia Hodges, Jennifer Howell, Julie Jimenez, Cindy Kendrick, Nina McClintock and Sandra Rhea.

For information on meetings or interested child care providers may call 915-773-5186 or 864-3870. All providers are welcome.

The next meeting will be Monday, April 10, at the Trinity Lutheran Church annex in Haskell.



### Nemir's Archery

Full Line of PSE Bows And Equipment  
Hunting Supplies • Targets  
Custom Built Arrows • Decoys  
Bow Fishing Equipment • Calls  
All Types Of Bow Repair  
510 North 2nd • Haskell  
817-864-2258  
EASTON. Nothing Else Comes Close


### Our depositors stand out in a crowd . . .



Because we do. All our services are geared to offering the most convenience, speed and efficiency in banking today, as well as providing the security of being insured by the U. S. government for up to \$100,000. Become one of our satisfied customers and find out what stand-out banking is all about.



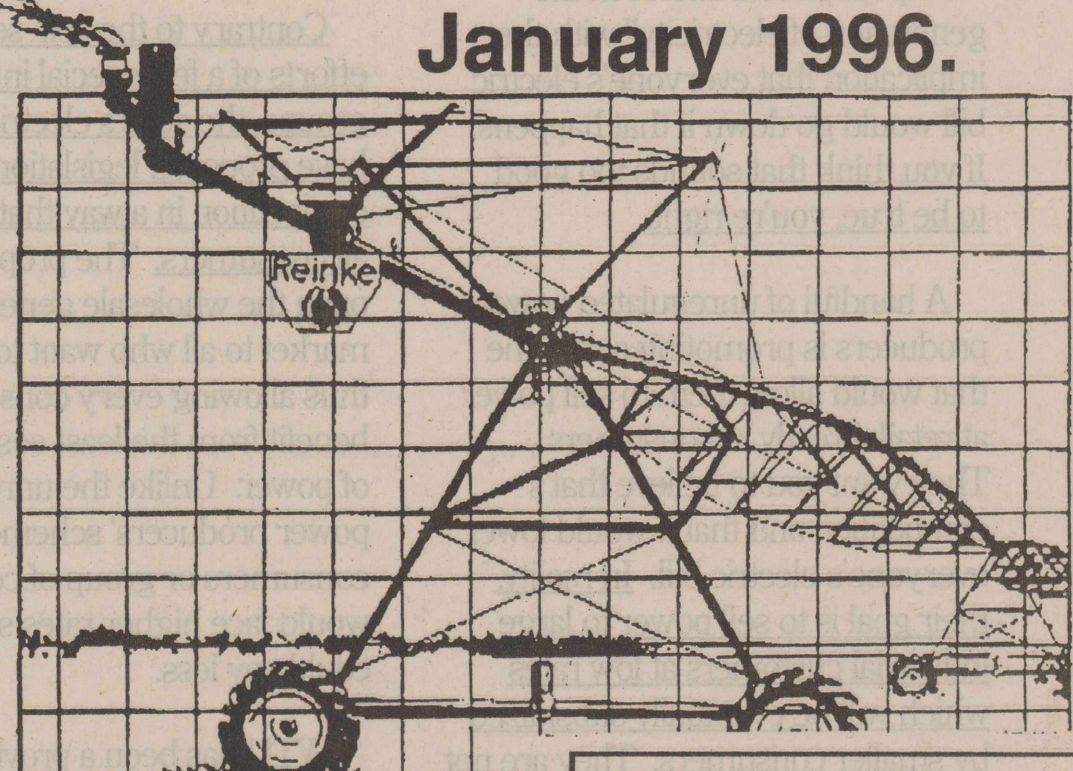

Post Office Box 10  
Phone (817) 997-2216  
Rule, Texas 79547



## REINKE IRRIGATION SYSTEMS

# LEASE NOW!

## Don't Pay Until January 1996.



### REINKE IS FIRST IN LOW RATES

Let us figure a Reinke system for you today and put the advantages of the industry leader to work for you. Call or come by:

## Western Pipe and Pivot Co.


Rochester, Texas  
George Mullino  
817-743-3215  
817-743-3559  
Cole Turner  
817-743-3347

### With Reinke's No Down Payment 6-Year Leasing Plan

You can put a dependable Reinke Irrigation System to work for your operation now, get a low implicit rate on your lease and still avoid tying up this year's working capital.

You make no down payment and you pay no security deposit. All you have to do is take delivery of any Reinke Irrigation System and defer your first lease payment until January 1996 or choose the month that best fits your cash flow.

This is a guaranteed purchase option lease, so don't wait. Come in and let us show you how you can start irrigating. This offer is only good for a limited time, so act now.



© 1994 Reinke Mfg. Co. Inc.



## RCA Model T20005BK

# \$499<sup>00</sup>

**RCA 20" TV/VCR Combination**

- 2-Head VCR With Auto Head Cleaner
- TV/VCR Remote (55 Functions)
- CaptionVision Closed Caption Capability\*
- 181-Channel Tuning Capability\*
- On-Screen VCR Programming
- Auto Repeat

T20005BK

## F & D Electronics

512 N. 1st • 864-2536 • Haskell, Texas

## In the Service

Army Pvt. Jason W. Simoneaux has completed basic training at Fort Knox, Ky. During his training, he received instruction in drill and ceremonies, weapons, map reading, tactics, military courtesy, military

justice, first aid and Army history and traditions.

His wife, Stacy, is the daughter of Lynn Sanders of Haskell and Deborah Sanders of Dallas.

### FREE BASEBALL

With Each Pair of Nike or Mizuna Baseball Shoe Purchased

**We have Little League and Softball Supplies**

- Shoes
- Gloves
- Bats
- Batting Gloves
- Uniforms
- Caps
- Trophies
- Balls
- Equipment
- T-Ball Supplies

- Free Baseball Offer Good Thru Sat., May 9

**"Where Winners Shop"**

817-864-3891  
402 N. 1st.  
Haskell, Texas 79521

## Methodist Church spring revival begins Sunday

First United Methodist Church's spring revival begins Sunday, Mar. 26, with the Rev. Jesse Hodge of Tulia delivering the morning message at 10:50 a.m. and the evening message at 6 p.m. The revival continues through Wednesday with breakfast at 7 a.m. and evening revival services at 7 p.m. Special music will be provided by area musicians.

Rev. Hodge entered the ministry in June, 1972 and pastored St. Luke UMC in Colorado City for three years. He also served Adrian-Wildorado charge, Wesley UMC in Hereford, FUMC in Raton, New Mex., FUMC in Canadian and FUMC in Tulia. He is presently serving on the Annual Conference Board of Ordained Ministry and the Board of the Sierra Grande Cowboy Camp Meeting. He also serves on the Plainview District Ministry Team and the Plainview District Committee on Ministry.

Rev. Hodge is a graduate from Whiteface High School in 1960, West Texas A&M in 1979 and completed a theological training at Perkins School of Theology in



REV. JESSE HODGE

1984. He has preached revivals throughout West Texas, New Mexico and Oklahoma and was the preacher at Cowboy Camp Meeting in northern New Mexico in 1988.

He and his wife, Liz, have four children and four grandchildren.

An invitation is extended to the community to attend these special services.

## Rice Springs Care Center

By Judy Wolsch

We here at RSCH are talking more about the weather these days, but are not really looking forward to what each day ahead might bring with it; hopefully sunshine!

The rain looks good but not the activities with it; but then again it is March.

We welcome new residents, Lona Linton, Nora Offill, C.V. Langford and Dove Furrh. Also new employees, Kenneth Lewellen as a janitor and Morna Andrews as a RN charge nurse.

Our prayers are with Sarita Parks

and Gladys Carruth who are in the hospital.

We extend our sympathy to the families of Lois Rogers, Mable Bryant, Cecil Pittman, Iscum Briscoe and Otis Sims.

Residents celebrating March birthdays will be Lucy Hunt-2nd, Ocie Garrett-4th, Myrtle Kinney-5th, Longina Barrios-15th, Jim Haynes-19th, Henrietta Stegemoeller-21st, Gussie Ford-22nd, Gladys Dyches-24th and Erma Marsh-31st.

Again we say "Thanks" to all the visitors and volunteers which make each day a little brighter.

## Property rights issue is moving to center stage

The president of Texas' largest farm organization said recently that the private property rights issue is moving to "center stage" in Austin and it's "long past time."

House Bill 2591 by Rep. Susan Combs (R-Austin) was filed Thursday, Mar. 9. Senate Bill 14, sponsored by Senator Teel Bivens, (R-Amarillo) was expected to be filed Monday, following extension of Friday's bill filing deadline.

Bob Stallman, President of the Texas Farm Bureau, said the private property rights bills will be among the most important issues considered by the legislature this session.

"It's absolutely certain that citizens and landowners are waking up to the fact that one of the basic principles upon which our country was founded is the right to own, use and enjoy private property," Stallman said. "If those rights are infringed, you're tearing at the very fabric of our society."

Bivens says the legislation asserts three basic property rights concepts. First, both bills call for a takings impact assessment before government engages in certain activities. Secondly, the legislation defines what a taking actually is.

"The Fifth Amendment of the Constitution says the government cannot take your property without paying for it," Bivens said. "We've had Supreme Court cases that further enunciate that doctrine, and we intend to take that case law and put it into the statute."

Finally, Bivens said, in those cases where a taking must occur, landowners would be compensated for lost value and lost income.

"It's my hope that this legislation will put state agencies and local governments on notice that there will now be a mechanism by which landowners can be compensated if these entities engage in activities that rise to the

level of a taking," Bivens said.

Representative Combs, the House sponsor, says the takings assessment is critical to a meaningful property rights law.

That's very much a part of the philosophy of 'look before you leap,' because there are often times consequences to regulations that are very serious," Combs said.

Stallman, a rice farmer from Columbus, said that regulators at the state and federal levels have gone too far and it's time to "pull back the reins and respect the rights of property owners."

Neither the House or Senate bill has any effect on federal regulations, but similar bills have been introduced in Congress. Combs said, however, that a strong state property rights law is a good preventive measure.

"You can slide down the slippery slope of more and more regulations until landowners become so bound up and tied down that they no longer have any effective use of their property," Combs said.

Stallman echoed those concerns, saying, "We want to lay out clear principles and clear law that indicates that state agencies must respect property owners rights."

Both bills affect the actions of the state and local governments, but do not affect the actions of the federal government. Similar legislation has passed the U.S. House of Representatives.

Neither Senate Bill 14 or House Bill 2591 has a specific formula for calculating compensation, and it is likely that the courts will develop compensation formulas when regulatory takings occur.

Stallman said Texas farmers and ranchers are very optimistic that a meaningful private property rights bill will pass the Legislature and eventually be signed into law by Governor George Bush.

# An Important Message for WTU Customers

Recently you may have read or heard about a plan proposing "competition and choice in the generation of electricity" with the implication that everyone's electric bill would go down if that happens. If you think that sounds too good to be true, you're right.

A handful of unregulated power producers is promoting a scheme that would allow them to sell power at retail directly to consumers. They want you to believe that's competition and that it would lower everyone's electric bill. In reality, their goal is to sell power to large industrial customers at low rates which will be eventually subsidized by smaller consumers. They are not interested in assuming an obligation to serve anybody.

At West Texas Utilities Company, we achieve success with a tradition of low rates, reliability, community involvement and dedication to superior customer service. The electric industry is changing. Deregulation, expanding customer expectation, new technologies and other dynamic forces are having a profound effect on our business, but

the strong commitment to our customers and communities remains.

Contrary to the self-serving efforts of a few special interest groups, the state's electric utilities have proposed legislation to increase competition in a way that will benefit all consumers. The proposal would open the wholesale generation market to all who want to participate, thus allowing every consumer to benefit from the least costly sources of power. Unlike the unregulated power producers' scheme, no consumers or group of consumers would face higher rates so a few could pay less.

WTU has been a provider of electrical service for some 80 years. Our involvement with and commitment to the communities we serve are stronger than ever. Our lower-than-average rates in Texas have been stable for years. We take our obligation to provide the best possible service to each and every one of our customers very seriously. Always have, always will! If you would like more information on this very important issue, please call or come by any WTU office.

# WTU

**West Texas Utilities Company**  
A member of the Central and South West System

## WEEDS?

### SHOOT TO KILL!

(130203)

(130200)

Specially formulated for homeowner use. Kills most weeds and grasses, roots and all. PLEASE NOTE: Now that grass is greening up, use only for spot spraying of weeds and unwanted grasses to prevent damage to yards.

24 Oz. Ready-To-Use	\$3.79
Pint Ready-To-Use	\$9.99

(130861)

Kills dandelions and other broadleaf weeds. Roots and all. Does not harm Bermuda grass.

\$3.99

PRICES GOOD THRU APRIL 1st

OSBORNES

VERNON (817) 552-7631	MUNDAY (817) 442-4851	STAMFORD (915) 773-5006
--------------------------	--------------------------	----------------------------



**GRANDDAUGHTER ON WINNING TEAM** - The Hurriscans of Plano, coached by Robin Colbert, won the City Champ title for the 2nd consecutive year. These girls are in the third grade in Dallas and beat out 22 other third grade teams for the title. Robin is the son of Golda Colbert of Haskell and Dr. R.F. Colbert of Huntsville, Ala. His daughter, Julee Ann (#10) is second from left on the front row. Julee Ann is also the granddaughter of Nancy and Bailey Toliver of Haskell.



**JOKERS** - Members of the Little Dribbler's Jokers team (in random order) are Brandie Smith, Heather Parsons, Katy McDaniel, Larissa Randle, Mega Bird, Melisa Buerger, Tara Hamilton and Whitney Crane. Coaches are Ricky Bird and Raymond Rodela.

### What's in social security for the "Thirty-somethings?"

So you're "thirty-something" and you've been working and paying into Social Security for 10 years or more. Now, you're thinking about the years that lie ahead until you're "sixty-something" and can start receiving Social Security retirement benefits. This is a good news/bad news situation.

The good news is that you may have already worked long enough to become eligible for benefits when you reach retirement. The bad news is you need to keep working if you want your benefits to be larger. Social Security benefit amounts are based on your earnings adjusted for inflation and averaged over your highest 35 years of earnings.

But there's more to Social Security than just the monthly checks you'll receive when you retire. All through those years you are working and paying into Social Security, you and your family are protected by the disability and

survivors programs.

This means that if you become disabled and are unable to do any kind of work for which you are suited for at least 12 months, you could receive monthly Social Security disability checks. To get those checks, you must have worked and paid Social Security taxes for up to five years just prior to becoming disabled, and earned enough credits to be fully insured - no more than 10 years of work.

The chances of becoming disabled or dying before reaching retirement age are not as remote as you may think. Studies show that about 42 percent of men and 30 percent of women will die or become disabled before reaching their retirement years. If this happens to you, not only would you receive Social Security benefits, but your spouse and young children may qualify as well. No one likes to think that they will

be disabled or die before enjoying a long life. But it should be comforting to know that if the unthinkable happens, you and your family will have a safety net.

### C-MORS BAIT & TACKLE

Wichita Falls Highway, Seymour, Texas  
817-888-3372

Miller Genuine Draft Light LN	case	\$11 <sup>96</sup>
-------------------------------	------	--------------------

Milwaukee Best Milwaukee Best Light	case	\$8 <sup>94</sup>
-------------------------------------	------	-------------------

Natural Light	\$11 <sup>05</sup> case	Coors & Coors Light	\$13 <sup>99</sup> cubes
---------------	-------------------------	---------------------	--------------------------

While Supplies Last • We Carry Kegs.

### Basketball shootout

Modern Way IGA will sponsor a 7-Up Basketball Shoot-out beginning at 10 a.m. on Saturday, Mar. 25.

A basketball will be given for the 1st place prize for ages 6 and under. A mountain bike will be given for the 1st place prize for ages 7-9 and 10-12.

## PLANTS



**Bedding Plants Now Available**

Check Our Plant Stock Everything You Need For Your Spring Planting Needs.

"Order Early"

... Easter Baskets Available With Homemade Suckers Now Taking Orders

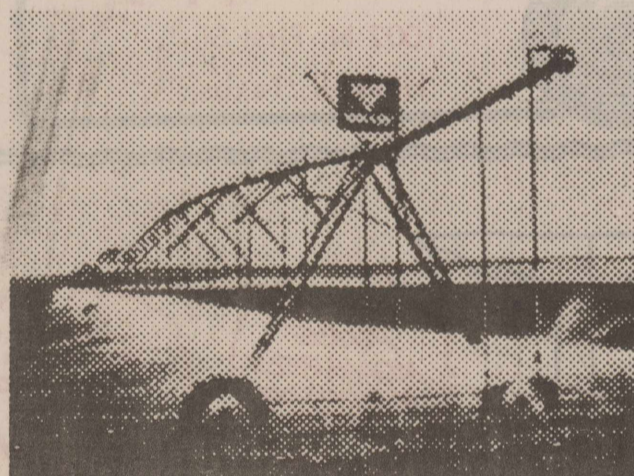
Toiletries Gift Baskets For Easter and Mother's Day

Phone 864-3121

Conner Nursery & Floral Co.

505 N. Ave. H

Haskell, Texas



## Three Choice Financing Packages:

**8.5% FIXED APR**      **3 YRS**

**9.25% FIXED APR**      **5 YRS**

**9.45% FIXED APR**      **7 YRS**

### Fixed Rate Retail Sales Contracts

- Low down payments 10% at 3 and 5 years, 15% on 7 year
- First payment due 12 mos.
- No prepayment penalty
- See your local Valley dealer today.

OFFER ENDS MARCH 31, 1995

## Knox Valley Irrigation

410 North Birch  
817-422-5346

(Mobile)  
817-422-5387

Munday, Texas  
1-800-687-1961

LIMITED TIME/QUANTITY OFFER: Subject to change without notice—financing (available only in U.S.A.) subject to credit approval—certain restrictions apply. For your nearest Valley Dealer call 1-800-825-6668 Ext. 3415

**Armin Poly Pipe Sales • PVC Grated & Flow Line Pipe**  
**• Underground Pipe Installation & Service •**



**8%**

**Financing With  
Approved Credit On  
New 1995 Models  
Limited Time Only**

**MEDFORD BUICK-PONTIAC-GMC**  
200 N. Ave. E • P.O. Box 696 • Haskell • 817-864-2644



**HNB promotes  
John M. Hicks**

Robert A. Howard, CEO of Haskell National Bank, is announcing the promotion of John M. Hicks to Vice President. John has worked for the bank since 1983. His duties include compliance and loan review. He also serves as the bank's security officer. John, a native of Rochester, graduated from Rochester High School, Tarleton State College, Southwestern Graduate School of Banking and is active in the Haskell Lions Club.



**YO-YOS** - Members of the Little Dribbler's YoYos team (in random order) are Cassie Hise, Debbie Long, Gina Rodriguez, Jillian Thomas, Maggie Brzozowski, Morgan Cox, Tarina Schonstedt and Tracy Richardson. Coaches are Tom Long and Thomas Rodriguez.



**BLAZERS** - Members of the Little Dribbler's Blazers team (in random order) are Angela Brown, Benito Lucio, Brittany Bird, Cassandra Ortiz, Kristi Flores, Sherri Ejem, Tara Gomez, Taylor Seelke and Toni Abila. Coaches are George Brown and Stephen Bird.

**Haskell native nominated for  
Teacher of the Year award**

Gena Whitaker Woodard, a 1983 graduate of Haskell High School, has been nominated for Teacher of the Year for the Wichita Falls ISD. She was selected from a staff of about 50 teachers at

Washington/Jackson Math-Science Center. The nominees will be honored at a banquet on April 6. Woodard, the daughter of Louis and Gladys Whitaker of Haskell, has been teaching Language Arts in

the fourth grade at Washington/Jackson for eight years. She is a member of their Vertical Team and is one of the District Cluster Coordinating Representatives for her staff.

Woodard also enjoys teaching students of all levels. She tutors and works for the Homework Hotline, which assists students with their daily assignments. She is a member of Delta Kappa Gamma Society International, an organization that promotes achievement and recognizes accomplishments of women in education.

Woodard and her fourth grade team were also recipients of the Diamond Shamrock "Hooray for Excellence Award." The fourth grade team at Washington/Jackson has won this very prestigious honor two years straight. They are the only teachers in the state of Texas to have ever accomplished this achievement.

Woodard is married to Essie Woodard Jr., III, a 1983 graduate of Stamford High School. He is attending NEC in Fort Worth studying toward a degree in Computer Technology.

**Things you  
should know**

(NAPS)—Seeds specially made for young gardeners by Ferry-Morse may be found at local stores in the Discovery Garden display.



A recent survey, sponsored by the Independent Insurance Agents of America found more than half the respondents placed great importance on an insurance agent who could select policies from a number of companies.

You can use Bisquick baking mix instead of noodles in a special spinach lasagne.

**ferti·lome**  
**Complete Lawn and Garden  
Supplies**

- Bedding Plants
- Garden Seed
- Live Oak Trees

Complete Line Ferti-Lome Products

**Allison  
Farm Supply**  
1002 N. First St.  
Haskell, Texas



100% PURE MONGRELS AT MONGREL PRICES!

WE'RE SICK OF LOOKING AT 'EM



30% Off Smith Sleeper Queen Size Reg. *699 <b>\$489</b>	35% Off Singer Complete Bedroom Group Reg. *1699 <b>\$1099</b>	40% Off Lehigh Dresser & Mirror Reg. *589 <b>\$349<sup>95</sup></b>	1/3 Off Regal Swivel Rocker - Navy Blue Reg. *279 <b>Now \$186</b>
35% Off Lehigh 5 Drawer Chest - Reg. *239 <b>\$155<sup>35</sup></b>	1/2 Price La-Z-Boy Small Sofa Reg. *699 <b>\$349<sup>50</sup></b>	1/2 Price Full Size Softside Waterbed Reg. *419 <b>\$209<sup>50</sup></b>	45% Off Ashley Coffee Table & End Table Reg. *358 <b>\$196<sup>90</sup> For Both</b>
1/3 Off Full Size Roll Away Bed Reg. 179 <sup>50</sup> <b>\$119<sup>65</sup></b>	1/2 Price Choice Of 2 China Cabinets - Reg. *519 <b>\$259<sup>50</sup></b>	45% Off Oak Coffee Table Reg. *139 <b>\$76<sup>45</sup></b>	Choice of 3 Acrylic Wall Paintings Reg. *199 <b>\$119<sup>40</sup></b>
			35% Off Jackson Sofa & Loveseat Reg. *1368 <b>\$889</b>

**We Want To Be Your Furniture Store**

**Boggs And Johnson Furniture**

East Side of Square  
Haskell, Texas  
817-864-2346

Due To These Incredible  
Low Prices, A Small  
Delivery Fee May Be  
Charged





# LIFESTYLES

## Happenings

By Lois Redwine

Mr. and Mrs. Frank Jircik recently visited in Ft. Worth with their son and family, Dr. and Mrs. Frank Paul Jircik, Courtney and Justin. The younger Jirciks have just moved from Burleson to a new home in Ft. Worth.

Trey and Patrick Kemp of Amarillo visited last week with their grandparents, Dr. and Mrs. William J. Kemp. They are the sons of Dr. Jim Kemp.

Brother-in-law, Gaylon Head, of Lubbock stopped by last week for a short visit.

Mona Kate Carrico of Denton visited with her cousin, Gladys O'Neal last week. She was enroute home from visiting her mother in Alamogordo.

Visiting with Neat Bevel were her son, Jack Bevel and his granddaughter, Jessica Hackney from Kenedy. They all spent Saturday in Abilene visiting Mrs. Bevel's daughter, Darlene Cummings. Also visiting Mrs. Bevel and Jack and Alta Faye Harvey were Jackie and Joy Harvey, Odessa and their son, Michael, Lubbock. Michael is a senior at Texas Tech and will graduate this spring.

Dustin and Sarah Burson were in Haskell last week visiting relatives and friends.

Angela Faust, her sister, Crissy Faust and Crissy's daughter, Taylor Forrester of Waco spent last weekend with their grandmother, Frances Bird. Enroute home, they visited in Abilene with grandparents, Mr. and Mrs. Dan Faust.

Spending spring break with John and LaVerne Mayfield in Weinert were their children and grandchildren, Arch and Eddie Lou Mayfield of Plainview and Duane and Alexia Rimmer, Adrienne, Elyse and Meredith of De Soto.

Joe and Joan Kolasa of

Maplewood, Mn. have been visiting with Joe's sister and brother-in-law, Elmer and Bernice Hilliard. While here, they visited Scott's Crossing, Lake Stamford and attended the Stamford Electric Cooperative dinner Saturday night. After leaving Haskell, they visited in Laredo and other south Texas spots. Others visiting the Hilliards were Pat Shaw, Roscoe, Ellen Hilliard, Abilene and Linda and Mary Jane Short, Rochester.

The Community Choir held a musical Sunday evening at the Hopewell Baptist Church.

Funeral services for Frances Scott of Phoenix, Az. were held Monday in the Holy Truth Church of God in Christ. She was the daughter of the late Mr. and Mrs. James Scott, Sr. and the granddaughter of the late Mr. and Mrs. Major Lewis.

Visiting with the Robert Yeldells were his brother, Billy Yeldell, his son and Pat and Angela Jordan, all of Stamford.

Members of the Greater Independent Baptist Church were in Anson Friday evening at the Weeping Mary Baptist Church. Rev. Clarence Walker was the speaker.

Attending Sunday morning services at the Greater Independent Baptist Church were Mr. and Mrs. Frank Ranson, their son and grandson of Ft. Worth. They are the grandchildren of Bessie Hanson.

The Senior Mission met Monday afternoon in the home of Verda Callaway.

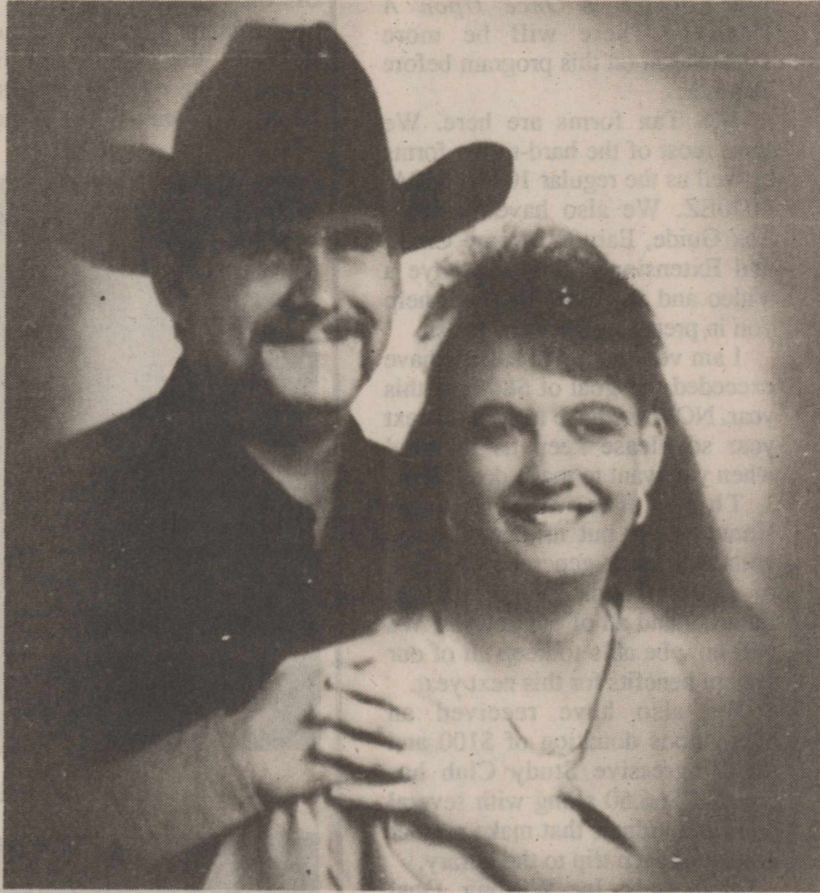
James Whitaker is in Hendrick Medical Center in Abilene for tests.

Some owners of an ostrich ranch near Midland have added a new business to their operation. They are raising snails. I am told that snails reproduce three times each year and require almost no care of maintenance. They practically raise themselves. Now--can people be educated to eat and enjoy this delicacy?

Chunky and Viola Tidwell and Dan Burson spent the weekend in Lubbock with Travis and Peggy Burson and Bruce and Shelley Burson. Bruce owns horses and an old hack. Chunky enjoyed a ride in the hack.

Please call you news to 864-2295 or mail to 1100 N. 8th St., Haskell, TX 79521. Thank you.

Visiting Monday with the E. L. Hilliards were Jesse and Dot Hilliard from Denison, Ellen Hilliard and Jean Ballard from Abilene. They also attended the Carroll Scheets funeral services.



JASON DAVIS AND MICHELLE STEVENS

## Engagement announced

Michelle Stevens of Lawn and Jason Davis of Coleman announce their engagement and forthcoming marriage on Saturday, April 22, at the Lawn Community Center.

The bride-elect is the daughter of Mr. and Mrs. Jerry Stevens of Lawn. She is a 1990 graduate of Jim Ned High School and is employed by Abilene State Park and CR Anthony Co.

The groom to be is the son of Mr. and Mrs. Bob Aycok of Haskell and David H. Davis of Arlington. He is a 1991 graduate of Haskell High School and a 1993 graduate of TSTC at Sweetwater. He is employed by Medavac EMS in Coleman.

The couple will reside in Coleman.

## Log cabin quilting class offered

A special class entitled 'Log Cabin Quilting' will be offered by the Division of Continuing Education of Vernon Regional Junior College, to be held in the Home Economics Dept. at Vernon High School.

The class will meet from 6:30 to 9:30 p.m. on Tuesdays, beginning Tuesday, April 11 and ending May 23. Registration fee is \$35 plus supplies and supply lists are available through the Continuing Education Office. For further information, contact the VRJC Continuing Education Office at 552-6291.

## Students in the News

Robert Huff, son of Mr. and Mrs. Dale Huff of Haskell, has been inducted as a member of Harding University's chapter of Phi Eta Sigma, the national freshman honor society.

Huff, a sophomore majoring in mathematics, was joined by 174 other Harding freshmen in induction ceremonies on Mar. 5. To be eligible, inductees must have a minimum cumulative grade point average of 3.5.

## Boone presents program at Jossilet FCE club meeting

By Edna Anderson

The Jossilet FCE Club met Tuesday, Mar. 14, in the home of Mildred Robertson, who called the meeting to order. Roll call was answered by seven members with each one saying, "One thing I Hope to Accomplish This Year." Minutes of the February meeting were read by Edna Anderson.

Everyone was happy to have Mary Ann Boone, supervisor for "Outreach Health Services" in Haskell County, as a special guest. Boone made a presentation to the group, explaining the many services that are available for people in this area.

Boone said that in order to receive these services a person must

see their doctor and he in turn will refer them to the supervisor at Outreach. She also informed the group that the services were paid by Medicare, Medicaid or private insurance and that all nurses involved in the services were trained and licensed LVNs.

A reading was given by Mildred Robertson entitled, "A Simple Misunderstanding."

Delicious refreshments of cake, strawberries, cool whip and coffee were served to Margaret Wall, Hazel Thomas, Dorothy Trussell, Martha Toliver, Edna Anderson and Earnel Bevel by the hostess.

The next meeting will be held Tuesday, April 11, with Edna Anderson.

## Jones-Haskell



## Eye Clinic

## Dr. Trussell Thane

Appointments Available • Monday through Friday

Dr. Thane is Board certified in the diagnosis and treatment of eye disease. Dr. Thane offers complete evaluation for eyeglasses and contact lenses.

### Frames

Over 500 frames in stock featuring Safilo frames the best selling frame in America.

Medicare and Medicaid Accepted.

### Contact Lenses

2 pair daily wear \$159.00

Includes exam, care kit follow-up (Torics for astigmatism and gas permeable slightly higher)

1501 Columbia Stamford, Texas 915-773-2083

## Weinert FCE club to meet for highway clean-up day

The Weinert Family, Community and Education Club met Tuesday, Mar. 7, in the home of Myrtle Phemister. Seven members and one guest were present. The hostess gave the club prayer and presented a reading entitled: "Three Words Can Change Lives."

After the minutes were read and the treasurer's report was given, it was announced that the club's 16th quilt donated to the West Texas Rehabilitation Telethon brought \$505.

Betty Sanders and Faye Jetton were appointed to attend the leadership training on Mar. 29.

Plans were made to attend the Tri-County Rally Day, in Baylor County on Mar. 16. This was a gathering for Haskell, Knox and Baylor County club for a day of skits, crafts and demonstrations.

The club's chairman of the Highway Clean-up project announced that on April 1, at 8 a.m., club members are to gather at the school house to begin the first clean-up of the year.

A motion was made by Myrtle Phemister to construct another quilt for the 1996 Telethon.

A survey entitled "Shooting Back" was distributed and several agreed to mail it in to show their disapproval of television violence, vulgarity and sexuality.

The program was given by Mary Ann Boone, R.N. and director of Outreach Health Services of Haskell. She stated that most people in hospitals, recovering from illness or surgery, want to go home. With the doctor's approval and supervision, Home Health Care can provide nursing, home health aid, physical, occupational and speech therapy; also medical, social work, I.V. therapy, nutritional counseling, laboratory services and medical supplies. Boone gave some guidelines to follow in selecting a home care provider. A very instructive pamphlet was given for future use.

The next meeting will be on April 4, in the Extension meeting room.

**Howard Johnsons** SPRING  
**TRUCKLOAD SALE!**



**26-3-3 Lawn Food**  
With 2% Iron

20 Lb. Bag 5,000 Sq. Ft. **\$4.19**

40 Lb. Bag 10,000 Sq. Ft. **\$7.99**



**25-3-3 Weed & Feed Plus**

20 Lb. Bag 5,000 Sq. Ft. **\$5.19**

40 Lb. Bag 10,000 Sq. Ft. **\$9.99**

LOANER SPREADERS AVAILABLE!



**1% DURSBAN GRANULES**

Controls Rod Weevils, Cutworms, and Many Other Lawn Insects

ONLY **\$4.99**

**GOT GRUBS? KILL 'EM QUICK.**

Aside from the serious damage done by grubs to your grass roots, grubs are one of the favorite foods of gophers and moles. The more grubs you have, the more gophers and moles are attracted to your yard. Kill the grubs and SEND GOPHERS AWAY hungry! 1% Dursban Granules in 10 pound bag covers 5,000 sq. ft. Apply with spreader.

PRICES GOOD THRU APRIL 1st

OSBORNES

VERNON  
(817) 552-7631

MUNDAY  
(817) 442-4851

STAMFORD  
(915) 773-5006

# ZIMMATIC®

## The New World Leader

### Absolutely Nothing Down

(Limited Time Offer)

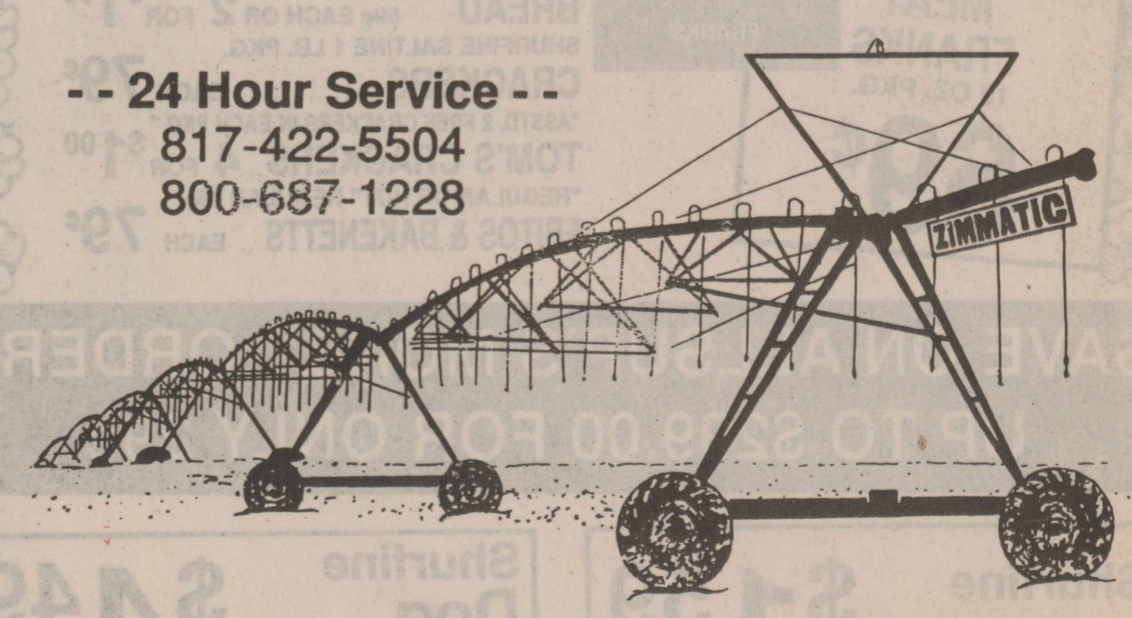
## No Payment Due Till January 1, 1996

**Zimmatic • The System with Superior Design**

- Easier to Install and Service
- The Best Value on the Market

**-- 24 Hour Service --**


**817-422-5504**  
**800-687-1228**



## KUEHLER

### Irrigation & Supply Co.

Gary Kuehler, Owner - Munday, Texas



# Library Notes

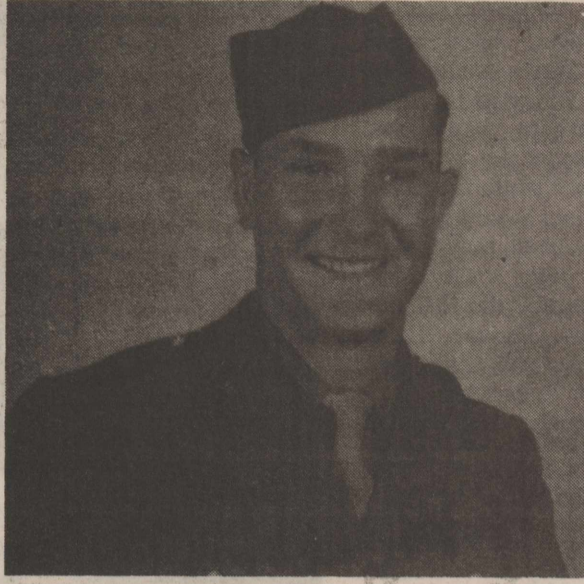
**By Joan Strickland**  
 The library will be closed Tuesday, Mar. 28, in order for the librarian to attend a meeting in Abilene at the Big Country Library System.  
 We need to find an interested person to attend these meetings twice a year in Abilene as Haskell's Lay-Representative and we also need an alternate representative.

Please give me a call at the library at 864-2747, or come by and talk to me about the meetings if you are interested.  
 We have in a few new books. I am asking that only one new book per person go out at a time until they have circulated for a few weeks.  
 Also readers are needed for our summer reading program. This

year's theme is *Once Upon A Planet*. There will be more information on this program before summer.  
 IRS Tax forms are here. We have most of the hard-to-get forms as well as the regular 1040, 1040A, 1040EZ. We also have Farmer's Tax Guide, Earned Income Credit and Extension forms. We have a Video and an Audio that will help you in preparing your taxes also.  
 I am very happy to say we have exceeded our goal of \$800 for this year. NOW we have to start on next year so please keep us in mind when you want to make donations.  
 The Haskell Young Homemakers put us over the top with their very generous donation of \$600. Thank you from the librarian and all of our patrons. We will now be able to keep all of our system benefits for this next year.  
 We also have received an anonymous donation of \$100 and the Progressive Study Club has donated \$66.50 along with several other individuals that make regular donations each trip to the library.  
 Memorials: Joe Wilfong, Opal Adkins, Alvin Sherman, Bonnie Therwanger, S.P. Herren, Boyd Rousseau, Slover Bledsoe, Sherlynn Stanland-niece of Jill Everett, Gertrud Ehrenhard-mother of Lee Barnett, J.E. Couch-father of Christie Stapleton, Inez Stapleton-mother of Max Stapleton, Thomas Evens-brother of Janis McDaniel and Felix Lancaster-grandfather of Brandy Huckabee.  
 See you at the library.

# Faces of by gone days.....

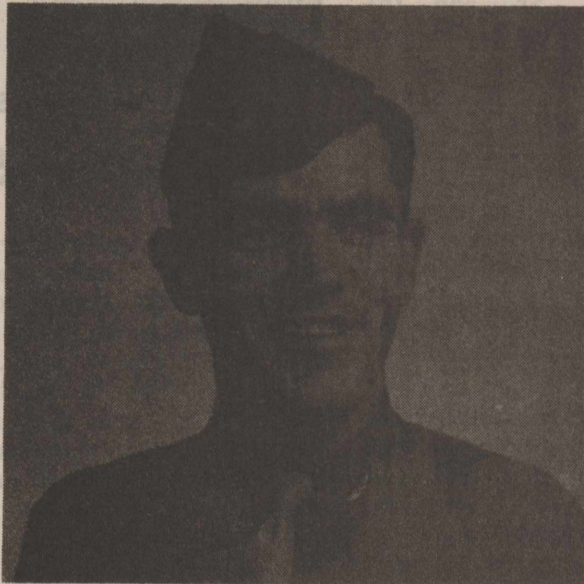
The Haskell Free Press has a lot of old pictures in the files, not identified. We will be publishing a few of these pictures each week and will be glad to give them to the rightful owners, their relatives or heirs if they will come by the office and pick them up; or you can send us a self-addressed return envelope for their return.  
 Our mailing address is P.O. Box 1058, Haskell TX 79521.



FELTAN HERRING



ZELDON B. THOMASON



JOSEPH CASEY



JAMES D. GUFFEY

TEACH CAT 2x4-8 DOG 2-3-5 TEACH CAT 2x4-8 DOG 2-3-5 TEACH CAT 2x4-8 DOG 2-3-5 TEACH CAT 2x4-8 DOG 2-3-5 TEACH CAT 2x4-8 DOG 2-3-5

## Keep On A Truckin'... Happy Birthday!!

DOG 2-3-5 TEACH CAT 2x4-8 DOG 2-3-5

# PRE-SPRING PRICE CUTTERS

**ALLSUP'S**

EFFECTIVE MARCH 19-25, 1995  
 HASKELL #153 RULE #91

SAVE ON COCA-COLA  
**\$2.49**  
 12 oz cans Six Pack

ALLSUP'S "MADE TO ORDER" BAR-B-Q BEEF SANDWICH FOR ONLY **99¢**

HAM, EGG, & CHEESE OR SAUSAGE, EGG, & CHEESE

BREAKFAST BURRITOS FOR ONLY **99¢**

DECKER CHOPPED HAM 4" X 6" 10 OZ. PKG. **\$1.49**

DECKER MEAT FRANKS 12 OZ. PKG. **69¢**

**GROCERY SPECIALS**

LANA'S PORK EGG ROLLS	2 FOR	\$1.00
ALLSUP'S 1.5 LB. LOAF SANDWICH BREAD	69¢ EACH OR 2 FOR	\$1.00
SHURFINE SALTINE 1 LB. PKG. CRACKERS	EACH	79¢
"ASST. 2 FREE CRACKERS IN EACH PKG."		
TOM'S CRACKERS	4 FOR	\$1.00
"REGULAR OR HOT" REGULAR		99¢
FRITOS & BAKENETTS	EACH	79¢

## Special payments may be excluded from report

Beneficiaries who must report excess earnings on their annual earnings reports due by April 17 should note that not all earnings count toward the annual earnings limits. If the earnings qualify as "special payments," they may be excluded from the annual report, according to Ken Hargis, manager of the Abilene Social Security office.

"Special payments are earnings you received after you began getting Social Security benefits for work you did before," Hargis stated. "If you worked as an employee, earnings received after retirement count as a special payment if the last thing you did to earn the payment was completed before you stopped working for your employer."

Beneficiaries under 65 who earned at least \$8,040 in 1994 and those aged 65 to 69 who earned at least \$11,160 must report their earnings to Social Security by April 1. Earnings over the limit reduce benefits \$1 for every \$2 for beneficiaries under 65, and \$1 for every \$3 for beneficiaries 65-69. Beneficiaries 70 and older are not subject to the earnings limits.

Some special payments to employees include: bonuses, accumulated vacation or sick pay, severance pay, back pay, standby pay, sales commissions, payments on account of retirement, or deferred compensation reported on a W-2 form for one year that was earned in a previous year. These amounts may be shown on your W-2 in the box labeled "Non-qualified Plan."

If you were self-employed, net income received after the first year you retire counts as a special payment if you performed the services to earn the payment before you were entitled to receive Social Security benefits. "Services" are any regular work or other significant activity you do for your business.

If your earnings in 1994 exceeded the limit but include an amount you think may be considered a special payment, contact Social Security before you file your annual report. Tell us you think your earnings for 1994 include a special payment. If we agree, we will not count the amount of the payment as part of your total earnings for 1994.

**YOU SAVE!** Get 2 Months **FREE!** **YOU SAVE!**

The **Haskell Free Press**

This special good for the following counties only  
 Haskell, Shackelford, Jones, Stonewall, King, Knox, Baylor and Throckmorton.

Check the insert in today's paper for the Money Saving Coupon.

A Whole Year Plus Two Free Months

For Only **\$15.00**

With A Full Year Subscription

That's 14 Full Months Or 60 Issues

If You Have Just Renewed Your Subscription, You Can Still Take Advantage Of This Great Offer. We Will Just Extend Your Expiration Date An Extra 14 Months For Only \$15.00

**SAVE ON ALLSUP'S MONEY ORDERS UP TO \$299.00 FOR ONLY 29¢**

Shurfine Sugar	\$1.59	4 lb. bag
Shurfine Dog Food	\$4.49	20 lb. bag
Allsup Ice Cream	\$1.49	1/2 gal.
Mello Crisp Bacon	99¢	1 lb.



# WORSHIP TOGETHER

A companion's words  
of persuasion  
are effective.  
— Homer



For thee the  
wonder-working  
earth puts forth  
sweet flowers.  
— Lucretius

## GOD'S LOVE APPEARS IN THE LOVELY PASTELS OF SPRING

When winter snows have joined the past,  
With skies no longer overcast,  
The sun will shine and soon, at last,  
A new day it will bring:  
Announced by every balmy breeze,  
While barren branches by degrees  
Will turn to green upon the trees,  
Where birds begin to sing.  
The butterflies are everywhere,  
And flowers' perfume fills the air;  
Their pastel beauty meant to share  
With every living thing.  
Your faith will help you understand  
The love of God, when He has planned  
That everything upon the land  
Will come to life in spring.

**Hanson Paint & Body Shop**  
207 S. 1st • 864-3631  
Professional Auto Body Repair • Glass Installation  
24 Hour Wrecker Service

**Sonic Drive-In**  
1402 N. Ave. E • 864-8533  
Managers: Leon & Carolyn Herring

**First National Bank of Haskell**  
200 S. Ave. E • 817-864-8555  
Member FDIC

**The Sweet Shop**  
507 N. Ave. E • 864-2711  
*Hebrews 10:25 - "Not forsaking the assembling of ourselves together"*

**Peddler's Village**  
Crafts ♥ Antiques ♥ Collectables ♥ Clothing & Accessories  
304 S. 1st ♥ 864-2878

**Tribbey Real Estate  
& Custom Homes**  
4 Ave. D • 864-2238

**Rule Co-op Gin & Elevator**  
301 Adams • Rule  
997-2421

**The Carpet Express**  
15 S. Ave. E  
864-8128

**Steele Machine**  
Hwy. 380  
864-2208

**Modern Way Food Store**  
1202 N. Ave. E  
817-864-3763

**Jay's Tire Center**  
506 N. 1st East • 864-2908  
*"See You In Church"*

**The Farmers National Bank of Rule**  
P. O. Box 10 • 817-997-2216  
Member FDIC

**The Anchor Lodge**  
Rt. 2 Box 1775 • Haskell  
864-3263

**Penman Propane Inc.**  
Rochester, Texas

**Smitty's Auto Parts**  
204 N. 1st St.  
817-864-2607

**Shear Perfection & Hair Designs**  
405 N. AVE. C • 864-8031  
OPEN: MON.-FRI. 8:30 A.M.-5 P.M. • WALK-INS WELCOME  
SHARON BIRD • HOLLY WADE • LYNETTE TRIBBEY

**Larned Sales Center**  
806 S. Ave. E  
864-2749

**Rice Springs Care Home Inc.**  
1302 N. 1st  
864-2652  
Medicare • Medicaid • Therapy  
Ruth Ann Klose • Committed To Excellence In Service

**East Side Baptist Church**  
David Page, pastor  
Sun. Morn. 9:45 a., 10:55 a., 6 p.; Wed. 7 p.  
600 N. 1st East, Haskell

**Christian Church**  
Frank Summers, preacher  
Sun. Morn. 9:45 a., 10:45 a., 6 p.; Wed. 7 p.  
107 N. Ave. F, Haskell

**Church of God**  
Delbert Davis, pastor  
Sun. Morn. 9:45 a.m., 11:00 a.m., 6 p.m.  
East Hwy 380, Haskell

**Trinity Lutheran Church**  
Bruce Adamson, pastor  
Sun. Morn. 9:30 a., 10:30 a.; Wed. 7:00 p.  
Hwy 380 East, Haskell

**Iglesia Bautista El Calvario**  
Raul Tirado, pastor  
Sun. Morn. 9:45 a., 10:45 a., 6 p.; Wed. 7 p.  
607 S. 7th, Haskell

**First United Methodist Church**  
Sidney Parsley, pastor  
Sun. Morn. 9:45 a., 10:50 a., 6 p.; Wed. 6 p.  
201 N. Ave. F, Haskell

**First Assembly of God**  
Rev. J.C. Amburn  
Sun. Morn. 9:45 a., 10:45 a., 6 p.; Wed. 7 p.  
1500 N. Ave. E, Haskell

**St. George Catholic Church**  
Father George Thekkadom  
Sat. Mass 7:15 p.m.; Sun. Morn. 9:00 a.m.  
901 N. 16th, Haskell

**Church of Christ**  
Dale Huff, minister  
Sun. Morn. 9:30 a., 10:30 a., 6 p.; Wed. 7:30 p.  
510 N. Ave. E, Haskell

**First Presbyterian Church**  
Steve C. Kerr, pastor  
Sun. Morn. 9:45 a., 11:00 a.m.  
306 N. Ave. E, Haskell

**Trinity Baptist Church**  
Rev. Kenneth Blair  
Sun. Morn. 10 a., 11 a., 6:30 p.; Wed. 7:30 p.  
401 S. Ave. D, Haskell

**Hopewell Baptist Church**  
John Lewis, pastor  
Sun. Morn. 9:30 a., 11:00 a.; Wed. 7 p.  
908 N. Ave. A, Haskell

**Greater Independent Baptist Church**  
Clarence Walker, pastor  
Sun. Morn. 9:45 a., 11:00 a., 7 p.; Wed. 7 p.  
300 N. 3rd St., Haskell

**New Covenant Foursquare**  
Freddy Perez, pastor  
Sun. Morn. 10 a., 11:00 a., 6:30 p.; Wed. 7 p.  
200 S. Ave. F, Haskell

**Mission Revival Center**  
Rev. William Hodge  
Sun. Morn. 10 a., 11 a., 6 p.; Tues. 6 p.  
1600 N. Ave. B, Haskell

**First Baptist Church**  
Jim Turner, pastor  
Sun. Morn. 9:45 a., 10:55 a., 6 p.; Wed. 7 p.  
301 N. Ave. E, Haskell

**First Baptist Church**  
Warth Mayes, pastor  
Sun. Morn. 10:00 a., 11:00 a., 6 p.; Wed. 7 p.  
Weinert

**Weinert Methodist Church**  
Rev. James Patterson  
Sun. Morn. 9:45 a.m.  
Weinert

**Weinert Foursquare Church**  
Rev. Paul Chambers  
Sun. Morn. 10:00 a.m., 11:00 a.m.  
Weinert

**Church of Christ**  
Jim Pratt, minister  
Sun. Morn. 9:45 a., 10:45 a., 6 p.; Wed. 6 p.  
West on Main Street, Rochester

**First Baptist Church**  
Rev. Truett Kuenstler  
Sun. 9:45 a., 11:00 a., 6 p.; Wed. 6:30 p.  
500 Main, Rochester

**Union Chapel Baptist Church**  
Rev. Andrew  
Sun. Morn. 9:45 a., 10:45 a., 6 p.; Wed. 7 p.  
Rochester

**Faith Chapel of Rochester**  
Katherine Byrd, minister  
Sun. Morn. 10 a.m., 11 a.m., 7 p.m.  
Hwy 6, Rochester

**First United Methodist Church**  
James P. Patterson, pastor  
Sun. Morn. 10:00 a.m., 11:00 a.m.  
Rochester

**Sagerton Methodist Church**  
Carol Krumpston, pastor  
Sun. Morn. 9:30 a.m.  
Sagerton

**Faith Lutheran Church**  
Jeff Zell, pastor  
Sun. Morn. 9:15 a.m., 10:30 a.m.; wed. / p.m.  
Sagerton

**Paint Creek United Methodist Church**  
Sidney Parsley, pastor  
Sun. Morn. 9:00 a.m., 10:00 a.m.  
Paint Creek

**Paint Creek Baptist Church**  
Sun. Morn. 10:00 a.m., 11:00 a.m., 6 p.m.  
Paint Creek

**First Baptist Church**  
Stewart Farrell, pastor  
Sun. Morn. 9:45 a., 11:00 a., 6 p.; Wed. 7 p.  
1001 Union Ave., Rule

**Primitive Baptist Church**  
Dale Turner Jr., pastor  
First & Third Sundays 10 a.m.  
Corner of 8th & Robins, Rule

**Church of Christ**  
John Gresson, minister  
Sun. Morn. 9:45 a., 10:40 a., 6 p.; Wed. 7 p.  
811 Union, Rule

**New Life Baptist Mission**  
Jesus Herrera  
Sun. Morn. 10:00 a.m., 11:00 a.m.  
Elm Street-Hwy 380 E, Rule

**Sweet Home Baptist Church**  
Matt Herrington, pastor  
Sun. Morn. 10:00 a., 11:00 a., 6 p.; Wed. 7 p.  
Gladstone Ave., Rule

**West Bethal Baptist Church**  
Rev. Robert Sweet  
Sun. Morn. 10:00 a., 11:00 a., 8 p.; Wed. 7:30 p.  
300 Sunny Ave., Rule

**Kittley Fertilizer Co.**  
310 N. Adams  
997-2338

**Farmers Gin Co.**  
P. O. Box 250 • Rochester  
743-3527

**Hospital Clinic**  
William D. McSmith Jr., DO  
1400 S. 1st • 864-8513

**Martha's Beauty Center**  
1006 N. 6th • 864-2192  
Karen, Debbie and Billie

**Haskell Save-A-Dollar Inc.**  
204 N. 1st • 817-864-2146  
Servicing your gasoline and diesel fuel needs  
24 HOURS A DAY

**Rochester Cotton Warehouse Co.**  
P. O. Box 236 • Rochester  
Phone 743-3215 • George Mullino, Owner

**Medford Buick - Pontiac - GMC, Inc.**  
200 N. Ave. E  
864-2644

**B & B Automotive & Parts**  
201 N. 1st  
864-2688

**Conner Nursery & Floral**  
505 N. Ave. H  
864-3121

**G & G Carpets**  
(Next to M-System)  
108 N. Ave. D • 864-3966

**Sport About of Haskell**  
864-3891  
*"Where Winners Shop"*

**Eddie's Welding**  
210 N. E. 1st • 864-2315

**Personality Slipper Shoppe**  
413 S. 1st (South Side of Square) • 864-2504 and 864-3051  
*"One Stop Shopping"*

**McGee's Lumber Yard**  
105 N. 1st

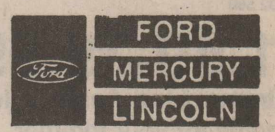
**Rodela Plumbing Services**  
110 N. 1st  
864-2460

**Sandy's New Image**  
107 S. Ave. D  
864-2890

Jana Loomis  
Adminisrator  
Haskell Healthcare Center  
Phone 864-8537

*Lane-Feltzer*  
103 N. Ave. E  
864-2266  
*"Take A Friend To Church"*

**Bill Wilson Motor Co.**  
864-2611  
*"Come See  
The New Team"*



# AGRICULTURE

## Getting spring vegetable gardens in the ground

While it may seem like springtime weather, Extension Horticultural Vegetable Specialist Dr. Sam Cotner says that with the exception of South Texas, most of the state is still subject to plant-killing freezes. So, if you must get going with the garden, Cotner advises getting a soil test done to find out what kind of fertility you have. That way, you'll know what kind of fertilizer to use.

But if you're overly anxious to plant a vegetable garden this weekend, Cotner advises sticking with the cold-hardy vegetables like broccoli, cauliflower and lettuce.

In the meantime, find out from the local County Extension office when the last average frost date is for your area. Wait until then to begin planting the more spring-like vegetables like tomatoes, squash, peppers and cucumbers.

Cotner notes that Texas springs are something of a Catch-22. While it's not advised to plant early, he says it's the only true way to take advantage of the unusual Texas season.

For more spring gardening information, contact your local Texas Agricultural Extension office at 101 S. Ave. D in Haskell or call 817-864-2658.



IRRIGATION TESTING TIME - An irrigation efficiency test will show the amount and uniformity of water applied to the crop.

## Tune up your irrigation system for top efficiency

The spring planting season is fast approaching, so it's time to think about tuning your center pivot irrigation system for top efficiency.

The first factor to look at is the gallons per minute (gpm) being pumped to the system. Each irrigation system is designed to operate at a specified gpm and pressure. If the system is applying too much, or too little water, the efficiency of the system could be reduced.

Inspect the system where irregular crop growth was noticed last year. These areas could be located under worn or plugged

nozzles. Leaks at the pivot or along the mainline of the system will reduce the system efficiency. Repair all leaks.

An irrigation efficiency check could help determine where problem areas are on the system. The test will check the gallons per minute (gpm), application efficiency (amount of water reaching the crop), and pattern efficiency (uniformity of the water applied).

To arrange a free irrigation efficiency test for your center pivot, or to check the gpm of your irrigation wells call the Seymour Aquifer Project at 817-864-3334.

## Rural hero named for 1994

Felipe Ortiz of Hamilton has been named rural hero for 1994, according to Ben Bullard, president of the Texas Farm and Ranch Safety Council.

Ortiz was honored on Mar. 21, at the 56th annual Texas-Southwestern Safety Conference and Exposition at the Austin Convention Center in Austin. The award honors an individual who performed an heroic act of human-lifesaving related to farming and ranching.

Ortiz is credited with saving the life of J.K. Wilhelm of Hamilton last May. According to Lillian Wilhelm, the three were getting the cows up to vaccinate, when J.K. stepped between a cow and her calf. "The cow, thinking my husband was trying to get her calf, turned on him, he fell and she continued to pounce on him," Lillian said.

Lillian, who was about 50 feet away, said she stood "utterly helpless." Not Felipe, however, who was about 30 feet away. "I never saw anyone move with such speed," she said. "He attacked the cow singlehanded and diverted her. I feel without Felipe risking his life, I'd be a widow today."

"The cow has been sold; Felipe is still the hired hand, and we always carry a stick when getting the cows up, and I see life and people with an appreciation I did not have before," she said.

## Timing, key to good waterway performance

Now is the time to shape your new waterways and prepare for spring planting of grasses. Grasses should be planted prior to the rainy season of May with the months of March and April being the best time.

Many of our older grassed waterways are in need of a little extra care. Any small rills or ditches should be repaired by filling the area with soil and then reseeding it. If you have a weed problem you may need to mow or shred them. Chemical weed control can be effective if done with proper care. Care should be taken to not make the bottom of the waterway a road or equipment parking lot.

In order to get a good start on growth for the coming year, an application of fertilizer is recommended. This will improve the vigor of the grass and reduce the amount of weeds. Fertilizing will also provide for a higher quality forage for those who plan to graze or bale hay from them later this year.

Waterways are designed to control the flow of runoff water from rains at velocities slow enough to prevent erosion. In order to work properly, they depend on the vegetation to control this water velocity. If the grass is too short or

the grass stand too thin, erosion will occur.

No waterway will last very long if you have a large amount of silt that it must handle. The key here is to reduce the amount of silt by controlling the erosion on the field before it gets to the waterway if possible.

Gently sloped waterways may have annual vegetation of small grain or sorghums. If rilling has occurred, these areas should be reshaped or smoothed over. After harvesting and prior to planting the next crop, plowing should be kept to a minimum. If possible, use a stubble mulcher or chisel type equipment, plowing only as deep as needed to control the weeds. You should leave the stubble attached in the ground in order to prevent erosion. The entire waterway area should be drilled at double rate of what you normally used for cropland.

Waterways in this portion of the Rolling Plains are sometimes difficult to maintain to look their best, but with a little extra care, they can be made to last for years. For more information, contact your Natural Resources Conservation Service office at 1203A S. Ave. E, Haskell, TX 79521 or call 864-8516.

## Houston rodeo cracked the one million mark in attendance

The 63rd celebration of the Houston Livestock Show and Rodeo continued its assault on the record books, cracking the one-million mark in rodeo attendance for the first time and bringing in a half million dollars for the grand champion steer.

The Houston Livestock Show and Rodeo:

- \*Recorded a total draw of 1,810,007 for general attendance, surpassing last year's total of 1,616,113 by 12 percent.

- \*Set a rodeo attendance record of 1,068,447, exceeding 1994's rodeo attendance of 985,871 by 8.38 percent. Four of the 20 rodeo performances set individual performance records.

- \*Established six world record auction sales marks - \$500,000 for the Grand Champion Steer; \$140,000 for the Reserve Grand Champion Steer; \$81,000 for the Grand Champion Barrow; \$80,000 for the Grand Champion Pen of Broilers; \$67,000 for the Grand Champion Turkey; and \$41,000 for the Reserve Grand Champion Barrow.

- \*Presented the Friday, March 3, rodeo performance on television nationwide through Turner Home

Satellite, DirecTV and TVN. Featuring rodeo highlights and a full-length concert by Hank Williams Jr. and Sawyer Brown, the performance also was shown on pay-per-view cable television throughout Texas, Oklahoma, Arkansas, Louisiana and select markets in New Mexico, Arizona and Nevada.

"The individual records that we set this year may stand forever or be broken next year, but the combined results of this year's Show will be remembered for a lifetime," said Don Jordan, Show president.

Total livestock auction sales (including a horse and ratite sale) tallied in at \$7,516,206, a decrease of 15 percent from the 1994 total of \$8,884,286. Three fewer commercial cattle sales were held in 1995 and the second annual ratite sale (made up of rheas, emus and ostriches) total of \$93,025 in 1995 dropped from \$1,247,000 in 1994.

However, junior show market sales, making up \$4,545,349 of the total, rose 6 percent from 1994. Of this amount, \$1,351,950 was placed in the Show's Educational Fund. And, due to the Show's guaranteed premium program initiated in 1994, the young Texas 4-H and FFA exhibitors received a total of \$3,125,575 for their auction animals.

Making up the \$4,545,349 junior show total were market steer sales of \$2,494,800, followed by junior market swine sales of \$718,225; junior market lamb sales of \$618,700; and junior market poultry sales of \$498,700. The junior commercial steer sale posted a final total of \$214,924.

The fourth annual Houston Livestock Show and Rodeo Premier Horse Sale totaled \$350,450, rising 16 percent over the previous year's figure of \$301,275.

Commercial cattle sales varied from breed to breed, totaling \$2,527,382 in sales.

Joe Beaver of Huntsville, Texas, won the All-Around Cowboy title, and added \$25,000 to the \$9,736.46 won in the calf roping and team roping events, for total earning of \$34,736.46.

Herbert Theriot of Poplarville, Miss., was runner-up, after competing in the team roping and calf roping events.

A total of 501 rodeo contestants contended for a share in \$634,757 in prize money.

**DANCE**  
at Rhineland  
**RICOCHET**  
of Abilene  
9 to 1 **Saturday, Mar. 25** \$5.00

**Haskell Eye Clinic**  
**VisionCare**  
ASSOCIATES

Thomas Labbe', O.D.  
Russell Kuempel, M.D.

~Comprehensive Eye Exams~  
~Contact Lens, All Types~  
~Complete Optical Service~

**OUT PATIENT SURGERY**  
Including Cataracts with Implants  
Laser Surgery - Glaucoma Surgery  
Medicare & Medicaid Accepted

For Appointment Call • 817-864-3104  
or Call Toll Free 1-800-558-3937  
530 S. 2nd • Haskell, TX 79521

**Richardson's** **True Value**  
Hwy. 277 N. HARDWARE  
Haskell, Tx 79521  
864-8551  
Open All Day  
Saturday's

**\$9.99** GreenThumb  
Gal. Spot Weed Killer with handy sprayer.

**\$4.99** GreenThumb  
Lawn Food covers an area up to 5,000 sq. ft.

**\$15.99** GreenThumb  
Lawn Food With Weed Control has nitrogen.

**\$1.99**  
All-Purpose Potting Soil. Economical 40 lb. Bag

**\$9.99**  
50-Ft. Reinforced Vinyl Hose. 1/2-in. I.D., 3-ply. Extra strong!

**\$13.99**  
75-Ft. Reinforced Vinyl Garden Hose has a mfr.'s 7-yr. warranty. 5/8 in. I.D.

**\$1.59 to \$9.99**  
Trimmer Line. Ass't'd styles, lengths for your trimmer.

**\$2.99**  
1 1/2-Lb. All-Purpose Miracle Gro Plant Food

**\$5.99**  
Weed & Feed contains Atrazine. 5,000-sq. ft.

The family of Opal Stephenson wishes to express our heartfelt thanks and appreciation for the many expressions of sympathy and support extended to us in our time of mourning. We will always feel indebted to Opal's many friends and neighbors who found so many ways to help in her time of need.

The family of Opal Stephenson

**HARTSFIELD**  
**INSURANCE AGENCY**  
417 SOUTH 1st • HASKELL, TX

	Yes	No
Homeowners	✓	
Automobile	✓	
Mobile Home	✓	
Boat	✓	
Business	✓	
Farm & Ranch	✓	
Farm Liability	✓	
Life	✓	
Health	✓	

Call or come by the office. I can help you with your insurance needs.  
**Bonita "Bo" Tatum**  
South Side of the Square  
817-864-2665

**IRBY DANCE**  
**Saturday**  
**Mar. 25**  
**8:00-12:00**  
Music by:  
**Texas Rhythm Boys**  
Members and Invited Guests Welcome

# Paint Creek School District hosts land, range and pasture judging contest



RANGE AND PASTURE JUDGING CONTEST - Shelly Palacios, Haskell FFA, shown judging a range site at the Haskell California Creek SWCD Range and Pasture Judging Contest.

The Haskell-California Creek Soil and Water Conservation Districts conducted their annual land judging and range and pasture judging contests. The 1995 contest was hosted by the Paint Creek school district. Contest sites were located on Dale Middlebrook and Gary Thomas' farms.

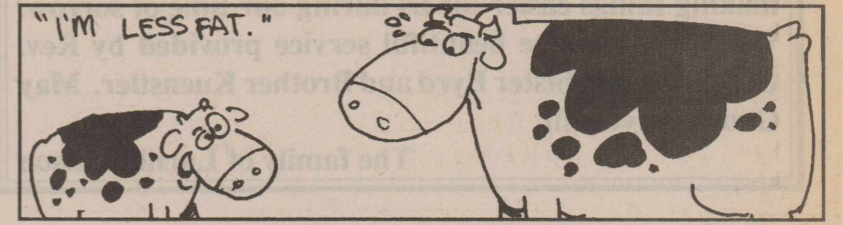
Five schools participated in the contest: Mertzton FFA, Anson FFA, Wylie FFA, Haskell FFA and Rochester FFA. Team members and coaches enjoyed a hamburger supper after the contest prepared by Paint Creek FFA and furnished by the Haskell SWCD.

Land Judging results: Mertzton-first place, Wylie-second place, Mertzton-third place. Aaron Earles of Haskell FFA also placed third high point individual. Range and Pasture Judging

results: Anson FFA-first place, team members: Bobby Waddell, Kyle Wilburn, Will Kiker and Jason On hand to help conduct the contest were personnel from the Haskell and Anson Natural Resources Conservation Service Field Offices. The contest is conducted as a learning tool for the

judging teams to prepare for their district contest later this month. Blue.

Haskell FFA-second place, team members: Bobby Ortiz, Casey Burgess, Shelly Palacios and Wendy Dulaney. Bobby Waddell was high point individual and Bobby Ortiz placed second high point individual.



Veal tends to have less fat than does beef.

## Community Calendar

The Haskell Free-Press will be featuring a Community Calendar each week. We will publish, as a free service to the community: announcements of club meetings, special events, regularly scheduled weekly or monthly school, civic and social events. Drop the announcement by our office and we will be happy to publish it in the Community Calendar.

### Thursday, March 23

Noon - Rotary Club meets at City Hall for weekly meeting.

### Friday, March 24

8:30 a.m. - Project PALS weekly meeting. Haskell HS Ag. Building.

8:30 a.m.-3 p.m. - U.I.L. Academic Meet, HHS, HJHS at Haskell.

Noon - Nutrition program presented by Lou Gilly, County Extension Agent-FCS at the ECC.

4:30 p.m. - Indian baseball with Seymour at Haskell.

### Saturday, March 25

6 p.m. - Old Glory Musical at the Community Center in Old Glory.

Concession stand will open at 5:30 p.m. Admission is free. JVB, VG, VB track meet at Aspermont.

The United Methodist Church of Hawley presents gospel music at the Opera House in Anson.

### Sunday, March 26

Noon - Sunday luncheon at the Haskell Country Club. All members are encouraged to attend and bring a covered dish.

1 p.m. - Cub Scout Pack 136 will hold a Pinewood Derby at the Little Gym.

### Monday, March 27

4:30 p.m. - JV baseball with Clyde at Haskell.

High School tennis tournament at Stamford.

### Tuesday, March 28

10 a.m.-3 p.m. - Texas Dept. of Health Immunization Clinic, Haskell County Courthouse.

6:30 a.m. - Kiwanis Club meets at the Dairy Queen for weekly meeting.

6 p.m. - Haskell City Council meets at City Hall.

7 p.m. - Cub Scout Pack 136 meets at Haskell National Bank Community Room.

7:30 p.m. - Eastern Star Lodge meeting at Masonic Lodge

### Wednesday, March 29

2 p.m. - Family Community Education County Council meeting at the County Extension Office kitchen. Meeting will be conducted by Jane Smith, FCE County Chairman.

4 p.m. - Family Community Education Program leader training "5 A Day" at the County Extension Office kitchen. Representatives from other clubs or organizations or individuals may attend the training and receive the training packet to present the program for their club or organization or to retain for their own personal use.

6 p.m. - Haskell Little League signup and organizational meeting at the Haskell National Bank Community Building.

6 p.m. - 4-H Committee meeting, 4-H Youth Issues Task Force meeting and 4-H Awards & Recognition Task Force meeting at the County Extension Office kitchen.

**Campbell Insurance Agency**  
 Auto - Home - Life - Health - Business Property  
 611 A Fifth Street  
 Rule, Texas 79547  
 Phone: 817-997-2218  
 Donna S. Saffel  
 Home 817-997-2433

**\$2299\***  
**Muffler at**  
**Hootens** ★  
 Supreme Unicam  
 817-864-3696  
 305 S. Ave E • Haskell  
 \* Same warranty as Auto Makers:  
 Ford, Mercury, Lincoln, Chevrolet, Buick,  
 Pontiac, Cadillac, Chrysler New Yorker  
 and Imperial

# CELLULARONE

## Has Arrived!

CELLULARONE® has arrived  
 With the Largest Home Coverage Area  
 and Best Quality Service  
 in the Big Country

**FREE**  
 Call  
 Forwarding



**FREE**  
 3-way  
 Business  
 Calling



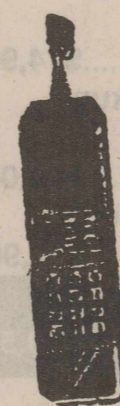
**FREE**  
 Activation



**FREE**  
 One month  
 access

*Motorola Bag Phone  
 With Battery*

**\$99.00**



**FREE**  
 Call  
 Waiting

**ACT NOW!**  
 Offer Expires  
 March 31, 1995

FREE North American Cellular Network allows you to receive your calls in most cities "Clear Across America" and Canada. NACN automatically connects you without having to dial \*18 or other clumsy codes.....

**42**  
 Cell Sites  
 and  
 Growing

**FREE**  
 Detailed  
 Billing

Toll Free America Allows you to call unlimited long distance to any state in the continental United States from inside CellularOne's huge 53,460 square mile home coverage area. You pay only \$6.95 per month, plus home airtime rates. Or, choose Tri-State Local Calling for only \$4.95.

Call 1-800-687-8888 (toll free) or visit our office in Haskell at 304 N. First Street. Or call Don Comedy at (817) 256-2000 or Jon Godsey at (817) 658-3606

Some restrictions apply  
 Contract required



**RANCH KING**  
 3 1/2 HP 20" Cut  
 Economy Push Mower  
 With Briggs & Stratton Engine  
 Assembled and serviced.  
 Only **\$99.95**

3 3/4 HP 22" Cut  
 Better Value Push Mower  
 With Briggs & Stratton Engine  
 • Larger engine than above model  
 • 2" wider cut than above model  
 • Larger wheels than above model  
 • Collapsible fold-down handle  
 • Individual height adjusters  
 Assembled and serviced.  
 Only **\$129.95**

5 H.P. 24"  
 Front Tine Tiller  
 With Briggs & Stratton Engine  
 Assembled and serviced.  
 Only **\$319.95**

225 AMP  
 Lawn Tractor Battery  
 A super value at only  
**\$19.95**

PRICES GOOD THRU APRIL 1st

**OSBORNES**  
 VERNON (817) 552-7631 MUNDAY (817) 422-4851 STAMFORD (915) 773-5006







**CITIZENS FIRE TRAINING CLASS**—These citizens received certificates for participating or completing the Haskell Volunteer Fire Department's citizens training course (left to right) Thomas Rodriguez, Ken Lane, James Billington, Greg Williams, Elicia Hogan, Cindy Barnes and Linda Haynes. Others who attended included David Davis, Jason Shaw, A. J. Shaw, Lisa Shaw and Nancy Trussell.

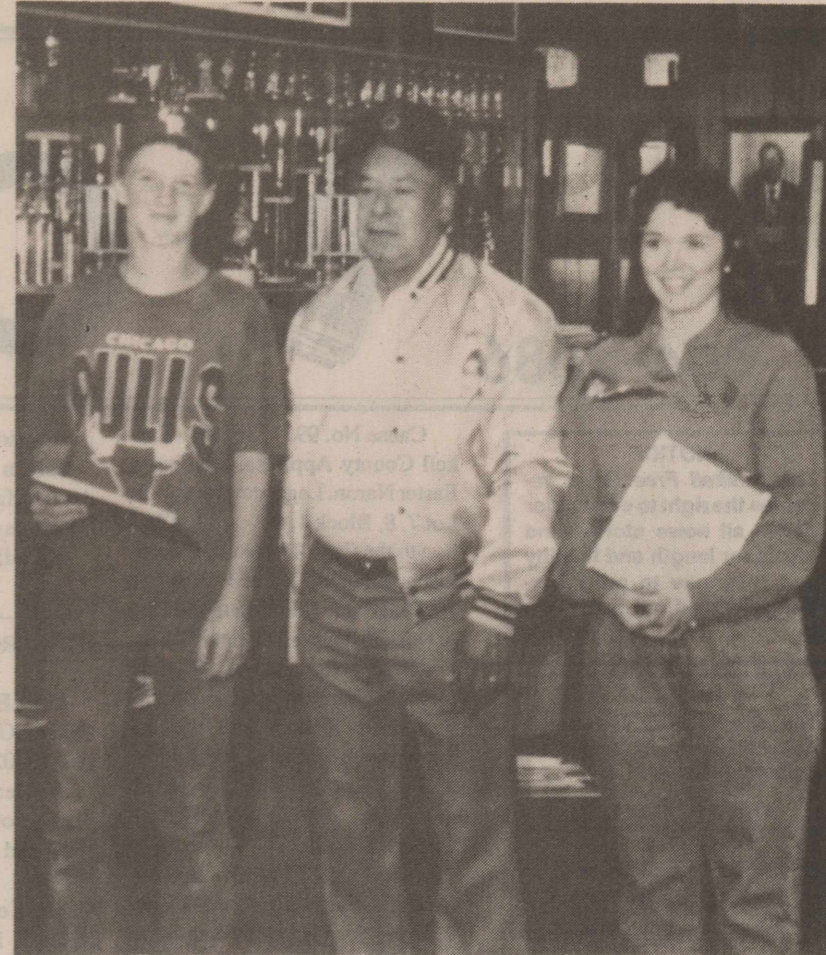
## Host families sought in Haskell area

How would you like to learn all about a foreign country's culture, traditions and lifestyle without every leaving your own home? Mary Mccorkle of the Dallas area, Local Coordinator for the AIFS Foundation's Academic Year in America (AYA) high school exchange program, is presently interviewing families in this part of Texas to host an international student during the 1995/96 school year.

Mccorkle has the applications of several boys and girls, aged 15-18, from Germany, Brazil, Hungary, Poland, Russia, Spain, or any one of 30 countries across the world. All have studied English, have their own spending money and full medical insurance.

Families who host AYA students have the unique opportunity to share their traditions and values with a foreign student, and in exchange learn the language and customs of another country. Interested families are invited to choose the boy or girl who would best fit with their lifestyles and interests, and hosting can be for 5 or 10 months. In addition, Host Families are awarded up to \$800 in scholarship funds to be used on certain travel/study abroad programs.

Whether you have young children, teenage children or no children, you may qualify as a Host Family if you can provide a bed, a place to study, two meals a day and, most importantly, an open heart. Interested families can find out more about hosting a student by contacting Mary Mccorkle at 214-348-5799, or Regional Director Katherine McDonald at 800-322-4678, ext. 5423.



**PRESENTS CERTIFICATES**—Joe Cortez, center, presents certificates to Brent Watson, left, and Jo Ann Watson, right, who completed the citizens training course provided by the Haskell Volunteer Fire Department. Instructors were Randy Shaw, Jerry Stocks, Bill Steele, Joey Hogan, Kenny Watson and Sam Watson.

## Deadline for filing in May 6 election closes

The deadline for filing for the May 6 election was Wednesday, Mar. 22 leaving some seats still open. Three Haskell city alderman seats are to be filled, those of Kenny Watson, Tony Burson and Iva Lee Gibson. Only one person, Mike Holson, had filed at press

time. On the Haskell School board, two places are vacant. Bob Aycock has filed for re-election in Place 6 and Melissa Robinson has filed for Place 1.

Two council seats and the mayor's office are open at Rochester. At press time there had been no filings. The Rochester School board has two vacancies and two people have filed, Bill Penman and Larry Short.

Three council seats, those of Earnie Carreon, James Marquis and Joyce Hester are to be filled at Rule. James Marquis has filed for re-election and Sydney Hester has filed for a seat. On the Rule School board, Steven Lehrman has filed in Place 1; three places are vacant.

Two council seats are vacant at Weinert. W.R. Hager has filed for re-election and Dwight Burgess, Fred Horan, Wade Raynes and Shane Stont have filed for a seat.

Election judges are Ann Druesedow at Haskell, Floyd Sterit at Weinert, Owen Aiken at Rochester and Jamie Pierce at Rule.



# Milk



**\$1.79**  
1 gal.

**Homo or Low Fat**



U.S.D.A. 7-Bone  
**Chuck Roast**

# 99¢

LB.

*Modern Way*  
1202 N. AVE. E  
**Haskell, Texas**

WE ACCEPT  
VISA, MASTERCARD  
AND DISCOVER

STORE HOURS: MON.-SAT. 7:30 A.M. TO 9 P.M.  
SUNDAY 8 A.M. TO 8 P.M.  
WE GLADLY ACCEPT FOOD STAMPS



### THE #1 NAME IN QUALITY COMPRESSION SPRAYERS!

Great for homeowner use. Extra-wide mouth. Pressure relief safety valve. Non-corrosive poly tank, pump, and valve with filter. 18" brass wand with adjustable nozzle. An outstanding value at only

1 1/2 Gallon	\$17.99
3 1/2 Gallon	\$24.99



(160601, 160603)

PRICES GOOD THRU APRIL 1st

## OSBORNES

VERNON (817) 552-7631	MUNDAY (817) 442-4851	STAMFORD (915) 773-5006
--------------------------	--------------------------	----------------------------



(NAPS)—Experts estimate that every newspaper sold in the U.S. today is seen by about two and a quarter persons. That quarter person probably just reads a section or two.

# Now! 24 HOUR

# ATM BANKING CONVENIENCE




## Haskell National Bank



Member FDIC

864-2631 • 601 N. 1st • Haskell, Tx 79521